

# Skating



Eugene Turner and Joan Tozzer

Official Publication of the United States Figure Skating Association

Vol. 17, No. 4

March, 1940

# United States Figure Skating Association

## *President*

JOSEPH K. SAVAGE  
48 Wall Street, New York, N. Y.

## *Honorary President*

A. WINSOR WELD  
Boston

## *First Vice-President*

CHARLES MYERS  
Philadelphia

## *Second Vice-President*

WALTER S. POWELL  
St. Louis

## *Secretary*

RICHARD L. HAPGOOD  
1 Telford St., Brighton Station  
Boston, Mass.

## *Treasurer*

HEATON R. ROBERTSON  
185 Church St., New Haven, Conn.

## EXECUTIVE COMMITTEE

### *The Officers and Chairmen of Standing Committees ex-officio*

| 1940*                | 1941                 | 1942                    |
|----------------------|----------------------|-------------------------|
| HOWARD P. EELLS, JR. | WILLIAM C. COLEMAN   | SHERWIN C. BADGER       |
| ROBERT H. FENN       | DAVID T. LAYMAN, JR. | JOHN K. EWING, 3rd      |
| JAMES L. MADDEN      | HARRY E. RADIX       | WILLIAM O. HICKOK, 4th  |
| ROY W. MCDANIEL      | CHARLES M. ROTCH     | WARREN THROOP           |
| ALEX YOUNG, JR.      | JOHN B. THAYER       | LYMAN E. WAKEFIELD, JR. |

\*Term of office ends at annual meeting of the year indicated

## CHAIRMEN OF STANDING COMMITTEES

### *Amateur Status*

CHARLES MYERS  
1421 Chestnut St., Philadelphia

### *Competitions and Rules*

BEDELL H. HARNED  
115 East 82nd St., New York

### *Membership*

CHARLES A. MCCARTHY  
6717 East End Ave., Chicago

### *Judges and Judging*

JOEL B. LIBERMAN  
342 Madison Ave., New York

### *Standards and Tests*

ROGER F. TURNER  
286 Central Ave., Milton, Mass.

### *Carnival and Exhibition Sanctions*

RICHARD L. HAPGOOD  
1 Telford St., Brighton Station, Boston

### *Records*

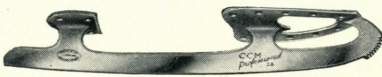
EDWARD E. DENNISTON  
Platt-LePage Aircraft Corp.  
Eddystone, Pa.

### *Publicity and Publications*

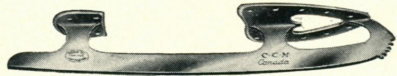
THERESA WELD BLANCHARD  
1 Telford St., Brighton Station, Boston

Association Office: 1 Telford Street, Brighton Station, Boston, Massachusetts

# CCM FIGURE SKATES



C C M Professional \$25.00  
 Sizes 9—12 (1-3 sizes)



C C M Canada \$15.00  
 Sizes 9—12 (1-3 sizes)



C C M Winter Club \$8.50  
 Sizes 9—12 (1-3 sizes)



C C M Pastime \$6.50  
 Sizes 9—12 (1-3 sizes)

PERFECTLY  
 PROPORTIONED



CORRECTLY  
 DESIGNED

C C M Junior \$5.00  
 Sizes 7, 7½, 8, 8½

**C C M INCORPORATED - Buffalo, N. Y.**



*Skate this Summer*

AT

*Lake Placid*

*in-the-Adirondacks*

**NINTH ANNUAL SUMMER ICE SEASON**

**JUNE 22 — SEPTEMBER 2**

(Season may be extended to Sept. 14 if sufficient requests)

**DANCE PERIOD — AUGUST 5-17**

**OTHER DATES IN APRIL ISSUE**

*For Information and Reservations — Write*

**THE SKATING CLUB OF LAKE PLACID**

**OLYMPIC ARENA, LAKE PLACID, N. Y.**

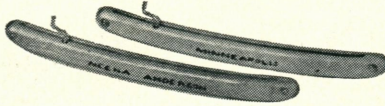
Please mention **SKATING** when answering advertisements.

## Barnard Guards

2183 Hendon Avenue

U. S. Patent No. 2,181,779

St. Paul, Minn.



Did you notice the Barnard Guards at the 1940 Nationals?

Most of the competitors certainly had them.

They are simple to order :-: Do it now!

Send your name and home town (to be burned into guards).

Also Size and make of blade, or a tracing of same.

Mailed to you 24 hours after receipt of order.

GUARANTEED SATISFACTORY

PRICE—\$2.50 the pair

Est. 1905

G. STANZIONE

*Custom Made Skating Shoes to Order*

Worn and recommended by the leading Amateur and Professional skaters the World over.

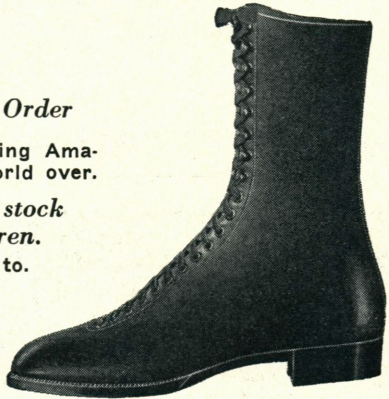
*We also carry Skating Shoes in stock for Men, Women, and Children.*

Mail orders promptly attended to.

Mail order blanks and catalogue sent upon request.

50 WEST 56th STREET

Telephone Circle 7-4517, New York



## STRAUSS



### Superior Figure Skates

The style leader for 25 years

Hardened by the one and only Strauss process and  
Absolutely guaranteed against breaking

Positively used by all leading amateur and professional skaters  
write for circular

MADE ONLY  
BY

**J. E. STRAUSS**

165 W. KELLOGG BLVD.  
ST. PAUL, MINN.

Please mention SKATING when answering advertisements.

# Skating

## EDITORS

Theresa Weld Blanchard, *Editor*  
Winfield A. Hird, *Managing Editor*

## EDITORIAL BOARD

Richard L. Hapgood   Olivia Stone Holmes   James L. Madden

## ADVISORY BOARD

William S. Bird, Frederick Goodridge, Mrs. Eduardo A. Hellmund,  
Mrs. Nellie Jensen, Joel B. Liberman, Roy W. McDaniel,  
Mrs. Pauline K. Neuman, Mrs. Harold L. Paige,  
Charles M. Rotch, Joseph K. Savage.

## CANADIAN ADVISORS

John S. MacLean   Arthur L. Dysart   Norman V. S. Gregory

## Contents

|   |    |
|---|----|
| United States Championships.....          | 5  |
| Canadian Championships.....               | 13 |
| 1939-40 Schedule.....                     | 17 |
| The New National Champion.....            | 19 |
| Fashions at the Nationals.....            | 20 |
| Skating on Rough Ice.....                 | 22 |
| Bennett and Kinney Suspended.....         | 23 |
| The Olympia Swing.....                    | 24 |
| Carnival Merry-Go-Round.....              | 26 |
| Middle Atlantic Championships.....        | 30 |
| United States Roller Championships.....   | 30 |
| Eastern States Championships.....         | 31 |
| California State Championships.....       | 36 |
| Western Ontario Regional Competition..... | 36 |
| Personals.....                            | 37 |
| Rockers and Counters.....                 | 38 |

SKATING, copyright 1940, by the U. S. F. S. A. in the U. S. A. Title Registered in U. S. Patent Office. Published six times a year: October, December, January, March, April and May: by the United States Figure Skating Association, 1 Telford St., Boston, Mass. Entered as second class matter October 25, 1939 at the post office at Boston, Mass., under the Act of March 3, 1879. Single Copy 50 cents, Subscription \$2.00. Address: SKATING, 1 Telford St., Brighton Sta., Boston, Mass.



*Photos loaned by the Cleveland Skating Club*

#### AT THE NATIONALS

Top Left: Cleveland girls and Gene Turner  
 Top Right: Mr. Hartshorne and Miss Macdonald  
 Center Left: Bobby Specht, Junior Champion  
 Center Right: Heddy Stenuf and Skippy Baxter  
 Left: Joan Tozzer, Double Winner  
 Above: Bedell H. Harned and H. P. Eells, Jr.

# The United States Championships

PETER REED

## *The Cleveland Skating Club*

THE 1940 NATIONAL CHAMPIONSHIPS, held at the Cleveland Skating Club February 9 and 10, produced the largest field ever to enter a national competition. A large delegation from the West Coast made its presence felt by winning the Men's Senior Singles and Ladies' Junior Singles as well as placing well up on the list in other events. The number of entries from Boston, New York, Philadelphia, Chicago and St. Paul were larger than in previous years. As a result, the skating at Cleveland was the finest that a national competition has yet brought forth, and the contest for top honors was close and hard fought in every class.

Particularly noticeable was the improvement in the Novice and Junior classes, which augers well for faster and closer Senior competition in future years. Especially fine, in both quantity and quality, were the entries in the Men's Novice and Junior.

The competitions were run off in two days, and to the amazement of even the officials in charge they were completed on schedule. To do this it was necessary to commence school figures at 8 o'clock Friday and Saturday mornings because of the large number of entries in the Novice and Junior divisions. But the judges stayed faithfully at their tasks and the work was concluded without rush or confusion, even though the evening intermission on Friday and the noon intermission on Saturday were used.

The Cleveland Skating Club arranged galleries and bleachers around its ice accommodating about 1400 spectators and the galleries were filled both nights, despite the fact that Saturday night presented us with a brand of weather which was, as the Californians would say, "very unusual." Throughout the two-day siege, the audience was appreciative and responded wholeheartedly.

The rivalries in both Ladies' and Men's Seniors were worthy of note. Especially brilliant was the duel between Joan Tozzer and Heddy Stenuf for the Ladies' Senior crown. By virtue of a commanding lead in school figures, Miss Tozzer was able to withstand Miss Stenuf's free skating assault and retain her title.

As Robin Lee turned professional last November, the Men's Senior contest was wide open. This turned out to be a beautiful two-man battle between Ollie Haupt, Jr. of St. Louis, last year's runner-up, and Eugene

LADIES' SINGLES FOR GERTRUDE CHEEVER PORTER TROPHY

Judges: I, Mr. Cary, Philadelphia; II, Mr. Christensen, St. Paul; III, Mr. McCarthy, Chicago; IV, Mr. Rotch, Boston; V, Mr. Savage, New York.

|   | I | II | III | IV | V | Totals |
|---|---|----|-----|----|---|--------|
| 1. Joan Tozzer<br><i>The Skating Club of Boston</i>           | 1 | 1  | 2   | 1  | 2 | 7      |
| 2. Heddy Stenuf<br><i>Figure Skating Club of Chicago</i>      | 2 | 2  | 1   | 2  | 1 | 8      |
| 3. Jane Vaughn<br><i>Philadelphia S. C. &amp; H. S.</i>       | 3 | 4  | 3   | 4  | 4 | 18     |
| 4. Gretchen Merrill<br><i>The Skating Club of Boston</i>      | 4 | 3  | 5   | 3  | 5 | 20     |
| 5. Charlotte Walther<br><i>The Skating Club, Inc. (N. Y.)</i> | 5 | 5  | 4   | 5  | 3 | 22     |
| 6. Dorothy Snell<br><i>Washington Figure Skating Club</i>     | 6 | 6  | 6   | 6  | 6 | 30     |

MEN'S SINGLES FOR GEORGE H. BROWNE MEMORIAL BOWL

Judges: I, Mr. Cary, Philadelphia; II, Mrs. Harned, New York; III, Mr. Liberman, New York; IV, Mr. McCarthy, Chicago; V, Mr. Rotch, Boston.

|   | I | II | III | IV | V | Totals |
|---|---|----|-----|----|---|--------|
| 1. Eugene Turner<br><i>Los Angeles Figure Skating Club</i>        | 1 | 1  | 1   | 2  | 1 | 6      |
| 2. Ollie E. Haupt, Jr.<br><i>St. Louis Skating Club</i>           | 2 | 2  | 2   | 1  | 2 | 9      |
| 3. Skippy Baxter<br><i>Figure Skating Club of Chicago</i>         | 3 | 3  | 3   | 3  | 3 | 15     |
| 4. Arthur R. Vaughn, Jr.<br><i>Philadelphia S. C. &amp; H. S.</i> | 4 | 4  | 4   | 4  | 4 | 20     |
| 5. William J. Nagle<br><i>Brooklyn Figure Skating Club</i>        | 5 | 5  | 5   | 5  | 5 | 25     |

Ed. Note—The reason for any ranking not obvious at first glance can be found by studying "the winner rule" on Pages 28, 29, 30 of U.S.F.S.A. RULES AND REGULATIONS FOR COMPETITIONS.

Turner, the challenger from Los Angeles. Seldom has a competition seen two such fine performances. By a close margin Gene Turner climaxed his seven years of skating with victory, and the crown went West.

Ramona Allen, twelve-year-old entry from Oakland, was successful in the Ladies' Junior. Betsy Nichols and Roberta Jenks, both from The Skating Club of Boston and both fifteen years old, took second and third places in this class. Their excellent showing this year is a sure indication that future Senior competitions will develop some really fine skating.

Bobbie Specht of Chicago stepped up from first place in the Novice (last year) to top position in the Men's Junior, but only after being hard pressed by both Sheldon and Murray Galbraith of San Francisco. The Senior division may well bear these names in mind for future reference.



## LADIES' JUNIOR

Judges: I, Miss Azbe, St. Louis; II, Mr. Cary, Philadelphia; III, Mrs. Cramer, New York; IV, Mr. Hill, Boston; V, Mr. Kelley, Cleveland.

|  | I  | II | III | IV | V  | Totals |
|--|----|----|-----|----|----|--------|
| 1. Ramona Allen<br><i>Oakland Figure Skating Club</i>            | 1  | 1  | 1   | 2  | 1  | 6      |
| 2. Betsy Nichols<br><i>The Skating Club of Boston</i>            | 3  | 2  | 6   | 1  | 2  | 14     |
| 3. Roberta Jenks<br><i>The Skating Club of Boston</i>            | 4  | 3  | 3   | 3  | 3  | 16     |
| 4. Dorothy Glazier<br><i>The Skating Club of Boston</i>          | 2  | 6  | 7   | 4  | 5  | 24     |
| 5. Barbara Ann Gingg<br><i>St. Moritz (Oakland)</i>              | 6  | 4  | 4   | 5  | 9  | 28     |
| 6. Phebe Tucker<br><i>The Skating Club, Inc. (N. Y.)</i>         | 7  | 8  | 2   | 6  | 12 | 35     |
| 7. Yvonne Sherman<br><i>The Skating Club, Inc. (N. Y.)</i>       | 12 | 5  | 5   | 11 | 7  | 40     |
| 8. Dorothy B. Lee<br><i>Sunday Skating Club (N. Y.)</i>          | 8  | 13 | 10  | 8  | 8  | 47     |
| 9. Shirley Bowman<br><i>St. Paul Figure Skating Club</i>         | 9  | 7  | 11  | 9  | 4  | 40     |
| 10. Joan Mitchell<br><i>Figure Skating Club of Chicago</i>       | 5  | 10 | 8   | 10 | 10 | 43     |
| 11. Mary Louise Premer<br><i>St. Paul Figure Skating Club</i>    | 11 | 9  | 9   | 7  | 6  | 42     |
| 12. Marjory E. Newell<br><i>Arena Skating Club (Minneapolis)</i> | 10 | 11 | 13  | 13 | 11 | 58     |
| 13. Gloria Haupt<br><i>St. Louis Skating Club</i>                | 13 | 12 | 12  | 12 | 13 | 62     |

## MEN'S JUNIOR

Judges: I, Mr. Christensen, St. Paul; II, Mrs. Cramer, New York; III, Dr. Creig, Cleveland; IV, Mr. McCarthy, Chicago; V, Mr. Rotch, Boston.

|   | I | II | III | IV | V | Totals |
|---|---|----|-----|----|---|--------|
| 1. Bobby Specht<br><i>Figure Skating Club of Chicago</i>            | 1 | 1  | 2   | 1  | 2 | 7      |
| 2. Murray Galbraith<br><i>Skate &amp; Ski Club (San Francisco)</i>  | 3 | 2  | 1   | 2  | 1 | 9      |
| 3. Sheldon Galbraith<br><i>Skate &amp; Ski Club (San Francisco)</i> | 2 | 3  | 3   | 3  | 3 | 14     |
| 4. Arthur F. Preusch, Jr.<br><i>St. Paul Figure Skating Club</i>    | 4 | 4  | 4   | 4  | 4 | 20     |
| 5. Robert Uppgren<br><i>St. Paul Figure Skating Club</i>            | 6 | 5  | 5   | 5  | 6 | 27     |
| 6. Robert F. Premer<br><i>St. Paul Figure Skating Club</i>          | 5 | 6  | 6   | 6  | 5 | 28     |

Caroline Brandt, competing in her home town on the ice of her own club, carried off top honors in the Ladies' Novice from the largest field ever entered in that event. In the Men's Novice, William Grimditch, Jr., of Philadelphia won first place from a long list of promising contestants. In this division it was very encouraging to witness the interest the coming generation of skaters are taking in the sport.

In the Senior Pairs Heddy Stenuf and Skippy Baxter made a strong bid.

#### LADIES' NOVICE

Judges: I, Miss Azbe, St. Louis; II, Mrs. Cramer, New York; III, Mr. Kelley, Cleveland; IV, Mr. Liberman, New York; V, Mr. Rotch, Boston.

|  | I | II | III | IV | V | Totals        |
|--|---|----|-----|----|---|---------------|
| 1. Caroline Brandt<br><i>Cleveland Skating Club</i>            | 1 | 1  | 1   | 1  | 1 | 5             |
| 2. Jannette Ahrens<br><i>St. Paul Figure Skating Club</i>      | 3 | 2  | 4   | 7  | 2 | 18            |
| 3. Hildegard Balmain<br><i>The Skating Club, Inc. (N. Y.)</i>  | 5 | 3  | 6   | 2  | 5 | 21            |
| 4. Jean Sturgeon<br><i>All Year F. S. C. (Los Angeles)</i>     | 2 | 6  | 2   | 4  | 7 | 21            |
| 5. Joanne Frazier<br><i>Cleveland Skating Club</i>             | 7 | 5  | 3   | 3  | 4 | 22<br>(277.2) |
| 6. Suzanne Uksila<br><i>Elysium F. S. C. (Cleveland)</i>       | 4 | 4  | 7   | 5  | 3 | 23<br>(276.0) |
| 7. Donna Atwood<br><i>Los Angeles F. S. C.</i>                 | 6 | 7  | 5   | 6  | 8 | 32            |
| 8. Amey Miller<br><i>Ice Club of Baltimore</i>                 | 8 | 8  | 8   | 8  | 6 | 38            |
| 9. Leslie Glazier, <i>The Skating Club of Boston</i>           |   |    |     |    |   |               |
| 10. Fay Kirby, <i>The Skating Club of Boston</i>               |   |    |     |    |   |               |
| 11. Janet McGean, <i>Cleveland Skating Club</i>                |   |    |     |    |   |               |
| 12. Marcella May, <i>Skate and Ski Club, San Francisco</i>     |   |    |     |    |   |               |
| 13. Barbara Barnard, <i>St. Paul Figure Skating Club</i>       |   |    |     |    |   |               |
| 14. Joan Coffman, <i>The Skating Club, Inc., New York</i>      |   |    |     |    |   |               |
| 15. Jeanne Peterson, <i>Figure Skating Club of Minneapolis</i> |   |    |     |    |   |               |
| 16. Barbara Raymond, <i>Figure Skating Club of Chicago</i>     |   |    |     |    |   |               |
| 17. Margaret Grant, <i>St. Paul Figure Skating Club</i>        |   |    |     |    |   |               |
| 18. Patricia Robb, <i>St. Paul Figure Skating Club</i>         |   |    |     |    |   |               |
| 19. Jeanne Drouillard, <i>Cleveland Skating Club</i>           |   |    |     |    |   |               |
| 20. Geraldine Nuhfer, <i>Elysium Figure Skating Club</i>       |   |    |     |    |   |               |
| 21. Priscilla Stimson, <i>Niagara Falls Skating Club</i>       |   |    |     |    |   |               |
| 22. Joan Yocum, <i>Figure Skating Club of Chicago</i>          |   |    |     |    |   |               |
| 23. Ann Thoburn, <i>Cleveland Skating Club</i>                 |   |    |     |    |   |               |
| 24. Sylvia Van Ness, <i>The Skating Club of Boston</i>         |   |    |     |    |   |               |
| 25. Grace Eddy, <i>The Skating Club of Boston</i>              |   |    |     |    |   |               |

MEN'S NOVICE

Judges: I, Miss Azbe, St. Louis; II, Dr. Carson, Cleveland; III, Mr. Cary, Philadelphia; IV, Mr. Hill, Boston; V, Mr. Savage, New York.

|   | I | II | III | IV | V | Totals        |
|---|---|----|-----|----|---|---------------|
| 1. William H. Grimditch, Jr.<br><i>Philadelphia S. C. &amp; H. S.</i> | 1 | 3  | 1   | 2  | 1 | 8             |
| 2. Edward Le Maire<br><i>The Skating Club, Inc. (N. Y.)</i>           | 3 | 8  | 2   | 1  | 2 | 16            |
| 3. Meryl Baxter<br><i>Oakland F. S. C.</i>                            | 2 | 6  | 3   | 5  | 3 | 19            |
| 4. Warren Goodman<br><i>International F. S. C. (Phil.)</i>            | 9 | 5  | 4   | 4  | 4 | 26            |
| 5. George G. Miller<br><i>Ice Club of Baltimore</i>                   | 5 | 2  | 6   | 8  | 8 | 29<br>(274.6) |
| 6. George Monnier<br><i>Skate &amp; Ski Club (San Francisco)</i>      | 6 | 4  | 7   | 7  | 5 | 29<br>(273.5) |
| 7. Wally Sahlin<br><i>F. S. C. of Minneapolis</i>                     | 7 | 7  | 8   | 6  | 6 | 34            |
| 8. Huntington Blair<br><i>Cleveland S. C.</i>                         | 8 | 1  | 9   | 5  | 9 | 32            |
| 9. Bruce Sheffer<br><i>St. Paul Figure Skating Club</i>               | 4 | 9  | 5   | 9  | 7 | 34            |
| 10. James W. Potts, <i>Cleveland Skating Club</i>                     |   |    |     |    |   |               |
| 11. Paul Pavliska, <i>Elysium Figure Skating Club (Cleveland)</i>     |   |    |     |    |   |               |
| 12. Richard W. More, <i>Buffalo Skating Club</i>                      |   |    |     |    |   |               |
| 13. Le Roy H. Lindgren, <i>Figure Skating Club of Chicago</i>         |   |    |     |    |   |               |
| 14. James Greene, <i>Cleveland Skating Club</i>                       |   |    |     |    |   |               |
| 15. Tommy Vail, <i>Cleveland Skating Club</i>                         |   |    |     |    |   |               |
| 16. John Foster, <i>Cleveland Skating Club</i>                        |   |    |     |    |   |               |
| 17. John Allen Leith, <i>The Skating Club of Boston</i>               |   |    |     |    |   |               |
| 18. Tommy Atchison, <i>Niagara Falls Figure Skating Club</i>          |   |    |     |    |   |               |

In accordance with the Elimination Rule in Novice Championships, only eight completed these competitions. The others were ranked in the above order on their school figures.

Their routine was startling and gives promise of a strong challenge next year, but the defending team of Joan Tozzer and M. Bernard Fox of Boston retained their laurels, giving a lovely program with the same smooth, flowing perfection of performance that won them the crown last year.

Boston was also successful in the Junior Pairs. Dorothy Glazier and Stephen Tanner placed just ahead of Nettie Prantel and George Boltres of New York. Third position went to the interesting father and daughter combination of Jean and Robert Matzke of Philadelphia.

Harold Hartshorne and Sandy Macdonald gave a flawless exhibition of the dance steps that won for them not only high scores, but also the applause

PAIRS FOR HENRY W. HOWE MEMORIAL CUP

Judges: I, Mr. Christensen, St. Paul; II, Mr. Harned, New York; III, Mr. Liberman, New York; IV, Mr. Rotch, Boston; V, Mr. Savage, New York.

|   | I | II | III | IV | V | Totals |
|---|---|----|-----|----|---|--------|
| 1. Joan Tozzer<br>M. Bernard Fox<br><i>The Skating Club of Boston</i>             | 2 | 1  | 1   | 1  | 1 | 6      |
| 2. Heddy Stenuf<br>Skippy Baxter<br><i>Figure Skating Club of Chicago</i>         | 1 | 2  | 2   | 2  | 2 | 9      |
| 3. Mr. and Mrs. William H. Bruns, Jr.<br><i>Bear Mountain Figure Skating Club</i> | 3 | 4  | 4   | 3  | 3 | 17     |
| 4. Nancy Follett<br>Roger F. Turner<br><i>The Skridsko Club</i>                   | 4 | 3  | 3   | 4  | 4 | 18     |

JUNIOR PAIRS

Judges: I, Mr. Christensen, St. Paul; II, Mrs. Harned, New York; III, Mr. McCarthy, Chicago; IV, Mr. Savage, New York; V, Mrs. Blanchard, Boston.

|   | I  | II | III | IV | V | Totals |
|---|----|----|-----|----|---|--------|
| 1. Dorothy Glazier<br>Stephen Tanner<br><i>The Skating Club of Boston</i>             | 1  | 2  | 1   | 3  | 1 | 8      |
| 2. Nettie C. Prantel<br>George R. Boltres<br><i>The Skating Club, Inc. (N. Y.)</i>    | 2½ | 4  | 2   | 1  | 2 | 11½    |
| 3. Jean H. Matzke<br>Robert R. Matzke<br><i>Philadelphia S. C. &amp; H. S.</i>        | 2½ | 1  | 3   | 2  | 3 | 11½    |
| 4. Mrs. Howard E. Wilkinson<br>Dr. Howard E. Wilkinson<br><i>Buffalo Skating Club</i> | 4  | 3  | 5   | 4  | 4 | 20     |
| 5. Joanne Frazier<br>James Greene<br><i>Cleveland Skating Club</i>                    | 5  | 5  | 4   | 5  | 5 | 24     |
| 6. Angeline Knapp<br>Dr. J. N. Pike<br><i>Figure Skating Club of Minneapolis</i>      | 7  | 6  | 6   | 6  | 8 | 33     |
| 7. Suzanne Uksila<br>Paul Pavliska<br><i>Elysium Figure Skating Club</i>              | 8  | 7  | 7   | 8  | 6 | 36     |
| 8. Mrs. Dorothy Beymer<br>Ralph Beymer<br><i>Seattle Skating Club, Inc.</i>           | 6  | 8  | 8   | 7  | 7 | 36     |

Mr. Edward E. Denniston, Chairman of the Records Committee, has prepared copies of all marks, which have been sent to all competitors and officials. Others may have copies from Mr. Denniston, Platt-LePage Aircraft Corp., Eddystone, Pa., upon request.

FOURS FOR HENRY WAINWRIGHT HOWE TROPHY

Judges: I, Mr. Harned, New York; II, Mr. Hill, Boston; III, Mr. Liberman, New York; IV, Mr. Rotch, Boston; V, Mr. Savage, New York.

|   | I | II | III | IV | V | Totals |
|---|---|----|-----|----|---|--------|
| 1. <i>St. Paul Figure Skating Club</i><br>(Jannette Ahrens, Mary Louise Premer, Robert Uppgren and Lyman E. Wakefield, Jr.)                                 | 1 | 1  | 1   | 1  | 2 | 6      |
| 2. <i>Philadelphia Skating Club and Humane Society</i><br>(Mary Stuart Dayton, Annah McKaig Hall, William Weaver Lukens, Jr. and W. Penn-Gaskill Hall, 3rd) | 2 | 2  | 2   | 2  | 1 | 9      |

DANCE FOR HARRY E. RADIX CUP

Judges: I, Mr. Savage, New York; II, Mrs. Blanchard, Boston; III, Mr. Lukens, Philadelphia; IV, Dr. Creig, Cleveland; V, Mrs. Harned, New York.

|   | I | II | III | IV | V | Totals |
|---|---|----|-----|----|---|--------|
| 1. Sandy Macdonald<br>Harold Hartshorne<br><i>The Skating Club, Inc. (N. Y.)</i>  | 1 | 1  | 1   | 1  | 1 | 5      |
| 2. Nettie C. Prantel<br>George R. Boltres<br><i>The Skating Club, Inc. (N. Y.)</i>  | 2 | 3  | 2   | 3  | 2 | 12     |
| 3. Vernafay Thysell<br><i>Fargo Winter Club (No. Dakota)</i><br>Paul F. Harrington<br><i>Commonwealth F. S. C. (Boston)</i> | 3 | 2  | 3   | 2  | 3 | 13     |
| 4. Barbara Ann Gingg<br>J. Drexel Gibbins<br><i>St. Moritz Ice Skating Club (Oakland)</i>                                   | 4 | 4  | 4   | 4  | 4 | 20     |

BEDELL H. HARNED TROPHY FOR CLUB SCORING MOST POINTS IN CHAMPIONSHIPS

|                                     |    |
|-------------------------------------|----|
| 1. The Skating Club of Boston       | 55 |
| 2. The Skating Club, Inc., New York | 35 |
| 3. Figure Skating Club of Chicago   | 34 |

of the spectators. There was a larger field in the dance events this year indicating a growing interest in this branch of skating.

It was encouraging to have a new Four entered, the St. Paul team. Coached by Bud Wilson, they gave an excellent performance and won over the Philadelphia quartet despite the fact that this team has greatly improved.

The whole affair wound up with the taking of news reel movies of the champions in action immediately following the contest, and a supper dance at the Wade Park Manor.



*Alexandra Studio*

SINGLES AND PAIR CHAMPIONS OF CANADA  
Norah McCarthy and Ralph McCreath  
*Toronto Skating Club*

# The Canadian Championships

JOAN PARKINS

*The Minto Skating Club, Ottawa*

THE MINTO SKATING CLUB held the interest of all figure skating enthusiasts Friday and Saturday, January 19 and 20, when the Canadian Championships took place there. All competitions have their surprises and this proved to be no exception when Norah McCarthy of the Toronto Skating Club was crowned Lady Champion of Canada defeating Mary Rose Thacker, last year's Canadian and North American Champion, and eleven-year-old Barbara Ann Scott of the Minto Skating Club captured the Junior title. Keen competition marked all events.

The Junior Championships were held on Friday and by evening Audrey Joyce of The Winter Club, Montreal, held the lead in the Ladies' event, with Barbara Ann Scott of The Minto Club second. Denis Ross of The Minto Club led the Junior men followed closely by Michael Kirby of the Toronto Skating Club.

The free skating in the evening held the spot light. Denis Ross gave an excellent exhibition which placed the half-won crown securely on his head. His spins and jumps together with his excellent foot-work gave his program plenty of dash. Michael Kirby's free skating is if anything more exciting to watch than Ross's as his jumps are high and very spectacular. John Milson, also of the Toronto Skating Club, gave a very good performance.

The Junior Ladies were all very strong free skaters. Audrey Joyce gave a very finished performance but her program lacked the contents which Barbara Ann's excelled in. She does everything including a double Salchow and three Axels in a row. Her excellent performance placed her ahead of Audrey Joyce. Christine Newson's free skating was a joy to watch.

The Junior Pairs were won by Michael Kirby and Shirley Halsted of the Toronto Skating Club with Margaret Wilson and Peter Killam close behind them.

IN THE LADIES' SENIOR competition the compulsory figures were concluded with Mary Rose Thacker taking a sharp lead over Norah McCarthy. Therese McCarthy, last year's Junior Champion, was third. Ralph McCreath led his two rivals, Donald Gilchrist and Wingate Snaith, all the way in the Men's Senior event.

In the free skating Eleanor O'Meara gave a marvellous performance.

### JUNIOR MEN'S FOR THE HOWARD CUP

Judges: I, Mr. G. M. Patterson, Winter Club, Montreal; II, Mr. J. Z. Machado, Toronto Skating Club; III, Mr. M. F. Rogers, Minto Skating Club, Ottawa; IV, Mr. G. M. Bleakney, Minto Skating Club, Ottawa; V, Mr. D. H. Nelles, Minto Skating Club, Ottawa.

|  | I | II | III | IV | V | Totals |
|--|---|----|-----|----|---|--------|
| 1. Denis Ross<br><i>Minto Skating Club, Ottawa</i> | 1 | 2  | 1   | 1  | 1 | 6      |
| 2. Michael Kirby<br><i>Toronto Skating Club</i>    | 2 | 1  | 2   | 2  | 2 | 9      |
| 3. John Milsom<br><i>Toronto Skating Club</i>      | 3 | 3  | 3   | 3  | 3 | 15     |

### JUNIOR LADIES' FOR THE HOWARD TROPHY

Judges: I, Mr. G. M. Patterson, Winter Club, Montreal; II, Mr. J. Z. Machado, Toronto Skating Club; III, Mr. M. F. Rogers, Minto Skating Club, Ottawa; IV, Mr. N. V. S. Gregory, Winter Club, Montreal; V, Mr. D. H. Nelles, Minto Skating Club, Ottawa.

|   | I | II | III | IV | V | Totals |
|---|---|----|-----|----|---|--------|
| 1. Barbara Ann Scott<br><i>Minto Skating Club, Ottawa</i> | 1 | 2  | 1   | 2  | 1 | 7      |
| 2. Audrey Joyce<br><i>Winter Club, Montreal</i>           | 2 | 3  | 2   | 1  | 4 | 12     |
| 3. Christine Newson<br><i>Toronto Skating Club</i>        | 4 | 1  | 3   | 4  | 2 | 14     |
| 4. Gwynneth Steeves<br><i>Minto Skating Club, Ottawa</i>  | 6 | 4  | 4   | 6  | 3 | 23     |
| 5. Elizabeth Gaunt<br><i>Winter Club, Montreal</i>        | 3 | 5  | 5   | 3  | 7 | 23     |
| 6. Joan McNeil<br><i>Minto Skating Club, Ottawa</i>       | 5 | 6  | 6   | 5  | 5 | 27     |
| 7. Shirley Halsted<br><i>Toronto Skating Club</i>         | 7 | 7  | 7   | 7  | 6 | 34     |
| 8. Florence McNamara<br><i>Granite Club, Toronto</i>      | 8 | 8  | 8   | 8  | 8 | 40     |

### SENIOR MEN'S FOR THE MINTO CUP

Judges: I, Mr. G. M. Patterson, Winter Club, Montreal; II, Mr. J. Z. Machado, Toronto Skating Club; III, Mr. M. F. Rogers, Minto Skating Club, Ottawa; IV, Mr. John S. MacLean, Toronto Skating Club; V, Mr. D. H. Nelles, Minto Skating Club, Ottawa.

|  | I | II | III | IV | V | Totals |
|--|---|----|-----|----|---|--------|
| 1. Ralph McCreath<br><i>Toronto Skating Club</i>   | 1 | 1  | 1   | 1  | 1 | 5      |
| 2. Donald Gilchrist<br><i>Toronto Skating Club</i> | 2 | 2  | 2   | 2  | 2 | 10     |
| 3. Wingate Snaith<br><i>Winter Club, Montreal</i>  | 3 | 3  | 3   | 3  | 3 | 15     |



SENIOR LADIES' FOR THE DEVONSHIRE CUP

Judges: I, Mr. G. M. Patterson, Winter Club, Montreal; II, Mr. J. Z. Machado, Toronto Skating Club; III, Mr. M. F. Rogers, Minto Skating Club, Ottawa; IV, Mr. John S. MacLean, Toronto Skating Club; V, Mr. D. H. Nelles, Minto Skating Club, Ottawa.

|   | I | II | III | IV | V | Totals |
|---|---|----|-----|----|---|--------|
| 1. Norah McCarthy<br><i>Toronto Skating Club</i>    | 2 | 1  | 1   | 2  | 2 | 8      |
| 2. Mary Rose Thacker<br><i>Winnipeg Winter Club</i> | 1 | 2  | 2   | 1  | 3 | 9      |
| 3. Eleanor O'Meara<br><i>Toronto Skating Club</i>   | 3 | 3  | 3   | 4  | 1 | 14     |
| 4. Therese McCarthy<br><i>Toronto Skating Club</i>  | 4 | 4  | 4   | 3  | 4 | 19     |
| 5. Virginia Wilson<br><i>Granite Club, Toronto</i>  | 5 | 6  | 6   | 5  | 5 | 27     |
| 6. Eleanor Wilson<br><i>Granite Club, Toronto</i>   | 6 | 5  | 5   | 6  | 6 | 28     |

SENIOR PAIRS FOR THE MINTO CUPS

Judges: I, Mr. G. M. Patterson, Winter Club, Montreal; II, Mr. J. Z. Machado, Toronto Skating Club; III, Mr. M. F. Rogers, Minto Skating Club, Ottawa; IV, Mr. John S. MacLean, Toronto Skating Club; V, Mr. D. H. Nelles, Minto Skating Club, Ottawa.

|   | I | II | III | IV | V | Totals |
|---|---|----|-----|----|---|--------|
| 1. Norah McCarthy<br>Ralph McCreath<br><i>Toronto Skating Club</i>    | 1 | 1  | 1   | 1  | 1 | 5      |
| 2. Christine Newson<br>Sandy McKechnie<br><i>Toronto Skating Club</i> | 2 | 2  | 2   | 3  | 3 | 12     |
| 3. Eleanor O'Meara<br>Donald Gilchrist<br><i>Toronto Skating Club</i> | 3 | 3  | 3   | 2  | 2 | 13     |

JUNIOR PAIRS FOR THE DYSART CUPS

(No judges' names given on official report.—Ed.)

|  | I | II | III | IV | V | Totals |
|--|---|----|-----|----|---|--------|
| 1. Shirley Halsted<br>Michael Kirby<br><i>Toronto Skating Club</i> | 1 | 2  | 1   | 1  | 2 | 7      |
| 2. Margaret Wilson<br>Peter Killam<br><i>Toronto Skating Club</i>  | 2 | 1  | 2   | 3  | 1 | 9      |
| 3. Helen Malcolm<br>Peter Stranger<br><i>Winter Club, Montreal</i> | 3 | 3  | 3   | 2  | 3 | 14     |

Skating a wonderfully polished program her solo was almost perfection and she was placed first in the free skating. Her performance lifted her from fourth to third place in the final tabulation. Norah McCarthy also gave a splendid exhibition with all the most difficult jumps and spins executed with ease and smoothness. Mary Rose Thacker, while giving an excellent program, was not at the top of her form on Saturday evening and a fall on a difficult jump did not help any. Her third in this section of the competition did not seem so far behind the others in marks as to spell defeat in the grand aggregate. However, the placings by the five judges were what counted and she received two firsts, two seconds and a third to Norah's two firsts and three seconds.

Ralph McCreath excelled himself in his free skating program. With all the ease in the world his Axel, double loop and Salchow jumps took him off the ice at a breath-taking height and in these he lighted on the ice as light as a feather. Donald Gilchrist and Wingate Snaith both gave excellent programs.

THERE WERE THREE entries in the Senior Pair Championship and all were from Toronto. Norah McCarthy and Ralph McCreath skated flawlessly to retain their title. Their beautiful lifts and difficult jumps done in perfect unison drew rounds of applause. Christine Newson and Sandy McKechnie came a close second. Their lifts were particularly good. Donald Gilchrist and Eleanor O'Meara, a new combination, gave a very smooth performance.

The Toronto Four (Ruth Hall, Elizabeth Chambers, William Calder and John Milson) was the only entry, thus winning the title.

Mr. and Mrs. Donald B. Cruikshank retained their Waltz title with Mrs. Elmore Davis and Melville Rogers second. The Tenstep was won by Mrs. Elmore Davis and Melville Rogers with Eleanor O'Meara and Donald Gilchrist second.

### Titles: Check Well Before Using

Many times in the advance publicity on club carnivals, and in the programs printed by clubs for their carnivals and exhibitions, the titles of participating skaters are incorrectly given—always with resulting complications or bad feeling from those concerned. For the sake of just treatment of title-holders, both amateur and professional, it is only fair that club carnival committees and club officers exercise care in publishing the titles of skaters in their shows. In reply to numerous requests, the *Carnival and Sanctions Committee* asks that clubs check all titles before using them.

## 1939-40 Schedule

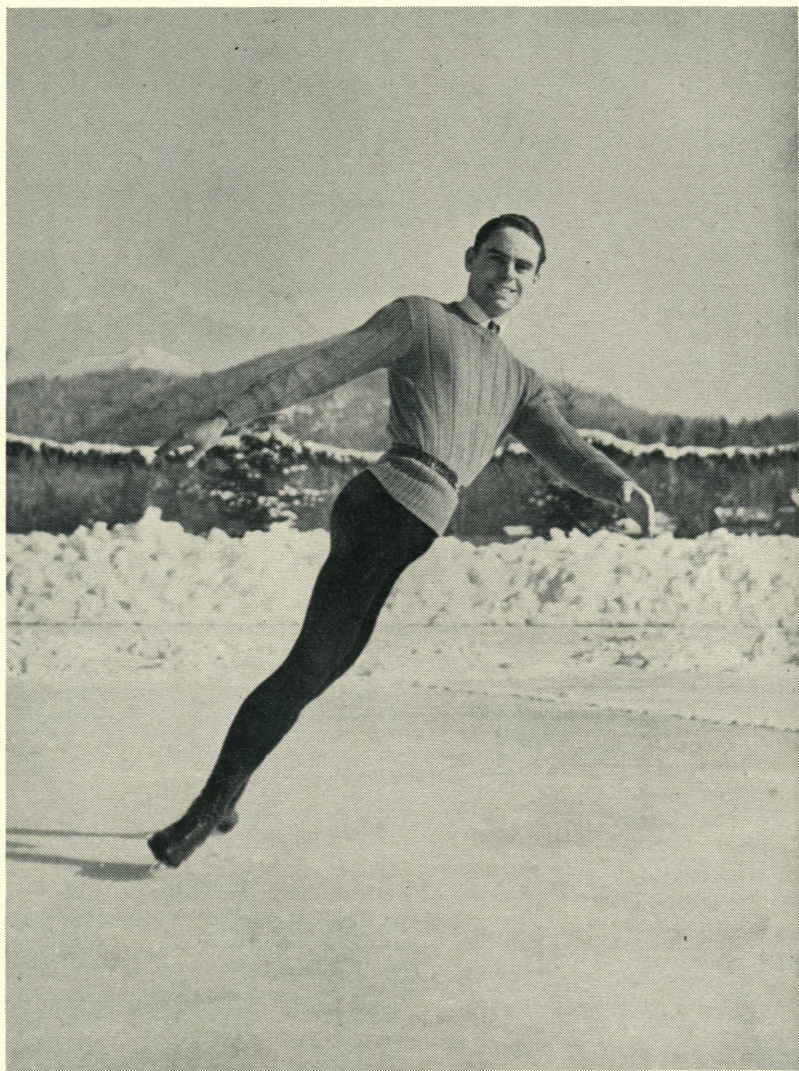
|                      |   |
|----------------------|---|
| March 1-2            | Imperial Figure Skating Club Carnival               |
| March 1-2            | Saskatoon Skating Club Carnival                     |
| March 1-2            | Philadelphia Skating Club & Humane Society Carnival |
| March 7-8-9-10       | The Skating Club of Boston Carnival                 |
| March 8-9            | Figure Skating Club of Northern New Jersey Carnival |
| March 8-9            | Flin Flon Figure Skating Club (Manitoba) Carnival   |
| March 9-10           | Rye Figure Skating Club Carnival                    |
| March 11-12-13       | Skate and Ski Club (San Francisco) Carnival         |
| March 12-13-14-15    | Toronto Skating Club Carnival                       |
| March 15-16          | Hershey Figure Skating Club Carnival                |
| March 15-16          | New Haven Skating Club Carnival                     |
| March 16             | Sun Valley Carnival                                 |
| March 23-24-25-26-27 | The Skating Club, Inc., New York, Carnival          |
| March 23-24-25-26    | Washington Figure Skating Club Carnival             |
| March 27-28-29-30    | Figure Skating Club of Chicago Carnival             |
| March 28-29-30       | Buffalo Figure Skating Club Carnival                |
| March 28-29-30       | London (Ont.) Skating Club Carnival                 |
| March 29-30          | Minto Skating Club (Ottawa) Carnival                |
| March 29-30          | Pacific Coast Championships at Oakland              |
| April 5-6            | Ice Club of Baltimore Carnival                      |
| April 13             | Middle Atlantic F. S. Championships at New York     |
| April 17-20          | National Roller Championships at Cleveland          |

### *Ice Skating Goes Into Big Figures*

IN THE PAST FOUR YEARS skating has cut a real man-sized figure in the American sports world. Just how popular skating has become as a national sport no present statistics show, but U. S. Census figures reaching this office recently tell a dramatic story of skating's rise from a small pastime to a country-wide phenomenon.

The output of skates in 1937, for example, more than doubled the output for 1935. In value the 1937 ice skate production was \$1,940,100—about \$900,000 worth of skates more than in 1935.

This sharp rise in production was also accompanied (as the above figures will show) by marked decrease in the cost per skate. Of additional interest is this fact—there were about \$700,000 worth more skates made in 1937 than skis and snow shoes combined! Figures for 1939-40 will not be available until the present 1939 census is completed, but if the 1935-37 trend continues skating enthusiasts may say, with proof, that theirs is America's favorite winter sport.



*Photo from The Skating Club of Lake Placid*

UNITED STATES CHAMPION  
Eugene Turner  
*Los Angeles Figure Skating Club*

# The New National Champion

FROM AN INTERVIEW WITH MRS. KATHLEEN TURNER

SEVEN YEARS AGO a curly-headed twelve-year-old youngster named Eugene Turner put on skates and tried his first edges at a rink in Hollywood, California. Once he learned to stand he wasted little time. The very next year he entered competition and won second place in the California State Juvenile Championship. Three years later, when he placed second in the National Juniors, Howard Nicholson wrote his mother—"Gene has everything it takes to make him the National Champion!"

Gene's skating career has been a steady and sure climb to the top. When he was fourteen he won the California State Junior title, advanced in 1936 to second in the California Seniors and won the Senior Pacific Coast title in his fourth year of competition. In Chicago that same year he passed up the National Novice competition and took a pot shot at the National Junior title, losing to Ollie Haupt, Jr. 1938 brought him the desired Junior Championship (Ollie having stepped up to the Seniors) and last year he won third ranking in the Seniors and placed fifth in the North Americans.

This year, with Robin Lee in the professional ranks, he arrived at Cleveland a month in advance of the competitions to practice devotedly for the vacated crown, while his principal rival, Ollie Haupt, was warming up with equal zest in Philadelphia. The duel at Cleveland is now history; and Gene has achieved his seven-year-old ambition to become the National Champion!

A well-built, medium-tall young man, Gene is now only nineteen years old. Beside his National crown he carries two other singular honors, he is the youngest National Judge in the country and the only Gold Medalist west of the Mississippi. He was one of the charter members of the Los Angeles Figure Skating Club and started his skating career at a time when other boys in the neighborhood thought figure skating was a "sissy's game." Mid-way in Gene's skating career, Jackie Dunn, then the English Champion turned-pro, came to Hollywood under contract to make movies. Jackie and Gene met and became fast friends. Much of what he now knows of skating, Gene credits to Jackie's friendship and instruction and much of Gene's present "style" reflects that teaching.

Outside of Jackie Dunn's help, Gene is a self-made champion. From the first he has been a "natural" skater and has advanced in perfection and form by patient practice and observation. He has had little professional coaching; none under a single instructor over a long period of time. But he

comes from a skating family. His sister, Kathleen, is in Sonja's "Hollywood Ice Revue," his brother played hockey at college, his mother is devoted to figure skating.

Of his future little can be said. He has had one year at the City College of Los Angeles, and may return there next fall. Exceptionally talented at many things, among them music, he has not decided upon any career other than amateur skating and prefers to let the future be in the future—at least until next summer.



## Fashions at the Nationals

THERESA WELD BLANCHARD

THE NATIONALS SEEM TO BE the fashion center of figure skating, all the contestants spending much time and thought, not to mention money, on their costumes for this important event of the winter. Several readers—ladies—have written asking that we describe some of the more striking costumes and general trends in skating dresses, so with an apology to our men readers, a brief summary follows:

For school figures, sweaters and skirts seem the most popular outfit. Gretchen Merrill had a lovely white knitted dress banded in red; these dresses are so comfortable for school figures that it is hard to understand why they were not more generally worn. (To be really suitable for school figures, knitted dresses should have much less wide skirts than those for free skating). Heddy wore an attractive black satin dress with a pleated skirt and Jane used her smart navy blue shorts and shirt. Incidentally the men agree with the girls in liking sweaters for the added freedom they give in school figures and most of the men appeared in sweaters and tights in this division.

The favorite materials for dresses were satins and heavy crepes, with some chiffon velvets. Joan wore a pale blue crepe dress, cut very severely with a square neck, in singles, and a white satin dress lined with bright red and a tiny red cap for the pair. Bernard was in black with a matching red tie. Jane wore a lovely white dress with two wide bands of gold sequins from shoulders to hips. Charlotte Walther's bright blue velvet had touches of silver and was most effective. Roberta Jenks was striking in royal purple chiffon with a gold sequin collar, cuffs, and cap.

The Philadelphia Four was smartly costumed—the men in conventional

black and the girls in white crepe with lavender orchids in their hair in place of caps. The St. Paul girls wore light blue with violets and petal skull caps of the same color.

In pairs practically all the men wore regulation black outfits and their partners light or bright colors, except for the Bruns (who had costumes of pink, brown and tan) and the Beymers (effectively dressed in identical bright blue brief jackets, with a black skirt and tights).

No costumes were reported from the Canadian Championships but the Toronto skaters' costumes were seen at Lake Placid. The pairs are going in for clothes of the same color and very smart looking they are. Christine Newson wore royal blue velvet with gold collar and cuffs and Sandy McKechnie had the same shade jacket and tights. Eleanor O'Meara wore a lovely dark purple-red velvet dress and cap trimmed with silhouettes of birds done in white feathers and Donald Gilchrist had a similar shade for his jacket and tights. In her single, Eleanor had a black velvet dress with a wide Vee of gold sequins running from the shoulders to her waist and a tiny black cap with a gold feather. Norah McCarthy's white chiffon dress with a pleated skirt and gold collar was most becoming to her dark coloring. It is interesting to note that Jane Vaughn and Eleanor O'Meara had dresses of very similar design, as did Norah McCarthy and Roberta Jenks, yet these girls live miles apart and could not possibly have compared notes.

### *They Don't Know Where They're Going, But—*

HAVE YOU EVER tried to skate with your eyes closed? Six Girl Scouts in Pittsburgh are doing it—and like it. *They have been blind since birth!*

Their blindness has neither barred them from skating nor lessened their enjoyment of it. Unlike aviators who "fly blind" they consider three-point landings beginners' stuff, and do it with a smile. They were lured onto skates last fall by the Ice-Skating Activity of the Pittsburgh Girl Scouts which is under the direction of Mrs. Murray Fahnestock, a member of the Pittsburgh Figure Skating Club. Now nobody can get them off!

"Skating blind" intrigues the girls. One remarked, after several minutes' observation, that different skates had different sounds on the ice. All roller-skated before they took to ice. All have had their "beginners' falls" and taken them in good grace. Generally they are accompanied around the rink by a guide, but in time they may learn the crooks and crannies of the rink just as they have learned and memorized the corridors of their home at the Western Pennsylvania School for the Blind. Already one pioneer—Hilma Hawk—has ventured to explore the arena on her own.

—Murray Fahnestock

## Skating on Rough Ice

JOHN S. MACLEAN

*Toronto Skating Club*

THE RAPID DEVELOPMENT of indoor artificial ice skating on this continent in rinks owned by the members themselves has one disadvantage. It may handicap our competitors in, for example, the Olympics for which many Europeans still practice on open air natural ice.

The conditions are different. Out of doors the skaters have to contend with wind, snow and, often, a brittle surface. But they learn what is called the "run of the skate," an expression which is difficult to explain but which is quickly realized by those who skate on rough ice. They learn to glide and balance on the portion of the blade which has the shortest skating surface, generally near the center and thus meet with the least amount of friction. They also learn how to gain a little necessary speed at certain places by the use of the knee, rising and sinking and at the same time passing the free foot. Skaters on poor ice also learn to follow the tracings better and are not so likely to become confused by the tracings of others in a competition. Moreover if they can do a figure well on rough ice they will certainly do it better on good ice.

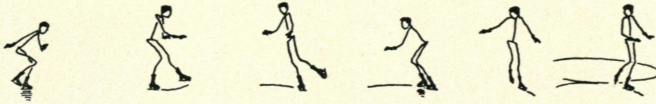
IF I AM NOT PLAIN I suggest that skaters might experiment with an inside back eight. If at about one quarter of the circle they will straighten the knee, pass the free foot and at the same time throw out their arms, all simultaneously, they will feel the additional speed thereby acquired. It will be noted that I guarded my suggestion by the use of the word "experiment." That was in order to convince some doubting Thomas. But beginners must be careful not to straighten abruptly and thus spoil part of their circle. Any of the suggested movements carried to excess are in bad form. Champion skaters can gain speed when necessary but they do it so delicately that their method is scarcely noticeable.

BEGINNERS ARE TAUGHT the use of the knee, to sink, rise and sink again, in the elementary changes of edge. But many forget the principle when they come to advanced figures. In a bracket change bracket, for example, skaters ordinarily cannot start at a speed sufficient to carry them through the two circles without a flat near the finish. Judges then are obliged to mark them



down because the rules say that all figures must be skated on the edge of the blade. But if skaters practice occasionally on cut-up ice they will quickly recall the proper use of the knee and learn the "run of the skate" so as to maintain an apparently uniform rate of speed throughout the figure.

These remarks should commend themselves to indoor club directors who frequently are harassed by demands for clear ice for the practice of school figures. Occasional practices on rough, cut-up ice will be to the advantage of the skaters themselves.



### BETTY LEE BENNETT AND JOHN KINNEY SUSPENDED

BETTY LEE BENNETT AND JOHN KINNEY, members of the Seattle Skating Club and National Junior Pair Champions in 1939, were suspended from the privileges of U. S. F. S. A. membership by vote of the Executive Committee, on recommendation of the Amateur Status Committee, January 25. Miss Bennett was suspended until May 1, Mr. Kinney until March 1, 1940.

Action was taken by the Amateur Status Committee after Miss Bennett and Mr. Kinney skated in a Seattle ski show when a sanction had been refused them by Thomas B. L. Jordan, Seattle member of the Carnival and Exhibitions Sanctions Committee. Miss Bennett's suspension was made more severe than that of Mr. Kinney because she later skated in another unsanctioned event in Yakima, Washington, while her suspension was under consideration. Mr. Kinney refused to skate in this latter show.

All material and evidence on this case was submitted to the members of the Amateur Status Committee on January 16 and a mail vote requested. On the strength of this vote the Amateur Status Committee recommended suspension of Miss Bennett until May 1 and Mr. Kinney until March 1, and the Executive Committee, upholding the findings of the Amateur Status Committee, voted the suspensions on January 25.

*Richard L. Hapgood*  
SECRETARY, U. S. F. S. A.

# Olympia Swing

INVENTED BY MR. AL STEINBACH

*The Olympia Skating Club, Detroit*

Time the side-by-side starting step and swing (4 beats) so that the first step of the dance will begin with the *strong* beat. The lady's three turn will, of course, be part of the dance proper (at start only). Remember to dance close; dip—swing—and raise on the four "swing steps." The dance is completed in 8 measures (32 beats).

**First Half** (4 measures) down length of rink.

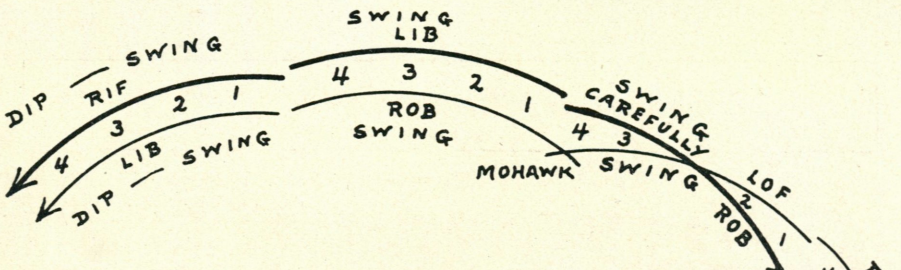
- 1 measure Plain chassé steps.
- 2 The man's dropped three.
- 3 Man cuts in back on his second step (LOB) drawing the lady close, but allowing her freedom (on her second step) to make her quick dropped three.
- 4 First long swing step—stay close to partner.

**Second Half** (4 measures) around end of rink.

- 5 Chassé steps—on third step lady turns forward (RIF). The only difficult part about this is to remember to do it.
- 6 Second swing step. Man's mohawk—lady to stay well outside while man swings *carefully* so as not to touch partner or himself with free foot. At finish man has drawn lady in across his tracing to his right.
- 7 Third swing step and lady's mohawk.
- 8 Fourth swing step. Partners *must be close*; and man's push-off should be vigorous here to avoid giving the dance a false impression of slowness.

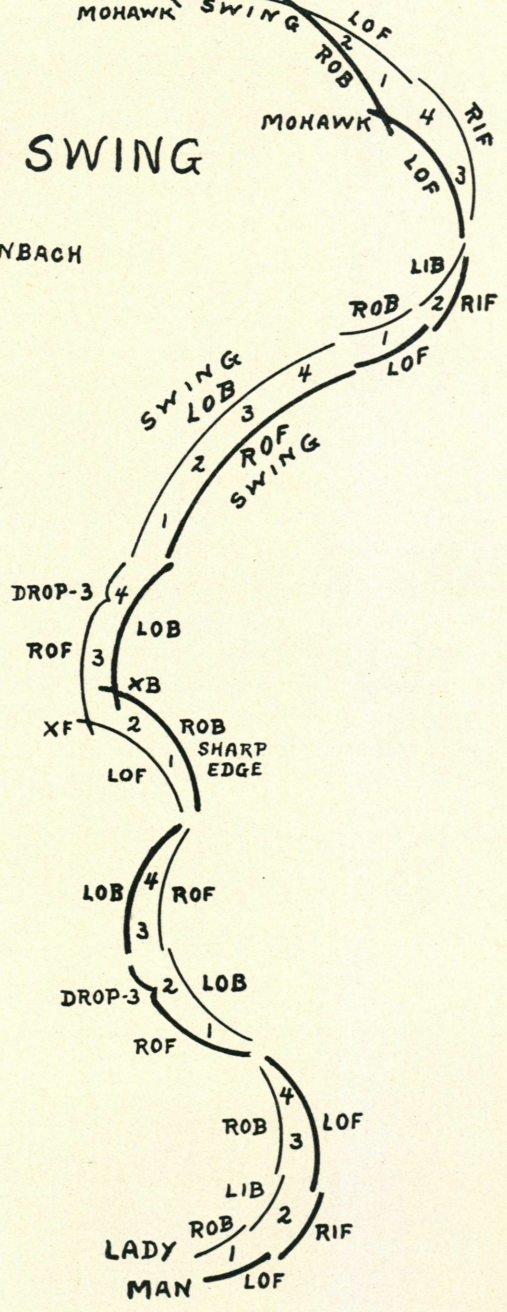
---

Ice Dances, Volume II, is at last taking shape and should be off the press by March 22—all orders will be filled promptly.

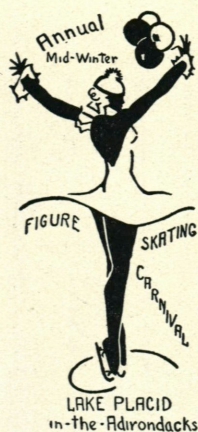


# OLYMPIA SWING

by  
AL STEINBACH



## Carnival Merry-Go-Round



THE PERIOD BETWEEN January 1 and February 15 is somewhat of an off-season for carnivals, but a few clubs select this time for their shows rather than a later and more popular date. Kitchener-Waterloo repeated the "Pied Piper of Hamelin" staged so successfully last year by the Glenora Skating Club. They bought the scenario, costumes, and program plates from Glenora and produced an equally effective show at greatly reduced effort. It does seem that this should be the solution to many club carnival problems (i.e. reproducing a successful show from another part of the country).

The Silver Blades Figure Skating Club used "Arabian Nights" as a unifying theme with apparent success. "Satan Takes a Holiday" was a novel idea used effectively by the newly-formed Cornell University Figure Skating Club.

Outstanding numbers so far this year, at least from reports submitted, seem to be the Toronto Six (see Placid carnival report)—four simultaneous Axels in a weave figure were impressive as done by the Gold Medal Four last year, those by the Six this year are even more exciting; the O'Meara-Gilchrist pair which has been receiving many encores; and Hazel Franklin's hoop number (see Placid report). We await with interest reports from the large number of March carnivals and hope to hear of many novel groups and central themes.

*Silver Blades Figure Skating Club, Inc.* (Kansas City) (January 12, 13) presented "Arabian Nights on Ice." Theme center of the show was the Sultan's throne perched on a staging at one end of the Pla-Mor Arena. Favor-seeking ambassadors escorted the Sultan (Lee Clark) to his regal seat of honor, Alladin (Robert Slaughter) and the Princess (Mrs. F. H. MacDonald) appeared before the Sultan, Aladdin rubbed his magic lamp and entertainers appeared. Visiting amateurs: Shirley Bowman, Bobby Specht and Barbara Ann Gingg. Visiting professionals: Montgomery Wilson and Douglas Duffy. Local pair: Eleanor Bucher and Mrs. Ed. Kocher. Groups: "Search for the Magic Lamp" with Leon Harkins as the Magician;

"Dance of the Northern Lights;" "Air, Earth, Fire and Water"—a four with Mrs. Wiles Gillespie, Mrs. Miriam Murdock, Mrs. Dora Nass and Mrs. Nathan Scarrott; and, as a finale, "1001 Glides" with the entire cast. The club Juniors participated as "Nubian Slaves." Director—G. Theo. Braakman.

*The Skridsko Club* (Walpole, Mass.) Jan. 13-14 presented "Figure Skating Pageantry" with the assistance of The Skating Club of Boston, the Providence Figure Skating Club and the Commonwealth Figure Skating Club. Featured visitors were 11-year-old Ramona Allen of Oakland, Cal. and Charlotte Walther of The Skating Club, Inc., New York. Visiting



Harkins Photo

Loaned by Silver Blades F. S. C.

### "ARABIAN NIGHTS ON ICE"

#### *Silver Blades Figure Skating Club Carnival*

The Sultan, his daughter, the princess, and his harem. (The Grand Vizier on the telephone directs lights, music and announcer.)

amateurs: Singles—Joan Tozzer, Polly Blodgett, Betsy Nichols, Leslie Glazier, Roger Brett, Ruth Hancock, Roberta Jenks and Joyce Brownell; Pairs—Dorothy Glazier and Stephen Tanner, Mary Jane Wolfson and Barbara Wylie, Joyce Brownell and Kenneth Parker. Local amateurs: Singles—Mary Barbara McDonough (youngest performer in the show) in a short but impressive routine, Rodney Prendergast, Doris Tufts; Pairs—Sally Davenport and Jane Weiss, Nancy Follett and Roger Turner. Professional Edi Scholdan provided comedy in "The Whistler and His Dog" (assisted by Dr. William L. Krieger) and contributed "The Fire Dance." The show opened with "Trumpets" led by Helen Gould and Mary Ellen Chamberlin, and a ballet number by junior members of the Providence Figure Skating Club under the direction of Audrey Garland (pro). Group numbers included three dances and a

"Torch Drill" by junior members of the Skridsko Club directed by Raeburn Davenport and Foster Weiss.

*Denver Figure Skating Club* (January 26) with the assistance of the Pikes Peak F. S. C., presented an ice carnival opening the Colorado Mid-Winter Carnival. Setting—Evergreen Lake under a full moon. Singles: Dick Hill (PP), Yvonne Broders and Bill Traher. Pairs: Olaf Andersen (pro) and Eleanor Griffith, the Broders sisters, Mr. and Mrs. Earl Loser, Mr. and Mrs. E. L. Broders, Dave Cater and Janet Burns (PP). Trio: Elynor Harter, Barbara Ann Lewis and Janet Burns (PP) in a gay interpretive number. Comedy: Jack Kline and Bert Drew, and Helen Lee Warren (PP) and her "trained horse." Groups: the Denver "Club Eight" in a beautiful black-and-white number, and members of the Denver club in the standard dances. Speed



*Loaned by the Atlantic City Skating Club*

“SKYLINE OF ATLANTIC CITY”  
*Atlantic City Skating Club Carnival*

skating and barrel jumping entertained the spectators during the intermission.

The morning after the carnival a float built by members of the club won first prize in the Winter Sports Parade.

*The Hunstville Skating Club* (February 3) presented “Carnival of the Snows” in conjunction with Ontario Provincial Ski Championships. Professionals: Hugh F. Pope (club pro and director of the show) and brother Joseph of the London Skating Club, in solos. Pairs: the “Huntsville Pair” (J. E. Hawkins and Mrs. E. H. Briggs), and Hugh Pope and Mrs. Harold Armstrong in an exhibition dance. Groups: “Indian Revelry” (including nearly all members of the club with George Kellock as “chief” and played against a background of tepees and artificial fire), “Dance of the Marionettes” (by the Juveniles with Joan Potter as the starlet), “Club Waltz and Tenstep,” “The Charladies” (comedy), “Club Ballet” (with Mrs. Hattie Briggs as ballerina), “Cafe

DeLuxe” (featuring Elmer Hawkins). Finale—“Beer Barrel Polka.”

*The Cornell Figure Skating Club* (February 8) presented “Satan Takes a Holiday” to campus crowds at Cornell University’s Junior Week. Theme—Finding things too hot in Hades, His Satanic Majesty (a dual personality played by William Herrmann and Loren K. Petry) forsakes his “world of gloomy fates for a world of ice and skates.” On arrival at Cornell he was entertained by: Norah and Therese McCarthy (Toronto Skating Club), Virginia Wilson (Granite Club), Edi Scholdan (pro), and 32 members of the Cornell Figure Skating Club. Hottest group number was “Currier and Ives Tableau,” a scene of skating in the 1860’s taken from a Currier and Ives print entitled “Skating in Central Park.” Other club groups: “The Fast Eighteen,” “The Ice Dances,” “The Willard Straight Sextet.” Hawley Bendixen contributed his first exhibition solo. “The Departure of

Satan" rang down the last curtain on Cornell's first full-sized ice carnival.

*Atlantic City Skating Club* (February 11): Although the auditorium has been the scene of many carnivals this was the first show ever produced by the club. Theme—Atlantic City itself. Setting—sea-green ice with a painted compass at the center against a background representing the "skyline of Atlantic City." Turning the clock ahead, the show opened with "Easter" picturing the Boardwalk Parade on Easter morning. Visiting amateurs: singles: Eleanor O'Meara and Donald Gilchrist; pairs: Eleanor and Donald, Dorothy and Hazel Caley. A group of 16 from the Philadelphia S. C. & H. S. took part in the dance numbers. Professionals: Edi Scholdan (comedy and juggling), Douglas Duffy (comedy and Apache Dance), Hazel Franklin (teen-age "Darling of England" in two solos), Belita Jepson-Turner, and Mr. and Mrs. Pierre Brunet. Club groups: "Sunrise," "Easter Bunny Gambol" (with Joan Coffman of The Skating Club of New York as the Frosted Egg Princess), "Boardwalk Parade" (spotlighting Patricia Donnelly, "Miss America of 1939"), "Will You Be My Valentine?" (featuring Margaret Fegley), "Neptune Ballet" (with Eleanor O'Meara as premier patineuse), and, in finale, "Anchors Aweigh." Director — Roland Janson.

*The Kitchener-Waterloo Skating Club* (February 15-16) enacted "The Pied Piper of Hamelin" to capacity audiences. Visiting amateurs: two ten-year-olds, Barbara Ann Scott of Ottawa (Canadian Junior champion) and Marilyn Ruth Take of Toronto; Stratford Skating Club Four (Margaret Evans, Barbara Lee, Douglas Greb, Jack Miller). Earl Myr (club professional) as the Pied Piper tied the whole show together with his clever pantomime. Local singles: Patty Jane Scully (juvenile soloist), Wallace Diestelmeyer, Harvey Pfeiffer, George Hoffman (stilt skater), Marie Schnurr and Cossette Hoffman. Club pairs: Mrs. Marion Smuck and Tiny Tait, Violet Petch (King Rat) and Harvey Pfeiffer (Fox), Floraine Ducharme and Wallace Diestelmeyer (excellent junior pair), Carol

Shields and John Pinder, Isabelle Henderson and Marie Schnurr, Earl Myr and Marie Schnurr. Club threesome: Grace Gouch, Isabelle Henderson and Marie Schnurr. Many group numbers depicting scenes and action in the old German fable. Finale—"Gold and Silver Waltz."

*The Skating Club of Lake Placid* (February 16, 17) presented its fourteenth annual winter carnival, "The Royal Ice Varieties," with the coöperation of the Toronto Skating Club. Scenery was most impressive; a medieval castle completely filled one end of the rink and large knights on horseback were painted on the four corners of the ice; the centre ice motif depicted winter sports figures. Featured stars were: Gene Turner (making his first appearance after winning the National Championship) and tiny Hazel Franklin (professional) in two numbers, one a very clever act in which she carried a large hoop and framed herself in striking poses. Toronto Skating Club numbers were: Singles by Christine Newson, Michael Kirby, Shirley Halsted, Donald Gilchrist, Eleanor O'Meara, Sandy McKechnie, and Norah McCarthy, Lady Champion of Canada; Pairs by Shirley Halsted and Michael Kirby (Canadian Junior Pair Champions), Eleanor O'Meara and Donald Gilchrist, Christine Newson and Sandy McKechnie; a girls' eight and sixteen; and a mixed six of the three ranking Canadian pairs (O'Meara - Gilchrist, Newson - McKechnie, McCarthy with Gene Turner replacing Ralph McCreath in his usual competent manner) which proved the hit of the show, especially on Saturday when they drew two encores and went completely haywire on the second to the great delight of the audience. Local numbers were: tiny Peggy Garren in a Norwegian Dance accompanied by a very young twelve; Lorraine Bryant; nine-year-old Arthur Levy; "Dance of the Hours," an excellent ballet with Cynthia Pettinger as star; Helen Carter; "The Fencers," a clever strobolite drill; "The Skating Rink," a waltz number; and an imitation of the Junior Canadian Pair Champions by Peggy Garren and Arthur Levy. Two comedy acts by Dick Salter (professional) rounded out the program.

## UNITED STATES ROLLER CHAMPIONSHIPS

THE UNITED STATES ROLLER SKATING CHAMPIONSHIPS will be held at the Public Auditorium in Cleveland, April 17-20. The surface will be 90 x 250 feet for all competitions; music from records. Special rates will be given at The Allerton, Hotel Cleveland and the Auditorium Hotel, which are located near the Public Auditorium.

The program, still tentative, has been announced as follows: April 17, Figure Skating for Novice, Junior, and Senior Singles; April 18, Speed Skating; April 19, Pair Skating and Dancing. The prizes will be presented at a supper dance at the Trianon Ballroom that evening. Judges Schools will be held in the afternoon on April 20, to which all skaters and professionals are invited. "Carnival of Champions," a skating show featuring the 1940 Champions, will wind up the event in the evening of April 20.

(For all further information please address Mr. Fred A. Martin, Secretary-Treasurer of the R. S. R. O. A., 5795 Woodward Ave., Detroit, Michigan.)

### Middle Atlantic Championships

The nineteenth annual Middle Atlantic Figure Skating Championships will be held on April 13 at Iceland, N. Y. All contestants must be amateurs and members of the Middle Atlantic Skating Association if they reside in New Jersey, or New York south of Albany. Other amateur members of the U. S. F. S. A. or its member clubs residing outside the Middle Atlantic territory but within the Eastern Sectional Territory are eligible to compete without joining the Middle Atlantic Skating Association. These championships are conducted along the lines of the Sectional Championships with the addition of several dance events. For full information write to Harold Hartshorne, Chairman, Iceland, 304 West 50th St., New York, N. Y.

THE APRIL ISSUE will be mailed to subscribers about *April 20*. It will be the big carnival issue of the year and will also contain reports on the Pacific Coast and District Championships. The deadline for editorial contributions and reports will be *March 27*.



# The Eastern States Championships

ANTHONY FORBES, *Chairman*

*Rye Figure Skating Club*

THE EASTERN STATES CHAMPIONSHIPS were held under the auspices of the Rye Figure Skating Club, Inc., at the Playland Ice Casino, Rye, New York, on Friday and Saturday, January 19 and 20. Owing to the splendid coöperation given to us by Bedell Harned, Chairman of the National Committee on Competitions and Rules, Heaton Robertson, our able and efficient referee, the judges and the members of the Club Committee, everything went off without a hitch and on schedule. Festivities started the night before with an informal supper given by Mr. Weimar, our club treasurer and a member of the Committee, and the writer for the referee and a number of the judges.

THE COMPETITION PROPER got under way on the dot of nine o'clock Friday morning with Novice Men's school figures. By 9:45 it was apparent that Joe Lane would, barring accidents, be crowned as the first champion of the meet. In the afternoon our home-club skater came through with a nicely balanced free skating program to secure top honors. Young Wilhelm Junker of the Commonwealth F. S. C. presented a brilliantly executed program but was unable to overtake the Rye skater's commanding lead in the school figures.

The home club also produced a champion in the Ladies' Novice in the person of Dorothy Goos, the unanimous choice of all the judges for first place. Dot increased the lead she had built up in the morning's school figures by a sensational free skating program consisting of a beautifully connected pattern of jumps and spins.

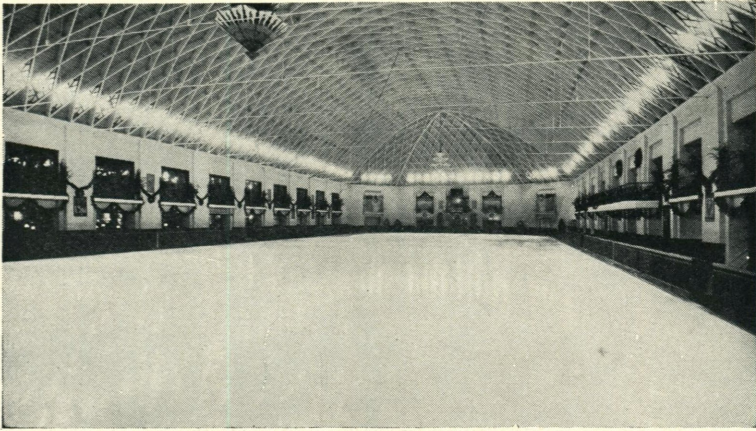
IN THE MEN'S JUNIOR EVENT, Eddie LeMaire of The Skating Club, New York, swept a very capable field before him. His school figures were surely executed and his free skating program left little doubt that here was someone who was "going places." George Miller, of The Ice Club

of Baltimore, presented an exciting free skating program but he couldn't head the New York boy.

The Ladies' Junior was also taken by a New York skater, Miss Hildegard Balmain of the Junior Skating Club. She shared with Miss Goos the distinction of being the unanimous choice of all the judges for first place. A lovely program skated in perfect tempo to unusual music made her free skating performance outstanding, which, added to her excellent school figures, gave her an impressive lead over the rest of the field of twelve.

EASILY THE BIGGEST THRILL of the two day meet was Jane Vaughn's triumph in the Ladies' Senior. Coming from behind like a whirlwind she caught Charlotte Walther of The Skating Club, who was in the lead as a result of the first day's school figures, and dragged her down to defeat in a maze of perfectly executed jumps and unbelievably fast spins, all tied together in a lovely pattern. Jane, like a real champion, came through when the heat was on. (How many people knew that she was suffering from a frightful cold and had a fever when she skated?) The fact that

*(The Rye Figure Skating Club has very kindly agreed to pay the extra charges involved in printing the Judges' ordinal marks. These appear on the following pages.—Ed.)*



*Loaned by Playland, Rye, New York*

SCENE OF EASTERN STATES CHAMPIONSHIPS  
*Playland, Rye, New York*

she beat such a sterling field makes her victory all the more impressive.

There was no contest in the Senior Men's event, Buddy Vaughn being the only entry. He very kindly gave an excellent free program on Saturday.

THE SENIOR PAIRS were won by Mr. and Mrs. Bruns of the Bear Mountain F. S. C. with an interesting program of lifts and spins skated close together. The Junior Pairs were captured by Dr. and Mrs. Wilkinson of the Buffalo F. S. C. after a tight battle with the Polts of the Rye Club. There were four entries in the Senior and six entries in the Junior event, a very pleasing increase in the interest in this type of skating.

Both dance events were captured by Miss Sandy Macdonald and Harold Hartshorne, the National Champions, although they certainly knew that they were in a competition, being closely pressed by Fred Parmenter and Miss Loretta Walsh of Boston in the Waltz and by Ed Berkson and Miss Roberta Betjeman of the Manhattan F. S. C. in the Fourteenstep.

WE, AT THE RYE CLUB, felt that it was a great honor to be awarded the Easterns. The credit for the success which the Easterns achieved cannot be laid at any one door. The chief credit must, of course, go to Heaton Robertson, the referee, who kept things moving to a smooth conclusion. Bedell Harned spent hours of his time teaching members of the committee the fundamentals of running a competition. The coöperation we received from the judges was remarkable; in no event were there less than three National judges. The members of the Club Committee must also come in for their share of the credit: Jim Weimar who handled the difficult problem of transporting the contestants and the officials, Dr. Sculley who was in charge of the music, Mr. Danzer who had the thankless job of supervising the recording of the marks, "Pete" Storke who acted as Clerk of the Course and was in charge of working out the results ("Pete" is President of the Commonwealth F. S. C.), and our Club President, Joe Gibson, who acted as general trouble shooter and Graham-MacNamee-at-the-Mike.

MEN'S NOVICE

Judges: I, Mr. Forbes, Rye; II, Mrs. Brandes, New York; III, Capt. Nelson, Philadelphia; IV, Mrs. Sanderson, New York; V, Mr. Turner, Boston.

|  | I | II | III | IV | V | Totals |
|--|---|----|-----|----|---|--------|
| 1. Joseph Lane, Jr.<br><i>Rye Figure Skating Club</i>        | 3 | 1  | 1   | 1  | 1 | 7      |
| 2. Wilhelm Junker<br><i>Commonwealth Figure Skating Club</i> | 2 | 4  | 2   | 3  | 2 | 13     |
| 3. Ken Parker<br><i>Commonwealth Figure Skating Club</i>     | 1 | 2  | 3   | 4  | 4 | 14     |
| 4. Jack Collins<br><i>Rye Figure Skating Club</i>            | 4 | 3  | 4   | 2  | 3 | 16     |

LADIES' NOVICE

Judges: I, Dr. Berger, Great Neck, L. I.; II, Mrs. Brandes, New York; III, Mrs. Ward, Boston; IV, Mrs. Sanderson, New York; V, Mr. Turner, Boston.

|  | I  | II | III | IV | V  | Totals |
|--|----|----|-----|----|----|--------|
| 1. Dorothy Goos<br><i>Rye Figure Skating Club</i>            | 1  | 1  | 1   | 1  | 1  | 5      |
| 2. Dorothy Warren<br><i>The Skating Club of Boston</i>       | 4  | 5  | 2   | 2  | 3  | 16     |
| 3. Mabel MacPherson<br><i>Individual Member, U.S.F.S.A.</i>  | 2  | 8  | 3   | 7  | 2  | 22     |
| 4. Grace M. Lee<br><i>Sunday Skating Club (N. Y.)</i>        | 5  | 6  | 5   | 3  | 5  | 24     |
| 5. Mary Brummer<br><i>Wednesday Skating Club (N. Y.)</i>     | 6  | 10 | 4   | 4  | 6  | 30     |
| 6. Ruth Hancock<br><i>Providence Figure Skating Club</i>     | 9  | 9  | 6   | 6  | 4  | 34     |
| 7. Joyce Brownell<br><i>Commonwealth Figure Skating Club</i> | 10 | 2  | 11  | 5  | 7  | 35     |
| 8. Sally Gullotta<br><i>Rye Figure Skating Club</i>          | 3  | 3  | 8   | 8  | 12 | 34     |
| 9. Jane McCaffrey<br><i>Rye Figure Skating Club</i>          | 7  | 7  | 7   | 11 | 11 | 43     |
| 10. Lois MacIntyre<br><i>Rye Figure Skating Club</i>         | 8  | 11 | 10  | 12 | 9  | 50     |
| 11. Estelle Dewolf<br><i>Providence Figure Skating Club</i>  | 14 | 12 | 9   | 10 | 10 | 55     |
| 12. Louise Nichols<br><i>Rye Figure Skating Club</i>         | 11 | 4  | 12  | 13 | 13 | 53     |
| 13. Doris Tufts<br><i>Commonwealth F. S. C. (Boston)</i>     | 12 | 13 | 14  | 9  | 8  | 56     |
| 14. Virginia Sculley<br><i>Rye Figure Skating Club</i>       | 13 | 14 | 13  | 14 | 14 | 68     |
| 15. Sandra Uzzell<br><i>Imperial Figure Skating Club</i>     | 15 | 15 | 15  | 15 | 15 | 75     |

## LADIES' JUNIOR

Judges: I, Mrs. Cramer, New York; II, Mr. Robertson, New Haven; III, Mrs. Secord (SF) and Mr. Liberman (FS), New York; IV, Capt. Nelson, Philadelphia; V, Mrs. Ward, Boston.

|   | I  | II | III | IV | V  | Totals |
|---|----|----|-----|----|----|--------|
| 1. Hildegarde Balmain<br><i>Junior Skating Club of New York</i> | 1  | 1  | 1   | 1  | 1  | 5      |
| 2. Nancy Follett<br><i>Skridsko Club (Walpole, Mass.)</i>       | 2  | 2  | 2   | 8  | 5  | 19     |
| 3. Doris Gumprich<br><i>Manhattan Figure Skating Club</i>       | 6  | 3  | 4   | 5  | 2  | 20     |
| 4. Jenifer Coward<br><i>Junior Skating Club of New York</i>     | 3  | 9  | 3   | 4  | 4  | 23     |
| 5. Marlene Fegley<br><i>Individual Member, U.S.F.S.A.</i>       | 4  | 4  | 7   | 2  | 8  | 25     |
| 6. Heloise Hyde<br><i>The Skating Club of Boston</i>            | 11 | 10 | 8   | 3  | 3  | 35     |
| 7. Joanne Barr<br><i>Rye Figure Skating Club</i>                | 7  | 8  | 5   | 10 | 6  | 36     |
| 8. Ann Robinson<br><i>New Haven Skating Club</i>                | 10 | 5  | 6   | 9  | 7  | 37     |
| 9. Helen Carter<br><i>Skating Club of Lake Placid</i>           | 8  | 7  | 9   | 6  | 11 | 41     |
| 10. Marie Desnoes<br><i>Rye Figure Skating Club</i>             | 5  | 6  | 11  | 11 | 9  | 42     |
| 11. Nancy Munn<br><i>Philadelphia S. C. &amp; H. S.</i>         | 9  | 11 | 12  | 7  | 10 | 49     |
| 12. Kay Cole<br><i>Junior Skating Club of New York</i>          | 12 | 12 | 10  | 12 | 12 | 58     |

## LADIES' SENIOR

Judges: I, Mr. Myers, Philadelphia; II, Mr. Savage, New York; III, Mr. Turner, Boston; IV, Dr. Berger, Great Neck, L. I.; V, Mr. Liberman, New York.

|   | I | II | III | IV | V | Totals |
|---|---|----|-----|----|---|--------|
| 1. Jane Vaughn<br><i>Philadelphia S. C. &amp; H. S.</i>       | 1 | 1  | 2   | 2  | 2 | 8      |
| 2. Charlotte Walther<br><i>The Skating Club, Inc. (N. Y.)</i> | 3 | 2  | 3   | 1  | 1 | 10     |
| 3. Roberta Jenks<br><i>The Skating Club of Boston</i>         | 2 | 3  | 1   | 5  | 3 | 14     |
| 4. Yvonne Sherman<br><i>Junior Skating Club of New York</i>   | 4 | 4  | 4   | 3  | 4 | 19     |
| 5. Dorothy B. Lee<br><i>Sunday Skating Club (N. Y.)</i>       | 5 | 5  | 5   | 4  | 5 | 24     |

### MEN'S JUNIOR

Judges: I, Mr. Forbes, Rye; II, Mr. Liberman, New York; III, Mrs. Secord (SF) and Mrs. Harned (FS), New York; IV, Capt. Nelson, Philadelphia; V, Mr. Myers, Philadelphia.

|   | I | II | III | IV | V | Totals |
|---|---|----|-----|----|---|--------|
| 1. Edward Le Maire<br><i>The Skating Club, Inc. (N. Y.)</i>     | 3 | 1  | 1   | 2  | 1 | 8      |
| 2. George Miller<br><i>Ice Club of Baltimore</i>                | 1 | 2  | 2   | 1  | 2 | 8      |
| 3. Charles White<br><i>Hershey Figure Skating Club</i>          | 4 | 3  | 3   | 3  | 3 | 16     |
| 4. Roderic Prendergast<br><i>Skridsko Club (Walpole, Mass.)</i> | 2 | 4  | 4   | 4  | 4 | 18     |

### SENIOR PAIRS

Judges: I, Mrs. Harned, New York; II, Mr. Savage, New York; III, Mr. Myers, Philadelphia; IV, Mrs. Ward, Boston; V, Mr. Liberman, New York.

|   | I | II | III | IV | V | Totals |
|---|---|----|-----|----|---|--------|
| 1. Mr. and Mrs. William H. Bruns, Jr.<br><i>Bear Mountain Figure Skating Club</i> | 1 | 1  | 2   | 2  | 1 | 7      |
| 2. Nettie Prantel<br>George Boltres<br><i>The Skating Club, Inc. (N. Y.)</i>      | 2 | 2  | 3   | 3  | 2 | 12     |
| 3. Dorothy Glazier<br>Stephen Tanner<br><i>The Skating Club of Boston</i>         | 4 | 3  | 1   | 1  | 3 | 12     |
| 4. Jean Matzke<br>Robert Matzke<br><i>Philadelphia S. C. &amp; H. S.</i>          | 3 | 4  | 4   | 4  | 4 | 19     |

### JUNIOR PAIRS

Judges: I, Mrs. Brandes, New York; II, Mr. Robertson, New Haven; III, Mrs. Sanderson, New York; IV, Mr. Turner, Boston; V, Dr. Berger, Great Neck, L. I.

|  | I | II | III | IV | V | Totals |
|--|---|----|-----|----|---|--------|
| 1. Dr. and Mrs. Howard E. Wilkinson<br><i>Buffalo Figure Skating Club</i>        | 2 | 1  | 2   | 1  | 1 | 7      |
| 2. Mr. and Mrs. Leopold Polt<br><i>Rye Figure Skating Club</i>                   | 1 | 4  | 1   | 3  | 2 | 11     |
| 3. Sandy Macdonald<br>Harold Hartshorne<br><i>The Skating Club, Inc. (N. Y.)</i> | 3 | 3  | 4   | 4  | 3 | 17     |
| 4. Edie Whetstone<br>Harry Mayer<br><i>Philadelphia S. C. &amp; H. S.</i>        | 5 | 2  | 3   | 6  | 5 | 21     |
| 5. Joyce Brownell<br>Ken Parker<br><i>Commonwealth Figure Skating Club</i>       | 6 | 6  | 5   | 2  | 4 | 23     |
| 6. Mary Platt<br>Jack Platt<br><i>New Haven Skating Club</i>                     | 4 | 5  | 6   | 5  | 6 | 26     |

## CALIFORNIA STATE CHAMPIONSHIPS

THE CALIFORNIA STATE CHAMPIONSHIPS, originally scheduled for January 26 and 27 at Yosemite but washed out by rain, were held on February 23 and 24 at the Sonoma County Ice Arena at Santa Rosa. The results, rushed to SKATING by wire while this issue was on the press, are listed below.

### *Men's Senior*

1. Murray Galbraith, *Skate & Ski Club*
2. Sheldon Galbraith, *Skate & Ski Club*

### *Men's Junior*

1. Meryl Baxter, *Oakland F. S. C.*
2. George Monnier, *Skate & Ski Club*
3. William Hart, *Skate & Ski Club*

### *Men's Novice*

1. Albert McNulty, *Skate & Ski Club*
2. Ed. Bodel, *Skate & Ski Club*
3. Neil Rose, *Oakland F. S. C.*

### *Men's Juvenile*

1. Carlton Licht, *Skate & Ski Club*

### *Ladies' Senior*

1. Barbara Ann Gingg, *St. Moritz I. S. C.*
2. Jean Sturgeon, *All Year F. S. C.*

### *Ladies' Juvenile*

1. Gloria Licht, *St. Moritz I. S. C.*
2. Constance Bissell, *St. Moritz I. S. C.*

### *Ladies' Novice*

1. Beverly Licht, *St. Moritz I. S. C.*
2. Zoe Longfield, *Skate & Ski Club*
3. Doryann Killian, *Los Angeles F. S. C.*

### *Junior Pairs*

1. Shirley Davies and Claude Gilker  
*Los Angeles F. S. C.*
2. June Rasmussen and William Udell  
*Oakland F. S. C.*

### *Senior Pairs*

1. Jean Sturgeon and Murray Galbraith  
*All Year F. S. C. and Skate & Ski Club*
2. Margaret Field and Sheldon Galbraith  
*Skate & Ski Club*

### *Dance*

1. Barbara Ann Gingg & Drexel Gibbons  
*St. Moritz I. S. C.*
2. Marcella May and Murray Galbraith  
*Skate & Ski Club*

## WESTERN ONTARIO REGIONAL COMPETITION

THE WESTERN ONTARIO REGIONAL SKATING COMPETITION was held at the London, Ontario, Skating Club Arena on Saturday, February 10. The competitors from the London Club made a fine showing winning four of the six main events, the other two events being won by entries from Niagara Falls, Ontario. The Results: Shirley Brown and Donald Thomson of Niagara Falls won the Pair Class with Ruth Shuttleworth and Bob Ivey of London taking second place. The Junior Ladies' Event went to Ruth Shuttleworth of London, with Jayne Draper (also from London) runner-up. Mary Collison of London was first in the Senior Ladies' Group; Beryle Goodman of Lon-

don, second. In the Dance Competition Shirley Brown and Gordon Thomson captured first prize; Ruth Page and McKay Falls of St. Catharines, second. Bob Ivey of London, carried off first honors in the Junior Men's Event, with Donald Thomson of Niagara Falls second. The Senior Men's Class was won by Gordon Jeffery of London.

Anita Smoothy



## Personals

### Births

*Oakland*—To Mr. and Mrs. W. C. Nicoll, Jr., a son, David Ronald Nicoll, on January 25.

*Seattle*—To Mr. and Mrs. William N. Rochelle, a son, on December 20.

*Toronto*—To Mr. and Mrs. David G. Guest (Valerie Jones), a daughter, on February 5.

### Engagements

*Miami*—Miss Irma Plant to Mr. William Switzer.

Miss Helen Ohler to Mr. Victor De Boy.

*New York*—Miss Ruth Lee to Mr. Edward Berkson.

*Oakland*—Miss Helen V. Sully to Mr. Nelson L. Best.

*Philadelphia*—Miss Elizabeth Anne Edwards to Mr. William Taliafferro Hord.

Miss Elizabeth York to Mr. Albert Blake Dick.

*Winnipeg*—Miss Audrey Jean Garland, 1935 Canadian Pair Champion now teaching at the Providence Skating Club, to Squadron Leader Lawrence Edward Wray of Ottawa.

### Marriages

*Hollywood*—Mr. William Wade and

Miss Betty Laberee (former Pacific Coast Junior Pair Champions, now with Sonja Henie's Hollywood Ice Revue).

*Miami*—Mr. Maxwell Kennedy and Miss Thelma Norlin.

Mr. Arnold Mims and Miss Jean Graves.

*St. Louis*—Mr. William Meyer and Miss Eleanor Walters.

*Vancouver*—Mr. Gerald Culver and Miss Diana Fripp.

*Vienna, Austria*—Mr. Joseph Wurm, of the Engelman Eislauf Verein hockey team, and Miss Emmy Putzinger, Austrian Champion in 1936-37-38.

### Deaths

*New Haven*—On January 31, Dr. Raynham Townshend, founder, in 1913, of the New Haven Skating Club, and its first President. Widely known locally and abroad as a distinguished physician and surgeon, prominent in medical and social circles, and as an instructor at Yale University.

*Oakland*—Mrs. Harry Pearson, wife of Harry Pearson, Professional at the St. Moritz and Oakland Figure Skating Clubs.

### Turned Professional

*Quebec*—Miss Denise Benoit to join the "Ice Vanities."

## Rockers and Counters

### United States

*The Superior Figure Skating Club*, off to a late start because of mild weather, held its first meeting on January 4. Elected were: E. A. Tancig, President; M. J. Bartelme, Vice-President; and Mrs. Paul Erickson, Secretary-Treasurer.

A number of our skaters attended the St. Paul summer sessions and some appeared in the Pop Concerts. More recently, members appeared, by invitation, in Ashland, Chisholm, Madison and Eveleth (dates were tentative at the writing of this item). Members of the club also participated in the Junior Chamber of Commerce's Second Annual Winter Sports Event on February 3-4.

Our own Carnival was held in late February. Meanwhile, an hour each night is given to patch sessions and skaters, from small tots to veterans, are busy with figure practice. T. F. S.

*Spokane Figure Skating Club*. We are fast becoming a group of nomad skaters. Elsa Pinkham again skated at Lake Placid last summer and, with Wilhelm Timm, skated in the Christmas Ice Show at Sun Valley over the holidays. (The Sun Valley Figure Skating Club recently awarded Dr. C. Hale Kimble one of their beautiful club pins; he was made a charter member last summer.) Moe Dellar is on a skating tour with stops planned at Seattle, Tacoma, Yakima and Olympia.

In the happy marriage of Betty Labaree and Bill Wade (Pacific Coast Junior Pair Champions) in November, we lost two of our most brilliant and popular skaters. They skated in Hollywood during the summer and fall and are now touring with Sonja Henie.

President Throop tried an innovation this season that met with instant success. He appointed Miss Pinkham, Miss Timm and Dr. Kimble to arrange a Christmas Party at the rink. The whole thing subsequently went off with a bang and will probably be another routine fixture in our regular activities. Part of the evening was given over to an ice program. Many pleas-

ing impromptu specialties were presented. Those participating were: Ann Davies; Peggy Theis; Mary Jane Keegan; Suzanne Smith; Helen, June and Donna Arbor; Daisy Jean Matthews (of the Trail, B. C., club); Ruth Edge; Mal Malmoe; Mary Ruth Barnes; and many of the older members in formations and dances.

A recent board meeting set dates for our mid-winter dance and school figure tests. Plans also were made in January for programs to be put on in Nelson, Trail, Grand Forks and Coeur d'Alene. Serious illness has kept our brilliant juvenile star, Del Jones, and hard-working Earl Carter, off the ice this season. Mrs. Charles Gillingham recently made a round of social skating calls in California. C. H. K.

*The Ice Club of Chicago*, after a slow start and a shaky beginning, is back in the swing. Its first meeting was held at the Chicago Stadium November 13. The objects of the club were outlined to prospective members and applications for membership were accepted from everyone interested in joining (these were later reviewed and passed on by the membership committee). It was also explained that a misunderstanding had last year resulted in our club being voted out of the U. S. F. S. A., but that negotiations had been started to reinstate the club in order that we might have our own judges and meet demands for tests.

Club officers for the season are: T. C. Worden, President; Miss G. Leach, Treasurer; and F. Henry Remien, Secretary. Club Professional (now swamped with demands for lessons) is Roy Fink.

A group of our members have travelled around the country-side recently giving exhibitions at country clubs and parks to promote interest in figure skating. On one of these occasions a group composed of Donald Janson, Douglas Miller, Henry Remien, and Mary Burke (of the Chicago F. S. C.) drew an attendance of about 12,000 at Indianapolis's new Coliseum!

Our club may not have the best figure skaters in the country, but judging from



the comments of visiting members, we do have a most congenial and friendly membership. Taking pride in this fact, we have accepted as our club motto: "A pleasant word and a helping hand for everyone at all times."

F. H. R.

*The Skating Club of Lake Placid* has reached a total membership of 130, out of which 120 are actually skating members (50 seniors and 70 juniors). Due to this increase the North Elba Park District has made considerable more ice available to the club at no cost. In order to facilitate work on school figures we have divided the children into three groups—Novices, Juniors and Intermediates—and have set up a regular weekly schedule.

Membership is still increasing and Freddie Mesot, former Belgian Champion, is doing a very fine job. In fact, the ballet in the winter show (February 16-17) was made up of thirty of our own intermediate skaters. In addition to Mesot's training they were given ballet work under a ballet teacher.

M. G.

*The Flamingo Ice Skating Club* (Miami) is less than a year old and is the first of its kind to be organized in sub-tropical Florida. Its officers are: President, Francis La Vigne; Vice-President, Rayford Peacock; Secretary, Thelma Norlin; Treasurer, Fred Culham; Press Chairman, Harold Snell. Our Club Professional is Miss Marguerite Verden of Vienna. The success of the First Annual Carnival in Florida, presented July 3, 1939 at the Metropolitan Ice Palace, was due entirely to her efforts.

Although the Club is pioneering in this section of the country and few of its members had ever seen ice skates before, one can but admire the progress made in these few short months. Two of its members, Rayford Peacock and Betty Lanzer, are particularly outstanding. Our star of hope, however, lies in our Junior membership.

Several parties have been given for club members and their friends. Among these were a cruise around Biscayne Bay under that old Miami Moon and a Christmas party on the ice with Raymond Scott holding forth as a genial Santa on skates.

We shall be without a rink for about a

month beginning February 19, during which time air conditioning will be installed, the plant generally improved and the rink enlarged. The Roller Derby will be held in that month and is always a favorite event here. Many club members plan to try out their newly-learned figures on rollers while we are rinkless, but first we shall bid the ice good-bye with a Valentine party February 17.

H. P.

*The Alpena Figure Skating Club* (Michigan) began a very successful season with the opening of the municipal ice rink the last week in December. A generous portion of the ice is roped off and reserved for the club. We also have our own shelter for a gathering place and social center.

Jerry Bezotte and Joe Reinke are again serving the club as President and Secretary-Treasurer respectively. The club is also fortunate in having Mary Percola as the club instructor. She has had wide experience in professional troupes and as an instructor at the Olympia F. S. C. in Detroit.

The annual winter carnival sponsored by the Alpena Chamber of Commerce took place January 19-28, and among the important events of the week were the programs presented by our club. Junior members presented "Snow White" with Lois Anderson as Snow White, Charles Malany as the Prince, and Ruth Spring as the witch. About thirty children were included as birds, bunnies, and dwarfs. Other outstanding numbers were: singles by Margaret Linke, Susan Foley, Ruth Spring, Margaret Krebs and Delores Hart; doubles by Leo and Edith Linke, Geraldine Remington and Margaret Shell, Mary Percola and June Storer, and Lou Ann Woelk and Jane Oliver. Group numbers included a foursome by Margaret Krebs, Edith Linke, Geraldine Remington, and Margaret Shell; a Scotch number featuring Mary Percola with twelve skaters in the chorus; and a group fourteenstep by adult members of the club.

Another program was presented February 17 at the State Highway Convention here, and six of our members were invited to Escanaba to exhibit at that city's winter carnival.

Since our club skates at an outdoor rink, when the ice goes we are through

for the year. But the weather has been ideal and the skating splendid, and we look forward to another fortnight of active skating. Our club is well organized and we are proud to have perhaps the only flourishing figure skating club at an outdoor rink in Michigan. T. E. S.

*Philadelphia Skating Club and Humane Society:* Early in January about 300 Philadelphia Girl Scouts held their annual party at our club. Some of the club members skated exhibitions and received a very enthusiastic reception. Those who skated were: our unique father and daughter pair, Bob and Jean Matzke; Lollie Wilhelm and Innes Drury in an interpretive peasant dance; Jane Vaughn and Bill Grimditch in singles; and the Philadelphia Four, Bunty Hall, Mary Dayton, Bill Lukens and Penn Hall. Comedy was furnished by George Harris and Bob Matzke and a group dance number closed the program. V. B.

*St. Moritz Ice Skating Club, Inc.* (Oakland): Our pride in the appointment of Dr. Paul Cadman as Economist with the American Bankers Association is tempered with regret that he must live henceforth in New York. Dr. Glen Terwilliger has been appointed Vice-President in his place. Mr. Drexel has been appointed to succeed Mrs. J. W. Garthwaite as a Director. As Honorary President with full voting privileges, Mrs. Garthwaite will continue to attend Board Meetings and advise the Club which owes so much of its existence and development to her effort and initiative.

Mrs. Stephen Pepper, Chairman, Grace Fisher, Dr. Howard Allen, W. Schenck and Kenneth Shipp make up the Nominating Committee which is rushing the seasons by considering the problem of Directors for 1940-41. If wrinkled brows are an indication, they are taking their responsibility seriously.

First issue of a Club Bulletin made its appearance in February. Its nickname, "Ice Cracks," will be used only long enough to permit the membership to decide on a fitting permanent name for this badly needed dispenser of Club information.

Adult sessions have provided appreciative audiences for the presentation of the following Junior awards: Second Test—Marilyn Grace and Beverly Licht; First Test—Dexter Nichols, Catherine Lally, Gloria Licht, Caroline Donaldson, Jack and Hester Ballantine. Delightful exhibitions for adult sessions have been presented by Valla Ramey, Marilyn Grace, Jean Parrish and Bill Hoyt, all Club Juniors, while their contemporaries have enjoyed solos by Marcia Ede, Constance Bissell, Deborah Hall, Catherine Lally, Beverly and Gloria Licht, Betty Mitchell and Peggy Fletcher and Bill Hoyt. The future of the St. Moritz Club is secure in the hands of these fine young skaters.

Adult awards recently presented by Mr. Henry Swift, President: First Test—Miss Edith Musser; Silver Medal Dance Tests—Miss Mary Adams, Mr. and Mrs. Harold L. Paige. M. L. P.

*The Ice Club of Baltimore:* A fancy dress party on January 15 ushered in our 1940 season with great success. Members played games, danced, ate hot dogs until midnight. Prizes were given for the best costumes.

Carnival practice has started with three group numbers rehearsing under the direction of Bill and Genevieve Swallender. The theme has not yet been decided, but dates have been set for April 5, 6. M. N.

*The Skridsko Club* (Walpole, Mass.) has entered its third year. Formed two years ago last month with only eight members, the club was incorporated in 1939 and admitted to the U. S. F. S. A. last spring. Under the very capable leadership of its president, Roger Turner, the club has grown in membership to this year's record of 84. John Trickey is Secretary-Treasurer and the following serve on the Board of Governors: S. D. Chamberlain, J. Hancock, U. S. Jackson, R. R. Jenks, J. Kaplan, F. H. Nichols, and A. Sieukiewicz.

Weather permitting, our season runs from mid-December to mid-March. The record of skating days in the '39 season was 67—remarkably high for an outdoor rink. Lessons are given at the club by popular Edi Scholdan of the Boston Arena. M. E. C.

*Portland Figure Skating Club:* With tests being held, members are concentrating with added zest on school figures. Much interest is also manifest in the Wednesday evening dance class and several couples worked hard through January and February on the four standard dances.

In order to stimulate membership, the club decided to allow applicants to join for one dollar for the last month of our skating season. Proponents of the plan estimated that about sixty (or more) skaters were interested in such an arrangement.

P.S.: A senior member, Jack Huntley, has decided to take out Social Security for his unemployed leg. V. M. D.

*The Seattle Skating Club, Inc.* followed the showing of its Ninth Annual Shrine Carnival in December with a luncheon and buffet supper for the visiting skaters, the former at the Washington Athletic Club with John Agner as Master of Ceremonies, and the latter at the New Washington Hotel.

Members of the club (Britta Lundequist, Myrtle Girten, Gladys Schulte and Joe Jensen) appeared in the Vancouver Rotary Carnival and others (Iola Smith, Dorothy Beymer, Ralph Beymer and Joe Jensen) skated in the Vernon (B. C.) Rotary Carnival. Motion pictures of the Shrine Carnival were shown at the club's January meeting by Mrs. Germaine Emerson. N. J.

*The Los Angeles Figure Skating Club, Inc.* sponsored "Ice Fashions of 1940" at the Polarink, January 18, 19 and 20, assisted by members of the newly-formed Long Beach Figure Skating Club. Singles were given by Marilyn Swan, Donna Atwood, Carol Lynne and Britta Lundequist, and pairs by Shirley Davies and Claude Gilker, Pat Merifield and Buford McCusker, the Thomas Twins (Mary and Jane), and Markhus and Thomas (pros).

Early in January members of the club, together with members of the All Year Club and the Ice Club De Morra participated in the ceremonies opening *Iceland*, a new rink in Hynes. Situated in a district populated by many Dutch people the rink is the new home of the Ice Club De Morra and is under the management of Mr. I. A. Thorns, formerly of Westwood

Gardens. During the opening ceremonies Shirley Davies and Claude Gilker executed a routine of pair and dance variations and nine pairs from the Los Angeles club staged a Fourteenstep. Singles were given by Jean Sturgeon, Carol Lynne (in a novel acrobatic number), and Donna Atwood. A grand march led by Betty Brown closed the program.

Before he left for Cleveland and the Nationals, Gene Turner appeared in carnivals in Vancouver, Portland and Seattle. Now that he has won the National Singles Title we are all very proud of him.

P. K. N.

*Figure Skating Club of Chicago:* Among regular activities in full swing are our popular Wednesday evening dance sessions and the weekly "Family Night" on Fridays when a series of informal exhibitions bring new talent to the club's attention. Annual jaunts to nearby towns and country clubs began last December with the final arrival of cold weather. Over New Year's week-end members presented programs at a Glenview Country Club children's party and at the Lake Forest Winter Club. A few nights later a group drove out to Glen Ellyn to add figure skating to the program of the Illinois State Speed Skating Championships. On the 12th the club participated in the annual Skokie Country Club winter sports party. Forty members journeyed to Muskegon, Michigan, to aid in a carnival there.

M. S. D.

*The Skate and Ski Club, Inc.* (San Francisco) has two evening, and one morning, sessions and is in the midst of its most successful season. About 200 guests and friends combined with members on December 18 for our big Christmas Costume Party. Prizes for costumes went to Gwen Turner (peasant dress) and Eldridge Douglass (lighted Christmas tree). Mr. Douglass also won a pair of skate guards in the club raffle and Margaret Chase won a pair of skates.

A 30-minute exhibition brought the party to a climax. Those participating: Zoe Longfield and Marcella May (pair), George Monnier and Ed Bodell (comedy duo), Beverly and Gloria Licht (sister

act), William Hart, Margaret Field, Sheldon Galbraith, Murray Galbraith and Hans Johnson. There were also two dance ensembles (fourteenstep and waltz) by a dozen gaily dressed members. Impressive high-light of the evening was a candle procession of all members around the Christmas tree under dim blue lights to the tune of "Silent Night"! The program concluded with the entrance of Santa Claus on a decorated toboggan drawn in by the children of the club.

And now, in mid-February, the club is very busy with plans for the California State Championships and our carnival ("Cinderella of the Silver Skates") scheduled for March 11, 12 and 13. G. H. S.

### Canada

*The London Skating Club* (Ontario) has Norton Wait and Eileen Noble as professionals this year, and the progress being made is a credit to them. Each week one of them devotes part of the Thursday night session to group instruction on the four dances and this has proved helpful. On February 3 we staged a carnival at Windsor sponsored by the Windsor Rotary Club, the proceeds of which went to a fund for crippled children. Members of the club have also been busy giving exhibitions at Dutton (Jan. 26), Ingersoll (Feb. 11), Guelph (Feb. 23), and at Stratford. The Western Ontario Regional Competition was held at our club arena February 10. This competition is constructed on a plan similar to the American Regional Competitions as a stepping stone to the Nationals.

Guests' nights, once a month, have been particularly interesting this year under the convenorship of Margaret Ramsden. Games, skits, general skating and exhibitions fill the program. Our Annual Skating Carnival is set for March 28, 29 and 30. Mrs. Charles Ivey is general Convenor and the program will be divided into two parts. The first will be an all-Dutch setting for an ice drama based on the well-known old story of the Silver Skates, and in the second half the Club will go modern and present a smart ice revue.

A. M. M. S.

*Copper Cliff Skating Club*: Visiting

Chapleau early in February, Betty Gathercole, Dorothy Digby, Patsy Thompson and Lorraine Rowe skated singles, pairs and fours.

During the same week, a large party of Copper Cliff members skated at North Bay. Anne Aubin brought the house down with her excellent skating, Mr. and Mrs. MacFarlane skated a dance medley, and 24 young ladies executed the Lambeth Walk in scarlet satin, white top hats and canes. A refreshing "Cadet Review" in white and gold sailor suits featured the fourteenstep.

A party of Juniors (Betty Gathercole, Dorothy Digby, Patsy Thompson, Lorraine Rowe, Anne Aubin, Lois McNeill and Patsy O'Brien) appeared in the Children's Carnival in Sudbury (February 10). Fifty-four of our skaters travelled to Sault Ste. Marie (Michigan) on February 16 to take part in the formal opening of their beautiful new rink. Plans for our own carnival are not definite, but it will be held late in April. E. M. T.

*Montreal Figure Skating Club, Inc.* This year we have a very effective Ice Committee under J. J. Higgins, Harris Beecher and C. J. Sutherland. The first half hour at each session is allotted to School Figures, and nothing else. This practice is rigidly adhered to and there has resulted a notable improvement in our skating over last year. Five-minute periods for the balance of the session are given to: Tenstep, Free Skating, Waltz, Free Skating, Tango, Free Skating. And we always include a Paul Jones in which all skaters participate and which helps those who have no regular partners to have a waltz and improve their edges.

During January the club entertained at out-of-door carnivals at the Notre Dame de Grace Y.M.C.A., the Verdun Y.M.C.A. and Loyola College. Twenty acts were performed at the first, fourteen at the second and several at the third. During February our engagements included carnivals at Shawbridge, Ste. Anne de Bellevue and Hampstead.

We are having a glorious winter and the parents who attend the sessions enjoy them to such an extent that many have cancelled their bridge clubs to be present. The parents also relate that the health of

# Yankee

*the magazine for*  
Yankees everywhere  
Refreshingly *different*  
Contains  
Facts—Dates—Humor  
Almanac  
Essays  
Articles  
Poetry  
Winter Sports . .  
Swoppers' Column  
25c a copy at your news  
stand or send \$1.00 for  
five month trial sub-  
scription.

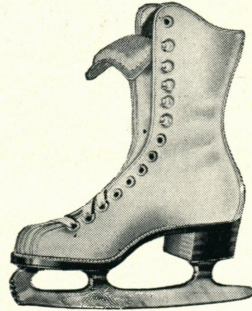
*Yankee, Inc.*

DUBLIN, N. H.

FOR *Brilliant*  
PERFORMANCE

use

*Alfred's*



- Faultless form is easier with Alfred's BALANCED skates.
- Scientifically designed blades insure keen lasting edges.
- Snug fitting shoes give more ankle and arch support.

***Alfred Johnson Skate Company***

***2846 W. North Ave. Chicago U. S. A.***

***Not Connected With Nestor Johnson Mfg. Co.***

*Julian T. Fitzgerald, Sales Manager*



*Olympic Arena, Lake Placid, N. Y., William G. Distin, Architect.*

Design and construction of patented long span steel arches for skating rinks, sports buildings, gymnasiums, auditoriums etc. A request will bring information.

**ARCH ROOF CONSTRUCTION CO., INC.**

Engineers — Contractors

53 - 55 WEST 42ND STREET, NEW YORK CITY

Please mention SKATING when answering advertisements.



*Loaned by the Granite Club, Toronto*

Eleanor Wilson, Dorothy Edgar, Eva Peace, Betty Dickson, Jean Peace  
and Florence McNamara  
*Granite Club, Toronto*

their children has improved and they have a new interest in which they are vitally interested.

P. G. McN.

*The Granite Club* (Toronto): A week before the Canadian Championship competitions opened in Ottawa, Audrey Miller, a member of the club and a candidate for national honors at the competitions, broke her leg while practicing. Eliminated not only from the national championships but also from many other skating events, she will be inactive for two months.

Another of Granite's skating parties was held January 18 at the club and surpassed all its predecessors. Dancing, skating and exhibitions high-lighted the program and a supper in the sports lounge climaxed it.

Thirty members put on a carnival at the new McIntyre Community Building in Schumacker the last weekend in January and were well received. The same group later skated in a carnival at Sault Ste. Marie (February 15 and 16). Dorothy and Hazel Caley, Eleanor Wilson and Eleanor O'Meara are off again! On the road

headed for points North, South, East and West, they have included their acts in carnivals at Dartmouth College, Hamilton University, Atlantic City, New York, Lake Placid and elsewhere, during the past few weeks. Virginia Wilson skated in the Cornell Carnival February 8-9. R. P.

*The Porcupine Skating Club* (Schumacker, Ont.) opened its season on November 1 with most of last year's members and many new ones (total membership now over 250).

On the last week day in December (the 30th) members of the club celebrated the opening of the new and elaborate McIntyre Community Building, a giant recreation center housing under one roof an arena, hockey rooms, dressing rooms, skate sharpening room, community hall, curling rink, lounge, small practice rink, gymnasium, bowling alleys, and a completely-equipped restaurant. The club program on this gala opening night included: solos by Olga Bernyck, Mary Jane Halsted, Alex Fulton, Margaret Keeley; pairs by Frankie

## LAKE PLACID ARENA

*Is pleased to announce the engagement of*

### **Howard Nicholson**

*For the 1940 Summer Ice Season*

JUNE 22 THRU LABOR DAY

Engagements with Howard Nicholson for the coming summer season may now be booked by writing Mr. Nicholson, % New York Skating Club, 304 West 50, New York City, until June 15th, after which they should be addressed to Booking Office, Olympic Arena, Lake Placid.

*In spite of war, skating carries on in Europe.*

## The Skating Times

is carrying on as well

The only skating magazine in Great Britain is continuing to be published monthly. Full reports of all skating activities, and instructional articles. Subscription: seven shillings and sixpence, post free (at current rate of exchange). Write for specimen copy to:

THE SKATING TIMES, 9-11 Tottenham St., London, W. 1, England

*Exhausted from the Carnival and Competitions Whirl?*

*IF YOU ARE*, Mrs. Helen Moss (formerly Miss Leacroft of the New Haven Skating Club), invites you to spend your spring or summer "rest-up" at

### **"ALLIANCE"**

*A Guest House in St. George's, BERMUDA*

Situated to command a view of the Islands. Accommodating ten selected guests. Featuring distinctive food. All sports at hand. Open March 1 to November 15. Rates: \$28 to \$35 weekly, American Plan.

For Information and Reservations Write:

Mrs. Helen Moss, Manager, ALLIANCE, St. George's, BERMUDA

Please mention SKATING when answering advertisements.

Morgan and Jean Zederozny, and Bob Chalmers and Jack Lansdell ("Grandma's First Lesson"); the "Top Hat" routine; waltz and tenstep by club members; and a grand march at the close.

Since the end of December we have had three rinks to skate on—the curling rink, (148' x 90'), the arena ice surface (190' x 80') and the small practice rink. In addition to regular club sessions, there is plenty of room for figure practice at the arena during morning public sessions. So, all in all, we have a fair amount of time on the ice for a new club.

Fifteen members of the club went to Cochrane in November to open that town's new rink. Solos by Margaret Keeley, Olga Bernyck, Bruce Palmer and Mary Jane Halsted (pro) and a twelve-girl "Top Hat" number were features. M. A. T.

*The Vancouver Skating Club* has engaged Ferd. Chatte, formerly of the Winnipeg and Montreal clubs. Because of its increased membership, the club has been divided into three sections: Senior, Intermediate and Junior. Everything points to a very successful season. Under the able direction of Verna Miles Fraser a large and colorful number was provided for the Rotary Ice Carnivals held during December in Vancouver and Vernon.

*Flin Flon Figure Skating Club* (Manitoba) opened its second season with 100% increase in membership over 1939. At our carnival last year we were fortunate to have Mary Rose Thacker, North American champion, heading the guest stars, while for "The Ice Follies of 1940," our second annual revue, we have the Caley Sisters, and an American artist for the first time, Robert Uppgren of the St. Paul Figure Skating Club. Committees have been working tirelessly for months preparing costumes, sets, scenery, ice design, lighting and all the numerous details to make the show even better than ever.

Thomas Foster, President of the Club, Joe Van Nes, professional, and Mrs. Dr. B. A. Biggs, are the busiest people in the north country; and have promised the 5000 who will see the production on March 8 and 9 something extra-special.

W. W. P.

*Glenora Skating Club* (Edmonton): The first club dinner was held January 10. A general outline of this year's carnival, "Ali Baba and the Forty Thieves," held February 22, 23, 24, was given. Ladies of the club assembled costumes and Miss Kinney, dancing instructor, was engaged to direct all ballets. At the second club dinner (February 7) A. J. Huff, carnival manager, and C. H. Chapman, President, told the large group present that the Caley sisters would return for a second appearance in our carnivals, that Sandy Macdonald and Harold Hartshorne were coming from New York and that Eric Waite was coming from Chicago.

Club competitions were held January 27. Muriel Sutton and Lloyd Wood won the Senior titles and Ian Keltie and Stephanie Macdonald the Senior Pair. Other top-notchers were: Intermediates—Doreen Fraser and Dick Keltie in singles and Gwen Swingle and Janet Matheson in pairs; Juniors: Joan Fraser and Murdo Munro in singles and Rhona Crystal and Margaret Hogan in pairs; Juveniles: Barbara Blackett in singles and Pat Cheshire and Jane Emery in pairs. B. N.

*Wascana Winter Club* (Regina, Sask.). Owing to the prolonged spell of mild weather, our club was unable to open for the season until December 22—about a month later than usual. Despite this, enthusiasm is high and Mr. and Mrs. Fred Pohlman are again with us as club professionals.

The formal opening took place January 20. This is the only day during the season when the general public have an opportunity to visit the club. A program of exhibition skating was arranged which included solos, pairs, and one trio, performed by junior and juvenile members; club waltz and tenstep by seniors and third-class juniors; a selected number for the tango, "swing" and "blues" foxtrots; and a junior tenstep. Mr. and Mrs. Pohlman also demonstrated dances. Tea was served during the intermission in the badminton section of the club to an attendance of over 500!

This year we have lost two of our best skaters—Dick Salter and Barbara Strothard—who have turned professional, Dick



# *Announcing . . . .*

## **The Sno Birds SUMMER SKATING LODGE**

**A new vacation rendezvous for senior\* skaters  
at Lake Placid Club**

- Complete living and housekeeping facilities for the skating group in a separate clubhouse.
- A summer holiday with all major sports and the distinctive social program of Lake Placid Club.
- Plus* daily opportunities for skating practice and skating instruction at the Olympic Arena.

*All this at attractively low American Plan rates by  
the week or for the full season!*

The Sno Birds SUMMER SKATING LODGE is being sponsored by a committee of your skating friends. Accommodations are limited. Reservations must be in by April 15. For complete information and applications—

**Address: The Secretary, Sno Birds**

## **LAKE PLACID CLUB**

**ESSEX COUNTY NEW YORK**

*In the Adirondacks*

\*The Junior FIGURE-SKATING CAMP under the direction of Miss Isabel Fisher will again be in session at the Club. . . . An unusually attractive vacation opportunity for younger skaters. Write to Miss Fisher in care of the Club for full details and illustrated folder.

Please mention SKATING when answering advertisements.

to teach at The Skating Club of Boston and Barbara at Fort William and Port Arthur, Ontario. Preparations were under way through January and February for our 8th Annual Carnival (February 23 & 24) which featured Hazel Franklin and the acrobatic team of McGowan and Mack.

W. T.

*The Glencoe Club* (Calgary): Doreen Dutton skated last summer in St. Paul, became a member of the U. S. F. S. A. and successfully passed her second and third tests.

The club's professionals this season are (Mr.) Hope Braine of Folkstone, England, and Margaret Manahan of Toronto (International Gold Medalist). They arrived here from a successful summer in Sidney, Australia, where they had been teaching. With Mr. Braine is his wife (the former Sylvia Law who travelled with skating shows on the continent for several years).

Mary Rose Thacker was the guest star at our carnival, February 22 & 23. C. M.

### Roller

*The Earl Van Horn Figure Skating Club* (Mineola, N. Y.) organized in April, 1937, has been active for the past three years in teaching figure and dance skating. Under the direction of Earl and Inez Van Horn, membership in this club has grown to over 280 skaters, of whom two hundred are active members at present. Practice sessions are held twice weekly at the Mineola Skating Rink with ice professional Francois Le Maire in attendance.

Ninety-seven members of the club have passed the Junior Tests in figure skating; fourteen the Bronze Test No. 1; two the Bronze Test No. 2; and one the Bronze Test No. 3. Ten members of the club are holders of the Bronze Test in Dance Skating, and are earnestly practicing for the

Silver Dance Tests. In addition to the Van Horns and Francois Le Maire the following professionals are on the teaching staff: Gerald Ziegler, Dorothy Chandler, Louise Campbell and Barney Fluke. The nationally sanctioned Amateur New York State Roller Skating Championships will be held at Mineola Skating Rink on March 16, 17 and 18. The winners of these (Junior, Novice, and Senior, in figure skating, free style skating, pair skating, and dance skating) will compete with other State Champions in the National Championships to be held next April in Cleveland under the auspices of the R. S. R. O. A.

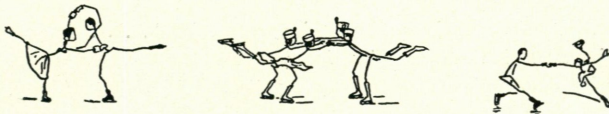
Believing that ice skating and roller skating are closely affiliated, Earl Van Horn attended the recent Eastern States Ice Championships held last January in Rye, N. Y., and the National Ice Championships in Cleveland in February. Howard Nicholson, popular ice professional, was a recent visitor to Mineola and guest of Mr. Van Horn, and collaborated with him on many kindred points of ice and roller skating.

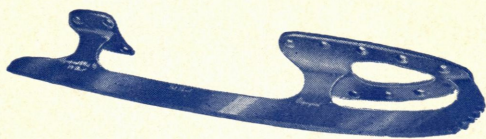
E. V. H.

*Fred H. Freeman Figure Skating Club* (Boston): Betty Lytle, Silver Medallist and outstanding roller-figure-skater, has been with us during January and February giving exhibitions and coaching. Decided improvement in form and interest has been shown at the club since she has been here. Her pair number with Melvin Umbach (our own dance instructor) has been given many times at the rink. (Betty is also an ice skater and figure skates with equal ease on ice skates.)

On February 20 we held our "R.S.R.O.A. Night" (proceeds to the R.S.R.O.A. treasury to promote roller figure skating nationally). Exhibitions and general skating were enjoyed at the Winter Garden Rink. Earlier in February we held our club championships.

B. T. P.





# Olympiad AND Zephyr FIGURE SKATES

make figure skating easier and more pleasant.  
They also last longer and cost less to maintain  
because they are tempered.

## OLYMPIAD SKATE CO.

1567 University Ave.

St. Paul, Minn.

*St. Paul Figure Skating Club  
Announces*

# 8 WEEKS

## SUMMER SKATING

JULY 8th to SEPT. 1st

*Third Successive Season  
in the beautiful, large*

# SAINT PAUL AUDITORIUM ARENA

SAINT PAUL, MINNESOTA

SYMPHONY ORCHESTRA • "POP CONCERTS"  
TUESDAY, THURSDAY, FRIDAY EVENINGS  
DURING AUGUST

INSTRUCTORS

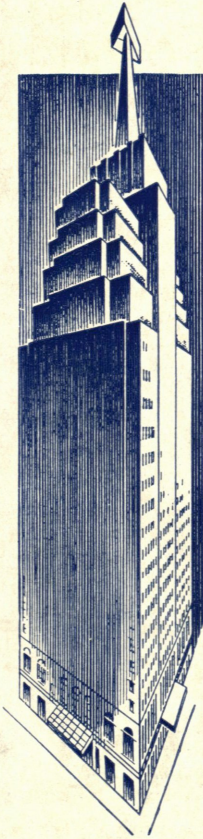
MONTGOMERY WILSON  
PIERRE BRUNET and ANDREY JOLY

For further information, write Edith Palmer,  
Exec. Sec.

St. Paul Figure Skating Club, 303 Auditorium Bldg.,  
St. Paul, Minn.

SESSIONS  
8:30 a.m. to 10 p.m. daily  
Season Ticket \$38.50 incl. tax.  
Weekly Ticket \$5.50 incl. tax.  
Daily Ticket \$1.10 incl. tax.  
Patch Sessions 40c each  
Judges School and  
Dance Conference

Please mention SKATING when answering advertisements.



# TOWERING MANSIONS

*Designed and Dedicated  
to Heighten the Joy  
of Living*

# LINCOLN HOTEL

● Live like a king when you visit New York. Stay at Manhattan's Mighty Hotel Lincoln, superb in every detail of location, luxury and hospitality.

HOME OF  
THE FAMOUS  
**BLUE ROOM**  
OUTSTANDING  
MUSIC AND  
ENTERTAINMENT

OWNERSHIP MANAGEMENT

**MARIA KRAMER**  
PRESIDENT

John L. Horgan, General Manager

**HOTEL EDISON**  
SAME MANAGEMENT



# NEW YORK CITY

44th to 45th Street at Eighth Avenue

---

Please mention SKATING when answering advertisements.