

# Skating

OFFICIAL MAGAZINE OF UNITED STATES FIGURE SKATING ASSOCIATION

VOL. 36, NO. 3

MARCH 1959



---

# Riedell



## **skating boots**

FEATURED IN **C·C·M**· FIGURE SETS

Write for your **FREE** measuring chart and catalogue.

Order through your Rink or Skate Shop.

**RIEDEL SHOES INC.**

**Red Wing, Minn.**

---

Please mention **SKATING** when answering advertisements.

## OFFICERS OF THE UNITED STATES FIGURE SKATING ASSN.

### President

Howard D. Herbert  
225 Paul Dr.  
Moorestown, N. J.

### First Vice-President

Delaplaine McDaniel  
Narberth, Pa.

### Second Vice-President

Harry N. Keighley  
Evanston, Ill.

### Third Vice-President

John P. Hart  
Tacoma, Wash.

### Secretary

Harold T. Leroux  
1530 East 19th St.  
Tulsa 20, Okla.

### Treasurer

Theodore G. Patterson  
Preston, Moss & Co.  
24 Federal St.  
Boston 10, Mass.

### EXECUTIVE COMMITTEE

#### Term Expiring August 31, 1959

Henry M. Beatty  
Norman E. Fuller  
Charles E. Ingersoll  
Richard Jackson  
Harold C. Payne  
Howard Taylor

#### Term Expiring August 31, 1960

Edmund C. Bold  
Henry R. Heebner  
Winston L. Molander  
Walter S. Powell  
John W. C. Rogers  
Charles H. Vilas

### STANDING COMMITTEE CHAIRMEN

#### Amateur Status

Col. Harold G. Storke  
P.O. Box 235, Allerton Station, Hull, Mass.

#### Competitions

Kenneth L. Brown  
1011 Mariposa Ave., Berkeley 7, Calif.

#### Dance

F. Ritter Shumway  
400 West Ave., Rochester 3, N. Y.

#### Dance Judging

Dr. Robert R. Kierland  
Mayo Clinic, Rochester, Minn.

#### Figure Judging

H. Kendall Kelley  
17433 Shelburne Rd., Cleveland Heights 18, Ohio

#### Finance

Abbot P. Mills  
1001 15th St. N.W., Washington 5, D. C.

#### International

John R. Shoemaker  
17 Shore View Ave., San Francisco 21, Calif.

#### Membership

Carl W. Gram, Jr.  
375 Park Ave., Room 3401, New York 22, N. Y.

#### Sanctions

Dr. Nelson F. Waters  
254 Ridge Rd., East Lansing, Mich.

#### Summer Skating

Spencer E. Cram  
22790 South Woodland Rd., Shaker Heights 22, Ohio

#### Tests

Deane E. McMinn  
2248 247th St., Box 433, Lomita, Calif.

#### Eastern

Delaplaine McDaniel  
429 Penn Valley Rd., Narberth, Pa.

#### Midwestern

Harry N. Keighley  
2647 Eastwood Ave., Evanston, Ill.

#### Pacific Coast

John P. Hart  
3536 East 11th St., Tacoma 1, Wash.

## OFFICERS OF THE CANADIAN FIGURE SKATING ASSN.

### President

E. R. S. McLaughlin  
430 Masson St.  
Oshawa, Ont.

### Past President

F. Herbert Crispo  
Toronto, Ont.

### First Vice-President

Granville Mayall  
Vancouver, B. C.

### Second Vice-President

James A. McKechnie  
Willowdale, Ont.

### Secretary-Treasurer

Charles H. Cumming  
74 George St., Ottawa, Ont.

### STANDING COMMITTEE CHAIRMEN

#### Competition and Rules

Norman V. S. Gregory  
330 Wood Ave., Westmount, P. Q.

#### Dance

Sidney V. Soanes  
64 Airdrie Rd., Toronto 17, Ont.

#### Finance and Investments

James A. McKechnie  
11 Hedgewood Rd., Willowdale, Ont.

#### Judges and Judging

Melville F. Rogers  
35 MacKay St., Ottawa, Ont.

#### Sections

Douglas L. Kimpel  
100 Blenheim Rd., Galt, Ont.

**OLYMPIC-SIZE**  
*skating fun!*

**SunValley**  
IDAHO



Only at Sun Valley will you find an outdoor, Olympic-size, all-seasons ice rink. Daily patch sessions and superb instruction available for beginners and advanced skaters. Again next summer, Sun Valley will feature its popular "Learn To Skate" Weeks program—7 days, 6 nights for the one all-expense rate of \$110.

**FOR RESERVATIONS:**

Address Mr. Winston McCrea, Mgr., Sun Valley, Idaho (or phone SunValley 3311) or Union Pacific Railroad, Room 2572, Omaha 2, Nebr., or see your travel agent.



owned and operated by  
**UNION PACIFIC RAILROAD**

*Announcing*  
**9th ANNUAL SUMMER SESSION**  
**JUNE 17th TO SEPT. 7th**

Plan now to spend your summer in historic New England at New England's largest skating center.

The most conveniently located summer session in the United States. Fifteen minutes from Logan International Airport.

Early Ice Reservations Advisable

Sponsored by North Shore Skating Club  
Sanctioned by USFSA

**For Information Write: Lillian Tribby, Skating Director**  
**William W. Taff, Director**

**NORTH SHORE SPORTS CENTER**

30 Boston St., Lynn, Mass.

Please mention **SKATING** when answering advertisements.

*Announcing the Fifth Annual*

# HERSHEY SPORTS ARENA SUMMER SKATING SESSION

In the Chocolate-Town of Hershey, Pa.

**June 13 Thru August 23**

**Under Direction Of**

*Felix Kaspar*

**World's Champion  
1937 - 1938**

New Arrangements for Skating Camp

Address All Inquiries To  
Hershey Sports Arena  
Hershey, Penna.



**FELIX KASPAR**

## WELLAND SUMMER SKATING SCHOOL in the NIAGARA DISTRICT

**NINE WEEKS  
JUNE 29th to AUGUST 30th**

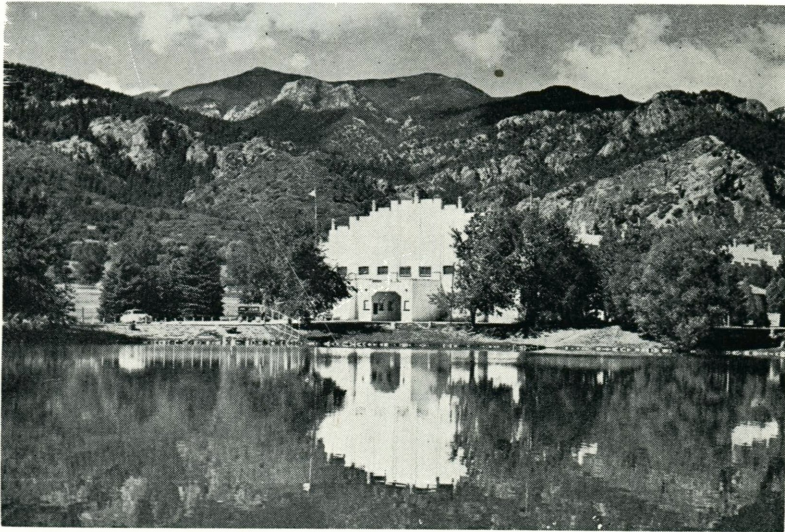
*Full staff of experienced professionals  
Director and professional Ronald Vincent*

**For reservations write:**

**Welland Summer Skating School,  
P.O. Box 104,  
St. Catharines, Ontario, Canada**

Licensed by the C.F.S.A.

Please mention SKATING when answering advertisements.



Train with the champions at the newly-enlarged **BROADMOOR ICE PALACE**, scene of the 1957 and 1959 World's Figure Skating competitions. Professional instruction by Edi Scholdan and staff.

**BROADMOOR hotel ICE PALACE**  
COLORADO SPRINGS, COLORADO

**5th Annual**

**LAKE BERNARD SUMMER SKATING SCHOOL**

Sundridge, Ontario

Sanctioned by the Canadian Figure Skating Association



**Gold Medalist Instructors in Figures—Free Skating & Dancing**

**Paul R. Tatton      Mrs. Ray Lockwood      Ray Lockwood**



**For Information:**

**Paul R. Tatton**  
204 Parsons Avenue  
North Bay, Ontario  
Telephone Grover 2-2295

**Girls' Residence:**  
Mrs. Gordon Burnley  
Sundridge, Ontario

**Other Accommodation:**  
W. J. Copeman, M.D.  
Sundridge, Ontario

Please mention **SKATING** when answering advertisements.

# Skating

30 HUNTINGTON AVENUE  
BOSTON 16, MASS.

OFFICIAL MAGAZINE OF  
*United States Figure Skating Association*  
*Canadian Figure Skating Association*  
36TH SEASON OF PUBLICATION

## Staff

THERESA WELD BLANCHARD, *Editor*  
EDITH E. RAY, *Managing Editor*  
FREDA ALEXANDER, *Assistant Editor*  
ELAINE J. HOLLAND, *Editorial Assistant*  
EVA A. YATES, *Circulation Manager*  
CAROLE RODENHIZER, *Business Manager*

## Advisory Board

### USFSA

SHERWIN C. BADGER, *Boston*  
RICHARD L. HAPGOOD, *Boston*  
HAROLD T. LEROUX, *Tulsa*  
THEODORE G. PATTERSON, *Boston*

### CFSA

NORMAN V. S. GREGORY, *Montreal*  
E. R. S. McLAUGHLIN, *Oshawa*  
GRANVILLE MAYALL, *Vancouver*



SKATING, copyright 1959 by the United States Figure Skating Association in the U. S. A. Title Registered in U. S. Patent Office, Published eight times a year: January, February, March, April, May, June, November and December; by the United States Figure Skating Association, 30 Huntington Ave., Boston 16, Mass. Second-class postage paid at Boston, Mass. Single Copy 50 cents. Subscription \$3.00. Address: SKATING, 30 Huntington Ave., Boston 16, Mass. SKATING is protected by copyright and nothing that appears in it may be reproduced without written permission.

## Contents

VOL. 36, NO. 3

MARCH 1959

### Articles

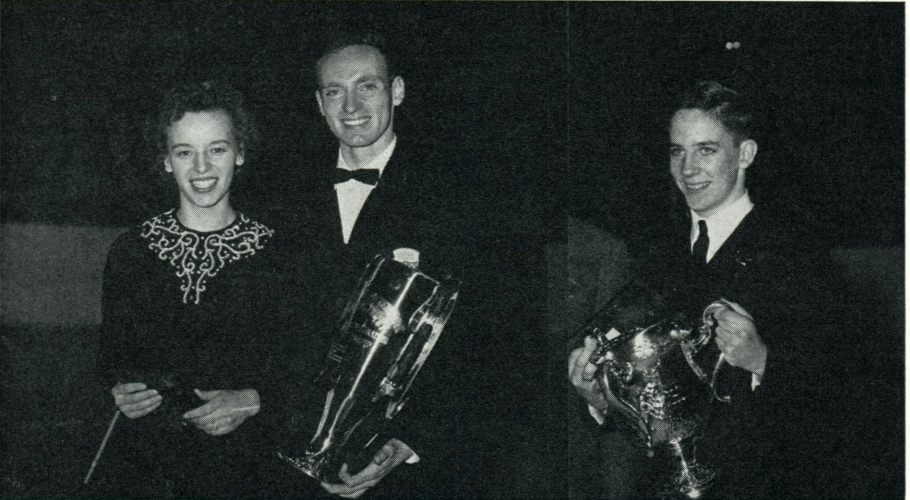
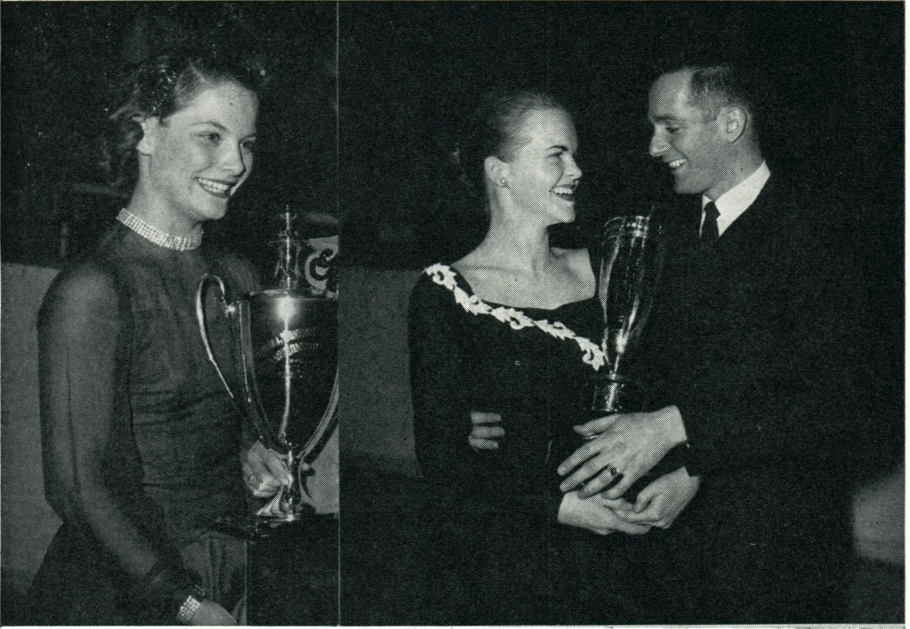
THE UNITED STATES CHAMPIONSHIPS <i>Marian P. Condit</i>	7
THE CASE FOR THE PROGRESSIVE <i>Muriel Kay</i>	10
ANNUAL MEETING OF USFSA GOV- ERNING COUNCIL	13
THE RHUMBA <i>R. J. Wilkie</i>	14
FOREIGN NEWS	15
SECTIONAL CHAMPIONSHIPS	
Northern Ontario	18
Pacific Coast	19
Midwesterns	20
Western Ontario	22
Easterns	23

### Departments

CHILDREN'S CORNER	16
PEOPLE	24
THE CALENDAR OF COMING EVENTS	24
ROCKERS AND COUNTERS	25
USFSA TESTS PASSED	38
CFSA TESTS PASSED	40
INDEX TO ADVERTISERS	39
THE SKATERS' EXCHANGE	39
PICTURE PAGES	6, 12

### This Month's Cover

features two of the 1959 United States Champions: David Jenkins, Broadmoor SC, won his third straight Men's Championship, and Laurence Owen, The SC of Boston, became the new Junior Lady Champion. David is holding the George E. Browne Memorial Bowl presented for the Men's title, while peering into the James A. Tower Trophy, the Junior Lady's award. Photo courtesy of William W. Woodbury, Rochester, N. Y.





# The United States Championships

By MARIAN P. CONDIT

*Genesee Figure Skating Club*

THE FOUR DAYS of January 29-February 1 made 1959 a banner year for both Rochester and the Nationals. For the city it meant the first opportunity to participate in this major winter sporting event. For the Genesee Figure Skating Club and the Rochester Junior Chamber of Commerce, co-sponsors, it meant the first chance to be proud hosts to the U. S. Figure Skating Championships. For skating and the Nationals, it meant a new high in public interest. A total of 13,873 spectators—almost double the number at any previous Nationals—attended the three days of free skating, dancing and pairs at the Community War Memorial, with several hundred more watching the compulsory figures and practice sessions at the nearby Ritter-Clark rink.

Best of all, everybody seemed happy. The skaters were delighted to find two indoor rinks at their disposal for four full days and several evenings. The judges, officials and visitors seemed pleased with accommodation and transportation facilities. The Genesee FSC was gratified that its arrangements for carrying on the competitions worked out so smoothly. The spectators, including the special guests of a dozen or so chair-ridden polio victims for whom a special viewing point had been arranged, were most enthusiastic. The Rochester Junior Chamber of Commerce, in particular, was elated at the large attendance, for upon this depended their success at raising funds to carry on community youth and charitable projects.

For four days prior to the events and during the days of competitions, the Ritter-Clark rink at Rochester Institute of

Technology was reserved for practice and compulsory figure skating. The only illumination here was that of daylight filtered palely through a few tinted windows. As expected, relatively few—and these mostly devotees, anxious relatives and pros—attended these events. The silence was tense, broken only by the muted voice of the announcer or the clack-clack of the judges' ice-grippers as they moved in to check the revelatory traces. In striking contrast was the atmosphere of the War Memorial. Here the skaters competed under the brilliant white of full flood illumination to magnified recordings and the murmur, applause—and occasional groans—of thousands. Here, too, the method of judging differed from that used for the compulsory figures.

The programming of events had been carefully balanced so that every major session would include at least one example of each form of skating. The Friday evening schedule was especially planned to appeal to children. The Novice Ladies were the first to skate under the bright lights. In their gay dresses they looked like scattering confetti as they took to the ice for the warm-up. Petite, dark-haired Ronna Mae Goldblatt led after the figures over blonde, hazel-eyed Mary Batdorf. But with firsts from all five judges for her free skating, Mary succeeded in winning a slight victory over Ronna. Thirteen-year-old Wanda Guntert held third place throughout, but won first for gallantry from all who knew the odds against which she skated. Thursday evening after seeing a dream come true—his daughter skating in the Nationals—her father suf-

---

## UNITED STATES CHAMPIONS

Pictured at left: Top: Carol Heiss, Senior Lady; Andree & Donald Jacoby, Gold Dance. Middle: F. Ritter Shumway, General Chairman, Genesee FSC; Monty Hoyt, Novice Man; Mary Batdorf, Novice Lady; Col. Harold G. Storke, Referee, The SC of Boston; Judianne Fotheringill & Jerry Fotheringill, Junior Pair; Delaplaine McDaniel, Assistant Referee, Philadelphia SC & HS; Marilyn Meeker & Larry Pierce, Silver Dance. Bottom: Nancy Ludington & Ronald Ludington, Senior Pair; Gregory Kelley, Junior Man. Photos by William W. Woodbury, Rochester.

### U. S. World Team

**LADIES:** Carol Heiss, The SC of New York; Nancy Heiss, The SC of New York; Barbara Ann Roles, Arctic Blades FSC; Lynn Finnegan, The SC of Boston.

**MEN:** David Jenkins, Broadmoor SC; Tim Brown, Broadmoor SC; Robert Lee Brewer, Los Angeles FSC; Bradley Lord, The SC of Boston. First alternate: Barlow Nelson, The SC at Dartmouth; second alternate: Gregory Kelley, The SC of Boston.

**PAIRS:** Nancy & Ronald Ludington, Commonwealth FSC; Gayle & Karl Freed, WC of Indianapolis; Maribel Owen & Dudley Richards, The SC of Boston. First alternates: Ila Ray & Ray Hadley, Seattle SC; second alternates: Sheila Wells & Tom Moore, Colorado Springs.

**DANCE:** Andree & Donald Jacoby, Buffalo SC; Margie Ackles, Los Angeles FSC; & Charles Phillips, Arctic Blades FSC; Judy Lamar & Ronald Ludington, Commonwealth FSC. Alternates: Susan Sebo & Tim Brown, Broadmoor SC.

### U. S. North American Team

The World skaters, listed above, with no alternates, and without David Jenkins who was unable to participate.

ferred a heart attack and died while the family were having dinner.

Monty Hoyt, 14-year-old straight A junior high school student, became the first Denver skater ever to win a National Figure Skating Championship as he took first place over 75-pound Scott Allen in the Novice Men's competition. Scott, at nine, was the youngest competitor ever to skate in the Nationals, and might well have edged closer to the cup had he not gone in for another sport on the side. After Thursday's figures, he sneaked into the R.I.T. gym to compete at basketball with the college boys. He pulled a ligament in his right leg, which required hours of work-overs to keep him in the competition. Ronnie Frank placed third; he, like Scott, was competing in the Nationals for the first time. Buddy Zack, the 13-year-old tumbler from Seattle, skated a terrific program that won him two first places and one second from the judges. With a low seventh in the figures, however, his final standing was only fifth.

Pairs are always exciting to watch, and this year's Junior Championship added

considerably to the evening's entertainment. Dainty Judianne Fotheringill, 14, and her brother Jerry, 16, received a majority of three first places to win the title. Gail Kizer & Lonnie Kane were second, with another 14- and 16-year-old brother and sister pair, Laurie & Bill Hickox, placing third.

Silver Dance finals were held on Saturday afternoon with eight contenders for honors; two couples were eliminated in Friday's compulsory dances. Marilyn Meeker & Larry Pierce skated from second to first place on the judging of their free dance. Diane Sherbloom & Roger Campbell, 16-year-old high school juniors, overcame the handicap of fourth in compulsory dances to win second place honors. The competition in this class was tantalizingly close. Blond Bob Dineen and his pert, dark-haired wife, Pat, finished first in the compulsory phase and were only one and a fraction points behind Diane and Roger in the final scoring.

The Junior Ladies also finished their competition on Saturday afternoon, with no change in the first three place standings of figures. Sparkling Laurence Owen led all the way, to finish three ordinals ahead of Stephanie Westerfeld. Rhode Lee Michelson, 1958 Novice Ladies' Champion, moved up creditably into this higher class with a third place win.

The spectators, as for the Junior Pair competition on Friday evening, were again entranced when the Senior Pairs took to the ice. Nancy & Ronald Ludington won first laurels for the third time with a dazzling performance that left the spectators both empathy-exhausted and loudly applauding. Hard-working Gayle & Karl Freed, last year's Junior Pair Champions, won a second place victory closely contested by Maribel Owen & Dudley Richards. All six pairs gave stellar performances.

David Jenkins, with Hayes Alan looking on, "did it again" in the Senior Men's singles. This time, however, he did it without the pressure of having to overcome a compulsory figure lead by Tim Brown. Closely contested by Tim in the first three figures, David's performance in the final three brought him well ahead. Needless to say, his free style was mag-

nificent and virtually incontestable. No judge rated him lower than 9.5 for contents, while three rated him 9.8, one 9.7 and one 9.9 for performance. Not that Tim Brown didn't skate well. He did, in a masterly, artistic style interspersed with difficult moves. Robert Brewer and Bradley Lord, no mean contenders by any standard, also rated high both in scores and applause.

In the Gold Dance, Andree & Don Jacoby, skating easily in their first major competition as husband and wife, won both the compulsory and free divisions with charming confidence. Their free dance was smooth and varied, with their third change of pace a beautiful transference to ice of the ballroom cha-cha. With a number of other couples, both Silver and Gold, using bits of cha-cha in their free routines, can it be that one of these days we will find cha-cha—like the Foxtrot, Rhumba and Tango—transferred in toto from the dance floor to a set-pattern dance on ice? Second place in the Gold Dance was closely contested. Judy Lamar & Ronald Ludington had a slight edge over Margie Ackles & Charles Phillips, Jr., on completion of the compulsory dances. In the final results the Ackles-Phillips team were accounted second place winners with 11 ordinals over the Bostonians with 15. Susan Sebo & Tim Brown were fourth with 19 ordinals.

Gregory Kelley, the 1958 runner-up, this year won the Junior Men's title. Don Mike Anthony was his closest rival, and James Murray placed third. The winners skated well-planned, well-executed free programs, but it was Douglas Ramsay who, with a sizzling performance, won the heartiest applause.

Senior Ladies' was the last event on the Sunday afternoon program. Carol Heiss, like a shooting flame in brilliant red chiffon, also "did it again." Not that there was ever any question about her winning. In the compulsory figures she earned five firsts, with total points of 969.2. Tense just before taking to the ice for her skating, she came off to thunderous applause from the 5,700 spectators with a happy smile which showed that even she knew she had skated well. Afterwards she said, "I never skated better." Her graceful and

#### 1959 Canadian Champions

The names of the Canadian Champions and members of the World and North American Teams were rushed to SKATING immediately following the Championships, for inclusion here. The story, complete results, and pictures of the 48th Canadians, held at the Noranda WC, will be carried in the next issue.

Senior Lady—	Margaret Crosland Winnipeg WC
Senior Man—	Donald Jackson Toronto CS & CC
Senior Pair—	Barbara Wagner & Robert Paul, Toronto CS & CC
Dance—	Geraldine Fenton & William McLachlan, Ham- ilton SC & Granite Club
Junior Lady—	Wendy Griner Toronto CS & CC
Junior Man—	Donald McPherson Stratford FSC
Junior Pair—	Debbie Wilkes & Guy Revell, Unionville SC
Junior Dance—	Vivian Tutton & Gille Venasse, Noranda WC

#### Canadian World Team

Ladies: Margaret Crosland, Sonia Snelling, Sandra Tewkesbury. Men: Donald Jackson, Eddie Collins. Pairs: Barbara Wagner & Robert Paul; Maria & Otto Jelinek. Dance: Geraldine Fenton & William McLachlan; Ann Martin & Eddie Collins; Svata & Mirek Staroba. Judges: Donald Gilchrist, Mrs. Pierrette Paquin Devine.

#### Canadian North American Team

Members of the World Team, with the exception of Maria & Otto Jelinek, and with the following additions: Men—Donald McPherson. Pairs—Jane Sinclair & Larry Rost; Debbie Wilkes & Guy Revell.

intricate series of jump spins and reverse axels, and her sparkling interpretation of excerpts from Tchaikovsky won her marks of 9.6 and better. In a competitors' audience for the first time was her father who also saw his other daughter, Nancy, win second place with a cool and solid, though somewhat less intricate, performance. Barbara Ann Roles, 1958 Junior Lady Champion, moved into third place over flashing Lynn Finnegan.

When the final scores were tallied, the Broadmoor Skating Club won the Harned Trophy; the Skating Club of Boston was

*(Continued on page 32)*

# The Case For The Progressive

By MURIEL KAY, Professional

Author of "The Key to Rhythmic Ice Dancing"

## FOREWORD

*The following article on "Progressives" is in itself progressive and for that reason may be considered by some to be controversial. Because of its widespread interest to dancers, both in the United States and abroad, it is published with a view to stimulating thought and discussion. It represents the opinion and analysis of Miss Kay and is not to be considered as an official position of the USFSA.*

DURING THE LAST four or five years American dancers have been trying to develop more run and flow with less visible effort. It has been noted how the World Champion dancers of the past few years have accomplished this in part by skating their progressives in such a way as to gain speed from every step of the run.

More and more in the higher dance tests and competitions, such qualities as expression and interpretation and all that may be said to add up to beauty of movement over and above the excellence of pure technique are being demanded. They are qualities which are difficult to define, and it would indeed be dangerous to try to confine them to the letter of the law as they are the spontaneous result of the individual's rhythmic and musical perception. The question is how to develop these qualities, and the first thing to realize is that if continuity and flow are to be developed each step should serve as a preparation for the one following, and the successor is the natural result of the previous preparation. In this way you will establish your rhythmic pattern, and this will be destroyed if the continuity is periodically broken by sudden spasmodic jerks when a power stroke (i.e., speed gaining step) is made.

Not all steps are power strokes, but by using the push from the *outer* edge of the blade as well as the push from the inner edge of the blade, you will find a surprising increase in the number of potential power strokes per dance sequence; and, consequently, because there will be fewer "dead" steps requiring compensating strong pushes to maintain continuous flow, the actual muscular exertion re-

quired to push can be lessened by redistribution, and this will result in better flow with less *visible* effort. Consider for a moment the stroking of the speed skater. He must derive the maximum value from every stroke, and note that he does this when turning a corner (a movement approximating a dancer's progressive) by using the thrust for the inner edge of the blade when making a LFO edge, and from the outer edge of the blade when making a RFI edge.

The two main prerequisites of any power stroke used in dancing are first and foremost a good body position, and second, making the push from the whole blade of the skate, and not just from the toe point. In fact, toe pushing is almost invariably the result of a poor body position with the weight inclined too far forward. The basic rules for good posture in dancing are the same as they are off the ice, and this does not mean only standing up straight, but maintaining an erect body position whilst in motion, and when transferring the weight and making a push. Ideally, the various parts of the body should be aligned vertically on one another so that the weight is borne by the skeletal framework with a minimum of work from the muscles.

Let us now take for example a LFO, RFI, LFO progressive sequence. The definition of the Progressive or Run states:

A sequence of steps in which the free foot during the period of becoming the skating foot passes the original skating foot, thus bringing the new free foot off the ice trailing the new skating foot.

As you skate on the LFO you will use the thrust from the inner edge of the right

blade, the right free leg then being extended and positioned behind and slightly to the right of the tracing. The free leg, coinciding with the beginning of the rise of the skating knee, starts to move slowly and continuously towards the skating foot as though to brush past it. At the point where the heel of the free foot becomes level with the instep of the skating foot, it touches the ice, and as it takes the skater's weight on the RFI continues to progress past the old (left) skating foot. This is important as there must be no break in continuity. During the time that elapses between the toe of the free foot first reaching the heel of the skating foot and the free foot touching the ice on the RFI, the skating knee will have reached peak rise, relaxed, and begun to bend very slightly. As the right foot touches the ice, the left knee is bent a little more to give a stronger pressure on the LFO, and as the heel of the right foot glides in line with the toe of the left the push is made from the outer edge of the left blade. The left foot will now have become the free foot, and in so doing will be positioned behind and slightly to the right of the new skating foot.

Note that this cross is made only after the left foot has become the free foot. Examination of the tracing will show no cross. For a short time, as stated in the definition, you will be on two feet and this is when the weight transference takes place. As the left foot leaves the ice after the push it is important not to let it go too far behind the skating foot, as this can easily result in a toe push, thus defeating the object of the entire movement. Care must be taken with the body position to keep the right hip "in and under" and not to lean forward from the waist. Then, again, coinciding with the rise of the skating knee the free foot is gradually brought from the slightly crossed behind position, in line with the skating foot, and the preparation for the next LFO is made in the usual manner, the push here again being taken from the inner edge of the right blade.

Practice this movement in slow motion, taking care with the placing of the right foot on the second step. Gradually reduce to a minimum the time required for the smooth weight transference so that you

will not be double tracking. The progressive is *not* made by deliberately crossing the right foot over the left as is sometimes seen. This would show a cross of tracings on the ice, and usually results in the knees being locked together and a push from the toe. This same result also arises when the correct method described has been used but the timing of the movement is faulty, being either too slow or too quick. If the actual weight transference is too slow the right foot will have glided across the left, thus the feet will be crossed before the push has been made. If the free leg is moved too quickly it will pass the skating foot too soon and will take the ice again crossed over. However, an alert critic can easily spot this. Soft, supple knee action is necessary, as lack of control of the bend and rise of the skating knee will give a bouncy appearance.

There are two other types of movement to avoid. One is the literal Run, where the feet are kicked up as though running on a track and where the speed is obtained merely by the friction between blade and ice, with very little muscular control, and no real push. I mentioned earlier that it is important for the right foot to continue to progress onward as it takes the ice, as failure to do this results in the second type of faulty movement where no power is obtained at all on the RFI, and the weight transference is made rather in the manner of a chassé, the free foot being just picked up or shuffled off the ice with no push whatsoever. This is very noticeable in the Willow Waltz, Steps 9-14 inclusive, where a progressive is followed by a chassé, and they are frequently indistinguishable.

The push from the outer edge of the blade is not an easy movement to perfect. By Silver and Pre Gold standard it should be semi-automatic, but it always requires care. The same push can be used for the cross roll and on any inside edge following an outside, thus developing further sources of power and eventually a dance movement of true lyric quality.





1



2



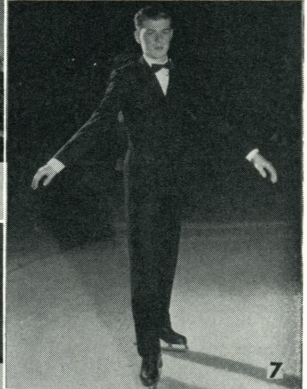
3



4



5



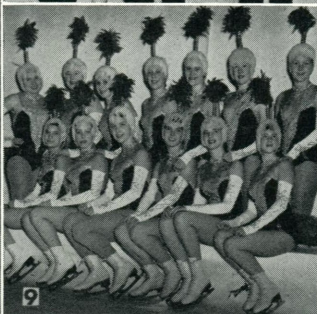
7



6



8



9



10

(1) Mary Cooper, The SC of Boston, winner of the club's 1957-58 Rotch Award. (2) Glengarry FSC members who won titles in the 1958 Okanagan Mainline Championships: kneeling: Jan Stapleton, Gail Flitton, Juvenile Ladies Pair; standing: Vernon Hartt, Juvenile; Elaine Donald, Novice Ladies Pair and Mixed Fours; Jacquie Hay, Junior Mixed Pair; Linda Leslie, Novice Ladies Pair; Raymond Troyer, Novice. (3) Martha Jean Berg, Minneapolis FSC. (4) Gerry, Jean and Susan Sturn, Syracuse FSC. (5) Lucy Flippen and Brenda Fritsche, Philadelphia SC & HS, pictured at Sun Valley. (6) Mick Cannon, Joan Kirk, Terry Lovern, Carole Travis, Ron Becker, Spokane FSC junior members. (7) Jimmy Bailey, North Bay FSC, 1958 Northern Ontario Junior Champion. (8) Carl & Margaret Wessman, Cleveland SC, winners of the club's Parent-Child Dance Championship. (9) "Modern Mood" group in the 1958 Oakville FSC carnival: front: Anna Kinzer, Carolyn Dykeman, Barbara Shute, Judy Lewis, Joylyn Richardson, Susan Gelling; back: Judy Brown, Wendy Milne, Valerie Wakelin, Ann Flavelle, Carolyn Anderson, Marilyn Turner. (10) Charles & Shirley Kanoff, dance team in Capitol City FSC's "Showtime USA." Photo credits: (1) Harvard Studio, Boston. (7) The Daily Nugget, North Bay; (9) Charles Osland, Oakville, Ont.

# *Annual Meeting of the USFSA Governing Council*

By **HOWARD D. HERBERT**

*President, United States Figure Skating Association*

THE ANNUAL MEETING of the USFSA Governing Council will be held this year in Seattle, Washington, at the Benjamin Franklin Hotel on May 8-10, 1959.

Delegates may be appointed or proxies submitted by clubs holding full membership and by Individual Members in keeping with Article VI of the Constitution as it appears on page 136 of the Eighteenth Annual Rulebook (completely revised edition for 1959).

A meeting of the Executive Committee of the Association will take place on Friday, May 8, at the Benjamin Franklin Hotel at 10 A.M.

Notice will be sent in due course from the Secretary to clubs with full membership and to Individual Members giving further details about the meetings, including the agenda as it is established for the Call of the Meeting. In this communication your attention is called particularly to Article I of the By-Laws on page 139 of the Rulebook.

Meetings of the Governing Council are traditionally open to all members of the figure skating fraternity. Visitors are welcome to take part in discussions within the limits of time available and of good parliamentary procedure. Executive Committee meetings frequently are closed because of the subject under discussion, but, other than that, those who wish to observe the proceedings are welcome.

Delegates and others are cordially invited to attend a general discussion period being set up for Saturday evening at 8:30. A panel of Committee Chairmen will be present to answer specific questions as to their respective operations. It is hoped also that all delegates and visitors will have information about their respective clubs' affairs and questions to ask that will result in discussions of benefit to all. There will be a number of other meetings scheduled for Saturday evening which will be selective in the matters under discussion.

## *Competition for the Novice Skater*

COMPETITION is a wonderful part of figure skating. It teaches the skater many things—good sportsmanship, perseverance, confidence, and poise—to mention a few. Meeting skaters from other clubs in other cities and seeing the best skaters in the sport make it a real thrill and inspiration to come home and try new things and pass more tests. For most young skaters, competition starts in their own home clubs first and, as the skaters pass tests, it leads to Sub-sectionals and Sectionals.

To avoid heartbreak, there is much to consider before one enters competition. Many times there are as many as 25 in each group and only those who place in

the first eight free skate, so it can be sad for the ones who don't get to wear their new skating dresses. In the juvenile group, where only three figures are skated, it can be very close. Every skater has big hopes and, without this hope, along with hard work and hours of practice, he or she wouldn't have much incentive. But everyone can't win, and learning to win or lose with grace is all part of the game, making it a happy, profitable time regardless of results. When it is all over, the skater's only thought should be of where will it be next year—with a new determination to become even better!—ELEANOR WILSON FISHER, *Ice Center, Minneapolis.*

# The Rhumba

By R. J. WILKIE

*Reprinted from the Skating World, April 1958*

THE RHUMBA WAS ORIGINATED by the late Walter Gregory, whose death on active service early in the War was such a grievous loss to the skating world. With his partner, Muriel Roberts, he won the first NSA Open Professional Ice Dance Championship, in 1939. The newly invented Rhumba was included as one of the compulsory dances in the Gold Dance Test instituted the same year, and I believe Gregory was the first skater to pass this test—I know I judged him, and if my recollection is not at fault it took place at the Empress Hall rink.

The Rhumba has for many years been the center of controversy. Nearly everyone seems captivated by Rhumba rhythm and by the original and tricky steps of the dance; yet many find something sadly lacking in the prescribed timing of the edges. No less than eleven of the sixteen steps in the dance sequence start on a third (weak) beat of music, though the character of the dance seems to cry out for accented striking on many of these steps. Not only do the accented starts of these edges coincide with weak beats of music, but from Steps 11 to 14 the strong first beats of the music fall midway along four-beat edges which do not appear to lend themselves at all to emphasizing dips of the knee halfway through their length. One has to ride these edges right across the beat. The rhythmic pattern of the dance is thus at perpetual loggerheads with the music, in a pointless form of syncopation.

How could this be? Surely no one composing a dance would incorporate such timing unless there was some feature midway through those edges to fit the throb of the accented beat? I felt there was a mystery here, because I knew Walter Gregory very well and remembered his execution of the Rhumba—which was outstanding. As he skated the dance it always looked right and never gave cause for criticism through any observable clash

between steps and music. All this was, however, many years ago, and memory on more precise points becomes uncertain. Gregory was not spared to give us the benefit of his guidance on queries arising in this dance, and controversy has raged subsequently without a satisfactory answer being found. Indeed, in efforts to resolve the musical difficulty proposals have from time to time been made to amend the time duration of certain steps, or to tack on additional steps to the sequence—with entire lack of success. The Rhumba, as if to say “there is really nothing wrong with me,” has shown itself singularly unamenable to any attempts to alter it from its original form—and in view of what I am going to suggest in this article it is perhaps a good thing no change has been allowed to occur.

Some time ago I hit upon what I believe to be the solution—a simple one—of the problem of this dance, and in recent correspondence with my old friend Frank Burrows it transpires that he also has arrived independently at the same conclusions, which I shall briefly set down.

There is no doubt that in setting his dance to Rhumba music Gregory was employing a rhythm which made a tremendous personal impact on him. His whole skating of the dance showed this to be so. Some of us get a particular thrill from, say, Tango rhythm, others find fascination in the Viennese Waltz—with Gregory it was certainly the Rhumba, and it is my belief that he never did skate—could never have skated—this dance on the off-beat as is done at present. His feeling for this particular rhythm would not have permitted him to do so. It cannot, of course, be proved, but I find it easy to believe that when he described his dance for the NSA he set down the steps and the correct timing of the edges, but thought it superfluous to add anything more. In later years everyone has assumed that he started the dance (the first



## Foreign News

of the two one-beat edges, forming the opening chassé) on the count of "1"—because we have got into the habit of thinking that all starts, whatever the dance, must be made on "1" without exception. To my mind he did no such thing—he skated to the music as he heard it, starting the opening chassé instinctively at the point where what followed would make rhythmic sense with the music—on the third beat. In this way the whole dance sequence is displaced two beats compared with how the regulations say we should skate it today.

Let us skate it this way and what do we find? Every strong beat of music coincides with a skating stroke, with two exceptions. (There are six exceptions in the present Rhumba—all unexplainable.) The two exceptions are edges where an accent is manifestly necessary, in one case halfway and in the other two-thirds along their length. The first is Step 5 (LFO), where the original list of steps stipulated that on this edge the free leg was held behind at first and there was a "dip of the tracing knee on the third beat." (The third beat referred to is, of course, the third beat of the four-beat LFO edge, which coincides with strong beat "1" of the music bar.) Though this dip of the knee is not specifically demanded in the current regulations, being rather considered a matter of manner of performance, nearly all dancers seem to feel that the expression of the dance requires it. The second is Step 14 (RFI), where the strong beat of music will now be found to coincide with the inside three turn—obviously an accented point. By this two-beat displacement we thus have a dance sequence which fits in perfectly with the music, which the present timing of the dance does not.

I would therefore urge all dancers to try out the Rhumba using the beat "3" start, to gauge the improvement which results from the shift in the timing. A suggested introduction to the dance, to be sure of hitting the right beat, could be starting on the left foot, two two-beat steps, followed by a double chassé of four short one-beat steps—the last two of these steps being the opening steps of the Rhumba proper.

THE CHAMPIONSHIPS OF WEST GERMANY took place in Berlin in January. Ina Bauer, who has been training in Colorado Springs, flew over to defend her Ladies' title and won decisively in a field of ten. Trailing her were Barbel Martin, Ursula Barkey and Ursel Dillman, in that order. Petra Damm placed fifth after finishing second in figures. Manfred Schnelldorfer successfully defended his Men's title, defeating Tilo Gutzeit, Hans-Jurgen Baumler and Jocken Niemann. Marika Kilius & Hans-Jurgen Baumler won the Pair title for the second year; second, Margret Gobl & Franz Ningel; third, Rita Blumenberg & Werner Mensching; fourth, Inge Haverkamp & Franz Pieringer. The Dance Championship was won by Rita Paucka & Peter Kiviet over three other couples. Those to represent Germany in the World events will be Ina Bauer, Manfred Schnelldorfer, Tilo Gutzeit, Marika Kilius & Hans-Jurgen Baumler, and Margret Gobl & Franz Ningel.

In France, this year's Senior Championships were held with but two contenders in the Men's class, Alain Gilette and Alain Calmat. Gilette reclaimed the title he had lost to Calmat last year. The Ladies' Championship consisted of six entries, and Dany Rigoulot again placed first; she was followed by Nicole Hassler, second, and Corinne Altman, third. The only entry in the Pairs, Anny Hirsch & Jean Vives, skated to standard and took the title. France's only World Dance entrants, Christiane & Jean Paul Guhel, placed first over three other couples.

Austria's skaters are expected to provide strong competition in International events. Hanna Walter, runner-up in last year's Europeans, and Regina Heitzer will be among the leading contenders. Karin Frohner suffered an accident and was operated on for a misplaced disc, so is out of competition this winter. Among the men, Champion Norbert Felsing appears as a leading contender for the European title. Last year's Pair Champions, Liesl Ellend & Konrad Lienert, are now professionals. Dance Champions Lucia Zorn & Rudolf Zorn will likely represent their country again internationally.



(1) Robert Molinari, The SC of San Francisco. (2) Jamie Wardle, Danny Trojan, Flin Flon FSC. (3) Jessica Kuzmanich, The SC of San Francisco. (4) "Water Babies," Saskatoon FSC. (5) Judy Aucoin, Heather DeMone, Jane Piers, Sheilagh Dickson, Margaret Kaiser, Lynne Sheehan, Halifax SC. (6) Melanie Rowe, Peggy Stephenson, Mary Grace Rowe, Syracuse FSC. (7) Jean Kondo, Kathy Murphy, Debby Scruggs, Sandra Fraser, Peggy Fleming, St. Moritz ISC. Photo credits: (1) Helene and Paul Sommer, San Francisco; (4) Len. Hilliard, Saskatoon, Sask.; (6) Karl J. Cook, Syracuse; (7) A. W. Bentley, Oakland.





## Children's Corner

Hi - fellow skating buddies, My name is Robert Molinari. I am 10 years old and a member of the San Francisco Skating Club. I laced on my first pair of Ice Skates 20 months ago and just recently won first place in the pre-juvenile boys division of the 1959 Central Pacific Figure skating Championships. My Instructors name is George Cross. I am very happy to have won my trophy and during the next year I intend to take my first and second figure tests so that I will be able to enter the juvenile Boys division and I hope that I can go on, to represent my club, In the Pacific Coast Championship. I hope that in years to come I will meet some of my skating friends.—*Robert Molinari.*

Hello skating friends, My name is Jessica Kuzmanich and I'm just 9 years old. I am a member of the San Francisco skating club. I entered competition this year. The Central Pacific championships in San Francisco. I entered in Pre-Juvenile, I came in second place. I owe this all to my skating teacher Mr. George Cross. I have passed my 1st test and am working on my 2nd test. I am taking my preliminary dance test soon.—*Jessica Kuzmanich.*

Dear Skating Friends, I am twelve years old and in the eighth grade. I belong to the Syracuse Figure Skating Club. We are fortunate in having Mrs. Connie Jamieson as our instructor. This summer I passed the Fiesta and Ten Fox of the Bronze Dances and am working on the Willow Waltz and the Second Test in Figures. At the close of the summer session in Syracuse, I enjoyed a week of skating at Lake Placid. Best of luck to all—*Peggy Stephenson.*

Hi Skaters, My name is Jean Kondo, and I'm ten years old. I am working on my second test. My skating instructor is

Evelynne Olsen Gill. This picture that I took with four other girls was taken when the St. Moritz I.S.C. had a show under the able direction of Bob Swenning. We had loads of fun skating the part of snow crystals. Good Luck to All Skaters.—*Jean Kondo.*

Dear Friends, I am 10 years old and have skated 4 years. I have passed my preliminary figure test and have gone into competitions once already. This year will be my second one and I am working on my first test. Mary Ann Turner is my pro. but on Saturdays I take from Eugene Turner, her husband. Good Luck to all skaters.—*Kathleen Murphy.*

Hi Skaters, I love skating and I have made many new friends while skating. This picture was taken from a number in one of the St. Moritz Skating Club shows directed by Mr. Robert Swenning. I take lessons from Mr. Eugene Turner. He is a real swell teacher. I went into Competition last year and won 1st place in Juvenile "B". I am twelve years old and have past my first and hope to pass my second before competition.—*Debby Scruggs.*

Dear Friends, This is my second year in skating and I'm looking forward to many more. The part I like best is "morning patches" and being in the Ice shows. My instructor, Eugene Turner makes working fun. I became interested in skating while on a trip back East, starting at the Arena Skating Club in Cleveland, Ohio, where I learned to "like" figures. I'd especially like to say "Hello" to everyone at the "Arena" and I hope someday to visit there again.—*Peggy Fleming,* age 10.





# Sectional Championships



## Northern Ontario

at North Bay FSC

January 16-17

### SENIOR LADIES

(Norman V. S. Gregory Trophy)

1. Joy Barnard, *Sudbury SC*
2. Jennifer Wilkin, *Port Arthur Thunder Bay FSC*
3. Connie Strickland, *Porcupine SC*
4. Adeline Griffith, *North Bay FSC*
5. Patricia Toppi, *Fort William Thunder Bay FSC*

### SENIOR MEN

(Melville F. Rogers Trophy)

1. Gille Venasse, *Noranda WC*
2. Nelson Bellmore, *Fort William Thunder Bay FSC*

### JUNIOR LADIES

(E. A. Collins Trophy)

1. Lynda McKeown, *Fort William Thunder Bay FSC*
2. Sandra Bailey, *North Bay FSC*
3. Seyja Hinkurri, *Porcupine SC*
4. Janice Charbonneau, *Porcupine SC*
5. Carol Stoddart, *Porcupine SC*
6. Barbara Marshall, *Noranda WC*
7. Virginia Weegar, *North Bay FSC*
8. Marlene Bailey, *North Bay FSC*
9. Vivian Tutton, *Noranda WC*
10. Brenda Sykes, *Bracebridge FSC*
11. Margo Remus, *Fort William Thunder Bay FSC*
12. Margaret Ann Bowen, *Sudbury SC*
13. Karen Duffield, *Kirkland District FSC*
14. Gloria J. Sibley, *Fort William Thunder Bay FSC*
15. Janet Finger, *Kirkland District FSC*
16. Marielle Breault, *New Liskeard FSC*

### JUNIOR MEN

(John S. MacLean Trophy)

1. Sidney Turner, *Fort William Thunder Bay FSC*
2. John Dorsey, *North Bay FSC*
3. Sanford Jones, *Fort William Thunder Bay FSC*

### NOVICE LADIES

1. Judy Marsh, *North Bay FSC*
2. Susan Beveridge, *North Bay FSC*
3. Brenda Gold, *Fort William Thunder Bay FSC*
4. Linda Ewisak, *Fort William Thunder Bay FSC*
5. Susan Grant, *New Liskeard FSC*

### SENIOR PAIRS

(Norah McCarthy & Michael Kirby Trophy)

1. Gertrude Desjardins & Maurice Lafrance, *Sudbury SC*
2. Alexis & Christopher Shields, *Porcupine SC*
3. Marlene & James Bailey, *North Bay FSC*

### SENIOR LADIES PAIRS

(Colonel C. E. Reynolds Trophy)

1. Marielle Breault & Bonnie Keon, *New Liskeard FSC*

### NOVICE PAIRS

1. Helen Beaton & John Wilson, *Tisdale FSC*

### NOVICE LADIES PAIRS

1. Seyja Hinkurri & Carol Stoddart, *Porcupine SC*
2. Donna Cane & Barbara Murray, *North Bay FSC*
3. Nora Davis & Helen Beaton, *Tisdale FSC*
4. Mary Prentiss & Mary Ann Koniewich, *New Liskeard FSC*

### SILVER DANCE

1. Vivian Tutton & Gille Venasse, *Noranda WC*
2. Gertrude Desjardins & Maurice Lafrance, *Sudbury SC*
3. Connie Strickland & Christopher Shields, *Porcupine SC*
4. Marlene & James Bailey, *North Bay FSC*
5. Jennifer Wilkin, *Port Arthur Thunder Bay FSC*, & Sidney Turner, *Fort William Thunder Bay FSC*
6. Patricia Toppi & Nelson Bellmore, *Fort William Thunder Bay FSC*

### BRONZE DANCE

1. Marlene & James Bailey, *North Bay FSC*
2. Virginia Weegar & John Dorsey, *North Bay FSC*
3. Lynda McKeown & Reg. DeWolfe, *Fort William Thunder Bay FSC*
4. Dianne Solitt & Charles McAvoy, *Porcupine SC*
5. Carolyn Hartling & James Doige, *Porcupine SC*
6. Nora Davis & John Wilson, *Tisdale FSC*

### BRONZE DANCE (LADIES COUPLES)

(J. D. Deyell Trophy)

1. Susan Douglas & Sandra Bailey, *North Bay FSC*
2. Karen Duffield & Janet Finger, *Kirkland District FSC*
2. Barbara McKenzie & Carolyn Hartling, *Porcupine SC*
4. Nora Davis & Helen Beaton, *Tisdale FSC*
5. Marielle Breault & Bonnie Keon, *New Liskeard FSC*

### DUTCH WALTZ

(Sudbury Skating Club Medals)

1. Judy Marsh & Christopher Rees, *North Bay FSC*

### DUTCH WALTZ (Ladies Couples)

(Sudbury Skating Club Medals)

1. Beverly Reid & Pam Parent, *Porcupine SC*
2. Donna Cane & Barbara Murray, *North Bay FSC*
3. Brenda Gold & Linda Ewisak, *Fort William Thunder Bay FSC*
4. Sharon Pittman & Jean Thompson, *New Liskeard FSC*
5. Sheila Burns & Sofia Maciaczyk, *Porcupine SC*
6. Elizabeth Tyler & Patricia Mullin, *North Bay FSC*

# Pacific Coast

at Los Angeles FSC

January 8 - 10

## SENIOR LADIES

1. Rhode Lee Michelson, *Arctic Blades FSC*
2. Karen Howland, *Sun Valley FSC*
3. Carol Galloway, *Arctic Blades FSC*
4. Sharon Constable, *Seattle SC*
5. Sandy Carson, *Los Angeles FSC*
6. Marianne Beeler, *Lakewood WC*
7. Linda Galbraith, *Lakewood WC*
8. Maureen Tinsley, *Butte FSC*
9. Theresa Von Hagen, *Los Angeles FSC*
10. Jacqueline Crandall, *Los Angeles FSC*
11. Charlotte Fowler, *Arctic Blades FSC*

## SENIOR MEN

1. Don Mike Anthony, *Los Angeles FSC*
2. Harvey Balch, *Arctic Blades FSC*
3. Dick Paice, *Lakewood WC*
4. James Murray, *Great Falls FSC*
5. John Swanson, *Lakewood WC*

## JUNIOR LADIES

1. Wanda Guntert, *Los Angeles FSC*
2. Michele Monnier, *The SC of San Francisco*
3. Ellen Kullmann, *The SC of San Francisco*
4. Kristin Mittun, *Seattle SC*
5. Karilyn Frampton, *St. Moritz ISC*
6. Gale Thomas, *Los Angeles FSC*
7. Mary Crowley, *The SC of San Francisco*
8. Valerie Hvatum, *Seattle SC*
9. Jerrilyn Crandall, *Los Angeles FSC*
10. Patty Gilroy, *Lakewood WC*
11. Judy Reed, *Lakewood WC*
12. Patricia Kessler, *Los Angeles FSC*

## JUNIOR MEN

1. Ronnie Frank, *Arctic Blades FSC*
2. Donald Bartelson, *Los Angeles FSC*
3. Roy Wagelein, *Los Angeles FSC*
4. Walter Hypes, *Los Angeles FSC*

## NOVICE LADIES

(St. Moritz Ice Skating Club Trophy)

1. Neysa Higgins, *Arctic Blades FSC*
2. Charlene Cruickshank, *Seattle SC*
3. Sarasue Gleis, *Los Angeles FSC*
4. Laurie Hickox, *The SC of San Francisco*
5. Eloise Morgan, *The SC of San Francisco*
6. Yvonne Littlefield, *Los Angeles FSC*
7. Judy Ann Nausin, *St. Moritz ISC*
8. Jennifer Tyrrell, *Los Angeles FSC*
9. Sandra Hoover, *St. Moritz ISC*
10. Melvylei Stone, *Seattle SC*
11. Molly Nolan, *Lakewood WC*

## NOVICE MEN

1. Bill Henley, *Lakewood WC*
2. Peter Veeck, *The SC of Phoenix*
3. Roger Berry, *Los Angeles FSC*

## JUVENILE GIRLS

1. Linda Lee Kneip, *Arctic Blades FSC*
2. Jennie Walsh, *Los Angeles FSC*
3. Nancy Lee Sheldon, *The SC of San Francisco*

## PACIFIC COAST CHAMPIONS →

Top: Bill & Laurie Hickox, Don Mike Anthony, Wanda Mae Guntert, Bill Henley. Middle: Steve Adler, Linda Lee Kneip, Dr. Robert Wilkins & Rose Morganroth, Hope Cuny & Mike Wayland. Bottom: (front) Ray Hadley & Ila Ray Hadley, Ronnie Frank; (back) Charles Phillips & Margie Ackles, Rhode Lee Michelson, Diane Sherbloom & Roger Campbell. Photos by William Udell, Hollywood.



- Anita Entriakin, *Arctic Blades FSC*
- Sandra Kirby, *St. Moritz ISC*
- Linda Adams, *Seattle SC*
- Vivien Quinn, *Seattle SC*
- Lonnye Harkonen, *Butte FSC*
- Joan Coulthart, *The SC of San Francisco*
- Linda Sowell, *Seattle SC*
- Barbara Smith, *Blade & Edge Club*
- Peggy Fleming, *St. Moritz ISC*

#### JUVENILE BOYS

- Steve Adler, *Los Angeles FSC*
- Billy Chapel, *Los Angeles FSC*

#### SENIOR PAIRS

- Ila Ray & Ray Hadley, Jr., *Seattle SC*
- Judi & Jerry Fotheringill, *Lakewood WC*
- Mary Lou Raymond & Jack Nankervis, *Butte FSC*

#### JUNIOR PAIRS

- Laurie & Bill Hickox, *The SC of San Francisco*
- Mary McGrath & Jeffrey Flowers, *Seattle SC*
- Cynthia & Ronald Kauffman, *Seattle SC*
- Yvonne Littlefield & Roy Wagelein, *Los Angeles FSC*
- Susan Berens & Robert Sable, *Blade & Edge Club*
- Judy Kuhnle & Edward Murray, *The SC of San Francisco*

#### GOLD DANCE

(Pacific Coast Dance Trophies)

- Margie Ackles, *Los Angeles FSC*, & Charles Phillips, *Arctic Blades FSC*
- Jean Robinson & Richard Wayland, *St. Moritz ISC*
- Yvonne Littlefield & Ray Sato, *Los Angeles FSC*
- Donna Carrier & Howie Harrold, *Los Angeles FSC*
- Rose Morganroth, *Los Angeles FSC*, & Joe Meininger, *Blade & Edge Club*
- Myrtle Girten, *Blade & Edge Club*, & Philip Girten, *Los Angeles FSC*

#### SILVER DANCE

- Diane Sherbloom & Roger Campbell, *Los Angeles FSC*
- Sandra Richardson & Raymond Chenson, *Los Angeles FSC*
- Shirley & Charles Kanoff, *Capitol City FSC*
- Betty & Richard Rogers, *The SC of San Francisco*
- Carole MacSween, *Blade & Edge Club*, & Louis Spievak, *Los Angeles FSC*
- Ila Ray & Ray Hadley, Jr., *Seattle SC*
- Kathy Casey & James Murray, *Great Falls FSC*
- Georgia & Howard Taylor, *St. Moritz ISC*
- Marjorie Diamond & Ben Wade, *Arctic Blades FSC*

#### BRONZE DANCE

- Hope Cuny & Mike Wayland, *St. Moritz ISC*
- Laurie & Bill Hickox, *The SC of San Francisco*
- Cathy & Jim Watrous, *Los Angeles FSC*
- Lorna Dyer & King Cole, *Seattle SC*
- Sandra Hoover & Kenneth Roe, *St. Moritz ISC*
- Josephine Thein & Roy Wagelein, *Los Angeles FSC*
- Joanne Henderson, *Los Angeles FSC*, & Paul Ferris, *Blade & Edge Club*
- Sandy Woods & Anthony Wilcock, *Blade & Edge Club*
- Cynthia & Ronald Kauffman, *Seattle SC*
- Eleanor Otey & William Woodbury, *The SC of San Francisco*

#### VETERANS DANCE

(Major Harry Gaver Memorial Trophies)

- Rose Morganroth & Dr. Robert Wilkins, *Los Angeles FSC*
- Bessie Brengartner & Walter Boyer, *Blade & Edge Club*

## Midwesterns

at Denver FSC

January 8-10

#### SENIOR LADIES

(Chicago Figure Skating Club Trophy)

- Stephanie Westerfeld, *Broadmoor SC*
- Diana Lapp, *Denver FSC*
- Vicky Fisher, *FSC of Minneapolis*
- Pam Zekman, *Chicago FSC*
- Donna Abbott, *Broadmoor SC*
- Louise Strudwick, *FSC of Minneapolis*
- Shirley Carlson, *Denver FSC*
- Blair Bacon, *Chicago FSC*
- Suzanne Walker, *Troy SC*
- Valerie Whittemore, *Broadmoor SC*
- Judy Boner, *FSC of Omaha*
- Paula Donald, *FSC of Minneapolis*
- Lynnae Callaway, *FSC of Omaha*
- Nancy Czarnecki, *Wauwatosa FSC*

#### SENIOR MEN

(Cleveland Skating Club Trophy)

- Tommy DeBaca, *Broadmoor SC*
- Douglas Ramsay, *Detroit SC*
- Richard Vraa, *Rochester FSC*
- Robert James, *Ann Arbor FSC*
- Peter Kollen, *Ann Arbor FSC*

#### JUNIOR LADIES

(Donald A. Raymond Cup)

- Lynda Waldrop, *Broadmoor SC*
- Chickie Berlin, *Chicago FSC*
- Christine Haigler, *Broadmoor SC*
- Bonnie Carlson, *Denver FSC*
- Jo Anne Leyden, *Chicago FSC*
- Barbara Hartwig, *FSC of Minneapolis*
- Vickie DeWeese, *Troy SC*
- Sue Jacobson, *Duluth FSC*
- Karen Dicke, *Chicago FSC*
- Francine Karpin, *South Side IC*
- Marilyn Keyes, *Cleveland SC*
- Sharon Starr, *Chicago FSC*
- Joanne Musashe, *Chicago FSC*
- Jeanne O'Brien, *Broadmoor SC*
- Jo Ann Mazzeri, *Broadmoor SC*
- Lynn Dore, *Arena FSC*
- Gwynne Shabouh, *Broadmoor SC*
- Joyce Komperda, *Wauwatosa FSC*
- Dalean Mauk, *Denver FSC*
- Carol Adams, *Cleveland SC*
- Carol Miller, *Plaza FSC*
- Ann Muse, *FSC of Omaha*

#### JUNIOR MEN

(Fred W. Premer Memorial Trophy)

- Monty Hoyt, *Colorado Springs*
- Buddy Zack, *Colorado Springs*
- Tim Hamilton, *Lansing SC*
- Skipper Mullins, *Broadmoor SC*
- Bobby Mecay, *St. Paul FSC*
- Loren Carlson, *Denver FSC*
- Bob Lubotina, *Hibbing FSC*
- Paul Pepp, *Lansing SC*
- Gene Mullenpoh, *FSC of Cincinnati*
- Johnnie Wertz, *FSC of Omaha*
- Bill Ahlstrom, *Duluth FSC*
- David Stone, *Plaza FSC*

#### NOVICE LADIES

(Fargo-Moorhead Winter Club Trophy)

- Janet Smith, *Denver FSC*
- Susan Watts, *South Side IC*
- Louise Wakefield, *FSC of Minneapolis*
- Theresa Von Engeln, *St. Louis SC*
- Dawn Anderson, *FSC of Minneapolis*
- Molly Adams, *Cleveland SC*
- Sandra Latocha, *Lansing SC*
- Susan Prange, *Arena FSC*
- Karen Serafine, *Chicago FSC*
- Nancy Karpin, *South Side IC*
- Judith Kittel, *Chicago FSC*
- Cookie Book, *Plaza FSC*



#### MIDWESTERN CHAMPIONS

Left to right, back row: Ronald Joseph, Tom Moore, Monty Hoyt, John Anderson, Roy Speeg, Gene Mulenpoh. Middle row: Vivian Joseph, Johnnie Kulenkamp, Sheila Wells, Margaret Grounds, Perry Byram, Tommy DeBaca, Thomasine Pierce. Front row: Dorothy Thompson, Janet Smith, Marilyn Ochs, Lynda Waldrop, Stephanie Westerfeld. At left, Frank Holcombe, General Chairman; at right, Referee Henry M. Beatty. Denver Post photo by David Mathias.

13. Valerie Whyman, *Denver FSC*
14. Melanie Niece, *South Side IC*
15. Barbara Hartman, *USFSA Individual Member*
16. Zoe Peterson, *Duluth FSC*
17. Jill Perkins, *Chicago FSC*
18. Arlene Hildebrandt, *Duluth FSC*

#### NOVICE MEN

(Carl W. Chamberlin Memorial Trophy)

1. Perry Byram, *Denver FSC*
2. Thomas Rosenbach, *Chicago FSC*
3. James Kelleher, *South Side IC*
4. Peter Norton, *Suburban FSC*

#### JUVENILE GIRLS

1. Dorothy Thompson, *Broadmoor SC*
2. Barbara Fisher, *FSC of Minneapolis*
3. Mary Lynn Haglund, *FSC of Minneapolis*
4. Judy Mullins, *Broadmoor SC*
5. Barbara Becker, *Denver FSC*
6. Barbara Fitzgerald, *Arena FSC*
7. Susan Diack, *Denver FSC*
8. Carolyn Milostan, *Duluth FSC*
9. Susan Underdahl, *Duluth FSC*
10. Susan Birkenstein, *Chicago FSC*
11. Suzanne Schafroth, *Broadmoor SC*
12. Marne Davis, *Broadmoor SC*
13. Janice Serafine, *Chicago FSC*
14. Roberta Burlison, *Chicago FSC*
15. Elizabeth Shannon, *Denver CC*

#### JUVENILE BOYS

1. Johnnie Kulenkamp, *FSC of Minneapolis*
2. Gregory Hoyt, *Denver CC*

#### SENIOR PAIRS

(Harry E. Radix Cup)

1. Sheila Wells & Tom Moore, *Colorado Springs*
2. Janet Harley & James Browning, *Lansing SC*
3. Gail Kizer & Lonnie Kane, *Queen City FSC*

#### JUNIOR PAIRS

(B. H. Metternich Trophy)

1. Vivian & Ronald Joseph, *Chicago FSC*
2. Claire & Charles Rossbach, *Arena FSC*

#### SILVER DANCE

(Harry E. Radix Trophy)

1. Thomasine Pierce & Roy Speeg, *FSC of Cincinnati*
2. Beverly McGee & Arthur Dammkoehler, *Chicago FSC*
3. Ausma Antons & Bob Bader, *Denver FSC*

#### BRONZE DANCE

(Rochester Figure Skating Club Trophy)

1. Marilyn Ochs & Gene Mulenpoh, *FSC of Cincinnati*
2. Sue Jacobson & Bill Ahlstrom, *Duluth FSC*
3. Barbara Boucher & Roy Larson, *Denver FSC*

#### VETERANS DANCE

1. Margaret Grounds & John Anderson, *Denver FSC*
2. Carol Mullen & Bob Bader, *Denver FSC*
3. Carol Bader & Roger Mitchell, *Denver FSC*

Cleveland Memorial Trophy (Team)

- |                 |    |
|-----------------|----|
| 1. Broadmoor SC | 84 |
| 2. Denver FSC   | 50 |
| 3. Chicago FSC  | 40 |

# Western Ontario

at Chatham FSC

January 8-9

## SENIOR LADIES

(Galt Skating Club Trophy)

1. Rose Bilyk, *Georgian FSC*
2. Virginia Thompson, *WC of St. Catharines*
3. Lorinda Farrell, *Hamilton SC*
4. Joanne Houghton, *Stratford FSC*
5. Judy Cosby, *WC of St. Catharines*
6. Marnee Campion, *London SC*
7. Jewel Steele, *Stamford SC*

## SENIOR MEN

(Galt Skating Club Trophy)

1. Donald McPherson, *Stratford FSC*
2. William Neale, *Stamford SC*
3. Bradley Black, *WC of St. Catharines*
4. David Dore, *Stamford SC*

## JUNIOR LADIES

(Georgian Skating Club Trophy)

1. Isabel Hourston, *WC of St. Catharines*
2. Carol Kiser, *Chatham FSC*
3. Barbara Shute, *Guelph College FSC*
4. Ardell Cole, *Georgian FSC*
5. Mary Verdon, *Aylmer FSC*
6. Diane Hill, *WC of St. Catharines*
7. Myrna Robb, *Guelph College FSC*
8. Judy Clawson, *Sarnia FSC*
9. Sandra Hudson, *Chatham FSC*
10. Margaret Billings, *Hamilton SC*
11. Patricia Rost, *WC of St. Catharines*
12. Lynn Moran, *Windsor FSC*
13. Judith Petterson, *Stratford FSC*
14. Diane McMinn, *Georgian FSC*
15. Gaye Clark, *London SC*
16. Virginia Caskie, *Hamilton SC*
17. Judy Poole, *Wallaceburg FSC*
18. Louise Gaskin, *Windsor FSC*

## JUNIOR MEN

(London Skating Club Trophy)

1. Gregory Folk, *Burlington FSC*
2. Gregory McQueen, *Stamford SC*
3. Sheldon Forbes, *Stamford SC*
4. Dave Thomas, *Kitchener-Waterloo SC*
5. Wayne Palmer, *Galt FSC*
6. John Thomas, *Georgian FSC*
7. Michael Hart, *WC of St. Catharines*

## NOVICE LADIES

(Kitchener-Waterloo Skating Club Trophy)

1. Penny Simpson, *Kitchener-Waterloo SC*
2. Gail Ann Newberry, *Niagara Falls SC*
3. Janet Grantham, *Chatham FSC*
4. Janet Brewer, *Wallaceburg FSC*
5. Linda Ann Ward, *Galt FSC*
6. Sandra Johnstone, *Chatham FSC*
7. Donna Whitney, *Georgian FSC*
8. Pamela Boaz, *Kitchener-Waterloo SC*
9. Lynn Godwin, *Galt FSC*
10. Sandra Lee Patterson, *Sarnia FSC*
11. Laurajean Smith, *Stratford FSC*
12. Jean Blanchard, *Georgian FSC*
13. Sharron Davis, *Guelph College FSC*
14. Jane Ford, *Blenheim FSC*
15. Mary Beth Jones, *Stratford FSC*
16. Nancy Brooks, *WC of St. Catharines*
17. Rosemary Cash, *Windsor FSC*
18. Jacqueline Milner, *Sarnia FSC*
19. Lee Jane McKeough, *Blenheim FSC*

## NOVICE MEN

(Charles Cumming Trophy)

1. Donnie Knight, *Dundas FSC*
2. John Bailey, *WC of St. Catharines*
3. Robert McCrabb, *Sarnia FSC*
4. Grant Weston, *Dundas FSC*
5. Neil Carpenter, *Galt FSC*

## JUVENILE GIRLS

(Sarnia Skating Club Trophy)

1. Barbara Budd, *Stratford FSC*
2. Carol Priamo, *Guelph College FSC*
3. Terry Leggat, *Dundas FSC*
4. Mary Lou Kemety, *WC of St. Catharines*
5. Anne Marie Hadley, *Chatham FSC*
6. Barbara Schilling, *Galt FSC*
7. Lynn Plewes, *Forest FSC*
8. Janice Hall, *Guelph College FSC*
9. Sandra Gray, *Stratford FSC*
10. Jo Anne Saville, *Chatham FSC*
11. Vicki Camper, *Windsor FSC*
12. Lyn Milner, *Sarnia FSC*
13. Janet Stewart, *Blenheim FSC*
14. Janice Morpew, *Sarnia FSC*
15. Cheryl Stull, *Hamilton SC*

## JUVENILE BOYS

(Gordon Jeffery Trophy)

1. Danny Hadley, *Chatham FSC*
2. Tommy Falls, *WC of St. Catharines*
3. Vaughan Osborne, *Hamilton SC*

## JUNIOR PAIRS

(Welland Skating Club Trophy)

1. Susan Herriott & Michael Hart, *WC of St. Catharines*
2. Jewel Steele & Gregory McQueen, *Stamford SC*
3. Linda Ward & Neil Carpenter, *Galt FSC*
4. Bronwyn Brothers & James Hutchinson, *Guelph College FSC*

## SIMILAR PAIRS

(Burlington Skating Club Trophy)

1. Ann Kendall & Diane Redman, *WC of St. Catharines*
2. Mary Jane & Elizabeth Force, *Guelph College FSC*
3. Faye Lightfoot & Jacqueline Milner, *Sarnia FSC*
4. Jane Ford & Sharon Powers, *Blenheim FSC*

## GOLD DANCE

(Chatham Figure Skating Club Trophy)

1. Lorraine Odbert, *Stratford FSC*, & Fraser Lawson, *Woodstock FSC*
2. Virginia Thompson, *WC of St. Catharines*, & William Neale, *Stamford SC*
3. Joanne Houghton & Donald McPherson, *Stratford FSC*
4. Paulette Doan & Rae Warden, *Guelph College FSC*
5. Lynn Nicholson & Gregory Folk, *Burlington FSC*

## SILVER DANCE

(Stamford Skating Club Trophy)

1. Sandra Hudson & Don Cumming, *Chatham FSC*
2. Elizabeth Force & John Caughell, *Guelph College FSC*
3. Virginia Caskie, *Dundas FSC*, & Grant Weston, *Hamilton SC*
4. Sharon Davis & Dean Akins, *Guelph College FSC*
5. Susan Herriott & Michael Hart, *WC of St. Catharines*

## BRONZE DANCE

(Bronze Dance Trophy)

1. Jewel Steele & Gregory McQueen, *Stamford SC*
2. Linda Ann Ward & Neil Carpenter, *Galt FSC*
3. Nancy Martin & Wayne Palmer, *Galt FSC*
4. Brenda Cole & Larry Bennett, *Guelph College FSC*
5. Suzanne Klein & Skip Lumley, *Delhi FSC*

## SIMILAR DANCE

1. Linda Colley & Clare Sonoddy, *Guelph College FSC*
2. Vicki Camper & Ann Coulter, *Windsor FSC*
3. Diane Bruner & Jane Reynolds, *Leamington FSC*
4. Jane Ford & Sharon Powers, *Blenheim FSC*
5. Caroline Hedrick & Wendy Sims, *Blenheim FSC*



# Easterns

at Rye FSC

January 8 - 10

## SENIOR LADIES

(The Skating Club of Lake Placid Trophy)

1. Laurence Owen, *The SC of Boston*
2. Rickie Ann Rendich, *Rye FSC*
3. Mary Cooper, *The SC of Boston*
4. Julie Ann Graham, *Commonwealth FSC*
5. Maude Hammer, *Buffalo SC*
6. Cecilia Luschak, *Brooklyn FSC*
7. Joanna Niska, *Commonwealth FSC*
8. Peggy Miller, *Hershey FSC*
9. Lynn Thomas, *Philadelphia SC & HS*
10. Norvetta Tribby, *North Shore SC*
11. Evelyn Muller, *The SC of Lake Placid*
12. Brenda Joyce Farmer, *Garden State SC*
13. Christie Allan, *The SC of Boston*
14. Maiselle Dolan, *Southern Connecticut FSC*

## SENIOR MEN

(Roger F. Turner Trophy)

1. Gregory Kelley, *The SC of Boston*
2. Frank Carroll, *The SC of Worcester*
3. Bruce Heiss, *The SC of New York*
4. James Tester, *Brooklyn, N. Y.*
5. Frank Muckian, *The SC of Boston*

## JUNIOR LADIES

(David T. Layman, Jr., Memorial Trophy)

1. Mary Batdorf, *Hershey FSC*
2. Ronna Mae Goldblatt, *Commonwealth FSC*
3. Carol Noir, *The SC of New York*
4. Anne Batdorf, *Hershey FSC*
5. Susan Halperin, *The SC of New York*
6. Darlene Russomanno, *Garden State SC*
7. Helen Dane, *The SC of Boston*
8. Elaine Joseph, *Great Neck FSC*
9. Shirley Arnold, *Commonwealth FSC*
10. Donna Jean Rhodes, *North Shore SC*
11. Meg Davis, *Wissahickon SC*
12. Kathy Coyle, *International FSC*

## JUNIOR MEN

(Buddy White Memorial Trophy)

1. Scott Ethan Allen, *The SC of New York*
2. David Edwards, *Philadelphia SC & HS*
3. Rick Anderson, *R. P. I. FSC*
4. Paul George, *The SC of Boston*
5. Wayne Falcone, *R. P. I. FSC*

## NOVICE LADIES

(Brooklyn Figure Skating Club Trophy)

1. Joye Utermohlen, *The SC of New York*
2. Pamela Boyer, *Philadelphia SC & HS*
3. Susan Hammond, *The SC of New York*
4. Suzy Hicking, *Hershey FSC*
5. Rosalie Haldeman, *Hershey FSC*
6. Bobbe Shire, *The SC of Lake Placid*
7. Phyllis Ann Whitman, *Philadelphia SC & HS*
8. Helen McHugh, *Commonwealth FSC*
9. Lennie Stamation, *North Shore SC*
10. Zonnie Tracy, *Garden State SC*
11. Nancy Mitchell, *The SC of Worcester*
12. Ann Pellegrino, *North Shore SC*

## NOVICE MEN

(Joseph Zirkelbach Memorial Trophy)

1. Gary Higbee, *R. P. I. FSC*
2. William A. Baird, Jr., *Philadelphia SC & HS*
3. Frank Holman, *Garden State SC*
4. Paul Schlossbach, *Garden State SC*
5. Richard Griffin, *International FSC*
6. Richard Callaghan, *Genesee FSC*

## JUVENILE GIRLS

(William B. Warren Memorial Trophy)

1. Albertina Noyes, *Cambridge SC*
2. Donna Lee Rice, *North Shore SC*
3. Pamela Schneider, *Garden State SC*
4. Margo Pergament, *Manhattan FSC*

5. Kathryn Hogan, *The SC of Boston*
6. Christine Kielczewski, *Little Sun Valley SC*
7. Rosemary Malmborg, *Oxford FSC*
8. Gail Sterling, *Washington, D. C.*
9. Donna Lee Dwulet, *Garden State SC*
10. Ernesta Ballard, *Wissahickon SC*
11. Carol Sheaffer, *Hershey FSC*
12. Bonnie Scott, *Philadelphia SC & HS*

## JUVENILE BOYS

1. Henry E. Kirk, IV, *Wissahickon SC*
2. Henry A. Rusch, III, *The SC of New York*
3. John Coyle, *International FSC*

## SENIOR PAIRS

(Ruth Parkinson Memorial Trophies)

1. Maribel Owen & Dudley Richards, *The SC of Boston*
2. Jeannie Gladding & Richard Kavanaugh, *Washington FSC*
3. Kathy Coyle & Douglas Searfoss, *International FSC*
4. Hannah & William Gedalecia, *USFSA Individual Members*
5. Nancy & Richard Siepel, *Buffalo SC*

## JUNIOR PAIRS

1. Linda Charbonneau & Peter Betts, *R. P. I. FSC*
2. Leona Lebel & Robert Dube, *Commonwealth FSC*
3. Wendy Brandschain & David McCoy, *Old York Road SC*

## GOLD DANCE

1. Andree & Donald Jacoby, *Buffalo SC*
2. Judy Lamar & Ronald Ludington, *Commonwealth FSC*

## SILVER DANCE

(Eastern Silver Dance Trophies)

1. Mr. & Mrs. Robert Dineen, *Metropolitan FSC*
2. Elizabeth Herman, *Rye FSC*, & Charles Rizzo, *Metropolitan FSC*
3. Rosemary McEvoy & Ralph Owen, *Metropolitan FSC*
4. Kay Simonton & Charles David, *The SC of Boston*
5. Nancy Baldwin & Donald Leslie, *Buffalo SC*
6. Kathryn & John Midney, *Southern Connecticut FSC*

## BRONZE DANCE

(Eastern Bronze Dance Trophies)

1. Peggy Eastman, *Garden State SC*, & Richard Hirsch, *Metropolitan FSC*
2. Cindy Webster & Thomas Williams, *Genesee FSC*
3. Jane Dystel & Douglass Norwick, *Rye FSC*
4. Ann Marie Heiser & John F. Christie, III, *Philadelphia SC & HS*
5. Beth Ann Huber, *Quaker City FSC*, & Walter Wisniewski, Jr., *International FSC*
6. Julie Ann Graham, *Commonwealth FSC*, & Frank Muckian, *The SC of Boston*
7. Marian Lord & Frank Carroll, *The SC of Worcester*
8. Kathy Coyle & Richard Griffin, *International FSC*
9. Susan Hunger & David A. Rothrock, III, *Philadelphia SC & HS*
10. Fran Bilofsky & John Morgan, *Garden State SC*

## VETERANS DANCE

(Harold Hartshorne Trophies)

1. Florence Schaefer, *Brooklyn FSC*, & Harold Hartshorne, *The SC of New York*
2. Josephine Moesel & Jerome Ross, *Rye FSC*
3. Marie & William Ramage, *Rye FSC*

# People



## BIRTHS

**Buffalo**—To Mr. and Mrs. Paul J. Kreppel (Shirley Schwartz), a son, Michael Paul, May 28, 1958.

**Germany**—To Mr. and Mrs. Ernst Baier (Maxi Herber), former World Pair Champions, a third child, Alexander-Maximilian, in December.

**Los Angeles**—To Mr. and Mrs. Jack Curtis, a daughter, Denise Marie, Jan. 11—To Mr. and Mrs. Jerry Rehfield, a daughter, Diana Louella, Dec. 21.

**Omaha**—To Mr. and Mrs. Tom Lee (Mary Collette Rance), a daughter, Therese Collette, Dec. 21—To Mr. and Mrs. Pat Rance, a daughter, Elise Jane, June 9.

**Paramount, Calif.**—To Mr. and Mrs. Ernest E. Burden, a daughter, Diana, Dec. 31.

**Sacramento**—To Mr. and Mrs. Alan James Hill (Beverly Gerlinger), a son, Sept. 30—To Mr. and Mrs. Richard Morrow (Barbara Nance), a son, June 30—To Mr. and Mrs. Richard Vesels, a daughter, Sept. 25.

**Schenectady, N. Y.**—To Mr. and Mrs. George Anthos, a son, Gregory George, Jan. 13.

**Tacoma**—To Mr. and Mrs. John Johnsen, a daughter, Annalise Kristine, Dec. 23.

## ENGAGEMENTS

**Chicago**—Miss Catherine Rathnow to Mr. Gerald Behrens.

**Los Angeles**—Miss Josephine Thein to Mr. Milton Lawless. Wedding Mar. 14.

**New Haven**—Miss Dorothy White to Mr. Ben Blake.

**Omaha**—Miss Marian Ann Schroeder to Mr. John Edward Hoffman of Detroit. Wedding Feb. 7.

**Scarborough, Ont.**—Miss Barbara Aldwynne Bourne, former Canadian Junior Pair Champion, to Mr. William Blair Graham. Wedding June 26.

**Toronto**—Miss Eileen McEwen to Mr. Peter Giffen.

## MARRIAGES

**San Francisco**—Mr. Bill Root and Miss Ellen M. Hoffman, Dec. 31.

**Washington**—Mr. Henry Waring and Miss Alice Veiley, Dec. 24.

## DEATHS

**Hoboken, N. J.**—Mr. Frank J. Alexander, one of the founders and a long time director of the Bear Mountain FSC, Dec. 25.

**Philadelphia**—Mr. William C. Bostwick, 86, a lifetime member of the Philadelphia SC & HS, Jan. 29.

**St. Paul**—Mr. Evar T. Cedarleaf, suddenly, Jan. 18. He had been active in figure skating circles in St. Paul for many years, was President of the St. Paul FSC for a number of terms and Vice-President at the time of his death. Mr. Cedarleaf was also active in USFSA affairs, serving as Chairman of the Membership Committee in 1948, 1949 and 1950 and later on the Executive Committee. He is survived by his wife and seven children.

## TURNED PROFESSIONAL

**Chicago**—Gladys Jacobs to teach at Saddle and Cycle Club, Chicago.

**Newmarket, Ont.**—Jeanne Revell to join Ice Capades.

## THE CALENDAR OF

# Coming Events

### Competitions

- March**  
13-14 Eastern Canadians at Town of Mount Royal FSC
- April**  
3-5 Niagara Invitational at Buffalo SC  
22 British Junior Figure & Dance Championships at Richmond

### Carnivals

- March**  
6-7 Peterborough FSC  
7 Sarnia FSC  
20 Leaside SC  
20-22 Commonwealth FSC  
26-28 Minto SC

### April

- 1-2 Orillia FSC  
3 Dallas FSC  
3-4 Brampton FSC  
3-4 Brant FSC  
3-4 Washington FSC  
4 Hiawatha SC  
9-12 The SC of Boston  
23-25 Cleveland SC

### Other Events

- May**  
8-10 USFSA Governing Council Meeting at Benjamin Franklin Hotel, Seattle
- June**  
3-6 ISU Congress at Tours, France



## Rockers and Counters



### Eastern Clubs

**Buffalo SC** held a Pair Competition on Jan. 18. The Junior Similar Pair class was limited to those twelve years of age or under. The winners were: Patricia Ryan & Penny Bain, junior similar pair; Molly Burke & Michele Georger, senior similar pair. Last year's ice buffet was so enthusiastically received by adult members that another such evening is scheduled for Feb. 7.

**Commonwealth FSC** is preparing for its Commonwealth Capers in March. This year's theme will be "Vacation U. S. A." The club will have as its featured skaters Nancy & Ronald Ludington, U. S. Pair Champions. The show will be presented not only in the Boston Arena but for the first time two performances will also be given at the Weymouth SC. Fifteen junior members of the club have organized a Junior Advisory Council, to assist the Board of Governors in club functions. The Council ran a Christmas party for the junior members which was extremely successful, and their next project is to organize ten teams with ten of the Council members acting as chairmen. These teams will be competing against each other to sell the most tickets to the club show, and the winning team will be rewarded with a prize.

**Greenville FSC** has now obtained exclusive use of the Greenville Community Skating Rink from 7:00 to 11:00 every Tuesday evening during the skating season. Instruction is given to juniors and seniors for two hours, using a portion of the rink. The club extends a warm invitation to all USFSA members to be their guests any time they are in the vicinity.

**Hershey Junior FSC** held its annual competition on Jan. 4 with approximately 150 members participating. There were classes for all skaters from beginners to most advanced. The following won Gold

Medals: Beginning groups: Ray Kuntz, Ann Dutlinger, Hope Parkinson, Mary Lou Sansone. Intermediate groups: Cheryl Abusio, Vicki Care, Daryl Ackerman, Charles Hickok, Gail Norris, Judy Todd. Preliminary Test Girls (12 and under), Sharon Shaeffer; Preliminary Test Girls (13 and over), Cynthia Frank; Preliminary Test Boys, Wynn Miller; First Test Girls, Linda Boyer; Juvenile Ladies, Carol Shaeffer; Novice Ladies, Rosalie Haldeman; Junior Ladies, Mary Jane Wilder; Junior Men, Tommy Litz. Recently plans were organized for a spring carnival in which both junior and senior divisions will participate. The junior club will, however, compose the greater part of the program. The show is under the direction of pro Felix Kaspar, and Mrs. Hal Kirk is costume director.

**New Haven SC** members participated on Jan. 11 in the ice carnival at Page Park put on by the Park Department. Besides the skating and exhibitions by the figure skaters, various races were organized; Jackie and Doris Doyon tied for first in the girls' figure skating class, and Ronald Messier won in the boys' division. On Jan. 18, club members appeared in the March of Dimes benefit carnival at Winsted, Conn. Solos were skated by Sheri and Patty Panczak, Claire Marsh, Nancy Guy, John Sheldon, Betty Petrillo, Linda Carbone, Beth Hoffman and Joyce Smith. Dancers who exhibited were Mr. & Mrs. Jack Galgot, William Petke, Audrey Livesey, George Rapp, Margaret Sanders, James Varrone, Harriet Marsh, John Chamberlain, Justine Shepard, Frank Coughlin and Mary Gibbons. The Chamber of Commerce organized the carnival and afterwards treated the visiting skaters to a buffet supper.

**Old York Road SC** was represented by twenty girls, from 10 to 15 years, in a Scotch drill at the opening of the Penn

Center ice rink in mid-Philadelphia on New Year's Eve. They appeared on a program that included Olympic Champion Hayes Alan Jenkins, pros Walter & Irene Muehlbronner, Jimmy McAnany and Lynn Thomas. Paul Branin, club sanctions officer, handled the arrangements for the appearance of the girls, who were well received by the large midnight crowd.

**Providence FSC** presented a skating program for the benefit of the March of Dimes at Capron Park, Attleboro, Mass., on Jan. 18. Members taking part were Susan Gregory, Ruth Whittaker, Ellen Ann Whittaker, Betty Gallen, Judy Gallen, Kathy Roe, Joyce Harpin, Marilyn Carlson, William Flaherty, Robert Harpin and Al Tanner. The program was arranged by Mrs. Elise Koontz Patz and President James A. Gallen.

**Rochester FSC's** winter season began in October and ended in February with a membership of approximately two hundred. In October the younger groups held a Halloween party in which all appeared in costumes. Prizes were awarded for the various types of costumes, and games and refreshments were on the agenda. In November a club movie party took place where movies of the 1958 Nationals and the Halloween party were shown. After the social part of the evening, plans for the annual ice show—Jan. 23-24—were discussed. A group of the senior members skated four exhibitions at outdoor rinks this winter, some of which were 60 miles away. All members are now looking forward to their summer session in June.

**R.P.I. FSC** Junior and Intermediate divisions each have had parties after their club sessions, featuring entertainment by Magician Verne Chesbro, a member of the senior division of the club. Training has been underway for several weeks in preparation for the annual Carnival in March.

**The SC of New York's** Entertainment Committee showed the USFSA reels of the free skating and dance events of the 1957 Nationals on Jan. 13, following the regular session. The films were preceded by a social hour, during which sandwiches and coffee were served.

**Springfield Ice Birds** were planning a skating party for Jan. 18 on the rink at

the Shaker Farms CC—weather permitting. All figure skaters in the area were to be invited to the general skate and dance session. Chairman George Guyett was making arrangements for club members to attend a Smorgasbord after the skating.

**Washington FSC** was anticipating a series of off-the-ice get-togethers during the period when the Uline Arena was engaged with other events. An evening of fun and conversation, with Mrs. Verna Wilkin in charge, was to be held on Feb. 3 in Chevy Chase. The agenda called for discussion of the coming club show, entertainment through skating movies, and a few surprise events. High-caloried goodies and coffee were to top off the evening. Outdoor skating was also planned, weather permitting, during the off-the-ice period, at the Rockville Skating Rink in Maryland.

#### Midwestern Clubs

**Chicago FSC** junior members held a Christmas party on ice during their regular session on Dec. 19; games and contests added to the holiday merriment. Following the skating fun, refreshments were served by the mothers. The seniors held their Christmas party on Dec. 20. The special skating program of games and dances, ending with a grand march led by Santa Claus (Beverly McGee) and Merry Christmas (Norma Foster), was planned by the hard-working committee. Festivities on ice were followed by dinner and ballroom dancing at the Verandi Club. Many eager spectators visited the regular senior session on Dec. 27 to see Andree & Don Jacoby, U. S. Gold Dance Champions, give a thrilling exhibition of their free dance number plus a variety of Gold and Silver dances.

**Cleveland SC** announced that its President's Ball, Jan. 31, would be held in the big Armory, with a canopy running from there to the club, and two special orchestras engaged for the evening. Seniors were treated to a Dutch Waltz Contest on Dec. 3—much to the surprise of all present, since no one knew about the contest until it was over. Top honors went to Mr. & Mrs. Kirk Reid, with Mr. & Mrs. Joel Carpenter in second place. Harry Walker and his orchestra set the tempos

on Dec. 16 for the Christmas Ice Dancing Party. Popcorn balls generously donated by Doris Mackley and Harvey Humphrey contained a spirited surprise of Christmas cheer—courtesy of the Senior N'ice Activities Committee—for three lucky people. The next Ice Dancing party was set for Jan. 14, and a Mardi Gras Party on ice was scheduled for Feb. 10.

**Dallas FSC**, although starting out with a smaller membership than usual (90), is operating at full scale with extra ice time, and has been concentrating on enlarging the club roster. Rehearsals are under way for the carnival to be held in the Arena in early April.

**FSC of Minneapolis** feels that the good showing of its skaters in the Midwesterns can be traced to the new Ice Center, which made extra ice time available. Vicky Fisher, who qualified for the Nationals with her third place showing in the Senior Ladies' event, is the first local skater to qualify in seven years.

**Queen City FSC** finished off the first half of the season with a successful Christmas party and guest night. Members invited their friends to skate during the regular skating session, and provided rental skates for those who needed them. The evening was highlighted by the smooth skating of Karl & Gayle Freed, 1958 U. S. Junior Pair Champions. Certificates of merit for outstanding skating achievement in 1958 were given to Gayle & Karl Freed and to Gail Kizer & Lonnie Kane. After the skating, club members and their guests, totalling more than 100, went upstairs in the Gardens where refreshments were served and gifts distributed.

**Troy SC** had a series of Christmas parties and the Arena was festive with bright decorations of pine boughs, mistletoe and strings of colored lights. Junior beginners were entertained on Monday after school, and advanced and intermediate skaters on Wednesday afternoon. Mrs. Paul Niederkorn had charge of all the relay games and entertainment; Mrs. A. C. Wykoff and Mrs. Mark Dehus served the refreshments. Robert Meeker and his committee entertained the senior club with unusual and hilarious games appropriate to the Christmas season. Robert

Scott played the part of Santa Claus and directed the grand march which was followed by a 25¢ grab bag. Refreshments were served by Mrs. Glen Teegardin and her committee.

**Tulsa FSC** held a very pretty Christmas party with festive decorations and dainty Christmas food. Parents and children participated in games and a grand march. Margaret Ann Graham Reed skated a solo as did Sharon and Jay Davisson. The club is delighted with its fine new members, their progress, and the interest they are taking in preparing for tests.

**Wauwatosa FSC** has established a new membership group—a limited membership for parents. This membership, with very nominal dues, was created to encourage parents to get out on the ice with their youngsters for at least one half hour each weekend. The hope is that they will become interested enough to become full time senior members. Within a month seven parents decided to become full senior members, and five of them have organized an adult skating class. The spring party this year—a Hat Party—is set for Feb. 21. Each person is asked to wear a hat of his or her own creation. There will be games, relays, prizes, and refreshments.

**WC of Indianapolis** members were guests at a two-day open house prior to the opening of the new Columbus, Ind., civic center and outdoor artificial ice rink, on Dec. 20 and 21. Special exhibitions were skated by Steve Jones, Judy and Sandy Schomeyer, John and Gary Politan, Bill Lincoln, Mary Ann Kavanaugh, Shirley Anne Everett, Ron Peavler, Gayle & Karl Freed (1958 U. S. Junior Pair Champions), Marilyn Meeker & Larry Pierce and club pros Dan & Roseanne Ryan. Sunday night the Indianapolis skaters were entertained at a dinner given by the city and the rink management.

#### Pacific Coast Clubs

**Butte FSC** has run one "Sunday Night Party" on the ice, with an excellent turnout. The present plan is to feature a "supper" club session once a month—on Sundays—and serve a meal to members

## Canadian Clubs

and their families before and during the patch session. The children will be encouraged to wear their old show costumes—or any “dress up” costumes—and perform in some way during the skating session.

**Capitol City FSC** held exhibitions on Nov. 19 to enable the competitive skaters to get the “feel” of performing before an audience. The Beginning and Advanced Dance Groups also did several dances each, including the Canasta Tango, Willow Waltz and the Fourteenstep. Included in the program were exhibitions by the club pros, Robert Hubbard and “Liz” Aldrinia Le Bel Reagan. This successful affair was by invitation and, to the delight of all members, was played to “standing room only”!

**ISC of Fresno** held a potluck dinner party for members and prospective members at the start of its new season in January. The dinner was served at the end of a club session, and beforehand everyone joined in a grand march. There are several new club members as a result of this activity. Recently the skaters celebrated the birthday of their oldest and one of the most active members, Oswald Jackson. The new officers are working on the possibility of staging an ice show late in the spring.

**Los Angeles FSC** held a benefit exhibition on Jan. 18 during their club session to supplement the Competitor's Fund. Exhibitions by members Jim Short, Lorin Caccamise, Don Bartelson, Robert Lee Brewer, Sandy Carson, Wanda Guntert, Yvonne Littlefield & Roy Wagelein, Roger Campbell & Diane Sherbloom, and Margie Ackles & Charles Phillips, and guest skater Carol Galloway, Arctic Blades FSC, helped to make the performance a wonderful success.

**Utah FSC** planned a beginner's competition to be held Jan. 28—the first attempt at an intra-club contest in a step to encourage the young and beginning skaters. An open session for morning members and their guests was scheduled for Jan. 27, when coffee and rolls were to be served in an effort to give everyone a good time. Sunday family sessions have been organized through arrangements by Edith Truman, Wally Anderson and Mary Mann.

**Brampton FSC** held a party on Nov. 24 in the form of a box social which both skaters and parents attended. Games and races on ice which were participated in by everyone made the occasion an enjoyable affair. The second social of the season was the annual Christmas party on Dec. 26 and was very well attended by skaters, their friends and parents. Dance demonstrations were given by some of the club members. In spite of busy preparations for the carnival, skaters are working very hard on tests to be taken the last week in January and the middle of March.

**Brant FSC Ladies Auxiliary** held its annual Christmas Bazaar in the C. O. F. Hall with real success, due to the hard work of the ladies of the club. A group of skaters again entertained the children after the Annual Santa Claus Parade at Paris, Ont. Members of the junior group put on an exhibition of individual skating climaxed by the grand march. The 1957-1958 club champions performed and the comedy group amused the kiddies. The first of two Family Nights was held on Nov. 20 when members, their families and friends took part in an evening of skating, games and lunch. Over 200 persons turned out to make this party the most successful in years. Music for the affair was pre-taped by Harold Sheere who has done a fine job on supplying music for all sessions.

**Connaught SC** held its annual open house and costume party in early December. For this event, raffle tickets were sold in a fund-raising project for the club, with great success. Approximately 450 members and friends turned out in costumes so original and beautiful the judges had difficulty picking the winners. Prizes were awarded for the most original, most artistic, and the funniest. Several members put on a fifteen minute program at the start of the party, and pros Mary Diane Campbell & Bill Nick entertained with a dance routine. The Christmas parties, put on by the Ladies Auxiliary, started with the junior party held during the regular junior session. There were races for the boys in which the older ones had to skate backwards across the arena and return; then for the smaller ones, forward one way and backwards

# WISSAHICKON SKATING CLUB

*Annual Summer Ice Session*

JUNE 22

AUGUST 22

## *Professional Staff*

**Albert Edmonds**

**Walter Muehlbronner**

**Sonya Klopfer**

**Sally-Anne Reid**

**Bruce Mapes**

**Megan Taylor**

DAILY PERIODS: 7 Patch — 3 Free Skating — 3 Dance

FOR INFORMATION WRITE:

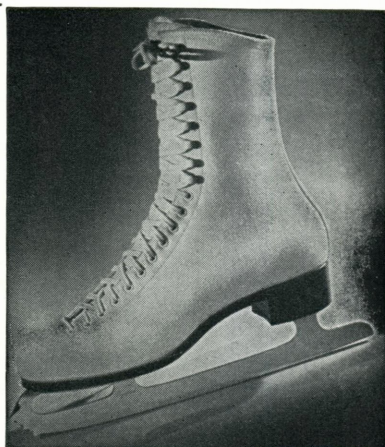
**Charles E. Ingersoll**, Summer Session Committee  
Willow Grove Avenue and Cherokee Street  
Philadelphia 18, Pennsylvania

## Skate with the Best

## ... on the Best

### Oberhamer

## SKATE BOOTS



Take a tip from the experts. Insist on the best to skate on. Skating skill is acquired. So is the craft of tailoring skate boots. Perfect fit, comfort and styling are the hall mark of Oberhamer boots. After all, we have been doing it for years. Try us and see for yourself.

**FREE: WRITE  
FOR MEASUREMENT  
CHART**

## **Oberhamer SHOE CO.**

**689 NORTH DALE  
ST. PAUL 3, MINNESOTA**

Ask the "Pros" — They ask for Oberhamer!

Please mention SKATING when answering advertisements.

the other. Prizes of skate laces had been donated for the winners. For the girls, there were shoot the duck races, and a competition to see who could hold a spiral the longest. In the grand march all the little skaters participated. After the children lined up around the arena, Santa Claus appeared to hand each one a bag of fruit and candy canes. While they were having their treats, Patsy Cook skated an exhibition and Santa danced the Dutch Waltz with pro Mary Diane Campbell, intriguing the children with his dancing ability. In the evening, the seniors—who are members in their 'teens—enjoyed coke and doughnuts, canes and oranges, and the surprise appearance of Santa.

**Glengarry FSC** ended the first half of the season with a Christmas party in the Memorial Arena on Dec. 21. Parents were invited and turned out in number. All skaters took part, from the "tiny tots" to seniors. The program started with a grand march followed by the Junior Pair. Races from plain skating to shoot the duck were next with all skaters taking part. The Glengarry Four preceded the highlight of the evening—Santa with his pack. Refreshments were served by the mothers. Afterwards a surprise party was held in a private home for club pro Dolores Causier.

**Mount Paul SC** celebrated the tenth anniversary of its organization by honoring the original officers and directors at a social evening. Two films of the 1957 World Championships were shown to the "old-timers," some of whom are still active in the club, and to the other guests. Skaters invited were all teen-agers and seniors in figure and dance groups. The first president of the club told how it came into existence—originally to help minor hockey players learn how to skate and to handle their bodies, but, he said, unfortunately not many boys took up figure skating. The local newspaper is running a series of articles on the club and its history. Kamloops and Mount Paul have become widely known for the winter ice carnival—Kamicecade.

**North Bay FSC** has recorded its largest membership in history, consisting mostly of juniors. Because of the high interest shown, the Directors have authorized junior group instruction for the second year,

under the guidance of pros Mona Irving and Claire Gregory. This instruction is divided into star groups who receive instruction on different days, depending on their progress. The club, host to the Northern Ontario Championships, arranged for several of the competitors to be interviewed on TV. The Ladies Auxiliary catered a buffet supper to celebrate the close of the Championships.

**Stratford FSC** skaters started activities late this year but have a large membership list. A Family Party was held on opening night to which all members, their parents, brothers and sisters were invited. They skated and played games and enjoyed the coffee and doughnuts served by the club's Parents Association. The event was such a success it is expected that every opening night will become an annual "family" affair.

**Toronto CS & CC** skaters, World Pair Champions Barbara Wagner & Bob Paul, were interviewed by Arthur Godfrey the Monday before Christmas on his TV show. They were invited to be guests on the program because of Mr. Godfrey's great interest when he saw them skate at the club in November. Earlier in the day, Barb & Bob skated on the Dave Garroway show in New York. Other honors went to the club's World competitor Donald Jackson, who was crowned "King of Winter" when he skated at Lake Placid this winter. The club has distributed an attractive decal showing the club seal for all members to affix to their automobile windshields.

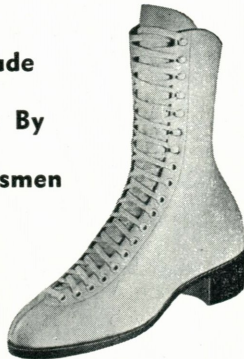
### Ice Scrapings

**The SC of Boston** Nationals competitors were supper guests of the club the Friday night before the Championships and each put on his National free skating or dance program. **FSC of Omaha's** committee for the Spring Party—a Circus Party—is very enthusiastic and has big plans for the event which is scheduled for March 16. **Cobourg FSC** held its first set of tests for 1959 in early January, with sixteen candidates being successful in figures and dancing.



THE CHOICE OF CHAMPIONS  
 THE "STUBURT" READY TO WEAR SKATING FOOTWEAR

English Made  
 Throughout By  
 Skilled Craftsmen



Also  
 The Famous  
 "Arnold Gerschwiler"  
 Custom Built Model

Est. 1870

(Measurement Forms on Request)

EACH SEASON MORE AND MORE DISCRIMINATING SKATERS  
 ARE WEARING THESE FINE BOOTS  
 HAVE YOU TRIED A PAIR YET?

Agents and Distributors

CANADA

W. S. HILL Esq.  
 60 Front Street, W.  
 Toronto, Ontario

Western & Mid Western States  
 RON PRIESTLY Esq., COMAX Inc.  
 The Westwood Ice Skating Studio  
 10984 Santa Monica Boulevard  
 Los Angeles 25, California.

U. S. A.

Eastern States  
 FRED GRUMAN Esq.  
 FRED GRUMAN'S SKATE SHOP, Inc.  
 304 West 50th Street  
 New York 19, N. Y.

STUBBS AND BURT LTD., Bristol - 1, England

MICHIGAN  
 STATE  
 UNIVERSITY

ICE

★  
 ARENA

East Lansing, Mich.

11th Annual

SUMMER SESSION  
 JUNE 27 TO AUGUST 22

8 weeks

180 PATCHES • TESTS  
 ICE SHOWS

Dormitory for Skaters  
 &  
 Kellogg Center Hotel  
 for skaters

GOLD TESTS—Aug. 21 - 22 - 23

Professional Staff—

WILLIAM SWALLENDER  
 JEAN ARLEN JORDAN

• MONTGOMERY WILSON  
 • PIERRE BRUNET

BERYL WILLIAMSON

ENJOY OUR NEW OUTDOOR OLYMPIC  
 SIZE SWIMMING POOL & SUN DECK

WRITE Norris Wold, Mgr., for Brochure  
 SANCTIONED BY U.S.F.S.A.

Please mention SKATING when answering advertisements.

## U. S. CHAMPIONSHIPS

(Continued from page 9)

second; and the Los Angeles Figure Skating Club and the Skating Club of New York tied for third.

These were the competitions, but during the four days of Nationals, a number of off-ice events were also enjoyed. Gilbert McCurdy gave a luncheon on Thursday for key members of the sponsoring organizations at which Mayor Peter Barry welcomed early arrivals among the officials and contestants. Few of the visitors had an opportunity to see it, but Mr. McCurdy also did much to promote the financial success of the Championships by donating a main show window of one of Rochester's largest department stores for a display of skating figures and photographs. Mr. & Mrs. F. Ritter Shumway, President of the Genesee FSC, gave a dinner for officials and judges on Thursday evening, and the women's council of R.I.T. entertained them at luncheon on Friday. Saturday evening skates were laid aside for the cocktail party given by Mr. & Mrs. Rex Rial for judges and officials, and for the lovely dinner-dance attended by almost 600 in the Hotel Manger ballroom. Sunday morning there was a Coffee Dance at the Ritter-Clark rink, with so many skaters in attendance that dances had to be maneuvered in three crowded flights.

The Genesee FSC and the Rochester Junior Chamber of Commerce are proud and pleased to have been hosts for the 1959 National Championships, and sincerely hope our visitors are just as proud and pleased to have been our guests.

### LADIES' SENIOR

FOR GERTRUDE CHEEVER PORTER TROPHY

JUDGES: (1) Mrs. Phebe Tucker Cox, New York; (2) Mrs. Rex V. Rial, Rochester; (3) Arthur F. Preusch, Minneapolis; (4) Mrs. Henry Riggs Sullivan, Colorado Springs; (5) Deane E. McMinn, Los Angeles. FIGURES: No. 21a, 22b, 32a, 34b, 37b, 39a.

1. (1)	Carol Heiss <i>The SC of New York</i>	1	1	1	5
2. (2)	Nancy Heiss <i>The SC of New York</i>	2	2	3	12
3. (4)	Barbara Ann Roles <i>Arctic Blades FSC</i>	4	4	3	15
4. (3)	Lynn Finnegan <i>The SC of Boston</i>	3	3	4	18

### MEN'S SENIOR

FOR GEORGE H. BROWNE MEMORIAL TROPHY

JUDGES: (1) Mrs. Rex V. Rial, Rochester; (2) Mrs. Lloyd B. Sanderson, Lake Placid; (3) Deane E. McMinn, Los Angeles; (4) Mrs. Henry Riggs Sullivan, Colorado Springs; (5) Mrs. L. A. Graham, Cleveland. FIGURES: No. 20a, 23b, 31b, 35a, 36b, 41a.

1. (1)	David Jenkins <i>Broadmoor SC</i>	1	1	1	5
2. (2)	Tim Brown <i>Broadmoor SC</i>	2	2	2	10
3. (3)	Robert Brewer <i>Los Angeles FSC</i>	4	3	4	17
4. (4)	Bradley Lord <i>The SC of Boston</i>	3	4	3	18
5. (5)	Barlow Nelson <i>The SC at Dartmouth</i>	5	5	6	26
6. (6)	James Short <i>Los Angeles FSC</i>	6	6	5	30
7. (7)	Lorin Caccamise <i>Los Angeles FSC</i>	7	7	7	34

### SENIOR PAIRS FOR HENRY WAINWRIGHT HOWE MEMORIAL TROPHY

JUDGES: (1) Mrs. Lloyd B. Sanderson, Lake Placid; (2) Wilhelm A. C. Appeltofft, Boston; (3) Mrs. Henry Riggs Sullivan, Colorado Springs; (4) Deane E. McMinn, Los Angeles FSC; (5) Mrs. H. Roger Willis, Berkeley.

1.	Nancy Ludington & Ronald Ludington <i>Commonwealth FSC</i>	1	2	1	1	6
2.	Gayle Freed & Karl Freed <i>WC of Indianapolis</i>	3	2	3	2	12
3.	Maribel Owen & Dudley Richards <i>The SC of Boston</i>	2	4	1	3	14
4.	Ila Ray Hadley & Ray Hadley, Jr. <i>Seattle SC</i>	4	5	4	4	20
5.	Sheila Wells & Tom Moore <i>Colorado Springs</i>	6	3	6	5	25
6.	Mary Lou Raymond & Jack Nankervis <i>Butte FSC</i>	5	6	5	6	28

### LADIES' JUNIOR FOR JAMES A. TOWER TROPHY

JUDGES: (1) Wilhelm A. C. Appeltofft, Boston; (2) Minerva S. Burke, Syracuse; (3) Mrs. Phebe Tucker Cox, New York; (4) Mrs. H. Roger Willis, Berkeley; (5) Arthur F. Preusch, Minneapolis. FIGURES: No. 20a, 23b, 30a, 32a, 34b.

1. (1)	Laurence Owen <i>The SC of Boston</i>	1	1	1	2	6
2. (2)	Stephanie Westerfeld <i>Broadmoor SC</i>	2	2	2	1	9
3. (3)	Rhode Lee Michelson <i>Arctic Blades FSC</i>	3	3	3	3	16

(Continued on page 34)

# 1932 LAKE PLACID 1959

in-the-Adirondacks

28th ANNUAL SEASON of SUMMER SKATING

JUNE 13 to SEPTEMBER 13

## EXPERT PROFESSIONAL STAFF:

WALTER BAINBRIDGE, Buffalo Skating Club — OTTO GOLD, Minto Skating Club — WILLIAM KIPP, Paramount, Calif. — HOWARD NICHOLSON, Skateland — PRISCILLA SNOW, The Skating Club of Lake Placid — CLIFF & EDWINA THAELL, Thael Studios, Philadelphia — JEAN WESTWOOD, Toronto Skating Club.

PATCH — FIGURE — PUBLIC SESSIONS

ICE DANCING — WEEKLY SHOWS

FIGURE AND DANCE CONFERENCES — JUDGES' SCHOOLS

U.S.F.S.A. FIGURE & DANCE TESTS

FREE SKATING, PAIR and DANCE COMPETITIONS

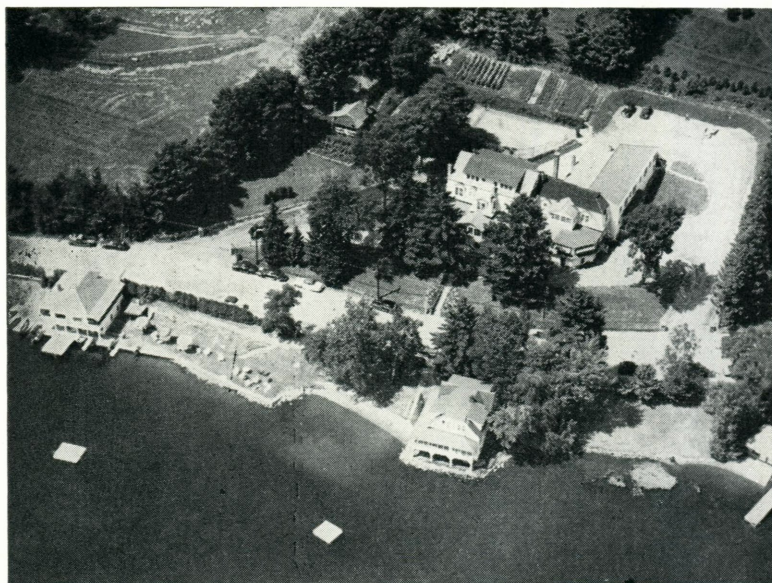
Sponsored by THE SKATING CLUB OF LAKE PLACID

Sanctioned by U.S.F.S.A.

For Information and Reservations Write:

**NORTH ELBA PARK DISTRICT**

**Olympic Arena, Lake Placid, New York**



Mirror Lake Inn, Cottages and Skating Camps for girls and boys with house-mothers in charge. Rates from \$45.00 weekly including transportation to the Arena and all facilities of the Inn. Special accommodations and rates for skating families. Write for free color booklet — Mrs. C. M. Wikoff, Owner and Manager.

Please mention SKATING when answering advertisements.

4.	(6)	Dorothyann Nelson <i>Chicago FSC</i>	7	4	8	5	3	27
5.	(5)	Vicky Fisher <i>FSC of Minneapolis</i>	5	7	4	7	5	28
6.	(4)	Diana Lapp <i>Denver FSC</i>	8	5	9	4	6	32
7.	(10)	Karen Howland <i>Sun Valley FSC</i>	4	9	6	6	9	34
8.	(7)	Rickie Anne Rendich <i>Rye FSC</i>	6	6	5	8	10	35
9.	(9)	Carol Galloway <i>Arctic Blades FSC</i>	9	8	10	10	7	44
10.	(8)	Mary Cooper <i>The SC of Boston</i>	10	10	7	9	8	44

MEN'S JUNIOR

FOR IRVING BROKAW MEMORIAL TROPHY

JUDGES: (1) Mrs. Lloyd B. Sanderson, Lake Placid; (2) G. J. Hurley, Tacoma; (3) Mrs. L. A. Graham, Cleveland; (4) Minerva S. Burke, Syracuse; (5) Dorothy M. Burkholder, Chicago. FIGURES: No. 17, 19a, 21b, 22b, 29a.

1.	(1)	Gregory Kelley <i>The SC of Boston</i>	1	2	1	1	1	6
2.	(2)	Don Mike Anthony <i>Los Angeles FSC</i>	2	1	2	3	3	11
3.	(4)	Frank Carroll <i>The SC of Worcester</i>	3	3	6	4	2	18
4.	(7)	Douglas Ramsay <i>Detroit FSC</i>	4	5	5	2	6	22
5.	(5)	Bruce Heiss <i>The SC of New York</i>	5	7	4	6	4	26
6.	(3)	James Murray <i>Great Falls FSC</i>	6	4	7	5	5	27
7.	(8)	Harvey Balch <i>Arctic Blades FSC</i>	7	6	3	7	7	30
8.	(9)	Robert James <i>Ann Arbor FSC</i>	8	8	8	8	8	40
	(6)	Tommy DeBaca <i>Broadmoor SC</i> (Withdraw before free skating)						

JUNIOR PAIRS FOR JOEL B. LIBERMAN TROPHY

JUDGES: (1) Mrs. Phebe Tucker Cox, New York; (2) Mrs. Rex V. Rial, Rochester; (3) Dorothy M. Burkholder, Chicago; (4) Arthur F. Preusch, Minneapolis; (5) G. J. Hurley, Tacoma.

1.	Judianne Fotheringill & Jerry Fotheringill <i>Lakewood WC</i>	4	2	1	1	1	9
2.	Gail Kizer & Lonnie Kane <i>Queen City FSC</i>	6	6	2	2	2	18
3.	Laurie Hickox & Bill Hickox <i>The SC of San Francisco</i>	1	3	4	3	3	14
4.	Vivian Joseph & Ronald Joseph <i>Chicago FSC</i>	2	1	3	6	5	17
5.	Janet Harley & James Browning <i>Lansing SC</i>	5	4½	5	4	4	22½

6.	Linda Charbonneau & Peter Betts <i>R. P. I. FSC</i>	3	4½	6	5	7	25½
7.	Jeanne Gladding & Richard Kavanaugh <i>Washington FSC</i>	7	7	7	7	6	34

LADIES' NOVICE

FOR HEATON R. ROBERTSON MEMORIAL TROPHY

JUDGES: (1) Minerva S. Burke, Syracuse; (2) Wilhelm A. C. Appeltofft, Boston; (3) Arthur F. Preusch, Minneapolis; (4) Mrs. Henry Riggs Sullivan, Colorado Springs; (5) G. J. Hurley, Tacoma. FIGURES: No. 8a, 16, 18b, 29a.

1.	(2)	Mary Batdorf <i>Hershey FSC</i>	1	1	1	2	1	6
2.	(1)	Ronna Mae Goldblatt <i>Commonwealth FSC</i>	2	2	3	3	3	12
3.	(3)	Wanda Guntert <i>Los Angeles FSC</i>	5	3	9	1	2	20
4.	(5)	Lynda Waldrop <i>Broadmoor SC</i>	3	6	3	4	5	21
5.	(4)	Michele Monnier <i>The SC of San Francisco</i>	4	4	6	6	4	24
6.	(6)	Chickie Berlin <i>Chicago FSC</i>	9	7	5	5	8	34
7.	(9)	Carol Noir <i>The SC of New York</i>	7	5	8	8	6	34
8.	(8)	Ellen Kullman <i>The SC of San Francisco</i>	8	8	7	7	7	37
9.	(7)	Christine Haigler <i>Broadmoor SC</i>	6	9	4	9	9	37

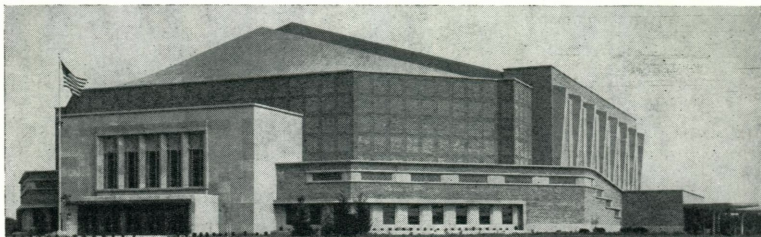
MEN'S NOVICE

FOR JEAN-PIERRE BRUNET MEMORIAL TROPHY

JUDGES: (1) Mrs. Phebe Tucker Cox, New York; (2) Mrs. Lloyd B. Sanderson, Lake Placid; (3) Dorothy M. Burkholder, Chicago; (4) Mrs. L. A. Graham, Cleveland; (5) Mrs. H. Roger Willis, Berkeley. FIGURES: No. 8b, 16, 18a, 29b.

1.	(1)	Monty Hoyt <i>Colorado Springs</i>	1	1	1	1	2	6
2.	(2)	Scott Allen <i>The SC of New York</i>	3	2	2	2	1	10
3.	(3)	Ronnie Frank <i>Arctic Blades FSC</i>	2	4	4	5	3	18
4.	(5)	David Edwards <i>Philadelphia SC &amp; HS</i>	4	3	3	4	4	18
5.	(7)	Buddy Zack <i>Colorado Springs</i>	6	6	5	9	5	31
6.	(4)	Rick Anderson <i>R. P. I. FSC</i>	5	7	9	6	6	33
7.	(8)	Donald Bartelson <i>Los Angeles FSC</i>	7	8	7	8	7	37
8.	(6)	Gary Visconti <i>Detroit SC</i>	8	9	6	7	8	38
9.	(9)	Tim Hamilton <i>Lansing SC</i>	9	5	8	3	9	34

(Continued on page 36)



MEMORIAL COLISEUM, Fort Wayne, Indiana

## SUMMER SKATING SCHOOL

Sanctioned by United States Figure Skating Association

**JUNE 15 to AUGUST 2**

Professionals

**NINO MINELLI  
RONNIE BAKER**

**MIMI PONG PAGE  
GLORIA FRASER**

For Information Write

**Don Myers, Manager, Memorial Coliseum, Fort Wayne, Indiana**

### DESIGNERS & ENGINEERS

# SKATING RINKS

PERMANENT — PORTABLE

INDOOR — OUTDOOR

Costs

Finance

Revenue

Operation

Construction

Planning

**PETER CARVER ASSOCIATES**

70 East 45th Street  
New York 17, N. Y.

**34 RINKS ENGINEERED DURING 1957**

**8 WEEKS OF SUMMER SKATING IN DENVER**

*JUNE 22 THRU AUG. 16, 1959*

## UNIVERSITY OF DENVER ARENA

Sponsored by the Denver FSC  
USFSA Sanction Applied For

Professional Staff

**WALLY SAHLIN • PETER DUNFIELD • NORMA SAHLIN**

**NORTON WAIT • JACK BOYLE**

**For details write: WALLY SAHLIN, MGR. D. U. ARENA  
UNIVERSITY OF DENVER, DENVER 10, COLORADO**

Please mention SKATING when answering advertisements.

GOLD DANCE FOR HARRY E. RADIX TROPHY

JUDGES: (1) Mrs. Rex V. Rial, Rochester; (2) Margaret G. Ridgely, Baltimore; (3) Mrs. L. A. Graham, Cleveland; (4) G. J. Hurley, Tacoma; (5) Deane E. McMinn, Los Angeles. COMPULSORY DANCES: Three-Lobe Waltz, Argentine Tango, Viennese, Paso Doble.

1. (1)	Andree Jacoby & Donald Jacoby					
	<i>Buffalo SC</i>	1	1	1	1	5
2. (3)	Margie Ackles & Charles W. Phillips, Jr.					
	<i>Los Angeles FSC, Arctic Blades FSC</i>	3	2	2	2	11
3. (2)	Judy Ann Lamar & Ronald Ludington					
	<i>Commonwealth FSC</i>	2	3	3	4	15
4. (4)	Susan Sebo & Tim Brown					
	<i>Broadmoor SC</i>	4	4	4	3	19

SILVER DANCE FOR HAROLD HARTSHORNE TROPHY

JUDGES: (1) Wilhelm A. C. Appeltofft, Boston; (2) Minerva S. Burke, Syracuse; (3) Dorothy M. Burkholder, Chicago; (4) Mrs. H. Roger Willis, Berkeley; (5) Mrs. Charles A. Sigrist, Jr., Buffalo. COMPULSORY DANCES: European Waltz, Fox-trot, Tango, Fourteenstep.

1. (2)	Marilyn Meeker & Larry Pierce					
	<i>WC of Indianapolis</i>	2	3	4	1	11
2. (4)	Diane Sherbloom & Roger Campbell					
	<i>Los Angeles FSC</i>	3	1	1	6	14
3. (1)	Patricia Dineen & Robert Dineen					
	<i>Metropolitan FSC</i>	4	2	3	3	14
4. (3)	Gloria Grossman & Peter Moesel					
	<i>Metropolitan FSC</i>	1	4	6	2	17
5. (7)	Jean Robinson & Richard Wayland					
	<i>St. Moritz ISC</i>	6	5	5	5	26
6. (5)	Thomasine Pierce & Roy Speeg					
	<i>FSC of Cincinnati</i>	5	8	2	4	26
7. (6)	Paula Maniago & D. Wilson Hess					
	<i>Genesee FSC</i>	8	7	7	7	35
8. (8)	Elizabeth Herman & Charles Rizzo					
	<i>Rye FSC, Metropolitan FSC</i>	7	6	8	8	37
† (9)	Beverly McGee & Arthur Dammkoehler					
	<i>Chicago FSC</i>					
† (10)	Rosemary McEvoy & Ralph Owen					
	<i>Metropolitan FSC</i>					

BEDELL H. HARNED TROPHY  
FOR CLUB WINNING MOST POINTS

Broadmoor SC	58
The SC of Boston	55
Los Angeles FSC	44
The SC of New York	44
Arctic Blades FSC	33
Commonwealth FSC	32
WC of Indianapolis	22
Buffalo SC	15
Chicago FSC	10
Hershey FSC	10
Lakewood WC	10
Metropolitan FSC	10
The SC of Worcester	9
Queen City FSC	8
Detroit SC	6
Seattle SC	6
The SC of San Francisco	6
Philadelphia SC & HS	4

† Eliminated before Final Round.

# Championship Performance

By DONALD E. LAWS

*Professional, Washington FSC*

Too OFTEN in discussing the outcome of a championship, or even the preliminaries, it is obvious that certain skaters will be classed as jumpers, others as non-spinners, and some as just smooth or graceful. Also, so much comment is made on one's advantage over the others in content or footwork. It then becomes clear that in training perhaps too much stress was placed on a skater's natural assets, or that even too much camouflaging has been done to the weaknesses. How much better it would be not to be forced to surrender to such temptations!

This is not to say that a skater should fail to make use of his greater abilities, or be indiscreet in choosing and placing his doubtful maneuvers. But, in order to develop a "complete" skater at any level, here are three basic rules which apply to both pupil and teacher from the moment the first program and exhibition is being prepared.

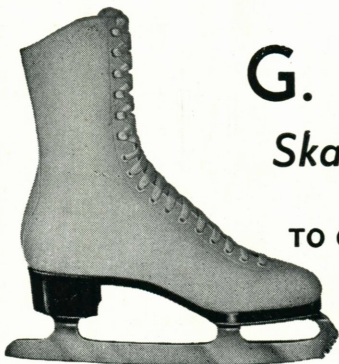
1. Positive controlled action.
2. Strong and sensitive balance.
3. Graceful and insouciant timing.

Whether you consider strong, fast, soft, or slow music you will begin with one of these rules, and from this will evolve the other two. To create a sound impression on the powers of thinking and acquire an intelligent routine of practicing, read and re-read the following; dominate your program by controlled aggressive action; plant your feet so securely that the initiative is not lost through fear or rigidity; exercise a sense of timing, of slow sauvity (when needed) in all movement.

To analyze these suggestions separately is but an aid. To incorporate them successfully in their ultimate meaning will be to transform a skating display into a performance worthy of being termed a plastic art, not falling short of athletic achievement. This result is so seldom seen, but it is up to both of us to strive toward the "complete" skater. It might be you!

CIRCULAR ON REQUEST

EST. 1905



# G. STANZIONE

*Skating Boots of Quality*

TO ORDER AND READY TO WEAR

COMPLETE LINE OF  
SKATING ACCESSORIES

*"The Most Beautiful Skating Boots in The World"*

50 West 56th St., New York 19, N. Y.

## BRITISH COUPLE

Desire position in U. S. or  
Canadian Club  
for next winter, '59 - '60 season

Willing to accept individual  
offers if necessary.

A number of years teaching  
experience in one of England's  
leading ice rinks.

Gold Dance standard, with experience  
in all branches including class  
instruction.

First class recommendations.

Write to Skating, Box 28

## WANTED

### ICE SKATING PROFESSIONAL

1959-60 SEASON

### TROY SKATING CLUB

SITE OF 1958 MIDWESTERNS

Write—F. C. LeFevre  
1208 Ridgewood Drive  
Troy, Ohio



*TO KEEP PACE WITH THE RISING  
STANDARDS OF PUBLIC SERVICE*

# SENTINEL

COIN-AND-KEY OPERATED  
**CHECKING LOCKERS**

**THE FLXIBLE COMPANY • LOUDONVILLE, OHIO**

Builders of the world's finest motor coaches

**RINK OPERATORS:** Write for complete information on the Sentinel Locker Checking System. It will be the most profitable thing you will do today.

Please mention **SKATING** when answering advertisements.

# Tests Passed by USFSA Skaters

**ARENA FSC OF CLEVELAND:** Pre—Betty Dubray, Stephany Dubray, Janet Phillips, Jerome Zak. 1—Paul Fitzgerald, Dorean Krilmsky, Carolann Kuhel. 2—Amy Milan. 4—Donna Mihevic. 7—Trudy Everling, Carolyn Hallett, Lois Ostasek.

**BLADE & EDGE CLUB:** Pre—Sally Berens, Michael Fields, Barbara Hight, Kay Hoffmann, Pam Thomas. **Pre D.**—Carl Brengartner, Shirlee Gray.

**BUFFALO SC:** Pre—Karen Frauenheim, Sharon Legg, Eleanor Ann Schweigert, Betty Siegner, Carol Smith. 1—Pamela Griffiths, Michael Hornung. 2—Mary Ellen Lowe. 3—Janet Parsons, Donald Leslie, Peter Meyer. 5—Kathleen Walker. **Bronze**—Mollie Burke, Elizabeth Anne Mitchell. **Silver**—Sundae Bafo.

**CHICAGO FSC:** 3—Thomas J. Rosenbach. **Pre D.**—Grace McGee. **Bronze**—Karen Serafine.

**CLEVELAND SC:** Pre—Mary Carter, Judy Davidson, Christine Hannon, Carol Meyer, Patty Tucker, Martha Welch. **Pre D.**—Jean Hazeltine. **Bronze**—Nathan Corning.

**COMMONWEALTH FSC:** Pre—Marie Furbush. 1—Kathleen Harney.

**DENVER FSC:** 2—Barbara Becker. 3—Perry Smith Byram.

**DETROIT SC:** Pre—Nancy Burton, A. D. Connor, Sue LaRose. 3—Myrna Bodek, Mary O'Donnell. 5—Gary Visconti. **Pre D.**—Maxine Karamon.

**DULUTH FSC:** 4—William Ahlstrom. 7—Barbara Hemmerling.

**ENGLEWOOD FIELD CLUB:** Pre—Carol Lee Adams, Sarah Miller, Stephanie Roberts, Virginia Scholl, John Seath.

**EVANSVILLE FSC:** **Pre D.**—Phyllis Ruthenburg.

**FSC OF CINCINNATI:** Pre—Jackie Comberger. 1—Linda Comberger. **Pre D.**—Emma Speeg. **Bronze**—Judy Otto. **Pre Silver**—Marilyn Ochs. **Pre Gold**—Roy J. Speeg.

**FSC OF OMAHA:** **Pre D.**—Matthew C. Clarke. **Bronze**—Mary Nelle Clemons, Alice Hill, Paul N. Morrow.

**GENESEE FSC:** Pre—Jule Lawson, John Webster. 1—Tom Bruce, Barbara Hill. 2—Janet Beeley. 4—Hank Moore. **Pre D.**—Nancy Hill, Barbara Morrison, Cameron Wheeler. **Bronze**—Beverly Weimer.

**GREAT FALLS FSC:** Pre—Martin Palagi.

**GREAT NECK FSC:** Pre—Ruth Blatman, Ellen Mishkin, Gail Novis, Bonnie Tavlin, Arlette Weill, Ann Snedeker.

**INDIVIDUAL MEMBERS USFSA:** Pre—Judy Weintraub (at Old York Road SC). 1—Valcia Hershdorfer, Cathy Lowe (both at Washington FSC).

**INTERNATIONAL FSC OF PHILADELPHIA:** 2—John Coyle, Jr.

**LAKEWOOD WC:** **Pre Silver**—Judy Reed.

**LANSING SC:** **Bronze**—Howard Jones.

**LOS ANGELES FSC:** 1—Thomas Adler, Gary Gaebler, Kathy Lynn. **Pre D.**—Curt J. Hager, Lorraine Hager.

**NEW HAVEN SC:** Pre—Ursula Barr, Karen Knup. 1—Mary Gibbons, Betty Petrillo. 3—Harriet Marsh, Mary Ellen Quinlan. **Pre D.**—Benjamin Blake, Patricia Panczak, Helen S. Papekas. **Pre Silver**—Nancy Guy.

**OLD YORK ROAD SC:** Pre—Susan T. Atkinson, Kathleen Batt, Marylou Braun, Ronald Burns, Barbara Cluck, Francean Hallinger, Peter Jacobson, Betsy Reichner, Lydia Reichner, Marilyn Young. 1—Wendy Brandschain, Beth Thompson.

**PHILADELPHIA SC & HS:** **Pre D.**—Eliot B. Hanscom, Barbara A. Jones. **Bronze**—Barbara A. Jones, Margaretta Markle. **Pre Gold**—Mary Van Urk.

**PITTSBURGH FSC:** Pre—Susan Bonsall, Dorothy Carr, Timothy J. Doyle, Patricia Heaston, Elmer Huerbin, Thomas Lescinski, Yolanda Serafini, Betty Jane West. 1—Thomas Lescinski, Carol Kirsacko, Dolly Rodenbaugh.

**PLAZA FSC:** Pre—Teddy Angelone, Patty Goulder, Marrietta Guinta, Wendy Jo Kaufman. 1—Allen Crane.

**PROFESSIONALS:** Pre—William Moser (at Great Neck FSC). **Bronze**—Clyde Shaw (at WC of Indianapolis).

**PROVIDENCE FSC:** Pre—Marilyn Carlson, Paul Gallant, Susan Gregory, Nancy Murphy. 1—Darlene Smith.

**QUEEN CITY FSC:** Pre—Janet Lawson. **Pre Silver**—Evelyn Lackner.

**R. P. I. FSC:** Pre—Barbara Kahn, Frank Thomas, Sharon Turnbull. **Pre D.**—Deane Semerad. **Bronze**—Olive Film, Cathy Rosenblatt.

**RYE FSC:** **Bronze**—Elizabeth Carson Custer.

**ST. MORITZ ISC:** Pre—Lindsay Cowan, Charlene Harbough, Linda Waltjen. 2—Cornelia Fisher, Marcella Vargas. 3—Sandra Hoover. 4—Karilyn Frampton, Marilyn Frampton.

**SAN DIEGO FSC:** Pre—Walter Hanford. 2—Kathleen Freres.

**SIOUX CITY FSC:** Pre—Carol Gelfand, Sue Gelfand, Danielle James, Jeanette Jensen, Michael McCline, Suzanne Welch. 1—Judy Zortman.

**THE SC OF BOSTON:** Pre—Edward H. Smith, Jr. 4—Paul George. **Pre D.**—LCDR Ellen M. Uren.

**THE SC OF LAKE PLACID:** 3—Marcia Servis. **Pre D.**—Charles Fetter.

**THE SC OF NEW YORK:** Pre—Carole Foeller Smith.

**THE SC OF PHOENIX:** Pre—Carolyn Kelton.

**SUBURBAN FSC:** 1—Elizabeth Barron.

**SUN VALLEY FSC:** **Pre D.**—Lois Katarski, Norbert Katarski.

**SYRACUSE FSC:** Pre—Mary Ann Gaworecki, Suzanne Ruff. 1—Gretchen Gregg. 2—Jimmy Sladky, Peggy Stephenson.

**TOLEDO FSC:** Pre—Judy Cantelas, Dennis Opicka, George Sanderson, Katharine Sanderson.



# Read USFSA Instructive Booklets

**Annual Rulebook.** Contains all the USFSA rules, including Competition, Figure Skating and Pair Skating Tests, Dance Tests (with diagrams and descriptions), Amateur Status; lists of judges and referees, committee members, member clubs, USFSA Constitution and By-Laws, and other valuable information. Price \$2.00.

**Evaluation of Errors in Figures.** Contains principles and details on Compulsory Figure technique. Illustrated with line drawings showing many of the common errors in edges and turns, with the correct tracing for each. Valuable for skaters and judges. Price \$2.00.

**How to Organize and Conduct Competitions.** Details on phases of running a competition. December 1955 edition. Price \$2.00.

**Ice Dances.** Diagrams and descriptions of many dances, excluding official test dances. A suggested source of ideas for new combinations and moves in the dance field. Published September 1948. Price \$2.00.

**USFSA Publications Committee**  
30 Huntington Ave. Boston 16, Mass.

## INDEX TO

# Advertisers

### Books

Muriel Kay ..... Inside Back Cover

### Clothes, Equipment

Peter Carver Associates ..... 35  
Flxible Co. .... 37

### Positions Available

Troy Skating Club ..... 37

### Professionals

British Couple ..... 37

### Skates and Boots

C.C.M. Inc. .... Outside Back Cover  
Oberhamer Shoe Co. .... 29  
Riedell Shoes, Inc. .... Inside Front Cover  
G. Stanzione ..... 37  
Stubbs and Burt, Ltd. .... 31

### Skating Centers and Resorts

Broadmoor Ice Palace ..... 4  
Fort Wayne, Ind. .... 35  
Hershey Sports Arena ..... 3  
Lake Placid ..... 33  
Lynn, Mass. .... 2  
Michigan State University ..... 31

Mirror Lake Inn .....	33
Rochester, N. Y. ....	Inside Back Cover
Sundridge, Ont. ....	4
Sun Valley .....	2
University of Denver .....	35
Welland, Ont. ....	3
Wissahickon Skating Club .....	29

## THE

# Skaters' Exchange

WANTED, new position, male pro with excellent record. Gold medal, figures. Silver dance medal 1952. Give full information to Box 22, Skating Magazine.

AVAILABLE for summer session, and . . . ? Top qualified and experienced male professional. Confidential correspondence. Box 24, Skating.

VALLEY FORGE Country Club, Audubon, Pennsylvania, vicinity of Philadelphia. Dance Professional wanted, summer and winter skating. Write to: Box 614, Norristown, Pennsylvania, or call: GLendale 2-4111.

MAN and WIFE, Senior and Junior pros respectively, seek employment for 1959 summer season and-or 1959-60 winter season. Fully experienced in advanced dancing, figures, free skating, competitive and show work. Apply Skating, Box 18.

Please mention SKATING when answering advertisements.

**TROY SC:** Pre—Joe Niederkorn, Lucinda Speelman, Karen Wycoff. **Pre D.**—Karen Eberwein, Joe Niederkorn, Barbara Yaggi. **Bronze**—Jane Brown, Cynthia Compton, Grace Houck. **Pre Silver**—Gene Floyd.

**TULSA FSC:** Pre—Elizabeth Callahan.

**WASHINGTON FSC:** Pre—Aileen Lalor, Rose Anne McDermitt, Betty Miller, Dorothy Mills, Jerry Pensiero, Sidra Singer, Ann Wilcox. 1—Beverly Bancroft, Janet Doyle, Dolly Duke, Nancy Hollingsworth, Patrick Lalor, Jane Ross. 2—Faith Jackson. 3—Jackie Pearson. **Bronze Pair**—Jeanie Gladding & Richard Kavanaugh.

**WC OF INDIANAPOLIS:** **Pre D.**—Mary Feltman, Gary Politan, Sandra Schwomeyer, Donald White. **Silver**—Bill Lincoln.

**WISSAHICKON SC:** 1—Susan E. Bacon, Margaret S. Fearey. **Pre D.**—Margaret A. Jones, Mrs. Charles M. Norris. **Bronze**—Mrs. Thomas Aspinwall, Charles E. Ingersoll, Mrs. John Wanamaker. **Pre Silver**—Carol H. Earle, James M. Earle.

## *Tests Passed by CISA Skaters*

**BRANT FSC:** Pre—Joan Butler, Janice Eagleson. 1—Susan Griggs, Marlene Haley, Patricia Higgins, Linda Hickingbottom, Dale Ralph.

**CAPILANO WC:** **Pre D.**—Pat Alley, Mrs. DeCassan, Jack Perkins, George Sherwood. **Bronze**—Thelma Blackburn, Audrey Rogers, Terry Webb.

**CONNAUGHT SC:** **Pre D.**—Carol Brown.

**EAST YORK FSC:** Pre—Dolly Acornley, Roberta Beattie, Peter Cairns, Susan Dardell, Kathleen Elborn, Lynda Fudge, Karen Grubner, Joanne Keith, Marilyn Keith, Diane McAuley, Cheryl Smith, Sharon Smith, Judy West. 1—Heather Bell. 3—Jean Sanders. **Senior Bronze**—Betty Jones. **Silver**—Donna Moorhead. **Senior Silver**—Lorraine Woodhouse.

**EDMONTON FSC:** Pre—Lorraine Allison, Barbara Denzer, Laverne Gerhbrandt, Heather Harris, Donna Hubenig, John Lederwood, Arlene Marudiak, Trevor Midgley, Heather Morton, Beverly Phoenix. 1—Gail Patton, Sandra St. Lawrence. 2—Carol Clute. 3—Paula Gregg, Bonnie Phoenix. 5—Jeanne Welsh. **Pre D.**—Carol Clute. **Bronze**—Carol Clute, Allison Hamilton.

**FORT WILLIAM THUNDER BAY FSC:** Pre—Janice Brown. 1—Randall Croome. 2—Sanford Jones. 5—Lynda McKeown.

**GLENCOE CLUB:** Pre—Aileen Cheatham, Mary Ann Cheatham. 1—Dianna Bennett, Katie Van Ostrand. **Pre D.**—Lynn Florendine, Barbara White. **Senior Bronze**—Carolyn Allan, Heather Robson, Barbara Simpson. **Senior Silver**—Ann Norton.

**GLENGARRY FSC:** Pre—Sharon Leard, Beverly Marshall. 1—Dale Hutchinson.

**HAMILTON SC:** Pre—Christine Clapman, Diane Dimen, Marilyn Foster, Barbara Gardner, Gail Leslie, Mary Elizabeth Vansickle. 1—Virginia Howard, Jan Jones, Helena Moorehouse, Elizabeth Shepley, Cheryl Stull.

**IC OF GREATER WINNIPEG:** Pre—Olive Squires, Barbara Tolholke. 1—Judy Hill. 4—Lesley Haddon.

**KELOWNA FSC:** 2—Frances Thiede.

**KERRISDALE FSC:** Pre—Pat Chow, Annabelle Elliott, Mimi Johnston, Louise Reid, Peter Zacks. **Bronze**—Anne Davis, Rene Paris, Seema Saslaff.

**LACHINE FSC:** Pre—Christine Jeffreys, Lorraine Seager. 1—Susan Hurdle, Lyanne Turcotte.

**LAKESHORE SC:** Pre—Pamela Barrett. 1—Karen West.

**MINTO SC:** **Silver**—Marilyn Atchison.

**MONTREAL FSC:** Pre—Yvonne Karijo.

**NELSON SC:** 2—Joan Padley. **Pre D.**—Michael Laughton. **Bronze**—Joan Padley, Doreen Spiers.

**NIAGARA FALLS SC:** Pre—Charles Powlowski, Candace Tracey. 1—Diane Cummings, Carol Marsh, Leslie Merlin, Judy Olsen.

**PROFESSIONALS:** Pre—Donald Boyes (at Glencoe Club). 2—Veronica Goska (at IC of Greater Winnipeg).

**RED DEER FSC:** Pre—Rusins Berzins, Barbara Hill, Joan Gilbertson, James Hancock, Toby Lawrence, Shirley Sutherland.

**RICHMOND HILL FSC:** **Pre D.**—Maureen Paske, Joylynn Wilson. **Bronze**—Diane Hayes, Charleen Smith.

**RIVERSIDE FSC:** 3—Lois Gardner.

**ST. THOMAS SC:** Pre—Nancy Cormack, Barbara Disbrowe, Barbara Foster, Trena Mitchell, Pamela McGuire, Marcelle Orchard. 1—Susan Martin. **Pre D.**—Julia Ayling, Carol Disbrowe, Sandra Higginbottom, Nancy Meredith.

**SASKATOON FSC:** 2—Gail Thompson. **Pre D.**—Elsie Bluett, Shirley Farthing, Yvette Gee, Maureen Maguire, Brenda Rennie.

**TORONTO CS & CC:** **Pre D.**—Kathie McLeod. **Bronze**—Leslie Black, Robin Black, Margie Ann Fitzpatrick, Cathy Smith.

**VICTORIA FSC:** Pre—Karen McKenzie. **Pre D.**—Karen McKenzie.

**WESTON SC:** Pre—Daiana Bevan, Shirleu Bohemier, Karen Darroch, Maureen Monrad, Patty Shales, Gail Smiley, Catherine Speechly. 1—Lynne Von Zuben. **Pre D.**—Elizabeth Bowden, Nancy LeGrow.

**WC OF ST. CATHARINES:** 1—Elaine Grosutti.

**WOODSTOCK FSC:** **Pre D.**—Linda Spence. **Bronze**—Kilby Crowder.



ROCHESTER INSTITUTE  
OF TECHNOLOGY  
ROCHESTER, NEW YORK

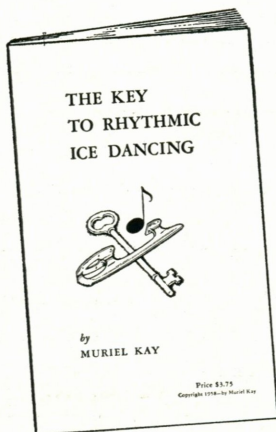


**FOURTH  
ANNUAL SUMMER SKATING SCHOOL**  
June 22nd to August 23rd

<b>Finest Instruction:</b>	In All Departments of Skating
<b>Living Accommodations:</b>	Girls & Boys Dormitories
<b>Will be</b>	Available to skaters and families
<b>Sponsored by:</b>	<b>Genesee Figure Skating Club</b>
<b>Sanction Applied for:</b>	<b>United States Figure Skating Association</b>
<b>For Information write:</b>	Lewis A. Elkin Rochester Institute of Technology Rochester 8, New York
<b>phone:</b>	HAmlton 6-5555

# ICE DANCERS!

AT LAST . . . A BOOK SPECIALLY  
FOR YOU!



## The Key To Rhythmic Ice Dancing

A completely new and up to date textbook on ice dancing.

CONTAINS—Analysis of basic steps—technique of turns, rhythm, music, expression. Easy to read Dance-at-a-Glance charts. Includes the Rhumba and a host of other valuable material. Price \$3.75 ppd. No C.O.D.'s.

**WRITE TO THE AUTHOR TODAY FOR YOUR COPY.**

Send check or money order to:

MURIEL KAY, P.O. BOX 386, BELLINGHAM, WASH.

Please mention **SKATING** when answering advertisements.

choose *The Winning Pair*



**C.C.M.**

**MATCHED SETS**

*featuring*

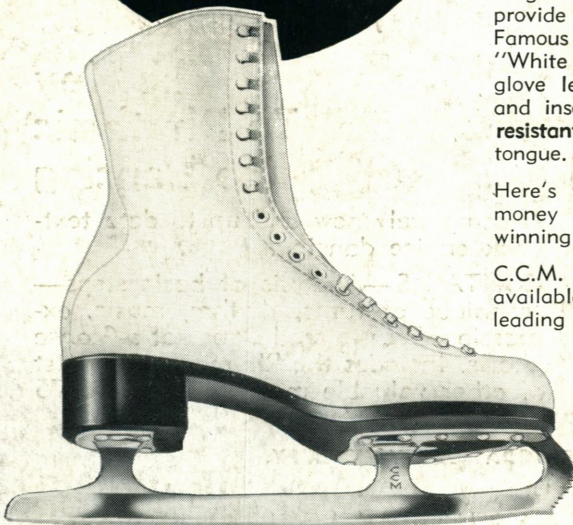
*Riedell*

**SKATING BOOTS**

C.C.M.'s 'Professional' Figure Skates with their new radius and teeth placement give greater power in jumping. Newly designed pivot tooth affords greater stability and freedom in spinning. Hollow ground concave blades provide sharp, long-lasting edges. Famous Riedell Skating Boots have "White Elk" leather uppers; sueded glove leather lining; leather outsole and insole; steel shank; long, water resistant counters and rubber padded tongue.

Here's the finest Matched Set that money can buy . . . truly it's the winning combination.

C.C.M. Matched Skating Outfits are available in all price ranges—sold by leading Dealers everywhere.



**C. C. M.  
INCORPORATED**

681 Seneca Street  
Buffalo, N. Y.