

# Skating

OFFICIAL MAGAZINE OF UNITED STATES FIGURE SKATING ASSOCIATION

VOL. 37, NO. 6

JUNE 1960





# 1960 WORLDS SOUVENIRS

## SOUVENIR PROGRAMMES

Containing complete programme of events  
Interesting articles  
Photographs

## ATTRACTIVE SOUVENIR PINS

Silver and turquoise  
enamelled.

BOTH FOR ONLY \$1.00  
postpaid.



Also limited supply Souvenir Jewelry —  
Bolo Ties                      Pendants                      Key chains  
\$3.50 each postpaid.

## ORDER NOW

1960 Worlds Championships Committee,  
% Capilano Winter Club,  
2034 Curling Rd, North Vancouver, B. C.



**THE  
BROADMOOR  
ICE PALACE**

**Skating every day of the year !**

**Train  
with Edi Scholdan  
Coach of Olympic  
and  
World Champions.**

**For information  
and reservations  
write  
Mrs. Edith Palmer  
Broadmoor Hotel  
Ice Palace  
Colorado Springs, Colo.**



## OFFICERS OF THE UNITED STATES FIGURE SKATING ASSN.

### **President**

Howard D. Herbert  
225 Paul Dr.  
Moorestown, N. J.

### **First Vice-President**

F. Ritter Shumway  
Rochester, N. Y.

### **Second Vice-President**

George B. Jenkinson  
Tulsa, Okla.

### **Third Vice-President**

John P. Hart  
Tacoma, Wash.

### **Secretary**

Harold T. Leroux  
1530 East 19th St.  
Tulsa 20, Okla.

### **Treasurer**

Theodore G. Patterson  
Preston, Moss & Co.  
24 Federal St.  
Boston 10, Mass.

### **EXECUTIVE COMMITTEE**

#### **Term Expiring August 31, 1960**

Edmund C. Bold  
Harold Hartshorne  
Henry R. Heebner  
Frank E. Holcombe  
Robert R. Kierland  
Walter S. Powell  
Howard G. Taylor  
Francis B. Turner  
Robert F. Wilkins

#### **Term Expiring August 31, 1961**

Henry M. Beatty  
Kenneth L. Brown  
Otto Dallmayr  
James M. Earle  
George W. Fisk  
William R. Haigler  
Delaplaine McDaniel  
Harry E. Radix  
Douglas O. Woodruff

### **STANDING COMMITTEE CHAIRMEN**

#### **Amateur Status**

Col. Harold G. Storke  
P.O. Box 235, Allerton Station, Hull, Mass.

#### **Competitions**

Spencer E. Cram  
22400 Canterbury Lane, Shaker Heights 22, Ohio

#### **Dance**

Harry N. Keighley  
2647 Eastwood Ave., Evanston, Ill.

#### **Dance Judging**

Deane E. McMin  
2248 247th St., Box 433, Lomita, Calif.

#### **Figure Judging**

H. Kendall Kelley  
17433 Shelburne Rd., Cleveland Heights 18, Ohio

#### **Finance**

Winston L. Molander  
1309 West Minnehaha Pkwy., Minneapolis 19, Minn.

#### **International**

John R. Shoemaker  
220 Bush St., San Francisco 4, Calif.

#### **Membership**

Carl W. Gram, Jr.  
375 Park Ave., Room 3401, New York 22, N. Y.

#### **Sanctions**

Dr. Nelson F. Waters  
254 Ridge Rd., East Lansing, Mich.

#### **Summer Skating**

Charles E. Ingersoll  
2110 Girard Trust Bldg., Philadelphia 2, Pa.

#### **Tests**

Norman E. Fuller  
7141 Atlantic Ave., Long Beach, Calif.

#### **Eastern**

F. Ritter Shumway  
400 West Ave., Rochester 3, N. Y.

#### **Midwestern**

George B. Jenkinson  
Pan American Bldg., Tulsa, Okla.

#### **Pacific Coast**

John P. Hart  
3536 East 11th St., Tacoma 1, Wash.

## OFFICERS OF THE CANADIAN FIGURE SKATING ASSN.

### **President**

Granville Mayall  
535 Georgia St. West  
Vancouver 2, B. C.

### **Past President**

E. R. S. McLaughlin  
Oshawa, Ont.

### **First Vice-President**

Nigel Stephens  
Willowdale, Ont.

### **Second Vice-President**

Douglas L. Kimpel  
Galt, Ont.

### **Secretary-Treasurer**

Charles H. Cumming  
74 George St., Ottawa, Ont.

### **STANDING COMMITTEE CHAIRMEN**

#### **Rules**

Norman V. S. Gregory  
330 Wood Ave., Westmount, P. Q.

#### **Dance**

Sidney V. Soanes  
64 Airdrie Rd., Toronto 17, Ont.

#### **Finance and Investments**

Nigel Stephens  
19 Birchwood Ave., Willowdale, Ont.

#### **Judges**

Nigel Stephens  
19 Birchwood Ave., Willowdale, Ont.

#### **Sections**

Douglas L. Kimpel  
100 Blenheim Rd., Galt, Ont.



**YOU and YOUR SKATES**  
**are ONE** when you Wear...



*Riedell*

**skating boots**

*featured in CCM figure sets*

Riedell's tailored fit makes skater and skate *one* to give unmatched maneuverability and control. Every built-in feature the champions have asked for! Quality construction from fine supple leathers together with advanced styling that only RIEDELL's experienced "know-how" can bring you.

For the finest, the best skating shoe in all America, insist on Riedell, the skating boot that's preferred by champions everywhere!



## **WHY RIEDELL ?**

- Exclusive, RIEDELL last assures perfect heel, arch, instep and ankle fit
- Select quality supple leather uppers
- Top grain or sueded leather lining throughout
- Extra-long, arch-supporting, firm, moisture-resisting counters
- Molded, ankle-fit, one piece sponge lined tongues
- Double-thick, straight line outer-soles

RINK MANAGERS AND OWNERS — Write today for complete information

**RIEDELL SHOES, INC., RED WING, MINNESOTA**

Please mention SKATING when answering advertisements.



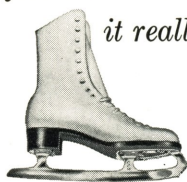
*Champions in skating circles!*



**C.C.M.**

*professional figure skates and matched sets*

Wherever you go, C.C.M.'s steal the show when it comes to jumping power, stability and spinning freedom. Not to mention quality and luxury looks! There's a pair for you at the price you want to pay—get them from your C.C.M. dealer right away!



*it really figures!* C.C.M. "Professional"

figure Skates are the finest money can buy. Superior features of C.C.M. "Professionals" include new radius and teeth placement for greater jumping power; newly designed pivot tooth for greater stability and spinning freedom; hollow ground concave blades for sharp, long-lasting edges... *plus* famous skating boots by Riedell with these superlative features: leather uppers of "White Elk"; sueded glove leather lining; leather outsole and insole; steel shank; long, water-resistant counters and rubber-padded tongue. An unmistakable winning combination!

**C.C.M.**

CANADA CYCLE AND MOTOR COMPANY LIMITED OR IN U.S.: C.C.M. INCORPORATED  
Weston, Ontario 681 Seneca St., Buffalo, N.Y.

Please mention **SKATING** when answering advertisements.



## An Editorial:

### *A Few Words on the "Spiral"*

MANY A FIGURE SKATING AUTHORITY has described, aptly, the proper execution of the Spiral as contained in the free skating program. We would like to discuss, briefly, the Spiral as seen in the free enterprise program. This, in short, is the Spiral of costs and expenditures in business—with a resultant spiralling of prices.

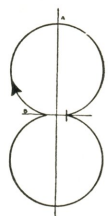
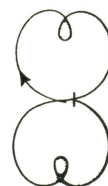
Bowing finally to the continuously rising uptrend in the costs of living and manufacturing, your Editors must of necessity announce an increase in the price of SKATING—effective with all 1961 subscription orders. Next season the price of the eight issues of a yearly subscription will cost \$3.00 for members of subscribing clubs allowed the reduced rate, and \$4.00 for all individual subscriptions. Professionals will be eligible for the \$3.00 rate.

We have had to bow to the inevitable, not to make money, nor even to break even, but to *lose less*. The United States Figure Skating Association, sponsor of the Magazine, has been absorbing, and intends to underwrite, deficits not covered by SKATING's modest rates.

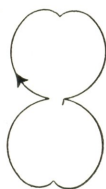
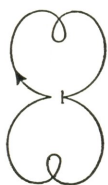
This increase in price will be only the third one since the Magazine was established in December of 1923—a sterling record, we think you will agree, in 37 years of continuous performance.

We ask you, our readers, for your indulgence in this "spiral" in our rates; we seek your support so that we may continue to present all the facts and facets of amateur ice figure skating activities without any curtailment in printing the news of interest to figure skaters everywhere.

Theresa Weld Blanchard, *Editor*



SKATING





# Skating

30 HUNTINGTON AVENUE  
BOSTON 16, MASS.

OFFICIAL MAGAZINE OF  
*United States Figure Skating Association*  
*Canadian Figure Skating Association*  
37TH SEASON OF PUBLICATION

## Staff

THERESA WELD BLANCHARD, *Editor*  
EDITH E. RAY, *Managing Editor*  
FRED A. ALEXANDER, *Assistant Editor*  
ELAINE J. HOLLAND, *Editorial Assistant*  
EVA A. YATES, *Circulation Manager*  
CAROLE RODENHIZER, *Business Manager*

## Advisory Board

### USFSA

RICHARD L. HAPGOOD, *Boston*  
WINSTON L. MOLANDER, *Minneapolis*  
THEODORE G. PATTERSON, *Boston*  
COL. HAROLD G. STORKE, *Boston*

### CFSA

NORMAN V. S. GREGORY, *Montreal*  
E. R. S. McLAUGHLIN, *Oshawa*  
GRANVILLE MAYALL, *Vancouver*



SKATING, copyright 1960 by the United States Figure Skating Association in the U. S. A. Title Registered in U. S. Patent Office. Published eight times a year: January, February, March, April, May, June, November and December; by the United States Figure Skating Association, 30 Huntington Ave., Boston 16, Mass. Second-class postage paid at Boston, Mass. Single Copy 50 cents. Subscription \$3.00. Address: SKATING, 30 Huntington Ave., Boston 16, Mass. SKATING is protected by copyright and nothing that appears in it may be reproduced without written permission.

## Contents

VOL. 37, NO. 6

JUNE 1960

### Articles

AN EDITORIAL .....	4
<i>Theresa Weld Blanchard</i>	
NEWS ABOUT SKATERS .....	7
NEVER TOO OLD TO LEARN .....	8
<i>Col. Gerard B. Crook</i>	
ETIQUETTE IN SKATING .....	10
<i>Jerome Ross</i>	
COMMON FAULTS IN DANCING .....	11
<i>Albert Edmonds</i>	
THEY CALLED IT ICE SKATING .....	12
<i>Lucille Davidson</i>	
MY IMPRESSION OF SUMMER SESSIONS .....	16
<i>Mrs. Charles A. Krejci</i>	
USFSA GOVERNING COUNCIL	
MEETING .....	17
ABOUT SHOES AND SKATES .....	32
<i>Oscar A. Morgan</i>	

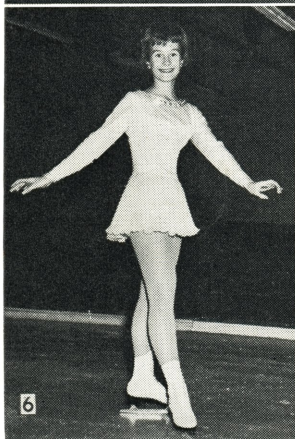
### Departments

THE YOUNGER SET .....	14
CALENDAR OF SUMMER EVENTS .....	15
OFFICIAL ANNOUNCEMENTS .....	20
CARNIVAL CAVALCADE .....	21
ROCKERS AND COUNTERS .....	25
PEOPLE .....	33
CFSA AND USFSA TESTS PASSED .....	37, 44
INDEX TO ADVERTISERS .....	47
THE SKATERS' EXCHANGE .....	47
PICTURE PAGES .....	6, 14, 24, 28

### This Month's Cover

features Canada's first Olympic Pair Champions, Barbara Wagner & Robert Paul, photographed at Squaw Valley, Calif., site of their 1960 Olympic triumph. Barbara & Bob are concluding an outstanding amateur career with the impressive record which includes also four World, two North American, and five Canadian Pair titles.





(1) Josephine Barnum Trenkler & Tommy McGinnis, professionals, Gold Pair Medalists. (2) James Tester, professional, Gold Medalist. (3) Vivian Percival & Roger Wickson, Capilano WC, Gold Dance Medalists and runners-up in the Canadian Junior Dance. (4) Garden State SC Carnival Committee: front, Mrs. Leon Dwulet, Dr. Theodore Schlossbach, Thomas Joy (Chairman), Mrs. Richard Wilson; back, Mrs. John Hopper, Christopher Carson, Katrine Neil, Richard Wilson, Mrs. Richard Dana. (5) Woodstock FSC's Garner Family: front, Elaine, John, Roger, Joyce, Brian, Glen; back, Allan, Mrs. Alice Garner, Ernie Garner, Ross, Wayne; not pictured are sons Douglas and Keith. (6) Jane Mason, Granite Club, double Gold Medalist. (7) Arctic Blades FSC members welcoming Barbara Roles following the Olympics and Worlds. (8) Dan Purvis, Lakeside FSC. Photo credits: (3) Rolly Ford Publications, West Vancouver; (4) Noumair Studios, Asbury Park, N. J.; (6) Howard Studios, Port Credit.





## News About Skaters



SINCE REPORTING on the recent activities of top competitors last month, additional information has been learned about other well-known personalities in the sport:

Germany's 1959 Lady Champion, Ina Bauer, is reported to have signed with a Berlin film production company to star in a movie entitled "The White Dream." Ina withdrew from competition during the 1960 European Championships; since 1957 she has lived and trained in Colorado Springs, U.S.A. . . . The Championships of Germany were held recently, and a surprise outcome was the upset of the European and National Pair Champions, Marika Kilius & Hans Jurgen-Baumler, by Margret Gobl & Franz Ningel. To translate from "Der Eissport," official magazine of the German Skating Association: "For once Lady Luck smiled on the season's most luckless pair, Gobl-Ningel. Amid resounding cheers, and borne along on a wave of sympathy without precedent, and skating a program which even their rivals (the European Champions, Olympics—second and Worlds—third Kilius-Baumler) recognized as outstanding, Gobl-Ningel were able to win the best marks." Barbel Martin succeeded to the Ladies' title, and Manfred Schnelldorfer was successful in defending his Men's championship.

Meanwhile, Soviet Russia held its Championships in Moscow, and a new pair won—Tatjana Zhuk (17-year-old sister of Stanislav Zhuk) & 16-year-old Alexander Gawrilow. The Olympic and World contenders, Nina Zhuk & Stanislav Zhuk, did not compete. Tatjana Nenzowa, 14 years old, won the Ladies' event, and Lev Mikhailov won the Men's title for the fifth time.

In the U. S., Olympic competitor Robert Lee Brewer has decided to end his amateur career and in future will be teaching in the Los Angeles area. . . . National Competitor Frank Carroll of Worcester, Mass., turned professional to skate exhibitions and teach; he is to join Ice Follies this June. . . . Nancy Heiss, who is just completing her freshman year

at Michigan State University, missed National competition and a possible selection on the Olympic and World Teams because of an ankle injury, but has recovered from her mishap and plans to resume skating competitively next winter.

The Minto SC in Ottawa paid tribute to Melville F. Rogers for his invaluable service during his 50 years as an active member of the club, at the annual "After the Follies" supper and dance on March 26. Mr. Rogers was presented with a sterling silver tray, engraved with the Minto Club crest; Mrs. Rogers was given a skating figurine. Besides being a Past President and a member of the Executive of the CFSA, Mr. Rogers in his competitive days won the North American Men's Championship twice, and the Canadian Men's title four times; he was Pair Champion of Canada, and a member of the famous Minto Four which won the North American Championship four times. He holds the rank of ISU World Referee and International Dance Judge.

### OTHER NATIONAL CHAMPIONSHIPS

Austria: Ladies—1. Regine Heitzer; 2. Karin Frohner. Men—1. Norbert Felsing; 2. Peter Jonas. Pairs—1. Diana Hinko & Heinz Dopfl.

Switzerland: Ladies—1. Liliane Crosa; 2. Franzi Schmidt. Men—1. Hubert Kopfler; 2. Francois Pache. Pairs—1. Gerda & Ruedi Johner; 2. Erika & Markus Germann.

Japan: Ladies—1. Miwa Fukuhara; 2. Junko Ueno. Men—1. Nubuo Sato; 2. Yukio Nishikura. Pairs—1. Junko Onoda & Ko-ji Hashiguchi. Dance—1. Mikio Takeuchi & Eiko Kaneko.

Hungary: Ladies—1. Helga Zollner; 2. Edda Jurek. Men—1. Charles Ujlaki; 2. Eugen Ebert. Dance—1. Korda-Varsanyi; 2. Porkolab-Harsanyi.

Poland: Ladies—1. B. Jankowska; 2. K. Wasik. Men—1. H. Hanzel; 2. F. Spitol. Pairs—1. L. Wasik-Kaczmarczyk. Dance—1. Zdankiewicz-Koczyba; 2. Wasilewska-Stryjecki.

# Never Too Old to Learn

By GERARD B. CROOK, Colonel USA

## *Washington Figure Skating Club*

MANY A SENIOR CLUB SESSION and veterans' dance competition proves the truth of the statement that you're never too old to skate. Yet, obviously, most of the accomplished older skaters appearing in such events have been skating for years, and so belong to the specially-favored class of people who enjoy in later life skills learned in youth. Thus, their example does not answer the unspoken question which occurs to many an adult who has never skated but would like to: "Isn't it too late for me to begin?"

An increasing number of adults are discovering that it is not too late for them. During the middle years, our capacity to enjoy new forms of recreation depends on many factors, but one must be well along in life before chronological age alone becomes a barrier.

For example, in our club, one of our prominent male members started to skate after celebrating his 55th birthday. Two more began at 52. The author and another member decided to take it up at the ages of 49 and 48, respectively. On the distaff side, there are several ladies who, if diplomatically approached, will admit that they were well into their fifth decade when they first donned skates. Many others started in their thirties and forties. Plenty of similar examples can be furnished by other clubs.

Regardless of age, adult beginners have much in common. Among other things, most of them became interested in skating in one of two ways. A few were ensnared by curiosity. They accepted a friend's invitation to see what a skating club did and, fascinated by what they saw, kept coming back. The majority, however, are parents. Some, with young children, joined a family session to start skating with their youngsters. Others, as I did, had to bring their offspring to a rink several days a week and finally became tired of occupying cold, hard seats on the sidelines while they watched others enjoy

themselves. Eventually, boredom brought them to the point where they were tempted to try it. Then, one thing led to another, and, suddenly, they were addicts.

In most instances, these conversions from observer to active participant took a little time. First, a few inhibitions had to be overcome. For one thing, learning to skate seemed an awkward business, rather undignified, and an invitation to ridicule. Also, that hard, slippery ice surface seemingly presented a dreadful risk to life and limb. But once the decision was made, these anxieties turned out to be the least of their problems.

The beginner quickly learns that he enjoys virtual oblivion during his early struggles on the ice. Other skaters concentrate singlemindedly on what they are doing, and most of the spectators present have eyes only for their own children, or for those whose performance is outstanding. No matter how crowded the rink may be, the new skater's initial efforts attract little notice and no comment. Later, as he grows proud of his achievements, he will welcome a little attention.

As for falls, they are, surprisingly enough, infrequent and seldom painful or injurious. Of course, if he attempts too much too soon, the overly-daring novice at any sport can come a cropper.

However, the uninformed beginner can run into real trouble in buying boots and blades. A poor choice can be costly in terms of time, money, and discouragement. The advice of the club professional will prove invaluable in selecting proper equipment, and he should be consulted not only about the fit of boots, but also about the placement of the blades. There is sound economy in purchasing good quality boots at the start, and sometimes these can be had for a song at the club skate exchange. The ill-equipped beginner soon discovers that he is under an insur-



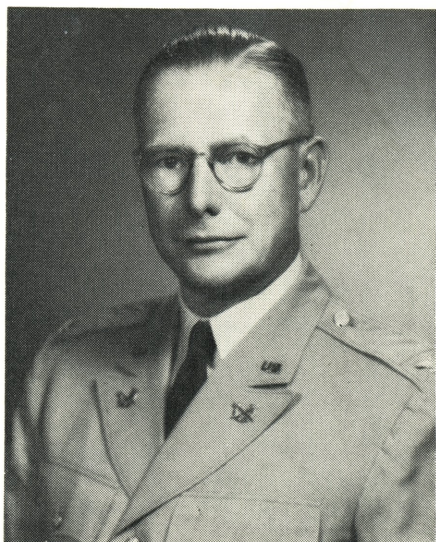
mountable handicap in learning to skate.

When he is ready to step out on the ice, the new skater should take a few lessons from a professional, unless the club provides group instruction for beginners. Disregard of this sound advice and an unfounded belief that I should get the feel of the ice on my own before wasting an instructor's time cost me months of progress. Worse, self-instruction may develop certain bad habits which can stick through the years. Fellow club members are often glad to lend a hand, but they can't be expected to devote too much time to beginners. Their help is often more valuable at a later stage. The sooner one learns the fundamentals, the longer he will enjoy skating.

The adult beginner is eager to learn to dance. In his hurry, he is apt to forget that he had to learn to walk before he could run, and he does not yet realize that ice dancing comes more easily to those who have first learned to skate. True, a relatively weak edge or a shaky mohawk need not bar enjoyment of a socially-acceptable preliminary dance. However, the penalty for slighting the fundamentals is paid in increasingly-higher installments as each Bronze dance is attempted, and there is no hope of mastering the Pre Silvers without them. Failure to realize this in time can lead to deflating experiences such as I recently had when I heard my instructor explain to my wife that he still might be able to teach me to dance if I would only learn basic skating. It is also damaging to the ego when one begins to suspect that the hazard he presents as a partner detracts from his popularity at dance sessions.

Admittedly, most adult beginners make relatively slow progress. As a result, they are frequently disappointed with their level of achievement, and seldom content with their accomplishments. But then, where is the skater who is? Yet, it is this very challenge which is skating's chief lure; we come to believe that given time we can achieve the impossible. Few of us are ever willing to quit trying while our knees can bend.

Skating provides many satisfactions. It is much-needed exercise which we can regulate to suit our individual tastes. We



*U. S. Army Photo*

COLONEL CROOK

enjoy the realization that we still are capable of learning something new, and of continuously improving our performance—the chief reward in any sport. Best of all, there are the friends we make. The camaraderie among skaters adds zest to all club activities and assures us of a warm welcome wherever there is ice.

For parents, there are extra dividends. Skating is one recreation all members of the family can enjoy together and, having a common interest, skating families seldom lack a topic of conversation to keep the channels of communication open between parent and child.

Skating parents also can add a sense of family competitive spirit which may help to keep a child interested in a sport which teaches and develops mental discipline and concentration. Last year, for instance, my daughter Sally had all but given up skating in favor of competing high school activities and interests. In the middle of the season, word percolated through her preoccupation with more important matters that her father had managed to pass his last Bronze dance, thus cutting down on the lead she had established by passing a Pre Silver. Instantly, she decided to attend the next club session, there ac-

cepted an invitation to enter a competition, later took part in the club show, and devoted her summer vacation to passing her remaining Pre Silvers and two Silvers. Though her new lead will never again be challenged within the family, her renewed enthusiasm has continued unabated.

For reasons such as these, more adults of every age, size, and physical condition are turning to skating for recreation than ever before.

Of course, the recruitment of adult beginners in large numbers may not be considered an unmixed blessing by those skaters who are already "in." These newcomers may make it necessary for a club to alter some of its time-honored methods of operation, perhaps by adding more low test dance session programs, organizing group instruction designed for the adult beginner's special needs, or by scheduling additional senior sessions. It may also become necessary to adjust conflicts brought about by increased competition for ice and instructor's time. Yet, these new members will help keep the treasurer happy, and they can make a variety of valuable contributions to club administration. Given a little time and encouragement, they will soon prove their worth. However, whether they are encouraged or not, their numbers will inevitably increase unless we succeed, by a vast conspiracy of silence, in keeping the advantages of skating a secret.

During the coming years, many an adult spectator will be tempted to join the swelling throng of skaters. Once it dawns on him that he is not too old to skate, as so few really are, he has many youthful years ahead.

This article inspired my wife, Nan, to the following bit of doggerel:

#### HOW TO LOSE YOUR SANITY IN ONE EASY LESSON

The adult beginner when bit by the bug  
Becomes as addicted as if on a drug.

Wild-eyed and violent, he has one obsession--  
Never to miss a single club session.

Rome may be burning, the world ending soon,  
But the senior club session will still start at noon.

The adult beginner has one driving aim,  
To change that "beginner" to "skater of fame."

## Etiquette in Skating

By JEROME ROSS

### *Rye Figure Skating Club*

GOOD MANNERS are essential on the ice. It is deplorable how few skaters know how to conduct themselves and understand the rules, whether written or unwritten. This is not always from a sense of willfulness, but rather from downright ignorance. Make yourself thoroughly acquainted with the rules of your club. When you are a guest of another club inquire about their rules.

When arriving late for a session, don't skate through many patches, stopping to chat. Don't hold conversations on the ice while other skaters are trying to practice. Don't feel that when you are skating everyone else is supposed to step aside and give you the ice.

Don't engage a professional in a conversation during a lesson. The pupil is paying for his time and resents the intrusion. Don't get into the act by offering unwanted advice to a pupil having a lesson—this has been done at club sessions and is rude and shockingly bad manners, to say nothing of being an insult to the professional.

If you like to jump and dig divots into the ice, don't do so during an all-skate number or when members are practicing dance steps, especially at a strange club as you may never be invited again.

When skating on a patch, allow a space between you and the next one. Don't skate into the adjoining patch unless you ask permission from the other skater. When a session is crowded, offer to share your patch, especially when you invite an outside guest.

In a dance session, a couple should have preference over a solo skater. The solo skater should always give way even if he or she is working out a pattern dance.

Should a lady forget that a certain dance was to be skated with you, don't be possessive when she is about to start the dance with another partner and reprimand her.

If you recently passed your Bronze



Test, or perhaps a higher one, don't get cocky and try to book most of the advanced dances with some Gold Medalist. There are many capable teachers around—why not brush up occasionally and have the professional correct your faults?

There are many judges and members of committees who go to considerable expense and sacrifice their own ice time in order that the sessions may be conducted properly. Therefore, respect these people when they try to do a little skating occasionally, and don't run them down.

Last, but nonetheless important, is to be

dressed in a suitable manner. A skater can be overdressed or underdressed. The stiffness in formality and the laxity of negligence are both extremes. There have been many articles written about appropriate attire—therefore, I will not repeat what to wear.

Good manners include true courtesy and a sincere desire to put others at ease. Follow these suggestions with plenty of common sense and consider the comfort of others. You will not only be promoting good etiquette but you will also help make skating safe and more enjoyable.

## *Common Faults in Dancing*

By **ALBERT EDMONDS**, *Professional*

(Reprinted from the *News Bulletin*, Wissahickon SC)

PERHAPS THE MOST GENERAL FAULTS to be seen in ice dancing have to do with carriage. An upright stance, not necessarily stiff and military, but a firm position with the head up and eyes looking their own level, is all too seldom seen. To some people their feet apparently hold a fatal fascination; they glue their eyes to them and maintain this coy attitude throughout the dance. This leads to a "two heads are better than one" position with both partners dancing forehead to forehead, but very little else in close proximity. Another similar position, the "cheek to cheek," also fails to meet with commendation from the judges.

Other points of good carriage, we are told, include a turned out free hip and extended toe—the latter is often apparently interpreted as meaning extended straight down at the ice or pointed directly to heaven, particularly by the male aspirant for dancing honors. Another important aspect of carriage is the hold, particularly in the closed or waltz position in which "sloppy" arms and wandering hands are often noticeable. In this position the man should place his right hand on the lady's back, with fingers extended and close together, the base of the palm against the lady's left shoulder

blade, the elbow raised; this hold should be maintained throughout both open and closed positions. One too frequently sees the man's hand moving about like a masseur's in such dances as the Foxtrot during Steps 4a and 11b, or 6 and 10-11 of the Rocker Foxtrot. Again the man's leading arm, instead of being extended from the shoulder in a firm position, can sometimes be seen bent at right angles at the elbow, held in the general level of the waist or extended up as though the owner were a Samba addict.

The same can be said of the lady's right hand and arm, though often she cannot be blamed for the peculiar holds to be observed. However, her hold should be a firm position to facilitate the man's leading and to maintain her own position squarely with her partner. Nothing could be worse than to dance with a girl whose carriage and hold have all the consistency of jelly. Her left hand should be placed on the man's shoulder with fingers closed but not clenched, and her elbow resting on his. This position, too, should be resolutely maintained, and any tendency to hold him close with an arm half way around his neck avoided, however pleasant this may be on the ballroom floor.

# *They Called It Ice Skating*

By LUCILLE DAVIDSON

*Chicago, Illinois*

FRIENDS, I want to tell you about the strangest thing that happened to me while I wuz a-visiting my aunt up north in the windy city of Chicago.

My aunt announced that we wuz goin' "ice skating." Now I had heard tell of skating back home—but it's called roller skating and though I have never attempted it I understand somehow people attach wheels to their shoes and move on them. I had also heard of ice too, some of the folk use it to keep their "Dr. Peppers" cool. So you see friends, I had heard of these words, but somehow it just didn't make sense to me to roller skate over ice cubes. My aunt started to round up the necessary equipment. She dove into her closet and emerged a few minutes later holdin' the funniest pair of shoes I ever saw. They were right pretty white boots but somebody had nailed something that looked like a hacksaw blade on the bottom of each one. The sawing teeth were all up at the front end with something that resembled a long handle (and a terrible waste of metal) runnin' all back under the sole. I was then told to try them on to check the fit. I said they felt rather good (for their construction) and if she wanted me to wear them I would. Mercy friends! imagine my surprise when I was told I was suppose to wear these things to skate over them ice cubes.

In a little bit we got some warmish clothes together and rode to a large brick building. Gracious, but it was cold in there. And land sakes, the first thing I saw was a whole bunch of girls walkin' around in the skirts they must have bought when they wuz in the first grade. Mercy, but they were short! They also had on the longest pairs of nylon stockings I ever saw. (Never did figure out what held them up.) I guess they must have realized it was quite cool cause with these skirts they wuz wearin' heavy knit sweaters, scarves and gloves. I guess they figured if they kept one half warm the rest would take care of itself.

The men were dressed pretty sensible though, but they wuz all wearin' them funny boots with the hacksaw bottoms.

As my aunt was helping me get my boots laced proper like, some man came around hollerin', "The second patch session is now starting." What a strange way to announce a sewing circle or a quilting party I thought. Soon as my shoes was on I followed the people through this little door marked "rink entrance." My stars! What a lot of ice cubes rolled into one. Why you could chill thousands of "Dr. Peppers" on it.

After I got over my first surprise I began to look at them people and do you know, friends, not a-one of them was sewing patches on anything. Instead it looked as though each one had claimed "squatters rights" on a little section of this cube and they was all movin' around in little circles. Some was goin' forwards, some backed up, a few was puttin' little curlycues and circles inside these bigger circles at each end. There wuz lots of people standing around the rink remarking about somebody's edges being weak or flat or their balance being off or something. Well believe me if I tried running around in them little circles on that ice cube my edges would be flat too—from fallin' on them.

After they kept this up a little while longer, this same feller announced that the dance session would start in two minutes. At this news they all scrambled for partners and lined up at one end of that cube. The feller then announced the first dance was to be the "Dutch Waltz" to warm them up. Well sir, I thought the ones that had been runnin' around in those little circles looked pretty warm to me—but as cold as it wuz in there I could understand them wanting to keep it up. (My aunt joined this bunch after she told me I could skate at the "Free" session—since I hadn't seen anyone pay yet I began to get worried as I was on somewhat of a budget.) However, I still watched with



interest and pretty soon they started movin' about in two's a-hangin' on to each other for dear life. I reckon they was holdin' each other up. After their warm up dance they went into a whole slew of others. Sometimes both went the same way—occasionally one backed up, then the other. (I guess the one goin' forwards got tired of pushin' all the time.) But I'll tell you something, they really moved. Sometimes they took great big swooping steps, then little bitty ones, once in a while they would put both toes in opposite directions and turn around. They seemed to know just what the other was going to do though I never did figure out their signal system.

In just a little bit, this "caller" feller announced that the free session was going to start. This was to be my big chance after I watched a little more, but after what I saw I wasn't so sure I wanted that chance. Such confusion—all the young'uns charged out there at one time. I never saw such shenanigans! Some of them was trying to make "Sputnik" look slow—a few was standing on one foot a-spinnin' so fast I thought they was tryin' to launch themselves. There was some that would gather lots of speed and jump up in the air and either turn around and land goin' the other way—or kick one foot north and one foot south and somehow get them back together before they landed going the same way they started in the first place. Some would take off and do a couple of turns before they landed. A few was sliding around on one foot with the other stuck straight up in the air behind them and all bent forward like they was hunting for lost golf balls. A couple of them grabbed hands and swung around holding on. One feller had each toe pointed a different direction and was movin' in a big circle. I tell you friends, I have never seen such goings on since the day Grandpa got the still finished! It was about this time I started to look for that little door I had come through and tip-toe out of there, when I discovered my aunt and this "caller" feller headed right for me. She grabbed one arm, he took the other and folks, I went, I went out on that there cube with those crazy hacksaws on my feet.

What a strange feelin', each foot headed for a different direction. Had they not been holdin' me up I'd have sat for sure and ruffed up some of my own edges. However, with them holding me up, I managed to stay upright and circle that cube a few times. Then they decided I should "solo"—mercy me but I was scared. Since I couldn't show it though, I took off. Well sir, outside of a few bruises and some powerful sore muscles I managed to get around her one time.

Folks, back in that dance session I heard one gal say someone was "off on their rocker." Just between us, I wasn't too sure most of those people weren't "off their rockers," but you know something, they were a mighty happy bunch, nice and friendly. And strange though it may seem I really wouldn't mind trying that "ice cube skating" again.

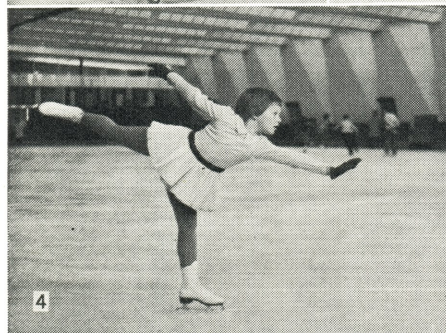
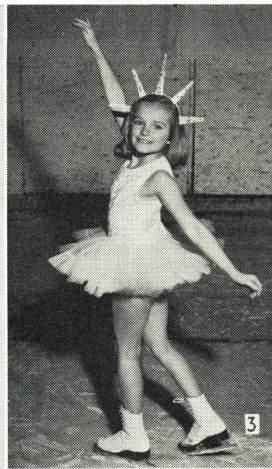


## *Breaking the Ice*

BY CHARLES V. MATHIS  
*Wildwood-by-the-Sea, New Jersey*

She fell upon the ice rink  
And a man who watched her whirls—  
Said: "There you'll have to lie, my dear;  
I never pick up girls."





(1) Jennie Walsh, Los Angeles FSC. (2) Linda Ann Jagel, Suburban FSC. (3) Cindy Wren, London SC. (4) Eileen Zillmer, Broadmoor SC. (5) Pam Steel, Watertown SC. (6) Kathryn Anderson, Moncton FSC. (7) Anne Gram, The SC of New York. (8) Betsy Epstein, Town of Mount Royal FSC. Photo credits: (1) William L. Udell, Hollywood; (3) McKittrick's, London; (6) Stan Comeau, Moncton, N. B.; (7) Natural, New York; (8) Bob Pichette, Ville La Salle, P. Q.



# The Younger Set

Nine-year-old Jennie Walsh (photo #1) placed fourth in the Pacific Coast and the Southwest Pacific Novice classes this season. In the 1958-1959 season, she was runner-up in the Pacific Coast Juvenile Girls' division and won the Southwest Pacific Juvenile title. Linda Ann Jagel (#2) is 11 years old. Dressed as the Winter Princess in last year's London SC carnival, Cindy Wren (#3) is 10 years old and competed in the Western Ontario Sectional this year in the Juvenile Girls' event.

"Bibi" Zillmer (#4) wrote she summer skated in Oberstdorf and in the new arena in Vienna, and that she is now in Hamburg, and in the first grade in a German school. Bibi, who is six, summer skated at Colorado Springs as a member of the Broadmoor SC before her family went abroad.

Eleven-year-old Pam Steel (#5) wrote SKATING telling of her feelings during her first experience in taking tests. "When I signed up for the USFSA tests I was sure I could pass. However, as the time drew nearer I was sure I *would not* make it. I would have taken my name off the list except for the fact that *if* I passed, after my next birthday I could skate with the seniors and get four more hours of skating each week! January third came and the first tests given at Watertown Skating Club were here. At first I thought I was lucky because my name began with S. I would get a longer warm-up. Then I was sure it would have been better to have been one of the first and get it over. Waiting for the test results was the longest. Five of the eight passed. I was one of them. I had also taken the Dutch Waltz test so when on top of passing the figure test they posted my name for passing the dance I was the happiest girl in Watertown."

Kathy Anderson (#6) is 10 years old; she took part in her club's carnival last season and has passed her Preliminary Figure Test. "Coco" Gram (#7) has been skating for four years and has passed her Second Test. She has two sisters—Mary and Carol—who also are

## Calendar of Summer Events



### May

- 14-15 Metropolitan ISS (Toronto) Judges Conference  
Metropolitan ISS Gold Figure and Dance Tests

### June

- 25-26 East Lansing Figure and Dance Judging School

### July

- 2 Lake Placid Mardi Gras
- 18-23 St. Thomas Ice Extravaganza
- 22-24 Lake Placid Fifth through Gold Figure Tests
- 23-24 Lake Placid Free Skating and Pair Skating Competitions
- 27 East Lansing Talent on Ice Show

### August

- 3 & 17 East Lansing Talent on Ice Show
- 7-14 Lake Placid Gold Dance Tests
- 11-13 Lake Placid Dance Competitions
- 17-21 Broadmoor Ice Revue
- 19-21 East Lansing Gold Figure and Dance Tests
- 20-21 Rockton (Ill.) Free Skating and Pair Skating Competitions (tentative)
- 22-27 Sun Valley Gold Figure and Dance Tests
- 22-24 Arctic Blades FSC carnival
- 27-28 Valley Forge Ice Show

### September

- 1-3 Schumacher Gold Figure and Dance Tests
- 3-4 Lake Placid Labor Day Operetta
- 3-4 Rockton (Ill.) Gold Figure and Dance Tests
- 9-11 Lake Placid Fifth through Gold Figure Tests
- Metropolitan ISS (Toronto) Gold Figure and Dance Tests
- Metropolitan ISS Show

skaters. Runner-up in the Eastern Canadian Sectional Novice class, Betsy Epstein (#8) won the Juvenile Championship in that competition last year. She is 11 years old and has been skating since she was six.

# My Impression of Summer Sessions

By MRS. CHARLES A. KREJCI

*Wauwatosa Figure Skating Club*

ALONG ABOUT MARCH each year, after exhaustive winter competitions have reached their full climax, a new fever grips skaters and takes a nostalgic precedence in skating clubs around the country—that of making preparations for the oncoming summer sessions. Skating brochures once again fill the mailboxes of figure skaters and this question arises: "Where will I go this year?" "Should I take advantage of local skating facilities or try an ice arena away from home?"

Last summer we chose the latter and this was a new experience for our family. While we have a daughter who has been skating for the past five years, it was our first venture to see just what summer sessions are like.

On checking in at the desk of the dormitory, we found house mothers eagerly awaiting the arrival of familiar faces as well as welcoming the newcomers. Almost immediately one felt the warmth of this friendly group.

While we were fortunate to have chosen an ice arena where a number of world champions assembled for their summer training, we found them to be genuinely humble in every sense of the word. Pros took on new students and resumed their teaching with old ones, although their general attitude and individual personal interest gave the impression that the new skaters had long been under their expert coaching and guidance.

The tremendous amount of organizational effort put forth should not be dispensed with lightly since this is the factor which makes summer sessions possible. Every consideration was given to each and every skater in allotting ice time. Sessions were split into various

groups on a no-partiality basis. Utilizing ice time to the fullest, starting at 5:00 A.M. through 8:30 P.M., is a remarkable feat. Summer sessions are extensive and concentrated training periods worthy of recognition by those who are skate-minded, and afford countless opportunities for rapid advancement in skating.

Any number of recreational facilities were offered to provide means of relaxation and with each one went a degree of hilarity. Of course, none of this would be possible without the good sportsmanship of all parties concerned.

I found that life in a dormitory for a "skating mother" can only be what one would want to make of it. In my particular case, it was an experience I shall never forget. I acquired a good sized "adopted" family and soon found myself engaged in a field of varied trades—laundress, seamstress, locksmith, barber, hairdresser, counsellor and the not-to-be-forgotten victim of pranks.

The summer session was drawing to an end and test time was upon us. Once again tension mounted in the rink. The quietness during test periods was not due to the absence of an audience. On the contrary, the balcony held a constant vigil of hopeful skating friends—be it for a beginner striving for his First Test or one vying to become a Gold Medalist.

Those who achieved the goal they aimed for when the summer session started—passing their test or tests—indeed had an eventful summer. Those who equally strived to accomplish the same results, and didn't, gained much in finding their weak points. This instilled a determination to accomplish their goal during the coming winter skating season.





# USFSA Annual Meeting

THE ANNUAL MEETING of the USFSA Governing Council was held at the Broadmoor Hotel, Colorado Springs, on May 7 and 8, with 68 clubs represented by delegates or by proxy. The Executive Committee, with 31 members present, held sessions on Thursday evening, Friday, and Saturday evening.

President Howard D. Herbert presided, with Secretary Harold T. Leroux calling the roll. CFSA President Granville Mayall was introduced and welcomed as a guest at the Meeting.

On the recommendation of Mr. Herbert, it was voted to send congratulations to Olympic Champions David Jenkins and Carol Heiss; and further, it was voted to send a message conveying best wishes to Carol Heiss and Hayes Alan Jenkins on their recent marriage. It was also voted to send a letter of congratulations to each member of the U. S. Olympic and World Teams.

A new Association pin has been approved similar in design to the present one, but the new pin will be smaller and in color.

The Constitution was amended to provide that all the USFSA Past Presidents be elected Honorary Members; and that the immediate Past President shall automatically serve a one-year term on the Executive Committee. It was further voted that all Past Presidents be life members of the Association, effective immediately.

The following Probationary Member Clubs were recommended and approved for Full Membership: Green Bay FSC, Green Bay, Wisc.; Greenville FSC, Greenville, Pa.; Lakeside FSC, Bethel, Kans.; Lincoln FSC, Lincoln, Nebr.; New Canaan WC, New Canaan, Conn.; Oklahoma City FSC, Oklahoma City, Okla.; Rocky River FSC, Rocky River, Ohio; Tucson FSC, Tucson, Ariz.; Watertown SC, Watertown, Conn.

The following Interim Probationary Member Clubs were approved for Probationary Membership: City of Lakes FSC, Minneapolis, Minn.; Colonial SC, Haddonfield, N. J.; Del-Co FSC, Lans-

downe, Pa.; El Camino ISC, Belmont, Calif.; Greater Milwaukee FSC, Milwaukee, Wisc.; ISC of Amarillo, Amarillo, Tex.; Iceland FSC, Houston, Tex.; Johnstown FSC, Johnstown, Pa.; Kalamazoo FSC, Kalamazoo, Mich.; North Jersey FSC, Westwood, N. J.; Peninsula Gay Blades, Palo Alto, Calif.; Penn State FSC, State College, Pa.; Southport SC, Southport, Conn.; Town 'N Country FSC, Strongsville, Ohio; Wagon Wheel FSC, Rockton, Ill.; Walnut Creek WC, Walnut Creek, Calif.

Dropped from membership because of delinquency in dues and registration fees were the Central New York FSC, Syracuse, N. Y. (disbanded); and the Eau Claire FSC, Eau Claire, Wisc. It was voted to accept the resignations of 35 Individual Members, and to drop 25 others for being delinquent in payment of dues.

The number of Member Clubs in the Association has increased substantially over the past three years, and the Membership Committee reported that there are 165 Member Clubs in 1960 as compared with 120 in 1957. The total number of Individual Members as of April 15, 1960 was 138 as compared to 115 in 1959.

It was reported that the late Alfred Johns bequeathed a sum of money to the Association, and this was gratefully accepted by the Governing Council.

The Competitions Committee recommended awarding the Nationals to the Broadmoor SC on January 25-28, 1961, and this was approved unanimously by the Executive Committee. The Competitions Committee reported that after study it has voted to retain the present schedule of competitions so that the Nationals shall precede the Worlds. Various changes in competitions rules proposed by the Committee were approved.

President Herbert announced the proposition by CBS-TV to put the 1961 Nationals on video tape and show the film eight days after the Nationals as a Sunday p.m. sports spectacular; the President was authorized to act on completing the arrangements.

The offer made by the Philadelphia SC & HS to hold the 1961 North American Championships was accepted, and they will take place after the World Championships. Delaplaine McDaniel, Philadelphia SC & HS, was appointed Chairman of the North American Committee.

The Special Committee for Publications reported that it has voted to raise the Magazine subscription price by \$1 and the advertising rates by \$50 per page, with smaller spaces in proportion. The advertising increase will take effect on September 1, 1960 and the subscription increase will start with 1961 subscriptions.

The Amateur Status Committee made various recommendations, which were acted upon as follows: Vernon A. Howay, Midland FSC, was reinstated as an amateur without the right to compete. The following suspensions made earlier by the Chairman of the Amateur Status Committee were approved by the Executive Committee: Jacqueline Blanchard, El Camino ISC, for skating in an unsanctioned show, suspended for ninety days effective October 15, 1959; Sheryl K. Robinson, San Francisco, for skating in an unsanctioned show, suspension effective December 5, 1959 and continued until September 5, 1960; Sharon LaFlam, Spokane FSC, for skating in an unsanctioned exhibition, suspension effective November 21, 1959 and continued until November 21, 1960.

The following skaters were suspended effective December 24, 1959 for skating in unsanctioned department store shows in San Francisco, and their suspensions continued until December 24, 1960: Linda Abinanti, Ann Anderson, Joan Coulthart, Nancy Dillon, Susan Falconi, Arthur Gresham, Karen Greene, Pat Kahle, David Mezzora, Judy Monaghan, Marijane Monaghan, Tony Nuno, Peggy Penhal, Linda Schottelkorb, Carol Sorensen, Mary Catherine Terry, Gail Thoms, Carol Vanham, Marilyn Walter, Laura Whitworth, Maurice Wolohan, Sheila Wolohan.

The suspensions of Marjorie Colgrove, Carol Grimstad, and Sandra Lind, effective from September 30, 1959, were continued until September 30, 1961.

Additional trophies in competition this winter were the Bonnickson Trophies, donated by the St. Moritz ISC for the Pacific Coast Silver Dance Championship and accepted by the Executive Committee earlier in the season by a mail vote. The SC of New York offered to replace the Liberman Trophy for the U. S. Junior Pair Championship with two sterling silver cups, and this offer was accepted. The original Liberman Trophy is to be retired and turned over to the USFSA Historic Collection Committee. Harry E. Radix has donated a new Gold Cup to replace the former trophy for the U. S. Dance Championship. A design for a new medal for Sub-sectional competitions was approved and an appropriation made for the cost of the dies and a supply of the medals.

The Dance Committee presented various rule changes for dance tests, which were approved and will be in effect next year. On reconsideration of the action taken last fall to adopt the Majority Judging system, in light of new information the Executive Committee at this Meeting voted to retain the Unanimous Judging system in dance tests.

The Dance Judging Committee recommended the adoption of practicability tests for dance judges, and approval was voted by the Executive Committee.

The Figure Judging Committee reported that numerous suggestions have been made concerning establishing Sectional Judges' Bureaus, such as are in operation in the CFSA; but the Committee feels the Bureaus would not solve the problems pertaining to the shortage of judges. To interest more people to take up judging, it was urged that clubs hold "workshops" for invited candidates to educate prospects for Low and Intermediate Test categories. Several clubs in the same area could work jointly on this plan. The Judging Committee is hopeful of preparing an outline for assistance in getting the idea of "workshops" started.

The International Committee is preparing a bulletin as a guide to skaters competing or exhibiting outside of North America which it hopes to have finished in the near future. The formation of a



subcommittee was approved to review the ISU Constitution and Regulations and to prepare recommendations for changes to be made at the 1961 ISU Congress.

It was voted that a letter of thanks be written to Carol Heiss Jenkins expressing appreciation for her appearing in the Fort Wayne ISC show, which raised \$1723 for the Olympic Fund. A letter of appreciation earlier had been sent by the Sanctions Committee to the Fort Wayne club. "Parade Magazine" received permission to publish a short article on Carol Heiss concerning her skating career, and in return contributed \$150 to the Olympic Figure Skating Fund.

The Wauwatosa FSC was voted temporary approval to hold tests through the Seventh, but no Golds, on their ice surface until September 30, 1961, since at present the area does not meet the minimum size requirements. A revision to the test rule changing the retake time of failed tests in summer was approved, effective with publication of the 1961 *Rulebook*.

The Finance Committee for the 1960 Olympic Figure Skating Team reported that net proceeds of \$14,794.98 were raised—the fourth Olympics in which the budget with the U. S. Olympic Committee was exceeded. All clubs, firms, and individuals who contributed \$25 or more will receive a copy of the 1960 Olympic Book to be published in the summer of 1961. Harry E. Radix, Chairman, was commended for his personal endeavors in again making this fund-raising campaign a success. At the suggestion of the Chairman of the 1960 Olympic Games Committee, the President has agreed to appoint the 1964 Olympic Games Planning Committee effective this September 1, in order that activities may be continuous during the four-year intervals of The Games.

The drafts of the revised USFSA Constitution and By-Laws were adopted, with some minor revisions, and will be effective with publication of the *Rulebook* in September 1961.

Wally Sahlin, President of the Professional Skaters Guild, read a report to the Executive Committee offering various sug-

gestions that the Guild felt would improve the sport. Copies of the talk and explanation of the new numerical judging system advocated by the Guild were distributed to all members of the Executive Committee for each Chairman to study parts affecting his department before reporting to the President. Mr. Sahlin and Mrs. Agnes Hutchinson, Secretary of the Guild, attended the Governing Council sessions at the invitation of the Association.

The Nominating Committee presented the following slate of Officers and Executive Committee members, who were unanimously elected, and made recommendations for Committee Chairmen, with terms to begin September 1, 1960: President, Howard D. Herbert, Moorestown, N. J.; First Vice-President, F. Ritter Shumway, Rochester, N. Y.; Second Vice-President, George B. Jenkinson, Tulsa; Third Vice-President, John R. Shoemaker, San Francisco; Secretary, Col. Harold G. Storke, Boston; Treasurer, Carl W. Gram, Jr., New York. Amateur Status, Dr. Nelson F. Waters, Lansing; Competitions, Spencer E. Cram, Cleveland; Dance, Harry N. Keighley, Chicago; Dance Judging, Deane E. McMinn, Los Angeles; Figure Judging, Henry R. Heebner, Philadelphia; Finance, Winston L. Molander, Minneapolis; International, H. Kendall Kelley, Cleveland; Membership, Howard G. Taylor, Walnut Creek, Calif.; Sanctions, Francis B. Turner, Boston; Summer Skating, Charles E. Ingersoll, Philadelphia; Tests, Norman E. Fuller, Long Beach, Calif.

Central Office, Col. Harold G. Storke, Boston; College Figure Skating, Dudley S. Richards, Boston; Public Relations, Douglas O. Woodruff, Salt Lake City; Publications, Mrs. Theresa Weld Blanchard, Boston; 1964 Olympic Games Planning, Henry M. Beatty, Cleveland; USFSA 1964 Olympic, Harry E. Radix, Chicago.

Elected members of the Executive Committee with terms expiring August 31, 1962: Edmund C. Bold, Seattle; John P. Hart, Tacoma; Harold Hartshorne, New York; Palmer Hoyt, Denver; Dr. Robert R. Kierland, Rochester, Minn.; William Moritz, Pomona, Calif.; Theodore G. Pat-

terson, Boston; Walter S. Powell, St. Louis; Dudley S. Richards, Boston.

Officials nominated and approved for promotion are as follows: To be recommended to the ISU: World Judge—Mrs. John R. Shoemaker, The SC of San Francisco. Other appointments: National Figure Judge—Frederick W. Amery, Broadmoor SC; Mrs. Don R. Archie, Buffalo SC; Arnold W. Schroeder, Lansing SC. National Figure Referee—Edmund C. Bold, Seattle SC. National Dance Referee—F. Ritter Shumway, Genesee FSC. Sectional Figure Referee—Arthur F. Preusch, Sr., FSC of Minneapolis. Sectional Dance Referee—Jerome Ross, Rye FSC. Sectional Accountant—E. Stanley Beacock, Troy SC; George Brusin, Sun Valley FSC; William R. Haigler, Broadmoor SC; Richard S. Joseph, Rye FSC; Mrs. C. Dallas Mauk, Jr., Denver FSC; Mrs. Bunny Roles, Arctic Blades FSC; Roy Winder, Seattle SC.

In place of the usual Sunday Luncheon, a Dinner was held for the Governing Council and guests on Friday evening; this was preceded by cocktails given by W. Thayer Tutt of the Broadmoor Hotel. Other social affairs included a cocktail party on Saturday given by Mrs. Palmer Hoyt of Denver; and a tour of the U. S. Air Force Academy with Mrs. Henry Riggs Sullivan the hostess.

It was decided to hold the 1961 Annual Meeting in New York City, on the suggested dates of May 6-7.

---

## Late News

THE PROFESSIONAL RANKS became enriched with the addition of one more champion skater when David Jenkins turned professional in April to skate several exhibitions. It is reported that he will make appearances with Holiday On Ice this summer. David's record includes the 1960 Olympic title, World Champion 1957-1959, 1957 North American titleholder, and U. S. Champion since 1957.

## OFFICIAL USFSA, CFSA ANNOUNCEMENTS

### Suspension by the USFSA

IT WAS VOTED that the Michael Kirby show of April 23, 1960 held without the sponsorship of a USFSA Member Club, without sanction, and under conditions not conforming to Sanction Rule 2.28, sections 2, 4, 5, 6, and 8, be declared an unsanctioned event as defined in Amateur Status Rule AS 3.01a, and, further, that all amateur skaters who participated in the show shall be suspended for a period of one year, through April 23, 1961, and, further, that the notice of this action shall be published in *SKATING Magazine*, and all sanctioned Summer Skating Sessions notified that said skaters may not join the USFSA, take tests, or skate in any competition or carnival that might be held by said Summer Skating Centers.

COL. HAROLD G. STORKE  
*Chm., USFSA Amateur Status Com.*

### Summer Sanctions

AS OF MAY 9, sanctions have been issued to 30 clubs to operate summer sessions in 1960:

East—Genesee FSC, Hershey FSC, IC of Baltimore, Johnstown FSC, Manhattan FSC, Metropolitan FSC, North Shore SC, Oxford FSC, Quaker City FSC, R. P. I. FSC, The SC of Lake Placid, Syracuse FSC, Wissahickon SC.

Midwest—Broadmoor SC, Denver FSC, FSC of Cincinnati, FSC of Minneapolis, Fort Wayne ISC, Green Bay FSC, Lakeside FSC, Lansing SC, Plaza FSC, Rochester FSC, St. Paul FSC, Sioux City FSC, Towne 'N Country FSC, Wagon Wheel FSC.

Pacific Coast—Arctic Blades FSC, Lakewood WC, Sun Valley FSC.

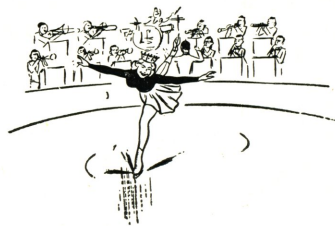
CHARLES E. INGERSOLL  
*Chm., USFSA Summer Skating Com.*





# Carnival

## Cavalcade



BALTIMORE FSC: Ice Crystals of 1960; Meadowbrook Ice Rink; Apr. 6-7. The first carnival given by the club in five years was presented under the direction of club pro Edith Kuemmert. As Baltimore had been without an ice show for such a long time, members gave a short demonstration of compulsory figures, with appropriate explanations. In order to show that age is unimportant, skaters from two and a half years on up were chosen to skate the various figures—ranging from a “zero,” skated by the baby of the club, Kathy Cahill, to the most advanced figures. The same system of giving a brief explanation of the different movements was also used for the dance numbers. Stars included guests Mary & Anne Batdorf, stilt skater George von Birgelen, pro, assisted by his wife, Eileen Meade, and Larry Lovett. Members also presented two solos, a pair, three dance numbers, and two all-girl routines, as well as the juniors’ “Toyland Fantasy.”

CAPILANO WC: Second Annual Carnival; Capilano WC rink; Apr. 14. The carnival was presented under the direction of club pro Alex Fulton. In the spotlight were performers Shirra Kenworthy, Pat Chestnut, Vivian Percival & Roger Wickson, Mary Lynne Whittall, Kathy Lewis, Sharon Browning, Joe Summerfield, and Carolyn Thomson & Susan Millerd. The opening scene was an “Easter Fantasy” in which over 200 pre-school children and juniors performed. The Fairy Queen (Joanne Lorimer) held court with groups as Trees, Birds, Earth Worms, pink and blue Bunnies, and Flowers. Two ladies-in waiting at the Fairy Court contributed solos—Sharon Browning and Louise Lind. The senior ladies appeared in the “Easter Parade” wearing bonnets of their own de-

sign. The men, in straw boaters, joined the ladies—making a cast of 40—in the “Dance Promenade.” Next was the lively performance of 36 Scotch Lassies, and then the advanced senior dancers took to the ice in a fast moving number. “The Top Hatters” was made up of 16 intermediate girls. The Grand Finale concluded the program with almost 350 skaters on the ice.

CHICAGO FSC: Mardi Gras; Rainbo Arena; Apr. 11. The program was directed by Edward Simonek and narrated by Joseph Serafine. In addition to a generous sprinkling of solos by the junior stars, the show opened with a group number by the less advanced juniors and included a precision routine by the junior “Debutantes.” Two comedy acts were performed: by the dance team of Mrs. Grace McGee and her daughter, Beverly, and by the “Swan Lake Ballet” troupe of Messrs. Aungst, Cleland, Katarski, Roy-non, and Wulff. Exhibitions were skated by guest Mrs. Marion Jacobs & Hub La-Friske, and Dorothyann Nelson & guest Pieter Kollen.

CORNELL FSC: Second Annual Carnival; Lynah Rink; Mar. 24. Despite a snow storm, a large enthusiastic crowd was on hand to view the show in which the 91 members participated. Directors were club pros Marianne Kreter and Mrs. Richard Wollmar. The program opened with a Grand March in which all skated. The seniors took part in several dance numbers, including the Dutch Waltz, Swing Dance, Canasta Tango, Willow Waltz, and concluded the program with the Fourteenstep; they were led by Mrs. Jean Hafer & Gerry Sturm and Dr. & Mrs. Jim Flood, who also

demonstrated the Rocker Foxtrot. Among the soloists and pairs were Paula Mueller, Priscilla Tobey, Connie Farrow, M. J. Herson, Denise Bortz and Glory Anne Snyder (two of the youngest performers), Barbara Hodes & Diane Wilson, Peggy Shaw, Donna & Joyce Young, Jim Sladky, Thomas Fletcher, and Sue Bass.

nison, Sandy Meredith, Sandy Sells & Mike Glover, pro Gerry Ketchem, Sue Bradford, Betty Larsen & Fred Lahee, Gail Williamson, Jerri Helm, Braden Clements, Christa & Claude Neil and Barbara Moore & Kaye Hammond.

---

### Writer's Cramp?

*Have your ideas or viewpoints on a certain aspect of skating been neglected in SKATING's contents? Have you or one of your club members originated a method of running a session, teaching beginners, running a profitable carnival, etc.? Salvage your spare moments this summer and jot down your ideas for the Magazine. Suggestions for possible authors and subjects for articles are always welcome.*

---

DALLAS FSC: Calendar Capers; Fair Park Arena; Apr. 8. The production, directed by the club professionals—Norton Wait assisted by Gerry Ketchem—was under the chairmanship of Mrs. Carl L. Larsen with Mrs. D. F. Clements, Assistant Chairman. The show, taking its theme from the seasons of the year, began with "Spring" which included an Easter Parade, a marching group of Scout and Campfire Troops from the Saturday Scout Classes, Rhythmic Rabbits, Charming Chicks, three girls "In the Pink," and two couples in "Spring Foursome." "Summer" was built around a July theme, with Calypso Cuties, dancers in a picnic in the park, and a line of six girls as "Red Hot 'Crackers." Football supplied the scene for "Autumn," with five couples in "Sweet Shop Rock," the young girls in "Win, Winsocki!" and cheer leaders in "Football Fever." The concluding portion, entitled "Winter," brought out the dancers in "Holiday Elegance," "Frostie's (the Snowman) Friends" and the "Valentine Sweethearts." Leading roles in the revue were skated by Ava Jan Clements, Mark Markiewicz, Mr. & Mrs. Richard Mellen, Carole Lou Leipsic, Margaret Sells & T. J. Ten-

FSC OF CINCINNATI AND QUEEN CITY FSC: Queen City Ice Revue; Cincinnati Gardens; Mar. 27. Sponsored by both clubs, the carnival was a success from both a financial and performance viewpoint. FSC of Cincinnati's portion of the show was organized and directed by club pro Lillian Erdman. Ice Minstrels was the theme and started with a "Minstrel Salute," complete with Interlocutor, End Man, Southern Belles and Dixie Music. Part of the cast remained seated through this scene in front of the curtain, resulting in a true Minstrel show background. Gene Muhlenpoh, Thomasine Pierce and Evelyn Lackner were featured in solo numbers. "Southland Waltz," with a cast dressed in typical minstrel costumes, was followed by the "Dixieland Ball" in which the couples wore formal attire. "Mardi Gras Parade" featured Linda & Jackie Comberger and the juniors in a spirited jitterbug and Charleston and a variety of dance themes. The Enchanted Dragon, made in sections by Edwin Erdman, first appeared in the form of playing cards painted on two sides; when turned 90 degrees, each section became the body of the Enchanted Dragon. Pair skaters included Martha Witherby & Donald Luttrell, and Thomasine Pierce & Roy Speeg. "Minstreleers"—28 girls doing a precision number—was climaxed by two fast whirling wheels made up of the seniors. Queen City FSC's part of the production was directed by club pros Laurel Pietsch and Hildegard Preston. Guest stars Gayle & Karl Freed skated two routines. Soloists were Gail Kizer, Jerry Schneider, Barbara Packard, Mary Ann Kavanaugh, Don Siebert, Jim Fitzpatrick, Ann Salinger, Corynn Ganley, Pam Withers, Jan Lawson, Delree Ferdon, Carol Waddell and Toni Meiss. There was a large supporting cast—80 per cent of the membership. A high point in the afternoon performance was provided by "Peter and the Wolf," enacted by children and young people



in charming costumes, who brought the story to life with imaginative choreography. Among the outstanding numbers were "Ship Ahoy" with the juniors, "Dancing on Ice," and "Fiesta."

FSC OF MINNEAPOLIS: Salute to the 50 States in 1960; Ice Center; Mar. 11-13. The 22nd annual show played to capacity crowds for its three performances. Choreography was by pro Dorothy Lewis, and guest star was Barbara Ann Roles. Five production numbers were presented: the children's group featured Penguins and Hula Girls for the two new states; a Swing Waltz with a masquerade Mardi Gras; an Indian number with strobe light; "Westward Ho!" featuring a square dance; and a precision number.

FSC OF OMAHA: Continental Capers; Ak-Sar-Ben Coliseum; Mar. 28. The theme of the program portrayed two American children on a visit to France and Spain. French numbers included a French school scene, French maids, a dance group, and an amusing cancan routine by the senior men. The visit to Spain began in the fiesta spirit with numbers by the senior dancers and featured a bullfight complete with matador and comic bull. A cast of about 200 juniors and 75 seniors performed in this production. Featured skaters were Corrine Meredith, Jay Novak, Tommy Henry, Lynnae Callaway, Mary Kay Prenk, Judy Boner, Maidie Sullivan, Carol & Charlotte Springman, Ann Muse, John Wertz, and pros Barbara Henry, Bruce Clark and Noel Ledin.

FLIN FLON FSC: Happy Holiday; Flin Flon Arena; Apr. 8-9. The one afternoon and two evening performances were highlighted by the skating of guests Coralie & Bonnie Phillips and Dennis McFarlane. Produced by club pro Stella Holmgren, the carnival was under the chairmanship of D. J. Robertson. The program was divided into three scenes. "The Toy Shop" included groups of youngsters as Wee Folk, Jack-in-the-Boxes, Teddy Bears, French Dolls and Toy Soldiers. Taking solo roles were Leonard Lapointe, Kathy Price, Jamie Wardle, and Erla Gar-

inger. The second scene, "The Story Book," opened with "Mary Contrary (Elaine Kenny) and Her Garden," followed by "Bo Peep (Dallas Wood) and her Little Lost Lambs." Then Hans Christian Andersen (Leonard Lapointe) told the school children three stories: "Thumbelina" (Susie McNeil), "The Ugly Duckling" with Donna Panasuik as the Swan, and "The Red Shoes" with Dave Johnston and Elaine Berg. The final scene—"Holidays"—incorporated several groups: the senior dancers, the Sweetheart Junior Dancers, Bonnets, Spring Flowers, Gifts, Reindeer, a Toboggan Party, and the Carolers. Featured skaters were Dave Johnston, Jim Ross, Janet Wasko, Doreen Black, Bonnie Brodach, Maureen Biggs, and Audrey Lizitsa.

GARDEN STATE SC: Ice Frolics of '60; Casino Ice Palace; Mar. 18-19. The sixth annual show was given for the benefit of the Fitkin Memorial Hospital; it was under the direction of Chairman Thomas Joy, assisted by club pros Megan Taylor, Harry Stafford, Bruce Mapes, Jr., Maude Hammer, and Jill Matthews. Highlights of the show, attended by about 3000 persons, were performances by Brenda Farmer, Zonnie Tracy, Darlene Russomanno, Pamela Schneider, Donna Lee Dwulet, Nancy Steffen, Nancy Lee Mazzarella, Katrine & William Neil, and Rosemary McEvoy & David Owen. The professional stars included Irene & Walter Muehlbronner, Bill Knapp, Maude Hammer, and Mr. Mapes as Master of Ceremonies. "Salute to Squaw Valley" was the first group number, with principal parts skated by Gayle Delaney and Carl DeAngelis. The production, "Spring Fantasy," starred the tiny tots of the club, assisted by some of the older children. "Singing in the Rain"—with real rain drops—was enacted by the junior teens. A night club atmosphere pervaded "Birth of the Blues." The senior dancers skated the Dutch Waltz, Willow Waltz and Fourteenstep; featured were Margaret Ann Gerrity, Richard Carasso, Judy Eberhart and William Hildebrandt. Among the colorful numbers were "By the Sea," "Club 8—Valse Elegante," "Ballet Roy-

*(Continued on page 34)*





(1) IC of Baltimore French Maids in one of the club's birthday party numbers: Lynn Alban, Betsy Mason, Anne Robinson, Jean Miller. (2) Photographed at a luncheon arranged by the CFSA Eastern Canada Section: seated, J. Williams, B. Murray, Sjoukje Dijkstra, R. Sutton, Joan Haanappel, M. Cook (Montreal Star Reporter), H. Mitchell, J. Wrigley; standing, pro Arnold Gerschwiler, Dr. Charlotte Benedict-Stieber, F. G. Sutton. (3) Susan Desilets & Michele Tessier, Indian Maidens in Sudbury SC's Fantasy on Ice. (4) Charlene Ann Kemp, The SC of Lake Placid, runner-up in the North Atlantic States Novice Ladies' class. (5) Mr. & Mrs. Thomas Krumenacher, St. Louis SC. (6) Victoria FSC cup winners in the club competitions: front, Bill MacDonald, Brenda & Sharon Mayne, Barry Castle, Paula Carr, Dierdre Humphries; back, Brice Swetnam, Jill Henrichs, Sharon Wood, Pat Appleby, Doug Doidge, Sandra Tregellas. (7) Louisville FSC's party on ice participants: Joy Baker, Walter Bauer, Kitty Davis, Madonna Lawless. Photo credits: (2) A. B. C. Studios, Montreal; (3) Sudbury Daily Star; (5) Howard Vogt, Globe-Democrat, St. Louis; (6) A. Doidge, Victoria; (7) Courier-Journal and Louisville Times.





# Rockers and Counters

EDITED BY FRED ALEXANDER



## Canadian Clubs

**Capilano WC's** annual competitions on Mar. 27 found some 300 spectators viewing a record entry of 43. The winners are: senior, Kathy Lewis; most artistic award, Mary Lynne Whittall; novice, Sharon Browning; preliminary, Louise Lind; juvenile and special junior award for outstanding progress, Joanne Lorimer; mixed pair, Sharon Browning & Joey Summerfield; junior girls' pair, Susan Millerd & Carol Thomson; intermediate girls' pair, Mary Lynne Whittall & Kathy Lewis; silver dance, Stuart Sherwood & Bill Lewis; bronze dance and senior bronze dance, Isabel & Lorin Lind; preliminary dance, Judy Watts & Bill Graham; family dance, Mrs. Barbara Phillips and her son, Don. The annual windup dance took place on Apr. 8 at the Commodore Cabaret with 337 in attendance. Awards were made to both skaters and curlers. The winter season closed at the end of April when pins and presentations were made to skaters who passed tests this year.

**Flin Flon FSC's** skating season ended after the April carnival. The natural ice in the club's own rink is gone; the main arena is to be torn down and a new one built around the present artificial ice area. Members are looking forward to their share of skating in the new building.

**Hamilton SC** competition winners are: senior open, Lorinda Farrell and Gregory Folk; senior novice men, Dave Hardwick; junior open, Mary Jane Mayes and Donald Knight; junior closed, Mary Jane Mayes and Vaughan Osborne; intermediate novice girl, Barbara Bowyer; novice girl, Diane Dimen; juvenile, Mary Lumley and Stephen Osborne; similar pair, Harriet MacFarlane & Cheryl Stull; similar dance, Barbara Bowyer & Jane Mulholland; silver dance, Virginia Caskie & Grant Weston; bronze dance,

Mary Jane Mayes & Vaughan Osborne. A final dance party was planned for the seniors and their parents on Apr. 21.

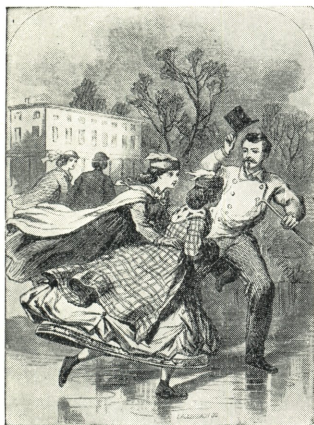
**Lachine FSC's** F.G. Sutton, Chairman of the Eastern Canada Section of the CFSA, arranged a luncheon on behalf of the Section for Holland's Sjoukje Dijkstra, Joan Haanappel, World Judge Charlotte Benedict-Stieber and pro Arnold Gerschwiler during their stopover in Montreal en route from the Olympic and World Championships. Senior skaters in the area enjoyed the opportunity of visiting with their guests from overseas.

**Mount Paul SC** substituted a Figure Skating Frolic on Mar. 17 for the annual Kamicecade. The successful event, attended by over 1400 people, was the club's first all-local show, with the featured skaters being winners in club, Okanagan-Mainline, and B. C. competitions. Expenses and admissions were low in comparison with a show on a larger scale, and the net financial gain was better than expected. Instead of a regular program booklet, the club had a four-page spread in the local newspaper, showing the names of the 275 members, and action pictures of featured skaters. The layout included the program and many advertisements of local businesses. Taking the spotlight were Joan Turner & Louise Samann, Roberta Corbin, Jennifer Ruskin, Eileen Sowerby & Doreen White, Mary Creech, Kelly McRae, Marilyn Palmer & Gail Holmes, Katherine Kukola, Janice McCully, Janine Pepper & Dennis Semeniuk, Bruce Bolton, and Joanne Hallmark. The director of the show was the club's senior professional, Shirley Ingham, assisted by junior pro Wendy Dunlop.

**Newmarket FSC** planned club competitions for Apr. 11. As many as possible were encouraged to compete for the 13 trophies. On Apr. 20 members anticipated having CFSA tests, and the season

was to end on the next day with a presentation of competition trophies and a wind-up party for all members.

**Noranda WC** closed a successful season with dance and figure tests. Considerably more tests were tried early in April than in mid-December, and the results were equally pleasing. Over the season, the percentage of tests passed was 87, which is the highest average since the inception of the club. During the two days of tests at the Recreation Centre, a judging school was conducted by J. Douglas Deyell, Chairman of the Northern Ontario Section.



**Toronto CS & CC** was to tender a special club party in honor of World and Olympic Champions Barbara Wagner & Robert Paul, the evening of Apr. 23. On the program were a hot and cold buffet, presentations to the Champions and an exhibition by them, and dancing to music by Art Dennis's Orchestra. That afternoon, the Senior Closing with a dance session and presentation of prizes was scheduled . . . also exhibitions by members and Canadian Champions Don Jackson, Wendy Griner, and Virginia Thompson & Bill McLachlan. The Junior Closing was set for Apr. 22 after a buffet supper and entertainment. The club championships were to take place on Apr. 14 and 16. Another April social was "Maverick Night" on the 6th, for all seniors and

their guests to partake in the games, fun and prizes.

**Victoria FSC** gave a Christmas party for the juniors on Dec. 20. About 400 children took part in this affair and prizes were awarded for costumes and dances—the Dutch Waltz and Canasta Tango. The function was attended by the mayor and his wife.

### Eastern Clubs

**Baltimore FSC's** spring meeting was scheduled for Apr. 28. The club held a birthday party for pro Norval Baptie—who is in his 80's—after the regular session on Mar. 17. Members are all looking forward to summer skating in their home town during June and July.

**Colonial SC** presented a show on Mar. 7 with no admission charge. Despite a snow storm, a thousand persons were in attendance. Among the groups were a little girls' Butterfly number, the junior ladies' group, and the adult dancers; in addition were two mixed pairs. Then four cups were awarded: the most artistic, Carol Jones; the most improved skater, Lynda Jones; the most congenial skater, Ethel Garwood (adult category), and Eleanor Lee (junior). The finale was skated by pro Melitta Brunner.

**Del-Co FSC** members and friends held their first banquet at the Club Deville in Springfield on Apr. 21, at which time the Dr. William M. Ruthrauff Trophies were presented to Frank Vogel, first, Peggy Turner, second, and David Fili, third. These awards are given each year to the skaters showing the greatest improvement and were established to create an incentive; they are named in honor of Dr. Ruthrauff, a founding member of the International FSC, the Quaker City FSC, as well as the Del-Co Club. Preliminary Test pins were awarded to Peggy Turner, Cathy Mellin, David Fili and Pat Sullivan. Guest speakers of the evening were Harry Carr, representing the management of Suburban Rink, Dr. Ruthrauff, and pro Melitta Brunner.

**Garden State SC** held a general membership meeting on Mar. 27 in the club rooms at the Casino Arena. Following the meeting a party was held—arranged by Mr. & Mrs. William Delaney assisted



by Marsha Delaney—with music furnished by “The Swing Kings.” The Board of Trustees meeting was scheduled for Apr. 4. The club closed out the most successful season in its history with the holding of its Ice Frolics of 1960.

**IC of Baltimore** members celebrated the club’s 29th birthday with a party on Apr. 10 at the Meadowbrook Ice Rink. It was a great success and lots of fun. An unusual feature was the human birthday cake formed by 29 girls as a white cake with 29 candles. Spectators viewed a regular carnival program, including solos, pairs, group and dance numbers, one of which was called the “Family Dutch Waltz.” This was limited to fathers and daughters, mothers and sons, and sisters and brothers. Among the costume groups were “The 76 Trombones,” “The French Maids,” and “The Hussars.” Performers included Gail Stone, Andrea Drozda & Tony Lilly, Jr., and pros Robert & Joan Ogilvie. Retiring President Edward T. Gieske and Vice-President John McNair awarded a number of prizes and medals. Mr. & Mrs. Gieske were each presented with a silver cup in appreciation of their many years of hard work and devotion to the club. The new President, S. Vannort Chapman, was in charge of the program. Judge William C. Coleman, the first Club President (who served in that capacity for many years) was on hand and gave some of the older members amusing gifts which added to the fun. About 500 guests attended the affair and were invited to skate after the show.

**Johnstown FSC** ran 85 events in its test session in a little less than four hours. The guest judges were Mrs. William L. Rhein, Reid McKinley, and Madeleine Skirven. The annual meeting was set for Apr. 22. During the summer months the membership will be active with the annual picnic, a swimming party, a roller skating party, and a Sunday trip to Hershey for a picnic and skating. Also, plans have been made for the first annual summer skating school to be held by the club.

**New Haven SC’s** annual meeting took place on Apr. 21 at the Quinnipiack Club, preceded by a dinner. After the repast and election of officers, moving pictures of



#### An Orchid to:

The Clubs who so generously included a complimentary advertisement for **SKATING** and **USFSA** Booklets in their competition or carnival programs: Kapuskasing FSC; Newmarket FSC; North Bay FSC; R. P. I. FSC; Seattle SC (U. S. Championships); Sioux City FSC; The Skating Clubs of Vancouver (World Championships); Wascana WC (Canadian Championships).

The Clubs who have given **SKATING** and **USFSA** Booklets a “plug” in the form of editorial mention in various club bulletins, news letters, etc., which have been sent out to their members: Beacon Hill Club’s *The Beacon*; CFSA Prairie Section’s *Ice Chips*; Colonial SC’s brochure; WC of Indianapolis’ *Boots and Blades*; Lansing SC’s *Boots and Blades*; Niagara Falls SC’s bulletin; The SC of San Francisco’s *The Inside Edge*; Washington FSC’s brochure; Watertown SC’s *Newsletter*; Wissahickon SC’s *News Bulletin*.

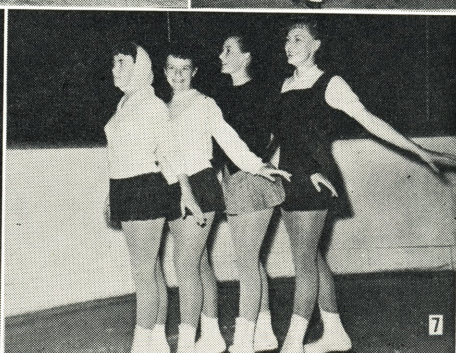
The above lists represent only some of the many clubs who have cooperated by mentioning **SKATING** in their club papers and show programs during the past season; copies of many programs had not reached the Magazine by the deadline for this issue.

the 1959 U. S. Championships were shown, and also color movies taken at the New Haven carnival by William Johnson.

**Philadelphia SC & HS’s** member, Mary Van Urk, who is spending her junior year of college in Switzerland, was permitted to skate in the National “B” dance competition—an equivalent to a junior championship—held on Mar. 6 in Berne. She won this contest with her partner, Jurg Wilhelm; they represented the Geneva Club, and competed with six other couples. Miss Van Urk has passed four Swiss tests during her stay in Geneva.

**Providence FSC** held its annual dinner-dance on Apr. 2 at the Highland Country Club, Attleboro, Mass. About 200 members attended the dinner and dance which





#### PICTURES FROM THE CLUBS

(1) Susan Peck, Louise Hubbard, Wissahickon SC; Lucy Flippen, Philadelphia SC & HS; Margaret Hubbard, Wissahickon SC. (2) Wascana WC girls in the "Earth Child and Little People of Mars" number: Priscilla Hahn, Gaye Staseson, Dorothy & Linda Gledhill, Brenda Wallace, Sharon Gerau. (3) Maureen Trainor & John Webster, Genesee FSC. (4) Mary Ann Kavanaugh, Queen City FSC. (5) The SC of Boston's Rainbelles—Edith Jackson & Ann Ferguson—with former Olympic Champion Tenley Albright. (6) John W. Donohue, Chairman of the Syracuse Public Recreation Commission with Syracuse FSC juniors: front, Susanne Ruff, Gretchen Gregg, James Sladky, Donna Young, Rosemary Maslak; back, Mary Dochner, Peggy Stephenson, Mr. Donohue, Melanie Rowe, Yvonne Miller. (7) Roberta Corbin, Mount Paul SC; Kay Faynor, Nelson FSC; Joan Turner, Mount Paul SC; Elsie Busch, Kelowna FSC. Photo credits: (1) The Sunday Bulletin, Philadelphia; (2) Gord. L. Hillyard, Regina; (3) Hubert Scheffy, Rochester, N. Y.; (4) DuMar Smith, Cincinnati; (5) The Boston Globe; (6) M. M. Zack, Syracuse.



closed the club activities for the season. Chairmen of the affair were H. Webster Youlden and Mrs. Raymond Gregory.

**Quaker City FSC** played host to the Philadelphia Area Championships on Apr. 2-3. The annual dinner-dance was planned for Apr. 28, at which time the results of the club competitions were to be announced. Awards were to be presented for figures, dance, and the annual award for the most artistic approach in the expression of music in free skating. The dance competition has been conducted throughout the entire season, twice weekly. Dances were drawn by lot each time as were the scrambling of partners. The entire membership is looking forward to the summer session, especially with the installation of the new dehumidifiers.

**Washington FSC's** junior competition on Mar. 20 found over 200 youngsters and parents taking part. Winners in the various categories: Gail Sterling, third test; Stacie Fiske, second test; Dan Eastburn, first test; Sidra-Kay Singer, preliminary. The competition was arranged by Mrs. Elizabeth Morris Doring, and closed the season for the juniors and their skating parents. Seniors ended their season the following Sunday and were treated to pair exhibitions by Helen Frank & Patrick Lalor, and Marie Sedano & Dan Eastburn. The annual meeting, conducted by President G. Norris Shaw, took place on Apr. 19; the election of Board Members was held and the meeting closed with refreshments supplied by the Entertainment Committee.

#### Midwestern Clubs

**Broadmoor SC** members gathered at the Ice Palace for an Easter Bonnet Party on Apr. 10. From the 50 persons attending, five were selected for their original and clever hat designs: Connie Espander, Dorothy Thompson, Mr. & Mrs. H. E. Anderson, Clell Harrison and Mrs. Marjorie Sylvester.

**Cleveland SC** set the 23rd for its "April in Paris" formal dinner-dance. An added attraction to cocktails and a gourmet dinner was the floor show; the committee was headed by Mr. & Mrs. Wilfred O'Reilly. The Presidents' Ball on Feb.

27 honoring Dr. York N. Pitkin and Past Presidents was a festive occasion enjoyed by 300 members. Carol Keyes took part in the ice show at Middlebury College—where she is a freshman—during the Feb. 27 weekend. With the decision to discontinue summer skating, the winter ice season has been extended to May 27.

**Dallas FSC** skaters, their families and friends enjoyed supper and dancing following the carnival on Apr. 8. The evening affair was held at the Margo Jones Theatre at Fair Park. On the following Sunday, tests were given and this activity marked the close of the season.

**Denver FSC** dance competition winners are: preliminary, Carol Crumbaker & Dick Grimes; bronze, Margaretta Smith & Dr. Moras Shubert; pre silver, Barbara Douglas & Jack Twombly; silver, Barbara Boucher & John Anderson.

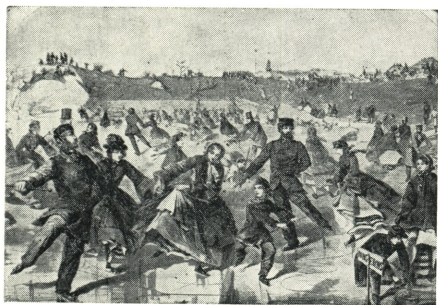
**FSC of Cincinnati** has accepted a new trophy, the "Brintnall" cup, in memory of L. Pierce Brintnall, the founder of the FSC of Cincinnati. This perpetual trophy was donated by Mrs. John G. Horsman and is to be awarded annually to the beginner who shows the most progress.

**Forest Park FSC** ran its first club competitions on Mar. 26. The ladies' event was the most exciting one of the evening with Mary Schniedermeyer coming in first, and Mary Flynn a close second. The men's class was won by Ray Wanderer, the dance competition by Alice La Bagge & John Tolcou, and the pairs by Mary Flynn & Steve Anstey.

**Lansing SC** celebrated its 10th anniversary at a chop suey party on Mar. 7. Dance programs on the back of the name tags provided fun for the after-dinner skating. The annual business meeting took place after the dinner. Members Nancy Scott & Paul Pepp were featured performers at the Midland Carnival on Mar. 19. "Les Girls" appeared on TV on Feb. 8; the Friday Ladies' Club session was taped and some of its members interviewed on the ice and at the studio.

**Louisville FSC** ended a very good season with a costume party on Apr. 2; the public and friends were invited as guests. USFSA pins were given to Walter Bauer for the funniest costume, Madonna Lawless for the prettiest, and Mimi Horner

for the most original. Several figures and dances were demonstrated, and guests Darlene Streich & Charles Fetter, Jr., gave a dance exhibition. Several members have put in a busy season in addition to their regular club duties. Fred Nobbe, Chris Carter and Roy Estes supervised 16 free sessions on ice sponsored by the Louisville Recreation Department for the purpose of promoting skating in the Louisville area. Group instruction and help were given and medals were presented to skaters from each group showing the most improvement. Madonna Lawless, Linda Moss, Chris Carter, Joe Scherer, Todd Gardner, Eddie Davis and Roy Estes were hosts at a party on ice for visiting Kentucky Basketball Tournament players and their friends on Mar. 19.



**St. Paul FSC** skaters—more than 50 of them—participated in the first Skate-O-Rama exhibition at the St. Paul Auditorium on Apr. 6. The figure skating performances were interspersed with speed skating races and a hockey exhibition match between the midget city champions and the runner-up team.

**Troy SC** gave a buffet dinner at the Troy Country Club following its carnival on Apr. 2, arranged by Mrs. Alan Braun, assisted by Mr. & Mrs. Donald Ryburn. Gifts were presented to the special performers and the club pros, Rita & David Lowery. Special recognition was given Mrs. William Nicholas, who designed and worked on the carnival wardrobes. Mr. & Mrs. Fred LeFevre received a milk glass filled with spring flowers and novelties as a souvenir of the show.

**Wagon Wheel FSC's** costume skating party on Mar. 16 was a successful affair with prizes going to a senior lady dressed as a black French poodle, to Mr. Williamson, owner of the Wagon Wheel Lodge, dressed as the "Lady in Red," and to another member attired as a King. Prizes were also awarded for impromptu solos, and several games were played. Many couples were surprised at being introduced as "Olympic winners," and after they skated their numbers were presented with cabbage bouquets. In recapping the season, membership was tabulated as having grown from 23 to 95, and activities have included an ice show, three test sessions, many breakfasts, two dinner parties, and the costume party. In addition, a monthly newsletter has been initiated by Mrs. Robert Steinke and Mrs. Nancy Kuchenmeister.

**WC of Fargo-Moorhead** skaters were treated to six weeks of extra artificial ice, beginning on Apr. 1, when President Arnold Miller secured the use of the curlers' "Ice Center." Club championships took place at the Arena on Feb. 28, with 15 boys and girls competing in the novice division; Betty Rutherford placed first. Winners in the junior ladies' events were Bobbie Schwartz, Nancy Twedten, and Mary Ann Thompson. Exhibitions were given by Judy Arnold, Susan Danovic and Judy Schrank.

**WC of Indianapolis** planned its club competitions the week of Apr. 25, and high dance tests Apr. 24. The Intra-Club Dance Competition scheduled for Apr. 10 was cancelled due to insufficient entries from other clubs, but it is hoped such an event can be held next year at a more convenient time.

### Pacific Coast Clubs

**Arctic Blades FSC** members are looking forward to having their first summer session. The annual club competitions were to be held in May and plans are underway for the annual carnival, Iceland Revue, to take place in August.

**ISC of Fresno** activities for the remainder of the season included figure and dance tests for 13 junior and senior members on Apr. 24 and a party after the last regular session on May 17. Two trips



are on the agenda—one to Los Angeles in May to see Ice Capades, and another to San Francisco in June for Ice Follies.

**Los Angeles FSC** members were to enjoy color movies of the Olympics, shown by Clyde Miller at the general meeting on Apr. 11. At the St. Patrick's Day party, Jennie Walsh won first prize for the best costume—Miss Irish Sweepstakes. The club is sponsoring an adult class for beginners on Sunday afternoon, with the cooperation of pros Sid & Helen Moore. The Wednesday evening club session has been opened to Bronze standard skaters of any clubs in the area, until Sept. 1, in order to acquaint more dancers with the session.

**St. Moritz ISC's** skating and dinner party on Feb. 29 was a social and financial success. After dinner, pro Bob Swenning served as narrator for an exhibition of figures, jumps and spins demonstrated by Kathy Collins, Karilyn & Marilyn Frampton and Judy Nausin. Next, Laurie & Bill Hickox, U. S. Junior Pair Champions, skated their competition number. After the introduction of the Olympic officials and professionals present, the adult dancers concluded the exhibitions with a Willow Waltz. A new figure judging class started on Mar. 7, under the direction of Meriel Wellington; classes meet on Monday evenings and watch demonstrations of test figures by skaters from the Berkeley and Walnut Creek rinks. On the calendar of spring events were the Spring Fling Luncheon by the morning adults' session on Apr. 18, the club competitions in May, and the annual dinner-dance and business meeting on June 11 at the Red Mill, with Daryce & Bob Andersen as Co-Chairmen.

**The SC of San Francisco** scheduled its annual business meeting and elections for Apr. 7 at the Fox Hostess House. A party at the Dolphin Club on Feb. 5 found members in Western garb, consuming the delicious refreshments and dancing to lively music. The committee in charge included Pete McFarland, Betty Roberts, Harriet Histed and Dottie Schraft.

**Yakima ISC** held its club competitions on Jan. 25. Winners: preliminary edges and free style, Vicki Chozewski; preliminary dance, Kris Timpke & Dianna

Packer; juvenile figures and free style, Kay Mills; sub novice free style and figures and artistic award, Kathleen Quinn; achievement award, Elizabeth Freshwater.



### Ice Scrapings

THE SESSIONS of the **Chicago FSC** ended with a senior gathering at the rink on Apr. 30; the annual business meeting and election of officers was set for May 17. **St. Louis SC** held its annual meeting on Feb. 23, with the election of officers. **St. Hyacinthe FSC's** annual carnival was presented with two performances on Apr. 2; guest stars included Carol Noir and Bruce Heiss from The SC of New York. **Old York Road SC**, in existence five seasons, reported fine skating progress on the basis of the results of its eight entries in the Philadelphia Area Championships.

### New Gold Medalists

TWO **CFSA GOLD DANCE** Tests were completed at the Capilano WC on Mar. 17 by members **Vivian Percival & Roger Wickson**, the latter becoming a double Gold Medalist. On the same date two Free Dance Tests were also passed at the Capilano WC by members **Pat Chestnut** and **Frank Royle**. **Elsie Busch**, Glencoe Club, won her CFSA Eighth Test on Apr. 3 at her home club. **James Tester**, professional, passed the USFSA Eighth Test at the Oxford FSC on Mar. 21. Two Golds were passed at the Winnipeg WC: **Heather Henderson** passed her Eighth on Mar. 30 at her home club, and **Elaine Protheroe**, professional, completed her Gold Dance on Apr. 5.

# About Shoes and Skates

By OSCAR A. MORGAN

GOOD SHOES and skates for ice figure skating are expensive. Therefore, proper care should be used when buying them, and proper treatment given to them every season. Because I have heard many beginners (or parents of young skaters) complain of weak ankles or that their shoes or skates bother them, this has led me to write these comments.

First, let me state that, generally, if the shoes fit properly there is no such thing as weak ankles. In practically every case of "weak ankles" brought to my attention (and this was generally from parents of small children who were beginners), I found the parent had purchased oversized shoes to let the child "grow into them." In some cases they had purchased oversized shoes and had the child wear thick woolen socks, or in some cases two pairs of socks. No greater mistake can be made by beginners than having shoes too large or, for that matter, too tight.

**BUYING OF SHOES:** Generally the skate shoe should be one full size smaller than the street shoe. Have the shoes fit snugly. Wear cotton-wool socks preferably. (Tights for girls and women are never made of thick material.) If parents are concerned about the expense of buying shoes every season for their children, they will be pleased to know that most clubs work out "trades" at the beginning of each skating year.

While it is all right for beginners to buy shoes with skates already attached, the more advanced skaters buy shoes and skates separately and have them attached by the club professional or the rink skate shop. As a measure of safety, check periodically to see that all skate screws are firm. Loose screws which drop out can cause accidents.

Don't buy hockey shoes for figure skating. Figure shoes are higher for better support.

Use braided laces—and keep an extra pair handy. Heels for adult shoes should be about 1½ inches high. Small children should have lower heels and work up to the higher heels as they grow.

**BUYING OF SKATES:** The better grade of skate is made from more finely tempered steel and will consequently retain sharp edges longer than the cheaper skates. Beginners should purchase "figure" skates. I emphasize *figure* because there are three fundamental types of blades for figure skating, i.e., figures, free skating and dancing. Each one has a different radius—or curve of the blade—from toe to heel. The more advanced figure skater frequently has two sets of skates and shoes, one for figures and one for free skating. The free skating radius has a more gradual curve than the figure skate to enable the skater to get a better "run" on the blades. So it follows that the dancing skate radius is even more gradual than the free skating curve as a better "run" is a help to dancers. The advanced skater will be wise to consult his or her professional (or rink skate shop operator) if planning to buy new equipment.

**CARE OF SHOES:** Use a good grade of leather preservative periodically as it softens and preserves the leather. Polish the shoes a couple of times during the season with a *good* grade of shoe polish.

**CARE OF SKATES:** When through skating, always dry your blades thoroughly. Wipe them off with absorbent towelling or a soft chamois. If you use tissue to dry the blades, it is well to polish with a cloth or chamois. This will prevent rusting. Buy a set of guards, preferably wood as wood absorbs a certain amount of moisture. *Don't* walk around on hard surfaces without first attaching your skate guards. Too many skates have been ruined by thoughtless skaters.

Skates should only be sharpened if the skater cannot hold an edge. Too much

---

When he was President of the Garden State Skating Club in New Jersey, Mr. Morgan wrote this article, assisted by Fred Gruman of Iceland, N. Y. It first appeared in October 1956 as a bulletin to aid his club members.

---



sharpening will take out the temper of the steel. Don't let just anybody sharpen your skates—have it done in your rink skate shop where they have the know-how and the proper equipment.

When storing skates and shoes out-of-season, go over the shoes with a leather preservative and put a thin coating of Vaseline on the blades. You'll Be So Glad You Did!



## People



### BIRTHS

**Flin Flon**—To Mr. and Mrs. Jack Steventon (Beverly McIntyre), a daughter, Sandra Lynn, Mar. 23.

**Los Angeles**—To Mr. and Mrs. George Flaherty, a daughter, Bridgette, Mar. 19.

**New York**—To Mr. and Mrs. William A. Bartle, III (Sheila Muldowny), a daughter, Alison Richmond, Apr. 12.

**St. Louis**—To Mr. and Mrs. Howard Mitchell (Marion Morris), a son, Eric Allen, Mar. 15.

**Scarsdale, N. Y.**—To Mr. and Mrs. Arthur C. McGowan (Yvonne Sherman, former North American and U. S. Lady Champion), a daughter, Claire Irene, Apr. 19.

**Wantagh, N. Y.**—To Mr. and Mrs. John T. Galloway (Jackie McMullen), a son, Douglas John, Apr. 21.

### ENGAGEMENTS

**Los Angeles**—Miss Margie Ackles, 1960 U. S. Dance Champion, to Mr. Ned Jones. Wedding May 14.

**Omaha**—Miss Noreene Sullivan to Mr. William Lange. Wedding in August.

**Washington**—Miss Virginia Alban Mills to Mr. John W. W. Wood—Miss Jeanne Carolyn Roy to Mr. Kenneth W. Stant.

### MARRIAGES

**Czechoslovakia**—Mr. Peter Bamberger of Germany and Miss Jerina Nekolova, Mar. 5.

**New York**—Mr. Robert Gurland and Miss Helen Bassett of Cleveland, Feb. 20.

**Phoenix**—Mr. Richard O. Washburn and Miss Katherine Woodward.

**San Francisco**—Mr. John Carter and Miss Dorothy Griffith—Mr. David L. Davis and Mrs. Barbara Amery—Mr. Ronald Douglas and Miss Kit Maynard.

**Victoria**—Mr. Douglas Doidge and Miss Astrid Strandlie, Nov. 7.

**Yakima**—Mr. Howard Johnson and Miss Carol Tissel, Mar. 5.

### DEATHS

**Boston**—Mr. David Sands Niles, brother of the late Nathaniel W. Niles, Mar. 28.

**Denver**—Mr. Harold Barger, husband of Mrs. Dahlia Barger, a charter member of the Denver FSC, by accident, Mar. 21.

**New York**—Mr. Lawrence Joseph, a charter member of the Manhattan FSC and its Treasurer for many years, Mar. 23—Mr. Howard J. Meredith, husband of Mrs. Mary Natwick Meredith, suddenly, Apr. 27. Mr. Meredith had been active in the Association and was a former member of the USFSA Executive Committee. He was First Vice-President of The SC of New York at the time of his death, and had served the Club in various capacities during a number of years.

### TURNED PROFESSIONAL

**Chicago**—Carol and Nina Wayne to join Ice Capades.

**New Haven**—Beth Hoffman to join Ice Follies.

**Omaha**—Opalea Dobbins to join Ice Follies.



## CARNIVAL CAVALCADE

*(Continued from page 23)*

ale," and "Elmer and His Trainer." The outstanding costumes were made by a group of mothers, directed by Mrs. Fred Tag, assisted by Mrs. Marilyn Cook.

**HALIFAX SC:** March Away; Dalhousie Memorial Rink; Mar. 28 & 30. The show, in which about 200 adults and juniors took part, was produced by club pro Maxinne Armstrong, and the costumes were designed by Mrs. H. E. DeMone. Lynne Sheehan, Judy Aucoin, and Patricia Martin skated solos, while juniors Heather DeMone and Robert Kehoe gave both pair and solo performances. For historical interest, the seniors demonstrated an ice dance of 50 years ago, the Militaire, revived under the guidance of Lloyd Hamilton. Among the productions was "Thank Heaven for Little Girls," featuring Joan Connolly; there were several parts including the Boulevardiers, Little Girls, Riders, and the "Waltz Time" and "East Side-West Side" groups. Two other big numbers were "Peter Pan in the Never-Never Land" with Pirates, Mermaids, Lost Boys, Fairies and Indians, and "Around the World in Eighty Days" in which various lands were represented by solos, a pair, and groups. Completing the program were the "March Away" opener, Mrs. R. E. McKay & David Oland in a "Dance Medley," "Slaughter on Tenth Avenue," and the finale, "Dance in March Time."

**HIAWATHA SC:** Silver Blades Revue; Pullar Ice Stadium; Apr. 2-3. The show, sponsored by the Sault Ste. Marie Lions Club, was directed by Marjorie Nash, club pro, who was a featured soloist, along with the club's junior pro, Donelda Tinkis. Soloists and pairs highlighting the program were Judi Hillier, Audrey Bailey, Linda Johnston, Cathy Brownlee, Jane McCarthy, Audrey Bailey & Linda Dale, Ethelene Nash, Jack Greenwood, Julie LeCoursiere, Diane Payment, Carol Kinney and Richard Vallee. The opener, "Ballet Rogue," featured 16 girls and was followed by the "Petite Ballerinas."

"Lands of Paints and Brushes" had groups including the tiniest girls as Water Colors, the Wooden Artists contingent, Model Dolls, four girls as Buckets of Paint, and a court of Chinese Artists. Productions included "Four Breezes," "Land of Beauty" with Viennese Waltzers and Four Intruders, "Down Mexico Way" with Stick Girls, and Big and Little Mexicans, "Into Space" with Bat and Scarf Girls and the Space Sextet, "Billy Goat" with the Hobos, the "Good Old Days" group, "Swing Waltz," and the precision "Highland Pageantry."

**KAPUSKASING FSC:** The Sleeping Beauty; the Arena; Mar. 11-12. The 16th annual carnival starred club pro Donna Kean and her sister, Joyce, and pros Michael Booker and Eleanor Guidolin. A guest group from the Smooth Rock Falls FSC presented a cancan number. Featured performers included Susan & Kenneth Sunquist, Mary Graham, Donna Wrightman, Gail McClintock, Linda Brown, Judy Brackenbury, Vivian Lepp, Pat Talentino and Larry Foden. The groups included "Dawn" (a ballet), "Palace Guards" with Captains Bobby Graham and Brian Boyce, Peasant Boys and Girls, and Bats, "Animals of the Woods" with Maureen Towers, "Palace Dancers" with Lynn McClintock & Paul Banks, and the little Pixies in "The Fairies' Helpers." The costume convener and designer was Mrs. H. Craig, assisted by Mrs. J. Grant.

**KITCHENER-WATERLOO SC:** Fantasy on Ice; Mar. 25-26. The junior court featured a "Journey into Space" with Space Travellers, Flying Saucers and a Martian Ballet. Senioritas, Caballeros and a Mexican Hat Dance were portrayed by the juniors in "Mexican Holiday." The intermediate and senior court presented a Paris theme highlighted by Beatniks, Artists, Models, Tourists, a cancan, and a precision number of Chips, Dice and Cards. A guest skater was pro Muri Burbidge.

**LANSING SC:** Silver Blades Ice Show; Michigan State University Ice Arena; Apr. 1. The carnival, featuring 21 numbers, had a cast of more than 120 skaters.



Taking the spotlight were U. S. Junior Champion Douglas Ramsay, Janet Harley & James Browning, Nancy Scott & Paul Pepp, Mary Lou Gillengerten, Margo Davenport, Joey Heckert and Gary Clark. Among the production numbers were "Sights of New York" with Susan Wilson, Charles Lewis, Elaine Lotocha and Sterling Tryon in various roles, and "Slaughter on 10th Avenue" performed by Sarah Bailey, Real Turcotte and Claude Fournel.

ARTHUR D. LITTLE FSC: Escapades of 1960; The SC of Boston rink; Apr. 11. Walter S. Colburn was Master of Ceremonies for this second annual show, and club members carried out the theme, "A Spring Vacation," under the direction of President Joseph Machado and their instructor, Cecilia Colledge. The first dance number, "Boston to Shannon," was a Fourteenstep dance ensemble. The trip continued to Amsterdam with the Dutch Waltz, to Mexico City for the Canasta Tango, to Paris for the Swing Dance, and finally to Buenos Aires for the Fiesta Tango. Guest skaters provided special entertainment for the trip: Bradley Lord, Maribel Owen & Dudley Richards, Karen Landry, Ruth Whittaker, Helen Dane, and Linda Robinson. Two comedy skits by members, and a hockey game by some of the Arthur D. Little Staff completed the program. The audience joined in the general skating after the show.

MINTO SC: Minto Follies of 1960; Ottawa Auditorium; Mar. 24-26. The 36th annual production was headlined by Canadian Champion Donald Jackson, Donald McPherson and professionals Jacqueline du Bief, Jo Barnum & Tommy McGinnis, Geraldine Fenton & Donald Tobin, Ben Dova and juggler Bobby May. The Follies Committee was headed by Ross Atchison, with Melville Rogers as Vice-Chairman. The junior court began the show with "What Dreams Are Made Of," directed by pro Joan Hunting, assisted by Mrs. J. D. Driano, club pro, and Dorothy Drew and Glenda Perry. Featured skaters were Linda Carbonetto and Barbara Haines, with Judy Maines, Sue Todd, Christine Reynolds, Deborah Firth, Lyla

may Leftly in leading roles. The court skated to the "Nutcracker Suite" and many groups of youngsters took part as Lead Soldiers, Mice, Sugar Plum Fairies, Chinese, Candy Canes, etc. The Folliettes performed in several numbers including "Gauchos," "Butterflies" with Shirley Rennick, and "Alabama Bound." The Public School FSC participated in "A Military Revue," which featured Minto's Marilyn Crawford & Blair Armitage. "Cinderella Fantasy" combined the talents of the senior dancers and Folliettes in a ballet group and featured Marilyn Atchison, Gordon Pranschke, Elizabeth Hayden, Alison Marsh & Catherine Bryan, and Dorothy Drew. Another group, made up of six girls, was entitled "The Beatniks."

-----  
*The June issue marks the end of the spring publishing schedule, but is not the last Magazine on your 1960 subscription. Watch for the November and December numbers for both summer and fall news.*  
 -----

NEWMARKET FSC: Our Town on Ice; Community Memorial Arena; Mar. 17-19. The 10th annual carnival involved the entire membership of 160, and choreography and training was under the direction of club pros Charles Kiel and Verdun Bourdon; Mr. Kiel also designed the costumes which were produced by Mrs. G. MacDonald and her committee. Headliners were Debbi Wilkes & Guy Revell, Karen Peat, Karen Lewis, Anna Shedlowich, Melanie Galbraith, Louise Dyck, pro Merle Louise Hart and the club instructors. Ten girls opened the show with "Pink Delight." The juniors in "Story Book Land" depicted Kittens, Children, Three Blind Mice, Three Men in a Tub, Lambs, Four and Twenty Blackbirds, and Three Little Pigs; in featured spots were Susan Mitchell, Brian Kohler, Carol Dutton, and Jacquie Revell. "On the Town" featured Susan Sproule and the top-hatted girls' Octette and Court. Other groups were "Red, White & Blue Military," "Celestial Ballet" with Ballerina Betsy Bell and groups of Stars, Moons and Comets, "Waltz Theme," "Gay Sophisticates," "Enchanted Rose

Garden" inhabited by Bugs, Roses and Gardeners, and the final "Cha-Cha-Cha" four.

**NORTH SHORE SC:** Annual Carnival; North Shore Sports Center; Apr. 23-24. The show opened with a large Easter Parade featuring the "Father and Daughter" number. Groups included a South American cha-cha-cha routine, a French Cafe scene, and a Squaw Valley number. The senior girls performed to "Ballin' the Jack," the junior girls marched to "76 Trombones," and the youngest skaters appeared as "The Chipmunks." Among the performers were the club pros Lillian Tribby and daughter, Norvetta. Club President William Taff served as the Carnival Chairman.

**PARK FSC:** Easter Festival; Flushing Arena; Apr. 10. President Newbold Morris gave a buffet supper party for the Board Members and guests preceding the show. The Board Members skated three dances in this third annual carnival and the guest skaters included Bruce Heiss, Katrine & William Neil, and Karen Hoffman & Leo Fritzlo.

**THE SC OF BOSTON:** Ice Chips of 1960; Boston Garden; Apr. 7-10. The star-studded cast was headed by Olympic and World Champions—Carol Heiss and Barbara Wagner & Robert Paul—Barbara Ann Roles, Bradley Lord, Lawrence Owen, Gregory Kelley, Maribel Owen & Dudley Richards and Lorraine Hanlon. Also featured were Helen Dane, Elizabeth & Paul George, Constance Brewster, Frank Muckian, professional comics Larry Hamm & David Riggs, and pantomimist A. Robins (the Banana Man). This 48th production was again directed by the club professionals—Montgomery Wilson assisted by Cecilia Colledge. General Chairman for the show was Walter A. Fuller, Jr., and Robert S. Hoffman, Jr., was Assistant Chairman. "Caribbean Holiday" opened with 16 boys as sailors and Gerard Lane as the Captain, and continued with a "cha Cha CHA" group of the youngest girls and the Danseros. "Scholar's Holiday" featured a group of four girls as The High I. Q.'s. "Winter

Holiday" brought out an Olympic theme in a precision routine by 24 girls who carried flags of many nations and later used ski poles in their maneuvers. "Dancing Holiday" was enacted by six couples. A group of young ladies and eight couples portrayed "Mardi Gras," and the final number, "Easter Holiday," was skated by the seniors.

**TROY SC:** Holidays U.S.A.; Hobart Arena; Apr. 2. The opening number featured soloist Vicki DeWeese and a group of young skaters in a Rock 'n Roll welcome to New Year's Eve. The younger set stole the show with the personification of the toys in Santa's Shop. Cynthia Compton appeared as the Snow Queen, while Chris Young portrayed Jack Frost. Toy Soldiers, Chipmunks, Reindeer, Raggedy Anns and Andys wheeling doll carriages made up this number. Valentine's Day brought forth six young cupids and featured Penny Sue Bausch as the Queen of Hearts, and Kathy Fellers & Gene Floyd as the Sweethearts. Next came Halloween with four young men dressed as witches on broomsticks. The St. Patrick's Day soloist was Cheryl Daugherty, and a group of young ladies performed a precision Irish jig. In the Fourth of July Ballet, Mary Ann Kavanaugh was the ballerina. A ballet spoof, entitled "April Fools Day," had an all-male cast. The Easter Parade depicted the skaters in the costumes of the 1925 period. The grandpas—Harry Marshall and Leo Bausman—skated with two tiny girls to "Thank Heaven for Little Girls." Heading the carnival cast were U. S. Junior Champion Douglas Ramsay, Gayle & Karl Freed, Suzanne Walker, club pros Rita & David Lowery, and Terry Browne, a barrel jumper. Mrs. William Nicholas designed the costumes for the production.

-----  
**Warning: Subscribers Take Notice**  
Don't miss an issue of your 1960 subscription through neglect. Make sure that you receive your copies of the November and December issues by sending any change of address you may have during the summer or early fall to SKATING, 30 Huntington Ave., Boston 16, Mass.  
-----



# Tests Passed by CFSA Skaters

FOLLOWING are all Tests passed and reported from March 17, 1960 to April 22, 1960. Errors should be reported to the local Test Officer and to the Secretary of the CFSA, Charles H. Cumming, 74 George St., Ottawa, Ont.

*In the April issue, Brandon FSC skater Jo-Ann Pegoraro, who passed the Second Test, was incorrectly listed as John Pegoraro.*

**AMHERST SC:** Pre—Mrs. S. Donaldson, Mrs. J. Matthews, Mildred Robinson. **Bronze**—Mrs. E. R. MacDonald, Mrs. J. Matthews.

**ASSINIBOINE FSC:** 5—Claire Dafoe.

**AURORA FSC:** Pre—Lynn Holman, Beverley Ward. 1—Mary Filitos. **Pre D.**—Jennifer Hamilton, Ann Harrison, Lynn Scott.

**AYLMER FSC:** Pre—Margaret Turtle. **Pre D.**—Donnajean Pattinson, Victoria Vernacht.

**BAIE D'URFE FSC:** Pre—Robert J. Cowan, Marilyn Dumaesq, Madeleine Howison, Patricia Irving, Vicky Lee, Sharron McGee.

**BATHURST SC:** Pre—Ruth Amos, Annette Babineau, Elinor Benjamin, Helen Bond, Shella Burns, Camilla Comeau, Madeline Ferris, Karen Hoelke, Isobel Kent, Jo Ann Lavigne, Diane Levy, Heather Logan, Diane Lutes, Ian Lutes, Colleen Murray, Natalie Willis. 1—Gerard Chamberlain, Camilla Comeau, Judy Ferris, Janet Seely. **Bronze**—Judy Ferris.

**BLENNHEIM FSC:** Pre—Janice Cruickshank, Katherine Fleming. 1—Janice Gable. 2—Janet Stewart. **Pre D.**—Katherine Fleming. **Bronze**—Janice Gable, Karen Neil. **Senior Bronze**—Katherine Cruickshank. **Silver**—Lee Ann McKeough.

**BORDER FSC:** Pre—Penny Bonner, Betty Ann Dallman, Fawn Elsey, Rochelle Gladu, Marjorie Hamlyn, Micheline Klmyko, Lorraine Mack, Ellen Reid, Ann Schyndel. 1—Raymond Tibbs.

**BRANDON FSC:** Pre—Sandra Graham, Marnie Hall, Eileen Hilhorst, Janet Hopkins, Jay Jacobson, Marjorie May, Karen Shields. 1—Joann Antoniuk, Linda Burnske, Trudy Hickling, Suzanne Morrison, Donna Wilson. 3—Noreen Martin, Bill Windover.

**BRANT FSC:** Pre—Carol Rendle. 1—Joan Denton. **Pre D.**—Marilyn Misner. **Bronze**—Patricia Higgins.

**BURLINGTON FSC:** Pre—Patricia Allen, Karen Brown, Marilee Griffith, Roberta Haley, David Hall, Karen Lye, Janis Taberner. 1—Leslie Lower, Helen Paterson. **Pre D.**—Elaine Folk, Pava Graves, Lorraine Griffith, Laurie Hoover, Chrissie Jack, Wendy Patterson, Susan Pennington, Lynne Roberts, Coleen Shields, Janis Taberner, Linda Thomas. **Bronze**—Jane Jackman.

**BURNABY WC:** Pre—Barbara Blair, Sidney Dean, Margaret Fraser, Darlene Saunders, Sandra Smylie, Judy Tapella, Jean Wilson. 1—Maureen Baker, Sandra Hicks, Helen Little, Donna Sankey.

**CALALTA COMMUNITY FSC:** Pre—Gerry Adams, Carol Beil, Valerie Campbell, Nancy Spence, Brenda Walls. 1—Carol Beil, Linda Brown, Brenda Walls. **Pre D.**—Gerry Adams, Ann Campbell, Joan Marshall, Nancy Spence.

**CAPILANO WC:** 2—Sharon Browning. **Senior Bronze**—Don Phillips. **USFSA Pre Silver**—Edward Tarling. **Gold**—Vivian Percival, Roger Wickson. **Free Dance**—Pat Chestnut, Frank Royle.

**CHATHAM FSC:** Pre—Carol Clarke, Pat Mulhern, Mary Jane Stevens. 1—Pam Russello. **Pre D.**—Maribeth Gauthier. **Bronze**—Ronald Beckett, Betty Fisher.

**COBOURG FSC:** Pre—Maureen Best, Michael Carey, Mary Grace Dawe, Pat Hoffman, Anne Melvanin, Ricki Melvanin, Brenda Mitchell, Michael Newton, Jean Parkin, Sharron Seguire, Teresa Stover. 1—Robert Emerson, Pat McElroy, Wendy McKim, Christine Rafuse, Susan Reisler, Bonnie Symons, Brenda Symons, Cheryl Timlin. **Pre D.**—Robert Emerson, Judy Gear, Patricia Huffman, Janice James, Manfred Schuman, Pamela Sheaff, Teresa Stover. **Bronze**—Barry Gable, Pat McElroy, Wendy McKim, Yvonne Smith, Carolyn Sutton, Cheryl Timlin.

**COLLINGWOOD FSC:** Pre—Judy Ellis, Judy Hawman, Linda Patrick, Judy Robinson, Sharon Smith, Sharon Stewart.

**CORNWALL YWCA FSC:** Pre—Barbara Pechie. 1—Nicole Dalbec, Bonnie Riddell, Ann Tomlinson.

**CRANBROOK FSC:** Pre—Ann Campbell, Avis Clifford, Janice Kary, Shellie Proctor, Jean Ann Webb.

**CREDIT VALLEY SC:** **Pre D.**—Joanne Randall. **Bronze**—Patricia Smith.

**DUNDAS FSC:** Pre—Janice Bates, Wendy Bradbury, Penny Grisdale, Lorna Holmes, Diane Tidey. 1—Dianne Leggat. 2—Noreen Gumbert. **Pre D.**—Janet Cowling, Elizabeth Gow, Penny Grisdale, Linda Horn, Darlene Shimoda, Dianne Tidey, Hilary White. **Senior Bronze**—Donald Knight. **Silver**—Mary Jane Mayes.

**EAST KENT FSC:** **Pre D.**—Jack Collins. **Bronze**—Marilyn Sales.

**EAST YORK SC:** **Senior Bronze**—Joanne Keith, Aletha Moorhead, Judy West. **Silver**—Donelda Fleischacker.

**EDMONTON FSC:** Pre—Phillip Barchard, Valerie Gergrandt, Teddy Lochner, Daphne Wright. 1—Barbara Barchard, Danazee Chambers, Sherrill Marchall, Beverly Phoenix, Nona Reuter, Pamela Wood, Archie Zariski. 2—Beverly Etherington. 3—Laverne Gerbrandt. 4—Allison Hamilton. 5—Peggy Welsh. **Pre D.**—Marilyn Bailey, Colleen Cameron, Carol Etherington, Marian Levison, Teddy Lochner, Donna Mace, Dawn Parker, Pam Wood, Daphne Wright, Archie Zariski. **Bronze**—Beverly Etherington, Marian Levison, Gail Paton, Lynne Paton, Vicki Reuter, Judy Topp.

**ESPAÑOLA SC:** Pre—Cecilia Callaghan, Karen Crockford, Susan Mahoney, Judith McMillan. 3—Connie Samotowka.

**ESTON FSC:** Pre—Kathy Grimes, Janice Hoeft, Linda Kellington, Cassie Kurpyta, Betty Macpherson, Diane Minogue, Vickie Minogue, Betty Thompson, Barbara Rooke.

**FERGUS SC:** Pre—James Cameron, Virginia Dickie, Jane Ferguson, Judy Gibson, Noreen Street. 2—Christine Russell. **Pre D.**—Karen Brown, James Cameron, Judy Gibson, Noreen Street.

**FLIN FLON FSC:** Pre—Louise Hone, Lynn McCoy, Alma Moule, Thersa Poloway, Donna Stevens.

**FOREST FSC:** Pre—Joanne Boylan, Penny Clarke, Paula Cockerham, Norrean Sheppard, Betsy Williamson, Beverly Wood. 1—Susan Coote, Donna Field, Mary Frances McCauley. **Pre D.**—Joan Stuart.

**FORT ERIE FSC:** Pre—Elizabeth Cook, Wendy Ellis, Mary Metzger, James Sauer, Carole Wrightman. 1—Sandra Kelly. **Pre D.**—Debbie Davidson, James Sauer. **Bronze**—Patricia Harber, Sandra Kelly.

**FORT WILLIAM THUNDER BAY FSC:** 6—Gloria Jean Sibley.

**GEORGIAN FSC:** Pre—Bernadette Beatty, Myrtle Keeling, Barbara Slater, Patsy Waines. 1—Gerald McGhee. **Pre D.**—Gerald McGhee, Louise Weller. **Bronze**—Wayne Fleck, William Richardson. **Silver**—Nancy Potter, Donna Whitney.

**GLENCOE CLUB:** Pre—Marsha Austin, Carol Ann Bigelow, Michele Cote, Shelley Florendine, Patricia Harvie, Mary King, Patricia Knectal, Rebecca Mackie, Laurie McNeil, Patricia Paulson. 1—Lucille Cote, Janice Florendine, John Simpson, Mary Ann Venini. 2—Lynn Florendine, Bonnie Pow, Oonagh Talbot. 3—Barbara Paulson, Barbara Simpson, Nancy Townshend. 4—Marilyn Berry, Richard Dunlap. 6—Mary Ackland. 8—Elsie Busch. **Pre D.**—Robert Bridgeman, Shelley Florendine, Patsy Paulson. **Bronze**—Barbara Ballochey, Elaine Cote, Lucille Cote, Michele Cote, Janice Florendine, Marilyn McNeil, Nancy Robson, Susan Todd. **Senior Bronze**—Margaret Newby, Barbara Paulson, Michael Talbot. **Silver**—Heather Robson. **Senior Silver**—Elsie Busch.

**GLENGARRY FSC:** Pre—Susan Amundsen, Linda Dolynuk, Wendy Dolynuk, Janet Douglas, Donni Girling, Joanne Hall, Gladys Hay, Janet Laidlaw, Carol Lake, Joan Morrey, Diane McArthur, Martha McCallum, Heather McConnachie, Sandra McKenzie, Kerry Norris, Joanne Reekie, Marilyn Saunders, Doreen Tannant, Sheila Thompson, Lynne Wayne. 1—Barbara Bathgate, Leslie Grove, Vivian Halbauer, Beverley Marshall, Cathy Settle, Peggy Speers, Judy Watt. 2—Fyfe Rutherford, Jan Stapleton. 3—Marlyne Dudeck, Sharon Southworth. **Pre D.**—Barbara Bathgate, Marjorie Bell, Marna Leslie, Verla MacDonald, Cathy Settle, Peggy Speers. **Bronze**—Nancy Batie, Sharlene Harvey, Karen Johnson, Sharon Leard, Jan Stapleton, Pamela Wyles. **Silver**—Bruce Barritt, Sally Warr.

**GRANITE CLUB (TORONTO):** Pre—Barbara Elliot, Debra Pepler, Barbara Winters. 2—Suzanne Russell.

**GRIMSBY FSC:** Pre—John Valk. **Bronze**—Donna Ogilvie.

**GUELPH COLLEGE FSC:** 6—John Caughell.

**HALIFAX SC:** Pre—Sandra Kennedy. **Bronze**—Robert Kehoe, Judy Reid. **Senior Bronze**—Shirley MacLeod.

**HAMILTON SC:** **Pre D.**—Gail Adams, Susan Blatz, Margaret Gains, Patricia Garniss, Elizabeth Scott, Sharon Vermette. **Bronze**—Mildred Manel, Jane Mulholland. **Senior Bronze**—Marilyn Guay-Taylor.

**IC OF GREATER WINNIPEG:** Pre—Cheryl Gorrie, Daria Prychun, Jeannie Stevenson. 1—Judy Bergey, Jennifer Donger, Barbara MacCaughy. 4—Shirley Robson.

**INGERSOLL FSC:** Pre—Brenda Rendle. **Pre D.**—Joan MacFarlane, Joel Piper, Brenda Rendle, Judy Stemmler, Lynda Williamson.

**KELOWNA FSC:** Pre—Lynn Adkins, Linda Berger, Carolyn Hickman, Shirley Schieve. 1—Lorraine Smith.

**KENORA FSC:** 2—Sheila Webb.

**KERRISDALE FSC:** Pre—Joanne Brown, Maureen Burke, Mrs. M. Dunn, Patricia Dunn, Erling Hanson, Janice Henriksen, Kathryn Jones, Tera Kirkpatrick, Janet Lecky, Dougal Livingstone, Mary McCaffrey, Elizabeth McCrick, Lindsay Macdonald, Judy McIntosh, Margot Miller, Darlene Mol, Ray Mol, Cynthia Munsie, Julie Norton, Donna Omelchuk, Janet Oppenheimer, Penny Pringle, Gillian Rand, Gail Roberts, Margaret Ross, Jane Saxton, Charles Schultz, Kathy Stockton, Roberta Stone, Faye Warner, Colleen Waymark, Ann West. 1—Ursie Binkert, Barbara Bird, Cathy Irwin, Thelma Hutchinson, Sheila MacDonald, Karen Maggnussen. 3—Mark Bowman. **Senior Bronze**—Patsy Ellis. **Silver**—Douglas Hole.

**KERROBERT FSC:** Pre—Eileen Fountain, Joan Hill, Heather Johnston, Carol McGrath, Lynda Rolston. 1—Bonnah Allen, Joanne Allen, Marlene Bahm.

**KINDERSLEY FSC:** Pre—Lois Angman, Laurel Cavanaugh, Sharon Elvis, Leanne Facca, Marilyn Friesen, Rhelda Furry, Judy Ham, Lorna Jones, Brenda Mathias, Patricia Staples, Gloria Stocks, Evelyn Weir, Hazel Wilkins, Daryl Wright.

**KIRKLAND DISTRICT FSC:** 1—Maureen Coulombe. 2—Barbara Cameron, Judy Paljucks. 3—Janet Finger, Barbara Pochopsky.

**LACHINE FSC:** Pre—Anna Carrignan, Elaine Clark, Carol Dunn, Judy Dunn, Geraldine Gogarty, Judy Halbert, Thomas Hayim, Elizabeth Hurdle, Joanne Laverdiere, Lynne O'Brien, Nancy Pike, Barbara Thornton, Vivia Tobin, Joanne Winslow. **Bronze**—Arlette DesGranges.

**LACOMBE FSC:** Pre—Edna Atkinson, Lois Atkinson, Judy Hopkins, Myrna Olafson, Merle Palmer, Maureen Thompson, Rena White. **Pre D.**—Judy Hopkins, Merle Palmer, Elana Scraba.

**LAKE SHORE SC:** Pre—Joyce Christie, Denise Hillman, Ian Hillman, Susan Kingston, Barbara Pursglove. 3—Roberta Laurent. **Pre D.**—Graeme Harris, Sherry Hahn, Denise Hillman, Debbie Hughes, Susan Kingston. **Bronze**—Martina Hetherington, Leslie Histrop. **Senior Bronze**—Susan Hirst. **Silver**—Mary Church, Paul Crowther. **Senior Silver**—Petra Burka.

**LETHBRIDGE FSC:** Pre—Judith Arnold, Barbara Brackie, Maureen Byrne, Karol Fogal, Sandra Fogal, Carolyn Hamilton, Lorraine Harrison, Rosemary Hummel, Kathy Irvine, Della Kascmar, Gail Klunkhammer, Barbara Kwassie, Ann McNally, Barbara Meredith, Marilyn Miller, Joyce Muotila, Diane Pederson, Carol Perkinson, Maureen Prouse, Pat Schwertzer. 1—Karin Blair, Sandra Fogal, Rosemary Hummel, Della Kascmar.



... announcing the

# Saint Paul

**FIGURE SKATING CLUB'S 24TH ANNUAL SUMMER SESSION**

**JUNE 27th through SEPTEMBER 3rd, 1960**

- **SKATE THE ENTIRE SEASON FOR ONLY \$49.00!**
- **ALL GOLD MEDAL INSTRUCTORS, INCLUDING NATE WALLEY, MADELOL OLSON WILLIAMS AND MURIEL KAY.**
- **A COMPLETE SUMMER SKATING PROGRAM WITH FIGURE, FREE SKATING AND DANCE.**
- **A CHANCE TO PARTICIPATE IN THE FAMOUS SAINT PAUL 'POP MUSICAL ICE REVUES' — CHOREOGRAPHY BY STANLEY JUDSON OF LONDON, ENGLAND.**

*For Further Information Write:*

**Saint Paul Figure Skating Club  
143 West Fourth Street  
Saint Paul 2, Minnesota**

*Announcing the Sixth Annual*

## HERSHEY SPORTS ARENA SUMMER SKATING SESSION

In the Chocolate-Town of Hershey, Pa.

**June 11 Thru August 21**

**Under Direction Of**

*Felix Kaspar*

**World's Champion  
1937 - 1938**

New Arrangements for Skating Camp

Sponsored by Hershey Figure Skating Club  
Sanctioned by U.S.F.S.A.

Address All Inquiries To  
Hershey Sports Arena  
Hershey, Penna.



**FELIX KASPAR**

Please mention **SKATING** when answering advertisements.

**LEVACK FSC:** Pre—Mavis Ceasar, Carol Dean, Pat Delorme, Sheryl McCourt, Cathy McGowan, Gail Moir, Susan Sirkka. 1—Jane Butterworth, Linda Forget, Ann MacDonald, Ina Lynn Purvis.

**LINDSAY FSC:** Pre—Margaret Terrett. **Pre D.**—Jayne Carnegie, Gail Forder, Elizabeth St. John, Margaret Terrett, Marianne Vernon.

**LONDON SC:** Pre—Christine Branigan, Christine Campion, Johnny Cooke, Linda Harvey, Mary Ann Jongerius, Angela Killoran, Danny McLellan, Sandra McLellan, Barbara Martin, Judy Powell, Elizabeth Rathbun, Flora Rathbun, Gail Schilbe, Beverley Taylor. 1—Patricia McDonald. 5—Carol LeCourtis. **Pre D.**—Marilyn Cosens, Michael Crellin, Diane Purkis. **Bronze**—Linda Evans, Brenda Hay.

**MAIDSTONE FSC:** Pre—Lana Carruthers, Janice Lambert, Jackie Newstad, Sharon Newstad, Helen Tasker, Linda Van Holwede, Marlene Wagner, Vonnice Watson. 1—Elle Creelman, Nancy Hanson, Theresa Lipka, Pat Newlove, Sonja Runge. **Pre D.**—Sonja Runge, Karen Wunsch.

**MARATHON FSC:** Pre—Barbara Tomczyk.

**MONCTON FSC:** Pre—Joan Battah, Claire Bourgeois, Francine Gaudet, Charlotte Glencross, John Paul Hayes, Diane Horsman, Elizabeth Jamieson, Linda Lean, Berthe LeBlanc, Muriel LeBlanc, Gerene Leger, Merva MacDonald, Nancy MacDonald, Davida Melanson, Gail Page, Gerald Roy, Mark Steeves, Kathy Tippet. 1—Nancy Grainger.

**MONTREAL FSC:** Pre—Debbie Dubrofsky, Susan Dubrofsky, Marlene Gauthier, Margaret Nish, DeWolf Shaw, Colin Smillie. 1—Benita Rorke. **Pre D.**—A. H. Godziszewski.

**MOUNT PAUL SC:** Senior Silver—Joan Turner.

**NANAIMO FSC:** Pre—Patti Hinde, Marion Kirkbride, Diane Mosdell, Carol Ward. 1—Jean MacLeod, Luanne Waldriff. **Pre D.**—Yvonne Aitken, Georgina Carmichael, Patti Hinde, Diane Mosdell.

**NELSON FSC:** Pre—Gayle May, Susan Wallach. 1—Elizabeth Clark, Judy Hooker. 4—Elizabeth Barclay. **Pre D.**—C. C. Padley. **Bronze**—Sharon Harshaw. **Senior Bronze**—Michael Laughton, Joan Padley, Doreen Speirs. **Silver**—Elizabeth Barclay.

**NEWCASTLE FSC:** Pre—Nancy Anderson, Roberta Innes, Margo Ann Parker, Patsy Tracy, Cheryl Watling. 1—Lois Crocker, Arlene Manderson. **Pre D.**—Nancy Anderson, Roberta Innis, Jaclyn Kingston. **Bronze**—Danny Arsenaault, Lois Crocker, Jaclyn Kingston, Arlene Manderson.

**NEW LISKEARD FSC:** Pre—Diana Dean, Barbara Farlinger, Trudi Grant, Kerry Ann Hogan, Louise Lamothe, Margaret Landry, Joyce Menzies, Margaret Menzies, Nancy Thoday, Sheila Thompson. 1—Tommy Binkley, Arlene Farlinger, Carman Landry, Bettijane Mills, Connie Spencer. 3—Bonnie Keon.

**NEWMARKET FSC:** Pre—Lexie Jay. **Pre D.**—Gayle Hutchinson, June Ritchie. **Bronze**—Anna Shedlowich. **Senior Bronze**—Karen Peat.

**NIAGARA FALLS SC:** Pre—Elizabeth Cole, Susan Edwards, Ann Garten, Janice Kandracs, Francis Miller, Maura McMahon. 1—Susan Amery, Charles Pawloski. **Pre D.**—Susan Amery, Gail Christopher, Diane Cummings, Margaret Haley, Wallace Keller, Debbie Kennedy, Charles Pawloski, Marilyn Wittkowsky. **Bronze**—Candy Bowman, Leslie Merlin, Jill Palumbo.

**NORTH BAY FSC:** Pre—Beverley Ann Alcorn, Anne Barron, Patti Harrison, Vicki Hollows, Wendy Kift, Judy Kizell, Linda Lamb, Rozanne Miller, Derek Penney, Jane Anne Wallace. 1—Barbara Cameron, Claudette Emery, Valerie Kennedy, Susan Muir, Linda Numella. 2—Janet Lorimer. 3—Judy Marsh, Lorraine Prouse. **Pre D.**—Janet Lorimer. **Bronze**—Gordon Lorimer.

**NORTH SHORE WC:** Pre—Lynn Campbell, Cindy MacLeod, Barbara MacLeod, Judy MacLeod, Paddi Prior.

**NORTHWESTERN FSC:** Pre—Shirley Gasparet, Rainer Henschel, May Keating, Bonnie LaRose, Jentie MacLeod. 1—Gerald D'Amico, Shirley Farmer.

**ORILLIA FSC:** Pre—Mary Bongard, Debbie Donevan, Barbara Glass, Ann Johnston, Colleen O'Brien, Lynn Robertson, Sheila Stewart, Suzanne Strong, Marianne Taylor. 1—Cheryl Behan. **Pre D.**—Maureen Blake, Doug Brown, Karen Dempsey, Barbara Guy, Mary Jackson. **Bronze**—Marilyn Green, Dianne Temple.

**OSHAWA SC:** Pre—Jane Alker, Rosemary Conlin, Roger Horton, Sharon Knox, Katherine Normyle, Barbara Storie. 1—Barbara Holland, Kathy Jones, Lynn Small, Janice Tomalak. 2—Judy Kewin. 3—April Carter. 5—Margaret Ann Witherspoon. **Pre D.**—Roger Horton, Catherine Normyle. **Bronze**—Shawn Leddy, Mary Oke, Janice Tomalak. **Silver**—Gloria Tatton, Doreen Yeo.

**PONOKA FSC:** Pre—Cheryl Campbell, Lynn Christianson, Connie Harris, Betty Moore, Linda Webber, Kristi Younge. 1—Marlene Brekke, Wendy Latiff. 2—Donna Webber. **Pre D.**—Marlene Brekke, Wendy Latiff, Deanne Schultz, Norman Smith, Donna Webber, Kristi Younge.

**PORT ARTHUR THUNDER BAY FSC:** **Pre D.**—Bonnie Walsh. **Bronze**—Judy Baker.

**PORTAGE LA PRAIRIE FSC:** 1—Carol Sing.

**PORT HOPE FSC:** Pre—Marianne Austin, Donna Foster, Mary Ann Kelly, Jacqueline Laurie, Valerie Sanders. 1—Joan Wakely. **Bronze**—Joan Wakely.

**PROFESSIONALS:** 3—Veronica Swischuk. **Pre D.**—Allan Bruce.

**RICHMOND HILL FSC:** Pre—Jill Anderson, Linda Hayes, Patsy Lambert, Kathy Mason, Heather Mills, Joan Morrow, Judith Paton, Nancy Wildfong. 1—Diane Hayes. **Pre D.**—Jill Anderson, Linda Hayes, Susan Mitchell.

**RIVERSIDE FSC:** **Pre D.**—Kathryn Eddie, Jaye Reid.

**RIVERTON IC:** Pre—Margaret Furgala, Olena Johnson, Shirley Kay, Margaret Luprypa, Kathy Majure, Janis Olafson, Elaine Sigurdson, Gloria Triska. 1—Carol Sigurdson.

**ST. HYACINTHE FSC:** Pre—Leslie Hamilton, Daniel Philie. 1—Christiane Bernier, Monique Bruneau, Sonia Robida, Suzanne St. Cyr.

**ST. THOMAS FSC:** Pre—Gail Barr, Brenda Bruce, Kay Burkman, Marilyne Clark, Judy Jordan, Gail Kline, Monie McCance, Lee MacLaughlin, Beth McNiven, Marilyne Metler, Mary Pell, Jacqueline Reynolds, Paula Sanders, Janice Scott, Sue Sutton, Carol Tuff, Lois Withenshaw. 1—Linda Campbell, Pat Duncan, Mary Jane Raven. 2—Julia Ayling. **Pre D.**—Sharon Evelyn, Susan Martin. **Bronze**—Susan Martin.

**SASKATOON FSC:** Pre—Karen Flichel, Marylee Koyl, Valerie McLean, Martina Poole, Patsy Sproule. 1—Dee English, Dale Hazell, Cheryl Roycroft, Jeanette Schmutz.



# SPRING AND SUMMER SKATING SCHOOL AT ROSLYN ICE STUDIO

MAY 15, 1960—SEPTEMBER 3, 1960

*Private and Class Instruction  
Patch and Practice*

Sponsored by Metropolitan Figure Skating Club  
New York, New York

Sanctioned by United States Figure Skating Association

80 Roslyn Road  
Roslyn Heights, N. Y

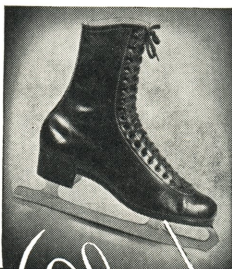
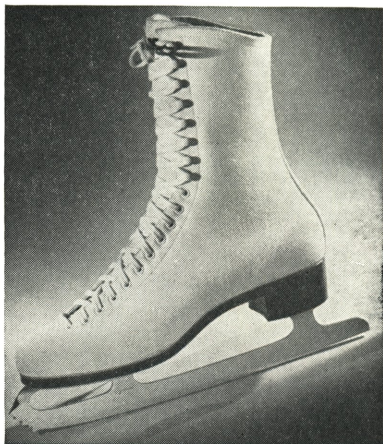
MAYfair 1-1177

## FIRST

... in fit                      ... in quality  
... in comfort              ... in preference  
... in styling                ... in durability

... and ...

**FIRST IN PRICE**  
on the Rink or in the Skate Shop



Novice or Pro, see your Rink or Skate Shop Operator. Ask to see and compare them all. Your best choice will be the logical one . . .

... a SKATE BOOT by Oberhammer

**FREE:**

Write for  
Measurement  
Chart!

FIRST CHOICE OF PROFESSIONALS...

SINCE 1927



*Oberhammer*

**SHOE CO.**

689 NO. DALE STREET  
ST. PAUL 3, MINNESOTA

Please mention SKATING when answering advertisements.

**SAULT FSC:** Pre—Maureen Lillie, 1—Jane Babcock.

**SCARBORO FSC:** 2—Haig Oundjian. **Silver**—Nancy Taylor.

**SELKIRK FSC:** Pre—Bonnie Chamberlain, Lauran Eglin, Geraldine Henrikson, Cheryl Leclair, Louanne Leclair, Shelley Mowat, Marion Preachuk, Linda Russell, Noreen Simon, Nancy Weir, 1—Nik Grandt.

**SILVER BLADES SC (TORONTO):** Pre D.—Leigh Anderson.

**STAMFORD SC:** Pre—Rose Mary Chisholm, 1—Donna Perkins, 2—Marian Spratt. **Silver**—Gregory McQueen.

**STOUFFVILLE FSC:** Pre—Patricia Foord, Donna Knox, Clara Mullen, Linda Wright, 1—Ronald Patrick, 2—Janet Button, Darlene Watson, 3—Barbara Button. **Bronze**—Janet Button.

**SUDBURY SC:** Pre—Beverley Browning, Marilyn Jacques, Susan Majkot, 6—Margaret Ann Bowen.

**SUSSEX SC:** Pre—Joyce Corbett, Pam Corbett, Judy Hyatt, Gerald MacFarlane, Carol McLeod, Susan Stockton, Barbara Windsor, Judy Wortley.

**SWIFT CURRENT FSC:** Pre—Marie Barnes, Maureen MacWilliam.

**TERRACE BAY FSC:** Pre—Cathy-Jo Cotton, Pamela Cumming, Lois Fraser, Elizabeth Hayes, Molly McCausland, Delcine Malcolm, Shirley Phillips, Stephanie Synishin, 1—Marie Delaronde, Terry Delaronde, Molly Harris, Elizabeth Hayes, Irene Stuart, 2—Arlene Coates, Marcia Hamilton, 4—Jane Heenan. **Pre D.**—Cheryl Duncan, Marcia Hamilton, Velma LeBlanc. **Bronze**—Jane Heenan.

**TISDALE FSC:** 1—Anne Dewar, Gertrude Kangas, Christine Pecore, 2—Helen Beaton, Gayle Chambers. **Pre D.**—Patricia Harris, Wendy Morel, June Philion, Peggy Salo. **Bronze**—Irene Ceconni, Ann Dewar, Sandra Dunn, Pat Heise, Gertrude Kangas.

**TORONTO CS & CC:** 1—David McCart, 3—Barbara Brunton. **Bronze**—Debbie Brooker, Mary McKechnie. **Senior Bronze**—David McCart, Ian McCart. **Senior Silver**—Leslie Black, Kathie Hamilton. **USFSA Pre Gold**—Judy Saunders.

**TOTEM FSC:** Pre—Marcia Atkinson, Gloria Borthwick, Wendy Borthwick, Carol Bowman, Nancy Styles, 1—April Borthwick, Ann Tripps.

**TOWN OF MOUNT ROYAL FSC:** Pre—Jane Archibald, Helen Booth, Louise Bourgault, Pamela Boyd, Beverley Bulger, Michele Claude, Suzanne Claude, Margaret Davidson, Claire Desjardins, Andre Geroux, Marilyn Harnder, Julie Holt, Cecily Lawson, Jo-Anne McLaughlin, Ruth McSkimming, Julie Pinder, Susue Sherer, Ann Swiston, Jennifer Watson, 1—Cynthia Miller, Judith Waller, 2—Carolyn Hall. **Bronze**—Pat MacCormac.

**UNIONVILLE SC:** Pre D.—Antony Betts, Cynthia Steer.

**UNIVERSITY SC (TORONTO):** Pre—Elizabeth King, Lynda Radford, 1—Valerie Beynon. **Pre D.**—Coral Boardman, Jana Boyce, Jennifer Clark, Gail Culley, Ronnie Hugli, Eileen Jousse, Mary Lewis, Marilyn McLellan, David Moreton, Susan Morison, Kalman Papp, Douglas Reid, Pamela Reid, Wendy Stephens, Brooke Thoburn. **Bronze**—Leslie Bennett, Donna Hodgkinson, Sonja Morawetz, Elizabeth Ruse, Mary Ruse. **Senior Bronze**—Valerie Beynon, Robert Cumming, Harvey Rorke.

**VANCOUVER SC:** Pre—Suzanne Bell, Brenna Bruce, Joyce Corrado, Joan Davie, Roby de Vries, Marie Fawcett, Barbara Goode, Linda Guthrie, Marie Howardson, Claire Newall, Gail Williams, 1—Leslie Kehlter, Joan Krisko, Sheila McConnachie, 2—Bill Chyplyk, 7—Lynn Pagliaro. **Pre D.**—Mary Lutz, Sheila McConnachie, Lyall Markham. **Bronze**—Beverley Curtis, Bonnie Jean Jackson, Sherry Monahan, Linda Sawle.

**VERDUN FSC:** Pre—Louise Casault, Danielle Tousignant.

**VERNON FSC:** Pre—Susan Edwards, Ann Hemming, Roberta Inkster, Dianne King, Linda Locheed, Wendy Wetherill, Phillip Zavaglia, 1—Gail Edwards, Sandra Ryan, Jo Watson, Patti Wight. **Pre D.**—Sandra Ryan, Patti Wight.

**VICTORIA FSC:** Pre—Kathleen Hobbs, Celia McNally, Brenda Maple, Sandra Miners, Sharon Spence. **Pre D.**—Doreen Copp, Jean Dunlop, Jean Gardner, Jean Groutage, Kathleen Hobbs, Brenda Holmes, Bruce Kaiser, John McKilligan, Donna Gail McMillan, Joan McMurtie, Reg. Meeres, Sandra Miners, Cheryl Moore, Judy Roe, Judy Rose, Bonnie Rush, Ann Stanbridge, Jill Stuckey, Glenda White. **Bronze**—Lorna Cooper, Ev. DeKolver, Ann Gyllenspetz, Jill Heinrichs, Margaret Kaiser, Janice Laidlaw, Bill McDonald, Bryce Swetnam, Cheryl Ann Watson.

**VIRDEN FSC:** 1—Shirley Stacey.

**WALLACEBURG FSC:** Pre—Susan Asseltine.

**WASCANA WC:** Pre—Sandra Barnett, Diane Filpchuk, Jill Harper, Carol Homenik, Dorothy Logan, Dawn McMillan, Maureen MacMillan, Patsy Parker, Joy Rippel, John Risdal, Frances Ross, Gordon Rublitz, Cheribea Shindle, 1—Brenda Babey, Arlee Gordon, Debbie Haug, Jackie Plaster, Judy Plaster, Mary Robb, Jane Tyerman, 2—Betty Ann Hubbs, 6—Bonnie Diamond, Claire Lane, Sharon Shannon. **Pre D.**—Brenda Babey, Reggie Bagwell, Betty Ann Hubbs, Jackie Plaster, Judy Plaster. **Bronze**—Nikki Hawkesford, Betty Ann Hubbs, Judith Minor, Linda Spriggs.

**WELLAND WC:** Pre—Donna George, Sharon Holmes, Roger Jones, Sharon Pettit, Douane Tufts, 1—Kathy Smith, 2—Poppy Black. **Pre D.**—Pamela Cawthorn, Anne Colter, Sharon Holmes, Brenda Shaw. **Bronze**—Kathy Smith, Linda Zimmerman.

**WEST END FSC:** Pre—Elaine Barnes, Barbara Carney, Wendy Chisnall, Susan Ferguson, Barbara Irwin, Robert Irwin, Rosemary Knowles, Maureen Newman, Janet Skalcik, Jaclyn Snyder, Mary Townsend, 2—Gail Doyle, 3—Marilyn Humphries, Barbara Russell. **Pre D.**—Jennifer Cann, Frances Hart. **Bronze**—Janet Karn, Peter Lemieux.

**WEST LORNE FSC:** Pre—Laura Jane Anderson, Anne Carruthers, Beverley Fairles, Dianne Ronson.

**WESTON SC:** Pre—Laura Gallasso, Beverly Hudson, Marian Hughes, Susan Kerr, 2—Elizabeth Bowden, Judy Henderson, 3—Sandra Mooney. **Pre D.**—Diane Bevan, Linda Michelin, Cathy Speechly. **Bronze**—Shirley Bohemier, Lynn Von Zuben.

**WEYBURN FSC:** Pre—Beverly Badham, Thelma Fisk, Arlaine Fleming, Joy Puddephatt, Ann Teesdale, Sandra Van Dusen, Constance Worden, Judith Worden, 1—Brian Link.



# Sentinel

COIN AND KEY OPERATED CHECKING SYSTEMS

if you  
want to  
provide  
patrons  
with the  
most modern  
and  
convenient  
checking  
service ...  
and at the  
same time  
eliminate  
checking  
costs...write  
or phone

**THE FLXIBLE COMPANY**

LOUDONVILLE 1, OHIO

*Finest name in the world of lockers*

*Summer Skate In  
Canada's Gorgeous Playland*

## LAKE BERNARD

### Summer Skating School

*Sundridge, Ontario*

*Sanctioned By  
The Canadian F. S. A.*

FIGURES

DANCING

FREE SKATING

TOP FLIGHT PROFESSIONALS

*6th Annual Season*

*For complete Details Write*

*Paul R. Tatton, 204 Parsons Ave.  
North Bay, Ontario, Canada*

*W. J. Copeman, M.D.  
Sundridge, Ontario, Canada*

## STAMFORD SUMMER SKATING SCHOOL

NIAGARA FALLS, ONTARIO  
CANADA

NINE FULL WEEKS

JUNE 27th TO AUGUST 28th, 1960

Licensed by the Canadian Figure Skating Association

Write to: DIRECTOR — WALLACE WM. DISTELMEYER

986 WHITTIER CRESCENT, BOX 281

Tel. Cr. 8-9857

Lorne Park, Ontario, Canada

Please mention SKATING when answering advertisements.

**WILLINGDON FSC:** Pre—Jo Brooks, Wendy Campbell, Gail Carruthers, Rhonda Chard, Sharon Collicutt, Susan Collins, Pat Craig, Beverley Creamer, Sandra Dykes, Madelon Hocken, Catherine Johnston, Donna Mitchell, Wanda Munson. 1—Jo Brooks, Vicki McCullough. 2—Ruth Davies, Jean Kosterwa.

**WINDSOR FSC:** Pre—Janice Law, Ann Marshall. **Pre D.**—Alma Jean Bergeron, Kathie Cascadden, Janice Law, Marilyn Laferet, Jane Lowry, Duane Maki, Elaine Miller, Evelyn Rapsky, Barry Spooner, Kathie Westfall, Beverley Young. **Bronze**—Duane Maki.

**WINGHAM FSC:** Pre—Jane Day, Gloria Reed, Joan Remington. **Pre D.**—Wendy Cronkwright, Rae Gurney, Susan McLandress, Joan Remington, William Rintoul, Marlene Rogers.

**WC OF ST. CATHARINES:** Pre—Marilyn Burman, Valerie Burzawa, Nancy Dover, Karen

**WOODBIDGE FSC:** Pre—Donna Ford. 1—John Byle. 2—Nancy Lingard. **Pre D.**—Margaret Ann Graham, Christine Hurren.

**WOODSTOCK FSC:** Pre—Elaine Garner. 2—Kilby Crowder, Richard Crowder, Karen Spence. Junke, Judy Wright.

## *Tests Passed by USFSA Skaters*

FOLLOWING are all Tests passed and recorded with this Committee from March 23 to April 25, 1960. All errors should be reported first to the Chairman of the local Test Committee and then to the USFSA Central Office, Rm. 517, 30 Huntington Ave., Boston 16, Mass.—Norman E. Fuller, Chairman, USFSA Tests Committee.

**ALBUQUERQUE FSC:** Pre—Linda Baltzley, Sue Gephart, Gay Moser, Judy Southall. 1—Jennie Murfin. 2—Beth Leopold, Lynn Stoppkotte, Peggy Wilson.

**ATLANTIC CITY FSC:** Pre—Mary Boczak.

**ARCTIC BLADES FSC:** Pre—Marilyn Allen, Deborah Blount, Cheryl Brubeck, Maxine Corson, Deborah Herder, Patricia Ann Melaney, Linda Roberts, Lelanie Schraffroth, Helaine Wachs. 1—Yvonne Link, Jean Szatlocky. 3—Toni Vierra. 4—Anita Entrikin.

**ARENA FSC OF CLEVELAND:** Pre—Carole Lorig. 1—Beth Brutvan, Debbie Uveges, Diane Weber.

**ARROWHEAD FSC:** 1—Wanda Lubis, Cecile Vance.

**BEACON HILL CLUB:** **Pre D.**—Nan Birkhold, Mrs. Kenneth Foster, Taffy Foster, Lainey Mixer, Melinda Sharts, Sumner Whitney. **Bronze**—Gail Curtis, Judy Marsh. **Pre Silver**—Fifi Maroney.

**BLADE & EDGE CLUB:** 1—Michael Fields, Sandra Rowan. **Pre D.**—Peggy Fleming.

**BROADMOOR SC:** 5—Janet Smith.

**BROOKLYN FSC:** Pre—Wendy Berman. 1—JoniLynne Richards, Ann Rinaldi, Pamela Stevens. **Bronze**—Carol Block, Ann Kaminsky.

**BUFFALO SC:** Pre—Jody Hollister, Mary Grace Hornung, Donna Kirtland, Christine Rupp, Margaret Schweigert. 1—Rosemary Batt, Lundy Braun, Mary Louise Georger, Linda Laube, Kathryn O'Donnell, Nancy Smith, Marcia Thompson. 2—Sara Burke, Karen Frauenheim, Susan Urban. 3—Colleen Bain, Patricia Ryan. **Pre D.**—Lundy Braun, Connie Gerstner, Kathryn O'Donnell, Patricia O'Donnell. **Bronze**—Alan E. Dewey.

**CAPITOL CITY FSC:** **Pre D.**—Ruth Porter. **Pre Silver**—Gay B. Goff, Eleanor Lenci, Barbara Morrow.

**CHICAGO FSC:** 6—Carolbeth Hoehamer. **Pre D.**—Martha Damron. **Pre Silver**—Nancy Karpin, Lois Katarski. **Silver**—Jo Anne Leyden. **Pre Gold**—Beverly McGee.

**CITY OF LAKES FSC:** Pre—Tamara Klindworth, Dianne Protas, Kathleen Slachta. 1—Dorothy Halloran, Penny Marcoe. 2—Jane Malen, Ruth Ann Williamson. 5—Dawn Carlson.

**CLINTON FSC:** 5—Sally Schantz.

**COLONIAL SC:** 1—Paul Ewan.

**COLUMBUS FSC:** Pre—Judy Hood, Mimi Williams. 2—Susan Loving, Colleen Meinert, Jackie Tietzel. 3—Denyse Smith.

**CORNELL FSC:** Pre—Denise Bortz, George Burrell, Sally Fry, M. J. Herson. 1—Nancy Laubengayer, Paula Mueller, Priscilla Tobey.

**DALLAS FSC:** Pre—Sandy Boyd, Connie Lucien, Connie Trites. 1—Connie Fuller, Edward Hernandez, Marjorie Lathrop, Cathy McAdams, Chris Schroeder, Pamela Shivers. 2—Mike Glover, Rubin Huron, Barbara McCarthy. 3—Kaye Hammond, Barbara Moore, Sandra Ann Sells, Gail Williamson. 4—Linda Hammond, Karen Hinn. 5—Sue Bradford. 6—Ava Jan Clements, Carole Leipsic. **Pre D.**—Mike Glover, Kaye Hammond, Joel Sanders, Pamela Shivers. **Silver**—Margaret Sells, T. J. Tennison.

**DEL-CO FSC:** Pre—David Fili, Kathy Mellin, Pat Sullivan, Peg Turner.

**DENVER CC FSC:** Pre—Randa Blount. 1—Mary Morrison.

**DENVER FSC:** 1—Roger Evans, Trudy Poettmann, Rae Ann Thompson, Pamela Tucker. 4—Perry Byram, Susan Diack. 6—Bonnie Carlson. **Pre D.**—Alice Sutherland.

**DETROIT SC:** Pre—Cornelia Catana, Ellen Freed, Arthur Godashian, Johnny Johns, Carole Kennedy, Bernice Senkovich. 1—Donna Fagnini, Deborah Reynolds. 2—Julia Borschardt, Maude Dubos. **Pre D.**—Susan Hesberger, Tim Spencer.



# SKATING RECORD GUIDE - - .. NEW!



Send Check or Money  
Order To:

Miss Betty Hiscock  
76 Delisle Avenue  
Toronto, Canada.

An Up-To-Date Classification of Over  
500 Recordings, Suitable For Free Skat-  
ing — Ballet Music, Marches, Waltzes,  
etc. Price \$1.00 ppd.

*Write for your copy today!*

## POSITION WANTED

*by Experienced Professional*

with excellent qualifications

Available for Winter Season  
1960-61

Write care of Skating  
Box 16

## WANTED

*Top Professional*

for 1960-61 season  
in large  
Eastern Club

Address applications to  
SKATING, Box 54

## DESIGNERS & ENGINEERS

### SKATING RINKS

PERMANENT — PORTABLE

Costs Revenue

Construction

INDOOR — OUTDOOR

Finance Operation

Planning

### PETER CARVER ASSOCIATES

235 West 46th Street  
New York 36, N. Y.

116 Rinks Designed and  
Engineered in all Parts of  
the World.

*Available for*

*Summer and Winter Seasons*

*1960-61*

**Jean Westwood**

Trainer of Canadian, American  
and North American Champions.  
Qualified to teach through Eighth  
Figure Test and Gold Dance.

Please reply % Skating.

**DULUTH FSC:** Pre—Amy Kurtovich. 1—Julie Kurtovich. 2—Clarice Koslowski. 4—Gary Benson. 5—La Rue Ahlstrom, Carolyn Milostan. 6—Arlene Hildebrandt.

**EL CAMINO ISC:** Pre—Marilyn Andersen, Gayle Hunter.

**ESSEX SC OF NEW JERSEY:** Pre—Cynthia Atwood, Peter Liska, Jan Nicholson, Julia Schleicher, Sandra Wishart. 1—Sandra Marvinney.

**EVANSVILLE FSC:** Pre—Karen Burch, Carol Camperman, Sally Carson, Claudia DeVillez, Jane Engbers, Gail Karen Enlow, Betsy Gorman, Susan Gorman, Johnny Mike Henderson, Trudy Herron, Carla Humphery, Ann Karger, Lynn Knebel, Mary Knebel, Sheila McCown, Joy Meyer, Kathleen Pascoe, James Pennington, Anne Reese, James Ruthenburg, Barbara Sanford, Lois Schmidt, Nancy Tuholski, Janet Wulff. 1—Kimberly Teru Althaus, Julie Bicking, George Deyss, James Disbrow, Elaine Gibson, Judy Gibson, Mary Hawkins, Carl Kuebler, Lynne Savage, Charlene Talarzyk. 2—Beverly Newcomb. **Pre D.**—Julie Bicking, Darby Dees, George Deyss, Diane Dixon, Bruce Dullum, Jane Engbers, Gail Karen Enlow, Steve Fox, Dianne Gibson, Elaine Gibson, Judy Gibson, Mary Hawkins, John Mike Henderson, Sheila McCown, James Pennington, Carol Reese, James Ruthenburg. **Bronze**—Linda Youngblood.

**FSC OF MINNEAPOLIS:** Pre—Sarah Arnold, Arthur Green, Lowell Green, Stephen Johnson, Roxanne Martin. 1—Kathy Freidheim, Patrice Leary, Michele McDevitt, Kathleen Rutledge.

**FSC OF OMAHA:** Pre—Corinne Meredith. 1—Bernice Colway, Betsy Kingman, Joyce Meredith. **Pre D.**—Bernice Colway, George Eisenhart.

**GARDEN STATE SC:** Pre—Sussane Brauer, Randi DeMartini, Marion Farrell, Lorna Johnson, Sandra Johnson, Sharon Johnson, Alison Rubin, Joan Suhl, Nancy Wrubel. 1—Susan Applegate, Susan St. Peter. 2—Jane Malbrock. 4—Donna Lee Dwuelt, Pamela Schneider. 5—Paul Schlossbach. **Pre D.**—Lorna Johnson, Sandra Johnson, Sharon Johnson, Susan McGinnis, Dawn Savannah. **Bronze**—Robert Evans.

**GENESEE FSC:** Pre—Larry Albano, Joyce McDonald, William Rider. 1—Robert Koster. 2—Mary Owens, Virginia Rugg. 3—Laurie Miller. 5—Richard Callaghan, Harrington Moore. **Pre D.**—Roberta Abbott, Vena DeBlisschop, O. V. Germano, Rose Germano, Patricia Lowenthal, Joyce McDonald, Mary Lou Sprague, Christine Thurber, Linda Wegner, Jeffrey Wilkens, Pamela Wilkens. **Bronze**—Patty Burns, Jeanne Clements, Karen Gundry, Dorothy Lull, James Lydon, Jane Miller, Nancy Miller, Mary Owens, Linda Semans. **Pre Silver**—Nancy Bailey, Janet Beeley, Dennis Norfleet, Paul White, III, Andrea Wollensak. **Silver**—Ronald Clawson, Harrington Moore.

**GREAT FALLS FSC:** Pre—Joyce Anderson, Dean Baker, Sandra Douglas, Gregory Kushnak, Beth Ann McGregor, Susan Nineman, Donna Sundquist, George Waltari. 1—Kathryn Soward.

**GREAT NECK FSC:** Pre—Susan Pitt. 1—Diane Firman, Elaine Moore. 2—Wendy Lipman. 3—Leslie Lubo.

**GREEN BAY FSC:** Pre—Nancy Bauer, Debbie Hughes, Julie Ann Soquet, Renne Van Adestini. 1—Marilynne Boyle.

**GREENVILLE FSC:** Pre—Robert C. Aiken, Debbie Diehl, Earl Kirkner, Linda Kirkner, James M. Laur, Maureen Mulligan, K. James Obermyer, Richard Rowland, Leo J. Sirnic.

**HERSHEY FSC:** Pre—Paul Beible, Karen Foller, Peter Hickok, Deborah Koons, Ann Landis, Sylvia Malm, Gayle Norris, Pam Smith, Carol Sprague. 2—Diane Urlick. 4—Brenda Sprague.

**HIAWATHA SC:** Pre—Linda Enstrom, Jack Greenwood, Cynthia Handziak, Ian McLurg, Louise McLurg, Ellen Matheson, Linda Muessel. 1—Janis Aldrich, Donna Enstrom, Jack Greenwood, Lovada Young. 2—Cathy Brownlee. 3—Richard Vallee. 4—Audrey Bailey.

**IC OF BALTIMORE:** Pre—Mary Arthur, Clare Chapman, Andrea Drozda, Alice Marquess, Mary Glynn Owens, Melissa McCarty, Anne Skinner. 1—Jean Miller, Ann Robinson. **Pre D.**—Lynn Alban, Mary Arthur, Clare Chapman, Charles Corson, Andrea Drozda, Linda Hamman, John McNulty, Alice Marquess, Betsy Mason, Powell Nixdorff, J. T. William Riepe, Mrs. J. T. William Riepe, Anne Skinner. **Bronze**—Gail Rinehart, Jr., Warden Rinehart, Jesse Nolley.

**ICELAND FSC:** Pre—Carrol Miller.

**ISC OF AMARILLO:** Pre—Linda Dee.

**INDIVIDUAL MEMBERS:** Pre—Andree Baron, Trudy Bast, Allison Boyle, Adrienne Dahl, Judy Freudman, Robin Green, Heidi Koenig, Judith Mothersell, Evelyn Noether, Linda Parrish, Tom Radsch, Vicki Radsch, Patricia Safer, Suzanne Sokol, Joanne Stuart, Diane Tillery, Bobbie Titus, Lisa Turner. 1—Sharon Chandler. 3—John Coyle. **Pre D.**—Gary Chandler, Nancy Huber.

**JOHNSTOWN FSC:** Pre—Patricia Byer, Andrew B. Pastorek, Jr., Mrs. E. Clark Shaffer. **Pre D.**—Lubby Agnello, Maureen Berry, Peggy Blackburn, Jack R. Bowers, Susan Byer, David Conjelko, Ronald Devine, Darryl D. Gay, Maxine Leckey, John C. Thomas.

**LANSING SC:** 3—Janet Burhans. 4—Gary Clark, Judy Reynolds. **Bronze Pair**—Joanne Heckert & Gary Clark. **Pre D.**—Mindy Angel, Bill Meuleman, Susan Ward, Naomi Weitzman. **Bronze**—Ronald Pfenning, Naomi Weitzman, Susan L. Wilson. **Pre Silver**—Janet Burhans, Beverly Knapp, Fontella Reynolds. **Silver**—Carol A. Miller, Judy Reynolds, Sterling E. Tryon. **Pre Gold**—Paul Pepp.

**LOS ANGELES FSC:** Pre—Sylvia Clay, Donna Scheimeister. 1—Lorie Harvey. **Pre D.**—Margaret Mellen. **Bronze**—Dorothy Beckett, Shirley Laughner. **CFSA Silver**—Senior Silver—Roger Campbell, Yvonne Littlefield.

**MANHATTAN FSC:** **Bronze**—Conrad Gale.

**METROPOLITAN FSC:** **Pre Silver**—Florence Hold.

**MIDLAND FSC:** **Bronze**—Dorothy Wilson.

**OKLAHOMA CITY FSC:** 2—Courtney Hart.

**OXFORD FSC:** 1—Dianne Kiefer, Edward Krochmal. 2—Suzanne Carol Banford. **Bronze Pair**—Karen Hoffman & Leo Fritzlo.

**PARK FSC:** Pre—Rosalyn Eccles, Rebecca Schenker, Marie Silvestri, Emily Wills. 1—Linnea Flaherty, Suzanne Gitelson, Theresa Grunsdorfer, Helen Klein, Diane Knobler. 3—Donald Freeman.

**PENGUIN FSC:** **Pre Silver**—Frank Glassmire.



## INDEX TO

# Advertisers

### Books, Equipment, Jewelry

Peter Carver Associates .....	45
Flxible Company .....	43
Betty Hiscok .....	45
World Championships Committee .....	
..... Inside Front Cover	

### Professionals

Experienced Professional .....	45
Jean Westwood .....	45

### Positions Available

Large Eastern Club .....	45
Wascana Winter Club .....	47

### Skates and Boots

C.C.M. Inc. ....	3
Oberhamer Shoe Co. ....	41
Riedell Shoes, Inc. ....	2
G. Stanzione .....	47

### Summer Centers and Resorts

Broadmoor Ice Palace ....	Inside Front Cover
Hershey Sports Arena .....	39
Lake Placid .....	Inside Back Cover
Lynn, Mass. ....	Outside Back Cover
Niagara Falls, Ont. ....	43
Roslyn Ice Studio .....	41
St. Paul .....	39
Sundridge, Ont. ....	43
Sun Valley .....	Inside Back Cover

## THE

# Skaters' Exchange

**HELP WANTED.** Dancers—Read "The Key to Rhythmic Ice Dancing." \$3.75 ppd. Order from Muriel Kay, P. O. Box 386, Bellingham, Wash.

**WANTED,** position for next winter, by experienced female pro. Gold Medal figures and Pre Gold dances. Send full information to Skating Magazine, Box 47.

**AVAILABLE.** Highly qualified lady professional is available for the Winter Season 1960-61. Gold Medal in figures and Silver Dance Medalist. Has had six years of carnival experience. Please apply Skating, Box 45.

**YOUNG LADY** desires teaching position next winter. Holder of Canadian and U. S. Gold Figure Medals, and CFSA Gold Dance Medalist. Reply to Skating, Box 58.

**PROFESSIONAL AVAILABLE.** Fifteen years experience skating, ballet and theatre, America and Europe. Currently Danish production "My Fair Lady," Copenhagen. Excellent recommendations. Write permanent American address: Patrick Kazda, 320 Wolcott Ave., Kingsford, Michigan.

Please mention **SKATING** when answering advertisements.

## WANTED

### Experienced Figure Skating Instructor for 1960-61 Season.

Excellent Opportunity for Husband and Wife.

Must be capable of teaching 7th and 8th tests.

Five months season — Private club with own artificial ice.

Reply giving details of experience and references to

Bert Penfold, 2925 Regina Avenue, Regina, Saskatchewan, Canada

## G. STANZIONE

### *Skating Boots of Quality*

**In order to give our employees a well-deserved vacation, we shall close our business from July 1st to 15th.**

**It is advisable to place your order early for the summer season to insure delivery. All orders received prior to June 15 will be completed on or about July 1.**

*"The most beautiful skating boots in the world."*

**50 West 56th St.  
New York 19, N. Y.**

**PHILADELPHIA SC & HS:** Pre—Fredricka Brecht, Cathy Anne Garnet, Gail M. Harry, Barbara W. Hunter, M. Katherine Layman, Virginia H. Luse, Nancy G. McCulloch, Alice A. McGlinn, Ann Madden, Peggy L. Scarborough, Margaret R. Somers, Louise R. Stengel, Mary J. Vaux, Jessie D. Watters. **Bronze Pair—Silver Pair**—Joan Heiser & Peter Betts. **Bronze**—A. Steffen Wright. **Silver**—Barbara A. Jones.

**PITTSBURGH FSC:** Pre **Dance—Bronze**—Thomas Lescinski.

**PRINCETON SC:** Pre—Barbara Freggens, Barbara Konover, Charlotte Peterson, Bruce Tyler, Dianne Tyler. 1—Charlotte Fremont, Jackie Linder.

**PROFESSIONALS:** Pre—JeNiel Brown, Frank Masterson, Lynn Newman. 3—Betsy Hauck. 4—Gerry Hartman. 8—James Tester. **Pre D.**—Mike Taylor.

**QUAKER CITY FSC:** **Pre D.**—Jacob S. Friedman. **Pre Gold**—Sandra Moon.

**R. P. I. FSC:** 4—Irma Staro.

**RYE FSC:** 5—MaryLouise Dvorak.

**ST. LAWRENCE FSC:** Pre—Ellen Grant, Colleen Livingston, Cheryl Towers. 1—Singleton Barr. Cheryl Frank, Marilyn McKenney, Leslie Spandorf. 2—Kay Kirkpatrick. **Pre D.**—Gail Blankman, Cheryl Frank, Marilyn McKenney, Stella Mayhew. **Bronze**—Jeanne Mulcahy. **Pre Silver**—Jary Crandall.

**ST. MORITZ ISC:** Pre—Michael McMorran, Pamela Smith, Georgia Taylor, Beverly Walker, Barbara Weinberg.

**ST. PAUL FSC:** Pre—Molly Aguilar, Wendy Berg, Carolyn Fay, Judy Minning. 1—Judy Anderson, Marjorie Nash, Mary Tracy. 2—Patricia Curley, Marlene Singer. 6—Robert Meck.

**SEATTLE SC:** 7—Linda Doepken. **Pre D.**—Bill Wilkins. **Bronze**—Don Corliss, Cheryl Saindon, Lisa Gayle Tatsumi. **Pre Silver**—Cynthia Kauffman, Joyce Segelbaum. **Silver**—Charlene Cruickshank. **Pre Gold**—Lorna Dyer.

**SIOUX CITY FSC:** Pre—Julianne Barker, Clare Cowan, Susan Jensen, Curtis McCline, Maureen Welch, Marcia Williams, Irma Wilson. 1—Michael McCline. **Pre D.**—Connie Black, Thomas Coridan, Michael McCline, Suzanne Welch.

**THE SC OF BOSTON:** Pre—Bernard J. Hogue, Deborah Webster. 1—Laura Codman, Sarah Keith.

**THE SC OF LAKE PLACID:** Pre—Gail Barry, Paula Bickford, Sue Bissonette, Debra Colby, Sunday Ann Dick, Joan Fortune, Helen Kempa, Phyllis Perkins, Janet Rand, Martha Tobin. 2—Ruth Speck.

**THE SC OF NEW YORK:** Pre—Francois Herve, Anne Howe, Sarah Howe, Janet Leckie, Robert Meiklejohn, Elsie Vance. 3—Ellen Schachtel.

**THE SC OF PHOENIX:** Pre—Kathy Washburn. 1—Midge Galst.

**THE SC OF SAN FRANCISCO:** Pre—Donna Antraccoli, Candy Boyajian, Allison Braun, Dale Chinn, Ellen Kermode, Randie Kermode, Phillip Lotz, Bonnie McCloy, Catherine Mibach, Richard Woodbury.

**SKOKIE VALLEY SC:** **Pre D.**—Janis Burhop, Joseph Kaymen, Nan Tatham, Pat Voneiff.

**SOUTH SIDE IC OF CHICAGO:** 3—Gail Middleton. **Pre D.**—Gail Middleton.

**SOUTHERN CONNECTICUT FSC:** Pre—Penelope Bixler, Nancy Bond, Charlotte Gardner, Elizabeth Grottle, Christine Joosten, Helga Joosten, Cynthia Robertson, Lynn Williams. 1—Nancy Lawrence. 2—Heather Howland. **Pre D.**—Roger Bennett, Kenneth H. Hannan, Christine Joosten, Helga Joosten, Lucinda Kardos, Cynthia Robertson, Katryna Van Dusen, Claire Walter, Shirley Westhaver. **Bronze**—Frances Bennett, Nancy Lawrence, Edna Sutcliffe. **Silver**—Geraldine Sutton.

**SUBURBAN FSC:** **Bronze**—Ann Marie Kriz.

**SUPERIOR FSC:** Pre—Barbara Lehn, Pamela Serre. 1—Darrell Rasmussen.

**SYRACUSE FSC:** Pre—Joan Young.

**TROY SC:** Pre—Charlene Cleveland, Mark Earhart, Jennifer Rodgers, Jerry Sullenberger, Cheryl Welsh. 1—Jennifer Clark. 2—Martha Cain. 3—Cynthia Compton.

**TUCSON FSC:** Pre—Kay Beaton, Rustie Brown, Jackie Coon, Russell Grina, Cindy Julian, Suzanne Morgan, Florayne Pohanic, Laurie Pohanic, Mike Pohanic, Huddy Richardson, Kip Ross, John Sandahl, Roy Scott, Donna Sweet, Patricia Trexler, Patsy Webb, Sarah Wharton. 1—Mike Pohanic.

**UTAH FSC:** Pre—Robyn Bird, Pamela Crane, Susan Morse, Quinn Whittaker. 1—Nicholle Gearheart.

**WAGON WHEEL FSC:** Pre—Jane Bonzi, Judith A. Klinkman. **Pre D.**—Judith A. Klinkman, Dorothy Sinykin, Gordon Sinykin, Jada Steinke, Ann Wood.

**WASHINGTON FSC:** Pre—Claire Aebersold, Florence Aebersold, Alice Buffington, George N. Buffington, Barbara Geier, Paul Geier, Alex Radcliffe, Sarah Sneed, Barbara Warner. 1—Dan C. Eastburn, Sidra Kay Singer, Jane Spence. 2—Paulette Moore. 3—Faith Jackson. 4—Dolly Duke. **Pre D.**—Barbara Geier, Jane Spence, Nancy Thomas. **Pre Silver**—Violet Sukiell.

**WAUWATOSA FSC:** Pre—Linda Benke. 1—Lynn Dornoff, David Kaufmann, David Larson. 2—Nancy Hufnagel, Wendy Hufnagel, Vivian Sommers. 3—Jean Bomborg. **Pre D.**—David Kaufmann, David Larson, Dale Pforr. **Bronze**—Sally Stamm.

**WESTCHESTER FSC:** 1—Judy Pertz. **Pre D.**—David Hirsch.

**WILLOW BROOK FSC:** 2—Patricia Fertel.

**WC OF FARGO-MOORHEAD:** Pre—Jacque Lynn Peterson, Lynne Pulkabek, Betty Rutherford. 1—Mary Ann Thompson. 3—Judy Arnold. 4—Lee Watkins. 6—Susan Danovic.

**WC OF INDIANAPOLIS:** Pre—Debbie Rohrmann. 2—Ronnie Peavler. **Pre D.**—Carol Gillman, Karen Kempf, Harold Meeker, John Politan, Alice Sauer, Ann Wilmeth. **Bronze**—Judy Scho-meyer.

**WISSAHICKON SC:** Pre—Mia Beale, Susan Broomall, Anne Dilks, Anne Hemphill, Gail Johnston, Susan Parke, Anne Putnam, Deedie Ziegler. 1—Suzann Franks. 2—Alice Ballard, Sarah Schoen. 3—Margaret Davison, Nancy Hoch, Margo Hubbard, Margaret Jones, Joyce Reath. **Bronze Pair**—Margaret Davison & Rodman Van Seiver. **Pre D.**—Thomas Aspinwall, Mrs. Tobias Wagner. **Bronze**—Mrs. John Ulmer. **Pre Silver**—Mrs. Thomas Aspinwall, Annette Smith.



**OLYMPIC-SIZE**  
*skating fun!*

**SunValley**  
IDAHO



America's foremost ski resort is just as popular for summer fun. Only at SunValley will you find an outdoor, Olympic-size, all-seasons ice rink. Daily patch sessions and superb instruction available for beginners and advanced skaters. Other activities include golf, tennis, skeet and trap shooting, riding, swimming, fishing and evening entertainment, so why not make *this* the year?

**FOR RESERVATIONS:**

Address Mr. Winston McCrea,  
Mgr., Sun Valley, Idaho (or phone  
Sun Valley 3311), or Union Pacific  
Railroad, Room 2598, Omaha 2,  
Nebr., or see your travel agent.



owned and operated by  
**UNION PACIFIC RAILROAD**

# 1932 LAKE PLACID 1960

in-the-Adirondacks

**29th ANNUAL SEASON of SUMMER SKATING**  
**JUNE 13th - SEPTEMBER 11th**

<b>PATCH</b>	<b>FIGURE</b>	<b>PUBLIC SESSIONS</b>
<b>ICE DANCING</b>	<b>WEEKLY SHOWS</b>	

July **MARDI GRAS**  
Free Skating and Mixed Pair  
Skating Competitions  
Dance Weeks  
Dance Competitions  
Labor Day Operetta

July 2nd  
July 22-23-24th

July 31st to August 14th  
August 11-12-13th  
September 3-4

**EXPERT PROFESSIONAL STAFF:**

Walter 'Red' Bainbridge, Barbara Burgoyne, Otto Gold,  
Gustave Lussi, Howard Nicholson, Claire O'Neill,  
Daniel Ryan, Cliff Thael and Edwina Thael

**U.S.F.S.A. FIGURE & DANCE TESTS**

Sponsored by **THE SKATING CLUB OF LAKE PLACID, Inc.**  
and the **NORTH ELBA PARK DISTRICT**  
Sanctioned by **U.S.F.S.A.**

For Information and Reservations Write:

**NORTH ELBA PARK DISTRICT**  
Olympic Arena, Lake Placid, N. Y.

Please mention **SKATING** when answering advertisements.



---

*The 10th Anniversary of the Lynn, Mass. Summer Session*

# **NORTH SHORE SPORTS CENTER**

**June 15th to September 5th**



*Rounding the buoy off Marblehead Harbor*

**Plan now to spend your summer in historic New England at New England's largest skating center.**

**The most conveniently located summer session in the United States. Fifteen minutes from Logan International Airport. Three miles from super highways Routes 1 and 128.**

**Excellent Patch, Free Skating and Dance time.**

**Professional Staff**

**LILLIAN TRIBBY**

**CECILIA COLLEDGE**

**NORVETTA TRIBBY**

**THOMAS McGINNIS**

**Early Ice Reservations Advisable**

**Sponsored by North Shore Skating Club  
Sanctioned by USFSA**

**For Information Write to: William W. Taff, Director**

# **NORTH SHORE SPORTS CENTER**

**30 BOSTON ST., LYNN, MASS.**

---