

VOL. 40 No. 2

FEBRUARY 1963

Skating

OFFICIAL MAGAZINE OF UNITED STATES FIGURE SKATING ASSOCIATION
AND CANADIAN FIGURE SKATING ASSOCIATION





they
never
take
their
eyes
off

the
girl
in

DANSKIN[®] *tights and trunks*

DANSKINS are universally famous for their perfect knit-in fit that glamorizes legs, that lasts and retains shape through long wear and many washings. Professional skaters insist on Danskins! Popular-priced—22 basic and new fashion colors—all sizes for Adults and Children. See them at arenas, sporting goods and department stores—or write for nearest store and illustrated catalog K.

Full Fashioned & Seamless Tights of superior quality stretch nylon

Full Fashioned Trunks — outer-weight, opaque

Full Fashioned Leotards (many styles — variety of necklines and sleeve lengths)

New Dance Girdle for gentle support, of nylon lastex

America's leading stylists and makers of Skating, Ski and Ballet Wear

DANSKIN, INC., division of Triumph Hosiery Mills • 437 Fifth Avenue, New York 16, N. Y.

OFFICERS OF THE UNITED STATES FIGURE SKATING ASSN.

President

F. Ritter Shumway
400 West Ave.
Rochester 3, N. Y.

First Vice-President

John R. Shoemaker
San Francisco, Calif.

Second Vice-President

Henry R. Heebner
Wynnewood, Pa.

Third Vice-President

Spencer E. Cram
Chagrin Falls, Ohio

Secretary

John F. Groden
73 Tremont St.
Boston 8, Mass.

Treasurer

Carl W. Gram, Jr.
575 Boylston St.
Boston 16, Mass.

USFSA Business Manager

Robert Y. Ellis
575 Boylston St.
Boston 16, Mass.

EXECUTIVE COMMITTEE

Term Expiring August 31, 1963

Milton W. Anderson
Henry M. Beatty
Edmund C. Bold
Dick P. Fullerton
John P. Hart
E. W. Harvey
Palmer Hoyt
Harry N. Keighley
Fred C. LeFevre
J. Keith Louden
S. A. MacSween
Thomas H. Miller
Winston L. Molander
Theodore G. Patterson
Dr. Frank M. Petkevich
Harry E. Radix
Jerome Ross
Dr. Lyndon D. Snow
Brooks Stewart

STANDING COMMITTEE CHAIRMEN

Amateur Status

Dr. Nelson F. Waters
254 Ridge Rd., East Lansing, Mich.

Competitions

George B. Jenkinson
314 Pan American Bldg., Tulsa 3, Okla.

Dance

H. Kendall Kelley
17433 Shelburne Rd., Cleveland Heights 18, Ohio

Dance Judging

Norman E. Fuller
7141 Atlantic Ave., Long Beach, Calif.

Figure Judging

Robert Sackett
1220 Hamilton Ave., Palo Alto, Calif.

Figure Tests

George W. Fisk
1512 Genesee St., Buffalo 11, N. Y.

Finance

Delaplane McDaniel
429 Penn Valley Rd., Narberth, Pa.

International

James M. Earle
4707 Stenton Ave., Philadelphia 44, Pa.

Membership

Howard G. Taylor
839 Holly Hill Dr., Walnut Creek, Calif.

Sanctions

Francis B. Turner
Abbott, Carr, Turner & Smith
53 State St., Boston 9, Mass.

Summer Skating

William R. Haigler
2022 Ridgeway, Colorado Springs, Colo.

Eastern

Henry R. Heebner
248 Hathaway Lane, Wynnewood, Pa.

Midwestern

Spencer E. Cram
Hunting Valley Farms, Hopewell Trail, Chagrin Falls, Ohio

Pacific Coast

John R. Shoemaker
17 Shore View Ave., San Francisco 21, Calif.

OFFICERS OF THE CANADIAN FIGURE SKATING ASSN.

President

Nigel Stephens
18 Beechwood Ave.
Willowdale, Ont.

Past President

Granville Mayall
Vancouver, B. C.

First Vice-President

Douglas L. Kimpel
Galt, Ont.

Second Vice-President

Bert Penfold
Regina, Sask.

Secretary-Treasurer

Charles H. Cumming
74 George St., Ottawa 2, Ont.

STANDING COMMITTEE CHAIRMEN

Rules

J. Gordon Garden
241 Yonge Blvd., Toronto 12, Ont.

Dance

Sidney V. Soanes
64 Airdrie Rd., Toronto 17, Ont.

Finance

Douglas L. Kimpel
100 Blenheim Rd., Galt, Ont.

Judges

Granville Mayall
535 Georgia St. West, Vancouver 2, B. C.

Sections

Hugh B. Glynn
8 Anderson Ave., Regina, Sask.



C.C.M.
DESIGNED FOR THE STARS!

Jump with greater ease and power, execute flawless figures, spin with the sure stability that shows up in high points on the judges pad — C.C.M. "Professional" matched figure sets for men and women have the precise blade contour and teeth placement to bring out your finest form and a poised, brilliant performance.



**C.C.M.-RIEDEL Skating Boots
SAVE YOU UP TO 50%!**

C.C.M.-Riedell skating Boots come in whole and half sizes, regular or narrow widths, in a range that will perfectly, comfortably, snugly fit 9 out of 10 skaters . . . and they cost only about half as much as custom-made boots. Save up to 50% on your next figure outfit when you buy a C.C.M.-Riedell matched set. See your C.C.M. dealer.

**AND THOSE WITH
STARS IN THEIR EYES!**

C.C.M.'s famous matched figure sets come in all price ranges; from "Pro" to "Beginner", boys', girls', women's, men's — there's a pair you can afford! These famous C.C.M. figure sets give you the snug comfortable fit that's needed for hours of practice or just pleasure skating.

C.C.M.

681 Seneca Street, Buffalo, N. Y.
or C.C.M., Weston, Ontario.

More value for your money . . . C.C.M.

FEBRUARY 1963
VOL. 40, NO. 2
40th SEASON OF PUBLICATION
575 BOYLSTON ST., BOSTON 16, MASS.

Skating

OFFICIAL MAGAZINE OF
UNITED STATES FIGURE SKATING ASSOCIATION
CANADIAN FIGURE SKATING ASSOCIATION

STAFF

THERESA WELD BLANCHARD

Editor

EDITH E. RAY

Managing Editor

FREDA ALEXANDER

Assistant Editor

ELAINE J. NOONE

Editorial Assistant

EVA A. YATES

Circulation Manager

ADVISORY BOARD

USFSA

OSCAR DYSTEL

New York

RICHARD L. HAPGOOD

Boston

DELAPLAINE McDANIEL

Philadelphia

THEODORE G. PATTERSON

Boston

CFSA

PETER R. L. CHARLES

Toronto

NORMAN V. S. GREGORY

Montreal

GRANVILLE MAYALL

Vancouver

SKATING, copyright 1963 by the United States Figure Skating Association in the U. S. A. Title Registered in U. S. Patent Office, Published eight times a year: January, February, March, April, May, June, November and December; by the United States Figure Skating Association, 575 Boylston St., Boston 16, Mass. Second-class postage paid at Boston, Mass. Single Copy 50 cents. Subscription \$4.00. Address: SKATING, 575 Boylston St., Boston 16, Mass. SKATING is protected by copyright and nothing that appears in it may be reproduced without written permission.

LESLEY GOODWIN

Recommends

Oberhamer

SKATE BOOTS



★
**Featured Star
of Shipstads
and Johnson
ICE
FOLLIES**

★
FIRST

**in fit
in comfort
in styling
in quality
in preference
in durability
and FIRST IN PRICE on the
rink or in the Skate Shop**

**FREE . . . WRITE FOR
MEASUREMENT CHART**

Oberhamer Shoe Co.

689 North Dale Street
St. Paul 3, Minn.



16,200 SQUARE FEET with 4 Patch Sessions each day for only \$1.00 an hour. 3 Dance Sessions — 75¢ an hour. 3 'Free Skating' Sessions — 75¢ an hour and 2 General Sessions — \$1.00 for 2 hours.

Your choice of accommodations or special Chalet Rooms for skaters \$2.50 a day.

Other attractions — golf, swimming, tennis, fishing, bowling, shooting, movies and dancing.

SKATE WEEKS — \$82.00 covers everything (except rail fare) for seven days — meals, chalet room, 2 Patch and 1 Free Skating session each day and Lessons (6 group or 3 private).

SunValley
IDAHO

For Color Folder with complete information, or reservations, address Winston McCrea, Mgr., Sun Valley, Idaho.

*Owned and operated by
Union Pacific Railroad*



CONTENTS

ARTICLES

TWO NATURAL PARTNERS	6
<i>Evelyn S. Taylor</i>	
USFSA SPRING MEETING	8
<i>F. Ritter Shumway</i>	
OLD TIMERS ON ICE	9
<i>Cecilia Tingle</i>	
SECTIONAL QUALIFIERS	10
I BROUGHT THE WRONG ANIMAL	11
<i>William M. Snell</i>	
THE BRITISH CHAMPIONSHIPS, 1962 ..	12
<i>John Noel</i>	
TRENDS IN SKATING	13
<i>Virginia Vale</i>	
THE THIRD EDGE	14
<i>Katherine M. Gebbie</i>	
ISU TESTS: INTRIGUING CHALLENGE ..	16
<i>Lorraine Hanlon</i>	
RESTRICTIVE ACTION FACES DANCE	
PARTNERS	17
<i>Dr. Nelson F. Waters</i>	
MEMORIAL FUND SKATE FAIR	18
<i>Etienne Noir</i>	
QUESTIONING THE CLUBS	19
SUB-SECTIONAL CHAMPIONSHIPS	
Southwest Pacific	20
Southwestern Area	20
B. C. Coast	21
North Atlantic States	32
Okanagan-Mainline	34
Upper Great Lakes	36
Northwest Pacific	36
THOUGHTS ON ICE DANCING	22
<i>Virginia S. Murray</i>	

DEPARTMENTS

PEOPLE	23
THE CALENDAR OF COMING EVENTS ..	23
ROCKERS AND COUNTERS	24
SPINS THROUGH PROFESSIONAL CIRCLES	32
USFSA AND CFSA TESTS PASSED	38, 40
INDEX TO ADVERTISERS	39
THE SKATERS' EXCHANGE	39

THIS MONTH'S COVER

features Yvonne Littlefield & Peter Betts of the Arctic Blades Figure Skating Club, who will be defending their U. S. Dance title at the 1963 Nationals. Photo courtesy of Joe Friezer, Los Angeles.

These are the
Dates to Remember:

February
15TH and 16TH



1963

North American Figure-Skating Championships

sanctioned by U.S.F.S.A. and C.F.S.A.
sponsored by
The Capilano Winter Club

Welcome to
**VANCOUVER
CANADA**

All Event Reserved Tickets are now
available . . . for further information
and reservations, please write to:

Mrs. Norma Koepke,
Executive Secretary,
2034 Curling Road,
North Vancouver, B. C.
Canada

Two Natural Partners

VERY EARLY IN MY SKATING YEARS, I experienced a feeling of deep revolt at what I saw on the ice—from the very beginning.

I got this feeling after watching skaters, who, to me, were magnificent performers of this magic called figure skating, go out on the ice and execute ridiculously intricate jumps and spins accompanied by what I felt was merely “background music.” I had been taught as a child to appreciate music, but it grew to be a major ingredient of both mind and soul in the formative years and it still remains so.

I felt instinctively that skaters were supposed at least to attempt to “marry” themselves to the music being played for them. Why else was it there? Time after time I saw the opposite happen, and each time my blood grew cold. I resolved some day to try to do something about it. Not knowing then how it was ever to come about, I decided to learn as much as my physical propensities would allow me to do on the

ice myself, just to get the “feel of it” if nothing else, and also to study the theory and physics of the art of figure skating.

It *is* an art, not a sport. The sporting end of it stops when the technique is consumed by the skater in order to express himself on the ice—to music! You may say, it does have sporting merit—yes it does, but only in competition as we know it today. Eventually, it is destined to be known only as an art and science.

by EVELYN S. TAYLOR

Quaker City FSC

I don't really care what kind of music is used, so long as the skater interprets it—or at least tries to pay some small degree of attention to the sounds we are hearing and hoping he is, too. To tell the truth, it is like hearing the uncomfortable sound of chalk scratching relentlessly across a blackboard to witness ignorance of music by an otherwise lovely skater. Perhaps, in many cases, the blame belongs with the pro, who doesn't get enough time with the pupil to get to know his personality or personal preferences in music. The pro cannot be charged with this entirely, of course, if the pupil has a “tin ear.”

Most kids instinctively love music—it only remains to find out what their type is. This can be done with very little effort if the desire is there. In any event, parents can do a lot to encourage their offspring to try to do a little more by subjecting



them to good music in the home. It has to rub off on them; repetition takes care of that.

Parents can be seen wherever one looks, in any rink, encouraging Junior or Sis to perfect their jumps and spins. Why can't they spend equal time at home listening to music with them? Besides, it's nice and warm at home!

To reiterate, my revolt has taken a concrete form, and I, plus a friend who feels the same way about the whole situation, decided to do something concrete to encourage young and old to participate in a program of literally making it compulsory to interpret music on the ice.

Thus, our club's Artistry Award Competition was born. In 1956, we announced that a competition would be held at the end of the season. All anyone had to do to be qualified was to skate to a record

A music-minded figure skater calls for better interpretation of music in free skating and describes one way to bring this about.

of one's own choosing, interpret the music as the individual's soul and spirit dictated, and be judged, *not* by figure skating judges but by carefully chosen representatives of the world of the "arts."

These judges were to have one prerequisite—absolutely no knowledge of figure skating! So, our first little group was judged by an organist, a dance teacher, and an artist!

Right off the bat, miraculously enough, each candidate paid some degree of attention to the music! It was no longer just background. We think the biggest step in the right direction is to allow absolutely *no* applause during the skating program. This has good results, inasmuch as the judges are allowed to concentrate solely



on the interpretation the skater is displaying for the music. The picture being created is totally uninterrupted. The audience can applaud all they wish when the skater is finished.

Each year since, we've added a few more innovations, but the contest remains essentially the same. More effort and enthusiasm are spent on this than one can imagine, and the rewards are great both for all who are receptive to the idea year after year (and it is growing in magnitude) and for ourselves, who dared to pioneer in this experiment in the first place. It is destined to spread out its "little wings" this year, for we are now planning an Open Invitational Artistic Competition, to include all the clubs of the Philadelphia Area.

Even if the response isn't too overwhelming at first, and the idea takes time to take root, it's bound to grow, because music and skating are natural partners and the marriage must take place!



USFSA Spring Meeting

by F. RITTER SHUMWAY *USFSA President*

A NEW FORMAT FOR ANNUAL MEETINGS of the Governing Council of the USFSA was, I believe, established by the 1962 meeting in Sun Valley. The delegates who attended last May have, I am sure, reported enthusiastically to their clubs the good time and good fellowship that was enjoyed, in addition to the good work that was accomplished at the business sessions.

To fit in with the trend established last year, an attempt is going to be made at the 1963 meeting of the Governing Council to "streamline" the procedures so as to eliminate some of the duplications which we have had in the past, without in any way sacrificing any of the careful deliberation and thought to be devoted to the proposals that will be before us. On the contrary, I believe that the proposed new procedures will allow more time for consideration of broader and important questions of policy and future planning.

Skating Chart Available

COPIES OF CAPT. T. D. RICHARDSON'S chart "The Master Key of Figure Skating" as printed in his book, "The Art of Figure Skating," may be obtained by writing to the undersigned at 57 Fernwood Road, Summit, N. J. This chart, which gives a "system of figure skating" as devised by Captain Richardson, was described by one British reviewer as a chart which "should be hung up in every ice rink and in the home of every aspiring instructor and competitor. Then we might see great improvements in school figure skating." Send 25¢ for the chart and include a stamped, self-addressed No. 10 size envelope.

MRS. JAMES H. MARONEY
*Chm., USFSA School and College
Figure Skating Com.*

The dates? Friday, Saturday and Sunday, May 3, 4 and 5, with adjournment scheduled no later than Sunday noon.

It is not at all too early to be marking your calendar and saving the dates of May 3 to 5, as a minimum, to attend the 1963 meeting of the Governing Council, and to meet with congenial skating-minded folks, as well as to make your own carefully considered suggestions and to join in the important work of making a better USFSA . . . the better to serve and promote amateur figure skating throughout our country.

Article VII of the Constitution and By-Laws of the USFSA, "Delegates to the Governing Council," sets forth the procedures to be followed in choosing delegates, the number of delegates to which your club is entitled, and the method of executing proxies. (We hope your delegates will attend and proxies will not be needed.) The Central Office will shortly send a form to your Club President for listing the delegates appointed by your club.

At your next Board Meeting, discuss the appointment of delegates who will be able to attend the meeting. The delegates you appoint well ahead of time will come to the meeting prepared to discuss subjects of interest to your club thereby assisting not only your club but other clubs throughout the country.

The strength of the Association depends on the representation of the clubs and the leadership that can be developed through active participation in the Association.

All will be most heartily welcome at the meetings of the Governing Council to take part in discussions whether delegates or not.

Look for more detailed plans for the meeting in next month's SKATING.

OLD TIMERS ON ICE

by CECILIA TINGLE *Providence FSC*

SOME ADULTS take up skating for fallen arches, or to protect themselves from the wheel chair, or maybe they want to prove, if they are over 50, that they can keep their motor going and regain, or try to recapture, the vim and vigor of the "good ole days"—those days when the stairs did not seem so steep, the newspaper print was never so small, and the people around you didn't talk in whispers!

Come now, let's face it; we all fight old age and the smarter ones take up skating. A skating session on the ice will tune up all your gadgets, and you get that "old feelin" that the old motor is hitting on at least four out of five cylinders depending on what year you are working on. Of course, the most important thing on reaching old age is to keep right on breathing, but even breathing would become monotonous if you couldn't shift into different speeds.

We are very proud to have in our club a bunch of old timers. We have one who is 78 years old (Mr. Tanner) and also Mr. Albert Benoit who is also over 70, and there are several others. And these boys can really dance all the patterns, too!

It is rarely that they take a tumble, but then our membership at the club reads like a medical convention roster. We have more doctors! And these old timers figure if they took a fall one of these doctors might charge them for being picked up off the ice!

Now when we have our annual ice show, do we all sweat it out! It is always a running race with the stork and we are always afraid the stork will win and we will hear a call, "Doctor, you are wanted in the lobby."

One doctor in our club has it all figured out. He solves it by selling tickets to the maternity cases and puts them right down in the seats on the ice. He has successfully completed the three years of performing his numbers in the show by just keeping these patients on ice, until the next day at least.



Toronto Globe & Mail Photo.

CANADA, too, has its figure skating elder statesmen. **Professor J. Roy Cockburn** skating with **Geraldine Crispo**, professional, is a member of the Toronto CS & CC. See *Rockers and Counters*, page 25.

So, in our club, you can readily see that whatever the patients are planning they had better not plan it for the time of the show because they can be assured that they will be put on ice until the doctor gets through with his three turns and dance numbers. He is keeping his motor cool and running.

It is so amazing—before you put on your skates, you keep thinking, "I had better go in for a spring check up," because maybe you feel that your battery is low; but after one hour on the ice, skating patterns, and even those horrible mohawks, you get the feeling that maybe you don't have a body streamlined by Fisher, but it is a good one—one that will take the stairs, even though they do seem steeper than a year ago. You can still read the newspaper even though your nose might be rather closer to it, and what if you don't hear everything that is said? You had a good time on the ice, didn't you?

U.S. Sectional Qualifiers

Space was held after the deadline to include the names of those who qualified for the U. S. Championships in their Sectional Championships. The complete rankings in all classes will be printed in the next issue.—Ed.

Easterns

SENIOR LADIES

1. Albertina Noyes, *The SC of Boston*
2. Joya Utermohlen, *The SC of New York*
3. Pamela Schneider, *New York, N. Y.*

SENIOR MEN

1. Richard Callaghan, *Genesee FSC*
2. Peter Meyer, *USFSA Individual Member*
3. Paul McGrath, *Commonwealth FSC*

JUNIOR LADIES

1. Taffy Pergament, *Westchester FSC*
2. Anne Ferguson, *The SC of Boston*
3. Gail Newbury, *Buffalo SC*

JUNIOR MEN

1. W. Patrick Lalor, *Philadelphia SC & HS*
2. Randolph Lees, *The SC of New York*
3. Robert Schwarzwaelder, *Metropolitan FSC*

GOLD DANCE

1. Sally Schantz, *The SC of Boston*, & Stanley Urban, *Buffalo SC*
2. Connie Caracciola, *The SC of New York*, & David Owen, *Metropolitan FSC*

SILVER DANCE

1. Margaret Ann Gerrity, *The SC of Lake Placid*, & Domenick Malavolta, *Brooklyn FSC*
2. Sally Crook & Edward Smith, *The SC of Boston*
3. Barbara Babcock & Stephen Smith, *The SC of Boston*

Midwesterns

SENIOR LADIES

1. Maidie Sullivan, *Broadmoor SC*
2. Yvonne Drummond, *Detroit SC*
3. Chickie Berlin, *South Side IC*

SENIOR MEN

1. Tim Wood, *Detroit SC*
2. Robert Lubotina, *Hibbing FSC*
3. Duane Maki, *Detroit SC*

JUNIOR LADIES

1. Dorothy Thompson, *Broadmoor SC*
2. Janice Lee Serafine, *Chicago FSC*
3. Janet Lynn, *Wagon Wheel FSC*

JUNIOR MEN

1. James Disbrow, *Troy SC*
2. Perry Byram, *Denver FSC*
3. Gregory Hoyt, *Broadmoor SC*

SENIOR PAIRS

1. Joanne Heckert & Gary Clark, *Lansing SC*
2. Barbara Yaggi & Gene Floyd, *Troy SC*
3. Sara Beth Riecken & Mac Cummins, *Troy, Ohio*

GOLD DANCE

1. JoAnne Leyden & Robert Munz, *Cleveland SC*
2. Mary Anne Kavanaugh & King Cole, *Colorado Springs, Colo.*

SILVER DANCE

1. Janet & Nicholas Burhans, *Lansing SC*
2. Sandy Schwomeyer, *WC of Indianapolis*, & James Pennington, *Evansville, Ind.*
3. Connie Expander & Claude Sweet, *Broadmoor SC*

Pacific Coast

SENIOR LADIES

1. Peggy Fleming, *Arctic Blades FSC*
2. Michele Monnier, *The SC of San Francisco*
3. Sondra Lee Holmes, *Arctic Blades FSC*

SENIOR MEN

1. William Chapel, *Los Angeles FSC*
2. Buddy Zack, *Seattle SC*
3. Ronnie Frank, *Arctic Blades FSC*

JUNIOR LADIES

1. Lynn Yonekura, *St. Moritz ISC*
2. Jean Kondo, *St. Moritz ISC*
3. Susan Berens, *Blade & Edge Club*

JUNIOR MEN

1. Johnny Moore, *Arctic Blades FSC*
2. Robert Sable, *Blade & Edge Club*
3. Lance Shinkle, *Arrowhead FSC*

SENIOR PAIRS

1. Cynthia & Ronald Kauffman, *Seattle SC*
2. Yvonne Littlefield & Peter Betts, *Arctic Blades FSC*
3. Susan Berens & Robert Sable, *Blade & Edge Club*

GOLD DANCE

1. Yvonne Littlefield & Peter Betts, *Arctic Blades FSC*
2. Lorna Dyer & John Carrell, *Seattle SC*

SILVER DANCE

1. Barbara McEvoy & Dennis Sveum, *Los Angeles FSC*
2. Patricia Sandefur & Roger Berry, *Los Angeles FSC*
3. Kathy Drelen & Roy Wagelein, *Los Angeles FSC*

I Brought the Wrong Animal

by WILLIAM M. SNELL *Greater Milwaukee FSC*

THE RESULTS at the last test session were catastrophic—I failed! After thinking it over, though, I realized that things were not as bad as they seemed. It was not that my figures were poor, or that the judges were mean and picked on me. It was just because I brought the wrong animal!

I used to take one of those inexpensive stuffed animals when I first started to take figure tests. You know how it is when a birthday party occurs and you're only six, your Mom won't let you spend more than one or two dollars on a gift. It was back then that I received a stuffed dog—a cheap one—that I used to take to my first test sessions. This wasn't too bad, because I only put a Preliminary emblem or a First Test emblem on it. But after it was squeezed a few times, and I got older also, I decided I needed a better looking animal.

So I talked my parents into getting me a nice kitten that was very prominent when held; in fact, Mother said it was larger than I was when I was born. I put all my USFSA pins on it, plus a few more skating pins I picked up along the way, and gave it to one of my friends to hold while I was going through my figures. It did the trick, because I sailed through my

next few tests with high marks from all the judges.

It was not until I tried my Sixth Test that I finally met what I thought was my Waterloo, and failed for the first time in quite a while. I was crestfallen.

Then I realized that I had been using the same animal for several tests, and that by now I actually needed a bigger and better one. This was especially true since I had a solo in addition to the figures.

By this time the amount of money my parents had spent was so tremendous that they didn't mind shelling out \$35 for an oversized stuffed panda. I figured this would be good for the Sixth and Seventh Tests. The results are not in yet, because I have not been able to use Puffy—that is what I call my panda. I am more confident, though, than I was before and am sure that Puffy will bring me success through the next two tests.

I feel, though, that I need something special when I get to the Eighth Test, my goal for all these years. I don't know yet what I should have, but I still have time to decide.

Dad asked one question I couldn't answer. He wondered if stuffed animals were sold to anyone other than skaters.

Royal Gala at Streatham

THE RE-OPENING of the Streatham Rink was celebrated on December 18 with a special gala, highlighted by the attendance of Queen Elizabeth the Queen Mother. World Champion Donald Jackson flew to London especially to add his talents to the international, star-studded cast which gave exhibitions. Headliners included World Champion Sjoukje Dijkstra, Marika Kilius & Hans-Jurgen Baumler, Ljudmila Belousova & Oleg Protopopov, Nicole Hassler, Sepp Schonmetzler and Ann-Margreth Frei. At a late-night banquet, all the stars were presented with silver rose bowls.

DON'T MOVE! . . .

without notifying SKATING, and thus insure receiving all your issues without interruption. The Subscription Department requires three weeks' notice in order to make a change of address on the mailing list.

Also, if your address is not completely accurate on your magazine envelope—wrong zone number, incorrect spelling of street name, etc.—please notify SKATING at 575 Boylston St., Boston 16, Mass., so that your addressograph plate may be corrected.

THE BRITISH CHAMPIONSHIPS, 1962

by JOHN NOEL

DENSE FOG smothered Richmond and its ice rink on December 6, when the British Championships were held, but it could not obscure the remarkable achievement of Diana Clifton-Peach, the first ex-British Champion in thirty years to regain her title.

Miss Clifton-Peach has had a chequered career in her country's national events. When she first competed, in 1956, she was last. Next year she placed third, and in 1958 was runner-up. In 1959 she dropped to fifth, but in 1960 she won. Defending the title in 1961, she suffered a knee injury in practice; she was 50 points ahead in the figures, but Jacqueline Harbord's brilliant free skating just gained the Championship —by one judge's placing.

This season Diana has made a splendid comeback. For several years she has been Britain's finest skater of the compulsory figures, and on this occasion she soon proved her supremacy. I was unable to be present myself, but in a letter to me Miss Clifton-Peach remarked: "It was not until after about the second figure that I realized that I might be able to get the title back. Actually on one figure I . . . was able to pull 30 marks ahead of Jackie . . . so that helped." After the six figures, the former Champion had established a

convincing lead; every judge placed her first, and on total points she was 53.5 marks ahead.

Miss Harbord was evidently not at her best in the figures, for she placed no higher than third, behind Sally Ann Stapleford. This may have been partly due to the after-effects of her leg fracture last August, when she fell over a cliff edge while on holiday. In the free skating she beat all her rivals, but she could not overcome Miss Clifton-Peach's figure advantage. So once again the title changed hands.

Eleven girls competed, but one had to withdraw after three figures, with a torn ligament. This was Peta Lynn Williams, who, like Miss Stapleford, trained last summer at Lake Placid and passed the USFSA Gold Test.

The entries for the Men's and Pair's events were disappointingly few. Malcolm Cannon is a sound school figure skater, however, and proved his worth in the European Championships last March, finishing a creditable 12th out of 21 skaters in his first international event.

Vera Jeffery and her partner Peter Webb, a Silver Medalist speed skater, had no difficulty in beating the British Junior Champions for the Pair title.

The Dance Championships took place at Nottingham Ice Rink on November 24. Linda Shearman & Michael Phillips won for the second time. On the same evening the Martineau Bowl for Women's free skating went to Anne Lenton, and Harold E. Williams retained the Jennings Cup in the Men's event.

The British international teams have now been selected. The top three dance couples will be entered in both the Europeans and the Worlds. For Cortina, only two are being entered in the figure events —Diana Clifton-Peach and Malcolm Cannon. The European Team will also include Jackie Harbord, Sally Stapleford, and Hywel Evans.

LADIES

1. Diana C. Clifton-Peach
2. Jacqueline R. Harbord
3. Sally Ann Stapleford
4. Anne P. Lenton
5. Carol Ann Warner
6. Janet A. Sawbridge

MEN

1. Malcolm Roger Cannon
2. Hywel L. Evans

PAIRS

1. Vera Ann Jeffery & Peter H. Webb
2. Diane C. Ward & Raymond E. Wilson

DANCE

1. Linda L. Shearman & Michael Phillips
2. Janet A. Sawbridge & David Hickinbottom
3. Mary A. Parry & Roy Mason
4. Anne R. Cross & Francis L. Williams
5. Marilyn K. Beavon & Anthony D. Berresford
6. Pauline A. Stevens & Gerald A. Spain

As Seen by the Judges

by VIRGINIA VALE *Los Angeles FSC*

FIGURES: All of us, I believe, have seen most of the faults that can be made in figure skating. So what new is there to say about changes in turns, S'd changes, flats, axes, lobes, etc.?

There is one thing. I believe there is now a trend here in Los Angeles to take more notice of a trailing foot on back take-offs. A judge is not surprised to see some trail after the initial thrust. But when the trail almost reaches the tracing, that is skating too long on two feet. Following is quoted a little item I wrote a year ago for the Los Angeles FSC paper:

"PET PEEVE—Trailing Foot on Back Take-offs. While this fault cannot be given too much weight, I do believe that judges are becoming more conscious of it. Many skaters, and others, say this trailing foot is no assist, that it is only carelessness. In my mind there is no valid excuse for carelessness. Therefore, my reply is, 'If it is no assist, why doesn't the skater pick up his foot? If he can't pick it up, there must be a weakness or lack of control.'"

FREE SKATING: I still don't like to see a skater selecting music that is too heavy for his physical person or his ability.

Regarding the Seventh and Eighth Tests (the Eighth particularly), I am beginning to agree more and more with a judge who commented that we are letting fine skaters pass with good figures and just fair free style. In fact, if an Eighth Test candidate doesn't have what I would consider a more than just fair Senior free style program and performance, I'm going to think more than twice before I pass it.

DANCING: Since I am only a Silver Judge, I don't feel that I have too much to offer. As a general rule, I think the compulsory dances are pretty good (for couples who would come in fourth or better). About the only specific thing I have to say about actual performance (tests or competition) is that when a couple skates perfectly on the weak beat I feel that they have no real feel for the music and should be marked down severely—this often results in surprising outcomes.

Senior Skaters Dance Competition

LAST APRIL, the Genesee Figure Skating Club of Rochester, N. Y. tried out a new type of competition designed for ice dancers of all levels of proficiency who had reached a stage where competition with the younger generation had lost its attractions. The Senior Skaters Dance Competition met with such success, and was so thoroughly enjoyed by those who participated, that to meet the demand another is scheduled for March 15-17.

In addition to the competitions, which will run the gamut from Preliminaries to Golds, there will again be a cocktail party, a banquet, a period of social program danc-

ing, and above all, a chance to meet kindred spirits on their favorite element, a program tailored for mature ice dancers who are not averse to a weekend of fun and frolic.

The eligibility rules should encourage wide participation, and are liberal with respect to test requirements. The geographical limitations, which exclude areas beyond a radius of approximately 500 miles from Rochester, have been adopted only because it would be administratively impractical to include more territory.

See your club secretary for details and entry forms.—COL. GERARD B. CROOK, *Genesee FSC*.

THE THIRD EDGE

by KATHERINE M. GEBBIE, A.T.C.I.

Member: American Educational Theatre Association, Inc.

"DRAMA FOR THE FIGURE SKATER? What next!" Before you pass judgment—let's explore the possibilities of the idea.

I would like figure skaters to think of Creative Drama as a "Third Edge"—a new tool. Drama has all the power of a good edge—inside and outside.

For a long time I've felt the art of drama could be more closely linked to the art of figure skating. After completing a most inspiring course—"Drama in Education" given by Miss Maisie Cobby, Senior Inspector of Spoken English and Drama for the London County Council—I'm convinced the whole wide world could benefit from creative drama, whether the subject be manners, mathematics—or figure skating.

Let's consider some of the basic elements of the two arts. Now being in the "arm-chair skater" class, except for an occasional Fiesta Tango on a summer evening, wisdom bids me quote the experts on the fundamental requirements of figure skating.

In the January 1954 issue of *SKATING*, Hans Huber expresses his "Thoughts on Figure Skating" following the 1953 World Championships. Because he emphasizes the importance of figure skating as a means of artistic expression, and because the schooling recommended is the essence of that afforded by creative drama, I can't resist recalling some pertinent passages from his article.

"They (competitors) lacked personality in their spontaneous expressions that make one feel with the performers. However, I also noticed imaginative exhibitions which by their technical perfection and 'personal' content displayed a fundamental understanding. I must admit that once again a few skaters have started to figure skate in an artistic sense. . . .

"The correct compulsory figure is an embodiment of the correct thought. Compulsory figure skating, therefore, starts in one's mind and ends on the ice, not the

other way around. . . . Naturally one can learn a movement only by mechanical exercise, but perfection for an individual can be achieved only by adequate mental education and schooling. An adequate mental schooling would shorten the actual training time quite a bit, so that more than adequate training possibilities would give far better results than heretofore.

"It should, therefore, be the first task of a teacher to develop the personality and to utilize the intellect of the pupil in order to stimulate interest and understanding. . . . As compulsory figure skating originates in the domain of logic, memory and will, free skating is developed by the union of the latter with the domain of fantasy, psyche, and feeling. The change from one position of equilibrium into another and the change in 'flow' and gliding quality in the rhythm of the music and the body is THE element of figure skating.

"Today we are still striving for development and improvement of these factors of the program content, but we recognize that again with many skaters the 'transformation' from mental to physical expression is in the foreground and this is the direction of progress. . . ."

Figure skating then, is artistic expression through bodily movement. It involves rhythm, grace, coordination, interpretation, imagination, acting, setting a mood—"the domain of fantasy, psyche, feeling"—CREATIVE DRAMA. Each of the points stressed in the article is an integral part of creative drama.

The purpose of creative drama is to enrich the thought of young people by unlocking the treasures of their imagination. It is a process of self-discovery using the creative ability inherent in every child. Class work provides for freedom of individual expression within a framework of exercise designed to stimulate thinking, arouse interest, develop sensitivity and feeling; and of carefully selected records which create an awareness of expression through



NEW GOLD MEDALISTS: **John Carrell**, Seattle SC, CFSA Gold Dance, with his new partner, **Lorna Dyer**, Seattle SC; **Judy Nausin**, St. Moritz ISC, USFSA Eighth Test; **Carole MacSween**, Los Angeles FSC, CFSA Gold Dance. Right hand photo by William L. Udell, Hollywood.

bodily movement, rhythms and moods. The music, poetry and literature used is of a high standard and is introduced at the child's own level. Through these make-believe experiences he gains a sense of dominion and control which is reflected in poise and confidence.

Although creative drama is not intended for an audience, let's peek in on an imaginary class in action.

Everyone is wearing play clothes and flexible shoes. Sh! We mustn't disturb the players. It looks as if they are just about to finish a scene from "The Princess and The Swineherd." Listen—the dialogue is being improvised, as is the action. Note the sincerity, concentration and absorption that is evident. Observe too how graceful and natural the movements and gestures. This is an ideal play for this work—it has so much scope. Oh, the scene has ended. Wonder what they will do next?

The teacher has decided to play a record. She's asking the group to listen carefully and show through movement the mood, rhythm and action inspired by the music. "Walk, dance, skip—whatever you feel

like," she says. Away they go. It sounds like a selection from "Petrouchka." "That was good. Now while you are catching your breath—can you think of a story that would go with this music?" These 11-year-olds certainly are lively. "Sounds like a Carnival," they eagerly exclaimed. "May we act it out in movement first? Please play the record again while we decorate the stalls, dance in the square, have a puppet show!" Speech or mime may enter into the action before they are through.

That was just a tiny glimpse of what takes place in class, but I hope it illustrates sufficiently its practicality for the skater.

In England this work is part of the school program, and in the U. S. and Canada classes are available in many schools and universities.

To avoid confusion, it should be stated that creative drama is also referred to as Child Drama and Creative Dramatics. It should also be noted that there is a distinction between this art form and that of drama in the theater.

All set to capture the magic of a Third Edge? Good—you'll love it.

ISU TESTS: INTRIGUING CHALLENGE

by LORRAINE HANLON *The SC of Boston*

IN THE SUMMER OF 1960 while training in Vienna, I was intrigued with the idea of taking all the figure tests over again at the ISU standard. These tests are not often given in Austria where skaters are not required to pass tests. Indeed, two of their veteran World competitors only last summer passed their Gold or First Class Test.

My club test chairman and the USFSA International Committee Chairman granted me permission to be a test candidate. All arrangements were made by the ISU central office in Davos, Switzerland, and the Austrian Association was authorized to hold the tests in Vienna. My parents agreed to assume all expenses.

Judges had to qualify by international rank and geographical distribution. Only one Viennese judge was permitted; a second had to be from at least one hundred miles distance, and a third from a foreign country. The latter was brought in from Stuttgart, Germany. The rink in the beautiful new Wiener Stadthalle was hired for two mornings. On Saturday I skated the first two classes approximately through our Fourth Test, and on Sunday I skated the top two including the Gold Test; that is, from our Fifth through our Eighth.

The ISU tests include the figures of all our tests but are divided into four classes instead of eight. Most of the figures are started on one foot only. However, it is necessary to practice both feet because one does not know which will be called. After the warm-up, the referee summons the candidate to test-ice then flips a coin to determine which will be the starting foot, a disconcerting procedure when one has just practiced the left foot and is asked to start on the right. It is a relief to come to back paragraph brackets and back paragraph loops which must be started right and left. The referee picks the ice. One is not permitted to use lines on the ice, or dashers, or even the axes or side lines of figures one has previously delineated.

I skated alone and the judges were very quick to mark the lower two classes leav-

ing little warm-up time. Sometimes it was possible to do just one and a half tracings on one foot before it was time to toss the coin for the starting foot and to skate the next figure. For the two higher classes the marking was "open" with the judges holding up their marks after each figure, an announcer calling them out over the public address system, and two secretaries recording them. All instructions, announcements and discussions were in German.

The atmosphere was cordial but very formal, hung heavily with old-world courtesy. Before the tests many skating celebrities, who had come to watch the Gold class, were introduced to me. They included: my judges, three former Olympic, four former World, and several former European Champions and the Vice-President of the ISU. We chatted pleasantly about skating in the United States.

While the tests were underway, there was a very respectful silence from the audience of about one hundred officials,



Boston Herald Photo

Barbara Roles Pursley and Miss Hanlon after taking first and second places respectively in 1962 U. S. Championships.

skaters, and professionals, broken only by the announcer calling off the marks after each figure.

At Oberstdorf, Germany, during the summer of 1961, I repeated the four classes for the German Gold. The requirements were similar to those described above. However, the starting foot was determined by a toss of the coin for the first figure of each class with the subsequent figures being skated on alternate feet. I was allowed to choose "open" or "closed" marking. Because I was a foreigner and a possible World competitor for the following winter, I was told that the figures

would be judged not by test but by World Championship standards. Evaluations for the two top classes took a long time and even though I was the only test candidate, I had to skate from 6:00 to 11:00 A.M. The judges were very helpful and gave me several valuable suggestions after the tests were finished. Then, although not required, free skating was requested. I was tired and stiff from hours of figures skated out-of-doors in the cold and rain, but since my judges were interested enough to continue standing in the cold, I changed my boots, did a few pliés and skated my program for them.

Restrictive Action Faces Dance Partners

IT HAS BEEN BROUGHT to the attention of the USFSA Amateur Status Committee that the acceptance of gifts by skaters for acting as partners for Dance Test candidates has reached alarming proportions in some localities. Apparently what started out as a friendly gesture of appreciation by grateful candidates has mushroomed into a practice that is in direct violation of our Amateur Status Rules. The situation has assumed its most difficult proportions in the case of men partners, especially for the higher Dance Tests, because of the scarcity of such partners and the amount of time which some are asked to spend to promote proficiency.

We must remember that figure skating is an amateur sport and that we all participate in it for fun and enjoyment. At no time may a skater receive money or other material compensation in return for skating services performed. It has been shocking to be informed that last summer one dance partner received in excess of \$200 in the form of gifts and gift certificates. Other popular test partners have, according to reliable reports, a standard price scaling upward with the difficulty of the test. This price scale has been found so objectional in one club that they have written to ask if a maximum of \$5 should

not be established to pay a partner in a dance test.

It is the opinion and ruling of the Chairman of the Amateur Status Committee that the practice of accepting compensation in the form of money, gift certificates or other valuable material consideration is in direct violation of Amateur Status Rule AS 2.01 which reads that "the following persons are disqualified as amateurs: (a) any person who has directly or indirectly received pay or financial benefit of any sort for competing or instructing in figure skating, or for giving an exhibition or other display of skating ability." Further, it is directly contrary to the definition of an amateur as contained in Article III of the Constitution and By-Laws of the USFSA which states that "an amateur in figure skating is a person who participates in this sport in any capacity without *seeking or receiving* material gain."

Because of the seriousness of this situation it will be necessary, effective immediately, to take action against those skaters who in the future accept gifts or monetary consideration in any form for acting as a partner in a Dance Test.

DR. NELSON F. WATERS
Chm., USFSA Amateur Status Com.

MEMORIAL FUND

SKATE FAIR

by **ETIENNE NOIR** *Manager, South Mountain Arena*

IN THE SPACIOUS, MODERN South Mountain Arena of the Essex County Park Commission, West Orange, N. J., we held our first Skate Fair on a stormy, snowy Sunday evening, November 18, 1962, for the benefit of the 1961 World Team Memorial Fund.

Skate Fair was the first of its kind; we threw away the conventional format and cut a new pattern from new cloth. The idea was to mold the program in the fashion of a Fair as it is generally understood. In other words, several things were going on somewhere in the Arena at all times. Our capable announcer kept our patrons informed as to what was happening when and where, and we diligently kept to our program.

The inner lobby with the following attractions was a veritable beehive of activity: Mrs. Clarence Kern's table on information about the USFSA; Mrs. James

Games on Ice

COPIES OF "Mixers, Games and Races on Ice," prepared by the USFSA School and College Figure Skating Committee, a series of group activities which can be played on ice and have been reprinted from past issues of *SKATING* and other sources, may be obtained by sending \$1 and your name and address to the USFSA, 575 Boylston St., Boston, Mass. One copy of this reprint is being sent to the president of every USFSA Member Club free of charge. The USFSA Central Office will also welcome any new games and suggestions which readers might like to have added to the present list from time to time.

MRS. JAMES H. MARONEY
*Chm., USFSA School & College
Figure Skating Com.*

H. Maroney's booth on colleges and schools with ice skating facilities; the rummage racks with over one hundred skating outfits for sale; Margaret Sanders' skating novelties and souvenirs from her studio in New Haven, Conn.; the refreshment stand; and five lovely, young ladies selling programs. The motif of the Fair was evident in the bustle; the only thing lacking was the loquacious fairway barker.

An eight-by-ten foot motion picture screen was erected from the ceiling in front of the grand stand and, while we thrilled a crowd of two hundred and fifty people to the artistry of such Olympic greats as Tenley Albright, Carol Heiss, Dave and Hayes Alan Jenkins, several hundred skaters remained on the ice for fun and frolic.

The rummage sale gave us the most work, but it was a novel innovation and happily received by skating parents. We accepted skating outfits fourteen days before the Fair so that the public could see them. By show time many of the clothes were tagged with "Sold" signs. Many skaters donated skating clothes, and on these the Memorial Fund received 100% of sales. In other instances, clothes were offered for sale with the donor receiving 75% and the Fund 25%.

The Fashion Show was a highlight of the evening. Lord & Taylor gave us skating outfits (which could be purchased by our models at 50% discount), and clothing from the Rummage Rack was modeled. Mrs. Eugene Slowinski of the South Mountain FSC did a professional job narrating. The models, too, did more than just promenade around the rink. . . . Most of them did spins and jumps which added considerably to this part of the show.

The senior pro at the Arena (and 1947

World Champion), Hans Gerschwiler, conducted the Ice Clinic, which was an excellent demonstration and extremely well received. The first lesson was actually authentic. We had a child and a grown-up on the ice who had never skated before. They received a starter lesson. The beginners and advanced groups on the ice received instruction by our junior pro while Mr. Gerschwiler at the mike described what the teachers and their pupils were trying to do.

Stroking technique and ice games were followed by a demonstration of compulsory figures on several levels between the First to the Eighth Test, and we did the same with free skating. Katrine Neil described the dances and explained dance techniques. Ballet exercises for ice skaters were demonstrated by Denise Winsten, a graduate of the Royal Ballet of England, and her pupils. Mrs. Howard J. Meredith

and Mrs. Carl W. Gram, Jr., of The SC of New York did an outstanding job with their informative talks on "How to Conduct Tests" and "How to Become a Judge." Their meeting room was filled.

Skate Fair was a success in spite of the first snowstorm of the season. It was enthusiastically received, and we feel it should become a yearly "must." The Essex Skating Club of N. J. sponsored the event, but we also had the cooperation of the South Mountain Figure Skating Club, the Metropolitan Figure Skating Club, the employees of the South Mountain Arena, and many others too numerous to mention.

One thing we are going to change the next time we stage a Skate Fair; we are going to make it bigger and better because the cause is close to our hearts and because it makes the future of ice skating bright like the stars which shine above in memoriam.

Questioning the Clubs . . .

About Annual Meetings

HOW IS THE BUSINESS OF A CLUB CONDUCTED among the USFSA Members? Who is responsible, how many take part, etc.? Here are the compiled answers culled from the 90 USFSA clubs replying to the Operation Survey Questionnaire.

The first specific question dealt with voting. Is proxy vote (or absentee ballot) authorized? Only 40% of the clubs follow this procedure.

What percentage of the membership attends annual meetings? The spread of answers to this question was considerable—some memberships being very active with 53% of them having one-half or more of the total roll on hand for meetings. Another 18% get about a 25 to 49% turnout. However, about 29% of the clubs are run by only 24% or less of their membership.

Clubs are not unmindful of the need for getting people to be more active in sharing the policy-making and elective responsibilities, and almost 90% make efforts to

increase participation. Have their efforts been successful? Clubs seem to have met with more failures (58% of them) than rewards from their work.

Among the successful "gimmicks" used to heighten interest in meetings or other off-ice activities are these used by various clubs: summer round-ups . . . cook-out and swim parties . . . annual picnics and potluck suppers . . . social functions with invited guests . . . combination dinner-business meetings . . . stressing social and family activities . . . holding informal "fun and games" skating sessions . . . holding "gripe" sessions. Added to these for maintaining interest are the usual contacts between club and members: personal contacts . . . constant letters, telephone calls and newspaper publicity . . . dinner meeting followed by skating movies . . . summer planning by Membership Committee for fall open house and skating season . . . putting people to work on committees.

SUB-SECTIONAL CHAMPIONSHIPS

Southwest Pacific

Blade & Edge Club, December 16-17

SENIOR LADIES

(Otto Dallmayr Trophy)

1. Peggy Fleming, *Arctic Blades FSC*
2. Sondra Lee Holmes, *Arctic Blades FSC*
3. Sarasue Gleis, *Los Angeles FSC*
(7 Contestants)

SENIOR MEN

1. Ronnie Frank, *Arctic Blades FSC*
2. William Chapel, *Los Angeles FSC*
3. Roy Wagelein, *Los Angeles FSC*
(5 Contestants)

JUNIOR LADIES

(North Hollywood Figure Skating Club Trophy)

1. Susan Berens, *Blade & Edge Club*
2. Roberta Buswell, *Los Angeles FSC*
3. Paulette Chaisson, *Arrowhead FSC*
(8 Contestants)



SOUTHWEST PACIFIC CHAMPIONS: front, Johnny Moore, Atoy Wilson, Susan Berens, Yvonne Littlefield, Peter Betts, Claudette Chaisson, Karen Grobba; back, Dave Turner, Joan Sherbloom, Peggy Fleming, Ronnie Frank, Barbara McEvoy, Dennis Sveum, Kristin Fortune. Photo by William L. Udell, Hollywood.

JUNIOR MEN

1. Johnny Moore, *Arctic Blades FSC*
2. Robert Sable, *Blade & Edge Club*
3. Lance Shinkle, *Arrowhead FSC*
(4 Contestants)

NOVICE LADIES

(Glacier Falls Figure Skating Club Trophy)

1. Claudette Chaisson, *Arrowhead FSC*
2. Julie Holmes, *Arctic Blades FSC*
3. Toni Meador, *Arctic Blades FSC*
(22 Contestants)

JUVENILE GIRLS

1. Karen Grobba, *Glacier Falls FSC*
2. Tina Sessions, *Arctic Blades FSC*
3. Avril Allan, *Arctic Blades FSC*
(14 Contestants)

JUVENILE BOYS

1. Atoy Wilson, *USFSA Individual Member*
2. Kenny Shelley, *Arctic Blades FSC*
3. Richard Vandenburg, *Arrowhead FSC*

SENIOR PAIRS

1. Yvonne Littlefield & Peter Betts, *Arctic Blades FSC*
2. Susan Berens & Robert Sable, *Blade & Edge Club*

JUNIOR PAIRS

1. Kristin Fortune & Dennis Sveum, *Los Angeles FSC*
2. Jo Jo Starbuck & Kenny Shelley, *Arctic Blades FSC*

SILVER DANCE

(Blade & Edge Club Trophy)

1. Barbara McEvoy & Dennis Sveum, *Los Angeles FSC*
2. Patricia Sandefur & Roger Berry, *Los Angeles FSC*
3. Kathy Drelen & Roy Wagelein, *Los Angeles FSC*
4. Suzi Kellerman, *Los Angeles FSC*, & Ben Wade, *Arctic Blades FSC*
(6 Couples)

BRONZE DANCE

1. Joan Sherbloom, *Los Angeles FSC*, & David Turner, *Arctic Blades FSC*
2. Kathy Flaherty, *Los Angeles FSC*, & Joel Otto, *Arctic Blades FSC*
3. Joan Brosten & Lawrence Darien, *Los Angeles FSC*
4. Ann Zawistowski & Preston Ervin, *Los Angeles FSC*
(9 Couples)

ARCTIC BLADES FIGURE SKATING CLUB TROPHY
FOR CLUB WINNING MOST POINTS

Los Angeles FSC

Southwestern Area

Dallas FSC, December 6-7

SENIOR LADIES

1. Maidie Sullivan, *Broadmoor SC*
2. Susan Prange, *Broadmoor SC*
3. June Rodriguez, *Denver FSC*

JUNIOR LADIES

1. Dorothy Thompson, *Broadmoor SC*
2. Judy Mullins, *Broadmoor SC*
3. Sandra Ann Sells, *Dallas FSC*
(7 Contestants)

JUNIOR MEN

1. Gregory Hoyt, *Broadmoor SC*
2. Rubin Huron, *Broadmoor SC*
3. Perry Byram, *Denver FSC*
(4 Contestants)

NOVICE LADIES

1. Pam Bruskotter, *Denver FSC*
2. Trudy Poettmann, *Denver FSC*
3. Marianne Holscher, *Denver FSC*
(8 Contestants)



B. C. COAST SILVER DANCE PLACE WINNERS:
Wendy Nordby & Douglas Doidge, Sharon Wood
& Bill McDonald, Lorraine Hyne & Len Simpson.

NOVICE MEN

1. John S. Kirwan, Jr., *Carriage FSC*
2. Wesley Hoyt, *Broadmoor SC*

JUVENILE GIRLS

1. Patty Grazier, *Denver FSC*
2. Lynn Stoppkotte, *Albuquerque FSC*
3. Elizabeth Shepherd, *Dallas FSC*
(7 Contestants)

SUB JUVENILE GIRLS

1. Lynn Severson, *Dallas FSC*
2. Tamie Rolland, *Houston FSC*

SUB JUVENILE BOYS

1. Sidney Rossoff, *Broadmoor SC*
2. Tim Flynn, *Denver FSC*
3. Lincoln Hoyt, *Broadmoor SC*

BRONZE DANCE

1. Elizabeth Vaughn & Gordon Wright, *Dallas FSC*
2. Elizabeth Shepherd & Steve Rampley, *Dallas FSC*
3. Christine & Greg Jenkins, *Dallas FSC*

B. C. Coast

Kerrisdale FSC, December 2

SENIOR LADIES

1. Bonnie Jean Jackson, *Connaught SC*
2. Lindsay Cowan, *North Shore WC*
3. Sharon Browning, *Capilano WC*
(6 Contestants)

GOLD FREE SKATING

1. Norma Sedlar, *Connaught SC*

JUNIOR LADIES

1. Karen Magnussen, *North Shore WC*
2. Louise Lind, *Capilano WC*
3. Kathy Lee Irwin, *North Shore WC*
(9 Contestants)

JUNIOR MEN

1. Steve Hutchinson, *Kerrisdale FSC*
2. Joey Summerfield, *Capilano WC*

NOVICE LADIES

1. Ellen McQuarrie, *Vancouver SC*
2. Shelley Bowman, *Kerrisdale FSC*
3. Susan Lovatt, *Vancouver SC*
(21 Contestants)

NOVICE MEN

1. Richard Madden, *Victoria FSC*
2. Jimmy Reid, *Vancouver SC*
3. Len Simpson, *Victoria FSC*
(4 Contestants)

JUVENILE GIRLS

1. Betsy Whitman, *Capilano WC*
2. Linda McCurdy, *North Shore WC*
3. Dawn Wakelyn, *Victoria FSC*
(21 Contestants)

JUVENILE BOYS

1. Patrick McKilligan, *Nanaimo FSC*
2. Thomas Dickson, *Vancouver SC*

JUNIOR PAIRS

1. Betty & John McKilligan, *Nanaimo FSC*

LADIES PAIRS

1. Deirdre Humphries & Diane Murdoch, *Victoria FSC*
2. Sharon Wood & Sandra Kattler, *Victoria FSC*

SILVER DANCE

1. Lorraine Hyne & Len Simpson, *Victoria FSC*
2. Wendy Nordby & Douglas Doidge, *Victoria FSC*
3. Sharon Wood & Bill McDonald, *Victoria FSC*
(10 Couples)

(Continued on page 32)



B. C. COAST SENIOR CHAMPION: Bonnie Jean Jackson. Photo by Douglas McHardy, Vancouver.

THOUGHTS ON ICE DANCING

by VIRGINIA S. MURRAY

Rye FSC

WHEN I DECIDED TO LEARN to dance I thought of it as a formal, black velvet, white kid gloves sort of endeavor, hardly even to be called a sport because it comes from another, gentler world. Waltzing on ice has been done ever since skaters have started to do figures. If Mr. Parke Cummings* thinks he has a corner on the market of individual original errors, I can add a few to his collection.

In the first place, I must admit I was shocked to read, even in the *Rulebook*, that certain parts of certain dances require the "hip to hip" position. "Well!" I said to myself in the same awed manner that Jack Benny does when he raises his eyebrows and looks appealingly at the audience. In the Ten-Fox when the lady approaches her mohawk at the end of the rink she will not be able to do it properly unless she is close to the man. My instructor brought this markedly home, when he remarked, "Well, you can never get on the right edge if you pull away from me like that—now you see you are on an *inside* edge." Well, anybody knows that I was supposed to be on an outside edge and unless I stay close to my partner I'll never make it. What I am trying to bring out is that this is a *friendly* sport, and don't ever let anyone tell you otherwise.

Then I found that to my instructor's disgust I was doing all the steps too fast! "What is the big rush?" he said. So I decided to slow down so much, that then he told me that my reflexes were slow, and I should be able to think fast to turn the three *there*, not over here. "It doesn't belong over here—you are late. You've got to speed that up." Well, if I speed it up too much, I'll be right back where I was three months ago.

I would be happily engaged in archery practice if I hadn't been trapped in a rink

a couple of years ago. This was a rink where the young things jumped over the barrier and once you get in there it is fine, but how do you get out? After doing this one night to get to my patch, it was just not one of those days for me, and I couldn't get on an edge, and suddenly I thought I would give the whole thing up and go home. But how would I leave? There was no escape, and the barrier was too high. There was no one there to open the gate, so in utter disgust I went on grinding my teeth around the figures—it happened that it was that night that I got on the edge, and if I hadn't stayed, I might never have returned.

One instructor told me that I must get over skating around the ice as though I were walking on butter. So in order to rid myself of this horrible habit, I developed a heavy foot and tried to bear down. Then when I started to dance I was told that I must develop a lighter touch—that if I stepped more gently the mohawk would be smoother. Now I have to go back to the butterfly stage again and if that other teacher ever sees me what will he think?

You see, Mr. Cummings, you are not alone. I too have individual errors. I used to have one that I defy you to try. I am the only skater in history who used to skate the back outside figure eight with the second circle on a pronounced inside edge—I was in a position for an outside edge, but my skate had other ideas. A European competition skater saw this feat that I was unconsciously doing with great ease, and she called over two of her chums to watch. I wondered why they looked in such awe. That was what they were looking at.

No wonder my instructor looks at my feet when I am dancing with him. He is not going to take any chances. He has suggested that I wear a button which reads "Skating at your own risk" in the dance sessions. He has a button which reads "Be reasonable—do it my way."

* See Mr. Cummings' article "Individual Original Errors—or I.O.E." in the February, 1961 issue of SKATING.



PEOPLE

Vancouver—Mrs. Leighton P. Harrison, mother of Miss Daphne Harrison and an Honorary Life Member of the Kerrisdale FSC.

TURNED PROFESSIONAL

Brick Town, N. J.—Virginia D. Wilson to teach in Lakewood, N. J.

England—Valerie Holman Hunt Burrows and Peter Burrows, 1962 British Pair Champions, to teach at Altrincham.

Hamilton—Lorinda Farrell to teach at the Caledonia FSC.

Seattle—Dolores Tremmel to join Holiday on Ice.

BIRTHS

Boston—To Mr. and Mrs. John Arnold (Sidney Foster, former U. S. Silver Dance Champion), a son, John Wilson, Dec. 1.

Hamilton—To Mr. and Mrs. H. Ambis, a son, David Paul.

London, Ont.—To Mr. and Mrs. Robert Hayman (Anne Walker), a son, Michael, May 18, 1962.

New York—To Mr. and Mrs. Edward Sherman (Jane Horsman), twin daughters, Karen and Sherry Lynn, Nov. 21.

Toronto—To Mr. and Mrs. Eric Lawson, a daughter, Adrienne Frances, Oct. 31—To. Mr. and Mrs. James H. Morlock (Beverly Balmer), a son, Nov. 10.

ENGAGEMENTS

New York—Miss Nancy Heiss, former U. S. Junior Champion, to Mr. Wedg Jones.

Toronto—Miss Isobel J. Harper to Mr. William Peter Fedosoff.

MARRIAGES

Cobourg—Mr. Victor Smith and Miss Patricia Kerr, Dec. 21.

Dayton—Mr. John F. Mingos and Miss Jeanine L. Keener, Aug. 25.

Detroit—Mr. Denver L. Rocker and Miss Joyce Swapka, Nov. 10.

Hamilton—Mr. Roger O'Grady and Miss Margaret Stewart, Sept. 22.

Indianapolis—Mr. Harry W. Meyer and Miss Ann Elizabeth Wilmeth, Nov. 2.

New York—Mr. George Geschwinder and Miss Carol J. Wanek, former U. S. Junior Champion, Oct. 18—Mr. Bernard Phillips and Miss Grace M. Lee, June 29, 1962.

Portland, Ore.—Mr. Keith Dodd and Miss Lila Sorenson.

Princeton—Mr. Eric F. Hockings and Miss Sarah C. Leidt, Dec. 1.

Sault Ste. Marie, Mich.—Mr. Michael Faff of Livonia, Mich., and Miss Bridget Ann Kinney, Dec. 1.

Seattle—Mr. George Zeufeldt and Miss Kathleen Mathews, Nov. 10.

Vancouver—Mr. Robert R. Eddie and Miss Helen Heffernan, Oct. 19.

DEATHS

Colorado Springs—Mrs. Evelyn Wiley, wife of Mr. Fred Wiley, Oct. 6.

New Haven—Mr. Edson VanBrunt, husband of Mrs. Dorothea VanBrunt and a former Director of the Rye FSC, Dec. 19.



THE CALENDAR OF COMING EVENTS

February

- 5-10 European Championships at Budapest, Hungary
- 7-9 Canadian Championships at Royal Glenora Club, Edmonton
- 7-10 U. S. Championships at Arctic Blades FSC, Long Beach
- 15-16 North American Championships at Capilano WC, Vancouver
- 17 FSC of Cincinnati carnival
- 22-23 Leaside SC carnival
- 23 Beacon Hill Club carnival
- 27-Mar. 3 World Championships at Cortina, Italy

March

- 1-2 Hamilton SC carnival
- 1-3 Middle Atlantic Championships at The SC of New York
- 7-9 Tulsa FSC carnival
- 8-9 Mount Paul SC carnival
- 8-9 Saskatoon FSC carnival
- 8-10 The SC of Boston carnival
- 9-10 South Mountain FSC carnival
- 11 FSC of Omaha carnival
- 14-16 Newmarket FSC carnival
- 15-16 Galt FSC carnival
- 15-16 Philadelphia SC & HS carnival
- 23-24 Hiawatha SC carnival
- 29-30 Woodstock FSC carnival
- 30-31 Commonwealth FSC carnival

April

- 7 Fort Wayne ISC carnival
- 20-21 Essex SC of New Jersey carnival

May

- 3-5 USFSA Spring Meeting

ROCKERS AND COUNTERS

Edited by
FREDA ALEXANDER



Canadian Clubs

Connaught SC reported on its program of aid to the blind. Last year, two blind children were taken into the club; one of them skated in the carnival and this year is taking her first ribbon tests. Two more youngsters are on the club roster this winter. The Government school for the blind has found the results of interested persons' efforts in helping these children to be so beneficial that, after the New Year, skating is going to be included as part of the school program. For five hours a week the children will be transported by bus to and from the arena and have supervised help in learning as much of skating as possible. One of the difficulties for blind children is the lack of exercise, and this is the first time they have been able to get into an organized sport. The Christmas party for the children of the club was a great success—Santa Claus passed out treats and Barbara White and Margot King, two of the leaders of groups in the junior session, performed solos for the youngsters. The seniors and intermediates held their parties in mid-December with games and competitions on the agenda.

Dundas FSC's annual Christmas party for juniors took place at the Dundas Arena on Dec. 22. The youngsters participated in races and games and all received candy. Extra ice time during Christmas vacation was employed by members to prepare for a test session set for Jan. 12 and by competitors to practice for the Sectionals.

Edmonton FSC opened its season on Oct. 1. There are now two branches of the club as regular ice time has been obtained at the new South Side Arena, in addition to that at its home rink, the Edmonton Gardens. This extra ice time has enabled the club to accept many more members. The Christmas party was planned for the third week in December, under the direction of Barry Parker, the

Social Convenor. A Christmas raffle was again sponsored to raise funds, and the winning tickets were drawn at the party.

Glencoe Club's publication, *Glencoe News*, in its November edition featured a photo taken at the opening of the new eight-sheet curling ice on Nov. 26. The fire which destroyed the club was a short, 11 months earlier. President R. C. Borland predicted that by January all winter activities should be in operation. The annual general meeting of the shareholders took place at the Al Azhar Temple on Oct. 18; the Skating Section's annual meeting was also held there on Oct. 3. The Skating Committee was elected, headed by Chairman W. E. Allan. The Committee adopted an improvised schedule for competitive skaters, arranging for practice time at the Corral, Winter Club and High River until the new rink was completed.

Glengarry FSC's Executive passed along to members the reduced rates for ice rental granted by the city to figure skaters. The club anticipates a resultant increase in membership. A Skating Dance Scholarship, equivalent to 20 15-minute private lessons has been made available by Harley Andrew, to be presented by the club to the skater passing the greatest number of dance tests during an annual period. A family skating party was held the afternoon of Nov. 4 and all the members from the tiny tots to the seniors were requested to invite their parents to join them. The Christmas skating party was set for Dec. 16. Parents and skaters were on hand for the program of races, a gift exchange, Santa Claus's arrival in a sleigh, and refreshments. Thirty-five attended the Dance Judges School conducted by Dr. Sidney V. Soanes at the Penticton Memorial Arena on Oct. 31. Following a discussion period, several skaters demonstrated dances from the Preliminary through the Senior Silver,

and Dr. Soanes also illustrated various faults. Actual dances were judged and comparisons made of the judges' marks.

Hamilton SC provided an evening of fun for Parents' Night, held at the Victoria Club on Nov. 24. The "oldsters" dusted off their skates and 40 of them enjoyed the program emceed by pro Gerry Woodstrom, and the supper provided by the Ladies Auxiliary. The annual Christmas Tea took place on Dec. 9 in the Upper Lounge of the Victoria Club; the Christmas Table was also there—displaying articles offered for sale by the ladies. An intermediate party was scheduled for Dec. 16 with tests the same day and on the 18th. The Ladies Auxiliary under the guidance of its President, Mrs. Fern Richardson, is again publishing a "Newsletter" which carries information on the club's activities. An adult class is being conducted every Sunday evening to teach basic skating and ice dancing.

London SC held a Christmas party during the junior session, and Santa made an appearance, to the delight of the children. The club scheduled a pop concert for Feb. 21. Junior pro Anna Chapman's group lessons and star system have resulted in marked progress among the juniors.

Saskatoon FSC members and parents gathered for a Halloween party on Oct. 30. A demonstration of free skating, spins, figures and dancing was given by the seniors, and professional John Hendrickson provided a commentary. Solos added to the entertainment—performed by Bernadette Aubert, Sharon Leigh, Bruce Roadhouse and Mr. Hendrickson.

Toronto CS & CC members gave a special party on Dec. 5 to honor Professor J. Roy Cockburn. A member of the old Toronto SC for many years and also of the current club, the Professor is now in his 80's and still an active participant at dance sessions. A large number of members turned out and skaters of all ages joined in the program planned for him. Juniors gave a Polka exhibition and, early in the evening, Professor Cockburn was introduced by J. A. (Sandy) McKechnie who gave a brief outline of the Professor's history. Many socials sparkled on the De-

ember calendar: a teenage double runner party on the 1st with dancing afterward in the lounge; junior guest day on the 7th; a dance for all senior members and guests on the 8th; a children's Christmas party on the 14th; and a teenage formal on the 22nd which is the highlight for the younger set. The "really big" event was the New Year's Eve Ball on Dec. 31.

Vancouver SC's season, which opened on Oct. 6, extends through March. The club provides 16 hours of ice time per week, with two two-hour sessions allotted to each age group per week: junior B (up to and including 12-year-olds); junior A (up to and including 12-year-olds who have passed their Gold Ribbon Test); intermediate (13- to 18-year-olds); senior (over 18). The intermediates' Halloween party took place on Oct. 26; about 90 teenagers participated in games and races on the ice.

Windsor FSC senior members sponsored an "Invitational Meet" on Nov. 18. Skaters from 10 neighboring clubs were invited and some of the guests came from as far away as Toledo, Ohio. Mrs. Joanne Burman was chairman for the event; games and refreshments were enjoyed.

WC of St. Catharines' first meeting of the season took place in the City Hall on Sept. 10. Past President J. R. Herriott's efforts to secure extra ice time at Prudhomme's have been successful. The club has an additional 12½ hours which are divided between two sessions—on Sundays and Thursdays.

Woodstock FSC's hard-hitting registration promotion program resulted in good, solid membership figures. Dec. 2 was a busy day; activities included the annual junior Christmas party, demonstrations and contests, and the first CFSA tests of the season conducted in the evening, with a good percentage being passed. Mrs. E. Evans and Mrs. W. Sedgwick conducted the youngsters' festivities.

Eastern Clubs

Beacon Hill Club activities are in full swing—the Thursday evening dance class and the ladies' morning classes have begun. On Dec. 7 and 21, the Friday "spe-



SCENE AT Great Neck FSC's Anniversary Celebration: Vera Cross, professional, Mrs. Perry Robinson, President, Abe Rosenberg, former President, Mrs. Helen Marshall, party chairman. Photo by Fred Sher, Flushing, N. Y.

cial" session for Eighth Graders and up, with guests welcome, was scheduled. A period on the ice was set for Christmas Day. The calendar for the season includes tests on Jan. 19 and 26 and Mar. 9; the club figure competition on Feb. 8 and the dance events on the 9th; and the ice show late in February.

Birmingham FSC presented its second annual ice show, *Around the World on Ice*, on Nov. 15-17. Bernice Huffman was the Show Chairman, with choreography by Joanne Howard. Many countries were represented; the "Enchanted Toy Shop" was presented as part of the theme. Soloists included Elaine Kinum, Sandra Rocks, Ben Briskey, Carol Kent, and Barbara and Doug Dailey.

Colonial SC drew some 200 men, women and children to its open house on Nov. 19. Performances of figure and free skating were given by Eleanor Lee, Bill Kean, Linda Lange and Rosemary Schroeder. Pro George Manuel conducted the junior members in a program, and a general skating period completed the session. The third annual Christmas party brought about 175 persons, among them guests from the Atlantic City FSC, Old York Road SC, and Wissahickon SC. Solos were skated by Eleanor Lee, Bill Kean, Barbara Delaney and Rosemary Schroeder. After

finishing a buffet dinner, the younger skaters participated in fun and games and received Christmas gifts. The clamor of little voices became louder when Santa Claus appeared and distributed candy canes to all. General skating completed the holiday festivities.

Commonwealth FSC conducted an open house on Dec. 16. Each member was allowed to bring an unlimited number of friends, and the guests were permitted to wear any type of skate. Competitors Paul McGrath, Allyson Brooks, Richard Stanley and Karen Landrey gave exhibitions. Members and guests skated in group games and programs. The annual Christmas party took place on Dec. 23; Santa Claus skated with the children and later gave out favors to all, who enjoyed a buffet supper afterwards.

Essex SC of New Jersey scheduled the annual children's Christmas party for Dec. 21; Peg Liska was in charge of arrangements. Tentative test dates were set for both figures and dances—Mar. 18 and Apr. 28.

Great Neck FSC celebrated the 25th anniversary of its founding during the annual Christmas party and show held at the Great Neck Rink on Dec. 23. Mrs. Helen Marshall was chairman of the festive occasion, highlighted by a cake-cutting ceremony in which Mrs. Perry Robinson, President, and Abe Rosenberg, former President and a founder, participated.

Hershey FSC honored member Tommy Litz at a buffet supper following the regular evening session on Nov. 25. Tommy received his Gold Figure Medal from the club. Special dances were skated and the spot dance prize went to Vivian Martin & Henry Weiler. Arranging the party were Cecelia Sweigert, Donald Fink and Dick Hummel. The junior division has been enjoying many sessions at the outdoor rink, and the teener group, which has its own ice periods, combines skating with wiener roasts in the adjacent lodge. The annual striving to be "best in the group" has begun for the youngsters. Each skater receives a star on the chart for doing well whatever the professional is teaching that day. The skater with the greatest number

of stars at the end of the first half of the season is awarded a private skating lesson.

IC of Syracuse entertained its members with an annual Christmas party at the home of Mr. & Mrs. Robert A. Rowe. A buffet supper was served after the Sunday session and skating movies of the last Olympic Winter Games were viewed by members and their families.

Manhattan FSC held its annual Christmas party on Dec. 16 at the Hotel Edison, following the regular skating session. Members and guests enjoyed a buffet dinner and dancing to recorded music and entered into the holiday spirit of the occasion.

Providence FSC scheduled its annual Christmas party for Dec. 16 at the Meehan Arena. A coffee hour, a skating exhibition, games on the ice, and Santa with his gifts made up the program. In charge of arrangements were Mr. & Mrs. Raymond Fortier, assisted by Mr. & Mrs. James Gallen, Dr. & Mrs. Edgar Bessette, Dr. & Mrs. Henry Maciejewski, Dr. & Mrs. Joseph Yacovone and Mr. & Mrs. Paul Carlson.

Quaker City FSC presented Christmas exhibitions for the General Washington Country Club members and guests on Dec. 16. Joel Leeds directed the program, assisted by Mrs. Walter Bechtel and Mrs. William Taylor. The show included William Taylor as Santa Claus; his Rein-"dears" (Gay Shillady, Sandy Moon, June Marquee and Rene Bechtel); the eldest and youngest skaters in the club (Dr. Herbert C. Warren and Sheree Hopkins); dancers Wilma Rhein & Walter Wisniewski; the senior dance group and some junior dancers; and soloists Gordon McKellen, Jr., Sheri Swearer, Karen Richards, Susan Lipsett, Nila Goodman, Susan Gertensberger, Sandra Moon and Gay Shillady. Charles Moon was Master of Ceremonies and Kenneth Richards and J. Swearer directed the music. The spectators were invited to skate afterwards and to partake of the refreshments provided by Mr. Leeds.

The SC of Boston gave a new members' skating party on Oct. 28, together with the children's Halloween party. New members were welcomed at the door, and presented

with festive name tags; after a free skating period, President Theodore G. Patterson, assisted by Benjamin T. Wright, introduced the newcomers on the ice. Each family received a club shield, a new directory and a copy of "Information for New Members." The youngsters then took to the ice and members judged their costumes; the winners were Kathy-Lee Wilcox, Roger Swain, Wegee and Nancy Roberts and Robbie Hendren. Ann Pellegrino, representing the new group, skated an exhibition number. Games followed for the youngsters, under the direction of Elizabeth George and Helen Dane. Party arrangements were made by Mr. Patterson, House Committee Chairman Mrs. Grogan, Elizabeth George, Helen Dane, and the members of the Hospitality Committee. The Harvest Ball was enjoyed on Nov. 7; ladies and gentlemen in formal attire ice danced and joined in informal competitions, won by Faith Patterson & Tom Harvey and Evelyn Carroll & Stan Leonard. "Engineers" for the successful affair were June deWilloughby and her Party Committee, headed by Ruth Jeffery.

South Mountain FSC members participated in the Skate Fair presented by the Essex County Park Commission at the club's home arena on Nov. 18. During part of the program, former Club President Mrs. Eugene Slowinski narrated the latest ice fashion styles. Performers in this segment included Chip Aiello, Joan Daniello, Jackie Delves, Robin Green, Gerald Gregory, Dickie Gross, the Hunt sisters—Candy, Melody and Pamela—Harriet Kaplan, Eric Marcus, Barbara Marshall, Martha Monroe, Judy Mothersell, Suna Murray, Bob Schwarzwaelder, Laura Slowinski, Bobbie Titus, Ellen Wellington and Janet Zukerberg.

Westchester FSC began its season with a buffet supper on Oct. 26. New members were introduced to all; the ladies received orchid corsages and the men, boutonnieres. Good food and dancing were included in the program which closed with a drawing of door prizes. The Social Committee, headed by Julie Rendina, planned a Christmas breakfast for the juniors on Dec. 23 and a senior dinner-dance in March.

Midwestern Clubs

Chicago FSC conducted a raffle on Dec. 1 for the benefit of the Competition Fund, raising almost \$80. The main objective of the fund this season is to treat all of this winter's competitors to a recognition banquet later. The winners of the five prizes were Dr. Elsie Wieczorowski, Mrs. Hukula, Dr. H. A. Evers, Sylvia Dorffi and Martha Fitzgerald. Donors of the prizes were President Jack Kuppig and Rainbo Arena Manager Allan C. Carvell. A splash party took place on Dec. 1 at the New Lawrence Hotel, with 18 members enjoying "liquid ice." James Wulff organized the group into two teams based on swimming handicaps for relay races and diving fun; Dr. Hugo Lambach brought his scuba diving equipment, and everyone had the opportunity to try it.

Detroit SC juniors were joined by Santa Claus on the ice at their party on Dec. 22. The youngsters were to bring gifts for the grab bag. Forty-six juniors attended the get-acquainted party on Nov. 24. The contest winners were Stacey Funk, Althea Samson, Paul Holliday, Ann Seror and Sherry Larsen.

FSC of Cincinnati's family groups met on Dec. 21 for skating and a Christmas party. For their entertainment, Susan Becker free skated and Linda & Jack Comberger gave a pair exhibition. There also was a demonstration Dutch Waltz and Fourteenstep by the more advanced dancers. On Dec. 23, the regular Wednesday evening and Sunday morning members enjoyed a similar treat in conjunction with skating; the holiday theme predominated in the decorations and refreshments.

FSC of Omaha ran a contest, with a \$10 prize to be given for the best title of the spring carnival. The winning name chosen was "Fantasy on Ice," and there were two entries submitting it, so the money was divided between Alice Hill and Sharon Pokorny. A post-session party to kick off the show publicity and to announce the winners of the contest was set for Jan. 4.

Fort Wayne ISC scheduled figure and dance tests the end of January and the club competitions late in February, with divisions ranging from beginners to ad-

vanced. Rehearsals for the April show commenced in January. The two Christmas socials brightened the Holiday season—the senior party on Dec. 20 and the junior gala on the 26th at which supper was served.

Hiawatha SC gave its Christmas party at the rink on Dec. 22. Santa Claus arrived, wearing skates, to distribute the gifts. Everyone enjoyed a grand march and doing the Twist on skates. All members voted to select a candidate to represent the club in the annual winter carnival queen contest the end of January; the girl chosen was Linda Dale.

Iceland FSC's Past President, Al Bass, was given a farewell party during the session on Nov. 4, prior to his leaving to join the U. S. Navy. The membership presented him with a gift and a cake in his honor.

Lansing SC's Christmas dinner on Dec. 17 was highlighted by the presentation of the Sandra Tewkesbury Memorial Trophy to the club. Afterward competitors Peggy Lill, Cindy Cheney and Jill Harrison skated for the group.

South Side IC of Chicago held a competition party at the home of Mrs. Harry Goldstein on Nov. 28 and another at the rink, hosted by Mr. & Mrs. Holtz on Dec. 5. Diane Goldstein was designated the mascot at the Sub-Sectionals. Dancing has resumed on Sunday evenings, beginning on Dec. 16, after a lapse of a few years. The Christmas party was scheduled for Dec. 23.

Troy SC has been having a busy season. Late in November, competitors who were entered in the Sub-Sectionals skated their programs for the seniors. The Christmas party was situated on the ice at Hobart Arena, which was decorated by member Bernard Mumma. In place of the usual small gift exchange, each member contributed money to Santa's sock for the USFSA World Team Memorial Fund. Club championships were scheduled the third week in January, sandwiched between the Midwesterns and carnival practice. Last year, seven permanent trophies were donated by members and the club hopes that more will be added this year.

Tulsa FSC conducted its championships on Dec. 17-19, under the chairmanship of Dr. Hugh Graham. The winners, who were awarded bronze placques with skating figures, are: Mary Page, junior; Gayle Gibbon, novice; Jacquelyn Parker and John Greve, subnovice; Lynn Butterworth and Mike Turpen, preliminary; Tricia Lewis & John Paul, preliminary dance. The Christmas party took place on Dec. 20 at which the competition prizes were distributed. The parents joined in the festivities, and there were races, dancing and refreshments, under the direction of Social Chairman Mrs. Bettye Paget.

Wagon Wheel FSC's adult Christmas party brought out a large crowd; Grace Ingoglia and Dorothy Mann were co-chairmen for the event. A four-piece orchestra played for community singing of carols and Santa (Joe Rosulek) appeared with gifts for everyone. Cocktails were served in the Silver Dollar, and dinner and dancing were enjoyed in the Martha Washington Room of the Wagon Wheel Lodge. The juniors' festivities took place on Dec. 21, chaired by Anna Marie Clothier and Susan Sinykin. Highlighting the program was an exchange of gifts. On Dec. 2, competitors skated a "dress rehearsal" for many parents and members; Mrs. Julie Kohout was a special guest.

WC of Indianapolis planned a dedication ceremony to take place at the regular session at the Fairgrounds Coliseum on Dec. 23. Being dedicated was a plaque in memory of Larry Pierce, Diane Sherbloom and Daniel Ryan, victims of the 1961 World Team plane crash. Concurrently there were presentation ceremonies of the Danny Ryan Memorial Trophies for the Midwestern Gold Dance Champions—one to Marilyn Meeker who won this title with Larry Pierce in 1960, and the other to Mr. & Mrs. Dallas Pierce, his parents. Invited were members of the Allison SC, Keen Kutters Club, Eli Lilly SC, Orchard School SC and Medical Auxiliary SC (all non-USFSA Members), all of whom contributed funds for the memorials. A Christmas party on-the-ice was held on Dec. 16 during the regular club session. Each junior brought a gift and

The European Scene

FRENCH DANCE CHAMPIONS Christiane and Jean Paul Guhel have retired from competition. Jean Paul has been named Director of the new rink to be opened at Grenoble. . . . Their compatriot and European Champion Alain Calmat is continuing his training, in addition to his medical studies, and has his sights on competing through the 1964 Olympics. . . . Winners of the International Junior Competition in Vienna on Dec. 12-13 were Astrid Czermak, Austria, and the French Pair Champion Philippe Pelissier. . . . Sjoukje Dijkstra, World Champion, and Manfred Schnelldorfer of West Germany skated a pair at a gala in Munich in November. . . . Franz Schmidt, Swiss Champion, won the World Roller title at Miami Beach in November. . . . Former World Dance Champions Doreen Denny & Courtney Jones skated together at a recent party at Queen's Ice Club given by Royal dress designer Hardy Amies.

Santa distributed the presents to the youngsters.

Pacific Coast Clubs

Blade & Edge Club of Pasadena recorded another first in December when members presented nightly free style exhibitions during the City of San Gabriel's Christmas festival. The half-hour performances were skated under the palm trees on a 30' x 40' portable rink, located across from the 180-year-old King of the Missions. The shows were given from Dec. 15 through 30.

ISC of Fresno juniors celebrated the Holidays with a Christmas party at the rink on Dec. 18. Refreshments included cookies with the youngsters' names on them, made by Vera Jones. The members played team games, and free passes to the rink, donated by owners Bill & Julie Barrett, were the prizes. A surprise visit by Santa Claus (Oswald Jackson) added to the gaiety and the man in the red suit gave out a gift to each child. Jeanne Lan-



SWINGSTERS in Seattle SC's Iceparade: Linda Adams, Vivien Quinn, Melvylei Stone.

dresse was in charge of the party with Mrs. Golden and Mrs. Hill assisting. The seniors' party took place at the rink on Dec. 23. A skating session, courtesy of the management, a buffet-style dinner, dancing and community singing comprised the festivities. Florence Goeringer and Patti Ogburn, assisted by Jeanne Landresse and Kay Bannister, were in charge of arrangements.

Portland ISC members, attired in colorful outfits, swished through the annual Christmas party on Dec. 18 at Lloyd Center. Vic Nelin as Santa, led by eight delightful reindeer (juniors), sped over the ice collecting cans of food from members, to be donated to the Portland Police Sunshine Division for Christmas-giving to the needy. Santa showed his skating skill when Mrs. Santa Claus—Fred Bennion—caught him under the mistletoe with Joyce Henderson and Betty Lonergan. Another highlight was a dance exhibition by pros Leone & David Spalding. Food and egg-nog topped off the occasion.

Seattle SC gave its annual Iceparade party at the Fort Lawton's Officers Club on Nov. 11, under the direction of Mrs. Geneva Groves. Following dinner, there was a festive time for all, including dancing to Gay Jones Orchestra. Five juniors were awarded their Gold Medals—Kris and Allana Mittun, Cynthia & Ronald Kauffman, and Buddy Zack. Making the presentations was Ed Bold. The show it-

self drew one of the largest Friday night audiences in years and made \$400 more than last year's production; Jan Jacobson was Iceparade Chairman. The free session at Civic Arena on Nov. 15 drew the largest club turnout; the period consisted of dancing, free skating and talk, and refreshments were served by the Board. On Dec. 15, members were to give numbers at the opening of the Burien Ice Chalet. The junior Christmas party was set for Dec. 19 at the Civic Ice Arena; the senior holiday festivities took place the same day.

Utah FSC helped open the season for the new arena, the Winter Garden, at Provo, Utah. Brigham Young University was to hold its Winter Carnival on Jan. 7 at which time the students were to skate at the new rink, among their other activities. The club planned a half-hour exhibition, demonstrating the various forms of skating. The program included solos by Marjean Langley, Patty Snarr, Susan Croft and Rolland Arthur, a pair by Charlotte Pomeroy & Jim Evans, and dances by Jo-Anne Perkins, Carlos Croft, Frank Godfrey, Jane Kimball, Marvin Mann, Caroline Riches and Mrs. Ida Tateoka. A group number was also performed; among the participants were Robyn Bird, Leigh Smith, Ruth Ann Barker, Eve Holbrook and Bertell Bagley. The second and third Figure Skating Clinics which the club sponsored in behalf of the 1961 World Figure Skating Team Memorial Fund were set for Jan. 12—one in the afternoon and another in the evening at the Winter Garden. About 250 in the Provo area were to take part in the Clinics and club members were to give demonstrations.

New Gold Medalists

ADDITIONS to the select circle of Gold Medal winners include **Sarasue Gleis**, Los Angeles FSC, who passed the USFSA Eighth Test at her home club on Nov. 19. Three skaters completed the CFSA Gold Dance Test at the Victoria FSC on Nov. 23: **Carole MacSween**, Los Angeles FSC; **Lorraine Hynes**, Victoria FSC; **John Carrell**, Seattle SC.

Rensselaer Polytechnic Institute
INVITES YOU TO ATTEND
THE 1963 SUMMER SKATING SCHOOL
JUNE 24th thru AUGUST 25th

Nine full weeks of concentrated skating under leading professionals. Skate in the most modern and convenient surroundings available. Excellent ice conditions at all times with a Zamboni ice resurfacers. Plenty of ice time for those wishing extra patches and program practice time.

Chaperoned living accommodations for both boys & girls on the R.P.I. campus.

Professional Staff:

BETH BOWMAN

HOWARD "Skip" BUTLER

MARY LOU BUTLER

DIANE FRITHSMITH

other Professionals to be added

Sponsored by the
RPI Figure Skating Club

Sanctioned by
U.S.F.S.A.

Under the Direction of:

HOWARD "Skip" BUTLER

For further information & brochures write:

RPI Summerskating
RPI Field House
Troy, New York
ASHley 4-0900

The 3rd Annual

TROY SCHOOL OF FIGURE SKATING LTD.
HOBART ARENA, TROY, OHIO

8 weeks
of
intensive
training

JULY 1 — AUGUST 25, 1963
(U.S.F.S.A. Sanctioned)

With these Outstanding Midwestern Professionals

- ★ **DAVE LOWERY**
- ★ **RITA LOWERY**
- ★ **RONNIE BAKER**
- ★ **JOHN CARLOW**
- ★ **RENE CARLOW**
- ★ **MIMI PONG PAGE**

Troy SC
Troy SC
Detroit SC
Bath & Tennis SC
Lake Forest SC
Detroit SC

The Finest Facilities Available for the
Beginner thru the Figure, Dance and Pair Champions
Brochure upon Request



SPINS THROUGH PROFESSIONAL CIRCLES

Changes in Position

ADDITIONAL NEWS in professional circles: Bruce Sheffer is managing the Long Beach Arena, site of the U. S. Championships. . . . George Manuel is instructing at the Colonial SC in Haddonfield, N. J. . . . Fran Pappas is teaching at the Atlanta FSC (Ga.) again after an absence of several years. . . . Two additional professionals are giving dance instruction at Essex SC of New Jersey—JoAnn Tracy and Joan Hanst. . . . Beverly Knapp has

been engaged to teach part-time at the Lansing SC.

In Canada, the Edmonton FSC, in addition to Harry Nevard, has Gordon Linney, Jean Palmer and Lillian Johnstone on its staff. . . . Rose Bilyk has signed with the Port Elgin FSC (Ont.). . . . Tamara Holliday has the duties of junior professional at the WC of St. Catharines and at the Dundas FSC, where James Macaulay has been appointed as senior instructor. . . . Margaret-Anne Witherspoon Warden is teaching at Bradford & District FSC as well as at Aurora FSC. . . . Joan Meloche Sherman will not be instructing at Newmarket FSC as planned as her husband's business has moved them to Peterborough, Ont.; Newmarket's instructors are Charles Kiel and Marijane Lennie. . . . London SC's junior professional is Anna Chapman.

SUB-SECTIONAL CHAMPIONSHIPS

Continued from page 21

B. C. Coast

BRONZE DANCE

1. Betty & John McKilligan, *Nanaimo FSC*
2. Judy McConnan & David MacDonald, *Victoria FSC*
3. Nancy King, *Connaught SC*, & Paul Baker, *Capilano WC*
(6 Couples)

VETERANS DANCE

1. Florence & Jack Morgan, *Kerrisdale FSC*

JUNIOR LADIES

1. Taffy Pergament, *Westchester FSC*
2. Gail Newberry, *Buffalo SC*
3. Laurie Miller, *Genesee FSC*
(13 Contestants)

JUNIOR MEN

1. John Dystel, *Rye FSC*
2. James Sladky, *IC of Syracuse*
3. Robert Schwarzwelder, *Metropolitan FSC*
(5 Contestants)

NOVICE LADIES

1. Judy Mothersell, *Metropolitan FSC*
2. Candice Brown, *Essex SC*
3. Linda Greenberg, *Copiague, N. Y.*
(11 Contestants)

NOVICE MEN

1. Frank Mantha, *R. P. I. FSC*
2. Michael Fiore, *Westchester FSC*
3. Gerald Gregory, *Beacon Hill Club*
(4 Contestants)

JUVENILE GIRLS

1. Ellen Wellington, *South Mountain FSC*
2. Judithann Dempsey, *Garden State SC*
3. Lisa Fulweiler, *The SC of New York*
(12 Contestants)

JUVENILE BOYS

1. Kenneth Wang, *The SC of New York*
2. John Baldwin, *Long Island FSC*

SILVER DANCE

1. Phyllis Hendrix, *Rochester, N. Y.*, & D. Wilson Hess, *Genesee FSC*
2. Margaret Anne Gerrity, *Lake Placid, N. Y.*, & Domenick Malavolta, *Brooklyn FSC*
3. Alma Davenport, *Metropolitan FSC*, & Donald Parent, *The SC of New York*
4. Francine Gumbs & Charles Rizzo, *Metropolitan FSC*
(6 Couples)

North Atlantic States

Garden State SC, December 14-16

SENIOR LADIES

1. Pamela Schneider, *New York, N. Y.*
2. Joya Utermohlen, *The SC of New York*
3. Vera Wang, *The SC of New York*
(12 Contestants)

SENIOR MEN

1. Peter Meyer, *USFSA Individual Member*
2. Richard Callaghan, *Genesee FSC*
3. Alexander Burnett, *Willow Brook FSC*

Announcing the Ninth Annual

HERSHEY SPORTS ARENA SUMMER SKATING SCHOOL

In the Chocolate-Town of Hershey, Pa.

June 8 Thru August 17

Under Direction Of

Felix Kaspar

Former World's Champion

Arrangements for Skating Camp

Sponsored by Hershey Figure Skating Club
Sanctioned by U.S.F.S.A.

Address All Inquiries To
Hershey Sports Arena
Hershey, Penna.



FELIX KASPAR

**Skating instruction by: Felix Kaspar, Harry Stafford,
Muriel Kay, Lois Duquette, Joan Seddon, Betty Hiscock.**

Read USFSA Instructive Booklets

Annual Rulebook. Contains all the USFSA rules, including Competition, Figure Skating and Pair Skating Tests, Dance Tests (with diagrams and descriptions), Amateur Status; lists of judges and referees, committee members, member clubs, USFSA Constitution and By-Laws, and other valuable information. Price \$2.00.

Evaluation of Errors in Figures. Contains principles and details on Compulsory Figure technique. Illustrated with line drawings showing many of the common errors in edges and turns, with the correct tracing for each. Special supplement on free skating. Valuable for skaters and judges. November 1959 edition. Price \$2.00.

Ice Dances. Diagrams and descriptions of many dances, excluding official test dances. A suggested source of ideas for new combinations and moves in the dance field. Published September 1948. Price \$2.00.

USFSA Publications Committee
575 BOYLSTON ST. BOSTON 16, MASS.

BRONZE DANCE

1. Gayle Delaney, *Garden State SC*, & Paul A. Barber, Jr., *Beacon Hill Club*
2. Jane Hellman, *Brooklyn FSC*, & Robert Winston, *The SC of Lake Placid*
3. Jean Linney, *Garden State SC*, & David Hirsch, *Westchester FSC*
4. Angela DiMaria & Irving Weiner, *Genesee FSC*

VETERANS DANCE

1. Elizabeth Stroukoff, *Manhattan FSC*, & Roger Cash, *Genesee FSC*
2. Florence Schaefer, *Brooklyn FSC*, & Dr. Samuel Weinstock, *Westchester FSC*
3. Nancy Baker, *Genesee FSC*, & Jerome Ross, *Rye FSC*

Okanagan-Mainline

Vernon FSC, December 1-2

SENIOR LADIES

(Hudson's Bay Company Trophy)

1. Jaquie Hay, *Glengarry FSC*
2. Lynne Sawicki, *Vernon FSC*
3. Bonnie Fuoco, *Glengarry FSC*

INTERMEDIATE LADIES

(Vernon Figure Skating Club Trophy)

1. Ann Gorman, *Vernon FSC*
2. Kelly McRae, *Mount Paul SC*
3. Dale Hutchinson, *Glengarry FSC*
(4 Contestants)

INTERMEDIATE MEN

1. Raymond Troyer, *Glengarry FSC*
2. Vernon Hartt, *Glengarry FSC*

JUNIOR LADIES

(Dearborn Motors Trophy)

1. Pam Wyles, *Glengarry FSC*
2. Marilyn Palmer, *Mount Paul SC*
3. Janice McCully, *Mount Paul SC*

JUNIOR MEN

(Glengarry Figure Skating Club Trophy)

1. Wess Campbell, *Summerland FSC*

NOVICE LADIES

(Penticton College of Commerce Trophy)

1. Janine Pepper, *Mount Paul SC*
2. Roberta Corbin, *Mount Paul SC*
3. Linda Munro, *Summerland FSC*
(15 Contestants)

NOVICE MEN

(Kelowna Figure Skating Club Trophy)

1. Dave Huggins, *Glengarry FSC*
2. Teddy Price, *Mount Paul SC*

JUVENILE GIRLS

(Simpson-Sears Trophy)

1. Diane King, *Vernon FSC*
2. Joanne Hallmark, *Mount Paul SC*
3. Belva Neilson, *Vernon FSC*
(17 Contestants)

JUVENILE BOYS

(Radio Station CFJC Trophy)

1. Richard Askew, *Mount Paul SC*
2. Lennie Pigeau, *Glengarry FSC*
3. Keith Dinicol, *Mount Paul SC*
(5 Contestants)

PRE-JUVENILE GIRLS

(Summerland Chamber of Commerce Trophy)

1. Nancy Irvine, *Mount Paul SC*
2. Patricia Young, *Kelowna FSC*
(15 Contestants)

PRE-JUVENILE BOYS

(Kelowna Secretarial School Trophy)

1. Patrick O'Brien, *Glengarry FSC*
2. Dennis Gauthier, *Kelowna FSC*
3. Raymond Campbell, *Glengarry FSC*
(5 Contestants)

OPEN PAIRS

(Safety Mart Trophy)

1. Bonnie Fuoco & Vernon Hartt, *Glengarry FSC*
2. Dale Hutchinson & Raymond Troyer, *Glengarry FSC*
3. Janet Munro & Wess Campbell, *Summerland FSC*

JUNIOR PAIRS

(Ingham Trophy)

1. Helen & Richard Askew, *Mount Paul SC*
2. Penny Worthing & Dave Huggins, *Glengarry FSC*
3. Barbara Porritt & Robert Munro, *Mount Paul SC*

JUVENILE PAIRS

(E. H. Oswell Trophy)

1. Kim Hutchinson & Patrick O'Brien, *Glengarry FSC*
2. Barbara Porritt & Robert Munro, *Summerland FSC*
3. Hallie Fugeta & Raymond Campbell, *Glengarry FSC*
(6 Pairs)

SENIOR LADIES PAIRS

(Frank Pearson Trophy)

1. Bonnie Fuoco & Dale Hutchinson, *Glengarry FSC*
2. Pam Wyles & Mody Stapleton, *Glengarry FSC*
3. Carma Campbell & Wendy Toevs, *Summerland FSC*

JUNIOR LADIES PAIRS

(Frank Koenders Trophy)

1. Nancy Beatie & Sharon Leard, *Glengarry FSC*
2. Janet & Linda Munro, *Summerland FSC*
3. Penny Worthing & Peggy Speers, *Glengarry FSC*
(4 Pairs)

NOVICE LADIES PAIRS

(Nick's Aces Trophy)

1. Diane King & Jo Watson, *Vernon FSC*
2. Ann McLachlan & Sharon McIntosh, *Summerland FSC*
3. Colleen Madill & Marilyn Saunders, *Glengarry FSC*
(4 Pairs)

JUVENILE GIRLS PAIRS

(F. B. Jacques & Son Trophy)

1. Marleen Madill & Jane Tannant, *Glengarry FSC*
2. Joanne Hallmark & Sherry Biagoni, *Mount Paul SC*
3. Beatrice Young & Barbara Porritt, *Summerland FSC*
(8 Pairs)



**ACTUAL SIZE, STYLE NO. 3FSP
in Sterling Silver**

**Above photo is the skaters' most
popular pin to wear.**

NOW! Earrings to match.

Send for prices and photos of other
Figure Skate Pins, Charms, Tie Clips,
Bracelets and other styles in the Skate
Jewelry line.

**Special discounts to Clubs, Rinks and
Sport Shops for quantity lots.**

EXCELLENT AS PRIZES OR GIFTS

AL GREEN, Rm. 69

**#871-7 Avenue, New York 19, N. Y.
Phone: Circle 7-3900**

The Stage is Set for Skating Fun



With

D & L

**FULLY ORCHESTRATED
ICE DANCE RECORDS**

**D & L "GOLD CREST SERIES"
PERFECTLY PICKED TUNES AT
EXACT TEMPO FOR EACH DANCE**

- LP-3301 Preliminary & Bronze Ice Dances — \$12.50
- LP-3302 Pre-Silver & Silver Ice Dances — 12.50
- LP-3303 Pre-Gold & Gold Ice Dances — 12.50
- Complete set of three albums — \$35.00

Instrumentation includes: Violins, Piano, Organ,
Drums, Bass, Clarinet, Trumpet, Trombone, Bass
Clarinet.

See Lake Placid List for titles.
Full Money Back Guarantee.

Order today from . . .

D & L SOUND SERVICES, INC.,
Box 75, New York 66, N. Y.

EXPERIENCED RINK MANAGER AVAILABLE

**Experienced Rink Manager and Skate
Shop Concessionaire Wishes to assume
complete charge of Ambitious Build-
ing. New or Established Operation.**

7 years Promotion, Box-Office and
Publicity work. Curling, Figure Skat-
ing, Hockey, Public Skating and Club
Programs. Physical Knowledge of
Rink, Machinery Operation, Skate
Shop Activities as well as Front Office
Experience.

For complete background write:

Box 39, Skating Magazine,
575 Boylston St., Boston 16, Mass.

THE CHOICE OF CHAMPIONS

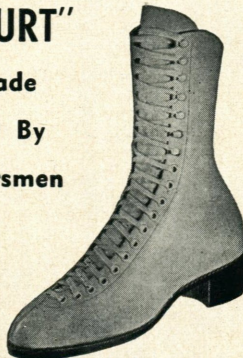
THE "STUBURT"

English Made

Throughout By

Skilled Craftsmen

Est. 1870



**READY TO WEAR
SKATING FOOTWEAR**

Also

The Famous

"Arnold Gerschwiler"

Custom Built Model

(Measurement Forms on Request)

**EACH SEASON MORE AND MORE DISCRIMINATING SKATERS ARE WEARING THESE FINE
BOOTS. HAVE YOU TRIED A PAIR YET?**

Agents and Distributors throughout the World. In Case of difficulty write: —

STUBBS AND BURT LTD., Bristol - 1, England

OPEN FOURS

(Kiwassa Trophy)

1. Dale Hutchinson, Bonnie Fuoco, Raymond Troyer, Vernon Hartt, *Glengarry FSC*
2. Janet & Linda Munro, Ann McLachlan, Sharon McIntosh, *Summerland FSC*
3. Marjorie Porritt, Becky Downing, Wendy Toevs, Carina Campbell, *Summerland FSC*

SILVER DANCE

(Radio Station CKOV Trophy)

1. Bonnie Fuoco & Vernon Hartt, *Glengarry FSC*
2. Dale Hutchinson & Raymond Troyer, *Glengarry FSC*
3. Pam Wyles & Harley Andrews, *Glengarry FSC*

BRONZE DANCE

(Charles Fullford Trophy)

1. Helen & Richard Askew, *Mount Paul SC*
2. Sharon Baird & Tony Roberts, *Kelowna FSC*
3. Colleen Madill & Dave Huggins, *Glengarry FSC (7 Couples)*

PRELIMINARY DANCE

(Revelstoke Figure Skating Club Trophy)

1. Barbara Porritt & Robert Munro, *Summerland FSC*
2. Kim Hutchinson & Patrick O'Brien, *Glengarry FSC*
3. Kathy Speers & Gail Palm, *Glengarry FSC (9 Couples)*

VETERANS DANCE

(Mount Paul Skating Club Trophy)

1. Lynda Dobie & Frank Pearson, *Vernon FSC*
2. Janet Munro, *Summerland FSC*, & E. H. Oswald, *Kelowna FSC*
3. Linda Munro & Gordon Blewitt, *Summerland FSC*

MOST ARTISTIC AWARD

(The T. Eaton Co. Trophy)

- Kelly McRae, *Mount Paul SC*

NOVICE LADIES

1. Cindy Watson, *Wagon Wheel FSC*
2. Anna Christenson, *Wagon Wheel FSC*
3. Elizabeth McFadden, *Wagon Wheel FSC (19 Contestants)*

NOVICE MEN

1. Jeffrey Hall, *Chicago FSC*
2. Graeme Powrie, *FSC of Minneapolis*
3. Lowell Green, *FSC of Minneapolis*

JUVENILE GIRLS

1. Diana Glenn, *Wagon Wheel FSC*
2. Leslie Baird, *Skokie Valley SC*
3. Maureen McLoughlin, *Chicago FSC (16 Contestants)*

JUVENILE BOYS

1. Perry Hutchings, *Skokie Valley SC*
2. Curtis McCline, *Sioux City FSC*

JUNIOR PAIRS

1. Nancy Kephart & Donald Figler, *Wagon Wheel FSC*
2. Judy James & Lowell Green, *FSC of Minneapolis*
3. Colleen Aylward, *Wauwatosa FSC*, & Ronald Basten, *Green Bay FSC (4 Pairs)*

Northwest Pacific

Portland ISC, December 3-4

SENIOR LADIES

1. Kris Mittun, *Seattle SC*
2. Marianne Beeler, *Lakewood WC*
3. Maureen Tinsley, *Lakewood WC (11 Contestants)*

SENIOR MEN

1. Buddy Zack, *Seattle SC*
2. Bill Henley, *Lakewood WC*

JUNIOR LADIES

1. Linda Sowell, *Seattle SC*
2. Ann Glenn, *Sun Valley FSC*
3. Cynthia Johnson, *Portland ISC (6 Contestants)*

JUNIOR MEN

1. John Petkevich, *Great Falls FSC*
2. Bradley Hislop, *Seattle SC*
3. John Carrell, *Seattle SC (5 Contestants)*

NOVICE LADIES

1. Denise Demers, *Lakewood WC*
2. Roseanne Lee, *Lakewood WC*
3. Charlene Sharlock, *Seattle SC (5 Contestants)*

NOVICE MEN

1. Dan Murphy, *Great Falls FSC*
2. Joseph Lasby, *Lakewood WC*

JUVENILE GIRLS

1. Patty Fitzpatrick, *Seattle SC*
2. Cheryl Stewart, *Seattle SC*
3. Carol Anderson, *Seattle SC*

Upper Great Lakes

Rochester FSC, December 8-9

SENIOR LADIES

1. Chickie Berlin, *South Side IC*
2. Louise Wakefield, *FSC of Minneapolis*
3. Bona Beckstrom, *St. Paul FSC (6 Contestants)*

SENIOR MEN

1. Robert Lubotina, *Hibbing FSC*
2. Robert Madden, *FSC of Minneapolis*
3. Dale Pforr, *Wauwatosa FSC*

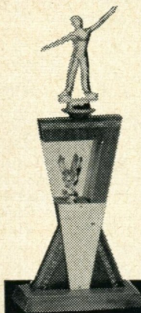
JUNIOR LADIES

1. Janet Lynn, *Wagon Wheel FSC*
2. Janice Serafine, *Chicago FSC*
3. Ruth Ann Williamson, *St. Paul FSC (13 Contestants)*

JUNIOR MEN

1. Michael Marino, *Chicago FSC*
2. John Kulenkamp, *FSC of Minneapolis*

SKATING TROPHIES



**MODERN DESIGN
TOP QUALITY
FAST SERVICE
LOWEST PRICES**

**SPECIAL DISCOUNTS
to RINK OPERATORS**

Send for **FREE Catalog**
& **FREE Engraving Offer**

TROPHIES, INC.

1448 W. Devon Ave., Chicago 26, Ill.

Subscribe Now for 1963

\$4.00 for individuals

**\$3.00 each for clubs with
subscribing groups (15
or more)**

\$3.00 for professionals

**\$7.00 for a two-year sub-
scription or two one-
year orders.**

SKATING

575 Boylston St.
Boston 16, Mass.

MIRACLES occur on the ice
when skaters wear the

St. Lidwina Medal

Finely crafted in Sterling Silver

. . . More than 580 years ago, a little Dutch girl who loved ice skating fell while skating with a group of friends. As a result of the accident, she was an invalid until her death at the age of 53. Several miracles were connected with her life, and she was canonized and declared patron saint of the ice skaters in 1890.

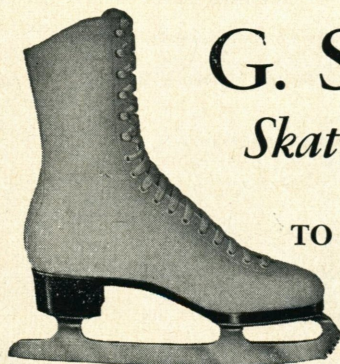
The **ST. LIDWINA MEDAL** shows two friends lifting her from the ice after her fall. It is now available from:

TRADE AND SPORT PUBLICATIONS, INC.

P.O. Box 1528,
2018 N. Sherman Ave.
Madison 1, Wisconsin

CIRCULAR ON REQUEST

EST. 1905



G. STANZIONE

Skating Boots of Quality

TO ORDER AND READY TO WEAR

**COMPLETE LINE OF
SKATING ACCESSORIES**

"The Most Beautiful Skating Boots in The World"

50 West 56th St., New York 19, N. Y.

SUB JUVENILE GIRLS

1. Christy Ito, *Portland ISC*
2. Jill Miller, *Seattle SC*
3. Danielle Delaney, *Seattle SC*
(14 Contestants)

SUB JUVENILE BOYS

1. Dennis Gehringer, *Seattle SC*
2. Ralph Meredith, *Seattle SC*
3. Anthony Radmilovich, *Portland ISC*

SENIOR PAIRS

1. Cynthia & Ronald Kauffman, *Seattle SC*
2. Diane Anderson & John Swanson, *Seattle SC*

JUNIOR PAIRS

1. Charlene Sharlock & Bradley Hislop, *Seattle SC*
2. Beverly & Ronald Riecks, *Seattle SC*

SILVER DANCE

1. Marianne Beeler & Roy Wallett, *Lakewood WC*
2. Janene Cavanaugh, *Portland ISC*, & Bill Henley, *Lakewood WC*
3. Roseanne Lee & Vance Kirklín, *Lakewood WC*

BRONZE DANCE

1. Linda Landin & Bill Wilkins, *Seattle SC*
2. Denise Demers & Joseph Lasby, *Lakewood WC*

The Lakewood Cup for the Team Championship was won by the Lakewood WC. The Babbit Artistic Award for the Senior and Junior Ladies' classes went to Linda Doepken (Seattle SC), who placed fourth in the Senior Ladies. The Jack Boyle Cup was awarded to Buddy Zack (Seattle SC), who placed first in the Senior Men's free skating.

Tests Passed by USFSA Skaters

FOLLOWING are all Tests passed and recorded with this Committee from November 20 to December 18, 1962. All errors should be reported first to the Chairman of the local Test Committee and then to the USFSA Office, 575 Boylston St., Boston 16, Mass.—George W. Fisk, Chairman, USFSA Figure Tests Committee.

ARCTIC BLADES FSC: Pre—Linda Sue Bryan, Linda Langford, Steven Langford. 3—Shirley Adams, Linda Walker. 4—Marlene Morris, Jeanne Sztatlocky. **Pre D.**—Glenda Rhodes. **Pre Silver**—Shirley Adams. **Pre Gold**—Marjorie Diamond.

ARROWHEAD FSC: **Pre Silver**—Leon Benedict, Jerry Wechsler.

BALTIMORE FSC: 1—Betty Maple. **Pre D.**—Gerard Perseghin.

BATH & TENNIS SC: Pre—Gail Brown, Alice Thomas, Sarah Wilson. 1—Daria Brown, Anne Cooper.

BLADE & EDGE CLUB OF PASADENA: Pre—Terrie Collins, David Downs, Gale Lawrence, Lorraine Lawrence, Regan McMahon, Robert Stephens, Ellen Tanaka. 1—Janine Fortin, Linda Koerner, Mary Jo Shields.

BROADMOOR SC: 1—Lincoln Hoyt. 2—Kathy West. 3—Susan Wilson. **Bronze Pair**—Silver Pair—Judy Mullins & Skip Mullins.

BROOKLYN FSC: **Bronze**—Thomas Tuohy. **Pre Silver**—Beatrice Jacobson.

BUFFALO SC: 2—Patricia O'Donnell. **Pre D.**—Patricia Clinton.

CARRIAGE FSC: Pre—Pete Crissey, Patricia Wheeler.

CLEVELAND SC: Pre—Ellen Clough, John Sheetz. 1—Ted Garfield. 7—Molly Adams. **Pre D.**—Mrs. Webber Pomeroy. **Bronze**—Ginny Luttenton.

CLINTON FSC: **Pre D.**—Sally Stasko.

DALLAS FSC: 1—Lynn Severson. **Bronze**—Greg Jenkins, Katrina McClung.

DENVER FSC: 1—Tim Flynn.

DESERT BLADES FSC: Pre—Phillip Ferris. 1—Patty Tally. 3—Patty Murphy. **Pre D.**—Patty Tally, Carolyn Watton.

EL CAMINO ISC: Pre—Jolene Bell. 1—Denise Webster. 2—Robert Houllhan. 3—Roger Sartore. **Pre D.**—Vicki Lynn Schuyler. **Silver**—Jessica Kuzmanich.

ESSEX SC OF NEW JERSEY: **Pre D.**—Bill Roberts. **Bronze**—Susan Roberts.

FSC OF ABILENE: Pre—Katy Johnson.

FSC OF MINNEAPOLIS: 1—Cheryl MacArthur, Jacquelyn Smith. 2—Debra Byrnes. 7—Louise Wakefield. **Bronze**—Arthur Green.

FSC OF OMAHA: 4—Betsy Kingman. **Pre D.**—Ellen Thornton.

GARDEN STATE SC OF ASBURY PARK: **Bronze**—Christine Linney.

GENESEE FSC: 5—Barbara Jo Hill, Janice Thomas. **Silver**—Patty Burns.

GREAT FALLS FSC: Pre—Penny DeMille, Gayle Powers. 1—Valerie Ferestad, John Salter.

GREATER MILWAUKEE FSC: 1—Jeanette Herro.

GREEN BAY FSC: 2—Ronald Basten.

HOUSTON FSC: 2—Paula Geery.

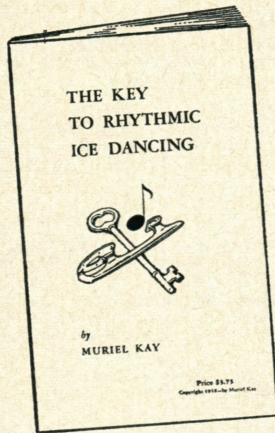
INDIVIDUAL MEMBERS USFSA: 3—Jacqueline Geschickter.

JOHNSTOWN FSC: Pre—Nike Cotchen.

LANSING SC: Pre—Thomas Jon Senatori. 1—Gregory Dines.

LONG ISLAND FSC: **Pre D.**—John Baldwin.

LOS ANGELES FSC: ISU 4—Wanda Guntert. 8—Sarasue Gleis. **Pre D.**—Audrey Chensen, Mike Lynn, Mike Mynatt, Judy Saltz. **Bronze**—Nancy Gleis. **Silver**—Roger Berry. **CFSA Gold**—Carole MacSween.



ICE DANCERS

2nd EDITION OF

THE KEY TO RHYTHMIC ICE DANCING
by MURIEL KAY

The UP TO DATE textbook on ice dancing. Used in 14 countries.

Contains Analysis of basic steps, technique of turns rhythm, music, expression. Easy to read Dance-at-a-Glance charts. Latest Amendments.

price \$3.95 ppd. — No COD's

ORDER from
MURIEL KAY
P.O. Box 386, Bellingham, Wash.



INDEX TO ADVERTISERS

Books

Muriel Kay 39

Clothes, Equipment and Jewelry

D & L Sound Services 35
 Danskin, Inc. Inside Front Cover
 Al Green 35
 St. Lidwina Medal 37
 Trophies, Inc. 37

Competitions

North American Championships 5

Positions Wanted

Experienced Rink Manager 35

Skates and Boots

C.C.M. Inc. 2
 Oberhamer Shoe Co. 3
 Riedell Shoes Inc. Inside Back Cover
 G. Stanzone 37
 Stubbs & Burt Ltd. 35

Skating Centers and Resorts

Broadmoor World Arena
 Outside Back Cover
 Hershey Sports Arena 33
 RPI Field House 31
 Sun Valley 4
 Troy, Ohio 31

NEW USFSA PINS



TIE CLASPS

Pin \$1.25
 (25 or more . . . 75¢ ea.)
 Clasp \$1.75
 (25 or more . . . \$1.25 ea.)

USFSA TEST EMBLEMS

Figure medals and bars
 Pair medals and bars
 Dance medals and bars

For sale at the

USFSA CENTRAL OFFICE

575 Boylston Street
 Boston 16, Mass.



THE SKATERS' EXCHANGE

HELP WANTED: Dancers—Read "The Key to Rhythmic Ice Dancing." \$3.95 ppd. Order from Muriel Kay, P.O. Box 386, Bellingham, Wash.

SHOW COSTUMES for sale or rental. Minto Skating Club, 255 Henderson Avenue, Ottawa 2, Ontario. CE 4-1631.

WANTED: Senior Professional for private Midwestern Club with qualifications to teach Eighth Figure Test and Gold Dances. Communications confidential. For information write Skating, Box 37.

LUBBOCK SILVER BLADES SC: Pre—Mathilde Antoszek, Gary Cheaney, Kay Woodson.
METROPOLITAN FSC: Pre—Lou Ann Baron, Claire Halpern, Jill Taylor. 1—Pat Winsten.
Pre D.—Carl Walker, Pat Winsten. **Silver**—Robert Schwarzwaelder.
NORTH HOLLYWOOD FSC: Pre—Lana Hudkins. 1—Gary Fiskum, Lanice Schweitzer, Gayle Stewart. **Bronze Pair**—Kristine Olson & Gary Fiskum, Sandy Sweitzer & Jerry Entwistle.
OLD YORK ROAD SC: Pre—David Doyle. 1—David Freiman. 2—Robert McBrien.
PENGUIN FSC: Pre—Douglas Brong, Karen Radio. 2—Karen Graf.
PITTSBURGH FSC: Pre—James McClelland, Richard Sprowls, Nina Stark. 1—Carol Cost, Ellis Enlow. 2—Kathleen Dunn, Mary Suzanne Gillespie, Nancy Nelson, Deborah Pellegrini.
PORTLAND ISC: Pre—Anthony Radmilovich. 1—Candace Foster, Anthony Radmilovich, Diane Van Deusen, Donna Whisman. 3—Mike Dowling.
PROFESSIONALS: 5—Cheryl Sales.
ST. LAWRENCE FSC: **Bronze**—Christopher Parker.
ST. MORITZ ISC: Pre—Boni Peterson. 2—Delia Dong. 3—Gail Cochrane. **Pre D.**—Kathy Fagoni, Elwin Kelsey, Chris Simons, Dan Trotter. **Bronze**—Linda Haet, Elwin Kelsey, Chris Simons, Dan Trotter. **Pre Silver**—Yvonne Stephens.
SEATTLE SC: Pre—Cynthia Driano, Marilyn Wasner. 1—Steve Balfour, Ralph Meredith, Danuta Wal. 2—Carolyn Crossett. 4—John Carrell. **Bronze Pair**—Beverly Riecks & Ronald Riecks. **Silver Pair**—Diane Anderson & John Swanson. **Bronze**—Gunnar Hoffman. **CFSA Gold**—John Carrell.
THE SC OF BOSTON: Pre—Cynthia Swain. 3—Sarah Keith.
THE SC OF SAN FRANCISCO: 2—Carole Foss, Judy Lyon, Paula Mardakis. 3—Judy Draeger. **Pre D.**—Claire Bodum. **Pre Silver**—Jim Larkin, Nancy Sheldon. **Silver**—Vesma Grinfelds, Eugene Heffron.
THE SC OF VAN NUYS: Pre—Robbie Bradshaw, Scott Lewis, Charles Nalley, Cynthia Rigsby. 1—Lori Barth, Jerry Emmons, Debbie Jones. 2—Mike Dwyer.
SOUTH MOUNTAIN FSC: **Pre D.**—Dorothy Corona, Robert Gross, Miriam Kuperman, Laurie Slowinski, Donna Statter. **Bronze**—Benedict Gross.
SYRACUSE FSC: 2—Gary Jones, Janice Zoanette. 4—Bonniejean Hopkins. 6—Mary Doehner. **Pre D.**—Janice Zoanette. **Bronze**—Nicholas Peters. **Pre Gold**—James Sladky.
TULSA FSC: Pre—Jacquelyn Parker. 1—John Greve. 2—Patti Hartig, Betsy Pratt.
WALNUT CREEK WC: 5—Barry Munns. **Bronze Pair**—Lois Walters & Bob Yunk. **Silver Pair**—Jan Marchiando & Lyman Stoddard.
WASHINGTON FSC: **Pre D.**—Paul Grieder, Betty Shugars.
WAUWATOSA FSC: 3—David Larson.
WESTCHESTER FSC: **Bronze**—David Hirsch.
WC OF INDIANAPOLIS: 2—3—Gary Palmer. **Bronze Pair**—Anne Meyer & Stanley Mersol.
WISSAHICKON SC: 2—Jane Merritt.

Tests Passed by CFSA Skaters

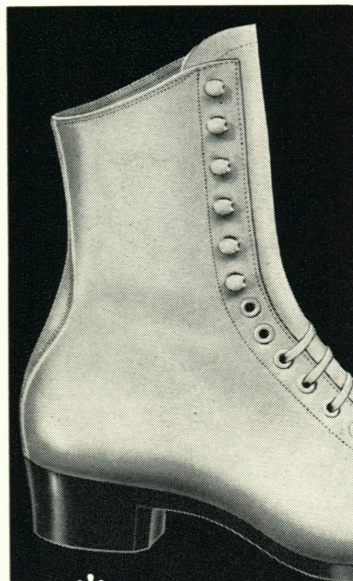
FOLLOWING are all Tests passed and reported from November 15 to December 17, 1962. Errors should be reported to the local Test Officer and to the Secretary of the CFSA, Charles H. Cumming, 74 George St., Ottawa, Ont.

AYLMER FSC: **Gold**—Sharon Davis. **Gold Free Dance**—Sharon Davis.
BRANDON FSC: Pre—Nancy Ardron, Carolyn Johnson, Debra Nye, Gail Southern.
BURNABY WC: 1—Kathryn Shibicky.
CAPILANO WC: 1—Janet Towill.
EDMONTON FSC: 3—Dawn Parker. 6—Laverne Gerbrandt. **Pre D.**—Donna Gregg Bruce. **Senior Bronze**—Barbara Phoenix.
GALT FSC: Pre—Barbara Dewhirst, Sharon Purdy, Nancy Watson.
IC OF GREATER WINNIPEG: 1—Joan Erickson. 5—Carolynne Rogan. **Pre D.**—Joan Erickson.
LACHINE FSC: Pre—Karin Judkins, Gail Mathews. 1—Wendy Alexander.
MONTREAL SILVER BLADES SKATERS: USFSA 7—Barbara Marshall. **USFSA Silver**—Barbara Marshall.
NIAGARA FALLS SC: Pre—Jim Forcucci, David Patton. **Bronze**—Barbara Howarth.
NORTH SHORE WC: 1—Brenda Facey. 4—David Coffin. 6—Cynthia Jean Titcombe.
ROSEMOUNT FSC: Pre—Dianne Charlebois. 1—Louise Gasper.
ROYAL GLENORA CLUB: Pre—Maryanne Nelson. 6—William Windover.
SASKATOON FSC: 5—Karen Flichel. 6—Bernadette Aubert. **Pre D.**—Heather Lane, Gerda Lewke. **Senior Bronze**—Jane Popoff.
STRATFORD SC: **Bronze**—Mrs. Anneli Whyte.
VICTORIA FSC: 1—Grace Higgins, Mary-Pat Pumfrey, Pam Reynolds, Linda Roe. **Senior Silver**—Bill McDonald, Diane Murdock. **Gold**—Lorraine Hyne.
WEST END FSC: 1—Patricia Lowe.

NEW choice of champions...

Riedell

PRO*form Skating Boots*



Developed by Riedell
in conjunction with
CCM.



Dotted line shows the
last on a conventional
boot . . . solid line
shows the new classic
PRO-form profile.

Developed by Riedell in conjunction with CCM . . . here's an entirely new skating boot designed on classic lines for the competitive skater . . . built on a new, modern last . . . to provide a new kind of complete freedom and flexible comfort never before experienced in a figure skating boot.

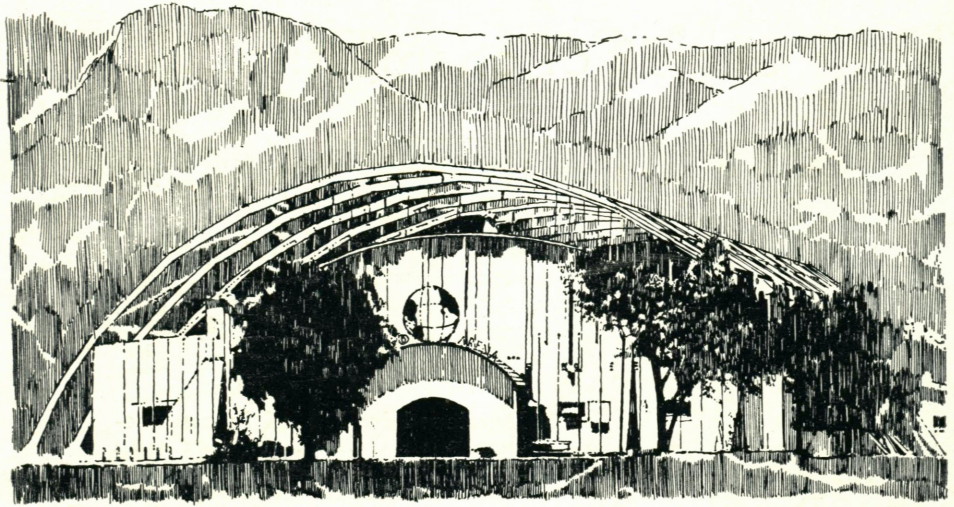
It's neater, trimmer, lower in profile. It's the boot champions are choosing for personal comfort and professional form. Naturally, all of the quality features which have made Riedell the leader in custom and professional skating boot construction are included in this new PRO-form Model 400 and 401 boot for men and women.

Here are the outstanding features of the new Riedell PRO-form Boot:

- Especially designed for the competitive skater.
- Accentuated backward pitch of boot, makes it easier to point the toe.
- Special flared backstay for strength and neatness.
- Low profile toe with plenty of room for freedom of movement.
- New modern last available in various widths.

Write today for complete information . . . or ask your skating boot dealer.

RIEDELLE
SHOES, INC.
RED WING, MINNESOTA



The **BRO^ADMOOR WORLD ARENA**

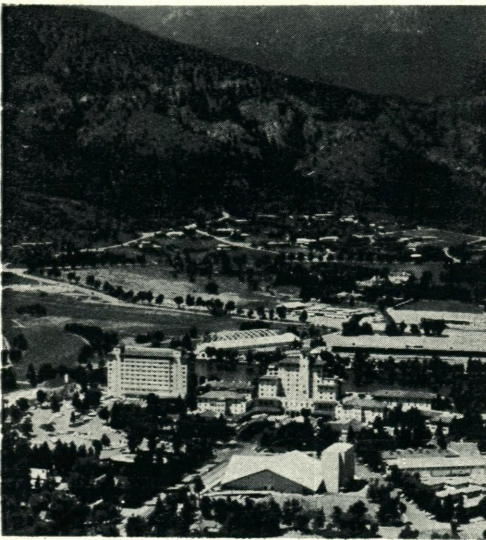
Professional staff headed by

Carlo Fassi

*assisted by Clarice Dillon, Ice dance
professional, and Geraldine Tapper*



Carlo Fassi



Clarice Dillon

**For information and reservations write:
The Broadmoor World Arena, Colorado Springs, Colorado**