

Skating

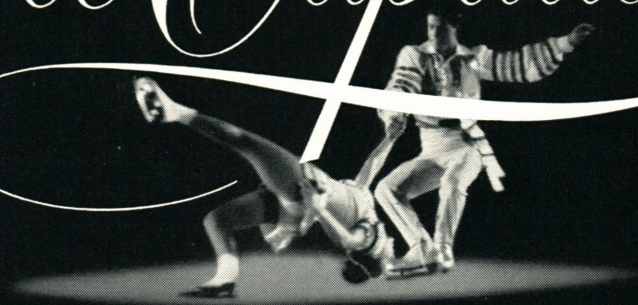
OFFICIAL MAGAZINE OF UNITED STATES FIGURE SKATING ASSOCIATION
AND CANADIAN FIGURE SKATING ASSOCIATION



THE
CFSA
1914-1964

50th
ANNIVERSARY
STORY: PAGE 4

Ice Capades



OFFICERS OF THE UNITED STATES FIGURE SKATING ASSN.

President

F. Ritter Shumway
400 West Ave.
Rochester, N. Y. 14603

First Vice-President

John P. Hart
Tacoma, Wash.

Second Vice-President

Henry R. Heebner
Wynnewood, Pa.

Third Vice-President

Spencer E. Cram
Chagrin Falls, Ohio

Secretary

John F. Groden
73 Tremont St.
Boston, Mass. 02108

Treasurer

John R. Shoemaker
17 Shore View Ave.
San Francisco, Calif. 94121

USFSA Business Manager

Robert Y. Ellis
575 Boylston St.
Boston, Mass. 02116

EXECUTIVE COMMITTEE

Term Expiring August 31, 1964

Milton W. Anderson
Henry M. Beatty
Edmund C. Bold
Kenneth L. Brown
Oscar Dystel
Carl W. Gram, Jr.
Palmer Hoyt
Harry N. Keighley
John W. McNair
Sidney A. MacSween
Theodore G. Patterson
Dr. Frank M. Petkevich
Harry E. Radix
Raymond Satterwhite
Dr. Lyndon D. Snow
Brooks Stewart
Dr. Nelson F. Waters
Roy Winder
Benjamin T. Wright

STANDING COMMITTEE CHAIRMEN

Amateur Status

Thomas H. Miller
87 Indian Spring Lane, Rochester, N. Y. 14618

Competitions

George B. Jenkinson
314 Pan American Bldg., Tulsa, Okla. 74103

Dance

H. Kendall Kelley
17433 Shelburne Rd., Cleveland Heights, Ohio 44118

Dance Judging

Norman E. Fuller
7141 Atlantic Ave., Long Beach, Calif.

Figure Judging

Robert Sackett
1220 Hamilton Ave., Palo Alto, Calif. 94301

Figure Tests

George W. Fisk
1512 Genesee St., Buffalo 11, N. Y.

Finance

Delaplaine McDaniel
429 Penn Valley Rd., Narberth, Pa. 19072

International

James M. Earle
4707 Stenton Ave., Philadelphia, Pa. 19144

Membership

Frederick C. LeFevre
1208 Ridgeway Dr., Troy, Ohio 54373

Sanctions

Howard G. Taylor
839 Holly Hill Dr., Walnut Creek, Calif. 94598

Summer Skating

William R. Haigler
2022 Ridgeway, Colorado Springs, Colo. 80906

Eastern

Henry R. Heebner
248 Hathaway Lane, Wynnewood, Pa. 19096

Midwestern

Spencer E. Cram
Hopewell Trail, Chagrin Falls, Ohio 44101

Pacific Coast

John P. Hart
3536 East 11th St., Tacoma, Wash. 98401

OFFICERS OF THE CANADIAN FIGURE SKATING ASSN.

President

Douglas L. Kimpel
100 Blenheim Rd.
Galt, Ont.

Past President

Nigel Stephens
Willowdale, Ont.

First Vice-President

Bert Penfold
Regina, Sask.

Second Vice-President

P. R. L. Charles
Toronto, Ont.

Secretary-Treasurer

Charles H. Cumming
74 George St., Ottawa 2, Ont.

STANDING COMMITTEE CHAIRMEN

Rules

J. Gordon Garden
241 Yonge Blvd., Toronto 12, Ont.

Dance

Sidney V. Soanes
64 Airdrie Rd., Toronto 17, Ont.

Finance

P. R. L. Charles
71 Cheritan Ave., Toronto 12, Ont.

Judges

George Blundun
212 40th Ave. S.W., Calgary, Alta.

Sections

Hugh B. Glynn
8 Anderson Ave., Regina, Sask.

Lorabelle's Chic Togs

DESIGNED AND FASHIONED
FOR COMFORT AND CHICNESS



920
Sheath
Mandarin collar



930
Flared skirt
Rolled collar



910
Pleated skirt
Round collar



810
Jumper
Pleated skirt



720
Straight skirt



710
Pleated skirt
Fitted girdle

600 — Lined matching vests

All styles have fitted, matching pants

Sizes:

Petite 23-24 waist
Small 25-26 waist
Medium 27-28 waist
Children's sizes also available

100% wool flannel

Colors:

Skirts and vest: red, navy, gray
Dresses and jumpers: teal, navy, moss green
Prices range from about \$9.00 to \$26.00

Good basic styles — can be enhanced by beading, braid or monogram

Available in Cleveland:
Gun and Tackle
Halle Bros. Co.

If not available at your favorite store,
write for information:
2838 Montgomery Road, Cleveland 22, Ohio

FEBRUARY 1964

VOL. 41, NO. 2

42nd SEASON OF PUBLICATION
575 BOYLSTON ST., BOSTON, MASS. 02116

Skating

OFFICIAL MAGAZINE OF
UNITED STATES FIGURE SKATING ASSOCIATION
CANADIAN FIGURE SKATING ASSOCIATION

STAFF

ROBERT Y. ELLIS
Editor

FREDA ALEXANDER
Managing Editor

ELAINE J. NOONE
Editorial Assistant

EVA A. YATES
Circulation Manager

ADVISORY BOARD USFSA

THERESA WELD BLANCHARD
Boston

OSCAR DYSTEL
New York

DELAPLAINE McDANIEL
Philadelphia

THEODORE G. PATTERSON
Boston

CFSA
PETER R. L. CHARLES
Toronto

NORMAN V. S. GREGORY
Montreal

GEORGE SHERWOOD
Vancouver

SKATING, copyright 1964 by the United States Figure Skating Association in the U. S. A. Title Registered in U. S. Patent Office, Published eight times a year: January, February, March, April, May, June, November and December; by the United States Figure Skating Association: Executive Offices, 575 Boylston St., Boston, Mass. 02116; Publication Office, 50 Emmett St., Bristol, Conn. Second-class postage paid at Bristol, Conn. Single Copy 50 cents. Subscription \$4.00. Address: SKATING, 575 Boylston St., Boston, Mass. 02116. SKATING is protected by copyright and nothing that appears in it may be reproduced without written permission.

CONTENTS

ARTICLES

- 4 THE CFSA: 50 YEARS OF PROGRESS
Norman V. S. Gregory
- 6 MEMORIES OF THE OLD WESTERN SECTION
Bert Penfold
- 8 STARTS AND CENTERS OF FIGURES
- 10 THE BRITISH CHAMPIONSHIPS, 1963
John Noel
- SECTIONAL CHAMPIONSHIPS
- 12 Easterns
- 13 Pacific Coast
- 17 TO MOVE REALLY WELL
Muriel Kay
- 20 INNSBRUCK COMPUTERS TESTED
Lt. Col. David Zillmer
- 22 COMPETITORS REVEAL THE ABC'S OF ICE DRESS
- 28 PROS SEEK CHANGES
SUB-SECTIONAL CHAMPIONSHIPS
- 16 B. C. Coast
- 16 Kootenay
- 30 Eastern Great Lakes
- 32 North Atlantic States
- 34 Southwestern Area
- 36 Upper Great Lakes

DEPARTMENTS

- 14 ROCKERS AND COUNTERS
- 19 PEOPLE
- 19 SPINS THROUGH PROFESSIONAL CIRCLES
- 20 THE CALENDAR OF COMING EVENTS
- 26 BOOK REVIEW
- 42 USFSA TESTS PASSED
- 43 INDEX TO ADVERTISERS
- 43 THE SKATERS' EXCHANGE
- 44 CFSA TESTS PASSED

THIS MONTH'S COVER

presents Canada's first Olympic Gold Medal winner in figure skating, Barbara Ann Scott, to commemorate a highpoint in CFSA history (see story on page 4). "B. A."—as she is fondly called—won the title in 1948. This Canadian Champion has the distinction of having captured the World, European and North American Championships twice. Photo by Gehri, Davos.



James, Niagara Falls

THE CFSA:

The Canadian Figure Skating Association celebrates its Golden Jubilee . . . marked by the greatest number of clubs in its history.

THE PASSING OF THE YEAR 1963 signifies many things. To the Canadian Figure Skating Association it means the celebration of its Golden Jubilee. After half a century has passed, it is common practice to reflect on accomplishments. In the case of this Association it can, with justification and pride, look back on a record of achievement and progress.

Old records show that from its beginning in 1914 the Association comprised perhaps half a dozen clubs—among them the Minto Club in Ottawa, the Winnipeg Skating Club, the Toronto Skating Club, the Earl Grey Club of Montreal, the Vancouver Skating Club and the Halifax Skating Club. Interesting to note is the fact that the Halifax Skating Club was founded by British officers stationed in the old garrison town and it is presumed to be the oldest club in Canada.

Today there are 260 affiliated clubs with a skating membership in the neighborhood of 75,000 or more. This, in one sense, seems incredible but, on the other hand, it is founded in fact and reflects the great interest that has been aroused in this country over the years. In the early days, figure skating was treated more or less as a social sport. Today it is participated in by all segments of the population.

At some time in the late 1800's certain enthusiasts in Europe decided that

the time had come to set up proper standards and generally to promote skating throughout the world. In consequence, the International Skating Union was formed. About that time the Amateur Skating Association of Canada came into being, controlling both speed and figure skating. The first President was the late Louis Rubinstein of Montreal who was one of the first Canadian skaters to compete in a World Championship, and with great success.

In 1914 Mr. Rubinstein, because of his interest in figure skating, decided that it would be advisable to set up a separate section to govern figure skating. Carrying this thought out, a new division was formed and was called the Figure Skating Department of the Amateur Skating Association of Canada, with jurisdiction over the whole of Canada. Mr. Rubinstein assumed the office of President and served in that capacity for a number of years.

Some 25 years later it was generally agreed that the name was too unwieldy, and consequently it was changed to the Canadian Figure Skating Association, still remaining as a part of the Amateur Skating Association of Canada.

In the meantime the International Skating Union had changed its constitution to admit two members from a country (under certain conditions)—one representing speed skating and the

50 YEARS OF PROGRESS

by **NORMAN V. S. GREGORY** *Former CFSA President*

other figure skating. Under these circumstances the Canadian Figure Skating Association decided that in the best interest of figure skating it was desirable to sever connections with the parent body and apply for membership in the ISU, into which it was duly admitted in 1947.

Thus, today the CFSA is the sole governing body of figure skating in Canada by virtue of the fact that it is the official figure skating member in the International Skating Union. The latest change was the Act of Incorporation in 1962.

Through the years many changes have taken place. One of significance is that in the early years it was the cus-

tom to always hold the annual meeting in Montreal. As the Association grew it soon became apparent that it was advisable to hold the annual meeting in a different city each year.

Some years ago, for many purposes administrative and otherwise, it was decided to set up Sections with certain authority, on a geographical basis. These now cover the whole country and number seven.

For the future, it is hoped the Canadian Figure Skating Association will enjoy continued achievement so that, as each Anniversary passes, it can reflect with satisfaction on its accomplishments, and at the same time look forward to future successes.

Outstanding Canadian Champions: Montgomery Wilson, former North American and Canadian Singles and Pair Champion; Norah McCarthy & Ralph McCreath, former Canadian Singles and Pair Champions—Mr. McCreath also was a North American Singles and Pair title-holder (photo by Alexandra Studio, Toronto); Donald Jackson, former World, North American and Canadian Champion (photo by Harry Josephson, Toronto).





MEMORIES OF THE OLD WESTERN SECTION

by BERT PENFOLD
CFS First Vice-President

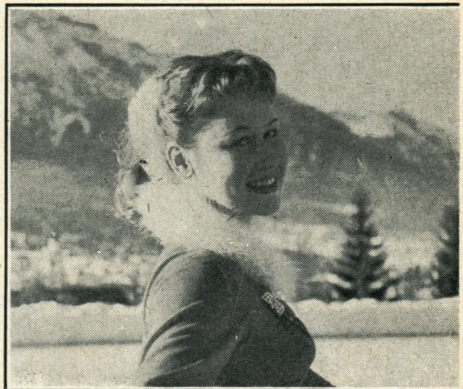
THE CANADIAN Figure Skating Association, as it is constituted today, is probably the largest and most influential organization of its kind in the world. It directs and controls figure skating in Canada through 260 affiliated clubs, representing between 75,000 and 100,000 figure skaters from Vancouver Island to Newfoundland. For purposes of government, Canada is divided into seven Sections: British Columbia; Prairie which comprises the Provinces of Alberta, Saskatchewan and Manitoba; Northern Ontario; Western Ontario; Central Ontario; Eastern Canada; and Atlantic Provinces.

Twenty years ago there were no Sections. The Canadian Championships were competed for mainly by Eastern Canadian skaters representing a few large clubs in that area. There were no other competitions beyond the club level and, consequently, our western skaters had little or no opportunity to compete. It was at this time that an idea which had been simmering in the minds of some vitally interested western people blossomed forth and culminated in the birth of the old Western Canada Section. Two meetings were held, the first at Edmonton in the fall of 1946 sponsored by the Glenora Skating & Tennis Club, Ltd., and the second one at the Glencoe Club in Calgary in January 1947. At this second meeting a resolution was passed resulting in the formation of the first Section in Canada, the Western Canada Section—the territory to include Victoria in the west to Fort William and Port Arthur in the east.

It is not possible to remember the names of all the people who attended these two meetings . . . however, to mention a few, the writer and Dr. de Witt from Regina, Gordon and John Wickson from Vancouver, Alex Munro from Edmonton, Herb Larson from Saskatoon, and Dr. & Mrs. Cliff Abbott from Winnipeg. Stuart Aitken of the Glencoe Club took the minutes of the second meeting.

The writer had the honor and privilege of being the first President of the Western Canada Section, and the first competition was held at Regina on February 15-16, 1947. There were between 30 and 40 skaters who participated in this first Sectional competition representing clubs in Vancouver, Calgary, Saskatoon, Regina and Winnipeg. The Judges were Dr. Urban Gareau, Mrs. A. G. E. Robbins and Roy M. Barnes; Allan M. Kerr was Referee.

The winners included: Senior Singles, Jeane Matthews and Roger Wickson;

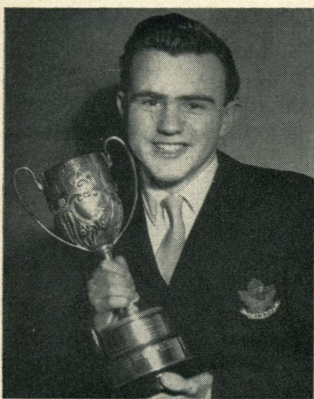


Carole Jane Pachi, former Canadian Lady Champion.

Junior, Jean Ross and Ross Smith; Novice, Frances Abbott and Malcolm Wickson; Senior Pair and Continental Waltz, Sheila Smith & Ross Smith; Junior Pair, Jeane Matthews & William Lewis; Ladies' Pair, Jean & Joan deWitt; Four, Frances Abbott, Roberta Wilcox, David Ross & Dr. John Abra; Fourteenstep, Mary Kingsley & G. M. Brockenshire.

The second Section was formed shortly after this in Northern Ontario under the guidance of Douglas Deyell, but it was not until 1956, almost 10 years later, that Sectional rules were eventually written into the CFSA *Rulebook* and Sections were formed right across Canada. For the next few years there were five Sections, the Western Canada Section continuing to embrace all of the territory from Victoria to Kenora, Ont. The Eastern Canada Section covered all of the territory from Ottawa to Newfoundland. These two Sections became too unwieldy and covered too vast a territory, involving heavy travelling expenses, and finally in 1959 the British Columbia and Atlantic Provinces Sections were formed, making seven in all.

So the "March of Progress" continues and figure skating is in the forefront. The formation of the Sections has had a terrific influence on figure skating in Canada, and the interest in Sectional competitions has been tremendous, far in excess of anything dreamed of by the people who organized the old Western Section.



Canada's World Pair Champions: Frances Dafeo & Norris Bowden, top; Barbara Wagner & Robert Paul, middle, also the first Canadian Olympic Pair Champions; Maria & Otto Jelinek, bottom. Charles Snelling, left, former Canadian Men's Champion.

STARTS AND CENTERS OF FIGURES

by: F. RITTER SHUMWAY
USFSA President

HENRY M. BEATTY
Delegate to the ISU

H. KENDALL KELLEY
Chm., Skating Standards Com.

THE USFSA BELIEVES strongly that the rules for figure skating should be uniform in all countries. In support of this position, the Association went to considerable trouble to change our own rules to conform with those of the ISU, as adopted by the Congress held in Helsinki in June, 1963.

The result is that the rules for starts and centers of figures are identical in the current *Rulebook* of the USFSA and in the "Regulations, 1963" of the ISU. They are, however, slightly changed from those that had been in effect for a number of prior years, in two particulars: (1) at the start the skater now stands "slightly before" instead of "at" the intersection of the longitudinal and transverse axes of the figure, and (2) the circles of the figures "are tangent" instead of "join each other."

While the written rules are in precise agreement, and are definite, there has been a vast amount of discussion as to interpretation. Exactly what is meant? How should we skate? How far before the intersection of the axes is "slightly?" Just where does the "strike" occur? Should the circles be "open" or "closed"—and if "open," how much?

The USFSA issued literal interpretive bulletins on August 8 and November 19, and published a literal interpretive article in the December issue of *SKATING*. In the week before Christmas and again on New Year's Day, 1964, letters were received from officials of the ISU reporting slightly more liberal interpretations of the rules for starts and centers which were made by the Technical Committee for Figure Skating of the

ISU at a meeting held in early December. A further interpretive bulletin was then mailed by the USFSA to all judges and professionals on December 23, 1963, quoting one of the aforementioned letters.

Unfortunately, this did not end the discussions because of varying interpretations of the interpretation. The following, then, is an attempt to give as concise an interpretation as possible, consistent with the rules of the USFSA and the ISU, and the interpretations that we have received from the ISU. In any event, our judges and skaters should be guided by the following for the balance of the current skating season.

START

"Slightly before the intersection of the long and transverse axes of the figure" means sufficiently before to enable the skater to strike on the long axis, even though—as stated in one letter from the ISU—a strong tracing, especially in the case of a light skater, may not be clearly discernible until some little distance beyond the long axis. Hence, while the strike should ideally start at the long axis, in most cases it might appear that the thrust and strike are equidistant from the long axis because the weight is not fully borne on the blade until some little distance beyond the long axis. The important criterion is whether the start and the repeated thrusts and strikes are controlled.

The distance from the thrust to strike should be as short as possible—certainly not greater than two feet and preferably

less, especially in the case of forward starts.

CENTERS

All agreed that the circles "are tangent." Whether the figure is to be "open" or "closed" is not mentioned anywhere in the written rules. In fact, this question arises only with a limited number of figures. (For example, Number 1. An example in which the question does not arise because the finishing tracings cross each other is Number 2.) If the circles are tangent, geometry and the mechanics of skating require some degree of "openness." If the thrust/strike distance is 18 inches, and if the circle is a normal 16 feet in diameter, geometry would make the "openness" $3\frac{1}{2}$ inches, or $1\frac{3}{4}$ inches either side of the transverse axis.

In a three-circle figure there must necessarily be a short flat at the point of tangency of the circles—that is, at the long axis where the change of edge occurs. The better the skater, the shorter this flat will be.

ROCKERS AND COUNTERS

The point of the rocker or counter should be exactly on the long axis.

When the circles "are tangent," geometrically correct rockers and counters will not have the former absolute symmetry in the area of the turn, but will have a slightly "downhill" appearance. That is, a straight line drawn between the entering and exit lobes of the turn itself will form an angle of approximately 5° with the transverse axis of the figures.

Judges, skaters, and professionals are again reminded that, since there are no scribed axes on the ice and no tape measures are used, it is extremely difficult to pin down the strikes and centers with exactitude, especially when skating backwards. It is only sensible and a part of judgment that there should be some latitude. Starts and centers are only a small part of the total skating of the figure—there are many elements, most of them more important. In starts and centers the important element is control.

MASTER RECORD SHEETS READY

THE USFSA OFFICE is pleased to announce that, starting with the 1964 Figure Skating Sectional and National competitions, copies of Master Record Sheets for all events will be available immediately following each competition. If you desire a copy of Master Record Sheets for any Sectional or National competition, simply send \$2 for a copy of the whole championship or 50¢ for any one event to: USFSA Office, 575 Boylston St., Boston, Mass., 02116.

An increasing work load which developed during the past few years, with more and more tests being processed each year and more individuals joining

the USFSA, had made it impossible for your USFSA Office to reproduce the sheets due to the fact that a great deal of hand copying was required. Advanced office copying machinery now is available, however, and the Master Record Sheets are being reproduced as soon as they are received by the USFSA Office.

The USFSA Office also is attempting to have past competition Master Record Sheets not heretofore copied reproduced as quickly as possible. As soon as these are available an announcement will be made in SKATING.

ROBERT Y. ELLIS
USFSA Business Manager



Everard Studio, London

Diana Clifton-Peach
British Champion, 1960, 1962

THE BRITISH CHAMPIONSHIPS, 1963

by JOHN NOEL

BOTH THE INDIVIDUAL title-holders were beaten when the British Championships took place at Wembley, London, on November 9, and the reigning Pair Champions narrowly escaped a similar fate.

The result in the Ladies' event was not unexpected. Diana Clifton-Peach, winner in 1960 and 1962, is an outstanding compulsory figure skater, but she invariably loses ground in free skating. So it happened at Wembley. At the end of the six figures she had a lead of only 24.7 points. This was not enough to win, although she skated well in the free.

The new Champion, Sally Anne Stapleford, is the daughter of the well-known Canadian ice hockey player, "Red" Stapleford. Last season she twice beat the more experienced Miss Clifton-Peach, in the European Championships and in the British Southern Regional event. At Wembley, apart from a disappointing paragraph double three, she showed great ability in the figures. Her well-packed free program was executed with speed and assurance, and included a splendid double axel.

The general standard of skating was high and there was keen competition for third place. The National Skating Association was regarding the Championships as Olympic Trials and Britain is entitled to enter three girls for the Winter Games. Anne Lenton's spirited program placed her third in free skating but her figure marks put her out of the running. Carol Warner, who has had much trouble with her health this year, made a triumphant comeback. Her neat, stylish figures and her artistic free skating deservedly earned her selection for the British Team.

The 1962 Men's Champion Malcolm Cannon was strongly challenged right from the start by the greatly-improved Hywel Evans. Cannon won three figures, but Evans beat him on the others, including two high-factor ones, finishing first on all but two judges' cards. He confirmed his superiority in the free, undeterred by a couple of falls, and skated throughout with style and confidence, doing a particularly good double lutz. Cannon skated competently, as usual, but did not land all his jumps

cleanly. Last in the figures, Michael Williams was unanimously placed first in the free. He jumped extremely well, but his style was unattractive.

None of the three pairs had a majority for first place. The results could hardly have been closer, but Defending Champions Vera Jeffery & Peter Webb just won, with a little more polish than their rivals.

The evening began with an impeccable demonstration of compulsory figures by World Champion Sjoukje Dijkstra, with a commentary by Geoffrey Yates. Later she gave a tremendously dynamic performance of free skating which showed she is in great form in this all-important season.

The British Dance Championships took place at Nottingham on Nov. 30. The Diana Peach listed is no relation of the former Lady Champion. The Peach situation is very confusing over here! First we had Dianne Carol Rosemary Peach, British Champion in 1957; then Diana Cynthia Clifton-Peach, Champion in 1960 and 1962; and now Diana C. Peach—and none of them are related. I expect we shall send the top three couples to Grenoble and Dortmund.

The free skating competitions held at Nottingham on the same day drew large entries—eight men and 18 girls. Michael T. Williams won the Jennings Cup for Men; holder Harold E. Williams (no relation) was third. Anne Lenton won the Martineau Bowl for Ladies for the second time.

LADIES

1. Sally Anne Stapleford
2. Diana C. Clifton-Peach
3. Carol A. Warner
4. Anne P. Lenton
5. Janet A. Sawbridge
6. Patricia A. Dodd
7. Janice C. Low
8. Adele Penney
9. Sylvia H. Oundjian
10. Margaret L. Hankinson
11. Susan J. Gregory

MEN

1. Hywel L. Evans
2. Malcolm R. Cannon
3. Harold E. Williams
4. Michael T. Williams
5. Alan H. McPherson

PAIRS

1. Vera A. Jeffery & Peter H. Webb
2. Diane C. Ward & Raymond E. Wilson
3. Fiona J. Hunt & John W. Bayman

R. J. WILKIE MEMORIAL TROPHY (Ice Dancing)

1. Yvonne Suddick & Roger A. Kennerson
(6 Couples)

DANCE

1. Janet A. Sawbridge & David M. Hickinbottom
2. Yvonne Suddick & Roger A. Kennerson
3. Marjorie McCoy & Ian Phillips
4. Diane Towler & Bernard Ford
5. Mary A. Parry & Roy Mason
6. Ann R. Cross & F. Leonard Williams
7. Susan M. Sutcliffe & William R. Thompson
8. Diana C. Peach & Anthony D. Berresford

News from Overseas

THE AUSTRIAN Championships were held at the new Olympic rink in Innsbruck early in December. The winners were Regine Heitzer and Peter Jonas.

News from Berlin tells of the defection from East Germany of Men's Champion Bodo Bockenauer, who is an outstanding free skater. He was competing in West Berlin for a place on the All-German Olympic Team, and decided not to go back behind the Wall.

The members of the Japanese Olympic Team are: Nobuo Sato, Miwa Fukuhara, Kumiko Ohkawa, Junko Ueno, and Manager Haruo Konno. In addition, Yoshiyaki Koizumi will compete at the Universiad in Czechoslovakia, along with Junko Ueno, Miwa Fukuhara and Nobuo Sato; Niro Kobayashi is Manager. The All-Japan Free Skating Competitions were held at Ohsaka on November 8. Ladies: 1. Kumiko Ohkawa; 2. Junko Ueno; 3. Miwa Fukuhara (17 Ladies). Men: 1. Nobuo Sato; 2. Yutaka Dohke; 3. Mitsuhiro Kozuka (14 Men). Dance: 1. Eiko Kaneko & Mikio Takeuchi (2 Couples).

Heard from Hungary: four figure skaters trained in Moscow in the fall and were to be sent to East Germany in the middle of December for further work.

SECTIONAL CHAMPIONSHIPS

Easterns

New Haven SC, December 13-15

SENIOR LADIES

(The Skating Club of Lake Placid Trophy)

1. Carol Noir, *Essex SC*
2. Taffy Pergament, *Westchester FSC*
3. Ann Pellegrino, *The SC of Boston*
4. Helen Dane, *The SC of Boston*
5. Pamela Schneider, *The SC of New York*
6. Ann Ferguson, *The SC of Boston*
7. Eleanor Lee, *Philadelphia SC & HS*
8. Cathy Lowe, *Hershey FSC*
9. Lesanne Walters, *Philadelphia SC & HS*

SENIOR MEN

(Roger F. Turner Trophy)

1. Richard Callaghan, *Ardmore, Pa.*
2. Paul McGrath, *Commonwealth FSC*
3. W. Patrick Lalor, *Philadelphia SC & HS*
4. John Dystel, *Rye FSC*
5. Robert Schwarzwaelder, *Metropolitan FSC*
6. Wynn Miller, *Hershey FSC*
7. Randolph Lees, *The SC of New York*

JUNIOR LADIES

(David T. Layman, Jr. Memorial Trophy)

1. Gail Newberry, *Buffalo SC*
2. Margaret Grogan, *The SC of Boston*
3. Wendy Jones, *Hershey FSC*
4. Coco Gram, *The SC of New York*
5. Nancy Brunckow, *The SC of Boston*
6. Allyson Brooks, *Commonwealth FSC*
7. Judy Mothersell, *Metropolitan FSC*
8. Diane Homewood, *Rye FSC*
9. Annetta Baird, *Philadelphia SC & HS*
10. Helen Frank, *Philadelphia SC & HS*

JUNIOR MEN

(Buddy White Memorial Trophy)

1. Robert Black, *The SC of Boston*
2. Richard Stanley, *Commonwealth FSC*
3. James Stuart, *USFSA Individual Member*
4. Mike Glover, *Hershey FSC*
5. Gerald Gregory, *Beacon Hill Club*
6. Michael Fiore, *Westchester FSC*
7. Gerard Lane, *The SC of Boston*

NOVICE LADIES

(Brooklyn Figure Skating Club Trophy)

1. Laura Codman, *The SC of Boston*
2. Leslie Boyer, *Philadelphia SC & HS*
3. Mary Helmers, *Philadelphia SC & HS*
4. Gail Kaplan, *Metropolitan FSC*
5. Carol Newberry, *Buffalo SC*
6. Barbara Keizer, *The SC of Boston*
7. Darlene Wright, *Pittsburgh FSC*
8. Karen Landrey, *Commonwealth FSC*
9. Patricia Burns, *Genesee FSC*

NOVICE MEN

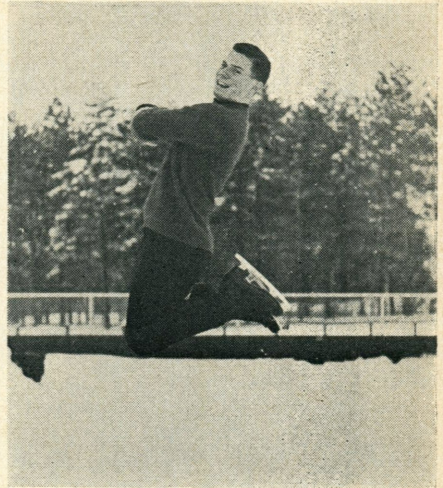
(Joseph Zirkelbach Memorial Trophy)

1. John Baldwin, *Metropolitan FSC*
2. Gordon R. McKellen, Jr., *Quaker City FSC*
3. Robert D. McBrien, Jr., *Old York Road SC*
4. Phillip D. Grout, Jr., *Southport SC*
5. Craig Lyall, *Buffalo SC*
6. Gary Jones, *Syracuse FSC*
7. S. Patrick Cadden, III, *Wissahickon SC*

JUVENILE GIRLS

(William B. Warren Memorial Trophy)

1. Lise Gantz, *Philadelphia SC & HS*
2. Stephanie Sidell, *USFSA Individual Member*



Eastern Senior Champion Richard S. Callaghan.

3. Suzy Carpino, *Westchester FSC*
4. Judith Perry, *The SC of Boston*
5. Jane Roche, *Commonwealth FSC*
6. Ellis Enlow, *Pittsburgh FSC*
7. Suna Murray, *South Mountain FSC*
8. Debbie Hummel, *Hershey FSC*
9. Jill Wender, *Great Neck FSC*

JUVENILE BOYS

(R. P. I. Figure Skating Club Trophy)

1. Robert Helmers, *Philadelphia SC & HS*
2. Gregg Morgan, *Pittsburgh FSC*
3. Ralph Hendrix, *R. P. I. FSC*
4. Kenneth Class, *Old York Road SC*
5. Charles Miller, *Syracuse FSC*
6. Martin Levy, *North Jersey FSC*

SENIOR PAIRS

(Ruth Parkinson Memorial Trophies)

1. Dianne Boucas & Roger Collard, *The SC of Boston*
2. Lynda Waldrop & Edwin Cossitt, *The SC of New York*

JUNIOR PAIRS

(Howard D. Herbert Memorial Trophies)

1. Dolly Rodenbaugh & Thomas Lescinski, *Pittsburgh FSC*
2. Susan & Jerrold Gearhart, *Genesee FSC*
3. Martha & Howard Webb, *Pittsburgh FSC*
4. Sheryl Panczak & Keith Galgot, *New Haven SC*

SILVER DANCE

(Eastern Silver Dance Trophies)

1. Dale Lynne & Russell Bowen, *New Haven SC*
2. Dolly Rodenbaugh & Thomas Lescinski, *Pittsburgh FSC*
3. Gail Stone & Wynn Miller, *Hershey FSC*
4. Janet Beeley & D. Wilson Hess, *Genesee FSC*

BRONZE DANCE

(Eastern Bronze Dance Trophies)

1. Nancy Wormser & Michael Tamres, *Metropolitan FSC*
2. Mary Gillespie & Timothy Doyle, *Pittsburgh FSC*
3. Sandra Gundry & Douglas Mantegna, *Genesee FSC*
4. Lynda Casson & Keith Galgot, *New Haven SC*

VETERANS DANCE

(Harold Hartshorne Trophies)

1. Mary Gundry & F. Ritter Shumway, *Genesee FSC*
2. Eliza & Samuel Miller, *Philadelphia SC & HS*
3. Harriet Marsh, *New Haven SC*, & Jerome Ross, *Rye FSC*
4. Felicia & Edward Sieminski, *Metropolitan FSC*

FRANK J. GOODWIN MEMORIAL TROPHY (TEAM)

1. The SC of Boston
 2. Philadelphia SC & HS
 2. Pittsburgh FSC
- (Tie for Second Place)

JUNIOR LADIES

(David Guntert Memorial Trophy)

1. Susan Berens, *Blade & Edge Club*
2. Julie Holmes, *Arctic Blades FSC*
3. Charlene McLaren, *Walnut Creek WC*
4. Jean Kondo, *St. Moritz ISC*
5. Cherrie Moritz, *Glacier Falls FSC*
6. Kim Millet, *Seattle SC*
7. Barbara Ray, *The SC of San Francisco*
8. Ann Glenn, *Sun Valley FSC*
9. Roseanne Lee, *Lakewood WC*

JUNIOR MEN

1. John Petkevich, *Great Falls FSC*
2. Barry Munns, *Walnut Creek WC*
3. Iain Kite, *Los Angeles FSC*
4. Michael Visley, *USFSA Individual Member*
5. Bradley Hislop, *Seattle SC*
6. Joe Lasby, *Lakewood WC*
7. David Mitchell, *Seattle SC*
8. Eugene Heffron, *Berkeley, Calif.*
9. Roger Sartore, *El Camino ISC*

NOVICE LADIES

(Dorothy Ballantine Trophy)

1. Karen Grobba, *Glacier Falls FSC*
2. Tina Sessions, *Arctic Blades FSC*
3. Sharon Davison, *Arctic Blades FSC*
4. Gail Cochrane, *St. Moritz ISC*
5. Sharon Smith, *Walnut Creek WC*
6. Patty Fitzpatrick, *Seattle SC*
7. Christine Kjarsgaard, *St. Moritz ISC*
8. Carol Anderson, *Seattle SC*
9. Patty Morton, *Seattle SC*

NOVICE MEN

1. Roger Bass, *Arctic Blades FSC*
 2. Atay Wilson, *USFSA Individual Member*
 3. Mike Fields, *Blade & Edge Club*
 4. Larry Langford, *Portland ISC*
 5. Sam Singer, *The SC of San Francisco*
 6. Robert Pittman Reese, Jr., *El Camino ISC*
- Richard Inglesi, *St. Moritz ISC*
(Withdrawn before free skating due to injury; placed first in figures.)

SENIOR PAIRS

(Hadley-Hickox Memorial Trophy)

1. Christine Simon & Edwin Kelsey, *Walnut Creek WC*
2. Linda Heiser & Edward J. Murray, Jr., *The SC of San Francisco*
3. Kathleen Mason & Larry Snider, *Seattle SC*
4. Diane Anderson & John Swanson, *Seattle SC*

(Continued on page 26)

Pacific Coast

Los Angeles FSC, December 5-7

SENIOR LADIES

(Rhode Lee Michelson Memorial Trophy)

1. Sondra Holmes, *Arctic Blades FSC*
2. Shari Bates, *St. Moritz ISC*
3. Kristin Mittun, *Seattle SC*
4. Michelle Monnier, *The SC of San Francisco*
5. Ellen Kullmann, *El Camino ISC*
6. Linda Galbraith, *Lakewood WC*
7. Roberta Buswell, *Los Angeles FSC*
8. Paulette Chaisson, *Arctic Blades FSC*
9. April White, *Lakewood WC*

SENIOR MEN

(Kenneth L. Brown Trophy)

1. Ronnie Frank, *Arctic Blades FSC*
2. Johnny Moore, *Arctic Blades FSC*
3. Walter Hypes, *Los Angeles FSC*
4. Roy Wagelein, *Los Angeles FSC*
5. William Henley, *Lakewood WC*

Pacific Coast Champions: front, Page Paulsen & Larry Dusich, Claude Sweet & Kristin Fortune, Karen Grobba, Susan Berens, John Petkevich, Roger Bass, Dr. Preston Ervin & Joan Brosten; back, John Carrell & Lorna Dyer, Ronnie Frank, Sonda Holmes, Christine Simon & Edwin Kelsey. Photo by William L. Udell, Hollywood.



ROCKERS AND COUNTERS

Canadian Clubs

Blenheim FSC opened the season on Oct. 29 with skating sessions commencing Nov. 10. . . . Linda Carbonetto was chosen by the Trade and Commerce Department to represent Canada during Canada Week in Philadelphia last November. . . . Alan Smith, President, was in charge of club competitions on Dec. 15.

Chatham FSC's registration on Oct. 6 signalled a take-off into a busy season with a growing membership. . . . St. Nick skated with members at the well-attended holiday party on Dec. 22 when presentations were made to pros D. Mathewson and A. Powers and to Mary Ann Abel who is joining Ice Follies.

Dundas FSC skaters made good use of extra ice time during the holidays to prepare for coming tests. . . . Mesdames R. Tunis and R. Stutley, session conveners, distributed bags of Christmas candy at the yule party for juniors on Dec. 21 at which ice games were played under the supervision of pro Tamara Halliday.

Glencoe Club hosted the Provincial Free Skating Championships on Dec. 7 with 94 skaters from Alberta province entered. Winners were: Barbara Paulson, Glencoe Club, and Archie Zariski, Edmonton FSC, Senior; Barbara Simpson, Glencoe Club, and Dwight Carpenter, Edmonton FSC, Junior; Margaret Zapfe, Calalta FSC, and Andrew Barron, Royal Glenora Club, Novice; Joan Vipond and Andrew Barron, Royal Glenora Club, Juvenile. Pair winners were: Sally Short & Archie Zariski, Royal Glenora Club, Senior; Shirley Robson & Sandra St.



Sharon Quigley, Metropolitan FSC, Gold Medalist.

Lawrence, Royal Glenora Club, Senior Ladies; Heather McBride & Andrew Barron, Royal Glenora Club, Junior; Sally Campbell & Sally Short, Royal Glenora Club, Junior Ladies; Heather McBride & Andrew Barron, Royal Glenora Club, Novice; Janice Florendine & Mary Ann Venini, Glencoe Club, Novice Ladies.

Newmarket FSC presented a Pop Concert on Dec. 1 which featured Canadian Olympic Trial skaters Petra Burka, Bill Neale, Debbi Wilkes & Guy Revell, Paulette Doan & Ken Ormsby, Carole Forrest & Kevin Lethbridge, and Linda Ward & Neil Carpenter, whose exhibitions were enthusiastically received by appreciative spectators. Mrs. Jay was in charge of the reception which followed.

Oshawa SC opened the season in early November; an enrollment of 250 is a new record. . . . Members were delighted with Alex Anonichuk's portrayal of Santa at the Dec. 10 Christmas party. . . . Preparations are being made for the inter-club competitions on Feb. 9 in which an anticipated 200 competitors from Oakville, Peterbor-



Gold Medalist Gary Visconti, Great Lakes FSC, photographed at Megeve, France.

ough, and Granite Clubs will compete.

Royal Glenora Club hosted an invitation skating party on Dec. 20 with Edmonton and Jasper Place members as guests. Ice games, exhibitions, skating films and refreshments in the lounge provided a variety of fun for everyone. . . . The Dec. 15 competitions produced the following winners: Shirley Robson and Bill Windover, Senior; Sally Short, Junior; Jane Cameron, Novice; Terry Flint and Andrew Barron, Juvenile.

Toronto CS & CC entertained Mr. Claus who skated with juniors at the Christmas party on Dec. 13 when a buffet supper, entertainment and dancing were part of the frivolity. Pro Wally Distelmeyer's instruction added much enjoyment to the last six dance sessions. . . . A formal New Year's Eve Ball ushered in 1964.

Victoria FSC members organized a Director's Tea on Dec. 1 when exhibitions were skated by Hamilton's latest pro, Joan Meloche, and Nancy & Steven Dover in a pair program. . . . The Ladies Auxiliary promoted a Christmas sale on Dec. 8 and a tea on the 15th

with solos skated by Cheryl Stull and Susan Blatz.

Woodstock FSC juniors had a jolly yule party on Dec. 8 for which Mrs. E. C. Evans and Mrs. W. S. Sedgwick were co-conveners. Winners of group events were: Dori Blair, Diane Ransome, Darcy Campbell, Nancy Poste, Bruce Pullen, Bruce Riffel, Betty Starr, Leslie Beach, Debbie Easton, Janet McDonald, Elizabeth Sedgwick, and Ruth Raper. . . . Every junior created a chapeau for the "Hilarious However Heterogeneous Host of Hi-Falutin Headgear" party on Jan. 12. The 12 categories of hats to be judged included "shades of Sherlock Holmes," "astronaut special," and "one dogs will be sure to bark at." Parents in the audience had as much fun as the "heady" youngsters.

Eastern Clubs

Baltimore FSC's annual meeting fell on Oct. 23 when it was decided to add another night to the schedule for junior and senior members. Thursday evening dance competitions were limited to Preliminary only so that all may compete. . . . A seniors' holiday party was on Dec. 19 followed by jolly St. Nick frolicking with the younger set on the 21st.

Buffalo C & SC's busy Entertainment Chairman, Mrs. Richard Conner, kept members hopping with a full December calendar: an Open House on the 8th with ice games and social hour; another opening on the 15th to which the public was invited. Pros Wilma Dee and Frances Durore organized an ice program made more enjoyable through their running commentary. Bill Neale skated an exhibition. Young club skaters demonstrated free skating and adults executed dance routines. A fashion show on ice rounded out the program. On the 21st Santa (in the person of Ed Dee) visited the children who presented Winter Pageant. Snowballs, icy winds, Jack Frost and snow-

(Continued on page 30)

B. C. Coast

Connaught SC, November 23-24

SENIOR LADIES

(Charles A. Dunn Trophy)

1. Cynthia Titcombe, *North Shore WC*
2. Lindsay Cowan, *North Shore WC*
3. Diane Murdoch, *Victoria FSC*
(10 Contestants)

JUNIOR LADIES

(Mrs. Gerald R. Hepburn Trophy)

1. Mary Kinsey, *Totem FSC*
2. Heather Fraser, *Connaught SC*
3. Barbara Walls, *Kerrisdale FSC*
(13 Contestants)

JUNIOR MEN

(Mr. & Mrs. J. S. K. Kenworthy Trophy)

1. David Coffin, *North Shore WC*
2. Richard Madden, *Kerrisdale FSC*

NOVICE LADIES

(Mrs. William A. Quigley Trophy)

1. Pat McGhee, *Capilano WC*
2. Colleen Bruce, *Vancouver SC*
3. Shelly Bowman, *Kerrisdale FSC*
(21 Contestants)

NOVICE MEN

(Granville Mayall Trophy)

1. David Johnstone, *North Shore WC*
2. Patrick McKilligan, *Nanaimo FSC*
3. Martin Bowles, *Victoria FSC*
(7 Contestants)

JUVENILE GIRLS

(Harry Shaw Trophy)

1. Judith White, *Vancouver SC*
2. Catherine Moore, *Vancouver SC*
3. Pamela Reynolds, *Victoria FSC*
(17 Contestants)

JUVENILE BOYS

(Vancouver Skating Club Trophy)

1. Thomas Dickson, *Vancouver SC*
2. Darren Gillett, *North Shore WC*
3. Duncan Regehr, *Victoria FSC*
(5 Contestants)

LADIES PAIRS

(Mrs. Donald Baxter & Mrs. Karley Pinkerton Trophy)

1. Louise Lind & Joanne Lorimer, *Capilano WC*
2. Gloria & Wendy Borthwick, *Totem FSC*
3. Daryl MacNeil & Lynn Moffett, *Burnaby WC*
(4 Pairs)

SILVER DANCE

(Mr. & Mrs. Jack Morgan Trophy)

1. Sharon Wood & Mark Bowman, *Kerrisdale FSC*
2. Ellen McQuarrie, *Vancouver SC*, & Jim Hibak, *Capilano WC*
3. Elizabeth Paukert & Donald Phillips, *Capilano WC*
(4 Pairs)

BRONZE DANCE

(Mr. & Mrs. J. H. Mitchell Trophy)

1. Nancy King, *Connaught SC*, & Paul Baker, *Capilano WC*
2. Marilyn & David Johnstone, *North Shore WC*
3. Pat McGhee & Barry Soper, *Capilano WC*
(5 Pairs)

MOST ARTISTIC AWARD

(Kerrisdale Figure Skating Club Trophy)

1. Heather Fraser, *Connaught SC*
2. Karen Magnussen, *North Shore WC*
3. Lindsay Cowan, *North Shore WC*

Kootenay

Nelson FSC, December 15

SENIOR LADIES

1. Becky Hodge, *Spokane FSC*
2. Laura Christie, *Trail SC*
3. Loris Olsen, *Nelson FSC*
(5 Contestants)

INTERMEDIATE LADIES

1. Patricia Shutty, *Trail SC*
2. Beth Powell, *Trail SC*
3. Margaret Konken, *Nelson FSC*

NOVICE LADIES

1. Bonnie York, *Trail SC*
2. Karen Hegland, *Nelson FSC*
3. Jackie Brown, *Cranbrook FSC*
(7 Contestants)

SUB-NOVICE LADIES

1. Janice Wright, *Trail SC*
2. Linda Rossi, *Trail SC*
3. Kathryn Haggarty, *Trail SC*
(13 Contestants)

SUB-NOVICE MEN

1. Dale Loy, *Spokane FSC*
2. Walter Zoobkoff, *Nelson FSC*

JUVENILE GIRLS

1. Jeanne Goodner, *Trail SC*
2. Shirley Uhryn, *Trail SC*

3. Judy Graham, *North Star FSC*
(7 Contestants)

NOVICE LADIES PAIRS

1. Kathryn Haggarty & Beverly Purdy, *Trail SC*
2. Carol Fabbro & Eldoreen Johnson, *Cranbrook FSC*

JUVENILE GIRLS PAIRS

1. Linda Rossi & Shirley Uhryn, *Trail SC*
2. Sheena Camozzi & Jayme McLaughlin, *Rossland FSC*
3. Janis Wright & Martha Walton, *Trail SC*
(7 Pairs)

GOLD DANCE

1. Becky Hodge, *Spokane FSC*
2. Elizabeth Clark, *Nelson FSC*
3. Laura Christie, *Trail SC*

JUNIOR SILVER DANCE

1. Beth Powell, *Trail SC*
2. Candaci Beattie, *Trail SC*

JUNIOR BRONZE DANCE

1. Beverly Purdy, *Trail SC*
2. Karen Hegland, *Nelson FSC*
3. Margaret Konken, *Nelson FSC*
(5 Contestants)

PRELIMINARY DANCE

1. Linda Rossi, *Trail SC*
2. Janis Wright, *Trail SC*
3. Linda McGillivray, *Castlegar FSC*
(4 Contestants)

To Move Really Well



by MURIEL KAY *Professional*
Author of "The Key to Rhythmic Ice Dancing"
(Reprinted from the "Skating World," October 1962)

IN THE BRITISH RULEBOOK under the regulations governing the Silver and Gold Dance Tests there appears a statement that could well stand to be included in the USFSA *Rulebook*. It is as follows:

"It should be emphasized that strict observance of time and academic correctness in skating the steps of the dance are *not in themselves* sufficient to gain a pass mark. In addition, a candidate is required to move really well and to give character and life to a dance."

Let us take a closer look at the last sentence, . . . "to move really well." Just what does that infer—even demand? Primarily, it infers using to the best possible advantage the ice dancer's unique property of glide. There is no other medium offering such a superb opportunity for movement, and it demands that this movement shall be performed with the appearance of consummate ease and grace—with flow and continuity.

Before going on, let me define further these terms connected with movement.

MOVEMENT—progress either forward or backward around the rink, or up and down, i.e., the bending and rising of the skating knee.

SPEED—the rate of movement, either fast or slow.

POWER—the strength of movement, i.e., the exerted energy force.

CONTINUITY AND FLOW—the maintenance of uniform speed throughout the dance.

ELAN—the "life" of the movement—bold, confidently skated edges.

Although it is not until the Silver Test that the rules stipulate the necessity for good movement as a requirement to pass, it is not something we can get along very well without until the complexities of choctaw and rocker turn have been mastered, and then add on as a "nice little extra" a week or two before the test. Just as a higher standard of technical accuracy is expected in each successive test, so should there be a corresponding degree of improvement in the movement and resulting flow over the ice.

In the higher tests, what may be called the intangible qualities—movement, expression, and interpretation—become increasingly important but, before the individual character of the different dances can be expressed, there must first be a basic rhythmic movement on which to build. Without it, attempts at expression resolve into affected mannerisms bordering on a rather cheap form of showmanship. In order to attain this movement there must be a proper understanding of how to obtain maximum glide with a minimum amount of visible effort, and a smooth transference of weight from one foot to the other.

The first essential is correct posture* for without this there cannot be proper balance over the skate. This means that the various parts of the body must be aligned vertically on one another so that the weight is borne by the skeletal framework with as little strain as possible. For a quick check, the base of the

*see SKATING, February 1961.

neck should be over the ankle bone of the skating foot, hips "in and under."

A sound basic movement can be developed from the following exercise:

Stand on the ice, heels together and toes out at an angle of about 30° from the long axis. Check posture. Place the heel of the right foot at the instep of the left and relax the knees slightly. Now slowly bend the knees and push away from the whole blade of the left skate, and keep bending the right knee. The left leg becomes the free leg and is extended and positioned at the back, with the knee straight and the toe turned slightly out and pointed down. Check the body position and make sure that you have a very slight backward lean from the hips and that the head is well up. Allow the edge to run as long as possible but, when the "run" of the skate begins to slow down markedly, rise up on the skating knee and, keeping the free leg straight, bring it in a slight arc up to the instep of the skating foot, and *relax* both knees. Now bend and push on stroke two, and so on. To summarize a plain stroke: 1. Relax. 2. Bend and push. 3. Continue bending skating knee; extend and position free leg. 4. Rise up on skating knee bringing free foot to instep of skating foot. 5. Relax.

The relaxing of stage No. 5 is the key to the continuity of the movement. (In second and subsequent strokes stage 5, of course, replaces stage 1.) Thus, the preparation for the new stroke is begun well before the actual weight transference, and each new stroke is a result of a previous movement so that there is a virtual "overlapping" and a continuity of movement is established. To help to get a rhythm, count slowly: down, down, down, down-up, relax—accenting the fourth "down" and almost instantaneously beginning the upward rise on the knee. This produces a stroke with a "2/3-1/3 ratio"—the downward bend occupying two-thirds the run of the stroke, and the rise and relax, one-third. It is the control of the *rate* of bend which is of supreme importance and that presents the difficulty. It sometimes helps

to try to visualize the actual physical process of the muscles of the leg bringing about the bending movement.

How deep is maximum bend and how straight is the peak of the rise? Maximum bend is as deep as possible within the limits of correct posture and a well-positioned free leg. Peak rise is to an almost straight, but never locked, knee as the release this requires makes a noticeable jerk. The knee is seldom as deeply bent as it feels to be, so a good rule is "if in doubt, bend."

During the course of the foregoing exercise, progress round the rink will leave a zigzag tracing rather than the straight line of the tightrope walker. At first do not try to push too hard or get too much speed as this will defeat the purpose of the exercise. Concentrate on making the push from the entire blade of the skate, controlling the bending and rising of the knee, checking posture, and feeling the center of balance over the blade. If this is correct you will be surprised at the distance the skate will travel doing the work for you.

Once you have the feeling and rhythm of this stroke movement, gradually increase the strength of the push until it results in a real power stroke and enables you to cover the ice with ease. Keep the free leg well positioned and close to the ice. It can only be raised through about 15° at the back before causing the body to incline forward. Use it rather to help to pull the weight towards the back of the skate. The movement of the free leg should also be continuous—timed to reach its furthest point of extension as the skating knee reaches maximum bend, and then slowly being brought up to the skating foot, coordinating with the rise and relax of the skating knee, to attain its position at the instep only just in time to go down on the ice and take the weight for the new stroke.

In recent years the term "rising knee" has been used to describe dance movement, and judging from examples designated by this term it is certainly a misconception of what may be more

(Continued on page 40)



PEOPLE

BIRTHS

Atlanta—To Mr. and Mrs. Rutherford L. Ellis, Jr., a daughter, Nancy Lynn, Nov. 30.

Beloit, Wis.—To Mr. and Mrs. Paul Mann, a daughter, Linda Louise, June 22.

Boston—To Mr. and Mrs. Dalmar Fisher (Janet Williams), a daughter, Nov. 27.

Kamloops—To Mr. and Mrs. John F. Dunlop, a son, John Frederick, July 22.

Los Angeles—To Mr. and Mrs. Peter F. Betts (Yvonne Littlefield), former U. S. Dance Champions, a son, Gregory, Dec. 7.

Montreal—To Mr. and Mrs. Steve Sagenski, a daughter, Susan Teresa, Nov. 22.

New Haven—To Mr. and Mrs. Munro S. Brook (Carolyn Sully), a daughter, Paige, Nov. 15.

Seattle—To Mr. and Mrs. Tom Moore, former U. S. Junior Champion, a daughter, Kari Lee, Nov. 28.

Toronto—To Mr. and Mrs. John Boynton (Marilyn Irwin), a son, John Irwin, Dec. 1.

Unionville—To Mr. and Mrs. William Clark, a son, in November.

ENGAGEMENTS

Boston—Miss Julie Graham to Mr. William B. O'Neil.

Cleveland—Miss Lois Ann Ostasek to Mr. John Howard Scott of Linwood, N. Y.

London, Ont.—Miss Margaret Campion to Mr. John McGarry.

Montreal—Miss Lise Petit to Mr. Gary Fetterly.

New York—Miss Sonya Klopfer, former North American and U. S. Lady Champion, to Mr. Peter Dunfield, former Canadian Junior Champion.

Toronto—Miss Paulette Doan to Mr. Kenneth Ormsby, North American and Canadian Dance Champions—Miss Wendy Hill to Mr. David M. B. Farquhar.

MARRIAGES

Cleveland—Mr. Ed Bialek and Miss Marion Ratusnik, Nov. 23—Mr. Robert Keyes and Miss Clara J. Snead, Dec. 22.

Detroit—Mr. Harold Coe and Miss Kay Harper, Dec. 18.

East Lansing—Mr. Timothy Culver and Miss Nancy Chamberlain, Dec. 14—Mr. Gene Desautels and Miss Millie Lynch, Nov. 22.

Indianapolis—Mr. W. F. Sully and Miss Jessera H. Meyers, Nov. 30.

Kamloops—Mr. R. Keith Orton and Miss Muriel F. Turner, Sept. 28.

Kelowna—Mr. Wayne Lougheed and Miss Diane Stoltz.

Paramount—Mr. Kenneth Owen and Miss Marilyn Long, Dec. 14.

Seattle—Mr. Floyd E. Johnson and Miss Betty Bradbury.

Toronto—Mr. John E. Chrysler and Miss Cyndie Button, Dec. 6—Mr. John Michael Geoghegan and Miss Wendy Ann Mason, Nov. 15.

DEATHS

Halifax—Mrs. Lloyd G. Hamilton, Sept. 13—Mr. Ivan Rosborough, in August.

Jersey City—Miss Gloria Mehl, June 9.

New York—Mr. Gustave Jablow, in September.

Toronto—Mr. Don Hudson, Toronto CS & CC member, in an air crash near Montreal, Nov. 28.

West Long Branch, N. J.—Mrs. Annie McCoy, grandmother of Miss Margaret Ann Gerrity, Dec. 7.

TURNED PROFESSIONAL

Chatham, Ont.—Mary Ann Abel to join Ice Follies.

Chicago—Susan Dunsmuir to skate at the Conrad Hilton Hotel.

Columbus, Ind.—Linda DeHart Bottorff to teach in Columbus.

East Lansing—Margo Davenport, Denny Leavitt and Sterling Tryon to join Holiday on Ice.



SPINS THROUGH PROFESSIONAL CIRCLES

ON THE SHOW SCENE: In December Donald Jackson gave exhibitions in Czechoslovakia before returning to Ice Follies on Christmas Day. . . . Ronnie Robertson was to open in a show Dec. 17 at the Viking Theatre Restaurant in Fort Lauderdale, Fla. . . . Barbara Wagner Grogan was crowned "Queen of Ice" by the Ice Institute of America, while in Texas with Ice Capades. . . . Christine Wood, one of the original members of the Unionville SC, is now an Ice Ca"Pet."

Innsbruck Computers Tested

by LT. COL. DAVID ZILLMER

THIRTY-FIVE SKATERS from 14 countries had been received by the official welcoming committee of the International Ladies' Junior Competition at Innsbruck, Austria, and were comfortably put up in hotels and inns around town. At the rink, too, everything was ready. The ice had been expertly prepared, special IBM tabulating machines were running, and modern, individual dressing rooms with names and country of entry noted on the doors had been assigned.

Sponsored by Austria and normally held in Vienna, this international junior competition took place on December 7-8. Eileen C. Zillmer (USFSA Individual Member), whose family resides in Germany, was the only United States entry.

The figure competition was very interesting to watch, for results were available in printed form about two minutes after the completion of each figure. This was achieved through the use of special IBM machines which have been installed for the Olympic figure skating events. For veteran coaches and officials it seemed fabulous to be able to get the results so quickly and in such detailed form down to points and ordinals.

To give a small impression of the excitement from figure to figure that the IBM interim reports caused, I shall retrace the ups and downs of the United States entry, Eileen Zillmer. At the end of the third figure, and much to everyone's surprise, the IBM results listed Eileen in third place. After the third figure, tensions rose when she appeared in second place just behind Hilde Ueberlacher (Austria) and just ahead of Denise Neanne (France). Eileen, however, was unable to hold this lofty position and dropped to fifth place after the next figure and then to 17th after the last figure. (Free skating brought her back up to a final ninth place.)

On the next day, a Sunday, the new stadium was visited by a most appreciative audience. Even though advertised as a junior event, there were few vacant seats. During the free style, the skaters were in splendid form and, for the number of participants, very few falls were registered. One of the most artistic performances—a beautiful flowing style with unusual footwork—was presented by Elen Slepowa (Soviet Union), while Hilde Ueberlacher (Austria) and Eva Flandorfer (Austria) skated the most difficult programs.

1. Hilde Ueberlacher, Austria; 2. Liesl Mikula, Austria; 3. Pia Zuercher, Switzerland; 4. Brigitte Jansky, Austria; 5. Eva Flandorfer, Austria.



THE CALENDAR OF COMING EVENTS

February

- 7- 8 London SC carnival
- 12&15 International Senior Competitions at Garmisch—Partenkirchen, Germany
- 21-22 Troy SC (Ohio) carnival
- 22 Chatham FSC carnival
- 22 Lachine FSC carnival
- 22 Laurelton Pines SC carnival
- 25-Mar. 1 World Championships at Dortmund, West Germany
- 29-Mar. 1 Middle Atlantic Championships at The SC of New York

March

- 13-15 Senior Skaters' Competition at Genesee FSC
- 13-15 The SC of Boston carnival
- 14-15 Saskatoon FSC carnival
- 17 Pittsburgh FSC carnival
- 19-21 Newmarket FSC carnival
- 20-21 Leaside SC carnival

April

- 3- 4 Woodstock FSC carnival
- 16-18 Toronto CS & CC carnival
- 17-18 Unionville SC carnival
- 18-19 Essex SC of New Jersey carnival



16,200 SQUARE FEET with 4 Patch Sessions each day for only \$1.00 an hour. 3 Dance Sessions—75¢ an hour. 3 'Free Skating' Sessions—75¢ an hour and 2 General Sessions—\$1.00 for 2 hours.

Your choice of accommodations or special Chalet Rooms for skaters \$2.50 a day.

Other attractions—golf, swimming, tennis, fishing, bowling, shooting, movies, dancing.

For complete information, or reservations, address Winston McCrea, Mgr., Sun Valley, Idaho.

SunValley
IDAHO

*Owned and served by
Union Pacific Railroad*



COMPETITORS

the • **A**PPROPRIATENESS

• **B**ASIC DESIGN

• **C**OLOR CHOICE

IS there a right and wrong—a correct and incorrect—standard for ice dress?

HAVE the popular ice shows with their great variety of theatrical costumes influenced the good taste of ice fashions worn by amateurs?

DOES one differentiate in selecting a costume for competition—free skating—exhibitions—ice shows?

ARE judges affected by a competitor's appearance?

In an effort to find answers to these and other sometimes controversial questions, SKATING queried top competitors, their mothers, professionals, and ice fashion designers. In this issue the top amateurs "tell all about" their individual handling of skating wardrobes. In the next issue you'll read of the pros' points of view—following that, a capitulation from the designers of skating apparel.

"Skating is a sport—competition clothes should be tailored and simple," comments Vivian Joseph in her fashion letter to SKATING. Joya Utermohlen emphasizes, "Skating clothes should be compatible with *ice*." This may account for her preferential use of high-necked, long-sleeved designs.

According to SKATING's dress survey, competitors strongly feel that there's not only a right and wrong dress for different skating events, but also a correct and incorrect design suitable to each individual's proportions.

There was unanimity of opinion amongst the female skaters that to develop attractive and becoming rink ap-

A classic basic costume design can be translated into show dresses by changes of fabric and decoration, illustrated below by the costume of Joya Utermohlen, 1963 U. S. Junior runner-up. Photo by Moss Photo Service, New York.



REVEAL

of ICE DRESS



parel, one should start from the *inside* and work *out*—which means that step number one is an *honest* figure analysis. If your figure hasn't the proportions of a Brigitte Bardot, don't fret. Develop a basic style which will camouflage the obvious discrepancies of Amazon or pint-sized height, short or long-waisted, under or over-developed bust, wide hips, heavy thighs or too much *derrière* padding. The trick here is to divert attention from a figure defect by stressing another part of the dress design. Example: rather than elaborate skirt trim for the wide-hipped girl, a decorative neckline will attract the eye to that part of the figure, consequently minimizing the hip breadth. Another must: always use plain, lusterless material and simple design for trouble spots. Example: never use a full, flowing circular skirt of shiny cloth for the hippy figure, but as straight a line as is compatible with action, being sure that any fullness does not occur on either side of the figure, but at center front or back. A gently gored skirt, cut in sections, can be adjusted to variable fullness. Tall girls can cut inches off

Attention is called to the decorative neck and sleeve treatment in Vivian Joseph's exhibition dress. Vivian & Ronald (above) are the 1964 U. S. Senior Pair runners-up. Photo by Wally Sahlin, Denver. . . . Elegant simplicity characterizes Wendy Griner's beautifully tailored costume (left). She is the North American and 1963 Canadian Lady Champion. Photo by Maioni, Cortina.

their height by making a bodice of a color contrasting to the skirt, whereas the petite miss would never consider anything but a one-color costume.

Simultaneously, the basic design you work out must allow ample "give" for easy body motion. Incidentally, most commercial pattern houses include several skating costume designs in their catalogues . . . and it's not necessary to cling to these, for many dress patterns can be adapted to the shorter length required by skaters.

Vivian Joseph's mother, working like a professional dress designer, makes a dress of muslin in which Vivian skates, testing all the possible areas of strain. If the basic design works, it is translated into the finished garment.

There is absolute agreement among competitors on two points of design: One, a skating skirt must always dip in the back—the degree dependent on individual figure construction, but always enough to cover the rounded derriere; Two, skating pants, without exception, should be made of the same color as the dress and, if feasible, of the same fabric. If they aren't, it creates a distressing optical distraction which can subtract from the skater's performance.

Joya Utermohlen, who is well-known for her classically simple dresses, works closely with a New York dressmaker designing her costumes and ironing out all the "bugs" of each new creation.

Most of the girls agree that a one-piece pattern is the most satisfactory. Wendy Griner starts with a good basic leotard in one piece, joining the skirt to this foundation which eliminates any possibility of the ugly separation of bodice and skirt at the midriff. With her dressmaker, she works to get plenty of underarm freedom through the use of gussets. "But," she warns, "one must be careful to avoid unwanted bulges."

Petra Burka's dressmaker has developed with her a basic pattern simply designed to her body structure. She loves the princess line, especially for practice.

Paulette Doan is a real fashion pioneer. Her mother and she created de-

signs from available commercial patterns, using McCall's #1176 as a basic leotard pattern, the finished dress often being a composite of several patterns. Since her mother now lives in Alberta, she took sewing lessons and carried on solo with an occasional helpful lift from Ken Ormsby's mother.

Simplicity is the keynote of Debbi Wilkes' ice dresses, too. She also works from commercial designs with many alterations to suit the occasion for which she is designing. Two piece mix-and-match sweaters and skirts are "tops for practice" in her book.

When it comes to material everyone is in accord: there is nothing, but nothing, which can hold a candle to jersey. It's resilient, gives with the body, is warm in wool, and comes in a wide variety of both pastel and brilliant color. Not only that, it takes to dye as a duck to water so can be matched to a gentleman's suit for pair and dancing partners. Debbi Wilkes uses double thickness wool jersey which, she feels, holds its shape better. She is also partial to Viyella flannel because it tailors beautifully. Vivian Joseph has a preference for fine wool suiting; Paulette Doan has good luck with wool crepe.

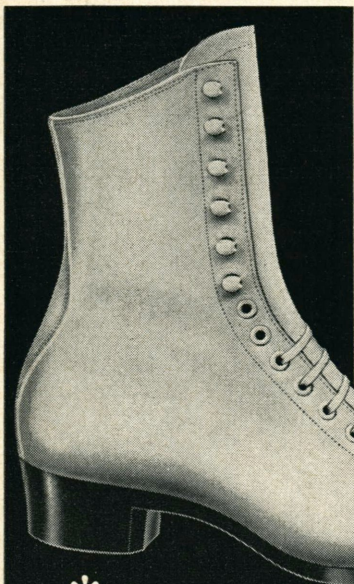
Exhibition dresses afford the opportunity for more expression and the use of a greater variety of material. Joya Utermohlen feels that lace and brocades are not only difficult to tailor satisfactorily, but incompatible with ice. Paulette Doan adores chiffon for dancing; her point of view is shared by Wendy Griner and Petra Burka, who says, "Soft flowing materials accentuate movement." Vivian Joseph warns against too much decorative glitter in dance costumes. "Besides giving the impression of a Christmas tree, it detracts from the skater's performance," she says.

In the area of color, the rainbow is the limit. Dimly-lit daytime arenas almost cry for vibrant color. Petra Burka likes strong color using it whenever she can. The right choice of color can also do much to enhance the skater's natural hair and skin coloring. Brunettes are
(Continued on page 38)

NEW choice of champions...

Riedell

PRO*form Skating Boots*



Developed by Riedell
in conjunction with
CCM.



Dotted line shows the
last on a conventional
boot . . . solid line
shows the new classic
PRO-form profile.

Developed by Riedell in conjunction with CCM . . . here's an entirely new skating boot designed on classic lines for the competitive skater . . . built on a new, modern last . . . to provide a new kind of complete freedom and flexible comfort never before experienced in a figure skating boot.

It's neater, trimmer, lower in profile. It's the boot champions are choosing for personal comfort and professional form. Naturally, all of the quality features which have made Riedell the leader in custom and professional skating boot construction are included in this new PRO-form Model 400 and 401 boot for men and women.

Here are the outstanding features of the new Riedell PRO-form Boot:

- Especially designed for the competitive skater.
- Accentuated backward pitch of boot, makes it easier to point the toe.
- Special flared backstay for strength and neatness.
- Low profile toe with plenty of room for freedom of movement.
- New modern last available in various widths.

Write today for complete information . . . or ask your skating boot dealer.

RIEDELLE
SHOES, INC.
RED WING, MINNESOTA

Book Review

"PRIMER OF FIGURE SKATING," by Maribel Y. Vinson, published by McGraw-Hill Book Company, Inc., 330 West 42nd St., New York 36, N. Y. 181 pages. Illustrated. \$2.45.

This book was first published in 1938 in slightly larger format with a hard cover. It was aimed at taking skaters from their first steps on ice through the USFSA Third Test. For many years, until it went out of print, it was one of the most popular books on the sport. Since then there have been many requests to have it re-issued, and at least McGraw-Hill has brought it out in a paperback edition. The book has been reset in clear legible type and the illustrations done in offset from the origi-

nals. After 25 years this is still one of the simplest and best textbooks on figure skating. No other book has better illustrations than these which were taken from movies of the author and clearly show how to execute the figures described. The chapter on dancing is somewhat out-of-date but gives clear directions on the four standard dances of that time (Waltz, Fourteenstep, Foxtrot, Tango) and these are still in use with only minor modifications. Maribel Vinson was an outstanding skater of figures and her knowledge, combined with her gift of vivid description, makes this a readable as well as a most valuable instruction book. Those who were not fortunate enough to purchase the original book will do well to buy and study this new paperback edition.—T.W.B.

PACIFIC COAST CHAMPIONSHIPS

(Continued from page 13)

JUNIOR PAIRS

(Hadley-Hickox Memorial Trophy)

1. Page Paulsen & Larry Dusich, *Arctic Blades FSC*
2. Sandi Sweitzer & Jerry Entwistle, *North Hollywood FSC*
3. Georgia Truffini, *Capitol City FSC*, & Eugene Heffron, *Berkeley, Calif.*
4. Jo Jo Starbuck & Kenneth Shelley, *Arctic Blades FSC*
5. Beverly & Ronald Riecks, *Seattle SC*
6. Jill Miller & Dennis Gehringer, *Seattle SC*
7. Sharon Smith & Robert Yunk, *Walnut Creek WC*

GOLD DANCE

(Pacific Coast Gold Dance Trophies)

1. Lorna Dyer & John Carrell, *Seattle SC*
2. Barbara McEvoy & Dennis Sveum, *Los Angeles FSC*
3. Darlene Nevel & Howie Harrold, *Los Angeles FSC*

SPECIAL GOLD FREE DANCE

(Roger Campbell & Dona Lee Carrier Memorial Trophies)

1. Lorna Dyer & John Carrell, *Seattle SC*

SILVER DANCE

(Kenneth Bonnickson Memorial Trophies)

1. Kristin Fortune & Claude Sweet, *Los Angeles FSC*
2. Kathy Flaherty & Roger Berry, *Los Angeles FSC*
3. Ellen Grande & Roy Wagelein, *Los Angeles FSC*
4. Marilyn Clark & Rik Van Heyst, *Berkeley, Calif.*
5. Kristine Myers, *Burlingame, Calif.*, & John Hubschmitt, *The SC of San Francisco*
6. Cheryl Saindon & Darrell Mathias, *Seattle SC*
7. Kathleen Mason & Lawrence Snider, *Seattle SC*

BRONZE DANCE

(Diane Sherbloom Memorial Trophy)

1. Joan Brosten & Preston Ervin, *Los Angeles FSC*
2. Leni & Lester Martin, *Los Angeles FSC*
3. Roberta Buswell & Mike Mynatt, *Los Angeles FSC*
4. Christine Simon & Edwin Kelsey, *Walnut Creek WC*
5. Wendy Bates & Daniel Trotter, *St. Moritz ISC*
6. Jeanette Olson & Larry Langford, *Portland ISC*

DEANE E. MCMINN MEMORIAL TROPHY (TEAM)

1. Los Angeles FSC



they
never
take
their
eyes
off
the
girl
in

DANSKIN[®]

tights and trunks

DANSKINS are universally famous for their perfect knit-in fit that glamorizes legs, that lasts and retains shape through long wear and many washings. Professional skaters insist on Danskins! Popular-priced—22 basic and new fashion colors—all sizes for Adults and Children. See them at arenas, sporting goods and department stores—or write for nearest store and illustrated catalog K.

Full Fashioned & Seamless Tights of superior quality stretch nylon
Full Fashioned Trunks — outer-weight, opaque
Full Fashioned Leotards (many styles — variety of necklines and sleeve lengths)
New Dance Girdle for gentle support, of nylon lastex

America's leading stylists and makers of Skating, Ski and Ballet Wear

DANSKIN, INC., division of Triumph Hosiery Mills • 437 Fifth Avenue, New York 16, N. Y.

PROS SEEK CHANGES

EACH YEAR the Professional Skaters Guild of America submits recommendations "aimed at improving" figure skating to the USFSA for consideration.

In 1963 Wally Sahlin, President of the Guild, presented several recommendations to the USFSA which SKATING is reporting as we embark on a new year.

According to Mr. Sahlin, the suggestions were the product of "hours of planning and counseling" by the Guild.

Recommendation No. 1 referred to a suggestion made by the Guild in 1962 concerning the removal of dance restrictions on partners. USFSA rule DTR 2.02 states that a partner for a Preliminary Dance Test must be chosen from among skaters who have not completed the Pre Silver Dance Test, which means that such a skater may have completed two out of three dances.

Mr. Sahlin said the Guild recommended that the rule be revised to read: "Partners for Preliminary Dance may be chosen from those who do not have any Silver dances." Similar proposals also were made for Bronze Dance candidates, the partner not to have any Pre Gold dances.

The PSGA President said that the "apparent insistence for adoption of this rule" was that there are too few male partners available in many areas. He declared that "a skater who has completed a particular dance test is oftentimes no more proficient within the same test than the skater who has completed two out of three dances and would, therefore, be of little help in making the difference as to whether the candidate would pass or fail."

Recommendation No. 2 was that a majority ruling should be established in dance test judging. The Guild felt, Mr. Sahlin said, that "since this method of judging is fair for skaters taking figure tests, it should be fair for skaters taking dance tests."

Recommendation No. 3 was that the USFSA consider a study of studio rink operations with the possibility of helping figure skating outside the normal member clubs.

"One reason for this recommendation," he said, "is that most skaters who patronize the studio-type operation do so merely with the thought that they are going to learn to skate. As the individual learns and advances, he begins to realize that there is more to skating than merely learning a few fancy moves and it is at this time, in a skater's life, that the USFSA comes into being.

"It might be possible that the USFSA could extend annual associate memberships to reputable studio operators so that their skaters could eventually take USFSA tests under the auspices of the local club in the area in which the studio is located.

"We realize that many clubs might object, with the thought that permitting studios this type of membership in the Association might lessen their memberships. Therefore, to prevent this from happening, there should be certain restrictions based upon this type of membership."

He suggested that one possibility would be that such an associate member would not be allowed to compete in sanctioned competitions without joining a member club. (The USFSA is exploring the possibilities of greater cooperation between the USFSA and the Ice Skating Institute of America. See SKATING's December 1963 report on the Fall Meeting of the USFSA Executive Committee.)

Recommendation No. 4 proposed that a minimum of five judges for qualifying Sub-Sectionals be appointed in all classes. The reason, he said, is that skaters would be more accurately judged by five than by three judges.



C.C.M. skates can help you skate better!

Here's Why! C.C.M. matched figure skate sets are carefully designed to encourage you to a poised, brilliant skating performance. Man or woman, boy or girl, there's such a wide range of C.C.M.'s that there will be one to suit you perfectly.

There is a pair of C.C.M.'s to suit your budget, too, because C.C.M. has a whole range of models from beginner to professional. And the C.C.M. name is your guarantee that you'll always get a perfectly-matched, expertly-made pair.

NEW!!! LOW COST!!! C.C.M. "CHAMPION"!!!!

This is the newest addition to the C.C.M. figure skate line for you who would like to be champions. The C.C.M. "Champion" has the precise blade contour and teeth placement that will help you to free, flawless figures and hours of easy, pleasure-filled pleasure skating.

With your new C.C.M. Champions you'll be surprised how much more power you have . . . how much easier it is to jump and turn . . . spin with a sure stability that is bound to please you.

Yet C.C.M. Champions are low in cost. You'll be surprised how inexpensive it is to step up to a new pair of C.C.M. Champions.

Save up to 50% on C.C.M. Skate Boots

With C.C.M. you have an added advantage—C.C.M. skate boots come in whole and half sizes, in regular and narrow widths, in such a wide range of sizes that there is a C.C.M. boot on the shelf that will fit 9 out of 10 skaters. This way, on C.C.M.'s better lines, you can save about 50% of what you would pay for custom-made boots.

Skate your best . . . and save, too . . . with C.C.M.

C.C.M.

C.C.M. INC., 681 Seneca Street,
Buffalo, N.Y. 14210 or C.C.M.,
Weston, Ontario

ROCKERS AND COUNTERS

(Continued from page 15)

flakes were portrayed by Winthrop Gregg and Michele & Sandra Whissell as soloists in boys and girls' group numbers. There were adult dancers and a comedy number featuring Dick Conner, Bob Whelan, Dick Siepel and Joe Magee. . . . Members will settle down to serious business readying themselves for the Jan. 25 club competitions.

Laurelton Pines SC's young members were presented with USFSA pins as Christmas presents from the club at the Dec. 22 covered dish holiday dinner. . . . A supper will precede the regular Sunday evening family session through the winter.

Metropolitan FSC's new rink, Skateland, was the scene for the Christmas party on the 23rd. President Vincent Gumbs' authentic portrayal of a skating St. Nick distributing gifts for all was the highlight of an evening packed with fun, frolic and food.

Old York Road SC held a picnic supper skating party followed by dancing in the handsome lounge. Joe McCauley, Philadelphia radio announcer, emceed a program which included a demonstration of basic skating elements by pro Frank Finn, pro Maude Hammer skated a pair with 5-year-old Carrie Donato, and ice dances skated by Mrs. Charles King & President William Berlinghof, Jessie Warms & William Schwartzman, Edna Schmidt & Andrew Massey, Marylou Braun & Jerry Norman, and Iris Meyer & George Hinderman. The committee responsible for all the frivolity comprised Mrs. William Berlinghof, Mr. & Mrs. Hugo Vogt, Mrs. Oscar Iobst, Mrs. Rose Brandschain, Dr. George Manstein, Mrs. Marge Schroeder, Mrs. Stanton Lipshutz and Mrs. Thomas Harbison with Bob Goldy.

Philadelphia SC & HS opened its season on Nov. 2 with a tea which has become a regular Saturday afternoon affair incorporated with exhibitions by member skaters. . . . A new Members and Beginners Party Night, initiated

Eastern Great Lakes

Fort Wayne ISC, December 6-7

SENIOR LADIES

1. Yvonne Drummond, *Detroit SC*
2. Mary O'Donnell, *Detroit SC*
3. Susan Martin, *Cleveland SC*

SENIOR MEN

1. Tim Wood, *Detroit SC*
2. Duane Maki, *Detroit SC*
3. James Disbrow, *Troy SC*
(5 Contestants)

JUNIOR LADIES

1. Lisa Marshall, *Plaza FSC*
2. Ann Seror, *Detroit SC*
3. Jill Osborne, *WC of Indianapolis*
(13 Contestants)

JUNIOR MEN

1. Christopher Young, *Troy SC*
2. Kenneth Schroeder, *Detroit SC*

NOVICE LADIES

1. Deborah Kohn, *Plaza FSC*
2. Katherine Walker, *Troy SC*
3. Ginny Luttenton, *Cleveland SC*
(15 Contestants)

NOVICE MEN

1. Johnny Johns, *Detroit SC*
2. Michael Garren, *Troy SC*
3. David Neal, *Troy SC*
(6 Contestants)

JUVENILE GIRLS

1. Barbara Freyer, *WC of Indianapolis*
2. Karen Zambrzicky, *Plaza FSC*
3. Barbara Han, *Troy SC*
(15 Contestants)

JUVENILE BOYS

1. Peter Aras, *Troy SC*
2. Doug Dailey, *Birmingham FSC*

JUNIOR PAIRS

1. Linda & Jack Comberger, *FSC of Cincinnati*
2. Ann Meyer & Stan Mersol, *WC of Indianapolis*

SILVER DANCE

1. Sandra Schwomeyer & James Pennington, *WC of Indianapolis*
2. Judy Schwomeyer, *WC of Indianapolis*, & Edward Perry, *Louisville FSC*
3. Barret Brown, *Louisville FSC*, & Gary Palmer, *WC of Indianapolis*
(5 Couples)

BRONZE DANCE

1. Linda & Jack Comberger, *FSC of Cincinnati*
2. Debby Uveges & Jerry Zak, *Towne 'N Country FSC*
3. Nicki & F. Todd Gardner, *Louisville FSC*
(4 Couples)

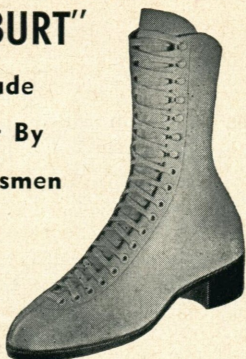
VETERANS DANCE

1. Kathryn Tenney, *Troy SC*, & Richard Day, *Fort Wayne ISC*
2. Bernice Senkovich & Edward Jankowiak, *Detroit SC*
3. Katherine & Ralph Zerkel, *Troy SC*
(4 Couples)

THE CHOICE OF CHAMPIONS

THE "STUBURT"

English Made
Throughout By
Skilled Craftsmen



READY TO WEAR
SKATING FOOTWEAR

Also
The Famous

"Arnold Gerschwiler"
Custom Built Model

Est. 1870

(Measurement Forms on Request)

EACH SEASON MORE AND MORE DISCRIMINATING SKATERS ARE WEARING THESE FINE
BOOTS. HAVE YOU TRIED A PAIR YET?

Agents and Distributors throughout the World. In Case of difficulty write:—

STUBBS AND BURT LTD., Bristol - 1, England

SKATE IN CONVENIENT CONNECTICUT

at the SECOND SUMMER SESSION of
THE NEW HAVEN SKATING CLUB, INC.

JUNE 8th — AUGUST 16th

Ten full weeks, with Special Wednesday and Saturday
Evening Dance Sessions at the New Haven Arena

PROFESSIONAL STAFF
VERA MASTRONI
ANN ROBINSON ADAIR
GRETCHEN MERRILL GAY
BETH HOFFMAN
JOSEPH MASTRONI

SANCTIONED BY THE U.S.F.S.A.
For information and reservations
New Haven Skating Club, Inc.
25 Cooper Road
North Haven, Connecticut

—NOW AVAILABLE

INTERNATIONAL FIGURE SKATING GLOSSARY

\$1.00 per copy (Add 10¢ per copy for handling)

Edited By

JOHN C. HENDRICKSON and GAYLE A. KLASKY

Approximately 1000 terms defined in detail for
the beginner through the most accomplished pro.

ORDER FROM

TRADE and SPORT PUBLICATIONS, INC.
P.O. BOX 1528 MADISON, WISCONSIN

North Atlantic States

Genesee FSC, Nov. 29-Dec. 1

SENIOR LADIES

1. Carol Noir, *Essex SC*
2. Taffy Pergament, *Westchester FSC*
3. Pamela Schneider, *The SC of New York*
(10 Contestants)

SENIOR MEN

1. Robert Schwarzwaelder, *Metropolitan FSC*
2. John Jay Dystel, *Rye FSC*
3. Randolph Lees, *The SC of New York*

JUNIOR LADIES

1. Gail Newberry, *Buffalo SC*
2. Diane Homewood, *Rye FSC*
3. Judy Mothersell, *Metropolitan FSC*
(10 Contestants)

JUNIOR MEN

1. Gerald Gregory, *Beacon Hill Club*
2. Michael Fiore, *Westchester FSC*
3. Robert Evans, *The SC of Lake Placid*

NOVICE LADIES

1. Gail Kaplan, *Metropolitan FSC*
2. Carol Newberry, *Buffalo SC*
3. Patti Burns, *Genesee FSC*
(12 Contestants)

NOVICE MEN

1. John Baldwin, *Metropolitan FSC*

2. Craig Lyall, *Buffalo SC*
3. Gary Jones, *Syracuse FSC*
(5 Contestants)

JUVENILE GIRLS

1. Suzanne Carpino, *Westchester FSC*
2. Suna Murray, *South Mountain FSC*
3. Jill Wender, *Great Neck FSC*
(21 Contestants)

JUVENILE BOYS

1. Ralph Hendrix, *R. P. I. FSC*
2. Charles Miller, *Syracuse FSC*
3. Martin Levy, *North Jersey FSC*

SILVER DANCE

1. Janet Beeley & D. Wilson Hess, *Genesee FSC*
2. Francine Gumbs & Charles Rizzo, *Metropolitan FSC*
3. Molly Adams & Jeffrey Wilkens, *Genesee FSC*
(6 Couples)

BRONZE DANCE

1. Nancy Wotmsner & Michael Tamres, *Metropolitan FSC*
2. Sandra Gundry & Douglas Mantegna, *Genesee FSC*
3. Stephanie Fitch & Robert Marafioti, *Genesee FSC*
(5 Couples)

VETERANS DANCE

1. Mary Gundry & F. Ritter Shumway, *Genesee FSC*
2. Felicia & Edward Sieminski, *Metropolitan FSC*

three years ago, has now become an institution with as many as 200 in attendance. Harry Mayer emceed this year's gala on Dec. 2 with Barbara Jones Lockwood in charge of entertainment. A buffet supper preceded the show, and the balance of the evening was given over to skating. . . . Santa arrived on the roof and descended to skate with the children on Dec. 18.

St. Lawrence FSC's Christmas spirit overflowed with good fun at the parties for members of all ages with Santa on hand to distribute gifts and candy canes. Mrs. James Frank recruited the Refreshment Committee, chairmanned by Mrs. Robert Sanderson, with Mrs. Arie Westdijk, Mrs. Bruce Petrie, Mrs. Clisson Brown and Mrs. John Rich as aides.

St. Petersburg FSC presented its Festival of Skaters at the Swiss Chalet Skating Rink on Dec. 17-19. A ringmaster guided leopards, ponies and tightrope walkers through their paces in the circus episode which was a showcase for the younger skaters. Karen Austin and Rebbie Kent, guest performer from the Philadelphia SC & HS, were soloists. A graceful waltz

group was the highlight of the ballroom scene in "Cinderella." Skaters dressed to represent different nations danced to appropriate music in "Christmas Around the World" which featured Cheryl Check, Frank Whitten and pro Claralynn Lewis.

Syracuse FSC roundly applauded a 100% increase in membership at the recent annual meeting at which the ladies prepared and served a delicious buffet supper. Ninety-eight per cent of the membership turned out for this overwhelmingly successful affair. . . . The Dec. 18 Christmas party was highlighted by the drawing for a TV set, the climax of a highly profitable fund-raising project.

The SC of Boston is now holding three cups for team merit at the same time! Besides the Harned Trophy for the U.S. Championships and Goodwin Trophy for Easterns, the club has won the New England Championship's award recently donated through the generosity of Charles M. Rotch. . . . On Nov. 16 Tina Noyes, Barbara Fitzgerald, Anne Ferguson, Nancy Brunnckow, Barbara Keizer and Bobby Black journeyed to Hyannis to skate in the annual



OBERHAMER

*First Choice
of Pro or
Beginner . . .*

Because they are **FIRST** in . . .

You will find boots and shoes for the competitive and professional skaters; lower priced skates to give the beginner extra support and comfort; and models to meet the varying needs of skaters in all stages.

- fit
- styling
- quality
- comfort
- durability

**FREE . . . WRITE FOR
MEASUREMENT CHART**

OBERHAMER Shoe Co.
689 No. Dale, St. Paul 3, Minn.

OCEAN ICE PALACE

Laurelton, Brick Town, N. J.

4th Annual Summer Skating School

Only school of its type on the Eastern Seaboard

June 21st—September 6th

Skating at its finest! Enjoy all the pleasures of the fabulous Jersey Shore, ocean bathing, water skiing, boardwalk amusements, golf, tennis, modern and convenient snack bar and lounge, recreation room.

Professional Staff

JOANE KELLEY

RAY FRISKE

BRUCE MAPES

MEGAN TAYLOR

Professionals invited to inquire

USFSA Sanction applied for

For further information:

OCEAN ICE PALACE

Brick Town, N. J.

899-1100

opening exhibition at the Kennedy Memorial Rink. "Christmas is World-wide" was the theme for the annual pageant on Dec. 22 after which St. Nick greeted the children. . . . John Mc-Key was Chairman for the New Year's Eve dinner-dance where skating started at midnight.

Wissahickon SC rolls out the red carpet for the "wobblers" and "stumblers" in the regular Beginner's Night Group on Mondays. Free instruction in basic edges and beginner's dance routines by Pros Edmonds and Muehlbronner at the Nov. 11 first party made Arthur Murray's famed classes look dull by comparison. . . . The energetic David Davises and cohorts planned a Hoe-down Party on Dec. 9, complete with country dances called by Annette Bishop, games and unusual refreshments. . . . Ambitious senior skaters are enjoying Pre Silver and Silver Dance sessions on Thursday nights. . . . Juniors loved the Dec. 19 Christmas party.

Midwestern Clubs

Birmingham FSC's Open House on Nov. 24 attracted about 100 invited guests who were entertained by Krista Manners and Doug Dailey who skated

several exhibitions. After a tour of the recently redecorated club room, guests took a whirl at skating, some for the first time (but avowedly not the last!). Pins were presented to Marylyn Warth, Joanne Howard, Barbara & Doug Dailey, and Krista Manners who had passed figure tests.

Detroit SC's Mabel & Ken Wood hosted a gay champagne party as a kick-off for ticket sales for the Midwesterns. The sales' goal was ten adult and ten children's tickets per member. . . . Santa paid a visit to the children's Christmas party on Dec. 21. . . . A Good Cheer Raffle of gourmet food was arranged by the Women's Auxiliary for New Year's Eve, which was also the date for the Candlelight Buffet.

FSC of Omaha members reflect with pride and joy on the successful conduct of their first hosting of the Southwestern Area Championships, indicated by the many letters of praise received. . . . The Shrine Christmas Show, another first, was a roaring success. Portions of the spring show were supplemented by a "Christmas Package" number, a portion of which was based on the Currier and Ives Central Park skating print

Southwestern Area

FSC of Omaha, December 6-7

SENIOR LADIES

1. Susan Prange, *Broadmoor SC*
2. Ardith Paul, *Broadmoor SC*
3. Linda Hammond, *Dallas FSC*
(5 Contestants)

SENIOR MEN

1. Loren Carlson, *Broadmoor SC*
2. Jim Smith, *Denver FSC*
3. Ruben Huron, *Broadmoor SC*

JUNIOR LADIES

1. Mary Diers, *Albuquerque FSC*
2. Judy Mullins, *Broadmoor SC*
3. Connie Espander, *Broadmoor SC*
(8 Contestants)

NOVICE LADIES

1. Patty Grazier, *Denver FSC*
2. Lois Walters, *Colorado Springs, Colo.*
3. Donna Merrill, *Broadmoor SC*
(9 Contestants)

NOVICE MEN

1. Doug Berndt, *Denver FSC*
2. Wesley Hoyt, *Denver FSC*
3. Roger Hollister, *Denver FSC*
(4 Contestants)

JUVENILE GIRLS

1. Wen-an Sun, *Broadmoor SC*

2. Kathy West, *Broadmoor SC*
3. Tamie Rolland, *Houston FSC*
(11 Contestants)

JUVENILE BOYS

1. Torrey Sun, *Broadmoor SC*
2. Tim Flynn, *Denver FSC*
3. Ronald Grazier, *Denver FSC*
(4 Contestants)

SUB-JUVENILE GIRLS

1. Patty Ann Miller, *Albuquerque FSC*
2. Laura Carroll, *Dallas FSC*
3. Candy Freeman, *Broadmoor SC*
(5 Contestants)

JUNIOR PAIRS

1. Wen-an & Torrey Sun, *Broadmoor SC*
2. Marianne Holscher & Doug Berndt, *Denver FSC*

BRONZE DANCE

1. Wen-an & Torrey Sun, *Broadmoor SC*
2. Susan Wilson & Greg Jenkins, *Broadmoor SC*
3. Valerie Davis, *Denver CC FSC*, & Allan P. Walker, Jr., *Denver FSC*
(6 Couples)

VETERANS DANCE

1. Ruth & Stan Southwick, *Iceland FSC*
2. Alice Hill & Paul Morrow, *FSC of Omaha*
3. Mary Averitt & William Colway, *FSC of Omaha*
(4 Couples)

Announcing the 10th Annual

HERSHEY SPORTS ARENA SUMMER SKATING SCHOOL

In Hershey, Pa. — Chocolatetown, USA

June 6 thru Aug. 15, 1964

Directed by

Felix Kaspar

Former World's Champion

Arrangements for Skating Camp

Sponsored by Hershey Figure Skating Club
Sanctioned by the USFSA

Address all inquiries to

Hershey Sports Arena
Hershey, Pa.



FELIX KASPAR

Skating Instruction by: Felix Kaspar, Harry Stafford,
Joan Seddon, Lois Duquette, Brenda Sprague, Carol Sansone

SKATE IN FRANCE

PATINOIRE DE CHAMONIX

IN THE HEART OF THE FRENCH ALPS

OPEN ALL SUMMER

JUNE 22 UNTIL SEPTEMBER 15

MOUNTAIN CLIMBING AND SUMMER SKIING

Director: HENRI LAFIT

FOR FURTHER INFORMATION WRITE:

PIERRE BRUNET, 15 WEST 55TH STREET, NEW YORK 19, N.Y.

SKATE IN SWITZERLAND

PATINOIRE DE VILLARS

CANTON DE VAUD—SWITZERLAND

OPEN ALL YEAR

SCHOOLS AND SUPERVISED VACATIONS

For Information Write Directly:

VILLARS SKATING RINK—VILLARS/OLLON—SWITZERLAND

or PIERRE BRUNET, 15 WEST 55th STREET, NEW YORK 19, N. Y.

Upper Great Lakes

St. Paul FSC, Nov. 30-Dec. 1

SENIOR LADIES

1. Louise Wakefield, *FSC of Minneapolis*
2. Chickie Berlin, *South Side IC*
3. Janet Lynn, *Wagon Wheel FSC*
(13 Contestants)

SENIOR MEN

1. Robert Lubotina, *Hibbing FSC*
2. Robert Madden, *FSC of Minneapolis*

JUNIOR LADIES

- (Nancy Kuchenmeister Memorial Trophy)
1. Libby McFadden, *Wagon Wheel FSC*
 2. Susan Lloyd, *Wagon Wheel FSC*
 3. Cindy Watson, *Wagon Wheel FSC*
(18 Contestants)

JUNIOR MEN

1. John Kulenkamp, *FSC of Minneapolis*
2. Jeffrey Hall, *Chicago FSC*
3. Graeme Powrie, *FSC of Minneapolis*

NOVICE LADIES

1. Cassie Howard, *FSC of Minneapolis*
2. Leslie Baird, *Skokie Valley SC*
3. Pamela Hoyoss, *Wagon Wheel FSC*
(13 Contestants)

JUVENILE GIRLS

1. Wally Griffin, *Wagon Wheel FSC*
2. Kathryn Kuta, *South Side IC*
3. Kathleen Engelking, *FSC of Minneapolis*
(19 Contestants)

JUVENILE BOYS

1. Stephan LeRoy, *City of Lakes FSC*
2. Allen Weingarden, *FSC of Minneapolis*
3. Ted Engelking, *FSC of Minneapolis*
(4 Contestants)

SENIOR PAIRS

1. Barbara Hartwig & Bobby Mecay, *St. Paul FSC*
2. Judy James & Lowell Green, *FSC of Minneapolis*
3. Colleen Aylward & Ronald Basten, *Green Bay FSC*

JUNIOR PAIRS

1. Cherry Griffin, *Wagon Wheel FSC*, & Dale Pffor, *Wauwatosa FSC*
2. Nancy & Thomas Hagen, *FSC of Minneapolis*
3. Nancy & Tim Holmes, *FSC of Minneapolis*

SILVER DANCE

1. Jean Bomberg, *Wauwatosa FSC*, & Monroe Meier, *Chicago FSC*
2. Cathy & Gerald Behrens, *USFSA Individual Members*

with authentic costumes designed by member-artist Mrs. Harold Gifford. A typical Nebraska blizzard did not prevent 2700 spectators from applauding soloists Leslie Halliday, Mary Kay Prenk, Betsy Kingman, Sharon Pokorny and Linda Srb, and the fine group skaters.

Illini FSC presented awards to juniors Nancy Weldon (Most Improved), and Cynthia Morgan and Patricia Stone (Best Sportsmanship) for 1963 proficiency. . . . Plans are now formulated for the intra-club dance competition the last week in February. Howard Knoebel, Chairman, will be assisted by Lois Bennett, Brian Walker, Bill Hilger and Dave Baker. A panel of non-skating judges will be recruited from local dance studios and the University's School of the Dance.

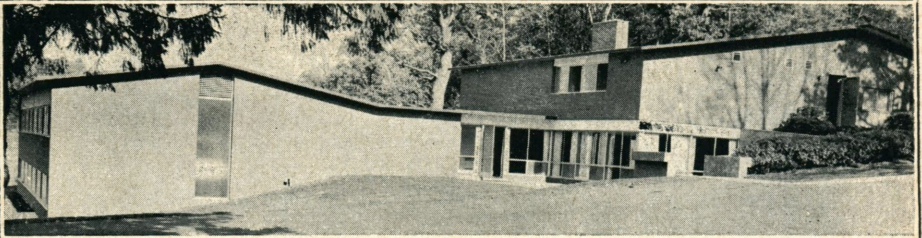
Lansing SC's Naomi Weitzman described club activities and opportunities for folks of all ages to enjoy the sport on a Nov. 27 TV program. . . . Skates served as flower holders to decorate the tables at the Annual Award Dinner. A film of the '63 U. S. Championships was shown. The event was chairmanned by Wilma Dressel.

Louisville FSC, in a quest for new members, threw a "celebrity party" at one of the evening sessions. President Virginia Burnham appeared as Sonja Henie, Olivia Brown and Walter Bauer were comically dressed as 1920 Gold Dance Champions, and Paladin was also there in the person of past President Harry Hartman.

WC of Indianapolis hopes to resume its regular sessions at the Indiana Coliseum soon. Since the disastrous Dec. 31 explosion, members have been the invited guests of the Fort Wayne ISC and the Columbus, Ind., Community Center, as well as skating weekends at Troy, Ohio and Louisville, Ky.

Pacific Coast Clubs

Blade & Edge Club of Pasadena's juniors had a chance to exhibit their free skating routines at the Christmas recital on Dec. 20 when Susan Berens, Sondra Holmes, Ronnie Franks and Mike Valley (all winners in the Pacific Coast Championships) were the featured soloists. June Kemp handled recital details. A juniors' holiday party, arranged by Marjorie Lawrence, was



GIRLS' RESIDENCE

RENSSELAER POLYTECHNIC INSTITUTE SUMMER SKATING SCHOOL

June 22 - August 23

*Plan Ahead — The early reservations have
their choice of patch times.*

PROFESSIONAL STAFF

Carole Jane Pacht
Beth Bowman

Mary Lou Butler
Howard "Skip" Butler

(Other Professionals to be announced)

Sanctioned by USFSA

Sponsored by RPI F.S.C. Inc.

FOR BROCHURE WRITE:

RPI FIELD HOUSE

TROY, NEW YORK

(518) 274-0900

The 4th Annual

TROY SCHOOL OF FIGURE SKATING LTD.

HOBART ARENA, TROY, OHIO

(Large City Facilities — Small Town Conveniences and Rates)

8

**weeks
of
intensive
training**

JULY 6 — AUGUST 30, 1964

(USFSA Sanction Applied For)

With these Outstanding Midwestern Professionals

- ★ **DAVE LOWERY**
- ★ **RITA LOWERY**
- ★ **RONNIE BAKER**
- ★ **JOHN CARLOW**
- ★ **RENE CARLOW**
- ★ **JULIANO GROSSI**
- ★ **BUNTY RADFORD**

Troy SC
Troy SC
Detroit SC
Bath & Tennis SC
Lake Forest SC
Fort Wayne SC
Fort Wayne SC

The Finest Facilities Available for the

**Beginner thru the Figure, Dance and Pair Champions
Brochure upon Request**

the following week. . . . Diana duVal, daughter of pro Bertha duVal, was a Rose Princess in the 1964 Tournament of Roses in Pasadena.

Great Falls FSC got off to a late start due to the breakdown of ice machinery, but repairs were made for an Oct. 30 opening party. Ambitious plans for a pop show and spring carnival are already in the making.

Los Angeles FSC and the **North Hollywood FSC** jointly sponsored exhibitions to raise money for the Olympic Fund on Dec. 22. . . . A gold medal in appreciation for dedicated service was presented to past Treasurer and Life Member Mary Richie at a reception in her honor planned by Mrs. Beverlee on Nov. 23. . . . Pacific Coast Champion skaters were televised on KTLA's "Special of the Week" show on Dec. 9.

Seattle SC members are now skating at Burien Ice Chalet, Ledin Studio and Crossroads Ice Rink on a four-day-week schedule. . . . A "no host" dinner party on Dec. 27 provided yule relaxation. . . . Skaters from 6 to 60 love the Sunday evening family sessions which incorporate instruction in basic technique and Preliminary dances with relaxed social exchange.

Ice Scrapings

SENIOR GIRLS who entered the Sub-Sectional were tendered a surprise party by **Queen City FSC** members. **Vancouver SC** hosted a party for seniors and juniors' parents on Nov. 27. **Plaza FSC** juniors had a whirl at the Christmas grab bag party on the 20th. **St. Moritz ISC** members had a "cool" yule party at Oak Springs Pool Club House on Dec. 14. **Saskatoon FSC** instigated a banquet with the hope that it will become a yearly affair to raise funds for competitions. **Long Island FSC** staged an exhibition to benefit the Olympic Fund on Dec. 8. **Bear Mountain FSC** skaters lunched and caroled together after the Christmas party at the rink. **Essex SC of New Jersey** celebrates its 10th anniversary on Jan. 27.

Montreal Silver Blades Skaters hosted the annual buffet dinner-dance on Jan. 31.

New Gold Medalists

SEVERAL SKATERS have joined the Gold Medalist fraternity. **Elizabeth Shore**, Oxford FSC, passed the USFSA Eighth Test at the North Jersey FSC on Oct. 28. **Bonadai Beckstrom**, St. Paul FSC, passed the CFSA Eighth Test at the Olympic SSS on Sept. 29, while **Archie Zariski**, Edmonton FSC, completed his Eighth at the Royal Glenora Club on Nov. 17. **Ardith Paul**, Broadmoor SC, completed both the USFSA Gold Dance and Gold Free Dance Tests at her home club on Dec. 1. **Shirley Robson**, Royal Glenora Club, passed the CFSA Gold Dance at her home club on Nov. 17. **Wilma Piper**, Genesee FSC, completed the USFSA Gold Dance on Dec. 7 at her home club.

CORRECTION: **Sandra Gaertner** was erroneously listed with the December Gold Medalists and as a Green Bay FSC member. She did, however, pass her Seventh Test, and her home club is the Wagon Wheel FSC.

ICE DRESS

(Continued from page 24)

smashing in sharp contrasts and brilliant reds. Blondes are utterly feminine in the new winter pastels which are not washed out. (A note of warning: never, never use pale blues and greens—they blend into the color of ice and you'll look like a smudgy blur!) Redheads are ravishing in tawny browns, oranges and greens. In exhibition and ice show dress, the effect of strong lights should be given consideration and samples of color tested before making up the costume.

Next month the professionals offer their valuable advice with a few tips on grooming, make-up and hair styles . . . and we'll have something for the men, too.

Under the direction of

HARRY A. STAFFORD

HERSHEY, PENNSYLVANIA

June 6 - August 15

Camp Carroll is the first skating camp of its kind in the United States. In addition to skating, the camp offers such additional activities as swimming, archery, badminton, canoeing, tennis, and golf.



Appetizing and nourishing meals are prepared three times a day with the open kitchen door policy for those who like to snack between meals.

The camp program is so laid out as to give the skater a maximum amount of sunshine daily. Sports apparel; shorts, etc. may be worn at all times.

There is a spacious recreation room, one of the camp's many facilities.

Swimming is under the supervision of a Red Cross Water Safety Instructor.

An accredited summer school is conducted by Hershey High School. The Camp director has also contacted several professors who are available for tutoring in special subjects.

**Reservations may be made by
the week or for the entire season**

For further information and reservations write:

**HARRY A. STAFFORD
509 LAUREL AVENUE
WEST ALLENHURST, NEW JERSEY**

TO MOVE REALLY WELL

(Continued from page 18)

accurately called an "undulating" movement, or "floating" knee. The "rising knee" is the reverse of the $\frac{2}{3}$ - $\frac{1}{3}$ ratio, in that the bend of the skating knee occupies only one third of the stroke, and after a quick rise the remainder of the stroke, almost two-thirds, is held on a practically straight knee. No matter how well positioned the body and free leg may be, this resolves into a static pose. The skate will be progressing over the ice, but the "life" of the movement will cease to exist the instant the pose is taken up. With this type of movement, there may be an attempt at relaxing in preparation for the new stroke, but with this timing the continuity has already been lost, and the result is not the desired flowing movement. Most often, though, the pose is held on the peak rise to the end of the stroke, and then there is a sudden bend on to the new skating foot.

A type of movement that falls halfway between the two already mentioned is what may be called the "arrested knee-bend." This occurs when the bend of the skating knee is stopped short of maximum depth. Then there is either an almost immediate rise and the remainder of the stroke is held in the "posed" position, or the glide may continue on the partially bent knee similar to the $\frac{2}{3}$ - $\frac{1}{3}$ ratio, but again involves loss of continuity, even though preparation for the new stroke may be well carried out. Very often this arrested knee-bend results from concentrating on straightening the free leg too soon, as the action transfers to the free leg and the skating knee simultaneously. It can also be caused by lack of preparation (omitting the relaxing) and a too strong, too rapid bend from peak rise or locked knee.

There are, of course, the extremes of movement, or lack of movement. The knee-bend that is so slight as to be non-existent, or the partially bent knee that stays down throughout, with no

perceptible rise. Occasionally, especially in older dancers, the feeling for the rhythm of the music gets transferred to the upper part of the body, and the work that should be done by the knees is done in the shoulders! However, these faulty movements usually occur at lower test levels, and are brought to the skater's attention in time to be corrected before becoming too ingrained.

At higher test levels it is possible for dancers to be very smooth, skating technically with great accuracy and covering the ice surface well and at good speed, but in a totally uninteresting manner, all the dances having the same monotonous and uninspired appearance. Here the missing qualities are *élan* and expression.

While it is desirable that all the dances be skated with a basically smooth and rhythmic movement, each dance has its own distinctive characteristic rhythm and, once the basic stroke has been developed, it must then be adapted and modified to the requirements of the edges and steps of a particular dance, the strength and rate of movement being determined by the length of the edges and the tempo of the music to which they are skated.

Bending and rising on the skating knee will not necessarily produce a good dance movement, nor is skating "on the beat" evidence of rhythm. It is the timing and control of the rate of bending and rising and the complete continuity of this movement governed by the music that will produce rhythmic dance movement. Some critics feels that this is achieved only at the expense of technique and examples of this are seen, but it is by no means inevitable. The top dancers in past years, if not at present, have ably demonstrated that both complete accuracy of technique and superb movement can and should exist together.

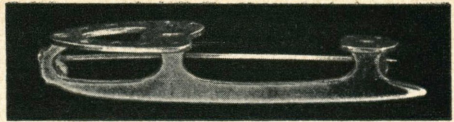
Dancing is in danger of becoming de-vitalized, and will do so unless all that is implied by the words "to move really well" and the entire concept of dance movement is once again given its rightful position of supreme importance.

GIFT IDEA

A SUBSCRIPTION TO SKATING

\$4 a year (\$3—club rate)
\$7 for 2 subscriptions

Consult your
Club representative or
Send check to:
SKATING
575 Boylston St.,
Boston, Mass. 02116



ACTUAL SIZE, STYLE NO. 3FSP
in Sterling Silver

Above photo is the skaters' most
popular pin to wear.

NOW! Earrings to match.

Send for prices and photos of other
Figure Skate Pins, Charms, Tie Clips,
Bracelets and other styles in the Skate
Jewelry line.

Special discounts to Clubs, Rinks and
Sport Shops for quantity lots.

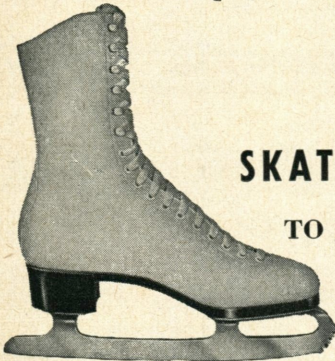
EXCELLENT AS PRIZES OR GIFTS

AL GREEN, Rm. 69

#871-7 Avenue, New York 19, N. Y.
Phone: Circle 7-3900

CIRCULAR ON REQUEST

EST. 1905



G. Stanzione

SKATING BOOTS OF QUALITY

TO ORDER AND READY TO WEAR

COMPLETE LINE OF
SKATING ACCESSORIES

"The Most Beautiful Skating Boots in The World"

50 West 56th St., New York 19, N. Y.

SKATE AND VISIT THE NEW YORK WORLD'S FAIR THIS SUMMER

Skateland, Long Island's largest &
newest enclosed rink invites member-
ship in summer ice skating school.
Nationally famous pros . . . Ideally
located on Long Island's North Shore
. . . close to fine accommodations . . .
swimming . . . golf . . . every outdoor
facility.

Only 20 miles from New York City
and 10 miles from the World's Fair.
Write for Brochure

SKATELAND

Hillside Ave. • New Hyde Park, N.Y.

In the heart of the Canadian Rockies

Banff School of Fine Arts

FIGURE SKATING SCHOOL

JULY 6TH TO AUGUST 8TH, 1964

Osborne Colson, Canadian Gold Medalist,
Director

In conjunction with regular Summer Session
program including courses in: Ballet, Drama,
Music, Painting, Crafts, Languages, Writing,
Photography.

For calendar and further particulars write:

Director, Banff School of Fine Arts,
Banff, Canada

Tests Passed by USFSA Skaters

FOLLOWING are all Tests passed and recorded with this Committee from November 16 to December 19, 1963. All errors should be reported first to the Chairman of the local Test Committee and then to the USFSA Office, 575 Boylston St., Boston, Mass. 02116.—George W. Fisk, Chairman, USFSA Figure Tests Committee.

Correction: Dale Pffor of the Wawatosa FSC has passed the Seventh Test, instead of the First Test as incorrectly listed in the December 1963 issue.

ALBUQUERQUE FSC: 2—Gilbert Sosa.

ALL YEAR FSC: 1—Sari Saevitz. **Bronze Pair**—Sari Saevitz & J. R. Couanse.

ARCTIC BLADES FSC: 1—Anna Garcia, Sandra Garcia, Cathy Strand. 2—Harry M. Barton, Jr., Debra Lynn Summers. **Bronze**—Gloria Vickers.

BALTIMORE FSC: **Pre D.**—Sue Ellen Krapp. **Bronze**—Ruth Sica. **Pre Silver**—Melvin Heil.

BATH & TENNIS SC: **Pre**—Helen Morrison. 2—Gail Brown. 3—Shelley Brown.

BROADMOOR SC: **Pre**—Kathleen McClanahan. 2—Tahlma Slingerland. 3—Donna Merrill. 7—Rubin Huron. **Pre D.**—Mike Kaes. **Bronze**—Jim Freddes, Charlotte Howar. **Gold**—**Gold Free Dance**—Ardith Paul.

CAPITOL CITY FSC: **Pre**—Terrye Callender. 1—Helene Anderson. 3—Cheré Villegas. 4—Diana Bathe. **Bronze Pair**—Georgia Truffini & Gene Heffron, Terri Kerth & Paul Packard.

CARRIAGE FSC: **Pre**—Michael Crissey. 1—Carolyn Coen, Peet Crissey.

CHICAGO FSC: **Pre D.**—Ian Taylor-Small. **Bronze**—Ian Taylor-Small.

CITY OF LAKES FSC: 1—Alison Fifer, Penny Fifer, Suzanne LeRoy. 2—Harris Collins, Teri Klindworth. 4—Dianne Protas. 7—Janie Wicklander. **Pre D.**—Stephen LeRoy.

CLEVELAND SC: **Pre D.**—Marjorie Branden, Cathy Campbell, Robert Griggs, Fred Perry, Cee Cee Thompson. **Bronze**—Martha Eakin.

COMMONWEALTH FSC: **Bronze**—Allyson Brooks, Paul McGrath.

DALLAS FSC: **Bronze**—Evelyn Wright. **Pre Silver**—Gordon Wright.

DENVER FSC: 2—Cindy DeMuth, Ronald Grazier.

EL CAMINO ISC: **Pre**—Lavonne Johnson. 1—Kimberly Bradley. 3—Ann Draper. 7—Jessica Kuzmanich.

FSC OF ABILENE: **Bronze**—Jerry Foote.

FSC OF CINCINNATI: 2—Jean Rhein.

FSC OF MINNEAPOLIS: 2—Teddy Engelking. 3—Sue Bjerken.

FSC OF OMAHA: **Pre**—Vance Siedlik. **Pre D.**—Vance Siedlik.

FORT WAYNE ISC: 3—Lisa Kane.

GARDEN STATE SC OF ASBURY PARK: **Pre Gold**—Gayle Delaney.

GATEWAY FSC OF MISSOURI: **Pre**—Alexine Cincere, Peg Jess, Helen Wassell. 1—Kim Vala.

GENESEE FSC: 6—Phyllis Hendrix. 7—Janet Beeley. **Pre D.**—Stella Radley, Mary Jo Stenzei. **Gold**—Wilma Piper.

GLACIER FALLS FSC: **Pre**—Shawne Amrock, David Kahn, Kirk Klauer, LaVonne McBride, Debbie Schoettlin, Janet Schulke. 1—Dorian Shields. 2—Julie Smith. 4—Wanda Lubis. **Pre D.**—Carolyn Griffith.

GREATER MILWAUKEE FSC: 2—Jeanette Herro. **Bronze Pair**—Terry Berry & Suzan Hauda (Hiawatha SC).

HIAWATHA SC: **Bronze Pair**—Suzan Hauda & Terry Berry (Greater Milwaukee FSC).

IC OF BALTIMORE: **Pre D.**—Marjorie Sutton.

INDIVIDUAL MEMBERS USFSA: **Pre**—Joan Bakunas, Elisa Levine. 1—Charlene Minneck, Colleen O'Connor, Claire Slack. 2—Carole Bowman. **Pre D.**—Michael Olmstead. **Bronze**—Colleen O'Connor.

LONG ISLAND FSC: 2—Melissa Militano. 3—Nancy Greenberg.

LOS ANGELES FSC: **Silver**—Kathy Flaherty.

METROPOLITAN FSC: 3—Beverly Koot. 4—Nancy Wormser. **Pre D.**—Jayne Rothenberg. **Bronze**—Janet Zukerberg.

NORTH HOLLYWOOD FSC: **Pre**—Diane Blodgett, Marilyn Hardnagel, Stephanie Lewis, Jan McGuire. 1—Susanne Fiola, Elaine Garner.

OLD YORK ROAD SC: **Silver**—Edna Schmidt.

OVERLAKE SC: 2—Jill Ritchie.

PITTSBURGH FSC: **Bronze**—Richard Moore.

PLAZA FSC: **Pre**—Mary Jo Roth. **Pre D.**—James Cunningham, Eddie Marshall, Nancy Rose, Pamela Stewart. **Bronze**—William McHale.

PROFESSIONALS: **Silver**—Douglas Chapman.

ST. MORITZ ISC: **Pre**—Cheryl Chatham, Robert McGuire. 1—Heather Dunlop, Jana Fulweiler. 2—Patty Bean, Charlene McGonegal, Allan Schrader.

SANTA ROSA FSC: **Pre D.**—Gus Andersen, Gary Cook, Florence Ferrari, Frank Kopriva, Gordon Mason, Albert Trucker, Anne Trucker.

SEATTLE SC: **Pre**—Cherie Eackert, Linda Marshall, Sue Mott, Sharon Prier, Marjorie Rennie. 1—Karen Major.

**NOW AVAILABLE
MASTER RECORD SHEETS**

for 1964 Competitions
and 1963 U. S. Championships.
50¢ per event,
or \$2.00 for a complete set
of events in a Championship.

Write to:

USFSA Office
575 Boylston St.
Boston, Mass. 02116

**Former members
of Ice Capades:**

You can help us compile
an address list of all past
members of Ice Capades.

Please drop a note, with
your present address to:

Mrs. Benjie Frescott
4319 Gentry Avenue
Studio City, California.



**INDEX TO
ADVERTISERS**

Clothes and Jewelry

Danskin, Inc.	27
Al Green	41
Lorabelle's Chic Togs	2

Ice Shows

Ice Capades	Inside Front Cover 43
-------------------	-----------------------

Publications

International Figure Skating Glossary	31
---------------------------------------	----

Skates and Boots

C.C.M. Inc.	29
Oberhamer Shoe Co.	33
Riedell Shoes, Inc.	25
G. Stanzione	41
Stubbs and Burt, Ltd.	31

Skating Centers and Resorts

Banff, Alta.	41
Brick Town, N. J.	33
Broadmoor World Arena	Outside Back Cover
Camp Carroll	39
Chamonix and Villars	35
Hershey Sports Arena	35
New Haven	31
New Hyde Park, N. Y.	41
Sun Valley	21
Troy, N. Y.	37
Troy, Ohio	37



**THE SKATERS'
EXCHANGE**

COSTUMES by NADINE. America's leading manufacturer of custom skating apparel. Famous for superb quality, fabric and workmanship. Skirts, dresses and tights. Retail and wholesale. Write to: 10811 Venice Blvd., Los Angeles, California 90034.

HELP WANTED: Dancers—Read "The Key to Rhythmic Ice Dancing." \$3.95 ppd. Order from Muriel Kay, P.O. Box 653, Bellingham, Wash.

FIGURE SKATING TEACHER with following to teach in Spring and Summer wanted by Long Island Skating Rink. Reply **SKATING**, Box 78, 575 Boylston St., Boston, Mass. 02116

PROFESSIONAL COUPLE, both highly qualified and experienced, desire teaching position for 64-65 season. Inquiries treated confidentially. Write **SKATING**, Box 65.

ICE DANCE RECORDINGS in the famous Andy Weis albums. Sets of 20 dance tunes by organ \$16.50. Twenty tunes by orchestra \$35.00. Gold or silver albums separately, \$12.50. Frank McGirr 257 Valentine Lane, Yonkers, N.Y.

FEMALE PROFESSIONAL, 2 years' experience, Gold Medalist, Silver Dance Medalist, requires spring, fall and winter club for 64/65 season. Central or Western Ontario preferred. Write **SKATING**, Box 81.

The Ads in This Department are read by thousands of skaters each month. Each ad must be paid for before insertion. Minimum rate is \$10.00 for 35 words or less; each additional word, 20 cents. Open all winter. Address: The Skaters' Exchange, **SKATING**, 575 Boylston St., Boston, Mass. 02116.

THE SC OF BOSTON: 3—Dale Proctor.
THE SC OF LAKE PLACID: 5—Robert Evans.
THE SC OF NEW YORK: Silver Pair—Lynda Waldrop & Edwin Cossitt.
THE SC OF SAN FRANCISCO: Pre—John Hubschmitt. 4—Pamela Shivers.
THE SC OF VAN NUYS: 1—Jamie Berliner, Marcia Bittner, Hedy Miller. 2—Patty Berliner, Cheryl VonZell. 3—Peggy Porter.
SOUTH BAY FSC: Pre D.—Kay Chartier, George Field, Lilly Lee, Ruth Livingston.
SOUTH MOUNTAIN FSC: 2—Laura Slowinski.
SYRACUSE FSC: Pre—Sharon Grant. 1—Sharon Reals. 2—Charles Miller. 7—Mary Doehner.
Bronze—Clifford Alcott, Nancy Chard, Charles Miller.
TOWNE 'N COUNTRY FSC: Pre—Robert Baratk, Karen Harpster. **CFSA Senior Bronze—**Marie Gallo.
TROY SC: 3—David Neal.
UTAH FSC: 1—Kristy Gregerson. 3—Patty Snarr. 4—Rolland Arthur. 7—Marjean Langley. **Bronze—**Lynda Snow Curtice. **Pre Silver—**Jane Kimball. **Silver—**Emily Hall, Ida Tateoka. **Pre Gold—**Caroline Riches.
WAGON WHEEL FSC: Pre—Kristie Sherard, Jodi Storey, Ellen Van Landingham. 2—Debbie Storey. 7—Kathy Brennan. **Bronze Pair—**Cherry Griffin & Dale Pforr (Wauwatosa FSC).
WALNUT CREEK WC: 3—Sharon Smith, Susan Wise. **Bronze Pair—**Sharon Smith & Bob Yunk.
WASHINGTON FSC: Pre—Barbara Fisk, Deborah Kelly, James McDaniel, Lynda Schrider. **Pre D.—**Bonnie Atwood, Nancy Hallinan, Edward King, Marilyn Mathers, Michele Vobe. **Bronze—**Vera Spinner.
WAUWATOSA FSC: Pre—Joan Rudig. 3—Mary Jane Larson. **Bronze Pair—**Dale Pforr & Cherry Griffin (Wagon Wheel FSC).
WC OF INDIANAPOLIS: Silver—Gary Palmer.

Tests Passed by CFSA Skaters

FOLLOWING are all Tests passed and reported from November 14 to December 17, 1963. Errors should be reported to the local Test Officer and to the Secretary of the CFSA, Charles H. Cumming, 74 George St., Ottawa, Ont.

CALALTA FSC: Senior Silver—Joanne Graham.
CAPILANO WC: Junior Silver—June Pinkerton.
CHEAM FSC: Pre—Rosemary Ballam, Tom Berry, Elaine Dueck, Karen Dueck, Kristal Finnsson, Linda McGonigal, Jeanette Woods.
CONNAUGHT SC: 6—Heather Fraser, David Killin.
EAST YORK SC: 2—Raymond Naismith. **Pre D.—**Sandra Ahrens. **Senior Bronze—**Carol Carney, Linda Ann Fletcher.
EDMONTON FSC: 1—Karen Weiss. 2—Renee Chernecki. 8—Archie Zariski. **Pre D.—**Karen Weiss.
FORT WILLIAM FSC: Pre—Joanne Lund, Judy Lund, Gail McKenzie, Leslie Nealin.
HAMILTON SC: 6—Susan Blatz.
IC OF GREATER WINNIPEG: Senior Silver—Barbara Tocholke.
KELOWNA FSC: Pre—Margaret Anderton, Jeanine Ritcliffe, Patricia Sullivan. 1—Barbara Curtis. 2—Susan Leonard, Dea Wood. 3—Dennis Gauthier.
KERRISDALE FSC: 1—Joan Carmichael.
LEASIDE SC: 5—Cathy Gornall.
NANAIMO FSC: 3—Patrick McKilligan. 4—Jane Lake.
NORTH BAY FSC: Pre—Marie St. Amour.
PRINCE GEORGE FSC: Pre D.—Karel Latham.
PROFESSIONALS: 6—Carol Lee.
ROYAL GLENORA CLUB: 5—Sally Short. 7—Judy Bergey. **Senior Bronze—**Georgette Stainton. **Gold—**Shirley Robson.
SASKATOON FSC: Pre—Joan Cardiff, Rhonda Everson, Lynn Grenier. **Pre D.—**Donna Hennigan, Sharon Hodgson, Darlene Hretsina, Judy Hretsina, Vicki Priest.
SCARBORO FSC: Junior Bronze—William Baker.
TORONTO CS & CC: 7—Mary Church.
TOTEM FSC: 6—Mary Ellen Kinsey.
TOWN OF MOUNT ROYAL FSC: 3—Linda Fair. 4—Dianne Hartley.
UPPER CANADA SC: 2—Sonja Dinkla.
VICTORIA FSC: 1—Rhonda Burton. 2—Penny Fisher, Mary-Pat Pumfrey. 5—Karen Kattler, Richard Madden. **Pre D.—**Grace Higgins, Diane Laidlaw, Jannine Richardson, Sirje Vanajan.
WINNIPEG WC: Senior Silver—Lorraine Whiteside.
YORKTON FSC: Pre—Dianne Finnie, Pat Hegan, Dianne Peet, Lynda Wallin, Cheri Yaholnitsky.

MUSTS

for

YOUR SKATING LIBRARY

● **THE FUN OF FIGURE SKATING** \$4.95

by Maribel Vinson Owen

“... The definitive study of the fundamentals of figure skating. . . . In this book the skater is guided by one of the country's great teachers of the 'art-sport' from the first movements on ice to the fun of free skating routines and graceful ice dances. . . .”

● **THE ART OF FIGURE SKATING** \$6.95

by Capt. T. D. Richardson

“... After a brief outline of the history of ice skating and a general review of it as a sport, an art and a means of mental as well as physical training, the author establishes the basic movements and positions. . . .”

● **FIGURE SKATING** paperback \$1.50 hardbound \$2.95

by Sally Lindsay

“... Another in a series of 'Fact Books' by Rand McNally, the first on a winter sport, it presents a 'birdseye' view of the history and essentials of figure skating—how it is performed with an outline of costs and organizational structure of tests and competitions.”

ORDER NOW THROUGH THE USFSA CENTRAL OFFICE

575 Boylston St., Boston, Mass.

Please send me copies of **THE FUN OF FIGURE SKATING**

by Maribel V. Owen, \$4.95 ea.

copies of **THE ART OF FIGURE SKATING** by Capt. T. D. Richardson
\$6.95 ea.

copies of **FIGURE SKATING** by Sally Lindsay paperback \$1.50-hardbound \$2.95

Name:

Address:

Enclosed is my check or money order for the full amount.

Learn Train Skate

The **BROADMOOR WORLD ARENA**

Carlo Fassi, Director of Professional Staff



Clarice Dillon, Dance Professional

Helen Maxson, Secretary, Broadmoor Figure Skating Club

U. S. F. S. A. Sanctioned