

JUNE 1966
vol. 43, no.6 - price 50¢

SKATING

OFFICIAL MAGAZINE OF UNITED STATES FIGURE SKATING ASSOCIATION
AND CANADIAN FIGURE SKATING ASSOCIATION



Rensselaer Polytechnic Institute

INVITES YOU TO THEIR



JUNE 27 - AUGUST 28, 1966

CHAPERONED LIVING ACCOMMODATIONS ON CAMPUS
FOR GIRLS AND BOYS.

WELL-BALANCED MEALS SERVED IN THE DINING AREA
OF THEIR QUARTERS.

ICE TIME AVAILABLE FOR THOSE WISHING EXTRA PATCHES
AND PROGRAM TIME.

Swimming, tennis, and other activities available on campus.

Professional Staff

MARY LOU BUTLER

SKIP BUTLER

PHYLLIS HENDRIX

BETH RANDALL

FOR BROCHURE WRITE: RPI SUMMER SKATING, RPI FIELD HOUSE, TROY, N. Y. 12180



RPI FIELD HOUSE TROY, NEW YORK

HOWARD "SKIP" BUTLER DIRECTOR

NOVEMBER 196
vol. 43, no.7-price 50¢

SKATING

OFFICIAL MAGAZINE OF UNITED STATES FIGURE SKATING ASSOCIATION
AND CANADIAN FIGURE SKATING ASSOCIATION

**This is
an ad to show
you that
SKATING
MAGAZINE
is coming in
king size
8½" x 11"
NOVEMBER!**

SKATING

OFFICIAL PUBLICATION OF THE UNITED STATES FIGURE SKATING ASSOCIATION
AND CANADIAN FIGURE SKATING ASSOCIATION

COVER

Anatomy of a spin —
from atop an eight-foot
ladder using available
light and a 35mm
camera, photographer
Lee Parks clicks a
skater's blurred action.
In preparation, the
camera's lens was
focused on a pre-selected
spot on ice and time
exposure set for 1/2
second.

SKATING

JUNE 1966

READERS WRITE	6
CALENDAR	8
NEWSMAKERS	9
IN MY OPINION/WHY NOT ICE DANCING IN OLYMPICS?	Howard Bass 10
DIALOGUE/THOMAS H. MILLER	Robert Y. Ellis 11
WHY BALLET	Jan Stockman 12
MEGEVE	Billy Chapel 15
MR. SKATING/CHARLES H. CUMMING	Norah Garden 16
CLUB OF THE MONTH/HOST WITH THE MOST	Elizabeth Engel 17
NEW ICE/PART 7: YOUR FIGURE SKATING CLUB	18
JUDGING JUDGES/PART 3	Spencer E. Cram 20
FROM ABROAD	23
TOP ICE/VALERIE JONES, SUSAN BERENS & ROY WAGELEIN	23
FIGURE SKATING HONOR ROLL	24
USFSA 1966 ANNUAL GOVERNING COUNCIL MEETING	34
CARNIVALS	37
CLUB NOTES	39
BONES TO STEEL/HISTORY OF THE SKATE	Mary Hagen 40
PEOPLE	42
FASHION/WHAT'S THE MODDER	44

STAFF

THERESA WELD BLANCHARD, *Editor Emeritus*

ROBERT Y. ELLIS, *Editor*

MARJORIE MARTIN, *Assistant Editor*

BETSY DANOVITCH, *Production*

ROBERT ALLEN, *Art Director*

PRISCILLA KELLEY, *Editorial Assistant*

FRANK P. MUCKIAN, *Technical*

JERI MARTIN, *Circulation*

IN THIS ISSUE

ADVISORY BOARD

USFSA

OSCAR DYSTEL, *New York City*

CARL W. GRAM, JR., *New York City*

THEODORE G. PATTERSON, *Boston*

BENJAMIN T. WRIGHT, *Boston*

CFSA

NORAH M. GARDEN, *Toronto, Ont.*

JOAN MACKIE MACLAGAN, *Calgary, Alta.*

SIDNEY V. SOANES, *Toronto, Ont.*

CANADIAN CORRESPONDENTS

MARGARET BOYLE, *Northern Lights*

NORAH M. GARDEN, *C.O.S.S.I.P.*

MRS. R. A. HARTLEY, *Eastern Section*

MRS. D. PAGLIARO, *Thin Ice*

MARGARET J. SANDISON, *Ice Chips*

GAIL SNYDER, *The Inside Edge*

FOREIGN CORRESPONDENTS

H. S. ABBOTT, *India*

GUNNAR BANG, *Sweden*

PER COCK-CLAUSEN, *Denmark*

KAROL DIVIN, *Czechoslovakia*

WENDY GRAFTON, *New Zealand*

EVA GYORGY, *Hungary*

DAVID HEWISON, *Australia*

KIKUKO MINAMI, *Japan*

INGEBORG NILSSON, *Norway*

JOHN NOEL, *England; Germany*

KAZUYOSHI OIMATSU, *Japan*

C. G. WEST, *South Africa*

SKATING, copyright 1966 by the United States Figure Skating Association in the U. S. A. Title Registered in U. S. Patent Office. Published eight times a year: January, February, March, April, May, June, November and December by the United States Figure Skating Association: Executive Offices, 575 Boylston St., Boston, Mass. 02116; Publication Office, 575 Boylston St., Boston, Mass. 02116. Second-class postage paid at Boston, Mass. Single Copy 50 cents. Subscription \$4.00. Address: SKATING, 575 Boylston St., Boston, Mass. 02116. SKATING is protected by copyright and nothing that appears in it may be reproduced without written permission.

Holy sitspins! What to wear to the rink? "What's the Modder" with mod? SKATING's dynamic designer responds sketchily on pages 44-45.

Highlight of the Third National Institute on Girls' Sports (SKATING, April) was a paper delivered by Jan Stockman on the relationship between modern dance and figure skating. In her article, "Why Ballet," on page 12, Miss Stockman brings her philosophy to SKATING's readers. She speaks from the solid background of a professional modern dancer, formerly a member of the Pauline Koner, Ruth Currier and José Limon companies, and presently dance instructor at the University of Illinois. She caught the figure skating bug in 1961, now teaches beginning skating in the University physical education classes.

Mary Hagen's interest in skating history ("Bones to Steel") stems from the fact that figure skating is her favorite sport. She has been published in *Westways*, *Motor News*, *Outdoors* and *True West*.

In his opinion, Howard Bass, editor of the English magazine, *Winter Sports*, feels that figure skating buffs should make an organized plea for the inclusion of ice dancing in the Olympic Winter Games. Bibliophiles will be interested in Mr. Bass' 66,000-word book, "Winter Sports," a compilation of definitive data on international ice and snow sports. Publishing date is scheduled for November.

June heat is synonymous with cool recreation for the dauntless vacationer who has already planned a rendezvous with ice. Holidays on blades are increasingly appealing to young and old, individuals and family groups. The mushrooming growth of summer skating schools has produced a variety of rink facilities, instruction, camp living and wholesome outdoor sports. SKATING's reporters and cameras are poised to zoom in on the scene for full coverage in the November issue.

READERS WRITE

The Editor welcomes all letters provided they are signed. Names will, however, be withheld on request. Send mail to SKATING, 575 Boylston St., Boston, Mass. 02116.

WORLDSCOPE 1966

Mr. Button's love of skating permeates his commentary. His is more than a report; it is an essay on the aesthetics of skating. I hope that every young competitor will read it and realize that technical merit alone is not sufficient. A great skater is more than a fine technician; he is an artist. The skating world is fortunate to have such a devotee as Mr. Button. — *Judith Buckley, St. Petersburg FSC.*

EDUCATIONAL TV

I lived in Germany for four years before coming to North Dakota. European television coverage of figure skating — and of most sports — is quite good. The 1964 Olympics and the World and European Championships were televised live or on tape by the European networks. This is one of the best ways to promote a sport, and to give sports fans the chance to follow their favorite athletes. In America, figure skating is televised once in a blue moon, and I miss seeing the competitors perform. We can afford to eliminate some of the poor shows on TV for educational programs. A greater number of Americans could become interested in figure skating if they saw more of it, and this would instill in them a more cultured attitude toward beauty which Europeans possess. To me, skating is an art and the most beautiful sport on earth. — *Dolores Ruvolo, N. D.*

IN THE BEGINNING

Do you have any authentic information as to the origin of the terms mohawk and choctaw — why the names of Indian tribes were used, who first used them? — *G. E. Barber, Va.*

SKATING is curious about this, too. We hope readers will send us any authentic information they may have on the derivation of these and other skating terms. — *Ed.*

KID STUFF

In my opinion your cover should be a full-size skating photograph of a champion. Each month you should publish an outstanding photo of an outstanding skater who *deserves* to appear on your cover. This is the *only* kind of cover that interests any amateur or professional skater. You should also publish more actual skating photographs, and avoid those children's pictures that interest no one but the children's parents. — *Miriam Michaelides, Monaco.*

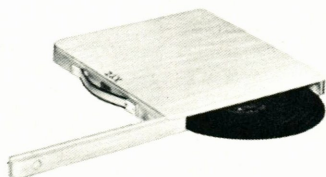
Thank you for printing such a fine picture of Eastern Senior Champion Honey Kerr (March, pg. 28) with Hans Gersch-wiler, a good family friend. — *Mrs. W. E. Kerr, N.Y.*

To clear up any possible confusion, Howard Nicholson is Honey's coach — *Ed.*

INSTITUTE INCENTIVE

Your wonderful support of the recent Institute on Girls' Sports (April SKATING) could give us that needed incentive to drive home our message: to develop figure skating more fully, on a broader base, across the country. — *Coralie Phillips, Chm. Sub-Committee on Figure Skating, Dept. of Physical Education for Women, Michigan State University.*

For Summer Skating or Competition
This is THE Record Carrying Case



3 initials free

\$10.00 Postpaid Pa. Residents
in U.S.A. Add 5% Pa. Sales
Tax

State Preference — Blond or Mahogany

ICE SCRIBES for FIGURE SKATERS AVAILABLE
prices upon request

GEM PRODUCTS CO.

2466 Amber St.

Phila. 25, Pa.

NEW choice of champions...



Riedell

PROFESSIONAL MODEL
Skating Boots
Lined with DuPont CORFAM
Poromeric Material

This boot made on the original Riedell skating last. The upper has been designed to give the maximum support for all styles of skating. The top line of the boot has been tapered to allow maximum freedom in the calf and leg muscle area. A boot made by craftsmen of the finest materials for skaters who demand the best.

LININGS — Made of DuPont CORFAM poromeric material guaranteed not to deteriorate from perspiration for one full year
UPPERS — The finest full grain Elk tanned leather
COUNTERS — Firm, leather, moisture resistant
SOLES — Double leather
LACES — Stay tied Taslon
SHANK — Steel ribbed

For complete information write —

RIEDEL SHOES, INC., RED WING, MINNESOTA

calendar

JUNE

- 3- 5 ISC of Fresno (Calif.) carnival
- 16-19 Desert Blades FSC (Calif.) "Holidays of the Year" carnival
- 18-19; 26-27 Southern California Inter-Club Competition, Special Events, Norwalk Rink; Figures, Free Skating, Dance, Pickwick Center Ice Arena

JULY

- 3; 24 Fort Wayne ISC (Ind.) Low Figure and Dance Tests; exhibition
- 7 Lake Placid (N.Y.) Gold Figure and Dance Tests
- 8-10 Green Bay FSC (Wis.) Pre.—7th Figure and Pre—Silver Dance Tests
- 9-10 Hershey FSC (Pa.) all Figure and Dance Tests
- 11-15 Great Falls FSC (Mont.) Low, Intermediate Figure and Dance Tests
- 13, 27 Michigan State U. show
- 17-22 St. Paul FSC (Minn.) Figure and Dance Tests
- 18 The SC of Wilmington (Del.) Figure and Pre-Gold Dance Tests
- 22-23 Rochester Institute of Technology (N.Y.) High Figure and Silver Dance Tests
- 23-24 North Shore SC (Mass.) Figure and Dance Tests (except Gold)
- 23-24 Michigan State U. 5th—7th Figure and Pre-Gold Dance Tests
- 25-29 Banff (Alta.) Figure and Dance Tests
- 26-27 Aug. 24-26, 29-31, Sept. 1 Arbutus Club (B.C.) all Figure, Dance, Free Dance, Bronze—Silver Pair, and Bronze—Silver Free Skating Tests
- 28-30; 31-Aug. 13 Lake Placid (N.Y.) Free Skating and Pairs Competition; Dance Weeks
- 29; 30 Royal Glenora FSC (Alta.) all Figure and Dance Tests; Open Free Skating Competition
- 29-31 Michigan State University (Mich.) Dance Weekend
- 30-31 B.C. Invitational Free Skating and Dance Championships, Esquimalt Municipal Sports Centre (Victoria)
- 30-31 Fort Wayne ISC (Ind.) Pre.—7th Figure, Bronze—Pre-Gold Dance Tests
- 30-31 Rensselaer Polytechnic Institute (N.Y.) all Figure and Dance Tests

AUGUST

- 5 U. of Denver (Colo.) Summer Free Skating Competition (tentative)
- 5- 7 Troy School of Figure Skating (O.) exhibition

- 6; 19-21 Green Bay FSC (Wis.) exhibition; all Figure and Dance Tests
- 8-12 Banff (Alta.) all Figure and Dance Tests; show and exhibition
- 13-14 Hershey FSC (Pa.) all Figure and Dance Tests
- 14-19 St. Paul FSC (Minn.) Figure and Dance Tests
- 17; 26-28 Michigan State U. shows; 5th—8th Figure and Pre-Gold—Gold Dance Tests
- 17-21 Broadmoor SC (Colo.) Ice Revue
- 22-27 Sun Valley (Idaho) all Figure and Dance Tests
- 26-27; 27 Rochester Institute of Technology (N.Y.) Gold Figure and Gold Dance Tests; exhibition
- 27 North Shore FSC (Mass.) exhibition
- 27 St. Andrews Summer School (N.B.) exhibition
- 27 The SC of Wilmington (Del.) Figure and Pre-Gold Dance Tests
- 27-28 Rensselaer Polytechnic Institute (N.Y.) all Figure and Dance Tests
- 27; 28 Towne 'N Country FSC (O.) Free Skating Competition; ISU Tests
- 28 Squaw Valley (Calif.) Invitational Free Style Competition for Singles and Pairs

SEPTEMBER

- 2- 3 Sun Valley (Idaho) Free Skating and Dance Championships
- 3- 5 North Shore FSC (Mass.) Figure and Dance Tests (except Gold)
- 9-10 Lake Placid (N.Y.) Gold Figure and Gold Dance Tests

NOVEMBER

- 2- 4 Northwest Pacific Championships, Seattle SC (Wash.)
- 24-26 Seattle SC (Wash.) Iceparade

DECEMBER

- 8-10 New England Championships, New Haven FSC (Conn.)
- 8-10 Pacific Coast Championships, St. Moritz ISC (Calif.)
- 15-17 Southwestern Championships, Tulsa FSC (Okla.)
- 28-30 Eastern Championships, Buffalo SC

JANUARY

- 5- 7 Midwestern Championships, Cleveland FSC (O.)
- 18-21 U. S. Championships, Omaha FSC
- 25-29 Canadian Championships, Toronto

FEBRUARY

- 10-12 North American Championships, Montreal (Que.)
- 28-Mar. 4 World Championships, Vienna (Dates subject to change)

newsmakers

Commemorative contributions were made to The 1961 World Figure Skating Team Memorial Fund by the following: Mr. and Mrs. Edward M. Hindert in memory of Dr. Robert Burhans; Miss Minerva S. Burke in memory of her mother, Mrs. Lelia M. Fowler, in whose name Mr. and Mrs. F. Ritter Shumway also donated. Charter Oak FSC gave in tribute to past President Douglas Swan and past instructor Gretchen Merrill Gay, and the Dallas FSC and Mrs. W. C. Marks made a joint gift in memory of Mr. T. J. Tension, Jr.

It's a record breaking month! Roger Bass, Arctic Blades FSC, was the first student in San Diego to be awarded a high school letter for figure skating; Cleveland SC veterans Harlene Jones and Paul Pavliska passed CFSA Gold Dance at the average age of 41; Dr. Sidney Soanes (Jan. SKATING) judged his 10,000th test on Dec. 21.

Television has proven to be an effective medium of communication and public information. Bruce Hyland, pro at Upper Canada SC, was the official voice of the airwaves for the Canadian Nationals. In a special program reviewing its five years of sports coverage, ABC's "Wide World of Sports" recapped Don Jackson's Prague program as a tribute to figure skating.

From Liechtenstein and Switzerland the nouveau sport is snow skating. Short ski skates (20" x 6" x 1/4") are attached to the feet by buffalo leather binding. Joseph Baumgartner, developer.

Recipients: March Skater of the Month at Seattle SC is Debra Ganson; skaters honored in April at Toronto CS & CC are Lindsay Histrop, Beth Peters, Nicole Dussault; Dawn Glab, 1966 U. S. Novice Lady, won the Deane E. McMinn Achievement Award, given each year to the Arctic Blades FSC member who placed highest in the highest competition; the Donna L. Orr Memorial Trophy, awarded annually to the most worthy skater of the Sioux City FSC, went to Sandra Adams.

And recipients. Los Angeles President Wendell Buttrey presented plaques to Dennis Sveum, Kristin Fortune and Roy Wagelein, honoring them as World Team members; Shari Thrapp and Debbie Blount of Arctic Blades capped the academic year with scholarship awards. CFSA Chief Accountant W. B. ("Dusty") Graham is now an international hockey referee and Norris

Bowden (Toronto CS & CC), 1954-55 World Pairs Champion with Frances Dafeo, was elected president of the Toronto chapter of Chartered Life Underwriters.

Still more recipients. John Misha Petkevich, U.S. Junior titleholder, merited national recognition as Teenage Athlete of the Month in May *Sport*. He is also Montana's delegate to Boys' State. Fellow competitor and fifth in Jr. Men's, Johnny Moore will represent Boys' State in Sacramento, Calif. Suna Murray, South Mountain FSC, received the Essex County Park Commission's trophy for achievement in figure skating; Essex SC members Sue and Bill Roberts were recognized for accomplishment with the Jacob Newman trophy; Betty Lewis and Richard Gilbert, U.S. Jr. Pairs Champions, earned The SC of Boston's Rotch award for outstanding skaters.

Pro Betty Berens and World Team daughter Susan stopped off in Paris after Davos. Susan is coifed *à la française*. Gary Visconti is telling Russian tales of the European tour. The Detroit SC heard of Standing Room Only and the 23rd Communist Party meeting.

Malcolm Cannon, current British Champion, has teamed up with dancer Yvonne Suddick, who placed fourth at Worlds with ex-partner Roger Kennerson.

Even star skaters have to face the realities of this American way of life: Dennis Sveum is 1A to his draft board and has applied for assignment to Special Services so he can continue skating. Bob Schwarzwaelder, Metropolitan SC-er and N. Atlantic States Champion, left for the Air Force in May.

A Parisian tribute for coach Pierre Brunet from the pages of *Sports de Glace*, in an article by Philippe Pelissier. In reviewing his fifteen weeks in the U. S. with compatriot Patrick Pera, Philippe wrote, "We arrived expecting to discover a magician and we discovered a man. We returned understanding that technique is not a miracle, that it is above all 99% work for 1% inspiration." A lesson well learned—Patrick emerged Champion of France with Philippe in fourth place.

Change of status: William MacDonald, Victoria FSC, now pro; Cheryl Saindon teaching at Yakima ISC; Steve Escott of Seattle SC joined Capades.

And Petra Burka, Bronze Medalist at Worlds, signed with Holiday on Ice.

in my opinion

WHY NOT ICE DANCING IN OLYMPICS?

A curious omission from the 1968 Winter Olympic program for Grenoble, France, is that of ice dancing. Since 1952, this event has been one of the recognized four which comprise the annual World Figure Skating Championships organized by the International Skating Union.

Yet still the International Olympic Committee refuses to admit ice dancing. Why?

A significant comment appeared in the minutes of the XXVII Ordinary Congress of the ISU at Salzburg, Austria, in June, 1957:

It seems obvious that the IOC has no knowledge of what dancing on ice really is, and consequently does not regard it as a sport. The Council will do their utmost to get ice dancing admitted to the program, but we (the ISU) would also ask our member associations, and their members, to take advantage of every opportunity that presents itself and use all the influence at their command to attain this objective.

That was nine long years ago.

The ISU recommends to the IOC those ice skating events that should be incorporated in each of the Winter Olympics, just as the International Ski Federation advises which skiing events should be included. Why is biathlon in and ice dancing out? The former was not included until 1960 and has a far smaller following.

Some say that the IOC, by admitting ice dancing, will find it difficult to exclude ballroom dancing from the Summer Olympic Games. This seems unlikely. By such reasoning, ice figure skating would have been unacceptable in 1908 for fear of having to admit roller skating, which then enjoyed much greater popularity.

Could it be that some nations are just not bothering to act since the American and British competitors are so prominent in ice dancing? No, I cannot believe that the rest of the world is that self-centered. But I do insist that it is time for the ISU to get tough with the IOC, and for the latter to stop emulating the ostrich.

*Howard Bass, Editor
Winter Sports
London, England*

A column designed for the expression of honest opinions — not necessarily reflecting the views of the CFSa or the USFSA. All contributions of 600 words or less are welcome. Names will be withheld on request.



The 16th ANNUAL LYNN, MASS. SUMMER SESSION

JUNE 15 THRU SEPT. 5, 1966

Plan now to spend your summer in historic New England at New England's largest skating center.

The most conveniently located summer session in the United States. Fifteen minutes from Logan International Airport.

Professional Staff

LILLIAN TRIBBY

Senior Professional in Charge

NORVETTA TRIBBY PINCH

THOMAS MCGINNIS

Other professionals may be added from time to time.

Early Ice Reservations Advisable

Sponsored by North Shore Skating Club
USFSA Official Tests

For Information Write to:
William W. Taff, Director

NORTH SHORE SPORTS CENTER

30 BOSTON ST.
LYNN, MASS.

dialogue



Eastman Kodak photo

THOMAS H. MILLER

A review of the Amateur Status Rules with subsequent notable changes characterized Thomas H. Miller's tenure as Chairman of that committee. Before his appointment, he served on the Executive Committee, was President of Genesee FSC for two years. He is Director of Marketing Personnel and Education Services for the Eastman Kodak Company, is active in Rochester, N. Y., civic affairs. Robert Y. Ellis interviews Mr. Miller for SKATING.

SKATING: As the outgoing USFSA Amateur Status Committee Chairman, could you state what progress has been made with regard to changes in the Amateur Status Rules?

MILLER: Most important, the rules are easier to understand. We now have specific skater classifications with clear statements about the activities in which each of these persons is allowed to participate. Unduly tight restriction on amateurs has been relaxed. For example: three years ago a USFSA member would lose his eligibility to compete or judge if he were employed at a rink—even in the music booth or check room—unless permission were obtained from the Amateur Status Chairman. The restriction imposed on applying for a professional position has been reduced from a year to thirty days. The authority given Committee members to grant re-instatements from temporary re-

strictions is another improvement. Formerly, only the Chairman had this authority.

SKATING: What prompted these changes?

MILLER: Two related conditions. One, practices in other similar sports. Two, the recent increased public awareness of, and interest in, figure skating. I think these points create a need for continued review of many figure skating practices.

SKATING: What practices need review?

MILLER: Figure skating requires a curious mixture of talent and execution. It's like viewing an art exhibition. You may accept the artist's abstract art, but require proof of his skill at the drafting board. In requiring skaters to free skate and skate compulsory figures, we ask them to be both painters and draftsmen. This combination has caused a general public misunderstanding about the sport. It is totally inconceivable to the public that the individual who scores highest in free skating may not win the competition. In other sports the contestant who gets the ball into the hole with the fewest strokes or jumps the highest wins. Simple enough!

This leads me to wonder whether a complete re-thinking of figure skating competitive structure isn't needed—an international study by individuals who will be receptive to positive, constructive ideas.

SKATING: Such a review, as you suggest, would have to be at the international level. What can be reviewed within the USFSA?

MILLER: I would like to see our Association consider the matter of membership services. We give thoughtful attention to regulatory responsibilities. This is good and necessary. But, just as a city does not grow if it limits its attention to police and taxes, we, too, must give major attention to promotion and development.

We have relatively few members compared to the golf, skiing and tennis associations. I feel we should make a careful study to determine what we can do to attract more individuals to figure skating and the USFSA. If a business is satisfied with its product and not concerned with improving customer service, the business isn't likely to flourish. But, if it surveys its present and potential users to determine their needs, and utilizes the results, the business is more likely to prosper. As far as I know, we have never really tried to find out what services our clubs and members want and need from the USFSA. The answers might help to solve a key problem—how to grow.

Courtesy, Museum of Fine Arts, Boston



WHY BALLET

by Jan Stockman

The relationship between dancing and figure skating is filled with exciting possibilities. In both, the best performers have well-trained, disciplined bodies capable of moving with style.

The dancer, by necessity, explores the technical problems of movement and involves kinesthetic awareness in solving these problems. The dancer's kinesthetic awareness enables him to sense the line of the body in its total relationship of moving parts, and thereby correct body alignment. A similar process of inner concentration through this muscle sense is used to gain flexibility and control. The

skater should train his body, too, gaining flexibility, strength and correct alignment in much the same manner as the dancer.

The skater is often more concerned with his figure tracings than with the total body movement necessary to make those tracings. When free skating, he is suddenly called upon to use arms and torso in a graceful manner and to perform with a sense of expressive style. This integration of all the moving parts of the body into an harmonious unity becomes a major problem for most skaters. The skater who studies dance will find that many of his movement problems can be solved.

"Keep your back straight" is the constant command of every skating teacher. In dance, correct alignment of the spine and the head is greatly emphasized and is easily transferred to ice. Beginner skaters are prone to lean forward from the hips and round out the upper back producing the unpleasant effect of pushing the shoulders and head forward. In contrast, one of the most pleasing sights on ice is the perfect alignment and skating posture of a good dance team. A well-placed body can do more for a skater's style, balance and efficiency of movement than any other one factor.

Dance exercises, correctly executed under expert guidance, greatly increase the flexibility and strength of a skater's body. The importance of the dance *plié* (deep knee bend) cannot be overstressed. This exercise is good for back alignment as well as for alignment of the hips, knees and ankles. The *plié* teaches correct outward rotation of the thigh at the hip—a turned-out position constantly used in skating. The true *plié* teaches the dancer-skater how to cushion a landing using the proper alignment of hip, knee and ankle joints. *Pliés* help to build the quadriceps (the great extensor muscle of the front of the thigh), necessary for the push-off in jumps. Elevation work done in a dance class builds leg strength for jumps which both the dancer and skater need to free themselves from gravity. A skater experiences dry land practice through dance instruction. Jump landings—as important as push-offs—are strengthened through dance.

Dance technique stresses particular positions of the legs and body. For example, first position (heels together, toes and legs turned out) is of enormous help to the dancer who employs many types of brushes of the feet and leg swings from the hip. Leg swings from the hip increase flexibility and strength so necessary in the

performance of the *arabesque* in dance which parallels the spiral in skating.

It is difficult for the beginner skater to use the arms so that they look like organic parts of the movement, not as decorative afterthoughts added to give so-called grace to the performance. Actually, the arms can initiate movement and should be considered an integral part of total body action. Modern dancing again helps the skater by providing an experience where arm motions are initiated from an impulse within the torso. This use of an impulse starting the movement is simply another way of integrating body movement with total body awareness.

Some skaters have made interesting use of arm designs in their programs, but there's room for more imaginative exploration. For instance, a skater seldom takes advantage of percussive arm gestures with an emphasis on the elbow rather than on a flowing arm. And it would be exciting to see what might be done with twisted or bent torsos and with asymmetrical design in general.

By good style this writer means that the skater has risen above the mechanics of movement and is performing with expressive quality. Since style is a major point of emphasis in dance, instruction in this area would undoubtedly carry over onto the ice rink. In addition to dance, the skater should commit himself to a daily exercise program done in a dance manner rather than as calisthenics.

Modern dance is known for its exciting use of syncopated, off-beat rhythms and of electronic, non-metrical music. Skaters, who must also be choreographers, develop a deeper musical awareness of rhythm and timing—a tuning-in to the dynamic ebb and flow of tensions within a piece of music—from close contact with the world of dance. A new sense of phrasing and timing will distinguish the skater's performance.

In dance composition class, the skater learns how to choreograph for the arms and torso, how to develop movement themes, how to make transition between jumps and spins and how to space dynamic movements. This choreographic knowledge can be used advantageously for moving large groups on ice as well as for directing the individual.

Through dance study the skater learns to move in a manner which truly suggests that the human body has at last won its struggle with gravity—that it can float through space with the grace, speed and daring of a bird in flight.

Olympic Arena



LAKE PLACID, N. Y.

Your Host for the 1967
NORTH ATLANTIC COMPETITIONS
December 15, 16, 17, 1966
Announces

10th ANNUAL

FREE SKATING AND PAIRS COMPETITIONS

July 28, 29, & 30, 1966

LAKE PLACID ANNUAL DANCE WEEKS

July 31 thru August 14

with

GOLD DANCE TESTS on August 7, 1966

and

ANNUAL DANCE COMPETITION

August 11, 12, 13, 1966

and

By Popular Demand

ISU FIGURE and DANCE TESTS

September 6 thru 9

Sponsored by:
THE SKATING CLUB OF LAKE PLACID
and
NORTH ELBA PARK DISTRICT

Sanctioned by:
UNITED STATES FIGURE SKATING
ASSOCIATION



Megève

by Billy Chapel

Le Grand Prix International de Patinage affixed a XXXI to its title and welcomed its special qualifiers — Gold Medalists who had not placed among the top three in world-wide competition. Sponsored by the Sporting Club of Megève and held in that village in the French Alps, the events were scheduled from March 3 to 6.

There were twenty-seven skaters from the eight countries represented. The United States sent Sondra Lee Holmes [placing eighth], Dorothy Thompson [seventh] and me.

All events were held in the morning to avoid the strong afternoon sun which melts the ice. Yvonne Sherman McGowan of the U. S. was among the seven judges officiating in the open system of judging.

The competition was completely new and different for me because it included compulsory free skating moves. It opened with the skating of three compulsory figures (for men: RFIO-LBIO Change 3, RFI-LBI Rocker, RBOI-LBIO Change Loop) which counted for thirty per cent of the total mark. The three compulsory free skating moves (also counting thirty per cent) were drawn by lot and, for men, consisted of a double lutz, axel sit-spin, and inside axel. Each move was performed twice on clean ice. Two marks were given: one for technique, the other for form and style. At the completion of figures and free style moves, I was leading.

I used the same program I skated at Nationals and Worlds for the five-minute free skating which counted the usual forty per cent. It was a great thrill for me to receive a first from each judge and win this Championship.

The entire population of Megève and the surrounding towns turned out to watch the contest. The skaters received the "celebrity treatment" right up to the closing day party when the trophies were presented by M. Philippe Potin, President, Fédération Française des Sports de Glace.

RESULTS:

1ère Catégorie: MESSIEURS

1. William Chapel, *United States*
2. Tsubuhiko Kozuka, *Japan*
3. Jacques Mrozek, *France*

(7 Contestants)

DAMES

1. Haruko Ishida, *Japan*
2. Micheline Joubert, *France*
3. Marie Vichova, *Czechoslovakia*

(8 Contestants)

Ile Catégorie: MESSIEURS

1. Willy Bargauan, *Italy*
2. Didier Gailhaguet, *France*
3. Petr Starec, *Czechoslovakia*

(4 Contestants)

DAMES

1. Lumila Bezakova, *Czechoslovakia*
2. Alena Matysova, *Czechoslovakia*
3. Marion Batavier, *Belgium*

(6 Contestants)

Ed. Note — We have received word that Billy turned pro to skate with Ice Capades.

SKATERS

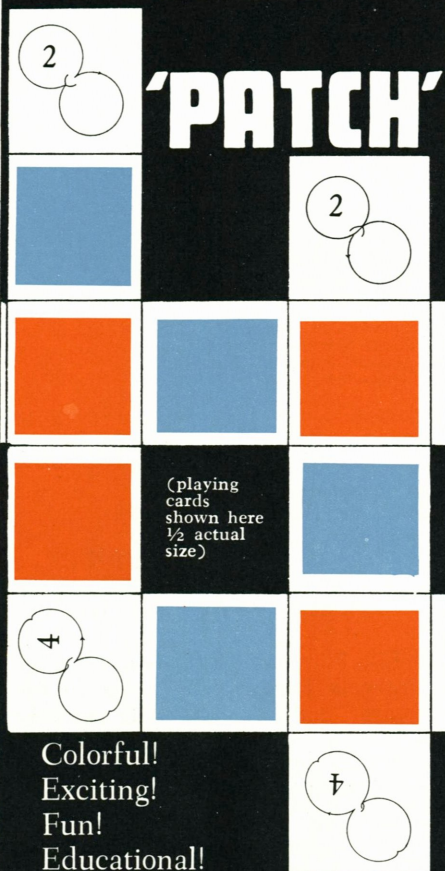
**For a sunny summer,
relax with READING**

USFSA Rulebook \$3.00/Evaluation of Errors in Figures \$3.00/How to Organize and Conduct Competitions \$2.00/The First 25 Years of the USFSA \$1.00/Competitions Annual 64-65 \$2.00/The Fun of Figure Skating, by Maribel Vinson Owen \$4.95/**Figure Skating**, by Sally Lindsay \$2.95 hardbound, \$1.50 paperback/**Figure Skating for Beginners**, by John Noel \$2.50/**Instant Skating**, by Dick Button \$1.95/**How to Form a Figure Skating Club**, no charge.

Thrilling story of
Otto and Maria Jelinek
"On Thin Ice"
by
Henry Jelinek, Jr.
and Ann Pinchot

Mail orders to Circulation Dept.,
SKATING
575 Boylston St.
Boston, Mass. 02116

FIRST TIME EVER A FIGURE SKATING GAME!



Colorful!
Exciting!
Fun!
Educational!

All ages, 8 to 80.

All skaters, pre to gold.

Easy to play, pocket size deck
of cards — for parties, travel-
ing, in-between patch, sum-
mer session; 1 to 20 can play.

Only \$1.50

Order now

P. O. Box 112

Prudential Center Station

Boston, Mass. 02199

Name _____

Address _____

(Add 25¢ for postage and handling)



MR. SKATING

by Norah Garden

For more than twenty years, Charles H. Cumming has been affectionately known as "Mr. Skating" to members of the Canadian Figure Skating Association. His resignation as Secretary-Treasurer is a personal loss to the countless skaters who prospered from his ever-ready words of encouragement.

In Cornwall, Ontario, where Charles was born, the Cumming clan was frequently seen at the local arena. After attending Cornwall schools, Charles Cumming was graduated from Queens University with an engineering degree. He worked on the Gatineau River Power Development, later moved to Ottawa as Examiner for the Canadian Patent Office.

Since 1935 "Charlie" has taken an active interest in Minto Skating Club affairs, serving both as President and Treasurer. Shortly after Barbara Ann Scott revolutionized figure skating in Canada by winning the World and Olympic titles, he accepted the part-time position of Secretary-Treasurer of the CFSA. In 1947 a boom in figure skating forced his total attention to CFSA affairs. In the time-span of his service with the organization, the CFSA grew from a 40-club membership to 327 in 1966. And the continued growth of summer schools greatly added to his year-round work schedule of preparing judges' lists, issuing sanctions, mailing official notices and assembling reports for the annual meeting, not to mention a continual flow of correspondence and attendance at CFSA affairs.

As for the sport's future, Mr. Skating feels that present growth should not be burdened with too many regulations, especially in the area of new small clubs which, he feels, need encouragement, not regimentation.

The fact that "Our Man in Ottawa" is no longer on call is difficult to accept, but no one denies Charles H. Cumming a well-earned retirement.

HOST WITH THE MOST

The Cleveland Skating Club has not yet found a way to include ice boating or ice fishing in its program, but in the course of a day a spectator at CSC can watch nearly every other conceivable sport on ice.

Any Saturday morning, visitors to the dining-room balcony overlooking the rink can observe early-bird patchers, free skaters, and classes for beginners taught by four professionals. Younger boys and girls use up excess energy through organized games and races. During "family general," anyone from toddler to grandparent may skate round and round the ice. Hockey groups, starting with eight year olds and divided according to age and ability, next elbow their way into action.

Early afternoon is patch time for adults and children with senior privileges. The high point of every Saturday is the dance session from 3:00 to 7:00 P. M., with a break for tea in the downstairs grille.

Saturday night, more family general skating or curling may be scheduled. Five years ago, CSC became the first club in Ohio to take up curling.



In addition to these activities, the Club manages to find ice time for Pop Show rehearsals (four or five shows are presented each year), competition practice, separate schedules for high and low test skaters, and dance sessions and classes. CSC is proud of the number of adult members who are ice dancers; in addition to the Saturday afternoon tea dance, dancers meet on Sunday morning and Monday through Wednesday evenings. Four or five times during the skating sea-

son an orchestra plays for "live music" parties which are usually so crowded that two shifts of dancers are necessary.

Members skated for the first time on their own ice in November, 1937, but CSC was incorporated in 1936. A group of Clevelanders who had been skating together at the Elysium during the thirties invited the Toronto Skating Club to bring their annual carnival to Cleveland to give a benefit performance for the Maternal Health Association. To protect the amateur standing of the Canadian skaters it was necessary, after two such shows, for a private club to sponsor them; thus, the Cleveland Skating Club was born.

The public rink soon become inadequate for a growing membership. CSC purchased a building and eight tennis courts from the Tennis and Racquet Club, and added an 85' x 185' rink. In 1960 the clubhouse was enlarged. Since the first borrowed carnivals, the Club has presented twenty-six of its own shows and donated \$5,000 to the United States Olympic Fund from the proceeds of the 1965 show.



John N. Rampe photos

The Club played host to the Midwestern Championships in 1944, '46, '47, '49, '52 and '56, and will set the scene again in 1967. The 1953 North Americans and the Nationals of 1940 and '64 were also held at CSC.

Seven days a week, from September to May, CSC's ice is in use. Eager members begrudge even the fifteen minutes needed to make fresh ice. At CSC, the most familiar cry is, "More ice time!"

—Elizabeth Engel

NEW ICE

Inter-club, -state and area competitions offer new competitive opportunities to up-and-coming skaters who, after entering their club championships, must wait another twelve months before competing again. The fact that non-qualifying competitions, such as those listed below, now command their own place in the sun (in this final installment on figure skating clubs) speaks well for the club organization, also for the ever proliferating, always enthusiastic competitor.

MIDDLE ATLANTIC CHAMPIONSHIPS THE SC OF N.Y., MARCH 11-13

SENIOR LADIES

1. Ginger Powell, *New Haven SC*
(3 Contestants)

JUNIOR MEN

1. Kenneth Class, *Old York Road SC*
(4 Contestants)

JUNIOR LADIES

1. Ellen Wellington, *South Mountain FSC*
(6 Contestants)

NOVICE MEN

1. Paul Gillane, *Philadelphia SC & HS*
(3 Contestants)

NOVICE LADIES

1. Louise Vacca, *Rye FSC*
(11 Contestants)

JUVENILE MEN

1. Randy Dayney, *Metropolitan FSC*
(5 Contestants)

JUVENILE LADIES

1. DeLancey Hollos, *The SC of New York*
(8 Contestants)

MIXED PAIRS

1. Ann & Dan Pasaric, *Long Island FSC*
(2 Pairs)

LADIES PAIRS

1. Pegeen Naughton, *Rye FSC*, & Judy Scarpinito, *Metropolitan FSC*
(4 Pairs)

SILVER DANCE

1. Debbi Gerken & Domenick Malavolta, *The SC of Lake Placid*
(6 Couples)

Bronze Dance

1. Stephanie & Peter Craw, *Essex SC*
(5 Couples)

VETERANS DANCE

1. Deborah Larsen, *Southport SC*, & Donald Parent, *The SC of New York*
(4 Couples)



Shelly Walters,
Tri-State Competition

FIRST ANNUAL TRI-STATE FREE SKATING COMPETITION (IND., MICH., O.)

TOLEDO FSC (O.), MARCH 19

SECOND TEST MEN'S FREE SKATING

1. Jim Platzer, *Detroit SC*
(3 Contestants)

SECOND TEST LADIES FREE SKATING

1. Judy Walker, *Great Lakes FSC*
(20 Contestants)

FIRST TEST MEN'S FREE SKATING

1. Paul Hees, *Forestwood FSC*
(7 Contestants)

FIRST TEST LADIES FREE SKATING

1. Joanne Yott, *Fort Wayne ISC*
(35 Contestants)

PRELIMINARY MEN'S FREE SKATING

1. Ralph Higden, *Detroit SC*
(4 Contestants)

PRELIMINARY LADIES FREE SKATING

1. Shelly Walters, *Detroit SC*
(16 Contestants)

JUNIOR MIXED PAIRS

1. Nancy & Roger Glenn, *Ann Arbor FSC*
(3 Pairs)

ADULT #1 SIMILAR PAIRS

1. Debby Uveges & Barbara Wall, *Plaza FSC*
(3 Pairs)

JUNIOR SIMILAR PAIRS

1. Pam Mason & Judy Walker, *Great Lakes FSC*
(3 Pairs)

ADULT #1 BRONZE DANCE

1. Kathleen Grier & Tom Caribardi, *Detroit SC*
(3 Couples)

ADULT #2 BRONZE DANCE

1. Bernice Senkovich & Edwin Faust, *Detroit SC*
(2 Couples)

JUNIOR BRONZE DANCE

1. Janet & Tom VanCamp, *Lansing SC*
(3 Couples)

ADULT #1 PRELIMINARY DANCE

1. Susan Winkler & Larry Corlett, *Toledo FSC*
(4 Couples)

ADULT #2 PRELIMINARY DANCE

1. Patricia Kaase & Ernest Mease, *Toledo FSC*
(3 Couples)

JUNIOR PRELIMINARY DANCE

1. Myra & David Chrien, *Towne 'N Country FSC*
(3 Couples)

SENIOR SKATERS DANCE COMPETITION

GENESEE FSC (N.Y.), MARCH 19-20

GOLD DANCE

1. Elizabeth Stroukoff, *Manhattan FSC*, &
F. Ritter Shumway, *Genesee FSC*
(2 Couples)

SILVER DANCE

1. Elizabeth Stroukoff, *Manhattan FSC*, &
Roger Cash, *Genesee FSC*
(6 Couples)

PRE-SILVER DANCE

1. Annette Cramer, *Genesee FSC*, &
William McHale, *Plaza FSC*
(9 Couples)

BRONZE DANCE

1. Pauline & Elio Ambrosini, *New Haven SC*
(4 Couples)

PRELIMINARY DANCE

1. Margaret Davis & David Thurber,
Genesee FSC
(4 Couples)

PHILADELPHIA AREA**FIGURE SKATING CHAMPIONSHIPS**

OLD YORK ROAD SC (PA.), MARCH 25-27

JUNIOR LADIES

1. Janet Lee Besz, *Quaker City FSC*
(2 Contestants)

NOVICE LADIES

1. Marjorie Lombard, *Philadelphia SC & HS*
(3 Contestants)

INTERMEDIATE BOYS

1. Thomas Lombard, *Philadelphia SC & HS*
(2 Contestants)

INTERMEDIATE GIRLS

1. Betsy Reath, *Wissahickon SC*
(7 Contestants)

JUVENILE GIRLS

1. Mary Braun, *Raritan Valley FSC*
(16 Contestants)

PRE-JUVENILE GIRLS

1. Edie Herbst, *Old York Road SC*
(19 Contestants)

MIXED PAIRS

1. Susan Friedman & George Magill,
Laurelton Pines SC
(3 Pairs)

LADIES SIMILAR PAIRS

1. Susan Friedman & JoAnn De Spirito,
Laurelton Pines SC
(2 Pairs)

JUVENILE SIMILAR PAIRS

1. Meg & Holly Toland, *Philadelphia SC & HS*
(2 Pairs)

SILVER DANCE

1. Ann & Harvey Millier, *Philadelphia SC & HS*
(3 Couples)

VETERANS DANCE

1. Bernie Krug & Bill Berlinghof, *Old York Road SC*
(2 Couples)

1966 UTAH STATE FIGURE SKATING

CHAMPIONSHIPS, WEBER FSC (UTAH),

UTAH FSC, MARCH 27, 28, 31

NOVICE LADIES

1. Kristy Gregerson, *Utah FSC*

PRE-NOVICE FIGURES (Group I)

1. Kathy Graser, *Weber FSC*

PRE-NOVICE FIGURES (Group II)

1. Christy Mjaatvedt, *Weber FSC*

INTERMEDIATE LADIES (Group I)

1. Kathy Bingham, *Weber FSC*

INTERMEDIATE LADIES (Group II)

1. Sandra Porter, *Weber FSC*

JUVENILE BOYS FIGURES

1. Russell Sessions, *Weber FSC*

JUVENILE GIRLS FIGURES

1. Vicki Carr, *Weber FSC*

PRE-JUVENILE GIRLS

1. Doree Tateoka, *Utah FSC*

PRELIMINARY LADIES PAIRS

1. Susan Gregerson & Ludeen Crawford,
Utah FSC

SILVER DANCE

1. Marvin Mann & Patty Snow, *Utah FSC*

BRONZE DANCE

1. Duane Fox, *Utah FSC*, & Lin Mjaatvedt,
Weber FSC

PRELIMINARY DANCE

1. Christa Neil & Paul Tassone, *Weber FSC*

PRELIMINARY FREE SKATING & EDGES

1. Scott Eggertson, *Utah FSC*

VETERANS DANCE

1. Marvin Mann & Ida Tateoka, *Utah FSC*

SPECIAL EVENTS—ARTISTRY ON ICE

1. Kathy Heitz, *Weber FSC*

LAKE ERIE INVITATIONAL CHAMPIONSHIPS

TOWNE 'N COUNTRY FSC (O.), APRIL 22-23

SENIOR LADIES

1. Barbara Fitzgerald, *City of Cleveland*
(3 Contestants)

JUNIOR LADIES

1. Marianne Mazur, *City of Cleveland*
(3 Contestants)

NOVICE MEN

1. Terry Viviani, *Detroit SC*
(2 Contestants)

NOVICE LADIES

1. Gail Hessler, *Plaza FSC*
(8 Contestants)

JUVENILE BOYS

1. Bill Cleveland, *Cleveland SC*
(3 Contestants)

JUVENILE GIRLS

1. Carol Hessler, *Plaza FSC*
(6 Contestants)

PRE-JUVENILE BOYS

1. Michael Stoller, *Plaza FSC*
(2 Contestants)

PRE-JUVENILE GIRLS

1. Nancy Kirtland, *Detroit SC*
(8 Contestants)

SPECIAL BOYS

1. Greg Taylor, *Towne 'N Country FSC*
(4 Contestants)

SPECIAL GIRLS

1. Linda Cleve, *Plaza FSC*
(4 Contestants)

SENIOR MIXED PAIRS

1. Linda & Jack Comberger, *FSC of Cincinnati*
(3 Pairs)

JUNIOR MIXED PAIRS

1. Denise & Ralph Higden, *Detroit SC*
(4 Pairs)

SENIOR SIMILAR PAIRS

1. Karen Kresge & Nikki Black, *Towne 'N Country FSC*
(3 Pairs)

JUNIOR SIMILAR PAIRS

1. Debra Fulsom & Melissa Selleck, *Buffalo C & SC*
(5 Pairs)

GOLD DANCE

1. Sundae Bafo, *Buffalo SC*, & Tom Easton,
Genesee FSC
(2 Couples)

SILVER DANCE

1. Donna Young & Ed Marshall, *Plaza FSC*
(4 Couples)

SENIOR BRONZE DANCE

1. Mrs. Nicholas Kouris & Frederick Grossman,
Towne 'N Country FSC
(5 Couples)

JUNIOR BRONZE DANCE

1. Andrea Bloch & John Stewart, *Plaza FSC*
(2 Couples)

SENIOR PRELIMINARY DANCE

1. Mrs. Ronald Kunes & Roy McGee,
Towne 'N Country FSC
(4 Couples)

JUNIOR PRELIMINARY DANCE

1. Myra & David Chrien, *Towne 'N Country FSC*
(4 Couples)

VETERANS DANCE

1. Mrs. Ben Fauver & Paul Pavliska,
Cleveland SC
(6 Couples)

JUDGING JUDGES

In this third and last article on judging, SPENCER E. CRAM, Judging Standards Committee Advisor, explains how the United States Figure Skating Association rates its judges and works to maintain basic standards of judging.

A comprehensive program to assure that figure skating judging in the United States is as free of error as possible is being developed by the USFSA Judging Standards Committee. The Committee realizes that a good test judge may not always be a good competition judge. To ascertain whether a skater has successfully passed specified moves in a given test is quite different from placing twelve amateur competitors according to their ability and interpretation.

The Committee is making use of practices inaugurated before the group's formation, along with recently expressed ideas. For example, a sixteen-year-old system for auditing a judge's accuracy is still in use.

The qualities necessary for a good competition judge have been defined by the Judging Standards Committee as follows: 1) proper temperament, 2) active participation and availability, 3) tact and 4) accuracy. Of these four categories, only accuracy can be measured mathematically and checked over a period of time.

Accuracy is based on the competitors' actual final placements, which is the only measure that can be used logically.

Essentially, a judge's accuracy determines the difference between his placements and the competitors' actual placements. Through this, one judge is determined the most accurate within a panel of judges; the others are permitted a divergence of 20 per cent on the sum of the number of competitors. By the same method, a judge's performance over a period of time may be accumulated to determine his general accuracy over many competitions.

Examples of how the accuracy of competition judges is computed are shown here. There are five judges, lettered A through E, on the panel. Twelve competitors compete in the compulsory figures and those marks are shown in the first table. The second table shows the free skating ordinals for the top eight of the twelve skaters competing.

In compulsory figures, it is important to select correctly the first eight places; these skaters qualify for finals in Regional competition. In the finals, the first four places are the most important to evaluate as accurately as possible.

In the diagrams below, the small numbers to the right of the ordinals indicate the divergence of each judge from the competitor's actual placement.

The following marks were the results after compulsory figures:

FINAL PLACE	1	2	3	4	5	6	7	8	9	10	11	12	PLACES OFF	
													1st 8	all 12
Judge A	1	2	5 ²	3 ¹	11 ⁶	6	4 ³	10 ²	8 ¹	9 ¹	7 ⁴	12	14	20
Judge B	2 ¹	1 ¹	3	5 ¹	4 ¹	6	7	11 ³	9	10	8 ³	12	(+) 7	(+) 10
Judge C	1	2	8 ⁵	5 ¹	6 ¹	7 ¹	9 ²	4 ⁴	3 ⁶	11 ¹	12 ¹	10 ²	14	24
Judge D	1	2	4 ¹	3 ¹	5	12 ⁶	11 ⁴	6 ²	8 ¹	7 ³	10 ¹	9 ³	14	22
Judge E	1	2	3	7 ³	9 ⁴	4 ²	6 ¹	8	11 ²	5 ⁵	12 ¹	10 ²	10	20

Judge B is the most accurate in the first eight places as well as in all twelve. He is marked with two plusses since he has been closest to the final result in both divisions (eight and twelve).

No one will dispute that it is more difficult to place twelve skaters than four. Therefore, the sum of the number of entries is taken and a 20 per cent variation permitted from the figure earned by the most accurate judge on the panel. The sum of 1 through 8 is 36; 20 per cent is 7.2. The sum of 1 through 12 is 78; 20 per cent is 15.6. In the first eight places above, no judge varies more than 7.2 from the +7 earned by Judge B; in all twelve placements, no judge varies more than 15.6 from the +10 of Judge B. Therefore, all the judges are within permissible variation from Judge B.

Here are the final marks of this hypothetical event:

FINAL PLACE	1	2	3	4	5	6	7	8	PLACES OFF	
									1st 4	All 8
Judge A	1	2	3	4	7 ²	6	5 ²	8	(+) 0	4
Judge B	2 ¹	1 ¹	3	4	5	6	7	8	2	(+) 2
Judge C	1	2	6 ³	7 ³	5	3 ³	8 ¹	4 ⁴	(-) 6	(-) 14
Judge D	1	2	3	4	5	7 ¹	8 ¹	6 ²	(+) 0	4
Judge E	2 ¹	1 ¹	5 ²	4	7 ²	3 ³	6 ¹	8	4	10

Judges A and D are the most accurate in the first four places and merit a plus. Judge C is more than 20 per cent off ($1+2+3+4=10 \times 20\% = 2$) and merits a minus. He also is more than 7.2 away from Judge B's +2 in all eight places, thereby earning another minus. Judge B again is the most accurate in placing all eight skaters and is given a plus. Judge E is also beyond the 20 per cent permissible variation, but a minus is given only to the least accurate — in this case, Judge C.

Each judge has now had four opportunities to be the most accurate: in the two divisions of eight and twelve placements of the compulsory figures, and in the groupings of four and eight placements of the final marks. To determine the percentage of his accuracy in the over-all event, a judge's net plus or minus is divided by 4 (the index), representing the four accuracy opportunities. The results are as follows:

	+	—	Net	Net÷4
Judge A	1	0	1	+25
Judge B	3	0	3	+75
Judge C	0	2	-2	-50
Judge D	1	0	1	+25
Judge E	0	0	0	0

Any impartial, non-mathematical analysis would produce the same answer derived from the above formula. Importance has

been given to the number of entries. There is no requirement to be letter perfect; both figure judging and finals are considered. However, Judge C, who has earned an accuracy rate of minus 50 per cent, could say that he was right and the others were wrong. To counter such a protest, the computation is continuous over all classes of events in all qualifying competitions.

	Index	+	—	Net	Net÷Index
Judge A	58	24	5	19	+33%
Judge B	134	35	21	14	+10%
Judge C	146	43	30	13	+ 9%
Judge D	86	25	23	2	+ 2%
Judge E	120	64	9	53	+46%

Although the events and competitions have been different, the same five judges are listed. In this case, Judge C, who has had more accuracy opportunities (a larger index) than any of his other fellow judges, has earned one of the lowest net accuracy rates: 13 plusses out of a possible 146 (plus 9 per cent).

This accumulative computation, covering many years of competition judging, results in a comparison factor that leaves little room for argument. A reasonable variation is always allowed, with the number of opportunities to be most accurate on a panel always divided into the net plus or minus figure.

This system of accumulating accuracy statistics in competition judging is not a new one. The first figures were compiled in 1950 from the Sectional and National competitions then in effect and have been carried forward accumulatively to include Regionals when established.

Evaluating competition judging is only one of the many services the Judging Standards Committee contributes to figure skating. Standardizing various skating elements is presently being done for pair moves in the area of vocabulary. Many elements of pair skating have different names depending on the section of the country. The same situation used to exist with free skating moves, but these names have slowly been standardized.

Part of the Committee's purpose is the development of a continuing program for the establishment of basic evaluations of all forms of figure skating and ice dancing for dissemination to official judges. One of the Committee's major suggestions, recently adopted and put into practice by the USFSA, was the establishment of judging clinics or seminars. These sessions are held at qualifying competitions and various summer sessions when judges from different areas are already present. The clinics, which are also an effort to standardize judging, include skating films specially prepared by the Committee. These narrated movies were made to train judges in the identification and evaluation of the components of free skating. The agenda also affords a good deal of give-and-take discussion among judges in an effort to iron out Sectional or Regional differences of approach.

Because the Judging Standards Committee is only designated a "special committee" within the USFSA framework, it is set up as a study group which recommends action to other committees and develops educational material for judges. Its innovations must be routed through various committees for consideration and action.

One thing is certain, however. As long as the Committee is in existence, figure skating judges will be challenged to perform at top level; there will be no resting on hard-earned laurels for the established judge. Each event in each competition will be a fresh opportunity for further refinement of figure skating judging and for substantial contribution to the general welfare of the sport.

from abroad

Grenoble, France: an architect's model of the stadium that will house ice sports at the 1968 Olympics shows a quadripartite star with a ceiling of four symmetrical hyperbolic paraboloids. Seating 14,000, it forecasts the shape of stadiums to come. Architect Demartini promised the French Federation of Ice Sports that the superstructure will be available for practice by April, 1967.

Further Olympic headlines indicate that the 1972 winter site will be Sapporo, Japan, and the summer games will be held in Munich, W. Germany.

Australia and New Zealand enjoy a skate boom as the winter season approaches. Newly opened are Auburn and Prince Alfred Park rinks in Sydney, Australia, and the Queenstown outdoor rink in Christchurch, N.Z.; the inter-action is flourishing as Australia sends participants to the New Zealand Championships.

British Jr. Championships — Men: Adrian Florence; Ladies: Norma Bowmar; Pairs: Judith Elliott & Donald Wells; Dance: Vivienne Dean & Michael Webster.

Third British Commonwealth Winter Games, St. Moritz, Switz. — Men: Harold Williams; Ladies: Diana Clifton-Peach.

XXXIV All Japan Championships — Men: Nobuo Sato; Ladies: Miwa Fukuhara; Dance: Norihisa Matsumoto & Noriko Yuzawa; Jr. Men: Hiroshi Nagakubo; Jr. Ladies: Machiko Kitano. (10th consecutive title for Sato; 5th for Miwa Fukuhara.)

Norwegian Championships — Men: Erik Skjold; Ladies: Anne-Karin Dehle. Norwegian Jr. Championships — Ladies: Bjorg Ringdal.

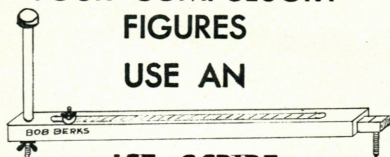
Danish National Championships—Men: Arne Hoffman; Ladies: Jette Wad.

Scandinavian Championships — Men: Tony Berntler, Sweden; Ladies: Britt Elfing, Sweden; Jr. Men: Erik Skjold, Norway; Jr. Ladies: Bjorg Ringdal, Norway.

World University Winter Games, Turin, Italy — Men: Nobuo Sato, Japan; Ladies: Miwa Fukuhara, Japan; Pairs: Tatiana Tarasova & Georgi Proskurin, U.S.S.R.; Dance: Edit Mato & Karolyi Csanadi, Hungary.

Garmisch International Competition — Men: Rainer Ketterer, W. Germany; Ladies: Monika Feldmann, W. Germany; Pairs: Monique Mathys & Yves Aellig, Switzerland.

**IMPROVE
YOUR COMPULSORY
FIGURES
USE AN**



ICE SCRIBE

Easily Adjustable Lightweight Wood. Over 100 in use by Professionals and Figure Skaters

For Information and Prices
Robert B. Berks, Jr.
90 Prospect Street
Canton, Mass. 02021

LATEST DANCE

(Starlight Waltz)

NEWEST TIMING

(Harris Tango — 108)

MUSIC TREAT

(Andy Weis — Artistry)

Retimed and repressed recording of Andy Weis organ album #109 (D&L) all Pre-Silver & Silver Dances —

UP-TO-DATE with the 1966 RULEBOOK changes in Dances — \$5.95 delivered. With Pre-Gold & Gold Dance album \$14.00 Complete 21 Dance set Pre thru Gold \$19.50

FRANK C. MCGIRR

217 Hamilton Ave. 1F7
Staten Island, N. Y. 10301

New Yorkers, please add sales tax.

NOTE: Silver dance music is not run together — 4 tunes are kept apart by circle grooves.

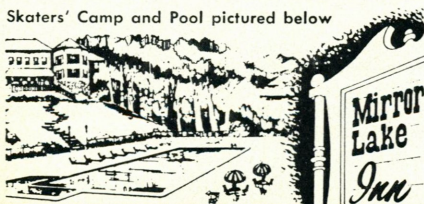
LAKE PLACID, N. Y.

Mirror Lake Inn, Cottages and Skating Camps for girls and boys with house-mothers in charge. Rates from \$49.00 weekly including transportation to the Arena and all facilities of the Inn. Special accommodations and rates for skating families.

Write for color booklet SC.
Mirror Lake Inn, Lake Placid, N.Y. 12946

OUR 35TH SUMMER SKATING SEASON

Skaters' Camp and Pool pictured below



TOP ICE



VALERIE JONES

"Keeping up with" is just a personal thing for this Jones. Others spin circles trying to follow, but this gay Val traces hers into figure 8's . . . and she adores practicing! Second love: Saturday night dates and afternoon shopping . . . normal for a 5'4" blue-eyed 18-year-old . . . who happens to be 1966 Canadian Lady runner-up and fourth placer at Worlds. Val has now eased her strict schedule in favor of a more relaxed four-day skating week because academics . . . English lit and comp . . . require double time to catch up. Forecast: daily training during summer school . . . except June and September for pure lazing. Fall return to Toronto CS & CC, coach Sheldon Galbraith . . . and onward to championship combat.



BERENS & WAGELEIN

Pioneers of new moves and variators of existing techniques . . . enough innovations to carry them to second place 1966 U.S. Senior Pairs, eleventh in Worlds. The Berens skating genealogy is traced to Norval Baptie, Susan's great-grandfather who, she says, invented the portable ice rink; continued by Susan's mother, Betty, coach of the fair pair. Roy has no genetic claim to fame but prides himself on his athletic ability . . . surfing, football, bowling. He is Silver Dance and Intermediate Figure Judge, triple Gold Medalist, past officer of the Los Angeles FSC. A scholastically dynamic duo, 19-year-old Susan is a Freshman . . . math major . . . Pasadena City College and Roy, 22, is completing political science at Santa Monica Jr. College.

FIGURE SKATING HONOR ROLL

GOLD MEDAL WINNERS

CANADA

GOLD FIGURE--North Bay FSC: Camille Vanier, Professionals: Candra Couch, Helen Nicholson. Saskatoon FSC: Jackie Flichel. Wascana WC: Barbara Hillyard. Winnipeg WC: Barbara Green. GOLD DANCE--Stamford FSC: Patricia Burns(Genesee FSC), Richard Callaghan (Philadelphia SC&HS).

UNITED STATES

GOLD FIGURE--Denver FSC: Sheila Valzke. GOLD DANCE--Detroit SC: Vicki Camper, Eugene Heffron. Genesee FSC: Patti Burns.

TESTS PASSED BY CFSA SKATERS

Following are all Tests passed and reported from March 8, 1966 to April 14, 1966. Errors should be reported to the local Test Officer and to the Acting Secretary of the CFSA, Hugh B. Glynn, 280 Metcalfe St., Room 203, Ottawa 4, Ontario.

- *ABITIBI FSC: Pre--Dennis Marion, Marilyn Spence.
- *AMHERST SC: Pre--Nancy Cunningham. 1--Sherry Crandall, Terry Fowler. Junior Bronze--Katherine Hannah. Senior Bronze--Julie Cowlan.
- *ARBUTUS CLUB: Pre--Jean Armstrong, Tricia Birks, Elizabeth Chepesuk, Oslin MacDonald, Julia Merrit, Mary Nairn.
- *ASSINIBOINE FSC: Pre--Wanda Batty, Susan Donnelley, Tricia Emery, Laurie Kyle, Dennis McGuinness. 1--DeLee Cowan, Debra Rasmussen. 2--Barbara Goulden, Cleo Magnuson. Bronze Free--Cleo Magnuson. Junior Bronze--DeLee Cowan.
- *BARRHEAD FSC: Pre--Pat Dixon, June Empson, Jean Ewart, Irene Hurychuk, Doug Rhul. 1--Myra Buckowski. Pre D--Debbie Lee, Judy Pahowich, Dennis Warhime.
- *BARRIE SC: Pre--Diane Arbour, Carol Hogg. Pre D--Judy Delaney, Ann Stevenson.
- *BELMONT FSC: Pre--Gail Betterley, Catherine Faulds, Mary Faulds.
- *BLENHEIM FSC: Pre--Jane Christmas, Jacqueline DeBruyne, Ann Faulkner, Debbie Lynch, Mary Meacham, Linda Sherrah, Lily Svec. 1--Ann Reynolds. Bronze Free--Elaine Cowan. 4--Johnny-Lou Mitchell. Pre D--Kathy Kozlof. Junior Bronze--Elaine Cowan.
- *BOLTON FSC: Pre--Edith Rantoul. Pre D--Celia Elvin, Betty Maw, Heather O'Brien, Valerie Peel, Lorrie Pilson, Edith Rantoul, Deborah Semple, Catherine Wells.
- *BORDER FSC: Pre--Marliss Colvin, Kelly Coppen, Kathy Guild, Corrine Sigurdson. 1--Linda Hamlyn, Mary Larson. 2--Cheryl McCallum.
- *BOWMANVILLE SC: Pre--Patricia Nowlan. Pre D--Sheila Crombie, Miriam Harrison, Patricia Nowlan.
- *BRADFORD & DISTRICT SC: Pre--Nancy Brinkos, Leslie Gardner, Jeannie MacTavish, Christine Szybel. Pre D--Nancy Brinkos, Christine Szybel. Junior Bronze--Geoffrey Brooks.
- *BRANDON FSC: Pre--Shelley Alexander, Michele Ardron, Ricki Atamanczuk, Wendy Bate, Barbara Bell, Connie Christopneson, Elizabeth Clement, Myrna Cobb, Debora DiBartelo, Lois Fannon, Robin Fewings, Dawna Freeman, Faye Hamilton, Leslie Henry, Allison Hill, Brenda Johnson, Carol Mee, Karen Mestage, Jacqueline O'Brien-Moran, Sharon McLartey, Gail McLeod, Sheree McMillan, Helen Vickers, Judith Walker, Cynthia Wall, Gail Warren. 1--Colleen Anderson, Donna Davidson, Irma Johnstone, Nancy Wall, Jo-Ann White.
- *BRANT FSC: Pre--Debbie Combord, Karen Elcombe, Ricky Franklin, Pam Whyte. 2--Pat Morris. 3--Kimberlee Sheere.
- *BROCKVILLE FSC: 1--Paul Publow. Bronze Free--Paul Publow.
- *CALALTA FSC: Pre--Deborah Barnes, Cheryl Bishop, Linda Gordon, Maxine McKenzie, Susan Shred, Susan Smith. 1--Pamela Barton, Susan Boyd, Leigh Bryant, Carol Doris, Frank Scott, Kathy Todd, Marilyn Whitfield. 2--Susan Knock, Brenda Dryden. 3--Heather Hamilton. Bronze Free--Barbara Barrett, Patricia Cook, Janet Knock, Susan Knock, Rod Spence, Valerie Teskey. Silver Free--Susan Walker. Pre D--Rudy Banet, R.R. Baxter, Rose Baxter, Jerry DeFraine, Kerry Fordyce, Marilyn Whitfield. Junior Bronze--Bonnie Heggis. Senior Bronze--Janet Knock, Kathleen Knock, Susan Knock, Valerie Teskey.
- *CALGARY WC: Pre--Arlene Hrdlicka, Betty Lamb, Wendy Pullen.
- *CAPREOL SC: Pre--Lise Ethier, Nicole Lacroix, Emile Guimond, Marilyn Kinloch, Carol Strain, Lual Tye. 1--Barry Burke, Carolyn Gibson, Jacqueline Lalonde, Beverly Lusk. 3--Jackie Bertrand. Senior Bronze--Jackie Bertrand.
- *CASTLEGAR FSC: Pre--Susan Craig, Vicki Jaques, Sandra Lamont, Cathy Rafter, Corinne Sheridan, Jacqueline Shutek, Patsy VanYzerloo, Suzanne VanYzerloo.

- *CHATHAM FSC: 1--Lee Armstrong.
- *CHEAM FSC: Pre--Laura Graham, Gary Lenihan, Wendy Ralph. 1--Debbie Burke, Valerie Huth. 2--Debbie Huth. 3--Cindy Cattermole. Pre D--Tom Berry, Debbie Burke, Randy Burke, Cindy Cattermole, Valerie Cook, Elaine Dueck, Ronnie Hesketh, Julie Tyson.
- *COBBOURG FSC: Pre--Sally Burdick, Holly Hynes, Karen Jarvis, Christine Lunn, Lorraine Vandam, Xenia Vandam. 1--Denine Gillespie. Pre D--Marilyn Cant, Holly Hynes.
- *COPPER CLIFF SC: Pre--Robert Digby, Patricia Flesch, Brenda Vance. 1--Lisa Ceppetelli, Mary Salonen, Lauri Stephens, Ann Taus. 2--Shelly Jack, Debbie Vagnini. Bronze Free--Debbie Vagnini. 5--Jane Closs, Micheline Neville. 6--Susan Metcalfe. Pre D--Lisa Ceppetelli, Mary Salonen, Linda Signoretti. Senior Bronze--Merry Carscallen, Debbie Vagnini.
- *CORNWALL FSC: Pre--Deborah Harrison. 2--Gail Curtis. Bronze Free--Gail Curtis, Susan Rowe, Nelda Youngs.
- *CRANBROOK FSC: Pre--Darlene Elnarson, Linda Fabro, Lorri-Ann Kennelly, Rosemarie Lamb.
- *CREDIT VALLEY SC: Pre--Lynda Sproule. Pre D--Judy Stafford.
- *DELTA FSC: Pre--Kristine Gronlund, Judy Lovell, Moira North, Patti-Ann Peyton, Sandra Robertson, Leslie Stewart. 1--Sandra Burnett. Pre D--Wendy Jack, Debbie Ronneseth, Brenda Ruetz, Romni Shepherd. Junior Bronze--Shirley Galbraith, Moira North, Leslie Stewart.
- *CAMP BORDEN FSC: Pre--Cynthia Cady, Deldre Clancy, Jennifer MacDonald, Patty Uliyot, Eric Williams, Nancy Williams. Pre D--Gail Courtney, Judy Hissa.
- *DIDSBOURY FSC: Pre--Wendy Berscht, Marna Johnson, Lynn Morgan, Nola Youngs. Pre D--Mary Currie.
- *DODSLAND FSC: Pre--Lynn Campbell, Myrna Helt. Pre D--Lynda Joyce.
- *DRYDEN FSC: Pre--Nancy Allan, Gay Murdick, Dixie McMonagle, Wendy Stansfield.
- *DUNDAS FSC: Pre--Marilyn Brown, Nancy Brown. 6--Hilary White.
- *DUNVILLE FSC: Senior Bronze--Alice Foster. Junior Silver--Daryl Adams.
- *EAST YORK FSC: Pre--Donna Menzak, Susan Merton. 1--Gayle Sibbick. Bronze Free--David Jackson, Raymond Naismith. Silver Free--Gail Hutchings. Junior Bronze--Karen Lawrence, Christine Tomkins, Elaine Voino.
- *EDMONTON FSC: Pre--Cheryl Gabelhouse, Ricky Gaudy, Terri Maddock, Debbie Reid, Glenda Strate. 1--Susan Slywin, Janice Bliault, Barbara Cole, Patricia Godman, Donald Isert, Gerald Smith, Marcella Szel. 2--Debbie Armstrong, Heather Smagda, Valerie Yakemchuk, Mary Henderson. 3--Janie Bako, Glenda Gates, Bonnie Lundeen, Karen Tottrup. 4--Linda Edwards, Wendy Smitten, Karen Weiss. Bronze Free--Wendy Smitten. Pre D--Susan Alywin, Gay Edmonds, Jeanette Gaudy, Donald Isert, Terri Maddock, Allison Theman, Darlene Watkins, Linda Wright. Junior Bronze--Debbie Armstrong, Barbara Cole, Mary Henderson, Kerry McLaclan, Daniel Raven. Senior Bronze--Ann Hoosen, Carol Lines.
- *ESPANOLA SC: Pre--Lise Chenier, Rosemary Heneghan, Jane Sutherland. 1--Diane Constantineau, Steve Higgins, Pauline Leeney. 2--Susan Mahoney.
- *ESTEVAN FSC: Pre--Sharon Birdsell, Beverly Lazaruk, Laurie MacRae, Denise Schlapkohl. 1--Janice Dyer, Cathy Friess, Nina MacDonald, Sheleen Ross. 2--Sandra Bannatyne.
- *ESTON FSC: Pre--Shirley Couch, Sandra Quiring. 1--Illa McIntoch. Pre D--Arla Bayliss, Margret Couch, Shirley Couch, Shirley Jones, Illa McIntosh.
- *FERGUS SC: Pre--Brenda Uttley. 1--Jane Sutherland. Pre D--Susan Janke, Janet Smith, Debbie Walker. Junior Bronze--James Cameron, Beverly Howes.
- *FORT WILLIAM FSC: Pre--Cheryl Massaro. 1--Laurie Nealin. Bronze Free--Terry De Laronde.
- *FORT ERIE FSC: 1--Nancy Ogilvie. Bronze Free--Brenda Desrosiers. Junior Bronze--Nancy Ogilvie. Senior Bronze--Lynne Benner, Gail Reddon, Susan Roberts. Junior Silver--Nancy Thomas.
- *GALT FSC: 2--Kim Warning.
- *GATEWAY FSC: Pre--Penny Houck. 1--Donna Thompson, Bayle Whyton. 3--Paula Venn. Bronze Free--Jean Faulkner, Barbara Schultz, Paula Venn. Silver Free--Paddy Kennedy, Valerie Trendall. Pre D--Norma Woodman. Junior Bronze--Patti MacDonald. Junior Silver--Sherry Shenfield. Senior Silver--Karen Maynes.
- *GLENAVON FSC: 1--Carol Harbottle, Wendy Parsons.
- *GLENCOE CLUB ALTA.: Pre--Douglas Brett, John Coyle, Sherri Gould, Trudy Lamareaux, Barbara Laughlin, Patricia Major, Karen Seaman, Brenda Sibley, Mark Sibley, Scott Sibley, Catherine Simmons. 1--Darrell Brett, Cristie Locke, Dianne Loucks, Debraugh Milliken, Debraugh McBride, Kris Paulson, Janet Rogers, Elizabeth Rowbotham, Patricia Rowbotham, Alice Simmons. 2--Whitney Bassarab, Elizabeth Coyle, Sheri Egbert, Alex Hoy. 3--Cheryl Amoson, Jane Cooper, Susan Cooper, Elizabeth Gain, Debbie Laurient, Brenda Lucy, Laurie McDonald, Patricia McPherson. 4--Jeff Hoy. 6--Beverly Marshall. 7--Margaret Zapfe. Pre D--Whitney Bassarab, Alice Simmons. Junior Bronze--Elizabeth Coyle, Elizabeth Rowbotham, Patricia Rowbotham. Senior Silver--Lauren Hunt, John Taylor.
- *GLENGARRY FSC: Pre--Connie Corcoran, Inge Czerwinski, Cheryl Eshleman, Lynn Hall, Bonnie Ollen, Valerie Palm, Bonnie Tone. 6--Beverly Marshall. 7--Pamela Wyles. Senior Silver--Beverly Marshall.
- *GRANITE CLUB TORONTO: Pre--Carla Finlayson, Barbara Porter, Wendy Roberts. 1--Ann Ritchie. Pre D--Barbara Ritchie, Martha Shirriff. Junior Bronze--Jane Wright.
- *GRIMSBY FSC: 5--Jane McKnight.
- *HALIFAX SC: Pre--Janice Ryan. 1--Janet Cox. 3--Deborah Hall. Senior Bronze--Shirley Beckman.
- *HAMILTON SC: Pre--Tina Buynink, Peggy Crawford, Nancy Foster, Janice Hall, Marla Havers. 3--Jayne Elliott. Bronze Free--Janice Boucher, Sherree Dafee, Judy Gardner, Allen Simoni, Marilyn Takeda. 5--Jane Hastings. Silver Free--Marilyn Simoni. Junior Bronze--Janice Boucher, Donna Heath, Stephanie Horvat.
- *HULL FSC: Pre--Charlotte Boucher, Marthe Rene De Cotret, Daniel Dufour, Carole Goyette, Ginette Lavole. 1--Michelle Kennedy. Bronze Free--Diane Goyette, Sylvie Parayre, Gilbert Roy, Sylvie St. Cyr. Pre D--Louise Belanger, Sylvie Rene De Cotret. Junior Bronze--Sylvie Clairoux, Anne Girard. Senior Bronze--Nicole Seguin.
- *HUMBOLDT FSC: Pre--Shirley Cote, Norlene Dreiger, Laurie Franklin, Julie Haugen, Fern Kulczycki, Myrna Mueller, Carol Ogilvie, Maureen Rooney, Maureen Ross, Linda Upton, Maria Wasilishen,

- Wendy Wiens, Mrs. Pat Wiesgerber, Gail Wolfe, Pre D--Linda Dagenais, Joan Hergott, Darlene Johnson, Fern Kulczyk, Myrna Mueller, Darlene McGrath, Carol Oglivie, Maureen Rooney, Brenda Schlosser, Maria Wasilishen, Gail Wolfe. Junior Bronze--Sandra Pitzel.
- *HUNTSVILLE SC: Pre--Karen Bullen, Dixie Edwards, Denise Giustini, Jennifer Percival, Pamela Rankin, Beverley MacWilliams. 1--George O'Riley. 2--Mary Stanga. Pre D--Mary Macleod. Junior Bronze--Kathy Mattice, Judy Woolman.
- *JASPER PLACE FSC: 1--Debra Wagner, Janice Strautman. 2--Shannon Crossen, Joanne Darby, Naomi Webb. 3--Celia Webb. 4--Margaret Koslowski. Pre D--Nora Crew, Julia Strautman. Junior Bronze--Nora Crew, Marianne Gantvoort, Margaret Koslowski. Senior Bronze--Celia Webb, Cheryl Webb.
- *JASPER SILVER BLADES FSC: Pre--Caryl Anderson, Yanina Betkowski, Joyce Leinweber, Bonnie Melklejohn, Judy McNaughton, Shirley Neis, Linda Nichol, Maxine Thompson. 1--Betty Baker, Brenda Geiselman, Brenda Pearce, Geraldine Street. Pre D--Betty Baker, Lucille Worsfold, Marilyn Worsfold.
- *KAPUSKASING FSC: Pre--Jennifer Banks, Chris Brady, Kathy Harris, Gaye Marchand, Ann Tomiak. 1--Lorraine Lebrun. Pre D--Veronica Harris, Martha Moore, Leslie Sleep, Darlene Weselowski.
- *KELOWNA FSC: Pre--Darlene Richardson. 1--Lynne Bassett, Anne Bilsland, Marion Huva. 3--Barbara Curtis, Sue Leonard. 4--Sandra Curtis, Debra Wood. Pre D--Gail Betuzzi, Elena Campbell, Judy Gerlach, Gay Laskosky. Junior Bronze--Muriel Neale.
- *KERRISDALE FSC: Senior Bronze--Julie McCrirkick. Junior Silver--Betty Ferguson.
- *KIMBERLEY FSC: Pre--Marie ElTink, Dianne Hay, Claudia Johnson, Elin Johnson, Lynn Killins, Lara Lauzon, Allison Oakley, Margaret Stedman, Rosalee Wik. 1--Karen Bennett, Maureen Dalzell, Debbie Graham, Betty Richelts.
- *KINGSTON SC: Pre--Donna Bullen, Neil Bullen, Laurie Campbell, Archie Caron, Judi Fox, Joanne Hayes, Debbie Kane, Allison Morgan, Cathy Orgill, Janet Potter, Gail Slater, John Szivek, Wilma Vanderzayden, Joan Willison. 1--Susanne Kelsey, Brenda Low. Bronze Free--Stephanie Amey, Susan Davis, Rhonda Davis. Pre D--Carolyn Clayson, Peggy Dalton, Colleen O'Hara, Marjorie Wilson. Junior Bronze--Alevia Dalton, Susanne Kelsey, Terry Sly, Ruth Willison. Senior Bronze--Susan Davis, Nancy MacLachlan, Suzanne Murray, Terry Murray.
- *KITCHENER-WATERLOO SC: Pre--Vicki Bauman, Wendy Dorsch, Julie Dyck, Linda Heier, Pegeen Walsh, Claudia Wunder, Lynn Zister. Pre D--Wendy Dorsch, Julie Dyck, Margaret Heldman, Brenda McKee, Lynn Schneider, Lynn Zister. Junior Bronze--Cheryl Coker, Susan Haus, Debbie Heldman, Jim McGill.
- *LACHINE FSC: 2--Vina Bray.
- *LAKE SHORE SC: 4--Kenneth Polk. Silver Free--Kenneth Polk. Junior Silver--Stephen Piluke.
- *LEAMINGTON FSC: Pre--Diane Nicol, Margaret Pridging, Ruth Rivers, Linda Willan. 1--Donna Ciliska, Marjolein Smit. Pre D--Diane Nicol. Junior Bronze--Nancy Addison. Senior Bronze--Susan Nichol.
- *LEASIDE SC: Senior Silver--Margaret McCaw.
- *LEVACK FSC: Pre--Mary Hamilton. 4--Ina Purvis.
- *LINWELL FSC: 3--Kathleen Pizzacalla. 5--Christine Hill. 6--Karen McSween. Junior Silver--Carole McSween.
- *LLOYDMINSTER FSC: 1--Bette Bailey, Sandra Dyce, Loretta Olsvik, Ann Peters, Marion Saint Onge, Marsha Tindall. 3--Frankie Lariviere. 6--Gail Holt. Pre D--Bette Bailey, Peggy Cavanaugh, Sandra Dyce, Sandra Faber, Ann Peters, Marion Saint Onge, Debbie Steeg.
- *LONDON SC: Pre--Diane Cook, Judy Riddler. 1--Diana Powe. Bronze Free--Beverly Mitchell. Pre D--Roberta Williamson, Susan Yates. Junior Bronze--Nancy Hilborn. Senior Bronze--Leslie Holtter.
- *LUNENBURG FSC: Pre--Betty Corkum, Carolyn Crouse, Louise Dares, Gail Fox, Janet St. Clair-Goulding, Lynn Hebb.
- *LUMSDEN SC: Pre--Linda Deitz, Elizabeth Lawson, Marjorie Moffat, Karen Nugent, Lee White. 1--Eleanor Friesen.
- *MAIDSTONE FSC: Pre--Karen Fleming, Ellen Foster, Margaret Marfleet, Sharon McEwen, Cathy Watson, Linda Watson, Jane Wood. 1--Ray Bexfield, Joy Eidsness, Alice Hardy, Sandra Hurlburt, Lynn Imrie, Lorraine More, Christine Ponto, Connie Rudler, Pam Stocker.
- *MARKHAM SC: Pre--Susan Rutledge. Pre D--Nancy Pashler. Junior Bronze--Mary Laurie.
- *MCGILL FSC: Pre--Judy Gasgrain, Eileen Caughell, Bonnie Damer, Claire Marshall, Joan Woo. Pre D--Claire Marshall, Joan Woo.
- *MELFORT FSC: Pre--Eunice Ottoson, Phyllis Rosvold. 1--Ray Schroder. Pre D--Catherine Holien, Janice Silver.
- *MONCTON FSC: Pre--Nancy Frizzell, Terry Frizzell, Odette Gautreau, Colleen Godard, Heather Goddard, Karen Heffernan, Debbie MacDonald, Linda Mailhot, Marion O'Hara, Brenda Oleschuk, Heather Strong. 1--Linda Garrison, Susan Robinson, Dianna Ryder, Susan Stewart. 3--Sheryl Robinson. Pre D--Linda Garrison, Louise Goguen, Joanne Hawryluk, Susan Stewart, David Thibodeau. Junior Bronze--Joanne Hawryluk.
- *MONTREAL FSC: 1--Jane Galbraith.
- *MONTREAL SILVER BLADES SKATERS INC: Senior Silver--Doreen Dumarescu.
- *MOUNT ARROWSMITH SC: Pre--Cathy Stuef. Bronze Free--William Majeresik. Pre D--Jean Arthurs, Cheryl Graf, William Majeresik, Cathy Stuef.
- *NANAIMO FSC: Pre--Debbie Amstutz, Lynne Bowe, Lorraine Chilton, Darlene Foster, Maureen Houston, Margaret Maurer. 1--Doreen Chilton, Darlene Medland. 4--Grace Higgins. Pre D--Margaret Johnson. Junior Bronze--Diane Chilton, Cynthia Riddell, Joan Stewart. Senior Bronze--Marilyn Crane. Senior Silver--Wendy Lake. Bronze Free--Christine Hornby.
- *NELSON FSC: Pre--Andrea Carpenter, Brenda Couston, Gail Konklin, Fern Niven, Vicki Proctor, Wendy Proctor.
- *NEPEAN FSC: Pre--Linda Brett, Linda Klovon, Kathleen Lang, Jeanette Potts, Jane Reid, Nancy Scott, Debbie Thomas, Nancy Warren. 1--Barbara Anderson. Pre D--Barbara Anderson, Barbara Potts, Rosemary Potts.
- *NEW LISKEARD FSC: Pre--Janis Bullen, Janice Ebert, Jackie Elliott, Leata Floreani, Barbara Wesley. 1--Jill Butler, Carol Grant, Jane Sergeant, Kelly Thompson. 2--Susan Ross. Pre D--Susan Ross. Junior Bronze--Trudi Wilson.
- *NEWMARKET FSC: Bronze Free--Paul Dillman.

- *NICOLA VALLEY FSC: Pre--Angela Elsaesser, Rita Franson, Karen Fukushima, Carol Graham, Lorna Lees, Gail Newhouse, Lynne Newhouse, Patsy Sears, Marjorie Stoneman, Mike Zuk.
- *NINAGARA FALLS SC: Pre--Susan Blamar. 2--Gail Gregory. Bronze Free--Susan Bevan. Silver Free--Susan Bevan, Cathy Capercione. Pre D--Kenneth Harris, Patsy O'Hearne, Pixie O'Hearne, Jamie Sattini. Junior Bronze--Hilda Haley. Senior Bronze--Joan Congolosi, Barbara Howarth. Junior Silver--Gail Gregory.
- *NORTH BATTLEFORD FSC: Pre--Debbie Arnold, Lloyd Beaudry, Maxine Eisel, Gaye Ernewin, Terron Farr, Lynn Heartwell, Michele Kraus, Kathryn Logan, Linda Makechak, Dianne Shaw, Sandra - Tait, Christine Taylor, Judy Thompson, Bonnie Torreson. 1--Katherine Makechak, Kathy Moffat, Janis Olson. 2--Jean Denluk, Elaine Eisel, Fern Kirby, Brenda Krauss. Bronze Free--Vivian Rhyorchuk. Pre D--Jean Denluk, Janis Olson.
- *NORTH BAY FSC: Pre--Myra Barker, Jeffrey Brown, Chantel Descoteaux, John Desjardins, Jeannette Gaudet, Patricia Heron, Karen Lahde, Robert MacCormack, Pam Moore, Shelley Pentland, Debbie Peters, Kathy Stein. 1--Kathy Fahlgren, Glen Laframboise, Valerie Perry, Jean Ritchie. 2--Loraine Melsom, Gail Parkinson. 3--Dawn Cockerline, Hollie Davison, Susan Diegal, Tommy Harrison, Terry McKee, Betsy McLean. 4--Michelle Boucher, Debby Drummond, Joanne Vannier, Jim White. Bronze Free--Wendy Browning, Dawn Cockerline, Hollie Davison, Kathy Fahlgren, Terry McKee, Gail Parkinson, Richard Reeves, Marie St. Amour. 5--Diane Cantin, Vickie Charlesworth, Terry Fahlgren. Silver Free--Michelle Boucher, Candy Currie, Patti Curry, Margaret MacCormack, Jim White. Pre D--Dawn Cockerline, Kathy Fahlgren, Glen Laframboise. Junior Bronze--Jill Bowes, Loraine Melsom, Gail Parkinson, Marie St. Amour. Senior Bronze--Betty Jo Bowes, Candy Currie, Terry Fahlgren, Tommy Harrison, Gloria Mutrie, Richard Reeves. Junior Silver--Betty Jo Bowes, Diane Cantin, Margaret MacCormack, Jim White. Senior Silver--Beverley Manary.
- *NORTH SHORE WC: Pre--Tracey Boyd, Terri Fox, Lynn Gallaway, Patricia Humphry, Kristin Moen. 1--Janine Boyd, Leslie Clough, Barbara Terpenning, Cindy Tesluck, Patti Thompson. Bronze Free--Margaret White. Junior Silver--Karel Latham.
- *NORTHWESTERN FSC: Pre--Kathy Beck, Jackie Dean, Lynne Frizzell, Darlene Halpenny, Raymond Marina, Carol Poirier, Laura Walker, Linda Wrobel. Pre D--Cathy Beck, Janice Gorlick, Darlene Halpenny, Laura Walker. Bronze Free--Maureen Moody.
- *OAKVILLE FSC: Pre--Cathy Chappelle, Patsy Gooderham, Margaret Hains, Erna Hiltman, Deborah Nash, Bonnie Tanner. 1--Janet Jarrett. 2--Susan Drowley, Janice Wood. 3--Bonnie Bruce. Bronze Free--Leslie Johnston, Kathy Martin, Barbara Milne, Yvonne Owen, Mary Sainthill, Janice Wood. 5--Janet Dunnet. Silver Free--Janet Dunnet, Ernest Withrow. Pre D--Cathy Chappelle, Debbie Dowding, Deirdre Gardner, Janet Jarrett, Pauline Miller, Bonnie Tanner. Senior Silver--David Dunnet.
- *ORANGEVILLE FSC: Bronze Free--Nancy Watson.
- *ORONO FSC: Pre--Caroline Johnson, Beverley Tennant. Pre D--Linda Barraball, Caroline Johnson, Beverley Tennant.
- *PEMBROKE FSC: Junior Bronze--Charlotte Kruger.
- *PETERBOROUGH FSC: Pre D--Jacqueline Mackey.
- *PINE POINT FSC: Pre--Deborah Douglas, Judy Horwood. Pre D--Judy Horwood, Brenda James, Linda Kuhn, Barbara Murray. Junior Bronze--Sheila MacDonald.
- *PLENTY FSC: Pre--Gaylene Halter, Susan Murk.
- *POINTE CLAIRE FSC: Pre--Margaret Cruikshank, Helen Davey, Patsy Eakins, Mary Findlay, Johanne Fleury, Carol Francis, Alison Howling, Susan Jecks, Sharon Leslie, Joanne Linklater, Beverley Muir, Linda Perrault, Linda Rowe, Barbara Smith, Nancy White. 1--Sharon Rowe.
- *POINT EDWARD FSC: Pre--Richard Evans, Jeannie Jost, Geoffrey Kent, Joanna Selman. 1--Patti MacDonald. 2--Ruth Askin, Diane Crawford, Kathy Haveling, Joan Hunt. Bronze Free--Ruth Askin, Shauna Harris, Kim Johnson, Sandy Wynne. Pre D--Julie Black, Marilyn Brown, Stephanie Gardner, Cheryl Harris.
- *PORT HOPE FSC: Pre--Dawn Bissett, Sharon Bourne, Ainsley Creighton, Barbara Creighton, Karen Green, Carol Riley, Sally Willets. 1--Julia Box, Marg Talbot. 2--Ann Melvanin, Sheryl Talbot, Cathy Williamson. 3--Wendy Babando. Pre D--Christina Denny, Nancy Kelly.
- *PORT PERRY FSC: Junior Silver--David Porter.
- *PRESTON FSC: Pre--Christine Allen, Nancy Carroll, Colleen Mannion, Brenda Hushley. 2--Robin Battley, Gail Decker. Bronze Free--Robin Battley, Gail Forsythe, Vicki Hutchison, Raed MacDonald. 5--Jane Patterson. Pre D--Christine Allen.
- *PRINCE EDWARD FSC: Pre--Janice Brant, Elizabeth Carman, Suzanne Carman, Wendy Magill. Pre D--Mary Murphy.
- *PRINCE GEORGE FSC: Pre--Mary Andre, Sarah Briggs, Leslie Coster, Alice Forward, Ann Cairns, Karen Gluta, Leslie Hemsall, Joanne Horner, Lynn Knight, Corine McCabe, Lynn Lopaschuk, Beverley Pitman, Violet Smith, Pat Thesen, Susan Thomsen. 1--Linda Burnell, Nancy Burnell, Beverly Foleman, Lana Ruddick, Kathy Saunders. 2--Joanne Kropp. 3--Judy Norbratten. Bronze Free--Joanne Kropp, Warren Gabriele, Silver Free--Donna Kropp. Pre D--Linda Burnell, Debbie Hurley, Sheralyn Hurley, Barbara Murray. Junior Bronze--Joanne Kropp, Marion Murray. Senior Bronze--Donna Kropp, William Paschal.
- *PROFESSIONALS: Pre--Marion Methot. 3--Sharon Bender. Pre D--Peter Park. Junior Bronze--Beverley Pettit, Peter Park. Senior Bronze--Keith Hipkin, Evelynne Ramsay, Peter Park. Junior Silver--Maureen Wood. Senior Silver--Carol Lee.
- *QUINTE S&T CLUB: Pre--Linda Beare, Bruce Keller, Lola Reid, Sandra Scott, Brenda Stubbett. 1--Peggy Foley. 4--Susan Beattie. Pre D--Linda Beare, Louise Bourdeau, Paulette Coglein, Roberta Driscoll, Nancy Keller. Junior Bronze--Susan Fox, Lillian Sprackett. Senior Bronze--Michael Fitzgibbon.
- *RICHMOND HILL FSC: Pre--Marie Souche. 1--Lynda Taylor. Pre D--Cathy Morrison, Bernard Souche. Junior Bronze--Cheryl Lance.
- *RIDEAU LAKES FSC: Pre--Joan Bigelow, Ruth Bigelow, Sonya Blackburn, Joan Kindellan, Robin Moorish, David Ryan. 1--Shelley Fader, Susan Hunt. 2--Mary Breen. Bronze Free--Janice Machin. Pre D--Linda Deegan, Janice Machin. Junior Bronze--Kent Blackburn.
- *RIDGETOWN FSC: Pre--Ruth Ashton, Barbara Blue, Lisa Roberts, Valerie Schmitthen, Eunice Stonefish, Christine Stover. 1--Annette Stonefish. 2--Susan Collins. Bronze Free--Susan Collins. Pre D--Jan Park, Eunice Stonefish, Christine Stover, Joan Stover. Junior Bronze--

- Karen Cope.
- *ROSETOWN ELKETTES FSC: Pre D--Sharon Nicholls.
- *ROSSLAND FSC: Pre--Karen Anderson, Marilyn Dupperon, Maryanne McCormack, Patsy Tait. 1--Kathy Speer. 4--Beverly Eccles.
- *ROYAL GLENORA CLUB: Bronze Free--Anne Spencer, Lori Youell. Junior Bronze--Linda Newcombe, Lori Youell.
- *ST. JOHN'S (N.B.) FSC: Pre--Norma Bourque, Donna Cooper, Jack Harvey. 1--Sharon Anderson.
- *ST. JOHN'S (Nfld) FSC: Pre--Brenda Dymond, Anne Green, Barbara Miller. 2--Andy Joy, Brian MacLeod. Pre D--Barbara Miller, Hubert White. Junior Bronze--Wendy Chapman, Carolyn Gosse. Senior Bronze--Brian MacLeod.
- *ST. HYACINTHE FSC: Pre--Ginette Racine. 2--Nicole Faucher. Pre D--Lise Beauregard, Diane Charest. Junior Bronze--Gay Hamilton.
- *SARNIA FSC: Senior Bronze--Robert Mathers.
- *SASKATOON FSC: 1--Beverley Andre, Heather Henderson. 2--Susan Halina. 3--Liah Currie. Bronze Free--Susan Halina. 5--Don Zeman. Silver Free--Marjorie Borne, Susan Forsberg, Bonnie Leard. Pre D--Wendy Henderson, Gail Ness, Maxine Valade. Junior Bronze--Norma Roadhouse.
- *SAULT FSC: Pre--Spephonie Bown, Marie Dufresne, Debbie Irving, Karen Palanuk. 1--Sherry Linton. 3--Janet Hafner.
- *SCARBORO FSC: Pre--Lori Anstey, Cathy Milne, Cathy Scott. 1--Lynda Anstey, William Baker, Janet Harper, Ronald Jackson, Ellen March, Lucy Schofield. Silver Free--Marilyn Olivo. Pre D--Daniel Caveney, Sheila Frisk, Marie Oystreich, Valerie Taylor. Junior Bronze--Vivian Taylor. Senior Bronze--Gisela Braune, Marilyn Olivo, Catherine Ramsden, Catherine Scott.
- *SILVER BLADES SC TORONTO: Pre--Loretta Bardsley, Lynda Bruce, Catherine Haire, Margaret McTaggart, Nancy Dangford. 2--Renee-Claire Chambers, Debbie Pointer. Bronze Free--Karen Drennan, Nancy Duff, Patty Welsh. Pre D--Janet Allen, Jane Boudreau, Robbie Fisher, Margaret McTaggart. Junior Bronze--Sharon Douglas. Senior Bronze --Arlene Hall. Junior Silver--Norah Galbraith.
- *SOUTH RIVER FSC: 1--Rebecca MacDonald.
- *STAMFORD FSC: Pre--Barbara Allen, Lorraine Pichette, Kristyn Wilson. 1--Ann Black, Charmaine Carter, Penny Code, David Ireland. 2--Mardi Biggar, Patricia LeMasters, Valerie Lewis. Bronze Free--Mardi Biggar, Debbie Higgins, David Ireland, Valerie Lewis, Adrienne Mezo, Enid Salisbury. 6--Jack Driscoll. Silver Free--Ruth Johnston, Louise Martin. Pre D--Eileen Black, Patty Edmunds, Stephanie Fredo, Vicky Goldsborough, Lindsey Hendershott, David Ireland, Carol Johnston, Susan Kemph, Sue Kimmel, Janice Martin, Ann McKenzie, Kathy Ofrenchuk, Lorraine Pichette, Enid Salisbury, Bonnie Sheppit, Karen Shuman, Kristyn Wilson. Junior Bronze--Ann Black, Donna Coleman, Monica Draeger, Betty Hamill, Janice Martin, Susan Montgomery. Senior Bronze--Debbie Higgins, Sheila Radovancevic. Junior Silver--Patsy LeMasters, Louise Martin. Bronze Pair--Robert Irvine.
- *STETTLER FSC: Pre--Beverley Falkenberg, Blythe Lagore, Dianne Martin, Gwen Phibbs. 1--Marilyn Martin, Suzanne Neilson, Laurie Sorenson. Pre D--Doug Biette, Caroline Hockley, Melinda Hockley, Linda Innocent, Marilyn Martin, Suzanne Neilson, Nancy Pooley, Laurie Sorenson, Joan Strain.
- *STRATHROY FSC: Pre--Kendra Baker, Carol Hamilton, Monica Healey, Cathy Lea. Pre D--Carol Sol.
- *STREETSVILLE FSC: Pre--Nancy Trimble.
- *STOUFFVILLE SC: Pre--Sharon Mercer, Debbie Ward. Pre D--Lyn Horton, Susan Huxtable, Sharon Mercer.
- *STURGEON FALLS FSC: 1--Sharon Dillon.
- *SUDBURY SC: Pre--Lorraine Champaigne, Susan Haryett, Irena Kuchtoruk, Susan Simms, Carl Steele. 1--Mary Cecutti, Michelle Mailloux. 2--Connie Fraser, Louise Gauthier, Cathy Litvinchuk. 5--Wendy Anderson. 6--Leigh Anderson. Pre D--Mary Cecutti, Patty McGarry. Junior Bronze--Connie Fraser, Michelle Tessier. Senior Bronze--Michelle Tessier. Junior Silver--Wendy Anderson. 1--Catherine First.
- *SUMMERLAND FSC: Pre--Janice Cook, Christine Corry, Mary-Lou Dunn, Estelle Irwin, Jennie Skipping. 1--Shirley Weeks. 2--Shirley Pruden. 3--Cathy Minchin. 5--Barbara Porritt.
- *TIMMINS-PORCUPINE FSC: Pre--Anne Pizzale, Susan Poulin. 1--Peter Poulin, Louise Roy. 2--Debra Millar, Lynda Scott. 4--Debbie Fauteaux. Pre D--Susan Cybulski, Mona Jones, Tina Jones. Junior Bronze--Cleo Clement, Lynda Scott. Junior Silver--Carol Farrell.
- *TISDALE FSC: Bronze Free--Debbie MacLeod. 6--Shelley MacLeod.
- *TORONTO CSACC: Pre--Kim Hill. 2--Nicole Dussault, 3--Beth Peters. Silver Free--Lindsay Histrop. Pre D--Ralph Dinkla, Mrs. G.M. Fisher, Mrs. J.A. Grieve, Julia McCraw, Barbara Ross, Sandra VanReef, Ann Taylor, John Watt. Junior Bronze--Lindsay Caldwell, Mrs. J.A. Grieve, Mrs. M.R. Smith. Senior Bronze--Nicole Dussault, Margaret Evans.
- *TOTEM FSC: Pre--Gloria Bachoffer, Deborah Lafrance. 1--Lillian Bachoffer, Michele Coutu, Jacqueline Kinsey.
- *TOWN OF MOUNT ROYAL FSC: Pre--Monica Friedman, Claudia Kabbash, Kathy Kulialk, Mary Mann, Freddy Ross. 1--Shelley Meyer. 2--Barbara Cook, Judy Langley. Silver Free--Maryellen Manning, Laura Maxfield.
- *TRAIL SC: Pre--Lynne Banks, Suzanne Bosse, Debbie Brandt, Bob Briley, Diana Brown, Donna Buna, Richard Hunter, Lynn Kilburn, Nancy Kabasek, Janet McClean, Linda Nutini, Beckie Reichert, Holly Ridenour, Debbie Taylor, Patti Young. 1--Darcy Almqvist, Laurie Bradford, Robin Briley, Marcia Dalziel, Darlene Debler, Karen Kenneway, Margaret Kolthammer, Donna Nutini, Bernadette Pisacreta, Carol Postmus, Patty Vamaske, Leslie Williams, Margaret Wood. 2--Kathryn Haggarty, Kerry Murphy. Pre D--Darcy Almqvist, Cyndi Beattie, Laurie Bradford, Darlene Debler, Karen Kenneway, Margaret Kolthammer, Carol Postmus, Margaret Wood. Junior Bronze--Vivienne Purdy Debra Wood.
- *TRENTON FSC: Pre--Mona Johnson, Velma Johnson, Tina Miluck. Pre D--Kim Bennett. Junior Bronze--Sharon Poole.

- *UPPER CANADA SC: 2--Kim Harper, Debbie Jones. Junior Bronze--Helen Woodjetts.
- *UPLANDS FSC: Pre--Shirley Calvert, Lisa Jobb. 2--Sandra Tittley. Pre D--Debra English, Lisa Jobb, Carole LaForge.
- *UNIONVILLE SC: Pre--Kim Kruger. Pre D--Melody Maynard, Debbie Roberts, Helen Speckert, Janice Thompson.
- *UNIVERSITY SC: Pre--Johanna Drummond, Susan Stone. Pre D--Attila Farkas, Virginia Livingstone, Catharine Norton, Kathy Slyne, Maureen Slyne. Junior Bronze--Daniel Lee, Kim Morishita, Beverley Owen, Joan Southam. Junior Silver--Donna Yates.
- *VALLEYFIELD FSC: Pre--Yolande Perron. 1--Louise Girard.
- *VANCOUVER SC: Pre D--Gregory Barker, Nancy Barker, Susan Barker, Glenn Loveng, Naomi Taguchi.
- *VERDUN FSC: Pre--Janis Williamson. Bronze Free--Greg Bodnar, Denise Lalonde. Silver Free--Janet O'Connor.
- *VERMILION FSC: 2--Oliver Goldsmith, Elaine Osterberg. 3--Arlene Goldsmith, Gloria Osterberg. Pre D--Keith Goldsmith.
- *VERNON FSC: 5--Sandra Ryan.
- *VICTORIA FSC: 1--Peggy Hoskins, Maureen Jasper. 2--Linda Campbell, Diane Laidlaw, Sirja Vanajan. 3--Philip Blake. 4--Ruby Zapotichny. Bronze Free--Maureen Jasper. 5--Pam Reynolds. 6--Judy Roe, Dawn Wakelyn. 7--Karen Kattler. Pre D--Cheryl Fink, Peggy Hoskins, A. Paone, Steve Trainor. Junior Bronze--Lynn Norris. Silver Free--Lorraine Hyne.
- *WALLACEBURG FSC: Pre--Mary Goetz. 2--Sharree Horley. Bronze Free--Barbara Snake.
- *WASCANA WC: Pre--Louise Fansher, Nona Kastning.
- *WATFORD FSC: Pre--Bob McClung, Suzanne Paquette.
- *WAWA FSC: Pre--Rancy Coyne, Lise Hamon, Jack Locke, Helen Nowak, Pauline Rancourt, Warren Robb, Heather Rutland.
- *WC OF ST. CATHARINES: Junior Silver--Karen Capell.
- *WELLAND FSC: Pre--Denise Henri. 2--Janise George, Debra Hammond. Bronze Free--Lee Burnett, Janise George, Debra Hammond. Pre D--Laura Fisher, Denise Henri. Senior Bronze--Debbie Hammond, Joan Mak.
- *WELLINGTON FSC: Pre--Darryle Boyce, Marilyn Channell, Linda MacDonald. Pre D--Linda Channell.
- *WEST END FSC: Pre--Lynn Cappodocia, Joanne Lindsay, Wendy Potter. Pre D--Vina Bray.
- *WEST LORNE FSC: Pre--Cheryle Albright, Sheila Lippold, Sharon Sudicky.
- *WESTON SC: Bronze Free--Marilyn Westra.
- *WILLIAMS LAKE SC: Pre--Maureen Kulak, Shelly Poole. 2--Patricia Latin. Pre D--Elaine Benoit, Denise Bernard, Karen Crosina, Marlene Oxnard.
- *WILLINGDON FSC: 1--Susan Cecconi. 2--Linda Taylor.
- *WINNIPEG FSC: Pre--Leslie Henry. Bronze Free--Janine Thomas.
- *WINNIPEG WC: Bronze Free--Nancy Down, Cindy Earp. Silver Free--Judy Beamish, Colleen Coulter, Carla Norris, Laurie Westcott.
- *WOODSTOCK FSC: Pre--Jane Sedgwick. 2--Wendy Dutton.
- *WYNYARD FSC: Pre--Bonnie Thorsteinson. Pre D--Charlotte Anderson, Carol Haver, Dane Moore, Linda Swedberg, Laurie Thorsteinson, Linda Wikberg.
- *YORKTON FSC: Pre--Pat Carey, Donna Godwin, Lorrie Lockhart, Maxine Teplitsky, Lark Wright.

AMERICAN SKATERS WHO PASSED TESTS IN CANADA

- *ARCTIC BLADES FSC: Junior Silver--Claude Sweet, Kathleen Sweet. Senior Silver--Claude Sweet, Kathleen Sweet.
- *BROADMOOR FSC: Junior Silver--Maureen Tinsley.
- *BUFFALO C&SC: Bronze Free--Bob McClure. Silver Free--Bob McClure.
- *BUFFALO FSC: Senior Bronze--Benedetta Kissel. Junior Silver--Benedetta Kissel, Elizabeth Roberts.
- *CIVIC FSC BUFFALO: Bronze Pair--Ann Czerwinski. Junior Silver--Ann Czerwinski.
- *KENAWAN SC: Bronze Free--Sally Nixon.
- *GENESSEE FSC: Senior Silver--Patricia Burns.
- *WESTMINSTER SC: Pre--Sharon Cullaton, Debbie Dailey, Maureen Flanagan, Connie Krepelka, Connie Roos. 1--Monica Spalding. 2--Bruce Chase. Senior Bronze--Kiara Spalding.

TESTS PASSED BY USFSA SKATERS

Following are all Tests passed and recorded with this Committee from March 8, 1966 to April 14, 1966. All errors should be reported to the USFSA Office, 575 Boylston St., Boston, Mass. 02116

- *ALBUQUERQUE FSC: Pre--Alice McLish, Michael Sousa. 1--Kevin Franchini, Sue Fulton, Steve Stewart.
- *ALL YEAR FSC: Pre--Diane Drury, Ann Frick, Ann Frick Sr., Debbie Kertes, Marilyn Lambert, Mary Lawton, Shanna Walker. 2--Karen Pearson. 4--Diane Garcia, Alex Rubio. 5--Sally Black. Bronze--Elmer Griggs, Nancy Griggs.
- *ANN ARBOR FSC: Pre--Alan Cohn, Beatrice Davisson, Debra Fraser, Allegra Haefner, Sue Johnson, Kathy Magielski, Beverly Morley, Ann Serafin, Elizabeth VanDenBosch. 1--Tony Epstein, Leslie Glenn, Diane Stewart, Sandra Swisher. 2--Nancy Mills. 3--Roger Glenn. 4--Dennis Vangleson. Pre D--Cindy Stein. Bronze--Chris Eschman, Barbara Farran, Kathy Hendrickson, Kay Katzenmeyer, Susan Porter, Cindy Roberts. Pre-Gold--Susannah Brown.
- *ARCTIC BLADES FSC: 1--Anne Sherman. 3--Robin Walsborn. 7--Kathleen Miller, Roger Bass. Pre D--Frances Heneise.
- *ARROWHEAD FSC: 6--Debbie Lauer. Pre D--Margaret Flintham. Bronze--Betty Patterson, Glenn

Patterson Jr. Pre-Silver--Doug Bailey.

*ATLANTIC CITY SC: 1--Ellen Hubbard.

*BALTIMORE FSC: Pre--Danny Dore, John Hasiuk, Cindy Hester, Barbara Lofgren. 1--Janet Lofgren. Pre D--Danny Dore, Deborah Foos, Judy La Grange, Marge Lewis, Tim Zink. Bronze--Scott Henderson, Linda Schaub, Laura Schwartz, Pre-Silver--Betty Dachtile.

*BERKSHIRE HILLS FSC: Pre--George Kirk. Pre D--Debbie West. Bronze--Mrs. James King. Pre-Silver--Jeffrey Caird.

*BLADE & EDGE OF PASADENA: Pre--Christine Baker. 1--Kathleen Lubanski. 2--Gloria Parmenter. Pre D--John Cooper.

*BROADMOOR SC: 2--Dixie Shipp. Pre-Gold--Kathleen West.

*BROOKLYN FSC: 6--Gail Kaplan.

*BUFFALO CURLING & SC: 2--Mary Hardt.

*BUFFALO SC: Bronze--Melissa Barton, Kate Bukowski, Elizabeth Cotter. Pre-Silver--Bryan Keller

*BURIEN SC: Pre--Dicka Wines. 2--Patty Mott. Bronze--JoAnn Adams.

*CAPITAL CITY FSC: Pre--Debbie Cotter. 1--Peggy Hanson, Pat Owens.

*CHALET FSC OF ROCKFORD: Pre--Julie Baer. 1--Barbara Hoyoss. 2--Shari Smith. Pre D--Robert Ambrose, Ronald Grubb, Dana Thienaman, Margo Thienaman, Rhonda Walters. Bronze--Shari Smith.

*CHARTER OAK FSC: Pre--Joy Cushner, Martha Turek, Jan Welch, Debbie Wood. 1--Lisa Scull. Pre D--Dorothy Biederman, Henri Carbonneau, Cherie Cushner, Joy Cushner, Carol Hendrickson, Miep Krot, Martha Turek. Bronze--Lisa Scull.

*CHEVY CHASE CLUB: Pre D--Claire Moorhead.

*CITY OF LAKES FSC: Pre--Teri Johnson. 1--Melody Livingston. 2--Nancy Johnson.

*CHICAGO FSC: 2--Geni Moots.

*CLEVELAND SC: Pre--Marcia Ault, David Baier, Mrs. David Baier, Claire Coakley, Lois Hamann, Roger Jackson, Janey Lemmon, Mrs. William Lemmon, Bill Oberndorf, DeWayne Richey, F. Cole Stearns. 1--Kathy Albrecht, Jane Clarke, Mrs. Robert Griggs. 5--Debbie Shaw.

*CLINTON FSC: Pre--Carol Butler, Martha Howard, Nancy Owens, Kris Slobodian. 1--Connie Kratzert, Dan Swartfiquer, Tom Taube. 2--Robin Hyde, Kristin Owens. Pre D--Debby Henry, Judy Henry, Kris Slobodian, Aimee Taube. Bronze--Christopher Powers.

*COLONIAL SC: Pre--Jackie Davidson. 1--Joyce Hamilton. Pre D--Carolyn Seeley.

*COLUMBUS FSC: Pre--Lynn Furber, Kathleen Hickok. Pre D--Joseph Harpster. Bronze--Joseph Harpster.

*COMMONWEALTH FSC: Pre D--Philip Chafee, Lee Janelle, Louis Scheyd, Claudette Tremblay. Bronze--David Baltin, Fred Skilling, Lucille Weigler.

*CORNELL FSC: Pre--Emily Adler, Nancy Gates, Michael Hall. 1--Sarah Murray. 2--Susan Metz. Pre D--Sandra Slovick. Bronze--Sarah Murray, Lyman Parratt, Alison Taylor. Pre-Silver--Sheela Fertig. Silver--Elizabeth Blatherwick.

*DALLAS FSC: Pre--Georgiana Green. 1--Mary Mook. 2--Ricky Plum. 4--Christy Jenkins, Carol Plum. 6--Beth Shepherd. Pre D--Byll Greene, Beverley Thompson. 1--Melinda Wilson.

*DENVER FSC: Pre--Diane Buchalter, Andrea Burr, Kitty DeLo, Diane Dennison, Lori Sullivan, Stephanie Tapp, Mary Thomas, Teri Wignall. 1--Diane Buchalter, Kitty DeLo, Diane Dennison, Mary Thomas. 2--Linda Hiestand, Julie Hyden, Patty Snyder. 3--Cindy Scott. 4--Tim Flynn. 6--Doug Berndt, Patty Grazier. 7--Patty Grazier. Pre D--Kaye Bache, Sandee Band, Edward Clinkenbeard, Judy Crossland, Betty Le Massena, Heather Little, Arlene Sibrell. Bronze--Ruth Hebard, Heather Little, Louise Raynie, Lynne Savage.

*DETROIT SC: 1--Valerie Chase. 6--Kenneth Schroeder. Pre D--Laurie MacPherson, Pat Shock. Bronze--Tom Caribardi. Pre-Silver--Denise Higden.

*DULUTH FSC: Pre--Susan Elliott, Debbie Riddell, Carmen Rindal, Wickie Toms. 1--Cheryl Elliott. 4--Shelley Pendleton.

*EAST CLEVELAND FSC: Pre--Juanita Grupe, Edward McTernan, Julius Smetona, Phoebe Tucker, Wiegand Wisner.

*EL CAMINO ISC: 7--Maureen O'Reilly.

*ENGLEWOOD FIELD CLUB: Pre--Liz Becton. 1--Cynthia Becton. Pre D--Sophie Bell, Libby Taussig. Bronze--Katherine Proctor, Lois Stanley.

*ESSEX HUNT CLUB: Pre--Patricia McDonnell, Katherine Moyer.

*ESSEX SC: Pre D--Pamela Adams, Leise Tracy. Silver--Andree Baron.

*EVANSVILLE FSC: Pre--Frank Mooney. Pre D--Amy Barrett, Eugene Young.

*FSC OF CINCINNATI: Pre--Talyn Altenbernd, Zilpha Begley, Martha Hall, Karen Jackson, Elizabeth Willard. 1--Gregory Jivoin, Marcie Schmidt. Pre D--Kathleen Berndsen, Cathy Burns, Deborah Decker, Father Paul Frey, Ruth Kolp. Bronze--Mary Doll, Gregory Jivoin, Robert Mersfelder. Pre-Silver--Emma Speeg.

*FSC OF GREEN BAY: 7--Patricia Noska.

*FSC OF MADISON: Pre D--Ed Borgatta.

*FSC OF MINNEAPOLIS: Pre--Carolyn Boyce, Janet Clarke, Peter Green, Paul Loring, Rebecca Ridgway. 1--Ferris Fletcher. 2--Allison Fawkes.

*FSC OF OMAHA: 4--Linda Srb.

*FORESTWOOD FSC: Pre--Steve Cochran, Diane Forster, Robert Forster, Gerri Graham, Martha Melter, Ellen Neagle, Scott Nagy, Ann Rosewicz, Debra Sarwinski, Ron Spencer, Kathryn Thaller, Lawrence Thaller, Debra Zinsmeister. 1--Diana Bosoty, Denise Nagy.

*FORT WAYNE ISC: Pre--Cathy Fendt, Carol Fishman, Wendy Giffin, Jill Maier, Jody Van Ry, Patty Young, Jennifer Zeh. 2--Hans Lupke, Barbara Meyer. 3--Rhonda Meeks.

*GATEWAY FSC: Pre--Bonnie Beardsmore, Mary Gerhard, Renee Hautz, Karen McLean, Lisa Stearns, Fred Wehrle, Jr.

*GENESEE FSC: 1--Marcy Lerner.

*GLACIER FALLS FSC: Pre--Christine Baim, Laurie Brandel, Gary Emerson. 1--Chuck Baker, Nancy Hildebrand, Sally Smith. 3--Howard Eno. Pre D--Jack Antonucci, Dorothy Barker, Ron Knudson. Pre-Silver--Ruth Sullivan.

*GREAT FALLS FSC: Pre--Jane Bateman, David Bauer, Connie Funk, Sandra Mares, Anna Miller, Kathy Murray, Cindy Van Diest. 1--Judy Bernsdorf, Carol Tigh.

- *GREAT NECK FSC: Pre--Robyn Cohen, Nina Cross, Sheara Friend, Judy Hirschowitz, Jill Katz, Susan Knowles, Madeleine Lehrer, Debbie Levine. 1--Stacey Raphael, Bonnie Marx. 4--Lynn Rothschild. Pre-Silver--Carole Lorber.
- *GREENWICH SC: Pre D--Richard Kegelman.
- *ICE CLUB OF BALTIMORE: Pre--Tracey Cahill, Carol Lothrop, Claire Owens. Pre D--William Hooper, Claire Owens.
- *ILLINOIS FSC: Pre--Tom Kuo. Pre D--Tom Kuo.
- *INDIVIDUAL MEMBER: Pre--Lily Aukstulis, Shirley Biscoe, Lyn Breach, Nancy Doherty, Deborah Henderson, Linda Palmer, Nancy Parisi. Carol Schwartz, Carol Small, Victoria Van Damm. 1--Lynne Baker, Leslie Walser. 2--Jeanne Mosman. 4--Michelle Kelley. Pre D--Dianne Shirlev, Bronze--Harlan Brunnermer.
- *INTERNATIONAL FSC: Pre--Leslie Davis, Susan Green, Diane Reichwein, Raymond Yeldham. 1--J. Wallace Davis III. 2--Robert Englert.
- *LAKE REGION SC: Pre--Mary Christianson, Betty Jonsson. 2--Colleen Bryn, Doug Schell.
- *LAKEWOOD WC: Pre--Walt Knowles. Pre D--Lisa Carman, Daniel Downey, Tracey Skidmore, Dawn Wieburg, Jeri Wolverton, William Wolverton. Pre-Silver--Sharon Newcomb.
- *LANSING SC: Pre--Alfred Assid, Donald Bunka, Roberta Lacey, David Leitner. 1--Kristie Lillevik. 2--Kathleen Leitner, Louise Moore, Rebecca Vore. 3--Janet Van Camp, Janet Weeks. 4--Lee Dickinson. 7--Margaret Lill. Pre D--Alfred Assid, Stephen Arrison, Ruth Brockway, Roselinde Crandall, Robert Minnicks, Louise Moore, Janet Weeks. Pre-Silver--Janet Van Camp, Thomas Van Camp. Silver--Mary Ambrook, Barbara Vary.
- *LAURELTON PINES SC: 2--Jeanne Rocklein. 3--Marguerite Roey. Pre-Silver--Anine Werlich.
- *LITTLE SUN VALLEY SC: Pre D--Brenda Lewis, Patricia Sassa.
- *LONG ISLAND FSC: Pre--Robin Schub. Bronze Pair--Ann Pasaric, Dan Pasaric.
- *LOS ANGELES FSC: 1--Loretta Abdun-Nur, Cynthia Sims. 2--Wendy Burge, Kerry MacLennan. 5--Robbie Bradshaw. Pre D--Jennie Walsh.
- *LOUISVILLE FSC: Pre--Joan Bauer, Carolyn Cook, Cynthia Davis, Jim Davis, Charlene Elam, Zak Hulak, Meme Sweets. 1--Iris Amundsen, Alexandra Brown, Martha Perry, Julie Pflughaupt, Kathy Pugh. 2--Pat Ashwill, Barry Kamber, Patsy King, Debbie Taylor. 3--Susan Dresel. Bronze--Caroline Cook, Frank Gaines, Julie Ravlin. Pre-Silver--Susan Dresel, Barry Kamber, Terry Harman.
- *MANHATTAN FSC: Pre D--Raymond Betsch. Pre-Silver--Charlotte D'Amato.
- *METROPOLITAN FSC: Pre--Monica DeRise, Suellen Mele, Frederic Meyers, Beth Middleton, Douglas Morris, Elizabeth Moss, Christine Windecker. 1--Jane Berger. 2--Randy Dayney, Laurie Rothstein, Amy Schenck.
- *NEW HAVEN SC: Pre--Paula Ambrosini, Irene Brandriff, Elizabeth Hundt, Melody Palm, Lynne Shelnitz.
- *NORDIC FSC: Pre--Gay Nutil, Susan Vetrano, Jim Waltz. 1--Amy Greenberg, Nancy Merkel, Linda Roberts.
- *NORTH JERSEY FSC: Pre--Cynthia Bashford, Barbara Johnson, Sally Schreyer, Sandra Shaw, Sarah Shemin. 1--Christina Bickell. 2--Lucy Picone, Michelle Siatke.
- *NORTH SHORE SC: Pre--Paul Hayward. 1--Maryanne DiMatteo, Freeman Nickerson, Jr.
- *OLD YORK ROAD SC: 1--Donna Videtto. 2--Eda Spielman. Pre D--Steven Balbus, Edward Goldman, Lolly Lipschutz, Sharon Newman, Susan Smith, Debby Tomaszewski, Wendy Wiseman. Pre-Silver--Leslie MacVaugh. Pre-Gold--Ronald Burns.
- *PARK FSC: Pre--Deborah Derow, Barbara Joyce, Susan Lavorato, Joan Werber. 1--Sheila Bushkin, Ann Gales, Susan Schmidt, Lisa Sontog. 2--Maria Bodman. Bronze--Theresa Grundorfer.
- *PENGUIN FSC: Pre--Cathy Fly. Pre D--Jan Henrick, John Kaiser, Nancy Kaiser, Joanne Snyder, Dawn Transue. Bronze--Frank Geroski.
- *PENN STATE FSC: Pre--Joan Lampe, Alan Mianulli. 1--Barbara Kaiser, Jeanne Tammen. Pre D--Susan Danforth, Mary Haper, Fred Lampe, Joan Lampe, John McCormick, Frank Palinski, Jan Tammen. Bronze--Ardalene Nease. Pre D--Richard Humphreys.
- *PHILADELPHIA SC&HS: Pre--Katie Bishop, Kim Conly, Joanna Crawford, Betsy Fergusson, Laura Fergusson, Raquel Feroe, Amanda Kohlhas, Alice Lefton, Marie Lefton, Beth Lishon, Leslie Lishon, Sara Smedley, Robert Yoh. 1--Sabin Colton, Leslie Dingle, Jane Fergusson, Jacob Kohlhas Jr., Margot Wilhelm. 2--Kathy Leydon. 5--Robert Helmers. 6--Lise Gantz. Pre-Silver-- Sylvia Davenport. Silver--Virginia Stearns.
- *PICKWICK CENTER SC: Pre--Rochelle Bricker, Cindy Browne, Christine Maasdam, Lynn Rossberg, Sheri Verran. 1--Maria Mejia, Candy Pacheco. Pre D--Rudi Cowl, Ginna Freno, Johanna Johnson, Elaine MacPherson, Nancy Marsh, Kristine Olson.
- *PLAZA FSC: 5--Marianne Mazur.
- *PORTLAND ISC: Pre--Debra Arenz, Denise Bottaro, Terry Emstrum, Linda Jordan, Carolyn Mattson, Leslie McCollum, Kathy Mena. 2--Kathy Chappell, Paul Herrmann, Janet Stuart. 3--Michelle Moody. 5--Christy Ito. Pre D--Kathy Chappell, Kerry Fitzpatrick, Candace Foster, Christy Ito, Leslie Sandberg, Jan Schieber, Gloria Taylor, Emily Zimmerman. Bronze--Christy Ito. Pre-Silver--Larry Langford, Carol Paulsen, Melody Spence. Silver--BITT Moore, Carol Paulsen.
- *PRINCETON SC: Pre--Melinda Pattison. 1--Carol Cracken, Holly Murphy. Pre D--Gregg Montgomery. Bronze--Andrew Stroukoff, Peter Stroukoff. Silver Free--Bruce Tyler, Dianne Tyler.
- *PROFESSIONAL: Pre--Jim From, Allan Shipman, Tom Thom. 1--Stan Sussina, Doris Walbrecker. 2--Theresa Reichart. Bronze--Jeanne Tiedemann. Pre-Silver--Allan Shipman. Pre-Gold--Mary Batdorf, Carol Porter.
- *PROVIDENCE FSC: Pre--Margaret Dooley, Linda Mazzuchelli, Jewell Montecalvo.
- *QUAKER CITY FSC: 1--Sharon Kohl. 2--Paula Heydt. 4--Valerie Nauroth.
- *QUEEN CITY FSC: Pre--Ann Bradshaw, Judy Cullen, Thomas Durden, Kathleen Eby, Holly Heines, Teri Miracle, Victoria Ogden. 1--John Malloy. 2--Kearlen Abel. 3--Christine Malloy. Bronze--Dorothy Benken, Mary Benken. Pre-Silver--Paula Guy.
- *R.P.I. FSC: Pre--Patricia Banta, Abby Resnick, Candace Smith. 1--Patti Larson, Linda Levitt. 6--Frank Mantha. Pre D--Evelyn Crandall, Christine Fletcher, Candace Smith. Bronze--Kathy

Facteau, Lesley Cadman, Alisa Cahill, Jerilyn Klein, Betty Rizzo, Kathleen Ryan, James Symanski.

*RARITAN VALLEY FSC: Bronze--Jayne Everitt.

*RED RIVER VALLEY SC: Pre--Connie Callahan, Connie Hofstrand, Susan Holly, Jennifer Johnson, Melba Johnson, Susan Knutson, Kimberly Moher, Cindy Motchenbacher, Polly Provencher. 1--Paula Cadwell, Mary Clower, Rebecca Miller, Jean O'Day, 2--Mary Black.

*RYE FSC: Pre--Nathan Auslander, Rose Auslander, Kris Birkeland, Ruth Cohen. 1--Missy Berry, Cynthia Conron, Kim Gantz, 2--Donald Bonacci, Lynn Chapman, 4--Beatriz Wrigg, 7--Nancy Wormser. Pre D--Marcia Hampton, Barbara Skelly. Bronze--Martha Bodner, Donald Bonacci, Elizabeth Gronberg, Renee Kent, James Lehrberger. Pre-Gold--Mary Dvorak, Nancy Wormser.

*ST. LAURENCE FSC: Pre--Carol Auster, Martha Howard, Kathy Dwyer, Laura Wheeler. 1--Sharon Petrie. 4--Linda Smith. Pre D--Ame Gehrig, Kathy Taylor, Cheryl Tiel. Bronze--Sharon Petrie.

*ST. LOUIS SC: Pre--Michele Horner, Richard Soderquist. 1--Patty Link. 2--Margaret Kirby, James Robertson, Kathleen Seithel, 3--Terri Adler, Debbie Dodge. 4--Andrea Wylie.

*ST. MORITZ ISC: Pre--Lynn White. 1--Kathy Dale, Robert McGuire, Terry Turner. 3--Joel Goodrich. 4--Judy Roe. Pre D--Wilfred Bigelow, Julie Carter. Bronze--Bud Greer. Pre-Silver--Allan Schrader, Barbara Zinzer. Silver--Cheryl Chatham. Pre-Gold--William Moyer.

*ST. PAUL FSC: Pre--Betsy Hobson, Diane Lange, Margo Stenes. 1--Barbara Bezek, Rosemary Wilzbacher, Barbara Yackel. 2--Gregory Scholten. 3--Mark Birnbaum.

*ST. PETERSBURG FSC: Pre--Deborah Brown, John Davis, Eileen Meredith, Judy Wallace. 1--Terese Robinette. 2--Debra Dabbs, Sharalyn Dodge, Larry Norton.

*SEATTLE SC: Pre--Rena Ringen, Doreen Underhill. 2--Paula Buntin, Cheryl Davis, Jackie Davis, Marjorie Hegge, Tom Steinruck. 3--Carolyn Crossett. Bronze--Karen Francom, Milt Johnson. 1--Janet Rector.

*SC OF BOSTON: Pre--Mary Martin, Dudley Miller III, Haven Spencer, David Warden, Ellen Watts. 1--Linda Leach, Karen Spencer.

*SC OF BRUNSWICK: Pre--Mary Kinworthy, Prudence Lord, Marjorie Perkins. 1--Vicky Frost.

*2--Pamela Morgrage. Pre D--Priscilla Bois, Charles Chase, Ronald Durgin, Linda Dyer, Marjorie Perkins, Karen Stevens, Robert Wade, Willoughby Wight. Bronze--James Kamin.

*SC AT DARTMOUTH: Pre--Deborah Breed, Eugenia Frey, Sandra Moore, Linda Skewes. 2--Marilyn King. *SC OF HARTFORD: Pre--Julia Wonsiewicz. 2--Bonnie McConnell.

*SC OF LEWISTON: Pre D--Peggy Buehl.

*SC OF NEW YORK: Pre--Richard Skudstad. 3--Michael Sklar. Pre D--Patricia Keightley. Bronze--Albert Clayburgh, Andrew Kalinyak.

*SC OF SAN FRANCISCO: Pre-Silver--Michael Hoffman.

*SC OF VAN NUYS: Pre--Linda Chulos, Debbie Crowell. Pre D--Robin Richardson.

*SC OF WORCESTER: Pre--Sally West.

*SKOKIE VALLEY FSC: 5--Steve Switzer.

*SOUTH BAY FSC: Pre--Ann Steward. 1--Wayne Armstrong, Matthew Bagdasarian, Greg Boyvin, Carolyn George, Kim McIsaac, Kristine Palica, Susan Rogers. 2--Michele Urbany. 4--Mark Rehfield. 5--Pamela Shivers. Bronze--Judith Colby, George Field Jr.

*SOUTH MOUNTAIN FSC: Pre--Phyllis Connell. Pre D--Deborah Dunn. 1--Richard Stolbach.

*SOUTH SIDE IC OF CHICAGO: 1--Janice Kude, Jack Campagna, Suzanne Davis. 7--Libby McFadden.

*SOUTHERN CONNECTICUT FSC: Pre--Ann Deselding, Peggy Jordan, Susan Mertz. 1--Barbara Gage, Dorothy Hamill. Pre D--Sue Angerole, Jane Durber, Lisa Leyland, Evelyn Magliola, Raymond Magliola. Bronze--Sharon Diekneit, Lois Jamieson, Carolyn Rugg.

*SOUTHPORT SC: Pre--Cheryl Haggarty, Karen Haggarty, Sandra Houghton, Dirk Smith. 1--Eleanor Peterkin.

*SUN VALLEY FSC: Pre--Monica Gaw, Karen Greenwell, Newell Jones, Madonna Lambert, Prentice Lambert, Marion Nugent, Connie Schmitt. Pre D--Betsy Duncan, Karen Greenwell, Nancy Hicks, Newell Jones, Prentice Lambert, Marion Nugent, Madonna Lambert. Pre-Betsy Duncan.

*SUPERIOR FSC: Pre--Jean Bourgeois, Marit Hassel, Pamela Johnsen, Steven Johnsen. 1--Ann Doyle, Molly McConnell. 3--Connie Colton.

*SYRACUSE FSC: Pre-Silver--Nancy Chard.

*TOLEDO FSC: Pre--Larry Corlett, Margaret Elliott, Nancy Stoll. Bronze--Margaret Elliott, Susan Winkler. Pre-Silver--Anne Melotik.

*TROY SC: Silver--Joyann Glinka.

*TULSA FSC: Pre--Martha Ainsworth, Terry Ainsworth, Nita Arnold, Lucile Carrico, Margo Carrico, Pamela Chelsea, Mary Cone, Deanna Dward, Patti Echols, Becky Hale, Jeff Hale, Linda Herzfeld, Susan Lipe, Carrie Mandeville, Lauren McKenzie, Claire McNearney, Rama Minnick, Melissa Morris, Leslie Nelson, Susan Newberry, Laurie O'Brien, Robert Parks Jr., Leslie Pharr, Annette Rogers, Sally Schoonover, Sandra Snead, Marion Townsend, Diane Zonker. 1--Leslie Atkins, Adrian Buitink, Gregory Echols, Karen Garrett, Sharon Hallman, Jimmie Hardebeck, Steven Hardebeck, Eileen McNearney, Sally Perkins, Lorrie Reed, Dick Sutterfield, Leslie Trammel, Forrest Turpen, Jack Welch. 2--Pamela Keeling, Linda LaFortune, Shelly LaFortune. 3--Melinda Paul. 4--Coe Crum. Pre D--Margaret Keeling, Pamela Keeling, Susan Smith.

*UNION COUNTY FSC: Pre--Laurie Carroll, Andrea Peterson, Jimmy Tierney, Pat Tierney. Pre D--Peter Guss, Michele Sabatini.

*UTAH FSC: Bronze--Diane Johnson, Linda Leaver. Pre-Silver--Sherrie Barrett, Talei Chase, LDeann Crowford, Duane Fox. Silver--Marvin Mann.

*VALLEY FSC: Pre--Ann Fulton, Connie Mitchell, Linda Stauffer, Karen Zager. 1--Patty Strouse. Pre D--Connie Mitchell, Betty Naylor, Graham Naylor, Sally Sommers. Bronze--Virginia Collins, Hal Marron, Billie Meneghel, Angie Siren, Jay Siren. Pre-Silver--Elaine Day.

*WAGON WHEEL FSC: Pre--Edith Hellyer, Ann Huntington. 1--Janella Barbow. 2--Karen Tesky, Ellen Vanlandingham. 6--Sharon Meunier, Susanne Susic.

*WALNUT CREEK WC: 1--Christine Ensminger. Pre-Gold--Christine Simon.

*WASHINGTON FSC: Pre--Anatol Dinbergs. 3--Candace Lewis. Pre D--Mary Fennesy, Sheldon Roseman, Colin Saunders. Bronze--Roxxy Mikalis, Colin Saunders.

*WATERTOWN SC: Pre--Elizabeth Banik, John Zakowski. 2--Mary Tracy, Ruth Tracy. Pre D--

Mary Allwein, Dr. William Fisher, Karen Grela, Katherine Martin, Anthony Mauro, Sylvia Mauro, Ann Symanovich, Alan Vaughn, John Zakowski. Bronze--Eileen Kirk, Ross Kirk, Anthony Mauro, Sylvia Mauro.

*WEBER FSC: Pre D--Vickey Carr, Eddie Greenwell, Betty Jones, Annette Kidd, Susie Merrill, Cory Mjaatvedt. Bronze--Betty Jones, Lin Mjaatvedt.

*WESTCHESTER FSC: Pre--Debbie Dahlgren, Debbie DiGiacomo. Pre D--Dr. Frank Reube, Belinda Leinoff, Winifred Stanton. Bronze--Carol Weinrod. Silver--Georgianna Shunney.

*WINTER CLUB: Pre--Meg Blackstone, Colleen Carroll, Peter Cuniff, Kitty King. I--Carley Cuniff, Robin Rogers. Pre D--Ann Stewart.

*WINTER CLUB OF INDIANAPOLIS: Pre--Michael Fisher, Beth Keller. I--Charlotte Melin, Beth Peterson. 4--Deborah Todd. Pre D--Linda Duffy, Michael Fisher, Robert Herzer, Robin Vereen, Lee Walker. Pre Silver--Maryon Valentine. Silver--Caren Cady, Russell Followell, Rosemary Lincoln.

*WISSAHICKON SC: 2--Hillary Jessar, Deborah Smith. 3--Maureen Flanagan. 4--Richard Stengle. 6--Mary Reath. Bronze Pair--Debbie Ziegler, Richard Stengle. Pre D--Mrs. F.J. Schindler, Caroline Tyler. Bronze--Mrs. Horace Lippincott.

*YAKIMA ISC: Pre--Sharon France, Michelle Lee, Jerry Leonard, LaDonna Miller, Chris Pugh, Julie Pugh, Joe Thola. I--Elizabeth Freshwater. Pre D--Jerry Leonard, Gini Richardson, Jill Richardson, John Wenner.

CFSA SKATERS WHO PASSED TESTS IN THE UNITED STATES

*VANCOUVER SC: 7--Marilyn Thompson.

CORRECTION: Paul Pavliska, Cleveland FSC, was erroneously listed in May as having passed the USFSA Gold Figure Test. He actually passed his CFSA Gold Dance Test.



MEN'S JUMPSUITS

Custom Made in Two-Way Stretch
Woven dacron and wool fabric
From \$65

Designed by Melitta Originals

Approved by amateurs and pros
Measure chart and colors available

If interested write: Melitta Enterprises
P. O. Box 9669
Philadelphia, Pa. 19131

DANCERS

For a swingin' summer, move with the right beat

Record **SET A** (6 dances) for Preliminary and Junior Bronze Dances — \$11.00

Record **SET B** (6 dances) for Senior Bronze and Junior Silver Dances — \$11.00

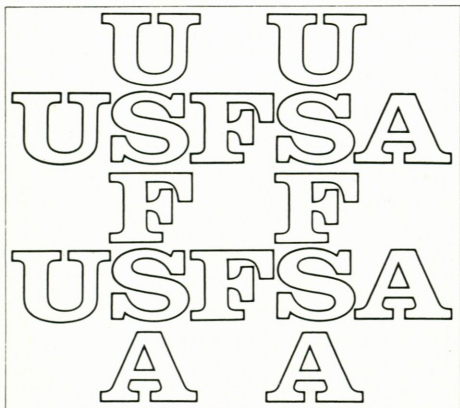
Record **SET C** (7 dances) for Senior Silver and Gold Dances — \$15.00

**ALL THREE SETS ORDERED
TOGETHER — \$30.00**

45 r.p.m. — 7 inch records

**Suggested Reading
for all
ICE DANCERS
"A Manual For
Judges and Skaters"**

**Mail orders to:
Canadian Figure Skating Association
280 Metcalfe Street
Room 203, Ottawa 4, Ontario**



USFSA 1966 ANNUAL GOVERNING COUNCIL MEETING

Nineteen hundred and sixty-six will go down in figure skating annals as a gold medal year.

At its Annual Meeting in Denver, Colorado, May 7-8, the USFSA Governing Council adopted by standing acclamation a resolution congratulating Peggy Fleming for her performance at Davos, Switzerland, last February, which brought her the 1966 Ladies' World title.

Another forward step came when Oscar Dystel, chairman of the USFSA Public Relations Committee, announced that SKATING will be enlarged from its present 6 x 9 format to 8½ x 11 inches, similar to many other popular sport magazines, starting with the November 1966 issue. The editorial content of the magazine will be broadened to include material of interest to the recreational skater as well as to present USFSA membership.

The magazine will be a monthly reminder to the presently unaffiliated skater that figure skating is a beautiful, recreational, fun-filled sport and that the USFSA offers opportunities for advancement through its member clubs.

Other business completed was the adoption of the new qualification rules for USFSA competitions which will come into effect for the next competition season. Robert T. McLeod, chairman of the USFSA Competitions Committee, explained that the

new rules will be published in the forthcoming 1967 edition of the *USFSA Rulebook*. Mr. McLeod announced the following Regional Championship dates which do not appear on the "Calendar" (page 8): Dec. 8-10, South Atlantic Championships at Wissahickon SC (Pa.); Dec. 15-17, North Atlantic Championships at The SC of Lake Placid (N.Y.).

Dr. Frank M. Petkevich, chairman of the Figure Tests Committee, announced that all test rules for figures, pairs and dance had been combined and that these also will be published in the 1967 *Rulebook*, as will all other rule changes approved at the meeting. He pointed out that, while the new test rules are essentially a combining of the existing figure and dance rules with few substantive changes, certain revisions could be highlighted. Of particular importance was a reduction from \$10 to \$5 in the test fee for professionals. Another revision in the rules provided that a Canadian guest judge may judge dance tests up to and including the Preliminary Gold test level. Presently, the CFSA extends the same courtesy to USFSA guest judges.

In connection with judging, it was also announced that, starting next year, applications for formal trial judging at competitions will be limited to individuals who wish to trial judge those events which they need for promotion to the next higher grade. This will not prevent people from practice judging any event they wish.

Another progressive move was taken when William R. Haigler, chairman of the Museum Committee, announced the adoption of formal rules to govern the operation of the Figure Skating Museum which has been established at The Broadmoor World Arena in Colorado Springs, Colorado. The facilities for the museum have been donated to the figure skating world by The Broadmoor. Mr. Haigler asked that all interested individuals write to the Committee with any information regarding skating memorabilia which may be of historical value. He emphasized, however, that articles should not be sent until a request for the item has been made by the Committee. Such letters may be sent to Mr. Haigler, 2022 Ridgeway, Colorado Springs, Colo. 80906.

In other action:

- A final sanction for the 1967 United States Figure Skating Championships was granted to the FSC of Omaha.

- A provisional sanction for the 1968 United States Figure Skating Championships was granted to the Buffalo SC.

- Approval was given making available to all interested competitors specially printed scrolls, suitable for framing, recognizing placement in USFSA qualifying competitions. These will be similar to those scrolls now distributed to schools and colleges for presentation to their skaters at award dinners. Skaters who placed in competitions prior to the introduction of the scrolls can now obtain them from the USFSA Central Office at \$2 per scroll.

- C. Dallas Mauk, vice chairman for Trophies and Medals of the Competitions Committee, announced the acceptance by the USFSA of The Norma McCullagh Zanlungi—Vicky Ann Zanlungi Memorial Trophies for Junior Pairs in the North Atlantic Regional Competitions. These trophies were presented by the Bear Mountain Figure Skating Club, Friends and Pupils. Mr. Mauk took the opportunity to remind the delegates that there are many events in USFSA qualifying competitions which are in need of trophies and said he would welcome any inquiries from individuals or clubs with regard to the presentation of new trophies to the USFSA.

- Henry M. Beatty stated that he was retiring from the chairmanship of the Olympic Games Committee for Figure Skating and that Carl W. Gram Jr. had been elected as the new chairman by the Committee.

- President John R. Shoemaker announced the appointment of Robert Y. Ellis, USFSA Business Manager and Editor of SKATING Magazine, as Executive Secretary of the USFSA.

- Mr. Ellis reported that a new book, *Ice Dances, Exercises and Figures*, will be published shortly by the USFSA. Orders for the book, which will cost \$3, can be sent to the USFSA Office, 575 Boylston St., Boston, Mass. 02116. He also said that the U. S. Figure Skating Association intends to publish, later this summer, a completely revised and updated *Skating Through the Years*.

- President John R. Shoemaker announced that the 1967 Annual Meeting of the Governing Council will be held in Buffalo, May 6-7, and the 1968 Annual Meeting of the Governing Council will be held in San Francisco, May 4-5.

- In addition, the Executive Committee elected Henry M. Beatty, Kenneth L. Brown, Harry N. Keighley and H. Kendall Kelley, all past presidents of the USFSA, to honorary life membership in the Executive Committee, in recognition of their many years of service to the sport and to the USFSA.

THE NOMINATING COMMITTEE presented the following slate of Officers and Executive Committee Members, who were elected, and made recommendations for Committee Chairmen, with terms to begin July 1, 1966: President, John R. Shoemaker, San Francisco; First Vice-President, Delaplaine McDaniel, Philadelphia; Second Vice-President, William R. Haigler, Colorado Springs; Third Vice-President, Norman E. Fuller, Long Beach, Calif.; Secretary, Benjamin T. Wright, Belmont, Massachusetts; Treasurer, John F. Groden, Boston; Amateur Status, Frederick C. LeFevre, Troy, Ohio; Competitions, Robert T. McLeod, Norwalk, Calif.; Dance, Howard G. Taylor, Walnut Creek, Calif.; Dance Judging, Dr. Gordon C. Brown, Ann Arbor, Mich.; Figure Judging, Frank E. Holcombe, Denver; Figure Tests, Dr. Frank M. Petkevich, Great Falls; Finance, Carl W. Gram, Jr., New York; International, Spencer E. Cram, Cleveland; Membership, Brooks Stewart, Southampton, Pa.; Public Relations, Oscar Dystel, New York; Sanctions, Roy Winder, Seattle.

Central Office, Theodore G. Patterson, Boston; School and College Figure Skating, Mrs. James H. Maroney, Summit, N.J.; Rules-Drafting, Benjamin T. Wright, Belmont, Mass.; USFSA 1968 Olympic Comm., Harry N. Keighley, Evanston, Ill.; Television, Carl W. Gram, Jr., New York; ISU Representative, Henry M. Beatty, Tacoma, Wash.; Memorial Fund, John F. Groden, Boston; Judging Standards, H. Kendall Kelley, Cleveland; President's Planning, F. Ritter Shumway, Rochester, N.Y.; USFSA-ISIA Liaison, Spencer E. Cram, Cleveland; USFSA-PSGA Liaison, Harry N. Keighley, Evanston, Ill.; Liaison Co-ordination, John W. McNair, Baltimore; Museum, William R. Haigler, Colorado Springs.

Elected members of the Executive Committee with terms expiring June 30, 1967: E. Newbold Black IV, Haverford, Pa.; Kenneth L. Brown, Fort Bidwell, Calif.; Charles A. De More, Cleveland; Patrick Donnelly, Seattle; John P. Hart, Tacoma; Henry R. Heebner, Philadelphia; George B. Jenkinson, Tulsa; Harry N. Keighley, Evanston, Ill.; H. Kendall Kelley, Cleveland; Alvin A. Lais, Los Angeles; C. Dallas Mauk, Denver; John W. McNair, Baltimore; Thomas H. Miller, Rochester, N.Y.; Theodore G. Patterson, Boston; Robert E. Reed, Tulsa; Robert Sackett, Palo Alto, Calif.; F. Ritter Shumway, Rochester, N.Y.; Dr. Kenneth O. Turner, Palos Verdes Estates, Calif.

JUDGE, REFEREE AND ACCOUNTANT appointments were as follows: The USFSA nominated to the ISU for appointment as International Referee Benjamin T. Wright, Belmont, Mass. In addition, the following appointments were made: National Referee—Robert T. McLeod, Norwalk, Calif. Sectional Referees—Dr. Gordon C. Brown, Ann Arbor, Mich.; Frederick C. LeFevre, Troy, O.; Dr. Hugh C. Graham, Jr., Tulsa. Sectional Dance Referee—Spencer E. Cram, Cleveland. Sectional Accountants—Mrs. Alene Fortune, Northridge, Calif.; Mrs. Albert L. Lenker, Bellevue, Wash.; Mrs. Miriam Hillier, San Mateo, Calif. National Judges—Mrs. Richard D. Bushey, Lyndhurst, O.; Mrs. Paul Dressel, East Lansing, Mich.; Mrs. Carl W. Gram, Jr., New York. Gold Dance Judges—Miss Margaret Hosford, Lynwood, Calif.; Robert T. McLeod, Norwalk, Calif.

THE FOLLOWING CLUBS were admitted to the USFSA as Full Members: Aspen SC, Colo.; The Bay Path FSC, Framingham, Mass.; Burien SC, Wash.; Huntsville FSC, Ala.; Oswego FSC, N.Y.; The SC of Clark Memorial, Winchendon, Mass.; The SC of Lewiston & Auburn, Me.; The SC of Rhode Island, Providence; The Southern New Hampshire SC, Manchester; Valley FSC, West Covina, Calif.; Yakima ISC, Wash.

Probationary Membership in the USFSA was granted to: Free State FSC, Baltimore; The Marin FSC, San Anselmo, Calif.; Rockland SC, Garmerville, N.Y.; Walla Walla FSC, Wash.; Colgate-Hamilton FSC, N.Y.; Euclid Blade & Edge Club, O.; Jefferson City ISC, Mo.



Ace is always high with Lizette.

Style 966 which we call "2 + 2" = perfection on the ice rink or tennis courts. Comes in white with embroidered ribbon trim; 100% Arnel.* Junior sizes 5 thru 17, Misses sizes 6 thru 18, \$16. Style 861 jumper, permanently pleated, the "New Yorker" in white and navy Arnel.* Girls, junior and misses sizes, \$16. Style 461 "Leisure Life" permanently pleated skirt comes in white and navy Arnel,* in girls, junior and misses sizes, \$9.

Lizette's full house insures you of a winner every time. For the highest stakes in active sports fashion, see our four page 1966-67 fashion layout in November issue of SKATING. All items available for immediate delivery.

*Wash and Wear — minimum care

Ice Originals by Lizette, 1223 St. Charles St., St. Louis, Mo. 63103
Tel. 314 - 231-8191

Carnival capers came again: Tchaikovsky's "Nutcracker Suite" was the principal number at Louisville FSC (Ky.). Members 10-18 years old did their own choreography and painted their own scenery . . . Greasepaint roared and stage lights glowed at the Cincinnati FSC (O.) Vaudeville on Ice . . . With a gust of chimney dust, the tale of the invincible Mary Poppins was presented by Baltimore FSC (Md.) . . . Tulsa FSC (Okla.) traveled "round the world on ice" at their annual Ice-Travaganza, jetting off in a life-like plane, from Oklahoma to the tinsel of Hong Kong, to the chimes of Big Ben, onto Red Square, a whirl at Coney Island then, finally, home.

An act featuring fathers and daughters highlighted *The SC of Worcester* (Mass.) show . . . Suddenly to Tyrol was the theme at *Wissahickon SC* (Pa.). The Huehnergards, J. Misha Petkevich and Janet Lynn were featured . . . The costumed Bees buzzed at the *Clinton FSC's* (N.Y.) Seasonal Showcase . . . With a swing of the hip and a toss of the head, *The SC of Boston* (Mass.) went hullabaloo while members monkeyed to the live sound of the go-go Shillings.

The Totem FSC skaters (B.C.) went through the looking glass and up the stairs of imagination with *Alice in Wonderland* . . . Proceeds from the *Essex SC* (N.J.) Funorama on Ice were donated to the Hospital Center of the Oranges. Part of a gala week of parties, the show featured adult dancers, a candyland characterization, a space spoof (see photo) and an act by eight two-year-olds. The guest skaters were Petra Burka, honored by a Royal Mountie presentation, the Kauffmans, Lorna Dyer & John Carrell, Gordon McKellen, and Nobuo Sato, for whom a Japanese act was dedicated . . . Fantasy set the pace at *North Shore WC* (B.C.) Icicles of 1966. *Alice in Wonderland* was topped by Batman and Robin fighting Mr. Iceman and the Rink Rats. Jay Humphry, Bette & John McKilligan and Karen Magnussen also skated.

South Mountain FSC (N.J.) joined the glitter and romance of *Up in Central Park*. The West Orange High School band serenaded sailors in eight 7-foot blue sailboats as they glided across the ice lake. Gary Visconti was one of several guests.

The magic of the music of the Pied Piper and the swirl of the skaters of the Ralph Evans Ice Skating Schools of Millburn and Westfield, N.J., enthralled 3000 people at the carnival sponsored by the *Beacon Hill FSC* . . . Skaters grabbed their partners and circled them 'round at the

CARNIVALS



Essex SC spacemen: Kenny Hoerner, Glenn Healey and Rob Prior. Ray W. Jones photo.



Tulsa FSC line-up: Melinda Paul, Gayle Gibbon, Patty Hartig, Lynn Butterworth, Joan Guillaume, Lenna Baranoff, Linda LaFortune, Mag Keeling, Suzanne Haas, Pam Keeling, Shelly LaFortune, Susan Smith. Howard Hopkins photo.

Pittsburgh FSC (Pa.) square dance presentation of their Frosty Frolics. Dolly Rodenbaugh and Tom Lescinski, 1966 U.S. Silver Dance Champions, were featured . . . From the shelves of the library, the *Arctic Blades FSC* (Calif.) members skated through the pages of "Anastasia" and "Gone With the Wind." Dawn Glab, 1966 U.S. Novice Ladies Champion, starred.



Let Rinkmast'r horsepower and versatility provide "muscle" for your resurfacing snow removal. "Special" 59 or 79 HP Rinkmast'r Shaves the ice, Melts the snow and lays hot water. You just ride and steer. No aches. No pains. No exhaustion. No snow dumping problems.

The rest of the year this vehicle Mows • Plows • Lifts • Hauls and Brooms. There is nothing like it for fast, complete, and economical ice resurfacing. Reasonably Priced.

RINK MACHINES

417 WHITE PLAINS ROAD
EASTCHESTER, N. Y. 10707

SKATE IN CONVENIENT CONNECTICUT

Fourth Summer Session of THE NEW HAVEN SKATING CLUB, INC.

JUNE 24—AUGUST 31

Ten full weeks

Special Wednesday and Friday Evening Dance Sessions
at the New Haven Arena

PROFESSIONAL STAFF

Ann Robinson Adair
Vera Elliott Bowen
Beth Hoffman Landino
Hugh Seaman
others to be added

For information and reservations
New Haven Skating Club, Inc.
55 Yowago Avenue
Branford, Conn. 06405

(Professionals are invited to inquire about joining our summer staff)

TOWN OF MOUNT ROYAL 10th ANNUAL SUMMER SKATING SCHOOL

JUNE 27 - AUGUST 20

PROFESSIONALS:

Lise Petit
John Routh

Gerry Williams
Helene Gagnon

Marcus Nikkanen
Dick Rimmer

Eva Vasak
Nancy Davidson

FOR INFORMATION WRITE:

D. R. EDMONDSON
ARENA MANAGER
RECREATION DEPARTMENT
1050 DUNKIRK RD.
TOWN OF MOUNT ROYAL, QUE.

SANCTIONED BY THE C.F.S.A.

BEGINNER BOOSTERS

LET YOUR MUSCLES DO THE WORK

Boot support is vastly overrated. The skater's foot muscles — not his boot leather — should keep the skate under control. Therefore, in buying a boot, the leather should not be so heavy that a foot is held rigid. It is imperative that the foot muscles be free to function.

GUARDS FOR BLADES

Never walk on cement or gravel — this will damage the edges. At indoor rinks where the floors are covered with rubber mats, no damage can be done. After skating and before storing skates, wipe blades dry to prevent rust. Use wooden guards. Rubber ones tend to produce a chemical action on the surface of the blade.

DON'T LET LACES STOP CIRCULATION

Boot laces should not be too tight over the top part of the arch, because that would tend to pull the arch downward, weaken it, and cut off circulation. Near the top of the boot, ease off on the tightness so there is clearance at the very top of the boot, enough to put your forefinger inside the boot after it is laced. This space allows the leg to move without cramping.

BOOT GROOMING

Boots should always look like new. A good procedure to follow is to clean first with saddle soap, then with a white polish for girls and a black paste wax for boys. Boots are made with a strong counter — that part above the sole which feels very solid and is built into the shoe between two layers of leather. Perspiration from hard skating will soften the counter; skating will force the counter apart. Eventually the counter will become wider than it was intended to be, making the boot shorter. To avoid this, when finished skating hold the boots by the counters and firmly press the counters together before storing.

CLUB NOTES

Amarillo SC (Tex.) will again become a USFSA member in September, 1968. A "turn key" ice skating facility with a 5000 permanent seating capacity will be part of that city's new auditorium-coliseum.

In 1967 *Charleston SC* (W. Va.) will finally have an ice arena. Members traveled great distances to compensate for their three-year lack of home ice.

An esprit de corps characterized *The SC of San Francisco* (Calif.) members in finding temporary headquarters upon learning that they could no longer skate at Sutros, since that rink was ordered closed by the Health Department.

Members of *South Bay FSC* (Calif.) are proudly sporting their new club pins.

Providence FSC (R.I.) offers a \$10 a month introductory membership to families, permitting them to take advantage of ice time and club activities for a thirty-day period. The charge is deducted from the next season's dues.

Skiers were introduced to figure skating at a party given by *Huntsville FSC* (Ala.).

The 1966 Canadian Championships gave birth to "the Pig," an oversized bank feeding on donations for the 1967 travel fund, sponsored by the British Columbia Section.

An *Owensboro* (Ky.) ice rink has an ice utilization program which offers low-cost skating instruction and rental skates to more than 2000 college and high school students during school gym hours. The program has served as a remunerative introductory offer, while filling normally empty ice. J. Richard Gaw, manager of the rink, is planning another "serious skater's" school in the fall.

The Glencoe Club (Alta.) played host to members of the *Royal Glenora Club* (Alta.) for the 4th Annual Inter-club Sports Competition between the two groups.

The "Beacon Blade" of the *Beacon Hill Club* (N.J.) reviewed the year from A to Z — Achievement to Zamboni.

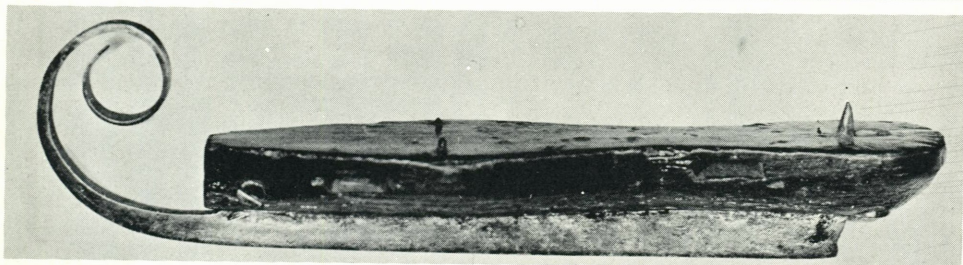
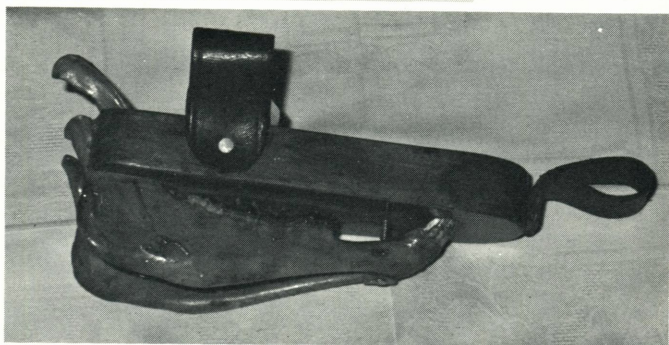
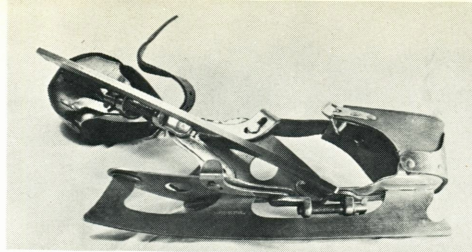
Photos from 1936 revived yesteryear in the *Los Angeles FSC* 1966 Directory.

The *All Year FSC* reported that the Central Judges Bureau handled 303 figure and dance tests the first six months of its operation.

Sixty-three people from a seven-state area attended the judging school held at the *IC of Baltimore* (Md.). The one-day school was run by Margaret Ridgely, Sally Rial and Elisabeth Hickok.

FROM BONES TO STEEL

by Mary Hagen



Top to Bottom: Club skates, Sam West photo. Replica of a sheep's jaw-bone skate displayed in the Science Museum, London, Eng., Gregory M. Kelley photo. Combination wood and metal skate at turn of eighteenth century, from the collection of the late Joseph K. Savage. Bone skates, Guildhall Museum photo.



Whether or not ice skating outranks all other sports in popularity, as some skating enthusiasts would lead us to believe, it is definitely one of the oldest sports, dating back to the Stone Age.

Skates in those days were nothing like the ones we use today. In fact, we probably couldn't stand up on them! The oldest known skates, bound to the skeleton of a Stone Age man, were discovered in Friesland, a province of the Netherlands. They were made from the cannon bone of a horse and date back to the second millennium B.C. Bone skates were not confined to Friesland, but have been found in Norway, Denmark, England, Germany, Switzerland and Hungary.

Many of these early bone skates were made from the ribs of cows and reindeer. Skaters ground the bones down until they had a flat traveling surface. It is thought that the skaters used poles with bone spikes to push themselves over the ice. In 1180, William Stephanides (or Fitzstephen) wrote in his *Description of London*:

... many young men play upon the ice; some, striding as wide as they may, do slide swiftly; others make themselves seats of ice, as great as millstones; one sits down, many hand in hand to draw him, and one slipping on a sudden, all fall together; some tie bones to their feet and under their heels; and shoving themselves by a little picked staff, do slide swiftly as a bird flieth in the air or an arrow out of a cross-bow.

Bone skates, oftentimes a foot in length,

remained the fashionable means of getting around the ice for hundreds of years. Few major improvements were made until bones appeared with curved ends to make gliding over rough spots easier.

Just when wooden skates came into use is not known, but the ease of shaping wood and its availability gave them an advantage over bone. Early samples of wooden skates display wide, flat surfaces. Finally, a skating entrepreneur added a metal runner and turned the front end over to form a toe support. From then on, improvements with wood and metal combinations came rapidly.

Early Dutch prints show skaters gliding over the ice with metal skates almost as wide as the wearer's shoe. A legend tells of a Dutchman visiting a country where the metal runner was not known. Having left his skates behind, he ordered a pair from a blacksmith. The blacksmith misunderstood the directions for a wide, flat running surface, making instead a thin edge of metal attached to a flat board. Undoubtedly, the Dutchman was distressed at the mistake, but he decided to pay the blacksmith and try the skate. Much to his surprise, it gave more security and maneuverability than the old flat blade. Whatever the story, the innovation of the narrow runner greatly increased the popularity of the sport. This occurred around 1550.

The early bladed skate was introduced to England about 1660. The blades of the skates curved the entire length, and the thickness ranged from .35 inches at the front to .275 inches at the back. They were held to the boot by spikes and straps.

At what may have been the first "ice follies" on December 1, 1662, Samuel Pepys wrote of seeing "people sliding with their Skatees, which is a very pretty art." On the same day John Evelyn, a commentator of the times, noted "having seen the strange and wonderful dexterity of the sliders on the new canal in St. James's Parke, performed before their Majesties by divers gentlemen and others with Skatees, after the manner of the Hollanders, with what swiftness they pass, how suddenly they stop in full career upon the ice."

Up to the 1800's all skaters had the problem of keeping their skates attached to their feet. Around the turn of the eighteenth century, a sharp point was placed in the rear of the skate to cut into the shoe heel to prevent slipping. Later, this sharp point was replaced by a screw, which was itself discarded in the late 1800's in favor of the greatly improved "English Shoe Skate." In 1697 Peter the Great of Russia supposedly invented this

all-metal skate with metal clamps for gripping the sole of the shoe.

Many of the fancy skates had long, ornamental, upcurved runners in front. The racers developed a long, thin runner that was just slightly raised in front and was called the "blade club skate." The blade was screwed to the boot and designed for sharp curves. The modern skating boot evolved from this model. One of the last developments of real importance came in the early 1900's when the saw tooth was added to the blade.

A few individuals experimented with the skate, and an American innovation called the "spring skate" was used for a short time. This skate had a break in the blade under the toe of the boot. A spring running from the break back to the heel was supposed to aid the skater in bouncing over rippled ice. There are, undoubtedly, some of these skates still hidden in attics.

Figure skating seems to have followed ice racing by more than a century. Racing was portrayed in seventeenth-century paintings as a popular pastime in the Netherlands, and therefore must be nearly as old as skates themselves. With the introduction in 1850 of the all-steel blade, on which elementary figure three turns could be skated by using inside and outside edges, figure skating came into its own. From then on the sport progressed at such a rapid rate that today definite rules and regulations are set for every skating event.

The skating boom was further strengthened with the opening of indoor skating rinks. The first mechanically operated rink, opened in 1876 in Kingsroad, Chelsea, London, was called the Glaciarium and was 40' x 24'. Water was frozen by means of a mixture of glycerine and water run through copper pipes and chilled by ether. In 1879, Thomas Rankin built an indoor rink in the old Madison Square Garden with a surface of 6,000 square feet. Next came a huge outdoor rink in Paris. And the rink race had begun!

Skating, first developed as a means of transportation, fast became a favorite pastime as well, and clubs began springing up. The oldest in the world, the Edinburgh Skating Society, is still in existence. Clubs became especially popular in the nineteenth century: the SC of London was organized in 1830 and the oldest club in the U. S., the Philadelphia SC & HS, in 1861.

It would be interesting to study the reaction of that first prehistoric man, who apparently died with his skates on, if he could be brought back today. He really started something — and there are millions of happy, grateful skaters to prove it!

PEOPLE

BIRTHS

Birmingham, Ala. — To Dr. and Mrs. John Crow, a daughter, Rebecca Ann, Mar. 14.

Grand Rapids, Mich. — To Dr. and Mrs. Henry Beckmeyer, a son, James Carl, Mar. 11.

Los Angeles, Calif. — To Mr. and Mrs. John Allen, a daughter, Kathryn Jean, Mar. 4.

Pasadena, Calif. — To Mr. and Mrs. Sam Wasson (Pheona Seaman), a daughter, Christine Pheona, Jan. 9.

Toronto, Ont. — To Mr. and Mrs. Michael Barber (Jane Omand), a son, Mar. 4 — To Mr. and Mrs. William Dafeo (Gwen Stogdill), a daughter, Dec. 20 — To Mr. and Mrs. Richard Hulburt (Judith Deeks), a daughter, Mar. 12 — To Mr. and Mrs. Charles W. Hunnisett (Leslie Bertram), a daughter, Jan. 26 — To Mr. and Mrs. Anthony Martin, a daughter — To Mr. and Mrs. James Peckham, a daughter, Feb. 9 — To Mr. and Mrs. Brian Pound, a son — To Mr. and Mrs. Otto Renelt (Toby Keeler), a son, Feb. 3 — To Mr. and Mrs. Byron Williams, a daughter.

Victoria, B.C. — To Mr. and Mrs. Douglas Dodge, a son, George Douglas Charles, Mar. 10.

ENGAGEMENTS

Bayside, N.Y. — Miss Deanna Weiss to Mr. Lester Goldstein. Wedding May 29.

Lake Bluff, Ill. — Miss Judith Ann Klinkman to Mr. Robert Sorrick of Madison, Wis.

London, Eng. — Miss Jacqueline Phillips to Mr. Pavel Roman, 1965 World Dance Champion with Eva Romanova.

Louisville, Ky. — Miss Sandra Parkerson to Mr. Charles Fetter Jr., 1964 U.S. Dance Champion with Darlene Streich. Wedding in June.

Penticton, B.C. — Miss Dolores Causier to Mr. Ray Troyer of Vancouver.

Scarborough, Ont. — Miss Mary Phillips to Mr. Mel Matthews.

Toronto, Ont. — Miss Katherine McLeod to Mr. Anthony Lea. Wedding in July.

MARRIAGES

Moscow, U.S.S.R. — Mr. Albert Schchesterniev and Miss Tatiana Zhuk, 1966 World Pairs runner-up with Alexandr Gorelik, Dec. 16.

San Francisco, Calif. — Mr. Michael Elgis and Miss Sandy Hoover, Feb. 6.

Syracuse, N.Y. — Ensign Paul Wilson de Lima Jr. and Miss Melanie Agnes Rowe, Feb. 26.

Toronto, Ont. — Mr. Robert Shaw and Miss Ann Martin, Feb. 18.

Victoria, B.C. — Mr. Gary Johnston and Miss Gail Buckle, Nov. 20.

DEATHS

Bethel Island, Calif. — Mr. Carl Hoff, Mar. 13.

Colorado Springs, Colo. — Mr. Albert Fleming, husband of Doris Fleming, father of Janice, Maxine, Cathryn and Peggy Fleming, 1966 World and U.S. Lady Champion, in Cleveland, O., Apr. 6.

Essex Fells, N.J. — Dr. Clarence Kern, member of USFSA Eastern and Amateur Status Committees, Apr. 19.

Lake Placid, N.Y. — Mr. Robert Bruce, president of The SC of Lake Placid, Apr. 1.

New York, N.Y. — Mr. Newbold Morris, former Middle Atlantic Champion, USFSA Judge and founder of Park FSC (N.Y.), Mar. 28. A friend of skating, Mr. Morris served as City Council President and Park Commissioner of New York City, was a candidate for Mayor of N.Y.C. in 1945 and 1949, a leader in the creation of and, later, chairman of the New York City Center of Music and Drama, a trustee of Hampton Institute, and a Vice-President of St. Barnabas Hospital.

San Francisco, Calif. — Mrs. Ruth Fisch, Jan. 18.

Saratoga Springs, N.Y. — Mr. George Purdy, former president Northern N.Y. Skating Assn., the Glens Falls SC and the Saratoga Springs WC.

Toronto, Ont. — Mr. William McCurdy, director, B.C. Section.

HOCKEYTOWN U.S.A.
180 Green Street, Melrose, Mass.

SUMMER SESSION

June 15 to September 5

**Sponsored by Commonwealth
Figure Skating Club**

**PATCH FREE STYLE
DANCE SESSIONS**

**The Only New England Ice Skating Rink
Open 12 Months a Year.**

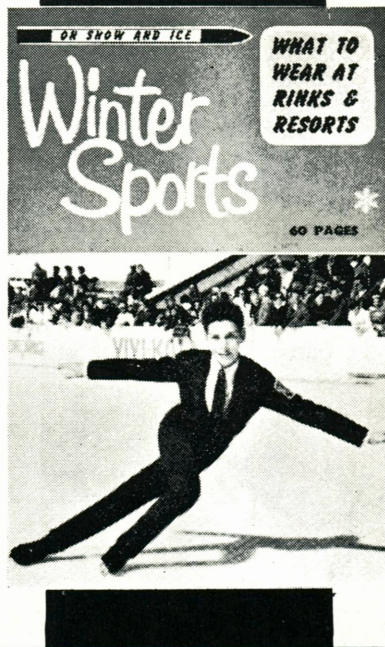
HOLIDAY ON ICE

ENSEMBLE SKATERS WANTED

"HOLIDAY ON ICE" is looking for skaters interested in joining a professional ice show, affording an opportunity to travel and see the country while working with top skating stars.

If interested, please write to John Finley, **HOLIDAY ON ICE, INC.**, 1860 Broadway, New York, N. Y. 10023. Enclose a full length photograph in skating costume (if possible) with other pertinent information regarding height, weight, age and experience.

The customary remuneration will be made to any professional teachers who supply talent.



BRITAIN'S SKATING AUTHORITY

Inside News • Action Photos

Articles by Experts

Official I.S.U. and N.S.A. Announcements

All North American enthusiasts who want to know regularly what's happening on ice across the Atlantic should subscribe without delay. The next seven issues of **WINTER SPORTS** will be posted direct to your home if you just send check or international money order for \$2.50 to:

**HOWARD BASS
PUBLICATIONS, LTD.**

1 HATTON GARDEN
LONDON, E.C.1 • ENGLAND

WHAT'S THE MOD- DER

SUFFERIN'
SPINS!
THE CAPED CRUSADER
STROKES OUT IN A
DOTTY CRAVAT
AND KRAZY Kool-Ot.



IT'S
SUMMER
CAMP

IT'S GEAR!
THIS BUGGY
BAT CAP THE
NOUVELLE
NEEFERTITI!
ACES THE ICE
IN YEAR ROUND
ENT-ICE-MENT!

Zip!

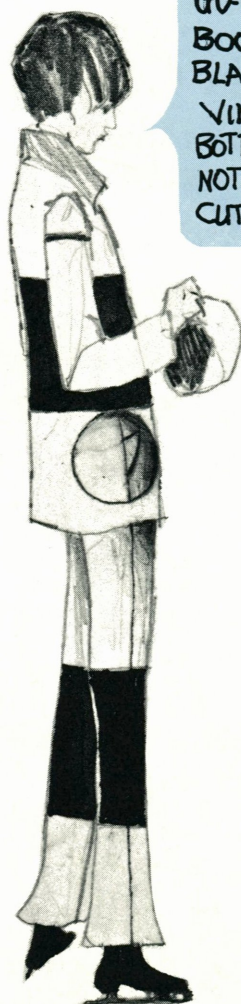
YOU'LL FLIP FOR A
TIGER-STRIPED
TUNIC WITH A TIE
AT THE HIP....
SUPERMOD
WITH OPAQUE
TIGHTS.





CRACK

THE ICE IN
GO-GO BAT
BOOTS AND
BLACK AND WHITE
VINYL BELL
BOTTOM ZOOT SUIT.
NOTE THE KNACKY
CUT OUT POCKET.



POW!

POLKA DOTS
PERK UP TIGHTS
JUST FOR
FUN-NEL
WHILE ON TOP
IT'S AN OP ART
RIDDLER JUST
FOR
PATCH WORK.



COOL

IT! SUMMER
SKATES CUT
OP EIGHTS
IN A BACK-
LESS TUNIC
TOPPING A
SUPER-CHIC
COTTON SUEDE
HIP HUGGER
AND 'T'NECK
DYED TO MATCH.
WHAT COULD
BE THE
MODDER?

classified

LOOKING FOR A JOB? Advertise in **SKATING!** Thirty word classified rate—\$10. Contact Advertising Dept., **SKATING**, 575 Boylston St., Boston, Mass. 02116.

TAN-TAR-A Resort desires the services of a young girl interested in turning pro. Beautiful new year-round ice rink. Live on resort. Located in the beautiful Lake of the Ozarks. Reply: **Tan-Tar-A** Resort, Osage Beach, Missouri, Att.: Mr. Jocko Braley.

MANAGER WANTED for ice studio north of Boston; skating professional or person experienced in ice studio work. Salary and commission arranged. Also interviewing for figure skating instructor. Write Box 46, **SKATING**, 575 Boylston St., Boston, Mass. 02116 or call 617-233-0820.

EXPERIENCED PROFESSIONAL teacher available. Gold Medalist and former National Champion. Contact: **SKATING**, Box 38, 575 Boylston St., Boston, Mass. 02116.

CORNELL UNIVERSITY needs male professional starting 1966, Nov.—Mar. Teach undergraduate men and women skating classes mornings. Work with 100-member skating club plus private lessons. Reply: Ned Harkness, Director Skating Operations, Cornell University, Ithaca, N.Y.

COLLECTORS—Why don't we form a "mutual aid" society to preserve the heritage of skating and to aid the USFSA Museum. We'll do the paperwork if you'll supply the information. Interested in books, figurines, art work on figure skating in all countries. Greg and Ann Kelley, Skating Heritage Library, Box 648, Los Alamos, N.M. 87544.

MATURE COUPLE seek good teaching positions. Both are experienced teachers with top qualifications. Reply: **SKATING**, Box 37, 575 Boylston St., Boston, Mass. 02116.

BEAUTIFUL SKATING RINK for sale or rent in Southern Florida. Ice surface 185' x 85'. All year operation. Ideal for summer session. Many motels with pools close by. Ocean two miles away. Write: F. Byron Parks, Realtor, P.O. Box 63, Boca Raton, Florida.

WANTED: Male Professional to teach singles, pairs and dance. Two months summer school, ten months winter season. Write: **SKATING**, Box 51, 575 Boylston St., Boston, Mass. 02116.

PROFESSIONAL COUPLE—first-class Figure, Free, Pair and Dance, are interested in a good position in either the States or Canada for winter season 1966/67. Reply: **SKATING**, Box 49, 575 Boylston St., Boston, Mass. 02116.

SKATING INDEX Vol. 42, Jan.-Dec. 1965—by photo, subject, author, 6" x 9" suitable for binding with **SKATING**. Send 50¢ to Box 39, **SKATING**, 575 Boylston St., Boston, Mass. 02116.

DO IT YOURSELF—Sharpen skates as per February '66 **SKATING** article. \$2.50 ppd. Urethane lined carrying cases for 3-6 or 12 records. \$7.00 ppd. Julius Czaja, 4 Crestview Dr., Pittsford, N.Y. 14534.

CANADIAN Gold Figure and Gold Dance Medalist (female) seeks teaching position for the 1966-67 winter season in British Columbia. Write: **SKATING**, Box 50, 575 Boylston St., Boston, Mass. 02116.

PROFESSIONAL WANTED for 66-67 season with qualifications to teach high test figures and dances. For information write Miss Barbara Scofield, 2707 East Sixth Ave., Hibbing, Minn.

SENIOR PROFESSIONAL—competent to teach all levels including Gold Test standard, Sept. 15—Apr. 15. Family recreation club with 6000 members. Salary plus full participation in employee benefit program. Write: D. M. Folinsbee, Sec'y-Mgr., The Glencoe Club, 29th Ave. & 6th St. S.W., Calgary, Alta.

WOMEN PROFESSIONAL: Must be able to do a skating exhibition solo, weekly. Teach beginners and dances. Salary, room and meals, plus full instruction fees your own. Season—Oct. thru Apr. Send full resume and picture (returnable). Write: Irving Jaffee, Winter Sports Director, Grossinger Country Club, Grossinger, N.Y.

ICE SKATING MUSIC—Tape Recordings: Organ tapes especially prepared for Ice Rinks and Ice Clubs. Ice Dance tapes at correct tempos as well as Social Session Tapes. Write for complete catalogue or ask your rink manager to see his copy. Roll-A-Round Tapes, 21 Wilson St., Milford, Conn.

Cecilia Colledge
Announces
That She Will Be
Teaching at
R.P.I.
Troy, New York
July 4-August 27
Winter: The Skating Club
of Boston

SAVE VACATION SPECIALS

KODACHROME or EKTACHROME FILM

35mm 20 exposure and 126 instamatic...\$2.75*

KODACOLOR FILM

620, 127, 120.....\$3.25*

35mm 20 exposure.....\$4.25*

126 instamatic.....\$3.30*

#Print coupon issued for unprintable negatives

KODACHROME SUPER 8 MOVIE FILM

50 ft.....\$3.90*

TECHNICOLOR 8mm MOVIE FILM

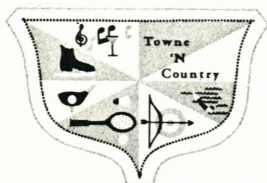
daylight or type A double 25 ft. rolls....\$2.75*

(*A minimum of three items must be ordered—any combination of different rolls of film may make up the minimum.)

Processing is included by Technicolor Corp. Dallas, New York, Chicago and Hollywood

MAIL SALES

3355 Primera Avenue
Hollywood, California 90028



TOWNE 'N COUNTRY

Announces

**1966 SUMMER SKATING SCHOOL
JUNE 20 — AUGUST 28**

ISU TESTS
Aug. 28

FREE SKATING COMPETITION
Aug. 27

USFSA TESTS
July & August

DIRECTORS AND PROFESSIONALS

MIMI PONG JOHNSTON

JEFFEREY JOHNSTON

Professionals invited to apply

Dormitory facilities — Swimming — Tennis — Dining Room

TOWNE 'N COUNTRY ICE ARENA Managing Director: J. M. Cottrell
16808 Pearl Road, Cleveland 36, Ohio Phone: 238-7766

Fastest Growing in Popularity . . .

OBERHAMER Figure Skating Shoes

Because You Get . . . Smooth Fit for

smoother skating

*. . . Rugged Construction for
longer wear*

*. . . Professional Style you can
Wear with Pride*



Choose from a complete line for beginners, competitive and professional skaters. Models include Ready-Made Economy, Popular, Semi-Professional and Professional plus Top Quality CUSTOM MADE . . . the finest in fit and quality.

Write for literature and
FREE Measurement Chart.

OBERHAMER Shoe Co.

689 No. Dale, St. Paul, Minnesota 55103

BROADMOOR WORLD ARENA
Colorado Springs, Colorado



Presents
SUMMER SEASON
skating



Train with champions at world famous Broadmoor. Carlo Fassi and his professional staff instruct the demanding skills and precision of skating to perfection. Housing, schools and training schedules are arranged through Executive Secretary, Broadmoor Skating Club, Broadmoor World Arena.