

An aerial, black and white photograph of a city street, likely in New York City. The street is filled with cars and traffic, running down the center of the frame. On either side are tall buildings of various architectural styles. In the foreground, the roof of a building is visible, showing a grid of pipes and structural elements. The word "SKATING" is superimposed in large, outlined letters across the middle of the image.

# SKATING

november 1970 vol. 47, no. 7-price 50 cents

MARI

Lest  
you  
forget...

# U.S. Figure Skating Championships

Buffalo  
Memorial  
Auditorium  
Jan. 27-31

Sponsored by the

**Buffalo  
Skating Club**

1250 Amherst Street  
Buffalo, New York 14216

*Ticket Reservations: P.O. Box  
200, Buffalo, N.Y. 14217*



## TENTATIVE SCHEDULE OF EVENTS

Wed.	Junior Men's Figures	Fri.	Senior Ladies' Figures
1/27	Novice Men's & Ladies' Figures	1/29	Junior Ladies' Figures
	Senior Pairs Initial		Junior Pairs
	Silver Dance Initial		Silver Dance Final
			Senior Men's Free
Thurs.	Senior Men's Figures	Sat.	Junior Men's Free
1/28	Novice Men's Free	1/30	Senior Ladies' Free
	Novice Ladies' Free		Gold Set Dance
	Gold Dance Initial	Sun.	Junior Ladies' Free
	Senior Pairs Final	1/31	Gold Dance Free Exhibitions



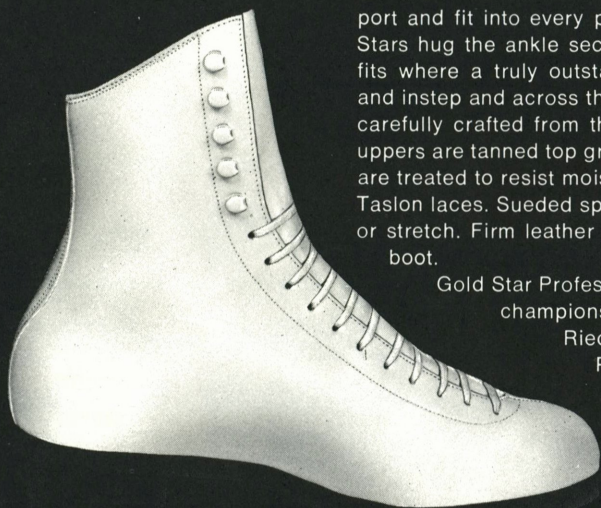
# GOLD ★ STAR PROFESSIONALS

## The Championship Boots

At every competitive level, Gold Star figure boots deliver the consistently superb performance champions demand. Paul Riedell designs confidence building support and fit into every pair of his excellent boots. Gold Stars hug the ankle securely but comfortably. The boot fits where a truly outstanding boot must — at the arch and instep and across the ball of the foot. Gold Stars are carefully crafted from the best materials available. The uppers are tanned top grain leather. Double leather soles are treated to resist moisture . . . steel ribbed shanks . . . Taslon laces. Sueded split leather linings will not harden or stretch. Firm leather counters will last the life of the boot.

Gold Star Professionals for men and women. The championship boot.

Riedell can match your Gold Star Professionals with a pair of famous MK Sheffield steel blades. Whatever your specialty — Free Style, Figures or Dance — a perfect combination of boot and blade is possible from Riedell.



**RIEDELL SHOES, INC.** RED WING, MINNESOTA 55066

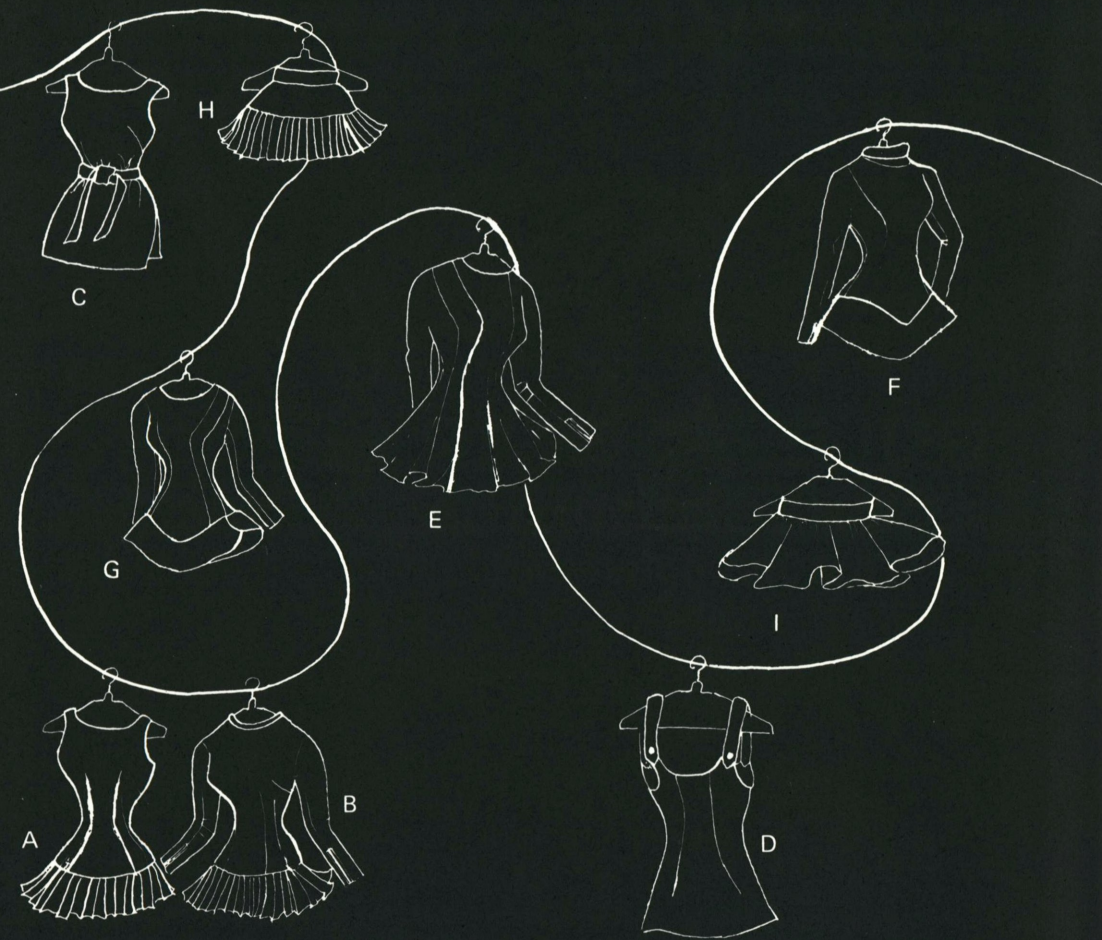
*Lizette, LTD.*

1708 Delmar

St. Louis, Missouri 63103

Tel: 314-241-0206

WE ARE MAKING WAY FOR NEW STYLES IN TIME FOR CHRISTMAS DELIVERY.



- A 1066—Girls & Adults Regularly \$23.00 Sale Price \$11.50
- B 1161—Girls & Adults Regularly \$25.00 Sale Price \$12.50  
Tots, not shown, Regularly \$20.00 Sale Price \$10.00
- C 1100—Adults Regularly \$25.00 Sale Price \$12.50
- D 875—Adults Regularly \$18.00 Sale Price \$9.00
- E 1275—Girls & Adults Regularly \$25.00 Sale Price \$12.50
- F 1500—Girls & Adults Regularly \$32.00 Sale Price \$16.00
- G 1400—Girls & Adults Regularly \$32.00 Sale Price \$16.00
- H 661—Girls & Adults Regularly \$13.00 Sale Price \$ 6.50
- I 400—TO FIT ALL SIZES TOTS THROUGH ADULTS, S.M.L. REGULARLY \$10.00 Sale Price \$5.00

ALL PRICES ABOVE PLUS \$1.50 EACH FOR POSTAGE AND HANDLING  
PLEASE STATE FIRST, SECOND AND THIRD COLOR CHOICES  
FREE BROCHURE AND COLOR SWATCHES UPON REQUEST  
ALL SALES FINAL

## STAFF

### Editor Emeritus

Theresa W. Blanchard

### Editor

Laura J. Kaplan

### Managing Editor

Virginia K. Burnham

### Art Director

### and Production Manager

Elizabeth L. Backer

### Assistant Production

Karen S. MacDonald

### Advertising

Brenda N. Barnes

### Circulation

Susan K. Shorey

### Compositor

Marlene A. Giuffre

### Copy Assistant

Marty MacDiarmid

USFSA Publications Committee: Brooks Stewart, Chairman, Southampton, Pa.; Patrick J. Donnelly, Seattle, Wash.; Gerald G. Gearheart, Sherborn, Mass.; Theodore G. Patterson, Boston, Mass.; Benjamin T. Wright, Belmont, Mass. Contributors: Canada—Mary Heffelfinger, Amy Kaltenbruner, Mrs. Dantes Pagliaro. Foreign—H.S. Abbot, India; Dennis Bird, England, Germany; Jacline Brown, France; Nigel Brown, Switzerland; Per Cock-Clausen, Denmark; Karol Divin, Czechoslovakia; Eva Gyorgy, Alice Peters, Hungary; Kikuko Minami, Kazuyoshi Oimatsu, Japan; Ingeborg Nilsson, Norway; Wendy Sellers, New Zealand.

SKATING is the official magazine of the United States Figure Skating Association.

COPYRIGHT: *Skating*, copyright 1970 by the United States Figure Skating Association in the U.S.A. Title Registered in U.S. Patent Office. Published eight times a year: January, February, March, April, May, June, November, December; by the United States Figure Skating Association: Executive Offices, 178 Tremont St., Boston, Mass. 02111; Publication Office, 178 Tremont St., Boston, Mass. 02111; Second-Class postage paid at Boston, Mass. Single Copy 50 Cents, Subscription \$3.50. Address: *Skating*, 178 Tremont St., Boston, Mass. 02111. *Skating* is protected by copyright and nothing that appears in it may be reproduced without written permission.

NOVEMBER PHOTO CREDITS: Pfohl-Roberts-Biggie, page 10; Jean Burnier, pages 12, 24; French Government Tourist Office, page 14; William Udell, pages 18, 35, 36; Roger Turner, pages 30, 31, 32, 37.

COVER: Accent is on the vertical in downtown Buffalo, site of the 1971 United States Championships, with skyscrapers forming a "little bit of Old New York" in the Queen City of the Lakes. Ed Zegorski photo.

# SKATING

- 7 Readers Write
- 7 In This Issue
- 8 Profile Of The President / Spencer Cram
- 10 The Buffalo Scene / Wren Taylor
- 12 Man Of Contrasts / Laura Kaplan
- 14 Lyon—A Travel Monologue / Alexandra Stevenson
- 16 Amateur Status Rules Changes / Charles DeMore
- 18 Demogines. . . A Greek Classic / Jacqueline Desbrow
- 20 The Making Of A Judge / Robert Whitney
- 22 Shop Through SKATING
- 24 St. Gervais Revisited
- 26 Official Notes
- 26 People
- 27 From The Editors
- 27 Calendar
- 28 Skate Tips / Figures / Consecutive Forward Outside Edges
- 29 Skate Tips / Dance / Rocker Foxtrot
- 30 Summer Results
- 38 Laurels / USFSA Tests Passed

# DANSKINS ARE NOT JUST FOR DANCING

What Danskin started for dancers the whole ice-skating world has grabbed up. On stage or on ice means the finest full-fashioned nylon sweaters, trunks and leotards, full-fashioned and seamless tights. At leading arenas, sporting goods and department stores, or write for illustrated brochure SK. Danskin, 437 Fifth Ave., New York, New York. **DANSKIN®**



# readers write

## GETTING TO KNOW YOU

We would like to read more news of clubs, officials and competitors around the country, so we can get to know them better. I also enjoy photos accompanying competitions.—Ed Bradley, New York, N.Y.

## WOMEN'S LIB

On looking over the names of the thirty-five members of the USFSA Executive Committee, I note that the Committee consists only of males. I would like to ask the Secretary of the USFSA whether this is by coincidence or design? It certainly seems strange that in an organization which is probably two-thirds female, there is not one qualified woman to serve on the Executive Committee. I doubt seriously that a Committee so constituted can adequately express the true feelings of the membership, and I suggest that strong efforts be made to correct this very ambiguous situation.—Le vrai Patineur

Ed Note: Among those from the distaff side who have served on the Executive Committee are Miss Beatrix Loughran, Miss Maribel Vinson, Mrs. Dorothy Ballantine, Mrs. Lyman M. Drake, Jr., and Mrs. Roger Willis.

## LAST JUNE

I enjoyed Stephenson's article "In the Beginning" no end. It is very well done. However, the idea of a Skating Club in Edinburgh in 1642 is not improbable.

Samuel Pepys in his Diary for Dec. 1, 1661 says, "To my Lord Sandwich's, to Mr. Moore; and then over to the Parke, where I first in my life, it being a great frost, did see people sliding with their Skeates, which is a very pretty art." And on Dec. 15, 1661 he says, "To the Duke, and followed him to the Parke, where though the ice was broken and dangerous, yet he would go slide upon his Skeates, which I did not like, but he slides very well."

Skating is said to have been brought over to England from Holland in the mid 1660's by the Cavaliers in Holland under Charles the Second, so it is possible that they got up to Edinburgh and formed a club for the sake of Auld Lang Syne.—Arthur N. Foxe, M.D., New York, N.Y.

---

The Editor welcomes all letters provided they are signed. Names will be withheld on request. Send mail to SKATING, 178 Tremont St., Boston, Mass. 02111.

# in this issue

A welcome back from SKATING to all our regular readers and a hearty hello to the new ones. Now that everyone in the Association will be subscribing to SKATING, we are looking forward to the increased participation of our readers in supplying their magazine with skating news, communication, interesting articles and humor. If ideas are lacking for literary inspiration, read "From the Editors" (page 27) and join in with our plans for the new season ahead.

For the new year there's a new President of the USFSA. Past President Spencer Cram writes a profile on President Fred LeFevre, from the personal aspect of their long-standing friendship. Having known Mr. LeFevre since 1957, Spencer Cram is able to give additional insight into his well-established qualifications for the comprehensive job of President (page 8).

With the onset of another exciting competitions cycle, competitors face days, weeks, even months, of the self-imposed discipline that must precede entry into Nationals or Worlds. However, there is more than just the goal of winning in the enjoyment that accompanies participating in or attending competition. We are reminded of this fact by Wren Taylor in an enthusiastic promotion of the city of Buffalo as an excellent choice in accommodations, extracurricular activities and hospitality for the 1971 Nationals (page 10). For an equally enjoyable, but far different atmosphere Alexandra Stevenson advocates a visit to Lyon, France, site of the 1971 Worlds (page 14). This modern city, two thousand years old, offers everything from remains of the Roman empire to a brand new skating rink. There are, as you will see, some interesting stops ahead for the majority of figure skaters who are notorious travellers.

With this issue SKATING introduces the reflections of both Richard Ewell, National Junior Champion (page 12), and Jimmy Demogines, National Junior runnerup (page 18), on the course that has directed them toward competitive excellence. SKATING feels privileged in having caught these two young men in the few spare moments they have in their rigorous, goal-directed schedules.

There's a huge Summer Results and Laurels section. Since we understand many of you read this first, we will direct you to it without further delay (page 30, page 38).

# PROFILE



# OF THE PRESIDENT

by Spencer Cram

It was in the fall of 1957 that I first came to know Fred LeFevre. The Troy Skating Club was hosting its first competition: the 1958 Midwesterns. I had come from Cleveland to give what advice and counsel I could on local committees, their duties and responsibilities, to project the number of competitors and outline a tentative schedule.

Fred and Robert G. Myers were in charge. Local committee chairmen were all set up and waiting for a two hour conference that left no questions unasked, demonstrating an organizing ability that resulted in a highly successful competition a few months later.

Fred absorbed the policies and techniques of planning a major competition that first time in 1957. The Troy Skating Club has since held two more Midwesterns and one Regional. Fred, with David Galbreath as co-chairman, was chief Referee of the last Midwesterns in 1970. Actively skating himself, Fred is not only a Sectional Referee but also a Gold Test Judge and a Gold Dance Test Judge.

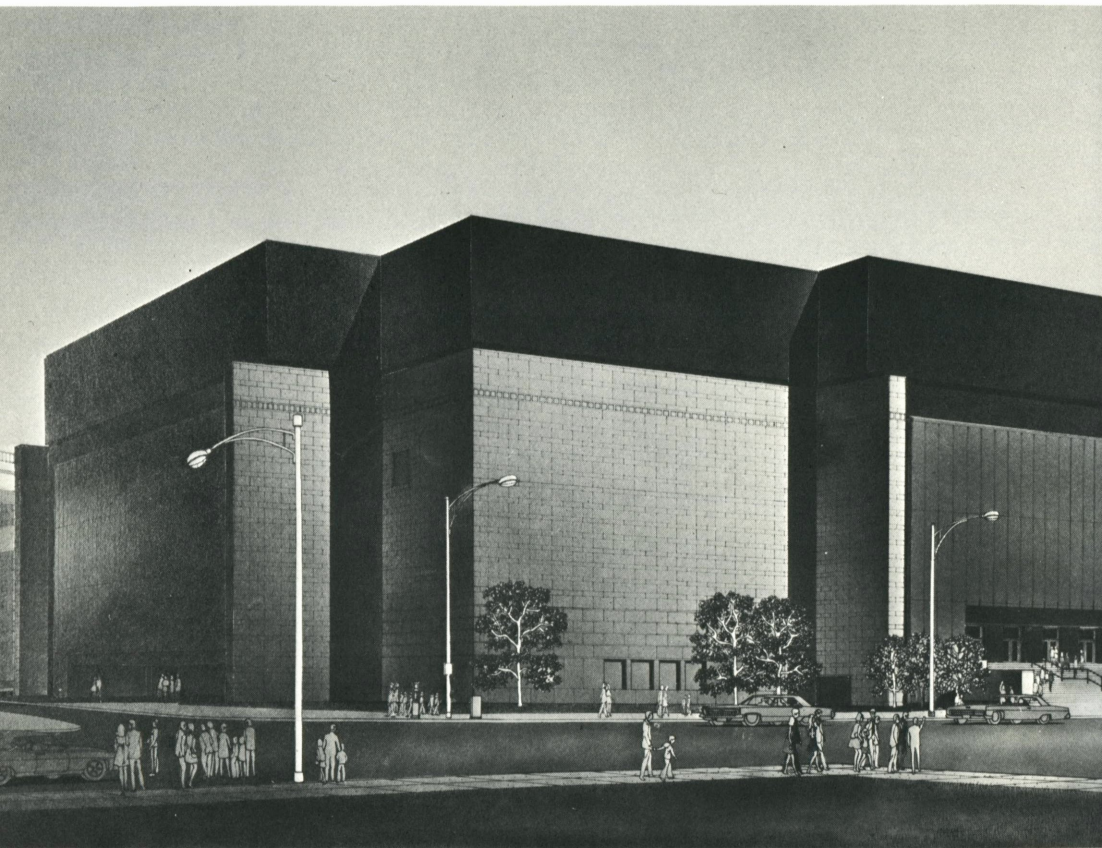
He was elected to the Executive Committee in 1961 and has since served as Membership Chairman for three years, Amateur Status Chairman for two years and as First Vice-Chairman for the Midwestern Section for two years.

The Hobart Arena in Troy, Ohio was built in 1950 by the C.C. Hobart Foundation which has maintained and operated the rink as a civic service to the city. A summer session has been in existence for nine years. Originally under professional management, for the last three years the Troy Skating Club has run the summer program with the LeFevres in the middle of the action from the beginning.

Fred's business life has been centered around the Troy Sunshade Division of the Hobart Manufacturing Company, where he is now treasurer and sales manager of the contract department. He is also a golfer of no mean accomplishment and has been active on the Board of the Troy Country Club as well as president of the Troy Skating Club for two non-consecutive terms of office.

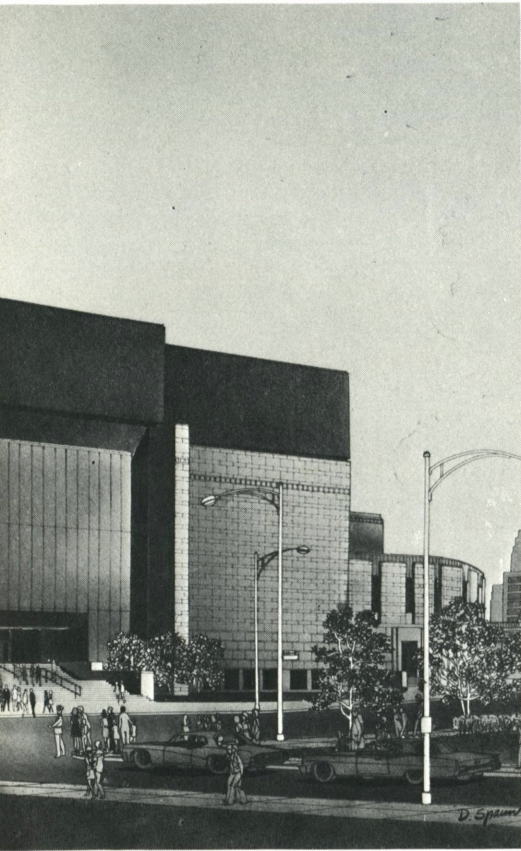
All this adds to many years of skating know-how in all fields as well as experienced depth in business management, which Fred will continue to devote to the best interest of the sport of figure skating. We are indeed fortunate to welcome Frederick C. LeFevre as our 17th president. With full confidence, we wish him the best of success in his administration.

Fred himself says: "It is going to be a big job to follow in the footsteps of the many fine men the Association has had in the past, and it is my earnest desire to continue the dedicated leadership to which we are accustomed."



# THE BUFFALO

The remodeled War Memorial Auditorium, where the major events of The 1971 United States Championships will be held.



Scajaquada. . . Cheektowaga. . . Niagara. . . Seneca. . . Mohawk. Sounds like a roll call for an Indian pow-wow. Yet visitors to Buffalo, N.Y. will find these Indian names throughout the area, bearing modern testimony to the days when Buffalo was a stark settlement on the shores of Lake Erie.

Strangely enough, if it hadn't been for an error on the part of an Indian interpreter at a Council meeting between U.S. Commissioners and Chiefs of the Six Nations of Indians in 1784, Buffalo might today be known as "Beaver Creek", since it *was* beaver rather than buffalo that made it a favorite Indian hunting ground.

Be that as it may, from the Indian Council fires back in 1784 to the competition of the 1971 United States Championships which are to be held in Buffalo from January 27 to 31. . . is a long way, and the years between have given Buffalo a lot more to offer than just a patch of nice ice!

Named by the N.Y. Times "the most accessible city on the North American continent", Buffalo was selected by the USFSA to host the Championships under the auspices of the Buffalo Skating Club. The city is served by three major airlines and ten railroads, plus the N.Y. State Thruway and

Please turn to page 49

# SCENE

by Wren Taylor



# MAN OF CONTRASTS

by Laura Kaplan

Richard Ewell III started skating at age 13, just for fun. The challenge of competition and taking tests lead him to serious skating, and the word serious truly fits. His dedication to the sport and his thoughtful perceptions of it reverberate through his statements as continually as applause reverberates through a rink where he performs. Ann Udell, of the All Year FSC, has this to say of him:

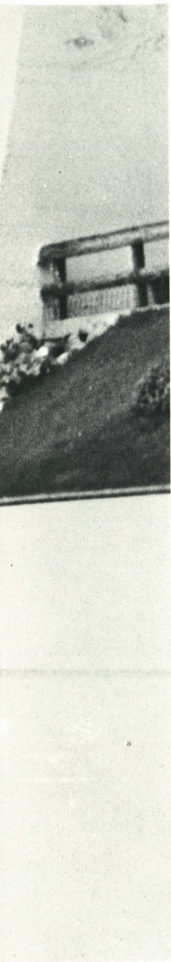
"National Junior Champion Richard Ewell is a young man of contrasts. A dynamic freeskater, he fights to overcome a basic shyness; he likes the challenge of working on triple jumps and the relaxation of a game of chess, the solitude of early morning patch and pair skating with his partner Michelle McCladdie. He has a great interest in music, history, the Moiseyev Dancers and the movies. Being selected as one of the skaters to represent the United States in St. Gervais was a great honor. At home in Los Angeles he will continue to train for the coming Southwest Pacific Championships at which he expects keen competition from the several fine skaters in the area."

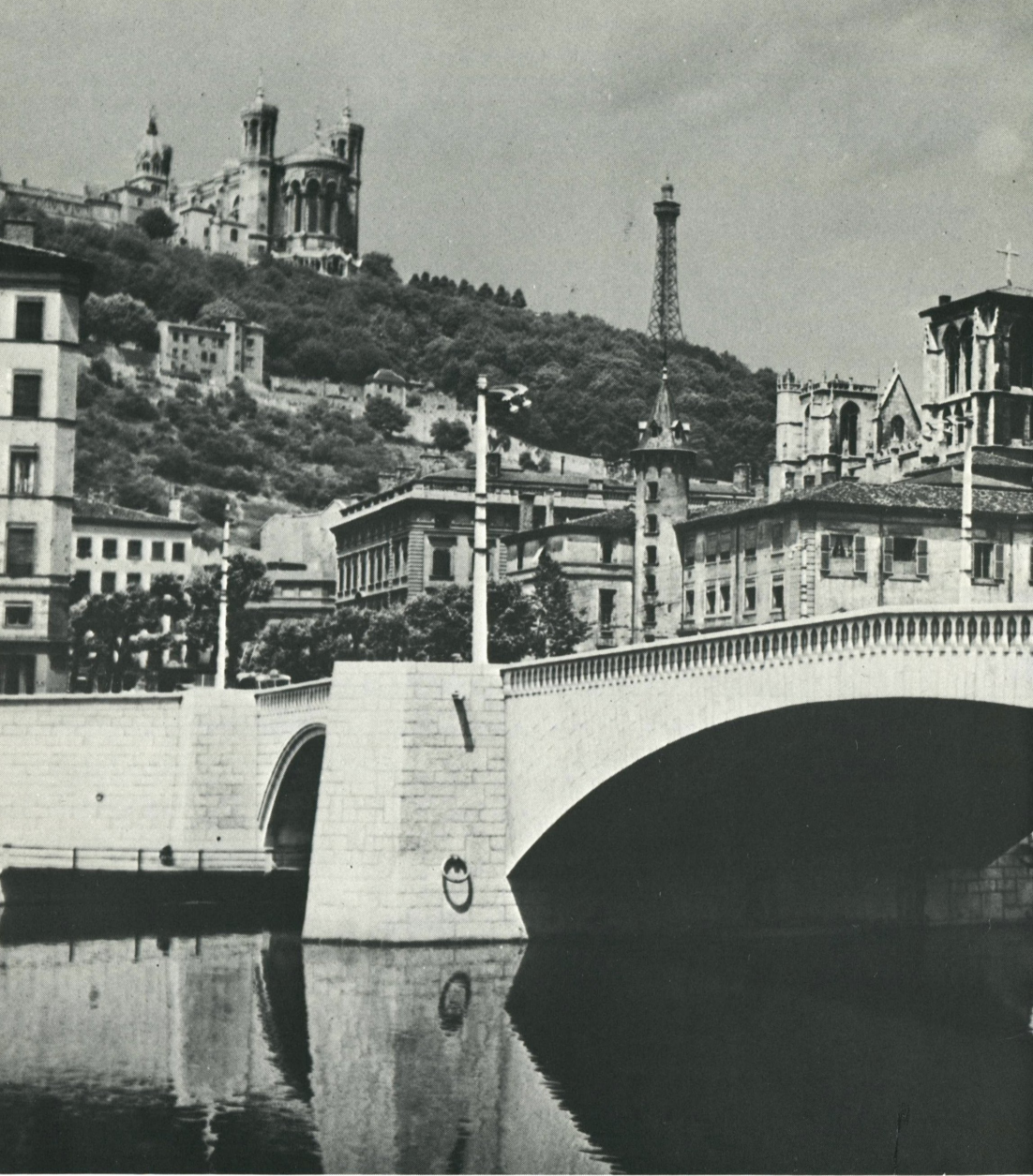
That such high opinions of Richard are merited is obvious when he speaks for himself. When asked, Richard will say that the best competitive spirit consists of a determination to perform at the highest level at all times. He states,

"In competition today there are so many very good skaters that it is necessary to come close to perfection in order to do well. In addition to self-discipline and concentration, the ability to withstand the pressures of competition is important, as is good sportsmanship."

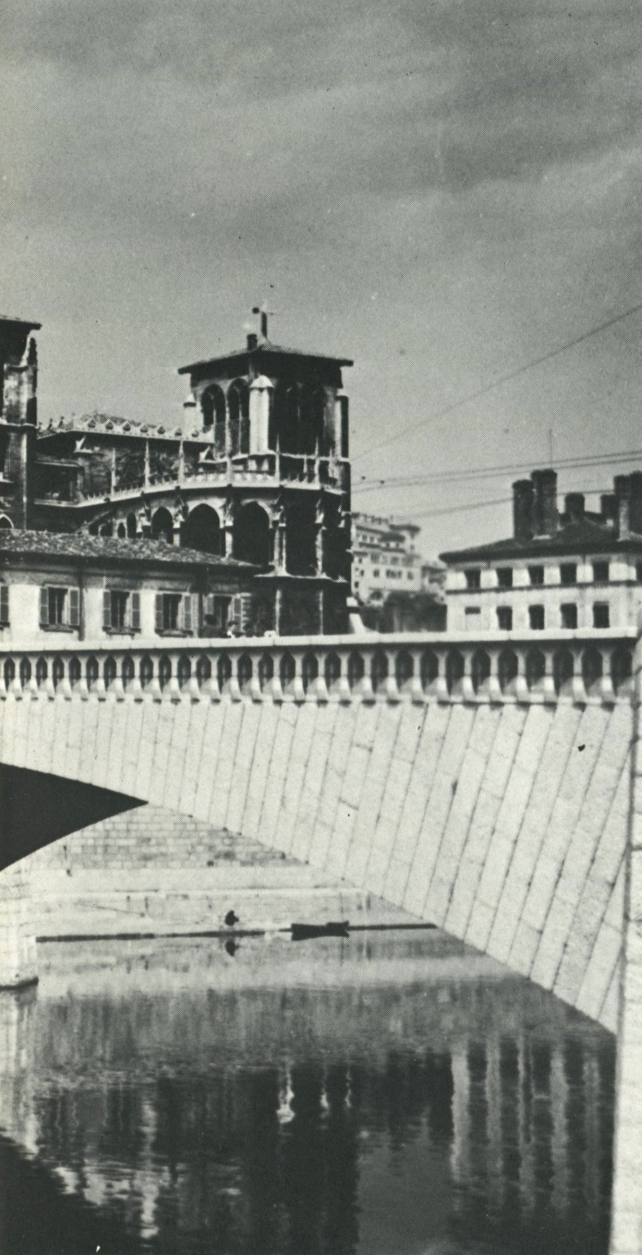
Richard reflects his attitudes actively, in a strict training schedule. In addition to being a member of the class of 1972 at West Los Angeles College where he majors in Education with plans to teach at high school level, Richard skates five hours a day, six days a week. Admitting that, for him, 6:00AM patch is the most difficult part of skating, Richard says that he enjoys figures more now that he is working on higher tests. Does this mean that he is among the skaters with an aversion to figures? Not at all.

Please turn to page 49





# LYON-A TRAVEL



France—a lady conjuring up images of perfumed fragrances, haute couture, deeds of gallantry and a cuisine to tempt the palate of gods;

—a nation of soft culture where the flourishing genius of painters, David, Delacroix, Manet, Monet, Renoir, Degas, Cezanne, Gauguin and Matisse, matched the wit of writers, Moliere, Voltaire, Victor Hugo and de Maupassant;

—with an epic history of turbulence from the Dordogne cave paintings of 20,000 B.C. through Charlemagne, Joan of Arc, Robespierre, Napoleon and de Gaulle;

plays host to the 1971 World Figure Skating Championships.

The welcoming city is Lyon, next to Paris, France's greatest metropolis, although with typical French individuality Marseille also claims this distinction. (And with typical Anglo-Saxon logic many of our publications insist upon adding a final, unnecessary "s" to both places' names.) However, there are no usurpers for Lyon's title of "gastronomic center of the country". Set in the heart of the Beaujolais wine-growing district, it draws tourists from all over France to sip the local wines and to sample the the local specialities such as *quenelle de brochet*, a delightful soufflé of minced pike.

Please turn to page 51

# MONOLOGUE

by Alexandra Stevenson

# Amateur Status Rules

Acts Causing

ASR 3

disqualific

a. A

receiv

or

ext

al

the

of the

skatin

the ric

beca

his r

in sports

Definitions (ASR 1.00)

An Amateur in figure skating is

who participates in this sport without

receiving any material gain or profit

under the USFSA.

## amateur status rules changes

by Charles DeMore

With the arrival of Autumn, we harken the coming of another skating season. As in the past, this season brings with it changes in the USFSA Rulebook. Many of these changes have occurred in the Amateur Status Rules; these changes are significant and important. This article is to advise you of these changes and also to make you aware of specific actions by other groups which could place in jeopardy the Amateur Status of USFSA Registered Skaters.

There are four classifications of skaters according to the USFSA Amateur Status Rules effective October of 1970.

1. The Amateur in Skating can enjoy full participation in all USFSA Activities. (Refer to Rule ASR 1.01 and ASR 5.01)
2. The Restricted Amateur "A" is restricted temporarily and for a specific period of time due to a violation of the USFSA Rules and can only participate in taking tests and skating in sanctioned carnivals. He may hold office in a USFSA Club (if permitted by the club's By-Laws), but

ing Loss of Amateur Status (ASR 3.00)

The following persons are classified as Amateurs and will be classified as Amateurs in Figure Skating:

- any person who has directly or indirectly participated in figure skating or for giving an financial benefit or for figure skating
- is ineligible for office in the USFSA (Refer to ASR 1.02, ASR 4.00 and ASR 5.02)
3. The Restricted Amateur "B" is a reinstated skater who may participate in all aspects of skating, except qualifying competitions. (Refer to ASR 1.02, ASR 3.01 and ASR 5.02)
4. A Professional in Skating is ineligible to participate in any USFSA activities, with the exception of taking USFSA tests and performing in sanctioned carnivals in accordance with USFSA Sanction Rules. A Professional in Skating includes those who are Professionals in figure skating, speed skating, roller skating and hockey. (Refer to ASR 1.03 and 5.03)

The Amateur Status Committee has had many inquiries regarding participation by USFSA Registered Amateurs in I.S.I.A. (Ice Skating Institute of America) activities. A broad statement can be made, "A USFSA member could participate in I.S.I.A. activities without jeopardizing his amateur status insofar as such partici-

pation does not violate USFSA Amateur Status and Sanctions Rules." Briefly, a person probably could take I.S.I.A. tests; but he would be in violation of ASR 4.013 if he participated in any event requiring a USFSA sanction. A note of warning: Sanctions issued by the I.S.I.A. for its competitions, exhibitions or other events are not recognized by the USFSA and, therefore, a USFSA member skating in such events would be subject to restriction for one year and be classified a Restricted Amateur "A". The I.S.I.A. has, in the past, issued such sanctions for their events thus adding confusion to the situation. Make sure the USFSA members skate in events properly sanctioned by it or, at least, are fully advised of the circumstances and consequences if they choose to participate in these unsanctioned activities.

Amateur Status, to a great extent, is a matter of honor and integrity. If you are in doubt about a situation which could jeopardize your Amateur Status, seek the advice of the nearest member of the Amateur Status Committee, as listed in the current Rulebook.



The soloist for the Los Angeles Figure Skating Club's second edition of its club show, "Excitement on Ice", are warming up for their numbers. As the theme from "Zorba the Greek" is heard over the sound system, the 1969 National Novice Mens Champion and the runnerup for the the 1970 National Junior Mens title, James Demogines, begins his dynamic program.

Jimmy does justice to his music in more ways than one, as both his paternal and maternal grandparents have come to the U.S. from southern Greece. Jimmy's parents have raised him according to Greek customs and philosophy. He has been taught to develop a strong character which will aid him in times of defeat and will inspire him to continue working toward his chosen goal. His character is constantly being tested in his chosen world of figure skating, as all competitive skaters and their parents know.

# DEMOGINES...



Jimmy and his parents and his two older brothers, Thomas and Steve, live in Pacoima, a city in the San Fernando Valley in Southern California. At the moment, however, the family is not together, for one of Jimmy's brothers is in the Army in Viet Nam. Both of Jimmy's parents have worked very hard to provide Jimmy with the ingredients necessary to produce a happy individual and a top skater.

Mr. Demogines is dedicated to supervising Jimmy's training habits. He arranges for all practice ice and transportation to and from the three rinks where Jimmy skates most. He also supervises all practices and helps Jimmy to remember what his coach, Frank Carroll, is currently stressing in his lessons.

Mrs. Demogines sees that he leads as normal a life as a champion possibly can live. She works, so that Jimmy can have lessons, ice time, travel money and all the

necessary equipment.

Jimmy started roller skating when he was eight. He switched to ice skating when the roller rink was converted to an ice rink. Now he practices six days a week for an average of three hours a day. During the summer, he usually stays in the Los Angeles area, but he has skated in Squaw Valley and Sun Valley.

Jimmy is in the eleventh grade at Hollywood Professional High School, where his major is math. He is a good student and was invited to join the scholarship club. By attending this school he has more time for skating, as did Peggy Fleming. He participates in other sports at school, such as running and gymnastics. He has also taken a few lessons in modern dance, and he plays tennis, softball and swims. He watches his diet, sticking to lean meats and dairy products.

Please turn to page 50

# A GREEK CLASSIC

by Jacqueline Desbrow

# THE MAKING OF A JUDGE

by Robert Whitney



Clipboards and boots, study guides and test sheets—these were the order of the day under sunny skies in Boston last June 20 and 21.

The first formal Judging School held in the New England area in more than fifteen years was an unqualified success. The school was organized under the capable Chairmanship of Mrs. Betsy N. Talbot, National Judge from Westwood, Massachusetts. It was conducted by the USFSA Judges Committee in cooperation with The Skating Club of Boston.

Figure skating judges are a dedicated and determined breed. They attend classroom seminars and ice demonstrations. They discuss elements of free skating and pair skating as well as figures. They join in open forum lectures. On-ice trial judging is sought in order to develop the uniformity of evaluation which is essential to figure skating as a sport based on individual human effort, both in performance and evaluation. The question is still posed, "Can enough definable standards be set by which to score the performance exactly?" Major faults and minor faults must be commonly agreed to by all the judges in



all parts of the world in order to bring athletes of the same caliber to World and Olympic level. This is the purpose of a Judges school.

The school held at The Skating Club of Boston had a four-fold design: to develop prospective judges, to increase the education of Low Test Judges, to include Intermediate Test Judges working for promotion and to serve as a refresher for High Test Judges. These four separate divisions of USFSA judging were coordinated into a two-day school.

Mrs. John Horsman, National Judge from Buck Hill Falls, Pennsylvania, served as Judge-in-Charge of an outstanding faculty consisting of one International Judge, four World, and four National Judges. Mrs. L.A. Graham, World Judge and National Vice-Chairman for Judges' Education and Training, provided educational materials which included a JET Judges School Manual, the USFSA Evaluation book and ISU Judges Handbooks. Mrs. Graham brought her talents from Akron, Ohio, second only in distance travelled to Dr. Franklin Nelson, National Judge, who came from Tulsa, Oklahoma.

All USFSA members eighteen years of age or older and figure skating instructors were eligible to attend. Professionals Arthur Bourke, Cecilia College, Frank Muckian, and Marion Proctor from The Skating Club of Boston attended as did Jean Allen and Mrs. Joyce Winship.

A full roster of sixty-eight applicants participated, not only from New England, but from as far away as Washington, D.C., and Greensboro, North Carolina. Four distinguished husband and wife teams of judges participated. The Skating Club of Boston's Betty and Gerry Gearheart worked with Harriet and Oscar Iobst of Churchville, Pennsylvania and the Wissahickon Skating Club, Elizabeth and Richard

# Shop Through SKATING

What's for Christmas from the pages of SKATING? Beautiful things! Please the skaters on your gift list, please your busy schedule and order now for a relaxed and happy holiday.

For instance, how would your favorite skaters like new stationery or notecards to make correspondence even more fun? Stationery or notecards with figure skating motifs are better yet, and so original. Liz Bierer offers a large selection of this special item. The motifs include the stag leap, layback spin, sitspin, and others. You couldn't get them anywhere else. Write Liz Bierer, 2413 Lambert Drive, Toledo, Ohio 43613.

But does the idea of sitting still and writing letters bring a groan from your active skater? There's no need to worry, it's a common problem. Show your pride in never stopping energy with a St. Lidwina Medal for good luck wherever she may go. Available for immediate delivery at \$5 per medal postpaid. Write National Sports Publications, Inc., P.O. Box 278, Manchester, New Hampshire 03105.

However, don't just sit there watching the action and waving goodbye. There's no need for anyone to stay behind. The North American Championships come this year and are in Peterborough, Ontario, Canada. Order forms for tickets are available on application to the 1971 North American Figure Skating Championships, c/o Peterborough Figure Skating Club, Box 956, Peterborough, Ontario, Canada. Don't forget the Nationals too. Even if you can't make it to Canada, Buffalo is the place to be. For tickets and information, write Buffalo Skating Club, P.O. Box 200, Buffalo, New York 14217. Write

up the traveling plans and schedule for your trip, wrap it up and watch the excitement when *that* present is discovered under the tree.

For the big trips and those smaller ones back and forth to the rink, a new case for those special records would surely come in handy. Frank Davenport, Box 43, Orinda, California 94563, has fine royal blue ones that hold six 10 or 12 inch records. Outside is quality luggage material and inside is polyfoam lining for protection. No C.O.D.'s. California residents add 5% sales tax.

Julius Czaja at 4 Crestview Drive, Pittsford, New York 14534, can also supply you with a record tote. He also offers a convenient rack for skates, a stoning kit and a scribe for your own personal use. Just write and order.

If you don't need a record case because you don't have any skating records, now is your chance. Ralph Melady has a special sale on two dance albums, personally supervised by a professional musician who is a silver dancer. Album # 2 contains 20 test dances, Rock & Roll 10-Fox, Jazz Willow Waltz, Starlight and Rhumba. The speed is 33 1/3, all tempos are correct, with never less than four instruments in any song. This album costs \$26.00, and with this purchase you get album # 1 for \$5.00 extra.

Frank McGirr has a different set of albums. One each for the three levels of progress—Preliminary and Bronze, Pre-Silver and Silver, Pre-Gold and Gold. Purchased separately they cost \$12.50 each. Together, they're a buy at \$35.00. They are the famous Andy Weis Orchestra series, and each disc has strobe markings. Check the ads in this issue on how to order each set. Just think. If you have your own records you'll know exactly when the scratches come. It's a good idea to be prepared.

Of course you know that with an Easy Hone skate sharpener kit you can be assured of being prepared all the time as far as perfect blade edges go. Ingenious to watch and simple to use, this device can save you countless hours, money and slippery dull edges. It's an excellent and thoughtful gift. Write BWD Sporting Equipment, 2685 Central Avenue, Baldwin, New York 11510.

The USFSA offers you a skater's carry-all, (\$7.50), with a shoulder strap, zipper and outside pocket. 16½" x 10" x 6", this laminated blue nylon bag is large enough to carry all your skater's paraphernalia. Also there's an executive style briefcase, (\$3.50), with a zipper top and USFSA shield, perhaps for the club officials on your list. Inside the cases, Santa could place a weather-resistant, blue nylon Rulebook cover which saves wear and tear on Rulebooks year

after year. What! You don't have the new 1971 Rulebook? Well then, all these needs can be met. Write USFSA Central Office, 178 Tremont Street, Boston, Massachusetts 02111.

And for an extra large, extra great stocking stuffer, how about putting Janet Lynn, Tim Wood or Judy Schwomeyer and James Sladky in your skater's socks? Impossible? No, just roll them up and slip them in. Personality Posters, 23" x 35", can be ordered from the USFSA Central Office at \$1.25 apiece, \$3.75 for the set. With these experts in the stockings, inspiration will fill your skater's boots.

After all the initial excitement over the skating gifts, and especially after celebrating and Christmas dinner, are you going to BE IN SHAPE TO SKATE? It's not always easy, but Barbara Altman can be of help. She has designed a wonderful off-ice exercise plan to help you get in shape and stay there. The 33 1/3 LP exercise record has music and verbal instruction and comes with an illustrated book for \$6.95. Send for the free brochure or go ahead and order from Barbara Altman, Ice Ballet Professional, 8224 Forest Avenue, Elkins Park, Pennsylvania 19117.

For those moments which truly are more sedentary SKATING would like to suggest some good books. *Linda Lane, Figure Skater*, by Alice Schumacher is a surprisingly realistic story of the skating ups and downs of a determined youngster. As Linda grows up, in age and skating ability, the reader accompanies her. At home, at school and at the rink, Linda's life is clearly drawn and healthily depicted. Aimed mainly at the younger teens, although others will enjoy it, the book is privately printed, autographed and can be obtained by sending \$4.95 to Alice Schumacher, 115-17th Street N., Great Falls, Montana 59401.

All collectors know that collecting can sometimes take a lot of searching and running all over, but SKATING has some prize items which will come to them. First is Lois and Richard Stephenson's new and beautiful book called *Skating Costume*. Painstakingly researched, this book contains the first full bibliography of the subject ever published. The illustrations, thirty plates in all, some hand colored, were charmingly done by Kathleen Stephenson. The text is excellent, and the book is bound in a lustrous blue and gold hand-marbled paper from France over boards, with the spine stamped in 14k gold. In sum, the book will be greeted with joy by all skating lovers who receive it. It's a limited edition of 300, each hand autographed. Write Lois and Richard Stephenson, 12 Hillyndale Road, Storrs, Con-

necticut 06268, and send \$20.00 per copy. (Connecticut residents add 70¢ salestax.)

Skate collectors will rejoice over the original Early American antique skates with wooden platforms, curved prow and iron runners at \$20.00 per pair. Write National Sports Publications, P.O. Box 278, Manchester, New Hampshire 03105. See the ad in this issue for further gift items from the same address.

Al Green has figure skate pins, charms, earrings, bracelets and other jewelry. Featured is a charming skate pin at \$2.75 each, with earrings to match. The same design in miniature also goes for tie tacks, by the pair in sterling at \$3.00 each. Write Al Green, 15A Juniper Lane, Eatontown, New Jersey 07724, (phone 201-542-0666) for a free catalogue or to order.

From Alan Zell, well-known to the readers of SKATING for his beautiful porcelain figurines, comes new gifts for this season. There are tiny skating figures 3/4" high on very highly polished stones which run from 2 1/2" x 4" to 4" x 5". At \$20.00 a piece plus some postage, no two are shaped exactly alike. And for the men on the ice in your life, there's a 10" high skating caricature. Hand carved in Italy from ten different rare woods, it's \$27.50 or \$30.50 with a plaque for engraving on the base. And, of course, Mr. Zell still has those wonderful porcelain figurines. Write Zell Brothers, Morrison at Park Avenue, Portland, Oregon 97205.

The one collector's item we haven't yet mentioned is skating dresses. Certainly the collectors of these are among the more avid in the avocation. From Pot Pourri designs come new cotton double-knit prints—florals, checks and stripes. They are heavy enough to be practical and the floral prints especially are so very gay and feminine. Featured are vibrantly striped leotards with tunics that also look great over pants. Tunic colors are basic navy, avocado or red.

Skate Togs by d'ann this season feature a terrific new washable easy-care Dacron-Polyester and Wool blend. It's a double knit of the finest quality and exclusive to manufacturers only. The new colors are interesting and do not fade out on the ice. Unusual is the new "Bustle & Bow" design, quite appealing and effective for dance competition because of the back-accent.

Lizette, Ltd. is making way for new styles in time for Christmas delivery, but if you order now you can take advantage of the SALE. In always classic styles, Lizette has a wide collection. Most prices are cut almost in half. For all skating dress prices and ordering directions, look at the ads in this issue.

SKATING wishes you a happy and rewarding Christmas shopping month.

# ST. GERVAIS REVISITED



The International Grand Prix was held August 17-23, 1970 in the delightful French Alpine village of St. Gervais. Eleven nations were represented. . . Belgium, Canada, Finland, France, West Germany, Great Britain, Holland, South Africa, Sweden, Switzerland and the United States.

The rink has a slightly larger than standard ice surface and a high arched

ceiling with seating on each side but open on both ends. Thus the weather was an important factor in skating conditions.

The competition started on a warm and sunny Tuesday with Ladies figures. Canada's Cathy-Lee Irwin took an early lead and continued her dominance on the second day, in spite of rain and cold. The U.S.A. was in strong contention after figures with Suna Murray and Mary-Lynn Gelderman placing second and fourth.

Ladies free skating was watched, as were all the free skating, pairs and exhibitions, by much of France, with live coverage each day by the National Television Network. Cathy-Lee Irwin won the free skating with a beautifully choreographed and artistic program. Her jumps were good and her music was well-chosen. An exciting program was turned in by Mary-Lynn Gelderman, capped by a strong double axel. She was rewarded with cheers from an enthusiastic audience, high marks from the judges and second place in the final results. Suna Murray turned in an intricate, well-executed program but was unable to hold a second in figures due to the more exciting performances of the first two ladies.

Pairs were skated on the cold afternoon of Ladies figures which did not dampen the enthusiastic spirit of the capacity crowd. Sandra and Val Bezic turned in an excellent performance that left no doubt as to their first place finish. Sheri Thrapp and Larry Dusich finished a disappointing second, failing to perform their difficult program well. Linda Connolly and Colin Taylforth of Great Britain and Florence Cahn and Roland Racle of France both skated well and show potential for the future.

Mens figures were swept by John Curry of Great Britain with Richard Ewell and Jimmy Demogines in sixth and seventh places.

Mens free skating was dominated by North America with Ron Shaver (Canada) and Richard Ewell (U.S.A.) delighting the crowd with their triples. An excellent performance was also given by Patrick McKilligan

Please turn to page 51

# official notes

1971 Referees & Accountants Examination  
available at Central Office - 178 Tremont

St., Boston, Mass. 02111.

## OFFICERS OF THE USFSA

### PRESIDENT

Frederick C. LeFevre, Troy, Ohio

### FIRST VICE-PRESIDENT

### EASTERN CHAIRMAN

Benjamin T. Wright, Belmont, Mass.

### SECOND VICE-PRESIDENT

### PACIFIC COAST CHAIRMAN

Howard G. Taylor, Walnut Creek, Calif.

### THIRD VICE-PRESIDENT

### MIDWESTERN CHAIRMAN

Dr. Gordon C. Brown, Ann Arbor, Mich.

### SECRETARY

Brooks Stewart, Southampton, Pa.

### TREASURER

John W.W. Wood, Wilmington, Del.

### STANDING COMMITTEE CHAIRMEN

#### AMATEUR STATUS

Charles A. DeMore, Cleveland Heights, Ohio

#### COMPETITIONS

William R. Haigler, Colorado Springs, Colo.

#### DANCE

Robert T. McLeod, Norwalk, Calif.

#### FIGURE TESTS

E. Newbold Black IV, New York, N.Y.

#### FINANCE

Theodore G. Patterson, Boston, Mass.

#### INTERNATIONAL

Spencer E. Cram, Islamorada, Fla.

#### JUDGES

Harry N. Keighley, Evanston, Ill.

#### MEMBERSHIP

George T. Yonekura, Berkeley, Calif.

#### PUBLIC RELATIONS

John W. McNair, Baltimore, Md.

#### SANCTIONS

William K. Munns, Concord, Calif.

#### ISU REPRESENTATIVE

John R. Shoemaker, San Francisco, Calif.

#### EXECUTIVE COMMITTEE

##### EASTERN

William J. Brennan Jr.

Charles U. Foster

Carl W. Gram Jr.

James H. Poyner

F. Ritter Shumway

Ralph W. Talley

##### MIDWESTERN

Louis Bodek

Dr. Hugh C. Graham Jr.

Rolf E. Hessler

C. Dallas Mauk

Joseph L. Serafine

Matthew H. Zats

##### PACIFIC COAST

Jack Curtis

Patrick J. Donnelly

Norman E. Fuller

E.W. Harvey

Dr. Kenneth O. Turner

Roy Winder

#### OFFICE MANAGER

Mrs. Virginia K. Burnham

USFSA Central Office

178 Tremont St.

Boston, Mass. 02111

Representing the USFSA at the December 1-5 meeting of the Amateur Athletic Union in San Francisco, California are Mr. E.W. Harvey of San Francisco, Calif., Mr. John R. Shoemaker of San Francisco, Calif., Mr. Howard G. Taylor of Walnut Creek, Calif., and Mr. George T. Yonekura of Berkeley, Calif. Mr. Harvey will serve as Chairman of the delegation.

# people

## BORN

To Mr. and Mrs. Ross Garner, Bramalea, Ontario, Canada, a son, Edward James, May 6.

To Mr. and Mrs. R.G. Masters (Carole Holliday), Greensburg, Penn., a son, Tyler Gordon, July 18.

To Mr. and Mrs. Edward Zalewski (Jo-Anne Leyden, 1963 Midwestern Gold Dance Champion), Chicago, Ill., a daughter, Robin Marie, July 13.

## MARRIED

Miss Carol Ann Challis and Mr. Roland Gamble, North Vancouver, Canada, June 27.

Miss Patricia Herrick and Mr. Dennis Silverthorne, Cleveland, Ohio, June 12.

Miss Marta Johnson and Mr. Grant Day, Los Angeles, Calif., July 24.

Miss Patricia Dorothy Joyce and Dr. Sidney V. Soanes, Brighton, Mass., July 28.

Miss Katherine McLaughlin and Mr. Joseph Mapes, Sacramento, Calif., July 25.

Miss Cynthia Stewart and Mr. Charles Hollingsworth, Los Angeles, Calif., August 29.

Miss Anna-Florette Valentin and Mr. John B. Glazer, New York, N.Y., May 1.

## DIED

Mrs. Paul van B. (Frances) Allen, mother of Mr. John E. Allen, August 18.

William E. Barz, father of Patti Barz, 1969 Midwestern Junior Lady Champion, Itasca, Ill., May 14.

Mrs. Edgar N. Black III, mother of E. Newbold Black IV, Chairman of the USFSA Figure Tests Committee, Haverford, Pa., June.

---

J. Gordon Garden, Chairman of the CFSA Rules Committee for seven years, was also active in the Canadian Association since 1957 as an Accountant and had served on its Board of Directors since 1962. He died on June 18, leaving a widow, Norah, former editor of C.O.S.S.I.P., and a daughter, Jane, a well-known judge in the Ontario section. Mr. Garden's contribution to skating in Canada will be long remembered in years to come.

---

Jaroslav Hainz, former World Referee and official of the Czechoslovak Skating Association, Prague, Czechoslovakia, May.

James J. Lane, member of the USFSA  
Continued on column 3

# from the editors

This is THE year to make SKATING an all-round, all-inclusive, Association magazine. The whole membership of the USFSA will subscribe to SKATING starting with the new year. (See your 1971 Rulebook, Article XXII, Section 2, for the rule change.) We need everyone's enthusiastic participation to help the magazine reach its top potential.

In order to help, we are bringing back some of the columns the magazine used to have in the past.

"Rockers and Counters" is one of them, and for it to be successful the CLUBS MUST WRITE IN about their activities. Let us know when you've had a party, an exhibition or an unusual event, how it went, and who was there.

The "Children's Corner" also will reappear. We're anxious to see letters and photographs of all the wonderful junior members. As many as possible will be printed.

New this year will be a column on "Unusual Skating Experiences". We welcome information regarding beautiful, strange or amusing occasions. All clubs and skaters have unusual experiences. Wouldn't it be fun to share them?

Also, if you can think of any sentence completions to the beginning, "Skating is..." send them to us. Mr. Paul E. Pepp, Professional at the FSC of Madison and some of the junior members of the Madison club have already begun. Here's a sample: Misery is ...finding yourself at the wrong end of the rink in the middle of a program. Misery is ...landing your first double axel and discovering no one was watching! Get the idea?

Everyone is looking forward to hearing from you.

---

## PEOPLE

Sanctions Committee, and father of Gerard V. Lane, 1970 National Silver Dance Champion, Swampscott, Mass., July 26.

Mrs. Evelyn Macdonald, Secretary of C.O.S. Judges Bureau, Toronto, Ontario, Canada, July 7.

Mrs. Beverly J. Schroeder, Portland, Ore., May 13.

# calendar

## NOVEMBER

- 1- 2 Richmond International Trophy, Richmond, England.

## DECEMBER

- 3- 5 North Atlantic Championships, The SC of Lake Placid, Lake Placid, New York.
- 3- 5 Northwest Pacific Championships, Portland ISC, Portland, Oregon.
- 7- 9 Central Pacific Championships, Utah FSC, Salt Lake City, Utah.
- 9-11 Eastern Great Lakes Championships, Port Huron FSC, Port Huron, Michigan.
- 9-11 Upper Great Lakes Championships, Greater Milwaukee FSC, Milwaukee, Wisconsin.
- 9-11 Southwestern Championships, Broadmoor SC, Colorado Springs, Colorado.
- 10-12 South Atlantic Championships, Philadelphia SC & HS, Ardmore, Pennsylvania.
- 11-12 New England Championships, SC of Hartford, Hartford, Connecticut.
- 11-13 Southwest Pacific Championships, Los Angeles FSC, Los Angeles, California.
- 18-20

## JANUARY

- 7- 9 Midwestern Championships, Wagon Wheel FSC, Rockton, Illinois.
- 7- 9 Pacific Coast Championships, Seattle SC, Seattle, Washington.
- 8-10 Eastern Championships, The SC of Boston, Boston, Massachusetts.
- 27-31 United States Championships, Buffalo SC, Buffalo, New York.

## FEBRUARY

- 2- 7 North American Championships, Peterborough, Ontario, Canada.
- 23-28 World Championships, Lyon, France.

## APRIL

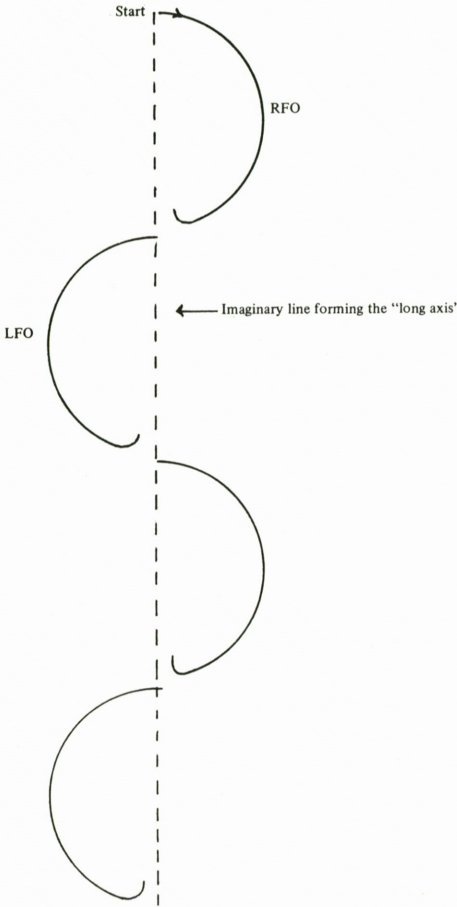
- 12-13 Edinburgh International Trophy, Murrayfield, England.
- 

## TURNED PROFESSIONAL

Marcia Phelan, of Sacramento, Calif., to join the Ice Follies.

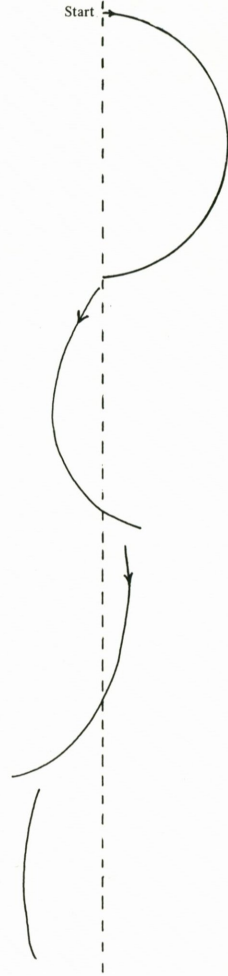
Tim Wood, 1969-70 World Champion, of Bloomfield Hills, Mich., to skate in Ice Follies.

# skate tips/figures



Adapted from *Basic Ice Skating Skills* by Robert Ogilvie; copyrighted by the USFSA and J.B. Lippincott Co.

See the long axis in your mind's eye extending across the rink, and stand at right angles to this line in the starting position for a forward outer edge. Make a thrust onto the outer edge, and as soon as you have it under control, (which by now should be almost immediately!) slowly start to pass your free leg forward. Just after your free foot has started to move forward, release your shoulder position so that at the quarter circle your shoulders are in a neutral position, and your free foot is just passing the skating foot. The free foot continues on

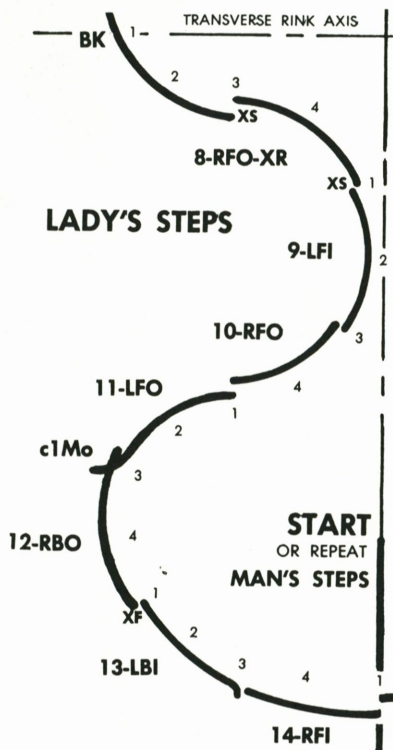


forward. At this point do not allow the shoulders to rotate too strongly. Just before the axis bring your feet together, bend your knees and at the same time start to assume the first position for the next edge. As the new edge is started, the arms and shoulders will have completed their movement so that you are now on a left forward outer in the first position. Apply the above instructions to the left foot and continue in this way across the rink.

The thing to remember in each half circle is not to rotate the shoulders too early, and that the new first position is not fully taken up before the knee bend just prior to the thrust. If your shoulders rotate too early or too strongly, it will be almost impossible to stop them, and you are liable to start the new edge badly out of position.

consecutive forward outside edges

# skate tips/dance



## rocker foxtrot

The Rocker Foxtrot is a set-pattern dance which must start on the long axis of the rink.

The error often occurs in steps eleven through fourteen where the mohawk is placed too close to the barrier, making it impossible to be in proper position to start the dance again on the long axis.

# SUMMER RESULTS

## LAKE PLACID FREE SKATING COMPETITION

THE SC OF LAKE PLACID, N.Y.,  
JULY 24-25

### GOLD MEN

1. Bob Rubens, Toronto CS & CC
2. Jimmy Demogines, Los Angeles FSC

### GOLD LADIES

1. Mary Petrie, Granite Club
2. Carol Farmer, Dundas FSC
3. Sally Stierstorfer, Philadelphia SC & HS (4 contestants)

### PRE-GOLD MEN

1. Sandy Moore, Weston SC
2. Charles Miller, Detroit SC

### PRE-GOLD LADIES

1. Heather Moore, Weston SC
2. Pegeen Naughton, Broadmoor SC
3. Betsy McLean, North Bay FSC (5 contestants)

### SILVER LADIES

1. Christine Messina, Commonwealth FSC
2. Elizabeth Freeman, Village of Lake Placid
3. Carol Vaughn, The SC of Lake Placid (4 contestants)

### SILVER PAIRS

1. Gale & Joel Fuhrman, Rye FSC
2. Kristin Gilbert & James Huffer Jr., Charter Oak FSC
3. Becky & Jeff Hale, Tulsa FSC

### PRE-SILVER MEN

1. Mark Henry, Long Island FSC
2. Chris Melin, The WC of Indianapolis
3. Leland Meadows, Bridgeport SC (6 contestants)



Gale & Joel Fuhrman

### PRE-SILVER LADIES-FIFTH TEST

1. Karen Crockett, Commonwealth FSC
2. Cynthia Ginkinger, Old York Road SC
3. Vicki Pisterzi, The SC of Lake Placid (12 contestants)

### PRE-SILVER LADIES-FOURTH TEST

1. Sonya Shewchuk, Silver Blades SC
2. Gale Fuhrman, Rye FSC
3. Ruth Cohen, Long Island FSC (8 contestants)

### BRONZE LADIES (13 and over)

1. Rachel Amelia, Chatham FSC
2. Cathy Foulkes, Hayden Recreation Centre FSC
3. Kristin Gilbert, Charter Oak FSC (8 contestants)

### BRONZE LADIES (12 and under)

1. Deborah Crawford, Metropolitan FSC
2. Kristina Ginkinger, Old York Road SC
3. Amy Brown, Buffalo C & SC (8 contestants)

### BRONZE PAIRS

1. Laura Johnson, The SC of Lake Placid, & Johnny Johns, Detroit SC
2. Sheryl Trueman & Jackie Courtney, The SC of Lake Placid
3. Sheryl Franks & Steven Wright, Hayden Recreation Centre FSC (7 pairs)

### PRE-BRONZE MEN

1. Kingsford Swan, Commonwealth FSC
2. Michael Botticelli, The SC of Boston
3. Gordon Modde, Chatham FSC (4 contestants)

### PRE-BRONZE LADIES (13 and over)

1. Becky Hibbard, Hayden Recreation Centre FSC
2. Sara Bernsley, Cantigue FSC
3. Anne Tufts, North Shore SC (14 contestants)

### PRE-BRONZE LADIES (11 and 12)

1. Tarya Simo, Detroit SC
2. Cindy Millican, Hayden Recreation Centre FSC
3. Laura Beardsley, The SC of Hartford (11 contestants)

### PRE-BRONZE LADIES (10 and under)

1. Ingrid Blomstrom, Metropolitan FSC
2. Sheryl Franks, Hayden Recreation Centre FSC
3. Kelly-Ann Hume, Toronto CS & CC (9 contestants)

### SIMILAR PAIRS

1. Laura Gephardt & Linda Vance,  
Buffalo C & SC



Marisa Messina

2. Marisa & Beverly Messina,  
Commonwealth FSC
  3. Vickie Irish & Maureen Currie,  
Buffalo C & SC  
(7 contestants)
- JUVENILE BOYS**
1. Peter Freeman, The SC of Boston
  2. Richard Rigby, Hayden Recreation Centre FSC
  3. Orestes Jowyk, Cantiague FSC  
(5 contestants)
- JUVENILE GIRLS (11 and over)**
1. Darly Clougher, Cantiague FSC
  2. Linda Wheatley, Hayden Recreation Centre FSC
  3. Laurie Adelstein, Commonwealth FSC  
(9 contestants)
- JUVENILE GIRLS (10 and under)**
1. Tracy Doyle, Long Island FSC
  2. Martha Jowyk, Cantiague FSC
  3. Diane Runyon, The SC of Boston  
(7 contestants)
- PRE-JUVENILE BOYS**
1. John Summers, The SC of Boston
  2. Jeffrey LaBrake, The SC of Lake Placid
- PRE-JUVENILE GIRLS (10 and over)**
1. Marianne Eichenberger, Metropolitan FSC
  2. Lauren Simon, Cantiague FSC
  3. Michelle Neuman, Cantiague FSC  
(7 contestants)
- PRE-JUVENILE GIRLS (9 and under)**
1. Olivia Biddle, The SC of Boston
  2. Sarah Koepfel, Great Neck FSC
  3. Kate Wilkins, North Shore SC  
(10 contestants)

### SUMMER FREE SKATING COMPETITION

THE SC OF WILMINGTON, DEL.,  
JULY 26

#### JUNIOR LADIES

1. Edith Wood, Washington FSC
2. Edith Herbst, Old York Road SC
3. Renee Parker, The SC of Wilmington  
(4 contestants)

#### NOVICE MEN

1. Tim Zink, Hershey FSC
2. Richard Dodson, The SC of Lake Placid

#### NOVICE LADIES

1. Valerie Cartus, Princeton SC
2. Jennifer Ghingher, IC of Baltimore
3. Brienne Pratt, IC of Baltimore  
(4 contestants)

#### INTERMEDIATE LADIES

1. Debbie Long, The SC of Lake Placid
2. Ann Hanson, Washington FSC
3. Gina Heyman, Illini FSC  
(7 contestants)

#### JUVENILE BOYS

1. Raymond Belmonte, Colonial SC
2. Sandy Morrow, IC of Baltimore

#### JUVENILE GIRLS

1. Barbara Lofgren, Baltimore FSC
2. Julia Hoover, Hershey FSC
3. Lisa Pavone, Hershey FSC  
(10 contestants)

#### PRE-JUVENILE GIRLS

1. Candy Mersereau, The SC of Wilmington
2. Ann McCarthy, Old York Road SC
3. Linda Goldsen, Metropolitan FSC  
(9 contestants)

### THE SKATING CLUB OF BOSTON SUMMER IMPROVISED FREE SKATING COMPETITION

THE SC OF BOSTON, MASS., JULY 30

#### JUVENILE BOYS

1. Michael Botticelli, The SC of Boston
2. Jean-Rene Basle, Seattle SC
3. Peter Freeman, The SC of Boston  
(6 contestants)

#### JUVENILE GIRLS

1. Ellen Roy, The SC of Boston
2. Emily Wendell, The SC of Boston
3. Edith Hansen, The SC of Boston  
(12 contestants)

### OPEN FREE SKATING CHAMPIONSHIPS

SILVER BLADES SC OF COHASSET,  
MASS.,

AUGUST 8

#### SENIOR LADIES

1. Christine Messina, Commonwealth FSC
2. Cathy Macri, Hershey FSC
3. Michelle Harnois, North Shore SC  
(4 contestants)

#### JUNIOR MEN

1. Tom Sobell, Country SC
2. David Hold, North Jersey FSC

#### JUNIOR LADIES

1. Karen Crockett, Commonwealth FSC
2. Terri Trespacz, Bay Path FSC
3. Chris Dodge, St. Louis SC  
(11 contestants)

#### NOVICE MEN

1. Kingsford Swan, Commonwealth FSC
2. Jean-Rene Basle, Seattle SC
3. Andrew Kalinyak, The SC of New York

#### NOVICE LADIES

1. Catherine Huszti, Commonwealth FSC
2. Donna Cortese, North Jersey FSC
3. Jill Peterson, Superior FSC  
(9 contestants)

#### INTERMEDIATE LADIES FINAL

1. Sheryl Franks, Hayden Recreation Centre FSC
  2. Cynthia Ekstein, Commonwealth FSC
  3. Emily Wendell, The SC of Boston  
(9 contestants)
- INTERMEDIATE LADIES A**
1. Kim Fernandes, Falmouth FSC
  2. Rebecca Berry, Hayden Recreation Centre FSC
  3. Francene Dooley, Providence FSC  
(9 contestants)



Sheryl Franks

**INTERMEDIATE LADIES B**

1. Cynthia Ekstein, Commonwealth FSC
2. Sheryl Franks, Hayden Recreation Centre FSC
3. Ellen Roy, The SC of Boston

**INTERMEDIATE LADIES C**

1. Jeanne Giblin, Commonwealth FSC
2. Emily Wendell, The SC of Boston
3. Beverly Messina, Commonwealth FSC

**JUVENILE BOYS**

1. John Summers, The SC of Boston
2. Richard Svenson, North Shore SC
3. Mark Meier, North Shore SC

**JUVENILE GIRLS FINAL**

1. Lisa Coppola, North Shore SC
2. Eve Goren, North Shore SC
3. Diane Runyon, The SC of Boston

**JUVENILE GIRLS A**

1. Sheryl Armstrong, The SC of Worcester
2. Lisa Coppola, North Shore SC
3. Linda Wheatley, Hayden Recreation Centre FSC

**(9 contestants)**

**JUVENILE GIRLS B**

1. Debbie Creighton, Commonwealth FSC
2. Patricia Soma, Bay Path FSC
3. Judith Mullen, North Shore SC

**JUVENILE GIRLS C**

1. Eve Goren, North Shore SC
2. Michelle Webber, Individual Member
3. Diane Runyon, The SC of Boston

**PRE-JUVENILE GIRLS FINAL**

1. Olivia Biddle, The SC of Boston
2. Pamela Drexler, North Shore SC
3. Debbie Deveney, North Shore SC

**(9 contestants)**

**PRE-JUVENILE GIRLS A**

1. Olivia Biddle, The SC of Boston
2. Andrea Ouellette, Southern New Hampshire SC
3. Corinne Fortini, Bay Path FSC

**(8 contestants)**

**PRE-JUVENILE GIRLS B**

1. Kate Wilkins, Individual Member
2. Pamela Drexler, North Shore SC
3. Tammy Kennedy, Southern New Hampshire SC

**(8 contestants)**

**PRE-JUVENILE GIRLS C**

1. Debbie Deveney, North Shore SC
2. Karen Blicher, Southern New Hampshire SC
3. Marlene Dooley, Providence FSC

**(9 contestants)**

**GIRLS PAIRS**

1. Marisa & Beverly Messina, Commonwealth FSC
2. Kim Fernandes & Kathy Sweeney, Falmouth FSC
3. Ann Shearer & Judy Kron, Old York Road SC

**(5 pairs)**

**LAKE PLACID SUMMER DANCE COMPETITION**

THE SC OF LAKE PLACID, N.Y.,  
AUGUST 14-15

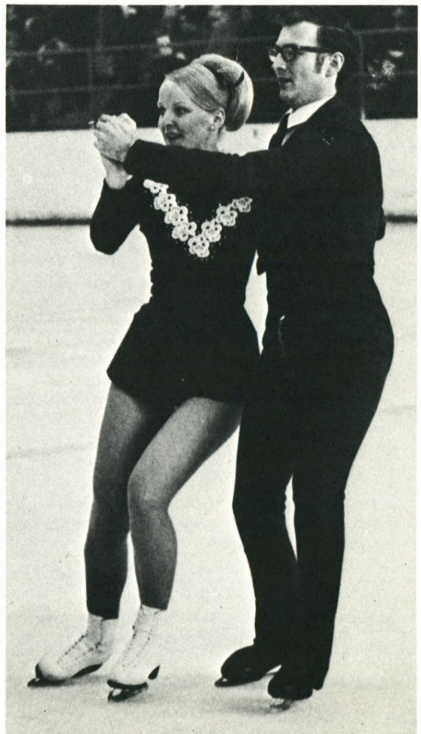
**MIXED GOLD DANCE**

1. Ann & Harvey Millier, Philadelphia SC & HS
2. Mary Campbell, Lansing SC, & Johnny Johns, Detroit SC
3. Mary Bonacci, Rye FSC, & Gerard Lane, The SC of Boston

**(5 couples)**

**GOLD FREE DANCE**

1. Ann & Harvey Millier, Philadelphia SC & HS
2. Mary Campbell, Lansing SC, & Johnny Johns, Detroit SC



Sally West & Malcolm McKown

**OPEN WALTZ**

1. Bonnie McConnell, Plaza FSC, & Keith Galgot, Watertown SC
2. Sally West & Malcolm McKown, The SC of Hartford
3. Myra & David Chrien, Plaza FSC (6 couples)

**SILVER DANCE**

1. Jane Hickey, The SC of Hartford, & Robert Young, Charter Oak FSC
2. Beatrice Sexton & James Thom, South Mountain FSC
3. Sally West & Malcolm McKown, The SC of Hartford (6 couples)

**SILVER FREE DANCE**

1. Jane Hickey, The SC of Hartford, & Robert Young, Charter Oak FSC
2. Myra & David Chrien, Plaza FSC
3. Beatrice Sexton & James Thom, South Mountain FSC

**OPEN FOURTEEN STEP**

1. Ann & Harvey Millier, Philadelphia SC & HS
2. Mary Campbell, Lansing SC, & Johnny Johns, Detroit SC
3. Mary Bonacci, Rye FSC, & Gerard Lane, The SC of Boston (12 couples)

**VETERANS DANCE**

1. Ann O'Donnell & Leo LaTulippe, Southern New Hampshire SC
2. Norma Simonek & Donald Simmons, Detroit SC
3. Ruth Wudte & Raymond Callahan, Metropolitan FSC (4 couples)

**SPECIAL VETERANS DANCE**

1. Catherine Nutter & Robert Burns, The SC of Boston
2. Ruth Southwick, Lincoln FSC, & Robert Young, Charter Oak FSC
3. Ann Millier, Philadelphia SC & HS, & Stan Southwick, Lincoln FSC (7 couples)

**BRONZE DANCE**

1. Judith Genovesi & Kent Weigle, the SC of Hartford
2. Nancy Engberg & David Young, The SC of Hartford
3. Diana Runde, The SC of Hartford, & James Kamin, The SC of Brunswick (6 couples)

**JUNIOR DANCE**

1. Mary Campbell, Lansing SC, & Johnny Johns, Detroit SC



Sandy Marvo

skating/1970 november

2. Bonnie McConnell, Plaza FSC, & Keith Galgot, Watertown SC
3. Amanda Gilbert, Charter Oak FSC, & Gerard Lane, The SC of Boston (5 couples)

**MIXED PRELIMINARY DANCE**

1. Gloria & Clarence Cook, North Shore SC
2. Cheryl & Jeff Stewart, Tulsa FSC

**MICHIGAN STATE UNIVERSITY SUMMER SCHOOL COMPETITION****MICHIGAN STATE UNIVERSITY ICE**

ARENA, MICH., JULY 19

**SEVENTH & EIGHTH TEST LADIES**

1. Sandy Marvo, Fort Wayne ISC
2. Helen Emrich, Fort Wayne ISC
3. Barbara Berquist, Individual Member (4 contestants)

**THIRD & FOURTH TEST LADIES**

1. Christine Fleming, Fort Wayne ISC
2. Janice Henning, Detroit SC
3. Wendy Graff, Ann Arbor FSC

**FIRST & SECOND TEST LADIES**

1. Christine Hucker, Lansing SC
2. Mary Scheffer, Lansing SC
3. Karin Rose, ISC of Fresno (12 contestants)

**PRELIMINARY BOYS**

1. Michael Deck, Trenton Community SC
2. Timothy Little, Lansing SC

**PRELIMINARY GIRLS**

1. Carol Nelson, Lansing SC
2. Katherine Little, Lansing SC
3. Lynn Migoski, Trenton Community SC (6 contestants)

**ST. PAUL INVITATIONAL FREE SKATING COMPETITION**ST. PAUL FSC, MINN., AUGUST 2  
JUNIOR LADIES

1. Paula Larson, Braemar-City of Lake FSC
2. Mari Watanabe, FSC of Minneapolis
3. Nancy Glenn, Wagon Wheel FSC (7 contestants)

**NOVICE LADIES**

1. Catherine Watanabe, FSC of Minneapolis
2. Betsy Hobson, Braemar-City of Lake FSC
3. Candyce Wenborg, FSC of Minneapolis (14 contestants)

**INTERMEDIATE LADIES**

1. Melissa McCandless, FSC of Minneapolis
2. Lana Kieffer, St. Paul FSC
3. Dawn Kaercher, FSC of Minneapolis (21 contestants)

**JUVENILE GIRLS**

1. Kathy Gelecinskyj, FSC of Minneapolis
2. Lynn Johnson, Individual Member
3. Karen Anderson, FSC of Minneapolis (12 contestants)

**SUB-JUVENILE GIRLS**

1. Mary Schuster, St. Paul FSC
2. Vonessa Scarella, St. Paul FSC
3. Kimberly Challman, FSC of Minneapolis (17 contestants)

**PRELIMINARY GIRLS**

1. Kella Stoeckman, FSC of Minneapolis
2. Sharon Landey, FSC of Minneapolis
3. Mona Mendoza, St. Paul FSC (12 contestants)

**SILVER BLADES SUMMER FREE STYLE INVITATIONAL COMPETITION**SILVER BLADES FSC, KANS., AUGUST 7  
JUNIOR LADIES

1. Mari Watanabe, FSC of Minneapolis
2. Dodie Baker, Silver Blades FSC

**NOVICE LADIES**

1. Katherine Watanabe, FSC of Minneapolis

2. Barbie Stivers, Silver Blades FSC

3. Debbie Schwartz, St. Paul FSC

(4 contestants)

**SIMILAR PAIRS**

1. Laurie Flynn & Carol Sagehorn, Silver Blades FSC

2. Kathy Flynn & Diane Wharton, Silver Blades FSC

3. Frannie Mortenson & Jamie Shields, Silver Blades FSC

(4 pairs)

**INTERMEDIATE LADIES**

1. Kelly Flynn, Silver Blades FSC

2. Gwen Mahler, Silver Blades FSC

3. Melissa McCandless, FSC of Minneapolis

(11 contestants)

**THIRD & FOURTH TEST MEN**

1. Kenneth Kawicki, Forestwood FSC

2. Scott Fitch, Wichita FSC

**SECOND TEST LADIES**

1. Madelaine Allain, Silver Blades FSC

2. Dana Gillespie, Silver Blades FSC

3. Gitta Griebel, Omaha FSC

(9 contestants)

**PRELIMINARY & FIRST TEST MEN**

1. Tommy Roseen, FSC of Minneapolis

2. Chuck Abbott, Arapahoe FSC

3. David Sinclair, Silver Blades FSC

**PRELIMINARY & FIRST TEST LADIES**  
(over 10)

1. Jackie Ratts, Wichita FSC

2. Carol Sagehorn, Silver Blades FSC

3. Cindy Babcock, FSC of Minneapolis

(9 contestants)

**PRELIMINARY & FIRST TEST LADIES**

(10 and under)

1. Leslie Barnes, Tulsa FSC

2. Mary Dullum, FSC of Minneapolis

3. Cindy Babcock, FSC of Minneapolis

(9 contestants)

**THIRD NOVICE INTER-CLUB COMPETITION**

CAPITAL CITY FSC, CALIF., May 16-17

**LADIES PAIRS**

1. Jenny Gilman & Kathy Rose, Walnut Creek WC

2. Tamara Gambill & Amy Brosseau, Capital City FSC

3. Phina Ford & Terrylin Turner, St. Moritz ISC

(6 pairs)

**SECOND TEST MEN FIGURES AND**

**FREE STYLE** (over 13)

1. Walter Kelley, St. Moritz ISC

2. Allen Schramm, Marin FSC

3. Richard Perez, Silver Edge FSC

(4 contestants)

**SECOND TEST LADIES FIGURES AND**

**FREE STYLE-GROUP A** (over 13)

1. Marian Messick, El Camino ISC

2. Lisa Weil, ISC of Fresno

3. Laurie Cava, Walnut Creek WC

(5 contestants)

**SECOND TEST LADIES COMPULSORY**

**MOVES AND FREE STYLE** (over 13)

1. Debbie Cutter, Capital City FSC

2. Debbie Blase, St. Moritz ISC

3. Christine Clark, Walnut Creek WC

(4 contestants)

**SECOND TEST LADIES COMPULSORY**

**MOVES AND FREE STYLE** (under 13)

1. Linda Bevier, Crystal Springs ISC

2. Tamara Gambill, Capital City FSC

3. Julianne Macie, El Camino ISC

(8 contestants)

**SECOND TEST LADIES FREE STYLE-**

**GROUP A** (under 13)

1. Amy Brosseau, Capital City FSC

2. Karen Moret, Crystal Springs ISC

3. Patricia Maley, Marin FSC

(4 contestants)

**SECOND TEST LADIES FREE STYLE-**

**GROUP B** (over 13)

1. Luran Vincent, Walnut Creek WC

2. Ann Boles, Marin FSC

3. Nancy Thym, Capital City FSC

(4 contestants)

**SECOND TEST LADIES FREE STYLE-**

**GROUP B** (under 13)

1. Robin Howard, St. Moritz ISC

2. Cheryl Nelson, Crystal Springs ISC

3. Kristan Jakob, Marin FSC

(6 contestants)

**FIRST TEST MEN FIGURES AND FREE**

**STYLE** (over 13)

1. James Bellevue, El Camino ISC

2. David Narron, St. Moritz ISC

3. David Hicks, Walnut Creek WC

**FIRST TEST LADIES COMPULSORY**

**MOVES AND FREE STYLE** (over 13)

1. Kimberly Caldwell, Capital City FSC

2. Desiree Ellsworth, Capital City FSC

3. Kathleen Funch, ISC of Fresno

**FIRST TEST LADIES COMPULSORY**

**MOVES AND FREE STYLE** (under 13)

1. Sally Anderson, El Camino ISC

2. Gail Moret, Crystal Springs ISC

3. Kim Urie, ISC of Fresno

(7 contestants)

**PRELIMINARY GIRLS FIGURES AND**

**FREE STYLE-GROUP A** (under 13)

1. Nickoletta Farros, El Camino ISC

2. Debbie Zaidin, Marin FSC

3. Betsy Micka, ISC of Fresno

(6 contestants)

**PRELIMINARY GIRLS FIGURES AND**

**FREE STYLE-GROUP B** (under 13)

1. Carol Allen, Walnut Creek WC

2. Sandra Mackinnon, El Camino ISC

3. Terri Tripp, El Camino ISC

(6 contestants)

**PRELIMINARY GIRLS FIGURES AND**

**FREE STYLE-GROUP C** (under 13)

1. Robin Lenhardt, Silver Edge FSC

2. Cindy Woodruff, Walnut Creek WC

3. Martha Novario, Walnut Creek WC

(7 contestants)

**PRELIMINARY GIRLS FIGURES AND**

**FREE STYLE-GROUP D** (under 13)

1. Lori Emerzian, ISC of Fresno

2. Georgiana Sutton, Capital City FSC

3. Cathy Gage, El Camino ISC

(8 contestants)

**PRE-JUVENILE GIRLS MOVES-GROUP**

**A** (under 13)

1. Candy Reid, Crystal Springs ISC

2. Cheryl Tindell, Crystal Springs ISC

3. Patti Henry, Crystal Springs ISC

(4 contestants)

**PRE-JUVENILE GIRLS MOVES-GROUP B**

(under 13)

1. Dianna Boone, Crystal Springs ISC

2. Karen King, Crystal Springs ISC

3. Lori Andress, Crystal Springs ISC

(5 contestants)

**PRE-JUVENILE GIRLS MOVES-GROUP**

**C** (under 13)

1. Kathryn McDonnell, Crystal Springs ISC

2. Dawn Linsley, El Camino ISC

3. Dee Hensel, Crystal Springs ISC

(5 contestants)

**CENTRAL CALIFORNIA INTER-CLUB**

**COMPETITION NOVICE**

EL CAMINO ISC, CALIF., MAY 24

**FIRST TEST LADIES-GROUP I** (over 13)

1. Cynthia Adams, Essex SC of N.J.

2. Lisa Mayson, Marin FSC

3. Cindy McNeil, Capital City FSC

**FIRST TEST LADIES-GROUP I** (under 13)

1. Juil Zusman, El Camino ISC

2. Dolores Hernandez, Crystal Springs ISC

3. Betsey Brittan, Crystal Springs ISC  
(6 contestants)

**FIRST TEST LADIES-GROUP II (over 13)**

1. Karen Dinsfriend, Capital City FSC
2. Pam Gustafson, Marin FSC
3. Gloria Ho, St. Moritz ISC

(4 contestants)

**FIRST TEST LADIES-GROUP II (under 13)**

1. Lisa Turner, St. Moritz ISC
2. Lisa Rolfe, Crystal Springs ISC
3. Jenny Cunningham, El Camino ISC

(6 contestants)

**FIRST TEST LADIES-GROUP III (under 13)**

1. Gigi Gustafson, Marin FSC
2. Lori Armanini, El Camino ISC
3. Juli Del Dotto, El Camino ISC

(5 contestants)

**PRELIMINARY GIRLS MOVES**

1. Denise Barton, El Camino ISC
2. Molly Zaidlin, Marin FSC
3. Theresa Eleson, El Camino ISC

(4 contestants)

**LADIES IMPROVISED ARTISTIC FREE STYLE**

1. Julianne Macie, El Camino ISC
2. Juli Zusman, El Camino ISC
3. Carole Millar, Capital City FSC

(9 contestants)

**CENTRAL CALIFORNIA SECOND  
ADVANCED INTER-CLUB COMPETITION**

CRYSTAL SPRINGS ISC, CALIF.,  
JUNE 15

**SENIOR LADIES (13 and over)**

1. Mary Turner, St. Moritz ISC
2. Leslie Cronin, Walnut Creek WC
3. Hetti Schramm, Marin FSC

**SENIOR LADIES MOVES (13 and over)**

1. Leslie Cronin, Walnut Creek WC
2. Jenny Gilman, Walnut Creek WC

**SENIOR DANCE**

1. Ginger Snyder & John Miscovich, St. Moritz ISC
2. Marilyn Miscovich & Richard Walter, St. Moritz ISC
3. Joyce & Ernie Burden, Crystal Springs ISC

(5 contestants)

**JUNIOR LADIES I (13 and over)**

1. Kym Likerman, Marin FSC
2. Christine Baker, San Francisco SC
3. Jenny Gilman, Walnut Creek WC

(5 contestants)

**JUNIOR LADIES MOVES (13 and over)**

1. Lisa Ferrarini, Crystal Springs ISC
2. Barbara Horton, Walnut Creek WC
3. Kym Likerman, Marin FSC

(10 contestants)

**JUNIOR LADIES MOVES (under 13)**

1. Kathy Rose, Walnut Creek WC
2. Linda Bevier, Crystal Springs ISC
3. Paula Leach, Crystal Springs ISC

(4 contestants)

**SILVER DANCE**

1. Ginger Snyder & Richard Walter, St. Moritz ISC
2. Ferne Bearse, San Francisco SC, & William Legner, St. Moritz ISC

**NOVICE LADIES**

1. Lisa Ferrarini, Crystal Springs ISC
2. Barbara Horton, Walnut Creek WC
3. Julie Scott, Silver Edge SC

(11 contestants)

**INTERMEDIATE LADIES (13 and over)**

1. Leane Jordan, Silver Edge SC
2. Lee Howard, Crystal Springs ISC
3. Linda McDonald, Crystal Springs ISC

(8 contestants)

**INTERMEDIATE LADIES (under 13)**

1. Tammy Gambill, Capital City FSC

2. Kathy Ondry, Crystal Springs ISC
3. Phina Ford, St. Moritz ISC

(8 contestants)



Bill Schneider

**SOUTHERN CALIFORNIA INTER-CLUB  
CHAMPIONSHIPS**

SAN DIEGO FSC, CALIF., JUNE 20, 27, 28  
SENIOR MEN

1. Tom Huff, Arctic Blades FSC
2. Bill Schneider, Los Angeles FSC
3. Robert Graham, Arctic Blades FSC

**SENIOR LADIES**

1. Wendy Burge, Los Angeles FSC
2. Mary Shields, Los Angeles FSC
3. Patricia Shelley, Arctic Blades FSC

(11 contestants)

**SENIOR PAIRS**

1. Michelle McCladdie & Richard Ewell, All Year FSC
2. Jodie Martin & Robert Berry, South Bay FSC
3. Gail & Stephen Heitert, San Diego FSC

**GOLD DANCE**

1. Kathy Flaherty, Los Angeles FSC, & Tom Easton, Genesee FSC
2. Dorothy Barker & Herb Swain, Glacier Falls FSC
3. Karen Warloe, Pacific FSC, & Rick Kolodziej, Los Angeles FSC

**JUNIOR MEN**

1. Johnny Carlow, Arctic Blades FSC
2. Robert Berry, South Bay FSC
3. Jim Hulick, Arctic Blades FSC

(6 contestants)

**JUNIOR LADIES**

1. Kim McIsaac, South Bay FSC
2. Laurie Hupp, South Bay FSC
3. Jodie Martin, South Bay FSC

(21 contestants)

**JUNIOR PAIRS**

1. Wendy Mullender & Tom Huff, Arctic Blades FSC
2. Brenda Rodgers, Las Vegas FSC, & Jack Campbell, Nevada State University ISC
3. Cathleen & Hal Marron, Valley FSC

(5 pairs)

**SILVER DANCE**

1. Sandra Hill & Roger Fortin, Glacier Falls FSC
2. Shareen & Curt Finley, Glacier Falls FSC
3. Beth Morrow, The SC of Phoenix, & David Underwood, Pittsburgh FSC

(6 couples)

**VETERANS DANCE**

1. Jean & Richard Kirk, Glacier Falls FSC
2. Lois Franke & Wendell Buttrey, Los Angeles FSC
3. Emily & William Smyth, Princeton FSC

**NOVICE MEN**

1. Jon Prasniewski, Arctic Blades FSC
2. Stephen Heitert, San Diego FSC
3. Randy Gardner, All Year FSC

**NOVICE LADIES**

1. Roberta Loughland, Arctic Blades FSC
2. Debra Lundgren, All Year FSC
3. Nancy Brown, South Bay FSC

**BRONZE DANCE**

1. Maureen Morrow & Glenn Parriott, The SC of Phoenix
2. Vicki Sheurn, Los Angeles FSC, & Steve Ledford, All Year FSC
3. Linda Huffsteter & David Bolton, The SC of Phoenix

(11 couples)

**JUVENILE BOYS**

1. Eric Johnson, South Bay FSC
2. Michael Fero, South Bay FSC

**JUVENILE GIRLS**

1. Lori Kyllonen, South Bay FSC
2. Marianne Souza, All Year FSC
3. Pamela Skinner, The SC of Phoenix

(10 contestants)

**SECOND TEST LADIES**

1. Marrilee Irwin, Arctic Blades FSC
2. Gail Heitert, San Diego FSC

3. Cathy Chadwick, San Diego FSC

**FIRST TEST MEN**

1. Jimmy Crawford, All Year FSC
2. Michael Ebersole, Valley FSC

**FIRST TEST LADIES-GROUP I**

1. Lisa Carey, The SC of Van Nuys
2. Doreen Jackson, South Bay FSC
3. Rebekah Street, Arctic Blades FSC

**FIRST TEST LADIES-GROUP I-A**

1. Anita Ruf, Valley FSC
2. Leslie Williams, Lilac City FSC
3. Michele Weiss, Nordic FSC

(10 contestants)

**FIRST TEST LADIES-GROUP I-B**

1. Lisa Carey, The SC of Van Nuys
2. Rebecca Baldwin, The SC of Van Nuys
3. Daria Schweitzer, Arctic Blades FSC

(10 contestants)

**FIRST TEST LADIES-GROUP I-C**

1. Rebekah Street, Arctic Blades FSC
2. Doreen Jackson, South Bay FSC
3. Michelle Fagan, South Bay FSC

(10 contestants)

**FIRST TEST LADIES-GROUP I-D**

1. Laurie Turner, San Diego FSC
2. Marianne McCaffrey, South Bay FSC
3. Patricia Solomon, Los Angeles FSC

(10 contestants)

**FIRST TEST LADIES-GROUP II**

1. Brenda Rodgers, Las Vegas FSC
2. Julie Emge, South Bay FSC
3. Leslie Selrenik, Pacific FSC

(9 contestants)

**FORMATION FIESTA TANGO**

1. Sara Hill, Roger Fortin, Roselee Ralphs, Bill Topps Jr., Nancy Smith, William Degroot, Glacier Falls FSC
2. Team B-Karla Klocki, Stan Klocki, Kathy Russell, Larry Seale, Lisa Johnson, Brian Hammer, All Year FSC
3. Team C-Janet Johnson, Jimmy Demogines, Kathy Nitz, Martin Brantley, Julia Saba, Sid Brosten, Los Angeles FSC

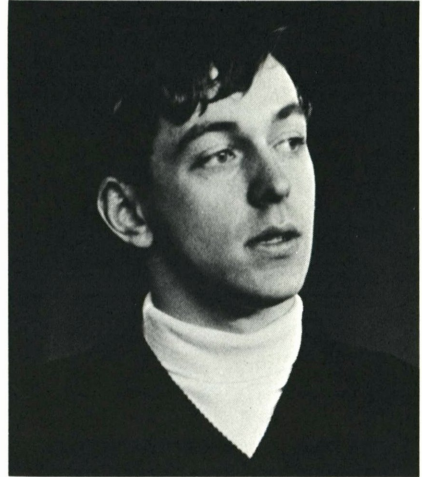
(7 entries)

**FORMATION FOURTEEN STEP**

1. Dorothy Barker, Herb Swain, Shareen

Finley, Curt Finley, Sara Hill, Roger Fortin, Glacier Falls FSC

2. Joan Brosten, Ricks Babb, Dorothy Stone, Barry Stroh, Barbara Wayland, Rick Kolodziej, Los Angeles FSC



Toller Cranston

**CENTRAL ONTARIO SUMMER SKATING COMPETITION**

LAKESHORE LIONS ARENA & OAKVILLE ARENA, ONT., CANADA, AUGUST 14-15-16

**SENIOR MEN**

1. Roger Uuemae, Toronto CS & CC
2. Glen Laframboise, North Bay FSC
3. Stephen Savino, North Jersey FSC

(10 contestants)

**SENIOR LADIES**

1. Patricia Moode, Chatham FSC
2. Kathy Malmberg, Wagon Wheel FSC
3. Janice Fletcher, Granite Club

(34 contestants)

**OPEN MENS SINGLES**

1. Toller Cranston, Toronto CS & CC
2. Robert Rubens, Toronto CS & CC

**OPEN LADIES SINGLES**

1. Diane Hall, Granite Club
2. Dorothy Hamill, Rye FSC
3. Teri Tucker, Buffalo SC

(9 contestants)

**LADIES GOLD INTERPRETIVE**

1. Jean Woelfle, Essex SC of N.J.
2. Shelley McLeod, Timmons-Porcupine SC
3. Cynthia Miller, Town of Mt. Royal SC

(6 contestants)

**JUNIOR MEN**

1. Gregory Taylor, Buffalo SC
2. Warren Keahey, Buffalo SC
3. Brian Mathe, WC of St. Catherines

(5 contestants)

**JUNIOR LADIES-FINAL ROUND**

1. Cheryl Richardson, Scarborough FSC
2. Valery Levine, The SC of New York
3. Donna Shubaly, Richmond Hill FSC

(10 contestants)

**JUNIOR LADIES-GROUP A**

1. Wendy Weisman, Old York Road SC
2. Susan Gillham, Oakville FSC
3. Valery Levine, The SC of New York

(8 contestants)

**JUNIOR LADIES-GROUP B**

1. Cheryl Richardson, Scarborough FSC
2. Sonya Shewchuk, Silver Blades Inc.
3. Donna Shubaly, Richmond Hill FSC

(10 contestants)

**MENS SILVER INTERPRETIVE**

1. Bob Knapp, Buffalo SC
2. Gregory Taylor, Buffalo SC
3. Warren Keahey, Buffalo SC

(6 contestants)

**LADIES SILVER INTERPRETIVE**

1. Cheryl Richardson, Scarborough FSC
2. Kathy Litvinchuk, Sudbury SC
3. Debbie Bartolotto, Ridgetown FSC

(19 contestants)

**NOVICE MEN**

1. Peter Zednik, Oshawa SC
2. Bob Houstoun, Toronto CS & CC
3. John Rait, Silver Blades Inc.

(8 contestants)

**NOVICE LADIES**

1. Jodie Maier, Chicago FSC
2. Pamela Martin, Upper Canada FSC
3. Martha Harding, North Shore SC

(22 contestants)

**NOVICE PAIRS**

1. Janice Maikawa, Dundas FSC, & Reed MacDonald, Preston FSC
2. Lindy Watts, North York SC, & Donald Fraser, Richmond Hill FSC
3. Cindy Conner & Warren Keahey, Buffalo SC

(9 pairs)

**PRE-NOVICE MEN**

1. Brian Nilson, Hamilton-Stoney Creek FSC
2. David Fraser, Upper Canada FSC
3. Dennis Johnston, Port Perry FSC

(6 contestants)

**PRE-NOVICE LADIES**

1. Rachel Amelia, Chatham FSC
2. Brenda Keay, East York SC
3. Karen Newton, Unionville SC

(48 contestants)

**MENS BRONZE INTERPRETIVE**

1. Kevin Hicks, Windsor FSC
2. Vern Taylor, University SC
3. David Svisco, Buffalo SC

(4 contestants)

**LADIES BRONZE INTERPRETIVE**

1. Kelly-Ann Hume, Toronto CS & CC
2. Shelly Simonton, Chatham FSC
3. Jennifer Cleave, North York SC

(25 contestants)

**JUVENILE BOYS**

1. Kevin Hicks, Windsor FSC
2. Gordon Moode, Chatham FSC
3. Richard Spence, Scarborough FSC

(12 contestants)



Mary Braun

**JUVENILE GIRLS**

1. Sally Ketner, Wagon Wheel FSC
2. Kelly-Ann Hume, Toronto CS & CC
3. Michele Koutnik, Unionville FSC

(63 contestants)

**GOLDEN WEST OPEN FREE SKATING CHAMPIONSHIPS**

**CULVER ICE ARENA, CALIF., SEPTEMBER**

**PRE-GOLD MEN**

1. Bill Alexander, Arctic Blades FSC
2. Perry Hutchings, The SC of Phoenix
3. Paul Guzman, Los Angeles FSC

**PRE-GOLD LADIES**

1. Leslie Cronin, Walnut Creek WC
2. Victoria Mihojevich, South Bay FSC
3. Linda Oren, Arctic Blades FSC

**SILVER LADIES**

1. Wendy Burge, Los Angeles FSC
2. Audrey Welch, All Year FSC
3. Mary Braun, Princeton SC

(8 contestants)

**PRE-SILVER MEN**

1. Larry Seale, All Year FSC
2. Wayne Armstrong, South Bay FSC
3. David Kirby, Oak Park FSC

**PRE-SILVER LADIES**

1. Laurie Brandel, Arctic Blades FSC
2. Jodie Martin, South Bay FSC
3. Kim Wilson, Seattle SC

(22 contestants)

**BRONZE MEN**

1. Stephen Heitert, San Diego FSC
2. Randy Gardner, All Year FSC
3. Marc Fero, South Bay FSC

(4 contestants)

**BRONZE LADIES**

1. Margaret Smith, Glacier Falls FSC
2. Stacy Rathbun, South Bay FSC
3. Kathy Rose, Walnut Creek WC

(20 contestants)

**BRONZE PAIRS**

1. Brenda Rodgers & Jack Campbell, Las Vegas FSC
2. Lynn Johnson, Individual Member, & David Kirby, Oak Park FSC
3. Rebecca Baldwin, The SC of Van Nuys, & Stanley Kolodziej, Los Angeles FSC

(6 pairs)

**BRONZE FREE DANCE**

1. Liz Cox & Jack Campbell, Las Vegas FSC
2. Marta Day & Stanley Klocki, All Year FSC
3. Edwaa Smith, Ann Arbor FSC, & Scott Hamilton, Bowling Green FSC

(6 couples)

**PRE-BRONZE MEN**

1. Ken Newfield, Santa Monica FSC
2. Scott Hamilton, Bowling Green FSC
3. Eric Johnson, South Bay FSC

(4 contestants)

**PRE-BRONZE LADIES**

1. Roni Botterell, San Diego FSC
2. Tai Babilonia, All Year FSC
3. Lynn Johnson, Individual Member

(21 contestants)

**JUVENILE BOYS**

1. James Hartley, Los Angeles FSC
2. David Nottoli, The SC of Phoenix
3. Tor Carson, Los Angeles FSC

(8 contestants)

**JUVENILE GIRLS (over 12)**

1. Anita Ruf, Valley FSC
2. Lisa Stone, The SC of Van Nuys
3. Lisa Carey, The SC of Van Nuys

(26 contestants)

**JUVENILE GIRLS (under 12)**

1. Kristy Chubb, South Bay FSC
2. Carolyn Kovtun, San Diego FSC
3. Rachelle Ottley, Arctic Blades FSC

(32 contestants)

# laurels

## TESTS PASSED BY USFSA SKATERS

Testing is an important part of a figure skater's progress. The following USFSA sanctioned tests in figure, pair & dance were reported passed the the USFSA Central Office during the period of April 1 through August 15. Any errors should be reported to the USFSA, 178 Tremont Street, Boston, Mass. 02111.

## GOLD MEDAL WINNERS

- GOLD FIGURE—** Sheri Bok, Troy SC; Dianne DeLeeuw, Arctic Blades FSC; Jimmy Demogines, Los Angeles FSC; Diane Goldstein, Arapahoe ISC; Pattie Gumaer, Arctic Blades FSC; Dorothy Hamill, SC of New York; Dean Hiltzik, SC of New York; Judy Johnson, FSC of Minneapolis; Lisa Kane, Fort Wayne ISC; Louise Loriaux, CFSA; Juli McKinstry, Santa Rosa FSC; Nancy Morgan, Troy SC; Sally Stierstorfer, Philadelphia SC & HS; Adela Vaclav, Los Angeles FSC; Deborah Wallace, Buffalo SC; Kim Warning, CFSA.
- GOLD PAIR—** Sandra & Val Bezic, CFSA; Barbara Brown, Denver FSC.
- GOLD DANCE—** Dall Bankley, CFSA; Bruce Bowland, Essex SC; Robert Castle, St. Moritz ISC; Patrick Dean, Professional; Lisa Illsley, Santa Rosa SC; Candace Johnstone, Essex SC; Linda Leaver, Utah FSC; Mary Malavolta, Rye FSC; Susan Mastroni, SC of Hartford; Melissa Selleck, Buffalo SC; Joan Sherbloom, Los Angeles FSC; Gretchen Stuart, Troy SC; Janet VanCamp, Lansing SC; Thomas VanCamp, Lansing SC; Deborah Wallace, Buffalo SC.
- GOLD FREE—** Bruce Bowland, Essex SC; Robert Castle, St. Moritz ISC; Patricia Grench, Buffalo SC; Vesma Grinfelds, St. Moritz ISC; Candace Johnstone, Essex SC.

**ALBUQUERQUE FSC:** 2 — Kathy Franchini, Terry Franchini.

**ALL YEAR FSC:** Pre — Cynthia Arline, Robert Beauchamp, Eugene Drayton Jr., Brian Haack, Linda Haack, Kaye Peterson, Deborah Reiner, Bruce Robinson, Carrie Rugh, Robin Stratton. 1 — Karen McMahan, Kim McMillan, Amyee Morrison, Shelly Palmer, Glenda Preston, Jill Preston, Susan Reed. 2 — Janice Cadlini, Scott Lillien, Rachel Roper. 3 — Mary Bryant, Randy Gardner, Scott Lillian, Debra Lundgren. 4 — Michelle

- McCladdie, Kathy Russell. 6 — Caren Davis, Audrey Welch. 7 — Alex Rubio. Bronze Pair — Tai Babilona, Randy Gardner. Pre D — Susan Doan, Mike Griggs, Ricky Johnson. Pre-Silver — Steve Ledford.
- AMHERST SC:** Pre — Cheryl Allenbach, Martha Buyer, Judy Conner, Lynn Crotty, Peggy Cullinan, Kathy Curthoys, Suzanne Goodrich, Cindy Kaye, Tom Montgomery, Celeste Prefontaine, Colette Prefontaine, Anna Reineck, Terry Schwegler, Patti Serrino, Melanie Wisniewski. 1 — Laura Clatworthy, Corinne Duroure, Joyce Lew, Edwaa Smith, John Tigue. 3 — Charisse Duroure. Pre D — Beatrice Brooks.
- ANN ARBOR FSC:** Pre — Robin Robinson. 1 — Edwaa Smith. Pre D — Nancy Gluck, Karla Meyer. Bronze — Melanie Faulkner.
- ARAPAHOE ISC:** Pre — Sonja Bachmeier, Cheryl Bredell, Lisa Burke, Cheri Ferguson, Mary Henry, Maryanne Horton, Cynthia Page, Cynthia Riddle, Jimmy Santee, Laura Smith, Diane Spindie, Barbara Springston, Peter Stauffer, Tom Stauffer, Karen Sturdevant, Karen Weaver. 1 — Linda Clay, Greg Glenn, Cheryl Goodson, Donna Schwartz, Robi Shepard, Eric Stauffer, Karen Sturdevant, Linda Trube. 2 — Ellen Anderson, Leslie Burke, Julie Cass, Kathy Fitzpatrick, Mark Hayes, Karen Lewis, Linda Lewis, Kim Shaffer. 5 — Susan McLauthlin. 6 — Lynn Krumveida, Angela Smith, Karen Tesky, Jannat Thompson. 7 — Millie Hlavaty, Carol Troyer. Pre D — Bobby Clark, Andy Fair, Vicki Meury, Eileen Nobles. Bronze — Bobby Clark. Silver — Carol Troyer. Pre-Gold — Paul Steiner.
- ARCTIC BLADES FSC:** Pre — Cheryl Czorny, Caryn Gething, Teresa Risdon, Linda Rutan, Susan Voigt. 1 — Jodi Amarantus, Toni Lupo, Lori Martin, Kathleen McLeod, Julie Sallenbach. 2 — Kathryn Tackett. 3 — Roberta Loughland, Barbara Munson. 4 — Annie Alexander, Diana Drew, Laurie Hupp, Jennifer Parkman, Patricia Picciano, Paula Veach. 5 — Jim Hulick, Heather McLeod. 6 — Bill Alexander, Greg Boyvin, Carol Freiseis, Wendy Halber, Patricia Shelley. 7 — Candice Aylor, Linda Oren, Jan Voich. Bronze Pair — Thomas Huff, Wendy Mullender. Bronze — Wayne Deming, Dolly Hamlin.
- ARROWHEAD FSC:** Pre — Tricia Friend, Debbie Gallant, Chris McBeth, Sue McCrum, Debbie Seaborn. 1 — Judi Bryant, Debbie Seaborn, Karen Sellick, Shelley Williams. 2 — Marcy Brown, Julia Crawford. 3 — Shelia Schroeder. 5 — Cheryl Hudson. Pre D — Sharon Paul. Bronze — Lynnda Kincer.
- ASPEN SC:** Pre — Janie Louer. 1 — Janie Louer, Leo Marchiorello. 3 — Suzi Brehmer. 6 — Jeannie Van Landingham. 7 — Terri Houlihan.
- ATLANTA FSC:** Pre — Howard Green, Susan Mehre, Jana Portman, Shari Shattuck, Paula Tate, Ellen Vaught, Allison Winter. 1 — Lynn Dillow, Helene Frisch, Mary Mehre, Paula Tate, Tekia Torell. 2 — Mike Casey. 3 — Nancy Ager. 4 — Karen Deangelo. Pre D — Anne Dickey, Clare Harland, Missie Roche, Allison Winter. Bronze — Nancy Ager, Dawn Malone, Patricia Rayle.
- ATLANTIC CITY FSC:** Pre — Susan Giles, Vicki Off, Deborah Sooy.
- BALTIMORE FSC:** 2 — Robin Bowers, Carila Cannella. 3 — Barbara Lofgren, Christine Shinosky. 4 — Mark Miller, Sandra Shinosky. 5 — Janet Lofgren. Pre-Silver — Janet Lofgren.
- BATH & TENNIS SC:** Pre — Kathy Pinkerton. 4 — James Moureau. 7 — Kim Freeman. Pre D — Leslie Freeman.
- BAY PATH FSC:** 1 — Janice Cunningham, Gayle Leinberry. 2 — Karen Mackeii, Paula Ziegler. 3 — Brenda Sheenan. Pre D — Janice Cunningham.
- BEAR MOUNTAIN FSC:** Pre — Gail Baehrea, Melissa Denehy, Rose Zanlunghi. 1 — Dinah Krauthamer. 3 — Glennace Cohen. Pre D — Nancy Lamb. Bronze — Pat Gorman.
- BEAVER DAM WSC:** Pre — Cathleen Fell, Carol Irons, Carley Miller, Valerie Minton, Heather Murray. 1 — Valerie Minton. Pre D — Barbara Candee, Alfred Matthews. Bronze — Theodore Danforth.
- BLUE HILLS SC OF MASS.:** Pre — Michele Arnold, Susan Berry, Mary Burns, Anne Curtin, Karen McCabe, Kathy McCarthy, Rita Mahoney, Mani Rachins. 1 — Andrea Anderson, Lee Ward. Pre D — Harriet Diamond, Andrea Klein, Regina O'Shea.
- BOWLING GREEN FSC:** Pre — Colleen Carty, Anita Dressel, Michele Hayes, Judith Lang, Karen Oster. 1 — Carrie Deyo, Debbi Lehman, Nancy Tinney, Scott Tyson. 2 — Colleen Palmiero, Kristine Walters. 3 — Jan Minifie, Stephanie Purdy. 4 — Bill Woehrle. 7 — Vicki Peddicord. Pre D — Colleen Carty, Wendy Chennell, Michael Hayes, Pam Klepner, Debbi Lehman, Karen Oster, Meika Spera, Nancy Tinney. Bronze — Roslyn Oster. Pre-Silver — Jan Minifie, Christine Walters.
- BRAEMAR CITY OF LAKES FSC:** Pre — Susan Adams, Elizabeth Bugby, Beth Fretland, Martha Heild, Judy Krough, Anne McLeod, Kaye McLeod, Karen Meltzer, Carrie Price, Cynthia Shelstad, Laurina Snyder, Linda Van Doren. 1 — Jennifer Branstrom, Colleen Chandler, Lisa Hanson, Cindy Heigl, Maureen Potasek, Kathy Recht, Kathy Salovich. 2 — Beth Brauer, Danette Harmon, Marie Peper. 4 — Janice Frick, Sue Stillwell, Pam Wales. 6 — Stephanie Allen, Ronnie Glaser. 7 — Paula Larson.
- BROADMOOR SC:** Pre — Carol Beaudoin, Eva Dobenin, Shirley Fowler, Cherie Gair, Janet Green, Georgene Jones, Kristen Munson, John Remer, Elizabeth Sapp, Bill Schenbaugh, Louise Schenbaugh, Martha Scott, Tamara Stark, Jewel Stone, Candy Strand, Ryshenka Wolfgang, Katherine Zarpaylic. 1 — Laureen Cunningham, Lori Dewender, Eva Dobenin, Jeanne Kirches, Julie Williams. 2 — Eva Dobenin, Shane Douglas, Debbie Might, Marci Phelan. 3 — Eva Dobenin, Shane Douglas, Jeanette Evans, Sharon Hamula, Lowell Moore, Susie Vater. 4 — Carter Ellison. 5 — Karen Foley, Jim Hardebeck, Bonnie Olson. 6 — Claire Rasmussen. 7 — Bobbie Chadd, Melissa Militano, Pegeen Naughton, Erik Nelson. Bronze Pair — Carter Ellison. Bronze — Arlene Sibrell.
- BRONXVILLE SC:** Pre — Eva Takacs, Marga VonKalckreuth. 2 — Joyce Copeland.
- BRIDGEPORT SC:** Pre — Deborah Cappello, Ann Forte, Ann Glaser, Thomas Midney, Vernon Morrell, Paula Murphy. 1 — Lisa Fedick, Melanie Pierce, Kimberly Wood. 2 — Katherine Bennett. 3 — Amy Griswold, Lesli Miles. 5 — Lee Meadows. Pre D — Ernest Domschine, Lisa Fedick, Tom Kay, Vernon Morrell, Kathy Wilson. Pre-Silver — Emilie Brewer, Leland Meadows, Lesli Miles.
- BUFFALO C & SC:** Pre — Karen Benjamin, Molly Ehrenreich, Joni Siff, Lynn Turner, Kelly Witter. 1 — Carolyn Charrette, Leslie Finck, Kathy Irish, Valerie Vance, Susan Ward. 2 — Larry Gephardt, Maureen May, Lori Turner. 3 — Laurie Irish, Vicki Irish. 4 — Linda

- Vance. 5 — Laurie Gephardt. Pre D — Susan Ward. Bronze — Larry Gephardt, Betty McClure, Nancy Nuwer. Pre-Silver — Amy Brown. Silver — Linda Vance.
- BUFFALO SC:** Pre — Belinda Barton, Molly Cabana, Ellen Carney, Maureen Ganey, Content Knowles, Susan Portin. 1 — Patricia Budik, Jamie Forton, Jeannine Forton, Beth Montesano, Cara Murphy. 3 — Margaret Burke. 4 — Bill Woehrl. 5 — Mary Hardt, Betsy Phillips, Victoria Rickert, Jamie Settini. 6 — Cynthia Connors, Warren Keahey. Pre D — Malorie Brown, Mary Caruana. Bronze — Michael Dee. Pre-Silver — Janice Conner, Greg Taylor. Silver Free — Patricia French, David Svisco. Pre-Gold — Betsy Phillips. Gold Free — Patricia French.
- BURIE SC:** Pre — Shaun Biddle, Annette Bogden, Sherry Campbell, Kelly Elgin, Tami Elmer, Jody Evans, Janet Hale, Carole Lennon, Jonnie Ludington, Lael McFarlane, Peggy Schultz, Tammy Seal, Erin Stevens. 1 — Susan Barclay, Connie Cameron, Cherri Elmer, Patricia Engel, Eliska Rodousky, Siri Smedvig, Linda Zehnder. 2 — Robert Benes, Margo Frain, Mary Frain, LuAnn Stokke. 3 — Eva Doherty, Julie Lein. 4 — Nancie Bakken. Pre D — Kelly Elgin, Steve Elgin, Jamie Wilcher. Bronze — LuAnn Stokke, Gloria Taylor. Pre-Silver — Lois Alden, Bob Benes, Ann Doherty, Janis Swanson, Ruth Swanson. Silver —Tarry Conrad, Eva Dohorth.
- BUTTE FSC:** Pre — Laurie Johns, Janet Kotan, Kathleen Williams. 2 — Diana Nevin, Diana Snyder.
- CANTIAGUE FSC:** Pre — Jan Bass, Sheri Chin, Cynthia Cohen, Faith Diamond, Julie Epstein, Diane Krencik, Jodi Merritt, Michelle Neuman, Corinne Raile, Lisa Retzkin, Judy Scheinfeld, Lauren Simon, Beth Young. 1 — Cathy Caronna, Lauren Goodstadt, Martha Jowyk, Orestes Jowyk, Nancy Owen, Corinne Paile, Peggy Spiegel. 2 — Charlene Beals, Debra Retzkin. Bronze — Beverly Gordon. Pre-Silver — Patricia Looney. Silver — Susan Kryswiewicz.
- CAPITAL CITY FSC:** Pre — Lynne Diederichs, Kathleen Douglas, Claudia Kinzey, Jim Meyers, Nancy Meyers, Valeria Perea. 1 — Kimberly Caldwell, Dianne Coiner, Karen Dinsfriend, Desiree Ellsworth, Cindy McNeil, Georgiana Sutton. 2 — Amy Brosseau, Carole Millar, Nancy Thym. 3 — Tammy Gambill. Pre D — Karen Gambill, Charles Klug, Marcella Savasta. Bronze — Dianne Coiner. Pre-Silver — Debbie Jones. Pre-Gold — Wayne Raley.
- CARRIAGE FSC:** Pre — Amber Edwards, Hillary Hall, Anne Voth.
- CHAMPLAIN VALLEY SC:** Pre D — Karen Cloutier, Allen Hunt.
- CHARLESTON FSC:** Pre — Valerie Bragg, Mica Spera. 1 — Linda Williams. Pre D — Valerie Bragg, Terry Kelly. Bronze — Terry Kelly. Pre-Silver — David Battle, Karen Battles, Gary Casto, Kim Casto, Martha Davis, Mark Simpson.
- CHARTER OAK FSC:** Pre — Dorothy Biederman, Alice Corrigan, Pamela Hartley, Louise Hyyppa, Christopher McCormick, Ann Minard, Thomas Neaverson, Jane Rothfield, Kenneth Simler, Linda Simler, Lisa Van Brederode, Lisa Vaughan, Kent Weigle. 1 — John Sjoberg. 2 — Suanne Mitchell. 3 — Joy Cushner. 4 — Kristin Gilbert. Pre D — Jean Bronson, Alice Corrigan, Mary Fuller, Anne Minard, Thomas Neaverson, Maxim Spitzler, Lisa Vaughan. Bronze — Alison Cornish, Kent Weigle. Silver — David Bushnell, Kenna Wennik. Silver Free — James Huffer Jr., Mary Tracy.
- CHEVY CHASE FSC:** 1 — Sara Grosvenor.
- CHICAGO FSC:** Pre — Elizabeth Parisoli, Allison Roberts. 1 — Sandy Carlson, Terese Parisoli, Ron Radke, Wanda Rotter. 2 — Caryn Altman, Connie Becker. 3 — Kerry Johnson, Mary Klein, Chriss Sieiks, Beth Sweiding. 4 — Anita Hortshorn, Jan Jaglowski, Jodie Maier. 5 — Tom Hilfman, Linda Juckett. 6 — Mark Migdalski, David Santee, Frank Sweiding. 7 — David Santee. Pre D — Connie Becker, Letitia Paradowski. Bronze — Jack Campagna, Vicki Lampros, Letitia Paradowski. Pre-Silver — Joan Braun.
- CIVIC FSC OF BUFFALO:** Pre — Brenda Rogers.
- CLEVELAND SC:** Pre — Mary Druckenbrod, Tracy Hromi, Betsy Jackson, Steve Jackson, Kathy Johnson, Peggy Meissner, Linda Naylor. 1 — Carey Ford, Margaret Gudbranson, Heather Hazel, Wendall Marhburn, Jim Mignone, Martha Newell. 2 — Betsy Jackson, Sherry Jouannet, Barbara Martien, Elizabeth McInnes. 3 — Doug Owens. 4 — Carey Byron. 5 — Carey Byron, Shelby Coleman. 6 — Kathy Weeks. Pre D — Susan Asman, Cindy Phillips, Betsy Ziegler. Bronze — Kristy Judson. Pre-Silver — Betty Cox, Louise Parks, Kathy Weeks. Silver Free — Marsha Griggs, Cole Stearns. Pre-Gold — Marsha Griggs, Carolyn Tonidandel.
- CLINTON FSC:** Pre — Martha Cleary, Susan Gray, Dennis Hunt, Debbie Inserra, Gordon Jeffery, Martha Jumprey, Ann Lindley, Kim North, Hilary Potts, Diane Rozmus, Pamela Spinelli, Barbara Suders, Joanne Taube, Lisa Vanderhorst. 1 — Bonnie Ferguson, Meg James. 2 — Bonny Bogar, Kristy Bogar, Archie Burton III, Sue Karwowski, Diane North. 4 — Tom Taube. 6 — Robin Hyde. Pre D — Connie Dowland, Marguerie Hunt, Nancy Sigrist, Debra Snow, Christine Spencer, Don Talen. Bronze — Bonnie Ferguson, Sharon North, William Sigrist. Pre-Silver — Ted Henry.
- COLONIAL SC:** Pre — Gloria Von Zech. 1 — Wendy Black, Rachele Sandmeyer. 2 — Jennifer Buzby, Patricia Conaway. Pre D — Raymond Belmonte.
- COLUMBUS FSC:** Pre — Debbie Oliver, Yvonne Pervau, Amy Pike, Beatrix Silberstein, Elizabeth Staehle. 1 — Barbara Scherer, Casey Strickling. 2 — Stephanie Stephens, Denise Young. 3 — Karen Drukker. Pre D — Chuck Schlagle, Casey Strickling, Charles Wilson.
- COMMONWEALTH FSC:** Pre — Ann Eagles, Joan Morano, Laura Palumbo, Deborah Young. 1 — Deborah Creighton, Susan Pyne, Lisa Reid, Chris Roberts. 2 — Maria Chesnut, Susan Connell, Cindy Ekstein. 4 — Marisa Messina. 5 — Deborah Regan. 6 — Mike Masionis, Karen Sears. 7 — Adele Boucher. Pre D — Maria Chesnut, Cynthia Ekstein, Mary Young. Bronze — Laurie Adelstein. Silver — Susan Kelley.
- CORNELL FSC:** Pre — James Bartow, Anne Digiacoimo. 2 — Alison Taylor. Pre D — Edgar Braun, Alexandra Meek.
- CRYSTAL SPRINGS ISC:** Pre — Lori Andress, Dave Baldwin, Dianna Boone, Douglas Boone. Dale Coddington, Betty Coleman, Kellin Glynn, Dee Hensel, Crystal Jones, Karen King, Teresa Markley, Julie McDonnell, Cheryl Tindell. 1 — Nancy Brittan, Theresa Cockshott, Lisa Levine, Theresa Markley, Lisa Roife. 3 — Nancy Helderfor, Linda McDonald, Kathy Ondry. 4 — Lisa Ferrarini, Caryn Somerville. Pre D — Elaine Dumas, Gail Moret. Bronze — Gail Moret, Karen Moret, Candy Shorey.

- DALLAS FSC:** Pre — Patricia Budendorf, Doreen Dowers, Ginger Gill, Leigh Kendall, Phyllis Nixon, April Russell, Alisa Simmons, Elizabeth Wylie. 1 — Teresa Lancione, Pam Lewis, Jenne Paine, Karen Parker. 2 — Karen Calabria, Blythe Buddendorf, Jeanine McDonald. 3 — Zack Mason, Robyn McCally. 4 — Rhonda Cannon. 5 — Carol Wright. 6 — Becky Haman. 7 — Iantha Powrie. Pre D — Blythe Buddendorf, Becky McCally, Sharon McCally. Bronze — Camille Mason. Pre-Silver — Dean Mason, Ann Robinette, Trina Tieber.
- DENVER FSC:** Pre — Melissa Adams, Dana Bowen, Peggy Christopherson, Heather Harvey, Laura Huisken, Martha McCann, Monica Xavier. 1 — Carol Anderson, Lori Hayes, Laura Kirk, Judy Lesan, Liane Shoji, Mike Smith, Janice Villers, Terrie White, Monica Xavier, Teresa Xavier. 2 — Vicki Asaffi, Chris Kirby, Melissa Mansell, Marla Marrone, Lauri Moore, David Schlichtemeier, Doug Swisher, Janice Villers. 3 — Alicia Fenny, Cindy Xavier. 4 — Julie Hyden. 5 — Julie Hyden, Mike Sahlin, Debbie Wood. 7 — Patti Snyder. Pre D — Brett Dowlen, Kathy Forgotson, Jamelae Kyle, Condoleezza Rice, John Smiley. Bronze — Doug Berndt, Charles Grumley, Katherine Forgotson, Michael Ochs, Debbie Weinstein. Silver — Moira Grumley. Silver Pair — Phillipp Grout, Debbie Hughes.
- DES MOINES FSC:** Pre — Debbie Norman, Terri Spangler. Pre D — Debbie Norman, Karen Swanson. Bronze — Terri Spangler.
- DESERT BLADES FSC:** Pre — Anita Stringham. 1 — Anita Stringham.
- DETROIT SC:** Alison Charnley, Richard Charnley, Sarah Deson, Sandy Griffin, Kathleen Hucker, Patrick McConnell. 1 — Shirley Acheson, Denise Blackwell, Nancy Goldston, Christine Hucker, Stephen Litwin, Bill Mango, Gwen Sullivan, Maureen Wheatley. 2 — Shirley Acheson, Gordon Black, Pamela Griffin, Catherine Litwin. 6 — Sherry Vangieson, Deborah Zarb. 7 — Lee Parker. Pre D — Kathryn Acheson, Margaret Acheson, Shirley Acheson, Jeanne Lindval, Neil McConnell, Maureen Riley, Maureen Wheatley. Bronze — Margaret Acheson, Shirley Acheson, Elaine Ahern, Mitzi Amelon. Pre-Silver — Shirley Acheson, Karen Krause, Catherine Litwin, Ahelly White, Carl Ziebell. Silver — Shirley Acheson.
- DULUTH FSC:** 2 — Lynda Anderson.
- EAST CLEVELAND FSC:** 1 — Wiegand Wishner..
- EL CAMINO ISC:** Pre — Nancy Engel, Lisa Goldman, Sandra Mackinnon, Cheryl Tassos, Nancy Yamahiro. 1 — Lori Armanini, Chris Colvin, Jenny Cunningham, Susan Nehse. 2 — April Gulbrandson, Julianne Macie. 3 — Mary Marelich. 4 — Don Willard. 5 — Diane Buchalter. 7 — Penny Parker. Pre D — Dave Giston, Monique Paiva. Bronze — William Bennet. Pre-Silver — Sue Bennett.
- ENGLEWOOD FC:** 1 — Stephanie Louise.
- ESSEX SC:** Pre — Pascale Conklin, Carol Craig, Richard Flower, Joan Griffin, Marlene Heydenreich, Martha Nesbitt. 1 — Collette Peters. 2 — Cindy Adams. 4 — Kathleen Bird, H. Austin Mitscher Jr. 5 — Patricia Dimm. Pre D — Carol Craig, Linda Gerschweiler, Marlene Heydenreich, Carol Mitschele, Collette Peters. Bronze — Kathleen Bird, Ruth Collins, Janet Craw, Dossie Hardwock, Nancy Stern. Pre-Silver — Heidi Dexheimer, Meghan Prior. Silver — Ann Flower, Betsy Martin.
- EUCLID BLADE & EDGE CLUB:** 1 — Timothy Casten, Mary Cox, Dianne Feeley, Mary Surrena. 2 — Alan Dole, Christopher Dole, Loyal Luikart III, Marianne Markuz. 3 — Joanne Kuebler. 4 — Lynn Luikart, Leslie Sherman. 6 — Julia Sutphin. Pre D — Tina Sesti, Debra Sidak.
- FALMOUTH FSC:** Pre — Kimberly Burke, Michelle Hallam. 1 — Rebecca Dewees, Walter Stevenson Jr., Geoffrey Way. 2 — Ann Shearer, Kathy Sweeney. 3 — Barbara Parrish, Jill Peterson, Crystal Scully. 4 — Debra Fernandes, David Hold, Gennie Lane. Pre D — Gloria Oliver, William Oliver.
- FSC OF CINCINNATI:** Pre — Susan Baney, Bianca Maurer, Robin Penick, Tammy Purdin. 1 — Sandra Baney, Kathy Byrd, Maura Gilkey, Todd Kaufman, Kenneth Montague, Bart Moon, Bill Randolph Jr. 3 — Marcie Schmidt. 4 — Bridget McCafferty. Pre D — Janet Jernigan, Carol Randolph. Bronze — Jackie Burke, Jeannie Dorsey, Nancy Law, Sara Montague. Pre-Silver — Frank Beitzinger, Bart Moon, Kimberly Moon, Nancy Speeg.
- FSC OF GREEN BAY:** Sonny Brauc, Kay Setzer. 1 — Ernestine Brauc, Eileen Gormaly, Kay Setzer. 2 — Patrick Hughes. 6 — Steve Leshar.
- FSC OF MADISON:** Pre — Katherine Henry, Ruth Imhoff, Helena Jaramillo, Andrea Mussey, Linda Nelson, Kelly O'Donahue, Dorothy Sinykin, Allison Slack, Sandra Suter. 1 — Patty Adams, Jack Boumeester, Lori Boumeester. Pre D — Katy Henry, Ruth Imhoff, Helena Jaramillo, Andrea Mussey, Linda Nelson, Kelly O'Donahue, Mike Ptazynski, Allison Slack, Laura Stein, Sandra Suter. Bronze — Patty Adams, Marie Borgatta, Kay Knight, Orion Zoch. Pre-Silver — Jim Young. Silver Free — James Young. Pre-Gold — Bob Sorrick, Judy Sorrick.
- FSC OF MINNEAPOLIS:** Pre — Kathy Moe, Leslie Paster, Holly Weisberg. 1 — Julie Bedessem, Julie Campbell, Kimberly Challman, Julie Geisenhoff, William Harris III, Sonja Hed, Betsy Meshbesh, Betsy Seed, Sharon Treacy. 2 — Julie Campbell, Kelsy Ufford. 3 — Donnarae Barry, Kristin Berg, Kim Ufford. 4 — Kristin Arneson, Janet Fritz, Catherine Watanabe. 6 — Susenne Reioux. Pre D — Judith Fisk, Elizabeth Krueger, James McCann. Bronze — Nels Gronquist, Terri Houlihan, Marlene Lofrano, Paul Loring, Melissa McCandless, George Rackie. Pre-Silver — Linda Pilling. Silver — Kristin Arneson.
- FSC OF OMAHA:** 2 — Martha Ridgway. 3 — Leah Malec
- FORESTWOOD FSC:** Pre — Donna Bailey, Mindy Broadhead, Dianna Cifelli, Liza Heinzerling, Colleen Hurley, Jeannette Kennedy, Gina Mattei, Cheryl Merleno, Michael Michnay, Kathi Saari, Kathy Widok, Sharon Wilk. 1 — Terri Burke, Marianne Crosley, Scott Graham, Rebecca Kiehl, Scott Nagy, Denise Sarwinski, Jean Tkach, Darlene Vlack, Donna Webster. 4 — Kenneth Kawiecki.
- FORT WAYNE ISC:** Pre — Laura Briney, Terri Czarowski, Colette Gleeson, Greg Helmer, Hally Hoffenberg, Jennifer Lahmeyer, Ronald Perkins, Tracy Taylor, Mary Thomas. 1 — Wendy Brooks, Nannette Farina, Lee Fleischer, Julie Halberg, Linda Hasnerl, Wayne Lohse. 2 — Loreli Engel, Vicki Fisher. 3 — William Burks. 7 — Sandy Marvo. Pre D — Cathy Boyle, Loreli Engel, Nannette Farina, Vicki Fisher, Lee Fleischer, Sheryl Marshall, Cynthia Perpich. Bronze — Cindy Perpich. Pre-Silver — Hans Lupke. Silver — Mary Johnson, Laura McClure.

**FREE STATE FSC:** Pre — Joseph Bates, Jane Dardin, Alex Feingold. 1 — Charles Crowley, Randy Hochverg.

**GARDEN STATE SC:** Pre — Dr. Fernando Pezarras. Bronze — Carol Bischof. Pre-Silver — Susan Simmons. Silver — Laurel Siebert.

**GATEWAY FSC:** Pre — Donna Gehlert, Bertha Lappas, Patricia McCormick, Fay Mosteller. 1 — Fay Mosteller, Jerra Smith, Susie Warfield. 2 — Andrea Godfrey. 4 — Sandi Bennett. Pre D — Donna Gehlert, Janet Knobbe, Sally Warfield, Susie Warfield, Charles Watson. Bronze — Pat Jackson.

**GENESEE FSC:** Pre — Amy Hirsh, Christina Leone, Tony Leone III, Marlene Mills. 2 — Debbie Lowry. 3 — Gretchen Gerle. 6 — Gayle Eisenbraun. Pre D — Grancine Glassic, Laurie MacKenzie, Betsy Peachey, Charlotte Smith. Bronze — Delia Cholerton, Linda Fitch, Beth Frank, Harry Green, Russ Gowland, Susan Jorgensen, Reginald Irvine, Tony Leone, Nancy Lermond, Lisa Vigdor. Pre-Silver — Linda Fitch. Silver — Diane Oseroff.

**GLACIER FALLS FSC:** Pre — Ruth Lyons, Garnet Ostermeier, Karen Ritchie. 1 — Joanne Curtis, Susan Godwin, Renee Floyd, Susan Nemechek, Debbie Wolvin. 2 — Jill Harbin, Celia Harper. 3 — Candy Brock, Nancy Roberts. 4 — Jill Kessler, Terry Kubicka, Susan McCarthy, Billie Passarella. 5 — Shanna Walker. 6 — Dorian Shields. 7 — Robert Graham, Debbie Takeuchi. Pre D — Mollie Martin. Bronze — Lauren Ritchie. Pre-Silver — Robert Topps, Hermina Vreeneqoor. Silver — Rose Ralphs.

**GLENWOOD FSC:** Pre — Karen Farina, April Feld, Margo Mankus, Kim Stock, Vanessa Vela, Jennifer Wroblewski.

**GREAT FALLS FSC:** Pre — Joey Gudatis, Stacie Kuglin, Jim McKenna, Lori Wojtowick. 1 — Bodei Wigen. 2 — Sara Bateman, Joey Goott, Tony Kudrna. 3 — Cheryl Draper, Mary Draper, Laura Goott, Bruce Hurd, Marianne Matsko. 6 — Kirk Bateman. Pre D — Lori Baszler, Jon Wigen. Bronze — Lori Baszler, Stacy Flaherty, Bodei Wigen. Bronze Pair — Mary Draper, Tony Kudrna. Pre-Silver — Mary Draper, Tony Kudrna.

**GREAT NECK FSC:** Pre — Sarah Koepfel. 2 — Karen Zeitel.

**GREATER MILWAUKEE FSC:** Pre — Viola Dretzka, Carolyn Raffel. 3 — Jill Greenthal. Pre D — Dr. H. Ackley, Viola Dretzka, Carolyn Raffel.

**GREENSBORO ISC:** 1 — Debbie Yates.

**GREENVILLE FSC:** Pre — Brian Christman, Kevin Dawes, Doreen Detullio, David Eakin. 1 — Kathy Graham. Bronze — David Eakin.

**GREENWICH SC:** Pre — Helen Clarke, Joan Patterson. Pre D — Hillary Spizzirri.

**HARBOR FSC:** Pre — Brad Mathews, Debbie Peterson.

**HAYDEN RECREATION CENTRE FSC:** Pre — Susan Barnes, Ruth Beckett, Ellen Blake, Laurie Blake, Laurel Boudreau, Sandy Bowersock, Dawn Brechnich, Diane Brennan, Deborah Cowen, Jane Cowperthwaite, Charles Harrington, Elizabeth King, Dianne Krensky, Jeremy Leib, Sharon Lima, Beverly McCoy, Ann Phinney, Laurie Poupolo, Janice Power, Cathy Rand, Susan Rand, William Rising, Martha Rowland, Michelle Segal, Karen Werlin, Allison Wheatley, Sybille Volz, Gayane Zartarian. 1 — Gwen Champion, Ann Drouillhet, Roger Estey, Nancy Holdsworth, Janice Kirby, Marion Miller, Pam Newcomb, Betsey Rising, Hawley Rising, Ann Storer, Janine Wong, Michelle Wong. 2 — Nancy Asarkof, Jennie Crowley, Deborah Friedman, Charles Lawsen, Cindy Millican, Emily Wyman. 3 — Diane Haroules, Susan MacKay. 7 — Gayna Grant. Pre D — Suzanne Allen, Joselyn Becker, Patsy Bird, Mary Cogan, Lorraine Davidson, Vera Grant, Naomi Gray, Nancy Holdsworth, Carolyn King, Marion Miller, Bruce Rankin, Karen Richards, Judy Rigby, Richard Rigby, Barbara Rising, Kathryn Ross, Ann Storer, Solveig Wright, Ann Zwicker. Bronze — Jean Brechnich, Roger Estey, Michelle Euart, Rena Parise, Kathy Ross. Pre-Silver — Dulce Anderson, Diane Brennan, Roger Estey.

**HERSHEY FSC:** Pre — Cindy Hamaker, Marjorie Hoover, Tommy Rozman. 1 — Louann Brechbill. 4 — Patti Edwards, Julianne Foschetti, Timothy Zink. 7 — Mary Matz. Pre D — Marjorie Hoover, Ann Kosco, Betsy Rozman, Betsy Wood. Bronze — Karen Brenizer, Julia Hoover, Lisa Pavone, Becky Rippon. Silver — Barbara Kaplan. Pre-Gold — Patti Edwards, Debbie Hummel.

**HIAWATHA SC:** Pre — Sharon MacArthur, Scott Marchetti, Linda Sanderson. 1 — Bonnie Savoie. Pre D — Genevieve Barr, Nancy Berlinger, Karen Cryderman. Bronze — Maria Berlinger, Donna Martin, Jocelyn Socia. Pre-Silver — Dianne Hooker, Lori Sipniewski. Silver — Terry Fabry.

**HUNTSVILLE FSC:** Pre — Edith Dotson.

**ICE & BLADES CLUB OF WASHINGTON:** Pre — Leslie Keffer, Robert Mock, Jody Sampson, Pam Sampson. 1 — Nancy Hoblack. Pre D — Howard Demuth, Leslie Keffer, Deborah Lewis, Robert Mock, Jody Sampson. Bronze — Valerie Moore. Pre-Silver — Debbie Conte.

**ICE CLUB OF BALTIMORE:** Pre — Catherine Counselman, Scottie Kastendike, Charles Kimmel, Elizabeth McDonald, Geraldine Nager, Victoria Stagle, Mrs. Jack Williams. 1 — Charles Kimmel, Lisa Lewens, Susan MacNab. 2 — Dede Demuth, Patricia Holmes. 4 — Brienne Pratt. 5 — Cecily Morrow. 7 — Jeanne Alexion. Bronze — Ann Gary, Robert Scarlett. Silver — Denise Cahill.

**ISC OF FRESNO:** Pre — Lisa Ashki, Lisa Becker, Kathy Egan, Richard Egan, Ann Gibbs, Elizabeth Wilson. 1 — Cindy Caswell, Shellie Perkins. 2 — Sharon Clark, Kim Urle. 5 — Terri Johnson. 7 — Lynn Gibson, Michael Tokar. Pre D — Carol Ghingher, Elizabeth McDonald.

**IC OF SYRACUSE:** Pre — Mary Lewis. Pre D — Mary Lewis. Bronze — Mary Lewis.

**ILLINI FSC:** Pre — Eileen Bentz, Janet Felsner, Jeannine Henriksen, Susi Looper. 1 — Linda Graham, Jory Segal, Tom Weinzerl, Helen Zimmerly. Pre D — Stanley Fletcher, Alicia Henriksen.

**INDIVIDUAL MEMBER:** Pre — Joann Bass, Ann Berriman, Beebe Boyer, Sally Boyer, Peggy Browning, Terence Burns, David Campbell, Donna Coleman, Brenda Colgan, Carol Griffing, Laura DeAngelis, Adria DeLandri, Carla DeLandri, Marie Drotter, Meri Firestone, Marie Forsythe, Susan Goldman, Tami Gorder, Anne Johnson, Ellen Jones, Charlotte Kirilin, Susan Klotz, Randall Lane, Carol MacFayden, Donna Madden, Betsy Mainwaring, Karol Manfredonia, Virginia Marenholz, Leslie Miller, Margie Miller, Tom Miller, Patricia Price, Ellen O'Connor, Brenda Pascale, Marie Scauzillo, Jana Schluchterer, Cliff Stone, Stacey Tea, Barbara Toney, Sarah

- Wheeler, Mrs. Albert Zumpano. 1 — Sally Berriman, Cathy Boyle, Gwen Braun, Peggy Browning, Sharon Coleman, Claudia Damsky, Jane Geary, Ann Johnson, Patricia Locuratola, Wayne Lonse, Sandra McGee, Geoffrey Momson, Jennifer Monk, Beth Rubino, Jana Schlutcher, Meika Spera, Peggy Sten. 2 — Mary Amole, Susan Breuninger, Sharon Coleman, Gail Franklin, Louise Jones, Richard Murphy, Lisa Valentine, Helen Zinn. 3 — Joann Brochmeier, Charlotte Candia. 4 — Lori Dunn. 5 — Linda Gillen, Bonnie Marshall. Pre D — Anees Adil, Cynthia Barrett, Cathy Boyle, Peggy Browning, Lisa Butler, Carol Carrigan, Marion Garnitz, Susan Goldman, Deborah Henderson, Carol MacGayden, Virginia Marenholz, Kathryn McDermott, Roberta Moore, Ellen O'Connor, Richard Pettit, Nina Ryan, Kelly Williams, Tina Zucker. Bronze — Mary Amole, Peggy Browning, Mary Broussard, David Campbell, Clayton Lowe, Paul Martel, Kelley McDermott, Shannon Taylor, Joseph Tetreault. Pre-Silver — Mrs. M. Donohue, Lillian Hulteen, Raymond McKenzie, Sheri Thompson, Cynthia Wright. Silver — Theresa Thibert.
- JOHNSTOWN FSC:** Pre — Patricia Bunja, Marie Furnary, Renee Roberge. 3 — Diane Glosser. Pre D — Marlene Budney, Lynda Hornick, Elizabeth Palmer, Renee Roberge, Jennifer Suppes. Silver — Diane Glosser.
- KALAMAZOO FSC:** 1 — Vicki White. 2 — Judi Stimson.
- KANSAS CITY SC:** Pre D — Eileen Van Buskirk.
- KENAWAN SC:** Pre — Mary Caruana, Debra Leimbach, Nadine Lorber, Steve Lorber, Paula Marinaccio.
- LAKEWOOD WC:** Pre — Debbie Andersen, Lisa Church, Heidi Hibbard, Staci Loop, Danette Williams. 1 — Lynn Carpenter, Brenda James. 2 — Pamela Anderle, Theresa Smith, Kim Wieburg. 3 — Heidi Broback. 4 — Peggy Mallon, Marcy Sulenes. 5 — Carol Clark, Marcy Sulenes. 6 — Dawn Wieburg. Pre D — Pamela Anderle, Renee Anderle, Peter Schindler. Bronze — Heidi Broback, Kim Wieburg. Silver — Colleen Clark, Peggy Mallon, Marcy Sulenes, Dawn Wieburg. Pre-Gold — Lorraine Santee.
- LANSING SC:** Pre — Christopher Bushell, Ann Daugherty, Denise Weidbrauk. 1 — Joseph Adney III, Michelle Cormier. 2 — Karen Davidson, Robin Hunt, Annette Zagaroli. 6 — Alice Cook, Terry Tunks. Pre D — Harold Howard, Dian Polin. Bronze — Teresa Beaman.
- LAS VEGAS FSC:** Pre — Denise Rogers. 1 — Melissa DiGregorio. 3 — Tery Jory. 4 — Peggy Welling. Bronze Pair — Brenda Rogers.
- LAURELTON PINES SC:** Pre — Laura Schaub, Robin Sprung. 1 — Jill Davidson, Andrea Dorman. 2 — Laurence Mondschein. 4 — James Tierney. Pre D — Marguerite Panico. Bronze — Eleanor Dohanyos. Pre-Silver — Phyllis Zeitler. Silver — Patricia Tierney.
- LINCOLN CENTER FSC:** Pre — Janet Hignite, Susie Sharp. Bronze — Kelly Morris. Silver — Tom Simms, Lynn Zeutschel.
- LITTLE SUN VALLEY FSC:** Pre — Lynette Backhaus, Stanley Makman. 1 — Mary Talbot. Pre D — Jean Manfredi. Bronze — Carol Ausman.
- LONG ISLAND FSC:** Pre — Jeannie Del Pozzie, Susan Hartz. 2 — Paula Bentz, Stacy Meister. 3 — Mary DeGroot. 4 — Robin Blinder, Vikki Mernone. 5 — Amy Schenck.
- LOS ANGELES FSC:** Pre — Cheryl Conley, Jim Hartley, Sabine Kaluza, Paul Kuhni, Kelly Smith, Billy Tilghman, Lilla Tilghman, Karin Trzepacz. 1 — Denise Curtis, Caroline Guttman, James Hartley, Sharon Hartley, Susan Hartley, Mary Openshaw, Ann Polethmus, Patricia Solomon, Michelle Weiss. 2 — Carla Bellmaggio, Jeanne Chapman, Julie Kahn, Deborah Lean, Linda Marsh, Richard Montoya. 3 — Judi Blumberg, Lauri Duffy, Lynellen Schneider. 4 — Laura Bernhardt, Manuela Bonsack, Kent Johnson, Kathy Nitz, Lindee O'Neil, Joann Schneider, Cyndi Sims, Erika Susman, Carole Tyou. 5 — Kerry MacLennon. 6 — Cathy Abdun-Nur, Wendy Burge, Paul Guzman, Billy Schneider, Janet Walsh. 7 — Natalie Brown, Mary Shields, Sheri Thrapp. Pre D — Chuck Aedo, Dayna Daniels, Bobby Mouser, Dr. Arthur Schneider, Janet Walsh. Bronze — Janet Johnson, Joann Schneider. Pre-Silver — Cathy Abdun-Nur, Caroline Guttman, Kent Johnson, Robert Lea, Kent Nitz. Silver — Cathy Abdun-Nur, Julie Saba.
- LOUISVILLE FSC:** Pre — Lori Saddler. Bronze — Mary Sullivan.
- MARIN FSC:** Pre — Cyndy Chadwick, Bonnie Gamper, Vickie Hagan, Diane Lee, Lesley Manheim, Bryce Wagner, Debby Zaidlin, Molly Zaidlin. 1 — Helen Castle, Gigi Gustafson, Pam Gustafson. 2 — Terrianne McDermott, Allen Schramm, Peggy Sousa. 3 — Lisa Craig. 6 — Forest Craig. Pre D — Nancy Spencer.
- METROPOLITAN FSC:** Pre — Debbie Babitch, Linda Carehietta, Jill Cookson, Carolyn Farrar, Mary Kearns, Kristina Glanz, Leslie Gluck, Pamela Goldman, Lida Greenberg, Deena Holliday, Arthur Klein, Jayne Maslin, Melinda Markland, Robin Schwabe, Preston Towber, Olinda Wenk. 1 — Shirley Cork, Lee Durst, Diane Frank, Linda Goldsen, Beth Jockhauser, Vicky Luwig. 2 — Carole Mitschel. 3 — Deborah Crawford, Melanie Wright, Joan Feigenbaum. 5 — Robin Freier. 6 — Neil Rubin. Pre D — Barbara Baron, Arthur Fuerherm, Linda Goldsen, Pamela Holden, Arthur Mercurio, Carole Mitscheu, Donald Rudalewincz. Bronze — Sharon Feldman, Luis Perez, Donald Rudalweicz, James Spear, Jean Tavin, Arlene Wolf. Pre Silver — Pat Doran, Neil Rubin.
- MUSKOGON SC:** Pre — Al Rich. 1 — Annette Zagaroli. 2 — Sandra Marshall. Pre D — Sheryl Marshall.
- NAVESINK SC:** Pre — Mary Cahill, Jane Malone, Kate Manulty, Nadine Maser, Susan Rahner. 1 — Mary Cahill. Bronze — Page Polk.
- NEW CANAAN WC:** 1 — Elizabeth Isham. 3 — Lynn Kay. 5 — Nancy Carlson.
- NEW HAVEN SC:** Pre — Ann Buccino, Carla Buonocore, Catherine Caule, Ilyssa Czarny, Betsy Day, Ann Harding, Louise Klimoff, Wendy Mack, Kim Myjak, Richard Pettit, Carla Straight. 1 — Kathie Barry, Paula Bartlett, Carla Buonocore, Ilyssa Czarny, Pamela Gannon, Gayle Gesner, Cynthia Halpin, Liza Liapunov, Kim Myjak, Eliza Niederman, Carl Petchler, Ellen Revere, Joan Shepherd, Sheri Thompson, Hilda Welch. 2 — Barbara Capone, Mary Esposito, Michael Giordano, Sandra Masterson, Leslie Montano, Carol Ploeger. 3 — Sharyn D'Urso, Carol Ploeger, Cathie Popham, Pre D — Ann Buccino, Betsy Day, Lorraine Healy, Stephen Mack, Debbie Riedel. Bronze — Paula Bartlett, Barbara Capone, Pamela Gannon, Paul Flander, Elizabeth Johnston, Liza Liapunov, Sandra Masterson, Lesli Montano, Kim Myjak,

- Sheri Thompson, Maria Wolog. Pre-Silver — Mary Day, Mary Esposito, Cynthia Halpin, Carol Ploeger.
- NORDIC FSC:** Pre — Sola Dituri, Anita Judson, Mary Togger. 1 — Loretta Clark, Linda Fratianna, Susi Newman. 2 — Lisa Kemp. 5 — Tina Simoes.
- NORTH JERSEY FSC:** Pre — Don Hayford, Susan Hellmann, Andrea Hofer, Wendy McGraw, Renee Maly, Martha Meyers, Janice Smith. 1 — Lynne Burtan, Lori Canter, Elizabeth L'Heureaux, Lyle Mayne, Carol Mirenda, Joanne Nowicki, Stacey Perrette, Laura Weber, Grace Wolf. 2 — Debbie Kingman, Martha Pease, Bryan Savino, Marianne Sughrue. 3 — Donna Cortese. 4 — Aimee Kravette, Valerie Otto. 6 — Lynn Krumveida. Pre D — Debbie Kingman. Bronze — Helen Laurie, Michele Paluszek, Nanette Pasquini.
- NORTH SHORE SC:** Pre — Michelle Albert, Joseph Coppola, Nancy Davern, Irene Gilligan, Donna Halloran, Keith Halloran, Rebecca Rupp, Jean Salvatore, Paula Spear. 1 — Lisa Coppola, Linda Elfman, Dianne Skelley, Anne Tully. 2 — Mary Balboni, Candia Cook, Robin Ingalls, Jackie Lavasseur. 3 — Kelly Hoy, Debbie Jubenville, Cheryl Smith, Sally Willetts. 4 — Pam Moreside. 5 — Martha Harding. 6 — Michelle Harnois, Barbara Terpenning. Pre D — Nancy Albert, Richard Albert, Irene Gilligan. Bronze — Martha Harding.
- OAK PARK FSC:** Pre — Ann Wilson. 1 — Michael Herforth, Sue Szilagyi. 2 — Jeanne Johnson. 3 — Barbara Peyton. 4 — Laurie Cole, David Kirby. Pre D — Denise Jirout, Denise Sorensen. Pre-Silver — Fay Andres, Laura Audino, Marianne Diekman. Pre-Gold — Laurie Cole.
- OIL CITY FSC:** Pre — Nancy Breene, Mary Dixon, Julie Gotham, Maria Rizzo, Don Tompkins, Mary Wnuk.
- OLD YORK ROAD SC:** Pre — Barbara Cassalia, Laura Cassalia, Carolyn Donato, Kathy Garvin, Terrence Garvin, Eric Ginkinger, Meryl Goldberg, Jayne Grallnick, Carolyn Grodinsky, Brian Henkles, Mark Henkles, Ellen Hockeimer, Debra Kay, William Kelso, Donna Lebowitz, Marci Lebowitz, Susan Parsons, Andrea Popowich, Deborah Wohl. 1 — Harriet Brody, Sally Cohen, Naomi Goldblum, Leslie Grodinsky, Harry Gordon, Eve Granick, Linda Johnson, Amy Kendall, Susan Kendall, Joann Manstein, William McLaughlin, Janet Wichenhaver. 2 — Marjie Altman, Judy Kron, Robyn Levin, Ann McCarthy, Dora Reno. 3 — Arlene Dervitz. 5 — Jill Cosgrove, Holly MacVaugh, Carmina Travagline. 6 — Edie Herbst, Wendy Weisman, Michael Whalen. Pre D — Julie Caplan, Tom Dumire, Dr. Arthur Gordon, Dora Reno. Pre-Silver — Luther Ginkinger. Silver — Kristina Ginkinger.
- OVERLAKE SC:** Pre — Georgene Carras, Smitty McLain, Elizabeth Pitzler, Kathy Savage, Sandy Springay. 1 — Rondi Meister, Connie Springay. 2 — Cynthia Charles, Penny Thomas. 3 — Julie Lein, Holly Stuns. 5 — Paula Spencer. 6 — Lauren MacDonald, Susan Moody. 7 — Cynthia Driano, Kyle Fulwiler. Pre D — Craig Knisely. Silver — Susan Moody. Bronze Pair — Nathan Alden, Stacy Meister.
- PACIFIC FSC:** Pre — Mark Cockerell, Brenda Como, Eva Gordon, Ellen Kaufman, Denise Paprota, Erica Peterson, Diana Peebler, Carrie Russell.
- PARK FSC:** Pre — Maria Castelli, Deanne Geruase, Dorothy Johnson, Karen Jug, Laura Montelbaum, Inde Naiman, Monica Parness, Mary Persina.
- PENGUIN FSC:** Pre — Maryann Hessinger, Linda Pengilly, James Sincavage, Karen Welty. 1 — Nancy Kaiser. 4 — Patricia Hessinger, Denise Peiss. Pre D — Rosalie Rutter, Maryann Hessinger. Pre-Silver — Jan Henricks.
- PHILADELPHIA SC & HS:** Pre — Michelle Alio, Nicole Alio, Jane Aspinall, Julie Becton, Marian Bodine, Janet Butterworth, Lynne Coughlin, Victoria D'Angelo, Cynthia Dilworth, Julie Edgerton, Marie Forsythe, Elizabeth Hanson, Kenneth Jones, Sonja Kenney, John Mitchell, Doreen Morris, Alexandria Richardson, Margaret Schneider, Shelley Supplee, Linda Susskind, Nan Wolek. 1 — Barbara Aspinall, Deborah Bush, Anne Osborn, Susan Price, Dorothy Potter, Channing Riggs. 2 — Kathryn Schoonover, Theodore Witmer. 3 — Linda Powers, Christine Raber. 4 — Kimberly Colton, Joanne Tredennick. 5 — Jock Kohlhas. 6 — Cynthia Reid, Kathryn Stearns, Pauline Toland. Pre D — Mrs. C. Alio, Mrs. Pierre Coant, Robert F. Engle Jr., Linda Powers. Bronze — Mrs. C. Alio. Pre-Silver — Peter Hickok, Amanda Kohlhas.
- PITTSBURGH FSC:** Pre — Gretchen Coss, Shelly Day, Leesa Jones, Jill Shapiro, Jean Paul Vergnes. 1 — Kristen Cady, Carolyn Fortuna, Janet Gallaway, Roberta Gunchuck, Victoria Hamby, Jaclyn Herring, Jeanne Podroskey. 2 — Sharon Burke, Susan Perrotto. Pre D — Kristen Cady, Gretchen Coss, Shelly Day, William Dunkel, Julie Jones, Marsha Karlowski, Joanne Podroskey. Bronze — Ronald Domansky, Carolyn Fortuna. Pre-Silver — Thomas George. Silver — Leich Hilliwel.
- PLAZA FSC:** Pre — Gladys Post, Tracey Weston. 1 — Alice Davis, Stella Gresham, Cathy Ludwig, Martha Morgan, Patty Sagvari, Marc Stenchever. 2 — Joyce Dunbar, Amalia Egri, Susan Papp. 3 — Virginia Dick, Katie Cabinet, Sarah Cabinet, Helene Keppler, Margie Middaugh. Pre D — Deanna Abdulla, Kimberly Agle, Lyn Davis, Susan Davis, Susan Hartman, Jodi Ludwig, Gail Neff, Michael Podmore, Karen Rysek, Suzanne Trush. Bronze — Shirley Holloran, Thomas Holloran, Roland Massatti, Susan Papp, Frances Schwegler, Nancy Smidansky. Pre-Silver — Joyce Dunbar, Glenn McFarland. Pre-Gold — David Chrien, Myra Chrien, Stacey Smith.
- POLAR PALACE FSC:** Pre — Melissa Holtz, Jeri-Lynn Langwith, Leslie Mason, Jeanne Morrow, Chris Negele, Laurie Snyder, Debra Stone, Kim Trueman, Thea Vandracek, Kathleen Walters, Kathleen Zechmeister. 1 — Lori Kinzy, Kim Krohn, Carole Phinney, Thea Vandracek. Pre D — Shyla Egan, Linda Keller, Helen Logan, Herbert Logan. Bronze — Warren Simmous.
- PORT HURON FSC:** Pre — Linda Harrington.
- PORTLAND ISC:** Pre — Ruth Aquino, Judy Constans, Carol Conrad, Kim Gray, Debbie Hydechuk, Dennis Oka, Cara Schmer, Judy Wasch, Annette Wootres. 1 — Renee Bagley. 2 — Rebecca Loughry, Kevin Roddy. 3 — Joi Nelson, Patrick Page, Lauren Zell. 4 — Deborah Parker, Keri Schmer. 6 — Linda Bucher, Julie Herzog. Pre D — Don Gregg, Joan Gudmundson, Carolyn Mattson. Bronze — Robin Levy, Rebecca Loughry, Keri Schmer. Pre-Silver — Julie Herzog, Robin Levy. Silver — Christy Ito. Bronze Pair — Mike Chapin, Karen Raile.
- PRINCETON SC:** Pre — Cary Bachelder, Sandra Benson, Kim Walker. 2 — Holly Murphy.

- Pre D — Joy Carter. Pre-Gold — Karen Cohen.
- PROFESSIONALS:** Pre — Mrs. George Anthon, Earlene Claussen, June Davidson, Patrick Dean. 1 — Patrick Dean. 2 — Renee Arbach, Patricia Barton, Patrick Dean. 7 — Gillie Nicholson. Pre D — Mrs. George Anthon, Rika Boyer, Jack Burton, Janet Champion, Joan Chour, Peggy Christopherson, John Dayney, Patrick Dean, Ruth Jenkins, Vivi Hulten, Walter Klimach, Arlene Rachins, Sharee Wonderlich. Bronze — Rika Boyer, Jack Burton, Mrs. Lee Chabot, John Dayney, Patrick Dean, Vivi Hulten, Jeanne Rentsch, Meredith Scarlett. Pre-Silver — Pat Barton, Patrick Dean, Joanne Riedel, Bernie Taheny. Silver — Fay Andreas, Uscki Boornazian, Patrick Dean, Becky Guscott, Hope Jaynes, Henry Krecioch, Jim Reid, Betty Rizzo, Kathy Rutledge, Frank Tyler, Constance Williams, Jackie Zoch, Shirley Zypf. Pre-Gold — Jean Kosterewa, Michele Madden.
- PROVIDENCE FSC:** Pre — Janina D'Abate, Barbara Gibbs, Lisa Samperil, Kathy Schmith. 1 — Diane Abel, Wendy Abel, Adnenne Dooley, Ann Hazelton, Robin Lightman, Susan Lightman, Diane Tessaglia. 2 — H. Christine Dooley. Pre D — Edward Kelaghan. Pre-Silver — Pamela Rodi.
- QUAKER CITY FSC:** Pre — Debbie Fehr, Anthony Heubach, Linnette Hewitt, Marcia Hewitt, Paula Klauger, Maureen McBride, Jane Polan, Nancy Pole, Paul Waldspurger, Patricia Walsh, Susan Wollman. 1 — Rita Gildea, Linnette Hewitt, Paula Klanger, Carolyn Morley. 2 — Linda Begola, Eileen Blodgett, Monica Drock, Nanette Hopkins, Diane Mendell, Agnes Waldspurger. Pre D — Beverly Jurenko.
- QUEEN CITY FSC:** Pre — Jennifer Bales, Julie Bales, Jeffrey Filcik, Toni Freed, Tommy Gaitskill, Robin Jacobs, Anita Rosenberg. 1 — Beverly Jurenks, Karen Kramer, Donna Stropfel. 4 — Cathy Hale. Pre D — Jeffrey Filcik, Karen Kramer, Lynda Parker, Ilissa Staadecker. Bronze — Sharon Filcik, Susan Hale. Pre-Silver — Cathy Hale.
- RARITAN VALLEY FSC:** Pre-Gold — Andrew Stroukoff.
- RED RIVER VALLEY FSC:** Pre — Lisa Barth, Jamie Gooselaw, Patty Magness, Carol Olson, Bob Pender, Kristi Sylvester. 1 — Marty Goltz, Linda Hertzgaard, Laurie Larson, Carolyn Moses. 2 — Mary Clower, Debby Williams.
- RIVERDALE FSC:** Pre — Stephanie Lambert. 2 — Kim Hankin, Lyn Hankin.
- RIVERVIEW FSC:** Pre D — Rachel Broadfoot.
- ROCHESTER FSC:** Pre — Tracy Mattson. 1 — Kurt Bahn. 2 — Kent Orwoll, Vikki Orwoll. 4 — Eileen Kaese.
- ROCKLAND SC:** Pre — Lynne Duvernoy, Harry Frei, Robert Lamb, Sipora Lamb, Lynn Logar, Mary McAllister, Kim Rudolph, Jarvia Shu, Jia Shu. Pre D — Sipora Lamb. Bronze — Sipora Lamb, Robert Lamb.
- RPI FSC:** Pre — Deborah Alcorn, Anna Christian, Sheldon Cleaves, Melissa Dempf, Robert Dempf, Susan Dempf, Duane Distel, Linda Dwyer, Marie Gendron, Deelia McBrinn, Maxine McBrinn, Alison Montgomery, Kevin Parker, Maureen Parker, Nell Plunkett, Sandra Shattuck, David Sherley, Mildred Viola. 1 — Laurie Alcorn, Erica Ling, Vicki Littman, Kim Rudolph, Laurie Serian. 2 — Lynn Masse. 4 — Linda Randall. Pre D — Laurie Alcorn, Vivian Gleisner, Deborah Maisel, Nancy O'Keefe, Laurie Serian, Mildred Viola. Bronze — Brendalee Strait. Pre-Silver — Patricia Kester. Silver — James Symanski. Pre-Gold — Patrick Dean, Dana Distel.
- RYE FSC:** Pre — Pam Fields, Sara Levine, Cherry Low. 1 — Denise Berger, Dean Copeland, Madelynn Hausman. 5 — Kris Birkeland. 6 — Ellen Kinney. Pre D — Carolyn Almy, Helen Buck. Silver — Orrin Feldman.
- ST. LAWRENCE FSC:** 2 — Susan Howell.
- ST. LOUIS SC:** Pre — Lolanda Bentman, Nancy Berg, Kathleen Bouvier, Ellen Corbin, Joan McKenna, Dennis Muckerman, Darwin Price, Sarah Reid, Luliet Sincoff, Liz Steinbaum. 1 — Laura Primm, Joanne Slosberg, Jerra Smith. 2 — Sima Alper, Andrea Godfrey, Kathleen Kleine, Connie Makariwicz. 3 — Diane Backi, Patricia Scheidle. 4 — James Robertson. Pre D — Gerald Burt, Cynthia Duquette, Kathy Ernst, Joan Goldstein, Terry Horowitz, Erin McKenna, Kristin McKenna, Joanne Slosberg, Mark Slosberg. Bronze — Milena Bogdanovich, Andrea Godfrey, Georgia Stephens. Silver — Diana Stahl.
- ST. MORITZ ISC:** Pre — Evelyn Berggren, Tus-Ling Chang, Laurie Chemsak, Karen Ditzler, Lori Dunsmore, Suzanne Hayward, Avra Kakures, Dorothy Mitchell, Vicky Simonds, Karesse Young-Vason, Joan Williams. 1 — Lisa Turner. 2 — Robin Howard, Rickie Lofquist, Susan Severloh. 3 — Phina Ford, Jennie Ilvesta. 4 — Julie Fraenkel. 6 — Donna Arquilla, Joan Daniels. 7 — Donna Arquilla. Pre D — Andy Blaurock, Lori Dunsmore, Odessa Krause, Eileen McGuire, Robin Pape, Fred Van Sant. Bronze — Jeannette Brister, Fred Van Sant. Pre-Silver — Carol Mann. Pre-Gold — Sherrilyn Littlefield.
- ST. PAUL FSC:** Pre — Michele Mandel, Lisa Mooney. 1 — Heather McKay, Karl Reinhardt. 2 — Karen Knox, Lisa Kuehn, Bernae Peterson. 3 — Cindy Larson, Denise LaVaque, Elizabeth Schuster, Lana Kieffer. 4 — Barbara Bichner, Alane Farkas, Deborah Schwartz, Gloria Scroggins, Barbara Yackel. 5 — Kathy Halweg, Kim Halweg, Wendy Leimbek, Rose Wilzbacher. 6 — Shannon O'Toole, Jerre Swene, Kay Tani.
- SAN DIEGO FSC:** Pre — Dixie Boyer, Susan Brickner, Daniel Crane, David Culver, Dennis Culver, Cynthia Doyle, Sharon Eshelman, Jody Fain, Patricia Flaherty, Helena Fortner, Sandra Fortner, Tracy Frith, Vilma Gaborc, Diane Gifford, Thomas Harris, Janet Johns, Elizabeth Kimball, Melinda Lee, Jusyn Livingston, Diana Marinos, Pamela Maushardt, Cynthia Moyers, Margie Sharkey, Shannon Smith, Heather Tardif, Joyce Tyler, Frank Weber, Lori Wilkinson, Synthia Wilkinson. 1 — Donna Brantley, Susan Brickner, Cindy Cuchna, Sheri Hanford, Karen Haustein, Jennifer Nichols, Lori Palmer, Ingrid Wraamann. 2 — Gail Heitert, Cheryl Parker. 3 — Sharon Ballard, Cathy Evans, Steve Heitert, Karen Palmer, Susan Stark. Pre D — Cathy Evans, Tom Harris, Gail Heitert, Stephen Heitert, Frank Weber.
- SANTA MONICA FSC:** Pre — Ken Jillson, Judith Mayer. 1 — Mark McKinney, Joey Mendelson, Laura Mendelson, Carl Smith. 2 — Ken Newfield.
- SANTA ROSA FSC:** Pre — Cory Crowley, Sue Torkelson. 1 — Amy Schultz, Jill Schultz. 2 — Linda Iilsley. Pre D — Debbie Herwig, Linda Iilsley, Peggy Longman, Barbara Richardson. Bronze — Grace Fleming, Dan Henry, Lani Mathews. Pre-Silver — Julie Flieger, Lani Mathews.

- SEATTLE SC:** Pre — Steve Box, Gail Colman, Julie Dexter, Jenny Lewis, Carol Maillet, Randi Roan, Diana Rupp, Michelle Treit. 1 — Steve Box, Michael Lettengarver, Debra Liu. 2 — Fiona Masters. 3 — Kathleen Kennedy, Gertrude Pawelka. 4 — Jacque Greyerbiehl. 5 — Kim Wilson. 6 — Anita Alexander, Robin Weaver. 7 — Jackie Davis. Pre D — Julie Pinckston. Silver — Jean Basle, Debbie Hutchens.
- SILVER BLADES FSC:** Pre — Catherine Booker, Laurie Flynn, Jane Goetze, Janis Kelsey, Dana Paul, Kelly Saylor, Cindy Winward, Leslie Wright. 1 — Laurie Flynn, Stephanie Mahler, Tom DeMate, Shelly Rosberg. 2 — Gitta Griebe, Kevin Kimes, Nancy Leo, Gwendolyn Mahler, Pam Sagehorn, Eileen VanBuskirk. 3 — Kelly Flynn, Dottie Hiersteiner, Karen Kimes, Barbara Lenk. 5 — Paula Fall, Beverly Wortmann. Pre D — Mickie Shapiro, D. Glynn Webb. Bronze — Dana Gillespie, Carl Lopp, Sam Price, Patrick VanBuskirk.
- SILVER BLADES SC OF COHASSET:** Pre — Tamara Arnoldy, Mae Burke, Joanne Grentz, Julie Harned, Susan Leiter, Jody Merlo, Martha Ridgway, Nancy Smith. 1 — Jane Dusselier, Jill Paton, Judy Spillane. 2 — Madelyn Allair, Kelly Flynn, Kim Kurtz, Claudette Mahler, Sandra Rowe. 3 — Kathy Flynn. 4 — Jane Bucher, Carole Spence, Lisa Swansom. 5 — Cheryle Ellsworth. 7 — Dody Baker. Pre D — Leonard Colarusso, Ann Medicott.
- SILVER EDGE FSC:** Pre — Kelley Girvan, Joy Kroeckel, Terri Mathis, Nan Mutnick, Marilyn Scoggins, Mark Scoggins, Karen Sherman, Carol Tait. 1 — Rhonda Ross, Mary Rzeszut, Robin Lenhardt, Mary Wiley. 2 — Debbie Ingalls, Richard Perez. 3 — Liane Jordan. 4 — Jolie Scott.
- SC OF BOSTON:** Pre — Lucia Antonellis, Margaret Cunningham, Charles Donovan, Patricia Dunn, Mrs. Ferzrd Handerson, Karen Lane, Douglas Mankowich, Karen Mankowich, Sarah Peak, Carol Putnam, Mary Ward, Karen Wendell. 1 — Mrs. William Burton, William Burton, Michele LaPointe, Timothy Murphy, Mrs. John Summers, Michelle Webber, Mrs. Faris Zeghibe. 2 — Susanne Buchmann, Edith Hansen, Ellen Roy, Julie Rustin, Paula Surette, Emily Wendell. 3 — Cynthia Swain. 5 — Robert Inguanti, Kathleen Taylor, Jacqueline Whitney. 6 — Carolyn Stafford. 7 — Joan Bakunas, Mary Marley, Pam Thraikill. Pre D — Martha Baker, Rosemary Briand, Bonnie Burton, Priscilla Burton, William Burton, Joan Creedon, Rita Drooker, Dana Hugenberger, Karen Reid, Diane Runyon, Cynthia Swain, E. Ann Whitney. Bronze — Rosemary Briand, Peter Freeman, Gael Sullivan, John Summers, Cynthia Swain, Ronald Zeghibe, Tina Zucker. Pre-Silver — Karen Avery, Karin Croft, Diana Donahue, Cynthia Swain, Jacqueline Whitney. Silver — Mary Marley.
- SC OF BRUNSWICK:** 1 — Charles Chase, Bertha Spear. 2 — Ronald Durgin, James Kamin. Pre D — Alcide Nadeau, Anette Pomerleau, Louise Stoddard, Urselin Tocash. Bronze — Marjorie Perkins.
- SC OF FLORIDA:** 2 — Francis Howe.
- SC OF HARTFORD:** Pre — Debbie Cutler, Frank Fenton III, Martha Fenton, Linda Green, Margaret MacDonough, Jane Monsarrat, Ann Stanton, Anne Williams. 1 — Anita Karpiej, Diana Runde, David Young, Jennifer Young. 2 — Laura Beardsley, Judy Genovesi. 5 — Nancy Doherty. 6 — Cathy Casey, Susan Mastroni. Pre D — Donna Dudley, Frank Fenton III, Linda Green, Elise McGurkin, Laura McGurkin, Marybeth McGurkin, Nancy Miller, Jane Monsarrat, Lynda Rapp, Pat Shannon, Ann Stanton, Anne Williams. Bronze — Claudynee Cassella. Pre-Silver — David Young. Silver — David Young. Silver Free — Cathy Casey, Francis Cassella, Janey Hickey, Susan Mastroni, David Young. Pre-Gold — Nancy Doherty, Janey Hickey, Malcolm McKown.
- SC OF LAKE PLACID:** Pre — Dianne Colby, Lisa Feinberg, Christel Holderied, Heather Grote, Meg Lowenthal, Pam McCasland, Donna McConnell, Sharon Nugent, Donna Wilford. 1 — Laurie Bushy, Leslie Gordon, Beth Hart, Kathy Madden. 2 — Pam Wylie. 6 — Carol Vaughn. 7 — Elizabeth Freeman. Pre D — Karen Edgeley, Leslie Gordon, Beth Hart, Meg Lowenthal, Amy McKenna, Mary Wilson. Bronze — Charlotte Peck. Pre-Silver — Douglas Ezick.
- SC OF LEWISTON & AUBURN:** Pre — Josephine Marsankis.
- SC OF NEW YORK:** Pre — Wendy Davies, Elizabeth Dewinton, Virginia Howard, Elizabeth Weeden. 1 — Katrina Cary, Robert Smith. 2 — Susan Bates. 3 — Melanie Rehkamp. 4 — Regina Rehkamp, John Solomon. 7 — Terri Cheesman. Pre D — Vicki Gage, Anita Newman, Janet Stanley. Bronze — Vicki Gage, Nancy Streeter. Pre-Silver — Jack Melady, James Stuart.
- SC OF MONTCLAIR:** Pre — Lisa Logan.
- SC OF PHOENIX:** Pre — Cathy Amey, John Amey, Naida Anglin, Rhonda Bayer, Patricia Cox, Sylvia Johnson, Mike Murphy, Pegi Nelson, Judy Tollackson, Kendra Tollackson, Hal Wester, Mary Wilmoth, Melissa Wilmoth. 1 — Michelle Burgman, Linda Huffsteter, Ann Murphy, David Nottoli, Kelly Witt, Lynn Yost. 2 — Pamela Hornung, Joyce Jordan, Kathy Morrow, Charma Rogers. 5 — Glenn Parriott. 7 — Perry Hutchings. Pre D — Constance Cross, Carol Dawson, Deborah Handley, Jennifer Handley, Mary Kreps, Charma Rogers, Jacquelyn Waggoner, Frances Wesolowski, Herbert Wester, Tammy Wilson. Bronze — Leah Bayer, Rhonda Bayer, Michelle Borgman, Kim Manning, Ann Murphy, Melinda Murphy, Sue Murphy. Pre-Silver — Pamela Hornung, Linda Huffsteter. Pre-Gold — Michelle Ford, Beth Morrow.
- SC OF RHODE ISLAND:** 1 — Kimeri Brown, Martha Wilcox. 2 — Belinda Bradley.
- SC OF RIVERDALE:** Pre — Barbara Kallir. 1 — Maria Irizarry, Gayl Jacobson, Barbara Johnson, Connie Kershner. 3 — Linda Abend.
- SC OF SAN FRANCISCO:** Pre — Bonnie Birkett, Lissa Birkett, Ruth Goldberg, Allison Goldman, Cherie Holt, Anne Kirby, Sharon Lapin, Marlayne Martin, Terri Thurston, Mary Toscanini, Shirley Toscanini, Peggy Tsujinoto, Cathryn Young. 1 — Mary Toscanini, Deborah Beck. 3 — Caroline Stergulle. 5 — Christine Baker. Pre D — Jane Shoemaker. Bronze — Ora Jenny.
- SC OF VAN NUYS:** Pre — Michelle Hopkins, Debbie McClusky, Rosemary Moore. 1 — Cheryl Bright, Vicki Scheurn, Wendy VanMeerbeke. 4 — Branna Brickman, Douglas Varvais. Pre D — Debbi Reyes. Bronze Pair — Mark Burns, Tina Tendler.
- SC OF WILMINGTON:** Pre — Ann Berkowitch, Lisa Garrett, James Stahl. 1 — Lisa Garrett,

- Mary Grabill, Linda Lusby, Christina Papastavros, Lois Patricoski, Lisa Petrillo, Kathy Premeaux, Robyn Rock, Barbara Rule, Pam Szimkunes. 2 — Candy Bersereau, Leigh Byrne, Leonore Copeland, Denele Johnston, Lisa Olsen, Eileen Savage. 3 — Gina Heyman, Barbara Lofgren, Liayne Sheppard. 6 — Patti Bartolone. 7 — Jill Abrahamson. Pre D — Andi Loux, Kathy Premeaux, Barbara Rule, Pam Szimkunas. Bronze — Nancy Aaron, Roe Blume. Pre-Silver — Jill Abrahamson, Dicky Dodson, Alice Stockfleth. Silver — Audrey King. Pre-Gold — Vickie Bowen.
- SC OF WORCESTER:** Pre — Edward Budzyna, Robin Powers, Kelley Wiggins. 1 — Pamela Hartley.
- SKOKIE VALLEY SC:** Pre — Teresa Gray, Leo Marchiorello, Karen Weise. 1 — Mary Anderson, Calla Urbanski. 2 — Brown Bailey, Lynn Johnson, Christine Metzinger. 3 — Sam Auxier, Lisa Horween, Scott Sherman. 4 — Aletha Bogan, Ilona Horvath, Linda Juckett, Carol Juenger, Sven Krevald. 5 — Lynda King, Arthur Rogal. 6 — Jodi Stoery. 7 — Jackie Swartz. Bronze Pair — Lynn Johnson, David Kirby. Pre-Silver — Sally Nethercot. Silver — Cara Markham, Stina Rogal.
- SOUTH BAY FSC:** Pre — Sigrun Agustsson, Marlene Akana, Marianne Carpenter, Katherine Doughty, Mathew Fero, Lisa Germain, Vicki Grappier, Lori Hedstrom, Rae Martz, Patti Ohlinger, Tina Ortega, Lizanne Owen, Julie Reynolds, Valerie Riggitano, Denise Rowe, Susan St. Sure, Nelle Spencer, Cynthia Stevenson, Grace Tanaka, Debbie Trunnell, Lesley Verrypp, Juanita Walls. 1 — Victoria Boyer, Justine Casey, Kristy Chubb, Nancy Colyar, Alan Doner, Julie Fleming, Sherri Furriel, Elizabeth Keitel, Jennifer Maraget, Jennifer Murdock, Gina Pacheco, Cynthia Swanson, Jane Yoes. 2 — Sally Halder. 3 — Marc Fero, Stacy Rathbun, Diana Rehfield, Linda Smith. 4 — Robert Berry, Patty Gyllenswan, Kim McIsaac. 5 — Wayne Armstrong, Mary Graving, Lailani Mihojevich. 6 — Susan Wolford. 7 — Deborah Larson. Pre D — Gloria Boothe. Bronze — Roger Hollister. Pre-Silver — Donald Lee. Silver Pair — Robert Berry, Jodie Martin.
- SOUTH MOUNTAIN FSC:** Pre — Janice Aceste, Barbara Benenson, Mary Desantis, Lisa Izzo, Martha Kadlubowski, Laura Koenig, Diane McHugh, Susan Naspo, Marion Reissberg, Mindy Steiner, Deborah Weisbard, Yvonne Young. 1 — Carol Benenson, Calvin Page, Audrey Pluskal, Ellen Rickard, Guy Sexton. 2 — David Batten, Cynthia Katz, Andrea Peterson, Gina Russo, Barbara Sasso. 3 — Karen Corona, Judith Hall. Pre D — Barbara Benenson, Deborah Cummins, Lori Decter, Bradley Drowne, Susan Ershow, Gloria Lockshin, Ellen Oxfeld. Bronze — Carol Benenson, Donald Burkler, Barbara Eisenberg, Lynn Keller, Calvin Page, Candi Rich. Pre-Silver — David Batten, Gina Russo, Gina Scheragg, Guy Sexton, Yvonne Young. Silver — Andrea Peterson, Gina Russo, Guy Sexton.
- SOUTH SIDE IC OF CHICAGO:** 1 — Jody LaPort, Marjorie Nist, Karen Zimmerman. Pre D — David Ireland, Jody LaPort, Eleana Sundberg.
- SOUTHERN CONNECTICUT FSC:** Pre — Kathy Engler, Jill Kinsley, Kim Reale, Scott Sutcliffe, Laura Walsh, Cynthia Westbrook. 1 — Elizabeth Eisman, Joan Fitzgibbon. 2 — Karen Burkhart, Cindy Raymond. Pre D — Joan Fitzgibbon, Barbara Manville, Scott Sutcliffe. Bronze — Karen Burkhart, Susan Strickler. Silver — Laurie Cook, Gregor Smith.
- SOUTHERN NEW HAMPSHIRE SC:** Pre — Karen Blicher, Ellen Fortin, Andrea Ouellette, Sandra Ouellette, Donna Savoit. Pre D — Darlene Brock, Kenelm Doaks, Badine Lambert, Sandra Ouellette, Steve Scruton, Kaye Swinarski. Bronze — Tammy Kennedy. Pre-Silver — Robert Bythway, John Webber.
- SPOKANE FSC:** Pre — Shannon Birchill, Misty Bodman, Vicki Butler, Randy Clark, Becky Dyer, Becky Gandini, Heidi Griffin, Kim Griffin, Theresa Mengert, Shelly Stamatz. 1 — Conor Buescher, Jody Kane. 2 — Lori Adera, Ruth Barandt, Vivian Hayter, Marilyn Willardson. 3 — Deborah Brandt, Ruth Brandt. 4 — Lee Bailor, Melinda Johnson. 5 — Tom Bailor, Kristi Thomas. Pre D — Vicki Butler, Ann Cipolla, Julie O'Connor. Pre-Silver — Lee Bailor, Ruth Brandt, Melinda Johnson, Kristi Thomas, Scott Wallace. Silver — Tom Bailor, Deborah Brandt, Kristi Thomas.
- STORRS FSC:** Pre — Mary House. Pre D — Daniel Spring.
- SUN VALLEY FSC:** 3 — Kelly Johnson. Pre D — Lori Kujich. Bronze — Kelly Johnson.
- SUPERIOR FSC:** 3 — Sue Miller, Mary Missinne. 4 — Nancy Banks, Jean Bourgeois, Marit Hassel, Sue Miller. Pre D — Cindy Matacznski, Sue Miller.
- TOLEDO FSC:** Pre — Anne Carter, Barbara Carter, Denise Vasaturo, Patrice Vasaturo.
- TOPANGA PLAZA FSC:** Pre — Robin Caire, Tina Giles, Terri Lieberman, Melody McNeil, Bess Motter, Andrea Tosenfield. 1 — Ellen Burns, Patti Lewoff.
- TOWNE 'N COUNTRY FSC:** 4 — Pauline McKay.
- TRENTON COMMUNITY FSC:** 1 — Kim Blankenbaker, Cathy Koteles. Bronze — Jill Calvin, Michael Deck. Pre-Silver — Janice Gorham.
- TROY SC:** Pre — Janet Cramlet, Stacey Fritz, Ellen Hobart, Mary Jenkins, Scott Schumm, Allison Washer. 1 — Peggy Augustine, Karla Boyles, Laura McDonald, Scott Schumm, Ron Veirs, Janet Weiler. 2 — Sandy Schumm. 5 — Patty Schoener. Bronze — Mark Earhart, Sandy Schumm. Pre-Silver — Sarah Alexander. Pre-Gold — Nancy Morgan.
- TUCSON FSC:** Pre — Wanda Banks, Mary Good, Peter Kouratou. 1 — Wendy Morphew.
- TULSA FSC:** Pre — Elizabeth Ash, Gwendolyn Ash, Carey Carter, Barbara Cehular, Lynn Conard, Patricia Crews, Shelley Eldridge, Dana Graham, Kellie Halloran, Cynthia Langford, Lee Leming, Kimberly Mans, Michelle Maroney, Kelly Mayfield, Kathy Phillips, Tracey Preston, James Reed, Marta Rich, Cynthia Scott, Jaimie Stewart, Jim Stewart, Deborah Williams, Katherine Williams, Julia Zoller. 1 — Janneka Buitink, Elizabeth Cleveland, Kate Pyeatte, Annette Rogers, Jane Wheeler. 2 — Madeleine Buitink, Susan Cleveland, Jay Grabel, Margaret Graham, Ann McCaslin. 4 — Becky Hale, Suzi Lipe. 5 — Margo Miller, Leslie Trammel. Pre D — Melinda Stewart. Bronze Pair — Cheryl Stewart, Jeff Stewart.
- UTAH FSC:** Pre — Nancy Carlton, Cindy Cork, Laura Cork, Karen Crawford, Korby Daw, Brent Ford, Steven Ford, Charles Lane, Caroline Nelson, Kristy Stayner, Janine Whitesell. 1 — Susan Daniels, Rebecca Despain, Sheri Haas, Marilyn Kruse, Julie Savage, Christi Ujifusa. 2 — Suzie Brasher, Jill Hanks. 3 — Cherril Ford, Russell Sessions. 4 — Doree Tateoka. 6 — Ludean Crawford, Kristy Gregerson, Susan Gregerson. Pre D —

- Steven Ford, Kristy Stayner. Bronze — Brent Ford, Cherril Ford. Bronze Pair — Brent Ford.
- VALLEY FSC:** Pre — Lisa Allen, Jolee Bell, Melba Bennett, David Carter, Linda Carter, Debbie Larson, Carole Pitre. 1 — Mike Ebersole. 2 — Lindell Adams. Bronze — Kathleen McKinney.
- WAGON WHEEL FSC:** Pre — Suzette Anderson, Bill Brown, Linda Brown, Penny Ellison, Theresa Green, Gabriele Scharre, Martina Scharre. 1 — Leslie Chabot, Susan Chabot, Adriane Chang, Laura Fowden, Sharon Heid, Kathleen Schmidt, Lauren Schmidt, Jaime Weier. 2 — Judy Hogfeldt, Sally Ketner, Sandy Lenz, Susan Rosengard. 3 — Cindy Nelson, Barbara Osinski. 6 — Nancy Glenn, Chris Kales, Shari Smith. 7 — Marilyn Meunier, Kris Sherard. Pre D — Lawrence Gannon, Earl Jackson. Pre-Silver — Mary Cook, Shari Smith.
- WALLA WALLA FSC:** Pre — Allison Bond, Heather Ford, Kenneth Hains, Lisa Lucas, Madalyne Pickens. 1 — Allison Bond, Ken Heins. 2 — Nina Reiser, Megan Rhay, Terri Wolfson. 3 — Kay Fleenor, Nina Keiser, Megan Rhay, Terri Wolfson. 4 — Craig Bond, Joyce Hanson. 5 — Craig Bond. Pre D — Allison Bond, Ken Heins, Mike Neher, Joni Reitz, Karen Roth, William VanWinkle. Bronze — Allison Bond, Nina Keiser, Mike Neher, Joni Reitz. Pre-Silver — Kay Fleenor, Nina Keiser, Marilyn Neher, Megan Rhay. Silver — Craig Bond, Kay Fleenor, Joyce Hanson, Nina Keiser, Terri Wolfson. Pre-Gold — Joyce Hanson. Silver Pair — Craig Bond, Joyce Hanson.
- WALNUT CREEK WC:** Pre — Carol Allen, Blair Koch, Martha Novario, Sandy Pletcher, Pat Trieble, Cindy Woodruff. 1 — Michelle Pletcher, Kathy Moore, Martha Novario, Cindy Woodruff. 2 — Laurie Cava. 3 — Kathy Rose. 4 — Barbara Horton. 5 — Jenny Gilman. 6 — Leslie Cronin. 7 — Leslie Cronin.
- WASATCH FSC:** Pre — David Murphree, Marion Shankweiller. 1 — Angela Oakes. 2 — Heather Hopkins. Pre D — Vicki Bosley, Paul Tassone. Bronze — Gregory Fuller, Vicky Bosley.
- WASHINGTON FSC:** Pre — Deborah Broyles, Charles Doring, Doty Heard, Lisa Henderson, Wendy Henderson, Robin Holderness, Ann Montgomery, Keeley O'Rouke, Michael O'Rouke, Judy Will. 1 — Craig Lussi, Lori Luke. 2 — Dede Dunegan, Diana Lussi, Sandra Sparger, Peggy Whilden. 3 — Wendy Luke, Cheryl Spinner. 5 — Alexa Novak. 6 — Susan Pearce. Pre D — Charles Doring, Doreen Fishkin, Carol Hayden, Linda Hayden, Susan Libbin, Andrea Seebold, Sandra Sparger, Cheryl Spinner, Nancy Wallace. Bronze — Alice Crerar, Mimi DeMaggio, Helen Price, Matt Weissman. Pre-Silver — Milena Tumova. Silver — Linda Burgess.
- WATERTOWN FSC:** Pre D — Frances Mendillo.
- WAUWATOSA FSC:** Missy Fugina, Anne Kuemmin, Jessica Suchy, Dacia Weerts. 1 — Roberta Kuemmin, Steven Schmidt. 3 — Mary Hawkins. 4 — Mary Hawkins. Bronze — Marcia Fugina.
- WESTCHESTER FSC:** Pre — Lynn Reyman. 4 — Deborah Digiacomo. Bronze — Philipia Repolt, Wendy Wolf.
- WESTMINSTER FSC:** Pre — Linda Baker, Karen Mytinger, Devie Siegel. 2 — Lisa O'Hern. 5 — Debbie Dailey.
- WICHITA FSC:** Pre — Julie Balay, Vicki Dunn, Patti Grant, Jackie Ratts, Elizabeth Seymour, Mary Spriggs. 1 — Jackie Ratts. 4 — Linda Crawford. Pre D — Laurie Grant, Darel Pitts, Gilbert Valentine. Bronze — Jim Schauer. Silver — Karen Brown. Pre-Gold — Opal Fralic, Charles Neville.
- WC OF INDIANAPOLIS:** Pre — Meg Azzoni, Jean Cuniff, Sheri Grank, Teena Johnson, Warren Kraft, Christy Luce, Sandy Mays, Betsy McIntyre, Ramsey Murray, Elizabeth Powers, Catherine Roberts, Elizabeth Roberts, Kristen Schubauer, Cecily Stewart, Terri Thompson. 1 — Joan Maguire. 3 — Beth Keller. Pre D — Paul Tuerk. Bronze — James Lockwood. Silver — Beth Keller, Dr. Lewis Morrison.
- WISSAHICKON SC:** Pre — Kathleen Adlam, Lori Bache, Sarah Finney, Christine Fleming, Sandra Frazier, Samuel Freeman III, John Harris, Lisa Harrison, Katie Kocke, Elizabeth Lippincott, Ginny Niebuhr, Nancy Smukler, Nina Somaripa, Susan Story, Firth Whitehouse, Maida Williams. 1 — Meredith Harris, Betsy Locke, Richard Muehlbronner, Meredith Smith. 2 — Leslie Benoliel, Mary Cheston, Patricia Fleming, Susan Saltonstall, Christine Wainwright, Eileen Whiteside. 3 — Neolle Bjornson, Anne Fiedler, Beth Lewis, Lisa Putsch, Polly Sloan, Betsy Whiteman. 4 — Kathy Steel. 5 — Mary Rawls. 6 — Scott Cramer. Pre D — Samuel Greeman II. Bronze — Christine Wainwright, Mrs. Clark Groome, Beth Lewis.
- YAKIMA ISC:** Pre — Ruth Allard, Douglas Babcock, Irene Stamatz, Susan Wiley. 3 — Gloria Wingenbach. 5 — Jill Richardson. 6 — Joe Thola. Bronze Pair — Ron France, Julie Pugh. Pre-Silver — Ron France, Julie Pugh.

#### CANADIAN SKATERS WHO PASSED TESTS IN U.S.

- CFSA:** 5 — Debra Hardie. Pre-Gold — Eileen Pettit.
- CHATHAM FSC:** Pre — Lee Armstrong, Esther Polaek. 1 — Lee Armstrong, Esther Polaek. 2 — Lee Armstrong, Esther Polaek. 3 — Lee Armstrong.
- LANCASTER FSC:** Pre — Kari Collins.
- MINTO SC:** 5 — Kim Alletson.
- POINT EDWARD FSC:** Bronze Pair — John Hubbell.
- ST. HYACINTHE FSC:** Silver — Yves Trudeau.
- ST. THOMAS FSC:** 7 — Moni McCance.
- TORONTO CS & CC:** 7 — Val Bezic. Silver — Val Bezic. Pre-Gold — Sandra Bezic.
- TOTEM FSC:** 3 — Laura Lake. 5 — Janis Williams.
- UNIONVILLE SC:** Silver — Eileen Pettit.
- VERDON FSC:** Pre-Gold — Dall Bankley.

#### FOREIGN SKATERS WHO PASSED TESTS IN U.S.

- SWEDEN:** 4 — Louise Lettstrom. 5 — Louise Lettstrom.

## THE BUFFALO SCENE

other limited-access superhighways. Actually, more than 90 million people live within a 500 mile radius of Buffalo. This includes New York, Chicago, Montreal, Toronto, Philadelphia, Washington, Baltimore, Boston, Pittsburgh, Detroit, Cleveland, Cincinnati, Richmond and Milwaukee.

Upon arrival in the "City of Good Neighbors", skaters and spectators are invited to register at the Statler Hilton in Niagara Square, which has been designated as the official hotel. Rates, which include free garage parking for registered guests, will range from a minimum of \$11 for a single room and bath for one to a maximum of \$29 for a twin bedroom and bath for two, with many variations in between. The Hilton Family Plan will also be in effect, which is, no charge for children who occupy a room with their parents.

Other hotels and motels by which both the Skating Club and Memorial Auditorium may be easily reached by bus or taxi are: Lafayette Hotel, Washington and Clinton Streets; Holiday Inn, 620 Delaware Avenue; The Lenox Hotel, 140 North Street; and the Fairfax Motor Inn, 715 Delaware Avenue.

Major events of the Championships will take place at War Memorial Auditorium, the newly revamped home of the Buffalo Sabres Hockey Team. Recently remodeled, the Auditorium now includes time-saving escalators, a modern restaurant, and an unobstructed view of the ice from every seat in the house.

School figures, practice sessions, and some events will also be held at Dann Memorial Rink, 1250 Amherst Street.

Ticket prices will be \$4.50, \$3.50, and \$2.50 for each event held at Memorial Auditorium while a charge of \$1.00 per person will be made for each event taking place at Dann Memorial Rink. All-events tickets, for the entire program, will also be available from \$12 up.

Advance tickets may be purchased by sending a check or money order payable to "1971 National Figure Skating Championships" at P.O. Box 200, Buffalo, N.Y. 14217. Be sure to include a self-addressed stamped envelope with name, address and zip code.

When contestants, et al., aren't engrossed in the rigors of practicing and actual competition, they'll find a host of other alluring activities including a big dinner-dance on Saturday evening in the Statler Hilton's Golden Ballroom.

And, within a snow-ball's throw of their hotels, sightseers will find Lafayette Square and the new library and Niagara Square and all the big, new buildings and major construction projects downtown. There's tree-lined Delaware skating/1970 november

Avenue and the Wilcox Mansion and Delaware Park and the Albright-Knox Art Gallery and the Historical Society Museum and the American-Canadian Peace Bridge and the Niagara River. Not to mention majestic Niagara Falls, just 25 miles away with its Skylon and Seagram Towers, spectacular New York State Power Vista and historic old Fort Niagara.

Those whose extra-curricular time is at the barest minimum will find the view from Buffalo City Hall's Observation Tower all-encompassing and well worth a small investment of time. Open Monday through Friday from 9:00 AM to 3:30 PM, at no charge, the Tower provides a spectacular panorama of western New York.

The red carpet is out. . .and the entire Niagara Frontier is set to extend a mighty WELCOME to those involved in the 1971 United States Championships! ○

## MAN OF CONTRASTS

"Personally, I like figures and I also enjoy figure practice."

Richard describes his skating style as athletic. On the athletic vs. artistic question he says,

"A blending of the two would be ideal but if a choice had to be made I would choose to be athletic because skating is a sport. Proper musical interpretation is important but men should show strength whereas ladies can also show grace and beauty of movement."

When questioned on his weak points, Richard simply says, "Probably I am too impulsive at times." But this does not seem so particularly terrible in a young man who goes on to add, "I always try to listen to everyone and I try to correct whatever criticism may be constant from several different people."

The best relationship between teacher and skater is one of mutual respect, according to Richard. This he freely gives to his teacher, Mr. John Nicks. Choosing music and choreographing programs is a joint effort for these two.

"My instructor chooses music suitable for my type of skating and we work together on the the choreography. My favorite type of music for skating is classical with fast rhythmic passages. My favorite composers are Verdi and Rossini. At present I am using two overtures by Verdi. However, I am undecided on my new music for the coming season."

Without a mascot or superstitions, the National Junior Champion states:

"I have no secrets to success. Many good skaters have learned technique, but all the great skaters have natural ability. The persistence to go on after disappointments is important. Family and friend support is necessary, especially

their encouragement and their faith in my ability. This has always been important to me."

Just before he performs, Richard says he feels a "sense of excitement." He wants the judges and spectators to "enjoy my performance. I want them to feel assured that I can perform whatever is in my program well, without worrying about it."

He remembers his most exciting moment in skating as winning the Junior Mens title, and feels that this was also his best performance. On winning, he says,

"It gives me a self-confidence. Winning always gives a skater a lift and the feeling that what he's done has been in the right direction."

"A basic enjoyment of the sport - win or lose " is what has kept him with it during the hard times. How does he accept defeat? Richard says, "Reluctantly ".

Richard's philosophical attitudes show a balance which belies his years and must come from the years of dedication that made him a champion. Richard feels skating augments education.

"Traveling to competitions, meeting other skaters, and the necessity to develop extreme concentration - all these things help in school. The qualities necessary to attain perfection, self-discipline, concentration, these are always useful in other areas of one's life. Many young people are confused and uncertain of the way to go. People in skating, young people too, are extremely dedicated to the sport and I feel fortunate to be associated with them."

Richard Ewell enjoys other sports as well as skating, especially swimming. Skating won out with him because, he says, "I have more ability in skating. It is the first sport in which I have done well."

From the thirteen year old who first hit his stride in the sports with skating to the twenty year old who can say with no small basis that being chosen for the World or Olympic team would "be the culmination of all my skating ambitions", Richard Ewell has proven himself to be a genuinely outstanding person. ○

#### DEMOGINES. . . A GREEK CLASSIC

Jimmy feels that skating has taught him self-discipline and the values placed on becoming successful. His favorite type of skating music is Russian classical, and his favorite composer is Tchaikovsky. The choice of music and the choreographing of programs is a joint effort between Jimmy and his teacher, and although he states that he has no preference concerning styles and color, Mary Ann Shields and Lois Hardin do very well by him in designing and making his costumes. Jimmy would like to skate someday in an ice show and then teach

skating afterwards, but this is far in the future, for Jimmy loves competitive skating. His most exciting moment in skating was in November 1968 when he pulled up from sixth to first in the intermediate class of the Southwest Pacifics.

It is a common sight to see Jimmy enjoying himself in the company of both big and little skaters while changing skates and waiting for fresh ice. But most important of all, he also seems to enjoy himself in another way while on the ice, working alone, seriously and consistently. Perhaps this is one reason why Jimmy is a champion. He is enjoying developing and refining his skills rather than dreading the necessary hours upon hours of work. He refuses to take even one day away from his regular weekly practice schedule.

Jimmy told me he believes in what Anne Morrow Lindbergh wrote: "The shape of my life is of course determined by many things. My background and childhood, my mind and its education, my conscience and its pressures, my heart and its desires."

I asked him if he had any helpful advice to young skaters. He said to tell them that "Whatever you do, always serve it with a little dressing!" Perhaps this too is another element in Jimmy's championship qualities—the necessary sparkle that all winners seem to have—and the sparkle certainly shown in the personality of ice skating's "Zorba The Greek". ○

#### THE MAKING OF A JUDGE

Doring from Garrett Park, Maryland and the Washington FSC, and Mr. and Mrs. Howard Jackson from Caldwell, New Jersey and the Essex Skating Club,

The students reported early Saturday and were greeted by the Registration and Hospitality Committees which dispensed study guides, test outline sheets and other educational material for classroom discussion. More than twenty young members of The Skating Club of Boston demonstrated for the on-ice study of the school.

Group I, the prospective judges, were taken in charge by Mrs. Lyman M. Drake Jr., ISU Test Judge from Glencoe, Illinois, and Mr. Charles U. Foster, International Judge from Worcester, Massachusetts, who opened the session with an explanation of the basic techniques of low figure testing. Mrs. Drake emphasized the importance of the skater gliding on a clean edge. Thereafter, the group adjourned to the ice for a practical demonstration of the subjects discussed in the classroom.

Mrs. Mary Louise Wright, World Judge from Belmont, Massachusetts, and Dr. Franklin Nelson worked with the Intermediate group. Particular emphasis was placed on the new ele-

ments met in the Intermediate Tests, including the double threes, loops, change threes, change double threes and brackets. Three and one half hours of actual trial judging were interspersed with two and one half hours of lecture and explanation of judging marks.

Discussion of the High Tests was led by three World Judges; Mr. Benjamin Wright from Belmont, Massachusetts, Mrs. Yvonne McGowan of Harrison, New York, and Mrs. Graham. Their expertise, abundant knowledge, and experience more than answered all questions to everyone's satisfaction. The marking of the free skating elements of these tests was perhaps the most intangible to define.

Because of the varying degree of difference that arises in the marking of free skating, all day Sunday was devoted to trial judging and evaluating skaters from Juvenile through Junior level. Sunday's classes also included a demonstration by Paul George and Elizabeth George Busconi, 1962 National Junior Pair Champions. They explained proper holds, lifts, and style and commented on the illegal movements in pair skating, and the generally poor standards for pair tests in comparison to figure tests. It was suggested that a preliminary pair test might be initiated by the USFSA comparable to the test recently adopted in Britain, which might not only improve the quality of pair testing but also develop skating ability earlier before the difficult moves are attempted.

The training of the men and ladies behind Peggy Fleming's 5.9's and 6.0's is a long and tedious road. It takes many years for a person to qualify to pass judgment on the World and Olympic Champions. The nine distinguished faculty members of The Skating Club of Boston's Figure Judges School are some of these people. They can analyze and scrutinize the fine balance and techniques required to skate that part of figure skating which the general public seldom sees. Over eighty figures must be mathematically interpreted in marking a figure skater while free skating encompasses but a brief span of time and many less elements.

Tim Wood may have trained ten years to become a National and World Champion, but chances are his judges trained for twenty years for the privilege of judging him. ○

#### ST. GERVAIS REVISITED

of Canada.

As usual in Europe, the award ceremonies were colorful affairs. New this year were separate medals and trophies for the first three in figures, free and final placements.

In all it was a most interesting Championship with U.S. skaters receiving invaluable skating/1970 november

perience in international competition. The French hosts were exceedingly gracious, and the competition was well run. It was with considerable regret that it was time to leave the Valley of Mont Blanc.

#### GRAND PRIX INTERNATIONAL DE PATINAGE ST. GERVAIS, FRANCE, AUGUST 17-23

##### MEN

1. John A. Curry, Great Britain
  2. Ron Shaver, Canada
  3. Michael Fish, Great Britain
  4. Richard Ewell, United States
  5. Patrick McKilligan, Canada
  6. Willy Bargauan, France
  7. James Demogines, United States
- (10 contestants)

##### LADIES

1. Cathy-Lee Irwin, Canada
  2. Mary-Lynn Gelderman, United States
  3. Suna Murray, United States
  4. Jean Scott, Great Britain
  5. Arlene Hall, Canada
- (18 contestants)

##### PAIRS

1. Sandra & Val Bezic, Canada
  2. Sheri Thrapp & Larry Dusich, United States
  3. Linda Connolly & Colin Taylforth, Great Britain
- (6 pairs) ○

#### LYON—A TRAVEL MONOLOGUE

The event will be held in the Palais des Sports. Constructed in 1962, it is slightly out of town with no nearby hotels. This presents no problems for, apart from the special transportation supplied for the competitors, the city has an excellent bus service. The concierge of your hotel will point out your quickest route. In fact this is a blessing in disguise because it means that you must see more of this beautiful city. You can't succumb to the awful fate of some supporters who return home, their only sights having been the inside of their bedrooms and the inside of the rink. Each bus trip costs 1 French Franc (FF) which is about 20 cents. If you have to change busses ask for a "correspondance" which is 1.30FF. A "carte" is cheaper and is good for seven trips. Of course taxis, which are moderately priced, are available.

Don't worry about getting lost. Most French people speak some English, particularly the younger ones. Unlike the Parisians, a breed to themselves, the Lyonnais are very friendly. During World War II this was the capital of the Resistance and many feel a special kinship with the British and Americans who helped them.

Although Lyon is "off the beaten track" for most tourists from this side of the Atlantic, you will be surprised by how easily you will be identified. Just stand on a corner looking perplexed and someone will materialize to ask in English if they can help you.

If you do feel a little insecure, always carry a sheet of your hotel's notepaper and your

Please turn to page 52

tickets with you. Display one of these when asking directions and, even with a language barrier, you cannot be misunderstood. The advertisements for the event were posted before August so the townspeople have had plenty of time to become familiar with its location.

You should make your reservations as soon as possible. A series ticket for Section A costs \$27 (150FF) and one for Section B, not as near the ice, is \$23 (125FF). The gala, scheduled for the 28th of February at 3 PM, costs extra. Seat prices are 8, 7, and 5 dollars. Send an international money order for the amount to Comite d'Organisation des Championnats du Monde de Patinage 1971, 100 Cours Charlemagne, Lyon, 2e, France.

The American and Soviet teams, along with the ISU officials will be accommodated in the 200 room, newest and most luxurious "Sofitel" at 20 Quai Gailleton, 2e. Among its amenities is a rooftop restaurant on the eighth floor which presents a panoramic view of Lyon. The Canadian and British teams will be at the terminus, whose 140 rooms are right at the Gare Perrache, 12 Cours Verdun, the main railroad station. An interesting housing arrangement occurs at the Royal which is already full. Both East and West German skaters will be here with the ABC television personnel presumedly acting as a buffer.

Though of a slightly lower standard, other first class hotels are:

- The Grand (130 rooms), 11 Rue Grolee, 2e
- The Roosevelt (150 rooms), 48 Rue Seze, 6e
- The Carlton (100 rooms), 4 Rue Jussieu, 2e
- The Beaux-Arts (80 rooms), 75 Rue Pres-Herriot, 2e
- The Etrangers (56 rooms), 5, Rue Stella, 2e
- The Terreaux (60 rooms), 16 Rue Lanterne, 1e
- The Bordeaux (90 rooms), 24 Cours Verdun, 2e
- The Bristol (130 rooms), 28 Cours Verdun, 2e
- The Atlantide (54 rooms), 51 Rue University, 7e

Aside from the first two, the hotels named in the above paragraph, serve only breakfast. This is due to the great reputation of the cuisine in this vicinity. Many tourists come to Lyon expressly to indulge themselves in the city's famous restaurants, and the hotels have been unable to stand up to such competition.

Your hotel staff will be glad to advise you on nearby places to eat. Often this will set off a heated discussion as to the relative merit of each establishment. You would do well to follow the local custom of taking your heavy meal at lunchtime. To hurry such a pleasure is sacrilegious to the French, and most evenings you will want to be in the rink by eight awaiting the

first contestant.

If at all possible make a reservation for the world-famous Pyramide in the town of Vienne, twenty miles to the south. Closed on Tuesdays, it is very expensive but it's guaranteed to provide a culinary experience which you'll remember for years. Take the waiter's and the wine steward's recommendations when ordering. This is no matter for amateurs! The short train journey is an added bonus for it will furnish you with a brief glimpse of the rich countryside.

Failing this, go five miles north to Auberge Paul Bocuse, Quai de la Plage, Collognes-au-Mont-d'Or. This is rated as one of France's three best restaurants outside of Paris.

Near the Patinoire, which will be used for practice, at 15 Rue Casimir is Midi et Minuit, where you can get a snack twenty-four hours of the day. A short ride from this three year old indoor rink, across the Saone river is the prestigious Mere Guy, at 35 Quai Jean Jacques Rousseau. Closed on Sundays, a table d'hote meal without wine will cost about \$10.

In the Guillotiere district, the closest to the Palais des Sports, is La Grille, 100 Rue S-Gryphe, 7e, where dinner a la carte should cost around \$9. For the more budget-minded, in the same district, also closed on Sundays, is La Bonne Auberge, Chez Jo, 48, Av. Felix Faure, 3e, where one can eat for around \$4.

Near the Terminus, Bordeaux and Bristol hotels is the Brasserie Alsacienne, 20 Place Carnot, table d'hote—\$5.

Between here and the Sofitel is the Museum of Textiles, unique in the world, and an absolute must on your sightseeing list. It's open ten till noon and two till five except Mondays and the mornings of Tuesday. Opposite is Tante Alice, 22 Rue Remparts D'Ainay, 2e, where a table d'hote meal may relieve you of about \$5.50. It's closed Saturdays.

In the center of town is Vettard Cafe Neuf, 7, Place Bellecour. Your bill will be approximately \$8.50.

On a hill north of the center is Croix-Rousse, a very interesting district where the *canuts* (silk weavers) live. A number thirteen trolleybus will take you to the summit and you can work up an appetite by walking down to Les Fantasques at 10 Rue Fantasques, 1er. It's closed Mondays and table d'hote should be around five dollars.

Even if you do speak some French, a menu translator will help you gain more enjoyment from your meals. Both T.W.A. and Pan Am have incorporated this aid into their guide booklets, the latter is the more extensive and expensive.

Don't order what you can have at home. American steaks are some of the best in the

world and you won't find their equivalent here. What the French excel in is the making of sauces. You have to taste these to believe how delicious they are. You must allow the chef to demonstrate his ingenuity. If you are on a diet have lunch only. In the evening the mounting excitement of skating will appease your hunger.

One word of caution; don't have a cocktail beforehand. It ruins your palate, besides which the Martini will be poor and the Scotch costly. This is your chance to become a wine expert. In most places you can simply order a carafe or half of red or white wine and get an admirable local brand. However, you may wish to take this opportunity to peruse the wine list, and if you are not familiar with wines ask for a medium or sweet variety. The more your palate matures, the drier it becomes, but at first these may seem a little bitter. If you develop a taste for a particular type, have half a dozen bottles sent home—very snobbish!

Service is automatically included in your bill but it is customary to leave an extra five per cent. If you've used the assistance of the wine steward, you should tip him separately depending on the amount of help. Five percent of the bill is a good guideline.

Prior to starting out for France, I highly recommend writing to the French Government Tourist Office, 610 Fifth Avenue, New York, N.Y. 10020 or telephoning 212-757-1125. They have an excellent thirty-six page, colorful booklet in English which contains maps, descriptions of the twenty-two museums and a detailed history of Lyon.

If you don't get this earlier, obtain it from the Tourist Office in Place Bellecour. Their English-speaking hostesses can also provide you with a bus route map, answer any questions you may have and book you on a sightseeing tour.

Five minutes walk from the Tourist Office, northwest across the red-bricked, tree-lined Place Bellecour, one of the largest squares in the world, along Rue Colonel Chambonnet, over the bridge, Pont Bonaparte, and to the end of Avenue Adolphe-Max, is the funicular (cable car) station. One line takes you to the Roman theater and odeum built in 15 B.C. by Augustus Caesar. The other branch deposits you at the Fourviere Basilica. From this vantage point, 281 meters high, you have a splendid view past old town with its fifteenth and sixteenth century houses, beyond the town center on the peninsula formed by the Saone and Rhone rivers, to the industrial areas. Lyon's silk trade, introduced by the Italians in the fifteen-hundreds, flourished and blossomed into today's textile and chemical factories. You can see petroleum-burning towers in the district where

the vaccine was synthesized that helped prevent the body's manufacture of antibodies in the world's first heart transplant.

To the north of the basilica is another landmark, the blue television antenna, constructed as a replica of the Eiffel Tower.

For shopping there are some fine stores in the Rue de la Republique, which runs north from the Place Bellecour to near the Town Hall, one of the most beautiful in France, and the Museum of Fine Arts.

Neither Jean Jacques, in Rue Emile Zola, or Danielle et Gerard, at 6, Cours Franklin Roosevelt, the most well-known beauty shops, are in the center of town although the latter is near the Roosevelt Hotel. However, those of the Sofitel and Royal hotels are first-rate.

If the skaters inspire you to take part in some physical activity yourself, there is a third indoor ice rink. Completed in November 1970, it will not be connected with the championships and so will be open to the public. Only an hour away are some great skiing areas. For swimmers there are two indoor pools plus one in the Club de Presse, which will house all the press and has not yet been finished.

To get there you fly to Paris and on to Lyon on Air Inter, France's internal airline. Or you can fly to Geneva and take the train some 100 miles.

Between Paris and Lyon runs the famous Mistral train. For those who choose to spend a few days in Paris, possibly to take in the spring and summer couturier collections which are shown in February, this in an unparalleled mode of transport. All first-class and requiring seat reservations, it has automatically opening doors between the carriages, press button action on venetian blinds in the middle of double-paned windows, special baggage stowage areas, reclining seats, a bar and restaurant cars. I can attest to the unique experience of having your hair set in its beauty shop whilst hurtling along at an average of 84 m.p.h. The journey takes three and a half hours and is always on time. If you are coming into Paris, the bilingual hostess will, at a charge of 1FF and a 6FF deposit towards the fare, radio ahead for a taxi. This operation is very smooth for you come out at a different exit to the normal passenger and a railroad official is there to help you into you cab.

There are about 60 castles and old manors

Please turn to page 54

NEW!



# 124-L—Leotard skate-dress with pants attached. Underarm-gussets for comfort, freedom. Smooth front-skirt, split-sides, gentle flare back-skirt. Collar, sleeve attractively trimmed. (Optional.) Exclusive, two-way stretch of dacron-polyester & wool-blend double knits. (Not bonded)—Emerald, Electric Blue, Purple, Shocking Pink, Fire Red, Navy.

Childrens: 4, 6, 7-\$24—8, 10, 12, 14-\$27  
Jr. Adult: 7/8, 9/10, 11/12, 13/14-\$30

CHILDREN'S SPECIAL! Skate-dress in washable bonded-knits: red, royal, kelly, all sizes—\$18 \*While they last!

Enclose \$1 for postage with order.  
To assure proper fit, send measurements.  
Free brochure upon request.

PRO SHOPS invited for dealer's information.

SKATE TOGS BY d'Ann  
P.O. Box 10206  
Cleveland, Ohio 44110

in France that have been converted into hotels. If you are driving you may wish to spend a night in one. Their atmosphere is too elegant for ghosts but a letter on their stationery may have your friends wondering about your ancestry. Just outside of Lyon is La Reserve and further north is Chateau de Fleurville. South is Chateau de Pilate et Fontager, which is on the site of one of Pontius Pilate's homes.

The posters for the event were designed by Lyonais, Rene Dejean. In using what appears to be Japanese brushwork, apparently he foresees this championship as an anticipation of Sapporo. There will be many souvenirs of the occasion including an absolutely delightful orange lion firmly planted on silver skates and sporting a blue sash proclaiming Championnats du Monde. (The lion is Lyon's symbol and its colors are blue and orange.) Other popular items will surely be kerchiefs and ties marked with the contest's insignia in the world-famous Lyon silk.

The organization for the affair seems to be very satisfactorily progressing. Conceivably, because the Chairman of the Organizing Committee, Monsieur Lafitte, is the uncle of Joelle Cartaux, French Ladies Champion, he is working especially hard to make sure this is a memorable competition for all concerned.

There are many guide books on France but none devote much space to Lyon. Nonetheless, if you'd like to absorb some of the national feeling, I heartily advise reading *The French Portrait of a People* by Sanche de Gramont, published by G.P. Putnam's Sons at \$7.95. Also available through the Book of the Month Club, this should whet your appetite for what surely will be a marvellous vacation. ○

---

IT USED TO BE that top amateurs in the skating field were taken for granted as being the best potential teachers of skating at any level... and generally knew more than existing PROFESSIONALS. That's all changed now... thanks to the PROFESSIONAL SKATERS GUILD OF AMERICA... which has helped some rather *average skaters* become *excellent teachers by keeping* them up to date with new ideas and teaching methods for the skating sport, art and recreation worlds. You can be a *top amateur* now and a *poor teacher* tomorrow... or an *average skater* today and a *top teacher* tomorrow. THE GUILD IS THE DIFFERENCE... FOR INFORMATION WRITE: P.S.G.A., c/o Buffalo Skating Club 1250 Amherst St. Buffalo, N.Y. 14216.

---

# classified

**HICKORY, dickory, dock:** Help reduce my stock! Case for records, rack for skates, stoning kit or scribe; Makes an ideal skater's Christmas bribe!! J. Czaja, 4 Crestview Drive, Pittsford, N.Y. 14534.

**AVAILABLE:** A few dealerships for the famous John Wilson blades. Selected areas. Please contact Cliff Thaeil, 2120 Sheepshead Drive, Naples, Fla.—813-649-8776.

**ST. LIDWINA MEDAL,** Patron Saint of All Skaters, Beautifully designed in sterling silver. Now available for immediate delivery at \$5 per medal, postpaid. National Sports Publications, Inc., P.O. Box 278, Manchester, N.H. 03105.

**EXCITING-entertaining!** Read *Linda Lane, Figure Skater*, ice skating novel for age ten to adult. Autographed. Fine gift. Price \$4.95. Order from author Alice Schumacher, 115-17th Street N., Great Falls, Mont. 59401.

**FREE BROCHURE:** Stationery, notecards, labels, postcards, notepads—all with figure skating motifs including stag leap, layback spin, pair skaters, sitspin—more! Also: business cards, stationery for clubs, pros. Liz Bierer, 2413 Lambert, Toledo, Ohio 43613.

**JOHN WILSON** famous blades now available in New England in all models wholesale and retail from Paul Gaudin, P.O. Box 126, Walpole, Mass. 02081—617-668-6197.

**BEAUTIFUL BOOK,** collector's treasure, limited edition. *Skating Costume.* History & annotated bibliography by Lois & Richard Stephenson. Fully illustrated with 30 full-page plates by Kathleen Stephenson. First complete bibliography of subject ever published. Order from authors, 12 Hillyndale Road, Storrs, Conn. 06268.

**FOR SALE:** Figure Skate Pins, Charms, Earrings, Bracelets, and other Jewelry. Send for free catalogue: Al Green, 15A Juniper Lane, Eatontown, N.J. 07724 (new address), phone: 201-542-0666.



**Use Christmas Seals.  
It's a matter  
of life and breath.**

Fight emphysema, tuberculosis, air pollution.

## FIGURE EIGHT®



**THE NUMBER ONE GAME...**  
CREATED FOR SKATERS BY A SKATER. \$4.95 + 55¢ FOR MAILING. CHECK OR M.O. TO LAVELLE-FORGUE, 4951 N. DELPHIA, NORRIDGE, ILL. 60656

get in

### SHAPE to SKI or SKATE

**OFF-ICE AND OFF-SLOPE METHOD OF CONDITIONING EXERCISES WITH MUSIC AND VERBAL INSTRUCTION**

33 1/3 L.P. record with illustrated book.

\$6.95 (we pay postage)

Pa. residents add 6% sales tax.



Send for free Brochure or

Order with payment enclosed:

**BARBARA ALTMAN**  
Ice Ballet Professional

8224 Forest Avenue—Elkins Park, Pa. 19117

# ICE CAPADES

THE SHOW  
FOR ALL SEASONS

### ATTENTION SKATERS AND PROFESSIONAL TEACHERS

We are looking for skaters of all races for both our East and West companies, traveling throughout the U.S. and Canada. Professional teachers knowing of prospective talent please write:

**Bill Bain**

**Ice Capades, Inc.**

**6121 Santa Monica Blvd.  
Hollywood, Calif. 90038**

Suitable remuneration will be made to the teacher once the skater has completed the required trial period.



JUMPER # 2 - WITH  
ATTACHED TIGHTS

\$20 in nylon and cotton bonded knits: lime, red, brown, pink/green stripe.

\$25 in acrilan bonded knits: navy, avocado, red, turquoise.

girls 8-14; teens 10-14; misses 6-16  
all orders plus \$1 mailing charge

**pot pourri designs by lois hamann**  
3301 e. monmouth rd., cleveland,  
ohio 44118

# 'EASY HONE'

*Precision Skate Sharpener*  
—IN—

## *Britain*

BWD Sporting Equipment  
102, Tarbock Road  
Huyton, Lancs.

## *South Africa*

Liqui-Seal (PTY.) Ltd.  
P.O. Box 10209  
Johannesburg

## *Japan*

The Izumiya Co., Inc.  
56, Sannocho 2-Chome  
Nishinari-Ku, Osaka

BWD Sporting Equipment  
2685 Central Avenue  
Baldwin, New York 11510

# dance records

## *Album No. 2*

*Personally supervised by a professional musician, silver dancer.*

*Music used with great success during Spring and Summer Dance Sessions at SKYRINK, N. Y. C.*

*Album No. 2 consists of 24 dances:*

*20 test dances*

*Rock 'n Roll 10-Fox*

*Jazz Willow Waltz*

*Starlight & Rhumba*

*33 1/3 RPM, all tempos are correct.  
No less than four instruments in any song.*

*Album No. 2—Price—\$26.00 (U.S.)*

### *SPECIAL CLOSEOUT SALE*

*Album No. 1 will be sold at \$5.00 with  
purchase of Album No. 2.*

*Price—\$31.00 (U.S.)*

*Send check or M.O. to:*

*Ralph Melady  
Jamel Productions  
138 E. 53rd St.  
New York, N. Y. 10022*

# *Olympiad*

*Choice of Champions*  
**SINCE 1932**



- **TWO GREAT MODELS**
- **HANDCRAFTED**
- **SELECTED STEEL**
- **Individually Heat-treated**
- **Finished in Gleaming Chrome**
- **Unconditionally Guaranteed**

*The Skate Shop, Inc.*  
797 Dodd Road  
West St. Paul, Minnesota  
55107

## PERFECT CIRCLE

*A first in record cases*

# RECO TOTE



- Molded from finest ABS grained luggage material
- Holds six 10 or 12 inch records
- Slimline design: 1¼" X 13½"
- Polyfoam lining protects your records
- Color: Royal blue

Price—U.S. and Canada  
\$17.50 (U.S. dollars)  
Calif. residents add 5% tax  
No C.O.D.'s  
Frank Davenport  
Box 43  
Orinda, California 94563

# WINTER ICE SEASON

October 15th Thru April 3rd

■ Outstanding Professional Staff

■ Skating Dorms Available

■ An Abundance of Ice Time

**olympic**  
LAKE PLACID, NEW YORK 12946  
**arena**

lake placid



WHY NOT  
SKATE  
THE CHAMPIONS WAY



on  
JOHN WILSON BLADES

- Gold Seal
- Phil Taylor
- Hans Gerschwiler
- Coronation Ace
- Pattern 99
- Coronation Dance

and many more. . .  
All Fully Guaranteed  
For Life in Every Way

Professionals and Dealers Contact

**CLIFF THAELL**  
2120 SHEEPSHEAD DRIVE  
NAPLES, FLORIDA 33940  
Tel: MI-9-8776

**AGENTS IN CANADA**  
A. Martin & L. Pearson, 203-1084 Homer St.,  
Vancouver 3, B.C. — Tel: MU-3-0821

BOY AND GIRL  
ENSEMBLE SKATERS WANTED



"HOLIDAY ON ICE" is looking for  
boy and girl skaters interested in joining  
a professional ice show, affording an  
opportunity to travel and see the country  
while working with top skating stars.  
If interested please write to:

Rod Kimble  
**HOLIDAY ON ICE, INC.**  
Two Pennsylvania Plaza  
New York, N.Y. 10001

Enclose a full-length photograph in  
skating costume (if possible) with other  
pertinent information regarding height,  
weight, age and experience.

The customary remuneration will be  
made to any professional teachers who  
supply talent.



# ZAMBONI

**the proven name in ice resurfacers**

Wherever ice skating is enjoyed as sport or entertainment, the name Zamboni is synonymous with excellence in ice resurfacing. Zamboni meets exacting demands of the finest ice performers in rinks throughout the world. Zamboni gives you *superior* ice, quickly, efficiently,

and economically. Result: more skating time—more profits! *Shown above: the popular Zamboni Model HD in action, shaves the ice, picks up all snow, applies fresh water to ice, removes excess water—all at once or in single operations*

write:

**FRANK J. ZAMBONI & CO.**

15714 Colorado Ave., Paramount, Calif. 90723 / (213)633-0751 • Cable FJZICE

Frank J. Zamboni & Co., LTD., Scott Ave., Paris, Ontario, Canada (519) 442-2235

Patents: U.S., Canada, Great Britain, Switzerland, West Germany, Japan. Other Patents applied for.



*Custom made figure skating boots, hand lasted and welted, stitched on sole, all leather heels, soles, insoles and counters. Delivery between 3 and 6 weeks. Immediate delivery on stock boots. SK "Pro" model priced from \$40.00 to \$52.00. SK "De-luxe" model priced from \$61.50 to \$70.00. John Wilson blades are also available.*

*For measurement charts write to:*

SK SPORT SHOES  
1077 Gerrard Street, East  
Toronto 8, Ontario, CANADA



1971  
SUMMER  
SKATING  
SCHOOL

June 21-August 22

- (Professionals are invited to inquire about joining our summer staff)
- For information & reservations Write:
- Howard "Skip" Butler  
RPI Field House
- RPI Summer Skating  
Troy, New York 12180



# GIFTS

## WITH A SPECIAL SKATING TWIST

1. ST. LIDWINA MEDAL  
Patron Saint of Skating  
in Sterling Silver. . . . . \$ 5.00
2. CLASSIC TEXT BOOKS
  - a) *Willy Boeckl On Skating*. . . . . \$12.00
  - b) Dench & Stewart  
*Pair Skating & Dancing On Ice*. . . . . \$ 8.00
3. ANTIQUE SKATES  
with wooden platforms, curved  
prow, iron runners. Early American.  
Per pair. . . . . \$20.00

NATIONAL SPORTS PUBLICATIONS  
P.O. Box 278  
Manchester, N.H. 03105

# Confidence . . .



starts with  
skate boots  
by . . .

# Oberhammer

First choice of Pro and beginner  
because they are FIRST in . . .



Fit-Style  
Quality  
Comfort  
Durability

Full selection of models and prices to  
meet demands of all skaters from Pros  
to beginners. Write for literature and  
FREE Measurement Chart.

**OBERHAMER SHOE CO**  
683 N. Dale, St. Paul, Minnesota 55103

# LEARN & TRAIN IN THE SKATING CENTER OF THE WORLD

The Broadmoor, Colorado Springs, Colorado, offers the finest living and training facilities for students of skating.

The Broadmoor Arena is in operation the year around for all skating activities: figure skating, speed skating, hockey, recreational skating, and curling.

The Broadmoor is often termed the Home of Champions, as the Broadmoor Skating Club is among the leading clubs sanctioned by the United States Figure Skating Association for earning national and international titles. More World Figure Skating Championships have been conducted here than at any other site in the Western Hemisphere.

The handsome new ice surface addition to the Broadmoor World Arena is particularly designed for patch skating, pairs programs, and free style. It is also used during public recreational skating sessions and regional curling activities. The professional staff includes instructors, highly proficient in all categories of figure skating.

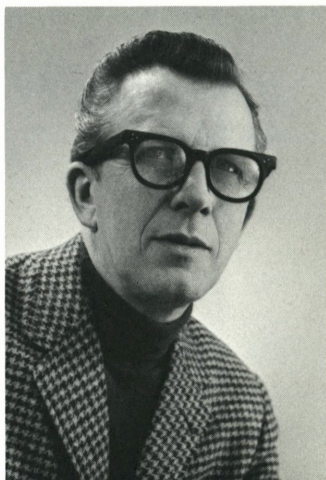
## BEATTY HALL

The Henry M. Beatty Hall offers comfortable and convenient accommodations and lodging for forty-

eight pupils. Spacious living areas, study rooms, adult supervision, good food and reasonable rates are available at Beatty Hall throughout the entire year. Grammar schools, high schools and colleges are in the nearby vicinity. For complete information write: Executive Secretary, Broadmoor Skating Club, Broadmoor World Arena, The Broadmoor, Colorado Springs, Colorado 80901.

## PROFESSIONAL STAFF

Headed by RONNIE BAKER  
"Trainer of Champions"



and including Jack Raffleur, Ruby Maxon, Christine Haigler.

The **BRO<sup>A</sup>DMOOR**  
Colorado Springs, Colorado



# 1971 North American Figure Skating Championships

SANCTIONED BY USFSA AND CFSA  
FEBRUARY 2-7, 1971  
PETERBOROUGH MEMORIAL COMMUNITY CENTRE  
PETERBOROUGH, ONTARIO, CANADA

## SCHEDULE OF EVENTS:

February 2, 3      Practice  
February 4      Men's Figures  
                         Compulsory Dance  
                         Compulsory Pairs  
February 5      Ladies' Figures  
                         Original Dance  
                         Men's Free Skate  
                         Pairs  
February 6      Free Dance  
                         Ladies' Free Skate  
                         Exhibition by winners

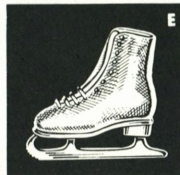
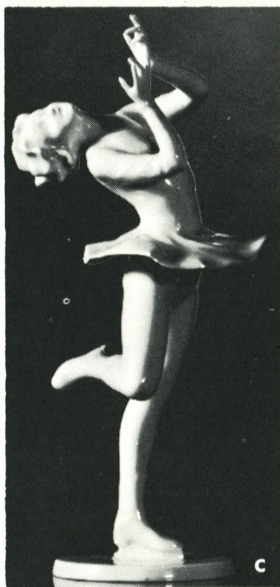
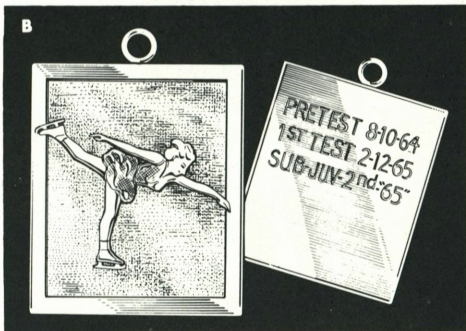
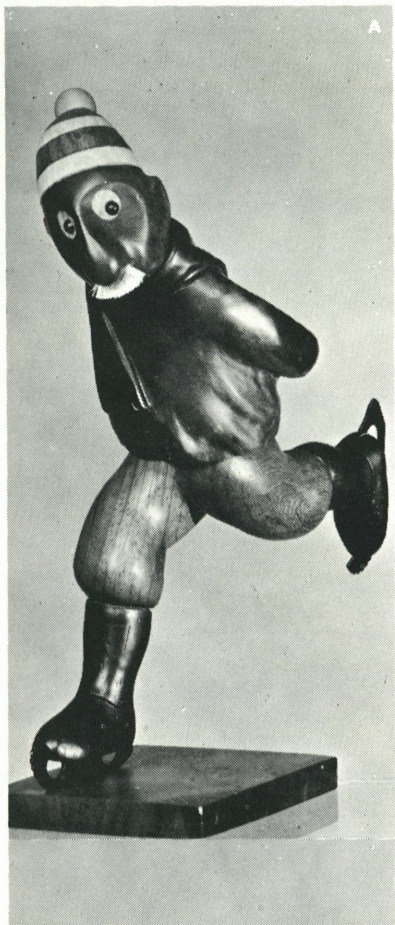
Plus special exhibition by team members on Sunday, February 7

Order forms available on application to:  
1971 North American Figure Skating Championships  
c/o Peterborough Figure Skating Club  
Box 956  
Peterborough, Ontario, Canada Tel.: 705-743-7212

## ADMISSION PRICES:

Evening events				
Thursday, February 4	\$ 4.00	\$ 3.00	\$ 2.50	\$ 1.50
Friday and Saturday, February 5 & 6	\$ 5.00	\$ 4.00	\$ 3.00	\$ 2.00
Day-time events				
General admission	\$ 1.25			
All events tickets	\$13.00	\$10.00	\$ 7.50	
Special exhibition Sunday, February 7	\$ 3.00	\$ 2.00	\$ 1.50	

Reduced rates for students 16 years and under



## *Gifts for the Skater*

Choice selections from the world's most famous artists and houses to becharm and delight the skating enthusiast. Beautifully gift-wrapped at no extra charge. Add \$1.50 postage West of the Mississippi, \$3.00 East of Mississippi for figurines; add \$1.00 West and \$2.00 East of Mississippi for jewelry items. Allow 2 weeks for delivery.

# Zell Bros

Registered Jewelers • American Gem Society

**A.** For your favorite man on the ice, colorful skating caricature, 10" high, hand-carved from rare woods in Italy. **\$27.50.** With plaque for engraving on base. **\$30.50.** (Engraving 10c per letter.)

**B.** 14k gold Skater's Charm with 30 letters of engraving to record those memorable occasions. **\$60.00.** (Additional letters, 10c each.)

**C.** The Layback. Beautiful white Bisque porcelain figurine 10" high. **\$35.00**

**D.** Golden Blades. 14k gold Skate and Boot Charm, Florentine Finish. **\$21.00**

**E.** 14k gold Skate Tie Tack. **\$27.00**

**F.** Skating Mouse, Tie Tack or Pin, 14k gold with ruby eyes. "Mickey Mohawk" Tie Tack. **\$40.00.** "Minnie Mohawk" Scatter Pin. **\$40.00**



Our boots  
give you  
the edge

Glide with Hyde figure skates for men, women and juniors. They'll give you the edge in longer lasting sharpness with English-made M & K Monarch blades tempered for extra hardness.

They'll give you the edge in sharp styling too, with a classic boot that features full grain upper leather for the Quality Look. A full lining of suede split leather and a sponge tongue lining for comfort. And double sole construction for longer wear.

Want to sharpen sales? Contact your Hyde representative and tell him you want the figure skates with the edge that'll give you the edge in profits.



234M

255M

233M

**IT TAKES A GIFT  
TO MAKE A  
DANCER**



Here at last is your opportunity to make such an overwhelming difference in your favorite skater's ice performance—taking only a few minutes a week—that skating professionals may actually ask what has happened!

Let me explain! Whether a dancer is a man, woman or child, six or sixty, gold medalist or untested, it makes no difference how difficult it may be for them to concentrate while on the ice—or how great a tendency there is to slip back to where they were weeks ago.

I'm convinced skaters are employing less than half their skating ability, simply because they were never shown the "extras" used by the great stars of other performing arts. The behind-the-scenes polishing that makes them shine. The trade secrets so easy for anyone else to use. Simply because brushups were brushed aside. The time gap wasn't considered. But look into the future. . . .

They should pass tests with ease in a fraction of the time it now takes. Gain strong control and confidence for solo or partner dancing. Hold improvements from week to week.

**What holds dancers back?**

The time schedule! Most skaters can only spend about six hours a week going to the rink—and only a couple of those hours actually dancing to music. So much time passes between sessions that by the time the next session rolls around dancers may have to learn some things all over again, simply because more practice wasn't available. Great performing artists stretch practice time with some private rehearsals. Shouldn't dancers do better if they had in-between practice of some kind? Of course.

Experts agree: the amount of time put into practice shows up in the dancing. "Rehearsal time and more rehearsal time produce results,"

**FRESH HOPE FOR  
THE TWICE-A-WEEK DANCER**

they say. It's that easy. But when and how to rehearse when time is so limited? The stars of the entertainment world have always made time. They practice OUT of the arena and off the stage—the short work-out at home counts. The daily ten-minute "in between" practice of their lines, steps or routines enables them to hold the line until the next performance.

What their success shows is the tremendous power of timeliness and frequency. When they have the music they can frequently listen to the dance tunes and recreate their own dance session in their mind at home. More than that, their body remembers to follow what they recently practiced on ice.

**Year After Year Success**

Correctly timed music can save lots of valuable ice time. Speed up the progress. Music which has been tested and proved to be correct for each of the twenty dances approved by the Canadian and U.S. Figure Skating Association is the Andy Weis ORCHESTRA Series. . . Long Playing 12" Discs. Seeing these records advertised year after year on the back cover of SKATING Magazine gives you the practical assurance that others of distinctive taste have helped dancers through the gift of their choice.

**Timely Holiday Gift**

There are three albums for your individual selection. One each for the three levels of progress: Preliminary and Bronze, Pre-Silver and Silver, and Pre-Gold and Gold. Purchased separately they cost \$12.50 each. A complete set of 20 tunes (three albums) for each of the dances is \$35.00.

**ORDER NOW—FOR THIS TIMELY SEASONAL GIFT!**

U.S. & CANADIAN ORDER (Mail to me <input type="checkbox"/> )	MAIL GIFT TO (Put my name on label <input type="checkbox"/> )
Name (Please Print)	Name (Please Print)
Address	Address
Zip	Zip
U.S. checks to Frank C. McGirr 33 Central Ave., Staten Island, N.Y. 10301	OR Cheques to Thomas G. Keenan Elerslye, P.E.I., Canada
N.Y. STATE RESIDENTS MUST ADD SALES TAX	