

march 1972 vol. 49, no. 3-price 50 cents

SKATING



ICE SKATES

- Are you interested in serious figure skating ?
- Do you wish to improve your figures ?
- Then make sure you are using the **MK Specialist Blade.....**



- Shallow hollow grind assists by reducing ice penetration and helps the skater to avoid double tracking as well as maintaining an even flow through the entire tracing.
- Special toe rake design enables cleaner and deeper figure turns.

MADE FROM FINEST SHEFFIELD STEEL by

Specialist blades for every purpose and every price need!



....GOLD TEST

Designed to assist figure skaters—features contoured radius to toe rake—shallow hollow grind—side honed tapered blade—perfectly balanced.



SILVER TEST

For those enthusiasts who cannot afford the luxury of the Gold Test—MK have introduced the Silver Test which incorporates the same toe rake design and shallow grind but has flat tapered blade with less precision finishing.





TRAIN WITH CHAMPIONS

in the skating center of the World. Large ice surfaces, pure air and 6,000 foot altitude, plus the finest instruction and training procedures have earned the Broadmoor World Arena this title. New, modern living facilities, and cooperative schools, assist the serious year-around student.

Seasonal programs are offered as well. The professional staff headed by Ronnie Baker, includes Ruby Maxson, Christine Haigler and Jack Raffloer, and Doreen Denny MacSalka. For more information contact: Executive Secretary, Broadmoor World Arena, The Broadmoor, Colorado Springs, Colorado 80901. Phone (303) 634-7711.

The **BROADMOOR WORLD ARENA**
COLORADO SPRINGS, COLORADO

Host for more World Figure Skating Championships than any other site in the Western Hemisphere.

Editor Emeritus

Theresa W. Blanchard

STAFF

Editor

Karen S. MacDonald

Art Director

and Production Manager

Elizabeth L. Backer

Managing Editor

and Advertising

Virginia K. Burnham

Composer

Marlene A. Giuffre

Circulation

Susan K. Shorey

US-ISA Publications Committee: Brooks Stewart, Chairman, Southampton, Pa.; Patrick J. Donnelly, Seattle, Wash.; Gerald G. Gearheart, Sherborn, Mass.; Theodore G. Patterson, Boston, Mass.; Benjamin T. Wright, Belmont, Mass. Contributors: Canada—Mary Heffelfinger, Amy Kaltenbruner, Mrs. Dantes Pagliaro. Foreign—H.S. Abbot, India; Howard Bass, England; Dennis Bird, England, Germany; Jacline Brown, France; Nigel Brown, Switzerland; Per Cock-Clausen, Denmark; Karol Divin, Czechoslovakia; Eva Gyorgy, Alice Peters, Hungary; Kikuko Minami, Kazuyoshi Oimatsu, Japan; Ingeborg Nilsson, Norway; Wendy Sellers, New Zealand.

SKATING is the official magazine of the United States Figure Skating Association. COPYRIGHT: *Skating*, copyright 1972 by the United States Figure Skating Association in the U.S.A. Title Registered in U.S. Patent Office. Published eight times a year: January, February, March, April, May, June, November, December; by the United States Figure Skating Association: Executive Offices, 178 Tremont St., Boston, Mass. 02111; Publication Office, 178 Tremont St., Boston, Mass. 02111; Second-Class postage paid at Boston, Mass. Single Copy 50 cents, Subscription \$3.50. Address: *Skating*, 178 Tremont St., Boston, Mass. 02111. *Skating* is protected by copyright and nothing that appears in it may be reproduced without written permission.

PHOTO CREDITS: William Udell, page 10, 16; Don Edwards, page 19; Photo by Skiapa, page 20; David Leonardi, pages 22, 23; Montreal Municipal Tourist Bureau, page 28; Margaret Williamson, page 30; John G. Walter, page 31; Heinz Kleutmeier, *SPORTS Illustrated*, property of *TIME Inc.*, page 33; Peter Travers, pages 34, 37; Minneapolis-Honeywell Corporation, page 40; Painting by Toller Cranston, page 42.

COVER: An all-around winner, Kenneth Shelley takes the National Men's and the National Pair's title. Photo by Winfield Paul.

SKATING

- 7 Readers Write
- 7 In This Issue
- 8 Not A Sound... / Joanna Hulsman
- 10 Sectionals
- 11 Pacifics / Barbara Ray
- 16 Midwesterns / Patricia Reioux
- 22 Easterns / Preston K. Jones
- 28 Memories Of A Pond Skater / Constance Cross
- 30 Nationals / Josephine Lawless
- 39 Press Success / Elaine Tamres and Amelia Bruner
- 40 "Hal" Hits Nationals / Jean Winder
- 42 Theatre On Ice / Heather Bowers
- 44 Canadians
- 50 Basic Test Boom / Mrs. Howard J. Jackson
- 52 Charity Begins At Home / F. Ritter Shumway
- 53 Size Bigotry / Nick Richmond
- 54 Laurels
- 56 Calendar
- 56 Official Notes
- 56 People
- 57 Rockers and Counters
- 57 Newsmakers
- 60 Classifieds

Rensselaer Polytechnic Institute

INVITES YOU TO SKATE

1971

AT THEIR

SUMMER

SKATING

SCHOOL



JUNE 19 - AUGUST 20

SPONSORED BY RPI FIGURE SKATING CLUB, INC.

ICE TIME AVAILABLE FOR THOSE WISHING EXTRA Patches AND PRACTICE TIME.

CHAPERONED LIVING ACCOMMODATIONS ON THE RPI CAMPUS FOR BOYS AND GIRLS.

WELL BALANCED MEALS ARE SERVED IN THE DINING AREA OF THEIR QUARTERS.



RPI FIELD HOUSE

For information
& reservations
Write:

Howard "Skip" Butler
RPI Field House

RPI Summer Skating
Troy, New York 12180

readers write

JUST AN IDEA

Nancy Meiss had a great idea for using the Memorial Fund to solve difficult gifts.

Here's a supplemental idea. The old, gracious nicety of giving your partner a little gift if he/she took you through a dance test successfully seems to be dying out in many places. Why not revive the idea, but instead mail a little donation in the partner's name to the World Team Memorial....

Also some clubs give judges a small memento of their visit...What could please any skater more than a donation to the World Team fund?—Margaret Whitmore, Athens, Ga.

SKATING MOTHERS—REALLY!

The women start coming into the ice studio in Winnetka, Ill., before 9 A.M. The children are in school after the usual morning confusion and the husbands slaving at their work. The beds have been made, the kitchen cleared, and a few loads of laundry done, if Lady Luck is smiling that day. Some women are accompanied by the little ones still too young for school, complete with toys, crayons, and coloring books, and a snack, of course. A prayer is silently said that maybe this time there won't be too many interruptions—for 15 minutes, at least.

These ladies are a different breed of cat (pardon the pun) of the usual skating mother. These mothers are the skaters, and the roles are reversed from the usual, young skater being driven to the ice rink....

A few dedicated souls are working patch and taking tests. Others are working on dance tests, but most are just working on their free skating. And the young skaters needn't sneer—some of the oldies are pretty good, and look pretty good too. Let's face it—skating does help keep you in shape and feeling young. Some days in the solitude of your home you can groan and moan over your aching muscles, but you can take a nap if you're real lucky, and fool everybody....

People find it quite strange when a skating mother's children don't skate, and they don't understand that here is someone doing their own thing—an overworked phrase, but true. I'll let you in on a secret—my kids are kind of proud of their "old Mom" who can do something they can't, and prefer it that way.—Teri Farnsworth, Winnetka, Ill.

The Editor welcomes all letters provided they are signed. Names will be withheld on request. Send mail to SKATING, 178 Tremont St., Boston, Mass. 02111.

in this issue

In the days of yore when the theatre first became round and skating was not noticeably a-round, the master hand of William Shakespeare wrote that all the world is a stage, and we are merely actors performing our parts on it. Theatre, whether round or Olympic size, has its own proportional importance in the skating microcosm.

Act I. Scene I. Setting—Time: A Thursday morning, mid-January. Place: An ice arena, located in Southern California. The ice itself is as yet untouched, but it appears that one character is about to nervously scratch its surface. Characters: Cast of thousands, mostly spectators. The main characters appear to be competitors in some type of sport as they are dressed in costumes and on their feet are boots with attached blades.

The course of skating affairs can seem to the competitor to be as tragic as any *Othello*, as humorous as any *Merchant of Venice*. The drama, entitled *The United States Figure Skating Championships*, had its share of hubris and Achilles' heels, but was balanced by equal elements of good fortune and felicity. The plot unfolds on page 30-38.

While involved in our own figure skating success dramas on the national level, we tend to forget that simultaneously other nations and individuals are just as greatly involved in their own struggles for sport's supremacy. To encourage a post-play awareness of others, SKATING presents the story and results of the Canadian Championships.

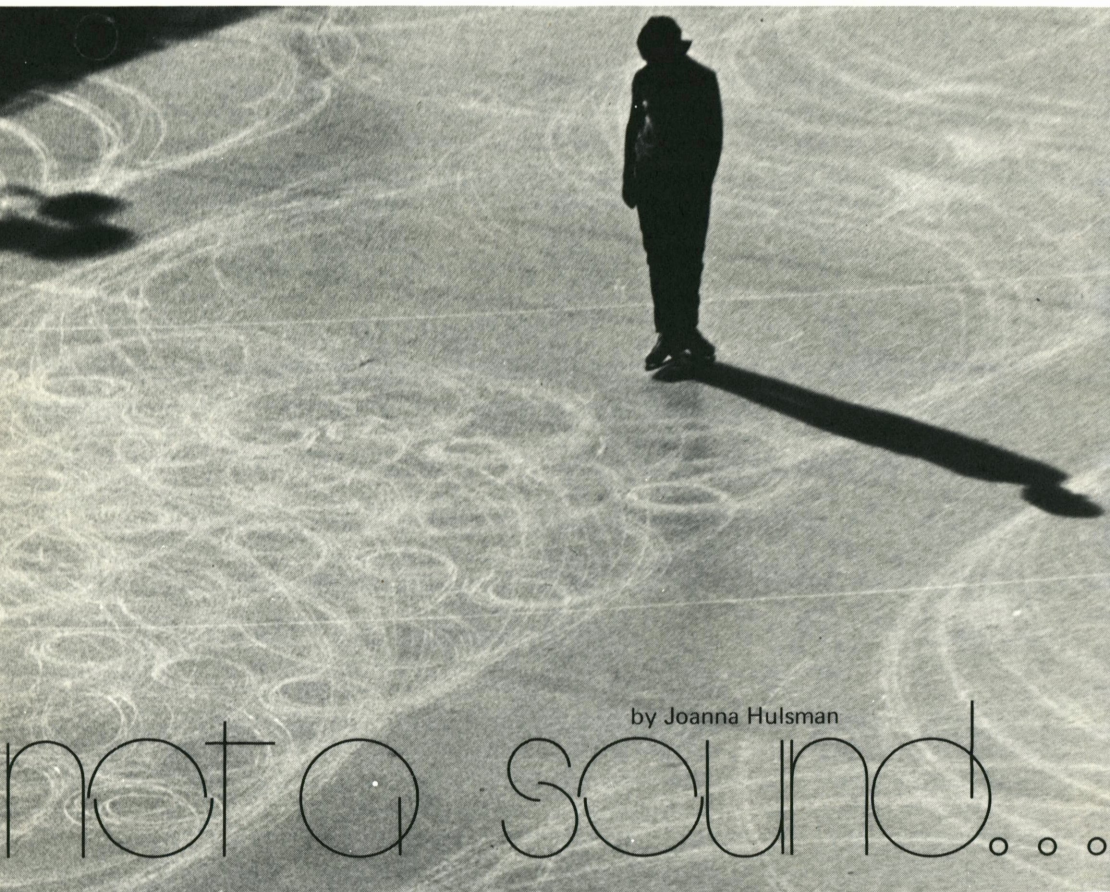
Canadian Toller Cranston has a remarkable awareness of the theatrics of life and utilizes this realization as a means to his end: theatre on ice. With his sensitivity to rhythms and movements, Toller's final statement, like the theatre, is an artistic abstraction of reality.

Even the child who is a regular at the local frozen-over basketball court has a bit of the John Barrymore or Helen Hayes in his/her antics on the pond's rutted, scratched surface. Call them "show-offs" or call them "daredevils", but they're as aware of their audience as any Janet Lynn in a crucial four-minute free style.

So here's to the memories, whether they be of a pond skater, a Canadian champion, or a Sectional entrant in fourteenth place. They've all known the thrill of the Thespian life, and hopefully, in this case, went out to "break a leg".

...except for the baritone rumble of the compressors in the machine room at the far end. There's no one in sight, but the maintenance man must be here... he always is. A light mist hangs sullenly over the glassy, gray ice, undisturbed by the brilliant yellow-orange sunrays that shower down through the holes in the dirty window panes high up on the far wall of the rink. The morning's work is always a bit more grueling when the sun fails to cheer the gray interior.

I walk along from the heavy, wooden entrance door to the left where the oaken bleachers yawn from the wall. My footsteps are anything but soft as they echo...and reecho...across the cold expanse. It's six o'clock. I often feel guilty because I'm the first to disturb the repose every morning. The ice must hate me for cutting into its un-



by Joanna Hulsmán

not a sound...

sullied surface, but I love the ice for much the same reason. I get my fun—but I can't think of fun now. I have work to do.

The skates in my bag are lifeless and heavy, soon to come alive. I didn't get much sleep last night; schoolwork kept me busy into the wee hours. It's Friday, and, as usual, everything is due all at once. But I've skated well before when I was tired. Occasionally the only thing that relaxes my normally fidgeting nerves *is* lack of sleep, and practice sessions go more smoothly. But there are those days when I can't do anything at all. Timing is off, and when that happens it's best to leave well enough alone. Otherwise temper flares: "I could do it yesterday! Why not today?" Then nothing is accomplished with a wrong attitude. Which will it be today?

sure anywhere. Tight at the instep, gradually looser as the lacing goes up from the ankle, but not too loose—just enough to get three fingers under the tongue. They feel like molds and they should. They were hand-made in Vienna and cost my folks eighty-two dollars. They'll last me a whole six months before they're no good any more, and that's a long life for a boot that goes through a five-hour massage every day.

I feel at home on ice. Usually I just play around for a few minutes making crazy marks in the ice and flexing knees and rolling ankles from side to side. This settles the foot in the boot and gets the reluctant blood going. But it's cold in here and, if I don't start practicing, I'll start shivering instead and never stop. I'm anemic.

Take a deep breath...and start stroking through the mist...slow, even, and cadenced... hard and strong around the outside of the big oval mass of ice. Palms flat facing downward...knees bent deeply...stroke to the side and not straight off the teeth of the blade. No speed that way. Don't break the cadence. It's an insistent kind of music...one...two...one...two. Three or four laps of speed and concentration wears me out even when I'm in top condition, but it sure gets me limber in a hurry. And it's exhilarating. Shivers are gone, and it's time to get down to serious business.

Figure eights are always first on the agenda. Timing and precision are the basic ingredients. The size of the eight depends on one's height—for me around four meters per lobe across. It's not an assigned size for height—although the correspondence is close, but the right size will look just right and nothing bigger or smaller will do. I found out what size was best by practicing and doing what my coach recommended.

The patch of ice in the corner where the sun is looks inviting. I'll do my eights there. Always start out doing the simple inside and outside edges, both forward and backward, first—they accustom me to the shape of the eight again. Since I've been doing them for so long, it takes only a couple of these to warm up. Each subsequent one was traced over the first as near as could be expected, and I had no problems with balance. Oftentimes I strain to stay on the track because I rotate my arms a bit too far: a weak spot for me. On days like today, when doing well, I don't pursue it. Practicing something too long ruins it. I have to be determined, but never too convinced that I can do it, for then I'll stop trying, and that's lethal.

Now for the paragraph eights with loops. Usually I leave these for last because they're hard. However, I've been having difficulty with them lately, and I don't know if I will pass the final skating test to be given by the district judges next Saturday. I also have to work on my free skating program for the test with only a week remaining and a forthcoming math test to boot.

The eighth or Gold medal test is the final one. Because my figures weren't quite up to par, I had to try twice to pass the Silver test, committing a "flat" on one of the three turns as well as going a little fast at an uneven speed. The judges pick up on my flats right away when on all fours they see the evidence that both edges of the skate blade were on the ice for a fraction of an inch coming into or going out of the turn. It's an easy foul to commit because it all depends on timing, as does everything else. I guess I was nervous. That's easy too!

Paragraph eights are done all on one foot, and with the loops, one at each apex of the lobe, the whole eight is smaller, only about a meter-and-a-half wide. Momentum comes from the free foot whipping around the skating foot. I always have trouble getting the loops exactly on center so that a line bisects the whole eight lengthwise through the loops. Somehow one loop or the other is slightly to one side of the line. Well, here goes...

The scratching of the blade reverberating through the rink must be loud, but I can't hear it. Concentration is that high. And whenever I concentrate too hard, my eyes water; the whole world blurs. That's how I failed the second and third tests. A funny quirk of mine. I just have to blink hard, even that throws me off. So I start again.



Robert Bradshaw

*Pacific Coast Championships
Berkeley Iceland
St. Moritz, ISC, Berkeley, Calif.
Dec. 9-11*

With such achievements as the first club west of the Rockies to hold an international event and three-time sponsors of National Championships, the forty-one-year-old St. Moritz ISC is no novice at hosting competitions. This master hand guided more than 100 competitors through three days of Pacific Coast Sectionals with a majority of the categories containing the full, nine hopefuls. The Southwest Pacific region single-handedly placed winners into the first three placings in both Senior Men and Senior Ladies, an exceptional achievement at this competitive level.

Patricia Shelley, adding momentum to the family name, took a first in Senior Ladies (after placing third in figures) with undeniably significant content and strength. Dawn Glab grabbed the lead in figures but her weak free style left her with a fourth place. Jennie Walsh held second, and Julia Johnson upped her fourth in figures by a notch after an extremely fast-moving and difficult program.

An early lead in figures for Robert Bradshaw foreshadowed his eventual overall success in the Senior Men's event. He executed a magnificent and nearly perfect free style program, highlighted by two triple toe loops. John Baldwin placed second, and Richard Ewell rose from fifth to third putting his abilities to the test in a free program that illustrated the intricacies of footwork and very well-performed, difficult jumps.

This year's group of Junior Ladies

outskated the ladies in the Senior event. All of the skaters in this event were good freestylers. Wendy Burge happily relinquished her number four position in figures to capture the title, swapping places with Dorian Shields. Laurie Brandel and Donna Arquilla, who held second and third after figures, consistently retained their placings after their free performances.

In both the initial and final round Terry Kubicka held off his Junior rivals. Johnny Carlow ably surpassed Bill Schneider in free to win second place leaving Bill in third.

Novice lady Kim McIsaac took ones across the board for her initial and final performances. Second to her was Barbara Smith. Both should be noted for their double Axels and superior free style techniques. Their male counterparts, Novice Men, produced Champion Perry Jewell, who surpassed second-placer David Kirby and number three man, Ken Newfield.

Intermediate Ladies was marked by a great deal of interchanging between figures and free, with the exception of Juli Miller who was first in compulsories as well as in the final round. Surprise victors Robin Levi (fifth in figures) and Daria Schweitzer (fourth in figures) placed second and third respectively. In comparison Intermediate Men evidenced little shuffling of placements between the figures and free style: Richard Perez, first; James Morgan, second; Scott Carson, third.

Only two pairs entered the Senior event. Cynthia Van Valkenberg and James Hulick emerged victorious over Julianne and Kent Johnson in both rounds. In both instances Cynthia and Jim had well-choreographed programs set to music that suited them well. Figuratively speaking, in the Junior

by Barbara Ray
PACIFICS

Pairs event there was a three-way tie for first place with Bill McPike and Georgia Truffini winning the battle, Richard Ewell and Michelle McCladdie placing second and Robert Berry and Jodie Martin in third. McPike and Truffini had weaker lifts than Ewell and McCladdie, but they compensated with more style and admirable interpretation. Difficult lifts and good execution propelled Greg Boyvin and Alison Blake to a win in Novice Pairs. Also meriting mention were Silver medalists Douglas Varvais and Lisa Carey, with Randy Gardner and Tai Babilonia in third.

The Gold Dance event was of good quality this year. The event was won by Michael and Barbara Wayland who proved to be very strong in all aspects of the division, with particular emphasis in their Original Set-Pattern. Their free dance contained many alterations in tempo, both difficult and interesting. In second place was Robert Castle and Ginger Snyder. Elaborate costumes accentuated the original dances of third-place finishers Linda and Barry Stroh.

The added showmanship of Glenn Parriott and Michelle Ford enhanced their stylistic capabilities to secure a winning majority in Silver Dance. Rivals Roger Fortin and Sara Hill soldily captured second place, with the third-place award singled out for Richard Kolodziej and Mitzi Robinson. The Bronze Dance event was dealt with maturely by winners Bob Cooper and Linda Beard, followed by fellow competitors Stephen and Gail Heitert, and William Ballard and Nancy Smith.

Jo Jo Starbuck and Kenneth Shelley graciously exhibited their special talents to conclude the Pacific Coast Championships. Worthy of note were the entries from the Southwest Pacific competition who dominated all events, taking thirty-four out of a possible forty-one placements. Post-competition activities included the traditional competitors' banquet sponsored by the host club, St. Moritz ISC.

results

SENIOR MEN

JUDGES: A—Raymond Alperth, San Francisco, Calif.; B—Mrs. Joseph Jensen, Seattle, Wash.; C—Mrs. Eleanor Curtis, Granada Hills, Calif.; D—Mrs. Roger Willis, Lafayette, Calif.; E—Mrs. Patricia Staunton, Pasadena, Calif. REFEREE: George Yonekura, Berkeley, Calif. COMPULSORY FIGURES: Group IV—23b, 34a, 20b, 36a, 39b, 40a.

| | A | B | C | D | E | M |
|---|---|---|---|---|---|-----|
| 1. (1) Robert Bradshaw, Los Angeles FSC | 1 | 1 | 1 | 1 | 1 | 5/1 |
| 2. (2) John Baldwin, San Diego FSC | 5 | 4 | 2 | 2 | 2 | 3/2 |
| 3. (5) Richard Ewell, III, City of Santa Monica, Calif. | 3 | 3 | 4 | 3 | 3 | 4/3 |
| 4. (3) Charles Tickner, Squaw Valley FSC | 2 | 2 | 3 | 4 | 4 | 3/3 |
| 5. (4) Mark Rehfield, South Bay FSC | 4 | 5 | 5 | 5 | 5 | 5/5 |
| 6. (8) Alex Rubio, Los Angeles FSC | 7 | 6 | 6 | 6 | 7 | 3/6 |
| 7. (6) Michael Tokar, Village of Olympic Valley, Calif. | 6 | 7 | 7 | 7 | 6 | 5/7 |
| (7) Thomas Huff, Arctic Blades FSC (did not free skate) | | | | | | |

SENIOR LADIES

JUDGES: A—John Rogers, San Francisco, Calif.; B—Mrs. Winston Coy, Lakebay, Wash.; C—Mrs. Eleanor Curtis, Granada Hills, Calif.; D—Mrs. Ramona McIntyre, Oakland, Calif.; E—Mrs. Patricia Staunton, Pasadena, Calif. REFEREE: George Yonekura, Berkeley, Calif. COMPULSORY FIGURES: Group I—23a, 35b, 20a, 36b, 31a, 41b.

| | A | B | C | D | E | M |
|--|---|---|---|---|---|-----|
| 1. (3) Patricia Shelley, Arctic Blades FSC | 2 | 1 | 2 | 4 | 1 | 4/2 |
| 2. (2) Jennie Walsh, Los Angeles FSC | 3 | 2 | 1 | 1 | 3 | 3/2 |
| 3. (4) Julia Johnson, Arctic Blades FSC | 4 | 3 | 3 | 3 | 4 | 3/3 |
| 4. (1) Dawn Glab, Arctic Blades FSC | 1 | 4 | 4 | 5 | 2 | 4/4 |
| 5. (6) Donna Albert, Lakewood WC | 5 | 5 | 5 | 2 | 5 | 5/5 |
| 6. (5) Wendy Halber, Arctic Blades FSC | 7 | 6 | 6 | 7 | 6 | 3/6 |
| 7. (8) Lynn Gibson, City of Berkeley, Calif. | 6 | 9 | 7 | 6 | 7 | 4/7 |
| 8. (7) Susan Moody, Overlake SC | 9 | 7 | 8 | 8 | 8 | 4/8 |
| 9. (9) Leslie Cronin, Diablo FSC | 8 | 8 | 9 | 9 | 9 | 5/9 |

SENIOR PAIRS

JUDGES: A—Mrs. Joseph Jensen, Seattle, Wash.; B—Mrs. Eleanor Curtis, Granada Hills, Calif.; C—Mrs. Ida Tateoka, Riverton, Utah; D—Mrs. Roger Willis, Lafayette, Calif.; E—Mrs. Ronald Robinson, San Leandro, Calif. REFEREE: Raymond Alperth, San Francisco, Calif. SHORT PROGRAM: Group A.

| | A | B | C | D | E | M |
|---|---|---|---|---|---|-----|
| 1. (1) Cynthia Van Valkenberg & James Hulick, Arctic Blades FSC | 1 | 1 | 1 | 1 | 1 | 5/1 |
| 2. (2) Julianne & Kent Johnson, Los Angeles FSC | 2 | 2 | 2 | 2 | 2 | 5/2 |

GOLD DANCE

JUDGES: A—Mrs. John Shoemaker, San Francisco, Calif.; B—Mrs. Winston Coy, Lakebay, Wash.; C—Mrs. Eleanor Curtis, Granada Hills, Calif.; D—Mrs. Roger Willis, Lafayette, Calif.; E—Mrs. Ronald Robinson, San Leandro, Calif. REFEREE: Howard Taylor, Walnut Creek, Calif.

COMPULSORY DANCES: Westminster Waltz, Paso Doble, Blues, Original Set-Pattern.

| | A | B | C | D | E | M |
|--|---|---|---|---|---|--------------|
| 1. (1) Barbara & Michael Wayland, Los Angeles FSC | 1 | 1 | 1 | 1 | 1 | 5/1 |
| 2. (4) Ginger Snyder & Robert Castle, St. Moritz ISC | 2 | 3 | 4 | 3 | 2 | 4/3 |
| 3. (3) Linda & Barry Stroh, Los Angeles FSC | 4 | 2 | 2 | 4 | 3 | 3/3 TOM 7 |
| 4. (2) Karen Raile & Mike Chapin, Portland ISC | 3 | 4 | 3 | 2 | 4 | 3/3 TOM 8 |

JUNIOR MEN

JUDGES: A—Mrs. Winston Coy, Lakebay, Wash.; B—Mrs. Eleanor Curtis, Granada Hills, Calif.; C—Mrs. Ida Tateoka, Riverton, Utah; D—Mrs. Roberta Hustead, Albany, Calif.; E—Mrs. Margery Schleh, Sacramento, Calif. REFEREE: George Yonekura, Berkeley, Calif. COMPULSORY FIGURES: Group II—22a, 30b, 35a, 21b, 32a.

| | A | B | C | D | E | M |
|---|---|---|---|---|---|-----|
| 1. (1) Terry Kubicka, City of Paramount, Calif. | 1 | 1 | 1 | 1 | 1 | 5/1 |
| 2. (3) John Carlow, Jr., Arctic Blades FSC | 2 | 2 | 3 | 3 | 2 | 3/2 |
| 3. (2) William Schneider, Los Angeles FSC | 3 | 3 | 2 | 2 | 3 | 5/3 |
| 4. (5) Robert Berry, South Bay FSC | 4 | 4 | 4 | 4 | 4 | 5/4 |
| 5. (6) Terry Weiner, St. Moritz ISC | 5 | 5 | 5 | 5 | 5 | 5/5 |
| (4) Joe Thola, Yakima ISC (did not free skate) | | | | | | |

JUNIOR LADIES

JUDGES: A—Mrs. John Shoemaker, San Francisco, Calif.; B—Mrs. Winston Coy, Lakebay, Wash.; C—Jack Curtis, Granada Hills, Calif.; D—Mrs. Betty Sonnhalter, Seal Beach, Calif.; E—Mrs. Ronald Robinson, San Leandro, Calif. REFEREE: John Rogers, San Francisco, Calif. COMPULSORY FIGURES: Group IV—23a, 30b, 34a, 20b, 33a.

| | A | B | C | D | E | M |
|--|----|----|----|----|----|------|
| 1. (4) Wendy Burge, Los Angeles FSC | 1 | 2 | 1 | 1 | 2 | 3/1 |
| 2. (2) Laurie Brandel, Arctic Blades FSC | 2 | 3 | 2 | 4 | 1 | 3/2 |
| 3. (3) Donna Arquilla, St. Moritz ISC | 3 | 1 | 3 | 3 | 3 | 5/3 |
| 4. (1) Dorian Shields, All Year FSC | 4 | 4 | 5 | 2 | 5 | 3/4 |
| 5. (6) Marcy Sulenes, Lakewood WC | 5 | 5 | 6 | 6 | 4 | 3/5 |
| 6. (5) Shana Walker, Arctic Blades FSC | 8 | 6 | 4 | 5 | 6 | 4/6 |
| 7. (9) Susan Driano, Overlake SC | 6 | 8 | 7 | 8 | 7 | 3/7 |
| 8. (10) Jill Monte, Crystal Springs ISC | 9 | 9 | 8 | 7 | 8 | 3/8 |
| 9. (7) Dawn Wieburg, Lakewood WC | 7 | 7 | 9 | 10 | 9 | 4/9 |
| 10. (8) Myra Swapp, Utah FSC | 10 | 10 | 10 | 9 | 10 | 5/10 |

JUNIOR PAIRS

JUDGES: A—Mrs. Joseph Jensen, Seattle, Wash.; B—Jack Curtis, Granada Hills, Calif.; C—Mrs. Betty Sonnhalter, Seal Beach,

Calif.; D—Robert Myers, Burlingame, Calif.; E—Mrs. Willard Burns, Jr., Millbrae, Calif. REFEREE: Raymond Alperth, San Francisco, Calif.

| | A | B | C | D | E | M |
|--|---|---|---|---|---|----------------|
| 1. Georgia Truffini & Bill McPike, St. Moritz ISC | 1 | 4 | 4 | 2 | 1 | 3/2 TP 46.7 |
| 2. Michelle McCladdie & Richard Ewell, III, City of Santa Monica | 5 | 2 | 1 | 1 | 3 | 3/2 TP 46.0 |
| 3. Jodie Martin & Robert Berry, South Bay FSC | 4 | 1 | 2 | 3 | 2 | 3/2 TOM 5 |
| 4. Lisa Illsley & Daniel Henry, Santa Rosa FSC | 2 | 3 | 3 | 4 | 4 | 3/3 |
| 5. Vickie Carr & Paul Tassone, Wasatch FSC | 6 | 6 | 5 | 5 | 5 | 3/5 |
| 6. Mary Draper & Tony Kudrna, Great Falls FSC | 7 | 5 | 7 | 6 | 6 | 3/6 |
| 7. Brenda Rodgers & Jack Campbell, Las Vegas FSC | 3 | 7 | 6 | 7 | 7 | 5/7 |

SILVER DANCE

JUDGES: A—Howard Taylor, Walnut Creek, Calif.; B—Harold Giles, Seattle, Wash.; C—Mrs. Eleanor Curtis, Granada Hills, Calif.; D—Mrs. Betty Sonnhalter, Seal Beach, Calif.; E—Mrs. Ramona McIntyre, Oakland, Calif. REFEREE: Mrs. John Shoemaker, San Francisco, Calif. COMPULSORY DANCES: Initial round—European Waltz, Rocker Foxtrot, Tango, Fourteenstep. Final round—American Waltz, Foxtrot, Tango, Fourteenstep

| | A | B | C | D | E | M |
|---|---|---|---|---|---|-----|
| 1. (1) Michelle Ford & Glenn Parriott, SC of Phoenix | 1 | 1 | 2 | 1 | 1 | 4/1 |
| 2. (2) Sara Hill & Roger Fortin, Glacier Falls FSC | 2 | 2 | 1 | 2 | 2 | 5/2 |
| 3. (3) Mitzi Robinson, All Year FSC, & Richard Kolodziej, Los Angeles FSC | 3 | 3 | 3 | 3 | 3 | 5/3 |
| 4. (4) Laurie Cole, Burien SC, & Patrick Holland, Seattle SC | 4 | 4 | 4 | 4 | 4 | 5/4 |
| Eliminated after compulsory dances | | | | | | |
| 5. Colleen Clark, Lakewood WC, & Jean Rene Basle, Seattle SC | | | | | | |
| 6. Karen Whitner & Terry Conrad, Burien SC | | | | | | |

NOVICE MEN

JUDGES: A—Mrs. Joseph Jensen, Seattle, Wash.; B—Jack Curtis, Granada Hills, Calif.; C—Joan Lucas, Oakland, Calif.; D—Mrs. Roberta Hustead, Albany, Calif.; E—Mrs. Margery Schleh, Sacramento, Calif. REFEREE: George Yonekura, Berkeley, Calif. COMPULSORY FIGURES: Group II—13, 16, 18a, 29b.

| | A | B | C | D | E | M |
|--|---|---|---|---|---|-----|
| 1. (2) Perry Jewell, Los Angeles FSC | 1 | 1 | 2 | 1 | 2 | 3/1 |
| 2. (1) David Kirby, Arctic Blades FSC | 2 | 2 | 1 | 5 | 1 | 4/2 |
| 3. (4) Ken Newfield, Los Angeles FSC | 5 | 3 | 7 | 2 | 3 | 3/3 |
| 4. (3) Jon Prasnowski, Arctic Blades FSC | 3 | 4 | 3 | 4 | 4 | 5/4 |
| 5. (5) Jean Rene Basle, Seattle SC | 4 | 5 | 5 | 3 | 6 | 4/5 |
| 6. (7) Patrick Page, Portland ISC | 7 | 6 | 4 | 6 | 7 | 3/6 |
| 7. (6) Paul Tassone, Wasatch FSC | 6 | 7 | 6 | 8 | 8 | 3/7 |



Michelle Ford & Glenn Parriott

- 8. (8) Russell Sessions, Utah FSC
8 8 9 7 5 4/8
- 9. (9) Bruce Hurd, Great Falls FSC
9 9 8 9 9 5/9

NOVICE LADIES

JUDGES: A—Mrs. Joseph Jensen, Seattle, Wash.; B—Harold Giles, Seattle, Wash.; C—Jack Curtis, Granada Hills, Calif.; D—Mrs. Betty Sonnhalter, Seal Beach, Calif.; E—Joan Lucas, Oakland, Calif. REFEREE: Raymond Alperth, San Francisco, Calif. COMPULSORY FIGURES: Group IV—24b, 17, 18a, 29b.

- | | A | B | C | D | E | M |
|---|---|-------|---|---|---|--------|
| 1. (1) Kim McIsaac, South Bay FSC | 1 | 1 | 1 | 1 | 1 | 5/1 |
| 2. (4) Barbara Smith, Arctic Blades FSC | 3 | 3 | 2 | 2 | 4 | 4/3 |
| 3. (2) Roberta Loughland, Arctic Blades FSC | 7 | 2 | 4 | 3 | 8 | 3/4 |
| | | | | | | TOM 9 |
| 4. (5) Terri Karis, Seattle SC | 4 | 4 | 3 | 5 | 5 | 3/4 |
| | | | | | | TOM 11 |
| 5. (3) Keri Schmer, Portland ISC | 5 | 5 | 6 | 4 | 3 | 4/5 |
| 6. (7) Colleen Clark, Lakewood WC | 2 | 6 | 5 | 6 | 6 | 5/6 |
| 7. (6) Julie Fraenkel, St. Moritz ISC | 9 | 7 1/2 | 7 | 7 | 2 | 3/7 |
| 8. (8) Lisa Ferrarini, Crystal Springs ISC | 6 | 7 1/2 | 8 | 8 | 7 | 5/8 |
| 9. (9) Kathy Ondry, Crystal Springs ISC | 8 | 9 | 9 | 9 | 9 | 5/9 |

NOVICE PAIRS

JUDGES: A—Harold Giles, Seattle, Wash.; B—Jack Curtis, Granada Hills, Calif.; C—Mrs. Betty Sonnhalter, Seal Beach, Calif.; D—Mrs. Ida Tateoka, Riverton, Utah; E—Mrs. Robert Myers, Burlingame, Calif. REFEREE: George Yonekura, Berkeley, Calif.

- | | A | B | C | D | E | M |
|---|---|---|-------|---|-------|-----|
| 1. Alison Blake & Greg Boyvin, Arctic Blades FSC | 2 | 1 | 1 | 2 | 1 | 3/1 |
| 2. Lisa Carey & Douglas Varvais, Los Angeles FSC | 1 | 2 | 2 1/2 | 1 | 3 | 3/2 |
| 3. Tai Babilonia, Los Angeles FSC, & Randy Gardner, All Year FSC | 3 | 3 | 2 1/2 | 3 | 2 | 5/3 |
| 4. Debbie Ingalls, Silver Edge FSC, & Chris Colvin, Crystal Springs ISC | 4 | 4 | 4 | 4 | 4 1/2 | 4/4 |
| 5. Jill Monte & Richard Perez, Crystal Springs ISC | 5 | 5 | 5 | 5 | 4 1/2 | 5/5 |
| 6. Rebecca Despain & Russell Sessions, Utah FSC | 6 | 6 | 8 | 7 | 6 | 3/6 |
| 7. Terri Karis & Jean Rene Basle, Seattle SC | 8 | 7 | 7 | 6 | 7 | 4/7 |
| 8. Lisa Ledin & Bruce Hurd, Great Falls FSC | 7 | 8 | 6 | 8 | 8 | 5/8 |

BRONZE DANCE

JUDGES: A—Mrs. Joseph Jensen, Seattle, Wash.; B—Mrs. Betty Sonnhalter, Seal Beach, Calif.; C—Mrs. Ida Tateoka, Riverton, Utah; D—Mrs. Robert Myers, Burlingame, Calif.; E—Mrs. S. Sartore, Los Altos, Calif. REFEREE: Howard Taylor, Walnut Creek, Calif. COMPULSORY DANCES: Initial round—Ten-Fox, Willow Waltz. Final round—Fiesta Tango, Willow Waltz.

- | | A | B | C | D | E | M |
|--|---|---|---|---|---|-----|
| 1. (1) Linda Beard & Bob Cooper, SC of Phoenix | 1 | 1 | 1 | 1 | 1 | 5/1 |

- 2. (2) Gail & Stephen Heitert, San Diego FSC
2 2 1/2 2 3 2 3/2
- 3. (3) Nancy Smith & William Ballard, Glacier Falls FSC
3 2 1/2 3 2 3 5/3
- 4. (4) Heidi Broback & Philip Carman, Lakewood WC
4 4 4 4 4 4 5/4

Eliminated after compulsory dances

- 5. Lynn Carpenter & Peter Schindler, Lakewood WC
- 6. Toni Martin & John Miscovich, St. Moritz ISC
- 7. Linda Illsley & Daniel Henry, Santa Rosa FSC
- 8. Margaret Hume & Martin Riley, Crystal Springs ISC

INTERMEDIATE MEN

JUDGES: A—Mrs. John Shoemaker, San Francisco, Calif.; B—Mrs. Winston Coy, Lakebay, Wash.; C—Mrs. Betty Sonnhalter, Seal Beach, Calif.; D—Robert Myers, Burlingame, Calif.; E—Mrs. Willard Burns, Jr., Millbrae, Calif. REFEREE: John Rogers, San Francisco, Calif. COMPULSORY FIGURES: Group I—6a, 15, 28b.

- | | A | B | C | D | E | M |
|---|---|---|---|---|---|-----|
| 1. (1) Richard Perez, Crystal Springs ISC | 1 | 1 | 1 | 1 | 1 | 5/1 |
| 2. (2) James Morgan, Pacific FSC | 2 | 2 | 3 | 3 | 2 | 3/2 |
| 3. (4) Scott Carson, Los Angeles FSC | 4 | 3 | 2 | 2 | 3 | 4/3 |
| 4. (3) Don Gregg, Portland ISC | 3 | 4 | 4 | 8 | 7 | 3/4 |
| 5. (5) Steve Box, City of Bellevue, Wash. | 6 | 6 | 5 | 4 | 5 | 3/5 |
| 6. (6) Michael Fero, Los Angeles FSC | 5 | 8 | 6 | 6 | 4 | 4/6 |
| 7. (7) Walter Kelley, St. Moritz ISC | 8 | 7 | 7 | 7 | 6 | 4/7 |
| 8. (8) Allan Schramm, Marin FSC | 7 | 5 | 8 | 5 | 8 | 3/7 |
| 9. (9) Tony Kudrna, Great Falls FSC | 9 | 9 | 9 | 9 | 9 | 5/9 |

INTERMEDIATE LADIES

JUDGES: A—Harold Giles, Seattle, Wash.; B—Mrs. Eleanor Curtis, Granada Hills, Calif.; C—Mrs. Patricia Staunton, Pasadena, Calif.; D—Mrs. S. Sartore, Los Altos, Calif.; E—Mrs. Margaret Kroeger, Piedmont, Calif. REFEREE: Raymond Alperth, San Francisco, Calif. COMPULSORY FIGURES: Group III—6a, 14, 28b.

- | | A | B | C | D | E | M |
|--|---|---|---|---|---|--------|
| 1. (1) Juli Miller, Seattle SC | 1 | 1 | 4 | 1 | 1 | 4/1 |
| 2. (5) Robin Levi, Portland ISC | 2 | 8 | 2 | 3 | 5 | 3/3 |
| | | | | | | TOM 7 |
| 3. (4) Daria Schweitzer, Arctic Blades FSC | 5 | 3 | 6 | 2 | 3 | 3/3 |
| | | | | | | TOM 8 |
| 4. (7) Jill Harbin, Arctic Blades FSC | 6 | 2 | 1 | 5 | 4 | 3/4 |
| | | | | | | TOM 7 |
| 5. (2) Kim Wieburg, Lakewood WC | 4 | 4 | 3 | 6 | 6 | 3/4 |
| | | | | | | TOM 11 |
| 6. (3) Kelley Burge, Los Angeles FSC | 3 | 5 | 5 | 7 | 7 | 3/5 |
| 7. (6) Sally Anderson, El Camino ISC | 8 | 7 | 7 | 4 | 2 | 4/7 |
| 8. (9) Gail Moret, Crystal Springs ISC | 7 | 9 | 8 | 8 | 8 | 4/8 |
| 9. (8) Teri Markley, Crystal Springs ISC | 9 | 6 | 9 | 9 | 9 | 5/9 |

DEAN MCMINN TROPHY

- 1. Arctic Blades FSC 124
- 2. Los Angeles FSC 111 1/2
- 3. St. Moritz ISC 35

midwe

*Midwestern Championships
Golden Valley Ice Center
Minneapolis FSC, Minn.
Dec. 16-18*

by Patricia Reioux

Tension and excitement filled the air with the arrival of the competitors! For the skaters it meant three important days of performing their very best before the panels of judges, followed by the intense anticipation while the results were determined. At hand was the next step to Nationals and a place on the World Team.

The organizing and planning that began back in October involving everyone in the Club began to culminate in an extremely well-run competition. A new first in figure skating developed—a computerized Sectional competition. Results were fed from a branch set-up at the Ice Center to a “brain” set-up at Honeywell. As each figure was skated and the marks recorded, results were relayed back, and the skaters were kept informed via the computer as to just how well they were doing.

Yet another precedent was set by televising the evening events of the competition. Dick Button, serving as commentator, honored the championship with his presence. Aided by Bob DeHaven, a well-known local announcer, the duo splendidly covered the events which were televised for nearly four hours on the two final nights. The unusual pick-up on television de-



Jimmy Demogines

sterns



voted two entire evenings to coverage of the Midwestern Championships.

With 144 entries all events were filled to capacity, and the strength of the competing talent made the judges' decisions difficult. It was apparent during the practice sessions and warm-up periods that the performance level was high and choosing the champions would not be easy.

Top performances were turned in by dancers and free skaters alike. David Schlichtemeier in Intermediate Men and Kathy Gelecinskyj in Intermediate Ladies skated excellent programs to win the crowns in their division. Novice Men was won by Ronnie Green, while Leslie Glenn breezed over the ice to win the Novice Ladies title.

The Junior Ladies title was captured by Jannat Thompson who glided across the ice in a flawless performance. After a very strong free style, Betsy Hobson moved into second place. Candy Wenborg placed third for a beautifully executed performance.

Tim Hilfman, skating very well, won first place in Junior Men. With Terry Tunks in second, Chris Kales blazed across the ice to third place.

In the Senior Ladies events, first place went to Kathy Malmberg who skated a beautifully planned and laid out program. Second-placed Diane Goldstein was awarded for her excellent showing. Juli McKinstry won

third place with a consistent and mature free style performance.

Senior man James Demogines was first after figures and held on with his strong style in free skating. David Santee won second, and Perry Hutchings finished in third place.

The awards presentation on Saturday evening featured all winners beaming from their pedestals on the ice. On the sidelines were many skaters who will return next year contending for those top spots.

The Midwesterns of 1972 showed that the work of individual clubs and their committees, in conjunction with excellent rink management, are helping to build and encourage figure skaters whose dedication and skill will carry them to future championships.

results

SENIOR MEN

JUDGES: A—Frederick Amery, Pueblo, Colo.; B—Louis Bodek, Birmingham, Mich.; C—Barlow Nelson, Tulsa, Okla.; D—Lyman Wakefield, Jr., Minneapolis, Minn.; E—Matthew Zats, St. Paul, Minn. REFEREE: Frederick LeFevre, Troy, Ohio. COMPULSORY FIGURES: Group I—23b, 25a, 20b, 36a, 31b, 41a.

| | A | B | C | D | E | M |
|---|---|---|---|---|---|-----|
| 1. (1) James Demogines, City of Colorado Springs, Colo. | 1 | 1 | 1 | 1 | 1 | 5/1 |
| 2. (4) David Santee, Chicago FSC | 2 | 2 | 2 | 2 | 2 | 5/2 |
| 3. (3) Perry Hutchings, Tulsa FSC | 3 | 3 | 3 | 3 | 4 | 4/3 |
| 4. (2) Ted Engelking, Braemar-City of Lakes FSC | 6 | 4 | 5 | 4 | 3 | 3/4 |
| 5. (5) Roger Glenn, Wagon Wheel FSC | 4 | 5 | 4 | 5 | 5 | 5/5 |
| 6. (6) John Maki, Plaza FSC | 5 | 6 | 6 | 6 | 6 | 5/6 |

SENIOR LADIES

JUDGES: A—Mrs. Frederick LeFevre, Troy, Ohio; B—Mrs. James Lincoln, Jr., Minneapolis, Minn.; C—Mrs. Yvonne McGowan, Colorado Springs, Colo.; D—Mrs. Harry Meiss, Cincinnati, Ohio; E—Mrs. Robert Ridder, St. Paul, Minn. REFEREE: Frederick LeFevre, Troy, Ohio. COMPULSORY FIGURES: Group III—22b, 35a, 21b, 36a, 38b, 41a.

| | A | B | C | D | E | M |
|--|---|---|---|---|---|-----|
| 1. (2) Kathy Malmberg, Wagon Wheel FSC | 2 | 1 | 2 | 1 | 1 | 3/1 |
| 2. (1) Diane Goldstein, City of Denver, Colo. | 3 | 3 | 3 | 2 | 2 | 5/3 |
| 3. (3) Juli McKinstry, City of Colorado Springs | 1 | 4 | 1 | 3 | 5 | 3/3 |
| 4. (4) Pamela Mason, Detroit SC | 4 | 5 | 6 | 4 | 4 | 3/4 |
| 5. (6) Tamie Klindworth, Braemar-City of Lakes FSC | 5 | 2 | 5 | 6 | 3 | 4/5 |

| | | | | | | |
|--|---|---|---|---|---|-----|
| 6. (7) Althea Samson, Detroit SC | 6 | 6 | 8 | 5 | 6 | 4/6 |
| 7. (9) Audrey King, Broadmoor SC | 7 | 8 | 4 | 7 | 7 | 4/7 |
| 8. (5) Paula Larson, Braemar-City of Lakes FSC | 8 | 7 | 7 | 8 | 8 | 5/8 |
| 9. (8) Laura Johnson, SC of Wilmington | 9 | 9 | 9 | 9 | 9 | 5/9 |

SENIOR PAIRS

JUDGES: A—Louis Bodek, Birmingham, Mich.; B—Mrs. Frederick LeFevre, Troy, Ohio.; C—Mrs. Yvonne McGowan, Colorado Springs, Colo.; D—Barlow Nelson, Tulsa, Okla.; E—Matthew Zats, St. Paul, Minn. REFEREE: Dr. Hugh Graham, Jr., Tulsa, Okla. SHORT PROGRAM: Group A.

| | A | B | C | D | E | M |
|---|---|---|---|---|---|-----|
| 1. (3) Laura Johnson, SC of Lake Placid, & Johnny Johns, Detroit SC | 2 | 1 | 1 | 2 | 1 | 3/1 |
| 2. (1) Cozette Cady & Jack Courtney, Troy SC | 1 | 2 | 3 | 3 | 2 | 3/2 |
| 3. (2) Debbie Hughes & Phillip Grout, Denver FSC | 3 | 3 | 2 | 1 | 3 | 5/3 |

GOLD DANCE

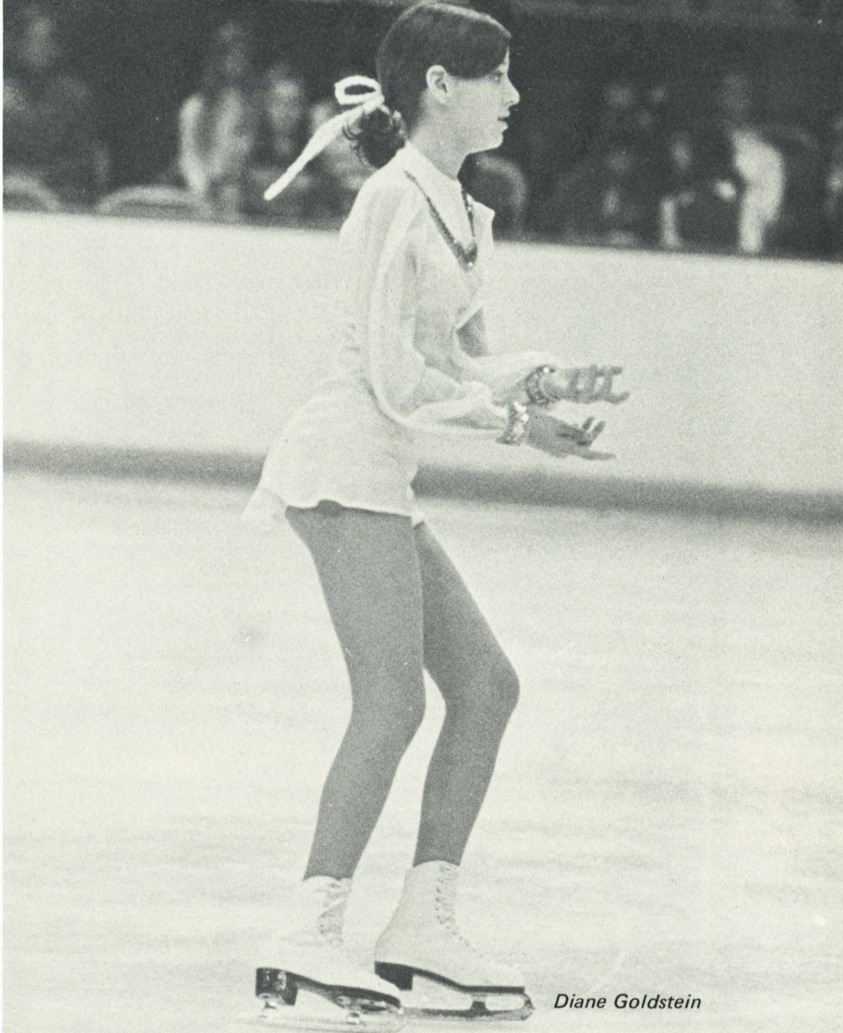
JUDGES: A—Frederick Amery, Pueblo, Colo.; B—Dorothy Burkholder, Chicago, Ill.; C—Mrs. Lyman Drake, Jr., Glencoe, Ill.; D—Mrs. Frederick LeFevre, Troy, Ohio; E—Mrs. Harry Meiss, Cincinnati, Ohio. REFEREE: Dr. Gordon Brown, Ann Arbor, Mich. COMPULSORY DANCES: Westminster Waltz, Paso Doble, Blues, Original Set-Pattern.

| | A | B | C | D | E | M |
|---|---|---|---|---|---|-----|
| 1. (1) Kathy West & Rollie Arthur, Broadmoor SC | 1 | 1 | 1 | 1 | 1 | 5/1 |
| 2. (2) Colleen O'Connor & Jim Millns, Wagon Wheel FSC | 3 | 3 | 2 | 2 | 3 | 5/3 |
| 3. (3) Suzy Ogletree, Detroit SC, & Gerard Lane, SC of Boston | 2 | 4 | 4 | 3 | 2 | 3/3 |
| 4. (4) Elizabeth Blatherwick, Genesee FSC, & Robert Kaine, WC of Indianapolis | 4 | 2 | 5 | 4 | 5 | 3/4 |
| 5. (5) Myra & David Chrien, Plaza FSC | 5 | 5 | 3 | 5 | 4 | 5/5 |
| 6. (6) Gretchen Stuart, City of Troy, Ohio, & Cole Stearns, Cleveland SC | 6 | 6 | 6 | 6 | 6 | 5/6 |

JUNIOR MEN

JUDGES: A—Louis Bodek, Birmingham, Mich.; B—Dorothy Burkholder, Chicago, Ill.; C—Marjorie Gorham, Dallas, Tex.; D—Frederick LeFevre, Troy, Ohio; E—Dr. Franklin Nelson, Tulsa, Okla. REFEREE: Dr. Hugh Graham, Jr., Tulsa, Okla. COMPULSORY FIGURES: Group I—16, 23a, 29b, 20a, 33b.

| | A | B | C | D | E | M |
|--|---|---|---|---|----|-------|
| 1. (3) Tom Hilfman, Chicago FSC | 3 | 1 | 1 | 6 | 2 | 3/2 |
| | | | | | TP | 90.05 |
| 2. (6) Terry Tunks, Lansing SC | 5 | 2 | 4 | 1 | 1 | 3/2 |
| | | | | | TP | 89.86 |
| 3. (1) Chris Kales, Wagon Wheel FSC | 1 | 3 | 6 | 2 | 3 | 4/3 |
| 4. (4) Kirk Bateman, City of Denver | 2 | 8 | 2 | 3 | 4 | 3/3 |
| 5. (2) Christopher Melin, City of Denver | 4 | 7 | 8 | 5 | 5 | 3/5 |
| 6. (8) Robert Steiner, Denver FSC | 6 | 6 | 3 | 4 | 6 | 5/6 |
| 7. (7) Jack Campagna, Chicago FSC | 7 | 4 | 7 | 7 | 7 | 5/7 |



Diane Goldstein

8. (5) Michael Stoller, Plaza FSC
8 5 5 8 8 5/8

JUNIOR LADIES

JUDGES: A—Mrs. Lyman Drake, Jr., Glencoe, Ill.; B—Mrs. Paul Dressel, East Lansing, Mich.; C—Dr. Hugh Graham, Jr., Tulsa, Okla.; D—Mrs. Janet Griffiths, St. Paul, Minn.; E—Marjorie Gorham, Dallas, Tex. REFEREE: Dr. Gordon Brown, Ann Arbor, Mich. COMPULSORY FIGURES: Group II—22b, 30a, 35b, 21a, 32b.

A B C D E M
1. (1) Jannat Thompson, City of Denver
1 1 1 3 1 4/1

2. (5) Betsy Hobson, Braemar-City of Lakes FSC
2 2 8 2 4 3/2

3. (3) Candyce Wenborg, FSC of Minneapolis
4 4 3 1 2 3/3
TOM 6

4. (2) Alice Cook, Lansing SC
3 3 2 5 5 3/3
TOM 8

5. (7) Carol Hessler, Towne 'N Country FSC
8 6 6 7 3 3/6
TO 30

6. (8) Kitty DeLio, Denver FSC
6 5 4 8 8 3/6
TO 31

7. (6) Sherry Kilmer, Cleveland CC

7 7 5 6 6 3/6
TOM 17

8. (4) Diane Dennison, Denver FSC

5 8 7 4 7 4/7

9. (9) Vicky Lampros, Chicago FSC

9 9 9 9 9 5/9

JUNIOR PAIRS

JUDGES: A—Louis Bodek, Birmingham, Mich.; B—Marjorie Gorham, Dallas, Tex.; C—Barlow Nelson, Tulsa, Okla.; D—Lyman Wakefield, Jr., Minneapolis, Minn.; E—Matthew Zats, St. Paul, Minn. REFEREE: Dr. Hugh Graham, Jr., Tulsa, Okla.

A B C D E M
1. Suki Hoagland & Mike Sahlin, Denver FSC

1 2 3 1 1 3/1
2. Patty Morton & Bill Fauver, Troy SC
3 3 1 2 2 3/2
TO 11

3. Becky & Jeff Hale, Tulsa FSC
2 1 2 3 5 3/2
TO 13

4. Rose Mary Wilzbacher & David Bolton, St. Paul FSC
4 5 4 5 3 3/4
TOM 11

5. Beth & Frank Sweiding, Chicago FSC
5 4 5 4 4 3/4
TOM 12



Juli McKinstry

6. Louise & Bill Sencenbaugh, Broadmoor SC
 6 6 6 6 5/6

SILVER DANCE

JUDGES: A—Frederick Amery, Pueblo, Colo.; B—Dorothy Burkholder, Chicago, Ill.; C—Mrs. Lyman Drake, Jr., Glencoe, Ill.; D—Frederick LeFevre, Troy, Ohio; E—Donald Siebert, Cincinnati, Ohio.
 REFEREE: Dr. Gordon Brown, Ann Arbor, Mich. COMPULSORY DANCES: Initial round—European Waltz, Rocker Foxtrot, Tango, Fourteenstep. Final round—American Waltz, Foxtrot, Tango, Fourteenstep.

| | A | B | C | D | E | M |
|--|---|---|---|---|---|-----|
| 1. (1) Stacey Smith & Frank Recco, Plaza FSC | 1 | 1 | 1 | 1 | 1 | 5/1 |
| 2. (2) Laurie & Fred Martin, Detroit SC | 2 | 2 | 2 | 2 | 2 | 5/2 |
| 3. (3) Marcia Fugina & Charles Larson, Greater Milwaukee FSC | 4 | 4 | 3 | 3 | 3 | 3/3 |
| 4. (4) Barbara Clare, City of Denver | | | | | | |

& Paul Steiner, Denver FSC
 3 3 4 4 4 5/4
 Eliminated after initial round

5. Sheila Corcoran, Pittsburgh FSC, & David Battles, City of Troy
6. Maureen Morrow, Albuquerque FSC, & David Underwood, SC of Phoenix
7. Cara Markham & Ron Radke, Chicago FSC
8. Melinda Stewart & Gregg Robins, Tulsa FSC

NOVICE MEN

JUDGES: A—Frederick Amery, Pueblo, Colo.; B—Louis Bodek, Birmingham, Mich.; C—Dorothy Burkholder, Chicago, Ill.; D—Mrs. Harry Meiss, Cincinnati, Ohio; E—Dr. Franklin Nelson, Tulsa, Okla. REFEREE: Frederick LeFevre, Troy, Ohio. COMPULSORY FIGURES: Group II—13, 16, 18b, 29a.

| | A | B | C | D | E | M |
|-----------------------------------|---|---|---|---|---|----------|
| 1. (1) Ronnie Green, Broadmoor SC | 1 | 1 | 1 | 1 | 1 | 5/1 |
| 2. (4) Tom Reagan, Denver FSC | 2 | 4 | 3 | 5 | 2 | 3/3 |
| | | | | | | TP 79.86 |

3. (2) Scott Sherman, Northbrook Skokie Valley SC
 3 2 2 4 5 3/3
 TP 79.83
4. (3) Scott Hamilton, Bowling Green SC
 4 3 4 3 4 5/4
5. (5) Shane Douglas, Broadmoor SC
 5 5 5 2 3 5/5
6. (6) Sam Auxier, Chicago FSC
 6 6 6 6 6 5/6
7. (7) Alan Dole, Euclid Blade & Edge Club
 7 7 7 7 7 5/7

NOVICE LADIES

JUDGES: A—Mrs. Lyman Drake, Jr., Glencoe, Ill.; B—Mrs. Paul Dressel, East Lansing, Mich.; C—Mrs. Janet Griffiths, St. Paul, Minn.; D—Mrs. Yvonne McGowan, Colorado Springs, Colo.; E—Donald Siebert, Cincinnati, Ohio. REFEREE: Dr. Hugh Graham, Jr., Tulsa, Okla. COMPULSORY FIGURES: Group II—13, 16, 18b, 29a.

- | | A | B | C | D | E | M |
|---|---|---|---|---|---|---------------|
| 1. (3) Leslie Glenn, Wagon Wheel FSC | 2 | 2 | 1 | 3 | 1 | 4/2 |
| 2. (8) Gail Hamula, Broadmoor SC | 1 | 4 | 5 | 1 | 3 | 3/3 |
| 3. (1) Peggy Amelon, Detroit SC | 4 | 6 | 3 | 5 | 2 | 3/4 TOM 9 |
| 4. (6) Susan McLauthlin, City of Denver | 8 | 3 | 4 | 4 | 5 | 3/4 TOM 11 |
| 5. (2) Eva Barton-Dobenin, Broadmoor SC | 6 | 7 | 2 | 2 | 6 | 4/6 |
| 6. (9) Jaqueline Dean, Wagon Wheel FSC | 7 | 8 | 6 | 6 | 4 | 3/6 |
| 7. (7) Holly Blunt, Lansing SC | 5 | 1 | 9 | 9 | 7 | 3/7 TOM 13 |
| 8. (5) Lisa DeLaney, Detroit SC | 3 | 5 | 8 | 7 | 9 | 3/7 TOM 15 |
| 9. (4) Barbara Bichner, St. Paul FSC | 9 | 9 | 7 | 8 | 8 | 3/8 |

NOVICE PAIRS

JUDGES: A—Frederick LeFevre, Troy, Ohio; B—Marjorie Gorham, Dallas, Tex.; C—Barlow Nelson, Tulsa, Okla.; D—Mrs. Robert Ridder, St. Paul, Minn.; E—Lyman Wakefield, Jr., Minneapolis, Minn. REFEREE: Dr. Hugh Graham, Jr., Tulsa, Okla.

- | | A | B | C | D | E | M |
|---|---|---|---|---|---|-----|
| 1. Vicki & David Assafi, Denver FSC | 1 | 1 | 1 | 1 | 2 | 4/1 |
| 2. Elizabeth & Gordon Black, Detroit SC | 2 | 2 | 2 | 2 | 1 | 5/2 |
| 3. Cheryl & Jeffrey Stewart, Tulsa FSC | 3 | 5 | 3 | 3 | 4 | 3/3 |
| 4. Heidi & Chip Rauth, Lansing SC | 4 | 3 | 5 | 6 | 3 | 3/4 |
| 5. Stephanie Purdy & Jon Whitbeck, Bowling Green SC | 5 | 6 | 4 | 5 | 5 | 4/5 |
| 6. Julie & Peter Williams, Broadmoor SC | 6 | 4 | 6 | 4 | 6 | 5/6 |

BRONZE DANCE

JUDGES: A—Frederick Amery, Pueblo, Colo.; B—Dorothy Burkholder, Chicago, Ill.; C—Mrs. Paul Dressel, East Lansing, Mich.; D—Dr. Franklin Nelson, Tulsa, Okla.; E—Donald Siebert, Cincinnati, Ohio. REFEREE: Mrs. Lyman Drake, Jr., Glencoe, Ill. COMPULSORY DANCES: Initial round—Ten-Fox, Willow Waltz. Final round—Fiesta Tango, Willow Waltz.

- | | A | B | C | D | E | M |
|---|---|---|---|---|---|-----|
| 1. (1) Helen Zinn & Richard Murphy, Muskegon SC | 1 | 1 | 3 | 1 | 1 | 4/1 |

2. (3) Sandra Speaker & Michael Tubbs, Lansing SC
 2 1/2 2 1 1/2 4 3 4/3
3. (4) Connie Krepelka & Michael Hall, Euclid Blade & Edge Club
 2 1/2 3 1/2 4 3 2 3/3
4. (2) Debbie Weinstein & Steven Goff, Denver FSC
 4 3 1/2 1 1/2 2 4 5/4

Eliminated after initial round

5. Laura Pierce & Rick Berg, FSC of Madison
6. Grushenka Wolfgang & Shane Douglas, Broadmoor SC
7. Julianne Ipsen & Douglas Babcock, FSC of Minneapolis

INTERMEDIATE MEN

JUDGES: A—Mrs. Paul Dressel, East Lansing, Mich.; B—Marjorie Gorham, Dallas, Tex.; C—Mrs. Harry Meiss, Cincinnati, Ohio; D—Dr. Franklin Nelson, Tulsa, Okla.; E—Mrs. Robert Ridder, St. Paul, Minn. REFEREE: Dr. Gordon Brown, Ann Arbor, Mich. COMPULSORY FIGURES: Group II—6b, 14, 26a.

- | | A | B | C | D | E | M |
|---|---|---|---|---|---|---------------|
| 1. (2) David Schlichtemeier, Denver FSC | 1 | 1 | 1 | 1 | 3 | 4/1 |
| 2. (1) Gregory R. Swisher, Denver FSC | 2 | 2 | 2 | 5 | 6 | 3/2 |
| 3. (7) Gregory Swisher, Ann Arbor FSC | 4 | 3 | 3 | 6 | 1 | 3/3 |
| 4. (4) Eric Werschin, Wagon Wheel FSC | 3 | 6 | 5 | 2 | 4 | 3/4 |
| 5. (3) Tony Williams, Northbrook Skokie Valley SC | 6 | 5 | 4 | 7 | 2 | 3/5 TOM 11 |
| 6. (8) Mark Hayes, Arapahoe ISC | 5 | 4 | 7 | 3 | 7 | 3/5 TOM 12 |
| 7. (5) Richard Murphy, Muskegon SC | 7 | 8 | 6 | 4 | 5 | 3/6 |
| 8. (9) Mark Zagaroti, Lansing SC | 9 | 7 | 9 | 8 | 8 | 3/8 |
| 9. (6) Kevin Cedergren, Chicago FSC | 8 | 9 | 8 | 9 | 9 | 5/9 |

INTERMEDIATE LADIES

JUDGES: A—Mrs. Frederick LeFevre, Troy, Ohio; B—Mrs. James Lincoln, Jr., Minneapolis, Minn.; C—Mrs. Yvonne McGowan, Colorado Springs, Colo.; D—Barlow Nelson, Tulsa, Okla.; E—Donald Siebert, Cincinnati, Ohio. REFEREE: Dr. Hugh Graham, Jr., Tulsa, Okla. COMPULSORY FIGURES: Group III—6a, 14, 28b.

- | | A | B | C | D | E | M |
|--|---|---|---|---|---|-----|
| 1. (2) Kathy Gelecinskyj, FSC of Minneapolis | 1 | 2 | 1 | 4 | 1 | 3/1 |
| 2. (8) Sally Ketner, Wagon Wheel FSC | 2 | 1 | 4 | 2 | 3 | 3/2 |
| 3. (6) Jeannette Evans, Broadmoor SC | 4 | 4 | 2 | 7 | 2 | 4/4 |
| 4. (3) Lynn Johnson, Northbrook Skokie Valley SC | 3 | 6 | 6 | 3 | 4 | 3/4 |
| 5. (1) Debbie Weinstein, Denver FSC | 5 | 3 | 5 | 1 | 5 | 5/5 |
| 6. (4) Debbie Sidak, City of Troy | 7 | 5 | 3 | 5 | 6 | 3/5 |
| 7. (5) Annette Schoener, Troy SC | 6 | 7 | 7 | 8 | 8 | 3/7 |
| 8. (9) Kim Kortier, Trenton Community SC | 9 | 8 | 9 | 6 | 7 | 3/8 |
| 9. (7) Terry Franchini, Albuquerque FSC | 8 | 9 | 8 | 9 | 9 | 5/9 |

CLEVELAND SC TROPHY

1. Wagon Wheel FSC 63
2. Denver FSC 56
3. City of Denver 43

easterns



Eastern Championships
Hershey FSC, Pa.
Dec. 16-18

by Preston K. Jones

Monday, December 13th, marked the beginning of practice on two ice rinks in preparation for the potentially exciting Eastern Figure Skating Championships. By 8:00 A.M. three days later the competition had begun and continued on schedule all the way through Saturday afternoon.

Evening activities on the opening night began with Intermediate Ladies free skating. The pace for the competition was keyed by ten-year-old Sheryl Franks who easily moved into first place with a beautifully choreographed program, performed delightfully by this lithe, petite figure. A secure double Lutz highlighted the first part of her program. Debbie Wilker slipped from first after figures but skated well enough to finish second, while Martha Jowyk moved into the

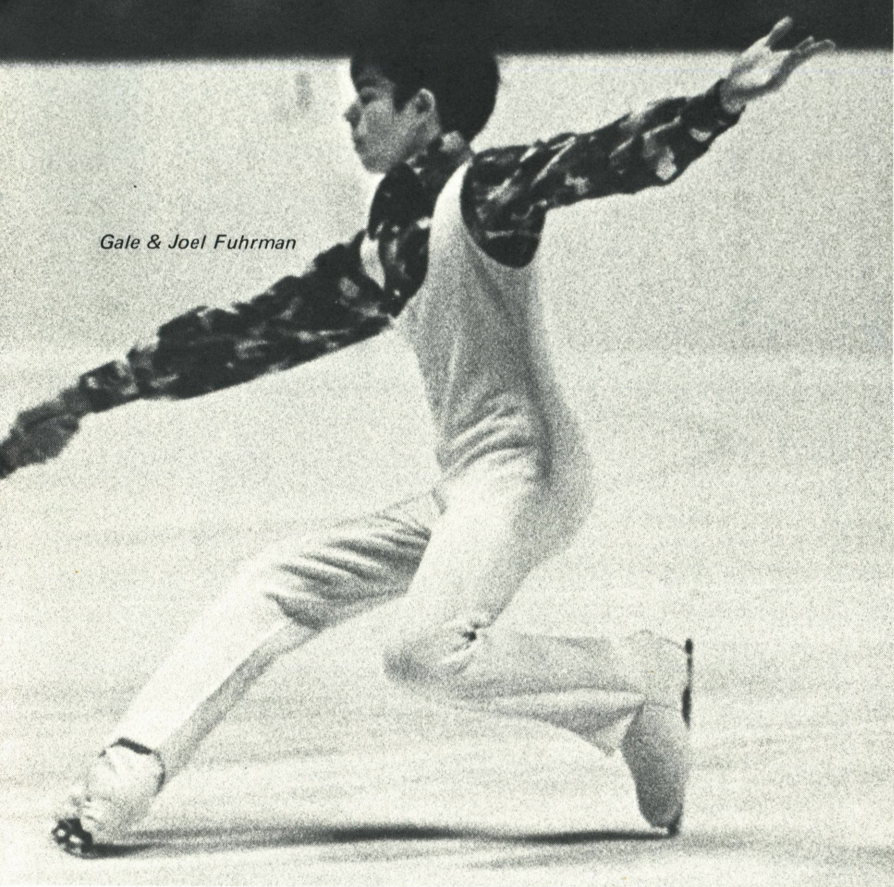
third spot.

Intermediate Men featured fifteen-year-old Mark Simpson edging Mark Meier after a strong free skating routine. A year of training in Finland appears to be paying dividends for young Simpson. Peter Freeman vaulted into third from seventh, the result of an outstanding performance that earned him first-place free skating marks.

In Bronze Dance Carolyn Fortuna and Robert Mock had no difficulty capturing the ultimate in honors with their distinctive style. Second were Debbie and Edward (Ted) Henry, followed by another familial team, Emily and Lawrence Zukerberg, in third.

Kristin Gilbert and David DeCaprio won with ease the Junior Pairs event, with good flow and unusually straight arm extensions on their lifts. They are a well-matched, pleasing, and interesting pair to watch. Placements were completed by Debbie Robbins and Jack Colern, second, and Sheryl

Gale & Joel Fuhrman



Franks and Michael Botticelli, third.

Thursday's final event saw Tim Zink maintain his lead in figures by skating a balanced, secure program to become Novice Men's Champion. Charles Carapazza moved from fourth in figures to second overall; Kingsford Swan, with a much-improved style over last year, jumped from fifth to third. Spiced by a fine double Axel, he skated a good, interpretive program.

As is often the case, the Junior Ladies on Friday evening encompassed the strongest group of free skaters in the entire competition. There were many changes in the standings from figures to final results. Barbara Salomon eased past Ruth Cohen to take the David Layman, Jr., Trophy back to its home club. Miss Salomon skated an exceptionally strong program to capture the plaudits of the crowd and judges alike. With a quick, sparkling manner of presentation, Miss Cohen covers the entire ice surface with a

variety of moves. Elizabeth Freeman rounded out the top three, giving a consistent performance composed of footwork, spins, and double jumps; particularly accomplished were her double Axels.

Next was the ever-popular Senior Men's free skating. Consensus of opinion was that the quality of Senior Men's figures was better than usual. Dean Hiltzik maintained his lead in compulsory figures with a very creditable program, losing some of his exciting qualities in an apparent effort to guard his first-place standing. Mahlon Bradley's pleasing, polished style kept him in the runner-up position. It remained, however, for Stephen Savino to perform the outstanding number of the event. His triple Salchow, his sureness, quickness, and enthusiasm justly earned his first place in the free skating.

Early Saturday morning Mrs. Ann O'Donnell and Raymond Hawes

skated off with the Veterans' Dance Championship. Runners-up were Mrs. Emory Mersereau and Charles Lalley.

Deep edges, good flow, and expression characterized the winning placement of Silver dancers Andrea Peterson and Guy Sexton. Beatrice Sexton and James Thom improved on last year's finish by moving into second. The third position was captured by Joy Cushner and Stephen Kanter, whose style and poise were instrumental in their placing ahead of a strong field of contenders.

In contrast to Junior Ladies, it would seem that Novice Ladies are in the frustrating position of not having quite found themselves in the free skating world. Most of the skaters appear to be imitating others and lack maturity of self-expression. It was, therefore, not too difficult for one outstanding free skater to bridge the gap from fifth in figures to first overall as Robin Wagner did. She pulled out the stops and skated to win. Second went to Tracey Cahill, with Amanda Kohlhas in third.

New England skaters dominated the Novice Pair class. Ginger Gray and David Peters, showing a little more strength, maturity, and unison than their fellow contenders, placed first. Mary Jo Tracy and Leland Meadows became Silver medalists, with Bronze medals going to Emily Wendell and Mahlon Bradley.

Scott Cramer defended his corner on figures in the Junior Men's division with an action-packed program. Capturing his audience early with Walleys both ways, intricate footwork and jump combinations, he had no difficulty in holding his lead. Fully recovered from an injury sustained during practice at North Atlantics, Neil Rubin performed a difficult program with excitement and individuality. Scott Henderson finished behind Rubin by edging into third place. Henderson's jumps are very high, landed on a clean, running edge, but his program lacks the necessary foot-

work, spins, and connecting steps that could very easily make him unbeatable in his class.

Defending Gold Dance Champions Jane Pankey and Richard Horne were shoo-in victors in this event. Their experience, poise, and capable manner as well as their apparent familiarity with the ice, earned them five firsts in both the initial and final rounds as they easily outdistanced the field. The struggle for second and third places became a real competition among the remaining four couples, with Cathleen Casey and Francis Cassella gaining the nod as runners-up, and Christine Linney and Bruce Bowland holding third.

Senior Lady, Dorothy Hamill, was in command all the way with four firsts in figures and a complete sweep in the free. The vivacious Miss Hamill was "in" with the audience the minute she took to the ice, looking so pretty in her hot pink costume. Excellent jumps, spins, footwork, and combinations were all blended in a program backed by appropriate music and excellent choreography. One official was heard to say that "this little Miss is a real threat to the girls vying for top spots in Long Beach, if she skates Nationals like this". Mary Marley, in her first try at Senior division, was a strong second. Denise Cahill, having been off the ice for weeks with a leg injury, did not skate up to her usual capability, but was able to maintain her third place.

The most startling upset came about in Senior Pairs when the young, daring, and exciting sister/brother team of Gale and Joel Fuhrman, after trailing in compulsories, lifted the crown of the defending champions Normile and Taylor. Gale, being a tiny person, has to skate "tall" to match her brother, but in this she is quite successful. Kathy Normile and Gregory Taylor were not easy to better for they skated very well, but it is possible that the Airman First Class preceding young Taylor's name might be taking its toll of training time. The new cham-

pions, the Fuhrmans, could not be denied. The third couple, Mishkin and Bonacci, gave an excellent account of themselves in one of their best performances yet.

At the conclusion of competitive skating Friday evening, the crowd was treated to an exhibition by the current National Dance Champions, Judy Schwomeyer and Jim Sladky. They were delightful and had everyone begging for more and more encores.

With the strain of competition out of the way, on Saturday evening 400 persons donned party attire and attended a Christmas dinner/dance at the beautiful Hotel Hershey to honor the competitors, officials, and judges. The USFSA's first Vice-President Benjamin T. Wright presented the trophies and awards at what was termed "a very successful affair".

The Goodwin Memorial Trophy for the club receiving the most points was awarded to The SC of New York.

results

SENIOR MEN

JUDGES: A—Mrs. William Brennan, Jr., New York, N.Y.; B—Minerva Burke, Baltimore, Md.; C—Mrs. Dorothy Dodson, Alexandria, Va.; D—Mrs. George Ferguson, Lincoln, R.I.; E—Patricia French, Williamsville, N.Y. REFEREE: Brooks Stewart, Southampton, Pa. COMPULSORY FIGURES: Group III—22a, 35b, 21a, 36b, 38a, 41b.

| | A | B | C | D | E | M |
|---|---|---|---|---|---|-----|
| 1. (1) Dean Hiltzik, SC of New York | 1 | 1 | 3 | 1 | 2 | 3/1 |
| 2. (2) Mahlon Bradley, SC of Boston | 3 | 2 | 2 | 2 | 1 | 4/2 |
| 3. (4) Stephen Savino, North Jersey FSC | 2 | 3 | 1 | 3 | 3 | 5/3 |
| 4. (3) Hans Lupke, City of Wilmington, Del. | 4 | 4 | 4 | 4 | 4 | 5/4 |

SENIOR LADIES

JUDGES: A—Wilhelm Appeltofft, So. Hamilton, Mass.; B—Mrs. Dorothy Dodson, Alexandria, Va.; C—Mrs. John Horsman, Buck Hill Falls, Pa.; D—Jerome Ross, New York, N.Y.; E—Mrs. Betsy Talbot, Westwood, Mass. REFEREE: Spencer Cram, Hendersonville, N.C. COMPULSORY FIGURES: Group IV—23b, 34a, 20b, 36a, 39b, 40a.

| | A | B | C | D | E | M |
|--|---|---|---|---|---|---------------|
| 1. (1) Dorothy Hamill, SC of New York | 1 | 1 | 1 | 1 | 1 | 5/1 |
| 2. (2) Mary Marley, SC of Boston | 2 | 2 | 2 | 2 | 2 | 5/2 |
| 3. (3) Denise Cahill, IC of Baltimore | 4 | 5 | 4 | 3 | 4 | 4/4 |
| 4. (4) Deborah Milne, City of New York, N.Y. | 5 | 6 | 3 | 5 | 3 | 4/5 TOM 16 |

| | | | | | | |
|--|---|---|---|---|---|---------------|
| 5. (5) Priscilla Hill, North Shore SC | 3 | 4 | 5 | 6 | 5 | 4/5 TOM 17 |
| 6. (6) Alice Stockfleth, SC of Wilmington | 6 | 3 | 6 | 4 | 6 | 5/6 |
| 7. (8) Gayna Grant, Hayden Recreation Centre FSC | 7 | 8 | 7 | 7 | 7 | 4/7 |
| 8. (7) Jill Abrahamson, SC of Wilmington | 8 | 7 | 8 | 8 | 8 | 5/8 |
| 9. (9) Mary Anne Matz, Hershey FSC | 9 | 9 | 9 | 9 | 9 | 5/9 |

SENIOR PAIRS

JUDGES: A—Wilhelm Appeltofft, So. Hamilton, Mass.; B—Mrs. William Brennan, Jr., New York, N.Y.; C—Mrs. John Horsman, Buck Hill Falls, Pa.; D—Delaplaine McDaniel, Narberth, Pa.; E—Mrs. Betsy Talbot, Westwood, Mass. REFEREE: Spencer Cram, Hendersonville, N.C. SHORT PROGRAM: Group A.

| | A | B | C | D | E | M |
|--|---|---|---|---|---|-----|
| 1. (2) Gale & Joel Fuhrman, Rye FSC | 1 | 1 | 2 | 1 | 2 | 3/1 |
| 2. (1) Kathy Normile & Gregory Taylor, Buffalo SC | 2 | 3 | 1 | 2 | 1 | 4/2 |
| 3. (3) Cathy Mishkin, City of Wilmington, & Donald Bonnacci, Rye FSC | 3 | 2 | 3 | 3 | 3 | 5/3 |

GOLD DANCE

JUDGES: A—Minerva Burke, Baltimore, Md.; B—Margaret Ridgely, Baltimore, Md.; C—Jerome Ross, New York, N.Y.; D—Ritter Shumway, Rochester, N.Y.; E—Benjamin Wright, Belmont, Mass. REFEREE: Delaplaine McDaniel, Narberth, Pa. COMPULSORY DANCES: Viennese Waltz, Kilian, Quickstep, Original Set-Pattern.

| | A | B | C | D | E | M |
|--|---|---|---|---|---|--------------|
| 1. (1) Jane Pankey & Richard Horne, SC of Wilmington | 1 | 1 | 1 | 1 | 1 | 5/1 |
| 2. (2) Cathleen Casey & Francis Cassella, SC of Hartford | 2 | 3 | 3 | 2 | 4 | 4/3 |
| 3. (3) Christine Linney, SC of New York, & Bruce Bowland, Essex SC of N.J. | 4 | 2 | 2 | 4 | 3 | 3/3 TOM 7 |
| 4. (4) Jane Hickey & Robert Young, Charter Oak FSC | 3 | 5 | 4 | 3 | 2 | 3/3 TOM 8 |
| 5. (5) Candace Johnstone, Essex SC of N.J., & Richard Stolbach, SC of Boston | 5 | 4 | 5 | 5 | 5 | 5/5 |

JUNIOR MEN

JUDGES: A—Mrs. William Brennan, Jr., New York, N.Y.; B—Minerva Burke, Baltimore, Md.; C—Mrs. George Ferguson, Lincoln, R.I.; D—Patricia French, Williamsville, N.Y.; E—Delaplaine McDaniel, Narberth, Pa. REFEREE: Brooks Stewart, Southampton, Pa. COMPULSORY FIGURES: Group II—22a, 30b, 35a, 21b, 32a.

| | A | B | C | D | E | M |
|-------------------------------------|---|---|---|---|---|---------------|
| 1. (1) Scott Cramer, Wissahickon SC | 1 | 1 | 1 | 1 | 1 | 5/1 |
| 2. (2) Neil Rubin, Metropolitan FSC | 2 | 4 | 3 | 3 | 2 | 4/3 |
| 3. (4) Scott Henderson, Hershey FSC | 3 | 2 | 4 | 4 | 3 | 3/3 |
| 4. (3) Warren Keahey, Buffalo SC | 6 | 3 | 5 | 2 | 7 | 3/5 TOM 10 |
| 5. (9) Mark Henry, Long Island FSC | 4 | 5 | 7 | 6 | 4 | 3/5 TOM 13 |
| 6. (6) Joel Fuhrman, Rye FSC | 7 | 6 | 2 | 5 | 8 | 3/6 |
| 7. (5) Tom Sobell, Country SC | 5 | 7 | 6 | 7 | 9 | 4/7 |

8. (7) James Webb, SC of Boston
 8 8 8 8 5 5/8
 9. (8) Michael Masonion, Commonwealth FSC
 9 9 9 9 6 5/9
 10. (10) Mark Miller, Baltimore FSC
 10 10 10 10 10 5/10

JUNIOR LADIES

JUDGES: A—Wilhelm Appelttofft, So. Hamilton, Mass.; B—Minerva Burke, Baltimore, Md.; C—Patricia French, Williamsville, N.Y.; D—Mrs. John Horsman, Buck Hill Falls, Pa.; E—Mrs. Betsy Talbot, Westwood, Mass. REFEREE: Brooks Stewart, Southampton, Pa. COMPULSORY FIGURES: Group II—22a, 30b, 35a, 21b, 32a.

- | | | | | | | |
|---|---|---|---|---|---|--------|
| | A | B | C | D | E | M |
| 1. (2) Barbara Salomon, SC of New York | 1 | 1 | 1 | 1 | 1 | 5/1 |
| 2. (1) Ruth Cohen, Long Island FSC | 2 | 2 | 2 | 2 | 2 | 5/2 |
| 3. (8) Elizabeth Freeman, SC of Lake Placid | 3 | 6 | 4 | 3 | 3 | 3/3 |
| 4. (7) Karolyn Stafford, SC of Boston | 4 | 3 | 3 | 4 | 4 | 5/4 |
| 5. (4) Cindy Ginkinger, Old York Road SC | 5 | 4 | 5 | 5 | 7 | 4/5 |
| 6. (3) Lynn Umstead, Old York Road SC | 7 | 5 | 6 | 8 | 5 | 3/6 |
| | | | | | | TOM 16 |
| 7. (5) Kathy Taylor, SC of Boston | 6 | 8 | 7 | 6 | 6 | 3/6 |
| | | | | | | TOM 18 |
| 8. (6) Theresa Martin, SC of Boston | 9 | 7 | 8 | 9 | 8 | 3/8 |
| 9. (9) Mary Beth Braun, Princeton SC | 8 | 9 | 9 | 7 | 9 | 5/9 |

JUNIOR PAIRS

JUDGES: A—Mrs. Dorothy Dodson, Alexandria, Va.; B—Mrs. Ralph France, Baltimore, Md.; C—Mrs. Doris Heinold, Wellesley, Mass.; D—Mrs. John Horsman, Buck Hill Falls, Pa.; E—Jerome Ross, New York, N.Y. REFEREE: Bower Keebler, Philadelphia, Pa.

- | | | | | | | |
|--|---|---|---|---|---|-------|
| | A | B | C | D | E | M |
| 1. Kristin Gilbert, City of Boston, Mass., & David DeCaprio, SC of Boston | 1 | 1 | 1 | 1 | 1 | 5/1 |
| 2. Debbie Robbins & Jack Colern, Buffalo SC | 2 | 5 | 5 | 2 | 3 | 3/3 |
| | | | | | | TOM 7 |
| 3. Sheryl Franks, Hayden Recreation Centre FSC, & Michael Botticelli, SC of Boston | 3 | 3 | 2 | 4 | 4 | 3/3 |
| | | | | | | TOM 8 |
| 4. Cynthia Conner & Warren Keahey, Buffalo SC | 4 | 4 | 4 | 3 | 2 | 5/4 |
| 5. Terri Cheesman, SC of New York, & Edwin Cossitt, Park FSC | 5 | 2 | 3 | 5 | 5 | 5/5 |

SILVER DANCE

JUDGES: A—Minerva Burke, Baltimore, Md.; B—Patricia French, Williamsville, N.Y.; C—Mrs. Doris Heinold, Wellesley, Mass.; D—Margaret Ridgely, Baltimore, Md.; E—Benjamin Wright, Belmont, Mass. REFEREE: Ritter Shumway, Rochester, N.Y. COMPULSORY DANCES: Initial round—European Waltz, Foxtrot, Tango, Fourteenstep. Final round—American Waltz, Foxtrot, Tango, Fourteenstep.

- | | | | | | | |
|---|---|---|---|---|---|-----|
| | A | B | C | D | E | M |
| 1. (1) Andrea Peterson & Guy Sexton, South Mountain FSC | 3 | 1 | 1 | 2 | 1 | 3/1 |
| 2. (2) Beatrice Sexton & James Thom, South Mountain FSC | 1 | 2 | 2 | 1 | 3 | 4/2 |

3. (3) Joy Cushner, Charter Oak FSC, & Stephen Kanter, SC of Boston
 2 3 3 3 1/2 2 4/3
 4. (4) Nancy Doherty, SC of Hartford, & Richard Stengle, Wissahickon SC
 4 4 4 3 1/2 4 5/4

Eliminated after initial round

5. Susan Kelley, Individual Member, & Andrew Stroukoff, City of Boston
 6. Jennifer & David Young, SC of Hartford
 7. Candy Anderson & Edward Dunlop, SC of Wilmington
 8. Gina Russo & Thomas Broadfoot, III, South Mountain FSC
 9. Nancy & John Kaiser, Penguin FSC

VETERANS DANCE

JUDGES: Wilhelm Appelttofft, So. Hamilton, Mass.; B—Margaret Ridgely, Baltimore, Md.; C—Mrs. Ralph France, Baltimore, Md.; D—Mrs. Doris Heinold, Wellesley, Mass.; E—Delaplaine McDaniel, Narberth, Pa. REFEREE: Brooks Stewart, Southampton, Pa. COMPULSORY DANCES: Initial round—Fourteenstep, American Waltz. Final round—Rocker Foxtrot, Blues.

- | | | | | | | |
|---|---|-------|---|---|-------|------------|
| | A | B | C | D | E | M |
| 1. (1) Ann O'Donnell & Raymond Hawes, Southern New Hampshire SC | 1 | 1 | 1 | 1 | 1 | 5/1 |
| 2. (2) Mrs. Emory Mersereau & Charles Lalley, SC of Wilmington | 2 | 2 | 2 | 3 | 2 1/2 | 3/2 |
| 3. (4) Mrs. Ralph Lee, III, SC of Wilmington, & Paul Pavliska, Town of Lakewood, Ohio | 4 | 3 1/2 | 4 | 2 | 2 1/2 | 5/4 |
| | | | | | | TOM 16 |
| 4. (3) Elizabeth Stroukoff, SC of New York, & Ritter Shumway, Genesee FSC | 3 | 3 1/2 | 3 | 4 | 4 | 5/4 |
| | | | | | | TOM 17 1/2 |

Eliminated after initial round

5. Grace Henrick & Richard Ross, Penguin FSC

NOVICE MEN

JUDGES: A—Wilhelm Appelttofft, So. Hamilton, Mass.; B—Mrs. Doris Heinold, Wellesley, Mass.; C—Mrs. John Horsman, Buck Hill Falls, Pa.; D—Mrs. Franz Knoke, Baltimore, Md.; E—Mrs. Betsy Talbot, Westwood, Mass. REFEREE: Bower Keebler, Philadelphia, Pa. COMPULSORY FIGURES: Group I—27a, 19b, 29a, 30b.

- | | | | | | | |
|--|---|---|---|---|---|-----|
| | A | B | C | D | E | M |
| 1. (1) Tim Zink, Charleston FSC | 1 | 1 | 1 | 1 | 1 | 5/1 |
| 2. (4) Charles Carapazza, Metropolitan FSC | 3 | 2 | 2 | 4 | 2 | 3/2 |
| 3. (5) Kingsford Swan, Commonwealth FSC | 2 | 4 | 3 | 3 | 4 | 3/3 |
| 4. (3) Michael Botticelli, SC of Boston | 4 | 5 | 4 | 2 | 3 | 4/4 |
| 5. (6) Bill Woehrl, Buffalo SC | 5 | 3 | 6 | 5 | 5 | 4/5 |
| 6. (2) Raymond Belmonte, Colonial SC | 6 | 8 | 7 | 6 | 6 | 3/6 |
| 7. (8) Richard Dodson, SC of Wilmington | 7 | 7 | 5 | 7 | 7 | 5/7 |
| 8. (7) David Hold, Falmouth FSC | 8 | 9 | 8 | 8 | 8 | 4/8 |
| 9. (9) Robert Metcalf, SC of New York | 9 | 6 | 9 | 9 | 9 | 5/9 |

NOVICE LADIES

JUDGES: A—Mrs. William Brennan, Jr., New York, N.Y.; B—Mrs. Ralph France, Baltimore, Md.; C—Patricia French, Williamsville, N.Y.; D—Mrs. Doris Heinold, Wellesley, Mass.; E—Mrs. Franz Knoke,

Baltimore, Md. REFEREE: Bower Keebler, Philadelphia, Pa. COMPULSORY FIGURES: Group I—27a, 19b, 29a, 30b.

| | A | B | C | D | E | M |
|--|---|---|---|---|---|-----|
| 1. (5) Robin Wagner, SC of New York | 1 | 1 | 3 | 3 | 1 | 3/1 |
| 2. (1) Tracey Cahill, IC of Baltimore | 2 | 3 | 2 | 2 | 2 | 4/2 |
| 3. (2) Amanda Kohlhas, Philadelphia SC & HS | 3 | 2 | 1 | 4 | 4 | 3/3 |
| 4. (4) Lori Dunn, Essex SC of N.J. | 4 | 4 | 4 | 5 | 3 | 4/4 |
| 5. (3) Catherine Foulkes, Hayden Recreation Centre FSC | 5 | 7 | 6 | 1 | 5 | 3/5 |
| 6. (9) Ingrid Blomstrom, Town of Bellmore, N.Y. | 6 | 6 | 5 | 7 | 6 | 4/6 |
| 7. (7) Debbie Fernandes, Falmouth FSC | 7 | 9 | 7 | 6 | 9 | 3/7 |
| 8. (6) Kris Ginkinger, Old York Road SC | 8 | 5 | 8 | 9 | 7 | 4/8 |
| 9. (8) Marisa Messina, Commonwealth FSC | 9 | 8 | 9 | 8 | 8 | 3/8 |

NOVICE PAIRS

JUDGES: A—Mrs. Dorothy Dodson, Alexandria, Va.; B—Mrs. John Horsman, Buck Hill Falls, Pa.; C—Mrs. Franz Knoke, Baltimore, Md.; D—Delaplaine McDaniel, Narberth, Pa.; E—Benjamin Wright, Belmont, Mass. REFEREE: Spencer Cram, Hendersonville, N.C.

| | A | B | C | D | E | M |
|---|---|---|---|-------|---|--------------|
| 1. Ginger Gray & David Peters, Silver Blades SC of Cohasset | 1 | 1 | 4 | 1 | 1 | 4/1 |
| 2. Mary Jo Tracy, Charter Oak FSC, & Leland Meadows, Jr., Bridgeport SC | 3 | 6 | 2 | 2 | 6 | 3/3 TO 19 |
| 3. Emily Wendell & Mahlon Bradley, SC of Boston | 2 | 7 | 3 | 7 | 2 | 3/3 TO 21 |
| 4. Darlene Duroire, Amherst SC, & Michael Dee, Town of Amherst, N.Y. | 7 | 3 | 1 | 5 1/2 | 4 | 3/4 TO 8 |
| 5. Elizabeth Montesano & Bill Woehrle, Buffalo SC | 4 | 2 | 7 | 5 1/2 | 3 | 3/4 TO 9 |
| 6. Julia Hoover, Hershey FSC, & Mitchell Moyer, City of Wilmington | 5 | 4 | 5 | 4 | 5 | 5/5 |
| 7. Martha & Orestes Jowyk, Town of Bellmore | 6 | 5 | 6 | 3 | 7 | 4/6 |
| 8. Michelle Webber & Peter Freeman, SC of Boston | 8 | 8 | 8 | 8 | 8 | 5/8 |

BRONZE DANCE

JUDGES: A—Mrs. Ralph France, Baltimore, Md.; B—Patricia French, Williamsville, N.Y.; C—Mrs. Franz Knoke, Baltimore, Md.; D—Jerome Ross, New York, N.Y.; E—Mrs. Reed Morgan, Jr., Philadelphia, Pa. REFEREE: Brooks Stewart, Southampton, Pa. COMPULSORY DANCES: Initial round—Fiesta Tango, Willow Waltz. Final round—Ten-Fox, Willow Waltz.

| | A | B | C | D | E | M |
|---|-------|---|---|---|---|-----|
| 1. (1) Carolyn Fortuna & Robert Mock, Pittsburgh FSC | 3 | 1 | 1 | 1 | 1 | 4/1 |
| 2. (2) Deborah & Edward Henry, SC of Lake Placid | 1 1/2 | 2 | 2 | 2 | 2 | 5/2 |
| 3. (3) Emily & Lawrence Zukerberg, South Mountain FSC | 4 | 3 | 3 | 4 | 3 | 3/3 |

| | | | | | | |
|--|-------|---|---|---|---|-----|
| 4. (4) Laura Beardsley, Town of South Windsor, Conn., & Kenneth Simler, SC of Hartford | 1 1/2 | 4 | 4 | 3 | 4 | 5/4 |
| Eliminated after initial round | | | | | | |
| 5. Ann Harding & Carl Petchler, New Haven SC | | | | | | |
| 6. Tamie Kidd & Fred Maynard, Charter Oak FSC | | | | | | |
| 7. Michele Szimkunas, SC of Wilmington, & Thomas Kaine, Cornell FSC of Ithaca | | | | | | |
| 8. Carol Lifland & Theodore Stroukoff, Princeton SC | | | | | | |
| 9. Judy Ferris & Kirk Wyse, City of Buffalo, N.Y. | | | | | | |

INTERMEDIATE MEN

JUDGES: A—Mrs. George Ferguson, Lincoln, R.I.; B—Mrs. Ralph France, Baltimore, Md.; C—Coco Gram, New York, N.Y.; D—Delaplaine McDaniel, Narberth, Pa.; E—Jerome Ross, New York, N.Y. REFEREE: Spencer Cram, Hendersonville, N.C. COMPULSORY FIGURES: Group I—6a, 15, 28b.

| | A | B | C | D | E | M |
|---|----|----|----|----|----|---------------|
| 1. (2) Mark Simpson, Charleston FSC | 2 | 8 | 1 | 1 | 1 | 3/1 |
| 2. (1) Mark Meier, North Shore FSC | 1 | 1 | 3 | 2 | 5 | 3/2 |
| 3. (7) Peter Freeman, SC of Boston | 3 | 6 | 4 | 6 | 2 | 3/4 TOM 9 |
| 4. (5) Duane Austin, Rye FSC | 7 | 4 | 2 | 4 | 6 | 3/4 TOM 10 |
| 5. (8) Mitchell Moyer, City of Wilmington | 5 | 2 | 5 | 5 | 8 | 4/5 |
| 6. (4) Michael Giordano, Bridgeport SC | 6 | 7 | 6 | 3 | 3 | 4/6 |
| 7. (6) John Dodson, SC of Wilmington | 4 | 5 | 8 | 8 | 7 | 3/7 TOM 16 |
| 8. (3) Charles Lawson, Hayden Recreation Centre FSC | 8 | 3 | 7 | 7 | 9 | 3/7 TOM 17 |
| 9. (9) Orestes Jowyk, Town of Bellmore | 9 | 9 | 9 | 9 | 4 | 5/9 |
| 10. (10) Archie Burton, III, Clinton FSC | 10 | 10 | 10 | 10 | 10 | 5/10 |

INTERMEDIATE LADIES

JUDGES: A—Mrs. Dorothy Dodson, Alexandria, Va.; B—Mrs. Oscar Iobst, Jr., Churchville, Pa.; C—Coco Gram, New York, N.Y.; D—Mrs. Franz Knoke, Baltimore, Md.; E—Jerome Ross, New York, N.Y. REFEREE: Bower Keebler, Philadelphia, Pa. COMPULSORY FIGURES: Group III—6a, 14, 28b.

| | A | B | C | D | E | M |
|--|---|---|---|---|---|---------------|
| 1. (2) Sheryl Franks, Hayden Recreation Centre FSC | 1 | 1 | 1 | 2 | 2 | 3/1 |
| 2. (1) Deborah Wilker, Metropolitan FSC | 2 | 5 | 2 | 1 | 1 | 4/2 |
| 3. (4) Martha Jowyk, Town of Bellmore | 7 | 2 | 3 | 3 | 3 | 4/3 |
| 4. (5) Ellen Roy, SC of Boston | 4 | 6 | 4 | 4 | 5 | 3/4 |
| 5. (8) Tricia Fleming, Wissahickon FSC | 3 | 3 | 5 | 7 | 7 | 3/5 |
| 6. (7) Robyn Rock, SC of Wilmington | 5 | 8 | 6 | 6 | 6 | 4/6 |
| 7. (6) Emily Wendell, SC of Boston | 8 | 4 | 7 | 8 | 4 | 3/7 TOM 15 |
| 8. (3) Pam Szimkunas, SC of Wilmington | 6 | 7 | 8 | 5 | 8 | 3/7 TOM 18 |

GOODWIN TROPHY

1. SC of New York 72
2. SC of Boston 62 1/2
3. South Mountain FSC 33



memories
of a pond
skater

by Constance Cross

There was never any question. The best thing about the long New England winter was skating. Sometimes the freeze would come early and we would have weeks of good ice before the snows covered the ponds. Other years we would work hard for our ice—or the boys would, at least, shoveling more than skating, and then when a rink had finally been cleared, declaring it off limits to all but hockey players.

I suppose I should remember when I tried to skate for the first time, but since skating was something everyone in our little Massachusetts town knew how to do, I guess I thought I knew how, long before I ever got up on skates. When that first day came, it must have seemed at least somewhat natural. Skating was just something you did when the ponds froze thick enough—and we all knew when that day came. The word would go out: “We can skate today!” and that afternoon after school every kid in town would be on the ice.

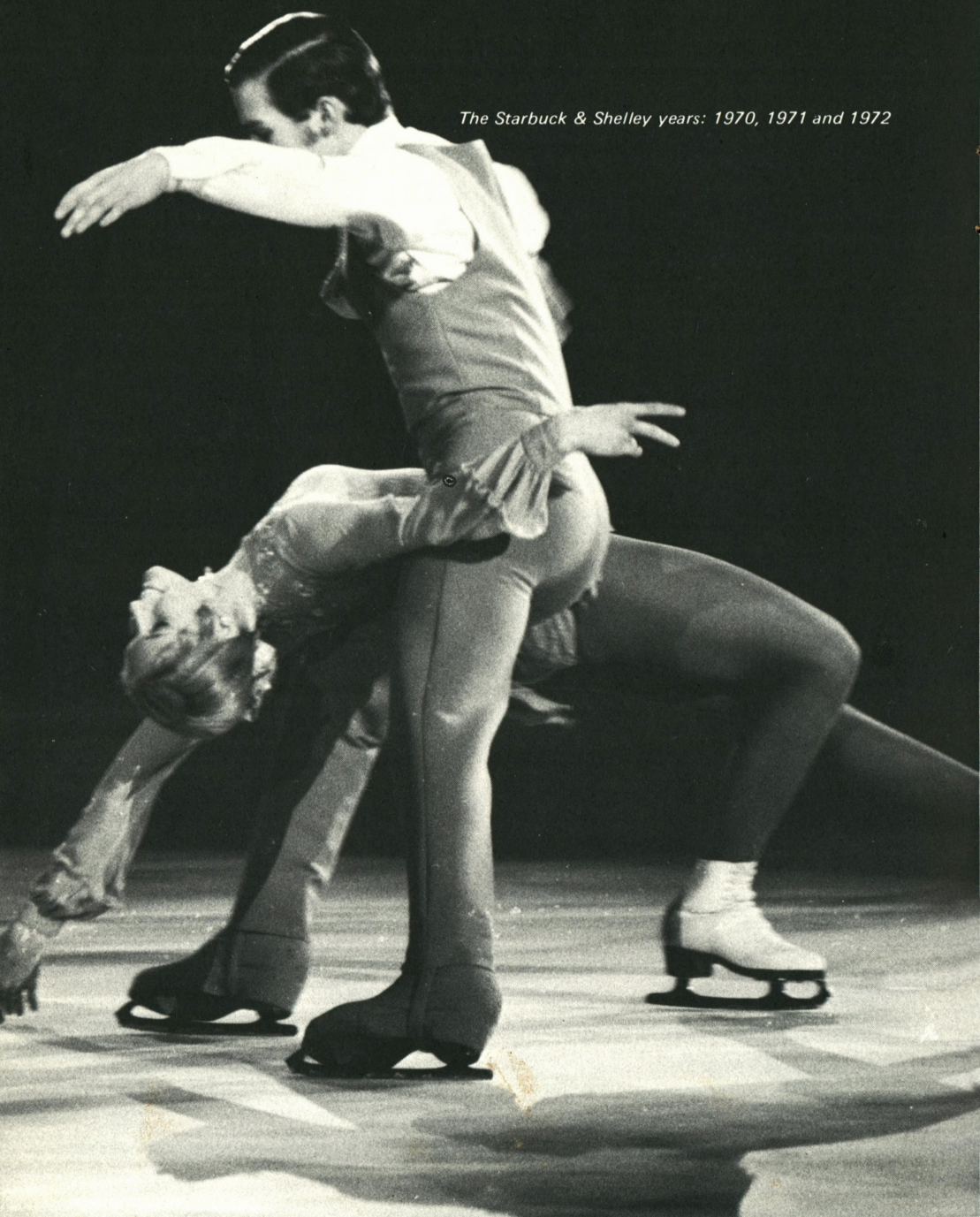
I do remember when I learned to go backwards. My friend Mary could go backwards, and I thought her an awfully good skater. One December day we walked into the woods behind her house to search for the tiny frog pond that we knew must be frozen. Sure enough, the pond, protected from the wind in this sheltered clearing, was black and glassy smooth. Clumps of dry leaves and an occasional twig had frozen to its surface, but to us the pond was perfect, and we had it all to ourselves. Mary was my best friend. She sat in front of me in school and sometimes I whispered answers to her, but today it was her turn to be the “teacher”. She told me that going backwards was like doing the hula, and she showed me how to wiggle my hips and swivel my feet so that I too would be able to do that one thing that would make me a good skater. It was a triumphant day.

Another winter, after we’d had a lot of snow and an early thaw, the brook below our house flooded its banks. And then, what seemed almost a miracle happened: a cold snap set in, and the brook, now a small pond, froze. A new place to skate, and one which might melt tomorrow and never in a million years be there again! We children were ecstatic and rushed to be the first on our new pond. Unfortunately, perhaps, what I most remember about that magic day was my friend Chrissy’s kid brother, Dana. Dana was a pest to begin with and had weak ankles besides. His skating style was both our delight and his proud father’s despair, for he skated on totally collapsed ankles using the side of his boot as a second runner. Yet he was determined to keep up with the other kids, so he would stroke madly, arms flailing, body bent nearly in half. Looking back, I have come to have a certain respect for Dana’s fortitude and skill. But at that time, a lofty ten-years-old and a proficient pond skater, I was utterly disdainful and, at the same time, absolutely delighted to see him make such a fool of himself. Happily, my father captured Dana’s efforts on movie film, and we giggled many a cold winter evening away watching poor Dana stagger precipitously across the ice—in slow motion, speeded up, backwards, and forwards.

Later on in junior high school, the most exciting thing to do was to go skating at night. The town had appropriated money for lights and warming shacks for Carpenter’s Pond and the town reservoir, which was known simply as the Rez. Carpenter’s played records, but the Rez was closer—not too far from Mary’s house, though we had to walk through a dark lover’s lane to get there which worried our mothers, but which we found deliciously scary. Because the Rez was such a popular spot, the ice was usually rutted and bumpy. However, we weren’t going just to skate. All our friends would be

Please turn to page 59

The Starbuck & Shelley years: 1970, 1971 and 1972



nationals '72

by Josephine Lawless

1972 United States Figure Skating Championships

Los Angeles FSC, Long Beach Arena, Calif.

January 13-16

For most of the young competitors anxiously awaiting their turn in the 1972 National Championships, the year, 1963, was scarcely on their minds, an unthinkable long time past, a hazy memory, if any, of child-like dreams of figure skating success. But for many inhabitants of the Los Angeles area, for even more judges, parents, friends, the 1972 Championships were reminiscent of that other Nationals nine years ago, if only by the identical physical surroundings, since both were held at the Los Angeles Figure Skating Club. Admittedly, this winter of '72 shared few other common factors with the competition of the past. Unlike those dreary, rainy days in January of '63, this past January temperaments were cheered by the basking warmth of 70° temperatures, and the sensation of heat was heightened by the energy of 25,000 spectators, an all-time record for a Southern Californian Nationals. Memories faded for all in light of the memorable present-day events that were taking place.



Standing alone as the number one free skater—Janet Lynn

The competition officially opened Thursday morning, January 13, with Senior Ladies figures. Julie Holmes, in a layered gold over black skating dress, took the lead, with Janet Lynn a close second.

The following evening continued the rivalry between Janet and Julie. Janet drew first in skating order, but did not let this disadvantage deter her from skating a faultless program. She combined intricate footwork with electrifying spins and jumps which included the best-executed inside Axel of the evening and a double Axel followed by a jump camel. All seven first places were the prize for her accomplishments. Julie Holmes skated a cautious program which lacked the difficulty of Janet's. After the first minute, however, she became more at ease and completed a nice double Axel. Dorothy Hamill was granted second place in free style for an exceptionally difficult program, but her fourth place finish in figures prevented her from moving up in the final standings. Suna Murray, in lime green, skated a mature program, after her strong third place in figures, assuring her a place in Worlds and Olympics.

A new record was set by Judy Schwomeyer and Jim Sladky, when they easily won Championship Dance for the fifth year in a row. No other couple has taken the title that many times consecutively. Two, small slips by Jim in the free were the only obvious flaw to an otherwise excellent performance.

The Original Set-Pattern Dance was the Samba, which provided the audience with a look at some beautiful costumes and busy footwork. Most of the Dance teams preferred modern music for their free dance. Ann and Skip Millier had a superior free with modern dance overtones. Mary Karen Campbell and Johnny Johns qualified for the World Team a second year with consistently meritorious skating and unison.

The Silver Dance eliminations showed a strong class of skaters, with no clear winners. It wasn't until the final round that Michelle Ford and Glenn Parriott won a majority of firsts, followed closely

by Shareen and Curt Finley. Third place went to Andrea Peterson and Guy Sexton.

The most innovative division of the competition proved to be Senior Pairs with the introduction of several, new lifts. This division leans more toward classical ballet each year. JoJo Starbuck and Kenneth Shelley drew first skating position, but like Janet Lynn, did not let it affect their performance. Dressed in jet black, they skated at a fast pace that never let up during their entire five-minute program. Their new bill of fare included a stag overhead lift and a double cartwheel with a throw landing. They received a standing ovation and firsts from all seven judges. Melissa and Mark Militano introduced the most original content: a throw double Axel, double Axels side by side, a back overhead in an attitude position, and a Russian split lift into a double twist. Their pair, skated to "Scheherazade", was more lyrical than that of Starbuck and Shelley, but lacked the unison and speed of the champions. Barbara Brown and Doug Berndt could lay claim to the smoothest routine of the evening, winning applause for individual spread eagles which met at the center of the rink. They also performed a difficult step-over lift to capture third place.

Michelle McCladdie and Richard Ewell, III, were the unanimous first choice of the judges in an exceptionally praiseworthy Junior Pairs division. They athletically skated a program that incorporated a double Axel by Richard. Suki Hoagland and Mike Sahlin were second, succeeded by Georgia Truffini and Bill McPike.

Terry Kubicka, the 1971 National Novice Men's Champion, gave an outstanding free skating presentation to win an unanimous first place and an undisputed 1972 Junior Men's title. The spectators gave his program, which ended with a double Axel and blur spin, a standing ovation. Scott Cramer, who was fourth in figures, emerged as second, and John Carlow, Jr., the figure winner, ended in the third spot.

After figures in the Junior Ladies competition, Wendy Burge held a slim lead



Intense concentration and a first in figures, John Misha Petkevich



Classical ballet on ice: The Militanos

over Laurie Brandel, the 1970 Novice Champion. Wendy skated an athletic free style to selections from Puccini and Glazanouv. She garnered four of five first places for the Junior Ladies title. Although Laurie skated a delightful program, she fell once and remained in second place. Barbara Salomon came from fourth in figures to finish in third place.

David Kirby and Perry Jewell, both from Southern California, continued their Sectional and Regional duel for first place in the National Novice Men's competition. David took a substantial lead in figures. In free style Perry presented a polished program with the best spins in the group. David's difficult program was marred by two falls, but his lead in figures enabled him to win the Novice crown. Charles Carapazza moved up from fourth in figures after a strong free, to take third place overall.

Free skating proved decisive in the final outcome of Novice Ladies. At the end of figure competition, Robin Joy Wagner, Roberta Loughland, and Kim McIsaac were locked in a virtual three-way tie; Robin was ahead by only two ordinals. But in free skating Kim McIsaac, wearing a sunny yellow dress, proved to be champion material by continually injecting her composition with difficult footwork and high jumps performed at tremendous speed. Kim is a speed skating champion, clearly noticeable in her free style. Roberta Loughland retained her second place with a graceful program, and Robin Joy Wagner dropped to third.

Senior Men's figures drew a large audience, which applauded as each of the leaders, John Petkevich and Kenneth Shelley, completed a figure. When the results were tallied, John Petkevich held a slim lead, with Ken Shelley, second, and Gordon McKellen, Jr., third.

Senior Men's free style was the last event of the competition on Sunday afternoon. Gordon McKellen, Jr., skated a well-planned program with excellent content. John Petkevich returned to his best known music, "Spanish Gypsy Dance", wearing a handsome, cocoa brown Spanish suit with a ruffled, rose shirt. He did

not, however, skate his best, falling on a triple Salchow and two footing a triple loop. Ken Shelley was in top form, opening his program with a spin sequence that included a flying camel and two jump over sit-spins. He also executed three double Axels, and a soaring flying sit-spin. All of his jumps were extremely high, and his Russian split jumps brought the house down. When the marks were held up, despite the 5.9's awarded to John, Kenneth Shelley was declared the new Senior Men's Champion.

Ken's selection as representative of the United States in both Pairs and Men's singles at the Olympic Games in Sapporo, Japan, and the World Championships in Calgary, Canada, also set a new record. He is the first skater in modern history to qualify for two Olympic Team positions. He is the first skater to win both Senior Men and Senior Pairs competitions since Eugene Turner's victories in 1941.

The well-trained champion San Diego Figure Skating Club Drill Team performed during the opening ceremonies which preceded each day's skating. This group mastered three different routines.

Six out of the ten National events were won by Southern California skaters. The Arctic Blades Figure Skating Club, recipient of the Harned Trophy for accumulating the most club points, won four of the events. This is the third consecutive year that Arctic Blades has won the Harned Trophy, which set another record in a competition studded with many such unprecedented circumstances.

results

MEN'S CHAMPIONSHIP

JUDGES: A—Mrs. William Brennan, Jr., New York, N.Y.; B—Mrs. Margaret Free-partner, San Diego, Calif.; C—Dr. Franklin Nelson, Tulsa, Okla.; D—John Rogers, San Francisco, Calif.; E—Jerome Ross, New York, N.Y.; F—Arnold Schroeder, St. Clair Shores, Mich.; G—Mrs. Mary Louise Wright, Belmont, Mass. REFEREE: Robert McLeod, Norwalk, Calif. COMPULSORY FIGURES: Group II—22a, 34b, 21a, 32b, 37a, 39b.

| | A | B | C | D | E | F | G | M |
|--|---|---|---|---|---|---|---|-----|
| 1. (2) Kenneth Shelley, Arctic Blades FSC | 1 | 1 | 1 | 1 | 2 | 3 | 2 | 4/1 |
| 2. (1) John Petkevich, Great Falls FSC | 2 | 2 | 3 | 3 | 1 | 2 | 1 | 5/2 |
| 3. (3) Gordon McKellen, Jr., SC of Lake Placid | 3 | 4 | 2 | 2 | 3 | 4 | 3 | 5/3 |

- 4. (4) John Baldwin, San Diego FSC
4 5 4 5 4 1 5 4/4
- 5. (5) Robert Bradshaw, Los Angeles FSC
5 3 5 4 5 7 4 6/5
- 6. (6) James Demogines, City of Colorado Springs, Colo.
9 7 11 6 10 5 6 4/7
- 7. (12) Richard Ewell, III, City of Santa Monica, Calif.
6 8 6 8 6 8 8 7/8
- 8. (8) David Santee, Chicago FSC
11 6 9 7 8 9 9 6/9
- 9. (10) Stephen Savino, North Jersey FSC
10 9 7 12 11 6 7 4/9
- 10. (9) Dean Hiltzik, SC of New York
8 10 10 9 7 11 10 6/10
- 11. (7) Perry Hutchings, Tulsa FSC
7 11 8 11 12 12 11 5/11
- 12. (11) Mahlon Bradley, SC of Boston
12 12 12 10 9 10 12 7/12

LADIES CHAMPIONSHIP

JUDGES: A—Mrs. Charles DeMore, Cleveland, Ohio; B—Norman Fuller, Chino, Calif.; C—Mrs. John Gruber, Wyomissing, Pa.; D—Mrs. Rex Rial, Rochester, N.Y.; E—Mrs. John Shoemaker, San Francisco, Calif.; F—Mrs. Jane Sullivan, Aspen, Colo.; G—Mrs. Roger Willis, Lafayette, Calif.

REFEREE: Benjamin Wright, Belmont, Mass. COMPULSORY FIGURES: Group I—23b, 35a, 20b, 36a, 31b, 41a.

- | | | | | | | | | |
|--|---|---|---|---|---|---|---|---|
| | A | B | C | D | E | F | G | M |
|--|---|---|---|---|---|---|---|---|
- 1. (2) Janet Lynn, Wagon Wheel FSC
1 1 1 1 1 1 1 7/1
 - 2. (1) Julie Holmes, Tulsa FSC
2 3 2 2 2 2 2 6/2
 - 3. (3) Suna Murray, SC of New York
3 2 3 3 5 3 4 5/3
 - 4. (4) Dorothy Hamill, SC of New York
4 5 4 4 3 4 3 6/4
 - 5. (5) Jennie Walsh, Los Angeles FSC
5 4 6 5 4 5 5 6/5
 - 6. (10) Juli McKinstry, City of Colorado Springs
7 7 7 13 7 7 8 5/7
 - 7. (8) Patricia Shelley, Arctic Blades FSC
6 6 5 7 10 10 9 4/7
 - 8. (7) Melissa Militano, SC of New York
8 9 8 8 6 8 6 6/8
 - 9. (6) Diane Goldstein, Denver FSC
11 10 9 6 8 11 11 4/10
TOM 33
 - 10. (12) Kathy Malmberg, Wagon Wheel FSC
9 13 11 12 9 6 10 4/10
TO 70
 - 11. (13) Julia Johnson, Arctic Blades FSC
10 8 12 9 12 13 7 4/10
TO 71
 - 12. (9) Mary Marley, SC of Boston
12 11 13 11 11 9 13 4/11
 - 13. (11) Denise Cahill, IC of Baltimore
13 12 10 10 13 12 12 5/12

PAIR CHAMPIONSHIP

JUDGES: A—Mrs. William Brennan, Jr., New York, N.Y.; B—Norman Fuller, Chino, Calif.; C—Mrs. John Gruber, Wyomissing, Pa.; D—Dr. Franklin Nelson, Tulsa, Okla.; E—John Rogers, San Francisco, Calif.; F—Mrs. Jane Sullivan, Aspen, Colo.; G—Mrs. Mary Louise Wright, Belmont, Mass. REFEREE: Dr. Hugh Graham, Jr., Tulsa, Okla. SHORT PROGRAM: Group A.

- | | | | | | | | | |
|--|---|---|---|---|---|---|---|---|
| | A | B | C | D | E | F | G | M |
|--|---|---|---|---|---|---|---|---|
- 1. (1) Jo Jo Starbuck & Kenneth Shelley, Arctic Blades FSC
1 1 1 1 1 1 1 7/1
 - 2. (2) Melissa & Mark Militano, SC of New York
2 2 2 2 2 2 2 7/2
 - 3. (3) Barbara Brown & Douglas Berndt, Denver FSC
3 3 3 3 3 3 3 7/3

- 4. (6) Cozette Cady & Jack Courtney, Troy SC
4 4 4 4 6 4 5 5/4
- 5. (5) Gale & Joel Fuhrman, Rye FSC
5 6 5 5 5 5 4 6/5
- 6. (7) Cathy Mishkin, City of Wilmington, & Donald Bonacci, Rye FSC
10 5 6 6 8 9 7 4/7
- 7. (4) Cynthia Van Valkenberg & Jim Hulick, Arctic Blades FSC
6 8 9 8 4 10 8 5/8
- 8. (11) Debbie Hughes & Philipp Grout, Jr., Denver FSC
11 9 8 7 7 7 9 4/8
- 9. (8) Laura Johnson, SC of Lake Placid, & Johnny Johns, Detroit SC
9 7 7 11 9 8 11 5/9
- 10. (10) Kathy Normile & Gregory Taylor, Buffalo SC
7 10 10 9 10 11 10 6/10
- 11. (9) Julianne & Kent Johnson, Los Angeles FSC
8 11 11 10 11 6 6 4/10

DANCE CHAMPIONSHIPS

JUDGES: A—Mrs. Charles DeMore, Cleveland, Ohio; B—Eugene Maeder, Los Angeles, Calif.; C—Mrs. Rex Rial, Rochester, N.Y.; D—Mrs. Frederic Rittinger, Cleveland, Ohio; E—Jerome Ross, New York, N.Y.; F—Arnold Schroeder, St. Clair Shores, Mich.; G—Mrs. Roger Willis, Lafayette, Calif. REFEREE: Mrs. John Shoemaker, San Francisco, Calif. COMPULSORY DANCES: Viennese Waltz, Kilian, Quickstep, Original Set-Pattern.

- | | | | | | | | | |
|--|---|---|---|---|---|---|---|---|
| | A | B | C | D | E | F | G | M |
|--|---|---|---|---|---|---|---|---|
- 1. (1) Judy Schwomeyer, WC of Indianapolis, & James Sladky, Genesee FSC
1 1 1 1 1 1 1 7/1
 - 2. (2) Ann & Skip Millier, Philadelphia SC & HS
2 2 2 4 2 4 2 5/2
 - 3. (3) Mary Karen Campbell, Lansing SC, & Johnny Johns, Detroit SC
3 3 4 2 3 2 4 5/3
 - 4. (4) Debbie Ganson & Bradley Hislop, Seattle SC
5 4 3 5 4 6 3 4/4
 - 5. (5) Jane Pankey & Richard Horne, SC of Wilmington
4 5 5 3 5 3 5 7/5
 - 6. (6) Kathleen West & Rollie Arthur, Broadmoor SC
6 6 6 6 6 5 8 6/6
 - 7. (7) Colleen O'Connor & Jim Millns, Wagon Wheel FSC
7 7 8 7 8 7 8 5/7
 - 8. (11) Cathleen Casey & Francis Cassella, SC of Hartford
8 9 7 9 10 7 6 4/8
 - 9. (8) Susan Ogletree, Detroit SC, & Gerard Lane, SC of Boston
9 10 9 8 9 9 9 6/9
 - 10. (10) Christine Linney, SC of New York, & Bruce Bowland, Essex SC of N.J.
10 8 10 10 8 10 10 7/10
 - 11. (12) Linda & Barry Stroth, Los Angeles FSC
12 11 12 11 11 12 11 4/11
 - 12. (13) Ginger Snyder & Robert Castle, St. Moritz ISC
11 12 11 12 12 11 12 7/12
 - 13. (9) Barbara & Michael Wayland, Los Angeles FSC

(Withdrew prior to completion of free dance)

JUNIOR MEN

JUDGES: A—Mrs. William Brennan, Jr., New York, N.Y.; B—Dr. Franklin Nelson, Tulsa, Okla.; C—Sanford Lindstrom, Mercer Island, Wash.; D—John Rogers, San Francisco, Calif.; E—Arnold Schroeder, St. Clair Shores, Mich. REFEREE: Dr. Hugh

Judy Schwomeyer & Jim Sladky, five-time National Dance Champions



Graham, Jr., Tulsa, Okla. COMPULSORY FIGURES: Group II—22a, 30b, 35a, 21b, 32a.

| | A | B | C | D | E | M |
|--|---|---|---|---|---|---------------|
| 1. (2) Terry Kubicka, Arctic Blades FSC | 1 | 1 | 1 | 1 | 2 | 4/1 |
| 2. (4) Scott Cramer, Wissahickon SC | 2 | 3 | 2 | 2 | 3 | 3/2 |
| 3. (1) John Carlow, Jr., Arctic Blades FSC | 3 | 2 | 4 | 3 | 1 | 4/3 |
| 4. (3) Bill Schneider, Los Angeles FSC | 4 | 4 | 3 | 4 | 5 | 4/4 |
| 5. (8) Terry Tunks, Lansing SC | 9 | 5 | 5 | 8 | 6 | 3/6 TOM 16 |
| 6. (7) Chris Kales, Wagon Wheel FSC | 5 | 6 | 9 | 6 | 8 | 3/6 TOM 17 |
| 7. (5) Robert Graham, City of Culver City, Calif | 7 | 7 | 7 | 5 | 4 | 5/7 |

| | | | | | | |
|--------------------------------------|----|----|----|----|----|------|
| 8. (11) Scott Henderson, Hershey FSC | 6 | 8 | 10 | 11 | 7 | 3/8 |
| 9. (6) Neil Rubin, Metropolitan FSC | 8 | 9 | 6 | 10 | 11 | 3/9 |
| 10. (10) Nathan Alden, Overlake SC | 10 | 11 | 8 | 7 | 10 | 4/10 |
| 11. (9) Tom Hilfman, Chicago FSC | 11 | 10 | 11 | 9 | 9 | 3/10 |

JUNIOR LADIES

JUDGES: A—Mrs. Margaret Freepartner, San Diego, Calif.; B—Mrs. John Gruber, Wyomissing, Pa.; C—Sanford Lindstrom, Mercer Island, Wash.; D—Dr. Franklin Nelson, Tulsa, Okla.; E—Mrs. Mary Louise Wright, Belmont, Mass. REFEREE: Dr. Hugh Graham, Jr., Tulsa, Okla. COMPULSORY FIGURES: Group II—22a, 30b, 35a, 21b, 32a.

| | A | B | C | D | E | M |
|-------------------------------------|---|---|---|---|---|-----|
| 1. (1) Wendy Burge, Los Angeles FSC | 1 | 1 | 2 | 1 | 1 | 4/1 |

2. (2) Laurie Brandel, Arctic Blades FSC
 2 2 1 2 2 5/2
3. (4) Barbara Salomon, SC of New York
 10 3 4 3 4 4/4
4. (7) Donna Arquilla, St. Moritz ISC
 3 4 7 6 3 3/4
5. (3) Candyce Wenborg, FSC of
 Minneapolis
 5 5 5 4 5 5/5
6. (5) Jannat Thompson, City of Denver,
 Colo.
 7 6 8 5 6 3/6
7. (10) Elizabeth Freeman, SC of Lake
 Placid
 4 9 9 7 7 3/7
8. (6) Ruth Cohen, Long Island FSC
 8 8 3 10 10 3/8
 TOM 19
9. (8) Betsy Hobson, Braemar-City of
 Lakes FSC
 9 7 6 9 8 3/8
 TOM 21
10. (9) Diane Dennison, Denver FSC
 6 10 10 8 9 3/9

JUNIOR PAIRS

JUDGES: A—Mrs. Charles DeMore, Cleve-
 land, Ohio; B—Mrs. John Gruber,
 Wyoming, Pa.; C—Sanford Lindstrom,
 Mercer Island, Wash.; D—Mrs. Jane Sullivan,
 Aspen, Colo.; E—Mrs. Roger Willis, Lafay-
 ette, Calif. REFEREE: Dr. Hugh Graham,
 Jr., Tulsa, Okla.

- A B C D E M
1. Michelle McCladdie & Richard Ewell,
 III, City of Santa Monica
 1 1 1 1 1 5/1
2. Suki Hoagland & Mike Sahlin, Denver
 FSC
 2 2 3 3 3 5/3
3. Georgia Truffini & Bill McPike, St.
 Moritz ISC
 6 5 2 4 2 3/4
 TOM 8
4. Jodie Martin & Robert Berry, South
 Bay FSC
 5 4 4 2 5 3/4
 TO 20
5. Kristin Gilbert, City of Boston, Mass., &
 David DeCaprio, SC of Boston
 3 3 7 5 4 3/4
 TO 22
6. Becky & Jeff Hale, Tulsa FSC
 8 6 6 6 9 3/6
7. Deborah Robbins & Jack Colern, Buffalo
 SC
 7 7 8 7 6 4/7
8. Patty Morton & Bill Fauver, Troy SC
 4 8 5 9 7 3/7
9. Sheryl Franks, Hayden Recreation Centre
 FSC, & Michael Botticelli, SC of Boston
 9 9 9 8 8 5/9

SILVER DANCE

JUDGES: A—Robert McLeod, Norwalk,
 Calif.; B—Mrs. Rex Rial, Rochester, N.Y.;
 C—Mrs. Frederic Rittinger, Cleveland,
 Ohio; D—Jerome Ross, New York, N.Y.;
 E—Arnold Schroeder, St. Clair Shores, Mich.
 REFEREE: Benjamin Wright, Belmont,
 Mass. COMPULSORY DANCES: Initial
 round—European Waltz, Rocker Foxtrot.
 Tango, Fourteenstep. Final round—
 American Waltz, Foxtrot, Tango, Fourteen-
 step.

- A B C D E M
1. (1) Michelle Ford & Glenn Parriott, SC
 of Phoenix
 3 1 2 1 1 3/1
2. (2) Shareen & Curt Finley, Glacier Falls
 FSC
 1 3 1 3 2 3/2
3. (4) Andrea Peterson & Guy Sexton,
 South Mountain FSC
 2 4 3 4 3 3/3

4. (3) Beatrice Sexton & James Thom,
 South Mountain FSC
 4 2 4 2 4 5/4
- Eliminated after initial round
5. Joy Cushner, Charter Oak FSC, &
 Stephen Kanter, SC of Boston
6. Laurie & Fred Martin, Detroit SC
7. Sara Hill & Roger Fortin, Glacier Falls
 FSC
8. Stacey Smith & Frank Recco, Plaza FSC
9. Mitzi Robinson, All Year FSC, &
 Richard Kolodziej, Los Angeles FSC
10. Marcia Fugina & Charles Larson,
 Greater Milwaukee FSC

NOVICE MEN

JUDGES: A—Norman Fuller, Chino, Calif.;
 B—Mrs. Rex Rial, Rochester, N.Y.; C—Mrs.
 Frederic Rittinger, Cleveland, Ohio; D—
 Mrs. Jane Sullivan, Aspen, Colo.; E—Mrs.
 Roger Willis, Lafayette, Calif. REFEREE:
 Benjamin Wright, Belmont, Mass. COM-
 PULSORY FIGURES: Group III—12, 19a,
 29b, 30a.

- A B C D E M
1. (1) David Kirby, Arctic Blades FSC
 2 1 1 2 1 3/1
2. (2) Perry Jewell, City of Paramount,
 Calif.
 1 2 2 1 2 5/2
3. (4) Charles Carapazza, Metropolitan
 FSC
 6 3 3 3 5 3/3
4. (3) Ronnie Green, Broadmoor SC
 3 5 4 4 4 4/4
5. (5) Ken Newfield, Los Angeles FSC
 4 4 5 7 3 3/4
6. (8) Tim Zink, Charleston FSC
 7 6 7 6 9 4/7
7. (10) Kingsford Swan, Commonwealth
 FSC
 5 7 6 9 8 3/7
8. (9) Tom Reagan, Denver FSC
 8 9 8 5 7 4/8
9. (6) Scott Sherman, Northbrook Skokie
 Valley FSC
 10 8 9 8 10 3/9
10. (7) Sven Kreveld, Chicago FSC
 9 10 10 10 6 5/10

NOVICE LADIES

JUDGES: Mrs. William Brennan, Jr., New
 York, N.Y.; B—Mrs. Charles DeMore, Cleve-
 land, Ohio; C—Mrs. Margaret Freepartner,
 San Diego, Calif.; D—John Rogers, San
 Francisco, Calif.; E—Jerome Ross, New
 York, N.Y. REFEREE: Robert McLeod,
 Norwalk, Calif. COMPULSORY FIGURES:
 Group IV—24a, 17, 18b, 29a.

- A B C D E M
1. (3) Kim McIsaac, South Bay FSC
 1 2 1 1 1 4/1
2. (2) Roberta Loughland, Arctic Blades
 FSC
 2 1 3 2 3 3/2
3. (1) Robin Wagner, SC of New York
 4 3 4 3 2 3/3
4. (4) Barbara Smith, Arctic Blades FSC
 3 4 2 5 5 3/4
5. (7) Gail Hamula, Broadmoor SC
 6 5 5 4 4 4/5
6. (6) Amanda Kohlhas, Philadelphia SC
 & HS
 5 7 6 8 6 3/6
7. (8) Leslie Glenn, Wagon Wheel FSC
 7 8 7 7 7 4/7
8. (5) Peggy Amelon, Detroit SC
 8 6 8 6 8 5/8
9. (9) Tracey Cahill, IC of Baltimore
 9 9 9 9 9 5/9

HARNED TROPHY

1. Arctic Blades FSC 93
 2. SC of New York 47
 3. Los Angeles FSC 21

by Elaine Tamres and Amelia Bruner
We would like to reply to the December feature article by Alan Zell regarding Publicity and Press Coverage at the local level. The following is a description of how publicity was handled for the North Atlantic Championships held at Commack, Long Island, on December 2-4, 1971.

press success

Our initial one-page release to sixty-five newspapers, radio and TV stations, and wire services featured "Olympic Year and Olympic Contenders". We capitalized on the fact that Dorothy Hamill and Melissa Militano were both to compete at this level.

To the New York news media who are alternately blasé and totally oblivious to figure skating, the mere mention of a few newsworthy skaters is not enough to create any kind of stir. So we tried a gimmick. Our invitations read: "Come to an old-fashioned press party at rinkside and bring your skates to skate with the competitor of your choice." After concentrated telephone follow-up to local sports editors, a number of reporters did attend, some with skates (hockey, at that). Teaming them up with our two Olympic contenders and other senior skaters for a turn around the rink provided a personal touch, after which the press photographers took pictures of the girls' spins and jumps. A buffet supper followed. Each sports editor and reporter received a USFSA pin and patch to make him feel a part of the skating fraternity.

A rapport with the reporters thus established, they proceeded to come to the

competitions each night, requesting explanations of the competitive activities. As a result, the major Long Island newspapers carried a feature story each night of the competition, including action pictures and interviews with the contestants.

In addition WINS (news radio station) gave spot coverage during competition days, and United Press International and Associated Press wire services asked for a telephoned report of 150 to 200 words each night. On the final night of the competition, NBC News sent a camera crew to film both Dorothy and Melissa for use by their News Program Service. NBC sells its program service to local stations throughout the country to fill out their news and sports programs. Perhaps you may have seen it on your local TV station.

Since the North Atlantic region encompasses all of New York State and Northern New Jersey, we engaged a newspaper clipping service to learn how much coverage was received outside the local area from reports gleaned from the wire services. Pleasantly surprised, we presented James Poyner, Competitions Chairman, with a scrapbook containing thirty newspaper clippings, six of which were feature stories. ○

Al Beard demonstrating the efficiency of the Honeywell Time-Saving computer to Sectional Accountant, Peg Colway



“hol” hits by Jean Winder
nationals

To see if figure skating could some day successfully join the computer age, a computer was used at the 1972 National Championships in California.

The answer—a very decided “Yes”. A simple, almost foolproof system produced 100 percent correct answers to the delight of all concerned. Computers were used in three competitions several years ago, but those systems were too expensive and too complicated.

The man responsible for this innovative program is Al Beard, a computer designer for the Minneapolis-Honeywell Company. His interest in skating came about as a result of the activities of his young daughter, a competitor for the Phoenix Figure Skating Club.

Under normal business procedures, computerizing a skating competition would be much too expensive. Through Al's business associates and his deep, personal interest, this problem was resolved. Minneapolis-Honeywell officials in Phoenix loaned the United States Figure Skating Association the computer. Time-sharing arrangements were donated by the Minneapolis office of Honeywell. Volunteer skating personnel operated the “simple to use” terminal.

Because he is not a programmer, Al himself returned to school to learn the Fortran language necessary to run the program. Working in his spare time for eighteen months, he tested and retested the program with only the Rulebook as his guide and with little personal knowledge of the USFSA accounting system.

Benefits from all of this hard work unfolded at Nationals as results poured from the computer with split-second timing. Actually the computer added a new dimension to the competition by providing standings after each compulsory figure. Needless to say, this heightened the interest in this admittedly drawn out phase of skating competitions.

The computer also made the final results available more quickly. Because USFSA rules do not permit the official

use of a computer (see CR 29.00), everything had to be labeled “unofficial” while the accounting room crew continued to work out the results by hand. (The International Skating Union already permits the use of a computer, with proper verification; hopefully, the USFSA will soon follow suit.)

However, since the computer results were always correct, the public treated them as final and official. In fact, officials of the Championships announced the results of the Ladies', Men's, and Pairs' Championships of the United States from the computer results in advance of the hand-calculated tabulations.

In addition to superb equipment and dedicated personnel, thorough preparations helped to pave the way for the computer operation to function smoothly. With the encouragement and assistance of Chuck Foster, USFSA Competitions Chairman, and Southern California officials, the computer was first tried at the 1972 Southwest Pacific Regional Championships at the Arctic Blades Figure Skating Club in Paramount, California.

This initial success encouraged USFSA officials to use the computer at the 1972 Midwestern Sectional Championships at Minneapolis, Minnesota. At both competitions, Minneapolis-Honeywell Corporation donated the equipment and the time-sharing facilities.

With two qualifying competitions under its belt, the computer was really ready “to make it to Nationals”.

As a National Accountant for the Association I was amazed at the ease of operation, the speed and accuracy of the entire program. The Association owes a special vote of thanks to James Binger, Chairman of the Board of the Minneapolis-Honeywell Corporation; Clyde Allen, Chairman of Honeywell's Information Services in Minneapolis; the host clubs, who provided much volunteer help; and to Al Beard, for a job well done.

Surely, we too may now join the computer age. O

"I try to achieve the grace and the movement of a form..."—Toller Cranston



Toller Cranston believes that "figure skating is a new art form, the potentiality of which is untapped". This attitude is not surprising when one considers that Cranston is a professional artist, with a successful career already in the making.

Cranston, who was raised in Baie d'Urfe, Quebec, got his art training at the École des Beaux Arts, a school of fine arts in Montreal. Most of the top French-Canadian artists have trained there, and for Cranston, "it was very inspiring, especially since it gave (him) an opportunity to see what other artists were doing."

After three years at the École des Beaux Arts, Cranston was offered a scholarship by the Pratt Institute in New York, but turned it down because he wished to continue to skate, and to do so in Canada. He is coached by Mrs. Ellen Burka, mother and trainer of daughter Petra, former World Figure Skating Champion.

Cranston pays for his skating by selling his paintings. "I do not have a skating mother or a government subsidy; I am completely self-supporting, and I think this is an advantage. That is why I take pride in my skating: I did it on my own." Cranston admitted that he just manages to "keep his head above water" financially, but he feels that it is worth the sacrifices he must make.

Last November, Cranston had a one-man art showing in Toronto, which was widely acclaimed by the critics. "I worked for almost a year to produce the work for that show. It was extremely difficult to produce the work because I was skating at the same time. My art work is so painstakingly difficult and time-consuming that I was becoming almost mechanical." Several of Cranston's paintings sold for as high as two thousand dollars.

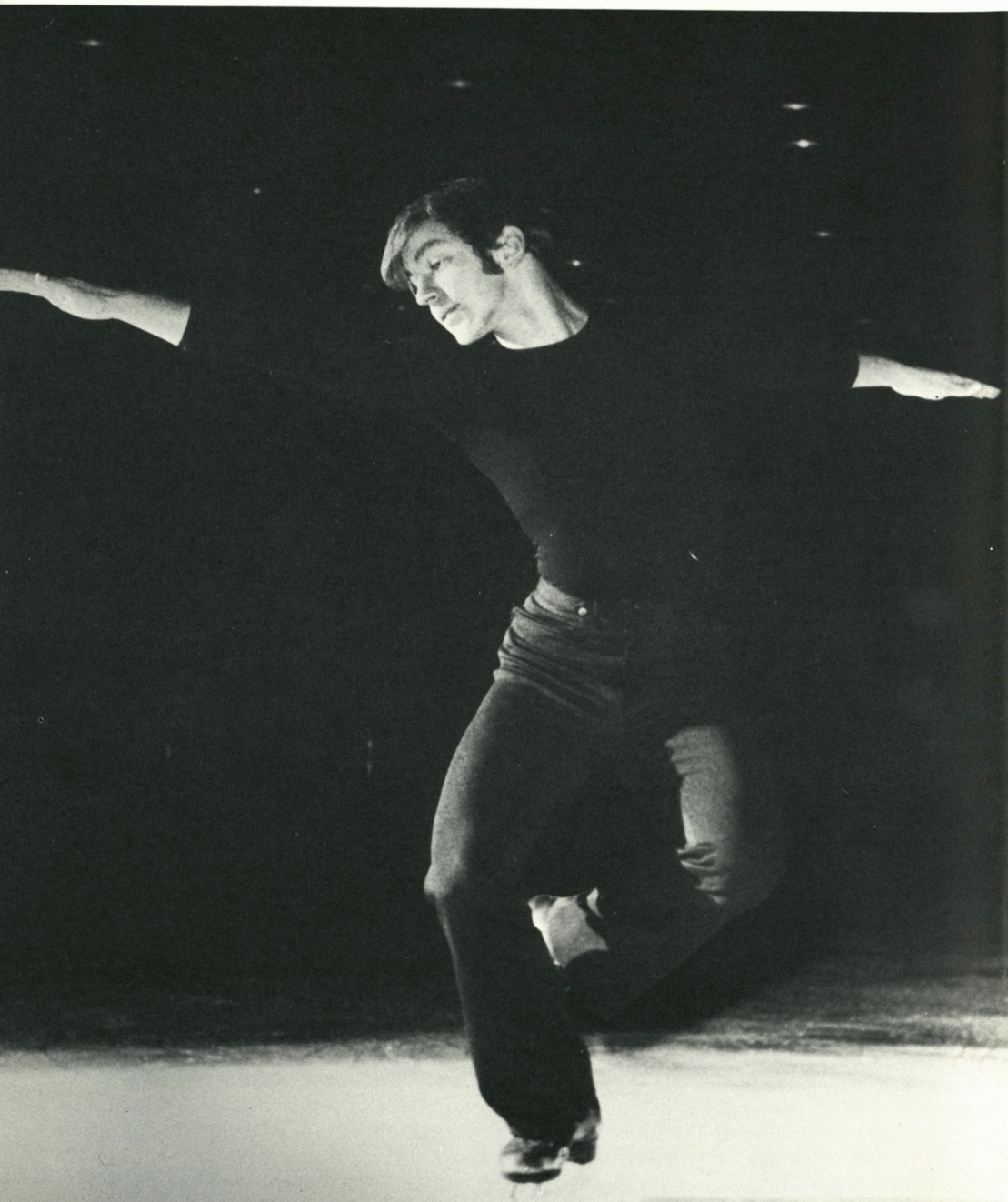
Many people have asked Cranston whether his art influences his skating. His answer is that he "hopes not", but that his skating very definitely influences his art. "I try to achieve the grace and the movement of a form, and especially a skating form because I want to create rhythms and a sense of movement in my work."

Toller Cranston is very definite when he talks about his future. His aim is not to join an ice show or to become a professional coach. He wants to pursue a career in painting. As for skating, he will continue to compete as long as it is enjoyable, and does not measure his success on the ice in terms of Gold medals. Cranston wants to make a contribution to figure skating in terms of what he calls "theatre on ice".

Cranston firmly believes that while figure skating is very much a sport, the "final statement is artistic". He adds that once a skater perfects his technique, he can then provide the kind of musical interpretation and choreography which expresses what he feels, or states something important to him as an individual. "To skate as you want is a gift and a pleasure which few people ever experience."

If the marks, four 6.0's and two 5.9's, which Toller Cranston received at the 1972 Canadian Championships for artistic impression are any indication, he is beginning to realize his goal. ○

theatre on ice
by Heather Bowers



Toller Cranston

conditions

*Canadian Championships
London, Ont., Canada
January 13-16*

An Olympic year, coming every four years, has a prestige denied the annual World Figure Skating Championships. Perhaps this is one reason why the Senior Ladies event at the '72 Canadian Championships held such importance for the twenty competitors, each one hoping for one of three spots on the Olympic Team.

No one doubted that Karen Magnussen, Bronze medal winner in the 1971 World Championships, would retain her title, but the second and third places were wide open. Due to a fractured pelvis, nineteen-year-old Cathy Lee Irwin had spent a year out of competition, although in a tremendous comeback at the Richmond Trophy this year, she had placed second. Last year's third place winner Diane Hall of Toronto would offer fair competition to both Cathy Lee and Ruth Hutchinson of Vancouver.

The competition, however, seemed to favor the unknowns after compulsory figures. Cathy Lee was sixth; Diane Hall, ninth; and Ruth Hutchinson, third. Janice Maikawa of Hamilton, who skates Pairs as well as singles, was in second place with Mary McCaffrey and Daria Prychun fourth and fifth respectively.

In free skating, Karen Magnussen skated an excellent performance, flawed unfortunately with two falls on her double Axels. The rest of her program surpassed anything which might have been expected, culminating in Karen's third Senior Ladies title. Ruth Hutchinson moved up to second place, and Cathy Lee Irwin, skating with her well-known excellence in free, catapulted to third place, earning herself a spot on the Olympic and World Team.

Defending Men's Champion Toller Cranston had no trouble maintaining a strong lead after the compulsory figures. His free skating, however, did more than confirm him as the champion: his marks

for artistic impression included four 6.0's, and six 5.9's for technical merit. Toller was matchless. The crowd responded with a standing ovation, leaving no doubt in anyone's mind as to the final acceptance of the creative free skating style which Toller has developed. Having built up a strong lead in figures, Paul Bonenfant of Vancouver was second overall, and Ken Polk was third.

The Senior Pairs event was won by the brother and sister team of Val and Sandra Bezic, who skated their compulsory program to "Tin Roof Blues", followed by the use of the classical music of Chopin, Brahms, and Tchaikovsky in their free performance. This pair, who placed ninth at the 1971 World Championships, are beginning their ascent in international competition. Mary Petrie (formerly paired with Robert McAvoy) and John Hubbell gained a berth to the Olympics and the Worlds by placing second. In third place were Marion Murray and Glenn Moore, both of Vancouver, but training in Santa Monica, California, under John Nicks. Their spectacular performance at the V Grand Prix International in St. Gervais last summer gave them a first place. Both Marion and Glenn stress versatility by also having competed in singles at the National Championships and having placed ninth and seventh respectively.

The Senior Dance event was again won by newlyweds Louise Lind and Barry Soper of Vancouver. Although they will not be at Sapporo for the Olympics, they will represent Canada at the World Championships in March. By virtue of their eleventh in the 1971 Worlds, Louise and Barry are hoping to place within the top ten and gain for Canada the right to enter a second Dance couple for 1973.

results

SENIOR MEN

JUDGES: A—Donald Cruikshank, Toronto, Ont.; B—Mrs. Joy Forster, Pointe Claire, Que.;

C—F. Geisler, Montreal, Que.; D—David Dore, Toronto, Ont.; E—Roy Haines, Ottawa, Ont.; F—Mrs. Amy Kaltenbruner, Regina, Sask.; G—Mrs. Frances Gunn, Vancouver, B.C. REFEREE: Mrs. Dorothy Leamen, Oakville, Ont.

COMPULSORY FIGURES: Group I—23b, 35a, 36a, 31b, 41a, 20b.

| | A | B | C | D | E | F | G | M |
|---|----|----|----|----|----|----|----|-------|
| 1. (1) Toller Cranston, Toronto CS & CC | 1 | 1 | 1 | 1 | 1 | 1 | 1 | 7/1 |
| 2. (2) Paul Bonenfant, Capilano WC | 4 | 2 | 4 | 2 | 3 | 3 | 4 | 4/3 |
| | | | | | | | | TO 22 |
| 3. (3) Kenneth Polk, Granite Club | 2 | 3 | 5 | 3 | 5 | 5 | 2 | 4/3 |
| | | | | | | | | TO 25 |
| 4. (4) Patrick McKilligan, North Shore WC | 3 | 4 | 3 | 4 | 4 | 4 | 3 | 7/4 |
| 5. (7) Ron Shaver, Hamilton-Stoney Creek | 5 | 6 | 2 | 6 | 2 | 2 | 5 | 5/5 |
| 6. (5) Stan Bohonek, Granite Club | 6 | 7 | 6 | 7 | 8 | 6 | 6 | 4/6 |
| 7. (6) Glenn Moore, North Shore WC | 8 | 5 | 7 | 5 | 6 | 9 | 7 | 5/7 |
| 8. (9) Robert Rubens, Toronto CS & CC | 7 | 8 | 8 | 8 | 7 | 8 | 9 | 6/8 |
| 9. (8) Urs Steinbrecher, Royal Glenora Club | 10 | 9 | 9 | 9 | 9 | 7 | 8 | 6/9 |
| 10. (10) Kevin Cottam, North Shore WC | 9 | 10 | 10 | 11 | 11 | 10 | 11 | 4/10 |
| 11. (12) Paul Fisher, Victoria FSC | 11 | 11 | 11 | 10 | 10 | 11 | 10 | 7/11 |
| 12. (11) Donald Zeman, Toronto CS & CC | 12 | 12 | 12 | 12 | 12 | 12 | 12 | 7/12 |

SENIOR LADIES

JUDGES: A—Mrs. Pierrette Devine, Montreal, Que.; B—William Lewis, New Westminster, B.C.; C—Dennis McFarlane, Edmonton, Alta.; D—William Barringham, Agincourt, Ont.; E—Dr. Suzanne Francis, Aurora, Ont. REFEREE: Mrs. Dorothy Leamen, Oakville, Ont.

COMPULSORY FIGURES: Group III—22b, 35a, 21b, 38b, 41a, 36a.

| | A | B | C | D | E | M |
|--|----|----|----|----|----|------|
| 1. (1) Karen Magnussen, North Shore WC | 1 | 1 | 1 | 1 | 1 | 5/1 |
| 2. (3) Ruth Hutchinson, Kerrisdale FSC | 2 | 3 | 2 | 2 | 4 | 3/2 |
| 3. (6) Cathy Irwin, Toronto CS & CC | 5 | 2 | 3 | 4 | 3 | 3/3 |
| 4. (5) Daria Prychun, Toronto CS & CC | 4 | 7 | 5 | 3 | 2 | 3/4 |
| 5. (9) Diane Hall, Granite Club | 3 | 6 | 6 | 5 | 9 | 4/6 |
| 6. (2) Janice Maikawa, Preston FSC | 8 | 4 | 4 | 6 | 8 | 3/6 |
| 7. (8) Karel Latham, Capilano WC | 6 | 8 | 7 | 7 | 6 | 4/7 |
| 8. (4) Mary McCaffery, North Shore WC | 7 | 10 | 8 | 8 | 7 | 4/8 |
| 9. (7) Marian Murray, North Shore WC | 9 | 5 | 11 | 10 | 5 | 3/9 |
| 10. (10) Madeleine Begg, Hollyburn CC | 10 | 9 | 10 | 9 | 11 | 4/10 |
| 11. (12) Mary Petrie, Toronto CS & CC | 11 | 11 | 9 | 12 | 10 | 4/11 |
| 12. (11) Karen Grobba, Granite Club | 13 | 12 | 13 | 11 | 14 | 4/13 |
| 13. (17) Carol Farmer, Toronto CS & CC | 15 | 13 | 12 | 13 | 13 | 4/13 |
| 14. (14) Sarah Kawahara, Granite Club | 12 | 15 | 14 | 14 | 12 | 4/14 |
| 15. (13) Cynthia Miller, Town of Mount Royal | 14 | 14 | 15 | 16 | 15 | 4/15 |
| 16. (20) Patricia Modde, Chatham FSC | 17 | 16 | 16 | 15 | 17 | 3/16 |
| 17. (19) Louise Loriaux, Toronto CS & CC | 16 | 17 | 17 | 17 | 16 | 5/17 |
| 18. (21) Betsy McLean, North Bay FSC | 18 | 19 | 18 | 20 | 18 | 3/18 |
| 19. (15) Kim Roberts, Preston FSC | 20 | 18 | 19 | 18 | 19 | 4/19 |

20. (18) Lindsay Histrop, Granite Club
19 20 20 19 20 5/20

SENIOR PAIRS

JUDGES: A—Mrs. Pierrette Devine, Montreal, Que.; B—Donald Cruikshank, Toronto, Ont.; C—David Dore, Toronto, Ont.; D—William Lewis, New Westminster, B.C.; E—Mrs. Audrey Williams, West Vancouver, B.C.; F—Dennis McFarlane, Edmonton, Alta.; G—Dr. Suzanne Francis, Aurora, Ont. REFEREE: Mrs. Dorothy Leamen, Oakville, Ont.

SHORT PROGRAM: Group A.

| | A | B | C | D | E | F | G | M |
|---|---|---|---|---|---|---|---|-----|
| 1. (1) Sandra & Val Bezic, Toronto CS & CC | 1 | 1 | 1 | 1 | 1 | 1 | 1 | 7/1 |
| 2. (2) Mary Petrie, Toronto CS & CC, & John Hubbell, Point Edward FSC | 2 | 2 | 3 | 2 | 2 | 2 | 2 | 6/2 |
| 3. (3) Marian Murray & Glenn Moore, North Shore WC | 3 | 3 | 2 | 3 | 3 | 3 | 4 | 6/3 |
| 4. (4) Linda Tasker & Allen Carson, Toronto CS & CC | 4 | 4 | 4 | 4 | 4 | 4 | 3 | 7/4 |

SENIOR DANCE

JUDGES: A—F. Geisler, Montreal, Que.; B—Mrs. Frances Gunn, Vancouver, B.C.; C—Mrs. Amy Kaltenbruner, Regina, Sask.; D—Roy Haines, Ottawa, Ont.; E—William Barringham, Agincourt, Ont.; F—Mrs. Audrey Williams, West Vancouver, B.C.; G—Mrs. Joy Forster, Pointe Claire, Que. REFEREE: Mrs. Audrey Moore, North Vancouver, B.C.

COMPULSORY DANCES: Starlight Waltz, Rhumba, Argentine Tango, Original Set-Pattern.

| | A | B | C | D | E | F | G | M |
|--|---|---|---|---|---|---|---|-------|
| 1. (1) Louise Lind & Barry Soper, Hollyburn CC | 1 | 1 | 1 | 1 | 1 | 1 | 1 | 7/1 |
| 2. (2) Barbara Berezowski, Toronto CS & CC, & David Porter, Unionville FSC | 3 | 2 | 2 | 3 | 2 | 3 | 5 | 6/3 |
| 3. (4) Linda Roe, Victoria FSC, & Michael Bradley, Unionville FSC | 5 | 3 | 3 | 2 | 5 | 2 | 2 | 5/3 |
| 4. (3) Judy Currah & Keith Caughell, St. Thomas FSC | 2 | 5 | 4 | 5 | 4 | 4 | 3 | 5/4 |
| | | | | | | | | TOM17 |
| 5. (5) Shelley MacLeod, Preston FSC, & Robert Knapp, Galt FSC | 4 | 4 | 6 | 4 | 3 | 5 | 4 | 5/4 |
| | | | | | | | | TOM19 |
| 6. (6) Cathy Cushner & Eric Gillies, Royal Glenora Club | 6 | 6 | 5 | 6 | 6 | 6 | 6 | 7/6 |
| 7. (7) Jill Miller & Darren Gillett, Hollyburn CC | 7 | 7 | 7 | 7 | 7 | 7 | 7 | 7/7 |

JUNIOR MEN

JUDGES: Panel I—CF: William Barringham, Agincourt, Ont.; Mrs. Margaret Berezowski, Calgary, Alta.; Robert Tewkesbury, Windsor, Ont. FS: Mrs. Margaret Berezowski, Calgary, Alta. Panel II—CF: Mrs. Joy Forster, Pointe Claire, Que., Roy Haines, Ottawa, Ont.; Charles Dover, Grimsby, Ont. FS: Charles Dover, Grimsby, Ont. Panel III—CF: Mrs. Marg Sandison, Regina, Sask.; Mrs. Pierrette Devine, Montreal, Que., Mrs. Frances Gunn, Vancouver, B.C. FS: Mrs. Pierrette Devine, Montreal, Que. Panel IV—CF: William Lewis, New Westminster, B.C.; F. Geisler, Montreal, Que.; Dennis McFarlane, Edmonton, Alta. FS: William Lewis, New Westminster, B.C. Panel V—Mrs. Jean Matthews, Kingston, Ont.; Mrs. Audrey Williams, West Vancouver, B.C.; Mrs. Amy Kaltenbruner, Regina, Sask. FS: Mrs. Jean Matthews, Kingston, Ont. REFEREE: Mrs. Dorothy Leamen, Oakville, Ont. COMPULSORY FIGURES: Group IV—23a, 30b, 34a, 20b, 33a.



Sandra & Val Bezic

| | I | II | III | IV | V | M |
|---|----|----|-----|----|----|-------|
| 1. (3) Lee Armstrong, Chatham FSC | 1 | 1 | 1 | 5 | 1 | 4/1 |
| 2. (2) Sandy Moore, Weston FSC | 2 | 2 | 6 | 2 | 4 | 3/2 |
| 3. (5) Roger Uemae, Toronto CS & CC | 3 | 3 | 2 | 6 | 2 | 4/3 |
| 4. (1) Skip Groff, Kerrisdale FSC | 6 | 5 | 4 | 3 | 3 | 3/4 |
| | | | | | | TOM10 |
| 5. (6) Ted Barton, Capilano WC | 5 | 4 | 3 | 4 | 5 | 3/4 |
| | | | | | | TOM11 |
| 6. (4) Kevin Cottam, North Shore WC | 4 | 6 | 5 | 1 | 6 | 3/5 |
| 7. (7) Jamie McGrigor, Preston FSC | 7 | 7 | 7 | 7 | 7 | 5/7 |
| 8. (8) Raymond Naismith, East York FSC | 8 | 8 | 8 | 8 | 8 | 5/8 |
| 9. (9) Tommy Harrison, North Bay FSC | 9 | 9 | 9 | 9 | 9 | 5/9 |
| 10. (10) Tim Sunquist, Wascana WC | 10 | 10 | 11 | 10 | 11 | 3/10 |
| 11. (11) Bob Rossignol, Fredericton FSC | 11 | 11 | 10 | 11 | 10 | 5/11 |

JUNIOR LADIES

JUDGES: Panel I—CF: Mrs. Marg Sandison, Regina, Sask.; Donald Cruikshank, Toronto, Ont.; William Lewis, New Westminster, B.C. FS: Mrs. Marg Sandison, Regina, Sask. Panel II—CF: Dr. Suzanne Francis, Aurora, Ont.;

Mrs. Jean Matthews, Kingston, Ont.; Mrs. Audrey Williams, West Vancouver, B.C. FS: Mrs. Jean Matthews, Kingston, Ont. Panel III—CF: Roy Haines, Ottawa, Ont.; Mrs. Margaret Berezowski, Calgary, Alta.; William Barringham, Agincourt, Ont. FS: William Barringham, Agincourt, Ont. Panel IV—CF: Mrs. Frances Gunn, Vancouver, B.C.; Robert Tewkesbury, Windsor, Ont.; Mrs. Joy Forster, Pointe Claire, Que. FS: Mrs. Frances Gunn, Vancouver, B.C. Panel V—CF: Mrs. Amy Kaltenbruner, Regina, Sask.; Charles Dover, Grimsby, Ont.; F. Geisler, Montreal, Que. FS: Charles Dover, Grimsby, Ont. REFEREE: Mrs. Audrey Moore, North Vancouver, B.C. COMPULSORY FIGURES: Group I—16b, 23a, 29b, 20a, 33b.

| | I | II | III | IV | V | M |
|---|---|----|-----|----|---|-----|
| 1. (5) Lynn Nightingale, Minto SC | 1 | 1 | 2 | 1 | 1 | 4/1 |
| 2. (4) Barbara Terpenning, North Shore WC | 2 | 2 | 1 | 2 | 2 | 5/2 |
| 3. (1) Kathy Ostapchuk, Brant FSC | 3 | 3 | 7 | 4 | 3 | 3/3 |
| 4. (8) Kim Wylie, Galt FSC | 4 | 4 | 6 | 5 | 4 | 3/4 |
| 5. (3) Debbie Froese, North Shore WC | 5 | 6 | 4 | 6 | 5 | 3/5 |
| 6. (2) Deborah-Lynn Paul, Royal Glenora Club | 6 | 12 | 5 | 3 | 6 | 4/6 |

7. (11) Rea Kraisosky, Halifax FSC
7 8 9 9 7 3/8
TOM 22
8. (7) Patty Welsh, Toronto CS & CC
8 11 8 8 12 3/8
TOM 24
9. (10) Heather Moore, Weston FSC
9 7 3 11 10 3/9
10. (6) Judy Dick, Toronto CS & CC
10 5 10 7 11 4/10
11. (9) Barbara Murray, North Shore WC
11 9 11 10 8 3/10
12. (13) Kris Paulson, Glencoe Club
12 13 12 13 9 3/12
13. (16) Linda Campbell, Halifax FSC
13 10 14 14 15 4/14
14. (12) Donna Reed, Lachine FSC
16 15 13 12 14 3/14
15. (15) Susan Carscallen, Copper Cliff FSC
14 16 15 16 13 3/15
TOM 42
16. (14) Barbara McBride, Jasper Place FSC
15 14 16 15 16 3/15
TOM 44
17. (17) Nancy Down, Winnipeg WC
17 17 17 17 17 5/17
18. (18) Linda Vahtra, Oromocto SC
18 18 18 18 18 5/18

JUNIOR PAIRS

JUDGES: A—Mrs. Margaret Berezowski, Calgary, Alta.; B—William Barringham, Agincourt, Ont.; C—Mrs. Frances Gunn, Vancouver, B.C.; D—Donald Cruikshank, Toronto, Ont.; E—Mrs. Joy Forster, Pointe Claire, Que.; F—Roy Haines, Ottawa, Ont.; G—Mrs. Audrey Williams, West Vancouver, B.C. REFEREE: Mrs. Dorothy Leamen, Oakville, Ont.

- | | A | B | C | D | E | F | G | M |
|---|---|---|---|---|---|---|-------|-----|
| 1. Linda Watts & Don Fraser, Richmond Hill FSC | 1 | 1 | 3 | 3 | 1 | 2 | 1 | 4/1 |
| 2. Daria Prychun & Roger Uuemae, Toronto CS & CC | 2 | 2 | 1 | 1 | 2 | 1 | 2 | 7/2 |
| 3. Marie-Ellen & Bernard Souche, Upper Canada FSC | 3 | 5 | 6 | 2 | 3 | 3 | 3 1/2 | 4/3 |
| 4. Janice Maikawa & Reed MacDonald, Preston FSC | 4 | 3 | 2 | 6 | 4 | 4 | 3 1/2 | 6/4 |
| 5. Susan Zonda & Frank Nowosad, Glencoe Club | 5 | 4 | 4 | 4 | 6 | 5 | 6 | 5/5 |
| 6. Kathy Stasiuk & Gerald Smith, Royal Glenora Club | 6 | 6 | 5 | 5 | 5 | 6 | 5 | 4/5 |

JUNIOR DANCE

JUDGES: A—Rex Booker, Ottawa, Ont.; B—Mrs. Joy Forster, Pointe Claire, Que.; C—F. Geisler, Montreal, Que.; D—Mrs. Amy Kaltenbruner, Regina, Sask.; E—William Barringham, Agincourt, Ont.; F—Mrs. Audrey Williams, West Vancouver, B.C.; G—Robert Tewkesbury, Windsor, Ont. REFEREE: Mrs. Audrey Moore, North Vancouver, B.C.

COMPULSORY DANCES: Group III—Fourteenstep, American Waltz, Rocker Foxtrot, Blues.

- | | A | B | C | D | E | F | G | M |
|--|---|---|---|---|---|---|---|-----|
| 1. (1) Judy Currah & Keith Caughell, St. Thomas FSC | 1 | 1 | 1 | 1 | 1 | 1 | 1 | 7/1 |
| 2. (2) Shelley MacLeod, Preston FSC, & Robert Knapp, Galt FSC | 2 | 2 | 2 | 3 | 2 | 3 | 2 | 5/2 |
| 3. (3) Debra Robertson & Greg Ladret, Hollyburn CC | 5 | 4 | 3 | 2 | 3 | 2 | 4 | 4/3 |
| 4. (4) Cathy Cushner & Eric Gillies, Royal Glenora Club | 3 | 3 | 6 | 4 | 4 | 4 | 7 | 5/7 |

5. (5) Debbie & John Dowding, Toronto CS & CC
4 5 4 6 5 5 3 6/5
6. (7) Ginnie Grieco & John Rait, Silver Blades SC
6 7 5 5 7 6 8 4/6
7. (6) Shauna McCann & Bill Marchyshyn, RC of Victoria
7 8 7 7 6 8 10 4/7
8. (8) Debbie & Randy Burke, Cheam FSC
9 6 8 8 9 9 9 7/9
9. (9) Cheryl Johns & Robert Fisher, Upper Canada FSC
10 9 9 9 10 7 6 5/9
10. (10) Patricia Baker & Peter Zednik, Oshawa SC
8 10 10 10 8 10 5 7/10
11. (11) Susan Carscallen, Copper Cliff FSC, & George O'Riley, North Bay FSC
12 12 11 11 11 11 11 5/11
12. (12) Margaret Stewart & Allan Carver, Royal Glenora Club
11 11 12 12 12 12 12 7/12

NOVICE MEN

JUDGES: Panel I—CF: William Barringham, Agincourt, Ont.; Mrs. Joy Forster, Pointe Claire, Que.; Mrs. Francis Gunn, Vancouver, B.C. FS: Mrs. Joy Forster, Pointe Claire, Que. Panel II—CF: F. Geisler, Montreal, Que.; Mrs. Jean Matthews, Kingston, Ont.; Charles Dover, Grimsby, Ont. FS: Mrs. Frances Gunn, Vancouver, B.C. Panel III—Mrs. Marg Sandison, Regina, Sask.; Mrs. Amy Kaltenbruner, Regina, Sask.; Dennis McFarlane, Edmonton, Alta. FS: Mrs. Amy Kaltenbruner, Regina, Sask. Panel IV—Roy Haines, Ottawa, Ont.; William Lewis, New Westminster, B.C.; Robert Tewkesbury, Windsor, Ont. FS: Roy Haines, Ottawa, Ont. Panel V—CF: Mrs. Audrey Williams, West Vancouver, B.C.; Dr. Suzanne Francis, Aurora, Ont.; Mrs. Margaret Berezowski, Calgary, Alta. FS: Mrs. Audrey Williams, West Vancouver, B.C. REFEREE: Mrs. Audrey Moore, North Vancouver, B.C. COMPULSORY FIGURES: Group IV—24a, 17b, 18a, 29b.

- | | I | II | III | IV | V | M |
|---|----|----|-------|----|----|------------|
| 1. (1) Kevin Robertson, Granite Club | 1 | 1 | 1 | 1 | | 5/1 |
| 2. (6) Barry Fraser, Royal Glenora Club | 7 | 2 | 2 | 3 | 3 | 4/3 |
| 3. (5) Bob Houstoun, Toronto CS & CC | 4 | 4 | 3 | 4 | 2 | 5/4 |
| 4. (9) Gordon Modde, Chatham FSC | 3 | 8 | 4 | 2 | 5 | 3/4 |
| 5. (7) Peter Zednik, Oshawa SC | 5 | 5 | 6 1/2 | 5 | 4 | 4/5 |
| 6. (3) Allan Carver, Royal Glenora Club | 8 | 6 | 8 | 6 | 7 | 3/7 |
| 7. (2) Paul Seeley, Preston FSC | 14 | 10 | 5 | 8 | 8 | 3/8 |
| 8. (10) Glen Campbell, Kelowna FSC | 2 | 9 | 10 | 9 | 6 | 4/9 |
| 9. (4) David Barnard, Granite Club | 11 | 3 | 6 1/2 | 12 | 9 | 3/9 |
| | | | | | | TOM 18 1/2 |
| 10. (12) Brian Pockar, Calgary WC | 6 | 7 | 9 | 10 | 10 | 3/9 |
| | | | | | | TOM 22 |
| 11. (8) John Melnyk, Winnipeg WC | 12 | 11 | 11 | 14 | 12 | 4/12 |
| 12. (15) Richard Gaudy, North Shore WC | 10 | 14 | 13 | 7 | 14 | 3/13 |
| 13. (16) Kenny Moir, Capilano WC | 9 | 12 | 15 | 13 | 15 | 3/13 |
| | | | | | | TOM 34 |
| 14. (11) Craig Pearce, Yorkton FSC | 16 | 16 | 12 | 11 | 13 | 3/13 |
| | | | | | | TOM 36 |
| 15. (17) Randy Coyne, Sault Ste. Marie FSC | 13 | 13 | 14 | 15 | 17 | 3/14 |
| 16. (14) Robert MacCormack, London SC | 15 | 15 | 17 | 16 | 16 | 4/16 |
| 17. (13) Sanford Jones, Jr., Fort William FSC | 17 | 17 | 16 | 17 | 11 | 5/17 |

NOVICE LADIES

JUDGES: Panel I—CF: Mrs. Marg Sandison, Regina, Sask.; Robert Tewkesbury, Windsor, Ont.; Mrs. Frances Gunn, Vancouver, B.C. FS: Mrs. Marg Sandison, Regina, Sask. Panel II—CF: Mrs. Pierrette Devine, Montreal, Que.; Mrs. Margaret Berezowski, Calgary, Alta.; Mrs. Joy Forster, Pointe Claire, Que. FS: Mrs. Margaret Berezowski, Calgary, Alta. Panel III—CF: F. Geister, Montreal, Que.; Mrs. Amy Kaitenbruner, Regina, Sask.; Charles Dover, Grimsby, Ont. FS: Charles Dover, Grimsby, Ont. Panel IV—CF: Mrs. Audrey Williams, West Vancouver, B.C.; Mrs. Jean Matthews, Kingston, Ont.; Donald Cruikshank, Toronto, Ont. FS: Mrs. Jean Matthews, Kingston, Ont. Panel V—CF: William Barringham, Agincourt, Ont.; William Lewis, New Westminster, B.C.; Dennis McFarlane, Edmonton, Alta. FS: Dennis McFarlane, Edmonton, Alta..

REFEREE: Mrs. Dorothy Leamen, Oakville, Ont. COMPULSORY FIGURES: Group IV—24b, 17a, 18b, 29a.

| | I | II | III | IV | V | M |
|---|----|----|-----|----|----|--------|
| 1. (2) Judy Bowden, Toronto SC & CC | 1 | 2 | 1 | 1 | 2 | 3/1 |
| 2. (1) Kim Alletson, Minto SC | 2 | 1 | 2 | 3 | 3 | 3/2 |
| 3. (3) Patricia Woods, North Shore WC | 3 | 3 | 3 | 2 | 1 | 5/3 |
| 4. (9) Camille Rebus, Royal Glenora Club | 4 | 4 | 6 | 13 | 4 | 3/4 |
| 5. (4) Angela Watson, Unionville SC | 5 | 5 | 4 | 4 | 5 | 5/5 |
| 6. (5) Naomi Taguchi, North Shore WC | 6 | 6 | 8 | 5 | 8 | 3/6 |
| 7. (8) Connie Swallow, London SC | 7 | 7 | 7 | 9 | 6 | 4/7 |
| 8. (10) Linda-Jean Davidson, Royal Glenora Club | 8 | 10 | 5 | 6 | 10 | 3/8 |
| | | | | | | TOM 19 |
| 9. (13) Lonna Jorgenson, Linwell SC | 9 | 8 | 10 | 8 | 7 | 3/8 |
| | | | | | | TOM 23 |
| 10. (6) Heather Kemkaren, Winnipeg WC | 10 | 9 | 9 | 11 | 11 | 3/10 |
| 11. (15) Moira McPherson, Pointe Claire FSC | 12 | 11 | 11 | 12 | 9 | 3/11 |
| 12. (14) Tracy Bratengeier, North Shore WC | 11 | 12 | 16 | 7 | 15 | 3/12 |
| 13. (18) Susan Patterson, Kitchener-Waterloo SC | 13 | 15 | 12 | 10 | 14 | 3/13 |
| 14. (7) Leslie McCann, Gateway SC | 14 | 13 | 15 | 15 | 12 | 3/14 |
| | | | | | | TOM 39 |
| 15. (16) Merry Carscallen, Copper Cliff SC | 15 | 16 | 13 | 14 | 13 | 3/14 |
| | | | | | | TOM 40 |
| 16. (12) Jacinte Jodoin, Boucherville FSC | 17 | 14 | 14 | 17 | 16 | 3/16 |
| 17. (17) Katherine Campbell, Fort William FSC | 18 | 17 | 17 | 20 | 17 | 3/17 |
| 18. (19) Elizabeth Young, Wascana WC | 16 | 18 | 19 | 16 | 20 | 3/18 |
| 19. (20) Susan Bruce, Halifax SC | 20 | 19 | 18 | 18 | 19 | 4/19 |
| 20. (21) Debbie Currie, Moncton FSC | 19 | 20 | 20 | 19 | 18 | 3/19 |

NOVICE PAIRS

JUDGES: A—Mrs. Margaret Berezowski, Calgary, Alta.; B—Donald Cruikshank, Toronto, Ont.; C—Mrs. Pierrette Devine, Montreal, Que.; D—William Lewis, New Westminster, B.C.; E—Mrs. Frances Gunn, Vancouver, B.C.; F—Dennis McFarlane, Edmonton, Alta.; G—Dr. Suzanne Francis, Aurora, Ont. REFEREE: Mrs. Dorothy Leamen, Oakville, Ont.

| | A | B | C | D | E | F | G | M |
|-------------------------------------|---|---|---|---|---|---|---|-----|
| 1. Cheri & Dennis Pinner, London SC | 2 | 1 | 2 | 3 | 2 | 1 | 1 | 6/2 |

| | | | | | | | | |
|--|----|----|----|----|----|----|----|--------|
| 2. Elaine Poast, Peterborough FSC, & Stan Hughes, Oshawa FSC | 3 | 3 | 3 | 1 | 1 | 2 | 2 | 4/2 |
| | | | | | | | | TO 15 |
| 3. Kelly Hume & Dennis Johnston, Toronto CS & CC | 1 | 2 | 1 | 2 | 5 | 4 | 7 | 4/2 |
| | | | | | | | | TO 22 |
| 4. Kathy Hutchinson & Jamie McGrigor, Preston FSC | 5 | 5 | 4 | 9 | 3 | 3 | 4 | 4/4 |
| 5. Lynne Begin & Mark Gignac, Sault St. Marie FSC | 4 | 4 | 5 | 5 | 8 | 5 | 3 | 6/5 |
| 6. Nancy Podalski & Randy Coyne, Sault St. Marie FSC | 7 | 7 | 9 | 11 | 12 | 6 | 5 | 4/7 |
| 7. Gaye Tamowski & Paul Seeley, Preston FSC | 10 | 10 | 7 | 4 | 6 | 8 | 8 | 5/8 |
| | | | | | | | | TOM 33 |
| 8. Diane Lynch & Michael Sanderson, Upper Canada FSC | 8 | 8 | 6 | 7 | 10 | 13 | 6 | 5/8 |
| | | | | | | | | TOM 35 |
| 9. Pat Fletcher, East York SC, & Keith Swindlehurst, Richmond Hill FSC | 6 | 9 | 8 | 8 | 4 | 9 | 9 | 4/8 |
| 10. Barbara & Michael Moewes, Gulf of Georgia FSC | 14 | 12 | 10 | 10 | 11 | 11 | 10 | 5/11 |
| 11. Nancy & Stephan Klovan, Nepean FSC | 11 | 6 | 12 | 13 | 7 | 12 | 4 | 4/11 |
| 12. Denise Ortynsky & Craig Pearce, Yorkton FSC | 9 | 13 | 11 | 6 | 13 | 12 | 13 | 4/12 |
| 13. Sonja Chapman & Brian Klavano, Gateway FSC | 12 | 14 | 13 | 12 | 9 | 14 | 15 | 4/13 |
| 14. Lizanne & Denis Vaillancourt, North Bay FSC | 13 | 11 | 14 | 14 | 14 | 15 | 14 | 6/14 |
| 15. Joan Blight, Oakville Manitoba FSC, & Brent Gilbert, Portage FSC | 15 | 15 | 15 | 15 | 15 | 10 | 11 | 7/15 |

NOVICE DANCE

JUDGES: A—Mrs. Joy Forster, Pointe Claire, Que.; B—Rex Booker, Ottawa, Ont.; C—Mrs. Pierrette Devine, Montreal, Que.; D—F. Geister, Montreal, Que.; E—Mrs. Amy Kaitenbruner, Regina, Sask.; F—William Lewis, New Westminster, B.C.; G—Dr. Suzanne Francis, Aurora, Ont. REFEREE: Roy Haines, Ottawa, Ont. COMPULSORY DANCES: Initial round—Fourteenstep, American Waltz, Rocker Foxtrot. Final round—Foxtrot, Tango.

| | A | B | C | D | E | F | G | M |
|--|---|---|---|---|---|---|---|-----|
| 1. (1) Nicole & Pierre Nadeau, Montreal Silver Blades | 1 | 2 | 1 | 1 | 1 | 3 | 1 | 5/1 |
| 2. (3) Suzanne Lamoureux & Paul Whiston, Riverside FSC | 2 | 1 | 3 | 2 | 3 | 1 | 3 | 4/2 |
| 3. (2) Mary Perry & Allen Coombe, Capilano WC | 3 | 3 | 2 | 3 | 2 | 2 | 4 | 6/3 |
| 4. (4) Debbie & Greg Young, Toronto CS & CC | 4 | 4 | 4 | 4 | 4 | 4 | 2 | 7/4 |
| Eliminated after initial round | | | | | | | | |
| 5. Danielle & Andre Nadeau, Montreal Silver Blades | | | | | | | | |
| 6. Carolyn Skoczen & Kevin Hicks, Windsor FSC | | | | | | | | |
| 7. Barbara & Robert Laidler, Winnipeg WC | | | | | | | | |
| 8. Jane Clarke & Barry Fraser, Royal Glenora Club | | | | | | | | |
| 9. Amy & David Martin, Lindsay FSC | | | | | | | | |
| 10. Susan Ritchie & Brian Klavano, Gateway FSC | | | | | | | | |
| 11. Laurie Treleven & Gary McGirr, North Bay FSC | | | | | | | | |
| 12. Sasha Boyd & Henry April, Saskatoon FSC | | | | | | | | |

by Mrs. Howard J. Jackson

The USFSA Basic Test Program is growing in numbers of knowledgeable leaders, through their attendance at the increasing number of Basic Test Seminars that have been held in every section of the country.

A new probationary USFSA club, the first in the state of Virginia, decided to start out properly on the two, new ice facilities at the Salem and Roanoke Civic Centers. For three months during the summer, the future leaders, most of them new to the sport of ice skating, took instruction on the Basic Test moves both on and off the ice and on October 9, 1971, held an open Basic Test Seminar. The Basic Test Instructional Film was shown, discussions were led by the National Chairman for Program Development, and ice demonstrations were arranged by Professional Mrs. Dolly Smith and Seminar Director Mrs. Graham Stephens. Following the seminar, an eight-week clinic featuring USFSA Basic Test instruction was held at the Roanoke Civic Center under the direction of the professional, assisted by the newly appointed Basic Test Instructor/Judges. In addition, a pilot school program for credit was initiated with Clifton Forge Community College. Much interest in skating has been generated in the community, and a new USFSA club has made its mark in its community.

Another successful Basic Test Seminar was held by the Bridgeport SC, Connecticut, on October 31, under the leadership of Mrs. Alis McCurdy, Seminar Leader, and Mrs. Richard Manville, Seminar Director. Thirty-three area participants heard discussions, viewed the instructional movie, witnessed demonstrations on ice, and qualified as Basic Test Instructor/Judges.

basic test
boom

To date, over twenty Basic Test Seminars have been reported in order to qualify administrators, judges, and instructors for the increasing USFSA Basic Test Programs.

Out of these seminars come a number of questions that may be common to others participating in the programs. Perhaps some clarification of accepted guidelines, as outlined in the USFSA Basic Test Manual, may be in order.

The USFSA Basic Test Program and all the material aids outlined in the Manual are available to anyone who cares to use them. This basic learning program is offered as a service to persons and groups outside USFSA clubs. Professionals and others, such as school administrators, recreational leaders, private rinks, and park officials, who are not USFSA members, are eligible to become judges/instructors for their Basic Test Programs given outside USFSA clubs; neither are they bound by USFSA Amateur Status and Judging rules. Amateur Status Rule 5.03 and Judging Rule 6.01 apply only to *official* USFSA tests and USFSA member activity with Basic Tests.

Professionals prefer to have someone else judge the students they instruct, unless there is no other qualified individual to judge these pupils, in which case the pro may then judge his own pupils.

Only one Basic Test Judge is needed to judge the Basic Tests. The skating moves and the procedure for judging are simple, in keeping with the philosophy that the Basic Test Program should be uncomplicated to administer and test, for ready adaptability to varied groups.

There is no one set of requirements for Basic Test Instructor/Judge appointment. To group all the Basic Test Programs in their varied situations under a USFSA official listing of requirements, would be to negate the fundamental purpose of the Basic Test Program. If we in the Association try to exercise too much control over outside programs, we risk the probability that the Basic Tests will not be used, thereby nullifying our goal of extending the sport to larger numbers. Usually Basic Test Programs outside the USFSA need the most encouragement.

Every Basic Test Judge should ideally have attended one good seminar. In my opinion, a person seeking to become a Basic Test Judge should read all the available materials, observe, inquire, and grow with experience. The judge should hopefully be able to do most of the basic moves himself. He should have some qualities inherently associated with a good judge: experience with knowledge, tact, fairness, and the courage of his convictions when he may on occasion be forced to fail a move. Of ultimate importance is the confidence that his judgment is concomitant with the standard.

Appointments are made in various ways: by the director or leader of a non-USFSA Club Program, by the Test Chairman for a Club Program, by a Basic Test Seminar Director after a seminar or by a Public Relations/Program Development Committee member on receipt of an applicant's name, address, and pertinent qualifications. In addition, all skating professionals and USFSA official judges are automatically qualified to judge the Basic Tests. Supplemental requirements are sometimes placed on those who may judge school and college Basic Test Programs for credit by the school administrators.

Additional copies of the USFSA Basic Test Instructional Movie have been made available for rental at \$15.00 by order to the Central Office.O

charity begins at home

by F. Ritter Shumway

For years many USFSA clubs have put on figure skating carnivals and exhibitions for the benefit of local and national charities, educational institutions, and other worthy causes, notably among these, the U.S. Olympic Fund. Such efforts have been worthwhile, having served the dual purpose of raising needed finances for worthy causes and of providing activities, goals, and purposeful drives for the clubs and their members.

Our own USFSA Memorial Fund has a similar urgent need for greater financing to enable it to carry out its important scholarship programs for deserving and needy skaters, its skating clinics for the introduction of figure skating to interested youngsters, and its financial aid program which enables skaters to more readily compete in National and International events. The scope of the good work that can be done by the Memorial Fund

is limited only by its financial resources which still today are very meager.

Understandably clubs that have been putting on carnivals and exhibitions for specific causes are committed to continue the established tradition for as long as they stage these money-making events. There are, however, many new clubs in the USFSA which have not as yet realized the possibilities of these benefits.

The USFSA Memorial Fund is a worthy cause to choose when considering potential recipients of benefit shows. What better example can be cited than the 50th Anniversary "Champions On Ice" show, organized by the Public Relations Committee of the USFSA, on November 29, 1971, all for the benefit of the USFSA Memorial Fund.

The zeal and enthusiasm of new clubs can be constructively channeled into a working force for the benefit of the Memorial Fund. O



by Nick Richmond

In our skating rink, I have found a direct relationship between shoe size and the loudness of a girl's voice. When a gal asks for a size 7 or below, they shout it right out. A size 7½ to 8 gets a quiet request, 8½ to 9½ are asked for in a whisper, 10 and above are only lip movements.

One busy night a teen-age girl came up to the skate counter and mumbled something. Right away I knew it was time for my talent as a lip reader. I immediately grabbed a size 10 and put them in front of her, but before she could snatch

them off the counter, a boy beside her spotted the "10" stamped on the heels of the skates.

He looked at his size 6 skates and then again at her 10's and blurted out "WOW! What big feet," and started to laugh. She glared back at him and spitted out, "O' yea, just remember, only outhouses come on small foundations."

With her dignity recovered she took her skates and strolled away leaving the boy sputtering, trying hard, but unsuccessfully to find an answer to her 'right on' reply. O

laurels

Testing is an important part of a figure skater's progress. The following USFSA sanctioned tests in figure, pair & dance were reported passed. Only tests which were received and processed by the USFSA Central Office during the period of December 1 through December 31 appear in this issue. Any errors should be reported to the USFSA, 178 Tremont St., Boston, Massachusetts 02111.

TESTS PASSED BY USFSA SKATERS

GOLD FIGURE— Susan McLean, Buffalo SC;
Beatrice Rowand, Philadelphia SC & HS.
GOLD DANCE— Bonnie McConnell, Towne 'N
Country FSC; Kathy Russell, All
Year FSC; Dorothy Barker Swain,
Glacier Falls FSC.

ALL YEAR FSC: 7—Caren Davis, Cynthia Yokoi. Silver—Marta Day, Lisa Johnson.
AMHERST SC: Pre—Natalie Miller. 1—Cheryl Allenbach, Kathy Fuller. 2—Barbara Funk, Dana Larsen.
ANN ARBOR FSC: Pre—Lynne Priebe. 1—Susan Brougher, Cindy Newton, Lisa Pehlke, Alice Warner. 2—Susan Gluck. Pre D—Susan Brougher, Martin Sichel. Bronze—Jolyn Baker, Penny Edwards, Edwaa Smith.
ARCTIC BLADES FSC: 1—Lisa Allen. 5—Cathleen Marron.
ARROWHEAD FSC: Pre—Carol Lance, Carol Tippet.
BALTIMORE FSC: Pre—Laurie MacLea, Denise Ramsey. 1—William Tabilio. 2—Kathie Metzbowler. 3—Carla Cannella. Pre D—Terry Brukiewa, John Geldmacher.
BAY PATH FSC: 2—Barbara Stadig.
BRIDGEPORT SC: 1—Lisa Quinn.
BROADMOOR SC: Pre—Laurice Baker, Kim Bowman, Pam Pedigo. 1—Bill Sencenbaugh, Louise Sencenbaugh, Jewel Stone, Ginger Welch, Katherine Zarpaylic. 3—Debbie Might. Bronze Pair—Julie Williams, Louise Sencenbaugh, Bill Sencenbaugh, Peter Williams. Bronze—Grushenka Wolfgang.
BUFFALO C & SC: Pre—Julie Charrette. 3—Lori Turner, Sue Ward.
BURIEN SC: 7—Laurie Cole. Silver Free—Laurie Cole.
CANTIAGUE FSC: Pre—Elizabeth Norton, Carolyn Peterson, Ellisa Reichstein, Pamela Sutzenberg. 2—Lisa Retzkin.
CAPE COD SC: Pre—Debbie Pass.
CAPITAL CITY FSC: Pre—Susan Coulter, Kathy Michaels, Teresah Smith. 3—Debby Cutter.
CHICAGO FSC: Pre—Silver—Julia Jordan.
CLEVELAND HEIGHTS SC: Pre—Silver—Joy Wood.
COLUMBUS FSC: 1—Diane Ouellette. 3—Barbara Scherer. Pre D—Beatrix Silberstein. Bronze—Stephanie Stephens.
COMMONWEALTH FSC: Bronze—Andrew Klein.
CORNELL FSC OF ITHACA: Bronze—Sandy Meek.
DENVER FSC: Pre—Nigel Cass, Pam Eckhardt, Michelle Houser, Julie McCarl, Linda Munz, Judy Olsen, Andrea Paterson, Christy Schertz, Andrew Szantho. 1—Cyd Charlier, Gracie Coleman, Cheryl Graham, Lisa Kelman. 2—Georgianna Sutton.
DETROIT SC: 1—Lizbeth Luther, Neil McConnell, Patrick McConnell. Pre D—Kandi Amelon, Allison Charnley, Kim Parker. Bronze—Kathryn Acheson. Silver—Mitzi Amelon.
EL CAMINO ISC: Pre—Linda Mendelsohn. 3—Lynn Windfeldt.
EUCLID BLADE & EDGE CLUB: 2—Janet Andrews.
FALMOUTH FSC: Pre—Ellen Brown, Theresa Devlin, Kathie Morrill, Bonnie Shapiro. 1—Tia Cummings. 2—Rebecca Dewees. Bronze—Maureen Jugelas.
FLINT SC: Pre—Brooke Ferguson, Anita Lehoux, Marjorie Montooth, Rochelle Scott. 1—Annette Heagen, Judy Parks.
FORT WAYNE ISC: Pre D—Mary Thomas.
GENESE FSC: Pre—Nancy Blum, Carol Bowman, Julie Clas, Amy Cornick. 2—Beth Frank. 7—Gayle Eisenbraun. Pre D—Sue Barber, Sue Brugler, Marge Grinols, Amy Hirsh, Barbara McClune, Darlene Montgomery, Janet Peachey, Jeffrey Powell, Christy Wood.
GLACIER FALLS FSC: Pre—Anita Corella, Sandi Penn, Joyce Stark. Pre D—Jacquelyn Wheeler, Richard Wheeler, Steve Wright. Pre—Silver—Donna Sow. Silver—Linda Kendall.
GLENWOOD FSC: 2—Jennifer Wroblewski. 4—Cheryl Sowa. Bronze—Cheryl Sowa.
GREATER MILWAUKEE FSC: Pre—Cheryl Klonowski, Tracey Price, Ellen Schwalback.
HAYDEN RECREATION CENTRE FSC: Silver Pair—Sheryl Franks.
HERSHEY FSC: 3—Rebecca Rippon. Bronze Pair—Julia Hoover.
HOUSTON FSC: Pre—Marsha Clayton, Mary Duck, Sara Duck, Brenda Harvey, Eric Holm, Sylvia Holm, Dianne Levy, Marie Marchand, C.V. Otto, Kathy Petmecky, Robert Petmecky, Katie Smith, Marjorie Thompson, Terri Worsham. 1—Debbie Kilgore. 2—Laurie Fowden. 3—Debbie Silverman, Pat Skipton.
HUNTSVILLE FSC: Pre—Katherine LeCompte, Rebecca Lutonsky, Elizabeth Parker, Karen

Paoletti, Susan Simpson, Jean Vaniman, Marcia Watts. 1—Deborah Weir. 2—Suzanne Parker.

IC OF BALTIMORE: Pre—Betty Lerch, Katherine Perkins, Robin Stieff. 2—Susan MacNab. Pre D—Katherine Perkins, Rebecca Proctor. Bronze—Ludmilla Davidovskii.

IC OF INDIANAPOLIS: 1—Berlinda Barnes, Kelly Hogan.

ISC OF FRESNO: Pre—Mark Pietroforte, Michelle Pietroforte, Lisa Snauffer, Cathy Sowers. 1—Mark Pietroforte, Michelle Pietroforte, Debbie Weisses. 2—Peggy O'Brien.

INDIVIDUAL MEMBER: Pre—Terry Arthur, Kristen Dahl. 1—Sansoen Thamvait. Pre D—Anne Johnson, Marcella Shramek.

LAKEWOOD WC: 1—Danette Williams.

LANSING SC: 2—Carol Nelson. 3—Helen Butcher.

LAS VEGAS FSC: 2—Ardith Peterson.

LILAC CITY FSC: Pre—Ann Butler, Julie Gibson, Renee Keck, Todd Meumiller, Jeff Moritz, Jolene Murphy, Pam Pettigrew, Lynn Rasmussen, Carol Ross, Raelene Soo, Shawn Sorenson, Lynn Vaughn, Kristi Wendland. 1—Patty Gillogly. Bronze—Kari Kine.

LINCOLN CENTER FSC: Pre—Lu Ann Essex.

LONG ISLAND FSC: 3—Wendy Bernstein, Tracy Doyle. 6—Mark Henry, Kathleen Jackman, Christine Windecker.

LOS ANGELES FSC: 1—Mary Togger. Pre D—Gayle Baker, Dawn Buttress, Joe Graffi.

METROPOLITAN FSC: 6—Judith Epstein.

NEW CANAAN WC: Bronze—Fiona Irving.

NEW HAVEN SC: Pre—Felicia DiGiusto, Dorothy Grave, Susan McColl, Cynthia Zywoecinski. 1—Catherine Caule, Kathryn Grant, Ann Harding. 2—Cindy Halpin, Liza Liapunov, Carl Petchler. 4—Barbara Capone, Carol Ploeger.

NEWBRIDGE ROAD PARK FSC: Pre—Patricia Johnson, Kathy Kennedy. 1—Adam Leib.

NORDIC FSC: Pre—Tony Bardin, Maria Formica. 1—Denise Cappel, Lisa Remland.

NORTH JERSEY FSC: Bronze—William Sempionius.

NORTHBROOK SKOKIE VALLEY SC: Pre—Jamie Remien. 2—Amy Ketchum. 3—Renee Gilbert.

OHIO STATE UNIVERSITY: Pre—Debbie Strawman.

OLD YORK ROAD SC: Pre—Patricia Neubauer. 5—Amy Simelson. 7—Lynn Umstead.

PACIFIC FSC: Pre—Silver—Terry Koch.

PENQUIN FSC: Silver—John Kaiser.

PHILADELPHIA SC & HS: 2—Eleanor Holt, Susan Minter.

PITTSBURGH FSC: 2—Jaclyn Herring.

PLAZA FSC: 2—Kim Agle. Silver—John Coghlan.

POLAR PALACE FSC: Pre—Anita Brehm, Tom Burschell, Jana June, Evelyn Knight, Gary Vrooman, Lisa Vrooman. 1—Michelle Brakebill. 2—Kathleen Walters. Bronze—Ron Grantalas. Silver—Corey Iseberg.

PORTLAND ISC: Pre—Aimee Studdard, Carrie Studdard. 1—Reggie Raiford, Alethea Shiolas. 2—Ruth Aquino. 3—Debra Schulstad. Bronze—Olivia Lehmer.

PRINCETON SC: Silver—Susie Marzoni.

PROFESSIONAL: 1—Cathy Clarry. Pre D—Bob Stephens. Bronze—Bob Stephens.

QUAKER CITY FSC: Pre—Dee Cufchak. 2—James Freeman, Carrie Gerhart.

R.P.I. FSC: Pre—Silver—Vivian Gleisner.

ROXBURY WC: Pre D—Susan Florby, Susan Fujioka, Michale Goldfarb, Emily Lowenthal, Leslie Lowenthal, Bennie Ruchin, Abbey Semel. Bronze—Meg Lowenthal.

ST. LOUIS SC: 1—Joy Hodel. 2—Peggy Tetric.

SAN DIEGO FSC: Pre—Michelle Beauchemin, Jillene Gloor, Anne Rogers. 2—Karen Parker.

SEATTLE SC: Pre—Darcie Baier, Diane Thomsen, Gretchen Wahl. 3—Lori Smith. Bronze Pair—Jean Rene Basle, Terri Karis. Silver Free—Pat Holland.

SC OF BOSTON: 6—Theresa Martin. Silver Pair—Michael Botticelli. Bronze—Scott Bennett, Paula Surette.

SC OF CLARK MEMORIAL: 1—Sheila Powley.

SC OF DARTMOUTH: Pre—Linda Gatsy, Lynn Webster.

SC OF HARTFORD: Pre—Kathy Green, LuAnn Mawhinney. 2—Linda Green.

SC OF LAKE PLACID: 5—Edith Keating.

SC OF NEW YORK: Pre—Eve Morton. Silver—Terri Cheesman.

SC OF RIVERDALE: Pre—Patricia Manousos, Martha Szabo. Pre D—Dorene Knapp. Bronze—Katherine Beiser.

SC OF RHODE ISLAND: Pre—Justina Wentworth. 1—Laura Godfrey, Jean Morey, Karen Senft.

SC OF WILMINGTON: Pre—Kirsten Abrahamson, Miles Huffaker, Sheldon Nix, Peter Ressel. 1—Rebecca Meilman, Jonathan Mersereau. 3—Jonathan Mersereau. Bronze Pair—Mitchell Moyer. Pre D—Donna Broyles, Robyn Rock.

SC OF WORCESTER: 1—Kathleen Powers.

SOUTH BAY FSC: Bronze—Danielle London.

SOUTHERN CONNECTICUT FSC: Pre—Silver—John Cole.

SOUTHERN NEW HAMPSHIRE FSC: Pre D—Judy Beausoleil, Lillian Demanche, Cindy Kurisko, Karen Mulligan, Paula Mulligan.

SPOKANE FSC: Pre—Michael Kratofil. 1—Theresa Mengert. Pre D—Becky Gandini, Cathy Huckaby. Bronze—Becky Gandini.

TOPANGA PLAZA FSC: 1—Julie Reese.

TRENTON COMMUNITY SC: Bronze Pair—Jill Calvin, Michael Deck.

TULSA FSC: 4—Melinda Stewart. 7—Margo Miller.

UTAH FSC: 1—Jolene Linschoten. Pre D—Kim Grooscup.

WAGON WHEEL FSC: 1—Carolyn Epstein, David Kinser. 2—Erin McKenna, Denise Rutledge.

WESTCHESTER FSC: Pre—Elise Plate, Bethan Cohen. Pre D—Bethan Cohen, Debbie DeGiacomo, Teresa MacFarlane. Bronze—Lisa Judge. Pre—Silver—Karen Bender. Silver—Glennace Cohen.

WESTMINSTER FSC OF ERIE: Pre—Jackie Goldberg, Parviz Zadeh. 1—Mary Ellen Manendo. 2—Devie Siegel. 6—Barbara Hazen.

WC OF INDIANAPOLIS: 3—Anne Landers.

WISSAHICKON SC: Silver—Peggy Browning.

calendar

MARCH

- 4-5 "Silver Blades Ice Review," Hiawatha SC, Sault Ste. Marie, Mich.
- 6-12 World Figure Skating Championships, Calgary, Alta., Canada
- 6-12 South Bay FSC Club Competition, Olympic Arena, Harbor City, Calif.
- 9, Washington FSC Club Competition, Washington, D.C.
- 11-12 "Ice Revue 1972," Everett Arena, Concord, N.H.
- 11 "1972 Bay Path Ice Follies," Loring Arena, Bay Path FSC, Framingham, Mass.
- 17-18 "Ice Revue 1972," J.F.K. Memorial Coliseum, Manchester, N.H.
- 17-18 "Capers on Ice, 1972," Cape Cod SC, Hyannis, Mass.
- 18 "Ice Time USA," Cornell FSC, Ithaca, N.Y.
- 18 Tri-State Low Test Free Skating Competition, Bowling Green State University Ice Arena, Ohio
- 23-26 Middle Atlantics Competition, Sky Rink, SC of New York, N.Y.
- 24-26 Genesee FSC Senior Skaters Competition, Frank Ritter Memorial Ice Arena, Rochester, N.Y.
- 24-26 "Festival on Ice," Pittsfield Boys Club Rink, Berkshire Hills FSC, Mass.
- 25-26 Low Test Judges Seminar, Falmouth Ice Arena, Falmouth FSC, Mass.
- 31 "Exploring The Wonderful World of Figure Skating," Anchorage FSC, Alas.

APRIL

- 7-8 "Ice Show, 1972," Wonderland of Ice Rink, Bridgeport SC, Conn.
- 13-16 Lake Erie Invitational Championships, Thornton Park Ice Rink, Plaza FSC, Shaker Heights, Ohio
- 14-15 "Brandywine Blades," SC of Wilmington, Del.
- 14-16 "Ice Chips," Boston Arena, The SC of Boston, Mass.
- 22-23 "Funorama on Ice," South Mountain Arena, Essex SC of N.J., West Orange, N.J.

MAY

- 12-13 USFSA Governing Council Meeting, Hollenden House Hotel, Cleveland, Ohio

Continued on column two

official notes

Frederick C. LeFevre, president of the USFSA, has issued a clarification to the 1972-1973 Rulebook regarding the fee to skaters taking Pairs, Silver Free, and Gold Free Dance Tests.

"The fee schedule is intended to list the fees to be paid by each skater taking the test," he said. "Therefore, if two skaters are taking a Pair Test, each would pay a fee of \$1 for Bronze, \$3 for Silver, and \$5 for Gold. If only one partner is taking the test, that partner alone would pay the applicable fee (e.g. \$3 for Silver Pair).

The interpretation of the Silver and Gold Free Dance fees is the same as for Pairs. Only the skater who is taking the test pays the fee. If both partners are testing, the full fee as shown in the 1972-1973 Rulebook should be charged. If only one partner is taking the test, he or she will pay half the listed fee.

The fee schedule as shown in TR 5.011, 5.012, and 5.013 must be followed, including the above interpretation."

PEOPLE

BORN

To Mr. and Mrs. Norman E. Fuller, Chairman of the USFSA Judges' Committee, a daughter, Rebecca Jo, January 11.

DIED

John L. Wood, former president of the Los Angeles FSC, January 12.

TURNUED PROFESSIONAL

Jill Ellen Talbert, Los Angeles FSC, to join the Holiday on Ice International.

Roger and Gaie Berry, of La Mirada, Calif., to teach at the Polar Palace in La Habra, Calif.

Michelle Harnois, North Shore SC and SC of Lake Placid, to teach at the New Peabody State Rink, Mass.

Kathy Lynn, Los Angeles FSC, to teach at Torrence Ice Rink, Calif.

Maud-Frances Dubos, of Detroit, Mich., to teach at the SC of Wilmington, Del.

CALENDAR

- 12-14 1972 CFSA Annual Meeting, Georgia Hotel, Vancouver, B.C., Canada
- 19-21 Greater Milwaukee Dance Weekend, Wilson Park, Milwaukee, Wis.
- 19-21 "1972 Ice Show," Highland Ice Rink, Seattle SC, Wash.

JUNE

- 8-11 Second Annual Figure Judges School, Aspen SC, Colo.

rockers and counters

For most skating club members, the "ice show" represents an established annual fling, a chance to dress up in costumes and skate in elaborate chorus line or solo programs. If your club is giving its first ice show, the format may not be quite so glamorous, but the performance can be just as exciting for both skaters and audience. The members of the Wilmington FSC, in Massachusetts, reached this conclusion after performing in the Wilmington Winter Carnival for the first time. Club members and instructors demonstrated Preliminary Figures and the requirements for USFSA Badges 1-4 in their show.

That first ice show must seem a distant memory to the Essex SC of Orange, N.J. In April the club will present the 13th annual "Funorama on Ice," their benefit show for the Hospital Center in Orange. Several as-yet-unnamed international skating stars will join the 150 members for the benefit. Guest stars over the years have included Carol Heiss, Peggy Fleming, Donald Jackson, and Tim Wood. Proceeds from past "Funoramas on Ice" have helped the Hospital Center establish a new cardiac unit and expand its pediatric and emergency facilities.

Lake Erie Invitational Championships, hosted by the Plaza FSC, will be held April 13-16, at Thornton Ice Rink, 20701 Farnsleigh, Shaker Heights, Ohio. The competition will encompass events in figures and free style, dance, and pairs. Each skater's test status will be that of February 12, 1972. Skaters from Ohio, Pennsylvania, Upper New York, Michigan, Indiana, and Canada are invited to participate. Further information will be mailed to clubs in these states. Other interested skaters are welcome and should contact Mrs. Herbert Fitzgerald, 20871 Edgecliff Drive, Euclid, Ohio 44123.

The Arrowhead FSC of Ontario, Calif., has successfully sponsored a proficiency test program. The program was developed by the Southern California Inter-Club Association to motivate skaters of all degrees to improve basic and advanced skills. At the first Arrowhead test, judges evaluated forty Juniors, who passed one or more tests and received their patches. The club plans to continue the proficiency test program at regular intervals throughout the year.

newsmakers

March promises to be a demanding month for world skating stars. After they have vied for honors at the World Championships in Calgary, Alberta, twenty-seven top-ranked skaters will present the Tour of Champions in fifteen North American cities. Skaters in the show include Karen Magnusson (Canada), Janet Lynn and John Misha Petkevich (USA), Sergei Chetverukhin (USSR), Toller Cranston (Canada), JoJo Starbuck and Kenneth Shelley (USA), and Irina Rodnina and Alexei Ulanov (USSR). The Tour of Champions will give performances in Edmonton, Winnipeg, Detroit, Toronto, Montreal, Ottawa, Philadelphia, New York, Halifax, Quebec, St. Paul, Vancouver, Seattle, Oakland, and Los Angeles.

Skaters will also take "center ice" in New York when thirteen artists of the Artists League of Brooklyn exhibit works of art with a sport theme. The month-long exhibition opens March 2, at the National Art Museum of Sport in Madison Square Garden Center. Sculpture and paintings of baseball and basketball players, golfers, skaters, swimmers, and boxers will share the spotlight.

The pros deserve a place in the spotlight for initiating a competition rating system at the Nationals this past January. PSGA members arrived at Long Beach Arena armed with a formidable checklist: Was the condition of the ice good? Was practice ice time adequate? Was the lighting good for figures? Were parking facilities convenient? Were hotel and motel accommodations convenient and comfortable? Was the judging consistent? Could the competition have been improved? The PSGA hopes the answers to these questions will serve two purposes. First, the rating system will let USFSA officials know what the pros think of competitions. Second, the system can make suggestions for improved competitions.

Looking toward another facet of future competitions, USFSA officials may take a cue from our northern neighbors. The CFSA will inaugurate a Skaters Development Program this summer. Their goal is to have Canadian skaters place consistently in the top ten at World Championships. The program will provide financial assistance and training facilities for participants. Coaches and specialists in all areas of figure skating have been recruited for the program. No doubt the USFSA will watch the Canadians' progress with interest.

the alpine camp

June - September

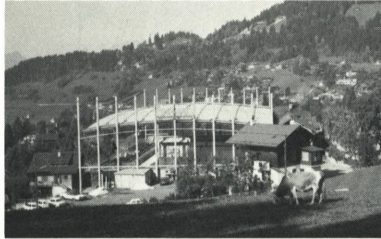
of villars



Dents du Midi
10,000 Ft. a.s.l.

Ice Rink 4,000 Ft. a.s.l.

Open all year round



*Gateway to the
high Peaks of the Alps*

Instructor in attendance

where you can patch, skate and dance all day
you can have a marvellous skating holiday
you can make new skating friends from many countries
you can pass the four degrees of the international tests
you can train for the coming season with your own coach

Enquiries to: Michel LECHAIRE, manager, 1884 Villars, Switzerland

NOT A SOUND...

I thought I'd be over that habit by now. I've willed it away many times, but this is ridiculous.

Time to quit this exercise. It's getting worse rather than better. Sometimes I have to be content with a mediocre job and go on. Sure, I want to get it right, especially since the test is coming up, but I learned a long time ago that you can practice yourself into the wrong rut rather than the right one if you start making too many mistakes. Sometimes you can repair the mistakes right away, but the chances aren't good. Better to have your coach there to prevent you from getting into that wrong rut. That's one function of practice sessions—to discover your problems so you can tell your coach. Every skater has different problems and the coach, if he's any good at all, molds your style according to you, not according to him.

The sun patch has slowly crept toward the wall and disappeared altogether. Now it's all dull gray again, and a few, white curlicues on the silent ice make a haphazard lace. Now to bring this place to life: a free style program, four minutes long, skated to a variety of musical selections all edited onto one record. First a few spins and single jumps to get used to the new pace.

The record is now on. The scratching

sound is loud through the public address system before the music starts. Oops—missed the cue note. So I skate all the way across the ice again, abruptly cut off the blaring music, and replace the needle at the beginning. Good thing the band of loud scratching is long, giving me enough time to get back into position. The maintenance man must have heard the music as he's leaning on the railing sipping coffee and watching. I must do well now.

I never can seem to pull off that jump just after the sit-spin. Even though I'm used to it for the most part, it's always difficult to land a good jump when I'm dizzy. A sideways glance at the maintenance man...there's no expression. He's seen this struggle before.

I pick up again about a third of the way through and find my place, slowly execute the small steps required there and get momentum to carry me through the rest of the program. Luckily my eyes don't water when I'm free skating. I'd be sunk if they did.

A final spin...a smooth check...and the music stops, right on the note. Not such a bad day after all. The maintenance man is gone, but it makes no difference. If he saw the ending, maybe he's satisfied. If he didn't, he'll see it on another morning...another morning just like this one.○

ANNOUNCING THE



41ST ANNUAL SUMMER ICE SKATING PROGRAM,
JUNE 20 TO SEPTEMBER 9

(And a reminder
to Lake Placid's Skating Friends
that the winter skating program
is now in full swing!)

lake placid



HOME OF CHAMPIONS

olympic arena

LAKE PLACID, NEW YORK

MEMORIES OF A POND SKATER

there, and, with luck, the boys would be there too.

Evenings at the Rez were as carefully programmed by our teenage sense of ritual as by the latter-day IBM computer. For a while we girls would skate together in our group, the boys in their group. We played snap-the whip a lot (I always quit before it was my turn to be the whip since it terrified me to go that fast and not be able to see very well and to know absolutely that I'd crash into somebody)—but we played it somewhat self-consciously, as we knew the boys were watching us just as we were watching them. Then, after that decent interval that seemed an eternity, some boy would skate up behind one of us and snatch off a hat. Success! The chase was on! The only wall-flowers were those who didn't have hats or mittens stolen.

This snatch-and-chase game was something to be endured though, sort of like having to work your way through turnips before being allowed to get your ice cream. The dessert in this case was not just retrieving your hat, but having your hat snatcher ask you if you'd like to skate with him. If you were really lucky, he might steer you down to the dark end of the Rez where the shrill voices of the other skaters seemed very far away, and you

could see the outlines of the bare trees against the star-bright sky, and you were suddenly aware that it was very cold and yet you felt quite warm and content inside. About the only thing that ever happened as a result of going to the dark end of the Rez was that the next day in school everyone knew you'd been down there with him, so it was assumed that you two were, from that moment, going together. At least that's what the girls assumed. I don't think the boys took it so seriously..

Now, in Phoenix, I skate indoors on artificial ice, and I concentrate on the kind of skating I would have given the world to do as a child. I have learned a lot. I know enough now not to buy my skates two sizes too big in anticipation of the three pairs of woolen socks that will fill up the space and hopefully keep the toes warm. I know that tying yarn pom-poms and jingle bells on my skates is unbearably gauche, and I know how to go backwards without swiveling my feet. I work on mohawks and progressives and think hardly at all of pond skating. But every once in a while, on a morning when the rink seems particularly frosty, or when a child bobbles by on his ankles, I hear the sudden boom of an ice crack, feel the sting of the wind on my face, and remember what it was like to skim over a winter pond.○

SUMMER SKATE AT
 The **Skating Club of Boston**

JUNE 26-AUGUST 20
 EIGHT WEEKS
 SUMMER PROFESSIONAL STAFF

Director, FRANK MUCKIAN
 CECILIA COLLEDGE
 ARTHUR BOURKE
 THOMAS MCGINNIS


THE SKATING CLUB OF BOSTON
 1240 SOLDIERS FIELD ROAD
 BRIGHTON STATION
 BOSTON, MASSACHUSETTS 02135



New for '72
 The big front zipper is in!
 Choose yours
 in wool or polyester doubleknit
 or flowered acrylic jersey with
 contrasting zipper and convertible collar.
 Priced \$25.00 to \$35.00

Skating Toqs
 by Jane

Write for free brochure and fabric samples:
 542 172 N.E.
 Bellevue, Wash. 98008
 Available in Canada
 Box 153, Kanata, Ont.



style #113 is \$28.
 washable
 drip dry
 polyester knit
 citrus green
 with white
 super ric rac
 slim skirt
 attached tights
 style #113 is \$28 + \$1
 mailing in girls 6-14,
 teens 10-14, misses 6-16

pot pourri designs by lois hamann
 3301 e. monmouth rd., cleveland,
 ohio 44118

classified

SKATING DRESS PATTERNS \$1.50. Skating jumper patterns \$1.50 plus 25c postage and handling. One piece - attached skirt. Girls sizes 8, 10, & 12. Teen sizes small, medium, large. Full payment must accompany all orders. Bee Jay Originations, Box 667, Station K, Toronto 12, Ontario, Canada.

FIGURE SKATERS in action!—on stationery, notecards, emblems, labels & other items. (Last year's favorite plus many new designs.) Nice gift idea! Send 8¢ stamp for my illustrated brochure: Liz Bierer, 2413 Lambert, Toledo, Ohio 43613.

MEN'S SKATING COSTUMES: For over twenty years the smartest and best fitting garments worn by National, World and Olympic champions. Samples and self measuring chart on request. Neil Maukonen, Suite 23, King Edward Sheraton Hotel, Toronto, Ontario, Canada. Tel.: 364-4644.

PROFESSIONAL ICE SHOW COSTUMES now available for amateur productions: reasonable rates! 3000 to choose from including full court ensembles; some hand props and draperies also available. Dave Lowery, c/o Costumes Unlimited, 1685 Elmwood Ave., Buffalo, New York 14207. Phone: 716-885-8675.



SKATE

JUNE 1 - OCT. 1

Sun Valley

SUMMER SKATING SCHOOL

JUNE 18 - SEPTEMBER 1

professional staff: john and rene carlow—albert edmunds
herman maricich—hugh mcaulay
carol mittun—dick salter

DORMITORY
HOUSING WITH
HOUSEMOTHER
SUPERVISION

SUN VALLEY FIGURE SKATING CLUB
SKATING CHAMPIONSHIPS

AUGUST 28 - 29

TEST WEEK AUGUST 21-25

WEEKLY EXHIBITIONS JULY 1 - AUGUST 19

FOR INFORMATION WRITE: HERMAN MARICICH, DIRECTOR OF SKATING
BOX 888, SUN VALLEY, IDAHO 83353

SUMMER SKATING IN

switzerland

CO-ED, 8-19. LANGUAGE INST. EXCURSIONS, OPTIONAL

DAILY ICE SKATING WITH INSTRUCTION IN CLASSES FOR BEGINNERS AND
ADVANCED SKATERS. FREE STYLE, FIGURE SKATING, SPEED SKATING, PATCH
SESSIONS, AMPLE ICE TIME. ORGANIZED PROGRAM.

DIRECTED BY:

KURT PULVER

COACH OF SWISS OLYMPIC SKATING TEAM & GOLD MEDALIST
STAR OF "ICE CAPEDES" AND "HOLIDAY ON ICE"
PROGRAMS-JULY, AUGUST 1972

Bureau Of International Relations Universities And Schools, Inc.

FOR FURTHER INFORMATION:

BOB WINTER, 1 LAWRENCE AVE., ELMSFORD, N.Y. 10523 (914-592-5094)

PERFECT CIRCLE

Reco-Tote. . . \$15.50
 Molded record carrier
 Holds six records
 The Spinner. . . \$30.00
 Adjustable Patch Marker
 Carrying case. . . \$5.75
 No C.O.D.'s
 Calif. residents add 5% Tax

Send for complete brochure
FRANK DAVENPORT
 Box 43, Orinda, California 94563

MIRROR LAKE SKATING CAMP *Inn*

Our 37th Summer Season
Lake Placid, N. Y.

Zip 12946
 On the Lakeshore
 Swimming Pool — Housemothers
 Write for Color Booklet SC

New Dance Music

Album #1.**SOLD OUT!**

Album #2.**SOLD OUT!**

Album #3.**Available Now!**

Album #3 consists of the 20 compulsory dances plus the starlight Waltz, and an extra Blues, Canasta and Swing Dance. All tempos are correct at 33 1/3 RPM. The instruments are: Guitar, Organ, Piano, Bass and Drums. This music has been tested and is used at rinks in and around New York City. Album #3—Price-\$26.00. Send check or M.O. to: Ralph Melady, **Jomel Productions**, 138 E. 53 St., New York, N.Y. 10022.

*Canadian Rockies
 Figure Skating School
 sanctioned by C.F.S.A.
 Osborne Colson, Director.
 Donald Jackson, Gustave
 Lussi and other world
 champion instructors.
 June thru August, 1972.
 Other courses: Dance,
 Music, Visual and
 Performing Arts. Write:
 School of Fine Arts,
 Banff, Alberta, Canada.*



**THE
 BANFF
 CENTRE
 SCHOOL OF
 FINE ARTS**



ZAMBONI

the proven name in ice resurfacers

Wherever ice skating is enjoyed as sport or entertainment, the name Zamboni is synonymous with excellence in ice resurfacing. Zamboni meets exacting demands of the finest ice performers in rinks throughout the world. Zamboni gives you *superior* ice, quickly, efficiently,

and economically. Result: more skating time—more profits! *Shown above: the popular Zamboni Model HD in action, shaves the ice, picks up all snow, applies fresh water to ice, removes excess water—all at once or in single operations*

write:

FRANK J. ZAMBONI & CO.

15714 Colorado Ave., Paramount, Calif. 90723 / (213)633-0751 • Cable FJZICE
 Frank J. Zamboni & Co., LTD., Scott Ave., Paris, Ontario, Canada (519) 442-2235
 Patents: U.S., Canada, Great Britain, Switzerland,
 West Germany, Japan. Other Patents applied for.



announces the
**8th ANNUAL
INTERNATIONAL
SUMMER
SKATING SCHOOL**
NINE WEEKS

OF CONCENTRATED SKATING

June 19th—August 20th, 1972

Professional Staff
under the direction of
KAREL DIVIN (Czechoslovakia)
BRIAN BAILIE
JOAN WILKES
DOUG LEIGH
TERRY FAHLGREN
MARION SPRATT BAILIE
CHRIS BLAIR
BETTY-JO BOWES
MICHELLE BOUCHER

Instruction of highest calibre in
Figures, Free Skating, Dances,
Free Dance and Pairs

Extra Features:
Stroking, Ballet and Private Programming
EXCELLENT ICE FACILITIES
AND ACCOMMODATIONS

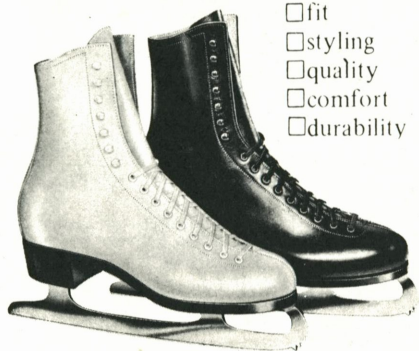
For Details, Brochures and Reservations Write:

Terry Talentino, Manager
Memorial Gardens
100 Cheppewa Street
North Bay, Ontario, Canada
Telephone 705-474-3770

BE GOOD TO YOUR FEET

skate in boots by

Oberhamer



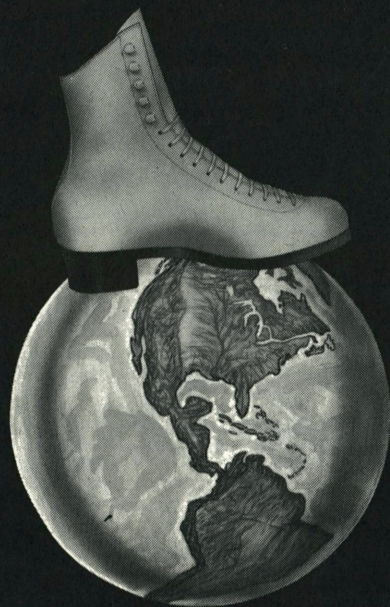
- fit
- styling
- quality
- comfort
- durability

First Choice of Pro or Beginner!

Write for Free Brochure

OBERHAMER SHOE CO.

683 No. Dale St.
St. Paul, Minn. 55103
Phone (612) 225-8841



“When you’re on top — a lot of words are not necessary”



RIEDEL SHOES INC. • RED WING, MINNESOTA 55066 • TELEPHONE (612) 388-4774