

november 1972 vol. 49, no. 7-price 50 cents

SKATING



Champions all over the world choose



FIGURE SKATES



Gold Test

The MK specialist blade
for compulsory figures

National and International skating
champions choose MK blades because
they know that MK gives consistent
QUALITY and RELIABILITY.

World Championships won on MK blades:—

1971	1st Ladies	1st Dance
1970	1st Mens	1st Ladies 1st Dance
1969	1st Mens	1st Ladies 1st Dance
1968	1st Ladies	1st Dance
1967	1st Ladies	1st Dance



Make sure YOU spend wisely—follow the Champions—BUY MK BLADES !!

Models to suit all purposes and every price need—available at all
ice rinks and specialist dealers.

MITCHEL & KING SKATES LTD. 216-219 Bedford Ave. Slough England

DANSKINS ARE NOT JUST FOR DANCING



They're for slides and glides and beautiful figure 8's. And great news! Danskini now makes an enchanting skater's skirt so all your fine full-fashioned leotards and trunks and tights and sweaters can be color coordinated. You can see them at leading arenas, sporting goods and department stores in a variety of colors. Write for illustrated brochure SK. Danskini Inc., 437 Fifth Avenue, New York, N.Y. 10016, Div. of Triumph Hosiery Mills.

DANSKIN®

Super Stars

Riedell Gold Star Boots



Riedell

RIEDEL SHOES, Inc.
Red Wing
Minnesota 55066

Editor Emeritus
Theresa W. Blanchard

STAFF

Acting Editor
Barbara R. Boucher
Art Director
and Production Manager
Elizabeth L. Backer
Assistant Art Director
and Production Manager
Bruce A. Boucher
Managing Editor
and Advertising
Virginia K. Burnham
Compositor
Marlene A. Giuffre
Circulation
Susan K. Shorey

USFSA Publications Committee: Brooks Stewart, Chairman, Southampton, Pa.; Patrick J. Donnelly, Seattle, Wash.; Gerald G. Gearheart, Sherborn, Mass.; Theodore G. Patterson, Boston, Mass.; Benjamin T. Wright, Belmont, Mass. Contributors: Canada—Mary Heffelfinger, Amy Kaltenbruner, Mrs. Dantes Pagliaro, Foreign—H.S. Abbot, India; Howard Bass, England; Dennis Bird, England, Germany; Jacline Brown, France; Nigel Brown, Switzerland; Per Cock-Clausen, Denmark; Karol Divin, Czechoslovakia; Eva Gyorgy, Alice Peters, Hungary; Kikuko Minami, Kazuyoshi Oimatsu, Japan; Ingeborg Nilsson, Norway; Rev. Kevin Reynolds, South Africa; Wendy Sellers, New Zealand. SKATING is the official magazine of the United States Figure Skating Association. COPYRIGHT: *Skating*, copyright 1972 by the United States Figure Skating Association in the U.S.A. Title Registered in U.S. Patent Office. Published eight times a year: January, February, March, April, May, June, November, December; by the United States Figure Skating Association: Executive Offices, 178 Tremont St., Boston, Mass. 02111; Publication Office, 178 Tremont St., Boston, Mass. 02111; Second-Class postage paid at Boston, Mass. Single Copy 50 cents, Subscription \$3.50. Address: *Skating*, 178 Tremont St., Boston, Mass. 02111. *Skating* is protected by copyright and nothing that appears in it may be reproduced without written permission.

PHOTO CREDITS: Gary Null, page 8; CEDOK, Czechoslovak Travel Bureau, page 10; Greater Minneapolis Chamber of Commerce, page 12; Michael Cutlip, page 23; Taube Greenspan, page 25.

COVER: The Mississippi River flows through Minneapolis-St. Paul, scene of the 1973 Nationals. Photo courtesy of the Greater Minneapolis Chamber of Commerce.

SKATING

- 7 Readers Write
- 7 In This Issue
- 8 The Guy Behind The Girl / William Carroll
- 10 Passport to Bratislava / Alexandra Stevenson
- 12 Ticket to the Twin Cities / Barbara R. Boucher
- 14 North Americans: End of an Era / Donald H. Gilchrist
- 16 Henry M. Beatty / H. Kendall Kelley
- 18 Do Not Fold, Spindle or Mutilate / Spencer E. Cram
- 20 ISU Council Meeting / John R. Shoemaker
- 22 Another Look: The Carbon Monoxide Scare / Richard Stephenson
- 24 The Patriarch / Taube Greenspan
- 26 Henry R. Heebner / Delaplaine McDaniel
- 26 H.L. Garren
- 27 How About Teaching Together / Mrs. S.J. Arons
- 28 Grassroots Campaigns / Mrs. Howard J. Jackson
- 30 Explorers II / Roger F. Turner
- 31 Shopsticks
- 32 St. Gervais & Oberstdorf
- 34 Summer Results
- 43 Kid Talk
- 44 People
- 44 Official Notes
- 45 Calendar
- 45 Club Notes
- 46 Laurels / USFSA Tests Passed
- 57 Classifieds

TRAIN WITH CHAMPIONS

in the Skating Center of the World!

More training time with two adjoining ice arenas. Pure air and the conditioning benefits of 6000 foot altitude, plus the finest instruction and training procedures, have earned the Broadmoor complex this title. Beatty Hall, our new modern living facility, and cooperating schools, assist the serious year-round students. Special summer competitor's skating program (June-August) is offered as well. The professional staff, headed by Ron Baker, includes Jack Raffloer, Christine Haigler, Ruby Maxson, Doreen Denny MacSalka and Pieter Kollen. For more information contact: Executive Secretary, Broadmoor World Arena, The Broadmoor, Colorado Springs, Colorado 80901. Phone (303) 634-7711.

The **BROADMOOR WORLD ARENA**
COLORADO SPRINGS, COLORADO

Host for more World Figure Skating Championships than any other site in the Western Hemisphere.



readers write

DAS BUCH

In reference to Richard Stephenson's interesting article on collecting skating books which appeared in the May issue of SKATING, I would like to clarify a point relating to the first German book published on skating. The first publication of importance appeared in 1789 (not 1790). It was not a book, but a lecture, which had been delivered to a club of friends in Dessau the previous year by Gerhard Vieth, a lecturer on mathematics in that town.

The 26-page discourse formed a chapter in the *Neue Litteratur und Volkerkunde* published in Leipzig. It was almost entirely devoted to big curves and spirals on the outside edge, interspersed with long quotations from the German poet Klopstock, who became an expert skater and wrote an ode to skating. Vieth concludes his lecture by referring to existing "artificialities" in skating—variations of figures which he dismisses contemptuously, only citing the outside forward loop three, the earliest mention of a loop three in literature.

In 1790 Vieth's lecture was republished in Vienna, which was the first Austrian publication on skating and no doubt the work Mr. Stephenson is referring to.

It was not until 1825 that the first German book, *Der Eislauf oder Schrittschuhfahren* by C.S. Zindel, was published in Nuremberg. Although more than three decades had elapsed since Vieth's lecture, Zindel's book contained practically nothing which was not to be found in the former's work.—Nigel Brown, Lausanne, Switzerland. FREE PRANCING?

Bravo to Rudy Loeser for his comments in the May issue (Readers Write) on Free Dancing, or as Muriel Kay once so aptly described it—Free Prancing! I am sorry to see so many complicated and technical restrictions on Free Dancing, especially since they are so often violated anyway—usually without apparent penalty. I think that if more of our "dancers" were seriously interested in dancing, rather than just trying to win another competition, we could see an improvement in quality. But, alas, there would probably also be a decrease in the number of dancers.—Sidney V. Soanes, Toronto, Ont.

The Editor welcomes all letters provided they are signed. Names will be withheld on request. Send mail to SKATING, 178 Tremont St., Boston, Mass. 02111.

in this issue

Ask any competitor what he enjoys most about skating and, more often than not, meeting new people and seeing new places will be high on his list. Whether he is a Juvenile skater entering his first inter-club competition or a World Team member setting off for an international event, the opportunity for new experiences is the same.

In a letter describing her summer exhibition tour of Europe, Senior Ladies competitor Dorothy Hamill captured the feeling many skaters experience through their travels. "It gave me such insight into people of different backgrounds," she said. "The friendships and the appreciation for one another that developed were such valuable experiences. We ate, swam, danced, talked and skated together. The love that so many of them have for this truly great sport brought us together with a greater understanding of one another."

In recognition of this enriching aspect of the competitive experience, this issue of SKATING focuses on some of the people and places that American skaters will come to know during the '72-'73 season.

Those competitors who realize their dream of skating in the World Championships will travel to Bratislava, Czechoslovakia, this year. Beginning on page 10, Alexandra Stevenson explores that ancient city.

For those who will limit their travelling to the '73 Nationals, we offer "Ticket to the Twin Cities." Minneapolis-St. Paul will do the hosting honors this year, and those who plan to attend the competition can look forward to an enjoyable stay in this "Gateway to the Mississippi."

People, no less than places, await the arrival of travelling competitors. One such gentleman is Ralph Oppenheim in New York. For those who have not had the opportunity to meet Mr. Oppenheim, Taube Greenspan sketches a vivid portrait.

Less visible but certainly important is Robert Paul, the choreographer credited with Peggy Fleming's memorable free style routines. William Carroll introduces the choreographic mastermind on page 8.

Whether you plan to compete this year or not, we hope you will enjoy this brief expedition through the skating world.

ERRATA: June, 1972 issue. "Savage Steps" was researched by Mrs. Charles A. Sigrist.

The Guy Behind The Girl

by William Carroll



Robert Paul, Peggy Fleming

There is an old, established saying that goes something like, "Behind the success of every man, there is usually a woman close at hand." Well, endearing, old sentiments momentarily aside, lucky skaters visiting a local rink in Los Angeles last summer had an opportunity to see the talent of Robert Paul—four-time World and 1960 Olympic Pair champion—retire that old statement! What those skaters saw was Bob Paul, coach and choreographer, creating "A Concert with Peggy Fleming," a new ice show built around the 1968 Olympic champion. Now it's "the guy behind the girl" or something like that.

People who have followed the television specials featuring Peggy Fleming have seen the name, "Bob Paul, Choreographer," on the closing credits of each show. In those shows, Peggy skated to "Aquarius," "I Want To Be Free," "Romeo and Juliet" and "Eleanor Rigby," with routines choreographed by Bob Paul and stamped with his individual flavor and genius.

"The job of a good choreographer," says Bob, "is a complex and complicated one. Among many things, you must find the precise music to fit the need of the sequence you want to act out on the ice. In television and live shows, the mood you create and project is vitally important. Your skater has to have the power and the right chemistry to sustain that mood. Here it's important to really know the personality you are working with. I wouldn't choreograph a similar routine for Julie Lynn Holmes and Peggy Fleming. No two skaters are alike. Each takes a different path emotionally toward expression, with a different level of technical mastery and presentation. Timing the routine, placing the jumps comes after other elements have been worked out.

"There wasn't a time that I did not find choreographing a challenge," Bob remembers. Born and raised in Toronto, Bob began his skating career at age eight. After his unfortunate brush with polio and his recovery, Bob's parents were convinced that formal lessons were the order of the day. And, under Coach Sheldon

Galbraith, Bob's dreams of an Olympic victory became a reality.

"I was a singles skater but in 1956 began to concentrate on Pair work with Barbara Wagner. In 1957 we won the Worlds and kept winning each year to finally capture the Olympic medal in 1960. The Ice Capades beckoned, and Barbara and I skated with them through 1964. Then we retired. Barbara came out of retirement briefly to skate with Richard Dwyer when his partner fell ill. It was a strange sight indeed to be sitting in the audience, watching the other half of myself skating by."

Bob began to coach, and filling his teaching hours were many lucky skaters: Junior Mens champion Billy Chapel, the Pair of Wagelin and Sweitzer, Ladies Silver medalist Julie Lynn Holmes and Ladies champion Peggy Fleming.

Bob feels that studying and working in the related arts is a big help in choreography. "Singing, dancing and acting keep my mind open to the potential and future expressive directions of skating. I take regular dance classes and am heavily into acting too. (Theatre productions of "Becket" and "Luther" and the TV series, "Bewitched," have exhibited Bob's thespian talents.) Singing is a pet love, and, although I don't expect La Scala to offer a contract, you just never know!"

"I'm seriously pleased over the new percentages in competitive markings. It's a step in the right direction. In fact, I hope to see free style dominate completely one day, with school figures remaining only as a qualifying requirement. When competitors can spend more hours on free style, we will reach new heights of perfection in free skating performance, such as we see in gymnastics and ballet. I envision a much more exciting sport than we have now."

Bob's daily schedule of coaching and choreographing keeps him busy now. But with the new ISU ruling placing more emphasis on free style, this Californian may find his talents even more in demand. So if you notice an increase in westward migration, you needn't wonder. Everybody will be heading for Bob Paul's place. O

by Alexandra Stevenson

From a spectator's point of view, the '73 World Championships should be among the most exciting ever. The ISU ruling which has reduced the percentage of marks awarded for figures will bring the final results in the singles events more in line with the audience's judgement. Consequently, the Janet Lynn/Karen Magnussen duel by itself should make your trip to Bratislava worthwhile. But, more than the promise of exciting competition, the '73 Worlds offer the myriad attractions of a host city in a different but inviting land.

Bratislava, with just over a quarter of a million inhabitants, is the capital of Slovakia and the third largest city in Czechoslovakia, a country smaller than New York State. Situated on the Danube only thirty-

PASSPORT TO BRATISLAVA



three miles from Vienna, Bratislava has a long history. The fifteenth Roman legion was garrisoned here on the site of a former Celtic settlement. By-contrast, the country of Czechoslovakia is only fifty-four years old and owes its existence to the stroke of a pen in Pittsburgh, Pennsylvania. There, in 1918, Czech and Slovak patriots signed a proclamation of independence and this new nation, a product of World War I, was born.

Though one nation, the Czechs and the Slovaks still consider themselves to be two distinct peoples. Each has its own language. For the benefit of the Bratislava-bound, all terms used in this article are Slovak. One further guide to travelers—make sure you don't commit the cardinal sin of calling a Slovak a Czech. There lurks within a fierce nationalism.

A largely mountainous country with a third of its area covered by rich forests, Czechoslovakia is a land of castles. More than two thousand of them dot the countryside. Dominating Bratislava is a medieval, brooding fortress reconstructed in the mid-eighteenth century to resemble an upturned table. Outside the city where the Moravia River flows into the Danube are the ruins of Devin Castle. At Bojnice there is a turreted fairytale chateau with a window for every day of the year.

One of the most fascinating places in Slovakia is the ice cavern at Dobšina. Its frozen waterfalls, transparent curtains, eerie ice pillars and beautiful frosty mirrors provide an enthralling glimpse of one of the earth's more spectacular natural wonders. In the lower part of the cave the ice has piled up seventy feet thick. No greater concentration of ice over a similar area can be seen anywhere outside the polar regions.

If in a fit of enthusiasm, you should overexert yourself while watching the skaters, take the quick train ride fifty miles to Piestany. This famous spa will bathe you in hot, bubbling, sulphurous, volcanic mud. Your aches and pains should disappear instantly.

If you do overexert yourself, it won't be because the facilities for the Championships are deficient in any way.

Bratislava's ice arena seats twelve thousand spectators and is the largest in Czechoslovakia. It stands at the edge of town at Tehelne pole in a sports complex which also houses a cycling track, football stadium, tennis courts and an Olympic-size outdoor swimming pool. Bratislava is well experienced in coping with skaters, for the 1958 and 1966 European Championships were held here. Furthermore, our skaters can look forward to a warm welcome. Ron Ludington, coach and former U.S. Pairs champion, skated before audiences in both Prague and Bratislava. He recalls, "European spectators are always enthusiastic, but those in Bratislava gave us one of our finest receptions."

The easiest and least expensive way to get to Bratislava is to join a tour (See the advertisement for the tour sponsored by Thomas Cook & Son elsewhere in this issue). If you plan to travel independently, accommodations and tickets can be booked through Cedok, the Czechoslovakian Travel Bureau. Their address is: 10 East 40th, New York, N.Y. 10016; telephone—(212) 689-9720. Alternative arrangements can be made with your local travel agency.

To get your visa in the U.S., send for a visa form to: Czechoslovak Embassy Visa Section, 3900 Linnean Avenue NW, Washington, D.C. 20008. Return the completed form with two passport photos, six dollars, a receipt for your hotel booking (which must be paid for in advance) and a stamped, self-addressed envelope. In Canada send to: Consulate General of Czechoslovakia, 1305 Pine Avenue West, Montreal 109 P.Q. Visas are valid for five months from their date of issue and are good for only one entry and exit. Residents in the States who are not U.S. citizens should remember that before they visit any Communist country they must obtain a reentry permit for this country from any immigration department.

There are very few hotels in Bratislava, and you are advised to book immediately. Overlooking the no-longer blue Danube at Riečna ulica 4 (*Ulica* or *ul* for short means street) is the official hotel, the

Please turn to page 55

Ticket to the



Twin Cities

by Barbara R. Boucher

Land of Lakes...Gateway to the Mississippi...Sports Capital of the Upper Midwest. The descriptive phrases, though many, are legitimate. Minneapolis-St. Paul, the object of innumerable mottos, offers that happy blend of local color and convenience that makes the Twin Cities a natural choice to host the 1973 United States Figure Skating Championships.

Sponsored by the Braemar-City of Lakes Figure Skating Club, the Nationals will be held January 24-27, 1973, at the Metropolitan Sports Center in suburban Bloomington. Only minutes by freeway from the Minneapolis-St. Paul downtown district, the Met Sports Center provides seating for 15,000 spectators. For further information on tickets contact: Metropolitan Sports Center

7901 Cedar Avenue South
Bloomington, Minnesota 55420.

A short walk from the Met Sports Center is the Marriott Inn, the official hotel for Nationals. The Inn boasts a glass-domed garden court and a restaurant. For reservations, write to 1919 East 78th Street at Cedar Avenue, Bloomington, Minnesota 55420, or call toll free (800) 228-9290. Other lodgings in Bloomington that are equally convenient to the sports center may be booked at:

Thunderbird Motel, 2201 East 78th Street,

Sheraton Motor Inn, 2525 East 78th Street

If you prefer to stay in downtown Minneapolis (only twelve minutes from the sports center), there are several excellent hotels with restaurant facilities:

Holiday Inn Central, 1313 Nicollet Avenue

Pick-Nicollet Hotel, Nicollet and Washington

Radisson Hotel, 45 South 7th Street

No matter where you stay, the downtown district exhibits several not-to-be-missed sites for visitors. Minneapolis, twice recipient of All-America City Awards, has done much to combat urban sprawl. Chief among its accomplishments is the rebuilding of its downtown district with Nicollet Mall as the major thoroughfare. The winding, park-like Mall spans eight blocks and is adorned with trees, benches and fountains. As the main avenue of the shopping district, Nicollet Mall provides a welcome convenience for winter shoppers—heated, snow-free pavement!

For those who would rather not brave the winter cold, Minneapolis offers its skyway system, a network of enclosed, above-the-street pedestrian bridges that make possible indoor travel between buildings in the downtown area.

But if the wintry outdoors appeals to you, the Twin Cities have plenty of it! Twenty-two lakes dot the metropolitan area. Scattered throughout 152 park areas totaling 6,000 acres, these waterways are the main feature of a lake and park system unsurpassed in the nation. Chief among these outdoor attractions is Minnehaha Falls, inspiration for Longfellow's "Song of Hiawatha." A statue of Hiawatha and Minnehaha commemorates the famous poem.

Add the "must see" attractions of Minneapolis-St. Paul to four days of competition excitement. The sum is bound to equal a memorable time for all at Nationals in the Twin Cities. O

north americans

by Donald H. Gilchrist

There seems to be some confusion about the termination of the North American Figure Skating Championships. To clarify this situation, it might be useful to provide some of the background and rationale behind the decision to end this ISU-sanctioned, Senior, international competition, which dates back to 1923.

The North Americans for 1973 were scheduled to take place next February 8-11 in Rochester, New York. Following normal procedure, a 1973 North American Figure Skating Championship Committee was established in the summer of 1971. The committee comprised the following members: USFSA—Charles U. Foster, F. Ritter Shumway and Benjamin T. Wright; CFSA—Donald H. Gilchrist and George J. Blundun. Mr. Foster was elected to the chairmanship.

Despite best efforts on both sides to

get together, this committee did not meet until April 15, 1972, in Toronto. However, there were informal discussions and exchanges of correspondence between some of the committee members prior to this meeting. When the committee met in Toronto, all members were present, plus John McKay, president of the CFSA, ex officio, and Hugh Glynn, Executive Manager of the CFSA, an observer. The meeting was chaired by Mr. Foster. A previously agreed upon item of the agenda was an evaluation of the North American Championships, encompassing the present situation and predictions for the future.

At the request of the chairman, this writer opened the meeting by outlining the problems in North Americans as presently conducted, which were of concern to the CFSA. These points include:

- 1) The imbalance of Judges between Canada and the United States, depending on which country was host. In earlier years the Judges' Panel comprised three Judges from each country. However, the ISU instructed North Americans to observe Rule 394 3(c) which stipulates that for ISU, Senior, international competitions there must be an odd number of Judges (not less than five nor more than nine). After reviewing some of the previous North American's results, it was evident that judging was becoming increasingly difficult and that there was obvious dissension in skating circles on both sides of the border.

end of an era

2) The timing of the North Americans was inopportune. It was always a tight squeeze between the U.S. and Canadian National Championships and Worlds.

3) Several competitors were of the opinion that the North American results could jeopardize their placings in the World Championships.

4) Top skaters from both countries were increasingly reluctant to compete. Therefore, neither Association could say its best skaters would participate.

5) North Americans had always been the training ground which enabled Judges from both countries to achieve ISU Championship Judge and Referee status. Now, with such international events as the Richmond Trophy, St. Gervais and Prague Skate, North Americans was no longer needed for this objective. In recent years the increased pressure at North Americans necessitated sending the best and most experienced Judges to this championship, rather than using it as a training vehicle.

Based on the foregoing factors, it was the view of the CFSA members of the North American Championships Committee that time had passed North Americans by. They recommended that in the best interest of skating between both Associations the North American Championships be terminated prior to the 1973 event. This recommendation was then discussed by all committee members. The following is an extract from the official minutes prepared by the U.S. Secretary:

"Accordingly, it was, upon motion duly made and seconded, unanimously voted: To recommend to the respective Associations, the termination of the North American Championships in their present form, effective with 1973."

This recommendation was then presented to the directors of each Association and finally to the USFSA and CFSA Annual Meetings in the spring of 1972 for final approval.

It is with real regret that this championship, which holds wonderful memories for many skaters, has been terminated. However, rather than have these memories blurred by increasing problems in the staging of this Championship, it is felt that the joint decision to terminate the North American Championships, although an extremely difficult one, was realistic. ○

HENRY M. BEATTY



1900-72

With the death of Henry McIntosh Beatty on August 11, our Association and the sport of figure skating lost one of its truly great servants. Henry M. Beatty served the USFSA as President for three years (1946-49) and as Standing Committee Chairman and member of the Executive Committee continuously from 1940 to 1967. He was an Honorary Member of the Association and the Executive Committee until his death.

Mr. Beatty was our Senior Referee and Judge. He was appointed a World Figure Referee and Judge in 1946, a World Dance Referee in 1951, a National Figure and Dance Judge in 1942, a National Dance Referee in 1945 and a National Figure Referee in 1946. Mr. Beatty served as Referee or Assistant Referee in eight World Championships, one Olympics and sixteen National Championships.

From 1961-1967, Beatty served as USFSA representative to the ISU and as a member of the Council of that body. As a member of the Broadmoor Skating Club, he organized four World Championships and at the time of his death was actively planning and preparing for another in 1975.

Henry was responsible for many improvements and refinements of our sport. He rewrote, expanded and clarified Heaton Robertson's *Tract* on compulsory figure errors (now *Evaluation of Errors in Figures*) and Bedell Harned's *How to Organize and Conduct a Competition* (now the *USFSA Competitions Manual*). He revised many of the forms and procedures now in use to conform to ISU rules and to be more practical.

Beatty may also be credited with many innovations in figure skating. For example, after the Midwestern Championships in 1939, Henry and I decided that we could learn more about judging if we studied the skating at the North American Championships. Accordingly, we presented ourselves at the Granite Club,

Member, Executive Committee 1940-43, 1957-62
 Chairman, Midwestern Committee 1943-45
 Chairman, Competitions & Rules Committee 1945-46, 1949-51
 Chairman, Olympic Games Committee for Figure Skating 1946-66
 President 1946-49
 Chairman, Judges & Judging Committee 1951-54
 Chairman, Competitions Committee 1954-55
 Chairman, International Committee 1955-57
 ISU Delegate 1961-62
 Chairman, Memorial Fund Committee 1961-62
 ISU Representative 1962-67
 Honorary Member of the USFSA 1953
 Honorary Member of the Executive Committee 1966
 World Referee 1946
 World Dance Referee 1951
 World Judge 1946
 National Referee 1946
 National Dance Referee 1945
 National Judge 1942
 National Dance Judge 1942
 National Accountant 1952
 World Championships
 North American Championships
 Olympics
 National Championships
 Manager, Japan Tour

Referee 1959, 1964, 1965
 Assistant Referee 1957, 1966,
 1967, 1969, 1972
 Referee 1949, 1953
 Assistant Referee 1963
 Referee 1964
 Referee 1946-57, 1960-61
 Assistant Referee 1940, 1942
 1958

bought tickets and asked (naively) if the judges would mind if we went out on the ice after them to examine the figures of Bud Wilson, Robin Lee, Ralph McCreath and Ollie Haupt. The amazed, but courteous, Canadian officials allowed us to do so. This was probably the best judging school we ever had. At any rate, it was the first case of trial judging that I know of.

Born in Cleveland in 1900, Henry graduated from Asheville School (North Carolina) in 1918 and from Cornell University as an electrical engineer in 1922. He had an active business career as a member of electrical contracting firms and a Vice President-Operations of a limestone and building materials company. He married Elizabeth Coates in 1922 and had a son and a daughter and five grandchildren. He lived in Cleveland all his life except for some ten years (1960-70) which were spent on the Pacific Coast.

Beatty had many interests and activities other than figure skating. For many years he was interested in amateur photography, did his own developing and enlarging, and won awards in many local competitions. He was an enthusiastic and proficient golfer who played "archery golf" in the winter before taking up figure skating in 1937. He was also very interested in fishing. He travelled to distant points, such as Alaska, Bermuda, Scotland and many parts of the U.S., in search of game fish.

Henry was gifted with keen intelligence, a forceful personality and great executive ability. He was deeply interested in figure skating and the Association and turned his talents wholeheartedly towards its activities and progress. His influence and contributions to the sport can never be surpassed in extent and value. All those of us who had the good fortune to enjoy close association with Henry M. Beatty will miss him sorely in the future.

—H. Kendall Kelley

DO NOT FOLD, SPIN—

by Spencer E. Cram

Last month the USFSA Central Office joined the computer age. The office signed up with the Service Bureau Corporation (SBC), a computer center which leases the use of its memory banks to several clients. Under this program, the Central Office can reap the benefits of electronic mechanization without having to own or operate the equipment. The SBC has taken over those operations—USFSA registrations, test reports and subscriptions to SKATING—that have proved impossible to conduct manually with efficiency. The transfer of these operations to computerization will affect you, the member, to varying degrees.

Under the new system, each USFSA member's registration number is his "address" in the computer memory unit. All pertinent information relating to each member, such as test records, club affiliation, judging status, magazine subscription and home address, will be stored under his registration number.

Obviously, for this system to be effective, each member's registration number must not change from year to year. The numbers issued this year will be permanent, but will be followed by a year designation digit. For example, a member may be issued #123456-3. The "3" indicates an expiration date of December 31, 1973. When that member registers for the

following year, he will receive a card with the same number but an updated expiration digit.

Each September the computer bureau will print sets of registration cards by club, complete with the names, addresses and numbers of those whom each club registered the preceding year. Clubs will only have to validate these cards by marking the magazine subscription and returning the carbon copy to the Central Office with the proper registration fee. Club secretaries should, of course, make sure that the name and address printed on each card are correct.

In addition to the printed cards, each club will receive several blank registration cards for new members. But when a skater moves from one club to another, rather than take one of these blank cards, he should inform his new club of his former registration number. This will enable the computer memory unit to keep all the information on that member in one place.

Subscriptions to SKATING will be greatly affected by computer processing. In the first place, the computer will automatically renew a subscription for one full year from its expiration date after the revalidated registration form has been received. In addition, the computer will produce address labels for each issue after scanning the subscriptions marked on registrations in its memory unit. Before this innovation, SKATING's circulation

— DOLE OR MUTILATE

director had to produce approximately 25,000 addressograph labels, file them in zip code sequence and run off the required number of address labels for each issue. The time involved in this procedure often caused subscription delays and dissatisfied readers. Hopefully, computerization will eliminate these problems.

Each member club has also been assigned an identification number in the computer memory unit. The club data currently listed on pages 186-215 of the Rulebook will be filed under each club's number. One bonus to the new system is that clubs may now advise the Central Office of changes in officers, addresses or judges at any time, rather than wait for the annual request each June. The computer will then produce an up-to-date listing of the club data, as well as a listing of judges by status with address and club affiliation, for each new Rulebook.

Semiannually, the computer will print out a registration report by club, along with the previous year's statistics for comparison. Similar reports on dance and figure tests and annual reports on judges' test activity will be readily available.

The processing of all test reports by computer began last month. Now, when a test report is received, the computer will:

- 1) Scan the information stored under the candidate's registration number, making sure the prior test was passed and noting the time lapse since the last failed test.

- 2) Scan the judges' registration numbers for their eligibility to judge the test.

- 3) Examine the total marks for passing average of a majority.

- 4) Issue Test Passed cards; print out lists of tests passed and tests failed with the reasons for failure.

- 5) Retain a memory record of each candidate's tests passed and failed and the date each test was taken.

When the computer processes a test report, it could award a test to the wrong person if an incorrect registration number is given. The chances of this occurring, however, are very remote. The incorrect number would have to belong to a member with a test record identical to that of the original candidate. Otherwise, the computer would automatically reject the test because the prior test had not been passed or the test in question had already been passed.

Computer processing of test reports, registrations and magazine subscriptions should prove to be far more efficient and accurate than the manual operations the Central Office has tried to perform in the past. Nevertheless, errors will undoubtedly occur. No computer installation has yet been devised that eliminated all sources of error from the start. So, report all mistakes that come to your attention. With your help, the Central Office can achieve the state of computerized efficiency that you are entitled to expect.○

ISU council meeting

by John R. Shoemaker

The 1972 ISU Council meeting was held June 1-4 in Bled, Yugoslavia. In the following report John R. Shoemaker, the Association's ISU Representative, discusses those decisions of the Council which are of particular importance to the USFSA.

On Championships

1973—Definite allotments

World Championships—Bratislava, Czechoslovakia, February 27-March 4, 1973.

European Championships—Cologne, BRD, February 6-11, 1973.

1974—Provisional allotments

World Championships—Munich, BRD, March 5-9, 1974.

European Championships—Zagreb, Yugoslavia, January 29-February 2, 1974.

Minimum and maximum values were set for the "Prizes of Honor" awarded at the World Championships. The values, per skater, are:

	Minimum	Maximum
1st Place	\$156	\$312
2nd Place	\$104	\$208
3rd Place	\$ 78	\$156

Beginning with the 1973 European Championships, doping tests as now administered to competitors in the Olympic

Games and ISU Speed Skating Championships will be adopted for figure skating championships. An ISU Communication has been released with details.

Candid Productions (Dick Button) has been awarded a TV contract selling it the North American rights to telecast the 1973-1976 World Championships. If the Championships are held in North America during this period, Candid Productions will pay \$45,000 for the telecast rights. Of this sum, ninety percent will go to the organizers, ten percent to the ISU.

On Barrier Advertising

The Council also signed a contract awarding all barrier advertising for the 1973-1977 World Championships to the Gloria-Transparente-Swiss Company. Henceforth, any ISU Member applying for the World Championships must guarantee:

- 1) that the rink will have no advertising of any kind—not even the name of the rink—in the entire area around and above the skating surface;
 - 2) that there will be barriers, and
 - 3) that the advertising company (Gloria-Transparente-Swiss) may place advertising matter on the barriers.
- The rink owners must also agree to the guarantee. The contract contains various

limitations on the number, length, height and spacing of the advertisements. The limitations specify that 1) there are to be no more than fourteen advertisements on each half (one side, one end) of the rink, 2) each advertisement may be not more than four and one-half meters long nor more than sixty centimeters high, and 3) the advertisements must be a least one meter apart.

Two-thirds of the fee for this barrier advertising will go to the organizers of the Championships and the other third will go to the ISU. The ISU will distribute all of its share to the ISU Members participating in the Championships (on a formula based on the placement of skaters from each Member in the previous year's Championships) to help defray the travel expenses of competitors. This year the USFSA will receive about \$3,000 from barrier advertising. In 1973, based on our 1972 World placings, we may receive \$6,000.

On World Tours

In future post-World Championship Tours, only the top three placers in free skating (Men, Ladies and Pairs), the top two couples in Free Dance and any champions not included in the foregoing categories will be invited to participate. Before the Championships, each ISU Member will be asked whether any of its entrants will be unwilling to participate if invited. This procedure should eliminate some of the problems of previous World Tours.

Air travel overweight charges have been a problem on past Tours. In the future, Tour participants will be allowed only eighty-eight pounds of luggage. The overweight charges on forty-four to eighty-eight pounds of luggage will be paid by the organizers. Charges on weight beyond this limit must be assumed by the skater.

On Judges Seminars

Two Judges Seminars will be held in Bratislava, Czechoslovakia, on March 5 and 6, 1973 (the Monday and Tuesday following the World Championships). There will be one seminar for Single and

Pair Skating and another for Ice Dancing. The seminars will run concurrently, using separate rinks and meeting rooms. Thus, it will be impossible for one person to attend both seminars. Each ISU Member will be allowed to send a maximum of two judges to the Single and Pair Skating seminar and one judge to the Ice Dancing seminar. Each seminar will have meetings both on the ice, where skaters will demonstrate, and in meeting rooms. Audio-visual aids and various other equipment will be available.

The purpose of the seminars is to arrive at conclusions regarding international standards through general discussion and to have the participants pass on those conclusions to judges in their own countries. The purpose is not to teach judges how to judge, but rather to prepare judges to be teachers of other judges. It is expected that all participants will be qualified World Judges.

The ISU will pay the room and board expenses of all participants. A Communication with further details on the seminars has been released.

On Miscellaneous Decisions

The ISU Supply of Judges Handbooks II (free skating) and III (pair skating) is exhausted. The Technical Committee for Figure Skating will work on replacements to be released in a year or two.

The Technical Committee for Ice Dancing has been asked to work on a Judges Handbook for Ice Dancing.

The 1973 ISU Congress will be held June 12-15 in Copenhagen, Denmark.

General

The meeting site was beautiful. We were housed and held our meetings in Marshal Tito's former summer villa on the shore of Lake Bled. The entire villa was reserved for those attending the meeting. The weather was conducive to long meetings—it rained almost all the time. On the social side, there were two dinners—one hosted by the Yugoslav Skating Association, the other by the Zagreb Skating Association—and a two-hour bus tour of the surrounding area on Saturday afternoon. O

ANOTHER LOOK:

THE CARBON

by Richard Stephenson

Although I believe that SKATING did a real service in pointing out the potential hazard from carbon monoxide, I was not at all happy with the manner in which this information was presented. I believe that many skaters have been unnecessarily frightened by this story. Perhaps it would be helpful to put things in proper focus and see what should be done about this problem.

First, carbon monoxide is something we must all live with. When you drive your children to school, you are exposing them to carbon monoxide. When you travel on a busy highway, you expose yourself to carbon monoxide. If you smoke a cigarette, you are exposed to carbon monoxide. And if you live in a large metropolitan area such as New York or Southern California, you are exposed to carbon monoxide both day and night, at home and at work.

What is the hazard of carbon monoxide? It is absorbed by hemoglobin some two hundred times more easily than oxy-

gen, so that exposure to carbon monoxide reduces the oxygen-carrying capacity of the blood. For example, exposure to air containing 100 parts per million (ppm) of carbon monoxide for two hours will reduce the oxygen content of hemoglobin by about thirteen percent. Higher concentrations or longer exposures will reduce the oxygen even further. However, the effect is entirely reversible; going into clean air for a few hours will remove all the carbon monoxide from the body. There is no cumulative effect.

What are reasonable limits for carbon monoxide exposure? For industrial workers, the maximum carbon monoxide concentration is set at 50 ppm for an eight-hour working day. Since skating is a strenuous exercise and since both old and young people skate, 50 ppm should certainly be an upper limit for them. With respect to a possible lower limit, the U.S. Environmental Protection Agency has proposed a maximum eight-hour concentration of 9 ppm for ambient air. (It should be noted that many metropolitan areas now frequently exceed this value because of ordinary pollution from automobiles and industry.) Thus a reasonable standard for carbon monoxide concentration should be somewhere in the range of 9-50 ppm.

What are the present concentrations of

Mr. Stephenson, a professor of chemical engineering at the University of Connecticut, offers an alternative to the view expressed in "Health Hazard: The Indoor Ice Arena," which appeared in the June, 1972, issue of SKATING.

MONOXIDE SCARE



*"Squeeze bulb"
carbon monoxide detector*

carbon monoxide in rinks? I personally have checked several rinks and have found the average concentration to exceed 50 ppm in approximately one-third of the rinks tested. This agrees closely with figures published by the Minnesota Department of Health which show that seven of nineteen rinks exceeded 50 ppm. Thus there is no question that a carbon monoxide hazard does exist in an appreciable

number of rinks now operating.

What can be done about this hazard?

First, member clubs should insist that their rinks be checked periodically to determine how much carbon monoxide is present. Values greater than 50 ppm should not be tolerated. One instrument available for such checks is the "squeeze bulb" carbon monoxide detector, which is very simple to operate. In addition to this measure, resurfacing should be kept to a minimum consistent with good ice. Any warm-up or tuning of the resurfacer should be done outside the rink area.

Ventilation is a necessity, even when only a few people are in the rink. Special care must be taken during warm and humid weather when there is a reluctance to provide adequate ventilation because of fogging or moisture condensation inside the rink.

I also might point out that research at the University of Connecticut and elsewhere has shown that carbon monoxide can be eliminated by the use of a non-leaded gasoline and catalytic converter attached to the engine exhaust of the resurfacer. This converts the carbon monoxide to non-poisonous carbon dioxide. I understand that the Zamboni Company is working on such a converter and that it may soon be a standard part of all their resurfacing machines. O

by Taube G. Greenspan

Who is that man known to so many skaters in the New York area? Of course, it's Ralph Oppenheim!

Even if one does not know him personally, he is recognized by scores of skaters through his enthusiastic attendance at competitions, dance weekends, club dance sessions or any other gathering of skaters. This peripatetic behaviour would perhaps go unnoticed were it not for the fact that Ralph Oppenheim is a skater of seventy-five years plus and a participating member of three skating clubs.

Mr. Oppenheim, with his late wife Emily, also an enthusiastic skater, was one of the founding members of the Westchester Figure Skating Club in 1956, and he still regularly attends two of its three weekly sessions. Also a member of both the Rye FSC and the Brooklyn FSC, Mr. Oppenheim likewise attends these sessions religiously. In fact, Wednesday is a big day on Ralph's calendar—he is present at sessions of both the Rye and Brooklyn Clubs, one in the morning, the other in the evening.

It is always interesting to ask a venerable skater how he/she started with this addictive activity; in the case of Ralph and Emily Oppenheim, this predilection has a long history. Ralph started on speed skates as a teenager and indulged in that phase of the sport until the 1930's. It was not an uncommon sight to see Ralph pacing his son Don, with Emily and daughter Enid in on the action. In the late 30's, Ralph and Emily became converted to figure skating and ice dancing. This came about rather fortuitously, for, having arrived at the Playland rink a few minutes early for a public session, they caught a glimpse of figure skating and dancing and became completely enthralled by the grace and ease of the skaters.

They subsequently put away the racing blades, started in immediately with figure and dance lessons, and were on their way to becoming part of the figure world.

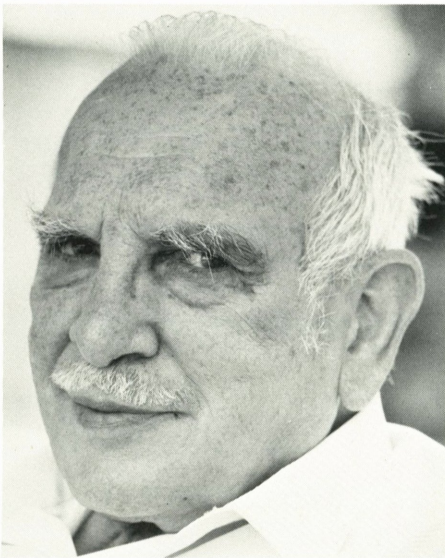
Ralph notes, somewhat modestly, that although he initiated the family activity, it was Emily who excelled in the endeavor, and this was the case not only

the Patriarch

in skating, but in tennis as well.

Ralph Oppenheim, when not on the ice himself, is also a devoted aficionado of the spectator aspect of the sport. There is no competition which he misses, from the local Regionals and Sectionals to the Nationals. Even when they are on the West Coast, Ralph enthusiastically enplanes to cheer on the aspiring competitors, many of whom he knows personally.

Examples of his all-consuming interest in skating can be found almost daily in his life, but especially memorable was his trek to Buffalo for the 1971 Nationals. Ralph, by himself, set forth on the New York Thruway, eagerly anticipating the thrill that the National Championships



always provide. However, as all who were involved in that weekend can attest, Mother Nature threw a curve ball and inundated the Northeast with a blizzard which hit New York just as many were en route to Buffalo. But Ralph Oppenheim persevered through the adverse weather and mounting snow until forced to leave the Thruway at Rochester, where it was closed down. There he stayed in a motel, waiting out the storm. Although he had to leave his car there for extensive repairs, he rented another and drove on, undaunted in his pilgrimage to Buffalo. He was able to see a good bit of the competition and found the entire episode exciting and worthwhile. How many younger devotees

would have embarked on this perilous course and followed through like this seasoned worshipper of skating?

Ralph Oppenheim's interest in the competitive aspect of skating has caused him to encourage hundreds of skaters over the years, from neophytes to Gold medalists. He has persuaded children to take up the sport and also urged their parents to take to the ice. This encouragement has assumed many forms, from verbal to the more concrete, and has included generous advice to both friends and relative strangers. Needless to say, his children and grandchildren, nieces and nephews now skate in rinks ranging from Baltimore and Princeton to New York.

Emily Oppenheim was equally enthusiastic about skating, and the memories of some of us older skaters include her presence as well. Emily was president of the Westchester FSC for the years 1961-1962. A tribute to her involvement with skating was made by the Westchester and Rye Figure Skating Clubs in 1965 when they presented a show in her memory for the benefit of The Guidance Center of New Rochelle, which had been one of Emily's keenest interests. All members of both clubs participated.

Ralph Oppenheim also regularly patronizes the dance weeks at Lake Placid and special dance weekends such as those sponsored by the Skating Club of Hartford. At Lake Placid he often takes time from rink activities to play a few sets of tennis and to socialize with many friends who gather there in August. Any gathering of skaters would be unthinkable without him!

When asked what he thinks of all this activity, Ralph says that it is simply the "pursuit of happiness". He recommends skating as an art-sport, one that makes for full family participation, is always challenging, and is good for a lifetime, however long.

To this we can all agree, and we now salute this indefatigable skating father, who has been helpful to so many. He is perhaps the most ubiquitous and enthusiastic member of the skating community for miles around.○

Henry R. Heebner

The USFSA has lost a true and valued friend with the death of Henry R. Heebner on May 10, 1972.

Henry's involvement with skating stems from 1928, when he joined the Philadelphia Skating Club and Humane Society. He was active in the promotion and building of that club's Ardmore Rink, which opened in January, 1937. Over the years, Henry served the Philadelphia SC & HS in a variety of capacities, holding the offices of President, Vice President and Secretary, as well as being a member of the Ice and Membership Committees.

Mr. Heebner was a judge of both figures and dance and for many years did yeoman work in tests and competitions. He rose to the positions of High Test and Silver Dance Judge and Sectional Referee for figures and dance. As such, he worked in many qualifying competitions in the Eastern Section for fifteen years. Henry's personality and warmth were such that all skaters with whom he came in contact

came to respect and love him.

Mr. Heebner served on the USFSA Executive Committee over a ten-year period. He was First Vice-President of the Association for 1961-62, Second Vice-President for 1962-64, and Secretary for 1964-66. He also served as Chairman of the Judges and Eastern Committees and was Vice-Chairman of the Competitions, Amateur Status and Dance Committees.

Henry was an ardent skater. He passed the Silver Dance Test in the 1940's when the Silver included six dances and had a passing average five percent higher than that required today.

Mr. Heebner, a graduate of Yale and the University of Pennsylvania Law School, was a partner in one of the larger Philadelphia law firms, Morgan, Lewis and Bockius. He is survived by his wife, Natalie, and two sons and two daughters, all of whom are married. His son, Charles, and daughter, Barbara Legakis, carry on the family tradition as active skaters.

—Delaplaine McDaniel

H.L. Garren

H.L. (Jack) Garren, who died May 9, 1972, in Troy, New York, made many unique contributions to winter sports and especially figure skating in this country.

Mr. Garren's impact was first felt in 1930 when he went to Lake Placid as a construction engineer to build the facilities for the 1932 Winter Olympic Games. He constructed the Olympic bobsled run, ski jumps, ski trails and Olympic Arena. Shortly after the Games, Jack became the manager of Olympic Arena and founded the Skating Club of Lake Placid. His initiation of the first summer ice skating program there prompted an article in the November, 1932, issue of SKATING which heralded "Ice Skating in August!"

With Mrs. Theresa Weld Blanchard and Richard L. Hapgood, Jack Garren organized the first judges school at Lake

Placid and the first Eastern Sectional competition in 1938. Garren and Joe Carroll furthered ice dancing through Lake Placid's summer ice season.

Jack was also a pioneer in the field of ice carnival production. He ran the SC of Boston's ice show in 1937 and served as Chairman of the USFSA Carnival Production Committee from 1937-1939.

Garren left Lake Placid in 1950 to manage the Rensselaer Polytechnic Institute Field House in Troy, N.Y. He founded the RPI Figure Skating Club shortly thereafter. He also acted as USFSA Chairman of the Professionals Committee from 1951-1953.

Jack Garren was vitally involved in figure skating for more than thirty-five years, during which time he introduced many "firsts" to the sport.

in my
opinion:

How About Teaching Together?

by Mrs. S.J. Arons

It has always been my impression that figure skating as a sport has a great deal to offer all participants, both as individuals and as sportsmen. Because the professional plays such an important role in the development of a skater, it is essential that he or she sets a good example for the student.

Therefore, I find it hard to believe that many professionals, for selfish reasons, do not like to work together to give their students the best possible instruction. When a pro works alone, his students compete against each other rather than work toward a common goal—excellence in skating. But if one pro's forte is free skating and another's is figures, why not give the student the benefit of a team-teaching program? Over the past few years, however, it has become evident that instead of working together for the good of the student and the sport, some pros are engaging in petty jealousies.

I think the limit has been reached when one who calls himself a professional can neither put together original music, choreograph a program, nor put together jump combinations without borrowing from his fellow professionals. I realize there are only so many things one can do on the ice, but the moves should be tailored to each skater's advantage. It is both disheartening and frustrating for a skater to come to the rink and be reluctant to try out something new in free skating or dance, for fear it may be copied. Also frustrating is the embarrassment a skater feels when he must perform the same sequence of jumps that was done "just last year" to the very same music by a fellow skater under the same pro. It would be far better for a pro to try for both creativity and good sportsmanship.

Perhaps all professionals should take time off for "post graduate" work, so they can get some fresh ideas. They should have the pride and the ability to assemble a unique program for each skater. After all, the student is a reflection of the pro who teaches him.O

by Mrs. Howard J. Jackson

Skating clubs and Basic Tests leaders are finding an increasing number of ways to promote skating through the use of USFSA Basic Tests. They have also devised many ways to conduct more organized and successful Basic Tests sessions.

For example, the Roanoke Valley Figure Skating Club made an excellent exhibit for the local library. Their exhibit featured Basic Tests Program materials, copies of *SKATING Magazine*, *Evaluation of Errors in Figures*, the *USFSA Rulebook*, *Ice Dancing* and local newsletters in an attractive composition on the back wall of a glass display case. Examples of proper skating equipment were placed in the foreground. This exhibit created much interest in figure skating in this area new to the sport and brought new members into the club.

In a more advanced skating area, the Santa Rosa Figure Skating Club conducted a highly successful competition



GRASSROOTS

at the Basic Tests level. Fifty competitors, all of whom had passed no official USFSA tests but had taken the Basic Tests, competed for the three cups awarded. The club also gave club crests to all those members who had completed the Basic Tests. If a club cannot conduct this type of competition, it may be helpful to invite those who are participating in local Basic Tests Programs, particularly in school programs, to regular club competitions. Exposure to the more advanced figure skating may encourage new skaters



to pursue the sport beyond the Basic Tests level.

Basic Tests leaders have some difficulty maintaining a supply of badges and often run out of certain badges. The Kalamazoo Figure Skating Club reports that their Basic Tests leaders purposely err on the high side when ordering their supply of badges for the year rather than disappoint the little skaters when they have successfully completed their tests. Since recognition should be given when it will give the greatest sense of pride in accomplishment, it behooves leaders to have an adequate supply of badges on hand and ordered well in advance of need. Leftover badges can always be used the following year, and the investment is small.

A Basic Tests skater who has just passed one test often becomes so motivated to go on that he immediately wants to know, "What do I have to do for the next test?" This can create some confusion and divert his attention. Some Basic Tests leaders have been very resourceful

the order of judging tests. During a testing period, the Basic Tests Judges test all the Beginners first. Those who successfully pass this test are invited to remain and watch those skaters who are testing on Novice Second Class before they return to the practice area. Those who complete Novice Second Class are invited to watch those testing on Novice First Class, and the process is continued until the end of the testing period. Thus, the skaters are exposed to the manner in which the moves are executed as well as to the written requirements of the next test. Fewer questions are then asked, and a more organized session usually results.

One high school program has separate sheets listing the requirements for each group level of the Basic Tests—Novice, Intermediate and Advanced. At the Beginner level, the skater is given the Novice sheet. Upon completion of the Novice Second and First Class Tests, he is given the Intermediate sheet which lists the requirements, along with tips on executing

CAMPAIGNS

in combatting this type of confusion without discouraging or dampening the enthusiasm of the skater. For example, some leaders place a large poster board listing all the requirements of each Basic Test in a strategic location, to which the skater is directed upon completion of a successful test. This aid also makes the skater aware of the vocabulary and the requirements of each test and eliminates repetitive questions to some degree.

Another device, often used in conjunction with the poster board, takes place in

the moves. The same process is repeated when the skater passes the Intermediate level. Dance and Free Style sheets could also be used where appropriate. This device is often useful where it is inappropriate to display a large poster board.

Local facilities and operating conditions usually dictate which devices can be used successfully. But no matter what these conditions may be, the Basic Tests Program seems to be adaptable because of the latitude that is allowed in the administration of individual programs.○

by Roger F. Turner

Not ones to let the parade pass them by, the Boy Scouts of America have discarded the cliché-ridden image of courteous, young men helping old ladies to cross the street. This is not to say that they have cast aside the virtues inherent in that image. Rather, the value of service, vocational responsibility, sportsmanship and citizenship is underscored through programs that are relevant to the youth of today.

Nowhere is this more apparent than in the BSA Explorer Division. Exploring offers young people of high school age the opportunity to develop their skills, physical fitness and goals within a flexible organizational framework. Given such an open-ended program and young people bent on achievement, the results can be astonishing.

Witness the growth of the Explorer Winter Olympic Games. Three years ago, the United States Olympic Committee authorized Exploring to establish its own version of the Winter Olympics. The first such event was held in November, 1971, and was limited to figure skating competitions. Nevertheless, the turnout was excellent, with Explorers from all parts of the country participating. In the year since that inaugural event, the Explorers have made plans for a full-scale series of competitive Games.

explorers II

The product of their efforts, the Second Explorer Winter Olympic Games, will take place January 11-13, 1973. Competitions will be held in figure skating, hockey, speed skating, both Alpine and Nordic skiing, snowshoe racing, tobogganning and bobsledding. Lake Placid, New York, site of the 1932 Winter Olympics, will host the sports-minded Explorers.

For those Explorers who rate their artistic ability above their athletic ability, there will be a snow sculpture competition. And for those who want to increase their skill on the slopes, a ski clinic is planned.

Present scheduling for the Second Explorer Olympics calls for an opening ceremony at 8 p.m. on January 11th. Concurrent sports events will take place on the 12th and 13th. The closing ceremony, where Gold, Silver and Bronze medals will be awarded, is planned for the evening of January 13th. The Games will be open to all Explorers of high school age throughout the United States and its territories. Further information will be released to all USFSA Member Clubs in the near future.

These Second Explorer Olympics will be sponsored by the Vice-President's Executive Committee of the New England Region Boy Scouts of America. Also lending support will be the United States Olympic Committee, the President's Council on Physical Fitness and Sports, the USFSA, the Sports Council of Lake Placid and affiliated organizations. General Chairman of the Games will be Roger F. Turner.

Next year, in addition to the national Explorer Olympics, plans call for an international Games. Thereafter, the national Games will be held annually, the international Games, bi-annually.

The philosophy behind these Explorer Winter Olympics emphasizes the growth of world peace through friendly, teenage competition in sports. The rapid progress from those first, skating-only Games to the projected international event next year indicates that the Explorers are well on their way toward fulfilling their philosophy. O

SHOPSTICKS

The Christmas shopping season—those woeful weeks of wondering, that semester of seeking some special something, that madcap month of meticulous present-picking—has descended upon us again. To help you find the perfect gift for every skater on your list, SKATING has some sure-to-please suggestions. By shopping through SKATING, you can even give yourself a Christmas gift—deliverance from those hours of indecision in shopper-crowded stores.

Every fashion-conscious miss will welcome an addition to her skating wardrobe. For the girl who wants something feminine but not frilly, D'Ann offers a sleek dress with skirt opened at the sides. The smooth front skirt drapes gracefully at the hips over a slightly flared back skirt. See page 56 for further information.

If your favorite lady prefers the sporty look, Lois Hamann suggests an "engineer's jumper" complete with bib front and buckles. Made of star-printed, striped denim, the jumper is priced at \$25. Order it from Pot Pourri Designs by Lois Hamann, 3301 E. Monmouth Road, Cleveland, Ohio 44118.

You may not know the fashion preferences of your skating miss. Then give her a gift certificate from Zambi Originals, and let her make the selection. Zambi offers certificates for a dress (\$33.50), jumper (\$28.50), skirt (\$14) or pattern (\$10.50). Prices of certificates for a pattern or skirt in child's sizes are the same; a child's jumper is \$25.50, a dress \$30.50. Order gift certificates from Zambi Originals, P.O. Box 11564, Santa Rosa, Calif.

For the girl who spends her hours off the ice behind a sewing machine, the SC of Wilmington presents *Making A Skating Dress*. This handy booklet gives detailed instructions for cutting, fitting and sewing

skate togs. With this gift you can help both the budding seamstress and the club, since proceeds from its sale benefit the club's Upper Lounge Fund. Order from the Skating Club of Wilmington, Box 7307, Wilmington, Del. 19803; price, \$2.00 plus 25¢ for postage.

To dress up skating fashions or everyday wear, Al Green has created a sterling silver skate blade pin. The two-inch pin is also available in gold plate. Your skating father or brother will appreciate Green's silver blade tie clasp or money clip.

Zell Brothers offer several items sure to inspire interest in the richly varied field of skating art. They are introducing two first limited edition plates from Holland. One, "Skating Couple," is wrought in pewter by Metawa, the other is Verte Delft with design by F. Piket. For the collector with a sense of humor, Zell Brothers suggest a delightful figurine entitled "Oops!" Though no description should be necessary, see the illustration on page 62.

If the collector on your list prefers books to art, here's a publication he will enjoy. *Wonderful World of Skates* by Arthur Goodfellow details the skating of antiquity and today. Filled with photos, this book traces the evolution of the skate, discusses skating in art, tells all about ice extravaganzas and reports on competitive figure and speed skating. For up-to-date information, it's hard to beat; even the results of the 1972 Winter Olympics are mentioned.

Perhaps you know a skater who would rather dance all night than read a book. To keep that ice dancer on the beat, give him Jomel Production's Album #3. The album features twenty compulsory dances plus the Starlight Waltz, all performed by a five piece combo.

After all this discussion of gifts, your skating friend might appreciate some notecards for those "compulsory" post-Christmas thank you's. What could be nicer than cards embellished by a sit-spin, spiral, Pair or Ice Dance pose? Liz Bierer creates notecards and stationery for skaters in a wide range of color combinations. And, before Christmas arrives, treat yourself—she makes Christmas cards too! O

Oberstdorf & St. Gervais

In this election year, the vote on the new, ISU, compulsory short program is underway. Early returns indicate a certain margin of victory for American skaters. Preliminary tests of the new rule, however, were conducted last summer far from the politically-noisy United States. Indeed, the atmosphere was more likely to evoke memories of fairytales as a U.S. team captured an impressive array of medals amid the Alpine beauty of Oberstdorf and St. Gervais.

The U.S. team embarked from New York on August 12th to participate in two international, invitational competitions, the Nebelhorn Trophy in Oberstdorf, BRD, and the Grand Prix International in St. Gervais, France. Oberstdorf is a colorful city of narrow, winding streets and Alpine cottages, nestled in the mountains and dominated by the snow-covered Nebelhorn. The Americans were welcomed there by Angelika and Erich Buck, World Dance Silver medalists, who served as both gracious hosts and much-needed interpreters.

Since this was to be the first competition under the new rules for singles skating (three compulsory figures, a short program of compulsory moves and a free skating program), a thorough discussion of interpretation and judging preceded and followed each event.

In the first event, Pairs, the U.S. skaters established the dominance that would continue throughout the competition. Despite a bad fall in practice which necessitated an ambulance trip to the hospital, Cozette Cady and her partner Jack Court-

ney led after the short program. They were closely followed by Gale and Joel Fuhrman, with Rausch and Halke of the BRD in third. All pairs skated exceptionally well in the final free skating and maintained the same placements. Cady and Courtney featured a throw double loop to narrowly beat the Fuhrmans.

Robert Bradshaw topped a field of nine Men in compulsory figures, but Terry Kubicka of the U.S., who was fourth after figures, edged out Bradshaw to win the short program. In free skating, Bradshaw countered by landing a triple toe loop, triple Salchow and triple toe Walley to best Kubicka in another close race and win the Gold medal. With outstanding style and performance, Kubicka easily outdistanced Reifschneider of the BRD for the Silver.

In Ladies, Isabel de Navarre, BRD, held a slim lead over Wendy Burge after compulsory figures. Patricia Shelley was firmly in third place with the eleven skaters from five nations trailing behind. The same three skaters held their respective positions after the short program, but, with a beautifully performed free skating routine that had the audience on its feet, Wendy Burge finished in first place ahead of de Navarre, and Patty Shelley easily held third.

Mary Karen Campbell and Johnny Johns, the only U.S. entry in the Dance competition, literally ran away with that event. They led by a comfortable margin after both the compulsory dances (the Westminster, Paso Doble and Blues) and the Original Set-Pattern dance. And, as a

measure of their free dance, Campbell-Johns received first place marks from all five judges. A most satisfying result, indeed! Their closest competitors, Druce-Barker and Lee-Smith, both of Great Britain, finished second and third respectively in a field of ten couples.

Filled with the glow of success, the U.S. team devoted the next day to travel by train through Austria and Switzerland and, by bus, down to the tiny village of St. Gervais, in the shadow of Mt. Blanc in the French Alps. Hoping to repeat their medal-winning performances, the U.S. skaters spent the next day practicing for the Sixth Annual Grand Prix International de Patinage Artistique.

The Pairs event at St. Gervais was entirely based on the five-minute free skating programs. Once again the U.S. couples finished first and second. But this time the Fuhrmans seemed inspired by the enthusiasm of the crowd, and they won seven first place scores to take the Gold medal. The Cady-Courtney team took the Silver and the Kuenzles of Switzerland earned the Bronze.

Eighteen Ladies from nine countries entered the single's event which, like the Men's to follow, was scored by nine judges. Karin Iten of Switzerland won the compulsory figures, followed by de Navarre, BRD, and Ludmila Bezakova of Czechoslovakia. Wendy Burge and Patty

Shelley were sixth and tenth respectively. In free skating, however, the superiority of American skaters was obvious as Wendy took first place, Barbara Terpenning of Canada took second and Patty, third. The combined final results left Karin Iten in first place, Wendy Burge in second, and Isabel de Navarre in third. Patty Shelley pulled up to sixth in the final results.

The Men's event, which included eleven skaters from eight countries, seemed like a repeat of the Oberstdorf competition. Robert Bradshaw and Terry Kubicka were first and second after figures, with Pekka Leskinen of Finland third. The Americans' superiority in free skating—won this time by Kubicka—enabled them to maintain their placements. After the final, combined results were tallied, Robert Bradshaw added another Gold medal to his credit, Kubicka again took the Silver, and Patrick McKilligan of Canada moved up to take the Bronze.

Although there was no Dance competition at St. Gervais, Mary Karen Campbell and Johnny Johns skated for very enthusiastic audiences in three exhibitions.

Altogether, the accomplishments of the U.S. team at Oberstdorf and St. Gervais were cause for celebration. No doubt it was a happy group that departed for home after a tiring but extremely satisfying two weeks.

NEBELHORN TROPHY OBERSTDORF, BRD AUGUST 18-20

MEN

1. Robert Bradshaw, USA
2. Terry Kubicka, USA
3. Erich Reifschneider, BRD
(8 contestants)

LADIES

1. Wendy Burge, USA
2. Isabel de Navarre, BRD
3. Patricia Shelley, USA
(10 contestants)

PAIRS

1. Cozette Cady & Jack Courtney, USA
2. Gale & Joel Fuhrman, USA
3. Corinna Halke & Eberhard Rausch, BRD
(5 pairs)

DANCE

1. Mary Karen Campbell & Johnny Johns, USA
2. Rosalind Druce & David Barker, Great Britain
3. Dixie Lee & Alan Smith, Great Britain
(10 couples)

GRAND PRIX INTERNATIONAL DE PATINAGE ARTISTIQUE, ST. GERVAIS, FRANCE, AUGUST 22-27

MEN

1. Robert Bradshaw, USA
2. Terry Kubicka, USA
3. Patrick McKilligan, Canada
4. Lee Armstrong, Canada
(11 contestants)

LADIES

1. Karin Iten, Switzerland
2. Wendy Burge, USA
3. Isabel de Navarre, BRD
4. Barbara Terpenning, Canada
5. Dagmar Lurz, BRD
6. Patricia Shelley, USA
(18 contestants)

PAIRS

1. Gale & Joel Fuhrman, USA
2. Cozette Cady & Jack Courtney, USA
3. Karin & Christian Kuenzle, Switzerland
4. Linda Tasker & Allen Carson, Canada
(8 pairs)

SUMMER RESULTS

CENTRAL CALIFORNIA INTER-CLUB NOVICE COMPETITION CRYSTAL SPRINGS ISC, BELMONT, CALIF. JUNE 17-18

BRONZE PAIRS

1. Jackie Hanson & David Hicks, Diablo FSC
2. Tracy & Scott Prussack, Crystal Springs ISC
3. Martha Novario & John Madison, Diablo FSC

(4 pairs)

LADIES IMPROVISED ARTISTIC FREE STYLE (over 12 years)

1. Adrienne Cacciari, Crystal Springs ISC
2. Katherine Turner, Capital City FSC
3. Lisa Rolfe, Crystal Springs ISC

(21 contestants)

LADIES IMPROVISED ARTISTIC FREE STYLE (under 12 years)

1. Wendy Lufrano, Crystal Springs ISC
2. Tracy Prussack, Crystal Springs ISC
3. Michelle Duarte, St. Moritz ISC

(17 contestants)

SECOND TEST MEN (over 12 years)

1. Scott Prussack, Crystal Springs ISC
2. Mike Smith, Crystal Springs ISC
3. Daniel Leitner, Squaw Valley FSC

(4 contestants)

SECOND TEST LADIES (over 12 years)

1. Taffee Palmer, Silver Edge FSC
2. Virginia Diffenderfer, Silver Edge FSC
3. Julie Cunningham, El Camino ISC

(16 contestants)

SECOND TEST LADIES (under 12 years)

1. Tracy Prussack, Crystal Springs ISC
2. Wendy Lufrano, Crystal Springs ISC

3. Katie McDonnell, Crystal Springs ISC

(15 contestants)

FIRST TEST LADIES (over 12 years)

1. Adrienne Cacciari, Crystal Springs ISC
2. Shelley Simons, Crystal Springs ISC
3. Lisa Birkett, Marin FSC

(11 contestants)

FIRST TEST MEN (under 12 years)

1. Gregory Ford, St. Moritz ISC
2. John Abel, St. Moritz ISC
3. Robert Abel, St. Moritz ISC

FIRST TEST LADIES (under 12 years)

1. Catherine Mansell, Silver Edge FSC
2. Maureen Browne, Santa Rosa FSC
3. Michelle Duarte, St. Moritz ISC

(15 contestants)

PRELIMINARY TEST LADIES (over 12 years)

1. Diana Biagi, Crystal Springs ISC
2. Katherine Turner, Capital City FSC
3. Katherine Bach, Crystal Springs ISC

(12 contestants)

PRELIMINARY TEST MEN (under 12 years)

1. Kevin Sarich, St. Moritz ISC
2. Ronald LeFevre, Silver Edge FSC

PRELIMINARY TEST LADIES (under 12 years)

1. Andrea Bauer, St. Moritz ISC
2. Renee Biagi, Crystal Springs ISC
3. Kathy Ewbank, Silver Edge FSC

(21 contestants)

PRE-JUVENILE GIRLS (over 12 years)

1. Amber Docktor, Crystal Springs ISC
2. Christine Kast, Crystal Springs ISC
3. Anne Campbell, Crystal Springs ISC

(7 contestants)

PRE-JUVENILE BOYS (under 12 years)

1. Tim Denike, Mission Valley ISC
 2. Charles Seltz, Mission Valley ISC
- PRE-JUVENILE GIRLS (under 12 years)**
1. Robin Guartney, Crystal Springs ISC
 2. Karen Smith, Crystal Springs ISC
 3. Judy Smith, Crystal Springs ISC
- (22 contestants)
- PIXIE BOYS**
1. Brian Boitano, Silver Edge FSC
 2. Michael Goodman, Capital City FSC
- PIXIE GIRLS**
1. Maryann Wilson, Santa Rosa FSC
 2. Kelly Mason, Crystal Springs ISC
 3. Nancy Nickel, Santa Rosa FSC
- (9 contestants)

1972 SOUTHERN CALIFORNIA INTER-CLUB FIGURE SKATING CHAMPIONSHIPS, LOS ANGELES FIGURE SKATING CLUB, CALIF., JUNE 23, 24; JULY 1, 2

SENIOR MEN

1. Terry Tunks, SC of Phoenix
 2. Robert Berry, South Bay FSC
 3. Jon Prasniewski, Arctic Blades FSC
- (4 contestants)

SENIOR LADIES

1. Jodie Martin, South Bay FSC
 2. Barbi Smith, Arctic Blades FSC
 3. Kim McIsaac, South Bay FSC
- (8 contestants)

GOLD DANCE

1. Michelle Ford & Glenn Parriot, SC of Phoenix
2. Shareen & Curt Finley, Glacier Falls FSC

JUNIOR MEN

1. Randy Gardner, All Year FSC
 2. Scott Carson, Los Angeles FSC
 3. Hal Marron, Arctic Blades FSC
- (5 contestants)

JUNIOR LADIES

1. Teresa Foy, Los Angeles FSC
 2. Lori Kyllonen, Arctic Blades FSC
 3. Sandi Starbuck, Arctic Blades FSC
- (9 contestants)

JUNIOR PAIRS

1. Tai Babilonia, Los Angeles FSC, & Randy Gardner, All Year FSC
2. Dana & Ed Reismann, SC of Van Nuys

SILVER DANCE

1. Linda Beard & Bob Cooper, SC of Phoenix
 2. Ann Murphy & David Underwood, SC of Phoenix
 3. Cathy Abdun-Nur, Los Angeles FSC, & Bill Topps, Glacier Falls FSC
- (4 couples)

VETERANS DANCE

1. Margueritta & Chuck Aedo, Los Angeles FSC
2. Eleanor Curtis & Wendell Buttrey, Los Angeles FSC

NOVICE MEN

1. Eric Johnson, South Bay FSC
2. Paul Kuhnli, Los Angeles FSC

NOVICE LADIES

1. Jeanne Chapman, Arctic Blades FSC
 2. Heidi Berry, Arctic Blades FSC
 3. Rachelle Ottley, Arctic Blades FSC
- (8 contestants)

BRONZE DANCE

1. Catherine Evans & Frank Weber, San Diego FSC
 2. Kathleen & Hal Marron, Arctic Blades FSC
 3. Denise Curtis & Martin Brantley, Los Angeles FSC
- (4 couples)

JUVENILE BOYS

1. Mark Cockerell, Pacific FSC

2. David Carter, Valley FSC
 3. Eric Greedy, Arctic Blades FSC
- (5 contestants)

JUVENILE GIRLS

1. Vicki Heasley, Arctic Blades FSC
 2. Carrie Rugh, All Year FSC
 3. Julie Fleming, South Bay FSC
- (9 contestants)

SECOND TEST BOYS

1. Brian Haack, All Year FSC
2. Gary Zaks, San Diego FSC
3. Gerry Zaks, San Diego FSC

SECOND TEST GIRLS

1. Luanne Kulp, South Bay FSC
 2. Cathy Mottaz, Arrowhead FSC
 3. Julie Reese, Topanga Plaza FSC
- (8 contestants)

FIRST TEST BOYS

1. Charles Barstow, San Diego FSC
 2. Robert Wagonhoffer, Arrowhead FSC
 3. Tibor Simon, Pacific FSC
- (8 contestants)

FIRST TEST GIRLS-Group I

1. Terri Lieberman, Los Angeles FSC
 2. Starla Freeman, Arctic Blades FSC
 3. Andrea Rosenfield, Topanga Plaza FSC
- (15 contestants)

FIRST TEST GIRLS-Group II

1. Marina Drasinin, Los Angeles FSC
 2. Suzette Rose, Nordic FSC
 3. Rose Sanzo, Los Angeles FSC
- (9 contestants)

FORMATION FIESTA TANGO

1. Sharon Parker, Chuck Aedo, Denise Curtis, Martin Brantley, Leslie Kiser, Stan Kolodzi, Los Angeles FSC
 2. Nancy Smith, William Ballard, Bonnie Butterworth, Robert Topps, Barbara & Phil Turbitt, Glacier Falls FSC
 3. Carol Bochard, Stanley Klocki, Karla Klocki, Bill Harris, Anne Harris, Elmer Griggs, All Year FSC
- (7 teams)

FORMATION FOURTEENSTEP

1. Kathy Flaherty, Tom Easton, Linda & Barry Stroh, Barbara & Michael Wayland, Los Angeles FSC
2. Shareen & Curt Finley, Hermina Vreenegeoor, William DeGroot, Nancy Smith, William Ballard, Glacier Falls FSC
3. Lisa Johnson, Brian Hammer, Kathy Russell, Grant Day, Margie Stein, Terry Iwamoto, All Year FSC

CENTRAL CALIFORNIA INTER-CLUB ADVANCED COMPETITION SQUAW VALLEY FSC, OLYMPIC VALLEY, CALIF. JULY 1

SEVENTH TEST LADIES

1. Jill Monte, Crystal Springs ISC
 2. Jenny Gilman, Diablo FSC
 3. Julie Scott, Silver Edge FSC
- (4 contestants)

SIXTH TEST LADIES

1. Tammy Gambill, Capital City FSC
 2. Caryn Somerville, Crystal Springs ISC
 3. Kathy Rose, Diablo FSC
- (7 contestants)

FIFTH TEST LADIES

1. Linda Bevier, Crystal Springs ISC
 2. Linda McDonald, Crystal Springs ISC
 3. Leslie Miller, Silver Edge FSC
- (5 contestants)

FOURTH TEST MEN

1. Richard Perez, Crystal Springs ISC
2. David Hicks, Diablo FSC

FOURTH TEST LADIES-Group A (12 years & over)

1. Sally Anderson, El Camino ISC

2. Teri Markley, Crystal Springs ISC
 3. Martha Navario, Diablo FSC
 (5 contestants)
FOURTH TEST LADIES-Group B (12 years & over)
 1. Gail Moret, Crystal Springs ISC
 2. Patti Maley, Marin FSC
 3. Robin Howard, St. Moritz ISC
 (8 contestants)
LADIES IMPROVISED ARTISTIC FREE STYLE-Group A
 1. Wendy Lufrano, Crystal Springs ISC
 2. Jackie Hanson, Diablo FSC
 3. Karen King, Crystal Springs ISC
 (10 contestants)
LADIES IMPROVISED ARTISTIC FREE STYLE-Group B
 1. Monique Paiva, El Camino ISC
 2. Patti Maley, Marin FSC
 3. Lori Mills, El Camino ISC
 (11 contestants)
LADIES PAIRS
 1. Kathy Rose & Jenny Gilman, Diablo FSC
 2. Sandy Oberg & Karen Fish, Crystal Springs ISC
 3. Danelle Porter & Linda Harries, Diablo FSC
 (5 pairs)
THIRD TEST LADIES-Group A (12 years & over)
 1. Karen King, Crystal Springs ISC
 2. Jenny Cunningham, El Camino ISC
 3. Juli Del Dotto, El Camino ISC
 (13 contestants)
THIRD TEST LADIES-Group B (12 years & over)
 1. Elaine Andrews, Marin FSC
 2. Lori Mills, El Camino ISC
 3. Liz Abel, St. Moritz ISC
 (12 contestants)
THIRD TEST LADIES (under 12 years)
 1. Wendy Lufrano, Crystal Springs ISC
 2. Kay Kaupert, Silver Edge FSC
 3. Michele Mehloff, Diablo FSC
 (6 contestants)

LAKE PLACID FREE SKATING COMPETITION, THE SC OF LAKE PLACID, N.Y., JULY 20-22, 1972

GOLD LADIES

1. Althea Samson, Detroit SC
 2. Laura Johnson, SC of Wilmington
 3. Deborah Milne, SC of New York

PRE-GOLD MEN

1. Barry Kamber, Philadelphia SC & HS
 2. Leland Meadows, Bridgeport SC
 3. James Webb, SC of Boston

PRE-GOLD LADIES

1. Christine Messina, Commonwealth FSC
 2. Robin Blinder, Long Island FSC
 3. Mary Jo Tracy, Charter Oak FSC
 (9 contestants)

SILVER LADIES

1. Robin Wagner, SC of New York
 2. Angela Watson, Unionville SC
 3. Keri Schmer, City of Wilmington, Del.
 (11 contestants)

SILVER PAIRS

1. Elaine Poast, Peterborough SC & Stan Hughes, Oshawa SC
 2. Sheryl Franks, Hayden Recreation Centre FSC & Michael Botticelli, SC of Boston

PRE-SILVER MEN

1. Kingsford Swan, Commonwealth FSC
 2. David Hold, Falmouth FSC
 3. Ray Belmonte, Colonial SC
 (4 contestants)

PRE-SILVER LADIES (5th Test)

1. Amy Brown, Buffalo C & SC
 2. Sandy Sparger, Washington FSC
 3. Donna Cortese, North Jersey FSC
 (9 contestants)

PRE-SILVER LADIES (4th Test)

1. Emily Wendell, SC of Boston
 2. Deborah Wilker, Metropolitan FSC
 3. Cathy Huszti, North Shore SC
 (14 contestants)

BRONZE MEN

1. Peter Freeman, SC of Boston
 2. Charles Doring, Washington FSC
 3. Tony Heubach, Quaker City FSC
BRONZE LADIES (13 years and over)

1. Elizabeth Purtle, Granite Club
 2. Susanne Buchmann, SC of Boston
 3. Sheryl Armstrong, SC of Worcester
 (15 contestants)

BRONZE LADIES (8-12 years)

1. Michele Kautnik, Upper Canada SC
 2. Sheryl Franks, Hayden Recreation Centre FSC

3. Tracy Doyle, Long Island FSC
 (12 contestants)

BRONZE PAIRS

1. Darlene Duroure & Michael Dee, Amherst SC

2. Amy Brown & Larry Gephardt, Buffalo C & SC

3. Johanne Fleury, Pointe Claire FSC & Barry Kamber, Philadelphia SC & HS
 (7 pairs)

SIMILAR PAIRS

1. Marisa & Beverly Messina, Commonwealth FSC

2. Cathy & Patty Hetman, Commonwealth FSC

3. Sara Secunda & Jean Manfredo, Woodland SC
 (4 pairs)

PRE-BRONZE MEN

1. Michael O'Rourke, Washington FSC
 2. John Summers, SC of Boston
 3. Jay Freeman, Quaker City FSC
 (4 contestants)

PRE-BRONZE LADIES (13 years and over)

1. Laura Kolb, Hayden Recreation Centre FSC

2. Linda Green, SC of Hartford
 3. Becky Rupp, North Shore SC
 (6 contestants)

PRE-BRONZE LADIES (12 years)

1. Joanne Berg, Metropolitan FSC
 2. Adrienne Melendez, Cantiague FSC
 3. Debbie Deveney, North Shore SC
 (12 contestants)

PRE-BRONZE LADIES (8-11 years)

1. Kelly McDermott, Hamden FSA
 2. Sheryl Abbot, City of Westwood, N.J.
 3. Cara Schmer, City of Wilmington
 (15 contestants)

JUVENILE BOYS

1. Vincent Johnston, Oshawa SC
 2. Sheldon Cleaves, RPI FSC
 3. Karl Kurtz, Hershey FSC
 (6 contestants)

JUVENILE GIRLS (13 years and over)

1. Cathy Hetman, Commonwealth FSC
 2. Patty Hetman, Commonwealth FSC
 3. Cathy Evans, Newbridge Road Park FSC
 (8 contestants)

JUVENILE GIRLS (11-12 years)

1. Kate Wilkins, SC of Boston
 2. Nancy Davern, North Shore SC
 3. Joan Murano, Commonwealth FSC
 (10 contestants)

JUVENILE GIRLS (10 years)

1. Diane Creighton, Commonwealth FSC
 2. Karen Smith, Newbridge Road Park FSC
 3. Liane Lamere, SC of Boston
 (16 contestants)

JUVENILE GIRLS (7-9 years)

1. Valerie Dry-Henich, SC of New York

2. Linda Kopman, North York FSC
3. Debra Fahy, Quaker City FSC
(6 contestants)
- PRE-JUVENILE BOYS
1. Paul Binkley, Lincoln Center FSC
2. Kenneth Congemi, Cantiague FSC
3. Perry Boskus, North Jersey FSC
(5 contestants)
- PRE-JUVENILE GIRLS (10 years and over)
1. Heidi Reynolds, Commonwealth FSC
2. Trevor Mahoney, SC of Boston
3. Terry Snyder, Long Island FSC
(16 contestants)
- PRE-JUVENILE GIRLS (9 years and under)
1. Christina Hoh, Cantiague FSC
2. Tracy Edmundson, Pittsburgh FSC
3. Kelly Ziegler, Pittsburgh FSC
(10 contestants)

**SAINT PAUL INVITATIONAL FREE
SKATING COMPETITION, SAINT PAUL
FSC, MINN., JULY 23**

SENIOR LADIES

1. Kathy Malmberg, Wagon Wheel FSC
2. Paula Larson, Braemar-City of Lakes FSC

JUNIOR LADIES

1. Cathy Watanabe, Shinagawa FSC, Japan
2. Betsy Hobson, Braemar-City of Lakes FSC

3. Jody Laursen, Rochester FSC
(14 contestants)

NOVICE LADIES

1. Bernae Peterson, Individual Member, USFSA
2. Deborah Schwartz, St. Paul FSC
3. Melissa McCandless, Braemar-City of Lakes FSC
(19 contestants)

INTERMEDIATE LADIES

1. Kelsy Ufford, FSC of Minneapolis
2. Mary Dullum, FSC of Minneapolis
3. Mary Rzeszut, Braemar-City of Lakes FSC
(18 contestants)

JUVENILE GIRLS

1. Kathleen McMillan, Wagon Wheel FSC
2. Elizabeth Chabot, Wagon Wheel FSC
3. Kimberly Reehoff, Wagon Wheel FSC
(17 contestants)

SUB-JUVENILE GIRLS

1. Stacie Cater, Braemar-City of Lakes FSC
2. Jacki Farrell, Wagon Wheel FSC
3. Keri Jo Nelson, FSC of Minneapolis
(6 contestants)

PRELIMINARY GIRLS

1. Cathy Fischer, Wagon Wheel FSC
2. Leslie Broder, Skokie Valley FSC
3. Laurie Collins, FSC of Minneapolis
(19 contestants)

**THE CAROUSEL FSC IMPROVISED
FREESTYLE COMPETITION, BEAVER
TON, ORE., JULY 28-29, 1972**

**FIFTH & SIXTH TEST LADIES
IMPROVISED**

1. Terri Karis, Seattle SC
2. Jodi Hanson, Walla Walla FSC
3. Susy Surman, Portland ISC
(5 contestants)

FOURTH TEST LADIES FREESTYLE

1. Robin Levi, Portland ISC
2. Jackie Hanson, Diablo FSC
3. Kristy Lunde, Seattle SC
(4 contestants)

FOURTH TEST LADIES IMPROVISED

1. Lennia Snyder, Portland ISC
2. Ann Doherty, Burien SC
3. Gertrude Pawelka, Seattle SC
(4 contestants)

THIRD TEST MEN

1. Andy Reed, Seattle SC
2. Don Gregg, Portland ISC

THIRD TEST LADIES

1. Betsy Britton, Crystal Springs ISC
2. Honey Houston, Portland ISC
3. Marsha Hill, Seattle SC
(5 contestants)

SECOND TEST LADIES-Group A

1. Karen King, Crystal Springs ISC
2. Marion Shankweiler, Wasatch FSC
3. Carol Conrad, Portland ISC

SECOND TEST LADIES-Group B

1. Tracy Cooley, Seattle SC
2. Ruth Aquino, Portland ISC
3. Lyn Sawyer, Portland ISC
(4 contestants)

SECOND TEST LADIES-Group C

1. Wendy Lufrano, Crystal Springs ISC
2. Joan Willey, Seattle SC
3. Michelle Treis, Seattle SC
(5 contestants)

FIRST TEST MEN

1. David Fee, Portland ISC
2. Reggie Raiford, Portland ISC
3. David DeGroot, Overlake SC
(4 contestants)

FIRST TEST LADIES-Group A

1. Diana Dobbins, Portland ISC
2. Debbie Brick, Seattle SC
3. Shari Bolvin, Seattle SC
(5 contestants)

FIRST TEST LADIES-Group B

1. Jill Sawyer, Seattle SC
2. Sheri Gartner, Portland ISC
3. Julie Frederick, Portland ISC
(5 contestants)

FIRST TEST LADIES-Group C

1. Kim DiPietro, Portland ISC
2. Lynne Pedegana, Seattle SC
3. Jennifer Krogstad, Seattle SC
(4 contestants)

FIRST TEST LADIES-Group D

1. Renee Bagley, Portland ISC
2. Jenni Rinaldi, Seattle SC
3. Jane Harris, Seattle SC
(4 contestants)

FIRST TEST LADIES-Group E

1. Sheri Purple, Seattle SC
2. Carol McCormich, Overlake SC
3. Christy Schuler, Portland ISC

FIRST TEST LADIES-Group F

1. Lisa Sims, Crystal Springs ISC
2. Gayle Machlan, Portland SC
3. Kathy Van Hasselt, Overlake SC
(4 contestants)

PRELIMINARY TEST & NON-TEST MEN

1. Francisco Castillos, Seattle SC
2. Ken Flora, Portland ISC

PRELIMINARY TEST LADIES-Group A

1. Michelle Surman, Portland ISC
2. Judy Brick, Seattle SC
3. Diana Rupp, Seattle SC
(5 contestants)

PRELIMINARY TEST LADIES-Group B

1. Triana Bangsund, Seattle SC
2. Alicia Castillos, Seattle SC
3. Gretchen Wahl, Seattle SC
(5 contestants)

PRELIMINARY TEST LADIES-Group C

1. Heidi Bosley, Portland ISC
2. Melissa McAdams, Portland ISC
3. Pamela Tye, Carousel FSC
(5 contestants)

PRELIMINARY TEST LADIES-Group D

1. Donna Sollenberger, Portland ISC
2. Christina DeGroot, Overlake SC
3. Jonna Maule, Carousel FSC
(5 contestants)

PRELIMINARY TEST LADIES-Group E

1. Cindy Holmes, Carousel FSC
2. Laurie Lybeck, Seattle SC
3. Lori Reyes, Portland ISC
(5 contestants)

NON-TEST LADIES-Group A

1. Joanne Krause, Carousel FSC
2. Kristine Warrent, Carousel FSC
3. Cynthia Lawson, Carousel FSC
(6 contestants)

NON-TEST LADIES-Group B

1. Beth Names, Lakewood WC
2. Laurie Nankarris, Seattle SC
3. Beth Meade, Seattle SC
(6 contestants)

**SILVER BLADES INVITATIONAL
SUMMER FREE SKATING COMPETITION
SILVER BLADES FSC OF GREATER
KANSAS CITY, OVERLAND PARK, KAN.
JULY 29**

JUNIOR LADIES

1. Karolyn Stafford, SC of Boston
2. Betsy Hobson, Braemar-City of Lakes
FSC
3. Candyce Wenborg, FSC of Minneapolis
(9 contestants)

NOVICE LADIES

1. Kristy Chubb, South Bay FSC
2. Bernae Peterson, Individual Member,
USFSA
3. Madelyn Allain, Silver Blades FSC
(19 contestants)

INTERMEDIATE LADIES

1. Kelsy Ufford, FSC of Minneapolis
2. Sandy Lenz, Wagon Wheel FSC
3. Susan Chabot, Wagon Wheel FSC
(10 contestants)

JUVENILE GIRLS (11 years and over)

1. Martha Hield, Braemar-City of Lakes FSC
2. Susan Babb, Wagon Wheel FSC
3. Jaime Weier, Wagon Wheel FSC
(13 contestants)

JUVENILE GIRLS (10 years and under)

1. Tammy Arnoldy, Silver Blades FSC
2. Dana Paul, Silver Blades FSC
3. Sharon Heid, Wagon Wheel FSC
(7 contestants)

SUB-JUVENILE BOYS

1. Ron Rupp, Silver Blades FSC
 2. Bryan Sinclair, Silver Blades FSC
- SUB-JUVENILE GIRLS (11 years and over)**

1. Karen Goodman, Wichita FSC
2. Avery Hughes, Carriage FSC
3. Lisa Tobin, St. Paul FSC
(14 contestants)

SUB-JUVENILE GIRLS (10 years and under)

1. Stacie Cater, Braemar-City of Lakes FSC
2. Lisa Moskowitz, Silver Blades FSC
3. Jacki Farrell, Wagon Wheel FSC
(19 contestants)

**WILMINGTON SUMMER FREE SKATING
COMPETITION, SC OF WILMINGTON,
DEL., JULY 30**

JUNIOR LADIES

1. Keri Schmer, City of Wilmington, Del.
2. Sonja Bokoch, SC of Wilmington
3. Cindy Ginkinger, Old York Road SC
(7 contestants)

MENS INTERPRETIVE

1. Reggie Stanley, Washington FSC

2. Mitch Moyer, SC of Wilmington

3. John Dodson, SC of Wilmington
(6 contestants)

LADIES INTERPRETIVE-Group I

1. Julia Hoover, Hershey FSC
2. Susan Mathay, Ice & Blades Club of
Washington

3. Robin Bowers, Baltimore FSC
(8 contestants)

LADIES INTERPRETIVE-Group II

1. Tracey Cahill, IC of Baltimore
2. Sonja Bokoch, SC of Wilmington
3. Keri Schmer, City of Wilmington
(12 contestants)

NOVICE MEN

1. Mitch Moyer, SC of Wilmington
 2. Jon Mersereau, SC of Wilmington
- NOVICE LADIES**

1. Robyn Rock, SC of Wilmington
2. Kris Ginkinger, Old York Road SC
3. Tracey Cahill, IC of Baltimore
(10 contestants)

INTERMEDIATE LADIES

1. Julia Hoover, Hershey FSC
2. Susan Mathay, Ice & Blades Club of
Washington
3. Victoria Hamby, Ice & Blades Club
of Washington
(5 contestants)

JUVENILE BOYS

1. Tom Kaine, Cornell FSC
 2. Jay Freeman, Quaker City FSC
 3. Brad Pressman, Old York Road SC
- JUVENILE GIRLS**

1. Cara Schmer, City of Wilmington
2. Anne Wise, SC of Wilmington
3. Elizabeth Lippincott, Wissahickon SC
(11 contestants)

PRE-JUVENILE BOYS

1. Karl Kurtz, Hershey FSC
2. Todd Pressman, Old York Road SC
3. Bruno Jerry, Baltimore FSC

PRE-JUVENILE GIRLS

1. Penny Epstein, Free State FSC
2. Debra Fahy, Quaker City FSC
3. Lynn Ogden, SC of Wilmington
(13 contestants)

**1972 OPEN FREE SKATING
COMPETITION, SILVER BLADES SC OF
COHASSET, MASS., AUGUST 5**

SENIOR LADIES

1. Christine Messina, Commonwealth FSC
2. Kathy Bird, Essex SC of New Jersey
3. Audrey Welch, All Year FSC
(11 contestants)

JUNIOR LADIES

1. Emily Wendell, SC of Boston
2. Beverly Messina, Commonwealth FSC
3. Donna Cortese, North Jersey FSC
(10 contestants)

NOVICE LADIES

1. Paula Surette, SC of Boston
2. Susan Buchman, SC of Boston
3. Deborah Rhodes, Hayden Recreation
Centre FSC
(7 contestants)

INTERMEDIATE LADIES

1. Kelly McDermott, Hamden FSA
2. Diane Creighton, Commonwealth FSC
3. Debbie Deveney, North Shore SC
(14 contestants)

JUVENILE BOYS

1. Charles Donovan, SC of Boston
2. Bernard Bruce, Hayden Recreation Centre
FSC

3. Scott Garland, Silver Blades SC
(5 contestants)

JUVENILE GIRLS

1. Caitlin Carruthers, SC of Worcester

2. Kate Wilkins, SC of Boston
3. Susan Spence, Silver Blades SC
(24 contestants)
- PRE-JUVENILE GIRLS**
1. Gigi Oliver, North Shore SC
2. Vivian Pozzi, San Diego FSC
3. Jennifer Terry, North Shore SC
(20 contestants)

**NINTH ANNUAL ARCTIC BLADES
INVITATIONAL CHAMPIONSHIPS
ARCTIC BLADES FSC, PARAMOUNT,
CALIF., AUGUST 6-7**

CHAMPIONSHIP PAIRS

1. Marian Murray & Glenn Moore, North
Shore WC, Canada.
2. Cynthia Van Valkenburg & James Hulick,
Arctic Blades FSC
3. Jodie Martin & Robert Berry, South Bay
FSC

CHAMPIONSHIP DANCE

1. Barbara & Michael Wayland, Los Angeles
FSC
2. Michelle Ford & Glenn Parriott, SC of
Phoenix
3. Kathy Flaherty & Tom Easton, Los
Angeles FSC

(8 couples)

SENIOR MEN

1. Robert Bradshaw, Los Angeles FSC
2. Terry Tunks, Lansing SC
3. Robert Berry, South Bay FSC
(7 contestants)

SENIOR LADIES

1. Kim McIsaac, South Bay FSC
2. Patty Gyllenswan, All Year FSC
3. Roberta Loughland, Arctic Blades FSC
(7 contestants)

SENIOR DANCE

1. Eleanor Curtis, Los Angeles FSC, &
Kenneth Woomer, All Year FSC
2. Margaret Freepartner & Ben Wade, Arctic
Blades FSC
3. Marguerita & Charles Aedo, Los Angeles
FSC

JUNIOR MEN

1. Randy Gardner, All Year FSC
2. Scott Carson, Los Angeles FSC
3. James Morgan, Pacific FSC
(4 contestants)

JUNIOR LADIES

1. Tai Babilonia, Los Angeles FSC
2. Robin Levi, Portland ISC
3. Juli Miller, Seattle SC
(7 contestants)

**LAKE PLACID SUMMER DANCE
COMPETITIONS, SC OF LAKE PLACID,
N.Y., AUGUST 10-12**

MIXED GOLD DANCE

1. Colleen O'Connor & Jim Millns, Wagon
Wheel FSC
2. Barbara Berezowski, Toronto CS & CC, &
David Porter, Unionville FSC
3. Susan Ogletree, Detroit FSC, & Gerard
Lane, SC of Boston

(15 couples)

GOLD FREE DANCE

1. Elizabeth Blatherwick, Genesee FSC, &
Robert Kaine, ISC of Indianapolis
2. Gretchen Stuart, Troy FSC, & Cole
Stearns, Cleveland FSC

SILVER DANCE

1. Joy Cushner, Charter Oak FSC, &
Stephen Kanter, SC of Boston
2. Judi Genovesi, SC of Hartford, & Kent
Weigle, Charter Oak FSC

3. Jennifer & David Young, SC of Hartford
(16 couples)

VETERAN'S DANCE

1. Mrs. Harlene Lee & Donald Simmons,
Wilmington FSC
2. Jackie Rhodes, Hayden Recreation
Centre FSC, & Robert Bythway,
Southern New Hampshire FSC
3. Nancy & Owen McCaffrey, Plaza FSC
(4 couples)

SPECIAL VETERAN'S DANCE

1. Eleanor Waring, Southern New Hampshire
FSC, & John Chrien, Plaza FSC
2. Diane Runde, SC of Hartford, & Bernard
Mach, Metropolitan FSC
3. Laura Beardsley, SC of Hartford, & Oleg
Stroukoff, North Jersey FSC

(4 couples)

JUNIOR DANCE

1. Jane Hickey & Robert Young, Charter
Oak FSC
2. Judi Genovesi, & Kent Weigle, SC of
Hartford
3. Deborah Broyles, SC of Wilmington, &
David Siebert, Garden State SC

(4 couples)

BRONZE DANCE

1. Karen & Douglas Mankowich, SC of
Boston
2. Elaine D'Esopo & Donald Adair, SC of
Hartford
3. Jane Rothfield & John Sjoberg, Charter
Oak FSC

(10 couples)

OPEN FOURTEENSTEP

1. Jane Hickey & Robert Young, Charter
Oak FSC
2. Susan Mila, Genesee FSC, & Guy Sexton,
South Mountain FSC
3. Jennifer & David Young, SC of Hartford
(18 couples)

OPEN WALTZ

1. Susan Ogletree, Detroit SC, & Gerard
Lane, SC of Boston
2. Beatrice Sexton, South Mountain FSC, &
Frank Recco, Plaza FSC
3. Chris Linney, SC of New York, & Bruce
Bowland, Wilmington FSC

(11 couples)

SPECIAL RELATIONS

1. Jennifer & Ralph Young, SC of Hartford
2. Dorothy & David Young, SC of Hartford
3. Carol & Fred Maynard, Charter Oak FSC
(4 couples)

**PUGET SOUND INTER-CLUB COMPETI-
TION, SEATTLE SC, WASH.,
AUGUST 11-13**

SENIOR LADIES

1. Susan Driano, Overlake SC
2. Donna Albert, Lakewood WC
3. Linda Campbell, Hollyburn CC
(5 contestants)

GOLD DANCE

1. Debbie Robertson & Greg Ladret, Holly-
burn CC
2. Debbie & Randy Burke, Cheam FSC
3. Diane Neils, Burien SC & Bill Santee,
Lakewood WC

(5 couples)

JUNIOR MEN

1. Randy Burke, Cheam FSC
2. Tom Bailor, San Diego FSC

JUNIOR LADIES

1. Marcy Sulenes, Lakewood WC
2. Terri Karis, Seattle SC
3. Arlene McSorley, Overlake SC
(6 contestants)

LADIES PAIRS

1. Colleen Clark & Marcy Sulenes,

Lakewood WC
 2. Kristy Lunde & Heather Shultz, Seattle SC
 3. Jennifer Chandler & Kathy Van Hasselt, Overlake SC
SILVER DANCE
 1. Colleen Clark, Lakewood WC & Jean Basle, Seattle SC
 2. Eva Doherty & Bob Benes, Burien SC
 3. Joanne Sloman & Jimmy Szabo, Hollyburn CC
NOVICE MEN
 1. Richard Perez, Crystal Springs ISC
 2. Craig Bond, Walla Walla FSC
 3. Andy Reed, Seattle SC
 (6 contestants)
NOVICE LADIES
 1. Juli Miller, Seattle SC
 2. Robin Levi, Portland ISC
 3. Linda Bevier, Crystal Springs ISC
 (9 contestants)
BRONZE PAIRS
 1. Christine McBeth, White Rock FSC & Rob Dick, North Shore WC
 2. Tracy & Scott Prussack, Crystal Springs ISC
 3. Sharon Hallet & Leonard Scharback, Victoria FSC
 (8 pairs)
BRONZE DANCE
 1. Lynn Carpenter & Peter Schindler, Lakewood WC
 2. Staci Loop & Kelly Yoshida, Lakewood WC
 3. Sharon Hallet & Leonard Scharback, Victoria FSC
 (4 couples)
SUB-NOVICE MEN
 1. Ralph Roppo, Seattle SC
 2. Greg Herr, Burien SC
 3. Doug Hansberry, Seattle SC
 (5 contestants)
SUB-NOVICE LADIES
 1. Lois Howard, Seattle SC
 2. Eliska Rodovsky, Seattle SC
 3. Nancy Nyland, Portland ISC
 (15 contestants)
INTERMEDIATE MEN
 1. Michael Lettengarver, Seattle SC
 2. David Fee, Portland ISC
 3. Donn Gregg, Portland ISC
INTERMEDIATE LADIES
 1. Cynthia Kawano, Portland ISC
 2. Kim Verdiun, Overlake SC
 3. Lisa Rolfe, Crystal Springs ISC
 (9 contestants)
JUVENILE BOYS
 1. Leonard Scharback, Victoria FSC
 2. David DeGroot, Overlake SC
JUVENILE GIRLS
 1. Karen Parker, San Diego FSC
 2. Jenni Rinaldi, Seattle SC
 3. Tina Falcioni, Lakewood WC
 (9 contestants)
SUB-JUVENILE BOYS
 1. Scott Prussack, Crystal Springs ISC
 2. Neil Giroday, Willingdon SC
 3. Douglas Brunn, Connaught SC
 (6 contestants)
SUB-JUVENILE GIRLS
 1. Tracy Prussack, Crystal Springs ISC
 2. Susan Prestin, Silver Edge FSC
 3. Kim DiPietro, Portland ISC
 (12 contestants)
PRELIMINARY BOYS (10 years & under)
 1. Brian Boitano, Silver Edge FSC
 2. Francisco Castillos, Seattle SC
 3. Dale Couch, RC of Victoria
PRELIMINARY GIRLS (11 years & over)
 1. Diana Biagi, Crystal Springs ISC
 2. Heidi Bosley, Portland ISC
 3. Colleen Carpenter, Lakewood WC
 (13 contestants)

PRELIMINARY GIRLS (10 years & under)
 1. Renee Biagi, Crystal Springs ISC
 2. Susan Steindorf, Silver Edge FSC
 3. Erika Donner, Seattle SC
 (9 contestants)
PRELIMINARY DANCE
 1. Lori Reyes & Ken Flora, Portland ISC
 2. Vanessa Howe, Mt. Arrowsmith FSC, & Dale Couch, RC of Victoria
 3. Holly McDonald & Richard Felix, Burien SC
TEAM CUP
 Seattle SC 43½
 Crystal Springs ISC 32
 Lakewood WC 28½

1972 COLORADO SUMMER FIGURE SKATING CHAMPIONSHIP, DENVER FSC, COLO., AUGUST 12-13

SENIOR LADIES
 1. Sissy Moody, Overlake SC
 2. Donna Arquilla, St. Moritz ISC
 3. Tarja Nasi, Helsinki, Finland
 (4 contestants)
JUNIOR MEN
 1. Scott Henderson, Hershey FSC
 2. Robert Steiner, Denver FSC
 3. Bill Schneider, Los Angeles FSC
 (4 contestants)
JUNIOR LADIES
 1. Tommy Gambil, Capital City FSC
 2. Linda Juckett, Chicago FSC
 3. Mary Bryant, Arctic Blades FSC
 (7 contestants)
SILVER DANCE
 1. Barbara Clare & Paul Steiner, Denver FSC
 2. JoAnn Schneider, Los Angeles FSC, & Richard Griffin, Denver FSC
NOVICE MEN
 1. David Schlichtemeier, Denver FSC
 2. Hal Marron, Arctic Blades FSC
 3. Scott Sherman, Skokie Valley SC
 (7 contestants)
NOVICE LADIES
 1. Barbara Smith, Arctic Blades FSC
 2. Lynn Johnson, Skokie Valley SC
 3. Laura McDonald, Chicago FSC
 (17 contestants)
BRONZE DANCE
 1. Cathleen & Hal Marron, Arctic Blades FSC
 2. Debbie Weinstein, Denver FSC, & Steven Goff, Arapahoe ISC
 3. Arlene Sibrell & John Smiley, Denver FSC
INTERMEDIATE MEN
 1. Dick Penland, Chapparel FSC
 2. Douglas Swisher, Denver FSC
 3. Steven Goff, Arapahoe ISC
INTERMEDIATE LADIES
 1. Lisa Allen, Arctic Blades FSC
 2. Gail Gilbert, Arctic Blades FSC
 3. Lori Mills, El Camino ISC
 (15 contestants)
SPECIAL INTERMEDIATE MEN
 1. Thomas Miller, Denver FSC
 2. Mike Brettell, Arapahoe ISC
 3. Mark Hammond, Chapparel FSC
 (4 contestants)
SPECIAL INTERMEDIATE LADIES
 1. Jennifer Wroblewski, Glenwood FSC
 2. Martha McCann, Denver FSC
 3. Tami Gorder, Boulder FSC
 (20 contestants)
JUVENILE BOYS
 1. Chuck Abbott, Denver FSC
 2. Geoff Glenn, Denver FSC
 3. Michael Smith, Denver FSC
JUVENILE GIRLS
 1. Sarah Dodge, Aspen SC
 2. Mary LeBeau, Chicago FSC

3. Sarah Bateman, Denver FSC
(14 contestants)
PRE-JUVENILE BOYS
1. Brad Goar, Arapahoe ISC
2. Jimmy Santee, Broadmoor SC
PRE-JUVENILE GIRLS
1. Michelle Spickard, Denver FSC
2. Amy Koslov, Skokie Valley SC
3. Kristin Hoke, Boulder FSC
(27 contestants)
LADIES SOLO AMERICAN WALTZ
1. Barbara Clare, Denver FSC
2. Debbie Weinstein, Denver FSC
3. Debra Russell, Arapahoe ISC

**1972 SUMMER FREE SKATING
COMPETITION, WISSAHICKON SC, PHIL-
ADELPHIA, PA.
AUGUST 13**

JUNIOR LADIES

1. Lynn Umstead, Laurelton Pines SC
2. Kris Ginkinger, Old York Road SC
3. Jill Cosgrove, Old York Road SC
INTERMEDIATE LADIES

1. Janet Wickenhaver, Old York Road SC
2. Beverly Jurenko, Quaker City FSC
3. Lynette Hewitt, Quaker City FSC
(5 contestants)
JUVENILE BOYS

1. Terry Garvin, Old York Road SC
2. Mark Henkels, Old York Road SC
3. Harry Gordon, Old York Road SC
(4 contestants)
JUVENILE GIRLS

1. Sue Minter, Philadelphia SC & HS
2. Susie Breuninger, Individual Member,
USFSA
3. Marji Rosenbluth, Old York Road SC
(8 contestants)
PRE-JUVENILE BOYS

1. Ozell Clayton, Individual Member,
USFSA
2. Todd Pressman, Old York Road SC
3. Robbie Rosenbluth, Old York Road SC
PRE-JUVENILE GIRLS

1. Lori Nichol, Philadelphia SC & HS
2. Barbara Cassalia, Old York Road SC
3. Susie Price, Philadelphia SC & HS
(7 contestants)
SPECIAL JUVENILE GIRLS

1. Sandy Hurtubise, Philadelphia SC & HS
2. Marylee Schneider, Individual Member,
USFSA
3. Cheryle Fortson, Individual Member,
USFSA
(12 contestants)

**1972 FLORIDA INVITATIONAL FIGURE
SKATING CHAMPIONSHIP,
JACKSONVILLE FSC, FLA.
AUGUST 19**

ADVANCED DANCE

1. Doris Dahl, SC of Florida & John Morgan,
Jacksonville FSC
2. Pamela & Alfred Dahl, SC of Florida

INTERMEDIATE LADIES

1. Debra Stitt, SC of Florida
2. Lynn MacDonald, St. Petersburg FSC
3. Lori Osborn, SC of Florida
(5 contestants)
BEGINNER LADIES

1. Vivienne Farmati, SC of Florida
2. Pamela Dahl, SC of Florida
3. Debbie Yates, Greensboro ISC
(8 contestants)
BEGINNER MEN

1. Mark Worrell, SC of Florida

**2. Sammy Guelli, SC of Florida
BEGINNER DANCE**

1. Anna Lindsey & Sammy Guelli, SC of
Florida
2. Melanie Wildrick & Michael Lindsey, SC
of Florida
PRELIMINARY LADIES

1. Patricia Adeimy, SC of Florida
2. Rita Goldman, SC of Florida

PRE-PRELIMINARY LADIES

1. Barbara Bogaty, Greensboro ISC
2. Melanie Wildrick, SC of Florida
RICHARD P. MORGAN MEMORIAL
TROPHY
SC of Florida

**SUN VALLEY SUMMER SKATING
CHAMPIONSHIPS, SUN VALLEY FSC,
IDA., AUGUST 28-29**

SENIOR LADIES

1. Laurie Hupp, Arctic Blades FSC
2. Donna Alpert, Lakewood WC
3. Julie Herzog, Portland ISC
(5 cc contestants)
SPECIAL GOLD DANCE

1. Karen Raille, Portland ISC, & Curt
Finley, Glacier Falls FSC
2. Laurie Cole, Burien SC, & Craig Bond,
Walla Walla FSC
3. Colleen Clark & John Basle, Lakewood
WC
JUNIOR MEN

1. Robert Steiner, Denver FSC
2. John Carlow, Jr., Arctic Blades FSC
3. Kirk Bateman, Denver FSC
(6 contestants)
JUNIOR LADIES

1. Arlene McSorley, Overlake SC
2. Betsy Hobson, Braemar-City of Lakes
FSC
3. Judi Blumberg, Los Angeles FSC
(8 contestants)
JUNIOR PAIRS

1. Erika Susman & Tom Huff, Los Angeles
FSC
2. Vickie Carr & Paul Tassone, Wasatch FSC
3. Lisa Carey & Douglas Varvais, Los
Angeles FSC
(4 pairs)
VETERANS DANCE

1. Eleanor & Jack Curtis, Los Angeles FSC
2. Marilyn & Dr. Robert Aamodt, Glacier
Falls FSC
NOVICE MEN

1. Patrick Page, Portland ISC
2. Walter Kelley, St. Moritz ISC
3. Allen Schramm, Marin FSC
(7 contestants)
NOVICE LADIES

1. Robin Levi, Portland ISC
2. Lauri-Lynn Duffy, Santa Monica FSC
3. Julie Miller, Seattle SC
(8 contestants)
NOVICE PAIRS

1. Heidi Berry, Arctic Blades FSC, & Randy
Branca, Polar Palace FSC
2. Karen & Mike Smith, Crystal Springs ISC
3. Sarah Bateman, Denver FSC, & Geoff
Glenn, Arapahoe ISC
(4 pairs)
BRONZE DANCE

1. Cynthia Kawano & Patrick Page, Portland
ISC
2. Staci Loop & Kelly Yoshida, Lakewood
WC
3. Lori Reyes & Ken Flora, Portland ISC
(4 couples)
INTERMEDIATE MEN

1. David Fee, Portland ISC
2. Michael Lettengarver, Seattle SC

3. Greg Herr, Burien SC
(4 contestants)
- INTERMEDIATE LADIES**
1. Cynthia Kawano, Portland ISC
2. Lori Mills, El Camino ISC
3. Rebekah Street, Arctic Blades FSC
(9 contestants)

JUVENILE BOYS

1. Mike Smith, Crystal Springs ISC
2. Michael Smith, Denver FSC
3. David Carter, Valley FSC
(5 contestants)

JUVENILE GIRLS

1. Staci Loop, Lakewood WC
2. Sarah Bateman, Denver FSC
3. Leigh Davis, Arctic Blades FSC
(8 contestants)

SUB-JUVENILE BOYS

1. Kelly Yoshida, Lakewood WC
2. Arnold Alt, Overlake SC
3. Kevin Sarich, St. Moritz ISC
(7 contestants)

SUB-JUVENILE GIRLS

1. Catherine Mansell, Silver Edge FSC
2. Malaguena Marshall, Los Angeles FSC
3. Karen Crawford, Utah FSC
(15 contestants)

SPECIAL JUVENILE GIRLS

1. Donna Stern, Las Vegas FSC
2. Jennifer Oerding, Las Vegas FSC
3. Kathie Jones, Las Vegas FSC
(14 contestants)

GOLDEN WEST FREE SKATING CHAMPIONSHIPS, ALL YEAR FSC, CULVER CITY, CALIF. SEPTEMBER 2-3

GOLD LADIES

1. Patty Gyllenswan, City of Paramount, Calif.

2. Diana Stahl, SC of Phoenix
3. Linda Stark, San Diego FSC
(4 contestants)

PRE-GOLD MEN

1. Terry Tunks, Lansing SC
2. Larry Seale, All Year FSC
3. Bill Alexander, City of Culver City, Calif.
(4 contestants)

PRE-GOLD LADIES

1. Caren Davis, All Year FSC
2. Susan Wolford, City of Culver City
3. Audrey Welch, All Year FSC
(5 contestants)

SILVER LADIES

1. Tammy Gambill, Capital City FSC
2. Billie Jo Passarella, Polar Palace FSC
3. Caryn Somerville, Crystal Springs ISC
(10 contestants)

SILVER FREE DANCE

1. Cynthia Davis, Louisville FSC, & Tim Sims, Columbus FSC
2. Gail & Stephen Heitert, San Diego FSC
3. Colleen Boyd, Santa Rosa FSC, & Robert Graham, All Year FSC

PRE-SILVER MEN

1. Ken Newfield, Los Angeles FSC
2. Richard Perez, Crystal Springs FSC

PRE-SILVER LADIES

1. Linda Bevier, Crystal Springs ISC
2. Dawn Duncan, Polar Plaae FSC
3. Roni Botterell, San Diego FSC
(32 contestants)

BRONZE MEN

1. Eric Johnson, City of Burbank, Calif.
2. Marc Fero, Los Angeles FSC
3. Dalwin Zuloaga, City of Burbank
(7 contestants)

BRONZE LADIES

1. Marianne McCaffrey, South Bay FSC
2. Lisa Rolfe, Crystal Springs ISC

3. Karen Sellick, Arrowhead FSC
(29 contestants)

BRONZE PAIRS

1. Tracy & Scott Prussack, Crystal Springs ISC
2. Dana & Edward Reisman, SC of Van Nuys

3. Jackie Hanson & David Hicks, Diablo FSC
(4 pairs)

BRONZE FREE DANCE

1. Catherine Evans & Frank Weber, San Diego FSC

2. Anne Harris, All Year FSC, & Ronald Plank, Jr., Los Angeles FSC

PRE-BRONZE MEN

1. Scott Prussack, Crystal Springs ISC
2. Frank Weber, San Diego FSC
3. Gary Zaks, San Diego FSC
(7 contestants)

PRE-BRONZE LADIES

1. Vicki Heasley, Arctic Blades FSC
2. Debbie Gallant, Los Angeles FSC
3. Carrie Rugh, All Year FSC
(53 contestants)

JUVENILE BOYS

1. Robert Wagonhoffer, Arrowhead FSC
2. Larry Lummis, All Year FSC
3. Charles Barstow, San Diego FSC
(11 contestants)

JUVENILE GIRLS (over 12 years)

1. Terri Lieberman, Los Angeles FSC
2. Marina Drasnin, Los Angeles FSC
3. Rose-Karen Sanzo, Los Angeles FSC
(34 contestants)

JUVENILE GIRLS (under 12 years)

1. Tracy Prussack, Crystal Springs ISC
2. Sue Packard, Arrowhead FSC
3. Donna Dawson, Arctic Blades FSC
(49 contestants)

- GOLDEN WEST ACHIEVMENT AWARD**
- Linda Bevier, Crystal Springs ISC

1972 SQUAW VALLEY SKATING CHAMPIONSHIPS, SQUAW VALLEY FSC, OLYMPIC VALLEY, CALIF. SEPTEMBER 3

SENIOR LADIES

1. Babs Vasser, Utah FSC
2. Holly Henderson, Edmonton FSC

JUNIOR LADIES

1. Julie Fraenkel, St. Moritz ISC
2. Vickie Carr, Wasatch FSC
3. Kim Kilsby, Silver Edge FSC
(6 contestants)

NOVICE MEN

1. Allan Schramm, Marin FSC
2. Paul Tassone, Wasatch FSC
3. Scott Sherman, Skokie Valley SC
(4 contestants)

NOVICE LADIES

1. Suzie Brasher, Utah FSC
2. Sundee Witt, SC of Phoenix
3. Jill Hanks, Utah FSC
(11 contestants)

INTERMEDIATE LADIES

1. Blair Koch, Diablo FSC
2. Katie Hurley, St. Moritz ISC
3. Ginger Diffendorfer, Silver Edge FSC
(13 contestants)

JUVENILE BOYS

1. Danny Leitner, Squaw Valley FSC
2. Kelley Witt, SC of Phoenix
3. Gregory Ford, St. Moritz ISC
(6 contestants)

JUVENILE GIRLS

1. Stephanie Grosscup, Utah FSC
2. Marilyn Greenwood, St. Moritz ISC
3. Renee Blagi, Crystal Springs ISC
(21 contestants)

AT TRIAL

The small crowd watched closely. Those who understood what was going on silently showed joy or disappointment. Those who didn't watched, trying to learn something new. Now ask: what was happening? Figure Tests, a trial in almost every skater's skating career.

Why do I say "almost"? Well, there are some skaters who have little trouble in figures. Why? Practice, hard work, concentration and sometimes it comes naturally. To others it's a trying experience.

If you haven't ever seen a skater two-foot or fall on a figure, watch next time for the expression on his or her face. Sometimes there will be a smile on the skater's face. Other times there will be a look of disappointment. Whatever the expression, smile or disappointment, there is love. The love of skating.

—Mary Boos, age 11
Great Falls FSC



THE PATCH SESSION

On the ice
Quiet and solemn
So quiet that you could hear a pin drop
Round and round
The skaters go on their patches.

Then on comes the music.
Blades dance
Spin
Flash across the ice.
Programs begin, end, and soon
The session is over.
Then, as before,
All is quiet.

—Dawn Kathleen Duncan
Polar Palace FSC

KID TALK

I have a problem, and I would like your advice on it. You see, I enjoy skating very much (I can almost land my Axel), but my mother doesn't have very much money. Being only fifteen, I am having a hard time paying for my lessons and skates, and it is hard to get a job. What do you suggest? —(Name withheld by request)

Many young skaters share your difficulties. Perhaps you could recruit one or two skating friends and establish a "lawn care service." Round up the necessary tools in your garage, sign up regular clients through a classified ad in the neighborhood shopping guide, and, with a Saturday's work each week, you should be able to pay for those lessons. Babysitting is another possible solution. Many a working mother needs someone to watch over her brood after school. Again, advertise your services and try to locate a regular client. Afternoon babysitting should leave you plenty of time for lessons and practice. Good luck!—Ed.

official notes

The 1973 Examinations for Referees and Accountants (CR 1.40) may be obtained by writing to the USFSA Central Office, 178 Tremont St., Boston, Mass. 02111. Those persons already on the approved lists of Referees and Accountants will automatically receive a copy of the examination.

The North American Committee, a joint committee of the CFSA and the USFSA, was recently established. The new committee will serve as a formal liaison and channel of communication between the two associations. The members are: USFSA—Charles A. DeMore, Charles U. Foster and Benjamin T. Wright; CFSA—Charles H. Dover, F.K.J. Geisler and Donald H. Gilchrist; EX OFFICIO—Frederick C. LeFevre, President of the USFSA, and John McKay, President of the CFSA. A chairman will be elected at the first meeting of the committee.

Harry N. Keighley, a member of the USFSA Executive Committee, will represent the Association at the 1972 Amateur Athletic Union Meeting. The meeting will be held November 26-December 2 at the Muehlebach Hotel Convention Center in Kansas City, Mo.

Canada Skate, an international, invitational skating competition, was given full endorsement by the ISU at its annual Council Meeting in Yugoslavia last June. This competition will be the first of its kind ever held in North America. An annual event for Men, Ladies and Ice Dancing, the first Canada Skate is slated for September, 1973. No site has yet been named. In other action at the Council Meeting, Spain was formally accepted as the newest member of the ISU.

AUSTRIAN INTERNATIONAL SENIOR LADIES COMPETITION VIENNA, AUSTRIA, JUNE 14-17

1. Zsuzsa Almassy, Hungary
 2. Maria McLean, Great Britain
 3. Kathy Malmberg, USA
 4. Diane Goldstein, USA
- (12 contestants)

calendar

NOVEMBER

- 5- 6 Richmond International Trophy, Richmond, England.
- 10-12 Prague Skate, International Senior Competition, Prague, Czechoslovakia.
- 15-18 Central Pacific Championships, Squaw Valley FSC, Olympic Valley, Calif.
- 18 British Ice Dance Championships, Nottingham, England.

DECEMBER

- 1- 2 "'73 On Ice," Class of 1923 Rink, Philadelphia, Penn.
- 1- 3, Southwest Pacific Championships, San Diego FSC, Calif.
- 6- 7 British Figure Championships, Richmond, England.
- 6- 9 Northwest Pacific Championships, Overlake SC, Bellevue, Wash.
- 7- 9 Southwestern Championships, Broadmoor SC, Colorado Springs, Colo.
- 7- 9 Upper Great Lakes Championships, Northbrook Skokie Valley SC, Northbrook, Ill.
- 7-10 North Atlantic Championships, Commonwealth FSC, South Weymouth, Mass.
- 13-17 6th International Senior Championships of Zagreb, Yugoslavia.
- 14-16 Eastern Great Lakes Championships, Columbus FSC, Ohio.
- 14-17 South Atlantic Championships, Wissahickon FSC, Philadelphia, Penn.

JANUARY

- 4- 7 Eastern Championships, SC of Lake Placid, N.Y.
- 11-13 Midwestern Championships, Denver FSC, Colo.
- 11-13 Pacific Coast Championships, All Year FSC, Culver City, Calif.
- 11-13 2nd Explorer Olympics, Lake Placid, N.Y.
- 15-21 Canadian Figure Skating Championships, Vancouver, B.C.
- 24-27 U.S. Figure Skating Championships, Braemar-City of Lakes FSC, Edina, Minn.

FEBRUARY

- 6-11 European Championships, Cologne, BRD.
- 27- March 4 World Figure Skating Championships, Bratislava, Czechoslovakia.

people

BORN

To Mr. & Mrs. Robert Davis (Cindy Kauffman), a son, Jefferson Lee, September 5.

To Mr. and Mrs. Charles U. Foster of Worcester, Mass., a son, Derek Simonton, June 6.

To Frank and Val Herman, Los Angeles FSC, a son, Brian Alex, April 1.

To Mr. & Mrs. Ron Kauffman of Portland, Ore., a daughter, Kimberly Diane, August 23.

To Mr. & Mrs. James Naughton, Portland ISC, a daughter, Jill, September 1.

To Allan and Cheryl Schrader, St. Moritz ISC, a daughter, Jennifer Ellen, April 1.

To Mr. and Mrs. G.K. Young (Marlene Lichti) of Kitchener, Ont., a son, David Andrew, May 31.

ENGAGED

Roger Hollister and Lynn Caine, South Bay FSC.

Michael H. Marino, III, and Barbara Ann Shetwell, both of the Willow Ice Chalet, Willow Springs, Ill., will be married November 25.

Darrell Mathias and Danielle London, Los Angeles FSC, plan to marry in December.

James Sladky and Judy Schwomeyer, National Gold Dance champions, plan a December wedding.

MARRIED

Ricks Babb and LuDean Crowford, Los Angeles FSC, June 30.

Rick Holloway and Dorothy Stone, Los Angeles FSC, July 1.

Delaplane McDaniel, Honorary Member of the USFSA Executive Committee, and Mrs. John Harlan Carter, July 22.

Phil Myring and Jane Poise, Los Angeles FSC, May 26.

Edward T. Shean, Jr., and Anne V. (Coco) Gram, High Test Judge for Park FSC, June 13.

Mark E. Smithberger and Jill Osborne, pro for Louisville FSC, July 15.

James Solliday and Linda Oren, South Bay FSC, June 18.

DIED

Shirley E. Boisvert, 30, former member of Providence FSC, August 21.

Nancy Glenn, 18, former Novice Ladies competitor and a member of Wagon Wheel FSC, August 10.

Eve Gold, wife of Otto and mother of

Continued in next column

club notes

The summer pause from the bustle of qualifying competitions offers skating clubs the opportunity to informally evaluate their members and give recognition to those who shone during the preceding competitive season. The Broadmoor SC honored Gail Hamula and Audrey King as co-winners of the club's Kelley Award. The selection, determined by a vote of the competitive skaters in the club, is based on achievement and sportsmanship. As a Novice skater last season, Gail was a medalist in Regional and Sectional events and placed fifth in Nationals. Audrey, a Senior competitor, overcame a leg injury to earn the Bronze medal in the 1972 Southwesterns. The Kelley Award is a continuing memorial to Nathalie and Gregory Kelley, who died in the 1961 plane crash that took the lives of the entire U.S. World Team and their coaches.

PEOPLE

Francis Gold, in Scarborough, Ont., in May.

James W. Holmquist, charter member of the FSC of Omaha, April 25.

Randolph B. Lees, featured skater in Holiday on Ice International and former member of Englewood FC and the SC of New York, in Bologna, Italy, April 25.

Nathaniel Perry Tufts, father of Mrs. Doris Tufts Heinold, in Wellesley, Mass., July 27.

TURNED PROFESSIONAL

Davette Aileen Beisner, Oak Park FSC, is skating with the Holiday on Ice.

Barbara Brown and Doug Berndt, 1972 U.S. Pair Bronze medalists and members of the U.S. World Team, will join Ice Follies International.

Julia Jean Johnson, Arctic Blades FSC, will skate with the Vienna Ice Revue.

Michelle McCladdie and Richard Ewell, III, 1972 Junior Pair champions joined Ice Capades.

Trixi Schuba, 1972 Olympic and World Ladies champion, will skate with Ice Follies for one year.

Judy Schwomeyer and James Sladky, 1972 World Dance Bronze medalists and five-time U.S. Gold Dance champions, will skate with Ice Follies.

JoJo Starbuck and Ken Shelley, 1972 World Pair Bronze medalists and U.S. Pair champions, have joined Ice Capades.

laurels

TESTS PASSED BY USFSA SKATERS

Testing is an important part of a figure skater's progress. The following USFSA sanctioned tests in figure, pair & dance were reported passed. Only tests which were received and processed by the USFSA Central Office during the period of April 15 through July 20 appear in this issue. Any errors should be reported to the USFSA, 178 Tremont Street, Boston, Mass. 02111.

GOLD MEDAL WINNERS

- GOLD FIGURE—** Donna Arquilla, St. Moritz ISC
Wendy Burge, Los Angeles FSC
Elizabeth Freeman, SC of Lake Placid
Patti Gyllenswan, All Year FSC
Laurie Hupp, Arctic Blades FSC
Barbara Lytle, North Jersey FSC
Mary Shields, Los Angeles FSC
Michael Stoller, Plaza FSC
Janet Van Camp, Ann Arbor FSC
- GOLD PAIR—** Jack Comberger, FSC of Cincinnati
Richard Ewell, III, Santa Monica FSC
Michelle McCladdie, Santa Monica FSC
Bill McPike, St. Moritz ISC
Georgia Truffini, St. Moritz ISC
Adrienne Wibbeler, FSC of Cincinnati
- GOLD DANCE—** Terry Berry, Professional
Adele Boyajian, Lansing SC
Linda Burgess, Baltimore FSC
Curtis Finley, Glacier Falls FSC
Marlene Fornwalt, Philadelphia SC & HS
Judy Gray, Professional
Sara Hill, Glacier Falls FSC
Gregory Jivoin, Queen City FSC
Ronald Kauffman, Professional
Charlotte Mersereau, SC of Wilmington
Suzanne Metzel, Chicago FSC
Linda Stoller, Plaza FSC
Michael Stoller, Plaza FSC
- GOLD FREE—** John Bickel, Genesee FSC
Cathleen Casey, SC of Hartford
Frances Cassella, SC of Hartford
Sue Mila, Genesee FSC

- ALBUQUERQUE FSC:** Pre—Vickie Martino, Robin Mason, Joyce Rivard. 2—Melinda Meahl. 3—Kathy Franchini. Pre-Gold—Maureen Morrow.
- ALEXANDRIA BAY FSC:** Pre—Marcelle Coiro, Robin Gionet, Diana Hewitt, Julie Hudon, Helen Irwin, Teri Reff, Mary Walentuk. 1—Susan Tague. Pre D—Marcelle Coiro, Robin Gionet, Diana Hewitt, Julie Hudon, Helen Irwin, Teri Reff, Susan Tague. Bronze — Marcelle Coiro, Susan Tague.
- ALL YEAR FSC:** Pre—Ronda Champion, Sheri Delbert, Shawn Edlund, Lori Lummis, Heike Ostermeier, Kathleen Schoen. 1—Linda Allen, Lisa Allen, Gail Leip, Cheryl Lummis, Brigitte Ostermeier, Lisa Potter, Carrol Toole, Nerissa Tovar, Richard Zander. 2—Julie Herron, Laura Mendelson. 3—Garnet Ostermeier, Jill Strawbridge. 4—Jim Hartley, Shelly Palmer. 6—Lisa Johnson. 7—Larry Seale. Pre D—Billy Harris, Julie Herron, Susan Reed. Bronze—Kim Hughes, Gail Leip. Pre-Silver—Grant Day, Robert Graham. Silver—Robert Graham. Silver Free—Robert Graham. Pre-Gold—Kenneth Woomer.
- AMARILLO FSC:** 1—Susan Nix, Tamara Stark.
- AMHERST SC:** Pre—Lisa Buyer, Joseph Druar, Connie Erickson, Carolyn Hamilton, Shelia Monahan, John Murray, Jonelle O'Meara, Erin Paradatto, Christine Swain, Sally Swain. 1—Patricia Edick, Molly Kessing. 2—Jeffrey Sitcov, Ellen Stiles. 3—Corinne Durore. 5—Charisse Durore. Bronze Pair—Corinne Durore, Tom Montgomery. Pre D—Cathy Carney, Gina Cassiol, Bill Collins, Merle Malone, Natalie Miller, Sheryl Muench, Katie Swain. Bronze—Debbie Colt.
- ANN ARBOR FSC:** Pre—Ann DeTar, Darlene Wheeler. 1—Mary DeTar, Penny Edwards, Margaret Godfrey, Julie Savarino.
- ARAPAHOE ISC:** Pre—Laurie Laughlin, Eden Marriot. 1—Kim Lewis. 2—Geoff Glenn, Bernie Krause, Debbie McClure. 5—Linda Lewis.
- ARCTIC BLADES FSC:** Pre—Yvonne Albers, Tammy Dalton, Donna Dawson, Pamela Graf, Diana Greene, Lynn Michal, Lisa Thomas, Karen Yates. 1—Gina Jacob, Lyndy Marron. 2—Eric

Greedy, Vicki Heasley, Ronny Pomeroy. 3—Lisa Allen, Rachelle Ottley. 4—Julia Crawford. 5—Daria Schweitzer. 6—Mary Bryant, Merrilee Irwin, Roberta Loughland, Jon Prasniewski. 7—Bill Alexander. Pre D—Gail Gilbert, Lori Kyllonen, Lisa Morgan, Rebekah Street. Bronze—Cathleen Marron, Hal Marron. Pre-Gold—Gary Forman, Jo Ann Schneider.

ARROWHEAD FSC: Pre—David Beahm, Marilyn Carl. 1—Timna Golub, Nancy Quinnell, Beth Stern. 2—Chris McBeth. 3—Karen Sellick. Pre D—Bernie Nellis, Sylvia Nellis, Karen Sellick, Elizabeth Stark. Bronze—Ruth Scharf.

ASPEN SC: Pre—Colleen Collins, Elisabeth Mathias, Sonia Shecter. 1—Toril McLoughlin. 5—Nannette Mayer.

ATLANTA FSC: Pre—Barbara Barrett, Carole Brannon, Isabel Gunn, Gaye Milner, Cindy Williams. 1—Joyce Andrus, Frances Phillips, Jana Portman, Kit Weirauch, Paul Wender, Allison Winter. 2—Joan Locke. 4—Tamy Sewell.

ATLANTIC CITY FSC: 4—Vickie Off.

BALTIMORE FSC: 5—Gail Goldner, Barbara Lofgren, Chris Shinosky. 7—Janet Lofgren. Pre D—Chris Langham.

BATH & TENNIS CLUB: Pre—Ann De Young, Theresa Haggarty. 1—Amy Bridges, Wendy Davis. 3—Helen Morrison.

BAY PATH FSC: Pre—Margaret Mitchell, Carol Mosier. 1—Anne Donovan, Julie Levites.

BEAR MOUNTAIN FSC: Pre—Charles Lamb. Pre D—Richard Caley. Bronze—Elly Vorbach.

BELVEDERE FSC: Pre—Jane Allen, Becky Ferguson, Peggy Morris, Nancy Wilson.

BERKSHIRE HILLS FSC: Pre—Sandy Bornak, Christine Curletti, Scott Rodman, Dorothy Wendling. 1—Mary Brennan. Pre D—Christine Curletti, Caroline Jalbert, Marisa Pizzuto. Bronze—Susan Rowell.

BOULDER FSC: Pre—Mary Dalton, Melanie Julian. 2—Laurie Corder, Tami Corder, Wendy Marin. Pre D—Pat Casala, Kris Hoke, Monika Ujvari.

BOWLING GREEN FSC: Pre—Chris Hefner, Teddi Klear, Pam Lord, Pat Lord, Sue Lord. 1—Devon Armstrong. 4—Scot Tyson.

BRAEMAR-CITY OF LAKES FSC: Pre—Stacy Bame, William Brauer, Linda Ell, Lisa McClellan, Diane Mukai, Lisa Wilson, Nancy Wittler. 1—Judy Boyle, Jill Getchman, Mary Kaiser, Cindy Larson, Laurie Weikert. 3—Jennifer Branstrom. 5—Becky Wallin.

BRIDGEPORT SC: Pre—Mary Manville, Ellen Schwartz. 1—Margaret McGhee, Miguel Rivera, Jr., Lauren Schine. 2—Susan McElhanney, Lisa Quinn. 3—Joan Fitzgibbon. 4—Michael Giordano. 6—Leland Meadows, Jr. Pre D—James Ambrose. Bronze—Anne Graeb, Denele Johnston, Kim Malafronte.

BROADMOOR SC: Pre—Dana Boles, Kit Hafey, Lisa Hein, Susan Kastel, Karen Kelley, Scott King, Dinah Newton, Ulrike Newton, Deena Pendleton, Nicki Poliac, Kathi Powers, Kelli Powers, Gretchen Rosenquist. 1—Cynthia Nesselhauf, Brenda Stevenson. 2—Donnie Might. 3—Grushenka Wolfgang. 4—Jeanette Evans. 6—Gail Hamula. 7—Ronnie Green. Pre D—Karen Kelley, Scott King.

BRONXVILLE SC: Pre D—Barbara Amar.

BROOKLYN FSC: Pre D—Eugene Koeck, Aino Luukhanen, Florence Needham.

BUFFALO C & SC: Pre—Christine Pusateri, Colleen Rustay. 1—Ann Klendshoj, Diane Pusateri, Kelly Witter. 2—Pamela Irish, Val Vance.

BUFFALO SC: 3—Larry Gephardt.

BURIEN SC: Pre—Elizabeth Aurich, Ellen Helsell, Karen Jorgenson, Daocy Kline. 1—Bailey Alexander, Nikki Blom, Teresa Gehringer, Greg Herr, Carol Lennon. Bronze Pair—Kelly Elgin, Steve Elgin.

CANTIAGUE FSC: Pre—Cheryl Cianiottto, Susan Felder, Lisa Frenkel, Diane Froese, Susan Gaba, Christina Hoh, Terry Mandala, Barbara Mitchell, Stacy Shuman, Debbie Trolman. 1—Wendy Birnbaum, Susan Chasteen, Sharon Cohen, Irene Goldsmith, Lynn Kruse, Melinda Markland, Lisa Peritz, Jamie Pestyner, Donna Peterson, Lori Rinaudo, Hillary Sokolski, Pamela Suttenger, Jane Waldman, Felita Yost, Marcia Zydney. 2—Holly Carobene, Bonnie Congemi, Julie Epstein, Nina Gottlieb, Valerie Hodgson, Michelle Neuman, Bonnie Retzkin, Judy Schienfeld. 3—Loren Goodstadt, Randi Neuman, Nancy Owen, Corinne Raile, Loren Simon. 4—Mary Shea. 5—Sara Bersley. Pre D—Arlene Trolman.

CAPE COD SC: Pre—Kathrine Mullin.

CAPITAL CITY FSC: Pre—Julie Bartholomew, Debbie Holzknicht, Jean Lander, Sue McKay, Susan Shively, William Towner. 1—Kathy Turner. 2—Dianne Coiner. 3—Carole Millar. 6—Tammy Gambill. Pre D—Rachael George, Roland Melicher. Bronze—Barbara Moriearty. Pre-Silver—Dianne Coiner. Silver—Lora Larsen.

CAROUSEL FSC: Pre—Susan Axtell, Cindy Holmes, Andrea Lindstrom, Margaret Thornton, Pamela Tye, Barbara Warren. Pre-Silver—Rebecca Post.

CARRIAGE FSC: 2—Nancy Hunt.

CHAPARRAL FSC: Pre—Brenda Giddens, Nancy Loritsch, Lisa Thoreen. 2—Mary de Leon, Barbara Finch, Jeanne Guertin, Tara Hosterman, Cynthia Karnes.

CHARLESTON FSC: Pre—Peggy Bassett, Lisa Johnson, Mark Mangus, TreAnn Mesaras, Laura Prescott, Salley Prescott. 1—Coleen Cochran, Cynthia Harris, Susan Harris.

CHARTER OAK FSC: Pre—Julie Dolinger, Pat Huntley, Ruth Ladd, Suzanne McCaughtry, Davida Marsh, Lynn Susman, Sarah Washburn, Louise Welch. 1—Steven Hollosi, 2—Jane Rothfield. Pre D—Carolyn Byrne, Cynthia Deming, David Duffy, Jo-Ann McCaughtry, Joan Michels, William Michels, Kathleen Slattery, Louise Welch, Marion Whitmore. Bronze—Elizabeth Arendt, Pam Hartley, Suzanne McCaughtry. Silver—Steven Hollosi. Silver Free—Kent Weigle.

CHEVY CHASE CLUB: Pre—Sara Greer, Charlotte Worsley. Bronze—Kim Noyes, Barbara Parrot, Nelia Worsley.

CHICAGO FSC: Pre—Jennifer Wulff. 1—Jamie Goldstein. 2—Michael Del Rosario. 3—Linda Auxier, Donna Schwartz, Sue Szilagyi. 5—Lisa Horween. 6—Sam Auxier. 7—Mark Migdalski. Pre D—Donna Schwartz. Pre-Gold—Tich Paradowski.

CHRISTMAS BROOK FSC: Pre—Denise Bigelow, Catherine Fresia, Bonnie McKenna, Larry Russett, Susan Zepka. 2—Susan Thompson. Pre D—Denise Bigelow, Elena Bua, Catherine Fresia, Ann Kozil, Bonnie McKenna, Robin Nassif, Patricia Russett, Susan Zepka. Bronze—William Haddad, Bonnie McKenna, Wendy McKenna, Larry Russett. Silver—Susan Russett

CLEVELAND HEIGHTS SC: Pre D—Susan Pilon, Robert Slater. Bronze—Robert Thorson.

CLEVELAND SC: Pre—Beth Edgerton, Ellen Fissinger, Christy Fotheringham, Cynthia

- Fotheringham, Mary Healy, Janice Kaplan, Mary Kaplan, Leslie Nichol, Carey Phillips, Ann Scalabrino, Beth Scalabrino, Susan Scalabrino, Meredith Washburn. 1—Liz Asman, Lucy Coakley, Susie Collins, Ann Dickenson, Susan McGuinness, Jeanne Schaffer. 2—Jane Albert, Robert Alexander, Therese Alexander, Martha Brandt, Bridgett Daley, Elizabeth Eels, Carey Ford, Nancy Hungerford, Lorie Matia, Carolyn McCarthy. 3—Susie Asman, Betsy Jackson. Pre D—Phyllis Hackett, Alice Henry, Grace Henry, James Jackson, David O'Patry, Therese Alexander. Bronze—Mrs. K.A. Cool, Jr., Susan Jackson, Cathy Newpher, Cindy Phillips. Pre-Silver—Martha Alexander, Heather Hazle, Dorothy Nyman, Sue Swails. Pre-Gold—Mrs. Pieter Kollen.
- CLINTON FSC:** 2—Lynne Edwards.
- COLONIAL SC:** Pre—Jan Freeman, Lynn Freeman, Randy Lionberger, Ann Mulholland, Lisa Roadside. 1—Brett Aranow, Beth Ladner, Traci Roadside. 2—Nancy Fillebrown. 3—Wendy Black, Patty Connolly. 5—Patty Kokotailo. 6—Jacqueline Davidson. Pre D—Cathy Cleary, Carole Turzanski. Bronze—Guy Elzey, Karen Hrynda. Pre-Silver—Jay Morgan. Silver—Jacqueline Davidson.
- COLUMBIA FSC:** Pre—Diana Anderson, Betty Annett, Shari Berglin, Sue Berglin, Keri Berquist, Kim Dahl, Kim Ebner, Kerri Johnson, Kim Knight, Karen Kuhnly, Sally Nichols, Patti Seigley, Monica Weinert.
- COLUMBUS FSC:** Pre—Charlotte Assor, Carol Bailey, Jacqueline Bromberg, Janet Couling, Marianne Deyo, Chris Freeman, Rosie Hajdu, Ted Masdea, Tina Stephan. 1—Ted Masdea, Margaret Ouellette, Connie Wiseman. 3—Susan Papp. Pre D—Luther McCoy, Andrew Ouellette, Elizabeth Pike, Ed Robertson. Bronze—Becky Dunay, Beth Ellis, Diane Ouellette
- COMMONWEALTH FSC:** Pre—Stacy Prevost. 1—Stephanie Andrews, Jane Blake. 2—Christine Cummings, Kim Ecivedo, Donna Flaherty, Debbie Mason, Paul Mazzucchelli. 3—Christine Roberts, Lorraine Thompson. 7—Debbie Regan. Pre D—Susan Connell
- CORNELL FSC OF ITHACA:** Bronze—Ruth Mark.
- CRYSTAL SPRINGS ISC:** Pre—Lorene Johnson, Melanie West. 2—Shelly Simons. 3—Shirley Pedersen. 4—Richard Perez. 6—Kathy Ondry, Caryn Somerville. 7—Jill Monte. Bronze Pair—Catherine Davies, Michael Davies.
- DALLAS FSC:** Pre—Kimberly Smith. 1—Sharon Fullhart. 2—Phyllis Nixon. 3—Sharon McCally, Trudy Sells. 6—Rhonda Cannon. Pre D—Sharon Fullhart. Bronze—Jay Chancellor, Lois Gray, Sylvia Gray, Dorothy Tiffin. Pre-Silver—Trudy Sells, Dawn Wylie.
- DENVER FSC:** Pre—Kaye Bache, Judy Biddison, Nanette Black, Kathy Catanzaro, Jennifer Clement, Diane Courtney, Gretchen Deckerson, Peggy Fredericks, Allison Kern, Andrea Kuiper, Barbara Merritt, Leslie Sherman, Adrian Stalbaum, Stella Stalbaum, Don Swisher, Sherri Wadsworth, Kathy Weber, Gay Willson, Lisa Wogan, Crystal Yoshida, Janet Yoshikawa. 1—Heide Albrecht, Andrea Aзанtho, Jill Braley, Lori Hartley, Kellie Hillstrom, Linda Munz, Gail Rutland, Kristy Schmetz. 2—Tracy Fjeseth, Laura Smith, Ann Young. 3—Liane Shoji, Douglas Swisher, Monice Xavier. 4—Christine Kirby, Gina Marrone, Laurie Moore, Gregory Swisher, Debbie Weinstein, Teresa Xavier. 5—Jamela Kyle. 6—Sue McLauthlin. 7—Julie Hyden. Pre D—Nigel Cass, David Morison, Gail Rutland. Bronze—Kaye Bache. Pre-Silver—Pam Pedigo. Pre-Gold—Moira Grumley, Debra Smiley.
- DES MOINES FSC:** 2—Karin Swanson.
- DETROIT SC:** Pre—Cathy Banyai, Cindy Christy, Michelle Crocker, Sue Kelley, Darlene Kovach, Duane Kovach, Cheryl Lasher, Barbara Maltby, Joanne Maslanka, Ellen Piligian, Joanne Piligian, Angela Rinke. 1—Kathy Banyai, Cindy Christy, Sarah Deson, Pamela Hansford, Lisa Lindval, Jeanine Malcomson, Barbara Maltby. 2—Elizabeth Black, Jill Kinsley, Neil McConnell, Kim Parker. 3—Mitzi Amelon, Nancy Robinson, Robin Saleski. 4—Gordon Black, Kim Kortier. 5—Karen Krause, Adrienne Rossoni. 6—Marybeth Klein. 7—Peggy Amelon. Pre D—Michael Acheson, Cindy Christy, Sarah Deson, Louise Knitter, Raphael Krause, Lizbeth Luther, Barbara Maltby, Joanne Maslanka. Bronze—Cindy Christie, Pamela Hansford, Brian Kadar, Donna Loveland, Barbara Maltby, Kim Parker, Nancy Robinson, Doris VanPeeren. Pre-Silver—Marybeth Klein. Silver—Anthony Hogan, Bernice Senkovich. Pre-Gold—Kevin Moran.
- DIABLO FSC:** Pre—Linda Harries, Tami Hilderbrand, John Madison, Tama Martin, Danielle Porter. 1—Cindy Crew, Pam Gimblin, Kathy Harnish, Linda Harries, John Madison. 2—Blair Koch, Shelley Mehlhoff. 3—Jackie Hanson, David Hicks, Blair Koch, Lauren Vincent, Cindy Woodruff. 4—Jackie Hanson. 5—Kathy Rose. 7—Barbara Horton. Bronze Pair—Jackie Hanson, David Hicks, John Madison, Martha Novario. Pre D—David Hicks.
- DULUTH FSC:** 2—Lesley Stewart.
- EL CAMINO ISC:** Pre—Monica Knopp, Jill Scott. 1—Jacqueline Girvin, Linda Mendelsohn. 2—Denice Barton, Julie Cunningham, Carrie Kloor, Sandra Mackinnon, Sabrina Royce, Joy Sutter. 3—Juli Del Dotto, Lori Mills, Julie Zusman. 4—Cathy Chalmers. Pre D—Cindy Brown. Pre-Silver—Steve Vitkovits. Silver—Sue Bennett.
- ESSEX SC OF NEW JERSEY:** 2—Ellen Richard. 6—Lori Dunn. 7—Kathleen Bird. Pre D—Pamela Faatz.
- EUCLID BLADE & EDGE CLUB:** 1—Kathryn Bartunek, Cathy Carpenter, Anita Mazi. 2—Julius Smetona. Pre D—Kathy Goepfert. Silver—Arnold Savage. Pre-Gold—Tina Sesti.
- FALMOUTH FSC:** Pre—Dorothy Cory, Laura Rebello. 1—Kristin Devlin, Maureen Jurgelas. 5—Jill Peterson, Kathy Sweeney. 6—Debra Fernandes. Pre D—Leslie Halady.
- FSC OF CINCINNATI:** Pre—Fritz Buckles, Melanie Kuhr, Leslie Nachbauer. Pre D—Edward Bracke, Jr., Wanda Keller, Karen Kiewert. Bronze—Carol Randolph. Silver—Tim Hodges, Bart Moon.
- FSC OF MADISON:** Pre—Cathy Culp, Annette Fuller, Marion Hughes, Eric Jacobson, Kristi Jacobson, Delores Nesnow, Cindy Paulson, Sandi Paulson, Kathy Pierce, Nina Sanna, Colleen Schmudlach, Becky Shaw, Jeff Thiesen. 1—Rick Berg. 2—Ruth Imhoff. Pre D—Pamela Craig, Cathy Culp, Barbara Frerker, Annette Fuller, Marion Hughes, Cindy Paulson, Sandy Paulson, Donald Phelan, Kathy Pierce, Nina Sanna, Colleen Schmudlach, Alice Wentworth. Bronze—Erik Falk. Silver Free—Hannah Hill, James Young.
- FSC OF MINNEAPOLIS:** Pre—Debbie Blochinger, Diana Brown, Liz Curran, Anne Frank, Jennifer Frank, Kirsten Frantzich, Amy Fusselman, Daniel Harris, Pam Hickman, Heidi Hillstrom, June Hughes, Margaret Nelson, Lori Plummer, Toni Roeckers, Elizabeth Sievert, Jay Uldrych, Cindy Wuketich. 1—Sandra Hick, Dale Roberge, II, Dawn Roberge. 2—Leslie Paster, Holly Weisberg. 3—Julie Bedessem, Mary Dullum, Diana Phillips, Kelsy Ufford. 4—Cynthia

Babcock, Kathy Gelecinskyj, Susan Klein, Dawn Peterson. 5—Kristin Berg, Dawn Kaercher, Mary Nichols. 6—Nancy Nylander. 7—Susan Rerat. Pre D—Mary Aprea, Suzanne Bouford, Linda Brown, Powell Krueger, Marilyn Larson, Kelsy Ufford. Pre-Silver—Douglas Babcock, Karen Reiaux.

FSC OF RIVERDALE: Pre—Donna Better, Rona Better, Kathy Gillick, Allison Heise, Peggy Klefter. 1—Kathy Gillick, Teddy Kelton. 2—Susan Hinkson, Teddy Kelton, Dolorita Noonan. 4—Linda Abend.

FLINT SC: Pre—Laurie Adams, Irene Frank. Pre D—Doris Manssur. Bronze—Larry Davis, Annette Heagen, Gregory Helmer, Rod Helmer.

FORESTWOOD FSC: Pre—Lisa Andonian, Diane Bielert, Scott Carlton, Lauren Dambaugh, Teri Lemmeyer, Lynn McKeon, Cathy Pallo. 6—Debra Zinsmeister. Pre D—Dr. Forrest Reed, Amanda Vavruska. Bronze—Dr. Forrest Reed.

FORT WAYNE ISC: Pre—Jeff DeWeese, Lyn Eberhardt, Nancy Stoudt. 1—Jennifer Lahmeyer.

FREE STATE FSC: Pre—Sheri Dunn. 2—Carol Thomson. 5—Randy Hochberg.

GATEWAY FSC: Pre—Sheila Bennett, Anne DeMarinis, Vicki Kern. 1—Lee Miller. 4—Kathleen Kleine. Pre-Silver—Lisa Hager, Susan Waffield.

GENESEE FSC: Pre—Jeffrey Powell. 1—Sue Blum, Cathy Frank, Janet Peachey, Christy Wood. 3—Helen Elder. 5—Barbara McMahon. Pre D—Florence Lewandowski, George Lewandowski, Cathy Smith, Suzanne Werner. Bronze—Kathy Kleuber, Norma Leone. Silver—Beth Frank.

GLACIER FALLS FSC: Pre—Julie Jenison, Jennifer Lundgren, Karen Parry. 1—Deborah Anderson. 2—Sherri Brown, Jan Duncan. 3—Mary Daniels, Lori Kinzy. 4—Lynette Webb. 5—Rozann Giuffre, Christine Pozanac. 6—Rhonda MacDonald, Cindy Solberg. Pre D—Jan Duncan, Cindy Solberg.

GLENWOOD FSC: Pre—Kathi Earles, David Escarraz, Maria Morris. 1—Lisa Ehrlich, Debbie Greenberg. 2—Heidi Jevey. 3—Margie Nist, Cindy Perpich.

GREAT FALLS FSC: Pre—Stephanie Pistoria.

GREAT NECK FSC: 1—Elizabeth Zeitel. 3—Lisa Zeitel. 4—Karen Zeitel. Pre D—Elizabeth Zeitel.

GREATER MILWAUKEE FSC: Pre—Lisa Albertson, Daniel Baudendistel, Pat Bogdansk, Tim Conover, Lauren Dunn, Mary Hermasinski, Terry Leack, Therese O'Toole, Julie Sorenson, Edythe Speerbrecher, Nancy Vitone. 1—Bruce Forcea, Donna Frankowski, Joy Hoepfl, Cheryl Klonowski, Christine Mayer. Pre D—Cheryl Carol, Dorice Conover, Herb Naase. Bronze—Janet Price, Suzanne Schindler. Pre-Silver—Terry Vaughn, Sharon Wright.

GREEN BAY FSC: 4—Patrick Hughes.

GREENSBORO ISC: 1—Sandra Geddings, Carolyn Williams.

HAMDEN FSA: Pre—George Arnaoutis, Jo Anne Della Camera, Lisa McNerney. 1—Virginia Marenholz. 2—Pamela Cannon, Carol MacFayden, Judith Sylvester. Pre D—Jo Anne Della Camera, Lisa McNerney.

HAYDEN RECREATION CENTRE FSC: Pre—Debbie Bacon, Jane Bracken, Leslie Burns, Melinda Burri, Leslie Cassazza, Mary Cowen, Jackie Cowperthwaite, Julie Dion, Leslie Doppler, Lynn Hartel, Thomas Harvey, Pauline Johnson, Karen Liberman, Joyce Miodra, Carla Posternak, Dana Ross, Caroline Scopa, Christine Shunny, Janet Tiampo, Chris Williams. 1—Laurie Blake, Bernard Bruce, Christian Fisher, Betsy Wells, Martha Wells, Harriet Whitaker. 2—Marion Miller, Hawley Rising. 3—Kerry Brown, Debbie Rhodes. 6—Pam Cogan, Catherine Foulkes. 7—Charlaine Ward. Pre D—Linda Glickman, Kathy Kaufman, Peggy Kinner, Kathleen Knodel, Carla Posternak, Gabrielle Reem, Karen Werlin, Emily Wyman. Bronze—Edmund Becker, Corinne Dallas. Pre-Silver—Deborah Rhodes. Silver—Roger Estey. Pre-Gold—Dianne Brennen.

HERSHEY FSC: 3—Stacey Perrette.

HICKORY HILL FSC: 1—Amy Covill, Sara Weil.

HIGHLAND BLADES SC: Pre—Johnny Bulger, Shelia Merrit. 1—Terry Dodd, Kim Guttery. 2—Carol Wallis.

HOUSTON FSC: Pre—Amy Blumenthal, Jane Dees, David Marchand, Laura Siller, Michael Siller. 1—Mary Duck, Kathy Petmecky, Terri Worsham. Pre D—Barbara Burnham, Brenda Harvey.

IC OF BALTIMORE: Pre—Anne Albert, Holly Albert. 2—Lindsay Ellison, Michele Jones. Bronze—Susan Macnab.

IC OF WASHINGTON: Pre—Mary Lynch, Sabina Paiewonsky. 1—Deborah Lewis. Pre D—Helen Iliff.

ISC OF FRESNO: Pre—Margo Raison. 1—Janet Edman, Lynn Edman, Ann Gibbs, Robin Madsen, Tina Warner. 2—Diane Doris, Ronnie Doris, Marc Pietroforte, Michelle Pietroforte, Betsy Rice. 5—Sharon Clark.

ICELAND FSC: Pre—Philip Snider. Pre D—Barbara Cleveland, Margot Hagen, Mary Lang, Frank Williamson. Bronze—Rudolf Hagen. Silver—Ian Taylor-Small.

INDIVIDUAL MEMBER: Pre—Nancy Berghoff, Nancy Bogle, Susan Bull, Pam Chapman, Robert Faulkner, Erik Gaskins, Iris Goldman, Karen Goldman, Laurette Gopoian, Jo Ann Groff, Joan Harkins, Deborah Hayden, Amy Hoyt, Becky Johns, Melanie Keates, Karen Krevits, Janice McCann, Susan Morris, Jan Moser, Marylee Schneider, John Sheehan, Diane Teatsorth, Monica Wollman, Beth Zaharia. 1—Nancy Berghoff, Heather Clark, Susan Goldman, Susan Hurst, Mary Larner, Kristen McKenna, Sharon Merkel, Hanna Piech, Barbara Spieler. 2—Harriet Diamond, Christine Ernst, Gayle Gesner, Barbara Jaeger, Christina Miezio, Bruce Sweet, Mrs. Judith Viscott. 3—Katherine Ernst, Mary Scaffidi. 4—Arlene Carroll. Pre D—Nancy Berghoff, Joseph Dovydaitis, James Halbert, Jeanine Malcomson, Priscilla Petterson, Patty Stowkowski, Patricia Tully, Peter Washburn. Pre-Silver—Martin DeMoerjian, Rosemary Marikle. Pre-Gold—Anne Tufts.

LAKE REGION SC: Pre—Connie Christel, Babbie Crawford, Beth Johnson, Joanne Lawonn, Laurie McBane, Kelly Miller, Dawn Ramsey, Cindy Sunderland, Dawn Thompson. 1—Kris Anderson, Nancy Crary, Kevin Hagan, Debbie Iverson, Carrie Young. 2—Karn Berg, Barbara Kostecki. Pre D—Ellen Heen, Jackie Wakefield.

LAKEWOOD WC: 1—Natalie Flake, Kelly Yoshida. 2—Eddie Bullatt, Lisa Church, Dana Olson. 5—Colleen Clark. Pre D—Heidi Hibbard, Helen Mims, Susan Olson. Bronze—Shelley Broback, Lisa Church, Richard Emery, Staci Loop, Kelly Yoshida. Pre-Silver—Heidi Broback, Philip Carman, Lyn Carpenter, Dana Olson, Peter Schindler. Silver—Heidi Broback, Philip Carman. Pre-Gold—Marcy Sulenes.

LANSING SC: Pre—Linda Holland, Nancy Roden. 1—Marianne Cherney, Susan Fortino, Kathryn

King, Kathy Swick, Ann Thornton, Amy Van Huss, Michele Wyant. 2—Christopher Bushell, Ann Dougherty, Kathy Myers. 3—Lorraine Adney. 4—Helen Butcher, Sandra Moore. Pre D—Christopher Bushell, Sarah Chapman, Patricia Hill, Bill Suggs. Bronze—Joseph Adney, Lorraine Adney, June Barnhart, Christopher Bushell, Helen Butcher, Michele Cormier, Marc Galonsky, Susan Guild, Mary Schaffer, Frank Tunks. Pre-Silver—Mary Scheffer.

LAS VEGAS FSC: 2—Rick Earheart. Bronze Pair—Rick Earhart.

LAURELTON PINES SC: Pre—Thomas McAllister, Cathy Morris. 1—Anthony De Spirito. 2—Mary De Spirito. 3—Eleanor Dohanyos. 5—Vicki Boa, Jo Ann Polise.

LILAC CITY FSC: Pre—Dee Dee Duncan, Ron Duncan, Missy Elixman, Heidi Harbert, Barbara Hinkley, Lou Ann Larson, Louise Liddicoatt, Patty MacDonald, Marla McKinley, Christi Moore, Cecelia Schulte, Nadine Schulte, Suzy Schulte, Marla Stach, Gail Stone, Scott Wendland, Dori Williams, Pam Zollman. 1—Edward Bergdorf, GERALYN Jaeger, Renee Keck, Brenda Kohler, Lori Martino, Molly McKenzie, Jim Miller, Jolene Murphy, Todd Neumiller, Cindy Rippee, Sandra Seipp, Kristi Wendland. 2—Jeff Hann, Susan Miller, Naelene Wallen. 6—Tami Blackwell, Pre D—Ann Butler, Bobby Jones, Brenda Kohler, Molly McKenzie, Todd Neumiller, Tami Oien, Kristi Wendland. Bronze—Cathy Huckaby, Molly McKenzie, Jim Miller, Susan Miller, Shannon Murphy, Tina Novelli.

LITTLE SUN VALLEY SC: Pre—Rosemarie Jordan, Valerie Twarog. Pre D—Rosemarie Jordan, Laura Krupa, Linda Stempek. Silver—Diane Fabricieni, Edwin Young.

LOCKPORT FSC: Pre—Duane Tritchler. 1—Debbie Leimbach, Paula Marinaccio. Pre D—Lisa Granchelli, Beth Pictor. Bronze—Linda Grigg.

LONG ISLAND FSC: Pre—Elizabeth Altschuler, Cynthia Benes, Jayne Hirschman, Joanne Klein, Amy Kresge, Kimberly Lynch, Michelle Manin, Heidi Messbauer, Ruth Pinkel, Laurie Plica. 1—Robin Friedwald. 3—Gayl Jacobson. 4—Martha Jowyk. 6—Ingrid Blomstrom, Cindi Hartz.

LOS ANGELES FSC: Pre—Walter Dancsecs, Josephine Ibbett, Dorothy Latham, Norma Lucy, Thais Moore, Virginia Russell, Ann Schramm, Lisa Toldi. 1—Matthew Fero, Robert Taylor. 2—Debbie Gallant, Janet Kramer, Dana Parra, Dusty Sorenson. 3—Lisa Carey, Denise Curtis, Caroline Guttman, Paul Kuhn, Martha Schmitt. 4—Kelly Burge, Ellen Byrnes, Louise Davidoff, Kimberly Greeneth, Sally Halder, Gay Lea, Mary Openshaw, April Prout, Lynellen Schneider. 5—Ruth Conrad, Linda Freedman, Luana Lawrence, Wendy Sedgeman. 6—Judi Blumberg, Douglas Varvais. Bronze Pair—Linda Freedman, David Goldberg. Silver Pair—Lisa Carey, Erika Susman, Douglas Varvais. Pre D—Marilyn Brodwick, Tricia Solomon. Bronze—Serena Bell, Karen Berzon, Dominique Kirkland, Sheila Parker, Ronald Plank, Bill Schneider.

LOUISVILLE FSC: Pre—Martin Reeb. 1—Elaine Borowitz, Joy Weldon. 2—Bruce Saylor. Pre D—Ginny Bailey, Lisa Baker, Susan Dowd, Norma Jones. Bronze—Susan Nolan, Ann Townes. Silver—Greg Mouser.

MANHATTAN FSC: 1—Nan Mutnick.

MARIN FSC: Pre—Mia De Vries. 3—Ann Boles.

METROPOLITAN FSC: Pre—Diedre Anello, Bonnie Ballato, Ruth Berger, Hilary Diamond, Valerie Gomes, Francine Le Coz, David Scharf, Abbe Silverberg, Jill Solomon, Laura Stanonis, Nancy Weinstein, Maren Woegens. 1—Kristina Glanz, Deena Holliday, Sandra Markeloff, Cathy Petrossian. 2—Beth Hockhauser, Christine Power. 4—Deborah Wilker, Mindy Zibitt. 7—Joan Feigenbaum. Pre D—Sid Hyman. Bronze—Edward Kaufman, Linda Moggio. Silver—Eleanor Gumbs.

MIDLAND FSC: Bronze—Lori Teddy.

MUSKEGON SC: 4—Richard Murphy. Pre-Silver—Barbara West.

NEW CANAAN WC: 1—Eliza Webb.

NEW HAVEN SC: Pre—Lorna Maloney, Lauren McColl, Nancy Tiefenbrunn. 1—Felicia DiGiusto, Dorothy Grave, Edith Kirk, Sheila Walsh, Cynthia Zywockinski. 2—Suzanne Flynn, Maria Wolog. Pre D—Edith Kirk, Heather Musante, Katy Nettleton. Bronze—Sandy Figaro, Dorothy Grave, Edith Kirk, Kim Nettleton, Missy Sanders. Pre-Silver—Liza Liapunov. Silver—Ann Harding. Pre-Gold—Carol Ploeger.

NEWBRIDGE ROAD PARK FSC: Pre—Laura Rampil, Craig Wagner. 1—Susan Leggio. Pre D—Adam Leib. Pre-Silver—Craig Wagner.

NORDIC FSC: Pre—Bethany Bardin, Linda Glick, Shelli Graff, Rene Tedesco. 1—Alice Glasner, Kim Pauli, Theresa Smith. 2—Debbie Dreyfus, Ann Figueroa, Dennis Hawe, Lisa Remland. 3—Lisa Kemp.

NORTH JERSEY FSC: Pre—Geraldine Costello, Debbie Fischler, Marlene Messinger, Debbie Nathin, Elizabeth Rabin, Julie Tanenbaum. 1—Elizabeth Bradshaw, Renee Maly, Dawn Roppate. 2—Sheryl Abbot, Lynne Burtan, Alys Soli. 3—Elizabeth L'Heureux, Lyle Mayne, Joanne Nowicki. 4—Cathy Cafiero, Amy Gittleman, Erica Paige, Maureen Slyne. 5—Debbie Kingman, Erica Paige. 7—Aimee Kravette. Bronze—Lyn Burtan. Pre-Silver—Cathy Beisler.

NORTH SHORE SC: Pre—Nancy Brennan, Catherine Carter, Debbie DePascale, Sherilyn Goodreau, Susan Letterman, Dorothy Serwacki, Jennifer Terry. 1—Leslie Hansen, Beth McNeish, Janet Tremblay. 2—Paula Spear. 4—Mary Balboni, Paula Goodridge, Ricky Svenson. 5—Suzi Landry.

NORTHBROOK SKOKIE VALLEY SC: Pre—Patti Bowe, Julie Chiado, Mary Finn, Blake Hobson, Melissa Johnson, Chris Lindhoy, Meg Mahoney, Beth Miller, Susan Roth, Patti Sherman, Victoria Vyse. 1—Jamie Remien. 2—Luci Goodman, Helen Johnstone, Michele Lehner, Tammie Remien. 3—Robin Powers. 4—Lynn Johnson. Pre D—Michele Lehner, Jamie Remien, Tammie Remien. Silver—Herb Weinstein.

OAK PARK FSC: Pre—Mary Bode, Barbara Bryzek, Kathy Porter. 1—Kathy Porter.

OLD YORK ROAD SC: Pre—Christine Cassalia, Dennis Garvin, Laurie Goldman, Joan Henkels, Debbie Jorgenson, Melissa Morris, Michele Morris, Robby Rosenbluth. 1—Debbie Castor, Jayne Grallnick, Laurie Granick, Mary Henkels, Cynthia Mathes, Amy Rosen, Stephanie Saft. 2—Mark Henkels, Ellen Hockeimer, Susan Parsons, Marjorie Rosenbluth. 3—Gregory Fanelli, Robin Fisher, Linda Johnson, Beverly Jurenko, Cindy Sutow, Janet Wickenhaver. 4—Sandra McGee. Bronze Pair—Gregory Fanelli, Dora Reno. Pre D—Joy Caplan, Debbie Castor, Sandy Clibanoff, Gregory Fanelli, Mark Henkels, Mary Henkels, Hallie Kubit, Julia Kubit, Eric Neubauer, Brad Pressman, Todd Pressman. Bronze—Beverly Jurenko, Gina McBean.

OVERLAKE SC: Pre—Cherise Bellman, Teresa Taylor. 1—Arnold Alt, Kelly Davies, Audree Huber, Smitty McLain, Jim Ross. 2—Georgene Carras. 3—Valerie McBroom, Stacy Meister, Penny Thomas. 4—Holly Stuns. 5—Laurie Ferguson. 6—Paula Spencer. Bronze Pair—Christina DeGroot, David DeGroot, Arlene McSorley. Pre-Silver—Dorothy Alt, Oldi Alt.

PACIFIC FSC: Pre—Sheri Long, Tara Tabuno. 1—Bernice Halpern, Antoinette Leverich, Tibor Simon, Kimberly Vanderberg. 2—Mark Cockerell, Lauayne Ingram, Janice Paprota, Karen Peebler. 3—Sheri Verran. 4—James Morgan. Pre D—Susan Biro, Bernice Halpern, Luayne Ingram, Katina Scalph, Zelma Simon, Kathleen Wrench. Bronze—Luayne Ingram, Tracy Koch, Debbie Moir.

PARK FSC: Pre—Candette Gilner. 1—Anna Korniczky. 2—Leslie Froehlich, Inde Naiman. 4—Joan Ertel.

PENGUIN FSC: 4—Paula Klauger.

PHILADELPHIA SC & HS: Pre—Ellie Aspinall, Craig Bostwick, Katie Heilman, Sandy Hurtubise, Amy Knowlton, Helen Laupheimer, Lisa Moyer, David Raymond, Dr. Chester Southam, Pam Supplee, Georgiana Williamson. 1—Cathy Cochran, Lynn Godshalk, Chris Hall, Seth Parker, Stayce Vastine. 2—Elizabeth Boyer, Sally Boyer, Sonja Kenney, Priscilla Toland. 5—Betsy Rettew. 6—Christine Raber. Pre D—Sally Boyer, Susan Dearden, Mrs. E.E. Dilworth, Sonja Kenney. Pre-Gold—Ellen Funk.

PLAZA FSC: 1—Starr Agle, Diane Bunin, Cheryl Miller, Michelle Oravec, Pamela Robusto, Cindy Schwartz. 2—Susan Speer. 3—Sherry Frank, Kelly Rossbach. 4—Stephanie Kazan, Louise Minihan. 6—Colleen Cahill, Diana Lewis. 7—Jackie Booth, Susan Lonsdale, Pre D—Diane Bunin, Charles Eloshway, Paul Morris. Bronze—Holly Begg, Geza Gaal, Paul O'Neil, Linda Ward. Pre-Silver—Thomas Holloran. Silver—Joy Wood.

POLAR PALACE FSC: Pre—Ann Burgard, John Burgard, Kimberlee Credle, Kelly Kummer, Pam Ross, Kristan Sauder, Leslie Ward. 1—Anita Brehm, Carolyn Dahlin, Valerie Martin, Carolyn Mason, Tammie Peterson, Vicki Woodard. 2—Tina Anderson, Randy Branca, Jeanne Morrow, Deborah Ward. 3—Gayla English. 4—Dawn Dunnan. Pre D—Mary Eymann.

PORTLAND ISC: Pre—Karen Anderson, Elise Graves, Gail Robertson, Cynthia Wayland. 1—Diana Dobbins, Gayle Machlan, Nancy Nyland, Christy Schuller. 2—Shannon Dowd, Carol Mattson, Cara Schmer. 3—Cynthia Kawano. 4—Robin Levi, Lenia Snyder. 5—Patrick Page. 6—Dody Askey, Brenda Johnson, Karen Rice, Keri Schmer, Susanne Surman. 7—Julie Herzog. Pre D—Julie Frederick, Lyn Sawyer. Bronze—Susanne Surman. Pre-Silver—Joan Gudmansen. Silver—Brenda Johnson, Robin Levi, Rebecca Loghry. Pre-Gold—Carol Troyer.

PRINCETON SC: 1—Margery Turner. Bronze—Casilda Huber. Pre-Silver—Roberta Shapiro.

PROFESSIONAL: Pre—Todd Bartholomew, Janis Fidler, Larry Skutnick. 1—Lolita Anthos. 2—Loraine Mergner. 5—Kathy Stitts. Pre D—Denise Elterman, Joan Harkins, Martha Kearns, Rosalie Montecalvo, Larry Skutnick, Jane Taylor, Virginia Tibbets, Mary Zubei. Bronze—Mary Cereo, Denise Elterman, Sharon Erath, Larry Skutnick, Jane Taylor, George Valle, Helga Valle. Pre-Silver—Peggy Krobach. Silver—Carol Conway, Forrest McKinnon. Pre-Gold—Henry Krecioch.

PROVIDENCE FSC: Pre—Janet Allen, Gail Bunonmano, Karen Carvalho, Julie Cometta, Barbara Kelley, Carol May, Anne Ricci. 1—Laurie Caspersen, Karen McLean, Kathie Schmith. 5—Barbara Rodi. Bronze Pair—Howard Dolley, Jr, Marlene Dooley. Pre D—Deborah Healy, Francis Howe. Bronze—Roland Bessette. Pre-Silver—Pamela Cometta. Silver—Pamela Rodi.

QUAKER CITY FSC: Pre—Lucille Focht, Danny Garrahan. 1—Dee Cupchak, Danny Garrahan, Phyllis Meltzer, Helen Mogel, Ruth Whomsly. 2—Dennis Novak, Nancy Pole. 3—Tony Heubach. 4—Carolyn Marley. Pre D—Dee Cupchak, Donna Fahy. Bronze—Maureen McBride, Helen Mogel.

QUEEN CITY FSC: Pre—Lauren Chesley, Tammy Goldman, Julie Goltzman, Nancy Kessel, Stacy Lang, Lurie Messer. 1—Christiana Gaddis, Thomas Gaitskill. 2—Cynthia Duquette. Pre D—Judy Goltzman, Stacy Lang. Bronze—Brenda Hunt.

RED RIVER VALLEY FSC: Pre—Kathy Cranston, Jill DeSautel, Diane Gauthier, Sjanet Lykken. 1—Laurie Lacrosse, Paula Stauss, Molly Williams. 2—Lisa Barth, Leigh Gentz, Katherine Sylvester, Kristi Sylvester. Pre D—Debbie Iverson, Leo LaChance, Laurie Lacrosse, Carol Olson.

ROCKLAND SC: Pre—Lulu Anderson, Joan Travaglini.

ROCKY RIVER FSC: Pre—Linda Fielder, Linda Hatfield, Jo Schumacher. 1—Judy Allen.

ROXBURY WC: Pre D—Linda Florby.

R.P.I. FSC: Pre—Roger Anthos, Stephen Anthos, Sheryl Brust, Helen Caulfield, Mark Dempf, Jacqueline Dignum, Carla Kohler, Sandra Lewandowski, Donna Palladino, Dawn Zlotnick. 1—James Ewing, Letitia Tatro. 2—Patricia Beaulac, Anna Christian, Michele Dignum. 3—Michelle Morin. 5—David Randall. 6—Margaret Duffy. 7—Linda Randall, Candace Smith. Pre D—Patricia Beaulac, Helen Caulfield, Chris Dempf, Elizabeth Healy, Karen Krivit, Sandra Lewandowski, Letitia Tatro. Bronze—Sheldon Cleaves, Susan Dempf, Marie Gendron, Kevin Parker. Pre-Silver—Sheldon Cleaves. Pre-Silver—Marie Gendron. Silver Free—Rudd Young.

RYE FSC: 2—Valerie Colville. 3—Karen Berger. 6—Amy Grisgold. Bronze—Cindy Lucas. Pre-Silver—Susan Hyman, Cherry Low.

ST. LAWRENCE FSC: 1—Barbara Polstein.

ST. LOUIS SC: Pre—Robert Sadlon, Amy Wasserman, Beth Worthen. 2—Joy Hoedel, Mary Mellott, Martha Tetrick. 3—Sima Alper, Laura Primm. 4—Diane Backi. Pre D—Lolanda Bentman, Ellen Corbin, Jill Lamkie, Kathy Moran, Marie Muckerman, Robert Sadlon, Tony Wasserman, Beth Worthen. Bronze—Kelli Anderson, Becky Baker, Gerald Burt, James Burt, Vicki McTaggart, Laura Primm, Martha Tetrick. Pre-Silver—Diane Backi, Connie Makarewicz.

ST. MORITZ ISC: Pre—Christina Barth, Helen Clott, Maren Danielson, Julie Deady, Marilyn Greenwood, Sarah Jenkins, Nina Muzzini, Jeanette Price, Wilson Price. 1—John Abel, Andrea, Laurie Chemsak, Michelle Duarte, Marilyn Greenwood, Vicky Simonds. 2—Catherine Hurley. 4—Jennie Ivesta. 5—Lisa Craig, Phina Ford. 6—Janet Arquilla, Julie Fraenkel. 7—Terry Weiner. Pre D—Wayne Melton, Marian Pickup. Bronze—Jill Davenport, Wilson Price. Pre-Silver—Andy Blaurock. Silver—Candy Shorey.

ST. PAUL FSC: Pre—Camille Hogan, Dianne Knott, Tami Morris, Kim Ruberg, Theresa Willmus. 1—Susan Cash, Mary Loeffler. 3—Mary Bagan. 4—Kathy Halweg, Wendy Limbek. 7—Kim Halweg.

ST. PETERSBURG FSC: Pre—Robert Bird, Edward Gimalouski. 1—Dianne Gifford.

SAN DIEGO FSC: Pre—Jennifer Braun, Sheri Fernandes, Wendy Levin, Pam Sematones, Brad Simmons, Sam Williams. 1—Marilynne Arledge, Charles Barstow, Jessica Berner, Marcy Danner, Kim Hubbard, Chris Knott, Eric Mumper, Connie Piserchio, Lydia Reiter. 2—Kim Carson, Cindy Moyers, Michelle Ruane, Gary Zaks, Gerry Zaks. 3—Erin McCaffrey. 4—Roni Botterell, Steve Heitert, Susan Stark. 5—Carrie Riehle. Pre D—Kim Hubbard, Sam Williams. Bronze—Kim Carson, Brad Matthews. Pre-Silver—Zane Clark. Silver—Lisa Kershaw.

SANTA MONICA FSC: Pre—Julie Goodhart, Kelly Ono, Lauri Smith, Laura Vidal. 1—Monica Buchanan, Pam Hickey. 2—Esperanza Jimenez. 4—Marianne Souza. 5—Lauri-Lynn Duffy. Pre D—Julie Herron, Marianne Souza, Angela Vizzari.

SANTA ROSA FSC: Pre—Ann Anderson. 3—Leslie Fuller. Pre D—Mary Anderson, Judith Nickel, Ron Nickel, Heather Sayles. Silver Free—Coleen Boyd.

SEATTLE SC: Pre—Robyn Albright, Heide Biernoth, Sue Bolender, Evangeline Castillos, Tony Castillos, Douglas Hansberry, Lauren Hiscock, Wanlyn Johnston, Bridget Keesee, Michelle Lane, Laurie Lybeck, Angie Sample, Linda Thompson, Nancy Weller. 1—Toni Dramse, Douglas Hansberry, Nancy Jacobs, Debbie Orth, Sheri Purple, Lisa Satre, Jill Sawyer, Peggy Schultz. 2—Debbie Austin, Tracy Cooley, Julie George, Kim Hathaway, Georgene Kollias, Joanne Zwingenberg. 3—Marsha Hill, Tina Schermer. 4—Juli Miller, Gertrude Pawelka. 5—Charlene Chaffin, Kim Derickson, Juli Miller. Pre D—Kim Derickson, Lois Howard, Lisa Satre. Bronze—Lois Howard. Silver—Jackie Davis, Colleen Kylling. Pre-Gold—Jean Basle.

SILVER BLADES FSC: Pre—Dallas Johnson, Jolene Johnson, Suki Katz, Lulu Mennen, Barbara Scott. 1—Felicia Mennen, Sandy Richart, Ronald Rupp. 2—Tammy Arnoldy, Cathy Booker, Susan Leiter, Judy Stauffer, Christine Thibert. 3—Michelle Johnson. 4—Dana Gillespie, Barbie Lenk, Carol Sagehorn, Jamie Shields. 5—Madelyn Allain, Kelly Flynn. 6—Kathy Flynn, Frank Snower. Pre D—Dorothy Ellenberger, Michelle Johnson. Bronze—Dorothy Ellenberger, Debbie Hook, Mrs. Elaine Merriman, Msg. J.K. Spurlock.

SILVER BLADES SC OF COHASSET: Pre—Jessica Bahros, John Campbell, Janine Doherty, Susan Dwyer, Natalie Gray, Kevin Healey, Kim Kibbe, Laura Ruddy, Kathie Sullivan. 1—Susan Camerlengo, Susan Dwyer, Stacey Winslow. 4—Susan Jensen. Silver Pair—Ginger Gray, David Peters. Pre D—Theodore Clarke, Ginger Gray. Bronze—Audrey Bills, Theodore Clarke, Carol Lynch.

SILVER EDGE FSC: Pre—Annette LeFevre, Ronnie LeFevre, Susan Steindorf. 1—Laurie Jackson, Judy Palfi. 2—Virginia Diffenderfer, Taffy Palmer. 3—Kay Kaupert, Mary Reszsut. 5—Leslie Miller. Bronze—Mary Wiley.

SC OF BOSTON: Pre—Elizabeth Hodder, Mrs. Robert Lawson, Trevor Mahony, Douglas Zeghibe, Suzanne Zeghibe. 1—Elizabeth Cahill, Liane Lamere. 2—Mary Connors, Patricia Dunn, Douglas Mankowich, Karen Mankowich, Ronald Zeghibe. 3—Carol Hansen, Timothy Murphy, Diane Runyon, Paula Surette. 4—Emily Wendell. 5—Michael Botticelli. 6—Jacqueline Whitney. 7—Theresa Martin. Silver Pair—Mahlon Bradley, Emily Wendell. Pre D—Edith Hansen, Jackie Mitus, Ellen Streeter, Douglas Zeghibe. Bronze—Diane Runyon. Pre-Silver—Karolyn Stafford.

SC OF CLARK MEMORIAL: Pre D—Mrs. Patricia Murphy.

SC OF FLORIDA: Pre—Samuel Guelli. 1—Pamela Dahl. 2—Meika Spera.

SC OF HARTFORD: Pre—Susan Ames, Jodi Arden, Vicki Botticello, Betsy Gummoe. 1—Corinne Bourdeau, Jane Mastroni, Anne Williamee. 2—Martha Fenton, Christine Tanguay, Jennifer Young. 3—Kenna Wennik. Pre D—Susan Ames, Helen Snelgrove, Jennifer Trzcinski. Bronze—Kathy Green. Pre-Silver—Elise McGurkin. Silver—Laura Beardsley, Kenneth Simler, Linda Simler. Silver Free—Judy Genovesi. Pre-Gold—Nancy Engberg.

SC OF LAKE PLACID: 4—Ann Pasaric. 6—Karen Maloney. Bronze—Debra Leeming.

SC OF MONTCLAIR: Pre—Betsy Ames.

SC OF NEW YORK: Pre—Lisa Greenwald, Judith Hellman, Nancy Stern. 1—Theresa Leopold, Deborah Levinson, Susan McGrath. 3—Cari Bittenwieser, Meg Streeter. 5—Austin Mitscher. 6—Ingrid Brenner, Marlene Rehkamp, Robin Wagner. 7—Regina Rehkamp. Pre D—Mary Carter, Paulette Gallou, Eve Morton, Anita Murray, Christopher Murray, Robin Wagner. Bronze—Leslie Schultheis.

SC OF NIAGARA FALLS: Pre—Bonnie Hill, Ellen Hoffman, Debbie Jenks, Lisa Williamson, Maria Zannin. Pre D—Elizabeth Dean, Bonnie Hill, Susan Irving, Lisa Williamson. Bronze—James Forcucci. Pre-Silver—Merridith Attick.

SC OF PHOENIX: Pre—Chris Coats. 1—Karla Earnhardt, Kyle McCroskey, Erika Moten, Alan Wardin. 4—Cindy Robinson, Robi Shepard, Linda Stein. Pre D—Nancy Beard, Betty Elliott, Monte Flagg. Bronze—Betty Wentz, Frances Wesolowski. Pre-Silver—Carolyn Dawson, Deborah Handley, Jennifer Handley, Dick Washburn. Silver—Bob Cooper, Jennifer Handley, Mindy Murphy. Pre-Gold—Pam Hornung.

SC OF RHODE ISLAND: 1—Patricia Simpson. 2—Marilyn Mott.

SC OF SAN FRANCISCO: Pre—Susan Hart, Debra Oxendine, Valerie Oxendine, Vicki Peterson. 1—Vicki Peterson. 2—Peggy Tsujimoto. Pre D—Jane Grant.

SC OF VAN NUYS: Pre—Cheryl Dillingham, Dana Reisman, Edward Reisman. 1—Gail Fiance, Donna Hoffberg, Terri Ness, Laura Reisman. 2—Beth Dayton, Kim Sabin. 3—Erica Peterson, Heidi Petrilli. 4—Debi McCluskey. Bronze—Erica Peterson.

SC OF WILMINGTON: Pre—Chrisse Anderson, Jill Burchnall, Ann Dodson, Dana Ogden, Carol Winter. 1—Laura Isken. 3—Susan Coleman, Jack Courtney. 4—Jonathan Mersereau. 7—Cindy Tynan. Bronze Pair—Sonja Bokoch, Richard Dodson. Pre D—Mary Gudaitis, Delores Washam. Bronze—Becky Mellman, Jonathan Mersereau. Silver—Pamela Szimkunas. Pre-Gold—Jill Abrahamson, Deborah Broyles.

SC OF WORCESTER: Pre—Betsy Bacon, Berit Berquist, Carol Bilzarian, Allen Bourbeau, Leslie Endlar, Jann Johnson, Jay Johnson, Deniese Lemire, Juli Logan, Kathy Lyons, Julie Orn, Paula Parece, Robert Paulson, Diane Stone. 2—Susan McGoldrick.

SOUTH BAY FSC: Pre—Suzanne Ashcraft, Dona Balfour, Diane Dai, Laurie Langan, Dawn Stanzoli, Elaine Williams, Pamela Williams. 1—Jami Evans, Anne Huffman, Robert Lovoff, Robin Morris, Shawn Oetting, Diane Pekins, Carol Stiglic. 2—Justine Casey, Jeananne Casson, Lisa Ellis, Yvonne Gutierrez, Tina Ortega. 4—Doreen Jackson, Diana Rehfield, Linda Smith.

SOUTH MOUNTAIN FSC: Pre—Susan Cohen, Lisa Eisenberg, Cathy Keller, Gloria Lockshin, Robert Rastelli, Liz Ruby, Patricia Savin, Katherine Schultz, Jeannette Zehr. 1—Jordy Lenter, Pam Morello, Susan Naspo. 3—Carol Benenson. 4—Dana Nash, Emily Zukerberg. Bronze Pair—Emily Benenson. Silver Pair—Emily Benenson. Pre D—Joanne Goldberg, Sandra Goldberg, Michele Hochberg, David Lipowitz, John Morello, Jacqueline Sovel. Bronze—Deborah Cummis, Marcia Palmer. Pre-Silver—Janice Aceste, Andrea Cummis, Dana Nash. Silver—Karen Corona, Helen Slowinski, Emily Zukerberg.

SOUTHERN CONNECTICUT FSC: Pre—Melissa Foodman, Caroline Haydock, Jocelyn Lovejoy. 1—Deborah Ehrenthal, Suanne Friedman, Grace Halsey, Karen Hanson, Gale Rodney. 2—Gretchen Kozak, Susan Steickler. 4—Karen Burkhart. Pre D—Suzie Solzer. Pre-Silver—Debbie LaVista.

SOUTHERN NEW HAMPSHIRE FSC: 1—Andrea Ouellette.

SPOKANE FSC: Pre—Elizabeth Ader, Sherri Corkle, Wesley Marburger, Robert Weeden. 1—Tina Novelli.

SPRAIN VALLEY FSC: Pre—Louise Hughes, Karen Russell, Janit Silberman, Lauren Wicek. 2—Susan Sierp. Pre D—Roger Cramer, John De Bernardo, Jr., Brad Smith, Michelle Soberman. Bronze—Brad Smith.

SQUAW VALLEY FSC: Pre—Mike Beaver, Eleonore Kirby, Toraun Motamedi. 1—Mike Beaver, Christine Rivers. 2—Sandy Bigman, Jack Campbell. 3—Joan Face, Lorre Mock. 7—Debbie Jones. Pre D—Mike Beaver, Joan Face. Bronze—Eleonore Kirby. Pre-Silver—Mike Tokar. Silver—Jack Campbell, Mike Tokar.

STORRS FSC: Bronze—Ray Doane.

SUN VALLEY FSC: Pre—Jean Baughman.

SYRACUSE FSC: Pre—Mary Di Nolfi. 1—Debra Quinn. 2—JoAnne Doehner, Kathy Edmonds. Pre-Silver—Patti Provo.

TOLEDO FSC: Pre—Tim Barber. Pre D—Matt Carter. Bronze—Anne Carter, Denise Vasaruro.

TOPANGA PLAZA FSC: Pre—Sharon Baker, Debbie Beach, Sherri Burnett, Diane Kramer, Mary Powley. 1—Deidre Gordon, Giovanna Minghetti, Lorrie Seifert, Carmen Stout. 2—Julie Reese.

TRENTON COMMUNITY SC: 2—Michael Deck. 3—Jill Calvin.

TROY SC: Pre—Elizabeth Dumbauld, Julie Goodan, Laurie Main, Susan Pittman. 1—Ellen Hobart. 2—Janet Weiler. 4—Shirlee Carpenter. Pre D—Bruce George. Silver—Mark Earhart.

TUCSON FSC: Pre—Chris Lund. 1—Lindsay Clark, Margaret Fisher, Karen Lund. 7—Linda Geiling. Pre D—Lindsay Clark, Emilie Finch, Kellie Jenckes, Christine Kinnison, David Williams. Pre-Silver—Linda Geiling.

TULSA FSC: 1—Elizabeth Ash, Kim Brock, Nanette Gabel, Karen Gary, Lynne West. 2—Sheila Brandenburg, Debbie Hughes, Lee Leming. 3—Renee Cosper. 4—Jilda Unruh. 5—Jay Gabel.

UNION COUNTY FSC: Pre—Pat Booth.

UNIVERSITY OF PENNSYLVANIA: Pre—Vito Caccavo.

UTAH FSC: Pre—Vicki Anderson, Kimberly Grosscup, Becky Jameson, Shelley Joseph, Michelle Miyake, Holly Smith. 1—Nikki Durrant, Terry Earl, Stephanie Grosscup, Stewart Sturgeon. 3—Lynne Bagley, Janine Whitesell. Pre D—Rebecca Despain, Jolene Lincolten, Stuart Sturgeon. Bronze—Heidi Berry, Kim Grosscup, Jill Hanks.

VALLEY FSC: Pre—Carol Anderson, Neil Letham, Tami Pennington, Audrey Rietema. 1—Lisa Masongsong. 2—Melba Bennett, David Carter.

WAGON WHEEL FSC: Pre—Susan Gummow. 1—Steven Akey, Jackie Farrell, Nan Peterson, Pamela Reeves. 2—David Kinser. 3—Susan Chabot, Denise Rutledge. Bronze—Susan Babb. Pre-Silver—Sally Ketner. Pre-Gold—Roger Glenn.

WALLA WALLA FSC: Pre—Kathy Cauvel, Barbara Heins, Mike Wells. 1—Kim Helsey, Lisa Lucas, Karen Roth. Pre D—Roberta Chastain.

WASATCH FSC: 2—Marion Shankweiler.

WASHINGTON FSC: Pre—Fay Benzinger, Jonathan Berge, Paul Cluck, Melissa Crownover, Cheryl Davis, Debbie Davis, Lynn Dawley, Stephanie Doring, Kelly Johnson, Judy Kuhn, Stacey Oliver, Cheryl Peterson, Amy Robertson, Ruth Robertson, Leslie Shakelford, Elizabeth Silby, Cynthia Wilbur, Carol Woods. 1—Victoria Benedict, Karen Brown, Cinda Haggren, Erica Heifitz, Patti Lynch, Jill MacLeod, Carla Patterson, Paula Shertz, Thomas Steinhoff. 2—James Gillespie, Julie Harton, Scott Holderness, Leslie Johnson, Cindy McKinney, Michael O'Rourke. 3—Charles Doring, Linda Lusby, Reginald Stanley. 4—Linda Morlacci. 5—Sandy Sparger, Paul Tassone. Pre D—Karen Brown, Ilene Kreisberg, Basil Maille, Robert Schrothe, Tracy Tuttle. Bronze—Wendy Luke. Pre-Silver—Dena Picken. Silver—Edith Picken.

WATERTOWN SC: Pre—Maribeth Reilly. 1—Mary Allwein.

WAUWATOSA FSC: Pre—Cathy Bauer, Ann Rauschenberger. 1—Missy Fugina, Julie Rauschenberger, Pam Treul, Dacia Weerts.

WESTCHESTER FSC: Pre—Teresa MacFarlane. 2—Lisa Judge. Pre D—Joyce McConnell. Silver—Glennace Cohen, Connie Rensing.

WHITE PLAINS FSC: Pre—Nancy Goldmann.

WILMINGTON FSC: Bronze—Nancy Hall.

WISSAHICKON SC: Pre—Kristina Adam, Cricket Barlow, Ainsley Beardwood, Kathleen Garrity, Mary Garrity, Beth Goodwin, Elizabeth Hechscher, Jeryl Hilleman, Debbie Keates, Kimberly Koppel, Ann McGill, Julia Myer, Vaughan Prichett, Christopher Smith. 1—Mrs. Thayer Adams. 2—Anna Brady, Richard Meuhlbronner, Ginny Niebuhr. 3—Lynette Hewitt. 4—Sara McGeehee, Eileen Whiteside. Pre D—Nan Brown, Harry Devoe, Virginia Jamison. Bronze—Mrs. Thayer Adams.

WOODLAND SC: 1—Cecilia Arienti, Andrea Duffin. 2—Mary Talbot. Pre D—Gail Adams, Karen Homa, Edwin Keppler. Bronze—Diane Scelsi, Mary Talbot. Pre-Silver—Carol Ausman. Pre-Gold—Lynette Backhaus.

YAKIMA ISC: 6—Jill Richardson

CANADIAN SKATERS WHO PASSED TESTS IN U.S.

LONDON FSC: Bronze Pair—Cheri Pinner, Dennis Pinner.
ST. THOMAS FSC: Silver Free—Keith Caughell, Judy Currah.
CANADIAN FSA: Bronze Pair—Johanne Fleury, Barry Kamber.

THOS. COOK & SON

*Leaders of World Travel Since 1841
in association with*

CSA CZECHOSLOVAK AIRLINES

*cordially invite everyone to attend an eight day, seven night "Gala" Tour
to the 1973 World Figure Skating Championships at romantic Bratislava
February 26 to March 5, 1973*

Featuring:

- Center ring seats for all figure & freestyle events. Also exhibition performance.
- Round trip transportation by sleek jetliner.
- Transfers and baggage handling upon arrival and departure.
- Hotel Carlton or Dukla. Room with facilities.
- Breakfast and dinner each day.
- Half-day tour to Bratislava.
- Tours to Vienna and Prague optional.

★TOUR PRICE

From New York..... \$444.00
From Montreal \$424.00

★Low cost special round trip fares available to all tour members from your local airport to either New York or Montreal. (based on Minimum of 10 persons—tax free).

TO NEW YORK:

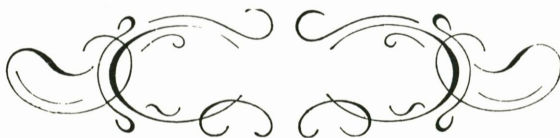
From San Francisco	\$149.00
St. Louis	\$128.00
Chicago	\$ 98.00
Buffalo	\$ 50.00
Minneapolis	\$144.00
Cincinnati	\$ 92.00

From Los Angeles	\$149.00
Washington D.C.	\$ 27.00
Syracuse	\$ 42.00
Rochester	\$ 52.00
Cleveland	\$ 66.00
Seattle	\$153.00

TO MONTREAL:

From Toronto	\$ 38.00
Calgary	\$101.00

From Vancouver	\$140.00
Winnipeg	\$ 64.00



To all readers of SKATING:

Thos. Cook & Son wish to thank all those who have enthusiastically joined our first World Figure Skating Championship Tour. The success of the tour is owed to many, but most to those whose love and interest in skating helped launch the '73 tour to Bratislava. We thank you! And look forward to bringing you to the 1974 Worlds.

To ensure your membership and for a colorful descriptive brochure, send twenty-five dollars (per person deposit) to:

Mr. A.W. Plenge

Championship Tour, Dept. NYPIT,

Thos. Cook & Son, 587 5th Ave., N.Y., N.Y. 10017

BRATISLAVA

Devin. With only 105 rooms there, however, space is very limited. A block away at Hviezdoslavovo namestie (*Namestie* or *nam* is square) is the Carlton with 279 rooms. This is where the Cook tour travellers will stay. The Number Four tram which stops near this hotel takes you straight to the ice arena.

Other recommended lodgings are the motel Ilava in the district of Zlate Piesky and the Sloven Hotel at Mileticova 20B, right near the sports complex. Modest hotels downtown are the Krym at Safarikovo namestie 6, the Palace at Postova ulica 1, the Tatra at Namestie 1 Maja 7 and the Krivan in Stefanikova Ulica. After reading all these foreign sounding addresses, you will be happy to know that Bratislava also has an Americke and a Rooseveltovo Square!

Bratislava can be reached by air via Prague or from Vienna by bus or train (the bus is quicker). From Bratislava airport there is a bus which will take you the twenty-five minutes downtown to within blocks of the Devin, Carlton or Krym Hotels.

The unit of currency in Czechoslovakia is the koruna which is divided into one hundred hellers. As a tourist, you will get a special exchange rate which is more than double the official listing.

The Devin and the Carlton are in the old part of town, and a short walk in their environs will prove very rewarding. There are many Gothic, Renaissance and Baroque monuments awaiting your perusal. Not to be missed is *Dom Svateho Martina* (Saint Martin's Cathedral). Bratislava was the capital of Hungary from 1536 to 1848, and in this cathedral ten kings and eight queens were crowned. In witness to the many coronations, a replica of the Hungarian crown of Saint Stephen sits atop the cathedral's two hundred eighty foot tower.

Not far away is the Archbishop's Palace, next door to the Old Town Hall. The Palace has a mirror room said to rival anything at Versailles. At 24 Michalska ulica you will find a building whose gables gave rise to its name, *U Cerveneho Raka*, the red lobster. In the fourteenth century this was an apothecary's shop. Now it houses a pharmaceutical museum complete with a witch's remedial kitchen. *Michalska brana*, Michael's Gate, is at the end of this street. From its tower, you get a fine view of the city.

Perhaps you would prefer to spend your time away from the Championships shopping. Bohemian glass and crystal are world famous. Other good buys are Slovakian ceramics, pottery and porcelain, woodcraft and dolls dressed in

Please turn to page 56

Skater's Waltz



Music Boxes



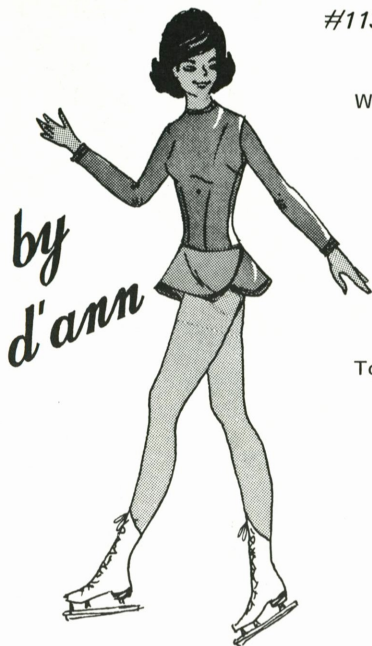
Beautifully hand-carved Swiss-movement music boxes that delightfully reproduce the strains of the "Skater's Waltz." A. "Snoopy," with bright yellow cap. B. "Skating Girl," in blue dress. Each **\$20.00**

Add \$1.50 for postage west of the Miss.
and \$2.25 for postage east of the Miss.

Zell Bros

Registered Jewelers • American Gem Society

Morrison at Park Avenue Portland, Oregon 97205



#113 -Skate dress with attached pants. Trim front and modified back skirt with open sides.

Washable dacron polyester, wool blend double knits in vibrant shades of purple, yellow, lime, melon red, military blue, Irish green.

*Children sizes: 4-5-6-7-8-10-12-14—\$30

*Jr.-Adult sizes: 5/6 7/8 9/11 12/14—\$33

*The above style also available in jumper, (#113-J), all sizes and same colors.

To assure proper fit, send body and full girth measurements with order, and *state second color selection.*

*Enclose \$1.50 for postage and handling. Free brochure and swatches upon request.

SKATE TOGS by d'ann
* * P.O. Box 43201 * *
CLEVELAND, OHIO 44143

BRATISLAVA

hand embroidered folk costumes. The Tuzex shop in Gorkeho ulica accepts only hard currency such as dollars. Because of this, the shop stocks many items, including domestic goods of an export quality and foreign imports, which are unavailable elsewhere in the city. For Slovak folk art and souvenirs, try Tvar in Namestie SNP or ULUV in Michalska ulica. Perhaps you would like to look around a department store. Two suggested stores are Dunaj in Namestie SNP and Prior in the nearby Kamenne namestie.

Your hotel will offer international cuisine, but you should try some of the local specialties. Breakfast tends to be just very strong coffee (*Kava*) or tea (*čaj*), so by lunchtime everyone is starving. To start your luncheon, try the popular soup, *Kapustnica*, which consists of cabbage, potatoes and mushrooms. Your main course might consist of roast pork (*peceň*), goose or duck (*kacica*) with sauerkraut and potatoes. Slovak cooking resembles Hungarian, so why not try chicken in paprika (*kurca na paprike*). A typical Slovak dish is *bryndzove halusky* whose main ingredient is cheese. Although fresh vegetables are scarce, the climate is very favorable to mushrooms, which you will find served with pickles everywhere. The Czechs and Slovaks like their meat

(*maso*) well done, and you may have trouble getting your beef (*horadzie*) cooked rare. The piece de resistance of the meal will be dessert—a selection of mouthwatering cakes or pancakes filled with jam (*palacinky*). Afterwards you might enjoy a *slivovica*. Of the two types, the best is *bosacka*. Those who went to Worlds in Ljubljana will remember this fiery plum brandy.

The Czechs consume much beer, but the Slovaks are wine drinkers. All over you will come across *viechy*—taverns selling the local wine out of casks and providing gypsy music. When ordering wine in a restaurant try the local product or bottle of red, *Franovka*, or white, *Malokarpatske zlato*. Your hotel staff or the local Cedok office at Sturova 9 will be glad to recommend restaurants and *viechy*. But, if all this drinking makes you thirsty, water is *voda*, ice is *ledova* and mineral water is *mineralka*.

I hope by now that thinking of all this food and drink has whetted your appetite for Bratislava. If you do decide to go, "*Stastnu cestu a prijemny pobyt*"—Have a pleasant journey and a happy stay!

For further reading on Bratislava, good sources are *Fodor's Guide to Czechoslovakia* (David McKay Corp., N.Y., 1970, \$6.95) and *Nagel Travel Guide to Czechoslovakia* (Cowles Education Corp., N.Y., \$6.95). O

ICE DANCE MUSIC

Albums #1 and #2...Sold out
Album #3...about to join them!

Only a few left...First come, first served.
Twenty Test Dances plus Starlight Waltz;
correct tempos; 5 pc. Combo. Album #3—
Price: \$26.00. Make check or M.O. to:
Ralph Melady, **JOMEL Productions**, 138
East 53 St., N.Y., N.Y. 10022.

The WONDERFUL SKATES WORLD OF

THE GENESIS • HISTORY • PROGRESS
OF SKATING FROM EARLIEST TIMES

150 ILLUSTRATIONS
ONLY \$2.50

Contents: World on Skates • Mystery of Ice •
Sport, Spectacle, Recreation • Evolution •
Skates in Art • Carnivals • Icetravaganza •
Single copies \$2.50; 3 copies \$6.

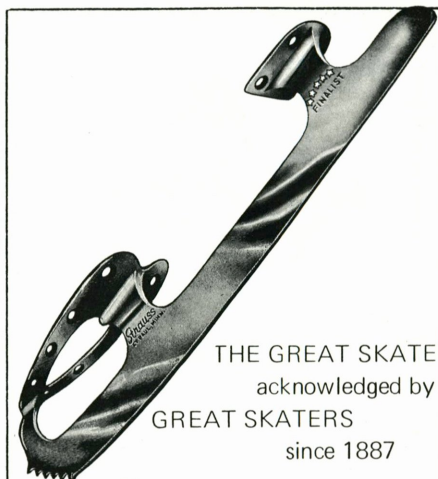
A. & T. GOODFELLOW
P.O. Box 384, Mountainburg, Ark. 72946

classified

EXPERIENCED PROFESSIONAL required for figures, free skating and dance instruction. Applicant should be competent in preparing skaters for competitions. Opportunity for year round employment with excellent remuneration. Apply Dr. R.D. Mutrie, North Bay Figure Skating Club, Box 554, North Bay, Ont., Can.

YOUNG FEMALE PRO seeks full time teaching. USFSA Gold Medal Figure, Freestyle, on Pre-Gold Dance. 10 yrs. competitive experience. Amateur and Ice Follies Show experience. Wants to develop ambitious talents on competitive level and will do ice carnival choreography, etc. Background in jazz, gymnastics, modern dance, ballet, music appreciation and teaching skating, production and taping. Replies confidential to **SKATING Magazine**, Box 27, 178 Tremont St., Boston, Mass. 02111.

SQUATIN SCRIBE: Calibrated feet and inches, skater's height (3 to 5½ feet), anodized aluminum, steel hardware, marker adapter. Packing and postage - \$22.00. Record cases: 8" dia. - \$6.50; 10" dia. - \$8.50; 12" dia. - \$10.25. Julius Czaja, 4 Crestview Dr., Pittsford, N.Y. 14534.



THE GREAT SKATE
acknowledged by
GREAT SKATERS
since 1887

Custom skates also built to order
or special specifications.

Strauss
SKATES INC.

1751 East Cope Ave., ● St. Paul, Minn. 55109
612 - 770-1344

FOR SALE: Figure Skate Pins, Charms, Earrings, Bracelets and other Jewelry. For free catalogue, send 8¢ stamp to Al Green, 15A Juniper Lane, Eatontown, N.J. 07724. Phone: 201-542-0666

EXCITING! Read *Linda Lane, Figure Skater*. Ice skating novel for age ten to adult. Autographed. Limited first edition. Fine Gift. Postpaid price \$4.95. Order from author Alice Schumacher, 115-17th St. N., Great Falls, Montana 59401.

BOSTON UNIVERSITY, WALTER BROWN RINK: Early bird patch time for Boston figure skaters. Available 7 a.m. to 8:30 a.m. Monday through Friday. \$3.00 per patch per hour. Sessions beginning September 20. Call Nancy at 353-2740.

FIGURE SKATERS in action! - on stationery, notepads, labels, notecards (Christmas cards) and other items. Nice gifts or prizes for skaters! For New 1973 Illustrated Brochure - please send 8¢ stamp. Liz Bierer, 2413 Lambert, Toledo, Ohio 43613.

SKATING DRESS PATTERNS \$1.50, SKATING JUMPER PATTERNS \$1.50. Girls sizes - 8G, 10G, 12G. Teen sizes - small, medium and large. One piece - attached skirt. Please add 25¢ per order for postage and handling. Bee Jay Originations, Box 667, Station K, Toronto 12, Ont.

Binocular Closeout



only \$9.95 per pair!

Built to professional standards for those who demand uncompromising precision craftsmanship and optical superiority. You'll feel the difference as the sculptured curve of the body balances effortlessly in your hands. You'll see the difference in the brilliant true color images sharply defined throughout the field of view...distant objects and action seem so close you'll swear they are only inches away! Yet these famous make Sport Glasses are offered below factory list price in Europe! Order today — limit two pairs to each buyer. When present supplies are exhausted prices will be much higher. No CODs, please. Money back in ten days if not fully satisfied.

Check these Custom Features:

- ★ *Electronically computed optical systems of unexcelled tru-color brilliance, balanced and aligned to super critical standards to prevent eye strain.*
- ★ *All air-to-glass optical surfaces amber hard coated to prevent internal light loss.*
- ★ *"Squint-Pruf" front lenses block reflected glare from water, snow, sand and haze.*
- ★ *Shock-resistant construction — extra strength hinge and bridge guard against misalignment; high index prisms are permanently locked in.*

MAIL ORDER MART DEPT. 12

2701 Sterlington Rd., Suite 237, Monroe, Louisiana 71201

Please send me the quantity of Sport Glasses checked below (limit two). If not fully satisfied I will return the merchandise within ten days for a full refund.

- ☐ Send ONE only. I enclose \$9.95.
- ☐ Send TWO at the bargain price of \$14.95

Name

Address

City, State, Zip

Olympiad



The makers of OLYMPIAD and ZEPHYR are introducing this year, the all new NORTH AMERICAN, the machine-made model of the Olympiad. Made of and finished in the same high quality materials as the Olympiad

—but at a much lower price—

The Skate Shop, Inc.
797 Dodd Rd.
West St. Paul, Minn. 55107
Phone: 612-225-5504

EASY HONE



U.S. PAT. No.
3,461,623

105
and.

K

Industries

42 DeHaven Drive • Yonkers, New York 10703

SKATING SCULPTURE



Individual
Creations
From Your
Photos



Cast In
Bronze
2 Figures—
(as shown)
Special
Rate

Individual
Figures
\$75.—Plus
Shipping

FREDWILL ART PRODUCTIONS
BOX 611, NORCO, CALIF. 91760

TO THE USFSA MEMORIAL FUND

178 Tremont Street
Boston, Massachusetts 02111

Enclosed is \$_____ as

1. ☐ A gift to the USFSA Memorial Fund in memory of _____

Notification of my gift should be made to

Name _____

Address _____

Zip _____

2. ☐ An unrestricted gift to the Memorial Fund.

3. ☐ For _____ Bronze (\$5) _____ Silver (\$10) _____ Gold (\$20)

USFSA 50th Anniversary medals.

Name _____

Address _____

Zip _____

Please make checks payable to the USFSA Memorial Fund and mail to the Fund at the above address.

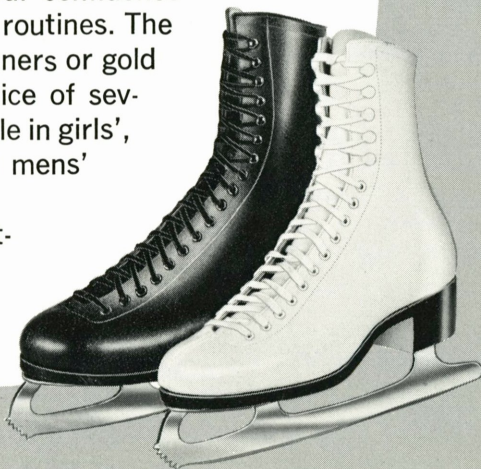
(Contributions to the USFSA Memorial Fund are deductible for income tax purposes to the extent allowable by law.)



**FOOT COMFORT . . .
SKATE CONTROL . . .
BUILT INTO EVERY
OBERHAMER BOOT**

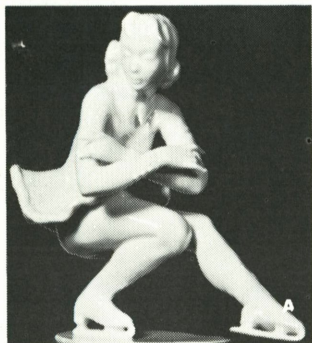
So important for those hours of practice, pleasure or competitive skating. Snug, heel hugging fit adds to your confidence through the most rigid routines. The perfect boot for beginners or gold medal winners. Choice of several blades. Available in girls', ladies', boys' and mens' sizes.

Send for our catalog and foot measurement chart.



Oberhamer

SHOE COMPANY 683 N. Dale St., St. Paul, Minn. 55103



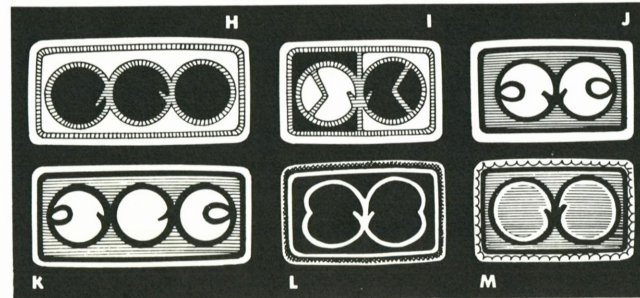
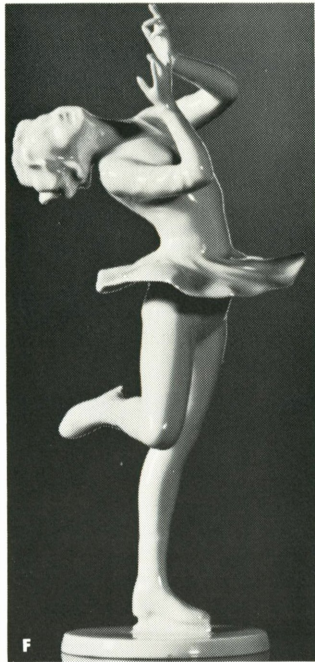
Gifts for the Skater

Distinctive and uniquely personal gifts for the skating enthusiast. Each is a choice selection from the world's most famous artists and houses.

All items beautifully gift-wrapped at no extra charge. Add \$2.00 for postage west of the Mississippi, \$3.50 for postage east of the Mississippi. Allow 2 weeks for delivery.

Zell Bros

Registered Jewelers • American Gem Society



A. Hutschenreuther "Sitspin." White porcelain, 5½" high. **\$43.50**

B. Verte Delft Plate. Design by F. Piket. First limited edition of only 500 pieces. Hand-painted in Holland, individually numbered. 7½" in diameter. **\$75.00**

C. "Oops!" Charming, textured and heavy pewter figurine with brass blades, 2½" high. **\$30.00**

D. "Skating Girl." Porcelain sculpture figurine by Royal Copenhagen. 6½" high. **\$88.00**

E. Bronze "Figure Eight" with lucite and wood base, 8" wide x 9" high x 4" deep. **\$50.00**

F. "The Layback." Beautiful white bisque porcelain figurine, 10" high. **\$45.00**

G. "Skating Couple." Beautifully crafted pewter by Metawa of Holland. First limited edition. **\$30.00**

H, I, J, K, L, M. Hand-made ceramic patch pins by Karin and Aase Schou of Denmark. Individually signed, beautiful combinations of blue, white and cobalt.

2-lobe Patch Pins. 2¼" x 1¼". **\$9.25** (including postage)

3-lobe Patch Pins. 2¾" x 1¼". **\$10.25** (including postage)

IT TAKES A GIFT TO MAKE A DANCER



Here at last is your opportunity to make such an overwhelming difference in your favorite skater's ice performance—taking only a few minutes a week—that skating professionals may actually ask what has happened!

Let me explain! Whether a dancer is a man, woman or child, six or sixty, gold medalist or untested, it makes no difference how difficult it may be for them to concentrate while on the ice—or how great a tendency there is to slip back to where they were weeks ago.

I'm convinced skaters are employing less than half their skating ability, simply because they were never shown the "extras" used by the great stars of other performing arts. The behind-the-scenes polishing that makes them shine. The trade secrets so easy for anyone else to use. Simply because brushups were brushed aside. The time gap wasn't considered. But look into the future....

They should pass tests with ease in a fraction of the time it now takes. Gain strong control and confidence for solo or partner dancing. Hold improvements from week to week.

What holds dancers back?

The time schedule! Most skaters can only spend about six hours a week going to the rink—and only a couple of those hours actually dancing to music. So much time passes between sessions that by the time the next session rolls around dancers may have to learn some things all over again, simply because more practice wasn't available. Great performing artists stretch practice time with some private rehearsals. Shouldn't dancers do better if they had in-between practice of some kind? Of course.

Experts agree: the amount of time put into practice shows up in the dancing. "Rehearsal time and more rehearsal time produce results,"

FRESH HOPE FOR THE TWICE-A-WEEK DANCER

they say. It's that easy. But when and how to rehearse when time is so limited? The stars of the entertainment world have always made time. They practice OUT of the arena and off the stage—the short work-out at home counts. The daily ten-minute "in between" practice of their lines, steps or routines enables them to hold the line until the next performance.

What their success shows is the tremendous power of timeliness and frequency. When they have the music they can frequently listen to the dance tunes and recreate their own dance session in their mind at home. More than that, their body remembers to follow what they recently practiced on ice.

Year After Year Success

Correctly timed music can save lots of valuable ice time. Speed up the progress. Music which has been tested and proved to be correct for each of the twenty dances approved by the Canadian and U.S. Figure Skating Association is the Andy Weis ORCHESTRA Series...Long Playing 12" Discs. Seeing these records advertised year after year on the back cover of SKATING Magazine gives you the practical assurance that others of distinctive taste have helped dancers through the gift of their choice.

Timely Holiday Gift

There are three albums for your individual selection. One each for the three levels of progress: Preliminary and Bronze, Pre-Silver and Silver, and Pre-Gold and Gold. Purchased separately they cost \$12.50 each. A complete set of 20 tunes (three albums) for each of the dances is \$35.00.

ORDER NOW—FOR THIS TIMELY SEASONAL GIFT!

U.S. & CANADIAN ORDER (Mail to me <input type="checkbox"/>)		MAIL GIFT TO (Put my name on label <input type="checkbox"/>)	
Name (Please Print) _____		Name (Please Print) _____	
Address _____		Address _____	
Zip _____		Zip _____	
U.S. checks to Frank C. McGirr 33 Central Ave., Staten Island, N.Y. 10301 N.Y. STATE RESIDENTS MUST ADD SALES TAX		OR Cheques to Thomas G. Keenan Elerslye, P.E.I., Canada	