

SKATING®

december 1973 vol. 50, no. 8-price 50 cents



DISCOVER NATIONALS IN THE OCEAN STATE

UNITED STATES FIGURE SKATING
CHAMPIONSHIPS

Providence, Rhode Island
February 6-9, 1974

IN THE BEAUTIFUL NEW
PROVIDENCE CIVIC CENTER



PROJECTED 1974 NATIONALS SCHEDULE*

Wednesday Morning: Senior Ladies Figures, Novice Men Figures. **Wednesday Afternoon:** Novice Ladies Figures. **Wednesday Evening:** Silver Dance Initial, Senior Pairs Short Program.

Thursday Morning: Junior Men Figures. **Thursday Afternoon:** Senior Men Figures, Gold Dance Compulsory. **Thursday Evening:** Novice Ladies Free, Senior Ladies Short Program, Gold Dance OSP, Senior Pairs Final.

Friday Morning: Junior Ladies Figures. **Friday Afternoon:** Silver Dance Final, Junior Men Free, Senior Men Short Program. **Friday Evening:** Novice Men Free, Junior Pairs, Senior Ladies Free.

Saturday Morning: Practice for Exhibitions-Senior Men, Junior Ladies & Gold Dance. **Saturday Afternoon:** Senior Men Free, Junior Ladies Free. **Saturday Evening:** Gold Free Dance, Exhibitions.

**For further information
about tickets and
accommodations write:
Nationals 1974
P.O. Box 9404
Providence, R.I. 02904*

*Sponsored by
The Providence FSC
Providence Journal Co.
The Junior League of
Providence, Inc.
Sanctioned by the USFSA*



POLAR SPORT™

First on the ice

AVAILABLE NOW:
TWIN RINKS
PORT WASHINGTON NY 11050
[516] 484 1016

SKY RINK
450 WEST 33 STREET
NEW YORK NY 10001



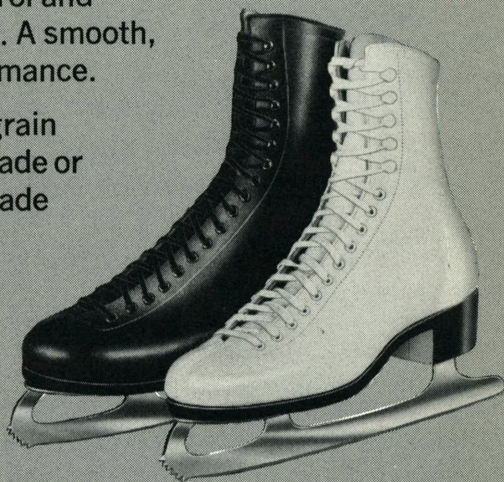
OBERHAMER'S

**If you're
beginning
or going
for the
gold . . .**

... let Oberhamer's help you through with complete skate control and confidence in every move. A smooth, effortless, exciting performance.

Beautifully styled in top grain leather. May be custom made or ordered from our ready made stock models.

*Send for our catalog and
foot measurement chart.*



Oberhamer

SHOE COMPANY 683 N. Dale St., St. Paul, Minn. 55103

DANSKINS ARE NOT JUST FOR DANCING



They're for slides and glides and beautiful figure 8's. And great news! Danskin now makes an enchanting skater's skirt so all your fine full-fashioned leotards and trunks and tights and sweaters can be color coordinated. You can see them at leading arenas, sporting goods and department stores in a variety of colors. Write for illustrated brochure SK. Danskin Inc., 437 Fifth Avenue, New York, N.Y. 10016

DANSKIN®

TRAIN WITH CHAMPIONS

in the Skating Center of the World!

More training time with two adjoining ice arenas. Pure air and the conditioning benefits of 6000 foot altitude, plus the finest instruction and training procedures, have earned the Broadmoor complex this title. Beatty Hall, our new modern living facility, and cooperating schools, assist the serious year-round students. Special summer competitor's skating program (June-August) is offered as well. The professional staff, headed by Ron Baker, includes Jack Raffloer, Christine Haigler, Ruby Maxson, Doreen Denny MacSalka, Pieter Kollen, Marty Martino and Kathy Thomas. For more information contact: Executive Secretary, Broadmoor World Arena, The Broadmoor, Colorado Springs, Colorado 80901. Phone (303) 634-7711.

The **BROADMOOR WORLD ARENA**
COLORADO SPRINGS, COLORADO

Host for more World Figure Skating Championships than any other site in the Western Hemisphere.



Editor Emeritus
Theresa Weld Blanchard

STAFF

Editor
Barbara R. Boucher
Art Director
and Production Manager
Bruce A. Boucher
Managing Editor
and Advertising
Virginia K. Burnham
Compositor
Marlene A. Cronin
Circulation
Colleen J. Trainor

SKATING is the official publication of the United States Figure Skating Association.

USFSA Publications Committee: Brooks Stewart, Chairman, Southampton, Pa.; Spencer E. Cram, Hendersonville, N.C.; Patrick J. Donnelly, Seattle, Wash.; Gerald G. Gearheart, Framingham, Mass.; Theodore G. Patterson, Boston, Mass. **Correspondents:** Howard Bass, England; Dennis L. Bird, England & Germany; Jacline Brown, France; Nigel Brown, Switzerland; Per Cock-Clausen, Denmark; Karol Divin, Czechoslovakia; Eva Gyorgy, Hungary; Kikuko Minami & Kazuyoshi Oimatsu, Japan; Ingeborg Nilsson, Norway; Rev. Kevin Reynolds, South Africa.

Copyright: SKATING, copyright 1973 by the United States Figure Skating Association in the U.S.A. Title registered in the U.S. Patent Office. Published eight times a year: January, February, March, April, May, June, November, December, by the United States Figure Skating Association. **Executive, Production & Subscription Offices:** 178 Tremont Street, Boston, Massachusetts 02111. Second Class postage paid at Boston, Mass. **Subscription Rates:** U.S. & Canada, \$3.50 per year; overseas, \$8.50 per year. SKATING is protected by copyright and nothing that appears in it may be reproduced without written permission.

CHANGE OF ADDRESS: Send your name and new address, along with the number from your mailing label, to Circulation Manager, SKATING, 178 Tremont St., Boston, MA 02111. Please allow 6-8 weeks.

COPY DEADLINES for club news, calendar events and other news items:

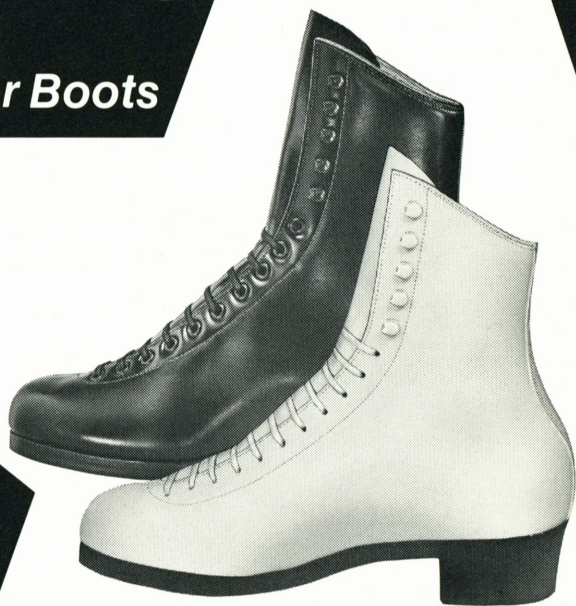
- ▷ for February issue, December 14;
- ▷ for March issue, January 18.

SKATING®

- 9 In This Issue: SKATING'S
50th Birthday / Barbara R.
Boucher
- 12 Meet Wendy & Terry / Gloria
Williams
- 17 A Milestone in Skating /
Benjamin T. Wright
- 18 A Skating Company: A
Possibility? / Frank Loeser
- 20 Curry on Ice—A Spicy
Mixture / Howard Bass
- 22 Fall Meeting Report / Virginia
K. Burnham
- 24 Crossover Crosswords /
Henry Harlan
- 26 Kid Talk
- 28 For Fun, Funds & the Future /
Theodore G. Clarke
- 29 Calendar
- 29 Official Notes
- 30 People
- 30 Newsmakers
- 31 Foreign Ice
- 32 Competitors Skating Educa-
tion Program / F. Ritter
Shumway
- 33 Laurels
- 49 Classifieds

Super Stars

Riedell Gold Star Boots



Riedell

RIEDEL SHOES, Inc.

Red Wing
Minnesota 55066

in this issue

SKATING's 50th Birthday

by Barbara R. Boucher

Through personal contact, correspondence
and a lot of hard work. . .

Oct. 23, 1923

Dear Mr. Engel,

. . . I have been appointed Chairman of a
Publication Committee to publish a magazine
or leaflet for the U.S. Figure Skating Assoc. I
have your name as representing the Chicago
Figure Skating Club.

We would like a letter from you or report
telling briefly of the club—number of members,
list of officers, professionals, success attained

by your skaters, etc.—just so other clubs will
know about you all. I am afraid we feel there is
no Figure Skating except on the Eastern Coast.
If you have time & can get the facts, could you
give us an article on skating around Chicago?
I personally know nothing about conditions or
ability of the skaters except here in the East
and we would all love to learn about other plac-
es. Do write anything up to 1000 words and
send pictures. Let me have it by December
first if possible.

This magazine is being financed by contri-
butions—New York, Philadelphia & Boston
skaters are raising \$100 each and the clubs are
giving \$50. New Haven, which has a member-
ship of 400, is giving \$50 and having the maga-
zine sent to 100 of its most interested mem-
bers. I have no idea of the type your club is so
perhaps you will be kind enough to decide for
yourself what it can do to help us & send me a
list as soon as possible of people who would be
interested to receive the magazine. We hope
that all who receive it will then subscribe in
order to give us money to carry it on next
year. It is to be the official means of spreading
the U.S.F.S.A. rules, etc., & also contain in-
structive & interesting articles.

If there are any non-club skaters or interest-
ed persons you know of, please let me know.

Sincerely,

Theresa Weld Blanchard

. . . a few determined figure skaters launched
SKATING Magazine in December, 1923. The
effort which culminated in that first issue, how-
ever, is merely hinted at in Theresa Weld Blan-
chard's letter.

SKATING was the brainchild of four enthu-
siastic skaters—Tee Blanchard, Nathaniel W.
Niles and Edith Rotch of Boston and Paul
Armitage of New York—who thought the fledg-
ling USFSA ought to have an official means of
communication. Appointed to the first USFSA
Publications Committee, the four worked in-

Theresa Weld Blanchard & Nathaniel W. Niles,
1920 photo.



formally for a year, gathering articles and finally receiving pledges of financial backing.

The final product took shape in the hands of Mrs. Blanchard and Mr. Niles. Knowing next to nothing about printing methods, the would-be editors had their first issue set on a hand press. Not surprisingly, it was a miserable failure! A commercial printer then reprinted the same material properly, and SKATING, No. 1, was mailed free to approximately 500 members of USFSA clubs. Subscription blanks tucked inside each of the inaugural copies brought enough response to support two more issues that winter.

Through the next 40 years, Theresa Weld Blanchard devoted her talents to SKATING—sharing editorial duties at first with Mr. Niles and, after his death in 1932, carrying on as Editor. The contributions of this dedicated woman were perhaps best summarized in the November 1963 SKATING, upon her retirement:

It can be said truly, SKATING is a product of Mrs. Blanchard's heart and mind and personality. Its continual stress on the development of amateur figure skating in all its aspects and its constant striving for accuracy. . . these are her hallmarks and her gifts to the USFSA and the sport.

From the beginning SKATING has been produced with the aid of volunteer personnel—completely at first except for the actual printing. The editors gathered at the home of Tee Blanchard and her husband, Charles B. Blanchard, to organize articles and news items and even address mailing envelopes for the magazines by hand. Not until 1935 did SKATING move to an office in downtown Boston, where it shared space and the services of a secretary (the first paid clerical help) with the Skating Club of Boston.

No wonder, then, that Mrs. Blanchard has said, "SKATING has been the only truly amateur magazine for figure skaters." The USFSA Publications Committee has devoted considerable time and money to the magazine throughout its 50-year history.

With the support of the Committee and an ever-increasing readership, SKATING weathered the years of financial insecurity which face all new publications, only to be confronted by severe paper and metal shortages during World War II. Many persons—especially editors of skating publications in England and Australia—convinced Mrs. Blanchard of the need to continue SKATING throughout the war to ensure a permanent record of the development of figure skating, which would otherwise be lost.

From 1941 to 1968, SKATING also served

as the official publication of the Canadian Figure Skating Association and, as such, contributed to the close affiliation that has existed between the two Associations since their organizational beginnings. For a while during the 1940's SKATING carried roller skating news as well, leading the editors to describe the magazine as "the journal of *all* figure skating in North America."

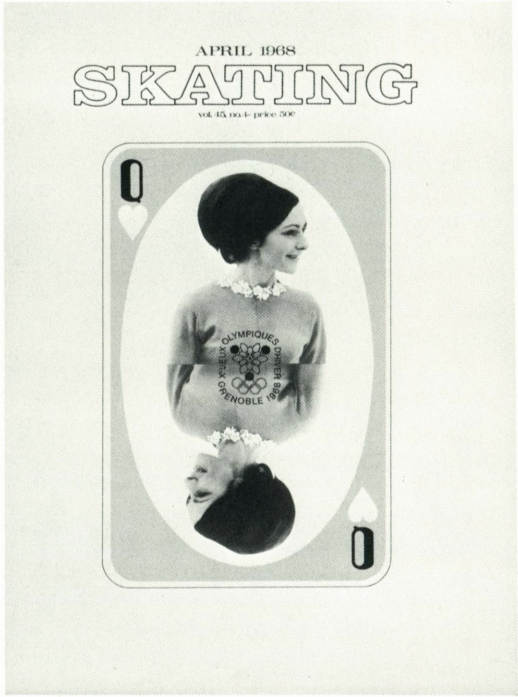
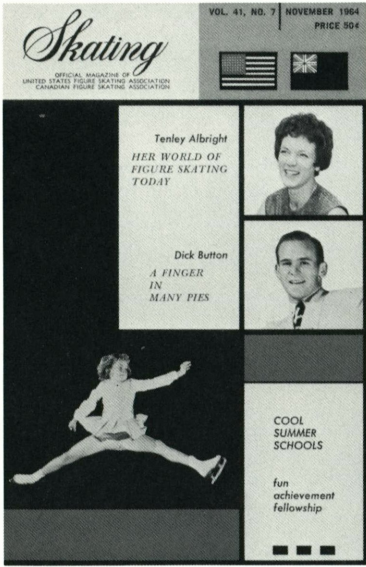
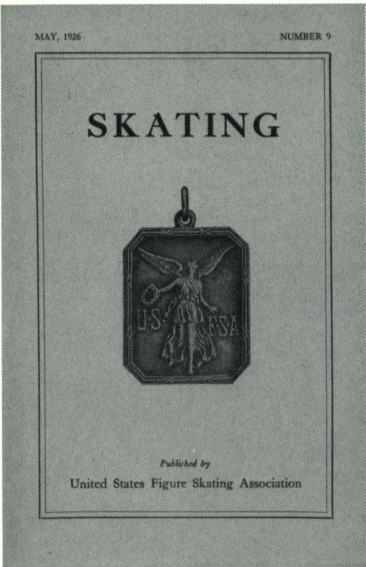
As SKATING continued to increase its circulation and advertising volume, the frequency of issue was stepped up from the three numbers a season adopted in 1923 to four, five and then six a season (beginning in November, 1934). The current practice of eight issues per season was instituted in 1947.

Except for a brief experiment with a larger format from 1966 to 1969, the magazine has maintained the familiar 6" X 9" size established in 1923. That doesn't mean, however, that SKATING has not experimented with different cover designs, as exemplified by the four illustrations on the opposite page.

Three years ago, the Governing Council amended the USFSA By-Laws to include a subscription to SKATING in the registration fee of the first member of each family. At last the intention of the founding Editors—that SKATING should be an official means of communication among all USFSA members—was guaranteed.

Through 50 years of publication, SKATING has gradually broadened the scope of its coverage. Tee Blanchard, reflecting recently on the journal, said, "SKATING was sometimes criticized as being *only* a club magazine, but that is precisely what we wanted—a magazine by amateur skaters for amateur skaters." As more of the official communiques were taken over by the USFSA Central Office, SKATING changed its emphasis to entertaining and informative articles. The resulting blend of features, news items and club notes bears little outward resemblance to that first, painstakingly prepared issue. And yet, the guiding principle of SKATING remains the same—to unify the members of the USFSA through a chronicle of the development of amateur figure skating. ○

Opposite page, upper left: SKATING's first cover design, used until 1936. Upper right: Cover girl Gretchen Merrill adds zip to the basic style maintained until 1962. Lower left: A new masthead and experiments with geometric shapes (and color!) characterized the mid-sixties. Lower right: Queen of Hearts Peggy Fleming highlights the 8½" x 11" format from 1966-69.



Meet Wendy & Terry

by Gloria Williams

Certain to make strong bids for World Team berths at the 1974 Nationals in Providence are two dynamic free skaters from Southern California—Wendy Burge and Terry Kubicka.

On the heels of twin National Junior titles and strong showings for the United States at Oberstdorf and St. Gervais in the summer of '72, these talented teenagers made the spotlight again by placing third in free style as "freshman" seniors in the 1973 Nationals. Wendy finished fifth and Terry fourth overall at Minneapolis, top-

ping all other first-year senior skaters and a number of veteran seniors as well!

So parallel has been the rise of Wendy and Terry through the populous ranks of the Southwest Pacific Region to national honors, that they are almost always thought of simultaneously in Southern California skating circles.

And although they represent Southwest Pacific's two big rival clubs—Wendy the Los Angeles FSC and Terry, Arctic Blades FSC—they are the best of "just friends" and have even tried pair skating together "just for fun."

While their skating histories have been similar, Wendy and

Terry have quite different families and interests apart from skating.



*The best of "just friends"—
Wendy Burge and Terry
Kubicka. All photos in this
five-page story by J. Keith
Williams.*



Wendy was born in Alaska while her father was on duty there with the U.S. Navy, and she started skating at the age of six.

Until the 1973 Nationals, she had won the free style segment of every competition she had ever been in, consistently finishing near the top of her class.

As a Junior Ladies competitor in the 1972 Southwest Pacifics, Wendy had the excruciating experience of placing first in both figures and free style but ending up second overall! Before long, however, winning the 1972 Junior Ladies titles in both Pacific Coast and National competition made up for that and all other previous disappointments.

In view of this upward pattern, could be "the sky's the limit" for Wendy!

The entire Burge family has been deeply involved in figure skating for over a decade. Wendy has an older sister, Roxann, who passed seven USFSA figure tests before joining Ice Follies this year. A younger sister, Kelly, has passed the Sixth Figure Test and the Silver Pair Test with her partner, Perry Jewell. Dr. Harland Burge, Wendy's father, is a Gold Test Judge and a member of the USFSA Executive Committee; her mother, Ruth, is an Intermediate Judge.

On the terrace of the Burges' suburban Los Angeles home, Wendy gives Kelly a hand on the "perch" where she practices her lift positions.

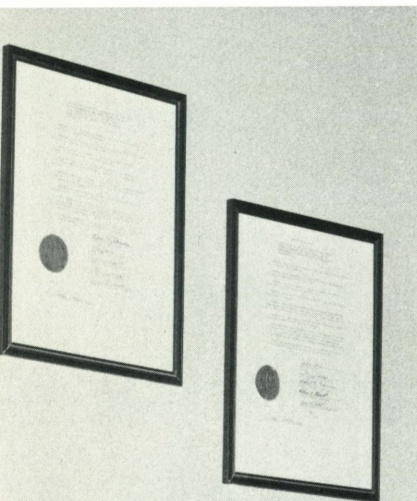


Terry started skating seven years ago, after seeing his first ice show, and—until running into veteran senior Robert Bradshaw last season—he had won every competition he'd ever entered. Prior to winning the National Junior Men's title in 1972, he was National Novice Men's champion in 1971.

Terry's name has become pretty synonymous with "triples" in the last couple of years, and while he would like to be the first to successfully perform the triple Lutz in U.S. National competition, it's not an obsession. After all, he points out, Donald Jackson of Canada did it in World competition more than a decade ago.

With improved school figures this season, the upward pattern of Terry's skating career seems unlikely to be broken.

In contrast to the Burges, Terry is the only member of his family involved in skating. He is "big brother" to three sisters who have taken up softball and gymnastics instead. Nevertheless, the other Kubickas are Terry's biggest fans and morale boosters! Wearing matching Kubicka smiles around the practice beam at the family home in Cypress, a suburb of Los Angeles, are (L to R) Sharron, Terry, Michele and Lori.



Terry's biggest interests besides skating are his school and church studies. Usually a 4.0 student in public high school, he refers apologetically to "that B" he got last year! Terry is active in his family's church and also belongs to a Christian skaters' organization founded by Janet Lynn. He feels that his efforts to apply Christian principles have contributed significantly to his school and skating success.

Hanging over Terry's desk are proud resolutions from the City Council of Cypress, commending his two National figure skating titles.

Wendy, too, enjoys many off-ice activities. Her busy schedule includes jazz and ballet lessons along with many hours per day on the ice.

During practice sessions at the rink, Fritzie, the family dachshund, is frequently present to offer quiet companionship. Naturally, Fritzie also enjoys those moments of relaxation at home!

Wendy's favorite class in school has always been art—the ceramic bust in the left foreground is one of her creations. She also gives form to her creativity by writing poetry, as evidenced by the poem below.

THOUGHTS TO WHOM?

by Wendy Burge

I have relaxed in the
quarters of my mind.
I have shared the feelings
of relief.
But to whom shall I
reveal my thoughts?
Shall I trust in one
who holds no greed,
Or that one who has
purchased the love of life?
Nay, Neither
Fore I reveal my thoughts,
mind to my own mind,
Thought to its destination
in the logic of intelligence,
I alone shall understand
what I do not.
I alone shall pierce
the projection of question,
for my mind, my thoughts
my intelligence could ne'er
Be understood by another.
I in turn must reveal
my thoughts to the One
who has created them
Then and only then
are they to be answered.



A Milestone in Skating

by Benjamin T. Wright
President of the USFSA

At their respective Executive Committee meetings in October, the USFSA and the Ice Skating Institute of America (ISIA) jointly adopted mutual statements of policy for cooperation between the two bodies. (The two statements are reprinted below.)

The primary objectives of the two organizations are to normalize their relations and to achieve full cooperation between them in the mutual interest of insuring full participation in skating of each individual recreational skater and figure skater without interference or restriction. In order for these goals to be achieved, it is vital that all Member Clubs of the USFSA implement fully the spirit of cooperation contained in the statements of policy; we are confident the members of the ISIA will do the same.

Further, to achieve the full coordination and cooperation between the two bodies contemplated, it is essential that each Member Club bring to our attention promptly any aspects of its relationships with its local rink which might have an adverse effect on either organization. To that end, a special committee has been appointed, called the Rink Cooperation Committee, with a member in each section who will be the point of contact for that purpose. In addition, the Sectional Vice-Presidents will also serve in this capacity, by virtue of their responsibility under the Association By-Laws to promote harmony and progress among the Member Clubs.

The present members of the Rink Cooperation Committee are:

Midwest - Joseph L. Serafine, Chairman

730 South Ridge Road, Lake Forest, Ill. 60045

East - Oscar T. Iobst, Jr.

By-A-Brook Farm, P.O. Box 233, Churchville, Pa. 18966

Pacific Coast - Mrs. Betty Sonnhalter

3680 Daisy Street, College Park, Seal Beach, Calif. 90740

Several persons deserve recognition and thanks for their role in bringing about this accord: Robert Kelton, President of the ISIA; Walter Muehlbronner, President of the Professional Skaters Guild of America; and E. Newbold Black, IV, who assisted me in representing the USFSA. We believe the adoption of the statements of policy represents a progressive step on the part of both the Association and the ISIA which will be of great benefit to the thousands of individual skaters whom both organizations serve.

USFSA Statement of Policy

The United States Figure Skating Association (USFSA) recognizes the primary role and interest of the Ice Skating Institute of America (ISIA) in promoting the activity of ice skating for the recreational skater.

Consistent with such recognition, the USFSA agrees to cooperate fully with the ISIA to further that objective. To that end, the USFSA further agrees that the participation of USFSA members who are also registered with the ISIA in tests, competitions, exhibitions and carnivals sponsored by the ISIA shall not be deemed to be a violation of the rules of the USFSA, subject only to the limitation that such participation does not result in any direct or indirect financial benefit to the participant.

ISIA Statement of Policy

The Ice Skating Institute of America (ISIA) recognizes that the United States Figure Skating Association (USFSA) has been and is the governing body of the sport of amateur figure skating on ice in the United States and that it is so recognized by the International Skating Union (ISU).

Consistent with such recognition, the ISIA agrees to cooperate fully with the USFSA and its Member Clubs to promote the full participation of the members of the USFSA in the sport of figure skating. To that end, the ISIA further agrees that the participation of skaters registered with the ISIA in activities sponsored by the USFSA shall not be deemed to be a violation of any applicable rules of the ISIA.

A Skating Company: A Possibility?

by Frank Loeser

One can sense an approaching change in skating but its exact nature is still undefinable. The best way to illustrate what is hopefully forthcoming is to examine skaters from both the more recent past and the present. Looking to another medium will also help.

Perhaps the first indications of a new skating concept came with Ljudmila and Oleg Protopopov, World Pair champions from 1965-1968. They brought the elegant feeling of grand ballet to the ice. Others presented "pair skating" but the Protopopovs were the first to skate a "pas de deux." Mood, music, technical accomplishment and clarity of line were all synthesized by this pair.

The cool detachment and classic movement of Peggy Fleming also hinted at ballet. Her competitive programs were exceptional but her exhibitions and later professional performances were more indicative of her total qualities. Her "West Side Story" and "Ave Maria" numbers were the mature precursors of polished professionalism.

John Misha Petkevich seemed to have

the potential for developing a unique style that could have transcended the competitive scene. Unfortunately, it never seemed to materialize. His "Espana" program was so successful and his jumping technique so impressive that the judges and the audience wanted the fire and excitement to be continually repeated. One wonders how far he could have advanced had his "On the Waterfront" and "Rachmaninoff Piano Concerto #2" programs been received with the encouragement they deserved.

The most distinct facets of the forthcoming change have been carried by Janet Lynn and Toller Cranston. Janet's use of her arms and upper body and, most of all, her total Impressionistic statement were new to the skating world. Her interpretations of Debussy's "Afternoon of a Faun" and "La Mer," Ravel's "La Valse," Satie's "Third Gymnopédie," and even Simon and Garfunkel's "Dangling Conversation" brought a freshness and ethereal to the ice.

Like Janet, Toller Cranston utilizes his entire body but his distinctive feature is his complete originality. Categorizing is often a mistake but his ornate lacing of



good technique reminds one of elaborate Rococo architecture. He always explores—even to the point of exploitation—such standard pieces as Liszt's "Hungarian Rhapsodies." Whether one admires the style or not, one has to give credit to his masterpieces of creativity. The supreme example was his compulsory short program set to Khachaturian's "Sabre Dance."

One also senses that both Janet Lynn and Toller Cranston could, with the right choreographer and favorable conditions, develop programs of completely different character.

Other top level competitors flash sporadically with qualities which could be advanced in a new skating sphere. Ljudmila Pakhomova (the ultimate in character expression), John Curry, the Militanos (before Mark's retirement) and the Bezics all possess a feeling for presenting something in addition to solely accomplished moves set to music. They seem capable of making individual and yet universally understood statements. Their bodies become instruments for portraying mental and psychological moods. These are qualities which really

cannot progress under existing amateur and professional structures.

A new concept of skating is needed. The key for this lies in skating's more earthbound partner—the dance. It has advanced an enviable basic philosophy which can also be applied to skating.

In the most concrete sense, skating would do well to emulate the organization and concepts of such famous companies as The Joffrey Ballet, The Royal Ballet of London, The American Ballet Theatre or The Royal Winnipeg Ballet. These companies actually have a much stronger tradition than skating and yet they have escaped being static. They seem to have refined their technique and then advanced into their psychological possibilities. They are aware of their potential for making historical and social statements and for portraying aspects of individual emotions and situations.

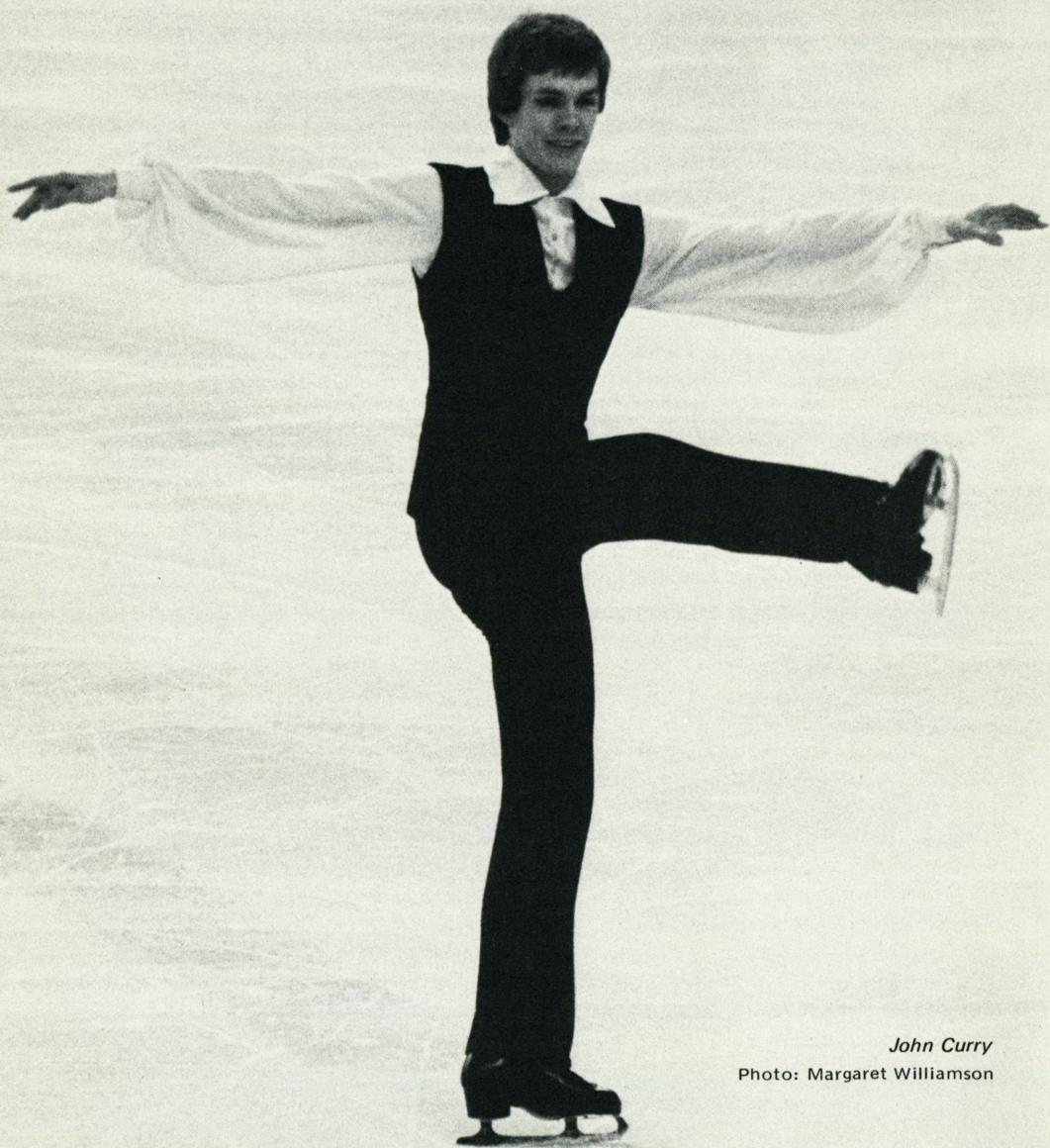
In skating we are still too anxious to accept just technical accomplishment. Even at the World Championships one becomes bored with the repetition of jump after jump. The saving lights are the sheer excitement of tense competition and the creative skating of a few individuals like those mentioned earlier.

Skating has to look to dance for a new start. It has been stealing from dance for years anyway (and often criticizing it in the same breath). Very practical features can be borrowed. The idea of a resident city and a limited tour are vital. Only under such conditions can productions of aesthetic and technical quality evolve. Neither this type of dancing nor skating can be ground out six nights a week, eight months a year. Actual dance productions can be adapted. In the most traditional sense, it is possible to produce something similar to "The Sleeping Beauty" on ice. (This has been done but only in a very commercial manner.)

Even more exciting is the thought of doing works comparable to those choreographed by dancing's Alvin Ailey, Gerald Arpino, George Balanchine or Jerome Robbins. The ideas of Robbins' "Dances

continued on page 44

Curry on Ice—



John Curry

Photo: Margaret Williamson

A Spicy Mixture

by Howard Bass

SKATING's Correspondent for England

Beside London's suburban banks of the Thames at Richmond, the commuters' rush hours have yet to begin when a national champion begins his daily training on an already crowded rink. "Almost all my free skating has to be done in public sessions because ice is so hard to get," he comments ruefully.

John Anthony Curry, the best free skater Britain has produced, is probably also the most reticent. Indeed, it takes time to get to know John—quiet and retiring, but with a sincere and friendly disposition.

A dedicated perfectionist at heart, John respects skating as an art and derives more satisfaction from his own technical advancement than from titles or trophies. The latter are incidental to his success, no doubt encouraging, but not so important as his personal improvement. His persevering coach, Alison Smith, shares much of this outlook, and the rapport between them has been a major factor in a story of quietly enjoyed progress.

A calm temperament is usually associated with the best exponents of compulsory figures, which require so much patience and concentration. It is thus not surprising that John traces accurate figures in impeccable fashion. But there is no outward suggestion of the fiery spirit of daring usually possessed by a great jumper, which undoubtedly he is, as evi-

denced by his high, so well controlled triple loop jump and immaculate triple Salchow. This man is a true all-rounder, equally at home in both phases of the sport.

Born in Birmingham on September 9, 1949, John displayed great potential when becoming British junior champion at Altrincham in April, 1967. His rare natural style and sense of positioning were self-evident, and he quickly adapted to more difficult tracings when taking fourth place in the national senior event seven months later. From then on, the words "Curry" and "stylish" became synonymous. His elegant precision of hand, arm and free leg movements were then, as now, exceptional.

After two years as runner-up to Haig Oundjian, John toppled the defending national champion in December, 1970, by a 4-3 judges' decision, a fair reflection of how little there was to choose between the London rivals.

John made his international debut in the 1970 Europeans in Leningrad, USSR, finishing 12th. The season after, at Zurich, Switzerland, he climbed four places after the figures to place seventh overall. In the Worlds which followed at Lyon, France, "13" was not exactly his lucky number. He finished in that position in both figures and free, but one of those score-calculating quirks placed him finally 14th.

Haig turned the tables on the domestic front by regaining the British title in December, 1971, with another 4-3 verdict,

continued on page 46

Fall Meeting

Roy Winder, Chairman of the Amateur Status Committee, announced that Clark B. Harding of Pittsfield, Mass., and Paul R. Desloover of Seattle, Wash., have been reinstated as Permanently Restricted Amateurs.

General Decisions

The Executive Committee approved a statement of policy for cooperation with the ISIA, subject to the approval of a like statement by the ISIA.

Also approved was the concept of a Program Aids Series to further implement the services provided by the USFSA for use in beginning skating programs. The series will be organized by the Program Development Committee.

Amendments were approved to GR 3.01(d), increasing the mileage allowance to 12¢, and to GR 3.02, increasing the daily expense allowance to \$30, subject to further review at the 1974 Executive Committee Meeting.

1974 Competition Officials

The following officials have been selected to serve at the 1974 National Championships: **Referee**—Charles U. Foster, Boston, Mass.; **Assistant Referees**—Hugh C. Graham, Jr., M.D., Tulsa, Okla.; and Robert T. McLeod, Norwalk, Calif.; **Dance Referee**—Benjamin T. Wright, Belmont, Mass.; **Chief Accountant**—Charles A. DeMore, Cleveland, Ohio; **Assistant Accountants**—Merton R. Gundry, Pittsford, N.Y., and Athene Burke, Jamaica Plain, Mass.; **Judges**—*Eastern*—E. Newbold Black, IV, New York, N.Y.; Mrs. John W. Gruber, Wyomissing, Pa.; Mrs. John G. Horsman, Buck Hill Falls, Pa.; Jerome Ross, New York, N.Y.; Mrs. Lloyd B. Sanderson, Lake Placid, N.Y.; F.

by Virginia K. Burnham
USFSA Business Manager

The 1973 Fall Meeting of the USFSA Executive Committee was held October 12-14 at the O'Hare Inn in Des Plaines, Illinois. President Benjamin T. Wright first introduced the following new members of the Executive Committee: Gerald G. Gearheart, Framingham, Mass.; Dr. Edward A. Glenn, Rockford, Ill.; and Mrs. Harry W. Meiss, Cincinnati, Ohio.

Memorial Resolution

A Memorial Resolution was adopted by the Committee for Abbot P. Mills, who formerly served the USFSA as Vice-President, Chairman of the Eastern, Finance and Summer Skating Committees and as a member of the Executive Committee.

Report

Ritter Shumway, Rochester, N.Y.; Mrs. George H. Ferguson, North Providence, R.I.; Mrs. Betsy N. Talbot, Eastham, Mass.; Mrs. Mary Louise Wright, Belmont, Mass.; *Midwestern*—Dr. Gordon C. Brown, Ann Arbor, Mich.; Mrs. James S. Lincoln, Jr., Minneapolis, Minn.; Mrs. Harry W. Meiss, Cincinnati, Ohio; J. Barlow Nelson, Tulsa, Okla.; Mrs. Jane V. Sullivan, Aspen, Colo.; *Pacific Coast*—Mrs. Winston F. Coy, Lakebay, Wash.; Mrs. Henrietta M. Nelson, Los Angeles, Calif.; Mrs. John R. Shoemaker, San Francisco, Calif.; Mrs. Betty Sonnhalter, Seal Beach, Calif.; and Mrs. Ida S. Tateoka, Riverton, Utah.

Judges named by the Selections Committee for the 1974 World Championships in Munich, West Germany, are: **Men & Pairs**—Charles U. Foster, Boston, Mass.; **Ladies**—Mrs. Yvonne S. McGowan, Colorado Springs, Colo.; **Dance**—Norman E. Fuller, Chino, Calif.

Judging Appointments

Mrs. Margaret H. Freepartner of San Diego, Calif., was nominated to the ISU for appointment as an International Dance Judge.

The Executive Committee made the following appointments: **National Judge**—Mrs. Janet G. Griffiths, St. Paul, Minn.; **Gold Test Judge**—Mrs. Ferne M. Bearse, San Francisco, Calif.; Mrs. Joyce Butchart, Seattle, Wash.; Mrs. Susan A. Johnson, Atlanta, Ga.; Mrs. Walter H. Lupke, Jr., Fort Wayne, Ind.; and Mrs. John W.W. Wood, Chadds Ford, Pa.; **Gold Dance Test Judge**—Mrs. Ferne M. Bearse, San

Francisco, Calif., and Matthew H. Zats, St. Paul, Minn.

In other action, the Executive Committee approved the continuing donation to the USFSA Memorial Fund of an amount sufficient to make available to each competitor in the 1974 National Championships the sum of \$150, to assist in defraying travel, training and living expenses. The Executive Committee also authorized the use of computer processing of the results at the National, two Sectional and one Regional Championships this season.

New Trophies

The following new trophies were accepted: 1) the Henry R. Heebner Memorial Trophy for Novice Ladies in the South Atlantic Championships, presented by the Philadelphia SC & HS, and 2) Trophies for Gold Dance in the Eastern Great Lakes Championships, presented by the Plaza FSC.

The International Holiday on Ice Company of Minneapolis was selected to act as promoter of the 1975 ISU Exhibition Tour, which will be held in the United States and Canada.

Future Meetings

The invitation of the Washington FSC to serve as host club of the 1976 USFSA Governing Council Meeting was accepted. The 1974 Annual Meeting of the USFSA Executive Committee will be held October 11-13 at the O'Hare Inn, Des Plaines, Illinois.

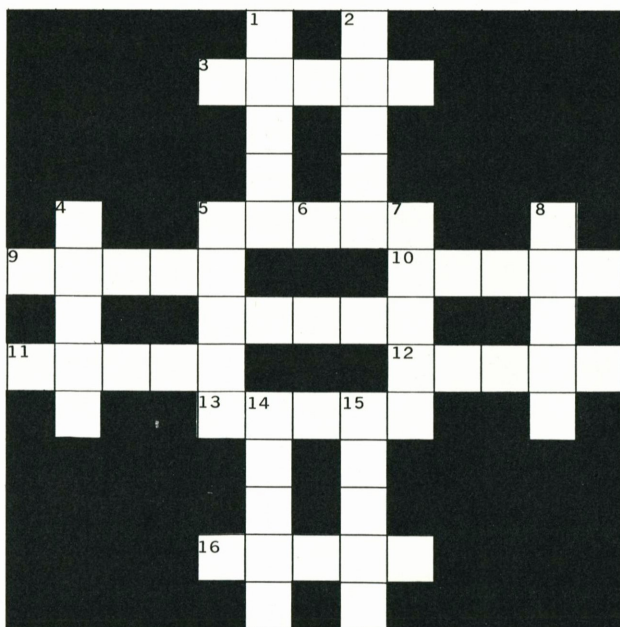
Elected to the Nominating Committee for 1973-74 were: **Eastern Section**—F. Ritter Shumway, Rochester, N.Y.; **Midwestern Section**—Spencer E. Cram, Hendersonville, N.C.; **Pacific Coast Section**—John R. Shoemaker, San Francisco, Calif. These members will serve with the three Vice-Presidents, Brooks Stewart, Hugh C. Graham, Jr., M.D., and Robert T. McLeod. President Wright appointed Mr. Cram as Chairman of the committee.

At the dinner following adjournment of the Executive Committee Meeting, those in attendance were honored by the presence of Mrs. T.D. Richardson, widow of the late Capt. T.D. Richardson, noted British figure skating authority. O

Crosswords over

by Henry Harlan

For symmetry and exclusive use of figure skating terminology, these crossword puzzles could claim the Gold in any competition. Stumped on a clue? Puzzle creator Henry Harlan of the Free State FSC suggests you check past issues of SKATING or the list of National Champions in the USFSA Rulebook. See page 48 for solutions.



ACROSS

3. Arabesque spin
5. Bruce & Evelyn Chandler _____
9. Miss Henie
10. Bend both _____ before striking onto an edge.
11. Plastic "ice"
12. Skating turn
13. Free _____ is free skating.
16. Position of free leg in loop jump

DOWN

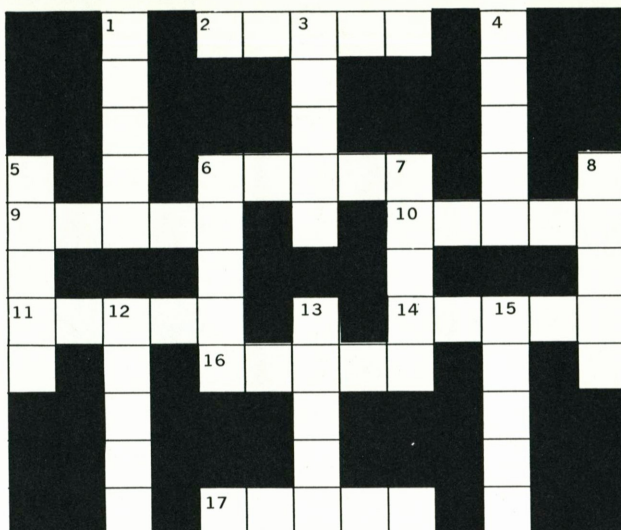
1. Silver _____ (ice dance)
2. Sonja _____
4. Paso _____
5. 5.4, 5.6, 5.7, etc.
6. Miss Fleming
7. Blade & Boot
8. Karol & _____ Kennedy
14. Spin
15. A good skater _____ into his circle.

ACROSS

2. To circle around a toe pick
6. Mr. Richard
9. _____ & Peter Kennedy
10. Inside (edges)
11. Miss Schuba
14. Miss Magnussen
16. LFO, RBI, LBO, etc.
17. Silver dance

DOWN

1. Outside (edges)
3. Louise _____ (1969 U.S. Junior Lady Champion)
4. Mr. Lee
5. To glide on ice
6. Mr. Haupt
7. Ice arenas
8. Miss Rodnina
12. Host for 1956 Winter Olympics
13. Home of the Weber FSC, Utah
15. Mr. Turner

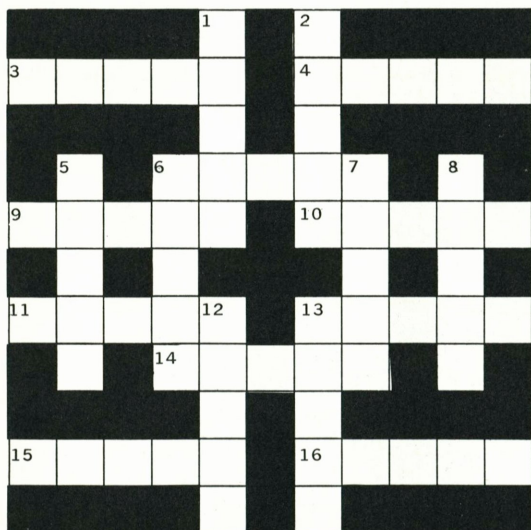


ACROSS

3. Skate runner
4. The smallest figures
6. _____ Alan Jenkins
9. Eva Romanova & _____ Roman
10. Barbara Ann _____
11. Waltz (French)
13. Eileen _____ Honnen
14. Valley where 1960 Winter Olympics were held.
15. John _____ Petkevich
16. Tina _____

DOWN

1. Award for skating achievement
2. Pre-Gold dance
5. Host for 1972 Winter Olympics
6. Carol _____ Jenkins
7. Device that fastens blade & boot
8. Fawn jumps
12. The lobes of a figure should be _____
13. Lidwina is the patron _____ of skaters.



KID TALK

Dear Kid Talk,

My name is Kathy David. I'm 11 years old and I live in Modesto, California. I love to ice skate. My goal is the Olympics. I've never been in competition but I plan to soon. I was in an ice show and I liked it a lot. My pro is Sharon.

Yours truly,
Kathy David



"And now for our trained man act."

—Sara Wattles
Kalamazoo FSC



Anne Parker

Hi!

I would like to tell Kid Talk how much I love skating. I have been skating for 10½ months. I spend a great deal of my time on the ice. I would like to say I've worked real hard in my 10½ months of skating. . . So far I've accomplished my Pre Figure, 1st Figure, Pre Dance and also my Bronze Dances. And also on August 4th and 5th I was in my second competition, and I placed 1st [*Columbus Free Skating Competition, Preliminary Girls 10 years & under*]. My pro Tom Caribardi said that we had four National Judges and one World Judge, and all five judges gave me all ones. I hope to keep up my hard work. My pro has really been good to me. He gives me a lot of time on his own. I know if Kid Talk could put this picture in SKATING it would make him really happy.

Thank you,
Anne Parker
Wyandotte Recreation FSC

Renee Pizer, Newbridge Road Park FSC, sent in this skating word game. Each phrase on the left is a clue to the word in dashes below. Each dash equals one letter of the answer. Look for the answers at the bottom of the page.

1. Ice compass

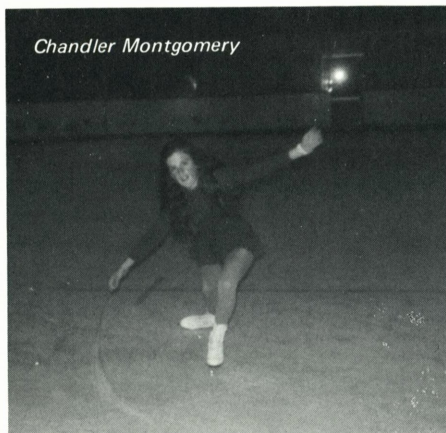
2. What to do on patch

3. Record to skate to

4. What you need to skate

5. Parts of skate

_____ and _____



Chandler Montgomery

Dear Kid Talk,

My name is Chandler Montgomery. I'm 12 years old. I've been skating 1½ years. I skate 1-2 hours a day on school days, in summer 3-4 hours. I have a similar pairs partner named Leslie Sillamen. We both belong to Charter Oak FSC. Our pro is Mrs. Arendt. We won 3rd in a competition at our club. Next year we go in singles.

Word Game Answers: 1) scribe 2) figures (3) program 4) ice 5) boot and blade

Hi!

My name is Shannon Fry. I am 11 years old. I really like to skate and I enjoy the magazine. It encourages me.

Well Bye!

Shannon Fry

Burien SC

P.S. Hope you like my picture.



Smile When You Skate

KIDS OF ALL AGES

Send in your letters, black and white photos and drawings to Kid Talk, c/o SKATING, 178 Tremont St., Boston, Mass. 02111. Be sure to include your name and club. If you would like your pictures returned, just let us know.

For Fun, Funds & the Future

by Theodore G. Clarke

A Basic Tests Program can and should be an important adjunct to every club's program. It is a means of involving club members in your club's activities, providing income that can lower their own costs, and bringing ice skating enjoyment and proficiency to hundreds of young people, some of whom will themselves become club members.

Our Basic Tests Program at the Silver Blades SC of Cohasset is run entirely by club members. There are no professionals involved. Amateurs administer it, teach the classes and do the judging. We've found that we have members who are knowledgeable, adept at teaching and who like to work with children. Your club has, too. The most satisfying aspect is the progress that we see our students making by year's end.

Before the season starts, a seminar is held at which we view and discuss the "Basic Test Instructional Film" which the USFSA rents, decide on makeup of classes, format and the like, and go over teaching points and methods. During the year other meetings are useful to share ideas, iron out problems and enhance our methods of operation. Club members also receive a newsletter as a means of interim communication.

We run a one-hour Saturday morning program from September to May at our home rink. Students pay a registration

fee of \$3 and are then charged \$1 each time they come thereafter. Good attendance is encouraged but not compulsory. (Attendance is kept weekly and postcard reminders are sent to those who are not regular.) We do have a fluctuation but believe that the low cost encourages new people to give our program a try; for most of the year we have between 150-220 skaters on the ice at a time. We also run a second program at another rink.

The format of the one-hour session is generally 10 minutes of warm-up skating (also gives late arrivals a chance to get their skates on), 20 minutes of teaching, a five-minute general skating break, 20 minutes more of teaching and five minutes of skating as a windup. This seems to work well in terms of attention spans and maintaining enthusiasm.

We have 12 groups of figure skating classes arranged mostly by proficiency and age. Some students with exceptional ability are moved ahead, but in many cases the rapport between teacher and students suggest leaving the situation intact. In a case where students are ready for free style or dance optional tests and the teacher is not accomplished in one area or the other, we switch classes.

A novelty of our situation is a hockey skills group run by a father of one of our figure skaters with three other men. He has devised a test system with eight badges which will be designed this year

continued on page 45

calendar

DECEMBER

- 11/29- Southwest Pacific Championships,
12/2, Arctic Blades FSC, Paramount,
6- 9 Calif.
11/30- New England Championships,
12/2 North Shore SC, Danvers, Mass.
4- 5 British Figure Skating Championships,
Richmond, England.
5- 8 Central Pacific Championships,
St. Moritz ISC, Berkeley, Calif.
5- 8 Southwestern Championships,
Arapahoe ISC, Littleton, Colo.
5- 8 Eastern Great Lakes Championships,
Troy SC, Ohio
6- 8 North Atlantic Championships,
Amherst SC, Williamsville, N.Y.
9-14 Moscow International Competition,
Moscow, USSR
12-15 Upper Great Lakes Championships,
Wagon Wheel FSC, Rockton, Ill.

JANUARY

- 9-12 Eastern Championships, Hayden
Recreation Centre FSC, Lexington,
Mass.
10-12 Midwestern Championships, Euclid
Blade & Edge Club, Euclid,
Ohio
10-12 Pacific Coast Championships, Portland
ISC, Ore.
17 New England Inter-Club Dance
Competition, Cohasset Winter Gardens,
Cohasset, Mass.
18-20 BSA Explorer Olympics, Lake
Placid, N.Y.
23-27 Canadian Figure Skating Championships,
Moncton, N.B.
29- European Figure Skating Championships,
Zagreb, Yugoslavia
2/2

FEBRUARY

- 6- 9 United States Figure Skating
Championships, Providence FSC,
R.I.

MARCH

- 5- 9 World Figure Skating Championships,
Munich, West Germany
19 New England Inter-Club Dance
Competition, Providence FSC, R.I.
28-30 Lake Erie Invitational Championships,
Plaza FSC, Northfield Plaza Ice Rink,
Cleveland, Ohio
30-31 Tri-State Free Style Competition,
Greater Milwaukee FSC, Wilson Park
Recreation Center, Milwaukee, Wis.

official notes

The following corrections and additions to the 1974-75 USFSA Rulebook have been issued:

● CR 23.041—The Pairs Short Program Group A, element D (solo spin) is the *change sit spin*, not the flying change sit spin, as printed. Competitive pair skaters should take special note of this correction since Group A will be skated in all 1974 Regional, Sectional and National Championships, as well as the ISU Championships.

● JR 4.03 in the new Rulebook was not amended to conform with TR 10.09 through an oversight. Notwithstanding its provisions, the terms of TR 10.09 shall govern; namely that there shall be at least two USFSA National Dance or Gold Dance Test Judges and one Silver Dance Test or higher Judge on the panel for the Pre-Gold Dance Test.

● The following USFSA Probationary Clubs were erroneously omitted from the list of Member Clubs in the Rulebook:

Colonial Figure Skating Club, Inc. #E0655,
Nashoba Valley Olympia, Rte. 111, Boxboro, Mass. 01719
Pres., Mrs. Phyllis Gopoian, Davidson Road,
Boxboro, Mass. 01719
Sec., Maureen Martello, 6 Broadview, Acton,
Mass. 01720

New Bedford Skating Club, Inc. #E1546,
Moby Dick Arena, Hathaway Blvd., New Bedford, Mass. 02740
Pres., Mrs. Suzanne S. Morse, P.O. Box P-156,
South Dartmouth, Mass. 02748
Sec., Sally M. Aldrich, 322 Smith Neck Road,
South Dartmouth, Mass. 02748

Shaker Figure Skating Club #M2115, Thornton Park,
20701 Farnsleigh Road, Shaker Heights, Ohio 44122
Pres., Mrs. Edward H. Chester, 15136 Hill Drive,
Russell, Ohio 44072
Sec., Kathryn A. Goepfert, 18530 Winslow Road,
Shaker Hts., Ohio 44122

Stockton Figure Skating Club #P2216, Oak Park Ice
Arena, Oak Park, Stockton, Calif. 95204
Pres., Norman Way, 27 East Ellis, Oak Park,
Stockton, Calif. 95204
Sec., Diane Barkman, 1871 West Alpine Avenue,
Oak Park, Stockton, Calif. 95204

people

BORN

To Mr. & Mrs. Stan Klocki, Los Angeles FSC, a son, Spencer John, on September 28.

ENGAGED

George Van Ashley, II, and Dorian Shields, former competitor and member of Arctic Blades FSC, plan a February 23 wedding.

MARRIED

Hubert Alber and Kristin Fortune, who held the National Gold Dance title (with Dennis Sveum) in 1965 & '66, were married September 4 in Malibu, Calif.

Dick Button and Slavka Kohout have announced their marriage on March 10, 1973, in Austria. Miss Kohout, recognized in recent years as coach to Janet Lynn and Gordie McKellen, was the Midwestern Senior Ladies champion in 1950 & '51. Mr. Button, known to television viewers as the figure skating commentator for ABC's Wide World of Sports, established himself in the skating world as World champion from 1948-52 and Olympic champion in 1948 & 1952.

Pat Holland and Trudy Pawelka, members of Seattle SC, have settled in Victoria, B.C., after their recent wedding.

DIED

Kimberly Diane Kauffman, 13-month-old daughter of Mr. & Mrs. Ronald Kauffman of Portland, Ore., on October 7.

Beulah Sylvester, long-time member of Los Angeles FSC, on September 12.

Melville F. Rogers, 1900-1973

The USFSA shares the sorrow of the Canadian Figure Skating Association upon the death of Melville F. Rogers on September 26. As a former President and judge for the CFSA, Mr. Rogers was actively involved for many years with relations between the two Associations.

Mr. Rogers gained recognition as an outstanding skater in the 1920's, being twice North American champion and many times Canadian champion. He represented Canada in international competition for several years. Mr. Rogers had served as President of the National Sports Advisory Council and was named to the Canadian Amateur Sports Federation Hall of Fame last February.

newsmakers

PROCLAMATION

September 1, 1973

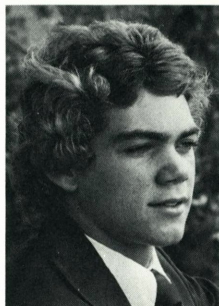


Photo: David Leonardi

Lake Placid, N.Y. Whereas, Gordon McKellen, Jr., of Lake Placid has proven himself to be an exceptional young man through his dedication to the sport of figure skating, and

Whereas, this dedication has made him the

Men's Singles National Figure Skating Champion, the first Lake Placid resident to gain this distinction, now by the powers vested in me,

Be it resolved, That Saturday, September 1, 1973, be set aside by residents and visitors as Gordon McKellen Day when he shall receive tributes for his accomplishments. Let this be an occasion to recognize the role of his parents, Gordon and Leila McKellen, who have made a large contribution to his success.

Robert J. Peacock, Mayor

Honors and awards sometimes come from unlikely sources. After the 1973 Nationals, Judy Genovesi — who won the National Silver Dance title with partner Kent Weigle — was named an honorary member of



Photo: David Leonardi the youth hockey organization in her hometown! The Vernon Youth Hockey Association of Vernon, Connecticut, cited their members' admiration for Judy's accomplishments in figure skating as the reason for selecting her for this honor.

The *MK Skater's Diary* for 1974, compiled by our London correspondent, Howard Bass, is an ideal, pocket-sized daily reminder. It includes a history of the sport, dates of the season's major skating events and other useful reference material. Priced at \$1, the *Diary* is available from leading skate shops or any Mitchel & King agent.

foreign ice

Correspondent Howard Bass sends this report on the International Ice Dance Competition for the Prestige Cutlery Awards, held October 4-5 at Streatham, London, England:

The season's first big international skating competition produced a resounding home victory at Streatham on October 5. It was nearly midnight when ice dancers Hilary Green and Glyn Watts took their rightful place on the Prestige trophy winners' podium, flanked by the second and third placed Russians, Gennedy Karponosov with Natalya Linichuk and Viacheslav Zhigalin with Tatiana Voituik.

The double Soviet challenge was magnificently thwarted. At no time did the British champions look in serious danger and their final free dancing was in a class of its own, for which coach Peri Horne must share due credit.

Spectators thought the Canadians, Louise and Barry Soper, had done well enough to come third. In fact, they were such a close fourth that a re-check considerably delayed official confirmation of the results.

Britons Janet Thompson and Warren Maxwell had a story-book international debut, finishing fifth after late promotion from reserves due to the injury of Janet Sawbridge.

The two U.S. teams, Ann and Harvey Millier and Jane Pankey and Richard Horne, finished ninth and tenth respectively. The Milliers, now coached by Bernard Ford, looked better than last season. Horne and Miss Pankey proved to have made a successful transition from wheels to blades after winning the world roller skating dance title in 1970 and 1971.

RESULTS

1. Hilary Green & Glyn Watts, Great Britain
2. Natalya Linichuk & Gennedy Karponosov, USSR
3. Tatiana Voituik & Viacheslav Zhigalin, USSR
4. Louise & Barry Soper, Canada
5. Janet Thompson & Warren Maxwell, Great Britain
6. Svetlana Alexeyef & Alexander Boitchuk, USSR
7. Rosalind Druce & David Barker, Great Britain
8. Kriszina Regoczy & Andras Sallay, Hungary
9. Ann & Harvey Millier, USA
10. Jane Pankey & Richard Horne, USA
11. Linda Roe & Michael Bradley, Canada
12. Sylvia & Michael Fuchs, BRD
13. Muriel Boucher & Yves Malatier, France



Reverend Kevin Reynolds reports on the activities at winter's end in South Africa:

With financial assistance from the state's Dept. of Sport and Recreation, the South African Ice Skating Association was able to bring to the Republic for three weeks Mrs. Sonia Bianchetti, Chairman of the ISU Technical Committee for figure skating, to conduct judges' courses in several cities prior to the annual National Championships, the singles and pairs sections of which she also refereed.

The 1973 South African Championships took place in Durban on September 28-29. With ever-increasing numbers of entries, this year's Nationals were limited to Primary, Junior and Senior levels in single skating and Junior and Senior levels in pair skating and ice dancing. Beginning next year, the age groups and novice sections, which used to be part of the Nationals, will form separate National Junior Championships.

At the commencement of the Championships, all four National Senior titles were vacant, as the 1972 Champion Lady, Man and Pair did not compete this year, while the Ice Dance title had not been awarded since 1966.

Pamela Smith of Natal, who competed at Oberstdorf and St. Gervais in August, had no difficulty in being placed first in figures, short program and free skating to become the new National Lady Champion.

Although two competitors were entered in the Senior Men's event, Peter Swemmer of Natal withdrew because of an injury a few days before the Championships. Stephen Melville from Northern Transvaal, making his first attempt at the Senior title, was not awarded first place because, although he skated well in the free and short programs, he narrowly missed attaining the required standard in figures. He was, therefore, awarded a second place.

Louise Buttle and Lenel van den Berg from Eastern Province comfortably beat the only other Senior pair of Jane Howard and Peter Swemmer of Natal to become the new Champion Pair. The only couple entered in the Senior Dance section, Elayne Reeve and Jan Kitching of Northern Transvaal, excelled themselves by more than attaining the required standard in both compulsory dances and free dance to be awarded the National Senior title in ice dancing.

Competitors Skating Education Program

by F. Ritter Shumway
Chairman, USFSA Memorial Fund Committee

I am glad to report this month that our legal advisors have cleared the way and our Scholarship Committee is set up to proceed with the new Competitors Skating Education Program. This program will provide initially for scholarships of up to \$1,000 per single skating scholar and up to \$1,500 per pair or dance couple. The Trustees of the Memorial Fund have allocated \$15,000 for these scholarships this season.

The scholarships are to be used for tuition and other direct expenses incurred in connection with education and progress in figure skating and/or ice dancing. They will be paid through, and upon requisition from, the designated officer of the skater's home club or through the nearest Scholarship Committee member in the case of an Individual Member of the USFSA.

Scholarships will be awarded on the basis of financial need and top competitive potential. Accurate data in support of financial need must be shown in the application for a scholarship. Good character and demonstrated good sportsmanship will also be factors in determining an award. Race, color, creed, sex, religion and ethnic background will not be considered at all in the selection of recipients of scholarships.

The program will be administered through the Scholarship Committee of the Memorial Fund Committee. Names of members of the Scholarship Committee, from whom application forms for Competitors Skating Education Scholarships may be obtained, are listed in the 1974-75 Rulebook. Application forms have also been sent to all Club Presidents. All applications must be endorsed by an officer of the skater's home club or by a thoroughly knowledgeable person in the applicant's community in the case of an Individual Member of the USFSA. To be considered for 1973-74, applications must reach the USFSA Central Office in Boston by February 15, 1974. In future years, applications are to be submitted in the late spring so that scholarships can be awarded earlier and the recipients can plan better for the coming skating season.

The continuance and enlargement of the Competitors Skating Education Program in the future will depend entirely upon the size and amount of contributions to the Memorial Fund. It is our hope that this is but a modest beginning of a program that can and must be of great help in developing the best figure skaters in the world. O

laurels

Testing is an important part of a figure skater's progress. The following USFSA sanctioned tests in figure, pair and dance were reported passed. Any errors should be reported to the USFSA, 178 Tremont Street, Boston, Massachusetts 02111.

TESTS PASSED BY USFSA SKATERS

- GOLD FIGURE—** Robert Graham, All Year FSC
John Carlow, Jr., Arctic Blades FSC
Roberta Loughland, Arctic Blades FSC
Shanna Walker, Arctic Blades FSC
Anne Marie Nesto, SC of Boston
Bill Schneider, Denver FSC
Charlene Ward, Hayden Recreation Centre FSC
Marcy Sulenes, Lakewood WC
Joan Feigenbaum, Metropolitan FSC
Susan Rerat, FSC of Minneapolis
Robin Blinder, SC of New York
Wilhelmina Timm, Spokane FSC
Cynthia Tynan, SC of Wilmington
Scott Cramer, Wissahickon SC
- GOLD PAIR—** Randy Gardner, All Year FSC
Tai Babilonia, Los Angeles FSC
- GOLD DANCE—** Jenny Vogel, Ann Arbor FSC
Joy Cushner, Charter Oak FSC
Kent Weigle, Charter Oak FSC
Julie Stark, Pittsburgh FSC
Ann Hanson, SC of Wilmington
- GOLD FREE—** Glenn Paterson, Jr., Arctic Blades FSC
Mark Miller, Baltimore FSC
Curtis Finley, Glacier Falls FSC
Michelle Ford, SC of Phoenix
Karen Raile, Portland ISC

ALBUQUERQUE FSC: Pre—Alanna Timmons, Linda Tabet, Marie Montgomery, Lynette Tischhauser, Marlene Reed, Lori Wilson, Patrick McHargey. 2—Jeanne Diehl. 5—Patricia Van Dersarl, Paula Van Dersarl. Pre D—Donna DeFranco.

ALEXANDRIA BAY FSC: Pre—Debbie Theobald, Heather Quencer, Randy Hewitt. 1—Teri Reff, Diana Hewitt, Helen Irwin. Pre D—Randy Hewitt. Bronze—Teri Reff, Helen Irwin.

ALL YEAR FSC: Pre—Jill Beber, Falonda Teartt, Melissa Preciado, Cecelia Strange, Jessica Ryan, Lisa Greenwood. 1—Deborah Kitashima, Robert Beauchamp, III, Gloria Boothe, Sally Guzman, Lorraine Bochar, Margo West, Debbie Hoffman, Tina Selden, Shawn Edlund, Kathleen Schoen, Sherri Delbert, Lisa Cricks, Brenda Wolf. 2—Kay Peterson, Susan Reed, Linda Haack, Patti Zander, Lawrence Lummis, Brigitte Ostermeier. 3—Karen McMahan, Carrie Rugh, Janice Papota. 4—Garnet Ostermeier. 6—Marianne Blaise, Randy Gardner. 7—Lisa Johnson. Pre D—Lawrence Lummis, Carrie Rugh, James Granger. Bronze—Sharon O'Neil, Lisa Allen.

ARMARILLO FSC: 2—Georgene Jones. Pre D—Jon Jensen.

AMHERST SC: Pre—Carolyn Allen, Sue Stiles, Jane Schifferle, Maria Abeyounis, Amy Vigneron, Nancy Ruslander, Lynn Newiger, Cheryl Lazzaro, Jennifer Sanders, Timothy Cercone, Marjorie Godin, Dagmar Odvarka, Gwen Hall, William Druar, Rebecca Delacruz. 1—David Fedor, Wendy Zacher, Polly Sigrist, Connie Erickson, Martha Buyer, Keith Maurizi, Susan Farrell. 2—Peggy Cullinan, Debora Colt, Nancy Colt, Julie Sitcov, Susan King, Holly Irish, Cindy Goldberg, Cheryl Goldberg. 3—Cristen Childs, Jeffrey Sitcov. 4—Corinne Duroure, Maureen Currie. 5—Darlene Duroure. Pre D—Jonelle O'Meara, Cheryl O'Meara, Elizabeth Blake. Bronze—Susan Fedor, Cheryl Allenbach. Pre-Silver—Patricia Edick. Silver—Barbara Funk.

ANCHORAGE FSC: Pre—Dawn Hopkins.

ANN ARBOR FSC: Pre—Paige Perry, Monica Borcherts, Leslie Butts, Melissa Forstner, Sarah Maugh, Claudia Niemann, Tina Datsko, Rebecca Grambeau, Martha Kennedy, Patty Kennedy, Kathy Kraft, Martha Brougher, Catherine Dahl, Leeann Hawkins, Kathy McAllister, Elizabeth Coldren, Margo Cushing, Mary Pollock. 1—Sara Genova, Valerie Ruschmeyer, Lisa Zili, Janice Reinke, Ann Detar, Maureen Dolan. 2—Susan Brougher, Mary Detar, Patty Hug. 4—Cheryl Balzhiser, Martha Niemann. Pre D—Kathleen Gibson, Debby Willmarth, Sara Genova, Marjorie Lester, Cynthia Cook, Judith Gagalis, Susan Haddad, Angela Jones, Suzanne Poznanski. Bronze—Peter Speers, Darlee Baker, Susan Brougher, Diana Poznanski, William Stebbins, Rhonda Graham, Maureen Dolan. Pre-Silver—Susan Gluck, Linda Forsythe, Kim Leonard. Silver—Nancy Gluck.

ARAPAHOE ISC: Pre—Karin Gillies, Susan Croffoot, Dee Wikstrom, Karen Reinking, Tracy King, Andrea Spieker, Gayle Palmer, Leslie George. 1—Margery Duthie, Mary Gersabeck, Kelli Powers, Kathi Powers. 2—Wendy Sheppard, Laurie Heath, Brad Goar, Karen Bloom, Anna Brettell. 3—Angela Yocum. 5—Michelle Miller. 6—Linda Lewis, Karen Lewis.

ARCTIC BLADES FSC: Pre—Betty Sinow, Deardra Hopkins, Teresa Earlywine, Denise Earlywine, Jennifer Schlichter, Monika Tilney. 1—Melodee Walden, Karen Baier, Barry Hagan, Robin Baier. 2—Donna Dawson, Gina Jacob, Lori Martin, Kye Lean, Barry Hagan, Deanna Stone. 3—Starla Freeman, Vicki Heasley, Deann Tindall. 4—Leslie Barnes, Jeanne Chapman, Karen DeComa, Gail Gilbert, Rachelle Ottley, Julie Reynolds, Rebekah Street, Kathleen Walters. 5—Jeanne Chapman, Joy Jani, Kimberly Krohn, Kathleen Walters. 6—Julia Crawford, Lisa Pezich, Daria Schweitzer, Barbara Smith, Sandi Starbuck, Lenore Carleton. 7—Mary Bryant, Jon Prasniewski, Daria Schweitzer, Barbara Smith, Sandi Starbuck. Bronze—Donna Dawson, Joy Jani, Karen Lapierre, Deann Tindall, Barry Hagan. Silver—Carol Freiseis. Bronze Pair—Mark Rehfield. Silver Pair—Dorian Shields.

ARROWHEAD FSC: Pre—Brenda Crowley, Debbie Williams. 1—Alison Meyer, Molly Bister, Sharon Staley, Erica Mach. 3—Robert Wagenhoffer. 4—Karen Sellick. Bronze Pair—Trudy Bast, Jerry Ruhl.

GARDEN STATE SC OF ASBURY PARK: 1—Carol Bischof. Pre D—Valerie Marshall. Bronze—John Everitt.

ASPEN SC: Pre—Laurie Shuldener. 1—Roslyn Van Horn, Sonja Shechter. 2—Coleen Collins. 3—Sarah Dodge, Coleen Collins. Pre D—Sonja Shechter.

ATLANTA FSC: Pre—Ellen Langford, Megan Rubin, Steffi Shattuck, Nina Swift, Christine Buckner. 1—Joan Hug, Barbara Barrett, Gaye Millner, Valerie Wender, Judith Lynch. 2—Shari Shattuck, Donna Lynch, Lynn Dillow. 3—Marianne Mehre. 4—Dawn Malone, Paula Tate. 5—Julia Adair, Dawn Malone, Patricia Rayle, Paula Tate. Pre D—Marie Ellis, Paula Tate.

ATLANTIC CITY FSC: Pre—Kelly Beckler, Carol Anne Fetter, James Miron. 5—Vicki Off.

THE BALTIMORE FSC: Pre—Susan Kemp, Janet Jones, Kristine Feil, Tracey Tunney, Kim Dellospedale, Karen Dellospedale, Kathy Sause, Lorenz Nowack, Mark Nowack, Kathy Appel, Tracey Smith, Terry Gradi, Michael Glorioso, Judy Owens, Shawn Ryan, Denise Wolfert. 2—Michele Tabilio, Bruno Jerry. 3—Bruno Jerry. 4—Robin Bowers. 6—Christine Shinosky. Pre D—Rachel Tepper, Terry Gradi, Jamie Etheridge, Shawn Ryan, Sharon Seeger. Bronze—Tracey Tunney.

IC OF BALTIMORE: Pre—Amy Scarlett, Gwendolen Smith, Karin McCloskey. 1—Mira Davidovski, Katherine Perkins, Murray Demuth, David Demuth, Anne Albert, Molly Albert. 3—Martha Fitzpatrick. 4—Geraldine Nager, Susan Macnab. 7—Juliet Cook. Pre D—Wendy Owens, Anne Hubbard, Karin McCloskey.

BATH & TENNIS CLUB: 1—Anne Deyoung. 2—Sarah Eddy.

BAY PATH FSC: Pre—Kelli Dugan, Carol Gentili, Debra Zigelbaum, Katie Giatrelis, Margo Shoup. 1—Maureen Garrahan, Stacey Kessel, Amy Keiley. 2—Elizabeth Kelley, Barbara Bell. 4—Grace Jones, Pamela Smith. 6—Paula Ziegler, Edith Keating. Pre D—Amy Keiley. Silver—Paula Ziegler.

BEAR MOUNTAIN FSC: Pre—Donna DeGaetani, Daryl Coppola. Pre D—Naomi Rubin. Bronze—Naomi Rubin.

BEAVER DAM WSC: Pre—Lisa Harrison. 1—Elizabeth Laszlo. Pre D—Edward Keefer, Donald Little. Bronze—Lisa Fletcher, Alicia Matthews. Pre-Silver—John Brinckerhoff, III.

BEMIDJI FSC: Pre—Debbie Hanson, John Parmeter, Joan Lidinsky, Kathleen Will, Lynn Gray, Theresa Welle, Sandra Halmgrimson, Terri Books, Patricia Johnson, Mary Manney, Lori Wackwitz, Diane Brooks, Kim Bahr, Kellii Edgington. 1—Penny Dreyer, Natalie Johnson, Denise Johnson, Teresa Olson, Monica Niskanen. 2—Jessi Sande. Pre D—Michelle Johnson, Denise Johnson, Teresa Olson, Teresa Ashley, Lynn Gray, Jessi Sande, Kathy McClellan, Patti McClellan. Bronze—Pamela Dreyer, Jean McClellan.

BERKSHIRE HILLS FSC: Pre—Kim Hamilton. Pre D—Nancy Graham.

BIRMINGHAM FSC: 1—Mary Brock.

SC OF BOSTON: Pre—Abigail Johnson, Elyra Lee Ward, Devin Mahony, Tracy Palmer, Anne Harvey. 1—Hilary Moher, Melissa Moher, Mary Dunlap, Robin Walther, Trevor Mahony, Mrs. Andrea Lawson, Robert Faulkner, Lise Wilson. 3—Patricia Dunn, Alison Slack, Charles Donovan, Karen Mankowich, Lisa Griffin, Mary Connors. 4—Paula Surette, Diane Runyon. 5—Emily Wendell, Peter Freeman. Pre D—Mary Connors. Silver—Douglas Mankowich. Pre-Gold—Peter Freeman. Silver Pairs—Mary Jo Tracy.

BOULDER FSC: Pre—Jody McCollum, Anne Weatherley, Amy Bilich, Rebecca Gustafson, Allison Beasley, Anne Kinneavy, Cindy Douthett. 1—Jody McCollum, Melanie Julian, Anne Weatherley, Mrs. Susan MacFarlan. 2—Carla Maes, Lynn Cook.

BOWLING GREEN SC: Pre—Mrs. Roselinde Crandall, Debbie Guyer. 1—Marguerite Ellis, Britta Bujak. 5—Scot Tyson. Pre D—Holly Morrison. Bronze—Sue Lord.

BOWLING GREEN UNIVERSITY FSC: 1—David Murray. Pre D—Tod Bartholomew, David Murray.

BRAEMAR-CITY OF LAKES FSC: Pre—Elizabeth Davis, Debra Dolney, Andrea Janesak, Trucy Krenkel, Lauren Swanson, Bonnie Tunheim, Kathryn Varco, Mary Voight, Donna Evert, Leslie Mihalik. 1—Kim Knudson, Tracey Klindworth, Lisa Swanson, Shannon Doyle, Pamela Laudenslager, Jody DKjei. 2—Denise Jarnberg, Susan Held, Jill Getchman, Elizabeth Sherman, Laurie Weikort. 3—Patricia Heimann. 4—Martha Heild. 5—Sandy Schwinkendorf.

BRIDGEPORT SC: Pre—Juanita Hall, Janet Curran, Reva Chevron, Gianine Paoletta, Mary Curran. 1—Mary White. 4—Barbara Manville. 5—Denele Johnston. 7—Michael Giordano. Silver Pair—Leland Meadows, Jr.

BROADMOOR SC: Pre—Carin Corley, Kim Christiansen, Chris Meagher, Joseph Guire, Elizabeth Braddock, Lee Roy Clinton, Annette Gildersleeve, Belinda Birdsell, Cynthia Hanchey, Tamra Nottingham, Marla Fritzen, Amy Kindel, Sue Broman. 1—Charles Jackson, Scott King, Deena Pendleton, Cdr. D.W. Sencenbaugh, Karen Kelley, Sue Broman. 2—Cynthia Nesselhauf, Sheryl Walker, Mike Howard, Sue Broman. 3—Lori Dewender. 4—Bill Sencenbaugh, Louise Sencenbaugh, Janet Green, Lisa Maxson, Pekka Leskinen. 5—Lesli Miles, Lowell Moore, Pam Schullek. 6—Eva Barton-Dobenin. Pre D—Bill Sencenbaugh, Louise Sencenbaugh. Bronze—Angela Kruse, Sharon Meredith. Pre-Silver—Karen Kelley, Pam Howard. Silver Pair—Peter Williams, Julie Williams.

BUFFALO SC: Pre—Gretchen Link, Nancy Zilliox, Alex Kardoulis, Lorinda Laub, Donna Notaro. 2—John Desemone, Rolann Crowe. 4—Jamie Forton, Lawrence Gephardt, Patricia Tighe. 6—Amy Brown, Helen Talamo. Pre D—Karin Cody, Michael McCarroll, Susan Petrella, Norman Robinson, David Roth, Pauline Rowell, Anne Vossler, Stephen Yannes, Rev. Andrew Buechele. Silver—Lawrence Gephardt.

BUFFALO C & SC: 3—Valerie Vance.

CIVIC FSC OF BUFFALO: Pre D—Mary Hartnett.

BURIEN SC: Pre—Lyn Hakala, Terri Pearl, Dana Gilbert, Karen Anderson, Mary Groshong, Annette Atkinson, Anne Bouley. 1—Richard Felix. 2—Elizabeth Aurich, Siri Smedvig. 3—Debbie Brick. 5—Lee Bailor. 6—Thomas Bailor. 7—Nancie Bakken. Pre D—Colleen Parke, Siri Smedvig, Anne Bouley. Bronze—Coral Graham. Silver—Kelley Elgin.

CANTIAGUE FSC: Pre—Ginny Katz, Jodi Gordon, Susan Kornhauser, Debbie Silverman, Susan Glickman, Donna Imbesi, Sandy Joseph, Lisa McCarthy, Laura Reiss. 1—Marcia Epstein, Susan Felder, Hillary Moldow, Ellen Horne, Christina Hoh, Debra Traub. 2—Irene Goldsmith, Lynn Kruse, Lori Rinnaudo, Pamela Suttnerberg, Carolyn Peterson, Donna Peterson, Jane Waldman, Lisa Peritz, Melinda Markland. 3—Valerie Hodgson, Michelle Neuman, Judy Scheinfeld. 4—Randi Neuman, Corinne Raile, Lisa Retzkin. 5—Mary Shea.

CAPE COD SC: 1—Janice O'Donnell.

CAPITAL CITY FSC: Pre—Robbie Kerth, Nancie Androlewicz, Debra Halpenny, Aleta Cahill, Wendy McLeod. 1—Lori Tomasik. 2—Elizabeth McKenney, Beth Way. 4—Cynthia Adams. 7—Tammy Gambill. Bronze—Iiona Oversby.

CAROUSEL FSC: Pre—Robin Falconer, Raelyn Hovig, Catherine Howe, Gabrielle Zimmer, Karen Wildman. 1—Andrea Lindstrom, Cindy Holmes. 2—David Fee, Carrie Studdard. 4—Honey Houston. 7—Dody Askey. Pre D—Robert Smith, Patricia Polich, Marilyn Blair. Bronze—Lauren Zell.

CARRIAGE FSC: Pre—Amy Wurst, Heidianne Hahn. 3—Nancy Hunt.

CHAPARRAL FSC: Pre—Douglas Moore, Tracy Andes, Paul Janosco. 1—Mary Hammond. 2—Joan Penland, Marcia Silva. 3—Tara Hosterman.

CHARTER OAK FSC: Pre—Mary Byrne, Katharine Fleming, Julie Godbout, Mrs. Joseph McCaughtry, Holly Sebrell, William Arendt, Jr., Elizabeth Arendt, Armand Bilodeau, Caroline Hooker. 1—Lea Demarest, Jean Leahy, William Michels. 3—Kathy Grower. 5—Maureen Masley. Pre D—William Boyens, Mary Byrne, Samantha Dolinger, Katharine Fleming, Robin Loomis, Jonathan Michels, Thomas Midney. Bronze—Linda Dvorak, Robert Henstenburg, William Michels, Armand Bilodeau. Silver—Lisa Vaughan. Silver Free—Joy Cushner, Frederick Maynard, III. Bronze Pair—Maureen Masley, Frederick Maynard, III.

CHEVY CHASE CLUB: Pre—Hugh Steers, Amy Harr. 1—Charlotte Worsley.

CHICAGO FSC: Pre—Laura Wellestait, Erin O'Connor, Joseph Hinch. 1—Brian Hess, Stella Sun. 2—David Michalowski. 3—Allison Roberts, Wanda Rotter, Susan Engbrecht. 4—Mary LeBeau. 6—Lisa Horween, Beth Sweiding. Silver—Beth Sweiding, Holly Stoll.

- CHRISTMAS BROOK FSC:** Pre—Robin Nassif, Charlene Homa, Laurie Bishop, John England, Emily Manewitz. Pre D—Charlene Homa, Lawrence Duby. Bronze—Nadine Gagnier. Pre-Silver—Susan Thompson. Silver—Paul Thompson, Larry Russett. Pre-Gold—Nancy Homa.
- FSC OF CINCINNATI:** Pre—Jennifer Montgomery, W. Bradford Davis, Irene Miracle, Nancy Hurley, Sabina Schrotter. 1—Melanie Kuhr, Julie Kress, Jami McFarland, Leslie Nashbauer, Lori Case. 2—James McKenna, Jr., Lori Parker, Allison Janney. Pre D—Fritz Buckles, Melanie Kuhr, Jackie Kutsko, Allison Janney, Irene Miracle. Bronze—Johanna Garrett, Bonnie Foster. Silver—Kenneth Montague.
- SC OF CLARK MEMORIAL:** Pre—Gail Norsky.
- CLEVELAND HEIGHTS SC:** Pre—Kim Jirus.
- CLEVELAND SC:** Pre—Phyllis Evans. 1—Kathy Johnson, Susan Opatrny, Carey Phillips, Kaylie Donahue. 2—Ann Brownell, Susan McInnes, Jean Schaffer, Janice Kaplan, Mary Jo Kaplan. 3—Elizabeth Eells. 5—Martha Alexander. 6—Molly Dowling. Pre D—Beth Edgerton, Alison Alexander, Elizabeth Peay, Lisa Kovacic. Pre-Silver—Mary Alexander. Silver Free—Melissa Martien.
- CLINTON FSC:** Pre—Jamie Stagner, Elizabeth Chapman, Wendy McCarthy, Denise Rockwood, Ellen Friedlander, Catherine Clark, Dean Stuttard, Julie Bohling, Kristin Burns, Linda Malloy, Debra Iles, Carrie Burns, Ann Colado. 1—Elizabeth Brown, Katrina Cresswell, Rebecca Dowsland, Julie Bohling. 2—Donna Lella, Donald Dowsland. 3—Nancy Siegrist. 4—Scott Klein. Pre D—Sandra Shumway, Denise Rockwood, Debra Iles. Bronze—Jennifer Stiner. Pre-Silver—Connie Dowsland.
- SILVER BLADES SC OF COHASSET:** Pre—Suzanne Defeo, Kathleen Bagas. 1—Holly Taylor, Marylou Ugo. 2—Natalie Gray, Ellen Ferriter. 3—Ellen Geminiani, Mary Larson. 5—Kathy Spillane. 6—Sandra Rowe. Pre D—Ellen Geminiani.
- COLONIAL FSC:** 2—Mary Lerner.
- COLONIAL SC:** Pre—Kirsten Thomas, Candy Camm, Dawn Meier, Dana Swartwood, Anne Lawson, Rosalyn Green, Charlene Phillips, Mary Musulin, Nathan Birch. 1—Carole Turzanski, Ann Mulholland. 2—Victoria Aronow, Marilyn Murray, Traci Roadside, Dorothy Butler. 4—Nancy Fillebrown, Richelle Sandmeyer. 5—Jennifer Buzby, Guy Elzey, Jill Davidson, Wendy Schofield. 6—Jeryl Tue, Raymond Belmonte. Pre D—Victoria Aronow, Jennifer Aronow, Candy Camm, Ann Mulholland, Dana Swartwood, Curt Meier, Mary Hovsepian. Bronze—Lynne Freeman, Rosalyn Green.
- COLORADO SC:** Pre—Carolyn Casey. 3—Dawn Seesler. 4—Stephanie Mahler.
- COLUMBIA FSC:** Pre—Denise Hansen. 1—Susan Berglin. Pre D—Helen Delzer, Dale Delzer, Cardy Sullivan.
- COLUMBUS FSC:** Pre—Barbara Corboto, Christine Ganger, Mary Alicen Drozda, Pam Manser, Marcy Custard, Marilyn Cryan, Gwynn Kannapel, Caryl Sellers, Kristine Kazee, Valere Wanke. 1—Carol Bailey, Sara Staehle, Julie Youmans, Kristina Stephan, Debra Barden, Marilyn Cryan. 2—Diane Ouellette, Elizabeth Staehle, Julie Youmans, Lisa Youmans. 3—Ted Masdea. Pre D—Sara Staehle, Lisa Youmans, Pamela Bailey, Debra Barden, Pam Manser. Bronze—Ted Masdea. Pre-Silver—Carol Bailey. Silver—Carolyn Deyo.
- COMMONWEALTH FSC:** Pre—Lee Zeboski, Magdalen Christian, Roberta Stewart. 1—Linda Johnson, Heidi Reynolds, Georgene Zubei, Holli Vara, Amy Rosenstein, Pamela Purcell. 2—Jane Blake, Karen McCabe, Joan Murano. 3—Dawn Carr, Diane Creighton, Deborah Young. 4—Deborah Day, Christine Cummings, Maria Chestnut, Joan Creedon. 5—Lisa Coppola, Deborah Day, GERALYN Saunders, Deborah Creighton. 6—Kingsford Swan. Bronze Pair—Michael Masonis. Silver Pair—Michael Masonis.
- CREVE COEUR FSC:** 1—Joan McKenna. 2—Kristin McKenna. 3—Christie Ernst, Erin Maria McKenna.
- CRYSTAL SPRINGS ISC:** Pre—Alice Mansell, Timothy Davis, Sandra Catalano, Terri Guilliat, Lynn Zender, Kelly Abolt, Pollyanna Sauerbrey, Susan Jackson. 1—Lisa Meneke. 2—Victoria Woodfield. 3—Candy Reid, Scott Prussack. 4—Lisa Rolfe, Shirley Pedersen, Betsy Britton. 5—Teri Markley. 6—Linda Bevier. Pre D—Katie McDonnell, Helen Burke, Richard Burke. Bronze—Candy Reid. Pre-Silver—Elaine Dumas. Silver Pair—Scott Prussack, Tracy Prussack.
- DALLAS FSC:** Pre—Cheryl Sims, Jeanne Sims, Karen Sims, Dorothy Garland, Crispin Jackson, Theana Afendis, Debbie Wolfson, Mrs. Charles Conrad, Jennifer Nejtek, Eileen Baland, Melissa Vinson. 1—Sylvia Gray, Karin Breedlove, Christine Korbuly, Denise Owen. 2—Leigh Kendall, Sharon Fullhart, Susan Feigl. 3—Phyllis Nixon. 7—Rhonda Cannon. Pre D—Edwin Sims, Jeanne Sims, Karen Sims, Vicki Smith, Hank Hutchinson, Nancy Smith, Peaches West, Christine Korbuly, Denise Owen, Jennifer Nejtek. Bronze—Susan Feigl, Karin Breedlove. Pre-Silver—Susan Feigl, Leslie Trammell.
- SC AT DARTMOUTH:** Pre—Heidi Sokol, Susan Klefos, Lori Norman, Kristina Gulick, Heide Page, Colleen McDonnell. 1—Laura MacDonald, Maureen Martin, Anne Williamson. 2—Megan Berthold. 3—Geoffrey McGean, Timothy Berthold. 5—Lucy Wood. Pre D—Laura MacDonald, Anne Williamson.
- DAYTON FSC:** Pre—Lynn Goldman, Lisa Sickenger, Denise Tatone. 1—Pam Materne. Pre D—Lynn Goldman.
- DENVER FSC:** Pre—June Rodriguez, Sandra Arnoneit, Cheryl Martin, Lea Meredith, Sharon Minton, Teri Keller, Laura Sandlin, Ann Abrahamson, Mona Correa, Stephanie Bron, Maria Montoya, Dena Lepewski, Diane Brinkman, Robin Marks, Teresa Catanzaro. 1—Jane Angstead, Nanette Block, Kaye Bache, Julie McCarl, Andrea Paterson, Sharon Komhyr, Peggy Fredericks, Christopher Spieker, Wendy Etter, Maria Zavier, Debbie Griebbling, Christine Martin, Kathy Aranda, Michelle Safran, Lea Meredith, Heather Harvey. 2—Stella Stalbaum, Adrian Stalbaum, Peggy Deems, Linda Munz, Christy Schmertz, Andrea Szantho, Cheryl Rogers. 3—Bernadette Dirk, Terrie White, Gay Willson, Louise Van Sickle. 4—Kathy Fitzpatrick, Chuck Abbott, Monica Xavier, Douglas Swisher, Liane Shoji. 5—Mark Hayes, Teresa Xavier, Liane Shoji, Janet Watson, Christine Kirby. 6—Gina Marrone, Laurie Moore, Janice Villers, David Assafi. 7—Laurie Moore, Kent Schlichtemeier, Jamelae Kyle, Tom Reagan, Julie Cass. Bronze—Andres Estrada.
- DES MOINES FSC:** Pre—Kathy Gorla, Barbara Rawles, Lynn Webb. 1—Sharon Iverson,

Christine Newlin, Dori Braley. Pre D—Christine Newlin. Bronze—Barbara Rawles.

DESERT BLADES FSC: Pre—Peter Vanderhyde. 1—Debra Chaffee.

DETROIT SC: Pre—Lisa Morgan, Christina Folk. 1—Joanna Piligian, Duane Kovach, Michelle Crocker, Amy Schomberger. 2—Sarah Deson, John Hudgins. 3—Kelley Dunn, Cindy Christy. 4—Mitzi Amelon. Pre D—Lisa Morgan. Pre-Silver—Louise Knitter, Patrick McConnell, Angela Rinke. Silver—Jill Kinsley, Cindy Christy.

DULUTH FSC: 4—Sherrie Pagliarini. Pre D—Sarah Alderink, Barbara Palmquist, Danny Monson, Will Swanson. Bronze—Melanie Goldish, Patti Petrich.

EL CAMINO ISC: Pre—Karen Haverty. 1—Kerry McNamara, Laura Arnsbarger, Kimberly Campbell, Michelle Byrne, Kimberlee Cricks, Susan Williams, Barbara Toffolo. 3—Joy Sutter, Carrie Kloor. 4—Kathie Cutts, Lori Mills, James Bellevue, Juli Del Datto. 5—Julianne Macie, Sally Anderson.

WESTMINSTER FSC OF ERIE: Pre—Mary Reinhold, Karen Sheridan, Roberts Schultz, Tina Weaver. 1—Elizabeth Petry, Laura Czulewicz, Kelly Pifer, Denise Slagter. 5—Marie O'Hern. Pre D—Virginia Regelman, Nancy Pehrson, Denise Slagter.

EUCLID BLADE AND EDGE CLUB: Pre—Robert Keyes, Jr., Heidi Malamud, Joann Nekic, David Bleistein, Louise Kogovsek, Pamela Golden, Frank Kogovsek, Jr., Karen Halliday. 1—Julianne Castro, Pammi Phillips, Michelle Nozik. 2—Denise McCartney. 3—Andrea Marshall. 4—Christopher Dole, Kim Marshall. 5—Jeff Marshall. Pre-Gold—Connie Krepelka.

FALMOUTH FSC: Pre—Marijune Miller. 2—Kristin Devlin, Theresa Devlin, Kathy Morrill. 6—Kimberly Fernandes. 7—Debra Fernandes.

FLINT SC: Pre—Diane Simko, Cindy Adams, Kelli Robinson. 1—Laurie Adams. 2—Roderic Helmer, Anita Lehoux. Pre D—Diane Simko, Cindy Adams. Silver—Gregory Helmer.

SC OF FLORIDA: 3—Lori Osborn.

FORESTWOOD FSC: Pre—Linda Maruszán, Sandy Ziedins, Rosemary Ponce, Melissa Spirek, Patricia Barkey, Amy Mehlman, Lyn Milan, Valerie Smolik, Debbie Ocilka, Jaclyn Roth, Mary Roecker. 1—Russell Anderson, Gina Mattei, Alison Rosewicz, Kathy Palo, Teri Lemmeyer. 2—Lisa Andonian, Megan Stoica. 3—Sandy Anderson, Debbie Krych, Lori Burke. 4—Diana Janocha. 5—Jacquelyn Scott.

FORT WAYNE ISC: Pre—Jacqueline Zimmerman, Lynne Petro, Nancy Fink, Veronica Fink, Kristine Kurtz, Susan Falk, Jessica Marcin. 1—Karen Dilling, Mark Spencer, Mary Kleber, Margo Parr. 2—Janet Richardson, Shellene Detwiler, Elaine Williams, Denise Mezzei, Lynn Eberhardt. 3—Bobbi Jean Van Ry. 6—Jill Maier. Pre D—Nancy Stoudt, Karen Dilling, Mark Spencer. Pre-Silver—Peggy Neidhart, Terry Grant, Lyn Eberhardt. Silver—Bobbi Jean Van Ry.

FREE STATE FSC: 2—Alex Feingold, Diane Gaffney. 5—Cynthia Epstein.

ISC OF FRESNO: 2—Debbie Wessies. 3—Ron Doris, Diane Doris, Lori Emerzian, Leslie Simmons. 4—Marc Pietroforte.

GARFIELD HEIGHTS FSC: Pre—Cindy Nichols, Mary Zahurak.

GENESEE FSC: Pre D—Dr. Bruce Brown, Joseph McGrain. Silver—Tony Leone. Pre-Gold—Luci Nowakowski.

GLACIER FALLS FSC: Pre—Janet Silfen, Angelique Gandy, Susan Townsend, Linda Ramirez, Jennifer Wahler, Wendy Jack. 1—Brenda Wood, Kim Galas, Julie Lynn, Cristine Sciarra. 2—Tom Dickson. 4—Lori Kinzy. 6—Rozann Giuffre. 7—Rhonda MacDonald. Pre-Silver—Jan Duncan. Silver—Cindy Solberg. Pre-Gold—Donna Dow.

GLENWOOD FSC: Pre—Aimee Twyman, Dawn Arnashus, Julie Malmen, Monica Kerner, Leona Ellis. 1—Adrienne Agresto, Susan Allison, Jill Wellman, Donna Ungaro, Celeste Alexander, Tammy Goins, Dawn Arnashus. 2—Mark Kwasinski. 3—Christina Miezio, Anna Marie Miezio, Kimberly Stock. 5—Cheryl Sowa. Pre D—Mark Kwasinski, Christine Juris. Silver—Vicki Fisher.

GREAT NECK FSC: Pre—Pamela Mehrberg, Diana Soldo, Lyn Spiro, Ilene Gold, Lisa Shapiro, Karen Leff. 1—Kathy Clark, Robin Braver, Winnie Rogovin. 2—Debbie Simon. 3—Derrell Marsella. 4—Deborah Page. 5—Deborah Page, Risa Schiffman.

GREAT FALLS FSC: Pre—Leora Rein, Renee Peluso, Erik Swenson, Lisa Fisher, Stephanie Powell. 2—Tamera Davis, Kathy Williamson, Debbie Hill. 3—Lori Baszler, Janet Gudatis, Jonathan Wigen. 5—Cheryl Draper. Pre D—Dr. Elmer Davis, Marcy Laffoon. Bronze—Lori Laffoon, Marcy Laffoon, Lora Lewis, Tim Bodner, Kathy Williamson. Silver—Lori Baszler, Anthony Kudrna, Jeffrey Wigen.

GREENWICH SC: Pre D—Joan Hirschorn, Elizabeth Graf, Diana Badger.

GREENSBORO ISC: Pre—Barbara Bogaty, Lynn Hamilton. 2—Susan Bacon, Sandra Geddings.

GREENVILLE FSC: Pre—Linda Hereman.

HAMDEN FSA: Pre—Barbara Veneris, Betsy Veneris. 1—Cheryl Pecoraro. 3—Pamela Gannon, Judith Sylvester. 4—Mary Esposito. Pre D—Lynn Gannon, Lydia Jacobsen, Barbara Veneris, Betsy Veneris. Bronze—Julia Smernoff, Sandra Greenstein. Pre-Silver—George Arnaoutis.

SC OF HARTFORD: Pre—Julie Raymond, Susan William, Jeanne Pickys, Suzanne Teselle, Debra Botticello. 1—Kathy Green, Lynda Mawhinney, Mark Szamrej. 2—Luann Mawhinney, Elise McGurkin, Jane Monsarrat. Pre D—Randy Harris, Marie Testa, Susan William, Elaine Fox, Nancy Clark. Bronze—Bryan Gudrian, Jane Johnson, Nancy Miller, Richard Simler, Diane DeCristo, Laura Beardsley, Betsy Gummo, Susan Gardner. Pre-Silver—Sharon Green, Lynda Mawhinney. Silver—Elise McGurkin. Silver Free—Jennifer Young.

HAYDEN RECREATION CENTRE FSC: Pre—Catherine White, Patti White, Joslyn Becker, Wendy Siegel, Faye Lieb, Sandra Harvey, Lisa Doane, Linda Glickman, Diana Cooper, Janet Parker, Julie Parker, Kendrick Justice, Robin Williams, Cassandra Enzmann, Kathleen Mahoney, Karen Fitzsimmons, Marcia Kaplan, Lisette Wong, Susannah Hodgkins, Nancy Haynes, Ari Lieb, James Ayers, Nina Fraenkel, Susan Hastings, Karen Macalka, Elaine Ryan, Marianne Abate, Eileen Reynolds, Judith McKenna, Gregory Scheidemantel, Lisa McLaughlin, Carol Ravanis, Susan Reynolds, Anne Hastings, Vivian Ellis, Laurie Parker, Leslie Glass, Ann Bartolotti, Laurie Cuccinello, Lynda Caines, Georgia Wood. 1—Geoffrey Thomas, Judith Henderson, Marilyn Smith, Susan Rigby, Mary Tiampo, Gayana Zartarian, Karen Werlin, Doreen Chapman, Michelle Segal, Miriam

Ward, Emily Rockwood, Gail Harvey, Susan Eby, Susan Hamburger, John Nash. 2—Cheryl Cuccinello, Cara Sussman, Bonnie Barrett, Carol Miller, Michelle Euart, Bernard Bruce, Jessica Kravett. 3—Laura Kalb, Carolyn King, Michelle Wong, Dianne Russell. 4—Suzanne Allen, Marla Ernst, Kerry Brown, Judith Rigby, Jeanne Crowley, Richard Rigby, Rebecca Hibbard, Deborah Rhodes, Linda Wheatley. 5—Sheryl Franks. 6—Deborah Cotty. 7—Pamela Cogan. Pre D—Geoffrey Thomas, Sybille Volz, Karen Cowperthwaite, Noelle Colbert, Ari Lieb, Susan Drouilhet, Astrid Johannessen, Anne Sinek. Bronze—Karen Werlin, Helen Ferranti, Mary Rockwood. Pre-Silver—Michelle Euart, Jeanne Brechnick.

HERSHEY FSC: Pre—Kathryn Brown, Jane Short, James Luck, Carolyn Porr, Donna Pritz, Sharon Rine, Christine Bevrey, Kristi Burgess, Denise Wine. 1—Marie Resanovich, Cindy Stripe. 2—Debra Keller, Jeffrey Nolt, Bill Knox. 3—Cynthia Duquette. 4—Julia Hoover. 6—Bruce Kirman. Pre D—Cynthia Cravener.

HICKORY HILLS FSC: 2—Wendy Williams. Bronze—Kim Reale, Wendy Williams.

HOUSTON FSC: Pre—Kathleen Ruwaldt. 1—Marsha Clayton. 2—Terri Worsham. Bronze—Brenda Harvey.

HUNTSVILLE FSC: Pre—Sherry Zmudzinski.

HYLAND HILLS FSC: Pre—Sue Lubker. 1—Aleta Haas, Ruth Langlee, Wayne Terrell, Charles Zagar. 2—Elizabeth Cobb.

ICELAND FSC: Pre—Judee Brucks, Terri Taffinder, Lisa Wyatt, Cynthia Windham, Julia Wyatt, Cathy Jamail, Karen Stang, Holly Micklewright. 1—Tammy Duffin, Donna McBrien, Lydia Perez, Rhonda Prince, Stephanie Steele, Terri Taffinder, Kelley Thompson, Toni Thompson. 2—Paula Jamail, Kelley Thompson, Toni Thompson. 3—Paula Jamail. Pre D—Elisabeth Allen, Joyce Godsey, Carl Godsey, Mickey Dotson, Pat Keegan, Craig Johnson. Pre-Silver—Philip Snider.

ILLINI FSC: Pre—Paul Klock.

INDIVIDUAL MEMBERS: Pre—Laura Lansinger, Marie Driscoll, J. Scott Driscoll, Christyne Cheney, Laurie Edlar, Anne Mavrides, Kenmarie Marryshow, Karie Feingold, Ann Eicherly, Sharon Irving, Ann Marie Behen, Cynthia Fowler, Amy Gassin, Patricia Shanley, Christine Paterson, Sue Goldstein, Michael Fowler, Beth Goldstein, Diane Lund, Rosemary Abruzzese, Leslie Finn, Lynda Ciolo, Edward Flournoy, Vicki Richman, Shannon Friedman, Sarah Wilson, Theresa Romano, Patti Rundlett, Cheryl Baylor, Cynthia Guest, Laura Quinn, Vicki Bonomo, Dawn DeAngelo, Denise Carr, Roger Schell, Cathy Popkin, Sherry Bogarde, Laura Wert, Cynthia Anderson, Cynthia Mulholland, Paula Ritchie, Gloria Niecestro, Susan Garrett, Diane McClintic, Jill Lambert, Kim Astrander, Alison Arnold, Jennifer Peters, Karen Boitnott, Vicki Foster, Toni-Jo Pescosolido, John Sadowski, John Campbell, Jr., Kate Caldwell, Elizabeth Pratt, Erik Ullmark, Angela Heath, Judith Naughton, Gaie Allemann, Margaret Meharg, Jonny Harris, Robin O'Keefe, Cindy Gilman, Susan Mills, Karen Prendiville, Margaret Prager, Julie Michelle Moss, Patty Hagen, Jeanine Spina, Rosanna Tovi, Bennett Shaffer, Noel Dent, Ann Eakins, Lisa Denaro, Paula Fontenot, Kendra Gleeson, Melinda Farley, Kathy O'Connell, Anna Saccone, Debra Perham, Debbie Hadley, Valencia Cousineau, William Hawkins, Julie Quinn, Toby Richman, Jane Wertz, Caralyn Meck, Beth Dembitzer, Renee Christopher, Kelly Desantis, Laurie Skeinkopf, Ruthanna Freidenbloom, Nancy Mumma, Kathleen Downing, Lisa Neukam, James Kelley, Sylvia Kodsí, Mary Tenney, Jean Daley, Laurel Trela, Belinda Huffaker. 1—Donna Henderson, Lisa Schleifer, Barbara Klingsberg, Gretchen Nostrom, Deanna Dinu, Heather Valentine, Susan Morris, Susan Bull, Paula Parece, Amy Yellen, Jeanette Halbert, Sarah Prager, Monica Meyer, Barbara Boswell, Jane Smolsky, Colleen Kirwan, Judith Hammond, Rhea Gallagher, Nancy O'Neill, Diane Dunaway, Paul Johnson, Sharon Irving, Juliet Sincoff, Amy Sherman, Julie Jones, Edward Flournoy, Susan Murawski, Melanie Keates, Janice McCann, Leslie Endlar, Colleen McGuire, Denise Spurk, Deborah Romano, Elizabeth Raisch, Cynthia Anderson, Carol Wilshire. 2—Anne Johnson, Barbara Spieller, Debra Johnson, Laura Lansinger, Kyle Simich. 3—Barbara Maltby. 5—Grushenka Wolfgang. 7—Debra Beardsley. Pre D—George Opp, Deanna Dinu, Marie Mazur, Kyle Simich, Peter Sasmore, Gilberte Sobel, Susan Patterson, Deborah Flood, Susan Murawski, Jeffrey Higgins, Theresa Romano, John Cook, Dawn DeAngelo, Mary Popkin, Cathy Popkin, Melanie Tomich, Jill Milliner, Lee Comfry, Patty Hagen, Elisabeth Roberts. Bronze—Patty Stokowski, Barbara Goodrich, Daniel Connors, Susan Colburn, Charyl Bradford, Lauren Bradford, James Halbert, Judith Jordan, Jay Spitzen, Gloria Speck, Jeffrey Higgins, Mark Server. Pre-Silver—Nancy Berghoff, Marcella Shramek, Laura Lansinger. Bronze Pair—Ken Shook, Laura Beardsley.

ISC OF INDIANAPOLIS: Pre—Marty Telfer, Julie Browning, Mary Diana, Jim Ruddell, Brent McClellan, Kimberly McClellan, Kimberly Fowler. 1—Dianne Phillips, Jennifer Browning, Brad Lewis, Bari Lewis, Jackie Brammer, Victor Grantham, Brent McClellan, Kimberly McClellan. 2—Mark Rowland, Jeff Watt, Terri Thompson. 3—Berylinda Barnes, Terri Thompson. Pre D—Anne Kenny, Priscilla Ruddell. Bronze—Bonnie Brammer, Bari Lewis. Pre-Silver—Terri Thompson.

WC OF INDIANAPOLIS: Bronze—Lisa Levin.

JACKSON FSC: Pre—Terri Rockwell, Julie Jensen.

JOHNSTOWN FSC: Pre—Holly Hall, Wendy Espey, Patricia Suppes, Alena Englehart, Cathy Glock. 1—Lisa Cwik. Pre D—Heidi Auvdel, Alena Englehart, Lauria Lydic, Cathy Glock.

SILVER BLADES FSC OF GREATER KANSAS CITY: Pre—Shelly Mengwasser, Christine Cramer, Cathy Garst, Nanette McCowen, Christine Stevens, Donna Pierce, Marty Mitchell. 1—Barbara Scott, Jolene Johnson, Karen Buckstead, Christian Roth, Kristin Buckstead. 2—Sandy Richard, Carol Hoffman, Alice Ruth. 3—Cathy Booker, Dana Paul, Wendy Strauss. 4—Tamara Arnoldy, Michelle Johnson, Judy Stauffer. 5—Dana Gillespie, Carol Sagehorn. 6—Jamie Shields. Pre D—David Sinclair.

KENAWAN SC: Pre—Donald Baltus, Penny Joslin. Pre D—Abby Lesser. Bronze—Laurilee Vizzi. Silver—Debbie Patrick.

LAKE REGION SC: Pre—Lynn Elliott. 1—Karyn Geary. Bronze—Karyn Geary.

SC OF LAKE PLACID: Pre—Tiffani Healey. 2—Jeffrey LaBrake, Ruth Devitt, Linda Warner.

- 3—Billie Jo Hardy, Kami Healey. 5—Christel Holderied. 6—Pamela Wylie. Pre D—Karen Cogan, James Cogan, Lori Hess, Donna Wilford. Bronze Pairs—Christel Holderied.
- LAKEWOOD WC:** Pre—Leslie Pim, Erin Names, Elizabeth Names, Darlene Ferris, Jenny Hodge, Susan Bowles, Sandra Schlotzhauer, Patricia Bowles, Holly Louderback. 2—Kelly Yoshida, Helen Mims. 3—Philip Carman, Lisa Church, Kristina Falcioni, Sandra Deatherage, Staci Loop, Eddie Bullatt, Danette Williams, Natalie Flake. 4—Kim Wieburg, Kristina Falcioni, Dana Olson, Eddie Bullatt. 6—Heidi Broback. 7—Colleen Clark, Heidi Broback. Pre D—Leslie Pim, Leslie Hrabetin, Laurel Hrabetin, Kelli Caughlan, Daniel Rock, Elizabeth Names, Cory Mims, Tammy Cook, Sean Hickey, David Pim. Pre-Silver—Kelly Yoshida, Kristina Falcioni.
- LANSING SC:** Pre—Jan Leppke. 1—Karen Robinson, Christine Arnold, Jayme Phelps, Linda Holland, Christine Bullock. 2—Kathryn King, Kathy Powell. 3—Kandie Fishe, Teresa Beaman. Pre D—Janet Wade, Denise Cain, Christine Bullock, Shelly Kruger. Bronze—William Suggs, Martha Kruger, Catherine Myers, Kathy Swick, Lisa Miller, Denise Cain, Kandie Fishe. Pre-Silver—Christopher Bushell, Marc Galonsky, Kathy Swick.
- LAS VEGAS FSC:** 2—Jamie Dick, Kathie Jones. 3—Lori Palmer.
- LAURELTON PINES SC:** Pre—Kerri O'Connor, Diane Meickle, Ginger Seaman. 1—Wendy Levy. 2—Kathleen Stankiewicz. Pre D—Laura Schaub, Laurie Patterson.
- LILAC CITY FSC:** Pre—Kimberly Bakke, Tammy Stella, Stephanie King, Lorean McDowell, Laurie Salyards, Susan Seipp, Cathye Cook, Tonia Bendickson, Christy Parker, Suzanne Liddicoat, Sheryl Bolen, Rebecca Geddes, Kris Riggs, Cara Gill, Carol Griffith, Mary Scarpelli, Bobbi Bockheim. 1—Jeralyn Oien, Marla McKinlay, Dori Williams, Missy Elixman, Suzy Schulte, Stephanie King, Gayle Ewing, Julie Gibson. 2—Lori Martino, Kerri Sullivan, Cindy Rippee, Heidi Harbert, Kristi Wendland, Sherri Corkle, Tina Novelli. 3—Dawn Lemon, Vicki Lister, Ann Marie Cipolla, Theresa Mengert, Randy Clark. 7—Jan Boberg, Mary Mancheni, Pamela McKenney, Jodi Miner. Pre D—Dori Williams, Mike Krotofil, Sally Watson. Bronze—Heidi Harbert, Gayle Ewing.
- LINCOLN CENTER FSC:** Pre—Julie Sharp, Beth Mitchell. 1—Susan Sharp. Bronze—Andrew Simms. Silver—Kelly Morris.
- LITTLE SUN VALLEY SC:** Pre—Linda Strempek, Theresa Strempek, Christine DeCarlo, Diana Backlund, Wilhelmina Backlund, Michael Manicki. 1—Judy Allen. 2—Karen Kaczowka. Pre D—Diana Backlund, Christine Jordan, Maudine Germain. Pre-Silver—Karen Yuneman, Judy Allen.
- LOCKPORT FSC:** 1—Lisa Granchelli. 2—Paul Furlong. Pre D—Heather Updegrove. Bronze—Lisa Cecere, Bonnie Gasior, Lisa Granchelli.
- LONG ISLAND FSC:** Pre—Jeanne Gray, Alyson Kirleis, Donna Brownstein, Lisa Fox, Sharon Matta, Claire Wallman. 1—Robyn Weissman, Gladys Cohen, Marnette Halligan, Amy Kresge, Debbie Martin, Suzanne Berger, Lisa Bowen, Shari Littman. 2—Melissa Thomas, Linda Hanneman, Cora Messbauer, Margaret Bodo, Cathy Evans, Jayne Hirschman. 3—Elliott Cohen, M.D. 4—Tammie Oestreicher, Gwen Podmore, Denise Beaumont, Tracy Doyle, Lorene Mitchell, Gayl Jacobson. 7—Ellen Danow. Bronze—Martha Jowyk. Pre-Silver—Gayl Jacobson.
- LOS ANGELES FSC:** Pre—Houston Pillow, III, Valerie Herman, Shiela Parker, Brett Baron, David Konell, Kimberly Stanchfield, Lisa Tracy, Lisa Seleny, Julia Honda, Michelle Hargis, Shiela Putnam. 1—Eileen Kenny, Jan Hutchinson, Ann Shramm, Darleen Ryan, Michelle Schelske, Jacqueline Griffin. 2—Denise Capell, Sally Carter, Diana Parker. 3—Dusty Sorenson, Malagena Marshall, Terri Lieberman, Rose Sanzo, David Carter. 4—Tai Babilonia, Paul Kuhn, Marina Drasin. 6—Lauri Duffy, Scott Carson, Teresa Foy, April Prout, Janet Johnson. 7—Ken Newfield. Pre D—Linda Marsh, Valerie Herman. Bronze—Joe Graffi, Erika Susman, Mary Roof. Bronze Pairs—Matthew Fero, Elaine Fero.
- LOUISVILLE FSC:** Pre—Anita Bloch, Susan Dowd, Peggy Dickenson, Judith Dukes, Pam McCarty, Gwen Ostroff, Dan Brandon, Susanne Busse, Barbara Lotz, Kathleen Kelly. 1—Annett Kleier, Eddie Reeb, Kim Chitwood, Mary Martin, Lisa Kletter, Connie Johnson, Donna Brooks, Liana Lowrey, Mary Ware. 2—Elizabeth Molnar, Joy Weldon, Mary Martin. Pre D—Pam McCarty. Bronze—Elizabeth Molnar, Lisa Donoghoe, Donna Brooks. Pre-Silver—Ginny Bailey, Annett Kleier. Pre-Gold—Greg Mouser.
- FSC OF MADISON:** Pre—Shirley Winsborough, Polly Johnson. 1—Mary Kobussen. Pre D—Sue Lapin. Bronze—Mark Walsh, Shirley Winsborough, Donald Phelan. Bronze Pairs—Mark Walsh, Cesca Wentworth.
- MARIN FSC:** Pre—Laureen Ogorman, Julia Alten, Rhonda Royal, Valerie Bollinger. 1—Mia DeVries, Julia Alten, Bonnie Gamper, Denise Skinner, Georgette Roubanis. 2—Julie Kraszulayak, Lissa Birkett. 5—Peggy Sousa, Patti Maley, Elaine Andrews.
- METROPOLITAN FSC:** Pre—Suzanne Dostal, Lorraine Capobianco, Denise Weimer, Darlene Haines, Barbara Rusinek, Kyle Basson, Stella Calobrisi, Nancy Murtagh, Jay Scharf, Ellen Weinberg, Gerri Wolowitz. 1—Lenore Zerman, Lisa Lederman, Suzanne Dostal, Deirdre Anello, Janice Handleman, Nina Handleman, Christine Landro, Debra Wallen. 2—Barbara Mills.
- MIDLAND FSC:** Bronze—Gregory Kajfez.
- GREATER MILWAUKEE FSC:** Pre—Kanae Tagawa, April Albrecht, Debbie Suttner, Richard Suttner, Elizabeth Wiza, Annie Oboyle, Barbara Hofstad, Gregory Laemmrich, Sandi Prank, Beth Jensen. 1—Lisa Conover, Julie Sorenson, Daniel Baudendistel, Sandi Prank.
- MINERAL KING ISC:** Pre—David Wessies.
- FSC OF MINNEAPOLIS:** Pre—Cheryl Christoferson, Jody Strimling, Peter Nelson, Jane Ruffenach, Renae Benson, Joyce Peterson, Carole Saboe, Patti Settergren. 1—Deanne Ringhand, Sandra Toughill, Diana Wagner, Jill Schwellenbach, Susan Latterell, Jill Solomonson, Carole Saboe. 3—Charlyn Sperry, Sharon Landey, Theresa Melnychuk. 4—Karen Anderson, Julie Bedessem, Kimberly Challman. 5—Kathy Gelecinsky, Susan Klein, Dawn Peterson. 6—Kristin Arneson, Dawn Kaercher, Alane Farkas. Bronze—Cynthia Babcock.
- MISSION VALLEY ISC:** Pre—Linda Sanderson, Renee Taylor. 1—Susan Prince, Charles Seltz,

- Kathleen Callan, Tim Denike, Robin Parker, Jenine Tomlinson. 2—Kathleen Blackmore.
- GATEWAY FSC OF MISSOURI:** Pre—Jennifer Bland, Linda Kozloff, Robin Moen, Debora Wieseman. 1—Deanna Throckmorton, Anne DeMarinis.
- SC OF MONTCLAIR:** Pre—Susanne Yeutter, Kimberly Medd. Pre D—Harriet Fitzpatrick, Mary Inhoff.
- NAVESINK FSC:** 1—Elizabeth Johnson. 2—Holly Genola. Pre D—Holly Genola. Bronze—Holly Genola, Elizabeth Johnson.
- NEW CANAAN WC:** Pre—Pam Jennings, Alyson Swallen, Elizabeth See, Susie Garfield, Sarah Tanner. 1—Nina Kimberly, Lauren Kimberly. Pre D—Susie Garfield.
- NEW HAVEN SC:** Pre—Linda Claffey, Robin McColi. 2—Eileen Groth, Edith Kirk, Missy Sanders. 3—Ann Buccino, Liza Liapunov, Lucinda Vonberen. Pre D—Sarah Miller, Philip Piasecki.
- ESSEX SC OF NEW JERSEY:** Pre—Michelle Moran. 1—Carol Mitschele, Karen Baker, June Wachtler, Elizabeth Holbrook, Michele Andreaggi. 2—Pamela Faatz, Mary Jo Desantis. 3—Ellen Ricard, 4—Collette Peters, Deborah Lowery, Larry Mondschein. Pre D—Bernadette Conklin. Bronze—Jacqueline Vitiello, Lisa Eisenberg. Pre-Silver—Richard Flower.
- SC OF NEW YORK:** Pre—Julia Blaut, Lucy Brown, Harriet Cuddihy, India Dunnington, Nina Gardner, Nancy Greenstein, Lucy Prager, Lawler Walsh, Pamela Weiler, Doris Landre, Joan Maguire, Mrs. Stuart Levin, Mrs. Michael Thomas, Fredericka Kohler, Allisyn Gras. 1—Mrs. Evan Thomas, II. 2—Mrs. Alling Woodruff, Jr. 3—Sari Kearnes. 4—Cari Buttenwieser. 5—Barbara Sasso. 7—Marlene Rehkamp, Ingrid Brenner, Robin Wagner. Pre D—Robert Metcalf, Joan Maguire. Bronze—Sari Kearnes, Emily Kurtz, Robert Metcalf, Mary Carter, Mrs. James Harder, William Wilkinson.
- NEWBRIDGE ROAD PARK FSC:** Pre—Gary Edelman, Ronnie Markowitz, Lynn Alpertstein, Craig Cohen, Steven Edelman, Julie Steinberg, Beth Kleiman, Helena Robinson, Lorelle Walshe, Donna Kutt, Nancy Townsend, Dale Orens, John Redmond. 1—Cori Weiner, Carole Lunny, Victoria Feldman, Jodi Schwartz, Renee Pizer, John Redmond. 2—Laurie Stabile, Susan Leggio, Jodi Hausen, Cynthia Cohen. 3—Angela Norizan. 4—Dawn Wagner. 5—Dawn Wagner.
- SC OF NIAGARA FALLS:** Pre—Cynthia Salfi, Lisa Hill, John Burns, Kathryn King. 1—Lisa Williamson, Barbara Herklotz, Merridith Attick, John Costanzo. Pre D—Rebecca Barber, Therese Costanzo, Kevin Ford, Kathryn King. Bronze—Connie Neville, Lisa Williamson, Cheryl Grishkewich. Pre-Silver—Barbara Herklotz, Suzette Johns.
- NORDIC FSC:** Pre—Julie Young, Lisa Aledort, Ann Holubec, Debbie Foster, Linda Schreck. 1—Bethany Bardin. 2—Pam Durham, Shelli Graff.
- NORTH SHORE SC:** Pre—Joy Cummings, Marcy Vannoy, Daniel Salera, Kathleen McGrath, Steven Lampropoulos. 1—Susan Letterman, Dorothy Serwacki, Tracey Tobia, Deborah DePascale, Walter Keenan, Maryann Salera. 2—Gigi Oliver, Jennifer Terry, Beth McNeish, Nancy Brennan, Sandy Brooke, Terri Sweeney. 3—Kim Woodell. 4—Mark Meier. 5—Paula Goodridge. 6—Suzi Landry. Bronze—Rebecca Rupp. Silver—Priscilla Hill. Bronze Pairs—Priscilla Hill. Silver Pairs—Priscilla Hill.
- NORTH JERSEY FSC:** Pre—Cecile Martin, Ilya Chaus, Helga Brown, Lisa Vitikainen, Darleen Haupt, Brenda Martini, Susan Emerson, Lisa Vitikainen. 1—Perry Boskus, Celia Rechtschaffen, Esther Shein, Elisabeth Rabin. 2—Elizabeth Bradshaw, Dawn Roppatte. 3—Sheryl Abbot, Lynne Burtan, Alyse Soll. 4—Elisabeth L'Heureux, Lyle Mayne, Vicki, Soll. 5—Vicki Soll. 6—Amy Gittleman. Pre D—Elisabeth Rabin, Ilya Chaus. Pre-Silver—Lynne Burtan.
- OAK PARK FSC:** 1—Emily Kittler. 3—Jeanne Johnson. Pre D—Barbara Bryzek, Albert Smith, Leta Smith, Kenneth Juris. Bronze—Donna Mariani, Barbara Bryzek. Silver—Georgia Cielenski.
- OLD YORK ROAD SC:** Pre—Susan Frank, Susan Bleznak, Diana Herbets, Susan Rosenberg, Andrew Kubit, Shelley Friedman, Liz Berger, Susan Butterworth, Menebeth Morris. 1—Joan Henkels, Robert Rosenbluth, Claire Donato, Julia Kubit, Jennifer McIlhenny, Michelle Morris. 2—Jean Granick, Debbie Goldblum, Amy Rosen, Joy Caplan, Debora Castor. 3—Charlotte Tyrala, Susan Parsons, Barbara Cassalia, Laura Cassalia, Cynthia Matthes. 4—Mark Henkels, Sharon Gordon, Gregory Fanelli. 5—Janet Wickenhaver. 6—Kristina Ginkinger, Carrie Applegate. 7—Kristina Ginkinger, Holly MacVaugh. Pre D—Charlotte Tyrala.
- FSC OF OMAHA:** Pre—Josi Farber, Connie Connors, Kelly Muchemore, Laurie Bedwell, Lezlie Roncka. 2—John Rokes, Jackie Graves. Pre D—Laura Young.
- OVERLAKE SC:** Pre—Nancy Hilscher, Anna Marie Carras, Cammie Leonard, Lisa Clark, Carol Monlux, Jane Evanson, Deanne Fulton, Debbie Collins, Deana Collins, Julie Carter, Brenda Bard. 1—Denise Speiser, Alison Holmes. 2—Audrey Huber, Kathy Van Hasselt, Renee Rask, Carol McCormick, Viann Verduin, Lee Miller, Annalise Johnsen. 3—Audrey Huber, Michele Hoel, Beth Pitzler, Shawn McLain, Kim Verduin, Georgene Carras, Shari Bolvin. 5—Julie Dexter, Cynthia Charles. Pre D—Shawn McLain. Bronze—Steve Box, Julie Dexter.
- OWENSBORO-EVANSVILLE FSC:** Pre-Silver—Susan Logan.
- PACIFIC FSC:** Pre—Kathleen Sue Bailey, Dierdre MacKenzie, Howard Morris, Renee Alrich. 3—Mark Cockerell.
- PARK FSC:** Pre—Lisa Gervais, Candette Gilner, Patricia Sobel, Linda Sarinsky, Diane Montpelier. 1—Lisa Gervais, Maureen Scanlon, Miriam Oberwiler. 2—Francine LeCoz, Laura Keenan, Anna Korniczky, Annette Wilcox. 3—Joan Bokzomati. 5—Karen Maldonado. Pre D—Joan Ertel.
- PENGUIN FSC:** 2—Debbie Fehr. 7—Aggie Waldspurger. Pre D—Holly Hessinger. Bronze—Paula Klauger. Pre-Silver—Alexandria Negoescu.
- PENN STATE FSC:** Pre—Nancy Allan, Lynn Hosler.
- PHILADELPHIA SC & HS:** Pre—Kathryn Bayer, Charles Coant, Simonetta Speri, Robin Supplee. 1—Kate Price, Hollis Archinal, Craig Bostwick, Elizabeth Forster, Jane Aspinall, Amy Hoyt. 2—Catherine Cochran, Ellen Watson. 3—Sonja Kenney, Sara Boyer, Shelley Supplee, Channing Riggs, Lori Nichol. 4—Susan Minter. 6—Kimberly Colton. 7—Tracey Cahill. Pre D—Sandra Hurtubise, Isabel Royer, Mrs. Henderson

SuppLee. Bronze—Susan Price, Sonja Kenney, Craig Bostwick.

- SC OF PHOENIX:** Pre—Carmaleta Albertson, Jana Sanderson, Lisa Sanderson, Laura Smith, Cheryl Winn. 1—Christine Lapointe, Kathy Dorgan, Edward McNellis, Susan DeRosa, Caroline Aldridge, Cindy Wheeler. 2—Stephanie Anderson, Lani Heckathorne, Kyle McCroskey, Tonya Perry. 3—Michelle Pietroforte, Kim Manning, Ileen Vinesky, Kelly Witt. Pre D—Christine LaPointe, Erika Moton, Dana Elliott, Michael Murphy, Mary Houdek, David Kimmel. Bronze—Erika Moton, Susan DeRosa. Silver Free—Linda Beard, Bob Cooper. Bronze Pair—Michelle Pietroforte.
- PITTSBURGH FSC:** 1—Linda Smith. 2—Tracy Edmondson, Shauna Cassidy. 3—Donna Dase, Kym Casto, Jaclyn Herring. Pre D—Beverly Saccamano, Jill Kanel. Pre-Silver—Casey Kelly, Amy Dalson, Betsy Burgart.
- PLAZA FSC:** 1—Agnes Nagy, Kathi Marks, Lisa Reed, Kathy DeGrandis, Gladys Post. 2—Stacy Braman, Elizabeth Levenson, Cindy Schwartz, Stephanie Sonkin. 3—Janet Jirus, Deanna Abdulla, Susan Speer. 4—Robin Frank, Sherry Frank, Kelly Rossbach, Patrick Podmore. 5—Susan Arons, Robin Frank, Martha Morgan. Bronze—Charles Eloshway, Jr.
- POLAR PALACE FSC:** Pre—Judy Sasine, Helen Wasley, Kimberly Sherman, Karen Jones, Wyatt Haupt, Monica Haupt, Carla Haupt, Sherry Gerler, Mrs. Dolly Hamlin. 1—Celeste Lucidi, Leslie Ward, Karen Hasler, Patti Payne, Lisa Roller. 2—Michele Brakebill, Carolyn Dahlin, Beth Luntsford, Valerie Martin.
- PORT HURON FSC:** 1—Scott Magnuson. Bronze—Laura Olary. Bronze Pair—Mary Lynn Boyd, Ron Holbrook.
- PORTLAND ISC:** Pre—Andschahna Lee, Cynthia Epley, Linda Schneider. 1—Donna Sollenberger, Katey Maggs, Vicki Carlson. 2—Gayle Machlan, Michelle Surman, Sheri Gartner, Lori Reyes, Reggie Raiford, Renee Bagley. 3—Kim DiPietro, Ruth Aquino, Susan Armintrout, Carol Conrad, Carol Mattson. 4—Cynthia Kawano. 5—Cynthia Kawano, Don Gregg. 6—Lennia Snyder. 7—Karen Rice, Susanne Surman. Pre D—Judith Wayland. Bronze—Carol Conrad, Kevin Roddy, Julie Frederick, Christy Schuler. Pre-Silver—Henry Mears, Jr., Kenneth Flora. Silver—Cynthia Kawano. Bronze Pair—Kenneth Flora, Beth Flora, Rebecca Loghry. Silver Pair—Rebecca Loghry.
- PRINCETON SC:** 1—Sharon Goll. 5—Marian Greenberg. Pre-Silver—Sandra Benson.
- PROVIDENCE FSC:** Pre—Lucy Gregory, Kimberly Rozak. 1—Nancy Goulet, Carol May, Suzy Scher. 2—Karen McLean. 3—Pamela Cometta. 6—Roland Besette.
- QUAKER CITY FCS:** Pre—Lynn Schierenbeck, Francis Palladino, Paul Smart. 1—Deborah Cox. 2—Debra Fahy, Ruth Whomsley, Jane Rolan. 3—James Freeman. Pre D—Carolyn Marley. Bronze—Deborah Cox, Debra Fahy, Donna Fahy.
- QUEEN CITY FSC:** Pre—Susan Rosenberg, Denice Denuccio, Lisa Denuccio, Laurie Anderson. 4—Karen Kramer. Pre D—Susan Kearney, Mrs. Marianne Lang, Bobbie McCarthy, Lisa Bogdan. Pre-Silver—Christiana Gaddis.
- R.P.I. FSC:** Pre—Melissa Caulfield, Melissa Jabour, Wendy Kendall, Karen Kearns, Cindy Martin, Eileen Parker, Stephen Procelli, Mariluz Saldarriaga. 1—Jacqueline Dignum, Kim Meinert, Anne Putney. 2—Sheryl Brust, Sheldon Cleaves, Chris Dempf, Melissa Dempf, James Ewing, Nancy O'Keefe, David Sherley, Erica Ling. 3—Donna Morin, Laurie Serian. 6—David Randall. Pre D—Steven Anthos, Donna Palladino, Erin Sheridan, Candy Bean. Bronze—Maureen Parker. Pre-Silver—Melissa Dempf.
- RED RIVER VALLEY FSC:** Pre—Beth Gaustad, Mary Connelly, Lisa Kopperud, Mari Matheson, Gayle Morgan, Julie Lessard. 1—Michelle Boyer, Diane Gauthier, Janet Lykken. 2—Elaine Barth. Pre D—Robert Pender, Lisa Schraufek, Michelle Boyer, Barbara Connelly.
- SC OF RHODE ISLAND:** Pre—Dorothy Beasley, Susan Costantino, Coleen Murphy. 1—Maryann Amaral, Linda Blount. 2—Caitlin Carruthers, Victoria Dwyer. 3—Lori Voepel. Pre D—Terry Antocicco. Pre-Silver—Ramona Sousa.
- SC OF RIVERDALE:** Pre—Kathleen Manousos, William Thompson, Toby Mann, Sunni Farkas. 1—Debra Geml, Venus Fernandez. 3—Judy Greenberg, Susan Hinkson. 5—Linda Abend. Pre-D—Inger-Marie Strom, Sunni Farkas. Silver—Dorene Knapp.
- ROANOKE VALLEY FSC:** Pre—Thelma Stephens, Penny Ferguson. 3—Carl Manthey.
- ROCKY RIVER FSC:** Pre—Kathy Sanders. 1—Joan Bartholomew. Pre D—Linda Fielder.
- ROXBURY WC:** Pre—Susan Michalovic, Deborah Neiman, Jill Semel. 2—Meg Lowenthal. 3—Emily Lowenthal. Bronze—Lisa Tibbetts, Ann Marie Diot. Silver—Meg Lowenthal.
- RYE FSC:** 1—Mrs. Linda Donohue, Kevin Koswick, Elizabeth Leamy. 3—Patty Celantano. 7—Amy Griswold.
- SAN DIEGO FSC:** Pre—Cheryl Rosenblatt, Robin Maze, Debrah Olea, Karla Schwartzau, Cynthia Watkins, Jennifer Miller, Caroline Miller. 1—Susan Hodges, Vivian Pozzi, Susan Rogers, Anne Rogers, Jennifer Braun, Diane Horan, Stacy Cline, George Scolari, Jr. 2—Vivian Pozzi, Marilynne Arledge, Darryn Berner, Julie Bloom, Kandy Clifton, Tenley Ehrenverth, Marcellina Fortner, Janet Johns, Jennifer Meeks, Dana Spuehler, Joyce Tyler, Wendy Craig, George Scolari, Jr. 3—Lori Benton, Kimberlie Carson, Justyn Livingston, Martin Moody, Jennifer Nichols, Michelle Ruane, Gary Zaks. 4—Susan Christensen. 5—Susan Christensen. 6—Carrie Riehle. Pre D—Susan Rogers, Elizabeth Mancock, Louise Livingston, George Scolari, Jr.
- SC OF SAN FRANCISCO:** Pre—Caroline Hughes. 1—Deborah Oxendine, Susan Hart, Pamela Leong. 3—Peggy Tsujimoto. Pre D—Richard Bratset, Harriet Behneke.
- SANTA MONICA FSC:** Pre—Richard London, Carole Mishkind, Elizabeth Moffit, Amy Grossman, Karen Grossman, Vicki Soltz, Susan Singer, Paul Le Grand, Terri Parman, Holly Green, Karen Randall, Kary Romano, Stephanie Gonzalez, Lori Miller, Kathleen Dinger, Michelle Agul, Flavia Krieg, Fiona Burkhard, Kerry Getzelman, Sheila Turek, Kendall Wilkinson, Kathy Powers, Denise Garcia. 1—Sharon Dror, Karen Wilson, Laura Vidal. 3—Tina Verville, Yasuko Ikejiri. 4—Yasuko Ikejiri. 6—Sylvia Odermatt. Pre D—Charlotte Rundle.
- SANTA ROSA FSC:** Pre—Monica Bun , Nancy Nickel, Maryann Wilson, Linda Geary, Erika Sweet. 1—Mary Anderson, Lisa Clyde, Linda Biondi, Karen Hutton, Susan Doyle, Earl Rodier, David Fleming. 2—Didi Carlin, Tamie Johnson. 3—Maureen Browne. 4—Suzanne Lanoue, Kathy Fuller. 5—Leslie Fuller, Amy Schulz, Jill Schulz. Pre D—Nancy Nickel, Mark Coughlan. Bronze—Maureen Browne. Pre-Silver—Heather Sayles.

SEATTLE SC: Pre—Karen Hansen, Debbie Eicher, Cynthia Breslich, Lori Bowen, Mary Adams, Janet Castrow, Christine Gockly, Patricia Bunata, Todd Craver, Linda Wells, Meg Fraser, Jodi Weller, Anna Wolff. 1—Luanne Didzun, Jeffrey Orth, Julie Davis, Erika Doner, Marci Spencer, Diana Rupp, Linda Thompson, Tamara Rossberg, Cammie Church, Jacqueline Boden. 2—Mark Turner, Sheri Purple, Alicia Castillos. 3—Tracy Cooley. 4—Tammy Jenkins, Colleen Kylling. 6—Charlene Chaffin. 7—Terri Karis. Pre D—Julie Miller, Barbara Ray. Silver—Lois Howard. Silver Free—Paula Buntun. Pre-Gold—Paula Buntun.

SHAKER FSC: Pre—Lisa Dixon, Carolyn Bell, Robin Lelyveld, Deborah Friedman, Janine Corneliuss. 1—Michael Molton, Peggy Nungesser. Pre D—William Clifford, Hal Klug.

SILVER EDGE FSC: Pre—Mary Henningsen, Peter Powell, Renee Windham, Diane Hassell. 1—Bob Gagen, Kim Henson, Brian Boitano, Becky Banks, Elizabeth Hillmer. 4—Virginia Diffenderfer, Taffee Palmer.

SKANEATELES FSC: 1—Sheila Powers, Lee Chappell. Pre-Silver—Jamie O'Neill. Silver—Jeanneanne Casson.

SKOKIE VALLEY SC: Pre—Laura Cramer, Scott David, Lori McDermid, Jill Schaum, Patricia Dutton, Elizabeth Mallace, David Kozlov, Jane Porter. 1—Melinda Brill, Julie Chiado, Melissa Johnson, Elizabeth McShane, Michelle Rabb, Susan Roth, Traci Fein, Diane Lake, Lori McDermid. 2—Kathy Porter, Barbara Bellamy, Joanne Bransley, Teresa Gray, Jamie Remien, Dawn Stone, Bobby Bower. 3—Judy Owens, Tammie Remien, Jamie Remien, Vicki Remien. 5—Denise Jirout. 6—Arthur Rogal, Ann Moureau, James Moureau, Barbara Peyton. Pre D—Diane Lake. Bronze—Michele Lehner, Jamie Remien.

SOUTHERN CONNECTICUT FSC: Pre—Cheryl Backer, Kathryn Burnett, Cindy Dean, Anne Kenny. 2—Debbie LaVista, Paula Shea. Pre D—Jocelyn Lovejoy.

SOUTHERN NEW HAMPSHIRE SC: Pre—Marie Reagan. 1—Marie Reagan. Pre D—Danielle Blais, Margo Cepilnskas, Kathleen Cullen, Diana Georgeou, Laurie Jacobson, Sue LaChance, Judi Sidman, Robin Shaka, Donna Parr, Beth Steinberg, Susan Webster, Danny Mulroy, Charles Colburn. Bronze—Cindy Kurisko, Andrea Ouellette, Patrick Shannon.

SOUTH MOUNTAIN FSC: Pre—Elaine Haemisegger, Adrienne Kestler, Elizabeth Neumiller, Robin Forsten, Kristina Schilling, Leslie Zehr, Jane Florin. 1—Susan Ershow, Lisa Izzo, Carol Scherer, Joanne Goldberg, Patricia Gavin, Susan Cohen, Jeannette Zehr, Kristy Hogan, Abigail Bernheim. 2—Sandra Goldberg, Cynthia Vona. 3—Janet Broadfoot. 4—Audrey Pluskal. 6—Karen Corona, Emily Zukerberg. Pre D—Mary Nigro, Loretta Mauer, Elaine Haemisegger, Frances Smith, Kathleen McCutcheon, Cynthia Vona, Elisa Spitz, Elizabeth Neumiller, Kristina Schilling, Lori Kelsey, Virginia Kiefer. Bronze—Lisa Izzo, Emily Eisen, John Morello, Jr. Silver—Janet Broadfoot.

SOUTH BAY FSC: Pre—Barbara Friedman, Nancy Solorzano, Kris Gazeley, Lori Guttman. 1—Donna Pekins, Paula Kim, Dawn Stanziole, Tammy Stanziole, Suzanne Ashcraft, Diane Dai. 2—Deborah Gralnik, Carol Stiglic. 3—Julie Fleming, Yvonne Gutierrez, Sandra LaFontaine, Linda Nemitz, Gina Pacheco. 4—Marianne McCaffrey, Eric Johnson, Jennifer Murdock. 5—Stacy Rathbun. 6—Diana Rehfield. Bronze Pair—Eric Johnson, Jennifer Murdock.

SPOKANE FSC: 1—Mike Kratofil. 2—Cathy Huckaby.

SPRAIN VALLEY FSC: Pre—Maria Green, Patricia Boos, Stephanie Sanders, Lisa Popoli, Karen Goralick, Loretta Schwartz. 1—Karen Russell, Debbie Hug. 2—Janet Silberman, Sandra Bosko. 4—Maryellen Scaffidi. Pre D—Dido Von Kalkreuth. Pre-Silver—John Dibernardo.

SQUAW VALLEY FSC: Pre—Kelly Hagadorn, Amie Guilford, Jeffrey Collins. 1—Jeri Wofford. 5—Lorre Mock.

ST. LOUIS SC: Pre—Myra Chunn, Pamela Spires, Karol Bussey. 1—Vicki McTaggart. 2—Becky Baker, Lolanda Bentmann. 3—Peggy Tetric. Bronze—Carolyn Harte.

ST. MORITZ ISC: Pre—Kathleen Carlson, Julie Fraenkel, Patricia Geraghty, Ardis Larson, Tracey Simmons, Susan Reynolds, Karen Johnson, Deborah Beal, Tina Hess, Roy Gotthold, Andrea Hausman, Mia Schemmerling, Mark Kaplan, Carole Johnson, Anne Reich, Lynn Jefferson, Emilie Jenkins, Hildy Schwartz. 1—Lynn Smith, Melissa Gaines, Cheryl Miller. 2—Andrea Bauer, Vicky Simonds, Marilyn Greenwood. 3—John Abel, Marian Messick. 4—Robin Gill, Jenifer Mackey. 5—Liz Abel, Robin Howard. 6—Liz Abel, Lisa Craig. Pre D—Kay Brackett, Avonia Dondero, Robin Gill, Arthur Peterson, Constance Olson. Silver—Andy Blaurock, Jill Davenport.

ST. PAUL FSC: Pre—Janie Cusick, Michelle Villaume, Michelle MacLean, Scott Hauth, Vicki Triemert, Tina Oie, Renee Miller, Lisa Albrecht, Ginny Burdette, Claudia Christensen, Julie Dewitt, Terry Dierberger, Jane Fletcher, Sigrun Lupp, Dawn Neault, Dawn Schmidt, Terri Telander, Leslie Testa, Jan Ferris, Lynn Harman, Margaret McDonald, Mary Reilly, Linda Schaberg, Lauri Uehlin, Sherry Brown. 1—Sandy Reinhardt, Johanna Fox, Michelle MacLean. 2—Susan Cash, Kathleen Cuff, Elizabeth Gerebi, Sheryl Keran, Mary Loeffler, Mona Mendoza. 3—Denice Dixon, Catherine Lee. 4—Lisa Kuehn, Mary Schuster. 5—Laurene Nelson. 6—Lana Kieffer, Deborah Schwartz. 7—Mrs. Willard Halweg, Wendy Leimbek, Rose Mary Wilzbacher, Rebecca Leroy.

STOCKTON FSC: Pre—Anne Burke.

STORRS FSC: Pre—Nancy Miller, Julie Morrison, Karen Stuart. 1—Sue Yphantis.

SUN VALLEY FSC: Pre—Tina Munson, Elizabeth Wallace, Gaylelynn Decker. 1—Nancie Donnelly, Penny Wilkins.

SUPERIOR FSC: Pre—Beatrice Bonet, Agnes Atkinson, Susan Ennis, Leslie Bluhm. 1—Shirlene Anderson, Kathy Fruehauf, Kathy Kending, Julie Kruger. 2—Katherine McConnell, Susan Tomzak. 3—Pamela Dean. 5—Sue Miller. Pre D—Darcey Doolittle, Susan Cowen. Bronze—Roxanne Wietala.

SYRACUSE FSC: Pre—Vanessa Yager, Joanne Fisher, Lisa Fazio, Stephanie Jacques, Kellie Blake, Karin Blake. 1—Hiedi Freliche, Sue Barott. 2—Tina Putman. 3—Kathy Edmonds, Joanne Doehner. Bronze—Elizabeth Falcone. Pre-Silver—Joanne Doehner.

TOLEDO FSC: 1—Robert Merrill. Silver—Patti Vasaturo.

TOPANGA PLAZA FSC: Pre—Yvonne Howell, Marianne Modispacher, Lisa Cotroneo, Denise Konantz. 1—Suzanne Perras. 2—Janet Wurtz, Giovanna Minghetti.

TRENTON COMMUNITY SC: Pre—Sherrill Kasenow, Luanne Grazino, Terry Michaels. 1—Ingrid Bjork, Connie Langlands. 2—Marcia Cagala. Pre D—Victoria Michaels. Bronze—Robin Fenton.

TROY SC: 1—Michelle Mann, Becky Baker, Cindy Baker, Ellen Cross, Pam Chapman. 2—Glenn Replogle. 5—Annette Schoener. Pre D—Becky Baker, Cindy Baker. Bronze—Becky Baker.

TUCSON FSC: 2—Linda Finley.

TULSA FSC: Pre—Dawn Duca, Cynthia Kelly, Tracy Shaefstall, Theresa Sommer, Steve Wilson. 1—Mrs. Charles Grau, Mary Linehan, Teri Rackley, Larry Woods. 3—Janneke Buitink. 4—Renee Cosper. 5—Deborah Richman. 6—Jay Grabel.

UNION COUNTY FSC: Bronze—Al Carroll. Pre-Silver—Susan Moon, Helen Hyun.

UNIVERSITY OF CONNECTICUT: Pre D—Cheryl Whiteside. Bronze—Diane Chaves, Pam German.

UNIVERSITY OF PENNSYLVANIA: 1—Wynn Eldredge.

UTAH FSC: Pre—Michele McClellan, Hope Eccles. 1—Becky Jameson, Shelley Joseph, Aileen Hohmann. 2—Stewart Sturgeon, Julie Savage. 3—Jan Bucher, Stephanie Grosscup. 5—Suzanne Brasher. Pre D—Tom Case, Stephanie Grosscup, Cindy Riches, Julie Savage. Bronze—Tom Case, Stephanie Grosscup. Silver—Cherril Ford.

SC OF VAN NUYS: Pre—Sylvia Dohi, Teresa Yolas. 2—Gail Fiance. 3—Jeri Braun. 6—Debi McCluskey. Pre D—Lou Ann Granger.

WAGON WHEEL FSC: 1—David Montaleone. 2—Pamela Reeves, Steven Akey. 3—Kathy Thronson, Elizabeth Chabot. 6—Jacqueline Dean. Silver—Jean Scott. Bronze Pair—Leslie Chabot, Eric Werschin.

WALLA WALLA FSC: Pre—Gerri McAdams. 7—Joyce Hanson.

WASATCH FSC: 5—Lamar Hopkins.

IC OF WASHINGTON: Pre D—James Maltby, Elizabeth Fletcher.

WASHINGTON FSC: Pre—Nina Ramo, Sacha Ramo, Barbara Buch, Peter Buch, Anita Gilroy, Patty Downs, Nora Lassiter, Martha Ainsworth, Honor Johnson. 1—Tracy Hamilton, Debbie Hamilton, Doug Hamilton, Robert Schreth, Stephanie Doring, Simone Scupi, Lorraine Mattingly, Cindy Moor, Cheryl Peterson. 2—Karen Brown, Gail Cormack, Andrea Levinson, Victoria Benedict, Ellen Meshkov, Susan Magagna, Leslie Shackelford, Kelly Johnson, Judith Kuhn, Lorraine Mattingly, Cindy Moore. 3—John Summers, Cindy McKinney, Denise Detwiler. 4—Michael O'Rourke, Reginald Stanley, Craig Lussi, Dede Dunegan, Charles Doring. 5—Diana Lussi. 7—Sandra Sparger, Wendy Luke. Pre D—Cynthia Wilber, Judith Kuhn. Bronze—Karen Brown, Nancy Edler, Ilene Kreisberg, Kelly Johnson, Elizabeth Silby.

ICE & BLADES CLUB OF WASHINGTON: Pre—Michael Seibert, Jacqueline Karako. 1—Ellen Pulver, Erma Bonadero, Ellen Mathews, Brenda Fry. 2—Patricia Weston, Mary Robinson, Margaret Singleton. 5—Victoria Hamby, Susan Mathay. 6—Mary Dalfonso. 7—Valerie Moore. Bronze—Paula Fidel, Michael Seibert. Pre-Silver—Laurie Cowieson. Silver—Susan Mathay, Renee Agostini, Noel Parent. Pre-Gold—Christopher Kearny.

WATERTOWN SC: 2—Diane Cerritelli.

WAUWATOSA FSC: Pre—Craig Friedrich, Amy Rauschenberger, Linda Shalek, Simone Schwartz. 1—Linda Friedrich, Ann Rauschenberger, Lisa Stuhler. 2—Carolyn Schmidt.

WEST COVINA FSC: Pre—Terri Anderson, Gregory Kobett, George Burl, Fred Willumsen. 1—Liza Hedley, Grace Miyagishima. 2—Shelley Palfrey. 3—Kimberly Bernier, Lisa Masongsong.

WESTCHESTER FSC: 3—Lisa Judge. Pre D—Amy Cohen, Susan Stark, Judith Szkolnik. Bronze—Bethan Cohen. Pre-Silver—Mark Frieder.

WHEELING FSC: Pre—Christy Newmeyer, Susan Merrick. 1—Kevin Dean, Jeff Duvall, Tim Orr, Tami Jeffers. 2—Lynna Beth Lanham. Pre D—Sarah King. Bronze—Melissa Dean.

WHITE PLAINS FSC: 2—Nancy Goldmann.

WICHITA FSC: 1—Diane Springfield.

SC OF WILMINGTON: Pre—Mrs. Elizabeth Poole, Lynne Meyers, David Sewing, Caroline Golt, Vanessa Grasman. 1—Betsy Bruton, Sheldon Nix, Lynn Ogden, Mary Gudaitis, Beth Kephart, Jill Burchnall, Noreen Graffus, Louise Sewing, Malinda Curro, Linda Trainer. 2—Laura Isken. 4—Leonore Copeland, Barbara Rule. 5—Leigh Byrne, John Dodson, Barbara Rule, Michelle Szimkunas. 6—Robyn Rock, Pamela Szimkunas, Mitchell Moyer. 7—Ann Hanson. Pre D—Mrs. Allan Reid, Lynne Meyers, Jeffrey Adams. Bronze—John Dodson, Allan Ford, Jill Burchnall, Linda Trainer. Pre-Silver—Donna Broyles, Rebecca Mellman. Pre-Gold—Barbara Rule, Cynthia Tynan.

WILMINGTON FSC: Pre—Cynthia Cornish. 2—Cindy Dion.

WINCHESTER FSC: Pre—Ravena Pundys, Bobbi-Ann Peterson, Lisa Ryan. 1—Lauren Malinsky, Leslie Finn.

THE WINTER CLUB: Pre—Ellen Feeney.

WISSAHICKON SC: Pre—Dana Smith, Cornelia Wallace, Mrs. Suzanne May, Anne Cretzmeyer, Virginia Judson, Lucy Lennon, Kathryn Lynch, Paige MacDonald, Cynthia Moulton, Elizabeth Nott, Rachel Ross, Madeline Delone, Sarah Delone, Denise Devoe, Elizabeth Castle. 1—Vibeke Hopkinson, Anita Brooke, Stacy Hamilton, Kimberly Koppie, Dorothy Jamison, Lyn Jordan. 2—Donna Smukler, Louisa Wright, Lillie Barroll, Jennifer Adams, Lyn Jordan. 3—Mrs. Kathryn Buzby, Marcia Hewitt, Jana Schluchterer, Elizabeth Lippincott. 4—Lynnette Hewitt. Pre D—Arlyn Lippincott, Christopher Coster.

WOODLAND SC: Pre—Julie Ruebush. Pre D—Janet Gerbereux, Susan Kordana, Julie Ruebush, Regina Fry, Cheryl Erbin.

SC OF WORCESTER: Pre—Judy Stone, Karen Rocheford, Kathleen Tierney, Regina Monfredo, Rose Levasseur, Linda Silva, Karen Colwell, Diane Paquin, Belinda Wright, Diane Wright, Monika Grimmer, Kathleen Timlege, Diane O'Regan, Lisa Kazarian. 1—Denise Lemire, Kristin Marshall.

WYANDOTTE RECREATION FSC: Pre—Carol Fox, Gail Lalande, Patty Lalande, Laura Cannon, Steven Hardy, Ellen Filipiak. 1—Shannon Curry, Lynda Malek, Anne Parker. 2—Andrea Zgrzyski. Pre D—Jamie Cope, Anne Parker, Barbara Centers, Laura Cannon, Steven Hardy. Bronze—Shannon Curry, Anne Parker, Ronald Byas.



See you on the ice, Anja

A SKATING COMPANY?

at a Gathering" can be converted to the ice with the same lightness, gaiety, humor and intelligence. To see something comparable to Arpino's "The Clowns" with its strange portrayal of life after a holocaust, would be both visually and intellectually stimulating.

Perhaps the coolness of the ice has been too overpowering, but skating has yet to enter the sensual world with the same intensity or subtlety as dance. In all the pair programs of the past five years, perhaps only one has really ventured into the realm of the strange and the sensual. This was the exhibition of Irina Rodnina and Alexei Ulanov which used a traditional arrangement of "Two Guitars." It was an athletic accomplishment but it added a new dimension by portraying a twisted but irresistible attraction between a man and a woman.

Dancing offers innumerable sources but borrowing is only a preliminary need. It is conceivable and necessary that a new skating sphere progress individually.

Skating already has its own creative choreographers. Just look behind what appears to be an individualistic skater, and you may find a professional who was able to develop the pupil. At times the programs belong more to the professional than the skater.

In time, skating will be able to make its own statements and have music composed especially for its own requirements. The fantastic speed, flow and momentum of skating project its potential beyond dancing.

This new sphere would automatically eliminate the concepts of a few major competitions, a time-limited program, compulsory moves and rules dictating musical changes of pace. New horizons would be defined. The skater would now have to ask, "Can I convey the mood of the music or the intentions of the choreographer or composer? Is what I am about to do within my mental and physical capabilities?" Nationality would become subordinate to the presentation.

Despite all of the optimism, many barriers still exist. Financing is and always will be a problem. The idea of building a "skating theatre" is a distant (but plausible) and expensive obstacle.

Hardest of all to overcome is the current attitude towards skating which restricts it to an athletic endeavor only. Skating is also an art form. It is beginning to rumble under existing structures, and a new sphere is conceivable. This does not imply the abolishment of others. Rather, it would provide a challenging alternative for a medium of limitless possibilities. O

* FIRST TIME ADVERTISED

FRAME YOUR FAVORITE SKATER

IN SOLID CLEAR CRYSTAL

FIGURE SKATER AND BOOTS
PERMANENTLY EMBOSSED IN CRYSTAL
TO LAST FOREVER. **GIFT WRAPPED**
FOR XMAS AT NO EXTRA COST. YOUR
SKATER WILL CHERISH THIS MASTER-
PIECE FOR MANY YEARS TO COME!

FRAME FOR 5" x 7" PHOTO - \$12.95
FRAME FOR 8" x 10" PHOTO - \$14.95
ADD \$1.00 FOR POSTAGE PLEASE.
ALLOW 3 WKS. FOR DELIVERY

SEND CHECK OR MONEY ORDER TO:

PIC - A - FRAME TROPHIES INC.
1360 W. 70 ST. CLEVELAND, OHIO 44102



PAT. PENDING

(FRAMES ALSO AVAILABLE IN MILITARY, WEDDING, BABY, ANNIVERSARY & GRADUATION)

FOR FUN, FUNDS & THE FUTURE

by another club member with artistic talent. These boys learn stops, starts and cuts, but don't use sticks. The group was started to accommodate some of the boys with hockey skates who came to the rink with their siblings but couldn't or wouldn't participate in the figure skating classes. Once on the ice, some of these boys decide to invest in figure skates or get their parents to do so in order to join their friends in the other classes.

We have tried two methods of testing and are ready for a third. Giving all of the tests during the last few weeks of the year proved to be too hectic. We tried the other extreme of using an extra non-teaching person to test a stated level each week, but children became surfeited and dropped out when spring came around. Now we plan to test periodically, perhaps three times a year. We expect to leave a stretch between February and May in which no tests will be given.

Last spring the final week featured demonstrations by each class. These were constructed like show numbers but they provided a display of the skills that the students had learned during the year. Parents who had not come to watch for several months were favorably impressed by the attainments of their children.

The final group had five girls who had earned all 12 of their patches and the announcer mentioned our hope that the other children in the program would soon be skating as well as these five. We had trophies made up to present to those who had passed their 12 tests and these students were encouraged to join the club, visit our patch and dance sessions and consider taking private instruction.

In addition, smaller trophies (progress awards) were given to those who in our judgment had made the greatest progress since entering the program the previous fall. The trophies were given to a boy in the hockey program and a boy and a girl in the figure skating classes.

Finally, there were demonstrations by the program instructors in various free style and dance moves while the announcer gave a brief explanation of each. We wanted to give the general picture of what ice skating is all about.

Parents found helpful our circulars explaining the program and listing test requirements, and another which offered advice on purchasing skates and the proper mounting of boots.

It takes some hard work and dedication, but we have found that a Basic Tests Program is well worth the effort. O



ZAMBONI

the proven name in ice resurfacers

Wherever ice skating is enjoyed as sport or entertainment, the name Zamboni is synonymous with excellence in ice resurfacing. Zamboni meets exacting demands of the finest ice performers in rinks throughout the world. Zamboni gives you *superior* ice, quickly, efficiently,

and economically. Result: more skating time—more profits! *Shown above: the popular Zamboni Model HD in action, shaves the ice, picks up all snow, applies fresh water to ice, removes excess water—all at once or in single operations.* For information and specifications, write:

FRANK J. ZAMBONI & CO.

15714 Colorado Ave., Paramount, Calif. 90723 / (213)633-0751 Cable FJZICE
Frank J. Zamboni & Co., LTD., Scott Ave., Paris, Ontario, Canada (519) 442-2235

Patents: U.S., Canada, Great Britain, Switzerland,
West Germany, Japan. Other Patents applied for.

CURRY ON ICE

but John afterwards showed all-round improvement, placing fifth in Europe at Gothenburg, Sweden, 11th in the Olympics at Sapporo, Japan, and ninth in the world at Calgary, Canada. "In Calgary I was actually sixth in figures and seventh in free," John said, "yet somehow managed to end behind people I had beaten in both."

Then came last season, 1972-73, and the big step forward. At Nottingham, he convincingly won the Jennings Cup for free skating for a record fifth successive year. A comfortable national championship victory on his home Richmond rink against runner-up Michael Fish and the promising youngster, Robin Cousins, was followed by a fourth in Europe at Cologne, West Germany, and then—the greatest result so far—a perhaps ominous fourth in the world at Bratislava.

In addition to his two famed triples at Worlds, a pleasing variety of graceful, well-centered spins and an intricate combination of four jumps in rapid succession helped him get the highest place attained by an Englishman since Graham Sharp's victory way back in 1939. Whatever material prizes he may yet gain, some say he is already the connoisseur's champion.

John's competition program music was all

Tchaikovsky—the Polonaise from Suite No. 3, a snatch of the slow first movement of the Sixth Symphony and the contrastingly fast finale of the First Symphony, finishing on the final beat with a perfectly timed double Axel.

The initial concept was John's, but Alison proved a tower of strength as they developed the shrewdly devised program together, starting practice at Richmond Ice Rink around 6:30 each morning, working five to six hours a day, five days a week for most of six months. As with most championship skaters, it meant early to bed and many social sacrifices, but few would say such tremendous effort is not rewardingly worthwhile through its healthful satisfaction of achievement.

Slightly built, dark haired and 5 feet 11 inches without his skates, John Curry goes to ballet class five times a week. The pursuit of finesse in artistic expression is what makes him tick, his ever-absorbing goal. Dancing was John's first love, but now skating is in his blood. After his competitive days, he may well become a coach, but a school of skating ballet would appeal to him more—a dream which Cecilia Colledge once fondly nurtured. If anyone could turn such a dream into reality, one cannot imagine a more capable principal than John Curry. ○

SK Sport Shoes

Handmade Skating Boots
Made-To-Measure or
Available in Stock

Delivery on custom made
orders approximately six weeks

For Further Information:
1077 Gerrard St. E.
Toronto 8 Ontario

SK "Deluxe" Free Skating Boot ▷



by d'ann



JUMPERS &
DRESSES
(pants attached)
available in:

brown, kelly
cranberry, red
ocean blue, navy
royal blue, purple

washable knits
all sizes available

write for free brochure, swatches
SKATE TOGS by d'ann
P.O. Box 43201
Cleveland, Ohio 44143

SEASON'S GREETINGS

from the staff at
The Skating School
Charles River Ice Skating
Center
Newton, Mass.

Ronna Gladstone, Tina Noyes,
Julie O'Neill, Leona Cooke,
Nancy Brunnckow Gould,
Judy Mothersell.

Ron Lynch,
Ballet-Resident Choreographer

John T. Grady, Jr.,
Hockey Coordinator

Thomas J. McGinnis,
Managing Director



Give to
Christmas Seals.
It's a matter
of life and breath.



Over forty million Americans suffer
some breathing disease. Lungs are
priceless. That's why Christmas Seals
are precious. Using Christmas Seals
says thanks for life and breath.

**Fight
Lung
Disease**

Fight emphysema,
tuberculosis, air pollution

Space contributed by the publisher as a public service

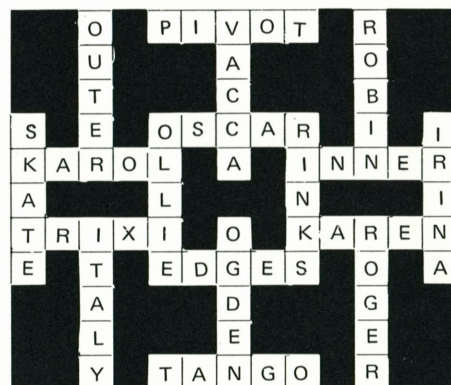
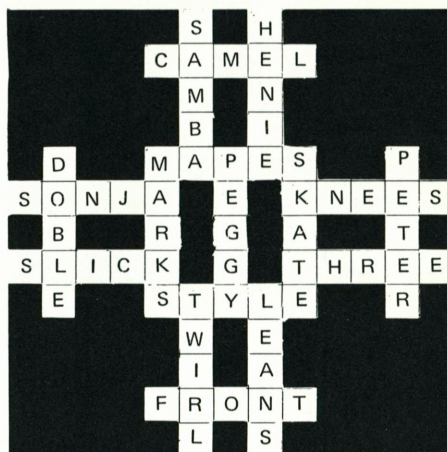


THE PERFECT GIFT

Handprints, washable
SCARVES—22" square, crepe, black on white,
yellow or light blue . . . \$6.00 ppd
PILLOWS—14" square, heavy cotton, black on
yellow, red or turquoise . . . \$8.75 ppd.

Send check or money order to:
Gisela Roessiger
9 East 97 St.
New York, N.Y. 10029
N.Y. residents add sales tax.

CROSSOVER CROSSWORD Solutions



classifieds

CLASSIFIED RATES: \$10.00 for first 35 words, 20¢ for each additional word. \$10.00 minimum. No bold, italics or agency commission on classified ads.

FOR SALE—A magnificent collection of eight 19th century skating lithographs, one signed oil and one reverse painting on glass. All in heavy gilt decorated frames of period. Folio size (16 x 20). Excellent for club or rink office. Mail \$2 (refundable) for color photos. \$850. Sam Wilson, P.O. Box 452, Manchester, N.H. 03105.

NEW FROM BEE JAY! Front zipper dress pattern featuring circle skirt. \$1.50 each plus 25¢ for handling. Girls sizes 8G, 10G, 12G. Teen sizes small, medium and large. One piece, attached skirt. Bee Jay Originations, Box 667, Station K. Toronto 12, Ont.

WANT TO BUY your used record library. 78 r.p.m. phonograph records: SKATIN TOONS - ice & roller rhythms - tempo - dance tone - M&K. Send lists, prices, to C.V. Otto, 307 South 79th St., Houston, Texas 77012.

WANTED—professionals and skaters for Michigan Technological University's Second Annual Summer Figure Skating School. For a free brochure, please write to Mrs. Cheryl DePuydt, Michigan Tech Student Ice Arena, Houghton, Mich. 49931.

8 x 10 PHOTOS OF SKATERS by Margaret Williamson as seen in SKATING beginning with February '72 cover. Specify issue, page. \$2.00 each, \$5.00 for three. Check or m.o. to: M. Williamson, 345 East 61 St., New York, N.Y. 10021.

DID YOU KNOW the USFSA has medals in stock that would make excellent birthday gifts for your children who have passed any official USFSA test? For free price list write: USFSA, 178 Tremont St., Boston, Mass. 02111.

SKATER'S GIFTS & COLLECTOR'S ITEMS—figurines, sculptures, music boxes, plates, tiles, prints, etc., all with skating motif. Send stamp for illustrated price list. Kuo's Imports, Box 6096, Denver, Colo. 80206.

SCRIBES—for skaters to 5½ and 6 ft. tall; Z Handle model \$28.00 & \$30.00; Squatin Scribe model \$22.00 & \$24.00. Julius Czaja, 4 Crestview Dr., Pittsford, N.Y. 14534.

FOR SALE—Figure Skate Pins, Charms, Earrings, Bracelets and other Jewelry. For free catalogue, send U.S. 8¢ stamp to Al Green, 15A Juniper Ln., Eatontown, N.J. 07724. Phone: (201) 542-0666.

CARNIVAL COSTUMES—new additional stock just acquired; inexpensively priced to fit your carnival budget and save you many costuming problems, solo or group. Inventory sheets available. Costumes Unlimited Inc., 1685 Elmwood Ave., Buffalo, N.Y. 14217. Phone: (716) 873-0709.

WONDERFUL WORLD OF SKATES—fascinating best seller of ice skating from earliest times. 150 illustrations, limited supply still available. \$2.50 single copy, three copies \$6.00. A. & T. Goodfellow, P.O. Box 384, Mountainburg, Ark. 79246.

SKATE COVERS—white or black, heavy stretch nylon, size A (12-5), size B (6-9). \$2.00 per pair plus 25¢ handling charge. Bee Jay Originations, Box 667, Station K, Toronto 12, Ont.

DANCE PRO wanted by Boston area figure skating club. Send resume to SKATING, Box 41, 178 Tremont St., Boston, Mass. 02111.

COMPETITIVE BLADE SHARPENING—"Sapphire Method", expertly done on our machine. 24 hour service. Send for free price list. We serve the champions. Sharpening, Colorado Ice Arena, 5555 West Evans, Denver, Colo. 80227. (303) 986-9552.

"SCREW HOLES IN YOUR BOOT SOLES?"—Send for "Perma-Plug" round leather rod. \$1.50 brings you enough to do one pair. Instructions included. Won't shrink. Colorado Ice Arena, 5555 West Evans, Denver, Colo. 80227.

Brandon FSC requires professionals for 1974-75 for figures, free skating and dance instruction. Season September 15th to April 1st, 33 hours ice per week, 225 members, Spring school. Please reply stating qualifications and experience to: Dr. G.W. Rahnefeld, Box 610, Brandon, Manitoba, Canada.

John Wilson

FAMOUS BLADES

Olympic and World Gold Medals have been won on all John Wilson Blades.

Why not use the best?

All models: Figure, Free, Dance & all round blades in stock in U.S.A.

*Dealers - Skate Shops -
Professionals contact*

Cliff Thael
2120 Sheepshead Dr.
Naples, Fla. 33940.
Phone (813) 774-0770

Great Styles become classics,
and here's a classic for action...
an 8 gore swing skirt and matching
vest in plushy nuvelle, a washable velour
in vibrant colors: royal, purple, gold, red,
black, white, kelly, orange.
Children's S,M,L. Adults' S,M,L.
Skirt: 10.00/10.95. Vest: 8.00/8.95.
Add 1.00 for Postage, please.

To order, write to:
Taffy's Great Styles For Action
1571 Golden Gate Plaza
Cleveland, Ohio 44124

TAFFY'S

GREAT STYLES FOR ACTION



ASK FOR TAFFY'S NEW
BROCHURE OF
GREAT SKATING
OUTFITS

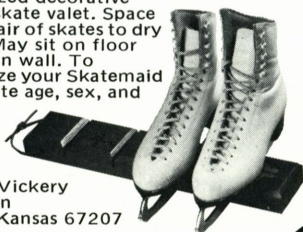
ATLANTA
BOSTON
CLEVELAND
DALLAS
SALT LAKE

skatemaids

Personalized decorative
wooden skate valet. Space
for two pair of skates to dry
and air. May sit on floor
or hang on wall. To
personalize your Skatemaids
please state age, sex, and
initials.

\$7.95

W. Dean Vickery
75 Mission
Wichita, Kansas 67207



OLYMPIAD SKATE GUARD

"The Cadillac of Figure Skate Guards"
11 Mountain Rise, Fairport, N.Y. 14450

- Hard rubber
- Custom Super Fit
- Life Time Spring
- Size Label
- Owner I.D. Plate
- Tuxedo Black Only

Send \$4.95 plus 50¢ mailing charge to
the above address. Enclose blade size.

Skate shops please write for dealer price
page.

PERFECT CIRCLE



Reco-Tote . . . \$15.50
Molded Record Carrier
Holds six records

The Spinner . . . \$30.00
Adjustable Patch Marker
Carrying Case . . . \$5.75

No C.O.D.'s
Calif. residents add 5% Tax

Send for complete brochure

FRANK DAVENPORT

Box 43, Orinda, California 94563

SHARPEN YOUR OWN SKATES WITH EASY HONE*



\$24.95
ppd.

U.S. Patent
No.
3,461,623

- Durable aluminum with rotating honing stones.
- Comes in handy travel container.
- Complete with simple instructions.

"K" Industries

42 DeHaven Drive, Yonkers, N.Y. 10703

ICE DANCING WITH Max Greger

*The International Skating Union
has recorded by the World Famous
Orchestra of MAX GREGER. . .
Three different Longplay Records,
30 cm, 33-1/3 RPM.*

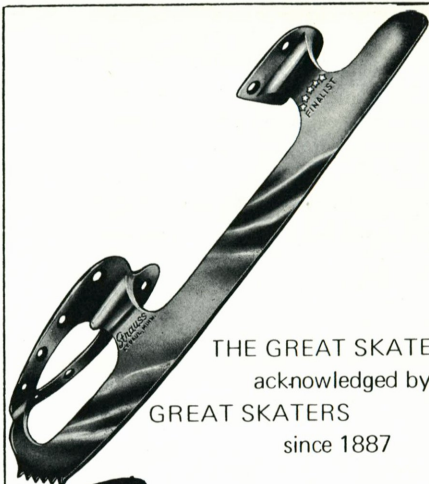
*Each with the 13 International
Compulsory Dances*

These Records are official ISU REC-
ORDS to be used at all International
Competitions and European and World
Championships.

**One Record—\$6.65
Three Records—\$16.65**

Airmail postage, \$5.00; surface
mail, \$1.20.

Please write to:
International Skating Union
Mr. Beat Hasler, Exec. Secretary
Postfach
7270 Davos-Platz
Switzerland



THE GREAT SKATE
acknowledged by
GREAT SKATERS
since 1887

Custom skates also built to order
or special specifications.

Strauss
SKATES INC.

1751 East Cope Ave., ● St. Paul, Minn. 55109
612 - 770-1344

TO THE USFSA MEMORIAL FUND
178 Tremont Street
Boston, Massachusetts 02111

Enclosed is \$ _____ as

1. ☐ A gift to the USFSA Memorial Fund in memory of _____

Notification of my gift should be made to

Name _____

Address _____

Zip _____

2. ☐ An unrestricted gift to the Memorial Fund.

3. ☐ For _____ Bronze (\$5) _____ Silver (\$10) _____ Gold (\$20)

USFSA 50th Anniversary medals.

Name _____

Address _____

Zip _____

Please make checks payable to the USFSA Memorial Fund and mail to the Fund at
the above address.

(Contributions to the USFSA Memorial Fund are deductible for income tax pur-
poses to the extent allowable by law.)

POLAR SPORT



First on the ice

115 East 70th Street
New York, N.Y. 10021
[212] 628 9347

U. S. POSTAL SERVICE STATEMENT OF OWNERSHIP, MANAGEMENT AND CIRCULATION <small>(Act of August 12, 1970: Section 3685, Title 39, United States Code)</small>		SEE INSTRUCTIONS ON PAGE 2 (REVERSE)
1. TITLE OF PUBLICATION SKATING		2. DATE OF FILING September 21, 1973
3. FREQUENCY OF ISSUE Monthly, November through June		
4. LOCATION OF KNOWN OFFICE OF PUBLICATION (Street, city, county, state, ZIP code) (Not printers) 178 Tremont Street, Boston, Massachusetts 02111		
5. LOCATION OF THE HEADQUARTERS OR GENERAL BUSINESS OFFICE OF THE PUBLISHERS (Not printers) 178 Tremont Street, Boston, Massachusetts 02111		
6. NAMES AND ADDRESSES OF PUBLISHER, EDITOR, AND MANAGING EDITOR PUBLISHER (Name and address) U.S. Figure Skating Association, 178 Tremont St., Boston, MA 02111 EDITOR (Name and address) Barbara R. Bouchee, 178 Tremont St., Boston, MA 02111 MANAGING EDITOR (Name and address) Virginia K. Burnham, 178 Tremont St., Boston, MA 02111		
7. OWNER (If owned by a corporation, its name and address must be stated and also immediately thereunder the names and addresses of stockholders owning or holding 1 percent or more of total amount of stock. If not owned by a corporation, the names and addresses of the individual owners must be given. If owned by a partnership or other unincorporated firm, its name and address, as well as that of each individual must be given.)		
NAME United States Figure Skating Association (a Massachusetts Trust with no stockholders)		ADDRESS 178 Tremont St., Boston, MA 02111
8. KNOWN BONDHOLDERS, MORTGAGEES, AND OTHER SECURITY HOLDERS OWNING OR HOLDING 1 PERCENT OR MORE OF TOTAL AMOUNT OF BONDS, MORTGAGES OR OTHER SECURITIES (If there are none, so state)		
NAME		ADDRESS
NONE		
9. FOR OPTIONAL COMPLETION BY PUBLISHERS MAILING AT THE REGULAR RATES (Section 132.12, Postal Service Manual)		
Do I, U. S. C. 3626, authorize in permanent part: The person who would have been entitled to mail matter under former section 4026 of this title shall mail such matter at the rates provided under this subsection unless he files annually with the Postal Service a written request for permission to mail matter at such rates.		
In accordance with the provisions of this statute, I hereby request permission to mail the publication named in item 1 at the reduced postage rates presently authorized by U. S. C. 3626.		
(Signature and title of editor, publisher, business manager, or owner)		
10. FOR COMPLETION BY NONPROFIT ORGANIZATIONS AUTHORIZED TO MAIL AT SPECIAL RATES (Section 132.12, Postal Manual) (Check one)		
The purpose, function, and nonprofit status of this organization and the exempt status for Federal income tax purposes: <input checked="" type="checkbox"/> Have not changed during preceding 12 months <input type="checkbox"/> Have changed during preceding 12 months (If changed, publisher must submit explanation of change with this statement.)		
11. EXTENT AND NATURE OF CIRCULATION		AVERAGE NO. COPIES EACH ISSUE DURING PRECEDING 12 MONTHS
A. TOTAL NO. COPIES PRINTED (Net Press Run)		26,119
B. PAID CIRCULATION 1. SALES THROUGH DEALERS AND CARRIERS, STREET VENDORS AND COUNTER SALES		649
2. MAIL SUBSCRIPTIONS		24,659
C. TOTAL PAID CIRCULATION		25,308
D. FREE DISTRIBUTION BY MAIL, CARRIER OR OTHER MEANS 1. SAMPLES, COMPLIMENTARY, AND OTHER FREE COPIES		107
2. COPIES DISTRIBUTED TO NEWS AGENTS, BUT NOT SOLD		NONE
E. TOTAL DISTRIBUTION (Sum of C and D)		25,415
F. OFFICE USE, LEFT-OVER, UNACCOUNTED, SPOILED AFTER PRINTING		704
G. TOTAL (Sum of E & F - should equal net press run shown in A)		26,119
I certify that the statements made by me above are correct and complete.		(Signature of editor, publisher, business manager, or owner) Virginia K. Burnham

PS Form 3526 July 1971



DON'T BUY
YOUR PRICE
LIST OUT ON
THE STREET...

GET IT FREE!

order from:
The United States Figure Skating Association
178 Tremont Street, Boston, Mass. 02111

Two pros. One skate. Daoust.

When people think of Daoust, they think of quality skates. For hockey. And rightly so. Because for the past 75 years, we've been manufacturing the kind of skates professionals have come to depend on. In hockey and figure skating. This year, we've added four new models to our popular line of figure skates. The Ballet Gold Label, Silhouette Silver Label, Caprice Bronze Label, and Caprice Red Label. These skates are for professionals. And hopeful professionals. They're constructed of top-quality materials — like cowhide leather, suede leather lining, once-piece crimp tongue — and are supported by the best blades available . . . Mitchell and King from England. Made from Sheffield steel, these blades are tested for hardness and durability and must register a reading of at least 58 on the Rockwell scale. Inside, these four new models all provide the steady support and balance so necessary — with a new, scientifically-designed arch support, one-piece rigid construction.

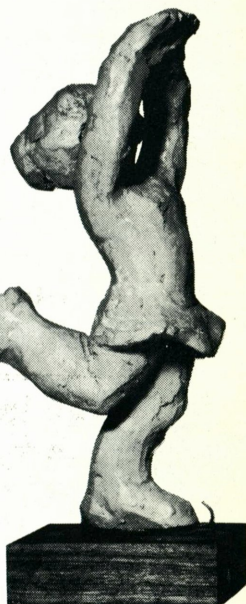
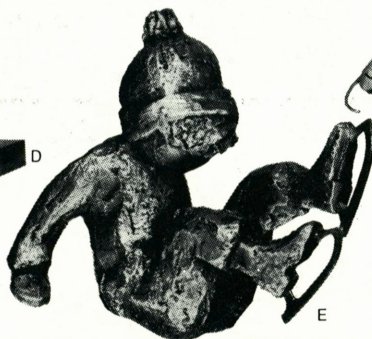


Daoust



**Professional skates.
For professionals.**

4343 Hochelaga St., Montréal, Québec



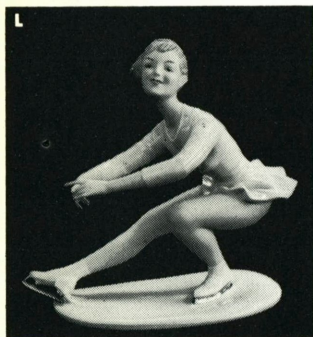
Gifts for the Skater

Distinctive and uniquely personal gifts for the skating enthusiast. Each is a choice selection from the world's most famous artists and houses.

All items beautifully gift-wrapped at no extra charge. Add \$2.00 for postage west of the Mississippi, \$3.50 for postage east of the Mississippi. Allow 2 weeks for delivery.

Zell Bros

MORRISON AT PARK AVENUE • PORTLAND, OREGON 97205 • 227-8471



A. Hutschenreuther "Sitspin" in white porcelain, 5½" high, **\$54.00.**

B. Bing & Grondahl "Seated Skater," Porcelain, 5¼" high, **\$83.00.**

C. Royal Copenhagen "Skating Girl," porcelain, 6½" high, **\$108.00.**

D. Handcarved from rare Italian woods, 10" high, **\$27.50.** With plaque for engraving, **\$30.50.** (Engraving 10¢ per letter.

E. "Oops!", charming pewter figurine with brass blades, 2½" high, **\$30.00.**

F. "The Ice Skater" by Mary Medda in Terra Cotta or Umber-black clay. Hand-cast and fired by artist, 9½" high, **\$35.00.**

G. Hand-carved Swiss-movement music box. Snoopy skates to the strains of the "Skater's Waltz," **\$20.00.**

H. Darling little girl skates to the "Skater's Waltz" in a blue dress, **\$20.00.**

I. "Skater," hand-tinted porcelain figurine, 6½" high, **\$39.50;** 8½" high, **\$45.00;** 11½" high, **\$75.00.**

J. "The Layback," beautiful white bisque porcelain figurine, 10" high, **\$55.00.**

K. Hand-tinted porcelain "Skater," 9½" high, **\$35.00;** 12" high, **\$50.00.**

L. Hand-tinted porcelain "Sitspin," 7½" high, 9" wide, **\$55.00.**

M. Hand-tinted porcelain "Skater," 5½" high, 9½" wide, **\$42.50;** 7½" high, 10½" wide, **\$50.00;** 9½" high, 12" wide, **\$65.00.**

Merry Christmas

and a

Happy New Year

FROM ALL 525 MEMBERS OF THE *ONLY* ORGANIZATION OF
TEACHING PROFESSIONALS IN THE UNITED STATES, THE

Professional Skaters Guild of America

Serving the Figure Skating and
Recreational Skating Worlds

*TEACHING SEMINARS • CONVENTIONS • NEWSLETTER • PENSION AND
INVESTMENT PROGRAM • LIABILITY INSURANCE • HOSPITALIZATION
INSURANCE • SCHOOL AND COLLEGE PROGRAMS • JOB PLACEMENT
SERVICE • RATINGS AND RATING EXAMINATIONS • USFSA, ISU, ISIA,
PSAC AND IPSU LIAISON*

*“Competence and Confidence
Come from Working with a
Guild-Rated Professional”*

P.S.G.A., P.O. Box 80, Elma, N.Y. 14059