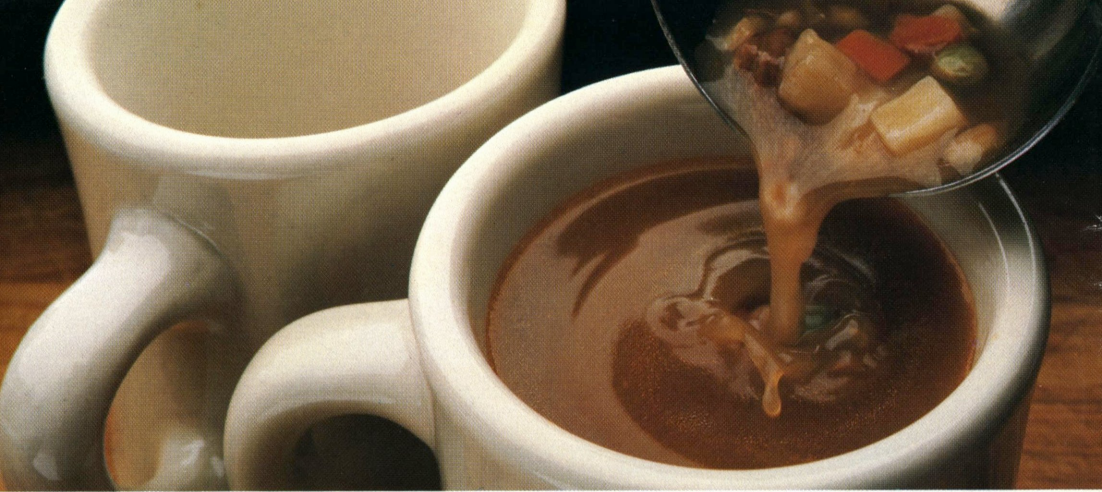


Skating®

M A G A Z I N E



JUNE 1983



CAMPBELL'S SOUP. FUEL FOR FITNESS.

The trend nowadays is to trimness. Doing the right things to stay in shape — jogging, cycling, walking to work — and eating the right things.

And there aren't many foods that fit into fitness better than soup.

SOUP IS THE STREAMLINED WAY TO STAY FIT

Because, according to nutrition experts,* you get a better deal on calories with soup. Most Campbell's Soups are dense in nutrients, to give you a higher level of nutrition with fewer calories than you get from many other foods.

SOUP CAN HELP MAKE YOU FEEL FIT

After a heavy meal you feel like going to sleep. After soup or something else that's light, you feel raring to go. Soup is easy to digest. Gives you the fuel you need to keep going, without weighing you down so much you don't feel like going anywhere.

SOUP TASTES AS GOOD AS IT IS GOOD FOR YOU

There's nothing quite as stimulating to the taste as hearty, hot soup. And with so many kinds of Campbell's Soups to choose from, like that luscious Vegetable Beef up there, there aren't many people who don't have a lot of favorites. Nice to know that something you enjoy so much is doing so much for you.

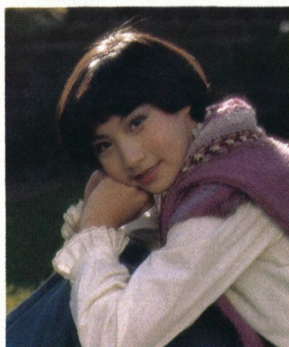
SOUP IS GOOD FOOD

*Source: Hansen, R.G., Wyse, B.W., Sorenson, A.W., The Nutritional Quality Index of Foods, AVI Publishing Co., Inc., Westport, CT 1979

Skating[®]

M A G A Z I N E

Feature Articles



COVER: Tiffany Chin celebrated her first year in Seniors by making the 1983 World Team. She placed a creditable seventh at Worlds. Tiffany was profiled in last month's issue.

PHOTO: BOB YOUNG

- 20 LEA ANN MILLER &
BILL FAUVER:
A Rare Blend of Grace and
Athleticism
by Lorna Simmons Nolt
- 24 JILL WATSON &
BURT LANCON:
Experience + Inexperience =
Instant Success
by Vicki Fassinger
- 32 LOS ANGELES FIGURE
SKATING CLUB:
Celebrating Its Fiftieth Year
by Libby Slate
- 40 SUPERSKATES
A pictorial look at the
1982 USOC Benefit

Food for Thought	5
Ricky Harris	9
Museum Newsletter	13
Calendar of Events	15
People, Places, & Faces	18
Official Notes	19
Memorial Fund	28
Kid Talk	44
Classifieds	46
Laurels	49
Advertisers' Index	62
Reader Service Card	62

Departments



Skating[®]

M A G A Z I N E

EDITOR

Ian A. Anderson

ADVERTISING/PRODUCTION

Mary Ann Purpura

SUBSCRIPTIONS

Diane Hoover

Correspondents

Betty Ann Bagley — Canada

Howard Bass — U.K.

Dennis L. Bird — Germany

Nigel Brown — Switzerland

Per Cock-Clausen — Denmark

Eva Gyorgy — Hungary

Junko Hiramatsu — Japan

Frank Loeser — Canada

Rev. Kevin Reynolds — South Africa

Advertising

Rate card supplied on request. SKATING and the USFSA neither endorse nor take responsibility for products or services advertised herein. The Publisher reserves the right to reject or cancel any advertising at any time.

SKATING (ISSN: 0037-6132) is published by the United States Figure Skating Association, 20 First Street, Colorado Springs, CO 80906. Phone (303) 635-5200. Subscription rate: United States, one year **\$12.00**. Canadian and foreign, one year **\$27.00**. Allow 6-8 weeks delivery of the first issue. Second Class postage paid at Colorado Springs and at additional mailing offices. SKATING is published monthly October through July (10 issues per year). Copyright 1983 by The United States Figure Skating Association (USFSA). **Postmaster: Please send FORM 3579 to SKATING, 20 First Street, Colorado Springs, CO 80906.**

USFSA President — Oscar T. Iobst, Jr.
Executive Director — Larry McCollum

SKATING is the official publication of the United States Figure Skating Association (USFSA).

Dura White[®]

professional white polish for figure skaters

Dura White[®] is not just another white shoe polish, but a truly durable white polish with outstanding wearability and beauty. Developed for the rigorous demands of figure skating, where competitive skills are complemented by consistently clean white skates, **Dura White[®]** is preferred by experienced and discriminating skaters.

CONSIDER THESE OUTSTANDING QUALITIES DELIVERED BY DURA WHITE[®]

- It defies the water hazard of a wet rink ice so that it does not come off or streak.
- It can be cleaned with a damp cloth, even using a mild cleaner if necessary.
- It is more resistant to soiling than ordinary white polishes making your skates whiter
- It imparts an almost-like-new look to your skates.
- It does not promote leather cracking as do many white polishes, nor does it create an ugly build-up.
- It gives consistent hiding with a pleasant shine, smooth appearance, and without buffing.

ATTENTION SKATERS

Show this ad to your preferred skate retailer.

ATTENTION RETAILERS

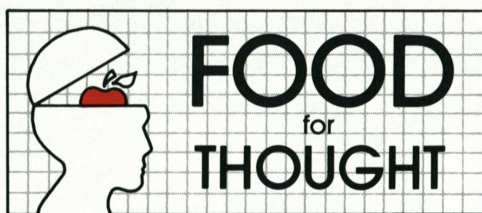
Dura White[®] retail sales continue to grow because it best meets the special needs of white figure skates, as you can see. Water resistance is especially appreciated. You need not wait for a distributor to bring **Dura White[®]** to you. Write us today for stocking information. Local distribution is under development.

ATTENTION DISTRIBUTORS

We want distributors, small or great, who can market the best polish ever developed for figure skate needs. Write today for all the necessary business information to obtain **Dura White[®]** for your distribution.

MAPLE LEAF LABORATORIES LTD.

Ste. 203 - 1120 Austin Avenue
Coquitlam, British Columbia
Canada V3K 3P5



*Nutritional
Guide for
the Skater.*

WATER—THE FORGOTTEN NUTRIENT

by
*Arnold E. Denton, President
Campbell Institute for Research
and Technology
and Member,
USFSA Sports Medicine Committee*

"Water, thou hast no color, no odors, canst not be defined, art relished while ever mysterious. Not necessary to life, but life itself; thou fillest us with a gratification that exceeds the delight of the senses."

—Antoine de Saint-Exupéry
Wind, Sand, and Stars
(1939)

Water—necessary for *all* chemical reactions in the body, and making up half to three-quarters of your body weight—is the forgotten, taken-for-granted nutrient.

We all know the facts of the other five nutrients, necessary for healthy bodies: carbohydrates, fats, protein, vitamins, and minerals, but did you know that in order for many of those other nutrients to be useable to the body, they must first be dissolved in water?

Water serves as the transportation system for nutrients and waste materials; is the building block of cells; and helps regulate body temperature. Now let's discuss what this means to you, the athlete.

First of all, you should be aware that athletes in training sometimes don't feel thirsty. Working-out in high altitudes emphasizes this problem. But water is so critical to you, that you should drink plenty of it before, in-between, and after workouts.

A common condition among athletes during strenuous activity is dehydration. Simply stated, dehydration is an imbalance of the water inside and outside of cells. During exercise, the

water surrounding the cell evaporates through perspiring and expiration. To correct this, the body signals for water to be taken from inside the cell to replace the liquid outside. Another cause of dehydration is a result of abnormally high salt intake. In this case, the high concentration of salt in the area surrounding the cell, pulls water from inside the cell. If water intake is restricted in either of these cases, severe dehydration inside the cell can occur. Heat stroke can be the result. The symptoms include: thirst, nausea, vomiting, hot and dry tongue, loss of coordination, and even blackout.

When salt intake is too little, the opposite condition can take place. In this case, water is drawn into the cells causing them to expand. For an athlete, this condition is as harmful as dehydration. It can lead to fatigue, lethargy, and general weakness.

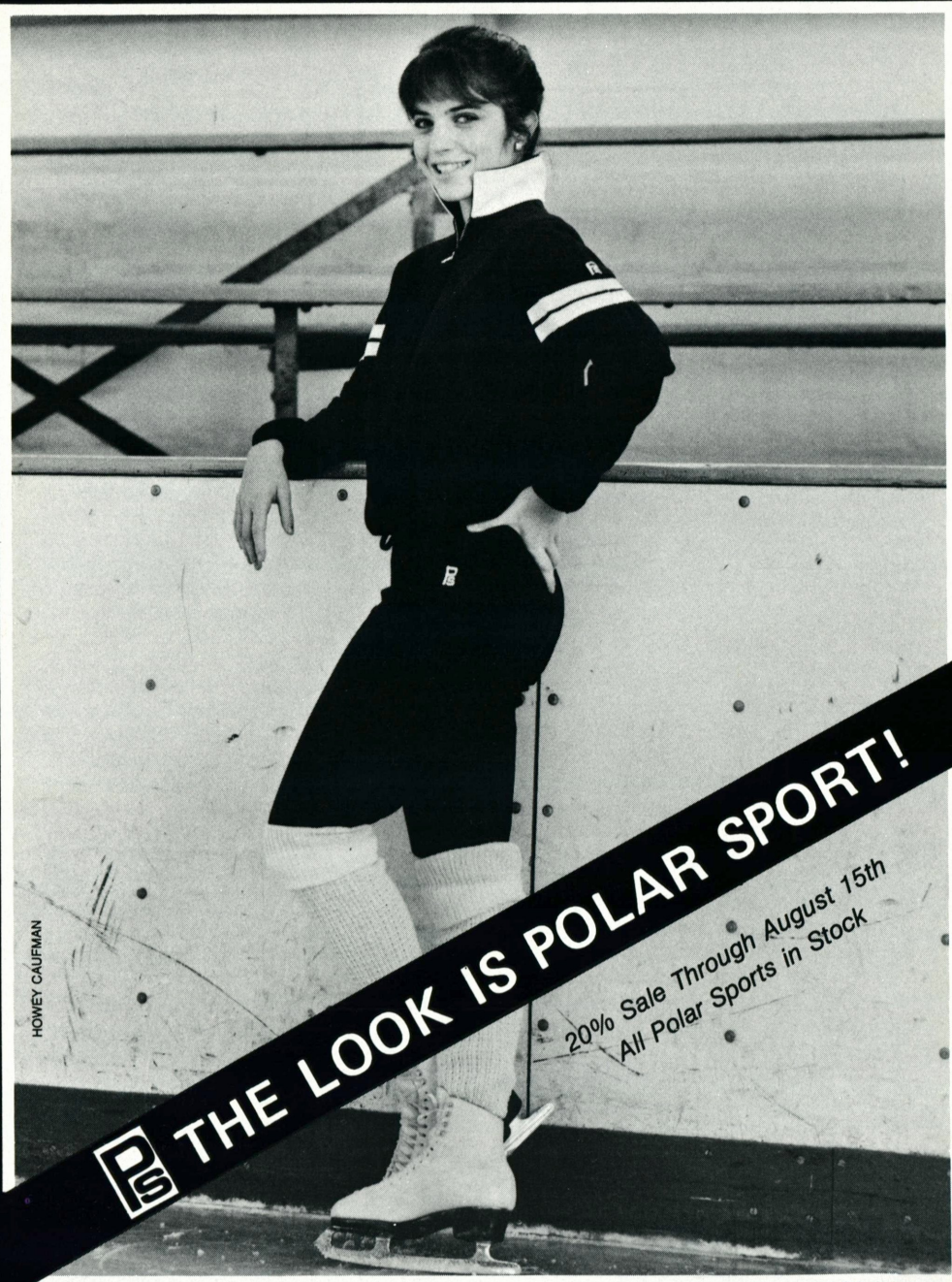
By now you must be getting the picture of *how important* water is—especially for you, the athlete. Now, for *how much* water is necessary. Water intake for normal adolescents and adults who are not perspiring, is about six to nine glasses daily; and three to six for children. Athletes or adults doing heavy workout in high temperatures need two to three times the normal amount of water. Drink more than you "think" is necessary; and eat plenty of fruit, soup, and vegetables which will add liquid to your body.

The proper liquid intake is especially important during training and pre-competition. Some sports physicians recommend including two to three glasses of water or fruit drinks, in the pre-game meal. Juicy fruits, such as peaches, plums, or nectarines can also be eaten. However, use of high caffeine liquids is not recommended because they may overstimulate the young athlete.

Again, an athlete in training might be in need of body water without being thirsty, so be sure you drink plenty of water before, during, and after your practices.

POLAR SPORT®

FIRST ON THE ICE



HOWEY CAUFMAN

THE LOOK IS POLAR SPORT!

20% Sale Through August 15th
All Polar Sports in Stock

Call or write for free brochure from POLAR SPORT LTD., 264 West 35th Street, NYC 10001
(212) 736-5477 or toll-free outside New York State (800) 223-6230

(212) 736-5477

A Great Gift Idea...from the U.S.F.S.A.

Kid
Talk

COLORIN'
BOOK

Featuring the many unique
animal characters from
SKATING magazines

popular **Kid Talk** section...
plus many more!!

Twenty pages of fun
for the young!!

Order Today



TO: KID TALK COLORIN' BOOK
USFSA
20 FIRST STREET
COLORADO SPRINGS, CO. 80906

Only \$2 per book
includes shipping and handling

Please send me copy/ies of the KID TALK COLORIN' BOOK.

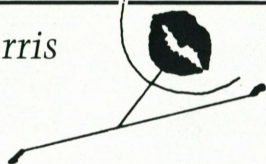
Name _____

Address _____

State _____ Zip _____

I enclose \$ _____ .

☐ Make check payable to: USFSA



On Endings

1. *You have just completed a perfect program.*
2. *You fell on one jump, but everything else was done well.*
3. *You botched the whole thing.*

No matter what you did, make your ending dramatic and confident. It is the finish; the conclusion of all your efforts and it says: "There, I did my best," or "I tried and will do better next time." This is your opportunity to show faith in yourself and for what you can do in the future. Make it positive, exciting and full of hope.

Your ending can complete the story you have displayed in your program. The program is finished and everything has been done, or attempted, so there is nothing more to worry about. You can now wrap up everything you said or wanted to say in your program.

The ending can be simple but expressive, or difficult and exciting. Many times it is fun to choreograph the ending before the beginning. You then have a goal towards which to work. This sometimes eases the choreographic process when you are not sure of how to proceed, and sets a style to work with.

Avant garde skaters such as Allen Schramm, Toller Cranston and Igor Bobrin have broken the ground and paved the way for innovative, interesting, and exciting moves. You can do anything without worrying about whether it will be accepted. After all, it is the end, the finish, and you have skated all the necessary elements for technical points. Now your ending should add to the artistic quality of your program; adding to the presentation points.

There are three levels in which to choreograph an ending position: Standing, Kneeling, Lying.

What you design has much to do with how many counts of music are left to complete the ending, as well as what style and feeling you are trying to project. Listen to your music carefully and find the exact amount of counts that you have. Determine whether they are evenly counted or the rhythm is broken up into syncopation. You may have 1-2-3-4 or 1&2&3 or 1& uh 2& uh 3-4, or just 1. Once you have your exact counts, you will have a better idea of how many moves you need to make. If you have already choreographed the whole program, you will have a fairly good idea of the music and the movement style it develops. This should show in the ending.

You can choreograph the ending by playing the music over and over and improvising until you hit on something that feels good and looks good. Or, you can deliberately design the moves methodically. If you improvise, the decision as to which level you will use will probably be made automatically. If you use the direct method, you should decide first which level you wish to use.

One thing to think about, no matter how you design your ending, is balance. Remember, you have just finished your program and may be tired. You should be able to hold your ending position for three counts before taking your bow.

Make your ending something important. Make a statement. Make the judges and audience remember you. After all, it is the last picture they see of you.



1983

SUMMER SKATING PROGRAM

*Located at Training Altitude (5100)
in the Southern California Mountain Resort
Area
of
Lake Arrowhead and Blue Jay*

3 SESSIONS

Session I June 5 - July 2

Session II July 3 - July 30

Session III July 31 - August 27

Patches and Free Style Daily — Ice Dancing Sessions —

On Ice: Stroking, Interpretive, Ice Theatre —

Off Ice: Jazz Ballet, Jump Conditioning, Stretch, Jazz Work

— World's First 360° Jump Trainer — Weekly Shows — Lectures — Evening Movies

— Residence Accommodations with Supervision — 2 Meals Daily

— Special Summer Skating Package Plan Available

Professional Staff — Larry Seale, Erica Seale, Margaret Beard, Jaime Beard

USFSA COMPETITION JULY 23/24, 1983

Sponsored by the Rim of the World Skating Club

For More Information and Brochure:

714-33-SKATE

P.O. Box 2109, BLUE JAY, CA 92317

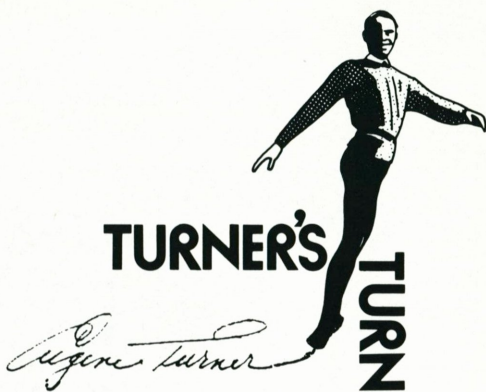
*Directors: Carol Caverly Probst
Eddie Shipstad*

Abe Burrows, veteran playwright (*Guys and Dolls*) and famous wit, wrote a book in which he, at one point, tells about the helpless feeling while watching something out of his control:

"I've done many shows (he writes), but on every opening night I feel a tension that causes me to stand in the back of the theater and use Body English. You can't talk to an actor during a performance, so when he has to say a line you silently try to help him by thrusting your shoulder toward the stage as though you are willing him to say the line with the proper timing. If an orchestra's tempo is slow, a composer tries to help by moving his shoulders faster. I've been at opening nights where the stuff going on in the back of the theater is more interesting than what's on stage."

In recent years, Body English hasn't been much in evidence around skating competitions. The stoic instructors' faces seen at the railings nowadays are about as exciting to watch as that of the Dallas Cowboys' coach Tom Landry. To see Landry, you never know whether his team has scored or been scored upon. When someone once said they saw Landry smile, the news rocked the football world. Tom Flores, of the Los Angeles Raiders, seems similar, but at least when under stress he chews faster. In skating, John Nicks, master-magician of instructors, takes the prize for massive emotionlessness. There is no close second. The first time I witnessed Nicks "undergoing stress" at rinkside he appeared only to have found one of his fingernails dirty. Over the years, he has been watched closely by many instructors, and today you can see them, a remarkable breed, standing calmly and boldly to the fore after putting their pupils on the ice to perform. No hint of anxiety shows, no twitch or convulsion. A pupil falls thrice; the pro's eyelids quiver. A successful triple Axel gets a half-inch nod of recognition. Somewhere between the finish of the pupil's fine routine and the search for her shoes, she may get her guards handed to her and four syllables, one of which might be "good."

I tried it one year. They said I was a great success. Old Stoneface Turner I was known as. My steely glare was awe-inspiring. So



were my steely fingers gripping the railing, for my knees tended to buckle. A year was enough. I then retreated to my usual post behind four rows of spectators to peek around necks and heads. But why should I be embarrassed? I once had a teacher who communed with the horses in the next door riding stable when I skated. Heaven knows what some of the parents do nowadays. I saw one with hand to face peer through her fingers, the way we used to watch a scary movie as kids.

But you take the late Maribel Vinson Owen. *There* was a sight, a marvel of delicious unrehearsed choreography. During a pupil's performance she looked like a belly dancer getting a hot-foot. A successful jump landing would produce an astounding leap in the air, or a yell that could split an atom. If the pupil fell, so would Maribel, or at least she would drop from sight behind the railing. And if the pupil weren't careful at routine's end she would get killed by Maribel's flying body hurtling through the air like some linebacker trying to stop a fullback at the goal line.

Of course, there are exceptions nowadays. The other day I saw an instructor stand immobile, dignified and concentrated, but a closer look showed her eyes closed. Then there was another who carried the bearing of a medieval knight, but betrayed himself by a twitching leg. The most interesting one, however, watched her pupil with regal calm and meltingly lovely eyes. But her lips moved noiselessly. I'm no lip-reader . . . but some indications showed she was either praying—or cussing.

Come glide into the past
and present at The

UNITED STATES FIGURE SKATING HALL OF FAME & MUSEUM



Free Admission

20 First St. (just East of
the Broadmoor)
Colorado Springs, CO
635-5200

(Sept. – May)

*Hours: Monday – Friday
10:00 A.M. – 4:00 P.M.*

The USFSA Hall of Fame and Museum features the finest collection of Skating Art in the world. Also on display are Costumes of the Champions, past and present, antique skates and pins and medals from around the world. A comprehensive library collection of skating books, films and videotapes is also available for research and relaxation.

Museum Newsletter

USFSA HALL OF FAME & MUSEUM RECEIVES "APPLAUSE"

On January 24, a brief ceremony was held in New York City at which time the magnificent porcelain sculpture "Applause" was presented to the United States Figure Skating Association Hall of Fame and Museum. Presentation was made by Mr. John F. Eppler, President of Hummelwerk, a U.S. distributor of Goebel products. Representing the USFSA Hall of Fame and Museum and accepting the figurine was William J. Brennan, Jr., USFSA East Coast Vice President.

"Applause" was created by world famous sculptor Laszlo Ispanky. His incomparable

artistry of porcelain creations is admired and applauded by collectors throughout the United States. Mr. Ispanky's works are also in the private collections of such well-known persons as Prince Charles of England, Pope John Paul II, and Princess Christina of Sweden.

A brass plaque affixed to the walnut base of the figurine is inscribed, "*Applause*" by *Laszlo Ispanky, presented to the U.S. Figure Skating Association by Goebel of North America, January 24, 1983.*

An invitation is extended from the Museum Staff to come and view this magnificent piece of Skating Art.



John F. Eppler (left), President of Hummelwerk presents "Applause" by Laszlo Ispanky to William J. Brennan, Jr. (right), East Coast Vice President of the USFSA.

DONATIONS DURING THE MONTH OF APRIL 1983:

Permanent

Carol Heiss Memorabilia — Paul Taylor
Gladys Hersh Skating Outfits and Memorabilia — Mrs. Peg Hersh

Help turn the
Dreams of many
Young Talented
Skaters into Reality...



*Make a Contribution to
the*
USFSA
Memorial Fund.

The USFSA Memorial Fund makes direct grants and very low interest loans to needy and highly promising skaters to assist them to continue their training and education in skating. This is in accord with the American tradition of voluntarism and freedom.

Your (tax deductible) contributions are well spent.

Send contributions to:

USFSA MEMORIAL FUND
20 FIRST STREET
COLORADO SPRINGS, CO 80906

Calendar

OF EVENTS

JUNE

3-5

American Music on Ice, sponsored by the St. Moritz ISC, to be held on the third and fourth at the Berkeley Iceland and on the fifth at the Dublin Iceland. For information contact: St. Moritz ISC, 2727 Milvia, Berkeley, CA 94703.

4

Santa Monica Adult Dance Competition, sponsored by the Santa Monica FSC, at Paramount Iceland Arena, 8041 Jackson St., Paramount, CA 90723. For information contact: Santa Monica FSC, Ice Capades Chalet, 550 Deep Valley Dr., Rolling Hills Estates, CA 90274, 213-541-6630.

6-7/30

Riverview Ice House 4th Annual Summer Skating School, sponsored by the FSC of Rockford. Skating exhibitions on Wednesday nights and July 4th. For information contact: Julie Elliott, Riverview Ice House, 324 N. Madison St., Rockford, IL 61107, 815-963-7408.

9-12

The Wonderful World of Ice, biennial ice show, sponsored by the Hamden FSA, to be held at the Hamden Community Rink in Hamden, CT. For information contact, Claire Chiarelli, Corresponding Secretary, Hamden Figure Skating Association, P.O. Box 5134, Hamden, CT 06518.

11

Golden Anniversary Revue, sponsored by the Los Angeles FSC, at the Pickwick Ice Arena, 1001 Riverside Dr., Burbank, CA 91506. Exhibitions celebrating the fiftieth anniversary of the Los Angeles FSC. For information contact: Mrs. Josephine Lawless, 7363 Sausalito Ave., Canoga Park, CA 91307, 213-347-1510.

11-12

Figure, Free Skating & Pairs Judges School, sponsored by the SC of Wilmington, at the SC of Wilmington, off Welding & Elk Roads, Wilmington, DE. For information contact: Mrs. Dorothy Dodson, 703-370-5959.

30-7/3

Skate America Competition & Benefit Show*, sponsored by the Santa Monica FSC, at the Pickwick Ice Arena, 1001 Riverside Dr., Burbank, CA 91506. For

information contact: Chairman Mike Lynch, 208 Alta Ave., Santa Monica, CA 90402.

JULY

13-17

8th Annual Summer Skating Competition, sponsored by the Troy SC, at Hobart Arena, Troy, OH. Events will include figures, free skating, compulsory free skating, dance, and pairs. For information contact: Doris South, 1420 West Eldean Rd., Troy, OH 45373, 513-335-7245.

15-16

Copper Cup Competition, sponsored by the Utah FSC, at the Bountiful Recreation Center, Bountiful, UT. Figures and Freestyle, Dance, Drill Teams, Artistry on Ice, and Pairs events. For information contact: Linda Nalder, Chairman, P.O. Box 61, Farmington, UT 84025, 801-451-0069 or Nancy Howard, Registrar, 3083 S. Bountiful Blvd., Bountiful, UT 84010, 801-298-4498.

15-17

A Showcase for Skating, sponsored by the Los Angeles FSC, at the Pickwick Ice Arena, 1001 Riverside Dr., Burbank, CA 91506. A club competition in theatrical skating. For information contact: Mrs. Eleanor Curtis, 12764 Meadowlark Ave., Granada Hills, CA 91506.

22-24

Miami Summer Skating Competition, sponsored by the FSC of Cincinnati, the Oxford SC, the Queen City FSC, and Miami University, to be held at the Miami University, Oxford, OH. For information contact: Jack Vivian, 513-529-3343.

22-24

Peoria Summer Invitational, sponsored by the Illinois Valley FSC, at the Owens Ice Center, 1017 W. Lake Ave., Peoria, IL. Freestyle, Compulsory, Figures, Pairs, and Dance. For information contact: Mrs. Linda Stout, 2109 Edna Ct., Peoria, IL 61604, 309-676-0665 or Mrs. Lynda Langen, 1008 S. Warren, Peoria, IL 61605, 309-673-1089.

29-31

Skate Wilmington '83, summer competition sponsored by the SC of Wilmington, at the SC of Wilmington,

*Not to be confused with the international event to be held in October.

CALENDAR OF EVENTS

Weldin Rd., Wilmington, DE 19803.
For information contact: D.J. Tindall,
P.O. Box 7307, Wilmington, DE 19803,
302-656-5005 & 5007.

AUGUST

6-7 **Cohasset Open Freestyle Competition**, sponsored by the Silver Blades SC, at the Cohasset Winter Garden Rink. For information contact: Judy Rauhauser, 84 Forest Ave., Cohasset, MA 02025, 617-383-9036.

6-7 **10th Annual Long Island Figure Skating Competition**, sponsored by the Long Island FSC, at Sport-O-Rama, Monsey, NY. Figure Competition (Juvenile through Senior) and Free Skating Competition (No-Test through Senior) For information, contact: B. Windecker, 16 Bunker Ln., Hicksville, NY 11801, 516-735-2984.

7-8 **Arctic Blades Invitational**, sponsored by the Arctic Blades FSC, at the Iceland Arena, 8041 Jackson St., Paramount, CA 90723. Competition with events in compulsory moves, freeskating, pairs and dance. For information contact: Mrs. Betty Sonnhalter, 3680 Daisy St., College Park, Seal Beach, CA 90740.

11-14 **Atlanta Open**, sponsored by the Atlanta FSC, at the Parkaire Olympic Ice Arena, Marietta, GA. Figure, Freeskating, Dance, and Pairs Competition. Beginner through Adult levels. For information contact: Mrs. Patty Morgan, 4371 Heritage Glen Ct., Marietta, GA 30067, 404-973-5604.

17-20 **Howard E. Van Camp Competition**, sponsored by the Lansing SC at the Lansing Ice & Gymnastic Center, 1475 Lake Lansing Road, Lansing, MI 48912. Figures, Freestyle, Dance, Pairs, Similar Pairs and Solo Dance. Preliminary through Senior. For information contact: Dr. Donald Polin, 3865 Raleigh Dr., Okemos, MI 48864; Bus: 517-355-8414, Home: 517-349-1733.

SEPTEMBER

3-4 **Sierra Nevada Freestyle and Dance Championships**, sponsored by the Sierra Nevada FSC, at Meadowood Ice Arena, Reno, NV. For details contact: Mary Sauer, Chairman, 1550 Cushman Rd., Fallon, NV 89406, 702-423-5450.

WORLD TEAM BOOK

ORDER FORM!

Please send me _____ copy(ies) of the
1983 World Team Book.

Checks payable to: USFSA

NAME _____	ADDRESS _____	ZIP _____	MEMBERSHIP NO. _____
------------	---------------	-----------	----------------------

Send Check or Money Order to:

World Team Books
The United States Figure Skating Association
20 First Street
Colorado Springs, CO 80906

**AVAILABLE
NOW!!**

\$3.75

USFSA Members \$3.40
5 or more copies \$3.15 ea.

SHIPPING & HANDLING CHARGE EXTRA

THE UNITED STATES
FIGURE SKATING
ASSOCIATION



**1983
WORLD
TEAM
BOOK**

People Places & Faces

THE TEST RESULTS ARE IN

1982 was a busy year for skaters, judges, test chairpersons, and all the other people involved with test sessions. The computer at National Headquarters has yielded some interesting numbers concerning the test activity of 1982.

Over 40,000 tests were taken by 13,690 skaters which makes an average of 2.92 tests per skater. Approximately 67 percent or 26,800 of these test were passed so CONGRATULATIONS are in order to those who passed tests. Somewhere among these skaters are the future skating champions of the United States.

What many people do not realize from the above figures is the amount of time and hard work the judges, test chairpersons, and volunteers put in to make these test sessions successful. More than 70,000 working hours were spent organizing and holding the test sessions and then computing the information afterwards. One may also not realize how valuable the computer at National Headquarters has proved to be by processing and retaining all the test information and by producing stacks upon stacks of test certificates for the skaters. In fact, the computer could handle a lot more! We here at the USFSA Headquarters wish to express our thanks to all the people out there who support and help further the sport of figure skating.

SOUTH AFRICAN NEWS

Possibly the most significant recognition ever given to figure skating in South Africa, where it is regarded very much as a "minor" sport, occurred on March 10, 1983. That night, at a prestigious banquet in Pretoria, the current national singles and pairs cham-

pion, Rick Simons, was awarded the trophy for the South African Police Force's Sportsman of the Year for 1982.

The value of this award was indicated by Rick heading the other ten nominees, including national hero, rugby-player, Naas Botha. Rick's citation for his nomination included the fact that in 1982 he received the South African Sports Merit Award for figure skating for a second time and the national senior singles title for the fourth consecutive year as well as the national senior pairs title.



Rick Simons

Twenty-year-old Rick Simons started his competitive skating career in Pretoria ten years ago. He took to his sport very much under the influence and guidance of his mother, Rita, who grew up on the iced canals of the Netherlands. He still trains under his original coach, Basil Michael, but now in Johannesburg at the country's only full-sized rink at the Carlton Centre.

—Reverend Kevin Reynolds

Continued on page 42

SCREENING AND SELECTION OF STAFF PERSONNEL (COACHES, MANAGERS AND SUPPORT STAFF) FOR THE 1984 OLYMPICS

Four coaches from a list of those recommended by the PSGA for Singles (2), Pairs (1) and Dance (1) from among coaches of eligible competitors being considered for selection to the team.

Two managers from among those serving as team leaders in World Championships and/or International Competitions from August 1980 to April 1, 1983. Managers (team leaders) to be one man and one woman since fifty percent of the team will be women.

Managers (team leaders) to be chosen by the Selection Committee, coaches selected by the International Committee.

—Joseph L. Serafine
Chairman

Competitions Committee

JUDGES' APPOINTMENTS . . .

LOW FIGURE TEST

Michael Sullivan, Pueblo FSC
Patricia Milligan, Rocky Mountain FSC

James Fix, Palace FSC
Joseph McKeever, Dallas FSC
Mary Lou Rothman, St. Moritz ISC
Kevin Rosenstein, SC of Fresno
Elaine Hickman, SC of Wilmington

INTERMEDIATE FIGURE TEST

Norman Lesser, Holiday Blades SC
James Valentine, Muskegon SC
Janet Wright, Chicago FSC
Sharon Wright, Greater Milwaukee FSC
Bill Reynolds, Houston FSC
Jerry Ashby, Lilac City FSC
Grace Duggan, Holiday Blades SC

HIGH FIGURE TEST

Susan Arnoff, Cleveland SC
Robert Lubotina, Houston FSC
Will Smith, Tulsa FSC
Sam Auxier, Chicago FSC
Delaplaine McDaniel, III, Silver Edge SC
Robert Horen, Philadelphia SC & HS
Marjorie Finley, Philadelphia SC & HS

SILVER DANCE TEST

Dick Potticary, Dallas FSC
Joanne Schiller, SC of Hartford
Bernard Taheny, Glenwood FSC

BRONZE DANCE TEST

Maria Truppa, Smithfield FSC
Frederick Hagedorn, SC of Boston
Helen Griffen, Los Angeles FSC
Howard Whelan, St. Moritz ISC

Continued on page 43

COMPETITION NOTES

U.S. Nationals

1984: Salt Lake City, UT — January 17-22, 1984
1985: Kansas City, KS — January 27-February 2, 1984

Worlds

1984: Ottawa, Canada — March 20-25, 1984

Olympics

1984: Sarajevo, Yugoslavia — February 9-19, 1984

Miller & Fauver

A RARE BLEND OF GRACE AND ATHLETICISM

by Lorna Simmons Nolt



Pair skaters on practice sessions respectfully crowd to the barrier to watch, to give them room. Competition and show audiences, too, quietly wait for their appearance. There's an anticipation of about-to-be-skated elegance—artistry in motion.

Their forte is creative, flowing beauty, a rarity these days in a pair, whether at beginning or World Team level. For beauty of movement is, for U.S. Bronze Medalists and U.S. Team members (seventh in 1983) Lea Ann Miller and Billy Fauver, the primary ingredient in their programs.

"We have found what is right for us," says Billy over a Coke and a vanilla milkshake in a small restaurant near their home rink in Wilmington. "The bottom line of our skating is that it has become uniquely our passion."



Miller & Fauver

Lea Ann, hurriedly chewing on a sandwich—they're off in a few hours for the airport to do yet another show—nods vigorously in agreement: this seasoned team, first in Sports Festival IV in Indianapolis last summer, fourth in the 1982 NHK Trophy in Japan, second in Skate America '82, knows *exactly* what they are and in which direction they're going in competitive skating.

Their forte may be their beauty of line, their self-invented moves, their on-ice rapport that fairly shouts for recognition. But they are no slouches when it comes to "tricks," either, and their technicality and sureness on the ice are increasing concurrently with that well-known elegance. A split triple twist and throw triple Salchow are no slouch moves, and they only add to the Miller/Fauver trademarks: the long-held bowl spin—with their heads on each other's shoulders, the bucket to overhead lift, Billy's now-famous Axel over his crouched and moving partner, and Lea Ann's breathtaking face-down death spiral. Innovative sport. Innovative art.

Is skating, and particularly your skating, more an art than a sport? Billy answers carefully but with well-thought-through conviction: "Art is something that will be appreciated in 100 years; sport connotes a shorter term of recognition. You don't go to a museum to see a sport." Adds Lea Ann: "We want out particular *style* of skating to endure."

Who knows? Going to a museum in 100 years may yield recorded videotapes of beautiful skating. But one thing is sure in this pair team's mind: "In recent years, there's been little grace in pair skating since the Protopopovs," says Lea Ann. "We want to change skating back to style."

Miller/Fauver set out early to do just that. They first got together in July 1978 in Colorado Springs with coaches Pieter Kollen and John Renn. Billy was twenty-four, Lea Ann seventeen.

John Renn, both emphasize strongly, changed their skating, their philosophies, their goals for themselves from the beginning. "John would always tell us," Billy explains, "that it will become a passion. 'Get lost in it and you'll never get tired of doing it.'"

Respect for John Renn's creative, artistic approach to them as a pair lights up their faces. Both Lea Ann and Billy had studied some ballet along with their skating, "but John brought it back," Lea Ann says in her quiet voice, as an integral and most important part of their off-ice training. "Whenever possible," Billy adds, "we work with him. We fell in love with John's love for skating—his passion. When Lea Ann and I got together, the addition of Lea Ann was the other bit of material he needed to create the pair and better realize his own special teaching techniques."

But everybody knows Billy and Lea Ann, separately, go back farther than 1978. Wasn't that Billy at the 1976 Olympics with partner Alice Cook?

The six-member Fauver family, to a person, are involved in skating, and Billy's involvement goes way, way back. "My first experience on ice was playing hockey," Billy grins with a certain rebellious pride. "My whole family figure skated." (Mother Ann is a Gold Medalist in dance, a national judge in "everything," and is currently heading JETS—the Judges' Educational Training Seminars; Dad Ben is a dancer "because of my Mom," both parents chair the Cleveland Skating Club's Memorial Fund Show—"a major contributor to the Memorial Fund;" sister Lynn Rimmer—husband Dick is a skater too—teaches skating in Kent, Ohio; sister Vicky, wife of South Charleston, West Virginia Mayor Richie Robb, teaches skating in Charleston; and sister Jane will start teaching this year in Portland, Maine.) Maybe the Fauver parents' love for skating was hereditary. If not hereditary, environmentally contagious!

In Cleveland, Billy graduated from hockey to figure skating, got his Fourth Test and his

Silver dances, competed one year in singles, and then turned to pair skating. "I started when the Militanos came to Cleveland as show guests." He had several partners and "a different goal with each one." After training for two years with partner Alice Cook, they placed twelfth in the 1976 Olympics. "People probably thought that when I left Cleveland after the Olympics with Alice, in the summer of 1977, I really didn't know if I was going to keep going."

It was John Renn who made the difference. And Lea Ann.

"I met Billy in Colorado Springs in 1978," Lea Ann remembers, although Billy came to St. Louis when she was fourteen to try out with another girl. "We did a couple of lifts in the lobby then just for fun," Lea Ann beams, "never dreaming of anything more."

Lea Ann's roots in skating go back far too. But she got started in a different way. "My mother was pregnant with my little sister Lynn, now fourteen, and she couldn't take me anywhere. So I started going to the rink just across the street." Lea Ann moved to Troy when she was fifteen and started getting very indirectly involved with Billy Fauver: her coach in Troy was Billy's brother-in-law Dick Rimmer and her St. Louis coach was Billy's sister, Vicky Fauver!

"I followed Chuck Shaw to Colorado in 1977 and placed seventh in Nationals in Junior Pairs. Then I met Billy there," Lea Ann continues, glancing at Billy with something akin to utter fondness. "We got our Gold Pair," Billy adds, eyes crinkling with remembered panic now turned to amusement, "at the last hour on the last day of qualifying time to make it to Nationals." They were fifth that year, 1979, in Cincinnati.

Injury and tragedy, which usually go hand-in-hand in sports, struck on, of all places, the ski slopes. On Easter Sunday, 1979, Billy and Lea Ann drove from Colorado Springs to ski at Copper Mountain in Billy's stiff little Fiesta. "I didn't know my back was broken," Lea Ann recalls, "and we drove back in those stiff little seats. I even



NOEL LEDIN

skated the next day." But x rays showed two compressed vertebral fractures, and Lea Ann wore a back brace for two months, stayed off the ice three months, and, Billy recalls with a smiling respect for Lea Ann's courage, "it took her months to get her strength back, but she never quit trying."

Then, probably what was inevitable happened. They made the move to Wilmington and the unsurpassed technical tutelage of Ron Ludington. "We didn't leave Colorado to leave John Renn," Billy emphasizes, looking to Lea Ann for assent. "We really didn't know how to train." "We had to be somewhere," Lea Ann adds, "where there were other competitors. We were the only Senior Pair team in Colorado. Luddy taught us how to train. We do our primary work now in Wilmington. The combination of Luddy and John is the best for us. We are lucky to have them both."

Moving halfway across the country was hard for homebody Lea Ann, who misses her sister Lynn, parents Larry and Dee, and poo-

Continued on page 31



DAVID LEONARDI

JILL WATSON & BURT LANCON:

Experience + Inexperience = Instant Success

by Vicki Fassinger

WANTED: female skater to train in Los Angeles with experienced male partner. Must be willing to work hard to make the World Team in only six months. **NO EXPERIENCE NECESSARY!**

This was not exactly what Burt Lancon had in mind when he decided last summer to change partners, yet what really happened for him and his new partner, Jill Watson, varied little from the qualifications of the fictitious ad above.

After skating together as a team for only six months, Jill Watson and Burt Lancon, Pacific Coast Champions, scored a stunning upset after the short program at the 1983 United States National Figure Skating Championships, by solidly placing second, ahead of veterans Lea Ann Miller and Bill Fauver, and closely behind defending champions Kitty and Peter Carruthers. Even though they finished third in the long program and third overall, Watson and Lancon came a long way in a short amount of time and deserved to represent the United States at the World Championships in Helsinki.

In a sport such as pair skating, where experience and years of skating together are vital, Jill's and Burt's success after six months of training was almost unbelievable. Even more phenomenal was the fact that Nationals was Jill's third competition ever.

Burt had been a veteran of national competition, and for the past two years garnered spotlights at Nationals: last year by placing second with Maria Di Domenico; and this year by finishing third with Jill. On the other hand, Jill has spent the majority of her skating career as a virtual unknown: train-

ing in Lake Placid as a test skater and performing in the Saturday evening summer shows in New York.

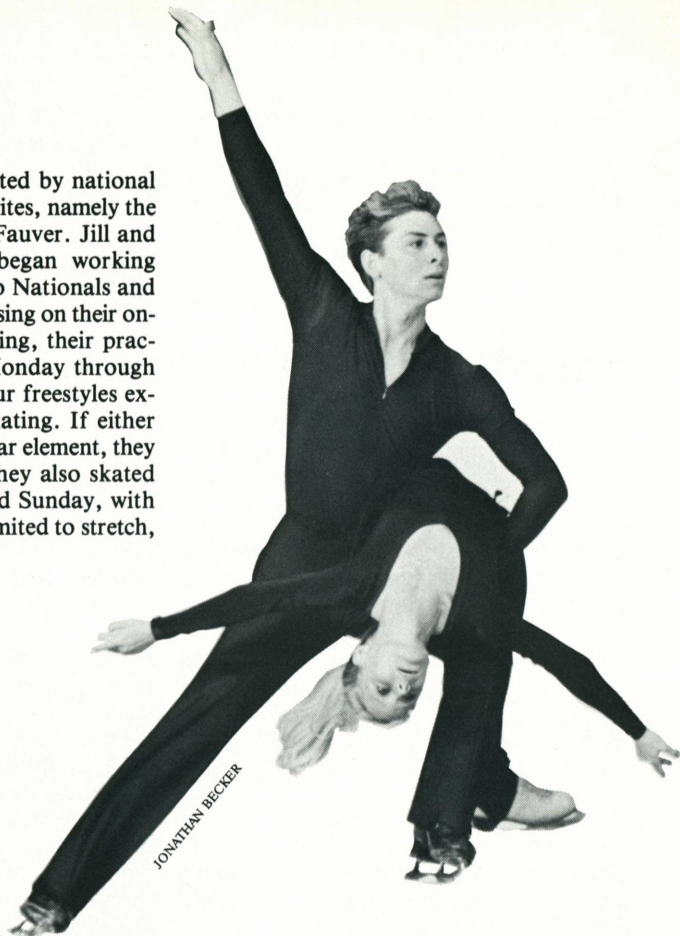
Destiny brought them together in July of 1982, as Jill's coach in Lake Placid, Tom Litz, recommended her as a pair partner to Burt's coach in Los Angeles, John Nicks, but not as a partner for Burt, who was still skating with Maria. Jill flew to Los Angeles to train with John Filbig, but the partnership dissolved when Filbig was hospitalized with blood poisoning, leaving Jill partnerless. In the meantime, Nicks felt that a change was needed for Burt, so a try-out was arranged for Jill and Burt, but the results were less than spectacular.

Both Jill and Burt remember the first day of skating together with a smile, not only for its successes, but also for its mishaps. Their stroking was good, because both skaters are powerful and athletic, but Jill's absence of pair experience turned throw Axels and throw double Salchows into "throw waxes."

For Burt, skating with Jill was much different than skating with previous partners. Because Jill weighs only ninety-four pounds, "during lifts I don't even notice that she's up there," admitted Burt. "I felt revived and alive again after the very first day of skating with Jill."

With only six months to prepare for Nationals, they were optimistic but also cautiously realistic about their chances to

succeed in an event dominated by national as well as international favorites, namely the Carruthers and Miller and Fauver. Jill and Burt set their goals and began working toward their dream: to go to Nationals and make the World Team. Focusing on their on-ice rather than off-ice training, their practices lasted for six hours Monday through Friday, and consisted of four freestyles exclusively devoted to pair skating. If either needed to work on a particular element, they would do it side by side. They also skated for an hour on Saturday and Sunday, with their off-ice training being limited to stretch, ballet, and jazz classes.



Finishing first at Southwest Pacifics and at Pacific Coasts gave Jill and Burt extra momentum and confidence going into Nationals. Even though they were relative unknowns, skating in only their third competition together, they handled the pressure extremely well. Jill felt pressure at Nationals, but not because it was her third competition. She later admitted, "I did feel pressure because Burt had made the World Team before, and that's probably the only thing that I felt at this competition."

At Nationals, when these two began stroking together on the ice during practice, their power and speed became evident, but was overshadowed by a special quality transmitted between them and projected to the audience; a feeling as if something special would happen. And at Nationals, it happened.

Their short program, skated to music from *The Electric Horseman*, was a dynamic per-

formance, but Jill and Burt did not stop there. They could have skated a "safe" long program, using lack of time as a legitimate excuse, but instead they opted to skate a program that developed a unique style for this duo, incorporating a perfect blend of artistry and athleticism in an attempt to get a European look for the United States. The program was highlighted by an original move called "the helicopter," which Burt described as "probably the fastest and most exciting rotating lift in skating." To watch these two execute the lift is comparable to riding a roller coaster: breathtaking, yet exciting.

Unfortunately a couple of slips and a fine performance by Miller and Fauver cost Burt and Jill the silver medal, but still gave them third place and a much-deserved trip to Worlds. A third-place finish was no reason

for them to hang their heads, because they came to Nationals hoping only to skate as well as they possibly could. Burt explained their philosophy by saying, "I knew what our ability would be and what we could do. I knew what it would take, but I didn't think there would be enough time. We wanted to place at Nationals and be on the World Team and skate what we can do. We kept it tattooed on our minds, and we kept together with the dream."

What made this team so successful besides their physical and athletic compatibility, was their mutual respect for one another and the quiet confidence each had in the other's ability. Burt and Jill both agreed that their immediate success could be attributed to "hard work, buckets of sweat, sore muscles, lots of tears, and lots of getting off the ice and discussing our disagreements."

After Nationals, Jill and Burt looked forward to returning to Los Angeles and training hard for Worlds, but a flu virus weakened Jill and a shoulder tendonitis problem hampered Burt, thus keeping them from preparing the way they wanted to for their first international competition.

At Worlds they skated well and finished a respectable eleventh of seventeen, and even though they hoped for a higher finish, they were satisfied with what they did. "The whole experience gave us seasoning," explained Burt, "and now we know what to expect and work for next year."

Jill and Burt also skated the entire sixteen

city North American leg of the 1983 World Figure Skating Tour, and they felt that the experience of skating before large crowds helped them in their efforts to better themselves for next year.

In 1983, time should prove to be the closest ally for this pair. This year Jill and Burt will place more emphasis on their off-ice training, incorporating more weight training and modern dance. "Basically we try to emulate the Russians and the European look—a fast, peppy style, but yet very smooth," began Jill, and Burt extrapolated on this point by adding, "The most important thing is to try to finish a program with as much energy and enthusiasm as you start out. We've strived for the look of effortlessness."

Jill and Burt have been very proud of their recent success, but they are not awestruck about it. They keep a level head about their recent popularity, because they remember where they came from, Indiana and Louisiana respectively, and they also remember who helped them get to where they are now. Both credit coach John Nicks as "the best thing for us," and look to him as their decision maker and a shoulder to lean on. Both skaters have supportive families who also are there to help when times are trying.

Their love of skating and their love of skating together becomes obvious to even the most casual of observers, and the way Jill and Burt feel about skating should keep them together on the ice until they are too old and feeble to stand on skates.

MEMORIAL



Each year the USFSA Memorial Fund salutes those who have made significant contributions during the period ending March 31, 1983. Contributors are named to the following lists of honor: *Gold Patrons*, for those donating \$25,000 or more since the Memorial Fund began in 1961; *Silver Patrons*, for those donating \$10,000-\$24,999; *Bronze Patrons*, for \$5,000-\$9,999; *Benefactors*, for \$2,500-\$4,999; *Sponsors*, for \$1,000-\$2,499; the *Century Club*, for those donating \$100 or more; the *Honor Roll of Clubs*, for those clubs donating the equivalent of \$1.00 per registered member; the *Bronze Honor Roll of Clubs*, for those clubs that have been on the Honor Roll of Clubs 2 to 9 times; and the *Silver Honor Roll of Clubs*, for those clubs that have been on the Honor Roll of Clubs 10 to 19 times. The figures in parentheses indicate the number of times a particular honor has been earned. As the swelling ranks indicate, more and more individuals and clubs are supporting the Memorial Fund in a significant way which, in turn, goes to further help all of skating. To each contributor the USFSA Memorial Fund extends a heartfelt "Thank You" and looks forward to another banner year for the Memorial Fund.

GOLD PATRONS 1982 — 1983

Morris D. Chalfen
Chicago Figure Skating Club
Clairol "Short n' Sassy"
Cleveland Skating Club
Tom Collins Enterprises
Essex Skating Club of New Jersey
F. Ritter and Hettie Shumway

SILVER PATRONS 1982 — 1983

Susan Strong Davis
Genesee Figure Skating Club
Ice Capades
Key Banks, Inc.
Lansing Skating Club
Helen Shumway Mayer
Frank & Helen McLoraine
Edwin H. Mosler, Jr. Foundation
Santa Rosa Figure Skating Club

BRONZE PATRONS 1982 — 1983

Canada Dry Corp.
Margaretta Drake
Harlene Lee
Pittsburgh Figure Skating Club
Los Angeles Figure Skating Club
Skating Club of Wilmington

BENEFACTORS 1982 — 1983

Atlanta Figure Skating Club
The Skating Club of Boston
Richard T. Button
Colorado Skating Club

Eastman Kodak Company
Glenwood Figure Skating Club
Greenbrier Figure Skating Club
Houston Figure Skating Club
Ismailia Temple of Buffalo
Ice Skating Club of Indianapolis
Dr. & Mrs. Greg Jenkins (Peggy Fleming)
Mrs. Frances Johnson
Charles King
Lupke Foundation
Joe Marchesotti Co., Inc.
Silvia Martin Foundation
Mrs. John B. Morris
Daniel & Mary Reeves Foundation
St. Moritz Figure Skating Club
Santa Monica Figure Skating Club
Skokie Valley Skating Club
Springfield Ice Birds
Twin City Figure Skating Association
Warner Communications
Evelyn Curtis Young
Daris Zinsmeyer

SPONSORS 1982 — 1983

Alltrans Management, Inc.
Andesa Corporation
Bay State Abrasives
Louis Bodek
Mrs. Kenneth Bonnickson
Buffalo Skating Club
Koert D. Burnham
Figure Skating Club of Cincinnati
Margaret Cole Foundation
Robert Cole
Deborah Cooley
Bess F. Craig Trust
Daco, Inc.
Dor-Jer Productions
Mrs. Alden B. Dow
Mrs. Lyman Drake, Jr.
Elwyn Institutes
Executive Travel Advisors
Mary Fitzgerald

FUND HONOR ROLL

Robert J. Fletcher
Fort Wayne Ice Skating Club
Samuel Gary
Paul & Helen George
Hardware Sq. Club of New York, Inc.
Mrs. Scottie Head
Frank E. Heaney
Harold Hiltzik
H.J. Heinz Foundation
I.B.M. Canada
Itek Corporation
Johnson and Higgins—New York
Johnson and Higgins—Texas
Joan Johnson
Kansas Coliseum
Kent Skating Club
Marvin S. Kivitz
Deborah Larsen
Mr. & Mrs. Frederick LeFevre
Leon Levy Foundation
Lilly Endowment, Inc.
Ralph B. Lloyd Foundation
William A. Loeb
John & Eleanor McKey
Harry & Nancy Meiss
Jack Might
Melissa Militano
Curtis McGraw Foundation
1983 Nationals Organizing Committee
Ernest Ohnell
Plymouth Figure Skating Club
Queen City Figure Skating Club
Robert Rivett
Rosemont, Inc.
Sangamon Valley Figure Skating Club
Joseph L. Serafine
Charles L. Shumway
A.G. Spanos Construction Company
Isabel H. Suhling
Superskates IX
Harold L. Suttle
Robert P. Thimot
Troy Skating Club
U.S. Trust Co. of New York
Mrs. Dorothy Von Hoffman
Webb IV Music, Inc.
Edward B. Weinstein Foundation
West Shore Figure Skating Club
Woodfield Ice Arena
Mr. & Mrs. Benjamin T. Wright

Ines Assafi (2)
Association of Philadelphia Area Figure Skating Clubs (2)
Bailey-Whalen Company
Mr. & Mrs. W.G. Billard (2)
Hertha O. Bitler
Louis Bodek (8)
Burrell Advertising (3)
John Butorac
Thomas Chong
Deborah Cooley (2)
Mr. & Mrs. O.P. Corley
Cumberland Companies, Inc.
Susan Strong Davis (8)
Margaretta Drake (2)
Mr. & Mrs. Charles DeMore (2)
Pamela D. DeSmidt & Alan M. Goldberg (2)
Ralph J. Dolan (Hubbard Foundation)
H. & F. Doll Foundation for Performing Arts (3)
The Doris Duke Foundation
Doubleday & Co., Inc.
Dennis & Carol Duffy
J. William & Elizabeth C. Ernstrom
Essex Precision Team
Dr. & Mrs. Michael Feingold (2)
First National Bank (Gatlinburg, TN)
Mary Fitzgerald (6)
Peter R. Fox
Robert S. Fuller (3)
Charles R. Gallant (3)
Helene H. Gephardt (2)
Ann Gerli (5)
Dr. Hugh C. Graham, Jr. (4)
Fred J. Guerin, Jr.
Harvey Handelman
Mrs. Roberta Head
Mrs. Scottie Head (8)
H.J. Heinz Foundation
Thomas Hellman
Mr. & Mrs. Robert Herring, Jr.
Carl J.W. Hessinger
Harold Hiltzik (2)
Robert & Hannelore Heyer
Dr. Ching Ho
Mr. & Mrs. Po Fu Huang (2)
Iceland of Atlanta
Inland Pizza Corporation (2)
Itek Corporation (2)
Suzanne Jackson (2)
Dr. & Mrs. Greg Jenkins (Peggy Fleming) (3)
Mrs. Frances Johnson (4)
Joan Johnson
Dorothy Josendale
The Journal Gazette (2)
Andrew P. & Patricia Kant
Herbert E. Kaplan
Dr. Edwin A. Kayser, Jr.
KDKA TV-Pittsburgh
Mrs. David O'D. Kennedy
Kenneth C. Kern & Associates, Inc.
Charles King (5)
Vincent Kirschner
Klein Brothers, LTD
Joyce Komperda (2)
Mr. & Mrs. Clifton Kruse (2)

CENTURY CLUB MEMBERS 1982 — 1883*

*Also included are those who are listed in an advanced permanent category; this reflects their yearly continued support.

Addison Pipe & Tube Co.
Mr. & Mrs. William T. Ahlborg
Dr. Tenley E. Albright (2)
George Alexander (3)
Alltrans Management, Inc. (2)
Raymond C. Alperth (3)

HONOR ROLL

Melvin O. Laabs
Robert LaLanne (2)
Harlene Lee (10)
Mr. & Mrs. Frederick LeFevre (3)
George Link, Jr. Foundation
Charles L. Lloyd, Jr.
Ralph B. Lloyd Foundation (2)
William A. Loeb (2)
Hal E. & Vee Marron
Joe Marchessotti Co., Inc. (2)
Joseph Mattingly
Helen Shumway Mayer (10)
Lesley T. McFadden
Curtis McGraw Foundation
John McKey (5)
Frank & Helen McLoraine (5)
Harry & Nancy Meiss (10)
Metrocom of Kentucky, Inc.
Metropolitan Ice Rink Managers Association (2)
Frederick D. Meyers
Morris-Knudsen Co., Inc.
W. Paul Mouchon
1983 National Organizing Committee
Dr. Franklin Nelson (3)
Network Communications Management, Inc.
News Publishing Co., Inc. (2)
Alfred Olmstead (3)
Dr. & Mrs. Terence J. O'Toole
Panway Foundation
Philadelphia Hockey Training School (James Shute)
Meredith Phillips
Mrs. Edith J. Pickens
Dr. E. Leonard Posey
James Prendergast
Bertha Prichard
Daniel & Mary Reeves Foundation (3)
Robert Rivett (2)
Mrs. John Roesch (3)
Romac & Associates (2)
John E. Roosevelt
Santee Rock, Inc.
Gerald & Florence Santoferrara
Henry G. Schlesinger
F. Ritter & Hettie Shumway (10)
Isabelle Carr Smythe
Sports Festival '82
George P. Springer (5)
Stanley's, Inc.
Charles & Mary Stevens
Ezra F. Stevens
Marian A. Streich (3)
Superskates IX
Harold L. Suttle
Dr. & Mrs. Thomas Swallen
Talent & Residuals, Inc.
Cliff & Edwina Thael
Robert P. Thimot (3)
David Threinen
Samuel Thorne, Jr.
Mr. & Mrs. Jack Vaughn
Mrs. Dorothy Von Hoffman (2)
Mr. & Mrs. Robert Warner, Jr. (2)
Weight Watchers, Inc.
Western Plastering, Inc. (3)
Dr. & Mrs. Kenneth Williams
Woodfield Ice Arena
Mr. & Mrs. Benjamin T. Wright (9)
The Wright Organization
George T. Yonekura
Evelyn Curtis Young (3)
Elaine Zayak

HONOR ROLL OF CLUBS 1982 — 1983

Broadmoor Skating Club
Detroit Skating Club
Euclid Blade and Edge Skating Club
Flagg Pond Skating Club
Gold and Silver Blades FSC
Janesville Figure Skating Club
Lakeland Figure Skating Club
Lakewood Winter Club
Midland Figure Skating Club
North Jersey Figure Skating Club
Pittsburgh Figure Skating Club
Skating Club of Rockland
Rocky Coast Figure Skating Club
St. Joseph Figure Skating Club
Silver Blades of Cohasset
Skaneateles Figure Skating Club
Skating Club of Westchester
Winterhurst Figure Skating Club
Wyoming Valley Ice Skating Club

BRONZE HONOR ROLL OF CLUBS 1982 — 1983

Academy Figure Skating Club (3)
Amherst Skating Club (2)
Bowling Green Skating Club (7)
Buffalo Skating Club (5)
Cantiague Figure Skating Club (6)
Charter Oak Figure Skating Club (4)
Chicago Figure Skating Club (8)
Cleveland Skating Club (9)
Colorado Skating Club (4)
Dixieland Figure Skating Club (2)
Essex Skating Club of New Jersey (7)
Garfield Heights Figure Skating Club (2)
Greenbrier Figure Skating Club (4)
Hamden Figure Skating Club (2)
Hayden Recreation Centre Figure Skating Club (3)
Hershey Figure Skating Club (4)
Houston Figure Skating Club (6)
Ice Skating Club of Indianapolis (4)
Kent Skating Club (5)
Lansing Skating Club (4)
Los Angeles Figure Skating Club (3)
Marquette Figure Skating Club (4)
Santa Monica Figure Skating Club (5)
Santa Rosa Figure Skating Club (5)
Skokie Valley Skating Club (7)
Skating Club of Sunrise (2)
South Mountain Figure Skating Club (3)
Tara Figure Skating Club (3)
Troy Skating Club (3)
Vacationland Figure Skating Club (2)
West Shore Figure Skating Club (4)
Wichita Figure Skating Club (2)
Skating Club of Wilmington (7)
Yarmouth Ice Club (7)

SILVER HONOR ROLL OF CLUBS 1982 — 1983

Genesee Figure Skating Club (10)

Miller & Fauver

Continued from page 23

dle Ralph. Even though Lynn doesn't skate—she studies piano and wants to compete in synchronized swimming—the two sisters, eight years apart in age, are close to each other and to their parents. "They come to competitions and shows," Lea Ann says, tears beginning to form, "but it's been hard on both them and me to be apart so much. Even at a distance though, they've kept the relationship close." She adds somewhat wistfully: "And I wish they could see the everyday grind, the *work* part of it."

The everyday grind includes several hours of single skating—Lea Ann's on her Eighth and her Pre-Silver dances, many hours of pair workouts both on mats and on the ice, and lots of ballet. Lea Ann, in addition, studies classical guitar and helps, along with John Renn, Billy, and Colorado Springs seamstress Chong Greene, to design their competition and show outfits. She's also enrolled in Widener College in a two-year business program. Billy, not to be undone, sings ("Ugh! Not at *all!* they agree, laughing), works on mostly classical music just right for their unique brand of skating, has two years of college under his belt, loves ballet and the theatre, studies ballet, likes racquetball and working with his hands, and is an athlete member of the USFSA Governing Council. Together, they have regular ses-

sions with sports techniques psychologist Dr. Hubert Kauffman.

Their goals? "We've made no commitments, no decisions," Billy states in that thought-out way of his. He grins. "We can get excited, though, about the pro-am things, the theatre, performing." "We don't skate against anybody but ourselves," Lea Ann emphasizes. They've come a long way in upgrading their technical proficiency, combining it with their special style in an almost perfect blend of grace and athleticism. Tough for a singles' skater very rare indeed for a pair. "When we get off the ice after a performance, the marks aren't very important to us," Lea Ann adds. "It's how *we* feel about how we skated that counts."

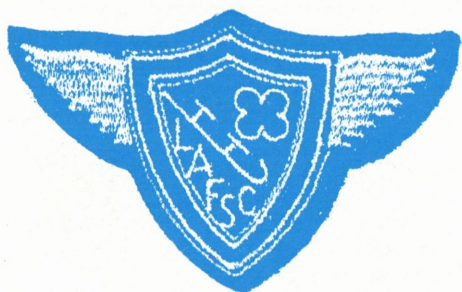
Audience reaction means a lot too: a kind of measuring stick to compare with their own assessment.

That often boisterous audience appreciation bothers Billy just a bit. "I recently saw Baryshnikov in a ballet in Philadelphia. He gave a *superb* performance, but he got no standing ovation. Yet we skaters get them for some of the things *we* do. Why?"

Maybe it's that art versus sport question, Billy. Maybe skaters have the best of both worlds: judges, critics, and audiences who appreciate *both* the athleticism and the beauty.

And who appreciate the special blend of both that is the pair team of Lea Ann Miller and Billy Fauver. Maybe that dedicated *passion* shows after all. Applause. Applause.

Los Angeles Figure Skating



Fiftieth Anniversary

by Libby Slate

March 10, 1933 will be remembered in Southern California as the night of the great Long Beach earthquake. But in nearby Hollywood, another event was also occurring, one which would have its own "earth-shaking" impact on the world of competitive figure skating: the creation of the Los Angeles Figure Skating Club (LAFSC). For in the ensuing years, the club would become a dominant force in skating, producing three World Champions—Linda Fratianne in 1977 and 1979 and Tai Babilonia/Randy Gardner in 1979; 43 national titlists, 26 World Team members, 7 Olympians and 13 North American Team members. Its stellar competitors have included Eugene Turner—who in the late 1930's and early 1940's became the first figure Gold Medalist and first National Junior Men's, Senior Men's and Senior Pairs' Champion west of the Mississippi; "Mr. Debonair" Richard Dwyer—1948 National Novice and 1949 National Junior Men's Champion, and more recently, 1975 and 1977 U.S. Ladies' Freeskating Champion Wendy Burge and 1979 U.S. Ladies' Silver Medalist Lisa-Marie Allen. Of the eleven LAFSC members



ing Club

The earliest known picture of the LAFSC. It is dated May 1936. At least two members are still active in skating; Gene Turner, second from left, top row, and Gene Maeder, third from right, second row. Turner, of course, writes a column for Skating and Maeder is a National Dance Judge.

who competed at this year's Nationals, three—Mark Cockerell and Jill Watson/Burt Lancon—made the World Team. Two others brought home titles: Christopher Bowman—the current Junior World Champion—in Junior Men and Christopher Mitchell in Novice Men. Club membership now numbers almost 1,000; only the Philadelphia Skating Club and Humane Society, which also incorporates other sports, is larger.

According to Josephine Lawless, club historian and a National Judge, the LAFSC began humbly enough as an informal group of about twenty-five skating enthusiasts who, beginning in 1928, met occasionally at the Palais de Glace rink in Hollywood. The group was self-taught, learning through reading books and observing visiting skaters. In February 1933,



members competed in the first annual California Outdoor Figure Skating Championships in Yosemite, taking three first places. They then entered the first annual Indoor Figure Skating Championships in San Francisco, predecessor of the Pacific Coast Championships, where they also performed well.

Upon returning to Los Angeles, the group decided to form a USFSA club. After giving exhibitions at the Palais de Glace on that memorable March 10 evening, they chose their first officers, with William Rehrig as president. Thus, the LAFSC was born, becoming the second West Coast club to join the USFSA.

The club's first National competitor was charter member Mabel Thorn Nichol, who won the Pacific Coast Senior Ladies' Championship in 1935 but had never taken USFSA tests, as they were unavailable in Los Angeles. That year, deciding to see how West Coast skills compared to the East, she passed her first three tests in Philadelphia—on borrowed skates, as hers were lost en route—and promptly captured the U.S. Novice Ladies' Silver Medal.

"Mabel was a strong, vigorous yet graceful skater," recalls Eugene Turner, another pioneering competitor, who now coaches in Northern California. "She had a jolly, outgoing personality; everyone liked her. Her dress caused quite a sensation at Nationals. It was one of the flimsiest and shortest of the time and quite provocative."

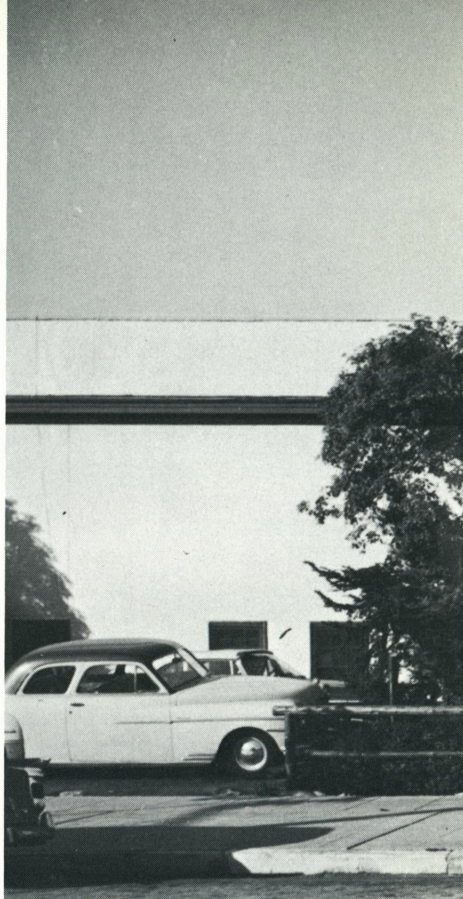
Another memorable highlight occurred the following year. Sonja Henie, having recently turned professional, came to Hollywood hoping to become a movie star. For her California skating debut she rented the town's only rink, the Polar Palace, where LAFSC had moved after the Palais de Glace was destroyed by fire in 1933. The club was rehearsing for its second annual Ice Revue, and the ice queen so liked its acts that she selected several for her own show one week later. Henie took the town by storm and soon after landed the contract that launched her film career.

Jo Lawless was not yet born when these events occurred, but she recounts them as en-

thusiastically as if she herself had participated. Indeed, it is such enthusiasm, multiplied by hundreds of club members, which accounts in part for LAFSC's development as a skating powerhouse. Says current President Dr. Harland Burge, active in the club for nearly two decades, a National Judge and father of Wendy Burge, "There's an extraordinary amount of support for our competitors. I've never experienced anything like it in any other organization. I remember in 1970, it was a cliffhanger to see if Wendy would qualify for her first time at Nationals. People didn't have to be so supportive, but they were. We always made it a point to pass that on to others.

"There's a lot of camaraderie here," he adds. "If someone has a problem, or thinks he does, we try to solve it. And if we can't, we refer it to somebody who can."

WILLIAM UDELL





Home of the LAFSC shortly after its last remodeling in 1958.

That camaraderie generates members' extensive participation in club functions. "There doesn't seem to be a problem getting people to step forward," Burge says, adding with a chuckle, "but if there is, we volunteer 'em!"

Another key to LAFSC's success, Burge points out, is the openness of communication between pros, skaters, and parents. "Visiting judges are amazed. Everything—program, music, technique—is open to discussion. The pros [among them Frank Carroll and Betty Berens] might have two or three of the top skaters, but they remain open and objective. And we don't play favorites between the champions and non-competitors."



WILLIAM UDEHL

Some weeks after Polar Palace was destroyed by fire Paul Smith and Charles Hollingsworth found the memorial plaque buried in the ashes.

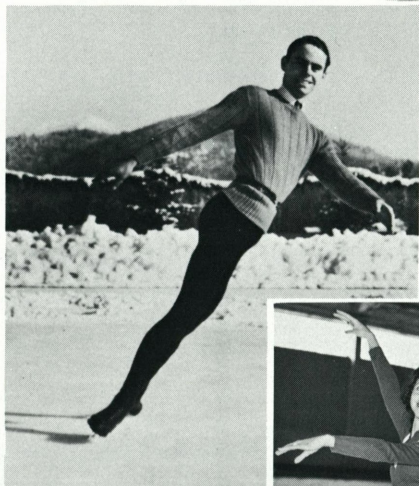
LAFSC Champions & Medalists: Past & Present

Richard Dwyer
*Nationals 1950—Bronze,
Senior Men*
*Joined the Ice Follies at age 14
as "Mr. Debonair."*

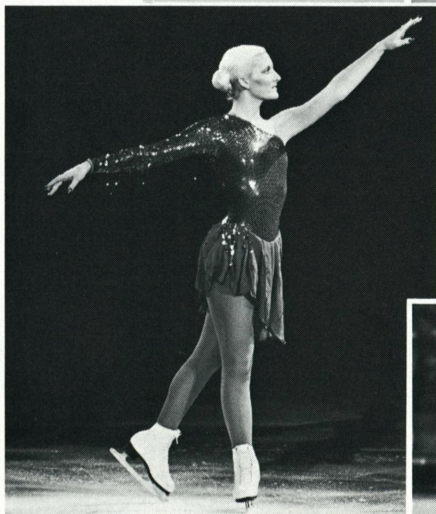


TOM COLLINS STUDIOS

Eugene Turner
*Nationals 1940-41—Champion,
Senior Men*



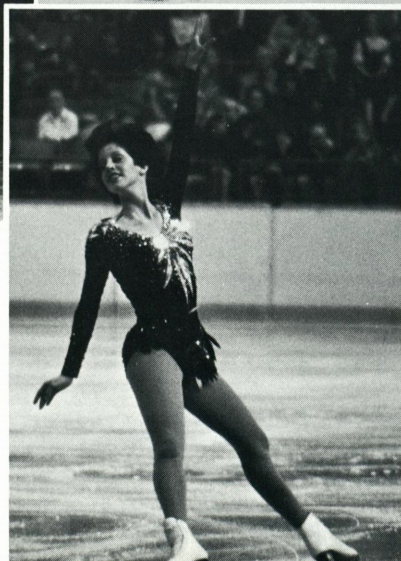
Wendy Burge
*Nationals 1976-77—Bronze,
Senior Ladies*
Olympics 1976—6th place



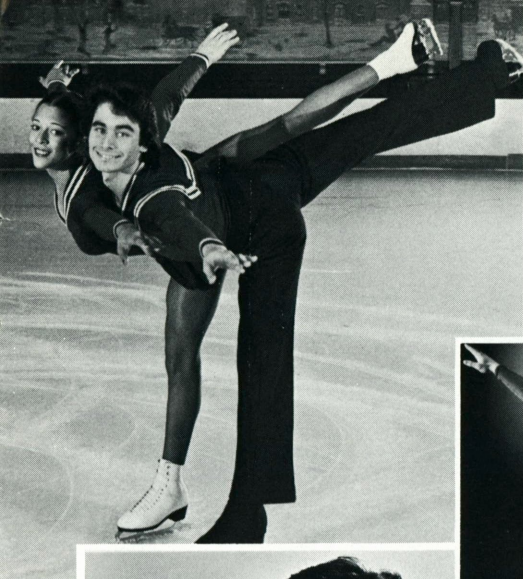
MARGARET WILLIAMSON

Lisa-Marie Allen
*Nationals 1978-80—Silver,
Senior Ladies; 1981—
Bronze.*
Olympics 1980—4th place

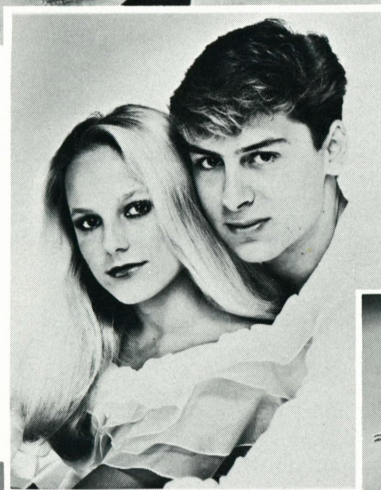
Linda Fratianne
*Nationals 1977-80—Champion,
Senior Ladies;*
Olympics 1980—Silver



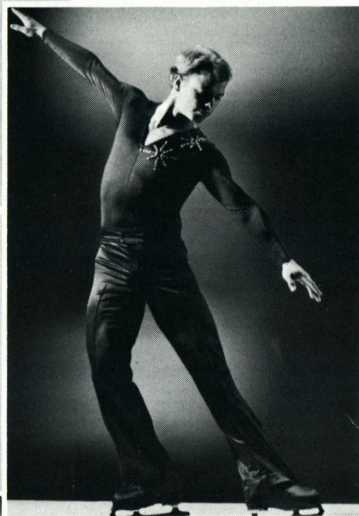
JUDY HAMMOND



**Tai Babilonia &
Randy Gardner**
*Nationals 1976-80—
Champions, Senior Pairs
Worlds 1979—Champions,
Pairs
Olympics 1976—5th place*



Mark Cockerell
*Nationals 1983—Bronze,
Senior Men*



**Jill Watson &
Burt Lancon**
*Nationals 1983—Bronze,
Senior Pairs*

WILLIAM UDELL



WILLIAM UDELL



Christopher Bowman
*Junior Worlds 1983—
Champion, Men's
Nationals 1983—Champion,
Junior Men*

Christopher Mitchell
*Nationals 1983—Champion,
Novice Men*



Tenley Albright holding the flag at the opening of the 1954 Nationals held at Hollywood's Polar Palace, the first Nationals held in Southern California and hosted by the LAFSC.

Such positive feelings have stood the club in good stead in times of misfortune. Tragedy struck in 1961 when two members were lost in the World Team air crash: Diane Sherbloom, U.S. Dance Champion with Larry Pierce, and Dona Lee Carrier, runner-up in the same event with Roger Campbell. Two years later the club suffered a different kind of loss when the Polar Palace, as the Palais de Glace before it, burned down. Salvaged in the rubble was a bronze plaque designed by Diane Sherbloom's father in honor of the victims' memories, which now hangs in the club's third and present home, the Pickwick Ice Arena in Burbank. Also on display is the Dona Lee Carrier Memorial Trophy, donated by the skater's parents, bearing the name of every member who has achieved a Gold Medal.

A happier milestone occurred in 1972, when LAFSC hosted Nationals, held, appropriately enough, in Long Beach—continuing the connection which began its very first evening!

The club was again in the limelight in the late 1970's with the stunning achievements of Linda Fratianne and Tai and Randy and today, of course, continues to foster World class skaters.

Along with this enviable track record, members encourage the growth of the sport through other means. Each year the club sponsors ice revues, judges' schools, group beginners' classes, and critiques. It also hosts two annual competitions: the Los Angeles Figure Skating Championships in May and a unique competition for theatrical skating, A Showcase for Skaters, in July. Members have also served the USFSA in many capacities.

LAFSC is commemorating these fifty productive years in a number of ways, notes Jo

Pacific Coast Senior winners at the Polar Palace. Of these eight skaters five were to perish in the 1961 World Team plane crash. Front row, Ray and Ila Ray Hadley, top row center, Rhode Lee Michelson, Diane Sherbloom, and Roger Campbell. Charles Phillips and Margie Ackles, top left, and Ronnie Frank, front right, are all instructors today.



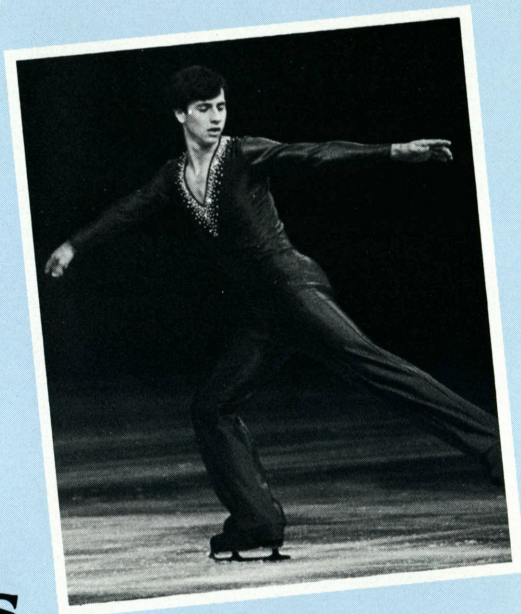
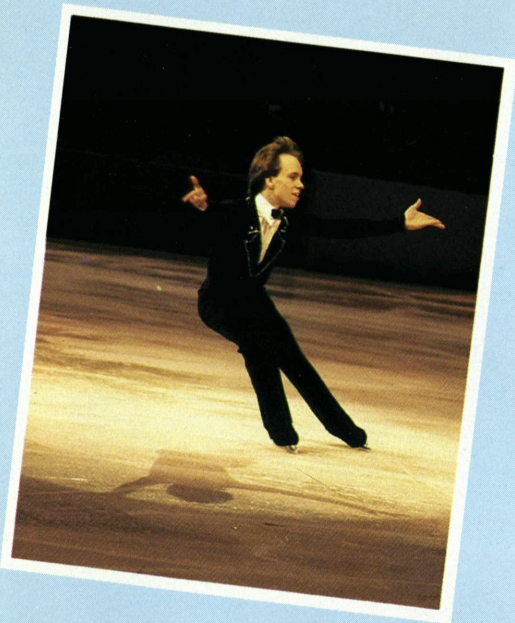
WILLIAM UDELL

Lawless, chairman of the celebration. Last November it hosted the Southwest Pacific Regional Championships, where arena exhibits honored its national titlists and Sonja Henie. A lavish dinner dance was held in March, and on June 11, a Golden Anniversary Revue featured exhibitions by present and former competitors. Throughout the year, prominent members will be spotlighted via rink displays and club newsletter biographies. Also on the agenda are several "film festivals"—evenings of movies and videotapes devoted to a particular skater.

Even as it celebrates the past, LAFSC is looking toward the future. Among its biggest challenges, says President Burge, is finding ways to maintain the facility and use ice efficiently in the face of increasing operating

costs. To encourage participation by non-competitive skaters, the club last year initiated a successful evening session for beginning dance. It hopes to offer classes as part of local school physical education programs, and would like to reach nursery-school age children as well.

A potential challenge is finding yet another home, for Pickwick, regrettably, is in a prime area for real estate development. Whatever the future brings, though, it's a safe bet that the club will survive. As Harland Burge says, "We'll consider our options and plan accordingly. We've had our calamities, but we've continued to operate as a vigorous club. When there's something that needs to be done, we just get our heads together and do it."

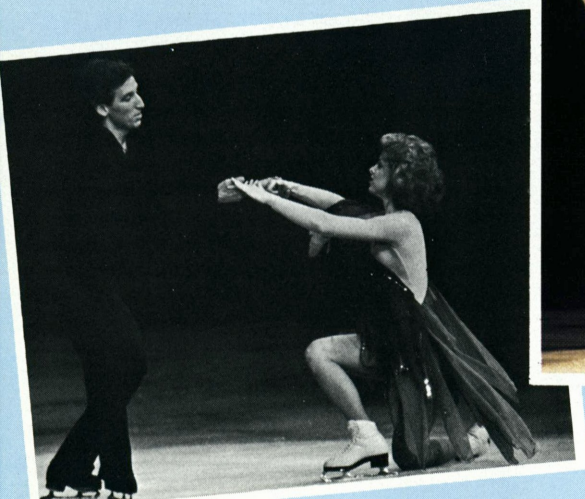


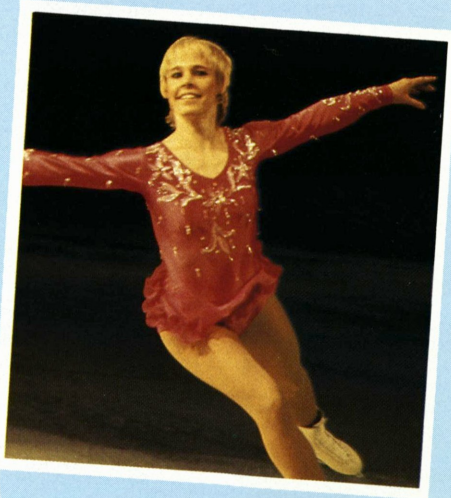
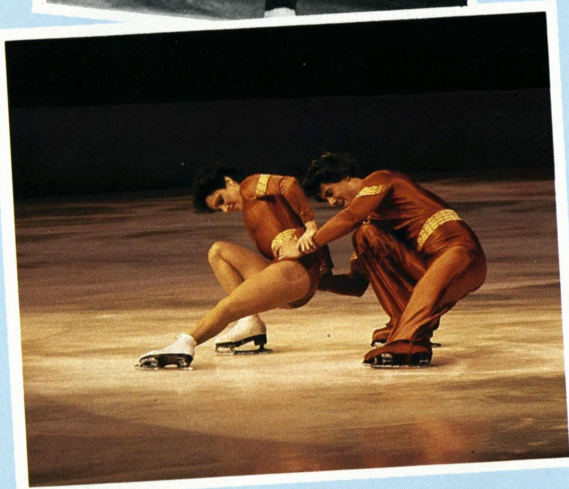
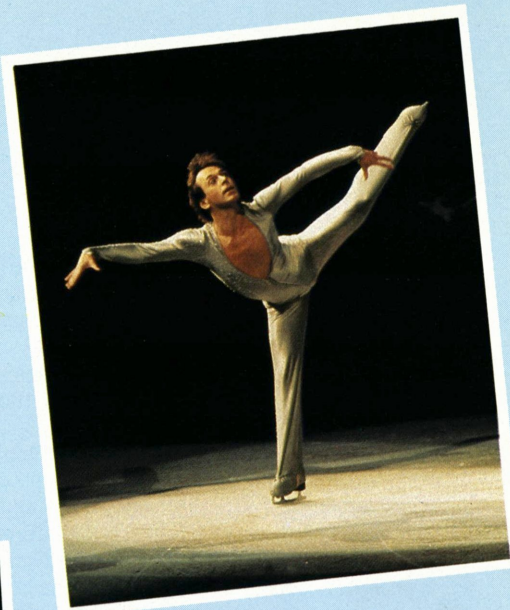
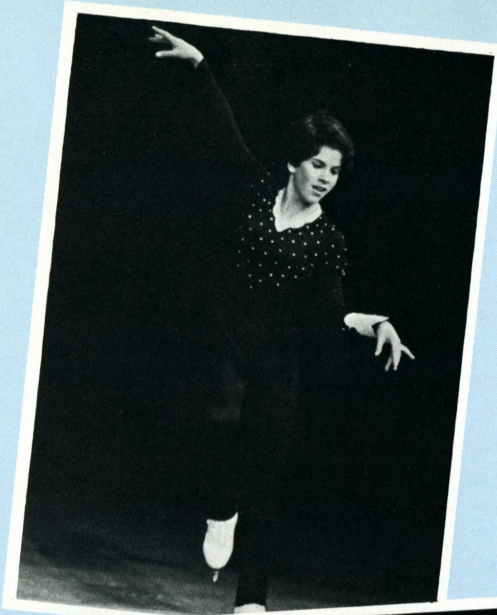
Superskates

Held on November 15, 1982, this annual performance and exhibition featured American and International Olympic figure skaters of the past, present, and future, several who are shown here. A U.S. Olympic Fund benefit.

Clockwise (top left): Scott Hamilton, Brian Boitano; Jill Frost; Toller Cranston; Janet Lynn; Carol Fox & Richard Dalley; Caitlin & Peter Carruthers; Lea Ann Miller & William Fauver; Judy Blumberg & Michael Seibert.

COLOR: CHRISTIE JENKINS
BLACK & WHITE: MARGARET WILLIAMSON





PEOPLE, PLACES, & FACES

Continued from page 18

TRAVELERS OFFER FILM LOAN

The Travelers Corporation has produced a new thirty-minute film, narrated by former Olympic skater and noted television skating commentator Dick Button. It will be added to the company's film library for free-loan distribution to skating clubs across the country.

The film, *Skating Now and Then*, features some of the people who have helped make it one of the most popular participatory and spectator sports in the world, says Andrew L. Letendre, Travelers second vice president. It includes footage of early skating champions and some of the stars of today. For information, contact: Travelers Film Library, 1 Tower Square, Hartford, CT 06115.

LOOKING TO COLLEGES FOR SKATING EXPOSURE

A source of public information usually overlooked by figure skating clubs is the local college and the television/cable system. If your club is located in a community having one or more colleges, check to see if any has a radio/television department. Radio/TV has become a popular course, and quite a number of four-year and community colleges have well-developed and equipped departments of broadcasting; department heads may find the challenge of videotaping an ice show or competition a great addition to their students "hands on" experience. The event, of course, would be played back at a later date.

Directing, camera work, editing, narration, and all the logistical problems such a project entails would provide the R/TV students insight into the real world of broadcasting. Some colleges operate their own educational channel, others have agreements

LAKE PLACID

SUMMER SKATING PROGRAM HAS IT ALL

The Professionals

Emmerich Danzer
Tom Lescinski
Tom Litz
Gustave Lussi
John Misha Petkevich
Stacey Smith
Priscilla Hill
and many more

The Features

Off Ice Training Program
including Ballet/Jazz,
Stretching/Warm-up
Weight Training,
Conditioning and Aerobics
(additional cost)
Saturday Night Ice Shows
Frequent Test Sessions

The Competitions

Annual Free Style Competition
July 21-23, 1983
Annual Dance Weeks
August 1 - 13, 1983
Annual Dance Competition
August 11 - 13, 1983
North American Training Camp
September 6 - 10, 1983
Singles: Carlo Fassi
Pairs/Dance: Ronald
Ludington

Four skating lodges,
catering to skaters, within
2 miles of the arena.

Openings still
available



June 13 - September 3, 1983
Lake Placid, N.Y.

Site of the United States Olympic Training Center
For information contact: Carol Vaughn at 518/523-1655

with public television stations, still others have access to and regularly provide programming for cable systems.

My advice is to contact the director of Radio/Television services at your local college or university. Arrange an interview, at your rink, if possible, where you can show off the facility and skaters to present a general picture of how the event might be covered. Granted, you've got a selling job to do, but the challenge, the visual impact and the presence of kids should help you to make your case.

Contact should be made early in the school year to give the school adequate time to consider such a proposal and fit it into their schedule.

One final and important point; check with your Sanctions chairman to make certain that all USFSA conditions are met.

—Bob Briley
Chairman

Public Relations Committee

OFFICIAL NOTES

Continued from page 19

Julia Jordan, Chicago FSC
Sandra Hampton, Marquette FSC
Robert Hampton, Marquette FSC
Pauline Hewes, Los Angeles FSC

NOVICE FIGURE COMPETITION

Lawrence Mondschein, Essex SC of New Jersey
John Sincavage, Penguin FSC

JUNIOR FIGURE COMPETITION

Margaret Flora, Portland ISC
Angeline DiPietro, Portland ISC
Reiko Seger, Portland ISC
Lori Dunn, Essex SC of New Jersey

NOVICE DANCE COMPETITION

Kathleen Flaherty, Los Angeles FSC
Leo LaChance, Red River Valley FSC

JUNIOR DANCE COMPETITION

Sharon Wright, Greater Milwaukee FSC

MARRIAGES . . .

Kelleigh Perot, former National Junior Dance Bronze medalist, to Farley Lane from Canada. Kelleigh is a member of the Iceland FSC.

BEREAVEMENTS . . .

Mrs. Margaret (Gladys) Hersh, longtime member of the USFSA, January 9, 1983. Mrs. Hersh was a High Test Figure Judge, a Gold Dance Judge, and Dance Test Chairman for the Penguin FSC.

Mrs. Mary Hurd Fine, former longtime member of the Philadelphia SC & HS. She was a Public Relations professional and served on the USFSA Public Relations Committee.

Paul Feigay, co-founder with Dick Button of Candid Productions, Inc., and longtime enthusiastic supporter of figure skating, passed away recently in New York City.

Nancy Burns Martin, a member of the Troy SC, OH, and former Gold Dance and Dance Judge, in an auto accident in late March in Tucson, AZ.

Elsa M. Pinkham, eighty-nine, one of the founders of the Spokane FSC. Miss Pinkham, who directed the girls' physical education department at Spokane's North Central High School for forty-one years was a former High Test Judge.

Mrs. Miriam B. Murdock, a charter member of the USFSA, a founder of the Silver Blades FSC, and a high test judge. She served several terms as president of the Silver Blades FSC and was elected president emeritus in 1961.

Kid Talk

SKATING Is Fun

Ice Skating
Is Fun To Do
But Also let's
of Hard Work Too!

When Doing my Jumps
I have a Ball and
I cross my fingers that
I Don't Fall!

When I Do my Camel
I Think of Dorothy Hamel
I hope Some Day I Can
Do The Hamel Camel!

Lynn
By Laura Treseone
Fraser Figure
Age 52 10

Dear Kid talk, (the greatest)

At tri-states
OHIO, Michigan, Indiana

Theresa Weber
Sharon Baravitt and
Becky Biggs placed First 1st
Suzy Sanders
and Charlotte Reid placed Second
and Heather Phoenix placed 3

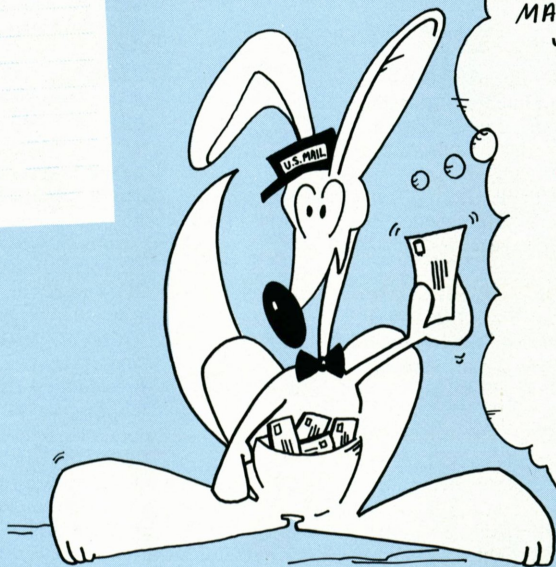
Out of 41 Clubs
We got 4th
Queen City FSC

To Linda
and Jack
the best
pros skaters
could ever
have

Kid Talk
The
Greatest

Keep Skating

Theresa Weber



"WE'VE RECEIVED
MAIL FROM THE
'KID TALK'
READERS!!"

Sheri Elkins, Lincoln
Park, MI; Kandis
Kobayashi, Harbor City,
CA; Lori Thompson,
Westminster, CA;
Karla Magnone, Des
Plaines, IL; Margo &
Mandy Flake, MN;
Erin Harrell, Platts-
burgh, NY; Denise &
Dana Craden,
Kalamazoo, MI; Kate
Jennings, Winter Park,
FL.

skate
&
lutz
&
to



CI



skate



~L~

Dear Kid Tale,

Hi! My name is LeAnne Swanson. I am 11 years old, and have been skating seriously for about 3 years. I've been a juvenile lady for about 3 months. I live in Coon Rapids, Minnesota. We don't have a rink here, so I skate at the Roseville Y.S.C. and the Columbia Y.S.C.

My pro's name is Wendy Danielson. She is super pretty, and is an excellent pro. The hardest jump I can do is my double lutz. I do it sometimes, but need to get it more consistent. My favorite spin is a layback where you lift your foot up to your head while your skis are laying back.

Some of my best skating friends at Columbia Y.S.C. are Julie Dyson, Kari Paulson, and Tracy Buckman. Some of my friends at Roseville are Maria Jorgensen, and Colleen McCarrie.

I think it's neat that you put something in your magazine for kids to write stuff, too instead of grown-ups.

Happy skating!

Love,

LeAnne Swanson

P.S. Please
publish this in
your COOL magazine

CI

MY SPORT: ICE SKATING

Your pro says hard work is right,
And then you tense and get up tight.
Your pro says go fast not slow,
Do your jumps high not low.
Then you spin and dance and
dazzle the crowd,
And when you win you scream
out loud:

I LOVE TO SKATE, AND MY PRO IS GREAT.

Lawr-Alea Carter
Dayton, OH

Skate-mate
Shake-shake
my skate-mate

Come out and skate
with me,

and bring your scribe
and things,

Can't wait till the school
bell rings,

Ride to the rink
with me,
and skate round
& round
and we will
jump & twirl till
we fall down down down

Dawn Miller
Roswell, GA

Never give up...



Andrea Hodde
Hamburg, IA

Classified

ADVERTISEMENTS

CLASSIFIED RATES: \$20 for the first 35 words, 50¢ for each additional word, \$20 minimum. Two-letter state abbreviation code plus zip code count as one word. *Payment required with order.* All advertising copy is subject to acceptability. BOX NUMBERS: \$5 extra. Send all box responses to *Skating*, Box No. —, 20 First Street, Colorado Springs, CO 80906.

FREESTYLES BY CAROLYN. Basic pull-on dress with attached skirt, including three neckline treatments. Directions for adding zipper, and separate wrap skirt also included. Children's sizes, 4x small through x small. Adult sizes, small, medium, large, x large: \$6.00 ea. Pull-on skirt, perfect for practice with T shirts or leotard, \$2.50 ea., all sizes. Figure flattering criss-cross dress: x small through x large, \$4.00 ea. Custom made patterns for \$8.00. Send for measurement chart. Add \$1.00 for postage and handling with each order. 5150 Bluestem Drive, Colorado Springs, CO 80917.

QUALITY FRONT ZIP SWEATERS, Skating bags, matching scribe cases, boot covers. For free brochure write: **FIGURES**, Box 5251, Berkeley, CA 94705.

PATTERNS FOR SKATERS: Step-in Dress Pattern for Lycra or Spandex: Scooped neck, no zipper, flat or full front, 4 paneled or one-piece full back skirt, straight sleeves. Panty and skirt is sewn onto top for one piece. Girls or ladies S4-6, M8-10, L12-14 \$5.00 ea. Multi-size Patterns includes different skirts, sleeves, necklines, darts, zipper. Adaptable for Jumper. Girls or ladies 4, 6, 8, 10, 12, 14 (All sizes included in each.) \$8.50 ea. Book of 160 exciting Patterns for Beading, Rhinestones, Embroidery includes modern, geometric, ornate, borders, floral designs. Instructions and ideas. \$12.95 ea. Check or Money Orders only: Skate-Stag, 8212 Ammons Cr., Arvada, CO 80005/303-423-7098.

WELL-ESTABLISHED CLUB seeks full-time professional qualified to teach through gold levels in all aspects of figure skating and having a proven record of success with competitive skaters. Municipal facility, 2 surfaces, 10 months of ice including an 8-week summer school. Inquiries kept confidential. Contact: MFSC, 3916 Woodside, Midland, MI 48640.

WANTED . . . INSTRUCTORS for New England Children's Figure Skating Camp for months of July-August. Write to: NEFSC, 14 Joyce Lane, Woodbury, Long Island, NY 11797.

SEEKING HIGHLY MOTIVATED individual wanting a Home Based Business as a Color Consultant. Fabulous Income. Develop skills as a professional in: Color Draping Analysis, Skin Care, Make-up Artistry, Wardrobe Personality Styling, Nationwide training/certification. Contact: Ruth Fisher, 6720 South La Rosa Dr., Tempe, AZ 85283, (602) 897-2118.

PRO WANTED FOR 1983-1984 season. Send resume to: Skating Club at Dartmouth, Box 914, Hanover, NH 03755.

PHOTOGRAPHS from the 79-80 Worlds, 80 Nationals, and 83 Europeans in both colour and B&W. For more information, write to: Diane DeLozier, 2854 W. Roxboro Road, Atlanta, GA 30324.



PERFECT CIRCLE
Adjustable Patch Marker
 The Spinner. . \$50.00
Choice of color trim
Enscribed owner's name
 Carrying Case. . \$9.50
 Calif. residents add 6% Tax

Send for complete brochure
FRANK DAVENPORT
 Box 43, Orinda, California 94563
 (415) 254-5067

FIGURE SKATING CLUBS, FUND RAISERS, pro shops, professionals: Beautiful, inexpensive, profitable, **SKATE/mate** quality jewelry; stationery; cloisonné enameled jewelry with your custom design. Brochure: above groups, please. **SKATE/mate**, Box 264 H, Orange, NJ 07051.

ICE DANCING ILLUSTRATED. Instructional guide to the compulsory ice dances by Lorna Dyer former U.S., North American Dance Champion, Silver World Medalist. Send \$29.50 (U.S. Funds) to: Moore Publications, 1720 130th N.E., Bellevue, WA 98005.

MALE PROFESSIONAL INSTRUCTOR with 7th test passed and competitive background seeks to teach in a year-round rink with an established group and private lessons program. Send replies to: Skating, Box 83, 20 First St., Colorado Springs, CO 80906.

HIGH CALIBRE MALE PRO: Seeks position with a serious minded competitive club or organization. European ex-national champion, quad gold medalist, I.S.U. Master's teaching diploma. 13 years teaching experience, pupils included national and international champions. Immaculate references. Please write: 160A, Highland Place, Penticton, British Columbia V2A 6M6, or call: 604-493-6892.

BLANK CASSETTES. C-15 \$12.00 dz. C-30 \$8.00 dz. C-60 \$10.00 dz. C-90 \$12.00 dz. Polyvinal boxes \$1.80 dz. Labels .03¢ ea. U.S.F.S.A. Compulsory Dance tapes. Pre through International. 4 cassettes \$19.95. Add \$1.00 per dz. tapes postage. Master Tape, 1627 S. Tejon, Colorado Springs, CO 80906.

WANTED: FEMALE PAIR PARTNER to train in Wilmington, DE with World-Olympic coaches. Must be approximately 5'2" — 100 pds., and very dedicated, needs to have all double jumps. All correspondence confidential. Send resume to: Skating, Box 88, 20 First St., Colorado Springs, CO 80906.

WANTED: FEMALE PAIR PARTNER. Strong free skater willing to train in southern California with international experienced coaches. I am a national Junior Pair competitor and Gold medalist in singles. Send resume to: Skating, Box 91, 20 First St., Colorado Springs, CO 80906.

WANTED: OUTGOING, PERSONABLE male dance partner for a personable, enthusiastic girl. Novice or Junior level, she is almost 5'. Currently training at Detroit Skating Club. Write or phone: 31056 Applewood Ln., Farmington Hls., MI 48018 (313) 661-1181.

PROUDLY introducing the "DESIGNER'S SPECIAL" LIMITED EDITION needlepoint designs—limited to 250 WORLDWIDE. \$1.50 from each kit will go the OLYMPIC COMMITTEE. Special thanks to SHARON and MARK TOLIVER for their support! **SKATING CHRISTMAS CARDS**, designed by MARGIE, of course!! Ready by SEPTEMBER FIRST. Send \$1.00 for our catalog. Introducing **SIMILAR PAIRS** and **NEEDLEPOINT**. (Send SASE for info.) **AMC ORIGINALS**, 5976 Cheviot Road, CINCINNATI, OHIO 45239.

EXPERIENCED PROFESSIONAL WANTED: High test preferable. New Civic Ice Arena in northwestern Michigan. Near Interlochen National Music Camp and Arts Academy. Expanding figure skating program. Please send inquiries to: Twin Bays Skating Club, P.O. Box 851, Traverse City, MI 49684.

TOP FLIGHT MALE PROFESSIONAL seeks permanent position with year round active competitive rink/club. Former national champion. European and world competitor, world professional champion. Quadruple gold medalist. Fully experienced all phases figure, free, dance, USFSA, ISIA, CFSA, test and competitive levels. All correspondence confidential. Skating, Box No. 72, 20 First St., Colorado Springs, CO 80906.

THE MARTIN SCRIBE

- Accurate and trouble-free
- Warranted for one year
- Choice of trim color
- Your name engraved free

\$55.00 plus 2.50 shipping

Deluxe vinyl carrying case in red,
blue or green \$17.50

Martin & Company

Send for complete brochure

P.O. Box 18174
Cleveland, Ohio 44118

LYCRA-SPANDEX MATERIAL \$2.50 per yard.
Lycra Spandex fabric bundles. 25 yards \$50.00.
1 to 5 yard pieces. Specify solids, prints, or
stretch cotton. Add \$5.00 shipping. Shipped
UPS-COD or MC/Visa. Bead Different, 1627 S.
Tejon, Colorado Springs, CO 80906. (303)
473-2188.

WANTED: FEMALE JUNIOR DANCE Partner
must be hard worker, dedicated, high com-
petitive goals. MUST relocate to Calif. work
under top pros. Replies confidential. Send
resume, photo to: Skating, Box 89, 20 First St.,
Colorado Springs, CO 80906.

ICE DANCERS: If you are traveling through
Washington, DC, the Ice Club of Washington in-
vites you to attend a session (through September
4): Wednesdays, 6:15-7:45 P.M., \$7.00; Sun-
days, 9:20-11:20 A.M., \$8.00. (Except May 22
and August 14.) Mt. Vernon Sports Complex,
2017 Belle View Blvd., Alexandria, VA. (Take
Beltway (495) Exit 1-S to Ft. Hunt Road. Go Ft.
Hunt 1 1/2 miles to Belleview Blvd. Rink is at this
corner.)

SKATING PROFESSIONAL FOR freestyle,
figures, and dance. Two rinks available. Open
year around. Skating, Box 90, 20 First St., Col-
orado Springs, CO 80906.

WANTED: MALE PAIR PARTNER to compete
in Junior or Senior Pairs: Have Novice Pair Test.
Placed third in 1983 Midwesterns' Novice Pairs.
5'6", 110 lbs. jumps through double-Axel. Also
jumps right to left. If interested contact: J. Johns,
236 Lyons, Troy, Michigan 48084.

WANTED: ARTISTIC, AMBITIOUS, Male Pair
Partner for Novice, Junior Competition. Able to
start training with eager skater, 17, 5'3", 104
lbs., as soon as possible. Write or phone: Gale
Furhman, 109 Amherst Drive, Yonkers, New
York, 10710, 914-779-1323.

Put Nature's best insulation between you
and the ice with

*New
Prices!*



Down UnderTM

down boot covers

Special design feature
puts down **under** your
boot, not just around it!

NAVY, RED, CREAM or BLACK - solid
color or combine any two

Nylon Taffeta Shell — Completely Washable	
Sm. (Child 11-2)	\$48
Med. (Ladies 3-6)	\$51
Lg. (Ladies 7-10)	\$54
XL (Mens 10-13)	\$57

VISA, Mastercard — Nevada residents add 6% tax

LIZ MILLER ENTERPRISES

P.O. Box 60598
Reno, NV 89506
(702) 972-3578

SKATING GIFT—up to 50% off. Figurines,
plates, bells, music boxes. Old books & print,
antique wooden skates, skater's lanterns, etc.,
\$1.00 for new list. Specify your interest. Also buy
& trade. Tom Kuo—Skatiques, P.O. Box 450154,
Atlanta, GA 30345. Tel: (404) 634-7009.

WANTED: MALE DANCE PARTNER to compete
Junior Dance: 5'3", 100 lbs. Brown hair, brown
eyes. On Gold Dances. Contact: J. Johns, 236
Lyons, Troy, Michigan 48084.

WANTED: 2 SKATING PROFESSIONALS
qualified to teach freestyle, figures, and/or
dance. Enthusiastic midwestern club. October
thru March and summer sessions. Interest in
shows and competition skaters. Arena located
close to universities and technological schools.
Inquiries kept confidential. Send resume:
Superior Figure Skating Club, P.O. Box 536,
Superior, WI 54880.

SKATING Classifieds reach 30,000
readers each month.

LAURELS

SKATING congratulates the following skaters who have passed USFSA sanctioned tests in figures, pair and dance. Only completed dance tests, rather than the individual dances passed, are recorded below. Any errors should be reported to the USFSA, 20 First Street, Colorado Springs, CO 80906.

GOLD 8TH FIGURE

Ashley Reece, Chicago FSC; Carrie L. Neher, Denver FSC; David M. Fedor, Philadelphia SC & HS; Kris Morzinski, FSC of Minneapolis; Lisa Zick, St. Clair Shores FSC; Nikki Peterson, SC of Wilmington; Stephanie Yen, SC at Dartmouth; Victoria L. Fisher, SC of Phoenix.

GOLD SENIOR FREE

Barbara Mattison, St. Lawrence FSC; Chris Hefner, SC of Wilmington; David M. Fedor, Philadelphia SC & HS; Monica Hoy, Chicago FSC; Stephanie Yokomizo, Denver FSC; Suzanne M. Brinser, Hershey FSC.

ACADEMY FSC: Pre—Julie Patterson, Michelle Milspaugh. 2—Megan Carpenter. 4—Andrea Costanzo. Pre FS—Michelle Milspaugh, Suzanne Vangieson. Silver—Mia M. Frantz. Pre Gold—Alicia Kisner.

ACHILLES FSC: Pre—Ariane Miligi, Eric Marshall, Tara A. Waters, Catherine Hunter, Lara Welch, Teresa Wagner. 1—Brenda Hastings, Rocco Irish, Vikki June Parker, Robert Hastings, Teddy Smith. 2—Marie Matteo, Susan Backshall. 3—Ann Marie Holck. 5—Sandra Albert. Pre FS—Andrew Delnegro, Candice Bryant, Cliona Jennings, Jennifer Diviney, Louise Leone, Tara A. Waters, Ariane Miligi, Christine Teagle, Janina Urban, Lori Anne Delnegro, Michelle Ingles. Juv FS—Daniela Hess, Rocco Irish. Nov FS—Kelly Clarke, Sandra Albert. Pre D—Kristen Painter. Bronze—Leslie Backshall, Steven Corino. Pre Silver—Liz Coleman.

SC OF THE ADIRONDACKS: Pre—Gretchen North, Jodi Meyer, Jennifer Frost. 3—Julia McLane. 6—Julie Thornton. Pre FS—Jodi Meyer, Liza Gonzales. Int FS—Julie McLane. Pre D—Jennifer Frost. Bronze—Amy Guglielmo, Paul Auger, Andrea Ann Bedard.

ALBUQUERQUE FSC: Pre D—Sylvia Tagliavere.

ALEXANDRIA BAY FSC: Pre—Desirae Valenzano, Kathleen M. Harnett, Susan Jones, Elizabeth Livermore, Leslie Calhoun, Tara Elk. 1—Amy Russell. 3—Renae Morgan. 4—Renée L. Stuttard. Pre FS—Cindy Dardano, Julie Giruzzi, Lana Santagata, Lynne Bradley, Patricia L. Stephens, Sherilyn Spies, Jill Stoughtenger, Kimberly Dzialo, Lorie M. Carpinella, Mary C. Spinelli, Shawn Townsend, Veronica Webber. Juv FS—Alison Scranton, Laura Ann Hedel, Noreen Webber, Heather L. Killian, Lisa J. Stanger. Int FS—Deanna Fenus, Elizabeth Cox. Nov FS—Lisa A. Stuttard, Renée L. Stuttard. Pre D—Desirae Valenzano, Kathleen M. Harnett, Katherine Jones. Bronze—Kevin Harris.

ALL YEAR FSC: Pre—Alexis Lavine, Celeste Catton, Julie Noble, Brian Kent, Eugenie Gordon, Lillian Muncan. 1—Maureen O'Conner, Tina V. Petrusis, Peggy Scarborough. 2—Shannon Murren. 5—Marlo Sipple, Michelle Knotts. Pre FS—Alexis Lavine, Celeste Catton, Julie Noble, Brian Kent, Eugenie Gordon. Nov FS—Alexis Randolph. Pre D—Suzanne M. McCune.

AMHERST SC: Pre—Anastasia Driscoll, Julia A. Sweet, Daniel Miller, Michelle Lauerman. 1—Alicia Weld, Heidi Devens, Diana L. Yellen. 2—Janet Czikk, Lara Jean Deni. 3—Anita M. Leslie. Pre FS—Anastasia Driscoll, Julia A. Sweet, Daniel Miller, Michelle Lauermann. Juv FS—Christina Bonasera, Perri Rosenfeld, Janet Czikk. Int FS—Anita M. Leslie.

SC OF AMHERST: Pre—Jennifer N. Aldrich. 2—Holly Kent. 3—Mary Ruth Warner. 4—Nicole Mantovani. Juv FS—Sarah Beth Lapuc.

ANCHORAGE FSC: Pre—Jennifer L. Huseman, Tori Lynn Clausen, Rene A. Coppola. 2—Jennifer A. Dickinson. 4—Anne K. Ratzlaff. Pre FS—Jennifer L. Huseman, Tori Lynn Clausen. Juv FS—Jennifer A. Dickinson.

ANN ARBOR FSC: Pre—Elena Waisanen, Karen Bentz, Tina Deupree, Heidi V. Spaly, Leslie Hohwart, Tom McRae. 1—Anne Gifford, Margaret Schreck, Cathy Hanna, Shelley Dunkel. 2—Linnea Nooden, Megan Copeman. 3—Karla Jean Stoermer. Pre FS—Amy Westerman, Heidi V. Spaly, Jessica Roberts, Margot J.

FINE
SKATING
APPAREL
FOR
MEN
WOMEN
& CHILDREN

J.P.
Designs, Inc.

Brochures Available

For More Information
Please Contact
J.P. DESIGNS, INC.
(415) 254-2322

220 La Espiral
P.O. Box 446
Orinda, California 94563

Photography by Mano Foto

Heitler, Tina Deupree, Christa E. Sprandel, Jane E. Gustine, Leslie Hohwart, Melina L. Hinton, Vanessa K. Dalton. Juv FS—Cathleen L. Argyle, Paul J. Keller. Pre D—Allison Greiner, Jessica Roberts, Margaret Schreck, Jane E. Gustine, Karen Bentz. Bronze—Becky Sue Dresselhouse, Stacey Sutfin, Lori Laughlin. Pre Silver—John Alger, Kelly Thompson.

ARCTIC BLADES FSC: 2—Lynette S. Osborne. Bronze—Karla Johnson.

ARIZONA FSC: 4—Timothy C. Dever. 7—Diane Dickner. Nov FS—Timothy C. Dever.

ARROWHEAD FSC: Pre—Eddie Plum, Joeli Crouch, Gabrielle Rogers, Shonn Northam. 1—Kim Connell. Misty Gordon. Pre FS—Eddie Plum, Joeli Crouch, Gabrielle Rogers, Shonn Northam. Juv FS—Geoffrey Migala.

ATLANTA FSC: 6—Robin W. Lewis. 7—Dawn M. Simon. Int FS—Tracee A. Moseley. Jr FS—Kathleen Bethards.

ATLANTIC CITY FSC: Pre—Susan Kwon. 2—Denise M. Lonergan, Stephanie Gifford, Karen Sue Wimbeg. Pre FS—Susan Kwon. Juv FS—Denise M. Lonergan.

BABSON SC: 1—Krista Eiseler. 3—Teri Ann Smith.

ICE CLUB OF BALTIMORE: Pre D—Anne Whithscarver.

BEAVER DAM WINTER SPORTS CLUB: 1—Carolyn Slanetz, Robin L. Body, Hillary C. Matthews. Pre FS—Angela L. Connolly, Jillian C. Backus, Lisa A. Ort, Jennifer L. Kilian, Kristin D. Davenport, Megan Duryea. Juv FS—Jolene Y. Eyre. Int FS—Pamela Polk.

BLADE AND EDGE FSC OF OMAHA: Pre—Georgia L. Welch, Shelley Brown, Molly McCoy. 1—Anna-Lisa Gallagher. 6—Amy Jo Cieslik. Pre FS—Angela Bonella, Molly McCoy, Georgia L. Welch, Shelley Brown. Pre D—Georgia L. Welch, Shelley Brown, Josie Militzer.

SC OF BOSTON: 3—John P. Pallis. 7—Sheryl Bath. Pre Gold—Peter Capobianco.

BOWLING GREEN SC: Pre—Lisa Ropiak, Terri Castle. 1—Kelly Wilson. Juv FS—Amy Jarvela, Tyna Sandberg. Pre D—Kathleen Eckert, Lisa Ropiak. Pre Silver—Bethany A. Jackson, Laura Green.

BRATTLEBORO FSC: Pre FS—Kristin Kuralt, Melissa Kuralt.

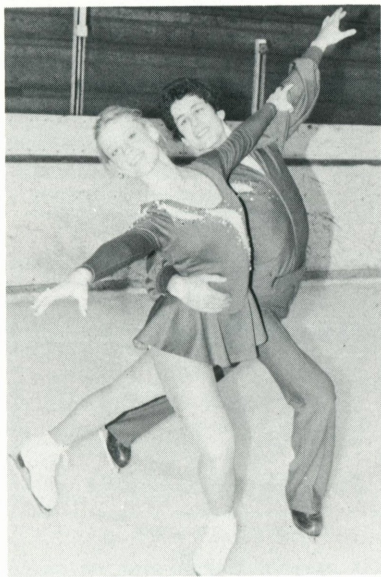
BREA CANYON FSC: Pre—Melissa Tezanos. 1—Amy Prince. Pre FS—Melissa Tezanos.

BRIDGEPORT SC: 1—Carlota M. Heed. 2—Diane Palermo.

BROOKLYN SC OF OHIO: Juv FS—Kim Siefert. Int FS—Diane Colonna.

SC OF BRUNSWICK: Pre—Caroline A. Brown, Heidi Coffin, Katherine Goodwin, Kristen M. Baecker, Michelle R. Breton, Denise A. Boynton, Julia H. Rentz, Kendra Jarratt, Kristina Hartnett. 3—Heidi Sproul. Pre FS—Caroline A. Brown, Julia H. Rentz, Denise A. Boynton, Michelle R. Breton. Juv FS—Margaret Davis, Rebecca J. Crichton. Pre D—Caroline A. Brown, Julia H. Rentz, Denise A. Boynton, Michelle R. Breton. Juv FS—

Academics & Skating



A unique boarding and day school, nationally recognized for preparation for college and performing arts, offers an opportunity for the talented & highly motivated skater to combine education with professional training. Up to three hours of ice plus a modern dance, ballet or gymnastic class available daily. 50-acre suburban campus 17 miles from Boston's cultural resources.

WALNUT HILL SCHOOL

FOR CATALOG CALL OR WRITE:

70 Highland Street
Natick, MA 01760
(617) 653-4312

Founded 1893

Grades 7-12

Margaret Davis, Rebecca J. Crichton. Pre D—Caroline A. Brown, K.C. Nelson, Kimberly J. Calderwood, Heidi Coffin, Katherine Goodwin, Kimberly J. Calderwood. Bronze—Katherine Pulsifer, Rebecca J. Crichton.

BUFFALO SC: Pre—Kathryn Gondree. 3—Linda Nagy. Nov FS—Robyn Pratt. Pre D—Joseph Roetter, Quentin J. Hoffman, Jr., Michael Siepel. Pre Pair—Elisabeth Mates. Bronze Pair—Elisabeth Mates.

CAMBRIDGE SC: Pre—Faren Pechet. Pre FS—Faren Pechet.

CAMILLUS FSC: Pre Silver—Deanna Cosgrove.

CANTIAGUE FSC: Pre—Alyssa Senter, Pamela Erlanger, Maria Montrone, Sharon J. Koehler. 1—Allisyn Paino. 2—Barret Mulligan. 5—Ellen McLean. Pre FS—Alyssa Senter, Sharon J. Koehler, Pamela Erlanger. Juv FS—Charlotte Montrone, Tracy Ann Leonardo, Maria Montrone. Int FS—Hannah Weeks.

CAPE COD SC: Pre FS—Zachary Hopkins.

CAROUSEL FSC: 1—Trista I. Lankow.

CARRIAGE FSC: Pre—Britton Franke, Rachel Kroh. Pre FS—Hanna Coen, Julie Johnson, Peggy McQueeney, Janet Johnson, Katie Voorhees. Juv FS—Christina Valentine, Jenny McCluney, Lisa Garbeff, Sarah Voorhees, Heather Merrigan, Kara Lynch, Peggy McQueeney, Wynne Madden. Int FS—Donna Walthall, Karen Cross.

CASPER FSC: Pre—Shannon Veber. 1—Kellie Bonvillian. Pre FS—Shannon Veber. Juv FS—Candice Wartick, Michele Reed.

CENTENNIAL SC: Nov FS—Shannon Goldsberry.

CHAMPLAIN VALLEY SC: Pre D—Cheryl Letourneau, Margaret Decker. Bronze—Larry Girard.

CHARLES RIVER SC: Pre D—Marie White.

CHARLESTON FSC: Pre—April Nichols, Stephen C. Nolen. 1—Christy L. Sunday, Joseph Craig, Jennifer B. Miller. Pre FS—Glenn Rowsey, Sarah J. Hurt.

CHAVAL FSC: 1—Jennifer Redding. 3—Jennifer A. Symonds.

CHESHIRE FSC: Pre—Christa Mancuso, Lisa Tisdale, Christine Lawler, Nicole Jimaki. 1—Lynn Parsons, Michelle Berthiaume. 2—Wendy Wasil. 4—Leah Latvis. Pre FS—Cherelle Shaw, Christine Lawler, Nicole Jimaki, Christa Mancuso, Lisa Tisdale, Peggy Rydberg. Juv FS—Melissa Dearborn, Peggy Rydberg, Michelle Berthiaume. Int FS—Leah Latvis. Pre D—Heather L. Cutting, Michelle Berthiaume, Meloney Harlow, Suzanne Johnson.

CHEVY CHASE CLUB: Pre—Helena Fernandes. 1—Ashley Dunaway. Pre FS—Charlotte Gaither, Sarah Black, Juvenile FS—Helen Gill. Pre D—Heather Karrick, Ida Smith.

CHICAGO FSC: Pre—Debbie Ungerleider, Julie C. Brady, Jeanette C. Tatkowski, Michelle A. Krafel. Juv FS—Bridget Ferrari, Michelle Young, Cathy Lendino. Bronze—Christina Hyland.

CHISHOLM SC: Pre—Gina Quirk, Lynda Birdsall, Nikki Fiorini, Jody Jacobson, Michele Sorenson. 1—Diane



New England

FIGURE SKATING CAMP

Contoocook (near Concord, NH)

Rated Best Skating Camp by
Town & Country magazine

Figure skating, plus tennis, water-
skiing, sailing, dance, gymnastics.

MD/RN in residence

*Only accredited and inspected
figure skating camp by American
Camping Association.*

FOR BROCHURE CALL OR WRITE:

NEFSC, 14 Joyce Ln. Woodbury, NY 11797 (516) 364-8099

Alberg. Pre FS—April Martin, Ericka Holland, Holly Erickson, Jennifer Rynes, Jody Jacobson, Lisa Ann Wahlberg, Michele Sorenson, Sheri L. Oman, Darcie Solberg, Gina Quirk, Jean Varda, Jennifer Hill, Kristi L. Oman, Maria Gregorich, Paula Florini. Juv FS—Diane Alberg, Kelli Bryan, Terri Anderson, Jennifer Quirk, Lynda Birdsall.

CHRISTMAS BROOK FSC: Pre—Melinda Gomes. 1—Kelley Bator. 2—Brenda Briggs, Ingrid Koch. Pre FS—Melinda Gomes, Melissa Oleskiewicz, Melissa Moon, Michelle Moon. Pre D—Kristen Decorie, Melinda Gomes. Bronze—Kelley Bator. Pre Gold—Ingrid Booth.

CLEVELAND SC: Jr FS—Catherine DiMassimo.

CLIFTON FINE FSA: Pre FS—Bridget McNamara, Rebecca Rixon.

CLINTON FSC: Pre—Amanda Hilton, Jennifer Stephenson, Maryanne Patti, Valerie Becker, Amy Benner, Katie Oliver, Terry L. Facticeau. 1—Kim Knoeller, Rebecca Raitt. Pre FS—Catherine Pcola, Jennifer Stewart, Katie Oliver, Kristen Wolthausen, Susan Sczerznie, Dorene K. Rinehard, Karen Livingston, Kelly McCoy, Susan Compson. Juv FS—Kristen Kowalczyk, Wendy Schwartz. Pre D—Jennifer Venero, Megan Knoeller, Terry L. Facticeau, Maryanne Patti, Tamara L. Slawson, Wendy Schwartz. Bronze—Mary Ellen Winter.

COLISEUM FSC: Pre—Lisa Floreck, Susan Halen. 1—Dawn Desimone. Pre FS—Lisa Floreck. Bronze Pair—Dawn Desimone, Kimberly Walker.

COLORADO FSC OF MA: Pre—Jim G. Staley, Jr., Nathan E. Hutchins, Shea Carney, Lisa Biro, Pamela Skiles. 2—Layne Connor. 5—Karen Anne Gendron. 6—Marcy A. LeBlanc. Pre FS—Jim G. Staley, Jr., Sarah Colburn, Elizabeth Cho. Int FS—Katherine Prince. Nov FS—Deborah M. Veilleaux. Pre D—Brenda R. Hervieux, Rachel Gagnebin, Joan Melanson, Katrin Howe. Bronze—Elizabeth Soule, Mark Skiles, Eunice Gagnon. Pre Silver—Wendy Millette. Adult D Pre Silver—Dorothy Barker.

COLONIAL SC OF PA: Pre—Jennifer Farruggio, Karen Ruddy, L. Tricia Cattani. Pre FS—Heather L. Wood, Karen Ruddy, Jennifer Farruggio, L. Tricia Cattani. Juv FS—Allison Cattani, Janine M. Burgess. Int FS—Lynn C. Mooney.

COLORADO SC: Pre—Charity Davault. 1—Krista Benninghoff, Lisa Marie Sulzer. 2—Jason Eric Bowman, Kelly Gregory. 3—Jennifer C. De Muinck. 4—Michelle Robinson. 6—Joel H. McKeever. Pre FS—Charity Davault. Int FS—Colleen J. Mickey. Nov FS—Michelle Robinson.

COLUMBIA FSC: Pre—Lori LeClair. 3—Jeannan Selger. Pre FS—Lori LeClair.

COMMONWEALTH FSC: 1—Jeannine Son.

CONEJO VALLEY FSC: Pre—Sarah R. Pickett. 1—Cameron McCoy, Stephanie Whithouse. 2—Philip Pessin. Pre FS—Sarah R. Pickett.



Skating Club of Sunrise

Announces

THE 1983 FLORIDA OPEN

TO BE HELD AT THE
SUNRISE ICE SKATING CENTER
SUNRISE, FLORIDA

AUGUST 22, 23, & 24, 1983

Written Inquiries to: Sharon Weinbrum
646 N.W. 99 Terr.
Coral Springs, Florida
33065
1-305-752-6911

Joan Anderson
5970 N.W. 27 Place
Sunrise, Florida
33313
1-305-742-7346

CORNELL FSC OF ITHICA: Pre—Linsey Salerno. Pre D—Lindsey Salerno.

COTTONWOOD HEIGHTS FSC: Pre—Karen Thosas. Pre FS—Karen Thosas.

CREVE COEUR FSC: 3—Roanne B. Daniels. 5—Pamela J. Hoffman. Pre Silver—Melissa Hall. Silver—Susan Ann Kerr.

CRYSTAL SPRINGS ISC: 1—Terry A. Corwin.

DALLAS FSC: Pre—Sebrina Guzman. 1—Diana Marcos, Tiffany L. McDaniel, Stacy Ann Lawson. Pre FS—Sebrina Guzman. Pre D—Tiffany L. McDaniel.

DANIEL BOONE ISC: Pre—Angela McGhee. 1—Shannah Markow. Bronze—Kevin Elvin.

SC AT DARTMOUTH: Pre—Melanie Lloyd, Nicole Danaïs. 1—Corinne Lemal, Heidi Weider, Samantha Davidson, Heather Greenslet, Krista Twombly, Sarah Barwood. 2—Julie B. Gilmer, Lisa Stevenson. 4—Mary Weider. Pre FS—Alison Lozner, Catherine Arms, Jennifer Brown, Mary Ellen Japikse, Alison Scheier, Heather Peske, Lynne Schiffman, Sarah Kniffin. Juv FS—Bronwen MacArthur, Corinne Lemal, Karin Chamberlain, Mara Taylor, Sarah Barwood, Christina Chamberlain, Karen DuBois, Lisa Stevenson, Molly O'Hara. Int FS—Deborah Bean, Tina Yen. Pre D—Janet Allen, Nichole Courtemanche, Karol Greenslet. Bronze—Diana Harrison.

DAYTON FSC: Pre—Lawr-Alea Carter, Micheline Brewer, Maria Rhee, Michelle Rhee. 1—Christy Bonner. Pre FS—Amy Crouse, Lamarica D. Keeton, Lisa Cohn, Micheline Brewer, Robyn Clayton, Tawnya Clark, Angela Vandervort, Lawr-Alea Carter, Maria Rhee, Michelle Rhee, Stephanie Thomas. Juv FS—Abbey Bokor.

DENVER FSC: Pre—Robin Tipton. 1—Brooke Beardall. 2—Amber Jackson, Stacey Blake. 4—Shannon McClennahan. 6—Jill Trenary. 7—Brooke Greene, Debbie L. Gallegos. Nov FS—Shannon McClennahan. Jr FS—Jill Trenary.

DEPERE FSC: Int FS—Craig G. Bodoh.

DES MOINES FSC: Pre D—Amy Sue Bethel, Paula McMaster.

DETROIT SC: Pre—Stacey Schwartz. 3—Pamela N. Accetta, Susan Norton, Stacey B. Schwartz. 4—Grant Noroyan. Nov FS—Shelly Propson. Bronze—Keli L. Keat.

DIABLO FSC: Pre—Dana Stockdale, Joan Marie Buckley, Kim Crisp, Shelly Coffey, Jennifer Poundstone, Julie Ginsbach, Lareine Ross. 1—Carol Morodomi, Laurie Sarachek, Yaser Mujahed, Laurel Mellema, Lisa McGuire. 5—Alison Reikes, Sandra C. Lewis. 6—Samantha Arends. Pre FS—Connie Isaksen, Jennifer Poundstone, Julie Ginsbach, Lareine Ross, Dana Stockdale, Joan Marie Buckley, Kim Crisp, Shelly Coffey.

DULUTH FSC: 1—Melissa Fryberger. 4—Amy Aasen. Nov FS—Amy Aasen.

DUPAGE FSC: 1—Mimi Esch. 4—Sandra Ann Smith.

EAGLE RIVER FSC: Pre—Jill Prince. Juv FS—Karla Johnston, Linda Grauvogl.

EASTLAND MALL ISC: 1—Stacy Wood.

EL CAMINO ISC: Pre—Jennifer Rose, Marion Somogyi, Marianne Melser, Melinda A. Rousseau. 1—Nouli Tucher. 4—Brenda Escobar. 5—Jennifer Schauf. Pre FS—Jennifer Rose, Marion Somogyi, Marianne Mesler, Melinda A. Rousseau. Juv FS—Nouli Tucher. Bronze—Robyn L. Lamarr.

ESSEX SC OF NEW JERSEY: Pre Silver—Peter Mirsky, Wendy Mirsky. Pre Gold—Christine Fitzpatrick. **EVANSTON FSC:** 1—Nadine Horwitz, Orskia Fejer. Pre D—Gergo Fejer, Linda Charley, Orskia Fejer, Helen M. Wu, Mary Lickerman. Bronze—Helen M. Wu.

FAIRBANKS FSC: Pre—Robin Brown, Jr. Pre FS—Brooke Spotts, Stacey Swift, Robin Brown, Jr. Juv FS—Mark Fink.

FLAGG POND SC: 2—Janet Redmond.

FORT WAYNE ISC: Pre—Monica Pulver. 1—Shelly Fowler, Stephanie Dobey. Pre FS—Monica Bowles. Juv FS—Cheryl Keegan.

FRASER FSC: 6—Deborah E. Selby. Pre D—Carin Cummings, Ronda Holler. Bronze—Karen Randall, Susan Hill, Kristine L. Berger.

FULTON FSC: Pre—John Valerio, Tracy Paeno. 2—Vanessa Winters. Pre FS—Christy Thorpe, Karen Thorpe, Tracy Nettles, John Valerio, Kimberley Haskell. Juv FS—Julie Pawlewicz, Sandra Davis, Kacey Valerio. Pre D—Corey Stewart, Kimberley Haskell, Kacey Valerio, Sandra Davis. Bronze—Tonya Paeno.

GALLERIA ISC: Pre—Anna Waddell, Michele Stoner, Emily Phillips. 1—Kathleen O. Riley, Rosario Castillo.

GARDEN CITY FSC: 1—April C. Ottino. 2—Kelly Birk. Juv FS—Meredith L. Hargrave.

GARDEN STATE SC: 1—Heather Peschieri. 2—Kim Gallagher. Int FS—Lori Tschupp.

GARFIELD HEIGHTS FSC: Pre—Samantha Goliat. Pre FS—Cathy Zwilling, Kelley Ann Rezac, Janice Her- ing, Pamela Makowski. Pre D—Donald Frate.

GATEWAY/ST. LOUIS FSC: Silver—Shirley Carron. Pre Gold—Kendall K. Hall.

GENESEE FSC: Int FS—Courtney Coffey.

GLACIER FSC: Pre FS—Andrea Szebeni.

GLENS FALLS FSC: Pre—Elizabeth Merrill, Rebecca Thomas, Melissa Ferrie. 1—Natalie Kapper. Pre FS—Erica J. Fleet, Kathleen Murphy, Meg Woodbury, Sunday Combs, Jessica Bolinder, Krista Gore, Rebecca Thomas, Tracy Gore. Juv FS—Jennifer Vogel, Valerie Munson.

Pre D—Brian O'Connor, Meg Woodbury, Rebecca Thomas, Diane Ryder, Melissa Ferrie. Bronze—Casey McCann, Elizabeth Little, Kelly McCann, Kristin Varley, Deirdre Fitzgerald, Jill Severance, Kristen Bolinder.

GLENWOOD FSC: Pre Gold—Lora Sawchik.

GOLD AND SILVER BLADES FSC: Pre—Amy Hamamura, Brandi Holzer. 1—Barbara Jo Young, Karen Sylvester. Pre FS—Amy Hamamura, Brandi Holzer.

GRAND RAPIDS FSC: 1—Kari Korhonen.

GREATER LYNN SC: Pre D—Marilyn L. Lee.

GREATER MILWAUKEE FSC: 1—Dawn C. Fiedler. Pre FS—Beth Ann Rajack, Rashida Williams. Juv FS—Anne Hall. Int FS—Vicki Wolke. Jr FS—Kelly Ann Szmurlo. Bronze—Judy Denny.

GREAT FALLS FSC: Pre—Kristen Lindell, Maureen Waters, Marni Steel, Trina L. Knaup. 1—Deedee Turner. 2—Betsy Reynolds. 3—Caroline Pederson. 5—Thad Wocasek. 6—Lisette F. Carter. Pre FS—Kristen Lindell, Maureen Waters, Marni Steel, Trina L. Knaup. Juv FS—Grace Wong, Kendra Pankratz. Int FS—Anne Steel, Tera Gue, Dana Barr. Pre D—Amy Smith, Maureen Waters, Kori Nobel. Bronze—Leslie Ackerman, Sunday Rossberg. Pre Silver—Anne Steel. Pre Gold—Caren McCabe.

GREENBRIER FSC: Pre—Bryan Spiegelberg, Stephanie Hildebrandt, Debbie D. Schultz. 1—Kim Hostelley. Pre FS—Colleen Cloherty, Trisha Gladish, Stephanie Hildebrandt. Juv FS—Christine Broestl, Tina Marie Cook. Int FS—Beth Galoch, Jennifer Jackson. Pre D—Christine Broestl, Michael E. Spoerke. Bronze—James Yorko, Jr.. Pre Pair—Kerry M. Lini, Ryan Lini, Megan Monosky. Bronze Pair—Christine Broestl, Jennifer Jacko.

GREENFIELD AREA FSC: Pre—Evelyn Carey. 4—Kristina Streeter. Juv FS—Lee Ann Baronas.

GREENSBORO ISC: Pre—Tina Speagle. 2—Lance Alan Vickers. Int FS—Allison Serafin, Stephanie Foster. Pre D—Rayanne M. Strong, Tina Speagle, Steven D. House. Bronze—Daniel Ibrahim. Pre Silver—Tracy Appleton.

HAMDEN FSA: Int FS—Cynthia M. DeMatteis.

HARBOR FSC: Pre—Alicia M. Brew. 2—Brett Libenson, Carla Jones. Pre FS—Alicia M. Brew. Juv FS—Carla Jones. Pre D—Erin M. Weatherford. Bronze—Erin M. Weatherford.

SC OF HARTFORD: Pre—Ami Klinsky, Amy Minifie. 2—Heather A. Harrington, Louise Valli. Pre FS—Ami Klinsky, Lindsey S. Haviland, Elizabeth Carbonneau. Int FS—Diane Gallo. Pre D—Lindsey S. Haviland. Pre Silver—Heather A. Harrington, Kimberly A. Little. Adult B Dance—Joanne Schiller.

HAYDEN RECREATION CENTRE FSC: Pre—Kelly Wilt, Melora Kuhn. 4—Connie W. Mezardash, Susan Doyle, Marcy Kramer. Pre FS—Anjali Nagpal, Nancy L. Allan, Elizabeth Labovitz. Nov FS—Marcy Kramer.


HERSHEY FSC: 2—Christina Nicholas. 4—Claudine Primorac. 5—Mark Alan Naylor. Nov FS—Mary L. Mem- mi. Pre D—Karlis Vente.

HIAWATHA SC: Pre—Loriann Fabry. 4—Melissa Mickewich. Pre FS—Brenda Osterhout, Mona Lacrosse, Carolyn Brown. Pre D—Jessica Munsell, Shari Mason, Leslye Ruddie, Susan Hegerich. Pre Silver—Lisa Harger. Silver—Shelley J. White.

HIBBING FSC: 2—Steve Nylund. Pre FS—Barbara J. Begalle, Dawn K. Mersch, Candie M. Andrican, Nicole M. Povich. Int FS—Terri Hamre, Terri LaFave.



PADDED SKATER AID
Krash Pad
 LIGHT and trim looking cover for hips and seat. Protects bruises, reduces fear. Thousands are in use now! Most users are competitive skaters. Ideal for learning double and triple jumps. Firm, foam cushioning covered with navy blue, maroon, green, black, brown. All sizes just **\$25.00**




EASY to put on or take off on the skating surface in seconds. Use only when needed.






KRASH PAD by JAN-PRO 
 P O Box 5154 San Diego Ca 92105
 Enclose check for \$25.00 ppd. (California residents add 6% sales tax.) Measurement around largest part of seat with skating attire on _____ Color _____

NAME _____
 ADDRESS _____
 CITY _____ STATE _____ ZIP _____

Send for **FREE** Catalog



SHAKER HEIGHTS, OHIO
 1-(216) 921-4300

Phone and mail orders
WELCOMED!
 Same day shipment on items
 in stock
 Inga, Skatewear
 Martin, Peep and Spinner Scribes and Covers

3433 LEE ROAD
 SHAKER HEIGHTS, OHIO 44120

HICKORY HILL FSC: Pre—Heather L. Stabell, Michelle Mosley, Jennifer C. Weinman. Pre FS—Heather L. Stabell, Michelle Mosley, Jennifer C. Weinman.

HIGHLAND SC: Pre—Dorinda Lindsay. Pre FS—Dorinda Lindsay. Pre D—Ann K. Schmidt, Sue Held. Bronze—Sue Held. Silver—Nial McGaughey. Pre Gold—Amanda Pike.

HILLTOP ISC: Pre—Anissa L. Davis, Jennifer Smith, Deanna Taylor. 1—Natasha Sumner, Sheila M. Martin. Pre FS—Deanna Taylor, Jennifer Smith.

HOLIDAY BLADES SC: Int FS—Deborah L. Beers.

HOUSTON FSC: Pre—Desiree Toneatto, Natalie G. Markham. 1—Holly Davidson.

HUDSON-MOHAWK FSC: 1—Jill Henry.

HUNTSVILLE FSC: 3—Louise Harrison. Int FS—Louise Harrison. Pre Silver—Louise Harrison. Pre Pair—Houston L. Cropp, Leigh A. Phillips, Kim Minchey, Robert D. Stakely.

ISC OF INDIANAPOLIS: Pre FS—Kristen E. Jones. Pre D—Jennifer Beck, Melissa Morris. Pre Gold—Susan M. Hindman.

WC OF INDIANAPOLIS: Pre—Jennie Anderson, Wayne Weaver. 2—Heather Chauvin. 4—Nicole Chappell. Nov FS—Nicole Chappell. Pre D—Wayne Weaver. Adult B Dance—Harlan Brunner.

INTERNATIONAL FALLS FSC: Pre—Tara L. Sohlman. Pre FS—Brenda Nissen, Heidi Austin, Madeline Gouin, Michelle Fulton, Sandy Schroeder, Tara L. Sohlman, Carmen Goetz, Jaci Kay Monrean, Melissa Dunn, Pamela Davison, Sherie Dion, Valerie Fulton. Juv FS—Anne Howes, Kim Boyum, Billy O'Brien.

JANESVILLE FSC: Pre Silver—Angela M. Jackson.

KANSAS CITY FSC: Pre—Laura Davis, Susan Schlotzhauer. 1—Anne Kronenberger, Tara Jenkins. 2—Toi Beavers. 3—Jean-Pierre Katt. 6—Carole E. Saboe. Pre FS—Bonnie S. Anderson, Susan Schlotzhauer, Laura Davis. Juv FS—Bonnie S. Anderson. Int FS—Bryce Moore. Pre D—Georgia W. Plaisted. Bronze—Emilie A. Elmore, Sara A. Lulo. Silver—Steven Huff.

KENNEBEC SC: Pre—Karen Kenyon, Sarah Lockwood, Sara Cheney. 2—Pamela Boucher. 3—Elizabeth Davidson. Pre FS—Sara Cheney. Juv FS—Emily T. Simon, John Merrill. Pre D—Anassa Sanborn. Bronze—Melissa Manocchio. Pre Pair—Elizabeth Davidson. Bronze Pair—Elizabeth Davidson.

KEYSTONE FSC: 2—Samantha Baiman.

LA JOLLA FSC: Pre—Laurie Appel. 1—Kristin Brown. Pre FS—Laurie Appel.

LAKELAND FSC: Pre D—Gretel Gaertner.

SC OF LAKE PLACID: 3—Cassandra Bates. Int FS—Angel K. Naylor, Vanessa Valle, Melissa L. Cheyne.

LAKEWOOD WC: Pre—Heidi Green. 2—Julie Elledge. Pre FS—Heidi Green. 2—Julie Elledge. Pre FS—Heidi Green. Stephanie Kellis.

LANSING SC: Pre—Susan Tranter. Pre FS—Laurie Penner, Maija Anne Jacobson, Linda Hazlett, Michelle Jagutis. Juv FS—Rebecca D. Klinger. Pre D—Kimberly Keller. Pre Gold—Deborah Leppek.

LAUREL RIDGE SC: Pre—Alison Benusis, Emily Morgan, Kimberly Bemberis, Megan Sandy, Pam Thompson, Diane Morris, Katie Lee, Linda Doyle, Nicole Romeo. 1—Heather Mangam, Vicki Jochim. 2—Carol Holland. Pre FS—Diane Morris, Jacqueline Pierandri, Kimberly Bemberis, Linda Doyle, Nicole Romeo, Susan McCallion, Emily Morgan, Katie Lee, Laura Sandy, Megan Sandy, Pam Thompson, Vicki Jochim. Juv FS—Heather Mangam, Jennifer Brown.

LILAC CITY FSC: Pre—Heather Derr, Julie Blake, Stacy Johnson, Johnnie Bevan, Molly Meekin. 1—Heather Miller. Pre FS—Heather Derr, Julie Blake, Stacy Johnson, Johnnie Bevan, Molly Meekin.

LINCOLN CENTER FSC: Pre—Becky Coleman, Sharon Williams. 1—Michelle L. Laughlin. 2—Jane Brueggemann, Jill Ann Cashen. 4—Sarah Devore. Pre FS—Becky Coleman, Kelly Reuteman, Carmella Dell. Juv FS—Jill Ann Cashen.

LITTLE SUN VALLEY SC: 2—Tracy Lea Roth. 4—Deena Kjeldsen. 5—Jennifer L. Betit, Lisa Grundstrom. Nov FS—Bee Upatham.

LOS ANGELES FSC: 1—Brandy Valencia, Tanya Kuligowski. 2—Laurie A. Silvers. 3—Jennifer Kline. 6—Christophe Mitchell. 7—John Davidson. Jr FS—Christophe Mitchell. Pre D—Walter Brewer.

FSC OF MADISON: 1—Bradley Cox, Gretchen Diem. 3—Jenny Saari. Pre FS—Lara Schuller, Shana L. Link. Juv FS—Gary Strangman. Int FS—Jacqueline Drouin. Silver—Allison Roseman.

MANKATO FSC: 2—Anne Koenig. 5—Pauline Lee. Juv FS—Anne Koenig.

MARQUETTE FSC: Pre—Becky Thomas, Michelle Lehtomaki, Brandi Carlson. Juv FS—Teresa Million. Pre D—Becky Thomas, Michelle Payment, Roberta Bink, John Madacey, Michelle Lehtomaki. Bronze—Monique Vandermissen, Theresa Million. Silver—Ann Marie Major, Roy Hamm. Silver Free—Ann Marie Major, Roy Hamm.

MASSENA FSC: Pre—Angela Ayotte, Maryanne Leary. Pre FS—Hope MacPherson. Juv FS—Kelli Schneider.

MEADVILLE FSC: Pre—Amy Taylor. 1—Krystee E. Coleman, Lisl Muckinhaupt. 2—Heidi Holtzhauser. Pre D—Geoffrey A. Turk.

MESA VERDE FSC: 4—Lisa Alejandre. Nov FS—Lisa Alejandre.

METROPOLITAN FSC: Pre D—Marion Zegers.

MIDLAND FSC: Pre—Rachel Carr. Int FS—Amy Bailey, Dennis K. Wasielewski.

MISSION VALLEY ISC: Pre—Cindy Bukus, Lory J. Paulding, Dorothy Scibuola, Melissa J. Allen. 1—Jennifer Nieman, Michelle J. Allen. 1—Jennifer Nieman, Michelle L. Rinks. 2—Annette S. McCormick, Tisha St. John. 3—Michelle Gentry. 6—Sherrilynn Sledge. Pre D—Catherine Pingue, Ronald Singson.

SC OF MORRIS NJ: 1—Diana Conklin, Nikki Deschamps. Juv FS—Cindy Zedeck. Int FS—Nicole A. Toye. Pre D—Diana Conklin, Jennifer Heeb, Laura Cimmino, Heather L. Allen, Kerry Krauss.

NEWBRIDGE ROAD PARK FSC: Pre—Esther Lowenstein, Tina Arokbaar, Lori Knecht. Pre FS—Esther Lowenstein, Stacey Summers, Lori Knecht. Int FS—Danielle E. Caro, Richard M. Wienecke. Pre D—Grace Gracia.

NEWBURYPORT FSC: Pre—Jeffrey Carleton, Tracy Love, Nancy Clay. 1—Ann Marie Marttila. Pre FS—Nancy Clay. Juv FS—Laura Hammond.

NEW CANAAN WC: Pre—Elizabeth Blabey, Kate Dawson, Lexie Goulard, K-K Smith, Katie Heyn. 1—Cinda Goulard, Jennifer Kerr. Pre FS—Allisa Mattison, Amy Wappler, Heather Weed, K-K Smith, Amanda Bryan, Bonnie Rose, Julie Sweitzer, Lizzie McLanahan. Juv FS—Holly Gidez, Melanie Kerr, Libby Shepard. Pre D—Bonnie Rose, Ellie Wright, Holly Gidez, Julie Fiske, Katie Heyn, Lindsay Bannister, Winkie Mleccko, Elizabeth Blabey, Heather Weed, Julie Sweitzer, Kate Dawson, Kristy Rothballer, Lizzie McLanahan. Bronze—Jennifer Kerr, Margaret Dawson, Karen Rothballer.

SC OF NEW HARTFORD: Pre FS—Holly Jones.

NEW HAVEN SC: 2—Sorrell Lewis.

FSC OF NEW ORLEANS: Pre—Nichole M. Morrow, Shelly F. Morrow. Int FS—Jane Butera. Pre D—Amy C. Thigpen, Nichole M. Morrow, Lani Guzman, Stephanie Burst. Bronze—Shelly F. Morrow.

SC OF NEW YORK: Pre—Thomas Incantalupo. Pre D—Margaret Tracy.

NORDIC FSC: Pre—Joan Phantong. 2—Christina Graves. Pre FS—Joan Phantong. Juv FS—Christina Graves, Wanda Schmacker, Jackie Nimitz.

NORTH COUNTRY SC: Pre—Bethany Bach, Lori A. Chenevert, Julia Schnell, Shannon Dauphinais. 1—Nicole Filion. Pre FS—Bethany Bach, Tammy Badger, Shannon Dauphinais. Pre D—Barbara Sutin, Bruce Boyden, Carol Kaufman, Julia Schnell.

SC OF NORTHERN VIRGINIA: Pre—Christina MacCabe, Missy M. Seamon. 2—Leanne Klein, Liza Cohen. 5—Darin M. Hosier. Pre FS—Christina MacCabe, Terry J. Walters. Juv FS—Terry J. Walters.

NORTH JERSEY FSC: Pre—Karlene Machovec. Pre FS—Karlene Machovec.

NORTH SHORE SC: Pre—Laura H. Halliday, Wendy Jill Clement. Pre FS—Laura H. Halliday, Wendy Jill Clement. Pre D—Barbara Sutin, Bruce Boyden, Carol Kaufman, Julia Schnell.

OAK PARK FSC: Pre D—Robert Peal.

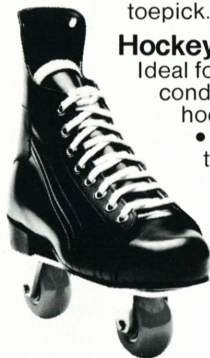
OGDENSBURG FSC: Pre—Amanda Premo. Pre FS—Martha Bouche, Teri Dow, Heidi Carter, Paula Doyle. Juv FS—Michele Premo, Patrick O'Neil. Int FS—Patrick O'Neil. Pre D—Amber Kinch, Patty Lightfoot.

BiSkates®

Best thing next to ice!



Figure BiSkate
with unique rotating
toepick.



Hockey BiSkate
Ideal for off-ice
conditioning & roller
hockey.

- Sold direct from the factory.
- Free brochure & price list available.

THE ROLLER SKATE
YOU CAN BANK ON!



RLS PRODUCTS
P.O. Box 665 • Fort Jones, CA 96032
(916) 468-5532

NEW SKATING PINS



Write for FREE CATALOGUE

© 1982 Designs By Margarita - All Rights Reserved

ALLOW 2 WEEKS DELIVERY	CODE	NAME	QTY.	COST	TOTAL
	272	Champion Women Skater		4.00	
	273	Champion Men Skater		4.00	
	262	Man - Russian Split		3.00	
	384	Ski U.S.A. Racer		3.00	
	359	U.S.A. Hockey		3.00	
	400	U.S.A. Fig. Ska. Juvenile		4.00	
	401	U.S.A. Fig. Ska. Intermediate		4.00	
	402	U.S.A. Fig. Ska. Novice		4.00	
	403	U.S.A. Fig. Ska. Junior		4.00	

U.S.
CURRENCY
*Postage:
5% of order
1.00 Minimum

Name: _____ Sub-Total: _____

Address: _____ Postage: _____

City: _____ Calif. Res. 6% Tax: _____

State: _____ Zip: _____ Total: _____

DESIGNS BY MARGARITA

18103 Santa Cecilia Fountain Valley, Ca. 92708

Circle No. 3 on Reader Service Card

OIL CITY FSC: Pre FS—Michele Rios. Juv FS—Stacie L. Slater. Pre D—Mark Clark.

OKLAHOMA CITY FSC: Pre FS—Julie Browning.

OLDE MONMOUTH SC: 1—Camay Jarvis, Dana Mednick, Charlotte Lobuono.

OLD YORK ROAD SC: Pre—Jennifer Angelo, Sandi Lizerbram. 1—David Maipass. 2—Maureen Morris. 4—Debbie Gray. 5—Randi Goldstein. 6—Brandon Lorry. Pre FS—Catherine Sloane, Sandi Lizerbram, Jennifer Angelo. Juv FS—Cheryl A. Izzo.

FSC OF OMAHA: Pre—Chanda Blanchard. 2—Angel Restivo. Pre FS—Chanda Blanchard. Juv FS—Carolyn Dow.

OSWEGO FSC: Pre FS—Michelle Meeker.

OVERLAKE SC: Bronze—Leanne M. Highsmith.

OWATONNA FSC: Pre—Heather Rietz, Natalie Ruppe. 1—Jeannie Kaplan. Juv FS—Meredith Hartle.

PARK FSC: Pre—Rosa Napolitano. Pre FS—Rosa Napolitano. Juv FS—Kim Marie Silva.

PASADENA FSC: Pre—Amy Zurlinden, Mia Borja, Kathy E. Brown, Sandra Rodriguez. 6—Nicole Locander.

Pre FS—Amy Zurlinden, Mia Borja, Kathy E. Brown, Sandra Rodriguez. 6—Nicole Locander. Pre FS—Amy Zurlinden, Mia Borja, Kathy E. Brown, Sandra Rodriguez.

PAUMANOK FSC: Pre D—Cindi Hall, Renee Balsamo.

PAVILION SC OF CLEVELAND: Pre FS—Danielle E. Bradshaw.

PENGUIN FSC: 1—Carolyn Brennan. 2—Francesca Panebianco. Int FS—Christina Gronski, Susan Tuscher. Silver—Susan Tuscher, Tracey Walker.

PHILADELPHIA SC & HS: 2—Amy P. Grove. 3—Jan Waldauer. 4—Dawn Latona. Pre FS—Christina Young, Michele Boornazian, Claire A. Archawski, Susane M. Soffe. Juv FS—Amy P. Grove. Pre D—Ella Dillon, Kim Waldauer. Bronze—Alicia Dilworth, Jan Waldauer. Adult B Dance—Raymond A. Munder, Jr., Stephanie Bennett. Pre Gold—Sanna A. Marshall. Adult D Pre Silver Dance—Suzanne Coonley.

SC OF PHOENIX: Pre—Judith A. Henry. 5—Judi Ann Lizarrago, Juliana Fisher.

PILGRIM SC: 2—Shelley Turner. Juv FS—Lisa Plant.

PITTSBURGH FSC: Pre—Adina Russman, Michele Lindsey, Marcy Terkel, Nichole Paoli. 1—Ann Pittman, Keeley Jauch, Robin Pilossoph, Heidi Dougherty, Renee L. Evans. Pre D—Maricia Walkney. Bronze—Ann Pittman, Elizabeth Entress.

PITTSFIELD FSC: Pre—Deirdre A. Whitman, Mark Nuciforo, Susan Austin, Margo Matthews, Sheila Hallas, Tracey Spruce. 1—Amy Nuciforo, Heather Allen, Erin E. O'Brien, Karen Lacatell. 2—Susan Jakubowicz.

5—Jennifer Collins. Pre FS—Donna Hallas, Karen Lacatell, Kara Woitkowski, Mark Nuciforo. Juv FS—Anita M. Jancewicz, Mary O'Neil, Tracy Fancher, Jacqueline Amuso, Sheila Hallas. Int FS—Susan Jakubowicz. Pre D—Deirdre A. Whitman, Tracey Spruce, Mark Nuciforo. Bronze—Nicole Laurin. Pre Silver—Erin E. O'Brien. Silver—Karen Lacatell.

PLYMOUTH FSC: Pre—Holly A. Krueger, Julie Currier, Janelle L. Gebeau. 1—Debbi Smith, Kristin A. Fazakas, Michelle L. German, Stephanie Hart, Tamra Chute, Karen Juergens, Michelle L. Nagy, Ronald A. Ciesiak, Tammie Beacher. 2—Carrie Hughes, Lisa H. Parker, Michelle M. Contini, Jessica Normile, Melissa A. Noel. 5—Colleen Armstrong. Pre FS—Danielle R. Goleniak, Mary Currier. Pre D—Lynn Wasielewski. Bronze—Regina N. Shearn. Pre Silver—Noel Schmeck.

PORTAGE LAKE FSC: Pre FS—Anna K. Schneider, Laurie Lett, Kari Effinger. Juv FS—Gloria Holappa, Susan L. Johnson. Bronze—Kristen Tiberger. Pre Silver—Jeanne Balog, Kathy Balog.

PORT HURON FSC: Juv FS—Maureen Flanigan.

PORTLAND ISC: Pre—Denise Sutton, Gina Brinkman, Kelley Corallo, Kim Law, Sarah A. Reed, Dominique Stewart, Keith Olenslager, Kelly Mazur, Krista L. Davis, Trisha Atkeson. 1—Jennifer Taylor, Tanya Durkee, Taina Coffey, Vickie Price. 5—Bonnie Moe. Pre FS—Denise Sutton, Gina Brinkman, Kelly Mazur, Krista L. Davis, Sarah A. Reed, Dominique Stewart, Keith Olenslager, Kim Law, Monica Hemmingsen, Trisha Atkeson. Int FS—Tristan Kotzian.

PORTLAND SC OF MAINE: Pre—Shelly A. Millette. Pre FS—Shelly A. Millette.

PRINCETON SC: Pre Gold—Beazie Zenzie.

PROVIDENCE FSC: Pre—Nancy A. McAdams. Juv FS—Jennifer Hyde. Int FS—Lisa A. Quinn, Steven Shola.

PUEBLO FSC: 1—Cindy Dockendorf. Pre FS—Lisa A. Vellar, Reyna Carpenter. Int FS—Jennifer Chambers, Jodi Friedman.

QUEEN CITY FSC: Pre—Julie Neumark. 2—Robin Dickhaus. 5—Jodi Shaw. Pre FS—Kathy M. Fondacaro, Steve M. Haas. Juv FS—Susan M. Nordmeyer. Int FS—Katie Gorman. Pre D—Theresa Weber. Pre Gold—Anne Raispis.

SC OF RADNOR: Pre D—Amy L. Elder.

RED RIVER VALLEY FSC: Pre FS—Bethany A. Bye.

SC OF RHODE ISLAND: 1—Jill MacBeth. Juv FS—Jill MacBeth.

RICHFIELD FSC: Pre—Heather N. Koehler, Kristen Collins. 1—Kathy McDermid. 3—Brenda Starleaf. Pre FS—Heather N. Koehler, Kristen Collins. Juv FS—Tonyea Tourtellott.

FSC OF RIVERDALE: Pre—Gingi Pica. 1—Jeri DeSalvatore.

ROCHESTER FSC: 2—Blair Robertson, Chica Maruta. 6—Tammy Dumstorf. Pre FS—Angela Taylor, Courtney A. Bass. Int FS—Dulcey Wiggs. Pre Pair—Seelye Stanger.

FSC OF ROCKFORD: Jr FS—Kristina Thenstedt. Bronze—Antonia M. Woodruff.

ROCKY COAST FSC: Pre—Bobby Bernard. 1—Karen Henigan. Pre FS—Birgitta Peterson, Sarah Drew, Hannah Sharp. Pre D—Beckie Sweetland, Stacy Holdsworth.

ROSEVILLE FSC: Pre—Kirsten Kvamme, Kyla Gordon, Kristin Frank, Michelle Pryor. 3—Maria Fragomeni. Int FS—Maria Fragomeni.

RYE FSC: Pre—Laurie Frolich. Pre FS—Laurie Frolich.

SC OF SACRAMENTO: Pre—Claire Centabar, Tami Irene Tomlin, Jennifer Uberti. 5—Debby Mart. Pre FS—Claire Centabar, Tami Irene Tomlin, Jennifer Uberti.

SALT CITY FIGURE SKATERS: Pre—Stephanie Santos. 1—Dina Fiorini. Int FS—Jennifer Webster. Pre D—Laura Shephardson. Pre Silver—Cheryl Demkowski, Lauren Nesci. Pre Gold—Susan Beth Egnatinsky.

SAN DIEGO FSC: Pre—Joanna Gibbs. 2—Cheryl Bailey, Nancy Goodridge. 4—Heather Werner. 5—Kelly Hudkins. 6—Dee Dee Couch. Pre FS—Joanna Gibbs. Juv FS—Cheryl Bailey, Nancy Goodridge. Nov FS—Heather Werner, Jr. FS—Dee Dee Couch. Pre D—Letty Zane Johnson. Bronze—Melissa A. Becker, Tamara Cole.

SANGAMON VALLEY FSC: Pre D—Linda Ushman.

SANTA BARBARA FSC: Pre—Leah Warner. Pre FS—Leah Warner. Juv FS—Helen C. Gallagher.

SANTA MONICA FSC: Pre—Tristen Vega. 1—Kerry L. Kugler. 3—Bridget McGill. Pre FS—Tristen Vega.

SEATTLE SC: Juv FS—Jennifer Elston.

SILVER BLADES FSC OF GREATER KANSAS CITY: 1—Jeana Bailey. 2—Laura Easley. 3—Kara Rodewald. Juv FS—Laura Easley. Int FS—Kara Rodewald.

SILVER BLADES SC: Jr. FS—Betsy Lee Briggs. Pre Silver—Bobbe Lawrence.

SILVER EDGE FSC: 1—Danein MacDermott. 2—Marjorie Hempstead. Pre D—Lianne Hatcher

SILVER SKATE FSC: Pre—Courtney Boatsman, Michelle L. Rice. 1—Jennifer E. Watson. Pre FS—Michelle L. Rice.

SKOKIE VALLEY SC: 1—Diane Cossarek, Holly Steidlmayer, Samantha Larson, Heidi Steidlmayer, Jennifer Chojnacki. 5—Susan Ayres. 7—Winfrid Mayer. Jr FS—Marge Minor. Pre D—Paul Guerrero. Silver Dance—Emily Vass.

SMITHFIELD FSC: 1—Susan Trinke. 2—Stephanie Taylor. 5—Lisa A. Bucci. Juv FS—Melissa Lentini, Stephanie Taylor, Renee Azzara, Tricia Altieri. Int FS—Laura Azzara. Pre D—Kristen Laurenza.

SOUTH BAY FSC: Pre—Jeanne Yoshida, Michelle Suesberry. 1—Amber J. MacArthur, Inez L. Nuhi. 2—Jill Noceti, Tracey L. Collins, Rachel Pierce. Pre FS—Michelle Suesberry. Juv FS—Rachel Pierce, Tracy L. Collins. Pre D—Terry L. Moore.

SOUTHERN CONNECTICUT FSC: Juv FS—Suzanne Coulter.

SOUTH MOUNTAIN FSC: Pre D—Steven Wasylszyn. Bronze—Russell Dickens.

"The Golden Skate"



\$19.95

Actual Size



\$49.95

BEAUTIFUL 14K SOLID GOLD SKATE

...For Neckchain or Bracelet

(Special 10% Discount for Skating
Clubs or Minimum Order of 6)

ORDER FORM

NAME _____

ADDRESS _____

CITY _____

STATE _____ ZIP _____

Enclosed please find my check for each charm
desired or: ☐ MC ☐ VISA ☐ AX

QUANTITY _____

Card # _____ EXP. DATE _____

Mail To: THE GOLD CO., 296 E. 5th St.
N.B.U. 8-3, Eugene, OR 97401 • (503) 343-1303

EMJAYTM Figure Mates

NOW...
for SKATING,
DANCING,
GYMNASTICS and
EXERCISE



Custom quality
at popular prices

Beautiful Prints and choice of 15 Solid
Colors made from the finest
LYCRA® Spandex

FIGURE MATES, inc.

For information
and an order blank,
clip and send to:
P.O. Box 218
East Hanover, N.J.
07936
Phone: 201-386-9314

NAME: _____

ADDRESS: _____

ZIP _____

SOUTHPORT SC: Pre FS—Jeffrey Apfel.

SOUTH TOWNS YMCA FSC: Nov FS—Chris Ahrens, Timothy Ahrens.

SPOKANE FSC: 7—Shannon Murphy.

SC OF SPRINGFIELD: Juv FS—Elena Contos.

ST. CLAIR SHORES: 1—Alissa J. Ellinger, Michele Weston, Brenda Willhite. 2—Karen Naturkas, Tracey Burns. 4—Heidi Hodge. Pre FS—Gina M. Oipari, Marsha A. Oipari. Juv FS—Julia N. Caputo, Tracey Burns, Shannan McMann. Nov FS—Debra L. Burns.

ST. CLOUD FSC: Pre—Kelly Wheeler, Theresa Lombardi. 1—Aimee Melville, Rochelle Hilger, Molly Hilger. 2—Bridget L. Ahles. Pre FS—Beth Paczkowski, Shannon O'Malley, Kelly Wheeler. Juv FS—Michele Kujawa, Sara Olson, Paula Frahm, Stacey Bradach. Nov FS—Marti Jo Gacusana. Bronze Pair—Kevin Hilger, Molly Hilger.

ST. JOSEPH FSC: Pre—Ben Williamson, Kelly Young. 1—Cydney Canterbury, Debra Cole. 2—Jill Duncan. 3—Robin Fisher. Pre FS—Ben Williamson, Kathleen Saulan. Int FS—Robin Fisher. Pre D—Carl Brill, Wayne Wheeler, Joy Harris. Bronze—Amy Brockett, Cynthia Tolly, Ben Williamson, Lara Rhea Donelson. Pre Silver—Amy Brockett, Robin Fisher, Jerry Wheeler.

ST. LAWRENCE FSC: 1—Kevin Budelman. Pre FS—Lisa Wisner, Mary Rasmussen, Natalie J. Newman, Marie D. Theobald, Nancy Theobald, Sara Wisner. Juv FS—Kelly Mattice.

ST. MORITZ ISC: Pre—Holly Warren-Mordecai, Rachel Valfer. 1—Calvin M. Toy. 5—Nicole Peters, Shawn Oda. Pre FS—Rachel Valfer. Juv FS—Danielle Ica, Sara Wexelman. Pre D—Christina Shoults. Bronze—Alisa R. Ortiz, Cathy D. Martinez, Calvin M. Toy.

STOCKTON FSC: Pre FS—Scott Bradford. Juv FS—Amy Benson, Scott Bradford. Pre D—Stephanie Mizrahi. Pre Pair—Amy Benson, Scott Bradford.

STONEHAM FSC: Juv FS—Louise M. Terciak.

STORRS FSC: Pre FS—Joyce Laszloffy, Nancy Dimock, Katherine Adzima. Pre D—Cara Jurkovic.

SUBURBAN SC OF MARYLAND: Pre—Peggy Jean Lee.

SUNCOAST FSC OF FLORIDA: Pre—Kristoffer Browne, Tiffany Bailey. Pre Pair—Kristoffer Browne, Tiffany Bailey.

SUPERIOR FSC: Pre—Erika Welby, Lawrence Lehto, Jodi Witthoft, Trina Stock. Pre FS—Amy Jo Walker. Deborah Lehto, Sandy Olson, Darla Jensen, Erika Welby, Teresa Lapinskas.

SYMMETRIC FSC: Juv FS—Stacey Yadisernia. Int FS—Robert E. Smith.

TAUNTON AREA FSC: 2—Pamela J. Easingwood.

Circle No. 6 on Reader Service Card

1984

**WORLD
FIGURE SKATING
CHAMPIONSHIPS**

March 20-26

Ottawa, Canada

Westin Hotel

Six Nights Accommodations,
Transportation to Rink, All Event
Ticket and Exhibition Ticket

For more information mail coupon to:

Travel Unlimited, Inc.
Petruzelo Agency
24 Gravel Street
Meriden, Conn. 06450
203 238-7701

Name _____

Address _____

City _____ State _____

Zip _____ Phone _____

Departure City Required for Air Transportation

1984 Worlds

March 20-26



It's Here: Sport Psychology
For Figure Skaters

The Champion's Edge

VISUAL IMAGERY

REHEARSAL, RELAXATION

AND MOTIVATION

for the special training needs of
figure skaters

State of the art in sport training.

Grasp that 2% edge for success

For more information and free
brochure, please contact:

THE CHAMPION'S EDGE
Psychological Consulting Services
LTD.

7530 E. Angus Dr.
Scottsdale, Arizona 85251
(602) 947-5739

TRENTON COMMUNITY SC: Pre—Julie A. Goss, Lisa L. Grabowski. Pre FS—Julie A. Goss, Kelly Mero, Karen Mero, Rachel L. Abramson. Pre D—Ericka R. Adolf.

TRI-CITIES FSC: Pre—Inga Hopkins, Melinda Daggett, Kelly J. Donnelly. 2—Susan Weller. Pre FS—Inga Hopkins, Melinda Daggett.

TULSA FSC: Pre—Beth Whitney, Meg Whitney, Tracy Harkreader, Julie Gilbert, Shannon Houtz. 1—Derek Votava, Julie Ann Forsythe. 2—Maria S. Gales. 3—Candace Cooley, Kim Watson. Pre FS—Julie Gilbert, Meg Whitney, Stacy Sense, Lori A. Gann, Shannon Houtz, Tracy Harkreader. Juv FS—Christie Carlton. Int FS—Candace Cooley. Pre D—Gretchen Sheets, Sharon Grelecki.

TUSCON FSC: Pre—Deanna Gallagher. Pre FS—Carlie J. Helgason, Kerstin J. Helgason, Deanna Gallagher. **TWIN STATE FSC:** Pre—Karen Meisser, Pamela Darrigo, Laura Donnelly. 1—Wendy Foote. Pre FS—Karen Meisser, Laura Donnelly.

UNIVERSAL FSC OF WINCHESTER: 1—Pamela Mericantante. 4—Kara Anne Rossi.

UNIVERSITY OF CONNECTICUT STUDENT SC: Pre FS—Anita Gravener, Leeann Lewis.

UTAH FSC: 2—Kathleen Bryan. 3—Nicole Garrett. 4—Holly Cook, Kenna M. Bailey. 6—Janet Nate. 7—Kathy May Searle. Int FS—Lisa Herzog, Roxanne Rees, Nicole Garrett. Nov FS—Holly Cook, Kenna M. Bailey. Pre D—Janet Wadsworth. Pre Gold—Kathy May Searle.

VACATIONLAND FSC: Pre—Brian Wetzel, Tracy French. 1—Nicole Ellingson. Pre FS—Kiki French, Tracy French.

WAGON WHEEL FSC: Pre—Jill Konecnik. Pre FS—Jill Konecnik. Pre Pair—Stephanie Gianetti.

WALLACE FSC: 2—Susan Conry.

WARWICK FIGURE SKATERS: Pre—Bridget Killilea, Kimberly Zimmerman, Debra Sorgi, Kristen Goff. 1—Kellie Hart. Pre FS—Christine Page. Juv FS—Beth Rooney, Tracey Krall, Int FS—Kellie Hart. Pre D—Christine O'Brien, Donna Parker, Susan Wright, Debra Sorgi, Kimberly Zimmerman, Tracey Fratantuono. Bronze—Kellie Hart.

WASHINGTON FSC: Pre—Kristin Irani. 2—Kristin B. Lyons, Shannon R. Beckstrom. 4—Amy Marsh. Pre D—Rebecca A. Reynolds.

ICE & BLADES CLUB OF WASHINGTON: Pre—Kirk Ian Strotman. 1—Eileen Schmitt. Pre Silver—Julia Hall. Silver Dance—Ann Morton Neale.

FSC OF WATERTOWN: Pre—Jennifer Lupia, Terry Heldt. 1—Margaret Brown. Pre FS—Amy Swartz, Terry Heldt. Juv FS—Catherine Brown, Dianne Rotella. Pre D—Margaret O'Neill. Silver Dance—Julie Heldt.

WATERTOWN SC: 1—Patricia M. Lawlor.

WISCONSIN FSC: 1—Linda Olson. Juv FS—Amy Ann Klotz. Nov FS—Lara Talbot.

WEST COVINA FSC: Pre Pair—Jennifer L. Krueger. Bronze—Jennifer L. Krueger.

WESTMINSTER FSC OF ERIE: 2—Brigitta Zollinger. Pre FS—David Flynn.

WHEELING FSC: Pre—Carolyn Baker, Joan Rolston. Pre FS—Jean Ann Loth, Vanessa L. Borkowski, Tara Sue Dunder. Pre D—Shirley Wilson. Pre Silver—Debbie Bole.

WICHITA FSC: Pre Silver—Denise Sarver. Silver Dance—Robert R. Boroughs.

SC OF WILMINGTON: 1—Dorothy E. Smith. 3—Wendy A. Allison. Pre FS—Brie Jontry, Stephanie Williams. Int FS—Andrea M. Catoia, Maria Rodowski. Jr FS—R. Keith Tindall. Bronze—Mark Todaro, Pre Silver—Sharon L. Sharpe. Adult E Bronze Dance—Joseph C. Warner. Adult D Pre Silver Dance—Eileen Hardy.

WINCHESTER FSC: Pre—Angela M. James, Jennifer K. Devingo, Colleen Morrison, Sandra A. Finnell. 1—Patricia O'Malley. Pre FS—Angela M. James, Jennifer K. Devingo, Colleen Morrison, Sandra A. Finnell. Juv FS—Allison McCann, Leah Manganaro.

WINTER CLUB: Pre—Amy C. Dartt, Chauncey Babcock, Jeanine Kassl, Kristin Ordway, Sarah Calabrese, Caroline Coneys, Hillary R. Graves, Karissa Deangelis, Lisa Kleinknecht, Tara S. Tucker. 4—Courtney Hurley. Juv FS—Wendy Debow.

WINTERHURST FSC: 1—Christophe Phillips. 2—Julia Lull. 3—Cathy Hein, Kristine M. Esper, Jennifer Browsky, Renee Reininger. 4—Maria Padovani. 5—John Paul King, Katy Beckenbach. Pre FS—Christi Heron, Laurie L. Sherman. Juv FS—Dave Miskoe. Int FS—Jennifer Browsky, Marla Stricklin, Kristine M. Esper, Renee Reininger. Nov FS—Denise Szelesta, Frank Singley, Jr. Bronze—Julia Lull. Silver—Tonia Sue Kwiatkowski.

WISSAHICKON SC: 5—Ethan Rogers, Jr., Pre FS—Victoria J. Selfridge. Int FS—Bill Brennan. Nov FS—Clare Raasch. Pre Silver—Gretchen J. Heebner.

SC OF WORCESTER: Pre—Lisa Choquette. 2—Tracy A. Kinney. Pre FS—Lisa Choquette.

WYANDOTTE FSC: Pre—Kristin L. Schnau, Paulette R. Andrus. 2—Lawrence Ulanski. 3—Katie Hankin. Pre FS—Amy McQuiston, Cari A. Genaw, Christine Fink, Paul Spevetz, Beth McQuiston, Caroline R. Jordan, Jennifer L. Higgins, Stacie A. Andrus. Int FS—Kim Thomas, Sandra Renaud. Nov FS—Michelle Chapman. Pre D—Christophe Hickson, Susan M. Younts, Roma Killian. Bronze—Carolyn A. Miller.

WYOMING VALLEY ISC: Pre—Kimberly Kaskey.

YAKIMA IC: Pre FS—Emily Wark, Kim Varco, Jessica Schulz. Juv FS—Nicole Varco.

YARMOUTH IC: 5—Phoebe E. Pierce, Todd Eldredge. Pre FS—Kerry Morris. Juv FS—Betsy Lovequist.

INDIVIDUAL MEMBERS: Pre—Margie Zeller, Suzanna Bonham. Pre FS—Caroline S. Lee, Margie Zeller, Lorey Anne Mancuso. Int FS—Thomas G. Firestine. Pre D—Elizabeth Lippincott, Margaret Owen, Joseph B. Homsher. Bronze—Elizabeth Lippincott, Laura Jean Rozon, Katherine Soskins. Adult E Bronze—Joseph B. Homsher. Judith A. Lepine.

PROFESSIONALS: 1—Nancy Pinwitz. 6—John Wilson. Pre FS—David W. Taulbee, Kathy Grant. Pre D—Lynda J. Hathaway. Bronze—Patricia Butler, Lynn Stanton. Silver—John Wilson.

Skating

JUNE 1983

MORE INFORMATION FROM ADVERTISERS

1 2 3 4 5 6 7 8 9 10 11 12 13 14 15
16 17 18 19 20 21 22 23 24 25 26 27 28 29 30
31 32 33 34 35 36 37 38 39 40 41 42 43 44 45

Please send me the USFSA Price List ☐
I am interested in Skating Subscription information ☐
I am ☐ am not ☐ a USFSA member. I am a member of

Club/Association/Institute.

USFSA No. _____

Name _____

Address _____

State _____

City _____

Telephone No. _____

Zip _____

This card expires June 30.

Skating

JUNE 1983

MORE INFORMATION FROM ADVERTISERS

1 2 3 4 5 6 7 8 9 10 11 12 13 14 15
16 17 18 19 20 21 22 23 24 25 26 27 28 29 30
31 32 33 34 35 36 37 38 39 40 41 42 43 44 45

Please send me the USFSA Price List ☐
I am interested in Skating Subscription information ☐
I am ☐ am not ☐ a USFSA member. I am a member of

Club/Association/Institute.

USFSA No. _____

Name _____

Address _____

State _____

City _____

Telephone No. _____

Zip _____

This card expires June 30.

Advertisers

INDEX

Blue Jay Ice Castle	B	10
Campbell's Soup	C	IFC
Designs by Margarita	D	57
Down Unders	F	48
Figure Mates	F	59
Frank Davenport	J	47
Jan-Pro		55
JP Designs, Inc.		50
Lake Placid	L	42
Maple Leaf Laboratories Ltd.	M	4
Martin & Co.		48
Maxwell House Coffee		OBC
New England Figure Skating Camp	N	52
Nicholls Sports		55
Polar Sport	P	6, 7
Riedell Shoes Inc.	R	IBC
RLS Products	S	57
SC of Sunrise		53
The Champion's Edge Ltd.	T	60
The Gold Co.		59
Travel Unlimited		60
USFSA Hall of Fame & Museum	U	12
USFSA Kid Talk Colorin' Book		8
USFSA Memorial Fund		14
USFSA 1983 World Team Book		16, 17
Walnut Hill School	W	51



Our Expertise and Craftsmanship Gives You The Finest Skating Boot Technology Can Provide

Riedell skating boots are recognized by professionals, top competitors, and amateurs as one of the finest skating boots in America today. Their expert design, quality materials, and superb craftsmanship offer the skater comfort and high performance that

can be depended upon. From the finest custom made boot to the other highly acclaimed styles, Riedell offers quality in every product sold.



Riedell

How the U.S. Figure Skating Team is warming up for the 1984 winter games. With Maxwell House.



And you can too. With your own official Skating Team mug from Maxwell House. It's just \$1.99 and one proof of purchase from Maxwell House Coffee. Or, for a set of four, \$7.95 and two proofs. For details and order form, write to: Maxwell House Skating Mug Offer, General Foods Corporation, P.O. Box 7103, Kankakee, Illinois 60902.

An official sponsor of the U.S. Figure Skating Team.

