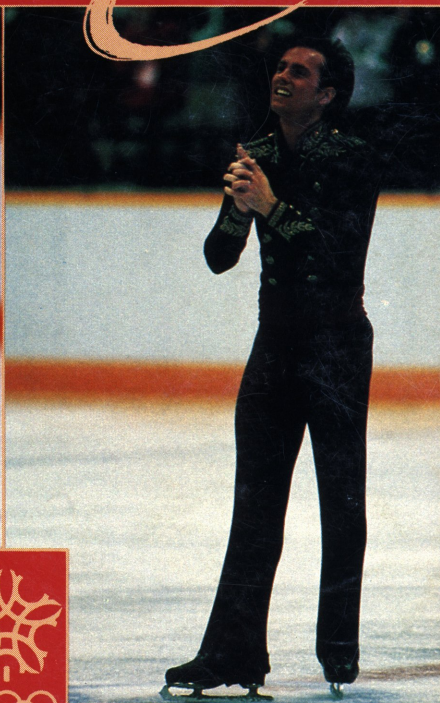


Skating®



APRIL 1988

1988 SUMMER PROGRAM

JUNE 5 thru JULY 23
JULY 31 thru SEPTEMBER 3

Ice Castle INTERNATIONAL
TRAINING CENTER
SIGN-UP TODAY!

Four Patch & Freestyle Plans
plus
Off-Ice Classes

BALLET • AEROBIC • JAZZ DANCE
JUMP/GENERAL CONDITIONING

*Professional
Staff*

**ROBIN
COUSINS**

Vice President
Head Coach, Director

Mary Couense
James D. Grogan

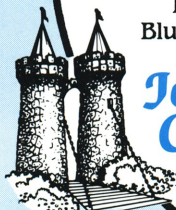
Karen Howland- Kelleher
Perry Jewell

Garnet Ostermeier
Linda Snow

*Located at the 5,100 ft. eleva-
tion near Lake Arrowhead, California
in the San Bernardino Mountains.*

*WE OFFER THE ULTIMATE FACILITY FOR
THE DEMANDING NEEDS OF THE IN-TRAINING
ICE SKATER. HOUSING IS
AVAILABLE AT OUR NEW
'ICE CAMP', INCLUDING A
FULLY STAFFED KITCHEN AND
DINING HALL, OUTDOOR
POOL AND SPA.*

P.O. Box 2109
Blue Jay, CA 92317



Ice Castle

INTERNATIONAL
TRAINING CENTER

(714) 336-2111



Skating®



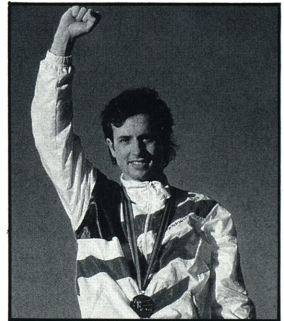
PAUL HARWATH

page 19



GILLIAN WACHSMAN

page 44



COURTESY OF USOC

page 24

| | |
|------------------------------------------------------|----|
| Calgary Notes by Christopher Bowman | 6 |
| NutraSweet Giving It 100% Awards | 19 |
| Showdown in Calgary: XV Olympic Winter Games | 24 |
| New Englands by Mary L. Clarke | 40 |
| Calgary Rap by Howard Silby & Joan Gruber | 42 |
| The Warmth of Northern Japan by Gillian Wachsmann | 44 |
| Eastern Great Lakes Photo Essay | 47 |
| Figure Skating Pins In Review | 49 |

Departments

| | | | |
|--------------------|----|----|----------------------|
| News Briefs | 4 | 23 | Memorial Fund Donors |
| Ice Dancing | 9 | 41 | Ricky Harris |
| Calendar of Events | 13 | 50 | Classifieds |
| Precision Review | 21 | 52 | Laurels |
| Sports Medicine | 22 | 58 | Advertisers' Index |

Results

| | | | |
|--------------------------|----|----|------------------------------|
| 1988 World Championships | 10 | 16 | 1988 Midwestern Precision |
| 1988 Eastern Precision | 16 | 17 | 1988 Pacific Coast Precision |

Cover: 1988 Olympic Winter Games medalists, Debi Thomas, Brian Boitano, Jill Watson and Peter Oppegard. PHOTOS BY ALL SPORT/MIKE POWELL/VANDYSTADT/BOB MARTIN.

Skating

Editor
DALE MITCH

Art Director
PAMELA S. GUIRE

Managing Editor
IAN A. ANDERSON

Advertising/Production
MARY ANN PURPURA

Contributors

T. Sundae Bafo
Howard Bass – U.K.
Jean C. Berlot – France
Dennis L. Bird – Germany

Nigel Brown – Switzerland
Per Cock-Clausen – Denmark
Mary L. Clarke
Eva Gyorgy – Hungary
Ricky Harris

Junko Hiramatsu – Japan
Vivi-Anne Hulten
Frank Loeser Nowosad – Canada
Libby Slate
Benjamin T. Wright

Advertising

Rate card supplied on request. SKATING and the USFSA neither endorse nor take responsibility for products or services advertised herein. The Publisher reserves the right to reject or cancel any advertising at any time.

SKATING (ISSN: 0037-6132) is published by the United States Figure Skating Association, 20 First Street, Colorado Springs, CO 80906. Phone (719) 635-5200. Subscription rate: United States and Canada, one year **\$12.00**. Foreign, one year **\$27.00**. Allow 6-8 weeks delivery of the first issue. Second Class postage paid at Colorado Springs and at additional mailing offices. SKATING is published monthly October through July (10 issues per year). Copyright 1988 by The United States Figure Skating Association (USFSA). **Postmaster: Please send FORM 3579 to SKATING, 20 First Street, Colorado Springs, CO 80906.**

USFSA President – Hugh C. Graham, Jr., M.D.

Executive Director – Ian A. Anderson



Member: International Skating Union



SKATING is the official publication of
The United States Figure Skating Association (USFSA).



Group A Member

NEWS BRIEFS

Did you know that in regaining the World title in Budapest, Brian Boitano gained the distinction of being only the second man to do so since the inception of the championships in 1896? The other was Vladimir Kovalev, 1977 and 1979.

☆ ☆ ☆

Skate America '88 will be held in Portland, Maine this year, October

18 to 23, at the Cumberland Civic Center. All-event tickets are now available at \$49 for adults and children, and \$45 for senior citizens over 60, plus a \$2 per order handling charge. Write: Evelyn Weeks, 429 Turner Street, Auburn, Maine 04210. All-event tickets include admission to practices and the Exhibition of Champions. For general information, write: Skate America '88, 11 Penwood Road, Winthrop, Maine 04210.

☆ ☆ ☆

The '88 Tour of Olympic and World Champions was an immediate sell-out in almost every city scheduled. Because of the high interest in this Olympic year, the Tour has been extended to include ten additional cities from May 30 through June 12. This extension will not include Katarina Witt or any of the Russian skaters but will add American and Canadian Olympians and World competitors. See page 45 for details of the Tour.

☆ ☆ ☆

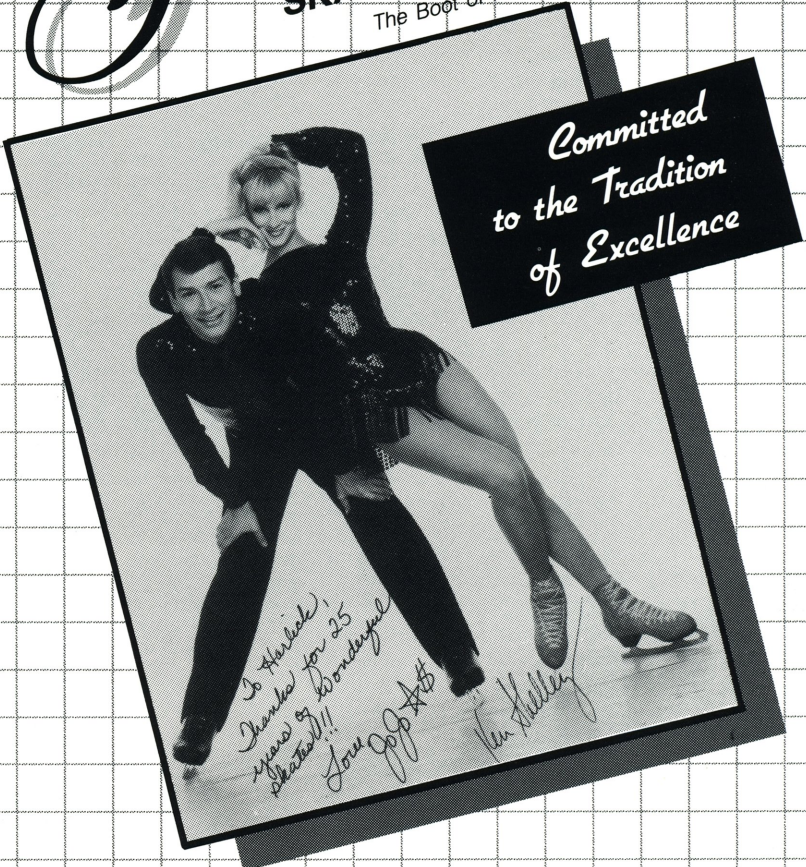
Continued on page 46

STARBUCK AND SHELL EY: THE SKATE SOURCE, A RESOURCE TO THE ADVERTISING, CORPORATE AND ENTERTAINMENT INDUSTRIES FOR SKATERS AND EVENTSON ICE 212-255-0869

Harlick

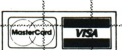
SKATING BOOTS

The Boot of Perfection



*Committed
to the Tradition
of Excellence*

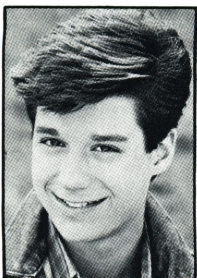
*So Harlicks,
Thanked for 25
Years of Wonderful
Skates!!!
Love JJP #10
Van Halley*



WE ACCEPT MASTERCARD/VISA

PLEASE CALL FOR THE LOCATION
OF YOUR NEAREST DEALER OR INSTRUCTIONS FOR ORDERING DIRECT

HARLICK & CO., 893 AMERICAN ST., SAN CARLOS, CALIFORNIA 94070 (415) 593-2093



CALGARY NOTES

by Christopher Bowman

Getting There

Beautiful, incredible, dumbfounding were the first impressions that warmed my body as I arrived at the airport in frigid Calgary. I had come on a plane packed with athletes, coaches, trainers, and tension so thick you could cut it with a knife.

The long awaited, maybe once in a lifetime, certainly thrill of a lifetime, chance was finally here. Nervous jitters were a par emotion for all of us who had been submerged into a larger than life view of the world's most elite athletes. Everyone got along great and was truly caring about each other's feelings.

After all of our luggage was sorted out and tagged for issue to our rooms, we shuffled off to the bus to the Village. We were told we must stop and be "sanitized," which I thought was great, because after a whole day of traveling and stomping through luggage with hundreds of athletes, I could have used a big dip in Pine-Sol. But to my dismay, it was a very bright airplane hangar, decorated with multi-colored scaffolding and filled with very long lines of athletes awaiting their Olympic credentials.

Then it was on to the Village, which in real life is the University of Calgary. It had been transformed into a maximum security compound complete with x-ray metal detector booths, hand searches done by guards with hand-held metal detectors at every entrance and exit, Royal Canadian Mounted Police, Swat Teams, guard dogs, and City of Calgary Police—the whole enclosed by a very high, electrified fence with barbed wire.

Once inside, we were shown to our quarters—a small apartment with four tiny bedrooms (two beds per room) and one bathroom for eight of us. Eight truly is enough! (Within four days, the bathtub began to look like a science experiment.) For-

tunately, we were all on different schedules so we could alternate very well.

After settling in, we went on to "Outfitting" where we were issued extra pieces of luggage filled with more T-shirts, outfits, and gifts than any one human could possibly carry. Our parade clothes were beautiful. We were also sized for the priceless Olympic ring which will be mailed to us after the Games.

The U.S. Bobsled Team was also on our floor and we had a lot of fun with them. I was very pleased to meet and spend some time with Chicago Bears receiver, Willie Gault. He told me that the Olympics made him feel like a little boy again, dreaming of the Super Bowl . . . a time when everything comes to a dead stop and the Olympics is the most important thing in the world . . . it's so hard getting to the Olympics and it's the dream of all athletes to be there and do their best.

The Main Event

The Saddledome was incredibly large with seats that went up so high that you couldn't see them with the naked eye. The ice was difficult to skate on because we were sharing it with fourteen hockey teams. The practice rinks were very small, but the ice was excellent. The Stampede Corral was quite narrow, which was a little hazardous for the ice dancers.

The Pairs went first, which really broke the ice for the U.S. since Jill and Peter took the bronze medal with a bang. Under the dominance of the Soviets, they shone like brilliant stars.

The Men's figure event was next; everyone psyching themselves up and jockeying for a good placement that would set them up for the short and long programs. I was nervous, but it wasn't upsetting. There were so many

distractions (press, cameras clicking, judges, people talking, clapping, crying, etc.) I was forced to concentrate harder.

The Men's short was held at the Stampede Corral. The crowd was very responsive to our U.S. Team, which was a great help. All of us skated very clean programs with much excitement and were then ushered into a press center for a conference with over four-hundred press representatives.

Thank God we had a day off before our long program—to collect our thoughts, catch our breath, and prepare for the day when legends are born.

Our practice at the Saddledome was short, but enough to get us through the night, and we were all glad to see it come together—a grand finale to a long and hard week. With our team leaders, Mrs. Joan Gruber and Dr. Howard Silby beaming and jumping for joy, we prevailed once again. We had all skated well, with Paul going first, myself second, and then Brian. I was really pleased that, with help from the Lord above, I was able to do all three phases of the competition to the best of my ability, and was able to feel good about myself.

As soon as I was finished skating, I ran to see Brian give the performance of his life. We were all so proud of him, and I felt honored to be a part of a truly great American team. "Personal best" is what it's all about, and I have come to really respect that after watching Brian do his very best. Brian winning the gold medal was just the frosting on the cake.

Then came a real treat to finish off a fun-filled evening of heart stopping skating. Yes, *free beer* in the Doping Control Lounge! The top three skaters plus other random picks were invited to have a glass of beer and then attempt to fill a specimen bottle all the while a friendly IOC representative watched and cheered us on! Excited, nervous, scared, anxious, and embarrassed all in one package. Aren't the Olympics fun!

Then it was time to relax and reflect and give each other a pat on the back. I caught up on some sleep and went in search of the beautiful and often misunderstood stepchild of figure skating—the "dance" event.

Having been disappointed many times about the press coverage given this fasci-

nating and beautiful event, I was pleased to see it handled very well this time. Both of our teams were *superb*. Especially under such a strong Soviet blanket, we can be really proud of our U.S. dance teams. Particularly interesting to me, were the Duchesnays, who caught my eye with a great spark of professionalism not seen very often. From what I was told, they "broke every rule in the book" but like Torvill and Dean, they left their mark on this frustratingly restricted sport of ice dancing.

On the note of professionalism, we come to the Ladies' event, which I call G.L.O.S.S.—Gorgeous Ladies of Super Skating—the beauty, grace, strength, prowess, and energy that could make any *Vogue* model or Miss America run in fear. Our team was great! Our hearts went out to Caryn, who fell ill and could not finish. Debi and Jill took their stand to strike gold, chasing at the heels of Katarina. They all took the ice "strong." Jill was electric, Katarina did the performance of her career, and Debi, holding up so beautifully under all that pressure, made us all proud of her bronze medal. Another exciting highlight for me was seeing longtime friends, Liz Manley and Midori Ito give the most stunning performances I had seen in many years.

Winding It Up

The figure skating had come to an end and we were all very tired after riding such an emotional roller coaster for two weeks, but we went over to the Olympic Oval to cheer our American teammate, Bonnie Blair, as she won her gold medal. We were all in awe to see an ice surface the size of an entire football field!

Many of us ventured out to Nakiska's bitter cold and winds to see our bobsled team miss a medal just by the blink of an eye. Most of the events were over now, and it was time to party, to eat, drink, and dance with all of our friends and get last pictures taken with the likes of Willie Gault, Eddie the Eagle, Prince Albert of Monaco, and many more.

The closing ceremonies were beautiful, with candles, fireworks, music, and an ice show. My tears of sadness came as they turned off the "flame" and the thought of the heartbreak for Dan Jansen and his family, but the wave of emotions that we felt in

Continued on page 58

THE ICE HOUSE



America's
Figure Skating
Store

The 1988 Olympic Year Edition full color catalog is available by calling **800-423-3391** (in MA **617-237-9609**) or visit us at 473 Washington St., Wellesley, MA 02181 617-237-6707

DANCING IS FOREVER

by Janet Becht
with Alec Binnie

competition: a rivalry between two or more persons or groups for an object desired in common, usually resulting in a victor and a loser or losers, but not necessarily involving the destruction of the latter.

—Webster's Dictionary

Every day hundreds of adults in all parts of the country grab their skates and dash off to the rink to prove that skating can be just as challenging and fun for the over-thirty set as it is for sixteen year olds. Many adults never have skated singles. A lot of them will never skate a patch. But adult skaters love to dance.

Adults have always thought of skating as a great form of exercise and a fun way to get out and socialize. With the adoption of the Adult test rules, more and more adults have been taking and passing tests, but many are missing out on the big fun: competition.

Adult dance competitions offer a wide range of events in which skaters at all levels can showcase their talents. Some adults have been skating all their lives and some are just beginning. For seasoned skaters, competition is a chance to hone their style and technique. For the beginning adult, it is a chance to experience, from the start, all the sport has to offer.

Winning is nice (of course), but open competitions are designed to help take the edge off the pressures of performance by creating a relaxed and friendly atmosphere. In competitions such as the Southern California Open Adult Dance Championships, skaters are encouraged to enter each event with a different partner. Even a Generation Gap event is included to give adults the opportunity to skate with younger competitors.

For the truly ambitious adults, there is the Adult Dance event at USFSA Regional and

Sectional Championships. Competition at this level is much more demanding, but the rewards are even greater. Competitors work long hours together perfecting their technique, trying to get the edge on the other couples. Couples also get the opportunity to expand their creative horizons by putting together their own Variation Dance. The more they work together, the more they can discover talents neither ever dreamed they had.

The USFSA plans to open up the Adult Dance event to a greater number of couples by dividing it into two categories. One division would be for skaters who have not completed their Pre-Silvers, the other for those who have passed one Silver dance or above.

Despite all the challenging and fun opportunities that are available, adults are often reticent about venturing into the competitive arena. Competition is not something to be feared, but relished. It gives adults an opportunity to display their skill and showmanship, and inspire other adults to become more actively involved in their sport. Skating needs a large following of involved, enthusiastic adults, so don't be shy . . . come dance with us. Over thirty is *not* over the hill.



New England

FIGURE SKATING CAMP

**Our 17th Year
July 2 - Aug. 27**

Contoocook (near Concord, NH). **Rated Best Skating Camp by Town & Country magazine. Figure skating, plus tennis, water-skiing, sailing, dance, gymnastics. MD/RN in residence.**

Only accredited and inspected figure skating camp by American Camping Association.

For Brochure Call: (516) 364-8050

Or Write: NEFSC, 14 Joyce Ln., Woodbury, NY 11797

1988 WORLD FIGURE SKATING CHAMPIONSHIPS
BUDAPEST, HUNGARY
MARCH 21-27, 1988

MEN

JUDGES: 1-Mr. Markus Germann, Switzerland; 2-Mrs. Görel Hyden, Sweden; 3-Mrs. Jean Matthews, Canada; 4-Mr. Alexander Vedenin, USSR; 5-Mrs. Maria Bialous-Zuchowicz, Poland; 6-Mr. Frank Parsons, Australia; 7-Mrs. Christiane Mörth, Austria; 8-Mrs. Ingelise Blangsted, Denmark; **9-Mrs. Elaine DeMore, USA.** SUBSTITUTE JUDGE: Mr. Gerhard Frey, Federal Republic of Germany. REFEREE: Mr. Benjamin T. Wright, ISU. ASSISTANT REFEREE: Mrs. Tjasa André-Prosec, ISU.

| | CF | SP | FS | | PLACES |
|------------------------|----|----|----|--------------------------------------------|-------------|
| 1. | 3 | 1 | 2 | Brian Boltano, USA | 4.2 |
| 2. | 5 | 2 | 1 | Brian Orser, Canada | 4.8 |
| 3. | 6 | 3 | 5 | Victor Petrenko, USSR | 9.8 |
| 4. | 2 | 4 | 7 | Grzegorz Filipowski, Poland | 9.8 |
| 5. | 7 | 9 | 4 | Christopher Bowman, USA | 11.8 |
| 6. | 12 | 7 | 3 | Kurt Browning, Canada | 13.0 |
| 7. | 4 | 6 | 9 | Heiko Fischer, Federal Republic of Germany | 13.8 |
| 8. | 11 | 5 | 8 | Petr Barna, Czechoslovakia | 16.6 |
| 9. | 13 | 8 | 6 | Paul Wylie, USA | 17.0 |
| 10. | 8 | 11 | 10 | Vladimir Petrenko, USSR | 19.2 |
| 11. | 14 | 10 | 11 | Cameron Medhurst, Australia | 23.4 |
| 12. | 9 | 13 | 15 | Oliver Hoener, Switzerland | 25.6 |
| 13. | 18 | 12 | 12 | Neil Paterson, Canada | 27.6 |
| 14. | 17 | 15 | 13 | Lars Dresler, Denmark | 29.2 |
| 15. | 19 | 14 | 14 | Paul Robinson, Great Britain | 31.0 |
| 16. | 10 | 25 | 20 | Ralph Burghart, Austria | 36.0 |
| 17. | 23 | 17 | 16 | Ronny Winkler, German Democratic Republic | 36.6 |
| 18. | 25 | 16 | 17 | Peter Johansson, Sweden | 38.4 |
| 19. | 16 | 18 | 23 | Daniel Weiss, Federal Republic of Germany | 39.8 |
| 20. | 22 | 22 | 18 | András Szaraz, Hungary | 40.0 |
| 21. | 21 | 19 | 21 | Alessandro Riccitelli, Italy | 41.2 |
| 22. | 27 | 21 | 19 | Oula Jääskeläinen, Finland | 43.6 |
| 23. | 20 | 26 | 22 | Frederic Lipka, France | 44.4 |
| retired due to injury: | | | | | |
| | 1 | | | Alexandr Fadeev, USSR | |
| | 15 | 20 | | Makoto Kano, Japan | |
| final not reached: | | | | | |
| | 24 | 28 | | Tomislav Cizmesija, Yugoslavia | |
| | 28 | 24 | | David Liu, Chinese Taipei | |
| | 26 | 27 | | Sung Il Jung, Republic of Korea | |
| | 30 | 23 | | Joaquin Guerrero, Mexico | |
| | 29 | 29 | | Alexandre Geers, Belgium | |

LADIES

JUDGES: 1-Mr. Mikheil Drei, USSR; 2-Mrs. Hely Abbondati, Finland; 3-Mrs. Evgenia Karnolska, Bulgaria; **4-Mrs. Margaret Wier, USA;** 5-Mr. Jürg Badraun, Switzerland; 6-Mrs. Audrey Moore, Canada; 7-Mr. Reinhard Mirmsecker, German Democratic Republic; 8-Mr. Jan Olesinski, Poland; 9-Mr. Radovan Lipovsčak, Yugoslavia. SUBSTITUTE JUDGE: Mrs. Monique Petis, France. REFEREE: Mrs. Sonia Bianchetti-Garbato, ISU. ASSISTANT REFEREE: Mrs. Britta Lindgren, ISU.

| | CF | SP | FS | | PLACES |
|-----|----|----|----|-----------------------------------------------|-------------|
| 1. | 1 | 2 | 1 | Katarina Witt, German Democratic Republic | 2.4 |
| 2. | 2 | 4 | 2 | Elizabeth Manley, Canada | 4.8 |
| 3. | 3 | 1 | 4 | Debi Thomas, USA | 6.2 |
| 4. | 5 | 5 | 6 | Claudia Leistner, Federal Republic of Germany | 11.0 |
| 5. | 4 | 11 | 5 | Jill Trenary, USA | 11.8 |
| 6. | 14 | 3 | 3 | Midori Ito, Japan | 12.6 |
| 7. | 6 | 8 | 7 | Caryn Kadavy, USA | 13.8 |
| 8. | 10 | 6 | 8 | Simone Koch, German Democratic Republic | 16.4 |
| 9. | 8 | 7 | 11 | Natalia Lebedeva, USSR | 18.6 |
| 10. | 7 | 10 | 12 | Joanne Conway, Great Britain | 20.2 |
| 11. | 15 | 9 | 9 | Tamara Teglassy, Hungary | 21.6 |
| 12. | 16 | 14 | 10 | Marina Kielmann, Federal Republic of Germany | 25.2 |
| 13. | 11 | 16 | 13 | Yvonne Gomez, Spain | 26.0 |
| 14. | 9 | 17 | 15 | Natalia Gorbenko, USSR | 27.2 |

| | | | | | |
|-----|----|----|----|------------------------------|------|
| 15. | 12 | 15 | 16 | Beatrice Gelmini, Italy | 29.2 |
| 16. | 19 | 25 | 14 | Lotta Falkenbäck, Sweden | 35.4 |
| 17. | 17 | 12 | 21 | Charlene Wong, Canada | 36.0 |
| 18. | 22 | 13 | 20 | Ivonne Pokorny, Austria | 38.4 |
| 19. | 24 | 18 | 17 | Claude Peri, France | 38.6 |
| 20. | 21 | 21 | 18 | Stefanie Schmid, Switzerland | 39.0 |
| 21. | 18 | 26 | 19 | Junko Yaginuma, Japan | 40.2 |
| 22. | 13 | 24 | 23 | Zeljka Cizmeseja, Yugoslavia | 40.4 |
| 23. | 20 | 23 | 22 | Mirela Gawłowska, Poland | 43.2 |
| 24. | 23 | 20 | 23 | Gina Fulton, Great Britain | 44.8 |

final not reached:

| | | |
|----|----|---------------------------------|
| 26 | 19 | Tracy Brook, Australia |
| 28 | 22 | Anisette Torp-Lind, Denmark |
| 25 | 28 | Jana Petruskova, Czechoslovakia |
| 27 | 30 | Elina Hänninen, Finland |
| 30 | 27 | Houn Jung Ji, Republic of Korea |
| 29 | 31 | Diana Marcos, Mexico |
| 31 | 29 | Assia Alexieva, Bulgaria |

PAIRS

JUDGES: 1—Mr. Frank Parsons, Australia; 2—Mr. Toshio Suzuki, Japan; 3—Mrs. Eva von Gamm, Federal Republic of Germany; 4—**Franklin S. Nelson, USA**; 5—Mrs. Dagmar Rehakova, Czechoslovakia; 6—Mrs. Joan Noble, Great Britain; 7—Mr. Mikhail Drei, USSR; 8—Mrs. Suzanne Francis, Canada; 9—Mrs. Ingrid Linke, German Democratic Republic; SUBSTITUTE JUDGE: Mrs. Merja Hertz, Finland. REFEREE: Mrs. Walburga Grim, ISU. ASSISTANT REFEREE: Mrs. Éva György, ISU.

| | SP | FS | | PLACES |
|-----|----|----|----------------------------------------------------------------|-------------|
| 1. | 2 | 1 | Elena Valova & Oleg Vasiliev, USSR | 1.8 |
| 2. | 1 | 2 | Ekaterina Gordeeva & Sergei Grinkov, USSR | 2.4 |
| 3. | 3 | 3 | Larisa Selezneva & Oleg Makarov, USSR | 4.2 |
| 4. | 5 | 4 | Gillian Wachsmen & Todd Waggoner, USA | 6.0 |
| 5. | 6 | 5 | Denise Benning & Lyndon Johnston, Canada | 7.4 |
| 6. | 4 | 7 | Jill Watson & Peter Opegaard, USA | 8.6 |
| 7. | 7 | 6 | Isabelle Brasseur & Lloyd Eisler, Canada | 8.8 |
| 8. | 8 | 8 | Mandy Wötzel & Axel Rauschenbach, German Democratic Republic | 11.2 |
| 9. | 9 | 9 | Christine Hough & Doug Ladret, Canada | 12.6 |
| 10. | 10 | 10 | Natalie Seybold & Wayne Seybold, USA | 14.0 |
| 11. | 11 | 11 | Lenka Knapova & René Novotny, Czechoslovakia | 15.4 |
| 12. | 12 | 12 | Cheryl Peake & Andrew Naylor, Great Britain | 16.8 |
| 13. | 13 | 13 | Anuschka Gläser & Stefan Pfrengle, Federal Republic of Germany | 18.2 |
| 14. | 14 | 14 | Lisa Cushley & Neil Cushley, Great Britain | 19.6 |
| 15. | 15 | 15 | Danielle Carr & Stephen Carr, Australia | 21.0 |
| 16. | 16 | 16 | Akiko Nogami & Yoichi Yamazaki, Japan | 22.4 |

DANCE

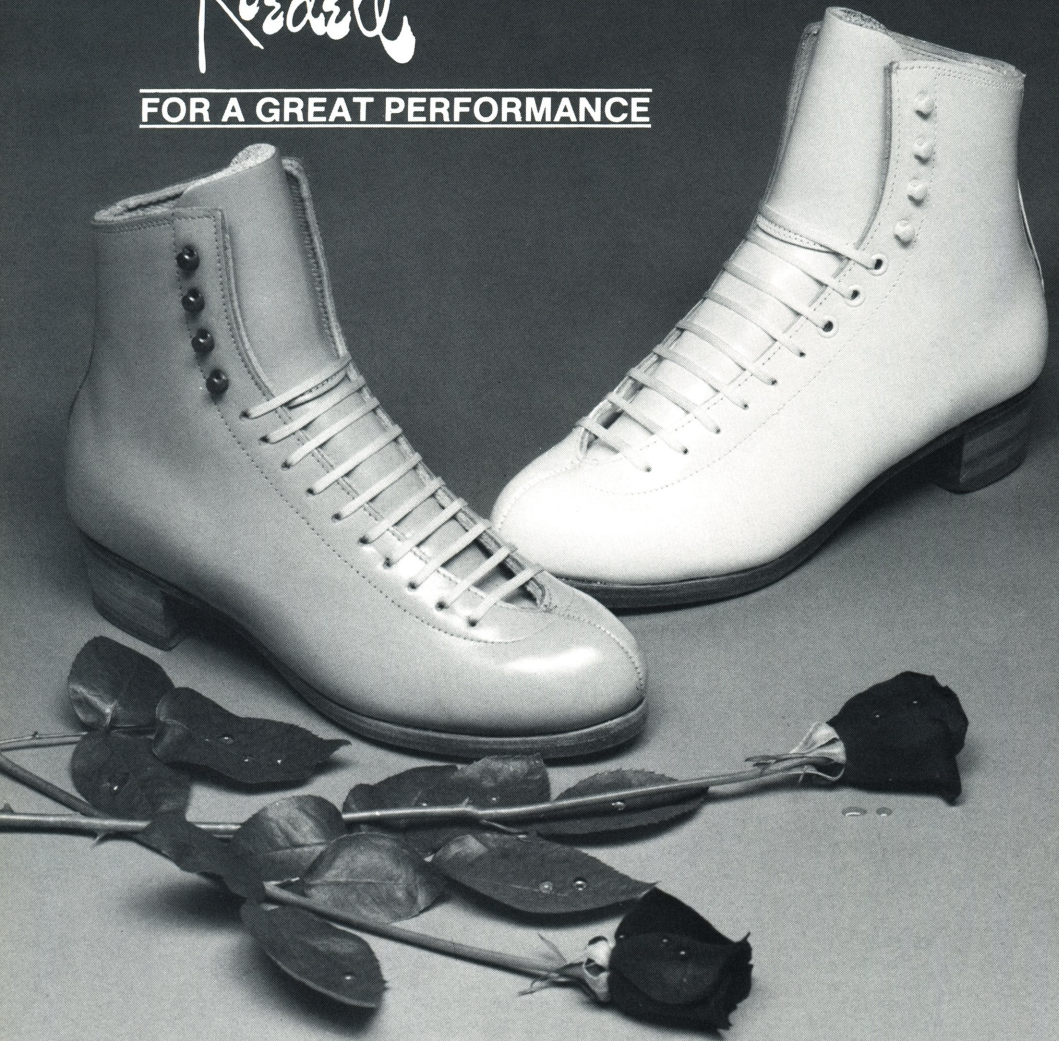
JUDGES: 1—Mrs. Jarmila Portova, Czechoslovakia; 2—Mrs. Maria Miller, Poland; 3—Mrs. Katalin Alpern, Hungary; 4—Mr. Heinz Müllenbach, Federal Republic of Germany; 5—Mrs. Brenda Long-Simpson, Great Britain; 6—Mrs. Anna Sharashkina, USSR; 7—Mrs. Ann Shaw, Canada; 8—**Mrs. Mary Louise Wright, USA**; 9—Mrs. Lysiane Lauret, France. SUBSTITUTE JUDGE: Mrs. Heidi Maritzcak, Austria. REFEREE: Mr. Roland Wehinger, ISU. ASSISTANT REFEREE: Mr. Pál Vasarhelyi, ISU.

| | CD | OSP | FD | | PLACES |
|-----|----|-----|----|--------------------------------------------------------------------|-------------|
| 1. | 1 | 1 | 1 | Natalia Bestemianova & Andrei Bukin, USSR | 2.0 |
| 2. | 2 | 2 | 2 | Marina Klimova & Sergei Ponomarenko, USSR | 4.0 |
| 3. | 3 | 3 | 3 | Tracy Wilson & Robert McCall, Canada | 6.0 |
| 4. | 4 | 4 | 4 | Natalia Annenko & Genrikh Sretenski, USSR | 8.0 |
| 5. | 5 | 5 | 6 | Kathrin Beck & Christoff Beck, Austria | 11.0 |
| 6. | 7 | 6 | 5 | Isabelle Duchesnay & Paul Duchesnay, France | 11.6 |
| 7. | 6 | 8 | 7 | Klára Engi & Attila Toth, Hungary | 13.8 |
| 8. | 8 | 7 | 8 | Antonia Becherer & Ferdinand Becherer, Federal Republic of Germany | 15.6 |
| 9. | 9 | 9 | 9 | Susan Wynne & Joseph Druar, USA | 18.0 |
| 10. | 10 | 10 | 10 | Lia Trovati & Roberto Pelizzola, Italy | 20.0 |
| 11. | 11 | 11 | 11 | Karyn Garossino & Rodney Garossino, Canada | 22.0 |
| 12. | 12 | 12 | 12 | Sharon Jones & Paul Askham, Great Britain | 24.0 |

Continued on page 57

Riedell

FOR A GREAT PERFORMANCE



Only Riedell can deliver the finest performance in every boot it produces. High quality and advanced technology are built into every pair of boots made whether it is the 220 set for beginners or the all new Comp 925 for top competitive skaters.

With the recent introduction of the Comp 925, Riedell now can offer the competitive skater the finest in fit, strength and maneuverability. Strategically placed materials within the Comp 925 allow for needed flexibility and at the same *time deliver comfort, strength and durability*. Available in white, black or beige with natural soles and heels for that distinctive look of the 80's. Add this to our already famous line of Silver Star, Gold Star, Royal and Imperial boots and we know you'll agree that Riedell out-performs all others in the industry today. All models are endorsed by the Professional Skaters Guild of America, your guarantee of quality and performance.

FIRST CHOICE BY MOST PROFESSIONAL AND COMPETITIVE SKATERS

P.O. BOX 21, RED WING, MN 55066 612-388-8251 TELEX 4731210

Calendar

OF EVENTS

MAY

- 6-8 **Sports Medicine and Science Symposium on Physically Disabled Athletes**, sponsored by the Department of Physical Medicine, Baylor College of Medicine, at the Houstonian Hotel and Conference Center, Houston, TX. This symposium for physicians, therapists, trainers, researchers, educators, coaches, and athletes on sports medicine and sports science for athletes with physical disabilities will feature nationally recognized experts in the areas of sports medicine, athletic training, and research for disabled athletes. For information contact: Marjorie Gordon, Division of Education, The Institute for Rehabilitation and Research, P.O. Box 20095, Houston, TX 77225, 713-797-5944.
- 8 **CERC Competition**, sponsored by the Bridgeport SC, Wonderland of Ice, Bridgeport, CT. Freestyle events Pre-Preliminary through Junior levels. For information contact: Mrs. Dorothy Fedick, 203-372-4166.
- 8, 14-15 **Love & Happiness**, ice show sponsored by the Babson SC, at the Babson Skating Rink, Wellesley, MA. For information contact: Joan Allen, Babson Skating Center, 150 Great Plain Ave., Wellesley, MA 02181.
- 12-14 **Just Imagine - Ice Show '88**, sponsored by the Cleveland SC, at the Cleveland SC, 2500 Kemper Road, Shaker Heights, OH 44120. Scott Hamilton, Kristi Yamaguchi and Rudi Galindo, Jodie Balogh and Jerod Swallow, and Jeri Campbell will be featured skaters. For information contact: Lynn Rimmer, 216-791-2800 or Sue Luria, 216-464-3827.
- 12-15 **Seasons to Remember**, club show sponsored by the Santa Rosa FSC, at the Redwood Empire Ice Arena, 1667 W. Steele Lane, Santa Rosa, CA 95401. For information contact: Terrie Gershman, 3716 Sacramento Ave., Santa Rosa, CA 95405, 707-523-4523.
- 13-15 **5th Annual Lakewood WC Open Championships**, sponsored by the Lakewood WC, at the Sprinkler Recreation

14-15

Center, 14824 South "C" St., Tacoma, WA. Figures, Short Program, Free Skating, Pairs, Compulsory Dance, Free Dance, Solo Dance, Precision, and Showcase events. For information contact: Sandi Gendreau, Chairperson, 206-848-8403, Karen Woods, Co-Chairperson, 206-537-9781, or Joann Calhoun, Registrar, 206-752-8184.

The Eleventh Annual West Covina Open Championships, sponsored by the West Covina FSC, at the West Covina Ice Arena, 2235 E. Garvey Ave. North, West Covina, CA 91790. Snow Cubs through Novice levels. For information contact: Jeanne Turner, President, 818-336-6336.

20-22 **The Great Adventure**, ice show sponsored by the Shaker FSC, at the Thornton Park Ice Rink, 20701 Farnsleigh Rd., Shaker Heights, OH 44122. For information contact: Caroline Conrad, 216-491-1290.

20-22 **Los Angeles FSC Championships**, sponsored by the Los Angeles FSC, at the Los Angeles FSC, 1001 Riverside Dr., Burbank, CA 91506. Figures, Freestyle, Pairs, and Dance events. For information contact: Karen Ferrell, 973 E. Villa #4, Pasadena, CA 91106, 818-440-1426 or Mrs. Marge Heslin, 3405 Paseo Del Campo, Palos Verdes Estates, CA 90274, 213-373-5990.

20-22 **Queen City Showtime '88**, sponsored by the Alpine SC, at the Alpine Ice Arena, 3601 S. Monaco, Denver, CO 80237. Showcase competition for Beginners thru Adults. Categories are Dramatic, Comedy, Character Solo, and Light Entertainment. Singles, Pairs, Small Groups, Large Groups, and Production Numbers. Best of Show Skate-Off. For information contact: Sharon Willey 303-753-1746.

21-22 **Dance Judges School - Class B**, Prospective thru Pre-Gold levels, sponsored by the Dallas FSC, at the North Texas Ice Arena, 10101 Cowboys Parkway, Irving, TX 75063. For information contact: Liz Vaughn, 2208 Ridge Crest Dr., Richardson, TX 75080, 214-690-9800.

JUNE

4 **Summer Recital**, sponsored by the Mesa Verde FSC, at the Ice Capades Chalet, 2701 Harbor Blvd., Costa Mesa, CA 92626. For information contact: Barbara Hoyt, President, 11660 Tarawa St., Cypress, CA 90630, 714-894-6795.

4-5 **David Spalding Ice Classic**, (formerly called Rose Festival Championships),

- sponsored by the Carousel FSC, at the Valley Ice Arena, 9250 S.W. Beaverton-Hillsdale Highway, Beaverton, OR 97005. Figures, Freestyle, Showcase, Dance, and Precision Skating events. For information contact: Marsha Carlton, 3304 S.W. Stonebrook Dr., Portland, OR 97201, 503-244-9169.
- 4-5 **1988 First Smithfield Annual Open Freestyle Competition**, sponsored by the Smithfield FSC, at the Smithfield Municipal Ice Rink, 101 Pleasant View Ave., Smithfield, RI 02817. Freestyle, Compulsory Moves, and Showcase events, Beginner through Senior levels. For information contact: Annette Cataldi, 14 Bel Aire Dr., Johnston, RI 02919, 401-231-7003.
- 11-12 **Connecticut Showcase**, theatrical competition, sponsored by the Bridgeport SC, at the Wonderland of Ice, Bridgeport, CT. For information contact: Mrs. Fedick, 203-372-4166.
- 11-7/31 **Summer Skating Practice Ice Program**, hosted by the FSC of Madison. There will be five (45-minute) sessions offered Monday through Friday consisting of patch and freestyle/dance. Housing can be arranged. For information contact: Mary Uhler, 5214 South Hill Dr., Madison, WI 53705, 608-238-0030, evenings.
- 13-9/3 **Lake Placid's 56th Annual Summer Ice Session**, sponsored by the SC of Lake Placid and the Olympic Regional Development Authority, at the Olympic Center, Main St., Lake Placid, NY 12946. For information contact: Patricia Preston, Director of Figure Skating, Olympic Center, Lake Placid, NY 12946, 518-523-3325.
- 20-7/31 **Marquette FSC Summer Skating Program**, sponsored by the Marquette FSC, at the Lakeview Arena, Marquette, MI. For information contact: Sherri Carlson, 214 N. Fifth, Marquette, MI 49855, 906-228-6364.
- 24-26 **Skate Memphis 88**, first annual non-qualifying competition, sponsored by the Holiday Corp. and the FSC of Memphis, at the Ice Capades Chalet, Memphis, TN. Singles and Pairs Freestyle, Figures, Compulsories, Adult and Solo Dance, and Interpretive events. For information contact: Bob Watson, Competition Chairman, 6516 Keswick Cove, Memphis, TN 38119, 901-521-2687 days or 901-682-6485 evenings.
- the Olympic Regional Development Authority, at the Olympic Center, Main St., Lake Placid, NY. For information contact: Patricia Preston, Olympic Center, Lake Placid, NY 12946, 518-523-3325.
- 14-17 **Vail Invitational Championships**, sponsored by the SC of Vail, Vail, CO. Figures, Short Program, Freestyle, Compulsory Moves, Pairs, Precision. For information contact: Betsy Sather, 303-668-3350 or Debby Warner, 303-949-5315.
- 15-16 **Copper Cup**, USFSA-sanctioned figures, freestyle, dance, and precision competition, sponsored by the Utah FSC, at the Bountiful Recreation Center, Bountiful, UT. For information contact: Debbie Buge, c/o Bountiful Recreation Center, 150 West 600 North, Bountiful, UT 84010.
- 15-17 **Showcase America 1988**, produced by the Los Angeles FSC, Burbank, CA. For information contact: Dana J. Goulston, 818-287-3710 or Kennard Taylor, 818-846-6406.
- 16-17 **Fourteenth Annual Chabot Skate Competition**, sponsored by the Palomares FSC, at the Ice Capades Chalet, 2202 San Mateo Fashion Island, San Mateo, CA 94404. Freestyle, Mixed Pairs, Solo Dance, Social Mixed Dance, and Precision Team Skating. For information contact: Nancy Weiss, 693 Saturn Court, Foster City, CA 94404, 415-574-7964.
- 29-31 **Skate Wilmington '88**, sponsored by the SC of Wilmington, at the SC of Wilmington, Weldin & Carruthers Lane, Wilmington, DE 19803-0307. Figures, Freestyle, or Pair events. For information contact: D.J. Tindall, (SCW) 302-656-5007 or (home) 215-358-3566.
- 30-31 **Far West Championship**, sponsored by the Stockton FSC, at the Oak Park Ice Arena, 3545 Alvarado St., Stockton, CA 95204. Figures, Freestyle, Pairs, and Dance events. For information contact: Tom or Marge Lee, 3208 Murchison Way, Carmichael, CA 95608, 916-489-5909.
- 30-31 **Summer Competition**, sponsored by the Cleveland SC, 2500 Kemper Rd., Shaker Heights, OH 44120. Figures & Ladies Solo Dance events. For information contact: Mariann Grdina, 22449 Shaker Blvd., Shaker Heights, OH 44122, 216-292-6297.
- 31-8/1 **A & B Dance Judges School**, sponsored by the Sun Valley FSC, at the Sun Valley Skating Center, Sun Valley, ID 83353. Featuring Russian coach Natalia Du-

JULY
14-16

Annual Free Skating Competition, sponsored by the SC of Lake Placid and

bova and her Olympic silver medalists. For information contact: Nancy Wulff, Box 351, Sun Valley, ID 83353, 208-726-9155.

AUGUST

6-7 **Manitoba Summer Open Figure Skating Competition**, at the River Heights Arena, Winnipeg, Manitoba, Canada. Figures, free skating, pairs, and dance events. For information contact: Manitoba Summer Open, Box 245, 905 Corydon Ave., Winnipeg, Manitoba R3M 3S7, Canada, 204-284-7801.

7 **Skate Long Island**, co-sponsored by the Cantiague FSC and the Long Island FSC, at the Cantiague Park Rink, Hicksville, Long Island, NY. Figures (Pre-Juvenile through Senior), Free Skating (Pre-Preliminary through Senior) as well as individual Compulsory Move categories (Preliminary through Novice). For information, write to: Skate Long Island, 16 Bunker Lane, Hicksville, NY 11801 or call: B. Windecker, 516-735-9640 or T. Jaworowski, 516-826-5058.

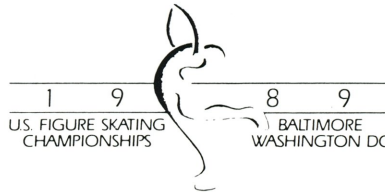
7-8 **25th Annual Arctic Blades Invitational Championships**, sponsored by the Arctic Blades FSC. Novice through Senior Singles (compulsory moves and free-

style), Championships Pairs (compulsory moves and freestyle), and Championship Dance (compulsory dances). By invitation only. For information contact: Janet McLeod, Chairman, 13936 Leibacher Ave., Norwalk, CA 90650, 213-864-5625.

11-13 **Annual Dance Competition**, sponsored by the SC of Lake Placid and the Olympic Regional Development Authority, at the Olympic Center, Main St., Lake Placid, NY. For information contact: Patricia M. Preston, Olympic Center, Lake Placid, NY 12946, 518-523-3325.

12-13 **The Hershey Open**, sponsored by the Hershey FSC, at the Hershey Park Arena, Hershey, PA. Freestyle, Dance, and Interpretive events, Sub-Juvenile through Novice levels. For information contact: Mrs. Debbi Librandi, 123 S. Arlington Ave., Harrisburg, PA 17109, 717-545-0138.

19-21 **17th Annual Midwest Open Competition**, sponsored by the FSC of Minneapolis, at the St. Louis Park Ice Arena, St. Louis Park, MN. Competition with Championship, Free Skating, Figures, Compulsory, and Dance events. For information contact: Dan or Ruth Olthoff, 612-881-9140 or 612-944-1955.



ROEDER TRAVEL LTD. OFFICIAL TRAVEL AGENCY

THE 1989 U.S. FIGURE SKATING CHAMPIONSHIP

BALTIMORE, MARYLAND — FEBRUARY 6-12, 1989

AIR — HOTELS / ALL TRAVEL ARRANGEMENTS

SPECIAL DISCOUNT AIRFARES ON UNITED AIRLINES

5% OFF ALL SUPERSAVERS

40% OFF ALL UNRESTRICTED COACH FARES

We are working with the 1989 Hospitality Committee to assure your comfort from departure to return.

Call The Skating Desk — Collect — 301-667-6090
Mon.-Thurs. 9am-8pm / Fri. & Sat. 9am-5pm

1988 EASTERN PRECISION TEAM CHAMPIONSHIPS

WARWICK, RHODE ISLAND

MARCH 6, 1988

SENIOR

JUDGES: A-Ardelle Sanderson, Lake Placid, NY; B-Sara Jayne Stephens, Marietta, GA; C-Shirley Holdsworth, Lexington, MA; D-Susan Haugh, Livonia, NY; E-Evelyn Minter, Providence, RI; F-Beatrice Rowand, Collingwood, NJ. G-Patricia S. French, Williamsville, NY. REFEREE: Virgil L. Widler, Williamsville, NY. ASSISTANT REFEREE: Nancy Archie Meyer, Lake Placid, NY. ACCOUNTANT: Paul J. Kreppel, Williamsville, NY.

| | A | B | C | D | E | F | G | M |
|----------------------------------------------|---|---|---|---|---|---|---|-----|
| 1. Haydenettes, Hayden Recreation Centre FSC | 1 | 1 | 1 | 1 | 1 | 1 | 1 | 7/1 |
| 2. Figuerettes, Hamden FSA | 2 | 2 | 2 | 2 | 2 | 2 | 2 | 7/2 |
| 3. Fairfax Follies, SC of Northern Virginia | 3 | 3 | 3 | 3 | 3 | 3 | 3 | 7/3 |

JUNIOR

JUDGES: A-William J. Mein, Potsdam, NY; B-Edward G. Picken, Chevy Chase, MD; C-PS. French; D-S.J. Stephens; E-S. Holdsworth; F-Marie Pearce, Atlanta, GA; G-E. Minter. REFEREE: N.A. Meyer. ASSISTANT REFEREE: Lee Ann Miele, Narragansett, RI. ACCOUNTANT: Cary Walker, Milford, CT.

| | A | B | C | D | E | F | G | M |
|-----------------------------------------------|---|---|---|---|---|---|---|--------|
| 1. Hot Fudge Sundaes, Buffalo SC | 1 | 1 | 1 | 1 | 1 | 1 | 1 | 7/1 |
| 2. Superettes, Warwick Figure Skaters | 3 | 3 | 2 | 2 | 4 | 2 | 2 | 4/2 |
| 3. Nashoba Valley Colonials, Colonial FSC | 2 | 2 | 3 | 3 | 2 | 3 | 3 | 7/3 |
| 4. Massena Northern Lights, Massena FSC | 4 | 5 | 4 | 4 | 3 | 3 | 4 | 6/4 |
| 5. Goldrush, Stone Mountain FSC | 7 | 4 | 5 | 6 | 6 | 5 | 6 | 6/6 |
| 6. Precisionaires, University of Delaware SC | 6 | 7 | 8 | 7 | 4 | 7 | 5 | 6/7 |
| | | | | | | | | TOM 36 |
| 7. Ice Sensations, St. Lawrence FSC | 5 | 8 | 7 | 5 | 7 | 6 | 7 | 6/7 |
| | | | | | | | | TOM 37 |
| 8. Emerald Blades, Bowie FSC | 8 | 9 | 6 | 8 | 8 | 8 | 8 | 6/8 |
| 9. Shadows, Darien SC of Southern Connecticut | 9 | 6 | 9 | 9 | 9 | 9 | 9 | 7/9 |

ADULT

JUDGES: A-Janet M. Dudley, Stone Mountain, GA; B-Robert Bell, Lincoln, RI; C-Norman Lesser, Alden, NY; D-S. Haugh;

E-M. Pearce; F-Shirley Taylor, Raynham, MA; G-Leonard J. Colarusso, Quincy, MA. REFEREE: V.L. Widler. ASSISTANT REFEREE: L.A. Miele. ACCOUNTANT: William Gennerich, Garden City, NY.

| | A | B | C | D | E | F | G | M |
|--------------------------------------------------|---|---|---|---|---|---|---|-----|
| 1. Esprit De Corps, Hayden Recreation Centre FSC | 1 | 1 | 1 | 1 | 1 | 1 | 1 | 7/1 |
| 2. Hot Fudge Sundae Supremes, Buffalo SC | 2 | 2 | 2 | 3 | 2 | 3 | 2 | 5/2 |
| 3. Penguinettes, Penguin FSC | 4 | 4 | 3 | 2 | 3 | 2 | 3 | 5/3 |
| 4. Moonlighters, Warwick Figure Skaters | 3 | 3 | 5 | 4 | 4 | 4 | 4 | 6/4 |
| 5. Brandywine Royales, SC of Wilmington | 5 | 5 | 4 | 5 | 5 | 5 | 5 | 7/5 |
| 6. Philadelphia Scribes, Philadelphia SC & HS | 6 | 6 | 6 | 6 | 6 | 6 | 6 | 7/6 |

INTERMEDIATE

JUDGES: A-N. Lesser; B-E.G. Picken; C-L.J. Colarusso; D-E. Minter; E-S. Taylor; F-M. Pearce; G-W.J. Mein. REFEREE: L.A. Miele. ASSISTANT REFEREE: N.A. Meyer. ACCOUNTANT: P.J. Kreppel.

| | A | B | C | D | E | F | G | M |
|--------------------------------------------|---|---|---|---|---|---|---|-----|
| 1. Ice Mates, Hayden Recreation Centre FSC | 2 | 1 | 1 | 1 | 1 | 2 | 2 | 4/1 |
| 2. Hot Fudge Sundaes, Buffalo SC | 1 | 2 | 2 | 2 | 2 | 1 | 1 | 7/2 |
| 3. Munchkins, Warwick Figure Skaters | 3 | 3 | 4 | 3 | 3 | 3 | 4 | 5/3 |
| 4. Nashoba Valley Patriettes, Colonial FSC | 5 | 4 | 3 | 4 | 4 | 4 | 3 | 6/4 |
| 5. Eisettes, SC of Northern Virginia | 4 | 5 | 5 | 5 | 5 | 5 | 5 | 7/5 |

JUVENILE

JUDGES: A-S. Holdsworth; B-PS. French; C-R. Bell; D-B. Rowand; E-J.M. Dudley; F-A. Sanderson; G-S. Haugh. REFEREE: N.A. Meyer. ASSISTANT REFEREE: V.L. Widler. ACCOUNTANT: W. Gennerich.

| | A | B | C | D | E | F | G | M |
|--------------------------------------------|---|---|---|---|---|---|---|-----|
| 1. Ice Cubes, Hayden Recreation Centre FSC | 2 | 1 | 1 | 2 | 1 | 1 | 1 | 5/1 |
| 2. Starlettes, SC of Northern Virginia | 1 | 2 | 2 | 1 | 2 | 2 | 3 | 6/2 |
| 3. Nashoba Valley Musketeers, Colonial FSC | 3 | 3 | 3 | 3 | 3 | 3 | 2 | 7/3 |

1988 MIDWESTERN PRECISION TEAM CHAMPIONSHIPS

LAKEWOOD, OHIO

FEBRUARY 26-27, 1988

SENIOR

JUDGES: A-Gay Barnes, Boulder, CO; B-Julia M. Jordan, Des Plaines, IL; C-Dorothy Nyman, Euclid, OH; D-Jerry Shipley, Cincinnati, OH; E-Rosemary Santee, Park Ridge, IL; F-Jane Lavintman, Minneapolis, MN; G-Ann Wachendorfer, St. Joseph, MO. REFEREE: John Chrien, Shaker Heights, OH. ASSISTANT REFEREE: Albert D. Viviani, Dearborn Heights, MI. ACCOUNTANT: Edmund J. Byrkit, Madison, WI.

| | A | B | C | D | E | F | G | M |
|---------------------------------------|---|---|---|---|---|---|---|-----|
| 1. Detroit Capets, Detroit SC | 1 | 1 | 1 | 1 | 2 | 1 | 1 | 6/1 |
| 2. Fraserettes, Fraser FSC | 2 | 3 | 2 | 2 | 1 | 2 | 2 | 6/2 |
| 3. Minneapplettes, FSC of Minneapolis | 3 | 2 | 3 | 3 | 3 | 3 | 3 | 7/3 |
| 4. The Dazzling Ones, Chicago FSC | 4 | 4 | 4 | 4 | 4 | 4 | 4 | 7/4 |

JUNIOR

JUDGES: A-Joane Bondar, Rochester, MI; B-J. Shipley; C-A. Wachendorfer; D-D. Nyman; E-Bonnie McLauthlin, Denver, CO; F-R. Santee; G-J.M. Jordan. REFEREE: William Wall, Macedonia, OH. ASSISTANT REFEREE: J. Chrien. ACCOUNTANT: E.J. Byrkit.

| | A | B | C | D | E | F | G | M |
|--------------------------------------|---|---|---|---|---|---|---|--------|
| 1. Goldenettes, Garfield Heights FSC | 1 | 1 | 4 | 1 | 1 | 1 | 1 | 6/1 |
| 2. Crystal Blades, Greenbrier FSC | 3 | 3 | 1 | 3 | 2 | 2 | 2 | 4/2 |
| | | | | | | | | TOM 7 |
| 3. Horizons, Bowling Green SC | 2 | 2 | 2 | 2 | 3 | 3 | 4 | 4/2 |
| | | | | | | | | TOM 8 |
| 4. Ice Crystallettes, Wyandotte FSC | 5 | 4 | 6 | 6 | 4 | 4 | 5 | 5/5 |
| | | | | | | | | TOM 22 |

5. Minnetonka Sailorettes, Lake Minnetonka FSC
 6 6 5 5 5 5 3 5/5
 TOM 23
6. Countertops, Midland FSC
 4 5 3 4 6 6 6 4/5

Eliminated after initial round

GROUP A

4. Braemarettes, Braemar-City of Lakes FSC
 TIE
4. Hockettes, Ann Arbor FSC

GROUP B

4. Roseville Rockettes, Roseville FSC
 5. Alpine Icettes, Alpine SC

ADULT

JUDGES: A-J.M. Jordan; B-G. Barnes; C-R. Santee; D-D. Nyman; E-J. Bondar; F-Scottie Head, Glendale, WI; G-Beth S. Graham, Littleton, CO. REFEREE: A.D. Viviani. ASSISTANT REFEREE: W. Wall. ACCOUNTANT: Janet Bushey, Peru, IN.

- | | A | B | C | D | E | F | G | M |
|-----------------------------------------|---|---|---|---|---|---|---|-----|
| 1. Detroit Royals, Detroit SC | 1 | 1 | 1 | 1 | 1 | 1 | 3 | 6/1 |
| 2. Minneapple Corps, FSC of Minneapolis | 2 | 2 | 2 | 2 | 2 | 2 | 2 | 7/2 |
| 3. Debonaires, Ann Arbor FSC | 3 | 3 | 3 | 3 | 3 | 3 | 4 | 6/3 |
| 4. Silver Belles & Beaus, Wyandotte FSC | 5 | 4 | 4 | 5 | 5 | 4 | 1 | 4/4 |
| 5. Fraser Precisionettes, Fraser FSC | 6 | 5 | 5 | 4 | 6 | 5 | 6 | 4/5 |
| 6. Turningpoints, Midland FSC | 4 | 6 | 6 | 6 | 4 | 6 | 5 | 7/6 |
| 7. Synchoblades, West Shore FSC | 8 | 8 | 7 | 7 | 7 | 8 | 6 | 4/7 |
| 8. City Lites, Plymouth FSC | 7 | 7 | 8 | 8 | 8 | 7 | 8 | 7/8 |

NOVICE

JUDGES: A-D. Nyman; B-B.S. Graham; C-Susan E. Adamson, Ann Arbor, MI; D-S. Head; E-A. Wachendorfer; F-J. Lavintman; G-J. Bondar. REFEREE: A.D. Viviani. ASSISTANT REFEREE: J. Chrien. ACCOUNTANT: J. Bushey.

- | | A | B | C | D | E | F | G | M |
|------------------------------------------------|---|---|---|---|---|---|---|-----|
| 1. Fraser Juniorettes, Fraser FSC | 1 | 1 | 1 | 1 | 2 | 2 | 1 | 5/1 |
| 2. Diamond Chips, Detroit SC | 2 | 2 | 2 | 2 | 1 | 1 | 2 | 7/2 |
| 3. Geminis, Greenbrier FSC | 3 | 3 | 3 | 4 | 3 | 3 | 3 | 6/3 |
| 4. Mini-Minneapplettes, FSC of Minneapolis | 5 | 4 | 4 | 3 | 4 | 4 | 6 | 5/4 |
| 5. Junior Hockettes, Ann Arbor FSC | 4 | 6 | 6 | 5 | 5 | 5 | 5 | 5/5 |
| 6. Minnetonka Windjammers, Lake Minnetonka FSC | 6 | 5 | 5 | 6 | 6 | 6 | 4 | 7/6 |

INTERMEDIATE

JUDGES: A- B.S. Graham; B-J. Bondar; C-G. Barnes; D-S. Head; E-J. Shipley; F-B. McLauthlin; G-J. Lavintman. REFEREE: W. Wall. ASSISTANT REFEREE: A.D. Viviani. ACCOUNTANT: J. Bushey.

- | | A | B | C | D | E | F | G | M |
|--------------------------------------|---|---|---|---|---|---|---|-----|
| 1. Starlettes, Garfield Heights FSC | 1 | 1 | 2 | 1 | 1 | 1 | 1 | 6/1 |
| 2. Shoreliners, St. Clair Shores FSC | 4 | 2 | 1 | 2 | 2 | 2 | 3 | 5/2 |
| 3. Gold Stars, Wyandotte FSC | 2 | 4 | 3 | 3 | 3 | 3 | 2 | 6/3 |
| 4. Horizonettes, Bowling Green SC | 3 | 3 | 4 | 4 | 4 | 4 | 4 | 7/4 |
| 5. St. Paul Pixies, St. Paul FSC | 6 | 5 | 5 | 6 | 6 | 5 | 5 | 4/5 |
| 6. Riverettes, Winterhurst FSC | 5 | 6 | 6 | 5 | 5 | 6 | 6 | 7/6 |

Eliminated after initial round

GROUP A

4. Crystalletes, Great Lakes FSC
 5. Ice Illusions, Lansing SC
 6. Flyerettes, Forestwood FSC
 7. Wisconsin Edge, Wisconsin FSC

GROUP B

4. Lincolnettes, Trenton FSC
 5. Jesse Janes, St. Joseph FSC
 6. The Ice Crystals, Broadmoor SC

JUVENILE

JUDGES: A-B. McLauthlin; B-J.M. Jordan; C-A. Wachendorfer; D-R. Santee; E-D. Nyman; F-W. Wall; G-J. Shipley. REFEREE: J. Chrien. ASSISTANT REFEREE: A.D. Viviani. ACCOUNTANT: E.J. Byrkit.

- | | A | B | C | D | E | F | G | M |
|-------------------------------------|---|---|---|---|---|---|---|-----|
| 1. Angelettes, Garfield Heights FSC | 1 | 1 | 1 | 1 | 1 | 1 | 1 | 7/1 |
| 2. Fraser Mini-ettes, Fraser FSC | 2 | 2 | 2 | 2 | 2 | 2 | 2 | 7/2 |
| 3. Crystal Gems, Greenbrier FSC | 3 | 4 | 3 | 3 | 4 | 3 | 3 | 5/3 |
| 4. Ice Angels, St. Clair Shores FSC | 4 | 6 | 6 | 5 | 3 | 4 | 4 | 4/4 |
| 5. Mini-Mates, Lake Minnetonka FSC | 6 | 3 | 4 | 4 | 5 | 5 | 5 | 6/5 |
| 6. Rinky Dinks, Wisconsin FSC | 5 | 5 | 5 | 6 | 6 | 6 | 6 | 7/6 |

Eliminated after initial round

GROUP A

4. Rising Stars, Wyandotte FSC
 5. The Skating Aces, Forestwood FSC
 6. Arborettes, Ann Arbor FSC
 7. Ice Pixies, Pavilion SC

GROUP B

4. Junior Crystalletes, Great Lakes FSC
 5. Lincolnettes, Trenton FSC
 6. Little Gems, Detroit SC
 7. Riverettes, Winterhurst FSC

1988 PACIFIC COAST PRECISION TEAM CHAMPIONSHIPS

SAN DIEGO, CALIFORNIA

FEBRUARY 28, 1988

SENIOR

JUDGES: A-Perry B. Livingston, Redondo Beach, CA; B-Charlene A. Tagas, Issaquah, WA; C-Nola Joy Carello, Sacramento, CA; D-Peggy J. Stark, San Diego, CA; E-Joyce Burden, San Carlos, CA; F-Joanne Butcher, San Clemente, CA; G-Lois Brosio, Seattle, WA. REFEREE: Donald E. Mumper, San Diego, CA. ASSISTANT REFEREE: Betty Sonnhalter, Seal Beach, CA. ACCOUNTANT: Avonia Dondero, Orinda, CA.

- | | A | B | C | D | E | F | G | M |
|------------------------------------------|---|---|---|---|---|---|---|-----|
| 1. Sun Valley Precision Team, Diablo FSC | 1 | 1 | 1 | 1 | 1 | 1 | 1 | 7/1 |
| 2. Ice Crystals, Silver Skate FSC | 2 | 2 | 2 | 2 | 2 | 2 | 2 | 7/2 |

JUNIOR

JUDGES: A-P.B. Livingston; B-C.A. Tagas; C-N.J. Carello; D-P.J. Stark; E-J. Burden; F-J. Butcher; G-L. Brosio. REFEREE: B. Sonnhalter; ASSISTANT REFEREE: D.E. Mumper. ACCOUNTANT: Dr. Byron C. Chan, Rancho Palos Verdes, CA.

- | | A | B | C | D | E | F | G | M |
|-----------------------------------|---|---|---|---|---|---|---|--------------|
| 1. Peppermint Supremes, Utah FSC | 3 | 2 | 1 | 3 | 2 | 1 | 1 | 5/2 TO 13 |
| 2. Dream Girls Plus, Highland FSC | 1 | 1 | 2 | 1 | 3 | 4 | 2 | 5/2 TO 14 |

Continued on page 58

SunValley

SUMMER SKATING SCHOOL TWIN RINK & SKATING CENTER

Unique recreational opportunities for all members of your family
Test Weekend, July 29-30

Test Week: August 29, 30, & 31, Championships, Sept. 3 & 4
Summer Session, June 1-September 10.

DANCE WORKSHOP directed by Natalia Dubova Russian Team Dance Coach assisted by Sun Valley Dance Pros **JULY 25-29**

SONYA DUNFIELD/ROB McBRIEN Skaters Workshop **JULY 25-29, AUG. 1-5**

JUDGES SCHOOL A & B DANCE Natalia Dubova with Klimova & Ponomarenko

SKATING CARNIVALS every Saturday night July through Sept. 10

MARINA KLIMOVA & SERGEI PONOMARENKO July 30 & Aug. 6

250 Patches daily
9 Free Style Sessions daily
6 Dance Sessions daily
Special Session for Pair & Individual Work
Ballet, Structural
Reprogramming,
Choreography
Adult Skater Program

Weekly Skating Carnivals
Supervised Dorm
Skating School Special Rates
Test Week
Sun Valley Summer Skating
Championships
Staff of Nationally Known
Instructors

Full-Size Outdoor Rink and Full-Size Indoor Ice Rink

PROFESSIONAL STAFF

Julie Barnett
Ron Barnett
Gary Beacom
Donald Bruce
Nesta Davies
Sonya Dunfield

Lorna Dyer
Charles Fetter
Kristin Fortun
Stephanee Lee Grosscup
Gia Guddat
Cindy Hulbert

Evelyn Kramer
Sharon La Riviere
David Lunn
Herman Maricich
Alex McGowan
Carol Mittun

Michele Monnier
Frank Loeser Nowosad
Glenn Patterson
Lona Sharp
Holly Stuns-Wheeler
Sherry Dorsey Winder

**For complete details write: HERMAN MARICICH,
Skating Director, Box 888, Sun Valley, Idaho 83353
(208)622-3888**

FOR LODGING RESERVATIONS CALL TOLL FREE 1-800-635-4408

The Ketchum-Sun Valley Community School, co-ed college preparatory boarding school, accommodates skaters in grades 7-12.





GIVING IT 100% AWARDS

At the 1988 National Championships in Denver, four athletes were singled out for special recognition and citation. Paul Wylie, Archie Tse, Susan Wynne and Joseph Druar were honored with the NutraSweet Giving It 100% Awards.

For the second year, these prestigious awards were given to competitors deserving of special recognition for their determination, spirit, and perseverance. The awards honor not the particular triumph of one competitor over another, but rather the high quality of being one's own best competitor. The selections were made by a special USFSA committee made up of officers and officials.

The criteria used for selection of the NutraSweet Giving It 100% Award winners were: an exceptional level of accomplishment in their sport; stamina under pressure; grace and good sportsmanship; generosity of spirit; and the ability to achieve a balance between individual accomplishment and outside activities. In addition to the award, a financial contribution will be given in each skater's name to the USFSA Memorial Fund.

Paul Wylie is a sophomore at Harvard University majoring in economics. With one week's notice, he substituted at the St. Ivel Ice International in London and won first place. Wylie performed at the World Univer-

sity Games in Czechoslovakia last year, despite having chicken pox and a 103° temperature, and still managed to finish third. Born in Dallas and raised in Denver, he represents the Skating Club of Boston.

Archie Tse is a sophomore at the University of Delaware, majoring in mechanical engineering where he is a participant in the University's honors program. He is a volunteer for the Special Olympics and devotes time to the American Medical Association Jump Rope For Heart. A native of Atlanta, Georgia, he skates for the University of Delaware Skating Club.

Susan Wynne and Joseph Druar have been skating together since they were college students in Philadelphia. On many international trips, they have pitched in to help their team leaders with the younger skaters, despite their own hectic schedules. Even though their training schedule has been strenuous during the past year, both held down full-time jobs and competed in three international competitions. Wynne, of Camillus, New York represents the Philadelphia Skating Club and Humane Society, while Druar, of Amherst, New York represents the Academy Figure Skating Club. In addition to training and working, Druar also completed studies and holds a degree in marketing.

As official sponsors of the United States Figure Skating Championships, NutraSweet has initiated these special Giving It 100% Awards as a means to honor deserving athletes, regardless of their national standings. *Skating* magazine adds its congratulations to these outstanding athletes.

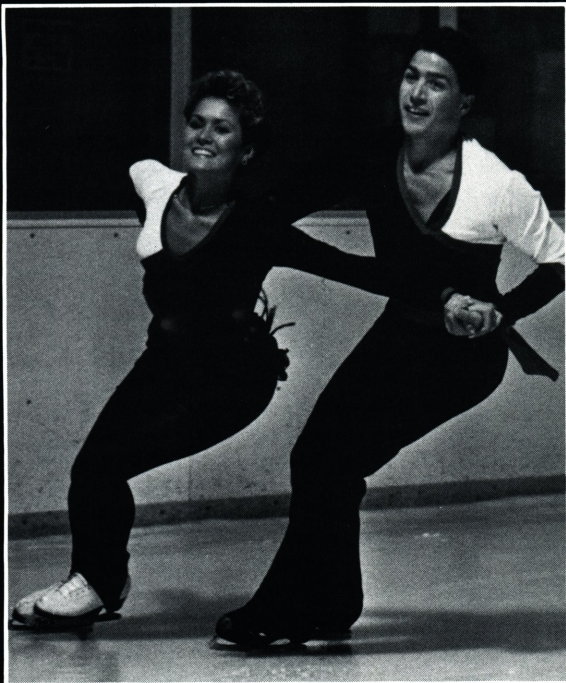


Robert Shapiro, chairman and CEO of The NutraSweet Company, and Claire Ferguson, chairman USFSA award committee congratulate Archie Tse, Joseph Druar, Susan Wynne, and Paul Wylie.

PHOTO COURTESY OF THE NUTRASWEET COMPANY

'89 U.S. Figure Skating Championships in Baltimore

ent^{ice}ing



1987 Dance Champions of the United States
Suzanne Semanick & Scott Gregory

Razor sharp silver blades glide around the frozen circle of lights. Icy spray glistens in the air. The crowd watches — their next breath suspended on an endless spiral. It's the magic of figure skating and it's coming to the Baltimore Arena, February 6 – 12, 1989!

You'll watch in awe as the fresh new faces of the Olympic hopefuls — the most dazzling talents the ice can offer — capture your heart with their skill and draw you into their dreams of gold. The 1989 U.S. National Figure Skating Championships are a thrill you'll never forget. And downtown Baltimore will provide an unforgettable setting for this event. Incomparable shops and restaurants set against the picturesque waterfront at Harborplace, elegant hotels within walking distance to The Arena, the National Aquarium and a host of fine theatres, art galleries and museums combine to bring you the very best during your stay.

So order your tickets today to guarantee priority reserved seating. Use the coupon below when ordering...and soon you'll be on your way to the most ent-ice-ing event on ice...ever!

'89 NATIONALS IN BALTIMORE, FEBRUARY 6-12. All-Events Tickets guarantee reserved seating at The Baltimore Arena. Full payment is required and All-Events Ticket supply is limited. Make checks or money orders payable to '89 Nationals.

\$100 through May 31, 1988 \$115 June 1-October 31, 1988
\$125 after November 1, 1988

Please reserve _____ tickets @ _____ ea.

Name _____

Address _____

City _____ State _____ Zip _____

Enclosed is my check for \$ _____ (\$1 service charge per ticket)

Money Order for \$ _____ (\$1 service charge per ticket)

Visa for \$ _____ (\$1.50 service charge per ticket)

Mastercard for \$ _____ (\$1.50 service charge per ticket)

Card Number _____ Exp. Date _____

Signature _____

Mail order form to:
'89 Nationals All-Events Ticket Department
The Baltimore Arena, 201 W. Baltimore
Street, Baltimore, Maryland 21201

or for more information call **(301) 625-1014**

*For information on special travel fares and hotel arrangements contact:
Roeder Travel Ltd., (Official travel agency for '89 Nationals), 9805 York Road, Cockeysville, MD 21030. Call collect-Skating Desk (301) 667-6090.

Sanctioned by the United States Figure Skating Association

1 9 8 9
U.S. FIGURE SKATING CHAMPIONSHIPS BALTIMORE WASHINGTON DC



Precision Review

by T. Sundae Bafo

DEFINING RESPONSIBILITIES - PART I

Over the past few years, I have had several coaches ask exactly what responsibilities belong to the coach and what responsibilities belong to the club's precision team committee. Many coaches feel they are expected to take charge of every aspect of organizing their team resulting in *burnout*, frustration, and ultimately the loss of a once enthusiastic coach. The problem with this situation is that the club's precision team committee is not doing its job. The coach *cannot* and *should not* be expected to do it all.

The coach's primary responsibility is on the ice, choreographing and training the team. This is not an easy task. It is a demanding job and the pressure never ends until the last competition or exhibition of the season. All the coach's responsibilities are derived from the primary and encompass three attributes needed to perform the role of "coach": (1) precision skating expertise, (2) leadership ability, and (3) administrative know-how.

Due to the coach's precision skating expertise it is his/her responsibility to conduct team tryouts, to select the team's members, its captain, and alternates, to cut music or arrange for its recording, to choreograph and teach the program to the team, and to select competitions best suited for the team's ability.

The coach's leadership ability is needed to responsibly set goals and objectives for the team, to motivate and encourage the team, and to instill, develop, and require good sportsmanship. As the leader of the team, it is the coach's responsibility to establish and enforce rules, and to discipline those who break the rules. The coach is the spirit of the team, generating enthusiasm and motivation to his/her skaters.

It is the coach's responsibility to perform some administrative functions for the team such as budgeting organized practice time, scheduling practice times with the general manager and off-ice practices when neces-

sary, meeting with the precision committee chairman, meeting with the costume chairman to discuss costume design, and finally attending all practices and competitions.

The coach should always be consulted on all pertinent issues affecting the team, e.g., costumes, warm-up suits, team logo, days and time of travel. (The coach may wish to schedule a practice prior to departure.) *An uninformed coach will be just as frustrated as an overburdened coach.*

The coach should have a good rapport with the general manager and individual team managers (Juvenile, Intermediate, Novice, Junior, Senior, Adult). If an issue pertains specifically to one of the teams, the coach should communicate with *that* team manager as well as the general manager.

The coach and the general manager should work closely together. The general manager is the link between the coach, the committee heads, and the parents of team members. He/she relays the needs and requests of the coach thus eliminating the endless hours the coach would otherwise spend on the phone talking to all the committee heads.

The coach's responsibilities do *not* include: purchasing fabric, contracting seamstresses, booking ice, arranging and securing travel arrangements, completing and mailing in competition applications, collecting medical forms, budgeting team accounts, seeking team sponsors, or running general meetings for parents.

Every team should have an organizational structure in order to run efficiently. The following positions and committees are vital: Precision General Manager, Assistant General Manager, Treasurer, Individual Team Managers, Fund Raising Committee, Costume Committee, Telephone Committee, Travel Committee, Dressing Room Manager, Sponsorship Committee, Equipment Committee, Publicity Committee, Social Events Committee, and Medical Forms Committee.

Continued on page 46



THE '4' BASIC '8's AND INJURY PREVENTION

by Claire F. McCarthy, PT, MS

"I didn't know I was really injured." "I always hurt somewhere." "When I skate hard, my body aches all over." "How can I tell if I'm really injured?" These are frequent responses of skaters when first seen by medical personnel for treatment, and are particularly characteristic of skaters unable to trace their problem to one or a combination of specific events. When further questioned as to what made them decide that a problem needed special attention, common replies are: "The pain didn't go away anymore," "Icing didn't help," "It still hurt when I stopped," "I couldn't do my combination anymore," "I lost my double Axel." The warning signs of a developing problem were present, but were either ignored or the significance not clearly understood. An approach to the question "How can I tell when I'm really getting hurt?" would be helpful for the individual skater.

Over the years and with the support of former competitor and professional, Frank Muckian, I have used "The 4 Basic 8's" (forward outside, forward inside, backward outside, backward inside) as a tool to monitor the condition and progress of an injured skater during the return to active skating. The main purpose: to prevent re-injury.

The selection of "The 4 Basic 8's" as an injury management tool was simply because a skater at the second test level and above can usually do the basic circles consistently and with confidence. The postures, edges, centers, and the shape of the circles are generally carbon copies of each other. Therefore, a difficulty or an inability to do even a portion of these figures becomes significant. It indicates that either the site of the original injury is still under stress or possible com-

ensation for the injury is occurring elsewhere inappropriately.

The management strategy for the actual return to the ice is developed with the skater. Figures, jumps, foot work, dance steps, and other moves are reviewed to identify: (1) activities of potential difficulty and concern and (2) activities which cause no apparent stress to the injured site. At this time, the participation of the skater's professional can be very helpful and is encouraged.

The specific guidelines for each strategy vary according to a skater's injury and unique situation. However, when resumed, the initial freestyle sessions usually include only those activities which were identified as stress-free for the injured area. In addition, all patch sessions begin with the "The 4 Basic 8's." The skater is asked to assess the quality of his/her performance on each session and to make minor adjustments to the schedule accordingly.

Subsequent decisions are concerned with the amount of time spent on the ice each day and on each session, the level of difficulty to be experienced, the introduction of the previously identified injury stress activities, which hopefully no longer are a problem, or some combination of the above. These decisions are based on (1) continued improvement and (2) the absence of unexpected problems or difficulties in performance. A lack of improvement or a decrease in performance suggests too much was allowed, too soon.

The skater as self-monitor is an important component of this re-injury prevention and rehabilitation management system. The significance of a pain free and consistent performance of "The 4 Basic 8's" is generally understood by the skater. Through this

process, the how to listen, the why to listen, and the what to do about some aches and pains are gradually learned.

If the use of "The 4 Basic 8's" is valuable in the prevention of re-injury, use as a monitoring tool by the skater in the prevention of an initial injury should be considered. A diminished performance on a basic figure or a performance described as "not usual" over a two or three day period, or an inability to correct a fault should be a warning sign for possible fatigue, over-work, or a minor injury. The skater can inform the instructor and discuss the problem. A critical review of the skater's activities and overall performance can only be informative. If difficulties are identified, adjustments to practice schedules and session content will help minimize undue stress and ultimately help prevent the development of an injury.

Warning Signs, Things to Ask Yourself, or Pain and Why

Pain on the inside of the push-off foot for an outside edge.

Are you landing your jumps extra hard?
Are you working too hard on loop figures and loop jumps?

Pain on the front of your foot or leg on forward edges

Are your boots laced too tight, particularly in freestyle or dance? Have you increased your daily skating time a lot, for example, prior to a competition or the beginning of a summer session.

Pain in your buttock of the leg doing the circle.

Have you done only jumps during freestyle and in lessons? Do you have trouble keeping your knee over your skating foot? Have you suddenly grown a few inches? Have you fallen frequently on that hip?

Pain in front of your hip in a closed position.

Have you increased the frequency of jumps? Do you land hard? Do you fall or land awkwardly on more jumps than you land properly?

Things to Think About

1. Gradually increase skating time. Don't go from three hours a day to six hours a day in one day.

Continued on page 58

MEMORIAL FUND DONORS



The USFSA Memorial Fund gratefully acknowledges the following contributors for the month of February 1988.

IN MEMORY OF

Bernard "Pop" Boffard: Mr. & Mrs. Dick Allan, Mr. & Mrs. Lee Coraor, Mr. & Mrs. David Grimm, Mr. & Mrs. Ed Ketz, Patrick Lee, Suzan Sargent, Mr. & Mrs. Wally Snipes.

Alex Burnett: Union County FSC, Eric Weisgerber.

Anthony M. De Muth: Ice & Blades Club of Washington, PA.

Michael Driscoll: Dr. & Mrs. Theodore A. Potter

Cynthia Hayward: Brentwood FSC

Nellie Jensen: Puget Sound Inter-Ice Skating Clubs

John Matthews: Jeanne, Annette, & Sian Matthews

Hal Salter: Mr. & Mrs. James Carolan & Family

CT. Schneider: Austin FSC

Kathleen Simak: Pavilion SC

George E. Tickner: Barbara & Martin Judnich, Marion & Al Rauscher, Mr. & Mrs. Kinsman Wright

IN HONOR OF

90th Birthday of Anthony Canal: Brentwood FSC

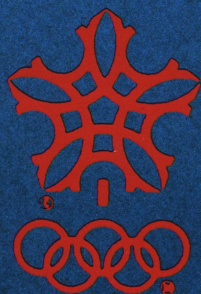
Esther Petrick: Dorothy D. Bragle

F. Ritter Shumway: Jeanne, Annette, & Sian Matthews.

Gig Siruno: Lake Minnetonka FSC

Batmitzvah of Judith Stein: Julie McKinstry Rustand

Jill Trenary: Lake Minnetonka FSC



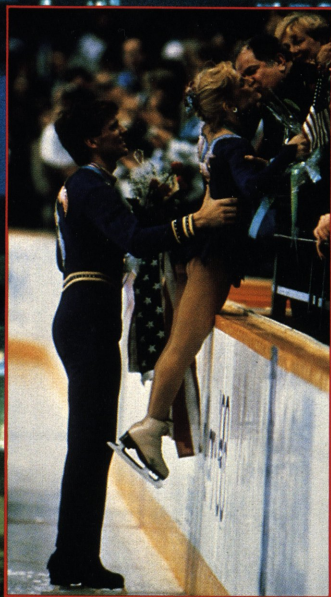
XV OLYMPIC WINTER GAMES

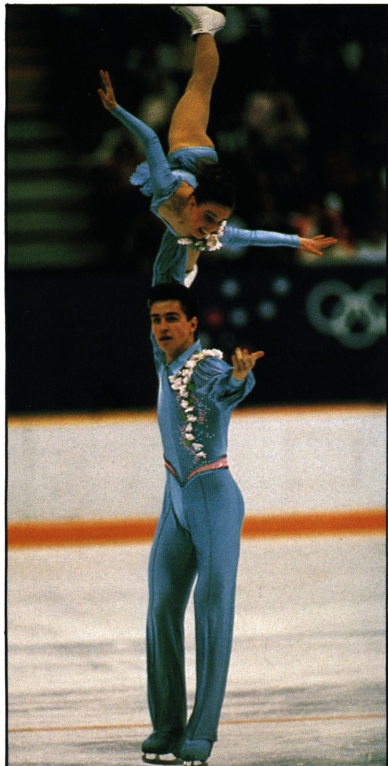
SHOWDOWN IN CALGARY

With the focus of the world centered on Calgary for two weeks in February, the city and province welcomed the quadrennial gathering of international athletes with open arms and warm hospitality. While other events were postponed due to changing weather conditions, figure skating opened its two-week stand at the Olympic Games. Eleven events and sixteen days later, the U.S. Team had won half of the total

medals for the country—one gold and two bronzes.

For the first time in memory, three different rinks were used for the competition: the Father David Bauer Arena, the Stampede Corral, and the cavernous Saddledome. A fourth undersized rink was used for practice, which for all practical purposes, did not entirely serve the skaters' needs.





**EKATERINA GORDEEVA &
SERGEI GRINKOV**
Pair's Gold
USSR

The main focus of the events centered on what became billed as "The Battle of the Brians" and "The Battle of the Carmens."

USA's Brian Boitano and Brian Orser of Canada, both world champions, were the pre-Games favorites for the gold in men's singles. Debi Thomas, USA, 1986 World champion, and Katarina Witt, the German Democratic Republic's 1984 Olympic champion and three-time World champion, would face off against each other with both using selections from Bizet's opera *Carmen*. Witt was seeking to become the first woman since Sonja Henie to win more than one Olympic title, and Orser was after Canada's first Olympic gold for men. One was successful, the other was not.

CHAMPIONSHIP PAIRS

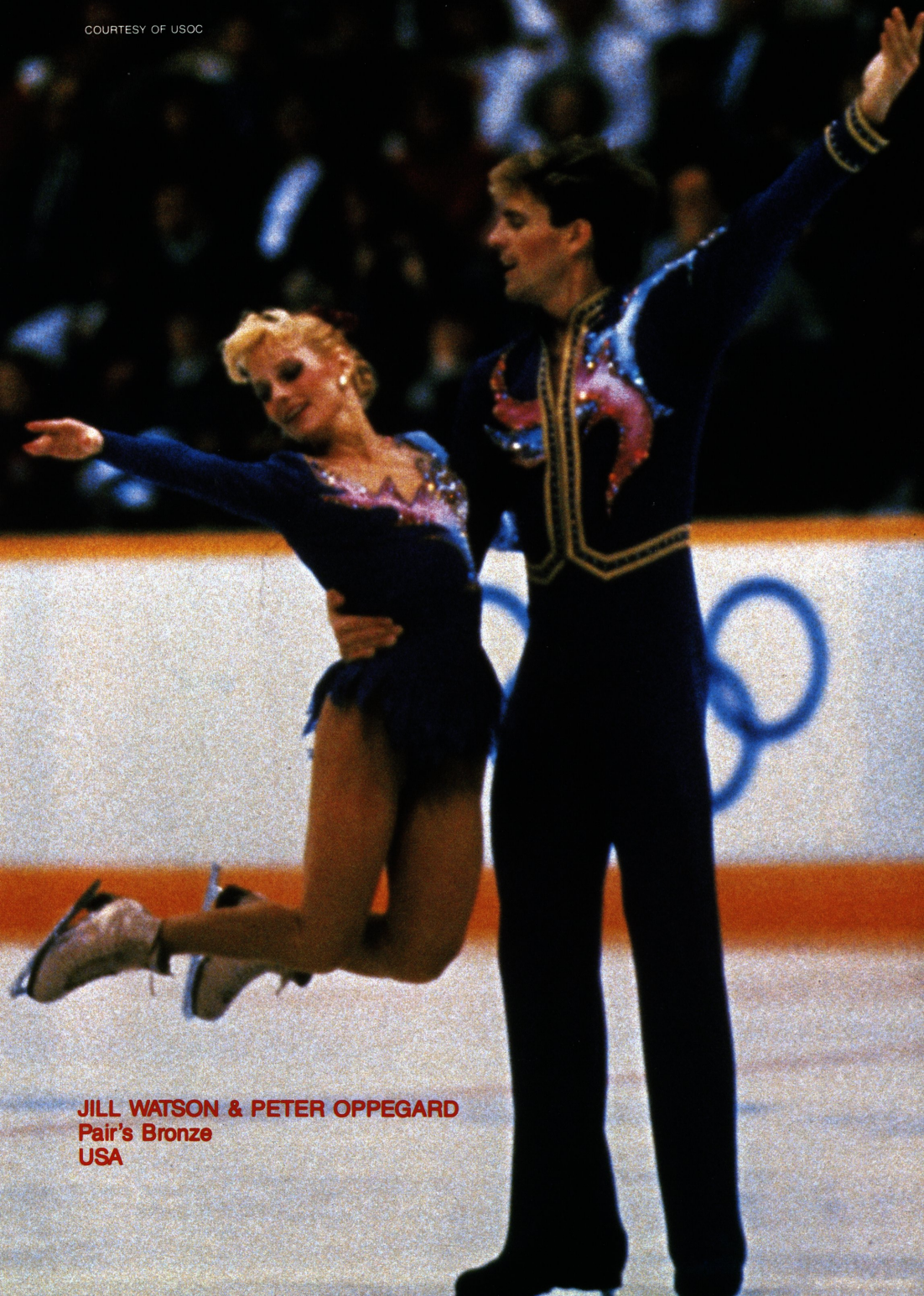
The skating competition began with the pair's short program in the Stampede Corral, with fifteen couples from eight countries. The Soviet Union, long dominant in this event, took the early lead, as expected, with sixteen-year-old Ekaterina (Katya) Gordeeva and partner Sergei Grinkov enchanting the audience with a flawless routine to (another) *Carmen*. They were followed by fellow countrymen, Olympic and World champions, Elena Valova and Oleg Vasiliev, in second.

America's Jill Watson and Peter Opegard, 1987 World bronze medalists, placed a solid third with a strong classical program, clean elements and good synchronized spins. Immediately behind were teammates Gillian Wachsmann and Todd Waggoner, whose high-spirited, crisp folk program showed increased power and speed since Nationals and placed them in fourth. Natalie and Wayne Seybold placed tenth with a rousing western routine to Copland's "Rodeo" that included an especially good footwork section.



**ELENA VALOVA &
OLEG VASILIEV**
Pair's Silver
USSR

COURTESY OF USOC



JILL WATSON & PETER OPPEGARD
Pair's Bronze
USA



**GILLIAN WACHSMAN &
TODD WAGGONER**
Pair's Fifth
USA

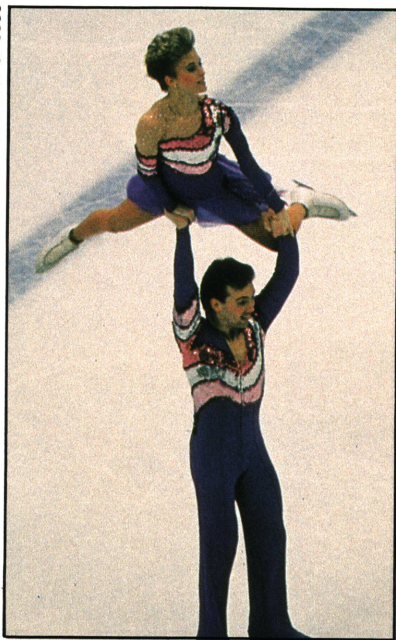
The long program, held at the Saddledome, brought out demanding performances from all medal contenders. The Seybolds were received warmly following following a strong program that included a lateral lift and an especially fine throw triple Lutz. Marks held them in tenth.

Gordeeva and Grinkov, skating first of the leaders, displayed their superior individual strengths and appeal. Katya had become one of the early media darlings of the games and the couple continued to charm the audiences and judges with an exceedingly high triple twist lift, side-by-side double Axels, throw triple jumps, and flawless technical execution. Scores of all 5.8's and 5.9's assured the gold medal.

Skating next, Watson and Oppegard had barely begun their program to music from *Madame Butterfly* when a photographer dropped a camera on the ice. In the middle of their original "free fall" lift, a volunteer walked on to the ice to retrieve the camera. Later Oppegard remarked, "I wish they just would have left it there. We saw it and were aware of it, but suddenly there was a third person on the ice. I wondered if there was a comedy going on behind us while we were performing." A fall on a double Axel was the only marred element in an otherwise strong performance. Their marks held them in third and

brought them the bronze medal, the first one for the U.S. at the Games.

Valova and Vasiliev, performed cleanly, if less than inspired. They were unable to surpass Gordeeva and Grinkov, but placed second for the silver medal. Wachsmann



**NATALIE SEYBOLD &
WAYNE SEYBOLD**
Pair's Tenth
USA

BRIAN BOITANO
Men's Gold
USA

USA OLYMPIC



PAUL HARVATH

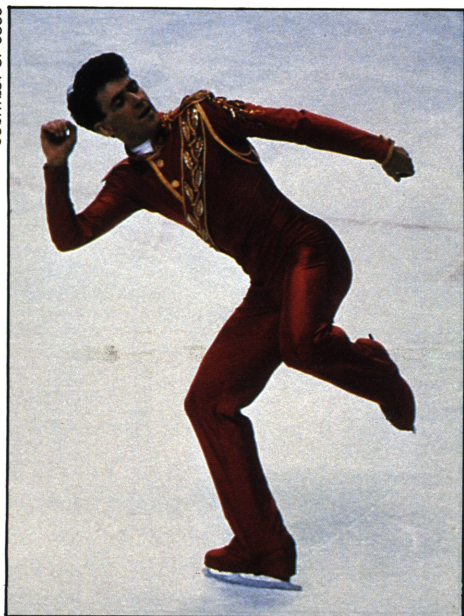


TEAM



1
9
8
8





BRIAN ORSER
Men's Silver
Canada

and Waggoner began with assurance and strength with a high throw double Axel and their own change-hand step-over death spiral entrance. They later experienced difficulties in a slip in a rut on pair spread eagles and finished fifth overall.

CHAMPIONSHIP MEN

For the first time in Olympic history three World champions began the compulsory figures in quest for the gold: Boitano, Orser, and Alexandr Fadeev of the USSR. In a field of twenty-eight men from twenty-one countries, Fadeev was not to be counted out. Seven hours later, when the figures ended at the Father David Bauer arena, Fadeev was in the lead, followed closely by Boitano. Orser was a strong third, then Heiko Fischer, Federal Republic of Germany, and Vladimir Kotin, USSR. America's Christopher Bowman and Paul Wylie held in eighth and twelfth places respectively.

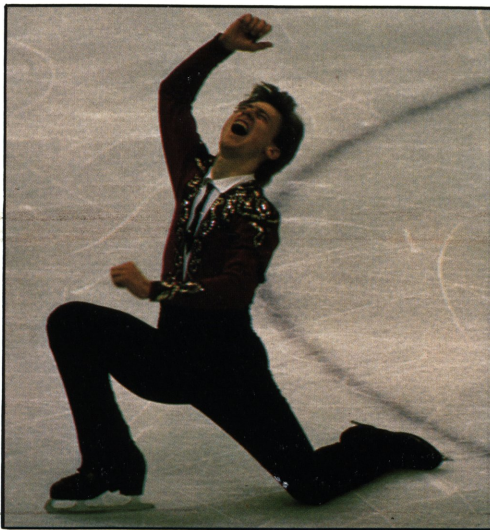
The short program soon began to sort out the field. Fadeev fell on the jump combination, dropping to third overall. Orser

won the short, with Boitano in second—both completing a triple Axel-double loop. Overall, Boitano moved into the lead followed by Orser, with only .2 of a point separating the two. The battle lines had been established, and the title would be determined in the long.

Following a sixth place in figures, Victor Petrenko, USSR, took third in the short and moved to fourth overall. Bowman placed fifth and moved up to seventh, and Wylie took eighth to move into eleventh. The two, skating after each other, received prolonged audience receptions for both of their stylishly executed programs.

Tension filled the Saddledome on the night of the long program. Wylie and Bowman again drew to skate after each other. Wylie began roughly with a fall from a triple flip but recovered to finish a stirring program with artistic marks from 5.6 to 5.8 for ninth in the long and tenth overall. Bowman's rich interpretation and strong jumps found great audience response and marks that placed him seventh in the long and seventh overall.

As the final group took the ice, the time for the battle was at hand, and, similar



VICTOR PETRENKO
Men's Bronze
USSR



COURTESY OF USOC

CHRISTOPHER BOWMAN
Men's Seventh
USA

to the Carmens, both men had selected military themes.

At the luck of the draw, Boitano skated first in the final group. Using music by Carmine Coppola from the film, *Napoleon*, he began what Scott Hamilton called "the most technically difficult program I have ever seen," with eight interpretive sections portraying the character of the soldier. Opening with a "Tano" triple Lutz with hand over head and followed by six other triple jumps, including two triple Axels, one in combination, he ended to a thunderous standing ovation.

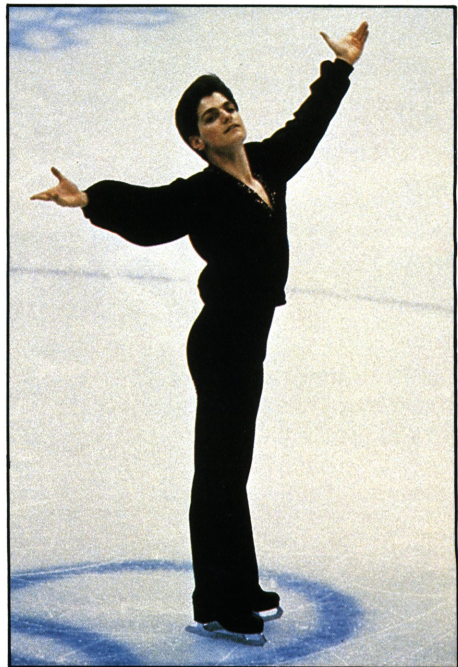
He had done what very few had been able to accomplish in their amateur careers. "I gave my very best performance, when everything was on the line. I did what I came to do. Things started out well, and I just told myself to keep my focus, one thing at a time. For a while I was overcome with the reality of a dream. The audience lifted me, and the support of the American

people was overwhelming. This medal really belongs to them."

The judges' marks were relatively low considering the merit of the program, but allowing room for the skaters to follow. With five technical marks of 5.9 and four of 5.8, the presentation marks were lower with three 5.9's, five 5.8's, and a single 5.7. It appeared space had been left.

Fadeev followed, but with an off night performance. Falling on his triple Axel, stepping out of one jump, and popping another, he dropped to fourth in the long and overall.

As Orser took the ice, the Saddledome vibrated with a roar for the would-be national hero. Skating to Shostakovich's "The Bolt," his high-paced, busy program unfolded in a much less serious mood than Boitano's, but with planned equally high technical difficulty. His battle was not to be victorious. A step-out from a triple flip and changing a triple Axel into a double were his undoing. Technical marks were all



COURTESY OF USOC

PAUL WYLIE
Men's Tenth
USA



**NATALIA BESTEMIANOVA &
ANDREI BUKIN**
Dance Gold
USSR

5.8 with a single 5.9, and presentation marks included one 6.0, five 5.9's, and three 5.8's. In a five-to-four judges' decision, Orser once again placed second, as he had in Sarajevo and in three succeeding World championships.

"I thought it was good enough," Orser stated. "I didn't think the error on the first jump would matter much. Near the end I felt tired, which is why I left out the last triple Axel. It was best to stay on my feet than take a chance."

Skating last, Victor Petrenko outscored compatriot Fadeev, with an enthusiastic and technically superior program, to finish third overall for the bronze medal.

As the national anthem was played and the American flag raised in the Saddledome, Boitano received the first gold medal of the games for the U.S., achieving the distinction of being only the fifth American to ever win the men's figure skating gold.

ICE DANCING

There seemed little doubt that the Soviets would be triumphant in the dance

event. The story was not so much in the performances as it was in the judging which locked competitors into positions from the first event to the final results.

Twenty couples from thirteen countries began the compulsory dances: the Kilian, Paso Doble, and Viennese Waltz. Placements after the compulsories were almost similar to the final standings of the previous World championships. Soviets, Natalia Bestemianova and Andrei Bukin, were in the lead, followed by teammates, Marina Klimova and Sergei Ponomarenko. In third were Tracy Wilson and Robert McCall of Canada. American champions Suzanne Semanick and Scott Gregory were sixth, following a fall, and Susan Wynne and Joseph Druar were eleventh.

Overall placements remained the same through the OSP, the Tango. Former Canadians now representing France, Isabelle and Paul Duchesnay, received a standing ovation and tremendous audience support but not that of the judges.

The free dance brought great variety of music and programs, from classical to boogie-woogie, from Broadway show tunes to jungle rhythms. It was the latter that set off the biggest controversy. Once again, it was the Duchesnays breaking tradition and style with a truly original and dynamic free dance to jungle rhythms, choreographed by World and Olympic champion Christopher Dean. The Duchesnays unleashed an astounding program filled with original moves, lifts, and holds to pulsating drums and African themes. The audience approval was deafening, but the judges split five to four, with marks ranging from 5.0 to 5.8, and held them in eighth overall. On seeing the work, it could only have been choreographed by Dean, stamped throughout with his trademark moves. The controversy ensued as to whether it was a competition or an exhibition number, and the need for revisions of dance rules and interpretation of the rules for judging.

Reigning World champions Bestemianova and Bukin won the gold, skating to the music of Borodin in their usual dramatic style, followed by Klimova and



**MARINA KLIMOVA &
SERGEI PONOMARENKO**
Dance Silver
USSR

Ponomarenko. Wilson and McCall captured the bronze, the first ever Olympic medal for Canada in ice dancing.

Semanick and Gregory had the unenviable position of following the Duchesnays in the free dance. Showing no signs of Scott's serious back injury, they included all the planned lifts and closed to the fast-paced "Hora Staccato" with good speed and deep edges for a sixth-place finish. Wynne and Druar held in eleventh with a lively program to rousing jazz and sentimental music from the 40's and 50's.

CHAMPIONSHIP LADIES

Thirty-one ladies from twenty-three countries began the compulsory figures. As expected, Kira Ivanova of the USSR, finished first, followed closely by Debi Thomas. Katarina Witt was a strong third, and Elizabeth Manley of Canada placed fourth, with Jill Trenary and Caryn Kadavy of the U.S. in the fifth and seventh spots respectively.

The short program became a survival contest on the jump combinations in the early skaters. Midori Ito of Japan practically drew all attention away from the top contenders, as she wowed the audience with her skill and unabashed enthusiasm. Starting from a tenth in figures, she placed fourth in the short.

When the leaders took the ice, the anticipated battle was between Witt and Thomas. Witt, skating first, to "Hello, Dolly" used all of her charm on the audience and neatly finished a triple toe-double loop for a clean program. Thomas, using rock rhythms of "Something in My House" by Dead or Alive, performed a more difficult double loop-triple toe, and received unanimous higher technical marks. However, Witt won the short and Thomas was second but moved into the lead overall. Ivanova, placed tenth in the short and began her decline. Trenary using a triple flip-double loop combination placed sixth in the short and held fifth go-



**TRACY WILSON &
ROBERT McCALL**
Dance Bronze
Canada



COURTESY OF USOC

**SUZANNE SEMANICK &
SCOTT GREGORY**
Dance Sixth
USA

ing into the long. Kadavy, giving one of the best performances of the night, included a lovely sustained Bauer into a triple loop-double loop to place fifth and move up into sixth overall.

Standing room only at the Saddledome greeted the ladies for the long program, which would also produce the highest TV ratings for the Games for ABC. Caryn Kadavy was forced to withdraw due to a severe case of influenza, and the night began un auspiciously with falls and spills by early skaters.

Once again, among the non-medalists, it was Ito who ignited the ice with six amazing triples, including a dynamic triple Lutz. Technical marks were the best of the night with seven 5.9's. Her artistic marks were considerably lower but good enough to hold the diminutive dynamo for third place in the long and fifth overall. It was hard to tell who was more excited, Midori or the cheering audience who saw the possible champion of the future.

With the current champion yet to be named, Witt took the ice to the tolling bells

from the *Carmen* themes. Her interpretation followed the story of the opera, of the tragic, seductive heroine, who dies at the hands of her lover. A questionable middle section with over thirty seconds of posing and no skating, plus completing only four triples, and turning a planned triple loop into a double, left her with deservedly low technical marks, but was boosted by a raft of seven 5.9's for interpretation.

Manley joined the battle with a fast-paced, high-spirited rendition to the music of *Irma la Douce* and "A Canadian Concerto." From an opening triple Lutz, she could do no wrong, popping off three other triples and fast centered spins. Good marks for both technique and presentation placed her first in the long, but the outcome was yet to be decided.

Skating last of the evening, a difficult position, Thomas's *Carmen* was distinctly different from Witt's. It was the personality and character of the woman that she sought to present, rather than a literal story of the opera. It was a new, mature,



COURTESY OF USOC

SUSAN WYNNE & JOSEPH DRUAR
Dance Eleventh
USA



COURTESY OF USOC

KATARINA WITT
Ladies' Gold
German Democratic Rep.

and artistic Thomas, but the doom of Carmen was to prevail. Opening with a triple toe-triple toe combination, she under-rotated the second jump, and later fell, as she seemed to weaken before the final spin. Scores placed her fourth in the long after Manley, Witt, and Ito.

Trenary doubled her planned triple flip and loop, but took control to complete a beautifully interpreted program, including her trademark one foot Axel-triple Salchow and elegant spin positions, placing a solid fourth overall. With the top three ladies all retiring, Trenary now stands as the heir apparent.

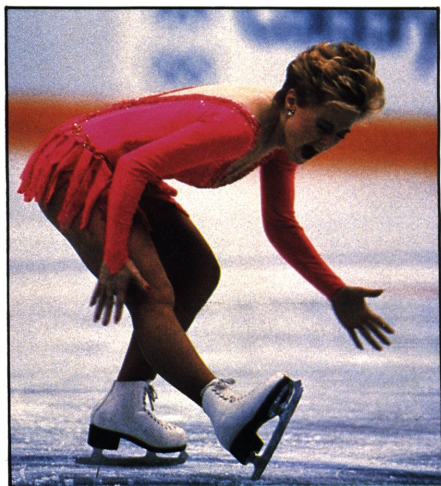
The final results saw Witt win the gold, Manley the silver, and Thomas the bronze.

"I'm not offering any excuses, it just wasn't there tonight," Thomas stated. "Missing the first jump, I think, threw my concentration. Skating last was hard. Everything for so long, training and everything, has been focused on this one night; but tonight was not my night. I wish it had been otherwise, but it wasn't."

An Exhibition of Champions brought to a close the figure skating events at the Winter Games. The gracious Calgary audience responded enthusiastically to all the medalists and non-medalists in their last appearance in the Saddledome. The competitors raced to the Closing Ceremonies to see the extinguishing of the flame and a superlatively staged ice spectacular. We await now the new Olympians to begin their drive towards Albertville in 1992 when a new flame will be lighted and the Olympic tradition will come to life again.

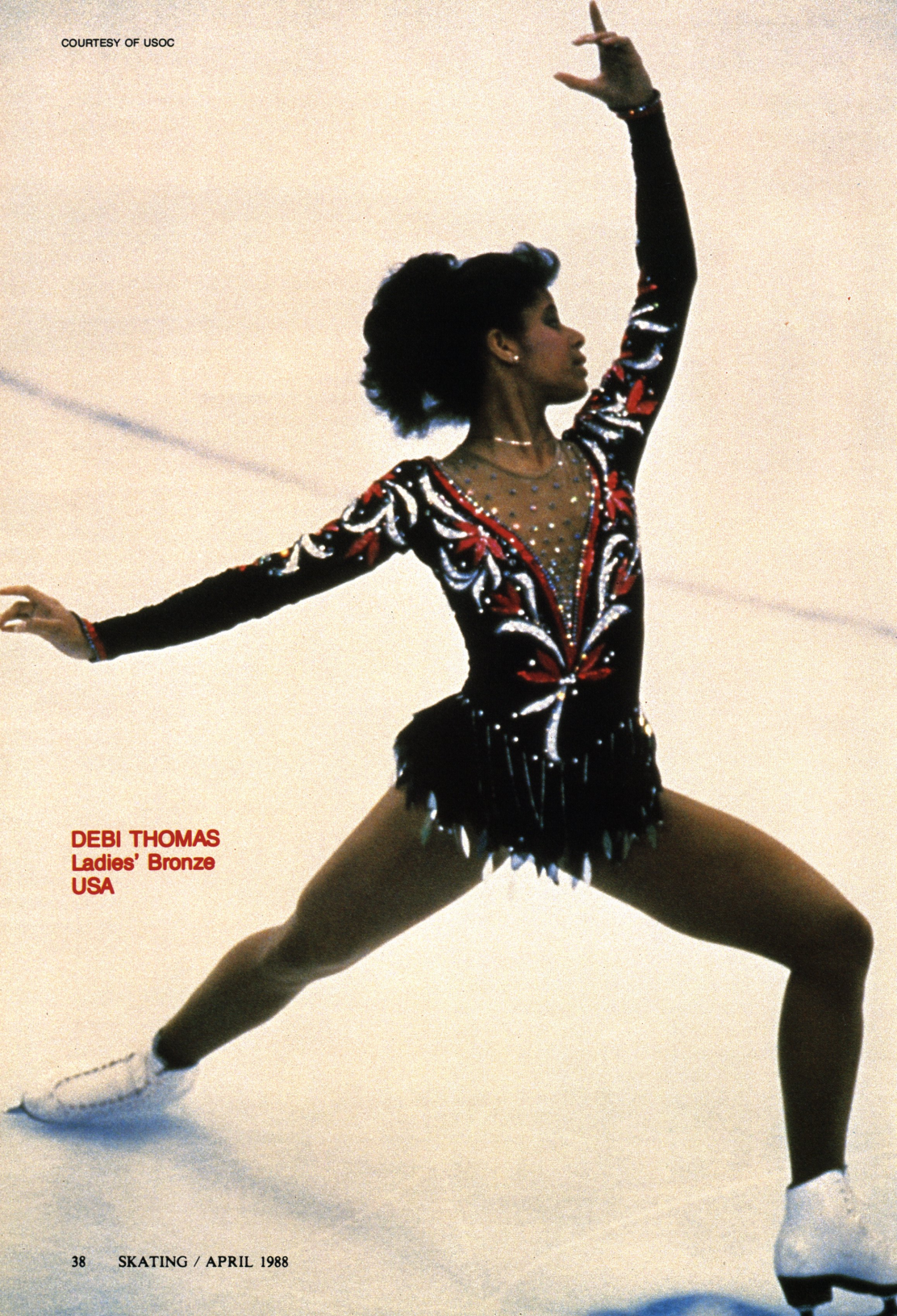
OLYMPIC FOOTNOTES

As far as can be determined, Linda Leaver is the first female coach of an Olympic men's champion, and is probably the first female coach to train an Olympic champion throughout his competitive career.



COURTESY OF USOC

ELIZABETH MANLEY
Ladies' Silver
Canada



DEBI THOMAS
Ladies' Bronze
USA



COURTESY OF USOC

JILL TRENARY
Ladies' Fourth
USA

The largest unofficial sport in the Olympics was pin trading which took on gargantuan proportions. The activity in Calgary made Los Angeles look like a match in a forest fire. There were many favorite scarce pins that were eagerly sought. The 2 1/2-inch Calgary logo pin was in high demand, as were most of the communication and sponsor pins. But, as usual, the most sought after were the international teams and federation emblems. The USA Team pin was high on the list of the most desirable. In figure skating along with the US Team, the mainland China pin and the German Democratic Republic pins were in short supply.

☆ ☆ ☆

The Province of Alberta issued limited edition posters honoring athletes from different countries. Two days after Brian Boitano's gold medal victory, a "Stars and Stripes Forever" poster was distributed with a photo of Brian, saluting his triumph. The supply was exhausted before the day was out. Other popular posters were of Eddie "The Eagle" and Midori Ito. These posters became instant collectors' items.

If Spain was not prominent in the Olympics, at least its music was in every form. Besides Thomas and Witt, at least six other selections from *Carmen* were used, causing Yvonne Gomez, dual U.S.-Spanish citizen who represented Spain to quip, "It seems I'm the only authentic Carmen here."

☆ ☆ ☆

Brian Boitano is the first male figure skater to ever appear on the cover of *Sports Illustrated* by himself. His diary in *U.S.A. Today* during the Games was well received, as was his appearance on *The People's Choice Awards Show* with Brooke Shields shortly after the Games. Also on national TV: Jill Watson and Peter Opegaard were special guests on *Hollywood Squares* following their Olympic success. Paul Wylie also added his personal thoughts on the Games in a two-part series in *U.S. News and World Report*.

☆ ☆ ☆

Special gold medals are due Joan Gruber, and Dr. Howard Silby, Team Leaders, for their outstanding service and Herculean efforts throughout the Games on behalf of all of the skaters.

☆ ☆ ☆



COURTESY OF USOC

CARYN KADAVY
USA

NEW ENGLANDS

by Mary L. Clarke

"New Enlands 1988: First Stroke to the Olympics," the posters said, and Paul Wylie (for one) was hoping that would come true because New Enlands '88 was certainly an encouraging first stroke for him.

Paul unloaded a free skating performance that shattered the shutters in his home club, the SC of Boston, and brought a standing ovation that lasted all the way through his scores—which reached the 5.8's. Paul began his program with an outside figure eight: one circle on each foot which looked perfectly scribed—perhaps a symbolic *sayonara* to the figures event. He went on to blast six triples into the ionosphere—one of them a triple Axel, his first in a qualifying competition—and that caused the building to reverberate with the shouts of his many fans who had filled all the seats and stood along the barriers forming a ring around the arena.

His program was a classic of balanced composition and faultless technique. Rifled among the rocketry were marvelous spins, magnificent footwork, his patented back-to-forward turn in spiral position, an Ina Bauer half the length of the ice, a flying Axel sit spin, and a Russian split flip—sparklers amidst the fireworks. His was a tough act to follow, but Mark Mitchell, SC of Hartford, who had to do that had a few surprises of his own: five triples, all different, three double Axels and a slinky, off-beat delivery which matched his music and contrasted interestingly with Wylie's classic skating.

Mark had matched Paul's triple Lutz-double loop combination in the short, and missed nothing; Paul had done the same. Again in the long, Mark skated what would have been a gold medal performance in many regions, but was silver here. He, too, received a standing ovation.

There were fourteen Junior ladies: Jennifer Leng, SC of Boston, the figures winner, stood first and was the final skater. Her fall on an opening triple toe loop and a later fall on a double Axel shocked her followers, but she didn't let up. She came back to land the tri-

ple along with an assortment of doubles. Her camel spins were beautiful and her interpretation splendid. Her third in the long assured victory.

Liane Moscato, also from the SC of Boston, had been third in figures and short. She, too, had a fall on a triple, but she did beautiful double Axels and spectacular spins for second in this section and a silver medal. Pepi Pierce, Yarmouth IC, won the free skating with a flawless long opened with double Axel-double loop and a constant attack which featured dazzling spins and energetic footwork as she battled back from fourth to the bronze medal. Dawn Duhamel, SC of Boston, short program winner, took fourth.

Senior Ladies was won by Nancy Kerrigan, SC of Boston, who took both long and short after a fourth in figures. Nancy did three triples in her long. Tracie Brown, also from the SC of Boston, placed second in each section with some beautiful skating in a fine effort.

Elizabeth McLean, SC of Boston, and Ari Lieb, Babson SC, won all three sections of Senior Dance, the best part an entertaining free dance.

Junior Dance was a contest. Rachel Mayer and Peter Breen, SC of Boston, bound for World Juniors in December, took a 4-3 decision in the compulsories, but Elizabeth Punsalan, Los Angeles FSC, and Shawn Rettstatt, Pittsfield FSC, last year's Eastern silver medalists, won the other two sections by 5-2 and 4-3 margins.

Some of the largest and most enthusiastic crowds were there to greet the Adult dancers who were seven strong and all competitive. The building filled each time the event went on, largely with other adult skaters from throughout the region. Patricia Roche, Colonial FSC, and Luis Chukiu, Providence FSC, won both sections. Their variation was the best interpretation of the St. Louis Blues music with its undulations and softness. Diana Goldman, Bay Path FSC, and Martin Demoorian, individual member, offered

them their closest competition with competent skating, and Elaine Savoy, SC of Boston, and Timothy Butterfield, Babson SC, wound up third.

Sara and Robert Powell, SC of Boston, won Junior Pairs with a superb display of lifts, pull-throughs, spirals, and spins. They showed growth in both strength and maturity as well as improved unison.

Novice Ladies was another tussle. Jennifer Frank, SC of Boston, emerged victorious on the strength of fine figures and a splendidly programmed free skate which she performed at top level. Especially catchy was her footwork section to "Glow Worm," which was wonderfully skated.

Heather Callaghan, Flagg Pond SC, jumped from fifth to second with a winning free skating performance that was built around myriad doubles combinations, some excellent spins, and a winning smile, and Anna Lowder, Hayden Recreation Centre FSC, took third.

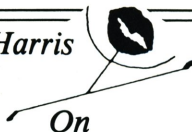
Intermediate Ladies went to Leslie Portnoy, North Shore SC, with Colleen Maguire, Colonial FSC, second, and Nicole Scherer, SC of Boston, third. Laura and Thomas Danielson, SC of Amherst, took all the firsts in winning Intermediate Dance with a splendid Fiesta Tango variation. Richard Sears, Colonial FSC, took each section of Junior Men, Garrett Swasey, SC of Boston, parlayed seconds in figures and free into the Novice Men's title, while SC of Amherst's Jay Warner's strong free program won the Intermediate Men's title for him.

The host club had a willing group of competent volunteers who seemed to anticipate needs, and the mood of the competition was relaxed, with a lot of camaraderie among the skaters, spectators, and officials.

The results for the New England Championships were published in the January 1988 issue, page 32. Photos appeared in the February 1988 issue, page 44.

Correction: An error in the results of the Central Pacific Championships in the December issue incorrectly listed Dorothy Scibuola, St. Moritz ISC and Mark Benjamin, Stockton FSC, as finishing sixth in Novice Pairs. The couple withdrew and did not skate.

Ricky Harris



On
The Use of Pressure

Sometimes when I watch a skating program, I am disturbed by the lack of pressure in the movements. I have tried to explain this before by asking skaters to imagine themselves in a room full of peanut butter. We are so used to thinking of air as having no substances, and therefore easy to move through. However, if you would imagine that you are surrounded by peanut butter, then there must be pressure applied to each movement to cause the movements to progress with importance in the dense space around you.

This takes in the use of the muscles with a variation of energy that controls their use. Muscles are willing to do almost anything for you if you train them to do so. Training even one muscle in the use of movement pressure, takes in the use of the total body, as well as the mind. There must be an inner focus that tells you that each movement is important, and there must be the correct amount of energy put to use.

You should feel that you are "making" the movement, creating it, and putting the strength behind it. A simple movement, if involving the whole body and mind, can become quite powerful.

There are many times, however, when you may wish to show a more ethereal quality, and perform movements that may not be so "earthy." This, then, requires a deep study into the degrees of intensity used in working the muscles and the amount of energy required to do so. Experiment with the following:

1. Stand with your arms rounded into a circle, shoulder height. Have another skater stand facing you, put his/her hands lightly at the sides of your arms. Now have your partner apply a slight pressure on your arms, resisting your movement, as you try to open them to your sides, shoulder high.

2. Try this exercise several times, each time having your partner use different

— Continued on page 46



Calgary Rap

(A Figure Skater's Talk and Tap)

by Howard Silby &
Joan Gruber

The official Olympic team meeting was held February 12, following the Draw Ceremony in Norquay Hall in the Olympic Village. With everyone in dress uniform following the draw, it seemed a little unusual that Team Leader, Joan Gruber, and Assistant Team Leader, Dr. Howard Silby, were dressed in red warm-up suits. After the official business was done, the reason became apparent.

To pulsating rap music, out came the headbands, the shades, a (Michael Jackson) glove. Up went the pants legs, revealing matching red shoes, and their dedication to the team (choreographed by Robbie Kaine, complete with dance steps and hand gestures) was a resounding success.

You're skating Olympians the
best there is
You work so hard, you're an
athletic wiz
You're the best there is for the
red, white, and blue
And that's why we're high five
proud of you.
High five, high five, high five,
proud of you.
You deal with stress, you make
the tricks
In our mind and hearts, you're
a perfect 6!
You're the best there is for the
red, white, and blue
And that's why we're high five
proud of you.

High five, high five, high five,
proud of you.

You're smart, you've got heart,
you're balletic, athletic
You've trained rough and
you're tough and
if that's not enough
You're the best there is for the
red, white, and blue
And that's why we're high five
proud of you.

High five, high five, high five,
proud of you.

We know the pressure is
tremendous
and that's what makes you
so stupendous
You're the best there is for the
red, white, and blue
And that's why we're high five
proud of you.

High five, high five, high five,
proud of you.

We're ready, we're psyched,
we're going to fight
And with all of you guys
we feel real tight
You're the best there is for the
red, white, and blue
And that's why we're high five
proud of you.

High five, high five, high five,
proud of you.

You've got spirit, spunk—
enthusiasm too
That's why we think you're the
greatest crew
You're the best there is for the
red, white, and blue
High five, high five, high five,
proud of you.

And that my people is what
we want to say

It's you and us—there ain't
no other way
We're the best there is for
the U S of A
And that's why we are
here today.

High five, high five, high five
proud of you!

Comfortably settled and stuffed in a prominent Calgary Chinese restaurant, the Team was given another surprise when the Gruber-Silby rappers delivered a surprise wrap-up to the rap that had the team high-fiving for two weeks.

THE CALGARY WRAP (An Ending)

by Howard Silby &
Joan Gruber

The two weeks are over,
good-bye to Norquay
It's been a grand affair,
every single day.

Your bodies are tired,
your emotions drained
But in three more weeks,
you'll be retrained.

It's off to Worlds,
you greatest of teams
Our warmth is with you,
you'll be in our dreams.

And so to Suzie times two,
and the dual Jills
And to Wayne and Kim
and to Todd and Gil

To Peter and Scott,
to Debbie and Brian
And Chris and Paul
and Joe and Caryn

You guys are the greatest,
what else can we do
Except to say,

“We're high five proud of you!”



The Warmth of Northern Japan

by Gillian Wachsman

This season's NHK Trophy took skaters, coaches, and officials from 16 countries to northern Japan, to Kushiro, a town of 220,000 whose main industries are wood, paper, and fish. Located on Hokkaido, the most northern of the four main Japanese islands, Kushiro is 560 miles north of Tokyo and a short 50 miles from the western Soviet islands. Although the trip from the United States is a long and tiring one, Japan is a country steeped in ancient tradition and dramatic landscapes whose people are among the most gracious and beautiful in the world.

The welcome the skaters received upon arrival in Kushiro was one that they will never forget. Television cameras, which were present all week to broadcast the competition nationwide, were waiting at the airport to catch the tired faces as they broke into smiles of surprise and joy. What seemed to be the entire population of school children under ten, their parents and teachers, along with a band of dramatic Japanese drummers, were waiting with an entire ceremony planned.

As the skaters filed into the parking lot, they found themselves surrounded by smiling Kushirians waving flags excitedly and expressing great pleasure at having this large group of foreigners visiting their corner of the world. The drummers then performed an energetic display of their rhythmic art, but the attention was soon drawn to the gathering of little school children, all in the yellow caps that are part of their uniforms, as they sang a greeting in high, fragile voices.

There is something very special about Japanese children that captivates visitors. They are the most adorable children in the world, and their endearing expressions make them totally irresistible. After their little song they gave a flower to each and every visitor

involved with the competition. This lovely greeting, which had obviously been prepared and practiced for weeks, was the first of many such receptions and set the mood for the whole week of competition.

It seems to be typical for the Japanese to take lots of time and preparation to make their visitors feel very welcome, but that is not the only way that they project this feeling. The Japanese people as a whole, from shop owners to passengers on the subway, are extremely polite. The common courtesy of bowing and holding doors for natives and visitors alike is an act of second nature to these people. Using the most formal form of greeting to a young American is also natural to them as they do anything they can to please.

When it came time to skate the tables were turned. The skaters gave their all to please both audience and judges. The U.S. team succeeded in this area by bringing home one gold, two silver, and three bronze medals. Although the biting cold of the Siberian wind called for hats and gloves outside, it also seemed to find its way into the arena where skaters must perform in flimsy spandex and



PHOTO BY GILLIAN WACHSMAN

Continued on page 48

ONE PERFORMANCE ONLY!

'88 TOUR

**OLYMPIC & WORLD
FIGURE SKATING
CHAMPIONS**

Presented by
TOM COLLINS



Sanctioned by



TOUR II

CITY

Las Vegas, NV
San Francisco, CA
Fort Wayne, IN
Kansas City, MO
Madison, WI
Cleveland, OH
Indianapolis, IN
Baltimore, MD
New Haven, CT
Worcester, MA

VENUE

Caesar's Palace
Cow Palace
Memorial Coliseum
Kemper Arena
Coliseum
Richfield Coliseum
Market Square Arena
Baltimore Arena
Memorial Coliseum
The Centrum

DAY & DATE

Mon. May 30
Fri. June 3
Sat. June 4
Sun. June 5
Tue. June 7
Wed. June 8
Thu. June 9
Fri. June 10
Sat. June 11
Sun. June 12

★The World's Top Ice Skating Champions★

News Briefs

Continued from page 4



Following the Exhibition of Champions at the World Championships in Budapest, Debi Thomas surprised friends with the announcement that she and Brian Vanden Hogen had been married on March 15, in Boulder, Colorado. The couple met at the University of Colorado at Boulder, where Debi had been training and attending classes since last summer and where Brian is a senior majoring in sports medicine and physical therapy. The couple plan to stay in Colorado through the summer and then make their home in California.

☆ ☆ ☆

The company for the '88 Tour of Olympic and World Champions will include a stellar cast headed by: Katarina Witt, Debi Thomas, Elizabeth Manley, Caryn Kadavy, Jill Trenary, Brian Boitano, Brian Orser, Christopher Bowman, Paul Wylie, Victor Petrenko, and Vladimir Kotin. Pairs and dance couples include: Ekaterina Gordeeva and Sergei Grinkov, Elena Valova and Oleg Vasiliev, Jill Watson and Peter Oppegard, Christine Hough and Doug Ladret, Natalia Bestemianova, and Andrei Bukin, Marina Klimova and Sergei Ponomarenko, Tracy Wilson and Rob McCall, and Isabelle and Paul Duchesnay. The public reception has been tremendous with almost all venues sold out immediately after tickets went on sale. It is a rare opportunity to see all of these champions in one performance and the last chance to see many as amateurs and performing in this country.

☆ ☆ ☆

Precision Review

Continued from page 21

The general manager and committee heads may be selected in two ways. Parents of team members may volunteer for these positions or elections for these positions may be held and voted upon by the precision parents.

Working closely with the coach is the General Manager whose duties are: delegating responsibilities to the committees at a pre-season meeting, arranging for ice time needed throughout the season with the club ice chairman, organizing and running parent meetings, meeting with committee heads pre-season and throughout the year, preparing and sending team applications to competitions, overseeing all organizational facets of the team's management, and making a monthly calendar of practice schedules and special dates for team members.

The responsibilities of the Team Secretary are keeping minutes at the precision meetings and keeping current with all pertinent correspondence.

The Team Treasurer is responsible for the team's finances. He/she prepares the year's budget (in consultation with the general manager and committee heads), keeps all financial records, pays bills incurred by the team, and maintains the bank account for the team.

The responsibilities of the various committee chairmen will be discussed in Part II.

Ricky Harris

Continued from page 41

degrees of pressure to give your movement different intensity.

3. Finally, without any help, put your own degree of intensity behind the movement of opening your arms, using your whole body and mind to focus on that movement, and using pressure against the air to do so.

Each different movement requires a different degree of pressure behind it, with a matching degree of energy. Experimentation is necessary to find just the right degree of pressure and energy required for each movement to get the correct artistic and emotional result.

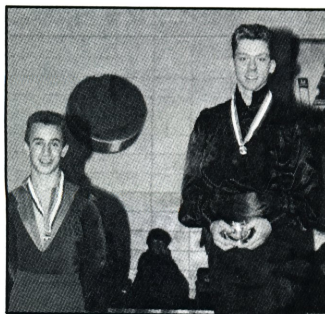
EASTERN GREAT LAKES



PHOTOS BY CBI, INC.

SENIOR LADIES

Tonia Kwiatkowski, Gold; Michelle Millikan, Silver;
Anne Fischer, Bronze; Jennifer Stavros, Fourth



JUNIOR MEN

John King, Gold; Dan Hollander, Silver



JUNIOR PAIRS

Paula Visingardi & Jeb Rand, Gold
Catherine Baffo & John Liotta, Silver
Hilary Olney & Jeff Meyers, Bronze



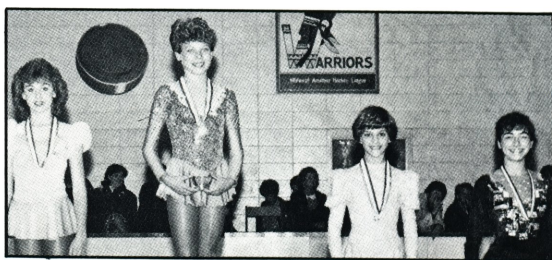
JUNIOR DANCE

Jennifer Goolsbee & Peter Chupa, Gold
Jennane Jones & Michael Shroge, Silver
Katherine Williamson & Ben Williamson, Bronze
Julie Benz & David Schilling, Fourth



ADULT DANCE

Sandy Burkons & Alan D. Narvy, Gold
Trudy Backus & John Dool, Silver
Ellen Clark & Harlan Brunnemer, Bronze



NOVICE LADIES

Tiffany Pinchon, Gold; Angela Deneweth, Silver;
Charlotte Irwin, Bronze; Erin Schuler, Fourth



NOVICE MEN

Michael D. Orr, Gold; John Wright, Silver;
Dave Tonidandel, Bronze; Brian Scherle, Fourth

Northern Japan

Continued from page 44

tights. However, the reception of admiration from the audience filled the arena with enough warmth to melt the ice on the nearby lake.

This beautiful reception, however, must not overshadow the superb effort of team leader Patricia French and assistant Monty Hoyt. For her first experience at this high tension job consisting of travel agent, judge, twenty-four hour mom and friend, while attempting to keep track of ten ambitious young skaters, Pat did a phenomenal job! Her fun loving manner and abundance of hugs endeared her to the skaters and created a special closeness within the team.

Thanksgiving fell on the third day of the trip and Pat sure was not going to let that holiday pass, even if we were 10,000 miles away from Plymouth Rock. For Thanksgiving dinner she had brought a suitcase filled entirely with paper turkeys, turkey napkins, and little toy Pilgrims with which she decorated the tables in the skater's dining

room! Turkey and stuffing were not served, but if a loving atmosphere is what Thanksgiving is all about, then the team sure had it that night in Japan, thanks to Pat's thoughtfulness!

Curious as this may sound, the Japanese people seem to enjoy figure skating more than in other countries. The culture is so art oriented that they view skating as an art form, and because they are such a hard working people, they appreciate the work that goes into perfecting a skating performance. It is this enthusiasm that creates the warm, energetic audience that is so crucial to a performer, and their lovely traditions of welcoming their guests, that makes Japan and its people number one in the hearts of the American skaters.

Correction: In the February issue of Skating, in the Nationals report on page 42, Heather Sniteman was incorrectly identified as placing sixth in the Ladies' Novice division. Karen Gooley, SC of Wilmington, was the sixth-place finisher, and Sniteman was seventh. We regret the error.

ASPEN, COLORADO, In The Summer . . .

SUMMER FIGURE SKATING SCHOOL

Nine Weeks

June 6 — August 5, 1988

GUEST PROFESSIONALS — FOR SEMINARS & PRIVATE LESSONS

☆ **DON LAWS** ☆ **JOJO STARBUCK** ☆ **ANN-MARGRETH FREI** ☆

(dates to be announced)

- Video Analysis
- Expert Instruction
- 11 Hours of ice time daily (6 days)
- Supervised dorm/in-home accommodations
- 2 Test Sessions
June 25, 1988
July 30, 1988
- Skating Harness
- Summer Ice Show
- Unique recreational Facilities
- Weekly exhibitions by school students

ATTENTION PROFESSIONALS!

If you have a following of at least five students, WE WANT YOU—and are offering a unique professional incentive.

FOR MORE INFORMATION CONTACT

Alma Davenport, Director, **Aspen Figure Skating School**, 233 West Hyman, Aspen, CO 81611
or phone (303) 925-8770 or (303) 925-7485

Nancy and Robert Quinn have produced an elaborate new full-color book on figure skating pins. The first of its kind, this 152-page paperback is long overdue and is an excellent reference work for any interested collector. It should find a ready market.

Separate sections focus on U.S., World, European, World Junior, Canadian, and international championships, along with pins of various federations and U.S. clubs. Also included are special pins from private collections. For the most part, the photography is excellent, with 396 photos which are the heart of the book. Unfortunately, the pins are not shown actual size, or in sizes relative to each other. The authors' concept was to show all of the pins in a large, similar size size for best viewing of detail. There is minimum of introductory text at the beginning of each section in support of the photos, and that is the primary fault of the book.

What is missing that would make the book an invaluable reference is sufficient text to describe each pin, its size, its type of back and pin mechanism, as well as base metals and colors, and most important, its method of production, be it cloisonné, stamped enamel, soft enamel, domed epoxy, or whatever. The majority of the pins are shown oversize, but more information is needed on the actual pins, their circulation, scarcity, design, and production.

Inevitably, in such a ground-breaking venture, there are some errors and omissions to be found. In the section on Federation pins,

IN REVIEW

FIGURE SKATING PINS

actual Federation pins along with traders are mixed together. The pin shown for Chinese Taipei is not the Federation pin but is a special one issued for Skate America in 1986, with the Skate America logo.

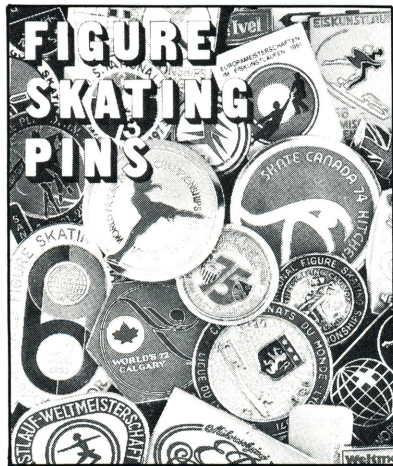
Other facts of interest that might have been included are the other pins from the 1975 World Championships not shown and the different sized pins from the 1969 World Championships.

The major error in the book is on the U.S. Championship pins, in which the authors state it is believed "that the first dated pin was issued in 1964, Cleveland, Ohio." The first dated pin known at this time actually was from the 1958 Nationals in Minneapolis, Minnesota, as can be seen in the World Figure Skating Hall of Fame and Museum in Colorado.

Additionally, only the gold pin from the 1976 U.S. Championships is shown, while there was also a silver edition. Notation might have been made that the only U.S. National sterling silver pin was from 1965 in Lake Placid.

Clarification of the Radix pin is needed in that it is given to medalists only at the U.S. Championships and at the World and Olympic Championships, not at "major U.S. competitions" as stated.

The book overall offers an opportunity for collectors to see many pins which they may not know about or never have seen before. (No regional or sectional pins are illustrated, and these are perhaps some of the rarest and most desirable, due to their limited production runs.) *Figure Skating Pins* is top-quality printing and production, but its shortcomings are in its lack of sufficient text and information about the pins to make it a truly total reference.



Classified

ADVERTISEMENTS

CLASSIFIED RATES: \$20 for the first 35 words, 50¢ for each additional word, \$20 minimum. Two-letter state abbreviation code plus zip code count as one word. *Payment required with order.* All advertising copy is subject to acceptability. BOX NUMBERS: \$5 extra. Send all box responses to: *Skating*, Box No. _____, 20 First Street, Colorado Springs, CO 80906.

ATTRACTIVE JR. FEMALE DANCE PARTNER wanted 5'6"-5'7", 120 lbs. or less to begin immediate training for 88 competitive season. Contact: Glyn Watts, 216-933-5028.

FREESTYLES BY CAROLYN. Basic pull-on dress with attached skirt, including three neckline treatments. Directions for adding zipper, and separate wrap skirt also included. Children's sizes, 4x small through x small. Adult sizes, small, medium, large, x large: \$6.00 ea. Pull-on skirt, perfect for practice with T shirts or leotard, \$2.50 ea., all sizes. Figure flattering criss-cross dress: x small through x large, \$4.00 ea. Custom made patterns for \$8.00. Send for measurement chart. Add \$1.00 for postage and handling with each order. 5150 Bluestem Drive, Colorado Springs, CO 80917.

ICE DANCING ILLUSTRATED. Instructional guide to the compulsory ice dances by Lorna Dyer former U.S., North American Dance Champion, Silver World Medalist. Send \$35.00 (U.S. Funds) to: Moore Publications, 9216 220th S.W., Edmonds, WA 98020.

ESTABLISHED PROGRESSIVE RINK in Midwest interviewing for addition to professional staff. We're looking for a self-motivated person with background in national competition, including dance and/or pairs as well as figures and free skating. We offer a strong figure skating program with opportunity for growth almost unlimited. All responses confidential. If you would like further information, give us a call. Julie Elliot, Manager, Gayle Dixon, Figure Skating Director, c/o Riverview Ice House, 324 N. Madison Street, Rockford, IL 61107, 815/963-7408.

PATTERNS FOR SKATERS: Step-in Dress Pattern for Lycra or Spandex: No zipper, panty and skirt is sewn onto top for one piece. Girls or ladies S4-6, M8-10, L12-14 \$5.00 ea. Multi-size Patterns includes different skirts, sleeves, necklines, zipper. Girls or ladies 4-14 (All sizes in each.) \$8.50 ea. Book of Patterns for Beading, Rhinestones, Embroidery includes geometric, floral, etc. \$12.95 ea. Check/Money Orders only: Skate-Stag, 8212 Ammons Cr., Arvada, CO 80005/303-423-7098.

SKATING JEWELRY FOR CLUBS, competitions, rinks, and camps. Gorgeous non-dangling earrings, pendants, and bracelets. Custom cloisonné enameled club pins, (your design). For brochure write to SKATE/MATE, P.O. Box 362, Englishtown, NJ 07726.

VIDEO TAPE now available of the 88 Nationals and 87 Worlds produced by USFSA official videographer. For information call Video Sports Productions, 800-USA-1996, in New Jersey, 201-276-7790 or write P.O. Box 2700, Westfield, NJ 07091.

**SP Teri, Riedell
John Wilson, MK
WIFA**

Write or call for current prices.
Same day shipping on in stock items.
Master Card and Visa

**Nicholls
SPORTS**

(216)921-4300

3431-33 Lee Road • Shaker Heights, Ohio 44120

**SKATE
OF THE ART**

**FRANKLIN P. NELSON
RECREATION CENTER**

1601 North 5th Street
Springfield, IL 62702 (217) 753-2800

**1988 SUMMER FIGURE SKATING SCHOOL
JUNE 13 - AUGUST 5**

Test Session August 4, 1988
Hosted by the Springfield FSC



8th Annual Springfield Invitational
Competition, Sponsored by SFSC

GUEST PROS AND STUDENTS WELCOME!

ACTIVE NORTH CENTRAL FSC has openings for professionals, preferably high test in figures and freestyle and gold in dance. Established club with 8 months ice including summer schools. Excellent double rink facility. Send resume to All Seasons Arena, P.O. Box 1796, Minot, North Dakota 58701.

KRASH PADS by JAN-PRO: Hip Pad: \$29.95, Measure around seat with skating attire on. Knee Pads: \$16.95, measure around knee. Colors: Blue, Black, Gray, and Maroon. Send CK/MO to JAN-PRO, 4470 Monroe Ave., San Diego, CA 92115, (619) 282-0637.

We have the LOWEST DISCOUNT PRICES on quality boots, blades, and tights—immediate shipment—satisfaction guaranteed. Call (906) 786-7752 or write LeCaptain Studio Store, 1620 Ludington, Escanaba, MI 49829. COD MC VISA.

CUSTOM CLOISSONNÉ PINS and embroidered patches. Made to your design. Highest quality and service. Luran Emblem, P.O. Box, 1615, Loveland, CO 80539, (303) 667-4940.

WANTED . . . INSTRUCTORS for New England Children's Figure Skating Camp for months of July-August. Call: 516-364-8050.

SPANDEX FABRIC — All weights, types, prints, solids, stripes, Nylon and Cotton blends, firsts and closeouts. Norbrook Industries Ltd., 172 Madison Avenue, New York, New York 10016, (212) 889-2708.

SUPERIOR QUALITY AUSTRIAN CRYSTAL: Margaritas, Lochrosens, Embroidery Stones, etc. Also: Silver-Lined Rocailles, Bugle Beads, Seed Beads, Sequins, Price list upon request. Gerrie Ball, 310 Juniper St., Brea, CA 92621, (714) 529-1474.

MK & WILSON BLADES, guards, booties, polish, laces, white test gloves. Send SASE for prices. The Blade Lady, 2290-B E. Fremont Ave., Littleton, CO 80122.

SKATING PRO NEEDED: Opening for coach for 88-89 season. Two arenas with growing program. Send inquiries to: Bismarck Figure Skating Club, P.O. Box 7372, Bismarck, ND 58502.

WANTED: MALE PAIR PARTNER for 5'3", 103 pound, 16 year old female—hardworking and dedicated. Has passed Senior freestyle, and Jr. Pair tests. Strong freeskater—double Axel and two triples. Call (216) 228-4627.



BARBARA KOSSOWSKA
OLYMPIC AND WORLD
CLASS COACH
OF FIGURE SKATING
PRESENTS

THE TOTAL TRAINING PROGRAM

- * Summer Session - June 13 to August 26
- * Two Full-Size Ice Sheets
- * 12-Month Dormitory Style Housing Available

Professional Staff

Barbara Kossowska
Zdzislaw Pienkowski
Lori Voepel

in conjunction with

The Rochester Figure Skating Club

Rochester-Olmsted Recreation Center
Rochester, Minnesota

Training Center for World & Olympic Skater

Grzegorz Filipowski

Inquiries: 102-14th Street, N.E.
Rochester, MN. 55904 (507) 289-9327

Laurels

Skating congratulates the following skaters who have passed USFSA sanctioned tests in figures, pair, and dance. Only completed dance tests, rather than the individual dances passed, are recorded below. Any errors should be reported to the USFSA, 20 First Street, Colorado Springs, CO 80906.

New Test Abbreviations are as follows: PRE = Preliminary Figure; 1 = First Figure; 2 = Second Figure; 3 = Third Figure; 4 = Fourth Figure; 5 = Fifth Figure; 6 = Sixth Figure; 7 = Seventh Figure; 8 = Eighth Figure; PF = Preliminary Free; JF = Juvenile Free; IF = Intermediate Free; NF = Novice Free; JRF = Junior Free; SRF = Senior Free; PPR = Preliminary Pair; BPR = Bronze Pair; SPR = Silver Pair; GPR = Gold Pair; P DT = Preliminary Dance Test; BR DT = Bronze Dance Test; PS DT = Pre Silver Dance Test; S DT = Silver Dance Test; SFD = Silver Free Dance; PG DT = Pre Gold Dance Test; G DT = Gold Dance Test; GFD = Gold Free Dance; I DT = International Dance Test; B ADT = Bronze Adult Dance Test; PS ADT = Pre Silver Adult Dance Test; S ADT = Silver Adult Dance Test; PG ADT = Pre Gold Adult Dance Test; G ADT = Gold Adult Dance Test.

GOLD FIGURES

Leah Bradish, Professional; Mary Gorgen, Braemar-City of Lakes FSC.

GOLD FREE

Anne Hall, Greater Milwaukee FSC; Christina Gronski, Penguin FSC; Joy Herron, Professional; Nancy Pluta, Wisconsin FSC.

GOLD DANCE

Ann Breen, Cleveland SC.

ACHILLES FSC: PRE–Margaret Bunting, Katie Potter, William Bunting. 1–Katherine Tobin. 2–Nicole Fernandez. PF–William Bunting, Linda Perry, Margaret Bunting, Sonya Soanes. BR DT–Kylie Sheehan. S DT–Vikki June Parker.

SC OF THE ADIRONDACKS: PRE–Sara Eigenberg, Sarah Schiff. 1–Emily Santora. PF–Sara Eigenberg. JF–Angela Breyette.

ALL YEAR FSC: 3–Benjamin Wylie. IF–Benjamin Wylie. P DT–Ellen Poulsen.

ALPINE SC: 1–Tracy Harr. IF–Lisa Bryson.

AMHERST SC: PRE–Jean Baik. PF–Jean Baik.

ANCHORAGE FSC: P DT–Meredith Verrochi. BR DT–Derek Stedingh. B ADT–James Rodgers, Kurt Stedingh. **ANN ARBOR FSC:** PRE–Aimee Grisdale, Heather Wing, Stacie Kalter, Tara Lee, Ted Schaefer. 1–Cheryl Evans. PF–Aimee Grisdale, Heather Wing, Stacie Kalter, Tara Lee, Ted Schaefer. IF–Tina Deupree. P DT–Andre Haskett, Heather Lirette. BR DT–Bobbie Stoermer. PS DT–Margaret Schreck. S DT–Kara Thomas. PS ADT–Martin Sichel.

AUSTIN FSC: PRE–Kathryn Smith. PF–Kathryn Smith.

ICE CLUB OF BALTIMORE: 3–Anne Whitescarver.

BEAVER COUNTY FSC: P DT–Aleta Wright.

BERKLEY ROYAL BLADES FSC: P DT–Tami Tarnow. S DT–Laura Graham.

FSC OF BLOOMINGTON: PRE–Stephanie Fairchild. PF–Andrea Falk, Stephanie Fairchild.

SC OF BOSTON: P DT–Lindsay Ervin.

BOWLING GREEN SC: PRE–Amy Sundermeier, Ellen Ralston, Heather Zwierlein, Jennifer Mulgrew. P DT–Ellen Ralston, Jennifer Mulgrew, Jody Lynn Rosenbalm. BR DT–Lori Leathers.

WALT DISNEY'S
**MAGIC KINGDOM
 ON ICE**
©MAGIC KEEPER THE WALT DISNEY COMPANY
 Produced by KENNETH FELD

WALT DISNEY'S
**WORLD
 ON ICE**
©MAGIC KEEPER THE WALT DISNEY COMPANY
 Produced by KENNETH FELD



COME JOIN THE WORLD'S GREATEST SKATERS!

AUDITIONS for the U.S. and International editions of Walt Disney's Magic Kingdom On Ice and Walt Disney's World On Ice are held in conjunction with an engagement in a city near you. If you're 17 or older, or a high school graduate, waiting for a great opportunity, please send your resume with phone number to:

Anne Schmidt, Director of Skating Personnel
 DEPT. S, 3201 New Mexico Ave., NW
 Washington, DC 20016

ICE FOLLIES® and HOLIDAY ON ICE SM

- BRAEMAR-CITY OF LAKES FSC:** 1-Anand Bokde.
BROADMOOR SC: PF-Patricia Moseley.
BUFFALO SC: 2-Heidi Brounshidle. JF-Heidi Brounshidle.
BURNSVILLE-MINNESOTA VALLEY FSC: PRE-Kim Barker. 4-Gwen Koolmo. PF-Kim Barker. NF-Gwen Koolmo.
CANTIAGUE FSC: PRE-B Meredith Ward, Jennifer Brown. 1-Mamie Moon, Maudy Kalangie. 2-Lori Dostis, Pamela Erlanger.
CENTENNIAL SC: PF-Heidi Litman.
CHICAGO FSC: PRE-Kimmie Pasquesi, Michelle Schlifke. 1-Karen Kos, Melissa Bowman. 6-Mary Lou Bauer. PF-Kimmie Pasquesi, Michelle Schlifke.
CHRISTMAS BROOK FSC: P DT-Shauna Quinn.
FSC OF CINCINNATI: P DT-Nicola Breeze.
CLEVELAND SC: PRE-Sally Moll. BR DT-Amy Hall. PG DT-Carolyn Eppes.
COLONIAL FSC OF MA: 2-Heather Breen, Jennifer Gooding. JF-Heather Breen. NF-Colleen Maguire.
COLORADO SC: JF-Kristen Agler.
COLUMBIA FSC OF MD: 1-Loryn Oliver.
COLUMBINE FSC: 1-Amanda Jones. 2-Shawna North. PF-Roslyn Bauer, Wynne Kennedy. JF-Shawna North.
COMMONWEALTH FSC: 5-Denise Powers.
COTTONWOOD HEIGHTS FSC: PRE-Janine Fouts, Jennifer Luangsawasdi, Kathleen Culla, Sophia Flinders. 1-Alicia Christians. 3-Teri Ann Nielsen. 5-Darcy Hunt. PF-Janine Fouts, Jennifer Luangsawasdi, Sophia Flinders. IF-Roberta Flygare, Teri Ann Nielsen. S DT-Shirlee Wilson.
DALLAS FSC: PRE-Tiffany Johnson. PF-Tiffany Johnson.
DARIEN SC OF SOUTHERN CT: PRE-Alicia Hall. JF-Laurie Bankowski.
DAYTON FSC: PRE-Ling Lin, Nicole Stadler. P DT-Andrea Clements, Julie Rice, Sheila Reser.
UNIVERSITY OF DELAWARE SC: 1-Jordan Gawinski. 2-Kristen Pedroso. PF-Amy Thompson, Dianne Nichols, Kirsten Gruin, Meredith Bolea. P DT-Amy Thompson, Meredith Bolea, Stefanie Smith.
DENVER FSC: PRE-Ashlee Bean, Jillaine Hutchings. 1-Ann Nevels, Betsy Baxa, Jennifer Fletcher, Jennifer Murdock. PF-Molly Kinne, Rebecca Arrington.
DETROIT SC: 1-Tana Lang. PS DT-Elizabeth Parker, Maria Valente, Shelly Maluchnik. PG DT-Christine Hrynyk.
DIABLO FSC: PRE-Christy Burt. 5-Heidi Pruett. PF-Christy Burt. IF-Teresa Crowell.
DUPAGE FSC: PRE-Sonia Nehrlich. PF-Sonia Nehrlich.

ESCANABA AREA FSC: PF–Kimberly Nelson.
ESSEX SC OF NEW JERSEY: PRE–Marcus Silva, Megan Tully.
EUCLID BLADE & EDGE CLUB: 1–Gwen Cherne. PF–Ann Feldkamp. IF–Emily Smayda.
FAIRBANKS FSC: JF–Jenny Sowry. P DT–Frank Wuttig, Lynn Ribar. S DT–Stacey Swift.
FLAGG POND SC: PF–Joy Pires.
SC OF FLORIDA: P DT–Nicholas Proscia.
FORESTWOOD FSC: PRE–Jannelle Muir. PF–Christine Lupico, L. Tammy Yurcik, Suzi Oswald. P DT–John Holton.
FRASER FSC: 1–Amanda Deyo. 3–Carrie Brown. 6–Laura Trescone. JF–Annie Shook, Erica Grunwald. IF–Heather Plati, Melissa Rosen. P DT–Kristy Long, Marisa Cybulski, Shawn Vitale. BR DT–Carolyn Crabtree, Leslie Walker, Lori Anderson, Mary Beth Perri, Wendy Pytlak. S DT–Shannon Livingston.
GARDEN CITY FSC: 7–Tamra Chute. NF–Kelly Bergman. JRF–Tamra Chute. P DT–Angela Pratt.
GARFIELD HEIGHTS FSC: NF–Jill Levy.
GENESEE FSC: PRE–Kelly McCormick. PF–Audrey Jones, Linda Forward, Maia Wilkin. IF–Jennifer Markham, Katie Brown, Robert Caldwell, Jr., Wendy Hendler. BR DT–Heather Campbell, Marni Dana Goodman, Pamela Jacobs. PS DT–Dave Carse, Heather Gornall, Karen Shapoff.
GLENWOOD FSC: PRE–Lauren Slomka, Miki Kern. PF–Darcy Guthrie, Lauren Slomka, Miki Kern. S DT–Erika White.
GOLDEN STATE FSC: PRE–Laura Snyder. 1–Chi Nguyen, Kathy Thompson. PF–Laura Snyder.
GREAT LAKES FSC: PRE–Victoria Lucas. 1–Darlene Hutton, Mary Moss, Shannon Olive, Stacey Droncheff. 2–Lori Pinter. 3–Michelle Konarski. JF–Christina Marcantonio, Nancy Lakatos. P DT–Catherine Perry, Jackie Haining, Nancy Lynn Zyskowski, Priscilla Nagy, Tina Nagy. BR DT–Pamela Witkowski.
GREATER GRAND RAPIDS FSC: PRE–Crystal Harris, Joyelle Monroe. 4–Jenna Jackson. PF–Crystal Harris, Katie Scott. PS DT–Jenna Jackson.
GREATER MILWAUKEE FSC: PRE–Laura Naus. 1–Michele Lavin. 7–Anne Hall.
GREENWICH SC: 1–Ryan MacLeod.
HAMDEN FSA: 1–Roman Fraden. 2–Melissa Depodesta. PF–Shelley Mascola. JF–Roman Fraden, Shandra Patton. P DT–Jennifer Hyduk. BR DT–Tricia De Podesta.
HERSHEY FSC: PRE–Kimberly Furjanic. JF–Christine Cline. P DT–Christine Cline. BR DT–Amy Reeder, Keena Wels, Nathan Buck, Pamela Erisman.
HIAWATHA SC: S DT–Lori Bourque.
HIGHLAND SC: 4–Shelby Reinholdtsen. PF–Catherine Bradshaw, Sally Crowell. B ADT–Stig Sundesten.

This summer, train in COLORADO!
PUEBLO PLAZA ICE ARENA

SUMMER TRAINING CAMP

June 13 through July 31

\$2.50 ALL SESSIONS!

YES, all Patch, Freestyle
 Dance, and Pairs \$2.50!

★ ★ **Icetime Package Discounts Available** ★ ★

- ★ High altitude training at 4,500+ ft.
- ★ Beautifully designed 200 × 85 ft. arena
- ★ Affordable housing on campus of University of Southern Colorado
- ★ (Around-the-clock transportation provided by P.P.I.A.)
- ★ Coaches, ask about housing discounts!
- ★ Videotaping
- ★ Just 40 minutes south of the Olympic Training Center!

ROBBIE BAKER, DIRECTOR

For more information, write P.P.I.A.,
 100 N. Grand Ave., Pueblo, CO 81003
 or call (719) 542-8784.

Sun Valley

Announcing

ALEX McGOWAN

1988 USFSA COACH
 WORLD & OLYMPIC
 TEAM COACH

Coach/instructor 1986 & '88 Ladies National
 Champion, 1986 World Champion

AT SUN VALLEY THIS SUMMER
July 1 – Sept. 5

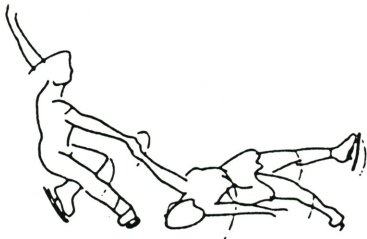
Sun Valley Skating Center
 Box 888, Sun Valley, Idaho 83353
 (208) 622-3888

Herman Maricich, Director

For More Information See Our Full Page Ad This Issue



1 9 8 8 • S U M M E R
SKATING SCHOOL



June 13 - July 22 or July 25 - Sept. 2

EDORA POOL ICE CENTER

1801 Riverside Avenue
Fort Collins, Colorado 80525

For free brochure,
contact Paul Thibert
at (303) 221-6679.



City of Fort Collins
Parks and Recreation

SCRIBE

FROM



**SOLD ALL OVER
THE WORLD**



CARRYING CASE AVAILABLE

This easy to use, compact Figure Skating
Scribe is **GUARANTEED FOR 2 YEARS.**

U S WHOLESALE DISTRIBUTORS
MIDWEST SKATE CO. MICHIGAN
LUBIN S SKATE SUPPLIES NEW HAMPSHIRE



JERRY'S SKATING WORLD^{INC.}

520 Hood Road, Markham, Ontario
Canada L3R 3K9 (416) 477-1172

HOUSTON FSC: PRE-Jessica Hitchcock. 4-Tiffany Wyndham. PF-Jessica Hitchcock. P DT-Jessica Hitchcock.

HUDSON-MOHAWK FSC: PRE-Katharine Cronk, Rachel Levine. 7-Mimi Wacholder. PF-Jamie Palmieri, Kristy Amato. JF-Erin Wojtowicz. PS ADT-Judy Bovitz.

IC OF WASHINGTON: PS ADT-Maureen Flanagan.

ICELAND FSC OF HOUSTON: P DT-Nita Elliott. PS DT-Shannon Blaney.

KALAMAZOO FSC: BR DT-Michael Gottwald. S DT-Lisa Lennon.

KANSAS CITY FSC: 1-Danielle McKinney. 2-Nicole Prugh. JF-Nicole Prugh. PPR-Kelly Martin, Kristopher Berkland.

LA JOLLA FSC: PRE-Karin Sherr, Kathryn Vaughn, Katrina Baughman, Katy Griffiths, Natalie Cruz. 1-Catherine Becker. 2-Samantha Liegner. PF-Karin Sherr, Kathryn Vaughn, Katrina Baughman, Katy Griffiths, Natalie Cruz. IF-Samantha Liegner. NF-Adrienne Alvarez.

SC OF LAKE PLACID: 4-Tricia Sabataso. 5-Laura Greenberg.

LAKEWOOD WINTER CLUB: PRE-Christina Harris, Kelly Hunsaker. 5-Jessica Markham. PF-Christina Harris, Kelly Hunsaker.

LINCOLN CENTER FSC: 7-Becky Francisco.

LONE STAR FSC: PRE-Margaret Perry, Sarah Del Valle. PF-Margaret Perry, Sarah Del Valle.

LOS ANGELES FSC: 1-Nancy Horton. PS DT-Caroline Wyman, Joanne Durst.

SC OF MAINE: 1-Carrie Hess, Danielle Lasker, Jerome Michael, Katie Doughty.

MANKATO FSC: PRE-Angie Dedinsky, Sarah Sylvester. 1-Anne Grothe Kruse. PF-Angie Dedinsky, Sarah Sylvester. JF-Amy Strobel.

MARQUETTE FSC: 1-Wendy Kivela. 2-Jamie Betts. 3-Kristen Carlson. P DT-Angela Vandermissen. BR DT-Carey Weiss. PS DT-Amanda Smith.

MASSENA FSC: PRE-Brooke Riggs. 1-Angela Ayotte.

MENTOR FSC: PRE-Heather Galatic. 1-Amanda Victor, Diana Zimmer. PF-Elizabeth Stratman, Jamie Yee, Kathryn Shuss, Stephanie Crock. JF-Heidi Vollstadt, Meredith Whitlock, Tina Jenuleson.

FSC OF MINNEAPOLIS: PRE-Cindy Swenson, Dina Knutson. PF-Cindy Swenson, Dina Knutson.

MISSION VALLEY ISC: PRE-Sheri Varrelmann. 1-Gretchen Schmidt. 2-Sandra Ann Dudley. PF-Amanda Hendricks, Brandee Malto, Evelyn Raphael, Sheri Varrelmann. JF-Sandra Ann Dudley, Sarah Ebersole. BR DT-Gretchen Schmidt, Melissa Allen.

SC OF MORRIS NJ: PRE-Colleen Baude, Emily Campbell, Karen Wells, Lauren Riley, Lise Gloede, Michael Chin. PF-Colleen Baude, Devon Martin, Karen Wells, Lise Gloede. JF-Jo Schlact Allsop. IF-Beth Allen, Devin Desimone, Kristina Doyle.

NEW HAVEN SC: 1-Eliza Barry.

SALT CITY FIGURE SKATERS: P DT–Sara Walrath.
SAN DIEGO FSC: PRE–Clara Hoagland. PF–Clara Hoagland. P DT–Cynthia Rosenbaum.
SAN FERNANDO VALLEY FSC: PRE–Andrea Copp, Jack Levenson, Kimberly Panter. 1–Kimberly Silva, Melody Morris. 2–Wonjung Park. PF–Andrea Copp, Jack Levenson, Kimberly Panter. JF–Wonjung Park.
SEATTLE SC: PRE–Cindy Prodigalidad. PF–Cindy Prodigalidad. P DT–Megan Nickolson.
SHAKER FSC: IF–Dana Goodman, Tania Menesse.
SILVER BLADES FSC OF KC: 2–Mary Uher. P DT–Olisa Warren. PS DT–Regina Stanek. S DT–Sariya Jarasviroj.
SILVER SKATE FSC: P DT–Jocelyn Cox, Marcus Gerlack.
SKOKIE VALLEY SC: PRE–Amanda Mareta, Megan Brannstrom, Scott Ohlmiller. 1–Anne Smith. 5–Lori Strull. PF–Amanda Mareta, Megan Brannstrom, Scott Ohlmiller.
SMITHFIELD FSC: 2–Wendy Altieri. P DT–Melissa Vardakis.
SOUTH MOUNTAIN FSC: PRE–Suzanne Obst. 5–Sloane Yeh. PS ADT–Dorothy Schild, Earl Roberts.
SOUTHERN CALIFORNIA FSC: 1–Jennifer George, Kristina Vera.
SOUTHERN NEW HAMPSHIRE SC: PRE–Lianne Gaudreau, Sarah Miville. PF–Heather Janelle, Lianne Gaudreau, Maria Davison, Sarah Miville.
SC OF SPRINGFIELD: 1–Leigh Garner, Sarah Foskett.
ST. CLOUD FSC: PRE–Elizabeth Bancroft, Kara Long, Sarah Okland. PF–Elizabeth Bancroft, Sarah Okland. JF–Nicole Noack. IF–Caela Marrin.
ST. MORITZ ISC: PRE–Jesus Juamos-i-timone. 1–Ilene Misheloff, Tracy Graves. 2–Heather Clements, Jennifer Luckhurst. 3–Brynn Leake, Tina Munson. 4–Kaho Koinuma. S DT–Randee Randall, Silvia Sorell.
ST. PAUL FSC: 1–Terri Tesser, Traci Davis. 3–Stephanie Holman. 5–Brenna Boyer.
STOCKTON FSC: SPR–Christopher Harwood, Kimberly Morales.
STONE MOUNTAIN FSC: PRE–Jacquelyn Lee. PF–Jacquelyn Lee.
TRI-COUNTY FSC: PRE–Alison Draz. PF–Alison Draz.
TROY SC: PRE–Christina Deaton. PF–Christina Deaton.
UNION COUNTY FSC: P DT–Kerry Kaltnecker.
UTAH FSC: 1–Katrina Cannon. 2–Kevin Garrett. JF–Kevin Garrett.
WAGON WHEEL FSC: PRE–Amanda Leahy, Betsy Lee, Chrissy Bechtold, Christy Datin, Leslie Schag, Suzanne Jokiel. 1–Nicole Wane. 2–Cory Eberhardt, Stacy Huggins. PF–Amanda Leahy, Betsy Lee, Chrissy Bechtold, Christy Datin, Leslie Schag, Suzanne Jokiel.
WARWICK FIGURE SKATERS: IF–Jill Ortelt. P DT–Erin Improta, Laura Pavia, Letizia Ciletti, Lynn Ridgewell, Marie McOsker. BR DT–Audra Bradshaw, Helen Harrison. PS DT–Andrew Schmitt.
WASHINGTON FSC: 7–Geremi Weiss. P DT–Adrienne Klein, Barbara Nastus, Emilie Karrick, Genevieve Kostic, Heather Thompson, Michael Johnson, Vidlet Mies. B ADT–Dita Smith.
FSC OF WATERTOWN: PS DT–Stephanie Sherman.
WEST COVINA FSC: PRE–Jennifer Holden, Jolene Pizzo, Rona Rapadas. 2–Salena Courtney. PF–Jennifer Holden, Jolene Pizzo, Rona Rapadas. JF–Lora Brophy, Salena Courtney.
SC OF WILMINGTON: 1–Amy Gunzenhauser, Michelle Olin. JF–Lisa Ann Meshbesh. P DT–Beth Feldpush, Linda Hazen, Robert Higgins, Jr. BR DT–Amy Theorin. PG DT–Christina Silvestri. B ADT–Josephine Eccel. PS ADT–Virginia Harcke.
WINCHESTER FSC: PRE–Janine Pagnotta, Kerrie Bartlett, Linda Di Matteo, Melissa Walters, Michelle Shramek, Paul Shvartzman.
WISCONSIN FSC: 2–Jennifer Stiemke, Natalie Dorman. P DT–Jennifer Stiemke, Kelly Burton, Michelle Young, Sam Serio. BR DT–Amy Krueger.
INDIVIDUAL MEMBERS: PRE–Darlin Baker, Kelly Burton, Michelle Pelchat. 1–Jayne Traurig. PF–Darlin Baker, Kelly Burton, Michelle Pelchat. P DT–Amanda Beitmann. S DT–Patricia Fulton.
PROFESSIONALS: BR DT–Bett Schaffhauser. PS DT–Deborah Koellner. PG DT–Kelly Thompson, Stacey Schlup.

World Championships

Continued from page 11

| | | | | | |
|--------------------|----|----|----|----------------------------------------------------------------------|------|
| 13. | 13 | 13 | 13 | April Sargent & Russ Witherby, USA | 26.0 |
| 14. | 14 | 14 | 14 | Vera Rehakova & Ivan Havranek, Czechoslovakia | 28.0 |
| 15. | 15 | 15 | 15 | Melanie Cole & Michael Farrington, Canada | 30.0 |
| 16. | 16 | 16 | 16 | Dominique Yvon & Frederic Palluel, France | 32.0 |
| 17. | 17 | 17 | 17 | Honorata Gorna & Andrzej Dostatni, Poland | 34.0 |
| 18. | 18 | 19 | 18 | Andrea Weppelmann & Hendryk Schamberger, Federal Republic of Germany | 36.4 |
| 19. | 19 | 18 | 19 | Tomoko Tanaka & Hiroyuki Suzuki, Japan | 37.6 |
| 20. | 20 | 20 | 20 | Susanna Rahkamo & Petri Kokko, Finland | 40.0 |
| 21. | 21 | 21 | 21 | Krisztina Kerekes & Csaba Szentpetery, Hungary | 42.0 |
| 22. | 22 | 22 | 22 | Monica MacDonald & Rodney Clarke, Australia | 44.0 |
| 23. | 23 | 23 | 23 | Desirée Schlegel & Patrik Brecht, Switzerland | 46.0 |
| 24. | 24 | 24 | 24 | Birgit Pleninger & Michael Steiner, Austria | 48.0 |
| final not reached: | | | | | |
| | 25 | 25 | | Yucca Liu & Jim Sun, Chinese Taipei | |

Pacific Coast Precision

Continued from page 17

| | | | | | | | | | |
|----------------------------------|---|---|---|---|---|---|-----|--|--|
| 3. Pacific Stars, Santa Rosa FSC | | | | | | | | | |
| 2 | 4 | 3 | 4 | 1 | 2 | 3 | 5/3 | | |
| 4. Icettes, San Diego FSC | | | | | | | | | |
| 4 | 3 | 4 | 2 | 4 | 3 | 4 | 7/4 | | |

ADULT

JUDGES: A-P.B. Livingston; B-C.A. Tagas; C-N.J. Carello; D-P.J. Stark; E-J. Burden; F-J. Butcher; G-L. Brosio. REFEREE: B. Sonnhalter. ASSISTANT REFEREE: D.E. Mumper. ACCOUNTANT: A. Dondoro.

| | A | B | C | D | E | F | G | M |
|--------------------------------------|---|---|---|---|---|---|---|-----|
| 1. Fabulous Forties, Los Angeles FSC | 1 | 1 | 1 | 1 | 1 | 1 | 1 | 7/1 |
| 2. Silver Cascades, Silver Skate FSC | 2 | 2 | 2 | 2 | 2 | 2 | 2 | 7/2 |
| 3. Dream Team, Highland FSC | 4 | 3 | 3 | 4 | 4 | 3 | 3 | 4/3 |
| 4. Quicksilver, Arctic Blades FSC | 3 | 4 | 4 | 3 | 3 | 4 | 4 | 7/4 |

INTERMEDIATE

JUDGES: A-Mary Lou Anders, San Diego, CA; B-P.B. Livingston; C-C.A. Tagas; D-N.J. Carello; E-J. Burden; F-J. Butcher; G-L. Brosio. REFEREE: D.E. Mumper. ASSISTANT REFEREE: B. Sonnhalter. ACCOUNTANT: A. Dondoro.

| | A | B | C | D | E | F | G | M |
|----------------------------------|---|---|---|---|---|---|---|-----|
| 1. Pacific Stars, Santa Rosa FSC | 1 | 1 | 1 | 1 | 1 | 1 | 1 | 7/1 |
| 2. Starlettes, All Year FSC | 2 | 2 | 2 | 2 | 2 | 2 | 2 | 7/2 |
| 3. Peppermint Twists, Utah FSC | 3 | 3 | 3 | 3 | 3 | 3 | 4 | 6/3 |
| 4. Cherokees, Arrowhead FSC | 4 | 4 | 4 | 4 | 4 | 4 | 3 | 7/4 |

JUVENILE

JUDGES: A-M.L. Anders; B-P.B. Livingston; C-C.A. Tagas; D-N.J. Carello; E-J. Burden; F-J. Butcher; G-L. Brosio. REFEREE: D.E. Mumper. ASSISTANT REFEREE: B. Sonnhalter. ACCOUNTANT: Dr. B.C. Chan.

| | A | B | C | D | E | F | G | M |
|----------------------------------|---|---|---|---|---|---|---|-----|
| 1. Starlites, San Diego FSC | 1 | 1 | 1 | 2 | 1 | 1 | 1 | 6/1 |
| 2. Ice Crystals, All Year FSC | 2 | 2 | 4 | 1 | 2 | 2 | 3 | 5/2 |
| 3. Pacific Stars, Santa Rosa FSC | 3 | 6 | 3 | 5 | 3 | 3 | 2 | 5/3 |
| 4. Sweet Dreams, Highland FSC | 5 | 3 | 2 | 4 | 4 | 4 | 4 | 6/4 |
| 5. Mini Mints, Utah FSC | 4 | 5 | 5 | 3 | 6 | 5 | 5 | 6/5 |
| 6. Crystal Stars, All Year FSC | 5 | 4 | 6 | 6 | 5 | 6 | 6 | 7/6 |

Calgary Notes

Continued from page 7

Calgary will be carried with us forever. We all had the time of our lives, but it was time to return to reality after being in the center of the world's attention for two whole weeks.

To top everything off, one week after we came home, we were all invited to the White House for a reception with President Reagan. What an honor and how truly blessed we athletes are! It was really exciting being in the White House with the President. And it was also wonderful being with my teammates again and reliving the Big "O" all over again.

This article was first printed in the Los Angeles Figure Skating Club News Bulletin.

Advertisers

INDEX

| | | |
|------------------------------------------|---|--------|
| Aspen Summer Skating School | A | 48 |
| Bryan International Travel | B | IBC |
| Campbell's Soup | C | OBC |
| Designs by Margarita | D | 56 |
| Endora Pool Ice Center | E | 55 |
| Franklin Nelson Center | F | 51 |
| Harlick & Co. Inc. | H | 5 |
| Ice Castle International Training Center | I | IFC |
| Ice Follies & Holiday on Ice | | 53 |
| The Ice House | | 8 |
| Jerry's Skating World | J | 55, 56 |
| 89 Nationals, Baltimore | N | 20 |
| New England Figure Skating Camp | | 9 |
| Nicholls Sports Inc. | | 50 |
| Pueblo Plaza Ice Arena | P | 54 |
| Riedell Shoes Inc. | R | 12 |
| Rochester-Olmsted Recreation Center | | 51 |
| Roeder Travel Ltd. | | 15 |
| Sun Valley Skating Center | S | 18, 54 |
| Tom Collins 88 Olympic & World Tour | T | 45 |

Sports Medicine

Continued from page 23

2. Consider having easy and hard days. Don't just have hard days.
3. Vary content during lessons and practice sessions. Don't stay on the same jump all day.
4. Consider taking a day off. Don't deny your body deserved R & R. Injury and re-injury are not part of the sport. Pain is not necessary. Pain is usually a warning. Take heed and monitor your own activities. Be your own best friend.

Claire F. McCarthy is Director of Physical and Occupational Therapy at The Children's Hospital, Boston, and is Associate Professor at the Massachusetts General Hospital Institute for Health Professions.

A Winning Team . . .



. . . continues in the AIR

**THE UNITED STATES
FIGURE SKATING ASSOCIATION**



is pleased to continue the appointment of

UNITED AIRLINES



as the official carrier of the USFSA
in conjunction with

**BRYAN INTERNATIONAL
TRAVEL**



exclusive travel agency for the USFSA

**BRYAN SKATING DESK
(800) 234-6432 (Nationwide)
(415) 579-0455**

Special Discount fares available to all USFSA members and skating enthusiasts for all skating related functions.

5% off all Supersaver fares
45% off any unrestricted coach fares
at any time for all skating related travel

FOR COMPLETE INFORMATION AND TICKET PURCHASES,
CALL OR WRITE TO: **BRYAN INTERNATIONAL TRAVEL**

Attention: Sports Department
1200 Howard Avenue #203
Burlingame, CA 94010

Head Office in San Francisco, CA 94102



CARE PACKAGE

When you pack a thermos of piping-hot Campbell's® Soup alongside that sandwich, you're packing your child's lunch box with a lot more than you think.

Take Campbell's Chicken Vegetable Soup, for instance. You probably make it because it's a good way to get your child to eat vegetables, but it's also a good source of vitamin A. So is our Beef Soup, by the way. And Campbell's four tomato soups aren't just delicious, they're a good source of vitamin C, too.

You might pack one of our cream soups because it's so warm and soothing, but when it's made with an equal amount of milk, it's a good source of calcium.

There are a lot of reasons to send Campbell's Soup along. In fact, there are a lot of Campbell's Soups. Which means you can pack a different one every day and make that same old sandwich seem a lot more interesting.

But the best reason is that these Campbell's Soups show you care. Not just about giving your child something that tastes good and is good for them, but something that makes your child feel good.

And when you can pack all that into one lunch box, that makes it a very special package.

**CAMPBELL'S
SOUP IS GOOD FOOD**



Campbell's has a full line of low sodium soups for those people who are on a salt-restricted diet or have a concern about sodium.