

APRIL 1989

Skating®



Campbell's® Soups

'89 TOUR OLYMPIC & WORLD FIGURE SKATING CHAMPIONS

Sanctioned by



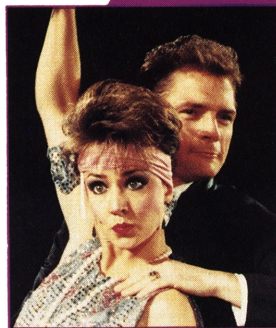
Presented by
TOM COLLINS



*The World's
Top Ice Skating
Champions*

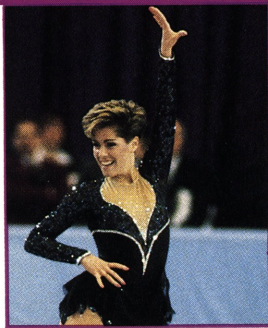
ONE PERFORMANCE ONLY!

Baltimore, MD, Baltimore Arena, Fri. May 19 • Washington, DC, Capital Centre, Sat. May 20 • East Rutherford, NJ, Meadowlands Arena, Sun. May 21 • Philadelphia, PA, The Spectrum, Mon. May 22 • Long Island, NY, Nassau Coliseum, Wed. May 24 • Hartford, CT, Civic Center, Thu. May 25 • Boston, MA, Boston Garden, Fri. May 26 • Pittsburgh, PA, Civic Arena, Sat. May 27 • Cincinnati, OH, Riverfront Coliseum, Sun. May 28 • Milwaukee, WI, Bradley Center, Tue. May 30 • Chicago, IL, Chicago Stadium, Wed. May 31 • Detroit, MI, Joe Louis Arena, Thu. June 1 • Cleveland, OH, Richfield Coliseum, Fri. June 2 • Atlanta, GA, The Omni, Sat. June 3 • Denver, CO, McNichols Arena, Sun. June 4 • Houston, TX, The Summit, Tue. June 6 • Oakland, CA, Oakland Coliseum, Wed. June 7 • San Francisco, CA, Cow Palace, Thu. June 8 • Los Angeles, CA, The Forum, Sat. June 10 • San Diego, CA, Sports Arena, Sun. June 11 • Tacoma, WA, Tacoma Dome, Mon. June 12 • Portland, OR, Memorial Coliseum, Tues. June 13 • Sacramento, CA, Arco Arena, Wed. June 14 • Phoenix, AZ, Memorial Coliseum, Sat. June 17 • Kansas City, MO, Kemper Arena, Sun. June 18 • Minneapolis, MN, Met Center, Mon. June 19 • Indianapolis, IN, Market Square Arena, Tue. June 20 • Baton Rouge, LA, Riverside Centreplex, Thu. June 22 • Orlando, FL, Orlando Arena, Fri. June 23 • Dallas, TX, Reunion Arena, Mon. June 26



GEORGE S. ROSSANO

page 24



INGRID BUTT

page 28



page 21

1989 World Figure Skating Championships Results	16
William Thayer Tutt	21
by Benjamin T. Wright	
Wynne and Druar	24
At Long Last Gold	
Maria's Christmas - 1988	27
1989 U.S. Figure Skating Championships	28
Closing Out the Decade	
Photographic Memory	46
NutraSweet "Giving It 100%" Awards	49
1989 Canadians	50
by Michael Graham	
Northwest Pacifics	53
Midwesterners	56

Departments

News Briefs	4	19	Ice Abroad
From the President's Desk	6		1989 World University Games
In Reply	9	59	Calendar of Events
Ricky Harris	11	61	Classifieds
Official Notes	13	63	Laurels
People & Places	14	70	Advertisers' Index

Cover: Susan Wynne & Joseph Druar, 1989 U.S. Senior Dance Champions.

PHOTO BY PAUL HARVATH

Skating

Editor
DALE MITCH

Art Director
PAMELA S. GUIRE

Managing Editor
IAN A. ANDERSON

Advertising/Production
MARY ANN PURPURA

Advertising

Rate card supplied on request. SKATING and the USFSA neither endorse nor take responsibility for products or services advertised herein. The Publisher reserves the right to reject or cancel any advertising at any time.

SKATING (ISSN: 0037-6132) is published by the United States Figure Skating Association, 20 First Street, Colorado Springs, CO 80906-3697. Phone (719) 635-5200. Subscription rate: United States and Canada, one year **\$15.00 (U.S.)**. Foreign, one year **\$30.00 (U.S.)**. Allow 6-8 weeks delivery of the first issue. Second Class postage paid at Colorado Springs and at additional mailing offices. SKATING is published monthly October through July (10 issues per year). Copyright © 1989 by The United States Figure Skating Association (USFSA), Colorado Springs, CO. **Postmaster: Please send address corrections to SKATING, 20 First Street, Colorado Springs, CO 80906-3697.**

USFSA President – Hugh C. Graham, Jr., M.D.

Executive Director – Ian A. Anderson



Member International Skating Union



SKATING is the official publication of
The United States Figure Skating Association (USFSA).



Group A Member

NEWS BRIEFS

U.S. skaters ended the fall international season with a very successful showing, taking a total of 46 medals at 14 competitions: 12 gold, 16 silver, and 18 bronze. It was a admirable showing, and congratulations are due to the entire 1988-89 International Team.

☆ ☆ ☆

Television coverage of skating events and personalities continues to increase. In March, in addition to CBS's extensive coverage of the World Championships, ABC carried the professional *Challenge of Champions*

from Paris, and ESPN broadcast the *Stars on Ice* production. Brian Boitano was seen as a special guest of the *Pat Sajak Show*, and Christopher Bowman appeared on both the Roy Firestone ESPN talk show, and on (what else?) *The Dating Game*, a game Chris is said to know quite well.

☆ ☆ ☆

President Bush on a recent visit to Colorado Springs startled early morning skaters at the Broadmoor World Arena. He strolled into the Arena, unannounced, a little after 6:00 A.M. to watch the young skaters doing early morning patch. Aware of the world

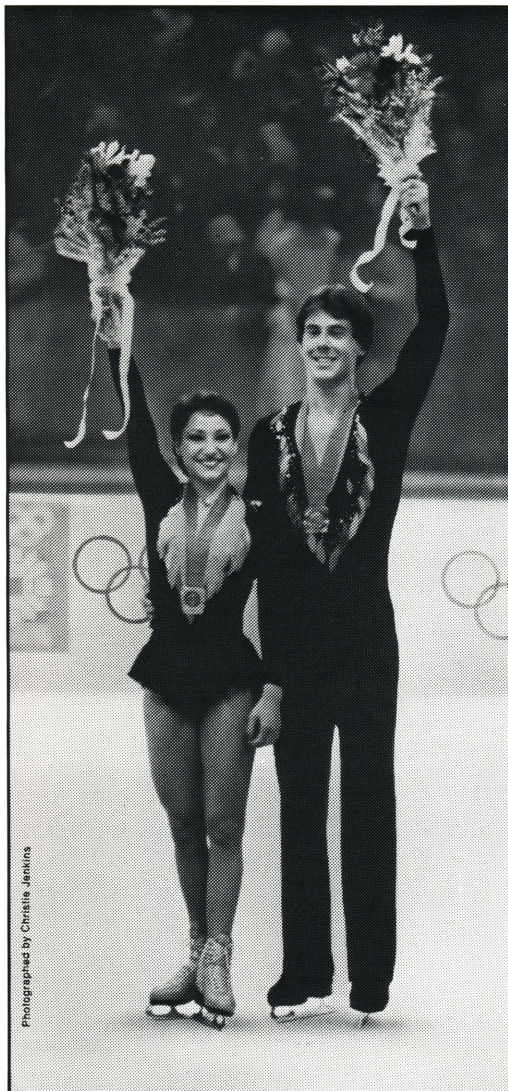
reputation of the training center, he wanted a first-hand look, and stayed about fifteen minutes chatting with the astonished skaters, encouraging their training, and asking which would be "future Olympians."

☆ ☆ ☆

Lily Lee, who trained in Colorado Springs, is now the new Korean Ladies' Champion. She represented Korea at the World University Games and World Championships under her Korean name of Lyoon-Jung Lee.

☆ ☆ ☆

Have you mailed your ballot for the 1989 *Skating Magazine Readers' Choice Award*?



Photographed by Christine Jenkins

WEAR
SP-TERI
CUSTOM
BOOTS,
WHEN
YOU
WANT TO
WIN.

Olympic
Silver Medalists

Kitty Cannith
Peter Cannith



2490 San Bruno Avenue • San Francisco, CA 94134 • (415) 467-7620



We accept Mastercard and Visa.





FROM THE PRESIDENT'S DESK

The Long Range Planning Committee has been reviewing the Association's organizational structure for some time. As a result, at this year's Governing Council Meeting, on May 12 and 13, the delegates will be asked to approve several significant changes to the Bylaws of the Association.

The overall intent is to provide greater efficiency and focus with more emphasis on policy by the Board and on rules by the suggested Administrative Council, to increase financial planning, to include more completely two important constituencies (coaches and rink operators), and to encourage continuity of competent leadership. It is interesting to note that the recent report of the USOC Oversight Commission, chaired by George Steinbrenner, contains many similar recommendations aimed at the same objectives in the Olympic Committee.

There are currently 18 Permanent committees and 20 Special committees of the USFSA, plus the Executive Director and Headquarters Staff, all of whom until this year reported to the President of the USFSA. Clearly, an organization of 50,000 members and a multi-million dollar budget cannot be run efficiently with the CEO overseeing so many of the committees and decisions necessary to keep the Association running, let alone plan effectively for the future.

Last May, at my direction, each Sectional Vice President was assigned over-

sight responsibility for a group of committees, based on their respective areas of knowledge, interest, and strength. The response has been very positive, both in terms of facilitating communications from the committees to the leadership and in terms of making effective use of these capable officers. Therefore, one of the recommendations is to make these reporting relationships permanent.

The role of the Board of Directors, and its composition also need modernization. We feel the Board of Directors should be more a planning and policy making body. With all permanent committee chairs on the Board, it has become an operational body consumed with making rules. The recommended reduction in the size of the Board, and the establishment of an Administrative Council consisting of all permanent chairs for rule making, should enhance the ability of the Association to plan and to set policy.

The Chairs of Competitions, Judges, and International Committees will continue as voting members of the Board. The Olympic and ISU Representatives, our interface to these important organizations, will be ex officio members of the Board. The plan envisions the Board and the Administrative Council both meeting in October and May as is the case now with the Board.

Another area of concern is the budget of the Association, and its varying sources of income and its ever increasing expenses. It is the full-time job of the Treasurer just to track our funds properly, leaving no time for financial and investment planning. It is clear that if the Association is to prosper and grow, the position of a Vice President for Finance must be created to manage that planning function.

The highlights, then, of the proposed Bylaws are:

- "Chairman" is changed to "Chair" throughout. Long overdue in my opinion.
- New category of Membership—Professional Members—for instructors, coaches, and performers.

• Creation of three Councils: Administrative Council, Rink Management Council, and Professional Council.

• New Administrative Council consisting of the Chairs of the Permanent Committees, for coordination of rules formulation and enforcement.

• Voting rights for Rink Management Members and Professional Members through their respective Rink Management Council and Professional Council, with each such Council's delegates calculated in the same manner as a member club.

• Reduction of Board of Directors from 45 voting members to 35 voting members, with emphasis on policy making and planning, as opposed to rule making.

• New Vice President for Finance, in addition to 3 Sectional Vice Presidents.

• Job description for Vice President for Finance, emphasizing financial and investment planning.

• Modest expansion of Finance Committee to permit more members with experience in finance.

• Creation of the position of President Elect to achieve greater continuity in the chief executive office of the USFSA.

I urge your support of these forward thinking changes, aimed at ensuring that the USFSA will move into the last decade of the 20th Century with renewed efficiency and vigor.

—Hugh C. Graham, Jr., M.D.
President, USFSA

Dr. Graham was a skater in his youth, competing in Singles and Pairs and represented the U.S. in the World Championships in both events. He has served as Team Leader for the Worlds and Olympics, has judged the Worlds and Olympics, is a World Referee, and was a consultant to President Ford's Commission on Olympic Sports. He graduated from Harvard College, received his M.D. from the University of Chicago and did his postgraduate medical studies at the University of Oklahoma, where he now serves as an Associate Clinical Professor of Pediatrics. He has been USFSA President since May 1986.

 **JERRY'S**
SKATING WORLD Inc.
EVERYTHING FOR
THE FIGURE SKATER



520 Hood Road
Markham, Ontario
Canada L3R 3K9
(416) 477-1172

Visions
of Excellence **Write or Call for a**
FREE Colour Catalogue

Riedell™



For a great performance

Endorsed By



RIEDEL SHOES, INC. P.O. BOX 21 RED WING, MN 55066
TELEPHONE: 612-388-8251 TELEX: 4931210 FAX 612-388-8616

IN REPLY

Dear Dr. Graham,

Your article in the January 1989 issue of *Skating* was an answer to a prayer! On Friday, my coach and I were bemoaning the ISU decision to eliminate figures from international competition. When I read your letter and learned that, yes, we *will* still be able to do figures if we so desire, I felt a lot better.

I'm over forty and working on First Figures, Juvenile Freestyle and Swing Dance and my Bronze Dances. Obviously, I'm *not* doing figures to qualify for *anything*. I do them because I *like* them, and of everything I do in skating I enjoy figures the most, because therein lies the greatest challenge.

My progress is slow—a forty-hour a week job and housework leave me with only ten hours of ice time a week, total, lessons included. But I *am* making progress, if only in “baby steps”

I was afraid, after the ISU decision, that I wouldn't be able to *do* figures anymore, or find a coach to teach them, or judges to judge them. I'm so happy figures are still with us, if only in a different way!

I'm sure there are *lots* of other skaters in the country who like figures as much as I do, kids and adults, who will still want to do them.

When you think about the situation, it opens up some exciting possibilities for adults, who can't possibly compete against kids in freestyle competitions without looking silly. Now that figures are separate, it gives the “over-the-hill gang” something to compete in *besides* dance.

The only problem that I can foresee with this is that those of us who *do* want to continue with figures might have difficulties trying to convince rink owners to provide patch time. I would imagine that if they can't fill all the patches, they won't let us patch any more.

Thank you again for your article! Figures are fun!

Mary Louise Chulak
Beaver Falls, PA

JERRY'S SKATING WORLD INC.

PRESENTS

SKATER'S WATCH

U.S. \$29.95

TO ORDER:
CALL OR WRITE
(416) 477-1172
520 HOOD RD.
MARKHAM, ONT.
L3R 3K9
CANADA





SUMMER SKATING SCHOOL TWIN RINK & SKATING CENTER

Unique recreational opportunities for all members of your family

Test Weekend, July 28-29

Test Week: August 28, 29, & 30, Championships, Aug. 31, Sept. 1, 2

Summer Session, June 1-September 10.

Adult Skater Program

DANCE WORKSHOP directed by Natalia Dubova Russian Team Dance Coach assisted by Sun Valley Dance Pros and Soviet World Team Dancers **JULY 25, 26, 27**

JUDGES SCHOOL HIGH & LOW PAIRS JULY 15-16

SKATING CARNIVALS every Saturday night July through Sept. 16

MARINA KLIMOVA & SERGEI PONOMARENKO, MAYA USSOVA & ALEXANDR ZHULIN
JULY 22 & 29

250 Patches daily
9 Free Style Sessions daily
6 Dance Sessions daily
Special Session for Pair &
Individual Work
Ballet, Structural
Reprogramming,
Choreography

Weekly Skating Carnivals
Supervised Dorm
Skating School Special Rates
Test Week
Sun Valley Summer Skating
Championships
Staff of Nationally Known
Instructors

Full-Size Outdoor Rink and Full-Size Indoor Ice Rink

PROFESSIONAL STAFF

Julie Barnett
Ron Barnett
Gary Beacom
Cathy Bird
Donald Bruce
Nesta Davies
Sonya Dunfield

Lorna Dyer
Charles Fetter
Kristin Fortune
Stephanee Lee Grosscup
Gia Guddat
Cindy Hulbert
Evelyn Kramer

Sharon La Riviere
David Lunn
Herman Maricich
Carol Mittun
Michele Monnier
Frank Loeser Nowosad
Glenn Patterson

Lona Sharp
Holly Stuns-Wheeler
Frank Sweiding
Anita Sweiding
Sherry Dorsey Winder

**For complete details write: HERMAN MARICICH,
Skating Director, Box 888, Sun Valley, Idaho 83353
(208)622-3888**

FOR LODGING RESERVATIONS CALL TOLL FREE 1-800-635-4408

The Ketchum-Sun Valley Community School, co-ed college preparatory boarding school, accommodates skaters in grades 7-12.



Ricky

HARRIS

On Teaching Choreography

Choreographic information can sometimes be transferred with little demonstration. In this way, skaters are able to inject their own qualities into the work, rather than imitating the choreographer. Instead of dictating an emotional response, encourage your skater to find their own within the choreography.

At times it helps to create the movements in slow motion, even though the finished phrase is to be done quickly, precisely, and with lightning clarity. After the skater masters the choreographic pattern, then speed can be gradually increased until it is skated at the correct tempo. Once the skater is taught the steps in a precise, slow motion manner, try not to demonstrate again, unless the skater is getting off on the wrong track. In this way, you won't impose your own psyche on them and they will have a chance to develop their own style and ways of moving.

To create a movement, *motivation* should come first to determine the gesture needed, and the attitude of the movement. The gesture can then be devised to make the motivation clear. You can then extend and abstract it into a movement that is strong enough to have an emotional impact on the audience.

In teaching footwork, the very act of having a skater count the music and memorize the rhythm is half the battle of learning. For a difficult piece of footwork, start by having the skater remember high points in the phrase. Then certain movements can be memorized at these high points. Following that, other movements can be learned and fitted in between. Through repetition, the timing will be perfected. It is interesting to start with a movement out of a section, and watch new situations present themselves between the skater and space; and space and time.

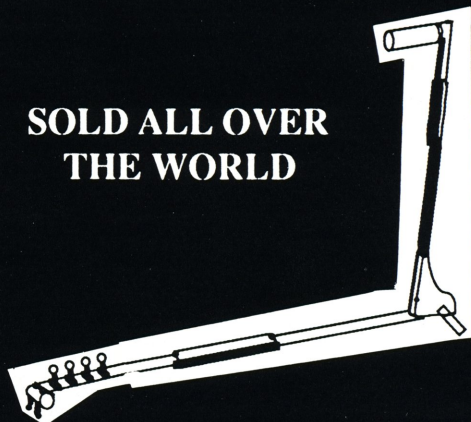
Continued on page 69

SCRIBE

FROM



SOLD ALL OVER THE WORLD



CARRYING CASE AVAILABLE

**This easy to use, compact Figure Skating
Scribe is GUARANTEED FOR 2 YEARS.**

**U.S. WHOLESALE DISTRIBUTORS:
MIDWEST SKATE CO. MICHIGAN
LUBIN'S SKATE SUPPLIES NEW HAMPSHIRE**

**JERRY'S SKATING WORLD INC.
520 Hood Road, Markham, Ontario
Canada L3R 3K9 (416) 477-1172**

1990

UNITED

STATES

FIGURE

SKATING

CHAMPIONSHIPS

FEBRUARY 4-11, 1990

SALT LAKE CITY, UTAH



For information, please contact:

Ms. Nita Sniteman

(801) 451-2827

1990 Nationals All-Event Tickets

P.O. Box 16183

Salt Lake City, Utah 84116

ALL EVENT TICKETS

through Oct. 31, 1989 - \$95.00

Nov. 1 to Dec. 3, 1989 - \$125.00

Service charge - \$1.50 per ticket

Visa and MasterCard accepted

CORRECTION TO ER 5.041/.042, PAGE 224, 1988-1989 RULEBOOK

ER 5.041 and ER 5.042 were inadvertently printed incorrectly in the current *Rulebook*.

The Governing Council voted in May 1988 as follows: *"Upon motion duly made by Jerry Sisson and seconded and amended by Joe Driano and seconded, it was resolved that coaches may serve on the Board of Directors of USFSA Member Clubs, subject to the limitation that only one coach may serve at any given time."*

As a result of this action *no* professional may be a delegate or hold a proxy at the Governing Council meeting in May 1989.

The summary chart on page 226 of the current *Rulebook* clearly indicates permitted activities by category.

ER 5.041/.042 are corrected to read as follows:

ER 5.04 — Ineligible Persons

.041 — Ineligible persons in skating as defined in ER 1.04 are ineligible for the following USFSA activities:

- (a) Competitions
- (b) Judging or trial judging competitions or tests;
- (c) Officer of the USFSA.
- (d) *Delegate of a USFSA Member Club.*

.042 — Ineligible persons in skating may if otherwise qualified:

- (a) Take USFSA tests;
- (b) Skate in carnivals and exhibitions to the extent permitted by the Sanction Rules;
- (c) Be a member of a USFSA Member Club (if eligible under the Member Club's By Laws);
- (d) *Serve on the Board of Directors of a USFSA Member Club, limited to one at any given time;*
- (e) Be a member of the USFSA Board of Directors and other USFSA Committees.

If a club has appointed a professional as delegate, the club should notify USFSA National Headquarters in Colorado Springs at once and a designation should be made or a proxy should be issued to an eligible person.

—*Ian A. Anderson*
USFSA Executive Director

OFFICIAL

Notes

1989 SPRING MEETING

The 1989 Spring Meeting of the USFSA Board of Directors will be held Tuesday, Wednesday, and Thursday, May 9-11, 1989, at the Disneyland Hotel, 1150 West Cerritos, Anaheim, CA 92802, (714) 778-6600. The first session is scheduled for Tuesday, May 9 at 8:00 P.M. Additional sessions are scheduled for Wednesday, May 10 at 8:00 A.M. and Thursday, May 11 at 1:30 P.M. All Board of Directors meetings will be closed.

The 1989 Annual Meeting of the USFSA Governing Council will be held Friday and Saturday, May 12 and 13, 1989, at the Disneyland Hotel, 1150 West Cerritos, Anaheim, CA 92802, (714) 778-6600. The opening session of the Governing Council will begin Friday at 3:00 P.M., preceded by USFSA seminars. The Governing Council meeting will be continued on Saturday, May 13 at 8:30 A.M.

A copy of the written notice of the meeting is available to USFSA Associate and Individual members (Club members should obtain further information from their club officers) upon request to the USFSA National Headquarters, 20 First Street, Colorado Springs, CO 80906, (719) 635-5200.

1989 COLLEGIATE CHAMPIONSHIPS

The fifth annual 1989 National Collegiate Figure Skating Championships will be held in Lake Placid, August 21 to 27, 1989. Events include: Senior and Junior Figures, Senior and Junior single's, freestyle, pairs, and dance. Eligibility requires singles to be full-time students in an accredited degree program. Pairs and Dance couples may be part-time students. For application forms write: USFSA, 20 First Street, Colorado Springs, CO 80906, attn: 1989 Collegiate Championships. Number of entries limited on a first-come basis.

Continued on page 70

People

AND PLACES



OLYMPIC REPRESENTATIVE

Paul E. George has been appointed Olympic Representative for the USFSA, replacing Charles U. Foster, who was recently elected USOC Secretary. In his new assignment, George will oversee all USFSA activities relating to the USOC and serve as a member of the Olympic Committee's Executive Board and the USFSA Board of Directors.

George has been an active member of the USFSA for over 30 years and served as World Team Leader 1975-1977 and was Manager of the 1980 Olympic Team. He is currently Chairman of the Long Range Planning Committee, Vice Chairman of the Commercial Sponsorship Committee, and serves on both the Television and Skaters Sponsorship Program Committees.

He was a former competitor and won the 1962 National Junior Pairs Championship with his sister, Elizabeth. George is a graduate of Harvard College and the Boston University School of Law and is currently a partner in the law firm of Kellogg, Gardner, and George in Wellesley, Massachusetts, where he resides with his wife, Helen. The couple have two children, Laurence and Timothy.



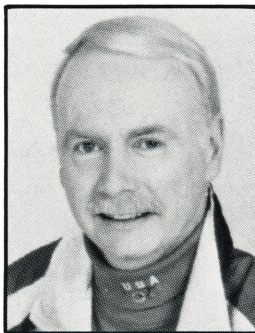
USOC SECRETARY

Charles U. Foster was elected to the position of Secretary of the U.S. Olympic Committee at the annual House of Delegates meeting in Portland, Oregon, in February. As Secretary, he will serve a four-year term during the current quadrennium, which will conclude following the 1992 Olympic Games.

Foster has been active with the USOC since 1973. He served three terms on the Board of Directors, was a member of the U.S. Olympic Festival Committee, and was the USFSA Olympic Representative. In 1988, he was Assistant Chef de Mission for the U.S. Olympic Team in Calgary.

Foster currently is USFSA Eastern Vice President, has been a member of the Board of Directors since 1966, and is one of only four American World Referees. He has served as Chairman of the Competitions Committee, a judge at the 1980 Olympics, 1972 Olympic Team Leader, and as a competitor, was the 1955 National Junior Pairs Champion (with partner Maribel Owen).

He is a graduate of Harvard University and is a wholesale lumber broker with Bush-Foster, Inc. in Duxbury, Massachusetts, where he makes his home with his wife Kay. They have two children, Victoria and Derrick.



CARROLL MOVES TO ARROWHEAD

Frank Carroll has been named the new senior vice president of the Ice Castle Inter-

national Training Center at Lake Arrowhead, California. He assumes his new position as of April 1.

As an amateur, Carroll trained under Maribel Vinson Owen, and was a medalist in three U.S. National Championships. He performed professionally for five years with Shipstad and Johnson's "Ice Follies." He holds a bachelor's degree in education and was the first official free skating coach for the U.S. Olympic Team.

His students have included Linda Frattianne, Mark Cockerell, Tiffany Chin, Fumio Igarashi, of Japan, Robert Bradshaw, Pekka Leskinen, Todd Sand, and currently Christopher Bowman. In 1977, he received a gold medal for teaching excellence from the International Professional Skaters Union.

BIRTHS

Skating professional **Trudy Holland** and husband Peter announced the arrival of their second son, Gerald Lucas, on February 4.

Lyndy Marron Brown and Robert K. Brown are the proud parents of Katie Elizabeth born February 9 in Costa Mesa, California. Lyndy is a former national competitor in Pairs with her brother Hal.

BEREAVEMENTS

Vincent H. "Dutch" Rendich, an active member of the Rye Figure Skating Club during the 1950's, passed away in December 1988. He was the father of Rikki Rendich Samuels, a former National competitor and gold medalist who currently teaches at Rockefeller Center and Skyrink in New York City.

Emily Kimbrough, mother of Gold Test Judge Alis W. McCurdy and skating professional Margaret Kuhn, succumbed to lung cancer on February 10 at the age of 90. She lead an eventful life having co-authored *Our Hearts Were Young and Gay* with Cornelia Otis Skinner and serving as fashion editor and later managing editor of *The Ladies Home Journal*.

Lois Waring McGean, five-time U.S. (1947-50, and 1952) and World Ice Dance champion in 1950 (the first time ice dancing became a world event), passed away on February 21. After her amateur career, she was a longtime skating instructor, choreographer, and director of skating shows for the Dartmouth Skating Club. She is survived by her husband and former dance partner Michael, two daughters Loren and Betsy, and her son Geoffrey.



Quality skating apparel
and accessories for skaters.
Custom designs available
for competition
Gymnastics dancewear and
precision teams.

DEALER INQUIRIES ONLY
Catalogue upon request

Information
5000 Buchan, Suite 403
Montreal, Quebec, Canada
H4P 1T2
Tel.: (514) 735-2589

les dessins
RLE designs



1989 WORLD FIGURE SKATING CHAMPIONSHIPS

PARIS, FRANCE
MARCH 14-19, 1989

MEN

JUDGES: 1-Mrs. Vanessa Riley, Great Britain; 2-Mrs. Jean Matthews, Canada; 3-Mrs. Joan Gruber, USA/Mrs. Shirley Taylor, Australia; 4-Mrs. Ingrid Reetz, Federal Republic of Germany; 5-Mrs. Evguenia Karnolska, Bulgaria; 6-Mrs. Eugenia Bogdanova, USSR; 7-Mrs. Jaqueline Itschner, Switzerland; 8-Mrs. Martha Leces, Hungary; 9-Mrs. Marie Lundmark, Finland. SUBSTITUTE JUDGE: Mr. Kazuo Ohashi, Japan. REFEREE: Mrs. Sonia Bianchetti-Garbato, ISU. ASSISTANT REFEREE: Mr. Benjamin T. Wright, ISU.

CF	SP	FS		PLACES
1. 5	1	1	Kurt Browning, Canada	3.6
2. 4	2	3	Christopher Bowman, USA	5.8
3. 3	5	2	Grzegorz Filipowski, Poland	6.2
4. 1	3	4	Alexandr Fadeev, USSR	6.2
5. 7	4	5	Petr Barna, Czechoslovakia	10.2
6. 2	6	6	Viktor Petrenko, USSR	10.4
7. 6	11	7	Daniel Doran, USA	16.0
8. 10	10	8	Oliver Hoener, Switzerland	18.0
9. 13	7	10	Michael Slipchuk, Canada	19.4
10. 11	9	11	Cameron Medhurst, Australia	20.8
11. 18	8	9	Makoto Kano, Japan	21.0
12. 9	16	12	Daniel Weiss, Federal Republic of Germany	25.2
13. 12	12	14	Axel Mederic, France	26.0
14. 14	15	13	Dmitri Gromov, USSR	27.6
15. 15	13	18	András Szaraz, Hungary	31.8
16. 20	17	15	Mirko Eichhorn, German Democratic Republic	33.2
17. 8	19	20	Ralph Burghart, Austria	34.6
18. 17	20	16	Alessandro Riccitelli, Italy	34.8
19. 19	14	19	Peter Johansson, Sweden	35.0
20. 23	18	17	Hendrik Walentin, Denmark	37.0
final not reached:				
16	25		Christian Newberry, Great Britain	
22	21		Sung Il Jung, Republic of Korea	
21	23		Iwo Svec, Federal Republic of Germany	
25	22		Oula Jääskeläinen, Finland	
26	24		David Liu, Chinese Taipei	
24	26		Boiko Alexiev, Bulgaria	
27	27		Alexandre Geers, Belgium	
retired due to injury:				
28			Ricardo Olavarrieta, Mexico	

LADIES

JUDGES: 1-Mr. Alexander Penchev, Bulgaria; 2-Mr. Reinhard Mirmseker, German Democratic Republic; 3-Mrs. Wendy Utley, Great Britain; 4-Mrs. Gorel Hyden, Sweden; 5-Mrs. Linda Petersen, Denmark; 6-Mr. Franco Benini, Italy; 7-Miss Judith Fürst-Tomber, Hungary; 8-Mrs. Rita Van den Broeke-Zonnekeyn, Belgium; 9-Mr. Gerhard Frey, Federal Republic of Germany. SUBSTITUTE JUDGE: Mr. Radovan Lipovcak, Yugoslavia. REFEREE: Dr. Elemer Tertak, ISU. ASSISTANT REFEREE: Mr. Jürg Wilhelm, ISU.

CF	OP	FS		PLACES
1. 6	1	1	Midori Ito, Japan	4.0
2. 1	3	2	Claudia Leistner, Federal Republic of Germany	4.2
3. 2	2	3	Jill Trenary, USA	5.0
4. 5	6	6	Patricia Neske, Federal Republic of Germany	11.6
5. 3	4	8	Natalia Lebedeva, USSR	11.6
6. 12	5	4	Kristi Yamaguchi, USA	11.8
7. 14	10	5	Evelin Grossmann, German Democratic Republic	16.6
8. 4	8	11	Natalia Gorbenko, USSR	17.4
9. 11	7	10	Béatrice Gelmini, Italy	18.6

10.	16	9	7	Surya Bonaly, France	18.8
11.	17	11	9	Karen Preston, Canada	22.4
12.	10	13	12	Simone Lang, German Democratic Republic	23.8
13.	9	14	15	Yvonne Pokorny, Austria	27.0
14.	13	16	14	Tamara Teglasy, Hungary	28.8
15.	15	12	16	Junko Yaginuma, Japan	29.2
16.	8	15	17	Charlene Wong, Canada	29.2
17.	7	19	20	Zeljka Cizmesija, Yugoslavia	34.2
18.	24	20	13	Yvonne Gomez, Spain	34.6
19.	21	18	18	Hélène Persson, Sweden	37.2
20.	22	17	19	Petra Vonmoos, Switzerland	38.0
final not reached:					
	23	21		Tracy Brook, Australia	
	20	25		Lyoon-Jung Lee, Republic of Korea	
	19	27		Louise Danskin, Great Britain	
	27	22		Anisette Torp-Lind, Denmark	
	26	23		Jaqueline Soames, Great Britain	
	25	24		Marie Niskanen, Finland	
	30	26		Tzvetelina Yankova, Bulgaria	
	28	28		Diana Marcos, Mexico	
	29	29		Charuda Upatham, Thailand	
retired due to injury					
	18			Sandy Suy, Belgium	

PAIRS

JUDGES: 1-Mrs. Audrey Williams, Canada; 2-Mrs. **Ida Tateoka, USA**; 3-Mr. Oskar Urban, Czechoslovakia; 4-Mr. Mikhail Drei, USSR; 5-Mr. Donald McKnight, Australia; 6-Mrs. Eva von Gamm, Federal Republic of Germany; 7-Mr. Günter Teichmann, German Democratic Republic; 8-Mrs. Maya Reinhart, Switzerland; 9-Mrs. Wendy Utley, Great Britain. SUBSTITUTE JUDGE: Mrs. Maria Bialous-Zuchowicz, Poland. REFEREE: Mr. Donald Gilchrist, ISU. ASSISTANT REFEREE: Mrs. Monique Georgelin, ISU.

	OP	FS		PLACES
1.	1	1	Ekaterina Gordeeva & Sergei Grinkov, USSR	1.5
2.	2	2	Cindy Landry & Lyndon Johnston, Canada	3.0
3.	4	3	Elena Bechke & Denis Petrov, USSR	5.0
4.	3	5	Peggy Schwarz & Alexander König	6.5
5.	6	4	Kristi Yamaguchi & Rudi Galindo, USA	7.0
6.	5	7	Elena Kvitchenko & Rashid Kadyrkaev, USSR	9.5
7.	8	6	Isabelle Brasseur & Lloyd Eisler, Canada	10.0
8.	6	8	Natalie Seybold & Wayne Seybold, USA	11.0
9.	9	9	Anuschka Gläser & Stefan Pfrengele, Federal Republic of Germany	13.5
10.	10	10	Danielle Carr & Stephen Carr, Australia	15.0
11.	11	11	Cheryl Peake & Andrew Naylor, Great Britain	16.5

DANCE

JUDGES: 1-Mrs. **Jean Robinson, USA**; 2-Mr. Dennis McFarlane, Canada; 3-Mrs. Heide Maritzczak, Austria; 4-Mrs. Irina Absalimova, USSR; 5-Mrs. Dagmar Rehakova, Czechoslovakia; 6-Mrs. Norika Shiota, Japan; 7-Mr. Daniel de Paix, France; 8-Mr. Vinicio Toncelli, Italy; 9-Mrs. Lily Klapp, Switzerland. SUBSTITUTE JUDGE: Mrs. Maria Miller, Poland. REFEREE: Mr. Hans Kutschera, ISU. ASSISTANT REFEREE: Mrs. Lysiane Lauret, ISU.

	CD	OSP	FD		PLACES
1.	1	1	1	Marina Klimova & Sergei Ponomarenko, USSR	2.0
2.	2	2	2	Maia Usova & Alexander Zhulin, USSR	4.0
3.	3	5	3	Isabelle Duchesnay & Paul Duchesnay, France	7.2
4.	4	3	4	Klára Engi & Attila Toth, Hungary	7.4
5.	5	4	5	Susan Wynne & Joseph Druar, USA	9.4
6.	6	6	6	Larisa Fedorinova & Evgeni Platov, USSR	12.0
7.	7	7	7	Stefania Calegari & Pasquale Camerlengo, Italy	14.0
8.	8	8	8	Karyn Garossino & Rodney Garossino, Canada	16.0
9.	9	9	9	Sharon Jones & Paul Askham, Great Britain	18.0
10.	11	10	10	Andrea Juklova & Martin Simecek, Czechoslovakia	20.4
11.	13	11	11	Michelle McDonald & Mark Mitchell, Canada	22.8
12.	12	12	12	Dominique Yvon & Frédéric Palluel, France	24.0
13.	15	13	13	Susanna Rahkamo & Petri Kokko, Finland	26.8

Continued on page 62

SPRING SALE

BLADES



	Reg. Price	Sale Price
Professional	\$ 124	\$100
Silver Test	149	115
Phantom	245	175
Elite	365	250
Dance Model	270	190
Gold Test	280	195
Gold Star (chrome)	297	205
Gold Star (gold)	420	285



	Reg. Price	Sale Price
Coronation Ace	\$ 145	\$ 130
Pattern 99	265	190
Pattern 88	405	280
H. Gerschwiler	340	235
Gold Seal	365	250

BOOTS



	Sale Price
Gold Star 375W	\$ 155
Gold Star Jr. 75W	130
Royal 900W	180
Royal Jr. 90W	145
Comp *special order 925W	205
Imperial 950W	195



	Sale Price
Super Teri Delux Women 550	\$ 215
Super Teri Stock Women 50	185
Super Teri Stock Girls 10	175

Polish - \$3.00 Scribe & Case - \$80.00 Booties & Rubber Guards - \$6.00

*** SALE ENDS 6-15-89 ***

All best quality with full manufacturers guarantee. Enclose money order check or C.O.D. orders. Add \$5.00 handling charge. NY residents add 8% tax.



DANTE COZZI SPORTS

2600 Newbridge Rd.

Bellmore, NY 11710 (516) 783-0215

1989 WORLD UNIVERSITY GAMES
SOFIA, BULGARIA
MARCH 2-12, 1989

Ice

ABROAD

MEN

JUDGES: 1-Mr. Florin Camulea, Rumania; 2-Mrs. Liliana Dozeva, Bulgaria; 3-Mrs. Anna Sierocka, Poland; 4-Mr. Valerii Tataurov, USSR; **5-Mr. Raymond Alperth, USA**; 6-Mr. Hisashi Yoshikawa, Japan; 7-Mr. Hae-Jung Lee, Republic of Korea; 8-Mrs. Sheena Meurin, Canada; 9-Mrs. Liselotte Maurur, Federal Republic of Germany. SUBSTITUTE JUDGE: Mr. Wang Yumin, China. REFEREE: Mrs. Evgenia Karnolska, Bulgaria. ASSISTANT REFEREE: Mr. Ivan Angelov, Bulgaria.

	CF	OP	FS		PLACES
1.	1	1	2	Makoto Kano, Japan	3.0
2.	2	5	1	James Cygan, USA	4.8
3.	3	2	3	Vladimir Petrenko, USSR	5.4
4.	10	4	4	Mitsuhiro Murata, Japan	10.4
5.	5	3	7	Yurii Zimbaluk, USSR	10.8
6.	4	9	5	Craig Heath, USA	12.0
7.	14	10	6	Stephane Yvars, Canada	17.6
8.	8	12	8	Cornel Gheorghe, Rumania	18.4
9.	15	6	9	Tatsuya Fujii, Japan	18.6
10.	6	11	12	Stephen Rice, USA	21.0
11.	12	8	14	Przemyslaw Noworyta, Poland	23.6
12.	16	7	13	Mihail Shmerkin, USSR	24.4
13.	7	18	11	Brent J. Frank, Canada	24.6
14.	23	13	10	Sung-II Jung, Republic of Korea	27.0
15.	19	14	15	Marius Negrea, Rumania	31.0
16.	16	16	16	Tomislav Cizmesia, Yugoslavia	32.0
17.	11	20	18	Bojko Aleksiev, Bulgaria	34.4
18.	22	15	17	Zhaoxiao Xu, China	34.6
19.	17	23	19	Gang Ho, Democratic People's Republic of Korea	39.6
20.	21	17	21	Changyu Luo, China	39.6
21.	13	22	22	Stephan Illig, Federal Republic of Germany	40.4
22.	20	21	20	Imre Raabe, Hungary	40.6

LADIES

JUDGES: 1-Mr. Sergei Shirokov, USSR; 2-Mrs. Kristina Potocki, Yugoslavia; 3-Mr. Hae-Jung Lee, Republic of Korea; 4-Mr. Sang Jong Han, Democratic People's Republic of Korea; 5-Mr. Wong Yumin, China; 6-Mrs. Sumiko Kobayashi, Japan; 7-Miss Daniela Martinelli, Italy; **8-Mrs. Margery Schleh, USA**; 9-Mrs. Liselotte Maurer, Federal Republic of Germany. SUBSTITUTE JUDGE: Mrs. Zoia Yordanova, Bulgaria. REFEREE: Mr. Alexander Pentchev, Bulgaria. ASSISTANT REFEREE: Mr. Georgi Dimkov, Bulgaria.

	CF	OP	FS		PLACES
1.	3	2	1	Marina Kielmann, Federal Republic of Germany	3.4
2.	5	1	3	Larisa Zamotina, USSR	5.6
3.	4	5	2	Nancy Kerrigan, USA	6.6
4.	2	3	4	Kathaleen Kelly, USA	6.6
5.	1	4	5	Kelly Szmurlo, USA	7.8
6.	9	6	7	Yvonne Gomez, Spain	14.2
7.	12	9	6	Elena Kushnir, USSR	16.2
8.	6	12	8	Lyoon-Jung Lee, Republic of Korea	17.6
9.	7	10	9	Izumi Aotani, Japan	17.8
10.	10	8	13	Sachie Yuki, Japan	21.8
11.	17	7	11	Sandrin Goes, Belgium	22.0
12.	11	14	10	Susanne Seger, Sweden	22.8
13.	8	13	12	Ritsuko Umehara, Japan	23.0
14.	14	11	14	Sung-Jin Byun, Republic of Korea	26.2
15.	13	15	15	Paola Tosi, Italy	29.2
16.	15	16	18	Song Suk Kim, Democratic People's Republic of Korea	33.6

Continued on page 58



THE ICE HOUSE

*America's
Figure Skating
Store*

The 1989 Edition full color catalog is available
by calling **800-423-3391 (in MA 617-237-9609)** or
visit us at 473 Washington St., Wellesley, MA 02181
617-237-6707.

William Thayer Tutt

It is with deep regret and a strong sense of loss that the world of figure skating mourns the passing on February 24, 1989 of William Thayer Tutt of Colorado Springs, an Honorary Member of the USFSA. Truly, one of the mighty has fallen!

Best known to his friends and associates as "Thayer," the extent of the contributions of William Thayer Tutt to the sport of figure skating in general and to the Association in particular can never be fully measured in tangible terms for they are truly incalculable.

Building on the foundation laid by the late Spencer Penrose, co-founder of the Broadmoor Hotel in 1918, together with Thayer's father the late Charles L. Tutt, who opened the Broadmoor Ice Palace in 1938, Thayer devoted tremendous time, effort, and material support to the development and growth of the twin ice sports of figure skating and hockey, so that today the Broadmoor World Arena, as it is now known, is recognized throughout the world as a major training center and site of championships.

It is safe to say that the World Figure Skating Championships would never have returned to the United States in 1957 (for only the second time and the first since 1930) had it not been for the efforts of Thayer and for the unstinting support provided by the Broadmoor organization that he so ably headed.

Building on that first most successful championship, the Broadmoor Skating Club subsequently hosted four more Senior World Championships in 1959, 1965, 1969, and 1975, the first World Junior Figure Skating Championships held in the United States in December 1984, and will again host the World Junior Championships in December 1989, a fitting memorial to him.

In addition, the Broadmoor Skating Club has hosted no less than six United States Championships, seven Sectional Championships (the first in 1941), and



by Benjamin T. Wright
Past President

five Regional Championships, the most recent in 1988), all under the benevolent sponsorship of Thayer Tutt.

In 1984 upon the invitation of Thayer, the biennial Congress of the International Skating Union was successfully held at the Broadmoor, the first to be held outside Europe in the 97-year history of the Union.

Thayer Tutt also was instrumental in making possible the relocation in 1979 of the USFSA National Headquarters and the World Figure Skating Hall of Fame and Museum to a site adjacent to the Broadmoor Hotel, and to the acquisition of the world famous Gillis Grafström Collection, *Skating in Art*, for permanent loan to the Museum. He was also instrumental in the accomplishment of the major expansion of the Museum completed in 1986. The World Figure Skating Hall of Fame and Museum is recognized today as the premier institu-

tion of its kind for the preservation of the heritage of the sport of figure skating on a world-wide basis.

Thayer Tutt is also one of the founding fathers of modern international ice hockey. He was President of the Amateur Hockey Association of the United States from 1972 to 1986 and was President of the International Ice Hockey Federation from 1966 to 1969, as well as serving for many years as a member of the governing bodies and as an officer of the two sports organizations.

He was instrumental in creating the National Collegiate Athletic Association Championship in ice hockey, inaugurated at the Broadmoor Ice Palace after World War II in 1948 and initially held there on an annual basis for its first ten years.

After World War II, Thayer also inaugurated invitational international ice hockey tournaments involving the major ice hockey nations, such as the Soviet Union, Czechoslovakia, Canada, Sweden, Finland, and others, which led to the holding of the World Ice Hockey Championship at the Broadmoor in 1962. Thayer has worked hard through sports to promote good will among nations and especially in ice hockey.

Highlights of Thayer's long career in ice hockey included his election to the Hockey Hall of Fame and the Canadian Hockey Hall of Fame and the holding of the Congress of the International Ice Hockey Federation at the Broadmoor in 1986. Another milestone for him was the holding of the first Congress of the General Association of International Sports Federations (AGFIS) to be held in the United States at the Broadmoor in 1987.

Thayer received from the International Olympic Committee the Olympic Order in Silver in recognition of his contributions to and support of the Olympic movement. It is indeed fitting to note that Thayer's nephew William L. Tutt,

serves as a Vice President of the United States Olympic Committee, continuing the Tutt family tradition of active participation in sports. It was, in fact, Thayer and the Broadmoor that were largely instrumental in encouraging the United States Olympic Committee to move its headquarters to Colorado Springs in 1977.

Thayer has also been an active force in golf as the longtime President of the Broadmoor Golf Club, building three championships golf courses and establishing international team matches under the sponsorship of the World Senior Golf Association, of which he served as a Director for many years.

Thayer also did much to obtain the location of the United States Air Force Academy in Colorado Springs, quite an appropriate effort in view of his World War II service in the Army Air Corps, for which he received the Legion of Merit.

A graduate of Denver University, Thayer served in many capacities at the Broadmoor Hotel, including President and ultimately as Honorary Chairman of the Board. While Spencer Penrose was the founding genius of the Broadmoor, it was and is the Tutt family who have made it the magnificent resort complex that it is today, unique as well for its strong dedication to and support of sports, under Thayer Tutt's inspired leadership from 1946 to 1989.

Thayer is survived by his wife, the former Yvonne Sherman, herself a former North American and United States Ladies' Champion, World silver medalist, and World Championship Judge in figure skating, as well as by three daughters, one son, two grandchildren, and two great-grandchildren.

It is with gratitude and appreciation for all that Thayer Tutt did for figure skating that he will be remembered by all who knew him and valued him as a friend.



'89 SKATE AMERICA

comes to
INDIANAPOLIS, INDIANA
at
MARKET SQUARE ARENA
OCTOBER 19-22, 1989

ALL-EVENT TICKET SALES INFORMATION

Guaranteed priority seating at Market Square Arena is only available through the purchase of advance sale All-Event tickets. Reservations for these tickets are now being accepted by '89 SKATEAMERICA. The deadline for ordering All-Event tickets is September 8, 1989. Tickets will be mailed to you after September 1, 1989. Individual tickets will be available at a later date. Your cancelled check will serve as your receipt.

MAKE CHECKS OR MONEY ORDERS PAYABLE TO " '89 SKATE AMERICA "

Sanctioned by the United States Figure Skating Association.



NAME: _____

ADDRESS: _____

CITY: _____ STATE: _____ ZIP: _____

DAYTIME PHONE: _____

PLEASE RESERVE ____ ALL-EVENT TICKETS @ \$46 EACH = \$ _____

ADD \$1 SERVICE CHARGE PER TICKET = \$ _____

TOTAL = \$ _____

RETURN THIS FORM WITH CHECK OR MONEY ORDER (AMERICAN \$)
PAYABLE TO " '89 SKATE AMERICA "

TO: '89 SKATE AMERICA
Mrs. Marcelle Dawe
7903 Fox Run Path
Plainfield, IN 46168
(317) 839-1265

FOR MORE INFORMATION CALL:
Mrs. Sue Johnson
(317) 342-3018

WYNNE

and

D

R

U

A

R



AT LONG
LAST GOLD

In a setting fitting a scene from *Casablanca*, Susan Wynne and Joseph Druar sit on the floor, lounging on giant pillows in a Moroccan restaurant in Colorado Springs. The towering Rockies outside seem far removed. Exotic music fills the room as the two sip lime water and eat chicken cous cous.

Wherever they go, the two are usually surrounded with music, and they are having a new "adventure." They have a special knack in finding pleasure and making an event out of even the simplest of things. Their outgoing natures and spontaneous humor are infective and endearing.

It is only a few weeks after their clear-cut victory as the 1988 U.S. Dance Champions—the topping on a golden year that saw them win Skate America, the Lalique Trophy in Paris, and Pacific Coasts with a powerful OSP Charleston and a sizzling Spanish free dance.

"There is no real way to express the feeling of at long last being National Champions," Joe puzzles. "It's a tremendous honor. We're happy and excited that we achieved a major goal that we had talked about and set years ago. When a dream becomes reality, it takes a while to believe it, and it really hasn't sunk in yet. We are in full training for Worlds, making some changes, and pushing to improve. I suppose we would have been greatly disappointed if we hadn't won, we've stayed in so long and worked so hard to get where we are and reach our goal."

"It's also a very big responsibility, and we must respect that," Susie adds.

The pairing of Wynne and Druar came about at a test session in Buffalo in 1980. The two had known each other casually but had never actually skated together. She was without a partner and some judges suggested they try a compulsory together.

"We weren't perfect," Susie recalls, "but we didn't kill each other, either. We started skating and everything just seemed so natural. There are several similarities about us, our knee bend, our heights and builds, things just seemed to match."

Joe was from Amherst, New York, a suburb of Buffalo, and had started skating

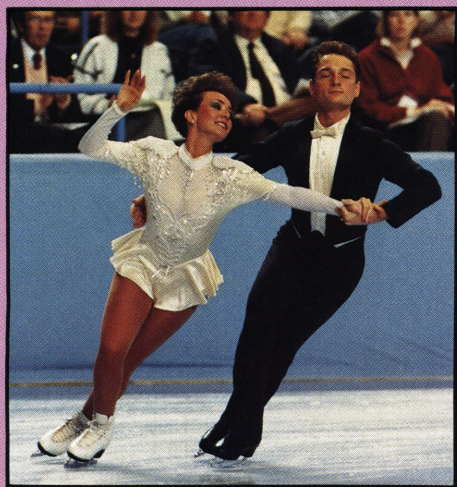
at age three, a fierce competitor with his brother. Susie from Camillus, near Syracuse, didn't begin skating until she was eleven. Both started in singles, and Joe even had a fling at pairs.

They worked one year in Buffalo with Richard Callaghan, and in 1981 when he moved to Philadelphia, the two went with him. Joe had just graduated from high school and entered St. Joseph's College where he majored in marketing while Susie still attended high school.

"He used to take me to school on his way to class," Sue laughs. "He had a horrible orange car. I was so embarrassed."

By 1983, they were fifth in the U.S. Nationals, a spot they held for the next two years. In 1986, when their coach made another move, the couple decided it was time for a change of training environment. For five years they had been training alone. They were somewhat discouraged with their development and also with not having other dancers at the rink. They moved to Detroit and joined coaches Sandra Hess, Peter Dalby, and Phillip Mills.





Training with other dancers began to give them the push they felt they needed as well as what became a mutual support system between skaters such as Renee Roca and Donald Adair, Jodie Balogh and Jerod Swallow.

"You have to thank your competitors who push you," Susie believes. "You have more in common with your competitors than anyone else. There is a mutual respect and understanding—yet you never want to get behind; you work as hard as you can."

"With everyone looking good, you want to look better. Training alone you never know where you stand."

They placed fourth in the 1986 Nationals. "That was a pivotal year for us," Joe explains. "Some people suggested we quit. But we manifested our own confidence and we are proud of that personal accomplishment. That started us in our own direction."

"We had matured and grown up, and one of the most important things is that we took control of what we were doing, the choice of music, the kind of interpretation, and some of the choreography. Rather than being told what to do, we began to explore what we could and wanted to do."

In 1987, after a third-place finish at Nationals, they were named alternates to the World Team. Then, unexpectedly, they were suddenly called to compete at the

Championships in Cincinnati when Roca and Adair retired. They finished twelfth in their first Worlds.

The next season, after a second at the Lalique Trophy in Paris and a third at the NHK, they finished second at the U.S. Championships to gain a berth on the Olympic and World Teams.

"A truly unforgettable experience from beginning to end, so many wonderful people and memories. It was two weeks of *Alice in Wonderland*," Susie says of Calgary, where they finished eleventh and then moved to ninth at the 1988 Worlds.

The following summer, they moved to Colorado Springs with coaches Hess and Mills and began training at the fine facility at the U.S. Air Force Academy as part of the Broadmoor SC's dance program. "You couldn't ask for a more ideal training situation," Joe states. "The facility is perfect, the people are great to work with, especially the Air Force staff and trainers who work with us on off-ice conditioning. Everyone has been so supportive."

Following the U.S. Championships in '89, they made a quantum leap and moved to fifth in the World.

In discussing their own working relationship and training, Susie feels, "Joe really holds the team together. He is more organized and logical and very musical. I have an abundance of ideas. Joe filters them out and can be more selective."

"I always get ideas right before that stage one of sleep, and I'll come into the rink the next morning full of excitement. Joe is able to expand on the ideas, incorporate them, and make them whole. While I am up and down, Joe is more level."

"Through the years, we have developed an operating plan that works for us. I handle most of the music cutting and business things. Susie makes all the costume decisions and exhibition plans, and we split the mail and letter writing. We plan schedules together, which keep getting busier."

The two feel strongly that dance is beginning to come into its own in the States. "There used to be the idea that if you couldn't make it in singles or pairs,

Continued on page 55

Maria's Christmas — 1988

by Hugh C. Graham, Jr., M.D.

As in the previous two paintings of Maria's Christmas, she has her big and beautiful cut tree that stood in the family room decorated with ornaments from around the world. Also in the painting is the beloved Charlie Brown tree that always held a proud place in our living room. There were some years that the little tree was so scrawny that we could only add a small string of lights for decoration. The little tree was always live and was planted in the backyard each year after the holidays. Some years we had very little hope that the tiny tree would survive; however, Maria never doubted that it would flourish. We are happy to report that all of Maria's Charlie Brown trees are healthy, happy, and beautiful.

The Christmas after Maria's death we tried to continue the tradition, but the little tree died shortly after it was planted and we felt it was because it didn't have the love of a young girl to keep it happy. The white starkness of the painting this year with Maria skating on a frozen puddle represents how she could find joy in the simple things of each day. There was no ordinary day for her; she found happiness where most of the world would have found emptiness. She lived all of her days as if they were her last. Added to the painting this year was the one in all the world that knew all of Maria's secrets, her most faithful companion, her dog Chablis. Chablis is now eleven years old and doing well except for the sadness of losing her young mistress.

As this presidency comes to an end, so does Maria's Christmas in print. She was looking forward to the presidency with excitement and great expectation, so wanting to do her part to make it successful. The



President's Christmas Cards, the oil paintings in the museum, and the lithographs were her contribution and is her legacy.

It has been a privilege for Connie and me to donate the third original oil painting—Maria's Christmas 1988—to the World Figure Skating Museum and Hall of Fame. Judith of Judith Galleri, Tulsa, Oklahoma, was commissioned to do this painting as well as the previous two. The original concepts and designs were Connie's and she worked with Judith, the artist, to achieve the correct effect. All three paintings have been used as the USFSA President's Official Christmas Card and so, has had quite a wide distribution throughout the figure skating world. One-hundred lithographs signed and numbered by the artist are available through the USFSA Gift Shop.



1989 U.S. Figure Skating Championships

Closing Out the Decade



PAUL HARVATH

The famous thoroughbreds of Maryland and Pimlico were overshadowed in February by a different kind of challenger, as Baltimore staged the 1989 U.S. Figure Skating Championships. Hosted by the Baltimore FSC and the Washington FSC, anticipation ran high as all ten National titles were open for the first time since 1981. Special attention focused on the Senior events for eight World Team berths.

With the two official hotels directly across the street from the main Baltimore Arena, the physical arrangement was one of the most convenient in years, requiring limited amounts of travel and busing. The Championships were extended one day longer than in the past, with events being staged on Sunday, as ABC's *Wide World of Sports* carried live broadcasts of both the Senior Ladies' and Men's finals to well over eleven million viewers.

In a slightly smaller field than last year, 183 competitors gathered, with four persons skating in double events: Kristi Yamaguchi in Senior Ladies and Senior Pairs, with partner Rudi Galindo; Troy Goldstein in Senior Men and Junior Pairs, with sister Dawn; Natasha Kuchiki in Junior Ladies and Junior Pairs, with partner Richard Alexander; and John Frederiksen in Novice Men and Junior Pairs, with Jennifer Heurlin.

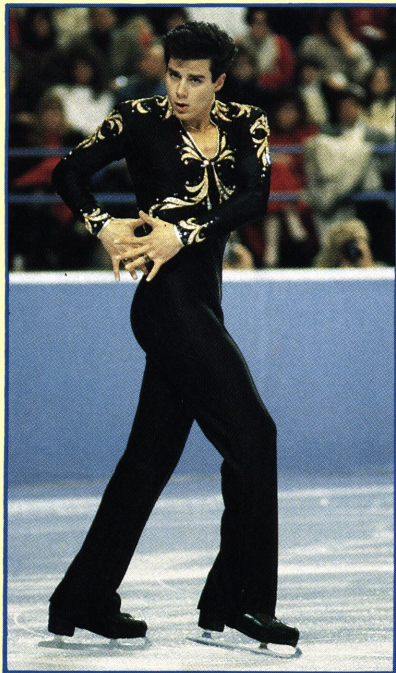
The competition had its share of drama, controversy, and upsets, along with rampant respiratory "bugs" which took their toll. Another type of epidemic caused one viewer to tag the Champion-

ships "Lace Capades." It is hard to remember any Nationals, or for that matter any competition, with so many boot lace problems—loosened, broken, or untied—there was at least one or more of each. However, it was the personal triumphs at many levels that will be remembered.

The Opening Ceremony featured a concert by the U.S. Army Band conducted by Col. Eugene Allen, highlighted by the premiere performance of a newly composed USFSA Championships Fanfare. Written by Sgt. Major James Kessler, "Ice Champions" was especially commissioned for the 1989 Championships. The theme was recorded by the band and used for all medal ceremonies and will most likely be used for official award ceremonies in years to come. The original score was presented to President Graham by Col. Allen.



PAUL HARVATH



MICHAEL ESPOSITO

Christopher Bowman
Senior Men – Gold



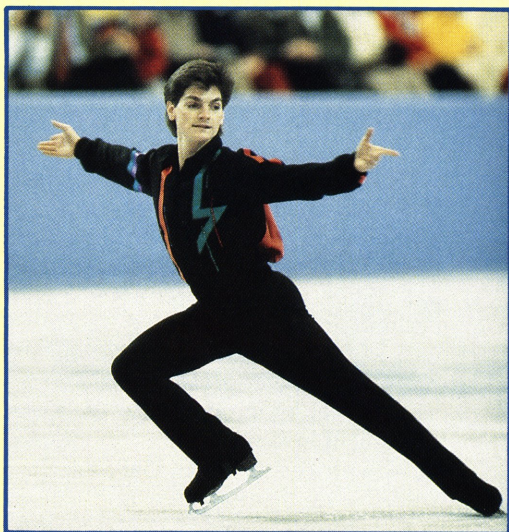
INGRID BUTT

Daniel Doran
Senior Men – Silver

CHAMPIONSHIP MEN

The LFO Counter and the RBO Paragraph Loop Compulsory Figures got the Senior Men's competition off to a surprising start. Daniel Doran, Colorado SC, took the lead followed by James Cygan, Broadmoor SC, and Todd Eldredge, San Diego FSC. Christopher Bowman, Los Angeles FSC, was fourth, followed by Doug Mattis, SC of Lake Placid, and Paul Wylie, SC of Boston, an unexpected sixth. Paul failed to receive a wake-up call at the hotel, arriving at the rink with little time for his normal warm-up and preparation.

It is doubtful if the new Original Program fulfilled expectations of most viewers, though it probably met the intent of the ISU rules changes allowing for greater freedom of selection of elements. Tremendous variety and bravado were anticipated. Instead, the overall approach at the first outing of an Original Program at Nationals appeared to be



INGRID BUTT

Paul Wylie
Senior Men – Bronze

cautious and conservative with few competitors daring to attempt their most difficult solo jumps or combinations.

Eric Larson, Overlake FSC, neatly landed a triple loop-double toe; Mark

Mitchell, SC of Hartford, followed with a triple flip-triple toe. Cygan held on to a triple toe-triple toe, with both Eldredge and Bowman pulling off the triple Lutz-triple toe. Wylie was the only one to attempt the triple Axel and stepped out of the landing before the double toe combination for a costly deduction.

Bowman won the Original Program with unanimous firsts from the judges, followed by Doran and then Erik Larson, who had begun with an eighth in figures. Wylie, finished fourth, with Eldredge in fifth.

"It may have been a tactical error on my part," Wylie said later, with the national title out of reach, "but I came here expecting everyone to put all the marbles on the table. At the first practice, I was surprised no one else was."

Going into the long, standings held Doran first, followed by Bowman; then Eldredge, Wylie, and Larson clustered with 0.8 points separating them. Few people were aware that Eldredge was skating with a severe back injury that had forced his withdrawal from Pacific Coast Championships and had kept him off the ice several weeks prior to Baltimore. Adjustments had to be made in programs eliminating certain jumps.

Excitement started in the long with a flawless performance by Mark Mitchell. Skating in part to "King of the Road," six perfectly executed triple jumps were practically a textbook lesson. His technical skills and clean landings were hardily matched the rest of the afternoon.

In the warm-up for the final group, all five seemed a little edgy and over-anxious on the jumps. The new costume rule apparently caused most to wear plain, indistinct outfits, except Bowman, who banished his customary black for a bolder look in decorated white and gold. With ABC standing by, ready to broadcast live, an added tension existed.

Skating first to classical selections, Bowman opened with a high, clean tri-

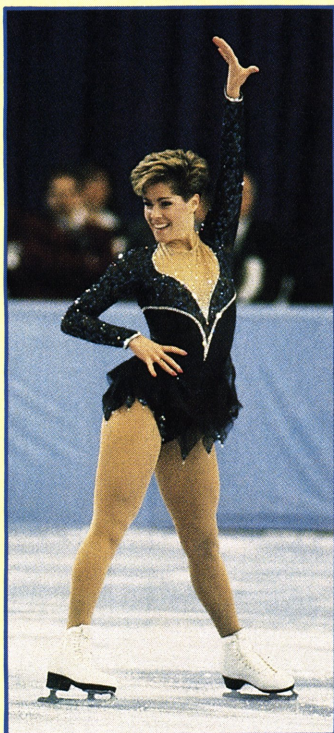
ple Axel, followed closely with a triple Lutz-triple toe combination. Incorporating an interesting split Lutz and four other triples, his scores were all 5.8's and 5.9's. If he appeared down a notch from his usual exuberance, it may have been due to the fact that he had been off the ice several weeks prior to Nationals due to a severe leg spiking that had limited his training.

Larson skating next had minor problems on a couple jumps, but for the first time came into his own with trademark stylish presentation, a high-flying tuck Axel, and excellent spins, including the always crowd-pleasing barrel spins.

Doran opened with a difficult triple Lutz from a Bauer but experienced problems on three of his other six triples. His music ranged from classical to rag and displayed his rich interpretive skills.

The audience eagerly awaited Wylie's performance. His opening dramatic spirals with exquisite body line drew applause. At times total stillness enveloped the arena as he held the crowd spell-bound. A planned triple Axel was doubled in an otherwise finely choreographed and executed program with six triples and exquisite connecting elements, including his trademark change spiral. As the theme from the "Lenore Overture" concluded, he was accorded the only standing ovation of the night.

Eldredge later stated, "That was a very hard act to follow," but pulled out all stops despite the back injury and opened with a fine triple Axel. Showing both technical and artistic growth, he included five other triples, forced to omit the flip and another triple Axel due to the injury. The standings placed Bowman first in the long, Wylie second, Larson third, Eldredge fourth, and Doran fifth. The final results placed Bowman on top of the podium winning his first National title, with Doran taking silver and Wylie bronze, followed by Larson and then Eldredge.



INGRID BUTT

Jill Trenary
Senior Ladies – Gold



MICHAEL ESPOSITO

Kristi Yamaguchi
Senior Ladies – Silver



Tonya Harding
Senior Ladies – Bronze

CHAMPIONSHIPS LADIES

"Take an early lead and hold on to it," was Jill Trenary's strategy coming in-

to the meet and that is exactly what she did. Unanimous firsts on the RFO Paragraph Bracket and LBO Paragraph Loop placed the Broadmoor SC's 1987 U.S. Champion above Jeri Campbell, Los Angeles FSC, in second and Holly Cook, Utah FSC, in third. Tonya Harding, Portland ISC, was fourth, followed by Kelly Szmurlo, Greater Milwaukee FSC, in sixth—and the chase was on.

The greatest confusion in the Original Program arose over what is and what constitutes a spiral sequence as a required element. There were numerous variations with many questionable presentations according to the description of the element. Trenary clearly showing the most mature presentation of the entries won the OP, followed by Kristi Yamaguchi, St. Moritz ISC, who had

begun with an eighth place in figures, then Harding. Both Yamaguchi and Harding performed a triple Lutz-double toe for the combination with rewards of only 5.5's to 5.7's for technical merit. Cook was fourth and Nancy Kerrigan, Colonial FSC, fifth.

Going into the long, Trenary had a comfortable lead, followed by Harding in second, then Cook and Yamaguchi. Campbell, fifth overall, withdrew due to an ankle injury, following a sixth-place finish in the OP.

The Long Program saw some of the finest skating of the week. Trenary, first of the leaders, took the ice with confidence opening with a triple flip and followed by three other triples, including her trademark combination, one-foot Axel to triple Salchow. Another planned combination was omitted due to the stress from a recurring ankle injury.

Yamaguchi followed, unleashing a powerful performance with seven triple jumps, including a dynamic triple Lutz-double toe combination twenty seconds from the end, that left the audience cheering and gave her a majority for first place in the long.

Harding, a favorite of many, once again displayed her stylish strength and skill, including a beautiful Bauer, strong jumps, and ending with a powerful scratch spin.

Cook showed great improvement but has not overcome inconsistency and relatively weak interpretive presentation. Results of the Long placed Yamaguchi first, Trenary second, Harding third, and Cook fourth. Overall, Trenary retained her lead and regained her U.S. title (only the fourth woman to ever do so). Yamaguchi was awarded the silver and Harding the bronze.

CHAMPIONSHIP PAIRS

As anticipated, the Senior Pairs started in a close battle for the title and

World Team berths. Natalie Seybold, University of Delaware SC, and brother Wayne Seybold, Fort Wayne ISC, skated second, setting the standard for the fourteen teams to follow with good double loop solo jumps, a lateral twist lift, and a multiple change hand lift.

Katy Keeley and Joseph Mero, Mesa Verde FSC, followed skating to *The Hungarian Rhapsody* with double loops side by side and a high lateral twist lift. Kristi Yamaguchi and Rudi Galindo, St. Moritz ISC, skated fourteenth out of the sixteen couples and executed sharp double Axels and an unusual drag entrance into a death spiral.

Standings held the Seybolds first, Keeley and Mero second, with Yamaguchi and Galindo in third, followed by Sharon Carz and Doug Williams, All Year FSC, and Calla Urbanski and Mark Naylor, University of Delaware SC. With the new scoring of 66.7% for the long program, the final medal standings were wide open.

In the long program, Keeley and Mero started the final race looking strong, with little evidence of the serious respiratory infection Katy was fighting. Always exciting, a fast helicopter lift and a powerful spin sequence looked good, though they weakened towards the end. She two-footed a double Axel and marks ranged from 5.4 to 5.8.

Yamaguchi and Galindo proved their technical prowess with a program to music from *Romeo and Juliet* that included side-by-side triple flips and triple toe loops and a throw triple Salchow, all done flawlessly. An unusual drag entrance into a death spiral with Rudi stepping onto a change of foot and edge was especially innovative and brought a warm reception from the crowd and marks of all 5.7's and 5.8's.

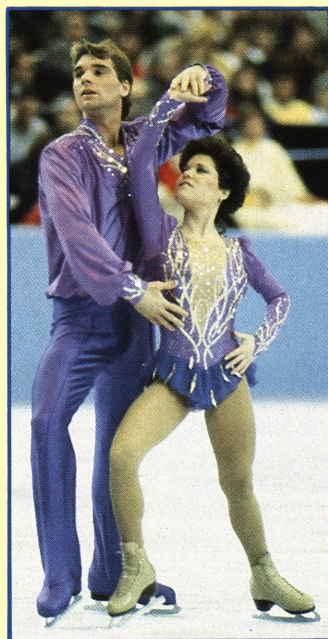
The strength and speed of the Seybolds who skated last was evident, but the performance was marred at the



INGRID BUTT

Kristi Yamaguchi & Rudi Galindo
Senior Pairs – Gold

opening with a faulty twist lift and popped jumps. A strong change position lift was offset with a fall from a throw loop when her skate pulled loose the lace in the crossfoot position and they stopped skating. Instead of being allowed a total reskate, they were instructed by the referee to pick up where they stopped. Scores ranged from 5.4 to 5.8. Final placements in the long placed Yamaguchi and Galindo in first, the Seybolds second, and Keeley and Mero third, which matched the final standings for the event.



INGRID BUTT

Katy Keeley & Joseph Mero
Senior Pairs – Bronze



MICHAEL ESPOSITO

Natalie Seybold & Wayne Seybold
Senior Pairs – Silver

CHAMPIONSHIP DANCE

Though pre-competition favorites for the title, Susan Wynne, Broadmoor SC, and Joseph Druar, Seattle SC, by no means underestimated their rivals. They took the lead after the Compulsory Dances, Yankee Polka and Westminster Waltz, followed by April Sargent and Russ Witherby, University of Delaware SC; Suzanne Semanick, University of Delaware SC, and Ron Kravette, Los Angeles FSC; with Renee Roca and James Yorke, Broadmoor SC, in fourth. Jeanne Miley and Michael Verlich of the Los Angeles FSC stood fifth.

A rousing time was had by competitors and audience alike with the new OSP, the Charleston, which offered challenging interpretations and recreations from those all too young to ever have remembered the original dance. Wynne and Druar, skating to authentic archival music, attacked a difficult footwork pattern combined with exaggerated interpretation, to what was tagged the "naughty Charleston" to again take first. Sargent and Witherby brought out the exuberance and joy of the carefree dance to place second, followed by the stylish dance of Semanick and Kravette. Overall positions held the same after the results of the OSP were posted.

Renee Roca had been fighting "the bug" for several days but finally had to succumb and withdraw following the warm-up for the free dance, vacating the fourth-place spot and a challenge for the bronze medal.

Every year, greater audience interest seems to grow for the dance events, due partially to the greater variety and creativity being brought to the event. Before the final group, two especially fine free dances were performed. Dorothea Rodek and Robert Nardoza, Lone Star FSC, jammed to music from the 40's, with him in an army uniform and her dress and hairstyle suggesting

the period. Jodie Balogh and Jerod Swallow, Broadmoor SC, presented an imaginative and creative puppet-theme program which delighted the audience.

Sargent and Witherby skated first of the leaders. They had barely begun when another shoelace popped, stopping the routine. They began again presenting a fast-paced stylish program to big band music with great flare and enthusiasm, reminiscent of the Fred and Ginger style.

Wynne and Druar followed setting the ice on fire with pulsating Latin music. Fully showing their ability at interpreting a wide range of emotions and rhythms, the program was intricately choreographed and expressively presented down to the finest detail.

Semanick and Kravette presented the only theme program of the evening, a fine dramatic interpretation in part to "The Bolt" by Shostakovich, the same piece of music used by Brian Orser last year. In only their first season together, they showed exceptional unison and creativity with strong presentation.

The standings remained the same for the free dance and overall, with Wynne and Druar winning their first National title, followed by Sargent and Witherby taking the silver, and Semanick and Kravette, the bronze.

JUNIOR MEN

The quality of skating at the Junior level was as high as has been seen in many years, clearly demonstrating the depth that has been established in the States in the last few years, not only in singles, which receive much of the attention, but in all disciplines. In fact, some of the best spins at Nationals were seen in the Junior competitions, which made for well rounded programs in aspects lacking in some of the Senior events.

In a split decision, with first placements divided between four competitors, Shepard Clark, Broadmoor SC, took the



JUDY HAMMOND

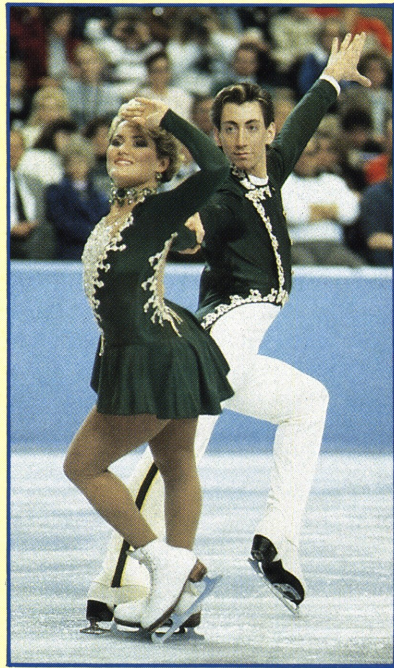
Susan Wynne & Joseph Druar
Senior Dance – Gold



INGRID BUTT

April Sargent & Russ Witherby
Senior Dance – Silver

lead in the Compulsory Figures: the RFO Counter and the LBO Change Loop. Gig Siruno, Lake Minnetonka FSC, placed a close second, followed by John Baldwin, Jr., Los Angeles FSC (the 1988 U.S. Novice Champion). Alex Chang, also Los Angeles FSC, held in fourth; Scott Davis, Lakewood Winter Club, in fifth, and Colin VanderVeen, Atlanta FSC, sixth.



MICHAEL ESPOSITO

Suzanne Semanick & Ron Kravette
Senior Dance – Bronze

Clark maintained his lead in the Original Program with a clean performance incorporating a triple Lutz-double toe combination and a double flip. VanderVeen placed second with a fast-paced precisely executed program that showed great personal improvement and confidence over previous years. Siruno outpointed Baldwin for third, with each doing admirable programs, including Baldwin's triple toe-double toe combination. Phillip DiGuglielmo, Philadelphia SC & HS, pulled into fifth in the OP after a tenth-place start in Figures, followed by Chang. Davis, in seventh, despite a commanding presence on the ice, had an off-night with a fall on a triple Lutz and a popped flip.

Following the OP, the standings held Clark clearly in first, Siruno in second, and VanderVeen in third. Baldwin, Chang and Davis followed in that order. With Clark's lead and the diversity of scores on the OP, the battle appeared to be for the silver and bronze, with only 1.0 factored points separating the next three competitors.

Clark had been in the same leading position last year in Denver going into the Long, also having won the Figures and the Short Program, but a sixth-place Freestyle performance marred with falls placed him out of the medals. This year, he was in total control. Opening with a triple Lutz, followed by a triple toe-double toe combination, he included three other triples to cement the win and the 1989 title.

In his first year as a Junior competitor, Baldwin made his challenge, snapping off triple toe, triple loop, and triple Salchow combinations for an impressive showing that placed him fourth in the free.

Davis brought the audience to life with a fast-paced well executed program to folk music that included five triples, fast footwork, and a high death drop. His spins are excellent, well positioned and as fast as anyone's, done with great

versatility and variety. He was obviously the audience's favorite and was accorded the only standing ovation of the event. He received two firsts and seven seconds for a solid second place in the Long. Despite placing out of the medals, he definitely is one to watch.

Siruno and Chang both fell out of contention with flawed performances. Chang's program seemed too full and rushed to allow for complete execution.

VanderVeen seized the opportunity, showing one of the most individual styles of the Junior Men, and though the attack seen in practices was not as strong and some planned triples were doubles, he did skate cleanly in a well choreographed program that gave him third.

Final results brought Clark to the top of the podium as the 1989 U.S. Junior Champion, and gave the Silver medal to VanderVeen and the Bronze to Baldwin. (In a family tradition, John Jr. is following the same path his father took who won the Novice Championship in 1967 and placed third in Juniors the following year. History does repeat itself.)

JUNIOR LADIES

From the first figure, the Junior Ladies' event became one of constant jockeying for positions. Robyn Petroskey, St. Paul FSC, took an early six-judge lead in the Figures, the LBO Counter and the RBO Change Loop. She was followed by the 1989 Ladies' World Junior Champion, Jessica Mills, of the Los Angeles FSC. Kyoko Ina, SC of New York, who once skated for Japan and has returned as a U.S. competitor held onto third over Geremi Weiss, Washington FSC, followed by Dawn Duhamel, SC of Boston, in fifth.

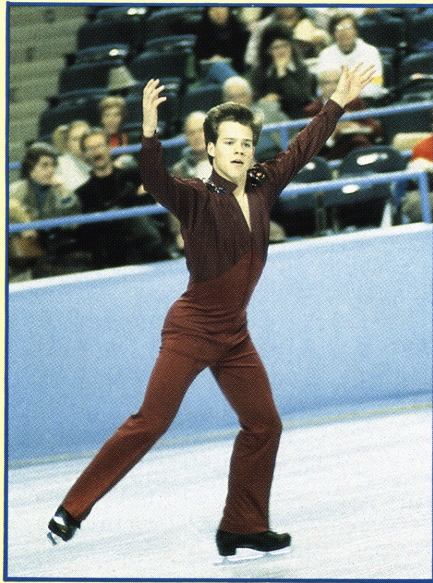
The Original Programs as a whole were rather indistinct and lacking of any impressive interpretation though filled with outstanding individual moments. By chance, all of the leaders happened to use the double Axel for the combination, with Petroskey and Duhamel fol-



JUDY HAMMOND

INGRID BUTT

Shepard Clark
Junior Men – Gold

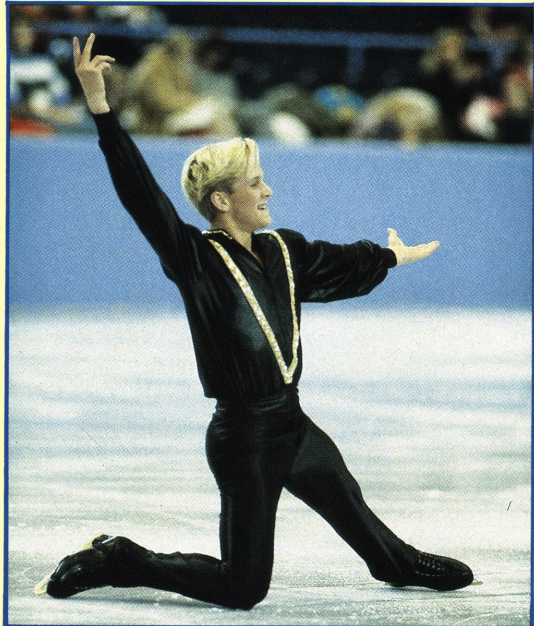


Colin Vander Veen
Junior Men – Silver

lowing with the double loop and Weiss and Ina accompanying it with the double toe. Once again, as in the Junior Men, some excellent spins were seen, notably Petroskey's headless spin in her combination, and good speed and body positions on Weiss and Mills. Unfortunately Mills missed her combination for a heavy required deduction and had a slip on her footwork. Even with the errors, her total presentation of elements and the program stood out.

Tisha Walker, Conejo Valley FSC, after a sixth-place in Figures came back with strong freestyle skills to win the OP, followed by Ina in second, then Weiss, Petroskey, and Mills. Standings going into the Long moved Ina into first above Petroskey, followed by Walker in third, Weiss in fourth, and Mills fifth. Duhamel dropped to sixth. The factoring was so close that only 1.4 points separated first from fifth. The race would go down to the wire.

Petroskey led off the Long Program but two-footed an opening triple Salchow and fell on a triple flip, dropping her to a fifth in the Long and out of the medal race.



INGRID BUTT

John Baldwin, Jr.
Junior Men – Bronze



MICHAEL ESPOSITO

Kyoko Ina
Junior Ladies – Gold



JUDY HAMMOND

Jessica Mills
Junior Ladies – Silver



MICHAEL ESPOSITO

Tisha Walker
Junior Ladies – Bronze

Walker also experienced a fall but held her program together exhibiting style and flow with a good triple toe-double toe and high double Axels; to place third. Ina started strongly with a triple toe-double toe and skated a consistent if conservative program with assuredness

and attention to details down to a nice final scratch spin.

Mills suffered a fall on an opening triple Salchow but recovered to grow in strength as the program continued with two other triples and a fine double Axel combination out of an elegant Bauer. Once again, the blending of artistic and technical elements into a total package is her strong suit with equal attention to each.

Weiss attacked a difficult program, with a fast section to *Flight of the Bumble Bee* and held on to four triples and displayed a lovely flow throughout the entire program.

Final standings placed Ina first in the Long and overall for the Junior Ladies' title. Mills was second in the Long to hold for the silver medal, and Tisa Walker took the bronze with a third in the Free. Weiss finished fourth and Petroskey fifth.

JUNIOR PAIRS

With the Junior title open, this year's event seemed like a bit of *deja vu* from



**Jennifer Heurlin &
John Fredriksen
Junior Pairs – Gold**

INGRID BUTT



**Natasha Kuchiki & Richard Alexander
Junior Pairs – Silver**

INGRID BUTT



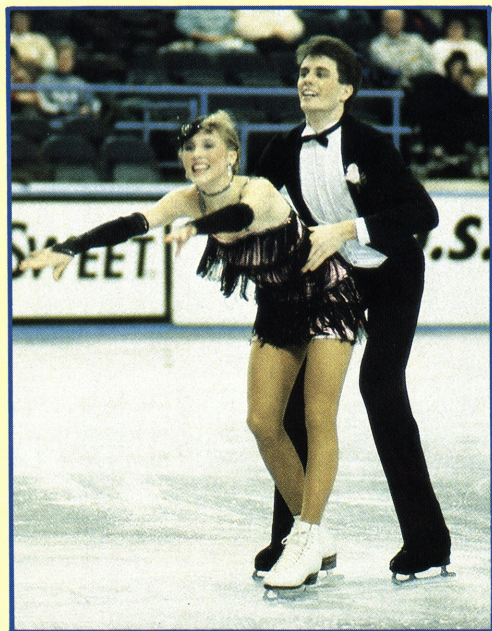
**Ann-Marie Wells & Brian Wells
Junior Pairs – Bronze**

INGRID BUTT

Denver with Jennifer Heurlin and John Frederiksen, Broadmoor SC, and Natasha Kuchiki and Richard Alexander, Los Angeles FSC, going head to head for position.

Each pair skated a strong Original Program with aggressiveness and attack. Though they have different styles and approaches to their skating it was evident from the start both pairs were skating for the title.

Heurlin and Frederiksen won the Original Program with a six-judge majority, based on well synchronized moves, especially firm spins, and smooth lifts. Past that, the marks varied widely with individual judges placing the next four pairs from first through eleventh. Kuchiki and Alexander finished second, followed by Ann-Marie and Brian Wells,



INGRID BUTT

Rachel Mayer & Peter Breen
Junior Dance – Gold



MICHAEL ESPOSITO

Wendy Millette & James Curtis
Junior Dance – Silver



MICHAEL ESPOSITO

Jeannine Jones & Michael Shroge
Junior Dance – Bronze

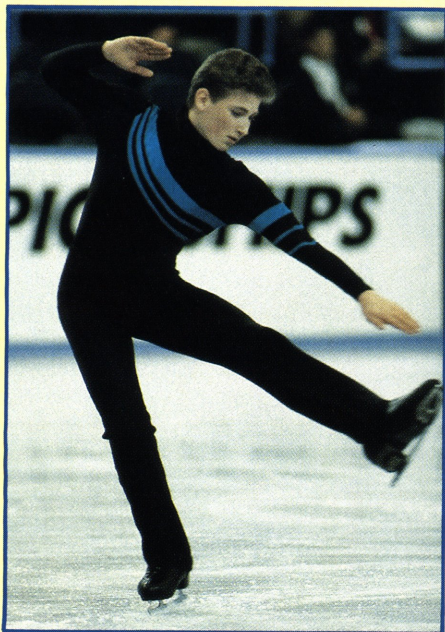
SC of Wilmington. Angela Deneweth, Detroit SC, and John Liotta, Providence FSC, were fourth, with Jocelyn Cox, FSC of Madison, and Brad Cox, University of Delaware SC, fifth.

The Free Skating brought out the best of all competitors giving the spectators

a tremendous range of programs incorporating many new variations on standard moves. By chance, the three leaders drew to skate in the order of their standings going into the event. Heurlin and Frederiksen opened with a good twist lift. Against a musical background of *Chariots of Fire*, they ignited with good synchronized spins and side-by-side triple toe loops. Despite a mishap in the footwork sequence, they recovered into a jump combination and strong helicopter and lateral twist lifts.

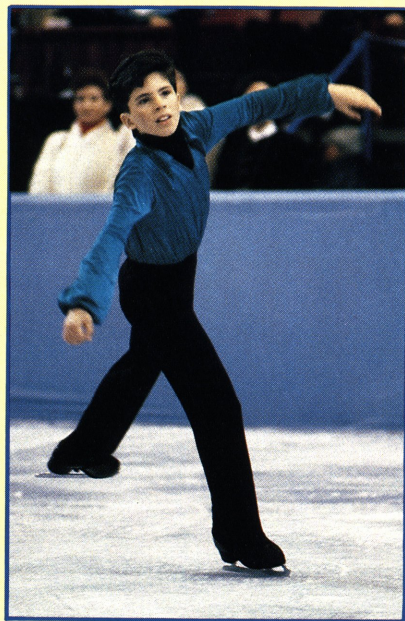
Kuchiki and Alexander began strongly and showed tremendous growth as a team over last year with increased speed and attack. A well executed press lift and fast combination spin were topped with a long flowing death spiral. A marred throw jump did not interrupt the total flow of the program.

Wells and Wells perhaps showed the greatest improvement since their sixth-place finish last year. Skating solidly and with determination, they showed quick timing and good body lines throughout



INGRID BUTT

Philip R. Dulebohn
Novice Men – Gold



PAUL HARVATH

Michael Weiss
Novice Men – Silver

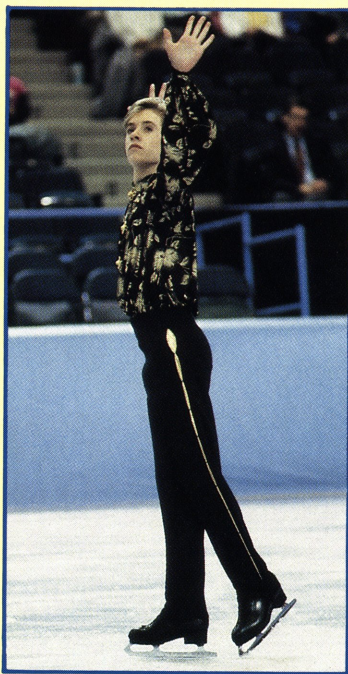
the program punctuated with fast spins and tight jumps.

In a five-to-four decision, Heurlin and Frederiksen won the Free and the 1989 U.S. Junior Pair's title. Kuchiki and Alexander won the silver medal, and Wells and Wells took the bronze in another split decision over Angela Deneweth, Detroit FSC, and John Liotta, Providence FSC.

JUNIOR DANCE

Rachel Mayer and Peter Breen, SC of Boston, took command of the Compulsory Dances, the Viennese Waltz and the Rocker Foxtrot, with unanimous firsts. They were followed by Ann-Morton Neale, SC of Wilmington, and Laurence Shaffer, Seattle SC, in second; Wendy Millette, SC of Boston, and James Curtis, Wissahickon SC, in third; and Jeanine Jones and Michael Shroge, Winterhurst FSC, in fourth.

Once again, the Charleston delighted the audience and brought out a wide



PAUL HARVATH

Todd Gairrett
Novice Men – Bronze



INGRID BUTT

Casey Link
Novice Ladies – Gold



PAUL HARVATH

Nicole Bobek
Novice Ladies – Silver



PAUL HARVATH

Danielle Olthoff
Novice Ladies – Bronze

that captured the true flavor of the dance and placed them second over Jones and Shroge in third. Neale and Shaffer, after a solid start in the Compulsories, dropped to fifth on the OSP behind Kara Berger, Los Angeles FSC, and Jay Barton, Arctic Blades FSC.

Mayer and Breen held onto first going into the Free Dance ahead of Millette and Curtis who had pulled into second, and Jones and Shroge who had moved to third. Neale and Shaffer were fourth.

Jones and Shroge chose Latin themes for the Free and outfits accentuated with hot pink for a sultry atmosphere. Using traditional interpretations of the themes, they brought a special flare and style of their own that enhanced their program.

Millette and Curtis dressed in classic black and white skated to popular American classics, including "Liza," "Fascinating Rhythm," "I Got Rhythm," (which they certainly did), and "The Man I Love." They took command with strong lifts, a smooth flow with deep edges, and sharp changes of mood.

Mayer and Breen, skating last, showed great flare and panache dancing in part

variety of interpretive approaches. Mayer and Breen's fast-paced, energetic version was judged first. Millette and Curtis came to life in a high-stepping version



to "Those Were The Days" and "Sunrise, Sunset." He is a powerful partner who presents her well. Their matched body lines and long extensions were well choreographed allowing for immaculate timing of each detail.

They received unanimous firsts in the Free (a total of 24 out of 27 for the competition) to handily take the gold medal. Millette and Curtis deservedly won the silver with unanimous seconds in the Free, and Jones and Shroge received the bronze.

NOVICE MEN

As in the Junior events, there was more talent in the Novice division than seen in some time. With three figures remaining in the Novice competition, the ones drawn were the LBO Change Double Three, the RFI Bracket, and the LBO Loop. Clay Sniteman, Utah FSC, placed a strong first, followed by Michael Gricus, Rocky Mountain FSC, and Michael Weiss, Washington FSC. Philip Dulebohn, Baltimore FSC, was fourth, and Todd Gairrett, SC of Wilmington, stood fifth.

In The Freestyle, the triple jump seemed the deciding factor for success in several performances, though it was not that long ago that a triple was seldom seen at the Novice level. John Frederiksen, Broadmoor SC, after a

tenth place in figures came out with a strong program peppered with high jumps and good connecting elements, plus tight spins to take a majority of firsts. Though his low Figure placement kept him out of the medals, he pulled up four places from the previous year.

Dulebohn incorporated a demanding triple toe-double toe-double toe combination along with two other triples and good spins to place a solid second.

Gricus had trouble with a triple Salchow but presented a nicely planned number to gypsy music themes with solid doubles throughout for a fourth placement in the Free. Weiss made a strong challenge but without the triples was held to fourth place but shows great promise.

The final results saw Dulebohn joyfully win the Novice title before his hometown audience. Weiss was awarded the silver, with a favorable reception from the co-host Washington supporters, and Gairrett received the bronze.

NOVICE LADIES

With some seesawing during the Compulsory Figures for placement, Shannon Smith, Utah FSC, matched her Novice clubmate Clay Sniteman for the lead after the LBO Change Double Three, RFO Bracket, and LBI Loop. Casey Link, Las Vegas FSC, was second, with Danielle Olthoff, FSC of Minneapolis, in third. Kristin Stoll, Rocky Mountain FSC, placed fourth, and Nicole Bobek, All Year FSC, was fifth.

As frequently happens in Novice competitions where Figures and Freestyle have equal value, positions in the Freestyle differed greatly from the Figures and determined the final outcome. Shanel Mayeshiro, Peninsula FSC, skated third, following a ninth in figures and turned in a nicely balanced dynamic performance to place second in a split decision with four firsts. Short of the medals, she has a commanding presence to watch in the future.

Bobek took a majority of firsts for a solid program that displayed her formidable free skating talents with a high flying double Axel and solid, fast spins. She has great audience appeal and charm in her presentation and pays attention to details.

Link proved her merit with a high energy program, solid doubles and combinations and once again showed the emphasis on strong body positions and firmly centered spins for third. Olthoff could not match the other three and overcame minor faults to deliver a sound program, stylishly presented with sincerity and enthusiasm for fourth.

Final placements gave the Novice National title to Link, with Bobek taking the silver medal and Olthoff the bronze.

BALTIMORE FOOTNOTES

Pin collecting mania continues among skating enthusiasts, proven by the fact that the 1989 Nationals' gold logo pin completely sold out before the competition was over. By the end of the week offers of \$20 a piece were made to those who had extras. The pin was designed by *Skating Art* Director, Pam Guire, based on the original Baltimore Organizing Committee logo.

Nationals is always like a family reunion, and it was good to see Brian Boitano, Debi Thomas, Ken Shelley, Hayes and Carol Heiss Jenkins, and other former champions in attendance. Caryn Kadavy was also on hand to lend her support to competitors, though she was unable to compete due to a stress fracture of the ankle.

ABC's *Wide World of Sports* coverage on both Saturday and Sunday brought high national ratings, with an estimated eleven million households watching. Due to the basketball game running over, they were forced to cut a special segment filmed with Susan Wynne and Joseph Druar, Renee Roca and James Yorke, Jodie Balogh and Jerod Swallow training at the U.S. Air Force Academy in Colorado Springs with Sandy Hess and Phillip Mills.



PAUL HARVATH

Congratulations are due Kristi Yamaguchi who was named ABC's Athlete of the Week following the championships, due to her distinguished accomplishment of medaling in two events. Kristi also celebrated an anniversary on the day of the Exhibition. It marked six years to the day that she and partner Rudi Galindo had been skating together.

A few people were lucky enough to catch a glimpse of the peregrine falcons who live on the 37th floor of the U.S. Fidelity and Guarantee Building. They are the only known city-dwellers on the Eastern seaboard and are a rare sight.

No event the magnitude of the Nationals can operate without efficient planning and the thousands of hours of work by volunteers. A big "thank you" is due to all those who helped so courteously to fill everyone's needs, with special laurels to co-chairmen, Dorothy Brown and Phyllis Howard for their superb work in making the event such a success.

Officials at the competition were presented a special gift of a P. Buckley Moss signed print commissioned for the Championships. Mrs. Moss is rapidly becoming one of the most popular contemporary artists using skating themes in her works.

At the closing Exhibition of Champions the audience was treated to the introduction of "Paws" the polar bear mascot for Salt Lake City in 1990, who will be waiting to greet visitors next year at the Salt Palace.

PHOTOGRAPHIC MEMORY

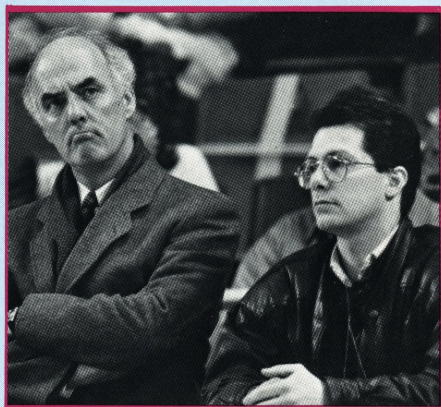
PHOTOS BY PAUL HARVATH



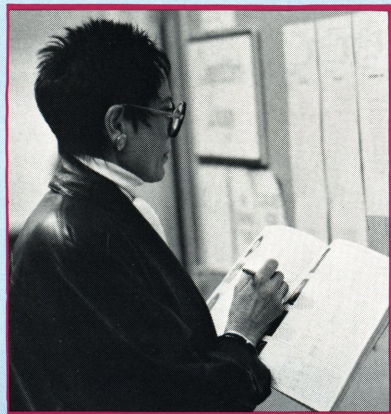
The final warm-up group of Junior Ladies wait to take the ice for warm-up.



Peggy Fleming and Carlo Fassi: still a winning duo.



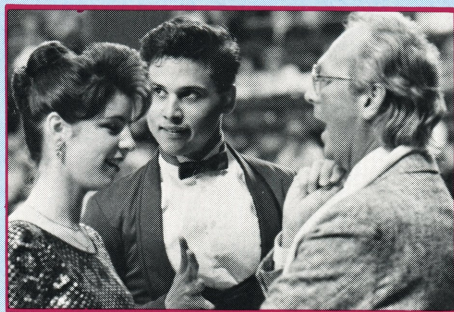
Peter Burrows studies the scoreboard.



Ricky Harris keeps a close check on results.



Referee, Benjamin T. Wright, resolves another shoelace problem with April Sargent and Russ Witherby.



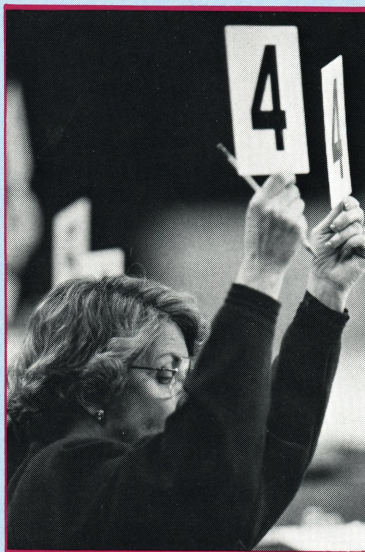
Jeannine Jones and Michael Shroge receive final encouragement from coach David Lowery.



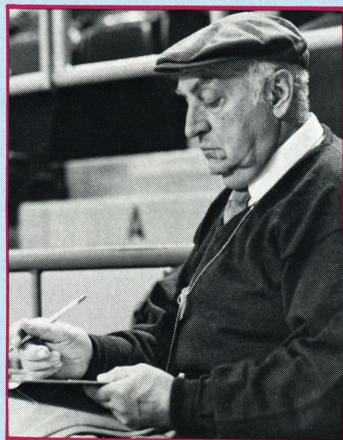
Doug Wilson, ABC Director, lines up a camera shot.



Jill Trenary signs autographs for waiting admirers.



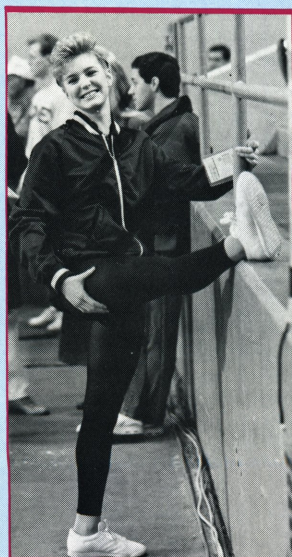
The computer decided to take a rest, but the judges continued.



The ice man, Joe Serafine, carefully monitors ice conditions.



Coach James Hulick has full attention of Kristi Yamaguchi and Rudi Galindo on their final practice before the long program.



Shanda Smith warms up before a pair practice.

Learn from the Finest.



CARLO FASSI
Director of Skating

Olympic Champions Peggy Fleming, John Curry, Dorothy Hamill and Robin Cousins did.

These skating greats, and many others, benefited from the finest training available. Now you're ready for the finest. And you'll find it, too—at the Broadmoor World Arena.

The finest training program. In addition to offering a superior year-round skating program, the Broadmoor also offers an excellent summer competitor's program from June through August.

The finest training facilities. The two adjoining ice arenas at the world-renowned Broadmoor complex offer you more ice time and ideal conditions.

The finest living facilities. Beatty Hall is a comfortable, convenient residence hall you'll be happy to call your home during your training.

The finest environment. You'll find the pure mountain air exhilarating, and will realize important conditioning benefits from training at an altitude of 6,000 feet.

The finest instruction. The top-notch professional staff, headed by Carlo Fassi, includes: Becky Haman Calvin, Janet Champion, Christa Fassi, Christine Haigler Krall, Phillip Mills, Connie Watanabe Nakamura, Jack Raffloer, Linda Soesbe. Dance Program headed by Sandy Hess, includes: Don Adair, Richard Griffin, Paul Paprocki, Doreen Routon.

Now is your chance to become part of the Broadmoor skating tradition—to join the finest. For more information on all Broadmoor skating programs, contact: Broadmoor World Arena, P.O. Box 1439, Colorado Springs, CO 80901. Phone (719) 634-7711, ext. 5158.

Upcoming Special Events:

March 31, 1989—United States Boxing Championships

June 5 - July 1, 1989—Summer Session I

July 3 - 29, 1989—Summer Session II

August 2 - 6, 1989—51st Annual Broadmoor Ice Revue

August 7 - September 2, 1989—Summer Session III

November 28 - December 2, 1989—World Junior Figure Skating Championships

THE BROADMOOR WORLD ARENA

Call (719) 577-5796 to order **50 Year Broadmoor World Arena Pictorial History Book**. The cost is \$15.00 plus \$2.00 postage and handling. Pin and Poster also available.

NutraSweet "Giving It 100%" Awards



PHOTO COURTESY OF THE NUTRASWEET COMPANY

Continuing a tradition established in 1987, The NutraSweet Company presented its "Giving It 100%" Award to four worthy competitors at the 1989 U.S. Figure Skating Championships in Baltimore, Maryland. Each year this honor is bestowed upon the national competitors who most personify the quality of being their own best competitor, rather than their triumphs over others. Winners are selected by a committee of judges, coaches, and USFSA representatives.

Recipients of this year's awards included:

James Cygan – a full-time honors student in his sophomore year at the University of Colorado. He is a biology major, speaks fluent French, has an interest in Eastern bloc politics and is planning to pursue a career in medicine. A native of Newport Beach, California, Jimmy trains at the Broadmoor in Colorado Springs. He is one of the few skaters to have won both the Novice and Junior U.S. titles.

Erik Larson – has been skating for fourteen of his twenty years, encouraged by his father's deep enthusiasm. Today, Erik continues to be inspired by his late father's support and presently holds two jobs to pursue his training. He takes pride in his sister, Lisa, who was a first-place finisher in swimming with the Special Olympics.

A 1985 World Junior Champion, he is a 1989 alternate to the U.S. World Team. Originally from San Diego, he also trains in Colorado Springs, with fellow award winner, James Cygan.

Elizabeth McLean – was forced to withdraw from Ladies' singles competitions in 1981 after developing a condition known as anterior compartment syndrome, resulting in overdevelopment of calf muscles in both legs. She underwent painful surgery and therapy and was told she would never skate again. But in 1984, she resumed skating in dance, and she and partner Ari Lieb were silver medalists in the 1988 Grand Prix International and Nebelhorn Trophy competitions.

A senior honors student at Boston College, she is majoring in history. A native of Falmouth, Massachusetts, she trains at the Skating Club of Boston in Wellesley.

Kristi Yamaguchi – Though only seventeen, Kristi has a remarkable list of credits to her name, including the 1988 World Junior Ladies' and Pair's Championship titles, being the first lady to medal in two events at the World Juniors. This year, she compounded her success in Baltimore by winning the Senior Pair's Championships, with partner Rudi Galindo, and going on to take the silver medal in Senior Ladies. She thus became the first American in twenty-seven years to earn berths on the U.S. World Team in two different disciplines. For her success, she was named the ABC Athlete of the Week, and was previously named the Most Promising Athlete in Artistic Sports by the Women's Sports Foundation. A senior at Mission San Jose High School, Kristi is looking forward to her June graduation and perhaps some college work next year.

1989 CANADIANS

by Michael Graham

The 1989 Canadian Figure Skating Championships was seriously lacking in high drama, but perhaps that is to be expected at the beginning of every quadrennial. There were actually quite a few bright spots in the competition, held February 8-11 in Chicoutimi, Quebec.

SENIOR MEN

Usually after the departure of a giant like Brian Orser, it takes years to develop another skater with such international potential, but this year was different. Twenty-one-year-old Kurt Browning won two international gold medals this fall making him a favorite for a World medal this year. This coupled with his third-place finish in the free skating at the World Championships last year makes him a contender.

Browning had no trouble easing into the Men's title vacated after eight years by Orser. In the Original Program, Browning started magnificently, landing a triple flip and a triple Axel-double loop combination, and he won this event as well as the Compulsory Figures. In the Long, Browning had some brilliant moments, including a breathtaking, picture perfect quadruple toe loop, his second clean one in competition. However, he fell on a second triple Axel, omitted half of his triple-triple toe combination, and touched down on a triple loop. His presentation was slick and humorous as usual, and he swept the Long Program easily winning the 1989 title.

The second-place winner, Michael Slipchuk, who finished seventeenth in the 1987 World Championships in Cincinnati, also had some strong technical moves. He landed a triple toe-triple toe combination, a triple

loop, and a triple Salchow. His second-place finish was probably due to the brilliant triple Axel he completed, the best one of the evening. He too, also was with error as he popped two triple Lutzes and fell on a triple Salchow.

In fact, third-place finisher Matthew Hall included much more content in his program than Slipchuk. His chances were hurt early in the program when he crashed on a triple Axel. Still, when finished, Hall had completed six triples to Slipchuk's four, and except for Slipchuk's Axel, they were all technically equal. His presentation was also much neater and more precise than Slipchuk's and one can only wonder why he was placed third instead of second. Two factors seem obvious: One, Slipchuk has competed in a World Championship before, and two, he landed a triple Axel while Hall did not. This is perhaps an example of the rapidly increasing emphasis on triples. With the elimination of figures in 1990, "figure skating" will probably be renamed "triple skating." It may also become a much more injury-plagued sport as a result.

SENIOR LADIES

In the Ladies' event, twenty-two-year-old veteran Charlene Wong, appearing in her ninth Senior championship, had her sights set on winning the title. In her nine years, Wong has won two silver medals and two bronzes, but had never won the gold. Internationally, Wong is the most experienced of the Senior Ladies, having placed thirteenth at the 1988 Olympics. This year, buoyed by a gold medal at Skate Electric and a win at the Eastern Divisionals, she arrived in Chicoutimi optimistic.

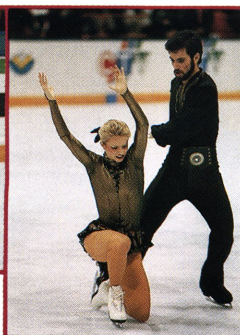
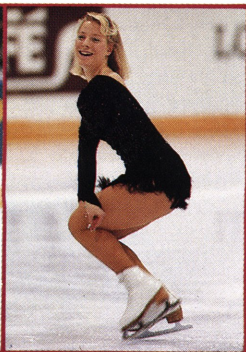
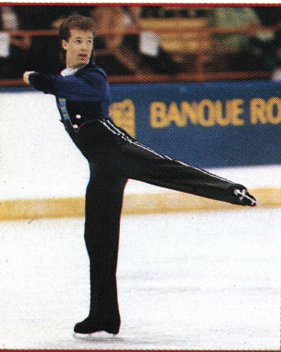
Her bid for the title started well, with a win in the figures and a clean Original Program.

*Isabelle Brasseur and
Lloyd Eisler*

Kurt Browning

Karen Preston

Karyn and Rod Garossino



PHOTOS BY GÉRARD CHÂTAIGNEAU

However, her poor triple repertoire would return to haunt her in the long program. Wong has never been a strong jumper. She stepped out of a triple Salchow and fell on a triple loop. She landed two strong double Axels, but towards the end of her program, missed a double Lutz and her normally reliable double Axel deserted her as well, resulting in a fourth-place finish in the free skating and second place overall.

The eventual winner was Karen Preston, an eighteen-year-old Torontonian competing in the Senior Ladies' event for the first time. In 1988, she had competed in the Junior Ladies and finished only third. Preston had arrived in Chicoutimi hoping for a top five finish. With the reduction of figures, Preston overcame an eighth-place finish in that event to win the title. Her Long Program featured four triples and demonstrated a strong jumping ability. Though a little sloppy at times, her performance was one of the bright spots in the championships.

Almost as incredible as Preston's story was Lisa Sargeant's of Edmonton, Alberta. Sargeant was competing in her first ever National competition, never having qualified at even the Novice or Junior levels in previous years. Sargeant won the bronze medal on the strength of her free skating. Her only mistake in the Long occurred when she missed a planned triple loop. Overall, there seems to be a crowd of young women with great potential to take over from former champions Elizabeth Manley and Tracey Wainman. Though the performances were very inconsistent this year, one can only wait for improvements which are sure to come.

SENIOR PAIRS

The Pairs, as did the Ladies, seemed to stumble their way through the free skating programs. The eventual winners, Isabel Brasseur and Lloyd Eisler (who won the title in 1984 with a different partner) were far from perfect. Brasseur touched down on both the throw triple toe loop and throw triple Salchow, and also overrotated her side-by-side double Axel. However, they did include a magnificent split triple twist, a lateral triple twist lift, and good side-by-side jumps. Despite the errors they committed, Brasseur and Eisler left a strong impression on both the audience and judges that the other pairs did not, earning a standing ovation. Perform-

ing to *Scheherazade*, their program was both energetic and crowd-pleasing, something which set them apart from the other pairs.

The silver medalists, Cindy Landry and Lyndon Johnston, are a newly formed pair and they surprisingly edged out defending champions Christine Hough and Doug Ladret for a spot on the World Team. However, Landry and Johnston also made serious mistakes. She took a violent fall on the throw double Axel, and their attempt at side-by-side triple Salchows failed, though a throw triple Salchow was landed with ease. Though she did miss two of the side-by-side double jumps they attempted, their technical content was superior to Landry and Johnston's, and being the defending champions and eighth-ranked in the world, it is a mystery why the judges placed them third.

SENIOR DANCE

After skating in the shadows of Olympic bronze medalists Tracy Wilson and Rob McCall for years, the brother and sister team of Karyn and Rod Garossino came into their own in Chicoutimi, winning all three portions of the Ice Dance event to finally capture the title they had been chasing since 1982. The Garossinos have improved over the years since their debut in the 1985 World Championships where they placed tenth, but ironically their world ranking has since slipped to twelfth. With the retirement of some of the top couples and their brilliant new free program, hopefully the Garossinos will be able to crack the top ten in Paris and begin the painstaking climb to the top of the ice dance rankings.

Relative newcomers compared to the Garossinos are Michelle McDonald and Mark Mitchell, who surprised everyone by moving up from fourth in the Compulsory Dances to second overall, an almost unheard of feat in ice dancing. Their OSP gained them three first-place votes from the seven judges, and their long program, a saucy, sexy blues number to *Fever* and *Echoes of Harlem*, lifted them above favorites Jo-Anne Borlase and Martin Smith to take the silver.

As seen from Canada, the best hopes for medals in Paris are Kurt Browning and Isabelle Brasseur and Lloyd Eisler. Top ten hopes are hanging on Karen Preston, Karyn and Rod Garossino, and Michael Slipchuk.

1989 CANADIAN CHAMPIONSHIPS
CHICOUTIMI-JONQUIERE, QUEBEC, CANADA
FEBRUARY 8-11, 1989

SENIOR MEN

	CF	OP	FS		PLACES
1.	1	1	1	Kurt Browning, Royal Glenora	2.0
2.	2	5	2	Michael Slipchuk, Royal Glenora	5.8
3.	5	2	4	Matthew Hall, Minto	7.2
4.	3	6	3	Norm Proft, Langley	7.8
5.	7	8	5	Brent Frank, Saskatoon	12.6
6.	12	4	7	Stephane Yvars, Boucherville	14.2
7.	8	7	8	Martin Marceau, Lames D'Argent	15.4
8.	11	9	6	Patrick Brault, Glencoe	15.8
9.	10	3	10	Jaimee Eggleton, St. Bruno	15.8
10.	9	10	9	Marcus Christensen, Toronto Cricket	18.6
11.	4	12	11	Jeffrey Partrick, Brandon	19.8
12.	6	11	12	Bernard Munger, Ste. Foy	21.0

SENIOR LADIES

	CF	OP	FS		PLACES
1.	8	1	1	Karen Preston, Toronto Cricket	4.8
2.	1	2	4	Charlene Wong, Pierrefonds	5.6
3.	7	3	2	Lisa-Lynn Sargeant, Royal Glenora	6.6
4.	2	5	3	Dianne Takeuchi, Preston	6.8
5.	3	4	5	Shannon Allison, Hollyburn	8.6
6.	5	6	7	Tanya Bingert, North Shore	12.6
7.	12	7	6	Josee Chouinard, Lames D'Argent	15.0
8.	4	10	9	Angie Folk, Glencoe	16.6
9.	13	9	8	Josee Arsenault, Stellaire	18.6
10.	14	8	10	Annie St. Hilaire, Jonquiere	20.4
11.	9	11	11	Leslie Anne White, Granite Club	21.2
12.	6	12	15	Pamela Giangualano, Lake Superior	24.6
13.	10	13	14	Kelly Doohan, Sarnia	25.8
14.	15	14	12	Shawn Jackson, Pierrefonds	26.4
15.	11	15	13	Susan MacKay, Sudbury	26.4

SENIOR PAIRS

	OP	FS		PLACES
1.	2	1	Isabelle Brasseur, St. Jean & Lloyd Eisler, Seaforth	2.0
2.	1	2	Cindy Landry, Vaudreuil & Lyndon Johnston, Hamiota	2.5
3.	3	3	Christine Hough, Preston & Doug Ladret, Vancouver	4.5
4.	4	4	Michelle Menzies, Preston & Kevin Wheeler, Brussels	6.0
5.	5	5	Melanie Gaylor, Stratford & Lee Barkell, Kirkland Lake	7.5
6.	6	6	Katherine Kates, Prince George & Robert Kates, Totem	9.0
7.	8	7	Jodi Barnes & Rob Williams, North Shore	11.0
8.	9	8	Alison Hughes, Kitchener Waterloo & Jim Blackburn, Toronto Cricket	12.5
9.	7	9	Chantal Gagnon, Lames D'Argent & Sylvain Lalonde, Fleur de Lys	12.5

SENIOR DANCE

	CD	OSP	FD		PLACES
1.	1	1	1	Karyn Garossino & Rod Garossino, Calalta	2.0
2.	4	2	2	Michelle McDonald, MSA & Mark Mitchell, Sackville	4.8
3.	2	3	3	Jo-Anne Borlase & Martin Smith, U. Canada N. York	5.6
4.	3	4	4	Penny Mann & Richard Perkins, Minto	7.6
5.	5	5	5	Melanie Cole & Michael Farrington, U. Canada N. York	10.0
6.	6	6	6	Jacqueline Petr, Century & Mark Janoschak, Chinguacousy	12.0
7.	8	8	7	Pamela Watson, Pointe. Claire & Aime LeBlanc, St. Leonard	15.0
8.	7	7	9	Dara Bailey, Unionville & Curtis Moore, Wingham	16.0
9.	9	9	8	Nathalie Lessard, Lames D'Argent & Donald Godfrey, U. Canada N. York	17.0
10.	11	11	10	Kim Weeks, U. Canada N. York & Jeff Fish, Guelph	21.0
11.	10	10	11	Chantal Loyer & Rock Lemay, Minto	21.0

NORTHWEST PACIFICS

The Northwest Pacific Sectional Championships took place in Seattle, Washington from December 7-10, 1988 and were hosted by the Highland Figure Skating Club. Complete results appeared in the February 1989 issue of *Skating*.

PHOTOS BY JACK PHELPS

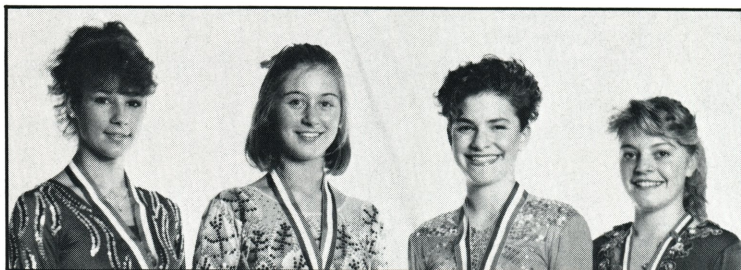


SENIOR LADIES

(L to R) Kelly Moller, Second; Dena Galech, First; Kristin McHale, Third; Cindy Warner, Fourth.

JUNIOR LADIES

(L to R) Berkley Villard, Second; Elizabeth Morse, First; Sarahbeth Gendreau, Third; Heather Waller, Fourth.



JUNIOR DANCE

(L to R) Beth Buhl & Tony Darnell, Second; Ann-Morton Neale & Laurence Shaffer, First; Ashley Hunt & Rick Wise, Third; Kate Boardman & Robert Kassas, Fourth.



NOVICE LADIES

(L to R) Amy Smith, Second; Dawn Marie Finley, First; Tamara Boni, Third; Stacie Bowerman, Fourth.



INTERMEDIATE LADIES

(L to R) Tonya Zuehlke, Second; Sheri Persello, First; Heidi Green, Third; Kelly Kristine Clark, Fourth.



OFFICIAL SOUVENIRS

ITEM	DESCRIPTION	PRICE	POST. & HDLG.	QTY.	TOTAL
Sweat Shirt	White with logo skater Adult S-M-L-XL	20.00	2.50		
Sweat Shirt	White with crab mascot Adult-M Youth-L	20.00	2.50		
T-shirt	White with crab mascot Long sleeved S-M-L-XL	10.00	2.50		
T-shirt	White with crab mascot Short sleeved S-M-L-XL	8.00	2.50		
Turtle Neck	White with logo on collar Adult M-L-XL	20.00	2.50		
Necktie	Maroon with logo	20.00	1.50		
Necktie	Navy blue with logo	20.00	1.50		
Scarf	Blue with skaters	20.00	1.50		
Tote bag	Ecrú with logo & crab	7.00	2.50		
Pin	Logo cloisonné	5.00	1.00		
Pin	Crab cloisonné	5.00	1.00		
Maryland residents add 5% Sales Tax _____					
TOTAL CHARGE _____					
Make check or money order payable to: '89 NATIONALS					

Send to: Sue Cronin, 811 Stagshead Rd., Towson, MD 21204

you did dance," Joe frowns. "I think the perception is beginning to change, and we would like to help make that happen. There is real depth now. Dance requires just as much time, effort, dedication, and money, and deserves more attention.

"Judy (Blumberg) and Michael (Seibert) certainly brought a lot to the sport and a large amount of serious attention. Maybe it goes in waves, and I'd like to think maybe we are working up to a new period in dance."

Susie adds. "We see what the Europeans are doing and know what we are doing. Both are rooted, I think, in our cultures. Much of the classical approach by the Europeans comes from their appreciation of ballet and classical arts, which are not as strong in the U.S. As skaters, we do what is most natural for us, and I guess that is a sign of our culture, too."

Unlike some teams, Sue and Joe spend time together off the ice and do socialize together, with friends or on double dates, and not always with skaters. "The question we're asked the most is 'Are we romantically involved?' Everyone asks. I'll admit, there have been times when we have more fun with each other than our dates on a night out," Joe laughs, "but we lead very separate lives."

"We're very honest with each other, and I respect his opinion."

"When you've been around someone . . . and it will be nine years in October . . . well, I can almost look at Susie and know what she's thinking, and the same goes for her."

"We balance one another," Susie explains. Except Joe is very cheery in the morning and I am not."

The future of the two seem intertwined. "Our lives will continue to be connected," Susie states securely. "I can see calling Joe in eight or ten years and asking 'How did you make that stir fry?' or 'How do you change a diaper?' she laughs and confides she is not exactly a whiz in the kitchen—yet.

As for life after competition? "It's hard to say. Those projections can give you a kind of false sense of security," Joe says. "One thing though, I think we would like to teach together, and start right after we retire as amateurs, so that we are fresh and have ideas to depart. We could make a good team with both a man's and a woman's viewpoint, and the experience of having been there. Our priorities are also a little different. Teaching on my own, I wouldn't be as good. Sue points out things as we work from the girl's perspective that I don't even know about."

Sue agrees but admits, "I can't even think about retirement. I get really sad. I also want to finish getting my degree, which has been put on hold."

For now, it is one step and one year at a time, with what they call "immediate, realistic goals."

"In the last four years, we have really come together as a team. We're on the same wave length and communicate together. We have the same goals. But this coming one is probably going to be one of the hardest years we've had, not in the sense of stress, but the demands we know we will make on ourselves and some of the ideas that we want to develop." Joe states.

"At long last we did win the gold, and it's a tremendous incentive. It's been a long road, but we've still got a long way to go and there are so many more things we want to do and explore."

". . . and promises to keep before we sleep," Susie smiles.



New England

FIGURE SKATING CAMP

Our 18th Year
July 1 - Aug. 26

Contoocook (near Concord, NH). Rated Best Skating Camp by Town & Country magazine. Figure skating, plus tennis, water-skiing, sailing, dance, gymnastics. MD/RN in residence.

Only accredited and inspected figure skating camp by American Camping Association.

For Brochure Call: (516) 364-8050

Or Write: NEFSC, 14 Joyce Ln., Woodbury, NY 11797

MIDWESTERNS

The Midwestern Sectional Championships were held January 4-7, 1989 in Detroit, Michigan and hosted by the Detroit Skating Club. Complete results appeared in the February issue of *Skating*.



SENIOR MEN

(L to R) James Cygan, Second; Daniel Doran, First; Angelo D'Agostino, Third; Aren Nielsen, Fourth.

SENIOR LADIES

(L to R) Tonia Kwiatkowski, Second; Jeni Meno, First; Kelly Szmurlo, Third; Kathryn Curielli, Fourth.



SENIOR PAIRS

(L to R) Elaine Asanakis & Joel McKeever, Second; Jason Dungjen & Paula Visingardi, First; Julianne Thompson & Brian Geddes, Third; Shanda Smith & Brandon Smith, Fourth.

SENIOR DANCE

(L to R) Jodie Balogh & Jerod Swallow, Second; Renee Roca & James Yorke, First; Dorothy Rodek & Robert Nardoza, Third; Elizabeth Punsalan & Shawn Rettstatt, Fourth.

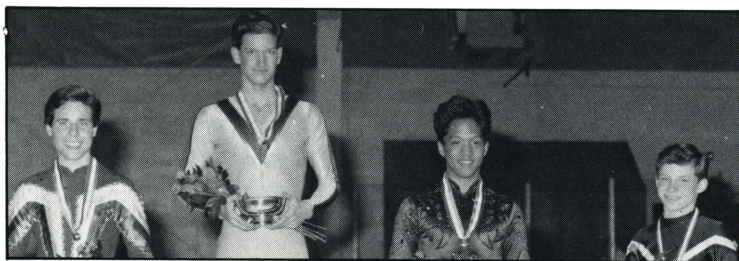


ADULT SENIOR DANCE

(L to R) Alan Narvy & Sandy Burkons, Second; Hazel Wecal & Michael Ochs, First; Lisa Brisse & Gregg Hartman, Third.

ADULT JUNIOR DANCE

(L to R) Susan Matthews & Harlan Higgins, Second; Heidi Allis & Tanner Allis, First; KathieJane Oehler & Gregory Pfeifer, Third.



JUNIOR MEN

(L to R) Tommy Jasper, Second; Shepherd Clark, First; Gig Siruno, Third; Brian Schmidt, Fourth.

JUNIOR LADIES

(L to R) Meredith Vaughan, Second; Robyn Petroskey, First; Stacy Rutkowski, Third; Alice Sue Claeys, Fourth.



JUNIOR PAIRS

(L to R) Angela Deneweth & John Liotta, Second; Jennifer Heurlin & John Frederiksen, First; Susan Purdy & Scott Chiamulera, Third; Hilary Olney & Steven Mills, Fourth.

JUNIOR DANCE

(L to R) Krista Schulz & Jonathan Stine, Second; Jeannine Jones & Michael Shroge, First; Holly Robbins & Kyle Schneble, Third; Katherine Williamson & Ben Williamson, Fourth.





NOVICE MEN

(L to R) Ryan Hunka, Second; Eric Bohnstedt, First; Mike Gricus, Third; John Frederiksen, Fourth.



NOVICE LADIES

(L to R) Stephanie Hillstrom, Second; Kirsten Stoll, First; Danielle Olthoff, Third; Denise Long, Fourth.

Ice Abroad

Continued from page 19

17.	18	19	16	Anu Jaaskelainen, Finland	34.6
18.	19	18	17	Mateja Avbreht, Yugoslavia	35.4
19.	16	17	19	Yibing Jiang, China	35.6
20.	20	20	20	Jacki Bird, Australia	40.0

PAIRS

JUDGES: 1-Mr. Sang Jong Han, Democratic People's Republic of Korea; 2-Mrs. Anna Sierocka, Poland; 3-Mr. Hisashi Yoshikawa, Japan; 4-Mr. Sergei Shirokov, USSR; 5-Mrs. Margery Schleh, USA. SUBSTITUTE JUDGE: Mrs. Liselotte Maurer, Federal Republic of Germany. REFEREE: Mrs. Dagmar Rehakova, Czechoslovakia. ASSISTANT REFEREE: Mr. Gavril Veltchev, Bulgaria.

OP	FS		PLACES
1.	1	1 Natalia Mishkutienok & Artur Dmitriev, USSR	1.5
2.	3	2 Sharon Carz & Doug Williams, USA	3.5
3.	2	3 Marina Elzova & Sergei Zaitsev, USSR	4.0
4.	4	4 Maria Lako & Rocky Marval, USA	6.0
5.	6	5 Hie Yong Nam & Hyok Kim, Democratic People's Republic of Korea	8.0
6.	5	6 K. Steizer & Szczerbowski, Poland	8.5

DANCE

JUDGES: 1-Mrs. Sheri Grimson, USA; 2-Mr. Valerii Tataurov, USSR; 3-Mrs. Liliana Dozeva, Bulgaria; 4-Mrs. Sumiko Kobayashi, Japan; 5-Mrs. Liudmila Aladjova, Bulgaria. SUBSTITUTE JUDGE: Mr. Sergei Shirokov, USSR. REFEREE: Mrs. Dagmar Rehakova, Czechoslovakia. ASSISTANT REFEREE: Mrs. Evgenia Karnolska, Bulgaria.

CD	OSP	FD		PLACES
1.	1	1	1 Svetlana Liapina & Georgi Sur, USSR	2.0
2.	2	2	2 Ilona Melnichenko & Gennadi Kaskov, USSR	4.0
3.	3	3	3 Tracy Sniadach & Leif Erickson, USA	6.0
4.	4	4	4 Luyang Liu & Xalei Zhao, China	8.0
5.	5	5	5 Regina Woodward & Charles Sinek, USA	10.0
6.	6	6	6 Bin Han & Hui Yang, China	12.0
7.	7	7	7 Hye Yong Kim & Sung Chon, Democratic People's Republic of Korea	14.0

APRIL

- 1-2 **Annual Ice Show**, sponsored by the FSC of Watertown, at the Watertown Ice Arena, William T. Field Dr., Watertown, NY 13601. For information contact Linda Sherman, 315-788-5912.
- 2 **Park Mini Free Skating Championship**, sponsored by the Park FSC, at the City Building, World's Fair Grounds, Corona, NY. Freestyle, Tots to Novice, Adults, and Theatrical Solo events. For information contact: Nena Segal, 8 Bingham Hill Cir., Rumson, NJ 07760, 201-842-6160.
- 6-9 **Canadian National Precision Championships**, sponsored by the Canadian Figure Skating Association, at Edmonton, Alberta, Canada. For information contact: Mrs. Pam Chen, 67 Westbrook Drive, Edmonton, Alberta, T6J 2C8, 403-434-5850.
- 7-8 **4th Annual Florida Spring Break Open Competition**, sponsored by the SC of Florida, at the Lighthouse Point Arena, 4601 North Federal Highway, Pompano Beach, FL 33064. For information, call the Arena 305-943-1437.
- 7-9 **Club Spring Festival**, sponsored by the Portland ISC, at the Clackamas Town Center, Portland, OR. Figures, Freestyle, and Showcase events. For information contact: Donna Morrison, Competition Chairman, 8742 S.E. Kingswood Way, Gresham, OR 97080, 503-666-4946 evenings.
- 7-9 **Philadelphia Area Council Competition**, sponsored by the Colonial SC of New Jersey, at the Grundy Skating Rink, 700 Jefferson Ave., Bristol, PA 19007. For information contact: Cheryl Wood, 609-882-0183 or Carol Sutor, 215-788-0527.
- 8-9 **Judges School**, sponsored by the SC of Florida in connection with the Florida Spring Break Open Competition. Low to Intermediate Figures, Preliminary to Bronze Dances. Judge-In-Charge: Dorothy Dodson. For information contact: Carolyn Grinditch, 305-482-3321.
- 8-9 **Mt. Lebanon Invitational**, hosted by the Ice & Blades Club of Washington, PA., at the Mt. Lebanon Recreation Center, 900 Cedar Blvd., Mt. Lebanon, PA. Figures, Freestyle, Dance, Solo Dance, Similar Pairs, Compulsory Moves, Theme Interpretive, and Maneuver Teams events. Beginner through Junior levels. For information contact: Betty M. Galligan, 412-483-5320 or Jean Young, 412-222-6220.

Calendar

OF EVENTS

- 8-9 **26th Annual New Jersey Council of Figure Skating Clubs Championships**, sponsored by the New Jersey Council of FSC's, at the William G. Mennen Sports Arena, 161 E. Hanover Ave., Morristown, NJ 07960. Freestyle, Dance, Interpretive, Precision, and Maneuver Teams events. Open to New Jersey residents or any person who maintains a NJ USFSA Home Club. For information contact: Nancy Noonan, Secretary NJCFSC, 11 B Parkway Village, Cranford, NJ 07016, 201-272-5381.
- 9 **Tarsh Trophy Ladies' Solo American Waltz Competition**, sponsored by the Los Angeles FSC, at the Pickwick Ice Arena, 1001 Riverside Dr., Burbank, CA 91506. For information contact: Virginia Vale, Chairman, 4039 Edenhurst, Los Angeles, CA 90039, 213-663-7233.
- 13-16 **The Magic of Music**, sponsored by the Trenton Community FSC, at the Lincoln Park Community Center, 3525 Dix, Lincoln Park, MI. For information contact: Tom McPartlin or Vickie Michaels, 313-386-4075.
- 13-16 **Tri-State Freestyle Championships**, sponsored by the St. Clair Shores FSC, at the St. Clair Shores Civic Arenas, 20000 Stephens Dr., St. Clair Shores, MI 48080, 313-445-5350. Freestyle, Compulsory Programs, Short Programs, Original Programs, Pairs, Dance, and Interpretive events. For information contact: Lydia Wolanchuk, Chairperson, 18531 Empire, East Detroit, MI 48021, 313-771-3511 or 313-445-5350.
- 14-16 **Dance Weekend**, sponsored by the WC of Indianapolis, to be held at the Pam Am Plaza Rinks. Music by Bruce George. High, Low, and International Clinics with Sandy Lamb. For information contact: Miss Ellen Clark, 4200 W. 800 N., Box 26B, Edinburgh, IN 46124.
- 15 **Tina Furlong Memorial Exhibition**, sponsored by the Philadelphia SC & HS,

- Ardmore, PA 19003. Benefit for the Philadelphia SC & HS Competitors' Fund. For information contact: Judy Altschuler, 215-642-8700.
- 15 **The World Is A Rainbow of Color**, ice show sponsored by the Sycamore ISC, at the Perry Park Ice Rink, Indianapolis, IN. For information contact: Marge Krampe, 540 Braugham Rd., Indianapolis, IN 46227, 317-888-2957.
- 15-16 **"City Lights" Ice-O-Rama '89**, ice show sponsored by the Essex SC of New Jersey and the Deborah Heart Foundation, at the South Mountain Arena, 560 Northfield Ave., West Orange, NJ 07052. For information contact: Roberta Gelber, South Mountain Arena, 560 Northfield Ave., West Orange, NJ 07052, 201-535-3915.
- 21-22 **Ice Horizons**, ice show sponsored by the Bowling Green SC, at the B.G.S.U. Ice Arena, Bowling Green, OH 43403. For information contact: Darlene Householder, 419-352-7295.
- 21-23 **Winners**, 51st annual ice show sponsored by the Rochester FSC of Rochester, MN. Featuring over 300 skaters. For information contact: Rochester FSC, 507-288-7536.
- 22 **Spring Revue**, ice skating exhibition sponsored by the Los Angeles FSC, at the Pickwick Ice Arena, 1001 Riverside Dr., Burbank, CA 91506. For information contact: Mary Spencer, Chairman, 12750 Addison, North Hollywood, CA 91607, 818-508-6290.
- 22-23 **Ann Arbor Springtime Invitational Competition**, sponsored by the Ann Arbor FSC, Ann Arbor, MI. Competition for Beginning to Novice competitors. For information contact: Ann Arbor FSC, P.O. Box 7386, Ann Arbor, MI 48107.
- 22-23 **"Celebration" Ice Capers '89**, fiftieth anniversary show sponsored by the Commonwealth FSC, at the Randolph Ice Arena, 240 North St., Randolph, MA 02368. For information contact: Cathy Campbell or Mary-Lou Burbank, 617-693-4053.
- 27-30 **Darien Open Figure Skating Competition**, sponsored by the Darien SC of Southern Connecticut, at the Darien Ice Rink, Old Kings Highway North, Darien, CT 06820. Figures, Freestyle, Dance, and Pairs events. For information contact: Ms. Ellie F. Kimelman, 31 Bronxville Glen Drive, Bronxville, NY 10708, 914-237-3962.
- 28-30 **Ice Chips - Show of Champions**, 77th edition ice show, sponsored by the SC of Boston, at the Walter Brown Arena, Boston University, Boston, MA. Featuring Kristi Yamaguchi, Paul Wylie, Rudi Galindo, The Haydenettes, Isabelle & Paul Duchesnay, and Rachel Meyer & Peter Breen. For information call: 617-782-5900.
- 29 **Bowling Green Precision Team Competition**, sponsored by the Bowling Green SC, at the B.G.S.U. Ice Arena, Bowling Green, OH 43403. For information contact: Darlene Householder, 419-352-7295.
- MAY**
- 4-6 **Love a Parade**, the 52nd annual ice show sponsored by the Cleveland SC, 2500 Kemper Rd., Shaker Heights, OH 44120. For information contact: Clare Obermeyer or Lynn Rimmer, Cleveland SC, 216-791-2800 ext. 230.
- 5-7 **Spring Skates '89**, adult dance weekend sponsored by the Hickory Hill FSC, at the Evarts Rink, Route 22, Katonah, NY 10536. For information contact: Wendy, 914-764-4703 or Maureen, 914-232-4313.
- 6 **Stars on Ice**, ice show sponsored by the SC of Springfield, at the Springfield Olympia, West Springfield, MA 01089. For information contact: George J. Varosky, 413-562-0773.
- 6-7 **Figure Judges' School**, prospective through gold judges, sponsored by the Dallas FSC, at the North Texas Ice Arena, 10101 Cowboys Pkwy., Irving, TX 75063. For information contact: Dick Potticary, Rt. 1, Box 40, Ferris, TX 75125, 214-544-3488.
- 7, 13-14 **Hooray for Hollywood**, sponsored by the Babson SC, at the Babson Skating Rink, Wellesley, MA. For information contact: Joan Allen, 617-431-7820.
- 12-14 **Heart of Illinois Invitational Competition**, sponsored by the Illinois Valley FSC and the Peoria Park District, at Owens Recreational Center, Peoria, IL. For information contact: Rick Kern, 425 Giles Lane, Peoria, IL 61614, 309-692-9435.
- 14 **14th Annual Southern California Open Adult Dance Championships**, sponsored by the Arctic Blades FSC, at the Paramount Iceland, 8041 Jackson St., Paramount, CA. Preliminary through Gold events, OSP, and Variation Dance. For information contact: Janet Becht, Chairman, 2013 N. Rose St., Burbank, CA 91505, 818-842-3987.

Classified

MINI NEON SKATING PINS. Silkscreen skate circled in red, blue, green, yellow, or pink neon. \$22.00 includes P & H. Calif. res. add 6.5% tax. Reflections, 4521-A Van Nuys Blvd., Box 112, Sherman Oaks, CA 91403.

SMALL MIDWEST COLLEGE TOWN needs professional . . . High Test, preferably some on and off ice dance experience. Eleven months ice, competitive and recreational skaters . . . Club sponsors group lessons. Call: 816-279-5776 or 816-232-5378.

FREESTYLES BY CAROLYN. Basic pull-on dress with attached skirt, including three neckline treatments. Directions for adding zipper, and separate wrap skirt also included. Children's sizes, 4x small through x small. Adult sizes, small, medium, large, x large: \$6.00 ea. Pull-on skirt, perfect for practice with T shirts or leotard, \$2.50 ea., all sizes. Figure flattering criss-cross dress: x small through x large, \$4.00 ea. Custom made patterns for \$8.00. Send for measurement chart. Add \$1.00 for postage and handling with each order. 5150 Bluestem Drive, Colorado Springs, CO 80917.

ICE DANCING ILLUSTRATED. Instructional guide to the compulsory ice dances by Lorna Dyer former U.S., North American Dance Champion, Silver World Medalist. Send \$37.00 (U.S. Funds) to: Moore Publications, 9216 220th S.W., Edmonds, WA 98020.

AUSTRIAN CRYSTAL: Margaritas, Lochrosens, Embroidery Stones, etc. Also: Silver-Lined Rocailles, Bugle Beads, Seed Beads, Sequins, Rhinestone Chain. Price list and samples upon request. Gerrie Ball, 310 Juniper Street, Brea, CA 92621, (714) 529-1474.

CLASSIFIED RATES: \$20 for the first 35 words, 50¢ for each additional word, \$20 minimum. Two-letter state abbreviation code plus zip code count as one word. *Payment required with order.* All advertising copy is subject to acceptability. **BOX NUMBERS:** \$5 extra. Send all box responses to: *Skating*, Box No. _____, 20 First Street, Colorado Springs, CO 80906-3697.

SKATING JEWELRY FOR CLUBS, competitions, rinks, and camps. Gorgeous non-dangling earrings, pendants, and bracelets. Custom cloisonné enameled club pins, (your design). For brochure write to SKATE/MATE, P.O. Box 362, Englishtown, NJ 07726.

VIDEO TAPE now available of the 88 Nationals and 87 Worlds produced by USFSA official videographer. For information call Video Sports Productions, 800-USA-1996 or send \$5 for 46 page catalog to P.O. Box 2700, Westfield, NJ 07091.

COMPETITIVE PAIR PARTNERS WANTED: Seeking both males & females to pair with strong pair skaters. Skaters must be willing to relocate. Contact Frank Sweiding at (312) 259-6540.

PROFESSIONAL WANTED: Club in Sweden looking for instructor to teach for period of 8 months. Our club is located in Osby in the southern part of Sweden. We have about 65 skaters ranging from beginners through Swedish sectional and national competitors. We also have two precision skating teams. Applicants apply to: Suzie Brasher, c/o Osby Konstakningsklubb, Box 29, 283 00 Osby, Sweden.

WORLD CLASS BAG DELUXE PRO BAG COMPETITION BAG SCRIBE CASES & GARMENT BAGS

CREATIVE PACK WORKS
429 NAVAJO DRIVE
SALINAS, CA 93906

(408) 449-2511



- High quality • Durable
- Handcrafted • Custom
- Lightweight • And many more features

**SKATE
OF THE ART**

**SP Teri, Riedell
John Wilson, MK
WIFA**

Write or call for current prices.
Same day shipping on in stock items.
Master Card and Visa

**Nicholls
SPORTS**

(216)921-4300

3431-33 Lee Road • Shaker Heights, Ohio 44120

SPANDEX FABRIC — All weights, types, prints, solids, stripes, Nylon and Cotton blends, firsts and closeouts. Norbrook Industries Ltd., 152 Madison Avenue, New York, New York 10016, (212) 889-2708.

PATTERNS FOR SKATERS: Step-in Dress Pattern for Lycra or Spandex: No zipper, panty and skirt is sewn onto top for one piece. Girls or ladies S4-6, M8-10, L12-14 \$5.00 ea. Multi-size Patterns includes different skirts, sleeves, necklines, zipper. Girls or ladies 4-14 (All sizes in each.) \$8.50 ea. Book of Patterns for Beading, Rhinestones, Embroidery includes geometric, floral, etc. \$12.95 ea. Check/Money Orders only: Skate-Stag, 8212 Ammons Cr., Arvada, CO 80005/303-423-7098.

WANTED . . . INSTRUCTORS for New England Children's Figure Skating Camp for months of July-August. Call: 516-364-8050.

SPORTS SCIENCE CAMP and **DON LAWS** presentation by the Indiana/World Skating Academy. Three days of each: June 12-17. State-of-the-art sports science with Pieter Kollen, director, nutritional analysis and counseling, sports psychology evaluation, exercise physiology, strength & flexibility, orthopedic evaluation, jump analysis, on and off ice training, weights, Don Laws on skating techniques. For reservation: I/WSA, 201 South Capitol #001, Indianapolis, IN 46225, (317) 237-5565.

HANDPAINTED STRETCH ACRYLIC KNIT gloves for girls and boys. Choice of handpainted white skate or black skate with silver glitter blades. Girls gloves are trimmed with Victorian lace and boys, black braid. One size fits all. State choice of color and skate. Colors: purple, pink, yellow, pale mint, turquoise. \$6.95 for each pair. Send CK/MO to Kathy Barron Originals, 12 Highland Avenue, Branford, CT 06405. Add .75 for postage and handling with each order.

KRASH PADS by JAN-PRO: Hip Pad: \$29.95, Measure around seat with skating attire on. Knee Pads: \$16.95, measure around knee. Colors: Blue, Black, Gray, and Maroon. Send CK/MO to JAN-PRO, 4470 Monroe Ave., San Diego, CA 92115, (619) 282-0637.

We have the **LOWEST DISCOUNT PRICES** on quality boots, blades, and tights—immediate shipment—satisfaction guaranteed. Call (906) 786-7752 or write LeCaptain Studio Store, 1620 Ludington, Escanaba, MI 49829. COD MC VISA.

World Results

Continued from page 17

14.	14	14	14	Andrea Weppelmann & Hendryk Schamberger, Federal Republic of Germany	28.0
15.	17	15	15	Anna Groci & Luca Mantovani, Italy	30.8
16.	16	16	16	Malgorzata Grajcar & Andrzej Dostatni, Poland	32.0
17.	18	17	17	Krisztina Kerekes & Csaba Szentpetery, Hungary	34.4
18.	19	18	18	Diane Gerencser & Bernard Columberg, Switzerland	36.4
19.	20	19	19	Kaoru Takino & Kenji Takino, Japan	38.4
20.	21	20	20	Petra Zietemann & Frank Ladd-Oshiro, Federal Republic of Germany	40.4
final not reached:					
	22	21		Monica MacDonald & Duncan Smart, Australia	
	23	22		Ursula Holik & Herbert Holik, Austria	
	24	23		Kyung-Sook Park & Seung-Jong Han, Republic of Korea	
	25	24		Petya Gavazova & Nikolay Tonev, Bulgaria	
retired due to injury:					
	10			April Sargent & Russ Witherby, USA	

Laurels

Skating congratulates the following skaters who have passed USFSA tests in figures, pair, and dance. Only completed dance tests, rather than individual dances, are recorded below.

New Test Abbreviations are as follows: PRE = Preliminary Figure; 1 = First Figure; 2 = Second Figure; 3 = Third Figure; 4 = Fourth Figure; 5 = Fifth Figure; 6 = Sixth Figure; 7 = Seventh Figure; 8 = Eighth Figure; PF = Preliminary Free; JF = Juvenile Free; IF = Intermediate Free; NF = Novice Free; JRF = Junior Free; SRF = Senior Free; PPR = Preliminary Pair; IPR = Intermediate Pair; NPR = Novice Pair; JPR = Junior Pair; GPR = Senior/Gold Pair; P DT = Preliminary Dance Test; BR DT = Bronze Dance Test; PS DT = Pre Silver Dance Test; S DT = Silver Dance Test; SFD = Silver Free Dance; PG DT = Pre Gold Dance Test; G DT = Gold Dance Test; GFD = Gold Free Dance; I DT = International Dance Test; B ADT = Bronze Adult Dance Test; PS ADT = Pre Silver Adult Dance Test; S ADT = Silver Adult Dance Test; PG ADT = Pre Gold Adult Dance Test; G ADT = Gold Adult Dance Test.

GOLD FREE

Blyth Weber, Austin FSC; Marcy Gordon, Skokie Valley SC.

GOLD DANCE

Christine Fowler, Baltimore FSC; Kathy Wilcox, Potsdam FSC; Kristin Anderson, Massena FSC.

ACADEMY FSC: PF—Christine Cetrone. JF—Angela Mazza.

ACHILLES FSC: PRE—Julie Brunk.

SC OF THE ADIRONDACKS: PRE—Barbara Brooks, Brooke Helvie, Kelly Coryer, Molly Eigenberg, Sandra Scruggs, Sonya Hostettler. 1—Francisca Balke. PF—John Lanoureux, Sonya Hostettler. P DT—Frances Schiff. BR DT—Francisca Balke.

ALEXANDRIA BAY FSC: IF—Christine Lingenfelter.

ALL YEAR FSC: 1—Mica Darley. 5—Tristan Colell. P DT—Elizabeth Vandernoot.

ALPINE SC: PRE—Anne Kingery, Dalia Topelson, Kanda Planter, Neva Galvez, Theresa Vocatura. 2—Katie Thompson. PF—Anne Kingery, Cindy Coons, Dalia Topelson, Erin Hawes, Giulia Giovanelli, Kanda Planter, Martha Koren, Neva Galvez, Sarah Beth Stose, Theresa Vocatura.

SC OF AMHERST: 1—Kristin Barstow. PF—Elizabeth Reilly, Hillary Wilbur, Margaret Ketcham. JF—April Zenisky.

ANCHORAGE FSC: PRE—Donald Dalsfoist, Karly Garber. PF—Donald Dalsfoist, Karly Garber.

ANN ARBOR FSC: 1—Priya Bery. PF—Jeremy Lee, Kristin Durant, Robin Quarton, Sara Collins. P DT—Diana Fodor. BR DT—Alliynn Maki. PS DT—Tiffany Fonseca.

ARCTIC BLADES FSC: PRE—Christy Kedulich, Felicia Lewis, Tyree Bolton. 3—Lindsey Westbrook. PF—Christy Kedulich, Felicia Lewis, Tyree Bolton. IF—Lindsey Westbrook.

ARIZONA FSC: 1—Erin Fairweather. 4—Jennifer Chi, Julie Magalnick, Miki Stevens. 5—Jennifer Checuras. NF—Jennifer Arce. PPR—Chris Jarosz.

ARROWHEAD FSC: PRE—Debra Lynn Risch, Tobey Hall. PF—Debra Lynn Risch, Tobey Hall.

ATLANTA FSC: P DT—Alexandra Ennever, Alison Presmanes.

BABSON SC: PRE—Allison Lewin. 3—Melanie Lambert. PF—Allison Lewin. JRF—Debbie Judge.

BALTIMORE FSC: PRE—Roxanne Moore, Scott Royston. PF—Roxanne Moore, Scott Royston. P DT—Scott Royston. PS DT—Timothy Parker.

ICE CLUB OF BALTIMORE: P DT—Alice Martin, Christopher Ostrowski.

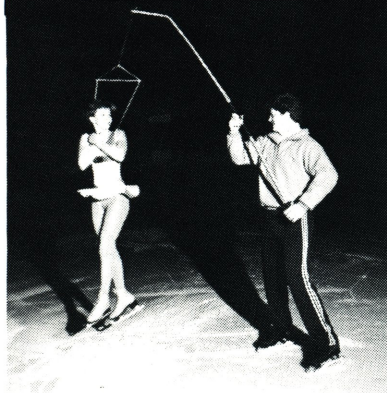
BAY PATH FSC: PRE—Lisa Inglese. JF—Nancy Cormier.

BEMIDJI FSC: NF—Heidi Austin.

BERKLEY ROYAL BLADES FSC: 2—Theresa Franco. PG DT—Jennifer Piron.

BLADE AND EDGE FSC OF OMAHA: PRE—Mellissa Stratton, Rachel Suarez. 1—Kathryn Deicke. PF—Mellissa Stratton.

*Designed by
Professionals for Professionals*



PRO-MOTION

THE ULTIMATE IN TRAINING TECHNOLOGY

Canada West Skating Supplies
RR#4 Duncan, B.C. • Canada • V9L 3W8
(604) 748-6619

The **PRO-MOTION** jumping harness dramatically reduces the learning time for double and triple rotation jumps. The coach is able to direct the take-off curve, keep the skater straight in the air, and keep the skater's back in position upon landing. Down-time due to injury can be avoided because with **PRO-MOTION** the coach is able to break the skater's fall. **PRO-MOTION** can be extended to over 8 feet and telescoped down to 3 feet for easy transportation. It is also available with a carrying case. The harness is completely adjustable and will fit any skater. The same harness can be used with the off-ice training system which is useful in teaching rotation technique and as a spotting mechanism for lifts.

PRO-MOTION is designed and developed in Canada by a professional figure skating coach. Write us for our brochure.

BOWLING GREEN SC: PRE—Melissa Adler. 6—Bethany Jackson. PF—Amy Marlowe, Bridie Myles, Melissa Adler. JRF—Heather Cooley. P DT—Amy Marlowe. BR DT—Dawn Loucks. PG ADT—Kevin Williams. PG DT—Kirsten Lee.

BRAEMAR-CITY OF LAKES FSC: PRE—Hillary Tansey. PF—Hillary Tansey.

BRENTWOOD FSC: P DT—Alaina Genakos, Julie Wilson, Lori Attebery.

BURNSVILLE-MINNESOTA VALLEY FSC: P DT—Amy Henschel. BR DT—Jill Chrz.

CANTIAGUE FSC: PRE—Laura Drumm. 1—A Harmony Fabrizio. 2—Mamie Moon. 5—Linda Land. PF—Donna Dersch, Julie Dodge.

CENTENNIAL SC: 4—Rachel Aldis.

CHAMPLAIN VALLEY SC: 1—Amy Waller, Trena Isler. PF—Hannah Smith.

CHESHIRE FSC: PRE—Jessica Gardner.

CHISHOLM SC: PRE—Laura Stone. 3—Michele Sorenson. PF—Laura Stone. IF—Michele Sorenson.

CHRISTMAS BROOK FSC: PRE—Laura Cece. 1—Andrea Davis. PF—Laura Cece. JF—Alison Behr. P DT—Jenna Cece, Jerusha Gale. BR DT—Alison Behr.

CLAYTON FSC: PRE—Julia Lundell. P DT—Amy Gardziel.

CLEVELAND SC: 2—Courtney Boyer. 6—Debbie Groppe. JF—Courtney Boyer.

COLUMBINE FSC: PRE—James Yoo. 1—Jenni Rose. PF—James Yoo, Kelley Avery. JF—Jenni Rose.

CORNELL FSC OF ITHACA: 3—Bridget Klein.

COTTONWOOD HEIGHTS FSC: BR DT—Darcie Poulsen.

DALLAS FSC: PRE—Jennifer Berry, Katie Harbin, Kimberly Perry, Tracy Borcharding. PF—Allyson Rose, Jennifer Berry, Katie Harbin, Kimberly Perry, Tracy Borcharding. P DT—Barbara Downes.

DARIEN SC OF SOUTHERN CT: PF—Michelle Riccio. JF—Elizabeth Morgan. IF—Jill Erica Geter.

UNIVERSITY OF DELAWARE SC: 3—Cindy Burton. B ADT—Patricia McQuaide.

DENVER FSC: PRE—Betsy Brown, Jennifer Clouse, Kajsa Moe, Lisa Ronayne. 1—Diane Neal. 2—Betsy Baxa. PF—Jennifer Clouse, Kajsa Moe, Karen Matusik, Lisa Ronayne, Pamela Miller, Susan Tiddens. IF—Jennifer Black.

DETROIT SC: PRE—Jamie Klingler. 2—Liana Firestone. PF—Jamie Klingler. P DT—Elizabeth Windram, Sarah Pekarek.

DIABLO FSC: PRE—Jenelle Hansen. 1—Duc Khuu, Tiffany Monroe. 2—Sabrina Carroll. PF—Jenelle Hansen.

DIAMOND EDGE FSC: PRE—Oc Owney. 1—Amy Roberson, Brittany Harthcock. 2—Brittany Jones, Carrie Runyan. 5—Rell Lemay. PF—Oc Owney. JF—Brittany Jones, Jennifer Beard, John Wagner, Monica Jackson.

IF—Kerry Hill. PPR—H Angie Elser. IPR—H Angie Elser.

DUPAGE FSC: PRE—Dawn Brehart, Elizabeth Andino, Jennifer Welch, Natalie Webb, Shannon Long. 1—Jennifer Statkus, Michelle Riccio. 2—Valerie Zions. 3—Christopher Calayag. PF—Dawn Brehart, Elizabeth

Andino, Jennifer Welch, Natalie Webb, Shannon Long. JF—Christine Calayag. IF—Christopher Calayag, Sharon Comitor. NF—Amy Duitsman. JRF—Kristen Winkler.

ESSEX SC OF NEW JERSEY: PRE—Anne Worden, Katherine Worden, Valerie Humbert. PF—Sara Parham, Stephanie Rogers. B ADT—Faith Roberson.

FAIRBANKS FSC: P DT—Elaine Ensign.

FERGUS FALLS SC: PRE—Stephanie Schierer. PF—Jessica Brimhall, Katie Weiss, Melissa Schroeder. JF—Stacy Stigen, Stephanie Schierer.

FORESTWOOD FSC: PF—Ginny Nowak.

ISC FORT COLLINS: 1—Julee Majors. JF—Benjamin Andersen, Jennifer Visocky, Julee Majors, Racheal Johnson.

FORT WAYNE ISC: PRE—Laura Brown. 2—Mercedes Ohlsson. PF—Laura Brown. IF—Mercedes Ohlsson, Jennifer Page.

FRASER FSC: PRE—Jamie Corbin, Jennifer Hubanks, Lindsey Kramer, Mandie Panski. 5—Jennifer Jungwirth. 7—Karen Leonard. PF—Andrea Riley, Jamie Corbin, Jennifer Hubanks, Lindsey Kramer, Mandie Panski. PS DT—Carrie Brown, Kristen Kirsch. S DT—Lori Anderson.

GARDEN CITY FSC: PF—Mimi Moore. P DT—Nicole Lang.

GARDEN STATE SC: PRE—Jennifer Tansley, Melissa Felton, Patricia Hines, Shannon O'Rourke. P DT—Erinn Stivala, Melissa Felton. BR DT—Jill Feigenbaum. PS DT—Karen Standl.

GOLDEN STATE FSC: 1—Allen Howard. 2—Rebecca Long. P DT—Melanie Straughan, Rachel Miller.

GREAT LAKES FSC: PRE—Gauvin Sara, Nikki Ann Harhold, Tobie Beurer. PF—Christine Ray, Danielle Hartsell, Gauvin Sara, Janet Nikolovski, Jody Dunbar, Nikki Ann Harhold, Steve Hartsell, Tobie Beurer. JF—Marcy Williams. P DT—Audra Cauchon, Christine Ray. BR DT—Nancy Lynn Zyskowski, Priscilla Nagy. PS DT—Holly Young.

GREATER GRAND RAPIDS FSC: PRE—Sally Tryc. PF—Sally Tryc.

GREATER MILWAUKEE FSC: PRE—Wendy Suckow. PF—Wendy Suckow. BR DT—Darryl Larson.

GREENBRIER FSC: 4—Nicole Kappenhagen.

GREENSBORO ISC: 1—Kimberly Saunders. JF—Kimberly Saunders.

HAWAII FSC: PRE—Katherine Burr. 1—Christine Longboy, Kristy Okubo, Noelani Goldstein, Shawnaleigh Shiroma. 3—Lani Lein Nilsson. PF—Katherine Burr, Melode Reinker. JF—Duke Aipa. P DT—Duke Aipa, Gabrielle Kaye.



Walt Disney's
MAGIC KINGDOM
ON ICE
WALT DISNEY THE WALT DISNEY COMPANY
Produced by KENNETH FELD



Walt Disney's
WORLD
ON ICE
WALT DISNEY THE WALT DISNEY COMPANY
Produced by KENNETH FELD

**COME JOIN THE
WORLD'S GREATEST
SKATERS!**

AUDITIONS for the U.S. and International editions of Walt Disney's Magic Kingdom On Ice and Walt Disney's World On Ice are held in conjunction with an engagement in a city near you. If you are 17 or older, waiting for a great opportunity, please send your resume with phone number to:

ANNE SCHMIDT, Director of Skating Personnel
Dept. S, 3201 New Mexico Ave., NW
Washington, DC 20016



★ ★ ★ ★ ★ **ICE FOLLIES® and HOLIDAY ON ICE™** ★ ★ ★ ★ ★

USSR FIGURE SKATING SCHOOL & COURSE

Tour & Learn in Leningrad & Moscow

SCHOOL FOR SKATERS: Open to all . . . female & male . . . singles . . . pairs . . . ice dancers . . . expert instruction by leading Soviet coaches . . . internationally acclaimed for their teaching excellence . . . exposure to new techniques, routines & training methods perfected by the Soviets . . . meet, train & exchange ideas with Soviet skaters.

Parents & other family members welcome.

COURSE FOR INSTRUCTORS: The Science of Coaching Figure Skating in the USSR (3 grad credits) . . . Lectures, seminars & practical sessions with world-renown Soviet instructors. Diplomas awarded upon successful completion. Travel free Group Leader positions available to instructors who recruit skaters and others to participate.

RESULTS GUARANTEED

Spectacular Sightseeing, Social & Cultural Program

ORGANIZED ON A NON-PROFIT BASIS: Transportation, lodging, complete meals, sightseeing, cultural & social events, expert instruction . . . June 16-23 or 23-30 intensive sessions . . . comprehensive session June 16-30. Tax Deductible.

REGISTRATION CLOSING

Call/write today to: George V. Binks, Sports Division
Association for International Cultural Exchange
10 Canvin, Kirkland, P.Q. Canada H9H 4S4
PHONE: (514) 697-3735

HAYDEN RECREATION CENTRE FSC: PRE-Margaret Ogden. 1-Kara Barker, Karen Schlein. JF-David Novello.

HIAWATHA SC: PRE-Stephanie Baldwin. PF-Stephanie Baldwin. P DT-Daraka McCoy, Stephanie Baldwin. BR DT-Janet Vizina, Tammy Jo Stott.

HIBBING FSC: PRE-Andrea Rauzi, Dominique Russo, Jennifer Fena, Jessica Fena, Katie Larkin, Sarah Luoma, Shalea Goerts, Stephanie Raedeke, Tricia Prestidge. 1-Jodi Fena, Kim Pariseau, Lori Pernu. 2-Sarah Nault. 4-Alison Chamernick. PF-Amanda Rice, Angela Cedar, Beth Brown, E. Jennifer Pedersen, Gretchen Huska, Gretchen Gates, Janelle Roberts, Kate Anderson, Nicholas Lamme, Rachel Swick, Riana Kritz, Sarah Luoma, Shalea Goerts, Stephanie Raedeke, Tricia Prestidge. JF-Alyssa Pusateri, Danielle O'Brien, Erica Miliander, Jessica Daniels, Jodi Fena.

HOUSTON FSC: PRE-Candice Quino, Melody Blaker. PF-Candice Quino.

ICELAND FSC OF HOUSTON: S DT-Douglas Valteau.

ILLINOIS VALLEY FSC: PRE-Jeffrey Fosselman, Katie Jenkins, Valerie Johnson. 2-Lynn Ann Jansen. PF-Jeffrey Fosselman, Kathryn Thomas, Katie Jenkins, Teri Powell, Valerie Johnson. JF-Lynn Ann Jansen. P DT-Teri Powell.

JAMESRIVER FSC: PRE-Becky Mueller. 1-Gina Bianco. 2-Michelle Melby. PF-Notesong Srisopark, Rachel Stanislawski. P DT-Becky Mueller, Crissy Smith, Karmen Jennings, Libby Wood, Notesong Srisopark, Rachel Stanislawski. BR DT-Alicia Thompson, Heather Washburn, Kari Peluso. PS DT-Michelle Melby. S DT-Dana Adams.

JANESVILLE FSC: PPR-Lloyd Sarbacker, Melissa Sarbacker.

JOHNSTOWN FSC: PRE-Gianna Poborski, Jessica Wilson, Shauna Lyn Fuge. PF-Christine Warren, Jessica Wilson, Shauna Lyn Fuge.

KALAMAZOO FSC: 3-Amanda Hodges.

KENT SC: 1-Chrissy Siracuse.

SC OF LAKE PLACID: PRE-Kara Pandolph, Sarah Allard, Sarah Beattie. 1-Kahlyn Booth, Karen Le Clair. 6-Sjoukje Brown. PF-Kara Pandolph, Nicole Lammann, Sarah Allard, Sarah Beattie. NF-Deborah Le Clair. BR DT-Amy Payton, Karen Le Clair. PS DT-Jean Widlicka.

LAKE REGION SC: PRE-Amanda Smith, Sarah Haugen.

LILAC CITY FSC: PF-Anne Judah, Christi Galewski, Monica Abrahamson.

LONE STAR FSC: PRE-Alicia Cline, Kristen Templin, Melissa Parker, Rachael Mariboho. 2-Amy Freeman, Jennifer Baxavanis. PF-Alicia Cline, Kristen Templin, Melissa Parker, Rachael Mariboho. JF-Amy Freeman, Jennifer Baxavanis. BR DT-Toni Reed.

LONG ISLAND FSC: PRE-Devon Bella, Elizabeth Cavanagh, Laura Alfasi. 1-Allison Minnock. PF-Laura Alfasi.

LOS ANGELES FSC: 2—Amanda Mittenzwei. PS DT—Margarita Willen.

FSC OF MADISON: P DT—Erika Hesse.

MAGIC CITY FSC: PRE—Heather Brenden, Heidi Brenden, Jamie Fundingsland, Kila Volk, Mandy Ressler. 1—Kimberly Stockert, Tricia Felchle. 2—Brenna Speiser, Dawn Feist, Diane Westereng. 3—Andrea Swenson. PF—Heather Brenden, Heidi Brenden, Kila Volk, Mandy Ressler. P DT—Brihan Christianson, Crystal Carlson, Heidi Brenden, Kila Volk, Kimberly Hall. BR DT—Barbara Swenson, Judy Anderson, Shauna Gietzen. PS DT—Lasha Ellis.

SC OF MAINE: PF—Beverly Frizzell.

MANKATO FSC: 1—Heidi Brose. JF—Bethany Peterson. IF—Kerri Saye. NF—Juli Bastian.

MAPLEWOOD FSC: PRE—Annelise Kendall, Nicole Morehouse. 1—Amy Jo Marks, Lisa Bartholomew. PF—Annelise Kendall, Nicole Morehouse.

MASSENA FSC: P DT—Emily Labarge, Jennifer Stoner. BR DT—Heather Wilson, Jennifer Serviss. PS DT—Tara Adams. S DT—Felicity Faucher.

MENTOR FSC: PRE—Jennifer Doan. 2—Melissa Ferenac. PF—Jennifer Doan. JF—Melissa Ferenac.

MESA VERDE FSC: 1—Melissa Kortes. JRF—Kristine Bingham. JPR—Nancy Goodridge.

METROPOLITAN FSC: PRE—Amanda Wallower. 4—Jaclyn Ward. PF—Robin Topol.

FSC OF MINNEAPOLIS: P DT—Angela Cuzzupe, Janet Frisch. B ADT—Shirley Wunderlich.

MISSION VALLEY ISC: PRE—Crystal Beckerdite, Kcenia Estrella, Ninik Deporta, Rebecca Ruiz. 1—Marie Rothhauser. PF—Rebecca Ruiz.

SC OF MORRIS NJ: B ADT—Beverly Diering.

SC OF NATICK: 1—Jennifer Adreani, Rhonda De Vincent.

NEWBURYPORT FSC: PRE—Alison Bean, Elizabeth Paszko, Heather MacDonald. 1—Jessica Leonard, Sandra Sarney, Shana Teague. 3—Beth Amy Houghton. PF—Christine Power. IF—Elise Roberts.

NORTH IOWA FSC: PRE—Hunter Schurtz, Janel Huber, Mary O'Neill, Sarah Larson, Whitney Bair. 1—Christen Beasley, Dawn Sutcliffe, Lisa Kuhlman, Shelby Funkhouser. PF—Becky Eckblad, Hunter Schurtz, Janel Huber, Mary O'Neill, Sarah Larson. JF—Christen Beasley, Lisa Kuhlman. IF—Shannon Picht.

NORTH JERSEY FSC: PRE—Amy Runkel, Cristina Crochiola, Elizabeth Waraksa, Gina Padovani, Janeen Vanbeesel, Mandy Norum, Susan Stabile. 1—Mandy Ferber. 2—Joanna Gerson. BR DT—Kimberly Caruso.

NORTH STAR FSC: PF—Leslie Girardi.

NORTH SUBURBAN FSC: 1—Wendy Gill.

NORTHEASTERN UNIVERSITY: P DT—Jeffrey Sokoloff.

OKLAHOMA CITY FSC: 1—Rachele Thompson.



ASPEN, Colorado, In The Summer . . .

SUMMER FIGURE SKATING SCHOOL

Nine Weeks

June 5 — August 4, 1989

GUEST PROFESSIONALS — FOR SEMINARS & PRIVATE LESSONS

☆ **DON LAWS** ☆ **JOJO STARBUCK** ☆ **ANN-MARGRETH FREI** ☆

(dates to be announced)

- Video Analysis
- Expert Instruction
- 11 Hours of ice time daily (6 days)
- Supervised dorm/in-home accommodations
- 2 Test Sessions
- Weekly exhibitions by school students
- Skating Harness
- Summer Ice Show
- Unique recreational Facilities

ATTENTION PROFESSIONALS!

If you have a following of at least five students, **WE WANT YOU**—and are offering a unique professional incentive.

FOR MORE INFORMATION CONTACT

Alma Davenport, Director, **Aspen Figure Skating School**, 233 West Hyman, Aspen, CO 81611 or phone (303) 925-8770 or (303) 925-7485

The Ice Never Melts In Lake Placid

"THE WINTER SPORTS CAPITAL OF THE WORLD"



Site of the 1932 & 1980 Winter Olympics



OLYMPIC AUTHORITY

57th Annual Summer Skating School June 12-September 2, 1989

Featuring:

- Three 4-Week Sessions:
June 12-July 8,
July 10-Aug. 5, Aug. 7-Sept. 2
- Excellent Professionals
- Saturday Night Ice Shows
- 3 Scheduled Test Sessions

Finest Training Facilities-
with 4 Ice Surfaces under one roof.

Season Highlights:

Annual Freestyle Competition - July 13-15
Dance Weeks - July 31-Aug. 12
Annual Dance Competition - Aug. 10-12

For more info contact: Tricia Preston
Olympic Center, Lake Placid (518) 523-1655, or 3325.

DOES YOUR CLUB HAVE A CUSTOM CLOISSONNE ENAMEL TEAM PIN?



Discover an easy fundraising idea
and profits for your club! Guaranteed
workmanship, fast service, Manu-
facturer of medals and pins.

Product line carries: © Pin Pals Character
Pins, 1980 Moscow
Olympic Pins

WRITE NOW

for new color catalog to

Designs by Margarita
19382 Woodlands Ln.
Huntington Beach, CA 92648



Please provide:

Name of
Organization: _____

Address _____

Zip _____

Project Description _____

FSC OF OMAHA: 5-Janine Lackey.

OXFORD SC: PRE-Julie Bacon, Shellie Wilhelm. 1-Sherrese Jackson, Tim McCarty. PF-Julie Bacon, Shellie Wilhelm. P DT-Bjorn Herman, Shellie Wilhelm. PPR-Sherrese Jackson, Tim McCarty.

PALM DESERT FSC: 3-Vicky Hudika. IF-Vicky Hudika. P DT-John Wheeler. BR DT-Ginna Hovsepan, John Wheeler.

PALOMARES FSC: BR DT-Shannon Harris. PG DT-Julie Weiss.

PASADENA FSC: PRE-Arwen Jewell, Marie Powers. 1-Christine Moran. PF-Arwen Jewell, Marie Powers.

PAVILION SC OF CLEVELAND HGTS: 2-Renee Wilson. JF-Nora Pollock. P DT-Tai Chizmar.

PENINSULA FSC: PRE-Reiko Schoenfeld. 2-Jill Marcelli. PF-Maureen Mikula, Reiko Schoenfeld. JF-Maureen Mikula, Tiffany Chan. IF-Melissa Nelson. NF-Kathryn Childs. P DT-Abbie Nissenson, Winnie Leung.

SC OF PHOENIX: PRE-Kelley Bores. PF-Kelley Bores.

PILGRIM SC: PRE-Melissa Clarke, Tara Connell.

PITTSBURGH FSC: PRE-Cathy Riefer. PF-Elizabeth Peck.

PITTSFIELD FSC: PRE-Joyce Ryu. 1-Sarah Rentz. PF-Lisa Maniatis. JF-Caroline Herman. P DT-Jill Ann Kotowski, Polly Polidoro. PG DT-Tracy Fancher.

PORT HURON FSC: PRE-Courtney Lund. PF-Courtney Lund. P DT-Sera Young. BR DT-Anne Turner, Georginna Cheng. S DT-Andrea Scheurer.

PORTAGE LAKE FSC: PRE-Connie Yang, Joanna De Guzman. 1-Angie Ligon, Jessica Comfort, June Johnson. PF-Jada Comfort. P DT-Heather Pattison, Lisa Smith. BR DT-Heather Ranta, Kristen Hood, Lyn Taavola. PS DT-Angie Ligon. PG DT-Kris Archambeau.

POTSDAM FSC: PF-Katherine Williamson. JF-Jessica Elliott. IF-Kristen Elliott. P DT-Angela De Pinto, Emily Murray, Jenny Waters. S DT-Elizabeth Coleman. PPR-Danielle Bartow, Michael Bartow.

PRINCETON SC: PF-Heidi Rodenberger. JF-Lucienne Papon. BR DT-Ann Gendaszek, Kareena Caunan. PG DT-William Doerler. PS ADT-Brewster Young.

PUEBLO FSC: PF-Cory Drummond.

QUEEN CITY FSC: 2-Lana Marie Whittington.

RARITAN VALLEY FSC: P DT-Andrew Muldoon, John Muldoon, Kevlyn Zurawski.

RED RIVER VALLEY FSC: PRE-Jerelyn Johanson, Melissa Steele. PF-Amber Clapp, Betsey Steele, Heather Grenier, Kelly Smith, Kristi Nelson, Kyia Christianson, Megan Rapp, Sara Breneman, Sara Christianson, Sarah Honek. P DT-Amber Schultz.

ROCHESTER FSC: PRE-Amy Onstott, Carrie Baker.

SC OF ROCKLAND NEW YORK: 2-Iris Erguder. 4-Mayumi Yamada.


ROCKY MOUNTAIN FSC: PRE-Leah Taylor, Melissa Schropp, Sara Keane, Sara Hardesty. PF-Carolyn Pounen, Edina Csicsics, Leah Taylor, Sara Keane, Sara Hardesty, Shawn Williams. JF-Stephanie Sinclair.

ROSEVILLE FSC: BR DT-Courtney Bodley.

JFC THE JANESVILLE FIGURE SKATING CLUB INC.

Freestyle Figures Testing Exhibitions Ballet Skating Off ice conditioning Choreography Techniques of show skating Skating harnesses Lodging

1989 SUMMER FIGURE SKATING SCHOOL June 12 -- August 18



— Located in the City of Parks —

Call or write for program information:

**Janesville Ice Arena
821 Belsolt Ave.
Janesville, WI 53646
608-756-3015**

Ricky Harris

Continued from page 11

"Spot" practices are very important. Sessions like these tend to focus the choreographer's and the skater's attention on minute details of pace, timing, and characterization. Details should be thoroughly pursued until they reach full realization. This type of practice creates an understanding and intimacy between the skater and the choreography, resulting in deeper insights. "Spot" rehearsals eventually enrich the work.

Frequent run-throughs strengthen the whole, basic structure of the work. The flow and continuity that they generate give the skater a strong sense of movement and rhythm of the total work and helps him/her in the details of the individual sections.

If there is a low energy level during a choreographic lesson, question your own attitude. Your spontaneity and energy can and should inspire your skaters. Make a continuous effort to capture their interest and intrigue them in the work. Make them feel a part of the choreographic process by discussing and analyzing your ideas as well as theirs.

SAN DIEGO FSC: PG DT—Christina Corbaci.

SAN FERNANDO VALLEY FSC: 2—Melody Morris, Racquel Bieda. JF—Erika Kita, Melody Morris, Racquel Bieda.

SKOKIE VALLEY SC: 2—Heather Alterson. 5—Katherine Nicoll.

SOUTH MOUNTAIN FSC: PRE—Shawn Cohen. PF—Danielle De Trollo. S DT—Melissa Gunther.

SOUTHERN NEW HAMPSHIRE SC: PF—Angela Lawrence, Billie Boisvert, Cynthia Tappin, Hue Lu, Kristine Frost, Melissa Levesque, Sarah Danault.

SC OF SPRINGFIELD: PRE—Jennie Bilodeau, Kimberlee Douglas.

ST. CLAIR SHORES FSC: PRE—Karrie Schemmel. 1—Rachele Mastromatteo. 2—Ana Maria Sarcheck. 3—Nicole Gimpert. PF—Karrie Schemmel. JF—Theresa Golski.

ST. JOSEPH FSC: BR DT—Tyson Dougherty.

ST. MORITZ ISC: 1—Lara Huntley, Tracy Williams. 7—Kaho Koinuma. PS DT—Ilene Misheloff.

ST. PAUL FSC: PRE—Lisa Vander Veer. 2—Anand Bokde. 3—Angela Rothmund. 7—Jennifer Marker. PF—Lisa Vander Veer. IF—Cheryl Marker, Michelle Larson. NF—Joy Carey. JRF—Jennifer Marker.

SC OF SUNRISE: P DT—Danielle Hartman.

SUPERIOR FSC: PRE—Anna Cirilli, Denette Willie. PF—Anna Cirilli, Denette Willie.

SYMMETRIC FSC: PRE—Sheryl Koval. 2—Jennifer Bliss. PF—Ginger Bisplinghoff. JF—Jennifer Bliss. IF—Lori Krim. P DT—Anne Mozzone, Donna Brennan, Ginger Bisplinghoff, Susan Raymond.

TRENTON COMMUNITY SC: PF—Ann Benson, Gabrielle Wilson, Jennifer Snoes, Jill Adams, Kathleen Hall, Michele King, Nicole Kaminski, Tara Lynn Williamson.

TROY SC: P DT—Brian Kowal.

TUCSON FSC: PG DT—Trisha Watkins.

UTAH FSC: PRE—Michal McKinnon. PF—Michal McKinnon. JF—Johnny McKinnon, Katrina Cannon.

VALLEY FSC: PRE—Jenny Parker. PF—Jenny Parker.

WARWICK FIGURE SKATERS: 3—Jill Ortel. P DT—Ashley McCormick, Colleen Driscoll, Jessica Brassard, Kate Thurston, Margaret Morse, Stanley Leibowitz, Susan Woodard.

FSC OF WATERTOWN: PRE—Danielle Shimmel, Sarah Metevia. 2—Katie Puccia. 3—Jennifer Lupia. PF—Krista Hulbert. IF—Russell Driggers. NF—Jennifer Lupia.

SC OF WESTCHESTER: P DT—Kathleen Klatte.

WESTMINSTER FSC OF ERIE: PRE—Kurt Fromknecht, Meagan Danylo. 2—Craig Shupenko. 6—Lori Wingerter. PF—Kelly Schultz, Kurt Fromknecht, Meagan Danylo. NF—Alyce Henness.

SC OF WILMINGTON: PRE—Kimberly Erdner. 4—Jamie Loper. PF—Monique Rollins. JF—Michelle Olin. P DT—Michelle Olin, Robyn Schiavi. PS ADT—Linda Hazen. S ADT—Christy Yembrick. S DT—Alicia Hayter. B ADT—Lani Thureau.

Official Notes

Continued from page 13

JUDGES' APPOINTMENTS

LOW TEST

Dr. Carolyn Falk, Watertown SC
John D. Nelson, Ann Arbor FSC
Melode Reinker, Hawaii FSC

INTERMEDIATE TEST

Diane Maurer, Ann Arbor FSC

BRONZE DANCE TEST

Catherine M. Hackney, Atlanta FSC

SILVER DANCE TEST

Julia Jordan, DuPage FSC
Gerald Miele, Providence FSC

JUNIOR COMPETITION

Avonia Dondero, St. Moritz ISC
Cossette Dudley, Peninsula FSC
Elaine Dumas, Peninsula FSC
Elaine K. Ettman, Peninsula FSC
Kathleen Kelly, SC of Lake Placid

JUDGE EMERITUS

Dorothy R. Baker, SC of Wilmington
Janet B. Owens, Cleveland SC

MEMORIAL FUND CSEP AND ASP APPLICATIONS FOR 1989-90 ARE AVAILABLE

Competitive Skaters Education Program (CSEP) and Academic Scholarship Program (ASP) explanatory brochures and application forms have been mailed to all USFSA Club Secretaries and to the 1988-89 applicants. These application forms are available at National Headquarters for anyone wishing to write or call for a copy.

—George B. Ludlow, Jr.
Chairman, Memorial Fund Grants and
Allocations Subcommittee

WILMINGTON FSC: 2—Maria Forziati. JF—Maria Forziati.

WINCHESTER FSC: PRE—Alison Cannon, Nicole Travelo. 1—Cheryl Sirignano, Michelle Shramek. 3—Stacy Crocker. PF—Christine McCartney, Wendy McCartney.

WINTERHURST FSC: PRE—Stephan Mertik. PF—Stephan Mertik.

WISCONSIN FSC: PRE—Sara-Beth Kaye. 1—Rebecca Behrendt. BR DT—Amy Behrendt, Michele Miller, Tara Stamm.

WYANDOTTE FSC: JF—Karen Magyar. P DT—Kim Ryba.

YARMOUTH ICE CLUB: 1—Rhyannon Gonzalo.

INDIVIDUAL MEMBERS: PRE—Amanda Haughey, Katie Ann Ogg. 1—Kathleen Cullen, Loree Cantrell. PF—Amanda Haughey, Katie Ann Ogg. JF—Katherine Tallin, Kathleen Cullen, Loree Cantrell.

PROFESSIONALS: I DT—Kelly Witt.

Advertisers

INDEX

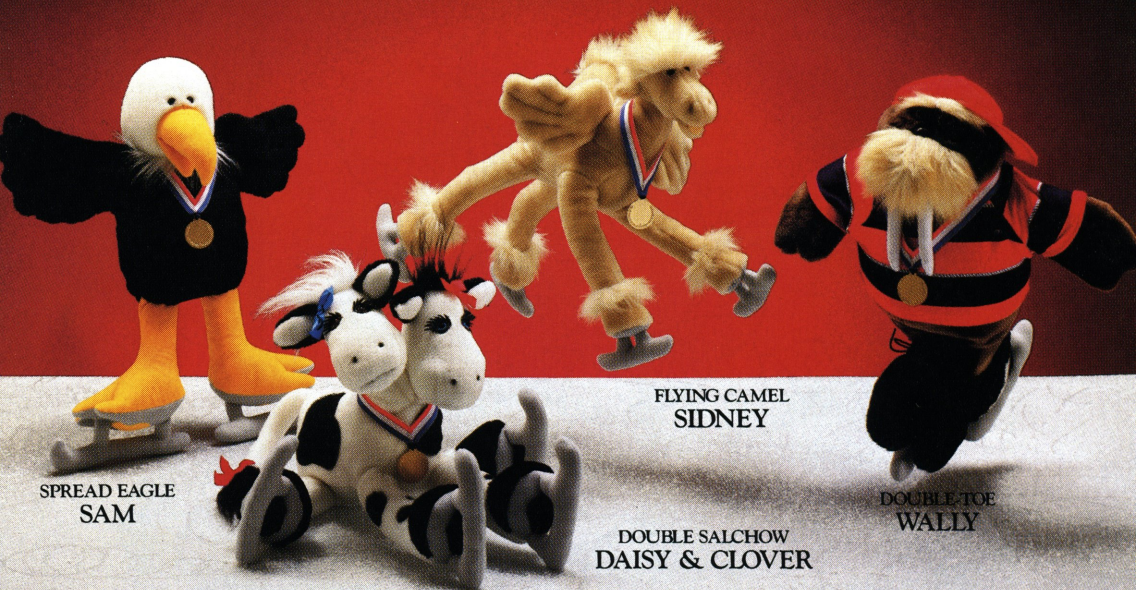
A	
Aspen Summer Skating School	67
B	
Broadmoor World Arena	48
C	
Campbell's Soup	IBC
Canada West Skating Supplies	64
Creative Pack Works	61
D	
Dante Cozzi Sports	18
Designs by Margarita	68
F	
Fraser Ice Arena	62
I	
Ice Follies & Holiday on Ice	65
The Ice House	20
J	
Janesville FSC Inc.	69
Jerry's Skating World	7, 9, 11
N	
1989 Nationals Souvenirs	54
1990 Nationals, Salt Lake City	12
New England Figure Skating Camp	55
Nicholls Sports Inc.	62
O	
ORDA Lake Placid	68
R	
Riedell Shoes Inc.	8
RLC Designs	15
S	
Sertich Ice Center	69
'89 Skate America	23
SP-Teri	5
Sun Valley Skating Center	10
T	
Tom Collins '89 World Tour	IFC
U	
Up In The Air Inc.	IBC
USSR Figure Skating School	66

Corrections: In the results of the 1989 U.S. Championships in the March 1989 issue, Benjamin T. Wright was the Assistant Referee in the Senior Pairs event. In the January 1989 issue, the name of Mary Louise Wright was omitted as Judge E in the Senior Dance event at the 1989 New England Championships.

INTRODUCING

STUFFED

S T U N T S



SPREAD EAGLE
SAM

FLYING CAMEL
SIDNEY

DOUBLE SALCHOW
DAISY & CLOVER

DOUBLE-TOE
WALLY

GOOD FRIENDS... FOR GOOD LUCK.

FOUR LOVABLE CHAMPIONS OUT TO WIN YOUR HEART

Stuffed Stunts are adorable characterizations of your favorite figure skating moves—huggable pals you can turn to when you feel you are on thin ice.

Stuffed Stunts are the newest plush toys on skates! They are a loony, lovable bunch of animal competitors,

each with a distinct personality guaranteed to win your heart: Double-toe Wally—a walrus of grace and humility.

Flying Camel—a camel with wings and a soaring ego.

Double Salchow—a two-headed cow that cannot make up its minds.

Spread Eagle—a wild and crazy kind of bird.



HOW TO ORDER:

Simply indicate the number of stuffed stunts you would like, be sure to include shipping and handling fees, and sales tax where applicable. Please include method of payment, check or money order along with your name and address and mail order to the address below. For fastest delivery phone orders are accepted. Satisfaction guaranteed.

QUANTITY

_____ 16" DOUBLE-TOE WALLY @ \$29 ⁹⁵	=	_____
_____ 16" DOUBLE SALCHOW DAISY & CLOVER @ \$29 ⁹⁵	=	_____
_____ 16" FLYING CAMEL SIDNEY @ \$29 ⁹⁵	=	_____
_____ 16" SPREAD EAGLE SAM @ \$29 ⁹⁵	=	_____

PLEASE BILL:

☐ VISA ☐ MASTER CARD
☐ ACCT: # _____

Exp. Date _____

Signature _____

Sub Total _____

Shipping and Handling
in the USA add \$2⁹⁵ ea.
in CANADA add \$3⁹⁵ ea.

Sales Tax (GA Res. only) _____

TOTAL _____



PRICE

Collect Stuffed Stunts for fun and moral support. These loyal friends are always there for you—ready to celebrate when you are up, or to elevate when you are down.

UP IN THE AIR INC.

1245 Old Alpharetta Road, Dept. A
Alpharetta, Georgia 30201
404-751-0913

**Feels so
"M'm! M'm! Good!"** [®]



Campbell's

CONDENSED

