

OCTOBER 1989

Skating®



Riedell™



For a great performance

Endorsed By



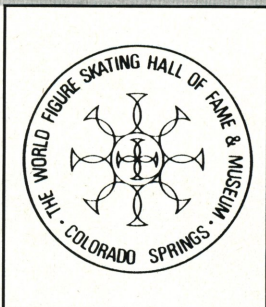
RIEDEL SHOES, INC. P.O. BOX 21 RED WING, MN 55066

TELEPHONE: 612-388-8251 TELEX: 4931210 FAX 612-388-8616



page 30

JOHN BALDWIN, JR.



page 37



page 22

THE NUTRASWEET COMPANY

Campbell's Soup's Skate America '89	6
Fours to the "Fore" Once Again by Mary Louise Wright	12
International Team Selections	17
Indianapolis Hosts NutraSweet Ice Skating Month Kick-Off	22
1989 National Collegiate Championships Results	25
Impressions of Albertville Youth of the World in Savoie by Gig Siruno	27
Uniting the World's Best 1990 Goodwill Games	29
U.S. Olympic Festival - '89	30
Figure Skating Museum Marks 10th Anniversary A Decade of Growth	37

Departments

News Briefs	4	20	Memorial Fund Donors
Ricky Harris	9	41	People & Places
Official Notes	11	42	Calendar of Events
Food for Thought	15	45	Classifieds
Ice Abroad	19	47	Laurels
Grand Prix International		62	Advertisers' Index
Nebelhorn Trophy			

Cover: Dorothy Hamill and Christopher Bowman promote NutraSweet Ice Skating Month for all ages. PHOTO COURTESY OF THE NUTRASWEET COMPANY

Skating

Editor
DALE MITCH

Art Director
PAMELA S. GUIRE

Managing Editor
IAN A. ANDERSON

Advertising/Production
MARY ANN PURPURA

Advertising

Rate card supplied on request. SKATING and the USFSA neither endorse nor take responsibility for products or services advertised herein. The Publisher reserves the right to reject or cancel any advertising at any time.

SKATING (ISSN: 0037-6132) is published by the United States Figure Skating Association, 20 First Street, Colorado Springs, CO 80906-3697. Phone (719) 635-5200. Subscription rate: United States and Canada, one year **\$15.00 (U.S.)**. Foreign, one year **\$30.00 (U.S.)**. Allow 6-8 weeks delivery of the first issue. Second Class postage paid at Colorado Springs and at additional mailing offices. SKATING is published monthly October through July (10 issues per year). Copyright © 1989 by The United States Figure Skating Association (USFSA), Colorado Springs, CO. SKATING assumes no responsibility for the return of unsolicited manuscripts or photographs. **Postmaster: Please send address corrections to SKATING, 20 First Street, Colorado Springs, CO 80906-3697.**

USFSA President – Franklin S. Nelson, M.D.

Executive Director – Ian A. Anderson



Member International Skating Union



SKATING is the official publication of
The United States Figure Skating Association (USFSA).



Group A Member

NEWS BRIEFS

Glasnost on ice! Torvill & Dean and the Russian Allstars will be seen in an extensive tour of the United States and Canada this fall and winter. The ambitious and unique tour will cover a total of 80 cities between October 5 and February 10, 1990. The company is coached by Tatyana Tarasova and directed by Yuri Ovchinnikov. The show will contain several new T & D numbers, choreographed by Dean, as they continue to explore and expand dance horizons. Jayne Torvill

and Christopher Dean were honored earlier this year for their contributions to the sport with election into the World Figure Skating Hall of Fame.

☆ ☆ ☆

Seven skaters from the Portland Figure Skating Club traveled to Japan in August for the Portland-Sapporo Goodwill Championships. They were Shane Smith, Anna Meisner, Tamara Boni, Kelli Clark, Karin Morrison, Mona Lin Smith, Deana Fresh, and Jacinda Hoffman-Sanders.

☆ ☆ ☆

Three figure skaters were honored this summer for superior achieve-

ment as part of the Glendale Federal Bank Grant program for California and Florida athletes. Those honored were Alex Chang, Seal Beach, California; John Baldwin, Jr., San Diego; and Kristi Yamaguchi, Fremont, California. The program is administered by the Amateur Athletic Foundation of Los Angeles and sponsored by Glendale Federal, the nation's fifth largest savings institution with branches in California and Florida.

☆ ☆ ☆

Olympians and popular national and international competitors, Natalie (Kim) and Wayne Seybold have retired from amateur competition to star with Ice



Capades this year. They will be appearing in the west company of Capades but will stay active with new routines as they also plan to enter professional competitions.

Angelo D'Agostino has made the move into the professional world, too, and will appear in the same company of Ice Capades with Kim and Wayne. We will miss these veteran competitors but wish them the best in their new careers.

☆ ☆ ☆

Despite rumors throughout the summer, Isabelle and Paul Duchesnay of France are remaining amateurs and will be competing this season. They have not turned professional, despite numerous offers.

☆ ☆ ☆

Executive producer, Michael Rosenberg has announced that the World Cup II professional competition will be held at the Ottawa Civic Center on Sunday, December 10. The event will be televised by CTV in Canada, ESPN in the States, and also be aired in over 12 foreign countries.

☆ ☆ ☆

World Champion Kurt Browning, competed in the Jane Kirby Drano Memorial Competition this summer in Lynnwood, Washington, quietly avoiding publicity. It was part of Canada's requirement for each national team member to compete in one summer competition, and word has it that he looked in top form. Kurt will be more in the limelight at Skate America this month and at Prize of Moscow News in November.

☆ ☆ ☆

A new book for young readers, ages 8 to 12, has just been published this month by Simon and Schuster. *The Day I Skated for the Gold* by Jill Trenary explores one day in the life of a skater. It is lavishly illustrated with photographs by Dino Ricci (husband of Sandra Bezic) and should be very popular this season.

☆ ☆ ☆

In late summer a new skating film *Ice Pawn* was shot at the Broadmoor World Arena and in and around Colorado

Springs. It is an independent production written by and starring Paul Cross. Christopher Mitchell did the double work, skating for the leading man, and other skaters appearing in the film include Nicole Bobek, Curtis Socha, Patrick Brault, Shepherd Clark and professional Gary Kemp. A distributor is yet to be found and the release date to be announced.

☆ ☆ ☆

There are several partner changes this season. Some that have come to our attention include the new pairings of: Elizabeth Punsalan with Jerod Swallow, who won the Lake Placid and Vail Invitational Competitions; Jennifer Goolsbee and Shawn Rettstatt; Regina Woodward and Michael Shroge; Lisa Curtis and Robert Nardoza; Amy Webster and Leif Erickson; Dawn Duhamel and Richard Alexander; and Natasha Kuchiki and Todd Sand.

☆ ☆ ☆

We previously announced a new Elizabeth Manley doll available through Toys-R-Us that caused a raft of inquiries. Production was delayed, and the doll is now available but *only* in Canada. It is manufactured by Distinctive Dolls of Canada, Ltd. For information on how to obtain it in the U.S., call Evelyn Strahlendorf at 613-727-5369.

☆ ☆ ☆

Campbell's® Soups

SKATE AMERICA '89

INDIANAPOLIS, INDIANA



The international spotlight shines on Indianapolis this month for the seventh Skate America, sponsored by Campbell's Soups and hosted by Scott Hamilton. Sixty-six competitors from fourteen countries are expected to attend the United States only senior international invitational competition of the season.

Structured under new competition rules, for the first time no compulsory figures will be skated this year, with singles' competitions being entirely freestyle with an Original Program and a Long Program. Practice begins on Wednesday, October 18, using both the Market Square Arena and the Indiana/World Skating Academy, followed by the Draw Party at the Indianapolis Zoo that evening.

All competition events will be held at Market Square Arena. Compulsory Dances will start the competition Thursday afternoon, October 19. That evening, the Opening Ceremony will be

held, followed by the Ladies' and Pair's Original Programs.

The Men's Original Program and the Dance OSP will be contested on Friday afternoon, October 20, with the Ladies' and Pair's Long Programs the same evening. Saturday afternoon will see the Men's Long Program being completed, with the Free Dance final that evening. The Exhibition of Champions brings the competition to a close Sunday afternoon, October 21. (Please note: The schedule is subject to change.)

At press time, the competitors who have accepted invitations and verified their intention to attend Campbell's Soups 1989 Skate America include:

Men: Cameron Medhurst, Australia; Ralph Burghart, Austria; Kurt Browning and Matthew Hall, Canada; Richard Zander, FRG; Alessandro Riccitelli, Italy; Mitsuhiro Murata, Japan; Ricardo Olavarrieta, Mexico; Oliver Hoener, Switzerland; Christopher Bowman, Erik

Larson, and Mark Mitchell from the USA; and Viktor Petrenko from the USSR.

Ladies: Lisa Lynn Sargeant, Diane Takeuchi, Canada; Marina Kielmann, FRG, Claude Peri, France; Evelyn Grossman, GDR; Joanne Conway, Great Britain; Beatrice Gelmini, Italy; Junko Yaginuma, Japan; Diana Marcos, Mexico; Jill Trenary, Tonya Harding and Nancy Kerrigan, USA; and Natalia Gorbenko from the USSR.

Pairs: Michelle Menzies and Kevin Wheeler, Canada; Peggy Schwarz and Alexander Koenig, GDR; Lisa and Neil Cushley, Great Britain; Kristi Yamaguchi and Rudy Galindo, Sharon Carz and Doug Williams, and Karen Courtland and David Goodman, USA; and Natalia Mishkutenok and Artur Dmitriev, USSR. One Canadian team remains to be announced.

Dance: Joanne Borlaise and Martin Smith, Canada; Dominique Yvon and Frederic Palluel, Sophie Moniotte and Pascal Lavanchy, France; Karen Quinn and Alan Abretti, Great Britain; Anna Croci and Luca Mantovani, Italy; Malgorzata Grajcar and Andrzej Dostatni, Poland; April Sargent and Russ Witherby, Jeanne Miley and Michael Verlich, and Elizabeth Punsalan and Jerod Swallow, USA; Maia Usova and Alexander Zhulin, Irina Antsifirova and Vladimir Granenov, USSR. One Canadian couple remains to be announced.

Campbell Soup's Skate America is sanctioned by the USFSA and organized by the Ice Skating Club of Indianapolis. It promises to be one of the strongest fields of international and world-ranked competitors in several years, with special fireworks expected in the men's events. If you cannot be there in person to share the excitement, complete coverage will be televised on ESPN. Check local listings for times in your area.

JERRY'S **SKATING WORLD Inc.**

EVERYTHING FOR THE FIGURE SKATER



**520 Hood Road
Markham, Ontario
Canada L3R 3K9
(416) 477-1172**

**Visions
of Excellence** **Write or Call for a
FREE Colour Catalogue**

AVANT GUARDS™

ICE SKATE GUARDS WITH AN INNOVATIVE FLAIR

Protect your blades in style with our colorful painted and plain guards made of durable rubber.



TO ORDER:

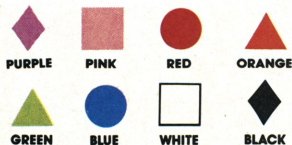
Along with your name and address, simply enclose your check, money order, or MC/VISA number with expiration date. Let us know name (or color), item # and quantity you would like to receive. Please include \$6.50 for painted guards and \$4.00 for solid colored guards, plus \$2.00 shipping and handling for each pair ordered.

Canadian residents, please send \$3.00 per pair to cover shipping.

PHONE ORDERS ARE ACCEPTED. Satisfaction Guaranteed.



**SOLID COLORS ALSO
AVAILABLE ITEM #90**



UP IN THE AIR, INC.

1245 OLD ALPHARETTA RD.
ALPHARETTA, GA 30201

(404) 751-0913

PAINTED GUARDS

\$6.50 plus shipping and handling

PLAIN GUARDS

\$4.00 plus shipping and handling

(SPRINGS INCLUDED)

Ricky

HARRIS

On Discipline Part I

Discipline can be divided into two broad categories: imposed and self-discipline.

There are many people without great levels of self-discipline living happily in an imposed disciplinary life. So happiness then, is relative. These people have just enough self-discipline, together with imposed discipline, to accomplish the necessary control in their emotional and physical habits. They are successful in attaining happiness without achieving great intellectual or artistic accomplishment, which does not necessarily relate to success. A person happy without them can still be termed successful. On the other hand, sometimes because of necessity, discipline must be maintained to accomplish something that may not bring personal happiness. For our purposes, let us consider discipline as it relates to the performing artistic skater.

The first step towards achieving artistic accomplishment is to set up a goal with standards for a way of life. Once the goal has been determined, then the paths leading to it must be decided upon. The rest seems easy, but this is where failure occurs. Why? Because discipline is not developed. This is not the discipline a mother hands to a child, or a teacher to a student, but the discipline exercised on oneself. The skater cannot become accomplished, regardless of talent, without this discipline, which is simply another term for the establishment of a fixed action pattern to ingrain into the subconscious all acts relating to effort.

Every accomplishment has its rewards and its sacrifices. It is up to the individual to decide if the rewards outweigh the sacrifices, which is a form of discipline. Many people seem to wish all of their lives for things to "happen" to them. These people are often heard saying "How lucky he is" about a successful skater. Nothing is farther from the truth.

Continued on page 62

JERRY'S SKATING WORLD INC.

PRESENTS

SKATER'S WATCH

(PINK ONLY)

U.S. \$19.95

ADD \$5.00

for postage & handling

TO ORDER:
CALL OR WRITE
(416) 477-1172
520 HOOD RD.
MARKHAM, ONT.
L3R 3K9
CANADA



Harlick

SKATING BOOTS

National, World
and Olympic
Gold Medalist
Brian Boitano
Achieved All
His Skating
Triumphs In
Harlick Boots.

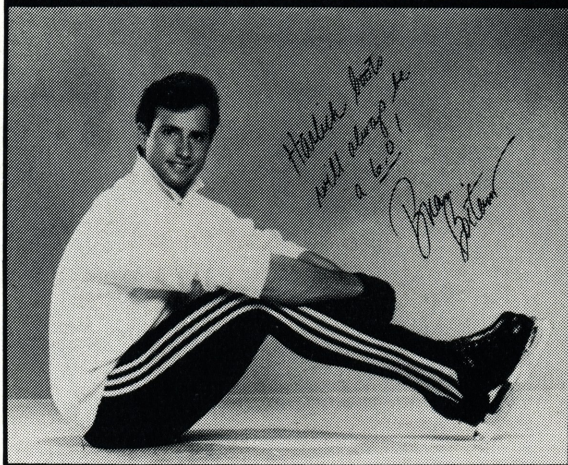


PHOTO BY ROY BLAKEY

**Committed to
the Tradition
of Excellence**



WE ACCEPT MASTERCARD VISA

Please call for the location of your nearest dealer or instructions for ordering direct:

HARLICK & CO. • 893 AMERICAN ST. • SAN CARLOS CA 94070
(415) 593-2093

OFFICIAL

Notes

FISU

Federation of International Sport University

WORLD UNIVERSITY GAMES

March 2-10, 1991

Sapporo, Japan

To participate, skaters must be:

- U.S. Citizens
- Age limits: competitors must be born between January 1, 1963 and December 31, 1973
- Eligible to compete on Senior level (singles, pairs, ice dance)
- Registered for full time or part time (6 credits) course of study in a university level academic program.

All interested skaters, address a brief description of your skating and academic qualifications to: **Joan Gruber, Chairman; International Committee, 400 Wyomissing Blvd., Wyomissing, PA 19610.**

NEW DATES FOR PRECISION CHAMPIONSHIPS

The following date changes have been announced for the 1990 Sectional Precision Championships: Easterns, March 2-4; Mid-westerns, February 23-24; and Pacific Coasts, will be held February 24-25, in Burbank, California, sponsored by the Los Angeles FSC.

MOVING?



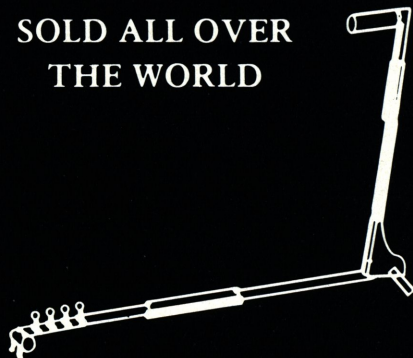
To ensure that your magazine will follow you to your new address send us your old address label from your magazine along with your new address.

SCRIBE

FROM

 **JERRY'S**

SOLD ALL OVER
THE WORLD



CARRYING CASE AVAILABLE

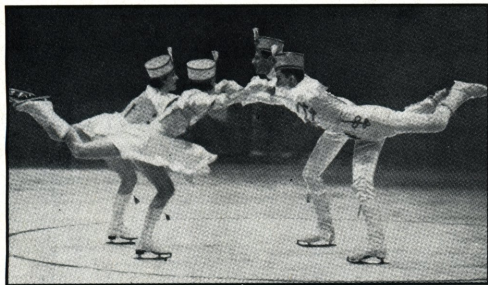
This easy to use, compact Figure Skating Scribe is **GUARANTEED FOR 2 YEARS.**

U.S. WHOLESALE DISTRIBUTORS:
MIDWEST SKATE CO. MICHIGAN
LUBIN'S SKATE SUPPLIES, NEW HAMPSHIRE

JERRY'S SKATING WORLD INC.
520 Hood Road, Markham, Ontario
Canada L3R 3K9 (416) 477-1172

Fours to the "Fore" Once Again

by Mary Louise Wright



The Minto Four, four-times North American and Canadian Champions: Prudence Holbrook, Margaret Davis, Melville Rogers, and Guy Owen.

The origin of modern Fours in the International Style, strictly a Canadian invention, can be traced to the so-called "English" style of skating in the latter half of the nineteenth century, in which combined figures were performed to a center by two men and ladies.

The first official competition in Fours in North America was held in Ottawa in 1908, following the Governor General's donation of the Earl Grey Trophy for national teams which included singles, pairs, and fours.

Fours became an international event with the first competition in 1913 also in Ottawa for the Connaught Cup, donated by the Duke of Connaught, the Governor General and son of Queen Victoria.

Between 1908 and 1951, when competition in Fours ended in the United States, the event was held on an "irregular" basis internationally (ultimately as part of the North American Championships), nationally, and even briefly in the Sectionals, primarily during the

1920's, the late 1930's, and immediately after World War II.

In Canada, efforts were made to continue competition in Fours as part of the Canadian Championships up to 1964, when the event was discontinued, only to be revived once again in 1982 and continued annually up to today.

The Canadian Figure Skating Association, with the consent of the ISU, has included Fours in Skate Canada 1989 on a trial basis, in an effort to revive international competition in the event, and it remains to be seen whether the latest revival will catch on in the United States and other countries.

Canadian fours won all the North American Championships in the event except for 1941 and 1949. These two competitions were won by fours from the St. Paul Figure Skating Club. The first St. Paul Four had its origins in a carnival number which was so popular with the audience and skaters alike that when Montgomery "Bud" Wilson of Toronto arrived in St. Paul in 1939, just prior to the St. Paul Summer Session and the famous St. Paul Pop Concerts, the four was revived with a slightly changed roster from the original carnival one. Bud Wilson had been many times North American and Canadian Champion in singles and pairs and had himself skated on several champion fours, so he became the coach of this four, which consisted of Janette Ahrens, Mary Louise Premer, Robert Uppgren, and Lyman E. Wakefield, Jr. Under his guidance, the four began serious training, that led first to the United States title in 1940 and then to the first ever win for the United States



The first St. Paul Four: Robert Uppgren, Janette Ahrens, Mary Louise Premer, and Lyman E. Wakefield, Jr.

in the North American Championships in 1941. Training was done early in the morning, starting at 6:00 A.M., before school and office hours and again from 5:00 to 6:00 P.M., which was at the end of the club's afternoon session.

Although this training schedule was continued after 1941 and while the four continued to give exhibitions, further competition ceased due to World War II. Early in the war years, Lyman Wakefield entered the Navy and the coach, Bud Wilson, entered the Army, winning a Bronze Star medal in combat in Europe.

The first St. Paul Four did not skate again, but another four from St. Paul began after the war. It was composed of two good pair teams, that won the first of three United States titles in 1947 and the North Americans in 1949. This became known as "The Little" or the Second St. Paul Four, perhaps because at the time, all its members were teenagers. The four consisted of Janet Gerhauser (now herself a World Judge), Marilyn Thomsen, John Nightingale, and Marlyn Thomsen, with Mary Louise Premer as amateur coach and mentor. Janet and John went on as a pair to be members of the United States Olympic

team in 1952 and silver medalists in the United States Championships.

In essence, Fours is the skating together of two men and two ladies. It is a lot of fun, even though it does require specialized training to produce a well balanced program with good unison. Such a program should have lifts, solo jumps, solo spins, pairs or fours spins, steps, and connecting moves. In the lifts, there should be at least one or two partner exchanges. Added to the above to further balance out the program are spirals, spread eagles, pair death spirals or the "quad" death spiral, plus an infinite variety of steps, while never forgetting the importance of unison.

For good unison, everything that the four does should always be "in the field of vision," which means that the observer (or judge) should be able to see all four skaters at every moment with one glance without having to move the head or eyes from side to side in order to find the skaters. The lifts, jumps, and solo spins should be done at exactly the same moment and, of course, in the field of vision. Often, these elements can be done as part of a "center" figure, together with an interesting assortment of steps and moves in the field.

The four must utilize the full ice surface and should have exciting opening and finishing moves. Skaters reasonably

Continued on page 62



The second St. Paul Four: John Nightingale, Janet Gerhauser, Marilyn Thomsen, and Marlyn Thomsen.

Special Gifts For Figure Skating

360° SPIN RING



SKATE EARRINGS

SKATE
CHARM
(large)



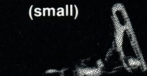
NAME
BLADE



SKATE
CHARM
RING



SKATE
(small)



TEST
NUMBERS



SKATE
CHARM
HOLDER



Prices subject to gold market.

14 KT SOLID GOLD CUSTOM JEWELRY

ORDER TODAY BY MAIL:

Fill in the form below with quantity and total amounts. Be sure to include shipping, handling fees and sales tax where applicable. Please include check or money order. For fast delivery, mail early or call (813) 784-6418.

QUANTITY

TOTAL PRICE

___ Name Blade with 21 diamonds @ \$475	=	___
___ Blade Charm @ \$129 (blade only)	=	___
___ Name Blade with 4 letters @ \$225 (not shown)	=	___
___ Skate Charm (large) @ \$199	=	___
___ Skate Pin (large) @ \$220 (not shown)	=	___
___ Skate Charm (small) @ \$69	=	___
___ Skate Pin (small) @ \$90 (not shown)	=	___
___ Skate Charm Holder @ \$99	=	___
___ Test Numbers 1 thru 8 @ \$25 ea.	=	___
___ 2mm ADD-A-BEADS (separates #'s) @ \$2.50	=	___
___ Skate Charm Ring @ \$125 (sizes 2-5)	=	___
___ 360° Spin Ring @ \$250	=	___
___ Skate Earrings @ \$129 pr.	=	___

Sub Total

Shipping & Handling \$4.95

Sales Tax (FL Res. only)

TOTAL

Personalize your Blade with diamonds.
Any 3 letters.

All jewelry available with 3 pt. and 5 pt.
full cut diamonds (white)
3 pt. parve - \$120 5 pt. parve - \$150

Personalize your Blade with gold 5/16
letters @ \$35 each (not shown).



☐ VISA

☐ MASTER CARD

☐ ACCT. # _____

Expiration Date _____

Signature _____

Order Today

Avoid disappointment.

Order early to ensure

timely delivery. (3-4 weeks)

Send to: **FIRST PLACE DESIGNS**

1995 Castille Drive, Palm Harbor, FL 34683

PHONE (813) 784-6418

THE PRE-COMPETITION MEAL: AT THE TABLE

by Rick L. Sharp, Ph.D.

It is two hours before competition time. You are sitting at the table, thinking about the performance and worrying about what you should eat. You decide to just have something to drink and not eat anything at all. After all, you need to concentrate on your performance and should not worry about what to eat. Right?

Wrong! Several studies have shown that skipping the pre-competition meal can actually hurt your performance. Consider this: most of the fuel you burn for energy during the competition has been stored in your muscles during the days before the performance, but your brain and nervous system need constant refueling, so they rely on a more recent meal. If neither one gets enough food fuel for the performance, they will have to compete with your muscles for what little fuel is left. During this time, your endurance may decrease, your motor skills weaken, and your performance could be a disappointment.

So you should go ahead and eat something. But what? And when is the best time?

When given a choice, working muscles prefer to use carbohydrate as an exercise fuel, because the molecules are simple and the food breaks down quickly (sometimes even in the mouth). Complex carbohydrates, such as starches found in vegetables, fruits, and grain products (pasta, bread, cereal) are recommended choices. But do not eat too many fruits with large amounts of fiber, such as figs, mango, papaya, and apples, as they can cause stomachaches and diarrhea.

However, not all carbohydrates are suitable in the pre-competition meal. For example, sugar is a carbohydrate that can actually *decrease* endurance and coordination when taken in a period of one to two hours before exercise. Sugar intake stimulates insulin secretion, causing rapid intake of glucose by the muscles and resulting in early exhaustion. Blood sugar level increases, but the insulin brings it back down to a level even lower than the original one. So if it's quick energy you are looking for, put down the candy bar and pick up a piece of fruit.

Other pre-competition meals to avoid include those high in protein and fat, such as

Campbell's® Soups

Food

FOR THOUGHT

steak and fried foods. Protein and fat take longer to digest and may not have enough time to break down between the meal and the competition. Muscles burn protein in large amounts *only* when carbohydrates are not available.

Aside from including foods that are high in complex carbohydrates, choose foods that you are accustomed to eating. The pre-competition meal is not a good time to try new exotic foods. If spicy foods are part of your regular diet, you may want to avoid eating them before a competition. The nervousness of an impending performance can make the stomach less tolerant of spicy foods and can cause distress. It is also important to avoid overeating and getting too full. The feeling of fullness during a performance can be uncomfortable and distracting. The last thing you should be thinking about during a performance is your stomach.

The best time to eat a pre-competition meal is two to three hours before a performance. If your schedule does not permit such a long waiting period, then eat smaller portions of recommended foods such as fruit, bread, and other complex carbohydrates, up to one hour before your performance.

So it is two hours before competition time . . . time to decide what to eat. Choose foods that will give you maximum energy for your performance. Maybe a bowl of low sugar cereal, a piece of fruit, toast, juice, and water. Then enjoy the meal and "taste" your new energy on the ice.

Rick L. Sharp, Ph.D. is associate professor in the Department of Physical Education and Leisure Studies at Iowa State University. Dr. Sharp spoke on nutrition at the "Campbell's Soups Sports Seminar" during the 1988 National Championships.

1990 UNITED STATES FIGURE SKATING CHAMPIONSHIPS

FEBRUARY 4-11, 1990

SALT LAKE CITY, UTAH

Return to:

1990 Nationals All-Event Tickets

P.O. Box 16183

Salt Lake City, Utah 84116



Name _____

Address _____

City _____ State _____ Zip _____

Phone _____

Through October 31, 1989

\$95 per ticket package × _____ = \$ _____

November 1-December 3, 1989

\$125 per ticket package × _____ = \$ _____

Service charge

\$1.50 per ticket package × _____ = \$ _____

Full payment enclosed

\$ _____

☐ Check ☐ Money order

Please make checks or money orders payable to the
1990 Nationals.

☐ Visa ☐ MasterCard

Credit card # _____ Exp. date _____

Signature _____

Please send the following information:

☐ Single ticket events, scheduling and prices

☐ Hotels and housing

☐ Transportation to Salt Lake City

☐ Transportation around Salt Lake City

☐ Bus pass

☐ Other _____

All information is sent as it becomes available.

INTERNATIONAL COMPETITIONS

OCTOBER 1989 – APRIL 1990

SUBJECT TO CHANGE

MEN

LADIES

PAIRS

DANCE

SKATE ELECTRIC – London, England, October 3-5, 1989

JUDGES: Roger Glenn, Coco Shean, and Nancy Meiss

TEAM LEADER: Roger Glenn

COMPETITORS:

Todd Eldredge

Tonia Kwiatkowski

Kellie Creel & Bob Pellaton

Jeanne Miley & Michael Verlich

DONAUPOKAL CUP

NOVARAT TROPHY – Budapest, Hungary, October 12-15, 1989

KARL SCHÄFER MEMORIAL – Vienna, Austria, October 16-19, 1989

JUDGES: Margaret Faulkner, Monty Hoyt, and Susan Johnson

TEAM LEADER: Monty Hoyt

COMPETITORS:

Daniel Doran

Holly Cook

Elizabeth McLean & Ari Lieb

SKATE AMERICA – Indianapolis, Indiana, October 19-22, 1989

JUDGES: Janet Allen, Eleanor Curtis, Joseph Inman, and Jean Robinson ALTERNATE: Monty Hoyt

REFEREES: Lucy Brennan, Franklin S. Nelson, M.D., Ronald Pfennig, Benjamin T. Wright

CHIEF ACCOUNTANT: Frederick Meyers ACCOUNTANTS: Adrienne Schaffer and Barbara Windecker

TEAM LEADER: Bette Snuggerud

MUSIC COORDINATOR: T. Todd

COMPETITORS:

Christopher Bowman
Erik Larson
Mark Mitchell

Jill Trenary
Tonya Harding
Nancy Kerrigan

Kristi Yamaguchi & Rudi Galindo
Sharon Carz & Doug Williams
Karen Courtland &
David Goodman

April Sargent & Russ Witherby
Jeanne Miley & Michael Verlich
Elizabeth Punsalan &
Jerod Swallow

SKATE CANADA – Cornwall, Canada, October 24-29, 1989

JUDGES: Joan Gruber, John LeFevre, Margery Schleh, and Mary Louise Wright

REFEREES: Benjamin T. Wright and Franklin S. Nelson, M.D.

TEAM LEADER: Linda Leaver

COMPETITORS:

Paul Wylie
Paul Wylie (Artistic)

Kristi Yamaguchi
Jenni Meno (Artistic)

Calla Urbanski & Mark Naylor
Natasha Kuchiki & Todd Sand

Suzanne Semanick & Ron Kravette

FOURS: Calla Urbanski/Mark Naylor and Elaine Asanakis/Joel McKeever

PRAGUE SKATE – Prague, Czechoslovakia, November 2-5, 1989

JUDGES: Sherie Grimson and Paula Naughton

TEAM LEADER: Paula Naughton

COMPETITORS:

Scott Davis

Tisha Walker

Maria Lako & Rocky Marval

GOLDEN SPIN OF ZAGREB – Zagreb, Yugoslavia, November 8-12, 1989

JUDGES: Margaret Faulkner and Robert Lubotina

TEAM LEADER: Margaret Faulkner

COMPETITORS:

Craig Heath

Kelly Szmurlo

Rachel Meyer & Peter Breen

POKAL DER BLAUEN SCHWERTER – Berlin, German Democratic Republic, November 9-12, 1989

JUDGES: J. Barlow Nelson and William Smith

TEAM LEADER: J. Barlow Nelson

COMPETITORS:

John Baldwin, Jr.

Robyn Petroskey

Aimee Offner & Brian Helgenberg

TROPHEE LALIQUE – Paris, France, November 10-12, 1989

JUDGES: Lucy Brennan, James Disbrow, and Ramona McIntyre

TEAM LEADER: James Disbrow

COMPETITORS:

Daniel Doran

Holly Cook

Sharon Carz & Doug Williams

April Sargent & Russ Witherby

NATIONS CUP – Gelsenkirchen, Federal Republic of Germany, November 15-18, 1989

JUDGES: Eleanor Curtis, Patricia French, and Gale Tanger

TEAM LEADER: Gale Tanger

COMPETITORS:

Paul Wylie

Tonya Harding

Calla Urbanski & Mark Naylor

Suzanne Semanick & Ron Kravette

GRAND PRIZE SNP – Banska Bystrica, Czechoslovakia, November 16-19, 1989

TEAM LEADER/JUDGE: Sherie Grimson

COMPETITORS:

Beth Buhl & Neal Smull
Katherine Williamson &
Ben Williamson

NHK TROPHY – Kobe, Japan, November 23-26, 1989

JUDGES: Joan Burns, Elaine DeMore, and Margery Schleh

REFEREE: Charles U. Foster

TEAM LEADER: Joan Burns

COMPETITORS:

Christopher Bowman

Kristi Yamaguchi

Kristi Yamaguchi &

Susan Wynne & Joseph Druar

Erik Larson

Tonia Kwiatkowski

Rudi Galindo

Paula Visigardi & Jason Dungen

WORLD JUNIOR CHAMPIONSHIPS – Colorado Springs, Colorado, Nov. 28-Dec. 2, 1989

JUDGES: Joan Gruber, Ida Tateoka, and Margaret Wier **ALTERNATES:** Janet Allen and Eleanor Curtis

REFEREES: Hugh C. Graham, Jr., M.D. and Benjamin T. Wright

CHIEF ACCOUNTANT: John Holdsworth **ACCOUNTANTS:** Gail Munns and Esther Winslow

TEAM LEADER: Hal Marron **ASSISTANT TEAM LEADER:** Jessica Gaynor

MUSIC COORDINATOR: Gene Thielman

COMPETITORS:

John Baldwin, Jr.

Jessica Mills

Jennifer Heurlin &

Beth Buhl & Neale Smull

Scott Davis

Kyoko Ina

John Frederiksen

Aimee Offner &

Katherine Williamson &

Tisha Walker

Brian Helgenberg

Ben Williamson

ALTERNATES:

Michael Chack

Geremi Weiss

Brandee Marvin &
Christopher Beck

PRIZE OF MOSCOW NEWS – Moscow, USSR, November 29-December 3, 1989

JUDGES: Janet Allen and Ronald Pfenning

TEAM LEADER: Howard Silby

COMPETITORS:

Todd Eldredge

Nancy Kerrigan

Kellie Creel & Bob Pellaton

WORLD CHAMPIONSHIPS – Halifax, Nova Scotia, Canada, March 6-11, 1990

JUDGES: Janet Allen, Lucy Brennan, and Ronald Pfenning

ALTERNATES: Eleanor Curtis and Charles U. Foster

REFEREE: Benjamin T. Wright

TEAM LEADER: Carole Ludlow **ASSISTANT TEAM LEADER:** Morry Stillwell

TEAM DOCTOR: Lester M. Cramer, M.D. **PHYSIOTHERAPIST:** Haik Gharibians

COMPETITORS:

To Be Announced

To Be Announced

To Be Announced

To Be Announced

COUPE DES ALPES

GRAND PRIX INTERNATIONAL

ST. GERVAIS, FRANCE

AUGUST 23-26, 1989



ABROAD

MEN

1. Colin VanderVeen, USA
 2. Shepherd Clark, USA
 3. Philippe Candeloro, France
 4. Pierre Gignac, Canada
 5. Eric Millor, France
 6. Masakazu Kagiyama, Japan
 7. Mitsuhiro Murata, Japan
 8. Brent Frank, Canada
 9. Alessandro Riccitelli, Italy
 10. Steven Cousins, Great Britain
 11. Axel Mederic, France
 12. Geoffrey Blee, Australia
- Michael Hassold, Federal Republic of Germany, withdrew

LADIES

1. Kyoko Ina, USA
2. Surya Bonaly, France
3. Sabine Contini, Italy
4. Junko Yaginuma, Japan
5. Jessica Mills, USA
6. Margot Bion, Canada
7. Mari Asanuma, Japan
8. Eun Hee Lee, Republic of Korea
9. Lisa Lynn Sargeant, Canada
10. Stephanie Ferrer, France
11. Anja Geissler, Federal Republic of Germany
12. Florence Sadecky, Switzerland
13. Sandrine Goes, Belgium
14. Barbara Hunger, Switzerland
15. Emma Murdoch, Great Britain
16. Isabelle Balhan, Belgium

17. Sandra Escoda, Spain
18. Jae Eun Jung, Republic of Korea

PAIRS

1. Elena Leonova & Gennadi Krasnitski, USSR
2. Inna Svetacheva & Vladimir Chagov, USSR
3. Patricia MacNeil & Cory Watson, Canada
4. Marie-Claude Savard-Gagnon & Luc Bradet, Canada
5. Elaine Asanakis & Joel McKeever, USA
6. Jennifer Heurlin & John Frederiksen, USA

DANCE

1. Irina Romanova & Igor Jaroshenko, USSR
2. Lisa Grove & Scott Myers, USA
3. Isabelle Sarech & Xavier Debernis, France
4. Julie Marcotte & Juan Carlos Noria, Canada
5. Christele Gautier & Alberic Dalongeville, France
6. Birgit Schulze & Markus Vignaroli, Federal Republic of Germany
7. Wendy Millette & James Curtis, USA
8. Christine Bomba & Patrick Zelechovsky, Federal Republic of Germany
9. Ayako Higashino & Tatsuro Matsumura, Japan
10. Sabina Baratelli & Pablo Carl Ceccatini, Italy
11. Yoon Hee Park & Jong Hyun You, Republic of Korea

NEBELHORN TROPHY

OBERSTDORF, FEDERAL REPUBLIC OF GERMANY

AUGUST 30-SEPTEMBER 3, 1989

MEN

1. Shepherd Clark, USA
2. Richard Zander, Federal Republic of Germany
3. Gleb Bokil, USSR
4. Philippe Candeloro, France
5. Colin VanderVeen, USA
6. Mitsuhiro Murata, Japan
7. Pierre Gignac, Canada
8. Masakazu Kagiyama, Japan
9. Brent Frank, Canada
10. Steven Cousins, Great Britain
11. Alessandro Riccitelli, Italy
12. Jaroslav Suchy, Czechoslovakia
13. Jan Erik Digernes, Norway
14. Michael Tyllesen, Denmark
15. Geoffrey Blee, Australia

LADIES

1. Kyoko Ina, USA
2. Surya Bonaly, France
3. Junko Yaginuma, Japan
4. Michele Claret, Switzerland
5. Jessica Mills, USA
6. Mari Asanuma, Japan
7. Elena Kushnir, USSR
8. Patricia Wirth, Federal Republic of Germany
9. Lisa Lynn Sargeant, Canada
10. Margot Bion, Canada
11. Stephanie Ferrer, France

12. Eun Hee Lee, Republic of Korea
 13. Marcela Kocholova, Czechoslovakia
 14. Emma Murdoch, Great Britain
 15. Maria Fuglsang, Denmark
 16. Sandrine Goes, Belgium
 17. Janine Bur, Switzerland
 18. Henrietta Wörner, Federal Republic of Germany
 19. Sally Williams, Belgium
 20. Ann Marie Söderholm, Stockholms Allmänna Skridskoklubb
 21. Sandra Escoda, Spain
 22. Jae Eun Jung, Republic of Korea
- Sabine Contini, Italy, withdrew

PAIRS

1. Jelena Leonova & Gennadi Krasnitski, USSR
2. Evgenia Shishkova & Vadim Naumov, USSR
3. Radka Kovarikova & Rene Novotny, Czechoslovakia
4. Marie-Claude Savard-Gagnon & Luc Bradet, Canada
5. Elaine Asanakis & Joel McKeever, USA
6. Patricia MacNeil & Cory Watson, Canada
7. Jennifer Heurlin & John Frederiksen, USA
8. Henrietta Wörner & Andreas Sigurdsson, Federal Republic of Germany

DANCE

1. Isabelle Sarech & Xavier Debernis, France
2. Lisa Grove & Scott Myers, USA
3. Dominique Yvon & Frederic Palluel, France

Continued on page 44

Memorial Fund

DONORS

The USFSA Memorial Fund gratefully acknowledges the following contributors for the months of April, May, and June 1989.

IN MEMORY OF

Thom Allan: Atlanta FSC
Betty Berens: Charles J. Finance
Arthur Bourque: Mrs. Diane Agle, Mr. & Mrs. Edward H. Buening, Jr., Tracey Chaill Poletis
Kenneth Brown: Shyrlie A. Brown
Oliver H. Buck: Buffalo FSC
Mrs. Frankie Champlin: FSC of Cincinnati
Daphne Cothran: Christine Kimball
Helen Creed: DuPage FSC
J. Carlos Croft: Ida Tateoka, Utah FSC
Frank Davenport: Mrs. Evelyn Corth
Ron De Cais's Father: DuPage FSC
Tom Easton: Barbara Lee Bardin, La Jolla FSC, Los Angeles FSC, Mrs. Janet R. McLeod, Mr. & Mrs. George Flaherty, Arctic Blades FSC, Sam E. Singer, Jr.
Alfred D. Fox: The Zenith
Jay Grabel: Mrs. Lorrie Reed Parker, Lisa Reed Pockrus, Stacey Reed
Lillian Rose Grace: Mrs. Marilyn G. Guilfoyle, Mrs. Florence Schaefer
Mr. & Mrs. Harold Hartshorne: Mrs. Florence Schaefer
Robert Heslin: G. Robert Omrod
Curtis Holden: Kalamazoo FSC
Irmgard E. Kahre: La Jolla FSC, Mrs. Aileen Arenson
Norma Peterson Mangum: Utah FSC
Lois Waring McGean: Mr. & Mrs. Bob Zeiser, Joan H. Cassidy & Sara, J. Barlow Nelson, Mr. & Mrs. John T. Schiffman

C. Dana McKinney: Maurice F. Bates, Martha C. Baumeister, John J. Chambers, Jr., Thomas A. Ford, Elizabeth B. Ingersoll, Bayard Marin, Emory P. Mersereau, Richard A. Stuckey, Donald D. Thureau, Doris Tindall, Daniel G. Tynan

Darriell Miller: Mr. & Mrs. Elliott Garr & Friends

Charles E. Mills, Jr.: Atlanta FSC

Nick Rajacich: Beverly Kimes

Jennifer Ritter: Robin Cousins Enterprises

John Roesch: Mrs. Marilyn G. Guilfoyle, Mrs. Florence Schaefer, Mrs. Helen M. Oak

Joseph Scherer II: Patricia S. Eckart

John & Edith Shoemaker: Shyrlie A. Brown

Franklin H. Shumway: Mrs. Beverly A. Shumway

Clare Snetsinger: Mr. Bruce S. Weinberg

Eleanor V. Spear: Joanne Benard, Nancy L. Hopkins, Mr. & Mrs. Charles Manuel, Jr., Mr. & Mrs. James Mulcahy, Jr., North Shore SC, Mr. & Mrs. Edward Raynard, Mr. & Mrs. James Riddell, Mr. & Mrs. R.J. Riddell, Mr. & Mrs. Fred Ward

Margaret Spitzmiller: Buffalo FSC

William Theobald: Mr. & Mrs. Donald Hazen

William Thayer Tutt: Judy Blumberg & Michael Siebert, Audrae M. Gillespie, Mrs. Maribel A. Leiter, Thomas Collins Enterprises, Mr. & Mrs. George B. Ludlow, Jr.

Grace Warren: Mary Jo & Randy Hanson

Susan Wheelock: La Jolla FSC

Cindy White: Santa Rosa FSC

Mrs. Virgil Widler: Northern New York Council FSC

Virgil L. Widler: Amherst SC, Dr. & Mrs. Herschel Balsom, William R. Beharrell, SC of Western New York

Nancy H. Williams: Joseph E. Williams

Kasumi Yonekura: F. Ritter Shumway, Mrs. Janet R. McLeod

IN HONOR OF

The Wedding of Lori Benton & Matt O'Donnell: Mr. & Mrs. J. Keith Williams

Brian Boitano: Dawn Elmer, Fantasy Productions Inc., Mr. & Mrs. Benedict F. Guazzo, Sabrina A. Henderson, Karen Marlo, Mr. & Mrs. George A. Reuhl, Mrs. Lowell T. Berenguer, Irene G. Chin, Mr. & Mrs. Mark De Vries, Vonda J. Dowell, John R. Evers, Mr.

& Mrs. George Gianelli, Lisa Anne Luciano,
Mrs. Debra L. Resing, Janice L. Smith, Mary
M. Stratton, Mr. & Mrs. Raz Syberts, Mr. &
Mrs. Joseph J. Vallera, Dorothy Knoell,
Patricia Knoell, Martha K. Parks, Laura
Wenberg, Geraldine M. Devine

Christopher Bowman: Norman D. Dagen, Jr.

Barbara Carr: Barbara S. Johnson

The Wedding of Mary Cook & John McEwan:
Mr. & Mrs. Frank Barnes

Mr. & Mrs. Charles A. DeMore: Fairmount
Guild of Fairmount Presbyterian Church

Margaretta Drake on Mother's Day: Mr.
Lyman M. Drake III

The Birthday of Mary Goldblatt: Anthony V.
Tantillo, Jr.

Dr. Hugh C. Graham, Jr.: J. Barlow Nelson

Hugh & Connie Graham: Mary Francis Smith

Dorothy Hamill: Harlestone E. Cabaniss

Sonja Henie: Geraldine M. Devine

Betty Jean Higgins: Mr. George G. Miller

Caryn Kadavy: Martha K. Parks

Katy Keeley & Joseph Mero: Cynthia
Rosenbaum

**The Wedding of Tamie Klindworth & Robert
Campbell:** Mr. & Mrs. Frank Barnes, Matthew
Zats

Ron Kravette: Nelly Peicov

Natasha Kuchiki & Richard Alexander: Helen
Moore

**Natasha Kuchiki & Richard Alexander &
Tamara Kuchiki:** Helen Moore

The Birth of Jeanne Marie Mandell: La Jolla
FSC

Brian Orser: Julie M. Wilson

Janiese Potempa: Mr. & Mrs. Leonard
Potempa

Heidi Joy Ruskin: Mr. & Mrs. Stanley Ruskin

Janet Lynn Salomon: Margaretta Drake

April Sargent & Russ Witherby: Catharine P.
Lennon

Audrey Sexton: Red River Valley FSC

Madeline Sheridan: Mr. & Mrs. James A.
Hanck

F. Ritter Shumway: Patricia S. French

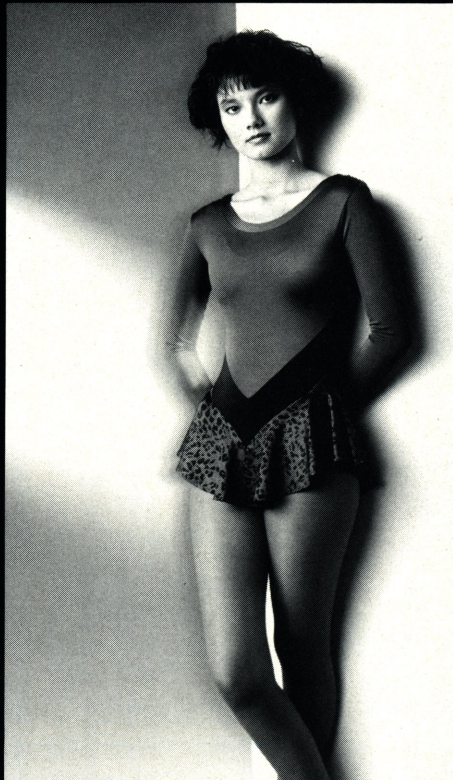
Stacy Smith: Dr. & Mrs. Albert B. Gerbie

Harry Stafford: Mr. & Mrs. Gordon Hochberg

Debbie Thomas: Caroline Chan, Gayle C. Holt

Jill Trenary: Charles D. Matteson, Julie De
Veaux

10 Years of Winning Designs



Unicorn Sport

The Skater's Edge in Fashion



Happy
10th
Anniversary!

For Catalog Send \$2.00

(REFUNDABLE WITH PURCHASE)
COMPLIMENTARY COPIES TO DEALERS

505 Lovenia Avenue, Knoxville, TN 37917

DIAL (615) 523-EDGE

Continued on page 44



INDIANAPOLIS HOSTS NUTRASWEET ICE SKATING MONTH KICK-OFF

Wollman Rink in New York was the site for 1987. In 1988, it was the Los Angeles Forum. Moving to the heartland this year, the kick-off ceremonies for NutraSweet Ice Skating Month 1989 will be held in the Midwest with the Indiana/World Skating Academy in Indianapolis as host.

Hundreds of local and national competitors and skating enthusiasts are expected to descend on the American Rink at Pan American Plaza on Sunday, October 1, to join in the festivities and to watch performances by some of America's favorite figure skaters, headed by Christopher Bowman, 1989 U.S. Men's Champion and World silver medalist, who is the national NutraSweet Ice Skating Month program co-spokesperson. The 1976 Olympic gold medalist and program co-spokesperson, Dorothy Hamill will officially usher in the month with an invitation for skaters to join her on the ice.

Featured speakers will include Franklin S. Nelson, M.D., President of

THE UNITED STATES
FIGURE SKATING ASSOCIATION
★ P R E S E N T S ★



NUTRASWEET
ICE SKATING
MONTH ★ OCTOBER

the USFSA and officials from The NutraSweet Company. A full report on the day's events will appear in next month's issue of *Skating*. Other popular skaters in addition to Hamill and Bowman who will appear include 1989 U.S. Dance Champions, Susan Wynne and Joseph Druar; and National competitors, Kathaleen Kelly, Sharon Carz and Doug Williams.

NutraSweet Skate Across America Tour

From Indianapolis, the team of top skaters will tour the country in a five-city NutraSweet Skate Across America Tour in celebration of NutraSweet Ice Skating Month. They will first appear with Dorothy Hamill at the Dorothy Hamill Ice Skating Rink in Greenwich, Connecticut, on October 2 for NutraSweet Skate Day festivities with the Skating Club of New York. Dorothy and Chris will appear in a satellite media tour that afternoon beaming news of the NutraSweet Ice Skating Month and its benefits to cities nationwide.

The tour will continue on to Boston on October 3 for the Skating Club of Boston's NutraSweet Skate Day. Jessica Mills will replace Kathaleen Kelly for the second part of the tour which then will join activities with the Oak Park Figure Skating Club at McPetridge Sports Center in Chicago on October 4. The Breck Ice Center in Minneapolis and the Figure Skating Club of Minneapolis is next on October 5, and the tour concludes at the Brentwood Ice Center in St. Louis on October 6, hosted by the Brentwood Figure Skating Club.

Publicity

Public relations efforts to increase awareness of NutraSweet Ice Skating Month and encourage participation in-

clude radio and TV public service announcements, displays of the official poster in rinks and clubs across the country, and articles in national and local magazines and newspapers. Magazines to scan for articles on the month include *Family Circle*, *Mothers Today*, *City Sports Magazine*, *New Woman*, *Senior Life*, *Men's Fitness*, and *American Baby*.

Participating Organizations

The NutraSweet Ice Skating Month is presented by the United States Figure Skating Association in conjunction with the Ice Skating Institute of America and the Professional Skaters Guild of America. Members of all three associations will be lending their time, expertise, and professional support of this major grass roots level program. Get in on the action! Hundreds of rinks across the country will hold NutraSweet Skate Days throughout the month of October. Check with *your* local rink and find out how you can join in the fun.



PHOTOS COURTESY OF THE NUTRASWEET COMPANY

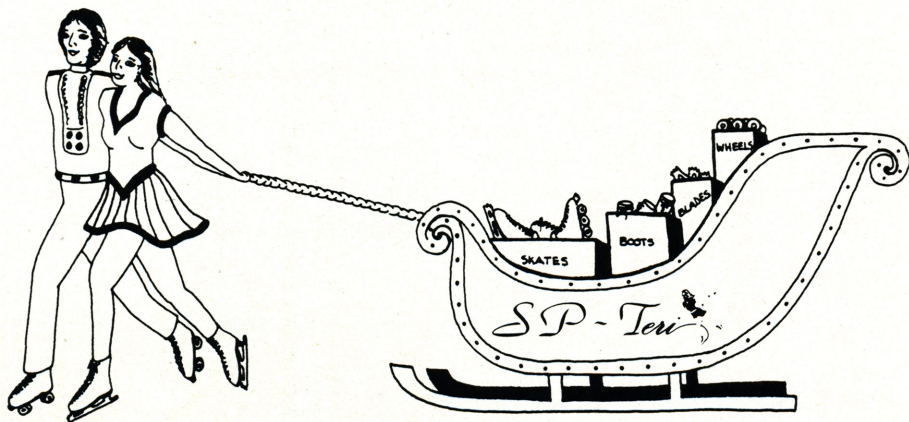
SP - Teri



**HAS MOVED
TO A BIGGER FACILITY
TO SERVE YOU BETTER**

OUR NEW LOCATION

**436 NORTH CANAL STREET, UNIT #1
SOUTH SAN FRANCISCO, CA 94080
415-871-1715**



1989 NATIONAL COLLEGIATE CHAMPIONSHIPS



LAKE PLACID, NEW YORK
AUGUST 24-26, 1989

FIGURES

SENIOR MEN

JUDGES: A-Tamie K. Campbell, Eden Prairie, MN; B-Dorothy G. Dodson, Alexandria, VA; C-Patricia J. Smart, Seattle, WA; D-Lester M. Cramer, M.D., Colorado Springs, CO; E-Theresa G. Fischer, Pound Ridge, NY. REFEREE: Frederick LeFevre, Williamsburg, VA. ASSISTANT REFEREE: Ben Wade, * Studio City, CA. ACCOUNTANT: Michael Wolek, Laurel, MD.

	A	B	C	D	E	M
1. Eddie Shipstad, University of Southern Colorado	1	1	1	1	1	5/1
2. Tim Dever, Arizona State University	2	2	2	2	2	5/2
3. Troy Goldstein, California State University, Long Beach	3	3	3	3	3	5/3

SENIOR LADIES

JUDGES: A-Virginia F. LeFevre, Williamsburg, VA; B-Robert J. Horen, Wynnwood, PA; C-William K. Munns, Concord, CA; D-T.K. Campbell; E-D.G. Dodson. REFEREE: B. Wade.* ASSISTANT REFEREE: F. LeFevre. ACCOUNTANT: Martha Cogan,* Ray Brook, NY.

	A	B	C	D	E	M
1. Kathaleen Kelly, Harvard/Radcliffe College	1	1	2	2	1	3/1
2. Melia Heimbuck, Metropolitan State College	2	2	1	1	2	5/2
3. Shannon Hunter, Seattle Pacific University	4	3	3	6	3	3/3
4. Noreen Kelly, Wheaton College	3	5	4	3	5	3/4
5. Michelle Millikan, Indiana University	5	4	5	6	4	4/5
6. Cathy Schrauff, Southern Methodist University	7	6	6	4	7	3/6
7. Maria Zarko, St. Mary's College	8	7	5	6	3	3/7
8. Maria Montes, Harvard/Radcliffe College	6	7	8	8	8	5/8
9. Aileen May Kelly, Harvard/Radcliffe College	9	10	11	9	10	4/10
9. Maureen Pearlman, University of Illinois	11	9	10	10	9	4/10
11. Kaia Ann Halvorson, University of Washington	9	11	9	11	11	5/11
12. Kathy Denham, Arizona State University	12	12	12	12	12	5/12

JUNIOR MEN

JUDGES: A-D.G. Dodson; B-T.G. Fischer; C-T.K. Campbell; D-V.F. LeFevre; E-W.K. Munns. REFEREE: B. Wade.* ASSISTANT REFEREE: F. LeFevre. ACCOUNTANT: M. Wolek.

	A	B	C	D	E	M
1. Glenn Zehnert, Adirondack Community College	1	1	1	1	1	5/1
2. Edmund Nesti, Northeastern University	2	2	2	2	2	5/2

JUNIOR LADIES

JUDGES: A-L.M. Cramer, M.D.; B-T.K. Campbell; C-T.G. Fischer; D-P.J. Smart; E-D.G. Dodson. REFEREE: F. LeFevre. ASSISTANT REFEREE: B. Wade.* ACCOUNTANT: M. Cogan.*

	A	B	C	D	E	M
1. Lisa Floreck, University of Delaware	1	1	1	1	1	5/1
2. Sandra Davis, LeMoyne College	2	2	3	2	2	4/2
3. Tracey Lynn Martin, St. Joseph's College	3	3	2	3	3	5/3

FREE SKATING

SENIOR MEN

JUDGES: A-W.K. Munns; B-V.F. LeFevre; C-L.M. Cramer, M.D.; D-T.G. Fischer; E-R.J. Horen. REFEREE: B. Wade.* ASSISTANT REFEREE: F. LeFevre. ACCOUNTANT: M. Wolek.

	OP	FS	PLACES
1. 2	1	Eddie Shipstad, University of Southern Colorado	2.6
2. 1	2	Troy Goldstein, California State University, Long Beach	3.0
3. 3	3	Tim Dever, Arizona State University	5.2
		Patrick O'Neil, St. Bonaventure University, withdrew	

SENIOR LADIES

JUDGES: A-P.J. Smart; B-D.G. Dodson; C-T.K. Campbell; D-L.M. Cramer, M.D.; E-T.G. Fischer. REFEREE: F. LeFevre. ASSISTANT REFEREE: B. Wade.* ACCOUNTANT: M. Cogan.*

	OP	FS	PLACES
1. 1	2	Michelle Millikan, Indiana University	3.0
2. 5	1	Kathaleen Kelly, Harvard/Radcliffe College	4.4
3. 2	3	Melia Heimbuck, Metropolitan State College	4.6
4. 3	4	Dorothy Crowley, Queens College	6.2
5. 4	5	Aileen May Kelly, Harvard/Radcliffe College	7.8
6. 7	6	Maureen Pearlman, University of Illinois	10.6
7. 6	8	Karen Anderson, Normandale College	12.0
8. 11	7	Shannon Hunter, Seattle Pacific University	14.0
9. 8	10	Kathy Denham, Arizona State University	15.2
10. 13	9	Kaia Ann Halvorson, University of Washington	17.2
11. 10	11	Maria Zarko, St. Mary's College	17.4
12. 9	12	Jolyne Kane, University of Connecticut	17.8

Maria Montes, Harvard/Radcliffe College, withdrew

SENIOR PAIRS

JUDGES: A-L.M. Cramer, M.D.; B-R.J. Horen; C-V.F. LeFevre; D-W.K. Munns; E-D.G. Dodson. REFEREE: F. LeFevre. ASSISTANT REFEREE: B. Wade.* ACCOUNTANT: M. Wolek.

	OP	FS	PLACES
1. 1	1	Calla Urbanski, Delaware Technical & Community College & Mark Naylor, University of Delaware	1.5

Continued on page 41

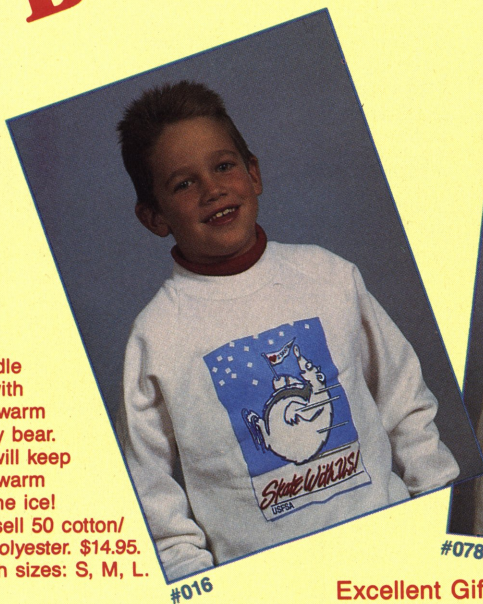
NEW!! from Basic Skills

Exciting Sweatshirts!



Join the Fun!

Cuddle
up with
this warm
fuzzy bear.
He will keep
you warm
on the ice!
Russell 50 cotton/
50 polyester. \$14.95.
Youth sizes: S, M, L.



#016



#078

Sizzling hot!
Bright, fun
colors with
pink puff
ink! Hanes
50 cotton/50
polyester. \$19.95.
Adult sizes:
S, M, L, XL.

Excellent Gift Ideas!

ORDER TODAY FOR HOLIDAY DELIVERY!

ORDER #	DESCRIPTION	Indicate Qty. of each				PRICE	TOTAL
		S	M	L	XL		
016	Cuddly Polar Bear design (youth sizes)				N/A	\$14.95	
078	Fluorescent Ink Scribble design (adult sizes)					\$19.95	
						Tax if applic	
Please Print							
TOTAL							

Mail your order to:

USFSA
20 First Street
Colo. Spgs., CO 80906

Make check payable to:
USFSA

Colorado Springs Residents
add 6.5% sales tax.

Colorado Residents
add 3% sales tax.

Please allow
4 weeks
for delivery.

Name _____

Address _____

City/State/Zip _____

Daytime Phone () _____

Youth of the World in Savoie:

Impressions of Albertville

by Gig Siruno

About two months after the 1989 National Championships, I was selected as one of the ten delegates from the United States to attend a two-week program called "Youth of the World in Savoie 1992." Our host was Albertville, France, site of the 1992 Winter Olympic Games.

The program was sponsored by the National Olympic Committee of France and the Albertville Olympic Organizing Committee and was established to bring together young athletes during a four-year period (1988-1991) leading up to the Winter Games in Savoie. Almost 2,000 delegates representing countries which are members of the Olympic movement, including those countries where winter sports are not practiced, will attend this program aimed at broadening the circle of countries involved in the Olympic Winter Games. I attended the third program in July where twenty-eight countries gathered to visit the Savoie region and Albertville.

The delegation from the United States were athletes chosen by their governing bodies to represent their winter sports. Fellow competitor Alex Chang and I were asked to represent figure skating, with seven other athletes in our group representing luge, alpine and nordic skiing, speedskating, and bobsledding. Our team leader was biathlon coach, Tom Horton.

Each athlete had taken two weeks off from training to experience the pre-Olympic planning stages, visit some Olympic venues, and enjoy the activities that go on before the Games actually begin in February 1992. We were fortunate enough to be there during the 200th anniversary of Bastille Day, the Independence Day of France.

Albertville is a city in the Savoie region which is located in the southeastern part of France. Our visit to the city was short due to visiting other cities in Savoie, but the quality of time we spent there surpassed its length.

Though a small town, it has a very big heart and friendly atmosphere. My first



U.S. athletes visit Albertville.

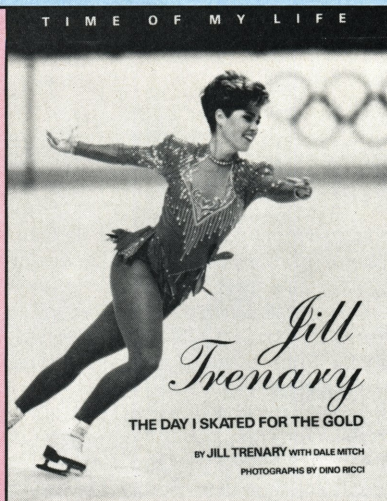
glimpse of Albertville was during a parade through its narrow streets where all the countries were given a big, warm "Hello!" from the city's people. The United States seemed to be one of the more popular and well-liked of the countries with the people of Albertville chanting "USA!" and cheering us on as we walked through the city. After the parade, a welcome speech was given by Henry Dujol, the mayor of Albertville, and as a sign of friendship and goodwill, he gave each delegation leader a medallion of the city. What is most memorable about Albertville is the beautiful mountains that surround the city creating a pretty setting for a Winter Olympics.

One of the highlights of the trip, was a triathlon where all of the countries competed against each other with a friendly sportsmanship-like attitude. The triathlon consisted of three competitions: rafting, mountain biking, and archery. The Americans came out first-second-third in the three categories respectively taking with us the overall first-place trophy as well. There was a dinner dance afterwards where friendships were made and many pins and addresses were exchanged.

Another highlight was being able to go downhill skiing during the summer on a glacier at Les Menuires, site of the men's special slalom during the Olympics. We also shopped and toured the Olympic nordic trails in the city of Les Saisies. Although Alex and I were not able to skate while there, we did

Continued on page 59

JUST PUBLISHED



Spend a very special day with an American Champion.

A completely new and delightfully different kind of book, up close and personal. Come along and share with U.S. Ladies' Champion Jill Trenary one special day in her life—the final day of her competition at the 1988 Olympics in Calgary.

This is the story of that momentous day—in Jill's own words and dramatic on-the-spot photographs that capture all the pageantry, pressure, tension, and triumphs behind the cameras and bright lights.

Step onto the ice with Jill and see the time of her life through her eyes. Join in the excitement. Catch a rare glimpse behind the scenes of the day she skated for the gold.

The large format 8 1/2 x 11 inch book is lavishly illustrated throughout with full-color and black-and-white photographs by Dino Ricci. Guaranteed reinforced hardback binding. Especially written for young readers ages 8 to 13, but enjoyable reading for skaters and fans of all ages.

The ideal Christmas gift for the young skater.

Order your copy now. \$14.95 including postage and handling.

Colorado residents add appropriate tax.

**Order from USFSA, 20 First Street
Colorado Springs, CO 80906**

Uniting the World's Best

The countdown is on for the 1990 Goodwill Games, the international multi-sport invitational that will be held July 20 to August 5, 1990, in Seattle and other cities in the state of Washington.

The event will unite 2,500 of the world's best athletes from more than 50 countries for 17 days of spectacular competition in 21 top-rated sports, including figure skating.

The Games will feature the best figure skaters in the world in Men's and Ladies' singles, Pairs, and Ice Dancing competitions, followed by a one-day exhibition.

Invitations to the 1990 Goodwill Games are currently being issued to many of the world's best athletes and teams by the participating U.S. sports federations. Following international protocol, the U.S. Figure Skating Association (USFSA) will issue invitations and is working with its international counterparts to ensure participation of the world's best.

"The 1986 Goodwill Games was a great success for us," said Charles U. Foster, a member of the USFSA Board of Directors and Secretary of the United States Olympic Committee (USOC). "The 1990 Games will be even better. In 1986, figure skating was an exhibition. In 1990, we decided to make it a competition because of the sport's popularity and summer scheduling. We look forward to Seattle where the best figure skaters in the world will compete. Events such as this offer our athletes an unprecedented opportunity to be involved in a world-class, multi-sport competition."

Under the Goodwill Games "top eight" format, the best Soviet and American participants are invited along with the best athletes/teams from around the world in each sport or event. The Goodwill Games are unique among international competitions. Only the top



Natalia Annenko and Genrich Sretensky of the Soviet Union appeared in the 1986 Goodwill Games.

eight individuals or teams in each sport or event are invited to compete.

Figure skating is one of two traditional winter sports in the 1990 Goodwill Games along with ice hockey. The competition and exhibition will take place August 2-5 at the Tacoma Dome, site of the very successful 1987 U.S. Figure Skating Championships.

All skaters will perform the Original program on the first day of competition; Long Programs in Men and Pairs on the second day, and Long Programs in Ladies and Dance on the third day. Winners will perform in a gala exhibition on the fourth and final day of the Games.

"You train all year for something like the Goodwill Games or a national championship, and you want to do your best," said 1988 Olympic gold medalist Brian Boitano, who participated in the 1986 Games. "With the Goodwill Games, you really do get the top athletes in each sporting event, the cream of the crop."

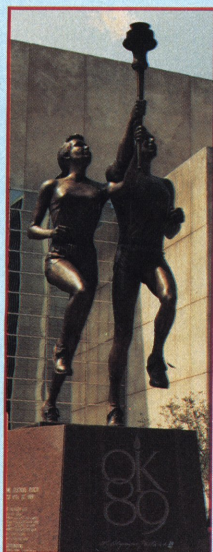
The USOC is in full support of the 1990 Goodwill Games and has pledged its assistance to the participating sports federations.

"The Goodwill Games have become a permanent fixture on the international sports calendar," said Robert Helmick, president of the USOC. "The United

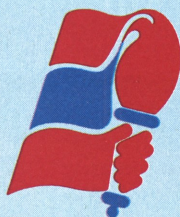
Continued on page 59

U.S. OLYMPIC FESTIVAL—'89

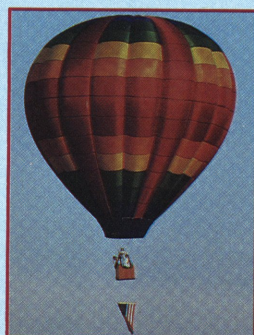
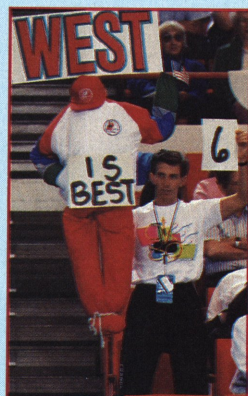
PHOTOS BY G.S. ROSSANO



MRS. S. WALKER



JOHN BALDWIN, JR.



Commemorative Festival statue erected outside of the arena; a spectacular Opening Ceremony; Michael Verlich was an unbiased observer; Stars and Stripes aloft; everyone wants to be a judge; Mark Mitchell calls home with the good news.



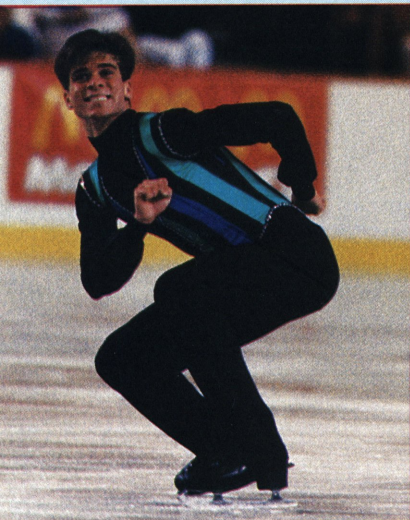
Always expect the unexpected, at least when it comes to figure skating and the U.S. Olympic Festival. As the first competition of the new season, the Festival sets the stage for one of the most interesting showdowns of the year. It pits the new faces against the old, the rookies against the veterans, and the outcome can be as unpredictable as Oklahoma weather in July.

At the U.S. Olympic Festival-'89 in Oklahoma City, the surprises started even before the competition was officially underway, as a record 76,000 fans gathered at the Opening Ceremonies to watch figure skating's own Kristi Yamaguchi carry the Olympic torch through Oklahoma Memorial Stadium. To heighten the drama of the arrival of the flame, the stadium was darkened and some 76,000 mini torches were lit by audience members as a tribute to the athletes.

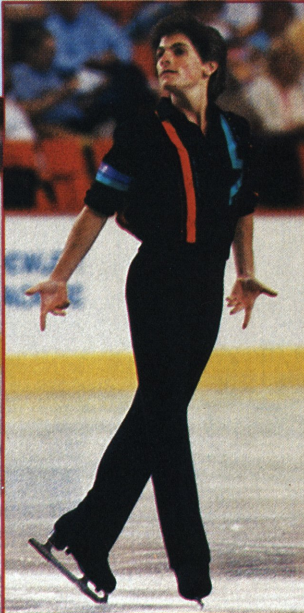
Paul Wylie admitted, "When the torch entered the stadium it was one of the most dramatic times I have ever seen that happen. I've seen it at a couple of previous Olympic Festivals and at the Olympic Games in Calgary, but there was just something about it this time—the way they had FloJo (Florence Griffith Joyner) run in with it and then Kristi (Yamaguchi) circle the stadium, handing it off to John Smith. It was really dramatic; a great moment."

It was clear early on that the purpose of the Opening Ceremonies was not merely to light the Olympic Flame that would signal the start of the nine-day event, but rather to kick off the Festival in style with a gala celebration suitable for a king (or the President of the United States). Indeed, the Local Organizing Committee did not miss a beat, bringing in former President Ronald Reagan to deliver the keynote address to the Festival's 4,000 participants.

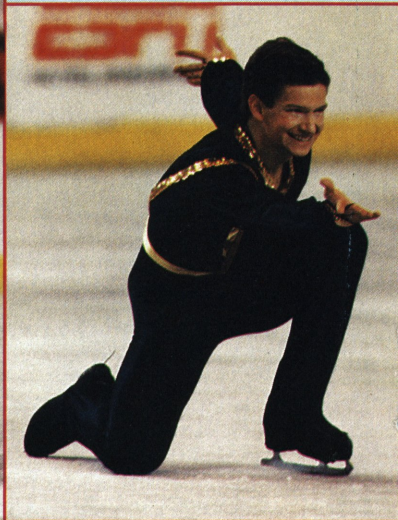
Fans and athletes in attendance were treated to two full hours of non-stop entertainment from celebrities, comedians, musicians, marching bands, and drill teams. The extravaganza featured a number of national entertainers who hail from the host state of Oklahoma, including country music star Reba McEntire, who in 1975 was actually discovered at the National Rodeo Finals in Oklahoma City where she sang the national anthem. Following McEntire's electric performance, Patti Page, Roger Miller, and the Oak Ridge Boys kept the athletes dancing on the field and the audience swaying and humming along. In addition, there was a flyover by a team of F-16 fighter jets to symbolize the Olympic motto "Faster, Higher, Stronger"; a special performance by comedian Bob Hope; and a spectacular grand finale complete with a laser light show, and a seemingly endless display of



Mark Mitchell, Men's Gold



Paul Wylie, Men's Silver



Shepherd Clark, Men's Bronze

fireworks. Most of the Festival skaters admitted that they were still "on a high" some fifteen hours later when their events officially got under way.

"The opening ceremonies were a real boost for me" commented Mark Mitchell just prior to the start of the Men's competition. "Just being there gets your adrenaline flowing and gets you ready to compete."

And ready he was. The 21 year old from the Skating Club of Hartford proceeded to bring about the first big upset of the competition, emerging as the one to beat following a winning performance in the Men's Original Program. Heavily favored Paul Wylie, of the Skating Club of Boston, trailed slightly in second after missing a required element. Craig Heath, St. Moritz Ice Skating Club, and Shepherd Clark, Broadmoor Skating Club, followed closely in third and fourth places.

The competition structure for all Singles and Pair events at the Festival-'89 consisted of an Original Program, worth 33.3% and a Long Program, worth 66.7%. With the majority of the

weight placed on the long program, Wylie still had a good chance to come from behind and capture the gold medal. But Mitchell, the 1986 U.S. Junior Men's Champion and eighth-place finisher at the 1989 Nationals, went into the long program seemingly unaffected by the pressures of going head-to-head with a former Olympian and national medalist. Performing a gutsy program that included two triple Lutzes as well as the most difficult move of the competition, a triple Axel, Mitchell held on to his lead to clench the gold medal overall. Wylie, skating to music from the *The Mission* and *The Secret of My Success* entranced the audience with one of the most inspired performances of the afternoon. With a few minor mistakes, Wylie remained out of striking distance of Mitchell but easily clenched the silver medal. Shepherd Clark came from behind to narrowly beat out Craig Heath for the bronze medal.

After making history by becoming the first figure skater ever to carry the torch at a U.S. Olympic Festival, Kristi Yamaguchi went on to further secure her

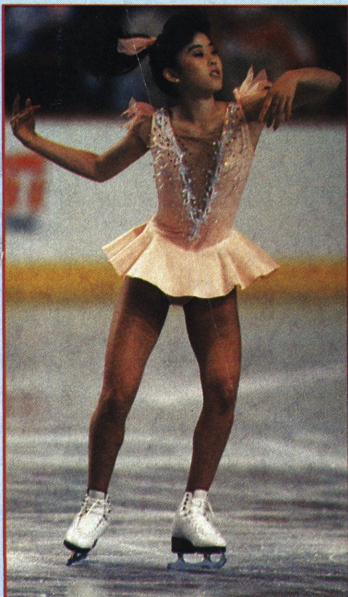
place in the skating world by dominating the Ladies' division from start to finish. The favorite going into the competition, Yamaguchi gave a flawless performance in the Original Program, earning unanimous first-place marks from all seven judges. Holly Cook, Utah Figure Skating Club, gave a crowd pleasing performance to earn second place, followed by Tonia Kwiatkowski, Winterhurst Figure Skating Club, in third.

Yamaguchi used the Festival to debut her new Long Program, designed to showcase her maturing style. Skating to selections from *Swan Lake*, she surprised everyone with a few minor mistakes, including a fall on a double Axel/double toe loop, but the 87-pound dynamo still managed to nail six triple jumps in her four-minute routine. Holly Cook, second going into the final phase of the competition, looked to be a threat to Yamaguchi early in her program, but falls on two triple jumps as well as on a butterfly dropped her out of medal contention and into fourth place. Kwiatkowski followed, dazzling the crowd with her powerful jumps and elegant style. The judges were equally

impressed, awarding her second place in the Long and the silver medal overall. In fourth place after the Original Program, Nancy Kerrigan, Colonial Figure Skating Club, outskated Cook for the bronze medal.

An equally intense battle was waged for the fifth, sixth, and seventh spots in the Ladies' division by three up-and-coming skaters all making their debuts at the Senior level. In the end it was Tisha Walker, Conejo Valley Figure Skating Club, seizing fifth place with an action-packed performance that concluded with two consecutive double Axels in the last ten seconds of her routine. Current U.S. Junior Ladies' Champion Kyoko Ina, Skating Club of New York, captured sixth place, followed by Geremi Weiss, Washington Figure Skating Club, in seventh.

The battle for the gold medal in Pairs pitted Sharon Carz and Doug Williams, All Year Figure Skating Club, against Calla Urbanski and Mark Naylor, University of Delaware Skating Club. Carz and Williams, the fourth-place finishers at the 1989 U.S. Championships and favorites going into the competition,



Kristi Yamaguchi, Ladies' Gold



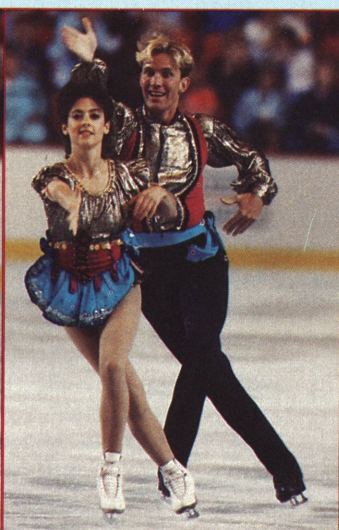
Tonia Kwiatkowski, Ladies' Silver



Nancy Kerrigan, Ladies' Bronze



Calla Urbanski & Mark Naylor, Pair Gold



*Sharon Carz & Doug Williams,
Pair Silver*



Elaine Asanakis & Joel McKeever, Pair Bronze

found themselves trailing Urbanski and Naylor, after a troubled Original Program. Urbanski and Naylor, who have only been together one year, held on to the lead in the Long Program with a dynamic performance that included a solid throw double Axel and side-by-side double flips, loops, and toe-loops. Using their 1989 competitive program, Carz and Williams exhibited their classical, elegant style with a well polished program that included side-by-side double loops and Salchows, side-by-side Russian splits, and an excellent throw double Axel.

Although three of the seven judges awarded them first-place marks, it wasn't enough to put them ahead of Urbanski and Naylor and the duo had to settle for the silver medal. Elaine Asanakis, University of Delaware Skating Club, and Joel McKeever, Dallas Figure Skating Club, moved up from fourth place in the short program with a powerful performance that earned them the bronze medal over the brother/sister team of Ginger and Archie Tse, University of Delaware Skating Club.

In Ice Dancing the competition consisted of two Compulsory Dances, worth 33.3% of the total score, and the Free Dance, worth 66.7%. April Sargent and Russ Witherby were making their first appearance since the World Championships where April sustained a foot injury. Heavy favorites going into the Festival, Sargent and Witherby viewed the competition as an opportunity to pick up where they left off at the World Championships

"What's special about this competition is that we're thinking of this as if it were our free dance in Paris at Worlds . . . that we never got to do. We're using this as a second opportunity."

Representing the University of Delaware Skating Club, Sargent and Witherby took full advantage of the "opportunity" by sweeping both the Compulsory Dance and Free Dance events. In doing so, the two captured the first gold medal of their career. Jeanne Miley and Michael Verlich, Los Angeles Figure Skating Club, proved to be a team to watch in the next quadrennium with solid second-place performances in both

phases of the competition. With their charismatic and energetic style, Miley and Verlich had the crowd on its feet with their performance in the Free Dance. The two may have made figure skating history by sparking the audience to perform one of the first "waves" ever seen at a national competition. Elizabeth McLean, Skating Club of Boston, and Ari Lieb, Babson Figure Skating Club, captured the bronze medal, with Wendy Millette, Skating Club of Boston, and James Curtis, Wissahickson Skating Club, finishing fourth.

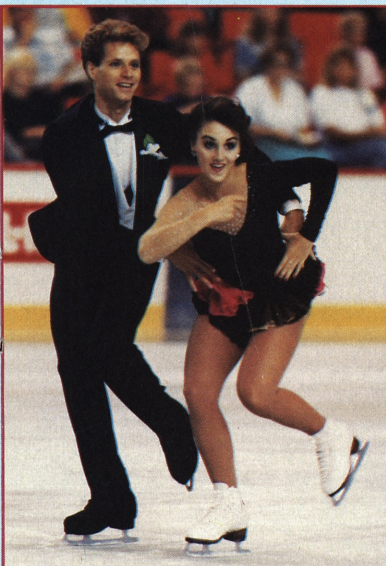
In addition to the one-on-one competition, skaters were divided into four teams: North, South, East, and West. Points were awarded for each team member's performance, and the team with the greatest total points at the conclusion of the Festival was named the winner. The winning team at the Festival-'89 was the East, with 319.00 points, followed by the South, 300.00 points. The West team captured third place with 282.00 just squeezing out

North in fourth place with 280.00 points.

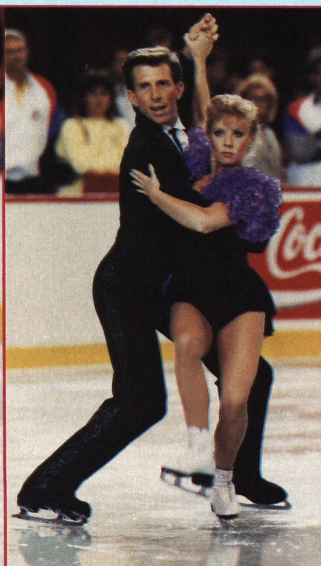
With the last major figure skating competition in Oklahoma occurring some nineteen years ago, Oklahomans were proud to have the opportunity to host such a top-caliber figure skating event. Calla Urbanski summed up the general sentiment shared by all who attended.

"Oklahoma City did a great job, especially since it is not a major skating capital. They went all out in everything they did—they gave one-hundred percent and it showed."

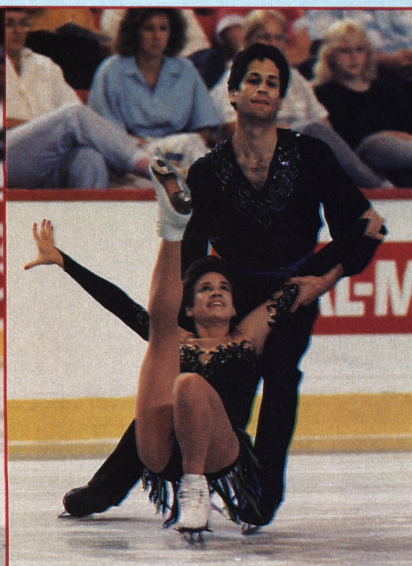
Not only does the U.S. Olympic Festival serve as a stepping stone to future success for many skaters, it also affords them the rare opportunity to participate in an event with athletes from some thirty-five other sports. And, as Jeanne Miley pointed out, "It's exciting because everyone who competes here wants to go to the Olympics. This gives you a taste of what it would be like. It makes you want it that much more."



April Sargent & Russ Witherby, Dance Gold



Jeanne Miley & Michael Verlich, Dance Silver



Elizabeth McLean & Ari Lieb, Dance Bronze

U.S. OLYMPIC FESTIVAL-'89

OKLAHOMA CITY, OKLAHOMA

JULY 22-23, 1989

NORTH TEAM (280 pts.)

MEN — Craig Heath, Colin VanderVeen; LADIES — Holly Cook, Jennifer Leng, Tisha Walker, Jodi Friedman; PAIRS — Sharon Carz & Doug Williams, Shanda Smith & Brandon Smith; DANCE — Wendy Millette & James Curtis, Lisa Grove & Scott Myers.

SOUTH TEAM (Silver Medal — 300 pts.)

MEN — Mark Mitchell, Jon Robinson, John Baldwin, Jr.; LADIES — Nancy Kerrigan, Jenni Meno, Kathryn Curielli, Tamara Kuchiki; PAIRS — Jennifer Heurlin & John Frederiksen, Ginger Tse & Archie Tse; DANCE — April Sargent & Russ Witherby, Mimi Wachholder & Bruce Montemayor.

EAST TEAM (Gold Medal — 319 pts.)

MEN — Paul Wylie, Troy Goldstein, Christopher Mitchell; LADIES — Tonia Kwiatkowski, Kelly Ann Szmurlo, Geremi Weiss; PAIRS — Calla Urbanski & Mark Naylor, Wendy Weston & Alexander Enzmann; DANCE — Elizabeth McLean & Ari Lieb, Tiffany Veltre & Duane Greenleaf.

WEST TEAM (Bronze Medal — 282 pts.)

MEN — Aren Nielsen, Shepherd Clark, Jay Murphy (withdrew); LADIES — Kristi Yamaguchi, Kathaleen Kelly, Kyoko Ina; PAIRS — Elaine Asanakis & Joel McKeever, Maria Lako & Rocky Marval; DANCE — Jeanne Miley & Michael Verlich, Ann-Morton Neale & Laurence Shaffer.

COMPETITION RESULTS

MEN

JUDGES: A—Roberta Parkinson, McMurray, PA; B—Dr. Paula J. Ziegler, Muncie, IN; C—Mary R. Cook, Boulder, CO; D—Beth S. Graham, Littleton, CO; E—Joyce Burden, San Carlos, CA; F—Eleonor G. Schultz, Burbank, CA; G—Peggy J. Stark, Ramona, CA. ACCOUNTANT: Marilyn Goldstein, St. Louis, MO. REFEREE: James W. Disbrow, Morristown, NJ.

OP	FS	PLACES
1. 1	1 Mark Mitchell	1.5
2. 2	2 Paul Wylie	3.0
3. 4	3 Shepherd Clark	5.0
4. 3	4 Craig Heath	5.5
5. 5	5 Jon Robinson	7.5
6. 6	7 Colin VanderVeen	10.0
7. 9	6 Aren Nielsen	10.5
8. 8	8 Troy Goldstein	12.0
9. 7	9 John Baldwin	12.5
10. 10	10 Christopher Mitchell	15.0

LADIES

JUDGES: A—Robert J. Horen, Wynnewood, PA; B—Carole L. Ludlow, Kent, CT; C—Sam Auxier, Glen Ellyn, IL; D—Bette Todd, Indianapolis, IN; E—Matthew H. Zats, St. Paul, MN; F—Ramona A. McIntyre, Kenei, HI; G—A. Jim Larkin III, Salt Lake City, UT. ACCOUNTANT: M. Goldstein. REFEREE: Walter H. Lupke, Jr., Fort Wayne, IN.

OP	FS	PLACES
1. 1	1 Kristi Yamaguchi	1.5
2. 3	2 Tonia Kwiatkowski	3.5
3. 4	3 Nancy Kerrigan	5.0
4. 2	5 Holly Cook	6.0
5. 5	4 Tisha Walker	6.5
6. 9	6 Kyoko Ina	10.5
7. 8	7 Geremi Weiss	11.0
8. 6	9 Kelly Ann Szmurlo	12.0
9. 10	8 Jennifer Leng	13.0

10. 7	11 Jenni Meno	14.5
11. 11	10 Kathaleen Kelly	15.5
12. 12	12 Tamara Kuchiki	18.0
13. 13	13 Jessica Mills	19.5
14. 14	14 Jodi Friedman	21.0
15. 15	15 Kathryn Curielli	22.5

PAIRS

JUDGES: A—R. Parkinson; B—Dr. P.J. Ziegler; C—M.R. Cook; D—B.S. Graham; E—J. Burden; F—E.G. Schultz; G—P.J. Stark. ACCOUNTANT: Richard T. Rigby, Lexington, MA. REFEREE: J.W. Disbrow.

OP	FS	PLACES
1. 1	1 Calla Urbanski & Mark Naylor	1.5
2. 2	2 Sharon Carz & Doug Williams	3.0
3. 4	3 Elaine Asanakis & Joel McKeever	5.0
4. 3	4 Ginger Tse & Archie Tse	5.5
5. 6	5 Maria Lako & Rocky Marval	8.0
6. 5	6 Jennifer Heurlin & John Frederiksen	8.5
7. 7	7 Wendy Weston & Alexander Enzmann	10.5

Shanda Smith & Brandon Smith withdrew

DANCE

JUDGES: A—R.J. Horen; B—C.L. Ludlow; C—B. Todd; D—M.H. Zats; E—Elaine G. Bushey, Peru, IN; F—R.A. McIntyre; G—A.J. Larkin III. ACCOUNTANT: R.T. Rigby. REFEREE: W.H. Lupke, Jr.

CD	FD	PLACES
1. 1	1 April Sargent & Russ Witherby	1.5
2. 2	2 Jeanne Miley & Michael Verlich	3.0
3. 3	3 Elizabeth McLean & Ari Lieb	4.5
4. 4	4 Wendy Millette & James Curtis	6.0
5. 5	5 Lisa Grove & Scott Myers	7.5
6. 6	6 Tiffany Veltre & Duane Greenleaf	9.0
7. 7	7 Ann-Morton Neale & Laurence Shaffer	10.5
8. 8	8 Mimi Wacholder & Bruce Montemayor	12.0

A Decade of Growth: Figure Skating Museum Marks 10th Anniversary



October 6, 1979 ribbon cutting: (l to r) Benjamin T. Wright, Mrs. Gillis Grafstrom, William Thayer Tutt, and Charles A. DeMore.

On October 6, the World Figure Skating Hall of Fame and Museum, sponsored by the USFSA, marks the tenth anniversary of its opening in Colorado Springs. Originally founded as the USFSA Museum in 1965 in the old Boston offices of the Association primarily as a repository for trophies, by 1971 space was at a premium, and the modest collection of memorabilia and retired trophies were transferred to the custody of the Skating Club of Boston. The Museum remained there until 1975, when expanded quarters for the Association including space for the Museum were opened at the Sears Crescent Building.

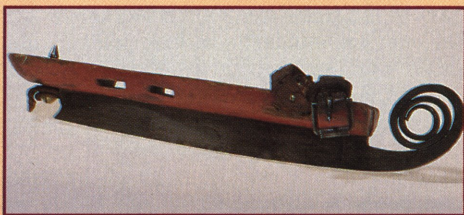
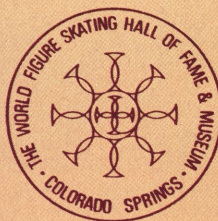
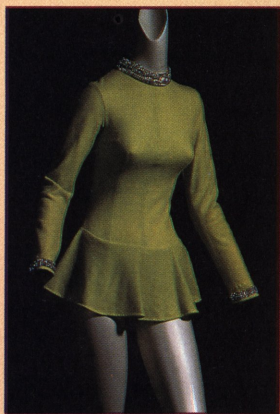
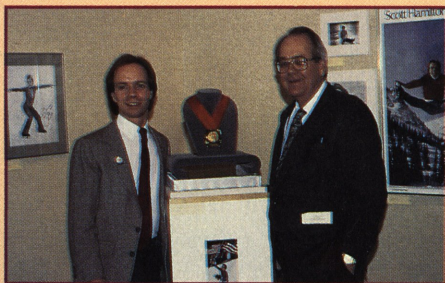
There were no funds for staffing, yet the Museum was supervised by Executive Director Roy Winder and his wife Jean, ably and generously assisted by Mr. and Mrs. Theodore Clarke. They laid the groundwork for the establishment of the new Museum in Colorado.

In 1979, for the first time a permanent staff was able to mount significant exhibitions and continue acquisitions that have grown enormously through the years. Pat Cataldi was appointed Curator and has served the Museum and Association with distinction for ten years.

In 1984, the Museum was recognized by the International Skating Union (ISU) as the official World repository for the sport. In 1986, an expansion project was completed adding a second floor and doubling exhibition space through a grant from the El Pomar Foundation.

The primary mission of the Museum is to preserve the heritage and history of the sport, including its fine art, literature, music, records, trophies, medals, graphics, films, tapes, costumes, and other memorabilia. The overall collection is not confined to any one area of the sport, but seeks to maintain and display representative materials from all aspects of figure skating over the years.

The Museum has received numerous significant collections, either through direct gifts or on loan, and countless individual donations. The principle "jewel" and truly the centerpiece of the Museum is "Skating in Art," the collection of Mr. and Mrs. Gillis Grafström. Largely put together in the 1930's, prior to his untimely death in 1938, it was continually expanded by Mrs. Cecile (Baby) Grafström after World War II and has been exhibited throughout the world before finding a per-



Clockwise: The Skate Gallery; Scott Hamilton, his father Ernie, and the coveted Olympic gold medal; a print from the Gillis Grafstrom collection of Skating in Art; an elaborate 19th century curly prow skate; Curator, Pat Cataldi, receives a figurine from artist P. Buckley Moss; the Scott Hamilton special exhibit; and Peggy Fleming's 1968 Olympic dress.

PHOTOS COURTESY WORLD FIGURE SKATING MUSEUM ARCHIVES



The entrance gallery at the World Figure Skating Museum.

manent home in Colorado, and is a legacy of and memorial to one of the legendary champions of all time. Representing Sweden, Grafström was Olympic Champion three times (1920, 1924, and 1928) and silver medalist in 1932. He was also World Champion three times.

The original emphasis of his collection was prints or engravings, to which were added paintings, silver, ivory and porcelain pieces, tiles, as well as many books, sheet music, photographs, and skates.

Other outstanding collections include that of Arthur Goodfellow, Jr., donated by the Ice Skating Institute of America (ISIA) consisting of 64 matched pairs of antique skates. They along with others from Grafström and Eddie Shipstad, Sr. now are exhibited in the special Skate Gallery, tracing over 1,200 years of the development of the skate.

Through the years major exhibitions have included: History of Skating Costumes, Historic Skating Figurines, Medallion Art of Winter Sports, Ice Capades Dolls, the Gladys McFerron Collection of figurines, the Carol Probst skating bronzes, and a special Scott Hamilton display including his Olympic medal. Several new and unusual exhibits are being planned for the next few years.

An integral part of the Museum is the World Hall of Fame Gallery, inaugurated

in 1975. The Hall of Fame serves to honor the achievements and to preserve the records of persons who have compiled an outstanding competitive record or who have made noteworthy contribution as a competitor; those who have made contributions in a non-skating capacity through service; and those who have contributed in a non-amateur capacity.

Elections are carried out every year by a board of electors, one third of whom are non-residents of the U.S. Tangible token medals and a plaque, are presented to each recipient. Within the Hall of Fame itself, a plaque with a photograph and record of the honoree is displayed. From the pre-modern era, legendary skaters such as Jackson Haines and Irving Brokaw of the USA, Axel Paulsen of Norway, Louis Rubinstein of Canada, and Charlotte of Germany are included. From the modern era, great American champions, Dick Button, Hayes and David Jenkins, Tenley Albright, Carol Heiss, and Peggy Fleming are honored, who hold 29 World and Olympic titles among them.

The Museum is anxious to receive donations of all kinds from throughout the world in its ongoing effort to be fully representative of the sport. Inquiries are welcomed from all those interested in preserving the heritage of figure skating.

1990 World Junior Figure Skating Championships

November 28 - December 3, 1989

ALL-EVENT TICKETS — \$35.00

All event tickets include priority seating for all practice sessions, competition events and exhibition.

OFFICIAL HOTEL: Broadmoor Hotel
P.O. Box 1439
Colorado Springs, CO 80901



RATES: \$75.00 single - European Plan
\$85.00 double occupancy - European Plan

For room reservations call: 1-800-634-7711, ext. 5775
local: 719-577-5765

Detach and mail to: Broadmoor World Arena Box Office, P.O. Box 1439,
Colorado Springs, CO 80901



Name _____

Address _____

City _____ State _____ Zip _____

Day-time

Phone # _____

_____ All-events tickets @ \$35.00 each TOTAL: _____

Make check payable to: 1990 WORLD JUNIORS

Tickets will be mailed to you after September 1, 1989.
Please enclose a self-addressed stamped envelope.

National Collegiate Results

Continued from page 25

2.	2	2	Maria Lako, University of Delaware & Rocky Marval, University of Delaware	3.0
3.	4	3	Dawn Goldstein, University of California, Los Angeles & Troy Goldstein, California State University, Long Beach	5.0
4.	5	4	Wendy Weston, Wellesley College & Alexander Enzman, Northeastern College	6.5
5.	3	5	Shanda Smith, University of Delaware & Brandon Smith, University of Delaware	6.5

JUNIOR MEN

JUDGES: A-T.K. Campbell; B-T.G. Fischer; C-R.J. Horen; D-V.F. LeFevre; E-P.J. Smart. REFEREE: F. LeFevre. ASSISTANT REFEREE: B. Wade.* ACCOUNTANT: M. Wolek.

OP FS			PLACES
1.	1	1 Edmund Nesti, Northeastern University	2.0
2.	2	2 Glenn Zeihnert, Adirondack Community College	3.6

JUNIOR LADIES

JUDGES: A-T.K. Campbell; B-R.J. Horen; C-D.G. Dodson; D-W.K. Munns; E-L.M. Cramer, M.D. REFEREE: B. Wade.* ASSISTANT REFEREE: F. LeFevre. ACCOUNTANT: M. Cogan.*

OP FS			PLACES
1.	1	1	Lisa Floreck, University of Delaware 2.0
2.	3	2	Sandra Davis, LeMoyne College 4.2
3.	2	3	Tracy Lynn Martin, St. Joseph's College 4.6

DANCE COMPULSORIES

JUNIOR DANCE

JUDGES: A-W.K. Munns; B-L.M. Cramer, M.D.; C-V.F. LeFevre; D-R.J. Horen; E-P.J. Smart. REFEREE: F. LeFevre. ASSISTANT REFEREE: B. Wade.* ACCOUNTANT: M. Cogan.*

A	B	C	D	E	M
1.	Beth Buhl & Neal Smull, University of Delaware				
1	1	1	1	1	5/1
2.	Michelle Maler & Tony Darnell, Bellevue Community College				
2	2	2	2	2	5/1
3.	May Lill Eidet, DeAnza College & Victor Cocchia, Canada College				
3	3	3	3	3	5/3

FREE DANCE

JUNIOR DANCE

JUDGES: A-W.K. Munns; B-L.M. Cramer, M.D.; C-V.F. LeFevre; D-R.J. Horen; E-P.J. Smart. REFEREE: F. LeFevre. ASSISTANT REFEREE: B. Wade.* ACCOUNTANT: M. Cogan.*

			PLACES
1.	Beth Buhl & Neal Smull, University of Delaware		2.0
2.	Michelle Maler & Tony Darnell, Bellevue Community College		3.0

People

AND PLACES

COURTNEY JONES HONORED

Courtney J.L. Jones, MBE, of Great Britain, has been elevated to OBE (Order of the British Empire) by her Majesty, Queen Elizabeth II. The induction took place in formal ceremonies at Buckingham Palace. Jones, one of the most dominant forces in dance in the 1950's, was four-times World Champion, five-times European and five-times British dance champion with two different partners. He has served as an international dance judge and referee and is president of the National Skating Association of Great Britain. He was elected to the World Figure Skating Hall of Fame in 1986.

BIRTHS

Jean Christophe Berlot, editor of *Patinage* magazine and French correspondent for *Skating*, and his wife Laurence are the proud parents of a new baby girl, Perrine, born August 16. This is the couple's second child.

MARRIAGES

Calla Vita Urbanski and James (Jay) Robb Freeman were married on May 28th in Kenneth Square, Pennsylvania. Calla will continue with her competitive skating career with partner Mark Naylor. Her husband was a pairs competitor and professional with partner Tammy Crowson.

Christy Kjarsgaard and Dr. Andrew Ness were married April 8, at the Mary Magdalen's Church in Berkeley, California. Attendants for the bride included her most prominent student Kristi Yamaguchi, Chris Garrick, Kathryn Adams, and Lynn Marie Smith. The couple now make their home in Stony Plain, Alberta, Canada.



Calendar

OF EVENTS

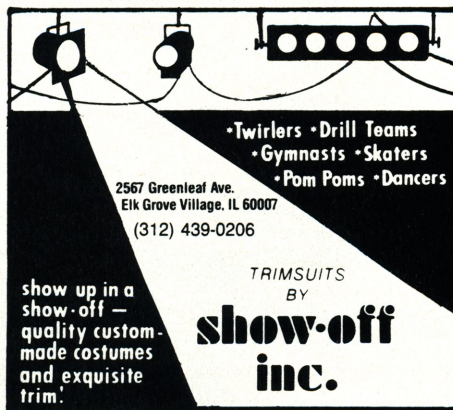
OCTOBER

- 6-8 **1989 Pepsi Games of Texas**, State Games figure skating competition, sponsored by the Galleria-Houston ISC, at the Galleria Ice Capades Rink, Houston, TX. For information contact: Debra Blish, 713-974-3364 or Susan Bujko, 713-461-9303.
- 6-8 **Skate Sun Coast**, sponsored by the Sun-coast FSC of Florida, at the Sun Blades Ice Arena in Clearwater, FL. Freestyle, Figures, and Dance events. For information call: 813-536-5843.
- 12-15 **Southeastern Wisconsin Classic**, sponsored by the Southport SC, Kenosha, WI. Beginner through Senior events. For information contact: Dennis or Judy Gade, 708 Water Street, Dundee, IL 60118, 312-428-8920.
- 13-15 **16th Annual Gateway Invitational**, sponsored by the Brentwood FSC in conjunction with the St. Louis Co. Parks Dept., St. Louis, MO. Championship events include: Singles, Pairs, Dance, Junior and Senior Adult Dance. Non-championship Figures, Non-championship Freestyle, Novice Original Program, Compulsory Moves, Interpretive, Solo Dance, Fundamental Skills (a stroking event), and Adult Precision. For information contact: Donna Vogt, 314-355-5167.
- 26-29 **Ninth Annual Madison Open Competition**, sponsored by the FSC of Madison, at the Madison Ice Arena, 725 Forward Dr., Madison, WI. Open competition, Beginners through Senior level, in singles free skating, figures and compulsory, pairs, and solo and couple dance. For information contact: Mary Uhler, 5214 South Hill Dr., Madison, WI 53705, 608-238-0030.
- 29-11/3 **First IOC World Congress on Sports Sciences**, conducted by the International

Olympic Committee Medical Commission, at the Broadmoor Hotel, Colorado Springs, CO, sponsored by 3M Health Care, and organized by the U.S. Olympic Committee. The program will feature keynote and invited presentations by internationally known experts, as well as contributed papers and poster sessions featuring reports of recent research. Major program areas will include Biological Sciences (Physiology, Biochemistry, Neuromotor Control, Anthropometry); Medical Sciences (Orthopaedics, General Medicine, Cardiology, Rehabilitation, and Injury Prevention Engineering and Technology); and Psychosocial Sciences (Psychology, Motor Behavior, Sociology). For information contact: M.M. Newson, U.S. Olympic Committee, Dept. of Education Services, 1750 East Boulder St., Colorado Springs, CO 80909 (Telephone: 719-578-4575, Telex: 3730251 USOCEDSVS, Fax: 719-635-2932).

NOVEMBER

- 3-5 **Shores Autumn Classic**, sponsored by the St. Clair Shores FSC, at the St. Clair Shores Civic Arena, 20000 Stephens Dr., St. Clair Shores, MI 48080. Third annual competition including figures, freestyle, short, original and compulsory programs, dance, and pairs events. For information contact: Alan Pronko, Chairman, 23079 Shakespeare, East Detroit, MI 48021, 313-779-3299.
- 5-11 **1990 North Atlantic Regional Championships**, hosted by the South Mountain FSC, at South Mountain Arena, 560 Northfield Ave., West Orange, NJ 07052. For information contact: Jeffrey Meyer, 10 Indian Run, Millington, NJ 07946.



•Twirlers •Drill Teams
•Gymnasts •Skaters
•Pom Poms •Dancers

2567 Greenleaf Ave.
Elk Grove Village, IL 60007
(312) 439-0206

show up in a
show-off —
quality custom-
made costumes
and exquisite
trim!

TRIMSUITS
BY
**show-off
inc.**



"Silent Tracings"

A LIMITED EDITION FINE ART PRINT
BY

AWARD WINNING ARTIST
DOUG LINDAUER

*Signed and numbered on
14 x 17 Museum quality paper.*

*Commemorating the
elimination of school
figures at the International
and World level.*

**A BEAUTIFUL PRINT TO GIVE AS A GIFT OR
TO HANG IN YOUR HOME OR OFFICE**

"A Tribute to Memories on Ice"

\$50⁰⁰ plus \$3⁰⁰ shipping and handling

Make checks payable to: **William R. Boeck, Fine Art**

743 Merus Court • Fenton, Missouri 63026 • Phone: 314-343-4900

- 17-19 **Amherst Invitational Competition**, sponsored by the Amherst SC, at the Amherst Audubon Recreation Center, 1516 Amherst Manor Dr., Williamsville, NY 14221. Freestyle, Music Interpretation, Solo Dance, Similar Pairs, and Compulsory Moves events. For information contact: Mrs. Carol Aquilina, 206 Conant Dr., Kenmore, NY 14223, 716-834-5723.

- 17-19 **Adult Social Ice Dance Weekend**, sponsored by the Plymouth FSC, at the Plymouth Cultural Center, 525 Farmer St., Plymouth, MI 48170. Events include a party Friday night following ice dancing, a dinner dance on Saturday night, and a breakfast and ice dancing on Sunday. For information contact: Alice J. Bohr, 16370 Haggerty, Plymouth, MI 48170, 313-420-0194.

DECEMBER

- 8 **1989 NutraSweet World Professional Figure Skating Championships**, to be held at the Capitol Centre, Landover, Maryland. For ticket information, call: 301-350-3400.
- 14 **The NutraSweet World Challenge of Champions Professional Figure Skating**

Championships, to be held in Moscow, USSR. For further information, call: 312-291-9666.

- 15 **"I'll Be Home For Christmas,"** second annual Christmas Show sponsored by the Plymouth FSC, at the Plymouth Cultural Center, 525 Farmer St., Plymouth, MI 48170. For information contact: Alice J. Bohr, 16370 Haggerty, Plymouth, MI 48170, 313-420-0194.

JANUARY 1990

- 26-27 **Fantasy on Ice - Cafe on Ice**, annual ice show sponsored by the Pittsfield FSC, at the Boys Club Rink, 16 Melville St., Pittsfield, MA 01201. Featuring club skaters and a special "guest" skater. For information contact: Margie Cohan, Show Chairman, 55 South Mountain Rd., Pittsfield, MA 01201, 413-442-5223.
- 26-28 **Winterfest Ice Skating Competition**, sponsored by the Blade & Edge FSC of Omaha and the Omaha FSC, at the Hitchcock Ice Arena, 45th and Q Streets, Omaha, NE 68107, 402-444-4955. For information contact: Rose Whalen, President, Blade & Edge FSC, 11810 Quail Dr., Omaha, NE 68123, 402-291-2995.

Memorial Fund Donors

Continued from page 21

Jill Watson & Peter Opepgard: Marlene M. Donner

Paul Wylie: Mr. & Mrs. Keith A. Kirkman

Kristi Yamaguchi: Debbie McCown, Mr. & Mrs. Charles T. Groswith III

Kristi Yamaguchi & Rudi Galindo: Narena & Carlton Beyer

Mr. & Mrs. Paul Young: Mary L. Chulak

The Birthday of Elaine Zayak: Alan Heiser

Judges & Officials of the 1989 Mt. Lebanon

Invitational Competition (William Wall,

JoAnne Bryan, Suzanne Courtright, Nona

Bafo, Jack Booth, Dorothy Bragle, Wilfred

Burgart, Joy Cunningham, Betty Galligan,

Phyllis Howard, Shirley Kreppel, Virginia Lut-

tenton, Dorothy Nyman, Roberta Parkinson,

Florence Sifferd, Mary Jane Underwood, Mark Yates, Ann Rogers, Ron DeCas, Janet French, Grace Duggan, Nancy McClenathan, E. Richie Van Vliet): Ice & Blades Club of Washington, PA

Officials of the Philadelphia Area Championship Competition (William Fitzpatrick, John Chambers, Donald Craig, Deborah Hagenauer, Elizabeth Hickok, Gloria Wolek, Frances Wolek, Brooks Stewart, Ethel Garwood, Robert Rosenbluth, Elaine Hickman, Patricia Cahill, John Grondski, Gladys Dunlap, Elizabeth Munder, Daniel Jamison, Virginia Jamison, Edwin Godwin, Jane Reno, Elinor Houk, Robert Houk): Colonial SC of NJ

Judges & Officials of the Third Annual Open Competition (Albert Viviani, Dr. Gordon Knudson, Myrl Lavintman, Bev Arneson, Margaret Nordstog, LuJean Frick, Hollie List, Susan Korkki, Jane Lavintman, Janet Mattson, Tim Boyle, Suzanne Carter, Helen Eagles, Marlys Larson, Jane Veitch, Betty Meck, Rose Kanger): Roseville FSC

Ice Abroad

Continued from page 19

4. Ann Hall & Jason Bloomfield, Great Britain
5. **Wendy Millette & James Curtis, USA**
6. Julie Marcotte & Juan Carlos Noria, Canada
7. Birgit Schulze & Markus Vignaroli, Federal Republic of Germany
8. Christine Bomba & Patrick Zelechovsky, Federal Republic of Germany
9. Ayako Higashino & Tatsuro Matsumura, Japan
10. Valerie Le Tensorer & Jörg Kienzie, Switzerland
11. Sabina Baratelli & Paolo Carl Ceccatini, Italy
12. Monika Müksch & Bernhard Hatzl, Austria
13. Yoon Hee Park & Jong Hyun You, Republic of Korea

COUPE DES ALPES (Team Trophy)

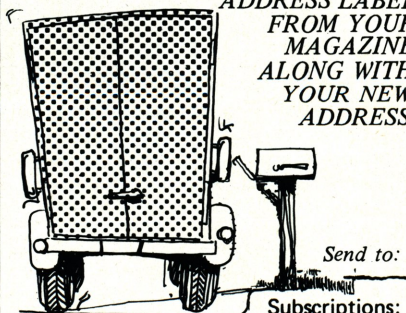
1. USA. 2. France. 3. Canada. 4. USSR. 5. Japan.
6. Federal Republic of Germany. 7. Italy. 8. Great Britain.
9. Switzerland. 10. Republic of Korea. 11. Belgium.
12. Australia. 13. Spain.

FRITZ GEIGER MEMORIAL TROPHY (Team Trophy)

1. USA. 2. France. 3. Federal Republic of Germany.
4. USSR. 5. Japan. 6. Canada. 7. Great Britain.
8. Czechoslovakia. 9. Switzerland. 10. Italy. 11. Republic of Korea. 12. Denmark. 13. Norway. 14. Belgium. 15. Austria.
16. Stockholms Allmänna Skridskoklubb. 17. Australia.
18. Spain.

MOVING?

TO ENSURE THAT YOUR
MAGAZINE WILL FOLLOW YOU TO
YOUR NEW ADDRESS SEND US
YOUR OLD
ADDRESS LABEL
FROM YOUR
MAGAZINE
ALONG WITH
YOUR NEW
ADDRESS.



Send to:

Subscriptions:

SKATING Magazine / 20 First Street,
Colorado Springs, CO 80906

CLASSIFIED RATES: \$20 for the first 35 words, 50¢ for each additional word, \$20 minimum. Two-letter state abbreviation code plus zip code count as one word. *Payment required with order.* All advertising copy is subject to acceptability. **BOX NUMBERS:** \$5 extra. Send all box responses to: *Skating*, Box No. _____, 20 First Street, Colorado Springs, CO 80906-3697.

SEQUINED AND BEADED APPLIQUES of highest quality. 100 stock designs or we make your own exclusive designs no extra charge. Finest work at lowest prices. Custom costumes made also. Catalogue. Lebasketers, 415 Central, Albuquerque, NM 87103, 505-247-9311.

WANTED: A VHS COPY of Rosalyn Sumners' performance to "The Rose." Name your price. Contact me at (818) 248-7989 (ask for Myra) or write: Myra Naito, 1612 S. Sierra Vista #C, Alhambra, CA 91801.

WANTED: YOUNG, AGGRESSIVE, DOUBLE gold medalist for new competitive program at established twin ice surfaces in North Carolina. Must be willing to teach Learn-to-Skate program and competitive skaters. Send resumé to: Scott Cudmore, c/o Skatemor, Inc., 291 S. Churton St., Hillsborough, NC 27278 or call 919-732-4647.

WELL ESTABLISHED 50 YEAR OLD CLUB in the Midwest seeking an additional ambitious professional. Year round ice, good competitive atmosphere, excellent opportunities. Need help with Basic Skills Program for over 100 participants per Learn-to-Skate session. Send resumé and inquiries to: Weylin Doyle, 16588 Nina Cir., Omaha, NE 68130.

ORIGINAL SKATES-GO-ROUND SWEATERS, now under new management. Orders being accepted by ARTISTIC DESIGNS, P.O. Box 15075, Loves Park, IL 61132-5075, or Phone 815-633-7717. ORDER EARLY for Fall or Christmas shipment.

ICE SKATING DOLL—close-out—15" Vinyl young lady doll, sleep eyes, brunette rooted hair, dressed in contemporary skating dress, tights, skates with metal blades. \$59.99pp. Porcelain skating dolls available on request. Gold Ribbon Dolls, 5949 Bellwether Dr., Saline, MI 48176.

Classified

WANTED: SKATING PRO WITH EXPERIENCE in ISIA/USFSA. All areas of Dance, Freestyle, and Figures preferred. Must work well with children and adults; group and private lessons. Rapidly growing area. Send resume: Aroostook Ice Skating School, c/o The Forum, Mechanic Street, Presque Isle, ME 04769.

AUSTRIAN CRYSTAL: Margaritas, Lochrosens, Embroidery Stones, etc. Also: Silver-Lined Rocailles, Bugle Beads, Seed Beads, Sequins, Rhinestone Chain. Price list and samples upon request. Gerrie Ball, 310 Juniper Street, Brea, CA 92621, (714) 529-1474.

VIDEO TAPE HOLIDAY GIFTS now available. The Nutcracker, Sleeping Beauty, Charlie Brown and much more. Send \$5 for 46 page catalog including Nationals, Precision, Skate America, Worlds, and Olympic videotape. Video Sports Productions, P.O. Box 2700, Westfield, NJ 07091, 800-USA-1996.



NEW!

**FIGURE SKATING PINS
FOR MEN OR WOMEN**

**OLYMPIC
COMMEMORATIVE CLUB PINS & MEDALS**

Discover an easy fundraising idea of profits for your club. Guaranteed workmanship, fast service, manufacturer of pins and medals, collector pin catalog with many figure skating collectibles. Write to or call: **(714) 964-5010**

WRITE FOR FREE COLOR CATALOG

DESIGNS BY MARGARITA

19382 WOODLANDS LANE
HUNTINGTON BEACH, CA 92648

OFFICIAL VIDEOS of the 1989 NATIONALS. Individual numbers or entire events. For information and prices call or write: William Udell, (818) 985-6866, 6006 Vantage Ave., North Hollywood, CA 91606 - UDELL PHOTO/VIDEO.

CROSS STITCH FOR SKATERS: Cross stitch graphs of skater silhouettes and many other poses. Sold singly and in sets. For brochure, write: Leslie Lowenthal, Windward Lane, Stamford, CT 06903.

MUSIC FOR ICE DANCING, Otto Memorial Library. PRE-BRONZES READY. Custom cassettes. Write or call (713-975-6557) for flyers. OML-Iceland FSC, P.O. Box 37334, Houston, TX 77237-7334.

KATARINA WITT, OLYMPIC & WORLD STAR, photos & tapes. Bob & Eva Senese, 10610 Central S.E. #74, Albuquerque, NM 87123, 505-292-5790.

PHOTOGRAPHS FROM WORLD and European Championships. Available in proof-size prints. For detailed information, please write to: Diane DeLozier, 2854 W. Roxboro Road, Atlanta, GA 30324.


PARTNER NEEDED 5'5" 15 year old male ice dancer at Silver level skating at SkyRink NYC seeking female ice dancing partner 212-517-6757, 212-302-8899.

PATTERNS FOR SKATERS: Step-in Dress Pattern for Lycra or Spandex: No zipper, panty and skirt is sewn onto top for one piece. Girls or ladies S4-6, M8-10, L12-14 \$5.00 ea. Multi-size Patterns includes different skirts, sleeves, necklines, zipper. Girls or ladies 4-14 (All sizes in each.) \$8.50 ea. Book of Patterns for Beading, Rhinestones, Embroidery includes geometric, floral, etc. \$12.95 ea. Check/Money Orders only: Skate-Stag, 8212 Ammons Cr., Arvada, CO 80005/303-423-7098.

PRINCETON SKATING CLUB looking for additional good professionals in order to expand program. All levels dance, freestyle, figures. Season October to April. Send resumé and references to P.O. Box 26, Princeton, NJ 08542.

SPANDEX FABRIC — All weights, types, prints, solids, stripes, Nylon and Cotton blends, firsts and closeouts. Norbrook Industries Ltd., 152 Madison Avenue, New York, New York 10016, (212) 889-2708.

Continued on page 59



SWIM WEAR

ACTIVE WEAR


INTIMATE APPAREL

YOUR PRIME SOURCE FOR

SPANDEX

CLOSEOUTS AND FIRST QUALITY

- ALL WEIGHTS, TYPES, PRINTS, SOLIDS, STRIPES
- NYLON BLENDS
- COTTON BLENDS
- SMALL ORDERS ACCOMMODATED



NORBROOK INDUSTRIES LTD
152 Madison Ave. New York, NY 10016
Tel 212-889-2708 Fax 212-679-0633

Laurels

Skating congratulates the following skaters who have passed USFSA tests in figures, pair, and dance. Only completed dance tests, rather than the individual dances, are recorded below.

New Test Abbreviations are as follows: PRE = Preliminary Figure; 1 = First Figure; 2 = Second Figure; 3 = Third Figure; 4 = Fourth Figure; 5 = Fifth Figure; 6 = Sixth Figure; 7 = Seventh Figure; PF = Preliminary Free; JF = Juvenile Free; IF = Intermediate Free; NF = Novice Free; JRF = Junior Free; PPR = Preliminary Pair; IPR = Intermediate Pair; NPR = Novice Pair; JPR = Junior Pair; GPR = Senior/Gold Pair; P DT = Preliminary Dance Test; BR DT = Bronze Dance Test; PS DT = Pre Silver Dance Test; S DT = Silver Dance Test; SFD = Silver Free Dance; PG DT = Pre Gold Dance Test; G DT = Gold Dance Test; GFD = Gold Free Dance; I DT = International Dance Test; B ADT = Bronze Adult Dance Test; PS ADT = Pre Silver Adult Dance Test; S ADT = Silver Adult Dance Test; PG ADT = Pre Gold Adult Dance Test; G ADT = Gold Adult Dance Test.

GOLD FIGURES

Amy Holmberg, Rocky Mountain FSC; Blyth Weber, Austin FSC; Christina McPherson, Washington FSC; Christine Walker, Wissahickon SC; Colin VanderVeen, Atlanta FSC; Dawn Duhamel, SC of Boston; Elisabeth Morse, Seattle SC; Greta Glover, FSC of Madison; Heather Hughes, Washington FSC; Jessica Mills, Los Angeles FSC; Kathleen Hostetter, Los Angeles FSC; Kimberly Schebig, Greater Milwaukee FSC; Kristin Russell, SC of Boston; Liane Moscato, SC of Boston; Lori Frohlich, Rye FSC; Maria Montes, SC of Boston; Melissa Murphy, St. Moritz ISC; Nanako Yuasa, North Jersey FSC; Nicole Toye, SC of Morris NJ; Patricia Loomis, Los Angeles FSC; Phillip Diguglielmo, Philadelphia SC & HS; Richard Sears, Colonial FSC of MA; Robyn Abear, FSC of Minneapolis; Sara Kastner, St. Paul FSC; Shawnalyn Weigel, Colorado SC; Shepherd Clark, Broadmoor SC; T. Alex La Fave, Lone Star FSC; Timothy Dever, Arizona FSC; Tisha Walker, Conejo Valley FSC; Wendy Lochridge, Hayden Recreation Centre FSC.

GOLD FREE

Amy Holmberg, Rocky Mountain FSC; Elizabeth Koepf, Peninsula FSC; Greta Glover, FSC of Madison; Heather Hughes, Washington FSC; Jacqueline Isabella, SC of Rockland, NY; Jason Dungjen, Detroit SC; Jennifer Johnson, Baltimore FSC; Jessica Mills, Los Angeles FSC; Kaho Koinuma, Peninsula FSC; Kristin Russell, SC of Boston; Lori MacDonald, Fraser FSC; Lori Richetelle, Hamden FSA; Mary Beth Perri, Fraser FSC; Mary Lou Bauer, Chicago FSC; Melissa Murphy, St. Moritz ISC; Peggy Schlatter, Greater Milwaukee FSC; Richard Sears, Colonial FSC of MA; Steven Moore, Dallas FSC; Tei Lea Kano, Albuquerque FSC; Tisha Walker, Conejo Valley FSC; Wendy Lochridge, Hayden Recreation Centre FSC.

GOLD DANCE

Amber Smith, Colorado SC; Cheryl Demkowski, Peninsula FSC; Collin Sullivan, Broadmoor SC; Dana Schneider, Arctic Blades FSC; Denise Curtis, Los Angeles FSC; Elisa Curtis, Wissahickon SC; Erika White, Glenwood FSC; Hilary Olney, Dallas FSC; James Curtis, Wissahickon SC; Jeffrey Czarnecki, University of Delaware SC; Jennifer Luckhurst, St. Moritz ISC; Jody Lemonik, Individual Member; Kim Harris, Port Huron FSC; Laurence Shaffer, Seattle SC; Patricia Hagen, Individual Member; Peter Breen, Jr., SC of Boston; Rachel Lee Mayer, SC of Boston; Ricardo Kisner, Detroit SC; Robert Wilson, Hamden FSA; Ron Grantalos, Mesa Verde FSC; S. Eileen Yeh, South Mountain FSC; Stacey Landacre, Port Huron FSC; Stephanie Jaramillo, Greenbrier FSC; Susan Schnoes, Detroit SC; E. Richie VanVliet, Genesee FSC.

GOLD ADULT DANCE

Penelope Shaw, Darien SC of Southern CT; Sherry McCormick, Detroit SC.

On the Go . . . with Imagination

BRYAN SPORTS EVENTS



All-Inclusive Packages to:

U.S. NATIONALS '90

Salt Lake City, UT
February 1990

WORLDS '90

Halifax, Nova Scotia
March 1990

See our skaters in action at these 1989 competitions also —

NHK Trophy (Kobe), November

Moscow Cup (Moscow), November

World Juniors (Colorado Springs), November

Plus, Special Discount Airfares on United Airlines to all Skating Events:

5% of all Supersaver Fares or 40% of any unrestricted coach fare
at any time for all skating-related travel

OFFICIAL AGENCY WORLDS '92 - OAKLAND

Please send me more information on packages to:

☐ World Juniors (Nov. 89)

☐ Worlds 90 (Mar. 90)

☐ NHK Trophy (Nov. 89)

☐ U.S. Nationals (Feb. 90)

☐ Worlds 92

☐ Moscow Cup (Nov. 89)

Name _____

Address _____

City/State/Zip _____

Please return to: **BRYAN SPORTS EVENTS**



Attn.: Skating Desk
1200 Howard Ave., Ste. 203
Burlingame, CA 94010

Telephones:

(415) 579-0455

or (800) 234-6432

Fax: (415) 579-0811

ACADEMY FSC: 1—Christine Cetrone. 2—Angela Mazza. JF—Stephanie Senterfit.

ALBUQUERQUE FSC: PRE—Jenny Sullivan. 1—Matthew Edmonds. 2—Courtney Ingram, Liza Bunting. PF—McAllister Hull. JF—Everett Weiss, Matthew Edmonds.

ALL YEAR FSC: PRE—Shannon Burke. 1—Jennifer Henz. 2—Liberte Sheldon. 3—Fiona Mason. 4—Jennifer Carlson, Laura Probst. 5—Kimberly Briley. 7—Christina Kopp. PF—Shannon Burke. JF—Liberte Sheldon. IF—Fiona Mason. NF—Jennifer Carlson, Laura Probst. P DT—Melanie Miller, Mike Lucek, Susan Sack. BR DT—Natasha Pederson.

ALPINE SC: IPR—Katie Thompson.

SC OF AMHERST: P DT—Madeline Ketcham.

AMHERST SC: 1—Jennifer Cunningham. 2—Amy Lynn Trimble, Christine O'Brien. BR DT—Pamela Savage. PS DT—Elizabeth Handley, Holden Humphrey.

ANCHORAGE FSC: 1—Aleta McEwen, Sydne Vogel. 2—Natasha Davidson. 3—Christy Tuomi, Derek Stedigh. 4—Windi Wentworth. BR DT—Meredithe Verrochi. S DT—Derek Stedigh. PG DT—Michelle Zarkovich.

ANN ARBOR FSC: PRE—Emily McKeever, Jessie Newman, Kate O'Brien, Katherine Cmejrek, Kathryn Patterson, Kristin Durant, Laura Livingston, Laura Luitje, Laurie McNamara, Lisa McGlone, Sarah Scott. 1—Ambyr Peterson, Brooke Tracy, Jan Johnston, Tara Lee. 3—Tiffany Fonseca. 5—Amilynn Maki, Margaret Schreck. PF—Kate O'Brien, Katherine Cmejrek, Kathryn Patterson, Laura Livingston, Laurie McNamara, Lisa McGlone, Martha Luitje, Sarah Scott. JF—Laura Livingston. IF—Dana Tummonds, Debby Livingston, Julie Pinter, Lori Pinter, Tiffany Fonseca. P DT—Anna Newman, Courtney Weimert, Jennifer Quanton. BR DT—Charles Fehrenbach.

ARCTIC BLADES FSC: PRE—Cheyenne Parris. 1—Tyree Bolton. 2—Sonia Kim, Theresa Cho. 4—Laura Petzoldt. 5—Caitlin Rabanera, Karie Lynn Yeomans. 6—Lisa Neville. PF—Cheyenne Parris. JF—Sonia Kim. IF—Caroline Song. NF—Laura Petzoldt, Shantelle Westbrook. JRF—Natalie Brooks. P DT—Bethany Koby, Javier Trejo, Jean Marie Rapoport. BR DT—Andrea Machado, Mary Firpo. PG DT—Frank Anderson, Lindy Nomura. **ARIZONA FSC:** PRE—Melissa Meserve. 4—Melanie Dupon. 6—Lucinda Day. PF—Melissa Meserve. IF—Patricia Thornham. NF—Miki Stevens. JRF—Lucinda Day. PS DT—Kara Thornham. PPR—Amy Grossnickle, Randy Tipton.

ARROWHEAD FSC: PRE—Jamelee Cagney, Kirsten Vesey. PF—Jamelee Cagney, Kirsten Vesey. P DT—Jacky Sitkowski.

ATLANTA FSC: PRE—Heather Epstein. 1—Honey Park, Jennifer Sacco, Jennifer Taylor, Robin Davis. 3—Jennifer Haverland. 4—Caryn Clyne, Christine Imperiale, Lisa Maria Cabrera, Tyler Fishman. 6—Carole Solloway, Kara Ullom, Russ Scott. IF—Amy Liang Schlosser, Erin Long, Troy West. NF—Caryn Clyne. JRF—Kara Ullom. P DT—Debbie Labuz. BR DT—Amanda Isenberg. S DT—Russ Scott.

ATLANTIC CITY FSC: PRE-Heather Teague, Jennifer Wrigley. 1-Deirdre McCoy, Deneb McCoy, Maria Nakos. 2-Charles Robel. PF-Geanine Friel, Laura Handy, Ma Gee De Felice, Maria Nakos, Natalie Costello. S DT-Amy Foy.

AUSTIN FSC: 1-Leigh-Ann Winborn. 2-Bea Tran, Lorena Loera. 5-Anna Waddell. PF-Dawn Crowder. P DT-Dory Levy, Emily Lehane, Jeffrey Brown, Svetlana Varnovitsky. BR DT-Brian Hill. PS DT-Laurence Trafton.

BABSON SC: 3-Michelle Heavey.

BALTIMORE FSC: 7-Jennifer Johnson. JRF-Lisa Shpritz, Philip Dulebohn. P DT-Cathy Fifield, Page Ettle, Roxanne Moore. PS DT-Maggie Murray. S DT-Alan Tepper. B ADT-Marilyn Coggins.

ICE CLUB OF BALTIMORE: 1-Martin Romanik. 2-Loryn Oliver. JF-Amy Lynn Marshall, April Gottsagen, Courtney Gentile, Loryn Oliver.

BAY COUNTRY FSC: JF-Karin Smith.

BAY PATH FSC: PRE-Christine Ward, Deanna Riseman, Deanna Riseman, Karen Lynch, Kristin Corazzini, Nadeige Genece, Shannon Connor. 1-Allis Ghim. PF-Nadeige Genece, Nancy Cormier, Shannon Connor.

BEAVER DAM WINTER SPORTS CLUB: PRE-Debra Valenti, Julie Roux. PF-Amanda Townsend, Elana Spiegel, Heather Upton. JF-Avery Coleman.

BEMIDJI FSC: PRE-Jessica Cronemiller, Monaya Lee. 3-Carrie Ree Halgrimson. 5-Tanya Kroeplin. PF-Jessica Cronemiller, Monaya Lee. IF-Carrie Ree Halgrimson.

BERKLEY ROYAL BLADES FSC: PRE-Angela Holly, Hillary Mathe, Liesl Rinke, Megan Menendez, Nicole Deman. 1-Natalie Hubbard, Sara Tarnow. 2-Laura Muma. 3-Kristin Lukezich. 4-Laura Graham. PF-Angela Holly, Liesl Rinke, Lisa Moed. IF-Rachel Bailey. NF-Donna Criger. P DT-Hillary Mathe, Megan Menendez. S DT-Jaimi Tarnow, Karen Wasielewski, Lynn Wasielewski. B ADT-Judy Craig.

FSC OF BILLINGS: P DT-Craig Pierson.

BIRMINGHAM FSC: 2-Charles Bernhard IV. 3-John Zimmerman IV. P DT-Charles Bernhard IV. IPR-John Zimmerman IV.

BLADE AND EDGE FSC OF OMAHA: PRE-Shawna Keister. PF-Shawna Keister. JF-Jennifer Whalen, Kjirsten Jessen, Kristy Siedlik, Sarah Suarez. P DT-Barb Keister, Laura Sullivan, Magdalene Kulik. B ADT-Patricia Renteria.

FSC OF BLOOMINGTON: 4-Susan Sjostrand. JF-Bessy Pakkala.

SC OF BOSTON: 1-Lindsay Ervin. 2-Leslie Eckel. 3-Kerry Colleran. 4-Bethany Quintin, Kristen Maclean, Sarah Russell. 5-Bethany Quintin. 6-Amanda Farkas, Jennifer Frank, Sarah Enman, Tracy Jean Kraihanzel. 7-Jennifer Blount. PF-Karin Black, Zoe Harris. JF-Debra Dunn, Jaclyn Galley, Leslie Eckel. IF-Jessica Burrows. NF-Katie O'Brien, Kristen Maclean, Loren Weinberg, Yvette Gattineri. JRF-Amanda Farkas, Lori Ann

Ice Cycles

MAGAZINE

... A New Temptation For Skating Lovers



In-Depth Interviews,
Straightforward Commentary,
Superb Photos,
Biting Humor

For Subscriptions Send Check or Money Order To:

Ice Cycles

10105 Arden Avenue

Tampa, Florida (That's Right, Florida) 33612

6 Issues: U.S. \$12.00/Canada \$18.00 (U.S. Currency)

Foreign Subscriptions \$24.00 (U.S. Currency). Use international money order.

ISU CALENDAR

The following dates have been announced for official ISU competitions.

1990

World Junior Championships
Colorado Springs, Colorado
November 28 to December 3, 1989

European Championships
Leningrad, USSR
January 30 to February 4, 1990

European Championships
Sofia, Bulgaria
January 22 to 27, 1991

World Championships
Munich, Germany
March 11 to 17, 1991

1992

World Championships
Halifax, Nova Scotia, Canada
March 6 to 11, 1990

World Junior Championships
Hull, Quebec, Canada
November 22 to December 1, 1991

European Championships
Lausanne, Switzerland
January 20 to 26, 1992

1991

World Junior Championships
Budapest, Hungary
November 27 to December 2, 1990

World Championships
San Francisco, Oakland, California
March 24 to 29, 1992

Hudoba, Tracy Jean Kraihanzel. P DT-Nancy Hargreaves. B ADT-Marlene Hazle. PPR-Dawn Duhamel. IPR-Dawn Duhamel. NPR-Dawn Duhamel.

BOWIE FSC: 5-Betsy Aten. JF-Margaret Logan. P DT-Kristina Pervi. PS DT-Christine Ham.

BOWLING GREEN SC: P DT-Andrea Smith, Bridie Myles.

BRAEMAR-CITY OF LAKES FSC: 6-Maureen Jordan. 7-Angeline Huppert. JF-Kenneth Reilly, Laura Schnitker. P DT-Ann Rae Cuniff, Hillery Tansey, Katie Grinnell.

BRENTWOOD FSC: 2-Julie Wilson. JF-Lorie Nall, Sheryl Vogt. BR DT-Julie Wilson, Walter Thomas. PS DT-Cynthia Mizera, Lynn Rose. PS ADT-Cynthia Allen.

BRIDGEPORT SC: 1-Margaret Szadeczyk.

BROADMOOR SC: PRE-Andrea Austin, Jennifer Austin, Kathleen Pierce, Melissa Sulkin. 1-Sarah McClenahan. 2-Angela Johns. 5-Melissa Getrost. 6-J.J. Beck, Jennifer Juhl. JF-Laura Holtzman. IF-Leslie Haskell, Paula Wilson. NF-Megan Austin. JRF-J.J. Beck, Jennifer Juhl. BR DT-Lindsay Krall. PS DT-Abbey Lavoo. PAIR-Jennifer Heurlin, John Frederiksen.

BROOKLYN FSC OF OHIO: PRE-Caryn Cua, John Myers, Victoria Haber. 1-Christine Lupico, Danielle Yurcik, Suzanne Oswald. PF-Caryn Cua. JF-Charlene Slapak, Jennifer Wozniak, Stacie Papp, Suzanne Oswald, Tammy Yurcik. IF-Karin Kistemaker.

BUFFALO SC: PRE-Cindy Lehmann. 5-Boni Ann Brounshidle. S ADT-Betty Walch. PG DT-Boni Ann Brounshidle.

BURNSVILLE-MINNESOTA VALLEY FSC: 2-Kallie Oberg. P DT-Kallie Oberg, Kerry Stack.

CAMILLUS FSC: IF-Carolyn Marzynski. P DT-Mary Whiteside, Sarah Ross.

CANTIAGUE FSC: PRE-Emily Cervini, Lauren Berrol, Lisa Weitzman, Tara Maceiko, Toni Ann Scappaticci. 1-Magdalena Cadet. 4-Robin Heckler. 5-Leander Grayson, Stacey Schieferstein. 6-Linda Land. PF-Melinda Maidel, Tara Maceiko. JF-A Kari Talley, Mamie Moon. IF-Anna Karamitsos. P DT-Barret Mulligan.

CAPE COD SC: PF-Heather Bassett.

CAPITAL CITY FSC: PRE-Holly Thompson. 1-Toby Tyler Johnson. 2-Kristin Johnson. PF-Charisse Covert, Holly Thompson, Katie McCue.

CAROUSEL FSC: P DT-Kelli Clark, Marcie Momb. B ADT-Marcie Momb.

CENTENNIAL SC: PRE-Carie Robison, Katie La Grange, Mandy Edwards, Megan Edwards, Shannon De Backer. 1-Nicole White. PF-Carie Robison, Katie La Grange, Mandy Edwards, Megan Edwards, Shannon De Backer. JF-Kathleen Conway, Nicole White.

CENTRAL FLORIDA FSA: 2-Kristen Varney. 3-Jamie Coffey. P DT-Debra Clark, Jamie Coffey, Kimberly Calhoun, Tonia Lee Ussrey. BR DT-Jamie Coffey, Kristen Varney.

CHAMPLAIN VALLEY SC: PRE-Julie MacDonald, Natalie Tomczak. 2-Carrie Knauer. 4-Jillian Geiss. PF-Heather Middlebrook, Julie MacDonald. NF-Brenda Luciano, Jillian Geiss. JRF-Diane Barrett. P DT-Amy

Waller, Carrie Knauer, Christina Spain, Hannah Smith, Kate Isley, Leslie Benoit, Rachel Thornton, Trena Isley. BR DT-Sarah Cloutier. JPR-Nancy Poitras, Ruben Montes, Jr.

CHARLESTON FSC: PF-Laura Hum.

CHARTER OAK FSC: PRE-Katherine Dudzinski. PF-Deirdre Bushnell. JF-Phoebe Fulkerson, Susan Ashley. IF-Diane Hernandez. P DT-Holly Mumford. S DT-Garrett Brockert.

CHEVY CHASE CLUB: PRE-Garren Bird.

CHICAGO FSC: PRE-Bryanne Nardella, Rachel Barnett, Sarah Rozensky. 1-Laura Grendys, Lesley Kagan, Stacey Zolt. 3-Tracy Bowman. PF-Bryanne Nardella, Rachel Barnett, Sarah Rozensky. P DT-Kelly Callahan.

FSC OF CINCINNATI: PF-Brenda Kohlmoegen. P DT-Brenda Kohlmoegen. PS ADT-Warren King.

CLEVELAND SC: PRE-Elizabeth Zuik. PF-Abby Bays, Caroline McCracken, Elizabeth Zuik, Elizabeth Walton, Kara Russo, Sara Stonehill. JF-Molly Nook. IF-Courtney Boyer, Lisa Hall. S DT-Sarah Horst.

CLINTON FSC: PRE-Nicole Duxbury, Wallace Sweet. 1-Bridget Bohn. 4-Megan Knoeller. PF-Nicole Austin. JF-Jennifer Yates. IF-Jennifer Venero. P DT-Kristy Ames. PG ADT-Kelly Hardy. PS ADT-James Hibbard.

COLISEUM FSC: PRE-Charlene Frame, Cindy Reed, Darlene Waterson, Michelle Galantic. 1-Susan Master. PF-Charlene Frame, Cindy Reed, Darlene Waterson.

COLONIAL FSC OF MA: 2-Christina Bethke. IF-R Mark Ingmanson. P DT-Tarah Donelan.

COLONIAL SC OF NJ: PRE-Ahsley Wargo, Allison Nichols, Erin Remensnyder, Jean-Marie Deguille, Nicole Reigelman, Stefanie Janoski, Suzana De Sousa. 5-Heather Castor. PF-Tiffany McFadden.

COLORADO SC: 2-Claudia Ereik. 3-Melissa Schetter. 4-Christopher Gaddis, Leah Hardy, Rachel Tracy.

JF-Jillaine Hutchings. IF-Stephanie Harbick. NF-Leah Hardy, Rachel Tracy.

COLUMBIA FSC OF MD: 1-Andrea Gigliotto. 2-Jamie Smith. JF-Jamie Smith.

COLUMBINE FSC: PRE-Cara Fogel. PF-Cara Fogel.

COLUMBUS FSC: PRE-Akane Toyama. PF-Jennifer Tieche, Manuel Fernandez, Richard Hand, Robert Wells. JF-Melissa Gregory, Melissa Will, Scott Kagan. P DT-Laura Kersell, Tammy Tuttle. PG DT-Jody Sjogren.

COMMONWEALTH FSC: 3-Michelle Pike. 5-Kerry Durand. 7-Debra Kleinberg.

CONEJO VALLEY FSC: PRE-Denise Buss, Jennifer Tucker, Samantha Froude. 1-Erica Wright, Kaile Josephs. 2-Sarah Pittlak. 4-Amanda Moore. 7-Jennifer Davidson. PF-Denise Buss, Jennifer Tucker, Samantha Froude. JF-Sarah Pittlak.

COTTONWOOD HEIGHTS FSC: PRE-Sibel Bird. 1-Jennifer Luangsawasdi. 2-Piper Bringhurst. 3-Alicia Christians, Crista Lym, Emily Boyd. 4-Eddie Gornik, Stephanie Poulton. 6-Carol Ann Richardson. PF-Sibel Bird. JF-Piper Bringhurst. IF-Alicia Christians, Crista Lym. NF-Eddie Gornik. JRF-Carol Ann Richardson. NPR-Darcy Hunt.



Ice Age presents the above **Figure 8 • Flake • Frame** designs with studded detailing on top quality **black and white** sweatshirts.

Sweatshirts • white/black, adult - S,M,L,XL \$40.00
youth, white/black - M,L \$30.00

Flight Jacket • black nylon, Figure 8, S,M,L,XL \$65.00

Write or call for catalog Allow 2-3 weeks for delivery

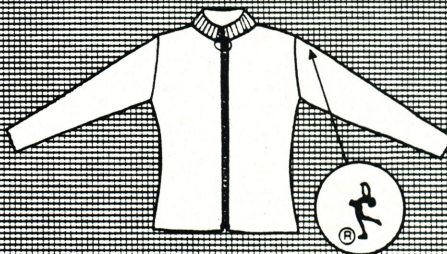
3917 Sunset Drive • L.A., CA 90027 • (213) 667-1868

Wholesale • Retail

Figures®

P.O. BOX 5251
BERKELEY, CA 94705
(415) 848-4280

WHOLESALE ONLY
SKATING ACCESSORIES



THE SKATING SWEATER

DEALERS: Write or call for information

SWEATERS
SKATE BAGS
SCRIBE CASES
GARMENT BAGS
BOOT COVERS
TAPE CASES

Retail Sales Call:
The Ice House 1-800-423-3391

CREVE COEUR FSC: PRE-Honey Lynn Bagley, Karen Sachs, Stephanie Henley, Tracy Goldberg. 1-Karen Brown, Nichole Loring. 2-Matthew Buttrey. PF-Honey Lynn Bagley, Karen Sachs, Stephanie Henley, Tracy Goldberg. JF-Matthew Buttrey, Trischa Kneale. IF-Heather Schneider. NF-Jennifer Davis. BR DT-Elizabeth Dugger.

DALLAS FSC: PRE-Cara Spradlin. 5-Lisa Renee Lowery. PF-Cara Spradlin. P DT-Allyson Rose. BR DT-Shanna Osborn.

DARIEN SC OF SOUTHERN CT: PRE-Lindsay Robertson. 2-Jennifer Bradbury. 3-Jill Erica Geter. PF-Lindsay Robertson. P DT-Virginia Harris. PS DT-Jill Erica Geter.

UNIVERSITY OF DELAWARE SC: PRE-Deborah Koegel, Jennifer Toland, Jonathan Martin, Julia Bolea, Kimberly Gregg, Kristin Toland. 1-Alexie Kolpak, Candice Neal, Heidi Keller, Katherine Walton, Stephanie Crawford. 3-Betty Bosch. PF-Julia Bolea. JF-Leslee Davis. P DT-Alaina Bronowicz, Becky Moore, Candice Neal, Erin Mann, Gary Irving, Jennifer Martin, Leigh Jordan, Mischa McManus, Sian Frick, Tara Lipinski. BR DT-Adrienne Welch, David Stillman, Gary Irving, Mischa McManus. PS DT-Catherine Huang, Gary Irving. S DT-Kristen Pedroso, Tina Lai. PG DT-Sung Ho Jung, Sung Min Jung.

DENVER FSC: PRE-Christine Butler, Meghan Lambert, Michelle Abhe, Reanna White, Tara Liddell. 1-Alexandra Cesteros, Jennifer Scott, Rebecca Brown, Rebecca Arrington, Troy Halouska. 2-Ashley Douglass, Gretchen Von Tongeln. PF-Ann Marie Clark, Christine Butler, Meghan Lambert, Melanie Cashen, Reanna White, Sissel Swanoe, Tara Liddell. JF-Sarah Law. P DT-Pamela Miller, Regina Delisle. IPR-James Becker. PS ADT-Anne Hendricks.

DETROIT SC: PRE-Christina Cechanowicz, Joanna Bonsignore, Whitney Johnson. 1-Cindy Lynn Eckert, Kelly Hodgins. 2-Jeanna Yi, Wendy Brundirks. 3-Mick Ryan. 4-Dawn Betrus, Sandra Mattson. 6-Jennie Yi, Kristin Buckler. PF-Cindy Lynn Eckert, Danielle Gerbe, Joanna Bonsignore, Rebecca Weight. JF-Adam Knuckles, Celicia Zlatkin. IF-Katie Ryan, Mick Ryan. NF-Dawn Betrus, Sandra Mattson. JRF-Ingrid Peterson. P DT-Alison Riggs, Dottie Pekarek, Lisa Berlenbach. BR DT-Amy Scott, Mollie Welcome. PG DT-Amy Phaneuf. B ADT-Marsha Grange.

DIABLO FSC: PRE-Lisa Abrew. PF-Lisa Abrew.

DIAMOND EDGE FSC: 3-Kerry Hill.

DUPAGE FSC: PRE-Annie Rhee, Beth Aiossa, Jamie Hoos, Jennifer Hanekamp, Jessica Parks. 1-Amanda Mattes, Amanda Ocon, Anbrit Stengele, Cherie Strzelecki, Tara Wasserman. 4-Jennifer Redden, Rachel Jimenez. 5-Jennifer Redden. 6-Stephanie Wagner. PF-Annie Rhee, Beth Aiossa, Jamie Hoos, Jennifer Hanekamp, Jessica Parks. JF-Ey Die Rallos, Joanne Recometa. IF-Inna Smirnova. NF-Jennifer Redden. JRF-Kristin Clark. P DT-Kimberly Callahan.

DUTCHESS FSC: PRE-Megan Raymond. 1-Karina Pavlov. PF-Hillary Reilly.

ENCHANTED MOUNTAIN FSC: PRE-Michelle MacRoy. PF-Michelle MacRoy.

ESSEX HUNT CLUB: PF-Dana Day, Emily Loudon, Lisa Murphy, Lynne Crawford. JF-Elizabeth Lewis, Jolie Lee.

ESSEX SC OF NEW JERSEY: 1-Jeanette Brandt, Meredith Brandt, Sara Parham, Sarah Schlesinger. 4-Stephanie Humbert. 5-Lisa Anne Kempf. P DT-Hayley Wurzel, Peggy Sue Singe. BR DT-Glen Roberson, Janice Roberson. S ADT-Calvin Page.

EUCLID BLADE & EDGE CLUB: PF-Jacqueline Hayes.

FAIRBANKS FSC: 1-Sara Vernia. 4-Michelle Jones. P DT-Ann Pittman, James Orvik, Michelle Jones. BR DT-Lynn Ribar. PS DT-Kristy Linginfelter, Mark Tumeo. B ADT-Elaine Ensign.

FALMOUTH FSC: PRE-Christine Day, Melissa Walsh. 1-Andrea Klein. PF-Christine Day, Doreen Manley-Desangro, Jennifer Peck. JF-Jillian Warner. IF-Kara Foley. JRF-Cari Lyn Sayers.

SC OF FLORIDA: PRE-Julie Michael. 4-Karen Rodriguez. 5-Sanna Heikkila. P DT-Barbara Thorne, Melissa Garrity.

FORESTWOOD FSC: PRE-Betsy Burk, Dana Becker, Ginny Nowak, Jaclyn Collins, Melissa Fritsche, Michelle Hicho, Shannon Synek. 2-Kristina Parker. PF-Betsy Burk, Dana Becker, Mark Vasarhelyi, Michelle Hicho. BR DT-Kristina Parker.

FORT WAYNE ISC: 3-Melissa Porter. 6-Renee Werling. JF-Melissa Walley. JRF-Mercedes Ohlsson. BR DT-Julie Ruedebusch.

FRASER FSC: PRE-Karen Lee Armstrong, Megan Armstrong. 2-Heidi Rappert, Shannon Menig. 3-Marisa Cybulski. 5-Kathleen Geary. 6-Shannon Livingston. PF-Da Neil Kwapis. NF-Heather Plati, Jennifer Jungwirth. P DT-Mandie Panski. BR DT-Andrea Christensen. PS DT-Erica Grunwald. S DT-Lisa Ann Barnett, Molly Green. PG DT-Karen Leonard.

GALLERIA-HOUSTON ISC: PRE-Melissa Whiteman. 1-Lesley Bujko, Madeleine Blish, Samantha Lusk. PF-Whitney Smullen.

GARDEN CITY FSC: 1-Lori Yuergens. 2-Kelly Smith. 3-Stephanie Carr. 4-Kari Ann Keyanchuk. JF-Kelly Smith. IF-Stephanie Carr. NF-Kari Ann Keyanchuk. JRF-Jodi McKenzie. PPR-Lisa Matras. IPR-Lisa Matras. NPR-Lisa Matras.

GARFIELD HEIGHTS FSC: 1-Danielle Bradshaw. NF-Pamela Makowski. JRF-Caroline Gebhardt. P DT-Kathy Karlik. BR DT-Mary Coleman. PS DT-Danielle Bradshaw.

GENESEE FSC: PRE-Erica Lynn Vance. 1-Janet Forward, Kelly Kirchhoff, Raena Kroeckel. 3-Marni Dana Goodman. 6-Erika Eichelberger. PF-Erica Lynn Vance. JRF-Erika Eichelberger. P DT-Cameron Zucker- man, Jenny Cocker, Julie Betz, Rebecca Skiles, William Jurgens. PS DT-Charles Glaser. S DT-Heather Gornall. PG ADT-Carol Sutter, David Lynn Hayes.

GLENWOOD FSC: 1-Jennifer Blue. 3-Erika White. IF-Erika White. P DT-Patricia Snyder. S DT-Maria Pabellon.

GOLDEN STATE FSC: P DT-James Ashley, Jennifer Conger, Karin Storm.

GREAT BAY FSC: PRE-Antonia Foster, Douglas Darrell, Karen Gowell, Kimberly Eddy, Marney Kelley, Shannon St. Hilaire. 1-Nikki Deane. 2-Kellie Cunningham. 3-Brigid Jordan. PF-Antonia Foster, Douglas Darrell, Jessica Tillery, Jill Ferrigno, Karen Gowell, Kimberly Eddy, Marney Kelley. JF-Jaime Smith, Jessica Lenzi, Nikki Deane, Tracey Bennett.

GREAT FALLS FSC: PRE-Jason Haney, Kelly Volkland, Maryann Zadick. 1-Jennifer Baker, Shannon Gilligan, Tausha Tabacco. 2-Stephan Foley, Wendy Volkland. 5-Amy Smith. PF-Jason Haney, Kelly Volkland, Maryann Zadick. JF-Heidi Ackerman, Jennifer Schilling, Wendy Volkland. P DT-Kelly Volkland, Renea Harris. BR DT-Stephan Foley. S DT-Brooks Beaudoin.

GREAT NECK FSC: BR DT-Regina Roehm, Wendy Seeley.

GREATER EVANSVILLE FSC: PRE-Candice Pinson, Nicole Robinson, Sarah Morgan, Sarah Hahn. 1-Michael Thompson. PF-Candice Pinson, Nicole Robinson, Sarah Morgan, Sarah Hahn. JF-Michael Thompson.

GREATER GRAND RAPIDS FSC: PRE-Karen Grevengoed. PF-Karen Grevengoed.

GREATER MILWAUKEE FSC: 2-Sarah Van Dam. 4-Jill Rector. PF-Nicole Lavin. JF-Angela Stucky, Sarah Van Dam. JRF-Kelly Ervin. BR DT-Peggy Schlatter. PS DT-Kelly Ervin. PPR-Dawn Dahliman-Schwab. IPR-Darryl Larson, Dawn Dahliman-Schwab, Kelly Ervin.

GREENBRIER FSC: PRE-David Forchione, Jennifer Klesch, Michelle Serrat. 1-Cheryl Pfeiffer, Elayna Boukis, Julie Clay, Suzanne Strong. 2-Craig Joeright, Jamie Rossino, Shelly Martin. PF-Alyson Noelker, Jennifer Klesch, Jennifer Fegan. JF-Jamie Rossino, Michele Patrick. NF-Stephanie Jaramillo. P DT-Amanda Mottl. BR DT-Julie Clay, Kate Black, Suzanne Strong. IPR-Amanda Mottl, Craig Joeright.

GREENSBORO ISC: PRE-Arren Spence, Brennie Sharpe, Tabatha Walker, Tommi Brown. 1-Angela Thomas, Laura Pickard, Shannon Stivers. 2-Corey Dickinson, Kara Rosson. 3-Rebekah Gaines, Shannon Stacy. 5-Lee Boren. PF-Arren Spence, Brennie Sharpe, Tabatha Walker, Tommi Brown. JF-Laura Pickard, Tabatha Walker. IF-Amber Sockwell, Corey Dickinson, Kara Rosson, Rebecca Newman, Shannon Stacy. S ADT-Louise Emington.

GREENWICH SC: PF-Sara Vintiadis, Sara Vintiadis.

HAMDEN FSA: PRE-Aaron Salinger. 6-Lori Richetelle. PF-Charlene Blanchette. P DT-Carrie Himes, M. Sarah Deleo.

SC OF HARTFORD: 1-Amy Fong, Patricia Loftus. 2-Emery Samuels, Heather Solesky. JF-Emery Samuels, Heather Solesky.

HAYDEN RECREATION CENTRE FSC: PRE-Amanda Pierce, Amy Gillis, Daniel Shnidman, Katherine Whitemore, Lacey Clarke, Michael Dimattia. 1-Carolyn Coppe, Lauren Andriolo. 2-Amy Seaquist, Catherine Halverson, Lisa Mason. 5-Margaret Michaels. 7-Siff Enzmann. PF-Amanda Mahoney, Amie Grosshans, Dana Paru, Deborah Cunha, Jennifer Frashure, Kay Horiuchi, Melissa Massello, Michelle Lin. JF-Jennifer Hartunian, Michelle Leahy. NF-Dana Easton. BR DT-Christine Murphy.

HERSHEY FSC: PF-Cynthia Johnson.

HICKORY HILL FSC: 4-Valerie Moskwa. PF-Michelle Ciraco. IF-Bethany Whipple, Rachel Wilmot.

HIGHLAND SC: PRE-Andrea Kral, Chungah Ahn, Jennifer Wood, Jenny Thompson. 1-Amalia Martino, Geraldine Basilio. 2-Shannon Dignon. 3-Carissa Green. 4-Lisa Rane Webster. 6-Ellen Kenny, Shelby Reinholdtsen. PF-Andrea Kral, Chungah Ahn, Jennifer Wood, Rebecca Aslin. IF-Carissa Green. NF-Larisa Copeland. BR DT-Diana Brown. PS DT-Carissa Green.

SC OF HINGHAM: PRE-Paul Salas. 1-Jennifer Welch. 2-Danielle Cheverie. PF-Paul Salas. JF-Jennifer Welch, Paul Salas.

HOUSTON FSC: PRE-Connie Li. 2-Kelly Malik. 3-Lindsay Leivo. 4-Lekfi Terzakis. 5-Lekfi Terzakis. PF-Connie Li, Jacqueline Austin. IF-Lindsay Leivo. NF-Lekfi Terzakis.

HUDSON-MOHAWK FSC: PF-Sara Haskins. PS DT-Erin Magee. S DT-Mark Menard.

HUNTSVILLE FSC: PRE-Heather Wilson, Jenny Medenbach, Keith Schonrock, Jr., Sasha Medenbach. 3-Dutchie Wine. 5-Teresa Love. PF-Heather Wilson, Kristin Sullins, Trina Rodriguez. IF-Dutchie Wine. P DT-Keith Schonrock III. PS DT-Mia Rodgers. IPR-Sarah Beth Simpson.

I & B CLUB OF WASHINGTON: PRE-Jason Simon, Kimberly Walker, Kristy Coquet, Rebecca Gerhart, Shaun Johnson, Stephanie Lepore. 1-Andrew MacDonald. 3-Caroline Fogarty. PF-Jason Simon, Kristy Coquet, Rebecca Gerhart, Shaun Johnson, Stephanie Lepore. P DT-Kristin Moore. BR DT-Andrew MacDonald, Jessica Radin, Rojan Quarles. PS DT-Sally Menzel. S DT-Rachel Srinivasagam. B ADT-James Withrow.

ICELAND FSC OF HOUSTON: P DT-Doug Feld. PS ADT-Anne Gerson.

ILLINI FSC: B ADT-Helene Dickel.

ILLINOIS VALLEY FSC: PRE-Susan McCarthy. IF-Lynn Ann Jansen. P DT-Emily Harter, Jeffrey Fosselman, Jennifer Kauffman, Katie Jenkins, Valerie Johnson. BR DT-Lynn Ann Jansen. B ADT-Kathryn Thomas.

ISC OF INDIANAPOLIS: PRE-Ann Gisler, Christi Freeman, Christine Reddy. 1-Abigail Dean, Heather Dean. 3-Megan Elliott. 4-Kristin Gardner. PF-Christi Freeman, Christine Reddy, David Fisch, Karen Sablosky, Katie Sablosky, Lauren Cohen, Linda Zynger, Megan Quigley. IF-Lisa Duval, Melis Ecer. NF-Michelle Mize.

JANESVILLE FSC: 1-Melissa Sarbacher. 2-Brandi Nicholson. IF-Brandi Nicholson.

KALAMAZOO FSC: IF-Angela Holden. BR DT-Anne Lindamood.

KANSAS CITY FSC: 1-Kimberly Firestone.

LA JOLLA FSC: P DT-Sally Anderson, Shaun Rodman. PS DT-Anne Borchers. S DT-David Ely.

SC OF LAKE FOREST: 1-Christine Frcka. JF-Stephanie Zanolco.

LAKE MINNETONKA FSC: PRE-Elizabeth Ondov, Jennifer Wistrand, Jillian Johnson, Katherine Lindquist, Katie Cook, Katie Cunningham, Michelle Burkholder, Monica Kirscher, Sarah Newberry, Suzanne Hertsted. 1-Jennifer Henderson, Lindsey Lang. 2-Nicole Vandergriff. 5-Gretchen Robideau. PF-Elizabeth Ondov, Jennifer Wistrand, Jillian Johnson, Katherine Lindquist, Katie Cook, Katie Cunningham, Michelle Burkholder, Monica Kirscher, Sarah Newberry, Suzanne Hertsted. JF-Nicole Vandergriff. NF-Gretchen Robideau.

SC OF LAKE PLACID: 6-Daniel Falcone. 7-Tammie Knox. JRF-Daniel Falcone.

LAKEWOOD WINTER CLUB: 2-Carrie Maultsby, Heidi Pelander, Reichen Woods. 3-Tamsen Woods. 4-Heidi Green. 6-Stephanie Rose. 7-Sarah Gendreau. JF-Heidi Pelander, Reichen Woods. IF-Tamsen Woods. NF-Heidi Green, Nancy Peterson. JRF-Stephanie Rose. P DT-Anastasia Hart, Annette Cooper, Emily Johnson, Heidi Pelander. BR DT-Heidi Green. PS DT-Kelly Clark, Stephanie Rose.

LANSING SC: PRE-Brooke Winston, Kelli Eyde. 2-Courtney Thornburg. 4-Carola Martinez, Kellie Richards. PF-Brooke Winston, Kelli Eyde. JF-Courtney Thornburg. NF-Carola Martinez, Kellie Richards. JRF-Melissa Stropkai. P DT-Janet Stone, Rachelle Covey. BR DT-Carola Martinez, Melissa Stropkai.

LAS VEGAS FSC: 6-Casey Link. JRF-Casey Link.

LAUREL RIDGE SC: BR DT-Gina Marie Pagano.

LILAC CITY FSC: PRE-Anna Marie Burchett, Christi Galewski, Heather Seiler. 1-Eden Du Crest, Heather Delong, Meegan McDonald. 2-Danica Du Crest, Kimberly Ferraro, Stephanie Lapikas, Kristi Torgerson. 3-Amber Horrocks, Kimberly Ferraro, Rose Childs, Solveia Gillund, Sheri Persello. 4-Sheri Persello. 5-Johnnie Bevan. 6-Stacie Bowerman. PF-Anna Marie Burchett, Heather Seiler. JF-Danica Du Crest, Kimberly Ferraro, Kristi Torgerson, Stephanie Lapikas, Tiffany Brickner. IF-Rose Childs, Sheri Persello, Kim Ferraro. NF-Sheri Persello.

LINCOLN CENTER FSC: 2-Matthew Kessinger.

LITTLE SUN VALLEY SC: P DT-Amy Ashley Butcher.

LONG STAR FSC: PRE-Kede Eddins, Khristi Varley, Mary Hennessy, Michael Tunks, Terry Perkins. 1-Alicia Surratt. 2-Brandon Frank, Hillary Rabun, Lynette Page. 4-Steven Allen. PF-Elizabeth Alvarez, Kede Eddins, Khristi Varley, Mary Hennessy, Michael Tunks, Terry Perkins. JF-Brandon Frank. IF-Andrea Meier. P DT-Carri Reid, Jennifer Darst, Rich Slater.

LONG ISLAND FSC: PRE-Morgan Hughes. 1-Jeannette Sacca. 3-Theresa Battaglini.

LOS ANGELES FSC: 1-Chantel Le Boff. 2-Christi Kayter, Matthew Miller. 3-Don Baldwin, Lisa Marie Auwinger, Susan Choi, Tamayu Takayama. 4-Ashley Basquin, Azumi Sagara, Christina Wu, Jessica Posada, Tamayu Takayama. 5-Danielle Umpierre, Tamayu Takayama. 6-Cassie Nuttman, Jennifer Wener, Ligaya Kinderman. 7-Laureece Saba, Tristen Vega. JF-Christi Kayter, Tamayu Takayama. IF-Don Baldwin, Lisa Marie Auwinger, Tamayu Takayama. NF-Ashley Basquin, Azumi Sagara, Christina Wu, Jessica Posada, Tamayu Takayama. JRF-Cassie Nuttman. P DT-Vicki Conrad-Dlugolec. PS DT-Kevin Kinneavy. S DT-Josephine Lee.

FSC OF MADISON: PS DT-Cathy Zinkel.

SC OF MAINE: PRE-Amanda Roberts, Emily Tompkins, Gwenn Kelly, Kristina Fitzgerald, Lucas Caron, Sara Lane, Sarah Pirrotta, Taryn Friedman. PF-Amanda Roberts, Diane Dolhman, Gwenn Kelly, J. Hollie Hallett, Kristina Fitzgerald, Lucas Caron, Sarah Pirrotta, Taryn Friedman. JF-Jerome Michael. IF-Shelly Millette. P DT-Becky Starbuck, Emily Tompkins, Jennelle Rowe, Kristina Fitzgerald, Laurie Rowe, Madonna De Vaudreuil, Sarah Pirrotta. PS DT-Julia Rentz.

MANKATO FSC: 1-Jennifer Jessen. 2-Kathryn McGregor.

MAPLEWOOD FSC: 1-Shalon Fiala. JF-Amy Jo Marks.

MARQUETTE FSC: PF-Jamie Starrett. JF-Jamie Thomas. P DT-Cameron Contois, Christy Kuhn, Maggy Cowell, Margot Contois. BR DT-Lisa Johnson. S DT-Kelly Turnbull.

MASS BAY SC: PRE-Shirley Smith. 1-Courtney Evans. 2-Maryann Sanfilippo. PF-Courtney Evans, Shirley Smith. JF-Amy Maranhos.

MASSENA FSC: 3-Felicity Faucher.

MENTOR FSC: JF-Allison Fox.

MESA VERDE FSC: PRE-Jonathan Keen, Lisa Sapra. 3-Kim Roby. 4-Nicole Sciarrotta, Shannon Birk. 5-Gregory Sciarrotta. 6-Kellie Otis. 7-Anne Lieber. PF-Jonathan Keen, Lisa Sapra. IF-Kim Roby. NF-Nicole Sciarrotta, Shannon Birk. PPR-Kristine Bingham, Shannon Birk. IPR-Kristine Bingham, Shannon Birk.

METROPOLITAN FSC: PRE-Cristina La Marca, Dianna Webster, George Hawkins, Lilah Tehrani, Melissa Ielpi. 1-Tara Fallik. 5-Jaclyn Ward. 7-Amy Rivers, Mindy Blitz. PF-Caryn Semelka, Cristina La Marca, Lilah Tehrani, Melissa Ielpi. BR DT-Keith Rehberger.

FSC OF MINNEAPOLIS: PRE-Maya Corey. 1-Jennifer Becker. PF-Maya Corey. BR DT-Lee Anne Swanson. B ADT-Diane Girod.

MISSION VALLEY ISC: PRE-Joel Vinson, Natasha Odama. 2-Sheri Varrelmann. 7-Annette McCormick. PF-Joel Vinson, Natasha Odama.

MIT FSC: B ADT-James Barry.

SC OF MORRIS NJ: PRE-Amy Whipple, Christie Suppa, Dorian Fenczak, Erin Murdoch, Kara McKinlay, Patricia Chapple, Sonia Bjornsen, Tiffany Ciperski. 1-Jodi Haft, Karen Wells, Kristen Ciezak, Nicole Suppa, Shannon Dunphy. 2-Anthony Gioia, Devon Martin, Jennifer Mulvihill, Jennifer Miranda, Lisa Colaluca. 3-Allison Clouston. 4-Beth Allen, Erica Lea Piekarski, Lisa Beth Anderson, Megan Bozios, Rebecca Cutler. 6-Christie Muraski. PF-Amy Whipple, Cathlin Rozman, Christie Suppa, Dorian Fenczak, Erin Murdoch, Kara McKinlay, Mark Fenczak, Monica Flanagan, Sonia Bjornsen, Tiffany Ciperski. JF-Allison Necco, Becky

Carlson, Blake Miller, Devon Martin, Jennifer Mulvihill, Karen Wells, Shannon Dunphy. IF—Anthony Gioia, Jennifer Miranda. NF—Beth Allen, Kristina Doyle. BR DT—Allison Necco. PS DT—Becky Carlson, Jennifer Mulvihill, Kristina Doyle. S DT—Celia Amy Cohen.

NASHVILLE FSC: PRE—Diana Griffith, Elfije Salihu, Kristin Stair, Rosanna Pierce. 2—Christa Simpson, Hope Alteri, John Gerth, Priscilla Rushing. 4—Ruth Williams. PF—Diana Griffith, Elfije Salihu, Jennifer Oertley, Kristin Stair, Margaret Gray Swain, Rosanna Pierce. JF—Christa Simpson, Diana Griffith, Elizabeth McLeod, Hope Alteri, Julie Schneider. NF—Ruth Williams. P DT—Arthur Reid, Ruth Williams. PPR—John Gerth. IPR—Ali Blank, John Gerth.

SC OF NATICK: PRE—Andreyka Majkut, Cristin Houlihan, Julianne Kahn, Kristie Burr. P DT—Dina Volpicelli. BR DT—Dina Volpicelli.

SC OF NEW HARTFORD: PRE—Brittanney Trebnik. 1—Carlos Dhabhar, Laura Ritchie. 2—Maggie Massoud. PF—Carlos Dhabhar, Karen Morreall. P DT—Robert Pecci, Stephen Marsh. BR DT—Stephanie Breslow. PS DT—Jennifer Breslow, Kimberly Dzalo.

NEW HAVEN SC: PRE—Amy Sublett, Corinne Towle, Jocelyn Thompson, Kelly Ann Roos, Kristie Formato. PF—Amy Sublett, Jennifer Riccio, Jocelyn Thompson, Kelly Ann Roos, Kristie Formato. BR DT—Eileen Mantell.

SC OF NEW YORK: PRE—Jennifer Jong, Jessica Betts, Katharine Flynn, Zimbabwe Harrison. 1—Chanler Coville, Sarah Epstein. 3—Jessica Lappin. 5—Aphrodite Milonopoulos. JF—Rebecca Kennedy. P DT—Rebecca Kennedy, William Dalsimer.

NEWBURYPORT FSC: PRE—Ashley Galat, Christine Power, Elizabeth Hriczo, Lauretta Charpentier, Sarah O'Connell. 1—Maida Shivik. 3—Kimberly Clarkson. 4—Elise Roberts, Juliette Power, Kelly Ann Tedford. PF—Emily Kiley, Sarah O'Connell.

NORTH JERSEY FSC: 1—Kelly Greene. 3—Danielle Messina. 4—Cathy Zorgo, Jodi Pink. IF—Danielle Messina. NF—Cathy Zorgo.

NORTH SHORE SC: 1—Nicole Williams. 4—Kristen Ward, Kristin Benard. 5—Stephanie Solano. PF—Kate Harrington. IF—Jennifer McCormack.

NORTH SUBURBAN FSC: PRE—Allison Dolehanty. 1—Patricia Fancy.

NORTHEASTERN UNIVERSITY: BR DT—Carole Horton.

SC OF NORTHERN VIRGINIA: PRE—Charlee Parkinson, Derek Wilkins, Elizabeth Strickland, Jennifer Harkins, Justine Keough, Marla Ulrich, Sandra Newton, Shannon Akers. 1—Bettina Weber, Julie Maloney, Malini Hozeoo. 2—Kimberly Lauer, Shana Byers. 3—Wendy Osten. 4—Judith Stein, Tina Munson. 6—Stephanie Horn. PF—Charlee Parkinson, Derek Wilkins, Elizabeth Strickland, Jennifer Harkins, Justine Keough, Sandra Newton, Shannon Akers. JF—Claudia Rodriguez, Julie Maloney, Lorian Pruett, Shana Byers. P DT—Christine Michalopoulos, M. Victoria Ballard, Marisa Dysart. BR DT—Barbara Hanley. IPR—Lorian Pruett.

OLD YORK ROAD SC: 3—Christina Rafa. 5—Suzanne Guiffre.

FSC OF OMAHA: PRE—Linda Piller, Mark Piller, Maureen O'Neill. 1—Alicia Coles. PF—Linda Piller, Mark Piller, Maureen O'Neill. IF—Ashley Penington. P DT—Walter Kopiasz.

OSWEGO FSC: BR DT—Michele Crego.

OWENSBORO FSC: P DT—Beth Tessandori, Kathleen Knott.

OXFORD SC: 1—Bjorn Herman. 4—Jennifer Ellis. JF—Joel Parks, Tim McCarty. IF—Lee Ann Shoker. P DT—Julie Bacon. BR DT—Megan Siebenhar, Tim McCarty.

PALM DESERT FSC: PRE—Pilar La Fargue. 2—Connie Schonert, Jill Schonert. PF—Pilar La Fargue. JF—Connie Schonert, Jill Schonert.

PALOMARES FSC: JF—Elizabeth Hopper. P DT—Nicole Perry. BR DT—Juli Ann Betz. PG DT—Rex Allen Betz, Victor Cocchia, Jr.

PARK FSC: PRE—Jonathan Saukin.

PAVILION SC OF CLEVELAND HGTS: PF—Elizabeth Merrick, Hollie Kusens, Rachel Couensky.

PAWTUCKET & PROVIDENCE FSC: 5—Dawn Ponte. BR DT—Sandy Ann Shepard.

PENGUIN FSC: PRE—Chrissy Stengel, William Maurer. 1—Jessica Mack, Laura Maurer. 2—Heather Phillips. 4—Kristi Stocker. 5—Heather Wagner. PF—Chrissy Stengel, Laura Moyer. NF—Kristi Stocker. P DT—Aillie McKeever, Stephanie Bearish. S DT—Shannon Reed.

PENINSULA FSC: PRE—Amanda Zamir, Germaine Lo, Winnie Leung. 1—Aki Bando. 2—Kelley Prebil, Tiffany Chan. 3—Melissa Nelson. 4—Andrea Massarelli, Christine Hackworth, Janelle Nelson, Shirley Pang. 5—Christine Nubla. 6—Shanel Mayeshiro. PF—Amanda Zamir, Germaine Lo, Winnie Leung. JF—Joanne Pasternack, Kelley Prebil. IF—Jaime Conklin, Stephanie Prebil, Tamara Palmer, Tami Tyler. NF—Andrea Massarelli, Christine Hackworth, Deborah Kass, Janelle Nelson, Megan Lynn Clark, Melodie Batt, Shirley Pang. P DT—Glenn Pollock, Joanne Pasternack, Whitney Gaynor. PS DT—Kelley Prebil, Sharon Parker.

PENN STATE FSC: PRE—Michelle Russell, Robin Marcus. PF—Michelle Russell, Robin Marcus. JF—Robin Marcus. NF—Gloria Masterson. B ADT—Glenn Roadman.

PHILADELPHIA SC & HS: PRE—Alexandra Zipf, Amy Braden, Jennie Kerson, Lauren Imbesi, Marcy Caldwell, Maura Lachman, Maura Cannon, Virginia Tuten, Wick McIlvain. 1—Jennifer Williams. 2—Coryell McIlvain. 3—Heather Templeton, Heather Higgins, Monica Holroyde, Niki Lynn Mozzillo. PF—Abigail Gleeson, Alison Sandler, Marcy Caldwell, Maura Cannon, Stephen Simmerman, Virginia Tuten. JF—Anne Drury, Rebecca Bevan. IF—Niki Lynn Mozzillo. P DT—Susan Freeland, Townsend Morris. PS DT—Emily Novak. PPR—Margaret Valenteen. IPR—Margaret Valenteen. NPR—Jane Wick. PS ADT—Zachary Simpson.

SC OF PHOENIX: 2—Elissa Beckman, Jennifer Petta, Julie Waters. 5—Amy Beart. JF—Elissa Beckman, Jennifer Petta. IF—Barbara Tang, Lynne Petta. P DT—Valerie Adams.

PILGRIM SC: PRE—Jennifer Leake. BR DT—Peter Abraham. S DT—John Reppucci.

PITTSBURGH FSC: PRE-Abigail Reyes, Catherine Appleton. 4-Sara Neiman. 5-Susan Neff. PF-Abigail Reyes, Catherine Appleton. BR DT-Bettina Jerome. S DT-Sara Neiman.

PLYMOUTH FSC: PRE-Julie Converse. 2-Tammy Brown. 4-Elizabeth Sorokac, Jennifer Dejohn. PF-Julie Converse. JF-Melissa Cook. JRF-Jenny Paterno.

PORT HURON FSC: PRE-Amy Fletcher, Dana Traver, Kara McFadden, Kari Hall, Kim Ingles, Melissa Wolff, Sera Young, Trisha Adler. 1-Jennifer Cheng, Jessica Thompson, Kristi Ruthven. 4-Erik Schulz. PF-Amy Fletcher, Dana Traver, Kara McFadden, Kari Hall, Kim Ingles, Melissa Wolff, Sera Young, Trisha Adler. JF-Jessica Thompson, Joyce Repp, Laura Betts. NF-Erik Schulz. P DT-Amy Fletcher, Courtney Lund, Dana Traver, Kara McFadden, Kari Hall, Melissa Wolff, Trisha Adler. BR DT-Jennifer Cheng, Katherine Murphy, Kristi Ruthven. PS DT-Maggie Bales. S DT-Tracey Anderson. PG DT-Erik Schulz, Jodi Lenore.

PORTLAND ISC: PRE-Angela Meduna. 1-Laurel Gill, Lorelei Olmscheid. 3-Elizabeth Bell. PF-Angela Meduna. JF-Angela Meduna. IF-Lomi Suttner. P DT-Melissa Chown, Stacey Steinwandel.

POTSDAM FSC: PRE-Amy Smith. 3-Kristen Elliott. JRF-Danielle Bartow. P DT-Lynda La Barge. PS DT-Kristin Warr. PG DT-Kristen Elliott.

PUEBLO FSC: PRE-Jacqueline Flores, Jennifer Warren, Samuel Tom Rougas. 1-Nonie Rougas. PF-Jill Huggins. S DT-Gregory Hartman.

QUEEN CITY FSC: PRE-Ronald De Witt. 2-Gretchen Boerup. 4-Denise Chyette. PF-Jeff Privett, Ronald De Witt. JF-Gretchen Boerup, Lisa Oliphant. IF-Anne Means. NF-Denise Chyette. JRF-Carrie Overstreet.

RED RIVER VALLEY FSC: 1-Amy Haugen. PF-Melissa Licht.

RIM OF THE WORLD FSC: PRE-Jamie Turner, Jenna Klopsch, Melissa Jackson. 1-Brooke Willick. 3-Heather Connolly. 5-China Lee Carl. PF-Jamie Turner, Jenna Klopsch, Melissa Jackson. IF-Heather Connolly.

ROCHESTER FSC: PRE-Amy Lawler, Amy Kriegshauser, Emily Cartwright, Jaime Leimer. 1-Elise Grant, Keith Framsted, Sarah Parker. 2-Sarah Brennan. 3-Annika Gill. 4-Genia Hesser. 6-Denise Long. PF-Amy Lawler, Amy Kriegshauser, Michael Colgan. IF-Annika Gill, Leah Kerrigan. NF-Genia Hesser, Jennifer Dvorak.

FSC OF ROCKFORD: PRE-Brian Buetsch. 1-Molly Kramer. 2-Heather White, Kaia Renae Olson. 6-Nicole Pelant. PF-Bethany Nelson, Kirsten Osborn. IF-Lisa Bell, Michael Edgren, Sunny Domark, Tara Johnson. NF-Jennifer Nordlof. JRF-Laura Nelson, Marianne Matty.

SC OF ROCKLAND NEW YORK: PRE-M Diane Higgins. 4-Margo Conti, Nickie Andrews. 5-Jennifer Di Costanzo. S DT-Eleanor Reishtein.

ROCKY MOUNTAIN FSC: PRE-Alicia Holland, Brandyn Wollrab, Leigh-Ann Kruz, Melissa Holtry. 1-Cheryl Raburn, Mandy Knight. 2-Lori Findley. 3-Cynthia Foulke, Dawn Renee Jensen, Denise Orr, Lindsay Broughton, Robyn Sudkamp. 4-Jahema Grier, Lindsay Fenlon, Sarah Brock, Sheryl Lewis. 5-Lindsay Fenlon. 7-Kirstin Stoll. PF-Cheryl Gallardo, Melissa Holtry. JF-Bonny Lee Clore, Cynthia Foulke, Dawn Renee Jensen, Denise Orr, Lindsay Broughton, Robyn Sudkamp. NF-Jahema Grier, Lindsay Fenlon, Sarah Brock, Sheryl Lewis. JRF-Janette Lewis, Lynette Hoshiko. BR DT-Jahema Grier.

ROSEVILLE FSC: PRE-Jennifer Bartel, Lindsay Olein, Stacie Ferrazzo. 1-Danielle Olein, Erica Vickers, Erin Pettijohn, Jennifer Lundberg, Lisa Turner. 2-Teri Schank. 3-Stephanie Edwards. PF-Ashlee Thoenke, Jenny Bruce, Megan Halvorsen, Stacie Ferrazzo. JF-Courtney Bodley, Erin Pettijohn. IF-Lynne Maker.

RYE FSC: 3-Kerry Lenahan. 5-Danielle Colacicco, Sheryl Mozur. IF-Leslie Efron. P DT-Wil Visser. PS DT-Christine Erdey. B ADT-Wil Visser.

SC OF SACRAMENTO: PRE-Alison Sparks, Ginelle Sakima, Natasha Nottoli. 2-Debbie Segal. 4-Deborah Lamerdin, Vanessa Jenkins. PF-Alison Sparks, Ginelle Sakima, Natasha Nottoli. JF-Debbie Segal. IF-Debbie Segal.

SALT CITY FIGURE SKATERS: PRE-Charlotte Mitchell, Jeanette Morgillo, Jennifer Konitsiotis. 1-Gerin Gagliardi, Kristin McCarthy, Teri Bloss. PF-Heather Jenners. P DT-Katy Williams, Kimberly Owens, Sarah Ungerer. S DT-Christa Stepien.

SAN DIEGO FSC: 1-Alexis Ruben. 2-Kathryn Vaughn. 5-Meghan Shafer. JF-Kathryn Vaughn. IF-Clara Hoagland. P DT-Amy Vaughn, Camille Boatwright, David Christman, Judy Clinton, Karen Ness, Katherine Abbott, William Ward. BR DT-Cynthia Rosenbaum. S ADT-Gwendolyn Morgen. S DT-Jeffrey White. B ADT-William Ward.

SAN FERNANDO VALLEY FSC: 1-Kandi Bishop, Michael Vorobiev. 2-Stephanie Hilger. JF-Stephanie Hilger.

SC OF SAN FRANCISCO: PRE-Julie Anne Zidek, Martin Sivorinovsky. PF-Julie Anne Zidek, Martin Sivorinovsky. NF-Serika Kokubu.

SEATTLE SC: PRE-Elena Rae Goodwin, Grifyn Sullivan, Jamie Kimpton, Leena Stratton, Lindsay Boehler, Sarah Berkovich. 1-Elliott Friedman, Jenni Hembree. 2-Rachel Smallbeck. 3-Dottie Brown, Karleen Murphy. 4-Glenn Armstrong, Perri Sutton. 6-Dawn Marie Finley. PF-Jamie Kimpton, Leena Stratton, Lindsay Boehler, Sarah Berkovich. JF-Mandy Cher Brickel. IF-Karleen Murphy. JRF-Dawn Marie Finley. P DT-Lindsay Boehler. BR DT-Kerry Washburn. GFD-Laurence Shaffer. IPR-Richard Wise.

SHAKER FSC: PRE-Anne Schneider, Beth Banck, Cristen Means, Jill Webster, Lara Dolin, Laura Kalur. 1-Heather Pavlik, Katherine Milano, Laurie Taubman. 2-Lindsey Waggle. 5-Amy Bujdos. PF-Anne McGinness, Brooke Hebert, Carrie Wooten, Cristen Means, Elizabeth Frazhen, Jill Webster, Lara Dolin, Monique Kademian. JF-Brie Zeltner, Lindsey Waggle. IF-Samantha Schaul. BR DT-Lisa Bodnar. PG DT-Sametra Wallace.

SIERRA NEVADA FSC: JRF-Claire Smith.

SILVER BLADES FSC OF KC: 1-Kasey Koch. 2-Jessica Klinghoffer, Molly Waterman, Robyn Brilliantine. 6-Regina Stanek. JF-Jane Gaunt, Jessica Klinghoffer, Molly Waterman. IF-Mandy McChesney. PPR-Deborah Pilant. IPR-Deborah Pilant.

SILVER SKATE FSC: P DT—Lynda Wright.

SKANEATELES FSC: P DT—Mark Robinson.

SKOKIE VALLEY SC: 1—Carrie Bulgajewski, Colleen Kraemer, Heather Hogg. 2—Kristin Arnold. 3—April Lambert, Faith Fogel, Kimberlee Lippert, Victoria Jenner. 4—Mark Forbes, Yasmin Fatah. 5—Jennifer Apfel. 6—Caroline Murray, Deborah Wagner, Mara Borden. 7—Heather Ballard. JF—Amanda Mareta, Angela De Vita, Erin Flax, Karen Peterson, Kristin Arnold, Teresa Anderson. IF—Heather Alterson, Patricia Fotsch, Sarah Nedrow. NF—Yasmin Fatah. JRF—Crystal Klepitsch, Heather Ballard, Melanie Schlesinger. P DT—Heather Ballard, Crystal Klepitsch, Heather Stanhaus, Kristin Arnold, Stephanie Colidge. BR DT—Yasmin Fatah. JPR—Jennifer Ostrom.

SMITHFIELD FSC: PRE—Michaela Tamboe. 1—Michael Phaneuf, Sarah Levine. 2—Jill Phillips. 3—Diana Passaretta. 7—Kelli Ann Cataldi. PF—Jennifer Judge, Kimberly Prue, Michaela Tamboe, Sarah Levine. JF—Michael Phaneuf. PS DT—Jennifer Judge.

SOUTH MOUNTAIN FSC: 1—Kaori Murakami. JF—Kaori Murakami. P DT—Stephanie Roth.

SC OF SOUTHERN NEW ENGLAND: 1—Carolyn Lacamera. 3—Julie De Benedetti. PF—Carolyn Lacamera, Heather Hague, Kelly Lavelle, Kristen Libera, Lindsay Rapoza, Tove Bendiksen. JF—Kristen Strotty. P DT—Kirstin Boyd.

SOUTHPORT SC: NF—Melissa Gade.

SPRINGFIELD FSC: 1—Alexia Griffin. 2—Misha Straus. 3—Renee Fleury. 4—Kristin Knotts. PF—Amy Waldron. JF—Misha Straus. IF—Courtney Shaffer, Renee Fleury. PS DT—Hilary Juretic.

ST. CLAIR SHORES FSC: 1—Andrea Adams, Nancy Zarkis. 2—Jennifer Hirth.

ST. JOSEPH FSC: 1—Megan Insko. JF—Julie Dyer. NF—Robin Fisher. BR DT—Julie Dyer.

ST. LAWRENCE FSC: P DT—Jodi Mace.

ST. MORITZ ISC: PRE—Catherine Sugg, Elizabeth Thayer, Jennifer Berman, Lisa Wu, Rachel Titen, Samantha Krenn, Tommy Branch. 1—Katie Alonso, Mika Christenty, Shannon Smith. 2—Lori Nelson, Melanie Phung, Tracy Williams. 3—Jessica Lesperance, Kimberley Weersing. 6—Brandee Marvin, Jennifer Verili, Leigh Sacrey. PF—Elizabeth Thayer, Jennifer Berman, Lisa Wu, Michele Silak, Rachel Titen, Samantha Krenn, Tommy Branch. JF—Lori Nelson, Melanie Phung, Tracy Williams. IF—Amy Leptien, Kimberley Weersing, Sabrina Carroll. JRF—Brandee Marvin, Darren Ehrenburg, Leigh Sacrey. P DT—Antonia Sweet, Candace Taylor-Weber, David Steere, Jennie Hammett-Cook, Kimberley Weersing, Mandy McManus, Marilyn Shoemaker, Mark Hammett-Cook. BR DT—Rachel Valfer. PPR—Darren Ehrenburg. IPR—Amy Leptien, Darren Ehrenburg.

ST. PAUL FSC: PRE—Elizabeth Grande, Melissa Schumi. 2—Jacqueline Tanberg. 3—Anand Bokde, Kelly Wald. 5—Stephanie Holman. 6—Joy Carey. PF—Elizabeth Grande, Melissa Schumi. JF—Anand Bokde, Jacqueline Tanberg. IF—Erin Graham.

STOCKTON FSC: PRE—Tina Wilson. 1—Kristen Van Fleet. 2—Jennifer Mariani. 3—Jan Fiori. 5—Jennifer Perez. PF—Tina Wilson. JF—Brandy Mead, Jennifer Mariani, Perrine Bakhshay. PPR—Perrine Bakhshay. IPR—Brandy Mead.

STONE MOUNTAIN FSC: PRE—Michael Cottrell. 1—Laura Hancock, Terri Steiner. 2—Alanna Burton, Nichole Copeland. 3—Allison Cowhig, Karen Karr. PF—Erica Ivy, Jennifer Archdeacon, Michael Cottrell. JF—Alanna Burton, Beverly Carey, Nichole Copeland. NF—Danielle Dudley. P DT—Donna Johnston, Janice Woodcock, Kate Kaszycki, Kerry McLeod, Maggie Kaszycki, Michael Cottrell. BR DT—Erica Ivy. PS DT—Allison Cowhig. PPR—Steven Garrett, Valerie White. IPR—Alanna Burton, Michael Cottrell.

STONEHAM FSC: 5—Erika Di Paolo. PF—Keri McConnell. JF—Amy Dentremon.

SUNCOAST FSC OF FLORIDA: 1—Deanna Burroughs. 2—Julie Anne Borkowski, Crystal Ash. 3—Brittney McConn. JF—Rebecca Ovesky. IF—Brittney McConn. P DT—Jennifer Stretch, Kenya Shields, Nicole Wasilewski. BR DT—Crystal Ash, Jessica Bernard, Nicole Wasilewski.

SC OF SUNRISE: NF—Meredith Montgomery.

SYMMETRIC FSC: 1—Denise La Pointe, Jennifer Carlson. JF—Denise La Pointe. P DT—Judy Davis.

TIDEWATER FSC: PRE—Stephen Wells. PF—Amy Kobelski, Brandy Taylor, Caitlin Stine, Lindsay Russek, Lisa Keller, Shyla Fugate, Stephen Wells. JF—Ashley Levy, Erin Sonn.

TIMBERLINE SC: PRE—Heather Ott. PF—Heather Ott.

TRI-COUNTY FSC: PRE—Holly Speiker, Julie Yorks, Melissa Johnson. 1—Eunice Ann Buck. PF—Melissa Johnson.

TRIANGLE FSC: PRE—Barbara Shepard. 1—Heather King. 2—Danielle Ulasewich, Thida Chokloikaew. 3—Kristin Tilley. 4—Jeffrey Tilley, Michelle Tilley. PF—Barbara Shepard. JF—Thida Chokloikaew. IF—Kristin Tilley, Maggie Chokloikaew. NF—Jeffrey Tilley, Michelle Tilley. P DT—Barbara Shepard, Teresa Sneider.

TROY SC: 7—Jennifer Ctvrtneck.

TUCSON FSC: PRE—Alicia Bacher. PF—Alicia Bacher.

TULSA FSC: PRE—Ashley Bennett, Mary O'Brien. 1—Ashley Frogge. 3—Candace Holmes. 4—Lindsey Ormiston. 5—Kristin Parker. PF—Ashley Bennett, Mary O'Brien. IF—Candace Holmes, Robert Baker. NF—Jacqui Pruett, Suzanne Jin. PPR—Kimberly Webster, Stephen Rosenthal.

TWIN STATE FSC: PRE—Alyssa Ludvino, Beth Love, Kelley Correia. PF—Alyssa Ludvino, Beth Love, Kelley Correia.

UNION COUNTY FSC: 1—Eric Weisgerber.

UTAH FSC: 1—Jennifer Pollom. 6—Shannon Smith. PF—Kalli Saibara. P DT—Dustin Bruening. IPR—Kevin Garrett, Mackenzie Baltz.

SC OF UTICA: P DT—Ashley Mondrick.

SC OF VAIL: 3—Brittney Baldwin. IF—Brittney Baldwin.

VALLCO SC: PRE-Jennifer Parks, Paige Evans, Serena Phillips. 1-Andres Lopez. PF-Jennifer Parks, Paige Evans, Serena Phillips.

WAGON WHEEL FSC: PRE-Deborah Jenssen, Emily Faith, Erika Ziembra, Jenny Lee, Megan Bowen, Tiffany Scurto, Valerie Brackett. 1-Christa Schippman, Ginger Page, Sandy Simek. 2-Betsy Lee, Sara Jack. 3-Erin Gustafson, Lenore Zibits. PF-Deborah Jenssen, Emily Faith, Erika Ziembra, Jenny Lee, Megan Bowen, Tiffany Scurto, Valerie Brackett. JF-Betsy Lee, Sara Jack. IF-Sakura Nakajima.

WALLACE FSC: PRE-Michelle Destroismaisons. PF-Michelle Destroismaisons.

WARWICK FIGURE SKATERS: PRE-Donna Lynn Paul. 2-Melissa Joyal, Shannon Diko. 3-Bethany Carnevale. PF-Colleen Driscoll, Donna Lynn Paul, Jessica Brassard, Marie Forster. JF-Melissa Joyal, Michelle Brassard, Stacy Simons. P DT-Donna Lynn Paul, Eleanor Michaud, Florence Rollo. S DT-Andrew Schmitt.

WASHINGTON FSC: PRE-Rebecca Schneider, Rebecca Urban, Tanya Seaborn. 1-Latoya Barnett. 2-Barbara Chen, Diane Chen. 3-Audrey Edmundson, Ayana May, Camille Costanzo, Danielle Papirtis, Gayle Horn, Susan Reynolds, Theoni Panagopoulos. 4-Dina Bambrey, Jennifer Lancaster. 5-Karen Tung, Najja Bracey, Stefanie Garofalo. 6-Amy Kirtland, Cathleen Reynolds, Elisa Goldberg, Kimberly Loucks. 7-Lizzy Scully. PF-Rebecca Schneider, Tanya Seaborn. JF-Diane Chen. IF-Audrey Edmundson, Cagri Urungu, Camille Costanzo, Carmie Chan, Danielle Papirtis, Elizabeth Windchy, Theoni Panagopoulos. NF-Dina Bambrey. JRF-Amy Kirtland, Margaret Reynolds. P DT-Deborah Smith, Heidi Napper, Kaila May, Kate Archambault, Kelly Newton, Kira Raffell. BR DT-Camille Costanzo, Kathy Nora Pongor. PS DT-Sarah Harre. S DT-Melissa Pettus, Michele Shannon. PS ADT-De Greenberg, Violet Mies.

WENATCHEE FSC: PRE-Jessica Semington. PF-Jessica Semington.

WEST COVINA FSC: PRE-Jennifer Kennedy. 1-Tiffany Bailey. 2-Elizabeth Wilcut, Jennifer Holden, Kristy Obregon. 3-Salena Courtney. PF-Jennifer Kennedy. JF-Jennifer Holden, Kristy Obregon. IF-Salena Courtney, Tylana Enomoto.

WEST SHORE FSC: PRE-Lisa Breda.

SC OF WESTCHESTER: PRE-Ailene King, Alexandra Demeter, Christine Rice, Lisa Monahan, Nicole San Marco, Nina Kogut, Tommye Rios. 1-Mara Youngblood. 6-Bobbie Flower. PF-Alexandra Demeter, Christine Rice, Lisa Ciero, Lisa Monahan, Nicole San Marco, Nina Kogut, Tommye Rios. JF-Karen Hook.

SC OF WESTERN NEW YORK: 4-Lisa Marie Rolls, Lynette Mitrey. 5-Stacy Adler. NF-Lynette Mitrey. JRF-Teresa Ginal. P DT-Amanda Mangione, Ameer Kossowsky, Karen Wailand.

WICHITA FSC: PF-Sarah Bishop, Sarah Langrehr.

SC OF WILMINGTON: 3-Laura Murphy. IF-Laura Murphy. JRF-Julia Piano. GFD-Ann Morton Neale.

WILMINGTON FSC: 1-Amy Stetson. 5-Christine Cooke. NF-Brenda Cardoza.

WINCHESTER FSC: PRE-Andrea Cross, Jennifer Dowler, Lauren Giuseppe. 1-Cara De Rosa, Jaclyn Callahan. 2-Kelly McElaney. 5-Jessica Proctor. PF-Alisa Ann Borselli, Cheryl Sirignano. NF-Jessica Proctor.

WINDY CITY FSC: P DT-Dorothy Di Vito. PS DT-Heather Kapas, Julie Welsh. PG DT-Margo Lynn Mankus. B ADT-Nancy Diaz. PS ADT-Roberta Barker.

WINTER CLUB OF INDIANAPOLIS: 1-Patricia Miller. B ADT-Harlan Higgins.

WINTERHURST FSC: PRE-Angela Draeger, Britany Graham, Robyn Hartman. 1-Marisa Razi. 2-Melanie Porada, Reagan Kendrick. 3-Lori Williamson, Patricia Kendra, Sarah Hitesman. 4-Janine Salloum. 5-Chaya Cashin. 6-Charlotte Irwin. 7-Marni Halasa, Tiffany Pichon. PF-Emily Lambros, Mehool Patel. JF-Kathy Petkash, Melanie Porada. IF-Kelly Connery. NF-Janine Salloum, Veronica Votykpa. PS DT-Janine Salloum.

WISCONSIN FSC: PRE-Brandon Jellison, Kristin Connor. 2-Ann Beauvais. 4-Andrea Davis, Susan Tsai. PF-Brandon Jellison, Kristin Connor. JF-Mandy Henry. IF-Audrey Moore. NF-Andrea Davis, Frida Slavich, Lisa Talbot, Natalie Dorman. JRF-Emily Dulde. P DT-Jennifer Raney, Sunny Turner. PS DT-Amy Behrendt, Lisa Talbot. IPR-Andrea Davis, Kimberly Cole, Lisa Talbot.

WISSAHICKON SC: PRE-Anna Schuenemann, Caroline Wybar, Elizabeth Steffey, Jeannine Dailey, Jessica Davis, Laura Kimberly, Miriam Schmidt, Nicholas Sosin, Paige Kollock, Victoria Campbell. 1-Angela Minissale. 2-Alison Hussey, Reilly Dempsey, Suzanne Hussey. 3-Tammy Frame. 4-Anita Zalewski, Helen Betancourt, John Chambers, Lisa Sklar, Meg Sagi, Sharon Tashjian, Valerie Klein. 5-Christine Chambers, Meg Sagi. 6-Karen Payonk. PF-Anna Schuenemann, Caroline Wybar, Katherine Frank, Lindsay Coleman, Miriam Schmidt, Nikki Nocella, Sara McElhinney, Timothy Cook. JF-Kimberly Ongaro. NF-Helen Betancourt, Meg Sagi. JRF-Karen Payonk. P DT-Angelika Mohnke, Melanie Finley. BR DT-Christine Chambers. PS DT-Meg Sagi. PG DT-Tammy Frame.

WYANDOTTE FSC: PRE-Celina Taylor, Francesca Noto. 1-Jennifer Downham, Steven Fulghum. PF-Celina Taylor, Steven Fulghum. JF-Steven Fulghum.

WYOMING VALLEY ISC: PF-Christine Defrancesco. IF-Jennifer Dingman. BR DT-Kristy Grabiec. S DT-Jennifer Dingman.

YALE FSC: 1-Emily Finkelstein. PF-Constance Foster. PG ADT-George Metz.

INDIVIDUAL MEMBERS: PRE-Cathy Schneck, Julie Anne Rood-Breithaupt, Maura Brown, Pamela MacAniff, Toby Jackson. 1-Anna Giaimo, Judith Anderson, Meredith Brown, Stephen Colella. 2-Kristen Erickson. 5-Caroline Mann. PF-Donnalynn Hartill, Dottie Janson, John Kauffman, Julie Anne Rood-Breithaupt, Maura Brown, Pamela MacAniff, Stacey Reich. JF-Kirsten Pope, Kristen Erickson, Pamela Sue Freudig. P DT-Cassandra Morency, Denise Campono, Irene Donaghey, Julie Jacob, Nicole Dziwla. BR DT-Robin Kay Hand. PG DT-Michelle Maler.

Albertville

Continued from page 27

find out some information on the Olympic complex for figure skating. The ice hall will consist of a training rink and a competition rink with over 10,000 seats. They have begun building it this year and estimate it to be finished in the year 1990. It will be in the Suavay area of Albertville along with the speedskating venue and the stadium.

For me, the trip was very rewarding. I experienced so many new things, made friends from around the world, and gained a better understanding of the meaning and purpose of the Olympic Games. It is truly one adventure I will never forget, and I would like to extend my gratitude to the USFSA for providing me the opportunity to participate in such a fun and wonderful experience. As my new friends in Albertville would say, "See you in 1992!"

Goodwill Games

Continued from page 29

States Olympic Committee will lend its full assistance to all of our national governing bodies who take part in the Goodwill Games."

The 1990 Goodwill Games are organized and implemented by the Seattle Organizing Committee (SOC). U.S. sports federations are responsible for technical aspects and the issuance of invitations. Turner Broadcasting System, Inc. (TBS), which will televise the Games as a cable exclusive in the U.S., is the official host broadcaster.

The 1990 Games are jointly presented by the SOC, the participating U.S. sports federations, TBS, the USSR State Committee for Physical Culture and Sport (Goskomsport) and the USSR State Committee for Television and Radio (Gosteleradio).

Classifieds

Continued from page 46

THE 1990 FIGURE SKATING CALENDAR. A must for the skating enthusiast. Terrific gift. Discounts on quantity orders from Clubs, Teams, or Skate Shops. Limited number; order now, \$14.00 prepaid: R.W. WHITE, BOX 181, PORT HENRY, NY 12974. (518) 546-9999.

"ICE DANCING MADE EASY" will teach you the techniques the top dancers use. This illustrated book will help you achieve effortless glide, perfect balance, faultless form, and offer valuable hints about partnering in Preliminary to Gold dances—including the new Pre-Bronzes). You can be a dancer that everyone wants to watch. Send \$15 to TRACINGS MAGAZINE, 21 Weybosset St., Weymouth, MA 02191.

ICE DANCING ILLUSTRATED. Instructional guide to the compulsory ice dances by Lorna Dyer former U.S., North American Dance Champion, Silver World Medalist. Send \$37.00 (U.S. Funds) to: Moore Publications, 9216 220th S.W., Edmonds, WA 98020.

FREESTYLES BY CAROLYN. Basic pull-on dress with attached skirt, including three neckline treatments. Directions for adding zipper, and separate wrap skirt also included. Children's sizes, 4x small through x small. Adult sizes, small, medium, large, x large: \$6.00 ea. Pull-on skirt, perfect for practice with T shirts or leotard, \$2.50 ea., all sizes. Figure flattering criss-cross dress: x small through x large, \$4.00 ea. Custom made patterns for \$8.00. Send for measurement chart. Add \$1.00 for postage and handling with each order. 5150 Bluestem Drive, Colorado Springs, CO 80917.

KRASH PADS by JAN-PRO: Hip Pad: \$29.95, Measure around seat with skating attire on. Knee Pads: \$16.95, measure around knee. Colors: Blue, Black, Gray, and Maroon. Send CK/MO to JAN-PRO, 4470 Monroe Ave., San Diego, CA 92115, (619) 282-0637.

We have the LOWEST DISCOUNT PRICES on quality boots, blades, and tights—immediate shipment—satisfaction guaranteed. Call (906) 786-7752 or write LeCaptain Studio Store, 1620 Ludington, Escanaba, MI 49829. COD MC VISA.



1989-90

USFSA RULEBOOK

The 1989-90 RULEBOOK IS AVAILABLE NOW!

There is only one way to keep up to date and understand the numerous changes in specific rules, tests, and competitions, and that is with the new 1989-90 USFSA Rulebook. Revised dance diagrams and charts highlight the new edition, along with changes and revisions in all matter concerning USFSA events, operations, and personnel. Last year's information just isn't enough to stay on top of the changes occurring in the sport. Order your copy today.

All orders will be processed IMMEDIATELY!

Single copies \$5.50 each*
plus \$1.95 shipping and handling.

USFSA member price \$4.95*
(include membership number with order)
plus \$1.95 shipping and handling.

10 or more copies \$4.70*
call for shipping and handling charges
(719) 635-5200

Send your order today to:

RULEBOOK
USFSA
20 First Street
Colorado Springs, CO 80906

**Colorado residents add 4% sales tax.
Colorado Springs residents add 6.5% sales tax.*

Fours

Continued from page 13

well matched in ability and size, as well as in the fundamentals of good skating usually make the best four. Four good singles skaters or two good pairs make excellent candidates for a good four. One member of the four should be the leader, but not so that it is obvious to the audience, since that would destroy the unison of the four.

The choice of music is, of course, very important. It is much easier for the skaters to maintain unison if there is a definite rhythm and beat; that is, not only unison in the "highlight" elements of lifts, jumps, spins, and the like, but also in steps, body position, leg swings, and extensions, as well as the movement over the ice in unison.

Fours were very popular with the audience and still are today when seen. It is a wonderful way for more good skaters to remain active on the ice in our great sport, enjoying both competitive and exhibition skating. Try it—you'll like it!

Mary Louise Wright is a World Judge and World Dance Judge. She is the former Mary Louise Premer, a member of the first St. Paul Four.

Ricky Harris

Continued from page 9

There are skaters possessing innate talent, who do not achieve success in skating because they are unwilling to sacrifice and discipline themselves to the kind of living necessary for its culmination. Opportunities come to everyone in a lifetime, but there must be work and preparation to be able to accept these opportunities.

All performers must utilize their bodies. The body must be in top physical condition at all times to fulfill the demands of artistic performing. Sadly enough, there is an overflow of those who lack this important ingre-

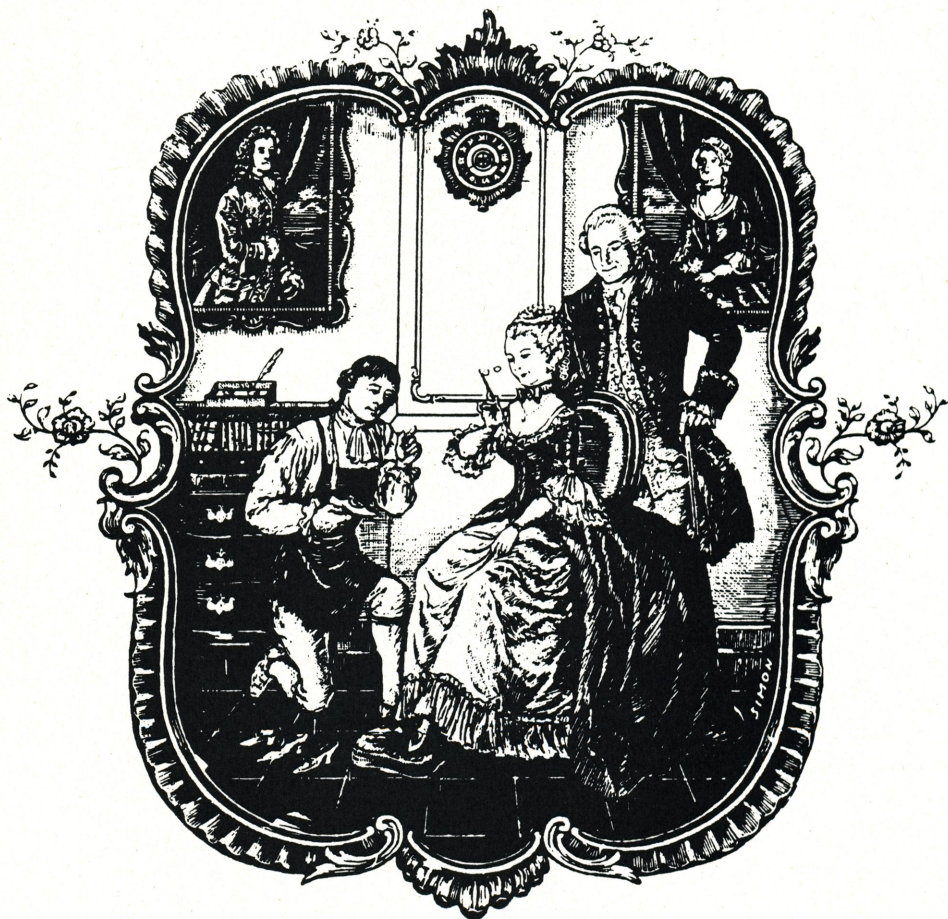
Advertisers

INDEX

Bryan International Travel	48
Basic Skills Sweatshirts	26
Campbell's Soups	OBC
Designs by Margarita	45
Figures	51
First Place Designs	14
Harlick & Co.	10
Ice Cycles	49
Ice Age	51
Jerry's Skating World	7, 9, 11
Jill Trenary Book	28
Klingbeil Shoe Labs	IBC
1990 Nationals, Salt Lake	16
Norbrook Industries	46
Riedell Shoes Inc.	IFC
Show Off Inc.	42
SP-Teri	24
Unicorn Sport	21
Up In the Air, Inc.	8
1989-90 USFSA Rulebook	60-61
William R. Boeck Fine Art	43
World Junior Figure Skating Championships	40

dient to success. This may well be the line of demarcation between the good and the great. There must be perfect coordination in skating, between the mind and the body. How frustrating, not only for the skater but also for the judges and audience, when the mind knows what to do, but the body cannot respond. What can be done about this? We will discuss this very important question next month.


Klingbeil®



CUSTOM MADE SKATING BOOTS

Established Since 1950

Klingbeil Shoe Labs, Inc.

145-01 Jamaica Avenue
Jamaica, New York 11435
(718) 297-6864

Order forms available upon request.
Please write or phone.

Feels so
"M'm! M'm! Good!" [®]



Campbell's

CONDENSED

