

JANUARY 1991

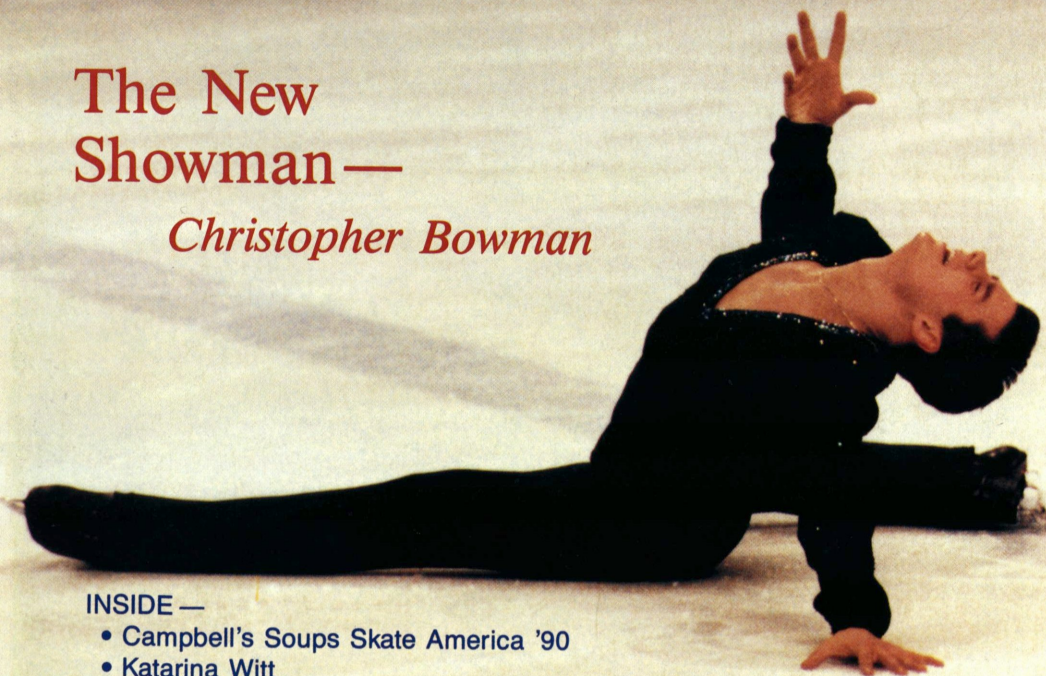
Skating®

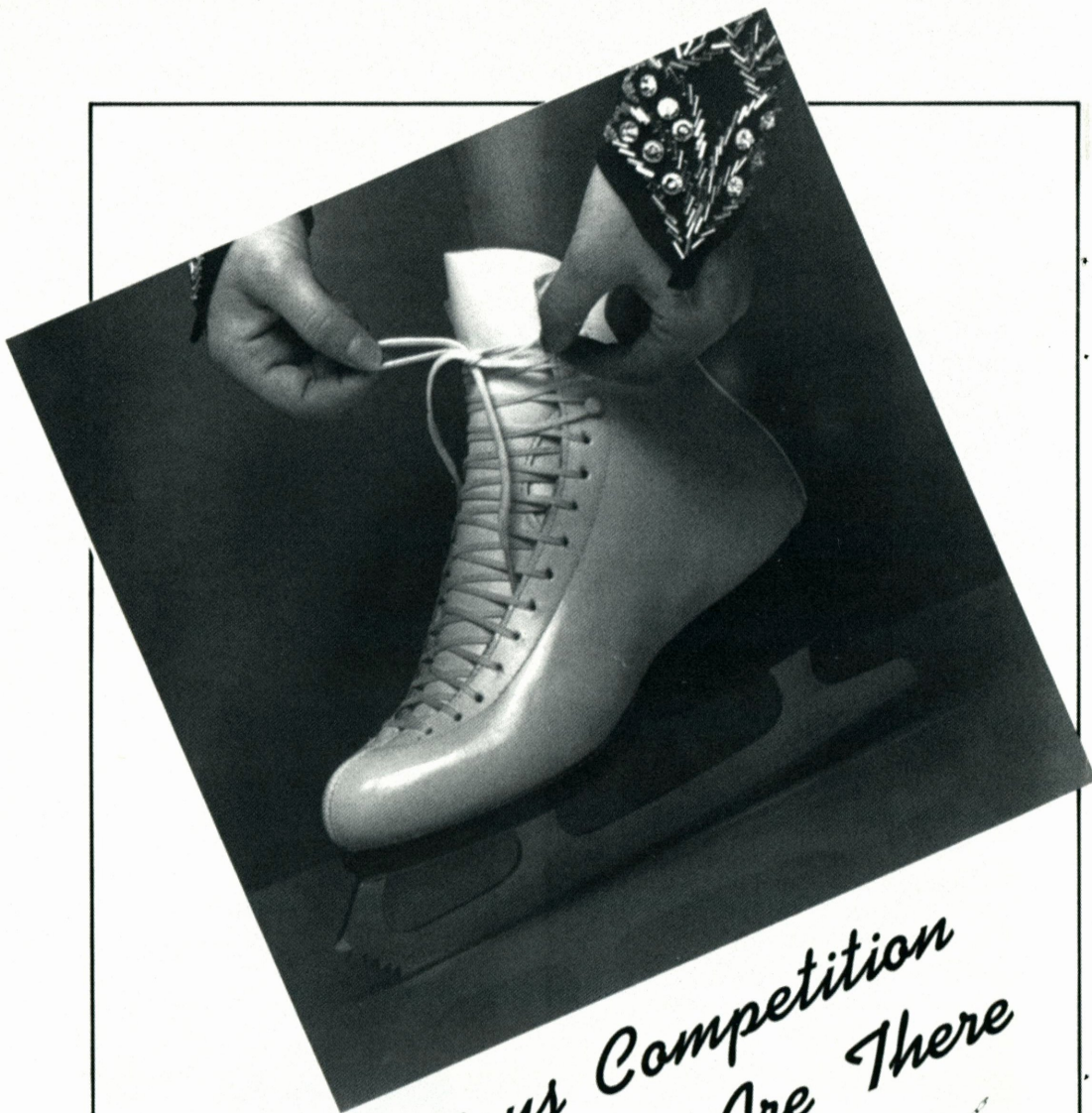
The New Showman—

Christopher Bowman

INSIDE —

- Campbell's Soups Skate America '90
- Katarina Witt
- Minneapolis/'91 Nationals





*For Serious Competition
SP-Teri Boots Are There*

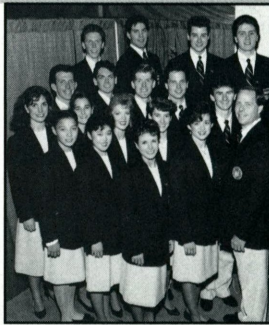
SP-Teri 

436 North Canal Street, Unit #1
South San Francisco
California 94080
415-871-1715



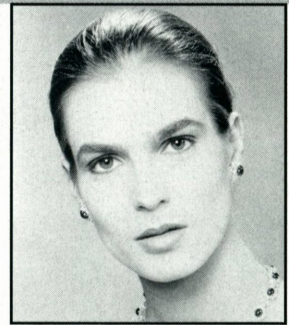
DURANT IMBODEN

page 6



PAUL HARVATH

page 26



MARTHA SWOPE

page 12

Robin Lee	6
A Champion Revisited by Durant Imboden	
Off-Ice Training for Dancers	8
by Joseph Druar	
USFSA Board of Directors Report of Action	11
Katarina Witt	12
She Wants It All by Deb Vestal	
Sun Life Skate Canada International 1990 Results	16
Recognizing 50-Year Judges	21
by Helen McLoraine, Kelly Morris-Bromilow, Shelley and Richard Dalley, and Barbara Holland	
Campbell's Soups Skate America '90	26
Solidifies a few New Faces	
1991 Nationals	38
On "Target" in the Twin Cities! by Jean Adams	

Departments

News Briefs	4	45	Ricky Harris
People and Places	15	47	Calendar of Events
Official Notes	19	49	Classifieds
Memorial Fund Donors	23	52	Laurels
Ice Abroad	24	62	Advertisers' Index
Skate Electric Report			
Autumn Trophy Mezzaluna Results			

Cover: Christopher Bowman finished second at Campbell's Soups Skate America '90 after debuting his new more conservative programs. PHOTO BY PAUL HARVATH

News Briefs

"Skating II" starring Brain Boitano and Katarina Witt, continues the second leg of its national tour this month with performances in Denver (January 4), Salt Lake City (6), Dallas (8), Hershey, Penn. (14), Boston (15), Philadelphia (16), Buffalo, NY (18), and Toronto (20).

The new revue also features Barbara Underhill and Paul Martini, Gary Beacom, Judy Blumberg and Michael Seibert, Alexandr Fadeev, Vladimir Kotin, Elena Valova and Oleg Vasiliev, Caryn Kadavy, Yvonne Gomez, and the new team of Renee Roca and Gorsha Sur.

☆ ☆ ☆

Reigning World Champion Jill Trenary made a special appearance in November with Scott Hamilton's "Stars on Ice" in her hometown of Minneapolis. She replaced Debi Thomas who will perform at all other stops. Working within new ISU rules, this was Trenary's first appearance with a professional touring company.

☆ ☆ ☆

This year's Tournament of Roses parade, January 1, in Pasadena, Calif., features four of America's top skaters. Kristi Yamaguchi, Todd Eldredge, Jeanne Miley and Michael Verlich will be skating atop the FTD float in the parade. The four skaters will be on an ice surface amidst a floral-covered setting.

☆ ☆ ☆

Canadian pop vocalist Gordon Lightfoot donated \$2,500 toward the construction of a new ice arena in Superior, Wisc. He was asked to send an autographed item for auction.

☆ ☆ ☆

After much speculation, it is official that World and Olympic Champions Ekaterina Gordeeva and Sergei Grinkov have retired from amateur competition and will be appearing with the Russian All Stars as well as competing at the World Professional Championships in Landover, Md., and at the Challenge of Champions in Spain. Also turning pro are countrymen Larisa Selezneva and Oleg Makarov. And, with the retirement of Americans Kristi Yamaguchi and Rudi Galindo, this opens up three of the top five slots in the world to new pairs champions at '91 Worlds in Munich.

☆ ☆ ☆

Skating

Editor

KIM MUTCHLER

Managing Editor

IAN A. ANDERSON

Assistant Editor

MARY ANN PURPURA

Contributing Editor

DALE MITCH

Art Director

PAMELA S. GALLOGLY

SKATING and the USFSA neither endorse nor take responsibility for products or services advertised herein. The Publisher reserves the right to reject or cancel any advertising at any time.

SKATING (ISSN: 0037-6132) is published by the United States Figure Skating Association, 20 First Street, Colorado Springs, CO 80906-3697. Phone (719) 635-5200. Subscription rate: United States and Canada, one year **\$15.00 (U.S.)**. Foreign, one year **\$30.00 (U.S.)**. Allow 6-8 weeks delivery of the first issue. Second Class postage paid at Colorado Springs and at additional mailing offices. SKATING is published monthly October through July (10 issues per year). Copyright © 1991 by The United States Figure Skating Association (USFSA), Colorado Springs, CO. SKATING assumes no responsibility for the return of unsolicited manuscripts or photographs. **Postmaster: Send address corrections to SKATING, 20 First Street, Colorado Springs, CO 80906-3697.**

USFSA President

Franklin S. Nelson, M.C., USNR

Executive Director

Ian A. Anderson



SKATING is the official publication of
The United States Figure Skating Association
(USFSA).

Member



International Skating Union



Group A Member



Jill Trenary and Sharon Carz help Notre Dame coach Lou Holtz across the ice during festivities for NutraSweet Ice Skating Month.

Irish ice was smiling when Olympic Gold Medalist Dorothy Hamill and Notre Dame football Coach Lou Holtz teamed up for "Irish On Ice," a figure skating and hockey extravaganza held at the Notre Dame campus as part of the NutraSweet Ice Skating Month festivities.

Hamill and Holtz participated in the exhibition to celebrate NutraSweet Ice Skating Month at a benefit for the Notre Dame varsity hockey program. The event included an appearance by Hamill and performances by 1990 World Champion Jill Trenary, 1989 U.S. Men's Champion Christopher Bowman, two-time National Dance Champions Susan Wynne and Joseph Druar, and 1990 U.S. Pairs Bronze Medalists Sharon Carz and Doug Williams.

The program also featured an intrasquad exhibition hockey game by the Notre Dame varsity team and a segment dur-

ing which the figure skaters and the hockey players shared the ice.

"NutraSweet Ice Skating Month is designed to encourage people of all ages and skills to take to the ice for fun and fitness," said Hamill, who serves as a spokesperson for The NutraSweet Company.

Holtz wasn't the only Irish coach donning his skates. Hamill took on a "coaching" role with Athletic Director Richard Rosenthal, Varsity Hockey Coach Ric Schafer, and the Notre Dame cheerleaders as well.

Following the exhibition, members of the Michiana Figure Skating Club and the Michiana Youth Hockey League took to the ice with the skating celebrities.

One week earlier Hamill and Bowman, performed at the Mt. Vernon Recreation Center in Alexandria, Va., along with 1990 Goodwill Games and Skate America Champion Kristi

Yamaguchi, dancers Wynne and Druar, and top U.S. pairs team Natasha Kuchiki and Todd Sand. Michael and Geremi Weiss, who have gained national acclaim at the Novice and Junior levels, respectively, also performed.

Skating fans were treated to a presentation by the Eisettes, the Skating Club of Northern Virginia's precision skating team, as well as a special dance exhibition by 84-year-old Ritter Shumway and his partner, Harlene Lee. Shumway and Lee travel across the country demonstrating that figure skating can be a lifetime sport. They were joined on the ice by a pair of 12-year-old skaters, Nilam Sanghvi and Benjie Hwang. Sanghvi lives in Rockville, Md., and Hwang is from Pittsburgh.

More than 200 clubs and rinks across the country participated in NutraSweet Ice Skating Month festivities; twice as many as last year.

☆ ☆ ☆

The Indiana/World Skating Academy (I/WSA) hosted top national skaters during the Elite Sports Medicine and Training Camp in September. The camp was held at the Pan American Plaza in downtown Indianapolis.

While at the camp,

Continued on page 17

Robin Lee

A Champion Revisited

by Durant Imboden

It's 7:15 on a Monday evening at Breck Ice Center, the comfortable old rink that is home to the Figure Skating Club of Minneapolis. A grandfatherly gentleman in a tan hip-length coat and a tweed hat leaves his skate guards at the barrier and glides across the ice, ready to teach preliminary figures and freestyle moves to a group of young skaters in the club's Junior Club program.

Few of his pupils are aware that their instructor, Robin Lee, is a five-time U.S. Men's Champion who competed at two World Championships and the 1936 Olympic Winter Games.

"That was a long time ago," Lee said with a laugh when asked to recount his early days as a figure skater in the 1920's. He does admit to winning his first competition, the Minnesota State Tournament, at the age of 10. "I skated against two of my dad's friends. We were outdoors, on natural ice, and the ice was very soft. I weighed less than the two men, so I didn't sink in as much as they did."

His coach in those days was his father, Aynar Lee, a telegrapher for the Northern Pacific Railroad who had taken up figure skating at the suggestion of a co-worker named Chris I. Christenson. (Christenson later went on to become the 1926 U.S. Men's Champion.)

"Pappy was at Nationals in 1922. He was one of the first American competitors to skate in the International Style," Lee recalled. "He coached me through the seventh test and worked with me on my gold."

Most of Lee's skating colleagues were adults—some of them "old-timers" who



DURANT IMBODEN

showed him how to do grapevines, inverted loops, and other traditional American Style figures.

"Along with Cecilia Colledge and Sonja Henie, I was one of the early, young people in the sport," he explained. "When my father coached me at the Minneapolis Arena, the other boys on the ice were sons of men who skated with the club. And when I won the Junior Nationals in Boston in 1932, all the other competitors were in their 20s and 30s."

At age 12, Lee competed at the World Championships in Canada. "My dad couldn't get away, so I took the train to Montreal and returned to St. Paul on my own. An adult skating friend looked after me during the competition."

His early success as a competitor led to an invitation to train with former World Champion Willi Böckl at Madison Square Garden. "I spent the first year with my uncle, a sculptor on Waverly Place in Greenwich Village, and then I

lived another year with my aunt in Brooklyn. I used to do my homework on the subway while commuting from Madison Square to Erasmus High School in Flatbush. Later, I trained with Karl Schäfer at the Chicago Arena. Like Willi Böckl, Karl was a World Champion from Vienna. I'd skated against him, and I started taking lessons from him after he turned professional."

Lee won his first U.S. Senior Men's Championship in New Haven at 15. "I beat Roger Turner, a very good figure skater who had been the champion since 1928."

Despite winning the U.S. men's title five years in a row from 1935 through 1939, Lee had few opportunities for international competition. "We paid for travel out of our own pockets in those days, and there wasn't a lot of money around because of the Depression. I did go to the 1936 World Championships in Paris and the 1936 Olympic Winter Games in Garmisch. I remember seeing Hitler and Goering in the stands, and having to squeeze up against buildings in Garmisch while tanks and groups of German soldiers came up narrow alleys."

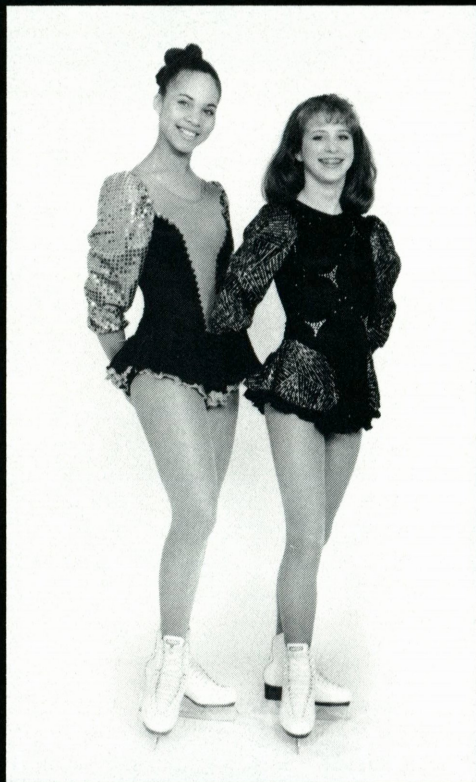
Lee drew the last skating position in a field of 27 competitors in the 1936 Winter Games. "The wind, snow, and ice conditions kept me down to 12th or 13th place," he recalled. "Luck and weather were important back in the days of outdoor ice. You could start a figure at the right speed, and a gust of wind might bring you to a complete stop."

The U.S. skating team had hosted a gathering with their Japanese colleagues at Garmisch, expecting to meet them again in 1940 at Sapporo. However, the world political situation forced a shift of the 1940 Olympic Winter Games to Finland, back to Sapporo, and then to St. Moritz before the Games were finally canceled.

Continued on page 61

Jerry's Skating World Inc.

*Everything for the
Figure Skater*



520 Hood Road
Markham, Ontario
Canada L3R 3K9
Tel: (416) 477-1172
Fax: (416) 477-8859

*A New Decade of
Skating Fashion*

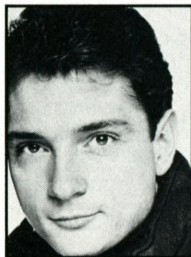
1990-91

Write or call for a
FREE Colour Catalogue



OFF-ICE TRAINING FOR DANCERS

by Joseph Druar



No one can step onto the ice and expect to be a good dancer. Talent can get you just so far. A training schedule suited to the needs of the individual should include on- and off-ice training. The recreational skater may not need such an intense program, but a tester or competitor should carefully explore off-ice training skills.

Stretching and limbering-up before you skate (or exercise) are a must. The warm-up process gets the blood flowing and lessens the risk of muscle injury. A stretching class is a terrific way to limber-up before you skate. If a class is not available, a 15-minute self-stretch will do. Stretching will lengthen muscles and improve extension and line. Flexibility will increase and the body will become more toned.

Ballet is also a great way to warm-up before stretching. The classical lines help with posture, toe point, and balance. A ballet class is also a way to work on body line off-ice; it does not need only to be a warm-up. At least three ballet classes a week are recommended for the serious dancer. It may be difficult at first, but after a few weeks you will feel and see a difference in flexibility, extension, and carriage.

Ballroom dancing can also help improve skills of an ice dancer. On the floor you can work out partner positions and develop a good "framework" between partners. With ballroom dancing, there are not toe picks to catch or blades to trip over, allowing time to really concentrate on body positions. Off-ice dancing can also improve knee bend, rhythm, and timing. Ballroom coaches are known for their wonderful expression in dance. Take advantage of their talents and develop different expressions for different dances, such as the waltz,

Unicorn Sport

The Skater's Edge in Fashion



For Catalog Send \$2.00

(REFUNDABLE WITH PURCHASE)
COMPLIMENTARY COPIES TO DEALERS

1411 N. Sixth Avenue, Knoxville, TN 37917

DIAL (615) 523-EDGE

FAX (615) 522-8560



blues, or tango. Ballroom teachers can also help with introductions and endings for your on-ice programs. Take the things learned in a ballroom lesson and transfer them to the ice.

Many upper level ice dances are very intricate and require good stamina and strength. Weight and conditioning training can improve these aspects for competitors and testers. Weight training at a gym—where you can be supervised—can improve strength in your legs, arms, and stomach.

Leg strength helps with lifts and increases knee bend. Arm strength is also important for lifting in the free dance or the original dance. For the tester, arm strength is needed to hold the framework between partners, especially when doing multiple patterns of a dance. Stomach toning is a necessity for the avid dancer. A strong stomach will take pressure off the back and help avoid back injuries from lifting or bad posture. A weight program and other physical activities are also good for all-around fitness. Cycling and running are good cardiovascular exercises which can improve stamina, leg strength, and breathing.

In the past decade, the VCR has made it possible to watch skating, ballroom dance and other events even when not in attendance. This new tool provides many new opportunities. New moves can be developed and other people's ideas can be expanded upon and made your own. Music and costume ideas are there for the taking with this massive source of input.

The VCR is most valuable, however, when taping your own practices and performances. Through video, you can see your mistakes and improvements in a short period of time. The best way is not always what feels the best to you. What *looks* the best is the most important, and video shows you this. Over a period of time a skater can keep track of his/her own improvement. The videotape allows us to see ourselves as others see us, and the camera does not lie.

Training off-ice in front of a mirror, especially with a partner, can improve timing, line, and general matching. Correction is immediate when seeing something unmatched or that does not look good. Now is the time to work on subtleties and matching elements.

Continued on page 17

JERRY'S SKATING WORLD INC.

PRESENTS

SKATER'S WATCH

(PINK ONLY)

U.S. \$19.95

ADD \$5.00

for postage & handling

TO ORDER:
CALL OR WRITE
(416) 477-1172
520 HOOD RD.
MARKHAM, ONT.
L3R 3K9
CANADA



Harlick

SKATING BOOTS

National, World
and Olympic
Gold Medalist
Brian Boitano
Achieved All
His Skating
Triumphs In
Harlick Boots.

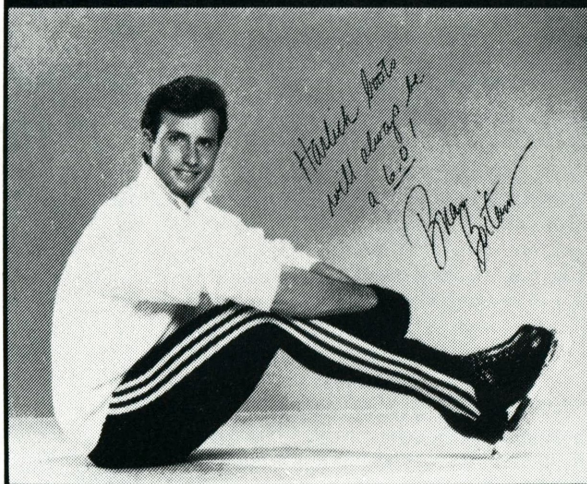


PHOTO BY ROY BLAKEY

*Visit our representatives
at Nationals in Minneapolis
February 1991*



WE ACCEPT MASTERCARD VISA

Please call for the location of your nearest dealer or instructions for ordering direct:

HARLICK & CO. • 893 AMERICAN ST. • SAN CARLOS CA 94070
(415) 593-2093

REPORT OF ACTION
taken by the
USFSA BOARD OF DIRECTORS
at its
ANNUAL MEETING
held in
COLORADO SPRINGS, COLORADO
October 5 & 6, 1990

The written reports of the Officers and Committee Chairs presented to the Annual Meeting of the USFSA Board of Directors are contained in the meeting book. All changes which were made by the Board of Directors in the official rules of the USFSA will be brought before the Governing Council at its Spring meeting and, if ratified, will become effective October 1, 1991, unless otherwise stated.

The Board of Directors took the following actions:

President

1. Approved the Minutes Committee report of the May 1990 Board of Directors Meeting, which was held in Indianapolis, Indiana.

Treasurer

1. Recommended to table action on budget changes until the end of the meeting.
2. Approved engaging the CPA firm of Grant Thornton as auditors for the fiscal year ending June 30, 1991.

Competitions

1. Approved the request for authority to redesignate combined trophies to Free Skating unless otherwise directed by the donor.
2. Authorized the Competitions Committee to get new trophies for Figures.
3. Approved a change in CR 5.03 to permit Rulebook listed Inter-Club Associations (three or more clubs) to host competitions.
4. Approved we adopt the ISU system of accounting procedures for dance competitions as follows:

CD 1 0.2 (10%)
or CD 1 0.4 (20%)
(for events with 1 Compulsory Dance)

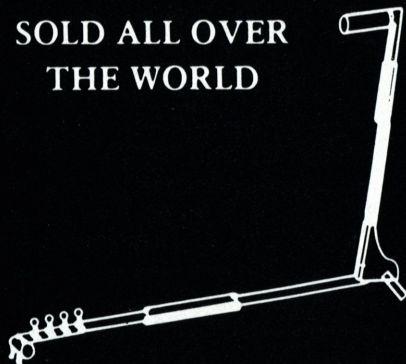
Continued on page 41

SCRIBE

FROM

 **JERRY'S**

**SOLD ALL OVER
THE WORLD**



CARRYING CASE AVAILABLE

This easy to use, compact Figure Skating Scribe is **GUARANTEED FOR 2 YEARS.**

U.S. WHOLESALE DISTRIBUTORS:
MIDWEST SKATE CO. MICHIGAN
LUBIN'S SKATE SUPPLIES, NEW HAMPSHIRE

JERRY'S SKATING WORLD INC.
520 Hood Road, Markham, Ontario
Canada L3R 3K9 (416) 477-1172

KATARINA WITT

She Wants It All

by Deb Vestal

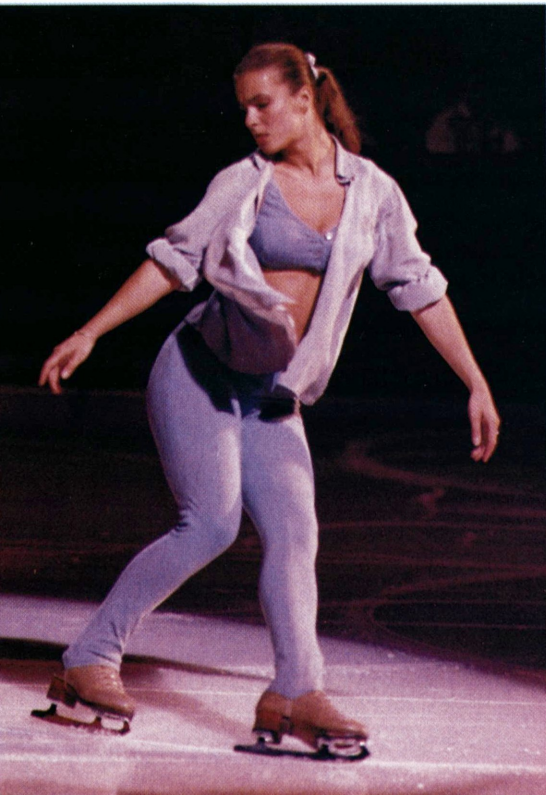
Every movement brings shooting pains. No grimace appears on her face. She tries to block out what she is feeling. After each jump or spin it is back to the boards to unlace the skates. Lace and unlace. Nothing helps. Frustration mounts.

Katarina Witt did not care about the problems back home that day. Her German Democratic Republic is now part of another country, she is a persona non grata in her hometown of Chemnitz, and she is in Sun Valley not with the man of her life but with sister-in-law Anett Potzsch. All she cares about today is the pain she feels every time her precious skates are on her feet. Nothing she does eases the pain.

"I had my skates rebuilt," explains Witt. "I think they put plastic in them. I will have to send them back. I hope they will be okay."

Coach Jutta Mueller walks around the outside of the rink watching what has happened. Witt is now leaning over the railing. Mueller stops where Witt is, strokes Witt's hair, whispers to her, and a smile appears on Witt's face. It is just the inspiration Witt needs. She forgets the pain temporarily and leaves the railing to try again.

Witt first put on a pair of skates at age 5 when her kindergarten class visited the rink in Karl-Marx-Stadt (now renamed Chemnitz). "I made it out to the middle



of the ice and I remember thinking—this is for me,” says Witt.

She begged her mother, a physical therapist, and father, an agricultural co-op manager, for lessons. When her parents finally agreed, she remembers her mother saying that if she fell, she would get her tights wet. “Maybe that is why I learned to skate so well,” she says.

At 10, she began with Mueller and the partnership ended 13 years later with six European championships, four World championships, and two Olympic golds.

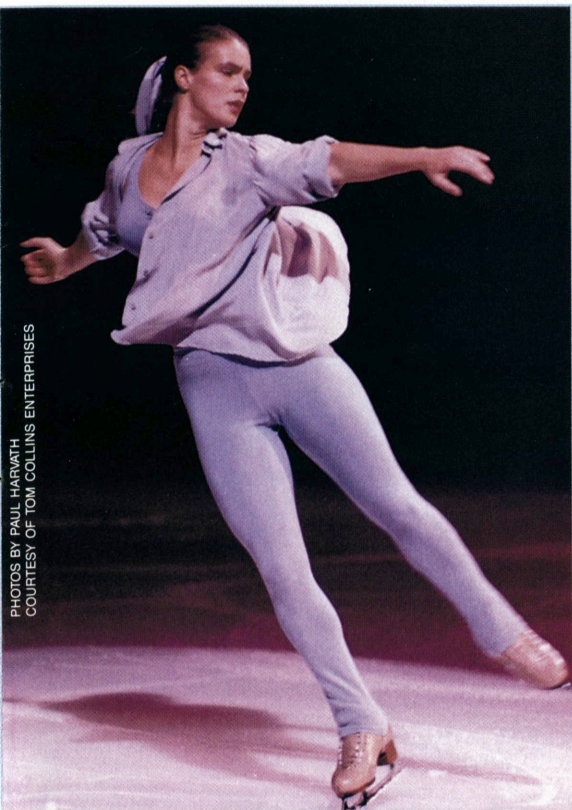
For Mueller, Witt was her entire focus, the entire meaning of her life. “When I was asleep at night I was thinking about new music, new hairstyles, new skating costumes for Kati,” remembers Mueller. But for Witt, Mueller had a special weapon. She put Witt into a character, into a story, and let her play the part. “Katarina can do this well. She feels it. I think this is a new style that Katarina is doing for skating.”

Practice today is not going well for Witt. As much as she tries to get into her characters, she falls out of them just as quickly when her triple jumps end disastrously. Witt has a few words with Mueller and then skates away building up speed for a triple in the corner of the rink. She overrotates the triple and lands on her stomach. She looks over at Mueller and Mueller is giggling from the railing.

It was not always this way with Mueller and Witt. Mueller was the tough taskmaster that did not allow much time for smiling and laughing. No ice cream, no junk food. Mueller knew Witt’s 5’5” frame, not a small or petite one, could not be an ounce overweight. Sex appeal is what would win the judges and the audience. An overweight skater would not be able to do the triple jumps.

Witt learned her lessons well. Although she may eat ice cream more frequently, she, now as then, does what she can to win over an audience. She picks a person out of the audience, preferably a man, and flirts. She waves and smiles and wiggles her body. She plays the part and transforms herself into someone else on the ice. When she is done, she emerges from the part as if she has been in a trance—a little embarrassed, a little surprised that she has drawn so much attention. The triple jumps are just part of the story.

But not today . . . the triple jumps evade Witt. She skates back to where Mueller is standing and cries, “I am falling and falling on my triples.” Mueller steps to the railing a few feet from Witt and says, “You must do this” as she demonstrates the straight line entrance three turn into the triple toe loop. She shows it again, and then with a lift of her free leg and bringing her arms close to her chest, says “Schnell, schnell, schnell (fast, fast, fast).”



PHOTOS BY PAUL HARWATH
COURTESY OF TOM COLLINS ENTERPRISES

Witt skates away, increases her speed, and flies into a triple toe. It is flawless. One perfect triple is not enough. 'Try another' goes through her mind. So she does a double three and instantly tries another triple. The second one ends in a splatted belly flop.

Mueller sees the first but her attention is already changed and she does not see the missed second. Mueller has someone else to think of. Her life with Witt is over now. The 25-year-old Witt must continue on her own.

Mueller has a new star, European Champion Evelyn Grossmann, and Mueller's attentions now turn to her. Like a drill sergeant Mueller barks orders at Grossmann and Grossmann only nods without replying. Witt looks at Mueller and then at Grossmann remembering her own tough training. Grossmann, at Mueller's insistence, tries and falls over and over on her triple flip.

"Ev-e-leen, Ev-e-leen," yells Mueller trying to call Grossmann over to the barrier. "Ka-ti, Ka-ti," mimics Witt in a whisper. Even though it has been a year and a half, Witt's memories of the sharp orders are still ringing in her ears.

But that is not her life any longer. Witt is happy with her new life even though it means months of living out of a suitcase and months away from home. She is still confused and hurt about the trouble and criticism at home. She had put her country on the map by winning two Olympic gold medals. But it seems to her, all the people in what used to be East Germany remember is what she has and what they do not have.

She has a four room apartment when families are forced to live in two or three rooms. She has been able to buy a car in six months when others had to wait 10 years. She has a country home 40 miles north of the city. She has been paid 25,000 East German marks for her win

in the Olympics when workers earned only a fraction of that amount.

What she has she feels she has earned. When the criticisms became more frequent, Witt thought of defecting but rejected that idea knowing the furor would die down and she could again live in peace. "It is my country and my home and my friends. There is no reason for me to leave."

Her new life means that she can use all of the lessons she learned from Mueller and please who she wants to please—currently herself and the audience. Her connection with the audience she explains simply, "With charisma, you either have it or you don't. You can't learn it."

And now her days are filled with airplanes, interviews, and ever so briefly a holiday such as this one in Sun Valley. It is tiring to the once protected Witt but also very exciting. There are so many new things to try, days to be planned just the way she wants them. "When the alarm goes off every morning, I am tired," says Witt. "But if I can play tennis, then after tennis, I am not tired."

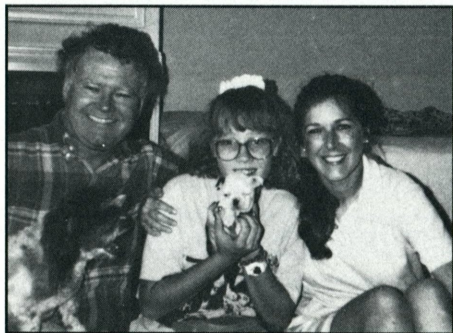
When pressed about her new life, she admits that she would like to make "lots of money." She has taken a step closer to that goal by signing an exclusive contract with Jefferson Pilot Sports and the Professional Skaters Guild of America to skate in a five event series offering total prize money of 2.5 million.

But to Witt, skating is much more than that. "I like the spotlight. I draw my strength from being in front of a crowd because I feel one with them.

"I don't want people to come up to me and say, 'Aren't you the skater who used to be famous.' I am and I will be much more than that."

In Sun Valley, Witt has more than that showing her versatility of putting on many masks. Playing with her spectators, she vamped from one end of the ice

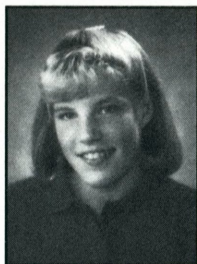
Continued on page 43



Dr. Hugh, Charity, and Mrs. Connie Graham

NEW FAMILY MEMBER

Twelve-year-old Charity Graham recently joined the Graham family. **Past USFSA President Dr. Hugh C. Graham, Jr.**, and his wife Connie, adopted Charity; all reside in Tulsa, Okla., where he is in private practice in pediatrics.



Crissy Giles

NO BLACK MARKS

Rochester Figure Skating Club member **Crissy Giles**, Rochester, Minn., passed her eighth figure test in October.

Although she is not an elite-level competitor, what makes this 17-year-old high school senior special is that she has passed every test on her first try, and passed every test by all three judges.

Giles began skating in 1977 at age 4 and passed her first test in 1979. "Keeping my skating in balance with many other activities has helped to maintain my interest. Each test was a challenge and after passing each one, I was rewarded for many hours of hard work."

People

AND PLACES

Giles will attend the University of Minnesota-Duluth next fall and plans to teach younger skaters in her spare time.

HEADQUARTERS

Beth Davis joined the Headquarters' staff as Curator of the World Figure Skating Hall of Fame and Museum, replacing Pat Cataldi who retired. Davis joined the Museum following four years as Executive Director of the Muncie Children's Museum in Muncie, Ind., and many other positions in education development. She holds a Bachelor of Fine and Applied Arts degree from the University of Illinois, and a Masters Degree from Western Illinois University. Davis and her husband, Jeff, and 10-year-old daughter Erin, recently moved to Colorado Springs where her husband is Assistant Director for Operations at University Center at the University of Colorado, Colorado Springs.

MARRIAGES

Jayne Torvill, of the renowned British dance duo of Jayne Torvill and Christopher Dean, four-time World champions and '84 Olympic gold medalists, was recently wed. She married Phil Christensen, a sound engineer for Phil Collins, in a private ceremony September 21, in Sacramento, Calif.

BEREAVEMENTS

Karen Gallaway, Nevada States Games Chairman, passed away recently. Along with her newly acquired duties as States Games chairman, Gallaway was chairman of the 1988 Precision Team Skating Championships held in Reno, Nev. Her dedication will be greatly missed by the skating community.

Continued on page 19

SUN LIFE SKATE CANADA INTERNATIONAL 1990
LETHBRIDGE, ALBERTA, CANADA
OCTOBER 23-28, 1990

MEN

JUDGES: 1–Mieko Fujimori, Japan; 2–Ute Villwock, Federal Republic of Germany; 3–Josette Betsch, France; **4–Roger Glenn, USA**; 5–Sally Rehorick, Canada; 6–Donald McKnight, Australia; 7–Halina Poltorak, Poland. SUBSTITUTE JUDGE: Prisca Binz-Moser, Switzerland. REFEREE: Joseph Dedic, ISU. ASSISTANT REFEREE: Jean Matthews, Canada.

OP	FS		PLACES
1.	2	1 Kurt Browning, Canada	2.0
2.	1	2 Grzegorz Filipowski, Poland	2.5
3.	3	3 Mark Mitchell, USA	4.5
4.	4	5 Norman Proft, Canada	7.0
5.	7	4 Daniel Weiss, Federal Republic of Germany	7.5
6.	5	6 Cameron Medhurst, Australia	8.5
7.	6	7 Oliver Hoener, Switzerland	10.0
8.	8	8 Dmitri Gromov, USSR	12.0
9.	9	9 Nicolas Petorin, France	13.5
10.	10	10 Masakazu Kagiyama, Japan	15.0

LADIES

JUDGES: 1–Marianne Overby, Sweden; 2–Noriko Shirota, Japan; 3–Jean Senft, Canada; 4–Alexander Lakernik, USSR; 5–Iris Paul, Federal Republic of Germany; 6–Linda Petersen, Denmark; **7–Ida Tateoka, USA**. SUBSTITUTE JUDGE: Josette Betsch, France. REFEREE: Walburga Grimm, ISU. ASSISTANT REFEREE: John McKay, Canada.

OP	FS		PLACES
1.	3	1 Josee Chouinard, Canada	2.5
2.	1	2 Lisa Sargeant, Canada	2.5
3.	2	3 Holly Cook, USA	4.0
4.	5	4 Yuka Sato, Japan	6.5
5.	7	5 Junko Yaginuma, Japan	8.5
6.	6	6 Tanja Krienke, Federal Republic of Germany	9.0
7.	4	7 Tatiana Rachkova, USSR	9.0
8.	10	8 Anisette Torp-Lind, Denmark	13.0
9.	11	9 Helene Persson, Sweden	14.5
10.	9	10 Claudia Unger, Federal Republic of Germany	14.5
11.	8	11 Sandra Garde, France	15.0
12.	12	12 Beatrice Gelmini, Italy	18.0

PAIRS

JUDGES: 1–Donald McKnight, Australia; **2–Roger Glenn, USA**; 3–Sally Rehorick, Canada; 4–Iris Paul, Federal Republic of Germany; 5–Noriko Shirota, Japan; 6–Vanessa Riley, Great Britain; 7–Alexander Lakernik, USSR. SUBSTITUTE JUDGE: Linda Petersen, Denmark. REFEREE: Donald Gilchrist, ISU. ASSISTANT REFEREE: Sally Stapleford, ISU.

OP	FS		PLACES
1.	1	1 Isabelle Brasseur & Lloyd Eisler, Canada	1.5
2.	3	2 Eugenia Shishkova & Vadim Naumov, USSR	3.5
3.	2	3 Michelle Menzies & Kevin Wheeler, Canada	4.0
4.	6	4 Jennifer Heurlin & John Frederiksen, USA	7.0
5.	4	5 Inez Mueller & Ingo Steuer, Federal Republic of Germany	7.0
6.	7	6 Danielle Carr & Steven Carr, Australia	9.5
7.	5	7 Elaine Asanakis & Joel McKeever, USA	9.5
8.	9	8 Anna Gorecki & Arkadius Gorecki, Federal Republic of Germany	12.5
9.	10	9 Anna Tabacchi & Massimu Salvade, Italy	14.0
		Catherine Barker & Michael Aldred, Great Britain, withdrew	

DANCE

JUDGES: 1-Prisca Binz-Moser, Switzerland; 2-Monika Zeidler, Federal Republic of Germany; 3-Catherine Robinson, Great Britain; 4-Halina Poltorak, Poland; 5-Cia Bordogna, Italy; 6-William McLachlan, Canada; 7-Anna Sharashkina, USSR. SUBSTITUTE JUDGE: **Ida Tateoka, USA**. REFEREE: Wolfgang Kunz, ISU. ASSISTANT REFEREE: Ann Shaw, Canada.

	D1	D2	OD	FD		PLACES
1.	1	1	1	1	Jacqueline Petr & Mark Janoschak, Canada	2.0
2.	2	2	2	2	Irina Romanova & Igor Iaroshenko, USSR	4.0
3.	4	3	4	3	Malgorgata Grajcar & Andrzej Dostatni, Poland	6.8
4.	3	4	3	4	Anna Croci & Luca Mantovani, Italy	7.2
5.	5	5	5	5	Ann Hall & Jason Blomfield, Great Britain	10.0
6.	7	8	7	6	Jennifer Nocito & Brad Hopkins, Canada	13.2
7.	6	7	6	8	Rachel Mayer & Peter Breen, USA	14.2
8.	9	10	9	7	Diane Gerencser & Bernard Columberg, Switzerland	16.2
9.	8	6	8	10	Petra Zietemann & Frank Ladd-Oshiro, Federal Republic of Germany	17.6
10.	10	9	10	9	Kaoru Takino & Kenji Takino, Japan	18.8

MEN'S INTERPRETIVE

JUDGES: 1-Prisca Binz-Moser, Switzerland; 2-Ann Shaw, Canada; **3-Roger Glenn, USA**; 4-Anna Sharashkina, USSR; 5-Vanessa Riley, Great Britain; 6-Donald McKnight, Australia; 7-Ute Villwock, Federal Republic of Germany. SUBSTITUTE JUDGE: Sally Rehorick, Canada. REFEREE: Sally Stapleford, ISU. ASSISTANT REFEREE: Dennis McFarlane, Canada.

	PLACES
1. Steven Belanger, Canada	1.0
2. Daniel Weiss, Federal Republic of Germany	2.0
3. Cameron Medhurst, Australia	3.0
4. Oliver Hoener, Switzerland	4.0
5. Larry Holliday, USA	5.0
6. Dmitri Gromov, USSR	6.0

LADIES' INTERPRETIVE

JUDGES: 1-Mieko Fujimori, Japan; 2-Linda Petersen, Denmark; 3-Marianne Overby, Sweden; **4-Ida Tateoka, USA**; 5-Anna Sharashkina, USSR; 6-Josette Betsch, France; 7-Dennis McFarlane, Canada. SUBSTITUTE JUDGE: Catherine Robinson, Great Britain. REFEREE: Sally Stapleford, ISU. ASSISTANT REFEREE: Walburga Grimm, ISU.

	PLACES
1. Joanna Ng, USA	1.0
2. Trudy Treslan, Canada	2.0
3. Anisette Torp-Lind, Denmark	3.0
4. Sandra Garde, France	4.0
5. Claudia Unger, Federal Republic of Germany	5.0
6. Helene Persson, Sweden	6.0
7. Tatiana Rachkova, USSR	7.0
8. Yuka Sato, Japan	8.0

FOURS

JUDGES: **1-Roger Glenn, USA**; 2-Donald McKnight, Australia; 3-Alexander Lakernik, USSR; 4-Josette Betsch, France; 5-Jean Serfat, Canada; 6-Monika Zeidler, Federal Republic of Germany; 7-Vanessa Riley, Great Britain. SUBSTITUTE JUDGE: Prisca Binz-Moser, Switzerland. REFEREE: Donald Gilchrist, ISU. ASSISTANT REFEREE: John McKay, Canada.

	PLACES
1. Ball/Brasseur & Bombardier/Eisler, Canada	1.0
2. Hough/Menzies & Ladret/Wheeler, Canada	2.0
3. Asanakis/Urbanski & Marval/McKeever	3.0
4. Gorecki/Jares & Gorecki/Weigel, Federal Republic of Germany	4.0

Off-Ice Training

Continued from page 9

Working on new moves is made easier with instant correction.

These are just some suggestions of how to use off-ice training to your advantage. Make it fit your needs. There are many more ideas out there for off-ice work. Find those that are best for you and keep improving.

Joseph Druar was 1989 and 1990 U.S. Senior Dance champion with partner Susan Wynne, a member of the 1988 Olympic Team, four-time World Team member, and 1990 Goodwill Games bronze medalist. He and Susan are currently touring with "Stars on Ice."

News Briefs

Continued from page 5

skaters were examined by Olympic team physiologists, doctors, and members of the I/WSA Sports Medicine staff. Tests were performed to measure strength and flexibility, jumping ability, speed, and endurance. Specialists on nutrition and psychology were also available, as well as coaches, including Don Laws, who analyzed jump, spin, and lift technique.

The Camp culminated with an exhibition by the skaters that was open to the public and free of charge.

The Elite Sports Medicine and Training Camp was preceded by a combined Figure Skating Coaches Education Program and USFSA Judges school.





**1991 United States
Figure Skating
Championships
Twin Cities, Minnesota**



Produced as a Holiday greeting and notecard by event co-sponsor Courage Center to commemorate the 1991 Figure Skating Championships, "Skaters Delight" includes this greeting: *This time of year when the air's full of cheer, and the fields are covered with snow, what could be better in this chilly weather than to send warmest greetings to all those we know!* Notecard without greeting also available. Size 5"x7 1/16". 10 cards and envelopes per box.

	PRICE	QUANTITY	TOTAL
	(Including Tax)		
Logo Oversized Sweat Shirt (white)			\$
Adult Small	\$24.00	_____	_____
Adult Medium	24.00	_____	_____
Adult Large	24.00	_____	_____
Adult X-Large	24.00	_____	_____
Embroidered Logo Sweat Shirt (gray)			
2" x 4" Left chest pocket			
Adult Medium	38.00	_____	_____
Adult Large	38.00	_____	_____
Adult X-Large	38.00	_____	_____
Turtleneck (white - 100% cotton - Logo at neck)			
Adult Small	24.00	_____	_____
Adult Medium	24.00	_____	_____
Adult Large	24.00	_____	_____
Adult X-Large	24.00	_____	_____
Black Satin Logo Baseball Jacket			
Adult Small	50.00	_____	_____
Adult Medium	50.00	_____	_____
Adult Large	50.00	_____	_____
Adult X-Large	50.00	_____	_____
Canvas Tote Bag (15"x20"x5")	14.00	_____	_____
Cloisonne Pin			
Logo	5.00	_____	_____
Minnesota Logo	5.00	_____	_____
Patch (Logo - 2"x4")	5.00	_____	_____
Shaeffer Pen (Logo)	3.00	_____	_____
"Skaters Delight" with Greeting	6.00	_____	_____
"Skaters Delight" Notecards	6.00	_____	_____

+ P&H _____

TOTAL _____

Name and Phone #

Street Address

City, State, Zip

Make check or money order payable to "1991 Nationals Souvenirs", c/o Jan Lynn at 20200 Oxboro Lane North, Marine on St. Croix, MN 55047, (612) 433-3096.

Postage and handling (allow 3-4 weeks for delivery):
\$0 to \$21 - add \$2.50
\$22 to \$44 - add \$3.50
\$45 to \$66 - add \$5.50
\$66 and over - add \$7

1991 NATIONAL JUVENILE AND INTERMEDIATE CHAMPIONSHIPS

At its annual October meeting in Colorado Springs, the Board of Directors of the United States Figure Skating Association approved the application of the New York Regional Council of Figure Skating Clubs to host the first National Juvenile and Intermediate Figure Skating Championships in the Spring of 1991.

The Council plans to host the competition April 19-20, at the Hidden Pond Park Ice Rink in Hauppauge, New York 11788. The following events are planned: Intermediate Men and Ladies Free Skating, Intermediate Men and Ladies Figures, Intermediate Pairs, Intermediate Dance, and Juvenile Boys and Girls Free Skating.

Eligibility will be based on the placement of Intermediates at their respective Sectionals and the placement of Juveniles in each of their elimination round groups at Regionals. Test levels and age at the closing date of entries for the preceding Regionals will govern; skaters will not become eligible by continuing to "test up" through the winter.

The competition will be conducted on an experimental basis this year. If it is successful, plans include to open bidding for the 1992 and 1993 competitions, next summer.

—John F. LeFevre

Chairman, Competitions Committee

JUDGES' APPOINTMENTS

LOW TEST

Lynn Goldman, Austin FSC

INTERMEDIATE TEST

John Gronski, Penguin FSC

People and Places

Continued from page 15

Kenneth A. Cool died September 19, in Cleveland. He is the husband of Kim Cool, USFSA gold figure and senior competition judge. Mr. Cool was active in curling at the Cleveland Skating Club and Mayfield Country Club and won championships in the early 1970's.

He is survived by his wife, Kim, and his

HIGH TEST

Alice Bohr, Plymouth FSC

Vicki Merten, Hickory Hill FSC

BRONZE DANCE TEST

Cynthia Flynn, SC of Hartford

Nancy Jehl, SC of Wilmington

Charles LeClair, SC of Maine

Martin Orisek, Windy City FSC

Shawn Rettstatt, Broadmoor SC

Jan Serafine, DuPage FSC

Kathy Wilcox, Potsdam FSC

SILVER DANCE TEST

Cathy Clarry, Greater Milwaukee FSC

Joyce Komperda, Greater Milwaukee FSC

JUNIOR COMPETITION

Kennard Taylor, Los Angeles FSC

INTERMEDIATE DANCE COMPETITION

Jan Serafine, DuPage FSC

NOVICE DANCE COMPETITION

Joyce Komperda, Greater Milwaukee FSC

JUNIOR DANCE COMPETITION

Jim Millns, Orlando FSC

REFEREES' APPOINTMENTS

Jack Curtis, Los Angeles FSC

daughter, Heidi, both of University Heights; and two sisters.

Twenty-five-year-old **Deborah L. Cann**, granddaughter of seven-time U.S. Men's Champion Roger Turner, died recently.

Originally from Connecticut, Cann moved to Massachusetts where she was a financial analyst and a literacy volunteer. She received a degree in economics from the University of Connecticut in 1987.

DON'T HIT
THE ICE
WITHOUT IT...™

IMPACTWEAR™



Protective skating
tights from

Höljen

inc.

- **IMPACTWEAR** significantly reduces body shock when falling on ice.
- These stylish lycra® skating tights are designed with a special padding in the hip and tailbone area to protect you when you fall, and to give you more confidence when attempting difficult jumps.
- **IMPACTWEAR** is comfortable, washer and dryer safe, and comes in seven designer colors in children's through adult sizes. Priced from \$42 per pair.
- Next time you take a spill on the ice, fall with **IMPACTWEAR**, the protective skating apparel endorsed by orthopedic specialists.
- For more information, and to order, call 1-303-223-8576,
or write: **höljen, inc.** • 749 S. Lemay • Suite A3-210 • Fort Collins, CO 80524
(Inquiries from pro shops welcome)

© 1990 höljen, inc. all rights reserved
patent pending

RECOGNIZING 50-YEAR JUDGES

Editor's note: At the May 1990 Governing Council in Indianapolis, six officials were honored for serving the USFSA for 50 years as judges. They are (1989) Vernon Campbell, Mary Louise Wright, (1990) Dorothy Burkholder, LeRoy H. Lindgren, Allen Lomax, and Sally Rial. The following includes memories and experiences as recounted by Dorothy Burkholder, LeRoy Lindgren, and Allen Lomax. We will include the other three in an upcoming issue. Authors for this section include Helen McLoraine, Colorado SC; Kelley Morris-Bromilow, Columbus FSC; Shelley and Richard Dalley, Detroit, Mich.; and Barbara Holland, Columbus FSC.



DOROTHY BURKHOLDER

Dorothy Burkholder became a figure and dance judge in 1940, a national judge in 1957, and a world judge in 1971. In dance she received national and international appointments in 1954 and 1957, respectively. She is a member and former president of the Chicago FSC, and she is still busy judging tests and competitions throughout the Midwest.

When asked how many and which competitions she judged, she replied, "I

never kept a record, but I can recall at least 12 Nationals, four North Americans, one World, as well as Richmond Trophy, Skate Canada, St. Gervais and Oberstdorf." She has also judged all but two Regionals since they were added to the competition structure in the 1960s.

Her personal competitive career is impressive. It includes four Sectionals and two Nationals; she was also Midwest dance champion in 1942.

Burkholder recalled how she learned the gold dances — by studying the diagrams, stepping out sections on the floor and then on the ice. At competitions it was interesting to see how different sections of the country would interpret the diagrams and descriptions independently.

Burkholder fondly remembered when she used to compete and those years when, at the first freeze of the winter, she and her partner would drive to a hidden lake in the forest, back the car down close to the lake and attach a heavy rope to the bumper — just in case anyone fell through the ice! Because the ice was clear and dark, they could see all the tracings from their figures and dances.

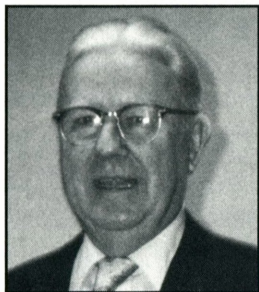
She also recalled the year when the club gave a benefit performance — the 1941 club carnival Fantasia with the entire cast transported by train, in private sleeping cars to Michigan. Throughout that weekend fun was had by all and she touchingly added "those days are gone forever."

Ask younger judges, or ask anyone who has had the pleasure of associating with Dorothy Burkholder throughout the years, and they will all probably tell you that she has always supported and helped

them in their skating and judging. Her reputation as a delightful, caring traveling companion and her radiant smile, are well known.

Burkholder has many prized memories of her experiences throughout the years in competitions and in judging. "It is a wonderful sport!" she said fondly.

She is certainly one of skating's greatest enthusiasts and ambassadors.



LeROY H. LINDGREN

LeRoy H. Lindgren, from Winchester, Mass., was also one of the distinguished honorees. He became a judge in 1939 and today is a high figure and freestyle judge and a silver dance test judge. He was an avid competitor in both singles and dance with partner Glenn Garrett. She later became Glenn Lindgren — a judge of 30 years herself.

The Chicago FSC is where LeRoy and Glenn started. He trained with Bill Swallender in dance, Eddie Scholdan in freestyle, and Lewis Elkin in figures. They skated many exhibitions with Bobby Specht and Skip Baxter. With fondness they, too, recalled the 1941 club carnival.

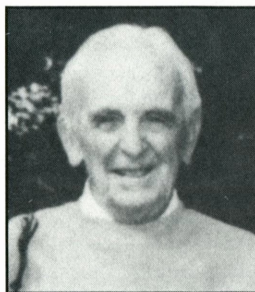
As the honorees gathered several times during the Governing Council, it was evident they were themselves celebrating 50 years of wonderful memories. The stories and pictures passed around the table painted beautiful pictures of how things used to be. To break the monotony of hard training in Chicago, LeRoy remembered along with Charlie McCarthy, Alex Krupy, and Dorothy

Burkholder, how they could not wait for early spring freezes to skate on a local lagoon. The "black ice" gave them a unique opportunity to skate on mirror-image conditions. On another occasion he recalled performing in the flooded courtyard of the Chicago Children's Hospital in a club exhibition facing 10 floors of patients peering out their windows.

From Chicago, LeRoy moved on to skate with many clubs: Southern New England FSC, Pittsburgh SC, Penguin SC, New Haven SC, and SC of Boston. He is now a member of the North Shore SC.

Both LeRoy and Glenn chuckled over various conditions faced in test sessions over the years. At one New Hampshire session, on a natural outdoor rink, temperatures were -15 degrees, and later, an indoor session was -10 degrees. "Skaters are truly dedicated athletes," he remarked.

Glenn and LeRoy have a combined 80 years of dedication to skating. They have been listed among the most active judges for several years. Getting to know this wonderful couple and sharing their memories was a special experience.



ALLEN LOMAX

What direction is the beautiful art of figure skating headed? What damage will be done with the exclusion of school figures? These are the concerns of Allen Lomax.

Lomax is not a boastful man. Rather he is reserved and dignified, a role model for the younger generation. "I did it because I wanted to," he simply stated

Memorial Fund

DONORS

when asked about getting involved in skating. "It's an exciting sport, but it's just too bad people don't know more about the real enjoyment of figure skating; the pure joy of gliding about the ice and sharing the activity with others."

Allen began his love affair with the sport while in his 20s. A graduate from Harvard Business School, he went on to become co-founder of the David L. Babson Co., an investment counseling firm in Cleveland. There he attended a Canadian figure skating exhibition that captured his heart.

With this new-found love, Lomax was hooked for life. Always wanting to learn more so that he could contribute more, he took a deep interest in all aspects of the sport: as a skater, a judge, and an officer of several clubs. Being one of the founders of the Cleveland SC brings out a special pride. Many of his fondest memories are those of the family skate sessions at the Club.

During World War II Lomax was stationed in Philadelphia with the Navy and remembers judging Dick Button's seventh figure test. Following a move to Detroit he was a founder of the Detroit SC and the Grosse Pointe FSC. When not in an ice rink, he may be found golfing, bowling, or with his wife Celia enjoying their two daughters and three granddaughters.

As President of the Grosse Pointe FSC he continues to give his heart to the sport. He can always find time to help youngsters preparing for upcoming tests and competitions. He well remembered the difficulty and discipline required on patch; he took great pride in perfecting his own school figures. The paragraph loop was his favorite.

A humble man, Lomax does not live in the past but is concerned about the future. His hope is that the new generation keeps skating an art in order to ensure that the sport remains a classic for all time.

The USFSA Memorial Fund gratefully acknowledges the following contributors for the month of October 1990.

IN MEMORY OF

Mr. Bryan: Marilyn Goldstein
Kenneth A. Cool, Jr.: Mr. & Mrs. Charles DeMore, Mr. & Mrs. Fred LeFevre, Kathy Slack
Michael Fiore: Mr. & Mrs. Elliott Garr, Lyn & Sam Nordan
Karen Gallaway: Mr. & Mrs. William Munns
Janet Graugard: Mrs. Joanne Schiller
Henry Hout: Twin City FSA
Roy Lacy: Marisa Lee
Kenneth Lohmeyer: Brentwood SC
Albert Moll: Pauline & Joe Johnson
Katrine Neil: Mr. & Mrs. Wayne Jesel, Florence Kern
Gordon Stene: Bob & Pat Cataldi
Georg Von Birgelen: Haley Brown
Dr. Sam Weinstock: Hickory Hill FSC

IN HONOR OF

1990 USA World Team: Ms. Bonnie Graham
1990-91 Century Club: Mr. & Mrs. Harry Meiss
1991 U.S. Figure Skating World Team: Debi Thomas
World Team: Denise Rover
Sandra & Debra Bangasser: Mr. & Mrs. Ronald Bangasser
Elena Bechke: Ms. Helen Moore
Brian Boitano: Loretta D'Erano and Catherine Filipowicz
Tim Brown: Helen Clynych
John Carrell: Helen Clynych
Hans Gerschwiler: South Mountain FSC
Scott Hamilton: Mr. & Mrs. Harry Meiss
Stephanie Lynn Keil: Ann Arbor FSC
Natasha & Tamara Kuchiki: Helen Moore
Erin & Colin Magee: Mr. & Mrs. Raymond Magee
Franklin S. Nelson: Jacque Witt
Denis Petrov: Helen Moore
Todd Sand: Helen Moore
Arlene Sibrell: Moras Shubert



ABROAD

SKATEELECTRIC

UK INTERNATIONAL

by Howard Bass

Holly Cook, world bronze medalist at Halifax, Nova Scotia, was a convincing winner at this year's Skate Electric UK International, October 1-4 in Richmond, Great Britain. The now traditional season opener was held again on London's Thames-side rink at Richmond. Fifty skaters from 12 countries competed in four events.

Cook's style was evident throughout her program. This graceful young lady from Bountiful, Utah, never stepped out of place in any of the eight required elements, but confessed afterwards that she had difficulty adjusting her spiral sequence to the rink's somewhat narrow surface.

Surya Bonaly, the flamboyant and highly flexible French skater, finished second in the original program, ahead of Canadian Lisa Sargeant. Sargeant defeated her in the free, however, when Bonaly's unorthodox but powerful jumping style earned significantly higher marks for technique than for artistry.

In striking contrast of style, Cook, coached in Salt Lake City by Kris Sherard, jumped with calm assurance and her finesse, especially in her arm movements, was admired by many. All three ladies gave the impression that they were not prepared to take undue risks so early in the season.

The next highest placed American performer was Erik Larson, who finished third in a seesawing men's event. Canada's Michael Slipchuk looked as though he would win the contest after leading the original with a program marred only by a fall on a triple Axel.

Larson was next best in this section, followed by Ronny Winkler, representing East Germany, and another Canadian, Norman Proft.

Four great triples and some dazzling spins enabled Proft to overtake the three men above him for a surprise victory, helped by a typical early-season spate of jumping errors from his competition. Proft trains with Michael Jiranek at Edmonton, Alberta.

This competition made history, not only as the first held since compulsory figures were dropped, but it's also the last of its kind with separate entries from East and West Germany.

Winkler, finished second ahead of Larson with Daniel Weiss, the last champion of West Germany, in sixth place.

The Canadians, Christine Hough and Doug Ladret, trained by Kerry Leitch at Kitchener, Ontario, passed the Czechs, Radka Kovarikova and Rene Novotny, to win the pairs. The Soviets, Elena Nikonova and Nikolai Apter, also leapfrogged the Czechs for the second spot. Americans Sharon Carz and Doug Williams from California, unexpected seventh, were well below their best.

Ladret fell in a trivial move and Hough's landing from a triple twist was slightly suspect, but these lapses were amply atoned by a brilliantly devised program, dramatically choreographed to music from the *Planets* suite and from *Don Quixote*.

The Italians, Stefania Calegari and Pasquale Camerlengo, who placed 10th at Halifax, won the ice dance after trailing the



Pictured above is the U.S. contingent to Skate Electric.

French runners-up, Sophie Moniotte and Pascal Lavanchy, who underlined a national upsurge in this division. Britain's Lisa Bradby and Alan Towers ended third, above Americans Elizabeth Punsalan and Jerod Swallow.

Calegari and Camerlengo, coached in Milan by Britain's Michael Webster, sealed

their success with a free dance effectively interpreted to Andrew Lloyd-Weber's *Phantom of the Opera*.

Howard Bass has covered the sport of figure skating for Skating magazine for more than 20 years. He has also written several books on the sport.

AUTUMN TROPHY MEZZALUNA
MENTANA-ROME, ITALY
OCTOBER 25-27, 1990



DANCE

JUDGES: 1-Maira Abasova, USSR; 2-Maria Miller, Poland; 3-Elisabeth Clark, Canada; 4-Mirelle Dubois, France; 5-Svetla Krejcirova, Czechoslovakia; 6-Christel Heidler, Austria; 7-Vinicio Toncelli, Italy. SUBSTITUTE JUDGE: **Jean Robinson, USA**. REFEREE: Olga Gilar dini, ISU. ASSISTANT REFEREE: Sergio Pirelli, ISU.

	CD1	CD2	OD	FD		PLACES
1.	1	1	1	1	Marina Morel & Gwendal Peizerat, France	2.0
2.	2	2	2	2	Elena Kustorova & Sergei Romashkin, USSR	4.0
3.	3	3	3	3	Amelie Dion & Alexandre Alain, Canada	6.0
4.	4	4	4	4	Virginie Vuillemin & Remi Jaquemard, France	8.0
5.	8	5	5	5	Masha Soucy & Louis-Philippe Poirier, Canada	10.6
6.	5	6	6	6	Barbara Fusarpoli & Matteo Bonfá, Italy	11.8
7.	6	7	7	8	Kimberly Callahan & Robert Peal, USA	14.8
8.	10	9	8	7	Larissa Maritzczak & Thor-Andrij Maritzczak, Australia	15.6
9.	9	8	10	9	Agnieszka Domanska & Marcin Glowacki, Poland	18.4
10.	7	10	9	10	Viera Poracova & Pavol Porac, Czechoslovakia	18.8
11.	13	12	11	11	Sylwia Nowak & Sebastian Kolasinski, Poland	22.6
12.	11	11	12	12	Radka Chrobokova & Tomas Strondala, Czechoslovakia	23.6
13.	12	13	12	13	Claudia Frigoli & Maurizio Margaglio, Italy	25.2
14.	14	14	14	14	Tamara Goldin & Michele Mondino, Italy	28.0
15.	15	15	15	15	Clarissa Meazzi & Giancarlo Semplicini, Italy	30.0

Skate America Team



PAUL HARWATH

Campbell's® Soups

SKATE AMERICA '90

Solidifies a Few New Faces



It seemed fitting for the 1990 Skate America competition to be the first figure skating competition with one German team competing. Just one year earlier, members of the United States International Figure Skating Team were in East Berlin competing at the Pokal der Blauen Schwerter (the Blue Swords Competition) when the first announcement was made — the Wall was open.

This event marked the first time that Germany — formally reunified October 3, 1990 — would skate at the Federal Republic of Germany (FRG); one German team.

Germany brought seven of the total number of 70 competitors to Skate America this year. Fourteen other countries competed at the Buffalo Memorial Auditorium (the "Aud") October 18-21, two more than last year.

Campbell's Soups was again title sponsor of this year's event that was also sponsored by Pan American Airlines, Creamette brand pasta, and Cellular One.

Despite low attendance at the competition, the audience was very participative. The Local Organizing Committee and members of the Buffalo Skating Club, headed by Beth Ruddy, made sure the events went off without a hitch and with as little delay as possible. Local volunteers needed to gain competition experience here, in preparation for the 1993 World University Games slated for Buffalo.

Three-time Skate America Champion and Olympic Gold Medalist Scott Hamilton was in attendance commentating for CBS which will air the competition late January.

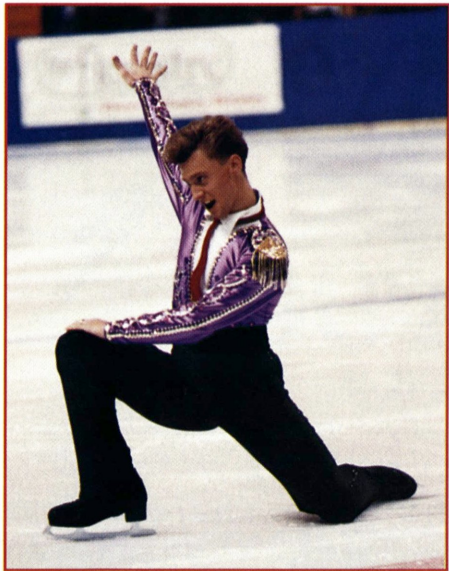
Outside the Aud, the Buffalo climate was unseasonably warm for the first two days of practice and competition, and wind and rain boosted business for the local transportation services by week's end.

Men

Reigning World Silver Medalist Viktor Petrenko summed up the Skate American men's competition best by saying, "It's like Worlds but we don't see Kurt Browning." The men's event did sport most of the world's best in early-season competition.

The draw for the original program placed all of the Americans and competition medalists in the last two groups. Petrenko led the pack after the original program. Right away he grabbed the audience's attention with his intensity as he debuted his new original program, skating to selections from *Carmen*. The performance and the two 6.0's that Petrenko received for presentation earned him a standing ovation from the enthusiastic crowd.

1990 U.S. Men's Champion Todd Eldredge grabbed second position after the original program, and was also showered



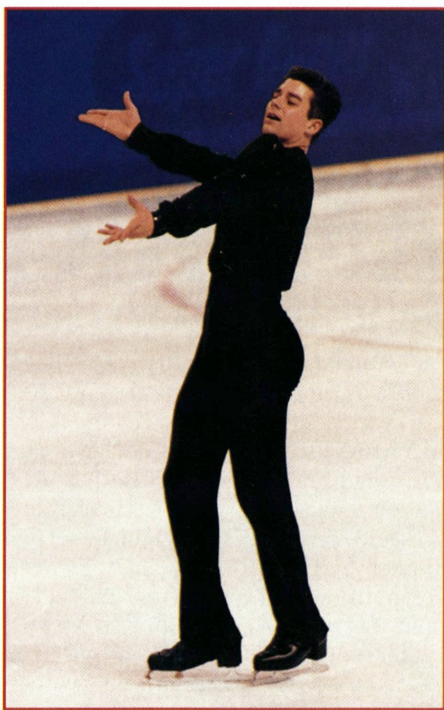
PAUL HARVATH

Men's Gold
VIKTOR PETRENKO
USSR

with standing applause rewarding his efforts. He skated a clean and fast program to "Semiramide" by Rossini. He solidly landed his jumps and appeared to have benefitted from his recent training emphasis on ballet and artistic moves.

The Soviet Union's Viacheslav Zagorodniuk entertained the audience with a number characteristic of James Bond, and also impressed the judges enough to grab hold of (the original program) third place. At 18, he is three and one-half years Petrenko's junior, and he is fast on the heels of his countryman.

Nearly last to skate and finishing the original program just behind Zagorodniuk, was Christopher Bowman — the new Bowman, that is. The audience wasn't sure what to expect from the recently-tamed playboy. Since September, following a disappointing show at last summer's Goodwill Games, Bowman has been training with Canada's '76 Olympian-turned-coach Toller Cranston, and Ellen



PAUL HARVATH

Men's Silver
CHRISTOPHER BOWMAN
USA

Burka (Cranston's former coach), in Toronto. He felt he needed discipline and a new image; one more palatable to skating judges. Bowman displayed a new, more conservative and artistic style in his original program, however, his performance was marred by a mistake in the required jump combination. When finished, the audience politely applauded, still curious if the "Showman" they were used to would resurface. He acknowledged the applause with the same still face that he held throughout his program and slowly skated off the ice. Despite doing a single Lutz in his combination, Bowman earned marks high enough to be in medal contention two nights later.

Twenty-three-year-old American Craig Heath performed an energetic number to "Little Bit 'O Scotland." He has proven talent with spins, and also completed a spread eagle into a triple Salchow. He was fifth after the original program.

Back to the draw for the free skate. Eldredge skated first; Bowman last, and Heath, Petrenko, and Zagorodniuk, respectively, in between the two.

The men's free skating began Saturday evening at 8:30; this meant the leaders didn't take to the ice until at least 9:30 and finished nearly one hour later.

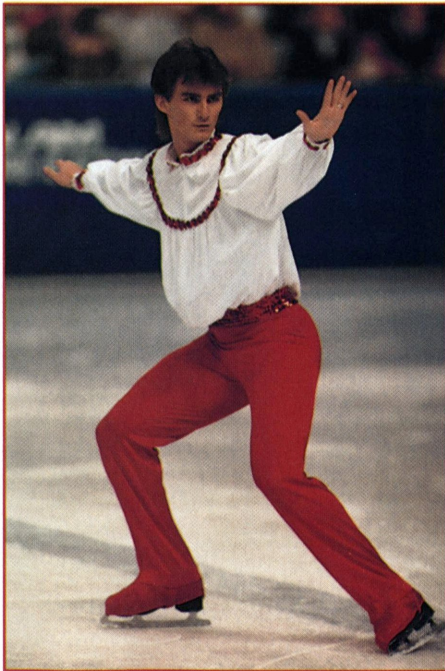
Totally unaffected by the bicoastal time change and late-day start, Eldredge came on to the ice to give one of his best artistic performances to date. He showed marked artistic improvement and achieved nice height on his jumps and death drop. It wasn't until the last 40

seconds of his program that he lost his footing and consequently the silver medal. He skated to *Man of La Mancha*, a program he knows well, but fell on a triple toe loop and a triple loop.

"I lost my concentration maybe going into it. But afterwards, I felt like I picked it up pretty well," Eldredge said. "And, I put in another triple Lutz where it wasn't planned."

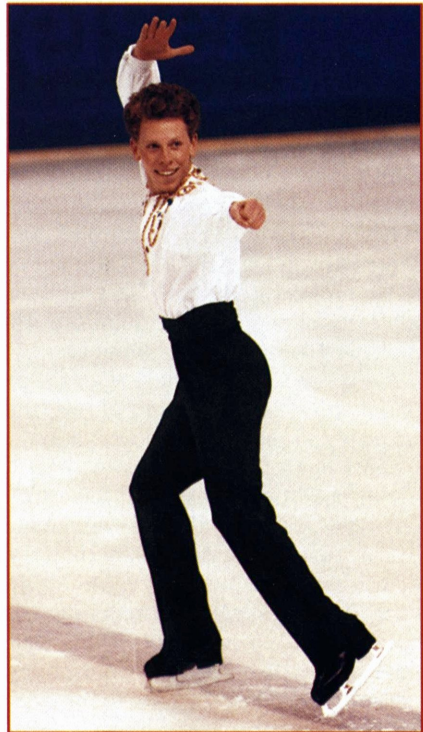
The judges gave him marks high enough to medal, still leaving plenty of room for the four men to follow.

Heath was up next and skated a well-choreographed program. He completed four triples; two in combination, and successfully added a strong spin combination. His abilities and animation encouraged the audience's participation and although he seemed pleased with his overall fifth-place finish, the audience jeered the marks he received.



GEORGE ROSSANO

Men's Bronze
TODD ELDREDGE
USA



PAUL HARVATH

Men's Fifth
CRAIG HEATH
USA



Ladies' Gold
KRISTI YAMAGUCHI
USA



Ladies' Silver
MIDORI ITO
JPN

Enter Petrenko. He performed to pieces by Toma, Chopin, and Verdi, and was the clear “victor” at this competition. His movements were in perfect synch with his musical selections, and his intensity and style mimicked the Soviet Union’s own Mikhail Baryshnikov, completely drawing in the audience. He completed five triples including two triple Axels, received eight 5.9’s for his artistic show, and brought down the house with a roaring standing ovation.

Countryman Zagorodniuk was in a difficult position — his draw was sandwiched between his alluring teammate and the “all-new” American that the audience was anxious to see. He let up during the free skate, not matching the difficulty and consistency of his performance two days earlier, and dropped his overall placement by one. At only 18,

he is still very much a likely contender through '94. Zagorodniuk ended fourth, behind Eldredge.

Bowman was last to skate. Wearing his customary black costume, he was elegant when he skated to music of Shostakovich and Khachaturian. He performed six triples, and finally convinced the audience and the judges that the new Bowman had indeed arrived. This time his new classical program did not seem out of place for him. His marks were consistent and high enough to place him just behind Petrenko with the competition’s silver medal.

Ladies

Petrenko might have also made a similar statement regarding the ladies’ competition as he did regarding the men’s — it was a lot like Worlds, however, Jill Trenary wasn’t there.

Japan's jumping phenom Midori Ito was competing for her first time since the '90 Worlds; American Kristi Yamaguchi was fresh from her gold-medal finish at the Goodwill Games, and another handful of could-be medalists including Evelyn Grossmann, FRG; Surya Bonaly, FRA; and American Tonia Kwiatkowski, were all present for the Buffalo showdown.

First to skate the original program was Yamaguchi. The undesirable draw certainly didn't affect her performance. Yamaguchi skated a new program to "Valencia" and "La Bamba." She wore a beautiful teal-green costume with silver-bead work. She skated with confidence and maturity showing graceful lines and movement between her required elements. She completed a triple Lutz/double toe with a somewhat shaky landing,

but fought and held on to it. The new program was beautifully choreographed and the 13 competitors that followed had a tough task ahead.

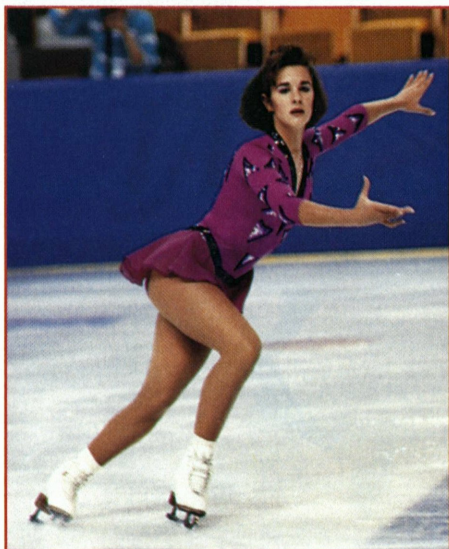
Last summer's Olympic Festival Bronze Medalist Tonia Kwiatkowski followed her teammate. She skated a flawless program despite problems with her taped music fading in and out. She completed a triple flip/double toe and showed impressive speed on her spin combination. Her marks for technical ability ranged from 5.3 - 5.7, and 5.4 - 5.6 for artistic merit.

Ito skated sixth and opened her program with a death drop the audience had been waiting for. She maintained her height on her jumps but couldn't maintain her consistency. She appeared to have a poor take-off on a triple Lutz and fell. She also appeared hesitant throughout the rest of her program and was clearly disappointed in her own performance. Her marks of 5.3 - 5.4 for technical



Ladies' Bronze
TONIA KWIATKOWSKI
USA

GEORGE ROSSANO



Ladies Sixth
JERI CAMPBELL
USA

PAUL HARVATH



GEORGE ROSSANO

Pair's Gold
MARINA ELTSOVA & ANDREI BUSHKOV
USSR

merit and 5.7 - 5.9 for artistic merit put her in second place going into the free skate; Kwiatkowski was third.

German Coach Jutta Mueller's current prodigy, Evelyn Grossmann, brought to mind visions of a young Katarina Witt. She skated without error, however, her elements were not difficult enough to bring her up into medal contention. Goodwill Games Bronze Medalist Surya Bonaly seemed to have an off-day. She fell on her triple Lutz, performed a shaky death drop and sat in eighth place going into the free skate.

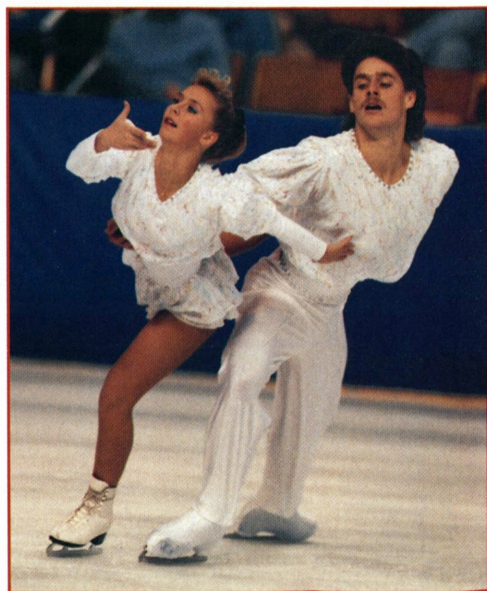
American Jeri Campbell skated with two taped ankles and still performed perhaps her best routine to date. She skated to *American Flyers*; an exciting new program emphasizing her strong lines, and captivating the audience. She finished with an excellent spin combination. She was sixth going into the free skate.

Yamaguchi returned to the free skate even stronger. She completed seven tri-



GEORGE ROSSANO

Pair's Silver
RADKA KOVARIKOVA &
RENE NOVOTNY
CZE



GEORGE ROSSANO

Pair's Bronze
MANDY WOTZEL &
AXEL RAUSCHENBACH
FRG



PAUL HARVATH

Pair's Fourth
NATASHA KUCHIKI & TODD SAND
USA

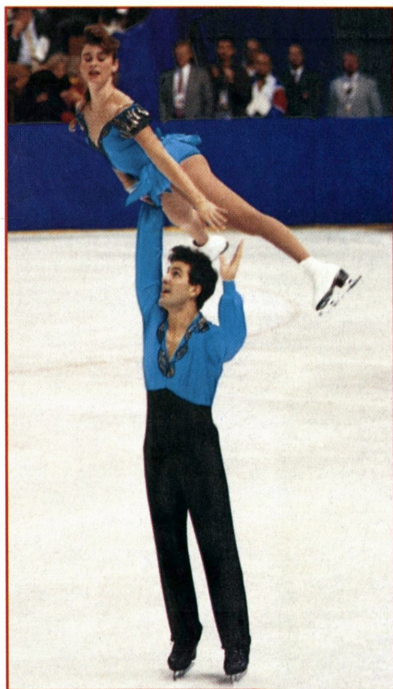
ples and performed a very fluid, graceful program from *Samson and Delilah*. Both of her programs are new and were choreographed by Sandra Bezic. She was rewarded with the only standing ovation during the ladies' portion of the competition, and of course, the only gold medal. This was her second major upset in two months — at this competition she beat '89 World Champion Ito, and in August at the Goodwill Games, she beat '90 World Champion Jill Trenary. Her marks were 5.7 - 5.8 for technical merit and 5.8 - 5.9 for artistic impression.

It followed Yamaguchi with interesting musical selections; a piano concerto to Koutei, "Rhapsody on a Theme of Paganini," and "Finlandia." She looked commanding in her black costume highlighted with rows of glittering silver beads. She completed five triples but still seemed to have some problems with them. Ito skated both events with a taped left ankle and contrary to rumor, she said that her ankle wasn't bothering her.



GEORGE ROSSANO

Pair's Seventh
CALLA URBANSKI &
ROCKY MARVAL
USA



PAUL HARVATH

Pair's Tenth
ANGELA DENEWETH &
JOHN DENTON
USA



Dance Gold
STEFANIA CALEGARI &
PASQUALE CAMERLENGO
ITA

She touched down with both hands on her trademarked triple Axel and stepped out of the triple flip that followed. She finished the competition with the silver medal, losing only to Yamaguchi's consistency and high artistic marks.

Kwiatkowski skated another solid performance also holding her placement after the original program — she earned the competition's bronze medal. She performed to "Rhapsody in Blue" by Gershwin and appeared confident and in top form. Kwiatkowski easily beat Germany's Patricia Neske and Surya Bonaly, who finished fourth and fifth respectively. Jeri Campbell placed sixth, and after a tough afternoon of tumbles, Grossmann dropped to ninth.

Pairs

Although they weren't scheduled to compete at this event, rumor of the retirement of Soviet pairs legends and current World Champions Ekaterina Gor-



Dance Silver
ISABELLE SARECH &
XAVIER DEBERNIS
FRA



Dance Bronze
ILLONA MELNICHENKO &
GENNADI KASKOV
USSR



PAUL HARVATH

Dance Sixth
JEANNE MILEY & MICHAEL VERLICH
USA

deeva and Sergei Grinkov, became fact when they announced their intent to compete in a professional competition in Landover, Md.

With this pair retiring, along with countrymen Larisa Selezneva and Oleg Makarov (ranked fourth in the world), and American Champions Kristi Yamaguchi and Rudy Galindo, three doors were opened into the top five slots in the world pairs event.

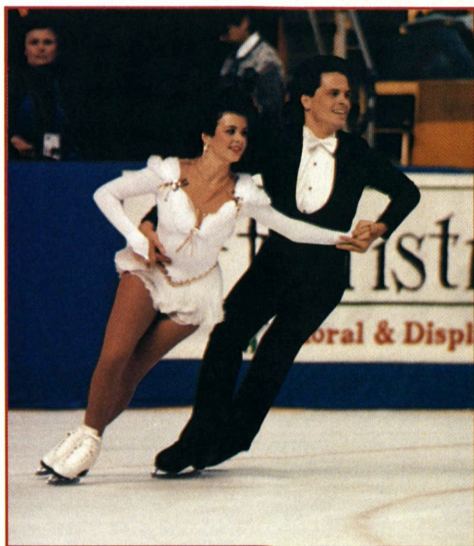
The Soviets appear to continue their domination of pair skating and still come forward with a seemingly endless supply of new pairs. The majority of pairs skaters at this year's competition, however, might be referred to as "up-and-coming;" with any one of a handful likely candidates for a medal at the '91 Worlds.

In the absence of U.S. Champions Yamaguchi and Galindo, 14-year-old Natasha Kuchiki and her 27-year-old partner Todd Sand stepped in. The duo has been skating together just over a year



GEORGE ROSSANO

Dance Tenth
AMY WEBSTER &
LEIF ERICKSON
USA



GEORGE ROSSANO

Dance Eleventh
WENDY MILLETTE & JAMES CURTIS
USA

and last year at Worlds, after only 10 months together, they finished 11th; at this competition they were fourth.

American Calla Urbanski is a familiar face in pair skating and recently — in fact, three weeks prior — she was paired with new partner Rocky Marval. The new team gave a solid performance and ended the competition with a respectable seventh-place finish.

Drawing first in the original program were Soviets Marina Eltsova and Andrei Bushkov. They skated to “Strangers in the Night,” performing clean side-by-side double Axels and a smooth, forward inside death spiral. Their marks for required elements ranged from 5.3 - 5.5, and from 5.6 - 5.7 for presentation.

Kuchiki and Sand followed the Soviets with a program that was good enough to place them in third going into the free skate. They skated to variations from “Beethoven or Bust,” completed nice side-by-side double Axels but were slightly off on their synchronization of side-by-side spins.

Countrymen Urbanski and Marval followed them with a jazzy number by Joe Jackson that included “Showtime in Chicago,” “Long Bank Loan Blues,” and “Tiger Rag.” Their synchronization was off on their side-by-side double Axels and their spins, however, after just three weeks together they looked well matched.

The third American pair — Angela Deneweth and John Denton skated seventh; just ahead of the Czechoslovakian team. Fresh from a win at last summer’s Olympic Festival, they appeared a bit cautious at this competition. They had problems with synchronization and were seated in the eighth position after the original program.

Czechoslovakians Radka Kovarikova and Rene Novotny were eighth to skate and their number quickly drew the audience in. They completed beautiful side-

by-side double Axels and a nice one-hand overhead lift. The audience approved and the judges moved them into second.

Moving into the free skate, Germany’s Mandy Wotzel and Axel Rauschenbach, in fifth after the original program, were the first of the champions to skate. Their program was solid with good throws and a high degree of difficulty. The judges rewarded them with high marks — high enough to move them up two notches to a silver-medal finish.

The three American pairs skated one after another. Urbanski and Marval were the first of the three, and again, skated a solid program for such a recently-paired couple. Their program included selections from “Entrance of the Hunters,” “Sea Hawk,” and “Russian Sailors Dance,” and they performed a triple twist, throw triple loop, and a unique death spiral where he kicks over her head. The U.S. pair ended seventh.

Deneweth and Denton came out to the ice in good form, completed side-by-side double Axels but suffered a terrible fall coming down from a lift. Denton avoided a collision, however, and the pair resumed their program. They finished 10th overall.

Skating a new program to *Prince Igor Overture* and *Polovtsian Dances* by Borodin, Kuchiki and Sand performed their program with a few slips. The degree of difficulty was high enough to put them into medal contention but his fall on side-by-side double Axels and a shaky lading on a throw dropped their marks slightly; enough to bump them to fourth.

Soviets Eltsova and Bushkov were consistent. Eltsova touched down on a side-by-side triple toe but then went on to complete a beautiful throw, triple Salchow, and a nice split, triple twist. They were clear victors at this event.

Finishing third just above Kuchiki and Sand, were the Czechoslovakians Ko-

varikova and Novotny. They included plenty of difficult moves — a throw triple-toe, split triple twist, throw double Salchow, and side-by-side double Axels; they stumbled a few times but held onto the bronze medal.

Dance

Eleven teams from eight different countries competed in the dance event with the Italian team of Stefania Calegari and Pasquale Camerlengo leading the pack.

The compulsory dances were the Ravensburger Waltz and the Rhumba. The Soviet team of Illona Melnichenko and Gennadi Kaskov skated clean routines to a second-place finish; Isabelle Sarech and Xavier Debernis from France, finished third. The handsome American couple of Jeanne Miley and Michael Verlich were in sixth place after the compulsory dances.

The final results varied only slightly after the compulsory dances. Generally, the same results held through all three dances — not providing a great deal of suspense or excitement for the audience.

The original dance was the Blues which was interpreted a bit differently by each set of dancers.

The champions, Calegari and Camerlengo, were synchronized and received high marks for their rendition of "Summertime." Their costumes were similar to the peasant costumes sometimes worn by the Duchesnay siblings.

The French team of Sarech and Debernis did a slinky, barroom blues number, complete with his shirt trimmed with a piano-keyboard design. Her flexibility helped to give them long, clean lines.

Soviets Melnichenko and Kaskov showed nice anticipation and awareness of the other's moves, and incorporated more moves into their program than many of the dancers to follow. They wore

beautiful steel-blue costumes accented with glittering silver-bead work.

Top U.S. dancers Miley and Verlich sat in sixth place. Their interpretation of the blues was a smoky, sleazy barroom number by Les and Larry Elgart titled "Blues in the Night." She wore a high-cut, revealing costume that may have given them a deduction for a costume violation. Even though they didn't win over the judges, Miley and Verlich did win the affections of the audience. After their free skate program they received the only standing ovation for the dance event. They skated a lively program to selections from *Peter Gunn*, "Harlem Nocturne," and "We'll Get It" by Doc Severinson.

The duo included unique choreography that, although not extremely difficult, the audience loved.

Calegari and Camerlengo included a lot of footwork in their free skate program for which the judges easily awarded them a gold medal.

The program carried an upbeat, lively circus theme that was also entertaining to the audience. Their clown-like costumes were perfectly coordinated to the number.

Melnichenko and Kaskov seemed a bit off and out of synch with their music for the free skate. They wore interesting lime green and black costumes, again, hers may have caused a deduction for costume violation because of a bare midriff. They were solid enough to maintain their bronze-medal finish, however.

Sarech and Debernis skated a beautifully choreographed number to "Kojiki" by Kitaro. They moved well together including lots of footwork, long, clean lines, and moves inspired by countrymen Isabelle and Paul Duchesnay.

One of the most unique free skate programs was skated by Regina Woodward and Csaba Szentpetery. Although Wood-

Continued on page 51

1991 NATIONALS — ON “TARGET” IN THE TWIN CITIES!

by *Jean Adams*

For participants and fans, the annual United States Figure Skating Championships stimulates its own special aura of excitement. Add to that the fact that this year's event is to be held in the brand-spanking-new \$92 million dollar Target Center arena which is located within downtown Minneapolis, Minn.

The Twin City Figure Skating Association and Courage Center have joined together as co-hosts of the '91 Nationals. Both are non-profit organizations that will share in the proceeds.

The Twin City Figure Skating Association was founded in 1973 and has 14 member clubs representing 1,150 skaters who promote, improve, and encourage the sport of amateur figure skating throughout the state of Minnesota.

The Courage Center, headquartered in the suburb of Golden Valley, is a rehabilitation facility for individuals who are physically disabled and for people who are speech, vision, or hearing impaired. It operates over 70 programs and serves more than 19,000 people each year.

Supported by over 70 committees and countless dedicated volunteers from the skating and corporate worlds, the hosts are confident everything possible will be done to make this a premiere event for competitors, visitors, and all who are involved.

The Target Center

From the outside, this imposing, all-purpose sports facility that's home to the NBA Timberwolves basketball team, looms large on a 1½ square block site. Built with private funds and buttressed

by corporate partners, its newness is evident and the design has received countless critiques throughout its 27 months of construction. Now that the dust has settled, the accolades are coming in locally and nationwide.

Inside the arena itself, there is a feeling of warmth and pleasure. The 18,000 wide-body seats are plush and upholstered in a rich cranberry color, with added leg room to accommodate more sitting comfort and ease of entry or exit. Some banks of seats emerge from beneath the lower sections, bringing viewers close to the action at almost floor level. From the closest seats, patrons can see the gleam of excitement in performers' eyes; from the farthest seats, fans have an uncluttered view that is 248 feet away from center court, ice, or stage, as the case may be. The movable floor holds 4.9 tons in the “down” position for basketball and can be raised five feet to support 2.4 tons in the “up” position for skating events—with conversion to prime ice taking just 24 hours. Needless to say, specific attention has been paid to acoustics and a state-of-the-art sound system has been installed to hopefully provide all facilities necessary for any type of performance in the arena.

There are 21 food concession locations scattered around the upper and lower levels that cater to a variety of tastes. And, if one chooses, there are such things as fresh salads, grilled hamburgers, and Domino's pizzas that can be ordered and delivered directly to you as you sit watching entertainment. In addition, there are eight novelty booths

where souvenirs of scheduled events are available for sale.

The Target Center also includes 67 suites, for which owners pay \$60,000 a year. They are located on a level midway between the lower and upper sections of the arena. The suites are spacious and offer many luxuries that include a wet bar, mirrored walls, a TV monitor, refrigerator, and bathroom. Access to the arena's health club is from the 6th Street entrance. Here there are tennis, racquetball, and swimming facilities along with aerobics studios, weights, and training equipment, plus two basketball courts. Membership is required for participation, however, short-term arrangements for visitors may be made by contacting the health club management.

Events At Other Arenas

Not all of the skating activity takes place at the Target Center. Parade Ice Garden will be the site for the Novice Compulsory Dances as well as the Novice Men's and Novice Ladies' Original Program. All Compulsory Figure Events will be held at the Augsburg College Ice Arena. Both of these Minneapolis facilities will also serve as practice sites.

Accommodations

No matter what your preference and means, there's no lack of a place to stay in the Twin Cities. The selection ranges from elegant first-class hotels to budget motels—with plenty of in-between choices that will cater to your needs. Listed below are the downtown Minneapolis hotels being used for the competition; all are within easy skyway or outdoor walking distance to the Target Center. For other options throughout the metro area, contact the Greater Minneapolis Convention and Visitors Bureau at (800) 445-7412 or the Saint Paul Convention and Visitors Bureau at (612) 297-6985.



Target Center lights up downtown Minneapolis.

PHOTO BY JOE GAUSS

RADISSON PLAZA HOTEL

35 South 7th Street
Minneapolis, MN 55402 (612) 339-4900
Contact: Nancy Deder-Spalding

MINNEAPOLIS MARRIOTT CITY CENTER

30 South 7th Street
Minneapolis, MN 55402 (612) 349-4062
Contact: Jeff Hilt

THE MARQUETTE MINNEAPOLIS

7th and Marquette
Minneapolis, MN 55402 (612) 332-2351
Contact: Julie J. Anderson

OMNI NORTHSTAR HOTEL

Northstar Center
618 Second Avenue South
Minneapolis, MN 55402 (612) 338-2288
Contact: Jennifer Eckhart Locke

Getting Around In Minneapolis-St. Paul

Visitors who have not been to the Twin Cities for several years, or ever, are in for a treat. Despite its frosty winter image (average February temperature is 17 F), this place is "hot" and basking in a reputation that marks it near the top of the nation for its quality of life. The Twin



Cities metropolitan area, with a population of nearly 2.5 million, offers a “big-time, small-town” atmosphere that makes it truly unique. Its treasure of culture, history, entertainment, recreation, shopping, and diversity of people provide an unexpected, world-class variety of pleasures to enjoy. While you may come for the nationals, don’t leave without sampling the magnificent array of “desserts” that await you. Some points of interest are highlighted as follows:

- The Minneapolis-St. Paul International Airport is on the way from everywhere. It is home to Northwest Airlines and regularly serviced by a host of other major carriers. Upon landing, inexpensive transportation or free hotel shuttle service is available to take you to either downtown or the suburbs in minutes—there is no such thing as “far from the airport.”

- Six interstate highways ring the metro area, keeping most commutes to under 30 minutes.

- Skyway systems connect nearly 40 downtown blocks in each of the Twin Cities, permitting coat-free walks to stores, offices, restaurants, sports, and entertainment facilities.

- Exciting nightlife offers a variety of clubs for comedy, dancing, jazz—intimate stages and large arenas regularly feature famous as well as up-and-coming performers.

- More than 1,500 restaurants tender a worldwide choice of cuisines—whatever you fancy, you’ll probably find it here. From elegant dining experiences to more trendy fare, it’s simply a matter of your preference and mood.

- The Twin Cities shopping scene is a delightful combination of high fashion stores, one-of-a-kind specialty shops, and popular discount outlets. Most of America’s finest retailers are represented, such as Dayton-Hudson, Saks Fifth Avenue,

Continued on page 51

Tuesday, February 12

6:30 P.M. Championship Dance – CD
Novice Pairs – FS
Championship Fours – FS

Wednesday, February 13

NOON Novice Dance OSP
Junior Dance – CD

7:00 P.M. Opening Ceremonies
Championship Pairs – OP
Junior Men – OP

Thursday, February 14

11:30 A.M. Novice Men – FS
Junior Pairs – OP
Novice Ladies – FS

7:00 P.M. Championship Ladies – OP
Championship Dance – OD

Friday, February 15

10:30 A.M. Junior Dance – OD
Junior Ladies – OP
Junior Men – FS
Awards

6:30 P.M. Championship Men – OP
Championship Pairs – FS
Awards

Saturday, February 16

11:30 A.M. Junior Pairs – FS
Championship Ladies – FS
Awards

5:30 P.M. Junior Ladies – FS
Championship Dance – FD
Awards

Sunday, February 17

11:45 A.M. Junior Dance – FD
Championship Men – FS
Awards

7:30 P.M. Exhibition

Report of Action

Continued from page 11

CD 2	0.2 (10%)
CD	0.6 (30%)
FD	1.0 (50%)

5. Approved we adopt the ISU draw for CD's and the OD which is now random (free) and the free dance draw which still is based on the combined results of the CD's and the OD.
6. Agreed by consensus that for bids for National Precisions we open the bidding to the entire country for these (1993 and 1994 sites) and all subsequent selections and drop the sectional rotation.
7. Approved a change in TMR 1.04 to permit donations in the name(s) of living persons. The difference is between "In Memory of" and "In Honor of."
8. Approved a change in TMR 1.06 to eliminate the requirements for bowls and trays.
9. Approved a change in TMR 1.08 to eliminate the requirements that photos be in "matte finish."
10. Approved a change in TMR 3.02 to eliminate the word "token" from this rule.
11. Approved resignations of referees and accountants as follows: National Accountant-(Midwestern) Dr. E. Leonard Arnoff; Sectional Accountant-(Eastern) Francis W. Wolek and Gloria P. Wolek.

Dance

1. Approved that Adults should take the standard Preliminary and Pre-Bronze Test and go on to the Adult Bronze Dance Test.
2. Approved that for the Hickory Hoe-down, the partner position of this section of the dance should be optional.
3. Approved including the Pre-Bronze Dances in the Pre-Intermediate Dance events.
4. Approved that if there are no entries in the Pre-Intermediate Dance at Regionals, the competitors go on to Sectionals.
5. Approved an increase in budget to \$5,000 which includes expense of the Music

Chairman and expense of Dance representatives, JETS or Vice Chairmen, who will conduct Dance meetings at each Regionals, Sectionals, Nationals and Governing Council Meetings.

Judges

1. Approved the deletion of the portion of JR 2.04 that reads as follows: A duly qualified CFSA judge may judge as a minority of the panel of the USFSA figure and pair tests, all USFSA free skating tests and all USFSA dance tests with the exception of the International Dance Test.
2. Approved a change to JR 1.02 "National Vice Chairman for Judges Education and Training, to whom shall report a Sectional Vice Chairman for Judges Education and Training for each section *and a Judges Education and Training Vice Chairman for each discipline—Singles, Pairs, Dance and Precision.*"
3. Approved a change to JR 11.01 to include the following sentence: "*A trial judge must be sixteen (16) years of age or older.*"
4. Approved that JR 7.05, 11.055 and 11.058 include this directive: "*The test chairmen shall have the responsibility of retaining a copy of all papers submitted for appointment.*"
5. Approved adding the National Novice Dance and the National Novice Pair event to the possible trial judging assignments at the National Championships.
6. Approved JR 11.021 be expanded to include: "*The appropriate Pair Test Videotape and accompanying test can supplement the trial judging of pair tests.*"
7. Approved appointments and resignations as follows: Appointments: *Singles and Pairs* Gold Test Judges-(Eastern) Carol Waszkelewicz, Charter Oak FSC, (Midwestern) Geri Armbruster, Detroit SC, (Pacific Coast) Dick Lean, Palomares FSC; Senior Competition Judges-(Eastern) Joan Liotta, Pawtucket-Providence FSC, Barbara Price, Jamestown SC; *Dance* Gold Dance Test Judges-(Eastern)

- Jim Millns, Orlando FSC, Shirley Bourquin, Rye FSC, (Pacific Coast) Aileen Arenson, La Jolla FSC; Senior Dance Competition Judge-(Eastern) Sharon Rogers, Philadelphia SC & HS; *Precision National Judges*-(Eastern) Edwin Picken, Washington FSC, (Pacific Coast) Eleanor Curtis, Los Angeles FSC; Sectional Judge-(Eastern) Susan Johnson, Atlanta FSC. Resignations: National Figure Judge-(Eastern) Nancy Steffen, Catiague FSC; Sectional Precision Judge-(Midwestern) Dr. Hugh C. Graham, Jr., Tulsa FSC.
8. Approved the recommendation of Linda Leaver to the ISU as International Dance Judge.
 9. Approved the recommendation of renominating Ronald Pfenning to the ISU as Championship Dance Referee.

Membership

1. Approved the requested changes in skating headquarters as follows: from Lone Star FSC, Plaza of the Americas, Ice Garden, Pearl at Bryan, Dallas, TX 75010 to Lone Star FSC, Ice Capades Chalet, Prestonwood Town Center, 5301 Beltline Road, Dallas, TX 75240; from Las Vegas FSC, Iceland Inc., 704 Sunset Road, Henderson, NV 89015 to Las Vegas FSC, Santa Fe Ice Skating Arena, 4949 North Rancho Drive, Las Vegas, NV 89130.
2. Approved the following clubs be placed on the inactive list: Colgate-Hamilton SC, Hamilton, NY and Overlake SC, Lynnwood, WA.

Precision

1. Approved a change to CR 47.04 to read: *"An individual skater may skate on more than one, but no more than two, precision skating teams as long as the respective teams are at different divisions. Notwithstanding the above, members of an Intermediate team may not skate on a Novice team and vice versa."*
2. Approved a change to CR 54.02 to: *"If teams are tied, the lower ordinal will be awarded to the team with the higher mark for Presentation."*

3. Approved the following division change: *"Novice: a team of 12 to 24 skaters. Skaters must be 14 years or younger on the preceding January 1st."*
4. Approved a change to CR 47.03 so that at Qualifying Competitions: *"Birth Certificates for members of Juvenile, Intermediate and Novice teams must be filed with the team roster as specified in CR 53.08. The roster and birth certificate will be considered official for the remainder of the competitive season. Adult teams must be able to provide proof of age if so requested by the referee and/or local organizing committee of the competition for which the team is entered."*
5. Approved a change to CR 51.01 to state that the minimum size of the ice surface for a Qualifying Competition be 85 × 185 feet.

Sanctions

1. Approved the following skaters requesting the status of reinstated person: Stacie Lynn Augustine, Alina M. Bokdo, Jennifer L. Gardner, Todd A. Kaufman, Laura Anne Kilty, Linda B. MacKinnon, Jennifer Mast, Barbara W. McKendry, Dawn D. Schmockol, and Billie L. Williams.

International

1. Approved that exhibition money be separated from prize money and be given to the exhibitor.
2. Approved that prize money be divided equally among all international competitive skaters.

Tests

1. Approved a change to TR 11.03 that there be a maximum penalty fee, such as \$10.00 per 30-day period.
2. Approved the Test Rules have the following incorporated: (a) If trial judges participate in a test session, a trial judging report must be completed and sent to the appropriate (figure or dance) Regional and Sectional Vice Chairmen of the Judges Committee within 30 days of the date of the test session. (b) Trial judging sheets for guest trial judges must be com-

pleted and sent to the trial judge's home club test chairman or monitor within 30 days of the date of the test session.

3. Approved the following changes to SSR 1.112 and TR 8.01: (a) The Sectional Vice Chairmen, with the approval of the Chairman, be authorized to waive the requirement, "The skater must not use painted lines or marks on the ice as a tangent, axis, or start, and must not locate or place turns on them" for legally blind figure test candidates. (b) A legally blind figure test candidate be allowed to mark the starting center of each figure, as may be done for the Preliminary and Adult Bronze Figure Tests.
4. Approved that the Adult Pre-Bronze Dance Test be deleted from the test structure.

Memorial Fund

1. Approved that the bidding form for all ISU sanctioned competitions in the United States and U.S. Nationals include a line item for contributions to the Memorial Fund.

Parents Advisory (Liaison)

1. Approved a request for a budget of \$3,000 to fund committee activities. (Part of budget approvals under new business)

Member Recognition

1. Approved a request for budget items totaling \$12,800. (Part of budget approvals under new business)

Hall of Fame

1. Approved the creation of a U.S. Figure Skating Hall of Fame under the following guidelines: (a) 15 member committee including the Vice Chair of the Museum Committee, the President, the three Vice Presidents, three coaches, and seven members at large. A two-thirds vote will be required for action. (b) Categories will be the same as the World Hall of Fame: (1) skaters, (2) administrators, (3) professionals—show and coaches, (4) old-timers—40 and back. (c) Criteria for nomination.

New Business

1. Approved Jerod Swallow as the replace-

ment for Scott Kurttila on the Board of Directors.

2. Approved an increase of \$5,000 in the budget from \$1,000 to \$6,000. (Part of budget approvals under new business)
3. Approved a proposal by the New York Skating Council for hosting a National Championships for Juvenile and Intermediate Skaters in the Spring of 1991 with a budget of \$25,000 plus additional 20% override if necessary. (Part of budget approvals under new business)
4. Approved election of Dr. E. Leonard Arnoff as Honorary National Accountant.
5. Approved the following budget amendments:

a. Dance Committee	\$ 4,000
b. Parents Liaison	3,000
c. Sports Medicine	25,000
d. Member Recognition	12,800
e. Athletes Advisory	5,000
f. Nationals Juv./Int.	25,000 + 20%
Total	\$74,800

Katarina Witt

Continued from page 14

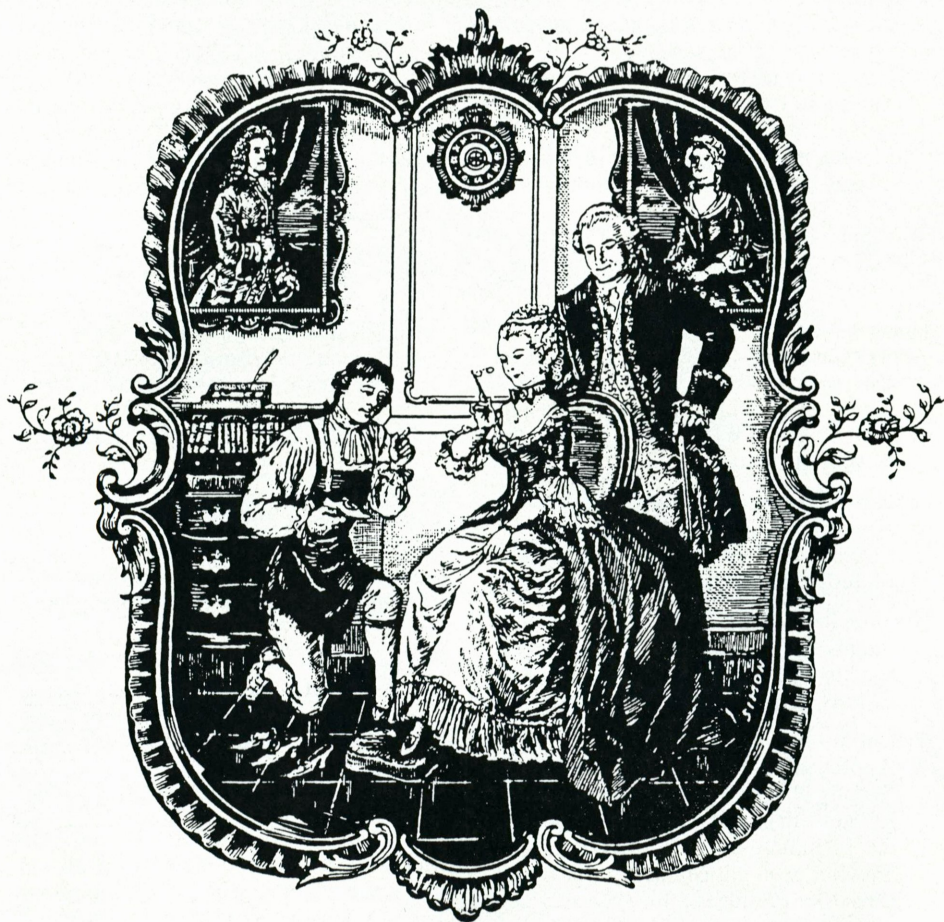
to the other. And then she skated a graceful number. And then she swayed to Michael Jackson.

When done with the practice, she skated over to the barrier once more. Mueller was gone. Standing in her place was the former National Dance Champion Judy Blumberg. "That was really nice down there," referring to her graceful number. Witt puts the compliment aside saying, "But I am still falling on my triples. Did you see it?" Blumberg shakes her head and again says, "That was really nice." Witt just smiles.

She still wants it all—the fame, the glory, the money, and the triples.

Deb Vestal is a free-lance sports writer in Minneapolis. She has been an Adult competitor for the past six years in both singles and dance events.


Klingbeil®



CUSTOM MADE SKATING BOOTS

Established Since 1950

Klingbeil Shoe Labs, Inc.

145-01 Jamaica Avenue
Jamaica, New York 11435
(718) 297-6864

Order forms available upon request.
Please write or phone.

Ricky

HARRIS

On *Choreography: A Craft*

You do not learn to choreograph by reading about or watching performances. You learn by doing it; by experimenting and creating fragments, bits of movement and movement phrases. You learn by trying all kinds of ways to move, by changing combinations around, visualizing feelings to movement, and experimenting with those kinds of movements that reproduce those feelings. There is a discipline and technique to choreography that can be taught.

The purpose of learning rules is to understand what a rule is so it can be recognized. You need to learn the basic rudiments in order to help you to create programs with an academic eye.

Composition is a common base in all of the arts. The principles of the arts are integrally bound together. The choreographer, who only knows skating, has divorced herself from an enormous background of compositional knowledge. She will create from formula and be marred by predictability.

Choreography is a craft. It is having the skill to arrange and structure movement. What makes a good composition? We have to ask ourselves these questions when creating a program:

1. Is the choreography theatrical, but not flamboyant?
2. Does it work?
3. Is it inventive?
4. Is it structural?
5. Is there something at the beginning to make the curtain "go up" and at the end to make it "come down?"
6. Does the choreography arrest the audience or at least maintain their interest?
7. Does it communicate?

Continued on page 62



Campbell's Soups

SKATE AMERICA '90

BUFFALO, NEW YORK VIDEO TAPES

All Video Prices include a new VHS or BETA tape. Please check format desired.

VHS _____ BETA _____

EVENTS AVAILABLE

Opening Ceremonies.....\$35.00 _____

Compulsory Dance.....\$35.00 _____
(Brandenburger Waltz - Rhumba)

O.S.P.....\$35.00 _____

Free Dance.....\$45.00 _____

Pairs Original Program....\$35.00 _____

Pairs Free Skating.....\$45.00 _____

Ladies Original Program...\$35.00 _____

Ladies Free Skating.....\$45.00 _____

Men's Original Program...\$35.00 _____

Men's Free Skating.....\$45.00 _____

Exhibition of Champions...\$55.00 _____

Add \$3.00 Postage & Handling for each tape. _____

Total Amount Due & Enclosed _____

Make Checks To: **LEDIN VIDEO**

Name _____

Address _____

City _____ State _____ Zip _____

Phone (Home) _____ (Other) _____

Ledin

PHOTO & VIDEO

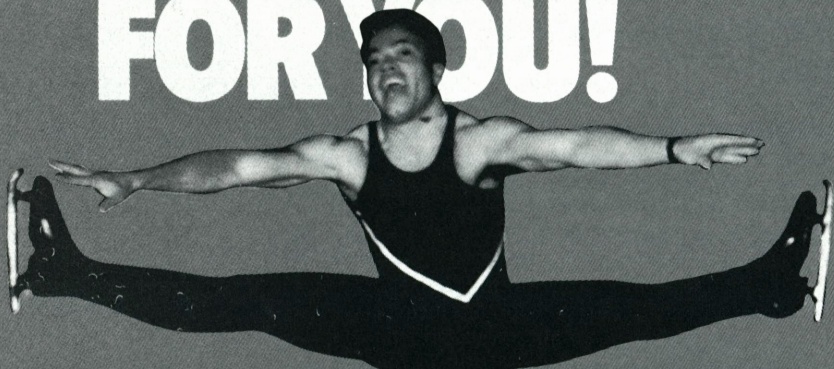
22495 Madison

St. Clair Shores, MI 48081

(313) 778-8971

Oberhamer

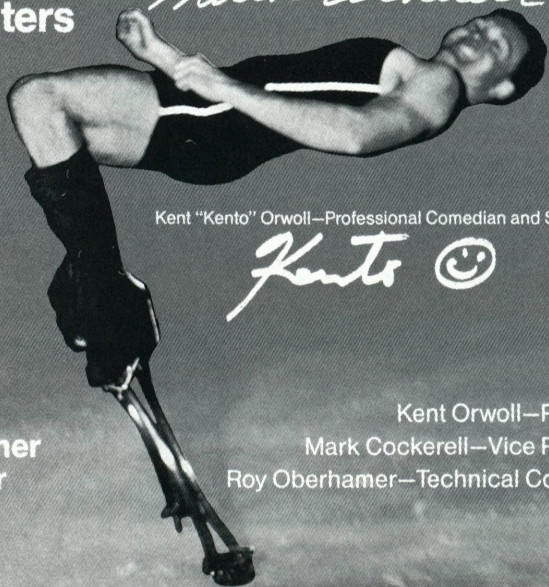
WE BEND OVER BACKWARDS FOR YOU!



Mark Cockerell—World and Olympic Team Member

Mark Cockerell

**Oberhamer,
Professional skaters
offering quality
skating attire
and a complete
line of the
world's best
fitting skates.**



Kent "Kento" Orwoll—Professional Comedian and Stunt Skater

Kento ☺

**Contact your Oberhamer
dealer or call direct for
ordering information.**

11975 Portland Ave. So., Suite #122
Burnsville, MN 55337
(612) 890-1657

Kent Orwoll—President
Mark Cockerell—Vice President
Roy Oberhamer—Technical Consultant

 Oberhamer
USA

JANUARY 1991

- 5-6 **Lake Placid Precision Open Classic**, to be held at the Olympic Center Arena, Lake Placid, NY. For information contact: Nona Bafo, Chairman, 716-837-3683 or Colleen Duffy, Director of Figure Skating, 518-523-3325.
- 8-12 **1991 Eastern Sectional Figure Skating Championships**, qualifying competition hosted by the Genesee FSC, Geneseo, NY. For information call: 716-243-4622 or 716-245-5247.
- 8-12 **1991 Pacific Coast Sectional Figure Skating Championships**, qualifying competition hosted by the Utah FSC, Bountiful, UT. For information call: 801-298-6120 or 801-292-6033.
- 9-12 **1991 Midwestern Sectional Figure Skating Championships**, qualifying competition hosted by the FSC of Omaha, Omaha, NE. For information contact: 402-330-6745.
- 14-17 **Utah Winter Games 1991**, sponsored by the Cottonwood Heights FSC, at the Cottonwood Heights Recreation Center, 7500 South 2700 East, Salt Lake City, UT 84121. Site of the 1992 Central Pacific Regionals. Special Olympics, Compulsories, Freestyle, Dance, Pair, and Artistry on Ice events. For information contact: Jan Poulsen, CHFSC, 7500 South 2700 East, Salt Lake City, UT 84121, 801-943-6459.
- 26 **Fraser Mid America Precision Team Championships**, sponsored by the Fraser FSC, at the Fraser Ice Arena, Fraser, MI. Juvenile, Intermediate, Novice, Junior, Senior, and Adult levels. For information contact: Russ or Sharon Brown, 43110 Ulman, Sterling Heights, MI 48313, 313-247-5915.
- 26 **4th Annual Santa Rosa Winter Precision Classic/3rd Pacific-Western Precision Skating Championships**, sponsored by the Santa Rosa FSC, at the Redwood Empire Ice Arena (Snoopy's Home Ice), in Santa Rosa, CA. For information contact: Terrie Gershman, 707-523-4523; Lois Benson, 707-528-1924; or Nola Joy Carello, 916-362-6477.
- 27 **USFSA Precision Judges School**, sponsored by the Santa Rosa FSC and the Central California Interclub Association, to be held at the Redwood Empire Ice Arena (Snoopy's Home Ice), in Santa Rosa, CA. For information contact: Patricia J. Smart, Judge-In-Charge,

Calendar

OF EVENTS

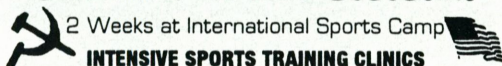
206-246-2580 or Dianne L. Clendenin, 707-528-6876.

FEBRUARY

- 1-3 **Omaha Winterfestival**, 10th annual competition sponsored by the Blade & Edge FSC of Omaha and the FSC of Omaha, at the Hitchcock Ice Arena, 45th & "P" Streets, Omaha, NE 68117. Figures, Freestyle, Dance, Test Session, and Pairs events, Basic Skills through Junior levels. Also Compulsory Moves, Interpretive, and Team Compulsory events. For information contact: Rose Whalen, President, Blade & Edge FSC, 11810 Quail Dr., Omaha, NE 68123, 402-291-2995.
- 10-17 **1991 U.S. Figure Skating Championships**, hosted by the Twin Cities FSA, Minneapolis, MN. For information call: 612-620-0522, Tuesday-Friday, 10:00 A.M. - 2:00 P.M.
- 15-16 **Calgary Rose Bowl Precision Skating Competition**, hosted by the Calalta Community FSC, at the Stampede Corral, Calgary, Alberta, Canada. For information contact: Mrs. Audrey Murphy, Chairman, 330 - 28 Ave. N.E., Calgary, Alberta, Canada T2E 2B3, or Mrs. Donna Cardwell, 403-256-6854 or Mrs. Sharon Mogen, 403-286-7431.
- 22-24 **1991 Midwestern Sectional Precision Championships**, qualifying competition hosted by the Fraser FSC, Fraser, MI. For information call: 313-294-8700.
- 22-24 **1991 New England Juvenile Figure Skating Championships**, hosted by the North Shore SC of Saugus, MA, at Hockeytown USA, 953 Broadway, Rte. 1 South, Saugus, MA. For information call: 508-887-2014.
- 23-24 **2nd Annual Gus Lussi Free Skating Invitational**, hosted by the SC of Lake Placid and the Olympic Regional Development Authority, at the Olympic Center, Lake Placid, NY 12946. Athletic, Artistic, Show, and Fours events.

Sports International

Skating in the U.S.S.R.



INTENSIVE SPORTS TRAINING CLINICS

Sports International taking advantage of the warm relations between our two countries has enlisted world renowned coaches of the Soviet Union, and are offering an intensive Sports Training Clinic headed by N. Dubova, N. Zmeevsky and S. Leonivich, this clinic will expand your skills and will allow you to train with some of USSR's finest athletes.

If you are truly serious about your sport, this clinic will push you to new competitive heights

TRAVEL * ROOM & BOARD * TRAINING * TOURS

Are all included in this fantastic price

\$2,195.00 * Reservations Limited

For more information:

1-800-969-6650 * (908) 382-6650

Fax:(908) 396-8199

33 Randolph Ave., Avenel, N.J. 07001

Novice, Junior, and Senior levels. For information call: The Olympic Center, 518-523-1655 ext. 224.

23-24 **Erie Invitational**, hosted by the Westminster FSC of Erie, at the Erie Civic Center, Erie, PA. Freestyle, Compulsory Moves, Show Case, Similar Pairs, and Solo Dance. For information contact: Donna Cerami, 814-825-6513 or Renee Kloecker, 814-456-5794.

23-24 **1991 Pacific Coast Sectional Precision Championships**, qualifying competition hosted by the Highland FSC, Seattle, WA. For information call: 206-546-2431.

MARCH

1-3 **11th Annual Garden City FSC Competition**, sponsored by the Garden City FSC, at the Garden City Civic Arena, 200 Log Cabin Rd., Garden City, MI 48135. Figures, Free Skating, Original Program, Compulsory, Interpretive, Similar Pairs, Team Compulsory, and Solo Dance events. Beginner through Senior levels. For information contact: Jack McMahon, 31781 Bock Rd., Garden City, MI 48135, 313-427-2790 or 313-522-5590.

1-4 **Colorado Mid-Winter Invitational**, sponsored by the Pueblo FSC, at the Pueblo Plaza Ice Arena, 100 N. Grand, Pueblo, CO 81003. Pre-Preliminary through Intermediate; Adult Junior and Senior Compulsory Moves, Free Skating; Intermediate Senior Original Program, Free Skating; Juvenile through Senior and Adult Artistic Free Skating; Pairs Free Skating, Dance, and Precision Teams. For information contact: Nancy Mastreno, 2 Sandcastle, Pueblo, CO 81001, 719-545-0604.

2-3 **1991 Eastern Sectional Precision Championships**, hosted by the SC of Morris, Morristown, NJ. For information call: 201-326-7650.

2-3 **Empire State Games**, to be held in Lake Placid, NY. For information call: Beverly Lalonde 518-523-4369.

9 **Annual Challenge Cup Precision Competitions**, sponsored by Wyandotte FSC, Yack Arena, Wyandotte, MI. For information contact: Bill Claeys, 12528 Huron, Taylor, MI 48180, 313-287-6389.

11-17 **1991 World Figure Skating Championships**, hosted by Deutsche Eislauf-Union, Munich, Germany. For tickets contact: Deutsches Reisebuero, Sport- und Olympiareisen, Eschersheimer Landstrasse 25-2 D-6000 Frankfurt/Main 1, Federal Republic of Germany. Phone: 069-15660. For information contact: Munchner Olympiapark GmbH, Veranstaltungsdienst, Postfach 401 305, D-8000 Munchen 40. Phone: 089-3061-3577.

15-17 **17th Annual Braemar McCandless Competition**, sponsored by the Braemar-City of Lakes FSC, at the Braemar Arena, 7501 South County Rd., #18, Edina, MN 55435. Figures, Free Skating, Dance, Interpretive, Compulsory, and Team events. Beginner through Senior levels. For information contact: Margie Grinnell, 58 Woodland Cir., Edina, MN 55424, 612-927-7157.

16-17 **Open Skating Competition**, sponsored by the Princeton SC, Princeton University, Princeton, NJ. For information and applications contact: Joseph C. Decker, Jr., 14 Deborah Court, Robbinsville, NJ 08691-1333.

21-24 **Ice-Travaganza 1991**, 19th annual ice show, sponsored by the Wyandotte FSC, at the Yack Arena, Wyandotte, MI. For information contact: The Wyandotte FSC, Box 496, Wyandotte, MI 48192.

CLASSIFIED RATES: \$20 for the first 35 words, 50¢ for each additional word, \$20 minimum. Two-letter state abbreviation code plus zip code count as one word. *Payment required with order.* All advertising copy is subject to acceptability. BOX NUMBERS: \$5 extra. Send all box responses to: *Skating*, Box No. _____, 20 First Street, Colorado Springs, CO 80906-3697.

WINTER OLYMPIC MURDER Mystery. "An intense, gripping story about the competitive skating world. If you like skating, you'll love **DEATH SPIRAL!**" said Richard Dalley. (PG-13) \$10 postpaid from Perseverance Press, Box 384-S, Menlo Park, CA 94026.

COSTUMES—Custom made costumes for soloist, pairs, and teams, designers available. Also, fabrics, rhinestones, jewels, and exquisite sequin and beaded motifs. **SHOW-OFF INC.**, 2567 Greenleaf Ave., Elk Grove Vil., IL 60007. (708) 439-0206.

FREE details on Ice Dance music, full orchestral sound, cassette tapes only, strong beat, correct tempos, unavailable elsewhere. **SKATE SOUNDS**, 155 E. 52 St., #9B, NYC, NY 10022.

"**ICE DANCING MADE EASY**" will teach you the techniques top dancers use. This illustrated book will help you achieve effortless glide, perfect balance, faultless form, and harmonious partnering. Send \$15 to **TRACINGS MAGAZINE**, 21 Weybosset St., Weymouth, MA 02191.

"**SKATE TO WIN**" Illustrated book with tips to competitors on how to stand out from the crowd, what judges are looking for, and how to prepare for competition including hints on figures, jumps, spins, choreography. Send \$15 to **Tracings**, 21 Weybosset St., Weymouth, MA 02191.

SKATING JEWELRY FOR CLUBS, competitions, rinks, and camps. Gorgeous non-dangling earrings, pendants, and bracelets. Custom cloisonné enameled club pins, (your design). For brochure write to **SKATE/MATE**, P.O. Box 362, Englishtown, NJ 07726.

TRACINGS MAGAZINE. Up-to-date stories and photos of top skaters, latest competitions, news and trends, by skating's best writers and photographers. Subscription: Eight issues, \$16. (\$19 overseas) to **Tracings**, 21 Weybosset, St., Weymouth, MA 02191.

Classified

AUSTRIAN CRYSTAL: Margaritas, Lochrosens, Embroidery Stones, etc. Also: Silver-Lined Rocailles, Bugle Beads, Seed Beads, Sequins, Rhinestone Chain. Price list and samples upon request. Gerrie Ball, 310 Juniper Street, Brea, CA 92621, (714) 529-1474.

A SKATING COLLECTOR'S DREAM. An extensively compiled collection now for sale. 160 + porcelain, brass, clay, glass, pewter figurines, plates, music boxes, Dorothy Hamill Doll, books, numerous misc. Many discontinued, hard-to-find items by Royal Doulton, Kaiser, Royal Copenhagen, Wallendorf, Hutschenreuther, B&G, Hudson, etc. Appraised in 1984 for \$7,000. Today's prices ??? **BEST OFFER/COMPLETE COLLECTION ONLY.** For complete list send **SASE** to Libbi Goodman, 810 E. Harmont Dr., Phoenix, AZ 85020.

KRASH PADS by **JAN-PRO:** Hip Pad: \$29.95, plus \$2.00 shipping and handling. Measure around seat with skating attire on. Knee Pads: \$16.95, plus \$1.50 shipping and handling. Measure around knee. Colors: Blue, Black, Gray, and Maroon. Send **CK/MO** to Jan-Pro, 4470 Monroe Avenue, San Diego, CA 92115, (619) 282-0637. Calif. res. add 7 1/4% tax.

CROWN TROPHY

1 Odell Plaza, Yonkers, New York 10701 Dept. SKIG
800/227-1557 • In NY 914/963-0005



FREE 30"
NECK RIBBON
only 99¢ ea.

10 to 99	\$1.79
100 to 499	\$1.49
500 to 999	\$1.39
1000 & up	\$.99

2 1/4" DIECAST MEDAL



NEW!
FIGURE SKATING PINS
FOR MEN OR WOMEN

OLYMPIC
COMMEMORATIVE CLUB PINS & MEDALS

Discover an easy fundraising idea of profits for your club. Guaranteed workmanship, fast service, manufacturer of pins and medals, collector pin catalog with many figure skating collectibles. Write to or call: **(714) 964-5010**

WRITE FOR FREE COLOR CATALOG

DESIGNS BY MARGARITA
 19382 WOODLANDS LANE
 HUNTINGTON BEACH, CA 92648

WINTER READING LIST: THUMBS UP! the new Elizabeth Manley autobiography, \$24.95; Jill Trenary's **THE DAY I SKATED FOR THE GOLD**, \$14.95; and **ORSER: A SKATER'S LIFE**, \$19.95. All prices include shipping and handling. Order directly from USFSA, 20 First Street, Colorado Springs, CO 80906.

8-MATE SCRIBE ATTACHMENT. Patented device fastens to your scribe and allows you to mark the ice with a marker pen or the scribe tip. Now, you can finally SEE the **FIGURE** you're SKATING! SAVES TIME - SAVES MONEY! Fits most round tube scribes. Money back guarantee. \$49.50 complete includes shipping. 8-Mate Skating Products Co., Inc., P.O. Box 1782, Centreville, VA 22020-8782.

BACK ISSUES OF SKATING for sale. From year 1979 through 1990, all copies good. I have 18 copies much older. Priced reasonable. For information contact, Raymond Heyduck, R.R.#1 Box 213, Centralia, Illinois 62801.

KAILEE'S KUSTOM PATTERNS & DESIGNS. Dress for success with the ultimate in skating patterns. A variety of sleeves, necklines, skirts and dress styles for practice & competition. Children's 3x thru X Small; Ladies S thru XL. Send \$7.95 plus \$1.50 for postage. Custom Patterns made on request \$10.00 plus postage. Kailee's Kustom Patterns & Designs, P.O. Box 101212, Denver, CO 80210.

We have the **LOWEST DISCOUNT PRICES** on quality boots, blades, and tights—immediate shipment—satisfaction guaranteed. Call (906) 786-7752 or write LeCaptain Studio Store, 1620 Ludington, Escanaba, MI 49829. COD MC VISA.

ICE DANCE MUSIC BY ORCHESTRAS. Program Dance, Pre-Bronze Dances, and more. Tape Cassettes. Send SASE to: **MANHATTAN LIBRARY OF DANCE SKATING MUSIC:** Suite 348, 163 Amsterdam Ave., NY, NY 10023.

PRISM SEQUINS! Jewels, Beaded Fringes, Sequined appliques, Feathers, Lycras, glisennette, lamés, Doubleknit, Superstretch, etc. For catalog send \$3.00. **MURIELLE ROY & CO.,** 67 Platts Mill Rd., Dpt. #2, Naugatuck, CT 06770. (203) 729-0480.

SPANDEX FABRIC — All weights, types, prints, solids, stripes, Nylon and Cotton blends, firsts and closeouts. Norbrook Industries Ltd., 152 Madison Avenue, New York, New York 10016, (212) 889-2708.

EVERYDAY LOW PRICES on boots, blades, scribes, clothing, tights, bags & accessories. Excellent service, immediate shipment. **MAJOR CREDIT CARDS ACCEPTED.** Send \$2.00 for catalog. **ON THIN ICE,** 2737 TWELVE MILE ROAD, BERKLEY, MI 48072. 313-543-1130.

SKATING DRESS PATTERNS: Step-in Dress Pattern for Lycra/Spandex: Girls OR Ladies size S4-6, M8-10, L12-14 \$6.00 ea. Multi-size Pattern w/diff skirts, sleeves, necklines — Girls 4-12 OR Ladies 4-14 \$10.00 ea. Book of 160 patterns for beading, embroidery, and rhinestone work. \$14.95 ea. Send Check/M.O. to: **RENATE PAYNE,** 1946-302 S. Vaughn Wy, Aurora, CO 80014.

Nicholls
SPORTS
 SINCE 1946

Call or write for
NEW 1990
CATALOG
1-800-828-6484
 Same day shipping

Richard
Spencer
W.W. Sw. Inc. Licensed

MK

3433 Lee Road • Shaker Hts. OH 44120

ONE STOP SHOPPING FOR SKATERS! Catalog \$5.00. Best selection of lycra solids, prints, lamés, rhinestones, beaded fringe, bugles, rocailles, spangles, beaded appliques. **BEAD DIFFERENT**, 214 E. Chicago Ave., Westmont, IL 60559, 1-800-BEADS-78, 1-708-971-3377.

FREESTYLES BY CAROLYN. Basic pull-on dress with attached skirt, including three neckline treatments. Directions for adding zipper, and separate wrap skirt also included. Children's sizes, 4x small through x small. Adult sizes, small, medium, large, x large: \$6.00 ea. Pull-on skirt, perfect for practice with T shirts or leotard, \$2.50 ea., all sizes. Figure flattering criss-cross dress: x small through x large, \$4.00 ea. Custom made patterns for \$8.00. Send for measurement chart. Add \$1.00 for postage and handling with each order. 5150 Bluestem Drive, Colorado Springs, CO 80917.

1991 Nationals

Continued from page 40

Ralph Lauren, Carson Pirie Scott, Laura Ashley, Brooks Brothers, and F.A.O. Schwarz. From the upscale Nicollet Mall in Minneapolis to the more stately downtown of St. Paul, there are also many major suburban malls, like Southdale and the Galleria in Edina, plus the unique stores along Grand Avenue in St. Paul are popular meccas for shoppers. Plan to come prepared; you can "shop till you drop in the Twin Cities."

- The arts are visible everywhere you look in Minneapolis-St. Paul, and are vigorously supported by corporate and individual patrons. The gleaming new Ordway Theatre and Science Museum in St. Paul along with the Guthrie Theatre, Walker Art Center, and Institute of Arts in Minneapolis, are exciting places that belong on a "must see" list. Of course, there are many other charming galleries in the Warehouse District of Minneapolis and Lowertown along the river in St. Paul.

- The people are friendly and most are eager to make visitors feel welcome. Residents like it here and will usually go out

Skate America

Continued from page 37

ward is an American citizen, the duo is coached by 1980 World Champion and Olympic Silver Medalist Krisztina Regoczy, and represents Hungary. Dressed as a bride and groom, their program told the story of a wedding day. They included nice footwork and when finished with the program, he carried her over the "threshold" to wait for their marks. They finished seventh.

Although not all of the world's top competitors were in Buffalo, the majority were. This competition seemed to solidify some faces formerly considered "up and coming" in the singles events. And, the competition still introduced new faces in the pairs and dance events, leaving questions in the minds of many as to who might compete at the '92 Olympic Games in Albertville — only 13 short months from now.

of their way to give directions and help. The predominate heritage is from German and Scandinavian countries, however, there is a rich ethnic mix of both cities that produces a grand diversity of lifestyles.

- Clothing is relatively casual in the environment of the Twin Cities—and whether it is cold or hot, people dress to be comfortable. There is a bit dressier look in the downtowns and occasional restaurants do require jackets and ties of men.

Jean Adams, a member of the '91 United States Figure Skating Championships Public Relations Committee, is a freelance writer in the Twin Cities and on staff at the Edina Chamber of Commerce. As a native resident of Minneapolis, she has been involved with the sport of figure skating most of her life through her own participation and that of her two daughters.

Laurels

Skating congratulates the following skaters who have passed USFSA tests in figures, pair, and dance. Only completed dance tests, rather than the individual dances, are recorded below.

New Test Abbreviations are as follows: PRE = Preliminary Figure; 1 = First Figure; 2 = Second Figure; 3 = Third Figure; 4 = Fourth Figure; 5 = Fifth Figure; 6 = Sixth Figure; 7 = Seventh Figure; PF = Preliminary Free; JF = Juvenile Free; IF = Intermediate Free; NF = Novice Free; JRF = Junior Free; PPR = Preliminary Pair; IPR = Intermediate Pair; NPR = Novice Pair; JPR = Junior Pair; GPR = Senior/Gold Pair; P DT = Preliminary Dance Test; PBR DT = Pre Bronze Dance Test; BR DT = Bronze Dance Test; BFD = Bronze Free Dance; PS DT = Pre Silver Dance Test; S DT = Silver Dance Test; SFD = Silver Free Dance; PG DT = Pre Gold Dance Test; G DT = Gold Dance Test; GFD = Gold Free Dance; I DT = International Dance Test; PBR ADT = Pre Bronze Adult Dance Test; B ADT = Bronze Adult Dance Test; ABFD = Adult Bronze Free Dance; PS ADT = Pre Silver Adult Dance Test; S ADT = Silver Adult Dance Test; PG ADT = Pre Gold Adult Dance Test; G ADT = Gold Adult Dance Test.

GOLD FIGURE

Amy Zurlinden, Los Angeles FSC; Christina Kopp, San Fernando Valley FSC; Heather Waller, Anchorage FSC; Heather Dunay, SC of New York; Kara Ullom, Atlanta FSC; Kirsten Sandage, San Diego FSC; Leanne Highsmith, Lakewood WC; Lisa Szytel, La Jolla FSC; Lori Cornelius, Arizona FSC; Margaret Valenteen, University of Delaware FSC; Shannon Caudill, Orange County FSC; Stephanie Hillstrom, FSC of Minneapolis; Vanessa Valle, Suncoast FSC of Florida.

GOLD SENIOR FREE

Amy Caron, SC of Lake Placid; Beth Woronoff, SC of New York; Brandee Marvin, St. Moritz ISC; Christina Kopp, San Fernando Valley FSC; Elizabeth Martin-Mora, SC of Rockland, New York; Heather Waller, Anchorage FSC; Heather Dunay, SC of New York; Jennifer Davidson, Conejo Valley FSC; Jennifer Gold, All Year FSC; Karen Carpenter, Broadmoor SC; Karen Johnson, Duluth FSC; Kathryn Childs, Peninsula FSC; Kirsten Sandage, San Diego FSC; Liza Nacino, Los Angeles FSC; Melanie Schlesinger, Skokie Valley SC; Michael Chack, SC of Rockland, New York; Michelle Meyer, Springfield FSC; Mindy Blitz, Metropolitan FSC; Shannon Caudill, Orange County FSC; Tricia Mulcahy, North Shore SC; Zoe Poledouris, Los Angeles FSC.

GOLD PAIR

Katie Wood, University of Delaware FSC; Kenneth Benson, University of Delaware FSC; Laura LaBarca, SC of Westchester.

GOLD DANCE

Alicia Jabour, Hudson-Mohawk FSC; Andrew De Vera, Los Angeles FSC; Augustine Di Bella, University of Delaware FSC; Becky Waugaman, SC of Wilmington; Carissa Green, Seattle SC; Cindy Burton, University of Delaware FSC; Courtney Mann, Red River Valley FSC; Jacqueline Voik, Winterhurst FSC; Jocelyn Cox, University of Delaware FSC; Kyle Wintermute, Seattle SC; Larry Laborde, Individual Member; Margaret Valenteen, University of Delaware FSC; Renee Werling, Fort Wayne ISC; Scott Merrill, San Diego FSC; Trina Robinson, University of Delaware FSC.

GOLD FREE DANCE

Collin Sullivan, Broadmoor SC; Janene Meyer, SC of the Adirondacks; Leslie Lane, WC of Indianapolis.

The Ice Never Melts In Lake Placid



Site of the 1932 & 1980 Winter Olympics

"THE WINTER SPORTS
CAPITAL OF THE WORLD"

59th Annual Summer Skating School June 10 - August 31, 1991

Featuring:

- ▶ Three 4-Week Sessions:
June 10 - July 6
July 8 - August 3
August 5 - August 31
 - ▶ Excellent Professionals
 - ▶ Saturday Night Ice Shows
 - ▶ Scheduled Test Sessions
- Finest Training Facilities
with 4 Ice Surfaces under one roof

Season Highlights:

Annual Freestyle Competition - July 11-13
Dance Weeks - July 29-August 10
Annual Dance Competition - August 8-10

For more info contact: Colleen M. Duffy
Olympic Center, Lake Placid (518)523-1655 or -3325

 **OLYMPIC REGIONAL
DEVELOPMENT AUTHORITY**

The Olympic Authority is proud to announce that Mr. Edward Pliner, a USSR National Team Coach for 28 years, will be teaching at the Olympic Center for the Summer of 1991.
Enrollment Limited.

ACADEMY FSC: 3-Casey Lipscomb.

ACHILLES FSC: JF-George Scheck, Jr. PS DT-Alissa Ann Coletta.

SC OF THE ADIRONDACKS: 1-Joanne McGovern. 3-Franisca Balke, Nicole Purick. IF-Franisca Balke. BR DT-Theresa Auger. S DT-Franisca Balke.

ALBUQUERQUE FSC: 1-Autumn Debord. 3-Everett Weiss, Matthew Edmonds. JF-Kyle Nesbit. IF-Matthew Edmonds. PBR DT-Larissa Weiss.

ALL YEAR FSC: PRE-Malissa Lawrence. 2-Amanda Glazebrook, Amber Corwin, Lindsay Slawter, Mya Zapata, Shannon Takahashi. 3-Tricia Yamamoto. PF-Malissa Lawrence, Patrice Chapman. JF-Amber Corwin, Kelley Bores, Lindsay Slawter, Mya Zapata, Shannon Takahashi. IF-Tricia Yamamoto. JRF-Anna Brathwaite. JPR-Tristan Colell. PBR DT-Edmund Hollis, Mica Darley. BR DT-Susan Sack. PS DT-Mitzie Carlson.

ALPINE SC: PRE-Becky Lane, Hurricane McEwen. 2-Amy Beth King, Lindsey Starck. PF-Becky Lane, Hurricane McEwen.

ANCHORAGE FSC: PRE-Amber Stout, Crystal Raskey, Kari Leamy, Maran Sutherlin, Maureen McCoy, Sylvia McEwen. 2-Laura Tisserand, Megan Hatswell. 3-Elyse Saugstad, Melanie Faber. 5-Christy Tuomi, Rachel Pearce, Stephanie Lapikas. PF-Amber Stout, Crystal Raskey, Kari Leamy, Maran Sutherlin, Sylvia McEwen. JF-Laura Tisserand, Megan Hatswell. IF-Elyse Saugstad, Melanie Faber.

ANN ARBOR FSC: 1-Jennifer Scheinfeldt. 4-Sara Grossman. PF-Meredith Fox. NF-Sara Grossman. BR DT-Walter Zimmerman.

ARCTIC BLADES FSC: JRF-Golnaz Movafaghi. P DT-Tikvah Hayes. PBR DT-Holly Strickland, Sonia Kim.

ARIZONA FSC: 1-Raquel Olmeda, Ryanne Strohm. 2-Dawn Thomas, Veronica Rohrbacher. 4-Kara Thornham, Stephanie Blunda. 7-Jennifer Checuras. JF-Dawn Thomas, Melissa Sandovai, Veronica Rohrbacher. NF-Kara Thornham. JRF-Jennifer Chi, Jennifer Checuras, Nicole Buckles. P DT-Jessica Warren, Megan Hodges. PBR DT-Dawn Thomas. B ADT-Randy Jacobs.

ARROWHEAD FSC: 1-Christine Choi, Stephanie Hom. NF-Sunny Dory.

ASPEN SC: 3-Greta Cate Gessele.

ATLANTA FSC: BR DT-Brienne Booth, Kerry McLeod. PG DT-Jennifer Haverland.

ATLANTIC CITY FSC: NF-Charles Robel.

AUSTIN FSC: P DT-Jenna Friede, Kallie Moore. BR DT-John Miller.

BABSON SC: PBR DT-Lisa Inglese.

BALTIMORE FSC: PRE-Ashley Dorr, Stephen Courter. PF-Alice Martin, Stephen Courter. PBR DT-Diane Sternpien, Kimberly Waldhauser, Susan Dumler. B ADT-Lester Wilkes, Susan Schnering.

1991 WORLD FIGURE SKATING HALL OF FAME NOMINATION FORM

All nominees for the World Figure Skating Hall of Fame are selected by the general public. Nominees are not limited to living persons nor to U.S. citizens and need not be members of the USFSA. Any person meeting the qualifications below is eligible.

Use this form to nominate those persons that are worthy of election to membership in the Hall of Fame and who meet the qualifications in any one of the categories listed below. Only one nomination form per person each year will be accepted and no more than ten nominees in total may be included on each form.

1. Skaters from throughout the world who have compiled an outstanding competitive record and who have made a noteworthy contribution in style or technique and have been retired from competitive skating for at least five years.
2. Persons who have made a noteworthy contribution to figure skating in a non-skating capacity through service to an amateur figure skating association and have not been active in such capacity for at least five years.
3. Persons who have made a noteworthy contribution to figure skating in a non-amateur capacity. Non-teaching professionals must have been retired at least five years, while teaching professionals must have at least twenty-five years of experience as such.

Following compilation of all nominations received by the closing date of February 1, 1991, the 27 Hall of Fame Electors will vote for the eligible nominees in each category. The announcement of the nominees elected will be made at the Annual Meeting of the USFSA Governing Council in May 1991:

My nominees to the Hall of Fame are:

Name _____

Address (City, State, Zip Code) _____

Clip or reproduce the form and mail to: Mrs. Josephine Lawless, Chairman, Hall of Fame Electors, c/o USFSA, 20 First Street, Colorado Springs, CO 80906.

Deadline for receipt of this form is February 1, 1991.

BAY COUNTRY FSC: PRE—Connie Ewing. JF—Connie Ewing. PBR DT—Amy Ireland.

BAY PATH FSC: BR DT—Jennifer Connor.

BERKLEY ROYAL BLADES FSC: PRE—Brian Stewart, Emily Thomas. 1—Christina Scarmeas, Megan Menendez. 6—Hope Marie Walkowiak. PF—Brian Stewart, Emily Thomas, Nicole Deman. IF—Brenda Walli.

BINGHAMTON FSC: S DT—Elaine Livingston.

BLADE & EDGE FSC OF OMAHA: BR DT—Sarah Stach. B ADT—Karen Sink.

FSC OF BLOOMINGTON: 2—Bessy Pakkala.

BORDER BLADES FSC: BR DT—Amber McLelland.

SC OF BOSTON: 1—Garrett Lucash. 2—Carrie Smith. PF—Jaisa MacAdam. JF—Zoe Harris. IF—Brandon Forsyth. NF—Domenica Palandro. P DT—Zoe Harris. S DT—Melinda Sweezy.

BOWLING GREEN SC: 2—Dawn Loucks. PF—Brian Misamore.

BRAEMAR-CITY OF LAKES FSC: PRE—Jackie Erdall, Jennifer Bungert, Sarah Bennett. 1—Gina Gambucci, Lindsay Halleckson, Megan Kramer. 2—Devon Hensel, Lisa Broz. 3—Jennifer Funk. 4—Christina Waters. PF—Jackie Erdall, Jennifer Bungert, Sarah Bennett. JF—Alissa Ann Hjermstad, Katie Wadsworth, Katie Grinnell. BR DT—Alissa Ann Hjermstad.

BRENTWOOD FSC: 2—Jennifer Thompson.

BROADMOOR SC: PRE—Sabrina Von Campe. 1—Andrea Austin, Lori Marie Hanson, Sabrina Von Campe, Shelly Humphrey, Stacie Harder. 2—Anne Marie Dalby. 4—Hollie Price, Ilyssa Lerner, Paula Wilson, William Annear. PF—Sabrina Von Campe. JF—Stacie Harder. NF—Paula Wilson, William Annear. JRF—Lindsay Krall.

BURNSVILLE-MINNESOTA VALLEY FSC: PRE—Aimee Anderson, Jennifer Brooks, Julie Conard. 1—Leah Lindner. PF—Aimee Anderson, Angela Thomae, Jennifer Brooks, Julie Conard.

CAMILLUS FSC: PS DT—Jennifer Benneck.

CANTIAGUE FSC: 2—Kim Johnson. 3—Anna Karamitsos. 6—Pamela Erlanger. JF—Stacy Arnold. IF—Kim Johnson. NF—Anna Karamitsos. JRF—Pamela Erlanger. BR DT—Barret Mulligan, Rachel Nash.

CAPE COD SC: PRE—Katherine Dean.

CAPITAL CITY FSC: 1—Ginelle Sakima. NF—Dawanna Fender. JRF—Claire Centabar.

CAROUSEL FSC: JF—Christine Sugiyama, Jacqui Tucker. IF—Cherie Terakura. P DT—Jacqui Tucker. PBR ADT—Linda LaValle, Nancy Ebsen. BR DT—Cherie Terakura. B ADT—Thomas Winroth. PS DT—Michelle Ebsen.

CHAMPLAIN VALLEY FSC: PRE—Jennifer Levanchy. 1—Jody Waller. 3—Carrie Knauer. PF—Aimee Audette, Amy Waller. IF—Carrie Knauer, Christin Spain. BR DT—Aimee Audette, Jillian Geiss. BFD—Carrie Knauer.



THE NINTH ANNUAL
**CALGARY
ROSE BOWL
PRECISION SKATING
COMPETITION**

NEW DATE

FEBRUARY 22 & 23, 1991

THE STAMPEDE CORRAL
CALGARY, ALBERTA

HOST - CALALTA COMMUNITY FIGURE SKATING CLUB, CALGARY

PRESENTED BY: ALBERTA TREASURY BRANCHES, ANCOO CANADA PETROLEUM LTD.,
AND CHANNELS 1 & 7 TELEVISION

INFORMATION: MRS. SORAH MOON (403) 286-7431
532 VAUSITY EST., TRUS,
CALGARY, ALBERTA
CANADA T2B 3C3


OR MRS. DONNA CAWDELL
403) 256-6854

BRING YOUR TEAM!

NEW! U.S.F.S. 4 AND U.S.F.S. 4 SANCTIONS HAVE BEEN APPLIED FOR

CALGARY
WINTER
FESTIVAL

NEW THERM-AID. DEVELOPED TO AID
IN
ATHLETIC TRAINING



"Rescue Your Competitive Edge"

- Sore muscles and joints
- Strains and sprains
- Arthritis and inflammation
- Injury prevention

THERM-AID® is a revolutionary new medicated bandage. It time releases up to 12 hours of soothing warmth and pain relief.

Used before, during and after training or performance sessions, THERM-AID® can help you rescue that competitive edge by reducing the pain and restricted motion of strain/sprain or impact injuries.

THERM-AID® is not greasy or harmful to clothes. **THERM-AID**® may be used under support taping for continuous pain reduction.

BE YOUR BEST

F.D.A. APPROVED - NO PRESCRIPTION NECESSARY

To order 100 applications of **THERM-AID**®, send only \$12.95 (check or money order) to:

Personal Best Products International

44 Hartnell Ave., Dept. 335
Redding, CA 96002

CHARLOTTE FSC: PRE—Amy Love, Laurie Bryan, Meera Kakad. 1—Emily Ann Best. 2—Gisele Auguste, Kendra Kent. 7—Kevin Howell. PF—Amy Love, Laurie Bryan, Meera Kakad. JF—Chea Hutton, Gisele Auguste, Kendra Kent. IF—Gina Deleon.

CHICAGO FSC: PRE—Ashley Malone. PF—Ashley Malone. JF—Laura Grendys.

CHRISTMAS BROOK FSC: PS DT—Andrea Davis, Elizabeth Davis.

FSC OF CINCINNATI: PBR DT—Michelle Pembaur.

CLEVELAND SC: PRE—Molly Malgieri. 1—Elizabeth Zuik. 3—Lisa Hall, Molly Nook. P DT—Carol Niemczura. PBR DT—Kara Russo. BR DT—Caroline McCracken.

COLONIAL FSC: PRE—Jill Moloney. 3—Maat Van Uitert, Natalia Kedves. 4—Robert Van Uitert. PBR DT—Keri VerSchure. BR DT—Gina Corrado.

COLONIAL SC OF NJ: PRE—Nicole Adamoyurka. PF—Berda Weisman, Denyne Lindaman. JF—Denyne Lindaman.

COLUMBIA FSC (MD): PF—Jennifer Folkemer. P DT—Daniel Coggins, Patricia Stephens. PBR ADT—Joseph Machovec. B ADT—Rhea Glisan.

COLUMBINE FSC: 1—Kimberly Colaizzi. JF—Karen Colaizzi.

COLUMBUS FSC: PBR DT—Suzanne Ellis. B ADT—Craig Hassler, Lois Harrington. S DT—Katrina Kaiser.

CONEJO VALLEY FSC: PRE—Megan Lindaman. 1—Olivia Hickman. 2—Christy Fahrenbruch. 3—Margaret Roberts. PF—Megan Lindaman. JF—Christy Fahrenbruch. IF—Margaret Roberts. JRF—Amanda Moore, Edmund Zeidler. NPR—Edmund Zeidler.

CORTLAND FSC: 1—Kristen Mitchell. PF—Kristen Mitchell. PBR DT—Kristen Mitchell. PS DT—Hilary Northrop. **COTTONWOOD HEIGHTS FSC:** PRE—Sarah Fillmore. 2—Liz Emery. 3—Jennifer Luangsawadi. PF—Sarah Fillmore. P DT—Tricia Ann Smith. BR DT—Laurie Fukushima.

CREVE COEUR FSC: PBR DT—Kelly Lynn Jones. BR DT—Matthew Buttrely.

DALLAS FSC: PRE—Angie Marth, Jennifer Bower. 2—Shanna Osborn. PF—Angie Marth, Jennifer Bower. JF—Gina Churchman, Jennifer Berry, Mary Turk, Sarah Delvalle, Shanna Osborn.

DARIEN SC OF SOUTHERN CT: 4—Jill Erica Geter. PBR DT—David Born.

DENVER FSC: NF—Michelle Henk. PS DT—Terrie Neukirch.

DETROIT SC: 7—Elizabeth Parker. PF—Justin Yednock. JF—Angela Vandermissen. NF—Christine Vandermissen. PBR DT—Kyle Jones, Lisa McCormick. BR DT—Hailey Mann, Holly Cook, Kate Richards, Lesley Watts, Ryan David Moir. B ADT—Dottie Pekarek.

DUPAGE FSC: PRE—Allison Balling, Heather Kavka, Katie Matsushima, Nicole Arnoux, Nina Siromaskul, Sharon Pfligler. 1—Aaron Parchem. 2—Aimee Martin, Chanel Paulsen, Greta Bogner. 3—Sherrie Ballantine. 4—Julie Peters,

Ice Angel

P.O. Box 20
Oley, PA 19547
(215) 987-3604

"COLLECTABLE FIGURINES"



Red girl (pair) • Red boy (pair)
Pink Skater • Blue Skater

\$11.00 each (PA residents add 6% sales tax)

Hand cast, hand painted, Barkley-Mone metal
figurines, approx. size 2 1/2"

Other figurines available

*"Skater's Working for
Skating."*



Foundation for International Ice Skating Advancement

Do you dream of someday winning the gold? Fulfilling your ultimate dream to be the greatest skater in the world?

The **Foundation for International Ice Skating Advancement** was established to help you realize such goals and achieve your dreams.

Established in 1983, the **FIISA** is committed to raising money to fund Scholarships for your skaters who show potential and talent on the ice. Each year the number of Scholarship recipients grows as support for the **FIISA** becomes stronger.

Last year, six Scholarship recipients went to National competition. Next year . . . this could be you!

You may be eligible for a scholarship from the **Foundation for International Ice Skating Advancement**.

Call or write today for more information:

**FOUNDATION FOR INTERNATIONAL
ICE SKATING ADVANCEMENT**

9230 Olympic Blvd. Suite 203
Beverly Hills, CA 90212

Tel: (213) 288-0283 ☆ Fax: (213) 274-5980

Laura Baucom. 6-Erin Moorad. 7-Anthony Chicalace. PF-Allison Balling, Heather Kavka, Katie Matsushima, Nicole Arnoux, Nina Siromaskul, Sharon Pfligler. JF-Greta Bogner. IF-Suzie Janossy. NF-Jena Roberts, Jennifer Caligiuri. JRF-Anthony Chicalace. IPR-Erin Moorad. NPR-Erin Moorad. PBR DT-Laura Baucom.

EUCLID BLADE & EDGE CLUB: 2-Kelly Carney.

EAGLE RIVER FSC: PG DT-Jennifer Renberg. SFD-Kurt Dreger.

EVANSTON FSC: BR DT-Josta Lieb.

FAIRBANKS FSC: PRE-Jessica Bouts, Nicholas Burger, Sheena Brady. 1-Elizabeth Baker, Melinda Yunker, Rhett Skelton. 2-Sara Vernia. 4-Anthea Bertelson, Trina Bailey. 7-Michelle Jones. PF-Jessica Bouts, Nicholas Burger, Sheena Brady. JF-Noelle Bertelson, Sara Vernia. NF-Anthea Bertelson, Maija Upesteja.

FALMOUTH FSC: PRE-Jennifer Peck, Suzanne McEvoy.

SC OF FLORIDA: PRE-Kimberly McCoy, Kristina Tew, Sharon Lance. 1-Jason Wahl. 2-Heather Fass. 5-Barbara Pump. PF-Kimberly McCoy, Kristina Tew, Sharon Lance. JF-Honey Lynn Bagley. PBR DT-Jason Wahl. BR DT-Mark Palermo, Melissa Garrity. B ADT-Sharon Beers. PS ADT-Terrell Nicholson. PG DT-Peter Machonis.

FORESTWOOD FSC OF PARMA, OHIO: 2-Maria Peskar. JF-Maria Peskar.

ISC FORT COLLINS: PRE-Amber Donley, Anna Freemyer, Erin Botcher, Mary Ellen Yates. 1-Deremie Nicholson, Elizabeth Ragan, Kendra Whitman, Linda Gale Dowlen. 2-Cortnee Preston, Sandra Kyser. PF-Amber Donley, Andrew Singleton, Anna Freemyer, Erin Botcher.

FORT WAYNE ISC: 4-Tammy Gick. IF-Sheri Stapleton.

FRASER FSC: PRE-Emily Lukacs, Kari MacLean, Lisa Kowal, Shannon Williams, Stacey Burnaford. 1-Kelly Brooks, Sarah Maley. 2-April Bisby. 3-Kristy Long. 4-Shawn Vitale. 5-Leslie Walker. PF-Emily Lukacs, Kari MacLean, Lisa Kowal, Sarah Bhatia, Stacey Burnaford. JF-Emily Mayer, Jennifer Jozefiak, Lisa Kowal. IF-Rebecca Reuter. P DT-Marian Smith. PBR DT-Angelina Danna, April Bisby, Jamie Corbin, Krista Danna, Kristy Leachman. BR DT-Jennifer Jozefiak.

GALLERIA-HOUSTON ISC: PRE-Tasha Billingsley. 1-Elizabeth Cagle, Millie Case, Shannon Chislett. 2-Aileen Simborio, Madeleine Blish, Melissa Whiteman. 3-Cynthia Crisp, Lana Grossman. PF-Tasha Billingsley. JF-Aileen Simborio, Madeleine Blish, Melissa Whiteman. BR DT-Allyson Becker.

GARDEN CITY FSC: PRE-Gina Scheffler, Jillian Yonemura. 1-Andrea Jaroh, Craig Suyak, Kelli Mitchell, Mary Muldoon. 2-Jennifer Matras, Lori Yuergens, Sara Wysocki. 3-Kelly Smith. 6-Brenda Blackmer. PF-Carla Rawson, Dawn Stoutenburg, Gina Scheffler. JF-Rachel Chambers. IF-Kelly Smith, Michelle Becklehamer. JRF-Susan Eastman.

GENESEE FSC: JF–Andrea Samson, Mary Kendig.

GOLDEN STATE FSC: PRE–John Ashley. 1–Jennifer Conger. 2–Amber Wasson, Marisa Perring, Michelle Avancena. PF–John Ashley. JF–Amber Wasson, Marisa Perring. PBR DT–Aileen Garcia, Jennifer Conger, Karina Ann Perera.

GREAT BAY FSC: PF–Amy Sawyer.

GREAT LAKES FSC: 3–Katrina Standaert.

GREATER EVANSVILLE FSC: 6–Michelle Mize.

GREATER MILWAUKEE FSC: 5–Spring Minor. PBR DT–Spring Minor, Tina Mayer Piemeisel. BR DT–Angela Larson, Candace Kane, Patti Arnold Koehn, Paula Rivera, Tina Mayer Piemeisel.

GREENBRIER FSC: 1–Alyson Noelker, Carrie Ann Minardo, Stefanie Pawnyk, Tara Kreutzer. 3–Amanda Mottl, Jamie Rossino. JF–Heather Collaros, Jennifer Klesch. PPR–Heather Collaros. BR DT–Jodi Giera. PS DT–Suzanne Strong.

GREENSBORO ISC: PG DT–Kevin Elvin.

HAMDEN FS ASSOC: PRE–Brienne Piteo, Christine Liguori, S. Amy Korn, Tara O’Niel. PF–Christine Liguori, Elizabeth Miranda, Jamie Katz, Michelle Lettierio, Stephanie Siclari, Tara O’Niel. JF–Alicia Ierardi, Kate Baldoni. PBR DT–Annalisa Zinn, Brienne Piteo, Tracy Shumway. BR DT–Aaron Salinger. KE.

SC OF HARTFORD: BR DT–Amy Fong, Emery Samuels, Sandi Fong. BFD–Ethel Field.

HAWAII FSC: PRE–Ainahau Harold. PF–Ainahau Harold. NPR–Kenny Tsai, Nani Malama. PG DT–Lani Lein Nilsson.

HAYDEN RECREATION CTR FSC: 1–Mary Jeys. 2–Sarah Giffen. 3–Amy Seaquist. 4–Carolina Reiling, Faye Ruth Fisher. 7–Lisa Ansin. PF–Helkin Von Schwaab, Jill Ohanian, Karen Delaney. P DT–Jacquelyn Jeys. PBR DT–Diane Reid.

HICKORY HILL FSC: PRE–Jennifer Lange. PF–Jennifer Lange. JF–Julie Anne Schlifman. PBR DT–Carol Halperin, Wendy Mlinar. B ADT–Larry Wagner.

HIGHLAND SC: PRE–Toya Ryan. 2–Erika Noel Dienes, Jill Friedman. 3–Andrea Dignon. 4–Tawnya Smith. PF–Michael Dew, Toya Ryan. JF–Erika Noel Dienes, Jennifer Hall, Jill Friedman. IF–Andrea Dignon.

HOUSTON FSC: 1–Katie Hernandez. PF–Jimmy Earle, Michelle Solomon, Tara Scardino. JF–Candice Quino. IF–Anna Quino, Jenna Boving. NF–Lindsay Leivo. PPR–Randall Doe. B ADT–Isabella Smythe.

HUDSON-MOHAWK FSC: PRE–Elizabeth Marvin. 4–Nicole Fernandez. PF–Elizabeth Marvin. NF–Melissa Piscitelli.

ICE CLUB OF BALTIMORE, INC: PRE–Laura Brandt. 4–Courtney Gentile. JF–Jon Tart. NF–Courtney Gentile. PS DT–Lindsay Corotis.

ICE & BLADES CLUB OF WASHINGTON: PRE–Allison Biley, Jennifer Frusco. 1–Andreaarena. 2–Andrew MacDonald, Jennifer Cobert. 3–Ann Searfoss. PF–Jamie Lynn Overly, Natalie Fanell. JF–Amber McKnight, Keri Holton, Shaun Johnson. BR DT–Allison Nega, Keri Holton, Tracy Ohm.

ICELAND FSC OF HOUSTON: P DT–Maria Tolotta. B ADT–Michele Yandel.

ILLINOIS VALLEY FSC: PRE–Amanda Kirk. PF–Amanda Kirk. B ADT–Teri Powell. PS DT–Heather Brune, Joel Hinnen-Leman, Valerie Johnson. S DT–Lynn Ann Jansen.

INDIANA/WORLD SKATING ACADEMY: PRE–Jordan Miller. PF–Jordan Miller. IF–Carrie Maultsby. NF–Matthew Kessinger. P DT–Brie Teaboldt. BR DT–Martha Faatz.

ISC OF INDIANAPOLIS: 4–Robert Lombard. JRF–William Widmeyer.

JANESVILLE FSC: PBR DT–Rosemarie Douglas.

KENT SC: P DT–Kristina Bogdan. PBR DT–Catherine Law.

LA JOLLA FSC: PRE–Jennifer Anderson. 2–Jennie Andrist. 3–Karin Sherr, Katrina Baughman, Katy Griffiths. 6–Joanna Gibbs. PF–Jennifer Anderson. JF–Jennie Andrist. IF–Katrina Baughman.

SC OF LAKE FOREST: 2–Christine Frcka. 3–Kopal Jain. 4–Tanya Noel Street. JF–Christine Frcka. IF–Kopal Jain. BR DT–Lili Park.

LAKE MINNETONKA FSC: PRE–Alex Kremer, Allison Lunden. 2–Laura Sheran. PF–Alex Kremer. JF–Laura Sheran. NF–Holly Lang.

SC OF LAKE PLACID: PPR–Adrienne Lenda, Elizabeth Morgan. IPR–Adrienne Lenda, Elizabeth Morgan, Kelly Herrington.

LAKEWOOD WINTER CLUB: PRE–Jessica Suter, Joanne High, Katrinka Mullins, Larry Mullins, Valerie Larsen. 3–Rina Thun. 6–Stacey Zimmerman. PF–Jessica Suter, Joanne High, Katrinka Mullins, Larry Mullins, Valerie Larsen. JF–Amanda Banks. IF–Heather Carr, Rina Thun. JRF–Heidi Green.

LANSING SC: PRE–Noreen Pickard. 1–Anna Doyle. 2–Beth Pritikin. 3–Rachelle Covey. 5–Kellie Richards. 6–Carola Martinez. PF–Noreen Pickard. JF–Noreen Pickard. PBR DT–Amy Grondin, Monica Mendez. BR DT–Maggie Hess.

LAS VEGAS FSC: 7–Casey Link.

LEHIGH VALLEY SC: PF–Megan Souder. PBR DT–Dana Hill, Niki Lynn Mozzillo. B ADT–Barbara Osborn. PG DT–Niki Lynn Mozzillo.

LILAC CITY FSC: PRE–Amanda Foraker, Andrea Welch, Melissa Cocks. 1–Eddie Bevan. 3–Jamie Aga. PF–Amanda Foraker, Andrea Welch, Melissa Cocks. IF–Jamie Aga. BR DT–Tori Stone.

LINCOLN CENTER FSC: 2–Sarah Neal, Stephanie Neal. PBR DT–Becky Carmichael, Brooke Pitman.

LITTLE SUN VALLEY SC: PBR DT–Kari Speight. BR DT–Ellen Goodwin.

LONE STAR FSC: PRE–April Gross, David Giersch, Jr., Rebecca Heaberg, Roshel VanDerGrinten, Shannon Sharp. 1–Cameron Cummins, Jessica Kunde, Maricarmen Szeszko. 2–Ann Sihatrai, Arin Dorris, Kelby Renfro, Sara Burnside. 3–Chris Castleberry, Jocelyn Sandoval, Michelle Silver. 4–Aerin Williams, Keith Yingling, Jr. 6–Kathy Anne Brown. 7–Jennifer Darst, Krissa Neathery. PF–April Gross, Rebecca Heaberg, Roshel VanDerGrinten, Shannon Sharp. JF–Ann Sihatrai, Arin Dorris, James White, Kelby Renfro, Rich Slater, Sara Burnside. IF–Aerin Williams, Chris Castleberry, Giana Brasil, Michelle Silver, Rich Slater. NF–Carri Reid, Keith Yingling, Jr. JRF–Denise Dana, Mary Ann Howard. P DT–Arin Dorris, Lefki Terzakis. PG DT–Tiffany Wyndham. SFD–Jeremy Wyndham, Tiffany Wyndham.

LONG ISLAND FSC: PRE–Jillian Duffy. PF–Jillian Duffy. IF–Dana Ferreri.

LOS ANGELES FSC: 1–Natalie Woode. 4–Jennifer Jones, Kristina Vera. NF–Jennifer Jones. JRF–Christina Wu, Laura Probst, Vicky Hudika. PPR–Jered Guzman, Liberte Sheldon, Natalie Vlandis. IPR–Douglas Mattis, Liberte Sheldon. NPR–Douglas Mattis, Liberte Sheldon. JPR–Douglas Mattis, John Baldwin, Jr., Liberte Sheldon. BR DT–David Miller, Jason Corley, Maria Mize, Melinda Seller. PS DT–Jason Corley. S DT–Todd Eldredge. S ADT–Martha Allen. BFD–Brandy Valencia, Cristin Callaghan, Jason Corley. SFD–Brandy Valencia, Garrett Swasey.

FSC OF MADISON: 2–Melissa Sarbacker. 3–Scott Sarbacker. JF–Melissa Sarbacker. IF–Scott Sarbacker. PBR DT–Rick Berg. BR DT–Erika Hesse.

MAGIC CITY FSC: PRE–Briana Jo Berryman, Liza Ronholdt. 3–Brenna Speiser. 4–Barbara Roberts. 5–Andrea Swenson. PF–Briana Jo Berryman, Liza Ronholdt. IF–Brenna Speiser, Lasha Ellis. NF–Barbara Roberts. P DT–Cheri Gowan, Michelle Gowan. BR DT–Becky Swenson. PS DT–Shauna Gietzen. S DT–Brenna Speiser.

SC OF MAINE: PRE–Abigail Lee, Kristie Miles. 1–Erica Pearl. PF–Abigail Lee, Bridget MacLennan. JF–Amanda Roberts, Lucas Caron, Michelle Jordan, Sara Lane. BR DT–Amanda Roberts, Carrie Hess. S DT–Alice Sauve.

MANKATO FSC: JF–Angie Dedinsky.

MARQUETTE FSC: SFD–Calder Duncanson, Carey Weiss.

MARTHA'S VINEYARD FSC: PF–Jennifer Whitman, Kristin Siple.

MEADVILLE FSC: 1–Amanda Massung, Quinn Weaver. PF–Bridget McLarlane. JF–Amanda Massung, Quinn Weaver. P DT–Nikole Bournias. BR DT–Amanda Massung, Quinn Weaver.

FSC OF MEMPHIS: PRE–Jeilenn Gerlach. 3–Nicole Janda.

MENTOR FSC: P DT–Deborah Bradley.

METROPOLITAN FSC: PRE–Nicole Maltz. 1–George Hawkins, Melissa Ielpi. PF–Meghan Rasdall. JF–George Hawkins, Melissa Ielpi. PS DT–Devera Pine.

MIDLAND FSC: NF–Marcia Kierpiec. B ADT–Ann-Marie Horcher.

FSC OF MINNEAPOLIS: 1–Lindsey Titus. 2–Amy Stoltenberg, Amy Marie Latvaaho, Sarah Beth Brewer. 4–Marla Polk. P DT–Amy Oberg.

MISSION VALLEY ISC: 1–Brandee Malto, Daniel Harper, Natasha McCann. 2–Jamie Vong. 6–Sarah Smith. JF–Dalea Fong. JRF–Michelle Hartman, Sarah Smith.

SC OF MORRIS NJ: 1–Anne Marie Chaker. PF–Anne Marie Chaker.

SC OF NATICK: PBR DT–Georgia Butler, Nicole Lattuca.

SC OF NEW YORK: 2–Ariel Aila Williams. IF–Rosemary Coletti. PBR DT–De De Hwang.

NEWBURYPORT FSC: PRE–Martha McLeod. PF–Martha McLeod.

NORTH IOWA FSC: PRE–Kathy Kaduce. PF–Kathy Kaduce.

NORTH SHORE SC: 3–Sheila Figurdio. 4–Sheila Mason. 5–Laura Di Nardi. 7–Alisa Wallis. PF–Cynthia Bukach, Erinn Bansfield. JF–Allyn Munroe. IF–Sheila Figurdio.

NORTH SUBURBAN FSC: PF–Erin Bridge.

SC OF NORTHERN VIRGINIA: PRE–Julie Duncan. 2–Christina Phipps, Nicole Andrejko. PF–Julie Duncan. JPR–Stephanie Horn. P DT–Amanda Stern, Carey Tushin, Luci Ferguson, Nefertiti Jones. BR DT–Shana Byers.

OLD YORK ROAD SC: IF–Rebekah Breen.

FSC OF OMAHA: 3–Lisa Goldapp. PBR DT–Walter Kopiasz.

ORANGE COUNTY FSC: PRE–Colleen Bathen, Hollis Bathen. 2–Jonathan Keen, Rosie Finocchi. PF–Colleen Bathen, Hollis Bathen. JF–Jonathan Keen. JPR–Shannon Caudill. P DT–Erin Lynn Hartzell, Hollis Bathen. BR DT–Nancy Goodridge.

ORLANDO FSC: 1–Tiffany Ross. PF–Darryl Hall. P DT–Robert Smith, Jr.

OWENSBORO FSC: PRE–Laura Bradley. PF–Laura Bradley. BR DT–Jenna Marlowe.

PALACE FSC: PRE–Cece Crum, Stephanie Doell. 1–Amanda Yarussi, Melissa Perley. PF–Cece Crum, Stephanie Doell.

PALOMARES FSC: PRE–Alicia Starr. 1–Elly Mayen. 2–Jamie Rose. PF–Alicia Starr. JF–Kimberly Edwards. NPR–Alexander Jacoby, Nicole Perry. P DT–Caty Cole. PBR DT–Caty Cole, Margaret Tamres. S DT–Denise Snyders, Elly Mayen. SFD–Michael Ricigliano, Sandra Ricigliano.

PASADENA FSC: 2–Arwen Jewell, Lina Chmiel. JF–Lina Chmiel. IF–Sara Robertson.

PAVILION SC OF CLEVE HGTS: 1–Tai Chizmar. 2–Shawnte Thompson. 3–Melissa Hrabak. PF–Alyssa Hicks. JF–Shawnte Thompson. P DT–Carol Abbott.

PAWTUCKET & PROVIDENCE FC: PF–Jennifer Pontes, Lynn Midgley. SFD–Dawn Ponte, Jason Tebo.

PENINSULA FSC: PRE–Jamie Miller, Jeanne Prieto. 1–Joel Vinson. 2–Amanda Zamir. 3–Sheri Varrelmann. 4–Jaime Conklin. 5–Lynne Petta. 6–Christine Hackworth. PF–Jamie Miller, Jeanne Prieto. JF–Amanda Zamir. NF–Jaime Conklin. PBR DT–Elaine Dumas, Joan Bartlett, Kim Hall. BR DT–Katie Kerwin, Lynne Petta.

SC OF PHOENIX: PRE–Valerie Adams. PF–Valerie Adams. IF–Jennifer Petta. BR DT–Jennifer Petta.

PILGRIM SC: 1–Caitlin Marino. 2–Kristen Works. 3–Tiffany Scott. 6–Jill MacCaferri.

PITTSBURGH FSC: 5–Sara Neiman. NPR–Sara Neiman.

PLYMOUTH FSC: PRE–Lisa Bloch. 1–Christine Collings. 6–Dawn Rice. PF–Lisa Bloch. NF–Kristin Kalinowski. JRF–Dawn Rice. PBR DT–Christine Verdone, Kimberly Brown. BR DT–Sylvia Francis.

PORTAGE LAKE FSC: PRE–Amy Antila, Barbara Summersett, Danielle Holmstrom, Jolene Ryan, Josie Rowe, Molly Roberts, Sarah Kolb, Stacy Lueking. 1–Jennifer Ranta, Teerada Sripaipan. 5–Michele Fisher. PF–Amy Antila, Danielle Holmstrom, Danille Dube, Josie Rowe, Maria Geiger, Maxine McCabe, Stacy Lueking, Annette Summersett. JF–Jessica Comfort, June Johnson. P DT–Becky Sved, Catherine Horsch, Danielle Holmstrom, Danille Dube, Heather Marzke, Hilary Niemela, Josie Rowe, Nicole Melchiori, Stephanie Tepkasetkul. PBR DT–Amy Voelker, Danielle Holmstrom, Heather Marzke, Michell Loukus, Rebecca Lampinen, Sarah Kolb, Stephanie Tepkasetkul. BR DT–Amy Antila, Jodi Hoffman, Penny Williams. PS DT–Heather Ranta, Jennifer Ranta, Michelle Tepkasetkul, Sandy Loukus. S DT–Sheryl Karnosky. PG DT–Angie Ligon.

PORTLAND ISC: PRE–Carolyn Fassel, Danielle Losoff, Malene Martinez, Reimee Ward. PF–Alexander Wilson, Allison Daniels, Danielle Losoff, Malene Martinez. JF–Danielle Meskill, Kelly Taylor. IF–Jolene Wacker, Jonas Moel. NF–Deana Fresh. JRF–Anna Marie Meisner. PBR ADT–Debbie Taylor. BR DT–Danielle Losoff.

PRINCETON SC: JPR–Christina Fitzgerald.

PUEBLO FSC: PRE–Cindy Scavarda. 1–Jennifer Warren. 3–Shanda Pate. PF–Katie Fimple, Val Rising-Moore. JF–Dan Smith. IF–Shanda Pate.

QUEEN CITY FSC: P DT–Michelle Longbons. PBR DT–Carmen Satterwhite, William O’Kain.

RED RIVER VALLEY FSC: 3–Cortney Mann. BR DT–Leslie Leistritz. S DT–Leah Nygaard.

RIM OF THE WORLD FSC: 2–Dustin Fujiwara, Melissa Worman. 3–Morgan Crabtree. JF–Melissa Worman. P DT–Barbara Powell. PBR DT–Barbara Powell.

FSC OF ROCKFORD: PRE–Amy Frazier, Amy Wiseley, Rachel Diedrick, Ruth Dickinson, Stephanie Rogers. 1–Angela Diller. 2–Stephanie Anderson. 4–Michael Edgren. 5–Tara Johnson. PF–Amy Frazier, Amy Wiseley, Benjamin Clements, Jamie Welden, Lisa Alfano, Stephanie Rogers.

SC OF ROCKLAND, NEW YORK: 2–Samantha Chaifetz. 3–Gina Marie Pagano. 4–Amanda Ward. 6–Nickie Andrews. 7–Elizabeth Martin-Mora, Lance Alan Travis. JF–Georgia Kaldis, Jennifer Curtis, Meredith Mobius. IF–Gina Marie Pagano. NF–Amanda Ward.

ROCKY MOUNTAIN FSC: PRE–Tawnya Parker. 1–Kelly Meyer. 2–Leah Taylor, Melissa Martin, Sara Hardesty. 3–Amanda Hagman. 5–Jaimee Dworkin. PF–Tawnya Parker. JF–Leah Taylor, Sara Hardesty. JRF–Kimberly Wordekemper.

ROSEVILLE FSC: IF–Colleen McCarter. NF–Colleen McCarter. P DT–Melissa Mitzuk. PBR DT–Melissa Mitzuk. PBR ADT–Janis Livingston. B ADT–Lynne Kuechle. BFD–Kimberly Hartley.

RYE FSC: 2–Rebecca Hut. 4–Lisa Giannattasio. 5–Ryan MacLeod. IF–Melissa Staffeldt.

SALT CITY FIGURE SKATERS: S DT–Celeste Treadwell.

SAN DIEGO FSC: PRE–David Recchia, Jacob O’Donnell. 2–Lena Gaskins. PF–David Recchia, Jacob O’Donnell. NPR–Sabrina Corbaci. P DT–Alissa Street, Amy Gramling, Jessica Pickett, Lena Gaskins, Shaun Blaze. PBR DT–Lena Gaskins. BR DT–Emily Berger, Sabrina Corbaci. B ADT–Linda Urban. PS ADT–Cyndi Johnson. SFD–Christina Corbaci, Scott Merrill.

SAN FERNANDO VALLEY FSC: 2–Julia Torgan, Kimberly Silva, Yvette Benito. 4–Erika Kita, Racquel Bieda. 5–Helen Siefert. JF–Kimberly Silva, Yvette Benito. NF–Erika Kita, Racquel Bieda.

SANTA ROSA FSC: PRE–Dawn Pizzini, Marisa Hirsch. 1–Duna Herman, Wren Herman. 4–Michelle King. 5–Shannon Anderson. PF–Dawn Pizzini, Marisa Hirsch. P DT–Dawn Pizzini. PBR ADT–Julie Flieger. B ADT–Richard Minnick. PS ADT–Jeannette Boudreau.

SEATTLE SC: PRE–Jessica Biringner. 2–Jaime Thompson, Kirsten Thomson. 4–Rachel Smallbeck. PF–Erika Hanson, Jessica Biringner. JF–Jaime Thompson, Kirsten Thomson. NF–Erin O’Connor, Karleen Murphy.

SHAKER FSC: 1–Cristen Means. JF–Anna Pinchak. P DT–Cristen Means. PBR DT–Carrie Wooten.

SILVER BLADES FSC OF KC: 1–Karen Chandler, Kelly Caranchini. 2–Lara Krigel. 3–Lindsay Hall. JF–Lara Krigel. IF–Lindsay Hall, Robyn Brillantine. NF–Amy Brown. NPR–Jill Ahders. P DT–Kelly Caranchini, Molly Waterman. S DT–Natalie Cope.

SILVER BLADES SC OF ROCKLAND: PRE–Michelle Owens. 2–Annette Pagliaro. 3–Heather Dugan.

SILVER SKATE SC: PRE–Patience Mann. 1–Kameko Gay, Miranda Carmine. 4–Sarah Rodway. PF–Patience Mann. NF–Sarah Rodway. P DT–Claire Kendall, Victoria Noble. PBR DT–Andrea Selkregg.

SILVER STREAKS SKATING CLUB: PRE–Marielle Silva, Melissa Owens. PF–Melissa Owens.

SKOKIE VALLEY SC: PRE–Sarah Beidler. 3–Chrisi Papachristopoul, Erin Flax, Jamie Ann Perry. 5–Melissa Schultz. 7–Jenifer Ostrom, Mara Borden. PF–Benjamin Brittsan. JF–Whitney Carrier. IF–Chrisi Papachristopoul, Erin Flax. NF–Faith Fogel, Kevin Spada, Victoria Jenner. JRF–Yasmin Fatah. PBR DT–Sarah Beidler.

SMITHFIELD FSC: 4–Christa Beauvais. PS DT–Michael Phaneuf.

SOUTH BAY FSC: 3–Kathleen Culla. IF–Kathleen Culla. BR DT–Garry Mallett. BFD–Ryoichi Kobayashi.

SOUTH MOUNTAIN FSC: 2–Lindsay Ehrlich. P DT–Haley Lunin. PS DT–Lynne Leger. S DT–Lynne Leger.

SC OF SOUTHERN NEW ENGLAND: 1–Morgan Rowe. P DT–Shaun Boynton. BR DT–Derek Youlden, Kerrin O’Donnell, Sara Webster, Sonja Hutchings.

SOUTHERN NEW HAMPSHIRE SC: JF–Angela Lawrence.

SOUTHPORT SC: 2–Katie Anderson, Melody Oakes, Stacey Beth. 3–Kelly Beth. 5–Sheryl Gordon. IF–Kelly Beth. BR DT–Christine Thull.

SPRINGFIELD FSC: 3–Cara Frasco. P DT–Deborah McNamara. PBR DT–Jill Jenkins. BR DT–Renee Fleury.

ST. JOSEPH FSC: PRE–Mary Nelson, Michele Modlin, Tiffanie Modlin. 1–Kristy Jones, Lindsey Walter, Russell Sale. 2–Janie Johnson. 4–Ouida Robins. 7–Katherine Williamson. PF–Kali Palmer, Mary Nelson, Michele Modlin, Tiffanie Modlin. JF–Janie Johnson. NF–Ouida Robins. PBR DT–Dawn Elrod, Kristy Jones. BR DT–Janie Johnson. PS DT–Ann Wachendorfer. S DT–Ouida Robins. PG DT–Jill Roasa.

ST. MORITZ ISC: PRE–Brita Rosenheim, Jennifer Eskildsen, Shannon Eaton. 1–Elisa Kim, Lisa Wu. 2–Katie Alonso, Lara Huntley, Sheila Nguyen. 4–Kim Sherod, Terry Hayes. 7–Sandra Varo. PF–Brita Rosenheim, Jennifer Eskildsen, Shannon Eaton. JF–Katie Alonso, Kelly McCann, Lara Huntley, Sandra Babcock, Sheila Nguyen, Tina Clark. NF–Amy Leptien, Kimberley Weersing, Terry Hayes. P DT–Barbara Martien, Brandon Stowe, Susan Jennison. PBR DT–Brandon Stowe, Claire Hayek, Jennafer Groswith, Kanae Tagawa, Karen Matsuoka, Mary Elbe, Robert Manners, Samantha Krenn, Susan Stokes. B ADT–Rosemary Ito. PS DT–Suzanne Foster. PS ADT–Jean Turzanski, Marilyn Sander.

ST. PAUL FSC: PPR–Cheryl Marker. IPR–Cheryl Marker. NPR–Cheryl Marker.

ST. CLAIR SHORES FSC: PRE–Samantha Jarecki. 6–Elizabeth Libtow. PF–Theresa Gehrke. JRF–Elizabeth Libtow. B ADT–Bonnie Collins-Landers.

STONE MOUNTAIN FSC: 1–Amy Grindstaff. JF–Brian Karr, Karen Christie. NPR–Jennifer Archdeacon, Jerrod Cooper. BR DT–Alessandra Burton.

STONEHAM FSC: JF–Joshua Figurido, Melissa Carney.

SUN VALLEY FSC: PRE–Jessica Wamsley. 6–Evelyn Richards. PF–Jessica Wamsley. P DT–Heather Mynatt.

SUNCOAST FSC OF FLORIDA: PRE–Jill Hanan. 1–Jennifer Stretch. PF–Jill Hanan. BR DT–Natalie Copeland, Rosann Heisler. B ADT–Janet Flowers, Raymond Rudolph.

SYCAMORE ISC: 2–Jennifer Nelson, Karen Nelson.

SYMMETRIC FSC: BR DT–Jennifer Garvey.

TAMPA BAY SC: 2–Sabrina Comins. JF–Jennifer Orsi, Jessica Bernard, Sabrina Comins, Tara Bulzone.

TRIANGLE FSC: PRE–Mimi Kelly. 6–Jeffrey Tilley. B ADT–Mimi Kelly. PS DT–Danielle Ulasewich.

TROY SC: 2–Ann Utrecht, Courtney Barnhart, Matthew Hartmann. 3–Mary Anne Bayat. JF–Courtney Barnhart. PBR ADT–Brian Kowal.

TULSA FSC: PRE–Jonathan Bartlett. 5–Jennifer Hicks. JF–Mary Ann Sloan. S DT–Robert Baker. BFD–Kristin Parker. SFD–Kristin Parker.

TWIN BAYS SC: IF–Tracey Schulz.

UNIVERSITY OF DELAWARE FSC: PRE–Sara Burkert. 1–Karen Hunley, Maggie MacDonald. 2–Melinda Dill. 3–Amy Gunzenhauser. PF–Christine Chang, Christine Marino, Lindsay Carroll, Sara Burkert. JF–Abigail Ber-man, Beth Eklund, Jonathan Nichols. NF–Kara Paxton. IPR–Kristen Pedroso. NPR–Betty Bosch, Kristen Pedroso, Lorien Pruett, Paul Dulebohn. P DT–Deborah Koegel. PBR DT–Alexie Kolpak, Brooke Graham, Deborah Koegel, Jimmy Bollinger, Jr., John Lanyon, Jr., Karen Hunley, Katie Bollinger, Patricia McQuaide, Sara Burkert. BR DT–Alicia Stankus. PS DT–Brian Helgenberg, James Wade, Rhonda Greenslet. S DT–Stephanie Crawford, Stephen Foy. BFD–Dawn Ostrom, Julie Ann Crain, Robin Pearce, Tina Lai, Wayne Lai.

WAGON WHEEL FSC: 1–Erika Ziemba, Erin Elliott, Jennifer Wambach, Kristen Lovda, Michelle Barrett. 2–Clare Jones. 5–Melissa Phelps. JF–Claudia Golsch, Jenny Lee, Melissa Duckwall. IF–Ginger Page, Melissa Duckwall, Sara Jack, Stacy Huggins. NF–Erika Fischer.

WARWICK FIGURE SKATERS: PRE–Allison Hurley, Erin Manchester, Jennifer Galli, Joyelle Galli, Keri Schaffner, Sara Roch, Tory Brody. 1–Stacey Thurston. 3–Lyndsey Read. PF–Allison Hurley, Courtney Asher, Ellen Anne Roch, Erin Manchester, Jennifer Galli, Katie Blanchard, Kelly Blanchard, Patrice Corrente, Sara Roch. JRF–Kristine McKenzie. P DT–Kelly Blanchard, Lois Pavia. PBR DT–Ellen Anne Roch, Jennifer Galli, Jessica Royal, Joyelle Galli, Sara Roch. BR DT–Elizabeth Aron. B ADT–Veri Rose. PS DT–Susan Bradshaw.

WASHINGTON FSC: PRE–Stephanie Jennings. 1–Tasha Purcell. 2–Carolyn Greene, Celine Griscom, David Almassian, Kelly Newton. 3–Amanda Carpenter. 4–Ayana May, Stephen Bidon, Theoni Panagopoulos. 5–Tatiana Pollard. 6–Sarah Harre. PF–Bette Gorman, Stephanie Jennings. JF–Elizabeth Ollapally, Kelly Newton. IF–Latoya Barnett. NPR–Alix Clymer, Derrick Delmore. P DT–Kathy Jaray. PBR DT–John Cherniavsky. BR DT–Genevieve Kotic, Lynn Goldfarb. S DT–Rebecca Hood.

SC OF WAYNE: PG DT–Janelle Gebeau.

WEST COVINA FSC: 3–Susan Parkhill.

SC OF WESTCHESTER: 2–Keri Simoson, Kerry Rose Knakal.

SC OF WESTERN NEW YORK: 2–Amanda Mangione. JF–Amanda Mangione. JRF–Lynette Mitrey. BR DT–Cory Harper.

WESTMINSTER FSC OF ERIE: PRE–Sharon Schultz. 1–Kathryn Kloecker. 2–Julie Strobel, Kurt Fromknecht. 4–Renee Shubert. PF–Sharon Schultz. JF–Julie Strobel, Kurt Fromknecht, Leslie Shupenko. P DT–Kelly Schultz, Meagan Danylko. PBR DT–Robert Schupp. S DT–Renee Shubert.

WILMINGTON FSC: PRE–Danielle Leccese, Larissa Randazzo. 1–Brenda Cardoza. 3–Amy Stetson. IF–Maria Forziati.

SC OF WILMINGTON: PF–Dawn Eminson, Karen Vorndran, Natalie Krause. NPR–Andrea Catoia. JPR–Heather Hughes. PBR DT–Karen Kryznanasukas, Nancy Jehl. BFD–Hayes Alan Knorr. SFD–Hayes Alan Knorr.

WINCHESTER FSC: 6—Yvette Gattineri. IF—Kelly McEleney.

WINTER CLUB INDIANAPOLIS: P DT—Judy Jones, Kimberly Kleinops. PBR DT—Jennifer Wagner. PBR ADT—Lynn Kenyon.

WINTERHURST FSC: P DT—Christina Petruskis.

WISSAHICKON SC: BR DT—Bruce Weinberg.

INDIVIDUAL MEMBERS: PBR DT—Mary Gaillard, Patricia Bishop. BR DT—Rhonda Overton-Avery. B ADT—Linda Reinfield. PS DT—Robin Kay Hand. PG DT—Jamie Coffey. PRE—Susie Gharib. 1—Joe Lemay, Stephanie Woods. 2—Megan Dowdy. PF—Jane Piercy, Kerry Jean Annis, Mary Hagen. IF—Brent Echols, Catherine Chalmers. NF—Mercedes Bransfield.

Robin Lee

Continued from page 7

“I was left high and dry, so I accepted an offer to teach in Winnipeg for a season,” Lee explained. “Then the Ice Follies were started, and I went to Philadelphia to join the company. I skated mostly solos, with some pair work, from the summer of 1939 until March of 1942, when I joined the Navy.”

After the war, Lee spent three years with a Canadian show called “Ice Cycles” that was a joint venture of Ice Capades and Ice Follies. He later began teaching in Chicago and returned to Minneapolis-St. Paul in the early 1950’s. He has been a coach at the Figure Skating Club of Minneapolis for more than 30 years.

In looking back over his career, Lee described his own competitive years as “an evolutionary period” in skating. “We had gone from the American Style to the International Style in a fairly short time. We were forerunners, without a lot of background to build on.”

He has witnessed major changes in the world of competitive skating. “There are a lot more figure skaters now, and they have more intensive training. In my day, there were only three places in the country with extended summer ice: Lake Placid, Colorado Springs, and St. Paul. And the equipment wasn’t as good as it is today—we skated figures and freestyle with the same boots and blades.”

Jumps were given less emphasis 50 years ago, when Lee was competing. “Doubles were just making their way into skating about the time I was getting

out of it. Double Salchows, double loops, and double toe loops were about as far as we got. Triples were thought of, but not as something that would really be done.”

Spins and footwork, on the other hand, were extremely important. “I think we spun every bit as well in those days, and maybe better. Footwork was also more important. Nowadays, you see the really fine footwork in free dance.”

Lee said that today’s big jumps are “terrific,” but he worries about the risk of injury—perhaps because he once fractured his own kneecap in a fall from a jump that was lower than today’s triples and quads.

“I’d like to see skaters required to jump in both directions, at least in the compulsory program,” he added. “Now that jumps have reached four turns and aren’t likely to reach five, making skaters jump to the left and the right would separate the men from the boys and the women from the girls.”

Lee also hopes that figures will become a competitive event in their own right, and that they will continue to be required of skaters in the lower divisions. “Skating isn’t just physical,” he pointed out. “It involves a lot of thinking and learning to control your body. Everything is directed; no part of your body is free to go on its own. Figures teach you to control your body—to make it do what you tell it to do.”

Although Lee has coached national and international competitors, he gets his greatest personal satisfaction from working with younger skaters. He still spends several hours a week on the ice, teaching group classes and a handful of

private students at the Figure Skating Club of Minneapolis.

"I've often said I'll do it for just one more season, but I keep coming back to the rink," he admitted good-naturedly. And if his pupils don't realize that their teacher has won more national men's figure skating titles than all but a handful of American skaters, they won't learn the truth from the man who patiently shows them the finer nuances of edges and figure eights.

Durant Imboden is a full-time professional writer of advertising, newsletters, and novels with magazine credits that range from Playboy to Writer's Digest. He resides in Minneapolis.

Ricky Harris

Continued from page 45

8. Are there possibilities and variations of level and dynamics?
9. Are all the elements included?

Choreographers have a real responsibility. They must have an objective of some kind in order to: show off athletic skills; cover up flaws; show off artistic skills; and tell a story.

For years music was used merely as a background for skating the elements. With figures not so important and with the vast television coverage skating gets, dramatic structure incorporated some of its rules into the building of choreographic skills. It is relating to the dance world with story ballets, using the same kind of athletic prowess. More and more we see characterizations, plot, addition of transitions, climax, and continuity.

Sometimes we see a story being told only during the slow portions. Oftentimes it is seen throughout the entire program as choreography begins to mesh the story with the skaters' required elements.

The choreographer does not always have complete control and this makes her job twice the challenge. The coach holds the ultimate voice, and can change moves around or replace them altogether. This may be

Advertisers

INDEX

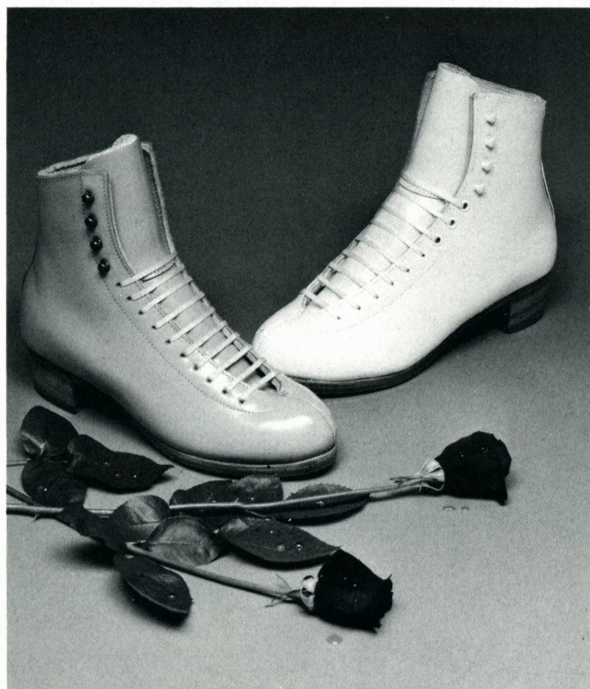
C	
Calalta Community Figure Skating Club	55
Campbell's Soup Co.	OBC
Crown Trophy	49
D	
Designs by Margarita	50
F	
Foundation for Ice Skating Advancement	56
H	
Harlick & Co.	10
Höjlen Inc.	20
I	
Ice Angel	56
International Sports Management	48
J	
Jerry's Skating World	7, 9, 11
K	
Klingbeil Shoe Labs Inc.	44
L	
Ledin Photo & Video	45
N	
1991 Nationals, Minnesota	18
Nicholls Sports	50
O	
Oberhamer	46
Olympic Authority	53
P	
Personal Best Products	55
R	
Riedell Shoes Inc.	IBC
S	
SP-Teri	IFC
U	
Unicorn Sport	8

necessary in order for the skater to better perform the elements, but it also sometimes causes havoc in the form of the program.

Obviously, there needs to be good communication between the choreographer and the coach so that the program maintains its choreographic intent, as well as its athletic requirements.

Note: If you have any questions you want answered or want any skating information relating to choreography and style, write to: "Dear Ricky," P.O. Box 2112, Newport Beach, CA 92663.

Riedell™



For a great performance

Endorsed By



RIEDEL SHOES, INC. P.O. BOX 21 RED WING, MN 55066

TELEPHONE: 612-388-8251 TELEX: 4931210 FAX 612-388-8616

**Feels so
"M'm! M'm! Good!"**®



Campbell's

CONDENSED

VERSILLE