

OCTOBER 1991

Skating



*Elizabeth Punsalan
& Jerod Swallow*

1991

U.S. Dance Champions,
Olympic Festival Champions

Inside —

- Lisa Ervin
- U.S. Olympic Festival - '91
- Amy Offner & Brian Helgenberg

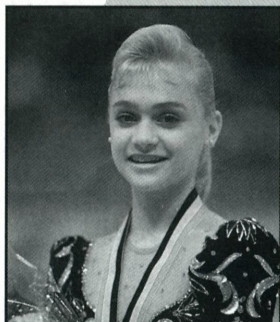
BUILT FOR PERFORMANCE



SP-Teri 

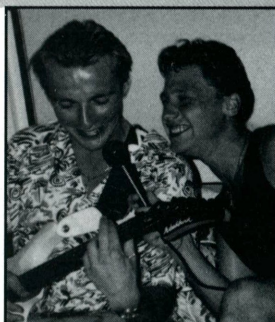
Skating Boots

436 North Canal St., Unit #1, So. San Francisco, CA 94080 415-871-1715

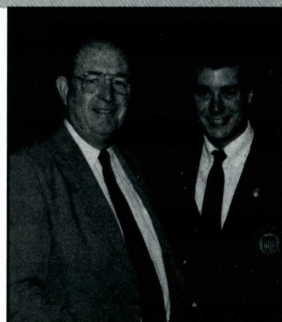


HOWEY CAUFMAN

page 8



page 22



PAUL HARVATH

page 39

Lisa Ervin	8
Homesick No More by Deb Vestal	
Campbell's Soup 1991 Tour of World Champions And the Tour Goes On	22
International Competitions	25
1991-1992 U.S. Competitions	26
USOF - '91 Finds City of Angels a Tough Place to Earn its Wings	27
Pair Partners for Life by Deb Vestal	36
1991 Governing Council Report of Action	39
Olympic Memories London — October 28-29, 1908	64

Departments

News Briefs	4	18	People and Places
Music	7	21	Calendar of Events
Official Notes	11	44	Classifieds
Precision Review	12	47	Laurels
Memorial Fund Donors	17	66	Advertisers' Index

Cover: 1991 U.S. Dance Champions Elizabeth Punsalan and Jerod Swallow also captured gold at this summer's Olympic Festival. PHOTO BY MICHAEL ESPOSITO

News Briefs

The grand reopening of an "all-new" Pickwick Ice Arena will take place October 12, bringing out many skating stars. Debi Thomas, Christopher Bowman, Natasha Kuchiki and Todd Sand, Jeanne Miley and Michael Verlich, Joanna Ng, Tisha Walker and others will skate in the show produced by the LAFSC to benefit United Cerebral Palsy.

☆ ☆ ☆

JoJo Starbuck and Scott Hamilton and track and field standouts Jackie Joyner-Kersey and Bob Beamon are among 24 U.S. Olympians who have been voted winners of the Clairol Personal Best Award. The award recognizes outstanding individuals who have excelled in sports and have also made a positive and lasting impact "off the field" by dedicating themselves to bettering the lives of others. The Clairol Personal Best Award is presented to one male and one female competitor from each of the Winter and Summer Olympic Games from 1968 through 1988. The

winners were selected from a field of 95 nominees all of whom met criteria established by the United States Olympic Committee. Clairol is the official hair care sponsor of the 1992 U.S. Olympic Team.

☆ ☆ ☆

Julie Benz, 1987 national Junior dance competitor with Dave Schilling and younger sister of Jeffrey and Jennifer Benz, can be seen in the new comedy, *Hi, Honey, I'm Home*, as the youngest daughter.

☆ ☆ ☆

"World Cup Champions On Ice," a theatre ice show produced by Michael A. Rosenberg and Barry Mendelson, will open its seven month international tour at the Cleveland Playhouse October 29. The show, choreographed by Randy Gardner, stars Elizabeth Manley and Robin Cousins, with special guest star Linda Frattianne. Also featured will be Cindy Landry and Peter Opegard, Charlie Tickner, Lisa Marie Allen, Alexandre Fadeev, Charlene Wong, Scott Williams, and Natalie and Wayne Seybold. The show will play in the U.S., Canada, and Australia through April 1992.

☆ ☆ ☆

Reigning Olympic Champions Brian Boitano and Katarina Witt will

Skating

Editor

KIM MUTCHLER

Managing Editor

IAN A. ANDERSON

Assistant Editor

MARY ANN PURPURA

Contributing Editor

DALE MITCH

Art Director

PAMELA S. GALLOGLY

SKATING and the USFSA neither endorse nor take responsibility for products or services advertised herein. The Publisher reserves the right to reject or cancel any advertising at any time.

SKATING (ISSN: 0037-6132) is published by the United States Figure Skating Association, 20 First Street, Colorado Springs, CO 80906-3697. Phone (719) 635-5200. Subscription rate: United States and Canada, one year **\$15.00 (U.S.)**. Foreign, one year **\$30.00 (U.S.)**. Allow 6-8 weeks delivery of the first issue. Second Class postage paid at Colorado Springs and at additional mailing offices. **SKATING** is published monthly October through July (10 issues per year). Copyright © 1991 by The United States Figure Skating Association (USFSA), Colorado Springs, CO. **SKATING** assumes no responsibility for the return of unsolicited manuscripts or photographs. **Postmaster: Send address corrections to SKATING, 20 First Street, Colorado Springs, CO 80906-3697.**

USFSA President

Franklin S. Nelson, M.C., USNR

Executive Director

Ian A. Anderson



SKATING is the official publication of
The United States Figure Skating Association
(USFSA)

Member



International Skating Union



Group A Member

reunite for Skating '92 scheduled to open November 17 in Portland, Maine. A full-scale theatrical event on ice, the show will tour arenas in North America, Europe, and Japan. Skating '92, produced by Bill Graham Presents, is the third show created by the two skaters—the first, Skating, and their second, Skating II. Sandra Bezic will again direct and choreograph the show that features Boitano and Witt joined by an international team of top Olympic and World champions. Other dates on the tour include: November 19, Halifax; November 22, Lake Placid; November 24, Hartford; December 27, Los Angeles; December 30, San Francisco. The American leg of the tour will conclude March 6 at Madison Square Garden in New York City. Other dates will be announced.

☆ ☆ ☆

Marina Klimova and Sergei Ponomarenko, two-time World champions and Olympic silver and bronze medalists, left longtime coach Natalia Dubova and are now training with Tatiana Tarasova, renowned coach of former Olympic Champions Irina Rodnina and Natalia Bestemianova and Andre Bukin.

☆ ☆ ☆

The U.S. will not participate in the Golden

Spin of Zagreb (Yugoslavia) scheduled November 14-17 this year due to the political unrest in that country at this time.

One other international competition is out this season—the United Kingdom International (formerly Skate Electric). Scheduled October 7-11 in London, England, the competition was canceled due to lack of sponsorship.

Participation in both competitions will be reevaluated next year.

☆ ☆ ☆

The Professional Skaters Guild of America (PSGA) has announced that the 1991 U.S. Open will be held December 27-30 at the Seattle Coliseum in Seattle, Wash. The competition will remain a two-part event with the Challenge Cup preceding the Master Cup on December 27. The Challenge Cup is open to any interested professional skater. In this portion of the U.S. Open, only an artistic program is skated. Winners of the Challenge Cup advance to the Master Cup December 28 and 29. In the Master Cup, a technical and an artistic program are performed by each skater. There are no required elements. Prize money will be awarded to the winners of each event.

☆ ☆ ☆

Two-time Olympic Gold Medalist and five-time

World Champion Katarina Witt has signed an agreement with Danskin. Witt will design and test a collection of figure skating and fitness apparel and also endorse Danskin's entire line of activewear.

☆ ☆ ☆

The Coca-Cola Company has signed agreements with 32 of the 40 national governing bodies for amateur sports in the U.S. including the United States Figure Skating Association (USFSA).

Negotiations are currently underway with the remaining eight associations.

☆ ☆ ☆

More than 235 skaters, representing 25 U.S. clubs, gathered in Bowling Green, Ohio in June for the first Bowling Green Precision Camp. Sundae Bafo-LeBel, coach of the Buffalo Hot Fudge Sundaes, 10 times national champions, directed on-ice activities for the enthusiastic crowd.

☆ ☆ ☆

NutraSweet has announced the following dates for professional competitions: The NutraSweet World Professional Figure Skating Championships, December 7, Capital Centre, Landover, Md.; The NutraSweet Challenge of Champions, December 13, Oslo Spektrum, Oslo, Norway.

☆ ☆ ☆



Dante Cozzi Sports Presents A Special Sale

★ MK BLADES ★

	Regular Price	Sale Price
Professional.....	\$139	\$124
Silver Test	165	145
Phantom.....	260	214
Elite	380	295
Dance Model.....	285	225
Gold Test.....	295	225
Gold Star (Chrome).....	309	237
Gold Star (Gold).....	420	325

★ JOHN WILSON BLADES ★

Coronation Ace.....	\$180	\$140
Pattern 99	280	235
Pattern 88	405	310
H. Gerschwiler.....	340	260
Gold Seal.....	400	315

★ RIEDELL BOOTS ★

Gold Star 375W.....	\$190	\$170
Gold Star Jr. 75W.....	155	140
Royal 900W	205	190
Royal Jr. 90W	175	160
Imperial 950W.....	220	206

Riedell 925W Comp..... \$230..... \$215

Polish - \$4.00 • Scribe & Case - \$90.00 • Booties & Rubber Guards - \$6.00



DANTE COZZI SPORTS

2600 Newbridge Road, Bellmore, New York 11710
Phone: 516-783-0215 • Fax: 516-783-2964

ALL TOP QUALITY MERCHANDISE WITH FULL MANUFACTURERS GUARANTEE. VISA OR
MASTERCARD ARE WELCOME, OTHERWISE USE CERTIFIED CHECK OR MONEY ORDER.
PLEASE ADD \$8.00 HANDLING CHARGE. NEW YORK RESIDENTS ADD APPLICABLE SALES TAX.

What is a Competition Quality Cassette?

by Tony Todd

First of all, a competition quality tape is recorded on a clean, high quality C-12 cassette. The tape recorder is calibrated before making the recording, using the USFSA Official Timing Tape which is available from USFSA National Headquarters. Today's CD's, records, and tapes permit good quality recordings to be made even with home equipment. However, inferior quality tape is just not able to reproduce the wide range of frequencies found in modern recordings. CrO2 tape is a must for CD's.

The recording level should not be too low or too high. Think of the tape as a roadway or tunnel. Run off the low side, below -20db average level, and you will end up in the gravel with a noisy "play loud" tape. Up in the red you will hit your head. Your music will be distorted and no amount of adjusting can fix that. Be sure that the level of the various segments of your music is consistent.

There is no lead-in. This enables the competition tape operator to achieve consistent starts by cueing the cassettes to the start of the tape visually. There is absolutely nothing else recorded either after the program or on the other side of the cassette.

The cassette is plainly labeled with the full name of the competitor, event, and running time. Registration people please note: New labels are fine but only if they fit the cassettes and do not cover any essential information, especially running time.

Traps: Incorrect music time causes more trips to the Music Room than any

Continued on page 15

Now On Video!

See The Great Routines of The 1980's!

TORVIL & DEAN

SCOTT HAMILTON

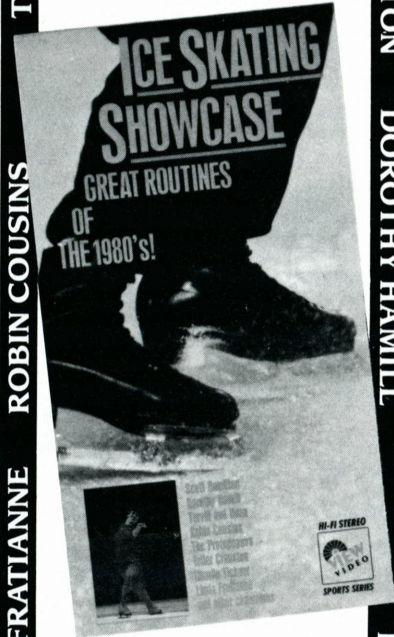
ROBIN COUSINS

DOROTHY HAMILL

LINDA FRATIENNE

CHARLIE TICKNER

KITTY & PETER CARRUTHERS



A Spectacular Compilation of The Very Best of World Professional Figure Skating!

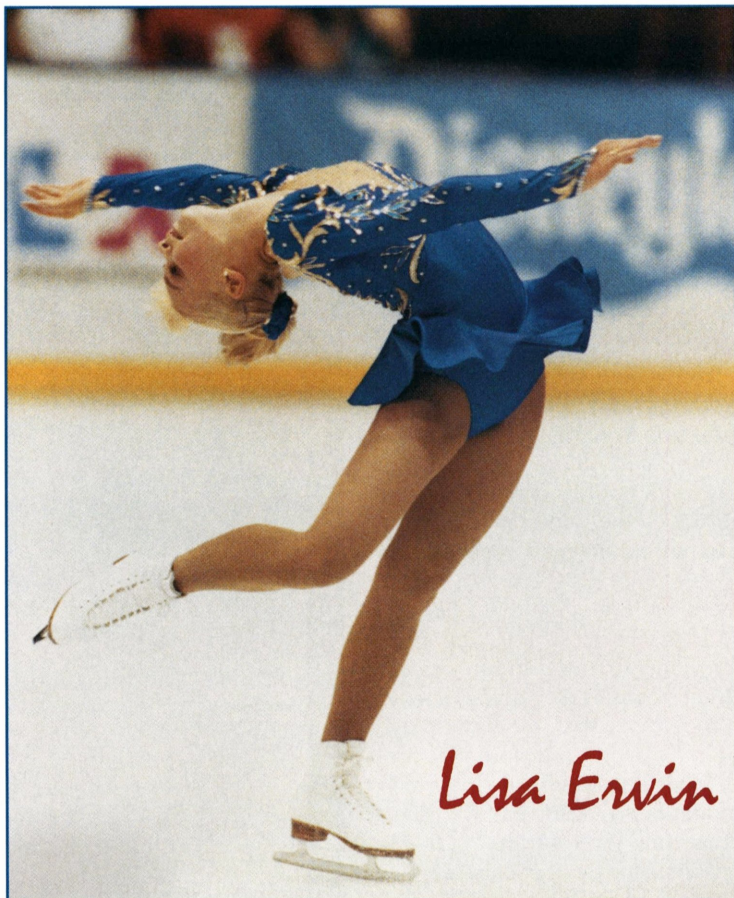
"One hour of memorable routines filled with grace, humor and breathtaking skill."

ONLY 19.95

To Order Call Toll Free
800-843-9843

Call Toll-Free or in NY 212-674-5550.
Or write V.I.E.W. Inc., 34 E. 23rd St., NYC, NY 10010.
\$3.50 S & H. Credit Cards Accepted.

THE PROTOPOPOVS



HOMESICK NO MORE

by *Deb Vestal*

Lisa Ervin knew the symptoms. Sadness. Frustration. Loneliness. And then the tears. She had to call home.

Ervin was only 250 miles from her parents in Charleston, W.Va., but to an 8 year old, it felt like 10,000 miles. Sometimes the tears wouldn't stop. Then she would be on a plane home.

Ervin was just 3 years old when she began to skate at the three-season rink in

her hometown. Five years later, Ervin's coach announced that she was moving to Buffalo but that she had a new coach in mind for Ervin.

At the Cleveland competition, Ervin and her parents were introduced to Carol Heiss Jenkins and Ervin's parents asked if their daughter might have a tryout. Jenkins hadn't seen Ervin skate and cautiously told the Ervins that they could

come to Cleveland at their convenience.

"I hear all the time from parents that my daughter is talented," said Jenkins. "I decided to wait and see for myself."

A short time later, a tiny blonde with winter ponytails showed up at the rink and wanted to see Jenkins. "We all fell in love with her right away. She was cute as a button and not as high as the barriers."

Jenkins had her stroke and to Jenkins's amazement, Ervin was already in the center of the rink after just four strokes. "She had such a wonderful glide. I thought, oh, my." Next Jenkins had her try a waltz jump and she just flew into the air. Jenkins tried everything thinking Ervin wouldn't listen or wasn't coachable in some way. Instead Jenkins was amazed at Ervin's eagerness, her talent, and her maturity.

Eight hours later, Jenkins and Ervin stepped off the ice and approached Ervin's parents. "I said to them, you know you have a real problem," remembered Jenkins. "And their faces dropped. I said, oh, no, not that kind of problem. You have a very talented daughter. And I do want to teach her."

Ervin's parents could not pick up and move for their only child. The solution was to find a family with which she might live. She was placed with a skating family.

The move brought about big changes in Ervin's life. Before she attended a private school with eight students in the classroom. Now she attended public school and had homework for the first time. Her boarding family had a different schedule than she did and she was often on her own. There was no one to help her with her homework.

"It was really hard, a struggle," said Ervin of the first year. "I was on the phone every night calling my dad and asking these questions about my homework. I missed my mom and dad so much. The tears would come all the time. It was really hard."

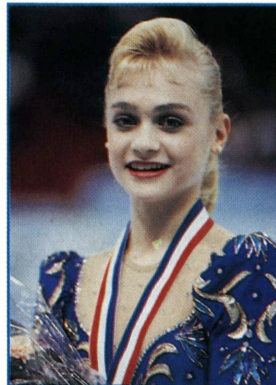
The first year was particularly hard for Ervin and after Regionals, Jenkins sent her home to be with her family. Ervin worked with Jenkins just once or twice a month after that until the following summer.

At nine, Ervin began to board there year round. Jenkins remembered that Ervin was brave with her dad. "She would say to her dad, 'I'm all right. Don't worry about me. I'm all right,' but of course she wasn't all right," said Jenkins.

Through all the tears, she never thought of going back home and giving up her skating. At the rink, she forgot about her sadness—all that existed was her skating and her friends. "As soon as I walked in the door of the rink, I was fine," she said.

When she left the rink Ervin was not fine. Jenkins was concerned and knew that something had to be done for her student. "It is terrible to have to separate the family because the three of them were so close," said Jenkins.

Ervin's father tried to get a job in Cleveland with no success. Instead he was transferred even farther away to Wilmington, Del. It was at that time that her mother decided to move to Cleveland, get an apartment, and live with her daughter. Shortly after that, her father was transferred again—this time to Buf-



HOWEY CAUFMAN



INGRID BUTTT

men's free skating. "It was quite exciting for us and for my coach," said a smiling Ervin. "She has had someone third and second but never a title. Now she has two titles."

The thrill of Ervin's life came last fall when she was named to compete in the 1991 World Junior Championships. Never before had a Novice skater been invited. "I really commend our association for doing that for Lisa," said Jenkins. "Talk about going from one year at Nationals, win the free skating, then right into World Juniors, and she handled it beautifully. That kind of experience is something you couldn't buy for a skater."

Ervin remembers the World Juniors experience as overwhelming. "I was nervous. I had never been out of the country before. I just wanted to skate my best for my country."

On the plane to Budapest, Ervin and Jenkins decided to shoot for the top eight. A medal probably was out of the question. The lack of pressure and the excitement of the experience drove her into second place past a more experienced Nicole Bobek who ended in fourth. "I was thrilled with it. I was second to Surya Bonaly," said Ervin about her performance. "I was really happy and excited to do so well because I know the USFSA was stepping out on a limb to send me and I am really glad they did."

At the 1991 U.S. Championships, Ervin was skating against her main rival Joanna Ng who placed second in last year's Novice free skating. After the original program, Ng had the advantage. With the confidence and style of a Senior lady and triple jumps to match, Ervin passed Ng for the Junior ladies' title.

She attributed her win to Jenkins who was also Novice and Junior ladies' champion back to back in 1951 and 1952 and her goal is to match Jenkins's Olympic title someday. "I have always wanted to be like her," said Ervin.

Continued on page 20

falo, N.Y. Now he is just a four-hour drive away and spends many weekends with them in Cleveland. The hope for the family is that all three will once again be living in the same city.

When her mother came to live with her, Ervin's skating career blossomed. "It has helped having my mom live with me. My school and my friends are very supportive too."

Ervin, now 14, claims to be five feet tall, and is a ninth grader in Lakewood, Ohio. She skates from 6:30 A.M. to 11:00 A.M. and then goes to school from 11:45 A.M. to 3:30 P.M.

Last year when Ervin qualified for Nationals in Novice ladies for the first time, her school had a surprise for her. "They threw an assembly for me. My school is a very special school."

Her first Nationals was also a surprise for her. "When I got to Nationals, I wanted to be in the top four," she said. "But then I knew I wanted to win, I could win."

Her confidence drove her to the top and she won the Novice free skating. Her rinkmate, Ryan Hunka, won the Novice

OFFICIAL

Notes

RULEBOOK CHANGES

The technical content of the free dance in the Novice dance event will be the same as outlined in SSR 4.53 and SSR 4.54 with the following exceptions:

Number of lifts permitted: 2

Duration: Maximum of 5 seconds per lift

Length of free dance: 2 minutes

Note: Couples should strive for interesting dance steps, turns, basic good timing, deep edges, flow, erect carriage, good form, unison, and expression to emphasize the character of the music selected.

—*Ida S. Tateoka*
Chairman, Dance Committee

In the Novice men and Novice ladies original program, the spin combination (e) will read as follows in the *1991-92 USFSA Rulebook*:

(e) Spin combination with *only* one change of foot and *only* one change of position.

Remarks: Spin combination (e) must include two of the three basic spin positions.

—*Josephine Lawless*
Chairman, Skating Standards Committee

PRELIMINARY FREE DANCE MUSIC

The Governing Council at its May 1991 meeting passed rules providing for a Preliminary free dance skated one minute and to standardized music.

A tape with eight one-minute (plus/minus 10 seconds) standardized dance selections including a slow waltz, fast waltz, polka, tango, march, foxtrot, cha-cha, and blues selection

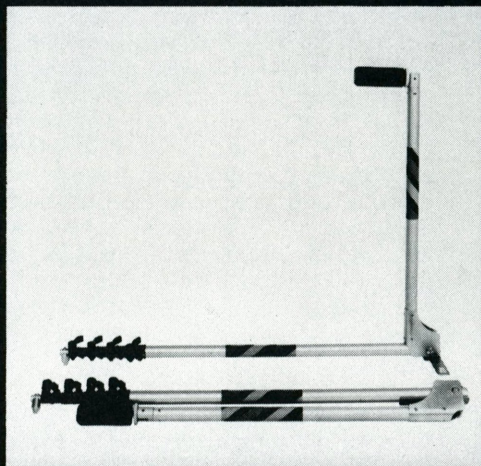
Continued on page 24

FINALLY!

The ultimate Scribe.

NEW LEVER TYPE LOCKING SYSTEM

We have improved our scribe again and managed to keep the price unchanged!



CARRYING CASE AVAILABLE

This easy to use, compact Figure Skating Scribe is GUARANTEED FOR 2 YEARS.

U.S. Wholesale Distributors:
Midwest Skate Co., Michigan
Lubin's Skate Supplies, New Hampshire

JERRY'S SKATING WORLD INC.
520 Hood Road, Markham, Ontario
Canada L3R 3K9 (416) 477-1172

Precision

REVIEW

Problems Backing a Precision Team

by E.R. Van Vliet

Precision Team Skating is the name of the newest discipline within our sport; the three parts in the title each spell difficulties for coaches, parents, skaters, and skating clubs. Of course, all of the disciplines of skating involve precision, i.e., accuracy, not varying in the slightest degree from a norm. However, in singles, pairs, and dance the synchronization of feet, hands, heads, and bodies is for a maximum of two individuals. Precision skating can range from 12 to 32 persons all in harmonious motion. This sportive event is perhaps unique in the world; its closest relative would be synchronized swimming where two to eight swimmers work in combination at the same time. In fact, in France this division is known as *patinage artistique synchronisé* (synchronized artistic skating). However, the maximum number of participants on a synchronized swimming team does not even match the minimum for precision skating.

The number of skaters alone makes precision skating difficult to produce. To find ice time for a couple to skate or for a singles skater is one matter but to find it for 32 is quite another. Teams must practice two, three, or more times per week. With private clubs as our local organizational setup in the United States, teams often find difficulty in taking valuable ice time from the other trainees in the sport not to mention the recreational skaters who care little for testing or competitive training.

Skating competitors of all kinds are in direct conflict with members who care little

for intensive training. As the youngest member of our sport, precision team skating often has the last choice in clubs where testing or individualized instruction is the norm. Professional coaches who are used for private instruction are reluctant to give up ice time where three or four instructors could profit financially from the more traditional instructional pattern. Precision team skating instructors are often at odds with their colleagues who teach other disciplines within the sport. In some clubs, the precision team instructor has been discouraged from developing his or her art form by other coaches as well as by members who already have to give up much time to club testing or competitive training for singles, pairs, or dance. Private clubs with limited ice time per week are reluctant to give precision team skating the facilities it needs to mature. Some clubs are willing to help one team develop but often no others. With teams from Juvenile to Adult, member clubs themselves feel threatened by large numbers of skaters who literally absorb more and more time from other skating activities. While precision team skating might be the salvation for some clubs, it could easily become the dissolution of others. Precision skating is all or nothing for ice time. Dancers and free skaters can barely use the ice when precision teams occupy it. Where free skaters have learned a certain symbiosis with dancers and vice versa, precision skaters are more like hockey players in that they need all the locker rooms, the ice surface, etc.

This all or nothing aspect of precision team skating is a problem with this discipline's public relations within our sport itself. Few dancers and free skaters have seen good precision team skating and vice versa, but that separation begins within the private clubs. Two people can practice year round to form a pair or dance team, but 30 people cannot afford year round training much less the psychological "oneness" that two skaters can endure. Even professional hockey teams need some free time from "the group." Precision teams form in the fall and need to train throughout the winter with peak preparation climaxing near the end of the six-month season. The Sectional Championships are usually held in March and the Nationals in April.

Unfortunately, the free skaters and dancers in figure skating have already finished Regionals, Sectionals, and Nationals in their selection processes toward the World and Olympic Championships. As members of the same sport, the coaches, the skaters, and spectators of precision are virtually isolated from those of the other branches. And, we now have special judges for the discipline further separating this newborn of our sport from its siblings.

Precision is expensive to support. Two skaters can get in a car with parents or coaches and ride off to an invitational or regional meet. Thirty people with the same outfits, the same program, the same itinerary cannot simply get into a van and go to a competition, especially if at some distance away from the homebase. As for any team enterprise, buses or planes must be arranged because large numbers travel more efficiently and more economically as a group. Then there are the lodging and meal arrangements upon arrival. Group rates are the norm for precision teams. Like any organized exclusive entity, there is financial and social pressure to conform with skate bags, travel outfits, etc. Conformity within a group can perhaps help provide a solidifying sentiment within a precision team, but it can also tear it apart financially and psychologically.

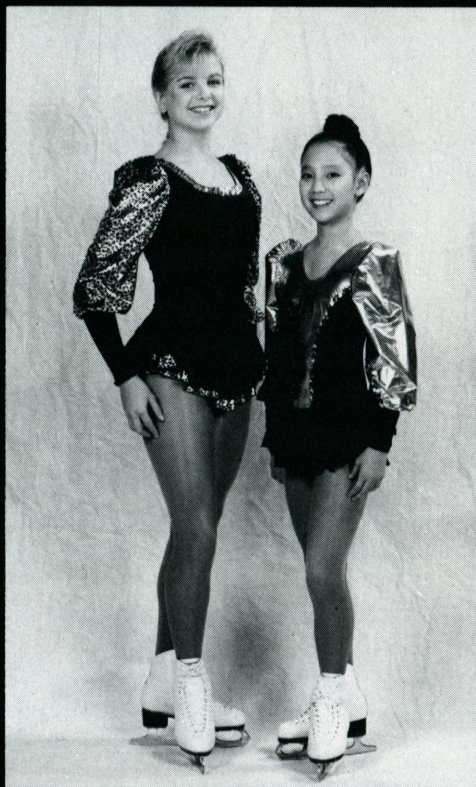
Precision team skating like any new branch of a sport has to look at its assets and liabilities. The very things that are good about precision are also its worst aspects. Teams are demanding; figure skating, like tennis or golf, has always appealed to the individual or *pas de deux* performer at most. The team or chorusline mentality was for the ballet, the Rockettes, or the New York Yankees; but certainly not for Nureyev, Fred Astaire, Billie Jean King, or Mohammed Ali. We cannot abandon the Kurt Brownings, the Peggy Flemings, the Protopopovs or Duchesnays in the sport for precision teams. However, in order for our sport to prosper, precision team skating must grow and it must integrate the "Brownings" and their glamour along with it. Nureyev or Baryshnikov could not have developed without the Leningrad or Bolshoi ballets to highlight them. We could not possibly watch only Kurt Browning or only the Hay-

Continued on page 24

Jerry's

Skating World Inc.

Everything for the
Figure Skater

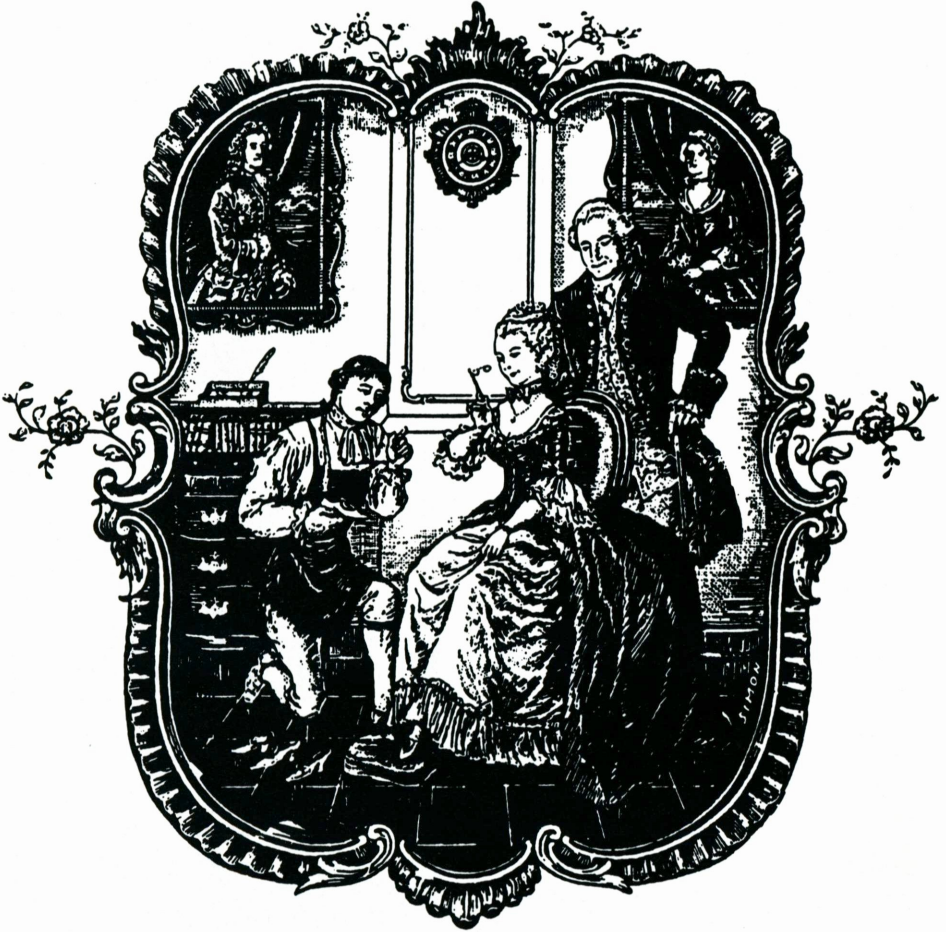


520 Hood Road
Markham, Ontario
Canada L3R 3K9
Tel: (416) 477-1172
Fax: (416) 477-8859

Skating Trends 1991 - 1992

Write or call for a
FREE Colour Catalogue


Klingbeil®



CUSTOM MADE SKATING BOOTS

Established Since 1950

Klingbeil Shoe Labs, Inc.

145-01 Jamaica Avenue
Jamaica, New York 11435
(718) 297-6864

Order forms available upon request.
Please write or phone.

Music

Continued from page 7

other problem! A tape running at a comfortable speed on an incorrectly calibrated rink-side deck will run too fast or too slow if run on a calibrated deck without appropriate correction. Music running time is confused with skating time. Usually a skater/coach has no idea how long the music has been running in practice, so a guess or no time at all is put on the music registration form.

Tips: A skater's correct music time, as long as his actual skating time is "legal," is 100 percent his option. The *only* way to measure this time is to use an accurate stopwatch at the practice rink after you have decided that you are skating at a comfortable pace. Or, have someone do it for you while you are skating. Start the watch at the first audible sound and stop it after the last audible sound including the starting beeps and fades at the end. This is "music running time." It should be marked on the cassette.

The objective of all this is to have all of the music at a competition played uniformly and at the desired speed (time). At a national championship the music coordinators go to great lengths to assure this. However, at lower levels good music is just as important to the total impression you are striving to present to the judges and your audience.

Newton "Tony" Todd, a stockbroker by profession, is an active skater and a member of the USFSA Music Committee. He is also a national music coordinator and has been involved with music for skating since the days of records and speed-dials.



★ ★ ★ ★ ★
Unicorn Sport
★ ★ ★ ★ ★

The Skater's Edge in Fashion



For Catalog Send \$2.00

(REFUNDABLE WITH PURCHASE)
COMPLIMENTARY COPIES TO DEALERS

1411 N. Sixth Avenue, Knoxville, TN 37917
DIAL (615) 523-EDGE
FAX (615) 522-8560



The USFSA Memorial Fund gratefully acknowledges the following contributors for the months of May, June, and July 1991.

IN MEMORY OF

Elsie Angola: Susan Sebo Scherer
Dorothy Ballantine: Ronald & Jean Robinson, St. Moritz ISC
Ed Bardin: Los Angeles FSC, Mary Roof
Teri Berg: Mr. & Mrs. O.L. Siebenthal
Don Cannon: Brentwood FSC, Mary Ann Carroll, Rose Kanger, Carolyn Kruse.
Helen Cover: Mr. & Mrs. William Edmunds, Elizabeth Pray
Jesse Keith Ferguson: Puget Sound Inter ISC
William F. Ford: Stanlee Schaffer
Marion Jacob: Sally Nystrom, Lou & Shirley Sherman
Todd Kaufman: Meredith Cline, Florence Kaufman
Louise Kiper: Phil Stover, Jr.
Mary Ann Larkin: Utah FSC
Paul McGrath: Charles Morse
Kathleen Mecay: Mr. & Mrs. Robert Allen
Woolford J. Murphy: Mr. & Mrs. Vincent Sanacore
Alyce Parman: The Jirout Family
Glen Patterson, Sr.: Walter & Joyce Bantz
Mr. & Mrs. F.W. Premer: Mr. & Mrs. Benjamin T. Wright
Marian Reinhardt: Pittsburgh FSC.
Jean Rockett: Judy, Heidi & Laura Edmund, Yarmouth IC
Marilyn Senuta: Elizabeth Casner
James Sinek: Mr. & Mrs. Benjamin T. Wright
Mary Francis Smith: Mr. & Mrs. Dave Bryant, James Flaherty, Elizabeth Kiper, Thomas & Gale Tanger, Mr. & Mrs. Duke Weir.
John Stuart: Bill & Donna Mathay
Bruce Stultz: Nancy & Pinky Ager, Mrs. John B. Morris
Ken Thornbrugh: Spokane FSC
Vadna Thornham: Arizona FSC Junior Board, Mr. & Mrs. Albert Beard, Jacque, Sundee & Kelly Witt
Peter Van Handel: Indiana/World Skating Academy
Debbie Wilson: Catherine Filipowicz, Dorothy Knoell, Patricia Knoell, Mr. & Mrs. Benjamin T. Wright

Memorial Fund

DONORS

Elizabeth Wissinger: Capuder Memorial
Ken Yackel: Mr. & Mrs. Robert Allen
Dorothy Zerck: Puget Sound Inter ISC

IN HONOR OF

All Skaters: Skaters Long Distance Network
Roger Alteri: Ingram Distribution Group
Brian Boitano: Sharon Surchek
Cleveland Ice Show: Cleveland SC
Pam DiPaolo: DuPage FSC
Duxbury Club: Janet Tersoff
Tonya Harding: Charles Covell
Nancy Kerrigan: Gregg Leeman, Charles Covell
Liz Kiper: Tulsa FSC
Tonia Kwiatkowski: Charles Covell
Erik Larson: Ronald Page
F. Ritter Shumway: Mr. & Mrs. George B. Ludlow, Jr.
Laurie Towne: Roberta Barker
Paul Tsotsos: Roberta Barker
Woody Weier: Illinois Valley FSC
Paul Wylie: Verlon Hollingsworth, Carol Radel, F. Ritter Shumway
Kristi Yamaguchi: Charles Covell
Skating Spectacular: Genesee FSC
The 60th Anniversary of St. Moritz ISC: Anne Symanovich
Officials & Judges of the 1991 Mt. Lebanon Invitational Competition: SC of Mt. Lebanon
The 30th Anniversary of the Memorial Fund: SC of Mt. Lebanon
The 30th Anniversary of the Ice & Blades Club of Washington: SC of Mt. Lebanon
Judges of the Heart of Illinois Invitational: Illinois Valley FSC
1990-91 Judges for the Pittsburgh FSC (Dorothy Bragle, Betty Galligan, Mary Lou

Continued on page 20

People

AND PLACES

MARRIAGES

Kelly Milligan and **Eddie Shipstad III** were married June 14 in an evening ceremony at Victory Church in Westminster, Colo. The wedding party included former skaters Brett Drury and James Cygan, as well as Eddie's brother Billy and his sister Mary Lou.

Milligan toured with Ice Capades for two years and then returned to Colorado where she has taught for the last two years. Shipstad joined the Disney Ice Show last year and both will tour with Disney this year. Billy and Mary Lou Shipstad are with the same Disney Tour.

Professional ice dancer **Susan Wynne** married Tyler Barth July 27, in her hometown of Camillus, N.Y. The two honeymooned in the Caribbean and reside in Boston where Barth is a lieutenant in the Air Force and Wynne teaches skating along with partner Joseph Druar when the two are not making professional appearances.

BIRTHS

Shelley and **Richard Dalley** proudly announce the birth of their son Walter Richard born May 14. Richard Dalley, along with partner Carol Fox, was a 1984 Olympian and two-time World professional figure skating champion. Shelley is a U.S. and Canadian figure and free skating gold medalist and Senior lady midwestern competitor. Dalley is also chairman of the USFSA Athletes Advisory Committee and serves on the Executive Committee for the Association.

Tracy Wilson, 1988 Olympic bronze medalist, and her husband, Brad Kinsella, announce the birth of their son, Shane Rory Kinsella. He was born June 5. Wilson is a figure skating analyst for CBS and will team

up with Scott Hamilton for the 1992 Olympic Winter Games in Albertville.

CLUB NEWS

The Stiegler family, of Southern California and the **Los Angeles FSC**, recently traveled to Washington D.C. where the three children took part in the "Great American Workout" celebration held on the South Lawn of the White House and on the West Steps of the Capitol Building. Pair skaters Johnny and Tiffany and their older sister Stephanie (who claimed the Juvenile girls' title at last April's first-ever Juvenile and Intermediate Figure Skating Championships) demonstrated skating techniques along with Kristi Yamaguchi on a small sheet of ice on the Capitol steps. The demonstration was done as part of the President's Council on Physical Fitness.

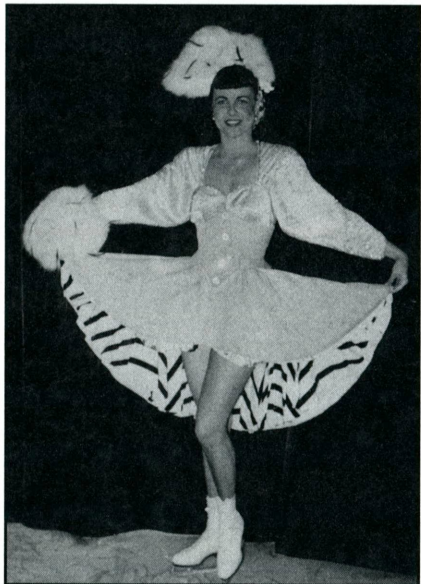
Ten-year-old Loryn Ball, member of **All Year FSC**, carried the Olympic torch on its route to the U.S. Olympic Festival. She ran one-fifth of a mile in Hawthorne and handed off to the first runner in the city of El Segundo. The torch was initially lit at the State Capitol in Sacramento and was carried into Dodger Stadium for the Opening Ceremonies July 12. Ball is a Preliminary competitor and winner of The Most Outstanding Skater award in a recent club competition.

BEREAVEMENTS

Mary R. Ross died April 13, 1991. She was a member of the Rye FSC for many years, and was an ice dancer and USFSA judge. Her husband, Jerome Ross, also deceased, was a past president of the Rye FSC, an international dance judge, and a USFSA honorary national judge.

Dorothy Zerck, grandmother of Scott Kurttila, passed away May 25. Scott and his sister Kelly were under her care for the past 20 years. She dedicated 14 years of her life to volunteer work including manning the registration desks at northwest competitions, serving as treasurer for the Highland SC, editing the Seattle SC newsletter, and making many skating costumes. Zerck is survived by Scott Kurttila and his sister Kelly, and two sons, Bob and Bill Zerck, 12 grandchildren, and numerous great grandchildren. Contribu-

tions in her memory may be made to the USFSA Memorial Fund.



Marian E. Reinhardt

Marian E. Reinhardt, 67, of Bethel Park, Penn., died May 23. She was a member of the Pittsburgh FSC, once skated professionally, and thoroughly enjoyed the sport with which she was so involved. She is survived by two sons, Dietrich of Bethel Park, and Glenn of Ellicott, Md.; two daughters, Allison Campbell of Finleyville, Penn., and Vanessa of Pittsburgh, Penn.; and five grandchildren.

Lone Star FSC mourns the loss of **Don Cannon**, its president, and along with wife Gay, its guiding force for many, many years. Cannon passed away July 12 after a brief illness, leaving behind his wife, and two sons, Greg and Jeffrey. He touched the lives of many skaters as a judge and an official and his contributions to the sport will be missed by all who knew him. Contributions in his memory may be made to the USFSA Memorial Fund for the benefit of a deserving member or members of the Lone Star FSC.

Pierre Brunet passed away August 30, following a long illness. He was 89. An

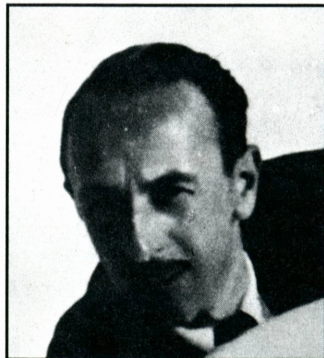
engineer by training, Brunet was seven times French men's champion (1924 to 1931), and along with partner and wife, Andrée Joly, held the French pair title for 11 years (1924 to 1935). They earned the bronze medal in pairs at the 1924 Olympics and were consecutive Olympic pair champions in 1928 and 1932. They took the silver medal at the World Championships in 1925 and followed with four titles in 1926, 1928, 1930, and 1932. In 1932, they also won the European Championships, the only time they ever entered.

Brunet moved to North America in 1938 prior to World War II, and following a professional performing career, taught first in Canada and then in New York, as well as in Illinois and Michigan. Considered one of the foremost international coaches, his more prominent students included Carol Heiss, Nancy Heiss, Gordon McKellen, Jr., and World Champions Alain Calmat and Alain Giletit of France, among others.

Following retirement in 1979, the Brunets made their home in Michigan. Their only son, Jean-Pierre, U.S. pair champion with Donna Jean Pospisil in 1945 and 1946, died in an automobile accident in 1948.

In 1976, Pierre Brunet and Andrée Joly were recognized for their contributions to the sport with election into the World Figure Skating Hall of Fame. In 1989, he was honored with France's highest award, the Legionne d'Honor.

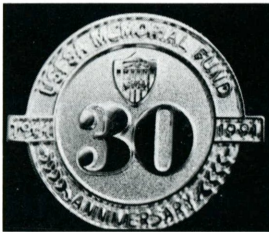
Brunet is survived by Andrée, his wife of over 60 years.



WORLD FIGURE SKATING MUSEUM

USFSA MEMORIAL FUND

Announcing a special limited edition
30th anniversary commemorative pin



To commemorate the 30th anniversary of the USFSA Memorial Fund and to honor the memory of the 1961 World Figure Skating Team, a special 3/4 inch sterling silver pin has been issued. It comes with a lock clip back.

Only a limited quantity of this special pin is available and it will not be reissued. The price is \$30.00 each, of which \$22.00 is tax deductible. All proceeds will benefit the USFSA Memorial Fund.

Order your pin today. Support the USFSA Memorial Fund and at the same time, support a champion.

I enclose my check in the amount of \$_____

for _____ commemorative Memorial Fund pin(s) at \$30.00 each.

NAME _____

ADDRESS _____

CITY _____ STATE _____ ZIP _____

All pins will be shipped insured mail, prepaid. Make checks payable to USFSA Memorial Fund. Mail to 20 First Street, Colorado Springs, CO 80906. Please allow 4-6 week delivery.

Lisa Ervin

Continued from page 10

Jenkins sees something different for Ervin over the next year. "I am looking forward to next year when people will come up to her and say nothing to her. For two years, everyone has been saying to her, 'you can win here' wherever she goes. That is too much pressure for someone her age. I am looking forward to her being in Senior ladies with no expectations."

Jenkins forgets that Ervin may return to World Juniors and win. Jenkins laughed, "I think we will just take it one step at a time."

Deb Vestal is a free-lance sports writer in Minneapolis. She has been an Adult competitor for the past six years in both singles and dance events.

Memorial Fund Donors

Continued from page 17

Olmo, Will Burgart, Roberta Parkinson, Esther Petrick, Mark Yates): Pittsburgh FSC

1991 Midwestern Sectional Championships:
FSC of Omaha

1991 Spring Funtastics Officials (Virginia Mount, Pam Rodda, Mike Sullivan, Phyllis Baldwin, Glennace Cohen, Priscilla Dahlen, Elsie Weinstein, Carl Schultz, D.W. Sencenbaugh, Elaine Tamres, Jay Murphy, Todd Bromley, Tina Dubois, Debbie Griffin, Gregg Hartman, Marilyn Hardy, Mary Zarpaylic, Arlene Sibrell, Dawn Thompson, Ed Brykit, Rita McComb, Patricia Knight, Annie Holton, Jamy Wetzel, Janette Lewis, Kara Welland, Mark Drouillard, Kim Wordekemper, Allyson Fenlon, Natalie Thomas, Jillian Schillaci, Jennifer Juhl, Curtis Socha, Amy Jaramillo, Kirk Bateman, Carol Coda): Mile High FSA

Officials of the 1991 CCIA Advanced Competition (Jeff Benz, Ernest Burden, Joyce Burden, Joan Burns, Charlotte Canida, Dianne Clendenin, Cosette Dudley, Elaine Dumas, Lisa Erle, Elaine Ettman, Jessica Gaynor, Martha Hanson, David Hopson, Melissa Kent, Dick Lean, Joan McDonnell, Bill Nelson, Franklin S. Nelson, Sharon Parker, Rick Perez, Rande Randoll, Alison Reikes, Jean Robinson, Kevin Rosenstein, Marinka Sasmore, Sue Stokes, George T. Yonekura, Sam Singer, Howard Taylor, Roy Cofer, Avonia Dondero, Sandy Hopson, Sandra Weaver): St. Moritz ISC

OCTOBER

- 4-6 **18th Annual Gateway Invitational**, sponsored by the Brentwood FSC at the Brentwood Ice Rink, St. Louis, MO. Beginning through Senior level (and adult) including: figures, freestyle (original and compulsory programs), pairs, dance, (pairs and solo), and artistic. Test session on October 3. For information contact: Donna Vogt, 314-355-5167.
- 4-6 **Roll Vermont 1991**, the Northeast's premier in-line skating competition, hosted by the Round Hearth, Stowe, VT. The competition features three main competitive events—Slalom, Team Relay, and Individual Time Trials—and is open to in-line skaters from around the country. For information contact: Event Coordinator George Bingham, 212-698-0770 or 212-362-2368.
- 9-13 **11th Annual Madison Open Competition**, sponsored by the FSC of Madison & CHAMPS, at the Madison Ice Arena, 725 Forward Drive, Madison, WI 53711. Singles, Free, Figures, Compulsory, Pairs, Dance, and Solo Dance events. For information contact: Kathy Page, 513 North Blackhawk Ave., Madison, WI 53705, 608-233-4927.
- 12 **Ice extravaganza**, sponsored by the Los Angeles FSC, at the Pickwick Ice Arena, 1001 Riverside Dr., Burbank, CA 91506. Ice skating exhibition by national competitors. For information contact: Eleanor Schultz, 913 E. Delaware Rd., Burbank, CA 91504, 818-846-7910 or Patrice Messina, 943 N. Laurel Ave., W. Hollywood, CA 90046, 213-654-3531.
- 12-13 **Figures Plus**, competition sponsored by the Colorado SC, at the South Suburban Ice Arena, 6580 South Vine St., Littleton, CO. Figure events for Pre-Juvenile through Senior, Original Program events for Intermediate through Senior, Freestyle for Pre-Juvenile through Senior, New Era Figures for Novice, Junior, and Senior; Solo Dance for Preliminary through Gold, Couples Dance for Pre-Preliminary through Senior, Adult Junior, and Adult Senior; and "Just for the Fun of It" Dance event. For information contact: James T. Stephens, Publicity Chairman, P.O. Box 100662, Denver, CO 80250.
- 13 **Dance Judges' Workshop**, sponsored by the Los Angeles FSC, at the Interna-

Calendar

OF EVENTS

- tional Training Center, Blue Jay, CA. Class B (two years) Judges' School for all dance and dance trial judges. Eleanor Curtis, Judge-In-Charge. For information contact: Linda Levy, Chairman, 4549 Haskell Ave. #8, Encino, CA 91436, 818-905-1558.
- 17-20 **10th Annual Challenge Cup Competition**, sponsored by the Philadelphia SC & HS, Ardmore, PA. Figures, Free Skating, Pairs, and Dance events, Juvenile through Senior levels. For information contact: The Philadelphia SC & HS, Holland Ave. & County Line Rd., Ardmore, PA 19003, 215-642-8700.
- 19-20 **Plymouth October Fest**, non-qualifying competition sponsored by the Plymouth FSC, Plymouth, MI. For information contact: Janet Scherle, 313-397-2843.
- 25-26 **Olympic Preview On Ice**, benefit for our U.S. Olympic Teams presented by the Delaware State Olympic Committee in cooperation with the University of Delaware and sponsored by Blue Cross & Blue Shield of Delaware, Inc. at the University of Delaware Blue Ice Arena, South College Ave., Newark, DE. Featuring Nancy Kerrigan, Mark Mitchell, and April Sargent and Russ Withby. For information contact: Dorothy Baker, 302-652-6693.
- 25-27 **28th Annual Arrowhead Open Championships**, sponsored by the Arrowhead FSC, at the Ontario Ice Skating Center, 1225 West Holt Blvd., Ontario, CA 91761. Events include Compulsory Moves, Figures, Free Skating, Pairs, Dance, Jump and Spin Teams, Footwork Programs, Solo Dance, Precision Teams, Mini-Precision Teams, and Eights (precision compulsory moves). For information contact: Linda Henderson, Chairman, 714-624-3447 or Wayne Hundley, Club President, 714-683-7633.

Continued on page 66

Campbell's Soups

1991 TOUR OF WORLD FIGURE SKATING CHAMPIONS

AND THE TOUR GOES ON

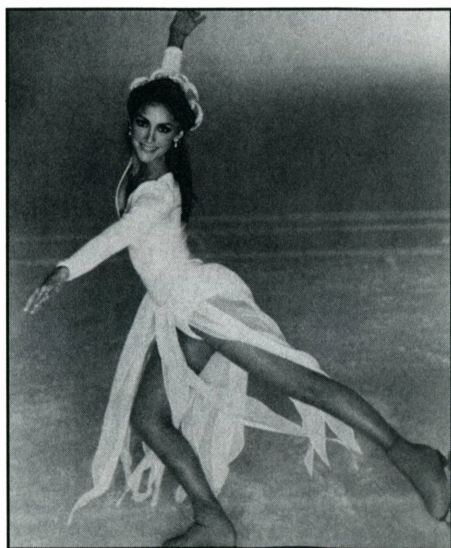
Campbell's Soups rolled out the red carpet across America for the annual Tour of World Champions early last summer, produced for the 11th year by Tom Collins. Building on a theme of past, present, and future, the show offered a gathering of some of the biggest names in the sport in the last two decades combining the world's top amateurs and professionals.

The schedule was grueling and demanding, with the logistics enough to give anyone nightmares: moving 40 tons of production equipment, including a digital sound system and fully computerized lighting system using state-of-the-art panaspots, and miles of cables, skate repair equipment, costumes, not to mention a cast and crew numbering over 40, plus luggage and assorted equipment. The show required no less than five hours to set-up, not including bringing up the ice. This gargantuan part of the tour is never seen by the public but requires months of planning, hundreds of man hours, with little or no room for error or breakdown.

After the original schedule was set, the 1991 tour ran head-on into unexpected conflicts. First, the surprise hockey playoffs in Minneapolis, then the basketball finals in both Chicago and Los Angeles preempted the arenas and caused last minute changes of performance dates as well as rearrangements of flights and hotel bookings. But the show went on.

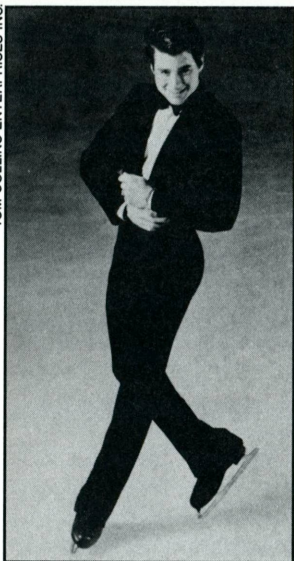
It is doubtful if there will ever be another production featuring so many great champions in the same show. The vivacious Peggy Fleming was an absolute joy to watch in her first tour in 10 years. It seemed hard to believe that 23 years had passed since her Olympic gold medal performance in Grenoble. She is as bright and radiant as ever, lighting up the arena with a beautiful rendition of "Once Upon A Time." Barbara Underhill and Paul Martini were audience favorites with their sultry "When A Man Loves a Woman" and "Unchained Melody."

In some cases aptly titled songs fit the performers. Brian Orser's "Like A



Peggy Fleming

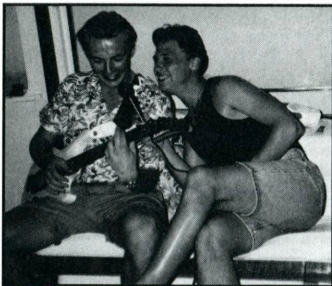
TOM COLLINS ENTERPRISES INC.



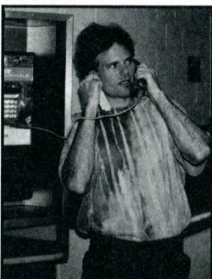
Christopher Bowman



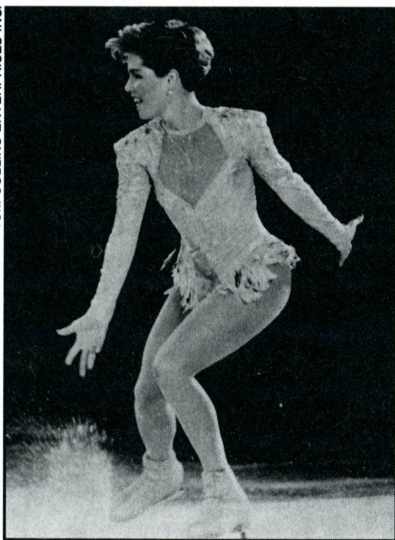
The Soviet Contingent—(l to r) Sergei Grinkov, Ekaterina Gordeeva, Maia Usova, Alexander Zhulin, Viktor Petrenko, Natalia Bestemianova, Galina Zmievskaja, Natalia Mishkuteniok, and (front) Oleg Vasiliev and Elena Valova.



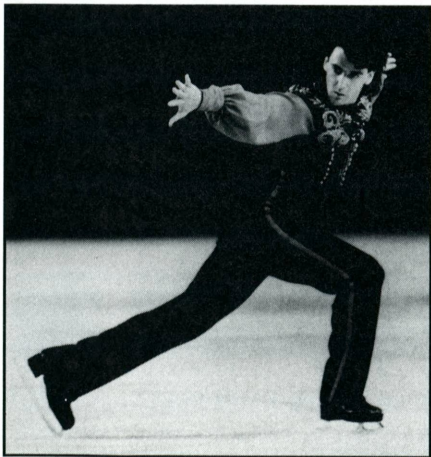
Alexander Zhulin and Viktor Petrenko



Gary Beacom

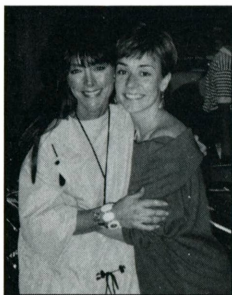


Jill Trenary

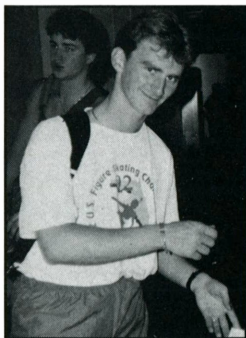


Brian Orser

Rock” was just that, solid and strong throughout commanding audience attention and response. Christopher Bowman’s selection of “Bad Boy” seemed a little too obvious (and could have been confused with “Be A Clown”). Petrenko’s “Back On My Feet Again” might well be a warning for the 1992 season.



Peggy Fleming and Susan Wynne



Todd Eldredge

Company changes occurred in some cities due in part to injuries as well as training commitments. Todd Eldredge, Tonya Harding, Kristi Yamaguchi, Elena Bechke and Denis Petrov, along with Isabelle Brasseur and Lloyd Eisler all drew special attention and receptions, while the incredible Gary Beacom once again proved himself to be the most innovative man on ice today.

Newlyweds Ekaterina Gordeeva and Sergei Grinkov found little time alone on the busy schedule, and were in constant demand by audiences, along with fellow Soviets Marina Klimova and Sergei Ponomarenko, Natalia Bestemianova and Andre Bukin, and the charming Maia Usova and Alexander Zhulin.

Plans are now underway for the 1992 Tour of World and Olympic Champions which will open in Orlando following the World Championships in Oakland. The complete schedule will be announced at a later date.

Precision Review

Continued from page 13

denettes all night long, yet our competitions are setup in exactly this fashion. Often, we hear the same pieces of music or the same rhythms for hours on end. When at a precision competition, one sees nothing but precision and sometimes 60 teams that often perform twice in silver rounds. Spectators and judges become mesmerized with endless lines, blocks, pass throughs, pieces, circles, wheels, and all sorts of geometric shapes in constant motion. We must look seriously to the future of this unique new sibling in our sport and guide it to maturity—next to dance, figures, and free skating. The ISU must also accept this discipline and give it legal status.

The most serious problem for precision is its isolation from the rest of the sport. Clubs, coaches, skaters, both competitive and recreational, must help it to mature, and precision skaters must also make every effort to integrate with the other disciplines.

E. Richie Van Vliet is a national precision judge and a member of the USFSA's Precision Committee.

Official Notes

Continued from page 11

has been prepared. The tapes are \$10 and are available through: Mr. Walter H. Lupke, Jr., 4900 North Washington Road, Fort Wayne, IN 46804-1838.

ATTENTION TEST CHAIRMEN

Due to a change in CFSA test structure, and certification of CFSA judge/evaluators, the USFSA Governing Council agreed that CFSA judges being used on USFSA panels will need to be certified by the USFSA Judges Committee. If you use CFSA judges for tests and have not already notified National Headquarters, please contact Dalean Greenlee at Headquarters and give her the name, address, and appointment level of those CFSA judges. This change will be effective with the publication of the *1991-92 USFSA Rulebook*.

RECOGNITION EMBLEMS

The officials' emblems shown at the Governing Council meetings in May will be mailed directly to each official before competition season begins this fall.

INTERNATIONAL COMPETITIONS

OCTOBER 1991 – MARCH 1992

SUBJECT TO CHANGE

MEN

LADIES

PAIRS

DANCE

POKAL DER BLAUEN SCHWERTER (Blue Swords) – Chemnitz, Germany, October 17-19, 1991

JUDGES: *To Be Announced*

TEAM LEADER: *To Be Announced*

COMPETITORS:

To Be Announced

To Be Announced

To Be Announced

To Be Announced

AUTUMN TROPHY (Junior) – Mezzaluna, Italy, October 24-26, 1991

JUDGE: John LeFevre

TEAM LEADER: John LeFevre

COMPETITORS:

To Be Announced

SKATE CANADA – London, Ontario, Canada, October 24-27, 1991

JUDGES: Joyce Komperda, Paula Naughton, Mary Louise Wright

TEAM LEADER: Charles Cyr

COMPETITORS:

Paul Wylie

Jill Trenary

Jenni Meno & Scott Wendland
Tristen Vega & Richard Alexander

Jeanne Miley & Michael Verlich

INTERPRETIVE:

Leana Naczynski

FOURS: Calla Urbanski/Rocky Marval and Katie Wood/Joel McKeever

GRAND PRIX INTERNATIONAL DE PARIS (Trophee Lalique) – Albertville, France, November 8-10, 1991

JUDGES: Joan Gruber, Hugh C. Graham, Margaret Anne Wier

TEAM LEADER: *To Be Announced*

COMPETITORS:

Todd Eldredge
Christopher Bowman

Kristi Yamaguchi
Holly Cook

Natasha Kuchiki & Todd Sand

Elizabeth Punsalan & Jerod Swallow

ALTERNATE:

Paul Wylie

NATIONS CUP – Gelsenkirchen, Germany, November 14-17, 1991

JUDGES: Coco Shean, Robert Horen, Monty Hoyt

TEAM LEADER: Coco Shean

COMPETITORS:

Mark Mitchell

Nancy Kerrigan

Calla Urbanski & Rocky Marval

April Sargent & Russ Witherby

OSLO-PIRUETTEN – Oslo, Norway, November 1991

JUDGES: Gale Tanger, Susan Johnson

TEAM LEADER: Gale Tanger

COMPETITORS:

SENIOR

Scott Davis

Kyoko Ina

JUNIOR

To Be Announced

To Be Announced

WORLD JUNIOR CHAMPIONSHIPS – Hull, Quebec, Canada, November 26-December 1, 1991

JUDGES: Claire Ferguson, Ramona McIntyre, Nancy Meiss

TEAM LEADER: Mary Cook ASSISTANT TEAM LEADER: Jim Millns

TEAM DOCTOR: Mahlon Bradley, M.D.

COMPETITORS:

Team will be selected at the October Board of Directors meeting

NHK TROPHY – Hiroshima, Japan, December 12-15, 1991

JUDGES: James Disbrow, Pat French, William Smith

TEAM LEADER: James Disbrow

COMPETITORS:

Erik Larson
Craig Heath

Tonya Harding
Tonia Kwiatkowski

Jenni Meno & Scott Wendland
To Be Announced

April Sargent & Russ Witherby
Elizabeth McLean & Ron Kravette

ALTERNATES:

Mark Mitchell

Nancy Kerrigan

To Be Announced

Jeanne Miley & Michael Verlich

PRECISION INTERNATIONAL — Helsinki, Finland, January 2-4, 1992

JUDGES: William Beharrell, Shirley Hage

TEAM LEADER: Ann Fauver

COMPETITORS:

SENIOR

Haydenettes, Hayden Recreation Centre FSC

JUNIOR

Team Elan, St. Clair Shores FSC
Supremes, Warwick Figure Skaters

NOVICE

Starlettes, Garfield Heights FSC

OLYMPIC WINTER GAMES – Albertville, France, February 8-23, 1992

JUDGES: Hugh Graham, Joan Gruber, Margaret Ann Weir, Mary Louise Wright

TEAM LEADER: George Ludlow ASSISTANT TEAM LEADER: Carole Ludlow, Morry Stillwell

WORLD CHAMPIONSHIPS – Oakland, California, March 24-29, 1992

JUDGES: Lucy Brennan, Eleanor Curtis, Ronald Pfенning

TEAM LEADER: Roger Glenn ASSISTANT TEAM LEADER: Paula Naughton

TEAM DOCTOR: Craig McQueen, M.D. PHYSIOTHERAPIST: Haik Gharibians

1991-1992 U.S. COMPETITIONS

AS OF SEPTEMBER 1, 1991

SUBJECT TO CHANGE

U.S. CHAMPIONSHIPS

Orlando FSC, Orlando, FL

Jan. 4-12, 1992

SECTIONAL CHAMPIONSHIPS

Eastern

Bridgeport SC, Bridgeport, CT

Dec. 3-7, 1991

Midwestern

Winterhurst FSC, Lakewood, OH

Dec. 4-7, 1991

Pacific Coast

Lakewood WC, Tacoma, WA

Dec. 10-14, 1991

REGIONAL CHAMPIONSHIPS

EASTERN

New England

Smithfield SC, Smithfield, RI

Nov. 4-9, 1991

North Atlantic

SC of Rockland, Monsey, NY

Oct. 27-Nov. 3, 1991

South Atlantic

Washington FSC, Alexandria, VA

Nov. 3-10, 1991

MIDWESTERN

Eastern Great Lakes

WC of Indianapolis, Indianapolis, IN

Nov. 4-9, 1991

Upper Great Lakes

Southport SC, Kenosha, WI

Oct. 28-Nov. 2, 1991

Southwestern

Broadmoor SC, Colorado Springs, CO

Nov. 4-9, 1991

PACIFIC COAST

Northwest Pacific

Seattle SC, Lynnwood, WA

Oct. 30-Nov. 2, 1991

Central Pacific

Cottonwood Heights FSC, Salt Lake City, UT

Nov. 5-9, 1991

Southwest Pacific

All Year FSC, Culver City, CA

Oct. 31-Nov. 3, 1991

Nov. 7-10, 1991

PRECISION TEAM SKATING CHAMPIONSHIPS

Easterns

Wallace FSC, Fitchburg, MA

Feb. 14-16, 1992

Midwesterns

Garfield Heights FSC, Garfield Heights, OH

Mar. 6-8, 1992

Pacific Coast

San Diego FSC, San Diego, CA

Feb. 21-23, 1992

Nationals

SC of Maine, Portland, ME

Apr. 7-12, 1992

USOF-'91

Finds City of Angels a Tough Place to Earn its Wings

In July, the U.S. Olympic Festival celebrated its 13th birthday by taking its first trip to the big city. After 12 successful years in smaller cities such as Colorado Springs, Houston, Oklahoma City, and Minneapolis/St. Paul, the U.S. Olympic Festival tried to play in the thriving metropolis of Los Angeles—a city of three million people and three times as many cars. A city where finding something to do is never a problem—it's getting there that provides the biggest challenge.

There was no doubt that the U.S. Olympic Festival had grown up rapidly over the past 12 years, but was it ready for a city the size of L.A.? The first Festival in 1978, known then as the National Sports Festival, drew 1,900 athletes to Colorado Springs to compete in 25 sports. Over a dozen years later, the Festival is now attracting approximately 3,000 athletes competing in 38 sports. The additional sports mean an increased number of spectators, and with sports ranging from yachting and gymnastics to taekwondo and boxing, the Festival offers something for every type of sports fan. Despite its many attractions, one question continually haunted organizers: "Will it play in L.A.?"

The answer came quickly, when only 26,000 people filled the seats at Dodger stadium for the opening ceremonies. Things improved slightly as the event progressed and awareness grew, but overall, L.A. organizers were greatly disappointed by the low turnout. The 10-day Festival drew only 200,000 spectators, the lowest figure in 10 years. The poor attendance was blamed on a lack of promotion. Figure skating, usually a tough ticket to get at a Festival, should

have had little trouble filling the Great Western Forum—especially with Southern California being considered one of the strongest skating communities in the country. But very few people were aware of the event, and the ticket sales at figure skating were well below average.

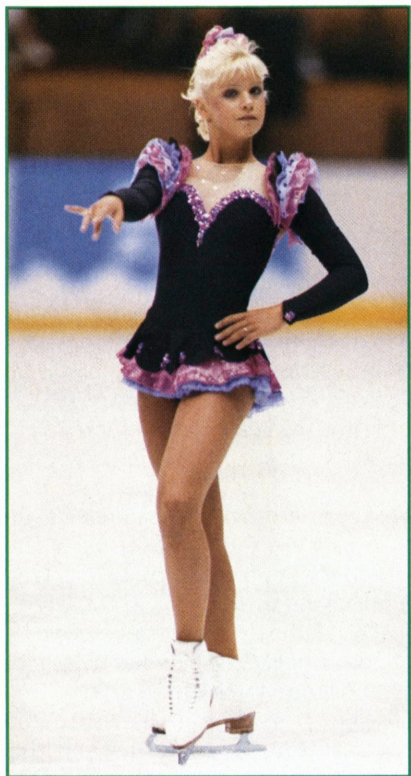
While the Festival may not have played to many spectators, it *did* play. The figure skating events provided some of the best competition in recent Festival memory, with the local Californians snatching up a whopping six medals in front of hometown fans.

The ladies' event saw 13-year-old Nicole Bobek capture her first Senior title just one week after suffering a concussion in a training accident. Bobek, who was originally expected to withdraw from the event, came back with two solid performances in the short and long programs to take the gold medal away from Festival veteran Tonia Kwiatkowski.

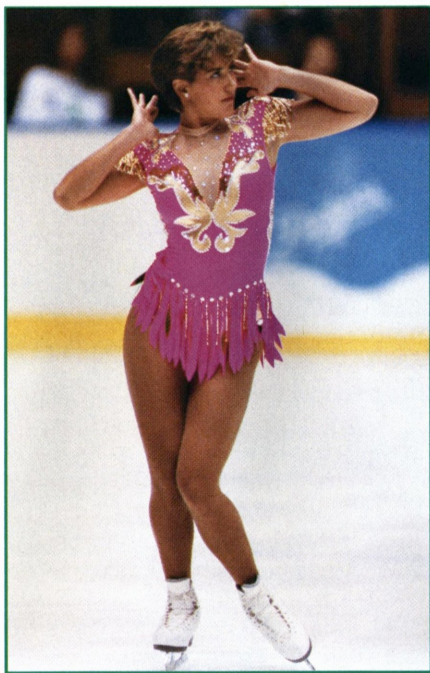
"At first they said, no way was I coming here," said Bobek. "After a while I said there was no way I was going to miss it."

Bobek got her first taste of success at the Senior level at last year's Festival in Minneapolis where she brought a sold-out house to its feet with a dynamic free skating performance. Although she fin-



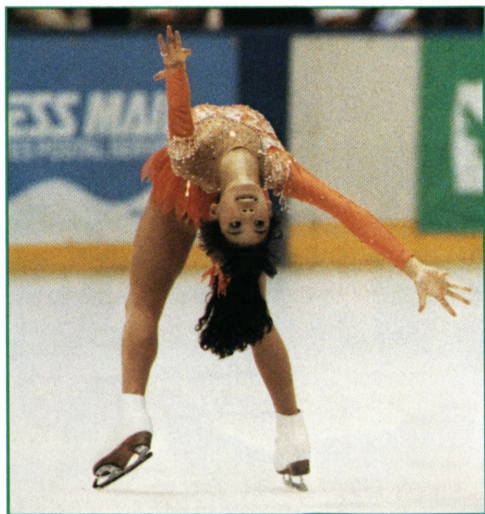


Nicole Bobek, Ladies' Gold



Tonia Kwiatkowski, Ladies' Silver

PHOTOS BY GEORGE S. ROSSANO



Joanna Ng, Ladies' Bronze

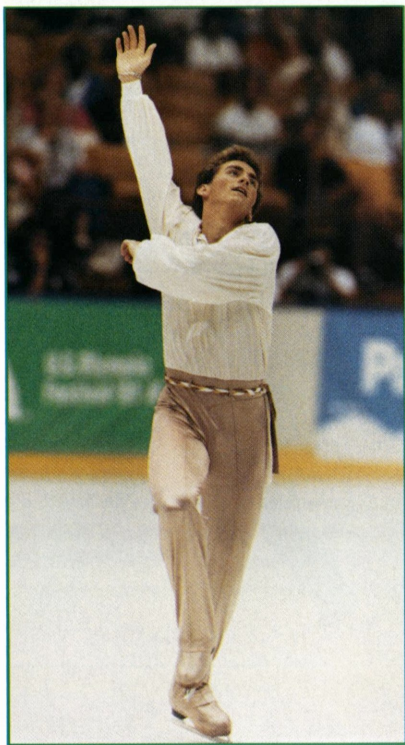
ished only seventh, the future looked bright for the then 12 year old from Chicago. At the L.A. Festival, Bobek once again stole the show, only this time she also stole the gold medal.

Kwiatkowski, a veteran of five Festivals, was right on Bobek's heels through both phases of the competition. In the decisive long program, Kwiatkowski barely lost out to Bobek, three judges to four.

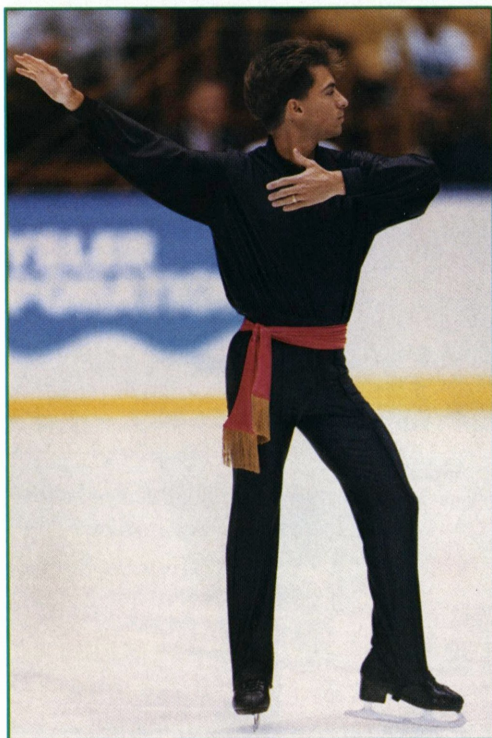
"I felt really confident and happy with my scores," said Kwiatkowski. "I did my best, and I was very happy for Nicole getting the gold."

Another youngster, 12-year-old Joanna Ng from nearby Woodland Hills, Calif., earned the bronze medal over rival Lisa Ervin who finished in fourth.

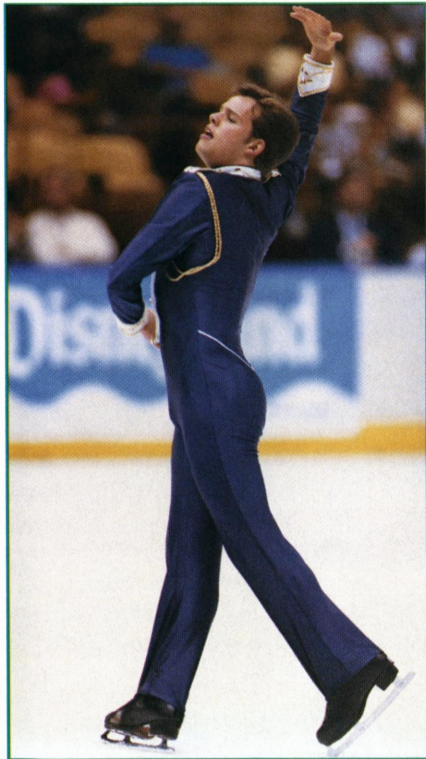
Of the top four ladies' finishers at this year's Festival, three were 14 years old or younger—a promising sign for the future of U.S. figure skating.



Todd Eldredge, Men's Gold



Aren Nielsen, Men's Silver



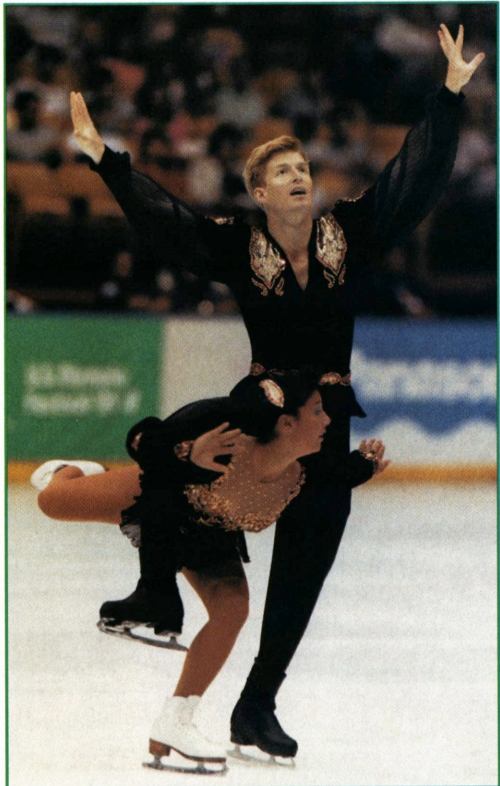
Colin Vanderveen, Men's Bronze

In the men's competition, two-time U.S. Champion and World Bronze Medalist Todd Eldredge dominated the event from start to finish. Performing the most technically difficult programs of the competition, the 19 year old from South Chatham, Mass., earned straight first place marks from all seven judges in both phases of the competition.

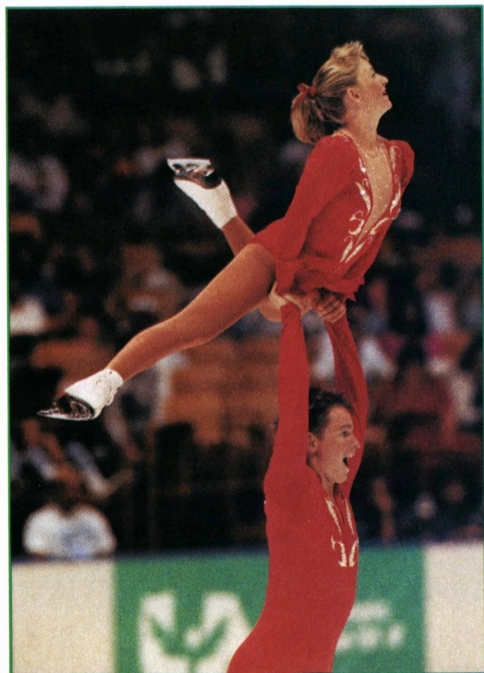
Eldredge's impressive performance at USOF-'91 came less than four weeks after the skater finished an 11-week stint with the Campbell's Soups Tour of Olympic and World Champions.

"It was pretty tough coming back to competition," said Eldredge. "I just made up my mind to do it. I have never competed in an Olympic Festival, so I decided to do it before I quit."

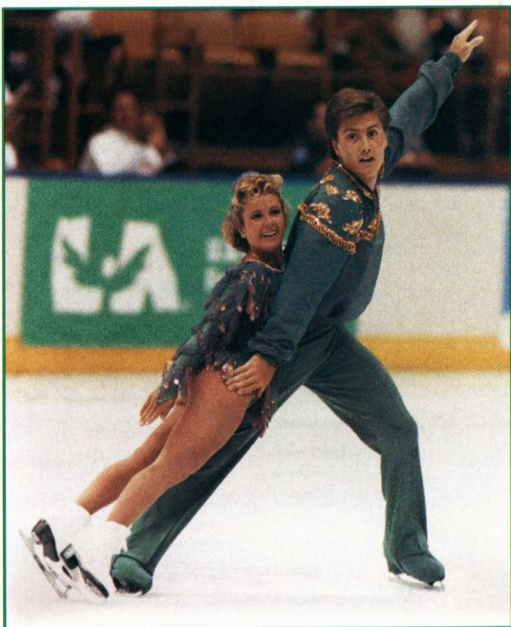
Aren Nielsen won his second straight USOF silver medal with a crowd pleasing



Natasha Kuchiki & Todd Sand, Pair Gold



Tristen Vega & Richard Alexander, Pair Bronze



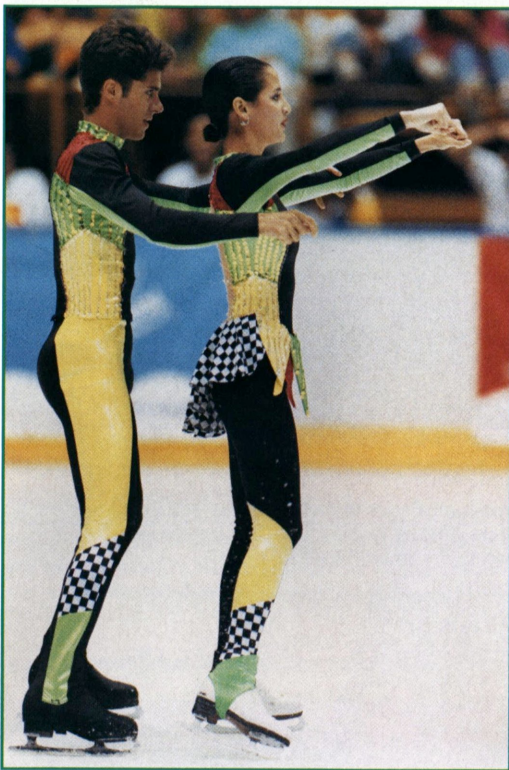
Calla Urbanski & Rocky Marval, Pair Silver

free skating performance that included five triple jumps. With a well choreographed program that complimented his musicality, Nielsen pulled up from third after the short, forcing Colin Vanderveen to settle for the bronze medal.

Ryan Hunka, the youngest competitor in the men's event, showed great promise to finish in fourth overall. Southern Californian John Baldwin Jr., withdrew from the competition after straining his back while tying his skate lace during the short program warm-up.

In the pairs competition, hometown favorites Natasha Kuchiki and Todd Sand looked as if they would easily run away with the gold medal after their flawless performance in the original program. The two were in top form as they skated flawlessly, showing marked improvement in speed and power.

"I have never seen them skate better," said coach John Nicks. "If they can stay the same (skate as well) as they did today, they can compete with anybody in the world."



Elizabeth Punsalan & Jerod Swallow, Dance Gold



Jeanne Miley & Michael Verlich, Dance Silver



Elizabeth McLean & Ron Kravette, Dance Bronze

The next day, however, the seemingly unbeatable Kuchiki and Sand were nearly upset by their rivals, Calla Urbanski and Rocky Marval. Skating the same program that earned them the bronze medal at the World Championships in March, Kuchiki and Sand gave a conservative performance that included a fall by Sand midway through. Urbanski and Marval, with little to lose, went all out with an energetic and powerful performance. With great speed and unique new lifts, Urbanski and Marval continue to show rapid improvement. A number of small technical mistakes barely kept them from upsetting the U.S. champions, and the team had to settle for the silver medal.

Two young, up-and-coming teams waged a tough battle for the bronze medal. Laura Murphy and Brian Wells moved into third place early on with a

strong original program performance, with Tristen Vega and Richard Alexander following closely in fourth. After the final free skate, however, it was Vega and Alexander who took to the podium to receive the bronze medals, while Murphy and Wells fell to fifth after a disappointing long program. Jenni Meno and Scott Wendland finished in fourth.

In ice dancing, Elizabeth Punsalan and Jerod Swallow remain the United States' top dance team after edging out defending Festival Champions Jeanne Miley and Michael Verlich for the gold medal.

Local favorites Miley and Verlich led after the compulsory dances, however in the free dance, Punsalan and Swallow's renowned dance entitled "The Race," which earned them the U.S. title in February, was once again unbeatable.

"Liz and I went into the free dance

with the attitude that we've gotten a lot of mileage out of this program, we've been successful with it, and we took to the ice like we owned it," said Swallow.

The approach was successful, and Punsalan and Swallow came away with the gold medal. Miley and Verlich took a different approach, opting to skate a completely new number to music from the movie *Beetlejuice*. The number was well skated, but lacked the polish of their rivals Punsalan and Swallow.

"I'm proud of the fact that we got this number down in time for this event," said Miley. "Now that we have it down, we have time to polish it up and make a few adjustments."

Miley and Verlich's *Beetlejuice* number earned them the silver medal, while Elizabeth McLean and Ron Kravette (another former Californian) won the bronze.

U.S. OLYMPIC FESTIVAL - '91 LOS ANGELES, CALIFORNIA JULY 12-21, 1991

MEN

JUDGES: 1-Bette Snuggerud, Minnetonka, MN; 2-Theresa Fischer, Pound Ridge, NY; 3-Janet McLeod, Norwalk, CA; 4-Nancy Bizzano, Long Lake, MN; 5-Robert Rosenbluth, Philadelphia, PA; 6-Linda Nelson, Santa Barbara, CA; 7-Beth Graham, Denver, CO. REFEREE: William Smith,* Tulsa, OK. ACCOUNTANT: Milroy Brandel, Cypress, CA.

	OP	FS		PLACES
1.	1	1	Todd Eldredge, Chatham, MA	1.5
2.	3	2	Aren Nielsen, Kansas City, MO	3.5
3.	2	3	Colin Vanderveen, Marietta, GA	4.0
4.	4	4	Ryan Hunka, Parma Heights, OH	6.0
5.	5	5	Rudy Galindo, San Jose, CA	7.5
6.	8	6	Damon Allen, Rockford, IL	10.0
7.	6	8	Larry Holliday, Chicago, IL	11.0
8.	9	7	Alex Chang, Seal Beach, CA	11.5
9.	7	9	Steven Smith, Union City, CA	12.5
John Baldwin, San Diego, CA, withdrew				

LADIES

JUDGES: 1-Marilyn Whelan, Castro Valley, CA; 2-Glennace Cohen, Castle Rock, CO; 3-Anne Rogers, Arlington, VA; 4-Joyce Butchart, Seattle, WA; 5-Elaine Bushey, Peru, IN; 6-Carole Ludlow, Kent, CT; 7-Charles Cyr, Palm Desert, CA. REFEREE: William Smith,* Tulsa, OK. ACCOUNTANT: Albert Beard,* Portland, OR.

	OP	FS		PLACES
1.	1	1	Nicole Bobek, Colorado Springs, CO	1.5
2.	2	2	Tonia Kwiatkowski, Broadview Heights, OH	3.0
3.	4	3	Joanna Ng, Woodland Hills, CA	5.0
4.	3	4	Lisa Ervin, Lakewood, OH	5.6
5.	5	5	Rosanna Tovi, Redondo Beach, CA	7.5
6.	6	6	Tamara Kuchiki, Canoga Park, CA	9.0

7.	7	7	Jessica Mills, Chicago, IL	10.5
8.	9	8	Leana Naczynski, Indianapolis, IN	12.5
9.	8	9	Karen Ann Gooley, Haddon Township, NJ	13.0

PAIRS

JUDGES: 1-Nancy Bizzano, Long Lake, MN; 2-Linda Nelson, Santa Barbara, CA; 3-Robert Rosenbluth, Philadelphia, PA; 4-Beth Graham, Denver, CO; 5-Janet McLeod, Norwalk, CA; 6-Theresa Fischer, Pound Ridge, NY; 7-Bette Snuggerud, Minnetonka, MN. REFEREE: William Smith,* Tulsa, OK. ACCOUNTANT: Milroy Brandel, Cypress, CA.

	OP	FS		PLACES
1.	1	1	Natasha Kuchiki, Canoga Park, CA Todd Sand, Costa Mesa, CA	1.5
2.	2	2	Calla Urbanski, Chicago, IL Rocky Marval, New Egypt, NJ	3.0
3.	4	3	Tristen Vega, Torrance, CA Richard Alexander, Simi Valley, CA	5.0
4.	5	4	Jenni Meno, Westlake, OH Scott Wendland, Costa Mesa, CA	6.5
5.	3	6	Laura Murphy, Wilmington, DE Brian Wells, Potomac, MD	7.5
6.	7	5	Aimee Offner, Philadelphia, PA Brian Helgenberg, Philadelphia, PA	8.5
7.	6	7	Cambria Goodman, Dallas, TX Steven Moore, Dallas, TX	10.0
8.	9	8	Nicole Sciarrotta, Huntington Beach, CA Gregory Sciarrotta, Huntington Beach, CA	12.5
9.	8	9	Laura Lynn LaBarca, New Castle, DE Kenneth Benson, Dallas, TX	13.0
10.	11	10	Dawn Goldstein, Culver City, CA Troy Goldstein, Culver City, CA	15.5
11.	10	11	Kara Paxton, Severna Park, MD Brad Cox, Newark, DE	16.0
12.	12	12	Annette Abel, Santa Rosa, CA William Abel, Santa Rosa, CA	18.0

Continued on page 63

FINALLY...

Blades

United States Figure Skating

(pro shop inquires welcome)

**Hot Silkscreen Design Shirts
Just For Figure Skaters !!!**

Available On 100% Cotton Short Or Long
Sleeve T's & 50/50 Crew Sweat Shirts

SPECIFY SIZE S-M-L-XL S.S. - \$13.95 L.S. - \$17.95 Sweat - \$23.95 (Inc. S&H)

Mail Check Or Money Order To: Ice T's 1800 Creek Crossing, Vienna Va 22182

The Castle Spa

... In The Pines



Ice Castle International Training Center
in Lake Arrowhead, California is pleased to introduce
it's newest endeavor . . . **The Castle Spa In The Pines.**

Situated at the untainted altitude of 5,000 feet in the picturesque San Bernardino Mountains, the Castle Spa offers 12 pampered ladies a week of renewed vitality and self awareness.

The Castle Spa Week includes:

- ★ Six days and six nights in single cottage accommodations with private bath, color television and telephone.
- ★ Individually charted fitness & exercise programs for all levels & goals.
- ★ Beauty care programs, with individual consultations & evaluations.
- ★ Heated pool & jacuzzi spa sessions.
- ★ Daily massage.
- ★ Three, deliciously well balanced meals each day.
- ★ Ice skating, with lessons from a World Class Professional Coach.
- ★ Optional afternoon shopping outing.
- ★ Evening presentations & relaxing activities.

★ ★ ★

September 15th - 21st 1991
September 22nd - 28th 1991

\$1,500.00 per person per week - plus tax

★ ★ ★

For more information and a descriptive brochure, Phone, Fax or Write:

The Castle Spa In The Pines
480 Cottage Grove Road
Post Office Box 939
Lake Arrowhead, CA 92352
(714) 337-0802 Fax (714)337-8949

Ice Castle

International Training Center

Two Of The World's Most Beautiful Ice Surfaces

Located at the 5,100 foot level in the picturesque San Bernardino Mountains near Lake Arrowhead.



Ice Castle, Lake Arrowhead



Ice Castle, Blue Jay

FEATURING ...

85' x 185' International-size public rink and 85' x 185' rink on the Training Center grounds with perfectly maintained ice surfaces • World's first 360° Jump Harness • Off/Ice classes, offering newly equipped, high-tech gymnasium and new 3,000 square foot Dance Pavilion • Beautiful swimming pool and Spa • Specially designed meal program • Year-round dormitory and private cottage accommodations.

Artistic Director

**ROBIN
COUSINS**

1980 Olympic
Gold Medalist



Skating Director

**FRANK
CARROLL**

Olympic and
International Coach



- Daily Public Sessions & Private Ice Lessons
- Group Rates
- Ice Shows
- Birthday Parties
- Snack Bar
- Complete Pro Shop plus
- Learn-To-Skate Classes Year Round



Professional Staff

Irina Rodnina - Senior Coach

Garnet Fiordalisi - Coach

Mary Couense - Coach

Perry Jewel - Coach

Glyn Jones - Coach & Rink Mgr.

Melody Houston - Fitness Coach

Susan Austin - Choreographer



For Information Call: (714) 337-0802 • (714) 336-2111

480 COTTAGE GROVE ROAD • P.O. Box 939 • LAKE ARROWHEAD, CALIFORNIA USA 92352

PAIR PARTNERS FOR LIFE

by Deb Vestal



GEORGE S. ROSSANO

Aimee's neck had swelled to the size of a bullfrog.

"We expected the worst," said Vicki. A mass of tissue grew in the muscles and nerves of Aimee's neck and covered a gland, not allowing the gland to drain. By the time the operation was completed, Aimee had 18 stitches on the outside of her neck and 18 on the inside. The season for Offner and Helgenberg was almost over before it started.

When Brian returned from Florida, he was at Aimee's side. He was not concerned that their skating might be on hold for a year. He was only concerned that Aimee get well.

Aimee's voice filled with emotion when she talked about those first difficult steps back on the ice. Physically she had healed but emotionally she was far from ready. She could not turn her head at all making back crossovers and death spirals nearly impossible if not frightening. She said she wanted to stay off the ice for the season. She was too afraid to try.

But Brian assured her that he would be there to guide her. Vicki said there is a deep trust between the two, a love for each other. "It is not like boyfriend and girlfriend. The love is very deep. It is a tremendous admiration they have for each other."

Brian took Aimee into the rink when no one else was there. She had to look forward at all times not able to turn her head from side to side. Brian was her guide. "It was very difficult and very emotional," remembered Vicki. "We felt if she could get over it physically, we could handle her head and get her head together."

Day by day, the pair improved, Aimee's stitches healed, and the pair be-

Every August the Helgenbergs vacation in Florida. And every year, Aimee Offner goes along. Last year, Offner didn't feel well. She said she wanted to spend time with her family. But in reality, she didn't feel like enjoying herself in Florida.

The following week Offner's mother called Vicki Helgenberg, mother of Brian and coach of Aimee and Brian.

gan to prepare for the season. Of six competitions since the surgery, Offner and Helgenberg won four. The others—a fifth place finish at the 1991 World Junior Championships and a sixth place finish at the 1991 U.S. Olympic Festival.

By far the 1991 U.S. Championships were the toughest. The nerves leading to Aimee's ear were still not healed. As she stepped on to the ice to practice the long program, Aimee found she couldn't hear out of one ear and her equilibrium was somewhat affected. Luckily the following day, the day of the competition, she felt better.

Despite one mistake, the 14-year-old Offner and the 16-year-old Helgenberg skated like champions to win the Junior pair title. "I wanted to skate my best. This year was hard on Brian," said Aimee. "I am a little disappointed because I wanted to land the triple throw." "It wasn't our best but we are happy with it," said Brian as he smiled at Aimee.

Brian was 8 when he first saw the dark haired Aimee skating in a group lesson. Brian landed Axels and double Salchows while Aimee learned to skate.

Brian won a local competition and for a reward, Vicki asked him if he would like to go out to lunch to celebrate. He answered no, that he would like to have a lesson with "Mr. Ludington." Brian's oldest sister, Donna, was then taking lessons from Ron Ludington and Vicki asked her to see if Brian could have a lesson. A week later, Donna returned with the answer that Ludington would work with Brian at 11:30 Friday night.

Vicki thought Donna was kidding. 11:30 at night for an 8 year old? She called Ludington to double check and that was the only time he could work with Brian. A few days before the lesson, Vicki asked Brian if he wanted to take the lesson alone or if he wanted to take a little girl and do a dance lesson. She was surprised when Brian answered that yes,

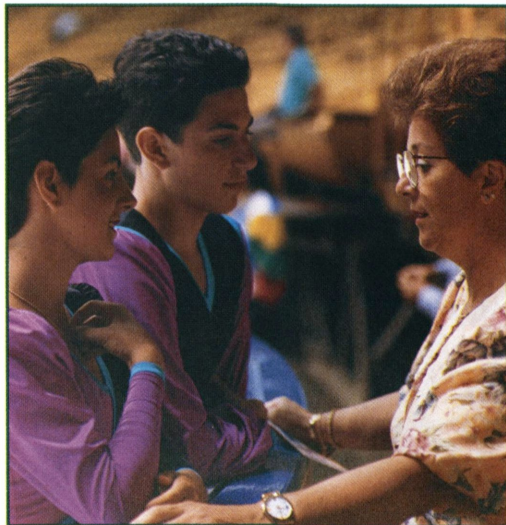
he wanted to take a little girl but no, he wanted to do pairs instead.

He chose 6-year-old Aimee whom he saw in the beginning class. He wanted to take the girl with the black hair. Vicki remembered her surprise, "Aimee? You have to be kidding. She can hardly skate." But Brian was insistent and the two were in the car with Vicki heading to Wilmington.

Vicki, thinking this was a one time thing, met with Ludington and asked that he humor her son. Twenty-five minutes later, Ludington walked over to Vicki and said the two had potential together. "I told him he had lost his mind," laughed Vicki. But Ludington was insistent. The two had potential.

Ludington remembered those early years. "They were babies," said Ludington. "I called them the muppets. I used to be able to pick her up. They were real tiny. You have no idea how small they were."

The skating schedule for the two varied depending on where Vicki taught that day. Vicki was a singles coach who went from rink to rink to teach in the eastern Pennsylvania area. Aimee and Brian



GEORGE S. ROSSANO

went along skating wherever they could to get enough ice time.

Right at the beginning, Offner had a problem. Her father had to work from morning until late at night. Her mother didn't drive much. Getting to the rink was a problem. Vicki was busy with her own teaching and did not have the time for the extra half hour trip each way. Vicki had an idea. Aimee would live at the Helgenbergs. To Aimee's amazement, her mother agreed.

Seven-year-old Aimee fit right in at the Helgenberg household. She resembles Vicki and has the same personality as Vicki's daughter, Donna. Vicki said, "Everybody says to me, 'Well, Aimee looks so much like you.' And she does. And then I get, 'Who does Brian look like?' and I don't know."

Aimee still has the chance to be with her family. She is with them on weekends and sometimes when the two skate at a rink near her family home, Aimee, Brian, and Vicki go over for lunch.

Along with the hectic schedule of traveling from rink to rink, Aimee and Brian discovered how difficult maintaining a school schedule would be. Both now do "home school" and allow school to work around the skating. Last spring Brian graduated from high school and Aimee entered the 10th grade this fall.

Although Vicki is mom and coach, she makes it very clear that at the rink she is only coach and at home she is only mom. The problems at the rink get solved at the rink and are not brought home. She has also made it clear that if the two have problems, Aimee and Brian must make the decisions and work it out, that she cannot do that for them. "They usually go into my office when there is a problem," said Vicki. "Five minutes later, I hear them giggling and laughing."

Vicki has also noticed a special bonding between the two, an almost innate sense to read the other. "If she is having a



bad day, he just takes her out and puts his arm around her and talks to her," said Vicki. "And then on other days, she will just say, 'Come on Brian, let's get into it!' and she will just make him laugh."

Even Ludington noticed the two had something special. "These two are inseparable. They have one of the best relationships I have seen in skating. It is not a fighting type of relationship. It is a beautiful relationship."

Both Aimee and Brian say they never fight except occasionally over the controls to the Nintendo game. Aimee says there is another reason, "It is because he is always right."

Brian says the two get along so well because they are such opposites. "I am calmer, she is more outgoing," said Brian almost in a whisper. Vicki sometimes wonders how she raised such a quiet son. His quietness is introspective and even Vicki is amazed at some of the poetry he writes. "He is deep and has tremendous insight into things. He is a tremendous writer but he would never tell you that."

Aimee is the bubbly, can't sit still person who enjoys dancing and reading and trying to cook. Nothing will make her laugh harder than when she talks about her attempts to cook. "Sometimes my dinners don't come out too good," said Aimee. "Sometimes I make things for Brian and he will be eating and will say, 'Did you cook this?'"

Continued on page 66

REPORT OF ACTION
Taken by the
USFSA GOVERNING COUNCIL
at its
ANNUAL MEETING
held in
LAKE BUENA VISTA, FLORIDA
May 10 AND 11, 1991

The Notice and written reports of the Officers and Committee Chairmen presented to the 1991 Annual Meeting of the United States Figure Skating Association Governing Council are contained in the Report Book of the meeting. The actions of the Governing Council with respect thereto are summarized below.

The Governing Council took the following actions:

PRESIDENT

1. Approved the Minutes Committee Report of the May 1990 Governing Council Meeting held in Indianapolis, Indiana.

2. Elected the following Probationary Member Clubs to Permanent membership in the United States Figure Skating Association: SC of Bucks County, Warminster, PA; FSC of Kentucky, Louisville, KY; Shoreline Figure Skaters, East Haven, CT; Tri Cities FSC, Kennewick, WA; SC of Wayne, Wayne, MI; Yonkers FSC; Yonkers, NY.

3. Elected the following Interim Probationary Member Clubs to Probationary membership in the United States Figure Skating Association: Alaska Assoc. of Figure Skaters, Inc.; Anchorage, AK; Calumet FSC, Calumet, MI; Eugene FSC, Eugene, OR; Flint 4 Seasons Skate Club, Flint, MI; International SC of Orlando, Inc., Orlando, FL; Lehigh Valley SC, Whitehall, PA; Mississippi Valley FSC, St. Louis, MO; Norfolk Norwood FSC, Norfolk, NY; Patriot FSC, West Concord, MA; Riverside FSC, Austin, MN; Silver Streaks SC, Peabody, MA; Thomas Creek FSC, Fairport, NY; Thoroughbred FS Team, Lexington, KY.

4. Approved a By Law change as set forth in Exhibit A, amending Article IV, Jurisdiction as follows: Addition to Section 2, Geographical Divisions: For Precision Skating only the Geographical Divisions are as follows: Insert Colorado in Pacific Coast Section.

5. Approved a By Law change as set forth in Exhibit B, with the following changes to Arti-

cle XIX, page 259: Memorial Fund: the raising of funds; the sponsorship by grants of figure skating clinics to interest and assist beginning skaters; the assistance by academic and skating scholarship to promising skaters who show future potential for national and international competition and who are in need of financial aid to continue their academic and skating education; and the review of applications for such academic and skating scholarships, designation of those who are to receive such grants and overseeing that the grants are properly made and used.

6. Approved a By Law change as set forth in Exhibit C, with the following changes to Selection of Athlete Members of the Executive Committee, Article IX, Section 2 with new text as follows: The Executive Committee shall consist of the President, the three Vice Presidents, the Secretary, the Treasurer, and the immediate Past President. Additionally, two athlete members of the Board shall be recommended by the Athletes Advisory Committee for designation as athlete members of the Executive Committee.

7. Approved a By Law change as set forth in Exhibit D, with the following changes to Composition of the Board - Article VIII, Section 2: The Board of Directors shall consist of the 45 voting members specified in Section 3 of this Article. In addition, Honorary Members elected in accordance with Section 4 of this Article and Substitute Athlete Representatives shall also be non-voting ex-officio members.

Create a new Article VIII, Section 7 and re-number current sections 7, 8 and 9 as 8, 9 and 10. Attendance by Substitute Athlete Representatives: Substitute Athlete Representatives, in sequential order as designated pursuant to Article XVI, Section 2, hereof, may attend meetings of the Board of Directors only in the event that an athlete Board member is unable to attend, such that the total of athlete Board members and Substitute Athlete Representatives in attendance shall be accorded the privileges of the floor at Board meetings but shall have no vote therein.

Revised text under Nomination of Athlete Board Members and Substitute Athlete Representatives - Article XVI, Section 2: . . . the Athletes Advisory Committee shall submit to the Nominating Committee the names of twelve individuals meeting the criteria specified in Arti-

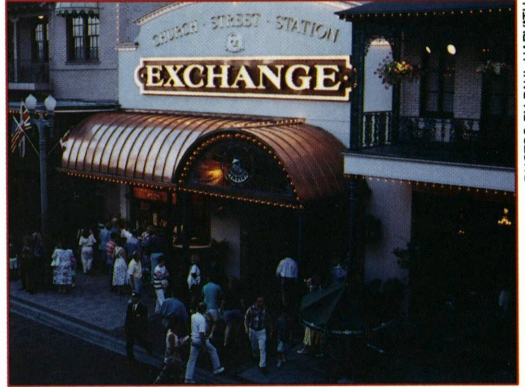
1991 Governing Council Meeting

More than 400 skating enthusiasts gathered the week of May 6-12 at the Walt Disney World Hilton in Orlando, Fla. USFSA officers and committee members met early in the week that culminated with the Governing Council meeting.

Along with the meetings there was much festivity surrounding the homecoming of USFSA President Franklin Nelson from his tour in the Gulf. The USA World Team members were recognized at a breakfast held in their honor and special longtime USFSA officials were also honored at dinners and receptions.



USFSA President Franklin Nelson and Christopher Bowman.



PHOTOS BY PAUL HARVATH

Delegates spent some of their free time at Church Street Station—where there was a mix of dining and shopping.



World Team members were busy signing autographs following the Breakfast of Champions. (above, l to r) Paul Wylie, Jerod Swallow, Elizabeth Punsalan, and Nancy Kerrigan. (left) Jenni Meno, and (right) Calla Urbanski.





More than 400 delegates and skating enthusiasts gathered at the Walt Disney World Hilton for a week filled with meetings and parties.

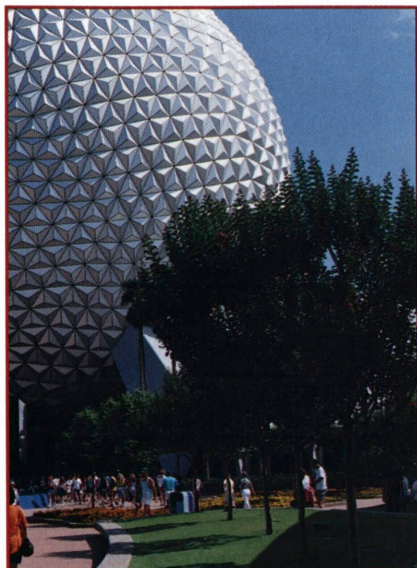


The Walt Disney World Hilton was an ideal meeting facility.



Four 50 year judges were honored this year. Pictured (l to r) Gale Tanger, outgoing chairman of the Judges Committee, Josephine Lawless accepting for Eugene Maeder, Janet French, Elisabeth Hickok, and Wilhelm Appeltofft.

Officers who completed their terms include: (l to r) Walter Lupke, Music, Charlene Tagas, Pacific Coast Rep., Franklin Nelson (May '92), Claire Ferguson, Acting President, George Ludlow, Program Development, Gale Tanger, Judges, and John Holdsworth, Investment.



Pictured above is the entrance to Epcot Center.



(l to r) Sandra Weaver accepts a 25 year accountant award for Miriam Hillier. Hugh Graham and Fred LeFevre, 25 year referees, pose with Franklin Nelson.

cle VIII, Section 3 hereof. The Nominating Committee shall designate nine athlete Board members and three sequentially numbered Substitute Athlete Representatives, and shall present these names to the annual meeting of the Governing Council for election as athlete members of the Board of Directors and Substitute Athlete Representatives.

Revised text under Length of Term and Elections - Article XVI, Section 4: The Governing Council at each annual meeting shall, by majority vote of the delegates present thereat in person or by proxy, elect: (a) . . . (b) Such number of additional voting members of the Board of Directors as are to be elected pursuant to the provisions of Article VIII, Section 3 hereof and Substitute Athlete Representatives for a term of one year commencing upon the conclusion of the meeting at which elected or until their respective successors are elected and assume office.

Revised text under Notice of Meetings - Article X, Section 11: An announcement of the date and place of each annual meeting shall be sent all members of the Board of Directors (including Honorary members and Substitute Athlete Representatives) at least two (2) months prior to the date of the meeting. Written notice of the meetings of the Board of Directors shall be mailed to all members including Honorary Members and Substitute Athlete Representatives) thereof at least twenty (20) days before the date of the meeting, stating the date, time and place of the meeting and the general character of the purpose of the meeting.

8. Approved a By Law change as set forth in Exhibit E, with the following rule changes: MF 2.03 - delete "and low interest loans".

MF 4.02 - delete "and low interest loans" (two references) and "and loans".

9. Approved designation of Cleveland, Ohio as the site for the 1993 annual Governing Council meeting.

10. Approved a resolution by Mrs. Margaret Faulkner honoring the 1991 World Figure Skating Team and directed that a copy be sent to each member.

11. Approved a resolution by Mrs. Barbara Holland honoring those Honorary National Judges, Honorary National Dance Judges and those Honorees with 50 years or more of service

to the Association and directed that a copy be sent to each individual honoree.

12. Approved a resolution honoring the 1991 World Junior Figure Skating Team and directed that a copy be sent to each team member.

13. Approved a resolution honoring the 1991 World University Games Figure Skating Team and directed that a copy be sent to each team member.

COMPETITIONS

1. Overruled vote of the Board of Directors pertaining to CR 2.631 "Activity Requirements for Referees" and deleted "chief" from the activity requirement for Regional Referee.

2. Approved motion to refer: "The issue raised concerning a Member Club's wishes regarding the use of its ice surface by an interclub association for a sanctioned event . . . competition, carnival, test, etc. . . . be considered and enforced be referred to the Membership, Competitions, Sanctions (and Test) Committees for consideration and possible rule drafting and that these actions be brought to the 1992 Governing Council meeting, and that in the interim, the Sanctions officers (performance, competitions, tests) be directed to take into consideration the wishes of a "home club" when issuing a sanction to an interclub association.

3. Rescinded action by the Board of Directors to eliminate Groups 1 and 4 from Intermediate Figures. (Draw will be from all four groups).

DANCE

1. Approved revisions to CR 37.011 and 37.021 to add sentence: "The draw of the dances shall consist of the waltz selected by the ISU and one other tempo to be drawn from the remaining. (This will become effective upon the close of the Governing Council meeting).

2. Rescinded action by the Board of Directors to add Novice to Adult Dance structure in CR 37.05. JUDGES

1. Approved change to action by the Board of Directors as reported on page 10 of the Interim Report of Action, Judges Committee, item #4, as follows: "Any trial judge may register with the USFSA Headquarters and Judges Committee for the purpose of receiving all mailings and information relating to judging."

2. Rescinded item #2, page 11 of Interim Report of Action by the Board of Directors under Membership and deleted reference to "a National Vice Chairman for Basic Skills," and "The National Vice Chairman for Basic Skills shall be responsible for overseeing the administration of the Basic Skills Program."

3. Approved clarification of item 1-B on page 65 of Requests for Action, Precision Skating Committee, and changed as follows: "All Senior teams may compete."

SANCTIONS

1. Approved that Interim Eligibility Rules become Eligibility Rules effective at the close of the Governing Council.

2. Rescinded ER 3.011 (d) as presented on Interim Report of Action of the Board of Directors as written on page 22 item #8 (d), which stated "must have competed in a USFSA Sectional Championship in the freestyle, dance or pair categories within the last twelve months, at Junior or Senior level, excluding adult skaters."

3. Approved amendment to MR 7.04, page 237 of Rulebook to include: . . . or sanctioned events such as carnivals, exhibitions, Skate With Us, or competitions at the Principal Skating Headquarters . . ."

NOMINATING

1. Approved the following Nominating Committee Recommendations for 1991-1992: *Officers:* President - Franklin S. Nelson, M.D.; Eastern Vice President (1st VP) - Claire Ferguson; Midwestern Vice President (2nd VP) - Carolyn Kruse; Pacific Coast Vice President (3rd VP) - Dr. Harland Burge; Secretary - Robert Watson; Treasurer - John Holdsworth. *Members At-Large:* Eastern Section - Lucy Brennan, James Disbrow, Phyllis Howard, Ronald Millier, and Howard Silby, M.D. Midwestern Section - William Estey, Julie Lobo, Marcha Pipes, Lou Sherman, and Bette Snuggerud. Pacific Coast Section - Avonia Dondero, Joseph Driano, Ron Hershberger, Reiko Seger, and Robb Steinheider. *Coaches:* Robbie Kaine,

Tod Bartholomew, and John Nicks. *Athlete Members:* Jeffrey Benz, Sharon Carz, James Cygan, Richard Dalley, and Kathaleen Kelly, Caroline Silby, Jerod Swallow, Archie Tse, and Paul Wylie. *ISU Representative:* Charles DeMore. *Olympic Representative:* Paul George

2. Recommendations to the President for Appointment to Chairmanships of the following committees:

Standing Voting Committees: Athletes Advisory - Richard Dalley; Competitions - John LeFevre; Dance - Ida Tateoka; International - Margaret Faulkner; Judges - Ron Pfenning; Membership - Richard Gold; Precision Skating - Patricia French; Sanctions - Gloria Earhardt; Singles and Pairs - Margery Schleh; Tests - Susan Johnson; Finance - John Holdsworth. *Past President:* Hugh C. Graham, Jr., M.D.

Standing Non-voting Committees: Hall of Fame & Museum - Benjamin Wright; Hall of Fame Electors - Josephine Lawless; Memorial Fund - F. Ritter Shumway; Program Development - Joanne Schillinger; Grants and Allocations - George B. Ludlow, Jr.; Rules - Gay Barnes; Sports Medicine - Morton Rosenstein, M.D.

3. *Special Committees Appointed By The President:* Basic Skills & Basic Competitions - Cindy Geltz; Investment - Bruce McNally; Long Range Planning - Howard Silby, M.D.; Music - Eugene Thielman; Rink Operations Liaison - Rich Hooper; Skating Standards - Josephine Lawless; Special Olympics - A. Jim Larkin III; State Games - Judy Edmunds; Television - William J. Brennan, Jr.; Member Recognition - Barbara Holland; Major Grants & Acquisitions - Marilyn Palik; Coaches - Ronald Ludington; Parents Advisory - Ann Morton Neale.

4. Approved all business of the Officers and Board of Directors from the past year, unless otherwise noted.

5. Approved the Operating and Memorial Fund budgets.

Classifieds

SKATING PROFESSIONAL WANTED: Seeking experienced figure skating professional to teach Evansville, IN. Must have background in both ISIA and USFSA instructional programs. Should be qualified to develop new programs and teach all skill levels and drill teams. This position is for nine months on and three months off. Compensation includes salary plus no fee charged to Skating Professional for private lessons. Send resumé and salary requirements to: Department of Parks and Recreation, 100 East Walnut Street, Evansville, IN 47713.

PEN PAL WANTED — I'm 15 yrs. old and I compete in Juniors. I love skating, writing, reading, and more. I promise to write back. Laura Petzoldt, 554 Fordham Dr., Placentia, Calif. 92670. Write soon!

CHRISTOPHER BOWMAN FAN CLUB. Fully authorized by Christopher and his management. For further information contact: Mary G. Hughes, President, P.O. Box 725, Narragansett, RI 02882.

WANTED: Head Skating Pro for fall 1991. Gold test desired in figures and freestyle, and Gold or International in dance. Winter season Mid-Sept. through Mid-April, 8-10 weeks intensive summer program, 3 arenas, 2 Universities. Send resumé to Bismarck Figure Skating Club, P.O. Box 7372, Bismarck, ND 58507 or call: 701-222-3079 or 701-258-6517.

THE 1992 FIGURE SKATING CALENDAR is available. A must for the skating enthusiast. Terrific gift. Great for competitions and shows. Limited number; order now, \$17.00 prepaid. Discounts on quantity orders from Clubs, Teams, or Skate Shops. Contact: A.A. & R.W. White, 7 Thompson Place, Port Henry, NY 12974. 518/546-9999.

CLASSIFIED RATES: \$20 for the first 35 words, 50¢ for each additional word, \$20 minimum. Two-letter state abbreviation code plus zip code count as one word. *Payment required with order.* All advertising copy is subject to acceptability. **BOX NUMBERS:** \$5 extra. Send all box responses to: *Skating*, Box No. , 20 First Street, Colorado Springs, CO 80906-3697.

ORIGINAL PROGRAM MUSIC! Six musical programs per cassette. Styles from classical to rock. Specify Tape A (Novice under 2:15) or Tape B (Junior/Senior under 2:40). Send \$11.95 plus \$2 s/h each to T&T Productions, P.O. Box 2145, Corona, CA 91718.

EXPERIENCED SKATING PROFESSIONAL with credentials in figures, freestyle, and choreography sought for serious young skaters. Please send resumé to: P.O. Box 525, Avon, Colorado, 81620.

ATTENTION: SKATERS & MOTHERS. Beautiful Sheer Magic Never Run Pantyhose. 3-7 times last longer. Even with holes, does not run. Guaranteed! For ordering & distributorship information, call (805) 665-1360 or 1-800-695-6838 24 hr. Voice Mail.

AMAZING NUTRITIONAL PRODUCTS. Lose weight & maintain. Improve stamina & energy. Delicious! Handy packets. You'll love it! Marketeer needed. Please call (805) 665-1360 or 1-800-695-6838 24 hr. Voice Mail.

FAIR ISLE SWEATER PATTERN FOR SKATERS. Yoke features two rows of figure skates. Pullover pattern has instructions for Size 4/6 (chest 25") to Size 42/44 (chest size 46"). Send \$5.00 check and stamped business envelope to: **BLOOMIN' BEAUTIES**, Box 13, West Yarmouth, MA 02673.

EXCITING NEW SKATING MUSIC! Choose from thousands of instrumental combinations, plus song search and custom recording services. Precision, freestyle, and others. Write, or send \$25.00 refundable deposit for demo tape. **R.R.R.** Box 44, Cohasset, MN 55721.

LYCRA SELL OUT 10 yd. mixed bundles—strips, print and plain—3/8 to 1-1/2 yd. lengths \$32.50 ppd. Black & colors on bolt—\$4.95 yd. Gold Ribbon Enterprises, P.O. Box 36, Saline, MI 48176, (313) 429-2147.

SKATERS' LONG DISTANCE

Special Skaters' Programs

- ✓ On Major Carriers
- ✓ At Low-cost
- ✓ Fundraising Programs for Clubs & Teams
- ✓ Skaters' Travel Cards at Special Rates

**For More Information Call
1-800-743-6043**

The Skaters' Long Distance Network
13 Woodlake Square #130, Houston, Texas 77063

*If you have to use long distance anyway,
why not get top quality, save money and
support skating all at the same time!*

THE SKATING CLUB OF BOSTON wishes to add a senior teaching professional to its existing staff. Qualifications for free skating and school figures of greatest interest. Ideal candidate will have experience taking competitors to national championships at minimum of Junior level. Please forward letter describing your qualifications, resumé, and names, addresses, and telephone numbers of references to: Professional Committee, The Skating Club of Boston, 1240 Soldiers Field Road, Boston, MA 02135-1086.

"ICE DANCING MADE EASY" will teach you the techniques top dancers use. This illustrated book will help you achieve effortless glide, perfect balance, faultless form, and harmonious partnering. Send \$15 to TRACINGS MAGAZINE, 21 Weybosset St., Weymouth, MA 02191.

BEADS-TRIMS-JEWELS: Complete selection of beads and beaded trims, fringes, appliques, sequins, pearls, rhinestones, and sew on crystals. Visa/MC, Amer. Express. Bead Box, 309 N. Kings Road, Los Angeles, CA 90048, (213) 651-3595.

WANTED: MALE DANCE PARTNER. For 5'6" 127 lb. female with blonde hair and brown eyes. Have complete Kilian and Blues, hard working, and determined. Respond to: Skating, Box 86, 20 First Street, Colorado Springs, CO 80906-3697.

COACHES WANTED: Now accepting applications for Instructor and a Skating Director. Rink is located in California 3 hours from San Francisco and Los Angeles. Facility is expanding to become 1st double wide ice surface in California. Rink has great potential for experienced coaches looking to relocate on the West Coast. Family owned and operated for the last 5 years. Please send resumé to Icelandia of Fresno, 2455 N. Marks Ave., Fresno, CA 93722. For further information please contact Wayne Kerwin at 209-275-1119 E.O.E.

TRADE, BUY OR SELL (prefer trade): figure skating books, magazines, some programs. Especially interested in acquiring pre-1980, figures, Canadian, European, and fiction. Gari-Anne, 725 N. Westfield E-4, Oshkosh, WI 54901.

AUSTRIAN CRYSTAL: Margaritas, Lochrosens, Embroidery Stones, etc. Also: Silver-Lined Rocailles, Bugle Beads, Seed Beads, Sequins, Rhinestone Chain. Price list and samples upon request. Gerrie Ball, 310 Juniper Street, Brea, CA 92621, (714) 529-1474.

KRASH PADS by JAN-PRO: Hip Pad: \$29.95, plus \$2.00 shipping and handling. Measure around seat with skating attire on. Knee Pads: \$16.95, plus \$1.50 shipping and handling. Measure around knee. Colors: Blue and Black. Send CK/MO to Jan-Pro, 4470 Monroe Avenue, San Diego, CA 92115, (619) 282-0637. Calif. res. add 8 1/4% tax.

We have the LOWEST DISCOUNT PRICES on quality boots, blades, and tights—immediate shipment—satisfaction guaranteed. Call (906) 786-7752 or write LeCaptain Studio Store, 1620 Ludington, Escanaba, MI 49829. COD MC VISA.

PRISM SEQUINS! Jewels, Beaded Fringes, Sequined appliques, Feathers, Lycras, glissennette, lamés, Doubleknit, Superstretch, etc. For catalog send \$3.50. MURIELLE ROY & CO., 67 Platts Mill Rd., Dpt. #2, Naugatuck, CT 06770. (203) 729-0480.

PICTURES, MEDALS, AND OVERFLOWING DRAWERS? Beautiful 11x14 oak finish SHADOW BOX, displays 5x7 photo and 3" medal. Select rose, light blue, or beige mat with black velvet background; vertical or horizontal photo. Other photo sizes, medals only, custom mats and finishes available. Send \$32.95 plus \$2.00 shipping to Rachel Napear, 3833 Delmar Avenue, San Diego, CA 92106, (619) 222-7498.

DO YOU LIVE IN NEW YORK STATE? Would you like to excel in ice dancing? Sure you do! A high professional coach, master of sport in ice dancing from Russia will help you. The 91-92 figure skating season is coming. So don't lose your chance. For more information call: Mikchail Zverev (518) 943-4329.

SKATE PLAQUE Creative way to display your pin collection. Hand crafted, skate cut out, walnut stained, black felt lining, ready to hang. \$20 includes s/h. Send check/M.O. Brian Sadwin, Box 269, Woonsocket, RI 02895.

"SKATE TO WIN" Illustrated book with tips to competitors on how to stand out from the crowd, what judges are looking for, and how to prepare for competition including hints on figures, jumps, spins, choreography. Send \$15 to Tracings, 21 Weybosset St., Weymouth, MA 02191.

SKATING DRESS PATTERNS: Step-in Dress Pattern for Lycra/Spandex: Girls OR Ladies size S4-6, M8-10, L12-14 \$6.00 ea. Multi-size Pattern w/diff skirts, sleeves, necklines — Girls 4-12 OR Ladies 4-14 \$10.00 ea. Book of 160 patterns for beading, embroidery, and rhinestone work. \$14.95 ea. Send Check/M.O. to: RENATE PAYNE, P.O. Box 18076, Denver, CO 80218-0076. (303) 424-7662.

SATIN STITCHES — CUSTOM DESIGNED COSTUMES! We specialize in the finest quality available for precision teams & soloists. We've been custom-designing costumes for twelve years. SATIN STITCHES, 11894 Reisling Blvd. NW, Coon Rapids, MN 55433, 1-800-48SATIN.

SEEKING EXPERIENCED FACILITY MANAGER. Full time, year round position in NEW DUAL RINK facility in Huntsville, AL. City complex, excellent benefits in South's only dual rink complex. Mail resumé, including salary history and references, to Mrs. Keith Schonrock, Huntsville Ice Skating Complex, 2615 Vista Drive, Huntsville, AL 35803.

SPANDEX FABRIC — All weights, types, prints, solids, stripes, Nylon and Cotton blends, firsts and closeouts. Norbrook Industries Ltd., 152 Madison Avenue, New York, New York 10016, (212) 889-2708.

ONE STOP SHOPPING FOR SKATERS! Catalog \$5.00. Best selection of lycra solids, prints, lamés, rhinestones, beaded fringe, bugles, rocailles, spangles, beaded appliques. BEAD DIFFERENT, 214 E. Chicago Ave., Westmont, IL 60559, 1-800-BEADS-78, 1-708-232-1962.

FREESTYLES BY CAROLYN. Basic pull-on dress with attached skirt, including three neckline treatments. Directions for adding zipper, and separate wrap skirt also included. Children's sizes, 4x small through x small. Adult sizes, small, medium, large, x large: \$6.00 ea. Pull-on skirt, perfect for practice with T shirts or leotard, \$2.50 ea., all sizes. Figure flattering criss-cross dress: x small through x large, \$4.00 ea. Custom made patterns for \$8.00. Send for measurement chart. Add \$1.00 for postage and handling with each order. 5150 Bluestem Drive, Colorado Springs, CO 80917.

BEADS, CRYSTALS, SEW ON STONES, Sequin Appliques, Sequin Trimming. Dellorfon Designs, 471 Washington Street, Wellesley, MA 02181, (617) 431-1590.

MILLIONS of dollars go unclaimed each year because students are unaware of many sources. College SCHOLARSHIPS are available, 6 to 25 sources per student guaranteed. Free information. Students to College, 110 (b) Butterfield Ave., Watertown, NY 13601.

MUSIC FOR ICE DANCING, Otto Memorial Library. Custom cassettes. Solo practice, single dance, programmed dance cassettes with numerous contemporary arrangements. Christmas Program orders received by November 1 delivered by December 6. Write or call (713-975-6557) for flyers. OML-Iceland FSC, P.O. Box 37334, Houston, TX 77237-7334.

EVERYDAY LOW PRICES on boots, blades, scribes, clothing, tights, bags & accessories. Excellent service, immediate shipment. MAJOR CREDIT CARDS ACCEPTED. Send \$2.00 for catalog. ON THIN ICE, 2737 TWELVE MILE ROAD, BERKLEY, MI 48072. 313-543-1130.

Continued on page 54

Laurels

Skating congratulates the following skaters who have passed USFSA tests in figures, pair, and dance. Only completed dance tests, rather than the individual dances, are recorded below.

New Test Abbreviations are as follows: PRE = Preliminary Figure; 1 = First Figure; 2 = Second Figure; 3 = Third Figure; 4 = Fourth Figure; 5 = Fifth Figure; 6 = Sixth Figure; 7 = Seventh Figure; PF = Preliminary Free; JF = Juvenile Free; IF = Intermediate Free; NF = Novice Free; JRF = Junior Free; PPR = Preliminary Pair; IPR = Intermediate Pair; NPR = Novice Pair; JPR = Junior Pair; GPR = Senior/Gold Pair; P DT = Preliminary Dance Test; PBR DT = Pre Bronze Dance Test; BR DT = Bronze Dance Test; BFD = Bronze Free Dance; PS DT = Pre Silver Dance Test; S DT = Silver Dance Test; SFD = Silver Free Dance; PG DT = Pre Gold Dance Test; G DT = Gold Dance Test; GFD = Gold Free Dance; I DT = International Dance Test; ABFI = Adult Bronze Figure; ASFI = Adult Silver Figure; AGFI = Adult Gold Figure; ABFS = Adult Bronze Free Skating; ASFS = Adult Silver Free Skating; AGFS = Adult Gold Free Skating; PBR ADT = Pre Bronze Adult Dance Test; B ADT = Bronze Adult Dance Test; ABFD = Adult Bronze Free Dance; PS ADT = Pre Silver Adult Dance Test; S ADT = Silver Adult Dance Test; PG ADT = Pre Gold Adult Dance Test; G ADT = Gold Adult Dance Test; PBR MDT = Masters Pre Bronze Dance Test; BR MDT = Masters Bronze Dance Test; PS MDT = Masters Pre Silver Dance Test; S MDT = Masters Silver Dance Test; PG MDT = Masters Pre Gold Dance Test; G MDT = Masters Gold Dance Test; I MDT = Masters International Dance Test; MBFD = Masters Bronze Free Dance; MSFD = Masters Silver Free Dance; MGFD = Masters Gold Free Dance; P SDT = Special Olympic Preliminary Dance Test; PBR SDT = Special Olympic Pre Bronze Dance Test; BR SDT = Special Olympic Bronze Dance Test; PS SDT = Special Olympic Pre Silver Dance Test.

GOLD FIGURES

Charlene Von Saher, Rye FSC; Dawn Marie Finley, Seattle SC; Debra Kleinberg, Commonwealth FSC; Jennifer Blount, SC of Boston; Julia Piano, Wissahickon SC; Kristen Weir, Colonial FSC; Natalie Thomas, Rocky Mountain FSC; Patricia Hessinger, Lehigh Valley SC; Sharon Sargent, Philadelphia SC & HS; Shirl Cattani, Colonial SC of NJ.

GOLD SENIOR FREE

Amy Grossman, Individual Member; Colleen Maguire, Colonial FSC; Dana Chinn, SC of Northern Virginia; Dede Schumacher, San Fernando Valley FSC; Debra Cole, St. Joseph FSC; Doreen Raudenbush, Wissahickon SC; Holly Thomsen, Indiana/World Skating Academy; Jamy Wetzel, Rocky Mountain FSC; Jennifer Deroche, North Shore SC; Jill Anderson, St. Paul FSC; Joy Jaworowski, Cantiguague FSC; Karen Gooley, SC of Wilmington; Kristen Elliott, Potsdam FSC; Laurie Fukushima, Cottonwood Heights FSC; Leslie Portnoy, North Shore SC; Lisa Bucci, Warwick Figure Skaters; Lizzy Scully, Washington FSC; Lucinda Day, Arizona FSC; Patricia Suyak, Garden City FSC; R. Sean Gales, FSC of Omaha; Stacey Maxwell, Springfield FSC; Stephanie Burst, Birmingham FSC; Yearle Klinger, SC of Phoenix.

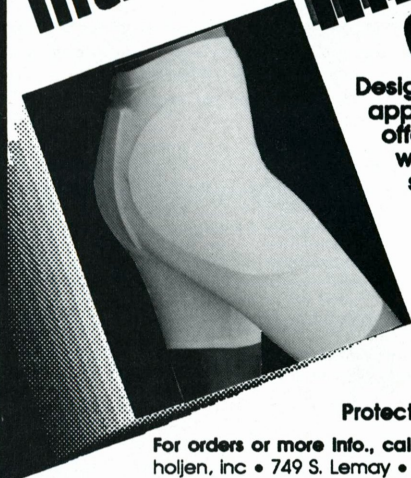
GOLD PAIR

Aimee Offner, University of Delaware FSC; Brian Helgenberg, University of Delaware FSC; Cambria Goodman, Dallas FSC; Christina Fitzgerald, Princeton SC; D. Bradley Cox, FSC of Madison; Kara Paxton, University of Delaware FSC; Steven Moore, Dallas FSC.

GOLD DANCE

Cynthia Dankworth, Alaska Association of Figure Skaters; Hope Beret Burchill, Red River Valley FSC; James Kelsey, Anchorage FSC; Jennifer Ellis, WC of Indianapolis; Jennifer Peterson, Glenwood FSC; Jonathan Stine, Broadmoor SC; Kimberly Callahan, Broadmoor SC; Lisa Pascoe, Kalamazoo FSC; Madeline Piasecki, Champlain Valley FSC; R. Sean Gales, FSC of Omaha; Steve Eichenberger, SC of Phoenix.

Introducing **IMPACTWEAR™** Compression Shorts



Designed to be worn under regular skating apparel, **IMPACTWEAR™ Compression Shorts** offer the protection and support necessary when jumping, as well as the stylish look skaters want.

- Made of lightweight, breathable fabric that conforms to the shape of your body.
- Provides hamstring compression to help prevent muscle pull or tear.
- Helps to increase circulation and reduce muscle fatigue.
- Fitted with the patented **IMPACTWEAR** hip & tailbone pads for protection when falling.
- Endorsed by top orthopedic specialists.
- Available in white only. Men's, women's & children's sizes.
- **IMPACTWEAR** lycra tights available in seven colors.

Protective Skating Apparel By *höljen* inc.

For orders or more info., call 1-303-223-8576

holjen, inc • 749 S. Lemay • Suite A3-210 • Fort Collins, CO 80524
 (pro shop inquires welcome) ©1991 holjen, inc. all rights reserved, patent pending

GOLD ADULT DANCE

Charles Hayek, St. Moritz ISC.

GOLD FREE DANCE

Jon Robinson, Stone Mountain FSC.

ACADEMY FSC: PRE-Lynnette Kania. 1-Julia Unger. 6-Dorota Meller. PF-Lynnette Kania.

ACHILLES FSC: PRE-Gretchen Jasek. 2-Kristen Blondin. PF-Gretchen Jasek. IF-Peter Campisi. P DT-Deborah Haitko, Gretchen Jasek. BR DT-Tara Tang. PS DT-Kristen Blondin.

ALASKA ASSOCIATION OF FIGURE SKATERS: PRE-Julia Fernandez, Lorena Chen, Melinda Young, Samantha Pestinger, Tiffini Jackson. 3-Hilary Holcomb. 7-Cynthia Dankworth. PF-Julia Fernandez, Lorena Chen, Lorien Lemon, Melinda Young, Samantha Pestinger, Tiffini Jackson. IF-Hilary Holcomb. PBR DT-Hilary Holcomb.

ALBUQUERQUE FSC: PRE-Angelique Morschauer, Julie Lynn Witte. 1-Ashlie Hightower. 3-Melissa Cudney. JRF-Sharon Walston. PPR-Laura Mann, Matthew Edmonds. PBR DT-Autumn Debord, Ronald Lipinski. PBR ADT-McAllister Hull. BR MDT-James Doran. PS DT-Emilia Baykian, Karen Moon. BFD-Mary Walston. ABFD-Norman Smith.

ALL YEAR FSC: PRE-Deloris Hsiung, Hathaway Loftus. 2-Malissa Lawrence. PF-Deloris Hsiung, Hathaway Loftus. JF-Malissa Lawrence. IF-Ambur Fork. ABFS-Barbara Pomykalski, Cece Frankhuizen, Denise Rossi. ASFS-Barbara Pomykalski, Denise Rossi. AGFS-Denise Rossi. BR DT-Jennifer Henz, Mica Darley, Shannon Livingston. B ADT-Karen Timberlake. S DT-Mitzie Carlson.

ALPENA FSC: 1-Jackie Timm.

ALPINE SC: PRE-Amy Brown, Devon Patterson, Jeffrey Willey, Kindra Dunlap, Rachel Guttenberg, Rachel Robinson. 1-Becky Lane. PF-Devon Patterson, Jeffrey Willey, Kindra Dunlap, Rachel Guttenberg, Rachel Robinson. NF-Jennifer Sanders.

AMHERST SC: PRE-Jackie Herzog, Lauren Alessi, Lynda Minbiole, Sonya Chaplinsky. 1-Abby Lestition, Alexandra Holland, Amy Lestition, Jill Marie Cummings, Kathleen Costello. 2-Victor Ehre III. 3-Amy Lynn Trimble, Jennifer Cunningham, Jessica Vieth, Pamela Savage. 4-Jean Baik. 5-Cheryl Gozdecki. PF-Lauren Alessi, Sonya

BRYAN SPORTS EVENTS

A Division of Bryan International Travel Inc.



Your One-Stop Worlds Shopping Center!



★ All-Inclusive Packages to ★
1992 Worlds • San Francisco/Oakland & 1993 Worlds • Prague
1992 Nationals

★ Hotel Accommodations & Tour Arrangements for 1992 & 1993 Worlds ★

★ Exclusive Agent for All-Event Tickets for 1993 Worlds Prague ★
for North America & Europe

Call or write today for further information.

BRYAN SPORTS EVENTS

400 S. El Camino Real, Suite 1550
San Mateo, CA 94402

Telephones:

(415) 579-0455

1-(800)-234-6432 FAX: (415) 579-0811

★ Official Agency of the 1992 & 1993 Worlds ★

Chaplinsky. JF–Jill Schneggenburger, Julie Spanos, Laura Shine, Lawrence Pace, Susan Hoffman, Victor Ehre III. IF–Heather Ehre. ASFS–Gail Phillips. P DT–Karen Sopic, Megan Green, Miriam Singer. PBR DT–Judy Silverman, Lisa De Perio. BR DT–Jillian Raskin, Lydia Georgiadis. B ADT–Gail Phillips. PS DT–Jessica Vieth. S DT–Elizabeth Handley, Heather Ehre.

SC OF AMHERST: S DT–Brietta Del Manzo.

ANCHORAGE FSC: PRE–Candice Briggs, Christina Gordon, Pamela Peterson. 1–Bree Michelsohn, Jennifer Faulkner. 3–Sarah Devereaux. 6–Christy Tuomi. PF–Candice Briggs, Charlotte Kopp, Christina Gordon, Pamela Peterson. B ADT–Linda Bethon.

ANN ARBOR FSC: PRE–Erika Nesse, Heather Clopton, Kristen Monan, Meredith Kelley, Tiffany Davis. 1–Kristin Durant, Laurel Dougherty, Melissa Naimowicz. 5–Lori Pinter. PF–Carolyn Kremm, Heather Clopton, Kay Ritchie, Kristen Monan, Meredith Kelley. JF–Dana Shapiro, Diana Fodor. P DT–Anne Bonine, Jackie Murray, Jill Johnson. BR DT–Andrea Mignolo. B ADT–George Marson. PS DT–Ann Galbraith, Charles Fehrenbach. PS ADT–Sunnie Bae.

ARCTIC BLADES FSC: 1–Chrissy Hinsley, Travis Perkins. 2–Amanda Crabtree, Julieta Sylvester. 3–Debra Lynn Risch. 4–Mary Boyadjian, Theresa Cho. JF–Travis Perkins. IF–Debra Lynn Risch. NF–Mary Boyadjian. JRF–Caroline Song. ABFS–Laura Chinnock. IPR–Rachelle Endres. P DT–Felicia Lewis, Julieta Sylvester. PBR DT–Cheyenne Parris, Tikvah Hayes. BR DT–Casper Young.

ARIZONA FSC: PRE–Anna Ezell, Jessica Warren. 1–Ami Kron. 7–Lucinda Day. PF–Amy Jo Winters, Anna Ezell, Jessica Warren, Randy Hack. JF–Melissa Mahon. IF–Nikki Reese. ABFS–Connie Fridley, Dawn Kinsley. P DT–Melissa Mahon.

ARROWHEAD FSC: PPR–Kristen Fraser. IPR–Kristen Fraser. P DT–Kristen Fraser.

ASPEN SC: NF–Greta Cate Gessele.

ATLANTA FSC: PRE–Amanda Kimbrough, Jamie Screven, Sherie Thompson. 1–Alison Presmanes, Georgia Kidd, Jessica Levine, Nicole Kidd. 3–Brooke Aaron, Janice Woodcock, Kerry McLeod, Terri Steiner. 4–Brittney McConn. PF–Amanda Kimbrough, Jamie Screven, Sherie Thompson. JF–Heather Epstein. IF–Janice Woodcock, Laura Stuart, Shireen Barday. NF–Brittney McConn. JRF–Caryn Clyne.

ATLANTIC CITY FSC: 1–Amy Margolis, Shannon Bade. 4–Charles Robel. PS DT–Maria Nakos.

AUSTIN FSC: P DT–Kelly Harrison, Kimberly Swift. PBR DT–Jenna Friede.

BABSON SC: PRE–Larissa Schyrokyj. 1–Hillary Weinblatt. 2–Stacy Jupiter, Suzanne Ronkin. 5–Rachel Ann Kell. JF–Julieanna Sacchetti, Lisa Inglese, Rachel Postman.

BALTIMORE FSC: PRE–Laura Skowronski.

BAY PATH FSC: ABFI–Laura Dully. ASFI–Laura Dully. ABFS–Laura Dully. ASFS–Laura Dully.

USFSA Memorial Fund World Team Posters

Full color, suitable for autographs and framing.

All proceeds from posters go to the USFSA Memorial Fund
to support skater's training and education expenses.

Each poster is \$7.50 (includes \$2.50 1st-class postage & handling).

Now Available

1991 World Team Poster (Munich, Germany)

1990 World Team Poster (Halifax, Canada)

1989 World Team Poster (Paris, France)

(receive all three for just \$20.00 or any two for \$14.00)

Please make check payable to USFSA Memorial Fund and mail to:

USFSA Memorial Fund

20 First Street

Colorado Springs, CO 80906

(If ordering more than one poster, please specify year)

BEAVER COUNTY FSC: IF-Brian Colegrande. NF-Lauren Ann MacDonald. ASFS-Randon Simmons.

BEAVER DAM WINTER SPORTS CLUB: PF-Lauren Stellato.

BERKLEY ROYAL BLADES FSC: PRE-Amber Jacques. 1-Angela Wagstaff. 2-Kristina Koesters. PF-Amber Jacques. PPR-Brian Stewart, Emily Thomas. PBR DT-Emily Thomas. SFD-Jaimi Tarnow.

BINGHAMTON FSC: 2-Elaine Livingston.

BIRMINGHAM FSC: ABFS-Kay Kelly. P DT-Elizabeth Kelly.

BISMARCK FSC: PRE-Jill Hare, Tonja Knutson. 1-Becky Mueller. 2-Crissy Smith. 3-Dana Dwyer. PF-Jill Hare, Tonja Knutson. IF-Dana Dwyer, Gina Bianco. P DT-Jill Hare, Tonja Knutson. PBR DT-Jill Hare, Tonja Knutson. BR DT-Leslie Hilgers, Tara Kringstad. PS DT-Crissy Smith, Libby Wood. PG DT-Alicia Thompson, Andrea Duleh.

FSC OF BLOOMINGTON: PRE-Cassie Field. 1-Adam Collins, Heidi Pakkala, Pam Regan. 4-Terri Tesser. PF-Cassie Field. JF-Sarah Stertz. IF-Bessy Pakkala.

SC OF BOSTON: PRE-Tessa Woodnick. 3-Amy Maranhas. 4-Anneliese Stephenson. 6-Sarah Russell. 7-Bethany Quintin, Lori Ann Hudoba. IF-Amy Maranhas, Jennifer Fischer, Lindsay Ervin. NF-Maria Forziati. JRF-E. Stuart Golden, Sarah Russell. PPR-Meredith Cataldo. IPR-Meredith Cataldo. PG DT-Melinda Swezey.

BOWIE FSC: PRE-Sara Corbett. PF-Sara Corbett.

BOWLING GREEN SC: PRE-Andrea Hennigan. 3-Kirsten Lee. JF-Erin Richter, Sarah Lane. IF-Dawn Loucks. S DT-Erin Richter.

BRAEMAR-CITY OF LAKES FSC: PRE-Rebecca Landuik. 1-Leslie Fleury. 2-Elizabeth Rockwell, Gara Rose Gambucci, Katie Steinke. 3-Lindsay Brown. PF-Rebecca Landuik, Sara Pedersen. IF-Hilary Tansey. BR DT-Katie Grinnell. PG DT-Nicole Dumonceaux.

BRENTWOOD FSC: PRE-Jill Wayant, Katherine Wheatley, Megan McDonald, Sarah Hubbard. 2-Jean Trask. PF-Jill Wayant, Katherine Wheatley, Megan McDonald, Sarah Hubbard. NF-Lorie Nall. ABFS-Kevin Kurth, Sharon Ollar. ASFS-Kevin Kurth, Sharon Ollar. PPR-Kevin Kurth, Sharon Ollar. P DT-Lissa Bourjolly. PBR DT-Kelly Brown. PG DT-Jennifer Thompson. SFD-Jennifer Thompson.

BRIDGEPORT SC: 5-Betsy Coppola.

BROADMOOR SC: PRE-Kem McDougall. 3-Kelly Komadoski. 4-Heather Solesky. 5-Inna Smirnova. PF-Kem McDougall. JF-Becky Randle. IF-Megan Gregory. PPR-Kelly Komadoski. IPR-Kelly Komadoski. P DT-Kelly Ann Trent.

BROOKLYN FSC OF OHIO: P DT-Shannon Malaney.

SC OF BUCKS COUNTY: PRE-Kathleen O'Brien. PF-Beth Dillon, Jennifer Shaftel, Kathleen O'Brien. BR DT-Megan Sullivan.

CAMBRIDGE SC: ASFS-Elizabeth Atwood.



Let Our "Sonja" Bear Skate Into Your Heart

\$19.95
+ shpg. & hdlg.

Colors: White,
pink, blue, orchid,
metallic gold, red,
hot pink, silver.

Our 10" bear comes with stand and is dressed in your choice of costume color.

Make checks payable to: **Merry Bears & Hares**

• PO Box 352 • Franklin Lakes, NJ 07417
(201) 670-4640

Style#	Quan.	Color	Price	Shpg.	Total
2024	_____	_____	19.95	2.75	_____
2024	_____	_____	19.95	2.75	_____

N.J. Residents add 7% Tax

Name _____ Tel: () _____

Street Address _____

City _____ State _____ Zip _____

MC/Visa # _____ Exp. Date: _____

Signature _____ **Allow 3 weeks for delivery.**

Orchestral ICE DANCE & MUSIC

GREAT MUSIC FOR
THE COMPULSORY
DANCES THAT WILL
MAKE YOU WANT
TO DANCE * CALL

(212) 873-2307

FOR A FREE
CATALOG OR
WRITE.

ORDER
OUR
SPECIAL
HOLIDAY
PROGRAM
DANCE
TAPES
NOW.



MLD SM

Manhattan Library of Dance Skating Music, Inc.

Suite 348, 163 Amsterdam Avenue

New York, NY 10023 • Fax/Phone: 212-873-2307

CAMILLUS FSC: PRE—Maria Perrone. 1—Jennifer Joy. 2—Jennifer Benneck. BR DT—Mary Whiteside.

CANTIAGUE FSC: PRE—Alexandra Brennan, Heather Gross, Jennifer Jaffe, Kelly Leader, Kimberly Benedetto, Lillian Leale. 1—Kristin Tronolone, Tracy Ann Benizzi, Wendy Heckler. 2—Cheryl Ekstrom, Dori Pasternak, Lauren Sposito, Suzanne Doucet, Tracey Hanfing. 3—Diana Miro, Magdalena Cadet, Tara Maceiko. 4—Michelle Gerdin. 6—Robin Heckler. PF—Alexandra Brennan, Alison Lynch, Heather Gross, Jennifer Jaffe, Kelly Leader, Kimberly Benedetto, Lillian Leale, Wendy Heckler. JF—Alison Miller, Cheryl Ekstrom, Dori Pasternak, Lauren Sposito, Suzanne Doucet. IF—Diana Miro. NF—A Harmony Fabrizio, Jennifer Steinberg. JRF—Lori Dostis.

CAPE COD SC: NF—Marisa Hedlund.

CAPITAL CITY FSC: PRE—Adeena Tomiyama. 1—Russell Edwards. 2—Ariana Baker. 3—Sally Frantzreb. 4—Dawnna Fender, Valerie Frith. PF—Adeena Tomiyama. JF—Diana Lynn Browne, Tanya Hahn. PBR DT—Claire Centabar.

CAROUSEL FSC: PRE—Chiquita Houghton. 1—Sarah Bickford. 4—Lomi Suttnerberg. 6—Karyn Morrison. PF—Chiquita Houghton. P DT—Mary Backus, Krissy Van Natta. PBR DT—Mary Backus, Roberta L'Esperance, Sarah Bickford, Tanya Sember. PS DT—Cherie Terakura, Kelli Clark. S DT—William Duran. BFD—William Duran.

CASPER FSC: PRE—Kellie Wistisen, Melanie Mosteller, Stephanie Nanneman. 1—Jennifer Carlsen. PF—Cheryl Jasmann, Jessica Hurlless, Paula Olson, Stephanie Nanneman, Teri Van Houten. JF—Jennifer Carlsen. ABFI—Judy Herron. ABFS—Judy Herron.

CENTENNIAL SC: PRE—Alicia Towns, Hillary Crockett, Katherine Capozzi. 1—Lynsey Long, Sara Buttenwieser. 2—Amber Schnese. 3—Cammi Bruns. PF—Hillary Crockett. JF—Kathleen Pierce. IF—Cammi Bruns. P DT—Kathy Eckhardt, Linda Wozny. PBR DT—Amber Schnese, Jeremiah Jackson.

CHAMPLAIN VALLEY FSC: PRE—Amy Johnson. 3—Rachel Thornton. PF—Rebecca Wertheimer. JF—Natalie Tomczak, Sarah Cloutier. IF—Jamie Miller. PBR DT—Audra Preston, Deborah Elvin. PS DT—Kathryn Dickovick, Leslie Benoit. S DT—Aimee Audette. BFD—Leslie Benoit.

CHARLESTON FSC: PRE—Brie McMillen, Kristi Berry, Nancy Wentz. 1—Jenny Thalheimer, Katherine Farias, Reagan Jones. PF—Ashley Blackshire, Kristi Berry, Lindsay Neuner, Stephanie Doty, Tracey Macey. JF—Amanda Taylor, Amanda Kiser, Katherine Farias, Nancy Wentz. P DT—Amanda Kiser, Annie Shapiro, Carol Black, Jenny Thalheimer, Nancy Wentz, Reagan Jones. PBR DT—Amanda Taylor, Brie McMillen.

CHARLOTTE FSC: 1—Ashley Franklin, Meera Kakad, Shannon Caveny. 2—Chea Hutton. 4—Gina Deleon. NF—Gina Deleon. JRF—Christy Breaux. P DT—Gina Deleon, Gisele Auguste, Sara Dougherty.

CHARTER OAK FSC: PRE—Sara Jacobs. 1—Kathryn Manu. PF—Alison Geraghty, Amy Davids, Courtney Clark, Karen Anderson, Robin Mumford. P DT—Alison Geraghty, Allan Ames, B.J. Peters, Eileen Scoles, Elizabeth Fisher,

VSC**SPORTS CONSULTANTS**

A Division Of VSC Sports, Inc.

Corporate Office: 5525 Saloma Ave., Van Nuys, CA 91411

Consultants -

Specializing In The Ice Skating Industry

Planning - Designing -**Construction - Operations**

VSC... Our goal is to provide our clients with the expertise that is necessary to fulfill developmental and operational needs.

VSC... We provide services and products in the following areas:

- Feasibility Studies
- Development
- Architecture
- Equipment
- Programming
- Scheduling
- Public Relations
- Management
- Financial Planning
- Retrofit
- Personnel
- Ice Arena Acquisition

(800) 786-7657 * (818) 994-6018

FAX (818) 994-6545

LYNCH'S

We'll help you look great on the ice!

We have a large selection of:

- | | |
|---------------|--------------|
| Skate Dresses | Skate Covers |
| Skate Laces | Boot Polish |
| Appliques | Rhinestones |
| Sequin Trims | Materials |
| Hats | Make Up |

& Much, Much More!

**Please Send \$5.00 For Our
New 100 Page Catalog**

Catalog cost will be credited to first
order of \$25.00 or more!

LYNCH'S

939 Howard

Dept. S.K.

Dearborn, MI 48124

1-800-24-LYNCH



Margot Metzler, Tara Foy, Peter Bergeron. PBR DT-Jennifer Thal.

CHESHIRE FSC: PRE-Amie Hall, Melanie Whorfe, Shannon Linn. NF-Stacy McIntire.**CHICAGO FSC:** PRE-Ashley Collins. 2-Becky Balkin. PF-Ashley Collins. PBR DT-Beverly Thurber.**CHRISTMAS BROOK FSC:** S DT-Andrea Davis, Danielle Steele, Elizabeth Davis.**FSC OF CINCINNATI:** PBR ADT-Ardelle Duffy.**CLIFTON FINE FSA:** PRE-Leanne Belcer.

CLINTON FSC: PRE-Jennifer Gapin, Lisa Parucki. 1-Christine Chamberlain, Katie Dowling. PF-Christina Burnham, Leanne Burnham, Lisa Burnham, Tracy Tanner. JF-Katie Dowling, Nicole Duxbury. ABFI-Janet Hedel. P DT-Lisa Burnham.

COLISEUM FSC: 1-Erin Lenk. JF-Erica Heyer.

COLONIAL FSC: PRE-Amanda Enos, Brienna Lannon, Kate Mary Hannafin, Kelley Steckevicz, Kristi Marshall, Lauren Holt, Marni Hamilton, Molly Quigley, Molly Ann Ziolkowski. 1-Andrew Eckard, Debra Machacek, Jessica Tyler, Jill Moloney, Kelley Steckevicz, Lauren Holt, Marni Hamilton, Stephanie Fisher, Tara Brennan, Tracy Frederick. 2-Christina Naughton, Christina Pavlock. 3-Jacob Wangh, K. Sooki Danosky, Kelley Washam, Marisa Tennaro, Michelle Machacek. 4-Dana Walczak. 5-Jennifer Stone, Melanie Lambert, Sarah Ingmanson. 6-Nathan Hutchins. PF-Amanda Enos, Amanda Boyce, Brienna Lannon, Jill Moloney, Kate Mary Hannafin, Kelley Steckevicz, Kristi Marshall, Lauren Holt, Molly Quigley, Molly Ann Ziolkowski. JF-Abigail Rink, Emmanuelle Accad, Jessica Tyler, Kimberlie Thibault, Stefanie Merritt, Stephanie Fisher. IF-Emmanuelle Accad, Jessica Tyler. NF-Amy D'Entremont, Heather Goldstein, Lena Wilensky, Sarah Ingmanson. JRF-Kirsten Schmidt. PPR-Jacob Wangh, Jessica St. Jean. NPR-Hannah Shallice, Nathan Hutchins. BR DT-Abigail Colwell. PS DT-Anne Mahoney. S DT-Lena Wilensky.

COLONIAL SC OF NJ: PRE-Mia Sorensen, Michelle Pincus. 1-Jessica Heitman. 2-Ahsley Wargo. 6-Heather Castor. PF-Jessica Heitman, Mia Sorensen.

COLORADO SC: PRE-Lesley Orr. 1-Crystal Fross. 2-Katy Traeger. 4-Jillaine Hutchings. 6-Tara Beth High. 7-Mark Drouillard. NF-Anna Cayton-Holland, Ilana Goldfogel, Jillaine Hutchings. PBR DT-Jennifer Lee. BR DT-Janice Wegert, Jill Ahlbrecht, Tara Smith. PS DT-Mark Drouillard, Sara Mulholland.

COLUMBIA FSC (MD): PRE-Anne Morgan, Cara Morrissey. 2-Andrea Giglitto. PF-Anne Morgan, Cara Morrissey.

COLUMBUS FSC: PRE-Natalie Blake. PF-Natalie Blake. JF-Erich Walentschak. ABFS-Diane Huston, Svetlana Khodorokousky, Yoshinobu Hara. ASFS-Yoshinobu Hara. P DT-Erich Walentschak, Mary Hiser, Natalie Blake. PBR DT-Erich Walentschak, Julie Hering. BR DT-Deborah McNamara. S DT-Laura Kersell. I DT-Jessica Dolven. ABFD-Laura Kersell.

SKATERS' LUGGAGE TAGS



1-1/4" x 2-1/2"

You'll love these engraved gold satin brass luggage tags for yourself or as a great gift. Each tag comes with a sturdy ball chain that will fit any piece of luggage. \$9.95 ea. 2 or more tags with same address \$7.95 ea. Add \$3.00 for shipping & handling. Send check or money order along with information as pictured on above tag to:

La Belle Fabrique
1119 Harrison Blvd.
Lincoln Park, MI 48146
(313) 381-4333

Get More For Your Award Dollars With CROWN Medals, Trophies and Plaques



2 1/4" SOLID DIECAST MEDAL

You can award the finest medals for

only **99¢** ea.

FREE 30" NECK RIBBON

10-99 \$1.79
100-499 \$1.49
500-999 \$1.39
1000 & up . . . \$.99

2" Custom Diecast Medals Starting at

Only **\$1.49** ▶

FREE NECK RIBBON!



CROWN TROPHY
INCORPORATED

1 Odell Plaza, Dept. SK1X, Yonkers, NY
800-227-1557 In NY 914-963-0005

COMMONWEALTH FSC: PRE—Chi-hae Kwan, Erin Hoelt, Hae-min Kwan, Jacqueline Penney. 1—Allison Doyle, Laura Mullen. 5—Rachelle Dibona. PF—Allison Doyle, Laura Mullen, Lauren Manley, Lauren Mueller, Lisa Erickson, Marianne Powers. P DT—Carrie Hedrick, Jill Shea. PS DT—Karen Burbank.

CONEJO VALLEY FSC: 1—Alexandra White. 3—Christy Fahrenbruch. IF—Christy Fahrenbruch. PPR—Megan Lindaman.

CORTLAND FSC: PRE—Jacquelyn Boss, Kathryn Hayes. 1—Tara Dippolito.

COTTONWOOD HEIGHTS FSC: PRE—Amanda Bloom, Deni Newey. 1—Jamie Heiner, Kathryn Payne, Stephanie Dunlap. 2—Sarah McGraw. 5—Crista Lym. PF—Amanda Bloom, Deni Newey. JF—Sarah McGraw. IF—Kathleen Gallagher. NF—Lucas Turner. PS DT—Crista Lym, Sibel Bird.

GRAVE COEUR FSC: PRE—Clare Meadows, Kelly Gunn, Shannon Wilson. 1—Amy Schraier, Sarah Borders. 5—Julie Wilson. PF—Anne Fuleihan, Clare Meadows, Kelly Gunn, Shannon Wilson. NF—Jill Johnson. JRF—Jennifer Davis. PBR DT—Sarah Booth.

DALLAS FSC: PRE—Kate Stokes. 4—Joyce Schaecher. PF—Kate Stokes. JF—Tracy Borchering. NF—Vernon Bell.

DARIEN SC OF SOUTHERN CT: PBR DT—Jocelyn Vento, Zoe Bringe. S DT—Jill Erica Geter.

DENVER FSC: PRE—Heather Wohletz, Megan Wood, Nicole Andrews. 1—Paula Pence, Sarah Krier. 2—Alexandra Cestero, Shannon Garrett. 4—Amber Keeney. 6—Leah Hardy. PF—Heather Wohletz, Jenny Autenrieth, Megan Wood, Nicole Andrews. JF—Kimberly Lynch. JRF—Leah Hardy. P DT—Jill Witkowski. PBR DT—Sophia Winter.

DEPERE FSC: PRE—Abby Schuh, Yvonne Yang. PF—Abby Schuh, Yvonne Yang. ABFI—Carol Bollenbeck. ABFS—Carol Bollenbeck.

DETROIT SC: PRE—Courtney Patton, Jessica Joseph, Katie McBroom, Katie Lynch. 1—Elizabeth Hill, Jessica Hunt, Lindsey Magee, Tracey O'Donnell. 2—Alexis Melton, Karen Felice. 3—Brenna Stephen, Kate Richards. 6—Traci Bozich. 7—Kristina Sak, Tekla Warezak. PF—Courtney Patton, Jessica Joseph, Katie McBroom, Katie Lynch. JF—Alexis Melton, Jennifer Wing, Juliet Newcomer, Michelle Millar. IF—Kate Richards. NF—Jeanna Yi. IPR—Jessica Hunt, Jonathan Hunt. P DT—Katie Lynch, Roxanne Jellse, Shawn Jellse. PBR DT—Katie McBroom. BR DT—Justin Pekarek, Stephanie Miller, Veronica Shpilband. PS DT—Amy Scott, Meg Paterson. S DT—Frederick Pronko, Krista Ritter. BFD—Camille Arioli.

DULUTH FSC: 3—Nicole Crassweller, Sarah Frost.

DUPAGE FSC: PRE—Aimee Del Mundo, Allison Levy, Courtney Williams, Dana Godlewski, Denise Lesniewski, Jaime Passaglia, Kristen Tripicchio, Lindsey Fash, Melissa Levy, Neha Patel, Sara Syms. 1—Ann Mattheis, Catherine Hansen, Jennifer Hanekamp, Jill Rubino, Katie Matsushima. 2—Amanda Mattes, Amy Alicia Arnold, Beth Aiossa, Danielle Kucera, John Lee, Kelli Fudge, Lila Joy Arnold, Stace Williams. 3—Anbritt Stengele. 5—Marybeth Brady. 6—Barbara Dolenga. 7—Christopher Calayag, Jay-Cochon. PF—Aimee Del Mundo, Courtney

BRS Rink

TURBOCHILLER™

**SIMPLY THE MOST
EFFICIENT
REFRIGERATION
SYSTEM IN THE ICE
RINK INDUSTRY**

**WE CERTIFY OUR CLAIMS WITH
ENGINEERING DOCUMENTATION!
800-428-7539**

Burley's Rink
S U P P L I E R S

P.O. Box 250 • 1 School Street • Salix, PA 15952-0250
814-487-7666 • 1-800-428-7539

Classifieds

Continued from page 46

CHRISTMAS ORNAMENTS AND GIFTS. Original handpainted skating designs of excellent quality and detail. Personalization available. Reasonable prices. Orders filled promptly. For brochure send SASE to: Orion's Edge, 1925 East Hillcrest, Salt Lake City, UT 84106.

COSTUMES—Custom made costumes for soloist, pairs, and teams, designers available. Also, fabrics, rhinestones, jewels, and exquisite sequin and beaded motifs. **SHOW-OFF INC.**, 2567 Greenleaf Ave., Elk Grove Vil., IL 60007. (708) 439-0206.

SKATING JEWELRY FOR CLUBS, competitions, rinks, and camps. Gorgeous non-dangling earrings, pendants, and bracelets. Custom cloisonné enameled club pins, (your design). For brochure write to **SKATE/MATE**, P.O. Box 362, Englishtown, NJ 07726.

Williams, Dana Godlewski, Denise Lesniewski, Eric Leser, Jaime Passaglia, Kristen Tripicchio, Lindsey Fash, Melissa Avanesian, Melissa Levy, Neha Patel, Rachel Blut, Sara Syms, Tiffany Scholle. JF—Aaron Parchem, Amy Alicia Arnold, Aviva Studnitzer, Beth Aiossa, Deborah Howe, Jennifer Johnson, Kelli Fudge, Lila Joy Arnold, Michael Kazarian, Pari Studnitzer, Stace Williams. NF—Laura Baucom. JRF—Barbara Dolenga, Jennifer Caligiuri, Kim Lusenhop. ABFI—Betty Schilke DVM. ABFS—Betty Schilke DVM.

DUTCHESS FSC: PRE—Jessica Robie. PF—Aileen Williams, Jessica Robie, Samantha Eiger. PBR ADT—Cathy Rohling. PS DT—Megan Raymond.

EDGE RIVER FSC: P DT—Meara Kelley.

EAGLE PRAIRIE FSC: PRE—Angela Ault. 1—Jillian Possin, Michelle Kneeland, Molly Schaub. PF—Angela Ault.

ESSEX SC OF NJ: PRE—Elizabeth Fricke, Joyce Levine. P DT—Loretta Desantis, Michele Pino.

EUCLID BLADE & EDGE CLUB: PRE—Erin Jochum. PF—Erin Jochum. PPR—Jacqueline Hayes, Michael Lawrence.

EUGENE FSC: P DT—Carol Whitehead.

FAIRBANKS FSC: PRE—Billie McManus, Jana Kuss, Jessica Minatra, Nicole Wood. 3—Sara Vernia. 5—Maija Upesleja. PF—Billie McManus, Jade Frank, Jana Kuss, Jessica Minatra, Nicole Wood, Tina Foster. JF—Elizabeth Baker. IF—Sara Vernia. P DT—Nicholas Burger, Susan Corkutt. PBR DT—Ann Pittman, Jennifer Murray, Lisa Kriley. BR DT—Curtis Chase, Leah Bursiel. S DT—Michelle Jones. BFD—Curtis Chase, Kristy Linginfelter.

FLAGG POND SC: 1—Erica Simons. 2—Karen Lincoln. PF—Tiffany Archambault.

SC OF FLORIDA: PRE—Allison Rand. 2—Colette Tantum, Julia Joh. PF—Allison Rand. PG ADT—Nicholas Proscia.

FORESTWOOD FSC OF PARMA OHIO: PRE—Carla De Girolamo, Christina Trimmer, Jennifer Nickles, Michelle Nowal, Regina Becker, Steffanie Grieger. 2—Shannon Synk. PF—Amy Hartley, Carla De Girolamo, Christina Trimmer, Regina Becker, Sheila Lauerhass, Steffanie Grieger. JF—Shannon Synk. IF—Kelly Parker. P DT—Carla De Girolamo, Elizabeth Coyle, Karen Carpenter, Karin Benninghoff, Lana Mastroianni, Shannon Synk. PBR DT—Alicia Esner, John Holton, Sr. BR DT—Ann Strike.

ISC OF FORT COLLINS: PRE—Anne Kirkpatrick, Christy Eyster, Heather Laake, Jessica Kullinger, Lindsay Thomas, Melisa McTague, Stacie Smith. 1—Andrea Rowe, Kim Melville, Sheila Cosgrove. PF—Heather Laake, Jeni Uskert, Jessica Kullinger, Katie Currier, Kristin Terry, Lindsay Thomas, Melisa McTague, Stacie Smith. JF—Kendra Whitman, Kim Melville. IF—Jennifer Visocky. NF—Heather Trantham. P DT—Anna Freemyer, Kathy Kuba.

FORT WAYNE ISC: PRE—Linda Derheimer. 1—Alexa Bergman, Angela Lauer, Brandy Book. 3—Laura Brown. JF—Kerry Nadolny. IF—Laura Brown. P DT—Alexa Bergman, Brandy Book, Kelly Gramling, Laura Caserta, Susan Szadkowski.

FRASER FSC: PRE—Cynthia Baron, Susan Pilnicki. 2—Abby Davidson, Emily Mayer. 5—Jill Sadler. PF—Cynthia Baron, Susan Pilnicki. JF—Abby Davidson, April Bisby, Melissa Cirillo. P DT—Janet Aupperle, Julie Danieluk, Lindsey Weber. PBR DT—Kelly Brooks, Kimberley Pytlak. BR DT—Sarah Valentine. PG DT—Elizabeth Daly.



Sports International

Skating in the U.S.S.R.



Sports International taking advantage of the warm relations between our two countries has enlisted world renowned coaches of the Soviet Union, and are offering an intensive Sports Training Clinic headed by N. Dubova, N. Zmeevsky and S. Leonivich, this clinic will expand your skills and will allow you to train with some of USSR's finest athletes.

If you are truly serious about your sport , this clinic will push you to new competitive heights

TRAVEL * ROOM & BOARD * TRAINING * TOURS

Are all included in this fantastic price

\$2,195.00 * Reservations Limited

For more information:

1-800-969-6650 * (908) 382-6650

Fax:(908) 396-8199

33 Randolph Ave., Avenel, N.J. 07001

Foundation for International Ice Skating Advancement

Do you dream of someday winning the gold? Fulfilling your ultimate dream to be the greatest skater in the world?

The **Foundation for International Ice Skating Advancement** was established to help you realize such goals and achieve your dreams.

Established in 1983, the **FIISA** is committed to raising money to fund Scholarships for your skaters who show potential and talent on the ice. Each year the number of Scholarship recipients grows as support for the **FIISA** becomes stronger.

Last year, six Scholarship recipients went to National competition. Next year . . . this could be you!

You may be eligible for a scholarship from the **Foundation for International Ice Skating Advancement**.

Call or write today for more information:

FOUNDATION FOR INTERNATIONAL ICE SKATING ADVANCEMENT

P.O. Box 13166

Palm Desert, CA 92255-3166

Tel: (619) 398-2010

FULTON FSC: 1-Reem Hazboun. PBR DT-Lori Ann King. BR DT-Virginia Lorenz.

GALLERIA-HOUSTON ISC: 4-Stephanie Leatherwood.

GARDEN CITY FSC: PRE-Rebecca Grabowski. 1-Danielle Hartsell, Steve Hartsell. 2-Celina Taylor, Veronica Wajda. 3-Jennifer Matras, Sara Wysocki. 4-Kelly Smith, Rebecca Yarbrough. 5-Kelley Becklehamer. JF-Craig Suyak, Steve Hartsell, Veronica Wajda. IF-Amanda McNamara, Sara Wysocki. NF-Rebecca Yarbrough. IPR-Emily Rose Pirronello.

GARDEN STATE SC: PBR DT-Danielle Foran.

GARFIELD HEIGHTS FSC: PRE-Amanda Maguth, Camden Urdzik, Janine Jasterbowski, Judy Migchelbrink, Lindsay Yee, Lindsay Jarosz, Magan Johnson. 1-Holly Migchelbrink, Jennifer Devan. PF-Amanda Maguth, Beth Ann Jasterbowski, Dawn Miss, Jacqueline Glinka, Lindsay Jarosz. JF-Angela Derbin, Carrie Spirakus, Holly Migchelbrink, Jennifer Devan. P DT-Amanda Maguth, Camden Urdzik. PBR DT-Julie Keane, Shannon Long. PS DT-Mary Coleman.

GENESSEE FSC: PRE-Lesley Loss, Michael Dellapietra. 1-Amanda Turk, Jocelyn Killmer, Kristine De Ruyscher, Marissa Moccia. 2-Caprice Parkinson, Jenny Cocker, Karen Melville, Maia Wilkin. 3-Christina Ware. 4-Marni Dana Goodman. 5-Heather Gornall, Marni Dana Goodman. 6-Susan Melville. PF-John Schultz, Lesley Loss, Michael Dellapietra. JF-Caprice Parkinson, Wendy Phelps. NF-Marni Dana Goodman, Pamela Jacobs. ABFI-Alice Johnson. PPR-Marni Dana Goodman, Robert Caldwell, Jr., Stacey Pensgen. P DT-Katherine Jacobs, Lesley Loss, Rachel Lawrence, Sidney Killmer, Stacey Pensgen. PBR DT-Aurora Brannigan, Kerry Bryan, Linda Forward, Sarah Banach, Sarah Diehl. BR DT-Julie Betz, Marcy McClain.

GLENWOOD FSC: PRE-Kristen Groves, Nicole Jones, Stefanie Swanson, Valerie Wolenter. 1-Cydney Stasik, Shannon Lamaster. 2-Melissa Skylas. 3-Erin O'Neil. 4-Jennifer Peterson. PF-Nicole Jones, Stefanie Swanson, Valerie Wolenter. IF-Jennifer De Baere. BR DT-Rebecca Seeman.

GOLDEN STATE FSC: PRE-Lori Hayward. PF-Lori Hayward.

GREAT BAY FSC: PRE-Brian Ladrie, Heather Fauteux, Susanna Tsakiris. 1-Kate McAtavey. 2-Kristin St. Hilaire, Nikki Deane. 4-Heidi Milne, Kelley Rosberg. PF-Alyssa Letourneau, Heather Fauteux, Meghan Ricker, Susanna Tsakiris. IF-Jaime Smith, Kellie Cunningham, Nikki Deane. NF-Elizabeth Seastrom, Kelley Rosberg. ABFI-Adina Hebert. ABFS-Adina Hebert.

GREAT FALLS FSC: PRE-Jolene Wendt. PF-Jolene Wendt.

GREAT NECK FSC: PRE-Sara Hughes. 1-Erica Muller, Tessa Dinstl. PF-Sara Hughes.

GREATER EVANSVILLE FSC: PRE–Sara Simpson, Sarah Heard. 1–Sarah Morgan. 3–Lisa Bosecker. PF–Sara Simpson. JF–Nicole Robinson. NF–Lisa Bosecker. JRF–Michelle Mize. ABFS–George Griffin-Atkinso, Mary Susan Hansen, Pamela Newberry. ASFS–Mary Susan Hansen. P DT–Alexander Ho, Cassandra Ho, George Griffin-Atkinso, Sara Simpson. PBR DT–Mary Susan Hansen. BFD–Sarah Jane King.

GREATER GRAND RAPIDS FSC: PRE–Michelle Miller, Tracy Gritter. 1–Jamielyn De Bruin, Tiffany Wohlford. 4–Sara Howland. PF–Craig Weiss, Michelle Miller, Samantha Wharton, Tracy Gritter. NF–Sara Howland.

GREATER MILWAUKEE FSC: P DT–Evelyn Halbman.

GREENBRIER FSC: PRE–Dana Siekaniec, Darlene Wredberg, Lauren Rider, Vicki Tweddell. 1–Angela Oriti. 2–Jennifer Klesch. PF–Josephine Hritz, Lauren Rider, Rebecca Crowe, Shannon Sopko. JF–Jessica Margocs. PPR–Jessica Margocs. P DT–Erica Ekstrand. PBR DT–Ann Marie Hicho. BR DT–Erin Vanor. PS DT–Carrie Hartwig, Julie Clay. S DT–Victoria Clay.

GREENSBORO ISC: PG DT–Susan Mounce.

GREENWICH SC: PRE–Marianna Sackler. PF–Joanna Sieghart, Lauren Lochner, Pascal Memishian.

HAMDEN FIGURE SKATING ASSN: PRE–David Fischer, Katie Donarum, Katie Aniballi. 1–Alicia Ditta. 2–Tracey Hyduk. 3–Jennifer Hyduk. PF–Christina Imholt, Kathi Hochberg, Katie Aniballi. JF–Tracey Hyduk. P DT–Ashley Ditta. PBR DT–Christina Imholt. BR DT–Michelle Lettiero. PS DT–Alicia Ditta, Jennifer Hyduk. PG DT–Jillian Bownes.

SC OF HARTFORD: PRE–Ashley Hughes, Elizabeth Cavazza, Jessica Maurer, Megan Steinnecker. 1–Morgan Hughes. 2–Courtney Hughes. 3–Sara Zuckerman. PF–Elizabeth Cavazza, Jessica Maurer, Megan Steinnecker. IF–Tiesha Potvin. P DT–Morgan Hughes. PBR DT–Courtney Hughes. S DT–Patricia Stroebel.

HAYDEN RECREATION CTR FSC, INC: PRE–Danielle Bund, Jamie Cook, Kelly Delaney, Mellisa Oei, Sarah Kahan, Sharon Liff, Susie Eustis, Vanessa Mayer. 1–Carly Gillis. 4–Lisa Mason. 7–Laurent Masse. PF–Corey Lyons, Cynthia Keefe, Emily Donaldson, Katrina Zorka, Mary Andaloro, Mellisa Oei, Sarah Kahan. JF–Carolyn Coppe, Meredith Cronin. IF–Lisa Mason. NPR–Tara Taylor.

HERSHEY FSC: PRE–Christie Wilson, Melissa Bellon, Shara Teter. 1–Whitney Detwiler. 3–Anne MacWilliams. 5–Amy Soller. PF–Andrea Cekovich, Christie Wilson, Karin Dugan, Melissa Bellon, Monett Roberto, Shara Teter, Shelly Petrewicz. JF–Adrienne Di Cecco, Kena Merrill, Meredith Alfano. IF–Anne MacWilliams. NF–Tracey Librandi. ABFS–Elizabeth Ricke, Monett Roberto. ASFS–Elizabeth Ricke. P DT–Anne Kennard, Becky Sherry, Shara Teter, Stephanie Kaplin, Suzanne Stone. PS ADT–Linda Weindel. PG DT–Jodi Weindel. BFD–Anne MacWilliams. SFD–Amy Soller.

HIAWATHA SC: PS DT–Leanna Bourque.

HIBBING FSC: IF–Lori Unger. NF–Lori Unger.

HICKORY HILL FSC: 1–Amy Sirlin, Jeanne Goldman, Meredith Dixon, Sahra Abid. 3–Owen Williams. PF–Joellen Horning. ABFI–Ruth Kaufmann. P DT–Ashlee Moskwa. PS MDT–Theodore Schmitt.

HIGHLAND SC: 4–Kristy Robinson. 6–Lisa Rane Webster. IF–Andrea Kral. PBR DT–Dana McLeland, Kristy Robinson, Teresa Kalvig.

SC OF HINGHAM: 1–Sandra Polizio. 2–Cein Monahan, Cory Allen, Katie Cook, Megan Lindholm. 3–Kerry Wehter. PF–Adrienne Luoma, Kristen Bedford, Laura MacKnight. JF–Bridget Wilkinson, Cein Monahan, Marie Rizzo. IF–Jennifer Welch, Julie Slodden. NF–Kara Protulis.

HUDSON-MOHAWK FSC: PRE–Jennifer Burrell, Russell Green. 1–Arpi Balgin, Kristy Burg. 2–Alexia Houser. JRF–Erin Wojtowicz, Jessica Randall, Nicole Fernandez. PBR DT–Jennifer Burrell. BR DT–Joy Anderson. PS DT–Nicole Fernandez. PG DT–Erin Wojtowicz.

HUNTSVILLE FSC: 1–Candice Caesar, D. Labreca Trehern. 2–Jana Priest. 3–Callie Sullins, Heather Wilson. 4–Heather Schonrock. IF–Callie Sullins. PS DT–Heather Schonrock.

ICE CLUB OF BALTIMORE: PRE–Megan McCullough. PF–Megan McCullough. JF–Sarah Hutson. P DT–Anne Schnering, Haley Brown.

ILLINOIS VALLEY FSC: PRE–Amelia Meyers, Julia Myers. 2–Heather Brune. PF–Amelia Meyers, Julia Myers. JF–Heather Brune. IF–Emily Harter. PPR–Jennifer Kauffman, Richard Kern. IPR–Heather Brune, Matthew Kennelly. PS DT–Summer Dyer.

INDIANA/WORLD SKATING ACADEMY: P DT–Forrest Bivens, Iris Goebel.

ISC OF INDIANAPOLIS: PRE–Jenny Lewis. 1–Christine Reddy, Kortney Trebnik, Laura Rutledge. 3–Brittanney Trebnik. 5–Danielle Seaman, Robert Lombard. PF–Jenny Lewis. JF–Carrie Upp, Megan Quigley. IF–Brittanney Trebnik. ABFS–Janet Sawchuk. S DT–Brittanney Trebnik, Christi Freeman.

JAMESRIVER FSC: PRE–Notesong Srisopark. 2–Jennifer Bower. PS DT–Jennifer Bower.

JAMESTOWN SC: 1–Lindsay Erickson. 2–Amy Peterson, Melissa Hansen. IF–Kelly Stranburg, Kristen Treni. NF–Erin Kay Durner.

JANESVILLE FSC: PRE–Valerie Chambers. PF–Valerie Chambers. P DT–Beth Anderson.

JOHNSTOWN FSC: PRE–Amy Anthony, Mandy Claypoole. 1–Jennifer Frombach. PF–Beth Gray, Deana Schofield, Marie Snitzer, Mary Litzinger. JF–Kathy Maloskey, Shauna Lyn Fuge. IF–Jennifer Frombach.

KALAMAZOO FSC: PRE–Jennifer Rachmaciej, Jennifer Hall, Kristen Kobayashi, Whitney Gibson. 1–Elizabeth Bateman. PF–Jennifer Hall, Jennifer Rachmaciej, Kristen Kobayashi, Whitney Gibson. PBR DT–Anne Cheaney, Elizabeth Bateman. BR DT–Anne Cheaney, Elizabeth Bateman. PG DT–Lynn Lennon Weller.

KENT SC: JF–Sara Omlor. PBR DT–Darla Kimak.

LA JOLLA FSC: PRE–Christopher Miller. 1–Elise Dabby. 3–Melissa Slivka. PF–Christopher Miller. P DT–Kharen Kloeffer, Michal Kloeffer. PBR DT–Michal Kloeffer.

SC OF LAKE FOREST: NF–Kopal Jain. JRF–Bill Brennan, Tanya Noel Street.

LAKE MINNETONKA FSC: JF–Jamie Lauler.

SC OF LAKE PLACID: 4–Deborah LeClair. 7–Kelly Herrington. JF–Mary Anderson. JPR–Adrienne Lenda. S DT–Christina Pitts. PG DT–Karen LeClair.

LAKEWOOD WINTER CLUB: PRE–Amber Linman. 1–Justin Dillon, Jr. 2–Sarah Campbell. 5–Jennifer Clark. PF–Amber Linman. JF–Sarah Campbell. JRF–James Peterson. PPR–Ralph Landis, Sheila Geisler. PBR DT–Stephanie Rowland, Summer Pelger. S DT–Amy Lynn Smith, Michael Bauer.

LANSING SC: JF–Brooke Winston. BR DT–Katie Doren.

LEHIGH VALLEY SC: PRE–Courtney Thompson, Megan Souder. 1–Erica Checkekeye, Lauren Weldon. 6–Niki Lynn Mozzillo. PF–George Forrest, Sandy Sorlien. P DT–Ali Camarano, Angela Roesch, Claire Fleming, Courtney Thompson, Jennifer Kaiser, Marybeth Neyhard. PBR DT–Lauren Weldon. BR DT–Erica Checkekeye. S DT–Dana Hill.

LILAC CITY FSC: PRE–Amber Duncan, Kathleen Lyman, Vanessa Jenson. 1–Melissa Cocks. 4–Heather Delong. PF–Amber Duncan, Vanessa Jenson. NF–Heather Delong, Kimberly Ferraro. JRF–Johnnie Bevan, Sheri Persello.

LINCOLN CENTER FSC: 1–Brooke Pitman, Daryl Molen, Emily Lynn Caudill, Kim Wever. B ADT–Marianne Petersen.

LITTLE SUN VALLEY SC: JRF–Rebecca Konerding.

LLOYD CENTER ISC: 1–Patience Mann. BFD–Dennise Bemis.

LONE STAR FSC: PRE–Alison O’Daniel, Cynthia Bloomer, Jordan Jacobs, Julie Thornton, Kelli Garcia, Martha Lang, Meg Eldridge, Robin Britton, Wendi Clark. 1–April Gross, David Giersch, Jr., Julie Thornton, Lindsay Sherp, Shannon Sharp. 2–Tara Diane Hicks. 4–Monica Sandoval. 5–Carri Reid, Hillary Rabun. 7–Amy Evans, Reil LeMay. PF–Alison O’Daniel, Cynthia Bloomer, Jordan Jacobs, Julie Thornton, Kelli Garcia, Martha Lang, Meg Eldridge, Robin Britton, Wendi Clark. JF–David Giersch, Jr., Tara Diane Hicks. IF–David Giersch, Jr. NF–Aerin Williams. ABFS–W. Zeares. P DT–Jessica Kunde, W. Zeares. BR DT–James White. PS DT–Carri Reid, Hillary Rabun. S DT–Krissa Neathery, Kristen Brodie.

LONG ISLAND FSC: P DT–Caroline Bazzini.

LOS ANGELES FSC: PRE–Maren Burbidge. 2–Amy Filbeck, Vanessa Badillo. 5–Diane Halber. 7–Robyn Brown. PF–Maren Burbidge. JF–Vanessa Badillo. NF–Jennifer Holden. PPR–Johnnie Stiegler, Tiffany Stiegler. P DT–Muriel Keithley. PBR DT–Alisa Fleischer, April Kayter, Natalie Cohen. BR DT–Christi Kayter, Dustin Fujiwara, Jennifer Patigler.

LOUISVILLE FSC: 1–C Fitzhugh Middleton.

FSC OF MADISON: PRE–Abby Bresser, Amanda Harbort, Emily Larsen, Sarah Ramirez, Sonja Gullen. 2–Kristin Donkle. 3–Bekah Levine, Heather Keintz, Jessica Hansen. 6–Cathy Zinkel. PF–Abby Bresser, Amanda Harbort, Amber Uelmen, Emily Larsen, Jody Martin, Sonja Gullen. JF–Erika Hesse, Heather Keintz. P DT–Heather Keintz, Kristin Donkle, Samantha Weston. PBR DT–Sarah Ramirez.

MAGIC CITY FSC: 1–Kristina Hall, Mandy Ressler. P DT–Stephanie Campbell, Tomi Hanson. PBR DT–Cheri Gowan, Michelle Gowan. BR DT–Heather Brenden, Heidi Brenden, Mandy Ressler. PS DT–Kimberly Hall, Michelle Sidener.

SC OF MAINE: 2–Amanda Roberts, Lesley Cedrone. PF–Julia Runyon, Kristie Miles. JF–Lesley Cedrone. IF–Michelle Jordan, Sara Lane.

MANKATO FSC: PRE–Anne Jernberg, Erin Hendrickson, Jennifer Myron, Lori Bye. 1–Becky Freyberg. 4–Loralee Mehrman. 5–Amy Strobel. PF–Anne Jernberg, Erin Hendrickson, Jennifer Myron, Lori Bye. JF–Becky Freyberg. IF–Sarah Johnson.

MAPLEWOOD FSC: PRE–Anne Paape, Sarah Graves. 1–Erica Evenson. PF–Anne Paape, Katie Lewandowski, Sarah Graves. P DT–Katherine Sommerer. PBR DT–Jenelle Charbonneau.

MARQUETTE FSC: PBR DT–Jamie Parks, Liza Hunter. BR DT–Tricia Dupras.

MARTHA’S VINEYARD FSC: PRE–Jennifer Whitman. PF–Ursula Carliss.

MASON-DIXON FSC: 1–Erin Benedum.

FSC OF MEMPHIS: PRE–Elisabeth Callihan, Jennifer Looney, Lauren Smith, Peter Vu. 1–Jeilenn Gerlach. PF–Elisabeth Callihan, Jennifer Looney, Lauren Smith, Peter Vu.

MENTOR FSC: PRE–Cheryl Zeiger, Christy Paine, Emily Harding. 1–Cari Savage, Meaghan Combs, Shannon Shamberger. 2–Tina Poshe. 6–Deborah Bradley. PF–Angela Sejnowski, Cheryl Zeiger, Christy Paine, Emily Harding. JF–Kelly MacKinnon, Kristin Silakoski, Mara Siegler, Robyn Ayers, Sarah Tkac. NF–Meredith Whitlock. JRF–Deborah Bradley.

METROPOLITAN FSC: PRE–Amy Rossi, Noreen Van der Waag. 1–Melissa Lohnes. 2–Charlotte Montrone. PF–Kristen Dobkowski, Noreen Van der Waag. JF–Debra Kiviat. IF–Erika Moeller. P DT–Terry Kaplan. PBR DT–Diane Mendez.

MIAMI UNIVERSITY: PRE–Bradley Bacik. PF–Bradley Bacik. P DT–Cory Eberhardt. PBR DT–Cory Eberhardt.

MIDLAND FSC: 7–Jodi Lewis.

FSC OF MINNEAPOLIS: PRE–Carolyn Ly, Kristi Slife. 2–Heidi Sinclair, Jessica Kaye, Kari Kloster. 4–Lara Kuepers. PF–Carolyn Ly, Cynthia Wilke, Kristi Slife. JF–Amy Stoltenberg. P DT–Bev Eberhard, Linda Kieffer, Mary Nelson, Susan Marshall. S MDT–Arthur Peterson.

MISSION VALLEY ISC: PRE–Amy Kalivada, Autumn Merrill, Gemma Francisco, Jonathan Schmidt, Rea Cramer, Sara Patterson. 1–Crystal Beckerdite. PF–Amy Kalivada, Autumn Merrill, Gemma Francisco, Jonathan Schmidt, Sara Patterson. JF–Brandee Maito, Evelyn Raphael, Natasha McCann. IF–Melanie Phung.

MISSISSIPPI VALLEY FSC: JF–Krista Tipton.

SC OF MORRIS NJ: PRE–Claire Bourne. 2–Rebecca De Witt, Tiffany Ciperski. 6–Beth Allen. PF–Nicole Humick.

JF—Jodi Haft. NPR—Anthony Gioia, Kristina Doyle. PBR DT—Jennifer Chapple, Megan Papier. BR DT—Rebecca De Witt. PS ADT—Cathy Roche. PG DT—Christopher Fullagar.

SC OF MT. LEBANON: PRE—Lisa Diamond. 1—Ashley Jeselnik. 2—Amber McKnight, Gina Cecchetti, Nicole Carlini, Tracy Ohm. 4—Jamie Markovich. PF—Elizabeth Bootay, Jennifer Frusco, Kimberly Walker, Lisa Diamond. JF—Kimberly Miller, Laurel Rosen. IF—Jenna Smith, Rachel Friede. NF—Benjamin Hwang. JRF—Gloria Masterson. P DT—Edna Schimizzi, Jean Lang, Kimberly Gratta, Mindy Rosen, Monica Carns. PBR DT—Kimberly Walker. PBR ADT—Deborah Shatten, Lorraine Kiehl. PS DT—Meredith Shuster. S DT—Tara Tafi.

NASHVILLE FSC: PRE—Elizabeth Rice, Katie Beasley, Kelley Allen, Kristy Spelman, Lauren Moore. 1—Corie Morell, Jennifer Oertley, Rosanna Pierce. 3—Ali Blank, Chelsea Rothschild. 5—Bert Cording. PF—Christina Connally, Elizabeth Rice, Katie Beasley, Kelley Allen, Kristy Spelman, Lauren Moore. JF—Kelly Randall, Rosanna Pierce. IF—Ali Blank. ABFI—Priscilla Rushing. ABFS—Priscilla Rushing. ASFS—Priscilla Rushing. PPR—Jennifer Oertley, Jonathan Pell, Katie Beasley. IPR—Jennifer Oertley. PS ADT—Royal Albridge, Jr.

SC OF NATICK: PRE—Alice Downs, Kerry Evers. 1—Christine Tyler, Lisa Petras. PF—Courtney Kasuba, Georgia Butler. ABFS—Stephanie Van Ness.

NEW CANAAN WINTER CLUB: 1—Kerry Ryan.

SC OF NEW HARTFORD: PRE—Becky Peterson, Renee Zawadzki, Tricia Hawkins. 1—Dara Silverman. 3—Kristin Williams. PF—Becky Peterson, Christine Billington, Renee Zawadzki. JF—M Tracy Dedrick, Sara Silverman, Stephanie Breslow. P DT—Becky Peterson.

NEW HAVEN SC: 2—Amy Massaro, Jennifer Riccio. JF—Beth Ladyko, Jennifer Riccio, Jessica Towle. IF—Amy Massaro.

NEW ULM FSC: PRE—Chrissie Dittrich, Kari Wendinger, Kelly Wendinger, Rachel Sunderman. 1—Christa Tess, Vanessa Landsteiner. PF—Chrissie Dittrich, Kari Wendinger, Kelly Wendinger, Rachel Sunderman.

SC OF NEW YORK: PRE—Jennifer Shields. 1—Katharine Flynn. 2—Jessica Betts. 3—Blake Miller, Edwin Visser. 6—Jenna Du Mond. 7—Sheryl Mozur. PF—Kelsy Eagan. IF—Blake Miller, Edwin Visser. JRF—Sheryl Mozur. PPR—Kyoko Ina. IPR—Kyoko Ina. NPR—Kyoko Ina. P DT—Alexi Nazem, Ginger Shields, Jennifer Shields, Taraneh Nazem. PBR DT—Alexis Frey, Kelsy Eagan. BR DT—Nerissa Weiner. B ADT—Nancy Petaja. PS DT—Ellen Dunkel. PS MDT—Derek Barnes.

SC OF NORTH CAROLINA: PRE—Julie Beall, Wendi Williams. PF—Julie Beall, Wendi Williams.

NORTH COUNTRY SC: PBR DT—Sarah Hicks.

NORTH SHORE SC: PRE—Cynthia Annis. 1—Katelyn Driscoll, Kerry Jean Annis. 2—Shannon Bansfield. 5—Michelle King. 7—Kristen Ward. IF—Kerrilee Figurido. NF—Eva Soroka, Sheila Figurido. JRF—Kristen Ward. PS DT—Diane O'Donnell.

NORTH STAR FSC: PRE—Jennifer England, Melanie Salerno. 2—Melissa Abdelnour.

NORTH SUBURBAN FSC: PRE—Ann Gordon. PF—Ann Gordon.

SC OF NORTHERN VIRGINIA: PRE—Kathryn Hufnagle, Monica Thompson, Stephanie Pasicov. 1—Julie Humphreys, Mina Pell. 2—Kristina Melton. 3—Christine Michalopoulos. 4—Shannon Weidman. 5—Gayle Horn. PF—Kathryn Hufnagle. IF—Christine Michalopoulos, Malini Hoozoo. NF—Shannon Weidman. ABFS—Cynthia Devore. P DT—Elaine Lederman, Jennifer DeSimone, Justin Hurwitz, Kara Norman, Monica Thompson, Sally Sadoff, Stephanie Pasicov. PBR DT—Bonnie Jones, Donna Lupinos, Emily Halayko, Mollie Klurfeld, Nefertiti Jones, Sarah Tushin, Tiffany Coe. BR DT—Carey Tushin. PS DT—Shannon Weidman.

OGDENSBURG FSC: PBR DT—Kathryn Bassity. PG DT—Leslie O'Donoghue.

OLD YORK ROAD SC: PRE—Jean Marie Stinson. PF—Jean Marie Stinson. P DT—Rachel Plasky.

OLEAN AREA SC: NF—Christin Forney.

FSC OF OMAHA: PRE—Athena Ramos, Sasha Archer, Todd Miller. PF—Athena Ramos, Sasha Archer, Todd Miller. JRF—R. Sean Gales.

ORANGE COUNTY FSC: 1—Erin Lynn Hartzell. 2—Carmen Gutierrez. JF—Carmen Gutierrez. ABFI—Nancy Horton. ABFS—Nancy Horton. ASFS—Nancy Horton.

ORLANDO FSC: PRE—Gale Lassiter, Katherin Machalek, Meghan Schenker. 1—Christine McElwain, Lisa Johnson, Mindy Banton, Robin Eubanks. 2—Tiffany Ross. 4—Kristen Varney. PF—Elizabeth Canty, Gale Lassiter, Katherin Machalek, Meghan Schenker. JF—Elizabeth Canty, Tiffany Ross. NF—Kristen Varney. P DT—Dale Grindle.

OSWEGO FSC: P DT—Erin Banta. BR DT—Mollie Barnes.

OWENSBORO FSC: PRE—Shanalyn Grant. PF—Shanalyn Grant. P DT—Emily Janoski. PBR DT—Laura Bradley.

OXFORD SC: PS DT—Sherrrese Jackson.

PALACE FSC: PRE—Melissa Willard. 1—Amanda Valencia, Lauren Stillman. PF—Melissa Willard.

PALM DESERT FSC: PRE—Katie Blanke. PF—Katie Blanke.

PALOMARES FSC: 3—Tanya Douglas. IF—Jamie Rose.

PAVILION SC OF CLEVELAND HGTS: PRE—Felicia Price, Jennifer Kangas, Jessica Pederson. 1—Nikki Neubauer. JF—Corrine Miller, Meredith Eland. PBR DT—Anna Biagianni, Chrissy Neubauer. BR DT—Casey Smith.

PAWTUCKET & PROVIDENCE FS: PRE—Michelle Hardy, Tammie Heron. 1—Caryn Alves. PF—Laurie Swisher, Sarah Viens, Susan Gouelt. JF—Caryn Alves, Susan Godlewski. BR DT—Elaine Frederick.

PENGUIN FSC: 3—Heather Phillips. 7—Heather Wagner. JF—Laura Maurer. P DT—Jodie Zalalas, Peggy Ann Pearson. PG DT—Laura Maurer.

PENINSULA FSC: 2—Sheila Ganjei. 3—Christine Naas, Tricia Pacheco. 4—Gillian Cervero. 6—Janelle Nelson, Megan Lynn Clark, Shirley Pang. PF—Waleed Mahasin. JF—Brooke Appelblom, Reiko Schoenfeld, Sheila Ganjei, Steven Goldberg, Waleed Mahasin. IF—Amanda Zamir, Christine Naas, Tricia Pacheco, Waleed Mahasin. NF—Gillian



Jill Trenary
1990 Ladies World Figure
Skating Champion

**AMERICA'S FAVORITE PASTA
IS PROUD TO SPONSOR
AMERICA'S BEST SKATERS.**



Creamette pasta and figure skating are natural partners. Creamette® products provide an excellent source of complex carbohydrates which deliver long lasting energy that all athletes need. It's our honor and privilege to sponsor the United States Figure Skating Team—the greatest athletes on ice.

Cervero, Tiffany Chan. P DT-Reiko Schoenfeld. PBR DT-Amber Evanoff. PS DT-Lynn Burdine. S DT-Tiffany Mark.

PENN STATE FSC: PF-Colleen Williams, Katie Williams, Mandy Kehoe.

PHILADELPHIA SC & HS: PRE-Hayley Brocker, Laura Herring, Rebecca Leigh. 1-Abigail Gleeson, Alison Sandler, Laura Carneccchia, Maura Lachman, Wick McLvain. 2-Angela Minissale, Dwayne Parker. 5-Townsend Morris. 6-Emily Novak. 7-Brenda Luciano. PF-Alexandra Slack, Emily Slack, Kate Levitt, Katherine Sweet, Laura Herring, Lauren Gold, Lauren Collings, Martha Riley, Paige Laverell, Victoria Havens. JF-Laura Carneccchia, Scott Miller. IF-Dwayne Parker, Lauren Cullen, Lisa Agresta. NF-Ashley Novak, Townsend Morris. JRF-Brenda Luciano. ABFS-Dorothy Ray. ASFS-Dorothy Ray. PPR-Katherine Simmerman. IPR-Abigail Gleeson, Charlotte McMichael, Lisa Agresta, Wick McLvain. NPR-Alison Sandler, Dwayne Parker. P DT-Donald Aspinall, Natali Chilcutt, Rebecca Leigh, Sarah Braden, Suzanne Schwartz. PBR DT-Natali Chilcutt, Nicole Scipione, Tyler Miele, Virginia Tuten. PBR MDT-Arnold Kamm. BR DT-Angela Minissale, B. Scott, Charlotte McMichael, Katherine Simmerman, Maura Lachman, Scott Miller. B ADT-Janet Creedon, Mary Segal. PS MDT-Carol Kamm. S DT-Brenda Luciano, Sharon Sargent. S ADT-Alice Connell. PG MDT-Margot Cunningham.

SC OF PHOENIX: PRE-Andria Timmons, Reena Dutt. 5-Barbara Tang. PF-Andria Timmons, Reena Dutt. ABFS-Betty Lou Keehn. P DT-Stephanie Adams. PG DT-Kristen Beebe.

PILGRIM SC: PRE-Shannon Lynch. 3-Melissa Berube, Rhyannon Gonzalo. 4-Tiffany Scott. JF-Rhyannon Gonzalo. IF-Ann Miller.

PITTSBURGH FSC: PRE-Katybeth Jerome, Kimberly Lackner. 1-Annie Strasbaugh. 4-Rojan Quarles. 6-Michele Subbot. PF-Katybeth Jerome, Kimberly Lackner. JF-Jamie Smith. PBR DT-Heather Stubbs, Jamie Silverstein, Kari Olmo. PG DT-Melissa Subbot, Susan Neff. PG ADT-Sharon Ann Cummings. I DT-Lisa Grove, Victor Farrow.

PITTSFIELD FSC: 1-Meagan Soutier.

PLYMOUTH FSC: PRE-Alexandra Banner, Carrie Proctor. 1-Elizabeth St. Jacques. 2-Jill Morrone, Kimberly Imperati. PF-Carrie Proctor. IF-Jill Marie Smith. PS DT-Tracie Beacher.

PORT HURON FSC: PRE-Andrea Fraser, Julia Carolan, Julie Kamer, Melissa Hills, Meredith Whipple, Sarah Moran. 1-Amy Fletcher, Dana Traver, Kelley Kamin. 2-Jennifer Cheung, Sara Burrows. 3-Anne Turner, Kristi Ruthven. PF-Andrea Fraser, Julia Carolan, Julie Kamer, Melissa Hills, Meredith Whipple, Sarah Moran. JF-Courtney Lund, Melissa Wolff, Natalie Robbins. P DT-Meredith Whipple, Nina Wylín. BR DT-Courtney Lund, Demerie Mirkin, Kyle Magneson, Randi Kettlewell. S DT-Georgeanna Cheung. PG DT-Shanda Smith.

PORTLAND ISC: 1-Rachel Fox. 7-Bonnie Moe Gill. PS DT-Dmitry White. S DT-Angela Carhart, Shannon Terry. PG DT-Angela Carhart. BFD-Shannon Terry. ABFD-Jacques Tournier.

POTSDAM FSC: 1-Allison Loucks. P DT-Elizabeth Wood, Erin Bicknell.

PRINCETON SC: 2-Karin Schierhold.

PUEBLO FSC: PRE-Daniel Lee, Suh Won Lee. PF-Krista Fish. JF-Daniel Lee, Nonie Rougas.

QUEEN CITY FSC: 1-Alexandra Shybut. 2-Robert Shmalo. IF-David Zint. P DT-David Zint. PBR DT-Jesse Powell, Melissa Harris. PBR ADT-Sandra Fox. B ADT-Kathleen Panoff.

Rocky Mountain FSC: PRE-Amber Quirk, Augusta Whitney, Joelle Quirk, Katie McCoy, Margaret Robidoux, Nadya Bosch. 1-Dana Tracy, Jennifer Riddle, Mandy Page, Michaela Minter, Tawnya Parker. 2-Jaime Walford, Sara Keane. 6-Dawn Renee Jensen, Jaimee Dworkin, Lisa Bryson. PF-Amber Quirk, Augusta Whitney, Cynthia Sherman, Joelle Quirk, Katie McCoy, Margaret Robidoux, Nadya Bosch, Nichole Riede, Tiffany Stabel. JF-Jaime Walford, Maggie Brosseau, Sara Keane. IF-Mandy Knight, Melissa Martin. NF-Daniel Rudnicki, Gretel Reich, Kristy Lovejoy, Shannon Qualls. JRF-Dawn Renee Jensen, Sarah Brock. B ADT-Kaoru Yamamoto.

RARITAN VALLEY FSC: 3-Kimberly Caruso.

RED RIVER VALLEY FSC: 3-Matthew Evers. 6-Jennifer Jamison. PF-Aanna Letnes. JRF-Hope Beret Burchill. BR DT-Betsy Steele. S DT-Pamela Sandborg.

RIM OF THE WORLD FSC: 1-Brandy Sinclair, Lisa Dimmitt. PPR-Bridget McCord. IPR-Bridget McCord. PBR DT-Calvin Edey. PS DT-Hayley Raynes.

ROCHESTER FSC: PRE-Brian Munson, Kyle Gill. 1-Michelle Brown. PF-Anna Slawson, Brian Munson, Brooke Zarling, Heidi Engebretson, Jenny Ann Wilson, Krystal Kasulis, Kyle Gill. JF-Jana Carroll.

FSC OF ROCKFORD: PRE-Benjamin Clements, Brian Bushaw, Kellie Schindler. 1-Amy Wiseley, Garrett Krug, Jamie Welden, Kirsten Osborn, Raegan Brierton. 2-Brittany Meyers, Carrie Istad, Melissa Sarbacker, Richard Lindsay-Jones. 3-Melissa Sarbacker. 5-Heather White, Lloyd Sarbacker. 6-Leanne Geddeis. 7-Carrie Matty, Jennifer Finley. PF-Jennifer Schultz, Rachel Diedrick. JF-Amy Frazier, Melissa Olson. IF-Melissa Sarbacker, Tiffany Kress. JRF-Lisa Bell. ABFS-Thomas Reif.

SC OF ROCKLAND NEW YORK: 7-Nickie Andrews. JF-Dana Marie Ceci.

ROSEVILLE FSC: JF-Ann Winny Brodt, Anne-Marie Carlson, Christina Edwards. IF-Erin Pettijohn.

RYE FSC: PRE-Alexandra Levin, Casey Savage, Debra Kate Baillie. 4-Jamie Haggerty. 5-Lindsay Picard. PF-Alexandra Levin, Casey Savage, Debra Kate Baillie. JF-Claire Stancarone. NF-Laura Kaufmann, Melissa Staf-feldt, Ryan MacLeod. PBR DT-Brenda North, Rebecca Hut. S DT-Kami Netri.

SALT CITY FIGURE SKATERS: PRE-Jeanne Denti, Kimberly Salvatore. 1-Susan Flynn. 2-Christa Stepien. PF-Marylyn McLoughlin. JF-Heather Jenners, Jennifer Konitsiotis, Susan Flynn. P DT-Corey Williams. PS DT-Marylyn McLoughlin.

SAN FERNANDO VALLEY FSC: PRE-Christina Almeida, Hoda Sapir. 4-Melody Morris. PF-Christina Almeida, Hoda Sapir. NF-Melody Morris.

SANTA ROSA FSC: PRE-Kirsten Uryu. 1-Janet Neary. 3-Penny Watkins. PF-Ann Longfellow, April Cordaro, Kirsten Uryu, Rebecca Imbimo, Suzie Eastman. JF-Duna Herman, Frances Porter, Gena Calegari, Wren Her-man. JRF-Jannette Abel. ABFI-Ann Longfellow.

SEATTLE SC: PRE–Alecia Moore, Kenneth Metzger, Maiko Ochi, Sarah Pearson, Tami Brown. 1–Brooke Love, Jessica Semington, Toby Rau. 2–Lara Malpass. 5–Erin O’Connor. 6–Stacey Madche. PF–Alecia Moore, Alison Blackwell, Kenneth Metzger, Maiko Ochi, Nicholas Hart, Sarah Pearson, Tami Brown. JF–Griffyn Sullivan, Lara Malpass. IF–Kirsten Thomson. JRF–Glenn Armstrong. PBR DT–Nancy Summe, Stephanie Peterson.

SHAKER FSC: PRE–Elizabeth Cooperman, Hilary Gibbons, Melissa Berman, Whitney Karfeld. 1–Carrie Wooten, Phasha Spencer. 2–Elizabeth Franklin. 6–Amanda Bennett, Carlie Kornbluth, Sametra Wallace. PF–Ariel Stern Markovitz, Elizabeth Cooperman, Whitney Karfeld. JF–Ftimah Ilahi, Heather Pavlik, Michelle Taubman, Sara Kaufman, Susan Krupa. IF–Laurie Taubman, Lindsey Waggle. NF–Karilyn Krupa. JRF–Kim Butler, Tania Menesse. ABFS–Caryl Richards. PS DT–Elizabeth Franklin. S DT–Lisa Bodnar.

SILVER BLADES FSC OF KC: PRE–Julia Poccia, Malinda Baehr. 1–Amanda Graham, Elizabeth Cheney, Lashanna Taylor, Lisa Heinbuch. 2–Jackie Bender, Karen Chandler. 4–Christopher Berkland, Stephanie Woodman. 5–Amy Love, Andrea Beauchamp. 7–Regina Stanek. PF–Julia Poccia, Malinda Baehr. JF–Jackie Bender, Sara Douthat. IF–Lara Krigel. ABFS–Gloria Danda, Mary Newcomer. ASFS–Gloria Danda, Mary Newcomer. P DT–Shannon Floyd. PBR DT–Lara Krigel, Leah Carpenter. PG DT–Christa Woodman.

SILVER BLADES SC OF ROCKLAND: 2–Kara Marie Hagan. JF–Kara Marie Hagan, Kerry Walsh, Kim Ward. NF–Heather Dugan.

SILVER STREAKS SC: PRE–Christina Ciampa, Diane MacGregor, Jessica Coombes. 1–Mary Smith. PF–Jessica Coombes.

SKANEATELES FSC: PF–Melanie Wood, Stacy Wright. IF–Audrey Sheldon. P DT–Erin MacDonald, Keri Lipincott, Robyn Chase, Sherri Smith.

SKOKIE VALLEY SC: PRE–Jennifer Dulski, Robin Behrstock. 1–C. Lindsey Wax, Christine Coolidge, Lauren Mehlman, Sarah Beidler, Stephanie Kieffer. 4–Timothy Goebel. 5–Sarah Nedrow. 6–Patricia Fotsch, Sara Ohlmiller. PF–Jennifer Dulski, Robin Behrstock. JRF–Deanna Luzzo. PPR–Jamie Ann Perry. P DT–Chad Sabora. PBR ADT–Abby Cartwright.

SMITHFIELD FSC: PRE–April Calitri, Jaime Tasca, Marissa De Salvo. 1–Suzanne Miller. 2–Michael Phaneuf. 3–Justine Arpin. PF–Courtney Sherlock, Marissa De Salvo. IF–Justine Arpin, Michaela Tamboe. S DT–Michael Phaneuf.

SOUTH BAY FSC: PBR DT–Araceli Ortiz.

SOUTH MOUNTAIN FSC: PRE–Daena Tamborini, Dori Schlesinger. PF–Dori Schlesinger. PBR DT–Blake Yael Faison, Christy Hughes.

SC OF SOUTHERN NEW ENGLAND: 1–Sarah Houde. P DT–Lindsay Rapoza.

SOUTHERN NEW HAMPSHIRE SC: PRE–Jamie Bixby, Kerri McNabb, Kerri McNabb, Stephanie Longchamp. PF–Jessica Vanvraken, Jessica Duval.

SOUTHPORT SC: 6–Melissa Gade.

SOUTHWEST MICHIGAN SC: 1–Lisa Matuga, Michael McPherson. JF–Alissa Bledsoe, Erica Dyresen, Naomi Lang. IF–Mary Cooley. P DT–Lisa Matuga. BR DT–Michael McPherson, Sarah McPherson. PS DT–Alissa Bledsoe. PG DT–Laurie Haener-Buckley.

SPRINGFIELD FSC: PRE–Breezy Linstromberg. 1–Andrea Mau. 2–Amy Lynn Zaffiri, Jill Jenkins, Nicole Alexander, Shannon Mahoney. 3–Alexia Griffin. 4–Cara Frasco. PF–Breezy Linstromberg, Rachel Sunderlin. JF–Amy Lynn Zaffiri, Debbie Lawhorn, Jill Jenkins, Nicole Alexander, Shannon Mahoney. NF–Cara Frasco, Shenoah Roseberry. P DT–Alexia Griffin, Christine Forbes, Debbie Lawhorn. PBR DT–Christine Maze, Heidi Niehaus.

ST. CLAIR SHORES FSC: PRE–Carter Debski, Patricia Seely. PF–Carter Debski, Patricia Seely.

ST. CLOUD FSC: PRE–Betsy Cyson, Lindsey Haugen, Michelle Possin, Raegan Errasti. IF–Betsy Cyson, Lindsey Haugen, Michelle Possin, Raegan Errasti. JF–Charryse Fouquette, Elizabeth Bancroft. IF–Julie Theisen.

ST. JOSEPH FSC: PRE–John Bailey, Ryan Bradley. 1–Tiffanie Modlin. 2–Russell Sale. 3–Megan Insko. PPR–John Bailey, Rebecca Bradley.

ST. LAWRENCE FSC: PRE–Alicia Brown, Rachel Jacobs, Victoria Hauck. PF–Elizabeth Durki, Emily Durki, Rachel Jacobs. JF–Jodi Mace. NF–Elizabeth Kiken. P DT–Elizabeth Washburn.

ST. MORITZ ISC: PRE–Bryan Elbe, Ildiko Banffy, Jessica Larsen, Kibibi Taylor, Lindsay Birtcil, Stacy Hallmeyer. 1–Emily Rossman, Jila Javdani, Kelly Peterman. 2–Julie O’Hara, Tina Clark. 3–Anne Symanovich, Beata Handra. 4–Charyl Dalapit. 6–Carrienne Coffey, Heidi Ligouri. PF–Bryan Elbe, Ildiko Banffy, Jessica Larsen, Kibibi Taylor, Lindsay Birtcil, Stacy Hallmeyer. JF–Julie O’Hara, Lori Ann Maher, Shannon Smith. IF–Katie Alonso, Sheila Nguyen. NF–Charyl Dalapit, Kelly Walls. JRF–Heidi Ligouri. ABFS–Lori Ann Maher. ASFS–Lori Ann Maher. PBR–David Delago. IPR–David Delago. P DT–Donna Burrinston. PBR ADT–Linda Nagle. BR DT– Sandra Nielson. S DT–Jennafer Groswith.

ST. PAUL FSC: PRE–Tara Benson, Tasha Benson. 2–Beth Swanson. 4–Bobby Kaping, Jennifer Karl. 6–Bridgit Ryan. PF–Tara Benson, Tasha Benson. JF–Katie Cook.

STOCKTON FSC: 1–Ferris Monge. 2–Aya Yamada. 3–Jennifer Faraci. 4–Joseph Ratto, Naomi Hill. JF–Amber Fideldy, Amy Henning, Aya Yamada. IF–Darcee Bandle, Jennifer Faraci. NF–Elizabeth Ratto, Jennifer Wilson, Naomi Hill. P DT–Aleisa McGowan, Elizabeth Ratto. PBR DT–Holly Thompson, Janet Hart, Kelley Williamson.

STONE MOUNTAIN FSC: PRE–Tracy Ovbye. 5–John Zimmerman IV. PF–Tracy Ovbye. SFD–Jon Robinson.

STONEHAM FSC: PRE–Christine Fedele, Jolene Di Paola, Laura Fardy, Margaret Hyde, Nicole Fedele. 1–Bevin Williams. PF–Christine Fedele, Jenny Washburn, Jolene Di Paola, Nicole Fedele, Patrick McGonagle, Vanessa Dunaway. JF–Tricia Lyman. NF–Erika Di Paolo. PBR DT–Andrea Cerchione.

SUBURBAN SC OF MARYLAND: P DT–Barbara Pfarr. PBR DT–Barbara Bent.

SUN VALLEY FSC: 1–Lisa McLean. IPR–Krista Ruwaldt. PG DT– Kahrin Sharp.

SUNCOAST FSC OF FLORIDA: PRE–Meghan Myers. 2–Jennifer Stretch. 3–Amy Jane Agnew. PF–Alia Preston, Meghan Myers. JF–Jennifer Stretch. PBR DT–Shannon Deeb.

SC OF SUNRISE: PRE–Andrea Ross, Elizabeth Rodriguez. 1–Chrystal Treneer, Lorianne Solms. 2–Marisa Miner. PF–Elizabeth Rodriguez.

SUPERIOR FSC: PRE–Amanda Liebaert, Amy Marie Flagstad. 1–Jenny Nault, Jessica Gronquist. 2–Rachael Dickenson. 3–Kalli Erickson. 4–Jill Beetcher. PF–Amy Jo Miller, Amy Marie Flagstad, Ashley Perry, Luciana Lanni. JF–Rachael Dickenson.

SYCAMORE ISC: IF–Jennifer Nelson. PS DT– Jennifer Nelson.

SYMMETRIC FSC: PRE–Marc Lanzoni. PF–Marc Lanzoni. JF–Jessica Kelly, Sheryl Koval.

SYRACUSE FSC: PF–Alyce Bullis.

TAMPA BAY SC: PRE–Dolores Wood, Erin Schaefer, Jamie Rizzo. 1–Josiah Modes. 2–Tara Bulzone. 3–Erin Ritchie, Gia Bonfe, Shannon Edens. PF–Dolores Wood, Erin Schaefer. IF–Shannon Edens. P DT–Joelle Baptist.

TERRY CONNERS FSC: PBR MDT–Gerald Soldner. PBR ADT–Walter Werdelin, Jr.

THOMAS CREEK FSC: PRE–Miranda Visick, Victoria Winkowski. PF–Miranda Visick, Victoria Winkowski. P DT–Miranda Visick.

THOROUGHbred FS TEAM: PRE–Katherine Bunkers, Katherine Freeman, Mary Freeman, Robin Lee Freeman. 2–Elizabeth Bush. PF–Katherine Freeman, Katherine Bunkers, Mary Freeman, Robin Lee Freeman. JF–Bethany Pritchett, Candice Wallace, Destin Judy, Hannah Crissey, Katherine Freeman, Martha Russell, Melissa Lawson, Tiffany Brown. IF–Elizabeth Bush. PBR DT–Hannah Crissey. PBR ADT–Dodie Copp. BR DT–Hannah Crissey.

TIMBERLINE SC: PF–Jennifer Aarrestad, Kelly Morgan.

TULSA FSC: PRE–Cynthia Walworth, Jennifer Newton. 1–Audrey Kindell, Kristin Swainey. PF–Cathryn Marsala, Cynthia Walworth, Jennifer Newton. JRF–Suzanne Jin. P DT–Cathryn Marsala, Jennifer Hicks. PBR DT–Jennifer Hicks. S DT–Suzanne Jin.

TWIN BAYS SC: 1–Beth Harris. PF–Sara Lynn McManus. JF–Heather Doucette, Jessica Hansen, Wendy Downey.

UNIV OF DELAWARE FSC: PRE–Erin Liedel, Pamela Quarles. 1–Amanda Adams, Tracey Momoda. 3–Nicole Bateson-Rock. 4–Trina Robinson. PF–Catherine Bollinger, Erica Ford, Erin Liedel, Katie Bollinger, Megan O'Brien. JF–Alicia Stankus, Erin Day, Jennifer Yadvish, Maggie MacDonald, Pam Welch, Sean Tilley. IF–Alexie Kolpak, Christine Rohm, Deborah Koegel, Jennifer Tilley, Nicole Bateson-Rock, Sara Riker, Shannon Harper. JRF–Michael Weiss, Michelle Tilley. ASFI–Pam Welch. PPR–Amanda Ramsay. IPR–Amanda Ramsay. NPR–Amanda Ramsay, Nicole Bateson-Rock. P DT–Alison Kirk, Carolyn Moloney, Gabrielle Baxter, Heather Allebach, Jake McGough, Lindsay Davis, Mary Hazel, Melissa Humphrey. BR DT–Brooke Graham, Candice Neal, Karen Hunley, Laura McLain. PS DT–Alicia Stankus, Heather Benedict. S DT–Rhonda Greenslet. PG DT–Tina Lai. I DT–Wendy Millette. BFD–Kate Black.

UTAH FSC: PRE–Crista Axenty. 4–Darlin Baker. 6–Eddie Gornik. PF–Crista Axenty. IF–Shayna Lund. NF–Darlin Baker. PBR DT–Mary Ann Wilcox. PBR ADT–David Scott. S DT–Cheryl Michels. PG DT–Shirlee Wilson.

SC OF UTICA: PRE–Cynthia Withington, Jennifer Mikus. 2–Kathleen Hartnett. PF–Kristen Nobles. JF–Gena Petrowski. P DT–Cynthia Withington, Kristen Nobles.

SC OF VAIL: PRE–Sage Grossi.

VALLCO SC: 1–Martina Sola. 2–Jennessa Van Kregten. 3–Maryjane Mendoza. NF–Maya Becker.

VALLEY FSC: PRE–Heather Birschbach. 1–Corey MacDonald, Stephanie Fields. 2–Shannon Ort. PF–Heather Birschbach.

SC OF VAN NUYS: ABFS–Linda Scott.

Washington FSC: 1–Gabriel London, Lisa Keller, Michelle Orban. 3–Megan Manfredi, Natasha Miller. 4–Alix Clymer, Derrick Delmore. 7–Sarah Harre. IF–David Almæssian, Kelly Newton, Natasha Miller. PPR–Rebecca Adams. P DT–Blaine Park, Dawnelle Park. PBR DT–Heidi Napper, James Gregory. BR DT–Kate Archambault. S DT–Ellen Kuta, Jennifer Lancaster.

WAGON WHEEL FSC: 1–Sarah Solberg. 3–Jenny Lee. 4–Stacy Huggins.

WALLACE FSC: PRE–Alysha Pelletier, Jessica Dupuis, Melissa Gravell, Talya Sapienza. 1–Linda Bourque. JF–Kristin Barone.

WARWICK FIGURE SKATERS: PRE–Beth Lury, Caroline Boggs, Jason Bentley, Katie Pennington, Krista Hecker. PF–Amanda Pennacchini, Jennifer Gabriel, Jessica O'Brien, Kara Scott, Shannon DeLman. JF–Karen Peterson. P DT–Crystal Mulcahy, Jessica O'Brien, Nola Monti. PBR DT–Kristine Royal. BR DT–Heather Andersen. PS DT–Tara Marsella. PS ADT–Marion Kerrigan.

WATERTOWN SC: P DT–Holly M. Roe, Linda Sherman. PBR DT–Laura Carbone.

SC OF WAYNE: PRE–Amie Reiners, Daina Reed. PF–Amie Reiners.

WEST SHORE FSC: 1–Holly Ann Jinks.

SC OF WESTCHESTER: 1–Yaeko Umemoto. JF–Yaeko Umemoto.

SC OF WESTERN NEW YORK: P DT–Maryclaire Devine, Michelle Wolbert, Nicole Knauber. BR DT–Danielle Bollman.

WESTMINSTER FSC OF ERIE: 1–Kelly Schultz. 2–Patrick McCarthy.

WHEELING FSC: P DT–Megan Rees.

WICHITA FSC: PRE–Sharlene Nida. PF–Sharlene Nida.

WILMINGTON FSC: PRE–Jill Murphy, Tracy Crowley. 1–Jessica Haynes, Liesl Finn. PF–Jill Murphy. IF–Brenda Di Pietro, Cheryl Driscoll. PPR–Liesl Finn.

SC OF WILMINGTON: PRE–Melissa Homan. 2–Leigh Hruz, Nicole Reigelman. 3–Marisa Rendeiro. 4–Abbie

McCammon. 5–Tiffany Fonseca. PF–Melissa Homan. IF–Marisa Rendeiro. ABFI–Cheryl Selz. PBR DT–Natalie Krause.

WINCHESTER FSC: PRE–Carissa Lonano, Christine Lynch, Gail Conley. 1–Amy Flynn, Elise Delgado, Jennifer Dowler, Kerri Ann Jones, Kimberley Clements, Lauren Guiseppe. 2–Alisa Ann Borselli, Elizabeth Fiore, Jessica Delgaudio, Lynda Beth Mobbs, Nicole Santini. 3–Cheryl Sirignano, Christine McCartney. 4–Kelly Harris. PF–Elise Delgado, Jessica Delgaudio, Kimberley Clements, Lauren Guiseppe. JF–Cheryl Sirignano, Wendy McCartney. NF–Kelly Harris.

WINDY CITY FSC: P DT–Amani Sarada. PBR ADT + QcQBetty Calahan, Kathy Huff.

WINDY HILL SC: PRE–Erika Niwa, Maryl Weissblatt. 3–Amy Ayres. PF–Carrie Starr, Erika Niwa, Maryl Weissblatt. P DT–Nicole Bologna-Emerick.

WC OF INDIANAPOLIS: 6–Jennifer Ellis. P DT–John Patterson. PG ADT–Jeanne Moorman. SFD–Kristine Weidner.

WINTERHURST FSC: PRE–Brittan McCarthy, Erin Elliott, Michelle Nipple, Nicole Ponyicky. 1–Nichole Vrsansky. 3–Marisa Razi, Susan Reyes. 4–Michele Forchione. 6–Erin Pearson, Veronica Votyka. PF–Alice Hassing, Kim Hansen. JF–Lisa Breda. IF–Christina Petruskis, Marisa Razi, Susan Reyes. NF–Corinne Ollom, Deana Gerbrick, Michele Forchione, Reagan Kendrick. JRF–Amilynn Maki. PBR DT–Cindy Stetler. BR DT–Cindy Stetler. PS DT–Laurel Keller.

WISSAHICKON SC: PRE–Noah Breen. 1–Eugenia Flaherty, Rebecca Weisberg. 2–Francesca Giaimo. 3–Reilly Dempsey. 6–Lisa Sklar, Valerie Klein. PF–Amy Welton, Lucia Montoya, Margaret Jones. IF–Melanie Finley. P DT–Eugenia Flaherty. BR DT–Rebecca Weisberg. PG ADT–Agnese Wojdak.

SC OF WORCESTER: PRE–Kerri Sundeen. 1–Julie Caruso, Karen Erickson. 2–Kristen Sbrogna. PF–Ellen Stavropoulos. JF–Karen Erickson, Kristen Sbrogna, Kristi Wunschel.

WYANDOTTE FSC: 4–Diane Bastien.

YALE FSC: 1–Christian Cheney. BR DT–Christian Cheney. S DT–Robert Fischer.

YONKERS FSC: PRE–Lynn Natale. PF–Lynn Natale. P DT–Tommye Rios.

INDIVIDUAL MEMBERS: PRE–Amanda Maskiell, Dawn Carlson, Dorothy Barker, Heather Pelletieri, Jill DiNapoli, Lisa Stonehocker, Lisa Montibello, Lisa dos Santos, Mary Boyd, Nina Wilking, Yvonne Cherne. 2–Ann Juergens-Behr. 3–David Shanklin, Erin Johnson. 5–Kelley Young. PF–Alan Weinstein, Amanda Maskiell, Anthony Hernandez, Edith Freni, Emily Hubbard, Erin Bacher, Erin Johnson, Heather Pelletieri, Jill DiNapoli, Joey Diego Rigol, Lisa dos Santos, Lisa Montibello, Lisa Stonehocker, Melissa Shippey, Nina Wilking, Yvonne Cherne. JF–Mary Boyd. PPR–Brent Echols, Joe Lemay. IPR–Brent Echols. P DT–Amanda Maskiell, Andre LeBlanc, Chet Douglas, Edith Freni, Emily Baillargeon, Lisa Stonehocker, Maureen Chaifetz, Nancy Lago. PBR DT–Adrienne Watkins, Renee Depew.

Olympic Festival

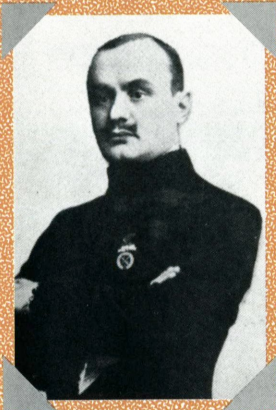
Continued from page 33

DANCE

JUDGES: 1–Joyce Butchart, Seattle, WA; 2–Carole Ludlow, Kent, CT; 3–Elaine Bushey, Peru, IN; 4–Charles Cyr, Palm Desert, CA; 5–Theodore Clarke, North Weymouth, MA; 6–Glennace Cohen, Castle Rock, CO; 7–Marilyn Whelan, Castro Valley, CA. REFEREE: Margaret Faulkner, Ann Arbor, MI. ASSISTANT REFEREE: William Smith*, Tulsa, OK. ACCOUNTANT: Albert Beard,* Portland, OR.

	D1	D2		PLACES
1.	1	3	Elizabeth Punsalan, Sheffield Lake, OH Jerrod Swallow, Northville, MI	2.00
2.	2	1	Jeanne Miley, Long Beach, CA Michael Verlich, Long Beach, CA	2.75
3.	4	4	Elizabeth McLean, Falmouth, MA Ron Kravette, Costa Mesa, CA	5.00
4.	3	2	Amy Webster, Yarmouth, ME Leif Erickson, Boston, MA	5.25
5.	5	5	Rachel Mayer, Wellesley, MA Peter Breen, Brockton, MA	7.50
6.	6	6	Beth Buhl, Wilmington, DE Neale Smull, Troy, OH	9.00
7.	7	7	Elisa Curtis, Philadelphia, PA Robert Nardoza, Dallas, TX	10.50
8.	8	10	Mimi Wacholder, West Newton, MA Collin Vail Sullivan, Columbus, IN	12.50
9.	10	8	Rachel Lane, Pittsburgh, PA Eric Meier, Freehold, NJ	13.50
10.	9	9	Ann-Morton Neale, Troy, OH Robert Peal, Chicago, IL	14.50
11.	11	11	Michelle Maler, Seattle, WA Tony Darnell, Bothell, WA	16.50

Olympic



Nikolai Panin, Russia



*Princes Skating Club,
London*



Heinrich Burger and Anna Hubler, Germany



Ulrich Salchow, Sweden



Madge Syers, Great Britain

Memories

London — October 28-29, 1908

In 1908, figure skating became the first winter sport to be contested in the Olympic Games.

Skating had been accepted as an official Olympic sport at the historic 1894 congress of the International Olympic Committee. This was due primarily to the fact that skating at that time was the only winter sport which already had an international body—the International Skating Union (ISU)—and staged international competitions. Suitable ice, however, was not available at the first three Olympics.

The IVth Olympiad had originally been awarded to Rome, but the Italians were unable to raise adequate financial support or interest and the Games were moved to London. Skating events were held at the Prince's Skating Club, an indoor rink built in 1895, with a surface of 200 by 52 feet. The entries included six men and five ladies in singles, three pairs, and three men in the special figures event.

At age 31, World Champion Ulrich Salchow won the men's event, followed by countrymen Richard Johansson and Per Thoren, a full Swedish sweep. Irving Brohaw was the only American competitor and the first ever to take part in an international style competition. He finished sixth.

The legendary Madge (Florence Madeleine) Syers of Great Britain won the ladies' event, followed by Elsa Rendschmidt of Germany, and Britain's Dorothy Greenhough-Smith.

Heinrich Burger and Anna Hubler of Germany took the first Olympic pair title, with James and Phyllis Johnson of Great Britain in second. Madge Syers won a second medal, placing third in pairs with her husband Edgar.

The Russian champion Nikolai Panin had withdrawn from the men's event due to illness but came back to win the special figures with intricate designs, followed by Charles Arthur Cumming in second and George N.E. Hall-Say in third, both of Great Britain. (Panin's real name was Nikolai Alexandrovich Kolomenkin. He skated under a pseudonym, however, because he was of Russian nobility and athletic competitions were not considered suitable endeavors.)

Because of the perceived conflicts with the established Nordic Games, skating was not included in the Vth Olympiad in Stockholm in 1912. The 1916 Games scheduled for Berlin were canceled with the outbreak of World War I, and skating was not seen again until the VIIth Olympiad in Antwerp in 1920.

Calendar of Events

Continued from page 21

NOVEMBER

22-24 **18th Annual Pizzazz Ice Dance Weekend**, sponsored by the Plymouth FSC, at the Plymouth Cultural Center, 525 Farmer St., Plymouth, MI 48170. For information contact: Alice Bohr, 313-420-0194 or FAX 313-476-6438.

JANUARY 1992

3-5 **Laval International 1992**, sponsored by the Laval FSC at the Centre Sportif Laval. Open precision skating competition with Juvenile through Adult events. For information contact: Laval International, 4939 de la Fabrique, Laval, Quebec H7C 1E4.

Offner & Helgenberg

Continued from page 38

"She is definitely an apprentice," Brian explained about Aimee's cooking. "She is getting better." And what can Brian cook? Aimee laughs again, "He can make bagels, cut them and put them in a toaster. And he is real good at making cereal." "I guess I am just an eater," added Brian.

As the two look ahead to the new year, both are excited about skating in Senior pairs but still need side-by-side double Axels before they are ready. Also in their plans for this year are a medal at World Juniors. "They are very strategic," explained Vicki. "They have it all planned for three years from now."

With Aimee's operation last year and the uncertainty that she would compete, Aimee and Brian have turned their future from uncertainty to certainty. They know what they want to accomplish and that it must be together. Both know what would happen if one or the other decides not to pair skate any longer. "It would be really hard," said Brian as he looks at Aimee.

"I go out there and know exactly what he is going to do," said Aimee. "I know how many steps he is going to take." "We work so well together, we don't think of

Advertisers

INDEX

B	
Bryan Sports Events	49
Burley's Rink Supply	54
C	
Creamettes	59
Crown Trophy	53
D	
Dante Cozzi Sports	6
F	
Foundation for International Ice Skating Advancement	55
H	
Holjen Inc.	48
I	
Ice Castle International Training Center	34, 35
Ice T's	33
International Sports Management	55
J	
Jerry's Skating World	11, 13
K	
Karaco Inc.	51
Klingbeil Shoe Labs	14
L	
LaBelle Fabrique	53
Lynch's Inc.	52
M	
Manhattan Library of Dance Skating Music, Inc.	51
N	
1992 Nationals, Florida	16
O	
Oberhamer	IBC
S	
Skaters' Long Distance Network	45
SP-Teri	IFC
U	
Unicorn Sport	15
Up In The Air	OBC
USFSA Memorial Fund	20, 50
V	
V.I.E.W. Inc.	7
VSC Sports Consultants	52

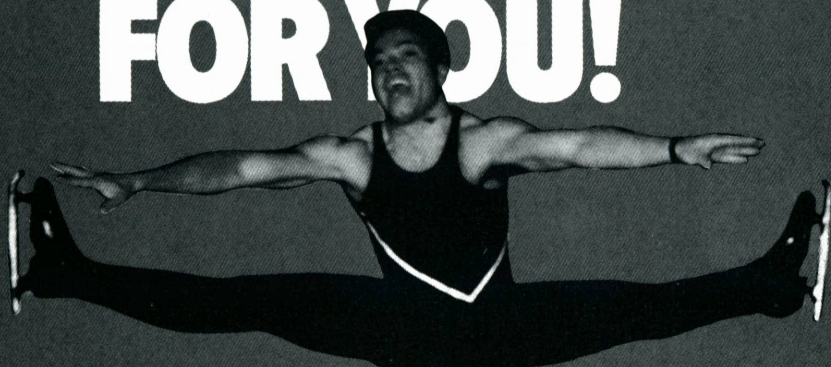
that," said Brian over the possibility of finding another partner.

"I wouldn't find another partner," responded Aimee with certainty. "Brian is my first partner and my only partner."

Deb Vestal is a free-lance sports writer in Minneapolis. She has been an Adult competitor for the past six years in both singles and dance events.

Oberhamer

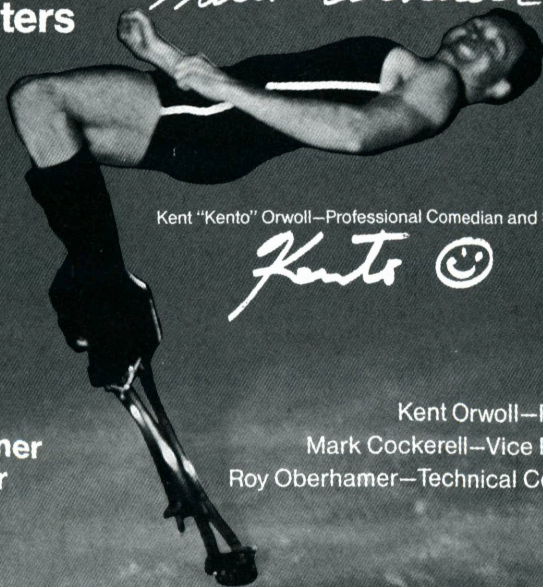
WE BEND OVER BACKWARDS FOR YOU!



Mark Cockerell—World and Olympic Team Member

Mark Cockerell

**Oberhamer,
Professional skaters
offering quality
skating attire
and a complete
line of the
world's best
fitting skates.**



Kent "Kento" Orwoll—Professional Comedian and Stunt Skater

Kento ☺

**Contact your Oberhamer
dealer or call direct for
ordering information.**

Kent Orwoll—President
Mark Cockerell—Vice President
Roy Oberhamer—Technical Consultant

11975 Portland Ave. So., Suite #122
Burnsville, MN 55337
(612) 890-1657

 Oberhamer
USA

THERE'S MORE "UP IN THE AIR" THAN YOU EVER IMAGINED.



Up in the Air, Inc. has put together one of the largest selections of skate guards, terry cloth blade covers, stuffed animals, T-shirts and sweats. All on the cutting edge of quality, fashion, and durability.

Ask for our products in your local pro-shop or write for a free catalog.

UP IN THE AIR
INCORPORATED

1245 OLD ALPHARETTA ROAD
ALPHARETTA, GEORGIA 30202
404 751-0913 FAX 751-0543

Dealers inquiries are always welcome! Worldwide shipping available.