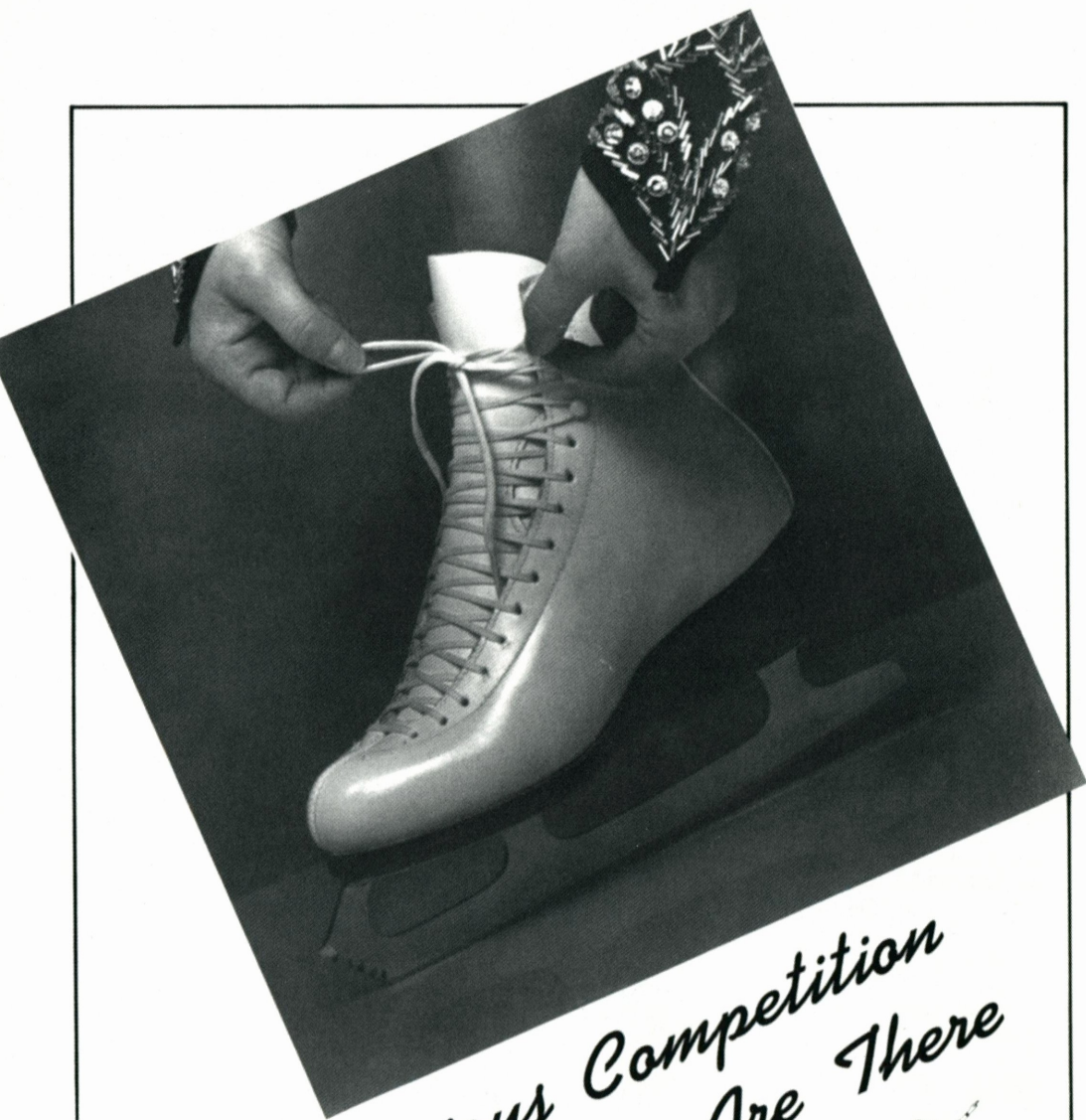


NOVEMBER 1991

Skating®

A group of seven children and a large mascot named Snowplow Sam are posed on an ice rink. The mascot is a large, light-colored bear-like figure with a black nose and a black star on its chest. The children are dressed in various costumes, including a girl in a floral dress, a boy in a black and white outfit with a star, and a girl in a pink polka-dot dress. The background is a solid red color with the word "Skating" in a large, stylized black font. The date "NOVEMBER 1991" is printed in the top right corner. The title "Snowplow Sam" is written in a large, bold, red font at the bottom of the image.

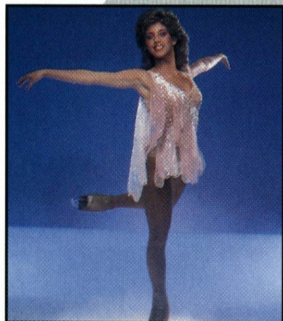
Snowplow Sam



*For Serious Competition
SP-Teri Boots Are There*

SP-Teri 

436 North Canal Street, Unit #1
South San Francisco
California 94080
415-871-1715



HARRY LANGDON

page 6



WORLD FIGURE SKATING MUSEUM

page 58



PAUL IDELMAN

page 36

Linda Fratianne	6
A Champion Revisited by Libby Slate	
Olympic Pin Notes	9
Skating Parents	12
by Pat Dolan	
Recognizing 50-Year Judges	17
1991 National Collegiate Championships Results	26
Orlando	28
Go for the Magic by Paul C. Rapp	
Snowplow Sam	36
Olympic Memories	58
Antwerp — April 20-30, 1920	

Departments

News Briefs	4	23	Ricky Harris
People and Places	11	24	Calendar of Events
Ice Abroad	15	35	Memorial Fund Donors
Grand Prix International		38	Classifieds
Nebelhorn Trophy 1991		41	Laurels
Official Notes	21	62	Advertisers' Index

Cover: 1991 U.S. Olympic Festival Champion Nicole Bobek sits with other young skaters and Snowplow Sam—mascot of the USFSA's Basic Skills program. See page 36 for more information. PHOTO BY PAUL IDELMAN

COPYRIGHT: *Skating*, copyright © 1991 by the United States Figure Skating Association (USFSA). Title registered in the U.S. Patent Office. *Skating* is protected by copyright, and nothing that appears in it may be reproduced without written permission. The USFSA is not responsible for statements or opinions in this magazine nor do they represent USFSA positions.

News Briefs



A celebratory beach party will be held Monday following the conclusion of the 1992 Nationals in Orlando, January 13. All competitors are invited as special guests to the party which is tentatively scheduled at noon at Cocoa Beach. After lunch, the group will head to Kennedy Space Center for the afternoon. Nationals attendees interested in accompanying the participants to the beach party/luncheon or the Kennedy Space Center must first contact the local organizing committee at 407-246-1992 to reserve a space and obtain other necessary information.



Turner Broadcasting System, Inc. announced that the 1994 Goodwill Games will be held July 23 through August 7, 1994, in Leningrad and

Moscow in the Soviet Union.

"We are looking forward to hosting the Goodwill Games again and to having the opportunity to showcase Soviet sports facilities," said Leonid Drachevsky, first deputy chairman, Gossport. "The Goodwill Games have established a solid reputation, both as a premier sporting event and as a demonstration of the benefits of international cooperation."

In 1998, the Goodwill Games will return to the United States where 18 U.S. cities have already placed their bids with the Site Selection Committee. The final decision on the 1998 Games site will be made October 1, 1992.



Next year's World Figure Skating Championships will host SkateFair '92—a tradeshow lineup including more than 50 exhibitors—offering the latest in equipment, sportswear, information services, and souvenirs for figure skating. SkateFair '92 is scheduled for Monday, March 23 through Sunday, March 29, on the concourse level inside the Oakland Coliseum Arena.

Skating

Editor

KIM MUTCHLER

Managing Editor

IAN A. ANDERSON

Assistant Editor

MARY ANN PURPURA

Contributing Editor

DALE MITCH

Art Director

PAMELA S. GALLOGLY

SKATING and the USFSA neither endorse nor take responsibility for products or services advertised herein. The Publisher reserves the right to reject or cancel any advertising at any time.

SKATING (ISSN: 0037-6132) is published by the United States Figure Skating Association, 20 First Street, Colorado Springs, CO 80906-3697. Phone (719) 635-5200. Subscription rate: United States and Canada, one year **\$15.00 (U.S.)**. Foreign, one year **\$30.00 (U.S.)**. Allow 6-8 weeks delivery of the first issue. Second Class postage paid at Colorado Springs and at additional mailing offices. **SKATING** is published monthly October through July (10 issues per year). Copyright © 1991 by The United States Figure Skating Association (USFSA), Colorado Springs, CO. **SKATING** assumes no responsibility for the return of unsolicited manuscripts or photographs. **Postmaster: Send address corrections to SKATING, 20 First Street, Colorado Springs, CO 80906-3697.**

USFSA President

Franklin S. Nelson, M.C., USNR

Executive Director

Ian A. Anderson



SKATING is the official publication of The United States Figure Skating Association (USFSA).

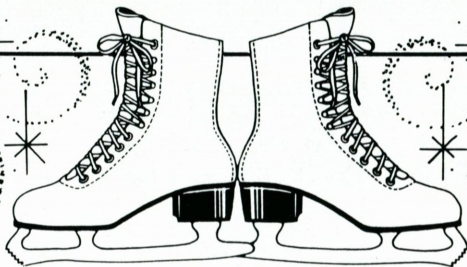
Member:



International Skating Union



Group A Member



1992 UNITED STATES FIGURE SKATING CHAMPIONSHIPS

January 7 - 12, 1992
Orlando Arena • Orlando, Florida

Let the Florida sun and the spirit of amateur competition warm you next winter as the nation's finest figure skaters bring their Ice Magic to the heart of the Sunshine State.

Sanctioned by **The United States Figure Skating Association**
Hosted by **The Orlando Figure Skating Club**

**Reserve your
All-Event
Tickets
today!**

'92 Nationals "Hotline"
(407) 263-8973

Presented By



'92 Nationals "Office"
(407) 246-1992

Orlando Arena
Box Office
(407) 849-2020

ALL-EVENT TICKET ORDER FORM

Name _____

Address _____

City _____ State _____ Zip _____

Country _____

Phone _____

☐ American Express ☐ Visa ☐ MasterCard

Credit Card No. _____

Expiration date _____

Signature _____

(Necessary for credit card orders.)

No. of Tickets Amount

\$145 per ticket package × _____ = \$ _____

Total payment enclosed \$ _____

Mail ticket order form to:

1992 All-Event Tickets
P.O. Box 1992
Orlando, FL 32801-1992 U.S.A.

☐ Check ☐ Money order

Please make checks or money orders payable to
1992 U.S. Figure Skating Championships

Linda Fratianne

A Champion Revisited

by Libby Slate



HARRY LANGDON

When Linda Fratianne first moved with husband Nick Maricich, a featured stunt skater in "Walt Disney's World on Ice," to his hometown of Sun Valley, Id., she would meet people at parties who had known Maricich since childhood. "Oh," they would say to her, "do you skate, too?"

And that's exactly how Fratianne, four-time United States ladies' champion, twice World champion and 1980 Olympic silver medalist, wants it. "At home, I don't even use 'Fratianne,'" she said. "People know me as a mom, not Linda Fratianne who won a silver medal at the Olympics. I don't want to be remembered as that, but as a person, as being your friend."

Fratianne, 31, became a mom on September 22, 1990 when she gave birth to daughter Alexandra, more commonly known as Ali. "She was born on Tai Babilonia's birthday, and Dorothy Hamill's and Peggy Fleming's babies were also born in September (two years earlier)," she reported. "I can just see them competing together!"

Her daughter and Hamill's also share the same first name. "We were sure I was going to have a boy, because I was carrying straight out, so I didn't have a name at first," Fratianne said. "We named her after my husband, whose full name is Alexander Nicholas."

Because of her pregnancy, she stopped skating just six months shy of a record 10-year stint as star of the Disney ice show; she had met Maricich there, and married him in 1988. "I took a year and a half off to have the baby, because when I got pregnant, I was quite burnt out on skating," she confessed. "I don't want to sound bratty, but I don't know of any other girl who had gone on 10-month tours (for so many years)."

She resumed performing in March, as special guest star of the "Champions on Ice" show at the Desert Inn in Las Vegas.

"Now," she said, "I love being back on the ice."

And when she is on that ice, Fratianne is all skater. "It's amazing that I don't think about Ali out there," she mused. "But I'm the type of person who gives skating 100 percent. Ali is there (backstage) with me, but I need to concentrate on what I'm doing. I need to do the job 100 percent, not 95 percent and have her on my mind the other 5 percent."

Skating as a new mother was not the only adjustment after her hiatus; having appeared with Disney almost exclusively since turning professional, the Vegas show was Fratianne's first experience with the small ice surface now common for theater productions.

"I was so excited. I thought it would be a piece of cake, that I wouldn't have to push," she said with a grimace. "But you're using different muscles. You do a jump, and you have to stop it before you go into the boards. It's tough. It's good that the audience is so close and you can



see their reactions, but the small ice is a challenge."

This was also Fratiannie's first opportunity, other than pro competitions, to perform with fellow Olympic and World caliber skaters. Ironically, she became close to Lisa-Marie Allen, her longtime former amateur rival. "We've been getting along so well, which is pretty amazing," she related. "I think it's because of our kids, now that those competition days are over. (In Vegas) she had her little girl, Sarah, and she brought her in with my nanny."

"To tell the truth, I was a bit nervous being around Lisa, because it was so intense competing with her," she added. "But it's actually been very nice."

Ali herself took a turn on the Vegas ice, after a fashion. "Chris Bowman was there, and he twirled her in the air above his head," mom reported. She has also skated outdoors in Sun Valley, the proud owner of runners given her by Dick Button when she was born.

Indeed, Sun Valley is very much the center of Fratiannie's world these days. "I love staying home, being a mom and leading a normal life," she said. "My life here is so calm, people wouldn't believe it. I run around in jeans and tennis shoes, run errands, fix dinner. There are 20 acres that are all natural, aspen trees behind the house, and a river where my husband goes fishing every day. We have deer in the backyard in the winter."

She does skate two hours a day, teaches a bit, and during the summer, performs at the rink's weekly ice shows. It's a far cry, though, from her heyday as an amateur, setting the skating world afire both because of her physical prowess—in 1975, at age 14, she became the first woman to do two triples in one program—and because of her trend-setting costumes, which brought glitz and glamour to the previously sedate amateur dress code.

She wore her first such costume, a sequin-studded hot orange and pink design by Pete Menefee, for the 1976 U.S. Figure Skating Championships. "Frank (longtime coach Frank Carroll) said, 'You should do it,'" she recalled. "I don't really know how it got started. I was only 15 at the time, and they said, 'This is yours, put it on,' so I said 'Okay.' I've used the same designer since then."

The conversation turned to her years of training with Carroll. "I had so much respect for him," she said. "It's not very often that you get a coach and student where the relationship is so special. I don't know if I ever really appreciated all his patience and talent."

Nowadays, her routines are created by former Olympic Pair Champion Bob Paul, the Disney show's director-choreographer, who helped ease the transition to her newest performing chapter. "Bob's almost my security blanket," she remarked. "He knows me so well. He came up to Sun Valley and worked with me on show numbers."

Those numbers were on display in June at the San Diego Sea World, where Fratiannie guest starred. Though her days of long-term touring are firmly behind her—she now chooses jobs compatible with family life—last month she embarked on a tour of several months with a new theater show, "World Cup Champions on Ice," because her husband went along as stage manager.

She has no plans beyond the tour, and relishes that freedom which her Disney decade did not permit. But despite the rigors of 10 months a year on the road, she looks back on the Disney show as "a wonderful experience." In fact, she said, "As a professional, I've really been on one big high—working with Disney, and then it was incredible working with all these champions in Las Vegas. (Disney producer) Kenneth Feld was probably the best boss anyone could have, and I say

Continued on page 27

OLYMPIC PIN NOTES

The Albertville Olympic pins are now appearing in the States, and understandably, there is some concern among collectors about authenticity and identification.

All of the first production pins carry a © copyright backstamp with no other designation or date. At first glance some people may think, "No way is that original." But a letter dated February 14, 1990, from Jacques Potiron, Director of Stadium Paris, official licensee for Albertville 1992 Olympics, states, "Please be advised that the letter © for copyright is the only backstamp used on the 1992 Albertville authentic Olympic pins."

This is true for all pins manufactured from January 1989 to April 1990. Since then, a change has been made. Pins manufactured from May 1990 to December 1990 carry the mark © COJO 1990 (Comité Organisation de Jeux Olympique).

Because of the massive demand for pins, those manufactured in 1991 (which will be the majority) carry the mark © COJO 1991. Any last-minute production immediately before or after the Games will supposedly carry a © COJO 1992 mark.

The official pins are hard to find and are *not* going to be sold through any U.S. distributor. The majority are cloisonné with duplicate designs produced on gold and silver bases. There are some sand-blasted logos and stick figures; mascots are epoxy domed, and some of the sport/venue pins are soft enamel.

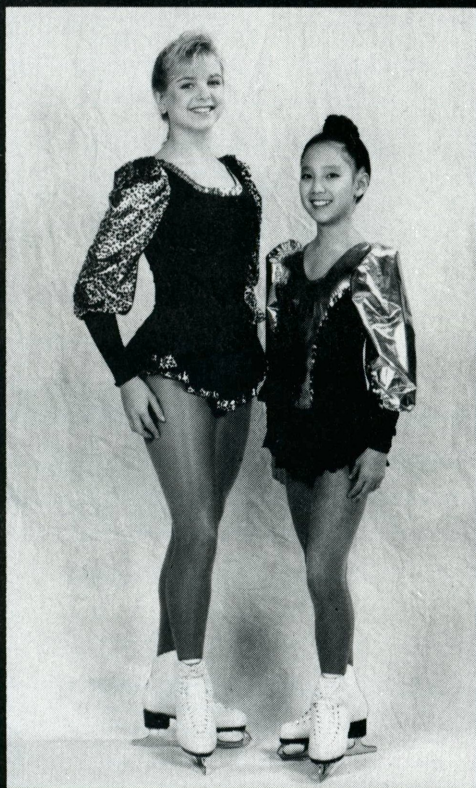
Don't overlook these early pins despite their limited identity, but also beware, as copies are bound to appear with the restricted U.S. distribution.

—*World Figure Skating Hall of Fame
and Museum*

Jerry's

Skating World Inc.

Everything for the
Figure Skater

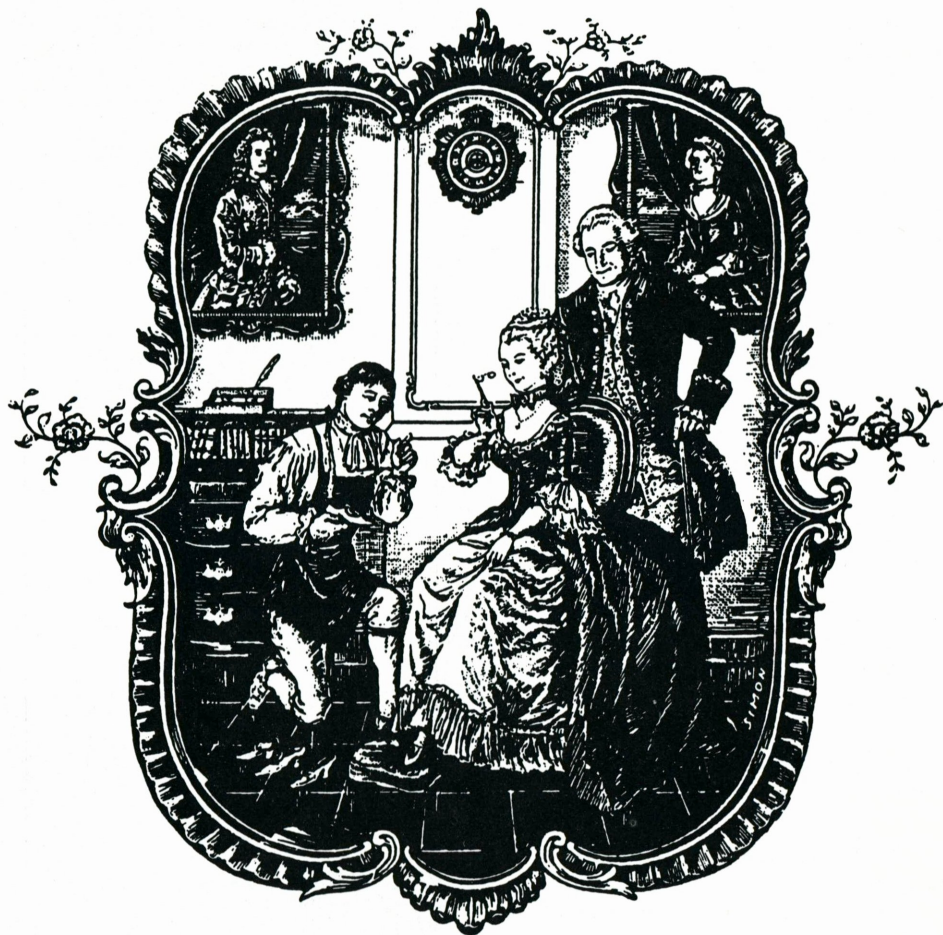


520 Hood Road
Markham, Ontario
Canada L3R 3K9
Tel: (416) 477-1172
Fax: (416) 477-8859

Skating Trends 1991 - 1992

Write or call for a
FREE Colour Catalogue


Klingbeil®



CUSTOM MADE SKATING BOOTS

Established Since 1950

Klingbeil Shoe Labs, Inc.

145-01 Jamaica Avenue
Jamaica, New York 11435
(718) 297-8864

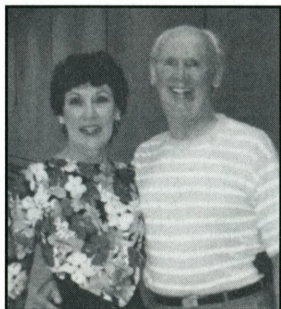
Order forms available upon request.
Please write or phone.

People

AND PLACES

SKATING EXHIBIT

The Museum of Richmond in Surrey, England, is planning an exhibition to mark the closing of the Richmond Ice Rink. The display will run from November through February 1992. The museum curator is still interested in gathering recollections of the Rink from U.S. competitors for the exhibit as well as for publication.



Bernice and Gerry Harris

CLUB NEWS

Broadmoor SC members Bernice and Gerry Harris recently passed their Preliminary free skating tests at the Broadmoor World Arena. What makes this couple unique is that they are 61-year-old skating enthusiasts that have been skating for three years. The couple moved to Colorado from California three years ago and wanted to learn a winter sport or to find a way to spend time together in a colder climate. They started with other adults in a basic skating program and, as they grew to enjoy the sport, supplemented those classes with a few private lessons. Bernice also passed her Preliminary dance test (with her husband not far behind) and they both hope to take their figure tests later this fall.

In addition to their skating accomplishments this year, the Harrises celebrated their 40th wedding anniversary.

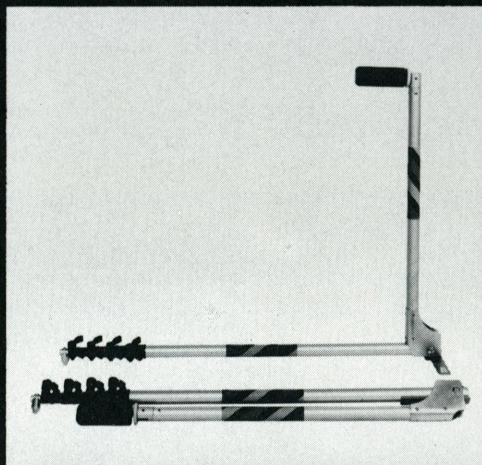
Continued on page 60

FINALLY!

The ultimate Scribe.

NEW LEVER TYPE LOCKING SYSTEM

We have improved our scribe again and managed to keep the price unchanged!



CARRYING CASE AVAILABLE

This easy to use, compact Figure Skating Scribe is **GUARANTEED FOR 2 YEARS.**

U.S. Wholesale Distributors:
Midwest Skate Co., Michigan
Lubin's Skate Supplies, New Hampshire

JERRY'S SKATING WORLD INC.
520 Hood Road, Markham, Ontario
Canada L3R 3K9 (416) 477-1172

\$kating Parents

Part I



by Pat Dolan

The alarm clock goes off at 4:45 A.M. waking Carol Sacrey, of Alameda, Calif., from her sleep.

It's cold and dark at 6:00 A.M. when she hops into the silver Ford Taurus to drive her daughter, Leigh, 20 minutes to the Berkeley Iceland. For the next three hours, she sits in the chilly rink sewing, catching up on her reading, or volunteering in the club's business office while 16-year-old Leigh, a talented Junior ladies' competitor, goes through her paces on the ice.

Today, as usual, Sacrey will drive Leigh to school when the skating session ends, then drive another 30 minutes to her job as an associate magazine publisher in Pleasanton, Calif., where she will put in an eight-hour workday. Then it is back home for a quick dinner, some shopping and household chores, and possibly just enough time to work on a skating project with Leigh before she tumbles into bed at 9:30 P.M.

Many of Sacrey's weekends center around Leigh's skating. Leigh has an early morning session at the rink on Saturday. One or two weekends a month mother and daughter travel to skating competitions throughout California—sometimes as far away as Los Angeles—or even Utah.

In many ways, parents like Carol Sacrey are the unsung heroes of ice skating. They pay the bills, give rides to the rink, sew the costumes, travel to competitions, volunteer at local clubs, and do a thou-

sand other things each day which enable their children to compete and help the sport to thrive in this country.

The endless hours of practice needed to maintain a skater's skills, coupled with the high cost of skating and the frequent difficulty in finding ice time, often require that parents make major sacrifices of their time, energy, and money to keep their child in the sport. Yet, until recently, their contributions have largely gone unrecognized.

Dr. Jessica Gaynor, a former skater and a national figure skating judge from San Francisco, said she didn't realize the pivotal role parents play in skating until her 8-year-old daughter, Whitney, recently started to compete.

"I'm learning a whole new level of things which I didn't appreciate from an official's point of view. There's a tremendous amount of work involved in getting a child ready for competition," she said.

Foremost to Gaynor, a clinical psychologist, is the role parents play in shaping the younger skater's work habits and attitude toward competition.

"The child's attitude toward commitment, how they relate to other skaters, their diet, how they cope with success and failure, these are all things that are taught by the parent," she added.

The high cost of skating strains the budgets of most parents, very few of whom ever see their child's dreams of an Olympic medal and a lucrative professional career come true. These costs can

total \$10,000 a year for a regional competitor and reach \$30,000-\$40,000 a year to train an international competitor. Many parents refinance the house, take out personal loans, work extra jobs, and scrimp to keep their child on the ice.

"Financially, it's been very hard. There's a lot of support for elite skaters, but I wish there was more support for skaters who are up and coming," said Sacrey, a single parent who is struggling to pay her daughter's skating bills on one salary.

The USFSA's Memorial Fund provides grants averaging about \$1,000 to a couple of hundred skaters each year who have attained at least Novice standing and who have qualified for sectional competition. But, Ann Morton Neale, chairman of the USFSA's newly formed Parents Liaison Committee, said parents are wise to consider more creative approaches to fundraising, as well.

Neale said parents of an Intermediate skater are unlikely to find an individual sponsor who will make a large donation, but it's often possible to find many different people who will give smaller donations.

As Neale sees it, the main obstacle for parents to overcome is their reluctance to ask for help. "You just have to swallow your pride a little bit. The parents who have been the most successful are the ones who have stuck their necks out," she said.

Neale added that some parents raise money by conducting direct mail campaigns which use tax deductible donations, or collect money at the front door of skating exhibitions. Some ask influential members of the community to write letters to the editor of the local newspaper on behalf of the skater, or hold social receptions at their home at which videos are shown and guests can meet the skater. Other successful strategies in-

clude club fundraisers such as bingo games, and the use of sponsorship presentation kits prepared with the help of USFSA personnel to attract corporate donations.

A few school districts in parts of the country which are skating hotbeds have flexible educational programs for skaters. But far more commonly parents encounter opposition when the child must miss school to skate or the school refuses to grant credit for required subjects such as physical education.

There are many alternative types of schooling which can eliminate some of the hassles involved in trying to combine skating with a traditional full-time public school education including correspondence courses, tutors, and private or part-time programs.

Ruth Eldredge, mother of the U.S. Men's Champion and 1991 World Bronze Medalist Todd Eldredge, believes it's important for skaters to receive as normal an education as possible. Todd attended public schools through the 11th grade and then finished his senior year of high school with correspondence courses.

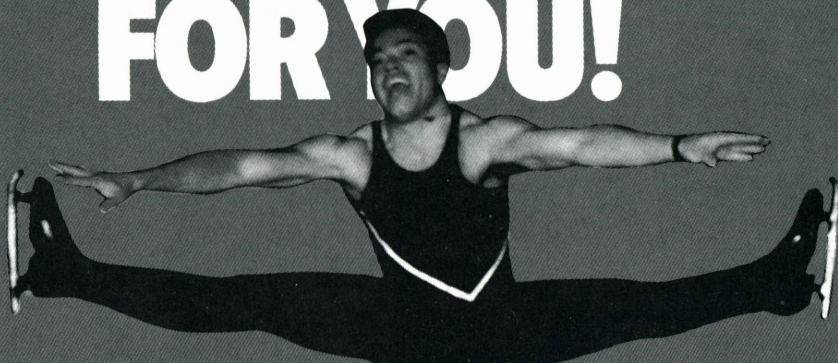
"There's life after skating and they have to be able to deal with it. I think public education is very beneficial because it exposes them to other things besides skating," Eldredge said.

Parents of skaters who are interested in working with the Parents Liaison Committee please contact: Anne Morton Neale, 2257 Fiesta Drive, Troy, OH 45373; (513) 339-5656.

Pat Dolan is a social worker in San Francisco and former radio news reporter. She is a freelance sports writer and longtime skating enthusiast.

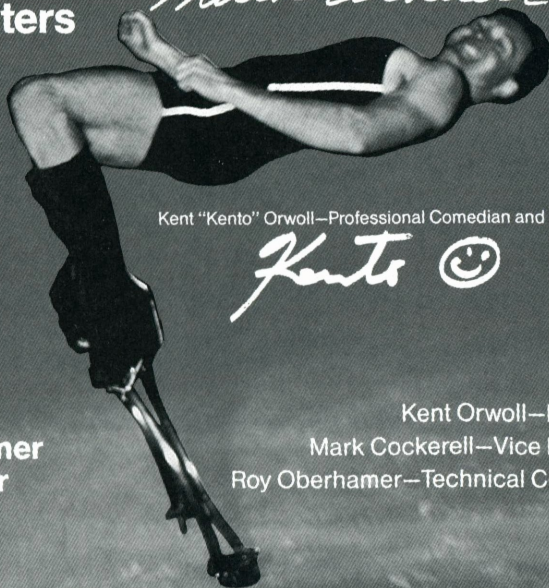
 **Oberhamer**

**WE BEND OVER
BACKWARDS
FOR YOU!**



Mark Cockerell—World and Olympic Team Member

Mark Cockerell



Kent "Kento" Orwoll—Professional Comedian and Stunt Skater

Kento ☺

**Oberhamer,
Professional skaters
offering quality
skating attire
and a complete
line of the
world's best
fitting skates.**

**Contact your Oberhamer
dealer or call direct for
ordering information.**

11975 Portland Ave. So., Suite #122
Burnsville, MN 55337
(612) 890-1657

Kent Orwoll—President
Mark Cockerell—Vice President
Roy Oberhamer—Technical Consultant

 **Oberhamer**
USA

COUPE DES ALPES

GRAND PRIX INTERNATIONAL

ST. GERVAIS, FRANCE

AUGUST 20-24, 1991

MEN

1. Philippe Candeloro, France
2. Oleg Tataurov, USSR
3. **Ryan Hunka, USA**
4. Sergei Dudakov, USSR
5. Brent Frank, Canada
6. **Damon Allen, USA**
7. Gaku Aiyoshi, Japan
8. Herb Cherwoniak, Canada
9. Cyril Deplace, France
10. Simon Briggs, Great Britain
11. Antonio Moffa, Italy
12. Thomas Dörmer, Germany
13. Stephen Carr, Australia
14. Seichi Suzuki, Japan
15. Jordi Lafarga, Spain
16. Hans Belaert, Belgium

LADIES

1. Surya Bonaly, France
2. **Lisa Ervin, USA**
3. Sherry Ball, Canada
4. Julie Hughes, Canada
5. Laetitia Hubert, France
6. Cécile Triboulet, France
7. **Karen Gooley, USA**
8. Yulia Kulibanova, USSR
9. Jutta Cossette, Canada
10. Eléna Kushnir, USSR
11. Jacqueline Soames, Great Britain
12. Marta Andrade, Spain
13. Kumiko Koiwai, Japan
14. Laia Papell, Spain
15. Anja Geissler, Germany
16. Janine Bur, Switzerland
17. Sarah Abitbol, France
18. Mari Kobayashi, Japan
19. Margaret Schlater, Italy
20. Nicole Skoda, Switzerland
21. Eun Hee Lee, Republic of Korea
22. Cristina Mauri, Italy
23. Tamara Heggen, Australia
24. Ja-Lin Weng, Chinese Taipei
25. Isabelle Balhan, Belgium
26. Hayley Antal, Australia
27. Sandrine Goes, Belgium
28. Sung Hee Koh, Republic of Korea

PAIRS

1. Nathalia Krestianikova & Alexei Torchinski, USSR
2. Eléna Nikonova & Nikolai Apté, USSR
3. Eléna Ledinkina & Denis Tikhonov, USSR
4. Sherry Ball & Kris Wirtz, Canada
5. **Aimee Offner & Brian Helgenberg, USA**
6. **Laura Murphy & Brian Wells, USA**
7. Kristy-Lee Sargent & Colin Epp, Canada
8. Jamie Sale & Jason Turner, Canada
9. Kathryn Pritchard & Jason Briggs, Great Britain
10. Lyne Haddad & Sylvain Prive, France
11. Angela Caspari & Mamo Krefft, Germany
12. Danielle Carr & Stephen Carr, Australia
13. Véronique Fleury & Jérémy Mabile, France
14. Jung Yoon Choi & Young Min Lee, Republic of Korea

DANCE

1. Marie-France Dubreuil & Bruno Yvars, Canada
2. Ekaterin Proskurina & Oleg Fedukov, USSR

Ice

ABROAD

3. Jennifer Boyce & Michel Brunet, Canada
4. Pascale Vrot & David Quinsac, France
5. Olga Ganicheva & Maxim Kachanov, USSR
6. **Elisa Curtis & Robert Nardozza, USA**
7. Virginie Soustelle & David Molina, France
8. **Mimi Wacholder & Collin Vail Sullivan, USA**
9. Aliz Veres & Gy Szombathelyi, Hungary
10. Monica MacDonald & Duncan Smart, Australia
11. Laura Bonardi & Alessandro Reani, Italy
12. Chiara Coldani & Alberto Reani, Italy
13. Nakako Tsuzuki & Kazu Nakamura, Japan
14. Sung Min Jung & Sung Ho Jung, Republic of Korea
15. Yun Hee Park & Jong Hyun Ryu, Republic of Korea

NEBELHORN TROPHY 1991

OBERSTDORF, GERMANY

AUGUST 27-30, 1991

MEN

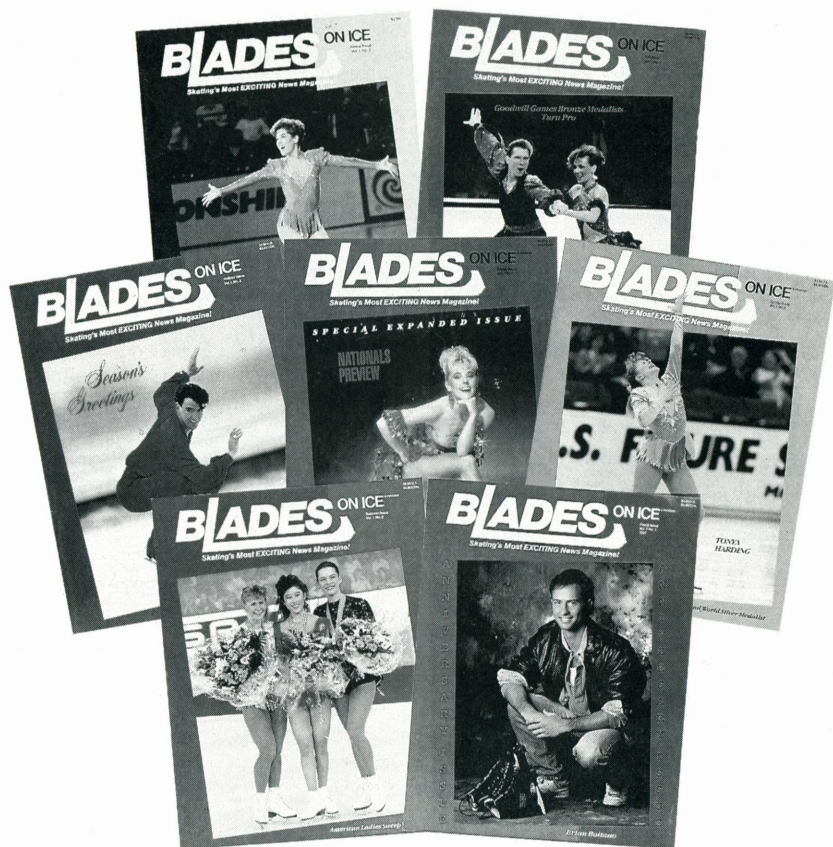
1. **Ryan Hunka, USA**
2. Igor Paschkewitsch, USSR
3. Brent Frank, Canada
4. Evgeni Pliuta, USSR
5. Gaku Aiyoshi, Japan
6. **Damon Allen, USA**
7. Michael Tyllesen, Denmark
8. Seichi Suzuki, Japan
9. Jan Kannegiesler, Germany
10. Marius Negrea, Romania
11. Thomas Dörmer, Germany
12. Herb Cherwoniak, Canada
13. Simon Briggs, Great Britain
14. Patrick-René Reinhardt, Germany
15. Jan Gröske-Weissenb., Germany
16. Antonio Moffa, Italy
17. Jordi Lafarga, Spain
18. Patrick Meier, Switzerland
19. Hans Beelaert, Belgium
- Frédéric Lipka, France, withdrew
- Henrik Walentin, Denmark, withdrew

LADIES

1. Kumiko Koiwai, Japan
2. Marie Pierre Leray, France
3. Nadeza Kowalewska, USSR
4. Jutta Cossette, Canada
5. Laetitia Hubert, France
6. **Lisa Ervin, USA**
7. Anja Geissler, Germany
8. Marta Andrade, Spain
9. Mari Kobayashi, Japan
10. **Karen Gooley, USA**
11. Yvonne Pokorny, Austria
12. Julie Hughes, Canada
13. Marion Krijgsman, Netherlands

Continued on page 62

DO YOU READ US?



If you're a skating fan you should be reading **BLADES On Ice**, skating's most exciting news magazine. Inside you'll find up-to-date news stories, coverage of the latest amateur and professional competitions, interviews with your favorite skaters along with the most beautiful color photos in skating today.

ORDER NOW
FOR COLOR AND QUALITY—NOBODY DOES IT BETTER

SEND CHECK OR
 MONEY ORDER TO: **BLADES** ON ICE

7040 N. MONA LISA RD., TUCSON, AZ 85741

■ SWITZERLAND ■ BRAZIL ■ HONG KONG ■ GERMANY ■ FRANCE ■ SCOTLAND ■ ENGLAND

YES!

PLEASE SIGN ME UP FOR:

1 YEAR—6 ISSUES

\$19.95—United States

\$29 (USD) Canada

\$45 (USD) Other
 Countries

2 YEARS—12 ISSUES

\$36—United States

\$53 (USD) Canada

\$85 (USD) Other
 Countries

NAME

ADDRESS

CITY

STATE ZIP

COUNTRY

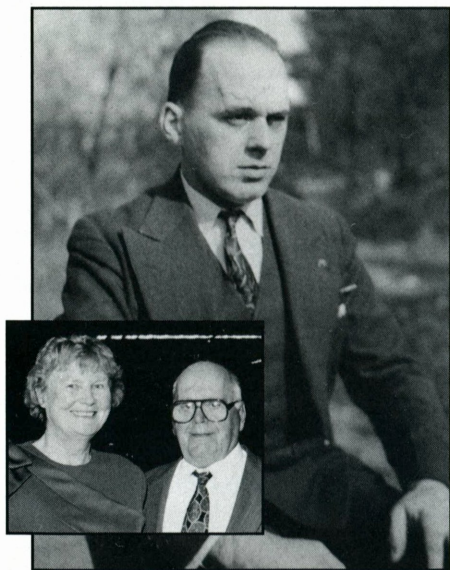
TEL.

■ CZECHOSLOVAKIA

■ SWEDEN ■ CANADA ■ USA ■ AUSTRALIA ■ AFRICA ■ HUNGARY ■ AUSTRIA ■

RECOGNIZING 50-YEAR JUDGES

At the 1991 Governing Council in Orlando, Fla., four USFSA officials who have served as judges for 50 years were recognized: Wilhelm Appeltofft, Kennebunk, Maine; Janet R. French, Williamsville, NY; Elisabeth H.D. Hickok, Wynnewood, Penn.; and Eugene Maeder, Los Angeles, Calif. The articles on these judges were written by Ted Clarke, Patricia Hagedorn, Shirley Holdsworth, Gay Barnes, Josephine Lawless, Joan Gruber, and Barbara Holland.



Wilhelm Appeltofft, (inset) Janet and Wilhelm Appeltofft

WILHELM APPELTOFFT

His face is a familiar one in New England rinks—open, friendly, and almost cherubic under the equally familiar Tyrolean hat ringed with skating pins.

Wilhelm “Bill” Appeltofft is one of the most willing and approachable judges. So willing, in fact, that he receives more phone calls and judges more tests than almost any

judge in the country. From 1982 (the beginning of the USFSA computer record keeping) through 1990, Appeltofft judged 3,860 figure, free skating, and pair tests, and 3,061 dance tests. He averages over 12 tests each week and then judges competitions too. Each year he logs about 40,000 miles, mostly by car to and from skating events. He often leaves a test or competition at midnight and drives from places like Burlington, VT, or New Haven, Conn., back to his home in Kennebunk, Maine. Then he’s likely to be at another session the following morning. Bad weather won’t deter him nor his diesel Mercedes.

Appeltofft is a retired chemist as well as an expert bridge player. He and his wife, Jean, have raised four children, none of whom became figure skaters. As a young man, Appeltofft was a competitive skater and a charter member of the Commonwealth FSC.

He has stayed with the sport because he enjoys the analytical aspects of judging as well as the people involved in the sport. He especially enjoys helping young people become judges.

Appeltofft is well known for his sense of humor. The funniest thing he ever saw in a rink was at a North American Championships in Philadelphia in the days when judges dressed formally (men wore tuxedos and top hats). The judges were lined up on the ice about to raise marks in each hand. One gentleman’s marks went up and his pants fell down; and Appeltofft laughs that he got more applause than the skater.

Appeltofft has traveled many miles and logged a lot of ice time. He enjoyed seeing Sonja Henie skate, he watched Edi Scholdan do a program entirely on one foot, he saw the first free dance and he has judged Dick Button, Tenley Albright, the Jenkins brothers, Carol Heiss, Donald Jackson, Peggy Fleming, Janet Lynn, and many more. No wonder he smiles a lot.



Janet Rice French, (inset, l to r)

Janet Rice French, Patricia French, and Gay Barnes

JANET RICE FRENCH

Even though Janet Rice French was honored recently at the Orlando Governing Council for her 50 years of judging figure skating and her dedication to the sport, she has no plans to retire! She can still be found at test sessions regularly and continues to judge four or five competitions throughout the northeast each year.

French began judging figures and free skating in 1939, at the Buffalo SC but was inactive for a few years in the late 1940's when her husband, Joseph W. French, took a temporary assignment in Hawaii. She received her high test appointment in 1953, became a Junior competition judge when that level was initiated, a bronze dance test judge in 1957, and a sectional precision judge in 1985. Because of this diversity, she has many opportunities to judge.

Her first coach was Ormonde B. Haycock and then Gus Lussi who came to teach in Buffalo. They planned a wonderful ice carnival in 1936, but a heavy, wet snowstorm collapsed the arena roof. If it had happened one day later, French, herself, would have been practicing on the ice. The show was moved to Niagara Falls and was later produced in Lake

Placid. French trained in Lake Placid in 1937, at one of their first summer sessions. Because of the damaged arena, Lussi left Buffalo and French's "serious" skating ended. But, first, she passed the fourth figure test and bronze dance test, then capped off her career by competing as a Novice lady in the 1936 Nationals where nine ladies were entered.

French bubbles with enthusiasm when she recalls incidents that have happened during test sessions over the years. She remembers: a skater who carved out a serpentine figure with four circles; a boy who insisted that his threes be placed in water so the judges couldn't see them; a girl whose mother had her blades sharpened with hockey grind for a figure test; and a young boy who wouldn't push off backwards on a three figure, so he turned an extra three about three feet before the center so he could push off forwards.

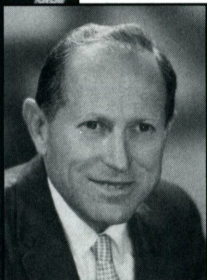
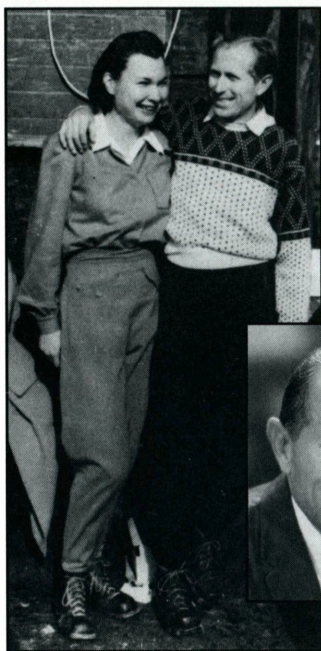
When regionals were added to the competition structure in 1960, French was one of the first to judge. She has since been an official at many regionals—either as judge or committee chairman—and was a judge at the 1967 Eastern Sectional. She has served in various capacities on the board of the Buffalo SC and as a member of the USFSA Test and Judges Committees.

Hundreds of skaters have been fortunate to learn from the expertise of this gracious woman including her daughter, Patricia French, who is an international judge in both singles and dance, and is the chairman of the USFSA Precision Skating Committee.

EUGENE MAEDER

Eugene Maeder's first love was not skating—he was an accomplished gymnast and skier before being drawn to skating. As a member of a German athletic club, he won several medals in California gymnastics competitions. In the mid-1920's, Maeder went skating "just for fun," and found himself part of the group that later founded the Los Angeles Figure Skating Club (1933).

Maeder met his wife, Janet, at the athletic club and they have long shared a mutual interest in sports. Janet joined "Gene" in skating a few years after the founding of the Los Angeles FSC. They were married in 1941; not only did Gene become a 50-year judge in



Janet and Eugene Maeder, (inset) Eugene Maeder

1991, he also celebrated his golden wedding anniversary with his wife.

Ice dancing was high on the list of the Maeders' priorities. They entered many local ice dancing competitions including competitions in the mid-1930's that were held on natural ice in Yosemite National Park.

An accomplished artist, he worked for most of the major movie studios at one time or another over a period of 45 years. He and Janet still live three blocks from the Paramount lot in Hollywood.

As a member of the Los Angeles FSC he became the first silver dance judge in Southern California in 1941.

Considered the vanguard of judges in Southern California, he was an official at nearly all the local tests and competitions for many years. Champions judged by Maeder include gold dance champions Sharon McKenzie and Bert Wright, Margie Ackles Jones and Charles W. Philips, Jr., Kristin Fortune and Dennis Sveum, and Judy Blumberg. Because of his work (once he started a picture, he could not take time off), Maeder was not able to travel to many out-of-town competitions.

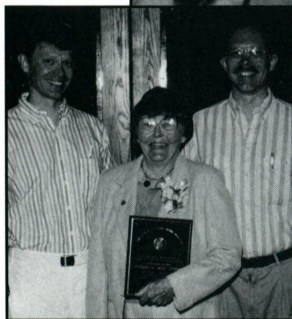
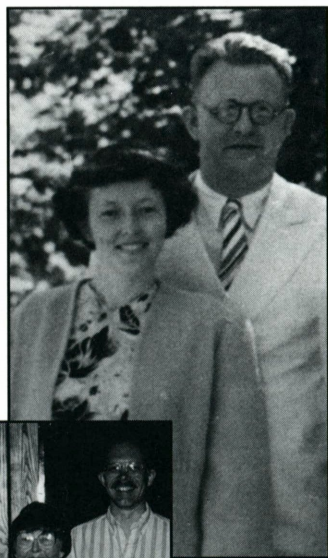
With the introduction of gold dance tests, Edith Shoemaker made many trips to Los Angeles from San Francisco to teach local skaters and judge the new dances. Maeder was an avid pupil, and later, after trial judging the gold dance event at the 1951 Nationals in Seattle, he was appointed gold dance judge. He subsequently judged the 1963 and 1972 Nationals.

Janet Maeder followed her husband in judging. She and Myrtle Girten were the second gold dance judges appointed in Southern California. Janet was later appointed international dance judge.

ELISABETH DAUB HICKOK

To actively judge figure skating for 50 years is an outstanding accomplishment in itself but for Elisabeth Daub Hickok it is not her only accomplishment.

Continued on page 61



Elisabeth and William O. Hickok IV, (inset, l to r) Peter, Elisabeth, and Charles Hickok

Dante Cozzi Sports Presents A Special Sale

★ MK BLADES ★

	Regular Price	Sale Price
Professional.....	\$139	\$124
Silver Test	165	145
Phantom.....	260	214
Elite	380	295
Dance Model.....	285	225
Gold Test.....	295	225
Gold Star (Chrome).....	309	237
Gold Star (Gold).....	420	325

★ JOHN WILSON BLADES ★

Coronation Ace	\$180	\$140
Pattern 99	280	235
Pattern 88	405	310
H. Gerschwiler.....	340	260
Gold Seal.....	400	315

★ RIEDELL BOOTS ★

Gold Star 375W	\$190	\$170
Gold Star Jr. 75W	155	140
Royal 900W	205	190
Royal Jr. 90W	175	160
Imperial 950W	220	206

Riedell 925W Comp..... \$230.....\$215

Polish - \$4.00 • Scribe & Case - \$90.00 • Booties & Rubber Guards - \$6.00



DANTE COZZI SPORTS

2600 Newbridge Road, Bellmore, New York 11710
Phone: 516-783-0215 • Fax: 516-783-2964

ALL TOP QUALITY MERCHANDISE WITH FULL MANUFACTURERS GUARANTEE. VISA OR
MASTERCARD ARE WELCOME, OTHERWISE USE CERTIFIED CHECK OR MONEY ORDER.
PLEASE ADD \$8.00 HANDLING CHARGE. NEW YORK RESIDENTS ADD APPLICABLE SALES TAX.

SCHOOL LETTERS

The Program Development Committee received an inquiry as to the awarding of school letters for figure skating. A survey letter was sent to associate and member clubs requesting this information. Those clubs unable to obtain information during the summer months are requested to do so as soon as possible and to return the survey to the Program Development Committee Chairman, 640 W. College Ave., Marquette, MI 49855. Results will be available from headquarters upon completion.

—Joanne Schillinger
Chairman,
Program Development Committee

CORRECTION

In the October 1991 issue of *Skating*, the placements for the free dance portion of the dance event at the U.S. Olympic Festival - '91 were missing. The complete results for the dance event appear below:

DANCE

JUDGES: 1—Joyce Butchart, Seattle, WA; 2—Carole Ludlow, Kent, CT; 3—Elaine Bushey, Peru, IN; 4—Charles Cyr, Palm Desert, CA; 5—Theodore Clarke, North Weymouth, MA; 6—Glennace Cohen, Castle Rock, CO; 7—Marilyn Whelan, Castro Valley, CA. REFEREE: Margaret Faulkner, Ann Arbor, MI. ASSISTANT REFEREE: William Smith*, Tulsa, OK. ACCOUNTANT: Albert Beard*, Portland, OR.

D1	D2	FD		PLACES
1.	1	3	1 Elizabeth Punsalan, Sheffield Lake, OH & Jerod Swallow, Northville, MI	2.00
2.	2	1	2 Jeanne Miley, Long Beach, CA & Michael Verlich, Long Beach, CA	2.75
3.	4	4	3 Elizabeth McLean, Falmouth, MA & Ron Kravette, Costa Mesa, CA	5.00
4.	3	2	4 Amy Webster, Yarmouth, ME & Leif Erickson, Boston, MA	5.25
5.	5	5	5 Rachel Mayer, Wellesley, MA & Peter Breen, Brockton, MA	7.50
6.	6	6	6 Beth Buhl, Wilmington, DE & Neale Smull, Troy, OH	9.00
7.	7	7	7 Elisa Curtis, Philadelphia, PA & Robert Nardoza, Dallas, TX	10.50
8.	8	10	8 Mimi Wacholder, West Newton, MA & Collin Vail Sullivan, Columbus, IN	12.50
9.	10	8	9 Rachel Lane, Pittsburgh, PA & Eric Meier, Freehold, NJ	13.50
10.	9	9	10 Ann-Morton Neale, Troy, OH & Robert Peal, Chicago, IL	14.50
11.	11	11	11 Michelle Maler, Seattle, WA & Tony Darnell, Bothell, WA	16.50

JUDGES' APPOINTMENTS

LOW TEST

Eric Todd Hampton, Marquette FSC

OFFICIAL

Notes

INTERMEDIATE TEST

Lisa Erle, St. Moritz ISC
Sonja B. Frandsen, Albuquerque FSC
Steve Kawalko, DuPage FSC
Karen W. Tobin, Denver FSC
James P. Webb, Arctic Blades FSC

BRONZE DANCE TEST

Mary L'Ecuyer, Champlain Valley FSC
Marilyn Keomalu, Hawaii FSC
Susan Naka, Hawaii FSC

SILVER DANCE TEST

Michael Barsotti, Great Falls FSC

NOVICE COMPETITION

Jacqueline Addis, Tampa Bay SC
Anna R. Ctvrtnicek, Troy SC
Lisa Erle, St. Moritz ISC
Dr. Paul M. Toomey, Triangle FSC

JUNIOR DANCE COMPETITION

Marge Heslin, Arctic Blades FSC
Vicki Merton, Hickory Hill FSC

EMERITUS

Maj. Max R. Stalbaum (ret.), Denver FSC

CFSA JUDGES

CFSA judges listed below have been certified to judge USFSA tests. USFSA member clubs along the Canadian border, or elsewhere, wishing to use CFSA judges at their club's test session may use only those listed here.

Test Chairmen should note that beginning October 1st all approved CFSA judges will possess a current USFSA membership card

Continued on page 35



**1992 UNITED STATES
FIGURE SKATING
CHAMPIONSHIPS**
Orlando, Florida

SOUVENIRS

	PRICE (Including Tax)	SIZE	QUANTITY	TOTAL
Embroidered White Turtleneck (white - 100% cotton - Logo at neck)				\$
Adult Sizes - S, M, L, Ex-L	25.00	_____	_____	_____
Official Cloisonne Logo Pin	5.00	_____	_____	_____
T-Shirts (standard white only)				
Adult Sizes - S, M, L, Ex-L	10.00	_____	_____	_____
Youth Sizes - S, M, L	10.00	_____	_____	_____
Fanny Bags (nylon - black with white logo)	9.00	_____	_____	_____
Zippered Sweat Jackets				
Black with White Logo				
Adult Sizes - S, M, L, Ex-L	27.00	_____	_____	_____
White with Black Logo				
Adult Sizes - S, M, L, Ex-L	27.00	_____	_____	_____
Sweat Pants				
Black with White "92 Nationals" on Leg				
Adult Sizes - S, M, L, Ex-L	19.00	_____	_____	_____
White with Black "92 Nationals" on Leg				
Adult Sizes - S, M, L, Ex-L	19.00	_____	_____	_____
Official Playing Cards	6.00	_____	_____	_____

Name and Phone # _____

+P&H _____

Street Address _____

TOTAL _____

City, State, Zip _____

Make check or money order payable to:
1992 Nationals Souvenirs
P.O. Box 1992
Orlando, Florida 32801-1992

☐ American Express ☐ Visa ☐ MasterCard

Credit Card No. _____

Expiration Date _____

Signature _____

(Necessary for credit card orders.)

Postage and Handling
(allow 3-4 weeks for
delivery):

\$0 to \$21 - add \$3.50
\$22 to \$44 - add \$4.50
\$45 to \$66 - add \$6.50
\$66 and over — add \$8

Presented By



Ricky

HARRIS

Letters from Readers

Dear Ricky:

I passed my Juvenile free and need some advice. For a 12-year-old at my level, in addition to the "doubles," at what point do I begin to insert into a two-minute program some of the slower, artistic footwork and arm movements like those I see in Rosalynn Sumner's professional programs?

Is Gershwin's "American in Paris" or "Rhapsody in Blue" too advanced? Lastly, is it necessary to wear such elaborate dresses at my level? Thank you for your time.

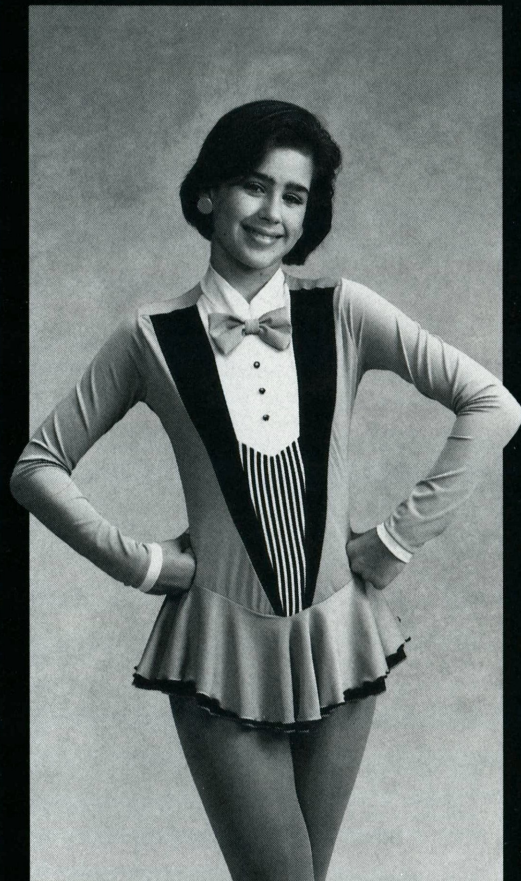
Bess
Short Hills, NJ

Dear Bess:

When you are skating a two-minute program, it is important to insert all the possible doubles that you are able to do consistently. This does not leave time for an abundance of artistic footwork. However, beautiful and/or interesting arm movements can be performed with almost everything that you do, including stroking into a jump. I would like to suggest to you, learning to do three turns, mohawks, and other connecting steps with a lot of speed and power, will enable you to keep up the necessary speed you need for a jump without just stroking. In this way you will be able to insert artistic footwork into your program. Artistic arm movements, as well as footwork, can be used at any time that the skater is capable of performing them. This means a little work on the part of the skater such as ballet lessons to learn how to move the arms and the body.

As far as what music you should use, let me say that depends not so much on your age, but on the maturity of your skating and performance qualities. It is best to be able to "feel" the music that you skate to, as that will help you skate better.

Continued on page 60



Unicorn Sport

The Skater's Edge in Fashion

★
For Catalog Send \$2.00

(REFUNDABLE WITH PURCHASE)
COMPLIMENTARY COPIES TO DEALERS

1411 N. Sixth Avenue, Knoxville, TN 37917
DIAL (615) 523-EDGE
FAX (615) 522-8560



Calendar

OF EVENTS

OCTOBER

- 25-26 **1992 Olympic Preview On Ice**, hosted by the Delaware State Olympic Committee, at the University of Delaware Blue Ice Arena, Newark, DE. Top American pair and dance teams and singles skaters, many of them top Olympic contenders for 1992 and 1994, will star in this ice extravaganza held every four years for the benefit of the U.S. Olympic Teams. For information call: Dorothy Baker, 302-652-6693.
- 27-11/3 **North Atlantic Regional Championships**, hosted by the SC of Rockland, New York, at Sport-O-Rama, 18 College Rd., Monsey, NY 10952. For information call: 914-356-3919.
- 28-11/2 **Upper Great Lakes Regional Championships**, hosted by the Southport SC, at the Kenosha County Ice Arena, 7727 60th Ave., Kenosha, WI 53142. For information call: 414-694-8011.
- 30-11/2 **Northwest Pacific Regional Championships**, hosted by the Seattle SC, at the Sno King Ice Arena, 19803 68th West, Lynwood, WA 98036. For information call: 206-775-7512.
- 31-11/3, 11/7-10 **Southwest Pacific Regional Championships**, hosted by the All Year FSC, at the Culver Ice Arena, 4545 Sepulveda Blvd., Culver City, CA 90230. For information call: 213-398-5719.

NOVEMBER

- 4-9 **New England Regional Championships**, hosted by the Smithfield SC, at the Smithfield Municipal Ice Rink, 101 Pleasant View Ave., Smithfield, RI 02917. For information call: 401-233-1510.
- 4-9 **Eastern Great Lakes Regional Championships**, hosted by the WC of Indianapolis, at the Indiana State Fair Coliseum, 1202 E. 38th St., Indianapolis, IN 46203. For information contact: Susan F. Matthews, President, 76 Wright Dr., Greenwood, IN 46143.

- 4-9 **Southwestern Regional Championships**, hosted by the Broadmoor SC, at the Broadmoor World Arena, Broadmoor Hotel, Colorado Springs, CO 80906. For information call: 719-577-5796.
- 5-9 **Central Pacific Regional Championships**, hosted by the Cottonwood Heights FSC, at the Cottonwood Heights Recreation Center, 7500 South 2700 East, Salt Lake City, UT 84121. For information call: 801-943-3190.
- 22-24 **18th Annual Pizzazz Ice Dance Weekend**, sponsored by the Plymouth FSC, at the Plymouth Cultural Center, 525 Farmer St., Plymouth, MI 48170. For information contact: Alice Bohr, 313-420-0194 or FAX 313-476-6438.

DECEMBER

- 3-7 **Eastern Sectional Championships**, hosted by the Bridgeport SC, at the Wonderland of Ice, 123 Glenwood Ave., Bridgeport, CT 06610. For information contact: Mrs. Dorothy F. Fedick, President, 51 Bartling Dr., Easton, CT 06612.
- 4-7 **Midwestern Sectional Championships**, hosted by the Winterhurst FSC, at the Winterhurst Ice Rink, 14740 Lakewood Heights Blvd., Lakewood, OH 44107. For information call: 216-529-4236.
- 10-14 **Pacific Coast Sectional Championships**, hosted by the Lakewood WC, at the Sprinker Recreation Center, 14824 South C Street, Tacoma, WA 98444. For information call: 206-573-2600.
- 14-15 **1991 Holiday Season Competition**, sponsored by the Columbus FSC, at the Ohio State University Ice Rink, Columbus, OH. Compulsory and freestyle events for beginners through Juvenile Freestyle and Adult Junior; Holiday Showcase for Preliminary through Juvenile; solo and team dance for Preliminary through Bronze plus open Willow Waltz and open Fourtenstep. Adult participation is encouraged. For information contact: Marcia Ouellette, 2470 Southway Dr., Columbus, OH 43221, 614-486-1305.

JANUARY 1992

- 3-5 **Laval International 1992**, sponsored by the Laval FSC at the Centre Sportif Laval. Open precision skating competition with Juvenile through Adult events. For information contact: Laval International, 4939 de la Fabrique, Laval, Quebec H7C 1E4.
- 4-12 **1992 U.S. Figure Skating Championships**, sponsored by the USFSA and

Laurie Skateplate Original Edition

**Limited Number
of Originals
Available**

The perfect gift
for your
favorite skater

\$25.00 + \$3.50 Shipping & Handling

Check or money order to:

M.G. Brandel

11393 Nantucket Ct., Cypress, CA 90630



hosted by the Orlando FSC, at the Orlando Arena, Orlando, FL. For tickets write: 1992 All-Event Tickets, P.O. Box 1992, Orlando, FL 32801-1992; or call: '92 Nationals, Hotline, 407-263-8973.

- 25 **Fraser Mid America Precision Team Championships**, sponsored by the Fraser FSC, at the Fraser Ice Arena, 34400 Utica Rd., Fraser, MI 48026. Preliminary, Juvenile, Intermediate, Novice, Junior, Senior, and Adult events. For information contact: Russ or Sharon Brown, 43110 Ulman, Sterling Heights, MI 48313, 313-247-5915.

FEBRUARY

- 14-16 **Colorado Mid-Winter Invitational**, sponsored by the Pueblo FSC, at the Pueblo Plaza Ice Arena, 100 N. Grand, Pueblo, CO 81003. Compulsory Moves, Free Skating, Original Program, Artistic Free Skating, Dance, and Precision Team events, Pre-Preliminary through Adult levels. For information contact: Nancy Mastreno, 2 Sandcastle Ct., Pueblo, CO 81001, 719-545-0604 (6:00

P.M. -9:00 P.M. MST.)

- 14-16 **Eastern Sectional Precision Skating Championships**, hosted by the Wallace FSC, at the Wallace Civic Center, 1000 John Fitch Highway, Fitchburg, MA 01420. For information call: 508-597-5036.
- 21-23 **Pacific Coast Sectional Precision Skating Championships**, hosted by the San Diego FSC, at the San Diego Ice Arena, 11001 Black Mountain Rd., San Diego, CA 92126. For information call: 619-530-1826.
- 28-3/1 **17th Annual Creve Coeur Figure Skating Competition**, sponsored by the Creve Coeur FSC, at the Creve Coeur and Queeny Park Ice Arenas, Creve Coeur, MO 63141. Freestyle, Compulsory Moves, Pairs, Figures, Showcase, Dance, and Short Program events, Beginner through Senior levels. Also, Intermediate Short Program and Adult events. For information call: Karen Shannon, 314-394-0533 or Shirley Sisson, 314-394-4947.



1991 NATIONAL COLLEGIATE CHAMPIONSHIPS

LAKE PLACID, NEW YORK

AUGUST 20-25, 1991

FIGURES

SENIOR LADIES

JUDGES: 1-Bonnie McLauthlin, Denver, CO; 2-Janet McLeod, Norwalk, CA; 3-Nancy Archie Meyer, Lake Placid, NY; 4-Ruth Burge, Laguna Hills, CA; 5-Lauren Jackson, Mount Kisco, NY; 6-Matthew Zats, St. Paul, MN; 7-A. Jim Larkin, Salt Lake City, UT; 8-Nancy Bizzano, Long Lake, MN; 9-Judith Reiner, Arlington, VA. REFEREE: Dorothy Dodson,* Alexandria, VA. ACCOUNTANT: Honor Johnson, Crofton, MD.

	MAJ
1. Samantha Hawks, Boston College	5/1
2. Heather Hughes, University of Pennsylvania	7/2
3. Carese Busby, Highline Community College	7/4
4. Wendy Weston, Salem State College	7/5
5. Kim Schebig, Rock Valley College	6/5
6. Elizabeth Scully, University of Delaware	5/6
7. Melissa Murphy, University of California Davis	6/7
8. Amy Zurlinden, Glendale Community College	5/8
9. April Weinberg, Tufts University	7/9
10. Jacqueline Dyer, North Country Community College	6/10
11. Leanne Highsmith, University of Delaware	5/10

JUNIOR LADIES

JUDGES: 1-Morry Stillwell, Malibu, CA; 2-Bonnie McLauthlin, Denver, CO; 3-Janet McLeod, Norwalk, CA; 4-Joy Cunningham, Hudson, OH; 5-George Ludlow, Kent, CT; 6-Nancy Bizzano, Long Lake, MN; 7-Lauren Jackson, Mount Kisco, NY; 8-Judith Reiner, Arlington, VA. 9-William Munns, Concord, CA. REFEREE: John Chrien, Shaker Heights, OH. ACCOUNTANT: Paul Kreppel, Williamsville, NY.

	MAJ
1. Cathleen Reynolds, Villanova University	8/1
2. Tiffany Purcell, George Washington University	7/3
3. Laura Mitchell, University of Delaware	5/3
4. Miriam Gelfand, University of Delaware	6/4
5. G. Sonja Castaneda, San Diego Mirimar Community College	7/5
6. Lou Anne Petersen, University of Colorado Boulder	6/6
7. Kelly Nearon, Brigham Young University	5/6
8. Deanna Luzzo, Elmhurst College	6/8
9. Lynn Luzzo, Harper College	5/9
10. Angela Kulak, Missouri Western State College	7/10
11. Jennifer Ellis, Butler University	5/10

FREE SKATING

SENIOR MEN

JUDGES: 1-Bonnie McLauthlin, Denver, CO; 2-Morry Stillwell, Malibu, CA; 3-Lauren Jackson, Mount Kisco, NY; 4-William Munns, Concord, CA; 5-George Ludlow, Kent, CT; 6-Joy Cunningham, Hudson, OH; 7-A. Jim Larkin, Salt Lake City, UT; 8-Judith Reiner, Arlington, VA; 9-Nancy Bizzano, Long Lake,

MN. REFEREE: Dorothy Dodson,* Alexandria, VA. ASSISTANT REFEREE: Josephine Lawless, Canoga Park, CA. ACCOUNTANT: Paul Kreppel, Williamsville, NY.

OP	FS		PLACES
1.	1	1 Alexander Chang, Harvard University	1.5
2.	2	2 Edmund Nesti, Northeastern University	3.0

SENIOR LADIES

JUDGES: 1-William Munns, Concord, CA; 2-Nancy Bizzano, Long Lake, MN; 3-Morry Stillwell, Malibu, CA; 4-Lauren Jackson, Mount Kisco, NY; 5-Bonnie McLauthlin, Denver, CO; 6-Ruth Burge, Laguna Hills, CA; 7-Joy Cunningham, Hudson, OH; 8-George Ludlow, Kent, CT; 9-Nancy Archie-Meyer, Lake Placid, NY. REFEREE: Dorothy Dodson,* Alexandria, VA. ASSISTANT REFEREE: John Chrien, Shaker Heights, OH. ACCOUNTANT: Dr. Gordon Knudson,* Edina, MN.

OP	FS		PLACES
1.	1	1 Dena Galech, Shoreline Community College	1.5
2.	2	2 Leana Naczynski, Indiana University	3.0
3.	3	3 Kathryn Curielli, Normandale Community College	4.5
4.	6	4 Sara Kastner, College of St. Thomas	7.0
5.	4	6 Elizabeth Koepf, Loyola Marymount University	8.0
6.	8	5 Elizabeth Scully, University of Delaware	9.0
7.	5	7 Nicole Wasilewski, Petersburg Junior College	9.5
8.	7	8 Heather Hughes, University of Pennsylvania	11.5
9.	13	9 Renee Dittmer, Marquette University	15.5
10.	9	11 Sara MacInnes, University of California Irvine	15.5
11.	12	12 Kristy Kasapis, Ferris State University	18.0
12.	18	10 Kim Schebig, Rock Valley College	19.0
13.	14	13 April Weinberg, Tufts University	20.0
14.	11	15 Zoe Poledouris, Bennington College	20.5
15.	16	14 Kelly Kispert, Gustavus Adolphus College	22.0
16.	10	18 Kristen Painter, St. Lawrence University	23.0
17.	22	16 Meredith Sancomb, University of Hartford	27.0
18.	20	17 Amy Caron, University of Vermont	27.0
19.	17	19 Aileen Kelly, Harvard University	27.5
20.	15	21 Jamey Wetzel, Metropolitan State College of Denver	28.5
21.	21	20 Tanya Pollack, Case Western Reserve University	30.5
22.	19	22 Noreen Kelly, Wheaton College	31.5
23.	23	23 Jessa Eisenwinter-Lake, Mount Holyoke College	34.5

JUNIOR LADIES

JUDGES: 1-Judith Reiner, Arlington, VA; 2-Janet McLeod, Norwalk, CA; 3-Lauren Jackson, Mount Kisco, NY; 4-Matthew Zats, St. Paul, MN; 5-Nancy Bizzano, Long Lake, MN; 6-Bonnie McLauthlin, Denver, CO; 7-Nancy Archie-Meyer, Lake Placid, NY; 8-Ruth Burge, Laguna Hills, CA; 9-A. Jim Larkin, Salt Lake City, UT. REFEREE: John Chrien, Shaker Heights, OH. ASSISTANT REFEREE: Dorothy Dodson,* Alexandria, VA. ACCOUNTANT: Paul Kreppel, Williamsville, NY.

OP	FS		PLACES
1.	1	1 Shirl Cattani, Pennsylvania State University	1.5
2.	2	2 Ingrid Peterson, Oakland University	3.0
3.	3	3 Amy Zurlinden, Glendale Community College	4.5
4.	7	4 Collette Lovullo, University of Rochester	7.5
5.	6	5 Tiffany Purcell, George Washington University	8.0
6.	4	7 Lou Anne Petersen, University of Colorado Boulder	9.0
7.	8	6 Dena Van Aert, Augsburg College	10.0
8.	10	8 Najja Bracey, Princeton University	13.0
9.	11	9 Jennifer Ross, University of New Hampshire	14.5
10.	5	12 Deanna Luzzo, Elmhurst College	14.5
11.	9	11 Kathleen Goetz, State University of New York Oswego	15.5
12.	12	10 Lynn Luzzo, Harper College	16.0
13.	13	13 Angela Kulak, Missouri Western State College	19.5

Julie Frank, Furman University, withdrew

JUNIOR PAIRS

JUDGES: 1-Nancy Bizzano, Long Lake, MN; 2-Lauren Jackson, Mount Kisco, NY; 3-Bonnie McLauthlin, Denver, CO; 4-Janet McLeod, Norwalk, CA; 5-Judith Reiner, Arlington, VA; 6-Morry Stillwell, Malibu, CA; 7-Nancy Archie-Meyer, Lake Placid, NY; 8-Matthew Zats, St. Paul, MN; 9-Ruth Burge, Laguna Hills, CA. REFEREE: Dorothy Dodson,* Alexandria, VA. ASSISTANT REFEREE: John Chrien, Shaker Heights, OH. ACCOUNTANT: Dr. Gordon Knudson,* Edina, MN.

OP	FS		PLACES
1.	1	1 Andrea Catoia, West Chester University & Paul Dulebohn	1.5
2.	3	2 Erin Covington & Brandon Powell, Portland State University	3.5
3.	2	3 Heather Hughes, University of Pennsylvania & Keith Tindall	4.0

JUNIOR DANCE

JUDGES: 1-William Munns, Concord, CA; 2-Michael Fisher, Indianapolis, IN; 3-Matthew Zats, St. Paul, MN; 4-Theodore Clarke, North Weymouth, MA; 5-A. Jim Larkin, Salt Lake City, UT; 6-Joy Cunningham, Hudson, OH; 7-George Ludlow, Kent, CT. REFEREE: Josephine Lawless, Canoga Park, CA. ASSISTANT REFEREE: John Chrien, Shaker Heights, OH. ACCOUNTANT: Honor Johnson, Crofton, MD.

CD	FD		PLACES
1.	1	1 Sian Matthews & Jeremy Wyndham, University of Texas Arlington	4.0
2.	2	2 Melissa Pettus, University of Delaware & Richard DuPaix, University of Delaware	4.0
3.	3	3 Susan Mounce, University of North Carolina Chapel Hill & Kevin Elvin	6.0

Linda Fratianne

Continued from page 8

that honestly."

And what of her last weeks as an amateur, when she struck Olympic silver instead of the hoped-for and hyped-up gold?

"I probably haven't thought about that for 10 years," Fratianne replied. "I almost think it was a blessing in disguise, because the amount of pressure, fanfare and stardom now is just enough for me to handle. I get very uptight when I don't have my space and my personal life.

"I'm not the kind of person who likes being the center of attention," she added. "I think it's because of the way I was brought up. I was never fussed over. I did the dishes, cleaned my room, cleaned the bathroom, did laundry. I was one of five kids, and when I got home I was kind of pushed aside, because my mom (Virginia, now a Senior competition and gold test judge) was with me at the rink so much. Even now, when someone fusses over me, I'm not comfortable.

"The Olympics were so long ago. That's not how I want people to relate to me. The most important thing in my life is my family."

So concluded Linda Maricich, Ali's mom.

Libby Slate is a Los Angeles-based freelance writer specializing in entertainment and figure skating. She writes for The Los Angeles Times and various entertainment magazines.



by Paul C. Rapp

If variety is the spice of life, participants in the 1992 annual United States Figure Skating Championships are in for some heavy seasoning.

The shift from last year's Minnesota snow belt to this year's Florida sun belt should be a dramatic change as skaters and guests experience the mild and temperate climates of Orlando and Central Florida.

And, unless one has been among the 13-14 million annual visitors to "The City Beautiful," it is hard to imagine so much activity in one single, vibrant, and diversified community.

One of the first things that might come to mind at mention of Central Florida is Walt Disney World. The 28,000-acre fun center southwest of the city houses Mickey and Minnie Mouse, EPCOT, and MGM Studios.

Or perhaps one might think of the sprawling \$650-million Universal Studios Florida, located within Orlando's

south city limits, with its six working sound stages and 444-acre movie-themed entertainment center. Rosie O'Grady's Good Time Emporium is in the center of town and Sea World is just down the road. Within easy reach are dozens of other attractions including Cypress Gardens, Kennedy Space Center, Gatorland, Medieval Times, the River-ship Grand Romance, and the Busch Gardens, just to name a few.

Central Florida has been called the vacation and entertainment capital of the world. But while these attractions are indeed a major factor, providing one out of every four jobs in the area, its economy is not based totally on fun and games. High-tech manufacturing, agriculture, insurance, financial and professional services and a wide range of other forms of industry and commerce are also very much in evidence in the tri-county area that makes up Greater Orlando.

Orlando traces its history back to 1838

when the army established Ft. Gatlin, just south of today's city limits, to protect settlers from Indians. By 1840 it was known as the village of Jernigan, named after one of its earliest settlers. The first post office was opened in 1850 and the town was given its current name in 1857 in memory of Orlando Reeves, a U.S. soldier who died from an Indian arrow while saving the lives of his companions.

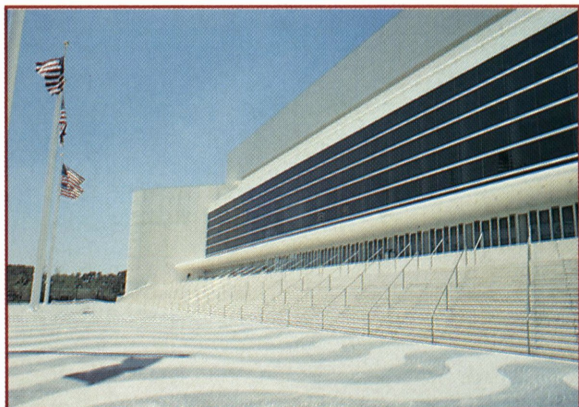
Orlando is the county seat of Orange County, which with two other counties, Seminole to the north and Osceola to the south, makes up the Greater Orlando Metropolitan Area.

Of immediate interest to skaters is the Orlando Arena (600 West Amelia Street), a 15,542-seat facility in a huge Centroplex in the heart of the city, home to NBA's Orlando Magic. Ice hockey, concerts, and sundry other events also occur throughout the year in this \$100-million facility.

When converted for competition ice skating, the arena accommodates 13,680 guests and provides an ice floor 200 × 85 feet. There are two "star" dressing areas, six performer dressing rooms, and five team dressing sections.

The air conditioned arena contains 26 sky boxes, some of which have been luxuriously equipped by corporate sponsors, and also houses its own television studio and full recording facilities. Concessions and catering services are available, as is a special telephone service which allows guests to receive and return important messages without leaving one's seat. On-site parking is provided for 3,800 cars while an additional 7,100 can be parked within a four-block radius.

As one of the leading hotel markets in the world, with more than 76,000 hotel rooms, spectator accommodations should be no problem. Additionally, special Walt Disney World housing arrangements are



There is no need to worry about how to fill your time away from the arena. Orlando is one of the vacation and entertainment capitals of the world.



being developed for visitors to the '92 Nationals. Competitors will be housed in the OMNI International and Howard Johnson hotels, adjacent to the Centroplex facility and just a short walk from the Orlando Arena. Officials will be staying at the Harley Hotel, overlooking Orlando's centerpiece Lake Eola. Shopping the area is an experience all its own with more than three dozen major malls and factory outlet complexes offering the full range of specialty shops, department stores, restaurants, jewelry stores, souvenir shops, discount stores, and upscale designer boutiques. Likewise, there is no shortage of excellent dining facilities, some in the downtown districts but others in all directions from midtown. Listing all the good restaurants would be impractical, but the headquarter hotels would be a good place to start.

Orlando is at the hub of a major transportation network and "getting there" should present no difficulty.

The ultra-modern Orlando International Airport, with its 72 gates and automated transit system, ranks among the best and busiest in the world, handling an average of 800 commercial operations per day. Two dozen carriers provide scheduled service to more than 100 cities, nationally and internationally, and accommodate nearly 20 million passengers annually.

Bus, van, and taxi services are available from the airport to downtown Orlando or the Disney area, while most major car rental agencies have airport operations.

Boasting an annual average temperature of 75.4 degrees, and blessed with some 2,000 fresh water lakes in the immediate area, it should not be surprising that life for many Central Floridians includes the outdoors. For salt water enthusiasts, the Atlantic Ocean and Gulf of Mexico are within easy reach. For campers and hikers, Central Florida offers some 3,000 acres of public parks. Those who seek their recreation on the links can choose from 80 golf courses, while tennis buffs will find more than 800 courts.

Other needs are served by 24 hospitals, more than 500 churches, an opera company, ballet theater, a symphony orchestra, and several amateur and dinner theaters.

Sports buffs have, besides the NBA's Orlando Magic and World League American Football, the annual Citrus Bowl classic, professional golfing, baseball training camps (American and National Leagues), the Silver Spurs Rodeo, Jai Alai, and harness racing.

It has been said that Orlando is not as cosmopolitan as New York, as trendy as Los Angeles, or as sophisticated as San Francisco, for which some residents might be grateful. Instead, Central Florida is a unique region, with a personality all its own.

And, one we think you'll like.

Paul C. Rapp has served as a senior publicity consultant to Walt Disney World and has written articles on travel, tourism, and military subjects for numerous regional and national magazines.

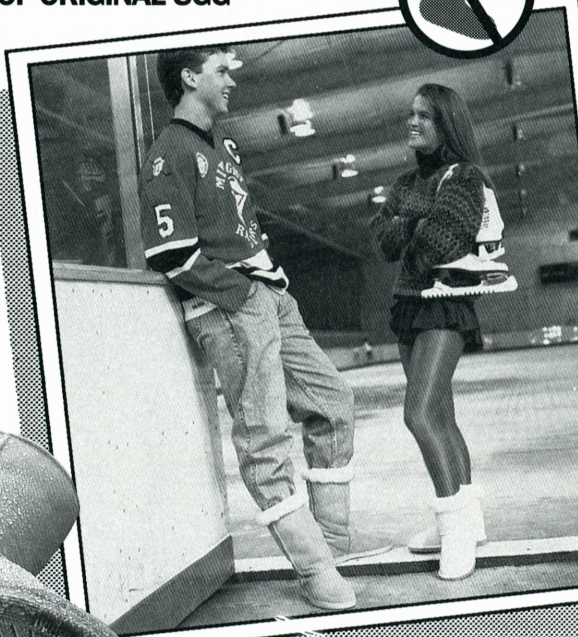
ULTRA WARM. ULTRA COOL!

**DIRECT FROM AUSTRALIA - ENJOY THE COMFORT,
WARMTH AND STYLE OF ORIGINAL UGG®
SHEEPSKIN BOOTS.**

- UGG®'s feel great anytime, but especially after a workout on the ice.

- Ask about UGG® boots at your skating shop, sporting goods dealer or specialty retail shop.

- Rugged and washable sheepskin footwear.



**THE ORIGINAL
- PREMIUM QUALITY -
SINCE 1978**



UGG Holdings Inc. • 2221 Las Palmas Drive • Carlsbad CA 92009 • (619) 431-8090

The Castle Spa

... In The Pines



Ice Castle International Training Center
in Lake Arrowhead, California is pleased to introduce
it's newest endeavor . . . **The Castle Spa In The Pines.**

Situated at the untainted altitude of 5,000 feet in the picturesque San Bernardino Mountains, the Castle Spa offers 12 pampered ladies a week of renewed vitality and self awareness.

The Castle Spa Week includes:

- ★ Six days and six nights in single cottage accommodations with private bath, color television and telephone.
- ★ Individually charted fitness & exercise programs for all levels & goals.
- ★ Beauty care programs, with individual consultations & evaluations.
- ★ Heated pool & jacuzzi spa sessions.
- ★ Daily massage.
- ★ Three, deliciously well balanced meals each day.
- ★ Ice skating, with lessons from a World Class Professional Coach.
- ★ Optional afternoon shopping outing.
- ★ Evening presentations & relaxing activities.

★ ★ ★

\$2,000 per person per week - plus tax

★ ★ ★

For more information and a descriptive brochure, Phone, Fax or Write:

**The Castle Spa In The Pines
480 Cottage Grove Road
Post Office Box 939
Lake Arrowhead, CA 92352
(714) 337-0802 Fax (714) 337-8949**

Ice Castle

International Training Center

Two Of The World's Most Beautiful Ice Surfaces

Located at the 5,100 foot level in the picturesque
San Bernardino Mountains near Lake Arrowhead.



Ice Castle, Lake Arrowhead



Ice Castle, Blue Jay

FEATURING...

85' x 185' International-size public rink and 85' x 185' rink on the Training Center grounds with perfectly maintained ice surfaces • World's first 360° Jump Harness • Off/Ice classes, offering newly equipped, high-tech gymnasium and new 3,000 square foot Dance Pavilion • Beautiful swimming pool and Spa • Specially designed meal program • Year-round dormitory and private cottage accommodations.

Artistic Director

**ROBIN
COUSINS**

1980 Olympic
Gold Medalist

Skating Director

**FRANK
CARROLL**

Olympic and
International Coach

Professional Staff

Irina Rodnina - Senior Coach

Garnet Fiordalisi - Coach

Mary Couense - Coach

Perry Jewel - Coach

Glyn Jones - Coach & Rink Coord.

Melody Houston - Fitness Coach

Susan Austin - Choreographer

- Daily Public Sessions
& Private Ice Lessons
- Group Rates
- Ice Shows
- Birthday Parties
- Snack Bar
- Complete Pro Shop
plus
- Learn-To-Skate Classes
Year Round



Founders: Walter and Carol Probst

For Information Call: (714) 337-0802 • (714) 336-2111

480 COTTAGE GROVE ROAD • P.O. Box 939 • LAKE ARROWHEAD, CALIFORNIA USA 92352

PHONE (813) 784-6418

Official Notes

Continued from page 21

and Judge's card. CFSA judges should be requested to present these cards prior to judging.

CFSA judges may only be used as a minority member of the panel.

—Ronald T. Pfenning
Chairman, Judges Committee

LOW TEST: Daphne Keck, Sharon Lapier.

INTERMEDIATE TEST: Nelson Armstrong, Cheryl Dunn, John McNeil Sr., Ruby McPhedran, Henry Odding, Sheelagh Porter, Janet Smallman, Marian Young.

HIGH TEST: Patricia Abela, Tom Mill, Karen Porter, Rachel Sequin.

GOLD TEST: Cynthia Alepin, Joan Alepin, Vera Armstrong, Arthur Bower, Etta Burnett, Elizabeth Clark, Georgia Clayton, Nancy Coley, Susan Craig, Eva Findlay, Joy Forster, John Greenwood, Thelma Gruhl, Dennis Gurnhill, Darren Hallet, Diane Harder, Lana Harder, Diane Holmen, George Holmen, Louise Howe, Simone Hughes, Karen Hussey, Myrna Hussey, Diane Jamieson, Denise LaPlante, Allen Macauley, Margaret Macauley, Heather MacDonald, Dennis McFarlane, John McKay, Ruth Mead, Eleanor Merryfield, Patricia Michie, Lloyd Ogilvie, Alice Pinos, Nancy Ravenhorst, Lisa Riddoch, Pearl Smith, Richard Vallee, Norma Voce, Sandra Wickett, Mary Wilkin, Patricia Young.

BRONZE DANCE TEST: Beth Crane, Diane Harder, George Holmen, Sharon Lapier, Heather MacDonald, John McNeil Sr., Ruby McPhedran, Henry Odding, Jane Smallman, Richard Vallee, Marian Young.

SILVER DANCE TEST: Vera Armstrong, Dennis Gurnhill, Simone Hughes, Allen Macauley, Karen Porter, Marilyn Wittkowsky, Richard Wittkowsky.

GOLD DANCE TEST: Patricia Abela, Cynthia Alepin, Joan Alepin, Arthur Bower, Etta Burnett, Elizabeth Clark, Nancy Coley, Susan Craig, Cheryl Dunn, Eva Findlay,

Memorial Fund

DONORS

The USFSA Memorial Fund gratefully acknowledges the following contributors for the month of August 1991.

IN MEMORY OF

Pierre Brunet: Lauren Jackson, Mr. & Mrs. Benjamin T. Wright

Don Cannon: Carol Ann Bidwell, Mr. & Mrs. Lou Sherman

Glen Edward Courtney: Centennial SC

George E. Jewett: Bertha Orlander

Helen Lean: Santa Rosa FSC

Mary Francis Smith: Wayne Garrison, Florence Nichols, Phil Stover, Jr., Gil Van Lunsen

Ken Stevens: Beverly Chalfen, Tom Collins

Elsie Weinstein: Moras Shubert

IN HONOR OF

Damon Allen: Seward Screw Products Inc.

Sherri Heinecke Chafin: Pittsburgh FSC

Mark Mitchell: Gregg Leeman

Mr. & Mrs. Daniel J. Nicholson: Mary Chulak

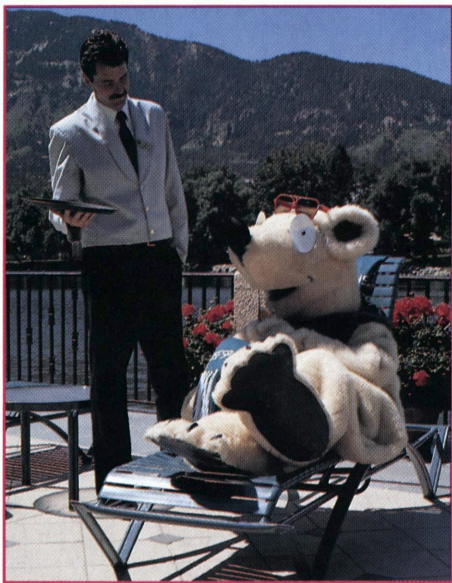
Joy Forster, John Greenwood, Thelma Gruhl, Darren Hallet, Lana Harder, Joyce Hisey, Diane Holmen, George Holmen, Louise Howe, Karen Hussey, Myrna Hussey, Diane Jamieson, Daphne Keck, Denise LaPlante, Margaret Macauley, Dennis McFarlane, John McKay, Ruth Mead, Eleanor Merryfield, Patricia Michie, Tom Mill, Lloyd Ogilvie, Alice Pinos, Sheelagh Porter, Nancy Ravenhorst, Rachel Sequin, Pearl Smith, Sandra Wickett, Mary Wilkin, Patricia Young.

Snowplow Sam



Snowplow Sam has finally emerged from hibernation! Many of you may recognize this big, friendly, skating star from the USFSA Basic Skills Program. While it was difficult getting in touch with Snowplow Sam (we had to contact his agent), the staff writers at *Skating* magazine will be the first to break this news flash on the USFSA's own talented, athletic, and handsome skating bear.

Snowplow Sam represents the USFSA Basic Skills Program as the official "spokesbear." When asked about his skating background, Snowplow Sam responded, "Back where I'm from, ev-



SHOT ON LOCATION AT PLAZA ICE CHALET AND THE BROADMOOR HOTEL IN COLORADO SPRINGS

everyone skated from the time they could walk . . . imagine everyone on skates, having a great time, skating for hours on end. Everyone, from Alaska to Florida, and Maine to California should have the opportunity to learn to skate. It's great fun!"

The Basic Skills Program, introduced in 1985, has grown by leaps and bounds each year. With the introduction of the Snowplow Sam portion of the Skate With U.S. curriculum last fall, even more skaters across the country have decided to sign up to "Skate With U.S.!"

The Snowplow Sam portion of the Basic Skills Program was created as a stepping stone for those skaters not yet ready to start at the Basic I level. These special levels allow skaters to become comfortable and confident on skates. Many clubs, rinks, and instructors adopted Snowplow Sam as part of their curriculum and he has been a smashing success ever since.

In his short reign as spokesbear for the Skate With U.S. Program, Snowplow Sam's secretary reported that he has been called on by numerous groups for



PHOTOS BY PAUL IDELMAN

appearances and television and print interviews. *Skating* magazine was able to obtain a partial list of those requesting interviews with Snowplow Sam and we must report the list is impressive.

His upcoming travel schedule is a busy one. He will be making several appearances at various skating clubs across the country and he is also booked for an appearance at the U.S. Figure Skating Championships in Orlando, Fla., in January. Soon, he may be at your club. Be on the lookout for more exciting news on Snowplow Sam in an upcoming issue of *Skating*.

Classifieds

FREESTYLES BY CAROLYN. Basic pull-on dress with attached skirt, including three neckline treatments. Directions for adding zipper, and separate wrap skirt also included. Children's sizes, 4x small through x small. Adult sizes, small, medium, large, x large: \$6.00 ea. Pull-on skirt, perfect for practice with T shirts or leotard, \$2.50 ea., all sizes. Figure flattering criss-cross dress: x small through x large, \$4.00 ea. Custom made patterns for \$8.00. Send for measurement chart. Add \$2.00 for postage and handling with each order. 5150 Bluestem Drive, Colorado Springs, CO 80917.

AUSTRIAN CRYSTAL: Margaritas, Lochrosens, Embroidery Stones, etc. Also: Silver-Lined Rocailles, Bugle Beads, Seed Beads, Sequins, Rhinestone Chain. Price list and samples upon request. Gerrie Ball, 310 Juniper Street, Brea, CA 92621, (714) 529-1474.

KRASH PADS by JAN-PRO: Hip Pad: \$29.95, plus \$2.00 shipping and handling. Measure around seat with skating attire on. Knee Pads: \$16.95, plus \$1.50 shipping and handling. Measure around knee. Colors: Blue and Black. Send CK/MO to Jan-Pro, 4470 Monroe Avenue, San Diego, CA 92115, (619) 282-0637. Calif. res. add 8 1/4% tax.

BEADS-TRIMS-JEWELS: Complete selection of beads and beaded trims, fringes, appliques, sequins, pearls, rhinestones, and sew on crystals. Visa/MC, Amer. Express. Bead Box, 309 N. Kings Road, Los Angeles, CA 90048, (213) 651-3595.

We have the **LOWEST DISCOUNT PRICES** on quality boots, blades, and tights—immediate shipment—satisfaction guaranteed. Call (906) 786-7752 or write LeCaptain Studio Store, 1620 Ludington, Escanaba, MI 49829. COD MC VISA.

CLASSIFIED RATES: \$20 for the first 35 words, 50¢ for each additional word, \$20 minimum. Two-letter state abbreviation code plus zip code count as one word. *Payment required with order.* All advertising copy is subject to acceptability. **BOX NUMBERS:** \$5 extra. Send all box responses to: *Skating*, Box No. , 20 First Street, Colorado Springs, CO 80906-3697.

THE SKATING CLUB OF BOSTON wishes to add a senior teaching professional to its existing staff. Qualifications for free skating and school figures of greatest interest. Ideal candidate will have experience taking competitors to national championships at minimum of Junior level. Please forward letter describing your qualifications, resumé, and names, addresses, and telephone numbers of references to: Professional Committee, The Skating Club of Boston, 1240 Soldiers Field Road, Boston, MA 02135-1086.

"ICE DANCING MADE EASY" will teach you the techniques top dancers use. This illustrated book will help you achieve effortless glide, perfect balance, faultless form, and harmonious partnering. Send \$15 to **TRACINGS MAGAZINE**, 21 Weybosset St., Weymouth, MA 02191.

PHOTOGRAPHS from the World or European Championships (1979-1988). Available in proof-size prints. For information, please contact: Diane DeLozier, 2854 W. Roxboro Road, Atlanta, GA 30324.

THE OUTSIDE EDGE — Famous since 1991! Send for our free skating catalog: The Outside Edge, 2500 Sheridan Rd., Suite 207, Zion, IL 60099, U.S.A. Planet Earth.

SPANDEX FABRIC — All weights, types, prints, solids, stripes, Nylon and Cotton blends, firsts and closeouts. Norbrook Industries Ltd., 152 Madison Avenue, New York, New York 10016, (212) 889-2708.

ORDER NOW for Holiday Gifts: **FIGURE SKATING: CHAMPIONSHIP TECHNIQUES** by John Misha Petkevich \$10.95, **THUMBS UP! THE ELIZABETH MANLEY STORY** \$24.95, Jill Trenary **THE DAY I SKATED FOR THE GOLD** \$14.95, Brian Orser **A SKATER'S LIFE** \$19.95, **MAGIC MEMORIES ON ICE** video \$24.98. All prices plus shipping and handling. Order from USFSA Gift Shop, 20 First Street, Colorado Springs, CO 80906. 719-635-5200.

WANTED SKATING COACH — The Skating Club of Maine/Aroostook Ice Skating School is seeking applications for coaches specializing in all forms of skating; freestyle, dance, and patch. We are located in Northern Maine, close to the Canadian border, in a fast growing city. Large student base with instructions given in large, clean multi-event forum. If interested send resumé to: Aroostook Ice Skating School, c/o The Forum, Mechanic St., Presque Isle, ME 04769.

EVERYDAY LOW PRICES on boots, blades, scribes, clothing, tights, bags & accessories. Excellent service, immediate shipment. **MAJOR CREDIT CARDS ACCEPTED.** Send \$2.00 for catalog. **ON THIN ICE, 2737 TWELVE MILE ROAD, BERKLEY, MI 48072. 313-543-1130.**

MUSIC FOR ICE DANCING, Otto Memorial Library. Custom cassettes. Solo practice, single dance, programmed dance cassettes with numerous contemporary arrangements. Write or call (713-975-6557) for flyers. **OML-Iceland FSC, P.O. Box 37334, Houston, TX 77237-7334.**

SKATING DRESS PATTERNS: Step-in Dress Pattern for Lycra/Spandex: Girls OR Ladies size S4-6, M8-10, L12-14 \$6.00 ea. Multi-size Pattern w/diff skirts, sleeves, necklines — Girls 4-12 OR Ladies 4-14 \$10.00 ea. Book of 160 patterns for beading, embroidery, and rhinestone work. \$14.95 ea. Send Check/M.O. to: **RENATE PAYNE, P.O. Box 18076, Denver, CO 80218-0076. (303) 424-7662.**

PICTURES, MEDALS, AND OVERFLOWING DRAWERS? Beautiful 11x14 oak finish **SHADOW BOX,** displays 5x7 photo and 3" medal. Select rose, light blue, or beige mat with black velvet background; vertical or horizontal photo. Other photo sizes, medals only, custom mats and finishes available. Send \$32.95 plus \$2.00 shipping to Rachel Napear, 3833 Delmar Avenue, San Diego, CA 92106 (619) 222-7498.

"SKATE TO WIN" Illustrated book with tips to competitors on how to stand out from the crowd, what judges are looking for, and how to prepare for competition including hints on figures, jumps, spins, choreography. Send \$15 to Tracings, 21 Weybosset St., Weymouth, MA 02191.

PRISM SEQUINS! Jewels, Beaded Fringes, Sequined appliques, Feathers, Lycras, glissennette, lamés, Doubleknit, Superstretch, etc. For catalog send \$3.50. **MURIELLE ROY & CO., 67 Platts Mill Rd., Dpt. #2, Naugatuck, CT 06770. (203) 729-0480.**

SATIN STITCHES — CUSTOM DESIGNED COSTUMES! We specialize in the finest quality available for precision teams & soloists. We've been custom-designing costumes for twelve years. **SATIN STITCHES, 11894 Reisling Blvd. NW, Coon Rapids, MN 55433, 1-800-48SATIN.**

SKATING JEWELRY FOR CLUBS, competitions, rinks, and camps. Gorgeous non-dangling earrings, pendants, and bracelets. Custom cloisonné enameled club pins, (your design). For brochure write to **SKATE/MATE, P.O. Box 362, Englishtown, NJ 07726.**

LYNCH'S

We'll help you look great on the ice!

We have a large selection of:

Skate Dresses	Skate Covers
Skate Laces	Boot Polish
Appliques	Rhinestones
Sequin Trims	Materials
Hats	Make Up

& Much, Much More!

**Please Send \$5.00 For Our
New 100 Page Catalog**

Catalog cost will be credited to first
order of \$25.00 or more!

LYNCH'S

**939 Howard
Dept. S.K.
Dearborn, MI 48124
1-800-24-LYNCH**





Jill Trenary
1990 Ladies World Figure
Skating Champion

**AMERICA'S FAVORITE PASTA
IS PROUD TO SPONSOR
AMERICA'S BEST SKATERS.**



Creamette pasta and figure skating are natural partners. Creamette® products provide an excellent source of complex carbohydrates which deliver long lasting energy that all athletes need. It's our honor and privilege to sponsor the United States Figure Skating Team—the greatest athletes on ice.

Laurels

Skating congratulates the following skaters who have passed USFSA tests in figures, pair, and dance. Only completed dance tests, rather than the individual dances, are recorded below.

New Test Abbreviations are as follows: PRE = Preliminary Figure; 1 = First Figure; 2 = Second Figure; 3 = Third Figure; 4 = Fourth Figure; 5 = Fifth Figure; 6 = Sixth Figure; 7 = Seventh Figure; PF = Preliminary Free; JF = Juvenile Free; IF = Intermediate Free; NF = Novice Free; JRF = Junior Free; PPR = Preliminary Pair; IPR = Intermediate Pair; NPR = Novice Pair; JPR = Junior Pair; GPR = Senior/Gold Pair; P DT = Preliminary Dance Test; PBR DT = Pre Bronze Dance Test; BR DT = Bronze Dance Test; BFD = Bronze Free Dance; PS DT = Pre Silver Dance Test; S DT = Silver Dance Test; SFD = Silver Free Dance; PG DT = Pre Gold Dance Test; G DT = Gold Dance Test; GFD = Gold Free Dance; I DT = International Dance Test; ABFI = Adult Bronze Figure; ASFI = Adult Silver Figure; AGFI = Adult Gold Figure; ABFS = Adult Bronze Free Skating; ASFS = Adult Silver Free Skating; AGFS = Adult Gold Free Skating; PBR ADT = Pre Bronze Adult Dance Test; B ADT = Bronze Adult Dance Test; ABFD = Adult Bronze Free Dance; PS ADT = Pre Silver Adult Dance Test; S ADT = Silver Adult Dance Test; PG ADT = Pre Gold Adult Dance Test; G ADT = Gold Adult Dance Test; PBR MDT = Masters Pre Bronze Dance Test; BR MDT = Masters Bronze Dance Test; PS MDT = Masters Pre Silver Dance Test; S MDT = Masters Silver Dance Test; PG MDT = Masters Pre Gold Dance Test; G MDT = Masters Gold Dance Test; I MDT = Masters International Dance Test; MBFD = Masters Bronze Free Dance; MSFD = Masters Silver Free Dance; MGFD = Masters Gold Free Dance; P SDT = Special Olympic Preliminary Dance Test; PBR SDT = Special Olympic Pre Bronze Dance Test; BR SDT = Special Olympic Bronze Dance Test; PS SDT = Special Olympic Pre Silver Dance Test.

GOLD FIGURES

Allison Hatch, Pilgrim SC; Allyson Fenlon, Rocky Mountain FSC; Angela Walchuk, Colorado SC; Carlee Wells, Atlanta FSC; Caroline Murray, Skokie Valley SC; Casey Link, Las Vegas FSC; Dawnelle Park, Washington FSC; Edmund Nestl, Champlain Valley FSC; Heather Callaghan, Flagg Pond SC; Jamy Wetzel, Rocky Mountain FSC; Janet Melville, Genesee SC; Jenifer Ostrom, Skokie Valley SC; Jennifer De Muinck, Colorado SC; Kara Welland, Colorado SC; Krissa Neathery, Lone Star FSC; Leslie Portnoy, North Shore SC; Lizzy Scully, Washington FSC; Marchelle Werner, Springfield FSC; Nicole Pelant, FSC of Rockford; Rachel Srinivasagam, SC of Mt. Lebanon; Sabrina Vora, Southport SC; Sarah Gendreau, Lakewood WC; Shannon Bryant, Tulsa FSC; Sian Matthews, Broadmoor SC; Storey Ellis, SC of Northern Virginia; Tiffany Severa, Broadmoor SC; Tommy Jasper, Skokie Valley SC.

GOLD SENIOR FREE

Carlee Wells, Atlanta FSC; Catherine Schrauff, Lone Star FSC; Cindy Ira Caraos, DuPage FSC, Damon Allen, FSC of Rockford; Danielle Proulx, Warwick Figure Skaters; Dara Steele, Atlanta FSC; Davin Grindstaff, Burnsville-Minnesota Valley FSC; Dawnelle Park, Washington FSC; Gretchen Stump, St. Paul FSC; Heather Callaghan, Flagg Pond SC; Heidi Green, Lakewood WC; Jenna Du Mond, SC of New York; Jennifer Carlson, All Year FSC; Jennifer Blount, SC of Boston; Joanna Ng, Los Angeles FSC; Jodi Weindel, Hershey FSC; Kristen Painter, SC of Lake Placid; Kristina Osten, SC of Northern Virginia; Lisa Gefsky, SC of Mt. Lebanon; Loren Weinberg, SC of Boston; Michelle Mize, Greater Evansville FSC; Natalie Thomas, Rocky Mountain FSC; Rachel Jimenez, DuPage FSC; Robyn Petroskey, Broadmoor SC; Sarah Gendreau, Lakewood WC; Shannon Bryant, Tulsa FSC; Stephanie Horn, SC of Northern Virginia; Susan Williams, Houston FSC; Tanya Pollack, Cleveland SC; Tarah Donelan, Colonial FSC; Tommy Jasper, Skokie Valley SC; Tracy Vopnford, Colorado SC; Tricia Mansfield, Colonial FSC.

GOLD PAIR

Amy Grossman, Eastern Individual Member; Jon Robinson, Stone Mountain FSC; Tracey Damigella, Broadmoor SC.

GOLD DANCE

Audrey Pawlowski, Glenwood FSC; Beata Handra, St. Moritz ISC; Bobbi Cochar, WC of Indianapolis; Christopher Fullagar, SC of Morris NJ; D. Bradley Cox, FSC of Madison; David Ody, Greater Milwaukee FSC; Dorothy

BRYAN SPORTS EVENTS

A Division of Bryan International Travel Inc.



Your One-Stop Worlds Shopping Center!



★ All-Inclusive Packages to ★
1992 Worlds • San Francisco/Oakland & 1993 Worlds • Prague
1992 Nationals

★ Hotel Accommodations & Tour Arrangements for 1992 & 1993 Worlds ★

★ Exclusive Agent for All-Event Tickets for 1993 Worlds Prague ★
for North America & Europe

Call or write today for further information.

BRYAN SPORTS EVENTS

400 S. El Camino Real, Suite 1550
San Mateo, CA 94402

Telephones:

(415) 579-0455

1-(800)-234-6432 FAX: (415) 579-0811

★ Official Agency of the 1992 & 1993 Worlds ★

Jamison, Kalamazoo FSC; Elizabeth Huff, Babson SC; Heather Ward, Glenwood FSC; Jason Tebo, SC of Boston; Jennifer Felinski, Glenwood FSC; Jennifer Jamison, Red River Valley FSC; Joy Arisman, Beaver County FSC; Kara Welland, Colorado SC; Kristen Elliott, Potsdam FSC; Kurt Dreger, Eagle River FSC; Melinda Gomes, Pittsfield FSC; Rachel Srinivasagam, SC of Mt. Lebanon; Stephanie Adler, Philadelphia SC & HS; Sung Min Jung, University of Delaware FSC; Yasmin Fatah, Skokie Valley SC.

GOLD ADULT DANCE

April Schramm, Los Angeles FSC, Barbara Smith, Pawtucket & Providence FS

GOLD FREE DANCE

D. Bradley Cox, FSC of Madison; Jonathan Stine, Broadmoor SC; Kimberly Callahan, Broadmoor SC; Kimbra Baurer, Illinois Valley FSC.

ACADEMY FSC: PRE-Lisa Ann Lange, Loni Zasadny. PF-Lindsay Thomas.

ACHILLES FSC: PRE-Hannah Thomas, Jessica Bloustein, Kelly Hourigan, Rachel Krefetz, Rebecca Cusack. 2-Erin Cooley. 4-Jennifer Hewlett. PF-Nicole De Meo. JF-Erin Cooley, Jennifer Lange, Kristen Blondin, Meg Ray. IF-Alissa Ann Coletta. NF-Jennifer Hewlett. PBR ADT-John Smith. S DT-Erin Cooley. S ADT-Sonya Soanes. PG DT-Vikki Parker. BFD-Greg Maddalone.

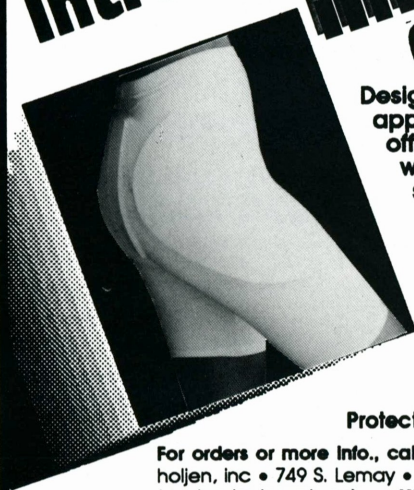
ALASKA ASSOC OF FIGURE SKATERS: PRE-Lindsey Silver, Matthew Taylor, Melissa Silver. 1-Megan Clark. 2-Chrystal Reed. 3-Dana Lindemann. PF-Lindsey Silver, Matthew Taylor, Melissa Silver. JF-Chrystal Reed. BFD-Cynthia Dankworth.

ALBUQUERQUE FSC: PRE-Nicki Scott. 1-Eric Payne. 2-Karen Moon, Laura Mann. 4-Everett Weiss, Sharon Walston. PF-Kristin Childress, Stephanie Green. IF-Melissa Cudney. PBR DT-Barbara Shepperson. BR DT-Larissa Weiss. S DT-Katherine Pulsifer.

ALEXANDRIA BAY FSC: PRE-Bethanie Beschle. BR DT-Julie Aznoe.

ALL YEAR FSC: PRE-Andrea Froehlich, Kerri McKay, Loryn Ball, Marika Decyk. 1-Julie Deutch. 3-Angela Nikodinov, Jennifer Henz, Mica Darley, Mya Zapata. 7-Jennifer Carlson, Nancy Mildengren. PF-Kerri McKay, Loryn Ball, Marika Decyk. JF-Carrie Machacek. IF-Angela Nikodinov, Jennifer Henz, Mica Darley, Mya Zapata.

Introducing **IMPACTWEAR™** Compression Shorts



Designed to be worn under regular skating apparel, **IMPACTWEAR™** Compression Shorts offer the protection and support necessary when jumping, as well as the stylish look skaters want.

- Made of lightweight, breathable fabric that conforms to the shape of your body.
- Provides hamstring compression to help prevent muscle pull or tear.
- Helps to increase circulation and reduce muscle fatigue.
- Fitted with the patented **IMPACTWEAR** hip & tailbone pads for protection when falling.
- Endorsed by top orthopedic specialists.
- Available in white only. Men's, women's & children's sizes.
- **IMPACTWEAR** lycra tights available in seven colors.

Protective Skating Apparel By

höljen
inc.

For orders or more info., call 1-303-223-8576

holjen, inc. • 749 S. Lemay • Suite A3-210 • Fort Collins, CO 80524
(pro shop inquiries welcome) ©1991 holjen, inc. all rights reserved. patent pending

JRF—Jacki Davison, Karen Kwan, Michelle Kwan. PPR—Christina Duclos. JPR—Jacki Davison. P DT—Sean O'Connor. PBR DT—Scott Gardner. I DT—Deborah Stanton.

ALPENA FSC: PBR DT—Janel Shafto. BR DT—Teresa Ann Dwyer.

ALPINE SC: 1—Christine Rodgers. 3—Lindsey Starck. JF—Christine Rodgers. IF—Lindsey Starck. PBR DT—Kathleen Vallow.

AMHERST SC: 1—Cynthia Rudin, Kallie Speller, Katherine Maxson, Lisa De Perio. 2—Jill Schneggenburger. 3—Heather Ehre. JRF—Heidi Brounshidle. P DT—Kristen Oehrich, Lauren Alessi, Robert Kossack, Sonya Chaplinsky. PBR DT—Kallie Speller. BR DT—Victor Ehre III.

SC OF AMHERST: 1—Gillian Howland. 2—Lucia Green-Weiskel. 4—Alecia Davis. PF—Marjorie Love. IF—Beth Ann Doherty, Heidi Weiskel, Laura Danielson.

ANCHORAGE FSC: PRE—Jennifer Sanders. 1—Angela Munoz, Chandra Allen, Crystal Raskey. 3—Megan Hatswell, Sydne Vogel. 4—Heidi Anderson, Melanie Faber. 5—Kristina Hunsaker. PF—Jennifer Sanders. IF—Megan Hatswell, Sarah Devereaux.

ANN ARBOR FSC: 6—Deanna Kremkow.

ARCTIC BLADES FSC: PRE—Paul Kimzey, Peter Kimzey. 2—Adam James Swift III, Stephanie Hom. 3—Tiffany Bailey. 4—Jacquie Turner, Peter Kongkasem, Rebecca Long, Sonia Kim, Stacy Trimboli. 5—Necia Krueger. 6—Laura Petzoldt, Shantelle Westbrook. PF—Paul Kimzey, Peter Kimzey. JF—Stephanie Hom. IF—Tiffany Bailey. NF—Jacquie Turner, Mary Firpo, Peter Kongkasem, Rebecca Long, Sonia Kim, Stacy Trimboli. JRF—Shantelle Westbrook. P DT—Chrissy Hinsley, Necia Krueger. PBR DT—Necia Krueger, Rebecca Long. BR DT—Jessica Koslow. S DT—Kristina Carlew.

ARIZONA FSC: ABFS—Jana Eth. P DT—Katherine Fee, Sarah Hansen. PBR DT—Melissa Mahon. S DT—Jonathan Magalnick, Kara Thornham. PG DT—Lucinda Day.

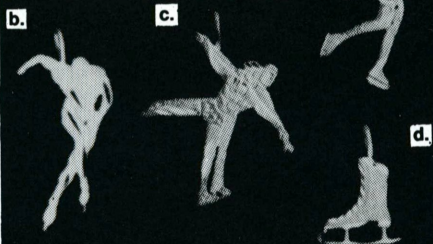
ARROWHEAD FSC: PRE—Carrie O'Connor, Monique Page. 1—Laura Wishart. 2—Bridget Proffitt, Kristen Morgan. PF—Carrie O'Connor, Monique Page. JF—Bridget Proffitt, Kristen Morgan.

ASPEN SC: PRE—Ashley Arrasmith. 1—Alexandra Davies. 4—Greta Cate Gessele. PF—Ashley Arrasmith. JF—Gary Sharkey.

ATLANTA FSC: PRE—Neda Ghanei, Olivia Nigh, Pasha Ghanei. 2—Heather Epstein. 3—Ju Jeung. 4—Laura Austin-Hashimoto. 7—Caryn Clyne. PF—Neda Ghanei, Olivia Nigh, Pasha Ghanei. JF—Katie Petlovany. IF—Ju Jeung. NF—Kendall Duncan, Laura Austin-Hashimoto. PBR DT—Grant Leslie. PBR ADT—Sharon Hyre. BR DT—Jennifer Taylor. PG DT—Pauline Kiessling. BFD—Heather Hyatt.

AUSTIN FSC: PRE—Claire Rybiski, Kimberly Swift, Nicole Klassen. 1—Clair Young. PF—Kimberly Swift, Nicole Klassen. IF—Bea Tran. ASFS—Gene Broadwater. PBR DT—Amber Barker.

14 KT. GOLD PENDANTS & CHARMS



shown actual size

- a. Layback Spin — \$19
- b. Speed Skater — \$19
- c. Pairs Spiral — \$24
- d. Skate — \$15

14 kt. gold rope chains
Lightweight, 16" - \$17, 18" - \$19
Medium Weight, 18" - \$49

add \$3.00 per order for shipping, handling & insurance
Visa, Mastercard, Check or Money Order

SPORTS JEWELRY, etc.

71 River Rd., Bow, NH 03304 • 603-224-2154

IT'S HERE!

PROGRAM MUSIC

Written & recorded exclusively for ice skating. With a wide variety of styles for your routines—from classical to rock, tropical to jazz and back again—there's nothing routine about it...

ORIGINAL PROGRAMS

TAPE A Novice Singles

6 programs per tape (max. 2:15)\$11.95

TAPE B Jr. & Sr. Singles/Pairs

6 programs per tape (max. 2:40)\$11.95

FREE SKATING & FREE DANCING

TAPE C 8 - 2 min. programs\$11.95

TAPE D 6 - 2.5 min. programs\$11.95

TAPE E 6 - 3 min. programs\$12.95

TAPE F 4 - 3.5 min. programs\$12.95

TAPE G 4 - 4 min. programs\$13.95

TAPE H 4 - 4.5 min. programs\$13.95

Please specify which tape(s) when ordering. Add \$2 s/h per tape. CA res. add sales tax.

Send check or money order to:

T & T PRODUCTIONS

P.O. Box 2145 • Corona, CA 91718



BABSON SC: PRE—Emi Iwamoto. 1—Allison Lewin, Cle Lyra Franklin, Jesse Green, Katie Cocks. PF—Caralin Houlihan, Cristin Houlihan, Emi Iwamoto. JF—Caitlin Houlihan, Elizabeth Reiber, Nicole Greene. IF—Nicole Richmond. PBR DT—Jason Coleman. PS DT—Rachel Postman. PS ADT—Kathy Kirchner. S ADT—Juliana Dupre.

BALTIMORE FSC: JF—Kimberly Waldhauser. PG DT—Alice Martin. BFD—Jayna Cronin. SFD—Alice Martin.

BAY PATH FSC: PRE—Mary Dussault. 1—Karen Lynch. PF—Mary Dussault.

BEAVER COUNTY FSC: 3—Lindsay Reed, Rebecca Ortenzio. PS DT—Rebecca Ortenzio.

BEAVER DAM WINTER SPORTS CLUB: PF—Jamie Fox. PS ADT—Candice Benjamin.

BEMIDJI FSC: PBR DT—Katie Erickson. BR DT—Bonnie Johnson. PS DT—Erin O'Keefe, Jessica Sundrud.

BERKLEY ROYAL BLADES FSC: 1—Teddy Mysliborski.

BIRMINGHAM FSC: 3—Charles Bernhard IV. S DT—Jan Smith. BFD—Charles Bernhard IV.

BISMARCK FSC: PRE—Andrea Nagel, Christie Nagel, Stephanie Eckland. PF—Andrea Nagel, Christie Nagel, Stephanie Eckland. P DT—Andrea Nagel, Christie Nagel, Melissa Schmidt, Stephanie Eckland. PBR DT—Andrea Nagel, Christie Nagel. PG DT—Dana Dwyer, Jennifer Keller.

BLACK RIVER FALLS FSC: PRE—Andrea Olsher, Cherish Hansen. PF—Andrea Olsher, Cherish Hansen.

BLADE & EDGE FSC OF OMAHA: PRE—Elizabeth Quinlan. 1—Kelda Vopnford, Teresa Bell. 2—Rachel Suarez. 3—Kathryn Deicke. PF—Elizabeth Quinlan. JF—Lori Ramspott. IF—Kathryn Deicke. P DT—Dena Gourley, Elizabeth Quinlan, Sabrina Lakin, Sara Lumb. PS DT—Sarah Stach.

FSC OF BLOOMINGTON: PRE—Chrysa Otto, Matt Wesenberg. 1—Leah Micheletti. PF—Chrysa Otto, Matt Wesenberg. IF—Heather Johnson. NF—Terri Tesser.

BOLTON FSC: PRE—Jennifer Lee. PF—Jennifer Lee.

BORDER BLADES FSC: PRE—Katherine Mihulka. 1—Jennifer Demaine, Kelly Bethke, Krystin Tarp. PF—Christine Norgren, Karie Lien, Katherine Mihulka. JF—Kristin Lien. P DT—Christine Norgren, Jennifer Rice, Karie Lien, Katherine Mihulka, Krystin Tarp. PBR DT—Jennifer Demaine, Katie Melland, Kelly Bethke.

SC OF BOSTON: PF—Kristin Griffin. NF—Anneliese Stephenson. JRF—Bethany Quintin, Kristen Maclean. PPR—Brandon Forsyth. P DT—Karin Black. PS DT—Paul Frey.

BOWIE FSC: 5—April Gottsagen. PBR DT—Katherine Sanpere. BR DT—Jessica Bunting.

BOWLING GREEN SC: PRE—Catherine Stark, Jennifer Sanka, Kelley Fisher. 1—Amanda Andrysiak, Heather Bobel, Kelly Grimm. ABFS—Cathy Carrigan. P DT—Alyson Zimmerman, Jennifer Sanka, Meredith Piersol. PBR DT—Adrean Ware, Stefanie Lopez. BR DT—Bridie Myles, Chrissy Wolfe, Kelly Grimm.

BRAEMAR-CITY OF LAKES FSC: PRE—Casaundra Brown, Dann Krueger, Michael Cuniff, Sara Popkin. 1—Cherrina Chatham. 2—Ann Rae Cuniff, Chauncey Herman, Salome Castro. 3—Hilary Tansey. 4—Genevieve Fridlund, Kellie Dean. 7—Laura Mitchell. PF—Dann Krueger, Sara Popkin. JF—Amy Alt. JPR—Todd Price. P DT—

SKATERS' LUGGAGE TAGS

BERNICE WEBER
1234 LAKEWOOD
DETROIT, MI 48236
USA (313) 555-1234

1-1/4" x 2-1/2"

You'll love these engraved gold satin brass luggage tags for yourself or as a great gift. Each tag comes with a sturdy ball chain that will fit any piece of luggage. \$9.95 ea. 2 or more tags with same address \$7.95 ea. Add \$3.00 for shipping & handling. Send check or money order along with information as pictured on above tag to:

La Belle Fabrique
1119 Harrison Blvd.
Lincoln Park, MI 48146
(313) 381-4333



Foundation for International Ice Skating Advancement

Do you dream of someday winning the gold? Fulfilling your ultimate dream to be the greatest skater in the world?

The **Foundation for International Ice Skating Advancement** was established to help you realize such goals and achieve your dreams.

Established in 1983, the **FIISA** is committed to raising money to fund Scholarships for your skaters who show potential and talent on the ice. Each year the number of Scholarship recipients grows as support for the **FIISA** becomes stronger.

Last year, six Scholarship recipients went to National competition. Next year . . . this could be you!

You may be eligible for a scholarship from the **Foundation for International Ice Skating Advancement**.

Call or write today for more information:
**FOUNDATION FOR INTERNATIONAL
ICE SKATING ADVANCEMENT**

P.O. Box 13166
Palm Desert, CA 92255-3166
Tel: (619) 398-2010

Erin Wicklund, Gina Gambucci, Katie Steinke, Lindsay Halleckson. PBR DT-Elizabeth Rockwell. BR DT-Ann Rae Cunniff, Devon Hensel, Hilary Tansey. SFD-John Reppucci, Nicole Dumonceaux.

BRATTLEBORO FSC: PRE-Julie Zelenakas.

BRENTWOOD FSC: PRE-Renee Montes, Sarah Curl. PF-Lynn Roseberry, Renee Montes, Sarah Curl. JF-Aiko Amen, Tina Coan. IF-Jean Trask. NF-Sheryl Vogt.

BRIDGEPORT SC: 1-Wendy Schimanskey. IF-Margaret Szadeczyk.

BROADMOOR SC: PRE-Jessica Steinkopf. 1-Ariel Elle Surdyka, Davin Anderson. 2-Kajsa Anderson, Lori Ann Phipps. 3-Sarah McClenahan. 4-Kathleen Martin, Laura Holtzman, Melissa Jimenez, Natalie Granger, Sarah Buhler. 7-Eric Ryan Bohnstedt. PF-Bernice Harris, Gerald Harris, Jennifer Somora. JF-Jessica Steinkopf. IF-Kelly Komadoski, Sarah McClenahan. NF-Kathleen Martin, Melissa Jimenez. JRF-Kristin Link, Melissa Getrost. JPR-Benjamin Oberman. PBR DT-Kelly Ann Trent.

BROOKLYN FSC OF OHIO: P DT-Kimberly Torino. PBR DT-Victoria Haber.

SC OF BRUNSWICK: PRE-Melissa Perry. PF-Molly Perry. P DT-Aaron Dyer Despres, Eleanor Newman. BR DT-Nicole Soucie. S DT-Julia Rentz.

SC OF BUCKS COUNTY: 1-Megan Sullivan.

BUFFALO SC: JF-Jennifer Frankiewicz.

BURNSVILLE-MINNESOTA VALLEY FSC: PRE-Cassie Glover, Kelly Ann Gabe. 1-Holly Speiker, Jennifer Rice, Jennifer Davis, Katherine Hatch, Molly Bullis, Tami Trenter, Tara Ponder. 2-Sarah Stenson. 3-Steven Kirby. PF-Cassie Glover, Kelly Ann Gabe. JF-Sarah Stenson.

CAMILLUS FSC: PRE-Lindsay Carr. 1-Sarah Rayo. PF-Sarah Ross. PBR DT-Maria Perrone. BR DT-Lindsay Carr, Sarah Ross. S DT-Kim Rayo.

CANTIAGUE FSC: PRE-Cary Jamieson. 1-Carol Martens. 2-Stacy Arnold. PF-Carol Martens, Cary Jamieson. JRF-Robin Heckler. PPR-Robin Heckler. PBR DT-Carol Martens.

CAPE COD SC: PRE-Melissa Siscoe, Nicole Provitola, Wendy Sugg. 1-Sarah Grimes. PF-Stephanie Wolff. JF-Sarah Grimes. ABFI-Heather Bassett. ABFS-Heather Bassett. ASFS-Heather Bassett.

CAROUSEL FSC: PRE-Erin Speck, Laurian Engels. 1-Amanda Swanson. 3-Jacqui Tucker. PF-Erin Speck, Laurian Engels. JF-Amy Volk, Krissy Van Natta. NF-Lomi Suttner. JRF-Karyn Morrison. P DT-Kaili Carlton. PBR DT-Kaili Carlton, Krissy Van Natta. BR DT-Richard Verburg Jr.

CENTENNIAL SC: PRE-Ann Pat McDonough. 2-Heather Dunn, Lindsay Nici. JF-Lindsay Nici.

Get More For Your Award Dollars With CROWN Medals, Trophies and Plaques



2 1/4" SOLID DIECAST MEDAL

You can award
the finest medals for

only **99¢** ea.

FREE 30" NECK RIBBON

10-99 \$1.79
100-499 \$1.49
500-999 \$1.39
1000 & up... \$.99

2" Custom
Diecast Medals
Starting at

**Only
\$1.49** ▶

FREE NECK
RIBBON!

CROWN TROPHY
INCORPORATED

1 Odell Plaza, Dept. SK1Y, Yonkers, NY
800-227-1557 In NY 914-963-0005



Limited Edition 14K GOLD PIN

\$195 plus \$5 shipping & insurance.

Each piece
is numbered
and comes
with a
certificate of
verification,
signed by
the Artist.



Also
available in
sterling sil-
ver.
(unlimited)
Illustration
is 1/3 actual
size.

modeled by

Kathleen Kelly

international competitor
from ~

Devitt Studios

HCR-1, BOX 11A, JAY, N.Y. 518/946-7238

WRITE OR CALL FOR BROCHURE

✱ in N.Y. State add 7 percent tax

CHAMPLAIN VALLEY FSC: PF-Jessica Asetline, Rachel Steward. PS DT-Carrie Knauer, Jillian Geiss.

CHARLESTON FSC: 1-Amanda Taylor. P DT-Katherine Farias.

CHARTER OAK FSC: 1-Melissa Stroebel. PF-Devon Greyson, Melissa Stroebel. JF-Karen Green. BFD-Garrett Brockert.

CHEVY CHASE CLUB: 1-Julie Welk, Torrey Stifel. 2-Courtney Cass. JF-Courtney Cass.

CHICAGO FSC: PRE-Dione Spiteri, Elizabeth Loza, Stacy Costales, Stephanie Katz, Tracey Leaf. 1-Amy Sider, Ashley Malone, Ashley Ratliff, Jennifer Juul, Kelly Voit, Renee Roux. 3-Jennifer McCowan. 4-Julie Bartnick, Kate Insolia. 6-Kevin Donovan. PF-Ali Goler, Beverly Thurber, Dione Spiteri, Elizabeth Loza, Stacy Costales, Stephanie Katz, Tracey Leaf. JF-Ashley Ratliff. JRF-Kevin Donovan.

CHISHOLM SC: 1-Melanie Banal.

CHRISTMAS BROOK FSC: PRE-Briana Kassin. PF-Briana Kassin, Jenna Cece. JF-Julie Sarrouf.

CLAYTON FSC: PRE-Jennifer Florek. BR DT-Anna Warden. PS DT-Erin Vieau.

CLEVELAND SC: PRE-Sarah Van Aken. 2-Kerry Klement. PF-Kathryn Rice, Sarah Van Aken. JF-Kerry Klement. P DT-Margot Russo.

CLINTON FSC: PF-Jay Serrano. PBR DT-Jay Serrano.

COLONIAL FSC: PRE-Charlene Johnson, Danielle Lussier, Danielle Lussier, Keri VerSchure, 1-Amanda Enos, Beth Moloney, Erin Williams, Jemila Mermay, Kate Mary Hannafin, Kristi Marshall, Kristine Padilla, Lindsay Rich, Molly Ann Ziolkowski, Suzi Carr. 2-Andrew Eckard, Gina Corrado, Jessica Tyler, Lyric Morgan-O'Connor. 3-Abigail Rink. 4-Amy D'Entremont, K. Sooki Danosky, Maudy Kalangie. 6-Elise Roberts, Jessica Prince. PF-Alexandra Connor, Beth Moloney, Charlene Johnson, Keri VerSchure, Liesl Finn, Suzi Carr. JF-Andrew Eckard, Kate Mary Hannafin, Kristi Marshall, Lyric Morgan-O'Connor, Shaina Lannon, Tara Brennan. IF-Marisa Tennaro. NF-Dana Walczak, Maudy Kalangie, Natalia Kedves. JRF-Hannah Shallice, Melanie Lambert, Nathan Hutchins. IPR-Joseph LeMay, Liesl Finn. PBR DT-Heather Tarvin. PG DT-Tarah Donelan.

COLONIAL SC OF NJ: PRE-Jennifer Alvarez. 1-Marilyn Harris. 6-Nicole Weiss. PF-Andrea Weisbein, Candice Harris, Melissa Gomez, Michelle Pincus. P DT-Christina Redante. PBR DT-Allison Nichols.

COLORADO SC: PRE-Bonny Cole. 1-Kelly Ann Heaney. 2-Christy Zenner, Kasey Koch. 3-Kimberly Berry. 4-Ilana Goldfogel, James Yoo. 5-Jillaine Hutchings, Katie Thompson. 6-Maureena Ollendorf. PF-Bonny Cole. IF-Kimberly Berry. NF-James Yoo. JRF-Maureena Ollendorf.

UNIVERSITY OF COLORADO: PS DT-Amanda Jones.

COLUMBIA FSC (MD): 4-Jamie Smith. JRF-Julie Peacock.

COLUMBINE FSC: PRE-Helena Preiss, Kelley Avery, Lindsay Dalton. 2-Gia Rintala. PF-Lindsay Dalton. JF-Gia Rintala, Helena Preiss, Jamie Johnson, Tobi Nicholas.

BRS Rink TURBOCHILLER

**SIMPLY THE MOST
EFFICIENT
REFRIGERATION
SYSTEM IN THE ICE
RINK INDUSTRY**

**WE CERTIFY OUR CLAIMS WITH
ENGINEERING DOCUMENTATION!
800-428-7539**

Burley's Rink
S U P P L Y I N C

P.O. Box 250 • 1 School Street • Salix, PA 15952-0250
814-487-7666 • 1-800-428-7539

Orchestral **ICE DANCE MUSIC**

GREAT MUSIC FOR
THE COMPULSORY
DANCES THAT WILL
MAKE YOU WANT
TO DANCE ★ CALL

(212) 873-2307

FOR A FREE
CATALOG OR
WRITE.

ORDER
OUR
SPECIAL
HOLIDAY
PROGRAM
DANCE
TAPES
NOW.



MILDSM

Manhattan Library of Dance Skating Music, Inc.

Suite 348, 163 Amsterdam Avenue

New York, NY 10023 • Fax/Phone: 212-873-2307

COLUMBUS FSC: PRE-Erich Walentschak, Jane Rini. 2-Deborah McNamara, Julie Macklin. ABFI-Diane Huston. ABFS-Mary Hiser. ASFS-Diane Huston, Svetlana Khodorkousky. PPR-Erich Walentschak, Laura Kersell. P DT-Ginger Hassler, Michael Sklutovsky. PBR DT-Michael Sklutovsky. S DT-Margot Kagan. ABFD-Julie Macklin. **COMMONWEALTH FSC:** PRE-Amanda Balcus, Danielle Lucchesi. 1-Marianne Powers, Mihisha Henderson. **CONEJO VALLEY FSC:** 2-Samantha Froude. 3-Denise Buss, Stephanie Anderson. 4-Sarah Pitlak. 7-Amanda Moore. JF-Natalie Nessen, Samantha Froude. IF-Denise Buss, Stephanie Anderson.

CORTLAND FSC: PF-Tara Dippolito.

COTTONWOOD HEIGHTS FSC: 4-Debbie Zahniser, Dustin Bruening, Lucas Turner. IF-Liz Emery, Rachael Zahniser. NF-Debbie Zahniser. S DT-Pilarr Parkinson.

CREVE COEUR FSC: PRE-Emily Fuleihan, Jae Anne Rayburn, Mandy Deimund, Megan Wilson, Rachel Johannes, Sarah Williamson. 1-Erica Gustavsen, Rachel Johannes, Shelby McCoy. 2-Christina Vitale, Kerri Ann Shipley, Kristine Lyons, Sadie Neralich, Sarah Booth, Wesley Grabel. 5-Matthew Buttrey, Taryn Collins. PF-Emily Fuleihan, Jae Anne Rayburn, Mandy Deimund, Megan Wilson, Rachel Johannes, Sarah Williamson. JF-Joy Miller, Sarah Booth. IF-Christi Harriman, Karen Brown, Sadie Neralich, Stephanie Flaten. NF-Sadie Neralich. NPR-Matthew Buttrey, Sarah Booth. P DT-Jill Johnson, Kristine Lyons. BR DT-Christina Vitale. PS DT-Sadie Neralich.

DALLAS FSC: PRE-Hannah Jayroe, Jason Tovar, Katherine Jayroe, Melody Guerra, Taunya Peper. 1-Michelle Ahbe. 3-Jennifer Peninger. JF-Jane Aldred. IF-Jennifer Peninger, Kelby Renfro, Sarah Delvalle. P DT-Kelby Renfro, Kristyn Starr. PBR DT-Erin Williams, Matthew Guggenheim, Tracy Borchering. BFD-Jaime Stevens.

DARIEN SC OF SOUTHERN CT: 1-Amanda Ceci, Jocelyn Vento. P DT-Frank Callahan.

SC AT DARTMOUTH: P DT-Emily Schaller, Lydia Sachs.

DENVER FSC: PRE-Brandon Cavender, Karen Key, Kimberly Key, Krista Bozinski, Robert Weber, Sierra Boggess. 1-Kristen Barton, Valerie Loewen. 2-Candi Warren, Courtney Cadice. 4-Cassy Papajohn, Stephanie Sinclair. 5-Cassy Papajohn, Stephanie Sinclair. 6-Ashley Clarke. PF-Brandon Cavender, Karen Key, Kimberly Key, Krista Bozinski, Robert Weber, Sierra Boggess. NF-Amber Keeney, Cassy Papajohn, Jennifer Patterson, Stephanie Sinclair. JRF-Hilary Burns. ABFI-Paula Pence. ABFS-Paula Pence. ASFS-Paula Pence. P DT-Leah Hardy, Robert Weber. PBR DT-Edward Weber. B ADT-Paula Pence. PS DT-Jonathan Oldham.

DEPERE FSC: PRE-Briana Constance, Jessica Mariucci.

DES MOINES FSC: PRE-Kelli Fees. PF-Kelli Fees. P DT-Carrie Fees, Kara Marks, Kelli Fees.

DETROIT SC: PRE-Allison Elenbaas, Erika Vader, Julie Szwed, Lisa Polvi, Veronica Shpilband. 1-Anna Berry, Cheryl Hackett. 2-Joanna Bonsignore, Kristin Gould. 4-Wendy Brundirks. 7-Carla Caputo. PF-Allison Elenbaas,



Let Our "Sonja" Bear Skate Into Your Heart

\$19.95
+ shpg. & hdlg.

Colors: White,
pink, blue, orchid,
metallic gold, red,
hot pink, silver.

Our 10" bear comes with stand and is dressed in
your choice of costume color.

Make checks payable to: **Merry Bears & Hares**

• PO Box 352 • Franklin Lakes, NJ 07417

(201) 670-4640

Style#	Quan.	Color	Price	Shpg.	Total
2024	_____	_____	19.95	2.75	_____
2024	_____	_____	19.95	2.75	_____

N.J. Residents add 7% Tax

Name _____ Tel: () _____

Street Address _____

City _____ State _____ Zip _____

MC/Visa # _____ Exp. Date: _____

Signature _____ Allow 3 weeks for delivery.



AIRLINE DISCOUNTS NOW AVAILABLE FOR ALL NATIONAL AND WORLD CHAMPIONSHIPS!

*Save money on all your
Individual Competition Needs*

**Call Cindi Graham at
800-821-2714**

Serving the Amateur Sports Community
for over 40 years

409 N. Tejon
Colorado Springs, CO 80903
(719) 635-3511

Erika Vader, Julie Szwed, Kristin Lingemann, Lisa Polvi. JF-Jean Whitney, Joanna Bonsignore, Kristin Gould, Kyle Jones, Mary Whitney. IF-Holly Cook, Kelly Kmit. NF-Theresa Franco. JRF-Christine Vandermissen, Meg Paterson. P DT-Amy Potoniec, Anna Berry, Arianna Gordon, Cynthia Schankin, Erin Roberts, Jamie Klingler, Kathryn Rzeppa, Patricia Brundirks. PBR DT-Amy Potoniec, Andrea Riley, Cynthia Schankin, Debra Davis, Jessica Joseph, Kathryn Rzeppa, Lisa Berlenbach. BR DT-Amy Potoniec, Kimberley Steffey, Lindsey Magas, Mary Whitney, Stephanie Miller, Stephanie Miller. S DT-Eve Chalom, Kelly Kmit, Michael Kawamoto. BFD-Eve Chalom, Eve Martin, Jerry Skinner.

DIAMOND EDGE FSC: PRE-Lisa Nesuda, Mary Helen Turney. 1-Rachel Elam. 2-Maryann Jackson. 4-Kerry Hill. PF-Lisa Nesuda. JF-Oc Owey. IF-Jamie Sandusky. NF-Kerry Hill. P DT-Ashley Dicus, Lisa Nesuda, Oc Owey. PBR DT-Jennifer Freeman, Oc Owey. BR DT-Brittany Harthcock, Carrie Runyan.

DULUTH FSC: 3-Kari Barbo. IF-Kari Barbo, Nicole Crassweller, Sarah Frost.

DUPAGE FSC: PRE-Alison Brown, Alison Neumann, Andrea Van Rengen, Anne Luebke, Becky Jo Goldyn, Christina Franz, Christine Kloepper, Danielle Isaacson, Darci Phillips, Emily Swiatek, Eric Leser, Holly Hepker, Jessica Morris, Joan Martinelli, Kathleen Conroy, Kylie Gustafson, Laura Pope, Lisa Gadwood, Megan Kosman, Meghan Harrison, Melissa Avanesian, Monica Walsh, Ruth Moser, Shelley Zarembo. 1-Alison Scanlan, Carol Kiely, Casey Solberg, Christina Barthel, Courtney Karas, Erin Pheanis, Katie Bobyk, Kimm Buettner, Kristin Mackey, Megan Loughlin, Michael Hopkins, Michelle Clem, Nicole Arnoux, Nina Siromaskul, Ursula Baldoceda, Vitas Plioplys. 2-Aaron Parchem, Blanca Baldoceda, Jaime Lynn Martino, James Shuford, Jessica Scanlan, Larry Frisk, Laura Caligiuri, Regan Behn, Tanya Sinclair. 3-Aaron Parchem, Aimee Martin, Amanda Ocon, Chanel Paulsen, Cherie Strzelecki, Chaynee Rohde, Cherie Strzelecki, Sonia Nehrlich. 4-Alexandra Beinbauer, Angela Mui, Emmy Yoshimura, Jennifer Eastman, Joanne Recometa, Sherrie Ballantine, Suzie Janossy. 5-Jaime Kalnicky. 6-Christine Calayag, Heidi Segert, Kathryn Moser. 7-Cindy Ira Caraos, Erin Moorad. PF-Alison Brown, Andrea Van Rengen, Anne Luebke, Becky Jo Goldyn, Christina Franz, Christine Kloepper, Clare Salustro, Danielle Isaacson, Darci Phillips, Eric Leser, Holly Hepker, Jessica Morris, Joan Martinelli, Kylie Gustafson, Laura Pope, Lisa Gadwood, Megan Kosman, Meghan Harrison, Monica Walsh, Ruth Moser, Shelley Zarembo, Tracy Green. JF-Anbritt Stengele, Betty Schilke DVM, Blanca Baldoceda, Brian Kureja, Gina Migliorese, Jacqueline Blue, Jaime Lynn Martino, Jennifer Blue, John Lee, Kelly Moran, Larry Frisk, Laura Caligiuri, Regan Behn, Tanya Sinclair, Ursula Baldoceda, Vitas Plioplys. IF-Aaron Parchem, Aimee Martin, Amanda Ocon, Chanel Paulsen, Cherie Strzelecki, Dana Levy, Jacqueline Blue, Jennifer Blue, Sonia Nehrlich, Vivian Livanos. NF-Alissa Levy, Emmy Yoshimura, Ey Die Rallos, Jacqueline Blue, Jennifer Blue, Jennifer Eastman, Joanne Recometa, Natalie Webb, Sherrie Ballantine, Suzie Janossy. JRF-Erin Moorad, Jacqueline Blue, Jennifer Blue, Michelle Voracka, Rachel Jimenez. ABFS-Linda Brewer. ASFS-Betty Schilke DVM, Linda Brewer. PPR-Michelle Riccio, Vitas Plioplys. IPR-Michael Kazarian. BR DT-Amber Wiener, Amber Wiener.

EAGLE RIVER FSC: PRE–Kathleen Kreul, Kristin Grigus, Melissa Graves, Stephanie Bauer, Sylvia Bonson. 1–Cara Nasi, Holly Gilbertson, Kari Leveille, Kathleen Kreul. 2–Jacquelyn Siegiej, Kurt Dreger. 5–Trina Kaczmarek. PF–Kathleen Kreul, Mary Ann Kmetz, Tura Glover. IF–Susan Nackers. NF–Sue Jacobson. P DT–Amy Beth Stoegbauer, Emily Miller, Joshua Saykally, Mara Peckman, Mary Ann Kmetz, Natalie Brandt, Rachel Bonson, Tura Glover. PBR DT–Chiana Loreti, Kristin Grigus, Melissa Graves, Patricia Mehr, Sylvia Bonson, Tricia Winkquist. BR DT–Jennifer Alward, Jenny Routheaux. PS DT–Melissa Kirsteatter. PS ADT–Gale Fisher. PG DT–Jacquelyn Siegiej. BFD–Michelle Renberg.

EAU CLAIRE FSC: PRE–Bridget Schimmel, Kaela Wold, Karla Geissler, Katie Geissler. 2–Amy Kirchner, Lindsey Moore, Luke Rose. 6–Becky Sternaman. PF–Alexa Halford, Amanda Bennington, Bridget Schimmel, Kaela Wold, Karla Geissler, Katie Cooney, Katie Geissler. JF–Lindsey Moore, Luke Rose. IF–Celena Smith, Nicole Soper. JRF–Becky Sternaman.

EDEN PRAIRIE FSC: PRE–Frances Kern, Jennifer Westmeyer, Laura Lee Lentner. 3–Jo Anna Deeter. PF–Frances Kern, Jennifer Westmeyer, Laura Lee Lentner.

ESCANABA AREA FSC: 2–Gretchen Larson. PF–Pam Grenier. P DT–Megan Pairolo, Pam Grenier. PBR DT–Jesse Cretens. BR DT–Lesley Peltin. PS DT–Elizabeth Venne.

ESSEX SC OF NJ: PRE–Abbie Kramer. 1–Kristoffer McKay. 7–Stephanie Humbert. PF–Abbie Kramer. JF–Allyson Rogers, Bess Feinsod, Jennifer McKay, Sharon Cogan. IF–Tanya Silva. P DT–Bess Feinsod. PBR DT–Danielle McKay. PS DT–Kristoffer McKay. S DT–Tanya Silva.

EUCLID BLADE & EDGE CLUB: 2–Rebecca Hatchadorian. 4–Gwen Cherne. PF–Maryann Colvin. JF–Elizabeth Steck.

EUGENE FSC: P DT–Juanita Manley, Lucinda Jensen, Stephen Sisson, Tara Kemp. PBR DT–Carol Whitehead, Lucinda Jensen.

EVANSTON FSC: S ADT–Joni Tuke.

FAIRBANKS FSC: 2–Sheena Brady. JF–Sheena Brady.

FALMOUTH FSC: PRE–Meghan Wheldon. 5–Allyson Foley. PF–Crystal Peters, Shanai Pires.

FERGUS FALLS SC: PRE–Erin McCallum. IF–Jessica Brimhall. P DT–Erin McCallum. PBR DT–Jessica Brimhall, Kara Axell.

FLAG POND SC: 1–Tiffany Archambault. 4–Jennifer Hunt.

FLINT 4 SEASONS SKATE CLUB: PRE–Angela French, Jaime O'Blenis, Jill Werschky. 1–Michelle Chambers, Toni Wright. PF–Angela French, Jaime O'Blenis, Jill Werschky.

SC OF FLORIDA: 2–Melissa Garrity. 3–Jennifer Joh. PF–Jesenia Ruiz de la Torr. JF–Lidia Schroeder, Melissa Garrity. IF–Jennifer Joh. ABFS–Mark Palermo, Robyn Levin. P DT–Julie Schroeder. PBR DT–Genie Amelung. S DT–Danielle Hartman.

ISC OF FORT COLLINS: PRE–Andrew Singleton, Kristin Terry, Mikyo Andresen. 1–Amber Donley, Anna Freemyer, Kendra Hartmann. 2–Alissa Hartmann. 3–Carrie Grundleger, Julee Majors. 4–Jennifer Visocky. PF–Kelli Smith, Keriann Gore, Mikyo Andresen, Molly McNaught. JF–Erin Botcher, Tara Lee Walling. IF–Carrie Grundleger, Julee Majors. NF–Jennifer Visocky. PBR ADT–Kathy Kuba.

FORT WAYNE ISC: PS DT–Jennifer Page.

FRASER FSC: PRE–Christina Polychronou, Jessica Miller. 1–Cori Chase, Kristy Leachman, Shauna Burd, Stephanie Miller. 2–Lindsay Ronayne. 5–Ryan Jahnke. PF–Christina Polychronou, Jessica Miller. JF–Jennifer Stan, Karen Barnett, Lindsay Ronayne. IF–Jennifer Jozefiak. NF–Heidi Rappert. P DT–Emily Lukacs, Mary Dobrzynski, Theresa Carlton. PBR DT–Michelle House. BR DT–Jamie Corbin, Krista Danna. S DT–Marisa Cybulski.

ISC OF FRESNO: 2–Kristen Cederquist. JF–Kristen Cederquist.

FULTON FSC: PRE–Kristin Brown, Megan Swanson. 2–Virginia Lorenz. JF–Virginia Lorenz. PS DT–Reem Hazboun.

GALLERIA-HOUSTON ISC: PRE–Lacey Kurzius. 1–Christina Yu, Ivan-Andre Alsbaugh, Michele Sullivan. 2–Andrea Gardiner, Kimberly Kroll. 3–Madeleine Blish. 7–Alyssa Walters. PF–Hilary Fried, Lacey Kurzius. JF–Andrea Gardiner, Kimberly Kroll, Rachel Ruperto, Tavia Lucas. IF–Jennifer Simborio, Lesley Bujko. NF–Julie Harms, Stephanie Leatherwood. JRF–Alyssa Walters. P DT–Jenny Ferrell, Stephanie Woods. PBR DT–Mae de la Calzada. BR DT–Jennifer Womack. PS DT–Melissa Whiteman.

GARDEN CITY FSC: PRE–Christina Hardare, Tara Eshshaki. 1–Gina Scheffler. 2–Andrea Jaroh, Andrea Saia, Emily Rose Pironello, Mary Muldoon, Patricia Suyak. 3–Amanda McNamara. 4–Stephanie Senterfit, Sunny Armstrong. 6–Kari Ann Keyanchuk. 7–Brenda Blackmer. PF–Christina Hardare, Tara Eshshaki. JF–Andrea Jaroh, Andrea Saia, Emily Rose Pironello, Mary Muldoon, Nanda Mitra. IF–Jennifer Matras. NF–Stephanie Senterfit, Sunny Armstrong. JRF–Jacquelyn Mitchell, Lisa Matras.

GARDEN STATE SC: 1–Noelle Stefanelli.

GARFIELD HEIGHTS FSC: PRE–Jennifer Sikon, Michelle Sikon. 1–Lindsay Yee. P DT–Jacqueline Hudec.

GENESEEE FSC: PRE–John Schultz, Justin Diehl, Nathan Pensgen. 1–Kristen Moccia. PF–Justin Diehl, Nathan Pensgen. NF–Winton Brown. ABFI–Karen Fortunato. ABFS–Karen Fortunato. ASFS–Karen Fortunato. PPR–John Schultz, Kristen Moccia, Nathan Pensgen. P DT–Meredith Vacca, Nathan Pensgen. PS DT–Leigh Dessauer.

GLENWOOD FSC: 3–Miki Kern. 4–Bridget Beddigs, Heather Ward. S DT–Bridget Beddigs. BFD–Jennifer Peterson.

GOLDEN STATE FSC: PRE–Deborah Johnson, Jacqueline Hernandez, Jennifer Johns. 2–Alisa Bloom, Jennifer Shaw, Melanie Straughan. 4–Allen Howard. PF–Deborah Johnson, Jacqueline Hernandez, Jennifer Johns.

JF–Alisa Bloom, Jennifer Shaw. **PPR**–Jade Brown, James Ashley. **P DT**–Deborah Johnson, Elizabeth Branson, Paul Solum. **PBR DT**–Camrin Dove. **PS DT**–Allen Howard, Karin Storm.
GREAT BAY FSC: **PRE**–Karen Moore. 2–Katrina Royce-Malmgren.
GREAT FALLS FSC: 1–Tamara Loch.
GREAT LAKES FSC: 1–Veronica Steskiak. **JF**–Deborah Noonan.
GREAT NECK FSC: **JF**–Rebecca Hughes.
GREATER EVANSVILLE FSC: **PBR ADT**–George Griffin-Atkinson.
GREATER MILWAUKEE FSC: **PRE**–Joscelyne Dracca. 1–Nicole Lavin. **PS DT**–Jill Rector.
GREENSBORO ISC: 2–Arren Spence.
GREENWICH SC: **IF**–Marianne Gimon.
HAMDEN FIGURE SKATING ASSN: **IF**–Amy Salinger, Jennifer Hyduk. **PBR DT**–Leah Taylor, Stacey Pitcher.
SC OF HARTFORD: 2–Patricia Stroebel. 3–Amy Fong. **PF**–Kim Nichols, Morgan Hughes. **JF**–Courtney Hughes, Patricia Stroebel. **P DT**–Frietha Lawrence. **S DT**–Maura Chilson.
HAWAII FSC: **PRE**–Colette Okamoto, Malia Kilpineu, Shara Takatsuki, Vashti Lonsdale. 1–Dianne Sta Maria. 3–Erin Masuda, Nani Malama. **PF**–Vashti Lonsdale. **IF**–Nani Malama, Shawnaleig Shiroma. **NF**–Alyssa Owen. **P DT**–Derilyn Boone, Audrey Marks. **PG ADT**–Therese Hayes.
HAYDEN RECREATION CTR FSC: **PRE**–Andrea Slate, Caitlin Rouse, Cinda Scott, Erin Rouleau, Larissa Rochford, Lauren Freese, Lia Gilbert, Mary Andaloro. 1–Amanda Mahoney, Amanda Pierce, Melanie Figueiredo, Reinita Susman, Sarah Clark. 2–Katherine Bunting. **PF**–Alison Prince, Andrea Nardone, Arielle Butterly, Elizabeth Lowenthal, Hillary Marino, Stephanie Monaghan-Blout, Tiffani Gavan. **JF**–Jeanine Chen. **IF**–Yvonne Ou. **NF**–Lisa Mason. **PPR**–Laurent Masse.
HERSHEY FSC: **PRE**–Beth Cherry, Karin Dugan, Shelly Petrewicz. 1–Ami Counts, Jillian Gladfelter, Kena Merrill. 2–Melinda Ormsbee, Susan Martin. 3–Nicole Devlin, Shannon Marks. 5–Pamela Erisman, Tracey Librandi. **PF**–Beth Cherry. **JF**–Melinda Ormsbee, Susan Martin. **IF**–Erica Haupt, Janice Miller, Jennifer Olarte, Michelle Nipple, Nicole Devlin. **P DT**–Jennifer Jenkins, Jenny Kegerise. **PBR DT**–Becky Sherry, Julie Bentz, Stephanie Kaplin, Suzanne Stone. **BR DT**–Hope Bikle, Kena Merrill. **PS DT**–Nicole Devlin. **PS ADT**–Joyce Rhoads. **S DT**–Shannon Marks. **PG DT**–Elizabeth Ricke. **I DT**–Bruce Montemayor. **BFD**–Pamela Erisman.
HIAWATHA SC: 2–Keri Lee Schwiderson. **JF**–Keri Lee Schwiderson, Tammy Jo Stott. **JRF**–Lisa Schwiderson.
HIBBING FSC: 7–Alison Chamerick.
HICKORY HILL FSC: **PRE**–Lauren Tor Torella, Romy Goldsmith. 1–Fawn Harris, Reina Nakamura. 2–Alys Guttenplan, Missy Dixon. 3–Carrie Safron, Elizabeth Schlifman, Jane Resor, Julie Anne Schlifman, Trieste Pierandri. 4–Kimberly Camarata. 6–Kim Karetsky, Valerie Moskwa. **PF**–Lauren Tor Torella, Meredith Dixon. **IF**–Carrie Safron, Elizabeth Schlifman, Reina Nakamura, Trieste Pierandri. **NF**–Kimberly Camarata. **JRF**–Teresa Aiello, Valerie Moskwa. **ABFS**–Heidi Kaplan. **ASFS**–Heidi Kaplan. **P DT**–Mae Rogers, Reina Nakamura. **PBR DT**–Patricia Pennebaker. **BR DT**–Amy Nicolis.
HIGHLAND SC: **PRE**–Christina Burnap, Madelyn McPhee, Olivia Olsen, Victoria Fowler. 3–Andrea Kral. **PF**–Christina Burnap, Olivia Olsen, Victoria Fowler. **NF**–Shannon Dignon. **JRF**–Larisa Copeland, Sandy Sandstrom. **ABFS**–Jenny Thompson.
SC OF HINGHAM: **PRE**–Courtney Costa, Michelle Keady. 1–Kristen Bedford, Marie Rizzo. 2–Bridget Wilkinson, Erin Singleton. 3–Christiana Messina. **PF**–Christine Maus, Jessica Griffin. **JF**–Cassie Hurley. **JRF**–Lisa Mayo. **P DT**–Walter Lang IV.
HOUSTON FSC: 2–Jean-Marie Degville. 3–Erin Reininger, Karen Kincade. 6–Lindsay Leivo. 7–Susan Williams. **PF**–Susan Tran. **JF**–Jean-Marie Degville. **IF**–Erin Reininger. **JRF**–Susan Williams. **ABFS**–Julia Nguyen. **BR DT**–Jean-Marie Degville.
HUDSON-MOHAWK FSC: 1–Elizabeth Marvin. 2–Kristen Scheu, Kristy Burg. 3–Melissa Piscitelli. **P DT**–Elizabeth Marvin. **BR DT**–Kelly Ryan.
HUNTSVILLE FSC: **PRE**–Lisa Schroer. 2–Elfije Salihu. 3–Keith Schonrock III. 7–Sarah Beth Simpson, Teresa Love. **IF**–Keith Schonrock III. **JRF**–Danny Tate. **P DT**–Keith Schonrock Jr. **BR DT**–Pamela Meininger. **PS DT**–Arthur Reid. **S DT**–Sarah Beth Simpson. **PG DT**–Danny Tate. **BFD**–Danny Tate, Heather Schonrock, Sarah Beth Simpson. **SFD**–Danny Tate, Sarah Beth Simpson.
ICE CLUB OF BALTIMORE: **PRE**–Kathleen Williams, Kenneth Smith. **PF**–Anne Schnering, Kathleen Williams, Kenneth Smith. **P DT**–Maisha James.
ICELAND FSC OF HOUSTON: **B ADT**–Michele Yandel.
IDAHO FALLS FSC: 1–Hillary Guilford. **JF**–Christy King. **P DT**–Jamie Close. **PBR DT**–Jamie Close. **BR DT**–Jamie Close. **PS DT**–Elizabeth Overby.
ILLINOIS VALLEY FSC: **PRE**–Carrie Meyers, Matthew Savoie. 1–Stephanie Zinser. 2–Sarah Kim, Valerie Johnson. **PF**–Carrie Meyers, Melissa Kirk. **JF**–Valerie Johnson. **ABFS**–Kathryn Thomas. **BR DT**–Sarah Kim. **PS ADT**–Linda Penrod. **S DT**–Joel Hinnen-Leman, Valerie Johnson. **BFD**–Kimbra Baurer. **SFD**–Kimbra Baurer.
INDIANA/WORLD SKATING ACADEMY: 1–Brie Teaboldt. **NF**–Michelle Poley. **ABFS**–Holly Green, Lynn Kenyon, Pat Miles. **ASFS**–Pat Miles. **PPR**–Holly Benson. **IPR**–Holly Benson. **NPR**–Holly Benson.
ISC OF INDIANAPOLIS: **PRE**–Haleah Blank. 1–Jenny Lewis, Laura Dean, Michelle Keene, Peggy Coupland. 2–Carrie Upp, Heather Dean, Megan Quigley. 3–Christi Freeman, Robyn Lane. 5–Megan Elliott. 6–Kristin Gardner, William Widmeyer. **PF**–Haleah Blank. **JF**–Elaina Stoner. **IF**–Christi Freeman, Laura Doty, Robyn Lane. **PPR**–Laura Morrison, Megan Quigley, Robert Lombard. **P DT**–Donna Nigh. **PBR DT**–Becky Freeman.
INTERNATIONAL SC OF ORLANDO: 3–Jennifer Meyerhoff.

JAMESRIVER FSC: PRE–Sunday Gasal. PF–Sunday Gasal. IF–Jonathan Herseeth. P DT–Sunday Gasal. PBR DT–Rena Larson. PS DT–Jonathan Herseeth, Margaret Jones.

JAMESTOWN SC: PRE–Erica Simpson. 2–Brianna Moller. 4–Kelly Wilson. PF–Erica Simpson.

JANESVILLE FSC: PRE–Rebecca Brandman. 4–Amy Meyer. PF–Beth Anderson, Rebecca Brandman. JF–Beth Anderson. PBR DT–Beth Anderson.

KENT SC: 2–Daria Kimak, Karla Atwood, Sara Omlor. PF–Candice Shubert, Hannah Loss, Heather Orenic, Tatum Craft.

LA JOLLA FSC: 4–Katy Griffiths. NF–Katy Griffiths. PBR DT–Bethany Sutton.

SC OF LAKE FOREST: 2–Lili Park. 4–Karen Kos, Kopal Jain. NF–Karen Kos.

LAKE MINNETONKA FSC: PRE–Katie Dekarski, Sarah Kneen. 3–Jennifer Jessen. IF–Jennifer Jessen, Julie Ann Laurance. NF–Gretchen Dau, Shannon Simonson.

SC OF LAKE PLACID: 1–Tamika Darden Williams. 3–Ashley Levy. 5–Jaclyn Lee Mehner. 7–Meredith Montgomery, Miriam Gelfand. JF–Tamika Darden Williams. IF–Tamika Darden Williams. JRF–Kelly Herrington, Sarah Dew. S DT–Miriam Gelfand.

LAKE REGION SC: PRE–Jennifer Haugen. 1–Sarah Haugen, Scott Salzman. 2–Tena Leever. P DT–Beth Leever, Scott Salzman. PBR DT–Jennifer Haugen, Michelle Dahlen. BR DT–Sarah Haugen, Sheyna Henry.

LAKEWOOD WINTER CLUB: PRE–Amber Linman, Bethanie Swendsen, Britt Neufer, Holly Campbell, Michell Graham, Sue Ellen Harris. 1–Brian Boissonneault, Justin Dillon Jr. 2–Amanda Banks, Catherine Spice, Sarah Campbell, Summer Pelger, Tiffany Qunell. 3–Michele Taylor, Stephanie Rowland. 4–Reichen Woods, Rina Thun. 5–Celeste Stacy, Jennifer Clark, Reichen Woods. 6–Kelly Clark. 7–Heidi Green, Kelly Clark. PF–Bethanie Swendsen, Britt Neufer, Holly Campbell, Michell Graham, Sue Ellen Harris. JF–Catherine Spice, Justin Dillon Jr, Sarah Campbell, Summer Pelger, Tiffany Qunell. IF–Heidi Gallasch, Michele Taylor, Stephanie Rowland. NF–Heidi Pelander, Reichen Woods, Rina Thun. JRF–James Peterson, Kelly Clark. PPR–James Peterson, Tiffany Qunell. IPR–James Peterson, Tiffany Qunell. NPR–James Peterson, Tiffany Qunell. P DT–Joanne High, Michele Taylor, Reichen Woods. PBR DT–Reichen Woods, Stephanie Rowland, Stephanie Rowland, Stephanie Rowland, Summer Pelger, Summer Pelger, Summer Pelger. BR DT–Ariella Wagonfeld, Stephanie Rowland, Summer Pelger. PS DT–Tamsen Woods.

LANSING SC: PRE–Gina Anne Mead, Jenifer Dettloff. 1–Bradley Newman. PF–Gina Anne Mead. JRF–Michelle Hachman. BR DT–Amy Grondin, Monica Mendez.

LAS VEGAS FSC: 2–Dena Darland. JF–Dena Darland.

LAUREL RIDGE SC: 1–Angela Patrizio, Farima Kermani, Kelly Smith. 2–Hari Beth Schwartz, Jennifer Lucas.

LEHIGH VALLEY SC: PRE–Alexandra Buckley, Allison Slott, Charlotte Edwards, Elizabeth Edwards, Elizabeth Edwards. 1–Claire Fleming, Jessica Salvato. PF–Alexandra Buckley, Ali Camarano. PPR–Lauren Weldon. BR DT–Martin Weinberger.

LILAC CITY FSC: 1–Amanda Foraker, Teresa Mabbott. 4–Meegan McDonald. NF–Meegan McDonald.

LINCOLN CENTER FSC: 1–Erin Aimers, Kristin Regenauer. IPR–Brad Russi, Jolene Carney.

LITTLE SUN VALLEY SC: PRE–Alana Dunigan, Kerry Doyle, Megan Ferenchak. 1–Samantha Samberg. 2–Kari Speight. 4–Elizabeth Monast, Lauren Raffa. 6–Amy Ross. PF–Huyen Vinh, Jenna Griggs, Siobhan Doucette, Tara Wright. JF–Michelle Sullivan. P DT–Alexandra Dunne-Bryant, Shane Greenleaf. BR DT–Kari Speight. PS DT–Heidi White.

LOYD CENTER ISC: 2–Amy Lea Meier, Miranda Carmine. P DT–Elizabeth Sampson, Lynda Harding, Mary-Lynne McNeill. PS DT–Dannell Garrison, Victoria Owings.

LONE STAR FSC: PRE–Allyson Chandler, Kathey Afanador, Tristan Boy. 1–Simeon Hanks. 2–Elizabeth Cox, Maricarmen Szeszko, Melissa Cox. 3–Courtney Bean, Leigh Ann Winborn. 7–Kristen Brodie. PF–Allyson Chandler, Kathey Afanador. JF–Elizabeth Cox, Melissa Cox, Rachael Mariboho. NF–Monica Sandoval. JRF–Kristen Brodie, Lefki Terzakis. PPR–Jennifer Darst. IPR–Jennifer Darst. P DT–Nora Tomlinson. PBR DT–Jessica Kunde. BR DT–Arin Dorris, Sara Burnside.

LONG ISLAND FSC: PRE–Shannon Foster. 2–Christina Battaglini. PF–Shannon Foster.

LOS ANGELES FSC: 1–Gretchen Ballard, Jamie Tam, Janyefur Park, Winslow Corbett. 2–Amarie Evidente, Jann Yusa, Pearl Evidente. 3–Amy Tuch, Angela Meadows, Cindy Im, Melissa Paull, Monica Kim, Stephanie Stiegler. 4–Christi Kayter, Dhurga Jeyaranjan, Jennifer Holden, Liberte Sheldon. 5–Taylor Neff. 7–Lisa Marie Auwinger. JF–Amarie Evidente, Cassandra Siegler, Jann Yusa, Natalie Woode. IF–Cindy Im, Keith Christopher, Melissa Paull, Monica Kim, Stephanie Stiegler. NF–Carrie Watson, Christi Kayter, Liberte Sheldon. JRF–Robyn Brown. PPR–Donna Baldwin, Erika Kita, Julie Shott. IPR–Edward Guzman, Erika Kita. P DT–Carla Golubski, Jessica Schwartz, Karen Torossian. PBR DT–Carla Golubski, Karen Torossian, Lisa Marie Auwinger. PS DT–John Wagner, Tad Kampenga. S DT–Karen Belasco. PG DT–Karen Terry, Patricia Loomis, Thomas Clark. PG ADT–Samantha Liegner. I DT–Kristin Fortune. BFD–Samantha Liegner.

LOUISVILLE FSC: 1–Natalie Tharp.

FSC OF MADISON: 1–Amanda Harbort, Emily Larsen. PF–Kimberly Tesch, Laura Schuch. JF–Kristin Donkle. IF–Jessica Hansen. JRF–Elizabeth Uhler. PBR DT–Samantha Weston. PBR ADT–Jean Rentsch. PG DT–Cathy Zinkel.

MAGIC CITY FSC: 2–Kimberly Hall. IF–Barbara Swenson. P DT–Erin Fink. PBR DT–Jacqueline Berg. PS DT–Alecia Swenson. S DT–Lisa Johnson, Barbara Swenson. PG DT–Diane Westereng.

SC MAINE: 1–Erin Pearl, Kristie Miles. 2–Alice Sauve, Beth Raymond, Danielle Laroche. 3–Cortney Arndt, Devon Adams, Karen Ann Drummond, Michelle Jordan. JF–Erica Pearl. IF–Karen Ann Drummond. PPR–Elizabeth Paine,

John Merrill, Karen Ann Drummond. P DT-Kristie Miles. PBR DT-Elizabeth Cowett, Kristy Bronsberg. PS DT-Karen Ann Drummond.

MAPLEWOOD FSC: PRE-Annette Williams, Libby Murphy. 2-Nicole Morehouse. PF-Annette Williams, Libby Murphy. JF-Nicole Morehouse.

MARQUETTE FSC: PRE-Anne Solka, Christy Kuhn, Heather Johnson, Kelly Contois, Margaret Mande, Sarah Starr. 1-Margot Contois. 2-Carey Weiss, Katherine Cooke. 3-Calder Duncanson. PF-Katie Heino, Maija Elmlad, Margaux Cory, Melissa Adams, Rebecca Aylesworth. JF-Elizabeth Peltz. P DT-Jamie VerDuin, Kimberly Contois, Margaret Mande, Melissa Adams. PBR DT-Krista LaJoyce, Maija Elmlad, Sarah Starr. BR DT-Anne Solka, Heather Johnson, Sarah Kniskern. PS DT-Christy Kuhn, Elizabeth Peltz, Katherine Cooke. PG DT-Calder Duncanson.

MASSENA FSC INC: PRE-Katie McDonald, Sarah Siddon.

FSC OF MEMPHIS: PRE-Jennifer Bousson, Lori Hill. 1-Jennifer Bousson, Jill Irby. 3-Erin Sutton. 4-Mary Faith Neenan, Nicole Janda. PF-Lori Hill. NF-Mary Faith Neenan, Nicole Janda. P DT-Lori Hill.

MENTOR FSC: PRE-Angela Sejnowski, Bethany Maine, Christen Baeslach, Eric Leafgreen, Kelly Royer, Wendy Middaugh. 1-Angela Cunningham, Janet Patti, Jennifer Patti, Lindsey Antonio, Pamela Sloan, Tia Murray. 2-Jacqueline Redenshek, Katy Powell, Robyn Ayers. 3-Helen Kilfoyle. 4-Meredith Whitlock. 5-Katie MacKinnon. PF-Bethany Maine, Christen Baeslach, Kelly Royer, Susan Roof, Wendy Middaugh. JF-Anna Cadwell, Jacqueline Redenshek, Katy Powell, Tina Poshe. IF-Helen Kilfoyle, Jamie Lacava, Michele Bordonaro, Stephanie Crock, Victoria Tkac. NF-Leslie Lin Brown.

METROPOLITAN FSC: PRE-Lauren Marotta. 1-Joy Thomas. PF-Jenifer Mazziotti, Sara Silverstein. JF-Elisa Argota, Tara Fallik. P DT-Elisa Argota.

MIDLAND FSC: 2-Amber Spence. 5-Allison Olson. 7-Jessica Rainey. PF-Samantha Eaton. JF-Samantha Eaton. IF-Katy Jarvela. NF-Lisa Gillespie, Michelle Marcou. P DT-Samantha Eaton. BR DT-Jane Ludtke, Maureen Kendall, Melissa Schuberg. S DT-Ann Ludtke, Michelle Marcou, Nicole Falardeau.

FSC OF MINNEAPOLIS: PRE-Ann Korkki, Danika Van Hoe, Jennifer Heilman, Laura Ignatowicz, Melissa Huseby. 1-Katie Oberstar. 2-Karen Torgerson. 4-Jennifer Sauer, Martha Osland. PF-Ann Korkki, Danika Van Hoe, Jennifer Heilman, Laura Ignatowicz, Melissa Huseby, Thatcher Imboden. JF-Jessica Kaye. NF-Lara Kueppers. PBR DT-Bey Eberhard, Mary Nelson, Shayna Palme. BR DT-Amy Henschel, Menka Sethi. S MDT-Arthur Peterson.

SC OF MORRIS NJ: PRE-Alyson Herman, Jennifer Weiss, Megan McGuire, Melissa Iappinen, Rachel Goren. 1-Anya Goodwin, Brooke Ballantine, Jackie Barnes, Jennifer Sheppard, Megan Papier, Melissa Stubenvoll. 2-Erin Murdoch, Kristen Ciezak, Sharon Riechmann. 3-Becky Carlson, Mark Fenczak, Tara Gorny. 4-Melissa Keybida, Shannon Dunphy. 5-Rebecca Cutler. 6-Erica Lea Piekarski. PF-Alyson Herman, Anya Goodwin, Brooke Ballantine, Cassie Glenn, Jennifer Weiss, Megan McGuire, Melissa Iappinen, Rachel Goren. JF-Jessica Nowill, Sonia Bjornsen, Tiffany Ciperski. IF-Mark Fenczak. NF-Anthony Gioia. JRF-Patricia Warhol. P DT-Anya Goodwin, Brooke Ballantine, Cassie Glenn, Claire Bourne, Hilary Reuben, Jeanette Brandt, Juliet Negin, Melissa Stubenvoll, Meredith Brandt. PBR DT-Brooke Ballantine, Kristen Ciezak, Melissa Iappinen. BR DT-Arlyn Davich, Jenna Watson, Kristen Vanorski. PS DT-Cathlin Rozman, Jenna Watson, Sonia Bjornsen. BFD-Jennifer Mulvihill, Shannon Dunphy.

SC OF MT. LEBANON: PRE-Adina Seidenfeld, Amy Nawrocki, Heather Smith, Jessica Harper, Katie Hindes, Lindsay Callahan, Melissa Wauthier, Shaina Auer, Tiffany Walters. 1-Allison Biley, Heather Joyce, Jessica Milberg. 2-Jason Simon, Rebecca Lj Gerhart, Shaun Johnson. 3-Jenna Smith, Meredith Shuster, Rachel Friede. 4-Benjamin Hwang, Jennifer Flagg. 5-Tara Tafi. 7-Carlina Leonette. PF-Adina Seidenfeld, Amy Nawrocki, Heather Smith, Jessica Harper, Katie Hindes, Lindsay Callahan, Melissa Wauthier, Shaina Auer, Tiffany Walters. JF-Amy Full, Jason Simon, Jill Bronowicz, Kristy Coquet, Rebecca Lj Gerhart, Shannon Simon. IF-Tracy Ohm. JRF-Stefanie Garofalo. P DT-Allison Biley, Lindsay Callahan, Natalie Fanelli. PBR DT-Elizabeth Bootay, Katie Hindes. BR DT-Heather Joyce, Kimberly Miller, Laurel Rosen. PS DT-Rachel Friede. S DT-Jennifer Flagg.

NASHVILLE FSC: PRE-Derek Pell, Jennifer Murphy, Leah Meadors, Sarah Davis. 1-Courtney Beavers, Kelly Randall. 6-Ruth Williams. PF-Derek Pell, Jennifer Murphy, Leah Meadors, Sarah Davis. JF-Corie Morell. P DT-Jane Johnson. PS DT-Ruth Williams.

SC OF NATICK: PRE-Stephanie Van Ness. 1-Mindy Bace.

NEW CANAAN WINTER CLUB: PF-Danielle Derbes.

NEW HAVEN SC: 1-Corinne Towle. JPR-Cristen Wisner. P DT-Alyson Cain. PBR DT-Jonah Neagle.

NEW ULM FSC: PRE-Mary Vancura. PF-Mary Vancura. JF-Mary Vancura. P DT-Mary Vancura.

SC OF NEW YORK: PRE-Kylie Cohn. 2-Zimbabwe Harrison. 4-Becky Elin. 5-Amanda Fialk. 6-Claudia Sidman, Kerry Lenahan. 7-Jenna Du Mond. PF-Kylie Cohn. NF-Becky Elin. JRF-Jenna Du Mond. PS DT-Jessica Betts. BFD-Emily Greenfield.

NEWBURYPORT FSC: PRE-Kristie Anderson. 2-Alison Bean, Susan Reslewic. 4-Jennifer Roberts. 5-Kimberly Clarkson. 6-Nicole Roberts. JF-Shana Teague. IF-Jennifer Roberts. NF-Kimberly Clarkson, Nicole Roberts.

NORTH JERSEY FSC INC: PRE-Nancy Breitweiser, Sarafaye Mahon. 1-Kelly Higgins, Lina Kontos, Margaret Szymanski, Shavawn Schaffer. 2-Yukiko Yamagata. PF-Darleen Cafasso, Nancy Breitweiser. JF-Kelly Greene.

NORTH SHORE SC: PRE-Alana Manthorn, Donna Taliger, Jessica Tatar, Kimberley Hazen. 1-Elizabeth Sloutsky, Lauretta Charpentier, Laurie Roper. 2-Kimberly Pinch, Meaghan Hall. 3-Allyn Munroe, Kerilee Figurido, Megan Foster. 4-Sheila Figurido. 7-Caren Manuel. JF-Meaghan Hall, Shannon Bansfield. IF-Allyn Munroe, Megan Foster. JRF-Caren Manuel.

NORTH SUBURBAN FSC: PRE-Colleen Callaghan. 1-Erin Bridge. PF-Colleen Callaghan.

NORTHEAST IOWA FSC: PF–Sarah Bainbridge.

NORTHERN LIGHTS FSC: PRE–Carmen Kreibich, Haley Gregoire. PF–Haley Gregoire, Yvette Matthews. JF–Carmen Kreibich, Yvette Matthews. P DT–Haley Gregoire, Yvette Matthews. BR DT–Carmen Kreibich, Kim Blake.

SC OF NORTHERN VIRGINIA: PRE–Ann Lohman, Bonnie Jones, Carlos Montalvan, Jenevieve Holton, Kristi Bubeck. 1–Cheryl Chang, Donna Lupinos, Erin Paice, Jerome Jones, Justin Hurwitz, Laura Petrolino, Lisa Rasmussen, Mollie Klurfeld, Nefertiti Jones, Stephanie Yoo. 2–Catherine McCann, Jennifer Freese, Molly Moore, Sarah Tushin, Tina Lee, Willy Rasmussen. 3–Christina Phipps, Derek Wilkins, Malini Hoezoo. 4–Wendy Osten. 7–Tina Munson. PF–Ann Lohman, Bonnie Jones, Carlos Montalvan, Cheryl Chang, John Hurwitz, Kristi Bubeck, Stephanie Pasicov. JF–Catherine McCann, Kathryn Henderson, Kristen Lindblad, Lisa Rasmussen, Marisa Dysart, Robert Clasen, Shannon Akers, Tina Lee, Willy Rasmussen. IF–Christina Phipps, Sarah Tushin. NF–Derek Wilkins, Wendy Osten. JRF–Jodie Horton, Kristina Osten, Storey Olsen, Tina Munson. PPR–Christine Lee, David Lee. P DT–Ann Angel, Catherine McCann, E. Shelby Singleton, Jennifer Hilbert, Malini Hoezoo, Melissa Yorks, Michael Richmond, Nicole Andrejko. PBR DT–Amanda Stern, Ann Lohman, Kathryn Henderson, Monica Thompson. BR DT–Alison Thompson, Mollie Klurfeld, Stefanie Stauffer. PS DT–Emily Miller, Kristina Osten. S DT–Christine Michalopoulos.

OGDENSBURG FSC: P DT–Marisa Serio. PBR DT–Hillary Lynch. BFD–Tara Newtown.

OLD YORK ROAD SC: PRE–Jessica Seitchik, Taryn Kay. 1–Kate Ellenberg. 2–Jill Nancy De Prince, Sarah Trager. 6–Cecilia Turner. PF–Jessica Seitchik, Taryn Kay. P DT–Brie McCrimmon.

FSC OF OMAHA: PRE–Honor Edson, Honor Edson. 1–Caitlin Brozna, Rachael Lesch. 3–Camie Doyle. ABFI–Carolyn Dow. ASFI–Carolyn Dow. ABFS–Carolyn Dow. P DT–Loren Cole. BR DT–Rebecca Di Giacinto.

ORANGE COUNTY FSC: PRE–Robin Harnish. 2–Catherine Trapp. 4–Kim Kaylor, Michell Cho. PF–Robin Harnish. JF–Catherine Trapp. NF–Michell Cho. JRF–Nicole Sciarrotta. ABFI–Rosie Finocchi. JPR–Russ Scott. BR DT–Erin Lynn Hartzell.

ORLANDO FSC: 1–Rhianon Cordy. 2–Lisa Johnson. JF–Lisa Johnson. P DT–Christine McElwain, Lisa Johnson. PBR DT–Lisa Johnson.

OSWEGO FSC: PRE–Amy Stephenson. 1–Mollie Barnes. JF–Shelby Lyons. PBR DT–Christina Uva. PS DT–Shelby Lyons.

OWENSBORO FSC: IF–Jenna Marlowe.

OXFORD SC: PRE–Brandy Smith. JF–Abbey Walker. BR DT–Abbey Walker.

PALACE FSC: PRE–Lindsay Stengle. 1–Missy Carmody, Stephanie Doell. PF–Lindsay Stengle. JRF–Heather Melton. P DT–Janna Napier.

PALOMARES FSC: PRE–Jason Schneidkraut. 1–Cathy Cole, Jayne Miyao, Julie Blodgett, Nikki Frohlich. 4–Tarayn Wagner. PF–Jason Schneidkraut. JF–Martin Sivorinovsky. IF–Tanya Douglas, Terese Ann Howard. PPR–Jason Schneidkraut, Tracy Schneidkraut. PG DT–Michael Ricigliano, Sandra Ricigliano.

PARK FSC: JF–Selyn Choi.

PASADENA FSC: PRE–Sabrina Uribe, Talia Roth. 1–Agatha Nowicki. PF–Sabrina Uribe, Talia Roth.

PAVILION SC OF CLEVELAND HGTS: PRE–Sarah Factor. 1–Rebecca Pletniewski. 2–Corrine Miller, Jennifer Jackson. P DT–Felicia Price, Jessica Pederson, Shannon Sharkey. BR DT–Elizabeth Sheridan. PS DT–Corrine Miller.

PAWTUCKET & PROVIDENCE FS: JF–Bethany Merry. IF–Carrie Alves. BR DT–Mary Anne Harrison.

PENGUIN FSC: PRE–Beth Luciano. 3–Jenna Lansek. PF–Beth Luciano.

PENINSULA FSC: PRE–Elizabeth McGowan, Joyce Chang. 1–Ariel Hoffman. 2–Kristina Kerwin. 3–Amanda Zamir. 4–Erica Chen, Sheri Varrelmann, Tiffany Chan. 5–Michelle Nathan. 6–Stephanie Prebil. PF–Elizabeth McGowan, Joyce Chang. JF–Kristina Kerwin, Maria Smith. IF–Allyson Day. NF–Sheri Varrelmann. JRF–Melissa Nelson. ABFS–Maureen Mikula-Hughes. ASFS–Maureen Mikula-Hughes. AGFS–Maureen Mikula-Hughes. PBR DT–Christine Hackworth. BR DT–Amber Evanoff. I DT–Jim Sun.

PENN STATE FSC: 2–Sara Grimm. IF–Sara Grimm.

PHILADELPHIA SC & HS: 1–Courtney Keyser. 3–Lauren Cullen. 5–Charlotte McMichael. B ADT–Susan Gerhart. PS DT–Courtney Keyser. ABFD–Alicia Connell.

SC OF PHOENIX: PRE–Kendra Hough. 1–Brandi Barrowcliff, Christy Goldsmith, Heidi Ruskin. PF–Kendra Hough. IF–Elissa Beckman. PG DT–Vearle Klinger.

PILGRIM SC: 1–Jennifer Hallahan. 3–Danielle Cheverie. 4–Kristen Hallahan, Nicolette Silvestri. 7–Jill MacCafferri. PF–Tiffany Scott. JRF–Jill MacCafferri.

PITTSBURGH FSC: PRE–Holly Law. 1–Jamie Silverstein, Kari Olmo. 2–Elizabeth Peck. 4–Heather Stubbs. 5–Cori Duncan. 7–Melissa Subbot, Michele Subbot. PF–Holly Law. JRF–Michele Subbot. P DT–Elizabeth Peck, Michelle Mantine. PBR DT–Dayna Swab. BR DT–Kari Olmo.

PITTSFIELD FSC: 3–Kristen Vangsness. P DT–Danielle Choiniere, Wendy Kenyon. BR DT–Jill Ann Kotowski, Kristen Vangsness, Meagan Soutier.

PLYMOUTH FSC: PRE–Marya Bak, Rachel Brown, Robin Tychewicz. 1–Danielle Spiewak, Kimberly Brown, Richard Brown. 2–Christine Collings, Sarah Ann Lesar. 3–Jill Marie Smith. 4–Candy Brown, Kimberly Lemke. PF–Marya Bak, Rachel Brown, Robin Tychewicz. JF–Christine Collings. PBR DT–Suzanne Okopny. PS DT–Jennifer DeJohn. PS ADT–Karen Fitzgerald. S DT–Steven Fulghum. PG DT–Kristin Kalinowski. BFD–Steven Fulghum.

PORT HURON FSC: 1–Kristina Terry, Letitia Wylin. 3–Angela Campbell. JF–Sara Burrows. IF–Anne Turner, Kristi Ruthven. PBR DT–Kristina Terry, Melissa Orr.

PORTAGE LAKE FSC: S DT-Kathy Carmody, Sarah Makinen. I DT-Kim Moyle. BFD-Heidi Wehr.

PORTLAND ISC: PRE-Amy Donahue, Emily Quinn, Kathryn Schilperoot, Miranda Sheppard, Quest Wolfe. 1-Carolyn Fassel, Jennifer Hooks, Kakani Young, Kami Anderson, Malene Martinez, Tamas Bakacs. 2-Laurel Gill. 3-Tiffany Crosswhite. 4-Kathryn Schreyer. PF-Emily Quinn, Kathryn Schilperoot, Randi Page. JF-Christine Edwards, Dmitry White, Jennifer Hooks, Rachel Fox. IF-Tiffany Crosswhite. NF-Kathryn Schreyer. ABFS-Colleen Conroy. ASFS-Colleen Conroy. PS DT-Stacey Steinwandell. PG DT-Steve Kroder.

POTSDAM FSC: PRE-Amy Triolo. 1-Elissa Levitt. 2-Sona Minnetyan. PF-Emily Murray, Melissa McLennan. IF-Cassie Labarge, Patty Coskran. ASFS-Lynda Lawrence. NPR-Danielle Bartow, Michael Bartow. P DT-Heidi Burnap. BR DT-Marta Minnetyan. B ADT-Dorothy Cole. S DT-Michael Bartow. PG DT-Patty Coskran.

PRINCETON SC: 2-Abby Bilanin. JF-Abby Bilanin. JRF-Christina Fitzgerald. P DT-Jennifer Schaufel, Summer Bergman. S DT-Courtney Hodock.

PUEBLO FSC: PRE-Val Rising-Moore. 1-Daniel Lee. PF-Samantha Holt. JF-Krista Fish, Sarah Grant.

QUEEN CITY FSC: PRE-Beth Ann Luman, C. Lauer Shea, Elizabeth Chapman, Lisa Bilecky, Melissa Harris, Shanna Hayes. 1-Erin Armstrong. 2-Mary Reid Gregory, Melanie Price. 3-Becky Baur, Bjorn Herman, Kimberly McKee. 4-Gretchen Boerup. 5-Anne Means. PF-Beth Ann Luman, C. Lauer Shea, Chad Rexroad, Elizabeth Chapman, Lisa Bilecky, Melissa Harris, Shanna Hayes. JF-Carey Schmidt, Lauren Paris, Mary Reid Gregory, Melanie Price, Robert Shmalo. IF-Becky Baur, James Kok, Kimberly McKee. NF-Gretchen Boerup. JRF-Anne Means. P DT-Beth Ann Luman, Elizabeth Chapman, Julie Lienesch, Kelly Rexroad. PBR DT-Andrea Harris, Michelle Longbons.

RARITAN VALLEY FSC: PRE-Kimberly Russo. 4-Cara Smith. PF-Kimberly Russo. PPR-Andrew Muldoon.

RED RIVER VALLEY FSC: PRE-Amy Linstadt, Jessica Silovich, Sarah Shellito, Tamra Schue, Tawny Wadeson. 1-Gina Lindemann, Heidi Bierdeman, Leslie Leistriz, Sara Breneman. 2-Kristi Nelson, Lanita Sexton. PF-Jill Kensok, Tawny Wadeson. IF-Elizabeth Giedt, Lanita Sexton, Leah Nygaard. NF-Matthew Evers. P DT-Aanna Letnes, Angela Marquart, Jessica Silovich, Megan Tillett, Sarah Braton, Sarah Shellito, Tamra Schue, Tawny Wadeson. PBR DT-Amy Linstadt, Jessica Silovich, Kelly Smith, Stephanie Marquart, Tamra Schue. BR DT-Anna Kay Hanson, Jennifer Schulte, Lisa Svaleson, Sara Christianson. PS DT-Amanda Gallo, Amber Clapp, Gina Lindemann, Heidi Bierdeman, Jerilyn Johanson, Melissa Steele. PG DT-Lanita Sexton.

RIM OF THE WORLD FSC: PRE-Annie Yang, Carlene Davis, Jennifer Calderin. 1-Shannon Seery. 2-Jeanette Gregory, Naomi Grabow. 4-Jill Schonert. PF-Annie Yang, Carlene Davis, Jennifer Calderin. JF-Jeanette Gregory, Naomi Grabow. IF-Melissa Worman. NF-Jill Schonert. PBR ADT-Barbara Freno. PS DT-Lisa Dimmitt.

ROCHESTER FSC: PRE-Allyson Ritchie, Anna Slawson, Audra Christiansen, Elizabeth Prochazka, Haley Praznik, Krystal Kasulis, Michelle Paulson, Petra Stocker. 1-Alyssa Reed, Andrea Rodrick, Becky Sweet, Diane Wick, Katie Drennan, Kristin Oftedahl. 2-Allison Thorson. 4-Dusan Cirlic. 5-Jennifer Dvorak. PF-Allyson Ritchie, Anna Collins, Breanna Merkle, Catherine Burgess, Don Schlosnagle, Elizabeth Prochazka, Emily Miller, Haley Praznik, Lindsay Cunningham, Petra Stocker. JF-Amy Trimble, Elise Grant, Karl Jarvis, Kelly Gill. NF-Jaime Lea Lund. JRF-Debbie Thompson, Genia Hesser. PS ADT-Vikki Dalquist. PBR DT-Janet Parkhurst.

FSC OF ROCKFORD: PRE-Anne Alexander, Jennifer Schultz, Trisha Dahl. 1-Bethany Magill, L. Heffron, Meghan Erickson, Rachel Diedrick. 2-Amy Wiseley, Bethany Nelson, Heather Politic, Melissa Olson, Suzanne Reif. 3-Kelly Pipitone, Tiffaney Kress. 4-Brian Buetsch. 6-Lloyd Sarbacker, Rebecca Metcalfe. 7-Leanne Geddes. PF-Anne Alexander, Trisha Dahl. JF-Amy Wiseley, Suzanne Reif. IF-Kelly Pipitone. ASFS-Thomas Reif. P DT-Angela Diller, Bethany Nelson, Brian Bushaw, Heather White, Kirsten Osborn, L. Heffron, Meghan Erickson, Michael Edgren, Rachel Diedrick. PBR DT-Heather White, Kirsten Osborn. PS DT-Rebecca Metcalfe.

SC OF ROCKLAND NEW YORK: PRE-Andrea Tufo, Lina Park, Nicholas Kuzmik. 2-Georgia Kaldis, Heidi Tinter, Jennifer Curtis. 3-Sabrina Solomon. 4-James Paul Binnebose II. 6-Kaori Yamada. JF-Heidi Tinter. JRF-Lisa Heinrich. BR DT-Samantha Chaifetz. PS DT-Galit Chait. S DT-Galit Chait. PG DT-Galit Chait.

ROCKY MOUNTAIN FSC: PRE-Bess Stoneham, Breanna Wagner, Brooke Prewitt, Jaclyn Smith, Jamie Richards, Joy Harrison, Sophia Brown. 2-Ilia Egan, Kelly Meyer, Natasha Naumann. 3-Mandy Knight. 4-Jamie Wunderlich, Kendra Mills, Kristy Lovejoy, Shannon Qualls. 5-Gretel Reich. 6-Denise Orr, Shelly Schreiter. 7-Dawn Renee Jensen. PF-Bess Stoneham, Breanna Wagner, Brooke Prewitt, Jaclyn Smith, Joy Harrison, Sophia Brown. JF-Carolyn Pouden, Emmy Yamamoto, Ilia Egan, Kelly Meyer, Natasha Naumann. IF-Cheryl Raburn, Sara Hardesty. NF-Amanda Hagman, Celina Reppond, Jamie Wunderlich, Racheal Johnson. JRF-Christopher Gaddis, Jaimee Dworkin, Lindsay Fenlon. JPR-Robyn Sudkamp.

ROSEVILLE FSC: 1-Ashlee Thoenke, Jennifer Bartel, Jeremy Allen, Lanette Rossini, Lindsay Olein. 2-Danielle Olein. PF-Sarah Roman. JF-Audrey Schuh, Jennifer Bartel. JRF-Lisa Turner. ASFS-Sandra Snider. P DT-Tamara Livingston.

RYE FSC: PRE-Barbara Benenati. 1-Claire Stancaron, Heather McDonough, Lauren Rackow, Nicole Lipkin. 2-Megan Stifel. 4-Laura Kaufmann, Melissa Stafield. 6-Evelyn Sprigg, Jeffrey Adler, Ryan MacLeod. 7-Danielle Colacicco. PF-Barbara Benenati. JF-Inna Postolov, Nicole San Marco. IF-Lisa Ciero. ABFI-Lisa Ferrari. ABFS-Lisa Ferrari. ASFS-Lisa Ferrari. P DT-Casey Savage, Heather McDonough, Rebecca Avrutin.

SALT CITY FIGURE SKATERS: 2-Jennifer Check. JF-Celeste Treadwell. IF-Jennifer Check. P DT-Elizabeth Kreiling. PBR DT-Elizabeth Kreiling. BR DT-Kimberly Salvatore. PS DT-Alissa Murfit, Katy Williams, Kimberly Owens, Susan Flynn. S DT-Jennifer Check.

SAN DIEGO FSC: 1-David Recchia, Katie Abbott. 2-Judy Cortez. 3-Amy Gramling. JF-Judy Cortez. IF-Amy Gramling. P DT-Catherine McCollum, Kellie Hallien. PBR DT-Catherine McCollum, Kellie Hallien. BR DT-Amy Gramling, Rachel Napear.

SAN FERNANDO VALLEY FSC: PRE–Romina Faramarzi. 1–Rachel Katz. 2–Mika Kadono. 3–Gemma Miller, Yuka Kadono, Yvette Benito. PF–Romina Faramarzi. JF–Mika Kadono. IF–Yuka Kadono, Yvette Benito. PPR–Dede Schumacher, Josh Martin. IPR–Dede Schumacher.

SANTA ROSA FSC: PRE–Melissa Mercurio, Sarah Salaz. 1–Claire Houx-Schaeffer, Marisa Hirsch. 5–Michelle King. PF–Melissa Mercurio, Michele Pellagrini, Sarah Salaz. JF–Aimee Stromgren. P DT–Dierdre Phillips, Jennifer Zaremski, Kimberly Navarro, Shannon Butler-Williams. PBR DT–Dawn Pizzini, Eric Harryman. PBR ADT–Diane Malnekoff. BR DT–Penny Watkins. PS ADT–Didi Cassidy.

SEATTLE SC: PRE–Alexandra Elvy, Andrea Campbell, Christina Haley, Linnea Welton, Sarah Wenker, Shawn Campbell. 3–Larisa Krievins, Margaret Evich. 6–Perri Sutton. PF–Alexandra Elvy, Andrea Campbell, Christina Haley, Linnea Welton, Sarah Wenker, Shawn Campbell. JF–Darlene Evich, Leigh Anne Tarbill, Melissa Metzger. IF–Margaret Evich. JRF–Perri Sutton. P DT–Jaime Thompson. PBR DT–Lindsay Boehler. S DT–Leigh Anne Tarbill.

SHAKER FSC: PRE–Ross Kinder. 1–Kristen Carter, Susan Friedell. 2–Sara Kaufman. 5–Kim Butler. 6–Stacey Simon. PF–Lorin Flournoy. JF–Leslie Simon, Virginia Pierce. JRF–Amanda Bennett. P DT–Alicia Kelley, Anne McGinness, Elizabeth Franzen, Elizabeth Cooperman, Elizabeth Treister, Grace Lee. PBR DT–Cristen Means, Jill Webster, Lara Dolin. BR DT–Carrie Wooten, Phasha Spencer.

SHORELINE FIGURE SKATERS: P DT–Meghan Snitkin.

SIERRA NEVADA FSC: 3–Sarah Verhey. 6–Gretchen Sauer.

SILVER BLADES FSC OF KC: PRE–Anne Kirchhoff. 3–Jill Ahders. PF–Anne Kirchhoff. JF–Elaine Perl, Karen Chandler, Kelly Caranchini. NF–Shawnda Beauchamp. JRF–Andrea Beauchamp. PPR–Stephanie Woodman. P DT–Lindsay Hall. BR DT–Leah Carpenter.

SILVER BLADES SC OF ROCKLAND: PRE–William Anderson, Jr. PF–Kristina Zaccheo, Rosemary Anderson. P DT–Trudy Tomlin.

SILVER STREAKS SC: 7–Lori Lafrance Morell.

SKOKIE VALLEY SC: PRE–Ann Laukkanen, Beth Massing, Jessica Mareta, Kelly Erin Mitchell, Liana Schmidt, Lindsay Talbert. 1–Ashley Rossman, Giselle Hartl, Jennifer Dulsik, Samantha Souyoul. 2–Alison Hicks, Caroline Rennemann, Ellen Behrstock, Kristin Peterson, Melissa Gregory, Meredith Rose. 3–Colleen Kraemer, Dana Glassman, Keith Schreiner, Sally Rosen. 4–Jamie Ann Perry, Karen Peterson, Kate Robinson, Kristin Javaras. 5–Faith Fogel, Kelly Anne Walsh, Timothy Goebel. 6–Anne Smith, Dana Keiser, Heather Stanhaus, Rebecca Buening, Tiffany Sfikas, Victoria Jenner. 7–Abigail Leavitt, Michelle Bacher, Sara Ohlmiller. PF–Ann Laukkanen, Beth Massing, Cheryl Primack, Jennifer Holmes, Jessica Mareta, Kelly Erin Mitchell, Liana Schmidt, Lindsay Talbert, Lisa Mazzone, Yumi Sato. JF–Ellen Behrstock, Meredith Rose. IF–Colleen Kraemer, Dana Glassman, Denise Knipp, Sally Rosen. NF–Kelly Anne Walsh, Patrick Connolly, Timothy Goebel. JRF–Anne Smith, Dana Keiser, Heather Alterson, Heather Stanhaus, Libby Kroner. IPR–Jamie Ann Perry. P DT–Anne Smith, Lauren Mehlman, Melissa Gregory. PBR DT–Anna Patel, Benjamin Brittsan, Diona Kelley, Megan Rigsby, Melissa Gregory. BR DT–Patricia Fotsch. S DT–Carole Fishman. BFD–Kate Robinson.

SMITHFIELD FSC: PRE–Charisse Giorgi, Erica Valenti, Lani-Lynn Masso, Nicole Giorgi, Susan Cavallaro. 3–Michaela Tamboe. 5–Wendy Altieri. PF–Charisse Giorgi.

SOUTH MOUNTAIN FSC: PRE–Nikki Francesconi. 4–Alexis Phillips. PF–Chalice Overy, Nikki Francesconi. JF–Blake Yael Faison, Mary Alice Greco, Shawn Cohen. NF–Alexis Phillips. P DT–Adrienne Phillips. BR DT–Blake Yael Faison, Danielle De Trollo, Renee Wise. PS DT–Stephanie Roth. PS ADT–Micalyn Harris. PG DT–Louis Cutrona, Jr.

SC OF SOUTHERN NEW ENGLAND: PRE–Dawn Copeland, Amanda Mercier, Elizabeth Pedrick, Hannah Laudon, Keri Hebert, Kerrie O'Donnell, Kirstin Boyd, Leah Siegel. 2–Cindy Lee Mattos, Kelly Chapman. 3–Elizabeth Reed. 4–Kristen Youlden. PF–Sara Webster. JF–Kristina Zbornak. IF–Elizabeth Reed, Sarah Houde. NF–Kristen Youlden. P DT–Bruce Hutchings, Hannah Laudon, Wendy Wolk. PBR DT–Amanda Mercier, Elizabeth Lester, Lindsay Rapoza, Michele Demers. PS DT–Kerrie O'Donnell, Kristina Zbornak. PG DT–Kristen Youlden.

SOUTHERN NEW HAMPSHIRE SC: PRE–Andrea Leshiwski, Angela Swist, Kimberly Leshinski, Kristen Travers, Kristina Baker, Ryan Tappin, Taryn Mari Hanson. 1–Sunny Austin. PF–Angela Swist, Kari Manni, Kristen Travers, Kristina Baker, Ryan Tappin, Taryn Mari Hanson.

SOUTHPORT SC: PRE–Stacy Letsom. 3–Jillian Johnson, Melody Oakes. 7–Natasha Vora. PF–Stacy Letsom. IF–Melody Oakes. JRF–Spring Minor.

SOUTHWEST MICHIGAN SC: 2–Naomi Lang. 3–Mary Cooley. S DT–Naomi Lang.

SPRINGFIELD FSC: PRE–Andrea Santini, Carleen Malany, Rachel Sunderlin, Rebecca Frigy. 1–Abby De Long, Amy Waldron, Jeanette Vogt. 2–Audrey Sturm, Christine Maze, Debbie Lawhorn. 3–Shannon Mahoney. 4–Hilary Juretic, Kelly Werner, Shenao Roseberry. 5–Renee Fleury. 6–Kristin Knotts. PF–Andrea Santini, Carleen Malany, Rebecca Frigy. JF–Audrey Sturm, Christine Maze. IF–Shannon Mahoney. NF–Hilary Juretic. JRF–Kristin Knotts. P DT–Abby De Long, Rachel Sunderlin, Shenao Roseberry.

THE SC SPRINGFIELD: PRE–Erica Hallot, Lauren Garrity. PF–Laura Abbott.

ST. CLAIR SHORES FSC: 1–Andrea Aggeler. P DT–Emily Miller, Marie Ciraulo, Nicole Stevelinck, Patricia Seely. PBR DT–Diane Wrightman. BR DT–Kristin Barrow, Trisha McNair.

ST. CLOUD FSC: 1–Becky Dreyling, Heather Eveslage, Katie Rothstein. 4–Theresa Lombardi. JF–Nicole Hall. IF–Jennifer Hall.

ST. JOSEPH FSC: 2–Katherine Bressman. 4–Amy Key. 5–Amy Key, Quida Robins. 7–Amy Watkins, Debra Cole. PF–Michelle Parlett. JF–Dawn Elrod, Katherine Bressman, Kristy Jones. JRF–Angela Kulak, Jill Roasa. ABFS–

Alice Schultz, Ann Wachendorfer. PPR-Megan Insko, Russell Sale. IPR-John Bailey, Megan Insko, Rebecca Bradley, Russell Sale. P DT-Jessica Novak, John Bailey, Kristine Parlett, Michelle Parlett. BR DT-Lindsey Walter, Russell Sale. PS DT-Megan Insko. S DT-Janie Johnson, Susan Cooper. PG DT-Quida Robins.

ST. LAWRENCE FSC: PRE-Morgan Martin. 2-Brooke Martin. P DT-Jenelle Paro. BR DT-Elizabeth Durki.

ST. MORITZ ISC: PRE-Marilyn Shoemaker. 1-Danielle Piro, Jim Meredith, Monika Thompson, Roshannak Ravan. 2-Jenelle Hansen, Jessica Ezpeleta, Kerri Thomas, Sarah Kalweit, Tommy Branch, Whitney Reck. 3-Julie Anne Zidek, Katie Alonso, Lara Huntley, Tracy Williams. 4-Jennifer Mariani. 6-Sonya Soohoo. PF-Rosemary Ito. JF-Elisa Kim, Jenelle Hansen, Jessica Ezpeleta, Kerri Thomas, Sarah Kalweit, Tommy Branch, Whitney Reck. IF-Julie Anne Zidek, Medina Brown, Tracy Williams. NF-Jennifer Mariani, Tanya Soohoo. JRF-David Delago. P DT-Allegria Printz, Judith Coe, William Commerford. PBR ADT-Susan Jennison. BR DT-Daniel Johnson. BR MDT-Robert Manners. I DT-Kanae Tagawa.

ST. PAUL FSC: PRE-Sinikka Sinks. 2-Katie Cook, Valerie Price. 3-Amanda Truax. 4-Jill Salmi, Tana Lambert. 6-Anand Bokde, Dena Van Aert. 7-Gretchen Stump, Stephanie Holman. PF-Sinikka Sinks. JF-Beth Swanson, Cari Longnecker, Sabrina Falquier, Sinikka Sinks, Teri Wood, Valerie Price. NF-Bobby Kaping, Jennifer Karl, Tana Lambert. JRF-Gretchen Stump. JPR-Cheryl Marker.

STOCKTON FSC: 1-Tammy Henning. 2-Amy Henning, Kristen Van Fleet. 3-Holly Thompson. 4-Janelle Loberg, Jennifer Wilson. JF-Kristen Van Fleet. NF-Janelle Loberg. BR DT-Holly Thompson.

STONE MOUNTAIN FSC: PRE-Amanda Christian, Catherine Grindstaff, Holly Mullins, Virginia Edwards. 1-Elizabeth Shane. 2-Melinda Scales. 3-Alison Vivona, Patricia Hayes. PF-Amanda Christian, Holly Mullins, Virginia Edwards. JF-Amy Grindstaff, Haley Curtis, Julia Wheatley, Melinda Scales. IF-Amy Liang Schlosser, Patricia Hayes. NF-Amanda Blandford. P DT-Elizabeth Wright. PBR DT-Elizabeth Wright. BR DT-Amy Grindstaff, Julia Wheatley. PS DT-Danielle Carroll. PG DT-Allison Cowhig, Valerie White. BFD-Jenise Jensen, Robert Cowhig.

STONEHAM FSC: PRE-Nicole Miller. 2-Jennifer Baker. 4-Shannon Corcoran. 7-Marissa Levine Britting.

SUN VALLEY FSC: PRE-Lily Gray. 1-Gabriela Saurel. 4-Kahrin Sharp. IF-Gabriela Saurel. NF-Kahrin Sharp, Susan Pereira. P DT-Gabriela Saurel, Holly Lallman. PBR DT-Rachel Humphrey, Tiffany Barnett. I DT-Patrick Dean.

SUNCOAST FSC OF FLORIDA: ABFS-Catherine Reep. ASFS-Catherine Reep. P DT-Michael Lokey. S DT-Amy Jane Agnew.

SC OF SUNRISE: IF-Audra Grace.

SWAN CITY ICE SKATERS: PRE-Dina Gubin. P DT-Dina Gubin, Laura Marshall. PBR DT-Rebecca Krueger.

SYCAMORE ISC: PS DT-Karen Krampe.

SYMMETRIC FSC: 1-Andrea Flaherty.

TAMPA BAY SC: 1-Emilie Nussear. IF-Gia Bonfe, Sabrina Comins.

THIEF RIVER FALLS SC: 1-Jennifer Stumpf. PF-Nickie Bulger. P DT-Elizabeth Odette, Erica Owen, Kim Stenseth, Rebecca Mooney, Tami Mooney.

THOROUGHbred FS TEAM: 1-Elizabeth Spencer. 2-Tiffany Brown.

TIDEWATER FSC: PRE-Heide Massetti, Megan Martin. PF-Heide Massetti, Megan Martin. P DT-Amy Kobelski, Brandy Taylor, Caitlin Stine, Christina Kern, Heide Massetti, Lindsay Russek. PS DT-Erin Sonn.

TIMBERLINE SC: PRE-Audrey Schultz, Christi Rusch, Jessica Plachetka, Kelly Reissmann, Michelle Hargraves. 1-Tricia Rusch. 2-Tara Wald. PF-Angela Duerkop, Audrey Schultz, Michelle Hargraves, Tessa Wald. JF-Linda Zahrt, Tara Wald. P DT-Jessica Plachetka, Tessa Wald, Tiffany Wald. PBR DT-Heather Cleveland, Kelly Reissmann. BR DT-Amy Grossnickle, Gabrielle Bielen, Tara Wald. PS DT-Linda Zahrt.

TRI-CITIES FSC: 1-Mary Braun.

TRI-COUNTY FSC: 1-Allison Schwartz.

TROY SC: PRE-Nathalie Webb. PBR DT-Jessica Miller. BR DT-Kristin Hamilton.

TUCSON FSC: PF-Kendra Flood.

TULSA FSC: PRE-Emily Horne. 5-Candace Holmes. PF-Emily Horne.

TWIN BAYS SC: 1-Jessica Hansen, Wendy Downey. JF-Sara Besaw.

UNIV OF DELAWARE FSC: PRE-Brooke Graham, Brooke Lacey, Katherine Conway, Lindsey Heilman. 1-Lori Naumowich. 2-Jennifer Yadvis, Maggie MacDonald, McKenzie Savidge. 3-Alexie Kolpak, Christine Rohm. 4-Amy Gunzenhauser. 5-Stephen Foy. 6-Rhonda Greenslet. PF-Brooke Graham, Brooke Lacey, Cabray Haines, Calvin Huang, Katherine Conway, Lana Mmcilovich, Lindsey Heilman, Sung Min Jung. JF-Alaina Bronowicz, Christine Lu, McKenzie Savidge, Sung Min Jung. NF-Amy Gunzenhauser, Pamela Sue Freudig. PPR-Stephen Foy. IPR-Stephen Foy. NPR-Stephen Foy. JPR-Paul Dulebohn. P DT-Alison Banning, Christina Rivera, Falyn Rudzinski, Rachael Kline. PBR DT-Carolyn Moloney, Catherine Bollinger, Heather Allebach, Heidi Allebach, Lindsay Davis, Melissa Desiderio, Nancy Chandross, Sandra Shacklady-White, Stephanie Rice. BR DT-Christie Moxley, Denise Martinez, Elizabeth Haines, Jimmy Bollinger Jr, Katie Bollinger. PS DT-Cabray Haines, Lorien Pruett. S DT-James Wade. PG DT-Wayne Lai. BFD-Aimee Kreimer, Jonathan Nichols. SFD-Robin Pearce, Tina Lai, Wayne Lai.

UTAH FSC: 2-MacKenzie Baltz. 3-Johnny McKinnon, Shayna Lund. 4-Amber Martin, Jennifer Palmer. PF-Janet Borg. JF-Janet Borg, MacKenzie Baltz. NF-Amber Martin, Brandy Mead. JRF-Tiffany Tayler. P DT-Amber Martin, Janet Borg, Kim Tayler. PBR DT-Danielle Dimeo, Janet Borg. BR DT-Darlin Baker.

SC OF UTICA: PBR DT-Le Ryiah Puffer.

SC OF VAIL: 1-Ailish Mulrooney, Parke Cogswell, Tara Yack. 2-Amanda Tennant, Christopher Malato. 3-Christine Guerrini, Lauren Backhus, Sara Robinson. 6-Meghan Doyle. PF-Vanessa Wertheim. JF-Cassandra Hoevelmann. IF-Christine Guerrini, Sara Robinson. JRF-Meghan Doyle.

VALLCO SC: 2-Angela Zankich, Elizabeth Dalmau, Michelle Roberts. 3-Alethea McConkey, Serena Phillips. JF-Elizabeth Dalmau, Hsing Chen, Jennessa Van Kregten. IF-Maryjane Mendoza. NF-Deirdre McMahon. PG DT-Andres Lopez.

SC OF VALLEY FORGE: PF-Amy White.

VERMONT SC AT ESSEX: PRE-Amanda Culver, Kris Gallas. PF-Kris Gallas.

WAGON WHEEL FSC: PRE-Bethany Haag, Carrie Griffin, Gwen Shully, Heather Paige, Julie Feld, Lauren Lovda, Megan Michiels, Tami Saltouros, Tanya Conner. 1-Meredith O'Boyle, Sarah Prekel, Tanja Golsch. 2-Tiffany Scurto. 4-Ginger Page, Sara Jack. 5-Christopher Shriver, Erika Fischer. PF-Bethany Haag, Carrie Griffin, Gwen Shully, Heather Paige, Julie Feld, Lauren Lovda, Megan Michiels, Tami Saltouros, Tanya Conner. IF-Jane Panzer. JRF-Christopher Shriver, Erika Fischer. BR DT-Becky Haag.

WALLACE FSC: PRE-Laurie Letarte, Melissa Irving, Sara Campbell. PF-Alysha Pelletier, Laurie Letarte. P DT-Alysha Pelletier.

WARWICK FIGURE SKATERS: JF-Heather Nye. ABFS-Debra Magiera, Joanne Baillargeon. ASFS-Debra Magiera, Joanne Baillargeon. P DT-Beth Lury. PBR DT-Jessica O'Brien. S DT-Lyndsey Read, Denise White.

WASHINGTON FSC: PRE-Ellen Cherniavsky, Jennifer Goebel, Joanna Harma, Rachel Gutter, Rachel Lieber, Stacey Roshan. 1-Cristin Murray, Heather Dalsimer. 2-Alissa Barrett, Kaila May, Tiffany Martin. 4-Audrey Edmundson. 5-Carmie Chan, Lea Potts. PF-Ellen Cherniavsky, Jacqueline Sheppard, Joanna Harma, Margaret Hill, Neva Cherniavsky, Rachel Lieber, Rachel Gutter, Stacey Roshan, Tara Quinn. JF-Tiffany Martin. JRF-Carmie Chan, Tiffany Purcell. PPR-Gabriel London. P DT-Alexandra Adams, Alice Berman, David Rogers, Erica Kolatch, Gabriel London, Meredith Tilch. PBR DT-Blaine Park, Dawnelle Park, Gabriel London. PBR ADT-Kathy Jaray. BR DT-Jennifer Smith, Kaila May, Melissa Weberman. PG DT-Lizzy Scully. ABFD-Susan Libbin, Vera Spinner.

FSC OF WATERTOWN: PBR DT-Katy Hogan, Kelly Ross, Shanna McNeil. PG DT-Lindsay Sherman.

WAUPUN FSC: 1-Charity Meinders.

SC OF WAYNE: S DT-Denise Modrzynski.

WEST COVINA FSC: 4-Susan Parkhill. NF-Susan Parkhill.

WEST SHORE FSC: PRE-Amy La Buda.

SC OF WESTCHESTER: 1-Kristen Simoson, Rosemary Yim. 3-Kerry Rose Knakal. PF-Gloria Park, Rosemary Yim. JF-Jay Ponazecski. IF-Kerry Rose Knakal.

SC OF WESTERN NEW YORK: PRE-Maryclaire Devine, Michelle Wolbert, Tara Niezgoda. 1-Erica Surbone, Erin Harper, Marla Schoenborn. 3-Amanda Mangione. 7-Lisa Dick, Sharon Cercone, Stacy Adler, Teresa Ginal. PF-Maryclaire Devine, Michelle Wolbert, Tara Niezgoda. JF-Cory Harper. IF-Amanda Mangione. P DT-Kimberly Kapaneck.

WESTMINSTER FSC OF ERIE: JF-Patrick McCarthy.

WHEELING FSC: PRE-Jennifer Fordyce.

WILMHURST FSC: PRE-Brianne Keefe, Jessica Stallings, Lindsey MacPherson, Sara Barber, Tiffany Laidley. 1-Jonathan Pozniak, Lisa Finch, Stacey Wade. 3-Michelle Reardon. 4-Amy Stetson. PF-Amy MacFarlane. NF-Amy Stetson, Christine Cooke.

SC OF WILMINGTON: PRE-Carolyn Schweitzer, Jennifer Beattie, Karen Vorndran, Raphael Nash. 1-Erin McLaughlin, Kristin Casey. 2-Angela Hill, Clair Bushey, Kristin Niewinski. PF-Raphael Nash. JF-Angela Hill, Clair Bushey, Kristin Niewinski, Laura Kirk, Leigh Hruz, Nicole Reigelman. PPR-Marisa Rendeiro. IPR-Marisa Rendeiro. JPR-Andrea Catoia. P DT-Angela Hill, Jamie Loper, Leigh Hruz, Cindy Stetler. S DT-Molly Nook. Mealey, Monique Rollins. S DT-Marisa Rendeiro. S ADT-Carol Alt. PG DT-Abbie McCammon.

WINCHESTER FSC: 2-Maura Winslow. 3-Elizabeth Fiore.

WINDY HILL SC: PRE-Jeff Sward, Jennifer Grant, Sharon Surcek. 1-Helena Henry, Sabrina Smith. 2-Lindsay P Robertson. PF-Jeff Sward, Jennifer Grant, Sharon Surcek. IF-Joanne Lee. BR DT-Sabrina Smith.

WC OF INDIANAPOLIS: 1-Kathy Velonis.

WINTERHURST FSC: PRE-Lorene Mickunas. 1-Julianne Sweeny, Lara Zbaeren, Lindsay Weitman, Lorene Mickunas. 2-Danielle Radloff, Lisa Breda. 4-Deana Gerbrick, Reagan Kendrick, Theresa Palascak. 5-Christine Halpin, Michael Keller. PF-Gina Herron, Lorene Mickunas, Maria Shaker. P DT-Alice Hassing, Julianne Sweeny, Kim Hansen. PBR DT-Christina Petruskis. PS DT-Christine Halpin, Cindy Stetler. S DT-Molly Nook.

WISCONSIN FSC: PRE-Jessica Sikorski. 1-Jennifer Raney. 2-Stephanie Hargraves. 4-Kelly Burton. 7-Natalie Dorman. PF-Jessica Sikorski. JF-Jennifer Raney. JRF-Shannon Hargraves. P DT-Angela Johnstad, Sarah Hestekin. PBR DT-Ann Harschutz, Jessica Schmidt, Kari Huse. BR DT-Ann Harschutz. S DT-Tara Stamm.

WISSAHICKON SC: IPR-Laura Brennan.

SC OF WORCESTER: 1-Kara Ann Sullivan, Tracy Lahair. PF-Melissa D'Acri.

WYANDOTTE FSC: 1-Crystal Swiney. 2-Colleen Coffey. 6-Chantelle Andrus. P DT-Christopher Pawlowski.

WYOMING VALLEY ISC: PS DT-Kristy Grabiec.

YALE FSC: BR DT-Eben Cobb. PS ADT-Christopher Collier.

YARMOUTH ICE CLUB: PRE-Rebecca Crocker. 1-Kari-Anne Hickey, Kristina Kelly, Marissa Crocker.

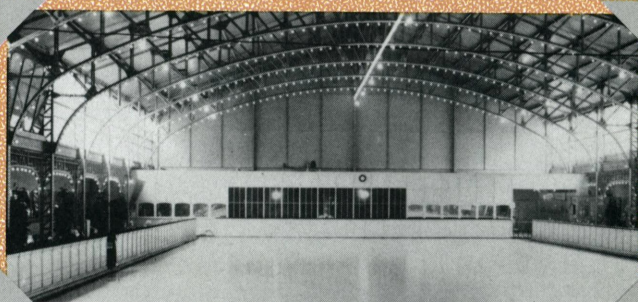
YONKERS FSC: PRE-Fiona Lennon. 1-Robin Erenberg. PF-Fiona Lennon. IF-Katie Bertine.

Continued on page 60

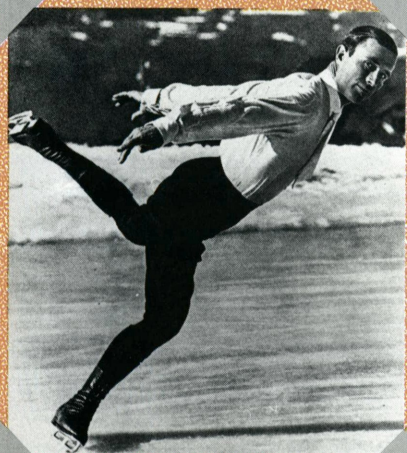
Olympic



Magda Julin-Mauroy, Sweden



Antwerp Ice Palace, Belgium



*Gillis Grafström,
Sweden*



*Theresa Weld and Nathaniel Niles,
United States*



*Ludowika Eilers Jakobsson and
Walter Jakobsson, Finland*

Memories

Antwerp — April 20-30, 1920

The second Olympic figure skating competition was staged at the VIIIth Olympiad in Antwerp, Belgium, in 1920. The event brought the largest number of entries ever for an international competition: six men, six ladies, and six pairs. The entire U.S. team was made up of Theresa Weld and Nathaniel Niles who skated both singles and pairs.

The World Championships had not been held since 1915, due to the war, and the next one would not take place until 1921, the year after the Olympics. Consequently, there were no absolute favorites coming into the event. Madge Syers, 1908 Olympic gold medalist, had died in 1917, and the only defending champion was an aging Ulrich Salchow.

The competitions were staged at the Antwerp Ice Palace, and in the men's event, Salchow who was 10 times World champion, nine times European champion, and the 1908 Olympic champion, faced off against fellow Swede Gillis Grafström. Grafström took the lead over the 42-year-old Salchow in the compulsory figures and held it through the free skate to win the gold, his first of three.

Salchow began the free with a swollen knee, hit the barriers on a jump and fell, dropping from contention. Second place went to Andreas Krogh of Norway and third to fellow countryman, Martin Stixrud. Nathaniel Niles, the 1918 U.S. Champion, finished sixth.

Magda Julin-Mauroy of Sweden won the ladies' event after a strong showing in figures and a less-than-perfect free skate, in which she did not gain a first placement from any of the judges. Svea Norén, also of Sweden, placed second, but reportedly the "best lady skater in the free style" was Theresa Weld of the United States who finished third, becoming the first American

woman to ever medal in an international figure skating event. (The day after the ladies' event, a retabulation of the scores showed that Weld had outpointed Norén and deserved the silver medal. The judges had approximated her points and awarded ordinals and medals accordingly. A protest was never lodged, and the results stood as posted.)

Ludowika Eilers Jakobsson and Walter Jakobsson of Finland took the gold in pairs, followed by Alexia Schöyen Bryn and Ungvar Bryn of Norway, and Basil Williams and Phyllis W. Johnson of Great Britain. Theresa Weld and Nathaniel Niles, the 1918 and 1920 U.S. pair champions, placed fourth, a strong finish for the American pair's first international outing.

The success of the figure skating events and the addition of hockey on the schedule increased the call for a separate Olympic Winter Games. The International Olympic Committee resisted such demands on the basis that all competitions in all sports should be held at one place and at one time. The events to come in 1924 would bring about a final resolution.

Laurels

Continued from page 57

EASTERN INDIVIDUAL MEMBER: PRE—Anna Vanderhurd, Ashlee Fotinakes, Barbara Heit, Claire Phillips, Erin Spurling, Gale Rossi, Joey Diego Rigol, Melissa Shippey, Natalie Miller, Susan LaBelle. PF—Ashlee Fotinakes, Claire Phillips, Erin Spurling, Gale Rossi, Monica Helberg, Natalie Miller, Sonoko Mizugaki. JF—Ann Juergens-Behr, David Carpenter. P DT—JoAnne Ognibene, Andrea Thomas, Melissa Shippey. PBR DT—Beth Woronoff. BR DT—Brett Dorfman. BFD—Denise Campono. ABFS—Robert Ziegler.

MIDWEST INDIVIDUAL MEMBER: PRE—Camela Bevil, Katherine Mowbray, Kristin Searle. 1—Camela Bevil. 2—Tynell Wilson. 4—Mercedes Bransfield. PF—Camela Bevil, Emily Chase, Barbara Madar, Kristin Searle. JF—Danielle Pierantoni, Victoria Gomez, Jocelyn Slowey. NF—Brent Echols. JRF—Mercedes Bransfield. BFD—Larry Laborde. P DT—Angela Rekuc, Heather Wahr, Krista Warner. PBR DT—Karen Angeline, Jocelyn Slowey. PG DT—Beth Erickson. ABFI—Yvonne Cherne.

PACIFIC COAST INDIVIDUAL MEMBER: PBR DT—Emily Baillargeon.

Ricky Harris

Continued from page 23

To answer your question about wearing elaborate dresses at your level, no, I do not think it is at all necessary. I think the judges will give you more credit for a beautifully extended leg, pointed toe, and lovely landing position rather than an elaborate dress.

So, save your money on the dress and spend it on ballet lessons!

People and Places

Continued from page 11

Jonathan P. Geen, former skater with the SC of New York, joined the law offices of Steven Jay Katz where he will practice in entertainment and sports law. Geen is a graduate of Northwestern University's School of Law (1985) and did his undergraduate work at Columbia College (1982).

50-Year Judges

Continued from page 19

Her years in skating were preceded by an interesting childhood spent in China. As a young girl there her favorite sport was cross-country riding. She rode with the Shanghai Paper Hunt Club in Shanghai, China, and upon returning to the United States, rode with the Beaufort Hunt in Harrisburg, Penn. Sailing has also been a sport Hickok and her two sons, Charles and Peter, have enjoyed. The Chesapeake Bay in Maryland is her main port of call but boating has also taken her to Cape Cod many times.

Art history and archaeology are also keen interests of Hickok's and although she has had many experiences pursuing them around the world, she speaks of one particularly fascinating excursion following Alexander the Great's route through Pakistan and into Afghanistan. Hickok is always eager to learn and has taken art and archaeology courses in such faraway places as Rome and Siena.

Skating, however, has been the constant in her life since 1936, when she joined the Hershey Figure Skating Club in Hershey, Penn. Hickok served as club president in both 1946 and 1958. Her late husband, William O. Hickok IV, a longtime USFSA board member, and she competed in many dance competitions. She competed at the regional, sectional, and national levels. Since 1961 Hickok has been a member of the Philadelphia Skating Club and Humane Society in Ardmore, Penn. Her coaches were Joseph Carroll, Donald Laws, Roger Bennett, and Charles Potter.

Her judging career began in 1941 when, as a member of the Hershey FSC, Hickok became a figure and dance judge. She achieved the status of international dance judge in 1951. In 1973 she became an ISU dance test judge, and in 1980, discontinued that level of judging. Hickok has judged 25 Regionals, 21 Sectionals, seven Nationals, and three North American championships. Currently she is a high test figure judge, a Junior competition judge, and a national judge.

To Wilhelm Appellofft, Janet Rice French, Eugene Maeder, and Elisabeth Daub Hickok . . . bouquets and thank you.

STATEMENT OF OWNERSHIP, MANAGEMENT AND CIRCULATION. 1A. Title of publication: SKATING. **1B. Publication no.:** 00376132. **2. Date of filing:** September 30, 1991. **3. Frequency of issue:** monthly, except August and September. **3A. No. of issues published annually:** 10. **3B. Annual subscription price:** \$15.00. **4. Complete mailing address of known office of publication:** 20 First Street, Colorado Springs, El Paso County, CO 80906-3697. **5. Complete mailing address of the headquarters of general business offices of the publisher:** 20 First Street, Colorado Springs, CO 80906-3697. **6. Publisher:** The United States Figure Skating Association, 20 First Street, Colorado Springs, CO 80906-3697. **Editor:** Kim Mutchler, 20 First Street, Colorado Springs, CO 80906-3697. **Managing Editor:** Ian A. Anderson, 20 First Street, Colorado Springs, CO 80906-3697. **7. Owner:** The United States Figure Skating Association (a Colorado Trust with no stockholders), 20 First Street, Colorado Springs, CO 80906-3697. **8. Known bondholder, mortgagees, and other security holders owning or holding 1 percent or more of total amount of bonds, mortgages, or other securities:** none. **9. For completion by nonprofit organizations authorized to mail at special rates (DMM Section 423.12 only). The purpose, function, and nonprofit status of this organization and the exempt status for Federal income tax purposes:** has not changed during preceding 12 months. **10. Extent and nature of circulation:**

	Average 12 mos.	Single Issue
A. Total no. copies printed	33,000	33,000
B. Paid Circulation		
1. Sales through dealers and carriers, street vendors and counter sales	NONE	NONE
2. Mail Subscriptions	30,786	31,112
C. Total paid circulation	30,786	31,112
D. Free distribution by mail, carrier, or other means, samples, complimentary, and other free copies	332	290
E. Total Distribution	31,118	31,402
F. Copies not distributed		
1. Office use, left over, unaccounted, spoiled after printing	1,888	1,598
2. Returns from news agents	NONE	NONE
G. Total	33,000	33,000

I certify that the statements made by me above are correct and complete.

(signed)

Kim Mutchler
Editor

Ice Abroad

Continued from page 15

14. Cristina Mauri, Italy
15. Margaret Schlater, Italy
16. Barbara Hunger, Switzerland
17. Zuzanna Szwed, Poland
18. Tamara Heggen, Australia
19. Daniela Kleisner, Switzerland
20. Andrea Law, Great Britain
21. Eun Hee Lee, Republic of Korea
22. Isabelle Balhan, Belgium
23. Sandrine Goes, Belgium
24. Hayley Antal, Australia
25. Monique van de Velden, Netherlands
26. Ja-Lin Weng, Chinese Taipei
27. Maria Fuglsang, Denmark

PAIRS

1. Sherry Ball & Kris Wirtz, Canada
2. Svetlana Pristav & Viacheslav Tkachenko, USSR
3. Jamie Sale & Jason Turner, Canada
4. Kristy-Lee Sargeant & Colin Epp, Canada
5. Leslie Monod & Cédric Monod, Switzerland
6. **Laura Murphy & Brian Wells, USA**
7. Nadine Pflaum & Daniele Caprano, Germany
8. Patricia Jares & Thorsten-Alexander Weigle, Germany
9. Kathryn Pritchard & Jason Briggs, Great Britain
10. **Almee Offner & Brian Helgenberg, USA**
11. Danielle Carr & Stephen Carr, Australia
12. Lyne Haddad & Sylvain Prive, France
13. Jung Yoon Choi & Young Min Lee, Republic of Korea

DANCE

1. Irina Lobacheva & Alexei Pospelov, USSR
2. Elena Kustarova & Oleg Ovsjanikov, USSR
3. Marie-France Dubreuil & Bruno Yvars, Canada
4. Jennifer Boyce & Michel Brunet, Canada
5. Barbara Minorini & Andrea Gilardi, Italy
6. Pascale Vrot & David Quinsac, France
7. Michelle Fitzgerald & Vincent Kyle, Great Britain
8. **Elisa Curtis & Robert Nardoza, USA**
9. Valérie Le Tensorer & Jörg Kienzie, Switzerland
10. **Mimi Wacholder & Collin Vail Sullivan, USA**
11. Monica MacDonald & Duncan Smart, Australia
12. Aliz Veres & Gyula Szombathelyi, Hungary
13. Nakako Tsuzuki & Kazu Nakamura, Japan
14. Sung Min Jung & Sung Ho Jung, Republic of Korea
15. Yoon Hee Park & Jong Hyun You, Republic of Korea

COUPE DES ALPES (Team Trophy)

1. USSR. 2. Canada. 3. **USA**. 4. France. 5. Japan.
6. Great Britain. 7. Germany. 8. Italy. 9. Switzerland.
10. Australia. 11. Spain. 12. Republic of Korea.
13. Hungary. 14. Belgium. 15. Chinese Taipei.

FRITZ GEIGER MEMORIAL TROPHY (Team Trophy)

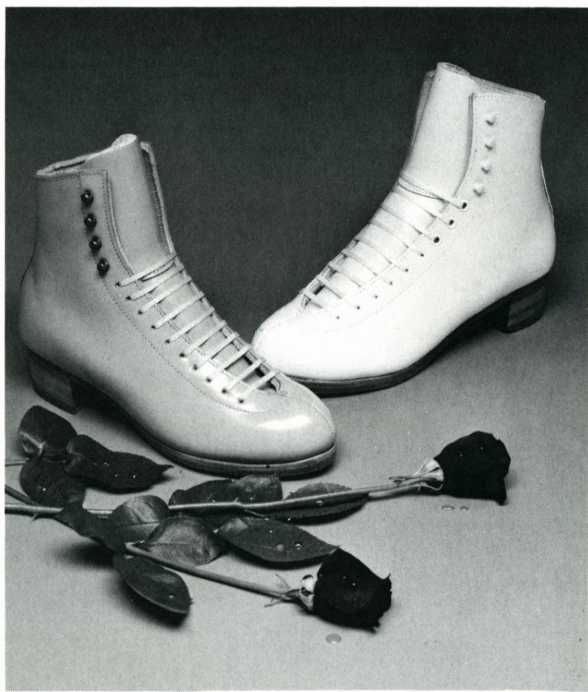
1. USSR. 2. Canada. 3. **USA**. 4. Japan. 5. France.
6. Germany. 7. Switzerland. 8. Italy. 9. Great Britain.
10. Spain. 11. Australia. 12. Austria. 13. Netherlands.
14. Denmark. 15. Poland. 16. Romania. 17. Republic of Korea. 18. Belgium. 19. Hungary. 20. Chinese Taipei.

Advertisers

INDEX

	B	
Blades on Ice	16	
Bryan Sports Events	42	
Burley's Rink Supply	47	
	C	
Creamettes	40	
Crown Trophy	46	
	D	
Dante Cozzi Sports	20	
Devitt Studios	46	
	F	
First Place Designs	34	
Foundation for Ice Skating Advancement	45	
	G	
Guide Travel	48	
	H	
Holjen Inc.	43	
	I	
Ice Castle International Training Center	32, 33	
	J	
Jerry's Skating World	9, 11	
	K	
Karaco Inc.	48	
Klingbeil Shoe Labs	10	
	L	
LaBelle Fabrique	45	
Laurie Skateplate	25	
Lynch's Inc.	39	
	M	
Manhattan Library of Dance Skating Music, Inc.	47	
	N	
1992 Nationals, Florida	5, 22	
	O	
Oberhamer	14	
	R	
Riedell Shoes Inc.	IBC	
	S	
Sports Jewelry Etc.	44	
SP-Teri	IFC	
	T	
T & T Productions	44	
	U	
Ugg Holdings Inc.	31	
Unicorn Sport	23	
Up In The Air	OBC	

Riedell™



For a great performance

Endorsed By



RIEDEL SHOES, INC. P.O. BOX 21 RED WING, MN 55066

TELEPHONE: 612-388-8251 TELEX: 4931210 FAX 612-388-8616

THERE'S MORE "UP IN THE AIR" THAN YOU EVER IMAGINED.



Up in the Air, Inc. has put together one of the largest selections of skate guards, terry cloth blade covers, stuffed animals, T-shirts and sweats. All on the cutting edge of quality, fashion, and durability.

Ask for our products in your local pro-shop or write for a free catalog.

UP IN THE AIR
INCORPORATED

1245 OLD ALPHARETTA ROAD
ALPHARETTA, GEORGIA 30202
404 751-0913 FAX 751-0543

Dealers inquiries are always welcome! Worldwide shipping available.