



SKATING

T A B L E O F C O N T E N T S

LETTERS TO THE EDITOR	2	
	3	INSIDE EDGE
TURNING POINTS	6	
	7	MEMORIAL FUND DONORS
BASIC SKILLS	8	
	9	OFFICIAL UPDATE
CALENDAR OF EVENTS	10	
	12	COMPETITION RESULTS
FACES AT THE RINK	15	
	16	BOARD OF DIRECTORS REPORT OF ACTION
JOHN DYSTEL	20	
	21	TESTS PASSED

CONTRADICTION INFORMATION IN THE PHYSICS OF JUMPING

Dear Editor:

The statements made in the article on the physics of jumping (*Skating*, September 1994) did not correspond with the graphs accompanying them. On page 18, it states that the skater traveled only 72 percent as far in the triple as in the single. Yet, no skater had a triple distance traversed less than that of the distance he traversed in his single.

The graphs do display the decreased horizontal velocity and the generally decreased takeoff velocity in the triple that was spoken of on page 18, but this is not consistent with the greater horizontal distance covered. Distance of flight is a function of horizontal velocity and vertical displacement. Decreasing both the horizontal and vertical velocity on the triple jump should not result in the greater distance traversed in flight shown in the graphs.

Although inconsistency in the digitized reference points may have caused this anomaly, I am more inclined to think that the graphs may have been mislabeled. Could you clear up this conundrum?

Carl A. Papenfuss
Meridian, Idaho

Dear Editor:

I very much enjoyed the article in your September 1994 issue about the mechanics of jumping. I hope that it will help me with my jumping. However, there was a contradiction between the text, which stated that skaters' single Axels covered more horizontal distance than their triple Axels, and the figured data, which showed triple Axels being longer than single Axels even though their horizontal take-off velocities were less. Could you clarify this? Thank you.

Da-Shih Hu
Hanover, New Hampshire

Dear Carl & Da-Shih,

Thank you for bringing this matter to our attention. The discrepancy obviously slipped by us in our review of the article and the accompanying graphs, so we directed your questions to the source of the article — the U.S. Olympic Committee Sports Science and Technology Division. It turns out the column numbers indeed had been inadvertently switched prior to submission. To set the record straight, the results for "distance travelled" under the column heading "Triples" are actually the "distance travelled" results for "Singles" and vice versa. Skating magazine regrets the error and we appreciate your interest in the article.

OUR CHAMPIONS AREN'T ALWAYS FAMOUS

Dear Editor:

Too often stories we see in *Skating* tend to be glossy tributes to the current success of one hard-working competitor or another. Yes, hard work does pay off in fame and fortune. But, sometimes things don't turn out in the conventional manner, and a skater in his prime is struck down.

Continued on page 7

Cover photo of National Collegiate
Senior Ladies' Free Skating Champion Kathaleen Kelly Cutone.

COPYRIGHT: Skating, Copyright, 1994 by The United States Figure Skating Association (USFSA). Title registered in the U.S. Patent Office. Skating is protected by copyright and nothing that appears in it may be reproduced without written permission.

SKATING

EDITOR
JAY MILLER

ASSISTANT EDITOR
MARY ANN PURPURA

ADVERTISING
LUANN DUDA

SKATING (ISSN: 0037-6132) is published monthly by The United States Figure Skating Association, 20 First Street, Colorado Springs, CO 80906-3697. Issue: Vol. 71, No. 11. Subscription rates: United States, one year \$25 (U.S.); Canada, one year \$35 (U.S.); Foreign, one year \$45 (U.S.). Allow 6-8 weeks for delivery of the first issue. Second Class postage paid at Colorado Springs and at additional mailing offices. Copyright ©1994 by The United States Figure Skating Association (USFSA), Colorado Springs, CO. Phone (719) 635-5200. **SKATING** assumes no responsibility for the return of unsolicited manuscripts or photographs. **Postmaster: Send address corrections to SKATING, 20 First Street, Colorado Springs, CO 80906-3697.**

USFSA PRESIDENT
CLAIRE W. FERGUSON

EXECUTIVE COMMITTEE
CLAIRE W. FERGUSON
JEFFREY BENZ
JACK CURTIS
JOAN GRUBER
RON HERSHBERGER
KATHALEEN A. KELLY CUTONE
ANNE KLEIN
FRANKLIN S. NELSON, MC, USNR
MORRY STILLWELL

EXECUTIVE DIRECTOR
JERRY LACE

EXECUTIVE BUSINESS DIRECTOR
ROBERT T. CROWLEY

SKATING is the official publication of
The United States Figure Skating Association
USFSA



Member



Member

FIRST TESTS IN THE "MOVES IN THE FIELD"

After a summer filled with "Moves in the Field" training schools for officials and coaches being conducted throughout the nation, the first official "Moves in the Field" tests took place at midnight on Oct. 1.

The first test taken and passed in the Eastern Section, according to USFSA records verifiable at press time, was a Pre-Preliminary Test by **Whitney Tashjian**, who had been a demonstrator at all of the schools held in the New England area. Her test was taken at the **SC of Boston** and judged by Club President **Ted Clarke**, who had been the presenter for all the schools in that area.

Two hours later in the Mountain Time Zone, **Centennial SC** of Colorado Springs, Colo., conducted the first test session in the Midwest Section. The first "Moves in the Field" test session in the Pacific Coast Section was not verifiable by press time.



HAVE A BASIC SKILLS CHRISTMAS

Each December, the **Garden City FSC** in Garden City, Mich., presents a Christmas Exhibition for two of their local public elementary schools. Each year, different schools are chosen. The purpose of the exhibition is to promote the growth of the sport of figure skating through the USFSA Basic Skills Program.

This free exhibition is held on the last two days of school before the Christmas break. Each school buses between 500 to 600 students on its assigned day to the morning exhibition. Taken together, the exhibitions expose approximately 1,200 children ages 5 to 12 to the fun and excitement of skating. The exhibition, complete with Christmas props, skaters in Christmas costumes,

and Christmas music, is a great prelude to the children's Christmas break.

The club encourages its skaters to perform in the exhibition no matter what skating level they may be, so that the children in the audience can see skaters from the beginner to the Senior level. In turn, the skaters get a thrill from the experience of performing in front of a *full* arena and hearing its thunderous applause. Of course, the exhibition ends with the arrival of Santa Claus to wish everyone a Merry Christmas. As the children leave, goodie bags containing Christmas favors and, most importantly, USFSA Basic Skills program information and lesson schedules from the Garden City Parks and Recreation Department are given to their teachers to dispense.

Skating is a sport that can be enjoyed by all ages. The next **Dorothy Hamill**, **Kristi Yamaguchi**, or **Brian Boitano** might be in that elementary school audience. It is the goal of the Garden City FSC to expose as many children as possible to figure skating. Without viewing the sport first-hand, a child may never develop the desire to participate in skating. There is a wealth of talent for figure skating in the U.S. and the Garden City FSC seeks to ensure that the interest in skating in its community continues to grow.



JUDGE FEATURED IN SPORTS ARCHIVES EXHIBIT

World Judge **Janet Gerhauser Allen** was recently featured in an exhibit celebrating Sports and Recreation during "Archives Week" in Ohio. The national headquarters of Kappa Kappa Gamma, the women's fraternity of which Allen is a member, created an exhibit of historic photos and memorabilia of members with athletic backgrounds. Allen, a member of the U.S. Champion Fours team in 1947, 1948 and 1950, was the only figure skater represented in the exhibit. Allen graduated from the University of Minnesota in 1954 and is a member of the Chi chapter of Kappa Kappa Gamma. In addition to judging, she currently serves the USFSA as a Sectional Vice Chair for both the International Committee and the Memorial Fund Awards and Allocations Subcommittee, as well as a World Hall of Fame elector.



'95 U.S. FIGURE SKATING CHAMPIONSHIPS OPENS HEADQUARTERS IN RHODE ISLAND

More than 100 skaters, political and skating officials were on hand to witness the Oct. 13 ribbon-cutting ceremonies for the Warwick, R.I., administrative offices of the **1995 U.S. Figure Skating Championships**, slated for Feb. 6-11, 1995, in Providence, R.I.



Championship Chair **Leo J. McCrone** and USFSA President **Claire W. Ferguson** held the ribbon as it was cut by Warwick Mayor **Lincoln Chafee** with some assistance from his parents, honorary event co-chairs U.S. Senator and Mrs. **John Chafee**.

Ferguson, who resides in Jamestown, R.I., spoke of the economic impact of the Championships, which is expected to generate more than \$7 million for local merchants, and the caliber of competition that will feature more than 300 of the nation's top skaters.

The 1995 U.S. Figure Skating Championships, expected to bring in more than 50,000 spectators, will be held at the Providence Civic Center and on other ice surfaces, including a temporary Olympic-size rink at the Rhode Island Convention Center and two Warwick rinks. Warwick FSC is the host club for the week-long event.

Peter Ventrone

1996 U.S. CHAMPIONSHIPS

TICKETS SELLING FAST

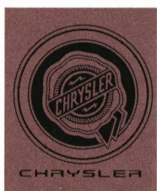
Procrastinators beware! Although still 15 months away, organizers of the 1996 U.S. Championships in San Jose, Calif., already have sold out of all-event tickets at the VIP level (first two rows rinkside with unlimited Arena Club access) and all-event tickets at the Club level (lower bowl with unlimited Arena Club access) are selling fast, according to event organizers. The event organizers say there are still plenty of all-event tickets on the Concourse (lower bowl with no access to Arena Club) and Value View (all upper bowl) levels.

The Championships in which skaters will vie for U.S. Senior, Junior and Novice titles will take place Jan. 14-21, 1996. All-event tickets, ranging in price from \$100 to \$400, admit holders to all Championship events and practice sessions. All-event tickets are available by mail order only. To purchase yours, write to: The 1996 U.S. Figure Skating Championships, P.O. Box 28117, San Jose, Calif. 95159.



CHRYSLER CORP. ANNOUNCES FSC PROGRAM IN CONJUNCTION WITH "NUTCRACKER ON ICE"

Most people don't aspire to get a ticket for driving a car, but USFSA and "Nutcracker On Ice" sponsor The Chrysler Corp. hopes to change that through an innovative program designed for select figure skating clubs in 17 U.S. cities.



Chrysler's recently announced Nutcracker On Ice Club Demo Drive Program will reward members of a select figure skating club in the 17 "Nutcracker On Ice" U.S. tour cities with 50 free pairs of tickets to the production starring Oksana Baiul, Viktor Petrenko and Brian Boitano for test driving its Cirrus and/or Minivans. Chrysler also will donate \$250 to each of the selected participating clubs.

In addition, The Chrysler Corp. will offer "Nutcracker On Ice" merchandise at, or near, cost for resale as a club fundraiser. The program is intended to provide member clubs with a low-involvement opportunity to raise funds and add value to its members while supporting their own programs through the involvement of one of the USFSA's corporate partners.

The "Nutcracker On Ice" tour runs from Dec. 6 through Dec. 17. Following is an update on the complete tour itinerary, which differs slightly from the preliminary one published in the October issue of *Skating*:

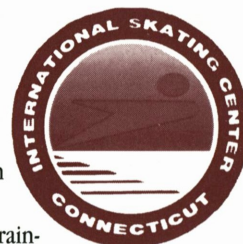
- December
- 6 Hartford Civic Center, Hartford, Conn.
- 7,8 Ottawa Civic Center, Ottawa, Canada
- 10 Star Of The Desert Arena, Las Vegas, Nev.
- 11 Great Western Forum, Los Angeles, Calif.
- 12 Cow Palace, San Francisco, Calif.
- 14 Civic Center, Jacksonville, Fla.
- 15 North Charleston Coliseum, North Charleston, S.C.
- 16 Rosemont Horizon, Chicago, Ill.*
- 17 War Memorial, Rochester, N.Y.
- 18 Target Center, Minneapolis, Minn.
- 19 The Spectrum, Philadelphia, Pa.

- 20 Richmond Coliseum, Richmond, Va.
- 22 Joe Louis Arena, Detroit, Mich.
- 23 Cleveland State Convention Center, Cleveland, Ohio
- 26 Knickerbocker Arena, Albany, N.Y.
- 27 The Centrum, Worcester, Mass.
- 28 Nassau Coliseum, Uniondale, N.Y.
- 29,30 The Fox Theatre, Atlanta, Ga.

* Show will be taped on this date for NBC's Dec. 31 (4-6 p.m.) telecast.

INTERNATIONAL SKATING CENTER OF CONNECTICUT OPENS DOORS

The International Skating Center of Connecticut (ISCC) in Simsbury, Conn., celebrated the completion of a four-month groundbreaking-to ice making construction process in mid-October with ribbon-cutting ceremonies.



The facility, which will serve as the training center home for nine Olympians including 1994 Olympic gold medalist **Oksana Baiul**, 1992 Olympic gold medalist **Viktor Petrenko**, two-time Olympic gold medalists **Ekaterina Gordeeva** and **Sergei Grinkov** and 1993 World Champions **Isabelle Brasseur** and **Lloyd Eisler**, features an Olympic-size rink, an NHL-size rink, professional dance studio, fully-equipped weight and fitness center, state-of-the-art sound system, pro shop, VIP lounge overlooking the Olympic arena and its own restaurant — "Sk8ters." There will be spectator seating for approximately 2,000.

In addition to the elite athlete training program, the ISCC will feature a Learn To Skate program, a hockey program and a recreational skating program. Olympic Coach **Galina Zmievskaya**, coach of Baiul and Petrenko, will head the center's singles skating program. The pairs program will be directed by ISCC President and Executive Director **Bob Young**, who has coached 10 skaters to U.S. titles and has had skaters compete at the 1988, 1992 and 1994 Olympic Winter Games. **Hugh Seaman** will head the center's dance program, while Olympic choreographer and professional ballet dancer **Nina Petrenko** will direct the off-ice training program.

For more information on the ISCC, please direct correspondence to: International Skating Center of Connecticut, 1375 Hopmeadow Street, P.O. Box 577, Simsbury, Conn. 06070.

LILLEHAMMER '94: 16 DAYS OF GLORY TO PREMIERE NOV. 27

Lillehammer '94: 16 Days of Glory, Emmy Award-winning producer **Bud Greenspan's** two-part chronicle of the memorable 1994 Olympic Winter Games in Norway, will make its world premiere on The Disney Channel, Sunday, Nov. 27 at 9 p.m. EST/PST. The second part of this three-hour epic will air Feb. 12, 1995, at a time to be announced.

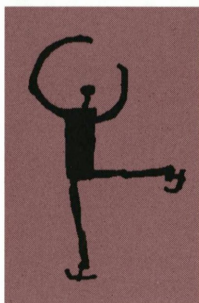
The premiere of *16 Days of Glory* coincides with a free fall pre-view weekend of The Disney Channel, which will enable even non-subscribers of the channel to see the film.

Lillehammer '94 is an emotional and revealing look at a select group of individuals who participated in the world's greatest specta-

cle of sport. For three weeks last winter, Greenspan and his crew went behind the scenes in Lillehammer to capture a side of Olympic competition rarely viewed by the public.

Featured among other compelling athlete stories in Part One of *16 Days of Glory* is the triumph of **Oksana Baiul**, the 16-year-old Ukrainian figure skater who overcame a sad and tragic childhood enroute to a world championship and an Olympic gold medal.

Greenspan, the world renowned filmmaker who has captured the drama and glory of the Olympic Games for more than 40 years, also produced *16 Days of Glory* on the 1984 Olympic Games in Los Angeles, the 1988 Olympic Winter Games in Calgary and the 1992 Olympic Games in Barcelona.



AN EVENING WITH CHAMPIONS CELEBRATES ITS SILVER ANNIVERSARY

An Evening With Champions, the charitable figure skating exhibition presented by the students of Harvard University's Eliot House, celebrated its 25th Anniversary this month with three performances Nov. 4-6 in Harvard University's Alexander H. Bright Hockey Center in Cambridge, Mass.

With proceeds going to the Jimmy Fund of Dana-Farber Cancer Institute, the exhibition has raised more than \$1.4 million in the search for a cure for children's cancer over the course of the past quarter century.

Among the many skating champions scheduled to perform in this year's Silver Anniversary celebration of the exhibition were **Paul Wylie**, **Michelle Kwan**, **Nancy Kerrigan**, **Aren Nielsen**, **Todd Eldredge**, **Michael Weiss**, **Derrick Delmore**, **Rory Flack**, **Tara Lipinski**, **Nicole Bobek**, **Calla Urbanski** and **Rocky Marval** and **Elizabeth Punsalan** and **Jerod Swallow**.

The exhibition will air on PBS at a yet-to-be announced date in the spring.

"ICE WARS: THE USA VS. THE WORLD" SLATED FOR NOV. 9, 12

Two-time Olympic medalist **Nancy Kerrigan**, 1988 Olympic gold medalist **Brian Boitano**, 1992 Olympic gold medalist **Kristi Yamaguchi** and 1992 Olympic silver medalist **Paul Wylie** take on the World Team of skaters led by 1994 Olympic gold medalist **Oksana Baiul** in a two-day team figure skating competition, "Ice Wars: The USA vs. The World," Nov. 9 at the Nassau Coliseum in Uniondale, N.Y., and Nov. 12 in Providence, R.I.

The competition will air live in prime time on CBS from 8-10 p.m. ET on Nov. 9 and 9-11 p.m. ET on Nov. 12.

In addition to Baiul, the World Team features two-time Olympic gold medalist **Katarina Witt** of Germany, '92 Olympic gold medalist **Viktor Petrenko** and four-time world champion **Kurt Browning** of Canada.

The eight skaters will skate at least one long program, one short program and one exhibition over the two days of competition. Each skater's short and long program scores will be totaled from the two days of competition to determine an overall teamscore and winner. There will be no individual winners. The competition will be judged using the six-point system.

CBS' SIX-PART "EYE ON SKATING" DEBUTS THANKSGIVING DAY

Olympic gold medalists **Oksana Baiul**, **Kristi Yamaguchi**, **Brian Boitano**, **Viktor Petrenko** and **Ekaterina Gordeeva** and **Sergei Grinkov** and silver medalist **Paul Wylie** are among the skating champions that are scheduled to compete on CBS Sports' "Eye On Skating," a newly created series of six figure skating competitions debuting Thanksgiving Day.

The highlights of the competitions and air times (subject to change) are as follows (actual competition date and site in parentheses):

Nov. 24, 2:30-4 p.m. ET — Reigning World Junior Champion **Michelle Kwan** competes in The U.S. Ladies Outdoor Skating Challenge at Sun Valley (Oct. 8/Sun Valley, Idaho)

Nov. 27, 4-6 p.m. ET — Baiul headlines a ladies' field that includes 1994 Goodwill Games gold medalist **Surya Bonaly** at The Ladies Outdoor Skating Championship at Sun Valley (Oct. 1/Sun Valley, Idaho);

Dec. 3, 5-6 p.m. ET — Petrenko competes against the "Brians" — **Orser** of Canada and **Boitano** of the United States — at The Nikon Skating Championships (Oct. 12/Kiel Center, St. Louis, Mo.);

Dec. 4, 3-6 p.m. ET — Nikon Skating Championships (Cont.);

Dec. 10, 4:30-6 p.m. ET — Yamaguchi, Wylie, Gordeeva and Grinkov and four-time world champion **Kurt Browning** of Canada are among the skaters from the U.S., Canada and Europe scheduled to compete in a team competition — The Northwestern Mutual Life Insurance World Team Skating Championship (Dec. 6/North Charleston Arena, Charleston, S.C.);

Dec. 11, 3-6 p.m. ET — Northwestern Mutual Life Insurance World Team Skating Championship (Cont.);

Dec. 18, 3-6 p.m. ET — The Vicks 44 North American Open Skating Championships will feature Boitano, Orser, Browning and Wylie, Gordeeva and Grinkov and '93 world champions **Isabelle Brasseur** and **Lloyd Eisler**. The ladies' field is expected to include reigning world champion **Yuka Sato** of Japan and Canadian champion **Josee Chouinard** (Oct. 19/Gateway Arena, Cleveland, Ohio);

Dec. 24, 4-6 p.m. ET — The Canadian Professional Skating Championships are expected to feature Browning, Orser and Chouinard and will include men's, ladies' and pair competition (Dec. 2-3/Copps Coliseum, Hamilton, Ontario, Canada);

Dec. 25, 4-6 p.m. ET — The Canadian Professional Figure Skating Championships (Cont.).■



TURNING

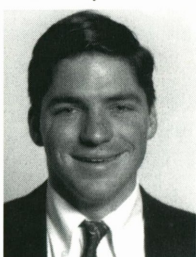


CAREER MOVES

Heather Linhart joined the staff at the USFSA Headquarters as the new Communications Coordinator in mid-October. A graduate of the University of Kansas, Linhart is a former intern and employee of the U.S. Olympic Committee's Public Information and Media Relations office. In addition to her experience with the USOC, Linhart also served as an intern for the Big Eight Conference and the University of Kansas Sports Information Office.



Linhart



Pensinger

She assumes the position formerly held by **Matt Pensinger**, who has been named Corporate Programs and Events Manager for the USFSA. In his new position, Pensinger will be responsible for generating sponsorship programs, servicing corporate sponsors and planning and coordinating event operations.

L. Richard De Prisco, a financial consultant with 19 years of fiscal experience, has joined Ice Castle International Training Center, the Lake Arrowhead, Calif., figure skating facility, as accounting manager. For the past two years, De Prisco operated a financial consulting firm in Twin Peaks, Calif.

ENGAGED

Karen Courtland has announced her engagement to **Patrick Kelly**, son of **Red Kelly**, member of the National Hockey League's Hockey Hall of Fame. The couple plans to marry on Sept. 25, 1995, in Toronto, Canada.

MARRIAGES

Elaine Rose DeMore and **Harry Hunt Gleeson** were married on Sept. 10, 1994, at the Shaker Heights Country Club in Shaker Heights, Ohio. The daughter of **Elaine DeMore**, a gold, national, and world-ranked judge and **Charles A. DeMore**, a former President of the USFSA, the bride is a member of the Broadmoor SC and a Sectional Accountant. The groom is one of the USFSA announcers for the U.S. Championships and has emceed the Awards Ceremonies at the annual USFSA Governing Council Meetings.

Jill Trenary and **Christopher Dean**, were married on Oct. 15 at the Cathedral Church of St. Mark, in Minneapolis, Minn.

Bridget Reppert and **Bruce Montemayor** were married on Oct. 29, 1994, in Kent, Ohio. Both are members of the SC of Mt. Lebanon in Pittsburgh, Pa. where he teaches dance. The couple will make their home in the Pittsburgh area.

DECEASED

Charles Galligan, treasurer of the SC of Mt. Lebanon, died unexpectedly in May 1994. During his longtime membership in the club, he served in many capacities and offices. Although he favored ice dancing, he assisted in every aspect of skating and frequently volunteered his

time as an announcer at USFSA-sanctioned competitions. Galligan is greatly missed by the skating community he served so long and so well. He is survived by his wife, Betty, an intermediate figure and free skating and bronze dance test judge, and their sons.

Megan Taylor, World champion in 1938 and 1939, passed away last summer after a long illness. She was 73 years of age. Born into a skating family in Wimbledon, England, Taylor was active in international skating circles from early childhood until her retirement to Ocho Rios, Jamaica in 1982. Her father, **Phil Taylor**, was the inventor of Taylor Blades and also developed the Taylor method of school figures. At the age of 12, Taylor was the youngest person to represent Great Britain at the 1932 Olympic Winter Games in Lake Placid. Taylor was a contemporary of Cecilia Colledge and their rivalry spanned a decade. During the late 1940s, Taylor made her way to Hollywood and appeared in several movies. She was personally honored by the Queen of England for her skating achievements. As an instructor, Taylor trained many students worldwide, including the East German Team. A resident of Glen Cove, N.Y. at the time of her death, Taylor is survived by her daughter Genevieve.

Walter Probst, owner and developer of the Ice Castle Training Center in Lake Arrowhead, Calif., succumbed to a long-term illness on Sept. 30 at the age of 79. A retired businessman and a prominent philanthropist, Probst was a longtime friend of figure skating and benefactor of figure skaters. He instituted — and served on the board of — the Foundation for International Ice Skating Advancement, which provides financial assistance to international skaters. Among the many skaters he assisted are **Michelle Kwan**, **Tai Babilonia** and **Randy Gardner**, **Robin Cousins**, **Surya Bonaly**, **Marina Klimova** and **Sergei Ponomarenko**, and **Radka Kovarikova** and **Rene Novotny**. Probst



Probst

was also a major donor to the Eisenhower Medical Center in Rancho Mirage, Calif., having contributed its first professional building, which bears his name, in 1972 and was chairman of its Board of Trustees at the time of his death. He is survived by his wife, Carol, a former skater with Shipstad and Johnson's Ice Follies, a son and daughter, two step-daughters, five grandchildren, and one great-grandchild.

Virginia Fratianne, mother of four-time U.S. Ladies' Champion and 1980 Olympic Silver Medalist **Linda Fratianne-Maricich**, died suddenly at her home in Palm Springs, Calif. on Oct. 19. She was 63.

Fratianne was a member of the Los Angeles FSC. A gold figure and free skating tests judge and senior singles/pairs competition judge, she had judged a competition only one week prior to her death. Fratianne was a graduate of Ohio University and taught school before becoming a realtor. In addition to Linda, she is survived by four other children, her mother, a sister, and seven grandchildren.

Clara H. Walton, a veteran ice dancer of 50 years, died at her home in Sacramento, Calif. on Oct. 23 at the age of 76. A silver test ice dancer, she began roller dancing in her teens and consequently met **Walter Walton**, her husband and dance partner for 55 years. She is survived by **Walter**, a son and a daughter.

Continued on page 7

The USFSA Memorial Fund gratefully acknowledges the following contributors for the months of July and August 1994.

IN MEMORY OF:

Jack Bryan: Dr. & Mrs. Gordon Knudson, Lainie DeMore, Karen & Lydia Wolanchuk

Chuck Galligan: SC of Mt. Lebanon

Patricia C. Guardino: Jerrilyn Wilder

Ernie Hamilton: CoAnn Ducat, Mr. & Mrs. Harry W. Hoemann

Ramon C. James: Terrence James

Ron P. LeFevre: Virginia Solyntjes

Stith Letsinger: Nancy Appelblom, Glen & Jan Carlson, Virginia Conner, Mr. & Mrs. Brian W. Connor, Darlene S. Gilbert, Nancy Grippo, Lillian Hansen, Hewlett Packard, INSIGHT 100, Inc., Mr. & Mrs. Peter R. Kimball, Joachim Laubsch, Ph.D., Mr. & Mrs. Howard Neff, Northern Telecom, Tom Saults, Mr. & Mrs. Herb Swain, Ivan Tou, Robert & Susana Weisberg, Carol Yamaguchi, Kristi Yamaguchi
Lloyd Pfenning: Mr. & Mrs. George B. Ludlow, Jr.

Mrs. Mary Ann Swiantek: SC of Mt. Lebanon

Thelma Wilson: The Carlisle Family, Judith Francis, Van & Audrae Gillespie, Namon & Ozie Holly, William P. Ku, Mr. & Mrs. George B. Ludlow, Jr., Kenneth G. Shelley, Clarissa M. Wildy, Ruth Wilson

Gloria Walentuk: Mr. & Mrs. George B. Ludlow, Jr.

David West: Marian Hornsby

Christine Whitaker: Karen A. Chew

IN HONOR OF:

Nicole Bobek: Raymond Gomez

Michael Chack: Raymond Gomez

Lanie DeMore & Harry Gleeson (Engagement): Valerie Powell

Lanie DeMore & Harry Gleeson (Wedding): Mr. & Mrs. Clifton Kruse

Turning Points

Continued from page 6

NAMES IN THE NEWS

World champion pair skater **Tai Babilonia** was honored Nov. 15 by the Girl Scouts Mount Wilson Vista Council Academy of Women Achievers in Arcadia, Calif. Babilonia, who with partner **Randy Gardner** won five consecutive U.S. pairs titles from 1976-1980, was recognized along with Oscar-nominated make-up artist Christina Smith for achievements in their respective fields.

1984 Olympic gold medalist **Scott Hamilton** joined in a recent campaign to discourage organizers of the 1996 Olympic Games in Atlanta, Ga., from releasing 2,000 live birds at the opening ceremonies of the Centennial Games because "it will, undoubtedly, lead to potential danger, injury or mortality." In a letter written to the Atlanta Committee for the Olympic Games by Hamilton's spokesman **Michael Sterling** and released by the animal rights activist group People For The Ethical Treatment Of Animals (PETA), Hamilton writes that he "feels certain there is an alternative to effectively replace this ritual, such as the environmentally safe, dove-shaped balloons used at the 1994 Winter Olympic Games in Norway." ■

Todd Eldredge: Emma L. Abraham

Tonia Kwiatkowski: Raymond Gomez

Rocky Marval: Raymond Gomez

Joe Mero: Raymond Gomez

Bill Munns: Sam E. Singer, Jr.

Ann Morton-Neale (Marriage): Mr. & Mrs. Clifton Kruse

Barbara A. Storm: John C. Chronister

Jane Sullivan Vaughn: William & Jean Meahl

Gladys Szapary: Edwin S. Sheffield, Jr.

Jill Trenary & Christopher Dean (Wedding): Christina Kinkaid, Paul & Gloria Kinkaid, Susan Kinkaid, Martin & Catherine McKinley

Jill Trenary: Raymond Gomez

U.S. Ice Dancers: Leah Naylor-Watson

Calla Urbanski: Raymond Gomez

Kristi Yamaguchi: Armando R. Macale

Elaine Zayak: Raymond Gomez, Terrence James

Dick Luttenton & Robert Mock Guest Speakers at the Cleveland

Coaches Council Seminar: Cleveland Coaches Council

Officials of the Creve Coeur Figure Skating Competition (William

Boeck, Judy Botz, Melissa Cohn, Don Conrad, Patricia Cook,

Priscilla Dahlen, Rose Kanger, Rick Kern, Elisa McDonald, Sarah

Reid, Shirley Sherman, Shirley Sisson, Phil Stover, Dennis

Sveum, Bette Todd, Al Viviani, Carol Weier, Woody Weier):

Cleveland Coaches Council

The USFSA Memorial Fund would like to give special recognition to the following donors for their generous support:

FSC of Rockford

CORRECTION

In the September issue of *Skating*, a Memorial Fund donation in honor of **Mark Mitchell** should have listed an anonymous contributor. ■

Letters to the Editor

Continued from page 2

Recently (September 11), *The New York Times* carried a story about a skater and his family, who many of us remember, and has not been doing too well. Because I believe there are many skaters more fortunate than John Dystel who would like to know what has happened to John and how they can help seek a cure for Multiple Sclerosis, I suggest that *Skating* reprint the article from the *Times* or quote from it.

Joseph J. Lane

Rye, New York

Dear Joseph,

Thank you for your letter. We certainly agree with your assertion that hard work does not necessarily bring fame and fortune. Many of us tend to forget that inspiration can be drawn from many sources – some famous and some relatively obscure. After reading the enclosed article from The New York Times, we were compelled to learn more about the story of John Dystel. Skating Assistant Editor Mary Ann Purpura researched John's skating achievements and spoke with his father, Oscar Dystel, to provide the update which appears on page 20. ■

By Kurt Ringenbach

The growing popularity of figure skating is not only increasing the visibility of today's top skaters, but also is translating into record membership numbers for the most popular program for beginner skaters in the U.S. — the U.S. Figure Skating Association's Skate With U.S. Basic Skills program.

The Basic Skills program, which began in September of 1988 with 481 members, has now boomed to an enrollment of more than 74,000. The program has shown steady growth from its inception to the present. By the end of the first year, the program had grown to more than 28,000 members and followed that with more than 10,000 additional members in its second year — a 33 percent increase in total members. Since that time, the program has grown by an average of 22 percent per year, with the exception of its 6 percent growth in 1992-93.

"We're just about finished with our fall session," said Kay Bruns, director of the Basic Skills Program at Sertich Ice Rink in Colorado Springs, Colo. "The program is going really well here. The students and parents are pleased with it and the majority of our classes are full."

In order to keep up with increasing membership, the program leadership has been working hard to make helpful changes and additions to Basic Skills.

One of the recent focuses of the Basic Skills program has been the promotion of the age-old principles of "fair play" and good sportsmanship. In light of the deluge of attention given to the bizarre incidents surrounding the 1994 U.S. Figure Skating Championships, program leaders saw the need to promote the ideals of "fair play" and good sportsmanship within the program, says Linda Kola, chair of the USFSA's Basic Skills Subcommittee. The leadership developed the "fair play" code, which appears on this page, as part of its efforts to spread the word through rinks across the country.

The new code centers around having fun, being nice, being honest, cooperating and setting a good example. It encourages all skaters to play by the rules and maintain a positive outlook.

To further promote the concept of "fair play" in the Basic Skills program, a poster featuring famous skaters and hockey players is in the works, Kola said.

In an effort to involve more college students in the Basic Skills program, a modified collegiate curriculum has been introduced. This curriculum is intended to introduce the Basic Skills program into universities nationwide.

"There are a lot of students in P.E. ice skating classes and there are no official collegiate programs to teach them," Kola says. "Why not use Basic Skills?"

College and university skating classes can now award enrollees with a special patch and sticker, which are different from those of the regular Basic Skills program. Kola says Michigan Tech is the only university using the Basic Skills program at present, but the University of Minnesota also is exploring the possibility.

"We have more than 100 students in the program right now, and it's only fall. That number should go up during the winter when the snow comes and people start thinking about skating," said Michigan Tech ice skating instructor Cheryl Dupudyt. "The students like to see their progression through the book — it gives them a chance to look ahead and see what's next. A lot of them have indicated they would



SNOWPLOW SAM SAYS, "HAVE FUN, SKATE WELL, PLAY FAIR"

In sports, there seems to be a need for "fair play" and good sportsmanship to be taught and displayed. The following "fair play" code has been developed with great hope that "fair play" can be learned and practiced at ice rinks all over the United States.

- 1.** Skate for fun. Skate for yourself. Set goals for your own improvement.
- 2.** Honest effort is as important as victory. Winning is doing your best.
- 3.** Play by the rules. Do the right thing.
- 4.** Cooperate with your coach, other skaters and rink staff; they make it possible for you to skate.
- 5.** Be nice to everyone no matter the outcome of the competition. Congratulate other skaters and coaches for a good performance.
- 6.** Control yourself — negative or bad comments and behavior detracts from the sport and makes you look bad.
- 7.** Never argue with the official's decisions. If a protest needs to be filed, your coach will do so.
- 8.** Treat all skaters as you would like to be treated.
- 9.** Set a good example for younger, less experienced skaters. They look up to you for guidance.
- 10.** Remember that the goals of any sport are to have fun, build skills, gain mental and physical conditioning and discipline.
- 11.** Maintain a positive attitude and outlook. Help others to see their strengths.

like to go back and teach Basic Skills in their communities."

In response to instructors' requests, an instructional video for teaching Basic Skills will be made available in the near future, Kola said. Instead of showing an elite skater completing the requirements of each level, skaters who are actually at the level will appear on the tape so that coaches, clubs, and rinks have a better idea of what to

Continued on page 9

APPOINTMENTS:

The USFSA congratulates the following members on their recent appointments.

JUDGES

LOW TEST

Paul Hernandez III, Golden State FSC; Anthony Meholic, Lansing SC; C. Lin Mjaatvedt, Wasatch FSC; Jeff Sanborn, Houston FSC; Kurt W. Stedingh, Alaska Association of Figure Skaters; Jeremy Wyndham, Lone Star FSC

INTERMEDIATE TEST

Michael Barsotti, Lloyd Center FSC; Eric Bohnstedt, Broadmoor SC; Jill Brillhart, Detroit SC; Kay Forck, ISC of Ft. Collins; Laurie Fukushima, Cottonwood Heights FSC; Catherine Maiuri Hackney, Atlanta FSC; Lolly Jensen, Sun Valley FSC; Kelly May Moller, Seattle SC; Kim Moore, Centennial SC; Kim Rasmussen, Yarmouth IC; Valerie Reinholdtsen, Highland SC; Regina Stanek, Silver Blades FSC

HIGH FIGURE TEST

Phyllis Baldwin, SC of Vail; Kitty De Lio, Colorado SC; Lynn Goldman, Austin FSC; Dana Graham, Broadmoor SC

HIGH FREE SKATING

Phyllis Baldwin, SC of Vail; Kitty De Lio, Colorado SC; Lynn Goldman, Austin FSC

BRONZE DANCE TEST

Anthony Bardin, Los Angeles FSC; Margaret Butlin, Stone Mountain SC; Marilyn R. Clark, St. Moritz ISC; Holly Cole, Baltimore FSC; John Cole, Hickory Hill FSC; Dena B. Jones, Silver Blades SC; Vivian Memmi, Hershey FSC; Kimberly Slack, Troy SC; Keith Schonrock, Jr., Huntsville FSC; Janelle H. Vizina, Hiawatha SC; Agnese Wojdak, Wissahickon SC.

SILVER DANCE TEST

Olivia Rompilla, South Mountain FSC; Lauren Zell, Highland SC

NOVICE COMPETITION

Lynn Goldman, Austin FSC; Heidi Wolthausen, Clinton FSC

JUNIOR COMPETITION

Mary P. Roberts, Vallco SC; Robert Wagner, Penguin FSC

NOVICE DANCE COMPETITION

Caroline Guttman, Los Angeles FSC

INTERMEDIATE DANCE COMPETITION

Sonja Frandsen, Albuquerque FSC

REGIONAL PRECISION

Hazel Wecal, Denver FSC

REFEREES

REGIONAL

Sonja Frandsen, Albuquerque FSC; Beth Graham, Broadmoor SC; Peggy Graham, Broadmoor SC; Jennifer Marker-Johnson, St. Paul FSC

SECTIONAL

Barbara Davis, Individual Member; Kathleen Flaherty, Los Angeles FSC; Phyllis Howard, Washington FSC; Paula Naughton, Portland ISC; Richard Perez, Peninsula FSC

ACCOUNTANTS

REGIONAL

Ann Morton Neale, Troy SC ■

CORRECTIONS

There are two corrections to the **1995 USFSA Directory**. The Test Chair of the Little Sun Valley SC, Inc. was incorrectly listed as Barbara Speight. The current Test Chair is: Kathleen Terhune, 1375 Enfield Street, Enfield, CT 06082, (203) 745-6625.

Also, Jerry Finley of Rockford, Ill., was incorrectly listed as a member of the Protocol Committee and the Association of Philadelphia Area Figure Skating Clubs. In actuality, this member is Gerard (Gerry) Finley, 9 Drum Moir Lane, Philadelphia, PA 19118, (215) 248-5241. ■

Basic Skills

Continued from page 8

standardized system," Kola said. "This will help show them what to expect at each level."

Approval for production of the video has been granted and taping is expected to begin in the near future, Kola said.

In order to keep the ever-growing membership informed of these changes and additions, Basic Skills will begin circulating a quarterly newsletter. One newsletter will go out to all clubs and organizations, which use the Basic Skills program. Included in the first newsletter will be a listing of all upcoming competitions throughout the country. An article on the inception of the new "fair play" rules also will appear in the initial newsletter. A Basic Skills committee member will write about one level of the Basic Skills program. Future

newsletters will include information from the hockey and collegiate divisions, as well as various feature articles.

All of these additions and changes mean that Basic Skills has something for all beginning ice skaters. With expectations for continued rapid growth and numerous new ideas in the works, if there isn't something there for you right now, chances are there will be very soon. If you are interested in Basic Skills, call your local ice rink where they will be happy to welcome you aboard one of the fastest growing programs in figure skating today. ■

Kurt Ringenbach currently is serving an internship at the USFSA Headquarters. He is a senior economics major at Carleton College in Northfield, Minn.

NOVEMBER

8-12 **1995 North Atlantic Regional Championships**, hosted by the Northern New York Council, at the Cheel Arena, Cheel Campus Center, Clarkson, University, Potsdam, NY 13699. For information contact: William Mein, 315-268-6432, fax: 315-268-6660.

11-13 **Granite City Figure Skating Classic**, sponsored by the St. Cloud FSC, at the St. Cloud Municipal Athletic Complex, 5001 8th St. N., St. Cloud, MN 56303 and the National Hockey Center — SCSU, St. Cloud, MN 56301. For information contact: Deborah A. Danell, 1553 12th Ave. S.E., St. Cloud, MN 56304, 612-251-8811 ext. 204 days or 612-253-3941 evenings.

14-19 **1995 South Atlantic Regional Championships**, hosted by the University of Delaware FSC, Newark, DE. For information contact: Anne Bloch or Barbara Heilman, 302-831-4686.

17-20 **1994 Cleveland's Rising Stars Competition**, sponsored by the Garfield Heights FSC, at the Dan Kostel Recreation Center, 5411 Turney Road, Garfield Heights, OH 44125. For information contact: Bea Zelasko and Frank Reese, 11923 Granger Rd., Garfield Heights, OH 44125, 216-475-0824 days or 216-663-5665 evenings.

18-20 **4th Annual Turkey Trot**, sponsored by the Copper Country Skating Academy, at the MacInnes Student Ice Arena, MacInnes Dr., Houghton, MI 49931. For information contact: Bruce Horsch, P.O. Box 366, Houghton, MI 49931, 906-487-2975 days or 906-482-8646 evenings.

18-20 **12th Annual Indiana Figure Skating Championships**, sponsored by the Greater Evansville FSC, at the Swonder Ice Rink, 201 North Boeke Rd., Evansville, IN 47711. For information contact: George Ann Griffin-Atkinson, 1030 Oak Trace, Evansville, IN 47711, 812-464-1701 days or 812-867-0506 evenings.

19-20 **Vineyard Open**, sponsored by the Martha's Vineyard FSC, at the Martha's Vineyard Arena, Edgartown Rd., Oak Bluffs, MA 02557. For information contact: Nancy B. Blankenship, P.O. Box 311, Oak Bluffs, MA 02557, 508-693-9400 days or 508-693-3913 evenings.

25-27 **Sunshine Valley Open**, sponsored by the Grand Forks FSC, at the Grand Forks Arena, 2020 Central Ave., Grand Forks, British Columbia, Canada V0H 1H0. For information contact: Grand Forks FSC, Box 1044, Grand Forks, British Columbia, Canada V0H 1H0, 604-442-3551, 604-442-5098.

27-12/2 **1995 Southwest Pacific Regional Championships**, hosted by the Arizona FSC, Phoenix, AZ. For information contact: Susan Magalnick, 602-942-7815.

28-12/3 **1995 Northwest Pacific Regional Championships**, hosted by the Anchorage FSC, Anchorage, AK. For information contact: Claudia Mushkin, 907-337-0700.

28-12/3 **1995 Central Pacific Regional Championships**, hosted by the Palomares FSC, Redwood City, CA. For information contact: Howard Taylor, 510-935-0325.

29-30 **USFSA International Pro-Am Challenge**, to be held at the CoreStates Spectrum in Philadelphia, PA. For ticket information call: 215-336-2000.

DECEMBER

3 **4th Annual Skaneateles Invitational Competition**, sponsored by the Skaneateles FSC, at the W.G. Allyn Arena, Jordan St., Skaneateles, NY 13152. For information contact: Deborah Zennamo, 4043 Jordan Rd., Skaneateles, NY 13152, 315-685-0068.

3-4 **Bismarck Invitational Competition**, sponsored by the Bismarck FSC, at the VFW All Seasons Arena, 1200 N. Washington St., Bismarck, ND 58501. For information contact: J. Steven Loeppke, 1949 Jackson Ave., Bismarck, ND 58501, 701-258-4294.

5-10 **1995 Midwestern Sectional Championships**, hosted by the Mile High FSA, Denver, CO. For information contact: Chris Papajohn, 303-740-8225.

10 **Basic Skills Competition**, sponsored by the SC of Springfield (Mass.), at the West Springfield Olympia, 125 Capital Dr., West Springfield, MA 01089. For information contact: Mary Merriman, 14 Smith Ave., West Springfield, MA 01089.

10-11 **The Holiday Season Competition**, sponsored by the Columbus FSC, at the Ohio State University Ice Rink, 390 Woody Hayes Dr., Columbus, OH 43123. For information contact: Mimzi Cryan Staten, 5699 Snow Dr., Hilliard, OH 43026, 614-777-5054.

11 **Winterfest Ice Show**, sponsored by the Warwick Figure Skaters, at the Thayer Rink, Sandy Lane, Warwick, RI. For information contact: Jim McCabe, Chairperson, P.O. Box 442, Charlestown, RI 02813, 401-364-3434.

JANUARY 1995

2-7 **1995 Eastern Sectional Championships**, hosted by the Wallace FSC, at the Wallace Civic Center, 1000 John Fitch Hwy., Fitchburg, MA 01420. For information contact: Jody Dupuis, 2 Michael Way, W. Townsend, MA 01474, 508-597-8678.

2-8 **1995 Pacific Coast Sectional Championships**, hosted by the Portland ISC, Portland, OR. For information contact: Lori Moiel, 503-697-0564.

4-7 **The Third International Snowflake Precision Competition**, sponsored by the Detroit Metro Skating Council, at the Dearborn Ice Arena on the campus of the University of Michigan. For information contact: Bill Ziegler, Co-Chair, 24904 Orchid, Mt. Clemens, MI 48045, 810-792-4514.

7-8 **7th Lake Placid Open Precision Classic**, sponsored by the SC of Lake Placid, at the Olympic Center, Main St., Lake Placid, NY 12946. For information contact: Nona Bafo/Dennis Allen, 83 Linden Ave., Buffalo, NY 14214, 518-523-1655 ext. 223.

13-15 **6th Annual Magic City International Figure Skating Competition**, sponsored by the Magic City FSC, at the All Seasons

Arena, 2005 Burdick Expy., Minot, ND 58701. For information contact: Jan Swenson, 25 Hacienda Hills, Minot, ND 58701, 701-852-5248.

14-15 New England Inter Club Competition, sponsored by the SC of Southern New England, at the Aleixo Rink, 1 Gordan Owen Riverway, Taunton, MA 02780. For information contact: Karen M. Rezendes, 54 Abner Potter's Way, South Dartmouth, MA 02748, 508-636-6797.

20-22 Northland Competition, sponsored by the Duluth FSC, at the Duluth Entertainment & Convention Center, 350 Harbor Dr., Duluth, MN 55802. For information contact: Dennis R. Paaso, 5530 N. Tischer Rd., Duluth, MN 55804, 218-722-1972 ext. 2501 days or 218-525-4265 evenings.

21-22 Great Oaks Invitational, sponsored by the North Suburban FSC, at the John Lindell Arena, 1403 Lexington Blvd., Royal Oak, MI 48073. For information contact: Carol Wetzel, 6846 Northpointe Dr., Troy, MI 48090-1210, 810-828-0222.

27-28 Mid-America Precision Team Championship, sponsored by the Fraser FSC, at the Fraser Ice Arena, 34400 Utica Road, Fraser, MI 48026. For information contact: Karen L. Kleinsorge, 47403 Lexington, Macomb Twp. MI 48044, 810-263-7128.

27-29 Winterfest '95 Precision Invitational Competition, sponsored by the CFSA and the Oakville SC, at the Newmarket Recreation Complex, 100 Eagle St., Newmarket, Ontario, Canada L3Y 1J4. For information contact: Ilona Kurcigs, Central Ontario Section CFSA, 76 Oakdale Rd., Suite 105, Downsview, Ontario, Canada M3N 1V9, 416-748-1069.

27-29 5th Annual Fox Cities Invitational Figure Skating Championship, sponsored by the Tri-County Arena, 700 E. Shady Lane, Neenah, WI 54956. For information contact: Marti Wollner, 1865 Oxwood Dr., Neenah, WI 54956, 414-727-0288.

28-29 Eastern Ontario Section Winter Invitational, sponsored by the Township of Cornwall FSC, at the Township of Cornwall Community Centre, 60 Milles Roches Rd., Long Sault, Ontario, Canada. For information contact: Debbie La Vallee, 27 Pembroke St., Kingston, Ontario, Canada K7L 4N5, 613-542-2110 days or 613-547-3437 evenings.

28-29 11th Annual Colonial Precision Open Competition, sponsored by the Colonial FSC, at the University of Massachusetts Lowell-Tully Forum, Brick Kiln Rd., Billerica, MA 01862. For information contact: The Colonial FSC, Attn. Judy Hadley, P.O. Box 517, Acton, MA 01720, 508-263-3450.

29 Northern Star International Precision Competition, sponsored by the Northern Lights FSC, at the East Grand Forks Civic Center, 300 15th St. N.E., East Grand Forks, MN 56721. For information contact: Jan L. Baune, 1900 7th Ave., N.W., East Grand Forks, MN 56721, 218-773-1141 days or 218-773-3738 evenings.

FEBRUARY

3-5 Edith Scheonrock International Competition, sponsored by the Port Huron FSC, at McMorran Place, 701 McMorran Blvd., Port Huron, MI 48060. For information contact: Donna McFadden, 510 Edison Blvd., Port Huron, Mich. 48060, 810-982-9005.

6-11 1995 U.S. Championships, hosted by the Warwick Figure Skaters, at the Providence Civic Center, Providence, RI 02903. For information contact: 1995 U.S. Figure Skating Championships, 2350 Post Rd., Warwick, RI 02886, 1-800-SKATE 95 or 401-738-1614.

11 Tri-State Precision Competition, sponsored by the Bowling Green SC, at the Bowling Green State University Ice Arena, Mercer Rd., Bowling Green, OH 43403. For information contact: Barbara Ridgeway, 712 S. River Rd., Waterville, OH, 43566, 419-878-6604.

17-19 1995 Hiawathaland Competition, sponsored by the Rochester FSC, at the Rochester-Olmsted County Recreation Center, 21 Elton Hills Dr., Rochester, MN 55901. For information contact: Gretchen P. Wilson, 20 Wilson Way, Wabasha, MN 55981, 612-565-4640.

17-19 Southport Winter Invitational, sponsored by the Southport SC, at the Zion Ice Arena, 2400 Dowie Memorial, Zion, IL 60099. For information contact: Dennis Gade, 708 Water St., Dundee, IL 60118, 708-402-8277 days or 708-428-8920 evenings.

19 Eastern Ontario Section Precision Invitational, sponsored by the Kingston SC, at the Kingston Memorial Centre, 303 York St., Kingston, Ontario, Canada. For information contact: Debbie La Vallee, 27 Pembroke St., Kingston, Ontario, Canada K7L 4N5, 613-542-2110 days or 613-547-3437 evenings.

23-26 Midwestern Precision Sectionals, hosted by the Chicago FSC and Wagon Wheel FSC, Chicago, IL.

24-25 Eastern Precision Sectionals, hosted by the Wallace FSC, at the Wallace Civic Center, 1000 John Fitch Hwy., Fitchburg, MA 01420. For information contact: Greg DuPuis, 173 Highland St., Lunenburg, MA 01462, 508-582-6604.

25-26 Pacific Coast Precision Sectionals, hosted by Las Vegas FSC, Las Vegas, NV.

MARCH

2-5 Grease on Ice, ice show sponsored by the New Ulm FSC, at the Vogel Arena, 122 South Garden, New Ulm, MN 56073. For tickets call: 507-354-5708.

3-5 Eau Claire Figure Skating Competition, sponsored by the Eau Claire FSC, at the Hobbs Ice Arena, 915 Menomonie, Eau Claire, WI 54701. For information contact: Rita or Bill Sparks, Co-Chairs, 1223 Blueberry Dr., Eau Claire, WI 54703, 715-836-5279 days or 715-832-0921 evenings.

22-23 Spring Pro-Am Skating Championships, to be held in Los Angeles, CA.

Continued on page 26

GRAND PRIX INTERNATIONAL

ST. GERVAIS, FRANCE, AUGUST 23-27, 1994

COUPE DES ALPES

MEN

JUDGES: 1 Robert Worsfold, GRB; 2 Elisabeth Louesdon, FRA; **3 William S. Smith, USA**; 4 Miekio Fujimori, JPN; 5 Ingrid Reetz, GER; 6 Beth Crane, CAN; 7 Christiane Miles, SWI; 8 Neil Garrard, SAF; 9 Anna Sierocka, POL. SUBSTITUTE JUDGE: Peter Rankin, AUS. REFEREE: Monique Georgelin, I.S.U. ASSISTANT REFEREE: Rita Zonnekeyn, BEL.

NAME, COUNTRY, SP-FS-PLACES

1. Thierry Cerez, FRA, 1-1-1.5
2. Gabriel Monnier, FRA, 3-2-3.5
3. Francis Gastellu, FRA, 4-3-5.0
4. Clive Shorten, GRB, 2-4-5.0
- 5. John Bevan, USA, 5-5-7.5**
6. Matthew Powers, CAN, 6-6-9.0
7. Axel Mederic, FRA, 7-9-12.5
8. Makoto Okazaki, JPN, 12-7-13.0
9. Alexandre Boudjadi, FRA, 10-8-13.0
- 10. Jason Sylvia, USA, 8-10-14.0**
11. Patrick Schmit, LUX, 9-13-17.5
12. Norman Jeschke, GER, 14-11-18.0
13. David Jäschke, GER, 13-12-18.5
14. Takashi Yamamoto, JPN, 11-14-19.5
15. Margus Hernits, EST, 15-15-22.5

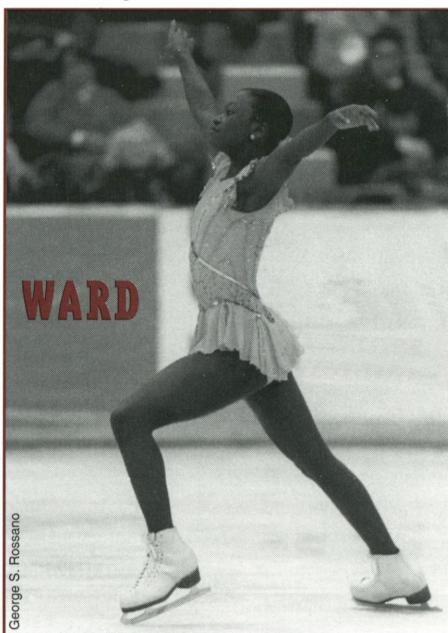
LADIES

JUDGES: 1 Florence Vuylstekker, FRA; 2 Candace Logozzo, CAN; 3 Michael Föll, GER; 4 Peter Rankin, AUS; 5 Noriko Shiota, JPN; 6 Brigitte Adam, BEL; 7 Agnes Morvay, HUN; 8 Miranda Marchi, ITA; 9 Helmut Sieber, AUT. SUBSTITUTE JUDGE: Christiane Miles, SWI. REFEREE: Linda Petersen, DEN. ASSISTANT REFEREE: Dr. Eva Von Gamm, GER.

NAME, COUNTRY, SP-FS-PLACES

- 1. Amanda Ward, USA, 2-2-3.0**
2. Shizuka Arakawa, JPN, 5-1-3.5
3. Vanessa Gusmeroli, FRA, 3-4-5.5
4. Zuzanna Szwed, POL, 1-6-6.5
5. Netty Kim, CAN, 10-3-8.0
6. Veronique Fleury, FRA, 4-8-10.0
- 7. Teresa Aiello, USA, 15-5-12.5**
8. Florentine Houdiniere, FRA, 11-7-12.5
9. Andrea Kus, AUT, 8-10-14.0
10. Anna Storchenegger, SWI, 12-9-15.0
11. Fanny Cagnard, FRA, 6-12-15.0

12. Miriam Manzano, AUS, 9-13-17.5
13. Silvia Fontana, ITA, 7-14-17.5
14. Nadine Lindenberger, GER, 17-11-19.5
15. Marta Senra, SPN, 16-15-23.0
16. Szilvia Szabo, HUN, 14-16-23.0
17. Kaisa Kella, FIN, 13-19-25.5
18. Claudia Unger, GER, 21-17-27.5



19. Shirene Human, SAF, 19-18-27.5
20. Christelle Damman, BEL, 20-20-30.0
21. Stephanie Main, GRB, 18-21-30.0
22. Han-Bit Cho, ROK, 22-22-33.0

PAIRS

JUDGES: 1 Helmut Sieber, AUT; 2 Beth Crane, CAN; 3 Elisabeth Louesdon, FRA; 4 Robert Worsfold, GRB; **5 William S. Smith, USA**; 6 Michael Föll, GER; 7 Anna Sierocka, POL. SUBSTITUTE JUDGE: Brigitte Adam, BEL. REFEREE: Rita Zonnekeyn, BEL. ASSISTANT REFEREE:

Monique Georgelin, I.S.U.

NAME, COUNTRY, SP-FS-PLACES

1. Sarah Abitbol & Stéphane Bernardis, FRA, 2-1-2.0
2. Marie-Claude Savard-Gagnon & Luc Bradet, CAN, 1-2-2.5
3. Lyne Haddad & Sylvain Prive, FRA, 3-3-4.5
4. Emilie Gras & Frédéric Lipka, FRA, 4-5-7.0
- 5. Cheryl Marker & Todd Price, USA, 5-6-8.5**
6. Lesley Rogers & Michael Aldred, GRB, 10-4-9.0
7. Jekaterina Silnitskaja & Mirko Müller, GER, 6-7-10.0
- 8. Nicole Bateson-Rock & Keith Tindall, USA, 9-8-12.5**
9. Sophie Gueustault & Francois Gueustault, FRA, 8-9-13.0
10. Marta Gluchowska & Mariusz Siudek, POL, 7-10-13.5
11. Fabiana Prudente & Andrew Bertleff, CAN, 11-11-16.5
12. Dorata Zagorska & Janusz Komendera, POL, 12-12-18.0
13. Eun-Mi Kim & Chang-Joo Lee, ROK, 13-13-19.5

DANCE

JUDGES: 1 Candace Logozzo, CAN; **2 Sherie Grimson, USA**; 3 Valérie Grevet, FRA; 4 Miekio Fujimori, JPN; 5 Olga Gilardini, ITA. SUBSTITUTE JUDGE: Ingrid Reetz, GER. REFEREE: Pal Vasarhelyi, HUN. ASSISTANT REFEREE: Mireille Dubois, FRA.

NAME, COUNTRY, CI-C2-OD-FD-PLACES

1. Barbara Fusar Poli & Maurizio Margaglio, ITA, 1-1-1-1-2.0
2. Agnes Jacquemard & Alexis Gayet, FRA, 3-2-2-2-4.2
3. Chantal Lefebvre & Patrice Lauzon, CAN, 2-3-3-3-5.8
4. Kati Winkler & Rene Lohse, GER, 4-5-4-4-8.2
5. Lorelei Isabey & Sylvain Leclerc, CAN, 5-4-5-6-10.8
6. Virginie Soustelle & David Molina, FRA, 6-6-6-5-11.0
- 7. Julia Bikhova & Robert Peal, USA, 7-7-7-7-14.0**
8. Babeth Cavaillé & Christophe Petit, FRA, 8-8-8-8-16.0
9. Francesca Fermi & Andrea Baldi, ITA, 9-9-9-9-18.0
- 10. Eve Chalom & Mathew Gates, USA, 10-10-10-9-19.0**
11. Yuki Habuki & Hitoshi Koizumi, JPN, 11-11-11-11-22.0
12. Tae-Hwa Yang & Hyun-Chul Kim, ROK, 12-12-12-12-24.0

Galit Chait & Maxim Sevostianov, ISR, withdrew

DR. ALBERT MURE TEAM TROPHY

1. FRA . 2. USA. 3. CAN. ■

MEN

JUDGES: 1 Alexei Shirshov, BLS; 2 Miekio Fujimori, JPN; 3 Matjaz Krusec, SLO; 4 Alfred Korytek, UKR; 5 Laure Junker-Neumann, LUX; **6 Anne G. Shean, USA**; 7 Ingelise Blangsted, DEN; 8 Alain Miquel, FRA; 9 Maria Miller, POL. SUBSTITUTE JUDGE: Hermann Schulz, GER. REFEREE: Dr. Gerhardt Bubnik, I.S.U. ASSISTANT REFEREE: Elfriede Beyer, GER.

NAME, COUNTRY, SP-FS-PLACES

1. Ilia Kulik, RUS, 2-1-2.0
- 2. Shepherd Clark, USA, 1-3-3.5**
3. Alexandr Abt, RUS, 4-2-4.0
4. Evgeny Pliuta, UKR, 3-4-5.5
- 5. Damon Allen, USA, 5-5-7.5**
6. Markus Leminen, FIN, 8-7-11.0
7. Michael Hopfes, GER, 7-8-11.5
8. Jens Ter Laak, GER, 6-10-13.0
9. David Jäschke, GER, 9-9-13.5
10. Matthew Powers, CAN, 10-11-16.0
11. Makoto Okazaki, JPN, 12-12-18.0
12. Stanick Jeannette, FRA, 25-6-18.5
13. Alexander Muraschko, BLS, 13-13-19.5

14. Johnny Ronne Jensen, DEN, 14-14-21.0
15. Sven Meyer, GER, 17-15-23.5
16. Frédéric Dambier, FRA, 15-17-24.5
17. David Ings, GRB, 11-19-24.5
18. Szaboics Vidrai, HUN, 19-16-25.5
19. Margus Hernits, EST, 16-18-26.0
20. Patrick Schmit, LUX, 22-20-31.0
21. Jan Cejvan, SLO, 20-21-31.0
22. Daniel Peinado, SPN, 21-22-32.5
23. Takashi Yamamoto, JPN, 18-25-34.0
24. Zbigniew Komorowski, POL, 24-23-35.0
25. Clifford F. Retamar, SPN, 23-24-35.5

LADIES

JUDGES: 1 Jozica Podbevsek, SLO; 2 Zsafia Wagner, HUN; 3 Sissy Krick, GER; 4 Patrick Ibens, BEL; 5 Marianne Huguenin, SWI; 6 Laura Presti, ITA; 7 Neil R. Garrard, SAF; 8 Peter K. Rankin, AUS; 9 Margaret Park, GRB. SUBSTITUTE JUDGE: Liudmila Volkova, RUS. REFEREE: Eva

NEBELHORN TROPHY

OBERSTDORF, GERMANY, AUG. 30-SEPT. 2, 1994

Von Gamm, GER. ASSISTANT REFEREE: Maria Zuchowicz, I.S.U.

NAME, COUNTRY, SP-FS-PLACES

1. Irina Sluzkaia, RUS, 1-1-1.5
2. Shizuka Arakawa, JPN, 4-2-4.0
- 3. Jennifer Karl, USA, 2-4-5.0**
4. Zuzanna Szwed, POL, 8-3-7.0
5. Elena Ivanova, RUS, 7-5-8.5
6. Veronique Fleury, FRA, 3-7-8.5
7. Lucinda Ruh, SWI, 6-6-9.0
8. Elena Lashenko, UKR, 4-8-10.0
9. Malika Tahir, FRA, 9-9-13.5
10. Jenna Arrowsmith, GRB, 11-10-15.5
11. Miriam Manzano, AUS, 16-11-19.0
12. Netty Kim, CAN, 12-13-19.0
13. Mila Kajas, FIN, 10-15-20.0
14. Fabienne Demovic, GER, 17-12-20.5
15. Silvia Fontana, ITA, 14-14-21.0

16. Tina Decker, GER, 15-17-24.5
17. Mojca Kopac, SLO, 13-18-24.5
18. Tamara Panjkret, CRO, 19-16-25.5
19. Shirene Human, SAF, 20-19-29.0
20. Zoe Jones, GRB, 18-20-29.0
21. Christelle Damman, BEL, 22-21-32.0
22. Angela Tuska, AUT, 21-22-32.5
23. Michaela Vais, GER, 24-23-35.0
24. Emilia Nagy, HUN, 25-24-36.5
25. Olga Vassiljeva, EST, 23-25-36.5
26. Han-Bit Cho, ROK, 26-26-39.0

PAIRS

JUDGES: 1 Liudmila Volkova, RUS; 2 Matjaz Krusec, SLO; 3 Alain Miquel, FRA; 4 Alfred Korytek, UKR; 5 **Anne B. Shean, USA**; 6 Beth Crane, CAN; 7 Maria Miller, POL; 8 Yuri Gyskhov, KZK; 9 Hermann Schulz, GER. SUBSTITUTE JUDGE: Neil R. Garrard, SAF. REFEREE: Jürg Wilhelm, I.S.U. ASSISTANT REFEREE: Dr. Eva Von Gamm, GER.

NAME, COUNTRY, SP-FS-PLACES

1. Marie-Claude Savard-Gagnon & Luc Bradet, CAN, 1-1-1.5
2. Lyne Haddad & Sylvain Prive, FRA, 4-2-4.0
3. Sarah Abitbol & Stéphane Bernardis, FRA, 3-3-4.5

4. Elena Belousovskaia & Sergey Potalov, UKR, 2-4-5.0
5. Fabiana Prudente & Andrew Bertleff, CAN, 7-5-8.5
6. Marina Yazovtseva & Vadim Yarkov, KZK, 5-6-8.5
7. Oksana Chupkina & Pavel Khaldin, RUS, 8-7-11.0
8. Marta Gluchowska & Mariusz Siudek, POL, 6-8-11.0
9. **Aimee Offner & Brad Cox, USA, 12-9-15.0**
10. Dorota Zagorska & Janusz Komendera, POL, 11-10-15.5
11. Viktoriya Shlyakhova & Alexander Maskov, RUS, 10-11-16.0
12. Jekaterina Silnitskaja & Mirko Müller, GER, 9-12-16.5
13. Eun-Mi Kim & Chang-Joo Lee, ROK, 13-13-19.5

DANCE

JUDGES: 1 Petr Grushman, RUS; 2 Sophia Schmitt, FRA; 3 Candace Logozzo, CAN; 4 **Eleanor B. Curtis, USA**; 5 Maria Szakacsi, HUN; 6 Noriko Shiota, JPN; 7 Rolf Pipoh, GER. SUBSTITUTE JUDGE: Yuri Gushkov, KZK. REFEREE: Dr. Wolfgang Kunz, I.S.U. ASSISTANT REFEREE: Dr. Maria Zuchowicz, I.S.U.

NAME, COUNTRY, CI-C2-OD-FS-PLACES

1. Barbara Piton & Alexandre Piton, FRA, 2-1-4-1-4.0
2. Elena Grushina & Ruslan Goncharov, UKR, 1-3-2-2-4.0
3. Chantal Lefebvre & Patrice Lauzon, CAN, 3-2-1-3-4.6
4. Kati Winkler & René Lohse, GER, 7-7-3-4-8.6

5. Lorelei Isabey & Sylvain Leclerc, CAN, 5-6-5-5-10.2
6. Svetlana Chernikova & Alexandr Sosnenko, UKR, 9-5-6-6-12.4
7. **Wendy Millette & Jason Tebo, USA, 6-8-7-7-14.0**
8. Ekaterina Svirina & Sergei Sakhnovskii, RUS, 4-4-8-8-14.4
9. **Laura Gayton & Oleg Fediukov, USA, 8-9-9-9-17.8**
10. Galit Chait & Maxim Sevostianov, ISR, 10-10-10-10-20.0
11. Sandra Blume & Markus Blume, GER, 12-11-13-11-23.4
12. Dominique Wenzel & Arno Dienenthal, GER, 11-12-11-13-24.2
13. Yuki Habuki & Hotoshi Koizumi, JPN, 14-14-14-12-26.0
14. Kornelia Barany & Gyula Szombathelyi, HUN, 13-13-12-14-26.4
15. Hyun-Chul Kim & Tae-Hwa Yang, ROK, 15-15-15-15-30.0

COUPE DES ALPES TEAM TROPHY

1. FRA. 2. **USA**. 3. CAN. 4. JPN. 5. GER. 6. POL.
7. GRB. 8. FIN. 9. ITA. 10. SWI. 11. AUS. 12. AUT.
13. HUN. 14. SAF. 15. SPN. 16. BEL. 17. EST. 18. LUX.
19. ROK. ■

VIENNA CUP

VIENNA, AUSTRIA, SEPTEMBER 22-25, 1994

MEN

JUDGES: 1 Birgit Föll, GER; 2 Maira Abasova, RUS; 3 Ferenc Batho, HUN; 4 **Roger Glenn, USA**; 5 Hana Basova, SVK; 6 Diane Jamieson, CAN; 7 Halina Gordon-Poltorak, POL; 8 Josette Betsch, FRA; 9 Werner Ehrhardt, AUT. SUBSTITUTE JUDGE: Ilze Jonikis, AUS. REFEREE: Walter Hüttner, AUT. ASSISTANT REFEREE: Helmut Sieber, AUT.

NAME, COUNTRY, SP-FS-PLACES

1. **Rudy Galindo, USA, 2-1-2.0**
 2. Zsolt Kerekes, HUN, 5-2-4.5
 3. Ilya Kulik, RUS, 1-4-4.5
 4. Szabolcs Vidrai, HUN, 4-3-5.0
 5. Igor Senutin, RUS, 3-5-6.5
 6. Nicolas Petorin, FRA, 6-6-9.0
 7. Michael Tyllesen, DEN, 8-7-11.0
 8. Robert Grzegorzczak, POL, 9-8-12.5
 9. Gabriel Monnier, FRA, 7-9-12.5
 10. Patrick-Rene Reinhardt, GER, 10-10-15.0
 11. Matthew Smith, CAN, 15-11-18.5
 12. Luiz-Mariano Taifas, ROM, 13-12-18.5
 13. Jan Cejvan, SLO, 12-13-19.0
 14. Margus Hernits, EST, 11-14-19.5
 15. Rastislav Vnucko, SVK, 14-15-22.0
- Florian Tuma, AUT, withdrew

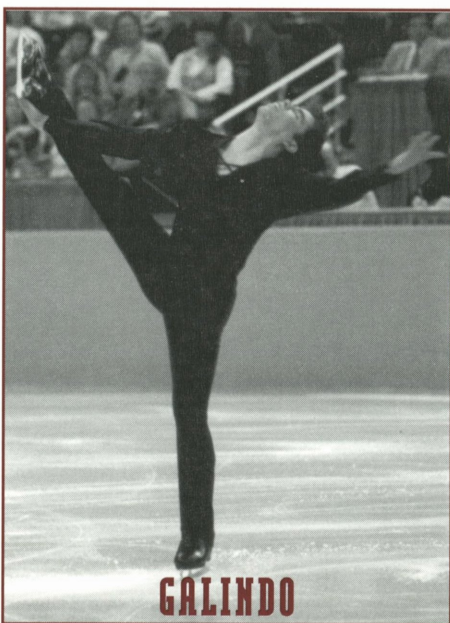
LADIES

JUDGES: 1 Christa Gunsam, AUT; 2 Daria Gabrovsek, SLO; 3 Claudia Fassora, SVI; 4 Diane Jamieson, CAN; 5 Mirella Metall, ITA; 6 Ilze Jonikis, AUS; 7 Zola Yordanova, BUL; 8 Ilona Sosnova, CZE; 9 Maria Zuchowicz, POL. SUBSTITUTE JUDGE: **Roger Glenn, USA**. REFEREE: Heide Maritzczak, AUT. ASSISTANT REFEREE: Christiane Mörth, AUT.

NAME, COUNTRY, SP-FS-PLACES

1. Szusanna Szwed, POL, 1-1-1.5
2. Christina Czako, HUN, 2-2-3.0
3. Maria Butyrskaya, RUS, 4-3-5.0
4. Elena Ivanova, RUS, 3-4-5.5
5. Katarina Berankova, CZE, 5-6-8.5
6. Jennifer Robinson, CAN, 8-5-9.0
7. **Chrisha Gossard, USA, 7-9-12.5**
8. Julia Lautowa, AUT, 12-7-13.0
9. Veronique Fleury, FRA, 10-8-13.0
10. Astrid Hochstetter, GER, 6-12-15.0

11. Mojca Kopac, SLO, 11-10-15.5
12. Tsvetelina Abrasheva, BUL, 9-11-15.5
13. Martina Kus, AUT, 13-13-19.5
14. Katharina Przystal, AUT, 15-14-21.5
15. Janine Bur, SWI, 17-15-23.5
16. Zsafia Kulcsar, HUN, 14-17-24.0
17. Maria Fuglsang, DEN, 19-16-25.5
18. Laetitia Bajot, FRA, 18-19-28.0



19. Jane Rolek, AUS, 21-18-28.5
20. Liina-Grete Lilender, EST, 20-20-30.0
21. Katja Avesani, ITA, 16-23-31.0
22. Eva Babisova, SVK, 22-21-32.0
23. Paula Stephenson, SAF, 23-22-33.5

DANCE

JUDGES: 1 Maira Abasova, RUS; 2 Halina Gordon-Poltorak, POL; 3 Susan Morriss, CAN; 4 Christi Heidler,

AUT; 5 Lynn Huddleston, GBR; 6 Sophie Schmitt, FRA; 7 Katalin Alpern, HUN; 8 **Sherie Grimson, USA**; 9 Vinicio Toncelli, ITA. SUBSTITUTE JUDGE: Maria Zuchowicz, POL. REFEREE: Hans Kutschera, I.S.U. ASSISTANT REFEREE: Istvan Sugar, HUN.

NAME, COUNTRY, CD-OD-FD-PLACES

1. Michelle Fitzgerald & Vincent Kyle, GBR, 3-1-1-2.8
 2. Agnes Jacquemard & Alexis Gayet, FRA, 2-3-2-4.6
 3. Barbara Fusarpoli & Maurizio Margaglio, ITA, 1-2-3-4.6
 4. Alison Maclean & Konrad Schaub, AUT, 5-4-4-8.4
 5. Josee Depapiche & Pascal Denis, CAN, 4-5-6-10.6
 6. Sylvia Novak & Sebastian Kolarsinski, POL, 6-6-5-11.0
 7. Galit Chait & Maxime Sevostianov, ISR, 9-9-7-16.0
 8. Isabelle Pecheur & Remi Jacquemard, FRA, 8-8-8-16.0
 9. Nathalie Gillet & Oliver Lores, FRA, 7-7-9-16.0
 10. **Nicole Dumonceaux & John Reppucci, USA, 10-10-10-20.0**
 11. Oksana Yaryshkina & Alexander Isheev, RUS, 13-11-11-22.8
 12. Sandra Blume & Markus Blume, GER, 14-12-12-24.8
 13. Lucie Jerabkova & Martin Andrasovsky, CZE, 12-12-13-25.0
 14. Kornelia Barany & Gyula Szombathelyi, HUN, 11-14-14-26.8
- Anita Chaudhuri & Hans t'Hart, NED, withdrew ■

COLORADO SPRINGS, COLO.
AUGUST 18-20, 1994

1994 NATIONAL COLLEGIATE CHAMPIONSHIPS



SENIOR LADIES FREE SKATING

LEFT TO RIGHT: Sabrina Vora, third; Kathaleen Kelly Cutone, first; Amanda Farkas, second.



SENIOR LADIES FIGURES

LEFT TO RIGHT: Shannon Livingston, third; Janette Lynn Lewis, first; not pictured – Lisa Bryson, first.



JUNIOR LADIES FREE SKATING

LEFT TO RIGHT: Brenda Blackmer, third; Amy Lynn Love, first; Sabrina Voncampe, second.



JUNIOR LADIES FIGURES

LEFT TO RIGHT: Sametra Wallace, third; Nicole Buckles, second; not pictured – Sonja Castaneda, first.

SENIOR LADIES FREE SKATING

JUDGES - TECHNICAL PROGRAM: 1 Shirley Sherman, Glenview, IL; 2 Ann Fauver, Gorham, ME; 3 Roberta Parkinson, McMurray, PA; 4 Wayne Hundley, Riverside, CA; 5 Shirley Hage, Marine St. Croix, MN; 6 Dr. Harland Burge, Laguna Hills, CA; 7 Dr. Larry Mondschein, E. Brunswick, NJ. **REFEREE:** George Ludlow, Jr., Venice, FL. **ASSISTANT REFEREE:** Dr. Lester Cramer, Colorado Springs, CO. **ACCOUNTANT:** Martha Cogan, Ray Brook, NY.

JUDGES - FREE SKATING: 1 Shirley Sherman, Glenview, IL; 2 Patricia Smart, Duncan, BC; 3 Carole Ludlow, Venice, FL; 4 Dr. Harland Burge, Laguna Hills, CA; 5 Shirley Hage, Marine St. Croix, MN; 6 Roberta Parkinson, McMurray, PA; 7 Ann Fauver, Gorham, ME. **REFEREE:** Dr. Lester Cramer, Colorado Springs, CO. **ASSISTANT REFEREE:** George Ludlow, Jr., Venice, FL. **ACCOUNTANT:** Martha Cogan, Ray Brook, NY.

NAME, CLUB NAME, TP-FS-PLACES

1. Kathaleen Kelly Cutone, Northeastern University Law

School, 3-1-2.5
2. Amanda Farkas, Boston University, 7-2-2-3.0
3. Sabrina Vora, University of Colorado - Colorado Springs, 1-4-4.5
4. Sara Kastner, University of St. Thomas, 4-3-5.0
5. Ellen Kenny, Edmonds Community College 5-5-7.5
6. Christine Nubla, University of California - Santa Barbara, 6-7-10.0
7. Kristin Lee Knotts, Augsburg College, 9-6-10.5
8. Shirl Marie Cattani, Temple University, 7-8-11.5
9. Valerie Moskwa, Springfield College, 10-10-15.0

10. Jill Jackson, Columbia College, 8-11-15.0
11. Sharon Wissel, Springfield College, 14-9-16.0
12. Natalie Thomas, University of Colorado - Boulder, 11-12-17.5
13. Nicole Buckles, Arizona State University 12-13-19.0
14. Elizabeth Uhler, St. Norbert College, 15-14-21.5
15. Jacqui Pruett, Augsburg College, 13-15-21.5
16. Stephanie Giannetti, Bowling Green State University, 16-16-24.0
17. Shannon Livingston, University of Michigan - Ann Arbor, 17-17-25.5
18. Melissa Marion, University of Massachusetts - Lowell, 18-18-27.0
19. Jeannie Widlicka, University of Buffalo, 19-20-29.5
20. Julianne Perciante, Wheaton College, 21-21-31.5
21. Lisa Webster, Western Washington University 20-22-32.0
22. Charlotte McMichael, Pennsylvania State University, 27-19-32.5
23. Heather Castor, Michigan State University, 23-24-35.5
24. Dena Vanaert, Augsburg College, 28-23-37.0
25. Kate Bertine, Colgate University, 25-25-37.5
26. Kristen Frazzini, Community College of Beaver County, 24-26-38.0
27. Michelle Stalzer, Syracuse University, 26-27-40.0
- Ashley Clarke, Pitzer University, 22- withdrew

SENIOR LADIES FIGURES

JUDGES - FIGURE 1: 1 Carole Ludlow, Venice, FL; 2 Shirley Hage, Marine St. Croix, MN; 3 Shirley Sherman, Glenview, IL; 4 Wayne Hundley, Riverside, CA; 5 Dr. Larry Mondschein, E. Brunswick, NJ; 6 Ann Fauver, Gorham, ME; 7 Dr. Harland Burge, Laguna Hills, CA. REFEREE: George Ludlow, Venice, FL. ASSISTANT REFEREE: Dr. Lester Cramer, Colorado Springs, CO. ACCOUNTANT: Avonia Dondero, Orinda, CA.

JUDGES - FIGURE 2: 1 Carole Ludlow, Venice, FL; 2 Shirley Hage, Marine St. Croix, MN; 3 Shirley Sherman, Glenview, IL; 4 Wayne Hundley, Riverside, CA; 5 Dr. Larry Mondschein, E. Brunswick, NJ; 6 Ann Fauver, Gorham, ME; 7 Dr. Harland Burge, Laguna Hills, CA. REFEREE: George Ludlow, Venice, FL. ASSISTANT REFEREE: Dr. Lester Cramer, Colorado Springs, CO. ACCOUNTANT: Avonia Dondero, Orinda, CA.

JUDGES - FIGURE 3: 1 Carole Ludlow, Venice, FL; 2 Shirley Hage, Marine St. Croix, MN; 3 Shirley Sherman,

Glenview, IL; 4 Wayne Hundley, Riverside, CA; 5 Dr. Larry Mondschein, E. Brunswick, NJ; 6 Ann Fauver, Gorham, ME; 7 Dr. Harland Burge, Laguna Hills, CA. REFEREE: George Ludlow, Venice, FL. ASSISTANT REFEREE: Dr. Lester Cramer, Colorado Springs, CO. ACCOUNTANT: Avonia Dondero, Orinda, CA.

NAME, CLUB NAME, F1-F2-F3-PLACES

1. Lisa Bryson, University of Colorado - Boulder, 3-2-2-7.0
1. Janette Lynn Lewis, Denver University, 1-1-5-7.0
3. Shannon Livingston, University of Michigan - Ann Arbor, 4-3-3-10.0
4. Laura Mitchell, University of Delaware, 5-4-4-13.0
5. Brenda Blackmer, Eastern Michigan College, 2-7-6-15.0
6. Stephanie Giannetti, Bowling Green State University, 10-5-1-16.0
7. Leah Hardy, Georgetown University, 7-10-7-24.0
8. Jeannie Widlicka, University of Buffalo, 8-6-11-25.0
9. Rebecca Buening, University of Delaware, 6-11-12-29.0
10. Angela Viviano, University of Delaware, 12-9-9-30.0
10. Kristen Frazzini, Community College of Beaver County, 9-8-13-30.0
12. Shirl Marie Cattani, Temple University, 11-12-8-31.0
13. Lindsay Picard, Stanford University, 14-13-10-37.0
14. Valerie Moskwa, Springfield College, 13-14-14-41.0

JUNIOR LADIES FREE SKATING

JUDGES - TECHNICAL PROGRAM: 1 Shirley Sherman, Glenview, IL; 2 Dr. Harland Burge, Laguna Hills, CA; 3 Shirley Hage, Marine St. Croix, MN; 4 Dr. Larry Mondschein, E. Brunswick, NJ; 5 Roberta Parkinson, McMurray, PA; 6 Patricia Smart, Duncan, BC; 7 Carole Ludlow, Venice, FL. REFEREE: Dr. Lester Cramer, Colorado Springs, CO. ASSISTANT REFEREE: George Ludlow, Jr., Venice, FL. ACCOUNTANT: Avonia Dondero, Orinda, CA.

JUDGES - FREE SKATING: 1 Patricia Smart, Duncan, BC; 2 Shirley Hage, Marine St. Croix, MN; 3 Carole Ludlow, Venice, FL; 4 Dr. Larry Mondschein, E. Brunswick, NJ; 5 Dr. Harland Burge, Laguna Hills, CA; 6 Todd Bromley, Fort Worth, TX; 7 Wayne Hundley, Riverside, CA. REFEREE: George Ludlow, Jr., Venice, FL. ASSISTANT REFEREE: Dr. Lester Cramer, Colorado Springs, CO. ACCOUNTANT: Avonia Dondero, Orinda, CA.

NAME, CLUB NAME, TP-FS-PLACES

1. Amy Lynn Love, University of Kansas, 1-1-1.5
2. Sabrina Voncampe, University of Colorado - Colorado Springs, 2-2-3.0
3. Brenda Blackmer, Eastern Michigan University, 4-3-5.0
4. Lou Anne Petersen, University of Colorado - Boulder, 3-4-5.5

JUNIOR LADIES FIGURES

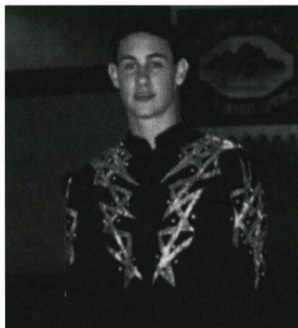
JUDGES - FIGURE 1: 1 Ann Fauver, Gorham, ME; 2 Carole Ludlow, Venice, FL; 3 Roberta Parkinson, McMurray, PA; 4 Wayne Hundley, Riverside, CA; 5 Shirley Sherman, Glenview, IL; 6 Patricia Smart, Duncan, BC; 7 Todd Bromley, Fort Worth, TX. REFEREE: Dr. Lester Cramer, Colorado Springs, CO. ASSISTANT REFEREE: George Ludlow, Jr., Venice, FL. ACCOUNTANT: Avonia Dondero, Orinda, CA.

JUDGES - FIGURE 2: 1 Ann Fauver, Gorham, ME; 2 Carole Ludlow, Venice, FL; 3 Roberta Parkinson, McMurray, PA; 4 Wayne Hundley, Riverside, CA; 5 Shirley Sherman, Glenview, IL; 6 Patricia Smart, Duncan, BC; 7 Todd Bromley, Fort Worth, TX. REFEREE: Dr. Lester Cramer, Colorado Springs, CO. ASSISTANT REFEREE: George Ludlow, Jr., Venice, FL. ACCOUNTANT: Avonia Dondero, Orinda, CA.

JUDGES - FIGURE 3: 1 Ann Fauver, Gorham, ME; 2 Carole Ludlow, Venice, FL; 3 Roberta Parkinson, McMurray, PA; 4 Wayne Hundley, Riverside, CA; 5 Shirley Sherman, Glenview, IL; 6 Patricia Smart, Duncan, BC; 7 Todd Bromley, Fort Worth, TX. REFEREE: Dr. Lester Cramer, Colorado Springs, CO. ASSISTANT REFEREE: George Ludlow, Jr., Venice, FL. ACCOUNTANT: Avonia Dondero, Orinda, CA.

NAME, CLUB NAME, F1-F2-F3-PLACES

1. Sonja Castaneda, University of Alaska - Fairbanks, 1-2-1-4.0
2. Nicole Buckles, Arizona State University, 2-4-2-8.0
3. Sametra Wallace, University of Michigan - Ann Arbor, 4-1-4-9.0
4. Melissa Marion, University of Massachusetts - Lowell, 3-3-5-11.0
5. Kelley Young, University of Illinois - Urbana, 5-4-3-12.0
6. Tamsen Woods, Wofford College, 7-6-7-20.0
7. Anne Smith, University of Michigan - Ann Arbor, 8-7-6-21.0
8. Heidi Bucher, Whittier College, 6-8-8-22.0



Matthew Weiner, Hamilton College, attended the National Collegiate Championships to compete in the Junior Men's Free Skating event, but due to a lack of entries the event was cancelled.■

FACES AT THE RINK



NAOMI LANG

Naomi, 15, is the 1994 Eastern Great Lakes Intermediate Champion. She trains at the Detroit SC in Bloomfield Hills, Mich. and is coached by Ann Seror, Igor Shpilband and Elizabeth Coates. Naomi was a recipient of a grant of \$1,500 from the Sudafed Travel and Training Fund in 1994. She enjoys ballet as off-ice training.

Would you like to be among the Faces at the Rink?

Skaters of all ages and skating levels are invited to send a recent photo and a paragraph of information detailing their skating background and recent skating accomplishments to: Skating Magazine, 20 First Street, Colorado Springs, CO 80906. Photos should be either black and white or color head shots and will not be returned. We hope to see your Face at the Rink soon!

The Fall meeting of the Board of directors

The USFSA Board of Directors took the following actions:

was held in Colorado Springs, Colo., on October 7, 1994.

Approved the Minutes of the Board of Directors at its meeting in Newport, R.I., Rhode Island on May 4-5, 1994.

FINANCE COMMITTEE

1. Approved to appoint Grant Thornton as USFSA auditors for a one- to three-year term.
2. Approved to rescind the Board objection to the Executive Committee motion terminating the processing of CSIP instructor earnings at Headquarters.

COMPETITIONS COMMITTEE

1. Approved a temporary substitution on Page 75 of Rulebook, CR 53.033(a) — change 15 to 9.
2. Approved to amend our rules to permit former World and Olympic medalists the right to enter Nationals without having to qualify at Regionals and/or Sectionals.
3. Approved to incorporate into our rules a World Junior Team Selection Competition.
4. Approved the issuance of the following Sanctions:
Final Sanction to Indianapolis for 1995 National Juvenile/Intermediate Championships:
Indiana/World Skating Academy FSC
Sycamore ISC
Winter Club of Indianapolis
Final Sanction to SC of Wilmington for 1995 Adult Nationals
Final Sanction for 1995 National Collegiate Championships
Provisional Sanction for 1996 National Precision Skating Championships
Wagon Wheel FSC and Chicago FSC, Chicago, IL
Provisional Sanction for 1997 National Precision Skating Championships
Salt City Figure Skaters, Syracuse, NY
Provisional Sanction for 1997 United States Figure Skating Championships
to Nashville FSC, Nashville, TN
Provisional Sanction for 1998 United States Figure Skating Championships
to Wissahickon SC, Philadelphia, PA
5. Approved the appointment of Shirley Kreppel as National Precision Referee
6. Approved to change the name of J/I Nationals to the Junior Olympic Skating Competition.
7. Approved that the Competitions Committee Chair be given time to and directed to develop a policy for sanctioning

non-qualifying competitions that propose to award prize money.

JUDGES COMMITTEE

1. Approved to amend rule JR 11.01 by deleting "Trial judges will be assigned monitors." and replacing with — "Normally, trial judges will be assigned new or replacement monitors of their choice provided these are selected from higher ranking judges who have agreed to serve. If a monitor is unavailable or not requested, the services are the responsibility of the trial judge's Home Club."
2. Approved the following judges appointments:
Senior Competition Judge
Wendy Boylan Melland, Silver Blades FSC
Carolyn Clausius, Wisconsin FSC
Carolyn Haman, Dallas FSC
Gretchen Wilson, Rochester FSC
Gold Figure Test Judge
Wendy Weston Enzmann, SC of Boston
Ronald E. Dei Cas, SC of Mt. Lebanon
Cynthia Flynn, Genesee FSC
Kristina Blackwell, Columbus FSC
Deveny Deck, Detroit SC
Sonja Frandsen, Albuquerque FSC
Jennifer Marker Johnson, St. Paul FSC
Richard Kern, Illinois Valley FSC
Wendy Boylan Melland, Silver Blades FSC
Linda Chihara, Lakewood WC
Gold Free Skating Test Judge
Wendy Weston Enzmann, SC of Boston
Ronald E. Dei Cas, SC of Mt. Lebanon
Kristina Blackwell, Columbus FSC
Deveny Deck, Detroit SC
Sonja Frandsen, Albuquerque FSC
Jennifer Marker Johnson, St. Paul FSC
Richard Kern, Illinois Valley FSC
Wendy Boylan Melland, Silver Blades FSC
Lydia Wolanchuk, St. Clair Shores
Steve Austin, Seattle SC
Linda Chihara, Lakewood WC
Aileen I. Arenson, LaJolla FSC
National Dance Judge
Hal Marron, Arizona FSC
Gold Dance Test Judge

QUOTEWORTHY

"WE'RE TAKING THE APPROACH THAT WE DON'T WANT TO BE TREATED LIKE EVERYBODY ELSE — THE USFSA IS SOMETHING SPECIAL. I THINK YOU CAN SEE THAT IN THE VARIOUS COMMITTEES THAT ARE WORKING OUT THERE. IT'S NOT TO SAY THAT WE'RE NOT WITHOUT PROBLEMS IN THIS ORGANIZATION BECAUSE WE AREN'T, BUT THEY'RE GOOD KINDS OF PROBLEMS."

**— USFSA EXECUTIVE DIRECTOR JERRY LACE
in his report to the Board of Directors**

Richard Kern, Illinois Valley FSC

Julia Jordan, DuPage FSC

Dennis Sveum, Brentwood FSC

Lolly Jensen, Sun Valley FSC

National Precision Judge

Robert Bell, Pawtucket & Providence FS

Hannelore Murphy, Fraser FSC

Resignations

Donald Jones, Gold Test, Gold Free Skating, Senior Competition

International Nominations

Write World Exam

John LeFevre Monty Hoyt Alt: Gale Tanger

International Judge

Robert Horen Linda Leaver Tamie Campbell

International Referee

Jim Disbrow Joan Gruber Steve Winkler

World Dance

Jim Disbrow

International Dance

Sharon Rogers

International Dance Referee

Robert Horen

World Precision Referee

Ronald T. Pfenning Pat French

World Precision Judge

Eleanor Curtis Peg Faulkner

William Beharrell Jerry Shipley

International Precision Referee

Gale Tanger

MEMBER RECOGNITION SUB-COMMITTEE

1. Approved establishing 40- year pins to be awarded to all members who have served as USFSA Judges, Referees or Accountants for forty years.
2. Approved that a supply of these 40- year pins be ordered for presentation at the 1995-96 Sectional Championships and at

Sectional Championships in subsequent years.

SANCTIONS & ELIGIBILITY COMMITTEE

1. Approved to reinstate the USFSA members who have applied to be fully eligible persons and have met the requirements for reinstatement:

Amelotte, Cheryl A. (Ecklund)	Korkki, Robin M.
Bacon, Linda (Burgess)	Levchenkov, Vladimir V.
Berger, Ruth	Lovelady, Jan E. (Wood)
Blades, Margie D. (Friedli)	Martin, Alice E.
Bondar, Elizabeth C.	Mitchell, Charlotte L. (Cornell)
Countryman-Jones, Darlene M.	Morrill, Dennis C.
Eastman, Susan Y.	Randhahn, Barbara (Mollineaux)
Guttenplan, Alys S.	Rowe, Lois A.
Henderson, Mary K. (Campbell)	Spinner, Vera (Dessauer)
Iles, Kenneth W.	Youel, Sandi J.

SINGLES & PAIRS COMMITTEE

1. Approved that the Preliminary Figure Test be eliminated from the USFSA test structure.
-

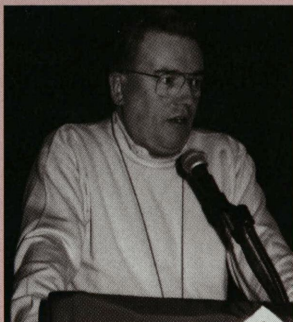
QUOTEWORTHY

"IT'S IMPORTANT TO ME TO WORK WITH THESE SPECIAL COMPETITIONS AND TO HAVE THE USFSA IDENTIFIED WITH MANY OF THEM. THIS WINTER, YOU MAY HAVE NUMEROUS TELEVISION EXPOSURES TO FIGURE SKATING AND VERY FEW OF THEM WILL BE USFSA OR I.S.U. (COMPETITIONS). IT MAKES ME WONDER WHAT THE PUBLIC'S PERCEPTION OF FIGURE SKATING IS GOING TO BE. THEY'RE GOING TO SEE 10, 10, 10 AND THEY'RE GOING TO SAY, 'THAT'S SKATING IN THE WORLD.' I THINK WE NEED TO HAVE OUR PRESENCE KNOWN. ... MY POSITION HAS BEEN TO COOPERATE AND SUPPORT SOME OF THESE ENDEAVORS MINDFUL OF THE DEMANDS ON OUR SKATERS AND PICK AND CHOOSE. BUT, WE SHOULD GET OUR FAIR SHARE, IF WE CAN ACCOMMODATE THEM UNDER OUR RULES."

— USFSA COMPETITIONS COMMITTEE CHAIR

RONALD T. PFENNING

**on his approach to the numerous "special" competitions
that recently have been developed**



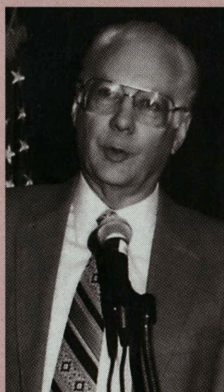
Photos: (clockwise)
Competitions Committee Chair Ronald T. Pfenning presents his report to the Board.

USFSA Executive Director Jerry Lace, Sue Lace, Detroit Mayor Dennis Archer, USFSA President Claire Ferguson, and Minneapolis Mayor Sharon Sayles-Belton.

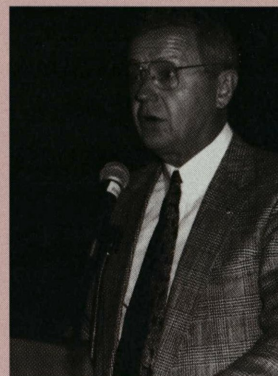
Jerry Lace addresses the Board.

Rachel Mayer, Karen Courtland, Jerod Swallow, Tom Collins, Claire Ferguson, and Elizabeth Punsalan.

USFSA Treasurer Jack Curtis presents the financial report to the Board.



Photos by Richard Tilley



2. Approved that the one-judge fail rule (below minimum mark as defined in TR 7.03) for Single (figure and free skating) and Pair tests be eliminated.
3. Approved to amend TR 10.02 as follows: "The officials for all tests shall consist of three judges with the exception that the Preliminary Figure Test, the Pre-Preliminary and Preliminary Moves in the Field and Free Skating Tests and the Juvenile Pair Test may be judged by one judge, who must be an Intermediate Figure Test Judge or higher or by three figure singles/pairs judges of any rank; and the Preliminary Dance, Preliminary Free Dance and the Pre-Bronze and Masters Pre-Bronze Dance Tests may be judged by one judge, who is a Silver Dance Judge or higher, or by three dance judges of any rank." The balance of the rule remains the same.
4. Approved a request for an additional \$30,000 to complete the new Free Skating Tests Training Schools.

LONG RANGE PLANNING COMMITTEE

1. Approved to amend LRPCR 2.02:
The Long Range Planning Committee shall gather information and assimilate ideas and concepts regarding the future of the Association to develop and maintain a plan to assure that the USFSA will continue to execute its charter effectively and efficiently in the future.
2. Approved to add LRPCR 2.03:
The plan and/or any amendments will be submitted annually for adoption by the Board of Directors.
3. Approved to add LRPCR 2.04:

The submission will include the procedures and financial concepts necessary for consideration, adoption and implementation into operations.

ETHICS COMMITTEE

1. Approved the overall scope of the Ethics Committee as presented in the report beginning on page 269 of the October '94 Meeting Book.
2. Approved the Ethics Principles as stated in the attachment to the report.
3. Approved the Conflict of Interest disclosure process as stated in the attachment to the report.

NEW BUSINESS

1. Approved to refer to the Singles and Pairs Committee the review of TR 7.03 to possibly permit figure tests to be stopped.
2. Approved to amend CR 35.064(b) and CR 35.065(b) by inserting "at least" and deleting "and no higher figure test," and to draft rules to be similar to CR 35.061, .062 and .063.
3. Approved to add sixty thousand (\$60,000) dollars to the Memorial Fund line item for distribution if needed in 1994-95 said funds not to be taken from the Memorial Fund Endowment Fund. Administratively, \$20,000 will be allocated to each Vice President, who may make recommendations to the Memorial Fund for grants to athletes.
4. Referred to the Ethics Committee the matter of having 20 percent (20%) athlete membership on the Selections Committee. ■



**HAVE FUN IN THE SUN
IN PHOENIX!**

**PLAN NOW
TO ATTEND**

THE

**1995 Spring Meeting of
the USFSA Board of Directors
May 17-18, 1995**

AND

**1995 USFSA Governing Council Meeting
May 19-20, 1995**

HOSTED BY

**The Arizona Figure Skating Club
and
The Skating Club of Phoenix**

AT

**The Ritz-Carlton
2401 East Camelback Road
Phoenix, AZ 85016
602-468-0700**

DYSTEL STILL EXHIBITING QUALITIES OF A CHAMPION

Longtime members of the USFSA may remember John Dystel, a promising young skater in the early 1960s.

Dystel first appeared on the competitive scene in 1962 when he finished fifth in the Novice Men's event in the Eastern Sectional Championships. In 1963, he was the North Atlantic Regional Junior Men's Champion and the following year he was that region's Senior Men's Silver Medalist. He passed the U.S. seventh test and the I.S.U. eighth figure test. His best competitive year was 1965 when he was the North Atlantic Senior Men's Champion, the Eastern Senior Men's Bronze Medalist and placed ninth in the Junior Men's event in the U.S. Championships. (According to the rules at that time, placement in the top three in Sectional Senior Competitions, only qualified singles skaters to skate in Junior events at the U.S. Championships, provided they had also passed the USFSA Sixth Figure Test.)

Dystel also was an outstanding student and his scholastic record combined with his regional title won him the honor of being chosen as one of a group of figure skaters to represent the U.S. in a "goodwill" program sponsored by the People-to-People Sports Committee. The group of skaters, dubbed the "Embassadors," spent nine weeks of the summer of 1964 training in Oberstdorf, Germany. In addition to training side by side with European skaters, they also performed at carnivals and exhibitions. By the end of the summer they had forged friendships not only for themselves but also for their country and their sport.

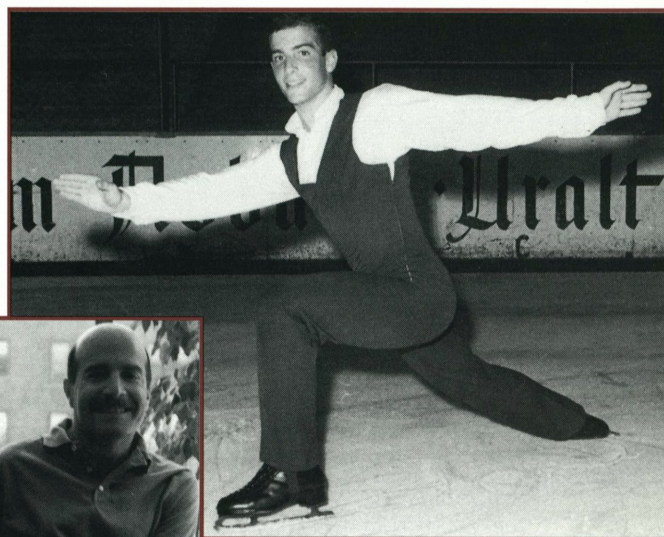
But Dystel's bright skating career came to a crashing halt late one night in 1965 when, training with Gus Lussi in Lake Placid, the blade of his free leg cut through the boot of his landing leg, severing his Achilles' tendon as he landed a double Axel. Eight hours of surgery re-attached the tendon, but he walked with a limp. Competitive skating was out of the question.

Fortunately, Dystel had an equally bright academic career to fall back on. As a student at Brown University, he excelled in his studies and was elected president of both his junior and senior classes. He was a member of Phi Beta Kappa and a finalist as a Rhodes Scholar. In fact, the student who won that year was Robert Reich, now Secretary of Labor. After graduating from Brown, Dystel attended Yale Law School where one of his classmates was Hillary Rodham, now First Lady. After law school, he went to Seattle to practice law.

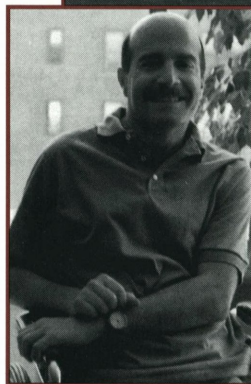
It was in Seattle that the vague symptoms he had been experiencing — blurring vision, numbness of his extremities, and muscle spasms in his legs when sleeping — became more troublesome. When he sat down to take his bar exam, he found he was unable to read the print. A neurologist narrowed his diagnosis to either a brain tumor or Multiple Sclerosis. It was M.S.

For a time, he was able to continue to practice law, but his is the chronic progressive type of M.S. where there is gradual physical decline with no remission. Eventually he needed a cane to walk, then crutches, and ultimately a wheelchair to get around. He was declared legally blind.

When he could no longer perform effectively in court for his firm, he went to Washington and became a lobbyist for the American Coalition of Citizens With Disabilities. For a time, he also worked at the Department of Education under the Carter administration.



ABOVE:
John Dystel in Oberstdorf in 1964



LEFT:
Dystel today

However, as his physical condition worsened, this work too became too much. He returned to his hometown in New York to be closer to his parents who have stood by him and supported him throughout his long ordeal.

In 1988, Dystel's home club, the Rye FSC, hosted "An Evening of Skating," a benefit for Multiple Sclerosis, in his honor. Among the many skaters who performed in the exhibition were Robin Cousins, Rosalynn Sumners, JoJo Starbuck and Ken Shelley, Judy Blumberg and Michael Seibert, Toller Cranston, Gary Beacom and Gia Guddat, Todd Eldredge, Tonia Kwiatkowski and Mark Mitchell. Peggy Fleming served as honorary chairman of the event and John Misha Petkevich served as its announcer.

Today, at age 48, Dystel, although confined to a wheelchair, lives independently in Ray Brook, N.Y. with the aid of excellent caregivers. Although his body has physically declined, his mind is still sharp. He may have lapses in his short-term memory, but he can remember his past in detail and is very aware of what is happening in the world today. He has retained his wit and still loves to meet and talk with people.

Due to his congenial nature and his physical limitations, he at times experiences intense feelings of isolation and loneliness. Any members who may have trained with him in the past, judged his tests, officiated at the competitions in which he competed, or simply wish to bolster his spirits are encouraged to send their letters and cards to: John Dystel, 134 Doral Greens West, Rye Brook, NY 10573. ■

Mr. and Mrs. Oscar Dystel recently established the John Dystel Prize for Multiple Sclerosis Research, which will annually award \$7,500 to a medical researcher who has made a significant contribution in the battle against M.S. Readers interested in contributing to this award may direct their contributions to: The John Dystel Award, 50 Main Street, White Plains, NY 10606.

Skating congratulates

the following skaters who have passed USFSA figure, free skating, pair, and dance tests. Only completed figure and dance tests, rather than the individual tests are recorded below.

Test Abbreviations are as follows: PRE Preliminary Figure; 1=First Figure; 2=Second Figure; 3=Third Figure; 4=Fourth Figure; 5 or 5C=Fifth Figure; 6 or 6C=Sixth Figure; 7 or 7C=Seventh Figure; PF=Preliminary Free; JF=Juvenile Free; IF=Intermediate Free; NF=Novice Free; JRF=Junior Free; PPR=Juvenile Pair; JPR=Intermediate Pair; NPR=Novice Pair; JPR=Junior Pair; PDT=Preliminary Dance Test; PBR DT=Pre Bronze Dance Test; BR DT=Bronze Dance Test; BFD=Bronze Free Dance; PS SDT=Pre Silver Dance Test; SDT=Silver Dance Test; SFD=Silver Free Dance; PG DT=Pre Gold Dance Test; I DT=International Dance Test; ABFI=Adult Bronze Figure; ASFI=Adult Silver Figure; ABFS=Adult Bronze Free Skating; ASFS=Adult Silver Free Skating; PS ADT=Pre Silver Adult Dance Test; S ADT=Silver Adult Dance Test; PG ADT=Pre Gold Adult Dance Test; PBR MDT=Masters Pre Bronze Dance Test; BR MDT=Masters Bronze Dance Test; PS MDT=Masters Pre Silver Dance Test; S MDT=Masters Silver Dance Test; PG MDT=Masters Pre Gold Dance Test; I MDT=Masters International Dance Test; MBFD=Masters Bronze Free Dance; MSFD=Masters Silver Free Dance; P SDT=Special Olympic Preliminary Dance Test; PBR SDT=Special Olympic Pre Bronze Dance Test; BR SDT=Special Olympic Bronze Dance Test; PSSDT=Special Olympic Pre Silver Dance Test.

EIGHTH FIGURE TEST

Ann Searfoss, SC of Mt. Lebanon; Brenna Boyer, St. Paul FSC, Inc.; Diane Chen, Washington FSC; Gayle Horn, SC of Northern Virginia; Kevin Donovan, Chicago FSC; Kristina Adlam-Shakarja, Wissahickon SC; Owen Williams, Hickory Hill FSC; Reichen Woods, Lakewood Winter Club; Sarah Russell, The SC of Boston; Sarah Nedrow, Skokie Valley SC; Suzie Janossy, DuPage FSC; Laura Petzoldt, Arctic Blades FSC.

SENIOR FREE SKATING TEST

Alexie Kolpak, University of Delaware FSC; Alexis Phillips, South Mountain FSC, Inc.; Brian Buetsch, FSC of Rockford, Inc.; Cherie Terakura, Lloyd Center ISC; D Bradley Cox, FSC of Madison, Inc.; Elizabeth Uhler, FSC of Madison, Inc.; Jaime Kalnicky, DuPage FSC; Jason Sylvia, Colonial FSC; Jennifer Rickard, Los Angeles FSC; Jennifer Eastman, DuPage FSC; Julia Speiser, Individual Member (Midwest); Katie Bertine, Yonkers FSC; Kevin Garrett, Utah FSC; Kimberly Camarata, Hickory Hill FSC; Kimberly Caruso, South Mountain FSC, Inc.; Kristina Vera, Los Angeles FSC; Kristyn Evans, Los Angeles FSC; Laura Lipetsky, Los Angeles FSC; Lindsay Page, St. Clair Shores FSC; Lynne Petta, The Peninsula FSC; Nicole Silvestri, Pilgrim SC; Perri Sutton, Seattle SC; Rachel Kolbe, The SC of Boston; Roman Fraden, Detroit SC, Inc.; Shantelle Westbrook, All Year FSC; Stephanie Smith, SC of Northern Virginia; Tiffany Bailey, Arctic Blades FSC; Tiffany Fonseca, Wissahickon SC; Valerie Moskwa, Hickory Hill FSC.

ADULT GOLD FREE SKATING TEST

John Hull, Individual Member (Eastern).

GOLD/SENIOR PAIR TEST

Lauren Weldon, University of Delaware FSC.

GOLD DANCE TEST

Abigail Leavitt, The SC of Lake Placid; Alison Vivona, Stone Mountain FSC; Andrea Messer, Detroit SC, Inc.; Angela Ligon, Copper Country Skating Academy; Hillary Tompkins, Colorado SC; Jennifer Hewlett, Achilles FSC, Inc.; Kate Robinson, Detroit SC, Inc.; Leslie Soderberg, Warwick Figure Skaters; Lisa Luening, Portage Lake FSC; Mary Spinelli, The SC of Lake Placid; Noelani Goldstein, Hawaii FSC; Wanda Beierle, Los Angeles FSC; Vearle Klinger, Arizona FSC.

ADULT GOLD DANCE TEST

Beith Thorp, Wissahickon SC; Mary Connors Kelley, Individual Member (Eastern); Robert Beyer, Greater Milwaukee FSC.

ACADEMY FSC:

PRE-Casie Fritz. PF-Casie Fritz. **ACHILLES FSC, INC.:** PRE-Daniel Paepka, Nicole Lemanski, Robyn DeSarbo, 2-Alysia Eibe. PF-Daniel Paepka, Danielle Lavenia, Nicole Lemanski. JF-Jessica Bloustein, Rachel Krefetz. P

DT-Nicole Lemanski.

ALASKA ASSOC OF FIGURE SKATERS: PRE-Kaitlin Clark, Mitsa Port. 1-Heidi Belden. 3-Megan Clark. 4-Christine Keene. PF-Joel Ehman, Kaitlin Clark, Mitsa Port. JF-Heidi Belden.

ALBUQUERQUE FSC: PRE-Charles Kelly. 1-Ariel Zellermayer, Diana Puglisi. 2-Molly Gatewood. PF-Donna Erven, Kassey Erven, Kristie Shreve, Samantha Eastham, Taylor Watrous. JF-Eryn Mathewson, Katy Moore, Meghan Webster, Michael Shagam, Molly Gatewood, Tracee Francis. JF-Chung-Hao Wu. P DT-Alexandra Sanchez, Crystal Sanchez, Miguel Sanchez, Molly Gatewood, Sondra Watrous, Stephen Johnson, Tracee Francis. PBR DT-Lisa Kelley, Mandy Edwards, Megan Edwards, Patrick Rafferty. BR DT-Susan Johnson. PS ADT-Frank Woodworth. BFD-Karen Milligan.

THE ALEXANDRIA BAY FSC: PRE-Kathryn Merrihew, Stephanie Booth. 1-Kate Bryant. PF-Kathryn Merrihew. BR DT-Stephanie Booth.

ALL YEAR FSC: PRE-Lia Nitake, Ted Tanthasiri. 1-Alyssa Lundy, Johanna Morgan, Sarah Friedman. 3-Deanna Wertheimer, Leinee Hornbeck. PF-Lia Nitake, Ted Tanthasiri. JF-Deanna Wertheimer, Leinee Hornbeck. NF-Aimee Micu. P DT-Lia Nitake. PBR DT-Melanee Shale. PS ADT-Denise Rossi. S ADT-Marilyn Rosenberg.

ALPENA FSC: PRE-Meghan Nowakowski. 1-Lana Kieliszewski. PF-Alicia Wells, Dana Dowling, Erica Timm. JF-Lana Kieliszewski.

ALPINE SC: PRE-Staci-Lyn Honda. 2-Cindy Keeler. 3-Caitlin Brozna. 4-Reanna White. PF-Staci-Lyn Honda. JF-Cindy Keeler. JF-Caitlin Brozna. NF-Alexis Melton. JRF-Jill Ahlbrecht.

SC OF AMHERST, INC.: PRE-Bayla Metzger, Cathryn Christiansen, Erin Mason. 1-Amy Lefebvre, Emily Bisson, Jennifer Garmirian. 2-Bonnie Canup. 4-Marjorie Love, Nina Pf-Meghan Tudryn, Suzanne Laventure, Vivian Leskes. NF-Nina Frant.

AMHERST SC, INC.: PRE-Lindsay Oswald, Sarah Lock. 2-Lauren Alessi, Lindsay Bloom. 3-Sarah Banach. 4-Angela De Pinto. PF-Jennifer Ebert, Jillian Czyz, Lindsay Oswald, Sarah Lock, Shelley Imbs, Shelley Imbs. JF-Jami Marsley, Lindsay Bloom, Matthew Kossack. IF-Alexandra Holland. JRF-Elizabeth Handley. PPR-Leslie Milk, Samuel Kossack.

ANCHORAGE FSC: 1-Melanie Hess.

ANN ARBOR FSC: PRE-Lindsay Matthews. 2-Ashley Wilson. 7C-Anne Smith. PF-Lindsay Matthews. IF-Laura Livingston. P DT-Lara Gamberg. BR DT-Andrea Fox, Rusty Constine. PS ADT-Michelle Seavey Harvath.

ARCTIC BLADES FSC: PRE-Lauren Godfrey, Raianna Barrows, Renee Carlos. 1-Michael Villarreal, Skye Wheeler, Susan Ng. 2-Vivian Olmedo. 3-Jacqueline Hernandez. 4-Chrissy Janning, Jessica Koslow. 6-Robyn Ann Risch, Tiffany Bailey. 7-Rebecca Long. PF-Lauren Godfrey, Raianna Barrows, Renee Carlos. JF-Dorsie Smith, Vivian Olmedo. IF-Jacqueline Hernandez. NF-Jessica Koslow. JRF-Debra Lynn Risch. PBR DT-Keesha Perera, Raianna Barrows. BR DT-Carrie O'Connor, Paul Kimzey, Peter Kimzey, Rhea Sy. PS DT-James Ashley, Marge Heslin, Vivian Olmedo.

ARIZONA FSC: PRE-Antonia Rayner, Jessica Meinhart, Krystle Kelley, Trisha Bailey, Uyen Nguyen. PF-Jessica Meinhart, Krystle Kelley, Trisha Bailey, Uyen Nguyen. JF-Sarah Hansen, Tatum Yount. IF-Ashley Wilcox, Jessica Warren. P DT-Esther Brewer, Krystle Kelley. PBR DT-Esther Brewer.

ARROWHEAD FSC: PRE-Cristina Pavia, Krista Isbell, Porschia Wong. 3-Wendi Mangiagli. PF-Cristina Pavia, Krista Isbell, Porschia Wong. IF-Wendi Mangiagli.

ASPEN SC: PRE-Danielle Kopf, Elizabeth Oakes, Katie Hoffmaster. 1-Ozzie Mena. 2-Gary Sharkey. PF-Danielle Kopf, Jennifer Cooper, Katie Hoffmaster. JF-Ashley Arrasmith, Jeremy Abbott, Nicole Reno. P DT-Ashley Arrasmith, Katie Hoffmaster. PBR DT-Jeremy Abbott. BR DT-Gary Sharkey.

ATLANTA FSC: PRE-Alaina Umeck, Victoria Horwitz. 1-Amanda Cook, Kimberly Dubrawa. 2-Aubrey Fielder, Caitlin McDonald, Jason Adkins, Joey Dickenson, Kerri Lux, Nicole Annes, Pegah Bashiri. 3-Katie Petkovany, Salisa Bacon-Kidkote. 4-Heather Epstein. PF-Robert Weaver, Victoria Horwitz. JF-Jason Adkins, Joanna Lynn Lore, Nicole Annes, Pegah Bashiri, Robert Weaver. IPR-Erin Basso, Jason Adkins. P DT-Courtney Amonds, Elissa Boraks, Helene Ranwez, Robert Weaver. PBR DT-Becky Funderburke, Christie Haggard. BR DT-Katherine Kasik, Sarah Caird. S DT-Tracy Kline. S ADT-Joan Bogdan.

ATLANTIC CITY FSC, INC.: IF-Honey Jaffe.

AUSTIN FSC: PRE-Kelly Martin. 2-Jenna Friede, Marie Blackmon. PF-Kathy Bell, Kelly Martin. JF-Jessica Harrison. IF-Amy Thompson. ABFS-Kathy Bell. P DT-Kelly Martin. PBR DT-Courtney Clark. PS DT-Charles Mire. PFD-Charles Mire. BFD-Charles Mire.

BLADE & EDGE FSC OF OMAHA: PRE-Alyssa Quinlan, Chloe Karpf, Elizabeth Caniglia, Laura Crites, Melissa Stein, Rachel Cotton, Willie Karpf. 1-Natasha Adler, Stefanie Armentrout. 2-Janell Rogers. 5-Lisa Goldapp. PF-Alyssa Quinlan, Chloe Karpf, Elizabeth Caniglia, Laura Crites, Melissa Stein, Rachel Cotton, Willie Karpf. JF-Caron Otto. P DT-Chloe Karpf, Christy Hyatt, Elizabeth Caniglia, Kelda Vopnford, Melissa Stein, Willie Karpf. PBR DT-Chloe Karpf, Kelda Vopnford. BR DT-Alicia Armentrout, Dena Gourley. S DT-Brooke Glassman. **BABSON SC, INC.:** PRE-Christine Walsh, Jennifer Siegel, Katie Joyce. 1-Catherine Murphy, Tanya Shah. PF-Christine Walsh, Katie Joyce, Kelly Hurd. JF-Alana Menitoff, Christine Bodnar, Kim Korff. P DT-Murielle Berke. BFD-Alexei Komarov.

SFD-Alexei Komarov.

THE BALTIMORE FSC, INC.: P DT-Rachel Hanson. PBR DT-Betty Swindlehurst, Meaghan Cassidy, Miriam Hannon, Victoria Winterling.

BAY PATH FSC: PRE-Lindsey Tessier.

BEAVER COUNTY FSC: 1-Joanna Buffalini, Kelley Angleberger, Lindsey Rodgers, Sage Young, Vincent Buffalini. 4-Michelle Mantine. JF-Kelley Angleberger.

BEAVER DAM WINTER SPORTS CLUB: 3-Elena Spiegel. **BEMIDIJ FSC, INC.:** 2-Katrina Kehoe, Tara Trepanier.

BERKLEY ROYAL BLADES FSC: PRE-Lindsay Seror. PF-Lindsay Seror, Nolan Johnson. JF-Lynn Kendrick, Sarah Bhatia. P DT-Ari Natinsky.

BIRMINGHAM FSC, INC.: IF-Sarah Jackson. NF-Melissa Morris.

BISMARCK FSC, INC.: S DT-Barbie Roberts.

BLACK RIVER FALLS FSC: PRE-April Stendahl, Tiffany Wiersma. PF-April Stendahl, Tiffany Wiersma. JF-Dana Rozmenoski.

FSC OF BLOOMINGTON: 2-Airina Rodrigues, Amber Anderson, Anya Adzick, Kiaja Morgenthauer. 3-Anne Jernberg, Heidi Pakkala. 4-Molly Schaub. 5-Monica Kirscher. IF-Heidi Pakkala, Jill Ewald, Kelly Smith. NF-Kristin Bye, Molly Bullis, Molly Schaub, Monica Kirscher, Sarah Call.

BOLTON FSC, INC.: 1-Christina Elwell.

BORDER BLADES FSC: PRE-Emily Purpur, Katie Jacobson. 1-Kathryn Bethke, PF-Emily Purpur, Katie Jacobson, Kristen Jelinek. JF-Kathryn Bethke, Laura Jelinek. JF-Lauren Teetzen. NF-Kelly Bethke. P DT-Katie Jacobson. PBR DT-Laura Jelinek, Lauren Teetzen. S DT-Kelly Bethke.

THE SC OF BOSTON: PRE-Lorianne Lacey, Lorianne Lacey. 1-Jessica Whitman, Kay Yamaoka, Stephanie Niloff. 2-Elizabeth Davidson, Jaia MacAdam, Kaitlin McKenna. 3-Adrienne Luoma, Chanel Luck, Lisa Grasso, Monica Romeri. 7-Lyndsey Read. PF-Lorianne Lacey. JF-Whitney Tashjian, JRF-Catherine Close, Kerrie Figurido, Maat VanUitert. PPR-Stacey Gagliardi. IPR-Stacey Gagliardi. NPR-Stacey Gagliardi.

THE BOURNE SC, INC.: JF-Michele Demers, Rachel Bloomfield. PS DT-Rachel Bloomfield.

BOWLING GREEN SC: PRE-Megan Decker. 1-Catherine Stark, Lauren Brandau. 2-Therese Peron. PF-Austin Beeman, Megan Decker. NF-Chrissy Wolfe. P DT-Nicole Rankin, Stacey Benschoter. BR DT-Lauren Brandau.

BRENTWOOD FSC, INC.: JF-Elizabeth Miller, Jenny Kunst. IF-Sarah Hubbard.

BRIDGEPORT SC, INC.: PRE-Irene Diakoumis, Joanna Reslink. PF-Anne Malcolm, Irene Diakoumis, Joanna Reslink, Kristin Pfeiffer.

BROADMOOR SC, INC.: PRE-Joy Neufeld. 3-Lindsay Thomson, Vinita Huddleston. PF-Denaysa Haagen, Malissa Lawrence. PG DT-Katherine Zarpyali.

SC OF BRUNSWICK: 2-Gretchen Perry. JF-Gretchen Perry. P DT-Rachel Brightbill. PBR DT-Cassidy Ferry, Molly Perry. BR DT-Megan Doughty. PS DT-Gretchen Perry.

SC OF BUCKS COUNTY: PRE-Jennifer Murphy, Kate Doscher, Meggie Doscher, Melanie Susi. 5-Eileen Kay Morrison. PF-Jennifer Murphy, Kate Doscher, Meggie Doscher, Melanie Susi. P DT-Colleen Dempsey, Jennifer Murphy, Kate Doscher, Kevin Donnelly, Meggie Doscher, Melanie Susi. BR DT-Joan Mize. PG DT-Michelle Mize.

BUFFALO SC, INC.: PRE-Christina Woodson, Karen Hutzler, Stacey Carlo. 1-Hana Chelikowsky. 2-Cindy Lehmann, Jaclyn Lucchino, Katie Rizzo. PF-Karen Hutzler. JF-Cindy Lehmann, Joe Haigh, Katie Rizzo. PPR-Karen Hutzler. BR DT-Jolie Roetter.

CAMILLUS FSC: PRE-Kendall Tupper. PG DT-Mary Whiteside.

CANTIAGUE FSC, INC.: PRE-Amanda Turner, Arielle Gottlieb, Jamie Asuncion, Jennifer Jurgens, Joseph Lynch, Laura Silbajoris. 2-Catherine Brix, Lydiane Interdonato. 3-Lisa Pilkington. 4-Kristen Dobkowski. 5-Lauren Sposito. 6-Marlyn Dantes, Tracey Hanfling. PF-Amanda Turner, Arielle Gottlieb, Jamie Asuncion, Jennifer Sittig, Jennifer Jurgens, John Romano, Laura Silbajoris. JF-Heather Verra, Holly Holecck, Irmak Ayverdi, Stephanie Marotta, Tate Mulligan. IF-Mark Tandatnick. NF-Jennifer Gallacher, Julie Dodge, Lauren Sposito. JRF-Melissa Dostis. P DT-Brooke Botwinick, Christine Wolfmaier, Sara Holle, Tracey Hanfling. PBR DT-Heather Verra, Tracey Hanfling. BR DT-Tracey Hanfling. PG DT-Cathryn Schwab.

CAPITAL CITY FSC, INC.: 4-Natasha Nottoli. IF-Natasha Nottoli.

CAROUSEL FSC: PRE-Trang Nguyen. 1-Angela Kim, Jenae Rozar. 2-Lauren Okada. 3-Laurian Engels. 4-Jennifer Morrissey. PF-Trang Nguyen. NF-Tippi Pearce. PS DT-Lomi Suttenberg. **CENTENNIAL SC:** PRE-Amanda Roller, Jennifer Mooney. 1-Cindy Thomas, Sara Sweet, Alicia Masias. 2-Alicia Towns, Amber Hunter, Linsey Schulze. 3-Jennifer Woody. PF-Amanda Roller, Jennifer Mooney, Sybil Phillips, Tom Milavec. JF-Linsey Schulze, Scott Eckhardt. BR DT-Alicia Towns, Ronald Schnese.

CHARLESTON FSC: PRE-Blair Harris, Jennifer Bell. PF-Alison Wise, Blair Harris, Jennifer Durham, Jennifer Bell, Juliana Solis. ABFS-Debbie Mulrooney. ASFS-Debbie Mulrooney. PBR DT-Eva Charninski.

CHARLOTTE FSC: PBR DT-Mei-Tsi Lawing.

CHARTER OAK FSC: PRE-Coleette Appel, Erin Sacharko, Jennifer Pelletier. PF-Coleette Appel, Erin Sacharko, Jennifer

Pelletier, IF-Kathryn Manu. P DT-Barbara Lewis.

CHESHIRE FSC: JF-Jennifer Blair.

CHICAGO FSC: PRE-Ashley Richmond, Gina Carby. 1-Rachel Descher. 2-Fanya Robinson, Jonathan Stevens, Kelly Voit. 3-Ashley Malone. PF-Ashley Richmond, Gina Carby. IF-Candace Cutlip. BR DT-William Strasser.

CHISHOLM SC: 1-Leah Baron. 2-Bryn Gornick. 3-Laura Stone. M Janice Belanger. JF-Bryn Gornick.

CLAYTON FSC: PRE-Meredith Paddock. JF-Cassie Benton, Vanessa Welser. BR DT-Jennifer Florek, Meredith Paddock. PS DT-Shanna McNeil.

CLINTON FSC: PRE-Carrie Thompson, Erin LaRochelle. 4-Christine Chamberlain. PF-Erin LaRochelle, Lauren Behlmer. JF-Charlotte Nelson, Kristen Hirshey. IF-Kara Lefevre, Melissa Chamberlain. NF-Jordan Rishel. P DT-Christine Chamberlain, Jessica Smithers, Lauren Behlmer, Melissa Chamberlain.

COLONIAL FSC: PRE-Carrie Tinkenberg, Lisa Bank, Meghan Majors, Robin Abraham. 2-Elizabeth Lamothe, Jennifer Connor, Kristi Marshall, Nancy Antonellis, Nicole Sutherland. 3-Andrea Giotopoulos, Courtney Kasuba, Kimberlie Thibeault, Kristin Travers, Lisa Giordano, Naomi Fuller. 4-Erin Williams, Suzi Carr. PF-Carey Tinkenberg, Lisa Bank, Rachel Santillo, JF-Alexandra Connor, Christopher Douglas, Danielle Carroll, Elysa Kenger, Jonathan Hayward, Karlene Lovett, Lisa Bank, Nancy Antonellis. IF-Christina Naughton, Elizabeth Lamothe, Midori Williams, Naomi Fuller. NF-Erin Williams, Jessica Haynes, Kerry Lubelczyk, Midori Williams. JRF-Marisa Tennaro. ASFS-Susan Raymond. PBR DT-Jessica St. Jean, Susan Cooper, Tara Brennan. BR DT-Elysa Kenger, Sarah Lucas, PS DT-Laurie Letarte. BFD-Felita Yost Carr. SFD-Felita Yost Carr.

COLONIAL SC (NJ): PRE-Elizabeth Licorish. 1-Amy Hunt, Marissa Vahlsing. PF-Amy Hunt, Gina Piscopo. PBR DT-Amy Hunt.

COLORADO SC: PRE-Jessica Steinberg, Julia Khorsand. 1-Erica Dietz. 2-Haven Wagner, Laura Cameron, Robin McCall-Greener. PF-Jessica Steinberg, JF-Colleen Passoth, Loren Brady, Minda Tocihara. P DT-Dana Anderson. PBR DT-Dana Anderson.

COLUMBIA FSC (MD): IF-Julie Glisan, Lauren Clark.

COLUMBINE FSC: PRE-Emily Murrey, Jessica Stewart, Shandy Ehresman. 1-Katie Finnie, Lisa Marie Grubbs. PF-Emily Murrey, Jessica Stewart. JF-Jessica Melton, Katie Finnie, Shandy Ehresman.

COLUMBUS FSC: PRE-Blythe Collier, Blythe Collier, Catherine Simpson, Catherine Simpson. 3-Ginger Hassler, Ginger Hassler, Natalie Blake, Natalie Blake. PF-Catherine Simpson, Catherine Simpson, Sharon Everett, Sharon Everett. JF-Sharon Everett, Sharon Everett. P DT-Gina DiCello, Julie Stradley, Sarah Mangini. PBR DT-Elizabeth Ellis, Kim Myers, Lauren Anderson, Sarah Collier. BR DT-Alexander Ho. S DT-Ginger Hassler, Pammi Jo Farren. BFD-Jody Sjogren.

COPPER COUNTRY SKATING ACADEMY: 2-Patricia Summersett. JF-Sara Kipfer.

CORTLAND FSC, INC.: JF-David Mitchell. BR DT-David Mitchell. PG DT-Kristen Mitchell.

COTTONWOOD HEIGHTS FSC: PRE-Brooke Johnson, Jennie Gillis, Kendall Newell, Marcie Christiansen, Rebecca Webster. 1-Betsy Cottrill, Cindee Harrison, Kelly Dalebout, Michelle Farrell. 2-Erika Wassom, Kristin Parkin. 4-Heidi Skaggs. PF-Brooke Johnson, Jennie Gillis, Kendall Newell, Marcie Christiansen, Rebecca Webster. JF-Erika Wassom, Lisa Sandgren. PBR DT-Stacie Hinman.

CREVE COEUR FSC: P DT-Maia Medve.

DALLAS FSC, INC.: PRE-Catherine Hennessy. 1-Abby Overstreet, Lauren Bland, Leska Hudgens. 2-Courtney Michalak, Katie Baethge, Misty Michalak, Nadine Abhe. 3-Blythe Hartley, Michelle Abhe, Simeon Hanks. PF-Catherine Hennessy. JF-Amelia Cates, Andrew Chang, Courtney Michalak, Helen Mootz, Katie Baethge, Misty Michalak, Nadine Abhe, Nicole Struss, Steven Pottinger II. IF-Michelle Abhe, Simeon Hanks. PPR-Courtney Michalak. IPR-Janna Napier. NPR-Alissa Cline.

DARIEN SC OF SOUTHERN CT: 2-Eunice Tavolacci. 6-Jocelyn Vento. JF-Danielle Derbes, Kari Lynne Pace. P DT-Jane Raye.

UNIVERSITY OF DELAWARE FSC: PRE-Cindy Adams, Jennifer Kolodzey. 1-Meredith Differ, Rachael Kline. 2-Christine Chang, Lania Herman. 3-Heather Allebach, Jonathan Hunt, Thomas Gaasbeck. 4-Susanna Stapleford. 5-Christine Chang, Kristina Pervi. 7-McKenzie Savidge. PF-Amy Barrett, Cindy Adams, Terri Adams. JF-Christine Chang, Kimberly Jones, Timothy Jones. IF-Heather Allebach, Lana Momcilovich, Lindsey Myers. NF-Brooke Graham, Laura Jean Lacasse, Ronnie Biancosino, Tracey Tyson. JRF-Tara Lipinski. IPR-Phillip Dulebohn. NPR-Anne MacWilliams, Jessica Hunt, Jonathan Hunt, Phillip Dulebohn. JPR-Cortney Riffe. P DT-Kathleen Watts, Kimberly Turner, Lindsey Heilman, Megan Brogley, Sandra Duarte. PBR DT-Ann Marie Luchansky, Jaime Hurd, Jennifer Gilbert, Megan Lynam, Megan McMillan, Katie Luccaro. BR DT-McKenzie Savidge. PS DT-Nichole Bloch. PFD-Kelly Donnelly.

DENVER FSC: PRE-Ginger Ponsford, Laurel Iivonen, Liza Davis, Michelle Lombardi, Taylore Wilson. 1-Katie Willett, Nicole Andrews. PF-Ginger Ponsford, Laurel Iivonen, Liza Davis, Michelle Lombardi, Taylore Wilson. NF-Jennifer Johnson, Kimberly Oberhamer. ABFI-Cathy Meserole. ABFS-Cathy Meserole. ASFS-Cathy Meserole.

DEPERE FSC, INC.: PRE-Amy Braun. 1-Jessie Blizniak. 3-

Emily Hodek, Jill Weyers. PF-Amy Braun, Angela Rowell. JF-Elizabeth Allen, Michelle Allen, Samantha Kozak, Tami Haaker. IF-Elizabeth Allen, Jill Weyers, Michelle Allen.

DES MOINES FSC: IF-Valerie Skow. P DT-Melissa Folden.

DETROIT SC, INC.: PRE-Erin Knight, Laura Kowalski. 1-Natalie Krol, Terese Anselmi. 2-Dustin Brinsmade, Kelly Patroske. 4-Elizabeth Hill. PF-Erin Knight, Laura Kowalski, Stephanie Kalesavich. JF-Abby Schock, Christina Winograd, Tiffani Reynolds. NF-Anne Hutchinson. ABFI-Cindy Eckert. ABFS-Cindy Eckert. ASFS-Cindy Eckert. IPR-Jessica Montgomery. P DT-Adrienne Becker, Dorota Meller, Lauren Fantini, Megan Wright. PBR DT-Cheryl Boyle, Jennifer Koshewitz, Sandra Czereszka. BR DT-Jennifer Murray. PS DT-Jennifer Grimm. S DT-Kara Cook, Ronald Hackett. PG DT-Christine Ray. PFD-Cheryl Hackett, Naomi Lang, Ronald Hackett. BFD-Cheryl Hackett, Naomi Lang, Ronald Hackett. **DIAMOND EDGE FSC:** 2-Christina Crisp.

DULUTH FSC: 1-Meghan Pesko. 6-Holly Smith. JF-Katrina Flick.

DUPAGE FSC: PRE-Annie Long, Candice Kubaszewski, Candice Kubaszewski, Cheryl Sychowski, Colleen Clennon, Devin Babe, Hayley Weiss, Julian Leikin, Karen Frantz, Katharine Young, Melissa Dortch, Taryn Natola. 1-Angela Pace, Brittany Scurto, Colin McCourt, Denise Dubinski, Elizabeth Caligiuri, Jennie Inouye, Sharon Pfleger, Stefanie Barron, Stephanie Joseph. 2-Aimee Del Mundo, Alexa Treichel, Arim Choi, Ashleigh Brooks, Bridget Purcell, Chasity McKinney, Christie Fanning, Crystal Calayag, Heather Bochenki, Jennifer Lynn, Karen Hutchinson, Kelly Bailey, Kelly Sircher, Kelly O'Donnell, Maggie Leski, Megan Rose, Natalia Lopatniuk, Nicole Marconi, Rebecca Brandman, Samantha Jochim. 3-Ashleigh Jones, Christina Barthel, Eric Leser, Heidi Deibler, Jaclyn Battistoni, Kerry Monaco, Laura Pope, Lisa Carestia, Shannon Lamaster Swanso. 5-Heather Summers. 5C-Becky Balkin. PF-Annie Long, Candice Kubaszewski, Candice Kubaszewski, Cheryl Sychowski, Colleen Clennon, Devin Babe, Georgia Overdorf, Hayley Weiss, Julian Leikin, Karen Frantz, Katharine Young, Melissa Dortch, Nicole Wolwark, Taryn Natola. JF-Aimee Del Mundo, Alexa Treichel, Amanda Scholey, Arim Choi, Bridget Purcell, Crystal Calayag, Heather Bochenki, Joshua Fischel, Karen Hutchinson, Kathleen Conroy, Keaton Perry, Kelly Bailey, Kristin Tomczak, Lisa Pekarek, Megan Rose, Samantha Jochim, Missa Mick. IF-Anna Tkaczky, Eric Leser, Heidi Deibler, Jaclyn Battistoni, Kerry Monaco, Laura Pope, Lisa Carestia, Melissa Pope, Melissa Zdeb. NF-Alison Balling, Courtney Karas, Erin Pheaniss. PPR-Eric Leser, Jermaine Angeles. BR DT-Ashleigh Brooks. PS DT-Natalie Webb. PFD-Julia Jordan.

DUTCHESS FSC: JF-Marie Manteria. BR DT-Tara McGarvey.

EAGLE RIVER FSC: PRE-Carrie Way, Erin Morgan, Mari Jo Reid. 1-Erin Morgan, Jennifer Alward. 2-Kathleen Kreul. PF-Amanda Trapp, Erin Morgan, Jennifer Korecky. JF-Carrie Way, Erin Morgan, Jessica Breese, Mara Peckman. IF-Erin Morgan, Kathleen Kreul. NF-Kristin Grigus. P DT-Carrie Way, Erin Morgan, Kristine Pokrandt, Nicki Hale. PBR DT-Amanda Trapp, Carrie Way, Erin Morgan, Tracy Grigus. BR DT-Amy Beth Stoegbauer, Elizabeth Bonson, Janlee Alward, Mari Jo Reid. PS DT-Jessica Saykally. S ADT-Ann Bonson.

EAU CLAIRE FSC: PRE-Katie Miettunen. 2-Kaela Wold, Karla Geissler, Polly Heidi. 5-Andrea Pugh. 6-Lindsey Moore, Stacy Sparks. PF-Katie Miettunen. JF-Kaela Wold. IF-Melissa Kneuppel.

EDEN PRAIRIE FSC: IF-Penny Finke.

FSC OF ERIE: PRE-Abigail Rensel, Hillary Farrah, Jennifer Drumm, Meghan Allen, Rebecca Turner. 1-Quinn Currie. 2-Tristin Sperhac. 3-Kristi Althof, Sarah Walker. 4-Amanda Massing, Bridget McElrane, Lauren Bittman. PF-Abigail Rensel, Hilary Truran, Hillary Farrah, Meghan Allen, Rebecca Turner. JF-Tristin Sperhac. IF-Sarah Walker. NF-Bridget McElrane. P DT-Abigail Rensel, Breanne Scully, Jennifer Drumm, Michelle Borecky. PBR DT-Sarah Walker.

ESCANABA AREA FSC: 1-Jennifer Schlais. 2-Angela Donovan. 3-Sarah Pelozo. BR DT-Jessica Pentti, Kathryn Fornetti. PS DT-Jennifer Schlais, Katie Doecker.

ESSEX SC OF NJ, INC.: PRE-Alexandra Peterson, Amy Picarell, Elana Bensoul, Ester Feldman, Genevieve Zaragoza, Marissa Hodges, Victoria Savino. 1-Kellen Kroll, Megan Lape. 2-Christina Kaneshige, Lindsey Wurzel. PF-Alexandra Peterson, Arleane Brady, Ashley Nerlfi, Elana Bensoul, Ester Feldman, Genevieve Zaragoza, Gia Brienza, Lianna Kong, Marissa Hodges. JF-Christina Kaneshige. P DT-Ashley Nerlfi, Dorice Terry-Stancher, Genevieve Zaragoza, Sandra Brienza. PBR DT-Danielle Brown, Dori Stroll. BR DT-Lindsey Wurzel. PS DT-Bess Feinsod. BFD-Bess Feinsod.

EUCLID BLASS & EDGE CLUB, INC.: 5-Emily Blakeley.

EUGENE FSC: PRE-Dustin Fletcher, Whitney Moser. 1-Stephanie Steward. 2-Allison Petch, Tye Carr. PF-Dustin Fletcher, Kacie Dickinson, Whitney Moser.

EVANSTON FSC, INC.: PF-Jason Donisch.

FAIRBANKS FSC: IF-Katie Zarling, Nicholas Burger, Nicholas Burger.

FERGUS FALLS SC, INC.: PRE-Katie Evans, Laura Schwarz. PF-Katie Evans, Laura Schwarz. IF-Jadde Johnson. S DT-Jadde Johnson. BFD-Jadde Johnson.

FLAGG POND SC: JF-Kerrin Damon. IF-Erica Simons.

FLINT 4 SEASONS FSC: 1-Jacquelyn Shelton. 3-Toni Wright. IF-Toni Wright. NF-Jaime O'Brien.

THE SC OF FLORIDA, INC.: 3-Kristina Tew. NF-Julia Joh.

FLORIDA SUNCOAST FSC, INC.: PRE-Ashleigh Pugh, Chelsea Bartkus, Kimberlee Lyum. 1-Adam Ostfeld, Lindsey Alvarez. 2-Danielle Davis, Jennifer Borland, Larisa Lazdins, Maria Gaudiel. 3-Erin Schaefer, Rachel Constantine. PF-Ashleigh Pugh, Kimberlee Lyum. JF-Anna Alexander, Anna Alexander, Candace Berger, Jennifer Borland. IF-Erin Schaefer. NF-Jennifer Stretch, Stephanie Allison, Susanne Searles, Tiffany Walters-Rivas. P DT-Adam Ostfeld, Ashleigh Pugh, Ashley Derricksen, Donna Sperber, Heidi Thompson, Morgan Tweedie. BR DT-Marina Menke. PS DT-Tiffany Walters-Rivas. PFD-Tiffany Walters-Rivas.

ISC OF FORT COLLINS: I-Jordi Scott. 2-Emily Terry, Meredith Hettler. PF-Lea Nightwalker. JF-Brandon Silar, Karen Abt, Nicole McTague. P DT-Jenny Tiller.

FORT WAYNE ISC, INC.: S DT-Debra Ruedebusch.

FRASER FSC: PRE-Jaime Barker, Jennifer Richards, Kelli Jensen, Nicole Salerno. 1-Lori Zywiol. 2-Bernadette Foth, Brandon Kollar. 4-Angelina House. PF-Jaime Barker, Jennifer Richards, Kelli Jensen, Tiffany Jessome. P DT-Keri Marchand, Nikki Lyczynski. PBR DT-Bernadette Foth.

FRONT RANGE FSC: PF-Sarah Messenger. IF-Kimberly Dillon.

FULTON FSC, INC.: IF-Tyran Powers. S DT-Megan Swanson. PG DT-Kristin Brown, Pamela Rusho.

GREENVILLE FSC, INC.: PRE-Angela Owens, Diana Chen. 2-Holly Chumley. PF-Diana Chen. ABFS-Sally Karpinski. P DT-Erica Britenburg. PBR DT-Valerie Hawkins. BR DT-Kelly Paterson. PFD-Andrew Gray, Courtney Parks.

GALLERIA DALLAS FSC: PRE-Megan Gover. PF-Megan Gover. NF-Melissa Perley. PPR-Scott Alan Winkelman, Tiffany Melton.

GALLERIA-HOUSTON ISC: PRE-Amy Haner, Monica Helberg. 1-Alicia Kalba, Jessica Sugianto, Sylvia Braswell. PF-Lauren Lucas. JF-Amanda Reese, Katherine Martin, Norah Vassen, Terry Bazbaz. ABFI-Nancy Erickson. PPR-Kenneth Deese. P DT-Nancy Erickson. BR DT-Lisa Posevina.

GARDEN CITY FSC: 1-Karen Deneau. 2-Crystal Swiney. 3-Christina Hardacre. JF-Miranda Germain. IF-Christina Hardacre. NF-Michelle Beckelhamer.

GARDEN STATE SC: PS ADT-Ruth Amato.

GARFIELD HEIGHTS FSC: PRE-Ethan Lea, Megan Lebovitz. 1-Meghann Snow. 3-Lindsay Yee. PF-Ethan Lea.

GENESEE FSC: 1-Holly Wagner, Lindsay Lewis. 2-Brynn Lucas. 3-Aurora Brannigan. 4-Amanda Maskiell. PF-Lauren Loss. JF-Lindsay Elliott. NF-Amanda Maskiell. P DT-Alexandra McElligott, Brynn Lucas, Shalyn Mule. BFD-Leanne Martin.

GLACIER FALLS FSC, INC.: PRE-Cara Foley. PF-Cara Foley, Catherine Huckaby. JF-Jacqueline Matson. BR DT-Richelle Dante, Terri Vernon.

GLENS FALLS FSC: 1-Alexandria Drellos.

GLENNWOOD FSC: PRE-Christine Lia, Kristine Giusto, Tom Giusto. PF-Christine Lia, Kristine Giusto, Tom Giusto. NF-Rebecca McNicholas. JRF-Erin McCabe.

GOLDEN STATE FSC: PRE-Julie Kim, Lindsay Zuck. 1-Jamie Garvey. 2-Camrin Dove. PF-Julie Kim, Lindsay Zuck.

GREAT LAKES FSC: PRE-Michael Bahena. 1-Katie Leshinsky. 3-Georgina Delgado. PF-Michael Bahena.

GREAT NECK FSC, INC.: P DT-Marcia Anderson.

GREATER GRAND RAPIDS FSC: 1-Theresa Antinori. 2-Brooke Zeller, Tara De Witt. 3-Amanda Meier. JF-Brooke Zeller, Jill Clawson, Justeen Antinori, Tara De Witt. IF-Jamielyn DeBruin. BR DT-Brooke Zeller.

GREATER MILWAUKEE FSC: PRE-Jessica Berta. 3-Wendy Suckow. JF-Angela Larson. PS DT-Stephanie Fields.

GREENBRIER FSC: P DT-Stacey Wojtowicz. PBR DT-Mary Jane Klimkewicz.

GREENWICH SC, INC.: PRE-Ashley Wolowicz, Elizabeth Lorig, Victoria Lockhart.

HAMDEN FIGURE SKATING ASSC INC: PRE-Amanda Howard, Barrett Evans, Christina Iovanne, Meredith Walsh, Nicole Elliott. 1-Marissa Esposito. 2-Jamie Katz. 3-Katie Aniballi. 4-Tracey Hyduk. 5C-Pauline Fagan. PF-Amy Ryder, Kerry Ryder, Meredith Walsh, Nicole Elliott, Katie Altieri. JF-Christine Liguori, Jill Sullivan. IF-Alicia Ditta. NF-Tracey Hyduk. P DT-Alison Paquette, Amy Ryder, Barrett Evans, Ingrid Rogelstad-Howe, Maura Farver, Meredith Walsh. PBR DT-Amanda Howard, Tricia Altieri. BR DT-Diana Preziosi, Sara Stair.

SC OF HARTFORD: PRE-Dawn Clark, Emily Dunham, Katie Lyn Guerin, Leah Schubert, Lindsay Higgins, Sarah Wojcikosi. 1-Constance Foster, Svea Nelson. 2-Jessica Maurer, Kari Prisco. 3-Betsy Day. PF-Emily Dunham, Katie Lyn Guerin, Meagan Donahue, Nicole Richardson. JF-Amanda Kardys. IF-Caitlin Ramsey. NF-Courtney Hughes. ABFS-Sandra Chadwick. P DT-Christophe Chi, Howard Kaplan, Kim Free, Svea Nelson. PS ADT-Amy Nargiso. PFD-Kathleen Macri.

HAWAII FSC: PRE-Christina Chang, Kahiapo Page, Veronica Hill. 1-Angela Nacnac, Charity Marx, Colette Okamoto, Dori Anne Ling. 3-Dianne Sta Maria. 4-Noelani Goldstein, Stella Meneses. PF-Christina Chang, Kahiapo Page, Veronica Hill. JF-Katrina Kiang, Tracee Tolentino. IF-Dianne Sta Maria.

HAYDEN RECREATION CTR FSC, INC: PRE-Carly Milden, Emily Hay, Lissa Hellman, Molly McLaughran, Sarah Fletcher, Theaura Ziegler. 1-Ashley Busa, Elizabeth Cunha, Elizabeth Lowenthal, Kate Jablonsky, Michael Bunting. 2-Brienne Johnson, Joanna Liberman. 3-Emily Donaldson, Meredith Cronin. PF-Elizabeth Shapiro, Jenna Busa, Katya Golovchenko, Kelly Makovich, Lindsay Wasserman, Meryl Slotkin. JF-Colette Irving,

Rebecca Busa. PBR DT-Caitlin Rollins, Lore Kantrowitz. BR DT-Lisa Aldrich.

HERSHEY FSC: PRE-Courtney Accurti. 1-Allyson Kennedy, Deanna Dietz, Julie Beth Packman. PF-Courtney Accurti, Jeremy Rockmaker, Keri Blakinger. JF-Claire Phillips.

HIAWATHA SC: PRE-Jessica Pace, Karen Bergeron. 2-Katie Kempfert. 3-Leanna Bourque. PF-Emily Vogt, Jillian Mackie, Katie Andary, Mandy Killips, Mandy Elliott. JF-Jennifer Quinn, Katie Kempfert. JF-Leanna Bourque. PBR DT-Robert Corbiere. PS DT-Marcie McLean. PFD-Sheri Neumann.

HIBBING FSC: 1-Kristine Clark. 2-Danielle Gross, Jill Kimmes. JF-Danielle Gross.

HICKORY HILL FSC: PRE-Amea Bunting, Jenny Kaplan, Megan Noonan, Winnifred Lewis. 1-Jacqueline Rollieri. 2-Danielle Mayo, Danny Diven. 5-Elizabeth Schlifman. PF-Jessica Riddle, Katy Frankel, Meagan Doyle, Megan Noonan. JF-Ashlee Moskwa, Fawn Harris, Meagan Doyle, Tara Caley. IF-Farah Gholamzad. JRF-Julie Anne Schlifman. P DT-Donna Thaus. PFD-Donald Woodlief, Joseph Kelly.

HIGHLAND SC: PRE-Adriene Leyda. PF-Cynthia Cheung, Rocky Ursino. JF-Kimberly Hamilton. IF-Alexa Resler, Kimberly Hamilton. ABFS-Bernadette Marquez, Rocky Ursino. P DT-Gloria Teves.

SC OF HINGHAM, INC.: 1-Jillian Rockoff. 4-Jennifer Parent, Kelly Lynch. PF-Jillian Rockoff. JF-Catherine Keough.

HOUSTON FSC: PRE-Meghan Moore. 2-Catherine Schick, Rebekah Kratochvil. JF-Ashley Harris, Catherine Schick, Rebekah Kratochvil, Zachary Fix. IF-Susie Im, Susie Im. PPR-Kimberly Kroll. PS DT-Libby Cagle. BFD-Libby Cagle.

HUDSON-MOHAWK FSC: 1-Kathryn Repas. 4-Kelly Ryan. PF-Christine Coulon, Jennifer Sullazo, Kathryn Coulon, Rebekah Adamek. JF-Kathryn Repas. NF-Kelly Ryan. JRF-Sarah Discanio.

HUNTSVILLE FSC: PRE-Carlos Torres. 1-Erin Jackson, Heather Gravitz. NPR-Katie Barnhart. JF-Katie Barnhart.

INDIANA/WORLD SK ACAD FSC: PRE-David Tankersley, Diana Schlamadinger, Rebecca Fritzges, Sharon Pemberton, Suzanne Heitman. 1-Dana Podlejski. 7-Samantha Berger. PF-David Tankersley, Diana Schlamadinger, Rebecca Fritzges, Sharon Pemberton, Suzanne Heitman. JF-David Tankersley. IF-David Tankersley. JRF-Jennifer Dodds, Peter St. Germaine, Samantha Berger. P DT-David Tankersley. PBR DT-David Tankersley. BR DT-Jill Jenkins, Scott Matthews. S DT-Darla Kimak. PG DT-Samantha Berger.

ICE REFLECTIONS-MOUNTAIN VIEW: PRE-Natalie Iacovoni. PF-Natalie Iacovoni. JF-Karen Knapp. P DT-Julie Downs. PBR DT-Natalie Iacovoni.

IDAHO FALLS FSC: PRE-Rebecca Vansteenkiste. PF-Rebecca Vansteenkiste. IF-Hillary Guilford. P DT-Hillary Guilford, Rebecca Vansteenkiste.

WINTER CLUB OF INDIANAPOLIS, I: PRE-Candi Shepherd. PF-Candi Shepherd. P DT-Pauline Kinnett. S DT-Jennifer Wagner.

JAMESRIVER FSC: PRE-Adam VanEckhout, Gina Herrick, Lacey Pollert. 1-Sarah Gehlhar. PF-Adam VanEckhout, Gina Herrick, Lacey Pollert. P DT-Adam VanEckhout, Gina Herrick, McKenzie Mickelson. PBR DT-April Rytter, Erin Owens, McKenzie Mickelson. PS DT-Sarah Gehlhar.

JAMESTOWN SC: PRE-Kate Lamancuso. 2-Julia Giovack. PF-Kate Lamancuso. JF-Julia Giovack. JRF-Robert Schupp. P DT-Janelle Cogley. PBR DT-Elisha Fisher. PS DT-Lindsay Erickson.

JANESVILLE FSC: PRE-Cassie Arduino, Elissa Spielvogel. PF-Cassie Arduino, Elissa Spielvogel. P DT-Becky Arduino, Elissa Spielvogel.

KALAMAZOO FSC: PRE-Laura Bielecki, Megan Farrell, Miranda Huggins. 1-Shelley DeAlth. PF-Miranda Huggins, Tara Wilson. BR DT-Danielle Lucio.

KEN-TON FSC: PRE-Shannon Hill. PF-Shannon Hill.

KENT SC: JF-Candice Shubert. IF-Janet Hensley.

FSC OF KENTUCKY: PG DT-Thomas Shaw.

LA JOLLA FSC: PRE-Claire Wells. 2-Joanna Rebel. 4-Shannon M Smith. PF-Claire Wells. JF-Joanna Rebel. NF-Shannon M Smith, Stephanie Chu. PG DT-Shaun Rodman. PFD-Shaun Rodman.

LAKE MINNETONKA FSC: PRE-Erin Wirtjes. 2-Kayla Kelly. PF-Erin Wirtjes, Megan Gladfelder. JF-Ann Chamberlain, Elizabeth Becker, Emily Johnson, Julia Adams, Katie Carlson, Kayla Kelly, Kelsey Peterson, Laura Stowe, Ramsay Saunders, Sarah Kelly, Sky Hornig, Sonja Bjordal. IF-Annenmarie Bjordal, Libby Ringer. NF-Erin Kelly.

THE SC OF LAKE PLACID: ABFS-Barbara Kelly. ASFS-Barbara Kelly.

LAKELAND SKATING CLUB: PRE-Lindy Sibel. 1-Kelly Thomas. PF-Lindy Sibel.

LAKES FSC: BR DT-Katie Aune.

LAKEWOOD WINTER CLUB: PRE-Donna Lewis, Elaine Jurun, Eric Estebe, Hillari McCall, Jennifer Sund, Krista Shirley, Paige Folsom, Rachel Carter. 1-Jennifer Board, Kristin Bagby, Suanne Neil. 2-Christophe Dougherty, Elena Anderson. 3-Bethanie Swendsen, Joellen McBee, Marla Keethler, Nicole McCall, Sue Ellen Harris. 4-Nicole Hoyes. 6-Michele Taylor. 7-Sharon Wendt. PF-Andrea Carter, Donna Lewis, Elaine Jurun, Eric Estebe, Hillari McCall, Jennifer Sund, Krista Shirley, Paige Folsom, Rachel Carter, Shannon Gazecki. JF-Alexis Nolte, Christophe Dougherty. IF-Bethanie Swendsen, Joellen McBee, Marla Keethler, Megan Neff, Nicole McCall, Sue Ellen Harris. NF-Nicole Hoyes. ABFI-Sonja Rasmussen. ABFS-Sonja Rasmussen. ASFS-Sonja Rasmussen. P DT-Dianna White. PBR

DT-Christophe Dougherty, Krista Shirley, Merrirose Parr, Nicole Hoyes, Shannon Gazecki, Suanne Neil. BR DT-Elisabeth Konek. PS DT-Sue Ellen Harris.

LANISING SC: PRE-Kara Farquhar, Paula Haynes. 1-Dana Hunter, Kathryn Coens, Stacy Morris. 2-Carrie Harris, Courtney Wilson, Jessica Lock. 3-Emily Harris, Larisa Spielberg. 4-Amy Grondin, Katie Doren. 5-Allison Quick. PF-Dana Hagedon, Hannah Stevens, Jamie Culver. JF-Carmel Gazel, Kyle Petty, Maria Shellenbarger. IF-Emily Harris, Gina Anne Mead. PBR DT-Mary Meholic. BR DT-Kyle Petty. PS DT-Rebecca Klinger.

LAS VEGAS FSC: PRE-Celia Thompson, Dovina Phillips, Joshua Franke, Kayte Thomas, Meagan Rynes. PF-Celia Thompson, Dovina Phillips, Joshua Franke, Kayte Thomas. IF-Brandy Brown. P DT-Margaret Dillon, Nancy Thompson.

LAUREL RIDGE SC: 1-Laudan Kermani. 2-Farima Kermani. 3-Katelyn Rose. 4-Hari Beth Schwartz. PF-Laudan Kermani. JF-Farima Kermani. IF-Katelyn Rose. PBR DT-Lindsay Hebert. BR DT-Clayton Lord, Cori Ellen Tolda. PS DT-Katelyn Rose.

LEHIGH VALLEY SC: PRE-Tania Degler. JF-Marcie Redenbaugh. ASFS-George Forrest. P DT-Kimberly Oettinger. PBR DT-George Forrest.

LITTLE SUN VALLEY SC, INC.: IF-Huyen Vinh. PBR DT-Jennifer Ambroziak.

LYOYD CENTER ISC: PRE-Debra Carus, Janet Haskell, Joy Gault, Joy Gault, Megan Wende, Sue Lewis. 1-Matthew Newman, Sadan Atay. 2-Kameko Gay. 4-Cheryl Smith, Joell Glennen. PF-Megan Wende. ABFS-Debbie Durgan, Debra Carus, Sue Lewis. ASFS-Sue Lewis. P DT-Lauren Haworth, Marion Craig. BR DT-Jocelyn Cox.

LONE STAR FSC: PRE-Jenny Matthew. 1-Erica Harris, Margaret Bowden, Matthew Quon. 2-Anh Nguyen. 4-Amanda Valencia. 7-Lynette Page. PF-Jenny Matthew, Nicole Flores. JF-Anh Nguyen. NF-Amanda Valencia. PPR-Matthew Quon. IPR-Micah Aday. P DT-Ashley Addison, Bonnie Blu Egger, Brandi Royer, Frank Chastain, Jonathan Addison, Melissa Bowman, Nicole Flores, Trevor Bird. PBR DT-Bonnie Blu Egger, Joan Guevara, Micah Aday. BFD-Lynette Page.

LONG ISLAND FSC: 1-Katherine Mangiardi, Lauren Fisher. ABFS-Victoria Reilly.

LOS ANGELES FSC: PRE-Brianna Combs, Jamie Tanker, Jordana Blesa, Lauren Raab, Michael Kuluva, Sarah Cobb, Shevahn Higelin, Sima Ganaba, Taylor Grant. 1-Orapim Tulyathan, Tiffany Stiegler. 2-Alison Blowers, Andrew Smith, Christine Chang, Orapim Tulyathan. 3-Josh Martin, Josselyn Baumgartner, Sarah Alesafar, Stephanie Clemens, Valen Scott. 5-Jered Guzman, Katy Griffiths. PF-Brianna Combs, Chalin Tulyathan, Jamie Tanker, Jordana Blesa, Lauren Raab, Michael Kuluva, Sarah Cobb, Sima Ganaba, Taylor Grant. JF-Alison Blowers, Andrew Smith, Christine Chang, Orapim Tulyathan, Tracy Fuhrmann. IF-Carlene Davis, Josh Martin, Josselyn Baumgartner, Orapim Tulyathan, Sarah Alesafar, Stephanie Clemens, Valen Scott. NF-Lisa Dimmitt, Lisa Dimmitt. JRF-Cohen Duncan, Jennifer Rickard, Liberte Sheldon, Stacy Trimboli. PPR-Lindsay Kepner. NPR-Elizabeth Wilcut. JPR-Jered Guzman, Natalie Vlandis, Romina Baron. P DT-Alice Hwang, Chalin Tulyathan, Christina Teresa, Laura Muzich, Linda Wang, Mi Yong Lee, Rosie Kim, Sarah Kepner, Suzanne Crandall. PBR DT-Christina Teresa, Sarah Kepner, Sarah Kepner, Suzanne Crandall. BR DT-Amy Zurldinen, Christina Teresa, Kelley Case, Russell Thebaud. PS DT-Amy Zurldinen, Bryan Hargreaves, Donna Baldwin. PS ADT-Carla Golubski. S DT-Jennifer Rickard, Kimberly Wong. S ADT-Carol Wood, Judy Armstrong. PG DT-Hayley Raynes, Jennifer Holden, Lisa Dimmitt. PFD-Jennifer Rickard, Patricia Loomis. BFD-Jennifer Rickard, Patricia Loomis.

M & M FSC: PRE-Heather Roe, Lindsey Bryan. PF-Heather Roe, Lindsey Bryan.

FSC OF MADISON, INC.: PRE-Amy Stigler, Mallory Mason, Zach Zitske. 1-Laura Kepner-Adney, Nicole Stasiewicz. PF-Amy Stigler, Kim Hirsig. JF-Melissa Husted, Nicole Stasiewicz, Valerie Ramirez. IF-Holly Wendt. NF-Abby Bresser, Amanda Harbort.

PBR DT-Michael Adler. BR DT-Elizabeth Schuster.

MAGIC CITY FSC: 5-Kristina Hall, IF-Holly Ellis. PG DT-Cheri Gowan. PFD-Kimberly Hall, Kristina Hall.

SC OF MAINE: PRE-Eowyn Eaton, Michelle Wyman. 1-Kimberlee Charles. 4-Erin Pearl. PF-Amanda Deschambeault, Amie DuBois, Carla Volkert, Eowyn Eaton, Jeremy Corb. JF-Brian Campbell, Jeanna Beals, Jennifer Campbell, Jeremy Corb, Julia Runyon, Sarah Belden, Whitney Sirois. NF-Erin Pearl. P DT-Eowyn Eaton. PBR DT-Sarah Duncan. BR DT-Julia Runyon. PS DT-Haley McCrum. PFD-Jesica Valentine. BFD-Teryn Bronsen. 6-MAPLEWOOD FSC: PRE-Lisa Swenson. 1-Debbie Tallent. 5-Nicole Morehouse. PF-Cassie Deilke, Gretchen Hayes, Jaime Davison, Lisa Swenson, Megan Kleok. IF-Libby Murphey. NF-Nicole Morehouse. S DT-Kisha Richburg.

MARQUETTE FSC: 1-Krista Lajoie, Margaux Cory. 2-Jamie Starrett. PF-Emily Meyskens, Jennifer Seldon, Jill Salminen, Kay Larson, Kimber Dollar, Lindsey Hulverson. JF-Majia Elmbald, Margaux Cory, Tricia Dupras. IF-Margot Contois. P DT-Ambre Constance, Ashley Dionne. PBR DT-Amy Lorinsor, Emily Meyskens, Jennifer Seldon, Jill Salminen. BR DT-Jennifer Erickson. PS DT-Margaux Cory. S DT-Anne Solka, Christy Kuhn. PFD-Calder Duncanson. BFD-Margot Contois.

METROPOLITAN FSC, INC.: PRE-Gregory Meditz. 1-Jill Adimando. 3-Melissa Lohnes, Tessa Dinstl. 4-Sarah Hughes. 5-Elisa Argota. JF-Jill Adimando, Tara Quinn. P DT-Chelsea Ziesig. BR DT-Tara Quinn. S ADT-Keith Rehberger.

MIDLAND FSC: 2-Ann Ludtke. PFD-Ann Ludtke.

FSC OF MINNEAPOLIS: 1-Katie Sather. 2-Jeannine Nelson.

4-Jennifer Becker. PF-Amy Tunell. JF-Christina Dahlquist.

MISSION VALLEY ISC: PRE-Joan Cristobal. 1-Autumn Merrill, Erica Bustos, Stephanie Hawkins. 2-Kacey Bradley, Michelle Heathman. PF-Joan Cristobal. JF-Jonathan Schmidt. JRF-Elina Neuman.

MISSISSIPPI VALLEY FSC: IF-Maika Prewitt.

MONADNOCK FSC: PRE-Sarah Anderson.

SC OF MORRIS NJ, INC.: PRE-Allison Fox, Amanda Gallis, Katherine Watt, Lauren Bernard, Lauren Hedinger, Rachael Levine, Taylor Karns. 1-Korina Ramsland. PF-Alexis Meier, Katherine Watt, Lauren Hedinger, Rachael Levine, Taylor Karns. JF-Julia Rafal, Kendra Goodwin, Marcie Solondz, Sloane Stover, Thalia Milelli. IF-Anya Goodwin. JRF-Kara McKinlay. P DT-Vidya Bhalodia. PBR DT-Daphne Green, Gerry Ward, Julia Rafal, Katherine Cipolla. PS DT-Hilary Reuben. PG DT-Marc Fenczak. PFD-Kendra Goodwin.

SC OF MT. LEBANON: PRE-Jamila Diggs, Jessica Sye, Katherine Horn, Laura Tobin, Muzon Baghai, Shea McMillan. 2-Adina Seidenfeld, 4-Shannon Simon. 5-Jason Wilson. PF-Katherine Horn, Lacey Lampi, Megan McCormack, Muzon Baghai. JF-Corey Cooper, Mandy Claypoolle, Melissa Wauthier, Melody Claypoolle. IF-Adina Seidenfeld, Amy Nawrocki, Kristyn Verghies, Michele Rager. BR DT-LeAnne Jack, Lisa Lampi, Mandy Claypoolle. S DT-Michele Rager. PFD-Kristyn Verghies.

NASHVILLE FSC: 1-Amanda Jan Lloyd. 2-Claire Castleberry. PPR-Claire Castleberry. IPR-Claire Castleberry. NPR-Jessica Miller.

SC OF NATICK: PRE-Susan Forshner. 1-Kim Koschek, William Bennett. 2-Christine Tyler, Denna Cahoon, Nicole Lattuca. PF-Fasha Onorato, Jasmine Armini, Kim Koschek, Kristen Hurley, Maura Sullivan, Shawna Kohout, Shay Cook, William Bennett. JF-Fasha Onorato, Lisa Petras, Nicole Lattuca. P DT-Shannon Gulliver. PBR DT-Kim Koschek, Kimberly Irving, William Bennett. PS DT-Kerilyn Verschure.

NEW CANAAN WINTER CLUB: PRE-Jane Hetherington. PF-Eliza Golden.

THE SC OF NEW HARTFORD: PRE-Victoria Chazin. 1-Elizabeth Cavo, Tricia Hawkins. 3-Karen Morreall. 6-Tracy Dedrick. PF-Robert Spivey, Sara Bianco, Sarah Jane Malowicki, Susan Min, Victoria Chazin. JF-Elizabeth Cavo, Jessica Keller, Tricia Hawkins. P DT-Jessica Keller. PBR DT-Carrie Roberts.

NEW HAVEN SC, INC.: PRE-Bethany Ansel, Jennifer Wiley, Kara Samatalski. 1-Evelyn Scaramella. 4-Jenae Avallone. 5-Jenae Avallone. 6-Lori Sonderegger. PF-Jennifer Wiley, John Cain. JF-Brian O'Connor, Catherine Hulford, Erin McLeod, Evelyn Scaramella, Linnaea Ostroff. P DT-Emily Swan, Kara Samatalski, Lori Sonderegger. PBR DT-Brian O'Connor, Linnaea Ostroff.

THE SC OF NEW YORK, INC.: PRE-Nicole Breskin. 1-Ginger Shields, Jacqueline Fondiller, Taraneh Wilson. 2-Jennifer Shields, Lindsay Bolonkin. 3-Sarah Kang. 4-Ariel Aila Williams, Gloria Park. JF-Kate Sawyer, Lindsay Bolonkin, Yurina Lee. IF-Sarah Kang. NF-Ariel Aila Williams, Gianna Erwin, Gloria Park. JRF-Diana Mirco. PBR DT-Jane Chan. BR DT-Jeanette Timmons.

NEWBURYPORT FSC: PRE-April DesMarais, Bethany Tevald. 1-Cara Judd. 2-Cayla Kuhs, Lisa Montibello. IF-Erin Johnson.

SC OF NORTH CAROLINA: 1-Deborah Blinder. 4-Julie Eldridge. NF-Julie Eldridge.

NORTH JERSEY FSC INC: 1-Julie Golden. 2-Alexis Imperatore, Alicia Delalio, Lina Kontos. JF-Mary Garrand. IF-Lina Kontos. NF-Darleen Cafasso. ASFS-Alicia Delalio. PPR-Julie Golden.

NORTH SHORE SC: PRE-Alexandra Logrippa, Jenilee Olejarz, Jessica Hamill, Kati Hourihan, Lindsay Larocca, Nicholas Moormann. 1-Angela Ottaviani, Carolyn Schwartz, Dara Reppucci, Donna Taliger, Rebekka Lee, Rhonda Rheume, Stefanie Tuck, Stephanie Przybylski. 2-C. Jayne Karolow, Heather Forman, Kimberly Dunn. 3-Courtney Lyons, Elizabeth Sloutsky. 4-Cynthia Bukach, Kerry Jean Annis. 5-Meaghan Hall. 6C-Megan Foster. PF-Aimee Wallis, Donna Taliger, Lindsay Larocca, Nicholas Moormann, Stefanie Przybylski, Stephanie Hanwell. JF-Colleen Tremblay, Jessica Tatar, Jessica Coombes, Melissa Farr, Rhonda Rheume. IF-Amanda Booth, Kristyn Sbordone.

NORTH STAR FSC: PRE-Beth Favreau, Kelly Bouley, Tracy Gwyther. 1-Kara Donahue, Noa Lai. 2-Kristin Marshall. 3-Vanessa Lee. JF-Ellen Jeskey. IF-Vanessa Lee. NF-Jennifer England. ABFI-Deborah Edwards.

NORTH SUBURBAN FSC: PRE-Lauren Semivan, Lindsay Mann. JF-Hillary Schwarb.

NORTHEAST IOWA FSC: P DT-Melanie McGeough. PBR DT-Melanie McGeough.

SC OF NORTHERN VIRGINIA: PRE-Jennifer Volk, Kelly Turner, Kristin Leonard, Stephanie Faust. 1-Amanda Evora, Jennifer Mercer, Jessica Robertson. 2-Caitlin Obremski, Stacey Seidel. PF-Jennifer Volk, Stephanie Faust. JF-Caitlin Obremski, Jennifer Eroo, Stacey Roshan. IF-Kristin Brannon.

OGDENSBURG FSC: PRE-Alissa Calandra, Danielle Calandra, Katie Chalom.

OKLAHOMA CITY FSC, INC.: PRE-Alexis King, Emily Fine, Kasha Marlow, Lindsey Ann Stucks, Stephanie Barrett. 1-Andrew Franklin, Brandi Guthery, Penny Hlubek. 2-Allison Franklin, Amber Mallory, Heather Young, Megan Rice. PF-Alexis King, Emily Fine, Kasha Marlow, Lindsey Ann Stucks, Stephanie Barrett.

JF-Heather Young.

OLD YORK ROAD SC: PRE-Christina Aicher. PF-Christina Aicher. JF-Emily Sluzas, Kayla Agran, Mandy Messinger, Miriam Goldberg, Taryn Kay. P DT-Kevin Keene. BR DT-Rachel Kolman. PS DT-Jacob Agran.

OLEAN AREA SC: PRE-Lisa Marie Garmong.

FSC OF OMAHA: PRE-Andrew Deffenbaugh. 2-Brenda Farley, Joshua Murphy, Taylor Billotte. 3-Beth Barr. PF-Andrew Deffenbaugh. JF-Brenda Farley, Elizabeth Kallstrom, Taylor Billotte. P DT-Andrew Deffenbaugh. PBR DT-Austin VanDeveer, Elizabeth VanDeveer. BR DT-Max Archer. S DT-Rebecca Di Giacinto.

ORANGE COUNTY FSC: PRE-Carol Smoody, Eunice Kim, Grace Young. 2-Courtney Reling, Natalie Phelps, Robin Harnish. PF-Carol Smoody, Eunice Kim, Grace Young. JF-Courtney Reling, Natalie Phelps, Robin Harnish.

ORLANDO FSC, INC.: PRE-Arezou Ireta, Erin Taute, Melissa Dantic. 3-Christine McElwain, Lisa Johnson. PF-Arezou Ireta, Erin Taute, Melissa Dantic. JF-Mindy Banton, Sheila DePrima. PFD-David Taublee, Lisa Johnson. BFD-David Taublee, Lisa Johnson.

INTERNATIONAL SC ORLANDO, INC.: PRE-Carol Glaros, Patrick Eby, Shoshanna Friedman. 1-Bernadette Feliciano. PF-Martha Mori, Patrick Eby, Shoshanna Friedman. JF-Valerie Baumeister.

OSWEGO FSC, INC.: PF-Alexislyn Stepien. P DT-Mary Kate Dehm.

PALM DESERT FSC: PRE-Danielle Brower. PF-Danielle Brower.

PALOMARES FSC: PRE-Kristina VanKregten, Stephanie Smith-Habelow. 1-Judy Lao. 2-Anna Cherednichenko, Tanisha Thompson. PF-Kristina VanKregten, Stephanie Smith-Habelow. JF-Anna Cherednichenko, Tanisha Thompson. IF-Lyndsey Dow. ABFI-Lisa Brumli. ABFS-Lisa Brumli. P DT-Cynthia Broderick, Emily Eaton, Judy Lao, Sara Sprang.

PARK FSC, INC.: PRE-Mariana Brancouveau.

PASADENA FSC: PRE-Lyn Heiden, Melissa Bishop, Stephanie McNeill. 1-Crystal Uribe. 2-Amy Lou Ferrer, Duy Nguyen, Julie Zuchowski. PF-Lyn Heiden, Melissa Bishop, Victoria Pang. JF-Amy Lou Ferrer, Duy Nguyen, Julie Zuchowski, Marieann Del Barrio. NF-Talia Roth.

PAVILION SC OF CLEVELAND HGTS: PRE-Katie Collins, Maya Edwards. 1-Jennifer Welty, Nicole West. PF-Katie Collins, Maya Edwards. NF-Meredith Eland. PBR DT-Tia Robertson.

PAWTUCKET & PROVIDENCE FS: 2-Caitlin Tierney. PF-Rachel Segal. JF-Jennifer Pontes. P DT-Timothy Bachand. PBR DT-Rachel Huling.

PENGUIN FSC, INC.: 2-Kathleen Rhodes. 3-Casey Rhodes. JF-Kathleen Rhodes. IF-Casey Rhodes. JRF-Tamirind Johnson.

THE PENINSULA FSC: PRE-Karen Smith. 1-Andria Bouskos, Sally Robinson, Theresa Ellerhorst. 2-Darby Gaynor, Justin Pun. 3-April Jackson, Cherylyn Sebastian, Kate Renninger, Tiffany Green, Trisha Tutana. 4-Emi Lesure, Miwa Watanabe, Stephanie Pun, Whitney Gaynor. 5-Kimberly Edwards. 6-Evelynn Raphael. 7-Michelle Nathan. PF-Karen Smith. JF-Darby Gaynor, Felipa Rodriguez, Justin Pun. IF-April Jackson, Kate Renninger. NF-Emi Lesure, Maria Smith, Whitney Gaynor. ABFI-Ted Gradian. JPR-Whitney Gaynor. PBR DT-Alicia Piscatelli, Jennifer Lee. BR DT-Jennifer Lee. PG DT-Denise Snyders.

PENN STATE FSC: PF-Bethany Ling. JF-Kelley Bitterly, Lori Vexler. ABFS-James Rushnock. ASFS-James Rushnock.

PHILADELPHIA SC & HS: PF-Alice Fetter. IF-April Loflin.

SC OF PHOENIX: PRE-Erin Harbinson. 2-Andria Timmons. PF-Erin Harbinson. IF-Elizabeth Gullikson. PFD-Erin Lee Hirschberg. BFD-Erin Lee Hirschberg.

PILGRIM SC: PRE-Emily Brush, Jamie Valente, Kathryn Johnson. 1-Blanca Rossetti, Leah Siegel. 2-Jana Linhart, Lacey Cochrane. 3-Khara Hersey. PF-Boni-Jeann Hoey. JF-Kristin Smith. IF-Shelley MacLeod.

PITTSBURGH FSC, INC.: 1-Amy Morse. PF-Lindsay Rahl, Megan Stanton, Risha Carnes, Samantha Shafer. JF-Amy Morse, Jason Kolcun, Katybeth Jerome. NF-Michelle Miller.

PITTSFIELD FSC: JF-James Baker. PBR DT-Wendy Kenyon.

PLYMOUTH FSC: PRE-Andrea Brophy, Halie Bojovic, Kristin Overfield, Meredith Boxberger. 1-Jessica Brackenridge. 2-Erin Banner, Marya Bak, Valerie Chambers. 5-Mary Faith Neenan. 7-Jennifer Katulski. PF-Halie Bojovic, Jacqueline Lupinacci, Meredith Boxberger. JF-Erin Banner, Julie Glissman, Molly Townsend. IF-Kristen Kowalczyk. JRF-Mary Faith Neenan. P DT-Andrea Brophy. PBR DT-Andrea Brophy.

PORT HURON FSC: PRE-Jill Setter. 2-Andrea Fraser. 3-Kelley Kamin. 6-Kristi Ruthven. PF-Jill Setter. JF-Lawren Smith. IF-Kelley Kamin. P DT-Megan Lardner. PBR DT-Kathryn Beck. BR DT-Casey Oliver, Julie Kamer. PS DT-Melissa Orr. S DT-Kara McFadden.

PORTAGE LAKE FSC: 1-Jolene Ryan, Laura Gentry. 2-Allison Brown. 3-Lisa Lueking. PS DT-Marja Makinen. PG DT-Amy Goke. SFD-Allison Brown.

PORTLAND ISC: PRE-Chance Hamlin. 1-April Willeford, Denise Lazatin, Genoa Titus, Racheal Johnson, Rory Sullivan. 2-Alexander Wilson, Emily Quinn. PF-Chance Hamlin, Leah Gregowicz. JF-Courtney Prince, Erica Oleson. JRF-Christine Sugiyama. ABFS-Jerilyn Felton. P DT-Elke Sykes, Rory Sullivan. PBR DT-Rory Sullivan. BR DT-Ikaika Young, Kakani Young. PS DT-Sarah Bickford.

PRINCETON SC, INC.: 1-Sara Lott. PBR DT-Shannon Coffey. BR DT-Sara Lott, Sarah Danielson.

PUEBLO FSC: PF-Kosha Patel. JF-Sonia Patel. IF-Val Rising-Moore.

QUEEN CITY FSC: PRE-Allison Kling, Jaclyn Tetzl. 1-Melissa Johnson, Meredith Bockelman. 2-Samuel L Milby. 3-Ada Milby, Beth Ann Luman, Michelle Longbons. 5C-Melanie Price. PF-Allison Kling, Allison Wegman, Jaclyn Tetzl, Kelly Gilmore, Melinda Sandfort. JF-Laura Lynn Fischer, Samuel L Milby. IF-Ada Milby, Beth Ann Luman, Elizabeth Chapman, Emily Bohanon. NF-Mary Reid Gregory. JRF-Melanie Price. ABFS-Lisa McCormick. PBR DT-Kelly Gilmore.

RARITAN VALLEY FSC, INC.: P DT-Alison Kraus.

RED RIVER VALLEY FSC: PRE-Katherine Paseka, Nadine Nilles. 1-Alexis Hendrickson, Alison Johnson, Amy Wegleitner, Heather Buesseler, Mary Hamby, Nichole Mather. 2-Tara Mickelson. 5-Elizabeth Giedt. 6-Leah Nygaard. PF-Chalcee Fingarson, Jennifer Swann. IF-Amber Clapp. P DT-Katie Dahlstrom. PBR DT-Heidi Reule, Katherine Paseka, Nadine Nilles, Tanya Zitow. BR DT-Amy Wegleitner, Kelsey Sollom, Sara Iszler. PS DT-Heather Buesseler, Jill Kensok, Mary Hamby, Stephanie Marquart. S DT-Jessica Silovich. PFD-Elizabeth Giedt, Sara Christianson. BFD-Amanda Gallo, Erin McCallum, Lanita Sexton.

RHINELANDER FSC: 1-Amy Randel, Becky Aylesworth. JF-Amy Randel. PBR DT-Amy Randel. BR DT-Amy Randel, Jessica Habeck, Laura Nelli. PFD-Becky Aylesworth. BFD-Becky Aylesworth.

RIM OF THE WORLD FSC: PRE-Eric Taylor, Jessica Ashworth, Kathryn Howe, Lindsey DeMent, Meghan Cochran, Qianna Smith, Susan Chung, Susan Chung. 1-David Cochran, David Cochran, Susan Chung. 2-Susan Chung. PF-Jessica Ashworth, Lindsey DeMent, Susan Chung, Tamara Rajunov. JF-Susan Chung. IF-Huilanie Yang. NF-Shannon Seery, Shannon Seery. P DT-Joan Birmann, Katy Edgecomb. PBR DT-Katy Edgecomb. BR DT-Kathi Jo Wormald. PS DT-Huilanie Yang. S DT-Ginna Hovsepian, Huilanie Yang, Morgan Crabtree. PFD-Morgan Crabtree.

ROCHESTER FSC: PRE-Alia Westra, Ashley Pehler, Katie Lembach, Laura McKusick, Lauren Vilen, Tinnie McCabe. 1-Alesia Riker-Jajowka, Lindsay Sarr. 2-Allyson Ritchie. 3-Andrea Rodrick, Katharine Drennan. 6-Jaime Lea Lund. PF-Alia Westra, Ashley Pehler, Katie Lembach, Kelsey Scanlon, Lauren Vilen, Lisa Lochner. JF-Brook Ahlquist, Colleen Carstensen, Emily Orszulak, Rechelda Ramirez. IF-Andrea Rodrick, Katharine Drennan. NF-Amanda Kiser. JRF-Annika Gill.

FSC OF ROCKFORD, INC: PRE-Lindsay Lunsford. 1-Emily Gustafson, Erin Spears, Michael Ruhnke. 2-Alexis Williamson, Andrea Cesario. 4-Jamie Walzer. 6-Amy Wieseley, Kelly Pitipone. PF-Kristina Moses, Lindsay Lunsford. JF-Andrea Cesario, Nicole MacNerland. NF-Lisa Alfano. JRF-Raegan Brierton. ABFS-Scott Salzman. ASFS-Scott Salzman. PPR-Benjamin Clements, Brittany Meyers. IPR-Benjamin Clements, Brittany Meyers. NPR-Amy Wieseley, L. Jason Heffron. P DT-Maggie Ellis. PBR DT-Thomas Reif. BR DT-Erin Spears. PS DT-Suzanne Reif.

SC OF ROCKLAND NEW YORK: PRE-Kristin Pehush, Tamsin Davies. 1-Kimberly Corcoran. 2-Briana Ferrigno, Lauren Stewart, Simone Petrella. 3-Annette Rizea, April Hillel, Ranya Husami. 4-Priscilla Obletz. 6-Jennifer Bradbury. PF-Kimberly Corcoran, Kristin Pehush, Tamsin Davies. JF-Briana Ferrigno, Corey Fleisher, Lauren Stewart, Rheema Ricks, Simone Petrella. IF-Annette Rizea, Ranya Husami. JRF-Dana Marie Ceci. NPR-Jason Briggs, JoAnn Hodges.

ROCKY MOUNTAIN FSC: 1-Dana Kaersvang. 2-Abbey Spresser, Jazzette Gallo, Joy L Harrison. JF-Alyssa Garcia, Cole Taylor, Cynthia Sherman, Dana Kaersvang, Katie McCoy, Rebecca Brunemeier. NF-Tawnya Parker.

ROSEVILLE FSC: 1-Ann Ellen Heffron-Davidso. 3-Jeremy Allen. JF-Andrea Medcall, Elizabeth Lantz, Erin Baker, Shannon Mikel, Stefanie Reinhart, Torrie Lukin.

RYE FSC, INC.: PRE-Ashley Walker, Caroline Keogh. 1-Kristen Goodman. 2-Debra Kate Baillie, Jaclyn Silkowitz, Lacey Rose, Marianna Sackler. 3-Heather McDonough, Rebecca Avrutin. PF-Brittany Baillie, Caroline Keogh, Caroline Gaffney, Laura Gaffney, Laurie Leithner. JF-Elizabeth Pfloh, Jesse Petrucelli, Kimrie Savage, Lacey Rose, Margot Dickson, Melissa Greco. IF-Heather McDonough, Rebecca Avrutin. ABFS-Laurie Leithner.

SALT CITY FIGURE SKATERS, INC.: PRE-Jennifer Simmons. 1-Celina Visser. 3-Kimberly Salvatore. 4-Marylyn McLoughlin. PF-Bonhia Lee, Jennifer Simmons, Jessica Lasda, Megan Alama, Robyn Alama, Suzanne Simmons. JF-Celina Visser. NF-Marylyn McLoughlin, Susan Flynn. P DT-Layne Lawyer, Matthew Thomas, Robyn Alama. PBR DT-Megan Alama, Robyn Alama. BR DT-Bonhia Lee, Jennifer Simmons, Suzanne Simmons. S DT-Kimberly Salvatore. PG DT-Susan Flynn. SFD-Celeste Treadwell.

SAN ANTONIO FSC: PRE-Amber Knabel, Christina Coho, Laura McManus, Marissa Philippi, Sarah Anne Baxter. 2-Jennifer Pue, Stefani Johnson. PF-Amber Knabel, Christina Coho, Katherine Smith, Laura McManus, Marissa Philippi, Sarah Anne Baxter. JF-Amberly Kurburski, Jennifer Pue, Matthew Eichler. ASFS-Heath Rogers.

SAN DIEGO FSC: PRE-Michelle Anselmo. 1-Clarisa Mondejar, Jamie Ledbetter, Jennifer Cornette, Renee Shoikhet. 3-Christophe Miller, Kacey Miller. 4-Clara Hoagland, David Recchia, Michal Kloeffer. PF-Michelle Anselmo. IF-Christophe

Miller, Kacey Miller, Kharen Kloeffer. NF-Clara Hoagland, David Recchia, Michal Kloeffer. PPR-Lauren Carbone. IPR-Lauren Carbone. P DT-Bryan Keller, Donna Lyons-Rhodes, Kristan Clark, Kristan Clark, Kristan Clark, Wendy Buchi, Wendy Buchi, Wendy Buchi. PBR DT-Darien Nelson, Ginny Sanchez, Wendy Buchi. BR DT-Anne Livelsberger, Rosemary Gardey, Wendy Buchi. PS ADT-Barbara Miller. S DT-Devrea Jewell, Michal Kloeffer. S ADT-Judy F Clinton. PG DT-Jonathan Robbins. PG ADT-Barbara Wrensch, Gwen Morgen. PFD-Twila Schoettger.

SAN FERNANDO VALLEY FSC: PRE-Harlyn Sidhu. 2-Nina Evans. 3-Christina Kane, Hitomi Kadono. JF-Nina Evans. IF-Christina Kane, Hitomi Kadono.

SANTA ROSA FSC: PRE-Katharine Harwell, Laura Wylie, Shannon Magee. 1-Joanna Ponick, Stacy Amundsen, Taylor Landuyt. 3-Marissa Kirk, Sarah Salaz. PF-Arin Fife, Katharine Harwell, Laura Wylie, Lindsay Bauman, Lindsay Buciles, Melissa Johnson. IF-Sarah Salaz. P DT-Gina Husk, Jamie Pearlman, Sarah Jenkins. PBR DT-Caitlin Feldman, Karly Avery. PG DT-April Ellis.

SEATTLE SC: PRE-Nicole Powers. 2-Olivia Olsen. 5C-Brienne Gustafson. PF-Nicole Powers. JF-Linnea Welton, Maiko Ochi, Olivia Olsen, Stacy St. John. IPR-Brian Boissonneault. NPR-Brian Boissonneault. P DT-Alexis Cox, Lisa Ware, Sarah Magruder, Suki Mulberg. PBR DT-Alecia Moore, Alexis Cox. BR DT-Brighton Hanson. PFD-Melissa Metzger. BFD-Melissa Metzger.

SHAKER FSC: PRE-Beth Dolinsky, Jacquelyn Catanese. 1-Ashley Nice, Nora Dietsch. 2-Ariel Stern-Markovitz, Erin Wolf, Ross Kinder. 3-Lindsay Karfeld. 4-Cristen Means, Michelle Taubman. 5-Jill Webster. PF-Kelly Monachino. JF-Ariel Stern-Markovitz. IPR-Anna Madorsky, Ross Kinder. P DT-Elizabeth Treister. PBR DT-Elizabeth Treister, Elizabeth Treister. BR DT-Anna Madorsky, Jennifer Wallace. PS DT-Cristen Means. S DT-Jill Webster.

SHORELINE FIGURE SKATERS: PRE-Jill Barents, Tracy Schloss. 1-Jonah Neagle, Lisa Gibney. PF-Jill Barents, Tracy Schloss. JF-Jonah Neagle. P DT-Jocelyn Thompson. BR DT-Meghan Snitkin.

SILVER BLADES SC OF ROCKLAND: PF-Elizabeth Caruso, Megan Rand.

SILVER BLADES FSC OF KC: PRE-Carter Collins, Jennifer Lowe, Julia Rieper, Katie Mathies. 1-Jennifer Polette, Krista Stuchlik. 3-Elizabeth McLinay. PF-Jennifer Davidson, Jennifer Lowe, Julia Rieper, Katie Mathies, Samantha Gordon. JF-Abigail Herbert, Ashley Smith, Crystal Henry. IF-Elizabeth McLinay, Sydney Trethewey. NF-Caroline Bader, Sean Tilley. PPR-Leslie Berger. S DT-Sara Douthat.

SILVER STREAKS SC: PRE-Hilary Drohan, Lindsay Brainerd, Rachel Demeule, Renee Shanahan. 1-K. Elizabe Flood. 3-Michelle Hincman. PF-K. Elizabe Flood. JF-Elizabeth Smith, Mara Moffie, Stephanie Snider. IF-Diane MacGregor, Jessica McKenzie.

SKANEATELES FSC: JF-Nicole Fishlock. P DT-Tiffany Conroy.

SKOKIE VALLEY SC: PRE-Erika Samis, Lauren Minelli. 1-Amy Rapoport, Anne Park, Ashley Coveny, Jaclyn Braverman, Lauren Schwartzman, Lindsey Cole, Lydia Savitz, Rachel Collins. 2-Elizabeth Rozenblat, Siobhan Findlay. 3-Lisa Andrews, Amy Popp, Darci Phillips. 6-Alison Hicks. PF-Erika Samis, Lauren Minelli. JF-Cheryl Primack, Jolene Tan, Katy Hill, Lindsay Buntman. IF-Mazzzone, Lizzy Hill, Siobhan Findlay. IF-Jaime Passaglia, Kristine Schmidt. JRF-Becky Hochstein. P DT-Jenna Rose. PBR DT-Kristine Schmidt. BR DT-Jennifer Hufnagel. PS ADT-Renee Tesmer-Brainerd. S DT-Alison Hicks. PFD-Raphael Lieb. BFD-Lois Todd, Raphael Lieb.

SOUTH MOUNTAIN FSC: 2-Courtney Sherlock, Michele Di Biasio. 3-Bethany Levine. PF-Melissa Gouin. IF-Karen Peterson, Stephanie Czech. JRF-Michela Tambore.

SOUTH BAY FSC, INC.: PRE-Jennifer Melvin, Vaishali Trivedi. 1-Aidi Gallanders. 3-Heather Rollins. PF-Jennifer Melvin, Vaishali Trivedi. IF-Heather Rollins.

SOUTH DAYTON FSC: 1-Lisa Horstman. PF-Jennifer VanMeter, Sarah Gainer.

SOUTH MOUNTAIN FSC, INC.: PRE-Aaron Gillespie, Brittany Weeden, Courtney Leone, Lauren Pucciarello. 2-Cristina Stanczyk, Natalie Epworth. PF-Aaron Gillespie, Lauren Pucciarello, Michele Messina. JF-Cristina Stanczyk, Natalie Epworth. JRF-Sara Ward. P DT-Abbie Slatius, Adrienne Platner, Sharonlee Zitirin. PBR DT-Claudia Erde. BR DT-Lauren VanNatten. PS DT-Samantha Safer.

SC OF SOUTHERN NEW ENGLAND: PRE-Candice Cabral, Courtney LaFleur, Kayla Freeborn. 1-Alyssa Rezendes, Ashley Zaverucha, Joseph Cabral, Kathleen Branco. 2-Hannah Laudon. 4-Suzanne Mattos. 5-Cindy Lee Mattos. JF-Bruce Hutchings, Dawn Copeland, Pamela Coates. PS DT-Hannah Laudon.

SOUTHERN NEW HAMPSHIRE SC: 2-Kristina Baker. IF-Andrea Leshinski, Kimberly Leshinski.

SOUTHERN VALLEY FSA: 1-Kierann Smith.

SOUTHPORT SC: PRE-Melissa Giacomara. 2-Melissa Ringler. 3-Jonelle Myers. PF-Melissa Giacomara.

SOUTHWEST MICHIGAN SC: PRE-Heather Wahr, Heather Fons, Kristina Dietz, Shawna Winter. 1-Kristina Simpson. PF-Heather Wahr, Kristina Dietz, Shawna Winter. P DT-Heather Fons, Kristy Constantine. PBR DT-Adrian Tolhurst. BR DT-Jennifer Rachmaciej, Melissa Rachmaciej. PG DT-Erica Dyresen.

SPRINGFIELD FSC: PRE-Kristin Eggebrecht, Shelley Couper.

1-Angela Langley, Brooke Sunderlin. 2-Emily Brown. 3-Carleen Malany. 4-Rachel Sunderlin. 7-Jaime Clark. PF-Kristin Eggebrecht, Matthieu Fortin, Shelley Couper, Wendy Bogart. JF-Angela Langley, Emily Brown. NF-Amy Lynn Zaffiri, Jennifer Mattingley. JRF-Emily Harter, Jaime Clark.

THE SC OF SPRINGFIELD: PRE-Angelique Kelley, Jennifer Rooke. 1-Hannah Meeran. 2-Aimee Leventis, Heather Garrity. 3-Lauren Garrity, Nancy Tulathimutte. PF-Heather Warwick, Kelly O'Malley. JF-Gregg Thornton, Heather Garrity. IF-Alexis Mante, Lauren Garrity, Nancy Tulathimutte. P DT-Angelique Kelley, Gregg Thornton, Nancy Tulathimutte. PBR DT-Hannah Meeran, Megan McVey, Nicole Boueya.

ST. CLAIR SHORES FSC: PRE-Allyson Hood, Krysten Tesch, Lisa Rheume, Megan Saylor. 1-Cheryl Catalanotte, Christie Skoczek, Danielle Brown. 2-Colleen Brennan, Jessica Frevik. 3-Pamela Corden. PF-Allyson Hood, April Thomas, Krysten Tesch, Lisa Rheume, Megan Saylor, Susan Pocock. JF-Carly Rodak, Colleen Brennan, Darlynn Deneweth, Kelly Dougherty, Nicole Raspa. JRF-Kristie Kolozsvary, Lindsay Ronayne. PBR DT-Jillian Zylinski, Megan Saylor.

ST. JOSEPH FSC, INC.: PRE-Audrey Elliott, Jessica Moran. 2-Jessica Stewart. PF-Audrey Elliott, Jessica Moran. JF-Megan Dorris, Raylee Novak. IPR-Christa Simpson. P DT-Megan Dorris. PBR DT-Raylee Novak. BR DT-Craig Partamian.

ST. MORITZ ISC, INC.: PRE-Alison Ueyehara, Daniel Grant. 1-Angela Bliss, Brian Webster, Chrissy Byron, Jenny Reynoso, Joshua Cutton, Scotty Smith. 2-Evan Young, Sonia Sylls. 3-Amy Phelps, Jessica Larsen, Jessica Halim. 4-Danielle Piro, Erin Elbe, Kelly Peterman. PF-Alison Ueyehara, Daniel Grant. JF-Evan Young, Sonia Sylls. IF-Jessica Larsen, Jessica Halim. NF-Danielle Piro, Kelly Peterman. JRF-Gerald Kaloi. IPR-Rebecca Erb. P DT-Serena Phillips. PBR DT-Francisco Leta-Pombo, Serena Phillips. BR DT-Hannah Lawler, Scott Stewart. PG DT-Amy Jaramillo.

ST. PAUL FSC, INC.: 3-Erica Evenson, Kristy Harris. 7-Katie Grinnell. JF-Benjamin Miller. JF-Bethany Peterson. NF-Heather George, Lindsey Halleckson. JRF-Jennifer Jensen, Jessica Kaye.

ST. CLOUD FSC: 6-Alisha Fouquette.

STAR OF THE NORTH SC: PRE-Shannon Wesley. 1-Danielle Kent. 2-Nichole Hedlund. PF-Shannon Wesley. JF-Danielle Kent.

STONE MOUNTAIN FSC: PRE-Alexander Garrard, Franklin Harrell, Stephanie Garrard. 1-Duncan Vaughn. PF-Alexander Garrard, Franklin Harrell, Stephanie Garrard. PBR DT-Donald Lalor.

STONEHAM FSC: PRE-Danielle DiBenedetto, Jessica Johnson. 4-Jennifer Baker. PF-Bonnie MacIsello, Jessica Johnson, Lauren Cornetta, Louann Donovan. JF-Christine Fedele, Nicole Fedele. P DT-Queenie Antonucci.

SUBURBAN SC OF MARYLAND: 5-Loryn Oliver.

SUN VALLEY FSC, INC.: 1-Mary Bathen. 6C-Lani Lein Nilsson. PF-Holly Sanders, Rainey Schneider. P DT-Megan Richer, Sierra Simmons. PBR DT-Cathy Asborno, Heather Mynatt. PFD-Susan Pereira.

SUPERIOR FSC: JF-Kate Murphy.

SWAN CITY ICE SKATERS: PRE-Heather Miller. PF-Heather Miller. P DT-Cheryl Uttech.

SYMMETRIC FSC: PRE-Holly Hester, Katherine Porter, Lindsey Fliger, Pella Anderson. 2-Kate Williams. PF-Leigh Gannon, Pella Anderson, JF-Larissa D'Andrea.

SYRACUSE FSC, INC.: 1-Jennifer Taranto. PF-Caitlin Connolly, Shannon Connolly. JF-Amanda Alcott, Sidney Coulter.

TAMPA BAY SC: PRE-Jessica Cummings, Lauren Dunkle, Lia Stephanos. 1-Hanna Drozdowski, Morgan Tweedie. 2-Brieanne Lyda, Lois Ann Fincher, Tanya Taylor. JF-Brieanne Lyda. IF-Cheyne Coppage. NF-Bubba Ward, Josiah Modes, Meredith Ward. PPR-Brandi Seabolt, Cheyenne Coppage, Daniel Minton, Josiah Modes, Kristina Skinner, Mallory Ward, Nicole Purdy. IPR-Josiah Modes, Nicole Purdy. P DT-Melissa Engle. PBR DT-Alice Jones, Melissa Engle. BR DT-Melissa Engle. PFD-Cheyne Coppage, Shannon Edens. BFD-Cheyne Coppage, Shannon Edens.

THIEF RIVER FALLS SC: 2-Rebecca Mooney. PBR DT-Stephanie Wiseth.

THOROUGHbred FSC: 2-Marta Tuttle. P DT-Lindsay Schweighart, Marta Tuttle. PBR DT-Marta Tuttle.

TIMBERLINE SC: PRE-Amy Gunnerson, Angel Overgaard, Jana Davidowski, Kacy Burg, Lindsey Day, Michelle Jensen. 1-Jessica Plachetka. 2-Stephanie Bay. PF-Angel Overgaard, Crystal Windorski, Kacy Burg, Lindsey Day, Michelle Jensen. P DT-Jana Davidowski, Lisa Jensen. PBR DT-Angel Overgaard, Danielle Wisz. BR DT-Amy Gunnerson, Beth Polzer, Dustin Ehster, Kathy Brazaitis, Mara Medeiros, Roxanne Radtke.

TRI-CITIES FSC: 2-Jacquelyn Orchard. P DT-Jacquelyn Orchard, Janessa Orchard.

TRI-COUNTY FSC: 1-E Jakob Barnard. IF-Heidi Warmoth.

TROY SC: PRE-Christie Barajas, Jessica Westfall. PF-Christie Barajas, Jessica Westfall. NF-Erin Wagner.

TULSA FSC, INC.: PRE-Jessica Harper. 2-Cynthia Walworth, Stacey Seabeck, Tiffani Jordan. PS ADT-Stacey James.

UNCLE SAM SKATING CLUB: 1-Kendra Poehling. IF-Rachel Levine. PBR DT-Emily DiPace.

UTAH FSC: PRE-Tonya Leigh. 1-Lindsey Addams, Viviana Rodriguez. 2-Kristen Vigil. 3-Kadee Leishman. PF-Erica Bieden, Tonya Leigh. IF-Kadee Leishman, Maren Burbridge. NF-Erin Bone.

SC OF UTICA: PF-Amy Clair, Angelina Sacco, Elizabeth Crawford, Kelly Smith, Kelly Oddy, Nicole Manley, Priscilla

Witte. JF-Laura Zammiello. IF-Cynthia Withington. P DT-Lauren Daley, Michele Kernan. BR DT-Cynthia Withington, Jennifer Miles. 5 DT-Audrey Mastrovito.

SC OF VAIL INC.: PRE-Alicia Heelan. 2-Lindsay Dalton. 3-Amanda Tennant. 5-Christophe Malato. PF-Alicia Heelan. JF-Lindsay Dalton. IF-Amanda Tennant. NF-Jennifer Lucas.

VALLCO SC: PRE-Alexandria Stegner, Holly Bragg. 1-Mollie Monahan. 2-Mindy Roberts. PF-Alexandria Stegner, Holly Bragg, Melinda Dugish. JF-Mindy Roberts. P DT-Blythe Hardeman, Olivia E.M. Goode. PBR DT-Mindy Roberts.

VALLEY FSC: 1-Anne Henseler, Maureen Asp. 2-Angela Seckar. BR DT-Cortney John.

WAGON WHEEL FSC: PRE-Bethany Kosman, Hilary Leng, Jaime Weinshenk, Jamie Anderson, Lisa Bonjour, Lisa Beiford, Melissa Vanoverbeke, Nicholas Pilborough, Sara Anderson, Stephanie Lopez. 1-Deanna Stellato, Megan Miller. 3-Lauren Lovda. 6-Sara Jack. PF-Bethany Kosman, Hilary Leng, Jaime Weinshenk, Jamie Anderson, Lisa Bonjour, Lisa Beiford, Melissa Vanoverbeke, Nicholas Pilborough, Sara Anderson, Stephanie Lopez. JF-Jennifer Malone, Lori Brook. IF-Dehnel Kluzak.

WALLACE FSC, INC.: PRE-Colleen Gendron, Demaris Mills, Heidi Jacob, Kristen Ross, Marianne Mahoney. 1-David Pelletier, Mairead Matthews, Melissa Irving, Tessa Beadoin. 2-Melissa Gravel, Talya Sapientza. 3-Jessica Dupuis. PF-Colleen Gendron, Jill Gonyon, Kristen Ross, Marianne Mahoney. JF-Allison Gallant, Karen Thibeault, Melissa Irving, Sabrina Sawyer, Sara Rafuse. IF-Jessica Dupuis, Talya Sapientza. P DT-Diane Mahoney, M Jonathan Dupuis.

WARWICK FIGURE SKATERS: PRE-Amy Chauvin, Anna Tobias, Ashley Neuhauser, Kerri Silva, Lauren Bryda, Natasha Bobek. 1-Bonnie Unkussi. 6-Diana Pepper. PF-Adam Kaplan, Lauren Bryda. JF-Bonnie Unkussi. P DT-Amy Chauvin, Brenda Dillman, Caryssa Marzilli, David Dillman. PBR DT-Roanne Rebello.

ICE CLUB OF WASHINGTON: BR DT-Ruth Schrider. PS ADT-Marie Lerch.

WASHINGTON FSC: PRE-Alissa Faden, Barbara Shaw, Caroline Thorington, Caroline Porter, Carolyn Davidson, Chayeon Koo, Danielle Flythe, Devon Olivola, Elizabeth Conley, Eve Copeland, Ginny Orndorff, Jennifer Johns, Katie Lane, Kin Ling Sham, Lauren Wagner, Sarah Spencer. 1-Benjamin Cohen, Elsbeth Purdy, Emily Morris, Jacqueline Sheppard, Megan Blaker, Sarita Aguiniga. 2-Christine Lee, Crystal Kim, Meredith Tilch. 3-Rebecca Adams. 4-Gabriel London. 7-Barbara Chen, Derrick Delmore. PF-Alissa Faden, Caroline Thorington, Caroline Porter, Carolyn Davidson, Chayeon Koo, Devon Olivola, Elizabeth Conley, Eve Copeland, Ginny Orndorff, Henry Richardson, Jennifer Johns, Katie Lane, Kin Ling Sham, Lauren Wagner. JF-Christine Lee, Emanuela Marino, Jennifer Goebel, Meredith Tilch, Noelle Mercer. JRF-Latoya Barnett, Tsai-Wen Hu. ABFS-Cyandi Bonds-Conaway, Michael Richmond. ASFS-Deborah Seaman. BR DT-Anna Kendall, Konrad Bergandy, Sandra Sgarlata. PS DT-Konrad Bergandy. PS ADT-Donald Griggs. 5 DT-Alison Thompson, Alissa Barrett.

FSC OF WATERTOWN, INC.: PRE-Kimberlee Beevers. 1-Molly Souch, Toni Petrillose. ASFS-Michael Mahoney. IPR-Colette Gipperich-Amici. PG DT-Colette Gipperich-Amici, Sarah Yaussi. PG ADT-Michael Mahoney. PFD-Jennifer Moseley.

WATERTOWN SC INC.: JF-Gillette DeBary. IF-Michelle Miklinevich. BR DT-Jana Gold.

SC OF WAYNE: 1-Charlotte Whitaker. JF-Melissa Shelton.

WEST SHORE FSC: PRE-Bridget Shramek. 1-Adam Smith. PF-Ashley Havanec, Bridget Shramek, Jessica Petretti, Kelly Gembala, Lauren Richnasky, Marius Grigoriu. JF-Carla Grywalski.

SC OF WESTERN NEW YORK: PRE-Ann Wojciechowski. JF-Adam Beyer, Nick Schwartz. NF-Cory Harper. P DT-Kristina Soderlund.

WESTLAND FSC: PRE-Jenny Sluzinski, Rachael Watkins, Shannon Baker. 1-Brandi Reed, Jennifer Goen. 2-Elizabeth Cox, Erin Oke. PF-Jenny Sluzinski, Rachael Watkins, Shannon Baker. JF-Dolores Acevedo.

WESTMINSTER FSC OF ERIE: PRE-Sarah Tar, Stephenie Diluzio. PF-Sarah Tar.

WHITE PLAINS FSC: PRE-Meredith Schwartz, Michelle Evangelista. PF-Meredith Schwartz, Michelle Evangelista.

WHITE ROSE FSC: 2-Kathleen McClure. JF-Jennifer McClure, Kathleen McClure.

THE SC OF WILMINGTON, INC.: 2-Lauren Skalina. PF-Jaana Martin, Jenna McElroy. JF-Lauren Skalina. IF-Kimberly Erdner. NF-Dawn Eminson. PBR DT-Kimberly Kent. PG DT-Brenda Flanagan. PFD-Nancy Neupert, R Keith Tindall.

WILMINGTON FSC: PRE-Amy Valente, Elizabeth Asch, Lauren Holloway, Melissa Arlotta. 1-Rachael Strandberg. 2-Emily Dodge, Kim Leo. PF-Courtney Connors, Jennifer Surette. JF-Lindsey MacPherson. NF-Cheryl Sirignano.

WINCHESTER FSC: 1-Danielle Blanc, Laura Tortolano, Megan Bailey. 2-Heather Quimby. 3-Heather Cooney. 5-Nicol Lally. JF-Elizabeth Nadeau. IF-Kristin Manna.

WINDY CITY FSC: PBR DT-Rachel Erickson. BR DT-Claudia Mosier, Julian Ares.

WINDY HILL SC: PRE-Amika Harada. 1-Alexa Liquori, Anna Reguero, Mauro Bruni. 2-Melissa Ralph. PF-Tracy Pidgen. JF-Anna Reguero, Julie Bernstein.

THE WINTER CLUB: PRE-Diana Wardell. 2-Sarah Moosbrugger. PF-Christina Creteur, Danielle Delahanty, Libby

Schuville, Lucy Coneys, Mary Quintilliar, Sara diBonaventura. JF-Elizabeth Wenk, Margaret Wenk, Shauna Moriarty. IF-Elena Drakos.

WINTERHURST FSC: PRE-Chelsea Fredrickson, Erin Brady, Lindsay Mariage, Shannon Schultz, Stephanie Botos. 2-Parker Pennington. PF-Chelsea Fredrickson, Colin Pennington, Erin Brady, Matt McGrath, Megan Martin, Micaela Chew. JF-Kelly Goliat. JRF-Deana Gerbrick. P DT-Mary Louis Holland. PBR DT-Matthew Dobson. PFD-Kelly Corrigan. SFD-Michael Keller, Shelly Martin.

WINTHROP SKATING ASSOC, INC.: PRE-Alexa Simeone. PF-Alexa Simeone.

WISCONSIN FSC, INC.: 1-Anne Golden, Emily Wagner. 2-Ashley Sinner. 5-Jessica Wisner. PF-Elizabeth Herbst, Jill O'Kelly. NF-Elizabeth Peltz, Ellen Birschel. JRF-Jessica Wisner. P DT-Amy Chang, Jenny Chudy, Mary Reneau. PBR DT-Samantha Heindl. S DT-Jessica Schmidt.

WISSAHICKON SC: 1-Allison Seitchik. 2-Frances Betancourt, Jessica Seitchik, Lauren Hill, Lesley Freiman, Martin Weinberger, Sarah Kanes, Sonya Jajrai. 3-Amy Welton, Nikki Nocella. 6-Reilly Dempsey. PF-Elizabeth Steel, Elsbeth Carter, Fiona Lapham. JF-Frances Betancourt, Lauren Hill. IF-Rebecca Weisberg. JRF-Melanie Finley, Rachel Gamza, Valerie Klein. P DT-Lauren Hill. PBR DT-Erica Rogers, Lauren Hill. PG ADT-Hannah Harberg.

SC OF WORCESTER, INC.: PF-Elaine Arsenault.

WYANDOTTE FSC: PRE-Christophe Gagnier, Karly Newton, Nicole Gosselin, Rayna Pizzimenti. PF-Alicia Dobija, Amber Rostkowski, Christina Callender, Danielle Ohs, Jodi Floyd, Karly Newton, Kristen Pierce, Lindsay Crooks, Stephanie Agrusa. BR DT-Kimberly Kim.

WYOMING VALLEY ISC: 1-Stephanie Capece. P DT-Layla Smith.

YALE FSC: PRE-Elizabeth Pickard.

YARMOUTH ICE CLUB, INC.: 1-Kaitlin McGrath. 2-Barbara DeConto. 4-Kristina Kelly, Morgan Rowe. 5-Kristen Strojny. JF-Barbara DeConto, Kirsten Ward.

YONKERS FSC: 1-Christina Podlas, Stephanie Cavalli. 2-Jeanne Cavalli. JF-Cynthia Kim. BR DT-Stacey Richmond.

INDIVIDUAL MEMBER (EASTERN): PRE-Amanda Urbanczyk, Andrea Dunn, Apina Lastoff, Carrie Strassfeld, Jaclyn Oelerich, Jonathan Plourde, Krista Chaff, Megan Hewes, Nicole Grandmaison, Staci Hilliard. 2-Anna Levin, Christy Carper. 3-Curt Doten, Shannon Kieley. PF-Amanda Urbanczyk, Andrea Dunn, Anna Glozman, Apina Lastoff, Casey Fabyanski, Cathy Bender, Colette Jackson-Belle, Colleen Martin, Courtney Kopf, Debra Adamkowski, Devin Kopf, Devin Schwarz, Elizabeth Fitzpatrick, Jaclyn Oelerich, Jennifer Harper, Jennifer Cheney, Jessica Lamothe, Jonathan Plourde, Juliet Verhofstad, Kelly Sager, Kerri Aherne, Kristyn Rosen, Laurie Katz, Leigh Ann Murduca, Megan Hewes, Melanie Cohen, Nancy Cook, Tara Springer. JF-Amanda Villafane, Anna Levin, Falynn Wzorek, Scott Schwartz, Tanya Kleynburg. ABFS-John Hull. ASFS-John Hull. PPR-Barbara Steele. IPR-Barbara Steele. NPR-Barbara Steele. JPR-Jane Kanicka. P DT-Alissa Bronsteen, Joseph St. Don, Linda Shure, Melissa Clark, Robert Daw, Sam Snyder. PBR DT-Robert Daw. BR DT-Robert Daw, Samantha Lennon. S DT-Brigitte Bazel. PFD-Gerry Kaplan.

INDIVIDUAL MEMBER (MIDWEST): PRE-Gina Sanchez, James Russell, Jennifer Croix, John Russell, Kea Trepanier, Laura Kleiss, Tammi Lyn Schlictemeier, Valerie Robinson. 1-Brandi Bailey, Kavon Moradi. 2-Lauren Schuppe. PF-Gina Sanchez, Howard Yee, Jennifer Croix, Cassidy Lytle, Laura Kleiss, Marissa Mahon, Marissa Haggard, Randi Thompson, Stephanie Russo, Tammi Lyn Schlictemeier. JF-Dana Ginsburg, Daniel Pierce, Howard Yee, Jessica Weber, Kavon Moradi, Lauren Schuppe. IF-Dana Ginsburg, Howard Yee, Shanna Dedie. P DT-Jennifer Oyer, Rosalind Druce, Shanna Dedie. PBR DT-Lauren Schuppe, Rosalind Druce, Shanna Dedie. BR DT-Lynda Haines, Rosalind Druce. PS DT-Julia Speiser. PS ADT-Rosalind Druce. PFD-Julia Speiser.

INDIVIDUAL MEMBER (PACIFIC): PF-Benedict Wu, Jennifer Ward. JF-Jennifer Ward. BR DT-Julie Keith. S ADT-Marty Hawley.■

Calendar of Events

Continued from page 11

25-26 **12th Annual Garren Invitational**, sponsored by the Hudson Mohawk FSC, at the RPI's Houston Field House, Peoples Ave., Troy, NY 12180. For information contact: Laurie Ryan, 4 Highpointe Dr., Troy, NY 12182, 518-237-0622.

APRIL

1 **Spring fest '95 Precision Invitational Competition**, sponsored by the Central Ontario Section and the Markham FSC, at the Markham Centennial Centre Arena, 8600 McCowan Road North, Markham, Ontario, Canada. For information contact: Ilona Kurcigs, Central Ontario Section CFSA, 76 Oakdale Road, Suite #105, Downsview, Ontario M3N 1V9 Canada, 416-748-1069.

11-15 **1995 Juvenile/Intermediate National Championships**, hosted by the ISC of Indianapolis, Indiana/World Skating Academy FSC, Sycamore ISC, and the WC of Indianapolis, at the Indiana/World Skating Academy, Pan American Plaza, 201 South Capitol Avenue, Suite #001, Indianapolis, IN 46225. For information contact: Heidi Hahn Mallin, Event & Program Coordinator, Indiana/World Skating Academy, Pan American Plaza, 201 South Capitol Avenue, Suite #001, Indianapolis, IN 46225, 317-237-5565.

20-23 **20th Annual Ladybug Competition**, hosted by the Glenwood FSC, at the Homewood-Flossmoor Ice Arena, 777 Kedzie Ave., Homewood, IL 60430. For information contact: Karen O'Neil, 1442 Ridge Rd., Homewood, IL 60430, 708-756-6740 days or 708-799-0823 evenings.

21-23 **1995 U.S. Adult Figure Skating Championships**, hosted by the SC of Wilmington, Wilmington, DE. For information contact: Phyllis Howard, 703-256-4235.

28-29 **Springtime on Ice Precision Competition**, hosted by the Bowling Green SC, at the Bowling Green State University Ice Arena, Mercer Rd., Bowling Green, OH 43403. For information contact: Dr. Bruce G. Yeager, 541 Cambridge Pk. N., Maumee, OH 43537-2347, 419-867-5611.

MAY

19-21 **5th Annual Eugene Ice Dance Weekend**, sponsored by the Eugene FSC, at Lane County Ice, 796 W. 13th Ave., Eugene, OR 97401. For information contact: Don Prebus, 260 E. Second #6, Eugene, OR 97401-2396, 503-461-7533 days or 503-343-2803 evenings.

19-21 **9th Annual Open Competition**, sponsored by the Roseville FSC, at the Roseville Ice Arena, 1200 Woodhill Dr., Roseville, MN 55113. For information contact: Pamela Larntz, 420 Old Farm Rd., Shoreview, MN 55126, 612-482-0624.

JUNE

17 **New England Inter-Club Competition**, sponsored by the Newburyport FSC, at the Henry Graf Rink, 28 Low St., Newburyport, MA 01950. For information contact: JoAnne Houghton, 7 Howard St., Newburyport, MA 01950, 508-465-4886 days or 508-465-3458 evenings.

17-18 **North Shore Open Competition**, sponsored by the North Shore SC, at the Burbank Ice Rink, 317R Haverhill St., Reading, MA 01867. For information contact: Janet Lee, 124 Miles River Rd., South Hamilton, MA 01982, 508-468-1283. ■



1995 U.S. ADULT FIGURE SKATING CHAMPIONSHIPS

The Skating Club of Wilmington, Del. has been given a sanction by the USFSA Board of Directors to host the U.S. Adult Figure Skating Championships on April 21-23, 1995.

An official Announcement of this competition detailing the specific events, fees, and qualifications will be out shortly. The following is a brief listing of highlights of the event.

- Free Skating, Figure, Pair and Dance events
- Three Adult Free Skating categories: Bronze, Silver and Gold (geared to Adult Free Skating Test levels)
- Masters Novice, Junior and Senior Free Skating events based on standard USFSA Tests
- Adult and Masters Free Skating age categories within each level
- No test requirements at the Adult Bronze level
- Test and jump restrictions at lower levels
- Adult Dance events will be held as currently listed in the 1995 USFSA Rulebook
- Compulsory Figure events based on current Adult Figure Tests and Masters Figure events for current Novice, Junior and Senior levels
- Interpretive Skating events - over 40 and under 40 years of age
- USFSA National-level Referees and Judges
- A reception for competitors, informational seminars, a small tradeshow, etc. will be a part of the weekend events.

The competition is open to all eligible skaters age 25 and over. Events at this year's Regional and Sectional Championships will not be qualifying events to this Nationals. All adult skaters are welcome.

For further information, please contact:

The United States Figure Skating Association
20 First Street
Colorado Springs, CO 80906
719-635-5200

DON'T MISS!

Sunday, November 20, 1994
Sudafed Skate America
4:00 - 6:00 P.M. EST
ABC

Saturday, December 24, 1994
Fall Pro-Am Figure Skating
Challenge
4:00 - 6:00 P.M. EST
ABC

Saturday, February 11, 1995
1995 U.S. Championships
4:30 - 6:00 P.M. EST
8:00 - 10:00 P.M. EST (live)
ABC

Saturday, March 4, 1995
1995 U.S. Championships
4:30 - 5:30 P.M. EST
ABC

Sunday, April 16, 1995
Spring Pro-Am Championships
4:00 - 6:00 P.M. EST
ABC

Sunday, May 7, 1995
Campbell's Soups Tour of World
Figure Skating Champions
4:00 - 6:00 P.M. EST
ABC

The USFSA gratefully
acknowledges its sponsors.

KORBEL
CHAMPAGNE

Leggs
PANTYHOSE



**BAUSCH
& LOMB**

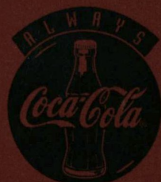
**Office
DEPOT, Inc.**

SEIKO

Campbell's Soups



Sudafed
Fast Relief, No Drowsiness



Thrifty
Car Rental

**TOM COLLINS
ENTERPRISES**

VISA

SKATING

The United States Figure Skating Association
20 First Street, Colorado Springs, CO 80906-3697